



## National Chess Month Named

The Chess Bug Sez:

by Robson

### USCF SETS FEBRUARY AS THE MONTH FOR MEMBERSHIP DRIVE

February—National Chess Month  
"Boost American Chess" the Slogan

Rolling up their sleeves for the task ahead, the members of the USCF National Chess Month Council are preparing for the gala month of February when the USCF inaugurates its first national drive for membership since its organization.

The time has passed, according to William M. Byland, Chairman of the Membership Committee, when the USCF can be content to rely upon the normal membership which has supported it through the years without solicitation. The growing program of the USCF has increased to a degree that demands whole-hearted support from all chess players in the country. Realizing that many of these players would gladly join the USCF if approached directly, the USCF Membership Committee will follow the example of Mohammed in dealing with the mountain and bring the membership drive directly to the chess players throughout the country.

A National Chess Month Council has been appointed with a key member in every State to dramatize the campaign in each area, the country efficiently. Chess clubs and chess publications will be requested to lend their efforts to the drive to make every chess player in the United States a member of the United States Chess Federation. And it is emphasized by the Committee that the success of the drive will largely depend upon the amount of cooperation given by the individual members of the USCF in canvassing their own friends and fellow club members for USCF memberships.

### CHICAGO CHESS & CHECKER BESTS ILLINOIS UNIV.

The recently organized Chess Club of the University of Illinois travelled to Chicago to meet defeat at the hands of a veteran team of the Chicago Chess and Checker Club at the latter's home quarters. After a hard struggle in which the teams proved more evenly matched than the score would seem to indicate, the University team was forced to admit defeat.

Bruno Czalkowski, captain of the Chicago Chess and Checker team, expressed the hope that this would be the first of many matches with teams from colleges and universities, and suggested that members of the Big Ten Conference in the vicinity of Chicago organize for intercollegiate competition around the nucleus of the chess clubs at the University of Chicago and the University of Illinois. The new IOK League in Indiana, Ohio and Kentucky has successfully organized its competition with greater distances to span between the member teams.

Results of the match at the Chicago Chess & Checker Club were:

| Chicago Chess         | Univ. of Illinois       |
|-----------------------|-------------------------|
| B. O. Dahlstrom.....1 | R. H. Berg.....0        |
| J. Winter.....1       | T. O. Omega.....0       |
| C. Jensen.....0       | R. E. Banister.....1    |
| E. H. Wicklund.....1  | C. K. Kirsher.....0     |
| S. Haacker.....1      | B. O. Gorozdon.....0    |
| A. Aronson.....1      | G. E. DeWolf.....0      |
| Mrs. B. Aronson.....1 | B. B. Youngberg.....0   |
| J. Betz.....1         | C. E. Glueck.....0      |
| W. H. James.....1     | C. E. Ockert.....1      |
| Chicago Chess.....7   | Univ. of Illinois.....1 |

host for the Illinois vs. Missouri team matches. More recently Peoria's hospitality as host and organizer of the 1945 U. S. Open Tournament will long be remembered.

Now the Peoria Chess Association adds its voice to those air-minded localities clamoring for a chess match via short-wave radio. Any club or community interested in this challenge may communicate with A. R. Hartwig, R.R. 6, Peoria 8, Illinois.



### INDIANA, OHIO, KENTUCKY FORM IOK CHESS GROUP

Within the last year chess enthusiasts at the University of Kentucky (Lexington) have formed a chess club, which now boasts of twenty-five members. W. B. Long of this club in co-operation with James A. Yunker, Jr., of the University of Louisville have been instrumental in organizing the IOK Intercollegiate Chess League which consists of chess clubs from the University of Kentucky (Lexington, Ky.), the University of Louisville (Louisville, Ky.), DePaul University (Greencastle, Ind.), and the University of Cincinnati (Cincinnati, Ohio). The name of the league comes from the initials of the three states: Indiana, Ohio, Kentucky. The league tournament is upon a home and home basis between the teams, and each player contests two games with his opponent.

### YOUNGSTER CHESS MENACE TO ELDER AT MINNEAPOLIS

Joining the growing ranks of youngsters like Sandrin, Friedman, the Byrne brothers, Berliner and many others, who prove a serious menace to the chessic peace of mind of their elders, Dave Eliason is leading in the current club championship tourney of the Minneapolis Chess and Checker Club with five wins and no losses or drawn games. Among his victims have been some of the best players in the club. Two veterans of the U. S. Junior Championship Tournament at Chicago are in the upper half of the contenders: Melvin Janowitz with a score of two wins, two losses and one draw, Sheldon Reinwith three wins and two losses.

### HARRISBURG CLUB ELECTS OFFICERS FOR BUSY SEASON

The Harrisburg (Penn.) YMCA Chess Club (organized in July) held its first annual meeting to elect its first slate of permanent officers. John D. French was chosen president; Ira Isenburg and H. B. Brillinger, vice-presidents; and Harry Schwartz, secretary-treasurer.

The Club has started its winter season auspiciously by defeating the Cumberland Valley Chess Association (Carlisle, Shippensburg, Chambersburg, Waynesboro) by a score of 6-4 in the first of a series of matches at the Central Y in Harrisburg. The exciting game of the match was the five-hour battle between Ira C. Isenburg (Harrisburg) and C. S. Shive (Shippensburg), runner up for the State title a few years back. Quite a crowd lingered until 1 a. m. to see the finish, for if Shive had drawn the game, it would have tied the match.

### KING'S MEN BEST EDISON CHESS (DETROIT) 7-5

In a team match played at the Service Building headquarters of the Edison Chess and Checker Club (Detroit) on November 22, the King's Men Chess Club (Detroit) came out victorious by a score of 7-5 in the twelve board contest.

| King's Men       | Edison Chess       |
|------------------|--------------------|
| Schmidt.....1    | Menzel.....0       |
| Eckhardt.....0   | O'Keefe.....1      |
| Schechter.....1  | Watson.....0       |
| Pawowski.....1   | Thomas.....0       |
| Gaba.....1       | Blackford.....0    |
| Sergeant.....0   | Roberts.....1      |
| Benslik.....0    | Black.....1        |
| Huester.....0    | Mason.....1        |
| Wolfe.....0      | Mahon.....1        |
| Weiss.....1      | Drake.....0        |
| Emsh.....0       | Fytkowsky.....0    |
| Bookstein.....1  | Shaw.....0         |
| King's Men.....7 | Edison Chess.....5 |

### PEORIA LEAGUE ONLY ONE CHESS ACTIVITY OF PCA

The Peoria Chess Association (PCA) of Peoria, Illinois sponsors among other chess activities the Peoria Chess League, composed of chess clubs and chess teams playing under the banner of various commercial institutions. Each sponsoring firm pays a \$5.00 fee to enter its team in the league, and these fees pay the incidental expenses of the league.

Present standings in the league, with the season well under way, are:

| Team                       | Match Points | Game Points |
|----------------------------|--------------|-------------|
| Caterpillars Bishops.....  | 45           | 24          |
| World Drug Store.....      | 4            | 13          |
| Illinois Furniture.....    | 33           | 12          |
| Northern Regional Lab..... | 3            | 153         |
| Hiram Walkers.....         | 3            | 11          |
| Shah Mat Chess Club.....   | 1            | 65          |
| Caterpillar Knights.....   | 1            | 4           |
| Central Ill. Light Co..... | 0            | 4           |

The number one team, Caterpillar Bishops, consists of USCF Director Arthur R. Hartwig (Champion of Peoria), Fritz Miller (Champion of Caterpillar Tractor Co.), Claude Holford and Joe Kruff. Play in the league is semi-monthly on the first and fourth Fridays of the month at the Leed Hotel.

Aside from the league competition the Peoria Chess Association has two active clubs. The Shah Mat Chess Club meets every Friday night at the Leed Hotel. Dean Lybarger is president, Howard J. Bell secretary-treasurer, and Henry G. Camar club champion. The YMCA Chess and Checker Club meets Tuesday and Thursday nights at the YMCA. Albert W. Johnson is president, and Forrest Cockerell secretary-treasurer.

Peoria has long been an active spot for chess, and Illinois players will remember with pleasure the Illinois Team matches held there for several years as well as the occasions when Peoria acted as

DON'T MISS ANY ISSUES OF YOUR U.S. CHESS NEWS  
SEND IN THAT SUBSCRIPTION TO 'CHESS LIFE' NOW!  
--- BE SEEING YOU.



# Chess Life

Official Publication of The United States Chess Federation

Published twice a month on the 5th and 20th

By

## THE UNITED STATES CHESS FEDERATION

At 845 Bluff Street, Dubuque, Iowa

Entered as second class matter September 5, 1946 at the post office at Dubuque, Iowa, under the act of March 3, 1879.

Subscription:—\$2.00 per year; Single copies 10c each

Address all subscriptions to—  
Edward I. Treend, Secretary

845 Bluff Street  
Dubuque, Iowa

OR 12869 Strathmore Avenue  
Detroit 27, Michigan

Make all checks payable to: THE UNITED STATES CHESS FEDERATION

EDITORIAL OFFICE: 123 North Humphrey Avenue  
Oak Park, Illinois

Editor and Business Manager  
MONTGOMERY MAJOR

Volume I, Number 8

Friday, December 20, 1946

### IS THIS NEWS TO YOU?

READER, are you among those who have written to the Editor of CHESS LIFE, commenting upon the fact that certain localities seem favored in the news published in these columns? If you are, here is the answer to your questions. CHESS LIFE is still in the process of expanding its new-born facilities for news coverage; but even when that expansion is completed CHESS LIFE will not have official correspondents in every city. Its pages will rely upon the unofficial reporter for many an item of interest to chess players.

Clubs whose players feel slighted at the lack of comment on their activity may remedy that sad state of affairs by instructing the secretary to report all important events to CHESS LIFE or by putting CHESS LIFE on the mailing list for the club publication. Officials of State Associations and Leagues have the same remedy, for the columns of CHESS LIFE are open to all news of interest to chess players in the United States and Canada.

And what is news? Reader, if what happens in your chess community would make interesting reading to you if it had happened elsewhere—that is chess news.

### THE USES OF AN EDITOR

USING as we must upon the habits of mankind, for that is supposed by the principle diversion of editors, it occurred to us to wonder what is the use of an editor in the opinion of the public. Certainly, it cannot be much, for the mail that contains items of interest for chess players is addressed to every desk save that of the editor. Just yesterday a very estimable gentleman in the East sent a letter to Mr. Wagner (USCF President), with copies to Mr. Giers (USCF Vice-President) and Mr. Treend (USCF Secretary) containing material he thought should be published in CHESS LIFE. But apparently he wished to keep the matter secret from the editor.

Such tactics, however, are fruitless for the editor is a stubborn man and insists on reading and selecting the items that are published in CHESS LIFE. Therefore, the interests of chess and news can be best served by addressing matters pertaining to CHESS LIFE (aside from the subscriptions which are destined for Mr. Treend) to the editor at the editorial office in Oak Park, Illinois. Much time can be saved by doing this, for letters addressed elsewhere must be forwarded—and forwarding means loss of time.

### Guest Editorial

#### IT'S UP TO YOU!

By William M. Byland

Vice-President, The United States Chess Federation

ALL of us have become aware, during the last few years, of the tremendous growth in chess interest throughout our forty-eight States. New clubs are springing up everywhere, new local and state associations are being formed, the touring simultaneous experts report mob scenes more characteristic of Sinatra than Caissa. The chessboard is attracting thousands of new devotees, and one of the most encouraging features of America's chess revival is the increased hold our game has taken on the nation's youth. On the levels of college, high school, grade school—yes, and even kindergarten!—we are fast developing the chess leaders of tomorrow. Many cities are planning to follow the admirable example set by Milwaukee, with its far-famed playground program; many more are devoting particular attention to high school and college chess; in practically all of our clubs, the young player is now an honored guest, receiving friendly instruction and guidance. In the space of a few short years, we have developed an outstanding array of promising young talent.

Thus, since the United States Chess Federation launched its co-ordinated coast-to-coast program in 1944, noteworthy progress has been recorded. The tremendous initial stimulus has already been provided—but we must not rest content with our present achievements. Greater programs, greater tasks, greater horizons lie before us. Much more remains to be done; more will be done; more will be done more quickly through a great and speedy increase in USCF membership. Our goals of service to American chess and chess players require the full and active support, by every chess enthusiast, of our national organization. Every chess player—and every club—in the country must become a member of the United States Chess Federation. In unity alone can we find the requisite strength to achieve our objectives; unity of purpose, unity of effort.

February 1947 has been designated as "National Chess Month." One of the important features of this period will be the first nation-wide USCF membership drive, our first concerted effort to enroll every American chess player in our national family. You will be asked to do your part in making this campaign a success. You—the individual chess player—are the very life-blood of our game. You—united in a common effort—can truly inaugurate the Golden Age of Chess in our country.

Do you believe in the future of American Chess? Would you like to see a greatly increased program of events and services to all American chess players? Would you like to see our game assume its rightful place in American Life? Then—be a chess "Booster" in February. It's up to you!

### SPEAKING OF STATE ASSOCIATIONS...

A Regular Message by

Paul G. Giers

Executive Vice-President, United States Chess Federation

IT has been pointed out, and quite justly so, that the state chess associations should be tied in more closely with the development of American chess and that the official state organizations should take over certain functions of the national body. Considering the vastness of our country, the great amount of missionary work still to be done and the best means of making the USCF program generally effective, there can be no question that American chess will be best served if every State assumes its share of responsibility and brings its own house in order.

If the work of our Federation is at present carried out primarily through the individual members and club chapters rather than the state associations, it is because of the fact that chess organization by States still leaves much to be desired. Let us look at the picture as it stands at present.

Only one-third of our forty-eight States have an active association. There are five other States where no state tournaments have been held in recent years. This leaves no less than twenty-seven States still to be organized.

These statistics may seem a bit discouraging at first glance. It must be remembered, however, that for many years organized chess activities were principally centered in our larger cities and that the growing popularity of the game in less populated areas is of fairly recent origin. Nor should we overlook the excellent work being done by our more active state associations, as well as the New England, Southern, and Southwestern Chess Associations, which are bringing the players of their respective areas together each year in well-managed tournaments.

A state association has certain definite functions in addition to sponsorship of an annual State Championship Tournament. It should establish a close relationship between the State's chess clubs, arrange for inter-club matches, sponsor the organization of new clubs wherever needed and help the clubs arrange for simultaneous exhibitions and other special events. Going outside of its own borders, it should join the associations of neighboring States in providing for Area Tournaments and other inter-state competition.

The United States Chess Federation stands ready to assist in the formation of more state associations. If your State is not already organized, we invite you to communicate with us and to give us detailed information regarding chess activities in your State. A list of Federation members in your State will be sent upon request.

Five new state associations are now in the process of formation. We urge chess leaders in the remaining States to take similar steps so that there will soon be an active association in each and every State.

Address inquiries regarding state association matters to: Paul G. Giers, 2304 South Avenue, Syracuse 7, N. Y.



Paul G. Giers

### The Kibitzer

From the Editor's Mail-Bag

Dear Sir:

I have been looking over your 11/20/46 issue of CHESS LIFE and noticed on page 4 game between Koltanowski and Livezey where George announced the win of the black queen but evidently overlooked the even quicker mate. Instead of 39. Q-Kt7 ch, why not 39. R-Kt7 ch., K-R4: 40. Q-B7 mate?

I have played Mr. Koltanowski several times here in New Orleans and he never overlooked anything against me.

I enjoy your paper very much. Keep up the good work.

NORMAN WRIGHT  
New Orleans, Louisiana

Dear Sir:

Last year I was outspokenly critical of the conduct of the 4th U. S. Speed Championship Tourney.

I have just returned from witnessing the 5th U. S. Speed Championship, and do not hesitate to pronounce it the best-staged and truest 10-second tournament I've ever seen.

Unfortunately, Reuben Fine could not be present to defend his title; and due to the long grind of the just-concluded Championship, the wet weather which prevailed on Sunday, and perhaps other reasons best-known to themselves, a number of more-or-less illustrious names were missing from the lineup. Only 24 played, competing in two sections—only half as many as in any of the four preceding contests. Nevertheless, the field was a very strong one.

Messrs. Kenneth Harkness and Richard Wayne are to be warmly congratulated on the arrangements for, and the conduct of, the play. For the first time in these tourneys, an electric 10-second clock was used; and it was attached to two amplifiers, so that all could hear its (maddening) chiming.

Each player was given a number-tag; and each a printed card giving his opponents' numbers, round by round, his "color" in each round, and a letter designating the seat he was to occupy in each round. He could not go wrong; there was no confusion.

Most important and unusual, however, was the fact that this was a refereed 10-second tournament. Players were required to move on the bell—not before, or more than one second after the ring on pain of forfeiture. I do not know how many forfeitures occurred, but there were a good many in both the afternoon (qualifying) and evening sessions. As one capable young contestant admitted to me, grinning: "We're not used to this, here!"

I will say this, however: There was no protesting, no fuss or grumbling that I could hear or observe.

Incidentally, I missed witnessing only the 1944 Speed Championship. Except for the strength of players, none of the others can be compared with this one. And please tell people I said so.

N. P. WIGGINTON  
Washington, D. C.

### Who's Who In American Chess

William M. Byland

Among the most active chess enthusiasts in the country, William Byland combines enthusiasm with a facility for both playing the game and organizing chess players into groups—

Employed in the Mortgage Loan Department of the Reliance Life Insurance Company of Pittsburgh,

Bill has managed his affairs so that business has not interfered too seriously with the more important occupation of playing chess. Perhaps the fact that he has so far escaped marriage has also contributed to his success in chess. Perhaps the fact that he has so far escaped marriage has also contributed to his success in chess.



William M. Byland

devoting so much time and effort to chess affairs.

As an organizer Bill has been secretary and then president of Pittsburgh's strong Downtown Y Chess Club for a number of years. He has been President of the Pennsylvania State Chess Federation since 1940 and Director for Pennsylvania in the USCF since 1944. In 1945 Bill became Vice-president of the CCLA, and in 1946 Vice-president of the USCF. In addition the USCF entrusted to his care the important tasks of the Membership Committee, of which he was appointed chairman.

As a player Bill Byland is noted for a rather aggressive style of game. He has been champion of the Downtown Y Chess Club four times; in 1941, 1942, 1943 and 1946. From 1941 to 1945 he was the champion of Pittsburgh. In 1945 he tied for fifth in the U. S. Open Tournament at Peoria; and in 1945 placed fifth in the International Tournament at Yankton.

Isaac Ash

Chess seems to have a particular fascination for men in the learned professions, and Isaac Ash, attorney-at-law in Philadelphia, has not been immune to its charm. Born in Philadelphia in 1885 (where he has lived all his life), Ash took up chess in his early high school days.

Entering college, he played for four years on the University of Pennsylvania team and in 1908 was selected as one of the college players in the famous intercollegiate cable match held between Columbia, Princeton and Pennsylvania in America and Oxford and Cambridge in England. The match was a victory for the United States collegiate team; and Ash drew his game with Woodhouse of Oxford.



Isaac Ash

Upon graduation from college and after admission to the bar, Ash restricted his chess playing to the local clubs and tournaments in Philadelphia. In 1936 he held a tie for the championship of the City of Philadelphia with Jacob Levin (fourth in the recent U. S. Championship Tournament).

Upon the death of Walter Penn Shipley in 1941 he took over the editing of Shipley's famous chess column in the Philadelphia Inquirer (a feature for fifty years). In addition Ash has been President of the Pennsylvania State Chess Association for eight years and a Director in the USCF for Pennsylvania for four years.

# Under The Chess-Nut Tree

By William Rojам

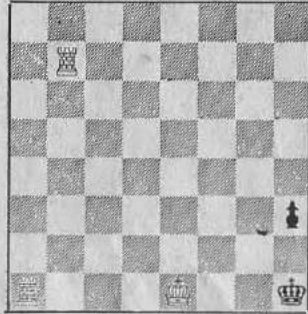
**P**ROBLEM composers turn to Fairy Chess as an outlet for their more fantastic conceptions; this column eschews such lurid designs as these and is content to present only the orthodox to its readers. But in the interest of the unusual, we will waive a lifetime rule in order to bring these two rare specimens of "Gremlin" chess problems to the readers' attention. Be warned that these two problems are much simpler than they look, for they represent "gremlin" and not "fairy" chess.

(Solutions on page four.)



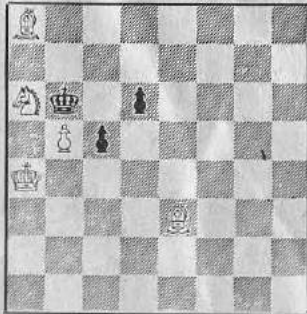
William Rojам

### I. Main Gremlin Theme



White to Move and Mate in Two

### II. Masked Gremlin Theme



White to Move and Mate in Two

## ILLINOIS BESTS WISCONSIN 6-4 IN ANNUAL MATCH

In the annual fall match at Lapham Park School in Milwaukee December 8 the Illinois Chess Team defeated the Wisconsin Chess Team by a score of 6-4 in four hours of intensive play. But the Wisconsin Junior Team whitewashed the Illinois Juniors 3-0. This annual affair is over fifteen years old and grew out of an informal team contest inaugurated by the late Otto Rathmann of Milwaukee and the late Charles Leach of Oak Park.

| Illinois               | Wisconsin                 |
|------------------------|---------------------------|
| Paul Poschel ..... 1   | Jerome Krzewski ..... 0   |
| Albert Sandrin ..... 1 | Averill Powers ..... 0    |
| Samuel Factor ..... 1  | Arpad Elo ..... 0         |
| Sam Cohen ..... 1      | Robert Simpson ..... 0    |
| S. Gerdez ..... 0      | L. R. Ayers ..... 1       |
| Angelo Sandrin ..... 1 | Fritz Rathmann ..... 0    |
| Earl Davidson ..... 0  | Paul Liebig ..... 1       |
| Don Thompson ..... 1   | Dr. O. M. Wehrley ..... 0 |
| Frank Klimas ..... 0   | Marshall Rohland ..... 1  |
| Alfred Poschel ..... 0 | Sgt. Geo. Harley ..... 1  |
| Illinois ..... 6       | Wisconsin ..... 4         |

The notable line-up for Wisconsin included Wisconsin Champion Krzewski, the 1945 Co-Champions Powers and Elo, former Milwaukee County Champion Dr. Wehrley and President of the Wisconsin Chess Association Ayers. The Illinois team was headed by Illinois Champion Paul Poschel with former Champions Sandrin and Factor in support.

| Illinois Juniors         | Wisconsin Juniors        |
|--------------------------|--------------------------|
| Paul Adams ..... 0       | Richard Kujoth ..... 1   |
| Ted Lewis ..... 0        | Robert Schmidt ..... 1   |
| Geo. Engelhart ..... 0   | Freddie Rathmann ..... 1 |
| Illinois Juniors ..... 0 | Wisconsin Jrs. .... 3    |

## PHILADELPHIA (PA.) CHESS LEAGUE STARTS SEASON

The Philadelphia Chess League begins its season with a strong line-up of competing teams. The defending champions, the Franklin Chess Club, will have a group headed by Frank and Harold Bander, Sydney T. Sharp and Isaac Ash (Chess columnist on *Phila. Inquirer*). Merchantile Library Chess Association's entry will be headed by State Champion A. DiCamillo and Jacob Levin (4th in U. S. Championship.) Germantown Chess Club will have two teams: the Red Team headed by Al Saxer and Walt Hall, and the White Team (or Gremlins) composed of youngsters of eighteen years or younger headed by Sol Wachs (State Junior Chess Champion), I. Steifel and Charles French. The North City Chess Club has not announced its team.

## COLLEGIATE TEAM TOURNAMENT COMBINE OF OLDER CLUBS

The Intercollegiate Team Tournament to be held under the auspices of the USCF at John Hay Hall on the campus of Columbia University December 26 to 30 represents a fusion of collegiate elements which formed the old Intercollegiate Chess League and the even older H. Y. P. D. Colledge Chess League. Play will be by college teams of four for the U. S. Collegiate Team Championship and custody of the beautiful Harold M. Phillips trophy.

As reported by Milton Finkelstein, director of college chess for the USCF, teams of four players each have been entered in the tournament by Brooklyn, Columbia, City College, Cornell, N. Y. University, Harvard, Yale, Princeton, Pennsylvania, Temple, Cooper Union and there is a possibility of a team from either the Army or Navy. Finkelstein heads the collegiate committee for the tournament of which the other members are Rhys Hays, Carl Plinek, John D. French, David Purman, Louis Kurelmeyer and Sol Weinstock.

## BETWEEN STRIKES DOWNTOWN "Y" HAS ANNUAL MEET

At the end of the Pittsburgh power strike and shortly before the coal-strike, the members of the Downtown Y Chess Club (Pittsburgh) held their annual meeting on October 24 after a month's delay. The meeting was well attended with over fifty members present.

As the result of the balloting William P. Holbrook became the new president; T. M. Cherington, first vice president; R. C. Cheeseman, second vice president; J. H. Stalnaker, treasurer; H. C. Lowe, secretary. In addition, Mr. Holbrook became the new Editor-in-chief of the club's official publication, *En Passant*.

## PHILIP L. GOLD NEW PRESIDENT BROOKLYN CLUB

At the annual business meeting of the Brooklyn Chess Club, held at the Brooklyn Institute of Arts and Sciences where the club meets on Tuesdays and Saturdays, Philip L. Gold was elected president; Gustav Gustafson, vice-president; Harry Ekstrom, treasurer; Jack W. Collins, secretary; and Dr. Harold Sussman, chairman of the tournament committee and team captain. Other members of the tournament committee are Profs. L. B. Adams and Albert Sheffel.

There is quite a literary flavor (in a scaccic sense) to the Brooklyn Club as Philip L. Gold is editor of the *Chess Correspondent* (publication of the CCLA) while Jack W. Collins is responsible for the Chess Movies in *Chess Review*.

### A. SID. TEST SAYS:—

United passed pawns are a lot stronger than a lone passed pawn. Join the USCF and get unity in American chess.

**BEST BUY IN CHESS IS CHESS LIFE.**

Illinois Correspondence Chess Ass'n  
Announces Its  
33rd January Special Postal Tourney  
Entry \$5  
Prizes in Section of 7 are \$15, \$10, \$15.  
Designed for players who enjoy strong and serious competition.  
Send entries to  
M. D. GILBERT  
214 S. Seramec Clayton 5, Mo.

## UNIV. OF PENN. HAS UNDEFEATED CHESS CLUB TEAM

Last year the Chess Club of the University of Pennsylvania had an undefeated season in which it met and vanquished in turn teams from Army, Navy, Princeton, Pennsylvania State, the Log Cabin B Chess Club (New Jersey) and finally Temple to claim the Chess Club presented by the *Philadelphia Evening Bulletin* as Champion of the Intercollegiate Chess League of Philadelphia.

This year the Chess Club continues in the vein of last year's victories by an initial conquest of the chess team of the United States Naval Academy by a score of 6½-2½.

## LEHIGH VALLEY RIDES HIGH FOR FIFTH SEASON

Undeclared in five seasons of play, the Lehigh Valley Chess Club (Penn.) continued that winning streak with the second win in this fall season of chess. At the Allentown YMCA they crushed the Reading Chess Club by a score of 16½-3½. Previously the U. S. Naval Academy at Annapolis had succumbed to the so-far invincibles of Lehigh Valley.

### A. SID. TEST SAYS:—

Join the USCF. It is always a sound opening move.

### USCF President

Elbert A. Wagner, Jr. ponders a difficult move against Homer F. Stelman in giving a

twelve-hour simultaneous at the Glen Ellyn (Ill.) Chess Club.



## Chess Life

Friday, December 20, 1945

## FIRESTONE CHESS BESTS GOODRICH (AKRON) BY 12-5

On December 3 at the Goodrich Chess Club, the Firestone Chess and Checker (Akron) was victorious by the score of 12-5.

| Firestone                | Goodrich                |
|--------------------------|-------------------------|
| Ernie Slater ..... ½     | Dr. D. M. Beach ..... ½ |
| Pete Seitz ..... 1       | Bob Harrington ..... 0  |
| Leo Sweet ..... 0        | Chas. Sorkin ..... 1    |
| Wm. Pissel ..... 1       | B. J. Cerny ..... 0     |
| A. E. Friedemann ..... 1 | A. E. Jure ..... 0      |
| E. A. Young ..... 0      | Herman Schlette ..... 1 |
| Joe Chirich ..... 1      | Tom Stoddman ..... 0    |
| Dick Hoekenberry ..... 0 | Harold Tucker ..... 1   |
| R. G. Allen ..... 1      | Chas. Siz ..... 0       |
| A. Turnock ..... 1       | H. W. Kowbator ..... 0  |
| W. Zimmerman ..... 1     | Hall Roush ..... 0      |
| A. R. Craig ..... 0      | Harry Gilbert ..... 1   |
| Richard Sweet ..... ½    | Clyde Harris ..... ½    |
| Leonard Sweet ..... 1    | Chas. Siz ..... 0       |
| A. J. Keller ..... 1     | Martin Allen ..... 0    |
| R. P. Moseley ..... 1    | Bill Fox ..... 0        |
| Earl Snyder ..... 1      | Earl Cole ..... 0       |
| Firestone ..... 12       | Goodrich ..... 5        |

## UNBEATEN PROV. CHESS DEFEATS BROWN UNIV. 6-4

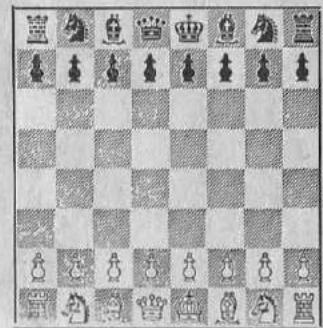
On October 23 the Brown University Chess Club lost to Providence Chess Club (R. I.) by 6-4.

| Providence         | Brown Univ.       |
|--------------------|-------------------|
| Snoeman ..... 1    | Rubinow ..... 0   |
| Hoffer ..... ½     | Karp ..... ½      |
| Reich ..... 1      | Wolk ..... 0      |
| Corey ..... 1      | Arzove ..... 0    |
| Hudant ..... 1     | Rodos ..... 0     |
| Glym ..... 1       | Fisher ..... 0    |
| H. Winsor ..... 0  | Shapiro ..... 1   |
| Worsell ..... 0    | Putnam ..... 1    |
| Bullworth ..... 0  | Schwartz ..... 1  |
| Mandini ..... ½    | Eate ..... ½      |
| Providence ..... 6 | Brown Uni. .... 4 |

## A COMPLICATED POSITION

What Is White's Best Move?

(Study the Position Carefully Before You Consult the Answer to the Problem Given Below)



WHITE'S BEST MOVE IS TO ENROLL BLACK AS A MEMBER OF THE USCF

## United States Chess Federation

APPLICATION FOR INDIVIDUAL MEMBERSHIP AND SUBSCRIPTION TO CHESS LIFE

Dues \$1 per year. Subscription \$2 per year. Total \$3 per year.

NAME .....  
(Please Print)  
ADDRESS .....  
CITY ..... ZONE ..... STATE .....

Send to:— EDWARD I. TREEND, Sec'y  
UNITED STATES CHESS FEDERATION  
12869 Strathmoor Avenue  
Detroit 27, Michigan

Make all checks payable to:— UNITED STATES CHESS FEDERATION

## ERROR IN SCORE OF U. S. WOMEN'S CHAMPIONSHIP

Inadvertently in printing the box score of the U. S. Women's Championship, Mrs. Kathryn Slater was not credited with her win over Miss K. Henschel, although in Miss Henschel's score the loss is correctly noted. As a consequence Mrs. Kathryn Slater should be given the score of four wins against five losses (instead of 3-6) and placed in a tie with Mrs. Catherine Nye for fifth place.

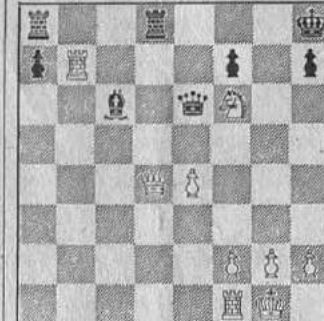
QUEEN'S INDIAN DEFENSE 1946 U. S. Championship Tournament

Notes by Erich W. Marchand
White Black
1. HOROWITZ A. S. DENKER
1. P-Q4 K1-KB3 6. Q-K1-Q2 K1-K5

SCOTCH GAMBIT 1946 U. S. Championship Tournament

Notes by Erich W. Marchand
White Black
O. ULVESTAD L. J. ISAACS
1. P-K4 P-K4 6. K1-QB3 B-K2

After 25. KR-Q1 Sandrin



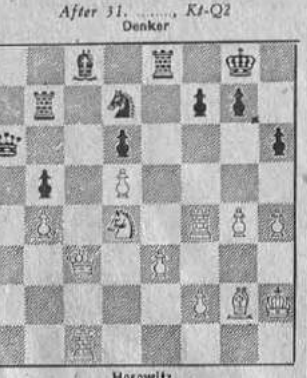
Denker
26. K1-Q5 ch. P-B3 33. Q-KB4 P-B4
27. RXP RXP 34. Q-O4 ch. K-B2

After 29. Q-K1 Steiner



Kramer
30. Q-K15 P-B4 32. K1-K15
31. K1-B3 K1-KB3

White has an overwhelming positional advantage. Hence he looks for combinations in order to cash in. The text threatens Kt-K5 with dire effect.



Horowitz
This sacrifice was not possible before because of the action of Black's Rook on the second rank. Note the end near Kt-B1.

White's position is definitely superior due to greater space. White will manoeuvre to create some tangible weakness while Black systematically attempts to drive away White's outposts and free his own game.

The only square, if 37. Q-B3; 38. KtXP ch. White gets ample compensation for the sacrificed QB.

QUEEN'S GAMBIT DECLINED 1946 U. S. Championship Tournament

Notes by Erich W. Marchand
White Black
G. KRAMER H. STEINER

1. P-Q4 K1-KB3 4. K1-QB3 P-B4
2. K1-KB3 P-Q4 5. P-K3

NIMZOVITCH DEFENSE 1946 U. S. Championship Tournament

Notes by A. C. Margolis and S. Cohen
White Black
S. RESHEVSKY G. KRAMER

1. P-Q4 K1-KB3 6. K1-KB3 Q-O
2. P-QB4 P-K3 7. P-OR3 BxK1 ch.

SICILIAN DEFENSE 1946 U. S. Championship Tournament

Notes by A. C. Margolis and S. Cohen
White Black
A. SANDRIN I. KASHDAN

1. P-K4 P-QB4 7. B-K2 Q-B2
2. K1-KB3 P-Q3 8. Q-O B-K2



SandrIn
37. R-O5 OR-B1 43. P-K7 KR-K1

NIMZOVITCH DEFENSE 1946 U. S. Championship Tournament

Notes by Erich W. Marchand
White Black
A. S. DENKER A. SANDRIN

1. P-Q4 K1-KB3 4. P-K3 P-Q4
2. P-QB4 P-K3 5. P-OR3 BxK1 ch.

White has a pair of "hanging pawns" which bear nicely on the center but may become weak. Black has achieved a rather good development and his QR will soon get a long diagonal.

White should try to make a constructive move at the same time that he defends his QP. The awkward Bishop at Q2 could go to K2.

CLASSIFIED ADVERTISEMENTS

Rates:—40c per count line. Minimum charge of \$1.20 per adv. Cash with order. Display type 20c per line additional.

Instruction YOU POSE THE QUESTION Instructive—Entertaining Have your game analyzed. Complete analysis—\$1.00 per game. Write Box AC, CHESS LIFE.

For Sale or Barter Bargain! all the chess news that counts for \$2.00 a year. Just write your check and mail it to CHESS LIFE.

Wanted to Buy or Exchange Chess Literature, Tournament Books & Periodicals especially. A. S. Pinkus, 1700 Albermarle Rd., Brooklyn 26, N. Y.

By a transposition of moves we have arrived at a position that could well have come about in the Dutch Defense. This position is considered as being about equal.

It is always wise to dislodge the advanced Knight. 10. Q-B2 11. K1-Q2



After 30. RxB Kramer



Reshevsky

Here White makes a slight error, possibly overlooking Black's cute reply. First 31. P-K6, R-K2 (not 31. R-K4, 32. PxR, RxB ch., 33. R-B3 wins, and now 42. Q-K6) and Black cannot reply Kt-Q8 because of QxBP. Black handles the remainder of the game in excellent fashion.

31. Q-K4 Here White makes a slight error, possibly overlooking Black's cute reply. First 31. P-K6, R-K2 (not 31. R-K4, 32. PxR, RxB ch., 33. R-B3 wins, and now 42. Q-K6) and Black cannot reply Kt-Q8 because of QxBP. Black handles the remainder of the game in excellent fashion.

BOOST AMERICAN CHESS! Celebrate NATIONAL CHESS MONTH by Joining the USCF Are You A Member? Is Your Friend A Member?

At Last! Chess Life

TWICE a month, every month of the year CHESS LIFE will tell the story of Chess news in these United States. Tournaments, Club Events, Game Scores, and Pictures. Each issue dedicated to the pleasant task of making Chess a bigger part of American Life.

Subscribe Now!

SUBSCRIPTION BLANK Chess Life Special rate for the eight issues of 1946 and twenty-four issues of 1947 \$2.50 Subscription for the year of 1947 only \$2.00 NAME (Please Print) ADDRESS CITY ZONE STATE Send to:— EDWARD I. TREEND, Sec'y UNITED STATES CHESS FEDERATION 12869 Strathmoor Avenue Detroit 27, Michigan Take all checks payable to: UNITED STATES CHESS FEDERATION

ANNOUNCING THE BOOK OF THE UNITED STATES CHESS FEDERATION 47th Annual Open Tournament

HELD IN Pittsburgh, Pennsylvania July 8-20, 1946 Contains the complete play-by-play scores of all games played by the top twenty players in each of the seventeen rounds of the tournament. These total 208 games.

The Top Twenty Players, Out of 58 Contestants, Were: ADAMS FAJANS SANTASIERE ALEMAN FORSTER SEIDMAN ALMGREN GORDON SHIPMAN BISGUIER KATZ STEINER D. BYRNE KRAMER ULVESTAD R. BYRNE KUPCZEK YERHOFF EVANS LEVIN Advance Sale to USCF Members Only Until January 1st — \$1.00 each (Price \$1.50 each after publication) Send Orders to: PAUL G. GIERS 2304 South Avenue Syracuse 7, N. Y. Make All Checks Payable to United States Chess Federation

Solutions to Gremlin Problems