



Chess Life



Volume I
Number 18

Official Publication of The United States Chess Federation

Tuesday,
May 20, 1947

Everywhere It's Junior Chess

NEW SCHOLASTIC CHESS LEAGUE BOOSTS JR. CHESS

Further strides were made in Pennsylvania scholastic chess and a new all-ages chess club organized in Altoona with a single event in that State recently. Led by William M. Byland (Pittsburgh), State Federation President and USCF Vice-President, a match between Central Pennsylvania, Pittsburgh and Altoona high schools was arranged in the latter city.

Pittsburgh's strong club walked off with all honors, defeating the new Altoona Club 6-0 and turning back the Central Staters 3-1. The last named club included players from Harrisburg, York and Reading. Harrisburg and Altoona drew their match 2-2 to place the new club in last place.

Byland, assisted by USCF Director John D. French (Harrisburg), held an organization meeting called by Durwood B. Hatch (Altoona) at the scene of the scholastic matches, the Altoona Undergraduate Center. With Hatch as temporary chairman and George Bender as acting secretary, the new senior club was formed with six senior members and twelve school players.

In addition to the three-sided match as an interest getter, Byland gave a simultaneous exhibition, scoring 15-2. He lost only to Paul Dietz, Pittsburgh Junior Champion, playing in consultation with other top board members of his team, and yielded a pair of draws.

A return event to make final plans for the Pennsylvania Interscholastic League has been set for Harrisburg, May 17-18, with teams from Pittsburgh (2), Philadelphia, Altoona, Allentown (The Lehigh Valley Club), and Central Pennsylvania (2) including junior players from Harrisburg, York, Reading, Lancaster and the Cumberland Valley Club. A match between the Pittsburgh Downtown "Y" Chess Club and the Lehigh Valley Chess Club will complete the highly chessed weekend. All events will be in the Central YMCA at Harrisburg.

The junior events will be directed by Jack Costello, (Hummelstown) who recently won a USCF Life Membership and is now director of Interscholastic Chess for the Pennsylvania State Federation; while the senior match and general chairmanship of the entire affair will be directed by John D. French.

CLEVELAND BESTS AKRON IN GALA 71 BOARD MATCH

A victorious delegation from Cleveland's various chess clubs included the Akron YMCA on April 27 and retired triumphant with a final score of 57½-23½ over the combined talent of the Firestone and Goodrich Chess Clubs of Akron. Ninetyfour players contested in the match with a double round played on the majority of the boards.



SO. FALLSBURG GRADE SCHOOL CHESS CLUB
The battle for Club Champion is on; and left to right, Leonard Cohen, Mike Finkelstein, Joseph Rosenshein, Allen Findling, Dick Stieglitz, Charles Stieglitz, Norman Klein, Monte Steingart, Melvin Feldman, Walter Greenstein, Harry Fertik, and Richard Rosen (club president) compete for the honor. Standing, left to right, are Max Reinbaum (Monticello, N. Y.) tournament referee; and A. C. Balducci (So. Fallsburg, N. Y.), tournament director and club advisor.

ILL. STATE CHESS HOLDS MEETING PLANS TOURNEY

The Illinois State Chess Ass'n held its annual meeting on May 4 and elected a new slate of officers. Earl Davidson (Chicago) was chosen president; Russell Cockrell (Rockford), Dean Lybarger (Peoria), Albert C. Margolis (Chicago), Einar Michelsen (Chicago), Homer T. Orsborn (Elgin), and Albert Sandrin (Chicago), vice-presidents; Paul Adams (Forest Park), secretary; and Charles P. Adams (Forest Park), treasurer.

Plans were immediately initiated to hold the Illinois State Junior Chess Championship Tournament upon Memorial Day weekend. Address Paul Adams, 1053 Troost Ave., Forest Park, Ill.



KOLTANOWSKI, WATCH OUT FOR YOUR LAURELS!
Young Albert Sandrin, former Illinois State Champion, grows proficient at the blindfold game. The setting is a recent exhibition at the Midwest Athletic Club (Chicago, Illinois).

OSIAS BAIN WINS QUEBEC CITY CHAMPIONSHIP

In Quebec (Canada) Osias Bain, a student of chemistry at Laval University, won a three-cornered play-off with Marcel Dion and Roger Lemelin to become City Champion of Quebec. In the play-off Bain won from Dion and drew with Lemelin, while Lemelin lost to Dion. In the regular tournament, Bain, Lemelin and Dion were tied for first with 6-1 each.

Quebec City Championship
Osias Bain 6-1
Marcel Dion 6-1
Roger Lemelin 6-1
Gerard Nadeau 4-3
G. G. Ferguson 2½-4½
Arthur Le Beuf 2-5
J. A. Morissette 1-6
Richard Trotter 1-6½
In Toronto F. R. Anderson leads in the current city championship with a score of 5-0 but must meet the runner-up, H. Ridout, in the final round. Ridout with 4-1 to his credit holds the threat of a tie. R. B. Cody with 4½-1½ and a bye for the final round awaits the result with interest, as a victory by Anderson will reward him with second place.

ST. PETE (FLA.) HAS 26th ANNUAL SOUTHERN MEET

July 3 at St. Petersburg (Fla.) will be the scene of the 26th Annual Tournament of the Southern Chess Association. The St. Petersburg Chess Club will play host to this historic event which had its humble beginnings in the Georgia-Florida Chess Ass'n, organized in 1922 by Major John B. Holt, editor then of a chess column in the Savannah Morning News, and D. P. White (deceased), editor of a column in the Jacksonville Times Union. This first tournament was won by Nestor Hernandez of Tampa who received a silver cup from the Jacksonville Times Union. The second tournament was won by P. J. Walker who received a silver cup from the Savannah Morning News.

The Georgia-Florida Ass'n grew into the Southeastern Chess Ass'n and in 1927 this became the Southern Chess Ass'n. Martin Southern (Knoxville) is president; Major J. B. Holt (Long Beach), secy-treas.; J. D. Gibson (Tampa), first vice-president; and E. A. Frokop (Chattanooga), second vice-president. P. V. Graham, director of recreation for St. Petersburg, and Jacob Szold, tournament director for the St. Petersburg Chess Club are collaborating in local arrangements for the meeting.

EDWARD TREEND'S SERVICES FETED AT EDISON CLUB

In honor of the ten consecutive years of service of Edward I. Treend as an officer, many of them in the arduous role of secretary, the Edison Chess and Checker Club (Detroit) turned the annual meeting into a gala event to celebrate the event. There were speeches, the presentation of a scroll of appreciation and the gift of a leather traveling bag to commemorate the occasion.

For The Tournament-Minded

May 30-June 1
Oak Ridge Open Tournament
Oak Ridge, Tennessee
Open to all chess players; Entry fee \$3.00, under 21 age \$2.00; address George W. Somers, 631 Pennsylvania Avenue, Oak Ridge.

May 30-June 1
Tennessee State Chess Championship
Oak Ridge, Tenn.
Open to Tennessee chess players; Entry fee \$3.00, under 21 age \$2.00; address George W. Somers, 631 Pennsylvania Avenue, Oak Ridge, Tenn.

NOTE: For reasons of security, Oak Ridge is a restricted area. Apply at once, as pass and permit must be obtained by tournament committee for each individual attending tournament.

May 30-June 1
Illinois Junior Championship
Chicago, Illinois
Open to all Illinois players under 21; entry fee and place to be announced. Address Paul Adams, 1053 Troost Ave., Forest Park, Ill.

June 17-21
South Dakota State Championship
Rapid City, So. Dak.
Open to South Dakota players; will be held at Montana-Dakota Utilities Co. Hospitality Room.

July 3-7
26th Southern Association Championship
St. Petersburg, Fla.
Open to all chess players; Entry fee, Championship, \$4.00; Class A, \$3.00; Class B, \$2.00. Address inquiries to C. E. Taylor, 540 Fourth Avenue N., St. Petersburg, Fla.

June 28-July 5
1947 Open Tournament of the New Jersey State Chess Federation
Ventnor City, N.J.
Open to all; entry fee \$5.00; address Richard W. Wayne, 238 No. Dudley Ave., Ventnor City, N.J.

June 30-July 12
2nd U. S. National Junior Championship
Cleveland, Ohio
Open to all junior players up to 21 years; entry fee \$5.00; address S. S. Keeney, 511 Park Bldg., Cleveland 14, Ohio.

July 4-6
Louisiana State Chess Tournament
Baton Rouge, La.
Open to all Louisiana chess players; no entry fee; to be held at YMCA.

August 11-23
48th U. S. Open Championship Tournament
Corpus Christi, Texas
Open to all chess players; Entry fee to be announced later; address Harry E. Graham, 325 Laurel, Corpus Christi, Texas.

August 30-September 7
New York State Tournament
Endicott, N. Y.
Open to all chess players; entry fee and address of registrar will be announced later.

August 30-September 1
Pennsylvania State Championship
Allentown, Penna.
Open to Pennsylvania players; will be held at Americus Hotel in Allentown with Lehigh Valley Chess Club as host. Entry fee not announced.

Chess Life

Official Publication of The United States Chess Federation

Published twice a month on the 5th and 20th

By THE UNITED STATES CHESS FEDERATION

At 845 Bluff Street, Dubuque, Iowa

Entered as second class matter September 5, 1946 at the post office at Dubuque, Iowa, under the act of March 3, 1879.

Subscription:—\$2.00 per year; Single copies 10c each

Address all subscriptions to:—
Edward I. Treand, Secretary

845 Bluff Street Dubuque, Iowa OR 12869 Strathmoor Avenue Detroit 27, Michigan

Make all checks payable to: THE UNITED STATES CHESS FEDERATION

Address all communications on editorial matters to:—

EDITORIAL: 125 North Humphrey Avenue
OFFICE: Oak Park, Illinois

Editor and Business Manager
MONTGOMERY MAJOR

Volume I, Number 18

Tuesday, May 20, 1947

THE DETECTIVE DISCOVERS CHESS

AN interesting signpost to the growing popularity of chess is the presence of the game as more than background material in many popular detective stories. Perhaps S. S. Van Dine pioneered the way with his "Bishop Murder Case." Here a Bishop was the symbol of the criminal and an ending (mate with the bishop) is worked into the distractions of the plot, even if the final significance of the Bishop refers to that most despicable villain in an Ibsen play rather than to a chess man.

Agatha Christie continued the vein of chess in a story of Poirot in which an imposter, disguised as a refugee Russian chess master, uses a chess match to murder, with the opening moves of the Ruy Lopez as the theme of her murder plot.

More brilliant than these examples is "A Happy Solution" by Raymond Allen in which the criminal's alibi is based upon his comments upon a game of chess being played at the time of the crime. The detective prives (and the game is analyzed for the reader) that the criminal could and did make these comments by studying the final position and from that position reconstructed the previous moves on which he commented.

But more surprising than these are the heroic hardboiled detectives of Raymond Chandler's popular works. One expects Philo Vance to know everything from Egyptian hieroglyphs to chess; one is not surprised at the cultured (if egotistical) Poirot's knowledge of a game akin to his own deft psychological maneuverings. But one hardly expects the prosaic, cynical, hard-drinking Philip Marlowe to ease his troubles by playing over a game of Capablanca—but he does.

It is a healthy sign for chess, for it wipes out the false stigma that chess is a "sissy" or an old-man's game. We who play chess know better, but the general public still lingers under a dangerously false impression that the jokes and quips of generations have fortified. Chess therefore owes a debt to the writer of detective stories who serves to rectify this impression by the use of chess as material for a plot. In particular it must acknowledge its debt to Raymond Chandler whose hard-boiled protagonist, Philip Marlowe, not only plays chess but leaves no doubt in the readers' mind that he plays it because it fills a need and satisfies a craving.

Guest Editorial

JUNIOR CHESS—AN IMPORTANT DEVELOPMENT

By George S. Barnes

Minnesota State Chess Champion

UNQUESTIONABLY one of the most important developments ahead of the United States Chess Federation lies in the teaching of chess to groups of children. Of course some activity along this line has already been started, but junior chess is still in its infancy as a major development in the United States. What better cause could the United States Chess Federation espouse than the nation-wide teaching of the game to thousands of children? The good of such a program is self-evident and the appeal of our national chess body is immeasurably strengthened.

In years as a national chess organization our U. S. Chess Federation is very young. As with all young organizations time is necessary to develop loyal support, efficient organization, and sound principles. This is being accomplished. Soon will arrive the time for aggressive intelligent action and then junior chess will undoubtedly become a major project of the Federation.

An organization should prosper and grow in proportion to the service it renders. It is difficult to conceive of a more worthy chess endeavor than the development of a young enthusiastic body of junior chess players, thousands of whom will develop a life-long love for the game. When the chess bug bites, it bites hard and all chess players know literally hundreds who would love chess if they had ever learned the game.

When the time for action comes in the development of junior chess on a national scale, the loyal membership of the Federation will receive the acid test. The time and energy of thousands of members will be required to teach chess to tens of thousands of grade and high school students if the job is to be done right. Such action on behalf of the royal game will be a gilt-edged insurance policy, guaranteeing a constantly growing group of chess players and chess public, many of whom will teach chess to others.

This program must be a long range plan. Once organized and

started, it must never be abandoned. An increased measure of support, undreamed of at the present and from many now unknown sources, will flood the Federation as a result of such a program.

¶ The views expressed in this Guest Editorial are not necessarily those of CHESS LIFE.

RAMBLING ABOUT

A Regular Message by

By Paul G. Giers

Executive Vice-President, United States Chess Federation

THE little woman called it spring fever. But righteously waving aside such half-truth, I took myself to the Windy City intent upon business and, incidentally, a bit of chess business. First of course, there had been a valiant attempt to liquidate that chronic accumulation of chess mail and it was a rare sight to see the desk down to bare wood for once.

Enveloped in Pullman comfort, I unsealed the latest batch of Club Manual manuscript just received from Gene Collett and settled down to reading all about chess publicity, club bulletins and how to start and edit a local chess column. Great stuff. Gene and his associate editors are turning out a Manual which far surpasses our fondest dreams. Watch the clubs zoom ahead after reading a few chapters of the Manual.



Paul G. Giers

I added my bit by dotting a couple of "fs" and paused to reflect how much easier it is to write a chess column these days. There are so many more chess happenings now to write about, and thanks to CHESS LIFE and our chess magazines we no longer need hunt up chess news as in the good old days.

As behoves any good USCF'er upon arrival at Chicago, I lost no time getting prexy Wagner to the phone and, within a few hours, sat down to a nice quiet lunch with him and C. N. Cahill, Vice-President of the Gits Molding Corporation. As you probably know, his company makes those handsome plastic chessmen which help you play a better game.

The Gits people really like our Federation. Not satisfied with packing a USCF membership application with every box of chessmen shipped from their plant, they are donating all the sets needed for our national tournaments. So you can safely leave your set at home the next time. Their small set, low in price but of the same fine design, is ideal for the youngsters, and will help to boost chess in playgrounds and schools. A toast to the Gits brothers and C. N. Cahill!

A pleasant hour with Maurice S. Kuhns at his Hotel Windermere apartment. If we could only stay young for so many years as our President Emeritus. Well up in the eighties, he looks younger each time I see him. We talked of international chess and our position at the F.I.D.E. general assembly at The Hague this summer. It was agreed that the USCF should take a lively interest in world chess affairs. Mr. Kuhns had much valuable advice for me to remember in Holland next July and I'll be flooring the other delegates by wearing that handsome lapel button bestowed upon Mr. Kuhns at the Hague back in 1928.

Elbert Wagner had joined us after disposing of his fast law client of the day. We nibbled on Mrs. Kuhns' choice tidbits, found ourselves in complete agreement with the P. E. (President Emeritus) and dashed downtown to meet up with Mont Major, that powerful censor of chess news. Half an hour late, but Mont graciously forgave us—having been a bit late himself.

A delicious dinner then, with friend Elbert appropriating the bill, and thus fortified, we entrenched ourselves for a long evening's discussion. It's surprising how many chess matters there are to talk about, even with almost daily correspondence passing back and forth.

Well, we let down our hair and went to work on such weighty problems as the Cleveland Junior championship, the August Corpus Christi open tourney, printing of the club Manual, increasing CHESS LIFE circulation, the new USCF Radio League, checking designs for a Federation lapel pin, getting a good line of chess trophies, the junior program, the next U. S. Championship, the 1949 Golden Jubilee tournament, and so on until the wee hours of the morning.

Chess had to give way the next day to the more prosaic tasks of making a living. A final half hour with friend Elbert before train-time in the evening and back to Syracuse and that desk which no longer was bare as I left it but straining again under the usual load.

The Kibitzer

From the Editor's Mail-Bag

Dear Sir:

Some more words used in Chess; their meaning and origin.

Stalemate:—From "stale"—a fixed position. Stalemate—where a player's King is not in check; his other pieces cannot be moved, and the last move of the opponent prevents the King from moving except into check. The player may claim a draw.

Forced Mate:—When a player cannot prevent the oncoming mate.

Smothered Mate:—Smother, stifle, suppress. Smothered mate—when a player's King is bottled up, cannot move as mate is announced by the opponent. See illustration below:—

| | | | |
|------------|-------------|-------------|------------|
| White | | Black | |
| ED. LASKER | I. HOROWITZ | | |
| 1. P-Q4 | Kt-KB3 | 2. P-P3 | P-P3 |
| 2. Kt-KB3 | P-Q4 | 3. Kt-Kt5 | B-Kt5ch. |
| 3. P-K3 | P-B4 | 4. B-Q2 | O-O |
| 4. P-B4 | PxQP | 5. Bx8 | Kt-B |
| 5. Kt-P | P-K4 | 6. Kt(5)xQP | Q-R4 |
| 6. Kt-KB3 | Kt-B3 | 7. Kt-Q2 | Q-K4 ch. |
| 7. Kt-B3 | P-Q5! | 8. Kt-K2 | Kt-Q6 mate |

Kibitzer:—Derived from the German word Kibitz (or Kiebitz)—a small bird which cries out to warn game at the approach of hunters, hence "one who gives unwanted advice."

For the last definition, I am in-

debted to Frank Colby, editor of Take my word for it.

Chicago, Illinois,
M. S. KUHN'S.



A Smothered Mate

DOUBLE FOR NOTHING

Eight pages of CHESS LIFE will cost the reader no more than four. But More Readers mean More Pages. **SUBSCRIBE TODAY!**

Want to find an out-of-print book on chess? Try the Want Ad Column of CHESS LIFE.

Who's Who In American Chess

George S. Barnes

Although his enterprise and talent has been dedicated to the dubious cause of advertising, George Barnes has never permitted material matters to blunt and lessen his fine appreciation of the game of chess. Even in advertising he has been an exponent of the finer ways of living as advertising executive for General Mills.

From the zest for better food George turns naturally to the zest for finer chess, believing that man



George S. Barnes

must be nourished mentally as well as physically. He served for many years on the Board of Directors of the original Western Chess Association; became the first president of the American Chess Federation (when the Western Ass'n expanded in 1934) and then served continuously on its Board of Directors through its expansion into the present United States Chess Federation.

In his many years of activity in chess affairs in Minnesota, George Barnes has been largely responsible for the series of interstate team matches between Minnesota, Wisconsin and Illinois.

As a player George has been very active in Minnesota events, and has held the Minnesota State Championship many times, including the current year of 1947.

In the current program of the Minneapolis Chess and Checker Club to sponsor and encourage junior chess, George Barnes is among the group who have generously donated their time and energy to the cause as benefactor of the senior members (in years of service) of the USCF Board of Directors.

Orrin M. Oulman

Learning his chess about fifteen years ago, Orrin M. Oulman has been busy in making up for lost time ever since. He has served as president of the Minnesota Chess Association and president of the Minneapolis Chess and Checker Club for many years as a counterpoise to his activity as an attorney in Minneapolis.

It was under Oulman's guidance and leadership that the Minneapolis Chess and Checker Club obtained the exceptional facilities which have made them one of the finest chess clubs in the country.

It was his active campaign for membership which has been sustained through the years which has placed the club upon a self-supporting basis and enabled it to finance the excellent equipment which sets it apart as one of the outstanding clubs.

Among Orrin Oulman's particular hobbies in chess has been the annual (until the war) Minneapolis-Winnipeg team match, conducted since 1935 with thirty players on each side. He has led five out of six teams to victory.

Oulman loves to play chess and is very proficient at the game. But he has never permitted his love of the game itself to interfere with the larger and more important considerations of chess organization and management. For many years he has served as USCF Director for Minnesota.



Orrin M. Oulman

Triumph of the Underdog

We are accustomed to thinking of Black as starting out with a disadvantage and working hard to equalize the position. For that reason it is always thrilling to see Black seize the initiative almost from the start and come through with a smashing attack.

QUEEN'S PAWN GAME Jurata, 1937

White
SCHAECTER
1. P-Q4
2. P-QB4
3. Kt-QB3
4. Q-B2
Black aims at quick development.
5. Kt-B3
6. B-K15
7. P-QR3
8. QxP

Black
WOITSEKOVSKY
Kt-KB3
P-K3
B-K15
Kt-B3
O-O
R-K1
BxKt ch.

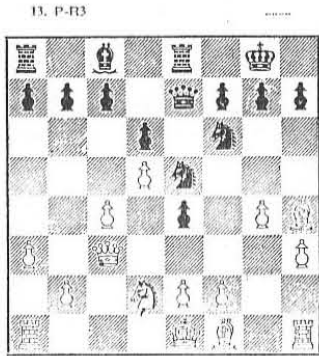
The natural way to recapture, but problems will soon arise regarding the possibility of Kt-K5. For this reason, Botvinnik has often recaptured with the Pawn in analogous positions, despite the weakening effect on White's Pawn position.

8. Q-K2
Now Black "threatens" Kt-K5. If played at once, it would have lost a Pawn.

9. B-R4
10. P-KK4
Realizing that 10. P-K3, P-K4; 11. B-K2, B-Kt5 gives Black pleasant prospects, White only compromises his position in a desperate attempt to force the issue.

11. B-K2, B-Kt5 gives Black pleasant prospects, White only compromises his position in a desperate attempt to force the issue.

12. Kt-Q2
Sharp. If 13. KtxP?, KtxKt and Black wins a piece. If 13. P-K15, Kt-R4; 14. Kt-K13 ditto; or 13. BxKt, QxB; 14. KtxP, Q-B5; 15. P-B3, KtxKtP with a winning game.



13. P-R3
So the discovered attack turned up after all! If now 14. PxKt, QxB; 15. QxP, KtxP or 15. P-K6 winning easily. White therefore gets rid of the Queens.

14. BxQ
15. BxP
He fights to maintain material equality, for after 15. PxKt, RxB; 16. B-K12, B-K3; 17. BxP, P-QB3 Black wins easily.

15. Kt-Q6 ch!!
16. PxKt
17. Kt-K4
Hoping to be let off with 17. KtxKt (if 17. RxB, RxB ch.; 18. K-Q2); 18. B-B4, Kt-K6 ch.; 19. B-K3, KtxR; 20. K-Q2, followed by B-K12. But now comes a stinging surprise. Can you see it?

17. P-Q7ch!!
Wins a piece! White resigned.

MILLER TWINS TWIN CHAMPIONS OF JR. TOURNEY

The Cleveland (Ohio) Junior Chess Championship ended in a tie between Harold and George Miller. Remembering that they finished in a tie for Cleveland City Championship in 1946 and that it took four hard-fought games to break the tie, it was mutually agreed that the Miller twins should hold the Junior title as Co-Champions. The tournament was played in the Treasure Room of the Cleveland Main Library.

| Cleveland Junior Championship | |
|-------------------------------|-------------|
| George Miller | 8-2 |
| Harold Miller | 8-2 |
| Fred Bartell | 7 1/2-2 1/2 |
| Jim Harkins | 6-4 |
| Victor Pollak | 6-4 |
| Rainer Sachs | 5 1/2-4 1/2 |
| Bill Granger | 5-5 |
| Alfred Robbety | 5-5 |
| Martin Levitin | 2 1/2-7 1/2 |
| Edward Congleton | 13-3 |
| Norman Samuels | 0-10 |

G. KOLTANOWSKI TO REFEREE AT 48th U. S. OPEN

The USCF announces that Geo. Koltanowski, the blindfold chess wizard, has accepted the invitation to act as Tournament Director for the 48th Annual U. S. Open Chess Tournament, to be held at Corpus Christi, Texas, from August 11 to 23. Local arrangements for the meeting are in the hands of the Corpus Christi Chess Club, hosts to the event, in collaboration with the business men of Corpus Christi and the Caller-Times.

PROVIDENCE TIES WORCESTER CHESS IN HARD BATTLE

March 21 saw the Worcester (Mass.) Chess Club invade the Providence (R. I.) Chess Club quarters at the YMCA and withdraw in good order with a drawn battle. Last year's three encounters netted Providence 1 1/2 to Worcester's 1 1/2—two evenly matched clubs.

DELMAR SAXTON RETAINS OMAHA CHESS TITLE

By defeating Lee Magee, University of Nebraska freshman, in three straight games in a playoff match, Delmar Saxton retains his grip on the Omaha Chess Championship. In the regular tournament, Saxton and Magee tied for first while Nebraska State Champion A. C. Ludwig and J. L. Spence, editor of the Nebraska Chess Bulletin, held a tie for third.

| Omaha City Championship | |
|-------------------------|------|
| D. Saxton | 13-3 |
| L. Magee | 13-3 |
| A. C. Ludwig | 10-4 |
| J. L. Spence | 10-4 |
| W. McLaughlin | 8-6 |
| E. L. Holland | 6-10 |
| Walter Nelson | 4-12 |
| E. Frederiksen | 0-16 |

BROWN UNIV. IS VICTOR OVER PROVIDENCE CLUB

Brown University Chess Club (preempting the services of three players, also members at Providence) inflicted defeat upon the Providence YMCA Chess Club in a recent match.

| Brown Univ. | | Providence | |
|--------------|----------|-------------------|----------|
| Rubinow | 0 | Sussman | 1 |
| Karp | 2 | Hudnut | 2 |
| Wolk | 1 | Eklaf | 0 |
| Arsove | 2 | Worrell | 2 |
| Putnam | 1 | Winsor | 0 |
| Shapiro | 1 | Eckhardt | 0 |
| Kelley | 1 | Mancini | 0 |
| Brown | 5 | Providence | 2 |

SURPRISE—OKLA. FACULTY OUTSMARTS STUDENTS

On May 4 the Faculty Chess Club of the University of Oklahoma at Norman (Okla.) defeated the Student Chess Club by a score of 9 1/2-2 1/2 in a double round match.

| Faculty | | Students | |
|----------------|--------------|-----------------|--------------|
| A. de la Torre | 1 | G. Atatur | 1 |
| G. Mueller | 2 | R. Payne | 0 |
| A. Bernhart | 2 | L. Hendrix | 0 |
| K. Svendsen | 1 | L. Long | 1 |
| F. Lee | 1 1/2 | W. Miller | 1 1/2 |
| R. Bambas | 2 | J. Moody | 0 |
| Faculty | 9 1/2 | Students | 2 1/2 |



Boys, and occasionally girls, from Cleveland's junior and senior high schools, as well as some grade school students, gather each Saturday afternoon during the school year in the Treasure Room of Cleveland's main public library. Some groups, like the one in this picture, come to play even during the vacation period, bringing their own boards and sets.

Men Who Work For Chess

Clarence S. Metcalf

LEADERS in Cleveland chess activities give credit to one man for the greatest contribution to the growth of interest in the Junior chess program there. That man is Clarence S. Metcalf, head of the great Cleveland Library System. In 1944, Mr. Metcalf learned that a number of high school boys had been playing chess and it occurred to him that it would be an advantage if these boys were given an opportunity to play once a week in the chess library. Mr. Metcalf proposed to the President of the Cleveland Chess Association that they cooperate with him in promoting activities at the library. Since that time the library has been the chief center of junior chess activities in Cleveland.



Clarence S. Metcalf

Mr. Metcalf is a very modest gentleman and when he is asked for more information about himself, he starts talking about the fine work of his staff and the cooperation of the Cleveland Chess Association. It has been through his guidance and direction that the young people have had the opportunity to play in the beautiful Treasure Room with its inspiring surroundings. The Treasure Room is adjacent to the great John G. White collection which is one of the finest chess libraries in the world and was bequeathed to the library by its former trustee, John G. White.

Cleveland is indeed fortunate to have as the head of its library system a man like Mr. Metcalf. He has often donated prizes and arranged for proper scrolls to be presented to winners of events at the library. The inspiration of such leadership is very helpful indeed!

CLEVELAND CITY CHAMPIONSHIP IN FULL SWING

Ten finalists, survivors of five preliminary qualifying sections, are now engaged in a hard struggle for the Cleveland (Ohio) City Championship. Bill Granger (Pawns) and Peter Stephan (Checkmate) topped the Club section; Elison (Post Office) and Frank Habau (Post Office) qualified from the Industrial section; Browski, Wyman (Cleveland), Bartell (Cleveland), Salom (Cleveland), Levy (Case School) and Elliott Stearns (Cleveland) were the victors in the three open sections.

The toughness of the preliminary rounds were testified to by the fact that 1946 Cleveland Champion George Miller and 1945 Industrial Champion Joe Chavayda were two ranking Cleveland players who failed to qualify.

ROCHESTER BESTS ITHACA CHESS AVENGING UNIV.

Rochester (N. Y.) defeated Ithaca (N. Y.) in a ten board match on May 4 at Ithaca by a score of 6-4, thereby avenging the two losses (5-0 and 3-2) suffered by the University of Rochester chess team in matches with Cornell University. The Ithaca team was largely composed of students from Cornell.

| Rochester | | Ithaca | |
|------------------|----------|---------------|----------|
| Marchand | 1 | Murdock | 0 |
| Hertzberger | 2 | Michael | 2 |
| Rickless | 1 | Thomas | 0 |
| Candee | 0 | Morgan | 1 |
| Weig | 0 | Black | 1 |
| Palmer | 1 | Bagnus | 0 |
| Lafferty | 1 | Moskowitz | 0 |
| Rogan | 1 | Ninburg | 2 |
| Schulman | 1 | Ross | 0 |
| Marshall | 0 | Goodridge | 1 |
| Rochester | 6 | Ithaca | 4 |

SUBSCRIBE
to America's only
Chess Newspaper

VACATION FUN
AT THE
TREASURE
ROOM
OF THE
CLEVELAND
PUBLIC LIBRARY

Honor Roll of Club Chapters

Chartered During Month of April, 1947

Charter No. 153

Fresno Chess Club
Fresno, Calif.

Meets Monday evenings at Hart's Restaurant.

President.....C. Wesley Bird
Vice-President.....Emmett Cantrell
Secretary-Treasurer.....Ralph Stage
Asst. Sec'y-Treasurer.....Dennis Hoffman.

Charter No. 154

Sullivan County Chess Club
Sullivan County, New York

Meets every Monday, October 1st to May 1st. Meetings rotate to the several towns in the county where members live.

President.....Nathan Rosenbaum, Monticello, New York.
Treasurer and Historian.....David A. Kyle, Monticello, New York.
Secretary.....Antonio C. Balducci, So. Fallsburg, New York.

Charter No. 155

So. Fallsburg Grade School Chess Club

So. Fallsburg, New York

Meets every Friday, October 1 to April 15 at Rivoli Theatre.

President.....Richard Rosen
Vice-President.....Harry Fertik
Secretary.....Walter Greenstein
Treasurer.....Melvin Feldman
Club Advisor.....Antonio C. Balducci
All officers and members are not yet in high school, averaging 12 years of age.

Charter No. 156

Buffalo Chess Club
Buffalo, New York

Meets in Room No. 131 of the Hotel Lafayette.

President.....Selby C. Parker
Vice-President.....Elmer C. Maurer
Exec. Vice-Pres.....Harold H. Hodge
Treasurer.....Arthur P. C. Rodenbach
Secretary.....Norman C. Wilder, Jr.

Charter No. 157

Princeton University Chess Club
Princeton, New Jersey

Meets every Wednesday night at Murray-Dodge Hall, Campus.

President.....Joseph Faucher
Vice-Pres.....Harry Maguire
Treasurer.....Charles Rourke
Secretary.....George Franck

Charter No. 158

Santa Monica Bay Chess Club
Santa Monica, Calif.

Meets at Miles Memorial Park, Seventh and Wilshire on Friday nights.

President.....Paul Wrangell
Vice-President.....Carl Budd
Sec'y-Treasurer.....C. E. Carlton
Tourn. Director.....G. A. Stiven

Charter No. 159

Tilers Chess Club
Newark, New Jersey

Membership limited to invitation.

TO THE UNITED STATES CHESS FEDERATION:

Please accept my entry to the Tournament for the Junior Chess Championship of the United States, to be played at Cleveland, June 30-July 12, 1947.

NAME: _____ (Please Print)

ADDRESS: _____ (Street Number) _____ (City) _____ (State)

DATE OF BIRTH: _____ (Month) _____ (Date) _____ (Year)

TOURNAMENTS WON OR TITLES HELD: _____

It is understood that free housing accommodations are to be provided for 60 players in the Junior Tournament. In the event that I am not among those to whom housing is to be given without cost, I shall.....shall not.....be able to play.

I agree to be bound by the playing rules of the United States Chess Federation and to comply with the decisions of the Referee, the Tournament Director and the Tournament Committee.

(Please sign full name)

All entries should be sent to S. S. KEENEY, 511 Park Building, Cleveland, Ohio, together with entrance fee in the amount of \$5.00. Checks or money orders should be payable to S. S. KEENEY. Please do not send currency.

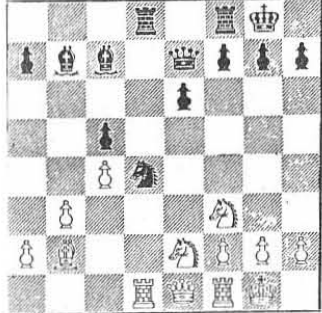
SICILIAN DEFENSE
St. Louis District Tournament, 1947

Notes by C. M. Burton

White: L. W. HALLER
1. P-K4
2. P-K3
3. B-K2
4. P-K5
5. P-K4
6. Kt-K3
7. B-K2
8. O-O
9. Kt-K3
10. Kt-K3
11. P-Q3
12. Kt-K3
13. Q-K1
14. Kt-K4
15. P-K4
16. P-K4
17. QP-K4

Black: R. H. STEINMEYER
1. P-Q4
2. P-Q4
3. Kt-R3
4. Kt-B4
5. P-Q3
6. Kt-K3
7. O-O
8. Kt-K3
9. Kt-K3
10. Kt-B4
11. P-Q3
12. Kt-K3
13. Q-K1
14. Kt-K4
15. P-B4
16. P-K4
17. QP-K4

After 19. Kt-Kt Steinmeyer



Haller
19. Kt-Kt
20. Kt-Kt
21. R-Q3
22. P-Q4
23. B-K2
24. Kt-K3
25. Kt-K3
26. Kt-K3
27. Kt-K3
28. Kt-K3
29. Kt-K3
30. Kt-K3
31. Kt-K3
32. Kt-K3
33. Kt-K3
34. Kt-K3
35. Kt-K3
36. Kt-K3
37. Kt-K3
38. Kt-K3
39. Kt-K3
40. Kt-K3
41. Kt-K3
42. Kt-K3
43. Kt-K3
44. Kt-K3
45. Kt-K3
46. Kt-K3
47. Kt-K3
48. Kt-K3
49. Kt-K3
50. Kt-K3

QUEEN'S PAWN GAME
Exhibition Game at Mount Vernon, Washington

Notes by Fred Reinfeld

White: D. ULVESTAD
1. P-Q4
2. P-Q4
3. Kt-Q3
4. P-Q3
5. P-Q3
6. P-Q3
7. B-K2
8. Kt-K3
9. P-B3
10. P-K4
11. R-K1
12. P-Kt1
13. P-Kt1
14. P-Kt1
15. P-Kt1
16. P-Kt1
17. P-Kt1
18. P-Kt1
19. P-Kt1
20. P-Kt1
21. P-Kt1
22. P-Kt1
23. P-Kt1
24. P-Kt1
25. P-Kt1
26. P-Kt1
27. P-Kt1
28. P-Kt1
29. P-Kt1
30. P-Kt1
31. P-Kt1
32. P-Kt1
33. P-Kt1
34. P-Kt1
35. P-Kt1
36. P-Kt1
37. P-Kt1
38. P-Kt1
39. P-Kt1
40. P-Kt1
41. P-Kt1
42. P-Kt1
43. P-Kt1
44. P-Kt1
45. P-Kt1
46. P-Kt1
47. P-Kt1
48. P-Kt1
49. P-Kt1
50. P-Kt1

After 22. R-B3 Dako



Ulvestad
22. R-B3
23. R-B3
24. R-B3
25. R-B3
26. R-B3
27. R-B3
28. R-B3
29. R-B3
30. R-B3
31. R-B3
32. R-B3
33. R-B3
34. R-B3
35. R-B3
36. R-B3
37. R-B3
38. R-B3
39. R-B3
40. R-B3
41. R-B3
42. R-B3
43. R-B3
44. R-B3
45. R-B3
46. R-B3
47. R-B3
48. R-B3
49. R-B3
50. R-B3



Ulvestad
22. R-B3
23. R-B3
24. R-B3
25. R-B3
26. R-B3
27. R-B3
28. R-B3
29. R-B3
30. R-B3
31. R-B3
32. R-B3
33. R-B3
34. R-B3
35. R-B3
36. R-B3
37. R-B3
38. R-B3
39. R-B3
40. R-B3
41. R-B3
42. R-B3
43. R-B3
44. R-B3
45. R-B3
46. R-B3
47. R-B3
48. R-B3
49. R-B3
50. R-B3

Tournament Life

Conducted by
Erich W. Marchand

Dept. of Mathematics
University of Rochester,
Rochester 3, New York

23. R-R
24. P-K4
25. Kt-K3
26. B-B1
27. R-B2

PxR
Kt-R4
Kt-P
R-Q1
B-K2

28. P-B4
29. PxP
30. P-R3
31. Kt-R5
32. Resigns

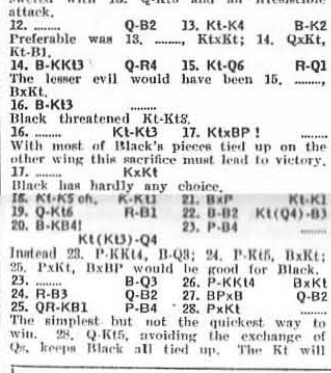
B-B6
PxP
R-Q6
P-K5

ORTHODOX DEFENSE
North American Tournament of the Correspondence Chess League of America

Notes by Dr. J. Platz

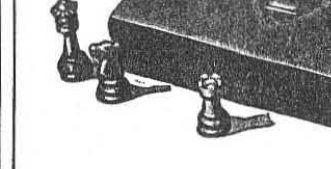
White: S. H. KOWALSKI
1. P-Q4
2. P-Q4
3. Kt-Q3
4. P-Q3
5. P-Q3
6. P-Q3
7. B-K2
8. Kt-K3
9. P-B3
10. P-K4
11. R-K1
12. P-Kt1
13. P-Kt1
14. P-Kt1
15. P-Kt1
16. P-Kt1
17. P-Kt1
18. P-Kt1
19. P-Kt1
20. P-Kt1
21. P-Kt1
22. P-Kt1
23. P-Kt1
24. P-Kt1
25. P-Kt1
26. P-Kt1
27. P-Kt1
28. P-Kt1
29. P-Kt1
30. P-Kt1
31. P-Kt1
32. P-Kt1
33. P-Kt1
34. P-Kt1
35. P-Kt1
36. P-Kt1
37. P-Kt1
38. P-Kt1
39. P-Kt1
40. P-Kt1
41. P-Kt1
42. P-Kt1
43. P-Kt1
44. P-Kt1
45. P-Kt1
46. P-Kt1
47. P-Kt1
48. P-Kt1
49. P-Kt1
50. P-Kt1

After 22. R-B3 Shipman



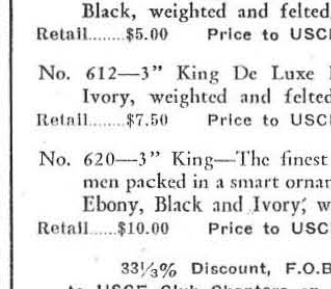
Shipman
22. R-B3
23. R-B3
24. R-B3
25. R-B3
26. R-B3
27. R-B3
28. R-B3
29. R-B3
30. R-B3
31. R-B3
32. R-B3
33. R-B3
34. R-B3
35. R-B3
36. R-B3
37. R-B3
38. R-B3
39. R-B3
40. R-B3
41. R-B3
42. R-B3
43. R-B3
44. R-B3
45. R-B3
46. R-B3
47. R-B3
48. R-B3
49. R-B3
50. R-B3

After 22. R-B3 Kieleson



Kieleson
22. R-B3
23. R-B3
24. R-B3
25. R-B3
26. R-B3
27. R-B3
28. R-B3
29. R-B3
30. R-B3
31. R-B3
32. R-B3
33. R-B3
34. R-B3
35. R-B3
36. R-B3
37. R-B3
38. R-B3
39. R-B3
40. R-B3
41. R-B3
42. R-B3
43. R-B3
44. R-B3
45. R-B3
46. R-B3
47. R-B3
48. R-B3
49. R-B3
50. R-B3

After 22. R-B3 Dako



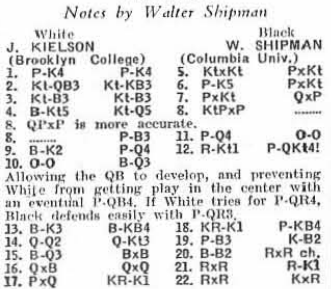
Dako
22. R-B3
23. R-B3
24. R-B3
25. R-B3
26. R-B3
27. R-B3
28. R-B3
29. R-B3
30. R-B3
31. R-B3
32. R-B3
33. R-B3
34. R-B3
35. R-B3
36. R-B3
37. R-B3
38. R-B3
39. R-B3
40. R-B3
41. R-B3
42. R-B3
43. R-B3
44. R-B3
45. R-B3
46. R-B3
47. R-B3
48. R-B3
49. R-B3
50. R-B3

FOUR KNIGHTS' GAME
1946 Intercollegiate Team Tournament

Notes by Walter Shipman

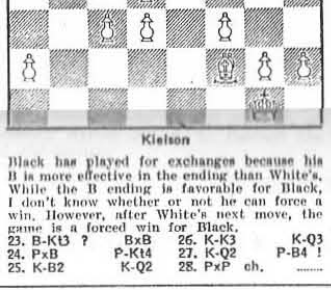
White: J. KIELSON
1. P-K4
2. Kt-Q3
3. Kt-B3
4. B-K5
5. P-Q3
6. P-Q3
7. P-Q3
8. P-Q3
9. P-Q3
10. P-Q3
11. P-Q3
12. P-Q3
13. P-Q3
14. P-Q3
15. P-Q3
16. P-Q3
17. P-Q3
18. P-Q3
19. P-Q3
20. P-Q3
21. P-Q3
22. P-Q3
23. P-Q3
24. P-Q3
25. P-Q3
26. P-Q3
27. P-Q3
28. P-Q3
29. P-Q3
30. P-Q3
31. P-Q3
32. P-Q3
33. P-Q3
34. P-Q3
35. P-Q3
36. P-Q3
37. P-Q3
38. P-Q3
39. P-Q3
40. P-Q3
41. P-Q3
42. P-Q3
43. P-Q3
44. P-Q3
45. P-Q3
46. P-Q3
47. P-Q3
48. P-Q3
49. P-Q3
50. P-Q3

After 22. R-B3 Shipman



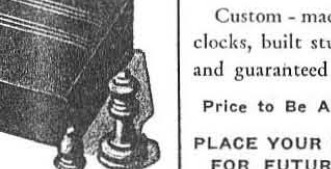
Shipman
22. R-B3
23. R-B3
24. R-B3
25. R-B3
26. R-B3
27. R-B3
28. R-B3
29. R-B3
30. R-B3
31. R-B3
32. R-B3
33. R-B3
34. R-B3
35. R-B3
36. R-B3
37. R-B3
38. R-B3
39. R-B3
40. R-B3
41. R-B3
42. R-B3
43. R-B3
44. R-B3
45. R-B3
46. R-B3
47. R-B3
48. R-B3
49. R-B3
50. R-B3

After 22. R-B3 Kieleson



Kieleson
22. R-B3
23. R-B3
24. R-B3
25. R-B3
26. R-B3
27. R-B3
28. R-B3
29. R-B3
30. R-B3
31. R-B3
32. R-B3
33. R-B3
34. R-B3
35. R-B3
36. R-B3
37. R-B3
38. R-B3
39. R-B3
40. R-B3
41. R-B3
42. R-B3
43. R-B3
44. R-B3
45. R-B3
46. R-B3
47. R-B3
48. R-B3
49. R-B3
50. R-B3

After 22. R-B3 Dako



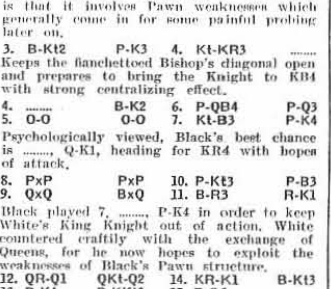
Dako
22. R-B3
23. R-B3
24. R-B3
25. R-B3
26. R-B3
27. R-B3
28. R-B3
29. R-B3
30. R-B3
31. R-B3
32. R-B3
33. R-B3
34. R-B3
35. R-B3
36. R-B3
37. R-B3
38. R-B3
39. R-B3
40. R-B3
41. R-B3
42. R-B3
43. R-B3
44. R-B3
45. R-B3
46. R-B3
47. R-B3
48. R-B3
49. R-B3
50. R-B3

DUTCH DEFENSE
Manhattan Chess Club Championship, 1947

Notes by Fred Reinfeld

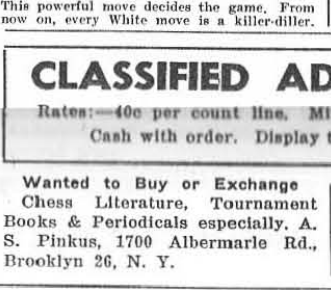
White: S. N. BERNSTEIN
1. P-Q4
2. P-K4
3. Kt-Q3
4. P-Q3
5. P-Q3
6. P-Q3
7. B-K2
8. Kt-K3
9. P-B3
10. P-K4
11. R-K1
12. P-Kt1
13. P-Kt1
14. P-Kt1
15. P-Kt1
16. P-Kt1
17. P-Kt1
18. P-Kt1
19. P-Kt1
20. P-Kt1
21. P-Kt1
22. P-Kt1
23. P-Kt1
24. P-Kt1
25. P-Kt1
26. P-Kt1
27. P-Kt1
28. P-Kt1
29. P-Kt1
30. P-Kt1
31. P-Kt1
32. P-Kt1
33. P-Kt1
34. P-Kt1
35. P-Kt1
36. P-Kt1
37. P-Kt1
38. P-Kt1
39. P-Kt1
40. P-Kt1
41. P-Kt1
42. P-Kt1
43. P-Kt1
44. P-Kt1
45. P-Kt1
46. P-Kt1
47. P-Kt1
48. P-Kt1
49. P-Kt1
50. P-Kt1

After 22. R-B3 Bernstein



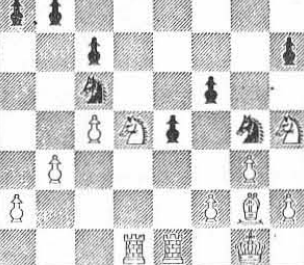
Bernstein
22. R-B3
23. R-B3
24. R-B3
25. R-B3
26. R-B3
27. R-B3
28. R-B3
29. R-B3
30. R-B3
31. R-B3
32. R-B3
33. R-B3
34. R-B3
35. R-B3
36. R-B3
37. R-B3
38. R-B3
39. R-B3
40. R-B3
41. R-B3
42. R-B3
43. R-B3
44. R-B3
45. R-B3
46. R-B3
47. R-B3
48. R-B3
49. R-B3
50. R-B3

After 22. R-B3 Pilnick



Pilnick
22. R-B3
23. R-B3
24. R-B3
25. R-B3
26. R-B3
27. R-B3
28. R-B3
29. R-B3
30. R-B3
31. R-B3
32. R-B3
33. R-B3
34. R-B3
35. R-B3
36. R-B3
37. R-B3
38. R-B3
39. R-B3
40. R-B3
41. R-B3
42. R-B3
43. R-B3
44. R-B3
45. R-B3
46. R-B3
47. R-B3
48. R-B3
49. R-B3
50. R-B3

After 22. Kt-Q4! Pilnick



Pilnick
22. Kt-Q4
23. Kt-Q4
24. Kt-Q4
25. Kt-Q4
26. Kt-Q4
27. Kt-Q4
28. Kt-Q4
29. Kt-Q4
30. Kt-Q4
31. Kt-Q4
32. Kt-Q4
33. Kt-Q4
34. Kt-Q4
35. Kt-Q4
36. Kt-Q4
37. Kt-Q4
38. Kt-Q4
39. Kt-Q4
40. Kt-Q4
41. Kt-Q4
42. Kt-Q4
43. Kt-Q4
44. Kt-Q4
45. Kt-Q4
46. Kt-Q4
47. Kt-Q4
48. Kt-Q4
49. Kt-Q4
50. Kt-Q4

G. KOLTANOWSKI ANNOUNCES MATE IN 8 (BLINDFOLD)

At a simultaneous blindfold exhibition in Milwaukee at the Northwestern Mutual Life Ins. Co. Chess Club on March 27, Koltanowski announced a mate in eight moves against the club secretary, Herbert Dunning. The blindfold expert won seven out of eight games and drew the eighth against Thomas Terry, the club tournament director.

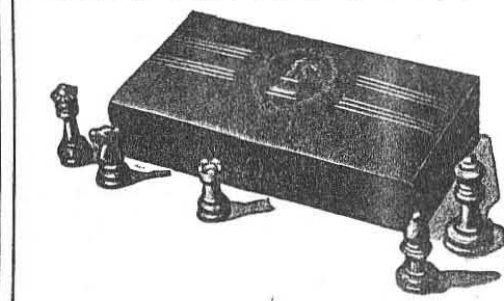
CLASSIFIED ADVERTISEMENTS

Rates:—40c per count line. Minimum charge of \$1.20 per adv. Cash with order. Display type 20c per line additional.

Wanted to Buy or Exchange Chess Literature, Tournament Books & Periodicals especially. A. S. Pinkus, 1700 Albermarle Rd., Brooklyn 26, N. Y.

The Russians Play Chess.....\$2.00
Keres' Best Games..... 3.00
Botvinnik the Invincible..... 2.00
UNIVERSITY PLACE BOOKSHOP
69 University Place (3) New York

Buy Your Chess Supplies from the USCF!



At Special Membership Prices
Gits Authentic "Staunton Pattern" Plastic Chessmen

No. 510—2 1/8" King—Mottled Ivory and Mottled Black, weighted and felted.
Retail.....\$2.50 Price to USCF Members.....\$2.25

No. 610—3" King—Mottled Ivory and Mottled Black, weighted and felted.
Retail.....\$5.00 Price to USCF Members.....\$4.50

No. 612—3" King De Luxe Ebony—Black and Ivory, weighted and felted.
Retail.....\$7.50 Price to USCF Members.....\$6.75

No. 620—3" King—The finest Gits Plastic Chessmen packed in a smart ornamental box. DeLuxe Ebony, Black and Ivory, weighted and felted.
Retail.....\$10.00 Price to USCF Members.....\$9.00

33 1/3% Discount, F.O.B. Syracuse to USCF Club Chapters on Quantity Orders.
(Special Rates Apply to USCF Members Only)

Clocks!

Custom-made, electric chess clocks, built sturdily for service and guaranteed for five years.
Price to Be Announced Later
PLACE YOUR REQUEST NOW FOR FUTURE DELIVERY
Orders Filled in Rotation When Production Starts

Chess Books

Practical End-Game Play.....\$2.00
By Fred Reinfeld

Common Sense in Chess.....\$1.50
By Dr. Emmanuel Lasker

The Art of Sacrifice in Chess.....\$3.00
By Rudolph Spielman

The Enjoyment of Chess Problems.....\$3.00
By Kenneth S. Howard

Modern Chess Openings.....\$2.50
By Griffiths & White

Chess Marches On!.....\$3.00
By Reuben Fine

Chessboard Magic.....\$2.50
By Irving Chernev

The Game of Chess.....\$3.50
By Dr. S. Tarrasch

Winning Chess Traps.....\$3.00
By Irving Chernev

Botvinnik the Invincible.....\$2.00
By Fred Reinfeld

Learn Chess Fast!.....\$1.00
By Sammy Reshevsky and Fred Reinfeld

The Russians Play Chess.....\$2.00
By Irving Chernev

If You Must Play Chess.....\$2.00
By Arnold S. Denker

Chess By Yourself.....\$2.00
By Fred Reinfeld

The Middle Game in Chess.....\$3.00
By E. A. Znosko-Borovsky

Complete List of Available Chess Books Sent Upon Request. 20% Discount to USCF Club Chapters on Orders for Five or More Titles. Add Five Cents Per Book for Postage.

Order From
USCF SERVICE DEPARTMENT
2304 South Avenue Syracuse 7, New York

Now Out

BOOK OF THE
47th USCF Open Tournament at Pittsburgh, 1946

208 games as played by the 20 Top Players in 17 Tournament Rounds.

Modern Plastic Binding Opens Flat for Convenience in Reading.
Price, \$1.50