

Tuesday, July 20, 1948

For The Tournament-Minded

August 14-15 Massachusetts State Championship Deerfield, Massachusetts... Open to MSCA members...

September 1 Correspondence Chess Championship of the U.S.A. Conducted by the CCLA...

September 4-6 2nd Georgia Open Tournament Augusta, Georgia... Open to all comers...

September 4-6 Pennsylvania State Championship Pittsburgh, Pennsylvania... Open to Pennsylvania players...

September 4-6 14th Annual Southwestern Open Championship San Antonio, Texas... Open to all players...

September 4-6 Nebraska State Championship North Platte, Nebraska... Open to Nebraska players...

September 4-12 New York State Championship Endicott, New York... Open to New York chess players...

September 4-6 West Virginia State Championship South Charleston, West Virginia... Open to West Virginia players...

September 4-6 Ohio State Chess Championship Columbus, Ohio... Open to Ohio players...

September 4-6 Virginia State Championship Charlottesville, Virginia... Open to Virginia players...

September 4-6 North Carolina Championship Winston-Salem, North Carolina... Open to all chess players...

HAWTHORNE LEADS IN BELL SYSTEM CHESS BY MAIL

Latest report from the Bell System Postal Chess Tournament shows the Western Electric-Hawthorne (Chicago) group to be leading in round one on a percentage basis...

Round One Standings Table with columns for Team, T, S, S. Urf. Lists various Bell Telephone Laboratories groups.



WOMAN'S TEAM MATCH

Miners vs. Tommies at the St. Peterburg Chess Divan. Right side, seated (front to rear) Mollie Brandt, Mary Ellen Stubbs, Lois Decker, Dr. Elizabeth Miner, Louise Baker...

Photo: Ken Richards



ANNUAL BANQUET FOR THE QUEENS

One of the few all woman chess clubs in America is the Queen's Chess Club of Cleveland, organized March 9, 1938 by Mrs. Flora Hauschild...

LASKER VISITS WEATT CHESS

The Weatt Chess Club (Western Electric and Amer. Telephone) had a visit from Dr. Edward Lasker as one of the closing events of the season...

The Annual Handicap Tournament ended with James E. Devaney as victor and custodian of the Handicap Cup...

Weatt Handicap Tournament Leaders: James E. Devaney 54-15 85%, John J. Clark 5-22 80%, George D. Walsh 84-23 77%...

WEATT REPULSES N. J. INVASION

The Weatt (Western Electric and American Telephone) Chess Club of New York repelled the strong invasion of the Wekeary (Western Electric-Keaney, N.J.) Chess Club...

Two tables comparing Weatt Chess and Wekeary Chess players and scores. Weatt players include Clark, Bittler, Devaney, Puzos, Egner, Das, McGinnis, Shilt, Dube, Bruce, Reutler, Redolph, Carroll, Dabuo, Dewey, Wubb, Prentice, Weber, H. Smith, Alstadt, Alxvus, Loox, Solbert, Miss Morsing, Spiker, Wittenborg, Miss Arca, Mrs. Ryan, Miss Livingston, Miss Bryson, Miss Wolford, Weatt. Wekeary players include Welland, Wojciechowski, Krjusz, Hurlton, Woolfing, Libbey, Staut, Koek, Dubowicz, Vermette, Abramowitz, Denton, forfett, Haroon, Prand, Morsing, W. M. Smith, Zohn, Robert, Grose, Abrolid, Docke, Pavelka, Morrell, forfett, Chalmers, Patton, Block, Rubright, Haller, Michale, Rawls, Kekeary.

KITCES WINS OTTAWA TITLE

S. Kitces won the Ottawa (Canada) championship with a score of 5-1. Cpl. W. N. Wilson was the runner-up with 4 1/2-1 1/2. The latter is a member of the RCMP band...

SYRACUSE CLUB FINDS NEW HOME

The Syracuse (N.Y.) Chess Club moved over the holiday to new quarters in the Third Club Room, YWCA Bldg, 339 E. Onondaga St. where beginning with July 12, the meetings will be held on Monday.

Team Matches From The Chess Clubs

Two tables showing team matches for CARONADO, CALIF and CLEVELAND, OHIO. Caronado players include Short, Carleton, Smith, Connors, Comm, McSheehy, Dr. H. C. Koek. Cleveland players include East Side, Cleve. Twist Drill, A. R. Phillips, Schaffer, Jacobsen, W. O'Brien, Reis, Skolowski, Foundell, Tatlock, Heathcote.

TORONTO, CANADA

Table showing Toronto chess players and their affiliations, including R. Beeth, H. Henry, M. Rodie, E. Greenfield, M. Boelan, E. Muise, P. Stollery.

CLEVELAND, OHIO

Table showing Cleveland chess players and their affiliations, including Cleve. Form Tool, J. Banko, A. Horne, G. Bantio, Cech, Christopher, Form Tool, Atlantic Tool & Die, E. Midgely, A. Martens, E. Melwald, Brandis, Montag, Atlantic Tool.

CLEVELAND, OHIO

Table showing Cleveland chess players and their affiliations, including Fenn College Chess, J. Diamond, L. Star, R. Beck, P. Levitt, V. Chelkoff, Fenn, Queen's Chess, Mrs. H. Rhein-stein, Miss Viola Bence, Mrs. C. Kelly, Miss Elsie Huvie, Mrs. Mema Schwartz, Queen's.

MERCED, CALIF.

Table showing Merced chess players and their affiliations, including Fresno Chess, F. Pelouse, C. W. Bird, R. Cook, I. M. Beck, S. Paulsen, Dr. H. Kallman, R. Slagor, T. Curt, L. Legler, Fresno, Modesto Chess, El. Bekker, J. Smith, L. Kerfont, H. Paul, L. Davis, J. Berry, A. Wente, Dr. G. J. Cook, L. Kogness, Modesto.

Just Out! WINNING CHESS \$2.75 By Irving Cherney and Fred Reinfield USCF Service Department 2304 So. Ave., Syracuse 7, N.Y.

SUBSCRIBE NOW TO CHESS LIFE

THE OFFICIAL 1948 Correspondence Chess Championship OF THE U. S. A. Begins September 1! Round 1—Preliminaries, with sterling silver medals... THE YEAR'S OUTSTANDING EVENT FOR EVERY CORRESPONDENCE CHESS PLAYER IN AMERICA! Entry fee per section: \$1 for CCLA Members; \$1.50 for non-members (*). You May Enter as Many Sections As You Wish! Send your entry NOW to: CCLA SECRETARY DICK REES, 2826 Correctionville Road, SIOUX CITY 19, IOWA.

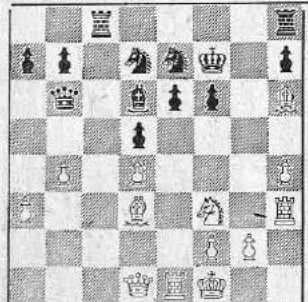
CHESS WATCHES Compact — Accurate — Attractive — Fully Guaranteed No Electrical Connections — Can Be Carried in Pocket Watch cases are hand made of translucent plexiglas—a material of great beauty despite the fact that it is very tough. The start and stop mechanisms are accurately fitted and assembled by skilled watchmakers... DELUXE MODEL Choice of white or black with white trim, with superior grade of watches, complete with cloth-lined plexiglas carrying case. Price \$17.60 (Federal Tax included) STANDARD MODEL Choice of white, black with white trim, or red with white trim, complete with cloth-lined cardboard carrying box. Price \$14.03 (Federal Tax included) Cash with order, mailed post paid. \$4.50 discount (75c per watch) on orders of six or more watches. USCF SERVICE DEPT. 2304 SOUTH AVE. SYRACUSE 7, N. Y.

Tuesday, July 20, 1948

FRENCH DEFENSE Manhattan Chess Club Championship Playoff match, New York, 1947

Notes by Fred Reinfeld... White: 1. P-K4 P-K3 4. P-K3 KKt-Q2... Black: 1. P-K4 P-K3 4. P-K3 KKt-Q2... After 22. Kt-K2 KEVITZ...

White: 1. P-K4 P-K3 4. P-K3 KKt-Q2... Black: 1. P-K4 P-K3 4. P-K3 KKt-Q2... After 22. Kt-K2 KEVITZ...



White: 1. P-K4 P-K3 4. P-K3 KKt-Q2... Black: 1. P-K4 P-K3 4. P-K3 KKt-Q2... After 22. Kt-K2 KEVITZ...

NIMZOINDIAN DEFENSE U. S. Championship Preliminaries Area 7, New York, 1948... Notes by Edward J. Korpany...

White: 1. P-Q4 P-K3 4. Q-B2 Kt-B3... Black: 1. P-Q4 P-K3 4. Q-B2 Kt-B3... After 23. Q-QK3 PILNICK...



White: 1. P-Q4 P-K3 4. Q-B2 Kt-B3... Black: 1. P-Q4 P-K3 4. Q-B2 Kt-B3... After 23. Q-QK3 PILNICK...

DONOVAN... Black's KP and QKP are weak. He's willing to take a doubled P to free his QB and threaten both the KP and QRP...

Tournament Life

Conducted by Erich W. Marchand

The R is tied down because of White's K-position... 30. B-B6 32. QxKtP... 31. BxR ch... 32. QxRP... 33. R-QB8 Q-Q8 ch... 34. K-R2 P-KR3... 35. QxRP ch... 36. QxRP Q-Q3... 37. Q-Kt8 ch... White must not lose a tempo now, Black's QP and BP (d) are very dangerous...

QUEEN'S GAMBIT DECLINED Omaha City Championship Omaha, 1948

Notes by I. Rivise... White: 1. P-Q4 P-K4 3. Kt-QB3 Kt-KB3... Black: 1. P-Q4 P-K4 3. Kt-QB3 Kt-KB3... Slightly more elastic than 4. ... K-R2. Black can threaten (or really play) the Cambridge Springs or Manhattan variations... After 22. BxR KRAMER...



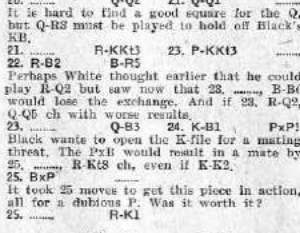
White: 1. P-Q4 P-K4 3. Kt-QB3 Kt-KB3... Black: 1. P-Q4 P-K4 3. Kt-QB3 Kt-KB3... After 22. BxR KRAMER...

White: 1. P-Q4 P-K4 3. Kt-QB3 Kt-KB3... Black: 1. P-Q4 P-K4 3. Kt-QB3 Kt-KB3... After 22. BxR KRAMER...

LUDWIG... Allowing a quick finish instead of a lingering death. White conducted the game beautifully — a model for this variation specifically demonstrating how one weak move and a lost tempo can be exploited with remarkable ease...

TWO KNIGHTS' DEFENSE U. S. Championship Preliminaries Area 7, New York, 1948... Notes by Dr. Bela Rozsa... White: 1. P-K4 P-K3 4. P-K3 KKt-Q2... Black: 1. P-K4 P-K3 4. P-K3 KKt-Q2... After 23. Q-QK3 PILNICK...

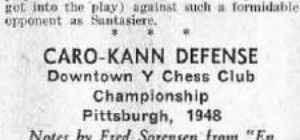
This seems too passive. The natural move is P-KB4, followed by 10. Kt-K3, Kt-KB5; 11. B-B1, B-B4; at which point Black has a time game... After 20. ... QxRP? MALLORY...



White has overextended himself. He is due for a rude shock, however... 20. P-Q6 QxP? After 20. ... QxRP? MALLORY...

After 22. ... R-K1 SANTASIERE... White: 1. P-Q4 P-K4 3. Kt-QB3 Kt-KB3... Black: 1. P-Q4 P-K4 3. Kt-QB3 Kt-KB3... After 22. BxR KRAMER...

After 19. Q-Q3! DONOVAN... White: 1. P-K4 P-QB4 6. B-K2 BxK2... Black: 1. P-K4 P-QB4 6. B-K2 BxK2... After 19. Q-Q3! DONOVAN...



White: 1. P-K4 P-QB4 6. B-K2 BxK2... Black: 1. P-K4 P-QB4 6. B-K2 BxK2... After 19. Q-Q3! DONOVAN...

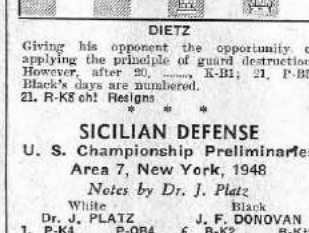
White: 1. P-K4 P-QB4 6. B-K2 BxK2... Black: 1. P-K4 P-QB4 6. B-K2 BxK2... After 19. Q-Q3! DONOVAN...

FOUR KNIGHTS' GAME Team Match, 1948... Notes by Erich W. Marchand... White: 1. P-K4 P-K3 4. P-K3 KKt-Q2... Black: 1. P-K4 P-K3 4. P-K3 KKt-Q2... After 16. Q-R5 LASKER...

ADAMS... Desperation, as the game is virtually lost. If 16. Q-R5, R-KB1... 16. BxR 19. R-Q7 R-K2... 17. QxP ch K-B1 Resigns... 18. R-Q1 QxKt

Dept. of Mathematics University of Rochester, Rochester 3, New York

White has overextended himself. He is due for a rude shock, however... 20. P-Q6 QxP? After 20. ... QxRP? MALLORY...



White has overextended himself. He is due for a rude shock, however... 20. P-Q6 QxP? After 20. ... QxRP? MALLORY...

After 19. Q-Q3! DONOVAN... White: 1. P-K4 P-QB4 6. B-K2 BxK2... Black: 1. P-K4 P-QB4 6. B-K2 BxK2... After 19. Q-Q3! DONOVAN...



White: 1. P-K4 P-QB4 6. B-K2 BxK2... Black: 1. P-K4 P-QB4 6. B-K2 BxK2... After 19. Q-Q3! DONOVAN...

White: 1. P-K4 P-QB4 6. B-K2 BxK2... Black: 1. P-K4 P-QB4 6. B-K2 BxK2... After 19. Q-Q3! DONOVAN...

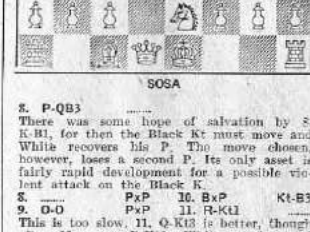
FOUR KNIGHTS' GAME Team Match, 1948... Notes by Erich W. Marchand... White: 1. P-K4 P-K3 4. P-K3 KKt-Q2... Black: 1. P-K4 P-K3 4. P-K3 KKt-Q2... After 16. Q-R5 LASKER...

ADAMS... Desperation, as the game is virtually lost. If 16. Q-R5, R-KB1... 16. BxR 19. R-Q7 R-K2... 17. QxP ch K-B1 Resigns... 18. R-Q1 QxKt

Annotators

J. B. Gee Dr. J. M. Horzberger A. V. Hesse Dr. J. Platz Fred Reinfeld I. Rivise Edw. J. Korpany G. E. Page Dr. Bela Rozsa J. Soudakoff

After 7. ... B-Kt5 ch NEWPORT... White: 1. P-K4 P-K3 4. P-K3 KKt-Q2... Black: 1. P-K4 P-K3 4. P-K3 KKt-Q2... After 7. ... B-Kt5 ch NEWPORT...



After 16. Q-R5 LASKER... White: 1. P-K4 P-K3 4. P-K3 KKt-Q2... Black: 1. P-K4 P-K3 4. P-K3 KKt-Q2... After 16. Q-R5 LASKER...

White: 1. P-K4 P-K3 4. P-K3 KKt-Q2... Black: 1. P-K4 P-K3 4. P-K3 KKt-Q2... After 16. Q-R5 LASKER...

White: 1. P-K4 P-K3 4. P-K3 KKt-Q2... Black: 1. P-K4 P-K3 4. P-K3 KKt-Q2... After 16. Q-R5 LASKER...

White: 1. P-K4 P-K3 4. P-K3 KKt-Q2... Black: 1. P-K4 P-K3 4. P-K3 KKt-Q2... After 16. Q-R5 LASKER...

ADAMS... Desperation, as the game is virtually lost. If 16. Q-R5, R-KB1... 16. BxR 19. R-Q7 R-K2... 17. QxP ch K-B1 Resigns... 18. R-Q1 QxKt

CLASSIFIED ADVERTISEMENTS Rates:—40c per count line. Minimum charge of \$1.20 per adv. Cash with order. Display type 20c per line additional.

Chess Players Wanted United passed pawns are a lot stronger than a lone passed pawn. Join the USCF and get unity in American chess.

For Sale or Barter Bargain: All the chess news that counts for \$2.00 a year. Just write your check and mail it to CHESS LIFE.