



Chess Life



Vol. III
Number 6

Official Publication of The United States Chess Federation

Saturday
November 20, 1948

N. Y. PLANS GALA TOURNEY

MANHATTAN CHESS CLUB PLANS INTERNATIONAL TOURNAMENT

Euwe, Najdorf, Stahlberg To Meet Top American Masters In Tourney

The most important international chess masters tournament held in this country since the six-cornered contest of 1927 in New York City, which was won by the late Jose R. Capablanca and preceded his world championship match with the late Dr. Alexander Alekhine, will be held in New York from December 24 to January 2, inclusive.

Announcement was made by the Manhattan Chess Club, of which Maurice Wertheim, the banker, is president, that the field would consist of ten invited players, including seven Americans and three foreigners, all of the highest rank. Acceptances have been received from Dr. Max Euwe of Amsterdam, world champion from 1935 to 1937, who is coming here to tour the country, and Mendel Najdorf, Polish master, who has returned to Argentina after playing in the world championship trials at Stockholm. The third foreigner to be invited is Gideon Stahlberg, Swedish master, who also played at Stockholm but has been making his home at Buenos Aires since 1933.

According to Sidney Kenton, chairman of the tournament committee at the Manhattan Chess Club where the games will be played, no direct communication has been received from Stahlberg who has been visiting points in Europe. Indirectly, through a correspondent in the Netherlands, it was learned that Stahlberg had recently declared his intention of coming to the United States for the purpose of playing in a tournament. The committee assumes that the Swedish expert had next month's contest in mind and that he will be heard from soon. At any rate a place will be reserved for him. Both Najdorf and Stahlberg entertain world championship aspirations, although they finished just below the five that qualified at Stockholm for the 1949 tournament of challengers.

The list of Americans selected to meet these international masters includes Reuben Fine, who has been seeded for next year's world tournament, although he did go to the Hague and Moscow to try for the title that was acquired by Mikhail Botvinnik, the Soviet grandmaster. He will be supported by Herman Steiner of Los Angeles, the present United States champion, Arnold S. Denker, U.S. champion in 1944, and Isaac I. Kashdan, co-champion with Samuel Reshevsky in 1942.

The other three places will be taken by Israel A. Horowitz, former national open champion, Arthur Bisguier, champion of the Manhattan Chess Club and holder of the national junior title, and George Kramer, New York State champion in 1945. In addition to an adequate expense fund, there will be four cash prizes of \$1,000, \$750, \$500 and \$250.

As the Intercollegiate Team Tournament will be held December 26-30 at Columbia University in New York, chess fans will be kept busy commuting between the University and Manhattan Chess Club during the holiday season.

sky, Herman Steiner and Arthur Dake tied for third; and the 1945 Pan-American Tournament at Hollywood, won by Samuel Reshevsky with Reuben Fine second, H. Pilnik of Argentina third and I. A. Horowitz fourth. Neither had as important a group of foreign masters competing.

LOG CABIN HOST TO SPEED EVENT

The Seventh Annual U.S. Lightning Chess Tournament will be held at the headquarters of the Log Cabin Chess Club, 30 Collamore Terrace, West Orange, N.J. on Sunday, November 28. The Log Cabin Chess Club and the New Jersey State Chess Federation will jointly act as hosts for this event, sponsored by the United States Chess Federation.

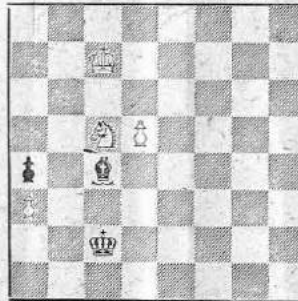
Open to all chess players who are USCF members (membership may be acquired by adding \$1.00 for dues for 1948 or \$3.00 for 1949 dues, plus subscription to Chess Life) upon payment of \$3.00 entry fee, the Lightning Tournament usually attracts a large and brilliant group of players. This year's tourney will be directed by Richard W. Wayne, 239 Dudley Avenue, Ventnor City, N.J., to whom all entries should be sent. Play will begin at 2 p.m.

J. S. NOEL HEADS LA. STATE CHESS

The annual meeting of the Louisiana State Chess Federation resulted in the election of USCF Director James S. Noel (Shreveport) as president. Woodrow W. Crew (Shreveport) was chosen secretary-treasurer. Vice-presidents were: Dr. Earl Jones (Alexandria), Eugene K. Flournoy (Monroe), W. Frank Gladney (Baton Rouge), Ralph H. Agate (Lafayette). Directors chosen were Newton Grant (Baton Rouge) and A. Wyatt Jones (Shreveport).

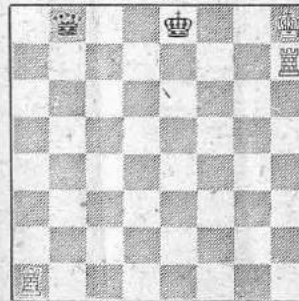
Victor in the annual state tournament was Collins of Shreveport with Grant of Baton Rouge second and Gladney of Baton Rouge third. Twenty-one players participated in the 6-round Swiss.

Position No. 41
By F. L. Fischer (London)
L'Echiquier de Paris, 1947



. 8, 2E5, 8, 5P4, plb6,
P7, 2d5, 8
White to play and win

Position No. 42
By H. Rinck (Badalona)
Revista Romana de Sah, 1940



1gch2K, 7R, 8, 8, 8,
8, 8, RT
White to play and win

White To Play And Win!

Conducted by William Rojam

Position No. 41 by the ingenious F. L. Fischer of London is a valuable study of a typical position in actual endgame play. Deft handling of the Knight with King moves made at the timely moment turns this very drawish position into a win for White, but he must be careful.

Position No. 42 by the one and only H. Rinck is a clever study in the power of two Rooks against a Queen in restricted positions. Contrary to the rules of tradition, these Rooks are stronger not united, and their various threats of mate or win of the Black Queen finally accomplish a tidy victory. The solution is short and straightforward and seems very simple — when found.

Solutions will be published in the issue of December 20th.

CLEVELAND LEAGUE STARTS SEASON

The team championships are well under way in Cleveland with 16 teams competing in the Industrial Chess League, and with 12 teams engaged in the Cleveland Chess Association Club League. Industrial League members are: Brush Development Co., Cleveland Graphite Bronze Co., Cleveland Twist Drill Co., Lubrocol Corp., New York Central R.R., Perfection Stove Co., Strong-Cobb & Co., Thompson Co., Atlantic Tool & Die Co., Cleveland Form Tool Co., Mick Construction Co., Ohio Bell Telephone Co., and United States Post Office. Thompson Products has two teams entered.

In the Club League the members are: Brooklyn Chess Nuts, Avon Lake Chess, Case Chess, Checkmate, Cleveland Chess, East Side Chess, Fenn Chessmen, Lakewood Chess, N.Y.C. "Y" Chess, Pawns, Queens Chess, and South Euclid Chess.

CHICAGO LEAGUE STARTS SEASON

The Greater Chicago Chess League has begun its new season with eight teams competing in the annual team tournament, representing Austin Chess & Checker Club, Berwyn Chess Club, Electro-Motive Chess Club, Hawthorne Chess Club, Hyde Park YMCA Chess Club, Illinois Institute of Technology Chess Club, West Suburban Chess Club, and Wilson Chess Club.

The Wilson Chess Club represents a reorganization of the Irving Park YMCA Chess Club which ten years ago was always one of the principal contenders for the Championship crown, while the West Suburban Chess Club is an enlarged Ogden Chess Club.

FERNDALE CLUB TEACHES CHESS

The Ferndale (Michigan) Chess and Checker Club now meets in new quarters in the Community Bldg, 400 East Nine Mile Road. Meetings are Monday evenings. As a public service to the community the club recently started classes open to the public. The accent is on the younger players, although all are welcome. USCF Director Thomas A. Jenkins of Huntington Woods is one of the guiding lights of the club.

JERSEY Y HOLDS SCHOLASTIC MEET

The third annual tournament of the Scholastic Chess League of Hudson County will be held at the Jersey City YMCA Chess Club with round one on November 23 at 8 p.m. and round two on November 30. Two teams, Memorial High School and Demarest High School, will compete for custody of the Paul Helbig trophy; both have won it once.

NEWELL BANKS PLANS TOUR

Newell Banks, chess and checker expert of Detroit, plans an extended tour of simultaneous exhibitions of both chess and checkers after January 1st. Banks will head for Florida, giving exhibitions on the way, spend February in Florida and leave Florida on about March 8th on his way home to Detroit. Clubs wishing to have Mr. Banks give a simultaneous exhibition may make arrangements by writing him at his permanent address: 1228 Newport Avenue, Detroit 15, Mich.

GERSHO, BAIN TIE IN QUEBEC

Playing for the Quebec Provincial Chess Championship, Jack Gersho (Montreal) and Osias Bain (Quebec) ended as co-champions for 1948 with tied scores in points and a further tie in Sonneborn-Berger ratings. In tying for the title Gersho staged a comeback after a modest showing in the recent Montreal City Championship where he finished well down the line behind both Guze and Rauch.

Bain, secretary of the Chess Federation of Canada, is Quebec City Champion.

Third place went to M. Gauze (Montreal) with a score of 4½-1½, and fourth place to I. Zalyz (Halet), a new-comer from Europe, with 4½-1½. Fifth place went to former Montreal champion Dr. J. Rauch with 4-2.

Twenty-nine players competed, and in the early rounds of the six-round Swiss, Ignas Zalyz was leading the field by half a point. In the six round he lost to Bain, after defeating Gersho in the fifth. Thereafter, it was Bain and Gersho. D. M. LeDain was tournament director.

At the annual meeting, held in the Community Hall of the Town of Mount Royal (Montreal) the following officers were elected for the Quebec Provincial Chess Association: Mayor R. E. Schofield (Town of Mount Royal) honorary patron, Mayor N. Courtemanche (Montreal East) honorary pres., Dr. J. Rauch (Montreal) president, R. Trolier (Quebec) 1st vice-president, E. Brisebois (Montreal) 2nd vice-president, J. A. Morissette (Quebec) treasurer, P. H. Nadeau (Quebec) junior chess convener, and D. M. LeDain (Montreal) secretary.

HARKINS CHOSEN CHESS ORGANIZER

The 18-year old James Harkins of Cleveland has become one of the youngest—if not the youngest—paid school chess instructor in the country. Harkins, an alumnus of the famous Pawns Club of Cleveland and 1947 Ohio Junior Champion, now becomes Scholastic Chess Director for the school system of Cleveland, and his first official act was to take steps to form a Scholastic Chess League embracing the 80 odd schools in the Greater Cleveland area. Junior chess has always been active in Cleveland, thanks to the Cleveland Chess Association and the Cleveland Public Library, and the act of creating a post of Scholastic Chess Director is recognition by the Cleveland Board of Education and Director of Physical Welfare, Floyd Rowe, of the contribution chess has already made in Cleveland in developing its young people.

U. S. LIGHTNING CHAMPIONSHIP
November 28th

U. S. INTERCOLLEGIATE TEAM CHAMPIONSHIP
December 26-30th

CATALAN SYSTEM

U. S. Junior Championship Oak Ridge, 1948

Notes by Edw. J. Korpany

White Black R. KUJOTH W. R. OAKER 1. P-Q4 P-Q4 4. P-KK3 PXP 2. P-QB4 P-K3 5. B-K12 3. K-K3 K1-K3 ...

FOUR KNIGHTS GAME

U. S. Biennial Championship South Fallsburg, 1948

Notes by Erich W. Marchand

White Black S. RUBINOW I. KASHDAN 1. P-K4 P-K4 4. P-Q4 PXP 2. K1-KB3 K1-KB3 5. K1-Q5 3. K1-B3 K1-B3 ...

REHBERG

After 22. QR-B1



With two nefarious ideas, First Black must provide against the powerful threat of RxB, followed by BxP1 with a quick mate. This seems to do it - but now comes the second point.

NIMZOWICIAN DEFENSE

Virginia State Championship Charlottesville, 1948

Notes by Erich W. Marchand

White Black C. R. LEVET R. CHAUVENET 1. P-Q4 K1-K3 2. K1-QB3 B-K5 2. P-QB4 P-K3 4. K1-B3 P-B4

GREATER CHICAGO CHESS LEAGUE

Table with columns for club names (Berwyn Chess Club, Electro Motive, etc.) and scores.

ORANGE, N. J.

Table with columns for club names (Club of Oranges, E. McCormick, etc.) and scores.

CLASSIFIED ADS.

COLLECTIONS OF MASTER GAMES

Alekhine, Andersen, Bernstein, Botvinnik, Capablanca, Chigorin, Charousek, Euwe, Keres, Lasker, Marshall, Morphy, Nimzovich, Pillsbury, Pomar, Rubinstein, Schlechter, Steinitz, Tarrasch, Yates - Write for List or specify in whose games you are interested.

FRENCH DEFENSE

U. S. Biennial Championship South Fallsburg, 1948

Notes by Erich W. Marchand

White Black W. SHIPMAN S. RUBINOW 1. P-Q4 P-K3 3. K1-QB3 B-K15 2. P-Q4 P-Q4 4. P-K5 P-QB2

KING'S GAMBIT

U. S. Open Championship Baltimore, 1948

Notes by I. Rivise

White Black W. BYLAND C. BARASCH 1. P-K4 P-K4 3. B-K2 PXP 2. P-KB4 PXP

QUEEN'S GAMBIT

New York State Championship Endicott, 1948

Notes by Jack Soudakoff

White Black J. SOUDAKOFF C. REHBERG 1. P-Q4 P-Q4 5. BXP P-K3 2. P-QB4 PXP 6. P-Q4 P-B4

ADAMS

Maybe the right line was 25. ... Kt-K6; 26. QxQ, KtB3 ch, with Bc of opposite colors but a strong passed P.

RUBINOW

Black must have overlooked this powerful move. Otherwise he surely would have played KtB3 when he had the chance.

CHAUVENET

No threats - except mate! 28. Q-K6, Q-Q5 ch 31. R-K3 PXP

LEVET

Black should have won by 23. ... B-K6; 24. Q-K6, Q-Q5 ch; 25. R-K3, B-K5 ch; 26. R-K1, Q-Q8 ch; 27. K-R1, Q-Q8 ch; 28. K-R2, Q-Q7 ch; 29. K-K1, B-K6.

SOLUTIONS

Endgame Positions No. 37 and 38 Chess Life, October 20, 1948

Position No. 37 by Retz: 1. K-R6! (a); B-K4; 2. K-R7; B-R2 (if 2. ... BxQ ch, 3. PxB and Black is in zugzwang); 3. P-B4 PXP (if 3. ... P-R5; 4. P-B5; PXP; 5. Q-B6 ch win); 4. P-B5! 5. P-B4; PXP; 6. P-B4; PXP; 7. K-R7, B-K5; 8. P-B4, B-K5; 9. P-B4; PXP; 10. P-B4, B-K5; 11. P-B4, B-K5; 12. P-B4, B-K5; 13. R-Q1 P-K4

ADAMS

White Black W. W. ADAMS W. M. SPACKMAN 1. P-K4 P-K3 6. 7. B K1-K2 2. P-Q4 P-Q4 7. Q-K14 PXP 3. K1-QB3 B-K5 8. P-P 4. P-K5 P-QB4 9. K-Q1 Q-B2

REHBERG

White Black W. W. ADAMS W. M. SPACKMAN 1. P-K4 P-K3 6. 7. B K1-K2 2. P-Q4 P-Q4 7. Q-K14 PXP 3. K1-QB3 B-K5 8. P-P 4. P-K5 P-QB4 9. K-Q1 Q-B2

REHBERG

White Black W. W. ADAMS W. M. SPACKMAN 1. P-K4 P-K3 6. 7. B K1-K2 2. P-Q4 P-Q4 7. Q-K14 PXP 3. K1-QB3 B-K5 8. P-P 4. P-K5 P-QB4 9. K-Q1 Q-B2

REHBERG

White Black W. W. ADAMS W. M. SPACKMAN 1. P-K4 P-K3 6. 7. B K1-K2 2. P-Q4 P-Q4 7. Q-K14 PXP 3. K1-QB3 B-K5 8. P-P 4. P-K5 P-QB4 9. K-Q1 Q-B2

REHBERG

White Black W. W. ADAMS W. M. SPACKMAN 1. P-K4 P-K3 6. 7. B K1-K2 2. P-Q4 P-Q4 7. Q-K14 PXP 3. K1-QB3 B-K5 8. P-P 4. P-K5 P-QB4 9. K-Q1 Q-B2

REHBERG

White Black W. W. ADAMS W. M. SPACKMAN 1. P-K4 P-K3 6. 7. B K1-K2 2. P-Q4 P-Q4 7. Q-K14 PXP 3. K1-QB3 B-K5 8. P-P 4. P-K5 P-QB4 9. K-Q1 Q-B2

REHBERG

White Black W. W. ADAMS W. M. SPACKMAN 1. P-K4 P-K3 6. 7. B K1-K2 2. P-Q4 P-Q4 7. Q-K14 PXP 3. K1-QB3 B-K5 8. P-P 4. P-K5 P-QB4 9. K-Q1 Q-B2

REHBERG

White Black W. W. ADAMS W. M. SPACKMAN 1. P-K4 P-K3 6. 7. B K1-K2 2. P-Q4 P-Q4 7. Q-K14 PXP 3. K1-QB3 B-K5 8. P-P 4. P-K5 P-QB4 9. K-Q1 Q-B2