



# Chess Life



Vol. IV  
Number 7

Official Publication of The United States Chess Federation

Monday,  
December 5, 1949

## EYES TURN TO RUTGERS

### Intercollegiate Championship Grows In Prestige and Size with the Years

The Fifth Annual Individual Intercollegiate Championship Tournament of the Intercollegiate Chess League (and the first to be held outside New York City) represents an event that has already become an institution in American chess. The individual championship alternates with a team championship (won in 1948 by City College of New York), and will be held this year at Rutgers University, New Brunswick, N.J. on the traditional dates of December 26-30.

The present title-holder, Robert Byrne of Yale, is not expected to defend his crown and possession of the H. Arthur Nabel Memorial Trophy, but a host of eager collegiate experts are anticipated in the scramble for the highest collegiate chess honor.

The first individual collegiate tournament was held in 1941 with an entry of 8 players, all from New York City colleges. It was won by Herbert Seidman of Brooklyn College, now one of the recognized younger ranking players of the country. In 1943 the second event was held with an entry of 8 players from as many New York colleges, and was won by Sol Rubinow of City College, now also recognized among the younger ranking players. Sol Baron of Brooklyn College was second.

In 1945 the third event was held upon a more national scale, the first truly intercollegiate event, with 23 contestants from 16 colleges. Victory went to Kiven Plesset of City College of New York, with his classmate, David Roskind, Jr. placing second. For this tournament the Swiss System was first adopted, to accommodate the growing number of entrants.

In 1947 the fourth tournament became even more national in scale with 44 entrants from some 24 colleges. Robert Byrne of Yale University won the title and second place went to Andrew Acrivios of Syracuse University. Even a larger entry is anticipated for the 1949 event with the promised appearance of players from many colleges hitherto unrepresented.

Organizer and guiding spirit of the Intercollegiate Tournaments has been USCF Vice-President Milton Finkelstein of New York, without whose promotional enthusiasm the first of these would never have been held. In more recent events he has been ably assisted by Rhys Hays and in the 1949 event much of the responsibility has been assumed by Joshua Gross who will direct the event.

### WOMEN WARM UP FOR MOSCOW MEET

An international women's tournament held at Barcelona, Spain resulted in a 5½-1½ tie for first between Mme. Chauda de Silans of France and Miss Eileen Tranmer of England. Third place went to Miss Bussers of Belgium with 4½-2½.

Other scores were: 4. Miss Saunders (England) 4-3; 5-6. Miss Cluantes (Spain) and Miss Heemskerck (Holland); 7. Miss Velat (Spain) 1-6; 8. Miss Guhart (Spain) ½-6½.

Surprise of the tourney was the Belgian Woman Champion, Miss Bussers. Not invited to the World Woman's Championship at Moscow, she drew with Miss Heemskerck, Miss Tranmer and Mme. de Silans, three of the invited.

### ULVESTAD PLANS EXTENDED TOUR

The noted Washington State analyst and player, Olaf Ulvestad, who scored a victory over David Bronstein in the US vs USSR team match in Moscow in 1946, plans an extended tour of simultaneous exhibitions, beginning in January, which will bring him to New York.

General itinerary is as follows: Jan. 16-22 San Francisco Bay Area, Calif.; Jan. 26-Feb. 10 Illinois, Michigan and Ohio; Feb. 12-22 New York State.

Ulvestad will give a regular simultaneous exhibition up to forty boards, and has a few blank dates on his list, open for engagements by interested clubs. Up to January 14, write Mr. Ulvestad at 712 Broadway North, Seattle, Wash. From Jan. 15-26, address him % F. A. Lashier, 714 Greer Lane, Palo Alto, Calif.

### TABER CAPTURES UTAH OPEN CHAMP

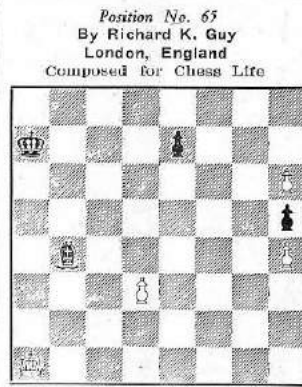
Victory in the 1st Utah Open Championship went to William F. Taber, Nevada State Champion with 5½-½ in the 6 round Swiss. Second place resulted in a three-way tie at 4½-1½ between Idaho State Champion C. H. Stewart, defending Utah Champion Louis N. Page, and Palmer Chase who directed the tourney. The Utah title went to Page, who has held it many times before.

18 players from Idaho, Nevada and Utah participated in the 3-day event, which was sponsored by the Salt Lake City Chess Club, and supervised by Herman Dittmann.

A special feature of the event was the full-page display of photos of the tournament in action in the Friday edition of the Deseret News, including such interesting and unusual shots as that of the blind player, Don Crawford of Boise, Idaho, keeping track of his game on a special peg-board chess set.

### CLEV'LAND MATCH STARTS PLAYING

The Cleveland "Match" League, so-called to distinguish it from the Industrial League, starts play with 12 teams, some representing the same club. Teams are Brooklyn Chessnuts, Case, Checkmate, Cavaliers (of East Cleveland Chess Club), Cleveland Chess Club, Cleveland College, Knights (of NYC Club), Lakewood Cubs, Lakewood Tigers, Queens Club, Reverse (of Western Reserve), and Rooks (of Fenn College).



### White To Play And Win!

Conducted by William Rojam

POSITION NO. 65 represents the careful craftsmanship of a noted English composer, Richard K. Guy, who edits the endgame section of the British Chess Magazine. Not as deep in concept as many of Mr. Guy's compositions, it will nevertheless repay careful study. White's first move is rather obvious, perhaps, but the strategy that follows is neatly pointed and the triumphant queening of White's KR is neither simple nor lacking in instruction.

Position No. 66, one of the rare compositions of CHESSE LIFE editor Montgomery Major, recognizes the fact that R and Kt can mate against the lone B. The problem resolves into one of erasing the two Black Ps before one of them queens, without sacrificing either R or Kt in the endeavor. Not a profound conception, but one that will repay thought for the mechanics of victory may someday be handy in an analogous position in a game.

Please turn to page four for solutions.



### PLANS SUBMITTED FOR CHAMPIONSHIP

The USCF Championship Tournament Committee, consisting of co-chairmen Maurice Wertheim and George Emlen Roosevelt, and committee members Hans Kmoch, Hermann Helms and Israel A. Horowitz, has submitted plans for the 1950 U.S. Championship Tournament and succeeding events to USCF President Paul G. Giers.

Pending the approval of the USCF Board of Directors, the Committee has released this general announcement of its plan. In a general way it will follow the pattern of the world championship, calling for a title contest every three years, with zonal and challengers' tournaments in intervening years.

For 1950, however, the participants will be selected from a list of some sixty-three qualified candidates from which the Committee will select twenty experts with ten reserves to fill any vacancies. Heading this list of twenty will, of course, be U.S. Champion Herman Rosenthal of Los Angeles, U.S. Grandmasters Samuel Reshevsky and Dr. Reuben Fine, together with Isaac I. Kasdan and Israel A. Horowitz. Automatically seeded will be the 1948 and 1949 U.S. Champions, Weaver W. Adams of Dedham, Mass. and Albert Sandrin, Jr. of Chicago.

### LIBRARY PROMPTS JUNIOR CHESS

The Cleveland Public Library is scheduled to begin its usual fall program of chess for juniors in the Stevenson room, with informal games, simultaneous exhibitions, etc. arranged by Tom Ellison, assisted by Frank Parrish and A. C. Probers, under the general supervision of Miss Roos of the Cleveland Public Library.

### DR. BOHATYRCHUK SCORES IN SIMUL.

Former Russian Co-Champion Dr. Feodor Bohatyrchuk barely missed a perfect score in a brilliant simultaneous exhibition at the Ukrainian Chess Club in Toronto where the members turned out in full force to greet the many-times Champion of the Ukraine. E. Boris marred the perfect score with a well-played draw with bishops of opposite color. Score for the exhibition was 29 wins and one draw for Dr. Bohatyrchuk.

### YEARBOOK ISSUED BY MASS. ASS'N

The Massachusetts State Chess Association has published an attractive 45 page yearbook containing a wealth of information on the history of chess in Massachusetts contributed by various well-known chess players and writers. Copy ranges from a report of a meeting of the Association in 1891 to game scores from the 1949 U.S. Open Championship at Omaha.

### Chess Problem Solving Machine Designed By Hungarian Research Engineer

By William Rojam

It was Jules Verne who proclaimed that what man can dream, man can perform, and while we have not yet visited the moon on a rocket or descended to the center of the earth, we have made fact of many of the dreams of Verne with submarines that outpace the Nautilus and trips around the world that make the eighty day jaunt a slowpoke's ambling. Perhaps the day shall come when the police will be faced with murder by a chess machine to fulfill the prophecy of Moxton's Master by Ambrose Bierce.

At least, the machine is beginning to form—and not an ingenious fraud like the famous automaton, but a real and terrifying concoction of photoelectric cells and cathode-ray tubes along the lines of the awe-inspiring calculating machines which

In "Chess," issue of November, appears a complex diagram of a two-move problem solving machine designed by T. Nemes, Chief Engineer, Research Station of the Hungarian Posts. According to "Chess," the problem position is fed into the machine which then with lightning speed runs through all the possible legal combinations of three moves (one Black and two White). Finding mate, it indicates it; finding no mate it stops with the indication that there is no solution, if there is more than one solution (cooks) this is also indicated.

The designer in his paper "Mechanical Solution of Diophantine Problems" indicates prophetically that a problem solving machine is only the first step toward a more elaborate but quite practical machine which could play a whole game (not repeating variations fed into it previously but creating its own strategy as the game proceeded.) As the machine would be exempt from "chess blindness," it would be a formidable opponent. "Chess" queries: "Is this the be-

### CLEV'ND LEAGUE IS UNDER WAY

The Cleveland Industrial Chess League is off to a flying start with two divisions of eight teams each. The Western Division consists of Atlantic Tool, Warner & Swasey (West), Cleveland Twist (West), Ohio Bell Phone, Post Office, Thompson (West), Cleveland Form Tool, and Mink Construction. The Eastern Division is composed of Perfection Stove, Warner & Swasey (East), Cleveland Twist (East), Strong-Cobb, Brush Development, Thompson (East), Lubrizol and New York Central.





