



Chess Life



Vol. V
Number 18

Official Publication of The United States Chess Federation

Monday,
March 5, 1951

HANAUER WINS MANHATTAN



SMALL FRY PAWNPUSHERS OF SALT LAKE CITY

Salt Lake Commissioner L. C. Romney surrounded by members of the "small fry" chess-player group which meets regularly at the YMCA. Left to right, the youngsters are: T. G. Rees, Mark Lundstrom, Dale Walker, Billy Wigginton, Corey Rees, Nick Lundstrom, Keith Larson.

Photo: Courtesy Deseret News

DU VALL CAPTURES SO. CHARLESTON

Victory in the first South Charleston (W. Va.) Open Championship went to Allen H. DuVall with 13-2. Drawing with runner-up Wm. F. Hartling and teenager Bruce Marples, DuVall did not lose a game. The veteran William Hartling placed second with 13-2, losing a game to Dr. J. S. Blagg and drawing with DuVall and Harold W. Liggett. Edwin M. Faust was third with 12-3, losing outright to DuVall, Hartling and Branner.

The tournament was conducted by the Carbide Chess Club as a 16-player round robin event, and was unfortunately marred by the necessity of a number of forfeits by McKoy and Schulz for whom a change in working schedule prevented the playing of all rounds. Hugh Allison was compelled to leave his schedule unfinished, due to illness.

COLLINS SECOND; PILKNICK THIRD

After a number of years of comparative inactivity, Milton Hanauer returned strongly to win the coveted Marshall Chess Club Championship by 12½-2½, leading steadily from the start of the event. Second place went to Jack Collins, well-known annotator for Chess Review, with 11-4, while Carl Pilnick (not to be confused with the South American master Herman Pilnik who is at present also a Manhattan resident) placed third with 10½-4½.

Other prize winners were B. Hill, a comparative new-comer to chess scoring in his first Marshall Championship event; Anthony E. Santasiere, the witty annotator for American Chess Bulletin; and New York State Champion Eliot Hearst, CHESS LIFE's New York correspondent.

For Hanauer it was his first important chess venture since winning the 1940 Ventnor City Tournament and tying for first in the Marshall Club Championship of 1939.

MIDLAND WINS PLAYOFF MATCH

Midland Chess Club won the championship of the Saginaw (Mich.) Valley League by beating the Flint Chess Club 6-2 in a special playoff match. Regular league season final standings saw Midland and Flint tied for first, with Rush Willard Chess Club of Bay City third.

In the new season of league play Midland has score two victories, while Flint has two victories and a drawn match with Bay City. Bay City is third in current standings with one victory and a draw while Saginaw has not yet broken into the winning side of the ledger.

STARNES TAKES MIDLAND TITLE

The Midland (Mich.) City Championship saw the victory go to Charles Starnes with 5-4 score in an 8-player round-robin event sponsored by the Midland Chess Club. Bob Broad placed second with 4½-2½ and Bruce Dieter third with 4-3.

ANOTHER PURDY BECOMES CHAMP

Like father, like son may well be said in noting the results of the recent Australian Junior Championship, for victory went to J.S. Purdy with 9½ points, with J. J. Bailey second with 9 and D. B. Pike and M. D. Broun tied for third with 8 each. All four represented New South Wales while Victoria was forced to be content with fifth in P. Liddell, tied for this spot with B. Mason at 6 points each.

The Junior champion is the son of the Australian Champion C.J.S. Purdy, editor of Chess World, and it is probably the first time in chess history that the Senior and Junior National Championships anywhere have been held simultaneously by father and son.

NORELAB LEADS PEORIA LEAGUE

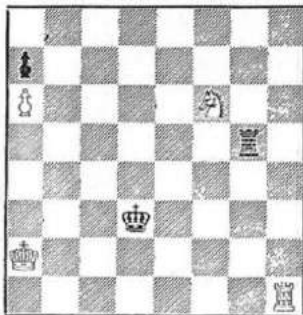
As competition draws to a close in the Peoria (Ill.) Chess League, Northern Regional Laboratory holds the lead and has the title clinched with a 22½ games and 4½ match score to gain the R.G. LeTourneau Trophy. Second is Caterpillar Tractor with 14½ in games and 3 in matches, while Illinois Furniture is third and Hiram Walker fourth. One round remains to be played.

QUEBEC AWARDS SPECIAL PRIZES

Award for the best-played game in the last Quebec Provincial Championship, donated by Mayor R. E. Schofield of the Town of Mount Royal, was presented to J. N. Williams for his victory over Therien, while the second prize, donated by Tip Top Tailors, went to J. Therien for his victory over Guze. Maurice Fox, Canadian Champion, made the adjudication for the awards.

Position No. 93
By A. and K. Sarychev
Reprinted in
Shakmaty, November 1949

Position No. 94
By Richard Kujoth
Milwaukee, Wis.
Composed for CHESS LIFE



8, p7, P4S2, 6r1, 8, 3k4, K7, 7R
White to play and win

R1s3q1, ps6, k1p5, 1S2Q3, 8, 7p, 7p, 7K
White to play and draw

White To Play And Win!

Conducted by William Rojам

WITH POSITION No. 94 we introduce another young American composer of endgames in Richard Kujoth, sometime Wisconsin Champion. The initial study reproduced here is a clever exercise of ingenuity in obtaining a draw for White in a position that has the appearance of a clean-cut win for Black. Threatened with mate at Kt2 or Kt1 and with the White Kt on prise, it takes some very quick-stepping on the part of White to elude disaster.

Position No. 93 represents a classic study by A and K Sarychev in which White finds it difficult (but not impossible) to convert his material superiority into victory. Obviously White cannot hold the QRP, so his victory must depend in trapping the Black R.

As reported in issue of February 5, both Positions No. 89 and 90 by Milos Marysko have met challenge. On Position No. 89, Russell Chauvenet suggests: 1. P-Kt6, R-R4! (rather than 1., K-B3 in the composer's solution); 2. P-Kt7, R-R1; 3. K-R7, P-QKt4; 4. P-Kt8(J), RxQ; 5. KxR, P-Kt5 and Black wins. Neil Bernstein suggests that 1. P-Kt6, R-QB4; 2. P-Kt7, R-B1 with play similar to that suggested by Chauvenet thereafter is sufficient for Black to win.

On Position No. 90 Russell Chauvenet suggests: 1. P-Kt3 ch, K-K5; 2. P-B3 ch, K-Q6; 3. B-B2, BxP (rather than 3., K-B7 or K-Q7) and White can no longer hold a stalemate position. On this Edmund Hand also has a winning line in 1. P-Kt3 ch, K-K4; 2. P-B4 ch, K-K3.; 3. B-B2, BxKt! and once again White cannot hold the stalemate position.

We are inclined to agree with our readers on both points and suggest that composer Marysko had one of those bad days that come to every composer, however, talented.

For solutions, please turn to Page two.

DATES TO REMEMBER!

U. S. Open Championship Tournament
Fort Worth, Texas, July 9-21, 1951

U. S. Junior Championship Tournament
Philadelphia, Penna., July 23-28, 1951

Chess Life

Published twice a month on the 5th and 20th by

THE UNITED STATES CHESS FEDERATION

Entered as second class matter September 5, 1946, at the post office at Dubuque, Iowa, under the act of March 9, 1879.

Subscription—\$2.00 per year; Single copies 10c each

Address all subscriptions to:— 845 Bluff Street OR 3219 Washington Ave.
Glenn E. Hardebe, Mem. Sec'y Dubuque, Iowa OR Erie, Pennsylvania

Make all checks payable to: THE UNITED STATES CHESS FEDERATION

Address all communications Editorial Office: 123 North Humphrey Avenue
on editorial matters to:— Oak Park, Illinois

Editor and Business Manager

MONTGOMERY MAJOR

Contributing Editors

Dr. A. Buschke Eliot Hearst Vincent L. Eaton
Guilherme Groesser Erich W. Marchand Edmund Nash
Fred Reinfeld William Rojahn Dr. Kester Svendsen

Address all communications to the United States Chess Federation (except those regarding CHESS LIFE) to USCF Secretary Phil J. Mary, 2011 Carew Tower, Cincinnati 2, Ohio. USCF Membership Dues—\$3.00.

Vol. V, Number 13

Monday, March 5, 1951

NATIONAL RATINGS

IN THIS ISSUE we publish the second list of National Performance Ratings, as of December 31, 1950. Before we comment upon certain of the changes in rating of individual players, it may be well to state that for the second and last time, we publish the complete list of available ratings of U.S. chess players, regardless of membership in the USCF. It was not originally our intention to do this, but the National Rating System has aroused so much interest throughout the country that we feel it is a very definite service to chess to publish once again the whole list for comparison and study.

Hereafter, however, below the rank of master we will publish only the names of USCF members. This is not an attempt at dictatorship as we have been accused illogically by certain readers, but merely the recognition of a basic principle in America that the average American expects and is willing to pay for what he receives, provided he gets value received for his money. The cost of maintaining a rating system is considerable, for it demands careful statistical computations by a trained statistician. Such expert services cannot be obtained without charge, even if the charge is a nominal one in comparison with the work accomplished. Since the members of the Federation are footing this bill with their dues, it is only just that the benefits should be exclusively theirs. And since any chess player can become a member of the Federation for the nominal dues of \$3 per year, it is obviously ridiculous to claim that this restriction of published ratings to the USCF membership works any hardship on any player. Any player, who cannot persuade himself to part with \$3 for the many benefits to chess provided by the Federation, cannot be very much interested in the rating system, however much he may profess to be.

Comparison between the first list of ratings and the second list provides some interesting studies as well as a very definite illustration of the effect of the "lag" in computation of ratings. But quite possibly some readers may be confused by the apparent discrepancies, and therefore the subject demands a few illustrative comments.

It will be noted, undoubtedly, that Isaac Kashdan has dropped from the list of Senior Masters to the list of Masters, and that he has done this without competing in any rated event since the list as of July 31 was published. This may at first glimpse seem illogical; but it actually is a very clear example of the principle of the "lag" in computing ratings. The ratings (as of July 31, 1950) covered each player's career from 1947 through the first half of 1950, and the published rating was his highest rating in any one of these four periods.

In the case of Kashdan, 1947 was a gala year. He won the U.S. Open Championship at Corpus Christi. This bolstered up an already high past record of performance, including his second to Reshevsky in the 1946 U.S. Biennial Championship. But 1948 told a somewhat different story. Kashdan only placed second in the 1948 U.S. Open Championship at Baltimore, and again was second in the 1948 U.S. Biennial Championship at South Fallsburg. So, when the performances in 1947 were removed from the current computation in the listing as of December 31, Kashdan's rating then was determined by his highest scoring in 1948, 1949 or 1950 and the resultant drop in his performance rating reflected his less successful appearances in recent tournaments. It is noteworthy that if Kashdan had followed his poorer year in 1948 with a more successful performance in 1949 or 1950, due to the "lag" procedure in rating, his one bad year would not have made any appearance in the ratings. Thus the "lag" tends to protect a player against one bad season, but cannot continue to bolster up his ratings over a period of years.

As Kashdan through a series of circumstances, including illness, has not competed in any rated event since 1948, he has not had an opportunity to reestablish a senior master rating performance.

An illustration of the reverse principle in the "lag" comes from the advent into the master class from the expert group of Eliot Hearst, F. S. Howard and Walter Shipman in the ratings as of December 31, 1951. These younger players began to be felt in chess as far back as 1946 and 1947, but their climb into the master class was slightly delayed by the drag effected by the lower performance points of their earlier chess career. To overcome the effect of this "lag" it was necessary for each of them by consistent performance to prove that their successes were not merely a flash in the pan. For Eliot Hearst it was the New York State Championship in September, 1950 that provided the ultimate boost into master class, for F. S. Howard it was the New Jersey State Championship.

In many cases, it will be noted that there has been no change in the rating. These players have not competed in rated events in the last half of 1950, while their peak period of performance has been since the year 1947, so no change is effected by removing the choice of 1947 from their performance rating basis. Their standings will only be effected by their performances in 1951 in tournaments yet to be played and rated.

Montgomery Major

Mate The Subtle Way!

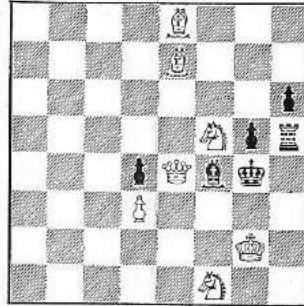
by Vincent L. Eaton

Address all communications to this column to Vincent L. Eaton, 612 McNeill Road, Silver Spring, Maryland.

Problem No. 235

By Dr. P. G. Keeney
Newport, Ky.

Entry in CHESS LIFE
Composing Tourney
Black: 6 men



White: 7 men
4B3, 4B3, 7p, 5Sp, 3pQk1, 3P4,
6K1, 5S2

White mates in two moves

Problem No. 237

By Ottavio Stocchi

Langhirane, Italy

Entry in CHESS LIFE

Composing Tourney

Black: 11 men



White: 9 men
8, p7, 1bBQ2, 1R3s1g, 1Bk2rS1, p2Sp2p,
h1P2, 3K4

White mates in two moves

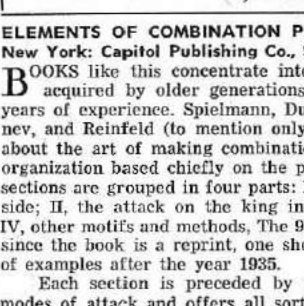
Problem No. 238

By Ewten Onyschuk

Toronto, Canada

Unpublished

Black: 2 men



White: 5 men
8, 5p2, 5R2, 6KP, 8, 7k, 7P, R7

White mates in three moves

Problem No. 236

By W. E. Frank Fillery

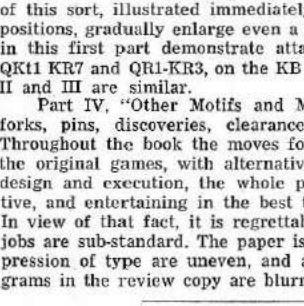
Vancouver, Canada

In Memoriam: Edgar W. Allen

Entry in CHESS LIFE

Composing Tourney

Black: 9 men



White: 12 men
3q1S1s, 1SR1p1BB, 2-2Fb, R4QPI, 3k4,
5p1, P2P2K1, 8

White mates in two moves

Problem No. 239

By Ewten Onyschuk

Toronto, Canada

Unpublished

Black: 2 men

White: 5 men
8, 5p2, 5R2, 6KP, 8, 7k, 7P, R7

White mates in three moves

Problem No. 238

By Ewten Onyschuk

Toronto, Canada

Unpublished

Black: 2 men

White: 5 men
8, 5p2, 5R2, 6KP, 8, 7k, 7P, R7

White mates in three moves

Problem No. 238

By Ewten Onyschuk

Toronto, Canada

Unpublished

Black: 2 men

White: 5 men
8, 5p2, 5R2, 6KP, 8, 7k, 7P, R7

White mates in three moves

Problem No. 238

By Ewten Onyschuk

Toronto, Canada

Unpublished

Black: 2 men

White: 5 men
8, 5p2, 5R2, 6KP, 8, 7k, 7P, R7

White mates in three moves

Problem No. 238

By Ewten Onyschuk

Toronto, Canada

Unpublished

Black: 2 men

White: 5 men
8, 5p2, 5R2, 6KP, 8, 7k, 7P, R7

White mates in three moves

Problem No. 238

By Ewten Onyschuk

Toronto, Canada

Unpublished

Black: 2 men

White: 5 men
8, 5p2, 5R2, 6KP, 8, 7k, 7P, R7

White mates in three moves

Problem No. 238

By Ewten Onyschuk

Toronto, Canada

Unpublished

Black: 2 men

White: 5 men
8, 5p2, 5R2, 6KP, 8, 7k, 7P, R7

White mates in three moves

Problem No. 238

By Ewten Onyschuk

Toronto, Canada

Unpublished

Black: 2 men

White: 5 men
8, 5p2, 5R2, 6KP, 8, 7k, 7P, R7

White mates in three moves

Problem No. 238

By Ewten Onyschuk

Toronto, Canada

Unpublished

Black: 2 men

White: 5 men
8, 5p2, 5R2, 6KP, 8, 7k, 7P, R7

White mates in three moves

Problem No. 238

By Ewten Onyschuk

Toronto, Canada

Unpublished

Black: 2 men

White: 5 men
8, 5p2, 5R2, 6KP, 8, 7k, 7P, R7

White mates in three moves

Problem No. 238

By Ewten Onyschuk

Toronto, Canada

Unpublished

Black: 2 men

White: 5 men
8, 5p2, 5R2, 6KP, 8, 7k, 7P, R7

White mates in three moves

Problem No. 238

By Ewten Onyschuk

Toronto, Canada

Unpublished

Black: 2 men

White: 5 men
8, 5p2, 5R2, 6KP, 8, 7k, 7P, R7

White mates in three moves

Problem No. 238

By Ewten Onyschuk

Toronto, Canada

Unpublished

Black: 2 men

White: 5 men
8, 5p2, 5R2, 6KP, 8, 7k, 7P, R7

White mates in three moves

Problem No. 238

By Ewten Onyschuk

Toronto, Canada

Unpublished

Black: 2 men

White: 5 men
8, 5p2, 5R2, 6KP, 8, 7k, 7P, R7

White mates in three moves

Problem No. 238

By Ewten Onyschuk

Toronto, Canada

Unpublished

Black: 2 men

White: 5 men
8, 5p2, 5R2, 6KP, 8, 7k, 7P, R7

White mates in three moves

Problem No. 238

By Ewten Onyschuk

Toronto, Canada

Unpublished

Black: 2 men

White: 5 men
8, 5p2, 5R2, 6KP, 8, 7k, 7P, R7

White mates in three moves

Problem No. 238

By Ewten Onyschuk

NATIONAL CHESS RATINGS
(as of December 31, 1950)

CLASSIFICATION:

Grandmaster	2700 points up
Grandmaster	2700 points up
Senior Master	2500 to 2699 points
Master	2300 to 2499 points
Expert	2100 to 2299 points
Class A	1900 to 2099 points
Class B	1700 to 1899 points
Class C	1500 to 1699 points
Class D	Below 1500 point

Note:

A players official rating, as published in this list, may be for the year 1948, the year 1949, the first seven months of 1950, or the last five months of 1950—whichever rating is the highest.

Previously rated players are considered inactive if they have not competed in a rated tournament since January 1st, 1948. The names of these players are not published.

GRANDMASTERS

Fine, Reuben (New York, N.Y.)	2817
Reshevsky, Sam. (New York, N.Y.)	2734

SENIOR MASTERS

Dake, Arthur W. (Portland, Ore.)	2598
Horowitz, I. A. (New York, N.Y.)	2558

MASTERS

Kashdan, Isaac (Los Angeles, Calif.)	2494
Evans, Larry (New York, N.Y.)	2484
Seldman, Herbert (Brooklyn, N.Y.)	2451
Pavey, Max (New York, N.Y.)	2442
Shainswitt, George (New York, N.Y.)	2442
Denker, Arnold S. (New York, N.Y.)	2431
Pinkus, Arthur S. (Brooklyn, N.Y.)	2422
Bisguier, Albert B. (New York, N.Y.)	2394
Kramer, George (New York, N.Y.)	2392
Boatz, David (Baltimore, Pa.)	2382
Adams, W. W. (Dedham, Mass.)	2383
Steiner, Herman (Los Angeles, Calif.)	2355
Byrne, Robert (New York, N.Y.)	2352
Pruner, Fred (San Francisco)	2352
Damilillo, A. (Philadelphia)	2347
Hearst, Eliot (New York, N.Y.)	2346
Jackson, E. S. Jr. (New York, N.Y.)	2345
Lasker, Edward (New York, N.Y.)	2336
Lasker, Edward (Detroit, Mich.)	2333
Santafiera, A. E. (New York, N.Y.)	2333
Turiansky, M. (New York, N.Y.)	2326
Sandrin, A. N. (Chicago)	2321
Cross, J. B. (Glendale, Calif.)	2321
Donovan, J. F. (New York, N.Y.)	2317
Howard, F. S. (N.J.)	2313
Uvstad, Olaf (Seattle, Wash.)	2310
Sorensen, Dr. A. (New York, N.Y.)	2310
Shipman, Walter (New York, N.Y.)	2303
Bernstein, S. N. (New York, N.Y.)	2300

EXPERTS

Abrams, Ralph (Milwaukee)	2284
Atison, Herman (Lima, Ohio)	2158
Almgren, Sven (Los Angeles, Calif.)	2218
Smith, James (Philadelphia)	2218
Avram, Herbert (New York, N.Y.)	2213
Bakos, Nicholas (N.Y.)	2160
Barnes, George S. (Ipswich)	2248
Black, Roy T. (Buffalo, N.Y.)	2257
Berliner, Hans (Washington, D.C.)	2257
Black, Roy T. (Buffalo, N.Y.)	2250
Bolton, James (New Haven, Conn.)	2225
Boyetle, Leslie (San Francisco)	2216
Braun, J. (Ill.)	2214
Brink, Robert S. (Houston, Tex.)	2113
Burgie, Harold (Washington, D.C.)	2127
Capps, C. M. (San Francisco)	2160
Chauvenet, L. R. (Vancouver, B.C.)	2162
Foster, John (Louisville, Ky.)	2190
Collins, C. K. (La.)	2209
Collins, Jack W. (Brooklyn, N.Y.)	2187
Crittenden, Kit (Raleigh, N.C.)	2111
Croy, George E. (Los Angeles)	2186
Curdo, J. (Boston)	2186
Dahlstrom, B. (Chicago)	2117
Daly, Hariow B. (Boston)	2105
Diefz, Paul (Pittsburgh)	2277
Dunst, Ted (New York, N.Y.)	2110
DeVail, A. H. (St. Albans, W. Va.)	2186
Edelbaum, Theodore	2103
Eio, Arpad P. (Milwaukee)	2273
Enquist, L. N. (Baltimore)	2180
Fajans, Harry (New York, N.Y.)	2131
Falconer, N. (Berkeley, Calif.)	2108
Fink, Chester T.	2152
Fink, A. J. (San Francisco)	2192
Foster, James (Detroit)	2192
Frank, Leo (Baltimore)	2116
French, C. (Germantown, Pa.)	2109
Friedman, Larry (Cleveland)	2244

Gaede, A. H. (N.C.)	2104
Garver, R. L. (Tulsa, Okla.)	2184
Ginsberg, M. (Syracuse, N.Y.)	2109
Gordon, Hyman (Los Angeles)	2106
Green, Matthew (Elmont, N.Y.)	2127
Gutekunst, T. C. (Allentown, Pa.)	2128
Hahibboom, Herman (Chicago)	2233
Halper, Nat (New York, N.Y.)	2295
Hamburger, David (Tampa, Fla.)	2290
Hanauer, Milton M. (New York, N.Y.)	2258
Harrell, Richard (Fort Worth, Tex.)	2126
Harlieb, Glenn (Erie, Pa.)	2189
Heitner, Irving (New York, N.Y.)	2175
Heiman, (Conn.)	2129
Hendricks, Wade (Santa Cruz, Calif.)	2179
Henkin, Dr. W. (Iowa)	2121
Hesse, Carl A. (Washington, D.C.)	2200
Hudson, John (Grampian, Pa.)	2151
Hurt, John F. Jr. (Charleston, W.Va.)	2109
Hurtlen, R. (N.J.)	2188
Iderton, R. B. (Baltimore)	2126
Jacobs, Robert (Los Angeles)	2256
Janes, Bill (Leroy, Tex.)	2120
Jones, Homer W. Jr. (Westfield, N.J.)	2146
Kalenian, Clarence (Miami, Fla.)	2106
Katz, Dr. G. (Boston)	2172
Klugman, Reuben (New York, N.Y.)	2238
Kodi, C. E. (Los Angeles)	2135
Koelsche, Dr. G. A. (Minn.)	2234
Kraeger, K. (Lizlet, Pa.)	2123
Kraszewski, J. (Milwaukee)	2254
Krausz, George (Jamaica, N.Y.)	2168
Kujthor, Richard (Milwaukee)	2196
LeCornu, P. C. (Detroit)	2196
Logan, Milton S. (Philadelphia)	2186
Ludwig, A. C. (Omaha, Neb.)	2110
Luprecht, Eric (Milwaukee)	2178

McCormick, E. T. (Orange, N.J.)	2149
Magee, Lee (Omaha, Neb.)	2135
Mann, Walter (Columbus, O.)	2135
Marchant, E. (Cochester, N.Y.)	2225
Marks, H. L. (Huntington, W.Va.)	2225
Martin, A. C. (Providence, R.I.)	2177
Martin, Raymond (Los Angeles)	2210
Mayers, Daniel (New York, N.Y.)	2210
Mayfield, S. J. (Tulsa, Okla.)	2170
Mechem, Kirke (Topeka, Kans.)	2195
Mechner, Francis (New York, N.Y.)	2236
Michelson, Einar (Chicago, Ill.)	2224
Miller, George (Cleveland)	2124
Miller, P. Z. (Syracuse, N.Y.)	2141
Mitchell, R. C. (Warehous Point, Conn.)	2140
Morgan, Paul (Rochester, N.Y.)	2140
Mott, Chas. D. (Mobile, Ala.)	2150
Mugridge, D. H. (Washington, D.C.)	2280
Nevded, K. (Chicago)	2105
Pinlick, Carl (New York, N.Y.)	2253
Platz, Dr. J. (New York, N.Y.)	2253
Poeschel, Paul (Chicago)	2244
Powers, Averill (Milwaukee)	2225
Pruner, Fred (San Francisco)	2253
Ragan, John (St. Louis, Mo.)	2195
Rehner, C. F. (New York, N.Y.)	2103
Richman, Joseph (New York, N.Y.)	2129
Rivise, Irving (Los Angeles)	2187
Rosa, Dr. Bela (Tulsa, Okla.)	2138
Rothman, Aaron, New York, N.Y.	2138
Rubinow, Sol (Pa.)	2243
Sable, Marvin (San Jose, Calif.)	2102
Sandrin, Angelo (Chicago)	2103
Schmidt, Dr. B. (Detroit)	2206
Schmid, E. (Mass.)	2286
Self, A. R. (Newton, Kans.)	2127
Shaffer, Joseph (Chicago)	2279
Shapiro, Oscar (Washington, D.C.)	2221
Shaw, T. J. (Baltimore, Md.)	2138
Sherwin, James T. (New York, N.Y.)	2138
Siff, Boris (New York, N.Y.)	2162
Simpson, Robert C.	2163
Skema, Kazys (Boston)	2297
Skloroff, Sam (Philadelphia)	2297
Smith, Kenneth (Dallas, Tex.)	2200
Smith, R. P. (Los Angeles)	2197
Smith, Stanley F. (Buffalo, N.Y.)	2200
Solona, Robert (Los Angeles)	2184
Sorensen, Dr. A. (New York, N.Y.)	2165
Soudakoff, Jack (New York, N.Y.)	2165
Spero, Simon (Los Angeles)	2135
Spiller, A. R. (Hollywood, Calif.)	2154
Spiro, David (Pittsburgh)	2216
Stander, Leonard (Los Angeles)	2232
Stark, Marshall (Chicago)	2144
Stearns, Elliott E. (Cleveland)	2148
Steckel, W. H. (Los Angeles)	2125
Steinmeyer, R. H. (St. Louis, Mo.)	2292
Steinmeyer, L. (Detroit)	2259
Suomen, Fred (Providence, R.I.)	2160
Surgies, Armin (Baltimore)	2243
Surgies, Mark (Milwaukee)	2160
Tauvaisaus, P. (Chicago)	2223
Taves, T. (Conn.)	2129
Tears, C. F. Jr. (Dallas, Tex.)	2109
Thompson, J. C. (Grand Prairie, Tex.)	2275
Velliotis, Pete (Calif.)	2120
Viavanti, Thomas	2118
Wachs, Saul (Philadelphia)	2161
Weber, Carl (Salina, Kans.)	2130
Weinstock, Sol (New York, N.Y.)	2167
Weyhammer, Dr. S. (Huntington, W.Va.)	2160
Westbrook, J. T. (New York, N.Y.)	2130
Whitaker, N. T. (Shady Side, Md.)	2169
Wiegmann, Karl H. (Rock Island, Ill.)	2182
Williams, James (New York, N.Y.)	2195
Wills, Alfred B. (New Orleans)	2140
Winkelman, B. F. (Philadelphia)	2245
Wittenberg, Louis (New York, N.Y.)	2106
Woody, J. W. (Wis.)	2128

*Not rated as a Master, having played in only one rated tournament. To be classed as a Master, a player must average 2300 points or more as a result of his performances in at least two rated tournaments.

CLASS A

Aarnhus, O. (St. Paul, Minn.)	1967
Abbott, Charles (Philadelphia)	1943
Ackerman, David (Omaha, Neb.)	2037
Acivros, Andrew (Syracuse, N.Y.)	2040
Adams, Paul (Forest Park, Ill.)	1902
Adams, William (San Jose, Calif.)	2025
Adelson, W. G. (La.)	2040
Adicks, W. C. Jr. (Asheville, N.C.)	2043
Allinger, P. (Oakland, Calif.)	1964
Alshifler, M. (Los Angeles, Calif.)	1938
Amidon, James (Wash.)	1990
Anderson, F. M. (St. Louis, Mo.)	1996
Anderson, D. (Md.)	1906
Armstrong, J. C. (Houston, Tex.)	1961
Ash, Isaac (Philadelphia)	1916
Aders, L. R. (Wis.)	2081
Baiget, Charles (Philadelphia)	1943
Bain, Mary (New York, N.Y.)	1926
Bain, R. M. (Va.)	2031
Banning, William (Los Angeles)	1946
Barasch, Charles (Baltimore)	1925
Baron, Samuel (Brooklyn, N.Y.)	2045
Barrett, James (Buffalo, N.Y.)	1950
Barry, (N.Y.)	1903
Barr, J. E. (Detroit)	1974
Balfanz, Jack S. (Brooklyn, N.Y.)	1903
Bel, Joseph (Los Angeles)	1930
Belzer, Jerry (Omaha, Neb.)	2048
Benitez, F. (Puerto Rico)	2096
Berry, Roy (Chicago)	1906
Bernstein, Neil (New York, N.Y.)	2036
Bersbach, Emil (Los Angeles)	2043
Bishop, E. (Chicago)	1933

Blizard, G. (Philadelphia)	1972
Blume, Henry (Milwaukee)	2069
Bordley, Robert (Baltimore)	1942
Boyer, R. (Buffalo, N.Y.)	1942
Bredt, Paul (New York, N.Y.)	1927
Brask, Sven (Attleboro, Mass.)	1970
Braskett, C. J. (Tracey, Minn.)	2012
Brice-Nash, Bert (Medora, Kans.)	2025
Buckland, (Ill.)	2029
Buerger, Ed. (Ill.)	2062
Burder, Ted (Wisc.)	1989
Burdick, Donald (Huntington, W.Va.)	1962
Burger, Carl H. (Brooklyn, N.Y.)	2041
Burke, Frank (Los Angeles)	2081
Burton, C. M. (St. Louis, Mo.)	1908
Buskager, Reuben (Battle Creek, Mich.)	2043
Byland, W. M. (Pittsburgh)	2089
Cafarelli, N. J. (Pittsburgh)	1957
Canwell, R. S. (Washington, D.C.)	1941
Carroll, E. (Chicago)	2066
Chase, George (Los Angeles)	2066
Cintron, R. (Puerto Rico)	1983
Clark, Dan (Racine, Wis.)	2039
Clarke, Carroll (Baltimore)	2029
Cobb, Tyson (Huntington, W.Va.)	2026
Cohen, Robert (New York, N.Y.)	1974
Cohen, Samuel (Chicago)	2074
Condon, W. F. (Bartlesville, Okla.)	2040
Condon, W. F. (Bartlesville, Okla.)	2040
Cook, James W. (St. Louis, Mo.)	2050
Cook, Dr. Robert J. (St. Louis, Mo.)	2077
Cooper, J. N. (Philadelphia)	2086
Coveyou, Robert (Caldwell, Tenn.)	1959
Crain, Carroll C. (Wash.)	1918
Cramer, Fred (Milwaukee)	2069
Croft, F. (San Jose, Calif.)	1972
Crosby, Carl E. (Oregon, Wisc.)	1972
Curran, W. F. (Galveston, Tex.)	1954
Czapski, Capt. E. (Roswell, N.H.)	2036
Damon, Arthur H. (Syracuse, N.Y.)	2010
Davenport, Gordon (Buffalo, N.Y.)	1950
Davidson, Earl (Chicago)	2088
Define, Donald (New York, N.Y.)	1951
De la Torre, A. (Norman, Okla.)	1950
DeLoach, Arthur (Chicago)	2055
Dieter, Bruce (Midland, Mich.)	2020
Donnelly, Howard (San Francisco)	1926
Dowling, E. J. (Fla.)	1930
Driver, P. B. (N.J.)	2001
Duchamp, Marcel (New York, N.Y.)	2001
Dunn, Paul (Huntington, W.Va.)	1901
Dutka, Jacques (New York, N.Y.)	1995
Eckhardt, Rudolph (Detroit)	2044
Edwards, Henry (Brooklyn, N.Y.)	1974
Edwards, William (Conn.)	1971
Ehlers, Otto A. (St. Louis, Mo.)	2000
Eliason, David (Minneapolis)	1901
Ellis, J. N. (Chicago)	2085
Eschrich, Fred (N.H.)	2083
Eucher, Mark (Detroit)	2081
Faber, H. V. (Yokum, Tex.)	2025
Fashingbauer, J. (Milwaukee)	1991
Fanger, R. (Ipswich, Md.)	1951
Fawcett, E. O. (Fla.)	2090
Feldman, J. (New York, N.Y.)	1968
Fiala, R. P. (Annapolis, Md.)	2026
Fidlow, D. (Calif.)	1994
Finkelstein, J. (N.Y.)	2000
Fischer, A. A. (Del.)	2000
Fleischer, Myron (New York, N.Y.)	2049
Fleissel, J. (Mass.)	1963
Fogel, Max (Des Moines, Ia.)	1950
Ford, Edward (Washington, W.Va.)	2042
Francisco, O. (Milwaukee)	1979
Frank, Ivan (Los Angeles)	2084
Frank, Joe (Midland, Mich.)	1975
Friderick, Myron (Columbus, O.)	1951
Frilling, F. (Calif.)	2016
Gable, Vernon (Buffalo, N.Y.)	1950
Garbony, M. (Pittsburgh)	2090
Gauper, H. (Wisc.)	1933
Geo, J. B. (Sacramento, Calif.)	2000
Geller, Samuel (Los Angeles)	2006
Genovese, W. (Philadelphia)	2009
Georgi, Henry (Lawrence, Kans.)	2007
Gilbert, Joe T. (Dallas, Tex.)	1928
Gilbert, M. W. (St. Louis, Mo.)	1923
Gill, E. H. (Oklahoma City, Okla.)	2004
Gilman, William (Philadelphia)	1927
Gladney, W. F. (Baton Rouge, La.)	2084
Gladstone, L. (Wis.-N.Y.)	1947
Glatt, Joseph (Baltimore)	1920
Glover, E. R. (Philadelphia)	1984
Golob, R. (Baltimore, Md.)	1984
Goldwater, Walter (New York, N.Y.)	1980
Gompert, William (New York)	2086
Gordon, Morris (Los Angeles)	2069
Granger, Dr. W. B. (Kans.)	1927
Granger, Mrs. (Cleveland)	2045
Grant, Newton (Baton Rouge, La.)	1944
Gray, Charles P. (Port Gibson, Miss.)	2001
Green, Henry M. E. (Cleveland, O.)	1902
Grazed, R. (Calif.)	1986
Gresser, Mrs. G. (New York, N.Y.)	1974
Grombacher, Walter (Chicago)	2035
Grossguth, Carl (Cranston, R.I.)	1977
Grossman, David (Baltimore)	1966
Hyde, C. (Calif.)	1964
Gueydan, Robert (Minn.)	1980
Gustafson, Frank D. (Attleboro, Mass.)	1922
Haefner, R. (N.J.)	2021
Haines, Roger (Totona, Minn.)	20

NATIONAL CHESS RATINGS

CLASS B (Continued)

Table listing chess players and their ratings for Class B, including names like Carey, C., Casdan, M., Casey, J., Carr, E., Casdan, M., Casey, J., Carr, E., Casdan, M., Casey, J., Carr, E., etc.

Table listing chess players and their ratings for Class B (Continued), including names like Hazuka, J., Henderson, H., Hendricks, G., Herman, Dr. A., Herndon, G., Hoffman, Berf, Ind., etc.

Table listing chess players and their ratings for Class B (Continued), including names like Myers, Edward (Baltimore), Naas, J. A., Nagel, R., Naiditch, Sam, Nance, Carter, etc.

Table listing chess players and their ratings for Class B (Continued), including names like Stevens, B. W., Stewart, R., Stone, J., Stork, R., Swanson, J., Swain, C., etc.

Table listing chess players and their ratings for Class B (Continued), including names like Chappin, G., Child, J., Church, B., Church, C., Church, N., Clark, D., Clark, F., etc.

CLASS C

Table listing chess players and their ratings for Class C, including names like Abel, D., Abert, F., Abert, F., Abert, F., Abert, F., Abert, F., etc.

Table listing chess players and their ratings for Class C, including names like Maher, Lawrence, Maisel, S. R., Malig, Dr. J., Malory, W. A., etc.

Table listing chess players and their ratings for Class C, including names like Maher, Lawrence, Maisel, S. R., Malig, Dr. J., Malory, W. A., etc.

Table listing chess players and their ratings for Class C, including names like Maher, Lawrence, Maisel, S. R., Malig, Dr. J., Malory, W. A., etc.

Table listing chess players and their ratings for Class C, including names like Maher, Lawrence, Maisel, S. R., Malig, Dr. J., Malory, W. A., etc.

Jetzer, C. (Sheboygan, Wis.)	1678
Johnson, J. (Iowa)	1501
A. Johnson, A. (St. Paul, Minn.)	1644
Johnson, R. (Salt Lake City)	1636
Johnson, S. G. (Sacramento, Cal.)	1600
Johnson, W. (Sheboygan, Wis.)	1616
Kerr, K. (Los Angeles)	1579
Jones, J. (New York)	1515
Karotzky, J. (Milwaukee)	1668
Kashin, G. (Salt Lake City)	1668
Kelly, M. (New York)	1593
Keim, W. (Milwaukee)	1617
Kenil, R. (Mo.)	1590
Kenyon, Lyle (Iowa)	1682
Kerr, K. (Stillwater, Okla.)	1539
Kilbourne, H. K. (Georgetown, S.C.)	1501
Killingder, D. W. (Topeka, Kans.)	1649
Killingder, J. J. (Topeka, Kans.)	1649
Kirkpatrick, Dr. W. L. (Charleston, S.C.)	1689
Kish, E. J. (Brandford, Pa.)	1561
Kilmas, (Ill.)	1539
Knight, R. E. (Danville, Pa.)	1673
Konrad, Carl (Conn.)	1554
Korstrom, L. (Washington, D.C.)	1570
Kotolbay, A. (Tenn.)	1624
Kraus, R. (Beardstown, Ill.)	1586
Kretschmar, K. (Milwaukee)	1505
Lancaster, C. (Mass.)	1525
Lano, C. (Wyo.)	1607
Lanning, C. L. (Iowa)	1601
Lanier, Dr. L. H. (Cordell, Okla.)	1693
Lanning, E. (Northville, Mich.)	1633
Lapin, A. (Bay City, Mich.)	1624
Larson, R. (Leavenworth, Kans.)	1649
Lawrence, H. J. (Milwaukee)	1617
Leffers, E. B. (Rochester, N.Y.)	1574
Leiminger, E. (Lansing, Mich.)	1681
Leisner, M. (Chicago)	1624
Leoke, E. (Los Angeles)	1693
Leonard, (Mo.)	1659
Le Roy, J. (Calif.)	1557
Lester, H. (Pompano, N. H.)	1681
Lewis, (Tenn.)	1605
Lewis, A. D. (Clemson, S.C.)	1616
Livogot, P. (Kalamazoo, Mich.)	1548
Liszewski, J. (Buffalo)	1624
Lisowski, K. (Columbus, O.)	1613
Loving, R. (La.)	1662
Luebert, M. (Tripplet, Mo.)	1561
Lueby, D. (Lawrence, Kans.)	1681
Lynch, Col. (St. Petersburg, Fla.)	1634
Lyon, C. A. (Peoria, Ill.)	1637
McCoy, W. L. (Los Angeles)	1580
McCreedy, Mrs. R. (New York)	1603
McDonald, M. (San Antonio, Tex.)	1597
McGrath, T. F. (Ind.)	1555
MacDonald, K. R. (Wichita, Kans.)	1628
Madgett, D. (Omaha, Neb.)	1542
Maiath, A. (Gary, Ind.)	1546
Manchester, R. (Saginaw, Mich.)	1680
Manly, B. (S. Charleston, W.Va.)	1610
Manly, B. (S. Charleston, W.Va.)	1610
Marx, E. (Ill.)	1658
Mason, A. (Detroit)	1616
Mazy, E. (San Antonio, Tex.)	1668
McAfee, G. (San Diego, Calif.)	1600
Mease, A. N. (Reading, Pa.)	1673
Meese, (Pittsburgh)	1583
Meisner, H. L. (Kalamazoo, Mich.)	1697
Melkus, R. (New York)	1592
Melin, D. (Ill.)	1587
Melstrand, H. St. Paul, Minn.)	1518
Middendorf, J. (St. Louis, Mo.)	1681
Miller, E. B. (Chicago)	1620
Miller, Coleman (Fla.)	1640
Miller, H. B. (Atlanta, Ga.)	1648
Mink, J. E. (Tampa, Fla.)	1655
Misovic, (Pittsburgh)	1668
Mitchell, Dale (Mich.)	1625
Modica, R. (Mich.)	1665
Moore, G. (Chicago)	1689
Morford, C. (Wis.)	1585
Morison, E. (Chicago)	1600
Morgan, Dale (Salt Lake City)	1500
Morris, James (Philadelphia)	1657
Morris, L. (Del.)	1625
Moser, M. E. (Delavan, Wis.)	1619
Moskowitz, E. (Mt. Carmel, Pa.)	1642
Moiz, H. O. (Rock Hill, S.C.)	1637
Movins, J. (Ill.)	1587
Muller, Charles (N.C.)	1649
Murphy, D. (Twin Falls, Id.)	1600
Murphy, J. (Alcoa, Tenn.)	1685
Muto, P. (Knowles, Ia.)	1520
Nagengast, R. (Baltimore)	1674
Nance, Walter (Oak Ridge, Tenn.)	1638
Nasser, W. P. (La.)	1606
Nass, J. A. (Wash.)	1610
Nearing, Mrs. T. (Ill.)	1535
Neff, P. (Salt Lake City)	1632
Neif, C. Jr. (Wichita, Kans.)	1681
Newmark, Louis (Ill.)	1696
Newton, C. (Northville, Mich.)	1683
Nilsen, E. (Chicago)	1623
Noble, C. (Honolulu)	1500
Nosky, R. (Nebraska)	1642
O'Brien, P. (New York)	1598
O'Connor, G. (Ind.)	1500
Olson, G. A. (St. Paul, Minn.)	1651
Oren, R. (Indiana)	1527
Ocker, Edsel	1604
Palmer, L. (Syracuse, N.Y.)	1582
Paresa, J. (Honolulu)	1686
Passigale, (Mo.)	1528
Patterson, R. F. (Low Ky.)	1628
Paynter, R. (Omaha, Neb.)	1587
Pederson, R. F. (Minn.)	1646
Pena, R. E. (Norman, Okla.)	1600
Pendergrass, J. D. (Waco, Tex.)	1658
Peters, G. (Gavenport, Ia.)	1549
Petit, Dr. A. M. (New York)	1697
Petrus, J. Jr. (New York)	1556
Petigrew, F. F.	1606
Pfeiffer, R. (Ill.)	1596
Pinney, W. T. (Calif.)	1537
Pirhofer, D. (Wis.)	1657
Plaisance, H. E.	1534
Ploffe, R. (Ft. Worth, Tex.)	1658
Poetschke, E. (Rasine, Wis.)	1665
Poole, R. (Ill.)	1658
Priele, F. (Puerto Rico)	1596
Pryer, G. (Jackson, Mich.)	1664
Radaikin, M. Sr. (San Francisco)	1679
Raethig, Adele (N.J.)	1525
Raetz, R. F. (Low Ky.)	1596
Ramme, R. N. (Pittsburgh)	1612
Rantlett, Miss H. (New York)	1556
Reek, R. J. (Ind.)	1628
Reich, R. (Calif.)	1642
Resar, G. (Racine, Wis.)	1616
Rosler, R. E. (Fla.)	1510
Richardson, L. LeR. (Ind.)	1578
Riordan, R. (Ill.)	1553
Roberts, Dick (Conn.)	1554
Roberts, K. (Calif.)	1557
Roberts, Prof. (Ohio)	1590
Roberts, W. (Philadelphia)	1514
Rodriguez, R. (Ohio)	1587
Rosen, S. (Ill.)	1587
Rourke, C. (N.J.)	1572
Rouw, W. H. (Tulsa, Okla.)	1594
Rubin, Irwin (Syracuse, N.Y.)	1626
Sacks, Paul (St. Louis, Mo.)	1500
Sabo, R. (Honolulu)	1500
Sayre, P. A. (Huntington, W.Va.)	1569
Scelsi, (Philadelphia)	1580

Schafer, R. (Ohio)	1613
Schilling, J. S. (Charleston, W.Va.)	1518
Schmitt, R. (St. Paul, Minn.)	1644
Schuetz, C. H. L. (Pittsburgh)	1560
Schultz, R. (Chicago)	1546
Schwartz, D. (Milwaukee)	1518
Schwartz, R. (Milwaukee)	1625
Schwartz, P. (Pittsburgh)	1662
Scott, J. (Milwaukee)	1606
Scott, Murray (Huntington, W.Va.)	1666
Scott, R. (St. Paul, Minn.)	1644
Seider, R. (Baltimore)	1688
Seidel, A. (Wis.)	1641
Seiter, Donald (Philadelphia)	1641
Semb, M. (Elroy, Wis.)	1635
Somers, M. H. (Rapid City, S.D.)	1295
Shallcross, (Neb.)	1573
Shanahan, W. (Peoria, Ill.)	1546
Shaw, J. (Albuquerque, N.M.)	1679
Shelton, G. (Chicago)	1629
Sheppard, I. (Philadelphia)	1657
Shields, M. (Mt. Joy, Pa.)	1668
Shinke, G. E. (Huntington, W.Va.)	1568
Shipman, G. (Peoria, Ill.)	1601
Siedelman, M. L. (Washington, D.C.)	1565
Silver, S. (Md.)	1573
Silverman, L. (Chicago)	1691
Simmonds, (Mo.)	1624
Sinclair, R. (Detroit)	1581
Smith, I. J. (Gatesville, Tex.)	1587
Smith, R. M. (Iowa)	1501
Smith, Prof. W. (Hartsville, S.C.)	1635
Sparr, J. G. (Norman, Okla.)	1653
Stapel, (Pittsburgh)	1611
Stapp, C. C. (San Antonio, Tex.)	1668
Stark, R. (Madison, Mich.)	1630
Stedman, L. (Wis.)	1690
Stephens, Mrs. Wm. (New York)	1548
Stiner, T. (Md.)	1573
Stoney, C. (Orsha, Neb.)	1621
Stork, Harold (Wash.)	1652
Strahl, S. (Ohio)	1697
Strief, Lee (Kans.)	1669
Strout, A. L. (Lubbock, Tex.)	1685
Sullivan, W. (Chicago)	1605
Sweet, D. (Ill.)	1624
Tarjot, J. (Cambridge, Mass.)	1658
Tharpe, Alvin (Mass.)	1588
Terrell, B. B. (Minn.)	1668
Terrible, Joseph (Ohio)	1649
Teufel, H. (Wichita, Kans.)	1600
Thomas, W. A. (Detroit)	1526
Thomas, J. (Oklahoma City, Okla.)	1560
Tobian, S. (Dallas, Tex.)	1642
Toby, Dd. L. (Baltimore)	1692
Towne, J. R. (Minneapolis)	1568
Tracy, D. (Oklahoma City, Okla.)	1546
Tralins, A. (Baltimore)	1546
Triebwetter, R. (Iowa)	1641
Trifley, J. (Columbus, S.C.)	1637
Truick, W. (Charleston, W.Va.)	1564
Tuffs, G. (Oregon)	1583
Turner, D. (Portland, Ore.)	1580
Upchurch, M. H. (Durham, N.C.)	1642
VanderRoest, E. (Mich.)	1515
Vidbert, (Mass.)	1624
Vin, D. (Chicago)	1648
Virgin, J. (Tulsa, Okla.)	1574
Virgin, R. (Chickasha, Okla.)	1670
Vittum, Winthrop (Mass.)	1658
Wahlstrom, J. (Los Angeles)	1551
Walker, A. (Chattanooga, Tenn.)	1528
Walker, Col. D. F. (Fort Worth, Tex.)	1624
Wallace, Lawrence (N.C.)	1506
Wardlaw, J. (Raleigh, N.C.)	1651
Ware, R. E. (N.C.)	1526
Warner, C. E. III (Iowa)	1676
Ward, R. (Wash.)	1624
Wass, M. (Los Angeles)	1579
Waterman, C. (Amesbury, Mass.)	1690
Waters, Mrs. C. L. (Waco, Tex.)	1567
Weare, R. E. (Stamford, Neb.)	1512
Weber, K. (St. Louis, Mo.)	1675
Weinstein, Lewis (La.)	1659
Weinhoff, J. (Ohio)	1673
Wollen, William (Mass.)	1575
Wolfe, R. (Baltimore)	1591
Wonta, G. W. Jr. (San Marcos, Tex.)	1668
Werner, N. (Pittsburgh)	1661
Wheeler, R. E. (Appleton, Wis.)	1548
White, R. (Richmond, Va.)	1649
White, Mrs. W. A. (Tulsa, Okla.)	1677
White, C. C. (Tulsa, Okla.)	1648
Whitlow, D. L. (Neb.)	1656
Winton, R. F. (Evannston, Ill.)	1609
Wing, Elmer (Baltimore)	1599
Winters, P. (Waltham, Minn.)	1621
Woffender, M. (Salt Lake City)	1648
Woods, F. S. (Charleston, S.C.)	1546
Yaeger, (Conn.)	1589
Yarbrunth, L. (Houston, Tex.)	1671
Young, J. (Charleston, W.Va.)	1584
Zellmayer, (Mo.)	1679
Zohal, R. (Oshkosh, Wis.)	1579
Zust, C. R. (Washington, D.C.)	1651

Burns, (Pittsburgh)	1531
Burns, V. M. (Sacramento, Cal.)	1000
Buttner, Clarence (Wash.)	1495
Butler, M. C. L. (Wash.)	1319
Butterfield, J. R. (Los Angeles)	1245
Caleman, F. T. (Boise, Id.)	1475
Campbell, E. D. (Ft. Worth, Tex.)	1316
Cannon, E. (Portland, Ore.)	1481
Capote, E. (Attleboro, Mass.)	1090
Carroll, R. (Honolulu)	1629
Carpenter, D. M. (Kans.)	1294
Case, H. A. (Wash.)	1402
Cassingham, J. R. (Oklahoma City, Okla.)	1295
Caulk, R. (Del.)	1375
Chase, E. V. B. (New York)	1225
Chapin, E. K. (Manhattan, Kans.)	1424
Chang, B. Y. (Honolulu)	1429
Ching, Edward (Honolulu)	1329
Christof, S. (Philadelphia)	1383
Coghil, K. (Charleston, W.Va.)	1221
Colins, G. (Chicago)	1498
Condon, Mrs. F. E. (Borger, Tex.)	1383
Convis, D. L. (Wichita, Kans.)	1447
Cook, C. T. (Ft. Worth, Tex.)	1492
Frank, L. T. (Fla.)	1439
Frank, B. (Attleboro, Mass.)	1099
Cross, G. S. (Honolulu)	1329
Crumpraker, J. P. (Durham, N.C.)	1045
Cujar, G. A. (Jackson, Mich.)	1498
Curry, A. (Cleveland)	1349
Dahlquist, Norman (Wash.)	1130
Dailey, Roy (Sacramento, Cal.)	1200
Danies, Ralph J. (Mass.)	1463
Danzler, T. (Pittsburgh)	1463
Danzler, T. E. (Charleston, S.C.)	1232
Davidson, Dr. V. A. (N.C.)	1356
Davis, F. (Kans.)	1455
Davis, S. (Gary, Ind.)	1470
Dehanty, J. (White Bear, Minn.)	1267
De Poy, Martin (Ind.)	1300
DeWitt, W. (Lake City)	1300
Dobkin, J. (Raleigh, N.C.)	1253
Dobler, Dr. L. (Redfield, S.D.)	1004
Donon, M. (Miami, Fla.)	1448
Droher, J. (Spring Springs, Fla.)	1600
Drummer, R. New York	1432
Dudley, Robt. (W.Va.)	1090
Dunning, H. (Wis.)	1420
Duprow, (Ore.)	1183
Durnham, R. (Ogden, Utah)	1432
Edwards, D. (St. Louis, Mo.)	1340
Ehnt, A. (Wash.)	1338
Ellington, K. (Minn.)	1480
Ellison, D. H. (Rapid City, S.D.)	1204
Engelman, R. (Oklahoma City, Okla.)	1340
Fake, Harry (Washington, D.C.)	1427
Fawns, Miss C. (New York, N.Y.)	1281
Ferguson, Edgar (Ga.)	1456
Ferguson, H. (Okla.)	1420
Flauding, F. C. (Ind.)	1428
Flournoy, E. K. (La.)	1480
Focht, B. (Buffalo, N.Y.)	1400
Ford, William (Syracuse, N.Y.)	1367
Fridman, G. (Los Angeles)	1460
Gaer, Jerry (Omaha, Neb.)	1223
Gailigan, (Attleboro, Mass.)	1388
Gibson, Sylvia W. (Newbury, Mass.)	1293
Gibson, W. W. (Waukegan, Kans.)	1420
Gilkinson, J.	1258
Gilliland, Alex. (Ind.)	1465
Ginsberg, R. (Wash.)	1280
Goris, David (Ind.)	1280
Gould, Margaret (Newburyport, Mass.)	1437
Gronier, (Attleboro, Mass.)	1178
Grover, Arthur (Ill.)	1309
Gurney, George (S.D.)	1075
Guststein, P. (Ill.)	1160
Hafferman, R. R. (Los Angeles)	1175
Halm, Dr. G. (Kailua, T.H.)	1471
Hamm, W. E. (Attleboro, Mass.)	1493
Hardin, C. C. (Del.)	1375
Hartley, A. (Oshkosh, Wis.)	1601
Harris, Reid (Haverhill, Mass.)	1428
Hart, Dr. R. C. (Chattanooga, Tenn.)	1428
Headrick, Glen (La.)	1438
Hedberg, C.raig (Ill.)	1461
Hershtad, B. S. (Neb.)	1471
Hill, Jack (Charleston, W.Va.)	1403
Hoge, W. (Ore.)	1383
Hoke, D. M. (Beckley, W.Va.)	1459
Holmes, F. (Beckley, W.Va.)	1259
Homan, B. (St. Louis, Mo.)	1375
Hoover, Z. L. (Pa.)	1380
Horne, Jesse (Ind.)	1240
Hou, H. G. (Beckley, W.Va.)	1292
Hughes, K. G. S. (Charleston, W.Va.)	1476
Hunt, A. (N.J.)	1410
Huntlinger, S. J. (Freemont, O.)	1498
Hyde, Mrs. H. H. (San Antonio, Tex.)	1300
Hymans, E. J. (Miami, Fla.)	1305
Jamison, Bob (Chattanooga, W.Va.)	1266
Jentschura, J. (Leaksville, N.C.)	1484
Johnson, F. W. (Tulsa, Okla.)	1462
Johnson, L. A. (S.C.)	1369
Johnson, J. (Kansas)	1492
Jones, Mrs. C. E. (Columbus, O.)	1498
Jones, W. D. (N.C.)	1476
Kaliner, J. F. (St. Petersburg, Fla.)	1467
Kappel, W. (Philadelphia)	1378
Keller, Oscar (Honolulu)	1329
Kende, H. (Ill.)	1360
Keyser, T. H. (Beckley, W.Va.)	1000
Kidley, F. (Beckley, W.Va.)	1200
Kum, K. L. (Honolulu)	1429
Leach, R.	1409
Leach, H. S. (Durham, N.C.)	1087
Lesley, R. K. (Detroit)	1489
Long, George (Boston)	1490
Longenecker, J. Van S. (Wichita, Kans.)	1272
Low, V. G. Jr. (Mahomet, Minn.)	1171
Lunday, Helen (Los Angeles)	1480
Lyman, S. (Portland, Ore.)	1210
McCarthy, W. E. (Okla.)	1402
McGee, J. (Kansas)	1402
McLaughlin, (Ind.)	1370
Mackenzie, J. (Portland, Ore.)	1480
MacNeil, R. A. (Mich.)	1444
Madsen, J. (American Fork, Utah)	1329
Maeda, Ralph (Honolulu)	1329
Manning, Bill (Des Moines, Ia.)	1400
Manning, Bob (Des Moines, Ia.)	1200
Marano, J. (Sacramento, Cal.)	1400
Marshall, Col. L. E. (San Antonio, Tex.)	1454
Martin, (Chicago)	1379
Martin, (Attleboro, Mass.)	1493
Martin, Clarence (Wash.)	1493
Martinak, P. (Gary, Ind.)	1163
Mendenhall, C. (Omaha, Neb.)	1152
Merritt, C. R. (N.C.)	1459
Miles, J. (Chicago)	1319
Michl, E. F. (Hudsonwood, Minn.)	1439
Moehn, K. (Mahomet, Minn.)	1328
Monroe, A. N. (Johnson City, Tenn.)	1220
Monro, J. (Mass.)	1451
Moon, T. E. (Fla.)	1347
Morgan, Robert (Conn.)	1388

Mueller, G. (Okla.)	1470
Murford, H. (Wash.)	1485
Nathan, Walter L. (Mass.)	1463
Nearing, P. (Decatur, Ill.)	1493
Nelson, Jack (Beckley, W.Va.)	1478
Nelson,	

STATEMENT OF RECEIPTS AND DISBURSEMENTS OPEN CHAMPIONSHIP TOURNAMENT DETROIT, MICHIGAN JULY 10-22, 1950

Table with columns for Receipts and Disbursements, listing various fees, prizes, and expenses.

CONTRIBUTORS TO THE TOURNAMENT FUND

Table listing names of contributors and their respective donation amounts to the tournament fund.

The following made contributions in amounts of \$5.00 or less:

Table listing names of contributors and their respective donation amounts, including Mrs. Catherine Jones and others.

Respectfully submitted EDWARD I. TREEND Secretary, The Detroit Tournament Committee

Club Chapters

Charter No. 199 Arkansas State College Chess Club State College, Arkansas President... Arthur Zakharian

METROPOLITAN CHESS LEAGUE

Table showing final standings for the Metropolitan Chess League, listing clubs and their scores.

Res Caissae By Guilherme Groesser

I HAVE been requested to adorn (or mar) these pages with various short discourses upon the inanimate things of chess—the res caissae—whereby the player communicates his thoughts into action on the chessboard.

Pocket Sets:—For those that dabble in problem composing and solving, endgame study and the doubtful delights of correspondence chess, the pocket chess set has always been a necessity.

Binder for CHESS LIFE:—At last, the much needed practical binder for copies of CHESS LIFE has been made available at the modest price of \$1.75.

Position Recorders for Correspondence Chess:—Among the most practical of labor and time-saving devices for correspondence chess players is the Gilcher Position Recorder.

Wooden Chess Sets:—In these days of plastics the wooden chess set is becoming a rarity, yet many players still prefer the wooden sets when they can be acquired.

SYDNEY E. GALE

Canada lost one of its premier players recently in the passing of Sydney E. Gale of Toronto. A very gifted player, capable of great brilliance, Gale was Champion of British Guiana before he came to Canada to win the Canadian Championship in 1920.

LOG CABIN TOPS NO. CITY-RIFLES

In a large interclub and intercity team match of 23 boards the Log Cabin Chess Club of Orange, N.J., overpowered the combined strength of the North City Chess club and Philadelphia Rifle Club of Philadelphia, Pa., by a 14½-8½ score.

Say You Saw It In CHESS LIFE.

Solutions: Mate the Subtle Way!

No. 227 (DeBlasio). 1. Q-K5. "This is pretty, with its sacrifice offer of an almost worthless Queen, who if not taken gains strength through friends and enemies interposing themselves"—M. A. Michaels.

No. 228 (Pink). 1. KtXP. "The set mates will develop many solvers. If, initially, K-K5; 2. Kt-B3 and if 1., KBxP; 2. Kt-B7. . . This is one of the most puzzling capture keys I have ever seen. I like it very much"—Alain White.

No. 229 (Shoppard). 1. BxP(Q7). "This composition is very pretty. It has so many pleasing facets"—M. A. Michaels.

No. 230 (Stearns). 1. B-K6, threat: 2. Q-KB5 ch. If 1., K-K2; 2. Q-KR8 ch. If 1., KxQkt; 2. Q-Q8 ch. If 1., KxKkt; 2. Q-KB5 "Nimble"—M. A. Michaels.

SOLVERS' LADDER

Table showing the Solvers' Ladder, listing names of solvers and their scores for various chess problems.

Under The Chess-Nut Tree

By William Rojman

OUR aimable correspondent in Port-of-Spain, Trinidad contributes a recent postal battle with the redoubtable Dr. Bohatirchuk in which our West Indian expert, Dr. Sturm, proved his own formidable skill by drawing—which is the best that World Champion Mikhail Botvinnik has ever done in facing the Ukrainian (now Canadian) master.

STAUNTON GAMBIT

BCCA Tourney No. W 29

1950

White DR. M. G. STURM (Trinidad, B.W.I.) 1. P-Q4 2. P-K4 3. P-B3 4. B-QB4 5. P-B3 6. N-K3 7. B-QB4 8. O-O



BOHATIRCHUK

INTERCITY MATCH

Philadelphia, 1951

Table showing the results of the Intercity Match in Philadelphia, 1951, listing players and their scores.

SAGINAW VALLEY LEAGUE

Playoff Match, 1951

Table showing the results of the Saginaw Valley League Playoff Match, 1951, listing players and their scores.

WASHINGTON OPEN CHAMPIONSHIP

Seattle, 1951

Table showing the results of the Washington Open Championship in Seattle, 1951, listing players and their scores.

SOUTH CHARLESTOWN OPEN CHAMPIONSHIP

South Charleston, 1951

Table showing the results of the South Charlestown Open Championship in South Charleston, 1951, listing players and their scores.

Chess For The Tired Business Man

By Fred Reinfeld

All rights reserved by Pitman Publishing Corporation, International Copyright, 1948. No part of this article may be reproduced in any form without written permission from the publishers.

Odds-Giving In The Modern Manner

THE old masters often gave odds in order to encourage their hopelessly outclassed opponents. Judging from the specimens of odds play that have come down to us, the odds-receivers derived no great benefit from these contests. The contemporary form of odds-giving is the simultaneous exhibition, which is suited to modern notions of efficient mass entertainment. The master and the amateur play on even material terms, but the master is nevertheless handicapped: by the physical effort of walking several miles; by having seconds instead of minutes in which to plan and execute; by having to rely on routine rather than on imagination. As a result, the master's tendency to blunder naturally becomes more marked.

QUEEN'S GAMBIT DECLINED

White R. FINE
1. P-Q4
2. P-QB4
3. Kt-QB3
4. Kt-B3
5. P-QR4
6. Kt-K5
7. Kt-P(4)
8. P-KKt3
9. PxP
10. B-B4
11. Q-Kt3?

Black ALLIES
Kt-KB3
P-B3
P-B3
P-Q4
B-B4
QKt-Q2
Q-B2
P-K4
Kt-Kt2
Kt-Kt2

A dubious experiment which turns out badly. The "book" move is 11. B-Kt2, leaving White a more comfortable position.

11. This pin forces the following frightful weakness (if 12. B-Kt2??, Q-B1 and wins).

12. P-K3
13. K-Q1
Likewise after 13. K-K2, Kt(6)-K4 White has a miserable position.

13. Threatening Kt-B4 ch.
14. K-B1
15. Q-Q1
16. KxQ
17. K-K2

Black's game is so superior that even the exchanges did not ease the pressure very much.

18. P-R3
Or 18. B-Kt2, Kt-K4 ch; 19. P-B3, Kt-Kt; 20. PxR, R-Q7 ch winning easily. The text allows a problem-like finish.



18. R-K7 ch!!!
19. KtXR
20. K-K2

(One of many brilliant games included in RELAX WITH CHESS by Fred Reinfeld, published by the Pitman Publishing Corporation.)

SALT LAKE YMCA Chess Club begins a 24 board match by mail with a German chess group at Bremen-Leseum in the U. S. zone in Germany. Match was arranged by the son of one of the German players, attending school at Las Vegas.

CHESS BOOKS

- The Unknown Alekhine\$4.00
- Immortal Games of Capablanca 3.50
- Chess by Yourself 2.00
- Nimzovich the Hypermodern 2.00
- Botvinnik the Invincible 2.00
- Keres' Best Games 3.50
- Challenge to Chessplayers. 2.00
- Tarrasch's Best Games 3.75
- Practical Endgame Play 2.00
- Chess Mastery 2.00
- How to Play Better Chess. 2.50
- Relax With Chess 2.50
- 51 Brilliant Chess Masterpieces 2.50
- The Elements of Combination Play 2.50
- With Irving Chernev
- Fireside Book of Chess 3.50
- Winning Chess 2.75

SEND ORDERS TO: FRED REINFELD, 3310 Rockambeau Avenue, New York 67, N. Y.

With The Chess Clubs

WILMINGTON (Del.) Chess Club meets at 8 p.m. Thursday evenings at 800 Washington St., Wilmington. The club is desirous of meeting nearby clubs in interclub matches. Recently elected officers of the club are: C. C. Harding, president; Walter Holloway, vice-president; R. D. Donaldson, treasurer; and Melvin M. Hope, secretary.

NORTHERN VALLEY (Hackensack, N.J.) Chess Club, meeting each week at the Hackensack YMCA, is among the most active of north New Jersey clubs. Recently elected officers are: Ernest W. Tyler, president, Carl O. Herfurth, vice-president, John Primosh, treasurer, and William Guisannie, secretary. Simultaneous exhibitions, local tournaments and matches are a continuous activity of the club.

UNIVERSITY OF CHICAGO Chess Club saw James C. Phillips of Albuquerque win the annual club championship 3½-½ in a 10-round event, drawing with Stephen Jacoby. Richard Greenbaum of Chicago and Robert Nieldorf of Water Gap, Pa. shared second with 7½-½ each - Greenbaum and Nieldorf each lost a game to Phillips and drew against each other. Frank W. Dobbs of Chicago was fourth with 5-4.

FLINT (Michigan) Chess Club saw the annual club championship go into the three game playoff between LaVern Morgan and John Reddy who both scored 12-2 in the regular 8-player double-round robin event. Reddy in the regular rounds lost games to Morgan and Edward F. Muller, while Morgan scored losses against Reddy and Muller. Edward Muller placed third with 10-4, losing two games to Verner Benson who placed fourth with 8½-5½. In the playoff Vern Morgan won the title by taking two out of the three games, after losing the first.

MIDLAND (Mich.) Chess Club elected Al Brauer president, Bruce Dieter secretary; Bob Broad was appointed club instructor, and Charles Starnes and Al Brauer co-captains of the team. This year Midland plans a round-robin club tournament to replace the ladder and Swiss events used in the past.

MONTREAL (Canada) Chess Club reelected Joseph Sawyer president with Philip Fisher and Gaston Daudet as honorary presidents. Other officials elected were: George Gravel executive vice-president, Fred M. Wren second vice-president, Mrs. Ivan Steven secretary, Emile Phaneuf treasurer, G. Grant assistant treasurer, and H. F. Kerrin auditor. The meeting awarded life memberships to Gravel and Phaneuf in recognition of their outstanding services to the club.

NORTH CITY (Philadelphia) Chess Club recently contested two intersectional matches, losing by the close score of 6-5 to the powerful Log Cabin Club of Orange, N. J., and drawing with the Red Rose Chess Club of Lancaster, Pa. In the Log Cabin match, Hickman of North City drew with Herman Hesse on board one while H. Morris bested W. Adams on board two. Thereafter the contest was tight with Borges, Badgett and A. Nickel scoring for North City while Howard, Parmalee, Boczar, Hurlen and Thompson gained points for Log Cabin. In the match with the Red Roses, North City scorers were Hickman, Cotter and Gibbons, while Stauffer, Eckenrode and Kemble turned in victories for Lancaster.

GARY (Ind.) Chess Club elected Harry Salisbury president and James Bolton secretary, while George Martinson was chosen team captain. The 10-second tournament was won by Kenneth Rearick with 6-0, while Novak Marcic placed second with 5-1 in the round robin event.

SYRACUSE (N. Y.) Chess Club saw J. C. Cummings elected president with Prof. Alfred H. Cope as vice-president; Jacques S. Levey recording secretary; Mrs. Carl S. Nye corresponding secretary; Donald D. Dann treasurer; Leon Grass, Arthur H. Damon, William L. Ford, P. L. Gluckemus, Bede Hutchinson, Peretz Z. Miller, Leland Palmer, Jesse Silverman, and Joseph A. Szcudlik as directors.

YALE & TOWNE Chess Club (Philadelphia) saw Frank Bennet become the new club champion by 4-1 game score and 11½ S-B points in a 16-player 5-round Swiss. Second to fourth with equal 4-1 scores on S-B points were John Dillio, Frank Rojewski, and John Schemeld. Defending Champion Otto Nietschmann could place no better than in a tie for sixth with 3-2.

GARY (IND.) Chess Club has won its second match from the South Bend YMCA Chess Club by 23-9 in a 16 board match. D. Brooks on top board for South Bend scored 1½ out of 2 in the double round event, while G. Dunkel of Gary on board two equalized with 1½ points out of two. Double victories for Gary went to K. Rearick, G. Martinson, B. Cowan, D. Sheer, P. Schuringa, J. Evanson, W. Trink and E. Kirche, while A. Smith scored the sole double victory for South Bend.

HARVARD TOPS METRO A CLASS

Harvard University with 7-3 in matches and 31½-18½ in games topped the A Division of the Metropolitan Chess League of Boston. Boylston Chess Club was a very close second, tying in match score, but with 29-21 in games, while the Lithuanian Chess Club was third with 5½-4½ in matches and 26-24 in games.

Harvard lost a match to the Lithuanian Club 1½-3½ and to the Cambridge Y Club 2-3, and drew once each with Boylston and Lithuanian Chess Clubs.

PEORIA CHESS LEAGUE

Peoria, 1951

Norelab Chess4½	22½
Caterpillar Tractor3	15½
Chess3	14½
Illinois Furniture Chess2	15½
Hiram Walker Chess3	12

SACRAMENTO (Calif.) Chess Club saw Newell Banks sweep the boards at simultaneous exhibition, conceding only two draws to Austin and USCF Vice-President J. B. Gee.

Alekhine's Career

(Continued from page 2, col. 5)

Alekhine had brought more material than what has been published in "Best Games" and "Das Schachleben in Sowjet-Russland", and as far as it is in our collection in manuscript form, it will now be made available for the first time; but unfortunately, Kagan seems to have disposed of or lost pages of the Alekhine manuscripts before he sold the rest to us in 1931 with the publication rights, and if these lost pages of the manuscript should ever turn up yet, we could expect to find a few more of the games Alekhine played while in the Soviet Union.

The obvious "clipping" of the game annotations made by the publisher leads us also to believe that the text part of the pamphlet "Das Schachleben in Sowjet-Russland" has been "cut to order" and does not comprise everything Alekhine had to report on chess life in Soviet Russia. It is not easy to verify this suspicion, all the more since the usually very thorough and reliable Russian chess historian M. S. Kogan in his book, "Sketches on the History of Chess in the USSR" (in Russian, Moscow-Leningrad, 1938, p. 239) treats this entire period with obvious disdain and passes over the "unimportant chess activities which were exercised in the first years of the revolution on the initiative of amateurish busy-bodies by small groups of qualified chess players of Moscow and Petrograd" as "belonging, in essence, only chronologically to the Soviet epoch"; still, he reports in note 395 on p. 383 "for informational purposes, about the Moscow "Championship" tournament of the winter 1919-1920, in which Alekhine having played "hors de concours" came in first and Grekov, as 2nd, won the Championship title, and similar events in Petrograd. This tournament is not mentioned by Alekhine at all in the text part of "Das Schachleben in Sowjet-Russland", but we find a number of games "played in the first class of the Moscow local tournament" 1919 as well as 1920 (about this later) in the game section of "Das Schachleben in Sowjet-Russland", including the game against Issakoff Misspelled "Issakozo" which is also published as game no. 52 in "Best Games", "Shakmaty" August 1922, p. 18, gives as date of this tournament "October 1919."

(To Be Continued)

Chess Life

Monday, March 5, 1951

Chess Life In New York

By Eliot Hearst

THE results of the Marshall Chess Club annual championship tournament, just completed, present a unique reversal from those of last year, for M. Hanauer, J. Collins, and C. Pilnick, the three top scorers this year, just missed the select group of seven prizewinners last year. This shows how unpredictable the outcome is in this tournament, and it's almost anyone's guess who will be the prizewinners.

Milton Hanauer, who led throughout the tourney and who was really never seriously threatened, won his first major title, the New York State Championship, exactly twenty five years ago. Since then his work as teacher and now as assistant - principal of a Junior High School left him much less time for the royal game, but, even so, in the past two decades he managed to capture two Ventnor City titles (1939 and 1940) and reach the finals in the U. S. championship three times besides tying for first in the 1939 Marshall championship. For years he has been promoting and conducting inter-scholastic chess tournaments among New York high school students - his only loss, by the way, in this year's Marshall tourney was at the hands of Carl Pilnick whom the new champion once coached in high school! Hanauer has two sons, one, eight years old (who knows the "moves") and the other, four years old (who knows the "pieces"). Hanauer utilized his teaching experience in his popular chess book "Chess for You and Me."

Jack Collins gained 2nd place by his stellar play in crucial games. He is the current U. S. representative in the world correspondence championship, and he spends much of his time in many other postal tourneys in addition to what he devotes to his job as an annotator for "Chess Review."

Carl Pilnick, who took 3rd prize, is a graduate of City College and has been a prizewinner in previous Marshall tourneys. While stationed in Texas during the last war, Carl won the Southwestern championship, and another memorable feat in his off-diagrammed "swindle" draw against Reshevsky in the 1942 U. S. championship.

The three other prizewinners are B. Hill, a newcomer to the club playing for the first time in this tournament and placing fourth, and A. E. Santasiere and E. Hearst, fifth and sixth places respectively, who were both prizewinners last year.

IN BRIEF: The Brooklyn Public Library chess exhibition, sponsored by the Brooklyn Chess Club, recently featured simultaneous exhibitions by Max Pavey and Mrs. Mary Bain; Irving Chernev, drawing liberally from his vast knowledge of the game, entertained the audience one night with a talk on various chess subjects... Marshall Chess Club is now conducting a Masters Tourney with Fine, Simonson, Lasker, Evans, Hanauer, and Santasiere as the entrants... George Kramer, 8-3½, leads the Manhattan Chess Club championship, while Arnold Denker has the excellent record of 4½-½... Art Bisguier won two straight Marshall rapids without a loss... Columbia defeated Army, 8-0, at the Marshall Chess Club.

MIDLAND CITY CHAMPIONSHIP

Midland, 1951

Charles Starnes	5-2	Al Brauer	3-4
Bob Broad	4½-2	Frank Micklich	3-4
Bruce Dieter	4-3	Walt Cepela	3-4
Joe Frank	3½-3	Hans Grether	2-5

CATALAN OPENING

Amsterdam International Tourney Amsterdam, 1951

Notes by J. Soudakoff

White M. NAJDORF Black H. KRAMER
1. P-Q4 K-KB3 4. B-K12 PxP
2. Q-K4 P-K3 5. K-KB3
3. P-KK1 P-Q4
Standard opening texts give scant attention to the increasingly popular Catalan. Here the books consider only 5. Q-R4 ch.



A focal point combination, forcing the Black Q to yield the long diagonal. The position of the two pieces are already en prise adds to the effect.
27. BxB
There is nothing. A) If 27. QxR; 28. BxB ch, KxK1 (28. BxB is an interesting position of the Q. White mates in two); 29. Q-R4 mate. B) If 27. Q-Q1; 28. BxB ch, KxK1; 29. Q-B8 ch, with a mating attack. C) If 27. Q-B4; 28. QxQ, RxB; 29. BxB ch, KxK1; 30. BxB wins.

NIMZOWITCH DEFENSE

St. Louis District Championship St. Louis, 1950

Notes by Harry A. Lew

White G. C. NEWBERRY Black H. A. LEW
1. P-K4 K-KB3 3. K1-QB3 B-K15
2. P-QB4 P-K3
This defense is a favorite of mine... because it's really an Offense and gives Black attacking chances.

Tournament Life

Conducted by Erich W. Marchand

192 Seville Drive Rochester 17, N. Y.

After 31., Q-R3



White's game.
31. RXP RXP 34. R-R5 K-B3
32. K1-B6 ch K-Q2 35. K1-B4
33. K1-K16 ch K-Q3
After K1xB, P-K11; RxB ch, K-K4; R-K7, B-B5 and the cut off White K's passed QP; and Black's own advanced K position must lead to a win for the second player.

QUEEN'S GAMBIT DECLINED

Southern Open Championship Durham, 1950

Notes by Kit Crittenden

White J. G. SULLIVAN, JR. Black H. MOUZON
1. P-Q4 P-Q4 4. B-K12 B-K1
2. Q-B4 P-K3 5. P-K3 O-O
3. K1-QB3 K1-KB3 6. K1-B3 P-KR3
The moderns consider it wise to interpolate this move in order to remove the KRP from the line of fire and to give the B the free B2.

NIMZOWITCH DEFENSE

St. Louis District Championship St. Louis, 1950

Notes by Harry A. Lew

White G. C. NEWBERRY Black H. A. LEW
1. P-K4 K-KB3 3. K1-QB3 B-K15
2. P-QB4 P-K3
This defense is a favorite of mine... because it's really an Offense and gives Black attacking chances.

The support for the Kt goes and with it White's game.
31. RXP RXP 34. R-R5 K-B3
32. K1-B6 ch K-Q2 35. K1-B4
33. K1-K16 ch K-Q3
After K1xB, P-K11; RxB ch, K-K4; R-K7, B-B5 and the cut off White K's passed QP; and Black's own advanced K position must lead to a win for the second player.

SLAV DEFENSE

United States vs. Australia CCLA 100 Board Match

Notes by Sven Brack

(Each and every move of the following game has traveled 22,000 miles by airplane. The first move was sent Sept. 1, 1949 and the game ended Dec. 30, 1950.)
White G. BRASK Black G. KOSHNIITSKY (USA) (Australia)
1. P-Q4 P-Q4 2. P-QB4
In over-the-board-play it probably would pay off to try 2. Kt-KB3, it may induce 2. P-K1B3; 3. P-QB4, PxB; 4. P-K3, B-K15? And now White gets a clear advantage with 5. BxP, P-K3; 6. Q-K13, BxK1; 7. PxB since 7. P-Q4 is not now feasible.

ALEKHINE'S DEFENSE

18th CCLA Grand National Correspondence Chess

Notes by J. Howarth

White W. J. COULTURE Black C. C. HARDING
1. P-K4 K1-KB3
Black invites the White Ps forward. This opening is chosen usually for the purpose of getting away from the modern book lines.
2. P-K5
Against other moves Black usually gets the initiative. Or at least equality.
3. P-QB4 K1-K13
Black strikes at the center. If here 4. P-Q4 then White gets too strong a center after 5. P-B5. Or if 4. P-QB4 then 5. P-Q5.

PAPER CHESS BOARDS

For Tournaments and Exhibitions, Buff and Green 2 1/2" squares on heavy stock, dull finish. Approx. size 20" x 20". Packaged in lots of 50 for \$25.00 in USA and 500 for \$30.00 postpaid in USA and Canada. Send M.O. or check to: B. M. SMITH 317 Division St. Schenectady 4, N. Y.

SUPER \$1.00 VALUE

Includes "Tips for Chess Progress" and "Selecto 4 Chess" by J. V. Reinhart. Send \$1 cash, check or M.O. to: J. V. Reinhart, P.O. BOX 855 PEORIA 1, ILLINOIS

THE BRITISH CHESS MAGAZINE

Founded in 1881 and now the oldest chess periodical extant. Games Editor: T. G. Colombek—Problem World: F. R. Dawson—\$2.25 per year (12 issues)—Specimen copy 25c

CHESS WORLD

Comprehensive Australian chess magazine edited by C. J. S. Purdy. Articles, annotated games, problems, news. \$2.00 per year—72 issues—Specimen copy 30c

CHESS LIFE

126 No. Humphrey Ave., Oak Park, Ill.

CARO-KANN DEFENSE

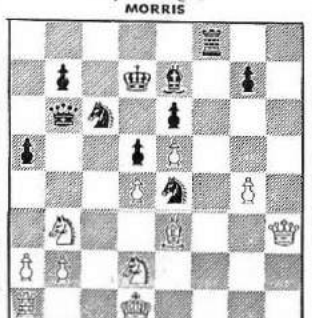
Log Cabin vs. North City Match Philadelphia, 1951

Notes by J. N. Cotter

White W. W. ADAMS Black H. MORRIS (Log Cabin) (North City)
1. P-K4 P-QB3 3. P-K5
2. P-Q4 P-Q4
Black's choice of the Caro-Kann was motivated by the knowledge of Adams' predilection for the text move. Instead 3. Kt-QB3 or 3. PxB, PxB; 4. P-QB4 would pose more difficult problems.
4. B-Q3 B-B4 6. P-KB4 K1-KR3
5. QxB P-K3 7. P-KR3
Deviating from his own analysis in Simple Chess which is 7. B-K3, a much more solid and promising move.
7. K1-B4 9. K-Q1 K1-K16
Not 10. Kt-KB3, K1xR; 11. K1xQ, Kt-B7 ch, etc.
10. Kt-K2 K1-K5 12. P-B3
11. Q-K2 P-QB4
12. Q-K16 ch, Kt-Q2; 13. QxK1P, R-QK1; 14. Qx1P, Q-K16 and White is lost.
12. K1-QB3 14. Q-K1-Q2 PxB
13. K1-B3 Q-Q1 15. PxB P-KR4!
The tactical justification of this move which cripples the White K-side Ps is seen in the following variation: 15. Kt-K1, PxB; 16. QxP, PxB; 17. PxB, RxB; 18. K1xR, QxP ch, regaining the P with superior position.
16. P-B5 RXP 19. PxB PxB
17. RXP RxB 20. Q-R5 ch K-Q2
18. QxR Q-K13
Black has correctly calculated the insignificance of this maneuver but White had nothing better for Black intended to castle long.
21. Kt-K13
If instead 21. Q-B7 ch, B-K2; 22. QxK1P, R-KB1 and Black's attack is overwhelming, there is no satisfactory answer to the coming K1xQ.
21. B-K2 23. K1(B3)-Q2
22. B-K3 R-KB1 24. P-QR4!
It is interesting to see how the attack switches from side to side to the other.
24. Q-R3

ADAMS

Protecting KB1 and also threatening 25. K1xK1, PxB; 26. P-Q5!



ADAMS

Protecting KB1 and also threatening 25. K1xK1, PxB; 26. P-Q5!
An excellent rejoinder which nullifies the threat and attacks KB8 twice. The Black Q operates beautifully on the light colored squares.
25. Q-K12 P-R5 26. Q-K2 Q-B7 ch
26. K1xK1 PxB(6)! 27. R-K1 B-R5 ch
27. K1-Q2 Q-Q6 Resigns
A beautiful game! The progressive strangulation of the White forces is reminiscent of Nimzovich at his best.

ALEKHINE'S DEFENSE

18th CCLA Grand National Correspondence Chess

Notes by J. Howarth

White W. J. COULTURE Black C. C. HARDING
1. P-K4 K1-KB3
Black invites the White Ps forward. This opening is chosen usually for the purpose of getting away from the modern book lines.
2. P-K5
Against other moves Black usually gets the initiative. Or at least equality.
3. P-QB4 K1-K13
Black strikes at the center. If here 4. P-Q4 then White gets too strong a center after 5. P-B5. Or if 4. P-QB4 then 5. P-Q5.

PAPER CHESS BOARDS

For Tournaments and Exhibitions, Buff and Green 2 1/2" squares on heavy stock, dull finish. Approx. size 20" x 20". Packaged in lots of 50 for \$25.00 in USA and 500 for \$30.00 postpaid in USA and Canada. Send M.O. or check to: B. M. SMITH 317 Division St. Schenectady 4, N. Y.

SUPER \$1.00 VALUE

Includes "Tips for Chess Progress" and "Selecto 4 Chess" by J. V. Reinhart. Send \$1 cash, check or M.O. to: J. V. Reinhart, P.O. BOX 855 PEORIA 1, ILLINOIS

THE BRITISH CHESS MAGAZINE

Founded in 1881 and now the oldest chess periodical extant. Games Editor: T. G. Colombek—Problem World: F. R. Dawson—\$2.25 per year (12 issues)—Specimen copy 25c

CHESS WORLD

Comprehensive Australian chess magazine edited by C. J. S. Purdy. Articles, annotated games, problems, news. \$2.00 per year—72 issues—Specimen copy 30c

CHESS LIFE

126 No. Humphrey Ave., Oak Park, Ill.

Annotations

- K. Crittenden Dr. M. Horzberger
E. J. Korpany J. E. Howarth
J. Lapin J. Mayer
Dr. J. Platz F. Reinfeld
Dr. B. Rozsa A. E. Santasera
J. Soudakoff Wayne Wagner

PxP lessens the chances of securing any P advantage in the center. E. g.; 5. PxB, P-KP3; 6. Kt-QB3, K1-B3; 7. B-K2, B-K2; 8. B-Q8, O-O; 9. Kt-K2, B-K5; 10. K-O, R-K1; 11. P-KR3, B-R4; 12. Q-Q2, B-K3; 13. BxB, RxB; 14. P-QK13, B-B1; 15. P-Q5, K1-K2; 16. B-K15, Q-Q2; 17. K1-Q4, P-QB4; 18. Kt-B3, K1-B4; 19. Q-R1, P-Q4; with equality, Petrov-Flohr, Kemer, 1937.
5. Black wishes to break the White P-chain. This cannot be accomplished by 6. P-QB4 because of 7. P-Q5. If then 7. P-K3; 8. Kt-QB3, PxB; 9. PxB, Q-R5 ch; 10. P-K3, Q-Q5; 11. B-K4 and White stands slightly better. While if 6. P-K3; 7. Kt-QB3 prevents P-QB4.
7. B-K3
Weak would be 7. Kt-KB3 after 7. P-K3; for the pinning of the Kt places the White QP and his QBP under slight pressure. Chess is still a risky business!
8. K1-QB3 P-K3 10. B-K2 O-O
Black has passed up a chance to attack White on the Q-side. Whether or not such an attack would lead to anything for him, is doubtful. For the fact that such an attack will be started with minor pieces, against greater force, may lead to trouble, instead of advantage. For instance: 9. P-K3; 10. R-B1, P-B4; 11. P-QR3, PxB; 12. K1xP or 12. P-K4 seems to favor White. White may also play 11. B-K2 after 11. P-B3; 11. Q-Q2 and if then 11. P-B3; 12. PxB, P-Q4; 13. O-O with White's position a little better.
11. P-B3 12. P-Q5
HARDING

COUTURE



Since 12. PxB, PxB; 13. P-Q5! K1-K4; 14. BxK1, K1xK1 ch; 15. BxK1, BxB (if 15. PxB; 16. K1-K15 wins for White); 16. P-QR3 and if 16. B-B4 ch; 17. K1-R1, P-K4; 18. P-QK14, B-Q5; 19. K1-K15, BxR; 20. K1xP ch, K-K1; 21. K1-K15 and White stands much better (Euwel) why does White choose the text? One of the basic principles about this defense is that if White could hold his Ps in the center, this defense would be discarded.
12. K1xK1 K1xP 14. P-QR4 PxB?
The moves in chess, or to a successful combination, are not chosen by chance. A random choice is seldom effective.
15. RxB1
He wastes no time
15. K1xBP
Of course 15. Q-Q5, QxK1 loses through 16. B-R4.
16. BxRP K1xP 19. K1-Q5 QR-K1
17. Q-KB1 P-Q5 20. K1xB ch QR-K1
18. B-K14 B-K2 21. RxB ch Resigns

IXth CHESS OLYMPICS

Dubrovnik 1950
Bulletin contain all 480 game scores, Nicely printed in English \$3.00 (postpaid)

BOOK OF THE NEW YORK 1948-49

INTERNATIONAL CHESS TOURNAMENT by Hans Kmoch \$2.50 (postpaid) Distributed by ALBERT S. PINKUS 1700 Albee Road Brooklyn 26, N. Y.

IF IT'S CHESS LITERATURE

Old-New; Rare-Common; Domestic-Foreign Books-Periodicals Ask THE SPECIALIST A. BUSCHKE 80 East 11th St. New York 3

CHESSETER LITERATURE

Ask THE SPECIALIST A. BUSCHKE 80 East 11th St. New York 3

HAVE YOUR TOURNAMENTS OFFICIALLY RATED!

Under the USCF National Rating System, any round-robin or Swiss System tournament of five rounds or more, with at least two USCF members as contestants, will be rated without charge.

Official rating forms should be secured in advance from:—

Montgomery Major 123 No. Humphrey Avenue Oak Park, Illinois

Do not write to other USCF officials for these rating forms.