

Chess Life



America's Chess Newspaper

Copyright 1953 by United States Chess Federation

Vol. VII, No. 18

Wednesday, May 20, 1953

15 Cents

Larry Evans On Chess



By
International
Master
LARRY EVANS
U. S. Chess
Champion
U. S. Open
Champion, 1951-52
U. S. Team
Member, 1950, 1952

SAMUEL RESHEVSKY U.S.A.

IT may be wishful thinking, or perhaps an atavistic nationalism on my part, but I would like to see Sammy cop first prize in the forthcoming Challengers' tournament. His confidence and tenacity are unsurpassed by any of his tournament rivals, and he is feared in match play by perhaps every player in the world with the exception of several of the top Russians. That he never reached the world title was due more to contrivance of circumstance than lack of ability. And now that he is a full-time chess professional, the chinks in his opening armor should have been repaired.

Yet he is the oldest of all the players whom I consider possible tournament winners. And age is no asset in a tournament like this. Moreover, whatever the reason, he has never fared well against the

Russians, as evidenced in the World Championship Tournament of 1948. In our two radio matches with the USSR he scored two draws out of four games with Botvinnik and Smyslov, in the absence of tournament pressures. I disagree with the editorial policies of certain American chess journals which intimate collusion amongst the Russians, with little proof except what might be termed paranoic doubts.

Reshevsky, should he play, will be playing them one at a time, with adequate rest days in between. It is true that the Soviets will have superior analysis on their adjourned games due to their almost grandmaster seconds. It is also true, and very natural, that they will be out gunning for Sammy. But to charge rigging of games and collusion is another matter.

Outside of the Soviet Union, Sammy is probably the strongest player in the world. This tournament gives him an opportunity to prove more than that.

CONCLUSION: Outside chance. It is inconceivable that Sammy will be lower than fourth, unless he has a complete collapse, but unlikely that he will win first prize in view of the large number of competing Russians. I predict he will end up in a two or three-way tie for 2nd or 3rd place.

(Next issue: Smyslov's chances.)

BOLTON TRIUMPHS IN CONNECTICUT

James Bolton of New Haven scored 7½-½ to win the Connecticut State title, drawing with Peter Field. Second place in the 24 player Swiss went to Arkadijs Strazdius on S-B with 6-2, while Richard Friedenthal was third also with 6-2. Strazdius lost Bolton and Elliot Wolk, while Friedenthal dropped games to Bolton and Strazdius. Fourth to sixth on S-B with 5-3 each were Peter Field, William Weil, and William Gallagher.

George Avery won the B Class event by scoring 4-4, while Fred Kuritz was second with 3-5.

TURIANSKY WINS CHICAGO CITY

M. Turiansky with 9½-1½ won the ISCA Chicago City Championship in a 12 player round robin finals, losing a game to P. Tautvaisas and drawing with W. Grombacher. Tautvaisas placed second with 9-2, losing to Albert Sandrin and K. Jakstas. Tied for third with 7½-3½ were S. Cohen and Albert Sandrin, while A. Zujus was fifth with 6-5.

HUX TRIUMPHS IN NEW HAMPSHIRE

Robert Hux won the 24 player Swiss event 5-0 to gain the New Hampshire title. Second place went to Gerth and 4-1 on S-B, losing only to Hux. Third and fourth on S-B with 4-1 each were Morse and Sadowsky, while Bell placed fifth with 3½-1½. Morse lost one game to Gerth, and Sadowsky also lost to Gerth in the 24 player Swiss.

SOMLO CAPTURES CLEV'L'ND TITLE

Ernest Somlo won the Cleveland City Championship 7-1 on S-B points in the nine player round robin, losing one game to Elliot Stearns. George Miller was second, also with 7-1, but lost his game to Somlo. Third place with 6-2 went to Stearns who lost games to Miller and J. Harkins. Harkins was fourth with 5-3.

In the concurrent Open Championship, a 20 player Swiss, L. Lipking placed first with 5½-½, drawing with R. Rosen in final round. D. Stauvers was second with 5-1, losing to Lipking. Third to sixth on S-B were R. Rosen, K. Leitson, J. Cohn, and D. Zaas with 4-2 each.

In the double round Junior Championship Adam Zachlin scored 4-0 to win the title, while Joe Gilchrist and Edwin Garnes tied at 1-3 each.

STARK REPEATS IN DISTRICT OPEN

Martin C. Stark for the second successive year won the District of Columbia Open title, on S-B points this time with 8-1. It was his sixth victory since 1935. Second place went to ex-soldier Hans Berliner, also with 8-1. Berliner held the title in 1949 and 1950. Herbert Avram was third with 5½-3½, while fourth to seventh on S-B with 4½-4½ each were Edmund Nash, William Nucker, and Durwood Hatch.

Stark lost no games, drawing with Nash and Nucker, while Berliner only lost to Stark in the 10 player round robin. By winning this year Stark again has a chance to gain permanent possession of the Championship Cup, donated by I. S. Turover, which must be won three times in a row.

BRIEGER TOPS HOUSTON EVENT

Robert Brieger won the Houston Experts' Tourney 6½-1½, losing one game to John Hudson and drawing once with William Bill in the 5 player double round event. John Hudson, former Philadelphian, was second on S-B with 5-3, while William A. Bill was third, also with 5-3. Hudson lost games to Brieger, Bill, and Mevis R. Smith, while Bill dropped games to Brieger and Hudson and drew with Brieger and George H. Smith.

CHAPMAN WINS IN NO. CAROLINA

William E. Chapman of York, Pa., senior at Duke University and a Phi Beta Kappa, won the North Carolina title 4½-½ in a 12 player Swiss, conceding a draw to Douglas A. Kahn. Second place with 4-1 went to Dr. A. G. Ashbrook, Jr. who lost only to Chapman. Kahn was third with 3½-1½, losing to Ashbrook and drawing with Chapman. On S-B with 3-2 each Dr. G. C. Harwell, Dr. Norman Honstein, and Samuel A. Agnelo placed fourth to sixth respectively.

TOLUSH SCORES AT BUCAREST

Alexander Tolush, making his debut in international chess, won the strong tournament at Bucarest ahead of such stalwarts as Smyslov, Boleslavsky and Szabo. He scored 14-5, losing only to Smyslov, while drawing with Petrosian, Boleslavsky, Spassky, L. Szabo, Barcza, Barda, and Milev. Tigran Petrosian placed second with 13-6, the only undefeated contestant, drawing 12 games however. Smyslov with 12½-6½ was third, while Boleslavsky, Spassky and L. Szabo shared fourth with 12-7 in the twenty player event.

FINAL STANDINGS

1. Tolush (USSR)	14-5
2. Petrosian (USSR)	13-6
3. Smyslov (USSR)	12½-6½
4. Boleslavsky (USSR)	12-7
5. Spassky (USSR)	12-7
6. L. Szabo (Hungary)	12-7
7. Barcza (Hungary)	11½-7½
8. O'Kelly (Belgium)	11-8
9. St. Szabo (Rumania)	11-8
10. Silwa (Poland)	10½-8½
11. Ciocaltea (Rumania)	9½-9½
12. Filip (Czechoslovakia)	9½-9½
13. Sajtar (Czechoslovakia)	8½-10½
14. Barda (Norway)	8-11
15. Milev (Bulgaria)	8-11
16. Stoltz (Sweden)	7-12
17. Golombek (England)	6-13
18. Radulescu (Rumania)	6-13
19. Troianescu (Rumania)	5-14
20. Reicher (Rumania)	3-16

HESSE TAKES LEHIGH VALLEY

Herman V. Hesse won the Lehigh Valley Championship at Allentown with 10-1, losing only to former Penn State Champ Thomas Gutekunst, who placed second with 9-2. Gutekunst lost a game to Fred Simsak and Mahlon Cleaver in the 12 player round robin event. Tied for third were Woodrow Young and Martin Simsak with 7-4, while Fred Sharpell was fifth with 6-5.

Juniors, Plan Now!
Attend the U.S.C.F.
JUNIOR
TOURNAMENT
Kansas City, Mo.
August 3-8, 1953

Plan Your Vacation
for 1953 NOW!
Attend the U.S.C.F.
OPEN
TOURNAMENT
Milwaukee, Wis.
August 10-21, 1953

YOUNG MASTERS' FORUM

America's Leading Young Masters Annotate
Outstanding Games from Recent Chess Events

Mar Del Plata

By U. S. Master WALTER SHIPMAN

THE annual tournaments at Mar del Plata, Argentina, are the leading chess events in South America. In the past, Najdorf and Stahlberg have been the leading contenders. With Stahlberg now back in his native Sweden, the 1953 tournament, recently concluded, shaped up as a battle between Najdorf and Svetozar Gligoric, Yugoslavian Grandmaster. True to form, these two took an early lead in the contest. The crucial game between them, annotated below, was won by Gligoric who went on to capture first, 1½ points ahead of Najdorf.

KING'S INDIAN DEFENSE Mar del Plata, 1953

White	Black
M. NAJDORF	S. GLIGORIC
1. P-Q4	K1-KB3
2. P-QB4	P-KK13
3. K1-QB3	B-K12
4. P-K4	P-Q3
5. K1-B3	O-O
6. B-K2

Najdorf here plays the older line rather than P-KK13 and B-K12, the modern favorite. The King's fianchetto for White in this variation has the advantage of strengthening White's King position, against the intended Black King-side assault. There is certainly nothing wrong with B-K2, however.

6. P-K4
Black is enabled to play this counter-thrust at the White center this early by virtue of a tactical finesse; thus if 7. PxP, PxP; 8. QxQ, RxQ; 9. KtxP, KtxP! regains the pawn.
7. O-O K1-B3



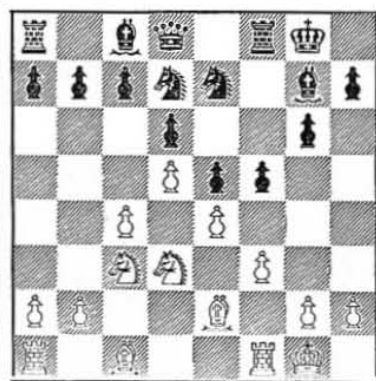
This move, instead of the more usual QKt-Q2, is designed to force White to block the center with P-Q5, after which Black can safely proceed with a King-side attack, beginning with P-KB4, etc. White, on the other hand, will have an advantage in space on the Queen-side, and a promising attack on that wing of the board.

8. P-Q5
Probably best. At first glance, 8. PxP looks good, but it can be met as follows: 8. KtxP; 9. KtxKt, PxKt; 10. QxQ, RxQ; 11. B-K15, P-QB3 (preventing Kt-Q5); 12. P-B4, R-K11; 13. PxP, Kt-Q2! and Black is safe.

8. Kt-K2
The alternative, Kt-K1 followed by QKt-Q2, is not attractive.

9. Kt-K1
An excellent move, preparing to bring the Kt to Q3 where it can support the Queen-side attack, and at the same time releasing White's King Bishop Pawn.

9. K1-Q2
Black wastes no time in preparing P-KB4.
10. K1-Q3 P-KB4
11. P-B3



This is the turning point in the game. Najdorf's move is a strategic error, allowing Black to set up a strong K-side bind. More important it is a psychological mistake, as Najdorf, a dashing, aggressive player, feels ill at ease in the long drawn out defense to which this move commits him. 11. P-KB4 was natural and correct.

11. P-B5
Black promptly takes advantage of White's mistake. The pawn at KB5 is a powerful wedge in the White game, and gives Black what Nimzovitch termed a "qualitative pawn majority." Black will continue with a pawn storm of White's King-side, culminating in P-KKt5.

12. B-Q2 K1-KB3
13. P-QK14 P-KK14
Black's K-side push is far more dangerous than White's Q-side advance.

14. P-B5 P-KR4
Logical and straightforward.

15. K1-B2
White correctly tries to prevent or at least slow down P-KK15.

15. K1-K13 R-B2
Excellent. The R makes way for the Bishop, which will defend the P at Q3 via KB1, while the R itself is utilized on the second rank to support the P advance and to defend the point QB2 if White plays Kt-QKt5.

17. PxP PxP
18. P-QR4 B-B1
19. P-R5 R-K12

Black's maneuvering with this Rook is very fine.

20. P-R3 Kt-R1
P-KK15 cannot be stopped.

21. Kt-K15
White tempts P-QR3, creating a target for him on the Q-side.

21. P-KK15!
(See Diagram next column)
Black is not to be denied. He knows that the pawn sacrificed is only temporary, and that he receives more than adequate compensation in the shattered White K-side pawn structure and the opening of lines to the White monarch.

22. BPxP PxP
23. PxP
White must capture; otherwise the Black threats are too powerful.



23. P-R3
24. K1-QR3
The White Knight heads for QK16.
24. B-Q2
25. K1-B4 R-B1
26. K1-K16 RxR
27. BxR B-K1

Black carefully preserves his B. The White Knight at QK16 has an interesting post, but is of very little use.

28. B-R3
Clearing the square QB1 for the Rook.

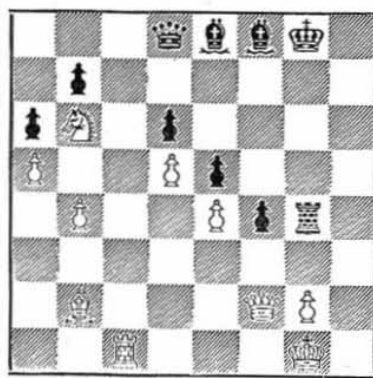
28. K1-B2
29. Q-B2
This and White's 30th move make Black's task easier.

29. K1-R3
Black is still concentrating on KKt5.

30. P-KK15
A mistake, but the defensive Q-Q1 was not in keeping with Najdorf's mercurial temperament. (See note to White's 11th move.) With the text move, White diverts Black's R from the defense of QB2.

30. RxP
31. R-B1 R-K16
32. B-K12 KKt-K15
33. KtxKt
The threat of Kt-K6 forces White to exchange both Black Knights.

33. KtxKt
34. BxKt RxB
35. Q-B2

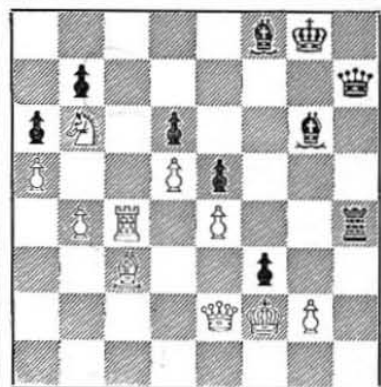


Preventing P-B6 and Q-R5. If 35. Q-B8, Q-Kt4!; 36. QxB, RxP ch; 37. K-B1 (if 37. K-R1, R-Kt5 wins), R-KR7!; 38. Q-K6 ch, K-R1 and Black wins. If 35. Q-B7, likewise Q-Kt4 Black now has a winning position based on the following factors: 1) White's Pawn at K4 is weak; 2) Black has a strong attack on the open K-Knight file, directed against White's weak KKt2; 3) Black has two powerful Bishops; 4) Neither of White's minor pieces has much scope.

35. B-KK13
36. R-B4 Q-K2
37. B-B3 Q-R2

The Queen is ideally posted at R2, exerting pressure on White's K4 and on the KR file at the same time.

38. Q-K2 R-R5
39. K-B2 P-B6!



A splendid stroke, opening all the approaches to the White King. The Pawn is offered three ways, but any capture loses the White Queen at once. Thus if 40. QxP, R-B5; if 40. KxP, B-R4 ch; and if 40 PxP, R-R7 ch.

40. Q-K3 R-B5
Forcing White to capture the P.

41. PxP Q-R7 ch
42. K-K1 Q-R8 ch
43. K-K2 B-R4
44. K-Q2 RxBP

Carefully calculated. White's check is harmless.

45. Q-Kf5 ch B-Kf2
46. K-B2

If 46. R-B8 ch, simply K-R2 and White has no more checks.

46. R-B7 ch
47. B-Q2 Q-Q8 ch
48. K-B3 Q-R8 ch

Resigns
For if 49. K-B2, B-Q8 ch; 50. K-Q3, B-K7 ch; 51. K-K3, R-B6 ch; 52. KxB, Q-B8 mate. Or in this variation, if 51. K-B2, Q-R7 ch; 52. K-B3 (best), Q-R6 ch; 53. K-B2, B-Q6 ch; 54. K-Q1, Q-K6 ch; 55. R-B2, QxR ch; 56. K-K1, R-B3 mate.

Eugene Krestini, a civil engineer from Belgrade, Yugoslavia who has settled in Toronto for the past two years, scored a final round victory over A. Lidavis to gain the Toronto City Championship 4-1. Krestini lost to Keith Kerns. Kerns and Lidavis tied for second with 3½-1½ each, and S. Blum was fourth with 2½-2½ in the 6 man finals.

TORONTO CITY CHAMPIONSHIP Toronto, 1953

1. E. Krestinix	0	1	1	1	1	4-1
2. K. Kerns1	x	½	½	1	½	3½-1½
3. A. Lidavis1	½	x	1	1	1	3½-1½
4. S. Blum0	½	0	x	1	1	2½-2
5. P. Torok0	0	0	0	x	1	1-4
6. R. E. Orlando	0	½	0	0	0	x	½-4½

Maryland Chess Club of Baltimore won the Maryland State Team Championship with 7-1 in matches and 29½ game points. Second was Loyola Alumni with 7-1 and 26½.

FINAL TEAM STANDINGS

	Matches	G.P.
1. Maryland Chess Club7-1	29½
2. Loyola University7-1	26½
3. Social Security4½-3½	23½
4. Local 181 "A" Team4½-3½	20
5. Phalanx4½-3½	19½
6. University of Maryland4-4	19
7. John Hopkins "A" Team3½-4½	22
8. Local 181 "B" Team1-7	5½
9. John Hopkins "B" Team0-8	5½

Dr. J. M. Aitken won the Scottish Championship with 8-0, while E. Knopfler and N. A. MacLeod shared second with 5-3 each. T. R. Harvey was fourth with 4½-3½. Mrs. R. P. Foggie won the Ladies' title in her first attempt 4-1, while W. McLaughlin scored a clean sweep of 4-0 for the Boys' title.

Contributors to the YOUNG MASTERS' FORUM

Arthur Bisguier
Eliot Hearst
Carl Pilnick
James Sherwin
Walter Shipman
Saul Wachs

Published twice a month on the 5th and 20th by
THE UNITED STATES CHESS FEDERATION

Entered as second class matter September 5, 1946, at the post office at Du-
 buque, Iowa, under the act of March 9, 1879.

POSTMASTER: Please return undeliverable copies with Form 3579 to Kenneth
 Harkness, USCF Business Manager, 93 Barrow Street, New York 14, N. Y.

Editor: MONTGOMERY MAJOR

USCF Membership Dues, including subscription to CHESS LIFE, enrollment in
 State Chess Association (if State of member's residence has an Association af-
 filiated with the USCF), semi-annual publication of national chess rating, and
 all other privileges of membership:

ONE YEAR: \$5.00 TWO YEARS: \$9.50 THREE YEARS: \$13.50

A new membership starts with the date of the first CHESS LIFE issue mailed after
 application is received, a renewal with the date of the first issue published
 after old membership expires. Subscription rate of CHESS LIFE to non-members
 is \$3 per year. Single copies 15c each. Fee for publication of non-member's na-
 tional chess rating: \$1 for each semi-annual listing. Two or more members of
 one family living at same address may join the USCF at flat annual rate of
 \$5.00 for one USCF Membership plus \$2.50 for each additional USCF Mem-
 bership. Such additional family memberships will receive all privileges of Mem-
 bership except a subscription to CHESS LIFE.

Send membership dues (or subscriptions) and changes of address to KENNETH
 HARKNESS, Business Manager, 93 Barrow Street, New York 14, N. Y.

Send tournament rating reports (with fees, if any) and all communications re-
 garding CHESS LIFE editorial matters to MONTGOMERY MAJOR, Editor, 123
 North Humphrey Avenue, Oak Park, Ill.

Make all checks payable to: THE UNITED STATES CHESS FEDERATION



represent a retrogression to the unhappy arrangements of the past.
 It also violates the wishes of the late Frank Marshall who tendered
 his title to the Federation to place in contest in a national tournament.
 But we would not have expressed these doubts, if the whole proposal
 had been given a factual presentation.

The Editor Reads A Book

By Montgomery Major

L'ANTI-DUAL Ou? Quand? Comment? Pourquoi? By Gabriel Authier.
 Pp 150 with numerous diagrams. Melle: Imprimerie Montazeau. Price
 \$1.65 pp from Gabriel Authier, Rue Saint-Jean, Melle (Deux-Sevres),
 France; or Librairie Julien Guisle, 13 Rue Saint-Jacques, Paris (5e),
 France. (Or 540 Fr. francs).

AUTHIER, a well-known problemist whom readers may remember
 for his amusing "Unpublished Adventure of Charlick Helmos"
 (CHESS LIFE, December 5, 1950) in this work presents an interesting
 and very comprehensive study of the Anti-Dual theme and mechanism
 in its many subtle variations, copiously illustrating the ideas with 170
 quoted problems covering every conceivable type of Anti-Dual mechan-
 ism. Problems cited and diagrammed include the work of such masters
 of composition as Barulin, Buchwald, Chicco, Dawson, Ellerman, Fleck,
 Hassberg, Mansfield, Shinkman, Stocchi and Wrobel. In all 99 different
 composers are represented by the illustrations. It is a study of the
 Anti-Dual that no composer can afford to miss, and which will entertain
 and instruct any problem lover. Anyone who knows French chess
 notation can follow the problem solutions and derive benefit, even if
 missing the instruction of the accompanying text.

RATED TOURNAMENTS

To compute ratings for the Spring 1953 official ranking list, the per-
 formances of 2705 contestants in 158 tournaments were measured and
 recorded. The rated tournaments are listed below.

	No. of Players	RATINGS Expert	Master
NATIONAL			
*U. S. Intercollegiate Team Championship, New York, N. Y.	69	4	1
*U. S. Junior Championship, Omaha, Nebr.	16	2	—
REGIONAL			
*Lake Erie Open Championship, Buffalo, N. Y.	14	3	—
Midwest Open Championship, Omaha, Neb.	18	4	—
New England Championship, Newburyport, Mass.	36	7	1
*Southwestern Open Championship, Dallas, Texas	76	3	2
Tri-State Championship, Pittsburgh, Pa.	6	5	—
Tri-State Junior Championship, Pittsburgh, Pa.	4	—	—
Tri-State Open Championship, Pittsburgh, Pa.	32	3	—
CALIFORNIA			
Northern California Championship, San Francisco	10	2	1
Central California Qualifying Tournament, Modesto	12	—	—
Central California Individual Championship, Modesto	16	1	—
Southern California Championship, Los Angeles	18	6	3
California State Championship, San Francisco	8	3	3
California Open Championship, Santa Barbara	40	4	1
California Interscholastic Tournament, Los Angeles	10	—	—
Fresno Chess Club Championship	16	—	—
Hollywood Invitational Tournament, Hollywood	20	4	4
Castle Chess Club Championship, Berkeley	11	2	—
Cosmo Chess Club Chp., Los Angeles	10	—	—
Cosmo Chess Club Championship, Section B	8	—	—
Golden Gate Chess Club Championship, San Francisco	24	4	2
Inglewood Chess Club Championship, Inglewood	16	—	—
Inglewood Open Tournament, Inglewood	19	1	—
Los Angeles County Championship	26	4	4
Mechanics Institute Open Championship, San Francisco	9	3	—
San Gabriel Open Tournament, Pasadena	10	—	—
San Jose "Y" Chess Club Championship, San Jose	10	2	—
Santa Monica Bay Chess Club Championship	10	—	—
COLORADO			
*Colorado Open Tournament, Denver	50	1	—
CONNECTICUT			
Connecticut State Championship	24	2	—
DISTRICT OF COLUMBIA			
District Open Championship, 1952	26	7	1
District of Columbia Open Championship, 1953	10	2	—
Washington Chess Divan Championship	6	2	—
FLORIDA			
Florida State Championship, Sarasota	32	1	—
City of Miami Championship	18	—	—
Greater Miami Chess Club Championship	19	—	—
Tampa Chess Club Championship	12	—	—
GEORGIA			
Georgia State Tournament, Atlanta	33	1	—
ILLINOIS			
Illinois State Championship, Rock Island	42	3	2
Illinois Open Tournament, Decatur	37	—	—
Chicago City Tournament, Preliminaries	21	—	—
ISCA Chicago City Championship	12	2	2
Chicago Christmas Social Tournament	8	2	—
Chicago Junior Championship	6	—	—
Irving Park YMCA Chess Club Championship, Chicago	20	1	—
University of Illinois Championship, Urbana	9	—	—
INDIANA			
Gary City Tournament	6	—	—
IOWA			
Iowa State Championship, Ames	29	—	—
Quad-City Challengers Tournament, Davenport	14	—	—
KANSAS			
Wichita Open Tournament	28	2	—
KENTUCKY			
Lexington Chess Club Tournament	9	—	—
LOUISIANA			
*Louisiana State Championship, New Orleans	29	2	—
New Orleans Qualifying Tournament, Section A	10	1	—
MASSACHUSETTS			
*Massachusetts State Championship, Cambridge	21	3	1
*Massachusetts State Championship, Class B	10	—	—
North Shore Invitational Tournament, Newburyport	14	—	—
* Indicates 100% USCF Rated Tournament.			

(Continued in next issue.)

Major Topics

By
 Montgomery Major

Unconsidered Trifles?

*Haste makes waste, and waste makes want, and want makes strife between the
 good man and his wife.*

Old Proverb

IT is with regret that we must inform the members of the Federation
 that a somewhat hasty decision by a group of men usually distin-
 guished for their thorough and deliberate study of a situation has
 resulted in the propagation of falsehood.

A special resolution is now being submitted to the Board of Di-
 rectors for a mail vote which would determine the immediate future
 of the U.S. Championship Tournament. Such action is obviously neces-
 sary, since it is evident that the Three-Year Cycle Plan, officially in
 force, will never be made effective while Mr. Harold M. Phillips is
 president and the U.S. Tournament Committee retains its present
 general composition.

Therefore, we do not object to the shelving of the Three-Year
 Cycle Plan (although we have consistently demanded in the past that
 it be given a test). But we do object to the false colors under which
 the proposed substitution is presented; and we can only charitably
 believe that the drafters and signers of the text submitted to the Board
 of Directors were both sound asleep at the moment of signing and in
 addition abysmally ignorant of the details. Otherwise there could be
 no excuse that would be acceptable for the gross misrepresentation of
 facts in the first paragraph of the text:

The three-year cycle plan for the United States Championship,
 previously approved by the Board of Directors, has been found to be
 unworkable. No area qualifying tournaments were conducted in 1952, as
 intended, due to the difficulty in breaking the country into equitable
 areas, and finding an organization in each area to organize and conduct
 such a tournament . . .

This stupid statement is not only a gratuitous slap in the face to
 the members of the committee which spent over a year in shaping the
 Three-Year Cycle Plan but a direct insult to all who have urged its
 actual use — a list which would include such names as Paul G. Giers,
 Elbert Wagner, etc. who are thus presumed not to have sufficient
 intelligence to recognize whether a tournament plan is practical or not.

In addition, it is a statement contrary to fact. The Three-Year
 Plan has been found "unworked" but not unworkable. The writer
 wasted much energy, time and paper in attempting to batter a hole in
 the stone-wall resistance the Tournament Committee—he never suc-
 ceeded in getting them even to consider the plan. Neither the Com-
 mittee nor Mr. Phillips can offer an opinion that the Plan is un-
 workable, because they never gave it sufficient study to hav an intelli-
 gent opinion on it.

Secondly, the statement regarding "area tournaments" demon-
 strates that those who drafted the text of the resolution knew no more
 about the Plan than the Tournament Committee and had themselves
 given it no intelligent study. For readers of previous comments on
 the Plan know that it definitely does not provide for area tournaments.

We do not object to the proposal to eliminate the first phase of
 the Plan and the proposal to substitute for the second phase a Swiss
 Candidates Tournament open to all U.S. players with the rating of
 Expert or better in the USCF National Ratings. This is, indeed, a very
 practical and acceptable substitute.

But we do object to its presentation under a cloak of falsehood.

The second half of the new proposal under vote calls for the
 winner of the Candidates' Tournament to play a match with the U.S.
 Champion for the title. We are not happy about this feature, as it

THE UNITED STATES CHESS FEDERATION

NATIONAL CHESS RATINGS - SPRING

National Chess Ratings, Spring 1953

By KENNETH HARKNESS

USCF Rating Statistician

Assisted by HENRY FALLASS

OUR YOUNG masters continue to replace the old-timers who have ruled the roost for the past twenty years. Reshevsky and Fine are still one-two on the list of ten top-ranking players, but their contemporaries are moving down the line. U.S. Champion Larry Evans remains the No. 3 player but has made no progress since 1951. Robert Byrne has sky-rocketed to the No. 4 spot as a result of his spectacular performance at the Chess Olympics of 1952. A welcome addition to the top-ten list is Arthur Bisquier, the popular young master who ran away with the Vienna International this year, 1½ points ahead of a strong field of European masters. Bisquier is returning to the U.S. in June for his Army discharge, will soon be competing in national events.

Four new American masters have been added to the list making a total of fifty in this class and higher. California's Eugene Levin and Raymond J. Martin established their master ratings in the State Championship tournaments. Levin confirmed his high rank by placing second to Kashdan in the Hollywood Invitational. Walter B. Suesman, a rated expert for many years, moved up to the master class by winning the New England Championship. Abe Turner of New Rochelle, N.Y., won his spurs by placing second in New York's Manhattan Chess Club Championship.

Included are the names of two foreign masters now residing in the United States. The rating of Dr. Paul Schmidt, famous Estonian master now living in Philadelphia, is based on his performances in German tournaments during 1949-1950, and on his match game with U.S. Master John Collins. Judging by his previous record, Dr. Schmidt may be under-rated at 2441 points; we will get a better line on his current strength when he competes in U.S. tournaments. Estonian master Elmars Zemgalis, living in Seattle, Wash., is given a provisional rating of 2626 which may be wide of the mark, being his performance in a tournament in Germany, 1949. Zemgalis is included because he won the Washington State Championship with a perfect score, but he was playing below his class and his performance was not recorded.

Every player on the current ranking list has competed in a rated tournament since January 1st, 1951. Each rating is the highest average the player achieved during the past 2 1/4 years. Below the rank of master the rated players are either members of the USCF or have paid the publication fee of \$1 each to have their names appear on this list. Previously rated members who have not competed since January 1st 1951 are now considered inactive and their names are not published.

A vote of thanks is due our friend Henry Fallass of New York who volunteered to compute the current list, devoted eight weeks to the enormous task of rating the performances of 2705 entries in 158 tournaments.

MASTERS EMERITUS

Jacob Bernstein (New York, N.Y.)	Charles S. Jacobs (Winchester, Mass.)
Roy T. Black, Sr. (Williamsville, N.Y.)	Abraham Kupchik (New York, N.Y.)
Albert W. Fox (Washington, D.C.)	Harold M. Phillips (New York, N.Y.)
Herman Hahlbohm (Chicago, Ill.)	William A. Ruth (Collingswood, N.J.)
Hermann Helms (New York, N.Y.)	Morris A. Shapiro (Brooklyn, N.Y.)
Lewis J. Isaacs (Chicago, Ill.)	Sydney T. Sharp (Philadelphia, Pa.)
	I. S. Tuover (Bethesda, Md.)

GRANDMASTERS

(2700 points up)
Reshevsky, Samuel (Brooklyn)2751

SENIOR MASTERS

(2500 to 2699 points)
Byrne, Robert (Brooklyn, N.Y.)2601
Denker, Arnold S. (New York)2538
Evans, Larry (New York, NY)2660
Fine, Dr. Reuben (Flushing, N.Y.)2676
Horowitz, I. A. (New York, NY)2545
Kramer, George (U.S. Army)2564
Pavey, Max (Brooklyn, NY)2502

MASTERS

(2300 to 2499 points)
Adams, Weaver (Dedham, Mass.)2305
Avram, Herbert (New York, NY)2304
Berliner, Hans (U.S. Army)2340
Bernstein, Sidney S. (Brooklyn)2358
Bisquier, Arthur B. (U.S. Army)2486
Byrne, Donald (Brooklyn, NY)2465
Collins, J. W. (Brooklyn, N.Y.)2413
Cross, James B. (Glendale, Cal.)2475
Dake, Arthur W. (Portland, Ore.)2475
DiCamillo, A. (Philadelphia, Pa.)2375
Hannauer, Milton (New York, NY)2352
Hearst, Elliot S. (New York, NY)2380
Hesse, Herman V. (Bethlehem, Pa.)2311
Hill, Bernard (New York, N.Y.)2323
Kashdan, Isaac (Tujunga, Calif.)2455
Kevitz, Alex. (Yonkers, NY)2450
Lasker, Edward (New York, NY)2342
Levin, Eugene (Los Angeles)2368
Levy, Louis (New York, N.Y.)2356
Martin, R. J. (San Monica, Cal.)2331

Mengarini, Dr. A. A. (New York)2329
Moskowitz, Jack (New York, NY)2330
Mugridge, D. H. (Washington, DC)2359
Pilnick, Carl (New York, N.Y.)2356
Pinkus, Albert S. (Brooklyn, NY)2313
Rivise, Irving (W. Los Angeles)2334
Sandrin, Albert (Chicago, Ill.)2363
Santasiere, A. E. (New York, N.Y.)2409
Schmidt, Dr. Paul (Philadelphia)2441
Schwartz, Edward (New York, NY)2310
Seidman, Herbert (Brooklyn, NY)2447
Shainswit, Geo. (New York, NY)2308
Sherwin, Jas. T. (New York, NY)2352
Shipman, Walter (New York, NY)2332
Simonson, A. C. (Hicksville, NY)2352
Steiner, Herman (Los Angeles)2410
Suesman, W. B. (Providence, R.I.)2307
Sussman, Dr. H. (Brooklyn, NY)2349
Turiansky, M. (Chicago, Ill.)2345
Turner, Abe (New Rochelle, NY)2359
Wachs, Saul P. (Philadelphia, Pa.)2309
Zemgalis, E. (Seattle, Wash.)2626*

* Provisional rating, representing performance in only one tournament. A player is not listed in the Senior Master class until he has established an average rating of 2500 points or higher.

EXPERTS

(2100 to 2299 points)
Adams, Wm. T. (San Jose, Calif.)2205
Addison, Wm. G. (U.S. Army)2125
Almgren, Sven (Los Angeles)2264
Anderson, F. S. (St. Louis, Mo.)2142
Bakos, Nicholas (New York, NY)2167
Barnes, Geo. S. (Minneapolis)2134

TEN TOP-RANKING U. S. PLAYERS

1. Samuel Reshevsky2751	6. Israel A. Horowitz2545
2. Dr. Reuben Fine2676	7. Arnold S. Denker2538
3. Larry Evans2660	8. Max Pavey2502
4. Robert Byrne2601	9. Arthur B. Bisquier2486
5. George Kramer2564	10. Arthur W. Dake2475

Baron, Samuel (Brooklyn, NY)2101	Baker, Dr. E. (Up. Montclair, NJ)1983
Bolton, James (New Haven, Ct.)2214	Barrett, James (Buffalo, NY)1994
Bomanov, V. (Philadelphia)2127	Barry, Jas. E. Jr. (Ann Arbor, Mich)1995
Brandts, Paul (New York, NY)2169	Battell, J. S. (Brooklyn, N.Y.)1946
Brasket, Curt J. (Tracy, Minn.)2212	Bauer, R. J. (Buffalo, N.Y.)1906*
Brieger, Robt. S. (Houston, Tex.)2168	Beach, L. W. (Jersey City, N.J.)1963
Bryan, Wm. J. (New York, NY)2135	Berg, R. A. Jr. (Chicago)2057
Burger, Karl H. (Brooklyn, NY)2255	Blach, J. L. (Cranford, N.J.)2085
Capps, C. M. (San Francisco)2278	Bills, Wm. A. (Houston, Tex.)2035
Chauvenet, L. R. (Silver Springs)2172	Bizar, Irving (New York, N.Y.)2091
Colon, Miguel (San Juan, P.R.)2166	Blair, John I. (Tulsa, Okla.)2024
Curdo, J. A. (E. Lynn, Mass.)2117	Boczar, Albert (Irvington, NJ)1993
Currie, R. G. (San Francisco)2101	Bolden, Harry (Philadelphia)2062*
Dietz, Paul L. Jr. (Pittsburgh)2296	Borsodi, E. M. (New Orleans)1952
Donovan, J. F. (Brooklyn, NY)2260	Brandreth, Dale A. (Miquon, Pa.)1905
Dreibergs, L. (Saginaw, Mich.)2167	Brask, Sven (Attleboro, Mass.)2046
Eastman, Geo. C. (Detroit, Mich.)2210	Brauer, Alvin R. (Midland, Mich.)1903
Elo, A. P. (Milwaukee, Wis.)2225	Braun, Chas. E. (Buffalo, N.Y.)1903
Fajans, Harry (New York, NY)2149	Brice-Nash, B. (Wichita, Kans.)1966
Fell, Chester T. (Buffalo, NY)2216	Burdick, Don (Huntington, W. Va.)1985
Fink, A. J. (San Francisco, Cal.)2235	Burn, Murray (Bronx, NY)1986
Gedance, M. M. (Las Vegas, Nev.)2103	Burton, Chas. M. (St. Louis, Mo.)2006
Goldwater, W. (New York, NY)2149	Byland, W. M. (Pittsburgh, Pa.)2042
Gresser, Mrs. G. K. (New York, NY)2108	Callis, James (Wichita, Kans.)1973
Grkavac, J. B. (Milwaukee)2181	Candee, A. H. (Rochester, N.Y.)1948
Gufekunst, T. C. (Allentown, Pa.)2238	Carlyle, Dr. R. A. (St. Petersburg)2032
Hamburger, David (Pittsburgh)2216	Caroe, Dr. A. E. (San Angelo, Tex.)1931
Hendricks, W. A. (Hayward, Cal.)2102	Chase, Geo. W. (Los Angeles, Cal.)2022
Henkin, Dr. W. (Mt. Clemens, Mich.)2223	Chu, Henry H. (Philadelphia)1927
Herzberger, Dr. M. (Rochester, NY)2148	Church, R. M. (Cambridge, Mass.)1925
Howard, F. S. (E. Orange, N.J.)2270	Cintron, Rafael (San Juan, PR)1998
Hudson, J. A. (U.S. Army)2142	Clares, Bertil (W. Hartford, Ct.)1910
Hurt, J. F. Jr. (Charleston, W. Va.)2126	Clark, Dan L. (Milwaukee, Wis.)1991
Hurtlien, Ralph (Union, N.J.)2118	Cohen, Robt. H. (New York, N.Y.)1983
Jurevics, Gustav (Dallas, Tex.)2141	Cole, J. R. (Albuquerque, N.M.)1960*
Keilson, Dr. J. (Cambridge, Mass.)2263	Coleburn, N. (Washington, D.C.)2035
Klugman, Reuben (Bronx, NY)2183	Coles, A. P. III (El Paso, Tex.)2006
Koelsche, Dr. G. (Rochester, Minn)2205	Cotter, J. N. (Harrington, Del.)2062
Kujoth, Richard (Milwaukee, Wis.)2202	Coveyou, R. R. (Oak Ridge, Tenn.)2093
LeCorru, Philip (Detroit, Mich.)2263	Cramer, Ted (Milwaukee)1914
Liepnick, Alex. (Lincoln, Neb.)2129	Crittenden, Kit (Raleigh, N.C.)2083
Ludwig, A. C. (Omaha, Neb.)2124	Cummings, F. W. (Baton Rouge)2064*
Lyman, Shelb. (Dorchester, Mass.)2134	Daly, H. B. (W. Roxbury, Mass.)2074
McClain, Guthrie S. (San Francisco)2202	Dane, E. T. (Los Altos, Calif.)2004
McClellan, D. H. (Jeanette, Pa.)2146	Danon, Milton (Philadelphia)1934
McCormac, Richd. (Baltimore, Md.)2168	Diesen, Carl E. (Tonawanda, NY)1995
McCormick, E. T. (E. Orange, N.J.)2228	Dina, L. J. (Ft. Worth, Tex.)1985
Magee, Lee T. (Omaha, Neb.)2212	Diffman, H. A. (Salt Lake City)1908
Marchand, E. W. (Rochester, NY)2241	Druglis, Ed. (Philadelphia)1964*
Marcus, Gordon (Philadelphia)2120	Duchamp, Marcel (New York, NY)2037
Mechner, Francis (Brooklyn, NY)2168	DuVall, A. H. (St. Albans, W. Va.)2094
Mednis, Edmar (New York, NY)2244	Earnest, John E. (Goldsmith, Tex.)2038
Mitchell, Robt. G. (W'hsr Pt. Conn.)2110	Eastwood, R. C. (Homestead, Fla.)1903
Morris, Harry (Philadelphia, Pa.)2158	Eaton, V. L. (Silver Springs, Mr.)1963*
Myers, Hugh E. Jr. (Decatur, Ill.)2147	Eckenrode, T. B. (Lancaster, Pa.)1943
Nash, Edmund (Washington, DC)2101	Eckstrom, Henry (Brooklyn, NY)2033
Nedved, Kimball (Glencoe, Ill.)2187	Egle, Dr. Val (Denver, Colo.)1938
Newberry, W. H. C. (Alton, Ill.)2125	Ellison, T. J. (Cleveland, O.)2047
Parmelee, C. L. (Newark, N.J.)2135	Eucher, Mark (Los Angeles, Cal.)2042
Payne, John B. (San Antonio, Tex.)2140	Faust, Edwin M. (Plainfield, NJ)1920
Phillips, J. C. (Albuquerque, N.M.)2146	Fawcett, E. O. (Lake Mary, Fla.)1974
Platz, Dr. J. E. (Hartford, Ct.)2290	Ferryman, F. F. (Middletown, Ohio)2099
Poschel, Paul (Urbana, Ill.)2273	Fischheimer, D. (Chicago)2014
Powers, Averill (Milwaukee)2257	Fleat, Howard (Dayton, O.)1936
Ralston, Dr. H. J. (San Francisco)2154*	Fleischer, Myron (New York, NY)2074
Reissmann, Paul (San Juan, P.R.)2222*	Foot, F. E. (Lansing, Mich.)1907*
Romanenko, Ivan (Plainfield, NJ)2110	Foy, E. M. (Charleston, W. Va.)1951
Roth, Paul (Pittsburgh, Pa.)2143	Francisco, O. (Milwaukee)1956
Rubinow, Sol (Cambridge, Mass.)2231	Fuchsman, C. H. (Corpus Christi)1956
Rutz, Gerald (Milwaukee)2116	Gaba, Dr. Howard (Detroit, Mich)1922
Sandrin, Angelo (Chicago, Ill.)2169	Gable, Vernon (Buffalo, N.Y.)1985
Schmitt, J. N. (Portland, Ore.)2148	Gaede, A. H. (Charlotte, N.C.)1916
Sibbett, D. J. (Woodbury, N.J.)2158	Gaigals, L. (Waukesha, Wis.)1926*
Siegel, M. R. (Buffalo, N.Y.)2168	Gartenhaus, S. (Philadelphia)2049
Simpson, Robt. C. (Annapolis, Md.)2114	Gaver, Robt. G. (Tulsa, Okla.)2096
Skema, Kazys (Brooklyn, NY)2257	Gates, H. (Brookline, Mass.)2076
Smith, Adam J. (Butte, Mont.)2106*	Geuper, Hugh (LaCrosse, Wis.)1981
Smith, Kenneth R. (U.S. Army)2174	Gee, J. B. (Sacramento, Calif.)1981
Sneiders, E. (Lansing, Mich.)2104*	Georgi, Henry (Lawrence, Kans.)2022
Sobel, Robt. D. (Philadelphia)2190	Gilbert, J. T. (Dallas, Tex.)1956
Sorenson, Fred (Pittsburgh, Pa.)2253	Gill, E. H. (Oklahoma City)1912
Soudakoff, Jack (New York, NY)2242	Gladney, W. F. (Baton Rouge, La.)2063
Spiller, Arthur R. (Culver City)2198	Gleason, R. (Springfield, Mass.)2010*
Spiro, David (Pittsburgh, Pa.)2136	Glover, E. R. (Wynnewood, Pa.)2001
Stark, M. C. (Bethesda, Md.)2266	Goldman, A. (Miami Beach, Fla.)2041
Steckel, Wm. H. (Huntington Pk)2199	Gording, Dr. E. J. (Windber, Pa.)1918*
Steinmeyer, R. H. (St. Louis, Mo.)2217	Granger, Wm. R. (Cleveland, O.)2005
Stolzenberg, Leon (Detroit, Mich)2267	Grant, Newton (Thibodaux, La.)2009
Strazdins, A. (New Britain, Conn.)2108*	Gray, Chas. P. (Port Gibson, Miss.)1948
Stumpers, Dr. (Cambridge, Mass.)2145	Greenbaum, Richd. (New York, NY)1901
Sullivan, J. G. Jr. (Knoxville, Tenn.)2127	Grossbacher, W. (Chicago)1935
Taufvaisas, P. (Chicago, Ill.)2265	Grossbuth, C. L. (Cranston, R.I.)1986
Tears, C. Fred, Jr. (Dallas, Tex.)2115	Haefner, Richd. (Irvington, NJ)2014
Tullus, K. (Philadelphia)2103*	Harkins, J. L. Jr. (Shaker Hts, O.)1999
Tums, John M. (Chicago, Ill.)2189	Harrell, R. S. (Cambridge, Mass.)2069
Underwood, E. (Cambridge, Mass.)2130	Harleb, G. E. (Erie, Pa.)2067
Van Sweden, E. J. (Grand Rapids)2140	Hatch, D. B. (Arlington, Va.)1961
Vossler, A. E. (Buffalo, NY)2120	Hayes, R. B. (Greenville, S. C.)2004
Werthammer, Dr. (Hunt'In, W. Va.)2113	Helbig, Paul (No. Bergen, NJ)1900*
Westbrock, John T. (Brooklyn)2116	Hernandez, Nestor (Tampa, Fla.)2070
Whitaker, N. T. (Washington, DC)2218	Hickman, H. W. (Pittsburgh, Pa.)2078
Wicher, Dr. E. R. (Atlanta, Ga.)2251	Higgenbotham, D. K. (Tulsa, Okla.)2002
Wills, A. B. (New Orleans)2127	Hobbs, J. W. (Aliquippa, Pa.)2012
Winkeiman, B. F. (Philadelphia)2103*	Hobson, A. H. (Montpelier, Vt.)1941
Yatron, Michael (Reading, Pa.)2124	Holley, M. V. (Buffalo, N.Y.)1982

* Provisional rating, representing performance in only one tournament.

CLASS A

(1900 to 2099 points)
Adams, Paul C. (Chicago, Ill.)1974
Adickes, W. C. Jr. (Asheville, N.C.)2053
Anderson, E. N. (Owassa, Okla.)1975
Austin, Neil T. (Sacramento, Cal.)1968*
Bain, Mary (New York, NY)2047

THE UNITED STATES CHESS FEDERATION

NATIONAL CHESS RATINGS — SPRING

CLASS A

(Continued from page 5, col. 4)

James, N. W. (Corpus Christi, Tex.)	1963
Janes, Wm. H. (Leroy, Tex.)	2075
Jenkins, T. A. (Hunt'n Wds, Mich.)	1904
Joachim, Chas K. (Seattle, Wash.)	1964
Jones, Kenneth R. (Chicago)	2054
Kalenian, Clarence (U.S. Army)	2072
Kalvaitis, F. (Chicago)	1981
Karff, Mona (New York, N.Y.)	2000
Kaufman, Abraham (Chicago)	2098
Kaufman, Allen (New York, N.Y.)	2052
Kechuk, John (Los Angeles)	1957
Keller, Fred J. (Boston, Mass.)	2009
Kimpton, Laverl E. (Filer, Ida.)	1908
King, S. W. D. (Quincy, Mass.)	1994
Kirby, Geo. A. Jr. (San Jose, Cal.)	1943
Knox, Phil C. (DeLand, Fla.)	1965
Kodil, Chas. E. (Los Angeles)	2034
Koppamy, A. (Philadelphia, Pa.)	1959
Kramer, Morris (Brooklyn, N.Y.)	2086*
Krueger, John (Plainfield, N.J.)	1926
Kupersmith, E. (Brooklyn, N.Y.)	1974
Lester, O. A. Jr. (Newburyport)	2046
Lew, Harry A. (St. Louis, Mo.)	2027
Lubar, B. H. (Philadelphia)	1918
Lyle, George A. (Annapolis, Md.)	1970
McAuley, A. L. (New Orleans, La.)	1953*
McAuley, Hugh (Sturgeon Bay)	1950
Mager, John D. (Plainfield, N.J.)	1966
Mahon, R. F. (Detroit, Mich.)	1985
Manney, O. W. (Seattle, Wash.)	1988
Maring, O. M. (Wichita, Kans.)	1972
Martin, D. B. (Ft. Worth, Tex.)	1912
Mease, Art N. (Reading, Pa.)	1997
Meiffert, H. R. (Kalamazoo, Mich.)	1979
Merkis, Kazys (So. Boston, Mass.)	1969
Meyer, M. O. (Sacramento, Cal.)	2002
Miles, D. H. (Rocky River, O.)	1925
Miller, G. F. (Cambridge, Mass.)	1985*
Montano, Arthur (Tampa, Fla.)	1961
Moore, Clarence J. (Chicago)	1994
Morgan, C. T. (Huntington, W. Va.)	1989
Morgan, Laverne (Flint, Mich.)	2048
Morgan, Leonard (Roanoke, Va.)	1936
Murray, Dr. A. A. (Ft. S. Houston)	1973
Neidich, Geo. (Rochester, N.Y.)	1915
Neugebauer, Franz (Chicago, Ill.)	1992
Noderer, L. C. (Oak Ridge, Tenn.)	2044
Ohman, Howard (Omaha, Neb.)	1992
Ottosen, Milf (St. Paul, Minn.)	1998
Pamijens, J. (Brooklyn, N.Y.)	2090
Partos, Geo. (Elmhurst, N.Y.)	1944
Pastinsky, M. (San Antonio, Tex.)	1904
Payne, F. B. (Lexington, Ky.)	1972
Pedersen, K. N. (Minneapolis)	1912
Penquite, John (Des Moines)	2016
Pohle, R. E. (Hazlehurst, Miss.)	2049
Poliakoff, L. (San Antonio, Tex.)	2027
Potter, R. B. (Dallas, Tex.)	1993
Proll, Geo. S. (New Haven, Conn.)	1905
Pupuls, Viktor (Lincoln, Neb.)	1947
Reid, P. J. (Tulsa, Okla.)	1917*
Ricard, Jas. H. (Queens Vill., N.Y.)	2393
Roesch, Eugene J. (St. Louis, Mo.)	2019
Rogan, Marvin (U.S. Army)	2030
Roland, M. R. (Milwaukee, Wis.)	2073
Rotov, Mike (Lancaster, Pa.)	1918*
Rozsa, Dr. Bela (Tulsa, Okla.)	2080
Ruckert, H. G. (Washington, D.C.)	1907
Rudich, Ben (Charleston, S.C.)	1905
Russell, Roy E. (Auburn, Calif.)	1921
Schmidt, Dr. B. (Homer, N.Y.)	2089
Schraeder, Dale (Philadelphia)	2035
Schroeder, J. R. (Columbus, O.)	2073
Schwartz, P. S. (New York, N.Y.)	2027
Seibert, J. P. (Philadelphia)	1993
Seidelman, M. (Kensington, Md.)	1969
Seitz, P. L. (Akron, Ohio)	2094
Shaffer, Jos. (Philadelphia)	2041
Sharp, Chas. (W. Scarborough, Maine)	2039
Sheels, J. L. (Seattle, Wash.)	1959
Sherr, Paul (Allentown, Pa.)	2019
Sklaroff, Samuel (Philadelphia)	2038
Slater, Dr. R. C. (Brooklyn, N.Y.)	2057
Smith, Geo. H. (Houston, Tex.)	2058
Smith, Mevis R. (Houston, Tex.)	1953
Smith, Phil D. (Fresno, Calif.)	2043
Smith, Stanley F. (Buffalo, N.Y.)	2095
Somlo, E. S. (Cleveland, O.)	1986
Southern, Martin (Knoxville)	2007
Spector, Ed. N. (Philadelphia)	1919
Spence, Jack (Omaha, Neb.)	1978
Stapp, J. W. (Dallas, Tex.)	2063
Stearns, Elliott E. (Cleveland)	2001
Stephan, Peter (Cambridge, Mass.)	2084
Stevens, Blake W. (San Antonio)	1978
Stock, A. (Philadelphia)	1903*
Stoppel, F. H. Jr. (Cicero, Ill.)	1978
Strang, E. W. (Camden, N.J.)	1992
Strange, W. T. (Dallas, Tex.)	1944
Struck, Hans (San Antonio, Tex.)	2051*
Taber, Wm. F. (Rena, Nev.)	1999
Taylor, H. P. (Jacksonville, Fla.)	2003
Temple, Bob (Galveston, Tex.)	1949
Thorbjornsen, P. E. (Winter, Wis.)	1957
Treend, Edw. I. (Detroit, Mich.)	1934
Underwood, A. K. Jr. (Denver, Col.)	2043
Wales, C. R. (Lawrence, Kans.)	1917
Weberg, Carl (Salina, Kans.)	2029
Whehley, Dr. O. M. J. (Milwaukee)	1997
Wells, Mark (Los Alamos, N.M.)	1955*
Wesenberg, H. M. (Kansas City)	1994
White, J. J. (Dorchester, Mass.)	1999
Wiegman, K. H. (Rock Is. Ill.)	2072
Wildner, N. C. Jr. (Buffalo, N.Y.)	1940
Yarmak, Saul N. (Passaic, N.J.)	2079
Young, Dr. L. C. (Madison, Wis.)	2081
Young, W. W. (Allentown, Pa.)	2021
Youngman, H. E. (Corpus Christi)	1956

Zemke, Norman (Detroit, Mich.)	1979
Zitzman, T. S. (West Lawn, Pa.)	1920*
Zujus, Alek. (Chicago, Ill.)	1997

* Provisional rating, representing performance in only one tournament.

CLASS B

(1700 to 1899 points)

Agnello, Sam A. (Durham, NC)	1742
Alexander, John (San Diego)	1805
Allen, Benj. (Haverford, Pa.)	1826*
Allen, I. W. (San Angelo, Tex.)	1733
Allen, R. P. (Bremerton, Wash.)	1789
Allison, A. A. (Buffalo, N.Y.)	1820
Alpiser, F. M. (St. Louis, Mo.)	1763
Amstden, H. B. (Wichita, Kans.)	1837
Andersen, Dan (Sturtevant, Wis.)	1779
Anderson, G. (Northwood, N.D.)	1788
Anderson, M. F. (Rapid City, SD)	1851
Arganian, David (Racine, Wis.)	1809
Arike, Enn (Stillwater, Okla.)	1870
Arkless, W. L. (Lansdowne, Pa.)	1869
Arnault, Claude (Dallas, Tex.)	1706*
Aronson, Mrs. Eva (Chicago)	1827
Aronson, Ninus (Chicago)	1757
Ash, Ben (Philadelphia, Pa.)	1774
Ashbrook, Dr. A. G. (Charlotte, NC)	1866
Bachhuber, Dr. H. A. (Saug City)	1787*
Backemeyer, F. W. (Los Angeles)	1775
Badgett, C. O. (Glenside, Pa.)	1893
Baker, A. H. Jr. (San Antonio)	1707
Baldwin, M. L. (Des Moines, Ia.)	1769
Banks, George (Sarasota, Fla.)	1723*
Baranovsky, J. (Buffalo, N.Y.)	1806*
Barnglow, Pete (Boulder, Colo.)	1725*
Barnes, David K. (Tulsa, Okla.)	1777
Barto, John R. (Gt. Falls, Mont.)	1706*
Barton, Paul (Cordele, Ga.)	1800
Bedford, Don (Ft. Worth, Tex.)	1808
Bender, R. B. (Johnstown, Pa.)	1862
Bennett, Gordon (St. Louis, Mo.)	1762*
Berger, Bernard (Pittsburgh)	1732
Bergquist, Helge (Jamestown)	1803
Blachford, R. M. (Detroit, Mich.)	1720
Bly, Frank T. (Ft. Worth, Tex.)	1788
Borges, F. W. (Up. Montclair, N.J.)	1853
Bramson, Abram (Paterson, N.J.)	1818*
Brauer, Herman W. (Haven, Kans.)	1727
Brown, A. L. (S. Orange, N.J.)	1767
Buckendorf, G. W. (Buhl, Ida.)	1857
Burnett, Owen (Ft. Worth, Tex.)	1872
Burns, Gene C. (Belton, Tex.)	1759
Campbell, J. T. (Waco, Tex.)	1762
Cattell, H. (Crawfordsville, Ind.)	1704
Chancellor, T. J. (Waco, Tex.)	1719
Chapin, Dr. F. J. (Bay City, Mich.)	1724
Chappuis, G. (Salt Lake City)	1843
Chase, Geo. F. (Buffalo, N.Y.)	1744
Cheevers, J. (Cambridge, Mass.)	1759
Clark, F. L. (Salt Lake City)	1872
Clayton, R. (Up. Montclair, N.J.)	1826
Clement, W. W. (Kansas City, Mo.)	1801*
Clemens, W. F. (Cleveland, O.)	1834*
Clewenger, W. F. (Pt. Tampa, Fla)	1662
Colby, Dr. K. M. (San Francisco)	1850
Collins, Dr. B. (Santa Monica)	1804
Condon, F. E. (Bogota, N.J.)	1813
Conner, Ben C. (Tulsa, Okla.)	1768
Conway, M. T. (Minneapolis)	1713
Cook, Alton (New York, N.Y.)	1843
Coons, E. A. (Sewickly, Pa.)	1788
Costello, J. L. (Harrisburg, Pa.)	1885*
Coughlin, Robt. (Orange, N.J.)	1770*
Craighton, J. A. (Corpus Christi)	1729
Crew, W. W. (Shreveport, La.)	1815
Crotuf, F. (San Jose, Calif.)	1879
Cromelin, Paul (Charlotte, NC)	1867
Davenport, G. J. (Buffalo, N.Y.)	1847
Day, Frank (New Orleans)	1721*
Dav, R. E. (Carson City, Nev.)	1708
DeBusk, Brad (Ft. Worth, Tex.)	1746*
DeFine, J. D. (Florissant, Mo.)	1722
de La Torre, A. M. (Norman, Okla.)	1816*
DeLieto, Mathew (New York, N.Y.)	1798
DeWitt, John (Seattle, Wash.)	1731*
Donahee, W. J. (Hartford, Conn.)	1737
Dollahite, V. (Ft. Worth, Tex.)	1803
Donon, Martin (Miami, Fla.)	1755
Dornier, R. R. (Baton Rouge, La.)	1734
Dreyfus, S. E. (Cambridge, Mass.)	1743
Drexler, W. D. (Bronx, N.Y.)	1809*
Driver, P. B. (Ridley Park, Pa.)	1847
Dunkel, Geo. O. (Gary, Ind.)	1736
Dupree, O. C. (Shreveport, La.)	1709*
Egle, B. (Dubuque, Ia.)	1831*
Elias, Percy (New York, NY)	1740*
Ellis, P. C. (Scottsbluff, Neb.)	1790
Elmenhorst, G. K. (Easton, Pa.)	1840*
Eudey, Dr. M. (Berkeley, Calif.)	1853*
Faber, H. F. (Corpus Christi)	1821*
Field, Harry (St. Paul, Minn.)	1850
Firebaugh, R. D. (Robinson, Ill.)	1872
Fletcher, R. L. (Decatur, Ill.)	1856
Flynn, G. W. (Sacramento, Calif.)	1801*
Forbes, John (Glen Elyn, Ill.)	1717
Foster, L. L. (Columbia, S.C.)	1849
Freeman, Claude (Ft. Worth, Tex.)	1851
Friedman, A. L. (Lansing, Mich.)	1880*
Garhart, J. D. (Johnstown, Pa.)	1795*
Gerson, Dr. A. J. (Philadelphia)	1843*
Ghezzi, L. (San Antonio, Tex.)	1773
Gianguilio, D. A. (Lansdowne, Pa.)	1717
Gibbons, John (Philadelphia)	1846*
Gibson, Jas. B. Jr. (Tampa, Fla.)	1702
Glazer, Dr. B. (Decatur, Ill.)	1714
Goldhold, Edmund (St. Louis, Mo.)	1839
Goddard, T. L. (Borger, Tex.)	1797*
Goldsmith, J. (Rego Park, N.Y.)	1820
Goodman, Julius (Cleveland, O.)	1866
Gould, Bart (Newburyport, Mass.)	1853
Graham, Harry E. (Lake Jackson)	1796
Grande, Robt. (Denver, Colo.)	1775*
Gray, Clyde H. (Rock Is., Ill.)	1809
Gruen, A. D. (Indianapolis, Ind.)	1878

Grumette, Lena (Brooklyn, N.Y.)	1726
Gunnis, M. J. (Detroit, Mich.)	1794
Hamilton, W. R. (Pittsburgh, Pa.)	1750
Hardy, Harry A. (Kansas City)	1827*
Hardy, Jack (Dallas, Tex.)	1703
Hart, Donald (Salem, N.H.)	1815*
Hartwig, A. R. (E. Peoria, Ill.)	1859
Hawkes, G. H. (Grand Forks, N.D.)	1711*
Henderson, C. E. (Beverly Hills)	1856*
Henderson, P. S. (Richmond, Va.)	1758
Herrich, Paul (Jersey City, N.J.)	1700*
Hernandez, Ben (Norman, Okla.)	1778
Hertzberg, Barry (Chicago)	1801
Hoffman, David (New York, NY)	1799
Hofman, B. J. (Indianapolis, Ind.)	1837
Hope, M. M. Jr. (Wilmingon, Del.)	1718
Hornberger, R. E. (Elysburg, Pa.)	1847
Hornstein, Dr. N. H. (Southf't, NC)	1807*
Horun, V. (St. Paul, Minn.)	1710*
Housewirth, G. H. (Dearborn, Mich.)	1813
Howard, Wm. T. (Philadelphia)	1773
Hulmes, Alfred (Denver, Colo.)	1735
Hyde, James S. (Des Moines, Ia.)	1816
Isbell, John (Washington, DC)	1854
Jacobson, G. H. (New York, N.Y.)	1715
Johnson, A. L. (St. Paul, Minn.)	1720
Johnson, O. W. (Ft. Worth, Tex.)	1725*
Johnson, Paul (Austin, Tex.)	1895
Johnson, S. S. (Grand Forks, N.D.)	1740
Jones, Wm. (Jersey City, N.J.)	1853
Jurevics, J. V. (Dallas, Tex.)	1724*
Kahan, James (Denver, Colo.)	1718*
Kalnins, Robt. (Lincoln, Neb.)	1831*
Karchmer, Sid (Denison, Tex.)	1712
Karpuska, W. (Chicago)	1872
Kashin, G. L. (Salt Lake City)	1722
Katz, Marvin (Greeley, Colo.)	1714
Kelley, A. H. (Hudson, N.H.)	1822
Kellner, Lucille (Detroit, Mich.)	1845
Kelly, R. F. (Oklahoma City)	1751
Kelly, V. F. (Riverside, R.I.)	1866*
Kemble, Dr. R. P. (Lancaster, Pa.)	1789
Kilian, Raymond (Fallon, Nev.)	1769*
Kindig, H. (Otsego, Mich.)	1809
Kitsley, Dr. S. L. (Milwaukee)	1841
Knapp, Dr. L. T. (Milwaukee)	1833
Kolvoord, P. A. (Walpole, N.H.)	1781
Kosiba, Wallace (Gary, Ind.)	1749
Krucke, John (Irvington, N.J.)	1776
Kupka, Dr. E. (San Francisco)	1885
Kupperman, J. (Chicago)	1792*
Kurruk, H. (DesPlaines, Ill.)	1784*
LaCroix, E. F. (Milwaukee, Wis.)	1800*
Lapin, John (Bay City, Mich.)	1797
Larsen, A. L. (Pasadena, Calif.)	1887
Laucks, E. F. (W. Orange, N.J.)	1762
Lavandero, P. S. (San Juan, PR)	1836
Lay, Kenneth (Ripon, Wis.)	1786
Lebzelter, E. P. (St. Petersburg)	1826
Lement, Dr. B. S. (Brookline)	1761*
Lee, Floyd Jr. (Norman, Okla.)	1752
Leonard, V. J. (Ft. Worth, Tex.)	1717*
Levadi, David (Chicago, Ill.)	1767
Levitin, Martin A. (Cleveland)	1708
Lewis, Ted (Chicago, Ill.)	1843
Lockett, A. M. Jr. (New Orleans)	1867*
Loening, K. E. (Columbus, O.)	1782
Lorah, J. E. (Hazlet, Pa.)	1783
Lourie, N. (Chestnut Hill, Mass.)	1838*
Lutz, Godfrey (St. Petersburg)	1867*
Lynch, Col. F. D. (St. Petersburg)	1818*
McCallister, R. A. (Hackensack)	1878
McClure, Jas. A. (Nashville, Tenn.)	1837
McLellan, R. A. (Omaha, Neb.)	1826
MacQuown, W. C. (Denver, Colo.)	1746
Madgett, Donald (Omaha, Neb.)	1713
Maier, Geo. E. (Woburn, Mass.)	1834
Marion, Max S. (Johnstown, Pa.)	1710*
Markson, T. A. (Miami Beach, Fla.)	1701*
Martin, J. R. (Sarasota, Fla.)	1731*
Martin, W. H. (Ellensburg, Wash.)	1700*
Martinson, Geo. (Chesterton, Ind.)	1820
Mayer, Geo. J. (Buffalo, NY)	1807
Mayer, Jackie (Louisville, Ky.)	1878
Menuet, R. A. (Kansas City, Mo.)	1760
Miller, A. G. (Ft. Worth, Tex.)	1876
Miller, Dr. R. F. (Hays, Kans.)	1795
Mincik, Richd. (New York, N.Y.)	1735
Moote, T. P. (Tulsa, Okla.)	1809
Morgan, C. W. (Watertown, Wis.)	1724*
Morgan, Dale L. (Salt Lake City)	1850*
Morris, David (Millburn, N.J.)	1702*
Moulden, J. M. (Dallas, Tex.)	1862
Mueller, M. F. Sr. (Belvidere, N.J.)	1722
Muller, Edw. F. (Flint, Mich.)	1773
Mulloney, F. A. (Winthrop, Mass.)	1865*
Mundt, Ken (Eldorado Sprgs)	1725*
Murphy, Jack (Maryville, Tenn.)	1731
Muska, Henry (St. Paul, Minn)	1797
Muto, Peter (Briff, Ia.)	1846
Nickel, Art F. (Philadelphia)	1750
Nields, N. B. (Evanston, Ill.)	1764
Nippell, N. H. (Houston, Tex.)	1861
Nitzsche, E. F. (Burlington)	1704
Noel, Jas. B. (Shreveport, La.)	1819
Noonan, Dr. T. (Rochester, N.Y.)	1808
Norham, Jack (Manhattan, Kans.)	1840
Older, J. F. (Washington, D.C.)	1844
Oleson, Svend H. (Chicago, Ill.)	1877
Otteson, Walter (Milwaukee, Wis.)	1736
Overseem, Henry (Clifton, N.J.)	1832
Owens, Willa W. (Avon Lake, O.)	1835
Palmer, J. M. (Richmond, Va.)	1808*
Parkin, Cecil L. (Ft. Worth, Tex.)	1828
Pathakis, T. W. (Salt Lake City)	1767
Pedrick, E. W. (Philadelphia)	1730
Piatigorsky, Mrs. G. (Los Angeles)	1872
Pike, Wilson H. (Lynn, Mass.)	1713
Popovych, O. (Newark, N.J.)	1882
Popp, J. H. (Haven, Kans.)	1712
Powelson, Robt. (Ft. Worth, Tex.)	1874
Pusecker, J. L. (Columbus, O.)	1734
Rasis, Constantine (Miami, Fla.)	1879
Raymond, N. (Hartford, Conn.)	1852
Reese, Merl W. (Denver, Colo.)	1717
Rein, Sheldon (Minneapolis)	1872
Renton, C. A. (Ft. Worth, Tex.)	1786

Rhomberg, R. (Northford, Conn.)	1767
Rice, Grady D. (Ft. Worth, Tex.)	1738
Rickless, N. (Rochester, N.Y.)	1789
Robertson, David (Detroit)	1786*
Romano, Donald (Brighton, Mass.)	1818*
Rose, Dr. R. M. (Tonawanda, N.Y.)	1725
Ruys, Dr. F. C. (Menlo Park, Cal.)	1717*
Saidy, A. F. (Douglaston, N.Y.)	1829
Schiebler, A. R. (Hamburg, Pa.)	1715
Schlosser, Dr. M. (Decatur, Ill.)	1820
Schmidt, Craig M. (Buffalo, N.Y.)	1710*
Schwartz, Dr. I. (Durand, Ill.)	1854
Scott, Wm. A. (Atlanta, Ga.)	1882
Selensky, Mary D. (Philadelphia)	1875
Semb, Melvin (Winona, Minn)	1750
Shaw, Jack (Santa Fe, N.M.)	1810
Shubow, David (Miami, Fla.)	1832
Shull, Wm. W. (Freeport, Tex.)	1761*
Sidley, Bruce J. (Cincinnati)	1744
Siddnits, Anton (Lincoln, Neb.)	1773
Simmer, C. H. (St. Paul, Min	

THE UNITED STATES CHESS FEDERATION

NATIONAL CHESS RATINGS — SPRING

CLASS C

(Continued from page 6, col. 4)

Davidson, Sander (Tulsa, Okla.).....	1611
Davis, Milton H. (Atlanta, Ga.).....	1664*
DiPaolo, Nick (Buffalo, N.Y.).....	1648
Ditmar, F. W. (Philadelphia).....	1562*
Divac, Leonard (Philadelphia).....	1550*
Dudley, B. G. (Denver, Colo.).....	1660*
Edwards, Davis (St. Louis, Mo.).....	1584
Eigen, Louis (N. Bergen, N.J.).....	1600*
Eklum, Robt. G. (Dunkirk, N.Y.).....	1622
Elkins, Duey (Ft. Worth, Tex.).....	1570*
Evans, Donald (San Diego, Cal.).....	1525*
Frankenfield, W. A. (Detroit).....	1656
Frankenstein, L. (Kan. City, Mo.).....	1699*
Freund, J. K. (Davenport, Ia.).....	1584
Filipovich, R. (Minneapolis).....	1678*
Galvin, Fred (St. Paul, Minn.).....	1597
Garland, R. E. W. (Newbury, Mass.).....	1520
Garver, Don (Lake George, Colo.).....	1580*
Geist, Thos. J. (Johnstown, Pa.).....	1528*
Ginter, Karl (Charlotte, N.C.).....	1641
Gleckler, Dr. J. D. (Denison, Tex.).....	1568*
Goble, W. W. (Clarion, Pa.).....	1614
Golden, W. J. (Saugus, Calif.).....	1601*
Gould, Margaret (Newburyport).....	1556
Graetz, L. (Hansboro, N.D.).....	1658
Graves, Frank R. (Ft. Worth).....	1684
Gray, Chas. E. (Los Angeles).....	1542
Gregg, Donald (Cleveland, O.).....	1608
Grother, Hans (Midland, Mich.).....	1600
Guthridge, LeRoy (York, Pa.).....	1565*
Haines, Wm. F. (Upper Darby).....	1535*
Halperin, Dr. I. E. (Cleveland).....	1647*
Haney, Donald (Buffalo, N.Y.).....	1688*
Harris, J. W. (Ft. Worth, Tex.).....	1619*
Harris, R. D. (Shreveport, La.).....	1554
Harris, Wm. (Chicago).....	1623
Hayward, Dr. V. S. (Huntington).....	1596
Heizner, Albert (Salem, Mass.).....	1634*
Hine, J. Brooks (Cleveland, O.).....	1660*
Hinton, Norman (Tulsa, Okla.).....	1510
Holeman, U. H. (Ft. Worth, Tex.).....	1582*
Hollway, F. A. (Grand Rapids).....	1666
Homer, Sidney Jr. (New York).....	1676
Horn, Murray L. (St. Louis, Mo.).....	1592*
Huff, Don C. (Houston, Tex.).....	1651*
Hue, Douglas (Dallas, Tex.).....	1549
Hunt, Henry (Irvington, N.J.).....	1527*
Hurwitz, J. H. (Chester Hill).....	1504*
Jackson, Geo. Jr. (Jacksonville).....	1678
Jeffrey, H. E. (Rock Island).....	1694
Johnson, Floyd A. (Ashville, N.Y.).....	1550
Johnson, F. W. (Tulsa, Okla.).....	1638
Johnson, Melvin (Northwood, N.D.).....	1568
Jones, Willard S. (Decatur).....	1614
Joseph, Sam (Corpus Christi).....	1565
Kahn, D. A. (Charlottesville, N.C.).....	1656
Kerr, Derwin (Cranford, N.J.).....	1688
King, Chancey D. (Fremont, O.).....	1680
Kinton, Jas. P. (Lansing, Mich.).....	1591
Kiraly, Wm. (Harrisburg, Pa.).....	1682
Kish, Edmund J. (Bradford, Pa.).....	1646
Knecht, L. P. (Golden, Colo.).....	1631
LaFreniere, O. (Yakima, Wash.).....	1623
Lindblade, L. E. (Moline, Ill.).....	1551
Lieberman, Jack (Philadelphia).....	1510
Ligvoet, P. (Kalamazoo, Mich.).....	1636
Longmire, O. K. (Beloit, Wis.).....	1657*
Lopez, B. F. (Tampa, Fla.).....	1640
Lorris, Serge (Cambridge, Mass.).....	1542
Lorton, H. E. (Wadsworth, O.).....	1585
Lubarsky, B. (Oak Ridge, Tenn.).....	1532*
Luebbert, M. W. Jr. (Kansas City).....	1622
Lyon, Chester A. (Peoria, Ill.).....	1672
McDaniel, C. A. (Beckley, Va.).....	1565
McDavid, H. R. (Ft. Worth, Tex.).....	1604
McDonald, K. R. (Wichita, Kans.).....	1670
Mades, Philip (Skyland, N.C.).....	1580
Maddison, H. O. (Maysville, Mo.).....	1633
Magalis, Cyrus (Houston, Tex.).....	1653*
Marshall, M. D. (Arlington, Mass.).....	1598
Martin, Mrs. K. (Sarasota, Fla.).....	1516*
Mason, Abra O. (Detroit, Mich.).....	1672
Mayer, F. A. (Philadelphia).....	1543*
Medina, Joe (Corpus Christi).....	1546
Morgan, E. (Phillips, Tex.).....	1626*
Morfon, Jos. V. (Greeley, Colo.).....	1661*
Moskowitz, Ely (Mt. Carmel, Pa.).....	1694
Muntz, Earl Jr. (Millburn, N.J.).....	1530*
Naser, W. P. (New Orleans, La.).....	1596
Nast, Tsd. (Laramie, Wyo.).....	1670
Nearing, Pauline (Decatur).....	1500
Neel, Rudd T. (Huntington, W.Va.).....	1654
Nelms, A. R. (Ft. Worth, Tex.).....	1577*
Nelson, Thor (Grand Forks, N.D.).....	1501*
Nitschke, Gibson (Buffalo, N.Y.).....	1608
Nunnally, J. E. (Austin, Tex.).....	1618*
Nute, George L. (Boston, Mass.).....	1547
O'Brien, Paul (Buffalo, N.Y.).....	1604
O'Neill, Shane (Dallas, Tex.).....	1691*
Oulman, O. M. (Minneapolis).....	1696
Ozment, R. E. (Marshall, Tex.).....	1580
Pabon, Anthony Jr. (Roanoke, Va.).....	1686
Pelton, Edwin (New Orleans).....	1657*
Pendergrass, Capt. J. (Waco, Tex.).....	1672
Pico, Wm. H. (Cavalier, N.D.).....	1618
Pierce, W. J. (Detroit, Mich.).....	1638
Pinkham, H. M. (Buffalo, N.Y.).....	1644
Piney, W. T. (Los Angeles, Cal.).....	1537
Poff, Wm. B. (Vicksburg, Va.).....	1538
Poulsen, S. B. (Philadelphia).....	1607
Powell, Chas. L. (Honolulu).....	1500
Prewitt, G. E. (Coffeyville, Kans.).....	1615*
Prindle, A. L. (Marshfield, Wis.).....	1583
Rajczak, W. (Buffalo, N.Y.).....	1575
Redwine, Dan A. (Ft. Worth, Tex.).....	1690
Resler, R. E. (Arcadia, Fla.).....	1544
Rhead, Dale E. (Gary, Ind.).....	1688
Ridley, J. W. (Philadelphia).....	1663
Roberson, B. L. (Tampa, Fla.).....	1539
Roll, Jack (Carter Lake, Ia.).....	1586
Roscher, Renato (New Orleans).....	1601*
Rothman, P. (Columbus, O.).....	1678
Rothschild, Leo (Tulsa, Okla.).....	1507
Rothwarf, Allen (Philadelphia).....	1635*

Rusch, Wm. Jr. (Buffalo, N.Y.).....	1672*
Sachs, C. (Philadelphia).....	1643*
Sacks, Paul (St. Louis, Mo.).....	1533
Simmons, W. R. (Sioux Falls, S.D.).....	1620*
St. Clair, Dr. R. (Northwood, N.D.).....	1548
Sampson, J. S. (Arlington, Mass.).....	1615*
Schmitt, Edward (Buffalo, N.Y.).....	1513*
Schtauers, O. (Lincoln, Neb.).....	1642*
Schumann, Wm. (Sheboygan, Wis.).....	1605
Schuringa, P. (Lansing, Ill.).....	1533
Sedig, Floyd B. (Beloit, Wis.).....	1663
Seeds, John S. (Altoona, Pa.).....	1586*
Shaw, Chas. A. (Miami, Fla.).....	1548
Sherman, David (Philadelphia).....	1681*
Smith, B. M. (Schenectady, N.Y.).....	1566
Smith, Dr. G. W. Jr. (Columbia, S.C.).....	1691
Smith, Leslie (Lexington, Ky.).....	1609
Smith, R. R. (Grand Forks, N.D.).....	1504*
Spann, Jerry G. (Norman, Okla.).....	1673
Speck, Robt. J. (U.S. Army).....	1506
Spencer, Edw. C. (Buffalo, NY).....	1564
Springbett, G. (Hutchinson, Kans.).....	1537
Stockhold, H. (Lakewood, N.J.).....	1695*
Terry, Thos. W. (Milwaukee).....	1673
Thompson, O. D. Jr. (Borger, Tex.).....	1541
Tritchell, Wm. (Passaic, N.J.).....	1696
Vandenberg, V. E. (Lansing, Mich.).....	1617
VanderRoest, E. (Kalamazoo, Mich.).....	1549
Vincent, Richd. (Omaha, Neb.).....	1565*
Virgin, Jerry (Tulsa, Okla.).....	1666
Von Brantley, G. (St. Louis, Mo.).....	1662*
Waag, Louis (Grand Forks, N.D.).....	1694
Waldrup, Capt. C. E. (Chicago).....	1654*
Wallace, L. H. (Smithfield, N.C.).....	1664
Waldorf, D. A. (New Orleans).....	1526
Waterman, C. (Amesbury, Mass.).....	1680
Watson, Mrs. E. N. (Ft. Worth, Tex.).....	1628
Wattenmaker, Dr. N. (Lansdowne).....	1684
Webber, Kenneth (Salina, Kans.).....	1569
Webbert, Bill (Salt Lake City).....	1565
Weinstein, Jack (Williamsville).....	1695
Werth, Dr. R. (Moorhead, Minn.).....	1637
White, R. E. (Appleton, Wis.).....	1548
White, Chas. (San Jose, Cal.).....	1659*
White, Gerald W. (Oilton, Tex.).....	1694*
White, Richd. T. (Buffalo, N.Y.).....	1656*
Whitlow, D. L. (Chicago, Ill.).....	1676
Whiteside, C. B. (Tulsa, Okla.).....	1658
Widney, W. A. (New York, NY).....	1588
Wild, Wayne (Storm Lake, Ia.).....	1527
Williams, Dorothy (St. Louis, Mo.).....	1679
Wilt, Mason S. (Borger, Tex.).....	1569*
Wingard, C. (Birmingham, Ala.).....	1588
Wong, Ben (San Francisco).....	1523*
Woodard, H. A. (San Diego, Cal.).....	1555
Wyman, Theo. Jr. (Los Angeles).....	1592*
Yamgren, A. E. (Borger, Tex.).....	1625*
Zaikowski, L. (Grand Ledge, Mich.).....	1687*

* Provisional rating, representing performance in only one tournament.

CLASS D

(Below 1500 points)

Abernethy, N. H. (Detroit).....	1128*
Adminis, E. (Lincoln, Neb.).....	1411
Albright, G. A. (Ft. Worth, Tex.).....	1123*
Allison, M. H. (Columbus, O.).....	1393*
Apelman, Jos. (New Orleans, La.).....	1219*
Banks, Chas. (Sarasota, Fla.).....	1446*
Beckel, L. J. (Buffalo, N.Y.).....	1260
Beer, F. H. (Pittsburgh, Pa.).....	1479
Bell, Howard J. (Peoria, Ill.).....	1478
Benson, Alfred (Jamestown, N.Y.).....	1322*
Berkowitz, A. (Morristown).....	1400
Bierschnek, E. (Ponca City, Okla.).....	1225*
Bollinger, E. A. (Ft. Worth, Tex.).....	1416
Bortner, J. C. (York, Pa.).....	1350*
Boyt, Fred Jr. (Detroit).....	1149*
Brenner, David (Detroit).....	1300*
Brindley, Dr. C. G. (Borger, Tex.).....	1400*
Burkart, Fred (New Orleans).....	1426*
Burton, M. C. Jr. (Philadelphia).....	1493*
Campbell, D. S. (Northwood, N.D.).....	1307
Capillon, Edw. A. (Attleboro).....	1434
Carleton, Frank (Detroit).....	1342
Cassingham, J. R. (Okla. City).....	1422
Chase, D. J. (Buffalo, N.Y.).....	1406*
Ching, B. Y. (Honolulu).....	1381
Clark, W. H. (Grand Forks, N.D.).....	1463*
Cooley, D. L. (Oklahoma City).....	1497*
Dahm, David (Dallas, Tex.).....	1354*
Daniel, C. L. (New Orleans).....	1436*
Dantzer, T. E. (Columbia, S.C.).....	1318
Darmer, F. E. (Des Moines, Ia.).....	1423*
Davis, Don (Milwaukee).....	1477
DeBusk, Jimmy (Ft. Worth, Tex.).....	1264*
Dickey, Sgt. R. A. (Tacoma, Wash.).....	1433
Dreher, L. C. (Sand Springs).....	1450
Dreschmanis, J. (Lincoln, Neb.).....	1408
Duckles, M. E. (Sarasota, Fla.).....	1380
Egan, J. P. (Watertown, Mass.).....	1351
Elkins, Elsie (Ft. Worth, Tex.).....	1365
Elkins, G. D. Jr. (Ft. Worth, Tex.).....	1459
Ellison, D. H. (Rapid City, S.D.).....	1340
Emanuel, V. E. (Miami Beach).....	1308
Ernst, E. J. (Detroit).....	1467*
Ferbrache, C. P. (Ft. Worth).....	1471
Fitzgerald, A. (New Orleans).....	1438*
Flaherty, H. E. (Bradford, Pa.).....	1411*
Foster, F. W. (Ft. Worth, Tex.).....	1436*
France, J. H. (Jamestown, NY).....	1357*
French, W. G. (Detroit).....	1450
Gavitt, Daniel (New Orleans).....	1482
Gayden, J. J. Jr. (Columbia, S.C.).....	1302*
Glitsch, M. C. (Dallas, Tex.).....	1370*
Graham, C. W. (Kansas City, Mo.).....	1431*
Green, Doyle (Ft. Worth, Tex.).....	1204*
Guebert, M. (St. Paul, Minn.).....	1305*
Hamm, W. E. (Attleboro, Mass.).....	1391
Harle, Albert L. (Boise, Ida.).....	1484
Hemphill, Grady (Ft. Worth, Tex.).....	1282*
Herring, G. C. Jr. (Dallas, Tex.).....	1356*
Hervert, R. J. (No. Platte, Neb.).....	1457
Higgins, Robt. (Buffalo, N.Y.).....	1356*

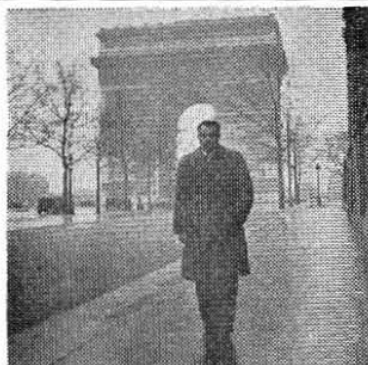
Hildremyr, J. (Petersburg, N.D.).....	1420*
Hirvela, Geo. (Detroit).....	1187*
Jacobs, Dr. P. (Ashville, N.C.).....	1453
Johnson, E. C. (Minneapolis, Minn.).....	1437
Kanner, Dr. O. (Asheville, N.C.).....	1480
Karhan, R. M. (Cleveland, O.).....	1450*
Keller, John F. (Ft. Worth, Tex.).....	1423*
Killing, Pat (Shreveport, La.).....	1486*
Koch, Arno (Detroit).....	1493
Kramer, Lloyd (Wishek, N.D.).....	1400*
LaBarge, H. W. (Fair Oaks, Cal.).....	1486*
Lacey, J. C. Jr. (Sacramento, Cal.).....	1174*
LaPire, Joe (Osnabrook, N.D.).....	1404*
Lindberg, Gus (Davenport, Ia.).....	1469
Lindgren, I. W. (Bradenton, Fla.).....	1438*
McCue, Wm. E. (Buffalo, N.Y.).....	1460*
McDaniel, C. C. (Salt Lake City).....	1472*
Mahjoubian, Richd. (Philadelphia).....	1064*
Marlow, Barney (Fairlawn, N.J.).....	1402*
Meistrand, A. A. (St. Paul, Minn.).....	1474
Metzelaer, C. P. (Salt Lake City).....	1431
Mortynczak, Paul (Jamestown, NY).....	1397*
Nail, Wesley W. (Arabi, La.).....	1357*
Neville, R. A. Jr. (Vero Beach, Fla.).....	1282*
Neville, R. W. (Vero Beach, Fla.).....	1338*
Olin, Richard (Tulsa, Okla.).....	1436
O'Shaughnessy, L. M. (St. Paul).....	1466*
Paddrick, R. (Jamestown, N.Y.).....	1341
Palmer, Mac (Tampa, Fla.).....	1294*
Perry, Dr. J. H. (Fredericksburg).....	1460
Peterson, L. A. (Kansas City, Mo.).....	1481
Pillote, R. G. (Detroit).....	1320
Poulter, F. S. (Ft. Worth, Tex.).....	1303*
Ramzell, C. M. (Borger, Tex.).....	1302*
Reep, Howard (Milwaukee).....	1378*
Rizos, A. C. (Salt Lake City).....	1451
Robertson, Mimi (Wichita, Kans.).....	1464
Rogers, Mrs. H. (New York, N.Y.).....	1485
Rudin, Larry (Venice, Calif.).....	1440*
Rutter, Donald (Buffalo, N.Y.).....	1410*
Ruud, G. (Northwood, N.D.).....	1453*
Scheuplen, E. (Miami, Fla.).....	1432
Schmidt, Robt. (Oklahoma City).....	1370*
Schuster, Harold (Buffalo, N.Y.).....	1406*
Scovel, Harley W. (Chicago).....	1377
Serpio, Jos. F. (St. Paul, Minn.).....	1430*
Shaffer, E. E. (Asheville, N.C.).....	1494
Shannon, S. F. (Ft. Worth, Tex.).....	1412*
Shore, Richard (Denver, Colo.).....	1463
Solano, Jos. (Lexington, Mass.).....	1450*
Starr, R. F. (Henderson, N.C.).....	1305
Stockton, Samuel (Buffalo, N.Y.).....	1356*
Stuver, N. L. (Johnstown, Pa.).....	1489*
Sullivan, Fred M. (Dallas, Tex.).....	1448*
Tom, Merle (Narberth, Pa.).....	1175*
Treuil, P. (Cambridge, Mass.).....	1350*
Trinks, W. R. (Hammond, Ind.).....	1381
Trumbull, S. L. (Columbus, O.).....	1477
Turek, Jos. A. (Buffalo, N.Y.).....	1456*
Van Dragt, Wm. (Flint, Mich.).....	1440
Van Sickle, J. S. (Shreveport, La.).....	1269*
Vignes, Maurice (New Orleans).....	1374*
Waters, Mrs. C. L. (Lubbock).....	1440
Werber, E. G. (Tampa, Fla.).....	1394
Willard, W. A. L. (Bay City, Mich.).....	1295

* Provisional rating, representing performance in only one tournament.

CANADIAN & FOREIGN MEMBERS

Barrs, L. (Bowness, Alberta).....	1752
Bohatchuk, Dr. F. (Ottawa, Ont.).....	2420
Crompton, C. A. (Toronto, Ont.).....	2178
Doe, Rae (Regina, Sask.).....	2129*
Florida, J. R. (Havana, Cuba).....	2210
Fox, Maurice (Montreal, Que.).....	2260
Gonzalez, Dr. J. (Havana, Cuba).....	2396
Guze, Max (Montreal, Que.).....	2085
Haley, P. G. (Sarnia, Ont.).....	2026
Kagefsu, Jack (Toronto, Ont.).....	1993
LeSage, Bernard (Quebec, Que.).....	1636
Marquez, L. E. J. (Columbia).....	1686*
Oaker, Wm. (Toronto, Ont.).....	2033
Siemms, R. E. (Toronto, Ont.).....	2277
Weaver, Gordon L. (Clinton, Ont.).....	1830
Zalys, I. (Montreal, Que.).....	2086

* Provisional rating, representing performance in only one tournament.



A SOLDIERS' BACKGROUND
PFC Arthur B. Bisguier in Paris with the Napoleonic Arc de Triumph in the background.

Chess Life In New York

By Eliot Hearst

READERS of our last column probably were left in more than a little suspense regarding the outcome of the Marshall Junior team's match with the champion Manhattan Chess Club—a most important contest in this year's Met League schedule. As you will recall, the match stood 2-1 in favor of the "youngsters" at the time of the last writing, but the Manhattan had advantages in the majority of the five adjournments and were expected to win 4½-3½ on those games' completion. What happened in those contests, especially two of them, is worth investigating!

As predicted, Burger of the Juniors scored over I. A. Horowitz, while Moscovitz and Williams of the Manhattanites turned in victories over their Marshall opponents, Turim and Mednis respectively. Thus the match score was balanced at 3-3 with the games Turner-Kaufman and Vine-Weissman (the first named the Manhattan players) still to be decided.

Everyone agreed that Turner, a pawn up in a rook and pawn ending, had a multitude of winning methods against Kaufman and almost two weeks of intensive analysis had indicated that there was no hope at all of holding that game for the Juniors! Upon resumption, Turner's sealed move, quite unexpected, forced a Kaufman king move and then, in one of the most astounding conclusions to an important game your reporter has witnessed, Turner's next move repeated the position three times!! Kaufman immediately claimed a draw, to the astonishment of his opponent and all the Manhattan Club partisans who had been so intent on discovering winning methods during the adjournment analysis that they had overlooked the possibility of a 3-time repetition! It took almost an hour of argument over the 3-repetition rule before the point was finally split and then all eyes were focussed on the Vine-Weissman game in which the former, a pawn up, had a difficult, but risky, winning method in mind. As the position got more and more unbalanced, the Manhattan Club captain, Leonard Meyer, began to fear that his team-member might overextend himself and thus lose the game, costing the Manhattan team any chance at all for first place in the Met League. So Meyer accepted the offer of a draw from Jim Sherwin, the Juniors' captain, and the match concluded in a 4-4 deadlock. On analy-

(Please turn to page 9, col. 2)

Are You A Member?
Is Your Friend A Member?



GAMES BY USCF MEMBERS

Annotated by Chess Master JOHN W. COLLINS, New York State Champion, 1953

USCF MEMBERS: Submit your best games for this department to JOHN W. COLLINS, 91 Lenox Road, Brooklyn 26, N.Y. Space being limited, Mr. Collins will select the most interesting and instructive for publication. Unless otherwise stated notes to games are by Mr. Collins.

BRILLIANCY PRIZE GAME

Jim Bolton of New Haven, Champion of Connecticut, won the Brilliancy Prize for this game—and yet took only thirty minutes to play it!

TWO KNIGHTS' DEFENSE

MCO: page 301, column 12, (c)
New England Tournament
Newburyport, 1952

White Black
J. BOLTON C. SHARP
1. P-K4 P-K4 3. B-B4 Kt-B3
2. Kt-KB3 Kt-QB3 4. Kt-Kt5

This is the most severe test of the Two Knights' Defense. 4. O-O is rather passive and 4. P-Q4 usually brings a Max Lange Attack, which favors Black. 4. P-Q4 5. Pxp KtxP 5. Kt-QR4 is a good, sound move. 6. KtxBP? The Fegatello (or Fried Liver) Attack—aggressive but defective. Better is 6. P-Q4. 7. Q-B3ch K-K3

Correct is 8. Kt-Kt5! Then if 9. Q-K4, P-B3! 10. P-Q4, K-Q2! 11. KtxKt, PxKt; 12. BxP, KtxB; 13. QxKt ch, K-B2 and Black stands better. And if 8. Kt-Kt5! 9. Q-K4, P-B3; 10. P-QR3, Kt-R3; 1. P-Q4, (12. P-B4 may be an improvement) Kt-B2; 12. P-B4, (better 12. B-B4) K-B2; 13. BpxP, K-Kt1; 14. O-O, B-K3; 15. Q-B3, Q-R5 and Black has a clear superiority. The text, on the other hand, gets Black in trouble. 9. P-Q4 P-B3

Or 9. P-QKt4; 10. B-Kt3! and White is for choice. Not 9. PxpP; 10. Q-K4 ch and White regains his piece with a won game. 10. B-KKt5 K-Q3

If 10. P-KR3; 11. BxKt, BxB; 12. O-O, B-Kt5ch; 13. K-Kt1, R-B1; 14. Q-K4, R-B5; 15. QxPch, K-B2; 16. KtxKt, PxKt; 17. BxPch, K-B1; 18. B-Kt3! and White wins on the QR2-KKt8 diagonal (Algaier). E.g., 18. RxBP; 19. Q-QB5 ch, Q-K2; 20. Q-B4, R-B2; 21. QR-K1, Q-Q2; 22. B-R4.

11. KBxKt PxB 13. O-O-O B-K3
12. Pxpch K-B3 14. KtxP!!

If 15. K-Q2; 16. RxB ch wins. White paid a Knight for this square. 15. K-Kt4
16. R-Q4 Threatening 17. R-Kt4 ch and mate in two. 16. P-QR4

Or 16. Q-R4; 17. P-QKt4, R-B1; (17. QxRP; 18. Q-B5 ch forces mate) 18. Q-Q3 ch, B-B5; 19. RxB, RxB; 20. PxxQ and wins. 17. BxKt? 17. BxB 19. R-Q1 Q-Kt3? 18. Q-Q3ch K-B3

Although two pieces ahead, for the moment, Black has a hard row to hoe. If 19. BxRP; 20. Q-K4 ch, K-B2; 21. P-K6 and White wins eventually. If 19. BxKtP; 20. Q-B4ch, K-Kt3; 21. RxxQ, BxR (if 21. KRxB; 22. Q-K6 ch and 23. QxB wins) 22. P-KB3! and White wins. (Threats: 23. R-Q6 ch and 23. Q-KKt4). However, if 19. B-K3! 20. Q-K4 ch (if 20. P-QR4, Q-QB1; 21. Q-Kt5 ch, K-B2; seems to hold for Black) K-Kt3; 21. RxxQ (there does not appear to be anything better) KRxB; and the outcome is not clear.

20. RxB QR-Q1
On 20. B-Kt4 ch; 21. K-Kt1, K-B2; 22. P-KB4, B-Q1; (22. BxP; 23. Q-B4 ch wins the Bishop) 23. Q-B4 ch wins the Queen or Bishop. 21. Q-B4ch B-B4 22. R-Q6ch Resigns
For after 22. RxB; 23. RxB ch, K-B2; 24. Q-B7 ch, K-Kt1; 25. RxQ, BxR; 26. P-K6 White's winning line is obvious.



FRENCH DEFENSE

MCO: page 55, column 51
Inter-Club Match
Boston, 1953

Notes by Ariel Mengarini, M.D.

White Black
MEDLEY DR. KEILSON
(Quincy C. C.) (Harvard C. C.)

1. P-K4 P-K3 3. Kt-QB3 B-Kt5
2. P-Q4 P-Q4 4. P-K5
The most popular move nowadays, but in my opinion not best. White usually goes to great lengths to break through on the king-side, but Black can so arrange his forces as to deny him any worthwhile object of attack in that sector. I like 4. Kt-K2 here, but not everyone likes to play the pawn down. Aside from that, 4. P-QR3 and 4. PxP are good.

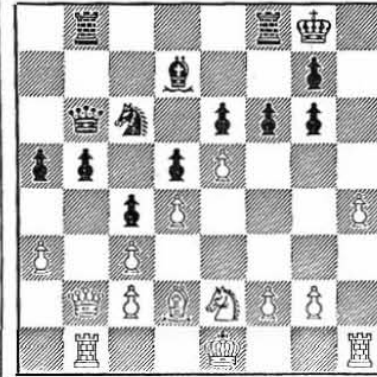
4. P-QB4 7. Q-Kt4 Kt-Kt3
5. P-QR3 BxKtch 8. B-Q3
6. PxB Kt-K2

Black's last move was an innovation, which should have been countered resolutely by 8. P-KR4, so that if 8. P-KR4; in reply, 9. Q-Kt3 and now 10. B-Q3 is a threat. The trouble with the text is that White's only consistent continuation is the following exchange which leaves him without initiative on either side of the board.

8. P-B5 11. B-Q2 Q-R5
9. BxKt RPxB 12. Q-Q1
10. Kt-R3 Q-R4

A menial task for the Queen, but she is better employed defending a pawn than doing nothing. 12. Kt-B3 13. Kt-B4
White seems to be moving aimlessly, and indeed there is little he can immediately undertake of an active nature. He might try 13. P-B3 followed by 14. Kt-B2, 16. Kt-Q1, and 17. Kt-Kt2 (after 15. Q-Kt1 in order to dislodge Black's Queen and restore freedom of action 13. B-Q2 15. Kt-K2 QR-Kt1
14. Q-B1 P-QKt4 16. B-Kt5

Now that Black cannot 0-0-0, an attempt to break through at KB5 would be justified. Thus 16. 0-0, 17. P-B4, 18. P-Kt4, 19. Kt-Kt3, and 20. P-B5. 16. Q-R4 19. R-QKt 0-0
17. Q-Kt2 Q-Kt3 20. P-KR4 P-B3
18. B-Q2 P-R4



White's pieces are so awkwardly bunched that Black can forego his queen-side action till a more appropriate moment, and take the initiative on the undefended king-side. The text leaves him with a backward KP which will be liquidated by P-K4, in turn leaving him with a weak QP which will be dissolved by P-Q5. That all these maneuvers are possible gives an indication of Black's command of the board.

21. Pxp RxB 23. Kt-B4 P-Kt5!
22. B-Kt5 R-B2 24. 0-0
Less drafty here than in the center, even though he has weakened himself unnecessarily with 20. P-KR4. On 24. KtxKtP, (waste of time) P-K4!

24. K-R2 28. Kt-K2 RxR
25. Q-B1 Q-B2 29. RxR P-K4!
26. RPxP PxP 30. QxBP B-Kt5
27. Q-K3 Pxp!
Black's QB, usually a supernumerary in the French Defense, now comes in to play strongly. It either removes a guard from White's Q4, or as actually happens, induces the creation of holes in the White King's position.

31. P-B3 Pxp 32. Q-R3
Hopelessly passive. He could still make a fight of it with 32. KtxP, KtxKt; 33. QxKt, BxP; 34. R-Kt1, (not 34. PxB, RxpP!). 32. B-B4 35. Pxp PxP
33. R-QB1 Q-K4 36. Kt-Kt3 Kt-Q5
34. K-B2 P-Q6 37. Q-B3 R-R2

The longest way around is the shortest way home. 38. KtxB R-R7ch 40. K-Kt3 KtxKtch
39. B-Q2 Q-K7ch 41. Resigns
The winner of this game, a young M.I.T. physicist, shows a good intuitive grasp of how to exploit the potential weaknesses, the power vacuum, left by his opponent's indecisiveness.



RUY LOPEZ

MCO: page 250, column 101 (d)
CCLA 1952 Grand National Correspondence

Notes by Dr. Bela Rogza

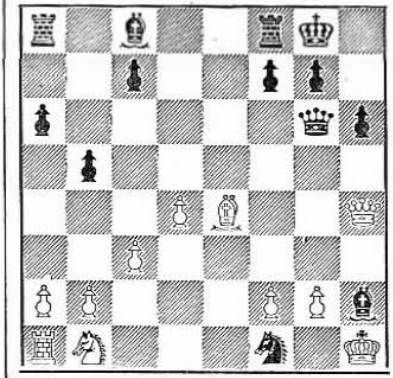
White Black
J. E. BISCHOFF DR. R. C. SLATER

1. P-K4 P-K4 4. B-R4 Kt-B3
2. Kt-KB3 Kt-QB3 5. O-O B-K2
3. B-Kt5 P-QR3 6. Q-K2
The Worrall Attack, a strong alternative to R-K1. In fact many masters feel that it is just as good. 6. P-QKt4 8. P-B3
7. B-Kt3 O-O
Best! P-QR4 has been tried which is not as good. 8. P-Q4! 9. Pxp
A dangerous capture. Black's sacrifice of the pawn is somewhat analogous to the Marshall Variation. White's safest move seems P-Q3. 9. KtxP 10. KtxP Kt-B5!

Black gets an excellent attack for the pawn.

11. Q-K4 KtxKt 12. QxKt(B4)?
This is definitely a bad move. White's correct play is P-Q4! (White can't play QxR as Black gets an overwhelming attack with Kt-K7 ch and KtxB). 12. B-Q3! 13. P-Q4?
This move seems to have no meaning as White's Queen is open to a discovered attack. True that White's Queen has no appetizing squares to go to, but Q-K4 would have been better. 13. Kt-Kt5 15. K-R1 Q-Q3
14. Q-Kt5 Bxpch 16. B-K3
Why not P-B3? And the Kt must retreat. 16. P-R3 18. B-Q5 KtxB
17. Q-R4 Q-KKt3 19. B-K4
White sees that PxKt would be followed by B-Kt6 and if White tries to save the Queen, he gets mated. 19. KtxR!

14. Q-Kt5 Bxpch 16. B-K3
Why not P-B3? And the Kt must retreat. 16. P-R3 18. B-Q5 KtxB
17. Q-R4 Q-KKt3 19. B-K4
White sees that PxKt would be followed by B-Kt6 and if White tries to save the Queen, he gets mated. 19. KtxR!



20. BxQ PxB 22. RxKt B-Q3
21. Kt-R3 B-Kt2

Those two Bishops have a tremendous bind on White's King and White has a difficult decision now how to proceed. 23. P-B3 R-B4 25. Kt-B2 QR-KB1
24. Q-Kt4 K-R2 26. Kt-K1
Kt-K3 seems a little better. 26. R-K1 27. P-KB4?
If White could not play this move before, he certainly can't play it now. 27. Bxp! 28. Kt-B3
Of course, 28. RxB, RtxKt ch; 29. K-R2 and loses the Queen. But this is no better. 28. R-R4ch 30. R-B2 BxKt
29. K-Kt1 B-K6ch Resigns
Because if 31. PxB, R-Kt4 and loses the Queen; if 31. QxB, R-KB4 and loses the Rook.



QUEEN PAWN GAME

MCO: page 203, column 11
Club Tournament
Pottstown, 1953

Notes by John E. Howarth

White Black
R. W. HUGHES T. LANDRY
1. P-Q4 P-Q4 2. Kt-KB3 Kt-QB3

Not to be recommended. In this opening, P-QB4 is always the freeing move for Black. And since he can play it here, "free of charge," he should do so. 3. P-K3
And here 3. P-QB4 expresses the correct gesture. If then 3. B-Kt5; 4. Pxp (better than 4. Q-R4), BxKt; 5. KtPxP, QxP; 6. P-K3 and White stands slightly best. 3. P-K3 4. P-B3
The more the mind is centered upon a certain thing, the less can it be fixed upon other affairs. 4. Kt-B3 7. O-O P-QR3
5. B-Q3 B-K2 8. Kt-K5 P-KR2
6. QKt-Q2 O-O

White already has an idea of what he's going to do! That is, with his center Pawns strongly entrenched, he visualizes an attack via P-KB4, P-KKt4, P-Kt5, etc., which can have crushing effects if not properly met. Consequently, 8. KtxKt; 9. PxtKt, Kt-Q2; and if 10. P-KB4, P-KB4 was an idea. 9. P-KB4 P-B4
Too late! 10. P-KKt4 P-R3

A brilliant vacating sacrifice that clinches the win. 14. BxKt
On 14. QxKt; 15. RxQ, BxR; 16. Q-B3 ch, K-Kt3; 17. R-Q1 wins. 15. Q-B3ch

PERSONAL SERVICE

The Editor of this Department will play you a game by mail, comment on every move, and give you a thorough post-game analysis. Fee \$10.

Mr. Collins will also annotate any one of your games for a fee of \$5.

Correction: The tournament game published, p. 6, April 5, 1953, was won by John Tums, playing White, not lost by him playing Black. Sorry!



10. Kt-Q2 would be somewhat better. But the fact is that Black has fashioned his game and molded it along lines where freedom will be hard sought.
11. P-Kt5 PxBtP 12. PxP Kt-Q2
With the conditions as they are, almost anything he tries will fail.
13. Q-R5
No reason to monkey around!
13. P-B4
On 13. P-KKt3; 14. BxKtP, PxB; 15. QxP ch.
14. PxB e.p. KtXP 15. RxKt
Finis.
15. RxR 16. Q-R7ch Resigns

MINUTE MAN

Ariel Mengarini, M.D., New York psychiatrist and former U. S. Amateur Champion, (and The Man Who Beat Reshevsky) is an ardent worker for "Minute Chess." The opinions expressed in the following introduction are his own and, while provocative and interesting, do not, as is said on radio and television, necessarily represent those of the USCF, CHESS LIFE, or the Editor of this Department: J.W.C.

IRREGULAR OPENING

MCO: page 265, column 1
New York, 1953

Notes by Ariel Mengarini, M.D.

White Black
A. MEGARINI C. HELLINGER
(Dr. Mengarini playing 30-30 chess simultaneously against two opponents.)

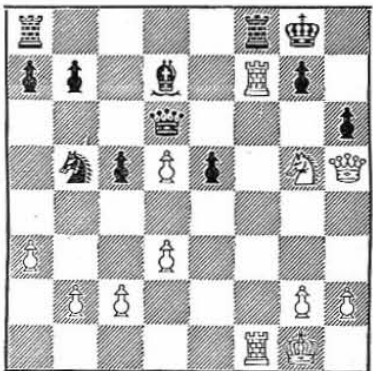
The following is a specimen of 30-30 chess (or "minute" chess), played at the rate of 30 moves in 30 minutes. I had determined to experiment with this time limit because it seemed to me that the usual 40 moves in two hours was too static for anything outside serious tournament play, while the other extreme, 10 seconds a move, is a rat race.

In September 1952 we held an informal intiaclub match at the Marshall Chess Club and I first inveigled my opponent into trying 30-30 chess then, I found that the advantages were numerous: 1) It can still be good hard chess, of course one keeps the score and so has a permanent record of any worthwhile games that may be produced. 2) This time limit seems to favor aggressive, original maneuvers; it seems to put a premium on inventiveness. 3) One can experiment with opening lines with a somewhat lighter heart than when the stakes are higher (less sticking to the conservative tested and true dull variations). 4) One can play a 2-out-of-3 match in less time on the average than it takes to play a regular tournament game, hence there is a chance to recoup from a mishap in the first game. 5) It is ideally suited for Swiss-system tournaments (players conducting two games consecutively against each other, having exchanged colors) because it avoids the problem of adjournments, the unfairness of who has White, and best of all the number of rounds is doubled thus giving finer discrimination in final standings. 6) It is excellent practice in handling time pressure in the slower tournaments. 7) If you lose, you can always blame it on the time limit! Seriously, 30-30 chess allows for good accurate planning provided you don't try to analyse every

improbable variation. As in every kind of struggle, it is a matter of intelligent adjustment to the stated conditions of the game.

I was pleased to see recently that the Mechanics Institute of San Francisco made their club championship a 30-30 affair. In New York we have already concluded a couple of small 30-30 tournaments. As more players are introduced to its advantages, I can well believe it will sweep the country and have the effect of raising the general playing level.

1. P-K4 P-QB4 2. P-QR3
A move I had introduced in December, 1952 in another 30-30 game. The main idea is to transpose into a favorable variation of the Wing Gambit, but it has other points as well.
2. P-K4 7. P-Q3 Q-B2
3. Kt-QB3 Kt-KB3 8. PXP PXP
4. P-B4 P-Q3 9. B-Kt5 B-K2
5. Kt-B3 Kt-B3 10. O-O O-O
6. B-Kt5 B-Q2
He would have done better with O-O-O;
11. Kt-Q5, Q-Q3.
11. Kt-Q5 KtxKt
But if now Q-Q3; 12. BxQKt!, BxB;
13. KtxB ch, QxKt; 14. Kt-R4 with a winning attack.
12. PxBt BxB 15. RxP KtxB
13. KtxB Kt-Q5 16. QR-KB1 Q-Q3
14. Q-R5 P-KR3



The only move to prevent both Q-Kt6 and the double exchange of rooks followed by mate.
17. Kt-K4 QxP 18. Kt-B6ch Resigns
Depriving the game of its proper conclusion: K-R1; 19. QxP ch, PxQ; 20. R-R7 mate.

GUEST ANNOTATORS

John E. Howarth
Dr. Ariel Mengarini
Dr. Bela Rozsa

N. Y. CHESS LIFE

(Continued from page 7, col. 4)
sis, Vine of the Manhattans was found to have an easy win!

As of now therefore, the Manhattan Chess Club leads the league with a 4½-½ match score, with the Marshall Seniors holding a 3½-½ aggregate and their Juniors a 4-1 standing. Next week is the date for the annual Manhattan-Marshall Senior match, a contest which almost always decides the title one way or the other. This year, however, the Marshall Juniors will be watching the match with an eye to winning or tying for the title themselves! Results in the next issue of Chess Life.

IN BRIEF: This year's Manhattan-Marshall Senior match will be played on 8 boards, quite a decrease over the past two years' 16 and 17 board matches. . . Now that Jimmy Sherwin has been named U. S. Junior representative in the World Junior Tourney at Copenhagen, Denmark, he has been the butt of many obvious attempts at humor; members of N. Y.'s chess clubs are asking him, for example, whether he will be eligible for the next women's championship on his return from Denmark! . . . E. Hearst in an 18-board exhibition at the Marshall C. C. scored 16 wins and 2 draws (with Willy Lombardy and Marlys Hearst, the ex-

Mate The Subtle Way!

by Vincent L. Eaton

Address all communications to this column to Vincent L. Eaton, 612 McNeill Road, Silver Spring, Maryland.

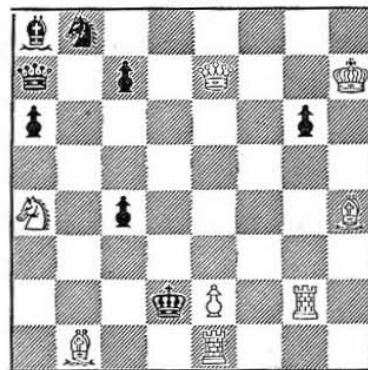
Contemporary American Composers -- 7

WALTER JACOBS

WALTER JACOBS is not a very active composer these days, but on those rare occasions when you see his name above a diagram you know that you are going to tussle with a problem of high quality and painstaking artistry. Born in Newark, New Jersey, on September 26, 1914, he attended school in New York City, and was a high-ranking player on the champion team of the College of the City of New York in the early '30's when his contemporary Reuben Fine was playing first board. He began composing problems in his teens, contributed many of his early efforts to Dr. P. G. Keeney's column in the *Cincinnati Enquirer*, and quickly established himself as one of the most brilliant American exponents of the art. In addition to his composing activities, he has served as problem editor of *Chess Review* and he is co-author (with Alain White) of "Variation Play," one of the most intricate studies of the chess problem ever written, published by the Overbrook Press in 1943.

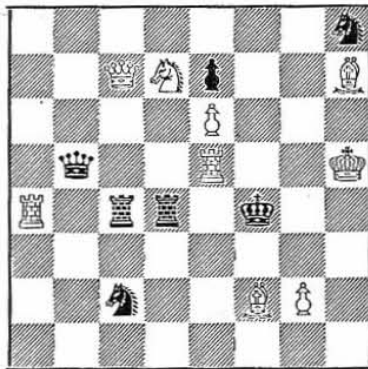
Jacobs' problems are distinguished by careful construction, richness of ideas, economy of force employed, and difficulty of solution. The four diagrammed below, which he has selected as samples of his best work, exemplify these qualities.

Problem No. 419
By Walter Jacobs
"British Chess Magazine,"
1933



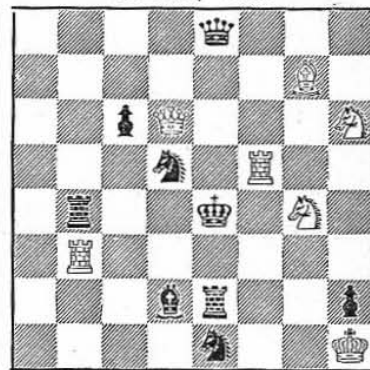
White mates in two moves

Problem No. 421
By Walter Jacobs
1st Prize, "American Chess
Bulletin," 1944



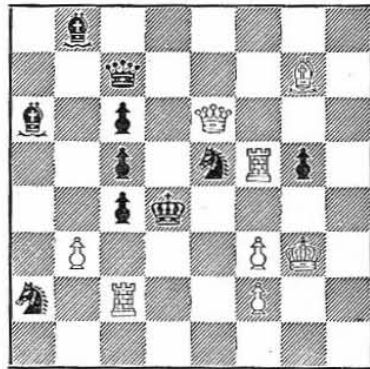
White mates in two moves

Problem No. 420
By Walter Jacobs
1st Prize, "American Chess
Bulletin," 1941



White mates in two moves

Problem No. 422
By Walter Jacobs
1st Prize, "American Chess
Bulletin," 1943



White mates in three moves

hibitor's sister, who had defeated him in a previous simultaneous!) . . . Columbia topped Harvard 3½-½ for the CHYPD title and concluded four years of undefeated match play. . . The prospect of seeing the top Russian stars in action here versus the U. S. has all N. Y. chess fans excited.

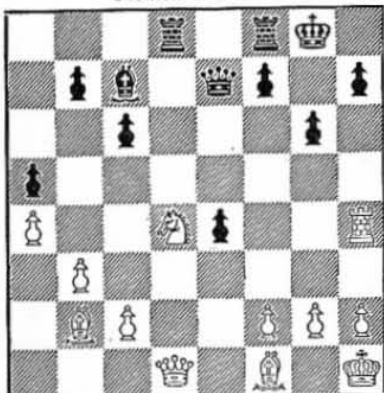
Columbus (Ohio) Y Chess Club scored a 3-2 victory over Lima YMCA with Voskressensky and Loening tallying for Columbus while Little saved a point for Lima. Schroeder and Rothman of Columbus drew with Kellner and Crier.

Scoring 15½-2½ in a 10 player double round event, Lee Magee won the Omaha City championship, losing and drawing with A. C. Ludwig. Ludwig, was second with 14½-3½, a loss to Halsey and five draws. Richard McLellan and former City Champ Howard Ohman tied for third with 12½-5½ while last year's co-champion David Ackerman placed fifth with 10½-7½.

What's The Best Move?

By Guilherme Groesser

Position No. 117



White to play

Send solutions to Position No. 117 to the Editor, CHESS LIFE, by June 20, 1953.

Solution to Position No. 114
This somewhat tricky position baffled some of our solvers as it baffled the player of the Black pieces. In the actual game, Bildhauer-Dirma, Arad, 1940, Black played 1., Kt-K7; 2. P-Kt6, Kt-Q5; 3. B-K3! and Black resigned, for 3., KxB; 4. P-Kt7, K-B6; 5. P-Kt8(Q), Kt-B5; 6. Q-KB1 and 7. QxKt ch win for White. Equally ineffective would be 1., Kt-R4; 2. P-Kt6, Kt-Kt6; for 3. B-K3!, KxB; 4. P-Kt7 produces the same general situation and a win for White.

The correct play is 1., Kt-Q3 (or 1., Kt-Q7 with identical continuation); 2. P-Kt6, Kt-K5; 3. P-Kt7 (if now 3. B-K3?, Kt-BP1; 4. P-R4, P-Kt6; 5. White moves, Kt-K7 mate), Kt-Kt4; 4. P-KR4, Kt-R6 ch; 5. K-R2, Kt-B5!; 6. P-Kt8(Q), P-Kt6 ch; 7. K-Kt1, Kt-R6 (or K7) mate. An ingenious victory that Black overlooked in the game.

Correct solutions are acknowledged received from: J. Barry (Ann Arbor), K. Blumberg (Chicago), F. Cabot III (Sturgeon Bay), J. E. Comstock (Duluth), W. J. Couture (Charleston), C. Joachim (Seattle), E. J. Korpanty (Woodside), H. Kurrak (DesPlaines), P. A. Lyberger (Spokane), Dr. J. Melnick (Portland), R. A. Monroe (Knoxville), E. ash (Washington), G. Payne (Webster Groves), W. E. Stevens (Laramie), H. C. Underwood (Washington), D. A. Walsdorf, Jr. (New Orleans), W. B. Wilson (Amherstburg), N. P. Witting (Salem).

July 3-5

South Florida Chess Championship Miami, Fla.

At Plaza Hotel; begins 8:00 p.m. Friday July 3; entry fee \$5.00; 5 rd Swiss; trophies for 1st to 3rd; for details, write Constantine Rasis, 1204 No. Miami Ave., Miami, Fla.

July 3-6

Southern Chess Ass'n Championship, Columbia, S. C.

At Wade-Hampton Hotel; begins 10:00 a. m. July 3; trophies; for details, write: J. B. Holt, Long Beach via Sarasota, Fla.

July 18-20

Colorado Open Championship Denver, Colo.

Third annual; open to all; 7 rd Swiss; Entry fee \$5.00 to USCF members, non-members pay USCF dues (\$5.00) plus entry fee; Silver Shower approx \$500.00; Write to: Merle W. Reese, Box 84, Capitol Hill Sta., Denver, Colo.

100% USCF rated event.

BOOST AMERICAN CHESS!

Tournament Life

May 28-30

Massachusetts Open Championship Springfield, Mass.

Open; 5 or 6 rd Swiss; begins 9:00 p.m. Friday May 28; entry fee \$5.00 to USCF members and \$7.50 to non-members; for hotel reservations and details, write: Dick Gleason, 935 Chestnut St., Springfield, Mass.

100% USCF rated event.

May 29-31

New Jersey Junior Championship At Log Cabin C. C., 30 Collamore

Terr; begins 7:00 p.m. May 29; 6 rd Swiss; entry fee \$1.50 (\$1.00 refunded on completion of schedule) plus USCF membership for non-members (\$5.00); sleeping accommodations provided free; notify E. Forry Laucks of entry by May 28, phone Or. 4-4699 or 30 Collamore Terrace.

100% USCF rated event.

May 30-31

Texas State Championship San Antonio, Tex.

For Texas residents and military personnel; at Lions Field Tourist Center, Broadway and Mulberry; trophies; Junior and Women's titles to highest ranking player qualified in class; 6 rd Swiss; entry fee \$5.00 plus membership in USCF and TCA (\$5.00) if not member; for details write J. B. Payne, 809 Garrity Road, San Antonio, Tex.

100 per cent USCF rated event.

June 5-7

29th Trans-Mississippi Open Championship Davenport, Iowa

(Revised). At Chamber of Commerce; open to all; 20 prizes, \$505 cash plus merchandise; \$150 first; \$60 for Classes B & C and other specials; free souvenir bulletin; entries close 6:45 p.m. June 5; play ends 7:30 p.m. Sunday; entry fee \$6.00 plus \$1.00 rating fee for non-USCF members; for details, write: Karl Wiegmann, 2610 Ninth St., Rock Island, Ill.

100% USCF rated event.

June 12-14

Carolinas Championship Wilmington, N. C.

Open to residents, students and servicemen in No. and So. Carolina; at Community Center; begins 7:30 p.m. Friday, June 12; entry fee and membership in NCCA or SCCA; 5 round Swiss; ten prizes; for details write: Mr. Harris, Recreation Dir., Community Center.

June 13-14

Oregon State Open Championship Portland, Ore.

Begins 10:00 a.m. June 13 at Portland Chess Club; open; entry fee \$3.00; Don Turner tournament director.

CHESS LIBRARY FOR SALE

Many rare tournament books and games collections in fine condition. Books on instruction and problems at substantial savings. Write for catalog to:

JACK SPENCE

208 So. 25th Ave. Omaha 2, Nebr.

Solutions: Mate the Subtle Way!
No. 411 (Rice): 1. Q-Kt5. A clever sacrifice key gives a flight and leads to a wealth of pin-unpin play. "Very lovely and hard to see"—Rev. G. Murray Chidley.
No. 412 (Rice): 1. Q-Kt7. A pioneer example of three White self-interference blocks on one square (KB4). "Fine indeed"—Rev. Chidley.
No. 413 (Rice): 1. R-K5. The set play 1., P-Q6; 2. Kt-K3 and 1., K-Q6; 2. RxP is changed by the key to unpins of the White Bishop, a difficult theme. "Not so easy to solve"—Rev. Chidley.
No. 414 (Rice): 1. B-Kt6, threat: 2. QxKt ch. If 1., Kt-B4; 2. QxP ch. If 1., Q-R2; 2. RxKt ch. If 1., B-K5; 2. BxB ch. If 1., Kt-B3; 2. R-Q3 ch. A complicated sacrifice and model-mate scheme. "Certainly a prize"—Rev. Chidley.

SOLVERS' LADDER

(Two points for two-movers; four points for three-movers; additional credit for correct claims of "cooks," i.e., solutions not intended by the composers. Prizes are awarded every two months to solvers at the top of the Ladder; their scores are then cancelled and they begin another climb. The following tally includes solutions received up to May 10, when we went to press. Solutions received after that date will be credited on next Ladder.)

R. M. Collins	324	F. A. Hollway	226	Robert Grande	104	Kurt Blumberg	20
E. Weatherford	316	C. J. Koch	216	A. L. Welsh	90	P. Hunsicker	20
G. Murtaugh	306	Ronald O'Neil	210	B. M. Marshall	76	H. G. McSorley	18
J. Kaufman	292	J. B. Mullogan	202	W. H. James	64	H. R. Meifert	16
Rev. Chidley	250	Heino Kurrak	194	Nicholas Yoc	64	J. Haliburton, Jr.	14
W. J. Couture	250	W. I. Lourie	164	N. Reidler	30	Tom Heermann	14
E. J. Korpanty	248	E. Narroway	144	M. A. Michaels	28	R. A. Skeris	14
Steve Myzel	248	Dr. I. Schwartz	138	O. C. Dupree	24	E. H. Benjamin	12
J. H. France	246	G. M. Banker	128	G. Springbett	24	R. E. Burry	10
Kenneth Lay	238	L. M. Brown	108	T. Seidel	22	F. Athey, Jr.	4

We welcome new solvers Kurt Blumberg and Orlean C. Dupree as they begin their ascent on the Ladder.

NEW HAMPSHIRE STATE CHAMPIONSHIP

Concord, 1953

1. HuxW15	W8	W11	W6	W2	5-0	14.50
2. GerthW18	W17	W4	W3	L1	4-1	11.50
3. MorseW13	W10	L2	L2	W8	4-1	11.00
4. SadowskyW16	W5	L2	W14	W6	4-1	10.50
5. BellW23	L4	W15	D13	W11	3½-1½	6.75
6. DayW12	W19	W9	L1	L4	3-2	7.00
7. KelleyL10	W22	L14	W15	W13	3-2	5.50
8. MapleW22	L1	W17	W16	L3	3-2	5.00
9. SullivanW21	L12	L6	W17	W18	3-2	4.50
10. ThompsonW7	L3	W18	L11	W14	3-2	4.50
11. RiceD19	W14	L1	W10	L5	2½-2½	5.75
12. EschrichL6	W9	L3	D18	W19	2½-2½	5.25
13. MagwoodL3	W24	W20	D5	L7	2½-2½	2.75
14. Koolvard 2-3 (3.00); 15. Fisk 2-3 (3.00); 16. Osgood 2-3 (2.50); 17. Bean 2-3 (1.00); 18. Dunn 1½-3½ (2.25); 19. Messier 1½-3½ (2.25); 20. Pelton 1-4 (1.00); 21. Gordon 1-4 (1.00); 22. Stavros 1-4 (0.00); 23. French 1-4 (0.00); 24. Phillard 0-5 (0.00). French and Phippard withdrew after the 3rd round.							

NEW JERSEY INDIVIDUAL INTERCOLLEGIATE CHAMPIONSHIP

Newark, 1953

1. Orest Popovych (Rutgers)W3	W4	W2	D5	W6	4½-½
2. Lev Blonarovych (Newark Col.)W5	W6	L1	W7	W3	4-1
3. A. P. Kvederavicius (Newark Col.)L1	W5	W7	W4	L2	3-2
4. S. K. Kosanowsky (Newark Col.)W8	L1	W6	L3	D5	2½-2½
5. Derwin Kerr (Newark Col.) 2-3; 6. Bruce Samitt (Newark Col.); 7. Lawrence J. Lerner (Newark Col.) 2-3.						

ISCA CHICAGO CITY CHAMPIONSHIP

Chicago, 1953

1. M. Turianskyx	0	1	1	1	1	1	1	1	1	9½-1½
2. P. Tautvaisas1	x	0	1	1	1	1	0	1	1	9-2
3. S. Cohen0	x	1	1	1	0	1	1	1	1	7½-3½
4. Alb. Sandrin0	1	x	1	1	0	1	1	1	1	7½-3½
5. A. Zujus0	0	0	x	1	1	0	1	1	1	6-5
6. W. Grombacher½	0	½	0	x	1	1	0	1	1	5-6
7. K. Czerniecki 4½-6½; 8. W. Norin 4½-6½; 9. V. Tums 4½-6½; 10. K. Jakstas 4-7; 11. Ang. Sandrin 3-8; 12. A. Mengelis 1-10.											

Solutions:

Finish It the Clever Way!

Position No. 105: 1., K-R2!; 2. R-Q6, R-R7; 3. K-Kt5, R-Kt7 ch; 4. K-B6, KxRP; 5. K-K7 ch, K-R2!; 6. P-B5, R-K7 ch; 7. R-K6, R-QR7; 8. P-B6, R-R1! and a basic drawn position is reached.
Position No. 106: 1. R-Kt1, R-R6; 2. R-QR1, R-Kt6 ch; 3. K-R4, R-Kt7; 4. P-R7, R-R7 ch; 5. K-Kt5, R-Kt7 ch; 6. K-B4, R-KR7; 7. R-R8! RxP; 8. R-R2 ch, K-Kt3; 9. RxR, KxR; 10. K-B5 wins.

THE NEWEST BOOK ON THE OLDEST GAMES CHAMPIONSHIP CHESS AND CHECKERS FOR ALL

By Larry Evans and Tom Wiswell
U. S. Chess World Unrestricted Champion
World Chess Checker Champion

AUTOGRAPHED! This newest work on the sister games, by two top-notch masters, is the only one of its kind. Streamlined and easy-to-read. Ideal as a gift to friends. Whether you play one or both games, this definitive work is a MUST. Deluxe, cloth bound copy only \$3.75. Send check or M.O. to:

LARRY EVANS
358 West 27 Street
New York 1 N. Y.

OMAHA-LINCOLN INTERCITY CHAMPIONSHIP Lincoln, 1952-53

1. L. Magee (Omaha)	x	1	1	1	1	1	4-0
2. Liepnieks (Lincoln)	0	x	1	0	1	1	2-2
3. J. Warner (Lincoln)	0	0	x	1	1	1	2-2
4. V. Pupols (Lincoln)	0	1	0	x	1	1	1-3
5. P. Wood (Lincoln)	0	0	0	1	x	1	1-3

Subscriptions Accepted for

THE BRITISH CHESS MAGAZINE
Founded in 1881 and now the oldest chess periodical extant. Games Editor: H. Golombek--Problem World: S. Sedgwick
—\$3.00 per year (12 Issues)—
Specimen copy 25c
Special thin-paper edition, sent by Airmail \$4.70 per year.
CHESS WORLD
Comprehensive Australian chess magazine edited by C. J. S. Purdy. Articles, annotated games, problems, news.
\$2.25 per year—12 issues
Sample copy 20c
CHESS LIFE, 123 No. Humphrey Ave. Oak Park, Ill.

For news of Canadian Chess Life, Subscribe To The CANADIAN CHESS CHAT Official Organ of the Chess Federation of Canada
Only publication with national coverage: Events, Games, Articles and personalities—Canadian Chess News!
Annual Subscription: \$2.75
CHESS LIFE, 123 No. Humphrey Ave., Oak Park, Ill. or D. A. MacAdam, 2084 Decarie Blvd., Montreal, 28