



Chess Life



America's Chess Newspaper

Copyright 1953 by United States Chess Federation

Vol. VIII, No. 8

Sunday, December 20, 1953

15 Cents

Larry Evans On Chess



By
International
Master
LARRY EVANS
U. S. Chess
Champion
U. S. Open
Champion, 1951-52
U. S. Team
Member, 1950, 1952

THE MANIA FOR RAPID CHESS

THE reason fast chess is so popular in America—as opposed to Europe—is that it is an escape from responsibility. That is, our players are unsure of their own ability. So what could be better than a medium where a win is ego gratifying while a loss can be attributed (at least subconsciously) to speed?

"Blitz" and "rapid transit" develop the reflexes at the cost of deliberation and profundity. It is conducive to the most superficial of chess. Anything is better: blindfold chess or skittles. I myself was weaned on fast chess and am still paying the penalty. Contrary to popular belief, rapid-transit is of but little help in time-difficulty. Witness the inability of one of the nation's very top speed players, Donald Byrne, to cope successfully with his clock in tournament play.

BOLTON GAINS NEW ENGLAND

With a score of 5½-½ James Bolton won the New England Championship at Boston, drawing with Kazys Merkis. Siff was second with 5-1. Third to fifth on Solkoff points with equal 4½-1½ scores were Strazdins, Wolk, and Book. Siff lost only to Bolton; Strazdins lost a game to Book and drew with Wolk; Wolk lost to Siff and drew with Strazdins; Book lost a game to Rubinov and drew with Underwood in the 38 player Swiss.

In the B Class event, Rose and Lankhorst were first and second respectively with 5-1 each on Solkoff points; Freeman and Paulakas third and fourth with 4½-1½ in the 20 player Swiss event.

His time pressure has held him back to a rating incommensurate with his ability. I can mention other masters who suffer from the same thing, while being top-notch rapid players: George Shainswit, Jerry Donovan, Jimmy Sherwin, Eliot Hearst, Herman Steiner, Arnold Denker, *ad infinitum*. My own experience has been that keenness of reflex is, of course, superior to slowness; but not if it can be bought only at the price of depth and accuracy. The ability to think fast is not proof of a good player; the ability to think slowly, with insight, is.

Ten-second chess, therefore, is the refuge of the insecure expert. The mania for speed has prostituted chess along with mass-production Americana. What distinguishes European chess from ours is tranquil deliberation and the desire to make each game a work of art. Experiments to speed up chess in serious play are immature. Our time limit of forty moves in two hours (40 in 2½ on the continent) is just adequate to produce good chess.

I am not advocating the abandonment of speed chess, which is an entertaining escape. I do believe, however, that the slower the chess, the surer you should feel of winning.

PENQUITE TOPS EAST TENN OPEN

John Penquite of Des Moines and Ann Arbor scored a 5½-½ victory, drawing with Robert Coveyou of Oak Ridge, in the Thanksgiving East Tennessee open at Bristol which drew 24 from Tennessee, Virginia, Kentucky, Alabama, Michigan and Ohio. Second and third on S-B were former Illinois State Champion Kimball Nedved, now at Ft. Campbell, Ky., and Martin Southern of Knoxville with 5-1 each. Nedved lost a game to Penquite and Southern to Jackie Mayer of Lexington, Ky., who placed fourth with 4½-1½.

Among the special features of the event was a half-hour broadcast of the final round in which the leading players were interviewed over WOPI of Bristol, while the daily newspaper gave coverage each day of the tournament with pictures and special write-ups. The tournament was staged by the Bristol Chess Club, managed by its secretary, Bill Rucker, and directed by Dr. Anthony F. Distefano.

Success of the event this year led to a promise of an annual event at Bristol.

What Should Not Be Found Lacking In A USCF Tournament Program

By MONTGOMERY MAJOR

Chairman, USCF Tournament Plans Committee

By the decree of the USCF Board of Directors at Milwaukee, a committee was created, consisting of the writer, Kenneth Harkness, and Jeremiah F. Donovan, to establish a sound, long-range program for all USCF Tournaments. It will be the duty of this Tournament Plans Committee to prepare a schedule of USCF Tournaments, providing for definite dates and regulations to govern each event, so that the somewhat haphazard system of the past can be discarded and players can know well in advance precisely when each tournament will be held and what its requirements will be.

The Committee has been working on this overall program for some months and is progressing to a point where an announcement can be made regarding the general basic structure of the tournament system. But before the Committee makes any final decisions, it wishes to consult with all available opinions. So, any player who has any definite ideas concerning what tournaments should be sponsored by the USCF, how they should be conducted, whether they should be open or invitational or entry be based on USCF ratings, etc. is invited to express his opinions to the Committee by writing to the chairman, Montgomery Major, 123 No. Humphrey Avenue, Oak Park, Ill. The Committee, of course, cannot acknowledge communications individually, but will welcome all expressions of opinions and suggestions as guidance in making its decisions.

Tournament Rules

A second Committee on Tournament Rules, consisting of Montgomery Major, chairman, Eliot Hearst, and Dr. Newton Grant, was also created by the USCF Board at Milwaukee. This Committee is concerned with the creation of subsidiary regulations to supplement and amplify the FIDE Laws of Chess, and with the provision of definite regulations to govern the conduct of Swiss and Round Robin events, pairings, tie-breakings systems, etc.

The work of this Committee also will be greatly assisted if players will submit their suggestions on these subjects, particularly pointing out those situations which may occur in tournament and match play where the FIDE Code is indefinite or ambiguous and needs supplementary rules for clarification. These suggestions also should be addressed to Montgomery Major, 123 No. Humphrey Avenue, Oak Park, Ill.

WOMEN'S EVENT PROMISES WELL

The U.S. Women's Championship started with a flourish with an entry list of former U.S. Women Champions Mrs. Gisela K. Gresser and Miss N. May Karff, former Costa Rica Woman Champion Mrs. Rosalie de Serrano, Miss Kate Henschel, Miss Wally Henschel, Miss Adele Raettig, Mrs. M. Story, Mrs. Michael Babakin, and Mrs. Henrietta Rogers.

A last minute business engagement prevented Mrs. Kathern Slater from competing as planned.

MANN TRIUMPHS AT COLUMBUS

Not satisfied with winning the Tri-State title, Walter Mann swept through the six player Columbus City Championship with 4½-½, drawing with Kurt Loening. R. Naylor was second with 4-1, losing only to Mann; and Loening was third with 2-3, losing to Naylor and Jerome Cox while drawing with Mann and T. Anderson.

In the Columbus B. Championship P. Thompson and G. Platau shared the honors with 4½-½ each, but Thompson took the title by a playoff victory 2-0 over Platau. In the regular event Thompson and Platau drew their encounter. Third place went to G Hudson with 2-3, losing to Thompson and Platau.

MAGEE REPEATS IN WICHITA OPEN

Lee Magee for the third time won the annual Wichita Open Championship, this time with 5½-½ from a field of 35 players, drawing only with runner-up Carl Weberg. Weberg scored 5-1 for second place, losing no games but drawing with Magee and Roy Meister. Third to fifth on S-B with 4½-1½ each were David Ackerman, Bert Brice-Nash and Jim W. Callis. Ackerman lost to Magee and drew with Richard McLellan; Brice-Nash lost to Magee and drew with Callis who lost his game to Magee.

The Union National Bank of Wichita donated a special trophy won by Magee, and the tournament was conducted by K. R. MacDonald.

U. S. Intercollegiate
New York

December 26-30,
1953

Place: John Jay Hall, Columbia
University, 114th St. and
Amsterdam Ave.

ALL'S WELL THAT ENDS WELL

Mastering the End Game

By WALTER KORN, Editor of MCO

AN ETUDE IN EXACTITUDE

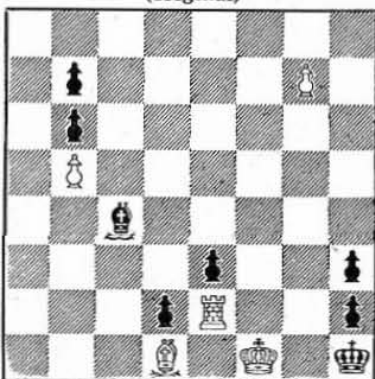
SERIOUS end game composition has for quite a while outgrown the mere woodshifting type found in some columns; namely the ending where just a more or less hidden combination, or a tactical finesse or a different application of a difficult but otherwise known technique provide the basis and solution.

Nowadays the subject for an end game is more romantic, thematic, and experimental. Rinck's work before his death was, e.g. a group of studies typical for draws by two minor versus two major pieces. Mandler exemplified the Kt only vs. R. only stratagems, Lommer specialized in minor promotions. The modern composer often sets himself a theoretical task and constructs the study around it synthetically.

Today I present an end game study with such "theme". The solution is very simple, but consists of a large number of possible White "tries", all of which Black can refute with precise play — all but one — the winning line. It is the involved accuracy in upsetting all but the legitimate solution which I consider the essential exercise in this ending, and I therefore let you keep trying first. Hence

don't look at the solution until you have gone through all the motions of solving. One — Two — Three — Go!:

Diagram No. 2
Walter Korn
(original)



White to play and win
(For solution, please turn to Page twelve)

WICHITA OPEN CHAMPIONSHIP

Wichita, 1953

1. Lee Magee (Omaha, Neb.)	W29	W12	W3	D2	W5	W4	5½-1	21.50																			
2. Carl Weberg (Salina, Kans.)	W25	D15	W23	D1	W16	W7	5-1	16.25																			
3. D. Ackerman (Omaha, Neb.)	W24	W14	L1	W8	W6	D10	4½-1½	16.00																			
4. B. Brice-Nash (Wichita)	W30	W9	D5	W11	W17	L1	4½-1½	14.75																			
5. J. W. Callis (Wichita)	W34	W20	D4	W10	L1	W11	4½-1½	12.75																			
6. J. Northam (Manhattan, Kan.)	D11	W21	D10	W14	L3	W20	4-2	13.25																			
7. W. McLaughlin (Wichita)	W28	L11	W12	W13	W9	L2	4-2	13.00																			
8. J. M. Stull (Wichita)	W19	D22	D24	L3	W30	W17	4-2	10.50																			
9. J. Spence (Omaha, Neb.)	W17	L4	W32	W22	L7	W15	4-2	9.50																			
10. R. McLellan (Omaha, Neb.)	W32	W31	D6	L5	W28	D3	4-2	9.25																			
11. O. M. Maring (Louisville, Ky.)	D6	W7	W22	L4	W23	L5	3½-2½	11.00																			
12. G. Springbett (Hutchison)	W21	L1	L7	D25	W24	W23	3½-2½	9.25																			
13. A. R. Self (Newton, Kans.)	W26	D23	D15	L7	D14	W22	3½-2½	9.00																			
14. N. Aboms (Wichita, Kans.)	W33	L3	W31	L6	D13	W16	3½-2½	7.75																			
15. R. Meister (Hutchison, Kans.)	W27	D2	D13	L17	W29	L9	3-3	8.25																			
16. H. B. Amsden (Wichita)	L23	W18	W20	W29	L2	L14	3-3	8.00																			
17. Copeland (Jefferson, Okla.)	L9	W28	W25	W15	L4	L8	3-3	7.50																			
18. G. E. Prewitt (Wichita)	L22	L16	W21	L28	W27	W29	3-3	7.00																			
19. Kenneth Weberg (Salina)	L8	L26	L27	W33	W31	W28	3-3	5.00																			
20. Freeman (Shawnee, Okla.)	W35	L5	L16	W31	W26	L6	3-3	4.00																			
21. J. H. Maguire (Wichita)	L12	L6	L18	W34	W32	W26	3-3	3.00																			
22. Hugo Teufel, Jr. (Wichita)	2½-3½ (7.50);	23. Dr. A. J. Welker (Pampa, Tex.)	2½-3½ (5.00);	24. Karl Heinz Zangerle (Lawrence, Kans.)	2½-3½ (5.00);	25. Earl Bishop (Omaha, Neb.)	2½-3½ (4.75);	26. K. R. MacDonald (Wichita)	2-4 (5.00);	27. Len A. Fugua (Wichita)	2-4 (4.00);	28. L. A. Peterson (Shawnee, Okla.)	2-4 (3.00);	29. Dale A. Nicholson (Wichita)	2-4 (2.00);	30. Dr. A. A. Herman (Hays, Kans.)	2-4 (2.00);	31. Robbie Robertson (Wichita)	2-4 (0.00);	32. D. L. Convis (Wichita)	1-5 (2.00);	33. Mimi Robertson (Wichita)	1-5 (0.00);	34. Frank Harrison (Wichita)	0-6 (0.00);	35. Booth Myers (Wichita)	0-6 (0.00).

Harrison withdrew after third round, and Myers after first round.

HAVE YOUR TOURNAMENTS OFFICIALLY RATED!

Ask your Club Secretary or tournament director to write for official rating forms to report the results of your next tournament or match, specifying the type of contest and the approximate number of players.

Official rating forms should be secured in advance from:

Montgomery Major
123 No. Humphrey Avenue
Oak Park, Illinois

Do not write to other USCF officials for these rating forms.

CORRECTION

In describing the Kooyman Filing System in the issue of November 20th, Staff Writer Rojam failed to state that the graphic representation as reproduced on page two is protected by copyright issued to Mr. Kooyman in 1953 and may not be reproduced for profit without his written permission.



New Mexico has plans for a state high school tournament, probably in April at Albuquerque, sponsored by the New Mexico Activities Association for High Schools. To date ten high schools have promised to participate in the event which has been promoted by Paul H. Hanson, chess playing school teacher of Albuquerque.

Attleboro Club Experiments With "Kirribilli" Handicap

By Staff Writer GUILHERME GROESSER

THE Attleboro (Mass.) Chess Club has finished an interesting experiment with the "Kirribilli" Handicap, named from a suburb of Sydney, Australia from whence the idea came to Sven Brask of the Attleboro Club. The "Kirribilli" differs from the normal "odds" tournament in the essential point that the odds shift according to the scores of the players. At Attleboro, the Ladder Standing was used as the initial handicapping standard; players with no difference in Ladder score played even; those with one to ten points difference, the higher conceded the move; 11 to 20 a pawn; 21 to 30 pawn (KBP) and move; 31 to 35 a knight (QKt); 36 to 40 a bishop (KB); 41 to 50 a rook (QR); 51 to 60 bishop and pawn (KB & KBP); 61 and over the queen.

After the first round, the players are rerated; those who won are rated 1,000, those who drew 500, and those who lost 000 and the odds awarded for the second round on the new basis. At the end of the second round ratings can be 2,000, 1,000, 1,500, 500, and 000 and these new ratings determine the odds for the third round, etc. The time limit is set at 40 moves in 60 minutes for the odds-giver and 40 moves in 45 minutes for the odds receiver with a straight time limit of 10 moves in 15 minutes for both after the first 40 moves.

Since it is possible for the strong players to lose in early rounds, the excitement can become terrific in later rounds when players may sometimes find themselves giving odds to opponents from whom they might normally expect to receive odds! We cannot commend it as a system to confer titles or qualify for ratings; but as something different and exciting for a jaded club program, the "Kirribilli" Handicap has the virtue of being a sporting novelty.

In the Attleboro Club experiment, D. Brask and K. Gustafson tied for first with 5½-2½, Diebling was third with 5-3, and F. Gustafson and S. Brask tied for fourth with 4½-3½. The upset effect of the odds is evident in the fact that victor Brask received Q odds six times, pawn and move once, and knight odds once; while victor Gustafson received Queen odds twice, pawn and move once, and Rook odds once while giving Queen odds once, pawn and move once, and Bishop odds once.

The following is a specimen of the wild play that naturally results in such handicap events:

KIRRIBILLI HANDICAP Attleboro, 1953

(Remove the White Queen)

White	Black
S. BRASK	M. GRZYB
1. P-K4	P-K4
2. B-B4	B-B4
3. Kt-KB3	P-Q3
4. P-QK4	B-K13
5. P-QR4	P-QR4
6. P-K15	B-K15
7. P-Q4	BxKt
8. PxB	BxP
9. R-R3	Q-R5
10. B-K3	BxR
11. RxR	P-QB4
12. B-Q5	R-R2
13. Kt-Q2	Kt-Q2
14. Kt-B4	K-K2
15. P-K16	R-R1
16. BxP	R-K11
17. Kt-RP	K-B3
18. R-Q3	K-K13
19. RxP ch	KKt-B3
20. K-K2	P-B5
21. B-Q5	Kt-B4
22. R-K11 ch	K-R3
23. KtxP	KtxRP
24. Kt-K3	P-K13
25. RxKt	Kt-B6 ch
26. K-Q3	KtxB
27. Kt-B5 ch	K-R4
28. Kt-K7ch	K-R3

Washington (D. C.) Chess Divan: D. H. Mugridge leads the hard-fought club championship 6-1 while R. Chauvenet with 5-1 and M. Tilles with 4-1 are close on his heels.

Faculty Club (Boston): Dr. Sol Rubinstein, now Research Associate in Physics, gave a 23-board simultaneous exhibition, drawing with Thomas A. Unger and winning the remaining 22 games.

ARTHUR BISGUIER AN INTRODUCTION

By WILLIAM ROJAM
Staff Writer

Ranking high among America's distinguished young masters is Arthur B. Bisguier who began early to acquire titles, being successively Bronx Champion, Interscholastic Champion in New York, and finally U. S. Intercollegiate Champion between the years of 1944 and 1947. Twice, in 1948 and 1949, Bisguier won the U.S. Junior Championship, outpointing Frank Anderson of Toronto in 1948 and yet-to-be U. S. Champion Larry Evans in 1949. The same two years saw him twice champion of the Manhattan Chess Club of New York.

But 1950 was even more of a gala year for the young master, for it began auspiciously with a 1½-½ score over Ivkov in the USA-Yugoslavia radio match. Then Bisguier sailed to England where he shared first place in the strong Southsea Tournament with Dr. Tartakower with 7½-2½. Next came a stirring victory in the 120 player U. S. Open Championship at Detroit. Injured in an auto accident on returning from Detroit the new U. S. Open Champion was prevented from sailing as a member of the U.S. Team for the International Team Matches at Dubrovnic. But he had recovered sufficiently by fall to place third in the New York State Championship, won by Eliot Hearst, and to win the New York Speed title. For these performances FIDE recognized him in 1950 as an International Master.

The Armed Services stepped in at this point to interrupt his career as a chess player, but his service in the European field permitted him occasional indulgence in chess. Thus he won the Vienna Christmas Tournament of 1952-53 and in 1952 did distinguished service as a member of the U. S. Team at the International Team Matches at Helsinki.

Released from the Army in 1953, Bisguier showed only slight signs of rust in his play in the U. S. Open at Milwaukee where on games won with 8½-4½ he was tied for 13th place in the 181 player event. The rust had completely vanished in September when Bisguier scored 8½-1½ to win the U. S. Championship Candidates Tournament at Philadelphia. It is evident that his tournament record has just begun, and that finer achievements may well be expected of him in the future.

YOUNG MASTERS' FORUM

America's Leading Young Masters Annotate
Outstanding Games from Recent Chess Events

Nuances Make The Difference

By U. S. Master ARTHUR BISGUIER

PERHAPS the prime difference between tournament players of today and those of yesteryear lies in the careful preparation and pains taken in the opening play by our present-day masters. Stress is particularly placed on transpositional nuances and subtleties.

The following game is a case in point. White's second move is a cliched avoidance of the Albin Gambit. (Dr. Mengarini often springs little surprises of this type.) Black's fourth move is an attempted transposition to the Queen's Gambit Accepted and his sixth is an effort to force the favorable Vienna Variation. White will have none of this and instead offers a Pawn which leads to a type of position frequently arrived at via the Slav Gambit. Black, thwarted in his opening plan, appears to be at a psychological disadvantage for the remainder of the encounter.

So, for a proper perspective of the ensuing game we must view not only the moves actually played but also the spectors of the Albin, the Queen's Gambit Accepted, the Vienna Variation and the Slav Gambit which perpetually hover in the background. So to begin!

QUEEN'S GAMBIT

U.S. Championship Candidates' Tournament
Philadelphia, 1953

White	Black
A. BISGUIER	DR. A. MENGARINI
1. P-Q4	P-Q4
2. Kt-KB3	Kt-KB3
3. P-QB4	P-K3
4. Kt-B3	PxP

Seldom seen at this point. However, we shall see that Black has something special in mind.

5. P-K4
Accepting the challenge. 5. P-K3 instead would transpose into well known lines of the Queen's Gambit Accepted.

6. P-K5
This is Black's idea. He expects White to answer with 6. B-K15 and transpose to the Vienna Variation, long a favorite of chess analysts and theoreticians. The pendulum has often swung first in one direction and then in the other. Recent opinion seems to demonstrate a good game for Black.



White goes his own way. The text is the introduction to a Pawn sacrifice which evidently offers fine chances. Geller, the Russian master, has frequently tried the sacrifice in similar positions of the Slav Defense and Queens Gambit Accepted with good success. Here it appears to be even stronger and more forceful.

7. B-Q2	Kt-Q4
8. PxP	BxKt
	P-QK14

Black's last few moves comprise the



only reasonable attempt to maintain the Pawn.

9. P-QR4 P-QB3
Falling in with Whites plan. Conceivably 9. P-Kt5 (and if 10. PxP, P-B6, or if 10. BxP, PxP) offered better chances. The text weakens Black's Q3 and now his game drifts from bad to worse.

10. Kt-K15
A routine attacking move in positions of this type. Besides preparing a possible Queen sortie with Q-R5 or B3 (creating further K-side weaknesses) this move prepares for Kt-K4 and Q6, further demonstrating the weakness of 9. P-QB3.

11. PxP e.p. KtxKBP
12. Q-Kt1!!
Played to forestall the above-mentioned note, but this move yields further concessions, as we shall see soon.



A very fine move with diverse purposes. The Queen is very well posted on the unusual QKt square. Not only is PxP threatened, but an eventual B-QK12 by Black is discouraged as White would have BxP. Also the Queen eyes voraciously the K-side squares KKt6 and KR7.

13. B-K2 P-QR4
Black's plan is worthy of mention. With this awkward move he intends to bolster the Q-side preliminary to Kt-R3, B2 and Q4. Unfortunately, like Caesar, he was too ambitious.

Consistent. White threatened PxP followed by B-B3. The alternate defense of 13. P-QR3 would leave his Queen-Knight without a developing square.

14. B-B3	R-R2
15. O-O	O-O
16. R-K1	Kt-R3

White's Pawn sacrifice has evidently paid rich dividends. Black decides to return the Pawn as 16. Q-K2 or K1 would be met by the powerful and thematic 17. P-Q5 (if 17. BPxP; 18. BxP) and other tries look even more unappetizing. Now, however, the interest begins to compound.

17. RxP!
This strong move gains an important tempo as Black's next move is virtually forced since 18. RxKt is threatened.

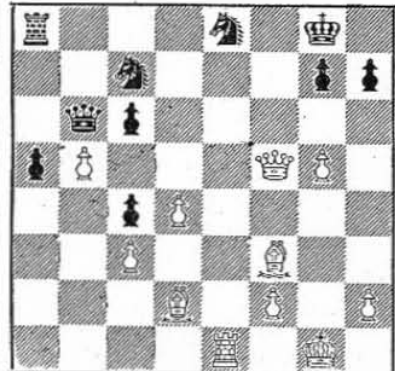
17. BxR	BxR
18. KtxB	Q-Kt2
19. KtxR	KxKt
20. Q-B5!	



Instead, 20. BxP, QxB; 21. PxP would not only be petty but weak as well since the endgame after 21. Q-Kt2; 22. PxKt, QxKt; 23. RxQ, RxP would bristle with technical difficulties.

21. P-K14
Among other things, White threatened Q-B8ch.

22. P-K15
This bayonet attack is devastating.
23. R-K1
24. PxP



White had a plethora of tempting variations. The move actually played tickled my risibilities inasmuch as the Pawn cannot be recaptured without great loss. Thus, 24. PxP loses the Rook; 24. QxP loses at least a Knight after 25. QxQ and 26. BxP; and 24. KtxP costs the Queen after 25. Q-K6ch, K-B1 (not K-R1 because of 26. QxKtch followed by mate) and 26. B-Q5!

24. Kt-Q3
25. Q-Q7
The only chance but painfully inadequate.

26. R-K7 R-R2
A blunder which merely serves to expediate the denouement and deprive White of the satisfaction attending an esthetic and piquant conclusion. After the game, Dr. Mengarini suggested he might have held on with 26. K-B1. Then White could not play 27. RxP because of 27. R-R2!, but 27. P-N6!! is the winning move, for if 27. PxP; 28. B-R6!, PxP; R-R7 with mate to follow, and if 28. R-R2 in answer to 28. B-R6 White forces mate with 29. BxPch, K-N1; 30. Q-Q6ch followed by Q-R3ch and Q-R8 mate. After 27. P-N6,

Contributors to the YOUNG MASTERS' FORUM

- Hans Berliner
- Arthur Bisguier
- Eliot Hearst
- George Kramer
- Carl Pilnick
- James Sherwin
- Walter Shipman

R-R2 (instead of PxP); 28. R-K8ch!, KtxR; 29. Q-B5ch, K-Kt1 (if 29. Kt-B3 or 29. K-K2; 30. PxP); 30. Q-K6ch, K-B1; 31. PxP either ties the bow on the package or rips it open, depending on which side of the board one is located.

27. R-K8ch
Evidently Black had hoped for 27. RxPch? for after 27. K-B1 it is White rather than Black who finds his face red (the Rook at K17 is lost). After the text it is mate next and Black jumps the gun by resigning.

U.S.C.F. Life Members

SINCE our last report in these pages, we wish to welcome the following new LIFE MEMBERS of the United States Chess Federation:

Attilio DiCamillo
Philadelphia, Pa.

CHESS MAGAZINES

(Continued from Dec. 5 Issue)

VIII. Club Publications in Canada

- Monthly Club Bulletin
H. Buisson
292 Merry St.
Magog, Que.
(Magog Chess Club)
- Weekly Club Bulletin
H. Drouyn
Plant Engineering Dept.
Pratt & Whitney Aircraft
% Longueuil Recreation Assn.
Chate, 234 St. Charles St. West
Longueuil, Que.
- L'Echiquier Quebecois
Paul H. Nadeau
49 Avenue Eymard
Quebec, P.Q.
(Weekly—in French)

UNITED STATES CHESS FEDERATION

OFFICERS

- | | |
|----------------------|--|
| President | Harold M. Phillips
258 Broadway
New York 7, N.Y. |
| Treasurer | William M. Byland
3244 Latonia Ave.
Pittsburgh 16, Pa. |
| Secretary | Major J. B. Holt
Long Beach via
Saraso, Fla. |
| Membership Secretary | Kenneth Harkness
93 Barrow Street
New York 14, N.Y. |

Vice-Presidents

- | | |
|------------------------------------|---------------------------------------|
| Frank R. Graves
Ft. Worth, Tex. | Rhys Hays
New York, N.Y. |
| A. Wyatt Jones
Shreveport, La. | Hans Knoch
New York, N.Y. |
| E. T. McCormick
E. Orange, N.J. | Phil J. Mary
Cincinnati, O. |
| Dr. Bela Roxza
Tulsa, Okla. | Geo. E. Roosevelt
New York, N.Y. |
| | Herman Steiner
Los Angeles, Calif. |

Past Presidents

- | | |
|---------------------------------|------------------------------------|
| Paul G. Giers
Syracuse, N.Y. | E. A. Wagner, Jr.
Chicago, Ill. |
|---------------------------------|------------------------------------|

Published twice a month on the 5th and 20th by
THE UNITED STATES CHESS FEDERATION

Entered as second class matter September 5, 1946, at the post office at Du-
buque, Iowa, under the act of March 9, 1879.

POSTMASTER: Please return undeliverable copies with Form 3579 to Kenneth
Harkness, USCF Business Manager, 93 Barrow Street, New York 14, N. Y.

Editor: MONTGOMERY MAJOR

USCF Membership Dues, including subscription to Chess Life, semi-annual publi-
cation of national chess rating, and all other privileges:

ONE YEAR: \$5.00 TWO YEARS: \$9.50 THREE YEARS: \$13.50 LIFE: \$100.00

A new membership starts on 21st day of month of enrollment, expires at the
end of the period for which dues are paid. Family Dues for two or more mem-
bers of one family living at same address, including only one subscription to
Chess Life, are at regular rates (see above) for first membership, at the follow-
ing rates for each additional membership; One year \$2.50; two years \$4.75; three
years \$6.75. Subscription rate of Chess Life to non-members is \$3.00 per year.
Single copies 15c each.

CHANGE OF ADDRESS: Four weeks' notice required. When ordering change
please furnish an address stencil impression from recent issue or exact repro-
duction, including numbers and dates on top line.

Send membership dues (or subscriptions) and changes of address to KENNETH
HARKNESS, Business Manager, 93 Barrow Street, New York 14, N. Y.

Send tournament rating reports (with fees, if any) and all communications re-
garding CHESS LIFE editorial matters to MONTGOMERY MAJOR, Editor, 123
North Humphrey Avenue, Oak Park, Ill.

Make all checks payable to: THE UNITED STATES CHESS FEDERATION



Major Topics

By
Montgomery Major

And Then Came Christmas TO SANTA CLAUS

Some thank thee for the gift of gold,
The gilded lure that tempts men on;
Some thank thee for the place they hold
As captains in life's marathon;
Some thank thee for the pride that rules
Their spirit like a hymn of praise;
Some thank thee (shall we call them fools?)
For humble belief in human ways.
Let others thank thee, if they will,
For gifts that bring to man success;
I thank thee for the calm and still
Delight that is a game of Chess.

The Reader's Road To Chess

By Kester Svendsen

THE THIRD CARLSBAD INTERNATIONAL CHESS CONGRESS 1923.
Spence Limited Editions. Foreign Tournament Series Vol. I. Edited
by Jack Spence. Published by The Nebraska Chess Association. 49 pp.,
mimeographed. \$2.

A SELECTION OF GAMES FROM THE NEW YORK MASTERS INVITATIONAL
CHESS CONGRESS 1915. Spence Limited Editions. American
Tournament Series Vol. VII. Edited by Jack Spence. 24 pp., mimeo-
graphed. \$2.

A RECORD OF THE NEW YORK INTERNATIONAL CHESS CONGRESS
1931. Spence Limited Editions. American Tournament Series Vol. VIII.
Edited by Jack Spence. Published by The Nebraska Chess Association.
29 pp., mimeographed. \$2.

IN the latest issue of Chess, editor Barauch Wood credits Dr. J. A.
Seitz, A. Crisovan, and Jack Spence with saving from oblivion the
scores of some fifty or more tournaments. With the three present
volumes, Spence adds to his international reputation, for they are top
quality productions in format and presentation. He offers 36 (all
available) of the 56 games played in the 1915 invitational event at the
Manhattan Chess Club, with annotations from notes in the **British Year-
book of Chess 1915-1916**. Contestants included Capablanca (winner),
Marshall (runner-up), Chajes, Kupchik, J. Bernstein, Edward Lasker, A.
B. Hodges, and J. Michelsen. The 1931 tourney of twelve masters
featured Capablanca again; Kashdan was second, followed by Kevitz,
Horowitz, Kupchik, Herman Steiner, Santasiere, Turover, Dake, Edward
Lasker, Marshall, and Maurice Fox. Spence recovered these games
from a carbon copy of a hand-written compilation made at the time of

the tournament; in consequence some of the 66 games are incomplete
because of illegibility. Many carry up-to-date light annotations, with
references to PCO.

The Carlsbad Congress of 1923 inaugurates Spence's foreign tourna-
ment series very handsomely. For the first time in English we have
the complete record of the most famous of Carlsbad meets; indeed,
even the German edition by Kagan (on which this is based) has been out
of print a long time. Alekhine, Bogoljuboff, and Maroczy tied for first
here, followed by such giants as Gruenfeld, Reti, Nimzovich, Theybal,
Yates, and ten others. The games are among the best ever played.
One of them is back-marker Spielmann's thrilling defeat of Alekhine
in the sixteenth round; another is Treybal's Rook and Pawn ending
against Bernstein; a third is Gruenfeld's equally masterful positional
game with Treybal. The games are not annotated, but here as in the
other two books there are complete tables, indexes, and round-by-round
commentary. The mimeographing is sharp and clear; spiral plastic
binding enables one to lay them out flat for playing over scores. Orders
should be directed to Spence at 208 South 25th Avenue, Omaha 2,
Nebraska.

TRI-STATE CHAMPIONSHIP

Youngstown, 1953

TRI-STATE CHAMPIONSHIP

1. Walter Mann (Columbus, O.)x	1	1	1	1	4-1
2. Allen DuVall (Charleston, W. Va.)x	1	0	1	1	3-1
3. Dr. S. Werthammer (Huntington)0	1	x	1	1	3-2
4. Paul Roth (Pittsburgh, Pa.)0	1	0	x	1	2 1/2-2 1/2
5. H. Heising (Ohio) 1 1/2-3 1/2; E. A. Coons (Pittsburgh, Pa.)1-4					

TRI-STATE JUNIOR CHAMPIONSHIP

1. Mahlon Cleaver (Allentown, Pa.)x	1	1	1	1	5-0
2. Don Burdick (Huntington, W. Va.)0	x	1	1	1	4-1
3. P. Rothman (Columbus, O.)0	0	x	1	1	3-2
4. Tim Anderson (Columbus, O.) 1-4; 5. Bruce Marples (W. Va.) 1-4; 6. Rae Stien- ing (Pittsburgh, Pa.) 1-4.1-4					

TRI-STATE OPEN, Section 1

1. Larry Lipking (Cleveland, O.)W10	W2	W5	W3	W6	5-0	15.00
2. Richard Ling (Fairborn, O.)W15	L1	W11	W10	W5	4-1	13.00
3. D. H. McClellan (Pittsburgh, Pa.)D4	W8	W7	L1	W11	3 1/2-1 1/2	16.00
4. M. McKinney (Youngstown, O.)D3	W14	W12	L5	W8	3 1/2-1 1/2	12.50
5. Richard Kause (Cleveland, O.)W16	W9	L1	W4	L2	3-2	16.00
6. Albert Ohralik (Cleveland, O.)L9	W15	W13	W7	L1	3-2	13.50
7. S. Ross Owens (Avon Lake, O.)W11	W13	L3	L6	W10	3-2	12.50
8. Willa W. Owens (Avon Lake, O.)D17	L3	W14	W12	L4	2 1/2-2 1/2	11.00
9. John Pusecker (Columbus, O.)W6	L5	L10	W15	D12	2 1/2-2 1/2	11.00
10. Charles Morgan (Huntington, W. Va.) 2-3 (15.50); 11. Lois Zaas (Cleveland, O.) 2-3 (12.00); Dr. V. S. Hayward (Huntington, W. Va.) 2-3 (10.50); 13. Richard Fremion (Clyde, O.) 2-3 (7.00); 14. Lee Schwartz (Lakewood, O.); 1 1/2-3 1/2 (10.00); Dr. C. D. King (Fremont) 1-4 (10.00); 16. M. Antunovich (Cleveland, O.) 1-4 (7.00); 17. Alan Smith (Warren, O.) 1 1/2-4 1/2 (5.50); 18. Glen King (Scottsdale, Pa.) 0-5 (5.00).2-3						

Smith and King withdrew after 3rd round; Dr. King and Antunovich and Fremion after 4th round.

TRI-STATE OPEN, Section 2

1. J. Glenn Waltz (Pittsburgh, Pa.)W14	W10	W2	D3	W6	4 1/2- 1/2	14.00
2. Elliott Stearns (Cleveland, O.)W12	W5	L1	W10	W3	4-1	15.00
3. Alex Spitzer (Pittsburgh, Pa.)W16	W6	W15	D1	L2	3 1/2-1 1/2	14.00
4. James Schroeder (Columbus, O.)D5	D15	W8	D7	W10	3 1/2-1 1/2	12.50
5. James Harkins (Shaker Hts., O.)D4	L2	W14	W9	D7	3-2	14.50
6. S. S. Keeney (Lakewood, O.)W13	L3	W16	W11	L1	3-2	13.00
7. Ronald Rosen (Cleveland, O.)L15	W12	W11	D4	D5	3-2	12.00
8. Joseph Kraja (Youngstown, O.)L10	W14	L4	W15	W12	3-2	10.50
9. Hugo Krumins (Cleveland, O.)L11	W18	W13	L5	D14	2 1/2-2 1/2	8.50
10. Rudd T. Neel (Huntington, W. Va.) 2-3 (16.00); 11. Norda Trop (Cleveland, O.) 2-3 (11.50); 12. Donald Zass (Cleveland, O.) 2-3 (11.00); 13. Mena Schwartz (Lakew- ood, O.) 2-3 (8.50); 14. Wayne Petran (Fairborn, O.) 1 1/2-3 1/2 (14.00); 15. Robert Larsen (Cleveland, O.) 1 1/2-3 1/2 (13.00); 16. Scott Andrews (Hubbard, O.) 1-4 (10.50); 17. Edna Smith (Fremont, O.) 1-4 (5.50); 18. Elam Hernley (Scottsdale, Pa.) 0-5 (5.50).2-3						

Hernley withdrew after 3rd round; Larsen, Andrews, and Smith after 4th
round. Solkoff points used.

EASTERN TENNESSEE OPEN

Bristol, 1953

1. Penquite (Ann Arbor, Mich.)	D7	W17	W4	W19	W6	W2	5 1/2- 1/2	19.25
2. Nedved (Ft. Campbell, Ky.)	W9	W18	W12	W3	W7	L1	5-1	17.00
3. Southern (Knoxville, Tenn.)	W8	W6	W16	L4	W12	W7	5-1	16.00
4. Mayer (Lexington, Ky.)	W22	D10	L3	W8	W16	W12	4 1/2-1 1/2	10.00
5. B. Pardue (Bristol, Tenn.)	L12	W21	W18	L7	W19	W11	4-2	8.00
6. Dr. Bond, Sr. (Norton, Va.)	W21	L3	W20	W17	L1	W10	4-2	7.00
7. R. Coveyou (Oak Ridge)	D1	W14	W10	W5	L2	L3	3 1/2-2 1/2	12.50
8. Wingard (Birmingham, Ala.)	L3	D9	W14	L4	W15	W16	3 1/2-2 1/2	8.25
9. B. Rucker (Bristol, Tenn.)	L2	D8	L11	W14	W20	W17	3 1/2-2 1/2	7.25
10. J. Roark (Lexington, Ky.)	W19	D4	L7	W11	D17	L6	3-3	8.25
11. L. Douglas (Emory, Va.)	W15	L16	W9	L10	W13	L5	3-3	7.50
12. L. Smith (Lexington, Ky.)	W5	W20	L2	W16	L3	L4	3-3	7.00
13. N. Caine (Bristol, Tenn.)	L20	L15	W21	W18	L11	W19	3-3	5.00
14. Anthony F. Distefano (St. Paul, Va.) 2 1/2-3 1/2 (3.00); 15. A. H. Bond, Jr. (Norton, Va.) 2-4 (4.00); 16. Tom Finucane (Blountville, Tenn.) 2-4 (3.00); 17. Robt. K. Salisbury (Russellville, O.) 2-4 (2.75); 18. Dick Sanders (Bristol, Tenn.) 2-4 (2.00); 19. J. W. Selby (Kingsport, Tenn.) 2-4 (2.00); 20. Francis Steppe (Bristol, Tenn.) 1-5 (3.00); 21. J. H. Smith (Kingsport, Tenn.) 1-5 (0.00); 22. Karl Smith (La Follette, Tenn.) 0-6 (0.00); 23. A. J. Bruner (La Follette, Tenn.) 0-6 (0.00); 24. Claude Burkhardt (Johnson City, Tenn.) 0-6 (0.00).2-3							

K. Smith and A. J. Bruner withdrew after 1st round; J. H. Smith and C.
Burkhardt after 5th round.

COLUMBUS CITY CHAMPIONSHIP

Columbus, 1953

A CLASS DIVISION

1. Walter Mannx	1	1	1	1	4 1/2- 1/2
2. Rex Naylor0	x	1	1	1	4-1
3. Kurt Loening0	0	x	1	0	2-3
4. Tim Anderson 1 1/2-3 1/2; 5. Jerome Cox 1 1/2-3 1/2; 6. Phillip Rothman 1 1/2-3 1/2.1-4					

B CLASS DIVISION

1. Gerard O. Plataux	1	1	1	1	4 1/2- 1/2
2. Paul L. Thompson1	x	1	1	1	4 1/2- 1/2
3. George Hudson0	0	x	1	1	3-2
4. Neil MacIvor 2-3; 5. H. E. Snyder 1-4; 6. Thomas Leonard 0-5.2-3					

THE UNITED STATES CHESS FEDERATION

NATIONAL CHESS RATINGS - FALL

National Chess Ratings, Fall 1953

By KENNETH HARKNESS

USCF Rating Statistician

IN THE Fall ranking list, which appears on these pages, we have made an important change in the method of presenting national ratings. Hitherto, we have published a player's highest semi-annual average over a period of two years. Now we publish the last semi-annual average. For the benefit of those who do not know the details of the rating system, a brief explanation of what this change means is necessary.

A player gets a "performance rating" for his score in each contest. Every six months he is issued an "average rating" which is recorded on his rating card in our files. (The figure is the arithmetical mean of his previous average and his current performance ratings.) It is these average ratings that appear in the ranking lists.

In order to stabilize classifications and give declining players a reasonable chance to recover their form without being demoted in rank, we have published hitherto the highest semi-annual average each player achieved during the two years prior to the closing date of each ranking list. However, the ratings are now being used to select teams, pair contestants in Swiss System tournaments, qualify players for championship tournaments, etc. For these purposes, it is necessary to know each player's current strength. Therefore, starting with the present list, we now publish the last semi-annual averages of all players.

This change will produce more fluctuations in published ratings than in the past. Up to now, a player with an established rating could be sure of remaining in his classification for at least two years, even though his current rating (in our files) had fallen below the minimum of his class. Now a player is demoted immediately if his current average declines below the minimum of his previous classification.

An exception is made for masters who decline slightly below the minimum of 2300 points for this classification. If a master's current average is between 2275 and 2299 points he is not demoted immediately and is allowed to retain the title of master for another six months. To retain his rank, however, he must earn an average rating of 2300 points or better before the closing date of the next list.

The vast majority of the ratings in the present list represent the current strength of players who have competed in rated tournaments this year. A few have not taken part in 1953 contests, so their ratings are one year or 18 months old. Previously rated players who have not competed since January 1st, 1952, are now considered inactive and their names are not published.

MASTERS EMERITUS

Jacob Bernstein (New York, N.Y.)
Roy T. Black Sr. (Williamsville, N.Y.)
Adolph J. Fink (San Francisco)
Albert W. Fox (Washington, D.C.)
Herman Hahlbohm (Chicago, Ill.)
Hermann Helms (New York, N.Y.)
Lewis J. Isaacs (Chicago, Ill.)

Charles S. Jacobs (Winchester, Mass.)
Abraham Kupchik (New York, N.Y.)
Harold M. Phillips (New York, N.Y.)
William A. Ruth (Collingswood, N.J.)
Morris A. Shapiro (Brooklyn, N.Y.)
I. S. Turover (Bethesda, Md.)

GRANDMASTERS

(2700 points up)

Reshevsky, S. (Brooklyn, N.Y.).....2739

SENIOR MASTERS

(2500 to 2699 points)

Byrne, Donald (Brooklyn, N.Y.).....2544
Byrne, Robert (Brooklyn, N.Y.).....2601
Denker, Arnold (New York, N.Y.).....2538
Kramer, Geo. (Aberdeen, Md.).....2564
Rossolimo, N. (New York, N.Y.).....2513

MASTERS

(2300 to 2499 points)

Berliner, H. (Wash., D.C.).....2413
Bernstein, S. S. (Brooklyn, N.Y.).....2300
Bisguier, A. B. (Bronx, N.Y.).....2460
Brasket, C. J. (Tracy, Minn.).....2313
Burger, K. H. (Brooklyn, N.Y.).....2306
Collins, J. W. (Brooklyn, N.Y.).....2325
Cross, J. B. (Glendale, Calif.).....2330
Dake, A. W. (Portland, Ore.).....2400
DiCamillo, A. (Philadelphia).....2336
Evans, Larry (New York, N.Y.).....2343
Gross, H. (San Francisco).....2314
Heerst, E. S. (New York, N.Y.).....2402
Hesse, H. V. (Bethlehem, Pa.).....2305
Hill, Bernard (New York, N.Y.).....2309
Horowitz, I. A. (New York, N.Y.).....2400
Kashdan, I. (Tujunga, Calif.).....2444
Kevitz, Alex. (Bronx, N.Y.).....2378
Lasker, Edw. (New York, N.Y.).....2276*
Levin, Eugene (Los Angeles).....2368
Levy, Louis (Paterson, N.J.).....2356
Mengarini, Dr. (New York, N.Y.).....2303
Moskowitz, J. (New York, N.Y.).....2330
Pavey, Max (Brooklyn, N.Y.).....2477
Pilnick, Carl (New York, N.Y.).....2322
Pinkus, A. S. (Brooklyn, N.Y.).....2276*

Rivise, I. (Los Angeles).....2276*
Santasiere, A. E. (New York, N.Y.).....2317
Schmidt, Dr. P. (Philadelphia).....2391
Seidman, B. (Brooklyn, N.Y.).....2403
Shainswit, G. (New York, N.Y.).....2281*
Sherwin, J. T. (New York, N.Y.).....2410
Steiner, Herman (Los Angeles).....2417
Steinmeyer, R. H. (St. Louis, Mo.).....2303
Suesman, W. B. (Providence, R.I.).....2307
Sussman, Dr. H. (Brooklyn, N.Y.).....2349
Zemgalis, E. (Seattle, Wash.).....2281*

*To retain master classification in next ranking list, an average rating of 2300 points or better must be earned before April 1st, 1954.

EXPERTS

(2100 to 2299 points)

Addison, W. G. (San Francisco).....2209
Almgren, Sven (Los Angeles).....2231
Anderson, F. S. (Univ. City, Mo.).....2135
Avram, H. (Arlington, Va.).....2200
Bakos, N. (New York, N.Y.).....2184
Baron, S. (Brooklyn, N.Y.).....2133
Biach, J. L. (Cranford, N.J.).....2107
Bolton, J. (New Haven, Conn.).....2192
Bomanov, V. (Philadelphia).....2171
Brandts, P. (New York, N.Y.).....2167
Bryan, W. J. (New York, N.Y.).....2135
Capps, C. M. (San Francisco).....2149
Chauvenet, L. (Silver Spring, Md.).....2129
Cohen, Sam (Chicago).....2169
Colon, Miguel (San Juan, P.R.).....2184
Curdo, J. A. (E. Lynn, Mass.).....2117
Currie, R. G. (San Francisco).....2178
Daly, H. B. (Sanford, Maine).....2158
Dietz, P. L. Jr. (Pittsburgh, Pa.).....2119
Donovan, J. F. (Brooklyn, N.Y.).....2139
Dreibergs, L. (Saginaw, Mich.).....2228
Eastman, G. C. (Detroit, Mich.).....2190
Elo, A. P. (Milwaukee).....2153

TEN TOP-RANKING U. S. PLAYERS

1. Samuel Reshevsky	2739	6. N. Rossolimo	2513
2. Robert Byrne	2601	7. Max Pavey	2477
3. George Kramer	2564	8. Arthur Bisguier	2460
4. Donald Byrne	2544	9. Isaac Kashdan	2444
5. Arnold Denker	2538	10. Larry Evans	2443

Fajans, H. (New York, N.Y.).....	2115	Borsodi, E. M. (New Orleans).....	2036
Gedance, M. N. (Las Vegas, Nev.).....	2103	Bottstein, Horst (York, Pa.).....	1900*
Goldwater, W. (New York, N.Y.).....	2149	Bourdon, Eli (Holyoke, Mass.).....	2036*
Grkavac, J. B. (Milwaukee).....	2134	Brickman, L. (Philadelphia).....	1951
Gross, Ronald (Compton, Calif.).....	2109	Brieger, R. S. (Houston, Tex.).....	2055
Gutekunst, T. C. (Allentown, Pa.).....	2118	Buerger, E. W. (Evanston, Ill.).....	1996
Hamburger, D. (Pittsburgh, Pa.).....	2148	Burdick, D. (Huntington, W. Va.).....	1942
Henkin, Dr. W. A. (Detroit, Mich.).....	2223	Burger, H. (Springfield, Mass.).....	1951*
Herzberger, Dr. M. (Rochester, N.Y.).....	2148	Burn, Murray (Bronx, N.Y.).....	1976
Howard, F. S. (E. Orange, N.J.).....	2252	Burton, C. M. (St. Louis, Mo.).....	2009
Hudson, J. A. (address unknown).....	2128	Byland, W. M. (Pittsburgh, Pa.).....	2085
Jakstas, K. (Chicago).....	2154	Cabot, F. J. III (Sturgin Bay, Wis.).....	2022
Kaufman, Allen (New York, N.Y.).....	2125	Callis, J. W. (Wichita, Kans.).....	1932
Keilson, Dr. J. (Cambridge, Mass.).....	2223	Carlyle, Dr. A. (St. Petersburg).....	1989
Klugman, R. (Bronx, N.Y.).....	2200	Caroe, Dr. A. E. (San Angelo, Tex.).....	1901
Kowalski, S.W. (Tracy Hills, N.J.).....	2190	Chase, G. W. (Los Angeles).....	2025
Krauss, Geo. (Jamaica, N.Y.).....	2241	Chu, H. H. (Philadelphia).....	1909
LeCornu, P. C. (Highland Pk, Mich).....	2262	Church, R. W. (Cambridge, Mass.).....	1925
Liepnieks, A. (Lincoln, Neb.).....	2105	Cintron, R. (San Juan, P.R.).....	2041
Lipkin, L. (E. Cleveland, O.).....	2100	Claitor, O. (Baton Rouge, La.).....	1900
Lombardy, W. J. (Bronx, N.Y.).....	2250*	Clark, D. L. (Milwaukee).....	1917
Lyman, S. (Dorchester, Mass.).....	2174	Cleaver, M. F. (Allentown, Pa.).....	1943
McClain, G. (San Francisco).....	2202	Cohn, Jean (Cleveland, O.).....	1928
McCormick, E. T. (E. Orange, N.J.).....	2175	Coleburn, N. L. (Wash., D.C.).....	2033
Magee, L. T. (Omaha, Neb.).....	2141	Coles, A. P. III (El Paso, Tex.).....	2006
Marchand, Dr. E. (Rochester, N.Y.).....	2195	Costello, J. L. Jr. (Harrisburg, Pa.).....	1907
Martin, R. J. (Santa Monica, Cal.).....	2224	Cotter, J. N. (Harrington, Del.).....	2062
Mednis, Edmar (New York, N.Y.).....	2273	Crittenden, Kit (Raleigh, N.C.).....	2089
Nedved, K. (Glencoe, Ill.).....	2127	Croft, F. (San Jose, Calif.).....	1938
O'Keefe, J. J. (Ann Arbor, Mich.).....	2200	Cummings, F. Jr. (Baton Rouge).....	2028
Pafnutieff, V. (San Francisco).....	2162	Czapski, Maj. E. (Roswell, N.H.).....	2048
Parmelee, C. L. (Newark, N.J.).....	2175	Dahlstrom, B. O. (Chicago).....	2067
Pitschak, R. (Cleveland, O.).....	2265*	Dana, E. T. (Los Altos, Calif.).....	1904*
Platz, Dr. J. (E. Hartford, Conn.).....	2290	Danon, Milton (Philadelphia).....	1934
Poschel, Paul (Urbana, Ill.).....	2167	Day, Frank A. (New Orleans, La.).....	1960
Powers, A. (Milwaukee).....	2149	DeFine, J. D. (Florissant, Mo.).....	1956
Ragan, J. V. (address unknown).....	2112	Diesen, C. E. (Tonawanda, N.Y.).....	1969
Reissman, P. (Sauturie, P.R.).....	2220	Dina, L. J. (Fort Worth, Tex.).....	2038
Remlinger, L. (Long Beach, Calif.).....	2116	Drauglis, E. (Philadelphia).....	1964*
Romanenko, I. (Plainfield, N.J.).....	2110	Dreher, E. (Willow Grove, Pa.).....	2047
Roth, Paul (Pittsburgh, Pa.).....	2124	Driver, P. B. (Ridley Pk, Pa.).....	1900
Rozsa, Dr. B. (Tulsa, Okla.).....	2135	Duchamp M. (New York, N.Y.).....	2049
Rubinow, Sol (Boston, Mass.).....	2215	DuVal, A. H. (Charleston, W. Va.).....	1991
Sandrin, Albert N. (Chicago).....	2101	Eastwood, R. C. (Homestead, Fla.).....	1913
Schmidt, Dr. B. W. (Homer, N.Y.).....	2165	Eaton, V. L. (Silver Spring, Md.).....	1962*
Shaffer, J. I. (Philadelphia).....	2142	Eckenrode, T. B. (Lancaster, Pa.).....	1939
Smith, K. R. (U.S. Army).....	2174	Egle, Dr. V. (Denver, Colo.).....	1938
Sobel, R. D. (Philadelphia).....	2227	Ellis, R. C. (Waynesville, N.C.).....	1915*
Somlo, E. S. (Cleveland, O.).....	2108	Eucher, Mark (Los Angeles).....	1937
Sorenson, F. A. (Pittsburgh, Pa.).....	2119	Fashingbauer, J. (Milwaukee).....	1968
Soudakoff, J. (New York, N.Y.).....	2187	Fawcett, E. O. (Lake Mary, Fla.).....	1925
Spiller, A. R. (U.S. Army).....	2100	Ferryman, F. F. (Middleton, O.).....	2085
Stapp, J. W. (Dallas, Tex.).....	2100	Firebaugh, R. D. (Robinson, Ill.).....	1914
Stark, M. C. (Bethesda, Md.).....	2266	Fischheimer, D. (Chicago).....	2001
Starn, Dr. A. (Brookline, Mass.).....	2147	Fleischer, M. (New York, N.Y.).....	1989
Stolzenberg, L. (Detroit).....	2210	Foot, F. (E. Lansing, Mich.).....	1907*
Strazins, A. (New Britain, Ct.).....	2108*	Francisco, O. (Milwaukee).....	1924
Sullivan, J. Jr. (Knoxville, Tenn.).....	2108	Freeman, C. (Fort Worth, Tex.).....	1923
Surgies, Mark (Milwaukee).....	2146	Gaba, Dr. H. B. (Detroit, Mich.).....	1900
Tautvaisas, P. (Chicago).....	2258	Gaigals, L. (Milwaukee).....	1930
Tears, C. F. Jr. (Dallas, Tex.).....	2116	Garver, R. L. (Tulsa, Okla.).....	2070
Thompson, D. I. (El Paso, Tex.).....	2181*	Gates, H. (Brookline, Mass.).....	2076*
Tullus, Koit (Seabrook, N.J.).....	2182	Gee, J. B. (Sacramento, Calif.).....	1930
Tums, J. M. (Chicago).....	2140	Georgi, H. J. (Kansas City, Mo.).....	2022
Turiansky, M. (Chicago).....	2273	Ghetzler, L. (San Antonio, Tex.).....	1955
Turner, Abe (New Rochelle, N.Y.).....	2201	Gilbert, J. T. (Dallas, Tex.).....	2062
Wachs, Saul P. (Philadelphia).....	2255	Gill, E. H. (Oklahoma City).....	1912
Warner, Eugene (Seattle, Wash.).....	2150	Gladney, W. F. (Baton Rouge, La.).....	1919
Werthammer, Dr. S. (Huntington).....	2150	Gleason, R. E. (Springfield, Mass.).....	1906
Whitaker, N. T. (Shady Side, Md.).....	2238	Glover, E. R. (Wynnewood, Pa.).....	1998
Wicher, Dr. E. S. (Atlanta, Ga.).....	2145	Godbold, E. (St. Louis, Mo.).....	1900
Wills, A. B. (New Orleans, La.).....	2127	Golec, F. J. (Chicago).....	2040
Winkelman, B. F. (Philadelphia).....	2103*	Gording, Dr. E. J. (Windber, Pa.).....	1918*
Yarmak, Saul N. (Passaic, N.J.).....	2176	Grant, Dr. R. (Monroe, La.).....	1923
Yatron, M. (Reading, Pa.).....	2137	Greenbaum, R. (New York, N.Y.).....	1901

*Provisional rating, representing performance in only one tournament.

CLASS A

(1900 to 2099 points)

Adams, P. C. (Chicago).....	1961
Adams, W. T. (San Jose, Calif.).....	1960
Adickes, W. C. Jr. (Asheville, N.C.).....	1984
Alexander, J. (San Diego, Calif.).....	1950
Aronson, Mrs. E. (Chicago).....	1953
Aronson, Ninus (Chicago).....	1905
Bain, Mary (New York, N.Y.).....	1902
Baker, Dr. E. S. (Up. Montclair, N.J.).....	1910
Barnes, G. S. (Minneapolis).....	2037
Barrett, J. J. (Buffalo, N.Y.).....	1977
Barry, J. E. Jr. (Ann Arbor, Mich.).....	1969
Berg, R. A. Jr. (Chicago).....	1970
Bersbach, E. (Sedalia, Ind.).....	2042
Berzarinis, Dr. (Glen Gardner, N.J.).....	1900*
Bills, W. A. (Houston, Tex.).....	2044
Blazek, W. F. (Cicero, Ill.).....	1937*
Blonarovych, L. (Newark, N.J.).....	1906
Blumberg, K. (Chicago).....	1909*
Boczar, A. (Irvington, N.J.).....	1986
Bolden, Dr. A. L. (Philadelphia).....	2035*

THE UNITED STATES CHESS FEDERATION

NATIONAL CHESS RATINGS - FALL

CLASS C

(Continued from page 7, col. 4)

Schatanoff, J. (New Freedom, Pa.).....1600*
Schick, Rev. W. (Menominee, Mich.).....1650
Schramm, H. (Sheboygan, Wis.).....1640
Schultz, R. H. (Chicago).....1500
Schumann, Wm. (Sheboygan, Wis.).....1600
Seeds, John S. (Altoona, Pa.).....1586*
Shaffer, E. E. (Asheville, N.C.).....1582
Shanahan, W. A. (Peoria, Ill.).....1508*
Shields, Morrell (Mt. Joy, Pa.).....1664
Simpson, F. F. Jr. (Augusta, Ga.).....1670
Skinner, Geo. (Ridgewood, N.J.).....1520*
Small, Geo. (Columbia, S.C.).....1532
Smith, B. M. (Schenectady, N.Y.).....1571
Smith, C. T. (Amherst, Mass.).....1641*
Smith, J. B. (E. Moline, Ill.).....1651*
Smith, Raymond A. (Reno, Nev.).....1571
Smith, Virgil (Hartsville, S.C.).....1550
Smith, W. D. (St. Paul, Minn.).....1621*
Smoron, Michael (Chicago).....1650
Spann, J. G. (Norman, Okla.).....1673
Spencer, E. C. (Buffalo, N.Y.).....1519
Springbett, G. (Hutchinson, Kans.).....1604
Stamm, Norval (Hastings, Mich.).....1600
Stearns, C. R. (Rapid City, S.D.).....1560
Stuber, N. L. (Johnstown, Pa.).....1580
Sube, Janis (Lancaster, Pa.).....1650*
Sveen, L. Jr. (Berkley, Mich.).....1559
Teichmann, M. E. (Nutley, N.J.).....1600*
Thies, D. E. (Evergreen, Colo.).....1546
Thompson, Earle (Clyde, O.).....1500*
Thompson, Lt. J. (Del Rio, Tex.).....1550*
Thompson, P. L. (Columbus, O.).....1673
Tollum, R. E. (Alexandria, La.).....1550*
Trinks, W. R. (Hammond, Ind.).....1580
Trotz, E. G. (Vermilion, S.D.).....1500*
Trumbull, S. L. (Columbus, O.).....1500
Turnbull, Richd. (Monmouth, Ill.).....1634*
Tyler, E. W. (Hackensack, N.J.).....1500*
Vandenburg, V. E. (Lansing, Mich.).....1650
VanderRoest, E. (Kalamazoo, Mich.).....1565
Van Dragt (Flint, Mich.).....1524
Venusaar, K. (Chicago).....1655
Vichules, L. (Northampton, Mass.).....1500*
Virgin, Jerry (Tulsa, Okla.).....1666
Waag, Louis (Grand Forks, N.D.).....1694
Waight, D. W. (Carlisle, Pa.).....1650*
Waldrep, Carl E. (Chicago).....1654*
Waldorf, D. A. Jr. (New Orleans).....1686
Watson, Dr. E. (Natchitoches, La.).....1600*
Webbert, Wm. (Salt Lake City).....1565
Weber, J. H. (Lincoln, Neb.).....1500
Weberg, Kenneth (Salina, Kans.).....1557
Werber, E. G. (Tampa, Fla.).....1600
Werth, Dr. R. (Moorhead, Minn.).....1637
Wettstein, R. E. (Appleton, Wis.).....1587
White, C. M. Jr. (San Jose, Cal.).....1600
Whitlow, D. O. (Chicago).....1676
Widney, W. A. (New York, N.Y.).....1532
Wild, W. G. (Storm Lake, Ia.).....1527
Wingard, C. (Birmingham, Ala.).....1624
Wodtke, W. C. (Vero Beach, Fla.).....1592*
Wong, Ben (San Francisco).....1523*
Wooldridge, S. (River Edge, N.J.).....1514
Wyman, Theo. Jr. (Los Angeles).....1615
Yeagley, W. B. (York, Pa.).....1675

*Provisional rating representing performance in only one tournament.

CLASS D

(Below 1500 points)

Albright, G. A. (Ft. Worth, Tex.).....1400
Allison, M. H. (Columbus, O.).....1400

CLASS D

(Continued from page 8, col. 1)

Apelman, J. (New Orleans).....1400
Beer, F. H. (Pittsburgh, Pa.).....1479
Berkowitz, A. W. (Morristown, N.J.).....1400
Bolliger, E. A. (Ft. Worth, Tex.).....1440
Bradley, Sam (Vero Beach, Fla.).....1300*
Brindley, Dr. C. G. (Borger, Tex.).....1475
Burkhart, F. (New Orleans).....1426*
Chaney, B. E. (Baton Rouge).....1450*
Culbertson, Mrs. N. (York, Pa.).....1400*
Darmer, F. E. (Des Moines, Ia.).....1423*
De Busk, Jimmy (Ft. Worth, Tex.).....1300*
De Vine, John (Pt. Arthur, Tex.).....1350*
Elkins, Elsie (Ft. Worth, Tex.).....1350*
Ellison, D. H. (Rapid City, S.D.).....1440
Fitzgerald, A. (New Orleans).....1438*
Flaherty, H. E. (Bradford, Pa.).....1411*
Gayden, J. J. Jr. (Columbia, S.C.).....1454
Glietsch, M. C. (Dallas, Tex.).....1380
Gould, H. W. (De Kalb, Ill.).....1400*
Graham, C. W. (Kansas City, Mo.).....1431*
Graves, Carl (Ft. Worth, Tex.).....1451*
Graves, Frank (Ft. Worth, Tex.).....1485
Gray, Larry (Homestead, Fla.).....1400*
Green, Doyle (Ft. Worth, Tex.).....1350*
Hemphill, G. (Ft. Worth, Tex.).....1300
Herring, G. C. Jr. (Dallas, Tex.).....1356*
Hoffman, John (Kans. City, Mo.).....1350
Houghton, R. G. (Newark, N.J.).....1350*
Josephson, H. (Libertyville, Ill.).....1450
Lacey, J. C. Jr. (Sacramento, Cal.).....1440
LaPire, Joe (Osnabrook, N.D.).....1404*
Lindberg, G. (Davenport, Ia.).....1469
Logan, Alex (Harrisburg, Pa.).....1400*
Madison, Berg (Moline, Ill.).....1332
Mumma, R. (Mechanicsburg, Pa.).....1450*
Murdock, R. S. (Urbana, Ill.).....1440*
Nail, W. W. (Arabi, La.).....1357*
Nearing, Pauline (Decatur, Ill.).....1409
Offenberg, R. D. (Bronx, N.Y.).....1360*
Olin, Richd. (Tulsa, Okla.).....1436
O'Shaughnessy, L. M. (St. Paul).....1466*
Peterson, L. A. (Kansas City, Mo.).....1481
Platau, G. O. (Columbus, O.).....1400*
Poulter, F. S. (Ft. Worth, Tex.).....1353
Roberts, E. W. (Presho, S.D.).....1450
Rogers, Mrs. H. (New York, N.Y.).....1443
Rudin, Larry (Venice, Calif.).....1440*
Scovel, H. W. (Chicago).....1377
Shannon, S. F. (Ft. Worth, Tex.).....1412*
Solano, Jos. (Lexington, Mass.).....1450*
Swanson, N. Jr. (Wauwatosa, Wis.).....1479*
Treuil, P. (Cambridge, Mass.).....1350*
Van Sickle, J. S. (Shreveport, La.).....1369
Vignes, Maurice (New Orleans).....1374*
Willard, W. A. L. Sr. (Bay City).....1408
Woo, Wm. (Kansas City, Mo.).....1400*

*Provisional rating, representing performance in only one tournament.

NON-RESIDENT USCF MEMBERS

Anderson, F. R. (Toronto, Ont.).....2403
Barrs, L. (Bowness, Alberta).....1752
Bohatirchuk, Dr. F. (Ottawa, Ont.).....2420
Florida, J. R. (Havana, Cuba).....2220
Fox, Maurice (Montreal, Que.).....2260
Garellick, A. (Outremont, Que.).....1968
Gonzalez, Dr. J. (Havana, Cuba).....2396
Haley, P. G. (Sarnis, Ont.).....2002
Kagetsu, J. (Toronto, Ont.).....1952
Marquez, L. E. J. (Columbia).....1686
Older, J. F. (Guatemala).....1844
Stumpers, Dr. F. L. (Netherlands).....2071

COLORADO

*Colorado Open Championship, Denver, July 18-20, 1953.....54
CONNECTICUT
New Haven Chess Club Championship, December 1952-May 1953.....8
DELAWARE
Delaware Open Championship, Wilmington, May 24-25, 1953.....8
FLORIDA
*Florida Chess League Championship, Vero Beach, Sept. 5-7, 1953.....26
South Florida Championship, Miami, July 3-5, 1953.....16
*Challenge Cup Tournament, Miami, May 4-18, 1953.....5
*City of Miami Championship, Sept. 12-14, 1953.....12
IDAHO
Idaho State Invitational Tournament, Boise, May 29-31, 1953.....14
ILLINOIS
*Illinois State Championship, Chicago, Sept. 5-7, 1953.....60
Chicago City Chess League Championship (dates not reported).....17
Latvian Tournament, Chicago, May 29-31, 1953.....6
Decatur City Tournament, Sept. 1952-March, 1953.....11
INDIANA
Indiana State Championship, Logansport, May 16-17, 1953.....44
Indianapolis YMCA Open Tournament, May 9-10, 1953.....14
KANSAS
Kansas State Championship, Wichita (no dates reported).....18
LOUISIANA
*Louisiana State Championship, Baton Rouge Sept. 5-7, 1953.....29
MASSACHUSETTS
Massachusetts Open Championship, Springfield May 29-31, 1953.....26
Massachusetts Open Class B Chp., Springfield, May 29-31, 1953.....7
Boston City Championship, 1952 (no dates reported).....16
Boston City Class B Championship, 1952 (no dates reported).....16
MICHIGAN
Kalamazoo Valley Tournament, Kalamazoo Jan.-April, 1953, prelims.....18
finals.....7
MISSOURI
St. Louis District Championship, Feb. 7-April 19, 1953.....11
MONTANA
Montana State Championship, Great Falls, May 2-3, 1953.....30
NEBRASKA
Lincoln Chess Club Spring Tournament, April 14-June 5, 1953.....20
Omaha-Lincoln Intercity Championship, Lincoln 1952-53.....3
Swenson Memorial Tournament, Omaha (no dates reported).....8
NEW HAMPSHIRE
New Hampshire State Championship, Concord April 26-27, 1953.....24
NEW JERSEY
*New Jersey Open Championship, Hackensack, Sept. 5-7, 1953.....32
*New Jersey Intercollegiate Championship, Newark, April 25-26, 1953.....7
Plainfield Chess Club Championship (no dates reported).....12
*Log Cabin Chess Club Championship, W. Orange (no dates reported).....10
NEW MEXICO
*New Mexico Open Tournament, Albuquerque Sept. 5-7, 1953.....28
NEW YORK
New York State Championship, Cazenovia, Aug. 29-Sept. 7, 1953.....35
New York State "Experts" Tmt., Cazenovia, Aug. 29-Sept. 7, 1953.....12
London Terrace Chess Club Championship, New York Dec. 52-June, 1953.....9
Marshall Chess Club Chp. Preliminaries, New York, 1953 (4 sections).....44
NORTH CAROLINA
North Carolina State Championship, Durham May 1-3, 1953.....12
Southeastern N. Carolina Open Tournament, Wilmington, May 5-July 14, 1953.....9
Asheville Open Tournament, July 15-Aug. 15, 1953.....13
Asheville Chess Club Tournament, July 3-7, 1953.....6
OHIO
Ohio State Championship, Columbus, Sept. 5-7, 1953.....47
Central Ohio Tournament, Columbus, April 24-May 22, 1953.....10
Cleveland City Championship, March-April, 1953.....9
Cleveland City Open Championship, Mar. 29-Apr. 29, 1953.....20
Cleveland City Junior Championship, Mar.-Apr., 1953.....3
OREGON
Oregon Open Championship, Portland 1953 (dates not reported).....19
PENNSYLVANIA
*Pennsylvania State Championship, York, Sept. 5-7, 1953.....67
Lehigh Valley Championship, Allentown 1953 (dates not reported).....12
Germantown Y Chess Club Chp., Philadelphia Mar. 6-June 19, 1953.....14
SOUTH CAROLINA
South Carolina Open Championship, Columbia Aug. 21-23, 1953.....19
Palmetto Chess Club Championship, Columbia, October, 1953.....14
SOUTH DAKOTA
*South Dakota Open Tournament, Vermilion, May 21-23, 1953.....8
TEXAS
*Texas State Championship, San Antonio, May 30-31, 1953.....38
*North Texas Open Championship, Dallas, July 3-5, 1953.....16
*South Texas Open Championship, Corpus Christi, May 2-3, 1953.....22
Panhandle Open Tournament, Borger, Aug. 29-30, 1953.....22
Corpus Christi Chess Club Tournament, Preliminaries Feb. 19-Apr. 23.....24
Corpus Christi Chess Club Tournament, Class A finals, May 7-June 25.....7
*Dallas City Championship, 1953 (dates not reported).....28
San Antonio Woodpushers Tournament, Jan. 11-May 16, 1953.....10
VIRGINIA
Virginia State Championship, Richmond, Sept. 5-7, 1953.....24
WASHINGTON
Washington State Open Championship, Seattle, Sept. 5-7, 1953.....24
Seafair Tournament, Class A, Seattle 1953 (dates not reported).....6
WEST VIRGINIA
West Virginia State Championship, Huntington Sept. 5-7, 1953.....12
West Virginia Open Tournament, Huntington, Sept. 5-7, 1953.....8
WISCONSIN
Wisconsin State Championship, Fond du Lac, May 1-3, 1953.....60
Madison City Championship, Dec. 1952-July, 1953.....5
Milwaukee County Championship, March-May, 1953.....56
PUERTO RICO
San Juan City Championship, 1953 (dates not reported).....17
CANADA
Canadian Championship, 1953.....9
Northern Saskatchewan Championship, Saskatoon.....8
British Columbia Championship.....8
Montreal City Championship.....18
Toronto Open Championship.....7
Toronto City Championship.....6

(Please turn to page 11, col. 1)

RATED TOURNAMENTS

To compute ratings for the Fall 1953 official ranking list, the performance of 2435 players in 172 tournaments and matches were measured and recorded. The rated contests are listed below.

	No. of Players
NATIONAL	
*United States Open Championship, Milwaukee, Wis. Aug. 10-21, 1953.....181	
*United States Junior Championship, Kansas City, Mo. Aug. 3-8, 1953.....24	
*U.S. Championship Candidates Tournament, Philadelphia Sep. 11-20, 1953.....23	
REGIONAL	
Carolinas Championship, Wilmington, N.C. June 12-14, 1953.....18	
Midwest Open Championship, Omaha, Neb., Sep. 5-7, 1953.....32	
*Southern Chess Association Chp., Columbia, S.C., July 3-6, 1953.....36	
*Southwestern Open Championship, Houston, Tex., Sept. 5-7, 1953.....46	
*Trans-Mississippi Championship, Davenport, Ia., June 5-7, 1953.....75	
CALIFORNIA	
California State Championship, Hollywood, Sept. 5-7, 1953.....10	
California Open Championship, San Jose, Sept. 5-7, 1953.....66	
Northern Calif. Qualifying Tmt. San Francisco, July 25-Aug. 8, 1953.....16	
Central Calif. Qualifying Tmt., Sacramento (dates not reported).....8	
Southern Calif. Qualifying Tmt. Hollywood (dates not reported).....33	
Sacramento City Championship, April 25-26, 1953.....6	
Capitol City Chess Club Championship, (dates not reported).....18	
Chess Friends of Calif. Championship, San Francisco (no dates).....4	
Russian Chess Club Championship, San Francisco (dates not reported).....15	



THE ELEMENTS OF CHESS

By International Master HERMAN STEINER

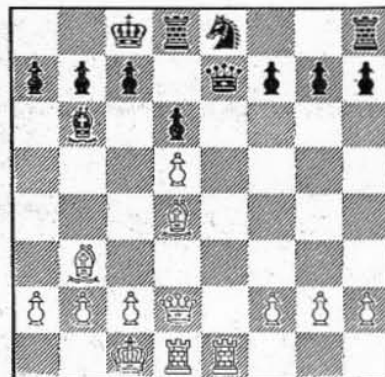
Hypothetical Game

Illustrating Principles, Rules, and Objectives
(Continued from issue of November 20)



After Black plays 13... Kt-Q2 Nullifies threat of Third Objective. Sacrifices pawn for counter attack.

Black used a diverting maneuver when he sacrificed the King-Knight Pawn by playing 13... Kt-Q2. Black might have played 13... Kt-K1, but this move would disconnect the Rooks and after White's play of 14. Kt-Q5, BxKt; 15. PxKt,



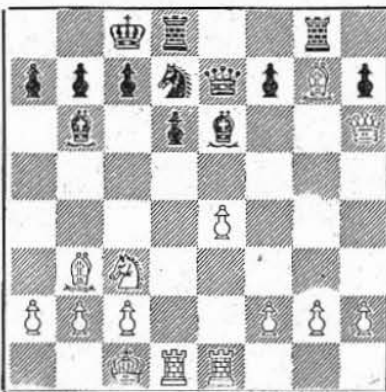
White would control the open King file.

What are the chances of grabbing the offered Pawn, after the text move 13... Kt-Q2? To the greedy player anything looks good which is not nailed down. At first glance, it looks as though the Knight-Pawn cannot be taken with the Bishop, for this move would be answered at once by KR-Kt1. If the attacked Bishop were to move, it would be followed by RxP, winning back the Pawn with advantage. This is where greediness ruins a well-played game. If White looks at the position superficially, and concludes that after 14. BxP, KR-Kt1, he can defend his Bishop by playing 15. Q-R6.

(See diagram next column)

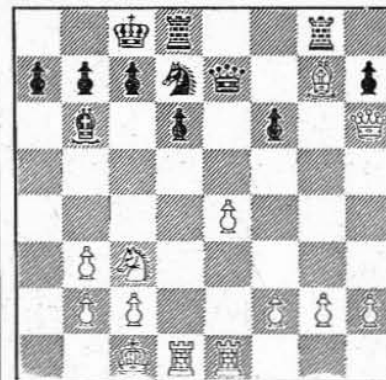
he is apt also to overlook the fact that the Bishop becomes an immobile target. This target can be attacked with more of the opponent's Forces than it can be defended with. The White Bishop is imprisoned by Black's P-KB3.

Before the move Black should review the principles of blunders, and ask himself, "Can my opponent capture with his Queen,

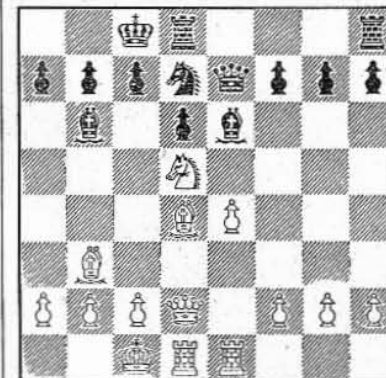


Rooks, Bishops, Knights, Pawns, and King?" If so, he would not have played 14... P-KB3, because White would have answered with 15. BxB, removing the Queen from the target. White would follow with Kt-Q5. Black would have lost an opportunity to win the Bishop on his Kt2.

The principle of blunders tells him what to play. "What does my opponent threaten? Are there any captures, checks, pins, forks? With what result? Can I capture with any of my pieces, and what will be the result?" The move should be 15... BxB; 16. RPxB, P-KB3, which wins the Bishop.



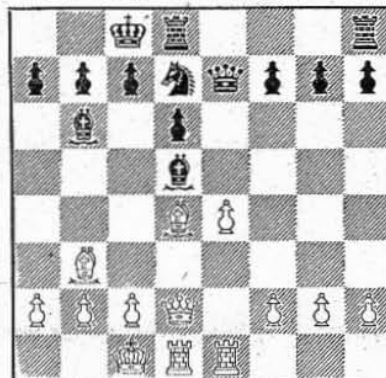
Leaving for the moment our discussion of hypothetical positions and questions and answers, let us go back to our plan for making the fourteenth move. Now 14. Kt-Q5 is the correct one for White.



After White plays 14. Kt-Q5 Threat of Third Objective. Controls greatest number of opponent's squares.

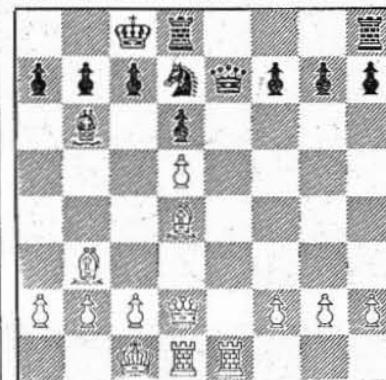
It not only controls the maximum number of squares of his opponent's territory but attacks his opponent's Queen, nullifies the power of the Bishop, and all in all occupies a powerful square for the Knight. You should be certain that if an attacking move is permitted, you must be able to exchange it (Fourth Objective) or failing that, dislodge it. If neither of these (to exchange or to dislodge) is possible, it is ample proof of poor tactics, for it cripples the defenses of whoever allows it.

So Black plays 14... BxKt.



After Black plays 14... BxKt Nullifies Third Objective. Fourth Objective achieved.

This gives White his Second Objective, but when there is a choice between yielding an Objective or being strangled, the first of the two evils is, of course, preferable. White answers with 15. PxB.



After White plays 15. PxB Fourth Objective achieved with gain of time and space. Controls greatest number of opponent's squares. Second Objective achieved.

This is the best continuation, although BxB could also be used here, but with less effect. A decided momentum is produced when Rook attacks Queen — a gain of Time and Space is made by forcing the opponent to move his Queen, and the Second Objective is achieved.

(To be continued)

BOOST AMERICAN CHESS!

Chess Life In New York By Eliot Hearst

WOMEN'S chess takes the spotlight as once again the members of the fair sex battle it out in the U.S. Women's Championship for the right to succeed Mary Bain as national titlist. Mrs. Bain, who took the championship with an 8½-½ score in the 1951 tourney, this year was unable to defend her title; working full time as a fashion designer did not permit her to undertake the rigorous schedule a round-robin tourney requires. It is to be regretted also that the late notice given for the playing dates of the tourney and the proximity of these dates to the Christmas holidays prevented the competition of such top-notch woman experts as Mrs. Lena Grummette and Mrs. Gregor Piatigorsky of California, Miss Lucille Kellner of Detroit, and Mrs. Willa Owens of Cleveland — all of whom impressed in the last ladies' championship. This observer believes the current tournament to be centered among three of the contestants — with the title probably to go either to Mrs. G. K. Gresser or Miss N. May Karff, both former champs, or to Mrs. Kathryn Slater, who has been improving steadily the past few years and has been holding her own recently with some of the Marshall C.C.'s top male experts! The tourney playing schedule calls for several rounds each at the Marshall, Manhattan, and London Terrace Chess Clubs, all in metropolitan New York; be sure to see the next issue of CHESS LIFE for complete details of this important tournament. **IN BRIEF:** Tony Saïdy, last year's Marshall Junior Champ, is currently in first place in the club's senior championship! His score of 5-2 sets the pace while Jack Collins 4½-½, Jimmy Sherwin 4½-2½, Tony Santasiere 4-3 and Richard Einhorn 3½-2½ are the other top scorers. Leaders in the Manhattan CC Championship preliminaries are: Section I D. Vano 3½-1½, A. Kaufman 3-1, and R. Klugman 3-2 and Section II E. McCormick 3½-½, Mrs. Gresser 3½-1½, and W. Bryan 2½-1½. Two qualify from each section into the finals which begin shortly. . . . Willy Lombardy of LaSalle High School is unbeaten in the N.Y. Interscholastic Championship and should easily take the title which last year's champ, Edmar Mednis of Stuyvesant H.S., was unable to defend this year. Lombardy has also scored two straight wins to take an early lead in the annual Marshall CC Junior Championship.

CLEVELAND SCHOLASTIC LEAGUE: Ever growing, this year the league will field 16 teams: Benedictine, Cathedral Latin, Cleveland Heights, East High, East Tech, Gilmour, Glenville, Holy Name, John Adams, John Marshall, Parma, St. Edwards, St. Ignatius, St. Joseph, Shaker, and West Tech.



GAMES BY USCF MEMBERS

Annotated by Chess Master JOHN W. COLLINS, New York State Champion, 1952

USCF MEMBERS: Submit your best games for this department to JOHN W. COLLINS, 91 Lenox Road, Brooklyn 26, N.Y. Space being limited, Mr. Collins will select the most interesting and instructive for publication. Unless otherwise stated notes to games are by Mr. Collins.

DONALD BYRNE

Donald Byrne proved he is one of America's leading masters by winning the U. S. Open Championship at Milwaukee in August. He scored 10½-2½, defeating Florido, Steiner, Daly, Turiansky, White, Pitschak, Dake, Rozsa, and Pavay, drew with Sherwin, Hearst, and Rossolimo, and lost only to Keritz.

Byrne, twenty-three and a native of Brooklyn, N. Y., is a product of the Brooklyn Tech H. S. Chess Team, and the Hawthorne and Manhattan Chess Clubs. Prior to his latest achievement, he tied for first and second with Franklin Howard in the 1952 Log Cabin C. C. Tournament, finished second in the 1951-52 Manhattan C. C. Championship, and ended in third place in the 1952 Open Championship at Tampa. And for years he has been a frequent winner in the weekly rapids at the Marshall and Manhattan Clubs.

Donald, having majored in English Literature, was graduated from Yale University and is now doing post-graduate studies at Michigan State University.

In the following game Byrne plays his favorite variation of the Sicilian Defense, works up a king-side attack, and finally out-combines his opponent.

SICILIAN DEFENSE

MCO: page 286, column 107

U. S. Open Championship
Milwaukee, 1953

White DR. BELA ROZSA DONALD BYRNE
1. P-K4 P-QB4 4. KtXP Kt-KB3
2. Kt-KB3 P-Q3 5. Kt-QB3 P-QR3
3. P-Q4 PXP

This is the Hague System (in conjunction with P-QKt4). D. Byrne wins game after game with it.

5. P-KR3
6. B-K2 and 6. P-KKt3 are the old standbys. But 6. B-Q3 is quite ambitious and is currently giving Black some trouble. The text is slow and fore-shadows a weakening of the king-side pawn-formation.

6. P-K3 7. P-KKt4? P-Q4!
Just the right center-counter to White's premature wing-advance.

8. B-Kt5
Also favorable to Black are 8. PXP, KtXP; and 8. P-K5, KKt-Q2.

8. PXP
Black cannot hold this Pawn, but he can better his chances while White is busy regaining it.

9. B-Kt2
Not 9. QKtXP? Q-R4ch; 10. B-Q2 (10. Q-Q2 is met in like manner) Q-K4! and Black wins a piece.

9. B-Kt5!
This is more than a good developing move. It prevents White from recapturing his Pawn immediately, under the most favorable circumstances.

10. O-O
For if 10. BxP? Q-R4; (threatening 11. QxB; 11. BxKtch; and 11. KtXB) 11. BxKt, BxKtch; 12. PxB, QxPch; 13. K-B1, PxB; and Black is a Pawn ahead.

10. BxKt
Saddling White with weak Pawns on both sides of the board.

11. PxB QKt-Q2 13. BxKt
12. BxP Q-R4
Because his KB, QB, and QBP(B3) are en prise, White must relinquish the advantage of the Two Bishops.

13. KtXB 14. B-Kt2 P-KR4!
Black plays both sides of the board, works on the weak Pawns, and opens a file on the king-side.

15. Kt-B6
White likes to attack too; But 15. Q-K2 is preferable.

15. Q-B2
If 15. QxBP?; 16. Q-Q8 mate. And if 15. PxB; 16. BxPch, wins the exchange. On the other hand, the text threatens 16. PxB; and 16. PxB; 17. PxB?, Q-R7 mate.

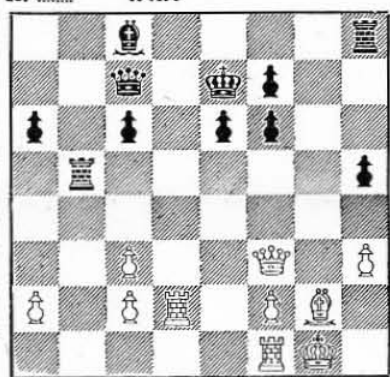
16. P-Kt5
Forced.

16. PxB 17. PxB PXP
Now the Kt-file can be utilized for an attack.

18. Q-B3
Hitting two BPs.

18. K-K2 19. QR-Q1
White must avoid the ending. E.g., 19. QxBP, QxQ; 20. BxQ, R-QR2!; (threatening 21. R-B2; 22. B moves, RxB) 21. QR-Kt1, R-B2; 22. R-Kt6, R-Q1; (threatening to win the Bishop with 23. R-Q3) 23. B-B3, RxB; 24. R-Kt3 (if 24. BxB? RxB; wins right off) RxB; 25. BxB, RxB; and Black's two pawn plus wins.

19. R-QKt1 20. R-Q2
Now if 20. QxP, QxQ; 21. BxQ, R-Kt7; and Black goes ahead a Pawn again with 22. RxBP; or 22. RxBP.
20. R-Kt4



A great Rook—both offensively and defensively.

21. P-KR4
To prevent 21. R-Kt4.

21. R-KKt1
Black protects his QBP.

22. P-B4
Better is 22. KR-Q1.

22. R-KB4 23. Q-R3ch P-B4
Black has maneuvered both Rooks into the game, made his King and queen-side secure, and set-up the winning counter-attack. The threats are now 24. Q-B5; 24. R-B5; followed by 25. RxBP; or 25. R/5-Kt5; and 24. B-Kt2. White cannot defend against them all.

24. R-Q3 R-B5 26. R-Q1
25. R-KKt3 RxBP!
Not 26. RxB? Q-R7 mate.

26. RxB 27. PxB
If 27. QxR, QxQ; 28. PxB; RxB; and Black has an easily won end-game.

27. R-Kt5 28. K-B2
Of 28. R-Q3, P-R5; 29. PxB, B-Kt2; 30. R-Q2, R-Kt6; 31. Q-B1, Q-B5; and Black wins.

28. P-R5 29. PxB
Or 29. R-Q3, PxBch; 30. RxB, Q-B5ch; 31. Q-B3, Q-Q5ch; and wins.

29. B-Kt2! 30. R-KKt1
If 30. BxB, Q-R7ch!; 31. K-K3 (if 31. K-K1, R-Kt8 mate) R-Kt6ch; 32. B-B3, RxBch; 33. KxR, Q-R6ch; 34. K-K2, QxQ; and wins.

30. Q-B5ch 31. Resigns
White must lose a piece.

CORRECTION

Mr. Korn indicates that in the Avram-Berliner game (CL Nov. 5) the MCO reference is incorrect. The reference should be to note (j) and not note (f), although the actual line of play in the game does

not conform to suggested "best" lines in MCO.



DRAWN

Some dismiss draws as being unworthy and dull. This rather amazing one shows how wrong such opinions can be.

DANISH GAMBIT

MCO: page 20, column 4

Masters Invitational 30-30 Tourney
New York, 1953

Notes by U. S. Master
Dr. Harold Sussman

White H. SEIDMAN Black DR. H. SUSSMAN

1. P-K4 P-K4 3. P-QB3 P-Q4!
2. P-Q4 PXP 4. KPXP QXP
A strong alternative is 4. Kt-KB3 to which White should retort either 5. B-Kt5 ch or 5. Kt-B3.

5. PXP Kt-QB3 7. B-K2 Kt-B3
6. Kt-KB3 B-Kt5 8. Kt-B3 B-Kt5
It is safer to try 8. Q-R4 at once. The text ultimately yields White a "2 Bishop" game and a strong pawn center but Black's pieces achieve sufficient counter-play in the center.

9. O-O Q-R4 10. B-K3! O-O
The win of a pawn here is too risky, i.e., 10. BxKt; 11. PxB, QxBP; 12. R-B1, Q-R6; 13. Kt-K5, BxB; 14. QxB, Q-Q3; 15. Q-B4, etc. The alternative of 10. O-O would give White strong attacking possibilities on Black's K-side.

11. P-KR3! B-R4 12. Q-Kt3
The purpose of his 11th move is now clear, for had the play been omitted Black could now reply B-K3.

12. QR-Q1 14. PxB Kt-Q4!
13. P-R3 BxKt 15. B-Q2
He eyes the Queen malevolently but her Majesty is nevertheless quite safe despite appearances.

15. Kt-Kt3
The threat is 16. BxKt followed by 17. KtxQP.

16. P-Kt4
He avoids 16. P-B4?, KtxQP!; 17. KtxKt, QxB and Black is a clear pawn up.
16. B-Kt3 17. B-QKt5
Black looks lost but actually has some advantage. White still doesn't threaten P-B4 for KtxQP! is too good.

17. B-B7
A crucial decision with time already running out. A good try is 17. B-K5 and Black's threats are powerful.

18. Q-Kt2 Kt-R5 20. QR-Kt1 Q-B5!
19. QxB QxB 21. RxB RxB!
Not 20. KtxQP?; 22. KtxKt, RxB; 23. R-Kt4, Q-Q6; 24. QxKt, RxB; 25. BPxB, QxB; 26. QxP with one pawn up.

22. Q-B5
To defend against Black's threatened RxBP! If instead 22. KtXR, KtxKt; 23. Q-Q1, Kt-K7 ch! is very strong.

22. P-Kt3
Or 22. R-Q4; 23. Q-B4, QxQ; 24. BxQ, KtxBP with the better ending for Black. The line played is very risky, but good 30-30 tactics.

23. Q-Kt5 R-Q4 26. BxR Kt-K7ch
24. Q-R6 KtxP 27. K-R2 Kt-K4
25. Kt-Kt5 RxB 28. B-B6



What's this? Will Black be mated after all? Let's check at B6!
28. Kt-B6ch 29. K-R1
This leads to an amusing draw but the

alternative 29. K-Kt2 is no better, i.e., 29. Kt-B5 ch; 30. K-Kt3! and Black stands well, but not 30. KxKt?, Q-Q6 ch; 31. KxKt, Q-Q7 ch, winning the Queen for R and B.

29. Kt-Kt6ch! 32. KxKt Q-R8ch!
30. K-Kt2 QxRch 33. K-Kt3! Q-Kt8ch
31. KxKt(Kt3) Drawn

The game is drawn for if 34. K-R4?, QxBP ch; 35. K-Kt5, Q-K6 wins the Queen, and on 34. K-B4, Q-B8 ch wins it once more. A final try would be 34. K-B3, Q-R8 ch; 35. K-K2, R-Kt1 and Black will win the Bishop and the game along with it.

A very tense hard tactical game, even if "only a draw!"



FRANK ANDERSON

Frank Anderson of Toronto, Co-Champion of Canada, scored 9½-3½ to finish sixth in the U. S. Open. Here is one of his best games in the event.

FRENCH DEFENSE

MCO: page 63, column 91

U. S. Open Championship
Milwaukee, 1953

White F. ANDERSON Black H. KALNINS

1. P-K4 P-K3 3. Kt-Q2
2. P-Q4 P-Q4

The Tarrasch Variation, which is played to avoid the Winawer Variation—3. Kt-QB3, B-Kt5.

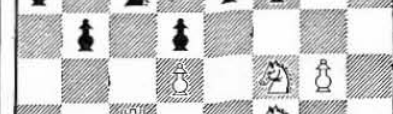
3. Kt-KB3
Black must always worry about his isolated QP on 3. P-QB4; 4. KPXP, KPXP; 5. B-Kt5ch. An interesting suggestion is 3.

4. P-K5 KKt-Q2 6. P-QB3 Kt-QB3
5. B-Q3 P-QB4 7. Kt-K2 Q-Kt3
Or 7. P-B3.

8. Kt-B3 PXP 9. PxB B-Kt5ch
Stronger than 9. P-B3.
10. B-Q2 BxBch 11. QxB Q-Kt5
Black plays for an ending in which he has only a slight inferiority.

12. R-QB1 QxQch 13. KxQ P-B3?
Premature. Best is 13. P-QR3.
14. B-Kt5!
Kt(Q2)-Kt1

A sad necessity.
15. PxB PxB 19. R-B3 P-Kt4
16. Kt-B4 K-B2 20. B-B2 R-R2
17. KR-K1 P-QR3 21. P-KKt4
18. B-R4 B-Q2



Threatening 22. P-Kt5, followed by the exchange of KKtP for BP in order to get control of K5.

21. R-Kt1 23. Kt-R5 Kt-K2?
22. P-KR3 P-R3
Bad. Better is 23. Kt-Q1; although White remains with a distinct advantage.

24. R(B3)-K3
Kt(Kt1)-B3
25. Kt-B4 26. B-B5!
Kt(B3)-Q1

This fine move forces open the K-file and saddles Black with three sets of isolated pawns.

26. KtXB
There is now way to guard the KP the necessary fifth time. And if 26. PxB; 27. RxBch, wins.
27. PxB R-K1
If 27. PxB; 28. R-K7ch, K-B1; 29. KtxP, wins.

GUEST ANNOTATORS

Dr. Harold Sussman
A. E. Santasiere

28. R-KKt1
It is very important to gain control of the KKt-file.
28. PXP 30. Kt-R4 B-Q2
29. RxR BXR 31. R-Kt6
Now Black's king-side Pawns are ready for the taking.
31. Kt-K3 33. RxP

32. KtxKt KxKt
The passed-KRP is a winner.
33. R-R1 34. Kt-Kt2
Threatening to win the QP or BP(B6) with 35. Kt-B4ch.
34. R-KB1 36. P-KR4 B-K1
35. Kt-B4ch K-Q3 37. P-R5 R-B2
Black is helpless.
38. P-B3 B-Q2 41. Kt-Kt6 P-B5
39. R-R8 B-B3 42. R-KB8
40. P-R6 B-Q2
This cuts it very thin. 42. R-R8 wins easily.

42. R-R2
Black's best, over-the-board, chance is 42. RxR!; 43. KtxR, B-B4; 44. P-R7, BxP; 45. K-K2. Now White's Knight is lost. How can White win? If 46. KtxP? KxKt; draws. If 46. K-B3? P-R4; keeps out the White King. And if White marches his King to the king-side, Black does likewise, picks up the Knight on the way, and then draws by opposing Kings. But there is a nice, hidden, win with 46. P-R4! PxP! (if 46. K-B2; 47. PxP, PxP; 48. K-B3, wins; and if 46. P-Kt5; 47. P-R5! wins) 47. K-Q3, P-R4; 48. P-Kt4!! PxPe-p; 49. KxP, K-B2; 50. K-R4, K-Kt2; 51. KxP, KxKt; 52. K-Kt4, K-Kt3; 53. K-B5, K-B2; 54. KxP, K-K2; 55. K-B6, and the QP goes in.
43. RxPch K-B2
If 43. B-K3; 44. Kt-B8 wins.
44. Kt-B8 R-R1 48. R-B5 B-Kt3
45. P-R7 B-K1 49. RxPch K-B3
46. Kt-K6ch K-Q2 50. R-B5ch K-Kt3
47. Kt-Kt5 P-R4 51. R-K5 Resigns
If 51. BxP; 52. R-K6ch, K-B2; 53. R-K7ch, wins the Bishop. White's play had a touch of Lasker.



FRENCH DEFENSE

MCO: page 52, c. 42

U. S. Open Championship Milwaukee, 1953

Notes by U. S. Master A. E. Santasiere
White Black
A. E. SANTASIERE E. ZEMGALIS
1. P-K4 P-K3 4. P-K5 KKt-Q2
2. P-Q4 P-Q4 5. P-B4 P-QB4
3. Kt-QB3 Kt-KB3 6. PxP BxP
KtBP is also good.
7. Q-Kt4 P-Kt3
O-O is usual.
8. Kt-B3 Kt-QB3 10. B-Q3 P-QKt4
9. P-QR3 P-QR3 11. B-Q2 B-R2
In order to play Kt-B4.
12. P-KR4 P-KR4 14. Kt-K2
13. Q-R3 Kt-B4
Trying for control of his Q4 or for P-KKt4 and Kt-Kt3.

14. B-Kt2 16. QxP Kt-K5
15. P-KKt4 PxP
Hoping for 17. BxKt, PxR; 18. Kt-Kt5, KtxP!; 19. PxKt, P-K6.
17. R-KR2 Kt-K2 19. KtxKt KPxKt
18. QKt-Q4 Kt-B4 20. Q-Kt2 P-Q5
Zemgalis agreed that B-B7 ch was harmless; but it seems that 20. Q-Q2 was necessary—Now White has a clear road to win.
21. P-K6 KtxB 23. KxKt Q-R4 ch
22. PxP ch K-B1
Hoping for P-Kt4, Q-B2.
24. K-K2 Q-Kt3 26. QxB KxP
25. K-B2 BxKt 27. P-R5



This tactical crown of White's strategy wins.
27. PxP 31. R-Kt1 ch K-B3
28. RxP RxR 32. R-Kt5 R-Kt1
29. QxRch Q-Kt3 33. RxP ch
30. QxQ ch KxQ
It is surprising that then ending is so easily won. But death was relatively painless. Not so with Martin Luther who ("Boners") "died a horrible death. He was excommunicated by a bull."
33. K-Kt2 40. R-B6 R-Kt2
34. R-Q5 R-Kt2 41. K-Kt5 B-Q1 ch
35. K-B3 K-B1 42. P-B6 R-Q2
36. P-B5 K-K2 43. B-Kt6 ch K-B1
37. K-B4 R-Kt1 44. R-K6 R-Q4ch
38. R-K5 ch K-B2 45. K-R6 Resigns
39. R-K6 B-Kt3



KING'S GAMBIT

MCO: page 137, column 1
Soviet Championship, 1952
Semi-Finals

White	Black
BARANOV	BONCH-OSMOLOVSKY
1. P-K4 P-K4 9. PxKt P-Q3	
2. P-KB4 PxP 10. BxP Q-Kt3ch?	
3. B-B4 Kt-K2 11. K-R1 PxP	
4. Kt-QB3 Kt-Kt3 12. BxP Q-B4	
5. Kt-B3 B-K2 13. RxP! RxR	
6. P-Q4 P-QB3? 14. BxRch KxB	
7. O-O O-O 15. Q-R5ch K-B1	
8. Kt-K5 KtxKt	
If 15. K-Kt1; 16. Q-K8ch, B-B1; 17. QxB, QxB; 18. QxKtP, wins.	
16. R-B1ch B-B3 17. Kt-Q5!! Kt-Q2	
If 17. PxKt; 18. BxB, PxR! 19. RxPch, wins.	
18. P-QKt4!	
Resigns	
For if 18. Q-B5; 19. B-Q6ch, K-Kt1; 20. Q-K8ch, Kt-B1; 21. QxKt mate.	

RATED TOURNAMENTS

(Continued from page 8, column 4)

MATCHES	
Cleveland-Pittsburgh, Youngstown, O., June 14th	40
Albuquerque, N. M.—Phoenix, Ariz., October 7th, 1953	42
Rasis-Magri, Miami, Fla.	2
FOREIGN	
World Championship Challengers' Tmt., Switzerland, Aug. 30-Oct. 25, 1953.....	15
World Junior Championship, Copenhagen 1953, Prelims (2 groups)	20
Finals	8
Placers' Tournament	12
International Tournament, Venice 1952	12
International Tournament, Bucharest 1953	20
Caissa Club International Tournament, Paris 1953	10
International Tournament, Monte Videe 1953	10
International Tournament, Rio de Janeiro, 1953	12
International Tournament, San Benedetto del Tronto, Italy 1953	14
Danish Championship, Horsens 1953	12
W. German Championship, Berlin 1953	16
21st USSR Championship Quarter-Finals (7 sections of 16)	112
Netherlands Championship Candidates Tournament	12
Championship of Italy	8
Yugoslav Championship Preliminaries (2 groups)	31
British Championship, Hastings 1953	32
British Ladies' Championship, Hastings 1953	20
Scottish Chess Association Tournament, Glasgow 1953	8
British Chess Federation Congress, Ilford 1953, Premier Tmt.	6
Premier Reserves	6
British Chess Federation Congress, Bognor 1953, Premier Tmt.	8

*Indicates 100% USCF Rated Tournament.

2,435

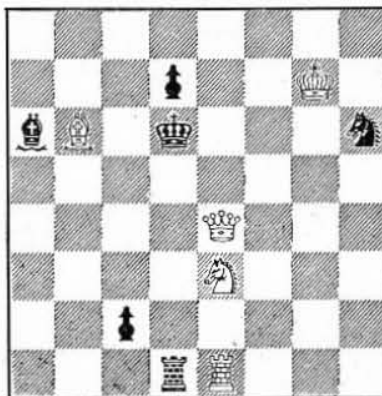
Mate The Subtle Way!

by Vincent L. Eaton

Address all communications to this column to Vincent L. Eaton, 612 McNeill Road, Silver Spring, Maryland.

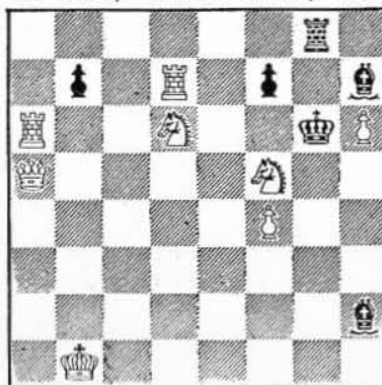
Problem No. 471

By F. Ravenscroft and F. T. Hawes
Sydney and Lithgow, New South
Wales
First Publication



White mates in two moves

10-RN
Problem No. 473
By Alberto Mari
1st Prize, "Bristol Times," 1929



White mates in two moves

Solutions: Mate the Subtle Way!
No. 459 (Stocchi): 1. R-Kt7, with piquant dual-stopping after every Black move.
No. 460 (Bata): 1. Q-R2. The try 1. Q-B4 is defeated by 1., RxP.
No. 461 (Chandler): 1. Q-R6.
No. 462 (Jacobs): 1. B-Q8, threat; 2. Q-K3ch. If 1., R-K4; 2. KtxP ch. If 1., R-Kt7 2. Kt-Kt7 ch. If 1., R-K5; 2. Q-R3. If 1., Kt-K5; 2. Q-Kt4!
No. 463 (Stocchi): 1. P-Kt5, showing the remarkable theme of No. 459 in a completely different setting.
No. 464 (Akerblom): 1. Kt-Q6. The try 1. R-K8 is defeated by 1., RxB, and 1. B-B4 is answered by 1., R-R6.
No. 465 (Mott-Smith): 1. P-Kt4.
No. 466 (Scheel): 1. Q-Kt7, waiting. If 1., Kt moves; 2. QxP ch. If 1., BxKt; 2. BxB ch. If 1., B-Kt6; 2. Kt-B5 ch! If 1., B-Q8; 2. Kt-B6 ch! If 1., B else; 2. Kt-B3 ch! If 1., K-Kt2; 2. QxP ch.

SOLVERS' LADDER

(Two points for two-movers; four points for three-movers; extra credit for correct claims of "cooks," i.e., solutions not intended by the composers. The following tally covers solutions received up to the time we went to press, on December 4. Solutions received after that date will be credited on the next Ladder.)

G. Murtaugh 392	K. Blumberg 146	L. R. Stein 34	W. Czarniecki 18
Steve Myzel 384	O. C. Dupree 144	J. M. Boge 32	A. F. Distefano 16
Rev. Chidley 376	R. M. Collins 120	E. Roethler 32	H. A. Trenchard 16
Kenneth Lay 350	R. G. McSorley 104	M. Herzberger 30	R. O. Mauldin 14
Ronald O'Neil 338	M. A. Michaels 104	T. Seidel 30	R. L. Beaulieu 12
J. B. Mulligan 320	E. T. Dana 76	Paul H. Smith 28	R. Bonwell 10
E. J. Korpany 314	W. A. Greenfield 74	Dr. J. Britain 26	D. L. Rumberger 10
J. H. France 304	W. H. James 68	K. A. Forssmark 26	Philip George 8
W. I. Lourie 302	Paul J. Smith 66	J. Kaufman 26	John M. Lally 6
W. J. Couture 292	Tom Heermann 64	F. F. Lawrence 26	K. Ouchi 6
Heino Kurruk 270	H. R. Meifert 62	Paul L. James 24	R. A. Karch 4
Dr. I. Schwartz 254	J. Haliburton, Jr. 52	Louis T. Ward 24	B. Burghardt 2
C. J. Koch 254	E. H. Benjamin 48	L. Frankenstein 22	E. R. Corson 2
Nicholas Yoe 196	R. E. Bury 44	G. W. Payne 22	C. B. Landis 2
Y. V. Oganosov 174	David Silver 44	E. Weatherford 20	A. G. Lubow 2
N. Reider 152	Ben Shaeffer, Jr. 38	R. W. Wittemann 20	Mrs. F. D. Rogers 2
Robert Grande 150	H. Schramm 34	H. G. Abbott 18	D. Walsdorf, Jr. 2

Congratulations to veteran solver Gardner Murtaugh who wins the bi-monthly Ladder prize! And a cordial welcome to the following new solvers: Bruce Burghardt of Wauwatosa, Wisc.; E. R. Corson, Altoona, Pa.; Sgt. Robert A. Karch, Columbus, Ga.; Charles B. Landis, Milwaukee, Wisc.; Paul L. James, Thornton, Iowa; K. Ouchi, Bogota, N. J.; J. E. Reinboldt (CS3), U. S. Armed Forces; and David A. Walsdorf, Jr., New Orleans, La.

BOOST AMERICAN CHESS!
By Joining the U.S.C.F.

Chess Life Sunday, Page 11
December 20, 1953

What's The Best Move?

By *Guilherme Groesser*

Position No. 131



White to play

Send solution to Position No. 131 to the Editor, CHESS LIFE, 123 No. Humphrey Ave., Oak Park, Ill., by January 20, 1954.

Solution to Position No. 128

We have lost our notes on this position and cannot now identify the game or players. However, the solution, as most solvers discovered, is gratifyingly simple: 1. Kt-B8 ch, K-Kt1; 2. Kt-Kt6, K-B2; 3. R-R8 mate. If 1., K-R1; 2. Kt-Kt6 ch wins the Kt and the game. If 2., K-R2; 3. KtxKt wins the game. A relief, possibly, after Nos. 126 and 127.

Correct solutions are acknowledged received from: D. Arganian (Racine), J. A. Baker (Mankato), A. R. Bomberault (Pittsburgh), G. F. Chase (Buffalo), R. Chauvenet (Silver Springs), G. S. Cunningham (New Rochelle), J. D. Define (Florissant), E. Gault (New Brighton), E. Godbold (St. Louis), R. Grande (Denver), J. Haliburton, Jr. (Allen), W. James (Fox Lake), C. Joachim (Seattle), E. J. Korpany (Bellevue), H. Kurruck (San Fernando), J. Melnick (Portland), E. Nash (Washington), E. Roman (New Britain), M. Schlosser (Decatur), I. Schwartz (Durand), I. Sigmond (Colwick), D. Silver (New York), P. Smith (?), W. W. Stevens (Laramie), R. Stiening (Pittsburgh), F. Trask (Plymouth), H. C. Underwood (Washington), D. A. Walsdorf, Jr. (New Orleans), J. L. Weininger (Schenectady), W. B. Wilson (Amherstburg), N. P. Witting (Salem), R. W. Wittmann (Brooklyn), N. Zemke (Detroit).

We also acknowledge correct solution for No. 127 from E. Roman (New Britain) received just too late for acknowledgment last issue.

On Position No. 126, both Mr. Norman Zemke and Mr. Carl Diesen upset the analysis of Jack Spence and others. Mr. Zemke points out that after 1. R-QR8, B-K6; 2. P-R7, K-Q3! (a line overlooked by Spence) White cannot do more than draw. Mr. Diesen points out that 1. R-QR8, B-Kt8; 2. P-R7, K-Kt2; 3. R-Q8, Kt-Kt3 is a basic drawing position. We award these two solvers an extra two points for upsetting the analysis.

**IDEAL XMAS GIFT
AUTOGRAPHED & INSCRIBED**
(limited offer)
Just Out!
**CHAMPIONSHIP CHESS
AND CHECKERS
FOR ALL**
By **Larry Evans** and **Tom Wiswell**
U.S. Chess World Unrestricted
Champion Checker Champion
\$3.75
LARRY EVANS
358 West 27 Street
New York 1 N. Y.

Solution:—

All's Well That Ends Well
(I-a): 1. B-B2, B-Q6!; 2. P-Kt8(Q), BxR ch; 3. KxB, P-Q8(Q) ch; 4. KxQ, P-K7 ch; 5. K-Q2, P-K8(Q) ch; 7. KxG, stalemate.

(I-b): 1. B-B2, B-Q6; 2. B-Kt3, B-B5; 3. P-Kt8(Q)! (if 3. B-K1, B-Q6!), BxQ; 4. B-B2, B-R7!; 5. B-Kt3, B-Kt8! drawn (6. RxKP?, BxB; 7. R-Q3, B-B5 and Black wins).

(I-c): 1. B-B2, B-Q6; 2. P-Kt8(B)!, BxR ch; 3. KxB, K-Kt1; 4. B-Q5!, P-R8(Q); 5. BxQ, KxB; 6. KxP, K-Kt1; 7. KxP, P-R7; 8. B-K4, P-R8(Q); 9. BxQ, KxB; 10. K-K3, K-Kt7; 11. K-K2, drawn (11. K-K4, K-B7; 12. K-Q5, K-K6; 13. K-Q6, K-Q5; 14. K-B7, K-B4 and Black wins).

(I-d): 1. B-B2, B-Q6; 2. B-R4, B-B5 (not 2., BxR ch; 3. KxB, P-Q8 ch; 4. BxQ, K-Kt8; 5. P-Kt8(Q), winning); 3. P-Kt8(Q)—if 3. P-Kt8(B), BxR ch draws—BxQ; 4. RxKP, B-Kt6!! drawn.

(II-a): 1. B-R4, B-Q6! (1., B-Kt6?; 2. RxP ch wins); 2. B-Kt3! B-B5; 3. P-Kt8(Q or B), BxQ(or B); 4. RxP ch (if 4. RxKP, BxB; 5. R-Q3, B-B5 wins), KxR; 5. BxB, K-Kt6; 6. K-K2, P-R7; 7. B-Q5, P-Q8(Q) ch; 8. KxQ, K-B7 and Black wins.

(II-b): 1. B-R4, B-Q6; 2. P-Kt8(Q), BxR ch (2., B-B5?; B-B5?; 3. B-Q5 ch, BxB; 4. RxKP wins); 3. KxB, P-Q8(Q) ch; 4. KxQ, P-K7 ch; 5. K-B2, P-K8(Q); 6. B-Kt3, Q-K7 ch, drawing.

(II-c): 1. B-R4, B-Q6; 2. P-Kt8(B)?, BxR ch; 3. KxB, K-Kt8; 4. B-Q5, P-R8(Q); 5. BxQ, KxB; 6. KxP, K-Kt8 and Black wins.

(III): 1. P-Kt8(Q), BxR ch (1., BxQ; 2. RxKP wins); 2. BxB, P-Q8(Q) ch; 3. BxQ, P-K7 ch; 4. K or BxP, stalemate.

(IV): 1. P-Kt8(B), BxR ch; 2. KxB, K-Kt8; 3. B-Q5, P-R8(Q); 4. BxQ, KxB; 5. KxP, K-Kt1, drawing just as in Variation (I-c).

The reader who has not tired by then, might have noticed that we have let the cat out of the bag with Var. IV. The winning idea is the under-promotion into a second white-squared Bishop and the correct execution is: 1. P-Kt8(B)!, BxR ch; 2. BxB!, P-Q8(Q) ch; 3. BxQ, P-K7 ch; 4. KxP and White wins. How simple (and how shall I blush if anybody cooks this "study in exactness").

NORTH JERSEY CHESS LEAGUE: At the end of two rounds Maroczy, Irvington, and Montclair are in the lead with 2-0 each, while Plainfield and Orange have 1-1 match scores.

DISTRICT CHESS LEAGUE: Federal Chess Club holds the lead with 4-0 in match score. Divan A and Navcom A share second with 3-0 each, while Library of Congress has 2-0 for third.

Shreveport (La.) Chess Club repelled an invasion from Natchitoches 5-3 in a double round encounter with M. Adkins scoring twice, while J. Noel, O. Dupree and T. McElroy tallied once each. For Natchitoches C. Fernbaugh, E. Watson, and R. Williams each scored one point.

Germantown Y M C A (Philadelphia) Chess Club: New Years Day (Jan. 1, 1954) will be celebrated by a simultaneous exhibition by Arthur B. Bisguler, beginning at 2:00 p.m. with everybody welcome to compete. The Germantown Y M C A Chess Club is at 5722 Greene St., Philadelphia 44, Pa.

Subscriptions Accepted for
THE BRITISH CHESS MAGAZINE
Founded in 1881 and now the oldest chess periodical extant. Games Editor: H. Golombek—Problem World: S. Sedgwick
—\$3.00 per year (12 issues)—
Specimen copy 25c
Special thin-paper edition, sent by Airmail \$4.70 per year.
CANADIAN CHESS CHAT
Official Organ of the Chess Federation of Canada
Only publication with national coverage: Events, Games, Articles and personalities—Canadian Chess News!
Annual Subscription: \$2.75
CHESS WORLD
Comprehensive Australian chess magazine edited by C. J. S. Purdy. Articles, annotated games, problems, news.
\$2.40 per year—12 issues
Sample copy 20c
Order From
CHESS LIFE, 123 No. Humphrey Ave., Oak Park, Ill.

Tournament Life

December 26-28
**3rd Illinois Open Championship
Decatur, Illinois**
At YMCA "All Purpose" room, 151 W. Prairie St.; entry fee \$5.00 (plus \$1.00 rating fee for USCF non-members), all entry fees used for prizes, 1st prize guaranteed \$75.00; entries close Sat., Dec. 26 at 7:45 p.m.; for details write: Mrs. C. Turner Nearing, 1400 W. Macon St., Decatur, Ill.
100% USCF rated event.

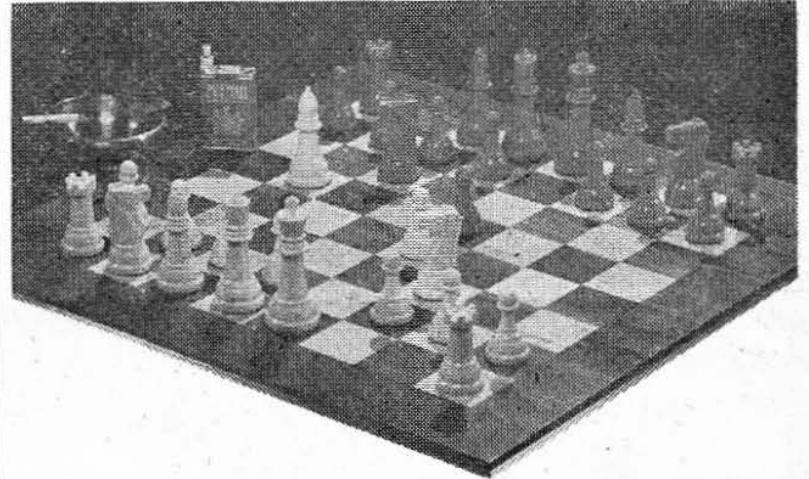
Gary (Ind.) Chess Club scored a 5-2 victory over Hamilton Park (Chicago) Chess Club with Rhead, Cox, Kosiba, Davis and Subanovich tallying the points for Gary while Abbott and J. Jones salvaged the points for Hamilton Park.

Library of Congress (Washington): In a simultaneous exhibition Hans Berliner scored 8½-½, drawing one game with Serebrennikov.

Boost American Chess! By Joining the U.S.C.F.

January 1-3
**"Heart of America" Open
combined with
Missouri State Championship
Kansas City, Mo.**
At YMCA Auditorium, 10th and Oak; entries close 11 a.m., January 1; entry fee \$5.00 plus \$1.00 rating fee for non-USCF members, \$2.00 deposit required to be refunded to players who complete all rounds; \$100.00 guaranteed first prize; highest ranking resident of Missouri becomes State Champion; time limit 40 moves in 2 hours; for details, write: Secretary, YMCA Chess Club, 404 East Tenth, Kansas City 6, Mo.
100% USCF rated event.

Greater Miami (Fla.) Chess Club: Charles Wisch with 5½-½ won the club title in a 16 player Swiss, drawing with runner-up Carleton Hurst. Hurst was second with 4½-1½, losing no games but drawing with Wisch, Armstrong Chinn, and Charles Rosenfeld. Third to fifth on S-M with 4-2 each were Murray Cohen, Arne Pederson, and N. B. Church.



Gallant Knight Famous 5" King Size Set!



Finest plastic men, weighted and felted. Set comes in de luxe leatherette-covered sturdy wood chest. See above and at left.

No. 525-B: Black & Ivory \$15.60
No. 526-R: Red & Ivory
\$19.50 less 20%.....

5" King Size Set in De Luxe Chest. STANDARD SET . . . 2¾" KING

All men weighted and felted. Comes in attractive leatherette chest. Photo at left.

No. 80-B: Black & Ivory \$5.20
No. 81-R: Red & Ivory
\$6.50 less 20%.....



Standard Set in Leatherette Case.

STUDENT SET . . . 2½" KING

All men weighted and felted. Packed in cardboard box. Not illustrated.

No. 35-B: Black & Ivory \$2.49
No. 36-R: Red & Ivory
\$3.00 less 17%.....

Discounts to USCF members only. Mail your order to
UNITED STATES CHESS FEDERATION
93 BARROW STREET NEW YORK 14, N. Y.