

Chess Life

America's Chess Newspaper

Copyright 1955 by United States Chess Federation

Vol. IX, No. 17

Thursday, May 5, 1955

15 Cents



What's The Best Move?

Conducted by

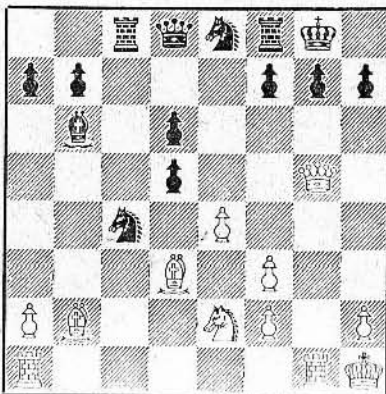
RUSSELL CHAUVENET

SEND solutions to Position No. 160 to Russell Chauvenet, 721 Gist Ave., Silver Spring, Md., by June 5, 1955. With your solution please send analysis or reasons supporting your choice as "Best Move" or moves.

Solution to Position No. 160 will appear in the June 20, 1955 issue.

NOTE: Do not place solutions to two positions on one card; be sure to indicate correct number of position being solved, and give the full name and address of the solver to assist in proper crediting of solution.

Position No. 160



White to play

How U.S. Players Have Fared In Chess In Contests With Soviet Masters

Notes for an unfinished article by the late William Rojman supply some interesting data on performances of U. S. Masters against the USSR. These comparisons are based on the encounters on seven different occasions: USA vs. USSR Radio Team Match, 1945; USA vs. USSR Team Match, Moscow, 1946; World Championship Tournament, 1948; International Team Matches, Helsinki, 1952; Interzonal Tournament, Salzburg, 1952; World Championship Candidates Tourney, 1953; and the USA vs. USSR Team Match, New York 1954.

The following table lists USA players in order of comparative success against the Soviet masters, giving percentage, game score, and number of separate events in which the U. S. player met Soviet opposition.

Player	%	Score	No. Events
D. Byrne	.750	3-1	1
R. Byrne	.500	3-3	2
L. Evans	.500	3-3	2
A. Kevitz	.500	1½-1½	2
G. Koltanowski	.500	½-½	1
O. Ulvestad	.500	1-1	1
S. Reshevsky	.439	18-23	6
H. Steiner	.388	3½-5½	3
I. Horowitz	.375	3-5	3
A. Dake	.333	1-2	2
M. Pavey	.333	1-2	1
I. Kashdan	.300	1½-3½	2
R. Fine	.250	1-3	2
A. Pinkus	.250	1-3	2
A. Kupchik	.250	½-1½	1
A. Bisguier	.250	1½-4½	2
A. Denker	.000	0-7	3
A. Santasiere	.000	0-2	1
H. Seidman	.000	0-2	1

If, however, we strike out the earlier events and merely consider the more recent encounters of Helsinki 1952, Saltzjobaden 1952, World Candidates 1953, and USA vs. USSR Match 1954, we arrive at somewhat different standings which are probably more representative

In This Issue SPRING RATING LIST

Pages 4-9

Player	Rating	Score	Events
D. Byrne	.750	3-1	1
S. Reshevsky	.524	11-10	3
R. Byrne	.500	3-3	2
L. Evans	.500	3-3	2
G. Koltanowski	.500	½-½	1
M. Pavey	.333	1-2	1
H. Steiner	.300	1½-3½	1
A. Bisguier	.250	1½-4½	2
I. Horowitz	.250	1-3	1
A. Dake	.000	0-1	1
A. Denker	.000	0-1	1
A. Kevitz	.000	0-1	1

110 BOARD SIMUL BY KOLTANOWSKI

Chess Friends of Southern California, Inc., who have just become a USCF Affiliated Chapter, are sponsoring a "world" beater exhibition on Sunday, May 22, 1955, starting at 12:00 Noon. International Master George Koltanowski will play a minimum of 110 boards simultaneously. The event will be held at the Biltmore Hotel in Los Angeles in the famous Renaissance Room. Player's tickets are \$2.00; spectator tickets 50c—either can be obtained from the CFSC President, Cal Taber, P.O. Box 2731, Terminal Annex, Los Angeles 54, Calif. The event will be under the auspices of the USCF.

Kevitz and Sherwin Share Honors In Manhattan C. C. Championship

In a thrilling and tight finish Alexander Kevitz and James T. Sherwin ended by sharing honors in the Manhattan Chess Club Championship with 9-4 each. Kevitz suffered losses against Arthur Bisguier, Arnold S. Denker and James T. Sherwin, while drawing with Richard Einhorn and Albert Pinkus. Sherwin conceded victories to Bisguier, Raul Benedicto, and Denker while drawing with Einhorn and Abe Turner. The club title will be decided in a play-off match between Sherwin and Denker, now under way.

Third place honors were shared by the formidable trio of U. S. Champion Arthur B. Bisguier, former U. S. Champion Arnold S. Denker, and Max Pavey with 8½-4½ each. Albert S. Pinkus was sixth with 8-5 and Abe Turner seventh with 7½-5½ in the fourteen player event.

In the Consolation Tournament for those who failed to qualify for the championship finals, the victory went to Brian E. Owens with 7-1, losing no games but drawing with Aben Rudy and Mario Schroeder. Second and third in the nine player event with 5½-2½ each were Mario Schroeder and Morton Siegel, while Victor A. Guala placed fourth with 5-3.

SEEK CANDIDATE ON WORLD JUNIOR

The USCF International Affairs Committee is engaged in seeking the highest rated eligible U. S. Junior who can travel to Antwerp, Belgium, July 20-August 5, 1955 to represent the USA in the World Junior Championship. To be eligible the player must be a resident of the USA and have been born after September 1935.

Interested junior players are requested to notify Mr. Max Pavey, Chairman of the USCF International Affairs Committee, 25 Lefterts, Brooklyn 25, N. Y. of their availability—the applicant with the highest rating will be chosen.

All expenses in Belgium will be borne by the Belgium Chess Federation, and the USCF expects to furnish the travel expenses to and from Belgium by popular subscription. Successful entrant must furnish certified birth certificate for forwarding to FIDE with the USCF formal entry of his name.

ULVESTAD TOPS SEATTLE OPEN

Olaf Ulvestad scored 5½-½ to win the 12 player Seattle Open Championship, drawing with William Bills. Second place went to Jerry Schain on Solkoff points with 4½-1½ with a loss to Ulvestad and a draw with M. Baumgart. William Bills was third, also with 4½-1½, drawing with Baumgart and losing his chances of victory by a late-arrival forfeit to Schain. Ken Mulford was fourth with 4-2, and tournament director Dan Wade finished fifth with 3½-2½.

WORLD JUNIOR CHAMPIONSHIP TRAVEL FUND

Contributions are solicited for a travel fund to send a qualified representative to the World Junior Championship Tournament at Antwerp, Belgium this July 20-August 5. Please forward your contributions, marked "For Junior Travel Fund" to:

KENNETH HARKNESS

USCF Business Manager

81 Bedford St. New York 13, N.Y.

SCHROEDER WINS COLUMBUS CITY

James Schroeder with 4½-1½ triumphed in the seven player Columbus City Championship, losing no games but drawing with Tim Anderson, Rex Naylor, and Kurt Loening. Tim Anderson was tied for second with Ervin Underwood, former Massachusetts Champion, with 3½-2½ each. Anderson lost a game to Loening and drew with Schroeder, former Ohio Champion Walter Mann, and John Biddle. Underwood lost games to Schroeder and Anderson and drew with Naylor.

PRESENT LINEUP OF U.S. TEAM

The shifting line-up of the American team selected to journey to Moscow in June currently is reported as consisting of Samuel Reshevsky, Arthur Bisguier, Larry Evans, Donald and Robert Byrne, I. A. Horowitz, and Max Pavey. The remaining board and posts of two alternates will be filled from the quartet of Isaac Kashdan, Herman Steiner, James T. Sherwin and Alexander Kevitz.

U. S. JUNIOR CHAMPIONSHIP

July 15-24, 1955

Lincoln, Nebraska

U. S. OPEN CHAMPIONSHIP

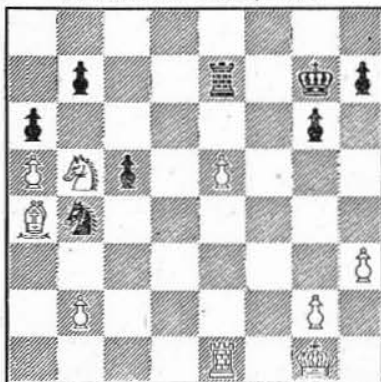
August 8-20, 1955

Long Beach, California

Finish It The Clever Way! by Edmund Nash

Position No. 151

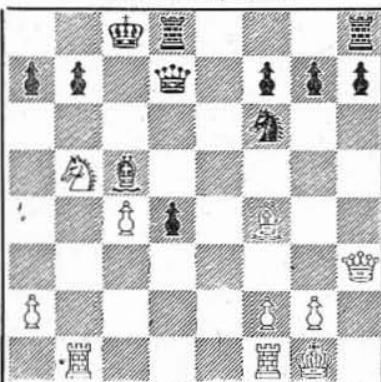
Geller vs. Smyslov
6th Match Game, 1955



Black to play and draw

Position No. 152

Mikenas vs. Flohr
Folkestone, 1933



White to play and win

THE Geller-Smyslov 6-game play-off match for the USSR Championship ended with the score of 3-3, after six drawn games. The players continue to play until one wins a game; he will be declared winner and new champion.

Position No. 151 arose in the most exciting game of the match, after White had played Kt(Q6)xKt(Kt4). A three-move combination gets Black out of serious trouble.

In Position No. 152, Black resigned after White's second move.

For solution, please turn to Page Eleven.

Send all contributions for this column to Edmund Nash, 1530 28th Place, S.E. Washington 20, D. C.



A final note on the passing of the Brooklyn Eagle: This newspaper, now finally laid at rest, was 118 years old—among its distinguished editors was Walt Whitman. The famous chess column of the Brooklyn Eagle was established on October 15, 1893 and was conducted for 62 years by the same chess editor—Hermann Helms.

HAVE YOUR TOURNAMENTS OFFICIALLY RATED

New Regulations Effective March 1, 1955

Tournaments, matches (individual or team; round robin or Swiss) are rateable when sponsored by USCF affiliated organizations, if played under FIDE Laws, directed by a competent official, and played at time limit of not more than 30 moves per hour.

The annual championship tournament of a USCF Club Chapter and the annual championship tournament of any USCF affiliate whose By-Laws provide that all its members must be USCF members also are rated without charge.

All other eligible events are rated only if official report of event is accompanied by a remittance covering a rating fee of 10c per game for all games actually played in the contest. (In a Swiss one-half the number of players times the number of rounds represents total games played if no byes or forfeits.)

Note that 10c Rating fee per game is collected from all players, whether USCF members or not.

Semi-annually ratings will be published of all participants in all USCF-rated events.

Official rating forms should be secured in advance from:—

Montgomery Major
123 No. Humphrey Avenue
Oak Park, Illinois

Do not write to other USCF officials for these rating forms.



Harry Lyman (one-half of the Lyman Burgess chess editor of Boston Globe) topped the Eastern Massachusetts Preliminaries in Class A with 4-1, dropping a game to John Curdo who placed second on Solkoff points with 3½-1½. Curdo lost a game to Alexis Klinushkoff and drew with Dr. Lement. Wilson Pike was third, also with 3½-1½, losing to Lyman and drawing with Klinushkoff. Arthur Freeman was fourth with 3-2. In the Class B division, Erich Nitzsche tallied a perfect 5-0 for first, Warren Blaisdall and Stanley Bloom were second and third with 3½-1½ each, and James Spencer was fourth with 3-2. In the Class C division, Frank Boland scored 5-0 to win, Charles Sampson placed second with 3½-1½, and third to fifth with 3-2 each were Dr. Sidney Cahan, Robert MacCormack, and Walter Hilliard. Erich Nitzsche directed all three divisions.



The Ontario Chess Association chess congress at Toronto saw the Ottawa RA "A" team score 2-1 with Dr. F. Bohatirchuk tallying three victories on board one. Other team scores were: Toronto Chess Club 1-1, St. Catherines 1-1, Central YMCA 1-0, Sarnia 2-2, Ottawa RA "B" team 0-1, and Toronto West End 0-1. Phil Haley on first board for Sarnia scored 3-1, and R. Draxl for Toronto C. C. tallied 2-0 on board one.



International Master Povilas Vaitonis scored 8-0 to win the Hamilton City Championship once again, and is spoken of as a possible Canadian representative at the Interzonal FIDE Tournament at Gothenburg in August.

KRIEGER TAKES COLUMBUS OPEN

By virtue of a 2-0 score in a play-off match, Theodore Krieger won the Columbus, Ohio Open Championship. In the regular tournament Krieger and Vladimir Voskressensky tied at 5-1 each, with Voskressensky losing one game to Krieger and Krieger drawing with John Pusecker and Charles Radow. John Pusecker was third with 4½-1½, losing a game to Voskressensky and drawing with Krieger. Fourth to sixth in the twenty player Swiss with 4-2 each were Gregory Paul, Joseph Terrible, and Warren Warwick.



The Maryland State Team Championship went to the USCF Affiliated Arion Chess Club with a match score of 7-1, losing only to John Hopkins University Chess Club. Members of the winning team were Joseph Glatt, Joseph Lasarko, Chester Van Brunt, Nicholas Boehl, Wm. Eietz, Roy Worthman, George Downs, Lee Schreiber, and Bill Koenig, captain. Other teams in the round-robin tournament were: Maryland Chess Club, John Hopkins University Chess Club, Glenn L. Martin Chess Club, Annapolis Chess Club, Loyola Alumni Chess Club, University of Maryland Chess Club, and Towson Chess Club.



As a follow-up to the Washington Birthday simultaneous by Grandmaster Reshevsky for the Massachusetts State annual meeting at Boston, on March 27th the Boston Sunday Globe featured a full page of photos of the exhibition in its magazine section with the candid-camera shots by B. H. Burdene of MIT and the captions by J. A. Burgess.



On S-B points John Ducharme won the 3rd annual Western Massachusetts Chess Championship at Holyoke with 4-1. Second also with 4-1 was Daniel Levin, while third and fourth on S-B with 3½-1½ each were Malcolm Harris and Eli Bourdon. Fifth to eighth with 3-2 were Henry Martel, Larry Birns, Harry Burger, and James Slattery in the 16 player Swiss.

Massachusetts State Chess Association: Annual election of officers at the Washington Birthday meeting of the MSCA saw Dr. Julian Keelson chosen president; Joseph H. Hurvitz treasurer; Missian Alden, 23 Lawrence Ave., Roxbury 21, Mass. secretary. Vice-presidents were: Charles Acorn, Leo Beriman, Dr. Sidney Cahan, Harold B. Dondis, John Egan, Harry Lyman, Tom Lyman, Kazys Merkis, Erich Nitzsche, Paul Travers. Orlando Lester was named North Shore Director, and Karl Allured Western Director. Dr. Julius Keelson, Stanley W. D. King, and James J. Burgess were appointed USCF Directors for 1955. A USCF Affiliated Chapter.

Daytona Beach (Fla.) Chess Club: Activity in the Daytona Beach club where Dr. Robert Y. Hubbard is teaching chess to youngsters drew a special story in the Daytona Beach Morning Journal by Bobbi Jackson accompanied by photographs of the club in action. The 40 members range from 8-year-old Carty Wharton to 69-year old F. M. Fortes and C. L. Ford. The club meets Tuesdays and Fridays at the YMCA.

Chess Life In New York By Allen Kaufman

It is to the credit of chess that its fascination does not require the added stimulus of a money wager. However, chess is sometimes played for stakes, and perhaps would be more often if the loser in a money game were not apt to linger so long over his moves that the winner becomes bored.

Vic Volk of the Marshall C. C. has been playing a game he calls "Penny-a-minute" chess that discourages slow play by the loser. In Penny-a-minute chess a clock is used but only the loser's time is counted, unless the game is drawn. If the game is not drawn, the loser pays a penny for each minute on his (the loser's) clock, plus a fixed wager of ten cents. Thus, if the loser has 15 minutes on his clock, he pays 25c to the winner, regardless of the time on the winner's clock. If a game is drawn, there is no fixed wager, but the slower player pays a penny for each minute of difference in the clocks.

When the game is played for higher wagers, its called "table stakes," and the fixed wager is always ten times the per-minute rate. In this game a player's time runs out if he does not have enough money on the table to cover the fixed wager plus the time he has used. We dread to think of hundred dollar a minute games that might occur, with one thousand dollar fixed wagers, and frantic wives rushing to mortgage the house before the time runs out, hubby having a mate in six! (Thanks to Victor Volk for the above).

IN BRIEF: James Gore has clinched the Marshall Junior Championship with a smashing 13-1 score (two draws). Sidney Zarkin was second . . . With the Marshall and Manhattan teams each 6-0 in the Metropolitan Chess League, their encounter this week determines premier honors . . . By swindling Abe Turner in a drawn Bishop vs. Knight ending, Alexander Kevitz was able to tie for first with James Sherwin in the Manhattan C. C. Championship . . . Drakert and Lorie, each 6-1, are the pace-setters in the Marshall C. C. Amateur Championship.

John Hopkins University Chess Club (Baltimore): In an annual match the John Hopkins team defeated the U. S. Naval Academy 7½-4½ with G. Hardman, Smith, Summers, Mendelsohn, Perry, Shaff, and Chatzky scoring for Hopkins, while Rigler, Blessing, Reister, and Jackson tallied for the Navy. Magruder of Hopkins drew with Kingrt.

Arion (Baltimore) Chess Club: Baltimore's League-leading Arion team lost a match 4-1 to John Hopkins University Chess Club with Glatt and Van Brunt drawing for Arion, while Hardman and Dr. Rivlin drew for Hopkins and Dr. Ankeny, Dr. Topper, and Benzinger tallied wins.

London Terrace (New York City) Chess Club: The club championship preliminaries resulted in a 1st-place tie between M. Finkelstein and D. Hoffmann at 9½-2½ each. S. Mottur was third with 9-3; and M. Peckar placed fourth with 8-3½. Fingelstein lost games to Mottur and M. Jacobson while drawing with Hoffmann. Hoffmann lost a game to Peckar and drew with Finkelstein, Mottur, and K. Bauer in the 13 player round robin. A USCF Affiliated Club.



MASTERS OF THE FUTURE

GAMES AND STORIES OF AMERICA'S YOUNGER PLAYERS OF PROMISE

By U. S. Master JAMES T. SHERWIN

Women's
Chess Life
By Willa White Owens

THE USSR Committee for the Development of Chess Among Women is preparing a proposal for FIDE to consider at the 1955 meeting regarding the organization of a World Women's Chess Team Championship Tournament.

As a sort of trial balloon, a women's team match was played in Moscow, October 8-18, 1954, between Czechoslovakia and the Soviet Union. Each team in this match had six players and one alternate who could replace any of the other players. There were six rounds, each contestant playing against each of the players on the opposing team. The score was: Soviet Union—29, Czechoslovakia—7. The Soviet score was 24 games won, 2 lost, 10 drawn.

This method of playing team matches (each player on one team playing one game against each member of the opposing team) seems to me to be very interesting. The rating of the players on any individual team would then be merely a matter of prestige and would not affect the score.

The USA has been requested to send suggestions to FIDE regarding the advisability of organizing international women's team matches and suggestions as to the form this competition should take. We have players for such a team, but the question is whether or not there is enough interest in U.S. women players to back such a team.

Other good questions are: What is being done in various parts of this country to promote women's chess? What should the USCF women's Division be doing to promote women's chess? Any good, progressive ideas in the audience?

Women have been doing well in simultaneous exhibitions this year. In California, Mrs. Gregor Piatigorsky and Mrs. Lena Grumette played in a ten-board clock match against Reshevsky recently. Mrs. Grumette gave the grandmaster serious opposition until the 43rd move. I do not know how Mrs. Piatigorsky fared in this match, but I mention here with pride that she finished fifth in the Idaho Tri-State Tournament.

In Cleveland, Mrs. Mena Schwartz, Mrs. Norda Troy, and I played in the 62-board match against Dr. Euwe. Mrs. Schwartz held an even game for about five hours of play and was the last game to fold. I was one of the four lucky winners.

In Vancouver, Mrs. M. McLeod was the only woman player in a 12-board blindfold exhibit by George Koltanowsky. Mrs. McLeod was one of the two winners, winning her game in 27 moves.

Mary Bain, former U. S. Women's Champion, won an interesting game from Charles Kalme last year. Mr. David Lawson of New York sent me this game as he thought it was (Please turn to page 12, col. 1)

Charles Kalme

CHARLES KALME is Philadelphia's youngest chess star (16 years old). He was born in Riga, Latvia but his family escaped to Germany when the Russians occupied the Baltic states. There they spent most of seven years in concentration camps and displaced person encampments. During this period he learned how to play chess. In 1951 his family came to the USA and settled in Philadelphia. Charles joined the Franklin Chess Club and under Di-Camillo's tutelage he developed rapidly. He finished second in the strong 1954 Pa. Championship and tied for third and fourth in the '54 U. S. Junior Championship.



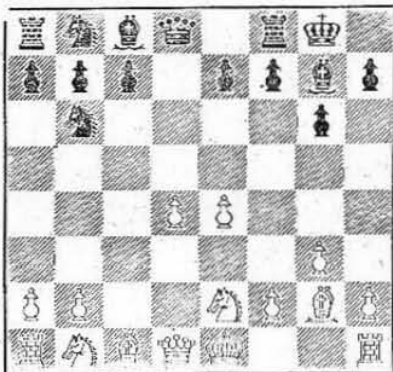
He has a solid positional style and prefers not to take too many chances (which accounts for his very few losses and many draws—he was undefeated in three recent tournaments. He is remarkably modest for a strong chess player

and is always announcing that the best he can do is draw—only when a Rook ahead does he admit that there are some winning chances. And, unfortunately, he is a good poker player. This deprives him of needed sleep during most tournaments in return for pocket money. It's hard to say which is more necessary. As soon as he begins to take his games more seriously he should become a master.

In the following game, he finds good counterplay in a difficult position and then wins convincingly when Euwe blunders.

GRUENFELD DEFENSE Eight Board Clock Match Philadelphia, 1955

White	Black
DR. M. EUWE	C. KALME
1. P-Q4	K1-KB3
2. P-QB4	P-KK1
3. P-KK1	B-K1
4. B-K1	P-Q4
5. PxP	K1xP
6. P-K4	K1-K1
7. K1-K2	O-O



Euwe-Smyslov, Zurich, continued 7.
P-QB4; 8. P-Q5, P-K3; 9. O-O, O-O; 10. P-QR4, K1-R3; 11. K1-R3, PxP; 12. PxP, B-B4; 13. K1-B3.

8. O-O P-QB3
Too passive.
9. QK1-B3 QK1-Q2
10. P-K1 B-K4
11. B-R3 R-K1
12. P-Q5 K1-B3

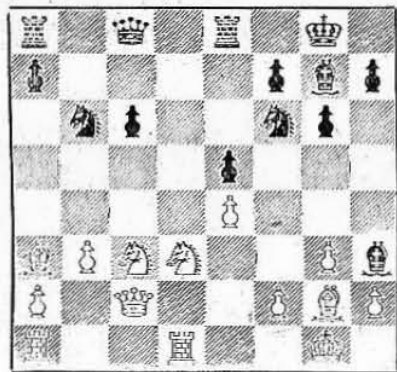
Exchange on Q5 would give White a ferocious passed pawn.

13. PxP PxP
14. Q-B2 B-K3
15. KR-Q1 Q-B1
16. K1-B1!

If 16. QR-B1, B-R3 drives the Rook back.
16. B-R6
17. K1-Q3

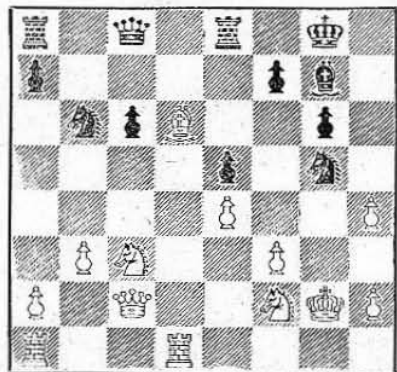
(Diagram top of next column)

It seems to me that the KB might well be preserved—pickled?—on KR1 in order to guard the white squares.
17. P-KR4!
18. B-Q6



Unnecessary—and it forces the following good move.

18.	K1-R2
19. P-B3	K1-K1
20. K1-B2	BxB
21. KxB	P-R5
22. PxP



This looks horribly anti-positional—although I can remember several games where doubled rook pawns were very strong—to accept them here is useless. Q-K2 was better.

22.	K1-K3
23. K1-K2	K1-Q2
24. K1-K1	K1-B3!
25. QR-B1?

25. KtxKt ch and then QR-B1 is okay for

White. If 25. KtxKP, then K1-Q2 is good;
26. P-B4, K1xP or 26. Q-B3, KtxKt; 27. BxK1, Kt-B5+.

25.	KtxK1
26. PxKt	K1-Q5
27. KtxKt	QxPch
28. K-R1	PxKt
29. R-K1	QR-Q1
30. P-K5



30. QxP, Q1-B6 ch and P-Q6 wins.
30. QxP
Threat of RxB.
31. QxBP B-R3
32. QR-Q1 B-B5
33. R-K2 Q-R4
34. R/1-K1?
The game was hopeless anyway.
34. P-Q6
35. K-K1 P-Q7
Resigns

New and Renewed
USCF Affiliates
Renewals of Charters

CALIFORNIA
*North American Aviation Downey Chess Club
Meets at Aviation Plant, 12214 Lakewood Blvd., Downey, Calif. on Thursdays at 7-11 p.m. President: Warren McGill; Secy-Treas.: Collin McKinnon, 8556 Fontana St., Downey, Calif.

MASSACHUSETTS
Western Mass. and Conn. Valley Chess Ass'n.
Meets at YMCA, 122 Chestnut St., Springfield, Mass., usually on Sunday afternoon in September for annual tournament. President: James Slattery; Secy-Treas.: Richard E. Gleason, 935 Chestnut St., Springfield, Mass.

MINNESOTA
*St. Paul Chess Club
Meets at Downtown YMCA, 9th and Cedar Sts., St. Paul, Minn. on Wednesday evenings. President: Robert C. Gove; Secy: Melvin C. Mallett, Lake City, Minn.; Treas.: Eugene B. Hoeflin.

MISSOURI
*Missouri Chess Association
President: Raymond Vollmar; Secy-Treas.: Charles M. Burton, 5706 Maffitt Ave., St. Louis 12, Mo.

NEW YORK
*Marshall Chess Club
Meets at 23 W. 10th St., New York City, N. Y. every day and evening.

TENNESSEE
*Tennessee Chess Association
President: Thomas W. Finucane; Secy-Treas.: Joseph Selby, Sullivan Gardens, Kingsport, Tenn.

TEXAS
Beaumont Chess Club
Meets at YMCA, Beaumont, Tex. President: H. W. Neidhardt; Secy: Herbert Lass.
*Texas Chess Association
President: Wm. H. James; Secy-Treas.: Homer H. Hyde, 3801 Ethel Ave., Waco, Tex.

THE UNITED STATES CHESS FEDERATION

NATIONAL CHESS RATINGS - SPRING 1955

MASTERS EMERITUS

Jacob Bernstein (New York, N.Y.)
 Roy T. Black, Sr. (Williamsville, N.Y.)
 Adolph J. Fink (San Francisco, Cal.)
 Albert W. Fox (Washington, D.C.)
 Herman Hahlbohm (Chicago, Ill.)
 Hermann Helms (New York, N.Y.)
 Lewis J. Isaacs (Chicago, Ill.)
 Charles S. Jacobs (Winchester, Mass.)

Abraham Kupchik (New York, N.Y.)
 Edward Lasker (New York, N.Y.)
 W. R. Lovegrove (San Francisco, Cal.)
 Frank E. Perkins (Boston, Mass.)
 Harold M. Phillips (New York, N.Y.)
 William A. Ruth (Collingswood, N.J.)
 Morris A. Schapiro (Brooklyn, N.Y.)
 I. S. Turover (Bethesda, Md.)

GRANDMASTERS

(2700 points up)

Reshevsky, S. (Spring Valley, N.Y.) 2766

SENIOR MASTERS

(2500 to 2699 points)

Bisguier, A. (Bronx, N.Y.) 2587
 Byrne, Donald (Ann Arbor, Mich.) 2587
 Byrne, Robt. (Brooklyn, N.Y.) 2621
 Evans, Larry (New York, N.Y.) 2629
 Steiner, Herman (Los Angeles) 2507

MASTERS

(2300 to 2499 points)

Berliner, H. (Washington, D.C.) 2300
 Bernstein, S. N. (Brooklyn, N.Y.) 2322
 Brasker, C. J. (Tracy, Minn.) 2313
 Burger, K. H. (Brooklyn, N.Y.) 2316
 Collins, J. W. (Brooklyn, N.Y.) 2375
 Cross, J. B. (Glendale, Calif.) 2330
 Dake, A. W. (Portland, Ore.) 2400
 Denker, A. S. (New York, N.Y.) 2432
 DiCamillo, A. (Philadelphia) 2336
 Hearst, E. S. (New York, N.Y.) 2315
 Hesse, H. V. (Bethlehem, Pa.) 2320
 Horowitz, J. A. (New York, N.Y.) 2394
 Howard, F. S. (S. Amboy, N.J.) 2338
 Kashdan, I. (Tujunga, Calif.) 2439
 Kevitz, A. (Bronx, N.Y.) 2391
 Kramer, Geo. (Philadelphia) 2404
 Lombardy, W. J. (Bronx, N.Y.) 2302
 Mednis, Edmar (New York, N.Y.) 2350
 Moskowitz, J. (Los Angeles) 2287
 Pavey, Max (Brooklyn, N.Y.) 2476
 Pinnick, Carl (New York, N.Y.) 2279
 Pitschak, R. (Cleveland, O.) 2320
 Rivise, Irving (Los Angeles) 2340
 Rossolimo, N. (New York, N.Y.) 2462
 Santasiere, A. E. (New York, N.Y.) 2275
 Seidman, H. (Brooklyn, N.Y.) 2434
 Shainswit, G. (New York, N.Y.) 2358
 Sherwin, J. T. (New York, N.Y.) 2404
 Shipman, W. C. (New York, N.Y.) 2349
 Simonson, A. C. (Hicksville, N.Y.) 2338
 Steinmeyer, R. H. (St. Louis, Mo.) 2332
 Suesman, W. B. (Providence, R.I.) 2307
 Sussman, Dr. H. (Brooklyn, N.Y.) 2349
 Turiansky, M. (Chicago, Ill.) 2300
 Turner, Abe (New Rochelle, N.Y.) 2366
 Whitaker, N. T. (Shady Side, Md.) 2313

* To retain master classification in next ranking list, an average rating of 2300 points or better must be earned by performances in tournaments meeting the standards of a master contest.

Included, since Master Rating was earned in events prior to expulsion of Mr. Whitaker from USCF Membership. Mr. Whitaker's name will not be eligible for inclusion on any future listings.

FOREIGN MASTERS

(Members of the USCF)

Fuster, Geza (Montreal, Que.) 2367
 Pomar, Arturo (Spain) 2478
 Vaitonis, P. (Hamilton, Ont.) 2359

EXPERTS AND CLASSES A, B & C

Experts: 2100 to 2299 points

Class A: 1900 to 2099 points

Class B: 1700 to 1899 points

Class C: Below 1700 points

(List includes foreign players who are members of the USCF.)

Abao, T. P. (San Francisco) 1700
 Abarno, F. P. (Bergenfield, N.J.) 1571
 Abeles, N. (Austin, Tex.) 1730
 Aboms, N. (Wichita, Kans.) 1858
 Abrahamson, (Bellingham, Wash.) 1700
 Abrams, Dr. A. (San Francisco) 1973
 Abrams, Larry (Chicago) 1400

Abrams, R. B. (Milwaukee) 1857
 Achterberg, E. F. (Visalia, Cal.) 1851
 Ackerman, D. (Omaha, Neb.) 1979
 Adair, R. D. (Albuquerque, N.M.) 1559
 Adams, M. (San Antonio, Tex.) 1545
 Adams, R. W. (Johnstown, Pa.) 1420
 Adams, W. W. (W. Orange, N.J.) 2249
 Adams, W. T. (San Jose, Cal.) 2000
 Addison, J. (Birmingham, Ala.) 1650
 Addison, W. G. (U.S. Army) 2185
 Adickes, W. C. Jr. (Asheville, N.C.) 1984
 Adminis, E. (Lincoln, Nebr.) 1568
 Agard, E. (Philadelphia) 1685
 Ager, Kenneth (Racine, Wis.) 1704
 Agre, Alex. (Yeadon, Pa.) 1679
 Aikman, P. (Spokane, Wash.) 1963
 Alam, J. G. (Newark, N.J.) 1655
 Albert, B. (Philadelphia) 2042
 Albert, K. L. (Homestead, Fla.) 1550
 Alberts, D. (Spokane, Wash.) 1550
 Alberts, W. (Pittsburgh, Pa.) 1500
 Albright, G. A. (Ft. Worth, Tex.) 1534
 Albrizio, C. A. (New Orleans) 1400
 Alexander, C. (St. Paul, Minn.) 1750
 Alexander, J. (San Diego, Cal.) 2021
 Alexander, Ray (Spokane, Wash.) 1570
 Alexander, Rod (Worthington, O.) 1850
 Allen, I. W. (San Angelo, Tex.) 1822
 Allen, Paul (Charleston, W.Va.) 1700
 Allen, Dr. Paul Jr. (N.J.) 1730
 Allen, Wm. (Raleigh, N.C.) 1750
 Allers, H. (St. Paul, Minn.) 1720
 Allerton, S. (Kalamazoo, Mich.) 1997
 Allison, M. H. (Columbus, O.) 1475
 Allured, K. (Northampton, Mass.) 1874
 Almrgren, S. (Los Angeles) 2191
 Alpiser, F. M. (St. Louis, Mo.) 1905
 Altmann, Dr. V. (Staten Is., N.Y.) 2042
 Altschiller, M. (Tujunga, Cal.) 2138
 Altschuler, A. (Los Angeles) 1816
 Amburn, E. (Tulsa, Okla.) 1652
 Ames, C. B. Jr. (Okla. City, Okla.) 1430
 Ames, G. F. (Meriden, Conn.) 1531
 Amidon, J. T. (Seattle, Wash.) 1793
 Amsden, H. B. (Wichita, Kans.) 1665
 Amsterdam, A. (Cleveland) 1750
 Anastasi, L. (Downey, Calif.) 1700
 Andersen, D. (Sturtevant, Wis.) 1744
 Andersen, Hank (New Orleans) 1538
 Anderson, Axel (Jamestown, N.Y.) 1805
 Anderson, B. (Garwood, N.J.) 1920
 Anderson, F. S. (Univ. City, Mo.) 2132
 Anderson, Geo. (Lincoln, Neb.) 1400
 Anderson, Geo. (Lexington, Ky.) 1855
 Anderson, G. (Northwood, N.D.) 1807
 Anderson, G. A. (Chicago) 1770
 Anderson, Hy. (Fredonia, N.Y.) 1524
 Anderson, M. F. (Rapid City, S.D.) 1795
 Anderson, Tim (Columbus, O.) 1930
 Andrews, S. (Hubbard, O.) 1700
 Anhauser, L. (Sugar Land, Tex.) 1600
 Anthony, J. C. Jr. (Jersey City) 1635
 Anthony, Mrs. J. (Jersey City) 1525
 Antunovich, M. (Cleveland) 1663
 Apelman, J. (New Orleans) 1588
 Apthorp, C. A. (Cleveland) 1850
 Archipoff, A. (Toledo, O.) 2125
 Arehart, C. (Kansas City, Mo.) 1570
 Arganian, D. (Racine, Wis.) 1917
 Arkless, W. L. (Lansdowne, Pa.) 1800
 Armstrong, D. (Sugar Land, Tex.) 1450
 Armstrong, E. (Niles, Mich.) 1650
 Armstrong, J. (Corp. Christi, Tex.) 1950
 Arnault, C. (Dallas, Tex.) 1734
 Arnholz, T. (Brooklyn, N.Y.) 1666
 Arnold, Paul (Miami, Fla.) 1400
 Arnst, C. (Buffalo, N.Y.) 1551
 Aroks, John (Racine, Wis.) 2062
 Aronson, Eva (Chicago) 1930
 Aronson, Ninus (Chicago) 1905
 Arrowood, W. B. (Ottawa, Ill.) 1870
 Ashler, J. (Philadelphia) 1800
 Astin, Mike (Salinas, Cal.) 1500

Atcheson, R. H. (Milwaukee) 1570
 Attaway, A. N. (Ft. Worth, Tex.) 1450
 Auit, L. (Cranford, N.J.) 1950
 Austin, M. W. (Spokane, Wash.) 1680
 Austin, N. T. (Sacramento, Cal.) 1867
 Autry, Tim (Beaumont, Tex.) 1500
 Avant, R. J. (Port Arthur, Tex.) 1450
 Avram, H. (Arlington, Va.) 2283
 Axelrod, A. (Lincoln, Neb.) 1700
 Babakin, Mrs. M. (L. I. City, N.Y.) 1600
 Babcock, G. E. (Peoria, Ill.) 1677
 Bacho, Paul (Cleveland) 1687
 Bader, K. W. (Milwaukee) 1500
 Bader, Max (Seattle, Wash.) 1865
 Bagby, C. (San Francisco) 2154
 Bagwell, J. (Fargo, N.D.) 1600
 Baikowitz, A. (Philadelphia) 1929
 Bain, Mary (New York, N.Y.) 1964
 Bain, R. (Los Angeles) 1570
 Baker, A. H. Jr. (San Antonio, Tex.) 1921
 Baker, Dr. E. (Up. Montclair, N.J.) 1956
 Baker, K. A. (Washington, D.C.) 1743
 Baker, R. A. (Murray Hill, N.J.) 1650
 Bakies, J. (Cleveland) 1650
 Bakos, N. (Forest Hills, N.Y.) 2150
 Bakst, A. (Los Angeles) 1890
 Baldwin, M. L. (Des Moines, Ia.) 1874
 Banerd, Wm. (Milwaukee) 1795
 Banister, P. B. (Brooklyn, N.Y.) 1680
 Banker, G. M. (Kansas City, Mo.) 1830
 Banks, C. M. (Miami, Fla.) 1800
 Banks, J. O. (Beaumont, Tex.) 1860
 Banks, J. W. (Miami, Fla.) 1694
 Banner, R. W. (Orange, Cal.) 1992
 Baptist, A. S. (Ann Arbor, Mich.) 1743
 Barquet, T. A. (Downey, Cal.) 1941
 Barden, A. (Durham, N.H.) 1400
 Barden, R. (New York, N.Y.) 1600
 Bardwick, A. (Homewood, Ill.) 1800
 Barham, A. (Holyoke, Mass.) 1600
 Barham, T. C. (Worcester, Mass.) 1983
 Barlow, G. A. (San Antonio, Tex.) 1917
 Barnes, G. S. (Minneapolis) 1997
 Barnes, J. C. (New Orleans) 1875
 Baron, Samuel (New York, N.Y.) 2117
 Barrett, C. K. (Lancaster, Pa.) 1700
 Barrett, J. J. (Buffalo, N.Y.) 1990
 Barrett, L. S. (Ft. Worth, Tex.) 1552
 Barry, H. (New Haven, Ct.) 1720
 Barry, J. E. Jr. (Detroit) 2091
 Barry, Lee (Briscoe, Tex.) 1800
 Bartha, F. (L. I. City, N.Y.) 2220
 Bartholy, F. (Vestal, N.Y.) 1895
 Barfkus, G. (Cleveland) 1750
 Bass, R. R. (S. Orange, N.J.) 1840
 Bass, W. A. (Lynchburg, Va.) 1814
 Batchelder, O. (Dearborn, Mich.) 1700
 Batchelder, W. (Bloomington, Ind.) 1600
 Bates, D. H. (Appleton, Wis.) 1580
 Bates, G. C. (Birmingham, Ala.) 1863
 Battell, J. S. (Brooklyn, N.Y.) 2057
 Batties, H. (Westfield, Mass.) 1700
 Baumann, C. (Chicopee, Mass.) 1800
 Baumler, Tommy (New Orleans) 1425
 Baxter, R. E. (Fairmont, Minn.) 1718
 Baxter, T. J. (Newbern, N.C.) 1552
 Beal, J. L. (Williamsville, N.Y.) 1844
 Beals, Tom (Ft. Worth, Tex.) 1300
 Bean, R. H. (Concord, N.H.) 1800
 Bearden, R. G. (Amarillo, Tex.) 1675
 Beaulieu, T. (Williamsett, Mass.) 1605
 Bechdorf, R. (Ft. Wayne, Ind.) 1800
 Beck, Chris (Racine, Wis.) 1668
 Beck, W. (Chappell, Nebr.) 1450
 Bedford, D. J. (Austin, Tex.) 1824
 Bedri, M. R. (Harrisonburg, Tex.) 1900
 Beery, Dale (Columbus, O.) 1750
 Beifling, J. R. (Kans. City, Mo.) 1732
 Bell, H. W. (Downey, Cal.) 1820
 Bellinger, D. J. (Norman, Okla.) 1840
 Belman, H. (Downey, Cal.) 1450
 Bender, M. (Mechanicsburg, Pa.) 1750
 Bender, O. (Sacramento, Cal.) 1767
 Bender, R. B. (Johnstown, Pa.) 1813
 Benedicto, R. J. (Queens, N.Y.) 2213
 Benge, D. E. (Salt Lake City) 1853
 Benham, T. W. (Trenton, N.J.) 2031
 Benjamin, G. (Paterson, N.J.) 1842
 Benjamin, H. (Bridgeport, Ct.) 1600
 Bennett, G. (St. Louis, Mo.) 1824
 Benson, A. (Jamestown, N.Y.) 1550
 Benson, P. (Downey, Cal.) 1730
 Bent, H. H. (Wabash, Ind.) 1890
 Benton, E. J. (Miami, Fla.) 1400

Benton, G. L. (Downey, Cal.) 1500
 Bercutt, R. (Los Angeles) 1500
 Berg, David (Allentown, Pa.) 1400
 Berg, Richard (Detroit) 1500
 Berg, Richard E. (La Porte, Ind.) 1840
 Berg, Roy A. (Chicago) 2005
 Bergquist, H. (Jamestown, N.Y.) 1837
 Bergquist, T. (Huntington, W.Va.) 1764
 Bergsten, W. C. (Lincoln, Neb.) 1671
 Berkenboech, W. (Garfield, N.J.) 1750
 Berlin, Frank (Philadelphia) 1718
 Bernd, J. L. (Macon, Ga.) 1576
 Bernhart, A. (Norman, Okla.) 1774
 Bernstein, Alex. (New York, N.Y.) 1850
 Berry, Dr. A. C. (Appleton, Wis.) 2009
 Berry, F. (National City, Cal.) 1400
 Berry, G. R. (Artesia, Cal.) 1500
 Berry, J. (Corp. Christi, Tex.) 1630
 Bersbach, E. (Sedalia, Ind.) 1998
 Berzarrins, Dr. V. (Glen Gardner, N.J.) 2065
 Bessey, R. (Westfield, Mass.) 1600
 Bever, V. W. (Bellevue, Wash.) 1820
 Biach, J. L. (Cranford, N.J.) 1977
 Bidde, J. R. (Columbus, O.) 1914
 Bielawski, A. (Bloomington, Ind.) 1580
 Biefnat, J. (Detroit) 1725
 Bilden, A. G. (Northwood, N.D.) 1619
 Billick, M. (Rochester, N.Y.) 1757
 Bills, W. A. (Houston, Tex.) 2128
 Bird, Alien (Wheeling, W.Va.) 1500
 Bishop, Earl (Omaha, Neb.) 1647
 Bishop, Geo. (Seattle, Wash.) 1860
 Bishop, J. (Des Moines, Ia.) 1710
 Blachford, R. M. (Detroit) 1768
 Black, E. (Ft. Worth, Tex.) 1600
 Blackburn, W. (Dayton, O.) 1747
 Blahuta, N. (West Point, N.Y.) 1650
 Blair, D. H. (Ft. Worth, Tex.) 1842
 Blair, R. (Midwest City, Okla.) 1650
 Blake, Kenneth (Bronx, N.Y.) 1865
 Blakesley, J. R. (Cleveland) 1570
 Bland, Wm. (Minneapolis) 1938
 Blankenburg, C. (Kalamazoo, Mich.) 1847
 Blanning, J. S. (Yonkers, N.Y.) 1850
 Blanpied, C. (Corp. Christi, Tex.) 1627
 Blenkinsop, L. (Brooklyn, N.Y.) 1864
 Blizard, G. F. (Philadelphia) 1930
 Blonarovych, L. (Newark, N.J.) 2183
 Blood, J. A. (Manhattan, Kans.) 1682
 Bloomer, J. H. (Louisville, Ky.) 1900
 Blumberg, Sarah (New York, N.Y.) 1450
 Blume, Frank (Flushing, N.Y.) 1550
 Blume, Henry (Athens, Ga.) 1850
 Blumenthal, M. (Los Angeles) 1946
 Blumenthal, M.D. (Bellaire, Tex.) 1671
 Bly, F. T. (Ft. Worth, Tex.) 1773
 Boczar, A. (Irvington, N.J.) 2006
 Bogue, Grant (E. Lansing, Mich.) 1759
 Bolden, Dr. A. L. (Philadelphia) 1953
 Bollinger, E. A. (Ft. Worth, Tex.) 1400
 Bolman, D. H. (Douglas, Alaska) 1770
 Bolton, F. B. (Hammond, Ind.) 1723
 Bolton, Jas. (New Haven, Ct.) 2110
 Bomanov, V. (Philadelphia) 2073
 Bond, Dr. A. H. Sr. (Norton, Va.) 1670
 Bond, A. H. Jr. (Norton, Va.) 1508
 Bond, J. A. Jr. (Borger, Tex.) 1500
 Bonesteel, R. (Seattle, Wash.) 1400
 Book, Erwin (Newport, R. I.) 2080
 Booras, P. (West Point, N.Y.) 1550
 Borden, P. (Amarillo, Tex.) 1550
 Boren, J. (Kansas City, Mo.) 1800
 Borges, F. (Kew Gardens, N.Y.) 2020
 Borman, A. (New Orleans) 1666
 Bornholz, R. (Pittsburgh, Pa.) 2264
 Borchow, Harry (Los Angeles) 2220
 Borsodi, E. M. (New Orleans) 2021
 Bourdon, Eli (Holyoke, Mass.) 1967
 Boyette, Leslie (Milwaukee) 2156
 Brabant, L. J. (Milwaukee) 1597
 Bracho, A. E. (Tulsa, Okla.) 1610
 Brady, C. V. (Alabama) 1700
 Brady, G. G. (Amarillo, Tex.) 1400
 Bragg, W. N. (Norman, Okla.) 1750
 Bramhall, Mrs. M. (Andover, Ct.) 1400
 Branch, H. (St. Louis, Mo.) 2032
 Brandes, E. (Cleveland) 1450
 Brandt, Roy (Spokane, Wash.) 1450
 Brandts, Paul (New York, N.Y.) 2122
 Brannum, Hank (Racine, Wis.) 1600
 Brantman, J. (Milwaukee) 1449
 Brask, D. J. (Attleboro, Mass.) 1600
 Brask, Sven (Attleboro, Mass.) 2045

Chess Life America's Chess Newspaper

Vol. IX, Number 17
 May 5, 1955

Published twice a month on the 5th and 20th by THE UNITED STATES CHESS FEDERATION. Entered as second class matter September 5, 1946, at the post office at Dubuque, Iowa, under the act of March 9, 1879.

POSTMASTER: Please return undeliverable copies with Form 3579 to Kenneth Harkness, USCF Business Manager, 81 Bedford Street, New York 14, N. Y.

USCF Membership Dues, including subscription to Chess Life, semi-annual publication of national chess rating, and all other privileges:

ONE YEAR: \$5.00 TWO YEARS: \$9.50 THREE YEARS: \$13.50 LIFE: \$100.00

A new membership starts on 21st day of month of enrollment, expires at the end of the period for which dues are paid. Family Dues for two or more members of one family living at same address, including only one subscription to

Chess Life, are at regular rates (see above) for first membership, at the following rates for each additional membership; One year \$2.50; two years \$4.75; three years \$6.75. Subscription rate of Chess Life to non-members is \$3.00 per year. Single copies 15c each.

CHANGE OF ADDRESS: Four weeks' notice required. When ordering change please furnish an address stencil impression from recent issue or exact reproduction, including numbers and dates on top line.

Send membership dues (or subscriptions) and changes of address to KENNETH HARKNESS, Business Manager, 81 Bedford Street, New York 14, N. Y.

Send tournament rating reports (with fees, if any) and all communications regarding CHESS LIFE editorial matters to MONTGOMERY MAJOR, Editor, 123 North Humphrey Avenue, Oak Park, Ill.

Make all checks payable to: THE UNITED STATES CHESS FEDERATION

TEN TOP-RANKING U. S. PLAYERS

1. Samuel Reshevsky 2766
2. Larry Evans 2629
3. Robert Byrne 2621
- 4-5. Arthur Bisguier 2587
- 4-5. Donald Byrne 2587
6. Herman Steiner 2507
7. Max Pavey 2476
8. Nicolas Rossolimo 2462
9. Isaac Kashdan 2439
10. Herbert Seidman 2434

Brauer, A. R. (Midland, Mich.)1822	Chavez, F. (New Orleans)1766	Dahl, Richd. (Lincoln, Neb.)1650*	Dalbergs, I. (Portland, Ore.)2014
Brauer, H. W. (Haven, Kans.)1648	Chen, L. K. (Newark, N.J.)1600*	Dale, John (New York, N.Y.)1848	Daly, H. B. (Sanford, Maine)2009
Breakey, J. (Spokane, Wash.)1600*	Chin, G. (Cambridge, Mass.)1650*	Dana, E. T. (Los Altos, Cal.)1927	Danenfelds, J. (Lincoln, Neb.)1950
Brehm, Chas. (Racine, Wis.)1500	Chinn, A. Jr. (S. Miami, Fla.)1704	Daniel, C. L. (New Orleans)1685	Daniel, Irene (New Orleans)1643
Brennels, R. (E. Rutherford, N.J.)1770*	Chizum, Robt. (Minneapolis)1700*	Daniel, Wendell (Austin, Tex.)1500*	Daniels, D. F. (Spokane, Wash.)1700*
Brice-Nash, B. (Wichita, Kans.)1976	Chorlton, F. C. (Kenmore, N.Y.)1565	Daniels, S. A. (Brooklyn, N.Y.)1650	Danielson, L. (Cleveland)1600*
Bricher, J. (Cottage Grove, Ore.)1550*	Christiansen, Mrs. A. (Milwaukee)1400*	Dasteel, H. Jr. (San Francisco)1711	Dasteel, H. Sr. (San Francisco)1589*
Bricher, V. (Cottage Grove, Ore.)1600*	Christoffers, W. H. (Linden, N.J.)1400*	Davenport, J. (Dallas, Tex.)1556	Davidson, Ted H. (Seattle, Wash.)1585
Brieger, R. S. (Houston, Tex.)2000	Chu, H. H. (Philadelphia)1900	Davidson, H. Sander (Tulsa, Okla.)1586	Davidson, J. Jr. (Homestead, Fla.)1920*
Brindley, Dr. C. G. (Borger, Tex.)1825	Chuang, S. (River Rouge, Mich.)1750	Davis, H. G. (Birmingham, Ala.)1650*	Davis, D. E. (San Francisco)1825*
Brittain, L. V. (Natchitoches, La.)1500*	Church, N.B. (Miami, Fla.)1803	Davis, G. H. (Texas)1623*	Davis, Dr. G. (Lincoln, Neb.)1700*
Broderson, B. F. (Minneapolis)1640	Ciariariello, T. (Evans City, Pa.)1850*	Davis, Mrs. G. (Lincoln, Neb.)1500*	Davis, Jack (Warwick, R.I.)1685*
Brodie, Dan (Ft. Worth, Tex.)1400*	Cieski, W. E. (Rochester, N.Y.)1500*	Davis, Jerry (Albuquerque, N.M.)1400*	Davis, M. H. (Atlanta, Ga.)1653
Brodsky, David (Miami, Fla.)1659	Claitor, O. (Baton Rouge, La.)1825	Davis, Paul J. (Georgia)1860*	Davis, Mrs. R. G. (Evanston, Wyo.)1440*
Bronstein, Murray (Bronx, N.Y.)1800	Clark, Alan (Seattle, Wash.)1884	Davis, S. P. (Gary, Ind.)1650	Day, F. A. (Dallas, Tex.)1989
Brook, S. (Attleboro, Mass.)1996*	Clark, Dan L. (Milwaukee)2054	Day, R. E. (Carson City, Nev.)1541	Dayton, H. J. (Brooklyn, N.Y.)1750*
Brooks, D. O. (South Bend, Ind.)1900*	Clark, David L. (Detroit)1954	DeBucharanne, J. D. Sr. (Home- stead, Fla.)1612	DeBucharanne, J. D. Jr. (Miami, Fla.)1650*
Brooks, L. R. (Denver, Colo.)1784	Clark, F. L. (Salt Lake City)1734	DeCarvalho, A. (Brooklyn, N.Y.)1749	DeFine, J. D. (Florissant, Mo.)1947
Broughton, S. (New York, N.Y.)1850	Clark, Foster (Salinas, Cal.)1930	DeLaTorre, A. M. (Norman, Okla.)1923	DeLieto, M. (New York, N.Y.)2010
Brown, A. L. (S. Orange, N.J.)1777	Clark, Fred (Milwaukee)1845	DeLieto, Mrs. M. (New York, N.Y.)1420	Dennis, M. (Otsego, Mich.)1679
Brown, Benj. (New York, N.Y.)1500*	Clark, J. R. (Richmond, Ind.)1743	Denu, R. B. (Rapid City, S.D.)1731	Depperschmidt, R. (Kansas)1753*
Brown, E. A. (Atlanta, Ga.)1790	Clark, T. G. (Paulding, O.)1620*	DeSerrano, Mrs. R. (E. Orange, N.J.)1704	DeSola, Frank (New York, N.Y.)1500*
Brown, James (Columbus, O.)1450*	Clark, Wm. A. (St. Louis, Mo.)1500*	DeVine, J. W. (Port Arthur, Tex.)1805	DeWitt, J. S. (Seattle, Wash.)1714
Brown, K. W. (Grand Forks, N.D.)1826	Clark, Wm. H. (Grand Forks, N.D.)1607*	DeWitt, Rev. Max (Lincoln, Neb.)1735	DeZeih, C. J. (Seattle, Wash.)1550*
Brown, R. G. (Hartsville, S.C.)1700*	Clary, Earl (Pittsburgh, Pa.)1737*	Diamond, E. (Lincoln, Neb.)1650*	Dick, James (Lincoln, Neb.)1600*
Brown, Victor (New Orleans)1850	Clawson, F. (Sacramento, Cal.)1752	Diamond, E. (Lincoln, Neb.)1650*	Diebling, G. N. (Rihoboth, Mass.)1437*
Browning, W. C. (Pasadena, Tex.)1982	Clayton, R. (Montclair, N.J.)1903	Diamond, E. (Lincoln, Neb.)1650*	Diesen, C. E. (Tonawanda, N.Y.)1988
Bruner, A. J. (La Follette, Tenn.)1400	Cleaver, M. F. (Allentown, Pa.)2140	Diamond, E. (Lincoln, Neb.)1650*	Dill, W. (Little Ferry, N.J.)1900*
Bryan, W. J. (New York, N.Y.)2205	Cleere, C. E. (Ft. Worth, Tex.)1585	Diamond, E. (Lincoln, Neb.)1650*	Dina, L. J. (Ft. Worth, Tex.)2050
Buck, Wm. S. (Altoona, Pa.)1939*	Clemens, G. (Up. Montclair, N.J.)1848	Diamond, E. (Lincoln, Neb.)1650*	Dineen, R. A. (Spokane, Wash.)1700*
Buckendorf, G. W. (Buhl, Ida.)1875	Clement, W. W. (Kansas City, Mo.)1773	Diamond, E. (Lincoln, Neb.)1650*	DiPaola, Nick (Buffalo, N.Y.)1670
Buczkowski, M. (Newark, N.J.)1400*	Cleve, Chas. (Forest Hills, N.Y.)1653	Diamond, E. (Lincoln, Neb.)1650*	DiPaula, Dr. F. R. (Arabi, La.)1950
Buerger, E. (Evanston, Ill.)2156*	Cleveland, C. (Birmingham, Ala.)1700*	Diamond, E. (Lincoln, Neb.)1650*	Distefano, Dr. A. F. (St. Paul, Va.)1630
Bullockus, T. (Hackensack, N.J.)1905	Cleveland, H. (Chicago)1691	Diamond, E. (Lincoln, Neb.)1650*	Dixie, J. H. III (Orlando, Fla.)1820*
Burdick, D. (Huntington, W.Va.)2048	Cleverger, W. (Tampa City, Fla.)1957	Diamond, E. (Lincoln, Neb.)1650*	Dixon, H. (Ft. Worth, Tex.)1460*
Burger, A. W. (Minneapolis)1677*	Cloud, W. W. (New Orleans)1800	Diamond, E. (Lincoln, Neb.)1650*	Doares, W. A. (New York, N.Y.)1450*
Burger, H. (Springfield, Mass.)1770	Clune, J. S. (St. Paul, Minn.)1680	Diamond, E. (Lincoln, Neb.)1650*	Dobley, R. (Berkely Hts., N.J.)1900*
Burger, R. E. (Oakland, Cal.)2087	Clyatt, H. (Corp. Christi, Tex.)1547	Diamond, E. (Lincoln, Neb.)1650*	Docke, F. (Halsbrouck Hts., N.J.)1400*
Burgess, E. (Kansas City, Mo.)1650*	Coady, G. F. (Toledo, O.)1600*	Diamond, E. (Lincoln, Neb.)1650*	Dodkewitz, H. (Spring Valley, N.Y.)1686
Burgyan, A. (Cleveland)1703	Cochrane, J. (Toledo, O.)1860*	Diamond, E. (Lincoln, Neb.)1650*	Doelling, M. (Irvington, N.J.)1660
Burkett, Max (Carlsbad, N.M.)1600*	Cockrell, E. M. (Fairfield, Ala.)1760*	Diamond, E. (Lincoln, Neb.)1650*	Dohse, L. (Prairie du Chien, Wis.)1450*
Burkhardt, C. (Johnson City, Tenn.)1400*	Cockrell, J. T. (Auburn, Ala.)1550*	Diamond, E. (Lincoln, Neb.)1650*	Dolinsky, H. (New York, N.Y.)1600*
Burnet, O. (Ft. Worth, Tex.)1909	Cohan, A. P. (Bronx, N.Y.)1755	Diamond, E. (Lincoln, Neb.)1650*	Domanski, L. (Los Angeles)1825
Burns, A. (Gadsden, Ala.)1500*	Cohan, N. (Bayonne, N.J.)1829	Diamond, E. (Lincoln, Neb.)1650*	Domsky, Arthur (Racine, Wis.)1952
Burns, Dr. G. C. (Compton, Cal.)1520	Cohen, Allen (New York, N.Y.)1800*	Diamond, E. (Lincoln, Neb.)1650*	Donaldson, C. (Carson City, Nev.)1625
Burton, C. M. (St. Louis, Mo.)1901	Cohen, Melvin (Milwaukee)1902	Diamond, E. (Lincoln, Neb.)1650*	Donnelly, W. H. (Valparaiso, Ind.)2035
Bussgang, J. J. (Cambridge, Mass.)1550*	Cohen, M. G. (Miami, Fla.)1928	Diamond, E. (Lincoln, Neb.)1650*	Donovan, J. F. (Brooklyn, N.Y.)2224
Butcher, R. F. (Florida City, Fla.)1650*	Cohen, R. E. (San Francisco)1600*	Diamond, E. (Lincoln, Neb.)1650*	Dorbandt, L. (Albuquerque, N.M.)1897*
Buttnerhoff, F. J. (Racine, Wis.)1716	Cohen, Sam (Chicago)2093	Diamond, E. (Lincoln, Neb.)1650*	Dorchester, D. (Port Arthur, Tex.)1500*
Byland, W. M. (Pittsburgh, Pa.)2164	Cohn, Jean (Cleveland)1920	Diamond, E. (Lincoln, Neb.)1650*	Dorn, Fred (New York, N.Y.)1619
Byrd, J. E. (Racine, Wis.)1712	Colby, Dr. K. M. (San Francisco)1944	Diamond, E. (Lincoln, Neb.)1650*	Dornier, R. R. (Baton Rouge, La.)1746
Cabe, J. L. (Georgia)2030*	Cole, J. R. (Albuquerque, N.M.)1810	Diamond, E. (Lincoln, Neb.)1650*	Doubleday, J. (Decatur, Ill.)1500*
Cable, A. (San Marcos, Tex.)1800*	Coles, A. P. III (El Paso, Tex.)2034	Diamond, E. (Lincoln, Neb.)1650*	Douglas, Lee (Emory, Va.)1630
Cabot, F. J. III (Sturgeon Bay, Wis.)2040	Collins, Dr. B. (Santa Monica, Cal.)1869	Diamond, E. (Lincoln, Neb.)1650*	Downey, Drew (Georgia)1700*
Cafarelli, N. (Bogota, N.J.)1917	Collins, C. (Philadelphia)1400*	Diamond, E. (Lincoln, Neb.)1650*	Drake, Alvin (Bayonne, N.J.)2006
Cain, C. W. (Newbury, Mass.)1850*	Collins, Dave (Wilmington, N.C.)1550	Diamond, E. (Lincoln, Neb.)1650*	Draker, Wm. (Hollis, N.Y.)2044
Cain, D. A. (Newbury, Mass.)1800	Collins, Francis (Dallas, Tex.)1642	Diamond, E. (Lincoln, Neb.)1650*	Drauglis, E. (Philadelphia)1872
Caine, Nick (Bristol, Tenn.)1587	Collins, R. M. (Tacoma, Wash.)1575	Diamond, E. (Lincoln, Neb.)1650*	Draves, Chas. Jr. (Cleveland)1767
Caine, Dr. W. H. (Antwerp, O.)1500*	Colvin, T. L. (Ft. Worth, Tex.)1515	Diamond, E. (Lincoln, Neb.)1650*	Dreher, E. (Willow Grove, Pa.)2100
Calder, P. (Berkley, Mich.)1650*	Compito, D. (New York, N.Y.)1600*	Diamond, E. (Lincoln, Neb.)1650*	Dreher, L. C. (Sand Springs, Okla.)1503
Callaway, J. (Washington, D.C.)1768	Compton, Mrs. W. (Columbia, S.C.)1558	Diamond, E. (Lincoln, Neb.)1650*	Drehfal, J. A. (Milwaukee)1550*
Callis, J. W. (Wichita, Kans.)2023	Condon, F. E. (Bogota, N.J.)1818	Diamond, E. (Lincoln, Neb.)1650*	Dreibergs, L. (Saginaw, Mich.)2259
Calyo, N. A. (Bronx, N.Y.)1400	Congleton, E. (E. Providence, R.I.)1774	Diamond, E. (Lincoln, Neb.)1650*	Drewry, (Wichita, Kans.)1600*
Campagna, G. (Chicopee Falls, Mass.)1500*	Contoski, V. (Minneapolis)1779	Diamond, E. (Lincoln, Neb.)1650*	Dreyfus, S. E. (Terre Haute, Ind.)1724
Campbell, D. (Northwood, N.D.)1525	Convis, D. L. (Wichita, Kans.)1551	Diamond, E. (Lincoln, Neb.)1650*	Driver, P. B. (Ridley Park, Pa.)1768
Campbell, John (Spokane, Wash.)1550*	Conwit, Dr. M. (New York, N.Y.)1600*	Diamond, E. (Lincoln, Neb.)1650*	DuBois, D. C. (Kansas City, Mo.)1585
Campbell, John T. (Waco, Tex.)1798	Coons, E. A. (Sewickley, Pa.)1910	Diamond, E. (Lincoln, Neb.)1650*	Dubrow, N. (Philadelphia)1400*
Campiglia, R. (Philadelphia)1813*	Copeland, G. H. (Jefferson, Okla.)1717	Diamond, E. (Lincoln, Neb.)1650*	Duchamp, M. (New York, N.Y.)2035
Campomanes, F. (New York, N.Y.)2149	Coplin, L. J. (Washington, D.C.)1610*	Diamond, E. (Lincoln, Neb.)1650*	Ducharme, J. (Easthampton, Mass.)1725
Candee, A. H. (Rochester, N.Y.)1874	Corcoran, R. J. (New York, N.Y.)1650*	Diamond, E. (Lincoln, Neb.)1650*	Ducharme, J. Jr. (Easthampton, Mass.)1700*
Cantor, R. (Philadelphia)1919	Corda, Robt. (Wausau, Wis.)1562	Diamond, E. (Lincoln, Neb.)1650*	Duda, N. (Cleveland)1590*
Capillon, E. A. (Attleboro, Mass.)1630	Corfman, H. (Cleveland)1600	Diamond, E. (Lincoln, Neb.)1650*	Dulicai, F. (Cranford, N.J.)1702
Caplan, Miss P. (New York, N.Y.)1550*	Corman, Ruth (San Francisco)1435*	Diamond, E. (Lincoln, Neb.)1650*	Dunker, R. (Milwaukee)1400*
Capo, Dr. James (Georgia)1540*	Cornelius, G. (Spokane, Wash.)2010*	Diamond, E. (Lincoln, Neb.)1650*	Dunn, Rev. R. (Portsmouth, N.H.)1700*
Capps, G. M. (San Francisco)2117	Cornish, H. (Milwaukee)1374	Diamond, E. (Lincoln, Neb.)1650*	Dunst, Theodore (New York, N.Y.)2090
Carey, Tom (San Luis Obispo, Cal.)1600*	Cospito, F. (Bartonville, Ill.)1650*	Diamond, E. (Lincoln, Neb.)1650*	Dunpre, C. C. (Shreveport, La.)1745
Carleton, Frank (Detroit)1406	Coughlin, R. J. (Orange, N.J.)1832	Diamond, E. (Lincoln, Neb.)1650*	Durant, R. B. (Spokane, Wash.)1480*
Carleton, Carl (Teaneck, N.J.)1755	Coveyou, R. R. (Oak Ridge, Tenn.)2022	Diamond, E. (Lincoln, Neb.)1650*	Durham, Rich. (Farmington, Utah)2025*
Carlson, Ed (New Orleans)1400*	Cox, J. R. (Columbus, O.)1790	Diamond, E. (Lincoln, Neb.)1650*	DuVall, A. H. (Charleston, W.Va.)1974
Carlson, Elmer (Bellevue, Wash.)1842*	Cox, John (Milwaukee)1509*	Diamond, E. (Lincoln, Neb.)1650*	Dwyer, A. (New Jersey)1800*
Carlson, Elward (Camden, N.J.)1800*	Cox, Marvin E. (Gary, Ind.)1947	Diamond, E. (Lincoln, Neb.)1650*	Dyal, D. F. (Georgia)1888*
Carlton, H. F. (Rochester, N.Y.)1885*	Cox, W. E. (Southern Pines, N.C.)1425*	Diamond, E. (Lincoln, Neb.)1650*	Dycus, Robt. (Spokane, Wash.)1830*
Carlyle, Dr. A. (St. Petersburg, Fla.)2020	Cramer, Fred (Milwaukee)1920	Diamond, E. (Lincoln, Neb.)1650*	Eastman, C. J. (Rego Park, N.Y.)2203
Carpenter, J. D. (Pella, Ia.)1600*	Cramer, H. G. (Peoria, Ill.)1700	Diamond, E. (Lincoln, Neb.)1650*	Eastman, G. C. (Detroit)2212
Carrier, L. D. (Groves, Tex.)1600*	Crandall, C. (Rochester, N.Y.)1685*	Diamond, E. (Lincoln, Neb.)1650*	Eastwood, R. C. (Homestead, Fla.)1933
Carroll, J. A. (Milwaukee)1766	Crankshaw, J. C. (DeLand, Fla.)1500*	Diamond, E. (Lincoln, Neb.)1650*	Ebersole, W. H. (Wichita, Kans.)1650*
Cartee, H. (Huntington, W.Va.)1600*	Creech, Claude E. (New Orleans)1730*	Diamond, E. (Lincoln, Neb.)1650*	Ebright, R. (Wichita, Kans.)1700*
Carter, Dan R. (Midland, Tex.)1650*	Creech, Gilbert (New Orleans)1450*	Diamond, E. (Lincoln, Neb.)1650*	Eckenrode, T. B. (Lancaster, Pa.)2020
Carter, M. (Pt. Blakely, Wash.)1500	Crichton, J. (Corp. Christi, Tex.)1600	Diamond, E. (Lincoln, Neb.)1650*	Eckhardt, R. F. (Detroit)1945
Carter, Tom (Beaumont, Tex.)1450*	Crew, Dr. A. E. (Marion, Ia.)1628	Diamond, E. (Lincoln, Neb.)1650*	
Casey, John (Plainfield, N.J.)1750*	Crew, W. W. (Shreveport, La.)1723	Diamond, E. (Lincoln, Neb.)1650*	
Castor, F. (Wichita, Kans.)1600*	Critchlow, A. J. (Campbell, Cal.)1900*	Diamond, E. (Lincoln, Neb.)1650*	
Celle, J. A. (Sacramento, Cal.)1928	Crittenden, C. C. (Raleigh, N.C.)2106	Diamond, E. (Lincoln, Neb.)1650*	
Celle, O. A. (Sacramento, Cal.)1930	Crofut, F. (San Jose, Cal.)1898	Diamond, E. (Lincoln, Neb.)1650*	
Cerretelli, J. P. (Olympia, Wash.)1823	Croll, Abraham (Detroit)1791	Diamond, E. (Lincoln, Neb.)1650*	
Cesaneck, M. (Allentown, Pa.)1800*	Cronin, H. (Jersey City, N.J.)1400	Diamond, E. (Lincoln, Neb.)1650*	
Chase, E. F. (Okla. City, Okla.)1820	Crooker, A. S. (Ambler, Pa.)1500*	Diamond, E. (Lincoln, Neb.)1650*	
Chalk, L. M. (Portland, Ind.)1445	Cross, R. G. (Santa Monica, Cal.)2068	Diamond, E. (Lincoln, Neb.)1650*	
Chamandy, W. (Providence, R.I.)1750*	Crow, A. J. (Amarillo, Tex.)1575*	Diamond, E. (Lincoln, Neb.)1650*	
Champagne, R. (Woronic, Mass.)1600*	Crowder, W. L. (Greensboro, N.C.)1825	Diamond, E. (Lincoln, Neb.)1650*	
Chancellor, T. J. (Waco, Tex.)1778	Cuculla, C. J. (New Orleans)1994*	Diamond, E. (Lincoln, Neb.)1650*	
Chandler, Dan (New Orleans)1600*	Culnan, J. (Carson City, Nev.)1540	Diamond, E. (Lincoln, Neb.)1650*	
Chandler, L. (Cleveland)1500*	Culpepper, E. P. (Mobile, Ala.)1500*	Diamond, E. (Lincoln, Neb.)1650*	
Chapin, Robt. (Peoria, Ill.)1844	Cummings, F. W. Jr. (New Orleans)1991	Diamond, E. (Lincoln, Neb.)1650*	
Chapman, W. (Reno, Nev.)1646	Cummings, J. W. (Gary, Ind.)1822*	Diamond, E. (Lincoln, Neb.)1650*	
Chappell, A. D. (Gilroy, Cal.)1961	Cummings, J. C. (Syracuse, N.Y.)1453	Diamond, E. (Lincoln, Neb.)1650*	
Chappuis, G. (Salt Lake City)1892	Cuneo, R. J. (Oakland, Cal.)1736	Diamond, E. (Lincoln, Neb.)1650*	
Charles, Dr. T. R. (Illinois)1650*	Cunningham, G. S. (New Rochelle, N.Y.)1652	Diamond, E. (Lincoln, Neb.)1650*	
Charlton, J. G. (Las Vegas, N.M.)1807	Curdo, J. A. (Lynn, Mass.)2128	Diamond, E. (Lincoln, Neb.)1650*	
Charney, J. (Cleveland)1500*	Currie, R. G. (San Francisco)2179	Diamond, E. (Lincoln, Neb.)1650*	
Chase, G. F. (Buffalo, N.Y.)1715	Curtis, Clinton (New York, N.Y.)1700	Diamond, E. (Lincoln, Neb.)1650*	
Chase, G. W. (Los Angeles)1933	Curtis, Robt. (Decatur, Ill.)1755	Diamond, E. (Lincoln, Neb.)1650*	
Chauvenet, R. (Silver Spring, Md.)2211	Cuthbert, W. R. (Kayford, W.Va.)1990*	Diamond, E. (Lincoln, Neb.)1650*	
Chavayda, J. (Cleveland)1773	Cutts, R. (Lincoln, Neb.)1770*	Diamond, E. (Lincoln, Neb.)1650*	
	Czermak, C. (Montclair, N.J.)1400*	Diamond, E. (Lincoln, Neb.)1650*	
	Czernieki, K. A. (Chicago)2041	Diamond, E. (Lincoln, Neb.)1650*	
	Dabney, E. S. (Lexington, Ky.)1821	Diamond, E. (Lincoln, Neb.)1650*	

Edberg, R. E. (Tiefen, Wash.)1932	Edelstein, H. (San Carlos, Cal.)1940
Edgar, T. D. (Beaumont, Tex.)1600*	Edison, T. W. (Orange, N.J.)1400
Edmondson, E. B. Jr. (El Paso, Tex.)1832	Edwards, D. W. (St. Louis, Mo.)1780
Edwards, E. G. (New Orleans)1950	Edwards, G. (Roselle, N.J.)1700*
Edwards, J. G. (Kingfisher, Okla.)1600*	Edwards, Jon (Long Beach, Cal.)1770
Egan, J. P. (Watertown, Mass.)1522	Eger, Felix (New York, N.Y.)1900*
Egbert, W. (Up. Montclair, N.J.)1650*	Einhorn, Alex. (Los Angeles)1775*
Einhorn, Richd. (New York, N.Y.)2240	Einhorn, S. J. (Philadelphia)1870*
Eisenstadt, T. (San Francisco)1920	Ek, Matthew C. (Downey, Cal.)1918
Ek, Matthew C. (Downey, Cal.)1918	Eklum, R. G. (Dunkirk, N.Y.)1811
Eliason, D. (Manhattan Beach, Cal.)1905	Ellingson, J. (Lincoln, Neb.)1700*
Ellis, Richd. E. (Brooklyn, N.Y.)1917	Ellison, T. J. (Cleveland)2073
Ellsworth, B. E. (N. Platte, Neb.)1667	Elo, Arpad P. (Milwaukee)2160
Elpers, J. P. (Lafayette, Ind.)1550*	Emerson, Harold (New Orleans)1520*
Emery, E. J. (Detroit)1432	Emigh, D. C. (Rapid City, S.D.)1901
Emile, P. (Richmond, Ind.)1727	Emmons, S. (Port Arthur, Tex.)1500*
Emmons, W. P. (Pt. Arthur, Tex.)1420*	English, Roy (San Diego, Cal.)1675*
Erdal, Gary B. (New Orleans)1821	Ericson, H. E. (Allentown, Pa.)1583
Erps, Robt. (Woodburn, Ind.)1924	Erpsen, T. (Cornucopia, Wis.)1868
Eschrich, F. (Manchester, N.H.)1890	Esteves, H. (Washington, D.C.)1855*
Eucher, Mark	

Fletcher, R. L. (Decatur, Ill.)1682
 Flores, Jose (San Antonio, Tex.)1650*
 Flowers, W. H. (Tulsa, Okla.)1750*
 Folds, Dr. E. (New York, N.Y.)1697
 Fonaroff's (Bronx, N.Y.)2009
 Fonnesebeck, L. (Logan, Utah)1470
 Fontan, Chas. (Oakland, Cal.)1900*
 Foote, F. K. (Hastings, Mich.)1937
 Forciosa, James (Milwaukee)1748
 Ford, Rodney (Salem, Mass.)1718
 Forester, F. (Ft. Worth, Tex.)1400*
 Forrest, K. (Manhattan Beach, Cal.)1800
 Fort, Ben (Pt. Arthur, Tex.)1650*
 Foster, B. W. (Pt. Arthur, Tex.)1650*
 Foster, C. (Pt. Arthur, Tex.)1900
 Foster, L. L. (Columbia, S.C.)1768
 Fotias, Chris (Visalia, Cal.)1834
 Fought, John (Racine, Wis.)1512
 Foust, Mrs. M. (New York, N.Y.)1400*
 Foy, E. M. (Charleston, W.Va.)1974
 Francisco, O. (Milwaukee)1955
 Frank, Ivan (New York, N.Y.)2060
 Frankenstein, W. A. (Detroit)1482
 Frankenstein, L. (Kansas City, Mo.)1909
 Frazier, Floyd (Wichita, Kans.)1800*
 Frazier, Mrs. F. (San Marino, Cal.)1640
 Frederic, Jack (Spokane, Wash.)1550*
 Frederick, C. (Columbus, O.)1650*
 Fredrick, Jim (Oakland, Cal.)1920
 Freed, J. (Los Angeles)1891
 Freedman, P. (Harrisburg, Pa.)1707
 Freeman, Arthur (Belmont, Mass.)1838
 Freeman, C. Jr. (Shawnee, Okla.)1818
 Freeman, Claude (Ft. Worth, Tex.)2023
 Freeman, Dr. R. (Amarillo, Tex.)1650*
 Freeman, Russ (Lexington, Ky.)1550*
 Freeman, Steve (W. Union, Ill.)1830*
 Freer, Dick (Racine, Wis.)1550*
 Freibergs, A. (Lincoln, Neb.)1765
 Freitag, Dr. H. L. (Buffalo, N.Y.)1918
 Fremion, Richard. (Clyde, O.)1600*
 French, G. F. (Ft. Bragg, N.C.)1800*
 Friedenthal, R. (Bridgeport, Ct.)2047
 Friedman, E. (Cambridge, Mass.)1771
 Fries, Tom (Fresno, Cal.)1939
 Frobegs, A. C. (Cleveland)1600*
 Froemke, R. L. (Georgia)1870*
 Frost, Jack K. (Spokane, Wash.)1450*
 Frucella, Dr. S. R. (Buffalo, N.Y.)1993
 Fry, R. J. (Havertown, Pa.)1800
 Fuchsman, C. H. (Corpus Christi, Tex.)1893
 Fugua, L. A. (Wichita, Kans.)1460*
 Gaba, Abraham (Detroit)1906
 Gaba, Dr. H. B. (Detroit)1876
 Gable, V. (Tonawanda, N.Y.)2120
 Gaede, A. H. (Charlotte, N.C.)1761
 Gage, Dr. A. A. (Kenmore, N.Y.)1864
 Gaigals, L. (Milwaukee)1967
 Galeff, Martin (New York, N.Y.)1600*
 Gallagher, W. (New Haven, Ct.)1812
 Galli, Tom (Paso Robles, Cal.)1560*
 Galvin, Fred (St. Paul, Minn.)1825
 Gambrell, H. (Birmingham, Ala.)1900*
 Gamster, H. (Portsmouth, N.H.)1650*
 Gans, H. (Cleveland)1700*
 Gant, George (Georgia)1500*
 Gant, R. P. (Athens, Ala.)1700*
 Garabedian, R. (Fresno, Cal.)1650*
 Garais, I. (Cleveland)2094
 Gardner, C. (Los Angeles)1975*
 Gardner, Curtis (Milwaukee)2060
 Gardner, Don (Denver, Colo.)1660*
 Gardner, Ed. (Wichita, Kans.)1600*
 Gardner, L. W. (Pittsburgh, Pa.)1942*
 Garfinkel, B. (Aberdeen, Md.)1909
 Garhart, J. D. (Johnstown, Pa.)1838
 Gariss, W. (Seattle, Wash.)1450*
 Garland, R. (W. Newbury, Mass.)1700
 Garratt, D. (Portsmouth, N.H.)1700*
 Garrett, H. O. (Auburn, Ind.)1550
 Garrison, J. (New Orleans)1550*
 Gartenhaus, S. (Urbana, Ill.)2065
 Gartley, F. (Up. Montclair, N.J.)1800*
 Garver, G. K. (Decatur, Ill.)1787
 Garver, R. L. (San Antonio, Tex.)2085
 Garza, B. (Lima, O.)1650*
 Gates, Herbert (Lynn, Mass.)2076*
 Gauper, Hugh (La Crosse, Wis.)1850
 Gavitt, Dan (New Orleans)1552
 Gedance, M. N. (Las Vegas, Nev.)2102
 Gee, J. B. (Sacramento, Cal.)1977
 Geisler, M. H. (New York, N.Y.)1633
 Gelfand, M. (New York, N.Y.)1725*
 Geller, Samuel (Los Angeles)1945
 Geller, Sidney (Philadelphia)1550*
 Gelobter, L. (Jackson Hts., N.Y.)1775
 George, Lewis (Minneapolis)1970
 George, P. H. (Verona, N.J.)1826
 Gerth, R. M. (Portsmouth, N.H.)1725
 Ghetzler, L. (San Antonio, Tex.)1880
 Giangliulo, D. A. (Lansdowne, Pa.)1832
 Gianni, Bertha (P. Christian, Miss.)1400*
 Gibbs, Wm. S. Jr. (Jamaica, N.Y.)1615*
 Gibson, J. B. Jr. (Tampa, Fla.)1625
 Gibson, Walter (Cambridge, Mass.)1650*
 Giertych, H. T. (Gary, Ind.)1934
 Gilbert, J. T. (Dallas, Tex.)1991
 Gilbert, M. W. (St. Louis, Mo.)1869
 Gilchrist, J. E. (Cleveland)1985
 Gillingberg, D. I. (Bronx, N.Y.)1640*
 Gilliland, M. E. (Pt. Arthur, Tex.)1500*

Gill, Bernard A. (Racine, Wis.)1700
 Gillespie, W. (Ft. Lauderdale, Fla.)1840*
 Gillette, W. F. (Seattle, Wash.)1800*
 Gilliland, A. (W. Lafayette, Ind.)1900
 Ginter, K. (Charlotte, N.C.)1645
 Gladney, W. F. (Baton Rouge, La.)1985
 Gladstone, David R. (Queens, N.Y.)1972
 Gladstone, L. (Kew Gardens, N.Y.)1906
 Glass, Curtis (Peoria, Ill.)1605
 Gleason, R. E. (Springfield, Mass.)1837
 Gleason, Roger (Minneapolis)1740
 Gleason, Fred (Spokane, Wash.)1500*
 Glenn, Gary (Spokane, Wash.)1480*
 Glickfield, B. W. (New York, N.Y.)1775
 Goldberg, Edmund (St. Louis, Mo.)1950
 Goddard, B. D. (Hot Springs, S.D.)1749
 Godwin, P. (Amarillo, Tex.)1500*
 Goehler, F. (Los Angeles)1932*
 Goehler, Geo. F. (Los Angeles)1820
 Goepf, Philip (Monson, Mass.)1400
 Goetz, Fred (Los Angeles)1400*
 Gorfth, R. A. (Spokane, Wash.)1600*
 Goldberg, Gerry (West Point, N.Y.)1800*
 Goldberg, N. J. (Los Angeles)1950*
 Golden, T. H. (Long Beach, Cal.)1850*
 Goldsmith, J. (Rego Park, N.Y.)1807
 Goldstein, Herbert (New Jersey)1760*
 Goldwater, W. (New York, N.Y.)1986
 Golec, Frank J. (Chicago)2065
 Golla, R. W. (Chicago)1788
 Gondert, Gerald (Racine, Wis.)1400*
 Gonzalez, M. (New York, N.Y.)1904
 Goodman, Julius (Cleveland)1846
 Gording, Dr. E. J. (Windber, Pa.)1987
 Gordon, Hyman (Los Angeles)1957
 Gordon, John (Grand Forks, N.D.)1735*
 Gordon, Morris (Los Angeles)1970
 Gore, James (New York, N.Y.)1950
 Gottesman, M. H. (Chicago)1833
 Gottsdanker, T. (Man. Beach, Cal.)1550*
 Gould, B. (Newburyport, Mass.)1868
 Gould, H. W. (DeKalb, Ill.)1525
 Gould, Mrs. B. (Newburyport, Mass.)1760
 Gove, R. C. (Wayzata, Minn.)1766
 Graetz, L. (Hansboro, N.D.)2065
 Graf-Stevenson, Sonja (Los Angeles)1706
 Graham, L. E. (Kansas City, Mo.)1900
 Grande, Robt. (Denver, Colo.)1862
 Granger, W. R. (Cleveland)2008
 Grant, Newton (Monroe, La.)1957
 Grants, Waldemars (Milwaukee)1642*
 Grava, Arvids (Lincoln, Neb.)1700*
 Graves, F. R. (Ft. Worth, Tex.)1598
 Gray, C. H. (Davenport, Ia.)1665
 Gray, Richard (West Point, N.Y.)1650*
 Greene, Doug. Jr. (Otsego, Mich.)1440*
 Greene, Lincoln (Otsego, Mich.)1644
 Greene, Ronald (Racine, Wis.)1620*
 Greene, Sanford (Mt. Vernon, N.Y.)1950
 Greenough, P. E. (Buffalo, N.Y.)2109
 Greenwald, Beni. (Provo, Utah)2220
 Greenway, J. (Denver, Colo.)1650*
 Greenwood, L. (Spokane, Wash.)1790
 Gregg, Robt. (New Milford, N.J.)1550
 Greiner, D. (Chappell, Neb.)1400*
 Greiner, G. (Chappell, Neb.)1400*
 Grenier, W. (Milwaukee)1350*
 Gresser, Mrs. G. (New York, N.Y.)2116
 Grieb, Kenneth (Buffalo, N.Y.)1532*
 Grkavac, J. B. (Milwaukee)2048
 Groesbeck, F. (Albuquerque, N.M.)1764*
 Grombacher, W. (Chicago)1871
 Groot, Pete (Wilmington, N.C.)1425
 Gross, Fletcher (La Canada, Cal.)1620*
 Gross, Henry (San Francisco)2224
 Gross, Robt. (Los Angeles)2193
 Gross, Ronald (Compton, Cal.)2123
 Grossguth, C. L. (Waterville, Me.)2053
 Grossman, Wm. (New York, N.Y.)2000*
 Grover, K. M. (Los Angeles)2200*
 Gruhn, Carl (Lincoln, Neb.)1650*
 Grumette, Mrs. L. (Hollywood, Cal.)1814
 Guala, Victor A. (Westbury, N.Y.)1990
 Guala, Mrs. V. A. (Westbury, N.Y.)1580
 Guendling, Jack (Lincoln, Neb.)1500*
 Guerrette, G. F. (Amarillo, Tex.)1650*
 Guinan, Mrs. R. (Philadelphia)1475*
 Gunnis, M. J. (Detroit)1741
 Gustafson, K. E. (Attleboro, Mass.)1854
 Gutekunst, T. C. (Allentown, Pa.)2158
 Guthridge, LeRoy (York, Pa.)1724
 Gutmanis, E. V. (Chicago)2069
 Gutwirth, Carl (New York, N.Y.)1725
 Gwin, Jack (Baton Rouge, La.)1700*
 Gyarmothy, E. (Cleveland)1650*
 Gysberg, J. C. (Downey, Cal.)1900*
 Haban, Frank (Cleveland)1827
 Haefner, Richd. (Irvington, N.J.)1952
 Haendige, Wm. (San Antonio, Tex.)1883*
 Hafke, Walter (Glendale, N.Y.)1700*
 Hagedorn, Z. (West Point, N.Y.)1600*
 Halparrn, Michael (Fresno, Cal.)1918
 Haines, Roger (Albuquerque, N.M.)1970
 Haliburton, J. A. Jr. (Allen, Okla.)1400
 Hall, Harry (Philadelphia)1550*
 Hall, Robt. E. (Sauquoit, N.Y.)1620*
 Hall, Walter (Philadelphia)1897
 Haller, L. W. (St. Louis, Mo.)1871
 Hallmark, J. (University, Ala.)1550*
 Halperin, Dr. I. E. (Cleveland)1700
 Halpern, Jerry (S. Orange, N.J.)1702
 Hamburger, D. (Pittsburgh, Pa.)2096
 Hamilton, John (S. Berwick, Me.)1600*
 Hamilton, John (West Point, N.Y.)1950*
 Hamilton, Jon C. (Dallas, Tex.)1608

Hamilton, Wm. (Pittsburgh, Pa.)1868
 Hammett, F. (San Antonio, Tex.)1600
 Hammond, Dick (W. Bear Lake, Minn.)1650*
 Hanauer, N. M. (New York, N.Y.)2239
 Hand, Edmund E. (W. Haven, Ct.)1963
 Haney, D. W. (Kenmore, N.Y.)1757
 Hannye, Geo. (Rochester, N.Y.)1800*
 Harari, R. (Los Angeles)1997*
 Hardman, G. (Garden City, N.Y.)1876
 Hardy, Chas. (Paso Robles, Cal.)1890*
 Harkins, J. L. Jr. (Shaker Hts., O.)2074
 Harle, A. L. (Ft. Worth, Tex.)1758
 Harling, Edgar (Miami, Fla.)1600
 Harmat, Mrs. M. (Los Angeles)1700
 Harmat, Paul (Los Angeles)1718*
 Harrington, Va. (San Diego, Cal.)1600*
 Harris, Dr. Jas. (Lexington, Ky.)1750*
 Harris, John (Ann Arbor, Mich.)1900
 Harris, M. (Springfield, Mass.)1852
 Harris, Dr. S. (Albuquerque, N.M.)1685
 Harris, V. W. Jr. (Kansas City, Mo.)1961
 Harrison, Frank (Wichita, Kans.)1400*
 Harrow, Martin (Jamaica, N.Y.)2132
 Harshbarger, R. G. (U.S. Army)1678
 Hart, Donald J. (Flushing, N.Y.)1816
 Hart, Hugh E. (Oakwood, Ill.)1680
 Hart, I. (Plainview, Tex.)1620*
 Hart, Michael H. (New York, N.Y.)1946
 Hart, Robt. E. (Wichita, Kans.)1450*
 Hartleb, G. E. (Erie, Pa.)2030
 Hartley, W. (Sacramento, Cal.)1714
 Hartling, W. F. (St. Albans, W.Va.)1846
 Hartzell, D. F. (Amarillo, Tex.)1400*
 Harvey, Jas. S. (Bedford, O.)1852*
 Harwell, Dr. Geo. (Durham, N.C.)1809
 Hasenohrl, J. (Rochester, N.Y.)2058
 Hassig, Carl E. (Ft. Wayne, Ind.)1500*
 Hastings, Keith (Istington, Ont.)2066
 Hatch, D. B. (Altoona, Pa.)2021
 Hauck, S. H. (Plainfield, N.J.)1830
 Hauer, Leonard (St. Paul, Minn.)1660
 Haug, E. (Linden, N.J.)1400*
 Hausman, Dr. H. (Columbus, O.)1750*
 Hawkins, Elmer (Salinas, Cal.)1809
 Hawley, R. (Tonawanda, N.Y.)1400*
 Hay, Edward (Spokane, Wash.)1550*
 Hayes, R. B. (Greenville, S.C.)1975
 Hayes, Richd. (Durham, N.H.)1600*
 Haynes, R. D. (Amarillo, Tex.)1450*
 Hayward, N. E. (Greenwich, R.I.)1785*
 Hayward, Dr. V. S. (Huntington, W.Va.)1533
 Hayworth, B. (Compton, Cal.)1570*
 Hazard, F. S. (Los Angeles)1933
 Hazen, G. L. (Ft. Atkins, Wis.)1500
 Hazle, N. (New Brunswick, N.J.)1870
 Heath, Bill (Ponca City, Okla.)1639
 Heath, Gerald (Racine, Wis.)1400*
 Hebinck, R. V. (Pt. Arthur, Tex.)1400*
 Hedgcock, Dr. R. A. (Frankfort, Ind.)1700
 Hefner, L. L. (Birmingham, Ala.)1800*
 Heidman, D. G. (Reno, Nev.)1440*
 Heilbut, P. R. (Salt Lake City)1700*
 Heising, C. R. (Hamilton, O.)1944
 Heising, H. (Ohio)1954*
 Heismann, W. (Buffalo, N.Y.)1400
 Heizman, Dr. J. J. (Fargo, N.D.)1400*
 Helbig, Paul (N. Bergen, N.J.)1855
 Helfman, E. (Cincinnati, O.)1460*
 Helwig, L. (New Orleans)1425
 Helton, L. (Panama City, Fla.)1712
 Helzner, A. (Salem, Mass.)1990
 Hemphill, G. (Ft. Worth, Tex.)1372
 Henderson, A. T. (Tazewell, Va.)1846
 Henderson, C. E. (Bev. Hills, Cal.)1890
 Henderson, Mrs. C. (Bev. Hills, Cal.)1578
 Henderson, Craig (Glenview, Ill.)1746
 Henderson, Geo. (Dallas, Tex.)1821
 Henderson, P.-S. (Chapel Hill, N.C.)1877
 Hendricks, G. (Charleston, W.Va.)1800
 Hendricks, W. A. (San Francisco)1964
 Henin, Chas. C. (Chicago)2190
 Henkin, Dr. W. A. (Detroit)2088
 Hennessy, Thos. (Bronx, N.Y.)2019
 Henschel, Kate (New York, N.Y.)1750*
 Henschel, Wally (New York, N.Y.)1750*
 Henwood, N. (San Francisco)1820
 Herbert, H. (Plainfield, N.J.)1777
 Herbrich, Paul (Jersey City)1865
 Herman, Dr. A. A. (Hays, Kans.)1605
 Herman, P. M. (Hays, Kans.)1420
 Hermann, A. P. (Houston, Tex.)2021
 Hernandez, N. (Tampa, Fla.)2074
 Herrley, E. (Scottsdale, Pa.)1500*
 Herrick, R. E. (Rochester, N.Y.)1775*
 Herrmann, A. (Allentown, Pa.)1930
 Hertzberg, A. (Buffalo, N.Y.)1650*
 Hertzert, R. J. (No. Platte, Neb.)1880
 Herzberg, Barry (Chicago)1861
 Herzberger, Dr. M. (Rochester, N.Y.)2143
 Herzfeld, Fred (Brooklyn, N.Y.)1865*
 Hesse, Jack (West Point, N.Y.)1800*
 Heuer, W. (Lincoln, Neb.)1800*
 Hewes, R. L. (So. Bend, Ind.)1840
 Hickey, J. (Hartford, Conn.)1952
 Hickman, H. W. (Orange, N.J.)2070
 Hidalgo, C. J. Jr. (New York, N.Y.)2008
 Higgins, J. (Downey, Cal.)1600*
 Higgins, Mike (West Point, N.Y.)1650*
 Higgins, Mrs. O. (S. Barbara, Cal.)1672
 Higginson, R. (Spokane, Wash.)1850*
 Higler, Wm. (New York, N.Y.)1770*

Hillinger, C. (New York, N.Y.)2200
 Hiltner, Ted (Seattle, Wash.)1400*
 Hirsch, Jas. (St. Paul, Minn.)1730
 Hobson, A. H. (Montpelier, Vt.)1915
 Hoeflin, E. (St. Paul, Minn.)1860
 Hoerchner, A. E. (Salinas, Cal.)1620
 Hoersch, J. J. (Moberly, S.D.)1648
 Hoff, E. B. (Ft. Wayne, Ind.)1600*
 Hoffman, David (New York, N.Y.)1916
 Holbrook, H. (Irvington, N.J.)1794
 Holt, Maj. (Long Beach, Fla.)1874
 Homer, S. Jr. (New York, N.Y.)1647
 Homer, Mrs. S. Jr. (New York, N.Y.)1450*
 Hook, Wm. (Brooklyn, N.Y.)2095
 Horak, H. G. (Lawrence, Kans.)1976
 Horne, J. H. (Lynn, Ind.)1604
 Hornstein, Dr. N. H. (Southport, S.C.)1867
 Horny, E. (Passaic, N.J.)1930*
 Hornyak, S. (Cleveland)1620*
 Horowitz, Edna (New York, N.Y.)1605
 Horton, Mary (Atascadero, Cal.)1450*
 Hostetter, C. (Kans. City, Mo.)1400*
 Houghton, R. G. (Newark, N.J.)1560
 Housewirth, G. H. (Detroit)1793
 Housfeld, Lois R. (Milwaukee)1668
 Housh, L. (Salinas, Cal.)1764
 Howard, Earl (Philadelphia)1890*
 Howard, Wm. J. (Grt. Neck, N.Y.)1856
 Howes, K. L. (London, O.)1478
 Hoyts, Hobart (Kansas)1670*
 Huber, A. J. (Spokane, Wash.)1550*
 Huber, John (Austin, Tex.)1500*
 Hudnut, D. (Providence, R.I.)1940
 Hudson, G. A. (Columbus, O.)1690
 Hudson, J. A. (U.S. Army)2086
 Huff, D. C. (Houston, Tex.)1905
 Huff, W. A. (Albuquerque, N.M.)1685*
 Hufnagel, Frank (Los Angeles)1900*
 Hughes, Mc. L. (New York, N.Y.)1875*
 Hulmes, A. (Denver, Colo.)1700*
 Hume, V. (Sheib. Falls, Mass.)1688
 Humphrey, A. (Gt. Barrington, Mass.)1780
 Humphrey, J. (Cleveland)1800*
 Humphrey, S. (Beaumont, Tex.)1700*
 Huneke, Carl (San Francisco)1718
 Hunnex, Geo. (Elsinore, Cal.)1994
 Hunt, Henry (Irvington, N.J.)1600
 Hunt, Stan. (Salt Lake City)1897
 Hursch, J. L. Jr. (Denver, Colo.)2015
 Hurst, Carlton (Miami, Fla.)1882
 Hurt, J. F. Jr. (Charleston, W.Va.)1988
 Hurlten, Norman (Union, N.J.)1952
 Hurlten, Ralph (Union, N.J.)2038
 Hurvitz, J. H. (Chest. Hill, Mass.)1590
 Huse, H. C. (Appletton, Wis.)1675
 Hutaff, O. K. (Wilmington, N.C.)1677
 Hux, Robt. (Dallas, Tex.)1977
 Hyde, Homer H. (Waco, Tex.)1710
 Hyde, R. M. (S. Barbara, Cal.)1786
 Hyder, Lee (Rockdale, Tex.)1924
 Hynes, E. C. (Saugus, Mass.)1750*
 Ignato, David (Brooklyn, N.Y.)1850*
 Inbusch, Frank Jr. (Milwaukee)1955
 Inbusch, Frank Sr. (Milwaukee)1685*
 Ingram, P. (Cleveland)1450*
 Innis, A. B. (Albuquerque, N.M.)1918
 Ireland, E. E. (Omaha, Neb.)1905
 Isbell, W. S. (Huntsville, Ala.)1650*
 Iverson, C. A. (Sacramento, Cal.)1745
 Jablonski, Edward (Detroit)1350*
 Jack, O. C. (New Orleans)1682
 Jackson, E. J. (N. Plainfield, N.J.)1852
 Jackson, E. S. Jr. (Flushing, N.Y.)2209
 Jackson, Frank (Sacramento, Cal.)1670*
 Jackson, Robt. (Worcester, Mass.)1804
 Jacobs, Robt. M. (Los Angeles)2080
 Jacobson, G. H. (New York, N.Y.)1809
 Jaffray, John W. (Glendale, Cal.)1800*
 Jahn, E. J. (St. Louis, Mo.)1762
 Jakstas, K. (Chicago)2085
 James, L. G. Jr. (Homestead, Fla.)1550*
 James, N. W. (Corp. Christi, Tex.)2009
 Janes, Tony L. (Alabama)1800*
 Janes, Wm. H. (Leroy, Tex.)2007
 Janko, Dorothy (New York, N.Y.)1655
 January, R. (Albuquerque, N.M.)1470*
 Janus, C. P. (Burlington, Ia.)1530
 Janushkowsky, Dr. A. (Sacramento)2120
 Jason, J. E. Jr. (Homestead, Fla.)1650*
 Jeffrey, H. E. (Rock Is., Ill.)1757
 Jenkins, Dr. A. M. (Raleigh, N.C.)2047
 Jenkins, T. (Hunt. Woods, Mich.)1900
 Jeter, Carl (Sheboygan, Wis.)1600
 Joachim, Dr. C. K. (Seattle, Wash.)1992
 Johnson, E. (Los Angeles)1730
 John, Herman (Milwaukee)1733*
 Johnson, A. L. (St. Paul, Minn.)1680
 Johnson, Don. (South Bend, Ind.)2042*
 Johnson, Edwin (Jamestown, N.Y.)1556
 Johnson, Floyd A. (Ashville, N.Y.)1538
 Johnson, Gerald D. (Chicago)1800
 Johnson, Leroy (Los Angeles)1897
 Johnson, Melvin (Gd. Forks, N.D.)1775
 Johnson, Merl (Fergus Falls, Minn.)1450*
 Johnson, M. O. (Healdsburg, Cal.)1612
 Johnson, O. W. (Dallas, Tex.)1960
 Johnson, R. (Milwaukee)1422*
 Johnson, Robt. (Fairchild, Wash.)1550*
 Johnson, Stan. (Gd. Forks, N.D.)1752
 Johnston, Richd. (Cleveland)1824
 Johnstone, Dr. F. E. (Athens, Ga.)1950

Johnstone, J. (Milwaukee)1400*
 Jones, Don C. (Fl. Wayne, Ind.)1990
 Jones, Dr. E. (Alexandria, La.)1755
 Jones, Hall (Albuquerque, N.M.)1960
 Jones, Harold (Kalamazoo, Mich.)1627
 Jones, K. R. (Reno, Nev.)1962
 Jones, W. B. (Kansas)1540*
 Jones, Willard (Decatur, Ill.)1666
 Jones, Wm. Jersey City)2000
 Jones, Wm. R. (Minneapolis)2015
 Jorgensen, G. (Compton, Cal.)1550*
 Joseph, Dr. N. B. (Reno, Nev.)1772
 Joseph, Sam (Corp. Christi, Tex.)1490
 Josephson, H. (Libertyville, Ill.)1740
 Joyce, James (Kansas City, Mo.)1550*
 Jude, Morris P. (Detroit)1600*
 Juhn, Kurt (Jackson Hts., N.Y.)1600*
 Jurevics, Gustav (Dallas, Tex.)2075
 Jurevics, J. V. (Dallas, Tex.)2007
 Jurjevskis, J. (Flint, Mich.)2000
 Kaercher, R. (Kalamazoo, Mich.)1628
 Kagetsu, Jack (Toronto, Ont.)1961
 Kahn, D. A. (Charlotte, N.C.)1786
 Kahn, Dr. I. S. (San Antonio, Tex.)1500
 Kaiser, V. (Racine, Wis.)1647
 Kaiser, W. E. (St. Paul, Minn.)2088
 Kalin, Morton (New York, N.Y.)1815*
 Kalme, Chas. (Philadelphia)2186
 Kalnin, Jacob (Chicago)1879
 Kalnins, Robt. (Lincoln, Neb.)1850
 Kaminsky, Amos (New York, N.Y.)2120
 Kampars, N. (Milwaukee)2110
 Kanarowski, S. (Ohio)1500*
 Kaplan, Alan (Lynn, Mass.)1750*
 Kapustij, Y. (Cleveland)1720
 Karff, Mona N. (New York, N.Y.)2040
 Karpilowsky, D. (Bev. Hills, Cal.)1730
 Karpuska, Walter (Chicago)1744
 Kasenga, A. G. (Sheboygan, Wis.)1729
 Kasparek, D. E. (Prairie du Chien, Wis.)1490
 Katz, Armand (New York, N.Y.)1783
 Katz, M. (Milwaukee)1587
 Kaufman, Allen (New York, N.Y.)2221
 Kaurats, K. (Cleveland)1806*
 Kause, R. H. (Cleveland)1880
 Kaweck, Walter (Montclair, N.J.)1730
 Kaye, Allen (Bellrose, N.Y.)1673
 Kazan, Henry (New York, N.Y.)1550*
 Keating, K. B. (New York, N.Y.)1936
 Keckhut, John (Los Angeles)2023
 Keeney, S. S. (Lakewood, O.)1680
 Keilson, Dr. J. (Arlington, Mass.)2115
 Keiser, O. (Elizabeth, N.J.)1750*
 Keith, H. A. (Sacramento, Cal.)1634
 Keklikian, Paul (St. Louis, Mo.)1506*
 Keller, F. W. Jr. (Northampton, Mass.)1760*
 Kellner, Geo. (Lima, O.)1900*
 Kellner, Lucille (Detroit)1777
 Kelly, John (Lansing, Mich.)1703
 Kemp, F. W. (Birmingham, Ala.)1810
 Kendall, D. R. (Tacoma, Wash.)1618
 Kennedy, Mark (Austin, Tex.)1550*
 Kenner, G. F. (Matchitoches, La.)1650*
 Kennist, A. (S. Deerfield, Mass.)1600*
 Kenny, G. S. (Dallas, Tex.)1903
 Kereszturi, J. (Cleveland)1900*
 Kerman, David (Detroit)1804
 Kerr, Derwin (Cranford, N.J.)1914
 Kerr, Robt. N. (Tulsa, Okla.)1460*
 Kessler, F. (Cleveland)1800*
 Kester, F. M. (Hereford, Tex.)1450*
 Keyser, C. A. (Bloomfield, N.J.)1675
 Key-Smith, G. (Detroit)1700*
 Kight, David (C. Christi, Tex.)1678
 Kilian, Paul (Wilmington, N.C.)1500*
 Killian, Paul (Wilmington, N.C.)1483
 Kimball, Richd. (Lynn, Mass.)1500*
 Kimball, Ted (Lynn, Mass.)1650*
 Kimbell, W. (St. Petersburg, Fla.)2028*
 Kime, R. H. (Racine, Wis.)1750
 Kimpton, L. E. (Twin Falls, Ida.)1975
 Kimpton, Lloyd (Twin Falls, Ida.)1848
 Kindig, H. (Otsego, Mich.)1877
 King, Dr. C. D. (Fremont, O.)1689
 King, C. D. (Royal Center, Ind.)1603
 King, Glen (Scottsdale, Pa.)1450
 King, Henry (San Francisco)1949
 King, S. W. D. (Quincy, Mass.)1900
 Kiraly, W. J. (Philadelphia)1702
 Kirby, Donald (New York, N.Y.)1700*
 Kirby, Robion (Chicago)1737*
 Kirkland, C. G. (Amarillo, Tex.)1650*
 Kirst, Mrs. A. (New Orleans)1530*
 Kish, E. J. (Bradford, Pa.)1633
 Kizely, Karl (Spokane, Wash.)1650*
 Kitt, Robt. (Racine, Wis.)1700*
 Kittley, Dr. S. L. (Milwaukee)1685
 Kiviah, A. (Redwood City, Cal.)1638
 Klavins, A. (New Britain, Ct.)1904
 Klebers, A. (Kalamazoo, Mich.)1678*
 Klein, J. K. (Ridgewood, N.Y.)1625
 Klein, M. N. (Denver, Colo.)1900
 Kleinberg, Max (Los Angeles)1400
 Klinushkoff, A. (Boston)1902
 Klug, E. (Milwaukee)1525*
 Klugman, R. (Bronx, N.Y.)2183
 Knecht, L. P. (Melrose Park, Pa.)1637
 Knievel, Wm. (St. Paul, Minn.)1512
 Knight, Gordon (Atlanta, Ga.)1790
 Knott, John (Dallas, Tex.)1763
 Knox, Phil C. (Deland, Fla.)1883
 Knuppel, D. F. (New York, N.Y.)1973*
 Koch, Arno (Detroit)1432
 Kochman, Karl (Hartford, Conn.)1857
 Koelsche, Dr. G. (Rochester, Minn.)2064
 Koger, J. D. (New Orleans)1500*

Kohn, Erwin (Austin, Tex.)1880*
 Kolesar, J. (Minneapolis)1630
 Kolody, Philip (Detroit)1875
 Konkel, Robt. (San Francisco)2204
 Konhorst, Tom (Centralia, Ill.)1635*
 Koppany, A. (Philadelphia)2010
 Kopperud, A. (Milwaukee)1683
 Kopta, K. (Lincoln, Neb.)1450*
 Korn, Donald (New Orleans)1513
 Kornhauser, M. (Brooklyn, N.Y.)1770
 Korsgaard, S. (Cleveland)1700*
 Kosiba, Wallace (Gary, Ind.)1672
 Koss, E. (Belleville, N.J.)1784*
 Kover, B. (Rochelle Pk., N.J.)1400*
 Kowalski, S. W. (Troy Hills, N.J.)2188
 Kraja, Joseph (Youngstown, O.)1860*
 Kramberg, J. (W. Monroe, La.)1700*
 Kramer, Fred (Plainfield, N.J.)1900*
 Kramer, Raymond (Cleveland)1680*
 Kran, A. (Jamaica Plain, Mass.)1570*
 Kraszewski, J. (Milwaukee)1953
 Kraus, Gustav (Trenton, N.J.)1976
 Kraus, J. (Downey, Cal.)1650*
 Krause, Geo. (Jamaica, N.Y.)2143
 Krebill, H. J. (Ft. Madison, Ia.)1540
 Krejnie, J. (Allentown, Pa.)1773
 Krieger, Ted (Columbus, O.)1800*
 Krisko, A. (Binghamton, N.Y.)1600*
 Krmpotich, Geo. (Cleveland)1727
 Krnzec, A. (Cleveland)1500*
 Kromer, R. F. (Spokane, Wash.)1780*
 Krozal, L. (Andover, Conn.)1864
 Krucke, J. (Irvington, N.J.)1700
 Krueger, J. (Plainfield, N.J.)1888
 Krugloff, V. (Montclair, N.J.)1800*
 Krul, Arnold (Buffalo, N.Y.)2036
 Krumins, A. (Chicago)2052
 Krumins, Hugo (Cleveland)1655
 Kuhffittig, (Milwaukee)1560*
 Kujoth, R. (Milwaukee)2067
 Kumagi, J. (Cleveland)1700*
 Kumro, D. C. Jr. (Chicago)1620
 Kumro, Thos. (Chicago)1520*
 Kunitz, R. E. (New York, N.Y.)1787
 Kunz, Rudy B. (Racine, Wis.)1929
 Kunze, Keith (Red House, Nev.)1664
 Kupersmith, Leo (Brooklyn, N.Y.)2012
 Kupperman, Joel (Chicago)1700
 Kurtzberg, J. (Philadelphia)1990
 Kufkus, V. (Detroit)1977
 Lackey, Tom (Robinson, Ill.)1640*
 LaCroix, E. F. (Cambridge, Mass.)1813
 LaFreniere, O. (Yakima, Wash.)1719
 Lahde, Peter (Nashville, Tenn.)1620*
 Lake, Robt. (Ohio)1450*
 Lambert, V. L. (Ft. Wayne, Ind.)1700*
 Lamberti, H. B. (Reno, Nev.)1440*
 Landis, Chas. (Milwaukee)1758*
 Landry, L. A. (Belleville, N.J.)1995*
 Landry, R. A. (Pt. Arthur, Tex.)1450*
 Lane, Glenn (West Point, N.Y.)1600*
 Lane, Robt. W. (Glastonbury, Ct.)1909
 Langenbacher, J. T. (Birmingham, Ala.)1600*
 Lankhorst, J. L. (Arlington, Mass.)1912
 Lapiken, Peter P. (Los Angeles)2230
 LaRose, Miles (St. Paul, Minn.)1670
 Larsen, Louis (Racine, Wis.)1655
 Larsen, Robt. R. (Pittsburgh, Pa.)1983
 Larson, A. J. (Kansas City, Mo.)1710
 Lass, Herbert (Beaumont, Tex.)1650*
 Latshaw, R. H. (Kansas City, Mo.)1872
 Latta, Bob (Okla. City, Okla.)1550*
 Laucks, E. F. (W. Orange, N.J.)1732
 Launius, Ralph (Lincoln, Neb.)1450*
 Lavandero, Jos. (New York, N.Y.)2078
 Lawrence, Elliott (Queens, N.Y.)1700*
 Lawrence, H. R. (Snyder, N.Y.)1944*
 Lawrence, R. Jr. (Homestead, Fla.)1550*
 Lawrence, S. J. (Rego Park, N.Y.)1802
 Lay, Kenneth (Ripon, Wis.)1856
 Lazarus, Stanley (Euclid, O.)1870
 Lazos, James (Los Angeles)2050
 Leaffer, M. (Ft. Worth, Tex.)1400*
 LeBlanc, J. (Springfield, Mass.)1978*
 LeBlanc, R. J. (Buffalo, N.Y.)1773*
 Lebow, M. (California)1550*
 Lebzeltner, E. P. (St. Petersburg, Fla.)1830
 LeCornu, P. C. (New York, N.Y.)2096
 Lee, Floyd Jr. (Norman, Okla.)1680
 Lee, Jean (Ft. Worth, Tex.)1350*
 Lee, T. A. (Ft. Worth, Tex.)1372*
 Leef, Harold (Chicago)2129
 Leekly, W. (Van Nuys, Calif.)1800*
 Lehwalt, W. W. (Beloit, Wis.)1713*
 Leisinger, E. (Grd. Lodge, Mich.)1950
 Leitson, L. L. (Cleveland)1932
 Leikes, Sandor (Cleveland)1770*
 Lement, Dr. B. (Brookline, Mass.)1794
 Lenz, P. (Union, N.J.)1800*
 Leonard, T. (Columbus, O.)1400*
 Leonard, Tracy (Kans. City, Mo.)1450*
 Leonard, V. J. (Ft. Worth, Tex.)1636
 Leopold, S. (Long Beach, Cal.)1450*
 Lester, H. B. (Northwood Narrows, N.H.)1920
 Lester, O. A. Jr. (W. Newbury, Mass.)2089
 Levene, Dr. R. (New York, N.Y.)1853
 Levin, Dan. (Northampton, Mass.)1900
 Levin, Eugene (Los Angeles)2198
 Levinger, Dr. E. (San Francisco)1400*
 Levy, E. (Chicago)2024
 Levy, Ellis (Bev. Hills, Cal.)1450*
 Levy, Sherwin (San Antonio, Tex.)1870
 Lew, Harry A. (St. Louis, Mo.)1925
 Lewis, B. O. (Lincoln, Neb.)1785

Lewis, Carroll (Pt. Arthur, Tex.)1830
 Lewis, J. D. (Pt. Arthur, Tex.)1612
 Lewis, R. (New Jersey)1820*
 Lewis, Ralph (Avon Lake, O.)1734
 Lexau, H. (St. Paul, Minn.)1500*
 Libin, F. (Kalamazoo, Mich.)1500*
 Liebman, W. H. (New York, N.Y.)1544
 Liepaskains, V. (Milwaukee)1708
 Liepnicks, Alex. (Lincoln, Neb.)2145
 Lightstone, Robt. (Brooklyn, N.Y.)1800
 Ligvoet, P. (Kalamazoo, Mich.)1600
 Lilly, S. B. (Toledo, O.)1719
 Lilyholm, A. C. (Christi, Tex.)1708
 Lin, Shen (Columbus, O.)1650
 Lindberg, G. (Davenport, Ia.)1506
 Lindell, H. (Boston)1550*
 Lindsey, R. F. (Ft. Worth, Tex.)1500*
 Ling, Richd. (Fairborn, O.)1914
 Linn, Stanley (Queens, N.Y.)2043
 Linthurst, R. (Bridgeport, Ct.)1700*
 Lipking, L. (Cleveland Hts.)2092
 Lipman, L. R. (Philadelphia)1673
 Lipman, M. (Philadelphia)1820*
 Littlefield, W. (Newburyport, Mass.)1550*
 Lively, Jack (New Orleans)1550*
 Lobl, Walter (Holyoke, Mass.)1600*
 Lobunz, W. (Philadelphia)1769*
 Lockett, A. M. Jr. (New Orleans)1903
 Loeb, J. B. (New Orleans)1584*
 Loening, K. L. (Columbus, O.)1882
 Logan, A. S. (Harrisburg, Pa.)1425
 Long, Joseph (Jersey City)1792
 Longenecker, J. (Wichita, Kans.)1410
 Lopez, B. F. (Tampa, Fla.)1836
 Lorber, Robt. (Reseda, Calif.)1600*
 Lorenz, Nicolas (New York, N.Y.)1500*
 Lorie, Theo. (New York, N.Y.)2055
 Losito, L. (Allentown, Pa.)1776
 Loter, C. E. (Wheeler, Tex.)1696
 Lotsof, Jack (Kenmore, N.Y.)1769*
 Lowder, Dan (Charleston, W.Va.)1700*
 Lowe, Sam (Salinas, Calif.)1688
 Luciw, S. (Cleveland)1700*
 Ludlow, Bobby (Orlando, Fla.)2150*
 Luebbert, M. (Kansas City, Mo.)1870
 Luekavich, A. (Salinas, Cal.)1880
 Lunde, Al (Spokane, Wash.)1540*
 Luneau, J. C. (Alexandria, La.)1745
 Lunsford, Chas. (Ohio)1460*
 Lutgen, E. M. (Minneapolis)1400*
 Lutz, Godfrey (San Francisco)1794
 Lybarger, D. (Peoria, Ill.)1736
 Lyberger, P. A. (Spokane, Wash.)1800*
 Lyman, Harry (Maitapan, Mass.)2139
 Lyman, Shelby (Dorchester, Mass.)2214
 Lurch, F. D. (St. Petersburg, Fla.)1921
 Lyon, C. A. (Peoria, Ill.)1738
 McAuley, A. L. (New Orleans)1985
 McAuley, J. E. (Norman, Okla.)1784*
 McCallister, R. (Hackensack, N.J.)1824
 McCaughy, H. (Buffalo, N.Y.)1860
 McChesney, M. (Wilmington, N.C.)1847
 McClancy, T. J. (Cleveland)1645*
 McClellan, D. H. (Pittsburgh, Pa.)2007
 McClellan, Dr. H. B. (Xenia, O.)1716
 McCollough, R. (Fresno, Cal.)1750*
 McConkie, D. (Birmingham, Mich.)1700*
 McCormack, Robt. (Boston)1400*
 McCormick, E. T. (E. Orange, N.J.)2134
 McCormick, Jim (Seattle, Wash.)1900
 McCoubrey, R. (Springfield, Mass.)1850*
 McCracken, C. (Columbus, O.)1440
 McCready, Dr. R. (Cleveland)1980
 McDaniel, C. C. (Salt Lake City)1426
 McElroy, T. (Shreveport, La.)1650*
 McGavock, W. G. (Davidson, N.C.)1850*
 McGill, W. (Downey, Cal.)1650*
 McGillvray, P. (Jersey City)1730*
 McGoire, V. (Lincoln, Neb.)1540*
 McGrath, T. P. (Longsford, Ind.)1635
 McGregor, R. M. (Laramie, Wyo.)1875
 McInturf, Dr. D. (Sunnyvale, Cal.)1633
 McIntyre, A. (Cheltenham, Pa.)1650*
 McKinney, M. F. (Youngstown, O.)1803*
 McKinnon, C. F. (New York, N.Y.)1816
 McLaughlin, H. C. (Duncan, Okla.)1775
 McLaughlin, W. (Wichita, Kans.)1953
 McLellan, R. A. (Omaha, Neb.)1983
 McLemore, Dale (Austin, Tex.)1694
 McMahon, G. R. (Los Angeles)1810
 McMaster, I. D. (Pt. Arthur, Tex.)1420*
 McMillan, W. J. (Kansas)1350*
 McMurray, Randy (Plainfield, N.J.)1752
 McNeill, O. (Kalamazoo, Mich.)1550*
 Maas, T. O. (San Antonio, Tex.)1327*
 MacDonald, K. R. (Wichita, Kans.)1557
 MacGrady, D. C. (Hicksville, N.Y.)1884*
 MacIvor, Neil (Columbus, O.)1550*
 Mack, Jack (Allentown, Pa.)1820
 Macke, Alvin (New Orleans)1660*
 Mackenzie, R. A. Jr. (Silverton, O.)1650
 MacLean, H. (Sturgeon Bay, Wis.)1880
 MacMurray, G. (Plainfield, N.J.)1700*
 MacNeill, Dr. R. A. (Kalamazoo, Mich.)1660
 Maddox, L. (Salinas, Cal.)1350
 Madrid, B. (Norwalk, Calif.)1975
 Madsen, V. (New Jersey)1850*
 Magee, Lee T. (Omaha, Neb.)2160
 Mager, J. D. (Kingston, N.Y.)1853
 Maguire, J. H. (Wichita, Kans.)1732
 Maher, L. (Moline, Ill.)1901
 Mahler, G. A. Jr. (Amarillo, Tex.)1675
 Mahon, R. F. (Detroit)1909
 Mahoney, W. (Cleveland)1800*
 Maier, John (Long Beach, Cal.)1650*
 Maistrus, T. (Cleveland)1400*

Makara, J. (Springfield, Mass.)1400
 Makens, T. E. (Charlotte, N.C.)1717
 Makiri, Uri (St. Paul, Minn.)1900*
 Makrides, Al (Austin, Tex.)1850*
 Malles, Melvin (St. Paul, Minn.)1530*
 Mallory, J. (Richmond, Va.)1700
 Mangan, Jas. (Milwaukee)1802
 Mangus, C. (Van Omry, Tex.)1590
 Mangus, Mrs. (Van Omry, Tex.)1417*
 Manis, Larry (Elwood, Ind.)1650*
 Mann, Jim (Amarillo, Tex.)1650*
 Mann, Walter (Columbus, O.)2035
 Manney, O. W. (Alaska)1919
 Manning, Wm. (Miami, Fla.)1650
 Maran, John (Malverne, N.Y.)1650
 Marberry, J. (New York, N.Y.)1650
 Marchand, Dr. E. (Rochester, N.Y.)2135
 Marous, Gordon (Philadelphia)2056
 Marcus, Paul (Holliswood, N.Y.)1509
 Marggraff, N. (Milwaukee)1880*
 Margolis, A. (St. Pauls, N.C.)1675*
 Maring, O. M. (Louisville, Ky.)1947
 Markey, W. L. (Exeter, N.H.)1700*
 Markis, G. (Cleveland)1500*
 Markland, S. (Ft. Worth, Tex.)1634
 Markowski, Alina (Toledo, O.)1464*
 Markowski, Steven (Toledo, O.)1700
 Marks, J. L. (Chaimette, La.)1627
 Markus, A. (Garden Grove, Cal.)1937
 Maron, Don (Los Angeles)1862
 Marples, D. (S. Charleston, W.Va.)1715
 Marples, H. (S. Charleston, W.Va.)1732
 Marque, G. (Dearborn, Mich.)1810
 Marrone, A. J. (New Orleans)1450
 Marshall, Wm. (West Point, N.Y.)1600*
 Marshall, W. O. (Lubbock, Tex.)1500*
 Martel, H. (Springfield, Mass.)1700
 Martin, A. C. (Providence, R. I.)2102
 Martin, Bercil (Wichita, Kans.)2000*
 Martin, B. (Bay St. Louis, Miss.)1550
 Martin, D. B. (San Marcos, Tex.)1957
 Martin, Glen Sr. (Mansfield, Mass.)1630
 Martin, J. R. (Sarasota, Fla.)1666
 Martin, Mrs. C. (Sarasota, Fla.)1530
 Martin, L. D. (Atlanta, Ga.)1728
 Martin, Ray. (Santa Monica, Cal.)2067
 Martin, R. G. (Jersey City)1950
 Martin, W. G. (Rochester, N.Y.)1675*
 Martinson, G. (Chesterton, Ind.)1930
 Martiniak, P. (Ind. Harbor, Ind.)1616
 Mason, A. O. (Detroit)1815
 Mastour, A. R. (Philadelphia)1824
 Mataich, P. (Cleveland)1630*
 Matherly, M. D. (Bettendorf, Ia.)1800
 Mathysovszky, K. (Passaic, N.J.)1950*
 Mauer, G. J. (Buffalo, N.Y.)2007
 Mauer, J. V. (Buffalo, N.Y.)1600*
 Maury, Col. D. (San Antonio, Tex.)1480
 Mayer, F. A. (Philadelphia)1582
 Mayer, Jackie (Louisville, Ky.)1961
 Mayfield, S. J. (Tulsa, Okla.)2020
 Maykowskyi, E. (Spokane, Wash.)1725*
 Mayo-Smith, Miss A. (New York, N.Y.)1450*
 Mazner, Steven (Los Angeles)2214
 Meador, B. (S. Houston, Tex.)1500*
 Meadows, Dr. J. (Pt. Arthur, Tex.)1700
 Mease, A. N. (Reading, Pa.)1992
 Mechem, K. F. (Lindsborg, Kans.)1896
 Medendorp, A. (Gd. Rapids, Mich.)1726
 Meifert, H. R. (Kalamazoo, Mich.)2076
 Meister, R. N. (Hutchinson, Kans.)1783
 Mekus, Robt. L. (Buffalo, N.Y.)2020
 Mekus, Walter (Dunkirk, N.Y.)1675
 Meng, H. (New York, N.Y.)1604*
 Mengarini, Dr. A. (New York, N.Y.)2173
 Menuet, R. A. (Kansas City, Mo.)1821
 Merkel, D. (Kansas City, Mo.)1450
 Merkis, K. (So. Boston, Mass.)1874
 Merrill, R. J. (Quincy, Mass.)1863
 Messler, R. (Columbus, O.)1500*
 Meszicsek, K. (Cleveland)1600*
 Metzelaar, C. P. (Salt Lake City)1618
 Meyer, M. O. (Sacramento, Cal.)1950
 Meyer, Peter (Van Nuys, Cal.)1846
 Meyers, D. A. (New York, N.Y.)1860
 Michael, Gary (Cleveland)1710*
 Michalski, V. (New York, N.Y.)2000*
 Michniak, R. (Cleveland)1750*
 Mike, Andrew (Racine, Wis.)1885
 Miles, D. H. (White Plains, N.Y.)1812
 Millard, N. K. (Buffalo, N.Y.)1676
 Miller, (Buffalo, N.Y.)1400*
 Miller, A. G. (Ft. Worth, Tex.)1953
 Miller, E. L. (Amarillo, Tex.)1700
 Miller, Floyd (Albuquerque, N.M.)1742
 Miller, Geo. (Cleveland Hts.)2041
 Miller, Geo. F. (Washington, D.C.)1928
 Miller, Joseph (Salinas, Cal.)1450*
 Miller, Louis (St. Paul, Minn.)1720*
 Miller, Max (Albuquerque, N.M.)1720
 Miller, Owen (Salinas, Cal.)1763
 Miller, Peretz (Brooklyn, N.Y.)2214
 Miller, Robt. (Ft. Bragg, N.C.)1475
 Miller, Ronald (St. Paul, Minn.)1400*
 Miller, Sandy (Georgia)2050*
 Miller, Tony (Spokane, Wash.)1400*
 Miller, Troy (Mississippi)1740
 Miller, Warren (Albuquerque, N.M.)1759
 Miller, W. T. (Natchez, Miss.)1937
 Mills, Derek (Atascadero, Cal.)1350*
 Mills, Wm. (New Haven, Ct.)1941*
 Millsaps, R. (Bristol, Va.)1680*
 Minck, Richd. (New York, N.Y.)1767

Ming, E. G. Jr. (Montgomery, Ala.)	1750*	Pico, W. H. (Cavalier, N.D.)	1614	Richards, Wm. (New York, N.Y.)	1785
Mink, J. E. (Tampa, Fla.)	1782*	Pierce, L. B. (Montgomery, Ala.)	1750*	Richardson, Don (Miami, Fla.)	1628
Mioduszewski, S. M. (Oblong, Ill.)	1500*	Pierce, Richd. (Miami, Fla.)	1559	Richardson, L. L. (S. Bend, Ind.)	1913
Mirkes, Sam (Racine, Wis.)	1575	Pietz, E. A. (Port Arthur, Tex.)	1670	Richardson, R. W. (S. Bend, Ind.)	1758
Mirsky, Robt. Snyder (N.Y.)	1710*	Pike, W. H. (Lyons, Mass.)	1807	Richman, Joseph (New York, N.Y.)	2005
Miskin, Alan (Wausau, Wis.)	1807*	Pilotte, R. G. (Detroit)	1540	Richman, Paul (Brooklyn, N.Y.)	1918
Miscevic, D. (Pittsburgh, Pa.)	1737	Pinkus, A. S. (New York, N.Y.)	2137	Richter, R. (Linden, N.J.)	1850*
Mitchell, Greg (West Point, N.Y.)	1550*	Pinto, F. (Philadelphia)	1450*	Richter, S. (Cleveland)	1500*
Mitchell, H. F. (Wilmington, N.C.)	1407	Piper, A. D. (Elmira, N.Y.)	1805	Rider, C. W. (Norfolk, Va.)	2018
Mitchniak, R. (Cleveland)	1800*	Pittner, Richd. (W. Orange, N.J.)	1686	Ridley, J. W. (Philadelphia)	1634
Mitton, Al (St. Paul, Minn.)	1300*	Plack, Albert (Cleveland)	1650*	Ridley, R. A. (Milwaukee)	1589
Modlinski, Clement (Milwaukee)	1466*	Placzek, V. (Westfield, Mass.)	1600*	Rigg, R. E. (Racine, Wis.)	1881
Modlinski, Conrad (Milwaukee)	1480	Platau, G. O. (Columbus, O.)	1587	Riley, A. R. (St. Paul, Minn.)	1450
Mohr, Al (Spokane, Wash.)	1770*	Platner, H. (Irvington, N.J.)	1400*	Rinaldo, J. (Long Beach, Cal.)	1847
Monahan, E. (Logansport, Ind.)	1518	Platz, Dr. J. (E. Hartford, Conn.)	2272	Ritchey, Phil (West Point, N.Y.)	1700*
Monsky, Paul (Swarthmore, Pa.)	1950*	Plock, Richd. (New Haven, Conn.)	1941*	Ritter, Robt. (Racine, Wis.)	1670*
Moore, J. D. (Robstown, Tex.)	1834	Poage, R. (San Antonio, Tex.)	1540	Ritt, C. L. (Wheeling, W.Va.)	1670*
Moote, T. P. (Tulsa, Okla.)	1750	Poehschke, E. H. (Racine, Wis.)	1709	Rix, Eric (Santa Barbara, Cal.)	1700*
Morell, Dr. S. A. (Milwaukee)	1825	Pohikowski, Geo. (Jersey City)	1600	Roark, J. A. (Lexington, Ky.)	1870
Morenus, R. T. (Atlanta, Ga.)	1755	Poliskoff, Leon (Dallas, Tex.)	2085	Robbetoy, Alfred (Cleveland)	1954
Morgan, C. T. (Huntington, W.Va.)	1976	Pomeroy, Leon (Amherst, Mass.)	1600*	Roberson, B. L. (Tampa, Fla.)	1814
Morgan, C. (Corp. Christi, Tex.)	1450*	Popoff, B. B. (San Francisco)	2031	Roberson, C. (Roanoke, Va.)	1670*
Morgan, E. (Corp. Christi, Tex.)	1533*	Popovych, Orest (Newark, N.J.)	2080	Roberts, Dr. A. (Lexington, Ky.)	1935
Morgan, T. (Richmond, Ind.)	1450*	Popp, J. H. (Haven, Kans.)	1603	Roberts, Dick (Kansas City, Mo.)	1400*
Morningstar, F. (Ferndale, Mich.)	1530*	Poppenberg, C. B. (Buffalo, N.Y.)	2020*	Roberts, K. (Spokane, Wash.)	1750*
Moroder, O. (Milwaukee)	1740	Porter, J. S. (Lexington, Ky.)	1763*	Roberts, R. (Overland Pk., Kans.)	1682
Morrell, Flora (New York, N.Y.)	1400*	Poschel, Alfred (Chicago)	1700*	Robertson, David (Detroit)	1870
Morrell, Mildred (Kans. City, Mo.)	1725	Poschel, Paul (Urbana, Ill.)	2142	Robertson, J. (Downey, Cal.)	1800*
Morrell, P. W. (Kansas City, Mo.)	1867	Poskrobko, J. (Verona, N.J.)	1600*	Robertson, Mrs. M. (Wichita, Kan.)	1400
Morris, Floyd (Spokane, Wash.)	1620*	Potter, Chas. (Salem, Mass.)	1850*	Robertson, O. (Newark, N.J.)	1900*
Morrison, H. S. (Miami, Fla.)	1600*	Potter, Robt. B. (Dallas, Tex.)	2050	Robertson, Robt. (Wichita, Kan.)	1400*
Morrison, Stuart (Miami, Fla.)	1650*	Poulsen, S. (Berkeley, Cal.)	1768	Robinson, D. (Westfield, Mass.)	1700*
Morse, Harold (Manchester, N.H.)	1842	Poulter, M. F. (Ft. Worth, Tex.)	1403	Robinson, E. (Gd. Forks, N.D.)	1650*
Morse, J. R. (Beverly, Mass.)	1710	Powelson, Robt. (Ft. Worth, Tex.)	2082	Robinson, H. (Belmont, Mass.)	1790*
Mortynczuk, P. (Jamestown, N.Y.)	1525	Powers, Averill (Milwaukee)	2086	Rock, H. E. (Becket, Mass.)	1550*
Morvant, G. (Pt. Arthur, Tex.)	1550*	Powers, E. M. (Lexington, Ky.)	1565	Rock, Louis (Becket, Mass.)	1450*
Mottur, S. (Brooklyn, N.Y.)	1660	Powers, John (Bristol, Pa.)	1753	Rodick, R. S. (Allentown, Pa.)	1805
Motylewski, L. F. (Minneapolis)	1500*	Praet, F. (Downey, Cal.)	1400*	Rodemich, E. (Cambridge, Mass.)	1547
Moulden, J. M. (Dallas, Tex.)	1950	Praet, Wm. (Columbus, O.)	1870	Rodgers, L. (Ft. Worth, Tex.)	1453
Muceniec, V. (Lincoln, Neb.)	1650*	Pratt, S. (Dallas, Tex.)	1697*	Roecker, J. G. (Peoria, Ill.)	1763
Mueller, E. H. (Campbell, Cal.)	1945	Pressman, Paul (New York, N.Y.)	2066	Roesch, E. J. (St. Louis, Mo.)	1751
Mueller, M. F. Sr. (Memphis, Tenn.)	1885	Preston, M. (Bals Oynwyd, Pa.)	1550*	Roehtler, Dr. E. (Cleveland)	2020
Mueller, Otto (Milwaukee)	1440*	Prewitt, C. E. (Coffeyville, Kans.)	750	Rogers, Mrs. H. (New York, N.Y.)	1540
Muellner, Don (Milwaukee)	1687*	Price, R. T. (Amarillo, Tex.)	1500	Rogovin, H. (Los Angeles)	1907
Mulford, K. (Seattle, Wash.)	1733	Primeaux, N. J. Jr. (New Orleans)	1600	Rohland, M. R. (Milwaukee)	1917
Mumma, R. (Mechanicsburg, Pa.)	1700	Prindl, Dr. F. J. (Lexington, Ky.)	1760	Roll, John (Auburn, Ia.)	1730
Mungle, Wm. (Plainfield, N.J.)	1562	Prindle, A. L. (Marshfield, Wis.)	1476	Rolo, O. M. (Long Beach, Cal.)	1836
Munifz, R. J. (New York, N.Y.)	1675	Prior, John (Queens, N.Y.)	1713	Romanenko, I. (Plainfield, N.J.)	2086
Munson, Geo. (Pittsfield, Mass.)	1400*	Privette, W. (Charleston, W.Va.)	1650*	Romanow, Jack (Lynn, Mass.)	1700*
Muntz, Earl Jr. (Sht. Hills, N.J.)	1826*	Proechel, G. (St. Paul, Minn.)	1630	Ros, Mrs. N. (Los Angeles)	1888
Murphy, Alpen (New York, N.Y.)	1842	Proil, G. S. (W. Orange, N.J.)	1860	Rosenberg, D. (Atascadero, Cal.)	1250*
Murphy, Jack (Maryville, Tenn.)	1727	Ptacek, Martin (Milwaukee)	1944	Rosburg, C. (Seattle, Wash.)	2020
Murphy, Richd. (Miami, Fla.)	1925	Pujol, J. (Cleveland)	1820*	Roscher, R. (New Orleans)	1504
Murray, C. A. (Nederland, Tex.)	1775*	Pupils, V. (Tacoma, Wash.)	2027	Rose, Geo. H. (Tulsa, Okla.)	1614
Murray, David (Jersey City)	1726	Purins, O. (Kalamazoo, Mich.)	1692*	Rose, Herman (W. Newton, Mass.)	1948
Murray, J. H. (Wayzata, Minn.)	1767*	Pusecker, J. L. (Columbus, O.)	1737	Rose, Virgil (Ft. Worth, Tex.)	1575
Musid, C. (San Francisco)	1896*	Putnam, G. V. (New London, Ct.)	1700*	Rosen, F. D. (Downey, Cal.)	1890*
Myers, Booth (Wichita, Kans.)	1757	Quimby, R. (Haverhill, Mass.)	1550*	Rosen, Ronald (Cleveland Hts.)	1931
Myers, Geo. (Johnstown, Pa.)	1600*	Quindry, L. A. (Philadelphia)	1600	Rosenbaum, H. (San Francisco)	1898
Myers, Hank (Swarthmore, Pa.)	1700*	Quinones, J. S. (Amarillo, Tex.)	1709	Rosenberg, K. (New York, N.Y.)	1638
Myers, Mrs. H. (Cp. Christi, Tex.)	1375	Rader, N. Jr. (Pt. Arthur, Tex.)	1400*	Rosenfeld, Dr. C. (Miami, Fla.)	1711
Myers, Henry (Shenandoah, Va.)	1805*	Radspinner, W. (New York, N.Y.)	1829	Rosenfeld, S. I. (Newark, N.J.)	1800*
Myers, Hugh (Decatur, Ill.)	2038	Raetfig, Adele (Hoboken, N.J.)	1557	Rosenfield, I. (Robinson, Ill.)	1700*
Myers, J. B. Jr. (Wichita, Kans.)	1978	Ragan, J. V. (St. Louis, Mo.)	2165	Ross, Walter (Lincoln, Neb.)	1700
Myers, J. C. (San Francisco)	1858*	Rager, Paul D. (Indianapolis)	1645	Rostoker, David (Toronto, Ont.)	1763
Myllinski, B. (Salem, Mass.)	1400*	Raich, Gilbert (Philadelphia)	1653	Roszkowski, D. H. (Chicago)	1990
Nagy, Frank (Passaic, N.J.)	1970	Rainko, Anthony (Newark, N.J.)	1785	Roth, Math (Alton, Ill.)	1700
Nail, W. W. (Arabi, La.)	1800	Ralph, H. (Westfield, Mass.)	1400*	Roth, Paul (Pittsburgh, Pa.)	2050
Namson, Chas. (Los Angeles)	1753	Ramasauskas, C. (Chicago)	1785	Roth, Richd. (Chicago)	1850
Napoles, J. G. (Atlanta, Ga.)	1740	Ramirez, G. (San Francisco)	1974	Rothenberg, J. (Georgia)	1850*
Narveson, L. P. (Minneapolis)	1853	Rammel, W. (Newark, N.J.)	1770*	Rothman, Philip (Columbus, O.)	1690
Naser, W. P. (New Orleans)	1920	Randlett, E. (Portsmouth, N.H.)	1550*	Rothkals, E. (Waukesha, Wis.)	1887
Nash, Edmund (Washington, D.C.)	1989	Randolph, J. (Corp. Christi, Tex.)	1400*	Rozsa, Dr. Bela (Tulsa, Okla.)	2101
Nasvytis, Dr. A. (Cleveland)	2006	Ranlett, Miss H. (New York, N.Y.)	1400	Rubin, Saul (New York, N.Y.)	1800*
Naylor, Rex (Columbus, O.)	2057	Rappaport, M. (Philadelphia)	1960	Rubinow, Dr. Sol (Boston)	2224
Neal, Dr. A. S. (Cordell, Okla.)	1923	Rapuano, R. E. (Hartford, Conn.)	1653*	Rubinstein, Leon (Miami, Fla.)	1600*
Neaf, David (Albuquerque, N.M.)	1637	Raschen, L. W. (Brooklyn, N.Y.)	1829	Ruck, A. (Cleveland)	1550*
Nedved, Kimball (Glencoe, Ill.)	2168	Raship, H. (New York, N.Y.)	1535	Rucker, Wm. (Bristol, Tenn.)	1755
Neel, R. T. (Huntington, W.Va.)	1852	Rasis, C. (New York, N.Y.)	2033	Rudin, W. (Rochester, N.Y.)	2030
Neff, Donald (St. Paul, Minn.)	1550*	Raszkowski, D. A. (Chicago)	2020*	Rudy, Aben (New York, N.Y.)	1985
Neff, P. D. (Las Vegas, Nev.)	1945	Rafermanis, Leo (Lowa City, Ia.)	2127	Runkel, K. (Wausau, Wis.)	1809
Neidhardt, Dr. H. (Beaumont, Tex.)	1600*	Raudenbush, R. (Allentown, Pa.)	1950	Rusch, Wm. Jr. (Buffalo, N.Y.)	1838
Nelson, Donald (New Orleans)	1438	Ravas, V. (Cleveland)	1500*	Russell, R. E. (Atascadero, Cal.)	1996
Nelson, E. C. (Elmhurst, N.Y.)	1650*	Raymond, N. (Hartford, Conn.)	1780	Russell, Tom (Salinas, Cal.)	1438
Nelson, L. (Downey, Cal.)	1700*	Reager, Tommy (Amarillo, Tex.)	1550*	Russo, F. (Cleveland)	1750*
Nelson, Mort (Columbus, O.)	1792*	Reager, Thos. D. (Lubbock, Tex.)	1650*	Ruth, Dale (Midwest, Okla.)	1785
Nelson, Robt. S. (Miami, Fla.)	1700*	Rebold, W. L. (Columbus, O.)	1758	Ruud, G. (Northwood, N.D.)	1500
Nelson, Sherman (Rochester, N.Y.)	1725*	Rebstock, F. (Westfield, Mass.)	1700*	Ryder, Merritt (Carmel, N.Y.)	1400*
Nelson, Terry C. (Yakima, Wash.)	1822	Rechtman, M. (Camp Hill, Ala.)	1400*	Sabin, Wm. (Lincoln, Neb.)	1806
Nelson, Wm. (Racine, Wis.)	1500	Redwine, D. A. (Ft. Worth, Tex.)	1754	Sachs, R. K. (Syracuse, N.Y.)	2137
Nemethy, L. (Cleveland)	1752	Reep, Howard (Milwaukee)	1650	Sadowsky, A. (Portsmouth, N.H.)	1898
Neugebauer, F. (Chicago)	1901	Reese, Johnny (Amarillo, Tex.)	1700*	Sadowy, S. (New Haven, Ct.)	1683
Neuman, Paul (Spokane, Wash.)	1690*	Reese, Merl W. (Denver, Colo.)	1712	Sagorsky, H. (Los Angeles)	1610
Neveu, Darwin (Milwaukee)	1515	Reese, R. G. (Los Angeles)	1600*	Saidy, A. F. (Douglas, N.Y.)	2248
Nevid, M. (Rochester, N.Y.)	2115*	Reese, S. C. (Johnstown, Pa.)	1600*	Sak Clair, Dr. R. (Northwood, N.D.)	1658
Nevins, Dr. W. N. (Lexington, Ky.)	1763	Regen, Adolph (Philadelphia)	2103	Sakaly, F. (Downey, Cal.)	1600*
Newberry, W. H. (W. Haven, Ct.)	2013	Reif, Lawrence (Decatur, Ill.)	1400*	Salisbury, H. B. (Gary, Ind.)	1774
Newton, Ivor (Ft. Worth, Tex.)	1733	Reif, Paul (New York, N.Y.)	1700*	Salisbury, R. K. (Russellville, O.)	1675
Newton, Paul (Raleigh, N.C.)	1400*	Rein, Sheldon (Minneapolis)	1909	Salome, Eugene (New York, N.Y.)	1720
Nicholson, D. A. (Wichita, Kans.)	1550	Reisman, Otto (New York, N.Y.)	1710*	Saltzman, N. (New York, N.Y.)	1850
Nicholson, R. Q. (U.S. Army)	1750*	Reisman, Karl (Hawthorne, Cal.)	2052	Sampson, J. S. (Arlington, Mass.)	1700
Nicklas, J. (Downey, Cal.)	1600*	Reiter, Alan (New York, N.Y.)	2000*	Samuels, Dan (Mt. Vernon, N.Y.)	1981*
Nickolakis, N. (Bingham, Utah)	1750*	Remlinger, L. (Long Beach, Cal.)	2114	Sanders, C. (Eliz. City, N.C.)	1700*
Nielsen, N. L. (San Francisco)	1511*	Remus, Fred J. Jr. (Gary, Ind.)	1688	Sanders, Dick (Bristol, Tenn.)	1500*
Niewarsky, P. (Cleveland)	1500*	ReVeal, David (Springfield, Ill.)	1938	Sanders, Ward (Royal Oak, Mich.)	1652
Nika, A. (Topeka, Kans.)	1450*	Reviczky, L. (New Brunswick, N.J.)	1750*	Sandrin, Albert N. (Chicago)	2113
Nixdorff, C. E. (Stratford, Conn.)	1700*	Rhead, Dale E. (Gary, Ind.)	1883	Sandrin, Angelo (Chicago)	2008
Noeder, L. C. (Oka Ridge, Tenn.)	2005	Rhodes, T. (Johnston, R. I.)	1585*	Sandford, R. A. (Los Angeles)	1500*
Noel, J. S. (Shreveport, La.)	1764	Ricca, Jack (Philadelphia)	1550*	Santabella, J. (Buffalo, N.Y.)	1400*
Nogaski, L. (Downey, Cal.)	1900*	Rice, Gordon (Dover, N.H.)	1734	Santos, C. E. (New Orleans)	1500
Nolan, J. (Newburyport, Mass.)	1550*	Rice, Grady (Ft. Worth, Tex.)	1616	Satterlee, D. (Elmhurst, Ill.)	1738
Nonmacher, Jack (Houston, Tex.)	1878*	Rice, John R. Jr. (Wash., D.C.)	1917	Sauder, M. S. (Manheim, Pa.)	1625
Norko, G. (Bridgeport, Conn.)	1500*	Rich, Allen (Brooklyn, N.Y.)	1765	Saunders, R. F. (New York, N.Y.)	1642*
		Rich, C. N. (Raleigh, N.C.)	1575*	Saxon, C. B. (New York, N.Y.)	2067*
		Richard, Harold (New Orleans)	1450*	Sayer, S. M. (Demopolis, Ala.)	1600*
		Richards, K. (Austin, Tex.)	1731*	Sayre, Paul (Huntington, W.Va.)	1711
		Richards, R. L. (Sacramento, Cal.)	1850	Scamara, Robt. (Salinas, Cal.)	1550
Normington, W. (Garland, Tex.)	1400*				
Northam, J. I. (Manhattan, Kans.)	1887				
Nowak, J. A. (Chicago)	1914				
Nowakivsky, S. (Philadelphia)	2010*				
Nunez, R. R. (San Antonio, Tex.)	1776				
Nunnally, J. E. (Ft. Worth, Tex.)	1590				
Nussbaum, J. (New York, N.Y.)	2080				
Nye, Mrs. C. (Syracuse, N.Y.)	1697				
Oakes, Geo. B. (Salinas, Cal.)	1860				
Obadel, A. (New York, N.Y.)	1650*				
Oberg, J. E. (Racine, Wis.)	1686				
O'Brien, John (Buffalo, N.Y.)	1475*				
O'Brien, Paul (Buffalo, N.Y.)	1567				
O'Connor, G. (Logansport, Ind.)	1584				
Offenberg, R. D. (Bronx, N.Y.)	1385				
Ogard, W. D. (Minneapolis)	1606				
Ogawa, J. (Cleveland)	1700*				
Ohman, H. E. (Omaha, Neb.)	2110				
Ohrlaik, A. (Lakewood, O.)	1726				
O'Keefe, J. J. (Ann Arbor, Mich.)	2083				
Olavson, S. A. (Providence, R.I.)	1600*				
Olefer, N. A. (New York, N.Y.)	1775				
Oleson, S. H. (Chicago)	2140				
Olin, R. C. (Tulsa, Okla.)	1600				
Oliver, J. H. (Dadeville, Ala.)	1800*				
Olsen, Douglas (Spokane, Wash.)	1500*				
Olsen, John C. (Racine, Wis.)	1753				
O'Malley, David (Salem, Mass.)	1600*				
O'Neill, Shane (Dallas, Tex.)	2000				
Opp, Kenwood (Lincoln, Neb.)	1895				
Oren, Roger (Muncie, Ind.)	1944				
Orenstein, J. (New York, N.Y.)	1808				
Orlandella, V. (Lynn, Mass.)	1750*				
Orlowski, M. A. (Beaumont, Tex.)	1650*				
O'Rourke, G. E. Jr. (Wash., D.C.)	1943*				
Orloff, S. (St. Paul, Minn.)	1680*				
O'Russa, L. (Peoria, Ill.)	1679				
O'Shaughnessy, L. (St. Paul, Minn.)	1550				
Ostroske, H. (Cleveland)	1550*				
Ostroske, R. (Cleveland)	1450*				
Oswald, Miss F. (New York, N.Y.)	1600				
Otis, G. R. (Kalamazoo, Mich.)	1687*				
Ott, Robt. (Minneapolis)	1868				
Ottosen, Milton (St. Paul, Minn.)	2024				
Ottosen, Walter (Milwaukee)	1652				
Ouchi, K. (Bogota, N.J.)	1764				
Overeem, H. Jr. (Clifton, N.J.)	1930				
Owens, Brian E. (Gt. Neck, N.Y.)	2074				
Owens, E. H. (Kansas City, Mo.)	1807				
Owens, S. R. (Avon Lake, O.)	1906				
Owens, Mrs. W. (Avon Lake, O.)	1788				
Owsiak, E. (Cleveland)	1700*				
Oxford, C. R. (Atlanta, Ga.)	1803				
Ozment, R. E. (Ft. Worth, Tex.)	1580				
Pabon, Ant. Jr. (Miami, Fla.)	2074				
Paddrick, R. (Jamestown, N.Y.)	1420				
Pafnutieff, V. (San Francisco)	2200				
Page, Miss H. (California)	1450*				
Page, Louis N. (Salt Lake City)	1888				
Pajor, J. (Detroit)	1800*				
Palmer, Bruce (Salt Lake City)	1600*				
Palmer, E. C. Jr. (Georgia)	1668				
Palmer, Marvin (Detroit)	2				

Scanlan, A. J. (Kans. City, Mo.)	1700
Schaeffer, F. (Allentown, Pa.)	1818*
Schain, Howard (Riverdale, N.Y.)	1850*
Schatanoff, D. (New Freedom, Pa.)	1915
Schatanoff, J. (New Freedom, Pa.)	1830
Schechter, A. (Santa Barbara, Cal.)	1952
Schechter, Harry (Detroit)	1913
Scheffer, Dav. (Fr. Meadows, N.Y.)	1865
Scheidt, E. (Raleigh, N.C.)	1600*
Schepflein, E. (Miami, Fla.)	1591
Schick, E. B. (Ft. Worth, Tex.)	1717
Schick, W. F. (Menominee, Mich.)	1650
Schiller, Ben (New York, N.Y.)	1852
Schiller, Syd (New York, N.Y.)	1874
Schimmel, J. E. (Bronx, N.Y.)	1643
Schleifer, M. (Los Angeles)	2050*
Schlosser, Dr. M. (Decatur, Ill.)	1792
Schmelter, M. (Hoboken, N.J.)	1704
Schmidt, Dr. B. W. (Homer, N.Y.)	2030
Schmidt, Markus (Detroit)	1642
Schmitt, Edward (Buffalo, N.Y.)	1824
Schmitt, Jas. N. (San Francisco)	2106*
Schmuck, E. A. (Rochester, N.Y.)	1550*
Schoenau, R. Jr. (St. Petersburg, Fla.)	1700*
Schrader, Dale (Philadelphia)	1940
Schrader, Rod (Racine, Wis.)	1600
Schramm, H. (Sheboygan, Wis.)	1718
Schroeder, J. R. (Columbus, O.)	1978
Schroeder, Mario (N. Y., N.Y.)	2060
Schroeder, W. (Caledonia, Minn.)	1900
Schroer, E. A. Jr. (Las Vegas, Nev.)	1840*
Schuer, H. W. (Columbus, O.)	1780
Schuetz, Mrs. W. (LaCrosse, Wis.)	1733
Schuh, R. (San Francisco)	1350*
Schuler, Wm. (Allentown, Pa.)	1705
Schultze, R. (Moline, Ill.)	1530
Schulz, F. W. (Dallas, Tex.)	1400*
Schulz, Tom (Racine, Wis.)	1700
Schumann, Wm. (Sheboygan, Wis.)	1670
Schuster, N. (Atascadero, Cal.)	1200*
Schwartz, Dr. I. (Durand, Ill.)	2035
Schwartz, J. (Rockford, Ill.)	1800
Schwartz, Lee (Lakewood, O.)	1540*
Schwartz, Mena (Lakewood, O.)	1633*
Sciaretti, D. (Collingsdale, Pa.)	1840
Scott, Wm. A. (Atlanta, Ga.)	1890
Scrivani, R. (San Francisco)	1400*
Seidelman, M. (Kensington, Md.)	1948
Seiden, R. (Westover, Mass.)	1450*
Seifert, Jas. (Minneapolis)	1500
Seitz, W. J. (Chicago)	1890*
Selby, J. W. (Kingsport, Tenn.)	1640
Selensky, Mary (Philadelphia)	1905
Self, A. R. (Newton, Kans.)	1784
Selkin, Jas. (S. Carolina)	1750*
Selvaggi, P. (Passaic, N.J.)	1970
Semb, Melvin (Winona, Minn.)	1724
Seropian, A. (New York, N.Y.)	1743
Serota, H. (New York, N.Y.)	1800*
Sessa, C. M. (Bellaire, N.Y.)	1852
Settle, J. C. (Harahan, La.)	1914*
Settle, W. L. (Kans. City, Mo.)	1700*
Shaeffer, Ben (S. Bernardino, Cal.)	1700*
Shaffer, E. E. (Asheville, N.C.)	1582
Shaffer, H. B. (Albuquerque, N.M.)	1700
Shaffer, Jos. I. (Philadelphia)	2220
Shanack, S. M. (Cambridge, Mass.)	1650*
Shanahan, W. A. (Peoria, Ill.)	1624
Shannon, S. F. (Ft. Worth, Tex.)	1500
Shapiro, Brent (New York, N.Y.)	1700*
Shapiro, Gerald (Lynbrook, N.Y.)	1862
Shapiro, I. L. (Chicago)	1950*
Shapiro, Robt. M. (Chicago)	1735
Sharon, Isaac (New York, N.Y.)	1640*
Sharp, Chas. (W. Scarborough, Me.)	1928
Sharpell, F. (Allentown, Pa.)	2096
Shaw, Chas. A. (Miami, Fla.)	1848
Shaw, Jack (Albuquerque, N.M.)	1942
Shea, John (Omaha, Neb.)	1740*
Shearer, O. (Los Angeles)	1700*
Sheer, David (Gary, Ind.)	1738
Sheets, J. L. (Seattle, Wash.)	2143
Shellenberger, R. (Indianapolis)	1770
Shepard, Mrs. M. (California)	1400*
Shepherd, Dr. J. (Auburn, Wash.)	1800
Sheridan, G. (New York, N.Y.)	1871*
Sherr, Paul (Allentown, Pa.)	1845
Sherrill, S. (Borger, Tex.)	1675*
Sherwood, C. (Buffalo, N.Y.)	1793*
Shields, Eileen (Kans. City, Mo.)	1450*
Shippen, F. J. (Camp Hill, Ala.)	1750*
Shirey, Wm. (Fresno, Cal.)	1750*
Shishkin, D. J. (San Francisco)	1993
Shore, H. (Providence, R.I.)	1685*
Shouts, R. D. (San Francisco)	1400*
Shubow, David (Miami, Fla.)	1630
Shuler, W. R. (Ft. Wayne, Ind.)	1668
Sibbett, D. J. (Woodbury, N.J.)	1982
Sidley, B. J. (Cincinnati, O.)	1706
Siegel, M. R. (New Rochelle, N.Y.)	2085
Siemms, Ross E. (Toronto, Ont.)	2282
Siewers, C. F. (Bartlesville, Okla.)	1763
Sieweke, C. F. (Wash., D.C.)	1543*
Siff, Boris (Boston)	2200
Sigmund, I. (Merchantville, N.J.)	2075
Sildmets, A. (Lincoln, Neb.)	1694
Silkmitter, G. (Wichita, Kans.)	1650*
Sills, M. (Roselle, N.J.)	1900*
Silva, R. (Corpus Christi, Tex.)	1500*
Simanis, E. J. (San Francisco)	1935*
Simmer, C. H. (St. Paul, Minn.)	1774
Simonds, E. W. (Georgia)	1650*
Simoneaux, N. E. (New Orleans)	1818
Simpson, F. Jr. (New York, N.Y.)	1610
Simpson, L. P. (New York, N.Y.)	1550*
Simpson, R. (Fayetteville, N.C.)	1710
Simsak, M. N. (Bethlehem, Pa.)	2003
Singer, David (Forest Hills, N.Y.)	2020
Skema, K. (Detroit)	2064

Skiba, P. (Cleveland)	1650*
Skinner, Geo. (Ridgewood, N.J.)	1520*
Sklaroff, S. (Philadelphia)	1957
Slater, Kathryn (New York, N.Y.)	1904
Slater, Wm. (New York, N.Y.)	2050
Slattery, J. (Westfield, Mass.)	1830*
Slavich, J. B. (Salinas, Cal.)	2125
Sleep, E. (Los Angeles)	1735*
Slifer, W. E. (Highland Pk., Mich.)	1950*
Sloboda, J. (New York, N.Y.)	1700*
Sluga, B. (Cleveland)	1450*
Smale, S. (Gd. Blanc, Mich.)	1989
Smalley, D. (Rochester, Minn.)	1730*
Smith, Alan (Warren, O.)	1550*
Smith, Bernard (Kalamazoo, Mich.)	1635
Smith, B. N. (Downey, Cal.)	1760*
Smith, Buck (Amarillo, Tex.)	1350*
Smith, C. T. (Amherst, Mass.)	1738
Smith, Dane (St. Paul, Minn.)	1864
Smith, Dennis (Racine, Wis.)	1550*
Smith, Douglas (Cloquet, Minn.)	1600*
Smith, Edna (Fremont, O.)	1488
Smith, Geo. H. (Houston, Tex.)	1992
Smith, Jas. B. (E. Moline, Ill.)	1735
Smith, Jos. J. (Detroit)	1830*
Smith, J. L. (Georgia)	1800*
Smith, J. Harlan (Kingsport, Tenn.)	1500
Smith, Karl (La Follette, Tenn.)	1400*
Smith, Kenneth R. (Dallas, Tex.)	2125
Smith, Leslie C. (Lexington, Ky.)	1602
Smith, Mike (New Orleans)	1400
Smith, Milford (Decatur, Ill.)	1400*
Smith, Patterson (New York, N.Y.)	1970
Smith, Phil D. (Fresno, Cal.)	2060
Smith, Raymond A. (Reno, Nev.)	1680
Smith, Russell W. (Dallas, Tex.)	1892
Smith, Virgil (Hartsville, S.C.)	1580
Smith, Winthrop (Amherst, Mass.)	1650*
Smook, Roger (Berkeley, Cal.)	2177
Smoron, M. (Chicago)	1736
Snitzer, F. S. (Brooklyn, N.Y.)	1850*
Snyder, H. E. (Columbus, O.)	1801
Snyder, P. K. (Philadelphia)	1750
Sobel, Robt. D. (Philadelphia)	2225
Sobin, Erwin (Brooklyn, N.Y.)	1992
Soderberg, R. G. (Edina, Minn.)	1450*
Soifer, Dave (Swarthmore, Pa.)	1740*
Sokoler, M. L. (New York, N.Y.)	1845
Soly, Fred (Las Vegas, Nev.)	1724
Somlo, E. S. (Cleveland)	2000
Sorahan, J. (New York, N.Y.)	1600*
Sorenson, Somner (Iowa City, Ia.)	2032
Soudakoff, Jack (New York, N.Y.)	2060
Soules, Geo. (Los Angeles)	1591
Southern, Mart. (Knoxville, Tenn.)	1938
Southworth, B. (Ware, Mass.)	1700*
Sovel, Chas. (Philadelphia)	1930
Spalding, W. (Amarillo, Tex.)	1450*
Spann, J. G. (Norman, Okla.)	1614
Spann, Dr. S. T. (Reno, Nev.)	1640*
Spector, E. N. (Philadelphia)	1881
Spector, Dr. I. (New York, N.Y.)	1894
Spence, Jack (Omaha, Neb.)	2005
Spencer, Jas. (Holyoke, Mass.)	1420*
Spero, R. A. (Atlantic Bch., N.Y.)	1800*
Spiegel, Sam (Lynn, Mass.)	1850*
Spiewak, H. (Hewitt Harb., N.Y.)	1800*
Spinner, L. (Montrose, Cal.)	2248
Spitzer, Alex (Pittsburgh, Pa.)	1973
Sponagle, C. E. (Wash., D.C.)	1917
Spray, S. (Lincoln, Neb.)	1400*
Springbett, G. (Hutchinson, Kans.)	1747
Springer, Miss A. (New Orleans)	1400*
Springer, Arthur (New Orleans)	1500*
Springfield, W. A. (Lexington, Ky.)	1557
Squire, Wm. (Kenmore, N.Y.)	1832
Squires, W. J. (W. Hartford, Ct.)	1450*
Sroba, J. J. (Philadelphia)	1903
Stack, E. (Elmhurst, N.Y.)	1800*
Staklis, A. (Lincoln, Neb.)	1923
Stallings, C. B. (Tampa, Fla.)	2012*
Stallknecht, T. (Garden City, N.Y.)	1620*
Stamm, Norval (Hastings, Mich.)	1753
Stanton, F. (Atascadero, Cal.)	1740*
Stanton, P. (Atascadero, Cal.)	1490*
Stapp, J. W. (Dallas, Tex.)	2046
Stark, M. C. (Bethesda, Md.)	2236
Startz, John (Pt. Arthur, Tex.)	1638
Stauvers, D. (Cleveland)	1960
Stearns, E. E. (Cleveland)	1850
Stearns, Richd. (Plainfield, N.J.)	1780
Steckel, W. H. (Minot, N.D.)	2199
Steege, K. Jr. (Kans. City, Mo.)	1725
Stein, Arthur (Brooklyn, N.Y.)	1856
Stein, Chas. (New Orleans)	1550*
Stein, Chas. (Chicago)	2070
Stein, Robt. H. (Chicago)	1753
Steinbergs, A. (Lincoln, Neb.)	1500*
Steiner, B. H. (Los Angeles)	1570*
Steiner, Eugene (Los Angeles)	1567*
Stenson, S. (Spokane, Wash.)	1400*
Stenzel, Col. R. (New York, N.Y.)	1450*
Stephens, Dr. L. G. (E. Alton, Ill.)	1760
Stephens, Mrs. L. G. (E. Alton, Ill.)	1400*
Stephens, Wm. (New York, N.Y.)	1700*
Stephenson, A. (Atascadero, Cal.)	1780*
Steppe, F. (Bristol, Tenn.)	1500*
Stern, Dr. A. (Brookline, Mass.)	2147
Steuier, Max (New York, N.Y.)	1650*
Steven, G. (Sherman Oaks, Cal.)	1880
Stevens, B. W. (San Antonio, Tex.)	2140
Stevens, W. (California)	1724*
Stevens, W. E. (Laramie, Wyo.)	1786
Stevenson, J. W. (Talladega, Ala.)	1870
Stewardson, D. (Shelbyville, Ill.)	1650*
Stewart, Chas. H. (Boise, Ida.)	1733
Stewart, Gordon (Buffalo, N.Y.)	1400
Stiening, R. (Pittsburgh, Pa.)	1704
Stikl, A. C. (Milwaukee)	1738

Stiles, E. M. (Kans. City, Mo.)	1450*
Stockhold, H. F. (Lakewood, N.J.)	1907
Stokes, F. C. (Waterloo, Wis.)	1628
Stolzenberg, L. (Detroit)	2236
Stone, Jan (Swarthmore, Pa.)	1700*
Stone, K. (Los Angeles)	1600*
Stone, T. (Richmond, Va.)	1700*
Stopinski, Z. A. (Buffalo, N.Y.)	1937
Storozynski, W. (Cleveland)	1700*
Story, Mrs. M. (New York, N.Y.)	1400
Stout, F. R. (St. Louis, Mo.)	1806*
Strals, I. (Ft. Bragg, N.C.)	1874*
Strand, M. (Elizabeth, N.J.)	1400*
Strand, Norman (Lincoln, Neb.)	1850*
Strang, E. W. (Camden, N.J.)	1978
Strange, W. T. (Dallas, Tex.)	1918
Strazdins, A. (New Britain, Ct.)	1967
Stroh, Phillis (Atascadero, Cal.)	1780*
Stroh, W. G. (Atascadero, Cal.)	1640*
Struck, Robt. (Cudahy, Wis.)	1500*
Stumpfig, J. (Racine, Wis.)	1792
Stull, J. M. (Wichita, Kans.)	1916
Sturges, R. (Long Beach, Cal.)	1400*
Stuver, N. L. (Johnstown, Pa.)	1700
Subanovich, L. (Gary, Ind.)	1650
Sube, Janis (Lancaster, Pa.)	1800
Suchobek, A. (Albany, N.Y.)	2066
Suhs, G. W. (Hammond, Ind.)	1772
Sullivan, D. V. (Rochester, N.Y.)	2012
Sullivan, Jas. (Lynn, Mass.)	1600*
Sullivan, Jer. (Portsmouth, N.H.)	1812
Sullivan, Jos. G. (Knoxville, Tenn.)	2087
Sulzer, H. (Ridgefield Pk., N.J.)	1785*
Suraci, A. (New Haven, Ct.)	1928
Surgies, Mark (Milwaukee)	1960
Sussan, W. E. (San Diego, Cal.)	1500*
Sussman, Jon. (Gt. Neck, N.Y.)	1725
Suyker, A. C. (Lordsburg, N.M.)	1851
Svalberg, Chas. (San Francisco)	1932
Svensson, L. (Spokane, Wash.)	2050*
Swain, Mark S. (Pt. Arthur, Tex.)	1460*
Swan, F. (Midwest, Okla.)	1600*
Swanson, C. D. (Huntsville, Ala.)	1750*
Swardson, E. L. (St. Joseph, Mo.)	1750*
Swarz, A. (Miami, Fla.)	2028
Sweeney, H. (U.S. Army)	1690
Sweeney, J. M. (Milton, Wis.)	1930
Sweet, David (Lake Forest, Ill.)	1820
Sweet, Frank Jr. (Durham, N.H.)	1400*
Swefach, J. (Bayonne, N.J.)	1844
Sweig, Mitchell (Chicago)	1820
Switzer, G. C. (Rochester, N.Y.)	1952
Szabo, W. (Cleveland)	1500*
Szentivanyi, J. (Cleveland)	1750
Taber, Wm. F. (Reno, Nev.)	1971
Talbot, Wm. (Miami, Fla.)	1550*
Talboys, R. G. (Maywood, N.J.)	1600*
Talcoff, N. E. (Sacramento, Cal.)	1554
Tamargo, Joe (Bronx, N.Y.)	1825
Tangeman, J. B. (Cincinnati, O.)	1607
Tangen, E. (Seattle, Wash.)	1450*
Tarshis, J. H. (New York, N.Y.)	1672*
Tate, A. H. (Knott, Tex.)	1700*
Taufvaisas, P. (Chicago)	2202
Taylor, H. P. (Jacksonville, Fla.)	1850
Taylor, Dr. H. W. (Atlanta, Ga.)	1608
Taylor, I. W. (Salt Lake City)	1932
Taylor, J. H. (Birmingham, Ala.)	1600*
Taylor, Paul (Houston, Tex.)	1550*
Tears, C. F. Jr. (Dallas, Tex.)	2084
Teichmann, M. E. (Nutley, N. J.)	1600*
Tejada, H. (An Arbor, Mich.)	2017*
Tallman, R. (Cleveland)	1600*
Temperley, D. H. (Lincoln, Neb.)	1790*
Tooste, F. (Ft. Wayne, Ind.)	1600*
Teplitsky, L. (Philadelphia)	1951*
Terer, Julius (Dayton, O.)	1805
Terry, Geo. (Cleveland)	1500*
Terrible, Jos. (Columbus, O.)	1825
Terry, John Oak Ridge, Tenn.)	1768*
Terry, Kenneth (Ft. Worth, Tex.)	1907*
Teubner, W. A. (Racine, Wis.)	1809
Teufel, H. Jr. (Wichita, Kans.)	1920
Thames, L. G. (Minneapolis)	1543
Thayer, C. B. (Whitewater, Wis.)	1735
Thedy, Herman (New Orleans)	1700*
Theos, Peter (Racine, Wis.)	1500*
Thiem, Walter (Greenwich, Vt.)	1400*
Thomas, D. (West Point, N.Y.)	1550*
Thomas, E. M. (Muncie, Ind.)	1482
Thomas, H. C. (Ada, Okla.)	1400*
Thomas, J. R. (Ferndale, Mich.)	1821
Thomason, J. (Ft. Worth, Tex.)	1600
Thompson, Bobby (Beaumont, Tex.)	1650*
Thompson, D. I. (El Paso, Tex.)	2181*
Thompson, Earle (Clyde, O.)	1485
Thompson, Ed. (Visalia, Cal.)	1700*
Thompson, Leroy (Wash., D.C.)	1875
Thompson, O. D. Jr. (Borger, Tex.)	1702
Thompson, Paul L. (Columbus, O.)	1697
Thorpe, Wayne (Kansas)	1400*
Thorp, Tom (Swarthmore, Pa.)	1860*
Thunberg, E. (Spokane, Wash.)	1700*
Tiers, G. Van D. (St. Paul, Minn.)	1863
Tigart, T. (Amarillo, Tex.)	1625
Tilles, Michael (Wash., D.C.)	1904
Tinker, K. (Cleveland)	1750*
Tirrell, R. (Dorchester, Mass.)	1900
Tobler, John (Verona, N.J.)	1700*
Toth, Steve (Cleveland)	1763
Tofola, J. N. (Jersey City)	1600*
Towle, L. (Exeter, N. H.)	1700*
Townsend, J. S. (Smithfield, N.C.)	1850*
Towson, A. N. (New York, N.Y.)	1770*
Traina, Sam (Buffalo, N.Y.)	1787*
Tratch, P. (Cleveland)	1900*
Travers, Paul (Lexington, Mass.)	1800
Trayers, F. J. (Salem, Mass.)	1902
Treend, E. I. (Detroit)	1988

Treez, Dr. S. (Cleveland)	1895*
Trimmer, W. (Cleveland)	1600*
Trinks, W. R. (Hammond, Ind.)	1703
Triplet, D. Jr. (Spokane, Wash.)	1600*
Tristian, L. E. (Albuquerque, N.M.)	1830*
Trogon, Wm. (Spokane, Wash.)	1400*
Trotter, S. A. (Provo, Utah)	1420*
Trotti, H. (Davidson, N.C.)	1820*
Troutman, G. (Lincoln, Neb.)	1450*
Troy, R. F. (Pt. Arthur, Tex.)	1650*
Troy, Norda (Cleveland)	1564
Troy, Wm. (Cleveland)	1520*
Trumbull, S. L. (Columbus, O.)	1730
Tubelis, E. (Ft. Worth, Tex.)	1733
Tujague, R. (New Orleans)	1400*
Tumek, Peter (Lincoln, Neb.)	1715
Tums, John M. (Chicago)	2112
Turner, Edward (New York, N.Y.)	1650*
Tusch, J. H. (Wilmington, N.C.)	1727
Tyler, E. W. (Hackensack, N.J.)	1625
Uhlman, Robt. (Gd. Rapids, Mich.)	2074
Ulvestad, Ole (Seattle, Wash.)	2218
Underwood, E. E. (Columbus, O.)	2116
Underwood, Dr. R. (Lubbock, Tex.)	1830
Unger, Thos. (Cambridge, Mass.)	1702
Urban, Carl (Appleton, Wis.)	1512
Urrutia, J. (Cleveland)	1850*
Valvo, F. (Guilderland Ctr., N.Y.)	1900*
Vanderberg, W. G. (Shell Rock, Ia.)	1621
VanderSchalie, H. (Wilmington, N.C.)	1725
VanderPlooy, A. (Pt. Arthur, Tex.)	1750*
VanderRoest, E. (Kalamazoo, Mich.)	1569
VanEerden, G. W. (Ft. Worth, Tex.)	1600
VanGelder, S. H. (San Francisco)	1910
Vano, E. T. (Highland, Ind.)	2073
VanSickle, W. (Cleveland)	1550*
Vellias, R. (Seattle, Wash.)	1978
Venesaar, K. (Chicago)	1680
Vhay, John (Spokane, Wash.)	1800*
Vibbert, D. (Springfield, Mass.)	1



GAMES BY USCF MEMBERS

Annotated by Chess Master JOHN W. COLLINS, Marshall Chess Club Champion, 1954

USCF MEMBERS: Submit your best games for this department to JOHN W. COLLINS, 91 Lenox Road, Brooklyn 26, N.Y. Space being limited, Mr. Collins will select the most interesting and instructive for publication. Unless otherwise stated notes to games are by Mr. Collins.

CENTER COUNTER GAMBIT

MCO: page 130, column 5 n (i)
Marshall C. C. Championship
New York, 1954-55
Notes by U. S. Expert
Florencio B. Campomanes

White F. HOWARD Black F. CAMPOMANES
1. P-K4 P-Q4
This defense is today rarely employed in tournament play save, as Black here intends, as a surprise weapon in the spirit of psychological chess.
2. PXP
The best attempt at an early refutation. An alternative P-Q4 may transpose into the French Defense.
2. Kt-KB3
QxP is an alternative but the Black Queen is plagued by the White pieces such that a much retarded development for Black results.
3. P-Q4 KtXP 5. Kt-QB3 P-KKt3
4. P-QB4 Kt-KB3
A fairly new idea in this opening. The plan is to allow White to maintain the upper hand in the center, in addition to preponderance in space, and then to strike back without giving White time to mend his whole front line and before White can translate his superior command of space into material advantage.
6. Kt-B3 B-Kt2 9. B-Q3 BxB
7. P-KR3 O-O 10. QxB
8. B-K3 B-B4
Aside from this exchange of the Bishops (an almost imperative swap for White lest he attempts a dubious Kt-KR4 or he permits the thorn of the Black's QB on the KB4-QKt8 diagonal), the fianchetto of Black's KB results in a position which is less susceptible to exchange of pieces or drawish outcomes.
10. P-B3 12. QR-Q1
11. O-O QKt-Q2
The last move appears to have the twofold purpose of protecting the Queen in the event of any tricky attempt to attack the square Q4 by Black with P-QB4 or P-K4, and of preparing for the vital push, P-Q5. This strategy is probably the logical course to pursue.
12. Q-B2 14. B-B4
13. Q-Q2 QR-Q1
Seizing the very important square and equally important diagonal from KR2-QKt8.
14. Q-B1
Not Q-R4? allowing 15. Kt-Q5 and losing at least a pawn.
15. KR-K1 KR-K1 16. Q-B1 Kt-B1
Both sides have now completed their development and believe that they have reached the maximum position prior to exploitation for advantage. The line chosen by Black, however, is so simple that by losing a pawn, he regains the critical diagonal and, paramount, the squares of White's KB4 and K5, and gets a tremendous K-side position.
17. R-K2 Kt-K3
The first stab on the squares.
18. B-K5 Kt-B2 19. Q-B4 Kt-R4
The second shot.
20. Q-R4 Kt-K3
A very peculiar situation has arisen. With apparently no real mistakes, White seems to be losing the initiative. Possibly, the variation just elected by him should have been ignored in favor of playing P-Q5 only after doubling his Rooks on the Q-file. The game now takes a turn and Black it is who goes on the offensive.

21. P-Q5
Not, however, with the force it could have had, had he adequately prepared for it without the Queen maneuvers.
21. BxB 22. RxB Kt/3-B5!



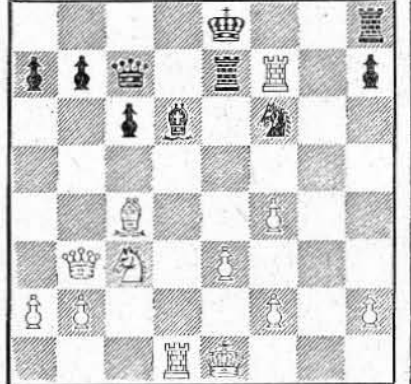
Suddenly, and very chesslike, one move changes the entire complexion of the game.
23. RxP RxR 25. Q-Kt5
24. QxR R-K1
True, White is now a pawn ahead but the Queen is compelled to make a decision. If she runs back to the K-side, she becomes ensnared in a Black-woven web. On the Q-Q6 attempt, Black possibly can force a draw by repetition R-Q1, Q-K7, R-K1, unless the harassed Queen chooses the Q-side retreat, far from the scene of impending battle. A Black sacrifice with KtXP, followed by QxRP, Kt-B5 could be dangerous.
25. P-B3
The first spin for the web.
26. Q-Kt4 P-KB4 28. P-KKt3
27. Q-R4 P-KR3
Creating loopholes for Black to peer into.
28. Kt-K7ch 30. P-Q6
29. KtXKt RxBt
An attempt to transfer the center of activities. Sharper would have been to bring the Queen out of the net with Q-Q4. The ensnarlment harries White into undue preoccupation with the King's position; and with the tension, misses Black's next two sharp moves.
30. PXP is also good.
30. Q-Q2 31. P-B5
A blunder. Again, Q-Q4 was indicated.
31. R-K5!
And Black is set to roll on with his forces.
32. P-KKt4 PXP 33. Kt-R2
Not PXP because of RxP ch winning the Queen.
33. Kt-B5! 34. PXP
Not QxP since Kt-K7 ch wins the Queen. KtXP falls against 34., KtXP ch, RxBt, etc.
34. P-KR4 35. K-B1
Once again White cannot play PXP because of Kt-K7 ch.
35. Kt-Q4 36. Q-Kt5 K-R2
Q-KB2 would be fatal for Black, owing to P-Q7, threatening to queen, 37., QxQP; 38. QxKtP ch, winning the Rook.
37. R-Q3 Q-K3
This last move was made possible by the quiet 35th move of Black which at the same time covers his K2 square preventing any design of White to exchange Queens.
38. PXP Kt-B5 39. PXPch K-Kt2
A curiously safe haven amidst the heat of battle.
40. R-K3
Black was threatening R-K8 checkmate. On 40. R-Q1, Q-B5 ch White loses the Queen.
40. RxR 42. K-B2
41. PXR Q-R6ch
Preferring to lose a piece in this manner to going through the ordeal of 42. K-Kt1, QxP ch; if 43. K-B1, Q-K7 ch; 44. K-Kt1, Kt-R6 ch wins the Queen. Or, if 43. K-R1, Q-K5 ch; 44. Kt-B3, QxKt ch and wins.

42. QxKtch 44. Q-Kt4 K-B3
43. K-B3 KtXP
43., KtXP removes the threats of one pawn so close to the queening square and covers the squares K2 and K4. 44., K-B3 provides the last thread for the mating web or the death sentence on the White Queen. The King, truly an attacking entity, and in such a wide open terrain!
45. Q-B8
Equally futile are Q-Kt3 or Q-Q4 ch since the Black check on K4 cannot be skirted.
45. Kt-K4ch!!
The stage is set for the coup de grace.
46. K-K4 Q-R5ch Resigns
Not even a Queen sacrifice avails. The fall of a titan!

QUEEN'S PAWN GAME

MCO: page 203, column 11
California State Championship
San Francisco, 1954

Notes by U.S. Master Edmar Mednis
White H. STEINER Black E. LEVIN
1. P-Q4 P-Q4 2. Kt-KB3 Kt-QB3
This continuation favored by Tschigorin is played rarely nowadays, Tony Santasiere being one of the few leading players who adopt it. The self imposed blockade of the QBP outweighs the chance for an early P-K4.
3. B-B4 B-Kt5 4. P-B4
Good also is P-K3 to be followed by B-K2 with control of White's K5.
4. BxKt! 5. KtXPB
After 5. KPxB, P-K4! would give Black a good game, e.g.: 6. PxKP, B-Kt5 ch; 7. Kt-Q2, PXP; 8. BxP?, Q-Q5! and wins.
5. P-K4 7. PXP Kt-Q-K14
6. BxP KtXB
An all-purpose move planning either QxKtP, Q-B8 ch, R-Q1 or B-Kt5 ch.
8. Kt-B3 PXP 11. P-B4 Q-B2
9. P-K3 QXP 12. Q-Kt3 Kt-B3?
10. BxP P-QB3
This natural developing move is the cause of the resulting trouble because now Black lacks a good way to defend his KBP. Correct was 12., Kt-R3! with almost complete equality.
12. R-KKt1 R-Q1
Instead of this clumsy defensive move, Black should sacrifice his KBP by castling Q-side.
14. R-Kt5 R-Q2 15. R-Q1! B-Q3
As long as Black had decided to hold on to his material, he should at least try to continue doing this by R-K2, even though White would still have a big edge after 16. R-K5! The text move offers no hope at all.
16. RxP R-K2 17. RxBP!

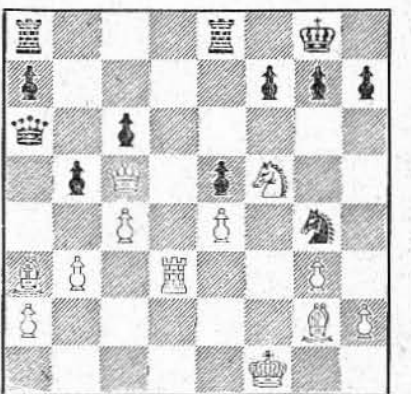


17. R-B1 19. B-K6 Kt-R4
18. RxR(2)ch QxR 20. Kt-K4
While Black decentralizes his pieces White does the opposite.
20. B-K15ch 21. K-K2 RxP
Desperation.
22. R-Q7 Q-R5 26. K-K1 Q-K4
23. PXR KtXPch 27. BxKt PxB
24. K-Q1 Kt-Q4 28. RxQP Resigns
25. QxB! Q-R4ch

KING'S INDIAN REVERSED

MCO: Cf. King's Indian Def.
Postal Game, 1954-55
Notes by S. J. Hankin

White S. J. HANKIN Black C. KUGELMAS
1. P-Q3
Intending, if allowed, a King's Indian Defense, in reverse, a debut whose popularity has been on the rise of late.
1. P-Q4 3. P-KK1 B-B4
2. Kt-KB3 Kt-KB3
This Bishop is not posted securely. Instead, 3., P-B4 or 3., P-KKt3, or even 3., Kt-B3 (aiming for a Pirc Defense in reverse) is better. While the text now prevents White's P-K4, that move comes in soon enough and with tempo.
4. B-Kt2 P-K3 6. QKt-Q2 B-Q3
5. O-O QKt-Q2
Premature. Correct is B-K2. A good alternative is 6., P-KR3, creating a retreat for the QB.
7. R-K1 O-O 8. P-B3
Another promising line is 8. P-K4, B-KKt5; 9. P-KR3, BxKt; 10. KtXB, PXP; 11. PXP. White has a clear edge (a two B game and a strong Kt which can settle via KR4 at KB5).
8. P-K4 10. PXP B-KKt5
9. P-K4 PXP 11. Q-B2 P-B3
Provides a retreat for the KB, increases the Queen's mobility and keeps the White pieces out of his Q4 square.
12. Kt-B4 B-B2 14. Kt-K3 B-Kt3
13. P-Kt3 P-QKt4 15. Kt-R4
After the obvious 15. KtXB, KtXKt; 16. R-B1, Black gets some initiative unnecessarily.
15. Kt-B4 17. Kt/4-B5 Kt-Q6
16. B-QR3 R-K1
A superficial reply which leads to the loss of two pieces for a Rook. 17., Q-B2 is sound but the most interesting line is 17., Q-Q6; 18. Q-Kt2, QR-Q1 (not 18., QKtXP; 19. KtXB1, KtXKt; 20. BxKt, KtXB; 21. BxQ, KtXB ch; 22. K-Kt2, KtXQ; 23. BxKt and White is a piece up for two pawns); 19. P-R3, BxKt; 20. QR-Q1, QxR (if 20., BxKP; 21. BxKt, KBxB; 22. RxQ, RxR; 23. BxB, KtXB, etc. The Queen is stronger than the R and B); 21. RxQ, RxR ch; 22. KtXR, Kt(B4)XP and again the Queen will prove stronger than the R and Kt.
18. KR-Q1 BxR 20. RxKt
19. RxB BxKt
But not 20. KtXB?, Q-R4 winning!
20. BxPch 21. K-B1
After 21. KxB Black plays Kt-Kt5 ch followed by Q-Kt3 with a dangerous attack.
21. Q-Kt3 23. Q-B5! Q-R3!
22. QxB Kt-Kt5!
Black takes advantage of the exposed position of the White King with this sortie. An exchange of Queens instead would yield White a certain endgame win, despite Black's win of the KP.
24. P-B4



This, perhaps, is not best, but a clear winning line for White is not easy to discern. For example: A) 24. B-Kt4 is met by QxP; 25. P-R3, Kt-R7 ch; 26. K-Kt1, Q-Kt8ch and Black has the advantage; B) Better is 24. K-K2, P-Kt5!; 25. BxP (if 25. QxKtP, Kt-B7 wins the ox), QxP ch; 26. R-Q2, QxP but Black has counterplay; C) Another try is 24. (Please turn to page 11, col. 4)

PERSONAL SERVICE
The Editor of this Department will play you a game by mail, comment on every move, and give you a thorough post-game analysis. Fee \$10.
Mr. Collins will also annotate any one of your games for a fee of \$5.

LARRY EVANS ON OPENINGS

By International Master LARRY EVANS

U. S. OPEN CHAMPION, 1954

From My Chess Notebooks

SICILIAN DEFENSE

1. P-K4, P-QB4;



Position after 1., P-QB4

Why is the Sicilian Defense so popular? The move 1., P-QB4 is in itself innocuous and may be ignored. It exerts pressure on the center, it is true, but it frees none of the K-side pieces and makes castling technically more difficult. There must be some way for White to capitalize on Black's lag in development without permitting the traditional counterplay along the QB file.

The answer, in my opinion, is that the habitual 2. N-KB3, 3. P-Q4 is all wrong! Discussing the alternatives on White's second move, Fine contends that "since White should prepare P-Q4, and 2. N-KB3 does that best, none of the alternatives have great theoretical importance." But why should White prepare P-Q4?

Smyslov's 2. N-QB3 is too slow. However, it is my opinion that theory in the future will consider 2. N-KB3, followed by P-KN3, B-N2, O-O, P-Q3, and P-QB3—a reverse K's Indian formation—White's best continuation.

RUY LOPEZ

Riga Variation
(PCO p. 347, col. 33)

An old and wild defense to the Ruy Lopez still poses a difficult problem of theoretical evaluation. The Riga Defense involves the following moves: 1. P-K4, P-K4; 2. N-KB3, N-QB3; 3. B-N5, P-QR3; 4. B-R4, N-B3; 5. O-O, NxP; 6. P-Q4, PxP!; 7. R-K1, P-Q4; 8. NxP (PCO gives 8. B-KN5!, leading to a plus, but Black's defense can be improved), B-Q3; 9. NxN, BxP ch; 10. K-R1! (if 10. KxB, Q-R5 ch; 11. K-N1, QxP ch—draw), Q-R5; 11. RxN ch!, PxR; 12. Q-Q8 ch!, QxQ; 13. NxQ dis. ch., KxN; 14. KxB, B-K3; and PCO gives White a slight edge.

(Diagram top of next column)

The question is: how does White continue? (Capablanca-Ed. Lasker, N.Y., 1915, went: 15. B-K3, P-KB4; 16. N-B3, K-K2; 17. P-KN4, P-KN3; 18. K-N3, with a strong position.)



Position after 14., B-K3

Black's K-side majority is potentially dangerous. If you really want to learn about Rook and Pawn vs. Two Piece endings, I suggest you play some skittles games from this fascinating position, which is considered theoretically to be in White's favor because the pieces have quick-striking power. You will find, however, that each exchange benefits Black; White, especially, must avoid exchanging his Rook.

15. B-K3 is undoubtedly White's best move, to stop P-QB4.

FRENCH DEFENSE

In a recent exhibition at Rochester, I was confronted with a new move in a variation considered unplayable for Black. 1. P-K4, P-K3; 2. P-Q4, P-Q4; 3. N-QB3, B-N5; 4. P-K5, P-QB4; 5. P-QR3, PxP; 6. PxP, PxN; 7. Q-N4, PxP! (the book—PCO p. 84, col. 36—considers only 7., P-KN3; 8. N-B3, Q-B2; 9. B-Q3, N-QB3; 10. O-O, KN-K2; 11. R-K1, with a strong game for White); 8. BxP, Q-K2!



Position after 8., Q-K2!

This is the new move which threatens to re-establish the entire variation for Black.

The point is 9. QxP, QxP ch; 10. K-Q1, QxB; 11. R-B1, N-QB3; 12. QxR, K-B1; or QN-K2; followed by the rapid advance of the QRP which is probably deadly, though it deserves a practical test; if White plays

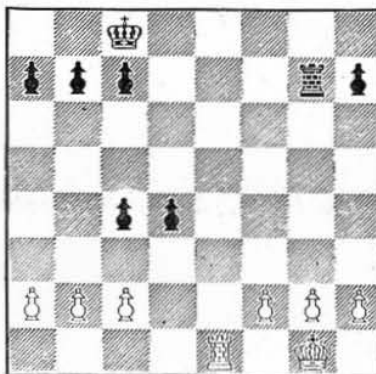
slowly, 9. P-N5 or N-B3, then either N-KR3 or P-KB4! repulses him.

TWO KNIGHTS' DEFENSE

Max Lange Attack
(PCO p. 455)

Dr. Max Herzberger suggests a variation which maintains White's advantage in a variation presently considered in Black's favor—all variations.

1. P-K4, P-K4; 2. N-KB3, N-QB3; 3. B-B4, N-B3; 4. P-Q4, PxP; 5. O-O, B-B4; 6. P-K5, P-Q4; 7. PxN, PxP; 8. R-K1 ch, B-K3; 9. N-N5, Q-Q4; 10. N-QB3, Q-B4; 11. QN-K4, O-O-O; 12. PxP, KR-N1; 13. NxKB, QxQN; 14. RxB, PxR; 15. NxP, if Q-K2; 16. NxR, NxN; 17. Q-N4 ch, Q-K3; 18. QxQ ch, Nx; 19. B-R6, NxP; 20. BxN, RxB; 21. R-K1—not at all convincing, but certainly in White's favor. If, 21., K-2; 22. P-KB4.



Position after 21. R-K1

Unplayable is 21., P-Q6?; 22. PxP, PxP; 23 R-K8 ch, K-Q2; 24. R-Q3. The Pawn formation is probably in White's favor for the ending. Still unclear. Deserves a practical test. Moreover, 15., Q-K2 may not be the best square for the Queen.

Conclusion: Mechanical thinking has led to a rut in chess theory. Before the next advance can be made, every opening must be viewed in a new perspective. In short: we must forget everything now known, and learn again through new eyes. It will be found that by a critical approach almost every column in MCO can be improved upon.

Lincoln Park (Calif.) Chess & Checker Club: Larry Remlinger, the dangerous youngster of California, won the club title without loss of a game, scoring 9-1 with draws to Doan and Fromess. Fromess was second with 8½-1½, losing a game to Day and drawing with Remlinger. Third went to R. Gross with 8-2, losing to Remlinger and Fromess, while fourth and fifth on weighted scores with 7-3 were Wallace and Day in the 31 player Swiss. A USCF Affiliated Club.

Kalamazoo Valley (Mich.) Chess Club: By defeating Lansing Chess Club 6-4, the Kalamazoo group tied Lansing for lead in the Central Michigan Chess League and avenged their only defeat of the season. Winning for Kalamazoo were S. Allerton, R. Ballenger, H. Kindig, H. Fall and G. Otis, while H. R. Meifert and R. A. MacNeill drew. For Lansing W. Morris, J. Kinto and E. Barwick won, while G. Leiminger and R. Urbaniak drew. A USCF Affiliated Club.

GUEST ANNOTATORS

F. B. Campomanes
S. J. Hankin
Edmar Mednis

P-KR3, P-Kt5; 25. P-B4, QxB; 26. PxKt, QxRP and Black still has considerable attacking chances against White's rather exposed King; D) Finally, 24. B-KR3, P-Kt5; 25. P-B4, KtxP ch; 26. K-Kt2, QxB; 27. KxKt, QxP ch; 28. B-Kt2, Q-K7 (or even Q-B7) still affords Black some chances. This last line may be White's best.

24. KtxPch
The correct reply is 24., PxP!; 25. PxP, QR-Kt1; 26. R-Kt3, RxR; 27. PxR, R-Q1!, etc. Black must use the open files for his Rooks or be crushed. The text capture of a pawn loses too much time.

25. K-Kt1 Kt-Kt5 26. R-Q7
The beginning of the end. On 26., QR-Q1; 27. Q-K7! wins outright. On 26., KR-Q1; 27. RxBP, R-Q8 ch; 28. B-B1 and will mate shortly.

26. Q-R4 28. K-Kt1 P-KR4
27. B-B3 Q-K8ch 29. R-Q1 Q-B6
Forced. On 29., Q-R4; 30. BxKt, PxP; 31. Kt-K7 ch, K-R1 (or R2); 32. R-R1 mate. Or if 31., K-B1; 32. Kt-Kt6 ch (quickest), K-Kt1; 33. Q-B8 ch, RxQ; 34. Kt-K7 ch, K-R1 (or R2); 35. R-R1 mate.

30. B-Kt4 Q-Kt7ch 31. R-Q2 Q-B8
Somewhat better is 31., Q-Kt8 but White wins with 32. Kt-K7 ch, K-R2; 33. BxKt, PxP; 34. QxKP, etc.

32. BxKt PxP 33. Kt-K7ch RxKt
If 33., K-R1 (or R2); 34. QxKP threatens Q-R5 mate.

34. QxR P-B3
Or 34., P-R4; 35. BxP!, RxB; 36. Q-Q8 ch followed by QxR, etc.

35. Q-K6ch K-R2 36. QxKtP PxP
Again if 36., P-R4, the reply is 37. BxP. After 37., RxB; 38. Q-R5 ch, K-Kt1; 39. R-Q8 mate.

37. R-Q1 Resigns
Somewhat premature, for White can still go wrong. The best try is 37., Q-B7 ch; 38. B-Q2, P-Kt3! White must then avoid the "obvious" 39. R-R1 ch, K-Kt2; 40. Q-Q7 ch, K-Kt1; 41. Q-R7 ch, K-B1; 42. Q-R8 ch, K-B2; 43. R-R7 ch, K-K3; 44. QxR, QxP ch! and draw by perpetual check! However, White can win rather simply with 39. Q-Q7 ch!, K-Kt1; 40. QxP, R-Q1; 41. QxP ch, QxQ; 42. PxQ, R-Q5; 43. K-B3, RxBP; 44. B-K3, etc. In this line, if 40., QxR; 41. QxR ch followed by QxP ch and Q-K3 wins easily.

SICILIAN DEFENSE

White	Black
W. W. ADAMS (Log Cabin)	G. TREYSTMAN (N.Y. Academy)
1. P-K4	22. K-Kt3
2. Kt-KB3	23. Q-B4
3. P-Q4	24. QxQ
4. KtP	25. K-B2
5. Kt-QB3	26. QR-Q1
6. P-KR3	27. Kt-Kt5
7. P-KKt4	28. K-K3
8. B-Kt2	29. KtxQP
9. KKtP	30. K-Q2
10. P-Kt5	31. Kt-QB4
11. P-Kt3	32. KtxB
12. B-K3	33. K-K3
13. O-O	34. R-Q6
14. P-B4	35. KR-Q1
15. B-R1	36. R-Q8ch
16. P-B5	37. RxRch
17. Q-Q2	38. Kt-B4
18. B-Kt5	39. KtxRP
19. K-R2	40. R-Q2
20. P-B6	41. B-B3
21. BxR	Resigns

Solutions

Finish It the Clever Way

Position No. 151: 1., Kt-Q6!; 2. R-K3 PxKt; 3. BxP, KtxKP; and the game continued: 4. K-B2, K-B3; 5. R-QB3, R-QB2; 6. K-K3, Kt-B2; 7. R-Q3, K-K2; 8. B-B4, Kt-K4; 9. R-B3, KtxB ch; 10. RxKt, K-Q3; 11. R-QR4. Draw.

Positiono. 152: 1. KtxRP ch!, BxKt; 2. Q-QR3! and Black resigned. If 2., P-QKt3; 3. RxKtP! If 2., B-Kt1; 3. Q-R3 decides.

*Solution To
What's The Best Move?*

Position No. 157

H. E. Grant—C. G. Watson, Melbourne, 1914. Black wins by 1., N-K7ch. 2. K-R QxP ch! 3. KxQ, R-R4 ch; 4. Q-R4, RxQ mate.

Correct solutions are acknowledged from Ann Adickes*, David Ames, F. E. Armstrong, R. A. Baker, Carl Bennett*, Irving Besen*, K. Blumberg, Milton D. Blumenthal, A. L. Bolden, Abel R. Bombardier, Max Burkett*, J. E. Byrd, J. D. Carpenter, J. E. Coachman, J. E. Comstock, E. B. Congleton, W. J. Couture, B. Deer, Robert Dickinson, Dr. H. B. Gaba, Edwin Gault, Wallace F. Getz, Rea B. Hayes, Max Herzberger*, Donald C. Hills, J. B. Holt, Richard Hornreich*, Victor E. Hultman*, Lee Hyder, Lawrence E. Johnson, J. Kaufman, Harrison Kindig, F. S. Klein, Edward J. Korpanty, Heino Kurruk, Gary H. Labowitz, Edward F. LaCroix, Alfred J. Larson*, Joseph P. Lee, Ed Luksus, C. W. Magerkurth*, George E. Maher*, J. L. McDonald, Robert W. Merrick, Elmer L. Miller, Charles T. Morgan, Max F. Mueller, Howard Murray, Charles Musgrove, Peter Muto, Edmund Nash, Rudd T. Neel*, Hugh Noland*, Ronald O'Neil, George W. Payne, Herbert C. Pierson, Jan Pinney, Dr. Ray Pinson, Norman Reider, Sheldon Rein, Ray F. Reithel, Edmund Roman, Julius Rosenwald 2d*, Dr. Frank C. Ruys*, Dr. I. Schwartz, Wm. A. Scott, James J. Seifert, Irwin Sigmund, Paul H. Smith, Ephraim Solkoff, Paul J. Sommer, James F. Soreth*, Andris Stakis, Gordon T. Stallknecht*, Bob Steinmeyer, W. E. Stevens, Rae F. Stiening, Allen W. Stuart*, T. J. Sullivan, Donald W. Taylor*, Edward Tobias*, Francis Trask, F. J. Valvo, Richard Vogel*, David A. Walsdorf Jr., L. A. Ware, J. L. Weininger, Harley D. Wilbur, William B. Wilson, Gordon Winrod*, Neil P. Witting, L. E. Wood, and Phil S. Work.

Mercifully, we will not penalize those who considered 3., R-R4 ch to mate. The solvers ran up a 91-5 margin on this somewhat simple problem. No other Black move can force mate in four; the claim submitted by two solvers that 3., P-N6 ch; 4. PxP, R-R4 ch; 5. Q-R4 RxQ is mate overlooks the reply 6. PxR. Ironically, most of those who complained that the position was too easy are solvers who seldom submit answers to our more difficult posers! We will continue to vary the difficulty of our selections from time to time.

*Welcome to new solvers!

WOMEN'S CHESS

(Continued from page 3, col. 4)

of particular interest now that the fifteen-year-old Kalme is being eagerly watched following his splendid win against Dr. Euwe in an 8-board clock match.

RETI OPENING

**2nd Pan-American Tournament
Hollywood, 1954**

White	Black
MARY BAIN	C. KALME
1. N-KB3	N-KB3
2. P-KN3	P-KN3
3. B-N2	B-N2
4. P-B4	P-Q3
5. N-QB3	P-K4
6. O-O	O-O
7. P-Q3	QN-Q2
8. R-N	P-B3
9. P-QN4	N-K
10. P-K4	N-B2
11. B-K3	P-KB4
12. N-K2	N-B3
13. PxP	PxP
14. P-N5	B-Q2
15. P-N6	PxP
16. BxP	RxP
17. P-B5	N(3)-K
18. PxP	B-K3
19. PxN	NxP
20. BxN	QxB
21. N-N5	N-N5
22. NxB	NxB
23. N-B3	N-B3
24. Q-B	R(1)-R
25. Q-N2	P-K5
26. PxP	RxN
27. QxP	QxQ
28. RxQ	PxP
29. BxP	R-Q
30. R-K	R-KB
31. R-K2	P-R4
32. P-R4	B-Q5
33. K-N2	R-B2
34. R-N8ch	K-N2
35. R-B8	R-K2
36. P-B3	P-B4
37. R-B6	B-B3
38. R-Q2	R-R2
39. R-Q5	R-R7ch
40. K-R3	Resigns

BOOST AMERICAN CHESS!
By Joining the U.S.C.F.

Tournament Life

Send to CHESS LIFE, 123 No. Humphrey Ave., Oak Park, Ill. for application form for announcing tournament in this column.

Unless otherwise specified, all tournaments announced in this column are 100% USCF rated. Rating fees, if any, are included in specified entry fee; no additional rating fee for non-members USCF.

May 28-30

**3rd Albuquerque City Tourney
Albuquerque, N. M.**

Open; at YMCA, 1st and Central; 7 rd Swiss, 30 moves per hr.; entry fee \$2.50; Trophies for 1st to 4th place; title to highest ranking city resident; Warren Miller TD; for details, write: Warren Miller, 822 Gold Ave., S.W., Albuquerque, N. Mex.
100% USCF rated event.

May 27-30

**Third Eastern States Open Championship
Philadelphia, Penna.**

Open; at Franklin Chess Club, 1614 Locust St., Philadelphia & Mercantile Library Chess Ass'n., 1421 Walnut St., Philadelphia; 7-rd Swiss; entry fee: \$10.00 (\$7.00 to juniors born after May 30, 1936) with \$5.00 refund on completion of schedule, USCF membership required (\$5.00); cash prizes: \$150 for 1st, \$115 for 2nd, \$85 for 3rd; \$60 for 4th; \$40 for 5th, etc., totalling \$500.00; for advance registration or details, write: William A. Ruth, 15 Gorman Ave., Collingswood, N. J.
100% USCF rated event.

May 28-30

**Arizona State Championship
Phoenix, Ariz.**

Open to residents of Arizona; 7 rd Swiss; play begins 9:30 a.m. May 28; entry fee: \$5.00; bring sets and boards; registration by mail or by 9:00 a.m. May 28; for details concerning location, etc., write: James Christman, 1700 West Whitton Ave., Phoenix, Ariz.
100% USCF rated event.

May 28-30

**Massachusetts Open Championship
Westfield, Mass.**

Open; at Westfield YMCA; 5 rd Swiss in Class "A" and "B"; entry fees \$5 and \$3 respectively; play starts 7:00 p.m. May 28; for details, write Erich Nitzsche, Mountain Road, Burlington, Mass.
100% USCF Rated Event.

May 28-30

**31st Annual Trans-Mississippi Open Championship
Davenport, Iowa**

Open; at Chamber of Commerce, 4th and Main, Davenport; 7 rd Swiss from 1:45 p.m. CST, May 28th to 4:00 p.m., May 30th; entry fee \$7; 45 moves in 1 hr 45 min.; bring sets and clocks; cash prizes total \$350 plus merchandise, \$100 1st prize; Classes A, B and C \$60, \$50, \$30; all play in one event; for details, write: John Warren, % Moline Despatch, Moline, Ill.
100% USCF rated event.

May 28-30

**Texas State Championship
Dallas, Tex.**

Open to Texas residents and military personnel stationed in Texas; 6 rd Swiss, two games per day; guaranteed 1st prize of \$75.00 plus permanent trophy; additional cash prizes and trophies; entry fee \$10 plus USCF membership; entries received in Parlor "C" of Adolphus Hotel between 11:00 a.m. and 12:30 p.m., Saturday, May 28th; for details write: C. F. Tears, 2849 Fondren Drive, Dallas 5, Tex.
100% USCF rated event.

July 2-4

**Louisiana State Championship
Baton Rouge, La.**

Restricted to residents of Louisiana, Texas, Mississippi; 6 rd Swiss, 45 moves in two hrs; at Heidelberg Hotel; entry fee \$2.30; prizes: trophy and chess equipment; Newton Grant TD; for details write: A. L. McAuley, 4225 So. Liberty St., New Orleans 15, La.
100% USCF rated event.

July 2-4

**2nd Annual Great Lakes Open Championship
Chicago, Ill.**

Open; 7 rd Swiss; \$175.00 1st prize with additional class A and B prizes; for details, write: AUSTIN CHESS AND CHECKER CLUB, Austin Town Hall, Central and Lake, Chicago 44, Ill.
100% USCF rated event.

Are You a Member?
Is Your Friend a Member?

July 8-10

**Carolinas' Open Championship
Asheville, No. Car.**

Open to all; at Battery Park Hotel; 6 rd Swiss; cash prizes and Trophy, with \$50 minimum 1st Prize; Junior Prizes; Southern hospitality and cool mountain dew; entry fee: \$3.50 and \$2 membership in NCCA or SCCA; register 9:00 a.m., July 8th; for details, write: Wm. C. Adickes, Jr. 66 Linden Ave., Asheville, N. C.
100% USCF Rated Event.



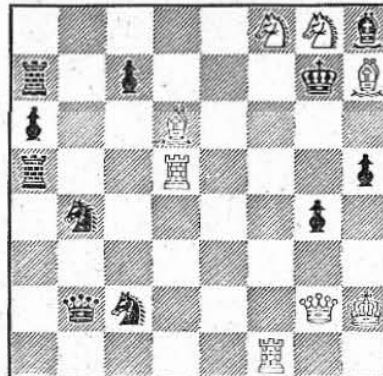
Mate The Subtle Way!

by Nicholas Gabor

Solutions, remarks, suggestions, etc., as well as compositions by any and all composers are welcome. Address all communications to Nicholas Gabor, Hotel Kemper Lane, Cincinnati 6, Ohio.

Problem No. 555

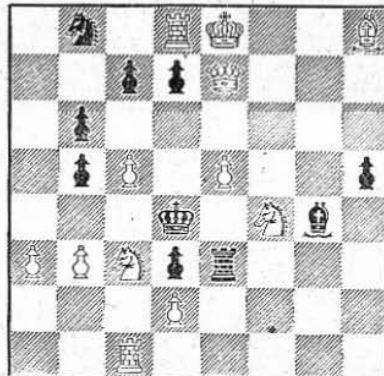
**By Geoffrey Mott-Smith
New York City**



White to move and mate in two

Problem No. 556

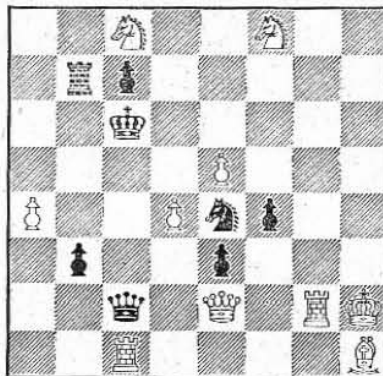
**By Charles S. Jacobs
Winchester, Mass.**



White to move and mate in two

Problem No. 557

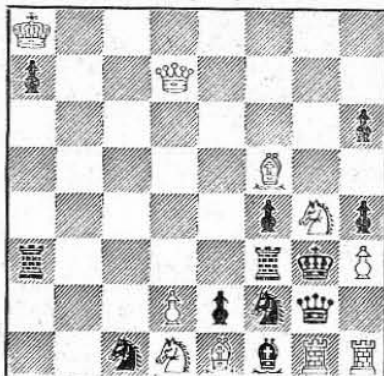
**By Frederick Gamage
Brockton, Mass.**



White to move and mate in two

Problem No. 558

**By William Rice
Philadelphia, Pa.**



White to move and mate in three

THE four problems presented above were all taken from the book "To Alain White" published in 1945 at the occasion of his 65th birthday and edited by Edgar W. Allen and Eric M. Hassberg. It contains many fine problems of all types contributed by his friends from all over the world. Since only 300 copies were printed and distributed, we feel we can safely assume that to many, or most, of our present-day solvers and followers this very interesting collection of original compositions is unknown and deserves a somewhat wider publicity. All four problems are by leading American composers and if the reaction of our readers is favorable and encouraging, we may, from time to time, quote again from this book works of American as well as foreign composers.

The quarterly Solvers' Ladder will appear in the May 20th issue.

Solutions: - Mate the Subtle Way!

No. 543 (Thorsson): 1. Kt-R4, threat: 2. Kt-B3 mate. The Black K has one, two and three flights depending on which piece captures the R. 1. Q-Kt6, R-K7 ch! and other tries won't work! Why?

No. 544 (Buchwald): 1. P-Kt3, threat 2. P-B4 and PxKt mate. Each Black Kt has three direct defenses to defeat the threat, with spectacular plays. A fine problem. 1. P-B4 is defeated by 1., R-Q3.

No. 545 (Gabor): 1. Q-R4, threat: 2. Q-R8 mate. If the Kt takes the flight granted by the key, two pieces become unpinned and two others pinned, all of them being exploited in the mate, 2. Kt-B5. The "Four-Pin-Way" mechanism, very much in vogue during the middle forties.

No. 546 (Suyker): 1. B-Kt7, threat: 2. B-R6 giving the K three flights. If 1., K-B5; 2. B-B6, P-Kt4; 3. B-Q5 mate, a cute play. Others are obvious.