

Chess Life



America's Chess Newspaper

Copyright 1957 by United States Chess Federation

Vol. XI, No. 17

Sunday, May 5, 1957

15 Cents

What's The Best Move?

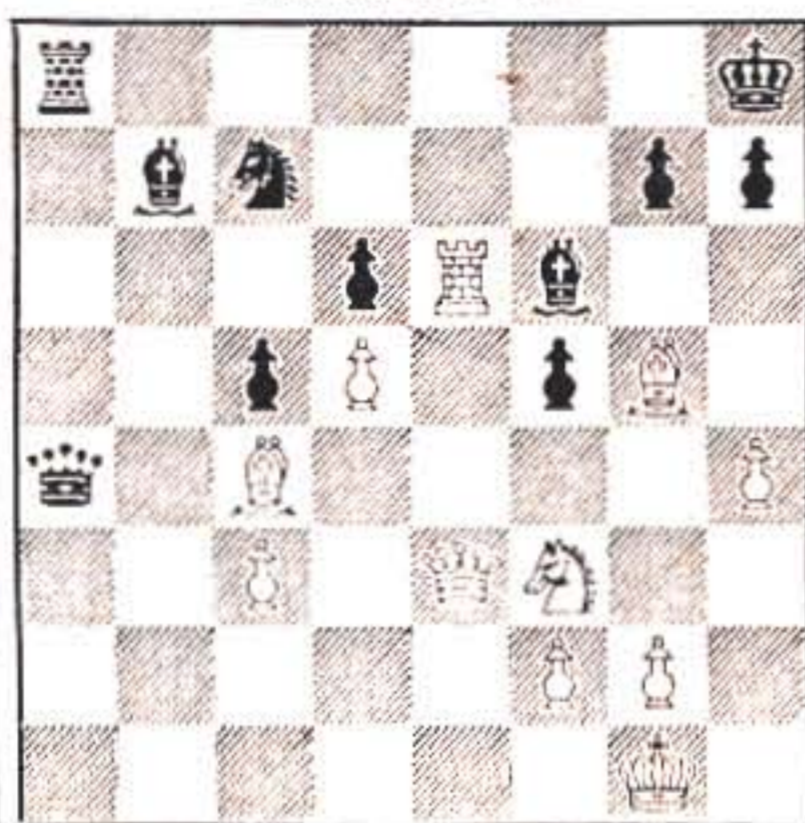
Conducted by
IRWIN SIGMOND

SEND solutions to Position No. 207 to reach Irwin Sigmond, 5200 Williamsburg Blvd., Arlington 7, Va., by June 5, 1957. With your solution, please send analysis or reasons supporting your choice of "Best Move" or moves.

Solution to Position No. 207 will appear in the June 20, 1957 issue.

NOTE: Do not place solutions to two positions on one card; be sure to indicate correct number of position being solved, and give the full name and address of the solver to assist in proper crediting of solution.

Position No. 207



White to play

FIFTEEN TOP-RANKING ACTIVE U.S. PLAYERS (1955-56)

1. Samuel Reshevsky	2648
2. Larry Evans	2593
3. Robert Byrne	2590
4. N. Rossolimo	2533
5. Isaac Kashdan	2525
6. Donald Byrne	2468
7. William Lombardy	2464
8. Arthur Bisguier	2460
9. James T. Sherwin	2447
10. I. A. Horowitz	2442
11. Arnold Denker	2420
12-13. Arthur Lake	2412
12-13. Max Pavey	2412
14. Edmar Mednis	2405
15. George Kramer	2404

FIFTEEN TOP-RANKING WOMEN PLAYERS (1955-56)

1. Sonja Graf	2037
2. Nancy Roos	2008
3. Mona May Karff	2004
4. Lucille Kellner	1984
5. Gisela K. Gresser	1983
6. Irene Vines	1954
7. Martha Chase	1950
8. Eva Aronson	1930
9. Kathryn Slater	1845
10. Jacqueline Piatigorsky	1821
11. Mrs. Dan McLeod	1813
12. Dorothy Williams	1811
13. Mrs. Guinan	1806
14. Mary Selensky	1790
15. Willa White Owens	1768

OHIO COLLEGIATE FINISHES IN TIE

Emil L. Bereczky of Cleveland and Charles Vaughn of Greenwich, Conn. each tallied 4-1 to tie for first in the Ohio Intercollegiate Individual Championship held at Case Institute of Technology in Cleveland. Bereczky drew with Richard W. Noel and Edward Stepan, while Vaughn lost a game to Noel. Third and fourth on Solkoff with 3½-1½ each were Noel of Chagrin Falls and Stepan of Cleveland; while fifth and sixth in the 12-player Swiss event with 3-2 each were Clara R. McCurdy of Ada, and Monroe Newborn of Athens.

Presidio (Monterey) Chess Club: The club speed championship ended in a 5-1 tie between Lewis Melton and Bruce Price. Alexander Jadan was third with 4½-1½, and Edward L. Johns fourth with 4-2 in the 17-player Swiss event. A group of ten juniors (school age) are attending regularly the "Student Chess Clinic" recently inaugurated by the club.

CHESS MATCH IS TELECAST

Through the promotional efforts of Alexander Victor, of RCA-Victor, on behalf of the Presidio Chess Club of Monterey a chess match between U.S. Expert Alexander Suchobek of the Presidio Club and International Master Nicolas Rossolimo was broadcast over Station KXXL in Monterey.

INVITATION TO HOLD CHESS OLYMPICS IN AMERICA WITHDRAWN:

It was my pleasure in August 1956 to attend the Congress of FIDE at Moscow USSR as the official representative of USCF. Our invitation to FIDE to hold the 1958 Chess Olympics and 59 Candidates Tournament in America was graciously accepted and I, together with the chess fraternity of America, was very much elated. At that time we had in mind certain plans for raising the necessary funds to finance such events and immediately upon return to America we began development of those plans. We have left nothing undone, so far as we know, to assure success but now, after seven months of earnest effort we regretfully arrive at the conclusion that we will not be able to finance the two events, and therefore, in keeping with our pledge and obligation to FIDE and in fairness to all other Federations of FIDE we have been obliged to withdraw our invitation and release FIDE to award the events to some other country. We have written to Mr. Folke Rogard, President of FIDE and so informed him and withdraw the invitation.

Your disappointment, I know, is keen and I share it with you.

Respectfully,
FRANK R. GRAVES

President U.S.C.F.

NATIONAL CHESS RATINGS

By KENNETH HARKNESS

USCF Rating Statistician

IN this issue we publish the eleventh national chess rating list. The recorded players of master rank competed in rated contests during the years 1955 and 1956. Players below master rank took part in rated contests finished in 1956 only. All masters who did not compete in 1955 or 1956, and all other players who did not enter 1956 rated tournaments or matches, are considered inactive, and their names are not published. Tournament directors who wish to find the latest ratings of inactive players should consult previous lists. Ranking List No. 10 was published in the issue of May 20, 1956.

With two exceptions, performances in tournaments ending after December 31st, 1956, were not included when computing averages for the current list. (The exceptions: New Orleans Semi-Final Tournament, ending January 4th, and the Inglewood, Cal., Tournament, ending January 2nd.)

Supplementary Lists to Appear Quarterly

In future, it is our intention to publish supplementary rating lists at intervals of about three months. Each of these will contain only the names and ratings of players who competed in contests reported during the quarter preceding the closing date of the list. Thus, the first supplement will include players who took part in tournaments and matches reported January 1st through March 31st, 1957. This supplement will be published in the near future. A complete rating list, similar to the one in this issue, will be published annually.

Coverage of Rating List No. 11

The current list contains the names of 3,350 players. With the exception of a few masters whose last performances were in 1955, these players competed in 180 tournaments and matches finished during the year 1956.

Unfortunately, only 1022 of these players are members of the USCF. In other words, only 30% of the contestants in 1956 rated tourna-

ments and matches belonged to the USCF or were required by the tournament organizers to join the national Federation.

Still more unfortunate is the fact that the Class B & C players, who should form the backbone of the U.S. Chess Federation, made the most miserable showing, as indicated in the following table:

	Total No. of Players	USCF Members	Percentage of Members
Masters	74	49	66%
Experts	296	169	57%
Class A	968	384	40%
Classes B & C	2012	420	21%
Totals	3350	1022	30%

If the non-members in 1956 tournaments alone had been required to join the Federation, the USCF would now have about 4500 members instead of 2100. And if the non-members in tournaments rated during the past years had joined the USCF, we would now have about 15,000 members!

It has been demonstrated countless times that the players in most tournaments would be quite willing to pay USCF dues if all contestants were required to do so. This is now being done by the State Associations of Connecticut, Michigan, New Jersey, Oklahoma, Pennsylvania, and Texas. Some other organizations (notably the Log Cabin Chess Club) conduct 100% USCF membership tournaments. These Associations and Clubs have no difficulty whatsoever in collecting

(Please turn to page 4, col. 1)

U. S. JUNIOR CHAMPIONSHIP

July 8-14, 1957

San Francisco, Calif.

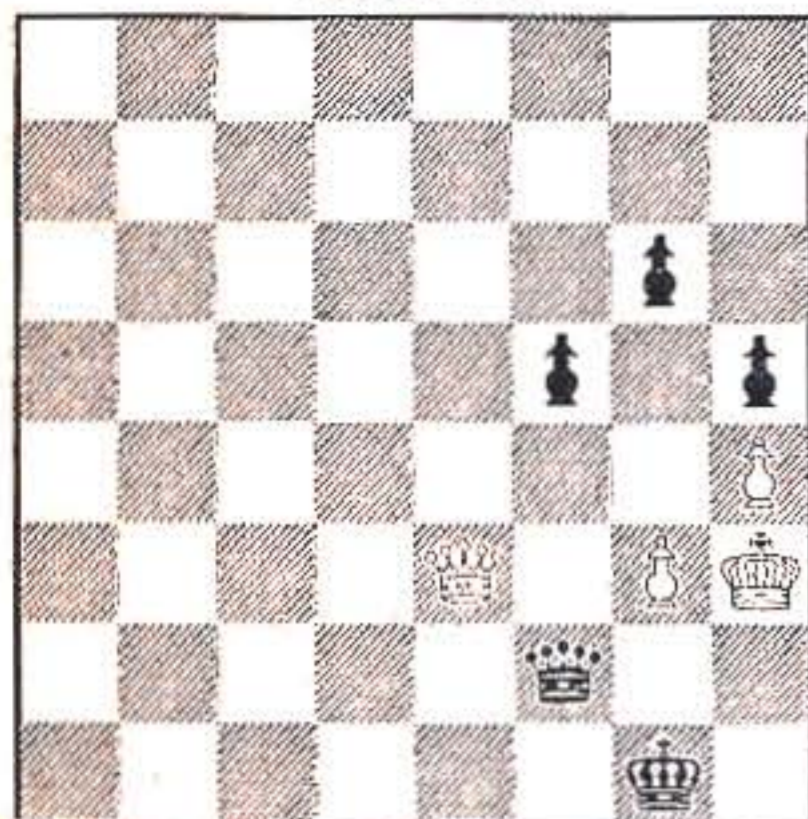
58TH U. S. OPEN CHAMPIONSHIP

August 5-17, 1957

Cleveland, Ohio

Finish It The Clever Way! by Edmund Nash

Position No. 199
Ciocaltea vs. Unzicker
USSR, 1956



Black to move and win

Position No. 200
Smyslov vs. Botvinnik
Fourth Match Game, 1957



Black to move and win

POSITION No. 199 occurred in the Alekhine Memorial Tournament. Black cannot take the White Queen because of stalemate; yet Black made one move (his 95th!) and White resigned.

In playing over the first 17 games of the Botvinnik-Smyslov match for the World Chess Championship, I found most pleasing the finish to the fourth game. A series of seven forceful moves brought about White's resignation.

For solutions, please turn to page eight

Send all contributions for this column to Edmund Nash, 1530 28th Place, S.E., Washington 20, D. C.



Ben Klotz won the City of Phoenix title in a 12-player Swiss sponsored by the Encanto Chess Club of Phoenix with a score of $4\frac{1}{2}$ - $\frac{1}{2}$, drawing one game with Starr M. Cook. Cook placed second on S-B points, also scoring $4\frac{1}{2}$. Third to sixth with equal 3-2 scores were Mrs. Mable Burlingame, Oscar Groebel, Phillip T. Luks, and Dr. Frank Honsik.



Kazys Merkis of South Boston won the Lithuanian Easter Tournament sponsored by the So. Boston Lithuanian Citizen Ass'n Chess Club with a 5-0 score. Albinas Sakalas of Woodhaven, N.Y. was second with 4-1. Tied for third with 2-3 each were Andrius Keturakis and Albinas Karosas, both of South Boston, and Kazys Bobelis of Hyde Park. The Class B event saw a first place tie between 12-year-old Gediminas Kuodis of Arlington and Saulius Vaicaitis of South Boston at 3-1 each. Olgimantas Ivaska of South Boston was third with 2-2.



USCF Tournament Administrator George Koltanowski appeared upon a Canadian TV program "Around Our Town" on April 5th while in Montreal. Koltanowski gave two simultaneous exhibitions at Sir George Williams College in Montreal, both exceptionally well attended. According to "The Montreal Chess-Paper" published by MacAdam, Moss, and Joyner, the two events were particularly gratifying to Montreal chess circles in bringing out many newcomers who had not previously participated in local chess events. The exhibitions were widely publicized in the local chess columns of William Oaker in the Star and Dudley LeDain in the Gazette.

CHESS LIFE PRINTING FUND

Previously acknowledged	\$568.16
Ed Godbold	15.00
James E. Warren	10.00
Players at Connecticut State Tournament	10.00
Anonymous	5.00
Sander Davidson	5.00
Anonymous	2.48
R. A. Karch	2.71
A. L. Brown	2.00
M. Turiansky	1.00
Total to March 30, 1957	\$621.35

TO THE MEMBERS OF THE USCF

This year, more than any other, it is important that we send a STUDENT TEAM abroad to compete in the WORLD STUDENTS TEAM CHAMPIONSHIP.

Our team is the strongest ever and this would be a fine opportunity to gain the coveted title of WORLD STUDENTS TEAM CHAMPIONS for the UNITED STATES OF AMERICA.

BUT, we cannot send this team of six masters to Iceland this July, unless we are given the necessary financial assistance. For this reason I ask each member to contribute ONE DOLLAR or MORE so that YOU can make this event possible for America to participate.

All donations may be sent to:
William Lombardy
% Student Traveling Fund
961 Faile Street
Bronx 59, New York

Sincerely,
WILLIAM LOMBARDY

BATCHELDER WINS KENTUCKY OPEN

William Batchelder of Bloomington, Ind. tallied 4-1 to win the 11-play Swiss event at Louisville on S-B points, losing no games but drawing with Edwin Cohen and Oscar Maring. Second, also with 4-1, was Richard W. Shields of Louisville, who lost one game to Batchelder. Edwin Cohen was third with $3\frac{1}{2}$ - $1\frac{1}{2}$, losing one game to Maring and drawing with Batchelder. Fourth and fifth with 3-2 each were Bill Long and George Anderson.



Chess in South New Jersey is thriving with the addition of two new clubs, Trenton and Camden, to the South Jersey Chess Association. Part of the increased activity is attributed to the advent of a weekly chess column in the Camden Courier-Post, conducted by Sam Laird, an editorial writer on that newspaper. Since the demise of the Philadelphia Inquirer chess column, the Camden chess column is the only one in the area.



The Vancouver Province photographically tells the story of two youngsters who used their ingenuity to establish a battery-operated telephone between their neighboring homes which they use for the main purpose of telephone chess matches. The youngsters are David Fillery and Bill Kowal. Problemists will recognize the name Fillery, for David's father is a well-known Canadian problem composer and also the chess editor of the Daily Province.

South Jersey Chess League: Atlantic City with a catch score of $8\frac{1}{2}$ - $1\frac{1}{2}$ won the A Division league title. Woodbury was second with 8-2, Wildwood third with $5\frac{1}{2}$ - $4\frac{1}{2}$, Camden and Trenton shared fourth with 3-6, and Millville was sixth with 0-8. Leading individual scorers were Samuel Caplan of Margate and Robert Montague of Mt. Ephraim with $6\frac{1}{2}$ - $3\frac{1}{2}$ each, while L. Streitfeld of Hammonton and W. Archer of Haddonfield tallied 6-4 each. A USCF League Affiliate.

South Jersey Chess League: In the B Division Camden tallied a 6-1 match score for first place. Atlantic City was second with $5\frac{1}{2}$ - $\frac{1}{2}$, Woodbury third with 5-3, Wildwood fourth with $2\frac{1}{2}$ - $5\frac{1}{2}$, and Millville fifth with 0-7. Leading individual scorer was David Gellman of Atlantic City with $7\frac{1}{2}$ - $\frac{1}{2}$, followed by Herbert A. Wright of Woodbury with 6-2. A USCF League Affiliate.

College Chess Life

Conducted by
Frederick H. Kerr

All college clubs and players are urged to send news items to Frederick H. Kerr, Nittany 32-13, Box 277, Pennsylvania State University, University Park, Pennsylvania.

NEW YORK'S Marshall Chess Club plays host each year to a match between the United States Military Academy and the United States Naval Academy. This year the men of Annapolis won $4\frac{1}{2}$ - $3\frac{1}{2}$. Navy winners were Midshipmen Pat Greene, Ben Simonton, Perry Jackson, and George Blessing. Winners for West Point were Cadets Jack Hesse, Dave Rogers, and Walt Brown. Midshipman M. Spillane drew with Cadet George Blessing.

As the Philadelphia Collegiate League enters its final round, Temple University and the University of Pennsylvania lead. Since two teams will qualify from this league to the finals of the Pennsylvania Intercollegiate League, it looks like both Temple and Penn will get a crack at the state title. In the third round, Temple's four solid players, Sobel, Weiner, Rothwarf, and Stevens defeated Haverford College 4-0. St. Joseph's College and Penn State's Ogontz Center drew 2-2 when Ogontz forfeited two boards. St. Joseph's then lost to Penn $3\frac{1}{2}$ - $\frac{1}{2}$ when St. Joseph's gave up two forfeits.

The University of Chicago is tied for the lead in the Greater Chicago Chess League. Robion Kirby reports that Chicago is looking forward to winning this metropolitan title for the second consecutive year.

Congratulations are extended to William Lombardy for his fifth-place finish in the Mar del Plata International Masters Tournament in Argentina. He finished behind Grandmasters Keres, Najdorf, and Panno. It has become clear that the grandmaster title will soon be his.

A team from Norwich University visited the Dartmouth College campus for a match. Four undergraduate boards resulted in a 2-2 tie. However, Norwich won the faculty board.

NORWICH		DARTMOUTH	
Prof. Bickford	1	M. Bender	0
Sher	0	G. Holterman	1
Browne	1	M. Glickman	0
R. Dodge	$\frac{1}{2}$	R. Morrison	$\frac{1}{2}$
Klufas	$\frac{1}{2}$	H. Forbes	$\frac{1}{2}$

IMPORTANT ANNOUNCEMENT

Any chess club, group, or State Chess Ass'n that would like to organize the U.S. Open or the U.S. Junior Championship for 1958 should write immediately to:

GEORGE KOLTANOWSKI
200 Alhambra Street, Apt. 9
San Francisco 23, Calif.

At the annual meeting of the USCF in Cleveland, it will then be officially announced where next year's important tournaments will be held.

WRITE TODAY!

THE UNITED STATES CHESS FEDERATION

NATIONAL CHESS RATINGS — SPRING 1957

MASTERS EMERITUS

Jacob Bernstein (New York, N.Y.)
Roy T. Black, Sr. (Williamsville, N.Y.)
Albert W. Fox (Washington, D.C.)
Herman Hahlbohm (Chicago, Ill.)
Hermann Helms (New York, N.Y.)
Lewis J. Isaacs (Chicago, Ill.)
Charles S. Jacobs (Winchester, Mass.)

Abraham Kupchik (New York, N.Y.)
Edward Lasker (New York, N.Y.)
Frank E. Perkins (Boston, Mass.)
Harold M. Phillips (New York, N.Y.)
William A. Ruth (Collingswood, N.J.)
Morris A. Shapiro (Brooklyn, N.Y.)
I. S. Turover (Bethesda, Md.)

GRANDMASTERS

(2600 points up)

Reshevsky, S. (Sprg. Valley, N.J.) 2648

SENIOR MASTERS

(2400 to 2599 points)

Bisguier, A. (Bronx, N.Y.) 2460
Byrne, Donald (Ann Arbor, Mich.) 2468
Byrne, Robt. (Valparaiso, Ind.) 2590
Dake, Arthur (Portland, Ore.) 2412
Denker, Arnold (New York, N.Y.) 2420
Evans, Larry (New York, N.Y.) 2593
Horowitz, I. A. (New York, N.Y.) 2442
Kashdan, I. (Los Angeles) 2525
Kramer, Geo. (Philadelphia) 2404
Lombardy, W. J. (Bronx, N.Y.) 2464
Mednis, E. (New York, N.Y.) 2405
Pavey, Max (Brooklyn, N.Y.) 2412
Rossolimo, N. (New York, N.Y.) 2533
Sherwin, J. T. (New York, N.Y.) 2447

MASTERS

(2200 to 2399 points)

Addison, W. G. (San Francisco) 2274
Berliner, H. (Wash., D.C.) 2313
Bernstein, S. N. (Brooklyn, N.Y.) 2322
Blonarovich, L. (Newark, N.J.) 2227
Brandts, P. (New York, N.Y.) 2247
Brasket, C. J. (U.S. Army) 2209
Burger, Karl (Brooklyn, N.Y.) 2275
Collins, J. W. (Brooklyn, N.Y.) 2351
Cross, J. B. (Los Angeles) 2320
Cross, R. G. (Santa Monica, Cal.) 2281
DiCamillo, A. (Philadelphia) 2367
Dreibergs, L. (Saginaw, Mich.) 2242
Eastman, C. J. (New York, N.Y.) 2203
Einhorn, Richard (Yonkers, N.Y.) 2217
Falconer, Neil (Lafayette, Cal.) 2238
Feuerstein, A. W. (New York, N.Y.) 2277
Fischer, Robt. J. (Brooklyn, N.Y.) 2231
Fuster, Geza (Toronto, Ont.) 2254
Greenwald, Beni. (York, Pa.) 2220
Hearst, E. S. (New York, N.Y.) 2298
Henin, Chas. C. (U.S. Army) 2265
Howard, F. S. (Sayreville, N.J.) 2271
Jacobs, R. M. (Los Angeles) 2210
Kalme, Chas. (Philadelphia) 2208
Kaufman, Allen (New York, N.Y.) 2218
Kevitz, Alex. (Bronx, N.Y.) 2369
Klugman, R. (Bronx, N.Y.) 2207
Konig, I. (San Francisco) 2322
Kovacs, Z. (Los Angeles) 2274
Levin, Eugene (Los Angeles) 2249
Levy, Louis (Paterson, N.J.) 2270
Martin, R. J. (Santa Monica, Cal.) 2221
Mengarini, A. A. (New York, N.Y.) 2217
Moskowitz, Jack (Los Angeles) 2294
Pilknick, Carl (New York, N.Y.) 2325
Pinkus, Albert S. (Mohegan, N.Y.) 2362
Poliakoff, D. (Los Angeles) 2200
Popel, Stephan (Detroit) 2328
Poschel, Paul (Urbana, Ill.) 2202
Radioic, Miro (Wash., D.C.) 2284
Ramirez, G. (San Francisco) 2222
Remlinger, L. (Long Beach, Cal.) 2240
Rivise, I. (Los Angeles) 2213
Robey, Paul (Metuchen, N.J.) 2268
Saidy, A. F. (Douglaston, N.Y.) 2367
Sandrin, A. N. Jr. (Chicago) 2251
Santasiere, A. E. (Bronx, N.Y.) 2333
Seidman, Herb. (Brooklyn, N.Y.) 2393
Shaffer, J. I. (Philadelphia) 2306
Shainswit, Geo. (New York, N.Y.) 2255
Shipman, Walter (New York, N.Y.) 2307
Siff, Boris (Wollaston, Mass.) 2229
Smith, Kenneth R. (Dallas, Tex.) 2216
Steinmeyer, R. H. (Cincinnati, O.) 2386
Tautvaisas, P. (Chicago) 2248
Turner, Abe (New Rochelle, N.Y.) 2306
Vaitonis, P. (Hamilton, Ont.) 2207
Wachs, Saul (Philadelphia) 2235
Whitaker, N. T. (Shady Side, Md.) 2313

NOTE: The players listed above competed in rated contests finished in 1955 or 1956. Those listed below competed in rated contests finished in 1956 only. See previous lists for ratings of players who did not compete in 1956.

EXPERTS AND CLASSES

A, B & C

Experts: 2000 to 2199 points

Class A: 1800 to 1999 points

Class B: 1600 to 1799 points

Class C: Below 1600 points

*Provisional rating based on one tournament performance.
Abarno, F. P. (Hoboken, N.J.) 1663
Abraham, J. (Hunt-ton, W.Va.) 1664
Abrahamson, C. (Cleveland) 1675
Abrams, R. B. (Milwaukee) 1931
Abramson, Dr. J. (Milford, Del.) 1777
Ackerman, D. (Omaha, Neb.) 1955
Adair, Richd. (Albuquerque) 1615
Adair, Robin (Albuquerque) 1572
Adamczak, F. (Cleveland) 1788
Adams, S. R. (New Orleans) 1510
Adams, W. B. (Bethesda, Md.) 1841
Adams, W. W. (W. Orange, N.J.) 2165
Adams, W. (Rochester, N.Y.) 1400*
Adamson, C. R. (Miami, Fla.) 1650*

Addington, J. F. (B'ham, Ala.) 1619
Adelman, F. (Berkeley, Cal.) 1830
Adminis, E. (Lincoln, Neb.) 1726
Agre, A. (Yeadon, Pa.) 1733
Aguero, A. (Key Biscayne, Fla.) 2038
Aikman, P. (Spokane, Wash.) 1862
Aker, S. P. (New London, Ct.) 1420
Akins, J. (San Francisco) 1600*
Akins, W. R. (Charlottesville) 1519
Albert, B. (Philadelphia) 2100
Alberts, D. (Spokane, Wash.) 1425
Albright, J. (Fargo, N.D.) 1400*
Albright, Mrs. (Fargo, N.D.) 1400*
Alexander, R. (Spokane, Wash.) 1621
Alexander, R. H. (Phoenix, Ariz.) 1600*
Alexander, Rod (Worth-ton, O.) 1736
Alexander, W. B. (Yellow Sprgs.) 1738
Alisbah, B. (Philadelphia) 1700*
Allen, H. (Cleveland) 1703
Allen, H. F. (Marcellus, N.Y.) 1800*
Allen, I. W. (San Angelo, Tex.) 1851
Allen, J. (Independence, Mo.) 1947
Allen, N. (Groom, Tex.) 1600*
Allen, Paul (Brookline, Mass.) 1700
Allen, Dr. P. (Up. Montclair, N.J.) 1805
Allen, V. (St. Paul, Minn.) 1300*
Allers, H. (St. Paul, Minn.) 1676
Allured, K. B. (Northampton) 1723
Almgren, S. (Los Angeles) 2128
Alpiser, F. M. (St. Louis, Mo.) 1741
Altman, J. (Rochester, N.Y.) 1829
Altmann, V. (Staten Is., N.Y.) 1811
Altshuler, J. K. (Okla. City) 1600*
Amato, A. (Waterloo, N.Y.) 1700*
Amburn, E. (Tulsa, Okla.) 1925
Amdahl, K. (Spokane, Wash.) 1400*
Ames, C. B. (Okla. City) 1624
Ames, D. (Quincy, Mass.) 1835
Ames, G. F. (Meriden, Ct.) 1730
Amsden, H. B. (Wichita, Kans.) 1666
Amsterdam, A. (Cleveland) 1603
Anders, E. O. (San Francisco) 1700*
Anderson, A. C. (Tulsa, Okla.) 2075*
Anderson, A. (Jamestown, N.Y.) 1778
Anderson, B. (Westfield, N.J.) 1882
Anderson, C. F. (Edina, Minn.) 1550
Anderson, C. (Naples, Fla.) 1657
Anderson, F. S. (Univ. City, Mo.) 2109
Anderson, G. E. (Lexington, Ky.) 1939
Anderson, G. (Northwood, N.D.) 1840
Anderson, H. (Missoula, Mont.) 1762
Anderson, L. (Williams Bay, Wis.) 1400*
Anderson, M. F. (Rapid City, S.D.) 1856
Anderson, Mrs. (Bismarck, N.D.) 1450*
Anderson, R. (Atl. City, N.J.) 1625
Anderson, S. (Berkeley, Cal.) 1880
Anderson, Tim (Columbus, O.) 1946
Andrews, D. (Rochester, N.Y.) 1600*
Andrews, S. M. (Hubbard, O.) 1721
Angel, T. (Monterey, Mass.) 1690*
Anger, H. B. (Milwaukee) 1782
Anrione, E. (Miami, Fla.) 1600*
Anskolis, R. (N. Bergen, N.J.) 1850*
Antcliff, C. (Lebanon, Ind.) 1400*
Anthony, Mrs. (Jers. City, N.J.) 1463
Antokol, N. (Baltimore) 1660*
Antunovich, M. (Cleveland) 1773
Aplet, L. (Hayward, Cal.) 1400*
Apthorp, C. A. (Cleveland) 1874
Araiza, J. J. (Mexico) 2097
Archer, W. E. (Haddonfield, N.J.) 1951
Ardies, W. (Louisville, Ky.) 1700
Arling, E. (Cleveland) 1500*
Arkless, W. L. (Lansdowne, Pa.) 1887
Armenat, K. (Cleveland) 1450*
Arnault, C. G. (New York, N.Y.) 1687
Arnold, J. (Kans. City, Mo.) 1790
Arnold, J. (Richmond, Va.) 1750
Arnot, G. (Albuquerque) 1640*
Aronson, Eva (Chicago) 1930
Ashley, J. (Philadelphia) 1707
Ashley, F. H. (Toledo, O.) 1925
Athearn, A. (Hammononton, N.J.) 1488
Atkinson, J. W. (Biloxi, Miss.) 1620*
Atkinson, L. (Anderson, Ind.) 1586
Atkinson, R. (Ft. Worth, Tex.) 1550*
Augustine, R. (Chicago) 1876
Ault, J. E. (Cleveland) 1400*
Ault, L. F. (Cranford, N.J.) 1953
Ault, L. H. (Cranford, N.J.) 1814
Ault, R. (Cranford, N.J.) 1720
Avery, P. (Toronto, Ont.) 1806
Avram, H. (Arlington, Va.) 2072
Axelrod, J. N. (Rochester, N.Y.) 1700
Ayer, M. (Berkeley, Cal.) 1350*
Aylen, P. (New York, N.Y.) 1600*
Ayres, J. (New Orleans) 1641

— B —

Babcock, E. (Atl. City, N.J.) 1400
Bacardi, J. F. (Wash., D.C.) 1770*
Bach, L. (Rochester, N.Y.) 1839
Bacho, P. (Cleveland) 1694
Backemeyer, W. F. (Logansport, Ind.) 1762
Baczynski, C. (Brooklyn, N.Y.) 1962
Bagby, C. (San Francisco) 2129
Baghat, I. M. (Austin, Tex.) 1825
Bagley, R. (Santa Ana, Cal.) 1658
Bagwell, J. C. (Fargo, N.D.) 1728
Bailey, Bill (Ft. Worth, Tex.) 1650*
Bailey, H. (Rochester, N.Y.) 1700*
Bailey, H. R. (Poq. Bridge, Ct.) 1400*
Bailey, J. L. (Miami Sprgs, Fla.) 1650*
Bailey, L. W. (Spokane, Wash.) 1684*
Bailey, W. J. (Rochester, N.Y.) 1900*
Baker, A. H. (San Antonio, Tex.) 2022
Baker, E. G. (Up. Montclair, N.J.) 1875
Baker, H. (Ft. Worth, Tex.) 1650*
Baker, R. A. (Murray Hill, N.J.) 1789
Baker, R. C. (New Haven, Ct.) 1700*

Baker, Ted (Hunt-ton, W.Va.) 1686
Bakies, J. (Cleveland) 1823
Bakos, N. (Forest Hills, N.Y.) 2067
Balasa, E. (Petoskey, Mich.) 1400*
Balding, J. B. (W. Lafayette, Ind.) 1770*
Baldrige, J. H. (New Haven, Ct.) 1833
Bali, S. (Cleveland) 1500*
Ball, L. (Liberty Lake, Wash.) 1700*
Ball, R. (Lubbock, Tex.) 1500
Ballard, J. R. (Hunt-ton, W.Va.) 1680*
Banerdt, W. (Milwaukee) 1829
Banker, G. M. (Kans. City, Mo.) 1747
Banks, G. I. (Sarasota, Fla.) 1828
Baptist, A. S. (Ypsilanti, Mich.) 1765
Barbour, W. L. (New Orleans) 1775*
Bardwick, A. (Homewood, Ill.) 1852
Barham, T. C. (Worcester, Mass.) 1901
Baringer, F. F. (New Orleans) 1570
Barnard, N. (Cleveland) 1500*
Barnes, G. S. (Minneapolis) 2051
Barnes, J. (Fort Ord, Cal.) 1860*
Barnhart, T. C. (Okla. City) 1600*
Barnwell, B. D. (Old Lyme, Ct.) 1700*
Baron, G. A. (Rochester, N.Y.) 1550*
Baron, S. (Brooklyn, N.Y.) 1936
Baronchuck, J. C. (New York, N.Y.) 1787
Barrett, C. K. (Up. Black Eddy, Pa.) 1722
Barricelli, N. A. (Rochester, N.Y.) 1700
Barron, C. (Brookline, Mass.) 1829
Bartholomew, E. (Hayward, Cal.) 1575*
Bartholomew, Mrs. (Hayward, Cal.) 1450*
Bartholy, F. (Binghamton, N.Y.) 1874
Barto, J. R. (Gt. Falls, Mont.) 1726
Bartolotta, S. (Amesbury, Mass.) 1665
Barton, C. (San Francisco) 1650*
Barzal, S. (Cleveland) 1550*
Basnight, B. (Eliz. City, N.C.) 1600*
Bass, R. R. (W. Orange, N.J.) 1855
Batchelder, C. (Dearborn, Mich.) 1909
Batchelder, W. (Bloomington, Ind.) 1859
Bates, D. H. (Appleton, Wis.) 1776
Bates, G. C. (Birmingham, Ala.) 1903
Bates, P. (Toronto, Ont.) 1902*
Bates, S. (Randolph, Mass.) 1800*
Bathe, D. (New Orleans) 1600*
Batson, B. (Knoxville, Tenn.) 1850*
Bauer, Wm. (Dayton, Ohio) 1695
Baumler, T. (St. Benedict, La.) 1513
Baumwell, M. (Walla Walla) 1912
Bayles, D. (Albuquerque) 1920*
Baylor, G. (Hollidaysburg, Pa.) 2014*
Bazar, A. (Toledo, O.) 1650*
Beach, L. W. (Philadelphia) 1914
Besle, J. J. (Raleigh, N.C.) 1778*
Beam, W. L. (Harrington, Tex.) 1700*
Bean, E. (Garden City, N.Y.) 1800*
Beck, C. (Racine, Wis.) 1670
Becker, E. J. (Mt. Carmel, Pa.) 1780
Becker, R. (Cleveland) 1750*
Beckwith, D. A. (Providence, R.I.) 1686*
Bedrij, O. (Rochester, N.Y.) 1700*
Beeler, B. (Rochester, N.Y.) 1503
Beer, F. H. (Pittsburgh, Pa.) 1567
Behler, C. W. (Somers Pt., N.J.) 1658
Beitling, J. R. (Kans. City, Mo.) 1934
Bellanti, P. (Buffalo, N.Y.) 1400*
Belmont, D. M. (San Francisco) 1650*
Bence, G. (Cleveland) 1500*
Bendit, K. (San Francisco) 2055
Benedicto, R. L. (Elmhurst, N.Y.) 2120
Benge, D. E. (El Paso, Tex.) 1910
Benham, G. (Ogontz, Pa.) 1500*
Benham, T. W. (Trenton, N.J.) 1935
Benison, D. (Berkeley, Cal.) 2179
Benjamin, G. (Paterson, N.J.) 1941
Benjamin, H. (Stratford, Ct.) 1866
Benjes, K. (Baltimore, Md.) 1667
Bennett, G. (St. Louis, Mo.) 1812
Bennett, H. (Rochester, N.Y.) 1803*
Benson, A. (Jamestown, N.Y.) 1600
Bent, H. H. (Wabash, Ind.) 1844
Bentley, L. R. (Safford, Ariz.) 1865
Benz, M. (Rochester, N.Y.) 1700*
Berardi, V. (Rochester, N.Y.) 1700*
Bereczky, E. (Cleveland) 1850
Berg, H. W. (Hillsboro, Kans.) 1600*
Berg, R. (Inglewood, Cal.) 1780*
Berger, B. (Pittsburgh, Pa.) 1862
Bergeron, D. (U.S. Navy) 1650*
Berghoff, A. (Atl. City, N.J.) 1700*
Bergman, C. J. (Berkeley, Cal.) 1978
Bergquist, H. (Jamestown, N.Y.) 1920
Bergquist, T. (Hunt-ton, W.Va.) 1816
Berkman, J. (St. Paul, Minn.) 1300*
Berkowitz, A. (Morristown, N.J.) 1674
Berlin, F. (Philadelphia) 1914
Berlow, P. (S. Orange, N.J.) 1684*
Bernhart, A. (Norman, Okla.) 1780
Bernstein, A. (New York, N.Y.) 2094
Bernstein, I. (Culver City, Cal.) 1600*
Berry, J. (Corp. Christi, Tex.) 1702
Bersbach, E. (Kokomo, Ind.) 1971
Berzarras, V. (Glen Gdns, N.Y.) 1956
Bessette, J. (Waterloo, N.Y.) 1600*
Betti, J. (Cleveland) 1720*
Bezemer, P. (Metairie Falls) 1835*
Biach, J. L. (Cranford, N.J.) 2045
Biallas, M. D. (Chalmette, La.) 1771
Biancki, T. (Rochester, N.Y.) 1650*
Biats, O. (Cleveland) 1650
Bick, J. W. (New Orleans) 1771
Bielefeld, M. (Milwaukee) 1600*
Bills, W. A. (Houston, Tex.) 2059
Billstein, S. A. (Univ. Park, Pa.) 1400*
Billy, E. (Cleveland) 1500*
Bingaman, G. C. (U.S. Navy) 1768
Birkenfeld, T. M. (Baltimore) 1605
Birulkin, J. (Minneapolis) 1670*
Bischoff, R. (Cleveland) 1550
Bishop, G. (Seattle, Wash.) 1941
Bishop, P. (El Paso, Tex.) 1717
Black, S. (Rochester, N.Y.) 1575
Blackburn, W. (Dayton, O.) 1798
Blackshear, L. (Millersburg, Ky.) 1894
Blair, G. (Corp. Christi, Tex.) 1803
Blair, J. I. (Tulsa, Okla.) 1767
Blake, K. (Bronx, N.Y.) 1916
Blakesley, J. R. (Cleveland) 1653
Blanchard, E. K. (Raleigh, N.C.) 1934*
Blanchard, S. (Raleigh, N.C.) 1400*
Blanchet, E. F. (Davenport, Ia.) 1550*
Blaney, J. (Arcadia, Cal.) 1700

Blanpied, C. W. (Corp. Christi) 1609
Blenkinsop, L. (Brooklyn, N.Y.) 1750
Bloomfield, V. (Berkeley, Cal.) 1892
Blount, D. (Kans. City, Mo.) 1650*
Bluecher, M. (Bismarck, N.D.) 1750*
Blumenthal, M. (Bellaire, Tex.) 1803
Boczar, A. (Irvington, N.J.) 1905
Boehl, N. O. (Baltimore) 1620*
Boettcher, R. W. (Bismarck, N.D.) 1650*
Bogdan, J. (Cleveland) 1700*
Bogdany, A. (New Jersey) 1850*
Boland, F. (Cambridge, Mass.) 1663
Bolton, F. B. (Hammond, Ind.) 1658
Bolton, J. M. (New Haven, Ct.) 2107
Bond, A. H. Sr. (Norton, Va.) 1683
Bone, E. (Baytown, Tex.) 1946
Bonneli, B. (Sayre, Okla.) 1558
Book, E. (Arlington, Mass.) 1997
Borges, F. W. (Coral Gables) 1929
Bork, J. (Cleveland) 1700
Borman, A. (New Orleans) 1571
Bornholz, R. (Pittsburgh, Pa.) 2160
Borochow, H. (Los Angeles) 2166
Borsodi, E. M. (New Orleans) 2042
Bosiljevic, V. (Cleveland) 1690
Boucher, W. (Somerville, Mass.) 1782
Bourdon, E. L. (Holyoke, Mass.) 1963
Bourgin, C. N. (E. Orange, N.J.) 1550
Bourke, A. W. (San Francisco) 2038
Bower, J. (Pittsford, N.Y.) 1738
Boyd, R. H. (State College, Pa.) 1650*
Boykin, D. B. (Groton, Ct.) 1470*
Bozarth, W. (Egg Harbor, N.J.) 1400*
Brady, F. (Staten Is., N.Y.) 1800*
Brady, L. (Flint, Mich.) 1716
Brainin, J. (New York, N.Y.) 1711*
Bralske, E. (Cleveland) 1655
Bram, Mrs. (New York, N.Y.) 1400*
Branch, H. F. (St. Louis, Mo.) 2065
Brandreth, D. A. (Miquon, Pa.) 1873
Brannin, J. (Redwood City, Cal.) 1500*
Brasher, E. (Cleveland) 1525
Brask, S. (Attleboro, Mass.) 1978
Brattin, J. (E. Lansing, Mich.) 1620*
Bratz, T. A. (Baltimore) 1700*
Brauer, A. R. (Midland, Mich.) 1743
Braumann, P. (Palo Alto, Cal.) 2051*
Brauner, F. A. (Philadelphia) 1873
Bray, B. (Ft. Worth, Tex.) 1400*
Breakay, J. (Spokane, Wash.) 1463
Bregman, R. (Philadelphia) 1650*
Brennan, T. (St. Paul, Minn.) 1650*
Brent, E. (San Francisco) 1750*
Brewer, R. (Berkeley, Cal.) 1500*
Brewer, W. (Toledo, O.) 1400*
Brice-Nash, B. (Anderson, Mo.) 1917
Brieger, R. S. (Houston, Tex.) 2139
Briggs, A. G. (Richmond, Va.) 1555
Briggs, R. (Baltimore) 1600*
Brigmanis, E. (Brooklyn, N.Y.) 2067*
Brindley, C. G. (Borger, Tex.) 1791
Brinkerhoff, S. (Safford, Ariz.) 1750
Briskin, L. (Youngstown, O.) 1640*
Brisson, A. P. (Glen Rock, N.J.) 1770
Bristol, R. P. (Charlottesville) 1700*
Bristol, W. A. (Cape May, N.J.) 1600*
Brobeck, J. (Rochester, N.Y.) 1550*
Brock, F. H. (Univ. Park, Pa.) 1400*
Brock, R. (Rochester, N.Y.) 1500*
Brockman, G. (Cleveland) 1780*
Brooks, D. O. (So. Bend, Ind.) 2081
Bross, U. (Philadelphia) 1745
Brower, S. (Minneapolis) 1620*
Brown, A. L. (S. Orange, N.J.) 1740
Brown, B. (Exeter, N.H.) 1300*
Brown, B. (New Orleans) 1300*
Brown, C. (Chicago) 1400*
Brown, C. L. (Appleton, Wis.) 1750*
Brown, F. K. (Moorestown, N.J.) 1717
Brown, H. A. (Wichita, Kans.) 1400*
Brown, L. (Sobrante, Cal.) 1600*
Brown, R. G. (Hartsville, S.C.) 1902
Brown, T. (WPAFB, Ohio) 1850*
Browning, W. C. (San Antonio) 1877
Brownlie, A. (Baltimore) 1850*
Brunner, J. (Vineland, N.J.) 1650*
Bucher, E. S. (Clifton, N.J.) 1700*
Buckland, A. C. (New Orleans) 2100
Buczowski, M. (Newark, N.J.) 1857
Bullard, R. G. (Des Moines) 1530
Bulloch, D. K. (Rochester, N.Y.) 1920*
Bullwinkel, H. (San Francisco) 1992
Bulmash, W. H. (Baltimore) 1813
Bundick, W. R. (Baltimore) 1760
Bundschuh, C. W. (Rochester, N.Y.) 1800*
Burdge, H. (Atl. City, N.J.) 1995
Burdick, D. (Hunt-ton, W.Va.) 2109
Burdick, G. (Bronx, N.Y.) 1560
Burgar, W. Jr. (Detroit) 2028
Burger, A. W. (Minneapolis) 1920
Burger, H. (Springfield, Mass.) 1745
Burgess, E. C. (Kans. City, Mo.) 1646
Burgan, A. (Cleveland) 1755
Burke, F. L. (Los Angeles) 1924
Burkett, M. (Carlsbad, N.M.) 1867
Burmaster, C. (Rochester, N.Y.) 1900*
Burnet, O. (Ft. Worth, Tex.) 1800
Burns, J. (Portsmouth, N.H.) 1600*
Burr, R. E. (Toledo, O.) 1400*
Burrus, J. (Biloxi, Miss.) 1788*
Burry, R. E. (Ft. Lauderdale, Fla.) 1734
Burton, C. M. (St. Louis, Mo.) 1820
Butler, C. (Baltimore) 1800*
Butler, V. K. (Midwest City) 1450
Buttenhoff, F. J. (Racine, Wis.) 1726
Byland, W. M. (Pittsburgh, Pa.) 2014
Byrd, J. E. (Racine, Wis.) 1776

— C —

Cabe, J. L. (Atlanta, Ga.) 2018
Cade, G. (N. Wildwood, N.J.) 1848
Cafarelli, N. (Westfield, N.J.) 1901
Cain, D. A. (Byfield, Mass.) 1992
Cain, R. F. (Cedar Rapids, Ia.) 1400*
Caine, W. H. (Antwerp, O.) 1500
Caka, E. (Cleveland) 1900
Cake, G. F. (Haddonfield, N.J.) 1891
Cake, R. (Eldora, N.J.) 1650*

(Please turn to page 5, col. 1)

Published twice a month on the 5th and 20th by THE UNITED STATES CHESS FEDERATION. Entered as second class matter September 5, 1946, at the post office at Dubuque, Iowa, under the act of March 9, 1879.

Editor: MONTGOMERY MAJOR

POSTMASTER: Please return undeliverable copies with Form 3579 to Kenneth Harkness, USCF Business Manager, 80 East 11th Street, New York 3, N. Y.

The Kibitzer Has His Day

To Checkmark Or Not To Checkmark

Dear Mr. Harkness,

Re Article 13 of the Laws of Chess, I believe that the whole conception of allowing a player in time trouble to make check marks instead of fully recorded moves (for an indeterminate number of moves) is wholly unsound.

I suppose it is nature to feel sorry for a man in time trouble and to wish to be lenient with him. But nothing can be gained by making a vague limit instead of a definite one. If recording the moves is required (as it must be), then the time limit evidently includes thinking and recording. Is it not clear that to give a player in time trouble the right to save 30 seconds by making check marks for the last four moves, is exactly the same as to give him an extra 30 seconds and require him to write the score.

Of course you are right in saying it is necessary to specify the number of moves a player may indicate by check marks. But no matter whether this is determined to be three, five, or ten, the principle remains that to allow a man in time trouble to save half a minute, or a minute is precisely equivalent to giving him a little extra time because he is in time trouble. Seen this way the whole conception becomes an absurdity. If it is felt too harsh to compel a player in time trouble to record his last eight moves then give each player 61 minutes to make his 20 moves to allow for this. The point is to allow a player to save time comes to the same thing as giving him extra time.

E. T. DANA
Los Altos, Calif.

Editorial comment: The logic of Mr. Dana's remarks cannot be denied, but, unfortunately, the situation is not one for local decision. So long as the FIDE Laws of Chess provide for checkmarks in time trouble, we are in general bound to accept them, whatever our personal opinions on the subject.

For the Simple Solution

Dear Mr. Major:

I agree entirely with Mr. Bisno.

Probably his ideas for the support of chess in this country would be fulfilled best by increased support of the United States Chess Federation.

When most chess players in this country are members of their national organization, vigorous promotion of chess activities will follow naturally.

ANDREW A. GAGE, M.D.
Tonawanda, N.Y.

NATIONAL CHESS RATINGS

(Continued from page 1, col. 4)

USCF dues from the participants in their tournaments. The USCF itself conducts many successful tournaments, and all the players must belong to the Federation. Even when no cash prizes are offered, as in the U.S. Amateur Championship, the Long Island Amateur Championship, and the amateur events recently conducted in various parts of the country by Tournament Administrator George Koltanowski, contestants are glad to play in such 100% USCF-membership events.

When we changed the rating regulations two years ago, we hoped that the added coverage of the system would increase its popularity (which it has done) and at the same time convince tournament organizers that they should depart from their policy of isolationism and lend their full support to national chess. But the latter goal has not been achieved. It is true that many Associations and Clubs have affiliated with the USCF, so that their tournaments may be rated; but the income from rating fees and affiliation dues is wholly inadequate to maintain the rating system and finance the other operations of the USCF.

To become a strong organization, capable of performing its national

and international duties, the USCF must have a great many more individual, dues-paying members. The tournament organizers of the United States can make this possible by requiring the players in their tournaments to become individual members of the Federation.

We urge the Chess Associations and Clubs of the United States to get behind American Chess by increasing the membership of the U.S. Chess Federation.

Herman Steiner (Los Angeles) Chess Club: Victory in the club Class A-L Tourney went to Evans Farber with 8½-1½, a loss to G. Dick and a draw with Robert Seiden. Guy Dick was second with 8-2, losing one game to Gerald Castleberry and drawing with D. Maron and R. Seiden. Tied for third in the 11-player round robin with 6-4 each were Don Maron and Richard Roth. G. Castleberry was fifth with 5-5 score. A USCF Club Affiliate.

New Orleans (La.) Chess Club: In a visit to Baton Rouge the New Orleans club scored a 6½-5½ victory over their hosts in a double-round match. A. L. McAuley tallied 2 points, while F. Cravez, John Marks, A. A. deCarvalho, and D. Oderr each scored one point, with J. Lively salvaging one draw. For Baton Rouge E. Van Valkenberg scored twice, while Frank Gladney, H. Owen, and M. Motta each scored a win, and J. Kimball drew. A USCF Club Affiliate.



USCF Membership Dues, including subscription to Chess Life, periodical publication of national chess rating, and all other privileges:

ONE YEAR: \$5.00 TWO YEARS: \$9.50 THREE YEARS: \$13.50 LIFE: \$100.00
SUSTAINING: \$10.00 (Becomes Life Membership after 10 payments)

A new membership starts on 21st day of month of enrollment, expires at the end of the period for which dues are paid. Family Dues for two or more members of one family living at same address, including only one subscription to Chess Life, are at regular rates (see above) for first membership, at the following rates for each additional membership: One year \$2.50; two years \$4.75; three years \$6.75. Subscription rate of Chess Life to non-members is \$3.00 per year. Single copies 15c each

WORLD CHAMPIONSHIP MATCH

KING'S INDIAN DEFENSE

MCO: page 92, column 61

Game Nine

World Championship Match
Moscow, 1957

White				Black			
M. BOTVINNIK				V. SMYSLOV			
1. P-QB4	Kt-KB3	21. Kt-B3	PxP	1. P-QB4	Kt-KB3	18. B-R3	Kt-B3
2. Kt-QB3	P-KKt3	22. PxP	Kt-B3	2. Kt-QB3	P-KKt3	19. KR-Q1	P-QR3
3. P-KKt3	B-Kt2	23. QR-B1	Q-R4	3. P-Q4	B-Kt5	20. Kt-B3	Kt-QKt5
4. B-Kt2	O-O	24. Kt-Kt5	B-B3	4. P-K3	P-QKt3	21. Q-Kt3	P-QR4
5. P-Q4	P-Q3	25. BxB	PxB	5. Kt-K2	B-R3	22. Kt-Kt5	P-R3
6. Kt-B3	P-B3	26. RxP	Kt-Kt5	6. P-QR3	BxKtch	23. B-Kt2	QR-B1
7. O-O	B-B4	27. P-KR4	P-KR3	7. Kt-B3	P-Q4	24. P-B3	PxP
8. Kt-KR4	B-K3	28. Kt-B7	K-R2	8. P-QKt3	O-O	25. PxP	Kt-R4
9. P-Q5	PxP	29. P-Kt4	QR-B1	9. B-K2	PxP	26. B-KB1	Q-Kt4
10. PxP	B-Q2	30. RxR	RxR	10. PxP	Kt-B3	27. B-R3	Kt-B5
11. B-K3	Kt-R3	31. Kt-QP	PxKt	11. P-QR4	Q-Q2	28. K-R1	P-R4
12. B-Q4	Q-R4	32. QxPch	K-R1	12. Kt-Kt5	KR-Q1	29. BxKt	PxB
13. R-K1	Kt-B4	33. Q-Q7	R-B6	13. B-Kt2	Kt-QR4	30. QxP	P-R5
14. P-K4	Kt-R5	34. Q-Q8ch	K-R2	14. Q-B2	P-B3	31. R-R3	R-B4
15. Kt-Kt	QxKt	35. Q-Q7ch	K-R1	15. Kt-R3	Q-K2	32. R-K1	R-B4
16. P-Kt3	Q-R6	36. Q-Q8ch	K-R2	16. O-O	P-B4	33. Kt-Q6
17. P-B4	B-Kt4	37. Q-K7ch	K-R1	17. Kt-Kt5	B-Kt2		
18. P-K5	Kt-Q2	38. Q-K8ch	K-R2				
19. P-K6	BxBch	39. Q-K7ch	K-R1				
20. QxB	Q-B4	40. Q-K8ch	K-R2				



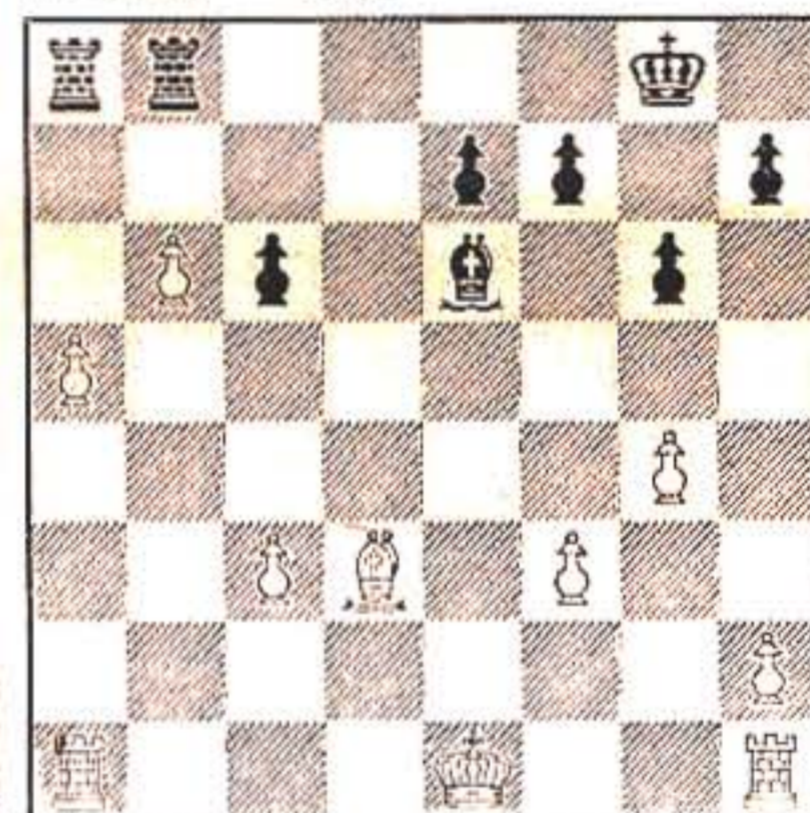
SICILIAN DEFENSE

MCO: page 288

Game Twelve

World Championship Match
Moscow, 1957

White				Black			
V. SMYSLOV				M. BOTVINNIK			
1. P-K4	P-QB4	12. Kt-Kt	PxKt	1. P-K4	P-QB4	12. Kt-Kt	PxKt
2. Kt-KB3	P-KKt3	13. BxRP	B-B4	2. Kt-KB3	P-KKt3	13. BxRP	B-B4
3. P-B4	B-Kt2	14. P-B3	Kt-Q3	3. P-B4	B-Kt2	14. P-B3	Kt-Q3
4. P-Q4	P-Q3	15. P-QR4	R-R1	4. P-Q4	P-Q3	15. P-QR4	R-R1
5. Kt-B3	Kt-QB3	16. B-Kt6	O-O	5. Kt-B3	Kt-QB3	16. B-Kt6	O-O
6. B-K3	B-Kt5	17. P-B5	Kt-B1	6. B-K3	B-Kt5	17. P-B5	Kt-B1
7. PxP	PxP	18. P-Kt4	B-K3	7. PxP	PxP	18. P-Kt4	B-K3
8. QxQch	RxQ	19. P-R5	Kt-B3	8. QxQch	RxQ	19. P-R5	Kt-B3
9. BxP	BxKtch	20. BPxKt	KR-Kt1	9. BxP	BxKtch	20. BPxKt	KR-Kt1
10. PxP	Kt-B3	21. B-Q3	10. PxP	Kt-B3	21. B-Q3
11. Kt-Q4	Kt-P			11. Kt-Q4	Kt-P		



21.	RxKtP	33. P-R3	R-Kt8
22. PxR	RxRch	34. K-Q2	R-Kt4
23. K-Q2	R-R7ch	35. K-Q3	R-Kt8
24. K-K3	B-B1	36. K-B4	R-B8ch
25. R-Q1	R-QKt7	37. K-Kt4	R-Kt8ch
26. B-B4	K-Kt2	38. K-R4	R-R8ch
27. R-Q8	B-K3	39. K-Kt4	R-K8
28. BxB	PxB	40. K-R3	R-R8ch
29. R-QKt8	P-K4	41. K-Kt2	R-R4
30. P-QB4	K-B2	42. R-Q3	R-R1
31. P-B5	K-K3	43. K-Kt3	Resigns
32. R-Q8	P-Kt4		



FRENCH DEFENSE

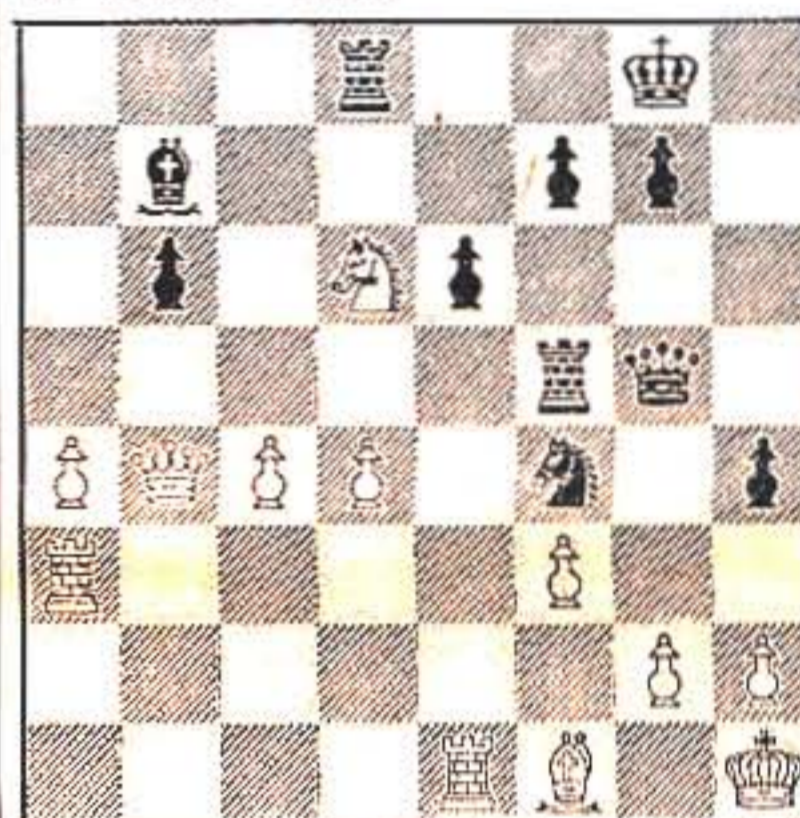
MCO: page 56, column 58

Game Fourteen

World Championship Match
Moscow, 1957

White				Black			
V. SMYSLOV				M. BOTVINNIK			
1. P-K4	P-K4	9. B-K2	O-O	1. P-K4	P-K4	14. Kt-B1	B-Q3
2. Kt-KB3	Kt-QB3	10. B-Q3	P-QKt3	2. Kt-KB3	Kt-QB3	15. Kt-R4	P-Kt3
3. B-Kt5	P-QR3	11. Kt-R3	B-R3	3. B-Kt5	P-QR3	16. B-R6	R-Q1
4. B-R4	Kt-B3	12. Kt-B4	Q-Q2	4. B-R4	Kt-B3	17. Q-B3	Kt-K1
5. O-O	B-K2	13. P-KR4	BxB	5. O-O	B-K2	18. Kt-K3	P-B3
6. R-K1	P-QKt4	14. PxP	QKt-B3	6. R-K1	P-QKt4	19. Kt-Q5	Q-B2
7. B-Kt3	O-O	15. B-K3	PxP	7. B-Kt3	O-O	20. Kt-Kt6	R-Kt1
8. P-B3	P-Q3	16. PxP	QR-B1	8. P-B3	P-Q3	21. Kt-B	QRxKt
9. P-KR3	Kt-QR4			9. P-KR3	Kt-QR4	22. P-KKt3	B-B1
10. B-B2	P-B4			10. B-B2	P-B4	23. B-K3	K-R1
11. P-Q4	Q-B2			11. P-Q4	Q-B2	24. Kt-Kt2	Kt-B2
12. QKt-Q2	Kt-B3			12. QKt-Q2	Kt-B3	25. QR-Q1	RxR
13. PxKtP	PxP			13. PxKtP	PxP	26. RxR	R-Q1

(Please turn to page 10, col. 4)



33.	Kt-P	46. K-Kt2	K-Kt3
34. BxKt	P-R6	47. K-B3	K-B4
35. BxP	BxPch	48. R-B4ch	K-K4
36. RxP	RxR	49. R-K4ch	K-B4
37. Kt-P	RxKt	50. R-B4ch	K-K4
38. BxP	RxP	51. K-Kt4	RxP
39. QxP	R-KB5	52. K-Kt5	R-R3
40. BxRch	RxB	53. P-R4	R-QB3
41. Q-K6	Q-KB5	54. P-R5	K-K3
42. Q-QB6	R-B4	55. K-Kt6	K-K4ch
43. Q-R8ch	K-R2	56. K-Kt5	K-K3
44. Q-K4	QxQ		
45. RxQ	R-QR4		



RUY LOPEZ

MCO: page 248

Game Sixteen

World Championship Match
Moscow, 1957

White				Black			
V. SMYSLOV				M. BOTVINNIK			
1. P-K4	P-K4	14. Kt-B1	B-Q3	1. P-K4	P-K4	14. Kt-B1	B-Q3
2. Kt-KB3	Kt-QB3	15. Kt-R4	P-Kt3	2. Kt-KB3	Kt-QB3	15. Kt-R4	P-Kt3
3. B-Kt5	P-QR3	16. B-R6	R-Q1	3. B-Kt5	P-QR3	16. B-R6	R-Q1
4. B-R4	Kt-B3	17. Q-B3	Kt-K1	4. B-R4	Kt-B3	17. Q-B3	Kt-K1
5. O-O	B-K2	18. Kt-K3	P-B3	5. O-O	B-K2	18. Kt-K3	P-B3
6. R-K1	P-QKt4	19. Kt-Q5	Q-B2	6. R-K1	P-QKt4	19. Kt-Q5	Q-B2
7. B-Kt3	O-O	20. Kt-Kt6	R-Kt1	7. B-Kt3	O-O	20. Kt-Kt6	R-Kt1
8. P-B3	P-Q3	21. Kt-B	QRxKt	8. P-B3	P-Q3	21. Kt-B	QRxKt
9. P-KR3	Kt-QR4	22. P-KKt3	B-B1	9. P-KR3	Kt-QR4	22. P-KKt3	B-B1
10. B-B2	P-B4	23. B-K3	K-R1	10. B-B2	P-B4	23. B-K3	K-R1
11. P-Q4	Q-B2	24. Kt-Kt2	Kt-B2	11. P-Q4	Q-B2	24. Kt-Kt2	Kt-B2
12. QKt-Q2	Kt-B3	25. QR-Q1	RxR	12. QKt-Q2	Kt-B3	25. QR-Q1	RxR
13. PxKtP	PxP	26. RxR	R-Q1	13. PxKtP	PxP	26. RxR	R-Q1

CHANGE OF ADDRESS: Four weeks' notice required. When ordering change please furnish an address stencil impression from recent issue or exact reproduction, including numbers and dates on top line.

Send membership dues (or subscriptions) and changes of address to KENNETH HARKNESS, Business Manager, 80 East 11th Street, New York 3, N. Y.

Send Tournament rating reports (with fees, if any) and all communications regarding CHESS LIFE editorial matters to MONTGOMERY MAJOR, Editor, 123 North Humphrey Avenue, Oak Park, Ill.

Make all checks payable to: THE UNITED STATES CHESS FEDERATION

Calabria, J. (Philadelphia)	1650*
Calder, P. Jr. (Berkley, Mich.)	1737
Calhammer, A. B. (Evanston, Ill.)	1991
Calkins, J. S. (Spokane, Wash.)	1650*
Callaghan, R. S. (Charlottesville)	1750*
Callaghan, R. (Charlottesville)	1600*
Calyo, N. A. (Bronx, N.Y.)	1550
Camarena, J. (Mexico)	2017
Cameron, D. (New Orleans)	1606
Cameron, H. (W. Palm Beach, Fla.)	1790
Cameron, L. (Cleveland)	1600
Campbell, D. (St. Clair Sh., Mich.)	1600*
Canfield, E. (El Cerrito, Cal.)	1880*
Cantone, A. (Philadelphia)	2013
Cantor, R. (Philadelphia)	1867
Caplan, S. (Margate, N.J.)	1863
Capps, C. M. (San Francisco)	2145
Carbone, S. (W. Lafayette, Ind.)	1777
Cardin, Bob (Philadelphia)	1500*
Carl, Philip (Cleveland)	1600
Carlson, C. (Teaneck, N.J.)	1793
Carlson, E. (Camden, N.J.)	1946
Carlyle, A. (St. Petersburg, Fla.)	2079
Carpenter, J. (Allentown, Pa.)	1500*
Carrigan, J. (Allentown, Pa.)	1500*
Carroll, J. (Milwaukee)	1811
Carter, A. (Ritzville, Wash.)	1769
Carter, B. (Berkeley, Cal.)	1700*
Carter, D. R. (Midland, Tex.)	1586
Carter, R. D. (W. Lafayette, Ind.)	1740
Cartwright, N. (Silver Creek, N.Y.)	1800*
Carty, T. (Mineola, N.Y.)	1400*
Carvalho, J. (Los Angeles)	1900*
Case, S. Z. (Avon, N.Y.)	1835*
Casiglio, R. (East Haven, Ct.)	1500*
Casimis, R. (Chicago)	2036*
Cassell, D. A. (Columbus, Ga.)	1800
Cassidy, M. (Corp. Christi, Tex.)	1700*
Cassingham, J. (Okla. City)	1475
Castallano, W. (San Lorenzo, Cal.)	1600*
Castailanos, A. (San Francisco)	1785*
Castleberry, G. J. (Los Angeles)	1704
Castown, R. W. (New York, N.Y.)	1700
Celle, O. A. (Berkeley, Cal.)	1845
Cesaneck, M. (Comington, Pa.)	1872
Chace, E. F. (Okla. City)	1878
Chain, A. (New Haven, Ct.)	1500*
Chamandy, W. (Providence, R.I.)	1807
Chamness, H. (Wilmington, Cal.)	1600
Champlin, B. (Flushing, N.Y.)	1750*
Chancellor, T. J. (Waco, Tex.)	1694
Chandler, Dan (New Orleans)	1642
Chandler, L. (Cleveland)	1544
Chanowitz, I. (New Haven, Ct.)	1500*
Chapman, E. (Rochester, N.Y.)	1600*
Chapman, W.E. III (Durham, N.C.)	2000
Chappell, A. D. (Gilroy, Cal.)	1935
Charles, T. R. (Beardstown, Ill.)	1726
Charney, J. (Cleveland)	1675
Chase, Martha (Rochester, N.Y.)	1950*
Chasey, G. (Rochester, N.Y.)	1540
Chattfield, D. (Dubuque, Ia.)	1600*
Chavayda, J. J. (Cleveland)	1897
Chavaz, F. (New Orleans)	1838
Chenoweth, R. (Cleveland)	1600*
Chermide, R. A. (Orange, Va.)	1750*
Chertkof, A. (Philadelphia)	1850*
Chesbro, R. (Cleveland)	1770
Chinn, A. Jr. (S. Miami, Fla.)	1698
Chodrow, M. (Bronx, N.Y.)	1675
Christensen, V. (Waterford, Ct.)	1500*
Christiansen, Mrs. (Milwaukee)	1483
Christman, J. (Phoenix, Ariz.)	1937
Chroninger, R. D. (Daly City, Cal.)	1553
Churchman, T. (Sarnia, Ont.)	1600*
Ciampa, L. L. (New York, N.Y.)	1600
Citrin, M. (Detroit)	1400*
Claffey, J. (Newark, N.J.)	1700*
Claire, A. (Rochester, N.Y.)	1650*
Clapp, H. (Waterloo, N.Y.)	1700*
Clareus, B. (W. Hartford, Ct.)	1843
Clark, D. L. (Milwaukee)	1912
Clark, D. L. (Detroit)	1936
Clark, Don (Baltimore)	1500*
Clark, R. A. (Long Beach, Cal.)	1867
Clark, W. (Cleveland)	1832
Clark, W. (Cumberland, Md.)	1784*
Clark, W. A. (St. Louis, Mo.)	1656
Clement, W. (Kans. City, Mo.)	1755
Cleveland, C. (Birmingham, Ala.)	1791
Cleveland, H. (Chicago)	1681
Cleworth, W. G. (Grafton, Ct.)	1525*
Clifton, D. (Lincoln, Neb.)	1500*
Cloud, W. W. (New Orleans)	1702
Clough, J. (Oberlin, O.)	1789
Cochrane, J. H. (Toledo, O.)	1768
Coffino, P. (Mt. Vernon, N.Y.)	1717
Coffman, R. (Ft. Lauderdale, Fla.)	1541
Cohen, A. (Univ. Park, Pa.)	1400*
Cohen, M. (Philadelphia)	2132
Cohen, M. G. (Miami, Fla.)	1880
Cohen, R. (Havre de Grace, Md.)	1700*
Cohen, R. (New Orleans)	1580*
Cohen, Sam (Chicago)	2052
Cohn, J. (Cleveland Hts.)	1933
Coker, C. (Cleveland)	1500*
Colby, K. M. (San Francisco)	1927
Cole, J. (Rochester, N.Y.)	1600*
Coles, A. P. (El Paso, Tex.)	2106
Colestock, R. O. (St. Paul, Minn.)	1550*
Collan, W. (Irvington, N.J.)	1600*
Collins, B. S. (Santa Monica)	1800
Collins, Mrs. (Toledo, O.)	1650
Collins, F. (Dallas, Tex.)	1728
Comstock, C. E. (Sylvania, O.)	1625
Concar, Miss (Cleveland)	1550*
Condon, F. E. (Bogota, N.J.)	1865
Cone, R. (Rochester, N.Y.)	1770*
Congleton, E. (Frederick, Md.)	1719
Conley, B. (Hunt'ton, W.Va.)	1700*
Connelly, D. (White Sands, N.M.)	1450*
Conner, R. (Millville, N.J.)	1600*
Connor, D. (Ft. Lauderdale, Fla.)	1400*
Conover, H. T. (Long Branch, N.J.)	1808*
Contoski, V. (Minneapolis)	1882
Converse, D. (Standish, Mich.)	1846
Convis, D. L. (Wichita, Kans.)	1566
Conway, L. J. (Omaha, Neb.)	1650*
Conway, M. T. (Minneapolis)	1700
Cook, R. V. (Mishawaka, Ind.)	2000*
Corbin, D. C. (Exeter, N.H.)	1450*
Corda, R. (Wausau, Wis.)	1568
Corfman, H. (Cleveland)	1665
Cornelius, G. (Spokane, Wash.)	2041
Cornwall, J. (Ft. Lauderdale, Fla.)	1600*
Cortez, P. Sr. (Corp. Christi)	1666
Cospito, F. (Bartonsville, Ill.)	1618
Cotter, N.J. (Harrington, Del.)	2080
Coughlin, R. J. (Orange, N.J.)	1844

Cousino, R. G. (Toledo, O.)	1670*
Coveyou, R. R. (Oak Ridge, Tenn.)	2100
Cowdrey, A. E. (New Orleans)	1880
Cox, M. E. (Oaklawn, Ill.)	1913
Cox, W. E. (So. Pines, N.C.)	1585
Craig, K. (Omaha, Neb.)	1750*
Cramer, C. (Cleveland)	1500*
Cramer, F. (Milwaukee)	1816
Crawford, D. (Spokane, Wash.)	1742
Crede, W. Jr. (Charleston, W.Va.)	1738
Creed, G. (Philadelphia)	1400*
Creel, N. E. (Ft. Bliss, Tex.)	1550*
Creighton, J. (Corp. Christi)	1630
Crew, A. E. (Marion, Ia.)	1600
Crew, W. W. (Shreveport, La.)	1908
Critchlow, A. J. (Los Gatos, Cal.)	1863
Crittenden, C.C. (Raleigh, N.C.)	2145
Crocker, P. L. (Butler, Pa.)	1600*
Croft, F. (San Jose, Cal.)	1898
Crosby, W. B. (New Haven, Ind.)	1400*
Crowder, P. (Greenville, Miss.)	1950*
Crozat, R. (New Orleans)	1450*
Cucullu, C. J. (New Orleans)	1780
Cuneo, E. (Walnut Crk, Cal.)	1650*
Cuneo, R. J. (Oakland, Cal.)	1927
Cunningham, R. (Kensington, Md.)	1800
Cuomo, R. (Merrick, N.Y.)	1768
Curdo, J. A. (Lynn, Mass.)	2172
Currie, R. G. (San Francisco)	2063
Curtis, C. (New York, N.Y.)	1757
Curtis, G. F. (Phoenix, Ariz.)	1650*
Curtis, T. (Ohio)	1550*
Custer, M. A. (Toledo, O.)	1650
Czernieki, K. A. (Chicago)	2041

- D -

Dahlman, M. (Cleveland)	1800*
Daigle, E. F. (Ventnor, N.J.)	1775
Dalager, P. (St. Paul, Minn.)	1550
Daly, H. B. (Sanford, Maine)	1970
Dana, E. T. (Los Altos, Cal.)	1886
Danenfelds, J. (Lincoln, Neb.)	1917
Daniel, C. L. (New Orleans)	1639
Daniel, Mrs. (New Orleans)	1652
Daniel, F. (Charlottesville)	1600*
Daniels, D. F. (Spokane, Wash.)	1822
Daniels, R. (San Benito, Tex.)	1900*
Daniels, S. A. (Brooklyn, N.Y.)	1731
Danielson, L. (Cleveland)	1674
Daniloff, E. (San Francisco)	1760*
David, F. (Cleveland)	1650
Davidson, S. (Tulsa, Okla.)	1666
Davies, J. E. (Philadelphia)	1430*
Davis, A. W. (Ames, Ia.)	1900
Davis, J. A. (Warwick, R. I.)	1637
Davis, J. (Louisville, Ky.)	1700
Davis, J. (Okla. City)	1500*
Davis, K. E. (Johnson City, Tenn.)	1950*
Davis, M. H. (Atlanta, Ga.)	1636
Dayol, S. (Rochester, N.Y.)	1675
Dawson, G. (Baltimore)	1683
Day, A. W. (Nazareth, Pa.)	1500*
Day, F. A. (Okla. City)	1767
Dearborn, D. (Elizabeth, N.J.)	1750*
Dearborn, R. (Homewood, Ill.)	1658
Debes, J. (Rochester, N.Y.)	1614
de Carvalho, A. (New Orleans)	1680
DeFine, J. D. (Florissant, Mo.)	2012
Deines, J. (Algonia, Ia.)	1560*
Deitrich, C. H. (Bellefonte, Pa.)	1718
Dejaiffe, R. (Univ. Park, Pa.)	1640
DeJong, S. S. (Flushing, N.Y.)	1350*
Deksnys, J. (Vineland, N.J.)	1650*
Defany, D. (New York, N.Y.)	1650*
de la Torre, A. (Norman, Okla.)	1916
De la Torre, J. (Wash., D.C.)	1800*
Deleau, M. J. (Birmingham, Ala.)	2000*
Del Gado, S. (Mexico)	1921*
Delman, M. (Tarpon Sprgs, Fla.)	1891
Delvalle, C. (Cleveland)	1700
Dembowski, P. (Urbana, Ill.)	1810*
Demos, J. (Hayward, Calif.)	2108
DeNicola, R. (Staten Is., N.Y.)	1570*
de Paradowsky, T. (Cleveland)	1690
Depledge, C. (Sincinclairville, N.Y.)	1680*
Derr, D. (Cedar Rapids, Ia.)	1585
Derring, H. (W. Pt. Pleasant, N.J.)	1754
De Serrano, Mrs. (E. Orange, N.J.)	1721
Des Hotels, W. (Cleveland)	1500*
Desmarais, V. (Pittsford, N.Y.)	1600*
De Sorcia, G. P. (New Orleans)	1525
Detchmندی, E. (Afton, Mo.)	1681*
Deutcher, Miss (New York, N.Y.)	1400*
Deviny, D. (Cleveland)	1730
De Witt, J. S. (Dayton, O.)	1819
De Witt, M. (Lincoln, Neb.)	1626
De Yarmon, D. (Longview, Wash.)	1690*
Dial, E. (Lynn, Mass.)	1650*
Diamond, L. (New York, N.Y.)	1800*
Diano, D. (Raleigh, N.C.)	1804
Dick, G. (Tarzana, Cal.)	1675*
Dick, J. (Lincoln, Neb.)	1425
Dickals, N. (Cleveland)	1928
Dickinson, R. (Redwood City, Cal.)	1990*
Dickson, Wm. (Ft. Lauderdale, Fla.)	1575
Dickstein, L. (Oakland, Cal.)	1740*
Di Domenico, J. (Providence, R.I.)	1700*
Diedrich, E. C. (Ft. Bliss, Tex.)	1806
Diefenbach, G. (Milwaukee)	1690*
Dietrich, F. (Haverford, Pa.)	1700*
Dietrich, M. (Rochester, N.Y.)	1650*
Dietz, J. L. (Midwest City, Okla.)	1550*
Dikinis, D. (Dorchester, Mass.)	1750*
Dill, W. (Little Ferry, N.J.)	1888
Dilliard, H. V. (Minneapolis)	1450*
Dimock, E. (New London, Ct.)	1850*
Dina, L. J. (Ft. Worth, Tex.)	1969
Dinnerstein, L. (Philadelphia)	1843
DiSanto, J. (Baltimore)	1600*
Diskin, C. (Bayonne, N.J.)	1700*
Dobbs, A. C. Sr. (Wheeling, W.Va.)	1500*
Dobbs, E. L. (Sheffield, Ala.)	1700
Dobner, C. A. (Rochester, N.Y.)	1600*
Dodge, G. (Portsmouth, N.H.)	1550*
Dodson, R. (Gallup, N.M.)	1685*
Doermann, A. H. (Rochester, N.Y.)	1675
Dohmen, V. (St. Paul, Minn.)	1550*
Domanski, Z. (Toledo, O.)	1600*
Domjan, F. (Cleveland)	1757
Domsky, A. (Racine, Wis.)	1834
Donaho, J. (Glendon, Md.)	1575*
Donaldson, D. (Cleveland)	1946
Donath, F. (Waterloo, Ia.)	1600*
Donath, O. J. (Waterloo, Ia.)	1717
Dondis, H. B. (Cambridge, Mass.)	1759
Donley, G. C. (Logansport, Ind.)	1764
Donnelly, R. (New Orleans)	1756
Donnelly, W. H. (Valparaiso, Ind.)	1955
Donner, L. (Rochester, N.Y.)	1450*

Donovan, E. (Milwaukee)	1550*
Donovan, J. F. (Brooklyn, N.Y.)	2180
Doran, P. (Minneapolis)	1500*
Dorer, G. (Paramus, N.J.)	1714*
Dorn, F. (New York, N.Y.)	1808
Dornier, R.R. (Baton Rouge, La.)	1754
Dostal, J. (Minneapolis)	1550*
Douglas, A. C. (Quonset AFB, R.I.)	1650*
Douglas, B.G. (Dallas, Tex.)	1560*
Douglas, B. (Dallas, Tex.)	1600*
Douglass, H. H. (Baltimore)	1827
Dover, C. (Orlando, Fla.)	1600*
Dowden, M. (Louisville, Ky.)	1800
Downey, A. F. (Columbia, S.C.)	1616
Downs, G. M. (Baltimore)	1790*
Doyen, Tom (Albuquerque)	1705
Draco, A. C. (Audobon, N.J.)	1691
Draker, W. (Jamaica, N.Y.)	2069
Dreher, E. (Abington, Pa.)	2103
Dreher, L. C. (Sand Sprgs., Okla.)	1579
Drewvonycky, W. (Cleveland)	1680*
Drexel, G. L. (Miami Beach, Fla.)	2112
Driscoll, F. Jr. (Albuquerque)	1820*
Drotar, T. (Cleveland)	1650*
Dubeck, L. (Maplewood, N.J.)	1851
DuBois, D. C. (Kans. City, Mo.)	1647
Ducharme, J. Sr. (Easthampton, Mass.)	1800*
Ducharme, J. Jr. (Easthampton, Mass.)	1800
Duda, N. (Cleveland)	1725
Dudley, R. (Flossmoor, Ill.)	1920*
Duerling, R. (San Francisco)	1780*
Dufaut, M. (New Orleans)	1854
Dufour, C. L. (New Orleans)	1400*
Dugan, R. E. (Ames, Ia.)	1500*
Duggan, J. (Philadelphia)	1550*
Duggan, W. G. (Spokane, Wash.)	1600*
Dulicai, F. D. (Cranford, N.J.)	1887
Dumling, E. A. (New Orleans)	1601
Dunham, G. (Chicago)	2000*
Dunkel, G. O. (Gary, Ind.)	1861
Dunn, R. M. (Rochester, N.Y.)	1700*
Dunn, R. H. (Portsmouth, N.H.)	1700
Dunne, A. (Sayre, Pa.)	1600
Dunst, T. (New York, N.Y.)	2122
Durbin, M. (Cleveland)	1550*
Durkin, R. T. (Lyons, N.J.)	1964
DuVall, A. H. (Charleston, W.Va.)	1979
Duwe, E. (Cleveland)	1500*
Duykers, D. (Butte, Mont.)	1750*
Dwyer, A. (Union, N.J.)	1774
Dygerf, J. F. Sr. (Rochester, N.Y.)	1600*

- E -

Earnest, J. (S. Pasadena, Cal.)	1940
Earnshaw, K. B. (Boulder, Colo.)	1700*
Eastwood, R. C. (Homestead, Fla.)	1986
Eckhardt, R. B. (Lancaster, Pa.)	1904
Eckhardt, T. F. (Ft. Lauderdale)	1923
Edberg, A. Y. (Tieton, Wash.)	1600*
Edberg, R. E. (Tieton, Wash.)	2015
Edelbaum, T. (Windsor, Conn.)	2057
Edelman, E. (Rochester, N.Y.)	1600*
Edelsburg, A. (Columbia, S.C.)	1821
Edelstein, H. (San Carlos, Cal.)	1850
Edgar, G. (New York, N.Y.)	1400*
Edmondson, E. (Mather Field, Cal.)	1853
Edwards, D. W. (St. Louis, Mo.)	1671
Edwards, G. (Roselle, N.J.)	1604
Egan, H. (Rochelle Park, N.J.)	1400*
Egbert, W. (Up. Montclair, N.J.)	1675
Egle, B. (Dubuque, Ia.)	1884
Eilmes, D. (Seattle, Wash.)	1760
Eilmes, Mrs. (Seattle, Wash.)	1600*
Einhorn, A. (Atl. City, N.J.)	1400*
Eisman, A. M. (New York, N.Y.)	1815
Eisner, L. (Columbus, O.)	1904
Eksstrom, F. (Brooklyn, N.Y.)	1772
Elam, J. E. (Huntertown, Ind.)	1820
Elder, R. D. (Philadelphia)	1892
Elcoff, C. (Rochester, N.Y.)	1700*
Elkes, C. K. (Toledo, O.)	1700*
Elkins, G. Jr. (Ft. Worth, Tex.)	1700*
Ellison, T. J. (Cleveland)	2072
Elmer, P. (Dubuque, Ia.)	1550*
Elo, A. P. (Milwaukee)	2025
Elsman, J. (Newark, N.J.)	1710
Elverhoy, E. S. (Milwaukee)	1500*
Elwood, R. (Margate, N.J.)	1568
Enequist, L. N. (Aberdeen, Md.)	1900*
Engelman, F. (Brooklyn, N.Y.)	2032
Engstrom, S. (St. Paul, Minn.)	1350*
Ennis, R. A. (Ft. Bragg, N.C.)	1791
Ephron, W. (New York, N.Y.)	1834
Epfstein, J. (New Haven, Ct.)	1650
Erdal, G. B. (New Orleans)	1831
Ericksen, F. (Baltimore)	1750*
Erkmanis, I. (Milwaukee)	1709
Erus, G. (Los Angeles)	1700*
Espenshade, F. (Ogontz, Pa.)	1500*
Estes, G. (Rochester, N.Y.)	1750*
Etter, D. (Rochester, N.Y.)	1700*
Evans, J. B. (St. Pauls, N.C.)	1586
Evans, J. (Ft. Worth, Tex.)	1600*
Evans, R. M. (Cary, N.C.)	1856*
Evans, R. (Corp. Christi, Tex.)	1525
Ewell, D. (San Francisco)	1450*
Ewing, P. (Chicago)	1780

- F -

Fabela, H. M. (El Paso, Tex.)	1810
Fabian, G. (Cleveland)	1500*
Falato, J. (Paterson, N.J.)	1766
Falconer, Mrs. (San Francisco)	1450*
Falkenhagen, J. (Edmonds, Wash.)	1650*
Fall, L. (Dayton, O.)	1632
Fallon, O. (Milwaukee)	1550
Farber, S. (Morristown, N.J.)	2012*
Farkas, J. R. (Bridgeport, Ct.)	1677
Farkas, J. (Cleveland)	1686
Farman, C. S. (New York, N.Y.)	1400*
Farnham, W. (Brooklyn, N.Y.)	1580*
Farrar, Dick (New York, N.Y.)	

Garais, I. (Cleveland)	2014
Garcia, G. (Pittsburg, Cal.)	1701
Gardner, C. (Los Angeles)	1994
Gardner, C. (Milwaukee)	1892
Garfinkel, B. (Aberdeen, Md.)	2059
Garibaldi, (Cleveland)	1500
Garland, R. (W. Newburg, Mass.)	1719
Garner, C. E. (Cleveland)	1842
Garner, M. (Chicago)	1600
Garrison, J. (New Orleans)	1678
Gartenhaus, S. (Stanford, Cal.)	2013
Gartley, F. M. (Up. Montclair, N.J.)	1820
Garver, R. L. (San Antonio, Tex.)	2029
Garwin, L. (Cleveland)	1650
Garza, C. E. (Hartlingen, Tex.)	1550
Gates, E. K. (Lynn, Mass.)	1685
Gates, H. P. (Exeter, N.H.)	1700
Gaunt, F. E. (Cambridge, Mass.)	1846
Gauper, H. (La Crosse, Wis.)	1889
Gavitt, D. (New Orleans)	1528
Gawecki, B. (Toledo, O.)	1500
Gyaman, L. V. (Dubuque, Ia.)	1678
Gebauer, C. (Cleveland)	1650
Gieger, D. (Ft. Worth, Tex.)	1650
Geldersma, J. M. (Harvey, La.)	1471
Geller, S. (Los Angeles)	2053
Geller, S. (Philadelphia)	2129
Gellman, D. (Atl. City, N.J.)	1650
Gemar, J. (Kelso, Wash.)	1550
Gennuso, J. (Brooklyn, N.Y.)	1905
George, M. (Long Beach, Cal.)	1525
Gerber, W. (Rochester, N.Y.)	1800
Gergel, M. G. (Columbia, S.C.)	1675
Germain, J. (Framingham, Mass.)	1967
Gerschlager, C. (New York, N.Y.)	2022
Gerth, R. M. (Portsmouth, N.H.)	1869
Gerue, D. (Pontiac, Mich.)	1500
Gibbons, J. (Philadelphia)	1800
Gibbs, J. (Hollywood, Cal.)	1879
Gibian, E. (Cleveland)	1700
Gibson, F. D. (Pontiac, Mich.)	1894
Gibson, R. K. (Pasadena, Md.)	1580
Giertych, H. (Gary, Ind.)	1993
Gifford, H. (N. Hollywood, Cal.)	1700
Gilchrist, J. E. (Cleveland)	1958
Gilden, L. C. (Takoma Park, Md.)	1925
Gill, B. A. (Racine, Wis.)	1707
Gill, E. H. (Okla. City, Okla.)	1802
Gillespie, W. (Ft. Lauderdale, Fla.)	1827
Gilliland, A. W. (Lafayette, Ind.)	1943
Gingold, G. (Cleveland)	1750
Girifalco, L. (Cleveland)	1675
Gladitsch, J. (St. Paul, Minn.)	1375
Gladney, W. F. (Baton Rouge, La.)	1894
Gladstone, L. (Kew Gdns., N.Y.)	1876
Gleason, R. E. (Springfield, Mass.)	1818
Gleason, R. (Minneapolis)	1803
Gleeson, F. (Spokane, Wash.)	1522
Glenn, G. S. (Spokane, Wash.)	1650
Glicker, J. (Detroit)	1800
Glickman, R. M. (New York, N.Y.)	1749
Glickstein, A. (Newton, Mass.)	1780
Glover, F. (Lees Summit, Mo.)	1650
Gluss, B. (Chicago)	1500
Godbold, E. (Chicago)	2131
Goddard, Mrs. M. (Miami, Fla.)	1600
Goddard, T. L. (Borger, Tex.)	1787
Goebler, G. F. (Los Angeles)	1917
Goepper, K. (Orlando, Fla.)	1700
Goetz, W. F. (Dubuque, Ia.)	1600
Goldberg, N. J. (Los Angeles)	1990
Golding, B. (Wildwood, N.J.)	1600
Goldman, H. (Detroit)	1600
Goldsmith, J. (Rego Park, N.Y.)	1838
Goldstein, H. (Elizabeth, N.J.)	1952
Goldstein, J. (Everett, Mass.)	1450
Goldwater, W. (New York, N.Y.)	1973
Golec, F. J. (Chicago)	1751
Golla, R. W. (Evanston, Ill.)	1942
Golsen, J. E. (Okla. City)	1400
Gonnella, J. C. (Richfield, Minn.)	1500
Goodman, J. (Cleveland)	1756
Goodman, M. (Lynn, Mass.)	1450
Goodspeed, R. (Quincy, Mass.)	1500
Goodwin, C. J. (Univ. Park, Pa.)	1400
Goodwin, J. (Ft. Worth, Tex.)	1700
Gordeef, C. (Oakland, Cal.)	1830
Gording, E. J. (Windber, Pa.)	2037
Gordon, B. (W. Palm Beach, Fla.)	2056
Gordon, H. (Los Angeles)	2003
Gordon, L. (Orlando, Fla.)	1500
Gordon, M. (Los Angeles)	2045
Gordon, R. W. (Exeter, N.H.)	1300
Gordon, W. (Ft. Lauderdale, Fla.)	1650
Gore, J. P. (New York, N.Y.)	2172
Gorman, C. Jr. (Maryville, Tenn.)	1556
Gottesman, M. (New Haven, Ct.)	1978
Gottlieb, F. (San Francisco)	1600
Gottlieb, L. (Baltimore)	1500
Gould, B. (Newburyport, Mass.)	1831
Gould, H. W. (De Kalb, Ill.)	1577
Gould, Marg. (Newburyport, Mass.)	1682
Gould, T. (Newburyport, Mass.)	1400
Gove, R. C. (Wayzata, Minn.)	1844
Gracia, V. (Temple, Tex.)	1825
Graetz, L. (Hansboro, N.D.)	1658
Graf, L. (Hallstead, Pa.)	1786
Graf, Sonja (Palm Sprgs., Cal.)	2037
Graham, L. E. (Kans. City, Mo.)	1904
Grande, R. (Channahon, Ill.)	1897
Grandjean, A. (Cleveland)	1700
Grant, N. (Monroe, La.)	2034
Gray, C. (Spokane, Wash.)	1620
Gray, C. H. (Brookline, Mass.)	1723
Gray, O. (Cleveland)	1675
Green, Matthew (Sussex, N.J.)	2138
Green, R. C. (Catonsville, Md.)	1450
Green, R. F. (Rochester, N.Y.)	1750
Green, W. (Rochester, N.Y.)	1750
Green, W. (Atl. City, N.J.)	1694
Greenbank, R. (Upper Darby, Pa.)	1687
Greenberg, S. (New York, N.Y.)	1880
Greene, L. (Cleveland)	1780
Greene, L. (Gables, Mich.)	1649
Greene, S. (Elmsford, N.Y.)	1923
Greene, S. (Sturgeon Bay, Wis.)	1600
Greene, W. (Univ. Park, Pa.)	1400
Greenwood, J. (Ft. Lauderdale)	1578
Gregg, D. (Cleveland)	1588
Gregory, F. (Kingsville, Tex.)	1620
Gregory, T. R. (Tulsa, Okla.)	1700
Greiner, D. (Cape May, N.J.)	1550
Greiner, P. (Cape May, N.J.)	1500
Greiser, Mrs. G. (New York, N.Y.)	1983

Greubel, O. W. (Racine, Wis.)	1524
Gribbin, D. J. (Toledo, O.)	1500
Gribbin, E. A. (Toledo, O.)	1650
Gribbin, Mrs. (Toledo, O.)	1500
Gries, C. (Cleveland)	1700
Griffith, J. (Cleveland)	1500
Griffiths, C. (Seattle, Wash.)	1734
Griffiths, T. (Des Moines, Ia.)	1685
Grimm, E. C. (Tulsa, Okla.)	1500
Groesbeck, F. (Albuquerque)	1786
Grombacher, W. (Chicago)	1980
Gronau, W. F. (Dubuque, Ia.)	1575
Griehong, R. (Greensboro, N.C.)	1710
Gross, Benj. (San Francisco)	1911
Gross, D. (Bronx, N.Y.)	1800
Gross, F. (La Canada, Cal.)	1707
Gross, H. (San Francisco)	2122
Gross, L. (Compton, Cal.)	1810
Gross, R. (Compton, Cal.)	2028
Grossguth, C. L. (Cranston, R.I.)	2005
Gruenberg, L. (Brooklyn, N.Y.)	1650
Grumette, L. (Hollywood, Cal.)	1735
Guala, Betty (Westbury, N.Y.)	1563
Guala, V. A. (Westbury, N.Y.)	2142
Guardian, V. (Dearborn, Mich.)	1400
Guber, S. (Brooklyn, N.Y.)	1913
Gugeler, A. (Cleveland)	1500
Guibert, M. (St. Paul, Minn.)	1550
Guidry, R. (Corp. Christi, Tex.)	1585
Guinan, Mrs. (Philadelphia)	1806
Gurski, D. (Allentown, Pa.)	1650
Gustafson, K. (Attleboro, Mass.)	1908
Gusztis, P. (Cleveland)	1728
Gufekunst, T. (Allentown, Pa.)	2076
Guthridge, L. (York, Pa.)	1624
Gyermathy, E. (Cleveland)	1657

H

Haarup, C. (W. Palm Beach, Fla.)	1670
Haban, F. (Cleveland)	1865
Haber, S. H. (Buffalo, N.Y.)	1600
Hackett, C. (Corp. Christi, Tex.)	1250
Hafer, R. (Ventnor, N.J.)	1400
Hagan, O. (Miami, Fla.)	1450
Haidu, R. (Elizabeth, N.J.)	1800
Hajicek, J. (Minneapolis)	1723
Hale, A. (Toledo, O.)	1550
Hale, J. (Rochester, N.Y.)	1900
Haley, P. G. (Sarnia, Ont.)	1877
Hall, L. M. (New York, N.Y.)	1650
Hallett, F. (Ft. Lauderdale)	1650
Halmosi, R. (Cleveland)	1766
Halperin, I. E. (Cleveland)	1734
Hamburger, D. (Up. Darby, Pa.)	2163
Hamburger, R. (Rochester, N.Y.)	1750
Hamel, R. A. (Salina, Kans.)	1650
Hamilton, D. E. (Tacoma, Wash.)	1740
Hamilton, D. (Rochester, N.Y.)	1500
Hamilton, L. (Lansing, Mich.)	1570
Hamilton, W. R. (Greensburg, Pa.)	1884
Hamman, R. (Canoga Park, Cal.)	2068
Hammett, F. W. (San Antonio)	1697
Hammond, A. E. (Riderwood, Md.)	1625
Hammond, R. P. (Wh. Bera Lake)	1658
Hamner, F. G. (Birmingham, Ala.)	1827
Hampton, J. (Berkeley, Cal.)	1600
Hand, E. E. (West Haven, Ct.)	1854
Haney, D. W. (Bel Air, Md.)	1720
Hanin, E. (Milwaukee)	1869
Hanker, J. (Lawrence, Kans.)	1610
Hannay, G. (Rochester, N.Y.)	1854
Hans, J. L. (New York, N.Y.)	1997
Hansen, R. (Missoula, Mont.)	1812
Hardesty, G. (Okla. City)	1665
Hardman, G. (Garden City, N.Y.)	1817
Hardy, D. (Berkeley, Cal.)	1700
Hardy, H. A. (Kans. City, Mo.)	1814
Hardy, Jack (Gary, Ind.)	1992
Harley, O. L. (Ft. Worth, Tex.)	1500
Harrell, M. (Ft. Worth, Tex.)	1450
Harris, M. (Hamilton, Ont.)	1943
Harris, R. B. (San Antonio)	1670
Harris, W. J. (Chicago)	1640
Harrison, A. K. (Toledo, O.)	1600
Harrold, J. I. (Rutherford, N.J.)	1800
Harrow, M. (Jamaica, N.Y.)	2198
Hart, G. (Somerville, Mass.)	1800
Hart, Ivy (Plainview, Tex.)	1719
Hart, R. E. (Wichita, Kans.)	1770
Harth, A. (Ft. Knox, Ky.)	1955
Hartigan, J. (Elkhart, Ind.)	1700
Hartleb, G. E. (Tampa, Fla.)	2080
Hartling, W. F. (St. Albans, W.Va.)	1884
Hartman, F. R. (Univ. Park, Pa.)	1400
Hartman, J. (Spokane, Wash.)	1662
Hartwell, D. F. (Amarillo, Tex.)	1670
Harvey, J. S. (Bedford, O.)	1794
Harvey, J. W. (Hollywood, Fla.)	1833
Harvey, P. (Cleveland)	1802
Harvey, R. (Long Beach, Cal.)	1500
Harwell, G. (Durham, N.C.)	1801
Hasenstaub, J. (Cleveland)	1500
Hatch, A. (Toledo, O.)	1750
Hatch, D. (Toledo, O.)	1800
Hattersley, T. (Rochester, N.Y.)	1600
Hauck, S. H. (Plainfield, N.J.)	1911
Hauer, L. (St. Paul, Minn.)	1720
Hawley, R. (Tenafly, N.J.)	1400
Hay, E. (Spokane, Wash.)	1600
Hayden, P. (Toledo, O.)	1600
Hayes, R. B. (Signal Mt., Tenn.)	2059
Hayes, W. (Waterloo, N.Y.)	1700
Haymaker, A. L. (Corp. Christi)	1500
Haymaker, T. W. (Kingsville, Tex.)	1575
Hays, Rhys (New York, N.Y.)	1975
Hayward, V. S. (Huntton, W.Va.)	1536
Hearsey, E. (Los Angeles)	1400
Hedreen, J. C. (Exeter, N.H.)	1450
Heineman, S. (Irvington, N.J.)	2041
Heinold, H. (Bridgeton, N.J.)	1709
Heising, C. R. (Hamilton, O.)	2018
Helbig, P. (No. Bergen, N.J.)	1728
Helzner, A. (Salem, Mass.)	1890
Hemmeter, E. (Cleveland)	1700
Henderson, A. T. (Tazewell, Va.)	1696
Henderson, C. E. (Bev. Hills, Cal.)	1907
Henderson, C. (Lake Villa, Ill.)	1746
Henderson, G. (Austin, Tex.)	1868
Henderson, P. S. (Lynchburg, Va.)	1893
Henderson, G. (Charleston, W.Va.)	1807
Hendricks, W. (S. San Francisco)	1998
Henry, L. L. (Pittsburgh, Pa.)	1800
Henry, R. J. (Perryburg, O.)	1944
Henry, W. P. (Ft. Wayne, Ind.)	1877
Hermes, G. (Baltimore)	1770
Herr, E. L. (State Coll., Pa.)	1750
Herrera, J. E. (Catonsville, Md.)	2080
Hersey, C. (Rochester, N.Y.)	1500
Hershey, G. (Wichita, Kans.)	1820
Hershey, L. (Wichita, Kans.)	1766
Hervet, R. J. (No. Platte, Neb.)	1881

Hersh, P. (Mt. Vernon, N.Y.)	1762
Hersberger, M. (Rochester, N.Y.)	2137
Hesse, H. V. (Bethlehem, Pa.)	2163
Hessing, K. (Louisville, Ky.)	1550
Hewes, R. L. (So. Bend, Ind.)	1833
Hickman, H. W. (Allston, Mass.)	2040
Hidveghy, G. (Cleveland)	1500
Higginbotham, G. (New Orleans)	1550
Higgins, Mrs. O. (S. Barbara, Cal.)	1661
Higginson, R. (Spokane, Wash.)	1836
Higler, W. (Herkimer, N.Y.)	1808
Higuera, A. (Puerto Rico)	1784
Hilburn, R. (Plainview, Tex.)	1780
Hildebrand, F. (Albuquerque)	1700
Hildebrand, J. Jr. (Clayton, N.J.)	1952
Hill, D. (Portsmouth, N.H.)	1750
Hill, Myron Jr. (Ohio)	1774
Hillinger, C. (New York, N.Y.)	2148
Himylowich, W. (Cleveland)	1900
Hinrichs, E. (Riderwood, Md.)	1450
Hiris, E. (Toledo, O.)	1750
Hirons, P. G. (Providence, R.I.)	1700
Hirtz, P. (Cleveland)	1450
Hitchcock, D. (Baltimore)	1650
Hitchcock, R. (Ann Arbor, Mich.)	1782
Hobbs, J. W. (Pittsburgh, Pa.)	1961
Hobson, A. H. (Montpelier, Vt.)	1933
Hochholter, R. (St. Chas., Minn.)	1500
Hodges, D. L. (Exeter, N.H.)	1420
Hoeflin, E. (St. Paul, Minn.)	1811
Hoffer, E. (Berkeley, Cal.)	1769
Hoffer, O. (Providence, R.I.)	1950
Hoffman, G. (Sicklerville, N.J.)	1538
Hoffman, J. (Baltimore)	1440
Hoffman, R. (Gross Pt., Mich.)	1900
Hoffmann, G. (Egg Harbor, N.J.)	1400
Hofvendahl, R. (San Jose, Cal.)	1670
Hoge, J. (Anchorage, Ky.)	1400
Hoge, W. H. (Yakima, Wash.)	1922
Holbrook, H. (Irvington, N.J.)	1794
Holcomb, H. (St. Paul, Minn.)	1400
Holden, C. A. Jr. (New Prov., R.I.)	1744
Hollingsworth, M. (Ft. Worth, Tex.)	1500
Holladay, E. (Charlottesville)	1780
Holland, K. D. (Princeton, Ind.)	1630
Hollowell, R. (Cleveland)	1500
Holmes, C. W. (Mid. River, Md.)	1780
Holmes, R. Jr. (San Antonio, Tex.)	1786
Holmes, T. P. (Okla. City)	1550
Holodny, E. (New York, N.Y.)	1829
Holt, W. (Rochester, N.Y.)	1850
Holway, L. H. (Groton, Ct.)	1570
Holzhausen, W. (Sheboygan, Wis.)	1736
Holsey, E. (Rochester, N.Y.)	1600
Honsik, F. J. (Phoenix, Ariz.)	1875
Hookey, L. (Pleasantville, N.J.)	1700
Horne, R. E. Jr. (Plainview, Tex.)	1867
Hornstein, N. H. (Southport, N.C.)	1912
Horny, E. (Passaic, N.J.)	1837
Hornyak, S. (Cleveland)	1810
Horowitz, F. (New York, N.Y.)	1857
Horowitz, M. (San Francisco)	1500
Houghton, R. G. (Newark, N.J.)	1653
Houle, P. D. (Ft. Lauderdale, Fla.)	1600
House, C. W. (Santa Cruz, Cal.)	1650
Housewirth, G. H. (Detroit, Mich.)	1888
Housfeld, Mrs. L. (Milwaukee)	1536
Howarth, J. (Providence, R.I.)	1600
Howes, K. L. (S. Charleston, O.)	1698
Hubbard, D. (New York, N.Y.)	1700
Hubbard, J. (El Paso, Tex.)	1300
Hube, H. K. (Appleton, Wis.)	1700
Huber, D. (Cleveland)	1850
Hubiak, D. D. (White Sands, N.M.)	1927
Hudson, G. A. (Sistersville, W.Va.)	1718
Hudson, J. A. (Dover AFB, Del.)	2167
Hudson, L. (Ft. Worth, Tex.)	1500
Hufnagel, F. (Los Angeles)	1905
Hughes, J. (Grosse Pt., Mich.)	1560
Hughes, R. (Louisville, Ky.)	1500
Hullett, T. (San Francisco)	1450
Hulmes, A. (Denver, Colo.)	1775
Hultgren, G. (Berkeley, Cal.)	1824
Hume, V. (Shelburne Falls, Mass.)	1688
Humphrey, A. (Cleveland)	1850
Humphreys, J. (Tenafly, N.J.)	1850
Humphreys, R. (Detroit)	1400
Huneke, C. (San Francisco)	1809
Hunnex, G. (Elsinore, Cal.)	2073
Hunt, H. (Irvington, N.J.)	1678
Hunter, C. E. (Phoenix, Ariz.)	1775
Huntress, K. G. (Ames, Ia.)	1629
Huppert, M. J. (Brooklyn, N.Y.)	1662
Hurlburt, L. (Springfield, Mo.)	1812
Hurley, J. T. (San Francisco)	1500
Hursch, J. L. (Berkeley, Cal.)	2053
Hurt, B. C. (Exeter, N.H.)	1550
Hurt, Clara (Orinda, Cal.)	1450
Hurt, J. F. Jr. (Charleston, W.Va.)	1984
Hurtlen, N. (Union, N.J.)	2020
Hurtlen, R. (Union, N.J.)	2029
Huse, H. K. (Appleton, Wis.)	1758
Huseby, D. (Baltimore)	1500
Hutaff, O. C. (Wilmington, N.C.)	1861
Hutchens, E. (Knoxville, Tenn.)	1650
Hutchinson, G. (Middlesboro, Ky.)	1500
Hutchinson, G. (Westfield, N.J.)	2049
Huth, J. L. (Kokomo, Ind.)	1795
Hutzmann, E. (Huntington, N.Y.)	1850
Hux, R. (Grand Prairie, Tex.)	2060
Hyde, H. C. (San Antonio, Tex.)	1900
Hynes, E. C. (Sauquoit, Mass.)	1708
Hyzy, A. (Rochester, N.Y.)	1650

I

Ifill, D. (Patton, Cal.)	1650
Igra, L. (Oakland, Cal.)	1798
Ilderton, R. B. (Chicago)	2050
Inbusch, F. Jr. (Milwaukee)	1977
Ingle, N. (Cockeysville, Md.)	1500
Innis, A. B. (Albuquerque, N.M.)	1783
Ireland, E. E. (Omaha, Neb.)	1958
Irvine, W. (Rochester, N.Y.)	1600
Isaacs, B. R. (Phoenix, Ariz.)	1825

Kimball, R. (Newburyport)	1688
Kime, R. H. (Racine, Wis.)	1859
Kime, W. (San Francisco)	1600*
Kindig, H. (Otsego, Mich.)	1805
King, C. D. (Fremont, O.)	1652
King, H. (San Francisco)	1810
King, L. G. (Norfolk, Va.)	1700
King, M. E. (Waterloo, Ia.)	1550*
King, S. W. D. (Groton, Ct.)	1919
Kinnear, W. (Toledo, O.)	1600*
Kinsley, C. (Rochester, N.Y.)	1735
Kiperts, A. J. (Spokane, Wash.)	1670
Kiraly, W. (Cleveland)	1500*
Kirby, R. C. (Chicago)	2007
Kirchner, K. (Waterloo, N.Y.)	2150*
Kirchner, Mrs. (Waterloo, N.Y.)	1600*
Kirke, A. (Ft. Worth, Tex.)	1650*
Kirkwood, I. (Urbana, Ill.)	1976*
Kish, E. J. (Bradford, Pa.)	1648
Kiss, M. (Garwood, N.J.)	1800*
Kiszely, K. (Spokane, Wash.)	1619
Kittredge, R. F. (Spokane)	1820
Kittsley, S. L. (Milwaukee)	1878
Klausner, M. (Los Angeles)	1750*
Klavins, A. (Hartford, Ct.)	1916
Kleeger, H. (New York, N.Y.)	1876
Kligerman, L. (At. City, N.J.)	1800*
Kline, V. (Cleveland)	1650
Klinko, A. S. (Campbell, O.)	1712*
Klinushkoff, A. (Boston)	1963
Klomparsens, A. (Homestead, Fla.)	1885
Klotz, B. P. (Phoenix, Ariz.)	1900*
Kluck, H. (Cleveland)	1500*
Knack, A. (Redwood City, Cal.)	1640*
Kneeream, R. J. (Reading, Pa.)	2094*
Kner, V. (Cleveland)	1724
Kniesel, W. R. (St. Paul, Minn.)	1612
Knight, H. V. (Neodesha, Ks.)	1600*
Knoop, J. (Delmont, N.J.)	1600*
Knox, P. C. (Deland, Fla.)	1723
Koch, K. (Rochester, N.Y.)	1650*
Kocjan, W. (Chicago)	1700*
Kocourek, R. A. (St. Paul, Minn.)	1550*
Koenig, J. (New York, N.Y.)	1550*
Koenig, W. (Oakland, Cal.)	1350*
Koenig, W. C. (Baltimore)	1550*
Koester, W. (Waukesha, Wis.)	1800*
Koger, J. D. (New Orleans)	1611
Kohler, A. (Jamaica, N.Y.)	1800*
Kohlhoff, R. (E. Paterson, N.J.)	1741
Koles, J. J. (Bronx, N.Y.)	1880
Kolesar, J. (Minneapolis)	1565
Kolody, P. (Detroit)	1858
Kolosso, P. (Appleton, Wis.)	1643
Koltun, J. (Philadelphia)	1770*
Konopliv, N. (Minneapolis)	1780*
Konfautas, P. (So. Boston)	1800*
Kontra, J. (Cleveland)	1700*
Koppany, A. (Philadelphia)	1989
Korczyk, B. (Rochester, N.Y.)	1600*
Korduba, J. (Cleveland)	1780*
Kornblum, M. (Ladue, Mo.)	1750*
Korsgaard, S. (Cleveland)	1780
Kosiba, W. (Gary, Ind.)	1764
Kosoff, H. (State Coll., Pa.)	1400*
Kossak, E. (Cleveland)	1788
Kostic, V. (Gary, Ind.)	2046*
Kotloby, A. P. (Jenkintown, Pa.)	1800*
Koutz, R. K. (Inglewood, Cal.)	1898
Koval, E. (Rochester, N.Y.)	1800*
Kowalski, L. J. (Phoenix, Ariz.)	1650*
Kowalski, S. W. (E. Orange, N.J.)	2078
Kraja, J. (Youngstown, O.)	1810
Kramer, M. (N. Plainfield, N.J.)	1887
Kramer, M. (Baltimore)	1800*
Kraszewski, J. (Milwaukee)	2144
Kraszewski, L. (New Britain)	1760*
Kratz, M. M. (Millville, N.J.)	1700
Kraus, G. (Trenton, N.J.)	1968
Kraus, A. (Boulder, Colo.)	1730*
Krause, R. (Cleveland)	1697
Krebill, H. J. (Ft. Madison, Ia.)	1575
Krell, W. (Irvington, N.J.)	1810
Kreuz, H. (Paterson, N.J.)	1800*
Krieg, D. (Rochester, N.Y.)	1750*
Krivosharko, A. (New York, N.Y.)	1643*
Krivoshenko, J. (Rochester, N.Y.)	1700
Krmpotich, G. (Cleveland)	1880
Krnzirec, A. (Cleveland)	1800*
Krofssik, P. (Fairfield, Ct.)	1900*
Kroll, P. (San Francisco)	1450*
Kromer, R. F. (Spokane, Wash.)	1853
Kronquist, R. (Walla Walla)	1800
Krumins, A. F. (Chicago)	2143
Krumins, H. (Cleveland)	1801
Krumins, J. (Cleveland)	1550
Krylow, K. (Ft. Benning, Ga.)	1850*
Krysa, W. (Cleveland)	1600
Kugel, E. (El Paso, Tex.)	1500*
Kuhn, K. R. (Webster, N.Y.)	1650*
Kuiat, A. (Ontario, N.Y.)	1800*
Kujawa, G. S. (Milwaukee)	1615
Kujawski, B. (Toledo, O.)	1450*
Kuioth, R. (Milwaukee)	1956
Kultschysky, I. (Phila., Pa.)	1400*
Kumagi, J. (Cleveland)	1800
Kunce, A. D. Jr. (Phillips, Tex.)	1600*
Kunoff, H. (Cleveland)	1500*
Kuntz, W. V. (Chalmette, La.)	1320*
Kunz, R. B. (Racine, Wis.)	1820
Kunzman, H. (Ormond Bch, Fla.)	1860*
Kupka, E. (Berkeley, Cal.)	1849
Kupperman, J. J. C. (Chicago)	1823
Kuritz, F. (E. Hampton, Ct.)	1637
Kwapich, R. J. (Toledo, O.)	1550*
Kwartler, H. (Vineland, N.J.)	1700*

— L —

La Belle, R. (Stanley, N.Y.)	1670
Labowitz, G. (Kans. City, Mo.)	1500*
Laemers, J. A. (Hazel Park, Mich.)	1700*
LaFreniere, O. (Seattle, Wash.)	1729
LaGrange, J. (Davenport, Ia.)	1575
Lahe, P. (Ft. Knox, Ky.)	1615
Lake, C. (Rochester, N.Y.)	1750*
Lake, R. G. (Toledo, O.)	1914
Lamb, L. H. (Knoxville, Tenn.)	1700*
Lamon, R. (Berkeley, Cal.)	1800*
Lanam, W. E. (Berkeley, Cal.)	1600*
Lander, G. (Baltimore)	1650*
Landfair, W. (Oakland, Cal.)	1960
Landis, C. B. (Milwaukee)	1684
Landolt, R. (Wauwatosa, Wis.)	1637
Lane, R. W. (S. Glastonbury, Ct.)	1971
Lane, T. (Xenia, O.)	1656
Lang, C. W. (Rochester, N.Y.)	2100*
Lang, E. B. Jr. (Rochester, N.Y.)	1750*
Langley, R. (Millville, N.J.)	1400*
Lankhorst, J. (Exeter, N.H.)	1800*
Lapiken, P. (Los Angeles)	2173

LaPlaca, R. (Oakland, Cal.)	1710*
Larsen, L. W. (Racine, Wis.)	1560
Larsen, R. (Cleveland)	1650*
Larson, A. J. (Kans. City, Mo.)	1661
Larson, C. W. (St. Paul, Minn.)	1796
Larson, M. (Redwood City, Cal.)	1980*
LaRuche, P. (Albuquerque)	1650*
LaSarko, J. (Baltimore)	1911
Lasher, H. (Cleveland)	1600
Lasich, J. (Berkeley, Cal.)	1700*
Laskorski, R. (Bronx, N.Y.)	1500*
Latta, G. (Palo Alto, Cal.)	1985
Laucks, E. F. (W. Orange, N.J.)	1736
Lavandero, J. (New York, N.Y.)	1956
Lawhon, G. (Melbourne, Fla.)	1800*
Lay, K. (Fond du Lac, Wis.)	1771
Lazarus, S. (Euclid, O.)	1849
Leavitt, J. (Anson, Tex.)	1625
LeCorno, P. C. (Highland, Pk. Mich.)	2073
Ledgerwood, L. (Oakland, Cal.)	2044
Lee, R. (Morgantown, W.Va.)	1797
Lee, W. D. (El Paso, Tex.)	1750*
Leewright, R. V. (Wichita, Ks.)	1800*
Lefferts, E. (Rochester, N.Y.)	1820*
Lehmer, R. H. (St. Coll, Pa.)	1700*
Leiber, F. (Chicago)	1863*
Leibowitz, A. (Philadelphia)	1700*
Leighton, J. A. (New Orleans)	1350
Leininger, E. (U.S. Army)	1866
Leister, A. (Tulsa, Okla.)	1750*
Leitch, J. (Cleveland)	1835
Leikes, S. (Cleveland)	1826
Lenk, E. W. (New York, N.Y.)	1597
Lenz, P. (Union, N.J.)	1652
Lepp, R. (Albuquerque)	1625
Leuch, R. (Baltimore)	1675
Lerman, H. N. (Hartford, Ct.)	1968
Lester, O. A. (W. Newbury, Mass.)	2003
Levin, F. (New Orleans)	1600*
Levin, P. (Lynn, Mass.)	1900*
Levin, S. (Baltimore)	1750*
Levine, T. S. (Pt. Wash., N.Y.)	2000*
Levy, A. (Louisville, Ky.)	1750*
Levy, D. (Philadelphia)	1500
Levy, R. (Buffalo, N.Y.)	1400*
Lewis, B. O. (Lincoln, Neb.)	1810
Lewis, R. (Avon Lake, O.)	1829
Lewis, R. (Irvington, N.J.)	1880
Lichow, L. (Philadelphia)	1730*
Lieb, J. (Omaha, Neb.)	1600
Lieb, L. (Irvington, N.J.)	1850*
Lieberman, J. (Oakland, Cal.)	1710*
Lieberman, M. (Miami, Fla.)	1720*
Liebligh, J. (Vineland, N.J.)	1804
Lief, H. (New Orleans)	1500
Liehl, F. (Cleveland)	1662
Lien, E. (Berkeley, Cal.)	1756
Lienenweber, Mrs. (Spokane)	1500*
Liepaskians, V. (Milwaukee)	1896
Liepniaks, A. (Lincoln, Neb.)	2132
Liess, R. (Rochester, N.Y.)	1750*
Liaquet, R. A. (Milton, Wis.)	1525
Lightman, D. (Bloomington, Ind.)	1700*
Litvoet, P. (Kalamazoo, Mich.)	1722
Lilley, J. (Omaha, Neb.)	1300*
Lilly, R. R. (Wanaque, N.J.)	2000*
Lilly, S. B. (Toledo, O.)	1773
Lind, F. (Rochester, N.Y.)	1750*
Lindberg, G. (Davenport, Ia.)	1512
Lindblade, L. E. (Moline, Ill.)	1617
Lindow, D. (Cleveland)	1800*
Lindsey, J. (New Orleans)	1500*
Lindsey, M. E. (Corp. Christi)	1550*
Lindstrom, E. (Long Beach, Cal.)	1808
Lindstrom, Mrs. (Long Bch., Cal.)	1400*
Ling, R. (Fairborn, D.)	1822
Ling, C. (Bismarck, N.D.)	1600*
Linn, S. (Flushing, N.Y.)	1946
Lippman, I. (Newark, N.J.)	1728
Lipsius, S. (Philadelphia)	1740*
Lipton, M. (Millville, N.J.)	1656
Liffin, W. J. (New York, N.Y.)	2043*
Liu, C. H. (Urbana, Ill.)	2050*
Lively, J. (New Orleans)	1655
Livemore, E. F. (Spokane)	1600*
Livingston, R. (Cleveland)	1500*
Llorens, A. (Charlottesville)	1550*
Lloyd, D. L. (Elkhart, Ind.)	1964
Lockett, A. M. (New Orleans)	1920
Locus, R. C. (Rochester, N.Y.)	1600*
Loeb, J. B. (New Orleans)	1695
Loening, K. L. (Columbus, O.)	1871
Logies, R. (Cleveland)	1575
Loquood, E. (San Francisco)	1995
Long, J. B. (Jersey City, N.J.)	1696
Long, R. (Ft. Smith, Ark.)	1933
Longenecker, M. (New Orleans)	1500*
Look, Bob (Milwaukee)	1500*
Lorber, R. (Reseda, Cal.)	1969
Lorie, T. (New York, N.Y.)	2032
Lorris, S. G. (Cambridge, Mass.)	1631
Loser, Wm. (Muncie, Ind.)	1600*
Loter, C. E. (Wheeler, Tex.)	1764
Lowack, W. P. (Rochester, N.Y.)	1700*
Luhell, M. (Oakland, Cal.)	1817
Lubliner, F. (For. Hills, N.Y.)	1758
Lucca, A. (Winslow, N.J.)	1500*
Luciw, S. (Cleveland)	1758
Ludlow, R. Jr. (Orlando, Fla.)	2002
Luviel, C. (Marensdale, Mich.)	1550
Luvs, P. T. (Scottsdale, Ariz.)	1775
Lulham, M. (Spokane, Wash.)	1674*
Lumpkin, C. R. (Corp. Christi)	1500*
Lunde, A. R. (Spokane, Wash.)	1750
Lundin, H. (Minneapolis)	1619
Lutes, W. (Bloomington, Ind.)	1957
Lutgen, E. M. (Minneapolis)	1675
Lutz, G. (San Francisco)	1848
Lutz, W. J. (Westbrook, Me.)	1798
Lyle, G. (Annapolis, Md.)	1760*
Lyman, H. (Mattapan, Mass.)	2188
Lyman, S. (Dorchester, Mass.)	2131
Lynch, F. D. (St. Pete Bg., Fla.)	1918
Lynne, Miss I. (Wash., D.C.)	1703
Lyon, C. A. (Peoria, Ill.)	1720

— Mc —

McAuley, A. L. (New Orleans)	2060
McBride, J. (St. Paul, Minn.)	1565
McBride, P. (Kelso, Wash.)	1600*
McCarthy, R. (Sta. Is., N.Y.)	1375*
McCasland, S. (Charville, Va.)	1751
McChesney, M. (Wilmington, N.C.)	1782
McClain, G. (San Francisco)	2034
McClancy, T. (Cleveland)	1812
McClary, R. (San Francisco)	1400*
McClellan, D. H. (Pittsburgh)	1978
McClellan, H. B. (Xenia, O.)	1731
McClellan, J. (Tucson, Ariz.)	1995*
McClendon, F. (New Orleans)	1781

McCloskey, D. (Cleveland)	1550*
McComas, H. R. (Baltimore)	2112
McComas, W. (Hunt'ton, W.Va.)	1575
McCormack, R. (Boston)	1550
McCormick, E. (E. Orange, N.J.)	2092
McCormick, J. H. (Seattle)	2049
McCracken, C. (Columbus, O.)	1701
McCreedy, R. R. (Cincinnati)	2027
McCurtain, J. (Ft. Worth, Tex.)	1600*
McDaniel, J. (Wichita, Kans.)	1450*
McDill, D. (Rochester, N.Y.)	1728
McElroy, T. (Shreveport, La.)	1697
McGee, J. (Omaha, Neb.)	1500*
McGinley, C. T. (Oakland, Cal.)	1575
McGrath, R. (Jersey City, N.J.)	1600*
McGregor, R. M. (Laramie, Wyo.)	2033
McGuire, B. H. (Exeter, N.H.)	1400*
McGuire, J. (Gadsden, Ala.)	1750
McIntosh, D. (New York, N.Y.)	1888*
McIntyre, C. (Salisbury, Md.)	1675
McIsaac, A. (Ft. Lauderdale)	1738
McIver, J. W. (Galveston, Tex.)	1650
McKee, R. J. (Tappan, N.D.)	1800*
McKenna, Mrs. (Phoenix, Ariz.)	1450
McKinney, M. (Youngstown, O.)	1734
McLaughlin, W. D. (Wichita, Ks.)	1882
McLellan, R. A. (Omaha, Neb.)	2030
McLemore, S. D. (Austin, Tex.)	1791
McLeod, D. (San Bruno, Cal.)	1861
McLeod, Mrs. (San Bruno, Cal.)	1813
McManus, M. (Waterloo, Ia.)	1400*
McNeese, J. (Portland, Ore.)	1870*
McWilliam, F. (S. Leandro, Cal.)	1550*

— M —

Macaluso, N. (New Orleans)	1600
MacCormick, Robt	1400*
MacDonald, J. A. (Union, N.J.)	1943
MacDonald, K. R. (Wichita, Ks.)	1656
MacGregor, E. R. (Oakland, Cal.)	1600*
Mack, R. (Minneapolis)	1655
Macke, A. (New Orleans)	1632
Macke, C. (Baltimore, Md.)	1650*
Mackenzie, R. Jr. (Silverton, O.)	1827
MacLean, H. (Sturgeon Bay, Wis.)	1715
MacMillan, I. D. (Iowa)	1600*
MacNamara, C. (Lansdowne, Pa.)	1800
MacNeil, A. (Brisbane, Cal.)	1600*
Madacz, J. (Cleveland)	1575*
Madow, W. G. (Palo Alto, Cal.)	1900*
Madsen, N. (Elizabeth, N.J.)	1850*
Magee, L. T. (Omaha, Neb.)	2070
Mager, J. E. (Tillson, N.Y.)	1735
Maher, L. (Moline, Ill.)	2029
Mahoney, J. (Cleveland)	1679
Mahoney, W. (Cleveland)	1739
Maihot, A. (Miami, Fla.)	2046*
Maistros, T. (Cleveland)	1700
Maistrot, A. (Rochester, N.Y.)	1750*
Majutskiak, W. (Rochester, N.Y.)	1425
Makara, J. (Springfield, Mass.)	1425
Makens, T. E. (U.S. Navy)	1835
Malcolm, H. (Spokane, Wash.)	1730*
Malev, J. (Houston, Tex.)	1650*
Malles, M. (St. Paul, Minn.)	1520
Mallof, G. (Roanoke, Va.)	1620
Manahan, C. (Sunnyvale, Cal.)	1660*
Mangan, J. (Milwaukee)	1972
Mangus, C. (San Antonio, Tex.)	1745
Manis, L. (Elwood, Ind.)	1712
Mann, S. (New York, N.Y.)	1579
Mann, W. (Columbus, Ohio)	1996
Manners, A. (Cleveland)	1714
Mar, C. (Hartford, Conn.)	1620*
March, D. (New Orleans)	1450*
Marchand, E. W. (Rochester, N.Y.)	2135
Marchevich, J. (Phila., Pa.)	1500*
Marcovich, J. (San Francisco)	1350*
Margolin, B. (Los Angeles)	1835
Margulies, S. (Brooklyn, N.Y.)	2027
Maring, O. M. (Middletown, Ky.)	1922
Mark, A. R. (Louisville, Ky.)	1625
Markowski, A. (Toledo, O.)	1722
Markowski, S. L. (Toledo, O.)	1672
Marks, J. L. (New Orleans)	1843
Marks, J. 3rd (New Orleans)	1400*
Marks, M. (New Orleans)	1350*
Markus, G. (Cleveland)	1500*
Maron, D. E. (Bev. Hills, Cal.)	1858
Marsden, G. (Middletown, Pa.)	1700*
Marshall, R. (Perry, N.Y.)	1800*
Martens, A. (Cleveland)	1725
Martin, A. C. (Edgewood, R.I.)	2153
Martin, B. A. (Cleveland)	1400*
Martin, D. (Cleveland)	1400*
Martin, J. R. (Sarasota, Fla.)	1483
Martin, Mrs. (Sarasota, Fla.)	1574
Martin, R. Q. (Kew Gdns, N.Y.)	1944
Martinez, M. (New York, N.Y.)	1800*
Martinson, G. (Chesterton, Ind.)	1965
Martinson, J. R. (Omaha, Neb.)	1817
Mason, G. L. (Starke, Fla.)	1618
Mason, J. W. (Wichita, Kans.)	1744*
Masters, V. V. (Phoenix, Ariz.)	1800*
Mastour, A. R. (Phila., Pa.)	1717
Materi, H. T. (Ft. Bliss, Tex.)	1650*
Mathias, D. (Baltimore)	1500*
Matik, A. (Cleveland)	1800
Matlock, A. (Cleveland)	1620
Matthews, J. (Albuquerque)	1820*
Mattiat, O. (Cleveland)	1905
Mauer, G. J. (Buffalo, N.Y.)	2096
Mauer, J. V. (Buffalo, N.Y.)	1743
Mauldin, J. (Ft. Worth, Tex.)	1650*
Maxwell, T. (New Orleans)	1600*
Maxwell, W. F. Jr. (Toledo, O.)	175*
May, J. P. (Lancaster, O.)	1931*
Mayer, F. A. (Phila., Pa.)	1736
Mayer, J. (Louisville, Ky.)	2000
Maynard, L. (Ft. Lauderdale)	1400*
Meacham, C. (Monroe, Ark.)	1600

Naylor, R. V. (Silv. Sprg., Md.)	1884
Nebesh, E. (Cleveland)	1883
Nedved, K. (Chicago)	2110
Needham, A. G. (Rochester, N.Y.)	1500*
Neel, R. T. (Hunt'gton, W.Va.)	1736
Neff, D. L. (Ames, Ia.)	1600*
Neff, D. (St. Paul, Minn.)	1616
Neldich, G. (Rochester, N.Y.)	1840
Neldich, L. (Elizabeth, N.J.)	2062
Nelson, D. (New Orleans)	1606
Nelson, G. (Baltimore)	1670
Nelson, J. (Millville, N.J.)	1600*
Nelson, S. (Rochester, N.Y.)	1856
Nelson, T. C. (Yakima, Wash.)	1866
Nelson, W. (Omaha, Neb.)	1650*
Nemethy, L. (Cleveland)	1819
Nepokroeff, C. (Buffalo, N.Y.)	1675
Neubert, E. (Rochester, N.Y.)	1750*
Neugebauer, D. (W. Lafayette)	1894
Neuman, P. F. (Spokane, Wash.)	1769
Nevid, M. (Rochester, N.Y.)	1955
Nevins, W. N. (Lexington, Ky.)	1692
Newberry, K. (W. Haven, Ct.)	1400
Newberry, W. H. (W. Haven, Ct.)	1885
Newell, C. (Omaha, Neb.)	1400*
Newell, J. K. (San Antonio, Tex.)	1532
Newmark, L. (Columbus, O.)	1914*
Newton, P. C. (Raleigh, N.C.)	1631
Nieder, D. (California)	1800*
Nielsen, N. L. (San Francisco)	1645
Nielsen, P. (Berkeley, Cal.)	1774
Nielsen, F. (Cleveland)	1800*
Niemira, J. (Cleveland)	1800*
Niewarsky, P. (Cleveland)	1620
Nigg, J. (Dubuque, Ia.)	1590
Nigro, C. (Brooklyn, N.Y.)	2028
Nika, A. F. (Topeka, Kans.)	2004
Nilsson, V. (Youngstown, O.)	1400*
Nitschke, E. (Cleveland)	1600
Nixdorff, C. E. (Stratford, Ct.)	1664
Noble, D. (St. Paul, Minn.)	1650
Noblin, S. (Garner, N.C.)	1644
Noel, J. S. (Shreveport, La.)	1975
Noel, R. W. (Chagrin Falls, O.)	1804
Noland, H. (Seattle, Wash.)	2063*
Noonan, T. (Rochester, N.Y.)	1925
Northrup, R. A. (Tulsa, Okla.)	1630*
Norton, B. J. (El Paso, Tex.)	1700*
Nowak, J. A. (Chicago)	1995
Nowakowski, S. (Phila., Pa.)	2031
Nowicki, R. E. (Univ. Pk., Pa.)	1400*
Noyes, R. (Newburyport, Mass.)	1650*
Nurme, U. (Cleveland)	1900*
Nute, G. L. (Cambridge, Mass.)	1660
Nygren, R. (Oakland, Cal.)	1400*

— O —	
Oakes, M. (Cleveland)	1670*
Oberferst, N. (Miami, Fla.)	1957*
Oberg, J. E. (Racine, Wis.)	1753
O'Brien, E. F. (Ft. Bragg, N.C.)	1825
O'Brien, J. H. (Standish, Mich.)	1843
O'Connor, F. (Rochester, N.Y.)	1600*
Oderr, D. (New Orleans)	1575
Oderr, Mrs. (New Orleans)	1400*
O'Desky, R. (Toledo, O.)	1550*
O'Donnell, W. A. (Camden, N.J.)	1836
Offenberg, R. D. (Bronx, N.Y.)	1503
Ogawa, J. (E. Cleveland, O.)	1850
Ohn, D. (Indianapolis)	1810*
Oinas, V. (Bloomington, Ind.)	1651
O'Keefe, J. J. (Ann Arbor)	2131
Oldham, R. C. (Louisville, Ky.)	1764
Olenchuk, M. (Cleveland)	1650*
Oleson, S. H. (Chicago)	2002
Olevson, S. A. (Providence, R.I.)	1740*
Olin, R. C. (Tulsa, Okla.)	1720
Olins, E. (Milwaukee)	1928
Oliver, J. (Dadeville, Ala.)	1763
Oliver, W. (Spencerport, N.Y.)	1600*
Olivieri, R. (Cleveland)	1725
Olney, F. B. (State Coll., Pa.)	1600*
Olsen, J. A. (Glen Ridge, N.J.)	1750*
Olsen, J. C. (Tampa, Fla.)	1852
Olson, D. (Fargo, N.D.)	1450*
Olson, R. B. (Des Moines, Ia.)	1650*
Olson, R. E. (Versailles, Ct.)	1550*
Olvera, F. (Pittsburg, Cal.)	1871
O'Malley, D. (Salem, Mass.)	1675
O'Neil, T. (Cleveland)	1500*
Opp, K. (Lincoln, Neb.)	1849
Oppenheim, R. (San Antonio)	1500*
Oren, R. (Muncie, Ind.)	1841
Oring, S. (Rochester, N.Y.)	1714*
Orlandella, V. (Lynn, Mass.)	1732
Orner, G. (Philadelphia)	1700*
Orth, P. A. (St. Louis, Mo.)	1800*
Orloff, S. (St. Paul, Minn.)	1737
Oryshkewych, G. (Wheeling, W.Va.)	1450*
Osborn, M. (St. Louis, Mo.)	1850*
Osborne, R. (San Francisco)	1770*
O'Shaughnessy, L. (St. Paul)	1620
Osher, M. (New York, N.Y.)	1988
Osits, J. (River Falls, Wis.)	1525
Osmond, D. (Omaha, Neb.)	1800*
Osness, J. M. (Waterloo, Ia.)	1684
Osterning, L. (Oakland, Cal.)	1600
Ostrich, A. D. (New Orleans)	1741
Ostrowsky, R. (Bronx, N.Y.)	1500*
Ostrum, A. (Edinburg, Tex.)	1500*
Otero, C. (Rochester, N.Y.)	1849
Offen, A. C. (Miami, Fla.)	1998
Offeson, M. (St. Paul, Minn.)	2100
Offeson, W. (Milwaukee)	1531
Ouchi, K. (Bogota, N.J.)	1744
Overeem, H. Jr. (Clifton, N.J.)	1782
Owen, H. C. (Baton Rouge, La.)	1700*
Owen, J. (Avon, Ct.)	1786*
Owens, B. E. (Grt. Neck, N.Y.)	2151
Owens, E. H. (Kans. City, Mo.)	1783
Owens, S. R. (Avon Lake, O.)	1787
Owens, Mrs. (Avon Lake, O.)	1768
Owskiak, E. (Cleveland)	1701

— P —	
Paddrick, R. (Jamestown, N.Y.)	1578
Pafnutieff, V. (San Francisco)	2091
Pagasts, M. (Brooklyn, N.Y.)	1700*
Page, Miss H. (Los Angeles)	1500
Page, O. (Rochester, N.Y.)	1800*
Painter, J. F. (Hubbard, O.)	1400*
Pajor, J. (Detroit)	1793
Palm, O. H. (Darien, Conn.)	1725
Palmer, J. M. (Richmond, Va.)	1820
Palmer, M. (Detroit)	2078

Palmi, A. H. (Springport, Mich.)	1784
Pamiliens, J. (Brooklyn, N.Y.)	2059
Papp, G. (Cleveland)	1550*
Papp, J. (Cleveland)	1575
Paquin, F. (Salem, Mass.)	1650*
Pardo, H. (Miami, Fla.)	1988
Parham, F. (Natchez, Miss.)	1912
Paris, P. (Rochester, N.Y.)	1700*
Parker, G. H. (Spokane, Wash.)	1740
Parker, Jas. (New Orleans)	1450*
Parker, John (New Orleans)	1600*
Parker, Miss L. (New Orleans)	1400*
Parker, W. L. (Alameda, Cal.)	1720*
Parmelee, C. L. (Newark, N.J.)	2093
Parnell, R. C. (Kans. City, Mo.)	1693
Parrish, J. (Cleveland)	1630*
Parsons, R. (Centralia, Wash.)	1885
Paruta, M. (Cleveland)	1908
Passant, P. (Waterloo, N.Y.)	1700*
Pastinsky, M. (San Antonio)	2064
Patrick, M. W. (Northfield, O.)	1905
Patten, P. (St. Louis, Mo.)	1400*
Patterson, R. E. (Waterford, Ct.)	1470*
Pattullo, W. (San Francisco)	1700*
Pauer, Z. (Cleveland)	1975
Pauli, G. (Pueblo, Colo.)	1730*
Paul, A. W. (Wheeling, W.Va.)	1650
Pawliczko, I. (Rochester, N.Y.)	1600*
Paxton, W. (Lexington, Ky.)	1400*
Payne, C. W. (Okla. City)	1485
Payne, F. R. (Laredo AFB, Tex.)	1965
Payne, G. W. (Web. Groves, Mo.)	1844*
Payne, J. B. (San Antonio)	2141
Payne, R. W. (Okla. City)	1658*
Payne, T. W. (Lafayette, Ind.)	1650*
Peach, C. (Rochester, N.Y.)	1500*
Pearce, C. W. (Palm Beach, Fla.)	1725*
Pearlman, B. (Atl. City, N.J.)	1540
Pearson, B. (Dayton, Wash.)	1970*
Pearson, R. (Jamestown, N.Y.)	1500*
Peckar, M. (Brooklyn, N.Y.)	2057
Pederson, K. N. (Minneapolis)	2026
Pederson, A. (Miami, Fla.)	1833
Pedrick, E. W. (Philadelphia)	1752
Peoples, W. (Birmingham, Ala.)	1750*
Pehne, B. (Elkhart, Ind.)	2022
Peix, C. H. (Exeter, N.H.)	1300*
Peizer, D. (San Francisco)	1992
Pence, M. E. (Adrian, Mich.)	1948
Penfield, R. W. (Cleveland)	1538
Penico, A. J. (Medford, Mass.)	1550*
Pennington, C. (Westfield, N.J.)	1979
Penquite, J. (Ann Arbor)	2129
Penrose, O. (New Haven, Ct.)	1950*
Percival, S. (Sarnia, Ont.)	1700*
Perey, G. (New Orleans)	1700*
Perkins, R. (Arizona)	1500*
Perkins, W. A. (Topeka, Kans.)	1818
Perkins, M. (Cleveland)	1582
Perry, L. E. (Hayward, Cal.)	1500*
Perry, O. (Ft. Worth, Tex.)	1600
Persinger, L. (New York, N.Y.)	1833
Peseck, J. (San Francisco)	1800*
Peters, G. (Omaha, Neb.)	1450*
Peters, P. (Chicago)	1770*
Peterson, R. (Spokane, Wash.)	1650*
Petrus, J. (New York, N.Y.)	1717
Petrelli, E. A. (Exeter, N.H.)	1400*
Petricaks, J. (Palo Alto, Cal.)	1855
Petters, R. (Dacono, Colo.)	2075*
Pflumm, E. (New York, N.Y.)	1989
Philo, R. (Rochester, N.Y.)	1500*
Phillips, R. (Weehawken, N.J.)	1400*
Phillips, W. (Okla. City)	1782*
Piatigorsky, Mrs. (L. Angeles)	1821
Picard, D. (St. Paul, Minn.)	1571
Pienick, J. (Cranford, N.J.)	1500*
Pierson, R. (Providence, R.I.)	1740
Pilli, H. (Racine, Wis.)	1890
Pinault, D. (Pompano Bch., Fla.)	1550*
Pinkham, P. (Westfield, Mass.)	1400*
Pinne, G. (Omaha, Neb.)	1300*
Pinney, J. (Chapel Hill, N.C.)	1773
Pitschak, R. (Cleveland)	2135
Pitt, M. (Philadelphia)	1600*
Pittenger, W. D. (Dayton, O.)	1780*
Plack, A. (Cleveland)	1700
Plampin, W. (Alexandria, Va.)	1700*
Plank, C. J. (Woodbury, N.J.)	1814
Plantike, C. (St. Paul, Minn.)	1300*
Plaskacz, M. (Rochester, N.Y.)	2118*
Platau, G. O. (Columbus, O.)	1612
Platz, Dr. J. (E. Hartford, Ct.)	2152
Plenicher, E. (Cleveland)	1700*
Pleskacz, B. (Detroit)	1887
Plock, R. (Freeport, N.Y.)	1966
Plowden, R. W. (Florence, Ala.)	1638
Plunkett, J. (Overland, Mo.)	1905
Pluto, J. (Baltimore)	1725
Polkowski, G. (Jersey City)	1733
Pokornowski, E. (Buffalo, N.Y.)	1650*
Poliakoff, L. (San Antonio)	1968
Poling, P. R. (Birmingham, Ala.)	1400*
Pollock, J. J. (Toledo, O.)	1450*
Pollock, L. E. (McAllen, Tex.)	1750*
Pool, S. (Rochester, N.Y.)	1650*
Popham, J. (Heppner, Ore.)	1735*
Popovich, O. (Lakewood, N.J.)	2176
Popp, J. H. (Haven, Kans.)	1667
Porter, M. H. (Exeter, N.H.)	1350*
Porter, D. (Sanborn, Ia.)	1500*
Porth, R. (Sanborn, Ia.)	1706*
Potter, C. (Linden, N.J.)	1750
Potter, C. (Salem, Mass.)	1741
Potter, F. F. (Pullman, Wash.)	1600
Potter, R. B. (Dallas, Tex.)	2007
Poulsen, S. (Berkeley, Cal.)	1859
Powelson, R. (Ft. Worth, Tex.)	2036
Power, J. R. (New Haven, Ct.)	1700*
Powers, E. M. (Lexington, Ky.)	1673
Powers, J. H. (Livermore, Cal.)	1650*
Prabe, S. (Waterloo, N.Y.)	1600*
Predmore, W. (Rochester, N.Y.)	1600*
Preece, N. A. (Roanoke, Va.)	1565
Premier, L. T. (Kans. City, Mo.)	1725
Prewitt, G. (Coffville, Ky.)	1637
Price, B. (Omaha, Neb.)	1675
Price, R. T. (Amarillo, Tex.)	1480
Priddy, L. (Ft. Worth, Tex.)	1400*
Prindle, A. L. (Marshallfield, Wis.)	1532
Priscilla, T. (Harundale, Md.)	1770
Pritchard, C. (Moraga, Cal.)	1400*
Probers, C. (Ft. Worth, Tex.)	1550*
Prochaska, R. (Cleveland)	1661
Prochel, G. F. (Janesville)	1770
Proll, G. S. (Kittery, Me.)	1894
Propp, G. W. (Palm Beach, Fla.)	1879
Prue, S. (Haverhill, Mass.)	1600
Pruner, E. (San Francisco)	2171

Ptacek, M. (Chicago)	1828
Pucciarelli, Mrs. (N. Bergen)	1350*
Pula, T. J. (Baltimore)	1725*
Pulver, E. (Philadelphia)	1500*
Pupols, V. (Tacoma, Wash.)	2007
Purmalis, A. (Brooklyn, N.Y.)	1856
Purvis, J. (No. Haven, Ct.)	1600*
Purucker, J. L. (Columbus, O.)	1874
Putsche, T. R. (W. Hartford, Ct.)	1732
Putzman, S. D. (Boston)	2017
Pyle, J. B. (Evansville, Ind.)	1450
— Q —	
Quagliano, A. (New Orleans)	1480
Quane, D. (Brooklyn, N.Y.)	1530
Quarstrom, T. (Cleveland)	1550*
Quillen, D. (E. Orange, N.J.)	1650*
Quindry, A. E. (Philadelphia)	1862
Quindry, L. A. (Philadelphia)	1847
Quoss, G. C. (Baltimore)	1450*
— R —	
Radinsky, A. (San Francisco)	1600*
Radspinner, W. (New York, N.Y.)	1857
Raedeke, D. (St. Paul, Minn.)	1300*
Ragan, J. V. (St. Louis, Mo.)	2173
Raich, G. (Philadelphia)	1956
Railey, I. (San Carlos, Cal.)	1860*
Rajnoha, V. (Lincoln, Neb.)	1986
Rakutis, A. (Rochester, N.Y.)	1800*
Ralston, L. (Los Angeles)	1600
Ramirez, J. (San Francisco)	1450*
Rammel, W. (Newark, N.J.)	1770
Ramsdell, J. (Cleveland)	1500*
Ramzell, C. M. (Borger, Tex.)	1644
Randolph, J. (Corp. Christi)	1724
Randolph, J. W. (Metairie, La.)	1636
Rankis, A. E. (Bronx, N.Y.)	2077
Raphael, M. (Rochester, N.Y.)	1813
Rappaport, M. (Philadelphia)	1888
Rapuan, R. E. (W. Hartford, Ct.)	1873
Raschen, L. W. (Brooklyn, N.Y.)	1973
Rasis, C. (Miami, Fla.)	1918
Ratcliff, W. M. (New York, N.Y.)	1813
Ratnerman, L. (Iowa City)	2117
Rathmann, Fritz (Milwaukee)	1920
Ratnieks, M. (Berkeley, Cal.)	1600*
Raut, K. B. (Norman, Okla.)	1961
Ravas, V. (Cleveland)	1570
Raven, R. S. (Catonsville, Md.)	1890*
Rawley, W. (San Francisco)	1500*
Ray, P. (Kans. City, Mo.)	1742
Ray, W. (Appleton, Wis.)	1550*
Rayle, W. D. (Berea, O.)	1897
Raymond, A. E. (Lancaster, Cal.)	1927
Raymond, N. (Hartford, Ct.)	1853
Raynal, E. (Redwood City, Cal.)	1600*
Rea, G. (Los Angeles)	1550*
Ream, J. (Wash., D.C.)	1776
Rebol, W. L. (Berkeley, Cal.)	1797
Redihan, C. N. (Providence, R.I.)	1710
Redman, R. (Toledo, O.)	1750*
Reeves, J. (Ft. Worth, Tex.)	1450*
Reed, R. E. (Inglewood, Cal.)	1943*
Reibel, R. W. (Ryl Oak, Mich.)	1735
Reichert, W. (Baltimore)	1700*
Reiley, H. B. (Exeter, N.H.)	1420*
Rein, S. (Minneapolis)	1939
Reisman, K. (Hawthorne, Cal.)	1869
Reiter, A. (Brooklyn, N.Y.)	2010
Reithel, R. (Ontario, N.Y.)	1897
Renaud, N. (San Francisco)	1630*
Repasky, R. (Minneapolis)	1620*
Resta, P. P. (Philadelphia)	1600*
Reviczky, L. (New Brunswick)	1887
Reynolds, D. (Des Moines, Ia.)	1918*
Reynolds, J. (San Francisco)	1764*
Rhead, D. E. (E. Gary, Ind.)	1900
Rheams, C. (Morristown, N.J.)	1800*
Rhodes, T. (Johnston, R.I.)	1576
Rhomberg, R. (Mansfield Ctr.)	1644
Ribble, L. Jr. (Richmond, Va.)	1950*
Ricca, J. C. (Philadelphia)	1713
Rice, H. G. (Dover, N.H.)	1786
Rice, R. (Spokane, Wash.)	1640*
Rich, A. D. (Brooklyn, N.Y.)	1905
Rich, F. C. (Omaha, Neb.)	1540
Richards, K. (Omaha, Neb.)	1750*
Richards, R. (Sacramento, Cal.)	1907
Richardson, R. W. (Tulsa, Okla.)	1802
Richman, J. (New York, N.Y.)	2119
Richman, P. (Brooklyn, N.Y.)	1905
Richman, S. (Omaha, Neb.)	1550*
Richter, R. (Linden, N.J.)	1726
Richter, S. (Cleveland)	1550
Riddel, R. Jr. (Lubbock, Tex.)	1815
Ridder, L. M. (Exeter, N.H.)	1600*
Rider, C. W. (Norfolk, Va.)	2076
Rigler, R. R. (Baltimore)	1844
Riley, A. R. (St. Paul, Minn.)	1564
Rinaldo, J. (Long Beach, Cal.)	1927
Ritter, C. L. (Wheeling, W.Va.)	1575
Ritzinger, F. (Cleveland)	1725*
Rizzo, V. (Pittsburgh, Pa.)	1550*
Roark, J. A. (Lexington, Ky.)	1972
Robbetoy, A. (Cleveland)	1925
Roberson, C. J. (Roanoke, Va.)	1822
Roberts, A. D. (Lexington, Ky.)	1990
Roberts, B. (Paughkeepsie, NY)	1700*
Roberts, B. (Ft. Sam Houston)	1600*
Roberts, H. E. (Rochester, NY)	1800*
Roberts, H. J. (Bismarck, ND)	1575
Roberts, L. (Cleveland)	1500*
Roberts, R. A. (Omaha, Neb.)	1577
Robertson, D. (Baltimore)	1500*
Robeson, W. S. (Arabi, La.)	1770*
Robinson, A. G. (Kingsport, Tenn.)	1680*
Robison, G. (New Orleans)	1773
Robinson, G. (Toledo, O.)	1840
Robinson, G. R. (Univ. Park, Pa.)	1400*
Robinson, H. A. (Belmont, Mass.)	1966
Robinson, M. N. (Chicago)	1935
Robinson, N. (Los Angeles)	1857
Robison, C. (Maxwell, Ia.)	1660*
Rockwell, J. (Rochester, NY)	1800
Rodgers, L. (Ft. Worth, Tex.)	1801
Roecker, J. G. (Peoria, Ill.)	1925
Roethler, E. (Cleveland)	2009
Rofe, D. (Pontiac, Mich.)	1600*
Roffman, E. (Little Neck, NY)	1600*

Sellers, J. (Wilmington, NC)	1400*
Seltzer, M. (Bronx, NY)	1623*
Seltzer, R. K. (Bev. Hills, Cal.)	1650*
Selvaggi, P. (Passaic, NJ)	1910
Semb, M. (Winona, Minn.)	1718
Semco, A. (N. Hollywood, Cal.)	1500*
Senecal, H. (Rochester, NY)	1500*
Senevey, S. (Ft. Worth, Tex.)	1500*
Seropian, A. (New York, NY)	1640
Serpico, T. (Mt. Ephraim, NJ)	1550
Servis, (New Jersey)	2050*
Settle, J. C. (Harahan, La.)	1816
Sevak, S. (St. Paul, Minn.)	1450*
Severance, R. (San Antonio)	1990*
Sewack, E. (Gary, Ind.)	1550*
Shaffer, H. B. (Albuquerque)	1712
Shagan, M. O. (Exeter, N.H.)	1350*
Shanahan, W. A. (Peoria, Ill.)	1718
Shapey, R. (Philadelphia)	1500*
Sharon, I. (New York, NY)	1700
Sharp, C. (W. Scarborough, Me.)	1992
Sharp, L. M. (Groton, Ct.)	1600*
Sharpell, F. (Fords, NJ)	2039
Shaw, C. A. (Miami, Fla.)	1793
Shaw, J. F. (Albuquerque)	2002
Shaw, S. J. (Gainesville, Fla.)	2031
Shea, J. (Omaha, Neb.)	1845
Shean, R. (Denver, Colo.)	1800*
Sheasby, A. (New Orleans)	1350
Sheehan, W. E. (Baltimore)	1700*
Sheets, H. (Anoka, Minn.)	1400
Sheler, R. O. (Bismarck, ND)	1450*
Shellenberger, R. (Ind'apolis)	1711
Shelley, W. E. (Youngstown, O.)	1720
Shelly, W. (Cleveland)	1600*
Shepherd, E. (Cleveland)	1575
Sherman, D. (Philadelphia)	1875
Sherman, H. (Englewood, NJ)	1786*
Sherman, J. (Waterloo, NY)	1750*
Sherr, P. (Allentown, Pa.)	1852
Shields, R. W. (Louisville, Ky.)	1959
Shirley, H. (New Orleans)	1765*
Shogren, R. (Minneapolis)	1700*
Sholomson, S. (Los Angeles)	2233*
Shore, H. (Providence, R.I.)	1804
Shore, W. (Durham, NC)	1701
Shorgel, L. (Baltimore)	1600*
Shoup, G. W. (Lafayette, Ind.)	1916
Shoven, J. J. (Norman, Okla.)	1727
Shreve, B. (Salem, Mass.)	1668
Shrider, K. (Cleveland)	1500*
Shuey, W. H. (Wichita, Kans.)	1650*
Shulman, A. (Rochester, NY)	1600*
Shultis, R. (Fontane, Wis.)	1450*
Shupp, L. M. (Rochester, NY)	1789
Sibbett, D. J. (Pittsburgh, Pa.)	1983
Siegel, R. M. (New Rochelle, NY)	2166
Siefen, R. (Cleveland)	1801
Sildmets, A. (Lincoln, Neb.)	1900
Sill, G. (Youngstown, O.)	1770*
Sill, P. H. (Toledo, O.)	1650*
Sills, M. (Miami, Fla.)	2035
Simanis, E. J. (Oakland, Cal.)	1924
Simirenko, A. (Minneapolis)	1750
Simon, E. J. (Englewood, NJ)	1600*
Simon, K. (Champaign, Ill.)	1958
Simon, R. (Rathdrum, Ida.)	1838
Simoneaux, N. E. (New Orleans)	1748
Simonoff, V. (Cleveland)	1660
Simpson, M. Jr. (Lansing, Mich.)	1575
Simpson, R. C. (Annapolis, Md.)	2043
Singer, C. S. (Philadelphia)	1830*
Sjogren, R. E. (Bloomfield, NJ)	1700*
Skarsten, M. O. (Forest Gr., Ore.)	1750
Skema, K. (Deroit)	2036
Skiba, P. (Cleveland)	1689
Sklaroff, S. (Philadelphia)	1848
Skowronski, J. (Cleveland)	1610
Skuris, P. G. (Chicago)	1724
Slade, N. T. (Exeter, N.H.)	1600*
Slade, T. (Wh. Bear Lake, Minn.)	1750*
Slagle, N. (Marion, O.)	1650*
Slater, H. (Revere, Mass.)	1800*
Slater, Kath. (New York, NY)	1845
Slattery, J. A. (Westfield, Mass.)	1874
Sliker, T. (Bedford, Mass.)	1650*
Sloan, J. (Cleveland)	1825
Sloan, S. (Lynchburg, Va.)	1475
Sluga, B. (Cleveland)	1675
Smith, Mrs. C. (Wheeling, W.Va.)	1650*
Smith, Clarence (Lynn, Mass.)	1550*
Smith, Dane (St. Paul, Minn.)	1941
Smith, Douglas (Cloquet, Minn.)	1745
Smith, E. C. (Umapa, Tex.)	1991
Smith, E. E. (Amarillo, Tex.)	1655
Smith, G. H. (Houston, Tex.)	2034
Smith, G. L. (Birmingham, Ala.)	1670*
Smith, J. B. (E. Moline, Ill.)	1766
Smith, J. H. (Kingsport, Tenn.)	1533
Smith, Jos. (Toledo, O.)	1750*
Smith, Ken (Pt. Townsend, Wash.)	1500
Smith, Patterson (New York, NY)	1819
Smith, P. D. (Fresno, Cal.)	2132
Smith, R. L. (Cape May, NJ)	1900*
Smith, Sturd. (Orange, NJ)	1856
Smith, Miss V. (Ohio)	1500*
Smook, G. (Berkeley, Cal.)	1550*
Smook, R. (Berkeley, Cal.)	2120
Smythe, J. A. (Peru, Ind.)	1530*
Snow, H. U. (Mystic, Conn.)	1750*
Snyder, H. E. (Columbus, O.)	1849
Snyder, J. (Heppner, Ore.)	1690*
Snyder, L. (Philadelphia)	1710
Snyder, P. K. (Philadelphia)	1720
Sobel, R. D. (Philadelphia)	2178
Sobin, G. (Irvington, NJ)	1890*
Sobolevskis, J. (Lincoln, Neb.)	1893
Sokoloff, J. (Miami Beach, Fla.)	1675*
Soloman, A. (Cleveland)	1620*
Somdahl, E. (Minneapolis)	1613
Somlo, E. S. (Cleveland)	1988
Somma, L. A. (E. Orange, NJ)	1585
Sommer, A. (Minneapolis)	1550*
Sorensen, G. (Portsmouth, NH)	1600
Sorenson, S. (Moorehead, Minn.)	2060
Soudakoff, J. (New York, NY)	2103
Soules, G. (Sherman Oaks, Cal.)	1946
Southern, M. (Knoxville, Tenn.)	1870
Sovel, C. (Philadelphia)	1904
Spahr, D. R. (Univ. Park, Pa.)	1400*
Spann, J. G. (Norman, Okla.)	1615
Spatz, S. (Cornelius, Ore.)	1600*
Spayde, H. (Univ. Park, Pa.)	1620*
Spears, G. (Rochester, NY)	1900*
Spears, W. (Oakland, Cal.)	1350*
Spector, E. N. (Philadelphia)	1895
Spector, I. (New York, NY)	1904
Spellman, J. (New York, NY)	1865

Spence, J. (Omaha, Neb.)	1970
Spencer, D. (Rochester, NY)	1600*
Spencer, J. (Cleveland)	1575
Spencer, W. (Rochester, NY)	1550*
Spiegel, S. (Lynn, Mass.)	1768
Spies, C. (St. Louis, Mo.)	1815
Spinner, Louis (Montrose, Cal.)	1990*
Spitzer, A. (Pittsburgh, Pa.)	1958
Sjonagle, C. E. (Denver, Colo.)	1913
Sprague, C. (Ventnor, NJ)	1900*
Sprague, R. (Lakewood, O.)	1920
Sprague, W. (Berkeley, Cal.)	1835
Sprenger, J. (Bismarck, N.D.)	1600*
Springbett, G. (Hutchinson, Kans.)	1831
Springer, A. (New Orleans)	1459
Springfield, W. A. (Lexington, Ky.)	1604
Sprinsky, G. (Everett, Mass.)	1600*
Sroba, J. J. (Philadelphia)	1864
Stachowski, R. (Milwaukee)	1720*
Stacy, J. W. (Hartford, Ct.)	1700
Staklis, A. (Lincoln, Neb.)	1944
Stam, J. (Rochester, NY)	1850*
Stamer, A. B. (San Francisco)	1759
Stamm, N. (Hastings, Mich.)	1810
Stander, N. (Chelsea Hts., NJ)	1400*
Standers, L. (Burbank, Cal.)	1977
Stanga, J. (Bogalusa, La.)	1600*
Staniskis, J. (Cleveland)	1650
Stapleton, E. G. (Riderwood, Md.)	1400
Starinkas, J. (Dorch., Mass.)	1750*
Statler, J. (Rochester, NY)	2050*
Staudinger, H. L. (St. Louis, Mo.)	1600*
Stauvers, D. (New Haven, Ct.)	1972
Stearns, E. E. (Cleveland)	1902
Stearns, G. (Inglewood, Cal.)	1945*
Steege, K. Jr. (Kansas City, Mo.)	1946
Steele, J. (Ft. Worth, Tex.)	1695
Stefanuck, W. (Newark, NJ)	1775
Steffens, J. (Baltimore)	1676
Stein, A. (Phillipsburg, Pa.)	1667
Stein, C. (Palo Alto, Cal.)	1900*
Stein, M. S. (Vineland, NJ)	1600*
Steinberg, W. F. (Miami, Fla.)	1797
Steinberger, E. (Elmhurst, NY)	2116
Steiner, C. (Willernie, Minn.)	1400*
Steiner, E. (Los Angeles)	1827
Steiner, L. (Atlantic City, NJ)	1700*
Steinig, J. (Philadelphia)	1825*
Steinklein, W. (Brooklyn, NY)	1892*
Stenerson, S. (Spokane, Wash.)	1400
Stepans, J. (Cleveland)	1875
Stephan, D. (Cleveland)	1500*
Stephens, L. G. (E. Alton, Ill.)	1875
Stepnicka, B. (Cleveland)	1500*
Stern, Dr. A. (Asbury Park, NJ)	2160
Stern, D. (Culver City, Cal.)	1733*
Sternissa, F. (Cleveland)	1500
Stetzer, D. F. (Providence, R.I.)	1996
Stevens, B. W. (San Antonio)	2098
Stevens, H. (Cleveland)	1900
Stevens, J. (Philadelphia)	1700*
Stevens, W. E. (Laramie, Wyo.)	1872
Stevens, W. S. (San Francisco)	1760
Stevenson, J. W. (Talladega, Ala.)	1893
Stewardson, D. J. (Monterey, Cal.)	1675
Stewart, C. (Pr. du Chien, Wis.)	1500*
Stewart, W. A. (Philadelphia)	1550
Stiles, C. F. (Rochester, NY)	1750*
Stiles, M. (Rochester, NY)	1500*
Stojkiw, D. (Cleveland)	1650*
Stokes, F. C. (Waterloo, Wis.)	1653
Stone, R. (Lincoln, Neb.)	1600*
Stoorza, L. (Ft. Worth, Tex.)	1550*
Storer, S. S. (Sylvania, O.)	1650*
Stowe, J. R. (San Pablo, Cal.)	1937
Straedey, E. R. (St. Louis, Mo.)	2050
Strand, N. (Lincoln, Neb.)	1802
Strang, E. W. (Bridgeport, Pa.)	1887
Strange, W. T. (Dallas, Tex.)	1967
Strazdins, A. (New Britain, Ct.)	1995
Streetman, J. (Cleveland)	1650*
Steirfeld, L. (Hammonon, NJ)	1835
Strelzoff, A. (Lansing, Mich.)	1863
Strickland, H. (River Edge, NJ)	1856*
Stringham, D. (Phoenix, Ariz.)	1880*
Strong, J. (Napa, Cal.)	1850*
Struck, H. D. (Corpus Christi)	2025
Struttgen, W. (St. Paul, Minn.)	1400*
Stubblebin, D. (Allendale, NJ)	1400*
Stulic, G. (Cleveland)	1450*
Stulken, D. (Vooruqa, Wis.)	1457
Stummer, W. (Cleveland)	1900*
Sturman, L. (Oak Park, Mich.)	1600*
Stutman, F. (Philadelphia)	1600*
Subanovich, L. (Gary, Ind.)	1654
Sube, J. (Philadelphia)	1956
Sudborough, D. (Mt. Pleasant)	1923
Sudborough, F. (Mt. Pleasant)	1500*
Sudborough, J. D. (Butler, Ind.)	1605
Suesman, W. B. (Providence, RI)	2124
Sugar, Bob (Cleveland)	1680*
Suib, Sue (Kew Gardens, NY)	1300*
Sukle, V. (Cleveland)	1550*
Sullivan, D. E. (Gulfport, Miss.)	1600*
Sullivan, D. V. (Rochester, NY)	1975
Sullivan, Jas. (Lynn, Mass.)	1733
Sullivan, J. F. (Portsmouth, NH)	1764
Sullivan, J. G. (Knoxville, Tenn.)	2119
Sulzer, H. (Ridgefield Pk., NJ)	1718
Summers, H. (Detroit)	1450*
Suraci, A. (New Haven, Ct.)	1930
Suranyi, B. (Cleveland)	1890
Surges, A. A. (Baltimore)	2026
Sussman, J. (Jersey City, NJ)	2088*
Sussman, J. (Great Neck, NY)	1631
Sutton, H. (Rochester, NY)	1500*
Svalberg, C. (San Francisco)	1980
Svaranovic, G. (McK. Rocks, Pa.)	1600
Sveen, L. Jr. (Berkley, Mich.)	1758
Sveikauskas, L. (W.Roxbury, Mass.)	1744
Swan, F. (Midwest City, Okla.)	1842
Swank, A. M. (Oklohoma City)	1687*
Swanson, N. H. (Milwaukee)	1645
Swardson, E. L. (St. Joseph, Mo.)	1980
Swarthout, C. (Baltimore)	1800*
Swartz, R. (Wollaston, Mass.)	1450*
Sweeney, J. M. (Milton, Wis.)	1782
Sweeney, T. (Wheeling, W.Va.)	1650
Sweet, D. V. (Evanson, Ill.)	1761
Sweifach, J. (Bayonne, NJ)	1859
Sweig, Mitchell (Chicago)	2044
Swinton, T. A. (Woodside, NY)	1741
Switzer, G. C. (Rochester, NY)	2003
Switzer, R. M. (Exeter, N.H.)	1300*
Swohoda, Paul (Omaha, Neb.)	1600*
Sylvan, B. (Oak Park, Mich.)	1650*
Syvertson, R. (Alhambra, Cal.)	2195*
Szabo, W. (Cleveland)	1655
Szakacs, L. (Cleveland)	1880*

Szavas, B. (Cleveland).....	1500*
Szentivanyi, J. (Cleveland).....	1773
Szigothy, A. (Cleveland).....	1684
Szillag, S. (Cleveland).....	1600*
—T—	
Taber, W. F. (Reno, Nev.).....	1955
Talcott, L. (Oakland, Cal.).....	1996
Talla, J. (Phoenix, Ariz.).....	1450*
Tamargo, J. (Bronx, NY).....	1967
Taro, L. W. (Packwood, Wash.).....	1950
Taylor, C. R. (Danville, Va.).....	1600*
Taylor, E. N. (Minneapolis).....	1783*
Taylor, H. (Ft. Worth, Tex.).....	1700*
Taylor, H. P. (Jacksonville, Fla.).....	1932
Taylor, J. H. (Raleigh, N.C.).....	1681
Taylor, O. S. (Springfield, O.).....	1840*
Taylor, P. L. (Houston, Tex.).....	1667
Taylor, R. (Ft. Smith, Ark.).....	1792
Taylor, Z. (Charlottesville).....	1600*
Teague, W. Jr. (Greensboro, NC).....	1638
Tears, C. F. Jr. (Dallas, Tex.).....	2119
Teichmann, M. E. (Nutley, NJ).....	1600
Teitelman, W. (Miami, Fla.).....	1900*
Tejada, H. (Ann Arbor, Mich.).....	1991
Tellman, R. (Cleveland).....	1626
Telford, M. (Seattle, Wash.).....	1400*
Temple, Bob (Fort Knox, Ky.).....	1827
Tenney, T. (Ottawa Hills, O.).....	1750*
Teper, R. (Baltimore).....	1800*
Terrell, D. B. (Minneapolis).....	1907*
Terrible, J. (Columbus, O.).....	1874
Terry, K. C. (Weatherford, Tex.).....	1930
Teubner, W. A. (Racine, Wis.).....	1800
Teufel, H. Jr. (Albuquerque).....	1927
Thach, F. B. (Long Beach, Cal.).....	1750
Thacker, R. S. (Richmond, Cal.).....	1888
Thatcher, R. B. (El Paso, Tex.).....	1350*
Thatcher, W. E. (Wh. Bear Lake).....	1550*
Thedy, H. L. S. (New Orleans).....	1643
Thedy, J. A. (New Orleans).....	1477
Theodorovich, I. (Toronto, Ont.).....	2193
Thomas, C. E. (Knoxville, Tenn.).....	1820
Thomas, C. H. (Baltimore).....	1960*
Thomas, D. (Cleveland).....	1600
Thomas, Don (Detroit).....	1800*
Thomas, E. M. (Muncie, Ind.).....	1620
Thomas, H. (Oakland, Cal.).....	1560*
Thomas, J. O. N. (Inglewood, Cal.).....	1979
Thomason, J. (Ft. Worth, Tex.).....	1638
Thomasson, L. (Cleveland).....	1870*
Thomasson, W. A. (Chicago).....	1910
Thompson, A. J. (Lawrence, Kans.).....	1650*
Thompson, Dick (Oklahoma City).....	1820
Thompson, H. F. (Kendrick, Ida.).....	1752
Thompson, Jas. (Dorch., Mass.).....	1792
Thompson, J. B. (Torrance, Cal.).....	1894*
Thompson, P. L. (Columbus, O.).....	1782
Thorne, Bob (Rochester, NY).....	1600*
Thunberg, E. (Spokane, Wash.).....	1703
Thurling, E. L. (Ft. Bliss, Tex.).....	1400*
Thurston, Ben (Albuquerque).....	1858
Thysell, J. C. (Bismarck, ND).....	1500*
Tidball, T. P. (El Paso, Tex.).....	1450*
Tiers, Dr. G. V. D. (St. Paul).....	1964
Tilles, M. (Baltimore).....	1957
Tinker, K. (Cleveland).....	1587
Tirrell, R. (So. Boston, Mass.).....	1870
Tischtschenko, M. (Baltimore).....	1742
Tkacz, Alex (Philadelphia).....	1600*
Tobias, D. (Fairport, NY).....	1950*
Tobin, H. J. (Rochester, NY).....	1700*
Tomassone, A. (Blue Anchor, NJ).....	1600*
Tomori, L. (San Bruno, Cal.).....	1807
Tonene, F. J. (Higginum, Ct.).....	1720
Topritzhof, T. (St. Paul).....	1500*
Torok, D. (Toledo, O.).....	1500*
Toth, F. (State College, Pa.).....	1650*
Toth, I. (Greenwich, Ct.).....	1900*
Toth, R. (Cleveland).....	1500*
Toth, S. (Cleveland).....	1766
Tottola, J. N. (Jersey City, NJ).....	1575
Townsend, A. (Cleveland).....	1500*
Traina, Sam (Buffalo, NY).....	1810
Tratch, P. (Cleveland).....	1958
Traum, P. (Berkeley, Cal.).....	1918
Travis, J. E. (Charlottesville).....	1550*
Traxler, D. (Youngstown, O.).....	1450*
Trayers, John (Salem, Mass.).....	1986
Traylor, R. (Richmond, Va.).....	1820
Treblow, M. (Philadelphia).....	1757
Trenberth, R. R. (Oakland, Cal.).....	1827
Tresz, Sander (Cleveland).....	1877
Treverton, R. (Rochester, NY).....	1950*
Trimmer, W. (Cleveland).....	1700
Trinks, W. R. (Hammond, Ind.).....	1782
Tripodes, T. (San Francisco).....	1803*
Tristram, L. E. (Albuquerque).....	1872
Troy, Norda (Cleveland).....	1513
Troy, Wm. (Cleveland).....	1525
Trumbull, S. L. (Columbus, O.).....	1580
Trusis, I. (Bridgeport, Ct.).....	1750*
Tsardoulas, G. (Exeter, N. H.).....	1650*
Tullis, L. (San Francisco).....	1500*
Tullus, Koit.....	2182
Tumek, P. (Rochester, NY).....	1762
Tums, J. M. (Chicago).....	2190
Tums, V. (Champaign, Ill.).....	2027
Turiansky, M. (Chicago).....	2184
Turk, D. (Cleveland).....	1600*
Turner, J. (Cleveland).....	1500*
Turner, L. W. (Concord, Cal.).....	1779
Turner, R. (Birmingham, Ala.).....	1400*
Turner, W. C. (Charlotte, NC).....	1500*
Tusch, J. H. (Wilmington, NC).....	1743
Twombly, J. L. (Norman, Okla.).....	1930*
Tyus, G. (Columbus, O.).....	1520*
—U—	
Uher, J. (Cleveland).....	1700*
Uhlmann, R. (Grand Rapids, Mich.).....	2052
Ullrich, C. (Los Angeles).....	1725*
Ulrich, J. (Lincoln, Neb.).....	1600*
Underhill, R. (Toledo, O.).....	1700*
Underwood, E. E. (Columbus, O.).....	2082
Underwood, R. S. (Lubbock, Tex.).....	1896
Unowski, J. (St. Paul, Minn.).....	1450*
Unterholzner, W. (Milwaukee).....	1550*
Urban, C. (Appleton, Wis.).....	1610
—V—	
Vail, R. (Cleveland).....	1550*
Vallee, T. F. (California, Md.).....	1879
Vallier, E. (Saugus, Mass.).....	1675
Vanaman, H. C. (Millville, NJ).....	1700
Van Breemen, W. (Trenton, NJ).....	1907*
Van Brunt, C. A. (Rumson, NJ).....	1924
Vandenburg, V. E. (Lansing, Mich.).....	1721
Vanderberg, W. G. (Shell Rock).....	1696
Van Gelder, S. (San Francisco).....	1891



GAMES BY USCF MEMBERS

Annotated by Chess Master JOHN W. COLLINS

USCF MEMBERS: Submit your best games for this department to JOHN W. COLLINS, 91 Lenox Road, Brooklyn 26, N. Y. Space being limited, Mr. Collins will select the most interesting and instructive for publication. Unless otherwise stated notes to games are by Mr. Collins.

WHITE PAPER

White tries a seldom used move against the King's Indian Defense, obtains the preferable middlegame, and finishes strongly.

KING'S INDIAN DEFENSE

MCO: page 90, column 53 (g:B)

Tartakover Memorial Tournament Detroit, 1956

White: K. SKEMA Black: M. SWEIG

1. Kt-KB3 Kt-KB3
2. P-B4 P-KK13
3. Kt-B3 B-K12

Black settles for a King's Indian Defense. If 3., P-Q4? (angling for a Grünfeld Defense) 4. PxP! KtxP; 5. Q-Kt3! Kt-Kt3; 6. Kt-KKt5 (Skema-Kirby, North Central Championship, Milwaukee, 1956) with advantage to White.

4. P-K4 P-Q3
5. P-Q4 O-O

Both 5., P-B4; 6. PxP, Q-R4! and 5., P-K4? 6. PxP, PxP; 7. QxQ ch, KxQ; 8. KtxP, KtxP; 9. KtxP ch, K-K2; 10. KtxR, KtxKt; 11. KtxP ch, PxKt; 12. B-Kt5 ch, K-B2; 13. B-Q3, Kt-R5; deserve consideration.

6. B-B4

This move, which is designed to prevent, P-K4; and thus practically refute the King's Indian, has been neglected, but warrants investigation. An alternative is 6. P-KR3! P-K4; 7. P-Q5, P-KR3; (better is 7., Kt-R4!) 8. B-K3, K-R2; 9. P-KKt4, Kt-Kt1; 10. Q-Q2, P1Kt3; 11. O-O-O, Kt-R3; 12. B-K2, Kt-B4; 13. P-KR4, Kt-K2; 14. QR-Kt1, R-R1; 15. P-Kt4, with a distinct advantage to White.

6. P-B3?

The most vigorous reaction is 6., Kt-B3! 7. Q-Q2, B-Kt5; 8. P-Q5, P-K4; 9. PxKt, PxP; 10. PxP, R-Kt1; 11. QxBP, RxP; with attacking chances for a Pawn.

7. Q-Q2 Kt-Kt2?

Black should avoid exchanging his KB by 7., R-K1.

8. B-R6 P-K4
9. BxB KxB
10. O-O-O

With Black's KB gone his king's field is weakened and White sets about taking advantage of it by "castling opposite" and advancing his king-side Pawns. The text move threatens 11. PxP, PxP; 12. KtxP, too.

10. Q-B3

Better is 10., Q-K2.

11. PxP

This exchange frees Black's cramped position. 11. K-Kt1, 11. B-K2, and 11. P-KR4, maintain the tension.

11. PxP
12. B-K2 Kt-B4

After 12., Q-B5; 13. QxQ, PxQ; 14. R-Q6, the ending distinctly favors White.

13. P-KR4

13. Q-Q6, QxQ; 14. RxQ, is at least as promising a way to handle the position.

13. B-Kt5
14. Kt-KKt5 BxB
15. QxB P-QR4

This loses a move. Better is 15., QKt-R3; and 16., QR-Q1.

16. Q-K3 QKt-R3
17. P-R5 P-R3
18. Kt-R3 P-KKt4

A sounder defense is 17., Kt-K3.

19. P-KKt3
20. Kt-Kt2

More logical is 19. Kt-KKt1, QR-Q1; 20. Kt-Kt2.

PERSONAL SERVICE

The Editor of this Department will play you a game by mail, comment on every move, and give you a thorough post-game analysis. Fee \$10.

Mr. Collins will also annotate any one of your games for a fee of \$5.

Black should play 19., P-Kt5; to restrain White's KBP.

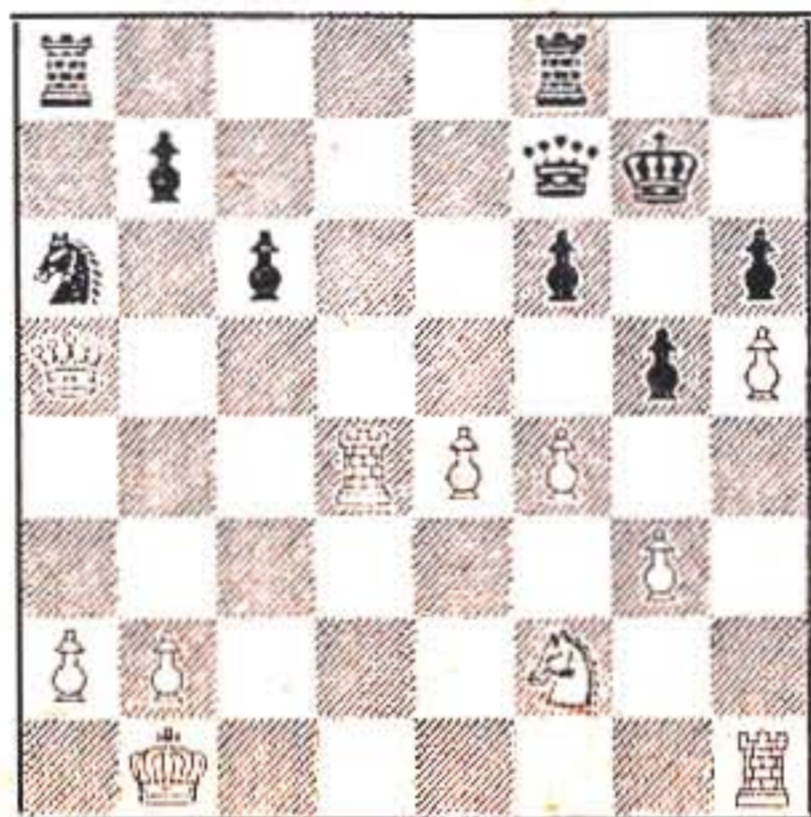
20. P-B4 P-B3 23. Q-Kt4 Kt-Q5
21. Q-K2 QR-Q1 24. Kt-K2 Q-Kt5
22. Kt-B2 Kt-K3 25. KtxKt
25. P-Kt3? KtxKt ch; 26. QxKt, Kt-B4; gives Black the attack.
25. QxBPch!
26. K-Kt1

Not 26. Kt-B2?? Kt-Kt5; 27. K-Kt1, QxP ch; 28. K-B1, Q-B5; 29. K-Kt1, QxKt ch; and Black mates in three.

26. PxKt
27. Q-B5 Q-B2
28. QxP R-QR1?

This move loses the Q-file, a Pawn, and the game. Correct is 28., P-QB4; and it is still a game.

29. RxP



Black's only chance is 29., P-QB4; 30. R-Q5! Kt-Kt5; 31. QxP, KtxR; 32. BxKt, KR-Q1; 33. R-Q1, QxRP.

If 30., QxP ch; 31. K-B2, and Black cannot defend against both 32. R-Q7 ch and 32. Q-Kt6 ch.

31. R-Q6 KR-K1
32. KR-Q1

Threatening 33. R-Q7, R-K2; 34. RxR, QxR; 35. Q-Kt6 ch, and wins.

32. R-K2
33. Kt-Kt4 R-R5

There is no defense. If 33., R-KB1; 34. P-K5, BPxP; 35. QxQ ch, R1xQ; 36. KtxKP, R-B3; 37. R-Q7, RxR; 38. RxR ch, K-Kt1; 39. PxP, KtxP; 40. RxP, wins.

34. P-K5 PxKP

Or 34., PxBP; 35. PxP ch, R-R1; 36. Kt-K5, and White wins.

35. QxKPch K-B1

If 35., K-R2; 36. Kt-B6ch, K-Kt2; 37. Kt-Q5 ch, K-Kt1; 38. KtxRch, and wins.

36. Q-R8ch Q-Kt1
37. R-Q8ch! Resigns

For if 37., KtxR; 38. RxKt ch, R-K1; 39. RxR ch, wins the Queen.



MENGARINI'S MOVE A MINUTE

Dr. Mengarini was one of the first to advocate move a minute chess in this country. He had another go at it in this tourney, chalked up this exciting win, and finished tied with six others for first to seventh places.

KING'S GAMBIT ACCEPTED

MCO: page 137, column 1

3rd Log Cabin 50-50 Tourney

West Orange, 1957

Notes by

U. S. Master Ariel Mengarini, M.D.

White: A. MENGARINI Black: S. WINTERS

1. P-K4 P-K4 4. BxP Kt-KB3
2. P-KB4 PxP 5. Kt-QB3 B-QKt5
3. B-B4 P-Q4 6. B-Kt3!

MCO8 gives only Q-B3, or Kt-K2, or Kt-B3, with equality. At the time of the game I did not know the text was an innovation, but on maturer reflection it still seems good.

6. BxKt 7. KtPxP B-Kt5
- Better was 7., KtxP; 8. Q-B3!, Q-B3! ch (or simply O-O; 9. QxP); 9. K-B1, Kt-Q3! (but not Kt-Kt6 ch?;

10. PxKt, QxR; 11. B-R3 and White's attack is irresistible) with White for choice due to the B-pair in an open position.

8. Kt-B3 KtxP 9. BxPch But not 9. B-R3?, BxKt winning for Black! The text is a true sacrifice inasmuch as it involves also giving up the Kt.

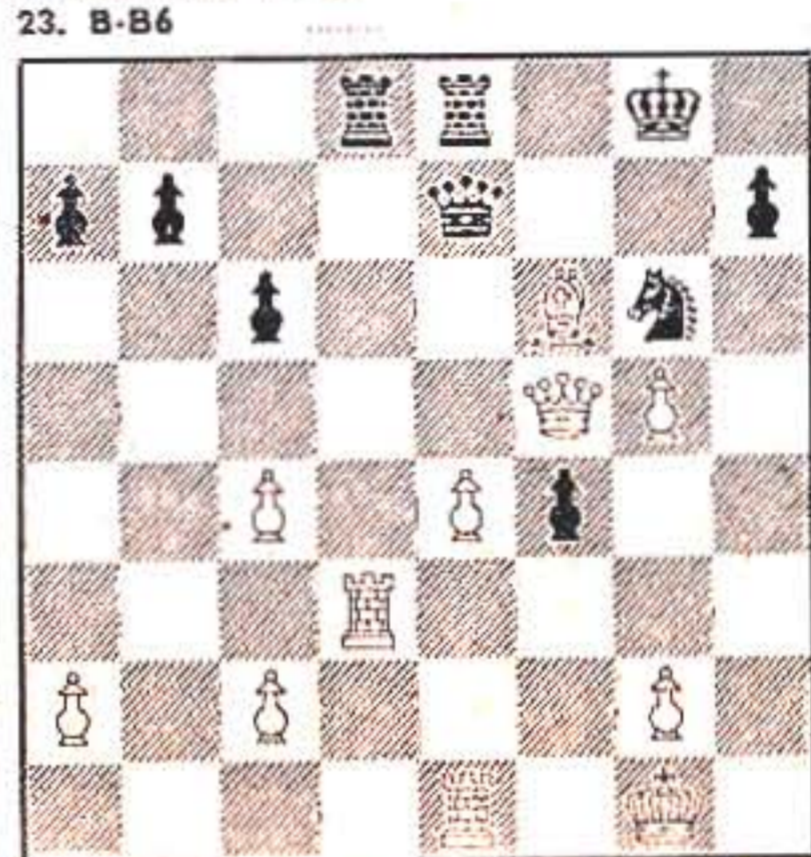
9. KxB 11. QxBch KxKt
10. Kt-K5ch K-K3 12. O-O P-KKt4
- Or Q-B3; 13. RxP!, or 12., Q-Kt4; 13. Q-K2 recovers the piece.
13. R-K1

Threatening 14. RxKt ch, KxR; 15. Q-K6 mate.

13. R-K1 18. P-KR4! Kt-K4
14. P-Q3 K-B3 19. Q-B5ch K-Kt1
15. PxKt Kt-B3 20. PxP Kt-Kt3
16. B-Kt2! Q-K2 21. QR-Q1 QR-Q1
17. P-B4ch K-B2 22. R-Q3

Setting up B-B6 which at this point could be answered by RxR with complications.

22. P-B3
- Better was RxR.
23. B-B6



23. Q-Kt5 29. RxR Kt-K4
24. P-B3 Q-Kt3ch 30. Q-B6ch Kt-B2
25. P-B5 Q-B2 31. P-K5 Q-K2
26. BxR RxB 32. P-K6 QxQ
27. Q-K6ch K-B1 33. PxQ Resigns
28. KR-Q1 RxR

Still the Kt can't move.



BRILLIANCY

Prof. George Harwell of Duke University is a specialist in the Colle System. The latter opening often provides a brilliant early attack for White. The following win over the Minnesota Champion is breathtaking and the most brilliant victory in last year's North Carolina Open.

COLLE SYSTEM

MCO: page 201, column 4

North Carolina Open

Wilmington, 1956

Notes by Norman M. Hornstein, M.D.

White: DR. G. HARWELL Black: DANE SMITH

1. Kt-KB3 Kt-KB3 3. P-K3 B-Kt2
2. P-Q4 P-KKt3 4. B-Q3 P-Q4

The fianchetto is one of Black's best answers to the Colle System. However, Black usually plays P-B4 on the third move, which insures at least equality with the best play, and is preferred to the text.

5. QKt-Q2 O-O 7. P-K4
6. O-O QKt-Q2

This move is much stronger here than if Black had already played P-B4. White now proceeds to set up a very strong center pawn formation.

7. P-B4

Too late in the day. 7., PxP is probably better.

8. P-K5 Kt-K1 10. PxP P-B3
9. P-B3 PxP

10., P-K3 was necessary although White then obtains a superior attack.

11. P-K6 While this move implies an ultimate sacrifice of the KP, Black has to waste so much time in its capture that the White pieces become fully mobilized in the meantime.

11. Kt-Kt3 13. Kt-Kt3 KtxP
12. R-K1 Kt-B2

Accustomed to shrieks of hilarious

laughter, the annotator now presents his readers with his Theory of Tempo Sacrifice!! This Theory states that when one player has wasted three moves, his opponent should sacrifice a piece. Black has now made four moves with his Kt. He will soon have to make another. Although unacquainted with my precious Theory, Prof. Harwell soon proceeds to put it to practice.

14. R-K2 Q-Q3 17. PxKt QxP
15. Q-K1 Kt-QB5? 18. RxP
16. Kt-B5! KtxKt

This Rook on the seventh rank is a veritable Molokh.

18. Kt-K4

It is sad to note that Black's best move here is B-Kt5, as the Rooks must be connected immediately. Of course, Black's best still gives White a tremendous advantage.

19. RxBch!



Initiating a beautiful King-hunt sacrifice.

19. KxR 20. KtxKt

Once the sacrifice is initiated, it is imperative that the side with the better development open the game as widely as possible.

20. PxKt 22. B-K3
21. QxPch K-Kt1

This is a much better move than 22. B-KR6.

22. Q-B3 27. RxBch K-Q1
23. B-Q4! K-B2 28. QxRch K-B2
24. Q-Kt7ch K-K1 29. Q-B7ch K-Q1
25. R-K1ch B-K3 30. B-B6ch! K-B1
26. B-Kt5!! QxB 31. R-K8ch Resigns

GUEST ANNOTATORS

Norman M. Hornstein, M.D.

Ariel Mengarini, M.D.

WORLD MATCH

(Continued from page 4, col. 4)

27. RxR KtxR 42. B-Kt7 P-K5
28. P-QR4 Q-K3 43. BxP QxP
29. PxP PxP 44. B-Q5ch KtxB
30. P-R4 K-Kt2 45. QxKtch K-B1
31. P-R5 P-Kt4 46. K-Kt2 Q-B7
32. B-B1 Kt-Kt2 47. P-Kt4 Q-K7
33. Kt-K3 Kt-Q3 48. K-Kt3 Q-B7
34. Kt-B5ch KtxKt 49. K-B3 Q-B6
35. PxKt Q-Q4 50. K-Kt2 Q-B7
36. B-K4 Q-Q3 51. Q-R8ch K-B2
37. B-K3 P-R3 52. Q-Q5ch K-B1
38. K-Kt2 B-K2 53. K-B3 Q-B6
39. P-Kt3 K-B1 54. Q-R8ch K-B2
40. B-B6 Q-Q6 55. Q-Q5ch Drawn
41. K-R2 K-B2

Herman Steiner (Los Angeles) Chess Club: Austin Gates tallied 8½-½ to win the club Class A-2 event, drawing one game with Clare Ulrich, Tied for second in the 10-player round robin at 6-3 each were Charles King and Clare Ulrich. Larry Owen was fourth with 4½-3½ and Henrietta Page fifth with 3½-3½. Several games were not played in the schedule. A USCF Club Affiliate.

Milwaukee Municipal Chess Ass'n: The board of directors met and elected the following officers: Fred Cramer, president; Arpad E. Elo, vice-president; Fred Zarse, secretary; Frank Inbusch, Sr., treasurer; Dan Clark, publicity director; and John Grkavac, activities director. This group is sponsored by the Milwaukee Municipal Recreational Department and meets at Hawthorne Glen on Monday and Friday nights.

Chess Life In New York

By Aben Rudy

SOME years ago, while scanning through the vast chess collection of the Astor-Lenox Library, New York's young master, Martin Harrow, suddenly became aware that although there were many volumes of amusing chess short stories, no anthology of chess humor had ever been compiled.

"I thought it would be interesting to start such a collection," Harrow told me recently.

"Even though chess players are noted for their rapacious wit, surprisingly, they have recorded little of it. Nevertheless, I've managed to gather a rather large collection.

"I've found postal chess a rich source of chess humor. Some anecdotes are found almost everywhere. For instance, this one from a German student:

"When Dr. Tarrasch reached the Pearly Gates and was about to enter the Heavenly Kingdom he was abruptly halted by St. Peter. 'Dr. Tarrasch,' he said, 'I am very sorry, but I must inform you that no chess players are allowed in Heaven.' Dr. Tarrasch, of course, was quite disturbed by this, but began making his descent when he noticed his old rival Teichmann waving to him from behind the gates. 'St. Peter,' protested the good doctor, 'you tell me no chess players are allowed, but there is Teichmann. How do you explain this?' 'Teichmann?' mused the kindly old Saint. 'Do you call Teichmann a chess player?'

"The protagonists in the American version of this story are always Alekhine and Bogoljubow."

After pausing briefly to refill his pipe, Harrow continued:

"There is no doubt, though, that the largest category of chess whimsy is the 'talking' animal story. Why this should be, I'm not so sure, but 'talking' animals do account for fully one-third of all my chess jokes."

Before leaving, I asked Harrow to recount his favorite tale. Here is the one he chose:

A man went away for the weekend. He arrived rather late, after dinner. The other members of the house-party were all sitting around in the drawing room and at one end of the room a game of chess was in progress. One of the players was a dog.

After he had been introduced all around, the man said to his host: "What a wonderful dog. He must be very intelligent to be able to play chess."

"Well, he's not a very good player really," replied the host, shaking his head sadly. "Whenever he sets a trap he wags his tail."

IN BRIEF: After three successive victories, John Westbrook is in first place in the Marshall Amateur Championship . . . A "Ruy Lopez" tournament, in celebration of nothing in particular, is to be held at the Manhattan in the coming month. The interest shown in this particular restricted-opening event has been great. At least three masters have promised to participate.

Leonie High (Bergen Co.) won the New Jersey Secondary School Open Championship Team event held at the Log Cabin Chess Club with a match score of 4½-1½. Tied for second were St. Peter's Prep (Hudson Co.) and Columbia High (Essex Co.) with 3-2 each. Pingry School (Union Co.) and Cranford High (Union Co.) shared fourth with 2-3, while Seton Hall Prep (Essex Co.) completed the tally with 1½-4½. Individual high score prize for board one went to Leslie Ault (Cranford) with 4-1, second board prize to Robin Ault (Cranford) with 4½-1½, third board prize to Richard Harney (St. Peter's) 4½-1½, fourth board prize to Vincent Lolordo (Leonie) 4-1, and fifth board prize to James Scholland (St. Peter's) 4-1.

SEA, SUN, FUN — AND CHESS!

For a gay and delightful weekend at the seashore,

plan now to attend the

UNITED STATES AMATEUR CHESS CHAMPIONSHIP

to be held at the famous

MONTEREY HOTEL, on the ocean front at ASBURY PARK, N. J., over the weekend of June 7th, 8th and 9th

Surf-bathing at the door of the hotel. Bridge, dancing, and other entertainment for players, their families and visitors. Dining room, coffee shop, card room, broad open and enclosed porches, TV lounge, cocktail lounge, barber shop, beauty salon, etc. are all located in the hotel. Adequate parking for guests' cars.

Special Low Hotel Rates: The Monterey Hotel offers excellent accommodations at special, reduced rates for this tournament. Minimum is \$4.00 per day per person in double room. For information and reservations, please write to the Monterey Hotel, Asbury Park, N. J.

TOURNAMENT DETAILS IN A NUTSHELL

WHO CAN PLAY: Open to all chess-players except rated masters. Entrants must be or become USCF members.

AWARDS: Winner recognized as United States Amateur Chess Champion and gets special trophy. Woman with highest score wins title of Woman Amateur Chess Champion of the U. S. and gets trophy. Also trophies for Class A and Class B entrants with highest scores. No cash prizes. Strictly amateur event.

TYPE OF TOURNEY: Six-round Swiss under USCF tournament rules. Harkness pairings. Time limit: 50 moves in 2 hours. Unfinished games adjudicated after 4 hours. Ties broken by Median System. Director: Kenneth Harkness.

MAIL YOUR ENTRY NOW!

It will assist the management to get the tournament started on time and provide for your comfort if you will mail your entry NOW to the address below:

UNITED STATES CHESS FEDERATION

80 East 11th Street

New York 3, N. Y.

Mate The Subtle Way!

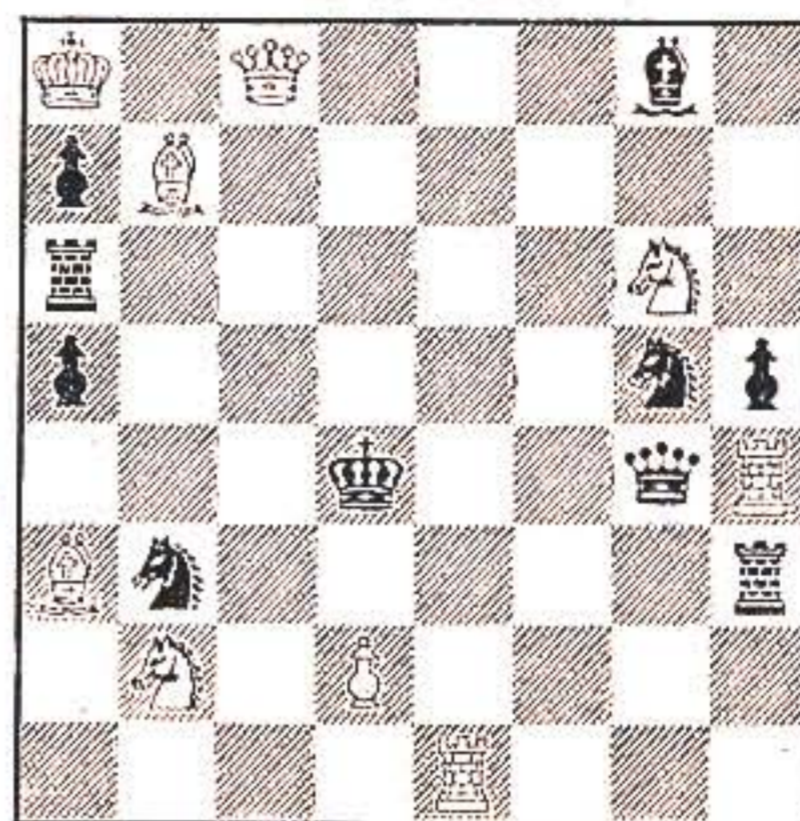
by Nicholas Gabor

All communications concerning this problem-column, including solutions as well as original compositions for publication (two- and three-mover direct mates from composers anywhere should be sent to Nicholas Gabor, Hotel Kemper Land, Cincinnati 6, Ohio.

CLUBE DE XADREZ SAO PAULO, BRAZIL CONTEST 1955/56

Problem No. 771

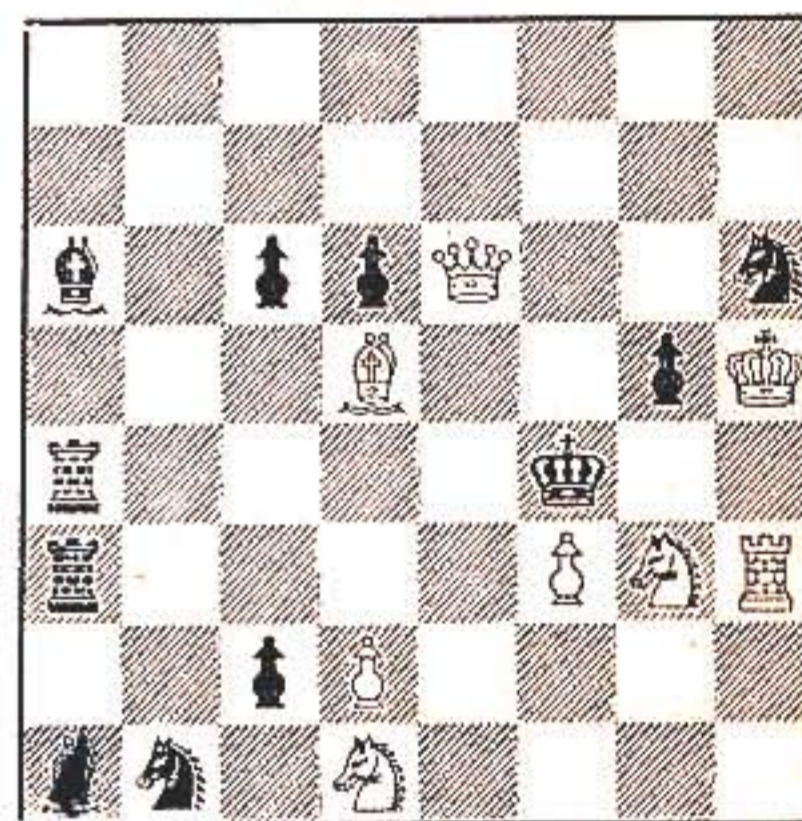
By Dr. Horacio L. Musante
Argentina
First Prize



Mate in two

Problem No. 772

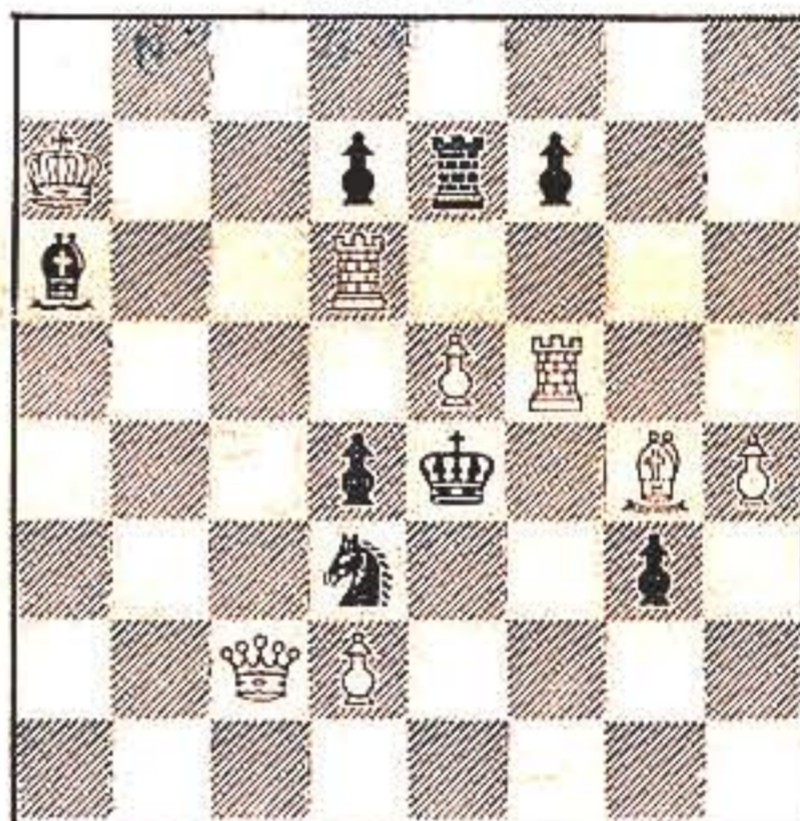
By Jan Hannelius
Finland
Second Prize



Mate in two

Problem No. 773

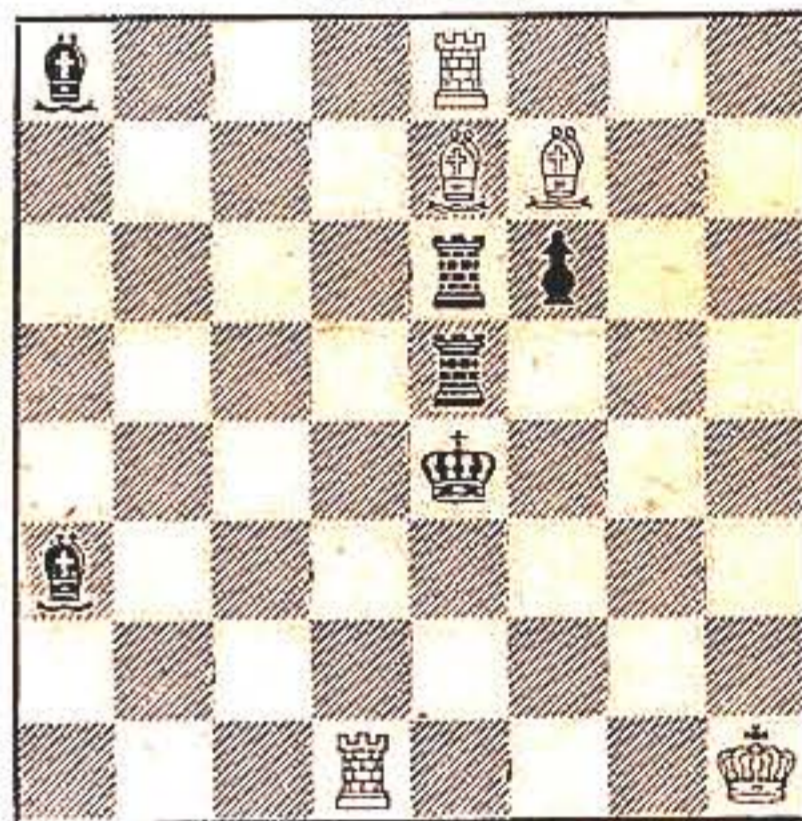
By J. Scheel
Norway
First Prize



Mate in three

Problem No. 774

By J. A. Rusek
Poland
First Prize



Helpmate in two

a) as on diagram;
b) place the Wh King to KB8: same

WE present above four top prize-winners of the recently concluded 1955-56 International Composing Contest of the "Sao Paulo Chess Club", Brazil. The contest was a very pretentious affair, attracting a total of as many as 729 compositions from 25 countries: 23 two-mover, 164 three-mover, 111 longer direct mate, 176 helpmate, and 75 endgame entries. (Your editor was given "2nd Commended" place in the 3-mover section, but was amongst those "also run" in the other sections.)

The coming "Solvers' Ladder" will give credit-points for solving helpmates, as promised. Future solutions of helpmates will grant 4 points per problem.

Solutions-Mate the Subtle Way!

No. 759 Jacobs: Intention 1. B-QB sq. waiting! Cooked by 1. R-B ch!, K-Kt3; 2. R-B6 mate. **No. 760 Fastosky:** Key 1. Q-B6 waiting. **No. 761 Fillrey:** Key 1. B-QB5 waiting! If 1. PxB; 2. B-B4. If 1. K-B3; 2. BxP. If 1. K-K5; 2. B-Q4. If 1. P-Q4; 2. B-Q4 ch! **No. 762 Lindner:** Diagram: 1. P-becomes Kt, B-K; 2. Kt-K7, B-Kt4 mate. Wh.K on Q4: the P becomes Rook! Wh.K on Kt4 sq.: the P must promote to B! Three different underpromotions of the Black pawn, depending on the place of the Wh.K! Then all these pieces have just one square to move to, all "tempo" moves in order to "help".

Encouraged by the success of the Cleveland Chess Center, a group in Montreal are now engaged upon promoting a similar Center for Montreal. Budget for the first year is estimated at \$1,500.00, and a contribution to the fund of \$10 entitles the donor to one year's membership in the Center. Checks should be made payable to "Montreal Chess Centre" and mailed to

M. Moss, 6150 Deacon Road, Montreal 8, Que., Canada. While the Centre is primarily for local residents, memberships will be accepted from out-of-town players who wish to contribute to the cause of better chess playing conditions and increased chess activity.

Solution To What's The Best Move?

Position No. 204

Ragozin-Veresov, Moscow, 1945
Ragozin continued with 1. RxB ch!, BPxR (RPxR makes no difference in what follows, and KxR loses to 2. Q-N3 ch, K-R3; 3. R-B4; 2. R-B7 ch, KxR; 3. QxRP ch, K-K3 (If K-Bsq; 4. N-B4 wins immediately); 4. QxNP ch, K-K4; 5. Q-N7 ch, KxP (If K-K3; 6. N-N4 mate); 6. N-B6 ch, PxN; 7. QxQ, and Black resigned since the endgame is hopeless for him.

Other tries are not convincing. If 1. N-K3, R-B4; 2. N-B5 ch, K-Rsq; 3. Q-R6, R-KNsq; and any win is a long way off. 1. N-B4 can be met with R-KBsq. And 1. R-B5, RxBP; 2. RxB, QxR leads to an ending in which Black seems to have adequate counterplay.

Correct solutions are acknowledged from: George W. Baylor, Gerald Blair, Abel Bombardier, Russell Chauvenet, K. A. Czerniecki, Richard Gliban, Rea B. Hayes, Ed Nash, George W. Payne, Edmund Roman, I. Schwartz, Paul Smith, Bob Steinmeyer, W. E. Stevens, and William B. Wilson. The solvers score 15-10.

Wesley, H. (Millville, N.J.)	1400*
Wesolowski, S. (Irvington, N.J.)	1750*
Westbrock, J. T. (Brooklyn, N.Y.)	2098
Westing, E. R. (Flushing, N.Y.)	1830
Wetherhorn, L. (Kans. City, Mo.)	1736*
Wetstein, R. (Appleton, Wis.)	1568
Wetzel, R. S. (State Coll., Pa.)	1650
Weyer, E. (San Francisco)	1400*
Weyerts, W. Jr. (Rochester, N.Y.)	1950*
Wheaton, H. H. (Verona, N.J.)	1762
Wheeler, H. (Chicago)	1940
Wheeler, L. (San Francisco)	1560*
Whisler, Wm. (Concord, Cal.)	1870
White, Ira (Elizabeth, N.J.)	1750*
White, J. L. (Tulsa, Okla.)	1592
White, L. D. (San Francisco)	1350*
White, Wm. (Waterloo, N.Y.)	1850*
Whitfield, J. (Louisville, Ky.)	1850
Whiting, J. D. (New Haven, Ct.)	1553
Whitney, K. L. (Univ. Park, Pa.)	1400*
Whyte, F. C. (Hattiesburg, Miss.)	1584*
Widdicombe, L. (Baltimore)	1525*
Widney, Mrs. M. (New York, N.Y.)	1430
Wiebe, R. (Berkeley, Cal.)	1600*
Wiencek, E. (Cleveland)	1727
Wiencek, T. R. (Milwaukee)	1720*
Wiener, J. (Granada Hills, Cal.)	1940
Wiener, M. (Cambridge, Mass.)	2007
Wiese, H. (Cleveland)	1600
Wilcock, Wm. (Jamestown, N.Y.)	1822
Wilcox, R. V. (Salinas, Cal.)	1837
Wild, W. G. (Storm Lake, Ia.)	1600
Wilder, N. C. (Buffalo, N.Y.)	1890
Wilkinson, D. (Cambridge, Mass.)	1765
Wilkinson, G. (Newburyport)	1600*
Williams, D. M. (Walbridge, O.)	1400*
Williams, Dorothy (Maplewood)	1811
Williams, Wm. (San Quentin, Cal.)	1500*
Williamson, C. A. (Rock Is., Ill.)	1895
Willis, D. (Oakland, Cal.)	1773
Wills, A. B. (New Orleans)	2119
Wills, J. (Pampa, Tex.)	1560
Willson, R. P. (San Francisco)	1955
Wilson, C. R. (Berkeley, Cal.)	1911
Wilson, Dan (Spokane, Wash.)	1450*
Wilson, E. P. (Albuquerque)	1632
Wilson, F. C. (Exeter, N.H.)	1650*
Wilson, Larry (Lorain, O.)	1714*
Wilson, Rose (Lorain, O.)	1400*
Wilson, Wm. (Atl. City, N.J.)	1750*
Wilt, M. S. (Borger, Tex.)	1639
Winfrey, B. (New Orleans)	1500*
Wing, M. (Louisville, Ky.)	1400*
Winkaitis, S. (Chicago)	1922
Winkelman, B. F. (Phila., Pa.)	2074
Winkelman, J. (Lincoln, Neb.)	1653
Winkler, (Cleveland)	1800*
Winkler, L. (Washington, N.J.)	1961
Winkler, M. B. (Fairlawn, N.J.)	1956
Winslow, B. H. (Univ. Park, Pa.)	1400*
Winston, H. (Brooklyn, N.Y.)	1674*
Winters, J. C. (Minneapolis)	1500*
Winters, Stanley (Uewark, N.J.)	2035
Wirth, W. C. (Richmond, Va.)	1960
Wisch, Chas. (Miami, Fla.)	1970
Witte, Chas. (New York, N.Y.)	2120
Witteman, R. (Brooklyn, N.Y.)	1400
Wolf, C. (Sheboygan, Wis.)	1611
Wolf, Edw. (New Orleans)	1550*
Wolf, J. E. (Elizabeth, N.J.)	1781
Wolf, Peter (Chicago)	2004*
Wolfe, R. (Eldora, N.J.)	1400*
Wolff, Wallace (Ithaca, N.Y.)	1985
Wolford, D. (Ohio)	1750*
Wolfson, L. (San Bruno, Cal.)	1790
Wolfson, L. (Elizabeth, N.J.)	1862
Wolk, E. S. (Storrs, Conn.)	2036
Wolter, Wm. (Verona, N.J.)	1675
Wolverton, C. (Ft. Worth, Tex.)	1550*
Wong, Ben (San Francisco)	1614
Wood, B. (Cleveland)	1775
Wood, L. E. (Haddon Hts., N.J.)	1775
Wood, Robt. (Ft. Worth, Tex.)	1550*
Wood, Vernon (Lynn, Mass.)	1692
Woods, R. (Waterloo, N.Y.)	1850*
Woodridge, S. (Flushing, N.Y.)	1822
Woolsey, Wm. (Louisville, Ky.)	1600*
Work, P. S. (Little Rock, Ark.)	1926*
Worthington, R. (Wilm'ton, N.C.)	1530
Wozniak, V. (Belleville, N.J.)	1800*
Wray, Mrs. (Aransas Pass, Tex.)	1400*

Tournament Life

Send to CHESS LIFE, 123 No. Humphrey Ave., Oak Park, Ill. for application form for announcing tournament in this column.

Unless otherwise specified, all tournaments announced in this column are 100% USCF rated. Rating fees, if any, are included in specified entry fee; no additional rating fee for non-members USCF.

May 11-12 2nd Annual Midwest Inter-University Team Tournament Chicago, Ill.

Open to teams-of-four composed of graduate and/or undergraduate students of any college or university; at Ida Noyes Hall, 1212 E. 59th Street (Univ. of Chicago campus), Chicago; 6 rd Swiss, 45 moves in 2 hrs.; entry fee: \$4 per person (\$16 per team); guaranteed minimum 1st prize \$60, also prizes for 2nd and 3rd (all but expenses into prize fund); 1st rd begins 9 a.m. Sat. May 11th, adjudication after 4 hrs. of play; rooms for Fri., Sat. and/or Sun. nights may be reserved through Robion Kirby; registration by mail postmarked no later than May 8th (make checks payable to Robion Kirby); bring at least two chess sets and all available clocks; for details or registration, write: Robion Kirby, 5639 So. University, Chicago 37, Ill.

100% USCF rated event.

May 30, June 1-2 Albuquerque Open Championship Albuquerque, N.M.

Open; at Hilton Hotel, Albuquerque; 7 rd Swiss, 45 moves 1st two hours and 24 moves per hr thereafter; starts 8:30 a.m. to midnight Thursday, May 30; 1 p.m. to 11 p.m. June 1; 8 a.m. to 6 p.m., June 2; Harkness pairing system; entry fee: \$3 with no extras; prizes include 2 cups and 3 medals for seniors, cup and book for juniors and other items; for details: write W. A. Muff, 2717 Espanola, N.E., Albuquerque, N.M.

100% USCF rated event.

Wright, C. A. (Henrietta, N.Y.)	1568
Wright, H. F. (Thorofare, N.J.)	1864
Wright, Herb. A. (Woodbury, N.J.)	1709
Wright, J. A. (Millington, Tenn.)	1890
Wright, M. (Rochester, N.Y.)	1500*
Wright, M. (St. Paul, Minn.)	1650*
Wright, R. (Midland, Tex.)	1891
Wujciak, R. (Irvington, N.J.)	1800*
Wurl, H. (Mayville, Wis.)	1708
Wynar, L. (Cleveland)	1800*
Wynberg, H. (New Orleans)	1855
Wysowski, S. (Westbrook, Ct.)	1943
Wyttanbach, C. (Elmira, N.Y.)	1600*

— Y —

Yaffe, I. (Winthrop, Mass.)	1801
Yaggle, E. H. (San Francisco)	1722
Yarbrough, D. W. (Baltimore)	1800*
Yarmak, Saul (Los Angeles)	2186
Yasinow, Dr. (Cleveland)	1650*
Yeager, C. (Sweetwater, Tex.)	1500*
Yeager, E. (Berkeley, Cal.)	1795
Yehl, J. (Hammononton, N.J.)	1645
Yelson, L. (Atl. City, N.J.)	1663*
York, D. W. (Canby, Ore.)	1770*
Yorke, J. (Linden, N.J.)	1661
Yosso, M. (Brooklyn, N.Y.)	1983
Young, Ed. (Pampa, Tex.)	1700*
Young, L. C. (Madison, Wis.)	1981
Youngman, S. E. (Corp. Christi)	1769
Youngquist, R. (Lancaster, Pa.)	1400*
Yunker, J. A. (Peabody, Mass.)	1921
Zaas, D. I. (So. Euclid, O.)	1714
Zaas, Lois (Cleveland)	1585
Zabin, B. (Urbana, Ill.)	1775*
Zachlin, Adam (Cleveland)	1863
Zachman, K. (Cleveland)	1550
Zadnikar, V. (Cleveland)	1820
Zaff, Sylvan (Detroit)	1858
Zangerle, K. H. (Lawrence, Ks.)	1803
Zaramsky, B. (Cleveland)	1650*
Zarkin, L. (Bronx, N.Y.)	1500*
Zarkin, S. (New York, N.Y.)	1977
Zeiffert, R. (Ft. Lauderdale)	1842
Zeiler, Ben (San Francisco)	1938
Zemitis, V. (U.S. Army)	2158
Zemzars, J. (Cleveland)	1853
Zededa, R. (Ft. Worth, Tex.)	1550*
Zichy, M. (Cleveland)	1860*
Ziegler, C. (Cleveland)	1780
Ziemba, S. (Cleveland)	1730*
Zierke, H. C. (Racine, Wis.)	1873
Zimmer, F. (Rochester, N.Y.)	1500*
Zimmerman, W. L. (Hyattsville)	1815
Zirnis, Peter (Brooklyn, N.Y.)	2110
Zivodr, W. (Cleveland)	1704
Znotins, G. (Jamaica, N.Y.)	2073
Zucker, S. (Oakland, Cal.)	1500*
Zufelt, E. (Sheboygan, Wis.)	1461
Zvers, J. (Milwaukee)	1856
Zujus, Alex. (Chicago)	2045
Zuk, B. (Philadelphia)	1850*
Zworba, W. (Cleveland)	1550*



Boost American Chess!

Solutions

Finish It the Clever Way!

Position No. 199: 1., P-B5! and White resigned.

Position No. 200: 1., RxB!; 2. RxB, Q-N8 ch; 3. K-B2, R-QB1 ch; 4. K-Q3, Q-N8 ch; 5. K-Q4 (if 5. K-K2, R-K1 ch; 6. K-B2, Q-K8 mate), QxNP ch; 6. K-K4, R-K1 ch; 7. K-Q3, R-K6 ch and White resigned.

Presidio (Monterey) Chess Club: Preliminaries of the club championship saw S. Oettingen win Section I with 6-0; Donald Hलगren was second with 5-1, losing to Oettingen, and John Olson and Robert A. Karch shared third with 3-3 each. In Section II Lev A. Belavsky was victor with 7-0; tied for second with 5-2 each were John H. Gidley and Alexander Jadan, while Eric E. Peabody was fourth with 3½-3½. Alexander Suchobek won Section III with 4-0; Solomin was second with 3-1 and Bruce Price third with 2-2.

Subscriptions Accepted for

THE BRITISH CHESS MAGAZINE
Founded in 1881 and now the oldest chess periodical extant. Games Editor: H. Golomoek—Problem World: S. Sedgwick
—\$4.00 per year (12 issues)—
Specimen copy 25c
Special thin-paper edition, sent by Airmail \$5.70 per year.

CANADIAN CHESS CHAT
Official Organ of the
Chess Federation of Canada
Only publication with national coverage:
Events, Games, Articles and personalities—
Canadian Chess News!
Annual Subscription: \$3.00

CHESS WORLD
Comprehensive Australian chess magazine edited by C. J. S. Purdy. Articles, annotated games, problems, news.
• \$3.00 per year—12 issues
Sample copy 20c

Order From
CHESS LIFE, 123 No. Humphrey Ave.
Oak Park, Ill.

June 7-9 U. S. Amateur Championship Asbury Park, N.J.

See special announcement on page 7

June 28-30 Carolinas Open Championship Greensboro, No. Car.

Open; at Municipal Office Bldg., Greensboro; 6 rd Swiss; register: 12:30 p.m., June 28; entry fee: \$5 and \$2 NCCA or SCCA dues; 1st prize \$100 and trophy; Women's, Junior, and other cash prizes; for details, write: Norman M. Hornstein, M.D., Southport, N.C.

100% USCF rated event.

July 4-7 New Western Open Championship Milwaukee, Wis.

Open; at Venetian Room, Astor Hotel, 924 E. Juneau Ave.; sponsored by Milwaukee Chess Foundation and Milwaukee Municipal Chess Assn.; 8-rd Swiss, 50 moves in 2½ hrs.; entry fee: \$10 for USCF members, \$11 for non-members; play begins 1:00 p.m. CST (2 p.m. DST), July 4, last round 2:00 p.m. DST, July 7; 1st prize \$300 and \$100 simultaneous exhibition, 2nd \$200, 3rd \$100, also \$400 to be awarded on game and tie-breaking points with guaranteed minimum prize fund of \$1,000; TD Ernest Olfe; for details, write Miss Pearl Mann, 1218 Railway Exchange Bldg., Milwaukee 2, Wis.

100% USCF rated event.

BOOST AMERICAN CHESS
By Joining the U.S.C.F.



Windsor Castle Chessmen

Solid plastic. Authentic Staunton design. King height about 4". Felt cemented permanently with plastic glue. Loaded sets have big lead weights moulded into bases. Unloaded sets much heavier than "weighted" chessmen made with plastic shells. Used at leading clubs.

No. 27 (Black & Ivory) or No. 28 (Red & Ivory): Felted but unloaded set in leatherette-covered case, as illustrated.

Special bargain! \$15.00 less 30% to USCF members... **\$10.50**
(In dozen lots, without cases, \$7.95 per set)

No. 21 (Black & Ivory) or No. 22 (Red & Ivory): Felted and heavily loaded set in leatherette-covered case, as shown.

\$16.95
\$20.00 less 15% to USCF members...
(In dozen lots, without cases, \$12.75 per set)

No. 23 (Black & Ivory) or No. 24 (Red & Ivory): Felted and heavily loaded set in leatherette-covered de luxe case with individual felt-lined divisions for all pieces (not shown).

\$19.75
\$25.00 less 21% to USCF members...

Mail your order now to

UNITED STATES CHESS FEDERATION

80 EAST 11th STREET

NEW YORK 3, N. Y.