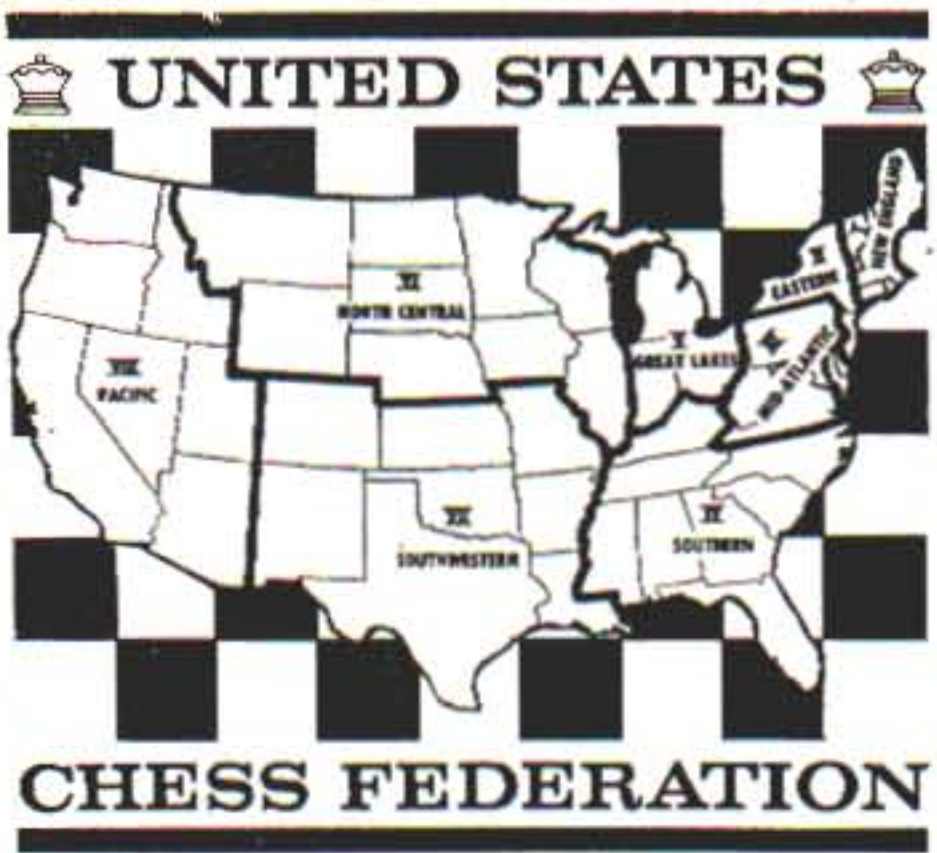




CHESS LIFE



ACTION AT THE MARSHALL C. C.
(See p. 64)



CHESS LIFE

Volume XIX

Number 3

March, 1964

EDITOR: J. F. Reinhardt

NOMINATIONS WANTED

The Nominating Committee of the USCF requests the help of the membership in suggesting suitable candidates for next year. The offices to be filled are eight USCF vice-presidencies; one in each USCF region. The outgoing Vice-Presidents are:

- Region I—New England—James A. Burgess, Dorchester, Mass.
- Region II—Eastern—Charles Keyser, Bloomfield, N.J.
- Region III—Mid-Atlantic—William Byland, Pittsburgh, Pa.
- Region IV—Southern—Dr. Stuart Noblin, Raleigh, N. Carolina
- Region V—Great Lakes—Dr. Howard V. Gaba, Detroit, Mich.
- Region VI—North Central—Dr. George Tiers, St. Paul, Minn.
- Region VII—Southwestern—Juan J. Reid, Colorado Springs, Colo.
- Region VIII—Pacific—Richard S. Vandenburg, Boise, Idaho

Names of suggested nominees may be sent to any member of the Nominating Committee listed below:

CHAIRMAN—Dr. Alex Janushkowski
691 Crocker Road
Sacramento, Calif.

William Slater
116 Pinehurst Ave.
New York 33, N.Y.

Fred W. Kemp
Box 114
Palmerdale, Ala.

Henry Meifert
6409 W. Kinnic River Pkw.
Milwaukee 19, Wisconsin

William N. Wells
2711 Briarfield
San Antonio, Texas 78230

PRESIDENT
Major Edmund B. Edmondson, Jr.

VICE-PRESIDENT
David Hoffmann

REGIONAL VICE-PRESIDENTS

- NEW ENGLAND** Eli Bourdon
James Burgess
Stanley King
- EASTERN** Donald Schultz
Charles Keyser
Peter Berlow
- MID-ATLANTIC** William S. Byland
George Thomas
Edward D. Strehle
- SOUTHERN** Dr. Stuart Noblin
Jerry Sullivan
Dr. Robert Froemke
- GREAT LAKES** James Schroeder
Dr. Howard Gaba
Norbert Matthews
- NORTH CENTRAL** Dr. George Tiers
Frank Skoff
John Osness
- SOUTHWESTERN** Juan J. Reid
John Beitling
Kenneth Smith
- PACIFIC** Richard Vandenburg
Mabel Burlingame
Gordon Barrett

SECRETARY
Marshall Rohland

- NATIONAL CHAIRMEN and OFFICERS**
- ARMED FORCES CHESS**.....Robert Karch
 - BUSINESS MANAGER**.....J. F. Reinhardt
 - COLLEGE CHESS**.....Owen Harris
 - INDUSTRIAL CHESS**.....Stanley W. D. King
 - INSTITUTIONS CHESS**.....Dr. Ralph Kuhns
 - INTERNATIONAL AFFAIRS**.....Jerry Spann
Women's International.....Kathryn Slater
 - JUNIOR CHESS**.....Mordecai D. Treblow
 - MASTERS AFFAIRS**.....Robert Byrne
 - MEMBERSHIP**.....Edward A. Dickerson
 - MEMBERSHIP SECRETARY**.....Greta Fuchs
 - NOMINATIONS**.....Dr. Alex Janushkowsky
 - PRESIDENTIAL ASSISTANT**.....Fred Cramer
 - RATING SYSTEM**.....Arpad E. Elo
 - SWISS SYSTEM METHODS**.....Arpad E. Elo
 - TOURNAMENT ADM.**.....George Koltanowski
 - TOURNAMENT RULES**.....James Sherwin
 - TREASURER**.....Milton Ruskin
 - U. S. CHAMPIONSHIP**.....Maurice Kasper
 - WOMEN'S CHESS**.....Eva Aronson

IN OUR NEXT ISSUE

- ✓ Fischer Talks Chess
- ✓ Hans Berliner on Postal Chess
- ✓ More Games by U. S. Open Champion William Lombardy
- ✓ A Complete Honor Roll of "International" Tournaments

JOIN THE UNITED STATES CHESS FEDERATION

USCF is a non-profit democratic organization, the official governing body and FIDE unit for chess in the USA. Anyone interested in advancing American chess is eligible for membership.

Membership, including CHESS LIFE subscription, eligibility for USCF-rating, and all privileges: 1 yr.: \$5.00; 2 yrs.: \$9.50; 3 yrs.: \$13.50; Sustaining: \$10.00 (becomes life Membership after 10 payments); Life: \$100.00. Family Membership (two or more family members at same address, only one CHESS LIFE subscription): rates as above for first family member, plus following for each additional member: 1 yr.: \$2.50; 2 yrs.: \$4.75; 3 yrs.: \$6.75.

CHESS LIFE is published monthly by USCF and entered as second-class matter at Dubuque, Iowa. Non-member 1-yr. subscription: \$4.00 (\$5.00 outside USA); single copy: 40c (50c outside USA). Change of address: Allow four weeks notice; please give us both the new address and the old address, including the number and dates on the top line of your stencil.

Address all communications, and make all checks payable to:

UNITED STATES CHESS FEDERATION, 80 East 11th Street, NEW YORK 3, N.Y.

WORLD CHESS FEDERATION
(F.I.D.E.)

Jerry G. Spann
Vice-President, Zone 5 (U.S.A.)

HOPPE SCORES IN NORTH CAL.

Roy Hoppe, USCF Expert from Novato, took first place in the 12th Annual Championship of Northern California, played in Oakland from February 29 through March 1.

A record-breaking field of 140 players turned out for the event, which was run in three sections. Hoppe, playing in the Expert-A Division, scored four out of five, winning out over seven other players on Solkoff points. Others with 4-1 scores were: George Kane, Redwood City; Max Wilkerson, San Francisco; Don Sutherland, San Francisco; Dr. J. K. Walters, Berkeley; Robert Trenberth, Oakland; John Blackstone, Saratoga; and Janis Salna, Oakland. Fifty-two players participated in the Expert-A Division.

In the B Division, with 48 players, top honors went to Michael Tritch of Hayward who scored a clean 5-0. In the C Division, R. V. Horn of Klamath Falls, Oregon won all five of his games to finish first.

STEUER TAKES RHINE EVENT

Julius J. Steuer, scoring $6\frac{1}{2}-\frac{1}{2}$, took first place in the George Washington Chess Holiday at the Rhein/Main AFB in Germany on February 21-23.

The event, sponsored by the European Chess District (ECD) of the USCF, attracted 38 entrants. Capt. Jack G. McKay ($5\frac{1}{2}$) edged out Anne Sunnucks, a captain in the Women's Royal Army Corps, for second place on median points. Captain Sunnucks, the highest-scorer of the three women who played in the tournament, is presently ranked as the number two woman player in Great Britain. She was undefeated in the tournament and was the only player to put a dent in the winner's score by drawing with Steuer in the fifth round.

FISCHER ON TOUR

←
United States Champion Robert J. Fischer, whose chess tour began on February 20, has already appeared at Brandeis University, Mass.; Montreal and Quebec, Canada; the University of Toronto; Westerly, R.I.; Fitchburg, Mass.; Hartford, Conn.; Richmond, Va.; Washington, D.C.; Yeshiva University, New York City; and Pittsburgh, Pa. Fischer's tour will continue through April and May and conclude with a 100-board exhibition in New York City, sponsored by the USCF, in early June.

The Champion is shown, left, during his exhibition at Westerly, R.I., where he won 47, lost one, drew two.

—Photo courtesy The Westerly Sun



MY GAMES FROM CHICAGO

by U. S. Open Champion William Lombardy

Starting with this issue, CHESS LIFE will present all the games played by Grandmaster William Lombardy at the 1963 United States Open in Chicago. Each game will be fully annotated by Mr. Lombardy himself.

The games are presented in chronological order. Those from the first four rounds are given in this issue.



Game 1

An ordinary Sicilian Defense with nothing particular in opening technics to recommend it. What should be carefully noted is the neat refutation of Black's 17th move, particularly in respect to his weakening of the Q5 square which opens wide the door to the combination.

White: W. Lombardy

Black: Ninus Aronson

SICILIAN DEFENSE

1. P-K4, P-QB4; 2. N-KB3, P-Q3; 3. P-Q4, PxP; 4. NxP, N-KB3; 5. N-QB3, P-KN3; 6. B-K2, B-N2; 7. B-K3, P-QR3.

To be regarded as a waiting move, more or less; but Black cannot afford to wait. One suggestion is 7., N-QB3; 8. P-KN4?!, P-Q4.

8. P-KN4, P-KR3; 9. P-KR3, N-B3; 10. N-N3,

Since Black has undermined his own king side by the weakening 8., P-KR3, there remains no doubt that he intends to castle on the other wing. White anticipates this plan.

10., Q-B2; 11. P-B4, P-K3.

Inevitably forced; 11., B-Q2; 12. P-N5, PxP; 13. PxP, KN-R4; 14. N-Q5, Q-N1; 15. B-N6.

12. Q-Q2, P-QN4; 13. B-B3, B-N2; 14. O-O-O, O-O-O; 15. K-N1, R-Q2; 16. Q-B2, R-KB1; 17. KR-K1,

Black has inherited a passive position with no effective activity possible. White merely intends patiently to apply pressure on the QP by means of R-K2-Q2, then B-N6 and eventually the rupturing P-K5. Black understandably becomes impatient. 17., P-K4?



18. P-N5!, PxBP.

A retreat of the knight is answered by N-Q5.

19. PxN, PxB; 20. PxB!, PxQ; 21. PxR/Q + R-Q1; 22. QxRP, PxR/Q; 23. RxQ,

The end of the tactical lesson; white has emerged a piece ahead.

23....., N-K4; 24. B-K2, Q-N3; 25. Q-B4, R-Q2; 26. B-N4. Unable to evade further simplification, Black resigns.

★ ★ ★

Game 2

My opponent, an old-timer and former champion of Montana, had not been up on modern opening theory and as a result very early developed a bad game. The fact that he was for so long reduced to passivity accounts for the finale.

White: Adam Smith

Black: W. Lombardy

SICILIAN DEFENSE

(By transposition)

1. P-K4, P-KN3; 2. P-Q4, B-N2; 3. P-KB4, P-QB4; 4. N-KB3, PxP; 5. NxP, N-QB3; 6. NxN?

It is the exception to the rule for White to exchange knights in this type of position, for only Black can gain from such an exchange, unless White can conjure up effective threats. The sounder move is 6. N-N3, N-B3; 7. N-B3, O-O; 8. B-K2, P-Q3; 9. O-O with good attacking chances for White. As played, Black derives several advantages, a central pawn majority, a more rapid development, and immediate pressure along both the open file (QN) and the long black diagonal.

6., NPxN; 7. B-Q3, P-Q3; 8. P-B3,

White could not yet castle: 8. O-O, Q-N3+; 9. K-R1, BxP.

8., N-B3; 9. Q-K2,

If White castles, he allows 9., B-R3; 10. BxB, Q-N3+; 11. K-R1, QxB and Black has a slight lead in development. That lead, however, could not be of any great moment under the circumstances.

9., O-O; 10. O-O, P-QR4.

Black plans to use this pawn as a wedge to break up the white queen side pawn formation. White should react instantly by posing the threat of P-K5, e.g. N-Q2-B4.

11. N-Q2, N-Q2; 12. K-R1,

A waste of time. Better was 12. R-Q1, N-B4; 13. B-B2, B-QR3; 14. Q-B3 and White can complete his development with N-B1 and B-K3. Of course 12. N-B4 is not very good on account of the reply N-B4, 13. B-B2, B-QR3! The text, however, gives Black time to execute his plans for White's queen side pawns.

12., P-R5! 13. QR-N1, P-R6; 14. N-N3,

Not much better is 14. PxP, BxP, when White's doubled rook pawns are too weak to stand for very long.

14., PxP; 15. QxP, P-QB4; 16. Q-QB2, N-N3; 17. B-K2, N-R5; 18. B-Q2, B-Q2; 19. N-B1, B-QB3.

Black is at no inconvenience whatever in exploiting the pawn weaknesses. Desperately trying to defend these pawns, White further compromises his already disorganized position, allowing a cute finish.

20. B-B3, Q-R4; 21. N-K2,

Advancing the pawn to QB4 makes it much more easily assailable. Such an advance would also open the entire diagonal to the action of the black king bishop.

21., Q-R3; 22. KR-B1, N-N3; 23. R-R1,

(Continued on page 60)



NONA TALKS

Nona Gaprindashvili, a petite 22-year-old brunette from Tiflis, Georgia, is the strongest woman player in the world today. Some of her countrymen, notably Mikhail Tal, go further and claim that she is already the best woman player of all time—stronger than the late Vera Menchik, who participated in international master tournaments. Nona won the 'Challengers' tournament at Hastings against several British Championship players and national masters from European countries; then went on to take part in her first real international test at Reykjavik, Iceland. Her results and play in these events convinced most experts that Tal was wrong; Nona is not yet a Menchik. True, she scored a draw with grandmaster Olafsson in Reykjavik, won the blitz tournament in Hastings (beating Tal in the finals) and held her own until the late middle game against both Tal and Gligoric at Reykjavik: but she showed some variation in form when losing to weaker players.

What does Nona herself think of her successes? Between Hastings and Reykjavik, she spent a few days in London, where I asked her about the background to her rise to fame. We talked in the hotel lounge, with Moscow chessmaster Abram Khasin interpreting and Tal sitting in the background conducting his own running commentary on the interview, more than once sending Nona into fits of giggles. Though Nona has been a student of English at the Tiflis foreign languages institute for four years and had studied it at school for four or five years previously, English isn't her strongest point. Though she answered my simpler questions in English, she would frequently turn to Khasin in bewilder-

ment or explain herself to him in voluble Russian.

What really excites Nona is sport. Not just chess, but almost any sport, indoor or outdoor. At Hastings, I watched her demonstrate her skill at table tennis, where she demolished several opponents in succession by a combination of a disguised flick service and fierce smashing. Her table-tennis method is similar to her chess style, unlike Tal, who is a keen player but has, table-tennis-wise, 'too defensive' an approach, according to a kibitzing expert.

Nona is also an avid soccer fan. Too avid, according to Tal, who used to play goalkeeper for the university team at

A CHESS LIFE Exclusive
by **LEONARD BARDEN**

Riga ("it was better for the team when I stopped") and who likes to watch the game: but he says that Nona is a "terrible girl" for soccer. Tal likes this word "terrible"; while I was interviewing Nona, he tried to kid her that the correct English expression was "terrible tennis."

Chess is in Nona's blood. She is one of six children, and all her five brothers play chess; three of them are Soviet first category players (roughly equivalent to U.S. Expert standard). "I learned the moves when I was five, and played in my first tournament at school when I was 12. Then I began to study chess, and found that it was . . ." (Nona groped for an adequate English expression) "very interesting."

"Did you have family tournaments at home?" I asked.

"Yes, we had several. My eldest brother always used to win."

"Is he still better than you?"

"No, not now," replied the world champion, adding diplomatically "Now we are not playing at all."

"Did you very much want to win the family tournaments?", I said, recalling Nona's keenly obvious determination to win against men opponents at Hastings.

"Yes, everybody wanted to win . . . but sometimes it was very difficult."

When Nona's talent became known in Tiflis, she was coached by Shishov, one of the leading Georgian masters. I asked her how soon it crossed her mind that she might become world champion. Nona hesitated, and Tal chipped in from the background "After the eleventh match game against Bykova!", a remark which set Nona into uncontrollable laughter. "I never imagined it when I was twelve," she told me, "but I suppose it gradually became a possibility as I grew older."

"How did you train for tournaments?" I asked her. "Which chess writers and players did you study most?" Up to this point in the interview, one thing which had struck me about Nona was her lack of feminine coyness, but now she fluttered her eyelids in the manner of one shyly confessing her true love as she replied "I very much like how Tal plays." This remark proved too much for both Tal and Nona, who promptly went off once more into gales of laughter. "In general, I don't have a preference for any particular players," she went on. "I like to play over any game which interests me. With Shishov, my trainer, I never used to play serious games. We would look over games, and when we came to a position we thought was interesting, we not only analyzed it, but played five minute games based on that particular position."

Nona then surprised me by saying that she had seen very few games of Vera Menchik's. She felt that it was "impossible to compare" herself with Menchik, but commented that, whereas Menchik had competed in dozens of tournaments against strong masters, she herself was only just beginning to do so.

When Nona plays against a man, you get a little the impression that she is out to do battle on behalf of her sex; that she's trying to prove that anything a man can perform at the chessboard is also within the compass of a woman. "Do you think that a woman can become a strong grandmaster?" I asked, remembering Bobby Fischer's famous 'knight-odds' remark. "I don't know; it's very difficult for a woman to reach such a level, and I know that no woman has done it yet. For myself, I feel I'm playing better than when I won the world title, and I was very pleased with my result in Hastings: it was the first time I'd played against men outside the Soviet Union." (Later, after Reykjavik, I heard that Nona had been very disappointed with her result there.)

"Do you prefer, in general, to play against men or women?" I said.

"I find it easier to play against women."

"If you had a choice of playing against a man or a woman who were both just as strong as each other, would you mind which one you played?"

"She'd like to play them simultaneously!" interjected Tal.)

"Playing against a man or a woman are interesting in different ways—but not simultaneously."

"Have you ever found it difficult to concentrate on a game because the man you were playing was handsome or attractive?" I went on, wondering if Nona's apparently complete absorption in the chessboard during her games was ever feigned. "No, when I'm playing, I never notice my opponent. What he looks like has no effect on me." Observing Nona at the board certainly supports what she says. She arrives looking demure and unsophisticated; she uses little make-up, and, unlike some women chessplayers, never varies her outfit or hairstyle to suit her opponent. In Reykjavik, one of the Icelandic players was a tall, handsome, blond, Scandinavian, and some of Nona's rivals wondered hopefully whether sitting opposite him might put her off her game. Not a bit of it—it was, in fact, in this very game (given below) that Nona produced her most crushing form of the tournament, sweeping her opponent off the board with an overwhelming king's side attack.

"What about marriage?" I asked finally. "What would you do if you fell in love with a man who was not a chess player?" Nona gave me her quickest and most definite answer of the whole interview: This was, clearly, a question she'd already asked in her own mind.

"I'll only marry a man who doesn't play chess," said the world champion decisively. "One chess fanatic in the family is quite enough!"



IT'S UP TO YOU . . .
to tell us that you're moving. Copies of **CHES LIFE** are not forwarded by the postoffice. We need six weeks notice of any change of address.

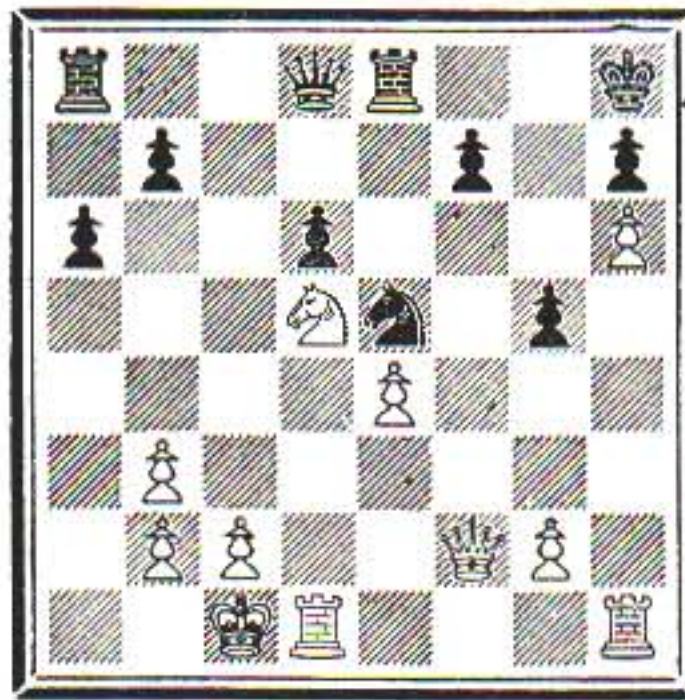
Nona and the Blond Scandinavian

SICILIAN DEFENSE

Reykjavik, 1964

Gaprindashvili-1		Gudmundsson-0	
1. P-K4	P-QB4	15. Q-B2	P-QR3
2. N-KB3	P-Q3	16. P-B4	B-N5
3. P-Q4	PxP	17. P-R5!?	P-K4?
4. NxP	N-KB3	18. N-B3	BxN
5. N-QB3	P-KN3	19. QxB	KPxP
6. B-K3	B-N2	20. QxP	P-KN4
7. P-B3	N-B3	21. Q-B2	NxBch
8. B-QB4	O-O	22. RPxN	N-K4
9. Q-Q2	N-Q2	23. N-Q5	R-K1
10. B-N3	N-R4	24. P-R6ch	K-R1*
11. B-R6	N-N3	25. N-B7!	Q-K2
12. BxB	KxB	26. NxQR	RxN
13. O-O-O	B-Q2	27. KR-B1	
14. P-KR4!			Resigns

N(N3)-B5



*After 24., K-R1.

Battle of Two World Champions

RUY LOPEZ

Reykjavik, 1964

Tal-1		Gaprindashvili-0	
1. P-K4	P-K4	22. Q-Q2	B-B1
2. N-KB3	N-QB3	23. B-N1	Q-R1
3. B-N5	P-QR3	24. B-R6	BxB
4. B-R4	N-B3	25. QxB	R-K2
5. O-O	B-K2	26. R-QB1	Q-KB1
6. R-K1	P-QN4	27. Q-Q2	P-Q4
7. B-N3	P-Q3	28. NxP	NxN
8. P-B3	O-O	29. PxN	NxP
9. P-KR3	N-QR4	30. BxN	PxB
10. B-B2	P-B4	31. Q-B4	Q-N1
11. P-Q4	BPxP	32. R-B5	Q-Q1
12. PxP	Q-B2	33. NxP	BxN
13. QN-Q2	B-N2	34. QxB	P-B3
14. N-B1	QR-B1	35. Q-B2	Q-Q5
15. B-N1	KR-K1	36. R-B8ch	K-B2
16. N-N3	P-N3	37. PxP	Q-R8ch
17. B-N5	N-B5	38. K-R2	QxBP
18. P-N3	N-N3	39. R-B6	Q-B5ch
19. B-Q3		40. P-N3	Q-B6
	N(N3)-Q2	41. RxRP	K-N2
20. R-QB1	Q-Q1	42. Q-N2ch	
21. RxR	QxR		Resigns

BOOST AMERICAN CHESS!
TELL YOUR FRIENDS
ABOUT USCF

First prize at Reykjavik was decided by the individual game between Tal (who scored 12½-½) and Gligoric (11½-1½).

RUY LOPEZ

M. Tal		S. Gligoric
1.	P-K4	P-K4
2.	N-KB3	N-QB3
3.	B-N5	P-QR3
4.	B-R4	N-B3
5.	O-O	B-K2
6.	R-K1	P-QN4
7.	B-N3	P-Q3
8.	P-B3	O-O
9.	P-KR3	N-QR4
10.	B-B2	P-B4
11.	P-Q4	Q-B2
12.	QN-Q2	B-Q2
13.	N-B1	KR-K1
14.	P-QN3

Tal's last move is a recent twist in place of the usual 14. N-K3 or 14. N-N3. The latest verdicts on these two moves are analyzed in my recent book *The Ruy Lopez*.

14. BPxP

In Tal-Matanovic at Moscow, 14., P-N3; 15. B-N5, N-R4; 16. BxB, RxB; 17. N-K3, N-KB3; 18. N-N5! favoured White, since 18., P-R3 is met by 19. Q-B3, K-N2; 20. QxN ch! In Keres-Zuidema at Beverwijk, Black played 14. P-N3; 15. B-N5, K-N2; 16. N-K3, B-K3; 17. Q-Q2 with a good central position for White. Gligoric knew the previous games, but as he had no time to prepare for his game with Tal because of an adjournment, he tried to find a better method for Black at the board.

15. PxP N-B3
16. B-N2 NxQP
17. NxN PxN
18. R-B1

Better than 18. BxP, B-B3; and, Q-N2 with counterplay. Black's defensive plan is refuted now, and White gains control of the center.

18. Q-Q1
19. QxP B-KB1
20. QR-Q1 R-B1
21. B-N1 B-B3
22. N-N3 P-Q4

Anything else leaves Black's game totally passive.

23. Q-K3?

Better is 24. P-K5, N-K5; 25. NxN, PxN; 26. BxP, QxQ; 27. BxQ, BxB; 28. RxB, R-B7 and Black has endgame drawing chances (Gligoric).

23. N-Q2
24. N-B5 P-B3?

24., PxP leaves White with nothing clear, says Gligoric.

25. Q-N3 Q-B2
26. Q-N4!

(Continued on page 68)

Winners in A Chess For Fun tournament, held in Minot, N.D. on the 7th and 8th of March, were: 1st section, Lt. Archie Myers of Minot AFB, 2nd section, Mr. Carmen Johnson of Minot; and 3rd section, James Pratt, a high school student. Prizes were USCF membership. \$5.00 went to Johnson who is already a member.

CHESS

KALEIDOSCOPE

by U. S. Senior Master **ELIOT HEARST**



The Village Queen

Not so well-known as the Manhattan and Marshall Chess Clubs, but much more popular at 2 or 3 in the morning, are the two studios which service the chess needs of New York's Greenwich Village—that downtown neighborhood where pizzaguzzling artists, monosyllabic poets, and bearded philosophers cater to the international and domestic tourist trade. Grandmaster Nicolas Rossolimo runs one of these studios and it has proven so successful that he no longer devotes very much time to driving a cab, his occupation for most of the years he has spent in this country. Last April, former U.S. Women's Champion Lisa Lane opened her own chess emporium nearby on Sheridan Square. The "Queen's Pawn," as she calls her studio, officially has its business hours from 2 P.M. to 2 A.M. (or later, if necessary) every day of the week except Monday, and it is rarely empty.

Lisa's studio lies on the route from New York to Washington—its 7th Avenue facade catches the eye of motorists approaching the Holland Tunnel to New Jersey—and so the proprietor of Chess Kaleidoscope has often passed the studio while fastening his seat belt on the way back to Washington. But it was only a few weeks ago that we actually entered the club for the first time.

Somehow it was not surprising to find out from Lisa that the studio formerly housed a typical Greenwich Village paperback bookshop. Now sixteen chess tables bloom where book-readers once browsed. Four or five games were in progress while we were visiting early one Saturday evening. A sign "Coffee 15c; Donuts 10c" stood behind Lisa as she talked to us. The feminine touch was evident from the neat arrangement of the pieces on each table and the attractive furnishings of the club. Lisa follows the policy of always leaving all the chess pieces out on their respective tables, a policy which differs from that of the public chess emporia further uptown where chess pieces are often found to disappear one by one if sets are not signed out and returned by the players who use them. A few years back even the austere Manhattan Chess Club was beset with a similar problem: some fellow was stealing a piece a week from the club. If he had been content to stop after 32 weeks he would never have been caught, but he was eventually apprehended trying to walk off with extra queens for his set, so that he would not be forced to use other pieces when all his pawns were promoted to queens.

A great variety of chess sets, big and small, domestic and foreign, are on sale at the Queen's Pawn, one of which is a creation of Mary Chess, the perfume distributor who occasionally shows interest in the Royal Game. This set, selling for more than \$100, is composed of hollow, transparent pieces each of which is, of course, filled with Mary Chess perfume. All of us immediately recalled the story of two great masters of the past, who once played a game with similar pieces under the strange condition that the capturer of an opponent's piece had to drink down in one gulp the entire liquid contents inside the piece. The liquid was naturally not perfume in that game, and the eventual winner found that by sacrificing his queen (which had the largest liquid capacity) early in the game, he was able to force a quick resignation.

Lisa's club, like Rossolimo's, does not have a permanent, formal membership. A standard fee of 30c per hour per player is maintained for everyone. Visitors include not only the 50 or so "regulars" at the club, but also foreign guests and Ameri-

can players who are too shy to cross the more private borders of the Manhattan or Marshall clubs. Part of the attraction of the Queen's Pawn is no doubt the temperamental and pretty Lisa herself, who manages to achieve publicity in non-chess periodicals with almost as great a frequency as Bobby Fischer. Articles about Lisa from such journals as *Cue*, *Sports Illustrated*, and *Life* fill the walls of the studio; and "Bobby never had his photo on the cover of a national magazine like *Sports Illustrated!*" Lisa remarked that Bobby occasionally visits her club "always with someone, never alone" and she was ecstatic over his performance in the last U.S. Championship: "Just like me he isn't happy unless he wins every game!" Lisa is friendly with Bobby and she has apparently forgiven Fischer's oft-quoted comment in reply to her evaluation of him as the "greatest chessplayer alive": "Lisa's statement is accurate, but she really wouldn't be in a position to know. They're all weak, all women. They're stupid compared to men. They shouldn't play chess, you know. They're like beginners. They lose every single game against a man. There isn't a woman player in the world I can't give knight-odds to and still beat." (*Harper's Magazine*, 1962).

* * *

Lisa has adopted Bobby's "No comment" when queried about her chess plans, so we couldn't get much information from her about her future activities away from the Queen's Pawn. Her face darkened and her eyes flashed as she talked about her most recent battles with other woman masters and organized chess in general. "They're jealous of me because I'm good-looking." She showed us a clipping from the N.Y. *Daily News* which last fall headlined her protest over not being selected to go to Europe as a member of the U.S. Women's Team (in a headline only the "News" could create): SCORNED WOMAN GETS SOMETHING OFF HER CHESS.

Talking about the Queen's Pawn, Lisa was calmer. "Unfortunately, not many women players come here to play" . . . "Business is good and I've recently hired a helper, a pretty college girl who doesn't play chess at all, but everyone likes her anyway" . . . "Outside the club a sign reads "Chess, Schach, Echecs, Scacchi, Ajedrez, Sah, Szachy" (chess in seven languages). One guy came in and was mad that checker sets and opponents were not available; he pointed to the sign and said, 'How can you advertise all those other games out there and not play checkers?'"

* * *

A few years ago Lisa told Robert Cantwell of *Sports Illustrated* that "chess is bound to become more and more popular and there should be people working at it all the time. It sounds foolish to say it, because even the best man players don't seem to be able to make their living by chess and no woman ever has. But I think I may be able to do so, and at least someone should try." At that time Lisa expected to make her living from chess tourneys, exhibitions, and endorsements. She may not have had an establishment like the Queen's Pawn in mind then, with the constant daily attention it requires, but she evidently enjoys being the village queen as much as she ever enjoyed playing serious tournament chess.

Chess Puts Two in Top Ten

A *New York Times* report (Dec. 28, 1963) gave the following information to the chess world:

"Valery Brumel, the world high-jump record-holder, today was named the top Soviet sportsman for the third straight year.

"The selection was made in the annual poll of sports writers by the federation of the sports press and radio of the Soviet Union, as reported by Tass.

"Brumel, a fourth-year student in a physical culture institute, set the record of 7 feet, 5¾ inches in a meet against a United States team July 21.

"Following Brumel in the poll were:

Lev Yashin, the goalie of the Moscow Dynamo soccer team; Yuri Vlasov, who won the world heavyweight weight-lifting championship for the fourth time; Lydia Skolblikova, the women's world champion speed skater; Tigran Petrosian, the world champion chess player; Tamara Press, the holder of the women's world record for the shotput and discus.

Also, Aleksandr Almeto, a forward on the Soviet hockey team that won the world championship at Stockholm; Boris Lagutin, winner of the European amateur light-welterweight boxing championship; Nona Gaprindashvili, the women's world chess champion and Ivan Karetnikov, the holder of the European swimming record for the 200-meter breast-stroke."

Ann Landers on Chess and Integrity

Reader Frank Skoff sent us the following excerpt from Ann Landers' Column in the Chicago Sun-Times, Oct., 1963.

Dear Ann Landers: I am a chess maniac. Not a very accomplished one, but I enjoy the game and I'm trying out for membership in our chess club at school.

Now that I've improved I can checkmate my father's king about 50% of the time. This seems to be causing a lot of trouble between us. If I put him in check with a piece he will make some snide remark like "Where did THAT come from . . ." as if I had cheated.

When he finds he's beaten he makes up an excuse to quit or "accidentally" tips over the board. Yesterday I beat him twice and he got so mad he almost hit me.

To be honest with you I don't want to play chess with my father any more. My mother says I SHOULD play with him but that I ought to let him win, so we can have peace in the house. Do you agree?—SIXTEEN PIECES OF TROUBLE

Dear SIXTEEN: I do NOT agree. What your mother calls peace is really appeasement. She is asking you to knuckle under to escape your father's wrath.

A person of integrity does not take a dive for any reason whatever. Do your homework during the evening and play chess with your friends.

Chess Motivation

An article by Prof. Ulric Neisser of Brandeis University in *Science* (1963, p. 193) on "The Imitation of Man by Machine" devotes itself to the question of whether machines will ever "think" in the same way as humans. A discussion of various characteristics of chess forms an important part of Neisser's argument. For example:

"Apart from considerations of winning and losing, playing chess may reflect many other human motives. One man may adopt what he considers to be a "daring" style of play because he wants to think of himself as a bold person; another may play conservatively for analogous reasons. Both men may be "playing" because (that is, partly because) chess is only a "game"—an activity in which they can succeed and be respected without growing up or competing in what they regard as more adult, and thus more frightening, realms. Some people probably play chess because it is at least something to do and a means of avoiding the anxiety-laden or self-destructive thoughts they might otherwise have. Others, of both sexes, may play because they somehow think of chess as a masculine rather than a feminine activity and playing it makes them more certain of their own sex identity."

Please send all material for this column to: Eliot Hearst, 401 N. Armistead St., Apt. 412, Alexandria 12, Virginia.

LOMBARDY—

(Continued from page 56)



If 23. P-B4, then N-Q2 leaves the RP without defense.
23., B-R5! 24. Q-N1, QR-N1; 25. N-N3,

There was really no good move.
White resigns. If, after 25., N-Q2; 26. B-K2, then P-B5; seals in the queen just the same.

★ ★ ★

Game 3

Black goes against the grain of the Sicilian Defense by seeking early simplifications, when it is the very purpose of the defense to complicate matters in order to play for the win at all cost. When the attempt at simplification fails, Black inherits a completely passive position.

White: W. Lombardy

Black: Jack Mayer

SICILIAN DEFENSE

1. P-K4, P-QB4; 2. N-KB3, P-K3; 3. P-Q4, PxP; 4. NxP, P-QR3; 5. N-QB3, Q-B2; 6. P-KN3, N-QB3; 7. B-N2, N-B3; 8. O-O, NxN; 9. QxN, B-B4; 10. Q-Q1!

So far a reproduction of my game with the Dutch International Master Langeweg, World Student Team Championship, Budva, Yugoslavia 1963. That game continued 10.,

O-O?! 11. B-B4, P-Q3; 12. N-R4!, and White was permitted to obtain a won ending. Mayer's continuation is slightly better in that his follow-up of B-Q2 on the eleventh turn prevents N-QR4.

White avoided 10. Q-Q3 on account of the reply N-N5 11. B-B4, B-Q2!; 12. Q-K2, P-Q3 with more than a satisfactory game for Black.

10., P-Q3!; 11. B-B4, B-Q2!; 12. Q-K2, B-B3; 13. KR-Q1, O-O; 14. P-QR3!; KR-Q1.

Apparently Black has solved his opening problems; his development is complete. What more could he desire? One problem still remains. The White advantage in space coupled with the pressure he can apply on the black QP makes the possibility of obtaining sufficient activity for the black pieces, developed as they may be, quite remote.

15. R-Q3! P-R3?

An unnecessary weakening, one which affords White a convenient target in the ensuing king side attack. Active play, P-QN4 and P-QR4, was indicated.

16. QR-Q1, P-K4.

One way or another, this was mandatory. Upon 16., P-QR4, then the continuation 17. Q-Q2, N-K1; 18. B-R3 to be followed by P-KN4-5 allows White to transfer the rook to the king side via the third rank. Of 17., P-K4? is answered by 18. BxKP.

17. B-QB1, P-QN4; 18. P-KN4, N-R2.

To prevent P-N5 Black had to relinquish control of his Q4. Now White is able to delay considerably any queen side action on Black's part.

19. N-Q5! BxN; 20. RxB, N-B1.

In a position already inferior one cannot afford to make even the slightest of errors. Since Black is on his way to K3 anyway, he ought to go there by way of KN4. White would not be able to capture the knight advantageously; so P-N5 would be blocked, for a while at least. Should White wish to proceed with the plan for P-KN5, he must first lose a move by playing P-KR4. Apparently, White's best is to play for a minimal edge with bishops of opposite colors: 20., N-N4; 21. BxN, PxB; 22. Q-Q2, P-B3; 23. B-B1, QR-B1; 24. B-Q3 with the idea of P-B3 and B-N1-R2-Q5, meanwhile constantly menacing P-QN4 to win the queen pawn.

21. P-N5!

The principal idea behind this move is to obtain a diagonal

on which the king bishop can operate with maximum efficiency the secondary purpose is the clearing of open lines in that area for the major pieces.

21., PxP; 22. BxP, P-B3; 23. B-B1, N-K3; 24. P-QB3, Q-K2.

The attempt to achieve bishops of opposite colors leads to nothing better: 24., N-B5; 25. BxN, PxP; 26. Q-N4 wins a pawn for White, if nothing else.

25. B-R3, P-R4?

Black should try to defend his white squares: 25., N-B1. The text permits White to nail down the point by presenting him a pawn on the queen side. In the event that his king side attack should fail, White can now rely on his queen side advantage.

26. P-N4, PxP; 27. RPxP, N-B2.

Black realizes that, after 27., B-R2; 28. RxP, White can still calmly proceed with his king side attack; consequently, he decides to take desperate measures.

28. PxP, NxR; 29. PxN!

The idea is not so much to obtain a passed pawn as to secure an anchor for the king bishop of K6. Firmly in position, that bishop will play a key role in the mating attack.

29., PxP; 30. B-K6+, K-B1; 31. Q-R5, Q-K1; 32. Q-R8ch, K-K2; 33. QxPch, K-Q3; 34. B-K3! P-N5?!



Black can delay the result with 34., Q-N1; 35. BxQ, RxB; 36. QxR, RxQch; 37. K-B1, when the extra piece insures White the win.

35. BxP+! KxB; 36. Q-B7+, K-N4; 37. Q-N7+ Black resigns, for checkmate is unavoidable.

★ ★ ★

Game 4

Reviewing my experience of twelve short years of tournament Chess, I cannot say that I have observed any slackening in the popularity of the Sicilian Defense. Chess journals are ever more consistently coming out with fresh analysis, or the latest suggestions of the masters. The pool of resources seems almost inexhaustible. My personal experience at the U.S. bears out this point, for out of the possible thirteen games I was involved in a Sicilian Defense nine times, four times with Black. Enough material for a small book anyway. This situation brings to our attention a pair of pertinent questions. **Is the Chess Opening exhausted? or Isn't the Chess player thinking, applying himself so that he will be, at least infrequently, the source of originality?**

White: Joseph Pundy

Black: W. Lombardy

SICILIAN DEFENSE

1. P-K4, P-QB4; 2. N-KB3, P-Q3; 3. P-Q4, PxP; 4. NxP, N-KB3; 5. N-QB3, P-QR3; 6. B-K2, P-K4; 7. N-N3, B-K3; 8. O-O, QN-Q2; 9. B-K3, B-K2; 10. P-QR4, O-O.

Time to catch your breath. Such a remark might be a fairly strong indication that the opening in vogue in modern-day Chess have reached the saturation point. Is the above opening no exception? Perhaps the prologue has already answered that question. Is the time far off when players will set the pieces up at move ten and proceed from there? Such is presently the case with the game of Checkers (No offense

meant to our Checkers playing friends.). Too many players take for granted the opening moves; they rattle them off with their eyes closed, no doubt relaxing the nerves and muscles in order to be better able to cope with the strain of the ensuing middle-game. A reminder—keep **your** eyes open; don't allow anyone to do your thinking for you.

11. P-B3,

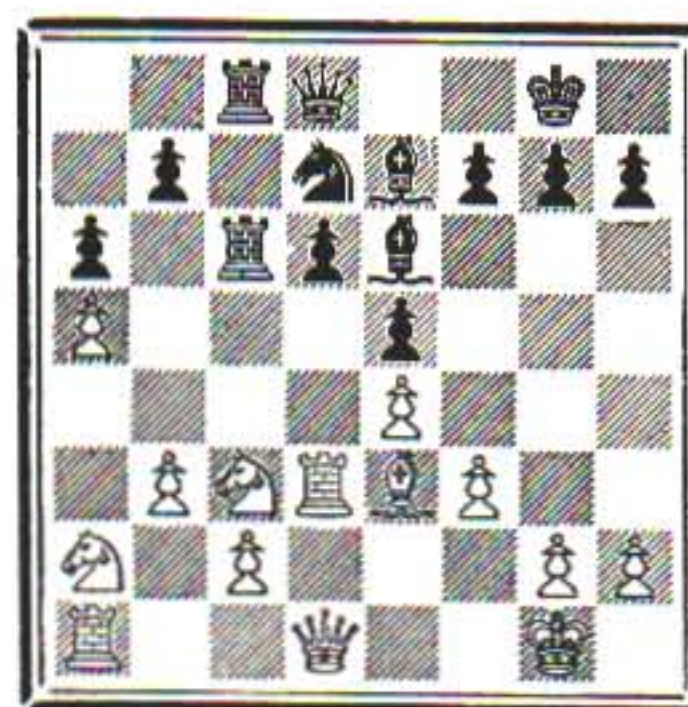
A routine position, a routine move; 11. P-R5 is to the point. For examples of play confer the games Geller-Fischer, Curacao 1962 and J. McCormack-Lombardy, U.S. Open 1963.

11., N-N3; 12. R-B2,

To prevent P-Q4, which would now lose a pawn: 12., P-Q4?; 13. BxN, QxB; 14. NxP, BxN; 15. PxP, KR-Q1; 16. P-QB4. 12., R-B1; 13. P-R5, N-B5; 14. BxN, RxP; 15. R-Q2, Q-B2; 16. N-B1, R-B1; 17. B-N6, Q-Q2; 18. N(1)-R2,

White's plan, ideally accomplished, would be to drive the rook (5) back to QB3 with P-QN3, after defending the knight at QB3 with R-Q3, then, after defending his QB pawn with R-B1, to establish his knight at Q5, so posted that it could not be readily exchanged on account of the awkward position of the block rook at QB3. Complicated? Indeed it is. That is the ideal; practically, there is no time to carry it out!

18., Q-K1; 19. R-Q3, N-Q2; 20. P-QN3, R(5)-B3; 21. B-K3, Q-Q1!



White had ill considered this maneuver netting black a pawn.

22. B-Q2,

No better is 22. R-B1, QxP; 23. N-Q5, BxN; 24. PxP (RxB then QxN) RxP!; 25. RxR, RxR; 26. QxR, Q-K8 mate.

22., N-B4; 23. R-K3, B-N4; 24. R-K2, N-Q2; 25. N-Q5, BxB; 26. RxP, BxN; 27. PxP, R-B4!

Had White foreseen this, he would probably have recaptured 27. RxP and taken his chances in a middle-game: 27., N-B3; 28. R-Q2, QxP; 29. P-QB4. Even here, he could not have held out for very long.

28. P-QB4,

Clearly P-QN4 leaves White in a hopelessly passive position, particularly after R-QB5 followed by an advance of the Black central pawn majority.

28., RxRP; 29. P-QN4,

There is another continuation: 29. N-B3, RxR; 30. QxR, Q-N3ch; 31. K-R1, QxP.

29., R-R6.

White admitted later on that he had thought this move unplayable!

30. Q-QB1, Q-N4!; 31. R-QB2,

The threats were RxQB pawn and RxKBP both.

31., QxQch; 32. QRxQ, R-Q6.

To prevent permanently any White pawn advance, which pawns must be fixed in order to attack them. Realizing the futility of the situation, White decides to give up yet another pawn—also with dim prospects.

33. K-B2, K-B1; 34. K-K2, R-Q5; 35. P-B5, PxP; 36. PxP, RxQP; 37. P-B6, RxP; 38. RxR, PxR; 39. N-N4, R-B4; 40. R-Q1, K-K2; 41. NxRP, R-B7ch; 42. R-Q2, RxRch; 43. KxR,

After the simplification of the last eight moves, White's resignation is a mere formality.

43., K-Q3; 44. N-N4, P-KB4; 45. P-KR4, N-B3; 46. N-B2, N-Q4; 47. P-N4, PxP; 48. PxP, P-B4; 49. K-Q3, N-N5ch; 50. White resigns.

(To Be Continued Next Month)

GAMES BY USCF MEMBERS

Annotated

by USCF MASTER JOHN W. COLLINS

PETER IRWIN

Peter Irwin of Summit, N. J., a student at Bard College and a protege of U.S.C.F. Expert Edgar T. McCormick, won the U. S. Junior Championship (John W. Collins Tournament), which was held at Pennsylvania State University last August. Heading a strong field of 72, the largest entry in the history of the event, Irwin scored 7½-1½. Tied with Myron Zelitch, a Penn State sophomore, at the conclusion of the 9-round Swiss, Irwin was awarded the title on a tie-breaking median half-point.

Peter concedes that the following game, one of his three draws, is perhaps not his best, but believes "it is most indicative of the general quality of competition at the tournament." He explains that he and his opponent "were fighting hard for a win, and the result is a wildly tactical battle." His notes are interspersed with those of the writer.

UNITED STATES JUNIOR

University Park, 1963

SICILIAN DEFENSE

MCO 9: p. 156, c. 173 (e)

P. Irwin W. Martz

- | | |
|----------|-------|
| 1. P-K4 | P-QB4 |
| 2. P-Q4 | PxP |
| 3. P-QB3 | |

Characteristic of the Mora Gambit. The theory is that White "sacs" a Pawn in the opening for an extreme lead in development and initiative. (I).

- | | |
|---------|------|
| 3. | P-Q4 |
|---------|------|

My opponent avoids the gambit proper in an attempt to vie for the initiative. (I).

An interesting line is 3., PxP; 4. NxP, N-QB3; 5. N-B3, P-K3; 6. B-QB4, B-B4; 7. O-O, KN-K2: Dubeck-Collins, Met. League, 1960.

- | | |
|----------|-------|
| 4. KPxP | QxP |
| 5. PxP | N-QB3 |
| 6. N-KB3 | P-K4 |

Overanxious to take the initiative and to solve every problem of development, Black breaks prematurely. The simple 6., P-K3 is in order.

- | | |
|---------|-------|
| 7. N-B3 | B-QN5 |
| 8. B-Q2 | BxN |

Black must cede the minor exchange.

- | | |
|--------|------|
| 9. BxB | P-K5 |
|--------|------|

If 9., PxP; 10. NxP, NxN; 11. QxN, QxQ; 12. BxQ, P-B3; 13. B-B4, and White has a clear advantage. If 9., B-N5?; 10. PxP wins.

- | | |
|----------|-------|
| 10. N-K5 | NxN |
| 11. PxN | N-K2 |
| 12. Q-K2 | |

Dubeck-Kaufman, Met. League, 1963, continued: 12. QxQ and White went on to win a difficult endgame. I diverge. (I).

- | | |
|----------|-------|
| 12. | O-O |
| 13. R-Q1 | |

White gains a tempo and exchanges QRP for KP.

- | | |
|----------|------|
| 13. | QxRP |
|----------|------|

- | | |
|---------|-------|
| 14. QxP | |
|---------|-------|

Threatening 15. B-B4, winning a piece.

- | | |
|----------|-------|
| 14. | B-B4. |
|----------|-------|

An excellent move, especially in light of the follow-up. Black trades a Pawn for initiative, trying to take advantage of White's lag in development.

- | | |
|---------|--------|
| 15. QxP | B-B7!? |
|---------|--------|

- | | |
|----------|-------|
| 16. R-B1 | |
|----------|-------|

If 16. QxN, BxR; 17. KxB, Q-N8ch leads to a fearsome assault on White. (I). And yet there are questions. Big ones!

- | | |
|----------|-------|
| 16. | N-Q4! |
|----------|-------|

- | | |
|-----------|-------|
| 17. Q-R6! | |
|-----------|-------|

A saving move White had calculated at 12. Q-K2. Black's attack "seems" broken, and White thinks he can now maintain his Pawn advantage.

If 17. RxB now, then Q-N8 ch; 18. K-Q2, QR-Q1 again gives Black an overwhelming game. (I).

- | | |
|----------|-----|
| 17. | NxB |
|----------|-----|

- | | |
|---------|-------|
| 18. QxQ | |
|---------|-------|

If 18. PxN, Q-N6! is strong.

- | | |
|----------|-----|
| 18. | NxQ |
|----------|-----|

- | | |
|---------|-------|
| 19. RxB | QR-B1 |
|---------|-------|

- | | |
|----------|-------|
| 20. B-B4 | |
|----------|-------|

If 20. RxR, RxR and White cannot stop Black from imposing on the lethal seventh rank. For instance, 21. K-Q2, N-N5 and White cannot play B-Q3 because of R-Q1.

- | | |
|----------|------|
| 20. | N-N5 |
|----------|------|

- | | |
|----------|------|
| 21. R-B3 | R-B4 |
|----------|------|

- | | |
|----------|-------|
| 22. P-B4 | |
|----------|-------|



It would definitely be more propitious for White to castle at this moment and allow Black to win back his Pawn with equality. However, White is trying to win and so attempts to maintain his Pawn advantage though his monarch's walls may crumble. (I).

- | | |
|----------|--------|
| 22. | R/1-B1 |
|----------|--------|

- | | |
|-----------|------|
| 23. P-QN3 | N-Q4 |
|-----------|------|

- | | |
|----------|-------|
| 24. R-B3 | |
|----------|-------|

How determined White is, and in time trouble at this point too! (I).

- | | |
|----------|------|
| 24. | N-N3 |
|----------|------|

- | | |
|----------|--------|
| 25. B-K2 | R-B8ch |
|----------|--------|

- | | |
|----------|------|
| 26. B-Q1 | R-Q1 |
|----------|------|

White's moves now become forced.

His minutes seem numbered yet somehow there are resources. (I).

- | | |
|----------|------|
| 27. K-K2 | N-Q4 |
|----------|------|

- | | |
|-----------|-------|
| 28. K-Q2! | |
|-----------|-------|

Necessary, in view of 28., N-B6ch.

- | | |
|----------|------|
| 28. | R-R8 |
|----------|------|

- | | |
|----------|--------|
| 29. R-Q3 | R-R7ch |
|----------|--------|

- | | |
|----------|-------|
| 30. K-K1 | |
|----------|-------|

If 30. K-B1, RxP; 31. B-B3, R-B1ch; 32. K-N1, NxP wins for Black. (I).

- | | |
|----------|-------|
| 30. | R-Q2! |
|----------|-------|

- | | |
|----------|-------|
| 31. R-Q4 | |
|----------|-------|

In time trouble, White is unable to find a move to avert the impending perpetual check. 31. R-N1 seems to avoid it, but after R-N7 there is little more than a draw, and possibly less. (I).

- | | |
|----------|-------|
| 31. | N-K6! |
|----------|-------|

- | | |
|---------|-------|
| 32. RxR | NxPch |
|---------|-------|

Drawn

The aforementioned conclusion. (I). Of course there is no choice for if 33. K-B1, N-K6ch and the King must return to K1 or be mated with 34. K-N1??? R-N7.

MYRON ZELITCH

International Master Donald Byrne, Director and adjudicator of the Junior, and instructor at Penn State and coach of its varsity chess team, writes that Myron Zelitch "appears to be a clever tactician, but perhaps his greatest strength lies in his strategical ability." Myron, who received a permanent trophy, split the \$100 scholarship prize with Irwin, and was awarded the Best Played Game Prize for his game with William Martz, exhibits both endowments in this dialogue.

RUY LOPEZ

MCO 9: p. 48, c. 116

J. Harris M. Zelitch

- | | | | |
|---------|------|--------|------|
| 1. P-K4 | P-K4 | 5. O-O | B-K2 |
|---------|------|--------|------|

- | | | | |
|----------|-------|---------|-------|
| 2. N-KB3 | N-QB3 | 6. R-K1 | P-QN4 |
|----------|-------|---------|-------|

- | | | | |
|---------|-------|---------|-----|
| 3. B-N5 | P-QR3 | 7. B-N3 | O-O |
|---------|-------|---------|-----|

- | | | | |
|---------|------|---------|-------|
| 4. B-R4 | N-B3 | 8. P-Q3 | |
|---------|------|---------|-------|

Anderssen and Steinitz liked this quiet move in the Ruy. Recently, Weinstein played it against his cousin Bisguier in the U. S. Championship, New York, 1963.

- | | | | |
|---------|------|----------|------|
| 8. | P-Q3 | 10. B-B2 | P-B4 |
|---------|------|----------|------|

- | | | | |
|---------|-------|-----------|------|
| 9. P-B3 | N-QR4 | 11. QN-Q2 | Q-B2 |
|---------|-------|-----------|------|

More active and preferable is the usual 11., N-B3; 12. N-B1, B-K3; 13. N-K3, P-Q4; 14. PxP, NxP; 15. NxN, QxN.

- | | |
|----------|------|
| 12. N-B1 | P-B5 |
|----------|------|

A different timing of this advance is wanted. A less committing sequence is 12., B-N2; 13. N-K3, KR-K1.

- | | | | |
|----------|------|-----------|-------|
| 13. P-Q4 | N-B3 | 16. P-KR3 | QN-Q2 |
|----------|------|-----------|-------|

- | | | | |
|----------|------|----------|------|
| 14. N-K3 | N-N1 | 17. N-B5 | N-B1 |
|----------|------|----------|------|

- | | | | |
|----------|------|--|--|
| 15. Q-K2 | R-K1 | | |
|----------|------|--|--|

The KB is generally preserved and re-deployed with, B-B1, P-N3, and B-N2.

- | | |
|------------|------|
| 18. N/3-R4 | N-N3 |
|------------|------|

- | | |
|-----------|-----|
| 19. NxBch | QxN |
|-----------|-----|

- | | |
|---------|------|
| 20. NxN | BPxN |
|---------|------|

This is anti-positional (capture towards the center), but Black seeks play on the KB file.

- | | |
|-----------|-------|
| 21. P-B4! | |
|-----------|-------|

It has been said that White practically gets a won game if he can play this in the Ruy.

21. B-Q2
 22. BPxP PxP
 23. B-N5?

White maintains his two Bishops and exploits his passed QP with 23. P-Q5 and 24. B-K3.

23. R-KB1
 24. R-KB1 P-R3
 25. BxN?

Correct is 25. B-KR4.

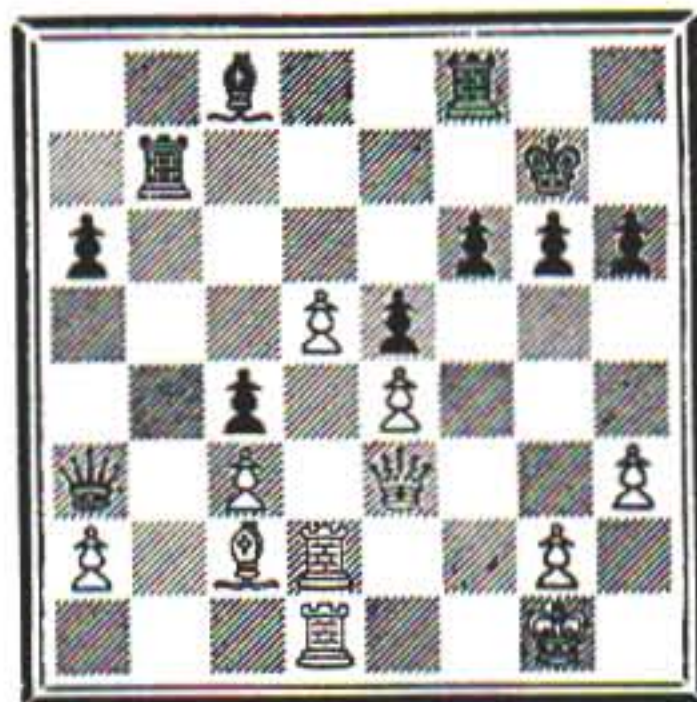
25. PxB 28. R-B2 QR-KB1
 26. QR-Q1 R-B2 29. R/2-Q2

Foreboding 30. PxB and 31. RxB.

29. B-B1
 30. P-QN3?

This allows the Black Queen to infiltrate effectively. Either 30. P-Q5 or 30. PxB, QxP; 31. R-Q6 should be played.

30. Q-R6
 31. PxBP PxBP
 32. P-Q5 R-N2!



Good judgment. The QN file is worth more than the QRP, especially as after 32., QxRP? 33. Q-B5, his Queen is enmeshed and White threatens to regain the Pawn with 34. B-Q3.

33. P-Q6?

Here and on the next move the QRP should be defended with B-N1.

33. B-Q2 35. Q-B5 R-B1
 34. R-B2 QxRP 36. Q-Q5

Threatening 37. QxR and 37. B-Q3.

36. R-N4! 39. B-Q1 R-N8
 37. Q-Q2 Q-R4 40. P-N4 Q-N3
 38. QR-KB1 R-B1 41. P-R4 R-QN1

With a Pawn advantage, complete control of the only open file, a sweep along the QR2-KN8 diagonal, and simplifying exchanges in view, Black stands very well indeed.

42. K-R2

This loses at least another Pawn, or as played a piece. 42. P-N5 is relatively best.

42. R-N7!
 43. B-B2

If 43. QxR, QxQ; 44. RxQ, RxRch; 45. K-N3, R-Q7 wins.

43. B-R5
 44. Q-Q5

With a second Pawn going, White desperately sacrifices a piece in hopes of getting at the black King or advancing his QP. If 44. Q-Q1 or 44. R-R1, Black wins the QP by exchanging twice at QB7.

44. RxB 48. K-N2 R-KB1
 45. RxR BxR 49. PxBch RxP
 46. P-N5 RPxB 50. P-Q7!

It's close!

50. RxR!

And both players called for an adjudication.

International Master Byrne, who did such a splendid job as promoter, organizer, director, and adjudicator of this memorable Junior, "demonstrated a clear win for Black."

The main variations are—

I. 51. KxR, B-Q6ch; 52. K-N2, Q-Q1; 53. Q-B6 (53. Q-K6, BxPch; 54. K-B2, B-B4 wins) K-B2; 54. K-B3, K-K2 and the removal of the QP makes the win easy for Black.

II. 51. KxR, B-Q6ch; 52. K-N2, Q-Q1; 53. QxPch, K-B2; 54. Q-Q5ch, K-K2; 55. Q-N5ch, KxP; 56. QxP, Q-K2 and wins.

III. 51. QxPch, R-B3; 52. Q-K7ch, K-R3; 53. P-Q8=Q, Q-B7ch and mate in four.

IV. 51. P-Q8=Q, Q-N8ch and mate in two.

Match, New York City

February, 1964

RUY LOPEZ

T. Loos		W. Fredericks
1. P-K4	P-K4	11. N-B3
2. N-KB3	N-QB3	12. B-K3
3. B-N5	P-QR3	13. Q-N3
4. B-R4	P-QN4	14. KR-Q
5. B-N3	N-R4	15. B-N5
6. O-O	NxB	16. RxP
7. RPxN	P-Q3	17. N-Q5
8. P-Q4	B-N5	18. RxP
9. PxB	BxN	19. N-N6
10. QxB	PxB	20. R-B8ch
		Resigns

KING'S GAMBIT

W. Fredericks		T. Loos
1. P-K4	P-K4	12. PxB
2. P-KB4	PxB	13. BxR
3. N-KB3	P-Q3	14. N-Q5
4. P-Q4	P-KN4	15. R-K
5. B-B4	P-KR3	16. N-K3
6. O-O	B-N2	17. P-R3
7. N-B3	N-KB3	18. K-B
8. P-K5	PxB	19. K-K2
9. NxB	O-O	20. PxB
10. P-QN3	QN-Q2	31. K-Q3
11. B-R3	NxN	Mate

Kansas City, Mo.

November, 1963

KING'S GAMBIT

J. Dukelow		J. R. Beittling
1. P-K4	P-K4	9. QxPch
2. P-KB4	P-Q4	10. Q-B8ch
3. KPxB	P-K5	11. QxPch
4. B-N5ch	P-B3	12. QxR
5. PxB	PxB	13. K-Q1
6. B-B4	B-QB4	14. RxB
7. P-B3	BxN	15. K-B2
8. Q-R5	Q-N3	16. Resigns

Marshall C. C. Preliminaries

November, 1963

SICILIAN DEFENSE

J. Pamijens		F. Roz
1. P-K4	P-QB4	14. N3-K2
2. N-KB3	N-QB3	15. P-B4
3. P-Q4	PxB	16. N2-B3
4. NxB	P-KN3	17. P-KN4
5. N-B3	B-N2	18. R-B3
6. B-K3	P-Q3	19. R-R3
7. B-K2	N-B3	20. P-B5
8. O-O	O-O	21. NxN
9. Q-Q2	N-KN5	22. B-R6
10. BxN	BxB	23. QxB
11. P-B4	B-Q2	24. BxR
12. QR-Q1	N-R4	25. QxQ
13. P-QN3	R-B1	26. P-B6
		Resigns

Two Tie in Gem City

Richard Kause of Garfield Heights, Ohio and William Martz of Madison, Wisconsin both posted scores of 5-0 to tie for first place in the 6th Annual Gem City Open. The tournament was played in Dayton, Ohio on February 22-23 and had thirty-nine players. In addition to tying for top honors in the event, Martz—who will be 19 this month—walked off with the Junior Award.

Tom Mazuchowski, Toledo; Tony Warnock, Madison; and John Elder, Chicago—all 4-1—finished behind the two leaders in the order listed.

Other prizes: Class A, Richard Ling, Dayton; Class B, John Elder; Class C, Don Taylor, Cincinnati, Ohio; Top Unrated, Tony Warnock.

The tournament was sponsored by the Dayton Chess Club and was directed by David G. Wolford.

Hardy in Florida Sweep

Ned Hardy, a medical student at the University of Florida Medical School in Gainesville, rang up five wins in five rounds to take first place in the North Florida Open, played in Gainesville on January 24-26. Hardy, winner of the Southern Championship in New Orleans last July and the West Florida Open in December, clinched his victory in a dramatic last-round win over fourth-place Emil Bersbach. All other games were finished and a big crowd had gathered to watch this decisive encounter, in which both players were in time trouble. Playing at almost blitz tempo, Hardy forced a beautiful mate—bringing forth a cheer from the crowd which Tournament Director R. L. Froemke reports "made you think you were at a basketball game."

Following Hardy in the standings were Ray McInish, Panama City; John Austin, Atlanta, Ga.; and Emil Bersbach, Sarasota—all with 4-1. L. H. Padgett won in the B Division (1600-1850) and Don James triumphed in the C (below 1600).

Bolton Cops Conn. Amateur

James Bolton led a quartet of players who scored 5-1 to take first prize in the Connecticut Amateur Open, played in New Haven from January 31 through February 2. Bolton topped Larry Tapper, S. Morrison and Edgar Watrous on "Arno points"—a new one on us. (We'd appreciate further information on some of the tie-breaking systems that are being employed and so, we trust, would Prof. Elo's Committee on Tie-Breaking Methods—Ed.)

Other prizes in the 48-player event: Class A, Frank Peretti, West New York, N.J.; Class B, Stephen Tarin, New York City; Class C, Keith Hagel; Class D, John Cumming; Unrated, Jerry de Pesquo. The tournament was sponsored by the Conn. State Chess Association and Roger Williamson of Guilford, Conn. was the T.D.



The Marshall Club: A Tradition in American Chess

The history of American chess during the first four decades of this century must give pre-eminent place to the late Frank J. Marshall. The club which bears his name has now, for almost fifty years, been the gathering place for chess players of all ranks, from International Grandmasters to neophytes, and all between. Figuring prominently in the annals of chess in this country, it is a fitting memorial to its founder, and his qualities of sportsmanship and cordiality permeate its rooms.

Founded in 1915 as "Marshall's Chess Divan" at Keene's Chop House on West 36th Street, it soon became the center for the gathering of chess players from all walks of life. The late Hermann Helms, in the November 1915 issue of *American Chess Bulletin* reported the opening in his inimitable style:

"A well matured plan has been set in operation by Frank J. Marshall with the object of establishing in New York City a central meeting place for lovers of chess much on the same lines as such famous resorts as Simpson's Divan in London and the Cafe de la Regence in Paris. A good start has been made by the United States champion and what will henceforth be known as "Marshall's Chess Divan" has been established at the well-known Keene's Chop House, located at No. 70 West Thirty-Sixth Street, just back of Herald Square, and within a stone's throw of one of the busiest sections of Broadway. Here, in a large room, will be found all the accommodations for players and lookers-on, whose creature comforts are the better looked after because of the propinquity of an excellent cuisine. A nominal fee is charged for the use of the tables and, of course, instruction and practice play are furnished by the champion to those who require it on the usual professional basis. A large sign, which can be seen a block away and proclaims to the world at large that chess players here will find a hearty welcome, is affixed to the outside of the building.

"Associated with Marshall in his pioneer work is Charles Jaffe, the well-known player of the Progressive Chess Club, whose presence will enable the champion to take short trips occasionally away from home for the purpose of filling nearby engagements. While the clubs of New York City have done their full share in the past and have shown no lack of hospitality to visitors from out of town, yet there was need of some such central meeting place where all might feel free to gather on equal terms whenever and as often as the will might move them to do so. It is Marshall's idea also to make his Divan a place where young players may be encouraged and new talent developed. It is an interesting experiment and chess players all over the country will wish Marshall the fullest success. The annual cost of membership in the Divan has been set at \$10, while life memberships are quoted at \$25. Friday evenings will be set aside for special attractions, such as lectures or exhibition play."

Followed, in the next few years, several changes of location, when in the late 1920's through the generous aid of Marshall's friends, and notably Gustavus A. Pfeiffer, a home was purchased at 23 West 10th Street, and this became the permanent site of the club. Though basically a dwelling structure, the lower two floors of the five story building were remodelled to fit the needs of the club, the remaining floors being rented to residential tenants. The Marshall family occupied one of the apartments, and now, its sole survivor, Mrs. Caroline Marshall, the club's Secretary, lives in a charming ground floor apartment.

* * *

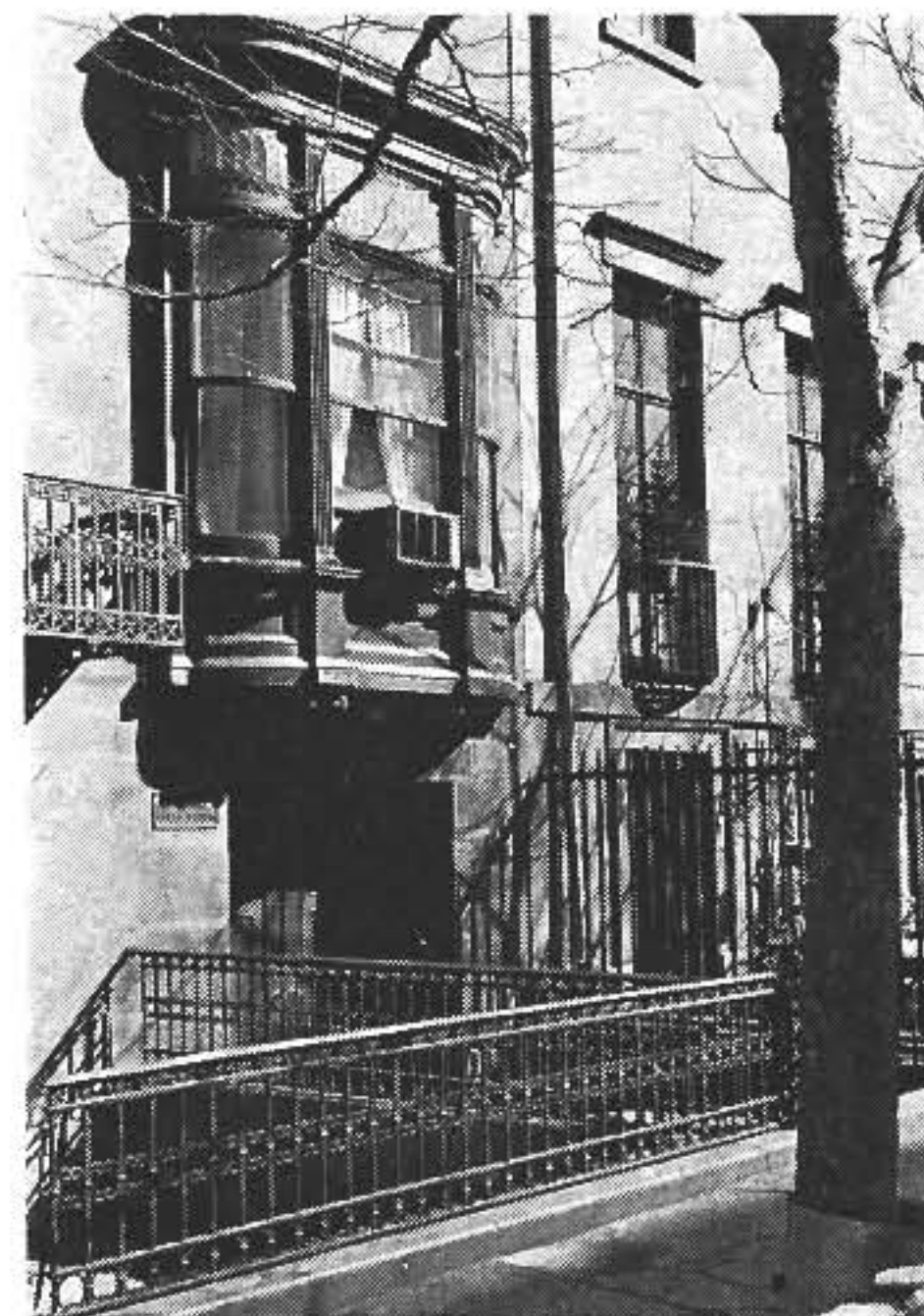
The location of the Marshall Club is ideal, combining the convenience of the lower Fifth Avenue area and the stimulating atmosphere of Greenwich Village, with its outdoor art exhibits, the New School, and the numerous exciting intellectual, musical, gastronomic, and the-

atrical ventures for which the area is noted.

To catalogue the events, tournaments, lectures and exhibitions for which the club has been host for the past forty years would entail the mention of nearly every foreign master who has ever visited the United States and all of our own top personages. They have all been at the club, played, lectured, kibitzed, analyzed—from Dr. Emanuel Lasker to Bobby Fischer — and, without exception, have expressed high praise for the physical appointments and the genial atmosphere.

One of the most gratifying achievements of the club has been the encouragement, training, and development of young, talented players who have come to take prominent place in the ranks of U.S. masters. This is our heritage from our founder who had great satisfaction in giving personal aid to our younger members. To mention a few who cut their eye teeth on our chessmen and went on to prominence in American chess, there are Santasiere, Hanauer, Fine, Bisguier, Evans, Lombardy, Sherwin, Seidman, Weinstein, Saidy, Hearst, and many others, as well as a lengthy roster of slightly less renown.

The Marshall has hosted many gala events. Since Marshall's retirement from the U.S. championship in 1936 the club has been the scene of action for many of the sessions of the U.S. Championships. Numerous other events of importance have been held. Matches such as Reshevsky-Najdorf and Fine-Najdorf,



UPPER LEFT: Mrs. Caroline Marshall, widow of the great American champion and secretary of the club which he founded.

BELOW: A view of the famous building at 23 W. 10th St.

—Photos by Renato Perez

COLLEGE CHESS

by Owen Harris

The year 1963 ended with many small tournaments, and of course the record breaking National Intercollegiate Chess Championship with 103 players. In the last month of 1963, Penn State announced victories over Bloomsburg College by 7½-½, and other non-college clubs. Charles Gish, the President of the University of Kansas Chess Club reports the following results: Kansas University over Emporia College 5-1, and 3-2 over Washburn University.

The year 1964, however, has started off even better than 1963. We have 20 Vice Presidents who are working in all parts of the country for the Intercollegiate Chess League of America.

Bob Dudley (Texas A & M University), the ICLA Vice President for the Southwest is planning to hold the 1964 Southwest Intercollegiate Team Championship at College Station, Texas on April 25 and 26, 1964. This event has all the attributes of success. The event will be USCF-rated with ICLA membership required. Trophies will be awarded to the highest scoring individuals and teams. The entry fees of \$10.00 per team will be used to award travel grants to the 1964 National Intercollegiate Team Championship this December. Some teams from the Southwest have traveled over 1,000 miles to the National Championship, and will no doubt travel to their local event. The following schools in this area have been known to have active clubs: New Mexico State University, University of Texas, University of Kansas, Midwestern University, University of Oklahoma, Louisiana State University, and Texas A & M University. All inquiries for this event should be sent to: Mr. R. Dudley, ICLA Vice President, 1013 East 23rd Street, Bryan, Texas.

Bids are now being considered for the 1964 National Intercollegiate Team Chess Championship in December. So far, Los Angeles State College, and Cornell University have expressed interest in sponsoring this event. At which school would you like to see this event played? Would your school like to sponsor this event? Express your opinion by writing to Mr. Owen Harris, ICLA President, 300 South University Avenue, Carbondale, Illinois. Bids are open until May 1st, 1964.

Benko in Baltimore

Pal Benko gave a simultaneous chess exhibition sponsored by the Maryland Chess Association against sixty players on February 15, 1964 at the studios of WMAR-TV, Baltimore, Maryland.

Mr. Benko lost to William J. Eisenbeis, Stanley Weiss, Russell Chauvenet and Michael Tischtschenko, and drew with Louis Matthei, George Murphy and Michael Williams. He won fifty-three games.

Highlights of the program were taped and telecast the following day.



Players enjoying chess in the pleasant surroundings of the Marshall Club. A bronze bust of the club's founder, the famed Frank Marshall, appears against a wallboard in the background.

have been contested here. Interesting was the Special Masters' Tournament of 1951 with Evans and Fine sharing first place.

Social evenings featuring an intracub match are always popular. Simultaneous exhibitions for our own and for distinguished visiting Grandmasters from abroad are frequent. Among those who've given exhibitions at the Marshall within the last year are Arthur Bisguier, Trifunovich, and Gligoric. The club enters as many as four teams at once in the various divisions of the Metropolitan Chess League, including a team composed entirely of junior members. U. S. Champion Robert J. Fischer recently lectured at the Marshall, and is a frequent visitor. Each year the Club Championship is a gala event. Others include the yearly Amateur Tournament for the Calderon Trophy, Marshall Club Junior Championship, Marshall Club Women's Championship, as well as class tournaments the year round. Recently a group of juniors was sent to the U.S. Team Championship in Washington, and another Marshall Junior group captured the Genessee Cup at Cazenovia.

Recently the preliminaries for the club championship were finished, a ten round Swiss with 56 entrants including a high proportion of U.S.C.F. Masters and

Experts. The eight qualifiers are pitted in the final round robin against the seeded players: Louis Levy, Shelby Lyman, James Sherwin, Raymond Weinstein.

High in the Marshall's list of accomplishments has been its activities in the development of women's chess. Remember, it was not so long ago when women were not admitted to the sacrosanct preserves of chess clubs. The Marshall was the first to welcome them. In 1935 Carrie Marshall organized an event to this day unequalled,—a women's championship in which thirty-six competed. And since then most of the succeeding U.S. Women's Championships have been held, at least in part, at the Marshall Club.

Always the Marshall has been known as a friendly club,—a first name club,—a club where everyone is made to feel at home. This is the tradition set by the never-to-be forgotten Frank Marshall so many years ago, and the glorious memory of his chivalrous and fighting spirit still is at the helm. Never to speak with contempt for a player of lesser skill,—never to use a deprecatory manner to others, as is so oft done in the world of chess, — always an atmosphere that's friendly, informal, relaxed.

—Wm. Slater

— THIS MONTH'S COVER —

Walter Harris (left) engages Bill Slater in a skittles game at the Marshall. Harris, the first Negro to be rated a USCF Master, is now serving with the U. S. Air Force and is stationed at Mather AFB, California.

—Photo by EBONY Magazine

AN ATTACK ON BOTH WINGS

BENONI DEFENSE

Reshevsky

Saidy

As I had predicted, Saidy was the surprise of the U. S. Championship tournament. If he had not slipped during the second part of the tourney, he might have finished as high as second place. He played steadily and demonstrated fine technique in positional play. His poise and confidence are that of a veteran.

Before our game, Saidy was in top form, and I knew that I had to beat him, in order to have any chance for a top prize. I was therefore prepared to take any calculated risk. I was pleasantly surprised when he selected the Benoni Defense against my queen-pawn opening, because this defense offers White greater opportunity for enterprising maneuvers.

I emerged with a freer game from the opening. Saidy's pieces remained inactive during the greater portion of the game. His queen's-knight remained at QB2 for the duration of the encounter. After having neutralized the action on the queen-wing, I began an assault on the opposite wing. Saidy's valiant defensive efforts were of no avail.

- | | |
|----------|-------|
| 1. P-QB4 | N-KB3 |
| 2. P-Q4 | P-K3 |
| 3. N-KB3 | P-B4 |
| 4. P-Q5 | PxP |
| 5. PxP | P-Q3 |
| 6. N-B3 | P-KN3 |
| 7. N-Q2 | B-N2 |
| 8. P-K4 | O-O |
| 9. B-K2 | QN-Q2 |
| 10. O-O | N-K1 |

There is no better way of development from here on than the one selected by Saidy. 10., R-K1; 11. Q-B2, followed by N-B4 would have been unpleasant for Black, because his QP would have been under severe pressure; in addition, Black's rook at K1 seriously inactivates his king-knight.

- | | |
|-----------|-------|
| 11. P-QR4 | Q-K2 |
| 12. R-K1 | |

Makes . . . P-B4 more difficult for Black. 12. N-B4 could have been met by 12., N-K4; 13. N-R3 (13. NxN, BxN would have been comfortable for Black) P-B4; 14. P-B4, N-KB2, with a satisfactory position.

- | | |
|----------|-------|
| 12. | N-B2 |
| 13. N-B4 | P-N3 |
| 14. B-B4 | N-K4 |
| 15. N-R3 | |

Black was seeking simplification by effecting exchanges, but White avoided them.

- | | |
|----------|-------|
| 15. | P-QR3 |
|----------|-------|

Black is forced to come to a decision at this point—either to play passively or to undertake action on the queen-wing. He chose the latter. Incidentally, 15., B-R3 could have been answered by 16. N(R3)-N5, and if 16., BxN; 17. PxB, and black's QRP would have

been a liability to him.

- | | |
|----------|-------|
| 16. B-N3 | |
|----------|-------|

With the menacing threat of 17. P-B4, followed by P-K5!

- | | |
|----------|-------|
| 16. | P-KN4 |
|----------|-------|

Saidy reluctantly created a lasting weakness at his KB4. There was no other way to stop white's threat. After the game, Saidy stated that it was this move that made him dislike the Benoni Defense.

- | | |
|-----------|-------|
| 17. Q-Q2 | B-Q2 |
| 18. QR-N1 | |

The immediate 18. N-B2 was preferable.

- | | |
|----------|-------|
| 18. | QR-N1 |
| 19. N-B2 | |

I rejected 19. P-N4, because of 19., P-B4; 20. PxKBP, BxBP; 21. R-N3, Q-B3, with fair counter-play.

- | | |
|----------|------|
| 19. | P-B4 |
| 20. PxP | BxBP |
| 21. R-R1 | B-N3 |
| 22. N-K3 | Q-B3 |

22., P-QN4 was unappetizing, on account of 23. PxP, PxP; 24. R-R7, P-QN5; 25. N-N5; 22., P-KR4, was, however, worth trying. If 23. N-B4, NxN; 24. BxN, Q-B3, with better play than in the game.

A CHESS LIFE Exclusive by SAMUEL RESHEVSKY

- | | |
|----------|-------|
| 23. N-N4 | |
|----------|-------|

The complications now begin. In order to make progress, white was compelled to get rid of black's strong knight at K4.

- | | |
|----------|------|
| 23. | NxN |
| 23. BxN | QR-K |



- | | |
|----------|-------|
| 25. B-Q7 | |
|----------|-------|

This is the key move to white's plan. He wants to retain control of the king file. If black persisted in staying on that file by continuing with 25., R-K2, there would have followed: 26. B-K6ch! NxN; 27. BxP, and wins.

- | | |
|----------|-------|
| 25. | R-Q1 |
| 26. B-B6 | |

Although the bishop appears to be out of play, it serves the important task of

disallowing the black rook access to the king file.

- | | |
|-----------|-------|
| 26. | R-B2 |
| 27. P-KR3 | B-B4 |
| 28. R-K2 | R-K2 |
| 29. R/-K1 | RxR |
| 30. QxR | B-KB1 |

Futile was 30., B-Q2, because of 31. N-K4, QxNP; 32. QxQ, BxQ; 33. NxQP, BxB; 34. PxP, with a great plus.

- | | |
|----------|-----|
| 31. N-K4 | BxN |
|----------|-----|

31., Q-N3 would have been met by 32. P-R5, PxP; 33. NxBP; but 31., Q-N2 was worthy of consideration.

- | | |
|---------|------|
| 32. QxB | Q-N3 |
|---------|------|

Bad would have been 32., QxNP, because of 33. R-N, regaining the pawn favorably.

- | | |
|----------|-------|
| 33. Q-K3 | P-N4 |
| 34. P-R5 | |

White does not feel inclined to oblige by opening lines for black's rook.

- | | |
|----------|-------|
| 34. | P-QN5 |
| 35. P-R4 | |

To open the king-knight file for white's rook.

- | | |
|----------|-----|
| 35. | PxP |
|----------|-----|

Wiser was 35., P-N5.

- | | |
|-----------|------|
| 36. BxRP | R-N1 |
| 37. Q-KR3 | Q-N2 |



Black's position has become untenable. His king is dangerously exposed; his rook is miserably misplaced; and he has no counter-play.

- | | |
|----------|------|
| 38. R-K3 | K-R1 |
|----------|------|

If 38., QxQNP, then 39. Q-Q7, N-N4; 40. Q-K6ch.

- | | |
|------------|---------|
| 39. Q-B5 | Q-N3 |
| 40. B-B6ch | B-N2 |
| 41. QxQ | PxQ |
| 42. BxBch | Resigns |

1964 U.S. OPEN

SHERATON PLAZA HOTEL
Boston, Mass.

AUGUST 16 - 29

HOUSING FOR JUNIORS

Players who have not reached their 19th birthday by August 16th, 1964, and who wish to be housed in private homes should contact the Committee Member listed below no later than May 15, 1964:

FRANK FERDINAND
33 Manton Road
Swampscott, Mass. 01907

Chess Life

Here and There . . .

Duncan Suttles swept to a 12-0 victory in the 1964 **Reno Championship**, concluded on February 25. Thirteen players competed in a round robin event; William Cornwall, Kenneth Jones and George Kirby finishing behind the winner with scores of 10-2. The Reno Chess Club sponsored the event, which was directed by Raymond Wheeler.

* * *

A **Washington's Birthday Tournament**, sponsored by the Ohio Chess Association and played in Cleveland, saw James Harkins, Jr. and Richard Noel, Jr. score 4½-½ to tie for first and second. Third-place James Tegel (4-1) was awarded the Junior Title in the 25-player event. James Schroeder directed.

* * *

The **Pittsburgh Metropolitan Championship** ended on February 15 with a median-point victory going to Fred Foreman. Virgil Rizzo and John Telega equaled the winner's 5-1 score and finished second and third respectively. Twenty-nine players competed in the tournament at the Pittsburgh, Pa. Golden Triangle YMCA, with Estill Duggins directing.

* * *

Serge von Oettingen, USCF Expert and chess columnist for the Davis (Calif.) "Enterprise" scored a convincing 8½-½ to take top honors in the University of California's second rating tournament, played on the Davis Campus from October 7 through January 13. Second place in the ten-player round robin went to Eriks Leitis (7); Rudolf Schmid, a sophomore at the University, was third with 5½.

* * *

In the first USCF-rated event in North Dakota in many years, **James A. Ostby** posted a 4½-½ score to triumph over a 17-player field on January 4-5. Second in the tournament—the **Minot Open**—was Dr. Ekrem Gozum (4) while Capt. Judson T. Bauman led the 3½-pointers to take third on tie-break points. In addition to competing in the tournament, Bauman also directed.

* * *

Julius Loftsson posted a 5-1 score to edge out Duncan Suttles and Robert M. Jacobs in the **Riverside Open**, played in Riverside, Calif. from November 30 through December 1. Donald R. Cotten directed on behalf of the sponsoring Riverside Chess Club.

* * *

The **Texas Junior Championship**, played on January 4-5, went to David M. Lees, 4½-½. John Dunning was runner-up (4) and Alan Laverty took third with 3 points. The 10-player tournament was played at College Station, Texas and was directed by B. G. Dudley.

* * *

The 1963 **Greater Meriden Champion-**

ship (Conn.), played last autumn, was won by Robert Libbey who scored 5½-½ to top the 24-player field. Second and third were split between Walter Tyll and Donald Grace (5).

* * *

In **Santa Monica**, Calif. the Winter Rating Tournament of the Santa Monica Bay Chess Club was won by Steve Geller (5-1). Emory Gardos, Frank McReynolds, Gene Rodemich and Art Spiller—all with 4½—followed the leader. A total of 24 players competed in the event, which was directed by Herbert T. Abel.

* * *

The annual championship of the **Golden Triangle Chess Club**, played in Grand Prairie, Texas from November 4 through December 30, 1963 ended in a tie between Joseph Kolar of Dallas and Chaplain L. Randall Rogrs, USN, both scoring 6-1 in an 8-player round robin. The results echoed those of the previous year, when Kolar and Chaplain Rogers also were awarded the co-championship.

* * *

In the **Cincinnati Industrial Chess League** the University of Cincinnati made a clean sweep, winning all five of its matches. Parkway Chess Club was second and Procter and Gamble third.

The league matches were directed by Don Etson and sponsored by Parkway Chess Club at the Central YMCA.

* * *

The **Bi-Club Invitational**, played in Monterey Park, Calif. in December and January, was won by Gordon Barrett, with an undefeated 6-1. Robert Lake (5½) was second and C. Marin third in a field of thirty players.

* * *

Robert (I. N-QR3) Durkin captured first prize in the **South Jersey Open** played in Atlantic City on February 14-16. Durkin's score of 5½-½ put him a full point ahead of George Cake and Robert Lincoln, who tied for second and third. Tournament winner Durkin received the Hoffman Memorial Trophy of the South Jersey Chess Association. Lew Wood was the T.D.

* * *

The **Kingsmen Chess Club** of Brooklyn, N.Y. concluded its club championship last December. Raymond Parker (8-1) took top honors in the 10-player round robin, followed by Jerome Bibuld (6-3) and Hamilton Robinson (5½). The handicap prize went to fourth-place Milton Straker.

* * *

The **Interboro Holiday Open**, played in New York City on February 21-23, was won by Kenneth Fitzgerald (5½-½). Runner-up in the 26-player field was Walter Browne (5) and Paul Mueckenberger (4½) took third.

* * *

Viktors Pupols won the **Washington State Championship**, played at the



Youthful **CECELIA ROCK**, a high school student from Hinsdale, Mass. will be one of the participants in the United States Women's Championship, which starts in New York City on April 24. Cecelia, some of whose games have appeared in **CHESS LIFE**, is shown here at a post-mortem from one of the many tournaments in which she has competed during the past year.

Seattle Chess Club on February 21-23. Pupols' score of 4½-1½ in the four-player double round robin put him a big point and a half ahead of runner-up James McCormick.

Norman T. Whitaker, USCF Master Emeritus from Washington, D.C., topped the field in the Rio Grande Valley Open in Weslaco, Texas with a breezy 5-0. Mexico's Raul Reza Delon edged out John Weikel of Fort Hood, Texas for second, both players scoring 3½.

Edward Buerger, Wilmette, Ill. eked out a tie-break victory in the Austin Chess Club (Chicago) "Year-End" Tournament, concluded on February 4. Frank S. Haubold of Chicago took second in the 16-player event, sponsored by the Great Lakes Chess Association.

Edward Kotski scored 7½ points in nine rounds to take top honors in a tournament at the Pittsfield (Mass.) Chess Club. Charles Schofield was second and Robert Bilodeau placed third.

The **New Orleans Midwinter Open**, played on February 22-23, saw Robert Garver edge out Richard Schultz in the Championship Section and Robert Donlon take first place in the Reserves.

Jack L. Gibson and **Jerome Wiener** are 1964 co-champions of the Phoenix (Ariz.) Chess Club. Each won 4, drew 2, lost 0, to finish 5-1 in the Championship Section. Other club titles went to R. Frederick Stahl (Class A); John B. Kelly (Class A Reserve); James H. Aden, Jr. (Class B); Clarence E. Bliss (Class B Reserve); Robert J. Wilson (Class C); and Cecil Terry (Class D). Col. Paul L. Webb was the T.D.

The **Gompers Park** (Chicago) Chess Club concluded its "B" and "C" Championships in early February. Victory in the former went to Clyde Doyle and in the latter to Carl Michel. Frank Skoff directed both events and reports that they were not as successful as previous tournaments held at Gompers Park because of an unusually large number of forfeits. His plea, which every T.D. can second: If you have a valid reason for not playing your game, let the Director (and, thus, your opponent) know about it!

The National Intercollegiate Chess Tournament 1964 Region 10 was won by the University of Colorado team; repeating last year's victory. Eugene Salome, former Manhattan Chess Club player, became Individual Champion.

Kenneth R. Smith, well-known Texas master, retained his title of Texas Champion by scoring 3½-1½ in a 6-player round robin in Houston. Smith defeated William Bills, Houston; Eric Bone, Baytown; and Fred Tears, Dallas. He drew with second-place Blake Stevens, San Antonio and lost to George Smith, Houston.

Earlier, Smith scored an international success by winning the National Open

Championship of Mexico. Smith compiled a score of 7½-½ and finished on top of a strong 76-player field.

In a joint contribution to the USCF's "International Month," the North Carolina Chess Assn. and the Virginia Chess Federation are sponsoring a simultaneous exhibition by Eliot Hearst at the Hillsboro Street YMCA in North Carolina on April 4. All entry fees will be turned over to the USCF's International Fund. Our congratulations to the two state organizations and to Dr. Hearst for this fine contribution!

Karl Panzner scored 11-1 (two draws) to win the club championship of **Gompers Park** (Chicago). Ralph Tobler Jr. was second with 10-2.

In another USCF Rating Tournament in **Denver**, Gerald Blair scored 5½-½ to top a 34-player field. Runner-up was Marvin Katz (5), while Dennis Naylin (4½) edged out Gayle Hershey for third. Al Wallace was the T.D.

The **Fifth El Paso Open**, played on February 21-23, was won by R. V. Wilcox, 5½-½. Canadian master Ivan Theodorovich and Erik Osburn followed with 5. The tournament was sponsored by the Chess Club of El Paso and was directed by International Master George Koltanowski.

In Michigan, the **Lansing Open**, concluded on February 20, was won by Lewis Hamilton on a median-point decision over Marc Hutchinson, Lloyd Kawamura, and Joe Blech—all 5-1. Thirty players competed in the event, sponsored by the Lansing Chess Club and directed by J. D. Brattin.

Robin Ault, three-time U. S. Junior Championship, edged out Michael Valva on median points but split the \$100 first prize in the **Massachusetts Open** in Pittsfield. John Curdo (4½) took third in the 32-player event, sponsored by the Pittsfield Chess Club and the MSCA. Robert Bilodeau directed.

TIE IN CONN.-MASS.

Seventy players turned out for the 40th Annual Western Massachusetts and Connecticut Valley Tournament, played in Springfield, Mass. on February 16 and 23.

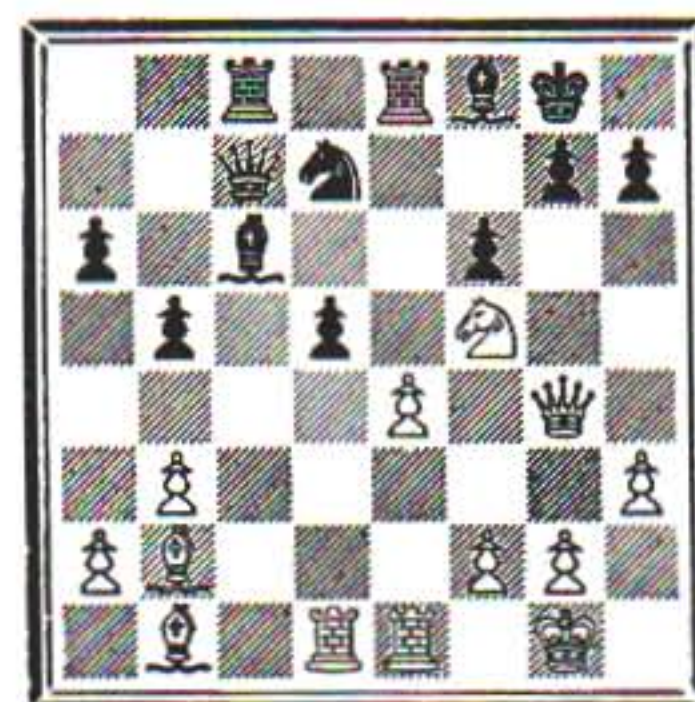
When the smoke of battle had cleared, Louis Petithory, Pittsfield, Mass. and Klaus Albrecht, Clinton, Conn. emerged as co-champions, each scoring 5½-½. Edward Kotski of Pittsfield was next (5-1), followed by Dr. Joseph Platz, East Hartford, Conn. and Arvid Klavins, Wethersfield, Conn.—with 4½.

Other prize winners included: Alan C. Morrill (B); Carl McClure (C); Joseph L. Heller (D); and Eugene Nafranowicz (Unrated).

This annual event is sponsored by the Western Mass. & Conn. Valley Chess As-

BARDEN—

(Continued from page 58)



The clever queen regrouping gives White a strong advantage. If 26., PxP; 27. BxP, BxB; then not 28. RxN? (with the idea of 28., QxR?; 29. N-R6 ch) because of 28., BxN but simply 28. RxB keeping up the pressure.

26. N-K4

27. BxN RxB

Or 27., PxB; 28. PxP.

28. N-R6ch K-R1

29. N-B7ch!

Winning material. The rest, for a grandmaster, is routine.

29. QxN

30. QxR B-N2

31. Q-B3 P-N5

32. Q-B1 PxP

33. R-Q8 P-N4

34. Q-Q2 B-B3

35. Q-Q6 B-K1

36. Q-N8 K-N2

37. RxP R-N4

38. Q-R8 B-Q2

39. B-Q3 R-Q4

40. RxB(B8)!

An echo of his 29th move. Again Black's queen is overloaded; this time White wins a bishop.

40. Resigns

WHITAKER WINS

Fifty-one players converged on Augusta, Georgia for the Second Georgia Open. Norman T. Whitaker of Washington, D.C. and David Steele of Raleigh, N.C. topped the 26 player open division with 4½-½ scores and split first and second cash prizes. Whitaker won first place on tie breaking points. Third and fourth cash prizes were split by Dr. R. L. Froemke of Tallahassee, Florida and Irwin Lyon of Biloxi, Mississippi with 4-1 scores, Froemke taking third on tie break points. In the amateur division, Milton Evans of Raleigh, N.C. had a clear first with his 4½-½ score. Remaining cash winners, in order of tie break determinations were: Homer Rhode (Tallahassee, Fla.) and Carrol Crull (Huntsville, Alabama) with 4-1, and F. Fielder Simpson, Robert Bronar, Thomas Davis, Clarence Love and George Townes all with 3½-1½.

The tournament was conducted by the Georgia State Chess Association.

sociation and was directed this year by Francis W. Keller Jr. and Thomas M. Colthart.

USCF RATING SUPPLEMENT

MARCH, 1964

by DAVID DANIELS and WILLIAM GOICHBURG

NATIONAL—National Intercollegiate Championship—Indiana—December

U.S. Championship—New York—December

FOREIGN—Rhein Main Open—Germany—June

Orleans Open—France—November

Veterans Day Open—Korea—November

Rating Tournament—Germany—December

ALABAMA—Rocket City Open—2 sections—October

ALASKA—Annual Thanksgiving Tournament—November

ARIZONA—Phoenix C.C. Championship Qualifying Tournament—4 sections—September-November

Arizona Open—November-December

Sierra Vista C.C. Double Round Robin—June-November

Matches: Vint-Rhyner, Weiner-Watson, Cottrell-Aylesworth

CALIFORNIA—California Championship Qualifying Tournaments—3 sections—October-November

Whittier Amateur Open—October

California Women's Open Championship—November-December

California State Championship—November-December

Balboa C.C. Rating Tournament—November-December

Santa Monica Fall Rating Tournament—October-November

Santa Monica Open—December

Riverside Open—December

City Terrace C.C. Preliminaries—May-June

Monterrey Park Summer Rating Tournament—June-September

University of California—Davis—2nd Rated Tournament—October-January

Monterrey Park Club Championship—October

Monterrey Park Novices Tournament—November-December

Westside Conference Championship—November-January

Santa Monica Winter Rating Tournament—December-January

Herman Steiner C.C. Junior Championship—December

Monterrey Park—Bi-Club Invitational—November-January

Matches: Freeman-Tossas; Jarvis-Singleton; Freeman-Coles

COLORADO—USCF Rating Open—September-November

Veterans Day Open—November

Colorado Open—August-September

FLORIDA—South Florida Open—November

Florida State U.—Atlanta C.C. Team Match—November

Orlando C.C.—U. of Florida Team Match—November

Florida Closed Championship—November

Florida West Coast Open—2 divisions—December

GEORGIA—Georgia Tech.—Florida State Team Match—November

Matches: Austin-Haas; Banffy-Ruehmann

IDAHO—Utah-Idaho Match—October

ILLINOIS—2nd Annual Region 5 Championship—October

Chess Unlimited Class B Championship—June-September

Illinois Open—October-November

First Illowa Open—November

Gompers Park C.C. "A" Championship

State Universities of Illinois Team Championship—November

INDIANA—Match: McCarty-Vidmar

KANSAS—Kansas State Open—November

Match: Winters-Allen

LOUISIANA—Louisiana Open—August-September

Matches: Acers-Robinson; Acers-West; Acers-Arias

MAINE—Maine Open—November

MARYLAND—Baltimore Open—October

2nd Bay Region Rating Tournament—September-November

National Inst. of Health C.C. Rating Tournament—August

Towson C.C. Championship—October-December

Match: Tschtschenko-Oliver

MASSACHUSETTS—Massachusetts Open—November

Chess Horizon Xmas Tournament—December

MICHIGAN—Motor City Open—November-December

Matches: Brady-Richardson; Richburg-Terry

MINNESOTA—Minneapolis Open—November

MISSOURI—Thanksgiving Rating Open—November-December

NEBRASKA—Midwest Open—October

Lincoln Rating Tournament—November-January

NEVADA—Reno City Championship—November-January

Match: Kirby-Cornwall

NEW JERSEY—Woodbury Summer Tournament—2 sections—July-August

South Jersey Amateur—November

Suburban C.C. Summer Tournament—June-October

NEW MEXICO—New Mexico Open—November

Match: Doddridge-Gaspar

NEW YORK—Poughkeepsie Championship Preliminaries—October-November

Match: Rochester C.C. Club Championship—September-November

Marshall C.C. Rating Tournaments—classes B and C—October

Lake Erie Open—October

Cornell Fall Open—October

Clarkson College—Malone C.C. team match—November

Baltic C.C. Championship Preliminaries—October-December

Marshall C.C. Championship Preliminaries—October-December

Greater New York Open—December

Annual Chadwick C.C. Championship—November-December

Manhattan C.C. Championship Prelims—October-December

Kingsmen C.C. Championship—September-December

Marshall C.C. A, B, C and C-Beginners Tournaments—December-January

Matches: Fredericks-Loos; Buchin-Fredericks; Ginsberg-Zukoff;

Zukoff-Reuben; Feldheim-Zukoff

NORTH CAROLINA—Match: Brewton-Stanley

OHIO—Parkway C.C. Championship—October-December

OKLAHOMA—Oklahoma State Championship—December

Match: Campbell-DeVault

OREGON—Erb Memorial Open—November

PENNSYLVANIA—Pennsylvania State YMCA Championship—December

McKeesport C.C. Championship—October-November

Shamokin-Bloomsburg Team Match—November

Match: Lawrence-Wagner

RHODE ISLAND—Southeastern New England Open—November

SOUTH CAROLINA—South Carolina Closed Championship—November-December

SOUTH DAKOTA—South Dakota Open—December

TENNESSEE—Team Match—Memphis-Nashville—October

4th Annual Mid-South Open—November-December

TEXAS—Big "D" Open—October

Texas Open—November-December

Texas Candidates—November-December

Golden Triangle C.C. Championship—November-December

UTAH—Utah Chess League—Summer-Fall

VIRGINIA—Arlington C.C. Ladder—Rounds 281-290

WEST VIRGINIA—Ohio Valley Open—November

Tri-State Championship—November

Holiday Open—December

WISCONSIN—North Central Open—November-December

Milwaukee City Championship—November-January

SENIOR MASTERS

(2400 and above)

Addison, William (Calif.)	2437
Benko, Pal (N.Y.)	2594
Bisguier, Arthur (N.Y.)	2495
Byrne, Donald (Pa.)	2458
Byrne, Robert (Ind.)	2541
Evans, Larry (N.Y.)	2582
Feuerstein, Arthur (N.Y.)	2435
Fischer, Robert J. (N.Y.)	2734
Mednis, Edmar (N.Y.)	2427
Reshevsky, Samuel (N.Y.)	2606
Saidy, Anthony (P.R.)	2531
Sherwin, James T. (N.Y.)	2415
Steinmeyer, Robert (N.Y.)	2428
Weinstein, Raymond (N.Y.)	2447

MASTERS

(2200-2399)

Angos, Dr. Alex (Wis.)	2301
Ault, Robin (N.J.)	2241
Bell, John D. (Ore.)	2226
Brandts, Paul (N.Y.)	2243
Brasket, Curt (Minn.)	2344
Burger, Dr. Karl (N.Y.)	2396
Crittenden, Charles C. (N.C.)	2276
Cunningham, Walter R. (Calif.)	2230
Curdo, John A. (Mass.)	2256

Currie, R. (Calif.)	2269*
Dalbergs, Ivars (Ore.)	2259
Farkas, Ervine (N.Y.)	2237
Fernandez-Leon, Dr. Jose (Fla.)	2274
Finegold, Ronald (Mich.)	2235
Formanek, Edward (Ill.)	2255
Freeman, Roderick A. (Cal.)	2214
Fuster, Geza (Canada)	2243
Gilden, Lawrence C. (Md.)	2358
Gross, Henry (Calif.)	2215
Guala, Victor A. (N.Y.)	2217
Hoffmann, Asa (N.Y.)	2287
Jacobs, Robert M. (Calif.)	2273
Kause, Richard (Ohio)	2281
Kirby, Robion C. (Ill.)	2296
Kostic, Vasa (Ind.)	2214
Kramer, George (Pa.)	2248
Loftsson, Julius (Calif.)	2282
McCormick, Edgar T. (N.J.)	2230
McCormick, James H. (Ore.)	2254
McKelvie, Neil (N.Y.)	2219
Marchand, Dr. Erich W. (N.Y.)	2210
Martin, Raymond J. (Calif.)	2247
Martz, William (Wis.)	2206
Matzner, Stephen (Calif.)	2214
Mengarini, Dr. Ariel A. (N.Y.)	2224
Momic, Milan (Ala.)	2279
Owens, Brian E. (N.Y.)	2227
Popel, Stephan (N.D.)	2238

Popovych, Orest (N.J.)	2258
Poschel, Dr. Paul (Mich.)	2312
Pundy, Joseph (Ill.)	2212
Radojic, Miro (N.Y.)	2259
Rankis, August E. (N.Y.)	2261
Richman, Joseph (N.Y.)	2226
Rivise, Irving (Calif.)	2227
Robey, Paul (N.Y.)	2233
Salyzberg, Mitchell (N.Y.)	2217
Sandrin, Albert (Ill.)	2232
Sandrin, Angelo (Ill.)	2287
Shean, Robert G. (Colo.)	2220
Sigmond, Irwin (Va.)	2201
Skema, Kazys (Mich.)	2213
Smith, Kenneth R. (Tex.)	2314
Suttles, Duncan (Nev.)	2308
Sweig, Mitchell (Ill.)	2283
Szedlaczek, Louis (Ohio)	2298
Tautvaisas, Povilas (Ill.)	2278
Theodorovich, Ivan (Canada)	2297
Tums, John M. (Ill.)	2234
Valvo, Michael (N.Y.)	2333
Vano, Edward (Ind.)	2208
Verber, Richard (Ill.)	2295
Walker, Robert W. (Colo.)	2222
Weaver, Norris (Calif.)	2224
Weinberger, Tibor (Calif.)	2302
Weldon, Charles (Wis.)	2259
Wozney, Thomas (Ohio)	2207

EXPERTS AND CLASSES A, B, C AND D

Expert: 2000-2199

Class A: 1800-1999

Class B: 1600-1799

Class C: 1400-1599

Class D: Below 1400

* indicates provisional rating.

Abel, H. L. (Fla.)1608*
 Abrams, R. (Wis.)1893
 Abshear, R. (Cal.)1629
 Acers, Jude (La.)2121
 Ackerman, T. (Ill.)1502*
 Adams, A. (Mass.)1507*
 Adams, C. P. (Ill.)1809
 Adams, P. (Md.)1968*
 Adams, P. E. (Colo.)1496
 Adamson, R. (La.)1571
 Adamsons, V. (N.Y.)1662
 Aden, J. (Ariz.)1696
 Adenstedt, R. (R.I.)1728*
 Adrian, H. (Mass.)1647
 Ahlstrom, M.W. (Ill.)1595*
 Ahrens, F. (Ill.)1618
 Aibinder, J. (Mass.)1484*
 Akin, R. (Ala.)1569*
 Akin, W. B. (Md.)1527
 Alberts, Gene (N.Y.)1671*
 Alberts, Walt (Ill.)1777
 Albrecht, K. (Conn.)2013
 Alden, Chas (Minn.)1769*
 Alden, Lee (Mich.)1431*
 Alice, Tom (Mich.)2011*
 Allen, Daniel (Mo.)2016
 Alonso, F. (Calif.)1826
 Alpiser, F. (Utah)1841
 Altman, Dr. V. (N.Y.)1799
 Alvord, L. (Utah)1829*
 Amdon, Earl (Calif.)1848
 Amort, Anthony (Ill.)1861
 Anderson, E. (Okla.)1518*
 Anderson, G. (Utah)1533*
 Anderson, Gus (Cal.)1657*
 Anderson, L. (Calif.)1771
 Anderson, R. (Ill.)1665
 Anderson, R. (Neb.)1798
 Anderson, S. (Calif.)1878
 Annen, Richard (Ill.)1539
 Apkarian, J. (Mich.)1365*
 Aranoff, Dan (Fla.)1573*
 Archbold, J. (Utah)1701
 Archer, Don (N.Y.)1607
 Argauer, Bob (N.J.)1898*
 Arias-Limonta, J. (La.)1200*
 Armagost, R. (Wis.)1601*
 Armstrong, R. (Cal.)1451*
 Arndt, Ludwig (Pa.)2013
 Arnholz, T. (N.Y.)1858
 Aronson, M. (Ariz.)1686
 Arthur, Lyle (N.Y.)1582
 Ashford, R. (Minn.)1501
 Athanassiadis, Y. (Germany)1738*
 Atwood, R. (Calif.)1481*
 Austin, Jere (Mo.)1526
 Austin, John (Ga.)1828*
 Avery, Pete (Canada)1890
 Aylesworth, K. (Ariz.)1200*

Bacone, Ev. (Ill.)1452
 Bahr, Fred (N.M.)1942
 Bailey, Geo. (Colo.)1636
 Bailey, Kath. (Ill.)1357
 Bailey, Robt. (Fla.)2072
 Baitz, Tom (Minn.)1744*
 Baker, A. D. (Kans.)1871*
 Baldock, R. (La.)1979
 Baldwin, Chas. (N.Y.)1650*
 Baljaj, Len (N.J.)1784*
 Ballard, D. (Okla.)1769*
 Balliant, H. (N.Y.)1587*
 Balsai, S. (Ark.)1873
 Banffy, F. (Ga.)2062
 Banker, Ger. (Mo.)1753
 Bantz, Tom (Wis.)1437*
 Barber, Rich. (Ariz.)1651*
 Barcz, Ed. (Pa.)1511
 Barnetski, A. (Kans.)1730
 Baron, Don. (Minn.)1868*
 Barr, Dr. J. (S.C.)1448*
 Barr, Wm. B. (Nev.)1578*
 Barrett, Rev. C. (Pa.)1636
 Barrett, G. (Calif.)2121
 Barrett, J. (Calif.)1397*
 Barrett, R. (Calif.)1645*
 Barrett, W. (Utah)1200*
 Barrios, E. (Calif.)1769
 Barrios, R. (Calif.)1641
 Bartholemew, J. (Wis.)1913
 Bash, David (Germ.)1288*
 Batchelder, C. (D.C.)2028
 Batchelder, W. (Cal.)2158
 Bauer, David (N.Y.)1616*
 Baum, Glenn (Ill.)1570
 Beach, L. W. (N.Y.)2041
 Becker, Ed. (Pa.)1868*
 Beckham, R. (Ohio)1845
 Beckman, T. (Calif.)1590*
 Beers, Jack (N.Y.)1805
 Behr, Pete (Ore.)1591*
 Beitling, J. (Mo.)1887
 Ben, Terry (Ill.)1380*

Bender, Carl (N.Y.)1837
 Benedek, R. (N.Y.)2183
 Benge, Don (Calif.)2079
 Beni, R. (Ariz.)1200*
 Benitez, M. (Fla.)1981*
 Bennett, I. (Ind.)1200*
 Bennett, J. A. (Ind.)1629
 Benson, Allen (Calif.)1616*
 Bentley, E. M. (Tex.)1472*
 Beres, Martin (Pa.)1516*
 Berger-Olson, M. (Ill.)1661*
 Berghoff, A. (N.J.)1705
 Bergmann, G. (Ill.)1308*
 Berlow, P. (N.J.)1986
 Berman, T. (Fla.)1993*
 Bernstein, A. (N.Y.)2074
 Bernstein, D. (Calif.)1418*
 Bernstein, R. (N.Y.)1514*
 Berrios, A. (P.R.)1910*
 Berry, Geo. (Ohio)2114
 Bersbach, E. (Calif.)2117
 Bersche, C. (Utah)1618*
 Bertram, R. (Tex.)1507*
 Berzins, K. (N.Y.)2016
 Berzins, V. (O.)1902
 Bettencourt, Mrs. W. (Calif.)1574*
 Betza, Ralph (N.Y.)1903
 Beveridge, W. (N.Y.)1376*
 Beverly, G. E. (Wis.)1524
 Bevin, Marg. (Colo.)1200*
 Bibuld, J. (N.Y.)1779
 Bielinski, R. (Wis.)1435*
 Biggs, D. L. (Ind.)1984
 Bikulcius, J. (Ill.)1538
 Bilcheck, J. (N.Y.)1200*
 Billey, John (S.D.)1759*
 Bills, Wm. A. (Tex.)2121
 Bingaman, Geo (Pa.)1858
 Birnbaum, H. (N.Y.)1947
 Birrell, D. (Utah)1357
 Bishop, P. (Tex.)1699
 Black, Ray (Calif.)1765*
 Blackstone, J. (Cal.)2177
 Blade, T. (Ill.)1803
 Blair, Ger. (Mich.)2062
 Blajwas, H. (Mass.)1736
 Blanchard, D. (S.C.)1533*
 Blankenstein, I. (Colo.)1589
 Blatt, Arthur (Mich.)1693*
 Blaustein, J. (Ill.)1694*
 Blechar, M. (N.Y.)1925
 Blighton, F. (N.Y.)1684
 Biiss, Rob. (Calif.)1980
 Blum, Stephen (Colo.)1267*
 Blumberg, G. (Ohio)1538
 Bobble, Wm. (Mich.)1597*
 Boege, H. (Minn.)1595*
 Boehner, M. (Ohio)1485*
 Bogas, E. (Calif.)2037
 Boggs, R. O. (Fla.)1535*
 Bokor, Z. (Tenn.)1675*
 Bollinger, D. (Ariz.)1533
 Bolton, Jas. (Conn.)2099
 Bond, Bob (Miss.)1900
 Bone, Eric (Tex.)2119
 Bookout, G. (Ind.)1318*
 Boos, Gary (Minn.)1818
 Booth, Robt. (Mass.)1568
 Bonnell, B. (Okla.)1337
 Borbely, R. (N.M.)1613*
 Borchardt, J. (Wis.)1929
 Bosco, A. (Ariz.)1760
 Bourdon, Eli (Mass.)1878
 Bourke, John (Pa.)1953
 Bowe, Dennis (N.J.)1818
 Bowen, Alb. (Tenn.)1824
 Bowen, Geo. (N.Y.)1616*
 Bowlin, S. (Ohio)1860
 Boyce, R. A. (Tex.)1461
 Boye, Gary (Calif.)1752*
 Brack, L. C. (Tex.)1568*
 Braden, R. (Ind.)2035
 Brady, Frank (N.Y.)1907
 Brady, Lind. (Mich.)1919
 Bragg, Wm. H. (Md.)1880
 Brame, Mike (Tex.)1935
 Brand, Les. (Ohio)2008
 Brand, Prof. R. (S.C.)1737
 Brandner, J. (Ill.)1817
 Brauer, Al. (Mich.)1881
 Brauer, J. (Mich.)1689
 Braun, Paul (Korea)1738
 Breen, R. (Pa.)1200*
 Brewer, F. (Tenn.)1200*
 Brewton, Jeff (N.C.)1602
 Brice, Cal. (Tex.)1385
 Bricker, Joe (Ore.)1542*
 Bricker, V. (Ore.)1663*
 Brickner, S. (Mich.)1877
 Brigmanis, E. (N.Y.)2056*
 Brockus, Bill (Ill.)1400*
 Broderson, B. (Minn.)1671
 Brooks, J. (Mich.)1847*
 Bronleben, F. (France)1667*

Brotze, R. (Tex.)1563
 Brow, Ray (Calif.)1898
 Brower, S. (N.M.)1898
 Brown, Jos. (Calif.)1430*
 Brown, Mrs. S. (N.Y.)1490*
 Browne, Walt. (N.Y.)1840
 Brummer, D. (Pa.)1806
 Buchanan, O. (Va.)1598
 Buchan, Wm. (N.Y.)2069
 Buckendorf, G. (Ida.)1841
 Buckley, T. (Tex.)1818
 Buckman, H. (Fla.)1632*
 Buckner, R. (Fla.)1803*
 Buerger, E. W. (Ill.)2029
 Buff, Jim (Conn.)1651
 Buining, S. (La.)2126
 Bullockus, A. (Calif.)1373*
 Bullockus, Dr. T. (Calif.)1917
 Bullockus, Ted Jr. (Calif.)1270*
 Bundick, Dr. W. (Md.)1827
 Burgess, Ed. (Mo.)1723
 Burgess, F. (Colo.)1512*
 Burk, Vern. (Ohio)1862
 Burke, Will (N.M.)1249*
 Burkett, M. (N.M.)2149
 Burko, Wm. (Va.)1943
 Burlingame, M. (Ariz.)1859
 Burlingame, E. (Ariz.)1577
 Burness, T. (N.J.)1673*
 Burns, N. (Mich.)1699
 Burrell, M. (Ala.)1282*
 Burris, Ron. (Mass.)1443*
 Burry, Rich. (Fla.)1839
 Burstin, M. (N.Y.)1679
 Bush, Bev. (Tex.)1832
 Busquets, L. (Fla.)1967
 Bussey, Chas. (Germ.)1416*
 Button, Dick (Ala.)1200*
 Byers, Ken (Utah)1497*
 Byland, W. M. (Pa.)1970

Collins, Sam (Calif.)1645
 Conner, Don (Fla.)1793*
 Conroy, J. A. (Mass.)1283
 Contos, G. (Ohio)1817*
 Convis, D. L. (Kans.)1595
 Conwit, D. (Calif.)2091
 Cooper, E. (Ohio)1208*
 Cooper, J. (Conn.)1544
 Cooper, M. (Calif.)1880
 Cooper, Marv. (Md.)1639*
 Cornwall, Wm. (Nev.)1875
 Cosho, John (Idaho)1841
 Costanzo, E. (N.J.)1712
 Cottrell, W. (Ariz.)1586*
 Covington, R. (Ariz.)1528*
 Cox, D. M. (Utah)1789*
 Cox, Robt. (Ala.)1554
 Cozzi, R. (N.Y.)1887*
 Craig, L. (Ariz.)1716*
 Cramer, F. (Wis.)2000
 Craver, D. (Germ.)1460*
 Creet, R. (Calif.)1823
 Crew, W. W. (La.)1923
 Crocker, S. (Colo.)1443*
 Croft, Don. (Tex.)1387*
 Cromelin, J. (Md.)1807
 Crooks, Doug (R.I.)1539*
 Crowder, Bill (N.Y.)2006
 Crull, C. M. (Ala.)1687
 Crumpacker, D. (Colo.)1439*
 Cserkuti, J. (Okla.)1626*
 Cucullu, C. (La.)1820
 Cullen, P. (Wis.)1443*
 Culotta, J. (Calif.)1514*
 Culotta, P. (Calif.)1544*
 Cunningham, W. (W. Va.)1440*
 Curran, J. J. (N.J.)1255*
 Czernieki, K. (Ill.)2178

Dahl, E. (Germ.)1200*
 Dahlstrom, B. (Ill.)1986*
 Dalka, Marv. (Ill.)1200*
 Daly, H. B. (Me.)2062
 Daly, W. (La.)1542*
 Dalrymple, C. (Neb.)1200*
 Daniels, D. (N.Y.)2150
 Daniels, J. (Calif.)1689*
 Daniels, J. (N.Y.)1784
 Danon, M. (N.J.)2059
 Darbes, Dr. A. (W. Va.)1860
 Darnieder, J. (Wis.)1594*
 Davidson, M. (Mo.)1996
 Davis, Dr. G. (Calif.)1410*
 Davis, Herb (Colo.)1714*
 Davis, Henry (Tex.)2172
 Davis, S. P. (Ind.)1656*
 Davis, Tom (Colo.)1574
 Davison, B. (Calif.)1717*
 Dawes, Grace (Mass.)1268
 Day, Mike (Ga.)1808*
 Day, Michael (Ill.)1774
 Dayson, H. (N.Y.)1938*
 Dean, Bill (Neb.)1374*
 Dean, Don F. (Calif.)1979*
 DeBarros, L. (Calif.)1726*
 DeBlois, J. (Ill.)1643
 DeBritto, S. (Md.)1724
 Dedinsky, J. (Wis.)2085
 Deets, Gary (Pa.)1338*
 DeFillipo, T. (N.Y.)1200*
 DeFotis, G. (Ill.)1854
 DeJongh, J. (Mich.)1631*
 Delaney, N. (N.Y.)1356*
 DeLieto, M. (N.Y.)1974
 Delo, H. (Calif.)1200*
 Demarest, R. (N.Y.)1525
 Dempsey, J. (Md.)1635
 DePorto, R. (N.Y.)1800*
 Derr, Dale (Pa.)1583
 Deutsch, R. (Fla.)1740*
 DeVault, R. (Okla.)1810
 Devine, Don (Mass.)1352*
 Dewey, Fred (Ala.)1564*
 Dickinson, A. (Fran.)1712*
 Diedrich, Ed. (N.Y.)1989
 DiFulvio, J. (Nev.)1713
 Dimac, V. (Mich.)1782
 Dimiani, M. (Mich.)1200*
 Dione, Robt. (Me.)1626*
 Ditrichs, R. (Iowa)2025
 Divis, H. (Alaska)1735*
 Docekal, F. (Utah)1830
 Dodd, Albert (Ill.)1506*
 Doddridge, P. (N.M.)1775
 Dodge, Robt. (Fla.)1741*
 Dohne, John (Ala.)1610
 Domabyli, H. (Pa.)1883*
 Domanski, R. (Mich.)1980*
 Dominguez, J. (Tex.)1521*
 Domsy, Art. (Wis.)1864
 Donaldson, R. (N.J.)1785*
 Donlon, Bob (La.)1619
 Donnelly, R. (Minn.)1646
 Dorman, W. (Okla.)1401*
 Dorn, Alan (Calif.)1779*
 Dorne, W. (N.M.)2006
 Dorsch, T. (Calif.)1894
 Dorsett, K. (N.J.)1666
 Douglas, B. G. (Tex.)1727
 Dove, Henry (Tex.)1993
 Downes, J. (W. Va.)2016
 Drago, A. (N.J.)1953
 Drake, Dave (Ill.)1200*

Druischilowsky, A. (N.Y.)1781
 Dudley, Cpt. B. (Tex.)1865
 Duhlmeier, Wm. (O.)1984
 Dunham, D. (Alaska)1560*
 Dunham, G. (Ill.)2086
 Dunn, Ian (Germany)1699*
 Dunne, Alex (N.Y.)1996
 Dunning, J. (Tex.)1658*
 Dunst, T. (N.Y.)2159
 Dupuis, P. (Mich.)2077
 Durkin, R. T. (N.J.)2141

Earnest, J. (Calif.)2065
 Eason, Bill (Ga.)1769*
 Edelschick, D. (Neb.)1699*
 Edgington, L. (Kans.)1856*
 Edmondson, E. (Cal.)1829
 Edwards, B. (Ohio)2024
 Edwards, G. (Kans.)1611*
 Efstoration, E. (N.J.)1485*
 Egan, J. P. (Mass.)1249*
 Eikerenkoeter, R. (N.Y.)1681*
 Eisenbeis, W. (Md.)1667
 Elias, Ron. (Ark.)1305*
 Ellin, M. (N.Y.)1617
 Ellingson, J. (Wis.)1620
 Ellis, A. B. (Ida.)1825
 Ellis, H. H. (Va.)1547
 Elo, Arpad (Wis.)2104
 Embretsen, J. (N.Y.)1464*
 Emery, W. G. (Germ.)1375*
 Endicott, S. (Ariz.)1661*
 Enrione, E. (Calif.)1786
 Enriquez, R. (Calif.)1574
 Enstrom, C. (Fla.)1385*
 Eoff, R. (Mich.)1847*
 Epeneter, J. (France)2018*
 Ephron, Walt. (N.Y.)1800
 Erichsen-Brown, J. (N.Y.)1638
 Ernst, H. (Ohio)1823*
 Essenburg, P. (Tex.)2016*
 Estes, A. (Tenn.)1553*
 Eton, Don (Ohio)1723
 Eucher, Mark (Calif.)1991
 Eusebi, Ed. (N.Y.)1640
 Evans, D. (Calif.)1362*
 Evans, Harold (N.Y.)1919
 Evans, Hugh (Ariz.)1442*
 Evans, Robt. (Germ.)1739*

Fabela, H. (Tex.)1918
 Fabritz, R. A. (Md.)1608*
 Fagan, Wm. (N.Y.)1859
 Fagin, Vern. (Calif.)1774
 Fahey, Wm. E. (N.Y.)1495
 Fajnor, Ed. (Ill.)1837
 Fallon, Joel (Germ.)1468
 Fallon, W. O. (Wis.)1537
 Farone, Wm. (N.Y.)1456*
 Feinerman, P. (Colo.)1200*
 Feinman, M. (Mass.)1340*
 Feldheim, H. (N.Y.)2159
 Feldman, J. (N.Y.)2052
 Feller, Marc (Calif.)1667*
 Fellner, S. (N.Y.)1755
 Felts, T. R. (Ind.)1699
 Fenner, C. (Minn.)1914
 Fenter, Farley (Ill.)1300*
 Ferdinand, F. (Mass.)1331*
 Fernandez, D. (N.J.)1732
 Fernandez, G. (La.)1508*
 Fernandez, N. (N.Y.)1888
 Ferrar, W. (Calif.)1445*
 Feruggia, R. (N.J.)1363*
 Ficsor, Les. (Minn.)1985
 Field, P. (Conn.)1905
 Filipovich, G. (Minn.)1584
 Filipovich, R. (Minn.)1838
 Fineman, Irv. (N.Y.)1997
 Fischer, R. B. (Colo.)1739
 Fish, R. S. (Md.)1455*
 Fisher, Jas. (Utah)1989
 Fitzgerald, K. (N.Y.)1932
 Fitzhugh, G. (Okla.)1205*
 Fitzmaurice, J. (Ger.)1407*
 Flaherty, R. (Ill.)1542
 Fleischer, M. (N.Y.)2081
 Fleming, F. (Ill.)1766*
 Florescu, L. (Ill.)1508*
 Foley, Jos. (Mass.)1568
 Ford, Adrian (Calif.)1762
 Foster, D. (Mich.)1745*
 Foster, J. L. (Fla.)2061
 Foster, L. L. (S.C.)1877
 Foster, Wm. (N.Y.)1631
 Fournier, A. (N.Y.)1887
 Fowler, W. L. (La.)1979
 Fox, Lt. J. (Ala.)1825
 Francisco, O. (Wis.)1957
 Franklin, D. (W. Va.)1352*
 Franzen, H. (Calif.)1592
 Franzen, H. (Germ.)1784*
 Fraser, W. S. (Pa.)1742
 Frazier, Mrs. F. (N.Y.)1548
 Fredericks, W. (N.Y.)2013
 Fredenburgh, M. (R.I.)1915
 Freed, H. (Calif.)1473
 Freed, Jack (Calif.)1862
 Freeman, A. (Md.)1726
 Freeman, C. (Tex.)1346
 Freeman, R. (Calif.)2096

Freeman, Wm. (Md.)...1851
 Freitag, H. (N.Y.)...1921
 French, R. (Conn.)...1563*
 Friedman, A. (Colo.)...1646
 Friedman, R. (Wis.)...1695
 Friel, C. (Ariz.)...1229*
 Fries, Tom (Calif.)...1947
 Frilling, Frank (Cal.)...1760
 Frilling, Fred (Calif.)...1735
 Fritsvold, J. (Wis.)...1732
 Froemke, B. (Fla.)...1341*
 Froemke, P. (Fla.)...1410*
 Froemke, R. (Fla.)...1966
 Frucella, S. (N.Y.)...2066
 Frueh, H. (N.J.)...1779
 Fuchs, G. (Conn.)...1724
 Fulk, W. D. (Ill.)...1902
 Fuller, L. J. (Korea)...1900*
 Fulton, W. P. (Utah)...1493
 Furze, M. (S.D.)...1664*

Gaba, Dr. H. (Mich.)...1910
 Gaitonde, M. (Mo.)...1344*
 Gales, Wes. (Wis.)...1585
 Gallagher, D. (Fla.)...1784*
 Gambelin, J. (Tex.)...1337*
 Gambrell, B. (France)...1742*
 Gandara, H. (Calif.)...1503
 Ganong, R. (Va.)...1915
 Gan, Geo. (N.Y.)...1548
 Garber, R. (N.Y.)...1424*
 Garcia, H. (Fla.)...1822*
 Garcia, O. (Fla.)...1816*
 Gardner, A. (Ariz.)...1828
 Gardner, C. (Wis.)...1842
 Gardner, R. (N.Y.)...1788
 Gardner, R. (Calif.)...1663
 Gardos, E. (Calif.)...1851*
 Garey, A. (Md.)...1904
 Garner, F. (Tenn.)...1673
 Garrett, Bill (Tex.)...1992
 Garrett, R. (N.C.)...1577*
 Garvey, J. (N.J.)...1715
 Gaspar, M. (N.Y.)...1532*
 Gawlinski, P. (Ill.)...1559
 Gaylor, E. (Calif.)...1791
 Gaylor, Mrs. E. (Cal.)...1434*
 Gazin, H. (Ariz.)...1682
 Geary, Chas. (Ore.)...1725
 Geiger, P. (Wis.)...1701*
 Gelbart, S. (Ill.)...1398*
 Geller, S. (Calif.)...1963
 Gemma, F. (Germ.)...1435
 Gennuso, J. (N.Y.)...1835
 George, J. (N.Y.)...1200*
 George, R. (Wis.)...1637
 Georgefon, J. (W.Va.)...1200*
 Gerber, N. (Ind.)...1951*
 Gershwitz, G. (Tex.)...1419*
 Gibson, Jack (Ariz.)...2048
 Gibson, John (Mich.)...1610
 Gifford, C. (Tenn.)...1268*
 Gilbert, G. (Ariz.)...1800*
 Gillespie, W. (Fla.)...1871
 Gilley, M. (Tenn.)...1824
 Gillies, R. (Md.)...1769
 Gilliland, W. (Ind.)...1473*
 Gilmore, A. (Ariz.)...1699*
 Gilvydis, A. (Mich.)...1824
 Ginsberg, D. (N.Y.)...1932*
 Girton, G. (Utah)...1883*
 Gish, Robt. (Calif.)...1915
 Glad, Chas. (Colo.)...1627
 Glanville, J. (Md.)...1994
 Glassberg, B. (N.Y.)...1766*
 Glassberg, S. (Calif.)...1596
 Glasser, M. (Okla.)...1606*
 Glazer, D. (N.Y.)...1591*
 Gleeson, M. (Calif.)...1329*
 Glickman, R. (N.Y.)...1924
 Gobert, J. (N.Y.)...1701*
 Gobins, D. (N.Y.)...1755*
 Goch, Lawr. (Ill.)...1618*
 Goddard, M. (Fla.)...1613
 Goddard, H. (Calif.)...1731
 Goddard, A. (Fla.)...1764
 Godfrey, B. (Minn.)...1972
 Gogol, Jerry (W.Va.)...1352*
 Goichberg, W. (N.Y.)...2094
 Goldberg, A. (Ill.)...1200*
 Goldblatt, M. (N.Y.)...1384*
 Goldshind, W. (Colo.)...1518*
 Goldstein, B. (Conn.)...1689*
 Golla, R. W. (Ill.)...2035
 Gollub, Dan (Ariz.)...1894
 Gonzales, M. (Calif.)...1502
 Gonzales, S. (R.I.)...1685
 Gonzalo, A. (Fla.)...1535*
 Goodman, L. (N.Y.)...1627
 Goodspeed, R. (Mass.)...1586
 Gorczyca, T. (France)...1539
 Goregliad, S. (Pa.)...2087
 Gosline, R. (Calif.)...1770
 Gotautas, V. (La.)...1615*
 Goudswaard, R. (Cal.)...1928
 Gould, How. (Ill.)...1473
 Gould, Wm. (R.I.)...2172
 Gozum, E. (N.D.)...1851
 Graeff, Wm. (Ore.)...1665*
 Gramberg, H. (N.Y.)...1671
 Grant, Doug (Mass.)...2039
 Grant, Steven (N.Y.)...1721*
 Grau, Garry (Neb.)...1518*
 Graves, H. J. (Colo.)...2005
 Graves, Peter (Md.)...1798

Gray, Martin (Md.)...1661
 Gray, Wm. F. (Conn.)...1945*
 Green, Rich. (N.Y.)...1573*
 Greenberg, B. (N.Y.)...1753
 Greenberg, S. (N.Y.)...1952
 Greenlaw, S. (Fla.)...1990
 Greenleaf, E. (La.)...1652
 Greenleaf, Kay (La.)...1545
 Greenwald, B. (N.Y.)...2117
 Greenwald, J. (Mich.)...1616*
 Greenwell, G. (Nev.)...1659*
 Gregg, Dan. (Ind.)...1726*
 Grendahl, R. (Minn.)...1429*
 Griesmeyer, W. (Ger.)...1633
 Griffith, V. (N.Y.)...1448*
 Griffiths, P. (Mass.)...1514*
 Grimm, J. (Neb.)...1200*
 Groebe, G. (Ill.)...1439*
 Grishin, A. (Germ.)...1716
 Groebel, O. (Ariz.)...1719
 Groeneman, S. (Ohio)...1492*
 Groenig, D. (Wash.)...1937
 Groenig, R. (Ariz.)...1707*
 Grombacher, W. (Ill.)...1981
 Gross, D. (N.Y.)...1802*
 Grover, K. (Calif.)...1339*
 Grover, T. (Calif.)...1200*
 Grumette, L. (Calif.)...1820
 Grut, C. (Mass.)...1317*
 Grzyb, M. (R.I.)...1718
 Guber, Sol (N.Y.)...2077
 Guertler, K. (Utah)...1489*
 Guetl, R. (Ill.)...1845
 Gutmann, M. (Wis.)...1803
 Gwin, Jack (Ga.)...1836

Haas, Rich. (Ga.)...1666
 Haanan, J. (Ark.)...1649*
 Hailparn, M. (N.J.)...1993*
 Haines, R. (N.M.)...1785
 Haley, Jim (Okla.)...1533
 Hall, David (N.Y.)...1979
 Hall, Edgar (Utah)...1653
 Hall, John (Tex.)...1559*
 Hall, Ralph (Fla.)...1833
 Halland, J. (Okla.)...1645*
 Hallman, Don. (Ill.)...2002
 Halofsky, M. (N.Y.)...1382*
 Ham, Mary (Iowa)...1246*
 Ham, Mich. (Iowa)...1511*
 Hambleton, I. (Can.)...1741*
 Hamermesh, M. (Ill.)...2040*
 Hamilton, L. (Germ.)...1507*
 Hampton, H. (Ariz.)...1495*
 Hanlon, Jos. (N.Y.)...1980
 Hansen, D. (Utah)...1668
 Hansen, Ed (Ill.)...1964*
 Hansen, R. (Calif.)...1809*
 Hardman, Geo. (Md.)...2026
 Hardy, G. A. (Germ.)...1582*
 Hardy, Ned (Fla.)...2146
 Hargett, P. (Ala.)...1736
 Harkins, J. (Ohio)...2082
 Harriot, J. (Ariz.)...1562
 Harris, C. E. (Ida.)...1668*
 Harris, F. (Tex.)...1590
 Harris, Frank (Calif.)...1847
 Harris, John (Colo.)...1430
 Harris, M. (Canada)...1831*
 Harris, Owen (Ill.)...1692
 Hart, Mich. (N.Y.)...1975
 Hart, Robt. (Kans.)...1932
 Hartwell, T. (Idaho)...1733
 Harvey, J. (Fla.)...1754
 Haskins, M. (Colo.)...1507
 Hatch, Alan (Calif.)...1794
 Haught, Jas. (W.Va.)...1882*
 Hausmann, A. (Utah)...1545*
 Hawkins, V. (Ind.)...1354*
 Hayes, Rea B. (Ohio)...2105
 Hayes, W. W. (Calif.)...1837
 Headd, E. (Mich.)...1791*
 Heath, R. (Wis.)...1819
 Heffernan, J. (Calif.)...1668
 Heidenrich (Fla.)...1200*
 Heiken, Jack (Ind.)...1528*
 Heilbut, R. (Utah)...1971
 Heiser, K. (Calif.)...1426*
 Heising, C. (Tex.)...2003
 Heisler, E. (Minn.)...1836
 Heldt, Tom (N.M.)...1927
 Helfrey, D. (Ill.)...1422
 Hellenthal, M. (Alas.)...1707
 Hendricks, C. (Ill.)...1359
 Hendrix, L. (Ill.)...1675*
 Hendrykowski, J. (Mich.)...1789
 Henin, Chas. (Calif.)...2192
 Hennessey, R. (Cal.)...1884
 Henry, R. L. (Calif.)...1973
 Herbka, P. (Germ.)...1669*
 Herrick, M. (N.Y.)...1821
 Herring, J. (Ala.)...1393
 Hershey, G. (Kans.)...1947
 Hessen, Pat (Ill.)...1669
 Hidalgo, C. (N.Y.)...2044
 Higginbotham, J. (N.Y.)...1997
 Higgins, O. (Calif.)...1572
 Hill, Lee (Ill.)...1371*
 Hill, Norm. (N.J.)...1484
 Hillman, Leo (Calif.)...1713
 Hills, D. (Ind.)...1625*
 Hiron, Phil (R.I.)...1817
 Hirschfield, J. (Ind.)...1216*

Hnojewyj, A. (Minn.)...1645
 Hoch, Chas. (Calif.)...1227*
 Hochburg, B. (N.Y.)...1854
 Hoereth, D. (Mass.)...1311*
 Hoenck, E. (S.C.)...1898
 Hoenig, P. (N.Y.)...1702
 Hoey, Chas. (Pa.)...1817
 Hofer, F. (Colo.)...1571*
 Hoffman, D. (D.C.)...1688*
 Hoffman, J. (Fla.)...1486*
 Hoke, Larry (Calif.)...1765
 Holbrook, S. (Calif.)...1657
 Hollenbaugh, R. (N.Y.)...1659
 Holmes, B. (S.D.)...1907
 Holmes, J. (Minn.)...1676
 Holyon, R. (France)...1976*
 Homolka, V. (Calif.)...1945
 Hook, Wm. (N.Y.)...2129
 Hooley, F. L. (N.J.)...1571
 Hooper, Ed (N.Y.)...1813*
 Hopkins, J. (Md.)...1352*
 Hoppe, R. (Calif.)...2190
 Horner, R. (N.J.)...1827
 Hornick, J. (N.Y.)...1819
 Horvath, J. (Ohio)...2039
 Houdek, C. (Iowa)...1598
 Howard, Bob (Fla.)...1884
 Howell, Wm. (Colo.)...1868
 Howie, V. M. (Ala.)...1461*
 Hoxie, G. (Utah)...1592
 Hoyer, John (Ill.)...1795
 Huang, J. (Ill.)...1628*
 Hubbard, G. (Okla.)...2024*
 Hubbard, R. (Calif.)...1759
 Huber, Z. (N.Y.)...1750*
 Huckin, Wm. (Okla.)...1614
 Hucks, Lew. (Md.)...2063
 Hudson, J. (Calif.)...1200*
 Huffman, J. (Calif.)...1893
 Hughart, H. (Ariz.)...1908
 Hughes, J. (Ind.)...1429*
 Hulmes, A. (Colo.)...1743
 Hulswit, R. (Germ.)...1632
 Hultgren, N. (Calif.)...1874
 Humphrey, E. (Ariz.)...1626
 Hunt, Stan. (Utah)...1975
 Huntsman, J. (Nev.)...1540*
 Hursch, Jack (Colo.)...2010
 Hurt, J. F. (Tenn.)...2044
 Huske, Clet. (Ill.)...1528
 Hutchinson, G. (Cal.)...1402
 Hutchison, M. (Ill.)...1995*
 Hux, Robt. (N.J.)...2045
 Hyde, Perry (Ala.)...1336

lesalnieks, G. (Neb.)...1573*
 Ignatowski, E. (Germany)...1233*
 Ihasz, L. (Ohio)...1857
 Ilderton, R. (Va.)...2106
 Imai, T. (Mich.)...1576
 Illes, A. (N.Y.)...1321*
 Inman, P. (Ariz.)...1200*
 Irvine, J. (Tex.)...1782
 Irwin, P. (N.J.)...2138

Jackman, D. (Wis.)...1315*
 Jackson, E. S. (N.Y.)...2045
 Jacobs, Lee (Mich.)...1608
 Jacobs, Steph. (Tex.)...1730
 Jahn, Les. (N.J.)...1715
 James, Robt. (N.Y.)...1531
 Jankowsky, J. (N.J.)...1486
 Jannetta, M. (Minn.)...1914*
 Jardine, D. (France)...1408*
 Jarnagin, R. (Fla.)...1985
 Jarvis, B. (Calif.)...1755
 Jaunzems, J. (Can.)...1700*
 Jeffs, Paul (Utah)...1830
 Jenkins, T. (Mich.)...1883
 Jensen, D. (Utah)...1357*
 Jessup, R. (Ill.)...1647*
 Jewell, C. (Tex.)...1949
 Jiron, Art (Colo.)...1628
 Johnson, B. (Utah)...1430*
 Johnson, D. (Pa.)...1772
 Johnson, F. (Ala.)...1729
 Johnson, L. (Calif.)...1857
 Johnson, M. (Tex.)...1249*
 Johnson, O. (Tex.)...1882
 Johnson, R. (Me.)...1694*
 Johnson, R. G. (Ind.)...1402*
 Johnson, R. (Minn.)...1681
 Johnson, R. B. (Pa.)...2121
 Jones, A. W. (La.)...1902
 Jones, D. E. (Ohio)...1541*
 Jones, H. T. (Neb.)...1707*
 Jones, J. C. (Germ.)...1739*
 Jones, K. L. (Tex.)...1597*
 Jones, K. R. (Nev.)...1994
 Jones, M. (Ga.)...1936*
 Jones, R. M. (Germ.)...1522
 Jones, Ron E. (Md.)...1365*
 Jones, Steph. (Tex.)...2194
 Jordan, E. (Mich.)...1338*
 Jordan, Tom (La.)...1647
 Joss, Paul (N.Y.)...1811
 Joy, Capt. A. (Germ.)...1760
 Junghanns, G. (Mass.)...1534

Kaert, E. (N.Y.)...1792
 Kaiser, M. (Colo.)...1873

Kaiser, Wm. (Minn.)...2009
 Kakini, Ben (Calif.)...2015
 Kalenian, C. (Pa.)...2188
 Kalivoda, J. (Calif.)...1489*
 Kane, Geo. (Calif.)...2069
 Kaplan, M. (Ind.)...1652*
 Karageanes, J. (Mich.)...1967
 Karch, Robt. (Md.)...1818
 Karell, L. (Ore.)...1618*
 Karklins, A. (Ill.)...2051
 Karklins, E. (Ill.)...2163
 Karlson, L. (Md.)...1471*
 Karp, Rich. (N.Y.)...1877
 Karpuska, W. (Ill.)...1714
 Kasenga, A. (Wis.)...1686
 Kaszas, J. (Minn.)...1523
 Katcher, F. (Korea)...1803*
 Katrein, M. (N.Y.)...1897
 Kawamura, L. (Mich.)...1930
 Kean, R. (Nev.)...1346*
 Kearns, D. (Mass.)...1528*
 Keesey, H. (Calif.)...1904
 Keleher, D. (Colo.)...1683*
 Kegel, John (Can.)...2199*
 Kelleher, C. (Ore.)...1962
 Kellerman, S. (N.Y.)...1908*
 Kellner, L. (Mich.)...1802
 Kelly, John (Ariz.)...1878
 Kelly, Ted (N.Y.)...1862*
 Kelsey, M. (Fla.)...1784
 Kempe, F. (Minn.)...1698
 Kempner, A. (Calif.)...1915
 Kennedy, E. L. (Cal.)...2094
 Kenney, D. (Mass.)...1466
 Kenny, Bill (Mo.)...1988
 Kent, Jeff (Calif.)...1200*
 Kern, Greg. (Ore.)...1928
 Kessler, F. (Ariz.)...1675
 Keyes, Alex. (Mass.)...2104
 Keyes, Mich. (Mass.)...1651*
 Keyman, C. (S.D.)...1747*
 Kiive, P. (Minn.)...1764
 Keyser, M. (Pa.)...1874*
 Kiefling, L. (Ala.)...1760
 Kile, L. E. (Minn.)...1935
 Kimpton, L. (Ida.)...1935
 King, A. H. (N.Y.)...1683
 King, Chas. B. (N.J.)...1668
 King, Fred (Tex.)...1923
 King, Wm. (Calif.)...1679
 Kiplinger, W. (Wash.)...1990
 Kirby, Geo. (Nev.)...1974
 Kirk, Wm. (N.M.)...1992
 Kirshner, A. (Ohio)...1779
 Kistler, A. (Okla.)...1606*
 Klar, Lawr. (France)...1827*
 Klass, M. (Iowa)...1776*
 Klein, A. (N.Y.)...1407*
 Klein, Les. (Ala.)...1431*
 Kleszczewski, N. (Ill.)...1860
 Knapp, E. (Va.)...1906
 Knox, Phil (Fla.)...1844
 Kobelt, Carl (Wis.)...1780
 Koehler, W. (Colo.)...2064
 Koenig, E. (N.Y.)...1444*
 Kohut, N. (Minn.)...1599*
 Kolar, Jos. (Tex.)...1733
 Konopliv, N. (Minn.)...1837
 Kontautas, P. (Mass.)...1759*
 Kosiba, L. (Germ.)...1739*
 Kotski, Ed (Mass.)...1800
 Kotz, Robt. (Calif.)...1711
 Koutlas, J. (Ga.)...1200*
 Kovas, J. (Calif.)...1888
 Kovats, L. (Okla.)...1932*
 Kover, B. (Calif.)...1818
 Krafzik, H. (Germ.)...2145*
 Krause, B. (Ill.)...1532
 Krause, F. (Ill.)...1431*
 Krebill, H. (Iowa)...1595
 Krohn, V. (Ill.)...1754*
 Kuehnrich, F. (N.Y.)...2178*
 Kulka, T. (Ill.)...1567*
 Kundin, S. (Md.)...1768
 Kunkemueffer, A. (N.J.)...1348
 Kuntz, G. (Fla.)...1535*
 Kupersmith, L. (Cal.)...2163
 Kurth, A. (Ariz.)...1671*
 Kutus, Les. (Alas.)...1463*
 Kuz, Kozmo (Ariz.)...1945

LaBreque, E. (Fla.)...1498*
 LaBreque, L. (Fla.)...1469*
 Lacie, J. (N.Y.)...1927
 Lahde, Peter (Tenn.)...1868
 Laird, John (Mass.)...1863
 Lake, Robt. (Calif.)...1978
 Lakios, A. (N.J.)...1579
 Lainson, B. (Calif.)...1853
 Lambros, C. (Mass.)...1550*
 Lamprecht, P. (Ariz.)...1200*
 Landau, I. (N.Y.)...1639*
 Lane, Gary (Ohio)...1600
 Langley, D. (N.J.)...1626*
 LaPorta, T. (Fla.)...1873*
 Larsen, Ron (Calif.)...2027
 Larsonneur, L. (Ill.)...1591*
 Lasarko, J. (Md.)...1965
 Lassen, G. (Tex.)...1699*
 Latta, R. (Okla.)...1842

Laughlin, S. (Me.)...1639
 Lawrence, D. (Pa.)...1935
 Lawrence, E. J. (O.)...1821
 Layton, Ron. (Wis.)...1665
 Lazaro, R. (Calif.)...1784*
 Leach, J. (Calif.)...1346*
 Leach, J. D. (Ariz.)...1874
 Leavesley, D. (Ohio)...1735
 LeBlanc, R. (Mich.)...1932
 LeCompte, G. (La.)...1940
 Leder, G. (Ohio)...1717
 Lee, Chester (Germ.)...1910
 Lee, J. (Okla.)...1328*
 Lee, Norman (Ida.)...1526
 Leeds, O. (N.Y.)...1716
 Lees, David (Mass.)...2123
 Leggett, D. (Okla.)...1444
 LeGrand, M. (N.Y.)...1720*
 Lehpamer, P. (Ill.)...1871
 Leiserson, A. (D.C.)...1706*
 Leitiss, E. (Ore.)...2024
 Lemme, S. (Calif.)...1439*
 Lenk, E. (N.Y.)...1501
 Leonosio, J. (Nev.)...1383*
 Leopoldi, N. (Ill.)...2173
 Lerch, Russell (Md.)...1802
 Leslie, R. (Iowa)...1828
 Leuthold, P. (N.Y.)...2072
 Lewis, G. (Tex.)...1437*
 Lewis, L. R. (Mich.)...1993
 Lichtenberg, S. (N.J.)...1859
 Lichtenstein, E. (N.Y.)...1455*
 Liddell, S. (Utah)...1868
 Lien, Ron. (S.D.)...1321*
 Liepaskals, V. (Wis.)...1858
 Liepnieks, A. (Neb.)...2100
 Lifson, Ron (Minn.)...1819
 Lightner, C. (Ariz.)...1528*
 Lightner, F. (Ariz.)...1676*
 Limber, R. (N.Y.)...1584*
 Lindblade, L. (Ill.)...1626
 Ling, Rich. (Ohio)...1989
 Linn, Stanley (N.Y.)...1920
 Lipp, Gil. (Colo.)...1348
 Lipszyc, I. (Tenn.)...1200*
 Lisanke, Bob (N.J.)...1544*
 Littrell, D. (Germ.)...1658
 Livingston, J. (N.Y.)...1977*
 Lockett, A. (N.M.)...1722*
 Lockhart, S. (Wash.)...1870
 LoCoco, A. (Ill.)...1703*
 Loetterle, D. (N.Y.)...1200*
 Lofton, H. (S.C.)...1773*
 Lohbeck, D. (N.M.)...1457*
 Lohrman, Ron (N.Y.)...1867
 London, Wm. (Ill.)...1718
 Long, Chas. (Calif.)...1200*
 Long, Jack (Tex.)...1664
 Long, Rich. (Tenn.)...1988
 Long, Wm. (N.J.)...1943
 Longacre, W. (N.J.)...1631
 Longeway, J. (N.Y.)...1200*
 Loomis, R. (La.)...1764
 Loos, Ted (N.Y.)...1932
 Lopez, R. J. (N.Y.)...1908
 Lorie, Ted (N.Y.)...1996
 Losasso, J. (Calif.)...1369*
 Loudas, B. (Minn.)...1435*
 Lourie, W. (D.C.)...1870*
 Lovata, C. (Utah)...1583
 Love, David (N.Y.)...2038
 Lowery, C. (Calif.)...1673
 Loyte, J. (Mass.)...1505*
 Lubanski, A. (Ill.)...1667*
 Lubin, E. (N.Y.)...1775*
 Lucas, Dr. T. (Neb.)...1931*
 Lucas, Tom (Fla.)...1992*
 Ludlow, R. (Fla.)...2115
 Luedeman, R. (Ind.)...1708*
 Luna, Dr. A. (Ohio)...1841
 Lundstrom, E. (Colo.)...1727
 Lurie, Alan (Calif.)...1751
 Lufes, W. (Ohio)...1987
 Lutz, Chas. (Md.)...1606*
 Lyman, M. (Germ.)...1660
 Lynch, Ken. (Germ.)...1493*
 Lyon, Irwin (Miss.)...2081
 Lyons, M. (Calif.)...1327*

McAndrew, H. (N.Y.)...1848*
 McAssey, R. (Calif.)...1708
 McAuley, A. L. (La.)...2114
 McBee, V. (Okla.)...1744*
 McCabe, W. (Nev.)...1445*
 McCafferty, T. (Mass.)...1820
 McCaffrey, G. (Mass.)...1801*
 McCarrin, D. (N.J.)...1736
 McCathy, M. (Fla.)...1528
 McCarthy, M. (Calif.)...1547*
 McCarthy, Joe (Mich.)...1836
 McCaskey, E. (Calif.)...1769*
 McClellan, H. (Ohio)...1681
 McClendon, L. (Fla.)...1745*
 McClure, C. (Mass.)...1658
 McClure, L. (Kans.)...1627*
 McCready, R. (Tex.)...2019
 McCreight, D. (Tex.)...1200*
 McDaniel, C. (Utah)...1695
 McDowell, R. (Tenn.)...1702*
 McFall, I. (France)...1200*
 McFarland, H. (Fla.)...1468
 McFarland, W. (Fla.)...1200*

McGee, P. (Minn.).....1885	Molenda, E. (Mich.).....1462	Pamiljens, J. (N.Y.).....2122	Ray, Douglas (Pa.).....1800*	Schlechter, D. (N.Y.).....1719*
McGehee, J. (Tex.).....1273*	Mongan, P. (Calif.).....1633	Pandolfini, B. (N.Y.).....1749*	Raya, Frank (Calif.).....1779*	Schlesinger, J. (N.Y.).....1880
McHale, Tom (Calif.).....1761*	Monroe, L. (Mich.).....1997	Pankin, M. (Ohio).....1755*	Read, Thos. (S.C.).....1732	Schlosser, M. (Calif.).....1752
McIlrath, J. (Calif.).....1911	Mont, Sy (N.Y.).....1741*	Panzner, K. (Ill.).....1968	Reddick, R. (Calif.).....1430	Schmid, Rud. (Calif.).....1844*
McInish, R. (Fla.).....1805	Montes, M. (N.Y.).....1200*	Papermaster, M. (Wis.).....1807	Reeb, Douglas (Cal.).....1744*	Schmidt, B. (N.Y.).....1970
McIntyre, P. (Calif.).....1720	Moers, H. (Calif.).....1414*	Parker, K. (Colo.).....1763*	Reeder, S. (Neb.).....1726	Schneider, B. (N.Y.).....1745*
McKaig, W. (Ore.).....1641*	Mooney, W. (Ariz.).....1544*	Parker, R. (N.Y.).....2010*	Reh, John (Ariz.).....1633	Schoen, Jos. (Pa.).....1580*
McKay, Jack (Germ.).....1791*	Moore, J. D. (Tenn.).....1677*	Parker, C. (Calif.).....1947	Reithel, D. (N.Y.).....1981	Schrader, J. (Ore.).....1750
McKee, Don (W.Va.).....1667	Moore, Rich. (Colo.).....2148	Parberry, W. (R.I.).....1672*	Rekey, T. (Tex.).....1945	Schrader, S. (N.J.).....1749
McKenzie, A. (Calif.).....1738*	Moraza, M. (P.R.).....2097*	Parham, B. (Ind.).....1576*	Renck, J. (Calif.).....1370*	Schramm, H. (Wis.).....1723
McKenzie, D. (Md.).....1801	Morey, R. (Ind.).....2011*	Pariseau, R. (Pa.).....2003	Reno, Fred (Germ.).....1215*	Schroeder, J. (Ohio).....2110
McKone, J. (Calif.).....1641*	Morrell, M. (Pa.).....1873	Parkhurst, J. (Calif.).....1590*	RePass, F. (La.).....2009	Schroeder, K. (N.Y.).....1882*
McLaughlin, C. (Okla.).....1661	Morrell, P. (Pa.).....1820	Parks, A. C. (Colo.).....1731	Reuben, S. (N.Y.).....2180	Schroeder, R. (Ill.).....1470*
McLaughlin, W. (Kans.).....1853	Morris, Ian (N.Y.).....1705*	Parmelee, R. (N.M.).....1774	Reynolds, L. (Wis.).....1757	Schulman, M. (Cana.).....2176
McLeon, Don (Mich.).....1613	Morris, M. (Calif.).....1868	Parr, Steven (Md.).....1676	Rhee, Peter (Calif.).....1773*	Schultz, A. (Alas.).....1566
McLean, Wm. (Ariz.).....1465*	Morris, R. (Fla.).....1555	Parton, G. (Ariz.).....1817	Rhode, H. (Fla.).....1734	Schultz, Don (N.Y.).....1978
McMillan, J. (La.).....1522*	Morrison, S. (N.Y.).....1634	Parton, LaNell (Ariz.).....1305*	Rhodes, S. (Ill.).....1521*	Schultz, R. A. (La.).....2164
McNeil, S. (Fla.).....1645	Moskov, J. (Ill.).....1662	Parton, Lawr. (Ariz.).....1682*	Rhyner, M. (Ariz.).....1259*	Schultz, W. (Pa.).....1420*
McReynolds, F. (Cal.).....1811	Moskovitz, E. (Pa.).....1687	Parun, B. (La.).....1533	Rice, Larry (Tex.).....1223*	Schultze, R. (Ill.).....1361*
McRoberts, R. (Minn.).....1729	Mofen, Ron. (Mich.).....1590*	Patino, L. (France).....2016*	Richman, P. (Ind.).....1990*	Schulz, A. (Calif.).....1448*
MacDonald, W. (Va.).....1630	Mowry, H. (Pa.).....1834*	Patrick, R. (Ohio).....1760	Richardson, T. (Mich.).....1847	Schuster, J. (Calif.).....1654*
MacNamara, C. (Pa.).....1827*	Muekenburger, P. (N.Y.).....1889	Patterson, R. (R.I.).....1200*	Richburg, J. (Mich.).....1745	Scott, A. (Mo.).....1415
Madden, P. (Okla.).....1832*	Munson, Ben (N.M.).....1953	Patty, J. (Canada).....2154	Ricker, J. (Ind.).....1824*	Seiden, Robt. (Calif.).....1726
Maedia, A. (Calif.).....1610	Murdock, W. (N.Y.).....2179	Payn, R. (Calif.).....1636*	Rickless, D. (N.Y.).....1655*	Seitz, W. (Ill.).....1945*
Mahan, Tom (La.).....1705*	Murphy, Alpen (N.Y.).....1975	Paynter, R. (Neb.).....1675*	Riley, A. (Minn.).....1812	Seizinger, R. (Mich.).....1701
Mahon, Dick (N.Y.).....1635*	Murphy, John (Cal.).....1641	Pearlstein, H. (N.Y.).....1641	Rill, B. (N.Y.).....1302	Selib, H. (N.Y.).....1862
Mahoney, M. (Colo.).....1227*	Murphy, C. (Calif.).....1200*	Pease, Ron. (Calif.).....1749	Riopelle, J. (Mich.).....1376*	Semb, Melvin (Minn.).....1843
Mahoney, P. (Colo.).....1725	Murray, D. (Mich.).....1518*	Pederson, M. (Ill.).....1844*	Risley, R. (D.C.).....1578*	Sendeckyi, G. (Ill.).....2086
Maillard, Bill (Calif.).....1934	Muth, Phil (Tex.).....1386*	Peek, Billy (La.).....1957	Rizzo, V. (Pa.).....1994	Sepulveda, P. (N.Y.).....1779
Mainetti, A. (N.Y.).....1443*	Myer, Ken (Ind.).....1561*	Pehnc, T. (Ind.).....2177	Roa, Fred (N.J.).....1979	Serebennikov, E. (Va.).....1752
Makutenas, S. (Ind.).....1890	Myers, Art. (Colo.).....1200*	Pendleton, E. (R.I.).....1460*	Roberson, C. (Md.).....1933	Sgro, Anth. (N.Y.).....1633
Maier, T. (Md.).....1917*	Myers, D. (Pa.).....1882*	Peraza, H. (Fla.).....1973	Roberts, B. (Ala.).....1780	Shahade, M. (Pa.).....1917
Males, Dor. (Ariz.).....1237*	Myers, Hugh (Ill.).....2168	Perez, J. C. (Tex.).....1864*	Roberts, B. E. (Fla.).....1290*	Sharp, C. (Me.).....1951
Malina, B. (Ill.).....1892	Myers, Mike (Tex.).....1348*	Perez, R. M. (Tex.).....1365*	Robinson, E. (Ind.).....1716*	Sharp, A. (N.Y.).....1611
Mandell, A. (Ohio).....1363*	Myers, R. (Calif.).....1520*	Perlo, Stan (N.Y.).....1994*	Robinson, G. (Mich.).....1513*	Sharp, T. L. (N.Y.).....1449
Mankin, Art. (N.Y.).....1890	Nabors, J. Jr. (Utah).....1694*	Perrotta, J. (Alaska).....1624	Robinson, H. (N.Y.).....1794*	Shaw, Jack F. (N.M.).....1997
Mann, Dann (Utah).....1568*	Nabors, J. III (Utah).....1323*	Perry, Geo. (N.Y.).....1801	Robinson, J. (La.).....1854	Shaw, Ken (Colo.).....1448*
Manter, L. (Ill.).....1735*	Nagin, H. (Va.).....1826	Perry, Oran (Tex.).....1814	Robinson, M. (Calif.).....1921*	Shaw, Stephen (S.C.).....2067
Mantia, A. (Ohio).....1818	Narron, W. (Germ.).....1211*	Perry, W. R. (Fla.).....1884	Robinson, O. (Ala.).....1778	Sheehan, W. (Md.).....1729*
Marasovic, K. (N.Y.).....1653	Narveson, R. (Neb.).....1817*	Peterson, B. (Utah).....1739	Rock, Cecilia (Mass.).....1824	Shelburn, R. (Wis.).....1726
Margulies, W. (Mass.).....1545*	Naylin, D. (Colo.).....1939	Peterson, H. (Ind.).....1861	Rock, H. E. (Mass.).....1613	Shepard, Ira (Germ.).....1580*
Marin, J. (Calif.).....2088	Naylor, W. C. (N.Y.).....1606	Petithory, L. (Mass.).....1949	Rodemich, E. (Minn.).....1938	Sheridan, P. (Mich.).....1520*
Marks, H. L. (W.V.).....2024	Naylor, Rex (Md.).....1919	Petran, W. (Ohio).....1607*	Rogan, M. (Ill.).....2133	Shifrine, M. (Calif.).....1791*
Markush, R. (D.C.).....1394*	Neckorcuk, R. (Ill.).....1401*	Peterson, J. (Ohio).....2017	Rogers, D. H. (Ger.).....1795	Shipin, H. (Calif.).....1738*
Marples, D. (W.Va.).....1876	Nedeljkovic, R. (N.Y.).....1991	Petrus, T. (Minn.).....1505*	Rogers, Mrs. H. (N.Y.).....1660	Shooter, W. (N.J.).....1631*
Marques, M. (Fla.).....1551*	Neil, W. (Texas).....1767	Pfister, B. (Germ.).....2102	Rogosin, H. (Calif.).....1916	Short, Ken (Okla.).....1688
Marshall, A. (Ohio).....1401*	Nell, Louis (Mich.).....1435	Pfister, F. (Wis.).....2120	Rogosin, P. (Calif.).....1272	Shortill, T. (Me.).....1485*
Marshall, Ed (Ill.).....1353	Nelson, B. (Pa.).....1775	Phillips, A. (N.Y.).....1290*	Rohland, M. (Wis.).....2032	Showery, Ray (Utah).....1732
Marsten, A. (Mass.).....1833*	Ney, Norb. (Mich.).....1896	Phillips, C. (Ariz.).....1802*	Rollins, B. (Mich.).....1750	Shuey, Paul (Calif.).....1629*
Martin, R. L. (Calif.).....1798*	Nichols, J. (Ill.).....1400*	Piatagorsky, J. (Cal.).....1936	Ronquillo, T. (Ariz.).....1355*	Shutt, S. (Pa.).....1675
Martin, R. Q. (Tex.).....1803	Nichols, L. (Calif.).....1365*	Picknally, J. (Germ.).....1347*	Rose, F. (Fla.).....2157	Sick, Wilmar (Md.).....1833
Martinez, C. (Fla.).....1904*	Nicholson, N. (Calif.).....1639	Pierce, D. (Colo.).....1517*	Rose, H. H. (R.I.).....1951	Siegel, Mort. (N.Y.).....2172
Martinez, F. (P.R.).....1893*	Nicol, C. (Kans.).....1438*	Pinneo, J. (N.Y.).....2123	Rosen, J. (Ill.).....1353*	Sieh, Frank (S.D.).....1286*
Mason, Elmer (Nev.).....1555	Nicholls, W. (Ind.).....1488*	Piper, Jas. (Va.).....1497	Rosenbaum, H. (Ariz.).....1628	Sildmets, A. (Neb.).....1982
Masters, V. (Ariz.).....1710*	Niedzienski, M. (Mass.).....1651*	Pipirinos, G. (Colo.).....2018	Rosenberg, H. (Mich.).....1462*	Sillars, D. (Ill.).....1328*
Matherly, M. (Ill.).....1593*	Nikoley, M. (Nev.).....1407	Pitts, Rich. (Tex.).....1477*	Rosenberg, L. (Kan.).....1456*	Sillars, R. (Ill.).....1654
Mathews, F. (Ill.).....1738*	Nilsson, S. (Utah).....1849	Plank, C. (N.J.).....1775	Rosenblum, R. (La.).....1820	Silver, C. (Colo.).....1264*
Matley, V. (Colo.).....1626	Nilsson, S. (Utah).....1849	Platz, J. E. (Conn.).....2153	Rosenstein, H. (N.Y.).....1511*	Silverstein, R. (Mich.).....1717*
Mattes, R. (Ill.).....1774	Noel, Louis (Calif.).....1837	Podgorski, R. (Mich.).....1637*	Rosenstein, J. (N.Y.).....2162	Simmons, B. (Wis.).....1614*
Matthews, G. (Colo.).....1752	Noennig, J. (Germ.).....1537	Pohl, Ira (N.Y.).....1900	Rosenwald, R. (N.Y.).....1385*	Simms, Gary (Tex.).....1735
Matty, H. (N.J.).....1557	Noftsker, R. (N.M.).....1498*	Pohls, Ron. (Okla.).....1970	Ross, And. (Ill.).....1690	Simon, Sam. (N.Y.).....1707*
Matz, Jas. (Pa.).....1686	Noren, E. (Wis.).....1625*	Pointer, E. (Ill.).....1270*	Ross, Boris (Ill.).....1223*	Simonet, J. (Tex.).....1970*
Mauer, G. (N.Y.).....2165	Norgard, R. (Ill.).....1731*	Pointer, Eug. (Ill.).....1439*	Ross, How. (Mass.).....1824	Simons, C. (Germ.).....1686
Mayer, E. (N.Y.).....1898*	Norman, R. (N.Y.).....1959*	Pokorny, F. (Ill.).....1577*	Ross, Ian (Germ.).....1596*	Sims, D. (Calif.).....1848
Mayhew, E. (Calif.).....1417*	Nosanov, M. (Calif.).....1639*	Polk, Jas. (N.Y.).....1850	Ross, L. (Ill.).....1443*	Singer, G. (Ore.).....1825
Mazuchowski, T. (O.).....1988	Novosad, C. (Calif.).....1685*	Pollard, B. (Calif.).....1838	Ross, Rich. (Germ.).....1283*	Singh, D. (D.C.).....1864*
Meifert, H. R. (Wis.).....2165	Nowak, A. (Wis.).....1433	Polstein, H. (N.Y.).....1853	Roth, John (N.J.).....1649	Singleton, C. (Cal.).....1811
Meinhardt, C. (Wis.).....1619	Nowak, G. (Wis.).....1898	Popov, A. (N.Y.).....1938	Rothman, L. (Mass.).....1724*	Sitshin, A. (Mich.).....1845*
Meister, R. (Kans.).....1739	Nowicki, B. (Mich.).....1698	Porat, D. (N.Y.).....1678	Roubik, D. (Wis.).....1718	Skinner, C. (N.Y.).....1704
Melendez, A. (Colo.).....1660*	Nussbaum, J. (N.Y.).....1951	Porter, J. (Calif.).....1438*	Rowan, Jas. (Mich.).....1645*	Skinner, H. (Tex.).....1740
Melstrads, O. (N.Y.).....1679	Nystrom, Dan (Ill.).....1666*	Portillo, L. (Calif.).....1755	Rowbottom, B. (O.).....1621*	Skinner, W. (Germ.).....1202*
Melton, R. (S.D.).....1432*	O'Bannon, R. (Tenn.).....1715	Post, L. (Calif.).....1675*	Rozsa, Bela (Okla.).....2044	Skrypak, S. (Calif.).....1762
Menegelis, A. (Ill.).....1968	Oberg, John (Wis.).....1821	Postma, J. (Calif.).....1773	Rudder, O. (Calif.).....1286*	Skuris, P. (Ill.).....2073
Menn, Mich. (Mass.).....1710*	Ockenfels, L. (Ariz.).....1459	Postwalk, J. (Mich.).....1664*	Rueckert, A. (Ohio).....1911	Sleep, F. E. (Calif.).....1912
Meola, T. (N.J.).....1867*	Odenweller, C. (Mich.).....1757	Potter, Robt. (Tex.).....2130	Ruehmann, A. (Ga.).....1938*	Slighter, V. (Germ.).....1200*
Merrill, S. (R.I.).....1563*	O'Doan, L. (Calif.).....1730	Powelaitis, D. (Pa.).....1506	Ruggles, V. (Utah).....1627	Sloan, Sam (Calif.).....1938
Merte, Otto (Mich.).....1788*	O'Donnell, M. (N.J.).....1778	Powell, C. (Va.).....2046	Ruiz, M. J. (N.J.).....1248*	Slosson, M. (Ill.).....1554
Meshi, J. (N.Y.).....1878*	O'Donnell, W. (N.J.).....1861	Pozarek, F. (Md.).....1961	Rumsch, B. (Fla.).....1948*	Sluss, Jas. (Ind.).....1434*
Mestetsky, R. (Me.).....1316*	Oelrich, R. (Ill.).....1490*	Pratt, P. (Tex.).....1298*	Rumsch, J. (Fla.).....1507*	Smaier, Ed. (N.J.).....1791
Metz, Frank (Calif.).....1859	Oganesov, Y. (Cal.).....1745	Prendergast, J. (Md.).....1572	Runge, S. (Ill.).....1200*	Smedley, P. (Cana.).....2000
Metzelaar, C. (Utah).....1808	Ogni, John (R.I.).....1890	Price, F. (N.Y.).....1694	Rupnow, R. (Wis.).....1484*	Smeltzer, Jeff (S.C.).....1677*
Meyer, Jack (Ill.).....1522*	O'Hara, R. (Calif.).....1615*	Priebe, S. (Colo.).....2027	Rusk, Cliff (France).....1474*	Smith, Chas. (N.J.).....1994*
Meyer, John (N.Y.).....2130	Oje, Lyle (N.M.).....1716	Primeaux, N. (La.).....1589*	Rutkauskas, P. (Ill.).....1575*	Smith, Chas. (Ala.).....1529*
Meyers, E. (Pa.).....1758	Oldenburger, G. (N.Y.).....1813*	Pritschow, R. (Germ.).....1910*	Rychtar, E. (Md.).....1811*	Smith, Fred (Va.).....1668*
Meyerson, J. (N.Y.).....1787*	Olin, Russ (Pa.).....2047	Proll, Geo. (N.J.).....2068	Rykken, K. (Minn.).....1798	Smith, J. (Calif.).....1887*
Michel, Carl (Ill.).....1404	Olins, E. (Wis.).....1951	Prue, Ed. (Kans.).....1653*	Saadi, M. (Calif.).....1874	Smith, Geo. (Tex.).....2048
Middleton, E. (Tenn.).....2035	Oliver, R. (Md.).....1840	Pugh, Julian (Ky.).....1729*	Sack, Jas. (Ariz.).....1609	Smith, J. M. (S.C.).....1524*
Miqala, John (Ill.).....1577*	Oliver, R. (Md.).....1840	Purdy, P. (N.Y.).....1237*	Sacks, Andy (Calif.).....1930	Smith, L. (Alas.).....1838
Miller, A. (Conn.).....1407*	Olmsted, D. (Calif.).....1768	Purmalis, A. (N.Y.).....1786	Sadowski, E. (Fla.).....2156	Smith, P. (N.J.).....1887
Miller, David (Neb.).....1200*	Olson, A. E. (N.Y.).....1630	Putnam, Wm. (S.C.).....1706*	Saenger, W. (Calif.).....1474*	Smith, Pete (S.C.).....1302*
Miller, F. (Ind.).....1657	Olson, Robt. (Minn.).....1643	Pye, Frank (Calif.).....1852	Saew, L. L. (Ore.).....1818	Smith, Rand. (Neb.).....1718
Miller, Geo. (Mich.).....1560*	Olsson, G. (Calif.).....1412*	Quillen, P. (Calif.).....2119	Salome, E. (Colo.).....1999	Smith, Roy (N.Y.).....1292*
Miller, John (Colo.).....1652	Ordo, Jos. (Pa.).....1884	Quillian, R. (S.C.).....1993*	Samet, S. (N.Y.).....1958	Smith, Vine (N.Y.).....1691*
Miller, K. (Pa.).....1367*	Orem, P. (Calif.).....1664*	Quiring, D. (Kans.).....1729	Sanchez, D. (Ill.).....1657	Smith, Walt. (Calif.).....1716
Miller, O. (Germ.).....1514*	Orlowski, C. (Mich.).....1200*	Radaikan, V. (Calif.).....2069	Sanders, K. (R.I.).....1337*	Smith, Wm. (N.Y.).....1610
Miller, Owen (N.Y.).....2012	Ornstain, C. (Mass.).....2021*	Rader, H. D. (Calif.).....1683	Sappenfield, J. (Tex.).....1781	Smith, W. (Minn.).....2034
Miller, T. (Okla.).....1822*	Oster, Roy (N.Y.).....1834	Radey, J. (Ill.).....1398*	Saudek, Glen (Calif.).....1301*	Smolick, G. (N.Y.).....1507*
Miller, V. (Fla.).....1200*	Osterhout, R. (Ariz.).....1432	Radl, Dick (Calif.).....1623*	Sauer, Gary (D.C.).....1567	Smyth, F. (Calif.).....1957
Miller, V. (Fla.).....1200*	Otteson, M. (Minn.).....2080	Ragsdale, J. (Mass.).....1871	Savery, C. (Calif.).....1792	Snow, Ray (Calif.).....1668
Milofsky, B. (Wis.).....1625	Otteson, W. (Wis.).....1422	Rains, S. (Calif.).....1791	Savitsky, M. (Calif.).....1563*	Snow, Robt. (Calif.).....1330*
Milofsky, C. (Wis.).....1761	Owen, Rich. (Utah).....2013	Rajnoha, V. (Neb.).....1917	Savon, A. (Calif.).....1580*	Snow, Tom (Tex.).....1709
Mintz, B. (Calif.).....1769	Owezynski, V. (Minn.).....1411*	Raley, Ed (Germ.).....1539	Sawicke, M. (Minn.).....1834	Snyder, Har. (Ohio).....1890
Mintzes, A. (Md.).....1512*	Oyler, R. (Calif.).....1474*	Ralston, B. (France).....1429*	Saxon, Jas. (Ill.).....1535*	Sobin, E. (N.Y.).....2068
Mir-Hosseini, M. (Colo.).....2012	Ozols, A. (Ill.).....1828	Ralston, T. (France).....1739*	Sayre, C. (Md.).....1772	Sodaro, A. (Ill.).....1427*
Milijanian, G. (Mass.).....1565*	Paala, E. (N.Y.).....1718	Ramas, C. (Ill.).....1897	Scheaffer, B. (Ill.).....1380*	Solomon, J. (Mich.).....1577*
Miskin, Alan (Wis.).....1979	Packer, E. (Ill.).....1675*	Ramsden, Ron (Ill.).....1605*	Scheffer, D. (Mass.).....2030	Solot, E. (Mass.).....1823
Missavage, D. (Ill.).....1200*	Pader, Doug (NY.).....1672	Randolph, J. (N.Y.).....1721	Schein, Mrs. E. (N.Y.).....1600	Soltan, P. (N.Y.).....1200*
Mitchell, F. (Utah).....1599	Pafow, P. (R.I.).....1828*	Raptis, J. (Ill.).....1200*	Scheinbaum, B. (Germ.).....1662*	Soltis, And. (N.Y.).....1954
Mitchell, F. (Utah).....1599	Pagan, Ray (Ariz.).....1485*	Rasor, G. (Idaho).....1612	Schemm, M. (Calif.).....1744*	Som, Arun (D.C.).....1985
Mitchell, Jas. (Tenn.).....1592	Pagasts, M. (N.Y.).....1746	Ratner, P. (N.Y.).....2098		Somerville, R. (N.Y.).....2056
Mitchell, R. (Ore.).....1912*		Raven, Robt. (Md.).....1970		Somlai, E. (Wis.).....1748
Mitchell, T. (N.Y.).....1586*		Rawles, R. (Calif.).....1226*		Somner, M. (Ill.).....1557
Mlatek, J. (Ill.).....1515*				
Moen, Paul (Kans.).....1429				

TOURNAMENT LIFE

Tournament organizers wishing announcement of USCF rated events should make application at least six weeks before the publication date of **CHESS LIFE**. Special forms for requesting such announcements may be obtained only from U.S. Chess Federation, 80 E. 11th St., New York 3, N.Y.

April 3-5

MARYLAND OPEN

6-round Swiss to be played at Dundalk YMCA Dunmanway, Baltimore 22, Md. \$6 entry fee (\$5 if received before March 27). 1st prize, \$50; 2nd, \$40; 3rd, \$30; 4th, \$20; 5th, \$10; 6th, \$5 plus trophies. Trophies for A, B, C, Women, Junior, Unrated. For details: Lewis A. Hucks, 2972 Cornwall Rd., Baltimore 22, Md.

April 3, 4, 5

PHOENIX OPEN

Sponsored by the Phoenix Chess Club, a 6-round Swiss, 45/2, will be held in the Adult Center, 1101 W. Washington St., Phoenix, Arizona. Entry fee: \$10 plus USCF membership. Guaranteed 1st, \$100 plus trophy; cash prizes for 2nd, 3rd, top A, B, C, Unrated, Woman and Jr. Address advance entries and inquiries to Col. Paul Webb, 1631 W. Mulberry Dr., Phoenix Arizona, 85015.

April 3, 4, 5

SOUTH CENTRAL VALLEY OPEN

Co-sponsored by the Fresno, Visalia and The College of the Sequoias Chess Clubs a 6-Round Swiss, 40 moves/2 hours. \$50.00 guaranteed for 1st prize. Other prizes as income permits. First round starts at 8:00 p.m., Friday night, April 3. At the Student Union of The College of the Sequoias, Visalia, California. Entry fee \$2.50 plus USCF membership. Players having boards, sets and clocks are requested to bring them for tournament use. Send entries in advance and inquiries to: Tom Stamper, 1334 South Conyer, Visalia, California.

April 4, 5

HURON VALLEY OPEN

5-round Swiss, 50/2, will be held at the Huron Motor Inn, Washington & Pearl Sts., Ypsilanti, Mich. 48197. Entry fee: \$6. seniors; \$4. jrs. under 16. Trophies. For further information write to Albert S. Baptist, 930 S. Grove Rd., Ypsilanti, Mich.

April 4, 5

7th ANNUAL LAKE ONTARIO OPEN

5-round Swiss will be held at the Central YMCA, 100 Gibbs St., Rochester, N.Y. on Sat. and at the University Club on Sun. Entry: \$6. plus USCF membership. Guaranteed 1st, \$100.00. For further information contact Erich Marchand, 192 Seville Dr., Rochester 17, N.Y. Players are requested to bring clocks and sets.

April 4, 5

FRANKLIN MERCANTILE 30-30

7-round Swiss, 30/30, sponsored by the Franklin Mercantile Chess Club for the title of Philadelphia 30/30 Champion, will be held at the Franklin Club, 133 S. 13th St., Philadelphia, Pa. Entry fee—

\$2.50 with a guaranteed 1st prize of \$25 and additional prizes for the other classes. Write Walter Fraser, 5630 N. 11th St., Philadelphia, Pa.

April 5

DAVIS INTERNATIONAL TEAM SPEED TOURNAMENT

Each team will consist of four players only and play will be in accordance with FIDE and USCF rules for Speed Tournaments. Each team is required to bring two clocks (drop-flag type only), two sets and two boards.

The deadline for entries is 1:30 P.M. April 5 at the Auditorium of Freeborn Hall, Davis Campus, University of California. Play will start at 2 P.M. and end at 6 P.M. Time limit—5 minutes per player per game. Entry fee: \$6. per player (\$5. each for advance entries received before April 1st). Codirected by Ed Edmondson and Dave Olmstead, two dollars of each entry fee will be earmarked for the USCF International Affairs Fund, the remainder of the entry fees will be given as cash prizes.

Send entry fees and write for additional information to: Serge von Oettingen, 621 East 8th St., Davis, Calif. 95616 (phone 753-4293)

April 11, 12

FOURTH ANNUAL FOREST CITY OPEN

Sponsored by the Cleveland Chess Association, a 5-round Swiss will be held at the Central YMCA, E. 22 & Prospect Ave., Cleveland, Ohio. Entry fee: \$5. plus USCF membership. Guaranteed 1st, \$100.; other cash prizes. Please bring clocks, sets and boards. Registration closes 8:30 A.M. April 11. Send advance entries and inquiries to Joe Uher, 1579 Holmden, S. Euclid, Ohio 44121.

April 11, 12

MISSISSIPPI-LOUISIANA OPEN

5-round Swiss, 50/2, will be held at the Eola Hotel, Natchez, Miss. on April 11 and 12 with an optional round on April 10. Entry: \$5. plus USCF membership. Trophies for Classes A, B, C. For further information contact W. W. Crews, Shreveport, La. or Neville Marshall, Natchez, Miss. Please bring clocks, sets and boards.

April 11, 12

1964 PENNSYLVANIA INTERCOLLEGIATE TEAM TOURNAMENT

Open to all colleges and universities in Pennsylvania (team members must be members of USCF) a 5-round Swiss, 50/2, will be held at the Penn. State University, University Park, Penn. Teams may consist of 5 players and 2 alternates. Entry is \$5. per team. Prizes: Penn. Chess Federation rotating trophy and permanent trophy for first place. Trophy for second place. Plaque awards to top player on each of 5 boards. Book awards for best played games and brilliancy award. Schedule of rounds: Sat.—9 A.M., 2 P.M., 7 P.M.; Sun.—9 A.M., 2 P.M. Please bring clocks, sets and boards. International Master Donald Byrne directs. For further information and housing reservations, write William F. Fuller, 202 Hetzel Union Bldg., University Park, Penn.

April 11, 12

FOURTH ANNUAL GOLDEN TRIANGLE OPEN

5-round Swiss, 50/2, to be held at the Golden Triangle YMCA, 304 Wood St., Pittsburgh 22, Pa. Entry fees: \$6. seniors; \$4. jrs. under 18. First prize guarantee—\$100. Other cash prizes according to entries. For additional information contact the tournament director, Dr. F. A. Sorensen, 814 East End Ave., Pittsburgh 21, Pa.

April 11, 12, 18, 19

GREATER CHICAGO OPEN

Sponsored by the Greater Chicago Chess League and the Chicago Chess Foundation, an 8-round Swiss will be played at the Gompers Park Field House, 4224 W. Foster, Chicago, Ill. Entries close at 11 A.M. April 11. Entry fees: \$12. seniors; \$8. Jrs. Tournament director—Mr. Frank Skoff.

This traditional tournament has always been a record setter for Chicago. This year there is a guaranteed prize fund of \$1,000.00. First three prizes—\$200., \$125., \$100. (15 top prizes in all!) Multiple prizes in all classes including trophies. Class A: \$40., \$25., \$15. Class B: \$30., \$20., \$10. Class C: \$25., \$15. In addition there are the woman's, Junior and unrated prizes. Address all inquiries to Peter Wolf, 6435 N. Damen, Chicago 45, Ill.

1964 LAS VEGAS OPEN CHESS TOURNAMENT

July 4-5-6-7 — Hotel Sahara — Guaranteed Prizes

	First	Second	Third	Fourth	Fifth
GENERAL . . .	\$300.00 + Trophy	\$200.00	\$100.00	\$50.00	\$25.00
WOMEN'S . . .	\$ 50.00 + Trophy	Trophy			
JUNIORS . . .	\$100.00 + Trophy	\$ 50.00	\$ 50.00		
CLASS A . . .	\$200.00 + Trophy	\$100.00	\$ 50.00		
CLASS B . . .	\$150.00 + Trophy	\$100.00	\$ 50.00		
CLASS C . . .	\$150.00 + Trophy	\$ 75.00	\$ 50.00		
UNRATED . . .	\$100.00 + Trophy	\$ 50.00	\$ 25.00		

No evening Games. Door prize \$50. Free coupon books for drinks, meals, gifts. Director: George Koltanowski. Entry Fee \$20. For advance registration write:

611 North Main

ART GAMLIN

Las Vegas, Nevada

EVERY-SUNDAY TOURNAMENT

4-Round Swiss; 40 moves in 2½ hours, no adjudications, will be held at the Rossolimo Chess Studio, 191 Sullivan St., N.Y. 12, N.Y. (Grandmaster Rossolimo will participate). One round each Sunday from 2 P.M. to 7. Please bring clocks. For further information, contact Nicolas Rossolimo at the above address, or GR-5-9737. Registration closes 7 P.M., Sat. USCF membership required. USCF rated.

April 14 - May 19

EAST LANSING SPRING OPEN

A 6-round Swiss, 40/2 will be held at the Inn America Motor Hotel, 2736 E. Grand River Avenue, East Lansing, Michigan. Entry fee is \$5 plus USCF membership; trophy and \$25 bond to the tournament winner; trophies to runner-up, A, B, & C. Address further inquiries to the sponsoring club—East Lansing P.O. Box #14, East Lansing, Mich.

April 17, 18, 19

APRIL IN PARIS

International Tournament

(5th USCF Rating Tournament, France)

7-round Swiss at Pershing Hall, Paris Post 1, American Legion, Paris, France. Open to all USCF members. \$5 entry fee of which \$3 will be applied to cash prizes. For information, write (air-mail) to the tournament director, Capt. Tad Gorczyca, Box 4046, APO 10, N.Y., N.Y. or to Mr. David H. Rogers, 8th MIDet., APO 111, N.Y., N.Y.

April 17-19

CORNELL INTERNATIONAL OPEN

Two dollars of the entry fee will be earmarked for the USCF's International Affairs Fund. 5-round Swiss, 50/2, will be played at Willard Straight Hall, Cornell Univ., Ithaca, N.Y. An optional first round may be played Friday evening—registration at 7 P.M. or Sat. morning—registration 9 A.M. \$6. entry fee. \$75. first prize; other prizes as entries permit. For full details: Peter Berlow, Chemistry Dept., Cornell University, Ithaca, N.Y.

April 17-19

5TH ANNUAL NEW ENGLAND AMATEUR

6-rd. Swiss, 50/2, to be played at Boylston YMCU, Boston, Mass. Entry fees according to USCF rating: Class A or better—\$9.00; Class B—\$7.00; Class C or lower—\$5.00. A \$1 discount on any entry received before April 10. Tournament open to any USCF member whose last published rating is 2199 or lower.

Prizes: trophies for 1st, Class A, B, C, Top Woman, Top Junior. Merchandise prizes according to entries. Tournament winner and top woman to have entries paid into U.S. Amateur. Door prize. Registration deadline: April 17, 7 p.m.; sets, boards, clocks. For details contact tournament director, Robert Goodspeed, 981 Plymouth St., Bridgewater, Mass. 02324.

April 18, 19

IOWA STATE CHAMPIONSHIP

Restricted to residents of the State of Iowa, a 5-round Swiss, 40/100 min., will be played at the Des Moines YMCA, 1st Ave. & Locust Ave., Des Moines, Iowa. Entry fees: \$5. seniors; \$4. if rated below 1700; \$2. for unrated Jrs. under 19. Trophies to first and second in championship division; trophies to top junior and top middle-class. For further details, write the tournament director John M. Osness, 320 Columbus Circle, Waterloo, Iowa 50701.

April 18, 19

1964 K. C. INTERNATIONAL

5-round Swiss, 40/2, will be held at the Downtown YMCA 10th & Oak, Kansas City, Mo. Entry fee: \$10.00. Trophies for 1st, 2nd, 3rd, 4th, a junior prize (under 21), an unrated prize and Class A, B, and C awards. Plus cash bonus awards of \$15 per point over 3½ points (this is for EVERY-ONE). For details: John R. Beitling, 3533 Genesee St., Kansas City 11, Mo.

April 18, 19

SECOND ANNUAL NORMAN CHESS FESTIVAL

Sponsored by the Oklahoma State Chess Association. a 4-round Swiss, 50/2½, will be played at the Okla. Memorial Union, University of Oklahoma, Norman, Okla. Entry fee: \$3. There will be a separate tournament for juniors under 18. Cash prizes as entries permit: book prize to top junior. Top Norman resident will be the Norman Champion. Registration closes 11 A.M. For further info, write D. Ballard, 1210 Wilson Center Drive, Norman, Okla.

April 24-26

1964 FLORIDA EXPERTS TOURNAMENT

This tournament is divided into three sections: Expert Division—(limited to rating 2000 plus or a plus score in the 1963 Regional or State Tournaments), A Division—(rating 1750-2000), Amateur Division—(below 1750 rating). Entry fees: Expert, \$10 + USCF + FCA (\$2); A, \$8 ++; Amateur, \$6. ++.

Awards: Expert, (1st) \$100 and trophy, (2nd) \$50 and trophy, (3rd) Chess Clock; "A", (1st) \$35. and trophy, (2nd) \$15. and trophy, (3rd) Staunton Chess Set; Amateur, (1st, 2nd) Chess clocks, (3rd) Staunton Chess Set.

5-round Swiss, 40/2, to be played at the Marion Hotel, 108 N. Magnolia, Ocala, Florida. For further information: Mr. Max Bruss, 1139 E. Henry St., Ocala, Florida.

April 24-26

NEW JERSEY STATE AMATEUR

Open to all who are rated below USCF masters (2200), a 6-round Swiss, 50/2, will be held at the Plaza Motor Hotel, 500 Cooper St., Camden, New Jersey. Entry fees: \$5 seniors; \$3 juniors under 21, plus USCF & NJSCF memberships. Trophies. For further details: Lewis E. Wood, 1425 Sycamore St., Haddon Heights, N.J. 08035

April 25 & 26

1st CENTRAL MICHIGAN OPEN

Sponsored by the Lansing Chess Club, 5 round, 50/2, Swiss, USCF, at YMCA, 301 W. Lenawee, 3 blocks south of Capitol, Lansing, Mich. 1st round at 9:00 A.M. on 4/25. Please bring sets & clocks. Prize fund over \$250. Savings bond of \$100 plus trophy for winner, \$50 and \$25 bond for 2nd and 3rd. Valuable prizes plus trophies for winners and runner-up in classes A, B, C and for Women and Junior. Entry fee \$6.00, Juniors \$5.00. Advance entries and inquiries to Ed Molenda, Treasurer LCC, 3105 W. Willow, Lansing, Mich.

April 25-26

REGION VII ICLA TEAM AND INDIVIDUAL CHAMPIONSHIP

Restricted to Region VII undergraduate students, a 5-round Swiss will be played at the Memorial Student Center, Texas A & M University, College Station, Texas. Entry fees: \$10 per team of four players plus ICLA affiliation (\$10). Trophies to winning team and to individuals plus travel grants to national intercollegiate. For further details: B. G. Dudley, 1013 E. 23 St., Bryan, Texas 77801.

April 25-26

QUEEN CITY OPEN

5-round Swiss, 24/1, will be played at the Parkway YMCA, 1105 Elm St., Cincinnati 10, Ohio. Entry fees: \$6 seniors; \$4.50 juniors (\$1 discount up to Apr. 20). Prize awards—at least 50% of entry fees. Two dollars of each entry fee will help support the International Affairs Fund. The Parkway Chess Club is the sponsor. Address advance entries and inquiries to R. B. Hayes, 820 Woodbine Ave., Glendale, Ohio.

April 25-26

TWIN CITY INTERNATIONAL OPEN

5-round Swiss, 30/1, will be played at the Minneapolis YMCA, 8th & La-Salle, Minneapolis, Minn. Entry fees: \$5 plus USCF membership; students, \$4. Prizes awarded according to the number of entries—awards for 1st, Classes A, B, C. For further details: Ken Rykken, 6301 Wentworth Av. So., Minneapolis, Minn. This is an International Affairs Tournament sponsored by the Twin City Chess League.

May 2, 3

NEW HAMPSHIRE OPEN

5-round Swiss, 50/2, will be played at the N.H. Savings Bank, Concord, N.H. Prizes: 1st, \$50 min.; other cash prizes and trophies—starting time—9 A.M. Entry fee: regular \$6; students, \$4 plus USCF membership. For further details, write Mr. George Bart, 36 Dunklee St., Concord, New Hampshire.

May 15, 16, 17

1964 ATLANTA OPEN

Sponsored by the Atlanta Chess Assn., a 6-round Swiss, 40/2, will be played at the Atlantan Hotel, 111 Luckie St., Atlanta, Ga. Prizes: 1st \$300; 2nd \$150; 3rd \$100; 4th \$50; classes \$25 each; other awards. Entry fees: juniors under 18, \$6; others rated under 1850, \$8; unrated \$9; all others \$12. Address advance entries and inquiries to tournament director, Dr. R. Fromke, Atlanta Chess Assn., Box 621, Atlanta, Ga. 30301.

Grandmaster Pal Benko will handle all adjudications and will conduct a simultaneous at the tourney site on Thursday (April 14, 7:30 P.M.). Special hotel rates and 10% on advance entries until May 2.

May 16, 17

INDIANA CHAMPIONSHIP

5-round Swiss, 60/2, will be held at Memorial Center, Purdue University, Lafayette, Indiana. Title restricted. Entry fees: \$5 seniors; \$3 juniors under 18. Awards: Trophies and book prizes. Registration until 9 A.M. May 16. For further information write, E. R. Sweetman, 3055 N. Meridian St., Apt. #4A, Indianapolis, Indiana 46208.

May 17 & 24

13TH ANNUAL W. MASS. CHESS TOURNEY

Restricted to residents of W. Mass. or members of W. Massachusetts clubs, a 6-round Swiss, 50/2, will be held at the Plimpton Library, Williston Academy, Payson Ave., Easthampton, Mass. Registration fees, \$4 plus USCF membership, must be paid by May 14. Players are requested to bring sets, boards and clocks. Trophy awards. Address entries

and inquiries to: Mrs. T. J. Howes, 67 Lawler St., Holyoke, Mass. 01041.

May 28-31

1964 BUCKEYE OPEN

7-round Swiss at the Secor Hotel, Jefferson Ave., Toledo, Ohio. Prizes—1st \$300; 2nd, \$200; 3rd, \$100. Merit prizes \$25 for each point over 4½, junior and class awards. Entry fee: \$12.50 seniors (18 or older); \$8.50 juniors (17 or younger). Registration closes 7 P.M. May 28. Advance registration—All persons who enter in advance will receive a free chess book. Do not mail entries after May 18. Send to—Ohio Chess Assn., Box 5268, Cleveland, Ohio.

May 28-31

UNITED STATES AMATEUR CHAMPIONSHIP

The traditional U.S. Amateur Championship will again be held in Asbury Park, N.J. over the Memorial Day weekend. Details in our next issue.

May 29, 30, 31

BIRMINGHAM OPEN & AMATEUR

5-round Swiss, 45/2, will be held at the Thomas Jefferson Hotel, Birmingham, Alabama. The open championship is unrestricted and the amateur championship is for 1800 and lower rated players. Entries: Open section \$6; Amateur \$4. Registration closes at 6:45 P.M. and there is an optional first round on Friday (7 P.M.) for those who do not want to play three rounds on Saturday. Cash awards and trophies. Players are requested to bring clocks. For further information write Charles Cleveland, 15th Floor, Empire Bldg., Birmingham 3, Ala.

May 29, 30, 31

MISSOURI OPEN

Sponsored by the St. Louis Chess League, a 6-round Swiss, 50/2, will start at 7 P.M. at the Downtown YMCA, 1528 Locust St., St. Louis, Mo. Entry fee: \$7. Prizes: 1st \$100; 2nd \$50; special class prizes. The title of Missouri Open Champion goes to the winner and the title of Missouri State Champion is restricted to the highest finishing Mo. resident. Address advance entries and inquiries to Mr. C. M. Burton, 2217 Thurman Ave., St. Louis, 10, Mo.

June 5, 6, 7

CORAL GABLES OPEN

5-round Swiss, 45/2, will be played at the War Memorial Youth Center, 400 Anastasia Ave., Coral Gables, Fla. and it is to be divided into three sections:—an Open, fees \$5 (\$3 juniors under 21); an Amateur, fees \$4 (\$2 juniors); a Booster (under 1700), fees \$3 (\$1 juniors). \$100 first prize guaranteed. Other prizes: cash and trophies. Please bring sets and clocks. For further information: Wm. O'Regan, 10720 SW 5th St., Miami, Fla. 33165.

June 6, 7

MINOT INTERNATIONAL OPEN

5-round Swiss, 50/2, will be held at the Ramada Inn, Minot, North Dakota—registration closes at 8:30 A.M. \$2 of the \$6 entry fee will go to the USCF International Affairs Fund. Prizes: 1st \$25; 2nd \$15; 3rd \$5 plus trophies. For further info: Capt. J. T. Bauman, 104-1 Glacier Dr., Minot AFB, N. Dakota. A second, non-rated novice event will be held at the same time. All players are requested to bring sets and clocks.

June 13, 14

FALLS CITY OPEN

6-round Swiss, sponsored by the Louisville Chess Club, will be held at The Mall, Shelbyville Road at Watterson Expressway, Louisville, Kentucky. Entry fee: \$5 plus USCF membership. Prizes—1st, \$50.; 2nd, \$20.; other, by number of entries. Address inquiries to Samuel Fulkerson, Route #2, Jeffersontown, Kentucky.

June 19, 20, 21

DOWNEAST OPEN

The third annual Downeast Open tournament, a 6-round Swiss, will be played at the Portland, Maine YMCA starting 8 P.M., Friday. Cash prizes plus trophy to the winner. Entry fee: \$5 plus USCF membership. For further details contact Stuart Laughlin, 68 Prospect St., Portland, Me.

June 19, 20

BITBURG OPEN

Sponsored by the European Chess District, a 5-round Swiss, 45/2, will be held at the Base Service Club, Bitburg Air Force Base, Bitburg, Germany. Entry: \$3.50; prizes according to entries. For further information: write the T.D. Mr. David H. Rogers, 8th Mil. Intel. Det., A.P.O. 111, N.Y., N.Y.

June 27, 28

CENTRAL NEW ENGLAND OPEN

The Fourth Annual Central New England Championship, sponsored by the Wachusett Chess Club, will be held at the First Parish Church Hall, Main St., Upper Common, Fitchburg, Mass. The 6-round Swiss, 60/2, starting at 9:30 A.M., will guarantee \$250 in cash prizes. Entry fees; Masters & Experts, \$10; A, \$8; B, \$7; C, \$6; Unrated, \$6. One dollar reduction if you enter prior to June 23. Please bring sets and clocks. Send all correspondence to: Frank Hacker, 30 Wendell Road, Fitchburg, Mass. 01420 (Diamond—2-7571).