



Chess Life



Vol. IV
Number 20

Official Publication of The United States Chess Federation

Tuesday,
June 20, 1950

USA WINS BORDER MATCH!

Final Call For Detroit As Open Nears; Let Your Vacation Plans Include Chess

Arrangements for the 51st Annual Congress of the United States Chess Federation and the U. S. Open Championship, Woman's Open Championship and U. S. Lightning Chess Championship Tournaments are completed; and every player is assured a fine time at what promises to be one of the finest of a long line of Open Tournaments.

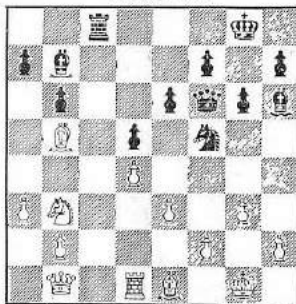
Hermann Helms, the "dean of American Chess" and Editor of the American Chess Bulletin, will officiate as Tournament Director, assisted by Malcolm Sim, chess editor of the Toronto Telegram, and USCF Membership Secretary Glenn E. Hartleb. These officials assure the player of a smoothly conducted meeting, running efficiently throughout the course of the tournament.

The Federation was very fortunate in being able to enlist Mr. Helms as director when Hans Kmoch had to cancel his engagement as Tournament Director in order to sail for Europe to undertake the organization and direction of the International Team Tournament in Yugoslavia. Mr. Sim is in a sense coming home, for he directed the first bonafide Open Tournament of the Federation, held at the Lawson L in Chicago in 1934—and is well known for his work as director of the New York State Tournaments for many years, as well as for his active role at the U. S. Championship at South Fallsburg in 1948. Glenn Hartleb will be remembered for his excellent work as Assistant Director at the U. S. Open at Omaha in 1949.

U. S. Open Champion Albert Sandrin plans to defend his title at the Tournament, and letters from New York indicate that an unusually strong and interesting group can be expected from that area; Puerto Rico will send a delegation, and due to the closeness to the border, and exceptionally strong entry from Canada is expected.

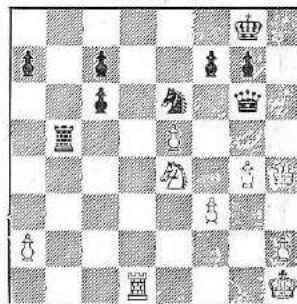
Present indications show that the ladies will not be neglected, for advance notices promise an unusually strong gathering of women players to compete for the Helen Cobb Trophy and the U. S. Woman's Open Championship. Miss N. May Karff, present titleholder, has indicated that she may be expected to defend the title won at Baltimore in 1948.

Position No. 35
Foltys vs. Gligoric
Venice, 1949



Black to play and win

Position No. 36
Kovacs vs. Beni
Vienna, 1949



White to play and win

Finish It The Clever Way!

Conducted by Edmund Nash

Send all contributions for this column to Edmund Nash, 1550 28th Place, S.E., Washington 20, D. C.

IN POSITION NO. 35 White resigned after Black's first move. Most of us, of course, if playing White, would have waited until Black's combination unrolled for several more moves before resigning.

In position No. 36 White forces mate in 6, unless Black gives up his Queen. This position is taken from the Viennese Schach-Magazin (November, 1949), the most enjoyable German-language chess magazine that has come to my attention.

Correction: In Position No. 34 a Black Pawn should be on Black's Q3.

Please turn to page four for solutions.

MARTIN, SUESMAN TIE IN R.I. MEET

Albert C. Martin of Providence, defending champion, and Walter B. Suesman, chess editor of the Providence Journal, tied for first place in the Rhode Island State Championship with 5-1 each. Third place went to P. P. Chen, also of Providence, with 2-4, and William Kiraly of Woonsocket was fourth with 0-6 in the double-round event. Martin and Suesman each won one game from the other, and two each from the other contestants. The Rhode Island Chess Ass'n's first championship was held in 1887.

The Class "A" Section of the State Tournament was won by Joseph S. Wholey, Jr. of Stillwater with 4-0. Wholey is 15 years old and another promising junior player. Second place went to Carl Grossguth of Cranston, 14 years old, with 3-1. Gilbert Boisvert of North Providence was third.

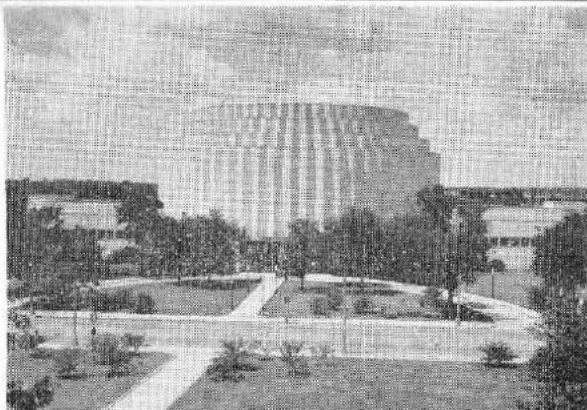
The Rhode Island Rapid Transit title was won by Walter Suesman with 10½-½. Otto Hoffer of Providence was second with 10-1, and Albert Martin third with 9-2.

TABER WINS OPEN KIMPTON, IDAHO

Former Nevada State Champion William F. Taber won the Idaho Open Championship with 6½-1½ in an 8-round 14-man Swiss event at the Rogerson Hotel, Twin Falls. Second place and the Idaho State Championship went to LaVerl Kimpton of Twin Falls with 6-2 on S-B points. Placing third and fourth respectively on S-B points with equal scores of 6-2 as well were G. Buckendorf of Buhl and Lloyd Kimpton of Twin Falls. Fifth place went to 1949 Champion C. W. Stewart of Boise with 5½-2½.

Among the players was Don Crawford of Boise, who placed seventh, despite the handicap of blindness. Crawford used a special pegboard and is a consistent tournament player.

At the annual meeting of the Idaho Chess Association, LaVerl Kimpton was elected president and D. Murphy of Twin Falls secretary-treasurer. Boise was selected as the site for the 1951 State Tournament.



THE FORD ROTUNDA

Gateway to the Ford Empire at Detroit, and one of many imposing beautiful buildings in the automobile capital of the world—scene of the 1950 U. S. Open Championship in July.



SITE OF THE 51st U. S. OPEN CHAMPIONSHIP

In the foreground, the Detroit-Leland Hotel, Headquarters of the Tournament. Above and to the right (the building just above the "Detroit" in the hotel sign) is the Service Building of the Detroit Edison Company and home of the Edison Chess & Checker Club, where the tournament will be held.



WOMEN'S CHAMPIONSHIP CANDIDATE

Miss Juliette De Meo, 19, youngest member of the Queen's Women's Chess Club in Cleveland, is a sophomore at Stauffer College, majoring in social work. She plans to play in the USA-Canada Match at Niagara Falls on June 18th and hopes to enter the U. S. Women's Open Tournament at Detroit in July, together with several other members of the all-women Queen's Chess Club. Aside from chess, Miss De Meo plays the violin.

NIAGARA FALLS SEES TEAMS TIE

SPECIAL: The USA won the second Annual USA-Canada 3000 Mile Border Match by a 120½ to 72½ score, although the largest individual contest at Niagara Falls, Ont. ended in a 47-47 draw. Matches in the Coast-to-Coast event were played June 18 at Bangor, Me.; Berlin, N. H.; Niagara Falls, Ont.; Detroit, Mich.; Grand Marais, Minn.; and Mount Vernon, Wash. Flood conditions in Manitoba cancelled the usual Minneapolis-Winnipeg contest at Detroit Lakes, and apparently the scheduled match at International Peace Gardens, Dunseith, N. D. was not played. A match between Alberta and Montana will be held at Glacier Park, Mont., on July 2nd.

USA Team	Canadian Team
Washington 25	British Col. 14
Minnesota 24	Ontario 13
Michigan 10	Ontario 2
Ohio, Pa., N.Y. 47	Ontario 47
N. Hampshire 10	Quebec 83
Maine 83	The Maritimes 3

USA 120½ Canada 72½
Details of match will be published in next issue.

MANHATTAN CLUB DOWNS MARSHALL

With the championship of the Metropolitan Chess League of New York at stake, the Manhattan Chess Club triumphed over the Marshall Chess Club 9-7 in a spectacular match which saw A. C. Simonson come from retirement to best Samuel Reshevsky, while Reuben Fine gained his revenge from A. S. Denker for Denker's spectacular win in the 1944 U. S. Championship which did much to cost Fine the U. S. title.

The match assembled what was possibly the greatest group of American "name" players ever to be gathered together for a single team contest. Two former U. S. Champions, one U. S. Junior Champion, one former U. S. Intercollegiate Champion, and five former U. S. Open Champions were among the contestants.

NO. CALIF. WINS BY TIGHT SCORE

By the slim margin in a 45-board match of 24½-20½. North California triumphed over Southern California at San Luis Obispo in the most recent of this historical series of matches. The South won ten out of the first thirteen boards, but lost the match on the lower boards. USCF Vice-President Herman Steiner won on board one, while USCF Vice-President J. B. Gee lost on board eight. On the top boards Steiner, Martin, Cross and Borochow scored for the South while Falconer and Barlow garnered points for the North.

SAVE THESE DATES!
Last Week of July
FOR THE
**5th Annual U. S.
Junior Tournament**
— AT —
MILWAUKEE, WIS.

For details: write Ernest Olfe, Dept. of Promotion and Research, Milwaukee Journal, Milwaukee 1, Wis.

Tuesday, June 20, 1950

Tournament Life

Conducted by Erich W. Marchand

192 Seville Drive Rochester 17, N. Y.

RETI OPENING

Metropolitan Chess League Marshall vs. Manhattan New York, 1950

Chess notation table for Marshall vs. Manhattan game, listing moves for White and Black.



Notes for the Marshall vs. Manhattan game, including move analysis and player names like Hendricks and Ruy Lopez.

RUY LOPEZ District of Columbia Championship, Round 5, Washington, 1950

Chess notation table for Ruy Lopez game, listing moves for White and Black.

Notes for the Ruy Lopez game, discussing the opening and player strategies.

After 29. P-K16! SHAPIRO



Notes for the Ruy Lopez game, mentioning the player Shapiro.

KANSAS STATE CHAMPIONSHIP

Table listing the results of the Kansas State Chess Championship, including player names and scores.

Solutions:—Mate The Subtle Way!

Chess puzzles and solutions, including a problem by Fagan and another by Burke.

Q-Q2

Chess notation and notes for the Q-Q2 game, mentioning White's strategy.

SICILIAN DEFENSE Southsea International Tournament Southsea, 1950

Notes for the Sicilian Defense game, discussing the opening and player strategies.

Chess notation and notes for the Sicilian Defense game, mentioning the player L. Prins.

Chess notation and notes for the Sicilian Defense game, discussing the tactical situation.

After 11. Kt-Q5! PRINS



Notes for the Sicilian Defense game, mentioning the player Prins and the tactical ideas.

TARTAKOWER

Chess notation and notes for the Tartakower game, discussing the opening and player strategies.

Tulsa Chess Club vanquished the University of Tulsa Chess Club by a 3 1/2-1/2 score

Table listing the results of the Tulsa Chess Club vs. University of Tulsa Chess Club match.

FRENCH DEFENSE

Southsea International Tournament Southsea, 1950

Notes for the French Defense game, discussing the opening and player strategies.

Chess notation and notes for the French Defense game, mentioning the player R. G. Wade.

Chess notation and notes for the French Defense game, discussing the tactical situation.

Chess notation and notes for the French Defense game, mentioning the player Anderson.

Log Cabin vs. Downtown YMCA Bedford Springs, 1950

Notes for the Log Cabin vs. Downtown YMCA game, discussing the opening and player strategies.



CARO-KANN DEFENSE Gambit Chess Club vs. Queen City Buffalo, 1950

Notes for the Caro-Kann Defense game, discussing the opening and player strategies.

Chess notation and notes for the Caro-Kann Defense game, mentioning the player F. R. Anderson.

NORTH vs. SOUTH CALIFORNIA MATCH

Table listing the results of the North vs. South California Chess Match, including player names and scores.

Following "M.C.O." likely best is Q-K12;

Chess notation and notes for the M.C.O. game, discussing the opening and player strategies.

After 22. Kt-K5! BLACK



Notes for the M.C.O. game, mentioning the player Anderson and the tactical ideas.

FRENCH DEFENSE Log Cabin vs. Downtown YMCA Bedford Springs, 1950

Notes for the French Defense game, discussing the opening and player strategies.

Chess notation and notes for the French Defense game, mentioning the player F. Howard.

Chess notation and notes for the French Defense game, discussing the tactical situation.

After 25. KtP BYLAND



Notes for the French Defense game, mentioning the player Byland.

Table listing the results of the North vs. South California Chess Match, including player names and scores.

SUPER \$1.00 VALUE

Advertisement for a chess magazine or book, offering a special price.

Annotations

Annotations for various chess games, listing player names and move numbers.

GRUENFELD DEFENSE North vs. South California San Luis Obispo, 1950

Table listing the results of the Gruenfeld Defense game, including player names and scores.

After 17. P-K15 SIMONSON



Notes for the Gruenfeld Defense game, mentioning the player Simonson.

RESHEVSKY

Table listing the results of the Reshevsky game, including player names and scores.

For The Tournament-Minded

Advertisement for the Southern Chess Association Championship, including details about the event.

New Mexico State Chess Association Albuquerque, N.M.

Advertisement for the New Mexico State Chess Association, including details about the event.

Solutions: Finish It The Clever Way

Chess puzzles and solutions, including a problem by Howard.

For news of Canadian Chess Life

Advertisement for Canadian Chess Life magazine, including subscription information.