

# Chess Life



America's Chess Newspaper

Copyright 1960 by United States Chess Federation

Vol. XIV, No. 13

Saturday, March 5, 1960

15 Cents

## ALL'S WELL THAT ENDS WELL

Mastering the End Game

By WALTER KORN, Editor of MCO

### AMERICANA (II)—Marvin Palmer

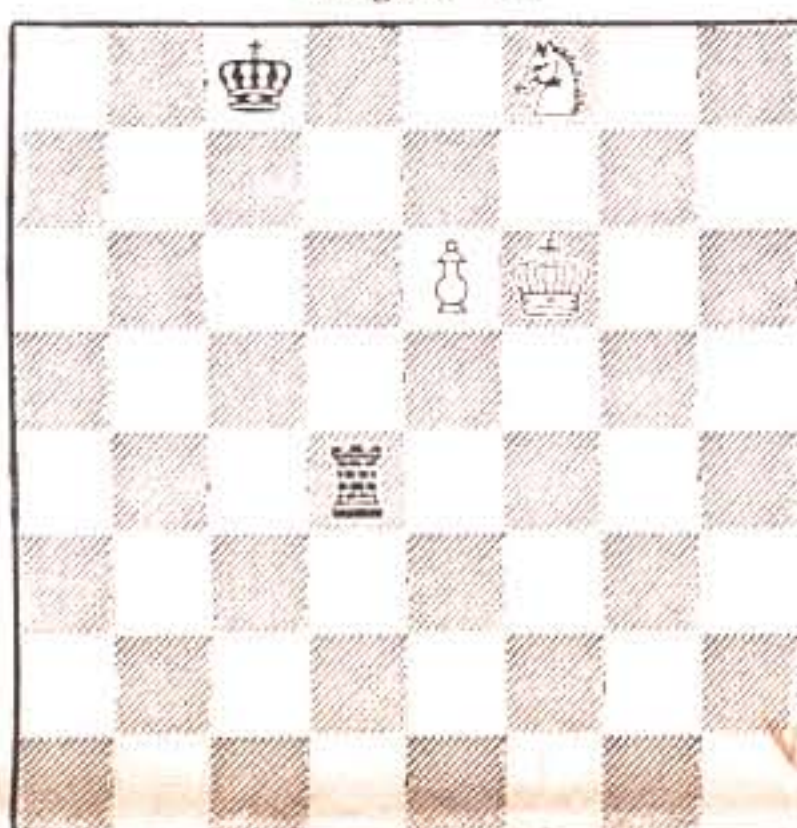
Marvin lives in Detroit, and although his talents have been dormant lately, he has composed quite a lot of end-game studies. Quite a tale hangs around this miniature. (Diagram 76)

See solution on page 8.

Looking at this gem recently, I realized that I had seen the idea elsewhere. True, it was one of Reti's studies, published in 1928, the only difference being that Reti has the Black rook on Black's Q-3, and an additional White pawn on White's Q3. His solution ran: 1. P-Q4, RxQP; 2. P-K7, R-Q3ch; 3. K-N7, R-Q1; 4. K-B7, winning as above, but adding the minor variation 1. ...., K-B2; 2. P-Q5, RxQP; 3. P-K7 etc.

(Continued, with solution,  
Column 1, Page 8)

Diagram 76



White to play and win

## Operation

**M** = 5000 MEMBERS  
By July 1960

### Colorado Story—The Perfected Plan

From: Fred Cramer, General Membership Chairman

To: Juan J. Reid, Colorado Membership Chairman

Colorado shows a sensational gain, from 15 members a year ago to 53! Drop me a line, telling me how it was done . . .

From: Juan J. Reid, Colorado Membership Chairman

To: Fred Cramer, General Membership Chairman

The increase in USCF membership in Colorado is due mainly to a few ideas and the concentrated effort of a few key people. Organization of the Colorado State Chess Association last year united our chess leaders in a common effort to promote the game. The CSCA directors, Ben Kriegh of Boulder, Al Hulmes of Denver, and Warren Barter of Pueblo, were in agreement that the USCF was the best instrument to promote chess for the typical club in the outlying provinces as well as at the national level, and they became the Membership Committee for OPERATION M. As a result the USCF program was publicized at the club level, at CSCA meetings, and through the CSCA Newsletter.

The CSCA adopted the requirement of USCF membership for participation in the state tournament. The Denver YMCA CC inaugurated rating tournaments for USCF members. The promise of national ratings brought out the best players in the state for the 1959 tournament, and the number of entries was 43% greater than the previous year.

Special recognition must be given two men. Dr. George Pipiringos of the Denver YMCA CC and the 1958 state champion, was an indefatigable worker for OPERATION M. Hans Berliner, member of the Martin Co. CC of Littleton, USCF Master and 1959 Colorado champion, offered simultaneous exhibitions at \$2.00 per board, or free to anyone joining

(Continued on page 2)

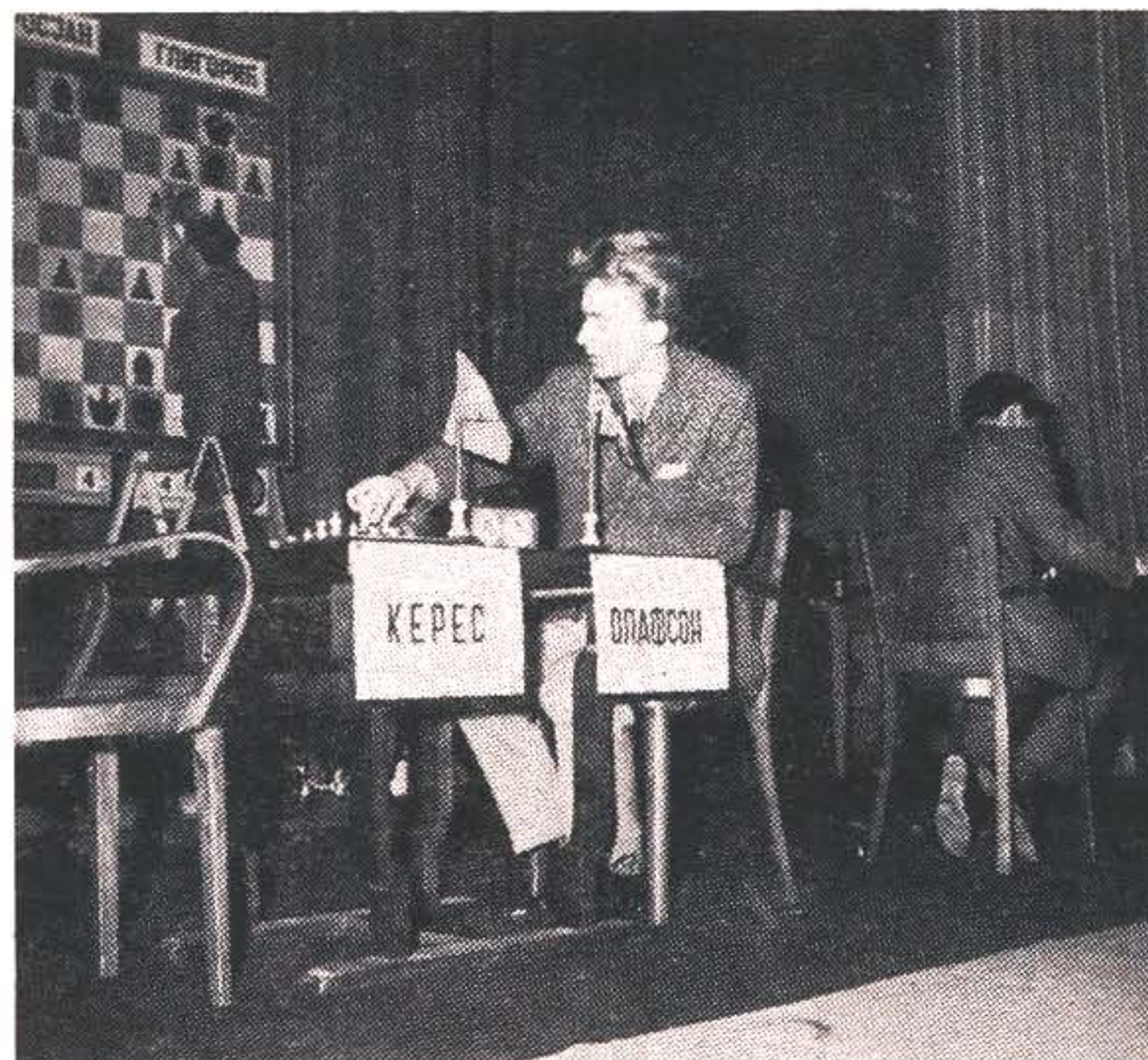
Make your plans now to attend one of these top-notch USCF-rated tournaments. Details later in CHESS LIFE.

**U.S. OPEN CHAMPIONSHIP—August 8-19**  
Hotel Sheraton-Jefferson, St. Louis, Missouri.  
**U.S. AMATEUR CHAMPIONSHIP—May 28, 29, 30—Asbury Park, New Jersey.**  
**GREATER NEW YORK OPEN CHAMPIONSHIP—June 24, 25, 26—New York, N.Y.**



FISCHER BEING PHOTOGRAPHED AFTER FINAL ROUND WIN OVER SMYSLOV

Here are two more photographs taken by Ken Harkness at Belgrade, Yugoslavia, the day the last round of the 1959 World Candidates Tournament was played.



OLAFSSON MAKING A FINAL ROUND MOVE. (HE WON FROM KERES)

### RATINGS SUPPLEMENT

USCF Ratings, reflecting performances up to and including some of the 1959 Labor Day events, are included in this issue, beginning on Page 3. Inquiries or complaints about your ratings should be addressed to Frank Brady, U.S.C.F. Rating Statistician, 80 East 11th St., New York 3, N.Y.



(Continued from page 1)

USCF. Several clubs have sponsored Hans' exhibitions, and others are due to follow.

Don't count Colorado's OPERATION M as concluded. **We have just started!**

**From: Fred Cramer, General Membership Chairman**

**To: All State and Local Membership Chairmen**

Formula for membership success—that's the Colorado story. It has everything! Notice the leadership, the working together of the leaders, the concentrated efforts of those named, the all-out propaganda campaign, followed by the action-producing activities (rated tournaments, Berliner simulcs). And what a fine thing it has been for chess in Colorado, and for the Chess organization in Colorado. A sweet smooth operation, a model for any state! All hats off to Juan Reid and crew!

## THE USCF RATING SYSTEM

A progress report by:

Arpad E. Elo

*(This partial progress report by the chairman of the committee appointed to study the Harkness Rating System, and, if considered desirable and feasible, to recommend the adoption of improvements, represents the contents of less than two of seven closely-typed pages of the entire report. The remainder of the report will be printed in subsequent issues of CHESS LIFE.)*

### Introduction:

The USCF ratings and the rating system itself as devised by Mr. Kenneth Harkness have become the object of a great deal of controversy within the American chess fraternity. To resolve this controversy President Jerry Spann early this year appointed a committee consisting of Dr. Erich Marchand, Mr. Guthrie McClain and the writer to study the matter and to make such recommendations as would effect an improvement in the rating system. This report summarizes the findings and some of the recommendations that have developed out of the study thus far.

At the outset the committee accepted a definition of the objective of a rating system as stated by Mr. C. H. Bone of the Texas Chess Association, namely;

**"THE RATING SYSTEM SHALL PROVIDE AS CLOSE AN ESTIMATE AS POSSIBLE OF THE CURRENT PLAYING STRENGTH OF THE INDIVIDUAL AS COMPUTED FROM HIS PERFORMANCE IN COMPETITION WITH OTHER PLAYERS AND MEASURED ALONG AN ARBITRARY ARITHMETIC SCALE."**

Some of the controversy in the past has resulted from an improper understanding of the objectives of a rating system; some has resulted from a lack of appreciation of the limitations of any rating systems. The Harkness system has been criticized for not showing past achievements (if these were good); for not agreeing with the subjective evaluation of playing strength and for not being accurate. Those individuals who in particular criticized the accuracy of the system claimed that other systems in use would provide more accurate or better results.

In addition to the Harkness System several other rating systems are currently in use in the United States, namely, the CCLA, the Chess Review, the West Coast System and numerous others of local importance. The principal systems listed here have different numerical scales but the ranges do not differ significantly so that, if desired, ratings could readily be translated from one system to another. A comparative study of these systems has been made by supplying them to the same tournament events. The mathematical and the logical bases of the systems were also examined critically. Out of these investigations the following basic facts of rating systems have emerged:

I. All the different rating systems if applied over a long enough period; if based upon a sufficient number of events and if adjusted for the numerical scales used will approach the same value for the rating of a player. The approach to this ideal value is, however, an oscillatory one. This is so not only because the performance of a player may vary from one event to the next but rather because of an inherent feature of the rating systems. All the systems considered are essentially self contained systems so that if one player gains rating points another player or players must lose the same number of points. Thus if a player gains and achieves a certain rating in a tournament, say a club tournament, he will depress the ratings of his competitors. Then in the next event even if the player concerned makes the same score as in the first event he is likely to lose rating points since in the second event his competition appears "weaker." A self contained system is thus going to be a "hunting" system in the sense that it tends to seek out the rating but seldom if ever indicates what would be the "true" rating of the individual player.

II. The concept of a TRUE rating is in itself an illusion. There exists an inherent uncertainty in the value of the rating of an individual as determined by any system. This fact is closely associated with the feature discussed in (I), however, it is even more basic. The uncertainty which exists in chess ratings is quite analogous to the uncertainty that exists in physical measurements on the atomic scale and much the same factors bring about this condition both in chess and in physics. In chess when the status-quo of the ratings is to be determined it is done through such measuring devices as match or tournament events. Any event, however, is bound to disturb the status-quo so that it can never be determined within an uncertainty the order of magnitude of which is the value of a chess game expressed in the rating points of the particular system.

III. All the principal rating systems are basically identical even though the formulae used for the computation of the ratings may superficially look different. The fact is that when the formulae are generalized they are either of identical algebraic form or if of seemingly different form derivable from one another. This fact was quite unsuspected at the beginning of this study.

The oscillatory character and the uncertainty in the ratings may be demonstrated by the following oversimplified example. Suppose that two evenly rated players A & B play a match by correspondence one game at a time and that they are rerated after each game. Let it be further assumed that the players alternate winning games. (Each could, say, exploit the advantage of the first move and win with the white pieces.) This order is not important but simplifies the computations. For the computations the Chess Review system will be used as the 50 rating point value of a game and the 10% handicap term gives nice round figures to work with. This system will be described later. Lastly assume that the rating of each player is 1000 at the beginning of the match and let the ratings be computed after each game and tabulated thus:

	A's rating	B's rating	Difference (A-B)
At beginning .....	1000	1000	0
After A wins .....	1050	950	100
After B wins .....	990	1010	-20
After A wins .....	1042	959	84
After B wins .....	984	1016	-32
After A wins .....	1037	963	74
Etc.			

Now if the calculations are continued with the same pattern of wins it will be evident that the differences in the two ratings, both the plus and minus, approach a value of 55 and the ratings approach the figures 972.5 and 1027.5 respectively. After these figures are reached the ratings of the two players will merely oscillate between the two extremes but will never again be equal to 1000 or to one another. Manifestly the example chosen is far fetched but it does illustrate the uncertainty principle. A similar situation would result in a match between two unusual players provided that the win-loss pattern bears some relation to the probability of either player winning. It should be apparent then that all that can be said of any rating is that it is somewhere within a range of values and not something which is absolutely definite. (To be continued)

## BRASKET WINS NORTH CENTRAL OPEN

Milwaukee, Wis.—Curt Brasket, Minneapolis, triumphed over a field of 90 players to win the 6th Annual North Central Open here. A half point in arrears, splitting 2nd and 3rd prize and a share of the Merit fund were Hans Berliner, Littleton, Colorado, Charles Henin, Chicago, and Martin Harrow, Indianapolis. Each received nearly \$100. Brasket, who also won the title in 1954, thus becoming the first player to win the tournament for the second time, received \$250. Milwaukee's veteran and popular competitor, Nicolajs Kampars was sole possessor of 5th place with 5½ points.

Sharing in the balance of the merit prize fund at five points each were Robion Kirby, Chicago, Vasa Kostic, Gary, Indiana, Milton Otteson, Minneapolis, Arpad Elo, Milwaukee, Jack O'Keefe, Ann Arbor, Michigan, Charles Weldon, Milwaukee, Sam Cohen, Chicago, Dr. I. Schwartz, Rockford, Ill., and Kenneth Grant, Cedar Rapids, Iowa.

A five minute "Blitz" tournament, in which 32 players competed was won by Angelo Sandrin, Chicago. Milton Otteson and Miro Radojcic tied for 2nd and 3rd place.

### Final Standings of Leaders

Brasket 6.5280; Berliner 6.0272; Henin 6.0250; Harrow 6.0240; Kampars 5.5210; Kirby 5.0235; Kostic 5.0212; Otteson 5.0196; Elo 5.0195; O'Keefe 5.0190; Weldon 5.0180; Cohen 5.0176; Dr. Schwartz 5.0175; Grant 5.0167.

Hillinger 4.5180; Radojcic 4.5170; Kraszewski 4.5167; Gutmanis 4.5162; Oliver Hutoff, Wilmington, N.C., 4.5135; Donald Hallman, Chicago, 4.5130.

Marvin Rogan, Chicago, 4.0165; Kalnins 4.0158; Angelo Sandrin, Chicago 4.0157; Kaegi 4.0147; Liepnicks 4.0137; Kasenga 4.0136; Grombacher 4.0135; Ainis Mengelis, Chicago, 4.0132; Donnelly 4.0131; Fred Cramer, Milwaukee, 4.0130; Edward Formanek, Cicero, Ill., 4.0127; Kaiser 4.0126; Sherman 4.0125; Peter Webster, Oshkosh, Wis., 4.0115; Fred Pfister, Milwaukee, 4.0112; Dane Smith, Milwaukee 4.0110; Eugene Hoeflin, St. Paul, 4.0107; Hugh Wheeler, Chicago, 4.0103; Harry Mayer, Chicago, 4.0102; John Oberg, Racine, 4.0100; Alan Miskin, Milwaukee, 4.0091; John Kelly, Lansing, Mich., 4.0090.

## 3-DIMENSIONAL TIC-TAC-TOE GAME

"Daze"—played in 3-D on four transparent tiers of 16 squares each. Win vertically, horizontally or diagonally on all levels. Draws are rare; strategies abound. Set comes complete with 48 red and green chips in distinctive game box. Custom crafted of durable clear plastic, "Daze" offers years of enjoyment. Just \$3.98 postpaid. Money-back guarantee. Send remittance to **DAZE, 1987 Paloma St., Pasadena, California.**



# USCF NATIONAL RATING LIST

## Supplement No. 2

by  
**FRANK R. BRADY**  
USCF Rating Statistician

This second supplement, which is still another attempt at reaching the "monthly" stage of publishing up-to-date ratings, is about three months late. Every attempt has been made to speed up the frequent publishing of ratings, and competent clerical assistance has been secured so that lists will be guaranteed to be published more frequently than in the past. The "monthly" rating supplement idea, which I am still convinced is a good one, may be too impractical to maintain consistently. The duration between lists, however, will never be longer than three months, and in fact, the lists will probably be appearing every two. At the end of the year, there will be one complete national list, containing the names of every player who took part in a USCF-rated tournament during that year.

The current supplement marks the end of the rating system as it was devised by Kenneth Harkness and maintained for over seven years. The USCF Rating Committee, headed by Prof. Arpad Elo, with Dr. Erich Marchand and Guthrie McClain as members, has, after laborious and painstaking research and discussion, originated an entirely new system of calculation which tends to great accuracy and less over-all fluctuation, with more emphasis on credit for past performance. As of this date, all tournaments submitted to the USCF Business Office will be calculated by the new system. (Further explanation of this system will be found elsewhere in this issue).

In order to make a March deadline it was necessary to break off sooner than we had expected. Thus, some of the Labor Day Week-end Tournaments will be found in this list, while others have not yet been calculated. These tournaments were done chronologically, in the order in which the reports were received, and any Labor Day tournaments not on this list will be included in the next.

### FACTS AND FIGURES

This list contains the names of 8 Senior Masters, 47 Masters, 166 Experts, and 776 Class A, B, and C Players. Quite a few new names appear for the first time among the Masters; special note should be made of Walter Harris of New York City who is a member of the Marshall Chess Club. By his outstanding performance in the U. S. Open, Harris achieved his Master rating, making him the first Negro to be so recognized in American chess.

### A NEW NAME

Joseph F. Reinhardt of Staten Island is now an employee of the USCF, working exclusively on ratings. Joe is a former student of Wagner College, and has long been an organizer of Island chess activities. The USCF is very fortunate, indeed, in being able to secure his services, and I hope that all USCF members will join me in welcoming him into the "fold."

### SENIOR MASTERS

(2400 to 2599 points)

Benko, Paul (New York, N.Y.)	2516
Berliner, H. (Littleton, Colo.)	2403
Bisguier, A. (Elmhurst, N.Y.)	2525
Byrne, Robert (Valparaiso, Ind.)	2430
Cross, James (Los Angeles, Calif.)	2408
Evans, Larry (New York, N.Y.)	2514
Lombardy, William (Bronx, N.Y.)	2554
Steinmeyer, Robt. (St. Louis, Mo.)	2450

### MASTERS

(2200 to 2399 points)

Adams, W. W. (Dedham, Mass.)	2288
Ault, Robin (Cranford, N.J.)	2250
Braskett, Curt (Minneapolis, Minn.)	2361
Burger, Karl (Brooklyn, N.Y.)	2261
Crittenden, C. (Raleigh, N.C.)	2204
Dueck, L. (Maplewood, N.J.)	2263
Dunst, Theodore (New York, N.Y.)	2238
Gilden, Larry (Takoma Park, Md.)	2210
Green, Matthew (Sussex, N.J.)	2288
Harris, Walter (New York, N.Y.)	2250
Harrow, Martin (Indianapolis, Ind.)	2225
Hearst, Eliot (Arlington, Va.)	2371
Henin, Charles (Chicago, Ill.)	2250
Howard, Franklin (Palatin, N.J.)	2269
Jimenez, Eleazar (Havana, Cuba)	2248
Kalme, Charles (Philadelphia, Pa.)	2374
Kause, Richard (Garfield Hts., O.)	2210
Levy, Louis (Paterson, N.J.)	2254
McCormick, Edgar (E. Orange)	2204
Marchand, Erich (Rochester, N.Y.)	2256
Martin, Geoffrey (Ypsilanti, Mich.)	2237
Mednis, Edmar (NYC)	2343
Martin, Ray (S. Monica, Calif.)	2276
Ortega, Rogelio (Havana, Cuba)	2234
Owens, Brian (Great Neck, N.Y.)	2224
Popel, Stephen (Detroit, Mich.)	2346
Popovich, Orest (Lakewood, N.J.)	2237
Poschel, Paul (Royal Oak, Mich.)	2252
Ramirez, Gilbert (San Francisco)	2266
Rankis, August (NYC)	2209
Rivera, Donato (Rio Piedras, P.R.)	2311
Rivise, Irving (Los Angeles, Cal.)	2265
Robey, Paul (Metuchen, N.J.)	2200
Saidy, Anthony (Douglastown, N.Y.)	2373
Sandrin, Albert N. (Chicago)	2252
Sherwin, James T. (New York)	2276
Shipman, Walter (New York)	2391
Siff, Boris (Miami Beach, Fla.)	2251
Simon, Leslie M. (Los Angeles)	2205
Smith, Kenneth R. (Dallas, Tex.)	2211
Sweig, Mitchell (Chicago, Ill.)	2225
Tautvaisas, P. (Chicago, Ill.)	2303

Tums, John M. (Chicago, Ill.)	2222
Ulvestad, Olaf (Seattle, Wash.)	2306
Wachs, Saul (Bloomfield, N.J.)	2340
Weinberger, T. (Glendale, Calif.)	2276
Weinstein, Raymond (Brooklyn)	2363

### EXPERTS

(2000 to 2199 points)

Abram, G. (Detroit, Mich.)	2015
Alexander, J. (Phoenix, Ariz.)	2041
Allen, D. (Independence, Mo.)	2110
Allen, J. (Independence, Mo.)	2046
Amneus, D. (Monterey Pk., Calif.)	2149
Aronson, Mrs. E. (Chicago, Ill.)	2013
Ault, L. H. (Cranford, N.J.)	2081
Balsai, S. (Hot Springs, Ark.)	2105
Barnes, G. (Minneapolis, Minn.)	2060
Batchelder, C. (Taylor, Mich.)	2030
Batchelder, W. (Bloomington, Ind.)	2025
Baylor, G. (Pittsburgh, Pa.)	2033
Beckedorf, D. (Albuquerque, N.M.)	2004
Berent, P. (Detroit, Mich.)	2029
Bierlich, G. (Chicago, Ill.)	2000
Bills, W. (Houston, Tex.)	2042
Bizar, I. (Bronx, N.Y.)	2137
Bornholz, R. (Pittsburgh, Pa.)	2173
Brand, L. (Cincinnati, O.)	2018
Brieger, R. (Houston, Tex.)	2045
Burgar, W. (Detroit, Mich.)	2171
Byland, W. (Pittsburgh, Pa.)	2069
Cake, G. (Haddonfield, N.J.)	2116
Cantone, A. (State College, Pa.)	2011
Carlyle, R. (St. Petersburg, Fla.)	2139
Carr, W. (Los Angeles, Calif.)	2169
Chalifoux, J. (Tampa, Fla.)	2026
Chressanthos, A. (Philadelphia)	2004
Cohen, Max (Philadelphia, Pa.)	2145
Coughlin, R. (Orange, N.J.)	2044
Crowder, L. (Starkville, Miss.)	2010
Donovan, J. (Brooklyn, N.Y.)	2088
Drexel, G. (Miami Beach, Fla.)	2191
Dupree, O. (Venice, Calif.)	2047
Durkin, R. (Newark, N.J.)	2142
Edelbaum, T. (Windsor, Conn.)	2138
Finigold, R. (Detroit, Mich.)	2072
Fisher, H. (Philadelphia, Pa.)	2011
Forsee, P. (Louisville, Ky.)	2034
Foster, J. (Miami, Fla.)	2003
Frankenstein, L. (Berkeley, Calif.)	2045
Frederick, M. (Johnsville, Pa.)	2048
Freeman, J. (El Paso, Tex.)	2045
Friedman, L. (Morristown, N.J.)	2090
Fries, T. (Los Angeles, Calif.)	2008
Fruella, S. (Buffalo, N.Y.)	2051
Gambrell, H. (Birmingham, Ala.)	2019

Goldman, A. (Miami Beach, Fla.)	2063
Golla, R. (Chicago, Ill.)	2037
Grande, R. (Washington, D.C.)	2078
Gross, H. (S. Francisco)	2059
Hallman, D. (Chicago, Ill.)	2025
Hamburger, D. (Upper Darby, Pa.)	2168
Hanken, J. (Cincinnati, O.)	2056
Hardy, J. (Kirkwood, Mo.)	2040
Harrell, R. (Washington, D.C.)	2004
Hartleb, G. (Tampa, Fla.)	2132
Hatch, D. (Altoona, Pa.)	2034
Hayes, R. (Cincinnati, O.)	2051
Heinemann, S. (Doran, N.J.)	2005
Heising, C. (Hamilton, O.)	2034
Herbst, H. (New York, N.Y.)	2086
Hestenes, D. (Los Angeles)	2163
Hickman, H. (E. Orange, N.J.)	2169
Himber, A. (Gainesville, Fla.)	2025
Hunnex, G. (Fullerton, Calif.)	2022
Hurt, J., Jr. (Pittsburgh, Pa.)	2001
Hurtlen, N. (Union, N.J.)	2137
Johnson, L. (Los Angeles, Calif.)	2025
Johnson, R. (Mercer, Pa.)	2002
Jones, H. (Alexandria, Va.)	2041
Jones, S. (Austin, Tex.)	2162
Jones, W. (Jersey City, N.J.)	2022
Kaiser, W. (St. Paul, Minn.)	2041
Kalenian, C. (Philadelphia, Pa.)	2017
Kalins, H. (Kalamazoo, Mich.)	2065
Kampars, N. (Milwaukee, Wisc.)	2086
Kempner, A. (S. Monica, Calif.)	2047
Kerman, D. (Detroit, Mich.)	2150
Kerr, D. (Cranford, N.J.)	2105
Kramer, M. (N. Plainfield, N.J.)	2010
Krause, D. (Palo Alto, Calif.)	2075
Kuioth, R. (Milwaukee, Wisc.)	2134
Kulyk, J. (E. Orange, N.J.)	2037
Lapiken, P. (Missoula, Mont.)	2160
Leiber, F. (S. Monica, Calif.)	2084
Litwinczuk, W. (Calgary, Alberta, Canada)	2070
Lux, T. (San Diego, Calif.)	2012
McCready, R. (Cincinnati, O.)	2090
McLellan, R. (Omaha, Nebr.)	2153
Matheson, J. (Arlington, Va.)	2072
Mayer, J. (Arlington, Va.)	2150
Meifert, H. (Milwaukee, Wisc.)	2101
Milburn, J. (Lubbock, Tex.)	2010
Montague, R. (Ft. Lauderdale, Fla.)	2021
Moran, R. (A.P.O. N.Y.)	2106
Naylor, R. (Washington, D.C.)	2050
Nedved, K. (Racine, Wis.)	2073
Nekvasil, M. (Washington, D.C.)	2001
Noel, R., Jr. (Chagrin Falls, O.)	2007
Ohman, H. (Omaha, Nebr.)	2017
O'Keefe, J. (Ann Arbor, Mich.)	2137
Orzano, J. (New York)	2033
Oshun, E. (Santa Rosa, Calif.)	2093
Palciauskas, V. (Cicero, Ill.)	2091
Palmer, G. (Santa Monica, Calif.)	2002
Pamiliens, J. (Brooklyn, N.Y.)	2095
Pardo, E. (Miami, Fla.)	2056
Parmelee, C. (Newark, N.J.)	2143
Patrick, M. (Bedford, O.)	2104
Payne, J. (San Antonio, Tex.)	2095
Peckar, M. (Brooklyn, N.Y.)	2032
Pence, M. (Adrian, Mich.)	2000
Pennette, J. (Ann Arbor, Mich.)	2070
Rabell, N. (Santurce, P.R.)	2077
Racan, J. (E. St. Louis, Ill.)	2076
Raskalnikov, R. (St. Petersburg)	2195
Robinson, M. (Ft. Gordon, Ga.)	2081
Rogan, M. (Chicago, Ill.)	2138
Rohland, M. (Milwaukee, Wis.)	2050
Rohlf, J. (Miami, Fla.)	2009
Rousseau, H. (Washington, D.C.)	2041
Rumiancev, A. (Newark, N.J.)	2029
Sandrin, Angelo (Chicago)	2113
Satterlee, D. (Elmhurst, Ill.)	2020
Schara, S. (Rockville, Md.)	2001
Schmidt, B. (Homer, N.Y.)	2138
Schoene, A. (Pittsburgh, Pa.)	2058
Schwartz, I. (Rockford, Ill.)	2000
Selvaggi, P. (N.J.)	2026
Sharpell, F. (Pequanno, N.J.)	2020
Shaw, J. (Albuquerque, N.M.)	2090
Sigmond, I. (Arlington, Va.)	2112
Sills, M. (Miami, Fla.)	2128
Skema, K. (Detroit, Mich.)	2093
Skoff, F. (Chicago, Ill.)	2054
Smith, P. (Fresno, Calif.)	2016
Smook, R. (San Bernardino, Calif.)	2074
Snyder, L. (Philadelphia, Pa.)	2018
Soules, G. (New Haven, Conn.)	2024
Spiller, A. (Cookstown, N.J.)	2100
Sprague, R. (Lakewood, O.)	2136
Stanbridge, III. (Chicago, Ill.)	2070
Stevens, B. (San Antonio, Tex.)	2138
Stevenson, Sonja Graf (L.A., Cal.)	2061
Stolzenberg, L. (Detroit, Mich.)	2180
Sullivan, J. (Knoxville, Tenn.)	2109
Suraci, A. (New Haven, Conn.)	2075
Svrette, E. (London, Ont., Can.)	2065
Thomas, G. (Burtonsville, Md.)	2043
Trott, M. (Jersey City, N.J.)	2026
Vano, E. (New York, N.Y.)	2126
Wade, B. (Birmingham, Ala.)	2043
Walker, C. (Riverside, Calif.)	2000
Waltz, J. (Pittsburgh, Pa.)	2035
Wang, A. (Berkeley, Calif.)	2091
Warner, E. (Playa del Rey, Cal.)	2060
Warren, J. (Chicago, Ill.)	2116
Wasserman, J. (Grand Rapids, Mich.)	2084
Weinbaum, S. (Los Angeles, Cal.)	2074
Weldon, C. (Milwaukee, Wisc.)	2107
Werthammer, S. (Huntington, W. Va.)	2001
Westbrock, J. (Brooklyn, N.Y.)	2187
Winkler, L. (S. Plainfield, N.J.)	2051
Wren, M. (Charleston, W. Va.)	2009
Zujus, A. (Chicago, Ill.)	2017

### CLASSES A, B and C

Classifications as follows:

- CLASS A: 1800 to 1999 points
- CLASS B: 1600 to 1799 points
- CLASS C: Below 1600 points

### A

Abarno, F. P. (Hoboken, N.J.)	1776
Ach, J. (Cincinnati, O.)	1569
Adams, C. P. (Chicago, Ill.)	1813
Ahrens, F. (Chicago, Ill.)	1657

Aldy, R. E. (Texas)	1409
Alexander, J. (San Diego, Calif.)	1573
Alexander, P. (China Lake, Calif.)	1786
Alibritton, O. (Pinebluff, Ark.)	1778
Allen, D. (Sturgeon Bay, Wisc.)	1824
Anderson, Allen (Chicago, Ill.)	1843
Anderson, A. C. (Tulsa, Okla.)	1980
Anderson, Eliz. (Dallas, Tex.)	1557
Anderson, G. F. (Wash., D.C.)	1970
Anderson, P. C. (Pittsburgh, Pa.)	1609
Anderson, R. (Jackson, Mich.)	1878
Armstrong, J. E. (Pittsburgh, Pa.)	1843
Armstrong, T. (Memphis, Tenn.)	1759
Aronson, N. (Chicago, Ill.)	1979
Atquette, L. (Ann Arbor, Mich.)	1722
Atkins, L. (Gadsden, Ala.)	1786
Ault, L. F. (Cranford, N.J.)	1932
Austin, G. (Grandview, Mo.)	1400

### B

Bagley, R. (Fullerton, Conn.)	1809
Bahr, F. (Cincinnati, O.)	1820
Bailey, R. (Gainesville, Fla.)	1928
Baine, R. (Montevallo, Ala.)	1972
Baker, E. (Upper Monclair, N.J.)	1887
Baker, R. A. (Murray Hill, N.J.)	1880
Baker, T. (Cambridge, Mass.)	1748
Bakst, I. (Miami, Fla.)	1988
Banker, G. M. (Kansas City, Mo.)	1958
Baptist, A. S. (Ypsilanti, Mich.)	1687
Barrett, G. (Los Angeles, Calif.)	1976
Barron, L. (Crystal Springs, Miss.)	1761
Barry, J. E. (Northridge, Calif.)	1961
Barry, L. (Briscoe, Tex.)	1400
Barfels, W. (Oshkosh, Wisc.)	1796
Bass, R. R. (Harrison, N.J.)	1890
Bates, G. C. (Birmingham, Ala.)	1851
Baumanis, G. (Cleveland, O.)	1905
Beale, J. J. (Raleigh, N.C.)	1687
Beasley, W. (Elizabeth, N.J.)	1717
Beitling, J. R. (Kansas City, Mo.)	1942
Bender, G. (Altoona, Pa.)	1861
Benham, T. W. (Trenton, N.J.)	1948
Bennett, J. R. (Ft. Worth, Texas)	1860
Bennett, W. (Hot Springs, Ark.)	1400
Berg, R. A. (Chicago, Ill.)	1931
Berquist, T. O. (Huntington, W. Va.)	1794
Berry, G. (N. Little Rock, Ark.)	1500
Berry, G. (Dayton, O.)	1604
Bersbach, E. (Los Angeles, Cal.)	1946
Berzarinis, V. (Cleveland, O.)	1962
Bickham, W. (State College, Pa.)	1835
Bingham, T. (St. Davids, Pa.)	1948
Bingham, R. (Williams Bay, Wisc.)	1400
Bishop, C. L. (Wheeling, W. Va.)	1784
Bitzer, C. (China Lake, Calif.)	1900
Blackshear, P. (Millersburg, Ky.)	1725
Blackstone, J. (Saratoga, Calif.)	1905
Blanchard, C. (Port Arthur, Tex.)	1761
Blanchard, E. (Raleigh, N.C.)	1772
Bledsoe, J. M. (Dallas, Tex.)	1561
Bliss, W. B. (Hickman, Hills, Mo.)	1497
Bohley, D. (Grand Rapids, Mich.)	1890
Bond, J. (Shamrock, Tex.)	1589
Bond, B. (Meridian, Miss.)	1905
Bone, E. (Baytown, Tex.)	1936
Bonnell, B. (Hayes, Okla.)	1646
Book, E. (Los Angeles, Calif.)	1913
Booth, H. (Villas, N.J.)	1708
Borges, F. (Coral Gables, Fla.)	1938
Borrero, G. (Baltimore, Md.)	1787
Boschan, E. (Wash., D.C.)	1794
Brady, L. (Flint, Mich.)	1819
Branch, W. G. (Kosciusko, Miss.)	1477
Brannies, D. (Huntington Park, Cal.)	1666
Brauer, A. (Midland, Mich.)	1803
Brauer, F. (Philadelphia, Pa.)	1821
Brazeal, J. (Amarillo, Tex.)	1643
Brickey, V. (Redlands, Calif.)	1627
Brickner, S. (Detroit, Mich.)	1908
Brodbeck, E. (Chicago, Ill.)	1681
Broderson, B. F. (Minneapolis, Minn.)	1777
Brooks, W. (Moorestown, N.J.)	1500
Brown, A. (E. Orange, N.J.)	1728
Brown, H. E. (Tulsa, Okla.)	1696
Buchanan, O. R. (Arlington, Va.)	1742
Brame, M. K. (San Antonio, Tex.)	1797
Buck, W. S. (Altoona, Pa.)	1764
Burkner, J. E. (Kansas City, Mo.)	1844
Bullockus, T. (Pacific Palisades, Cal.)	1883
Burchett, W. (Dayton, O.)	1686
Burgess, E. (N. Kans. City, Mo.)	1682
Burkett, M. (Memphis, Tenn.)	1911
Burlingame, E. (Phoenix, Ariz.)	1664
Burlingame, M. (Phoenix, Ariz.)	1774
Burroughs, W. (Southampton, Ct.)	1754
Burry, R. E. (Ft. Lauderdale, Fla.)	1759

### C

Cabe, J. L. (Atlanta, Ga.)	1860
Cafarelli, N. (Westfield, N.J.)	1903
Callaway, J. E. (Springfield, Va.)	1971
Campbell, D. (Detroit, Mich.)	1822
Campbell, J. (Hot Springs, Ark.)	1791
Campbell, J. (Arlington, Va.)	1981
Caplan, S. (Margate, N.J.)	1910
Carlin, W. (Tyrone, Pa.)	1691
Carmoday, L. (Ladue, Mo.)	1350
Carpenter, K. (San Antonio, Tex.)	1665
Carroll, M. (Milwaukee, Wisc.)	1540
Cartier, R. (Elsinore, Calif.)	1916
Celani, D. (San Antonio, Tex.)	1676
Celmins, L. (Grand Rapids, Mich.)	1841
Chavez, F. (New Orleans, La.)	1931
Cheek, F. (Milwaukee, Wisc.)	1801
Cherestes, A. (Santa Monica, Cal.)	1690
Chertkof, A. (Philadelphia, Pa.)	1974
Chinn, A. (Miami, Fla.)	1735
Christoforo, A. (Milwaukee, Wisc.)	1567
Christofferson, S. (Norfolk, Neb.)	1492
Chu, A. (Texas)	1472
Clary, E. (Pittsburgh, Pa.)	1729
Clay, M. T. (Texas)	1633
Cleveland, C. (Birmingham, Ala.)	181



Published twice a month on the 5th and 20th by THE UNITED STATES CHESS FEDERATION. Entered as second class matter September 5, 1946, at the post office at Dubuque, Iowa, under the act of March 9, 1879.

Editor: FRED M. WREN

POSTMASTER: Please return undeliverable copies with Form 3579 to Frank Brady, USCF Business Manager, 80 East 11th Street, New York 3, N. Y.



## COLUMNISTS AND CONTRIBUTORS



Samuel Reshevsky	Lowell Tullis	David Spiro	Robert Eastwood
Erich Marchand	Paul Leith	Guthrie McClain	Edward Nash
Claude Bloodgood III	William Lombardy	Robert Karch	Frank Brady
Fred Cramer	Walter Korn	Rea Hayes	Irwin Sigmund
George Koltanowski	Ernest Olfe	Larry Evans	Kester Svendsen
Harry Borocho	Nicholas Gabor	John Collins	Anthony Santasiere

Coady, G. F. (Toledo, O.)	1771
Cohen, J. (Ann Arbor, Mich.)	1701
Cohen, M. G. (Miami, Fla.)	1938
Cole, L. R. (Valparaiso, Ind.)	1692
Coleman, J. (Buckeye, Ariz.)	1699
Collins, F. (Dallas, Tex.)	1742
Colvin, W. (Chicago, Ill.)	1524
Condon, F. E. (Bogota, N.J.)	1960
Connelly, M. (Jersey City, N.J.)	1805
Cook, J. R. (Loves Park, Ill.)	1560*
Cooper, R. (Elsinore, Calif.)	1704
Corda, R. E. (Schofield, Wisc.)	1637
Cotter, R. P. (San Antonio, Texas)	1854
Cramer, F. (Milwaukee, Wisc.)	1900
Creighton, J. A. (Corpus Christi, Tex.)	1700
Creps, J. H. (Indiana, Pa.)	1542
Crew, W. (Shreveport, La.)	1882
Cronk, W. (Sterling, Ill.)	1682
Cross, J. (San Antonio, Tex.)	1694*
Cunningham, T. (Pt. Arthur, Tex.)	1690
Cunningham, W. (Arcadia, Calif.)	1902
Curtis, T. (Mt. Vernon, O.)	1711
Custer, P. (Independence, Mo.)	1615

### D

Daigle, E. (Ventnor, N.J.)	1636
Darbes, A. (Huntington, W.Va.)	1812
Davidson, S. (Tulsa, Okla.)	1772
Davis, H. (San Antonio, Tex.)	1997
Davis, J. (Midwest City, Okla.)	1584
Dawson, R. (Wheaton, Md.)	1965
Decker, W. (Ft. Lauderdale, Fla.)	1730
Deitrich, C. H. (Bellefonte, Pa.)	1766
DeLaTorre, J. (Wash., D.C.)	1648
Denny, D. W. (Irving, Tex.)	1639
Denoel, P. (Huron, O.)	1864
DiLillo, M. (Cleveland, O.)	1947
Dimac, V. (Shreveport, La.)	1844
Ditriche, R. (Iowa City, Iowa)	1939
Djordjovich, S. (Chicago, Ill.)	1828*
Dobies, P. (Riverside, Calif.)	1750
Donnelly, W. H. (Valparaiso, Ind.)	1927
Doray, R. L. (Philadelphia, Pa.)	1737*
Dornier, R. (Baton Rouge, La.)	1786
Douglas, B. G. (Dallas, Tex.)	1780
Downey, A. F. (Arlington, Va.)	1721
Doyle, D. (Barstow, Calif.)	1502
Drago, A. (Audobon, N.J.)	1861
Dreher, L. C. (Sand Springs, Okla.)	1553
Dreyfus, S. E. (Cambridge, Mass.)	1849
Duhaime, E. (Bristol, Conn.)	1910
Duke, P. W. (Harrison, Ark.)	1676
Duming, E. A. (Jackson, Miss.)	1730
Dupuis, P. (Detroit, Mich.)	1830*
Durio, F. M. (San Antonio, Texas)	1786
Durrett, R. (Gainesville, Fla.)	1747

### E

Eastwood, R. C. (Homestead, Fla.)	1964
Eckenrode, T. B. (Lancaster, Pa.)	1885
Eckhardt, R. F. (Ft. Lauderdale, Fla.)	1953
Eckman, J. (Millersville, Pa.)	1762
Edmondson, E. B. (Randolph AFB, Tex.)	1892
Edwards, R. (Raleigh, N.C.)	1720
Efrid, J. (Arlington, Va.)	1739
Elkins, F. D. (Amarillo, Tex.)	1555
Elmqvist, R. (St. Paul, Minn.)	1581
Evans, B. (Toronto, Canada)	1787
Evans, L. (Phoenix, Ariz.)	1751

### F

Fafoutakis, P. (Houston, Tex.)	1502*
Falato, J. (Paterson, N.J.)	1984
Falbo, C. (San Antonio, Tex.)	1676*
Farkas, K. (Milwaukee, Wisc.)	1810
Farrell, W. (Ashtabula, O.)	1649
Fasano, R. (Red Bank, N.J.)	1827
Faust, E. (Plainfield, N.J.)	1943
Fee, E. (King of Prussia, Pa.)	1638
Feld, J. (Indianapolis, Ind.)	1611
Felts, E. (Jackson, Miss.)	1840
Fennell, J. (San Antonio, Tex.)	1693
Feuchter, K. (Columbus, O.)	1905
Fitzgerald, R. (APO, N.Y.)	1802
Fitzgerald, R. V. (Milwaukee, Wisc.)	1657
Floreen, D. C. (La Porte, Texas)	1519*
Floyd, M. (Baytown, Texas)	1644

Foreman, F. (Pittsburgh, Pa.)	1913
Foreman, J. (Norman, Okla.)	1711*
Forester, F. (San Antonio, Tex.)	1560*
Formanek, E. (Cicero, Ill.)	1781
Forrest, K. (Manhattan B'ch, Cal.)	1766
Forsberg, K. (Altoona, Pa.)	1670
Foster, L. L. (Columbia, S.C.)	1847
Fowler, H. H. (Shreveport, La.)	1629
Fowler, W. L. (Shreveport, La.)	1847
Foy, E. M. (Charleston, W.Va.)	1838
Freed, J. (Los Angeles, Calif.)	1916
Freed, Mrs. H. (Los Angeles)	1596
Freeman, R. (Santa Monica, Cal.)	1825*
Frewert, K. (Chicago, Ill.)	1636*
Frink, O. (State College, Pa.)	1919
Frost, A. (Columbus, O.)	1630
Funston, G. (Pleasantville, N.J.)	1913

### G

Gaba, H. B. (Detroit, Mich.)	1840
Gaigals, L. (Milwaukee, Wisc.)	1978
Gallo, P. A. (Morgantown, W.Va.)	1738*
Galvin, H. E. (Terra Ceia, Fla.)	1883*
Gamm, P. (Charlotte, N.C.)	1820*
Garber, D. (Phila., Pa.)	1718
Garfield, H. (Atlantic City, N.J.)	1525
Garner, M. (Merion, Pa.)	1748
Geller, S. (Philadelphia, Pa.)	1990
Gibson, J. L. (McAlester, Okla.)	1927
Gillies, R. E. (Burlington, Md.)	1659*
Gilmore, I. A. (Cord, Ark.)	1584*
Gilvydis, A. (Detroit, Mich.)	1742
Giron, L. (San Antonio, Texas)	1787*
Godbold, E. (Chicago, Ill.)	1950
Goddard, Mrs. M. (Miami, Fla.)	1602
Goldsberry, C. E. (Springfield, O.)	1713
Gollub, Dan (Phoenix, Ariz.)	1752
Gollub, Dav. (Phoenix, Ariz.)	1735
Gould, H. W. (DeKalb, Ill.)	1586
Gray, J. A. (Columbus, O.)	1613*
Gray, R. T. (Houston, Texas)	1563*
Green, G. D. (Mobile, Ala.)	1675
Green, L. (Dallas, Texas)	1670
Green, L. Jr. (Kalamazoo, Mich.)	1738
Gregg, C. E. (Okla. City, Okla.)	1630
Gregg, H. (Newark, Ohio)	1400*
Gregg, L. (Oklahoma City, Okla.)	1592*
Grinnell, W. C. (Dallas, Tex.)	1722
Grombacher, W. (Chicago, Ill.)	1950
Gross, G. (Milton, Fla.)	1957
Gruber, J. (Milwaukee, Wisc.)	1760*
Grumer, E. (State College, Pa.)	1635

### H

Haban, S. (Columbus, O.)	1642
Hafer, R. (Lancaster, Pa.)	1464
Haight, F. A. (Santa Monica, Cal.)	1956
Hallett, F. (Ft. Lauderdale, Fla.)	1658
Hammitt, F. (San Antonio, Tex.)	1670
Hand, E. (West Haven, Conn.)	1956
Hardman, G. W. (Baltimore, Md.)	1918
Hardy, H. A. (Kansas City, Kan.)	1780
Hardy, N. (Bradenton, Fla.)	1854
Harkins, J. (Shaker, Hgts., O.)	1996
Harle, A. L. (Boise, Idaho)	1700
Harmon, C. (Portland, Ore.)	1963
Harris, C. G. (Arlington, Va.)	1745
Harris, J. (Phila., Pa.)	1739
Harris, R. B. (San Antonio, Tex.)	1618
Harrison, W. R. (Tuscaloosa, Ala.)	1744
Harshbarger, R. (Ocean Park, Cal.)	1959
Hart, R. (Wichita, Kan.)	1852
Hartigan, J. B. (Elkhart, Ind.)	1877
Harvey, J. W. (Anastasia, Mich.)	1867
Harvey, T. (Baytown, Tex.)	1669
Harwell, G. (Durham, N.C.)	1849
Harwell, Mrs. K. (Durham, N.C.)	1425
Haskell, H. C. (Camden, N.J.)	1596
Hasken, W. (Louisville, Ky.)	1802
Haug, E. A. (Westfield, N.J.)	1828
Haymaker, J. (Converse, Tex.)	1468*
Haymaker, T. (Converse, Tex.)	1598
Hayward, N. C. (Alexandria, Va.)	1819
Heckman, R. (Norfolk, Neb.)	1581
Heintschel, T. (Baytown, Tex.)	1786*
Helbig, P. (North Bergen, N.J.)	1723
Helm, F. (Dayton, O.)	1695*
Henderson, C. E. (Los Angeles)	1952
Henderson, L. (Phoenix, Ariz.)	1423
Hendricks, G. (Charleston, W.Va.)	1762
Hendy, A. E. (San Bernardino, Cal.)	1668

Henry, L. (Pittsburgh, Pa.)	1893
Henry, W. P. (Ft. Wayne, Ind.)	1900
Heras, E. (Havana, Cuba)	1867*
Hewitt, B. R. (Arlington, Va.)	1610*
Hickman, M. (Raleigh, N.C.)	1483
Higginbotham, D. K. (Tulsa, Okla.)	1931*
Higler, W. (Fort Bliss, Tex.)	1844
Hilding, D. W. (Toledo, O.)	1816
Hill, Dr. (Plymouth, Mich.)	1672*
Hobday, G. (Charleston, W.Va.)	1589*
Hochhalter, R. (St. Chas., Minn.)	1722
Hoffman, G. C. (Mobile, Ala.)	1769
Holbrook, S. (Santa Monica, Cal.)	1680
Hollenbaugh, R. (Meadeville, Pa.)	1656
Hooley, F. L. (Pleasantville, N.J.)	1584
Hornor, R. H. (Margate, N.J.)	1776
Hornstein, Mrs. G. (Knightdale, N.C.)	1677
Hornstein, N. (Knightdale, N.C.)	1903
Houdek, C. F. (Muscatine, Ia.)	1652
Houghton, R. (Newark, N.J.)	1556
Housewirth, G. H. (Detroit, Mich.)	1843
Howard, A. G. (Dundalk, Md.)	1671
Huch, D. (Columbia, Ill.)	1556*
Huckin, W. (Tulsa, Okla.)	1659
Huffman, H. R. (Lancaster, Pa.)	1700*
Hulmes, A. (Denver, Colo.)	1794
Humphrey, G. E. (Orange, N.J.)	1673
Hulburt, L. (Springfield, Mo.)	1789
Hutaff, O. C. (Wilmington, N.C.)	1969
Hutchins, F. K. (Akron, Ohio)	1725
Huth, J. (Fenwood, N.J.)	1634*
Hyde, H. (San Antonio, Tex.)	1682

### J

Jacobs, Mrs. J. (Gainesville, Fla.)	1400*
Jacobs, J. (Gainesville, Fla.)	1819
Jacobs, R. L. (Louisville, Ky.)	1914
Jaffray, J. W. (Los Angeles, Cal.)	1941
James, W. (Biloxi, Miss.)	1639
Jankowsky, J. (Pennsauken, N.J.)	1617
Jeffers, E. (Los Angeles, Cal.)	1808
Jeffress, J. (Amarillo, Tex.)	1400*
Jenkins, A. M. (Raleigh, N.C.)	1895
Jenkins, T. A. (Huntington Woods, Mich.)	1917
Jewell, C. (San Antonio, Tex.)	1922
Johnson, C. H. (Fairview Park, O.)	1880
Johnson, G. D. (Chicago, Ill.)	1961
Jones, B. (Ft. Smith, Ark.)	1800
Jones, D. (Clarksdale, Miss.)	1890
Jones, D. C. (Ft. Wayne, Ind.)	1936
Jones, Hall (San Antonio, Tex.)	1813
Jones, H. (Charlotte, N.C.)	1896
Jones, R. B. (W. Los Angeles, Cal.)	1606
Jones, T. (Lancaster, Calif.)	1632
Jordan, D. (Ft. Collins, Colo.)	1603
Jorgensen, T. (Wildwood Crest, N.J.)	1859
Jourdan, R. A. (Ann Arbor, Mich.)	1827

### K

Karpuska, W. (Chicago, Ill.)	1857
Kasenga, A. G. (Sheboygan, Wisc.)	1842
Kellner, L. (Detroit, Mich.)	1809
Kelly, F. (Baltimore, Md.)	1829
Kelly, J. (Lansing, Mich.)	1904
Kelly, R. K. (Silver Spring, Md.)	1777
Kemp, F. W. (Palmerdale, Ala.)	1880
Kerllenevich, M. (L. Angeles, Cal.)	1985
Keyser, C. A. (Bloomfield, N.J.)	1848
Killough, H. P. (Russell, Kans.)	1641
Kimm, V. M. (Terryville, Conn.)	1965
King, C. (Fremont, O.)	1512*
King, F. (Nederland, Texas)	1800
Kirwan, J. D. (Newark, N.J.)	1835
Kiss, M. (Garwood, N.J.)	1769
Knapp, E. M. (Arlington, Va.)	1984
Kneip, P. (Chicago, Ill.)	1795
Kocjan, W. (Chicago, Ill.)	1817
Koenig, M. (Chicago, Ill.)	1966
Koenig, W. C. (Baltimore, Md.)	1643
Kolody, P. (Detroit, Mich.)	1912
Koss, E. (Belleville, N.J.)	1968
Kramer, D. (Teaneck, N.J.)	1755
Kreneck, L. (San Antonio, Tex.)	1792*
Kronstedt, B. (Arlington, Va.)	1962
Kumro, D. C. (Chicago, Ill.)	1638
Kurtz, J. (Waukesha, Wis.)	1648
Kuttler, J. (San Antonio, Tex.)	1760

### L

Labowitz, G. (Kansas City, Kan.)	1630
LaCount, N. (Ft. Lauderdale, Fla.)	1662
LaCroix, E. (Waltham, Mass.)	1989
Laemers, J. (Warren, Mich.)	1756
Lahde, P. P. (Nashville, Tenn.)	1704
Lajcik, T. (Cincinnati, O.)	1895
Lambert, R. (Arlington, Va.)	1783
Lane, T. (Hanover, N.H.)	1654
Lanni, N. (Gainesville, Fla.)	1689
Latta, B. (Oklahoma City, Okla.)	1800
Laucks, E. F. (W. Orange, N.J.)	1704
Lawrence, R. E. (Malvern, Ark.)	1601
Leaffer, M. (Ft. Worth, Texas)	1762
LeBlanc, C. J. (N. Little Rock, Ark.)	1667
LeBlanc, R. J. (Dearborn, Mich.)	1792
Leder, G. (Cincinnati, Ohio)	1805
Lee, R. (Ft. Collins, Colo.)	1789
Leewright, R. (Wichita, Kans.)	1856
Leister, A. K. (Tulsa, Okla.)	1606

Lewis, R. (Elizabeth, N.J.)	1741
Lichtman, K. (Raleigh, N.C.)	1669
Liepkaskals, V. (Milwaukee, Wisc.)	1924
Lightvoet, P. (Kalamazoo, Mich.)	1800
Lilly, S. (E. Orange, N.J.)	1881
Lincoln, R. A. (Gloucester, N.J.)	1938
Ling, R. (Dayton, O.)	1974
Lockett, A. (New Orleans, La.)	1900
Loening, K. L. (Columbus, O.)	1844
Loera, T. (Hawthorne, Cal.)	1924
Long, J. W. (Okla. City, Okla.)	1625
Long, R. (Dallas, Tex.)	1982
Lorenz, R. (Fondulac, Wisc.)	1803*
Lubell, M. S. (Pittsburgh, Pa.)	1994
Lucas, T. (Gainesville, Pa.)	1955
Lukowiak, W. (Belleville, N.J.)	1924
Lutes, W. (Indianapolis, Ind.)	1975
Luwish, E. (Hackensack, E.)	1753
Lynch, J. T. (Upland, Calif.)	1987

### M

McCarren, D. W., Sr. (Wenonah, N.J.)	1690
McCleary, S. H. (Houston, Tex.)	1792
McClellan, H. B. (Xenia, O.)	1642
McCloud, Irene (Glenview, Ill.)	1767
McCloud, T. (Glenview, Ill.)	1726
McCoy, W., Jr. (Birmingham, Ala.)	1570
McCracken, C., Jr. (Columbus, O.)	1765
McElroy, T. (Shreveport, La.)	1918
McGregor, Mrs. K. (Chicago, Ill.)	1646
McGuire, J. (Gadsden, Ala.)	1783
McIsaac, A. (Wilton Manors, Fla.)	1692
McKenna, Mrs. M. (Phoenix, Ariz.)	1548
McKenna, P. (Phoenix, Ariz.)	1747
McKinney, H. (S. Charleston, W.Va.)	1789
McMahon, G. (Little Rock, Calif.)	1808
McMillin, C. (Arlington, Va.)	1797
MacDonald, J. (Union, N.J.)	1937
Mack, A., Jr. (Detroit, Mich.)	1826
MacNamara, C. (Lansdowne, Pa.)	1790
Mallory, J. (University, Ala.)	1841
Mangus, C. (San Antonio, Tex.)	1706
Markowski, Alina (Toledo, O.)	1665
Markowski, S. (Toledo, O.)	1569
Marshall, S. (California, Pa.)	1937
Martin, G. (Baltimore, Md.)	1579
Martin, J. (Dayton, O.)	1744
Martin, L. (Atlanta, Ga.)	1817
Martin, W. (Laurel, Md.)	1982
Martinson, J. (Omaha, Neb.)	1966
Mason, L. (Rockford, Ill.)	1980
Mathews, J. (Baltimore, Md.)	1527
Mattes, R. (Chicago, Ill.)	1756
Mathews, C. (Birmingham, Ala.)	1815
Mayer, H. (Chicago, Ill.)	1811
Mayfield, A. (Springfield, Mo.)	1490
Mayfield, W. (Hughes Springs, Tex.)	1700
Mayo, J. (Highland, Calif.)	1879
Meacham, C. (Monroe, Ark.)	1701
Medendorp, A. (Grand Rapids, Mich.)	1771
Mekus, R. (Dearborn, Mich.)	1933
Mena, H. (Lubbock, Tex.)	1650
Metz, F., Jr. (Riverside, Calif.)	1847
Meyer, S. (Woodbury, N.J.)	1715
Michaelson, A. (Los Angeles, Cal.)	1797
Miles, D. (Columbus, O.)	1879
Miller, C. (W. Collingswood, N.J.)	1775
Miller, D. (Los Angeles, Cal.)	1766
Miller, R. (Milwaukee, Wis.)	1676
Miller, W. (Albuquerque, N.M.)	1942
Miller, W. T. (Natchez, Miss.)	1923
Minter, W. (Lake Worth, Fla.)	1960
Mintz, Berle (Los Angeles, Cal.)	1836
Miscevic, D. (McKeesport, Pa.)	1837
Miskin, A. (Milwaukee, Wis.)	1865
Mitchell, B. (Laurel, Md.)	1954
Molnar, E. (Detroit, Mich.)	1673
Moore, R. (Red Bluff, Calif.)	1750
Moreau, J. (Houston, Tex.)	1474
Morgan, C. (Phillippi, W.Va.)	1975
Morgan, W. (Phillips, Tex.)	1684
Morningstar, F. (Drayton Plains, Mich.)	1743
Morrell, Mrs. M. (Gary, Ind.)	1754
Morrell, P. (Gary, Ind.)	1974
Morrison, J. (Raleigh, N.C.)	1774
Morrow, B. (Dearborn, Mich.)	1442
Mortz, J. (South Gate, Cal.)	1780
Mowery, E. (Toledo, O.)	1671
Mueller, T. (Westwood, N.J.)	1709
Muir, R. (Phoenix, Ariz.)	1626
Munana, R. (San Bernardino, Cal.)	1705
Mungle, W. (Plainfield, N.J.)	1754
Murphy, A. (Topeka, Kans.)	1972
Murphy, B. (San Diego, Calif.)	1897
Murray, J., Jr. (Alexandria, Va.)	1828
Murtha, R. (S. Charleston, W.Va.)	1694



— O —

O'Brien, J. (Ann Arbor, Mich.).....	1918
O'Connor, E., Jr. (Los Angeles, Cal.).....	1650
O'Donnell, J. (Fullerton, Pa.).....	1550
O'Donnell, P. (Arlington, Va.).....	1675
O'Donnell, W., Jr. (Camden, N.J.).....	1822
Oganesov, Y. (Monterey Park, Cal.).....	1913
Olin, R. (Tulsa, Okla.).....	1817
Olson, R. (Traverse City, Mich.).....	1613
O'Neal, N. (Louisville, Ky.).....	1818
Opalek, J. (Cleveland, O.).....	1805
O'Quinn, J. (Houston, Tex.).....	1418
O'Rourke, G., Sr. (D.C.).....	1671
Ostfeld, D. (Chicago, Ill.).....	1608
Otteson, W. (Milwaukee, Wis.).....	1582
Ouchi, F. (Bogota, N.J.).....	1735
Overeem, H. (Clifton, N.J.).....	1907
Owens, Mrs. W. (Avon Lake, O.).....	1814
Oxford, C. (Decatur, Ga.).....	1839

— P —

Page, C. (Ann Arbor, Mich.).....	1778
Pajor, J. (Detroit, Mich.).....	1825
Palcich, A. (Bristol, Conn.).....	1734
Palmer, P. (N.J.).....	1634
Palmi, A. (Springport, Mich.).....	1912
Palucius, B. (Waukegan, Ill.).....	1850
Papadeas, N. (Merchantville, N.J.).....	1794
Parker, D. (Kansas City, Mo.).....	1584
Parnell, R. (Kansas City, Mo.).....	1749
Patteson, B. (Houston, Tex.).....	1806
Patton, E. (Camden, N.J.).....	1800
Pearson, A. (Charlotte, N.C.).....	1686
Pedrick, E. (Philadelphia, Pa.).....	1815
Pennington, C. (Madison, Conn.).....	1893
Perez, O. (Havana, Cuba).....	1709
Perry, A. (N. Miami, Fla.).....	1890
Pfister, F. (Milwaukee, Wisc.).....	1829
Phillips, E. (Tucson, Ariz.).....	1612
Phythyon, J. (Dayton, O.).....	1500
Pietrzak, R. (Newburgh Hts. O.).....	1821
Pipiringos, G. (Denver, Colo.).....	1794
Pitcher, W. (Portsmouth, O.).....	1534
Plampin, W. (Alexandria, Va.).....	1732
Plank, C. (Woodbury, N. J.).....	1710
Poliakoff, L. (Dallas, Tex.).....	1991
Poole, J. (Jackson, Miss.).....	1931
Pranter, J. (Univ. City, Mo.).....	1889
Pratt, F. (Hot Springs, Ark.).....	1553
Presser, D. (Cleveland Hts., O.).....	1919
Price, C. (Pittsburgh, Pa.).....	1521
Price, D. (Hawthorne, Calif.).....	1900
Priebe, S. (Quana, Tex.).....	1966
Propp, G. (W. Palm Beach, Fla.).....	1861
Pullen, K. (Albuquerque, N.M.).....	1962
Purinton, M. (Keene, N.H.).....	1525

— Q —

Quinones, J. (San Antonio, Tex.).....	1726
Quindry, L. (Philadelphia, Pa.).....	1819

— R —

Rabar, J. (Altoona, Pa.).....	1785
Raich, G. (Philadelphia, Pa.).....	1876
Raimo, M. (Orange, N.J.).....	1735
Raven, R. (Catonsville, Md.).....	1909
Ravic, A. (Maple Shade, N.J.).....	1846
Ray, P. (New Haven, Conn.).....	1727
Raymond, A. (Lancaster, Calif.).....	1953
Reagor, T. (Dallas, Tex.).....	1766
Rebold, W. (Sacramento, Calif.).....	1899
Reibel, R. (Royal Oak, Mich.).....	1831
Reitze, G. (Jersey City, N.J.).....	1773
Remus, F., Jr. (Hammond, Ind.).....	1703
Rengo, J. (Manistee, Mich.).....	1574
Reynolds, D. (Ann Arbor, Mich.).....	1896
Richman, D. (Greensboro, N.C.).....	1736
Richter, E. (Pennsauken, N.J.).....	1715
Riddle, R., Jr. (Lubbock, Tex.).....	1795
Riesenbeck, J. (Cincinnati, O.).....	1916
Riley, H. (Pittsburgh, Pa.).....	1738
Ritter, C. (Wheeling, W.Va.).....	1805
Roa, F. (Paramus, N.J.).....	1837
Roberts, B. (Athens, Ala.).....	1760
Robinson, C. (Alexander City, Ala.).....	1758
Robinson, N. (Los Angeles).....	1856
Robinson, V. (Charlotte, N.C.).....	1794
Rock, Cecilia (Becket, Mass.).....	1405
Rock, H. (Becket, Mass.).....	1692
Rockwell, D. (Chicago, Ill.).....	1801
Rodin, L. (Chicago, Ill.).....	1841
Roger, N. (Ardley, Pa.).....	1729
Rose, F. (Ft. Lauderdale, Fla.).....	1990
Rosen, S. (Chicago, Ill.).....	1868
Rosenbaum, H. (Glendale, Ariz.).....	1460
Rosenberg, J. (Plymouth Meeting, Pa.).....	1612
Roth, J. (Bell Mawr, N.J.).....	1771
Rothenberg, J. (Atlanta, Ga.).....	1855
Rothman, P. (Columbus, O.).....	1771
Rozkals, E. (Waukesha, Wis.).....	1810
Rozsa, B. (Tulsa, Okla.).....	1952
Rudizis, E. (Lockport, Ill.).....	1744
Rumiancaw, B. (Orange, N.J.).....	1940
Runkel, K. (Wausau, Wisc.).....	1902
Rutledge, R. (Pampa, Tex.).....	1425

— S —

Salisbury, R. (Russellville, O.).....	1844
Salomon, F. (Rego Park, N.Y.).....	1500
Sandridge, P. (Dayton, O.).....	1748
Santa, M. (Philadelphia, Pa.).....	1917
Savery, C. (Memphis, Tenn.).....	1675
Sayre, C. (Dundalk, Md.).....	1610
Sayre, P. (Huntington, W.Va.).....	1810
Schlosser, M. (San Bernardino).....	1783
Schmelter, M. (Hoboken, N.J.).....	1815
Schneider, W. (Woodhaven, N.Y.).....	1737
Schneider, S. (Jersey City, N.J.).....	145
Schroeder, Lucy (Columbus, O.).....	1617
Schuller, B. (Temperance, Mich.).....	1668
Schulman, M. (Baltimore, Md.).....	1837
Schultz, C. (Kansas City, Mo.).....	1749
Schumann, W. (Sheboygan, Wisc.).....	1637
Schwartz, H. (Marietta, O.).....	1844
Schwartz, L. (W. Orange, N.J.).....	1791
Scott, J. (Little Rock, Ark.).....	1532

Scott, L. (Little Rock, Ark.).....	1784
Scott, W. (Atlanta, Ga.).....	1937
Scrivener, R. (Nesbit, Miss.).....	1917
Seifert, D. (Kansas City, Kans.).....	1743
Selensky, Mary (Philadelphia).....	1952
Self, A. (Newton, Kans.).....	1884
Serbinoff, G. (Rockville, Md.).....	1781
Serpico, T. (Mt. Ephraim, N.J.).....	1866
Shaffer, B. (S. Bernardino, Cal.).....	1960
Seeds, J. (Altoona, Pa.).....	1500
Semb, M. (Winona, Minn.).....	1821
Shaffer, F. (Somerset, Pa.).....	1770
Shaffer, J. (Lancaster, Pa.).....	1400
Shaw, C. (Miami, Fla.).....	1973
Shelton, G. (Hot Springs, Ark.).....	1450
Shindle, W. (Camden, N.J.).....	1832
Silverman, H. (Philadelphia).....	1924
Simpson, R. (Fayetteville, N.C.).....	1841
Sims, D. (N. Little Rock, Ark.).....	1707
Sinclair, C. (Plainview, Tex.).....	1700
Skinner, R. (S. Monica, Calif.).....	1824
Skrypzak, S. (Beaumont, Calif.).....	1766
Slater, Mrs. K. (New York, N.Y.).....	1900
Slater, W. (New York, N.Y.).....	1935
Sloan, S. (Lynchburg, Va.).....	1691
Sloan, T. (Greensboro, N.C.).....	1700
Smith, S. (Amarillo, Tex.).....	1755
Smith, G. (Houston, Tex.).....	1942
Smith, J. (Phoenix, Ariz.).....	1994
Smith, R. (Cincinnati, O.).....	1690
Smith, W. (Omaha, Nebr.).....	1729
Smoron, M. (Chicago, Ill.).....	1852
Snell, J. (Kansas City, Mo.).....	1730
Snyder, H. (Columbus, O.).....	1981
Sokoler, M. (Mamaroneck, N.Y.).....	1917
Somerville, R. (Alexandria, Va.).....	1897
Spann, Cathy (Norman, Okla.).....	1477
Spann, J., Jr. (Norman, Okla.).....	1510
Spann, Susan (Norman, Okla.).....	1400
Specht, J. (Garfield Hts., O.).....	1594
Spector, E. (Philadelphia, Pa.).....	1872
Speights, J. (Raleigh, N.C.).....	1693
Spiegel, J. (Memphis, Tenn.).....	1600
Spielman, A. (Ventnor, N.J.).....	1961
Spies, C. (Memphis, Tenn.).....	1920
Spitzer, A. (Pittsburgh, Pa.).....	1882
Springer, H. (Raleigh, N.C.).....	1646
Stallings, C. (Orlando, Fla.).....	1965
Stallings, J. (Dallas, Tex.).....	1825
Stearns, E. (Cleveland, O.).....	1942
Steele, D. (Raleigh, N.C.).....	1794
Steen, M. (San Antonio, Tex.).....	1724
Stevens, W. (Laramie, Wyo.).....	1811
Stewart, C. (Tulsa, Okla.).....	1740

Stowe, J. (Arlington, Va.).....	1900
Streiffeld, L. (Hammonont, N.J.).....	1931
Sturges, G. (Los Angeles, Cal.).....	1677
Sturges, Mrs. S. (Los Angeles).....	1670
Suarez, L. (Santurce, P.R.).....	1981
Surgies, A. (Baltimore, Md.).....	1930
Szeremi, R. (Garnesville, Fla.).....	1858

— T —

Tanner, P. (Haddonfield, N.J.).....	1737
Tarravechia, R. (Arlington, Va.).....	1897
Taylor, David (Decatur, Ill.).....	1923
Taylor, Don (Cincinnati, O.).....	1430
Taylor, E. (Minneapolis, Minn.).....	1765
Taylor, J. (Birmingham, Ala.).....	1670
Taylor, M. (South Bend, Ind.).....	1714
Taylor, P. (Kansas City, Mo.).....	1649
Taylor, R. (E. Lansing, Mich.).....	1767
Taylor, R. L. (Jackson, Mich.).....	1785
Taylor, Ron (Ft. Smith, Ark.).....	1836
Terrell, D. (Minneapolis, Minn.).....	1891
Tessler, B. (Maplewood, N.J.).....	1578
Thompson, A. (Grant City, Mo.).....	1733
Thompson, P. (Columbus, O.).....	1732
Thompson, D. (Dayton, O.).....	1694
Tigart, T. (Masterson, Tex.).....	1525
Tilden, D. (Tulsa, Okla.).....	1804
Tirman, V. (Phoenix, Ariz.).....	1892
Tischtschenko, M. (Balt., Md.).....	1936
Todd, M. (Canyon, Tex.).....	1559
Toth, F. (Shippensburg, Pa.).....	1681
Townsend, J. (Chagrin Falls, O.).....	1630
Treblow, M. (State College, Pa.).....	1725
Trimble, S. (Hopkinsville, Ky.).....	1820
Trinks, W. (Hammond, Ind.).....	1651
Troy, A. (Los Angeles, Calif.).....	1911
Tumek, P. (Orange, N.J.).....	1740
Turetsky, R. (Kensington, Md.).....	1911
Tyler, J. (Chicago, Ill.).....	1834

— U & V —

Uhlmann, R. (Grand Rapids, Mich.).....	1981
Underhill, R. (Toledo, O.).....	1749
Underwood, R. (Lubbock, Tex.).....	1903
Underwood, R. (Greensboro, N.C.).....	1597
Vandenberg, V. (Lansing, Mich.).....	1649
Vandiver, B. (Overland, Kans.).....	1649
VanGelder, S. (S. Francisco).....	1808
Veirosta, V. (Chicago, Ill.).....	1960

# LIST OF EVENTS RATED IN MARCH RATING SUPPLEMENT

**ALABAMA**—Southern Open Championship, Birmingham, July 2-5, 1959.  
Southern Chess Association Championship.

**ARIZONA**—Arizona Open Championship, Phoenix, Sept. 5-7, 1959.

**ARKANSAS**—Arkansas Open Championship, Hot Springs, July 25-26, 1959  
Arkansas Reserve Tournament.

**CALIFORNIA**—First San Bernardino Open, S. Bernardino, June, 1959.  
Southern California Championship, qualifying rounds. Santa Monica  
July 15-Aug. 19, 1959, Santa Monica Bay Chess Club Invitational  
Tournament, Santa Monica, July 6-Aug. 24, 1959.

**CONNECTICUT**—Bristol Chess Club Championship, Bristol, Jan.-May,  
1959.

**FLORIDA**—Broward County Championship—Finals and play-off. Ft.  
Lauderdale, Mar. 15-May 18, 1959. South Florida Team League, Spring  
Championship. South Florida Team League, Summer Championship.  
Southeast Florida Open, Miami Beach, August, 1959.

**ILLINOIS**—Irving Park Chess Club Championships, "A" and "B". Chicago,  
March-Sept., 1959.

**MICHIGAN**—Michigan Open, Ann Arbor, Sept. 4-7, 1959.

**MISSOURI**—"Heart of America" Open, Kansas City, Mo., Sept., 1959.

**NEBRASKA**—U.S. Open, Omaha, July 20-Aug. 1, 1959.

U.S. Junior Championship, Omaha.

**NEW JERSEY**—South Jersey Chess League, Team Championship, Sept.  
1958-May, 1959. North Jersey Chess League, Team Championship,  
Oct., 1958-May, 1959, U.S. Seeded Tournament, Log Cabin Chess  
Club, Aug., 1959.

**NEW YORK**—Marshall Chess Club Consolation Tournament.

**N. CAROLINA**—North Carolina Closed Championship, Raleigh, Sept.  
5-7, 1959.

**OHIO**—Ohio Championship, Columbus, Aug-Sept., 1958 (reported late).  
Ohio Junior Championship, Columbus, Aug-Sept., 1958 (reported late)  
Ohio Championship, Columbus, Sept. 1959. Ohio Junior Champion-  
ship, Columbus, Sept. 1959. Cincinnati Open, Aug. 1-2, 1959. Peter  
J. Harvey Memorial Tournament, Cleveland, Mar. 1-July 5, 1959.

**OKLAHOMA**—Oklahoma Open, Tulsa, Sept. 5-7, 1959.

**PENNSYLVANIA**—Philadelphia Metropolitan Championship, April, 1959.  
Pittsburgh Chess Club Championships, Mar.-June, 1959. Penn State  
Chess Club matches against Altoona Chess Club, Dickinson College  
Chess Club, Franklin and Marshall Chess Club, and Red Rose Chess  
Club (Lancaster), Feb.-Mar., 1959.

**TEXAS**—Texas Junior Championship, Houston, July 4-5, 1959. San An-  
tonio City Championship, July 18-19, 1959. Panhandle Open, Amar-  
illo, August, 1959.

**VIRGINIA**—Arlington Chess Club Ladder Tournament, Rounds 61-80,  
Apr.-Aug., 1959.

**WASHINGTON, D.C.**—District of Columbia Amateur Championship,  
Rockville, Md., August 21-23, 1959.

**WEST VIRGINIA**—West Virginia Championship, Charleston, Sept. 5-7,  
1959.

**WISCONSIN**—Third Western Open, Milwaukee, July 2-5, 1959.

Venesaar, K. (Chicago, Ill.).....	1702
Viggiano, J. (Lumberport, W.Va.).....	1726
Vincent, R. (Omaha, Nebr.).....	1982
Vines, K. (New Orleans, La.).....	1837
Vissepo, D. (Santurce, P.R.).....	1692
Voet, A. (Borger, Tex.).....	1725
Vogele, A. (Franklin Park, Ill.).....	1400
Volk, L., Jr. (Chicago, Ill.).....	1715
Vorpagel, R. (Milwaukee, Wisc.).....	1707

— W —

Wagner, C. (Toms River, N.J.).....	1938
Wagner, L. (Toms River, N.J.).....	1991
Waid, C. (Socorro, N.M.).....	1786
Walbrecht, W. (Jersey City, N.J.).....	1790
Waldo, M. (Philadelphia, Pa.).....	1744
Wall, H. (Merchantville, N.J.).....	1708
Walter, D. (Brooklyn, N.Y.).....	1812
Warner, R. (Cape May, N.J.).....	1746
Watkins, R. (Anderson, Md.).....	1714
Watkins, W. (Gloucester City, N.J.).....	1790
Webster, P. (Oshkosh, Wisc.).....	1765
Wehrley, O. M. J. (Wauwatosa, Wis.).....	1839
Weidner, R. (Cincinnati, O.).....	1778
Weinstein, H. (Brooklyn, N.Y.).....	1935
Weinstein, W. (Brooklyn, N.Y.).....	1400
Wells, W. (San Antonio, Tex.).....	1761
Wert, H. (Baytown, Tex.).....	1639
Westing, E. (Flushing, N.Y.).....	1790
Wetzel, J. (State College, Pa.).....	1571
Wheelock, J. (Canyon, Tex.).....	1778
Wilkerson, M. (Albuquerque, N.M.).....	1850
Wilkerson, S. (Kansas City, Mo.).....	1658
Williams, J. (Bethesda, Md.).....	1874
Williams, L. (Baytown, Tex.).....	1548
Willman, J. (Mobile, Ala.).....	1726
Wilson, L. (Lorain, O.).....	1764
Wilson, W. (Atlantic City, N.J.).....	1811
Wilt, M. (Borger, Tex.).....	1680
Wisch, C. (Miami, Fla.).....	1957
Wolf, J. (Elizabeth, N.J.).....	1790
Wolford, D. (New Carlisle, O.).....	1900
Wood, G. (Palmdale, Calif.).....	1750
Wood, L. (Haddon Hts., N.J.).....	1900
Worell, J. (Woodbury, N.J.).....	1880
Wozney, T. (Parma, O.).....	1826
Wright, H. A. (Woodbury, N.J.).....	1895
Wright, H. F. (Woodbury, N.J.).....	1870
Wright, J. (Kansas City, Mo.).....	1961

— Y & Z —

Yaffa, I. (Arlington, Va.).....	1872
Yehl, J. (Bethlehem, Pa.).....	1721
Young, A. (Ann Arbor, Mich.).....	1685
Zaas, D. (S. Euclid, O.).....	1876
Zaas, L. (S. Euclid, O.).....	1732
Zangerle, K. (Ann Arbor, Mich.).....	1940
Zeeb, C. (Ann Arbor, Mich.).....	1600
Zuckerman, B. (Brooklyn, N.Y.).....	1990
Zukaitis, V. (Dayton, O.).....	1848
Zwerdling, T. (Miami Beach, Fla.).....	1983

## Official USCF Emblem



Be proud of your national chess organization! Wear this attractive lapel button and show everyone you're a USCF member and a chess-player.

Gold plated with enameled black and white miniature chess board.

Letters and crown in gold. Screws into buttonhole and remains there. Available only to USCF members. Price includes Federal excise tax of 10%.

Only

\$2.20





# GAMES BY USCF MEMBERS

Annotated by Chess Master JOHN W. COLLINS

USCF MEMBERS: Submit your best games for this department to JOHN W. COLLINS, Stuyvesant Town, 521 East 14th St., New York 9, N. Y. Space being limited. Mr. Collins will select the most interesting and instructive for publication. Unless otherwise stated notes to games are by Mr. Collins.

## Slashing Play!

### SICILIAN DEFENSE

MCO 9: p. 150 c. 142 (b)

U.S. Junior Championship  
Omaha, 1959

Notes by U.S. Expert Don Define

G. Ramirez White D. Krause Black

- |          |       |
|----------|-------|
| 1. P-K4  | P-QB4 |
| 2. N-KB3 | P-Q3  |
| 3. P-Q4  | PxP   |
| 4. NxP   | N-KB3 |
| 5. N-QB3 | N-B3  |
| 6. B-QB4 |       |

Known thus far as Leonhardt's Variation.

- |         |       |
|---------|-------|
| 6. .... | P-K3  |
| 7. O-O  | B-K2  |
| 8. B-N3 | P-QR3 |

The game Keres-Mikenas, (22nd U.S. S.R. Champ.) continued 8. .... O-O; 9. B-K3, B-Q2; 10. P-B4, NxN; 11. BxN, B-B3; 12. Q-Q3, P-QN4. Mikenas eventually won. An alternative is 8. .... N-QR4 followed by 9. .... NxN which is supposedly best.

- |           |       |
|-----------|-------|
| 9. B-K3   | B-Q2  |
| 10. P-B4  | R-QR1 |
| 11. P-B5! |       |

Formerly the idea was that the bishop was wasted on the QR2-KN8 diagonal since Black invariably would play P-K3 and the bishop would bite on granite. Now the idea is to utilize the bishop anyway and to eliminate the granite.

- |          |      |
|----------|------|
| 11. .... | NxN  |
| 12. BxN  | P-K4 |
| 13. B-K3 | B-B3 |

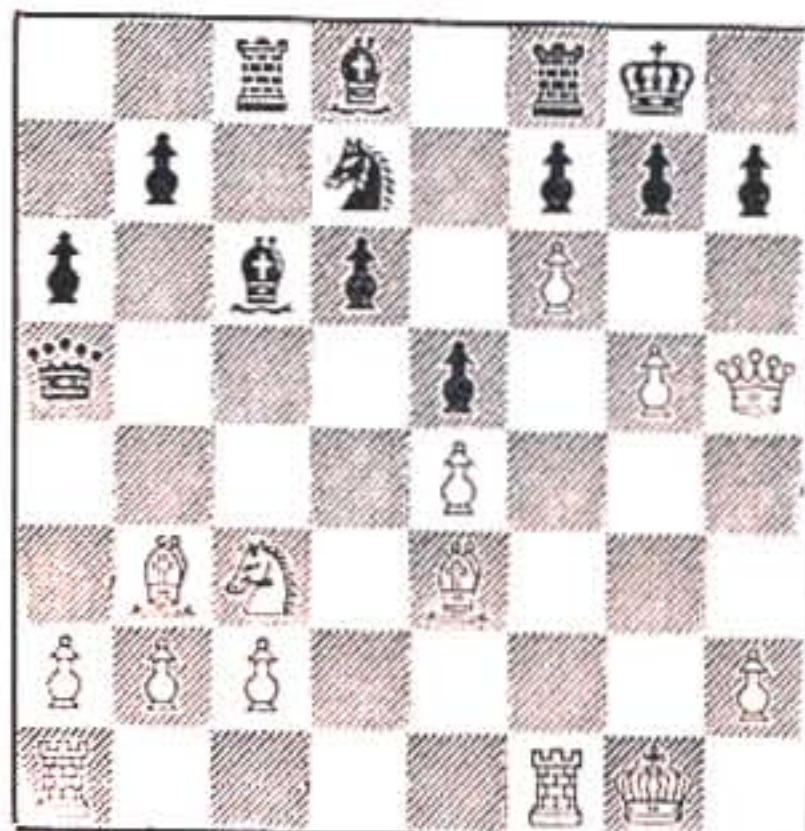
White's primary purpose is achieved as his bishop now has clear access. The piece ... a backward KP ... a liability for the endgame. But an attacking player gambles that there will be no endgame.

- |          |     |
|----------|-----|
| 14. Q-B3 | O-O |
|----------|-----|

Some players prefer leaving the king in the center in obvious attacking situations. 14. .... P-KR4 seems an alternative.

- |           |      |
|-----------|------|
| 15. P-N4  | Q-R4 |
| 16. P-N5  | N-Q2 |
| 17. Q-R5  | B-Q1 |
| 18. P-B6! | BxBP |

R-K-1



Position after 18. P-B6!

On 18. .... PxP; 18. PxP, BxP; 20. RxN, NxR; 21. Q-N5ch, K-R1; 22. QxNch, K-N1; 23. B-R6 is the end or 18. .... P-N3; 19. Q-R6, NxP (or BxP 20. PxN) 20. RxN puts black in a quandary as he can't take the rook (mate in two) and he can't move his king, and coming is 21. RxPch, RPxR; 22. QxPch, K-R1; 23. Q-R6ch, K-N1; 24. P-N6 and 25. Q-R7 mate (unless 24. .... R-K1; 25. BxP mate).

- |          |     |
|----------|-----|
| 19. PxN  | NxP |
| 20. RxN  | PxR |
| 21. K-B2 |     |

The alternative 21. B-R6 leads to a quick mate if Black is foolish enough to move his attacked Rook, e.g. 21. .... KR-Q1?? 22. Q-N4ch on 21. .... B-Q2; 22. Q-B3! is strong. But 21. .... K-R1; 22. Q-B5, R-N1ch; 23. K-R1, R-N3 holds of course 22. BxR would win too, but not fast enough for White.

- |             |                   |
|-------------|-------------------|
| 21. ....    | K-R1              |
| 22. R-KN1   | R-KN1             |
| 23. RxRch   | RxR               |
| 24. QxBP    | Q-Q1              |
| Or 24. .... | R-N3; 25. Q-B8ch. |
| 25. QxRch   | QxQ               |
| 26. BxQ     | Resigns           |

Black has nothing with which to right. Very fine aggressive play by White.

## Another Crucial U. S. Junior Championship Game

Tension was high as the winner of this game would be crowned U.S. Junior Champion. Both players are among the newest Masters for the USCF. A sideline of the Kings Indian is played with ensuing complexities that are not always correctly solved. But the very flaws make this struggle interesting. Incidentally, if this game had resulted in a draw, a third player, Ramirez, would have won the title.

### KING'S INDIAN DEFENCE

MCO: page 311, column 23

U. S. Junior Championship  
Omaha, 1959

Notes by Norman M. Hornstein, M.D.

L. Gilden White R. Ault Black

- |          |       |
|----------|-------|
| 1. P-Q4  | N-KB3 |
| 2. N-KB3 | P-KN3 |
| 3. P-B4  | B-N2  |
| 4. N-B3  | O-O   |

By delaying the advance of his center pawns, Ault reserves the option of his defence. The method is not without danger.

- |         |  |
|---------|--|
| 5. P-K4 |  |
|---------|--|

5. B-B4 seems to have more possibilities for white. Other sound variants are P-KN3 and B-N5.

- |         |      |
|---------|------|
| 5. .... | P-Q3 |
|---------|------|

Now this move has weaknesses. The classical B-K2 or P-KR3 are better.

- |         |       |
|---------|-------|
| 6. .... | P-KR3 |
|---------|-------|

With this move, Black could have landed in lasting difficulties. Best is 7. .... P-KN4; 8. B-N3, N-R4 at least according to the books. Personally I like P-B4 as an alternative.

- |         |  |
|---------|--|
| 8. B-K2 |  |
|---------|--|

White misses a good chance. 8. P-K5, PxP; 9. PxP and after any Kt move, P-K6 creates a fertile field for White. The same is true if Black does not exchange the pawns.

- |         |      |
|---------|------|
| 8. .... | P-B3 |
|---------|------|

Perhaps Ault is convinced that he has Larry hypnotized. Maybe he has. In any event 8. .... P-K4 is necessary and good. And 8. .... P-KN4 as above is also excellent.

- |         |  |
|---------|--|
| 9. .... |  |
|---------|--|

I can well remember the young Washington, D. C. Master at a recent Carolina tournament. During his games, his time was equally divided between thought and munching shrimpburgers. Is this the secret of this lapse? Was he lulled by a shrimpburger? And Omaha shrimpburgers at that—not the fresh, wholesome variety served at Carolina events. 9. P-K5 is even stronger now.

- |         |      |
|---------|------|
| 9. .... | Q-B2 |
|---------|------|

P-KN4 was still fairly good to prevent the QB from escaping.

- |          |  |
|----------|--|
| 10. N-K1 |  |
|----------|--|

Excellent. He preserves the QB. Moreover, as will be seen, this Knight plays several important roles. Another plan was the Queenside push, P-QR3, R-N1, and P-QN4.

- |          |      |
|----------|------|
| 10. .... | P-K4 |
|----------|------|

With this delayed push, the game begins to look prosaic even for teenagers. The text also prevents White from playing the devastating P-B4.

- |          |  |
|----------|--|
| 11. P-Q5 |  |
|----------|--|

11. PxP would lead to a rather drawish position.

- |          |       |
|----------|-------|
| 11. .... | P-KN4 |
| 12. B-N3 | PxP   |

This move creates a fundamental weakness in Black's pawn structure leaving the P at Q3 backward. However, the text gives Ault a powerful attack.

- |          |       |
|----------|-------|
| 13. BPxP | N-B4  |
| 14. Q-B2 | Q-N3! |

He must prevent P-N4. If 15. .... P-QR4; 16. P-QR4 and Black has permanent queenside weaknesses.

- |          |      |
|----------|------|
| 15. K-R1 | B-Q2 |
|----------|------|

The combination 15. .... QNxP; 16. NxN, NxN; 17. QxN, P-B4; 18. Q-B2, P-B5 leaves Black too exposed to attack.

- |          |       |
|----------|-------|
| 16. P-B3 | KR-B1 |
| 17. B-B2 |       |

White is faced with a powerful but not irresistible attack. As the bishop drives the queen to a better square (attacking the pinned) 17. N-Q3 should have been played. Then 17. .... N-R5; 18. B-K1 and Gilden can consolidate his position.

- |          |      |
|----------|------|
| 17. .... | Q-R4 |
| 18. Q-N1 |      |

Fatal. N-Q3 would still hold.

- |           |       |
|-----------|-------|
| 18. ....  | N-R5! |
| 19. NxN   | QxN   |
| 20. P-QN3 | Q-R4  |
| 21. B-K3  | N-R4  |
| 22. P-N3  |       |

Ault's threat to the second rank is only one key to the situation. If 22. N-Q3, N-B5; 24. NxN, KPxN! Hence the text is forced.

- |          |       |
|----------|-------|
| 22. .... | P-B4  |
| 23. Q-N2 | B-N4! |
| 24. BxB  | QxB   |
| 25. Q-N2 | N-B3  |

He now proceeds to demolish the white center.

- |          |      |         |      |
|----------|------|---------|------|
| 26. R-B2 | PxP  | 27. PxP | Q-N5 |
| 28. R-K2 | QxKP | 29. QxQ | NxQ  |
| 30. R-B1 | RxR  | 31. BxR | N-B5 |

The remainder of the game is interesting but requires no comment.

- |             |        |          |        |
|-------------|--------|----------|--------|
| 32. R-QB2   | P-K5!  | 33. B-N2 | NxQP   |
| 34. BxB     | KxB    | 35. R-Q2 | R-KB1! |
| 36. RxN     | R-B8ch | 37. K-N2 | RxN    |
| 38. RxR     | R-K7ch | 39. K-N1 | RxQRP  |
| 40. R-Q7ch  | K-B3   | 41. RxP  | K-K4   |
| 42. R-R7    | P-K6   | 43. K-B1 | RxP    |
| 44. RxQRP   | R-QN7  | 45. R-R6 | RxP    |
| 46. RxP     | K-K5   | 47. K-K2 | R-N7ch |
| 48. Resigns |        |          |        |

## PERSONAL SERVICE

The Editor of this Department, a former New York State Champion, and Co-Reviser of "Modern Chess Openings," 9th Edition, will play you a correspondence game and give critical comments on every move for a \$15 fee.

## DUTCH DEFENSE

MCO 9: p. 247, c. 21 (b)

U. S. Open  
Omaha, 1959

H. Berliner White R. Ault Black

- |          |       |             |       |
|----------|-------|-------------|-------|
| 1. P-Q4  | P-KB4 | 2. P-QB4    | N-KB3 |
| 3. N-QB3 | P-KN3 | 4. P-B3     | P-Q4  |
| 5. PxP   | NxP   | 6. P-K4     | NxN   |
| 7. PxN   | B-N2  | 8. B-QB4    | P-B4  |
| 9. N-K2  | N-B3  | 10. B-K3    | PxQP  |
| 11. BPxP | PxP   | 12. PxP     | R-B1  |
| 13. Q-N3 | BxP   | 14. BxB     | NxB   |
| 15. NxN  | QxN   | 16. Q-R4 ch |       |
| Resigns  |       |             |       |

## College Chess Life

by

GEORGE BAYLOR

Forty-four collegians participated in a nine round Swiss tournament for the championship of The City College of New York this fall. Triumphant in this tournament with a 7½-1½ score was Sanford Greene, new vice-president of the ICLA, who lost only to Lanton and drew with Levine. With 7-2 scores were Levine and Cohen, followed in fourth place by Berkowitz with a 6½-2½ score. Fifth and sixth places went to Lanton and Schachter, respectively, each finishing with a 6-3 score. The size of this tournament was surprisingly large (even for New York!) and serves to illustrate the huge amount of chess interest prevalent in our colleges and universities—it only has to be cultivated!

At Columbia University also an interclub tournament was held from October to December, 1959. In this twenty player Swiss, Leslie Ault, new intercollegiate champion, with a loss to Alan Abramson and a draw with Mark Chodrow, tied for first and second with Joseph Rosenstein, who lost to Leslie Ault and also drew with Chodrow. Third and fourth places were annexed by Robin Ault, U. S. Junior champ, and Alan Abramson, both with 5-2 scores. Pete Sager took fifth with 4½-2½ and Jerry Finkelstein rounded out the plus scorers with a sixth place 4-3 score.

The teams of the Western Division of the 1959-60 Ivy League Team Championship met at Princeton on December 12-13, 1959, for a triangular match. Columbia won all three of its matches; the University of Pennsylvania scored one and a half; Cornell one; and Princeton one-half. The results of the individual matches were as follows:

### Round I

Columbia 6	Princeton 0
L. H. Ault .....1	Berlow .....0
R. Ault .....1	Beckedorff .....0
J. Rosenstein ....1	Randolph .....0
Chodrow .....1	Kenez .....0
Abramson .....1	Kennedy .....0
Robison .....1	Powell .....0
Penn 3½	Cornell 2½
Friedman .....½	Severance .....½
Kelly .....1	Eisman .....0
Welsh .....1	Young .....0
J. Arnold .....0	Wagner .....1
D. Arnold .....0	Siegel .....1
Ichiro .....1	Forfeit .....0

### Round II

Columbia 6	Cornell 0
L. H. Ault .....1	Severance .....0
Rosenstein .....1	Eisman .....0
Chodrow .....1	Young .....0
Abramson .....1	Wagner .....0
Putterman .....1	Siegel .....0
Robison .....1	Forfeit .....0
Princeton 3	Penn 3
Beckedorff .....1	Friedman .....0
Berlow .....1	Kelly .....0
Randolph .....1	Welsh .....0
Kenez .....0	J. Arnold .....1
Missel .....0	D. Arnold .....1
Goldberg .....0	Ichiro .....1

### Round III

Columbia 5½	Penn ½
R. Ault .....1	Friedman .....0
L. H. Ault .....1	Kelly .....0
Rosenstein .....1	Welsh .....0
Chodrow .....½	J. Arnold .....½
Abramson .....1	D. Arnold .....0
Robison .....1	Ichiro .....0
Cornell 3½	Princeton 2½
Severance .....½	Berlow .....½
Eisman .....½	Beckedorff .....½
Young .....½	Randolph .....½
Wagner .....1	Missel .....0
Siegel .....1	Forfeit .....0
Forfeit .....0	Bye .....1



## TOURNAMENT RESULTS

### USCF RATING IMPROVEMENT TOURNAMENTS, New York.

DECEMBER: 1st, G. Schnitzler; 2nd, A. Spiller; 3rd, R. Rurkin. (No point scores available.)

JANUARY: 1st (after tie-breaking) R. Durkin, 5-1; 2nd, Dr. A. Mengarini, 5-1; 3rd, L. Klugman, 4½-1½; 4th, W. Fredericks, 4-2; 5th, H. Herbst, 4-2. Highest in classes: A, R. Egan, 4-2; B, H. Jancis, 3-3; C, W. Katz, 4-2; Unrated, C. Daniels, 3-3.

### ARION CLUB CHAMPIONSHIP, Baltimore, Md.

Dr. George Hardman 1st with 6-0, over Surgies, Lasarko, Raven, Murphy, Priscilla, and Jones, in round robin.

### SAN GABRIEL-MONTEREY PARK INVITATIONAL, Monterey Park, Cal.

1st, Walter Cunningham, 7-0; 2nd, Leo Thompson, 5½-1½; 3rd, Alex Carpenter, 5-2; 4th, Martin Sarley, 4½-2½; 5th, Neil Hultgren, 4½-2½; 6th, Gordon Barrett, 4½-2½. (Winner Cunningham is 16 year old high school football star)

### 2nd ESSEX OPEN, E. Orange, N.J.

1st, R. Durkin, defending champion, 4-1; no other point scores or places reported, except that Durkin lost in 1st round to Mike Connelly, and came into last round tied with Peter Irwin, whom he defeated for the title.

### STUTTGART INVITATIONAL, Stuttgart, Arkansas.

1st, Troy Armstrong, 4½-½; 2nd, Leonard Scott, 4-1; 3rd, James Wright, 3½-1½; 4th, Gowan Meacham, 3½-1½; 5th, Orval Allbritton, 3-2.

### ARKANSAS STATE CHAMPIONSHIP, Little Rock, Arkansas.

1st, Capt. Charles Rosburg, USAF, 5-0; 2nd to 4th with 4-1, Bill Jones, Leonard Scott, Jr., and Orval Allbritton; 5th, Ronnie Taylor, 3½-1½.

### CHINA LAKE OPEN, California.

1st, Imre Barlai (California Collegiate Champ) 5-1; 2nd, Al Raymond, 4½-1½; 3rd Roger Smook, 4½-1½; 4th, Phil Smith, 4-2; followed by Metz, Eidemiller, and Richards, each with 4-2.

### WEST FLORIDA OPEN, Tampa, Fla.

1st, Charles W. Stallings, (who lost an 11-mover, but rallied to win title) 5-1; 2nd, Bob Bailey, 4½-1½; 3rd and 4th, Dr. R. A. Carlyle (defending champion) and Ned Hardy, each with 4-2. Glen Hartleb, Alan Himber and Dr. R. L. Froemke, each scored 3½-2½. Ex-champ, Joel Chalifoux, scored 3-3. The 12-player amateur (separate event) division was won by Bill Baer, 5-1; 2nd, Bob Durrett, 4½-1½; 3rd and 4th, John Jacobs and Morill Goddard, each with 4-2. Bailey, Hardy (who hit winner Stallings with the 11 move win), Himber, and Jacobs, were all University of Florida students.

### IRVING PARK CC CHAMPIONSHIP, Chicago.

1st, Tom McCloud, 6½-1½; 2nd and 3rd, Ninus Aronson and Roy Radys, each with 6-2.

### EASTERN IDAHO CHAMPIONSHIP, Pocatello, Idaho.

1st, Nigel Robinson, 4½-½; 2nd, Eugene Cowan, 3½-1½; 3rd, Ray Fricke, 3½-1½; 4th, Mel Schubert, 3-2.

### NORTHWEST STATES OPEN, Missoula, Montana.

1st, Richard Schultz (Seattle), 6-0, defeating players finishing 16, 13, 10, 2, 3, and 5, in final standings! 2nd, Olav, Ulvestad, 5-1; 3rd, Herman Hesse, (Bethlehem, Pa.) 4½-1½; 4th to 7th in order listed, each with 4-2—Jim McCormick, Loren Meierding, Viktors Pupols and Ingwold Stromsberg. Since CHESS LIFE was criticized for not having given this event more advance publicity, it may give its generous sponsors something to think about to learn that the information above was gleaned from "The Idaho Chess Bulletin," no report on the tournament having been received from the responsible organizers.

### UTAH OPEN, Salt Lake City, Utah.

1st, Richard Heilbut, 5-1; 2nd, Donald Bengé, 5-1; 3rd and 4th, each with 4-2, Bill Taber and C. K. Williamson; 5th to 9th, each with 3½-2½, L. N. Page, Ken Jones, Fred Docekal, Raymond Smith, and Clinton McDaniel. (Interesting note on 1st place tie-break—S.B. points were used; if median points had been used, Heilbut and Bengé would have remained in a tie; if Solkoff system had been employed, Bengé would have taken the title by ½ point.)

### CENTRAL WASHINGTON OPEN, Yakima, Wash.

1st, Clark Harmon, 5½-½; 2nd, Olaf Ulvestad (defending champion) 5½-½; 3rd, Viktors Pupols, 5-1; 4th, Ivars Dalbergs, 5-1; 5th to 8th, each with 4½-1½, Danny Towne, Dr. David Groenig, Donald Turner; 8th to 10th, each with 4-2, Richard Jerome, Mike Frannett, and Richard Schultz.

### JACKSON OPEN, Jackson, Mississippi.

1st, Andrew Lockett, 4½-½; 2nd, Jack Rushing, 4-1; 3rd to 5th, each with 3½-1½, John Poole, Frank Shavez, and Ed Felts. In the B Section, the following finished in the order listed: Woody James, 4½-½; James West, 4-1; Douglas Harvey, 3½-1½; Ross Moore, 3-2; E. H. Gleason, 3-2. New Orleans players took 1st and 4th places in Class A, while Baton Rouge pushers took 2nd, 3rd, and 5th in Class B. All other prize winners were from the host state of Mississippi.

### ALAMO OPEN, San Antonio, Texas.

1st, Blake W. Stevens, 4-1; 2nd, John Allen, 4-1; 3rd, John Bob Payne, 4-1; 4th, Morley Pastinsky, 4-1; 5th to 7th, each with 3½-1½, Homer H. Hyde, Henry Davis, Sam Priebe. 5 of first 6 places were taken by San Antonio players, Allen, of Independence, Mo. being the only non-Texan in the prize list.

## Mate The Subtle Way!

by Nicholas Gabor

All communications concerning this problem-column, including solutions as well as original compositions for publication (two- and three-mover direct mates), from composers anywhere should be sent to Nicholas Gabor, Hotel Kemper Lane, Cincinnati 6, Ohio.

As promised, herewith we attempt to give a little advice to our inexperienced solvers about how to look at a chessproblem, in trying to find the solution. The subject is too rich and would require many pages of analysis, but we hope that a few casual points will help them. Practice will increase their technique, useful even in playing regular games!

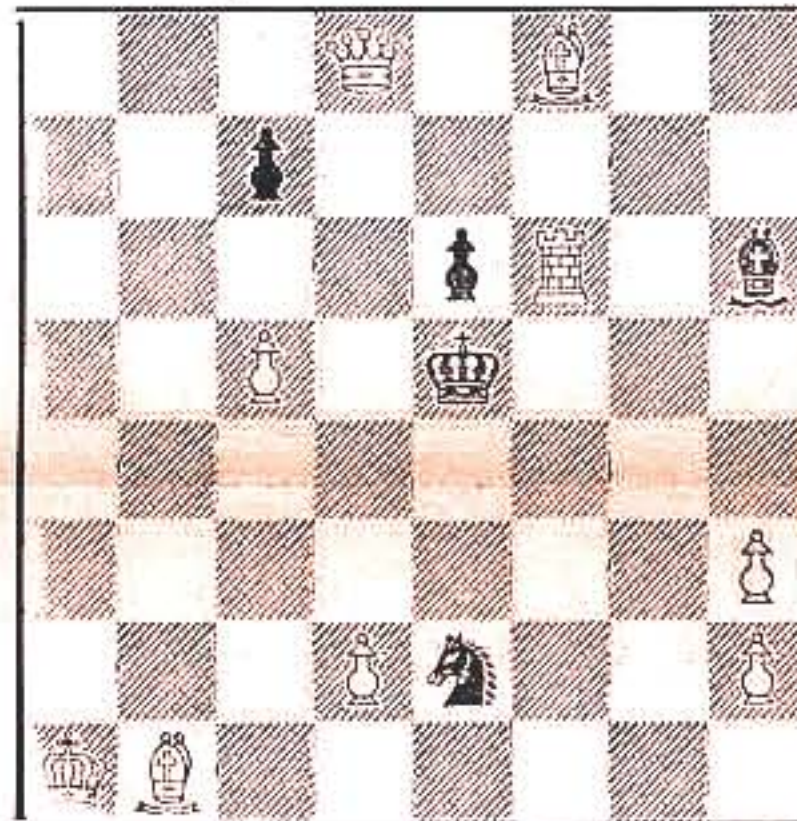
The first thing is to look at the position of the B1 K. In No. 1061 the K is fully blocked! It cannot move. But since one of the most important requirements of a problem is that every single piece on the board MUST HAVE a purpose, you soon notice the 2. Wh P-s on KR2 and KR3. If the K cannot move, why are these P-s there? The only purpose of their being on the board must be that during the solution, the K will be able to move closer to them. This obvious fact may indicate the keymove. In No. 1062 the B1 K is also blocked. The B1 Q and B are in "half-pin" which means that moves of one of them away from the diagonal "pins" the other! And this pinning of the B or Q will be exploited in Wh's second move, the mate.

Never look for checking keymoves! Aside from a very few existing samples, (we have published some, in the past) such "keymoves," if they mate in 2 moves, must be "cooks." (Unintended solutions which ruin the problem!) Never look for piece-capturing keymoves! Pawn-capturing keymoves are frequent. Never look for "keymoves" which decrease the freedom of the B1 K without any recompensation. Good keymoves often increase the B1 K's (or other B1 pieces') freedom and seemingly give Wh some disadvantages! . . .

*To be continued.*

Problem No. 1061

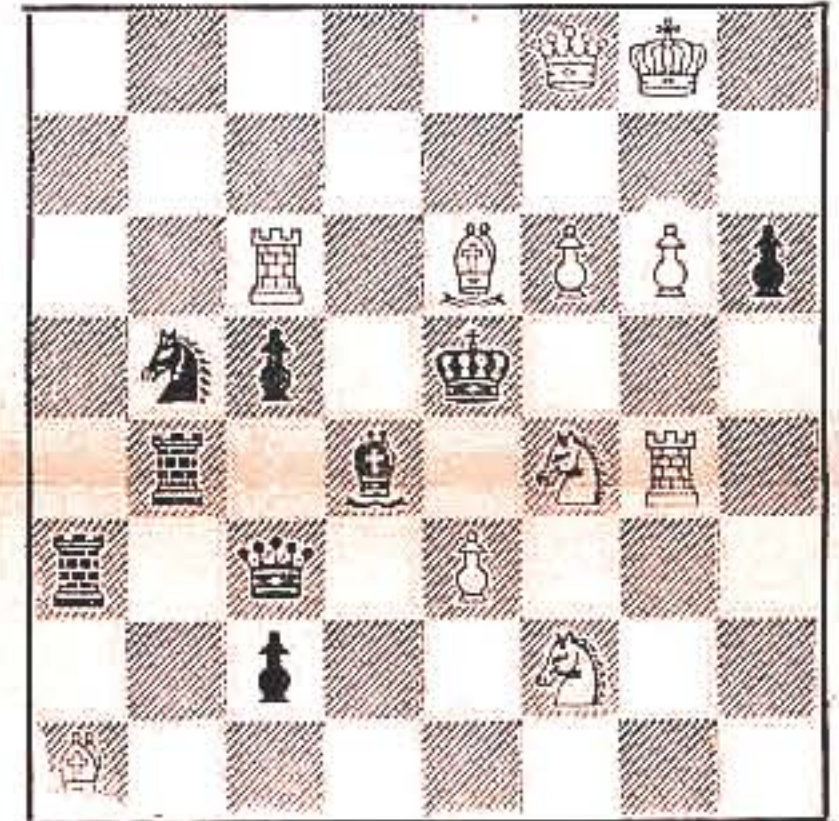
By Petko A. Petkow  
Tolbuchin, Bulgaria  
Original for Chess Life



Mate in two moves

Problem No. 1062

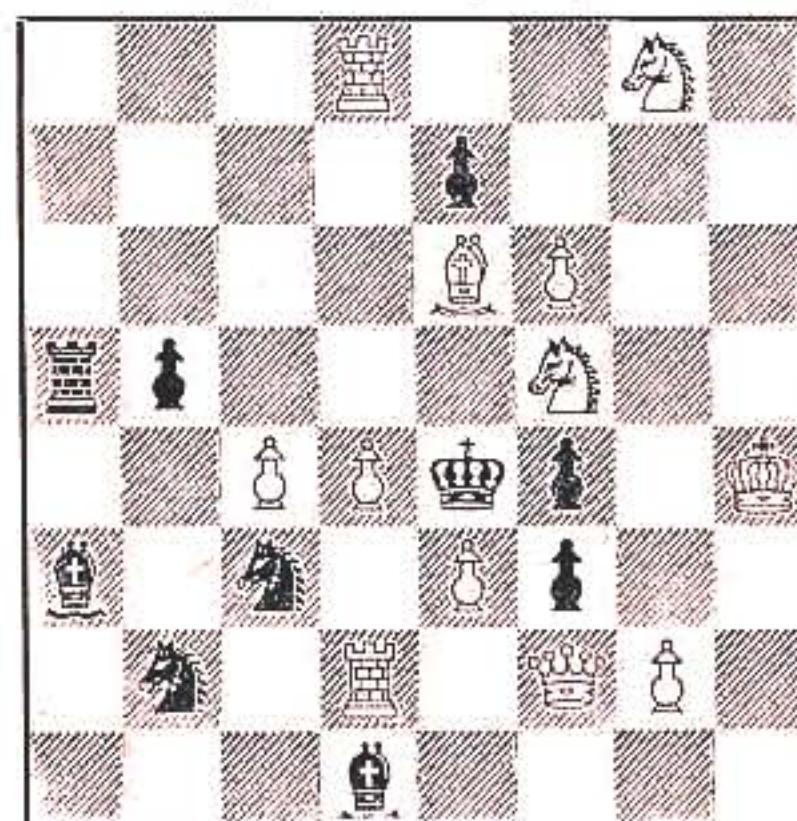
By Waldemar Tura  
Lublin, Poland  
Original for Chess Life



Mate in two moves

Problem No. 1063

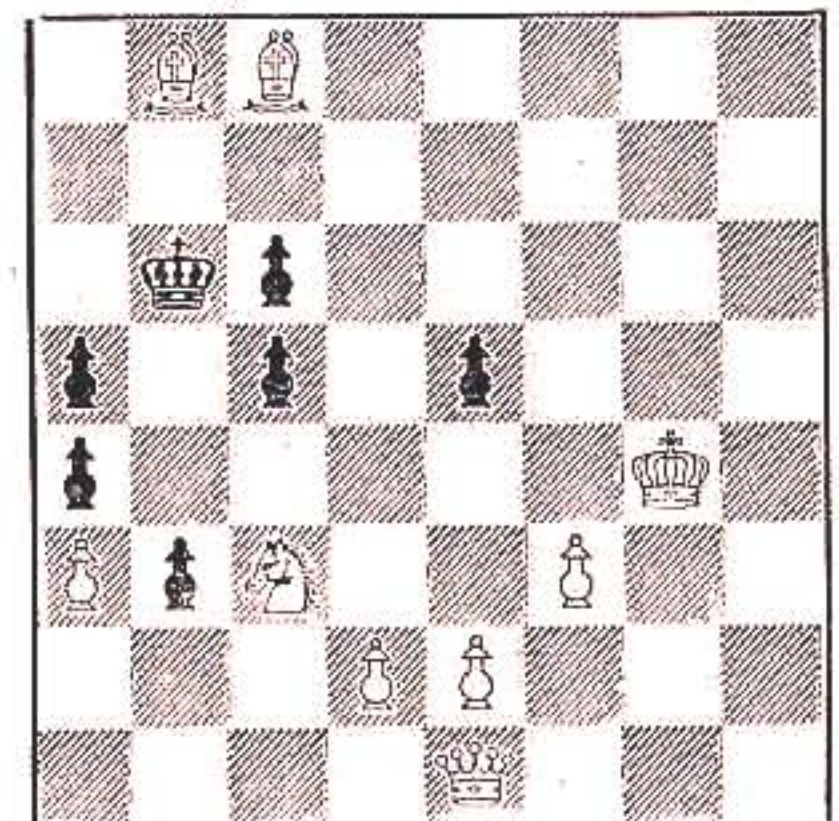
By George Bakcsi  
Budapest, Hungary  
Original for Chess Life



Mate in three moves

Problem No. 1064

By M. Marysko  
Olesnice, Tchechoslovakia  
Original for Chess Life



Mate in three moves

### Solutions to "Mate the Subtle Way"

No. 1049 Barclay Sweeney: try 1. R(R4)-R2 defeated by 1. ...., P-N6. Keymove 1. Q-R2 threatening 2. N-Q4. Grants a flight and permits check. If 1. ...., Pxh2! 2. N-Q4. If 1. ...., K-B6, 2. N-K. If 1. ...., P-N8 (kt!) 2. R-KB. If 1. ...., NxP, 2. QxR. If 1. ...., P-N6, 2. R-KB4. No. 1050 Kowalewski: set play: 1. ...., N-Q2, 2. Q or BxP; 1. ...., B-Q5, 2. Q-K4 or NxP; 1. ...., R-Q5, 2. Q-R5; 1. ...., RxP, 2. QxR or Q-K4; 1. ...., R-K5, 2. QxR. Close tries: 1. KxP, R-B5? 1. N-K8, RxP 1. B-Q4, R-K8? Keymove 1. N-B7 threatening 2. R-B5. Two changed mates in the actual play. No. 1051 Rizzetti: Misprint: The Rook on Wh-s K3 should be a Black Rook! Apparently, if 1. ...., N-Q3, 2. QxB and if 1. ...., R-QB6, 2. Q-R5. Key 1. Q-N5, threatening 2. N-B4 mate. Now, if 1. ...., N-Q3, 2. B-N2 and if 1. ...., R-QB6, 2. Q-N8. No. 1052 Jacobs: key 1. N-N5 threatening 2. N-B3 ch!—QxN and 3. R-Q4 dbl ch! If 1. ...., KxN, 2. R-Q5 ch! etc. If 1. ...., QxN, 2. R-R4ch! etc.; if 1. ...., BxN, 2. R-R7 ch! etc. A series of clever pins and double pins.

Are You a Member?

Join the USCF! It is always a sound opening move.

**Chess Life** Saturday, Page 7  
March 5, 1960



## ALL'S WELL THAT ENDS WELL

(Continued from page 1)

The intriguing question arose who copied whom, and readers will be pleased to know that Palmer's study appeared first, in 1917, in the "Iowa News" of Iowa. We will never know if Reti thought out the same theme years later, or if he had seen it during his earlier migrations through chess literature, "forgotten it," and revived it later with a minor plus—these subconscious processes do happen.

Lommer's "1934 Modern Chess Endings" give the Reti study under No. 539, with the added subvariation: "If 1. P-Q4, K-Q1; 2. K-B7, K-B1; 3. P-K7, R-Q1; 4. P-Q5! winning—" which to us is mysterious. Plainly 4. PxR ch would win, as White has retained his other Pawn on Q4.

### SOLUTION—Diagram 76

1. P-K7, R-Q3ch; 2. K-N7!! R-Q1; 3. K-B7! wins.

If White had played 2. K-B7, he would have been in zugzwang after 2. .... R-Q1, and Black would have drawn. After 2. K-N7 and 3. K-B7, it is Black who has to lift the blockade of his first rank, and White wins. If 1. .... R-K5; 2. N-K6, K-Q2; 3. N-B5ch and wins rook and ending.

## Tournament Life

Tournament organizers wishing announcements of their forthcoming USCF rated events to appear in this column should make application at least five weeks before the publication date of the issue of **CHESS LIFE** in which you wish to have the announcement appear. Special forms for requesting such announcements may be obtained either from USCF Business Manager Frank Brady, 80 E. 11th St., New York 3, N. Y. or from your editor, but the completed request forms should be mailed only to Editor **CHESS LIFE**, Gove House, Perry, Maine.

March 12 & 13

### 2nd Annual USCF Pacific Northwest Open

Will be held at the Oregonian Hostess House, Oregonian Bldg., 1320 S.W. Broadway, Portland, Oregon. 6 round Swiss, open to all, with a time limit of 45 moves in 2 hours. Entry fee is \$5.00. \$50 first prize, other cash prizes. Address entries and inquiries to Clark R. Harmon, 5706 S.E. Flora Drive, Portland 22, Oregon.

March 19

### North Carolina-Virginia Speed Championship

Will be held at 7 p.m., March 19th at the Warrenton Hotel, Warrenton, N. C. Open to all Virginia and North Carolina residents. 10 minute chess. Entry fee \$2.00. First prize \$50. North Carolina players are invited to stay over for annual North Carolina-Virginia team match to be played on the following day starting at noon. Address inquiries to Dr. Norman Hornstein, Knightdale, N. C.

March 19 & 20

### Fifth Annual Capital City Open Chess Tournament

Will be held at the Seneca Hotel, 361 Broad Street, Columbus, Ohio. 5 round Swiss, with a time limit of 50 moves in 2 hours. Adjudications after 4 hours of play. Entry fee is \$5.00 plus membership in USCF. First prize, trophy plus \$25.00. Other cash prizes. Tournament Director is James Schroeder, 1483 Pennsylvania, Columbus, Ohio.

April 8-10

### New Jersey State Amateur

Will be held at the Town House Restaurant, Hammonton, New Jersey. 6

round Swiss, open to all except rated Masters and higher, with a time limit of 50 moves in two hours. Entry fee \$5.00 to members of USCF and NJSCF. Membership in NJSCF \$2.00. Entry fee for Juniors \$3.00. Trophies for top 3, A, B, C, and unrated. Profits to fund to send winners of N. J. Junior tournament to Open in St. Louis. Address entries and inquiries to L. E. Wood, 1425 Sycamore St., Haddon Heights, N.J.

April 15, 16, 17

### New Jersey State Intercollegiate Championship

Will be held at the Chancellor Green Student Center, Princeton University, Princeton, New Jersey. 5 round Swiss, with a time limit of 40 moves in 1½ hours. The tournament is restricted to full-time college undergraduates residing in, or studying in New Jersey. Entry fee is \$4.00. Special entry fee of \$3.00 to Juniors under 20 years of age. Prizes include permanent trophy, plus several book prizes. Address entries and inquiries to Peter Barlow, 62 Campbell Hall, Princeton University, Princeton, New Jersey.

April 22, 23, 24

### The New Jersey State High School Chess Team Championships

Will be held at the Independent Chess Club, 102 North Maple Avenue, East Orange, New Jersey. The opening round will be on Friday evening, April 22nd.

April 22, 23, 24

### The 2nd Phoenix City Open

First round will be held in the Phoenix Chess Club Rooms, 2700 N. 15th Avenue, Phoenix, Arizona. 2nd through 6th rounds to be held in the National Life and Casualty Insurance Company Building, 2300 N. Central Avenue, Phoenix. Six round Swiss, open to all who are or become USCF members. Entry fee: \$3.00 for Juniors under 18; \$4.00 for USCF members; \$9.00 for non-members. Prizes: 1st, trophy and cash; 2nd, 3rd, 4th, trophies; prizes for top Woman, Junior, Class B and C. For additional information contact Mabel Burlingame, 3310 E. Roosevelt Street, Phoenix, Arizona.

April 23-24 & April 30-May 1

### 1960 Maryland Open

Will be held at the Dundalk YMCA, 10 Dunmanway, Dundalk, Maryland. 6 round Swiss, open to all, with a time limit of 50 moves in two hours. Title restricted to top Maryland player. Entry fee is \$3.00; special entry fee of \$2.00 for juniors under 21. Prizes include 1st, 50%; 2nd, 30%; 3rd, 20%. Trophies to top A, B and Junior players. Address entries and inquiries to William C. Koenig, 810 Braeside Road, Baltimore 29, Maryland.

April 29, 30 & May 1

### Third Mid-Continent Open Chess Tournament &

### 1960 Kansas State Chess Championship Tournament

Will be held at the Armory, East 8th Street, Russell, Kansas. Entry fee is \$5.50 if registered before April 25th (\$7.50 after that date); Juniors have a special entry fee of \$3.00 if registered before April 25 (\$5.00 after that date). Guaranteed prizes in the Open Tournament: 1st—trophy plus \$50.00; 2nd—trophy plus \$25.00; 3rd—trophy plus \$15.00; 4th—trophy plus \$10.00; 5th—trophy. Prize money will be increased according to registration. Separate Junior Division: 1st and 2nd place trophies (16 years or under); 1st place trophy for best Junior girl (16 years or under); 1st place trophy for best player under 12 years of age. Women's Division: 1st and 2nd place trophies. There will also be 2 prizes each in Class A, B, and C. Plus a trophy for best player that has never played in a rated tournament before. Prizes in the State Tournament—determined by highest ranking Kansas players. 1st, 2nd, 3rd, 4th and 5th place trophies and State titles. Junior (16 or under)—1st place trophy and State Junior Title. Women's—1st place trophy and State Women's Title. For further information and reservations contact Mrs. H. P. Killough, Tournament Secretary, Russell, Kansas.

## UNITED STATES CHESS FEDERATION OPERATION "M"

The NEW YORK STATE MEMBERSHIP COMMITTEE and the NEW YORK STATE CHESS ASSOCIATION require the services of U.S.C.F. members to recruit new members for a State-wide program. The objective is to restore the EMPIRE STATE to its rightful position as the PREMIER CHESS STATE of the Union. If you are willing to help, please write to any of the following members of the MEMBERSHIP COMMITTEE:

Mr. Louis Persinger, Chairman of the N.Y. State Association  
340 Riverside Drive, New York 25, N.Y.

Mr. Walter Shipman, President of the Metropolitan Chess League  
123 West 74th St., New York City.

Mr. Jose M. Calderon, Chairman of N.Y. State Membership Com.  
1 Washington Mews, New York 3, N.Y.

## IN ENGLISH: TWELFTH CHESS TOURNAMENT OF NATIONS (1956)

by  
SALO FLOHR  
International Grandmaster  
119 pages. Selected annotated games, photographs and cartoons. Paper cover.

ONLY ONE DOLLAR  
Remittance with order — we pay postage.

A. Buschke — Chess Literature  
80 East 11th Street  
New York 3, N.Y.

## NEW

### THE COLLE SYSTEM by International Master, GEORGE KOLTANOWSKI

The 4th revised, printed edition, with durable cover, spiral bound. Just off the press. Many new features and ideas! A MUST FOR EVERY CHESS PLAYER. Order your copy, autographed by the author, by sending \$2.75 to—

MASTER PUBLICATIONS  
3049 Laguna St.,  
San Francisco 23, California

## NOTICE TO ALL USCF MEMBERS NOMINATIONS WANTED

The Nominating Committee for 1960 has been named as follows:  
Thomas A. Jenkins (Chairman)  
26409 York Road  
Huntington Woods, Michigan

Guthrie McClain  
244 Kearny St.  
San Francisco, California

William Slater  
116 Pinehurst Avenue  
New York 33, N.Y.

William Trinks  
2714 Cleveland Avenue  
Hammond, Indiana

A. Wyatt Jones  
P.O. Box 202  
Shreveport, Louisiana

Every member is requested to write to any committee-member he chooses, nominating or suggesting the nomination of a USCF member for each of the following posts, which will become vacant in August:

President (one)  
Vice-presidents (three,  
including one woman)  
Secretary (one)

## BALTIMORE-WASHINGTON INTERCITY MATCH

It was Washington over Baltimore 18-11 in a giant 29 board match Dec. 13 at the Dundalk YMCA. Washington thus retained the I. S. Turover trophy and went ahead in this annual event 3 to 2. Besides setting a record for size, this was the first time that the home team has been upset. Featuring four masters, the Washingtonians couldn't be headed although the first five boards were split. From there on down, it was just about all Washington. Kudos are due Bill Koenig (B), George Thomas (W), and the Bay Region C.C. for the great job they did in bringing off this huge match. The line-ups and results are given below.

### Baltimore Washington

1. S. Wanetick	0	E. Hearst	1
2. R. McComas	½	M. Stark	½
3. M. Tilles	0	C. Mott	1
4. B. Garfinkel	1	N. Whitaker	0
5. A. Surgies	1	V. Eaton	0
6. G. Jones	0	L. Gilden	1
7. H. Heimlich	0	J. Mayer	1
8. B. Rosenthal	0	R. Grande	1
9. B. Tilles, Jr.	0	R. Paul	1
10. J. Glatt	0	J. Matheson	1
11. R. Raven	½	M. Kurtz	½
12. Tishtshenko	½	G. Thomas	½
13. R. Rigler	½	L. Helfenstein	½
14. T. Priscilla	1	T. Sloan	0
15. J. Lasarko	1	H. Cimmermanis	0
16. H. Heimlich	1	R. Tureskey	0
17. G. Borrero	0	K. Baer	1
18. W. Bundick	0	D. Olmstead	1
19. D. Mathai	0	R. Frederickson	1
20. R. Erkes	½	G. O'Rourke, Sr.	½
21. R. Lerch	1	R. McKenna	0
22. N. Antokol	0	B. Mitchell	1
23. C. Barrasch	1	J. Ream	0
24. D. Grossman	½	G. Garcia	½
25. L. Lander	0	R. Jollensten	1
26. A. Howard	0	V. Buck	1
27. L. Hucks	1	Miss A. Carter	0
28. E. Myers	½	Mrs. R. Grande	½
29. E. Schultz	0	R. Merritt	1
Totals	11	Total	18

## FLORIDA TEAMS EXPAND AGAIN

The annual team league program during the winter months in South Florida continues to expand. Four leagues with 17 teams are active now in the various rating categories.

The Open division includes entries from the defending champions, the Miami Club, plus Miami Beach, the University of Miami, Broward County and Dade County.

Co-titleholders North Dade and Miami Beach are being challenged in Class A by Homestead, Miami Club, and the Miami Herald. At the halfway mark the first four teams were tied for the lead in this extremely well balanced competition.

A new Class B loop includes groups from Miami, North Dade, and three from tiny Homestead.

Homestead dominates entries in the new Class C League as well.