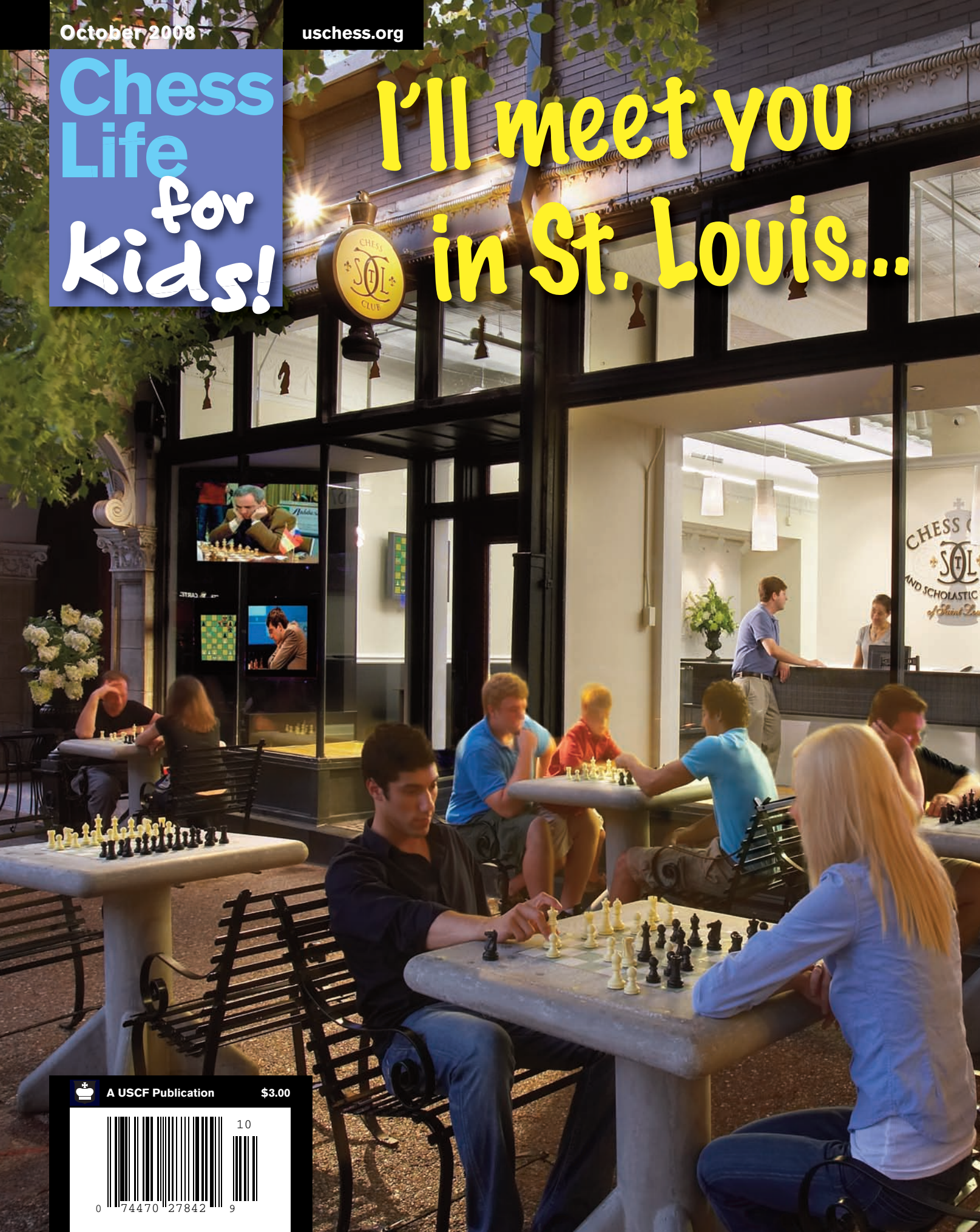


Chess Life for Kids!

I'll meet you in St. Louis...



A USCF Publication

\$3.00



10

0 74470 27842 9

Better Than Any Textbook for Learning Chess!

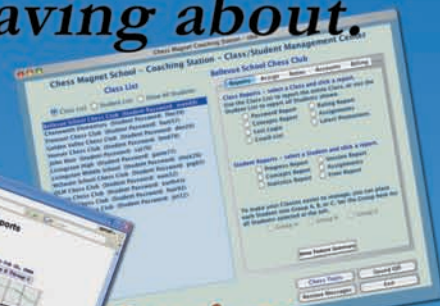
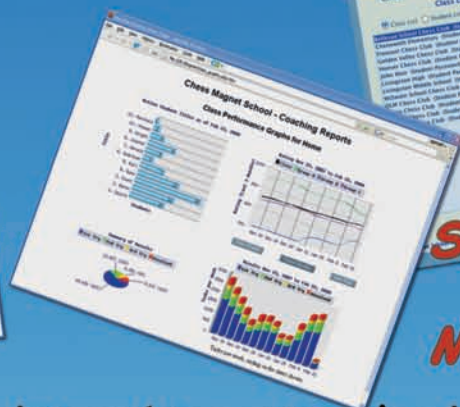
In 2006, and again in 2007,
young Chess Magnet students
from Portland, OR, scored 7-0 in the
USCF Spring Nationals.

CHESS MAGNET SCHOOL

The interactive training program
that coaches and parents are raving about.



**Student
Training**



**Student
& Class
Management**

"Chess Magnet School was integral to our team's winning."

- Mike Hosford, Coach, Alcott Elementary

2008 Washington State Elementary Grades 4-6 Champions

"Great stuff! I just delivered my first Belgian champion under 10 and
boosted his development by using Chess Magnet School."

- Ton Montforts, Coach, Schaak Academie Limburg, Belgium

Start Your 30-day Free Trial Today!
at
www.ChessMagnetSchool.com

	1 month	3 months	1 year	1 yr USCF
Individuals	\$6.95	\$15.00	\$29.95	\$26.95
Class/Family	\$6.00	\$12.00	\$25.00	\$22.00

Free to teachers/coaches of at least 5 students
Includes our powerful, easy-to-use Coaching Tools & Reports

Works on Windows and Macintosh
computers (requires internet access)

To learn more, call 650-284-5062
877-378-4319 (US toll-free)
email info@ChessMagnetSchool.com



October 2008

Chess Life for Kids!

Vol. 3, No. 5

Publisher

USCF Executive Director: Bill Hall

bhall@uschess.org

Scholastic Director: Jerry Nash

jnash@uschess.org

Scholastic Editor: Glenn Petersen

gpetersen@uschess.org

Art Director: Cat Connor Spradlin

catseyephoto@mac.com

Editorial Asst./Copy Editor: Alan Kantor

akantor@uschess.org

Editorial Assistant: Jennifer Pearson

jenpearson@uschess.org

Advertising Manager: Ray West

rwest@uschess.org

Tournament Life: Joan DuBois

tia@uschess.org

Director of Publications: Daniel Lucas

ducas@uschess.org

CONTRIBUTORS: Send your contributions and articles to *Chess Life for KIDS*, PO Box 3967, Crossville, Tennessee 38557 or better yet, e-mail to gpetersen@uschess.org.

Chess Life for KIDS (USPS 023-567, ISSN: 1932-5894) is published in February, April, June, August, October, and December of every year by the United States Chess Federation, 137 Obrien Drive, Crossville, Tennessee 38555. Periodic postage paid at Crossville, Tennessee.

CHANGE OF ADDRESS: Be sure to notify us at once of any change of address. Please include your old address and your new address, along with your USCF I.D. number.

POSTMASTER: Send address changes to USCF, PO Box 3967, Crossville, Tennessee 38557.

Annual Scholastic Membership

Age 12 and under is \$17 per year. Annual subscription rate is \$18.00. \$13.00 of every membership goes towards providing *Chess Life for KIDS*. Entire contents copyright 2008, United States Chess Federation.

Teachers may photocopy instructional articles for classroom use, but republication or widespread copying without the written consent of the USCF is forbidden.

Table of Contents

POW! ZOOM!.....	4
ARABIAN KNIGHTS BY RICK KENNEDY.....	5
OPENING TRICKS AND TRAPS BY GM SUSAN POLGAR.....	6
ASK GM EVANS BY GM LARRY EVANS.....	8
THE CHESS DETECTIVE BY NM TODD BARDWICK.....	9
MY FAVORITE KING AND PAWN ENDINGS BY PETE TAMBURRO.....	10
HOW TO BURST THE WORST (OPENINGS)! BY PETE TAMBURRO.....	12
ZARIA BY ROZ KATZ.....	13
I'LL MEET YOU IN ST. LOUIS.....	15
CONTEST WINNERS: PUTTIN' ON THE FRITZ!.....	16
JUNIOR GRAND PRIX STANDINGS.....	17
THE CHESS REPORT(S) CARD.....	18
TOURNAMENT LIFE ANNOUNCEMENTS.....	21

COVER PHOTO COURTESY OF THE ST. LOUIS CHESS CENTER



Renew your membership NOW and save!

Starting December 1st,
there will be **TWO** membership categories:

PREMIUM SCHOLASTIC

(you will still receive *Chess Life for Kids* by mail): \$23 per year

REGULAR SCHOLASTIC

(online version of *Chess Life for Kids* and a newsletter three times a year): \$16 per year.

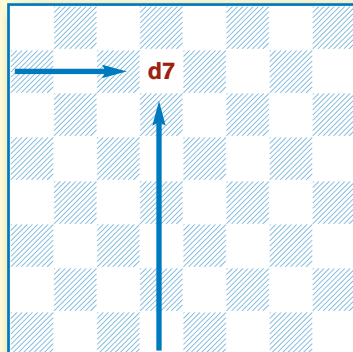
If you renew your membership before December 1st, 2008, you will still receive your magazine for just \$17 a year!

MAKE YOUR MOVE TODAY!

HOW TO Read & Write Chess

There are many different ways to write chess moves. The most popular method (described below) is called **algebraic notation**:

Each square has a name, taken from the intersection of the file (vertical or up-and-down rows of squares, which are lettered) and rank (horizontal or side-by-side rows of squares, which are numbered) the square is on. In the diagram the square on the intersection of the 7th rank and the d-file is called d7. Like in battleship!



The pieces are abbreviated by a capital letter, like this:

K: King; Q: Queen; R: Rook; B: Bishop; N: Knight.

Notice that the Knight is N, since K is reserved for the King. Notice also that pawns have no abbreviation.

A move is written by using the abbreviation for the piece that moves, followed by the square the piece moves to (1. ... Nf6). A pawn move is written as the square the pawn has moved to (1. d4). A capture by a piece is written as the abbreviation for the piece that moved, followed by an x, and finally the square the capture takes place on (8. Bxe5). A pawn capture is written as the file the capturing pawn stands on, followed by an x, and finally the square the capture takes place on (3. dxe5).

Other moves are castling kingside, which is written O-O, and castling queenside, which is written O-O-O. An *en passant* capture is indicated by *e.p.* after the move. A check is indicated by + after the move, and pawn promotion is indicated by adding () and the abbreviation for the piece the pawn promotes to. Ambiguous moves (where more than one piece or pawn can move to the destination square) are taken care of by putting an extra rank or file in to make it clear which piece or pawn moved.

Here is a sample, using the famous smothered mate trap from the Budapest Defense.

1. d4 Nf6 2. c4 e5 3. dxe5 Ng4

4. Bf4 Nc6 5. Nf3 Bb4+ (diagram A)

6. Nbd2 Qe7 7. a3 (diagram B)

7. ... Ncxe5 8. Bxe5 Nxe5 9. axb4 Nd3 checkmate. (diagram C)

x: take or capture #: checkmate

O-O: kingside castle (): promotion

O-O-O: queenside castle !: good move

+: check

?: blunder

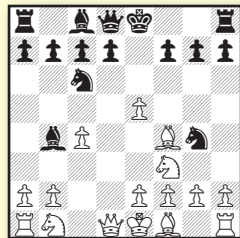


diagram A • 5. ... Bb4+

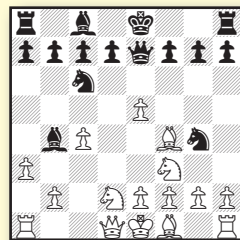


diagram B • 7. a3

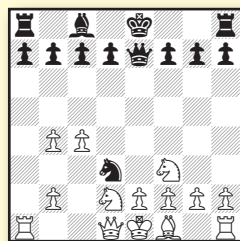
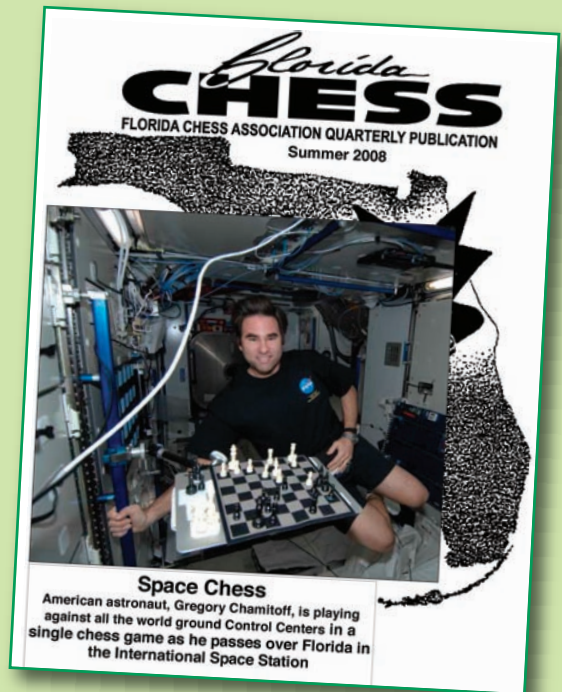


diagram C • 8. ... Nd3 checkmate

POW! ZOOM!



Almost every state has a state chess organization and a state publication. You can find your state chapter by going to www.chessjournalism.org, and clicking on LINKS. One of the best state publications is *floridaCHESS* (quarterly). It is read everywhere. The current issue features an interview with Dr. Gregory Chamitoff, an astronaut who is in space in the International Space Station!

As a result of the interview (you can read it at <http://floridachess.org/SpaceChess.pdf>), an interactive chess game will be played between Dr. Chamitoff ... and YOU! In fact, by the time most of you read this, the game will be underway! But by going to www.uschess.org, and following the instructions, you can participate in the game!

The Stevenson Elementary School in Bellevue, Washington, won this year's K-3 team championship in Pittsburgh, Pennsylvania. Four of the seven team members (Daniel Hua, Patrick Wang, Amith Vanmane, and Kevin L. Ma) will choose four candidate moves to consider. Then YOU can vote online for the move you think is the best move!

Dr. Chamitoff will make the first move with the white pieces, the K-3 champs will suggest four possible replies, and then YOU can vote and help decide what move to play with the black pieces.

If you can log on, you can be part of history in the making! Go for it!

TO THE MOON!

TALES OF THE Arabian KNIGHTS

BY RICK KENNEDY Illustrations by Pamela Key

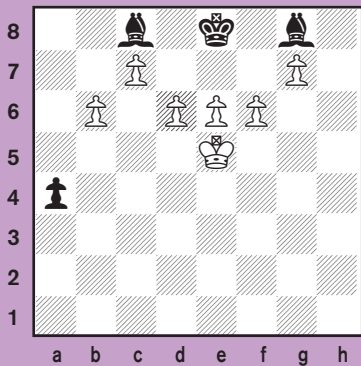


A Little Puzzle



"I am meeting with some important men soon," said the King. "I need my wits to be sharp and my mind clear. Do you have some little puzzle that will give me my thoughts a spark?"

She smiled, thought a moment, and then set the following position before him.



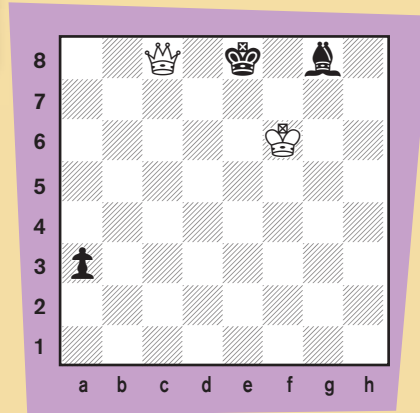
"Pawns against pieces," the King murmured, and his eyes sparkled when he noticed "and two light squared bishops!"

"The task," she told him, "is for White to checkmate the black king in six moves."

"Well, let's try 1.b7 Bxb7 2.d7 checkmate – no, no, that is hardly the best defense for Black, is it?"

The king smiled broadly and began to study the position.

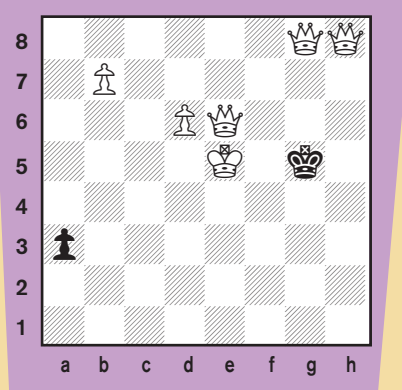
"How droll," he said presently. "What do you make of this?" and he played out on the board: **1.f7+ Bxf7 2.d7+ Bxd7 3.b7 Bfxe6 4.Kf6 a3 5.g8=Q+ Bxg8 6.c8=Q+ Bxc8 7.bxc8=Q#**



"Of course, I could have reversed my first two moves with the same result."

She coughed gently and reminded him "The task is to checkmate in **six** moves, Majesty."

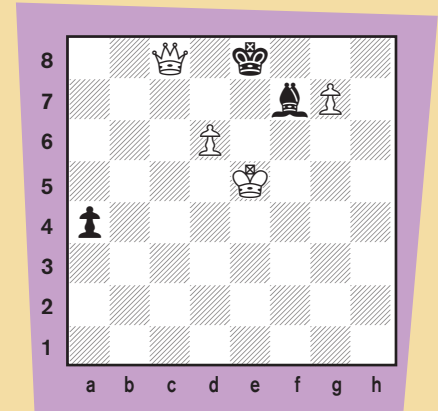
"Oh," said the King, with little loss of enthusiasm. "Well, then, let's try **1.b7** as before, although Black has the much better **1...Bcxe6**. I promote my pawn with **2.c8=Q+...** and Black slyly responds **2...Kf7** for what little good it does him: **3.Qxe6+ Kg6 4.f7+ Kh5 5.fxg8=Q Kg5 6.Qh8 a3 7.g8=Q checkmate!**"



"Oh, no" the King sighed. "That's **seven** moves again." He returned to deep thought.

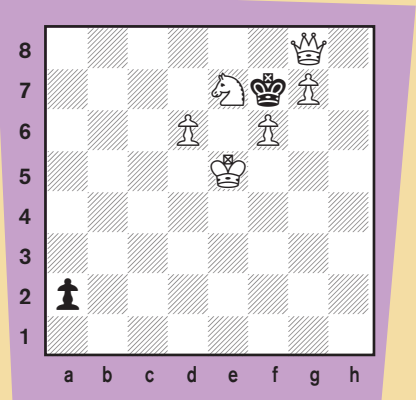
Finally, the King smiled. "At last, here it is. **1.b7 Bcxe6 2.c8=N!** The

under-promotion is the key. Of course, Black cannot take the knight, just like he could not take the queen before, because then **2...Bxc8 3.bxc8=Q+ Kf7 4.Qf5 Ke8 5.f7+ Bxf7 6.Qc8** is checkmate. In six moves."



She smiled.

"But if Black ignores the knight, it goes to e7 and brings about the enemy's downfall, like 1.b7 Bcxe6 2.c8=N a3 3.Ne7 Kf7 4.b8=Q Bc8 5.Qxc8 a2 6.Qxg8 checkmate."



"Black can try the tricky 1.b7 Bcxe6 2.c8=N Bgf7, but White simply reverses his next two moves with 3.b8=Q Bg8 4.Ne7+ Bc8 5.Qxc8+ Kf7 6.Qxg8 and checkmates as well."

Please turn to page 7 >>>>

OPENING TRICKS AND TRAPS



by GM Susan Polgar

An important opening idea

I believe that for most scholastic players (at least until one reaches 1800 rating), very little specific opening knowledge is needed. On the other hand, being familiar with as many tactical and strategic ideas in the opening as possible can be very useful. This understanding can sometimes be useful in various openings as positions can transpose.

In this column, we shall look at a famous and beautiful idea that was invented by Mr. Legal a long time ago in the 18th century.

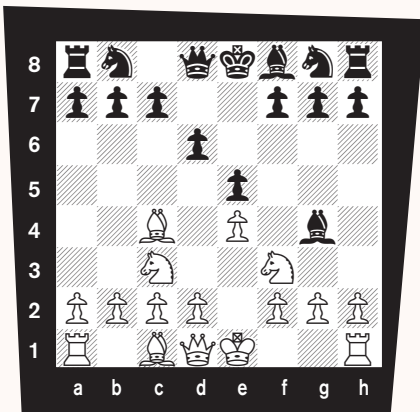
Legal's Mate

1.e4 e5 2.Nf3 d6 3.Bc4 Bg4

Pinning the knight on f3 is often a good idea in similar positions, but as a rule of thumb, I prefer to wait with it until after White castles. The reason is that until then White by playing h2-h3, Bg4-h5 and g2-g4 does not weaken the king's position as the king has not chosen yet to which side it will castle. Therefore, queenside castling would still be an option.

4.Nc3

Now Black has to be careful not to fall into the famous trap.

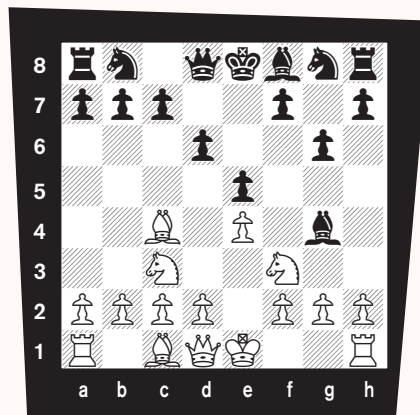


4...Nc6 would not avoid the same

trick either. 5.h3 Bh5? Of course, here Black could still avoid material loss by either trading on f3 or by retreating with the bishop on the c8-h3 diagonal. However, the whole idea of playing Bg4 was to create a pin over White's knight on f3.

And here comes the famous "Legal Mate" idea: 6.Nxe5! Amazingly White can sacrifice the queen as after 6...Nxe5 at first it seems that actually White has fallen into a trap as after (If 6...Bxd1 a forced checkmate in two follows: 7.Bxf7+ Ke7 8.Nd5#) 7.Qxh5 Black can capture White's bishop on c4 by 7...Nxc4. In this case, White has the final laugh after 8.Qb5+ forking Black's king and knight! 8...c6 9.Qxc4 and it is White, who will be up a pawn at the end of all tactics.

4...g6?

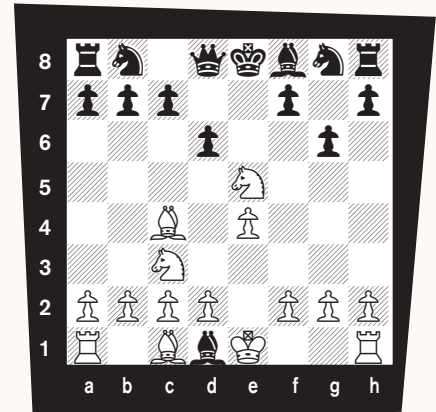


Black's best choice would have been 4...Nf6. The upcoming combination is possible due to fact that Black's light squared bishop is on an unprotected square.

5.Nxe5!! Bxd1

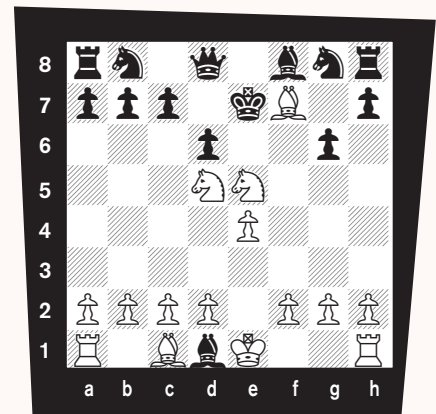
(See diagram top of next column)

This leads to an immediate loss. After 5...dxe5 White simply would capture Black's Bishop with 6.Qxg4 winning a pawn. But that would have



been Black's best option anyway at this point.

6.Bxf7+ Ke7 7.Nd5#



A picturesque gorgeous checkmate! As we shall see, the same theme can also arise from totally different openings.

Vucinic - Durovic

Yugoslavia, 1984

1.e4 Nf6 2.Nc3 d5 3.exd5 Nxd5

The game started out as an Alekhine defense, but now it resembles the Scandinavian defense more.

4.Bc4 Nb6

If 4...Nxc3 White can avoid doubled pawns (by b2xc3 or d2xc3)

thanks to the intermediate move 5.Qf3 threatening Black's f7 pawn and after 5...e6 6.Qxc3.

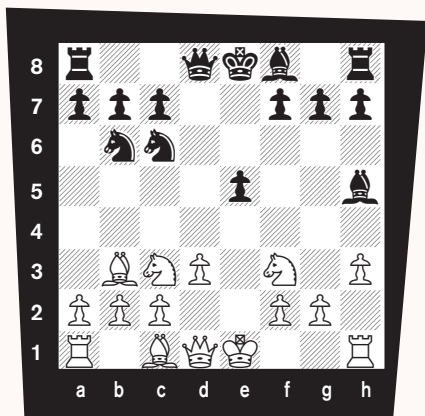
5.Bb3 e5?!

I would prefer the more solid 5...e6 lessening the power of White's light-squared bishop.

6.d3 Nc6 7.Nf3 Bg4

Generally if this kind of pin cannot be maintained (as we shall see in this game) it makes no sense to create it in the first place.

8.h3 Bh5?



Again Black should have either traded on f3 or retreated back along the c8-h3 diagonal. Now we shall see a more complex version of Legal's idea.

9.Nxe5!!

A brilliancy!! In this position, by White sacrificing his queen, he had to foresee more than ten moves ahead!

9...Bxd1

After 9...Nxe5 the answer would be 10.Qxh5 leaving Black a pawn down. It would still be better for Black than what happened in the game.

10.Bxf7+ Ke7 11.Bg5+

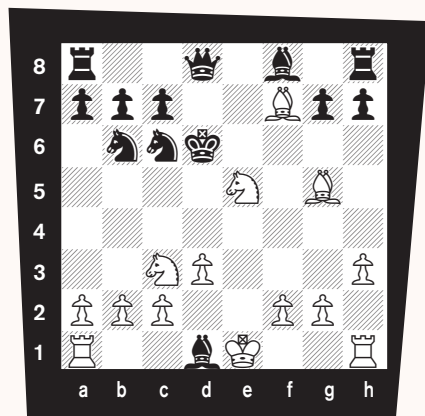
Unlike in the previous example, Nd5 does not make sense here.

11...Kd6

(See diagram top of next column)

12.Ne4+!

This is an impressive way to continue the "king-chase" by sacrificing another knight. Capturing Black's queen by 12.Bxd8? is not the right idea, as after 12...Nxe5 Black stays ahead, as both white bishops are under attack.



12...Kxe5 13.f4+ Kd4

So far so good, but White is running out of checks...and pieces.

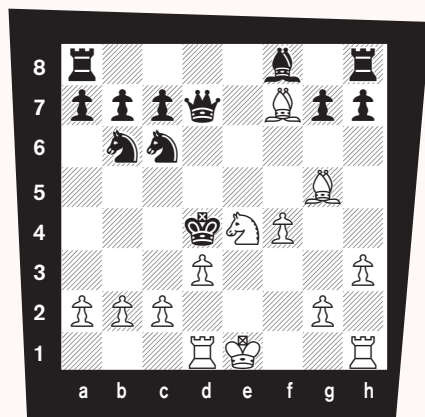
14.Rxd1!

A quiet move, being a queen down! Impressive! After 14.Bxd8 Bxc2 or 14.c3+ Kxd3 15.Rxd1+ Kxe4 Black would win easily.

14...Qxg5

In another game which reached this very same position, Black tried 14...Nb4 but White won quickly after 15.c3+ Ke3 and 16.0-0!, threatening checkmate with Rf1-e1. (But not 16.Rf1?? allowing Black to checkmate with 16...Nc2#) 16...Nxd3 17.Ng3. Another quiet move, threatening Rf1-f3 checkmate and Black resigned (Rozentalis - Mikenas, Vilnius, 1981).

If Black tries to save the queen by (for example) 14...Qd7 White can checkmate in two moves elegantly...can you see how?



The answer is: 15.c3+ Ke3 16.f5#.

15.c3+

Chasing Black's king further into

White's territory. 15.fxg5 would open up a retreat square on e5, while 15.Nxg5 opens one on c5, giving the black king the opportunity to escape safely from the middle of the board.

15...Ke3 16.0-0

This is the best choice, threatening checkmate in three with Rf3+ Ke2, Rd2+ Ke1, and Rf1 checkmate!

16.fxg5 also was good enough to win: 16...Kf4 17.0-0+ Ke5 18.d4+ Kxe4 19.Rf3 followed by Rd1-e1.

16...Qh4

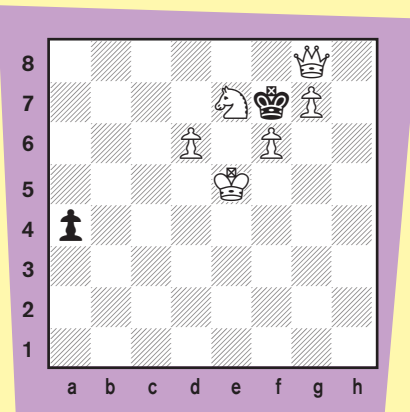
Black could have delayed the end a bit longer by 16...Nd4 but not change the end result of the game.

17.Rf3+ Ke2 18.Rd2+ 1-0

As I have often stated before, it is more important for young players to understand opening ideas rather than to memorize long variations. Also, don't forget to improve your tactics and endgame. I offer free chess puzzles daily on my blog, www.susanpolgar.blogspot.com, as well as my SPICE website, <http://www.depts.ttu.edu/spice/>. Try to solve them daily and please feel free to let me know how you are doing by sending me an e-mail at SusanPolgar@aol.com. Good luck!

A Little Puzzle

Continued from page 5



"His Majesty is clearly ready for his meeting" she said.

(The puzzle in the story was created by David Zimbeck for his recent Zimbecks Chess Puzzles.)



ASK GM LARRY EVANS!

Grandmaster Larry Evans won the U.S. Championship in 1951, 1952, 1961-62, 1968, and again in 1980!

BEST QUESTION:

QUIET MOVES

Payam Parhami
Great Neck, NY

Q: Can you recommend a book that tells us what to do in quiet, dull positions?

A: It's been said many times that tactics are what to do when there's something to do; but strategy is what to do when there's nothing to do. Improving dull positions in small ways is an art that studying the collected games of Samuel Reshevsky and Tigran Petrosian, for example, will reward. They squeezed tiny advantages out of lifeless positions, and their styles resemble a boa constrictor.

A helpful book is *The Amateur's Mind* by Jeremy Silman. It goes beyond tactics or tricks to explore positional elements. My book *What's The Best Move?* (out of print) also teaches you how to proceed in boring positions using a multiple choice quiz. I explain why it's the best move and why both alternatives are inferior.

Pairings

Dennis Uchimura
Los Angeles, CA

Q: In a recent tournament at our local club a well-known master protested being paired with a nationally top-rated 7-year

old opponent, calling him a "kindergartener." Can professionals refuse to face certain players on the grounds that it may cause their reputation embarrassment? In *Secrets I Learned From The Chess Masters* by Edward Lasker he said he was paired with chess prodigy Sammy Reshevsky and refused to play a "baby" who needed books placed on the seat of his chair to see the board.

A: You can't refuse a legitimate pairing.

By the way, a photo of 11-year-old Reshevsky graces page 209 of my book *This Crazy World of Chess* when he competed in his first tournament at New York 1922 (won by Edward Lasker) after a worldwide tour. Reshevsky finished last with one win, two losses and two draws in five games. Lasker said that after two days the boy was pale and his eyes seemed lifeless.

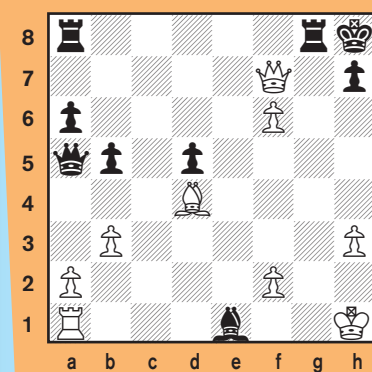
A month later his parents were charged with "undue exploitation." The case made headlines but was dismissed when the court appointed a guardian to oversee the boy's education. His benefactor was Julius Rosenwald, founder of Sears & Roebuck. Sammy finally attended public school at 12 and later graduated from the University of Chicago. In 1935 he resumed his chess career at Margate, England, where he created a sensation by taking first in a field of 10 ahead of the legendary Jose Raoul Capablanca.

A Spectacular Shot

Walt Donovan
Saratoga, CA

Q: I am requesting a copy of one of your old problems that I used to have up on my refrigerator door to admire. It was the most educational one I ever had the pleasure to solve. Since my daughter is taking up chess, I thought that showing it to her would be great, so that's when I started looking for it and discovered it was lost.

A: Unlike a composed problem, this diagram arose between two amateurs in a real game (Christie-Kurzdorfer, New York 1986). White's initial move was easily the most spectacular shot I saw in a long time. When presenting this game in *Chess Life* I foolishly added: "How many computers would solve this move, I wonder?"



White Mates in 4

The question should have been: "How many seconds does it take?" I was deluged with letters from readers saying it took their machine a split second to solve. **1.Qe8!! Raxe8 2.f7+ Re5 3.Bxe5+ Rg7 4.f8=Q mate.**

ASK A QUESTION: If you have a question for GM Larry Evans, send it to gpetersen@uschess.org. GM Evans will choose the Best Question for the next issue. --The Best Question winner will receive a copy of *This Crazy World of Chess*.

DISCOVERED CHECK and DOUBLE CHECK



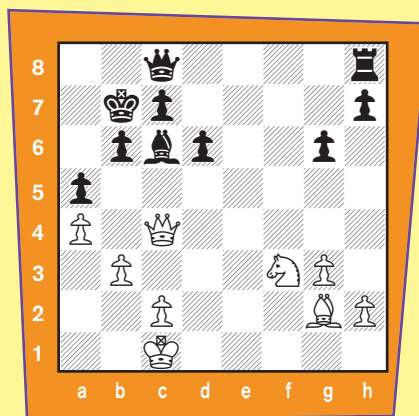
One of the rarer types of tactics that you don't see nearly as often as pins and forks is called the discovered check. A discovered check occurs when a player moves a piece that reveals a hidden piece behind it that attacks the enemy king.

Double check is a more dangerous form of a discovered check where not only the hidden piece attacks the king, but also the piece that moves. Double checks force the king to move because capturing or blocking one of the checking pieces is not possible as the other piece also attacks the king.

Masters love to set up double checks because of their awesome checking power with two pieces suddenly attacking the enemy king.

Here is a position from a game from Erevan played in 1936 with White to move.

Manvelian



Kasparian

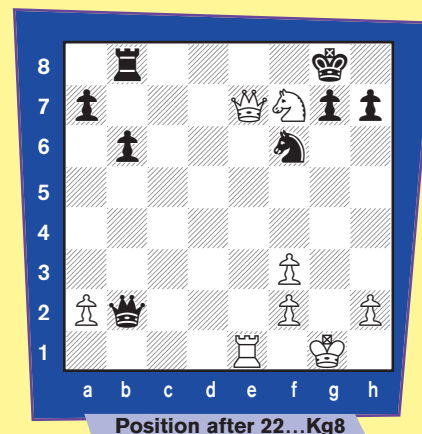
Starting with material, Black is ahead by an Exchange and a pawn. If the queens were to trade, Black would win easily. Both light-squared bishops, a knight and a king are on the h1-a8 diagonal. Whenever you observe pieces lined up on the same diagonal, rank, or file, you should note that tactical discovery possibilities exist.

White sets up the double check by playing **1.Qxc6+!** Black must recapture the queen (or be in big trouble after 2.Nd4), bringing his king into center of the board. White is running out of attackers, but they are perfectly positioned! The game continued

1...Kxc6 2.Ne5++ Kc5 3.Nd3+. White drives Black's king towards him, away from his friends. **3...Kd4 4.Kd2!** Resigns as 5.c3 mate cannot be stopped!

Here is a critical position from game 10 of the 2000 World Championship match between Garry Kasparov and Vladimir Kramnik.

Kasparov



Position after 22...Kg8

Kramnik

Kramnik sets up a trap and a discovered check by playing **23.Qe6!** Kasparov replied **23...Rf8?**

Kramnik demonstrates the power that a queen and knight have attacking the king using a discovered check. **24.Nd8+ Kh8 25.Qe7** Black resigns. The rook can't escape. After 25...Rg8 26.Nf7 is mate. If 25...Kg8, White would play 26.Ne6 Rf7 27.Qd8+ Rf8 28.Qxf8 mate.

Discovered checks and double checks don't always work, but whenever the possibility of creating one exists, be sure to spend extra time to carefully consider the options.

Todd Bardwick

is the author of

**Teaching Chess in the 21st Century
and Chess Workbook for Children.**

He can be reached at www.ColoradoMasterChess.com

MY FAVORITE KING AND PAWN ENDINGS FOR STUDENTS

by Pete Tamburro



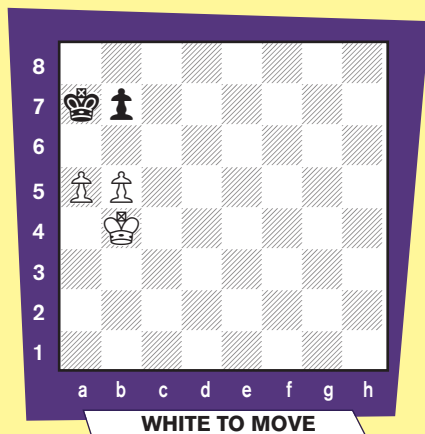
So far, we have looked at king and pawn vs. king, and king and pawn vs. king and pawn, and have found that these endings can be very tricky.



Every chess teacher will tell students that they have to learn the key king and pawn endings and the key rook and pawn endings in order to grow as chess players. These endings are the most common in chess.

The essential idea of all king and pawn endings is to either get down to the winning king and pawn vs. king ending or to queen a pawn somehow before that. These endings are as tricky as their cousins we studied in the last two articles.

In ending number one we have:



If you have been reading our previous articles, you know two things are important: don't stalemate Black and when you're with king and pawn vs. king, be aware of the opposition and keeping it. White wins in all variations:

1.Kc5 b6+

A clever try at tricking White. If White falls for: 2.axb6+ Kb7 3.Kb4 Kxb6, we have a draw! However, White sees right through this and plays:

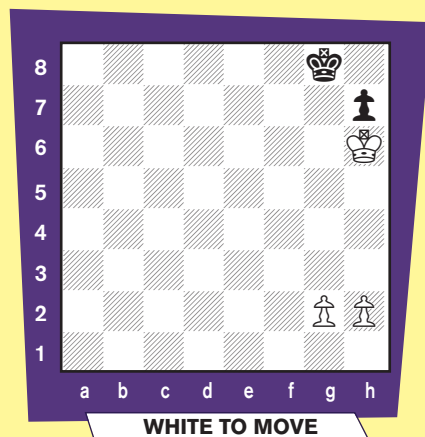
2.Kc6 which is followed by **2...bxa5 3.Kc7 a4 4.b6+ Ka6 5.b7**

a3 6.b8=Q a2 7.Qa8+ and wins the pawn.

What happens if Black doesn't check? What would you play against 1...Kb8 or 1...Ka8? If Black plays:

1...Kb8 2.Kb6 Ka8 (2...Kc8 3.Ka7 3.Kc7 Ka7 4.a6 bxa6 (4...b6 5.Kc6) 5.b6+ and wins, as above or 1...Ka8 2.Kb6 Kb8 3.a6 bxa6 4.Kxa6 Ka8 5.b6 Kb8 6.b7.

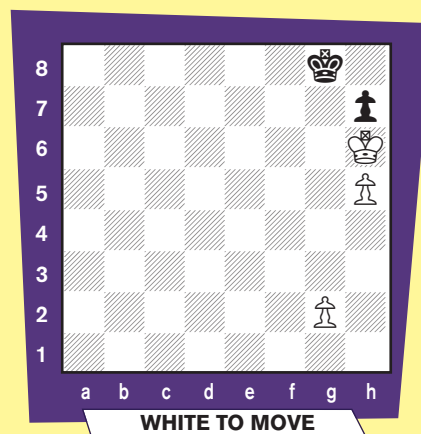
You can see how important gaining the opposition was in that last line. One move can make a difference in this kind of ending. The two on one pawn ending I saw as a kid was in *The Art of Chess* by James Mason, revised by Fred Reinfeld.



You can learn a lot from this position. You know that the black king is just going to shuttle between g8 and h8, and at some point you will have white pawns on h5 and g5. Then, you have to push the pawn to g6, and, after he takes, you recapture and ... hmmm, what square will the king be on?

If it's on g8 after the exchange, you win. If it's on h8, you only draw. So, how do you figure it out? Well, you

count it out! In this position, after you've moved the h-pawn as far as you have, this is your time to make the right decision:

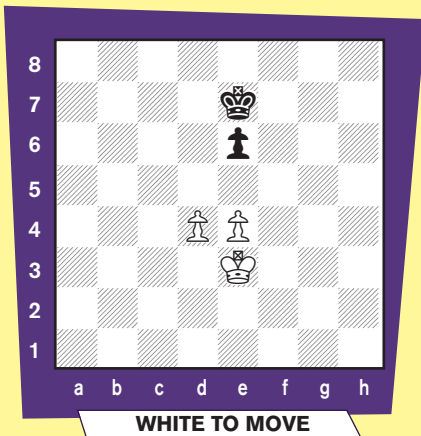


What I learned many years ago, by counting it out, was that if the king was on g8 when I reached this position, I would be more cautious and play g3, and if the king was on h8, I would be more bold and play g4.

Here's how it works out:

1.h4 Kh8 2.h5 Kg8 3.g3 (3.g4 Kh8 4.g5 Kg8 5.g6 hxg6 6.hxg6 Kh8 7.g7+ Kg8 and draws) **3...Kh8 4.g4 Kg8 5.g5 Kh8 6.g6 hxg6 (6...Kg8 7.g7 Kf7 8.Kxh7) 7.hxg6 Kg8 8.g7.**

The next diagram looks pretty common. It can be. There are two items to pay attention to here: the opposition and the move e5. You want to restrict Black with the e5 move because your pawn then controls the key f6 and d6 squares. You can't play d5 because the exchanges lead to a drawn position you already know about. The big thing with e5 is that if you play it at the wrong time you may give the opposition to your opponent who will save the draw. Let's look:



1.Kf4 Kf6 2.Kg4

The pawn move won't work now because Black would gain the opposition: 2.e5+ Kf7 3.Kg5 Kg7.

2...Kg7

If Black goes for the opposition right away with 2...Kg6, then White gets it back with 3.e5 Kg7 4.Kg5 Kf7 5.Kh6 Kf8 6.Kg6 Ke7 7.Kg7 and the black king is forced off the defense of his pawn.

3.Kg5 Kf7 4.Kh6 Kf6

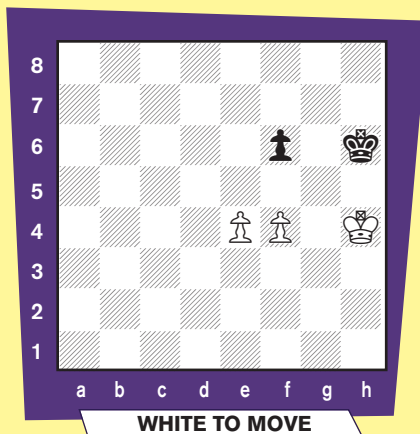
And, again, Black tries to get the

opposition, but White has that pawn move in reserve. This is very important to remember.

5.e5+ Kf5 6.Kg7 Ke4 7.Kf6 Kd5 8.Ke7 Kxd4 9.Kxe6

And White wins.

Let's say we move everybody over a little in our starting diagram. We do it because now we have a position with a little less space:



The same ideas as this last diagram are in effect. Watch how it works:

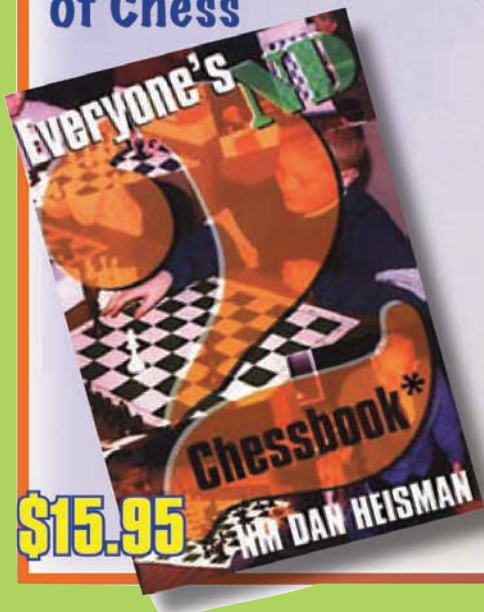
1.Kg4 Kg6 2.Kf3 ...

Wrong moves to make: 2.e5 fxe5 3.fxe5 Kf7 4.Kf5 Ke7 5.e6 Ke8 6.Kf6 and the tempting 2.f5+ Kf7 and White can't break Black's hold on the opposition. If you contrast this with the f5 line that is played, you learn that the strong pawn advance should only be played when necessary to gain the opposition. If you play it too soon, Black then can plan his "opposition defense." If you hold onto the move to play it when Black does have the opposition, then you gain the opposition and win. But you shouldn't do it until the black king is in a defensive position with no moves to spare.

2...Kf7 3.Ke3 Ke7 4.Kd4 Kd6 5.f5

And wins. And you should know how from here. As you can see, understanding what the opposition is and how to gain it are the most important skills you can have as a chess player when you reach a king and pawn ending. And you will.

An Introduction to the World of Chess



CHES

Wanna get good?

Who doesn't?

Wanna Get GREAT?

"Check" out these books.

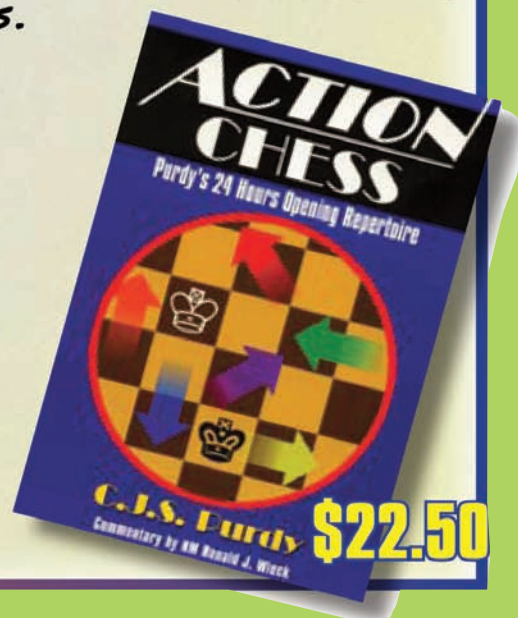
Satisfaction Guaranteed

Add \$3.00 each for S&H

PayPal, MC, Discover, and Visa accepted.

available from booksellers or **Thinkers' Press, Inc.**
1524 LeClaire, Davenport, IA
52803 • 563-271-6657
bob@thinkerspressinc.com

"Action Chess" for Where to Go Next!



How to BURST the Worst (Openings)!

By Pete Tamburro

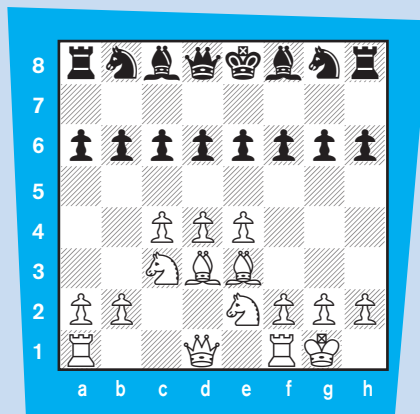
In past CL4K articles, we have talked about early mistakes players can make in the opening.

For example, **1.e4 e5 2.Nf3 f6? 3.Nxe5!** Sometimes these openings actually show up in grandmaster play. One of our U.S. champions, GM Hikaru Nakamura, startled the chess world by playing **1.e4 e5 2.Qh5?!** In both these cases, you can't take it for granted you're going to win if your opponent plays these bad moves. You still have to play a whole chess game!

This time around we picked some of the worst openings. What do you do if your opponent is really bad?

Let's take a look at the first eight moves of a truly bad opening for black. When my sons and I were at the U.S. Open in Chicago in 1994, we ran into one of our chess friends, Mike Wojcio, at the airport. Mike came by and played, just for the fun of it, an opening for black that mystified my oldest son. He knew it was bad, but didn't know quite how to deal with it.

The first eight moves were actually played by Black, and our recommendation on how White should have reacted is pictured on the other side of the board. Here are the moves: **1.d4 h6 2.e4 g6 3.Bd3 f6 4.c4 e6 5.Ne2 d6 6.Nbc3 c6 7.Be3 b6 8.0-0 a6** and here is the diagram:



There are a couple of things you should notice here. Black hasn't developed one piece! There is no safe place for Black to castle; however, we've actually seen people play the rooks to h7 and a7 and then slide both over to guard the king.

Other than these problems, what is Black's weakest square? What pawn is not protected? What would White's best move here be? Right! The pawn on g6 is weakest and White could play either 9.e5 or 9.Nf4 to start an attack on Black's weakest point.

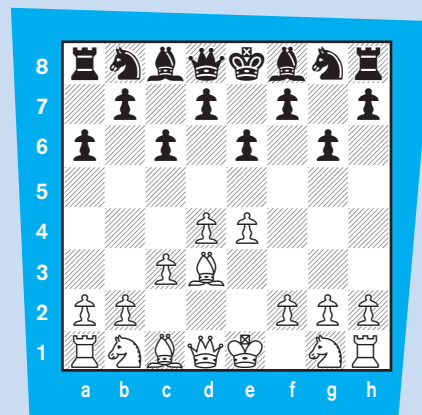
Look at what we have White doing: putting some center pawns on the fourth rank to gain space; placing the minor pieces on good squares in the center (notice how the bishop on d3 is ready to attack g6); castling quickly. You should have a question or two right now: why do you put the knight on e2 rather than f3? Why did you move the c-pawn rather than the f-pawn?

We put the knight on e2 to prepare for castling and the move f4 with the rook directly behind it. We want the c-pawn out there to help the other pawns attack the black front line. Players who play these "hedgehog"

positions will try to avoid pawn exchanges, so every chance you get you want to swap pawns to open lines. The knight on e2 also allows you to play Ng3 to aid the move f5 and to open a diagonal for your king. This is called strategy. You put pieces on certain squares to cooperate with some later action with your other pawns and pieces. That's planning and teamwork!

There are other funny pawn move defenses that we've seen that are related to this. This could be called the "checkers defense."

This line goes **1.e4 e6 2.d4 g6 3.c3 c6 4.Bd3 a6** and we have the following diagram:



Black looks like his pawns are ready to play checkers. Really strong players avoid this kind of defense because it leaves Black with weak dark squares. In other words, no pawns defend a single dark square, and White can use these dark squares to travel on without worrying about the black pawns.

Black will play Bg7 and probably d5 at some point, followed by a Nh6 and maybe a Nf5 later if you move your e-pawn.

VIRTUAL CHESS OPENINGS

www.chessopenings.com

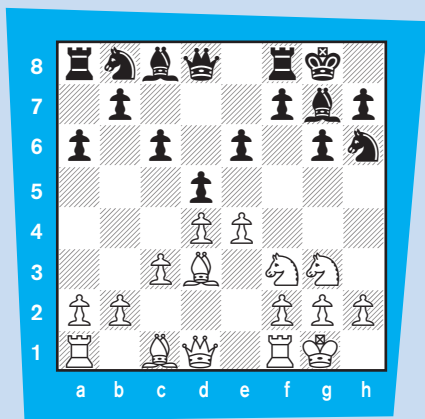
The most comprehensive chess opening reference in the world!

Although bad, this defense is playable. How should you meet it? There's something different in the second diagram. The pawn is on c3 instead of c4. Why?

The reason is the black bishop going to g7. White can defend with a pawn instead of a piece, which we want to use in the attack. White will play Ne2 and Ng3 to support f5 as a move. The other bishop will head to e3 and the queen to d2. The white queen knight will head to a3 only because d2 and c3 are occupied.

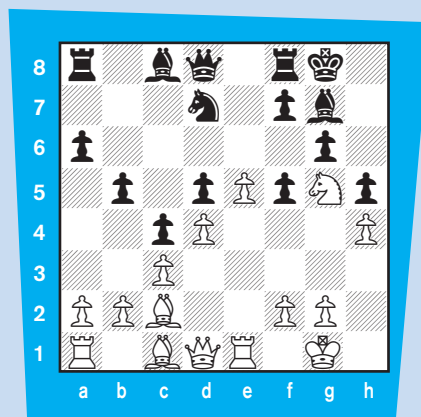
The trick is that Na3, normally a bad idea, is good here because you will then go to c4 or c2 and then to e3 to aid in the attack in the center or the kingside because Black will probably castle there. Because Black is not challenging you in the center, you have time for this knight maneuver.

If and when Black plays d5, should you take the pawn, advance your e-pawn or defend your e-pawn? If Black plays d5 early, then you can go another way with your knight: **1.e4 e6 2.d4 g6 3.c3 c6 4.Bd3 a6 5.Ne2 d5 6.Nd2 Bg7 7.Ng3 Nh6 8.0-0 0-0 9.Nf3** and you arrive at this position:



White's position is better than Black's. Except for the queen rook, all of White's pieces are ready to go over to attack the king. Let's say the game continued this way:

Black plays **9...Nd7** to support 10...e5. Now, to prevent that, White has to play **10.e5**, so Black gets his **10...Nf5** but White has someone waiting for him! **11.Nxf5 exf5**. He shouldn't play gxf5 which would open up his castled position. **12.Re1** If Black tries to open up with f6, this rook will be on the right file—an open one! **12...c5 13.h4** You don't always need a rook to push the h-pawn. Plus, the threat of h5, tearing up Black's pawns again is a real threat to Black. **13...c4 14.Bc2 h5** White has kept his bishop on the right diagonal and Black tries to prevent h5, but an even weaker dark square is created for the knight: **15.Ng5 b5**

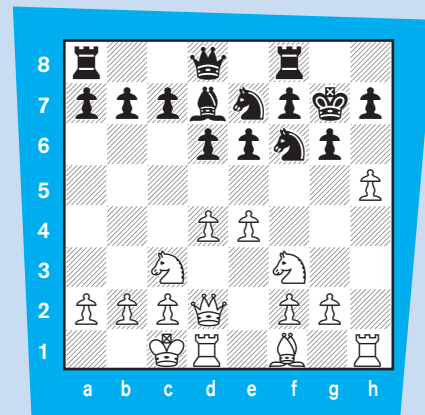


Look at this diagram and compare it with the original diagram of this game. See how much has changed? White is ready for anything and on the attack. Black is cramped and has weakened his pawns around the king.

His pawn storm on the queenside has not bothered White, who now has a winning combination: **16.Bxf5! gxf5** (all because the black knight is blocking the bishop) **17.Qxh5 Re8 18.Qxf7+ Kh8 19.Qxd5** and White has four pawns for his piece, is threatening a knight fork on f7 and can take the rook on a8 next move. It happens that quickly!

Remember what White did here. White developed with a plan, was aware of what Black was up to, and gathered his pieces on the kingside for a teamwork attack.

There is a formation you will see a fair number of times on the Internet with five-minute games. It's called the Hippopotamus. It can go a number of ways. Here's a couple of possibilities: **1.e4 g6 2.d4 Bg7 3.Nc3 d6 4.Nf3 e6 5.Bf4 Ne7 6.Qd2 Nd7 7.0-0 0-0 8.Bh6 Nf6 9.Bxg7 Kxg7 10.h4 Bd7 11.h5** and if Nxh5?? 12.g4! wins the knight or the h-file for a queen check on h6.



Let's look at this position after White's 11th move and the earlier positions we looked at. You'll notice

Continued on page 14



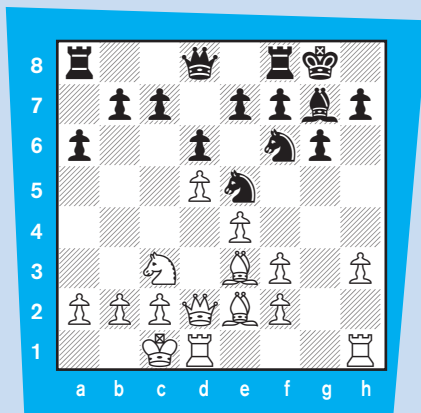
things that are similar and different.

The center pawns are still there on d4 and e4. White is castled, but on the queenside! The knights are both at their usual posts at f3 and c3. White has swapped dark-squared bishops to weaken the squares around the enemy king position. White has played h4 and h5 with the rook behind it. If Black tries to attack on the queenside with **11...a5**, White will develop his bishop to d3 after he exchanges on g6: **12.hxg6 fxg6 13.Qh6+ Kg8 14.Bd3 Rf7 15.e5 Ng4 16.Qh4 h5 17.Ne4** and White's position is overwhelming.

We showed you queenside castling because it is important for you to know that there is more than one way to go against these kinds of openings. Castling queenside and pushing the h-pawn is a time-honored way to attack a fianchettoed position.

This last game could have gone many other ways. They are all fine as long as you remember the basic principles. Here was one other possibility for us to look at. Black plays more actively by trying to get his bishop out:

1.e4 g6 2.d4 Bg7 3.Nc3 d6 4.Nf3 Bg4 5.Be3 Nc6 6.h3 Bxf3 7.gxf3 Nf6 8.Qd2 0-0 9.0-0-0 a6 10.d5 Ne5 11.Be2



White has much in common with our last diagram. The big thing to notice is that since White knew he was going to castle queenside, he took with the g-pawn on the bishop for knight exchange. He developed a plan: "I'll open the g-file to put my queen rook on g1 and then I'll have both rooks and the queen and bishop team, along with the pawns to launch

a dangerous attack." White wouldn't know how it would end or what exact moves would be played, but the set-up could be seen. He will next play f4 to chase the knight and get his rook over to g1 and push h4-h5, keeping in mind f5 as well. He might try to exchange bishops by keeping the pawn on f3 and playing Bh6.

If you take these examples to heart, you'll be ready for anything because you'll have enough ideas taken from these set-ups to create your own plan. The important thing is to stay calm. Have reasons why you make a move. Don't just develop your pieces without considering how they're going to be a team to attack the black (or white) king.

Next time out, we'll have the Black pieces, and we'll look at all the funny and sometimes dangerous openings that White can throw at you as Black.

And we'll start with the Grob Attack!



National Youth Action

November 7-9, 2008

UTB/TSC FORT BROWN MEMORIAL CENTER

600 International Blvd., Brownsville, TX 78520

HOLIDAY INN

3777 N. Expressway, Brownsville, TX 78520 • Chess rate: \$69 • (956) 547-1500

For complete details, check out the TLA on page 21, or go to www.uschess.org and follow the links for registration.

I'll Meet You In St. Louis

One of the most exciting things to happen this year was the opening of the Chess Club and Scholastic Center of Saint Louis in July.

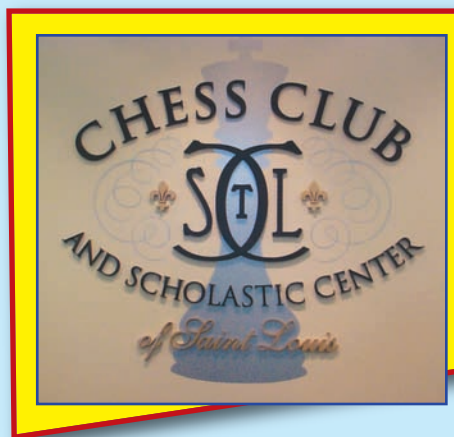
Founded by retired investment fund manager Rex Sinquefeld, the club is located at 4657 Maryland Avenue in the historic Central West End of St. Louis. So if you are visiting St. Louis, stop by for a real treat!

But if you can't get to St. Louis, you can take a virtual tour of the new facility by going to <http://www.saintlouischessclub.org/photos>. You will be absolutely dazzled by the interior of the three story building.

The stated goal of the chess club is to create a world class destination for chess players, both beginning and advanced, and to elevate the game of chess throughout the St. Louis area. And under Executive Director Tony Rich, they've already made great strides to achieve those goals.

Advanced and Beginning

The Chess Club and Scholastic Center will sponsor and host the U.S. Chess Championship in May of 2009. First place will be \$30,000 and the total prize fund will be \$100,000! All the top players—and probably some



Photos courtesy of Chess Club and Scholastic Center of St. Louis

Margaret Hua at the board.

classroom setting and after school programs. Recognizing the cognitive and behavioral benefits of chess, the Chess Club and Scholastic Center of Saint Louis aims to bring these benefits to as many students as possible through their scholastic programs. They provide financial support for existing programs and establish, at no cost, new programs at local schools currently without chess programs.

And support for beginning players is also part of their goal. Later this month (October) a full contingent of U.S. students will be participating in the World Youth Championships in Vietnam. Local player Margaret Hua, age 10, will be one of the players going to Vietnam, and the Chess Club and Scholastic Center of Saint Louis will be paying

her expenses!

So it is a great time to be living in St. Louis! "Meet me in St. Louis, Louis"* takes on a whole new meaning.

**Meet me in St. Louis*, 1904, F.A. Mills. Lyrics by Andrew B. Sterling, music by Kerry Mills. In the song, Louis is pronounced "Loo-ee." It was written for the St. Louis World's Fair in 1904, celebrating the 100th anniversary of the Louisiana Purchase. The song was again made popular by Judy Garland in 1944, in a movie of the same name.

of your coaches!—will be in St. Louis in May.

The Chess Club and Scholastic Center of Saint Louis is currently working to establish a comprehensive scholastic chess program that will bring chess into Saint Louis schools, both in the daytime





Puttin' On The



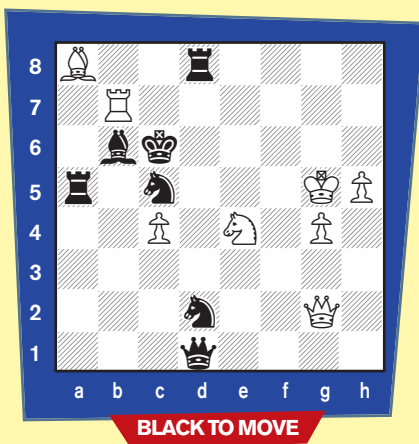
At least, I HOPE you didn't use Fritz!

Well, I learned something. You guys don't even like to HEAR the word homework during the summer. On page four of the August issue, we asked you: If both sides play perfectly, who should win, or should every game be a draw?

In other words, does White, having the first move, have a decisive advantage over Black? Or should Black be able to counter every move White makes and draw? How you answer those questions will very much decide how you play chess. Talk it over with your coach.

The overall opinion of those who responded is that, "It depends!" And I guess that's as good an answer as any. The winning essay came from **HARRISON WANG** of California, and he will receive the two book series, *Back to Basics* from Russell Enterprises.

GIVE IT A SHOT: On page 12 we asked for the LONGEST continuation of checks, resulting in checkmate.



I liked this problem by Noah Weisz because I don't think you can solve it using Fritz. The answer is 1 ... Rg8+ 2.Rg7+ Nb7+ 3.Nc5+ Ne4+ 4.Qxe4+ Qd5+ 5.Qxd5 mate.

And the book prize (*Back to Basics: Tactics* by Dan Heisman) goes to: **ANIRUDHA HADAGALI** of Michigan.

As for **Colton Payne** of Arizona: Sorry, you can't have your picture taken with my gnomes from Outer Mongolia. They are camera-shy. But they are flattered you asked!

WORK IT OUT!: The Chess Magnet School puzzles on page 21 received the most responses and the most compliments. I hope the winners have as much fun with their one year, online chess course!

You'll have to refer to the August issue for the positions, but here are the answers.

- 1. White to play and checkmate in two moves:** 1.Bg6+ Kh4 2.g3#. or 1.Bg6+ hxg6 2.Qh3#.
- 2. White to play and checkmate in three moves:** 1.Bxg5+ Kxg5 2.Qg7+ Kh5 3.g4#.
- 3. Black to play and checkmate in four moves:** 1 ... Qxg2+ 2.Nxg2 Nf2+ 3.Kg1 Nh3+ 4.Kh1 Bxg2#, or 4.Kf1 and Black can checkmate with either Bxg2 or Rf2.
- 4. The white rook reaches the target square in eight moves by:** b4, a4, a7, d7, d6, h6, h1, f1.
- 5. The white knight reaches the target square in eight moves by:** d8, e6, c5, e4, f2, h3, g1, e2.
- 6. The white bishop reaches the target square in eight moves by:** e4, b1, a2, b3, a4, b5, e2, h5.

There were so many good responses, my gnomes had to work overtime to pick seven winners. Good thing they had their eyes closed! (The winners were chosen randomly.) And the winners are:



Jessica Proctor
of North Carolina



David Patuwo
of Ohio



Tristan Pollner
of California



Andrew Rausch
of Maryland



Raffi Piliero
of New York



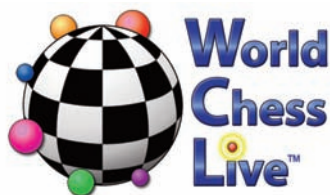
Qinhong Chen
of Pennsylvania



Dennis Bolshakov
of Colorado

I want to thank everyone who entered the contests, and I hope you all score well on the Chess Report(s) Card.

**Ask your grandparents.*



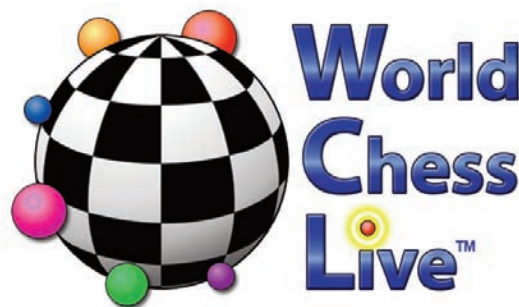
2008 World Chess Live Junior Grand Prix Overall Standings

For state leaders, please visit www.uschess.org

The following point totals reflect all rated event information as of Sept. 3 for the 2008 World Chess Live Junior Grand Prix. All Junior Grand Prix updates are unofficial and subject to change during the year or until year-end tabulation is complete. There are currently 4,408 players with JGP points. 323 JGP events resulted in points earned.

Name	State	JGP Pts.	Name	State	JGP Pts.
ZHAO, SHICHENG	VA	135	CHIANG, MICHAEL	NY	95
GIANNATOS, PETER	NC	135	GUREVICH, DANIEL	GA	95
PENA, JOEL ANTHONY U	NJ	135	LARSON, ERIC DANIEL	MI	95
PINKERTON, JAMES CARL	MD	125	OSMULSKI, MAX	NJ	95
GRAIF, WILLIAM	NY	120	DANG, MICHAEL	MI	95
SHEINWALD, NOWELL R	NY	120	SINGH, REVA SHREE	NY	90
DEJONG, ANDREW	NC	115	MALHOTRA, AKSHAY	TX	90
VIRKUD, APURVA	MI	110	BAT-AMGALAN, MARAL	CA-N	90
CACHAY, JOHN JEFFERSON	CA-S	110	CHEN, JEREMY	NJ	90
HUTTON, JACK	NY	110	SIA, DERRICK LEE	CA-S	85
LI, BRIAN S	VA	110	ROSENTHAL, NICHOLAS	FL	85
FISHER, WILLIAM	NY	105	WOODBURY, GEORGE	TN	85
SCHNEIDER, THOMAS GEORGE	WI	105	NARODITSKY, DANIEL A	CA-N	85
BODEK, MICHAEL H	NY	105	DING, RICHARD	AZ	85
AMARASINGHE, PRASHANTHA N	MI	100	TALWAR, JAMES V	NY	85
MC CLANAHAN, GAVIN JACOB	IL	100	MO, KEVIN	PA	85
MOST, ERIC M	VA	100	AGARWAL, ROHAN	CA-N	85
CHILLAKANTI, KARTIK	CA-N	100	HILTON, JONATHAN LAWRENCE	OH	85
HELLWIG, LUKE	AL	100	MATLIN, ANNA R	NJ	85
HARMON-VELLOTTI, LUKE	ID	100	CLAYTON, RYAN DANIEL	OH	80

A new family-friendly online chess service from the Internet Chess Club, is pleased to welcome our friends from the U.S. Chess Federation.



To celebrate its launch, this year WCL will be:

- Sponsoring the USCF's 2008 Grand Prix and Junior Grand Prix
- Running weekly and monthly online Grand Prix tournaments
- Giving every USCF member a free six-month subscription to WCL
- And more...

For details, go to www.worldchesslive.com/uscf

The Chess Report(s) Card

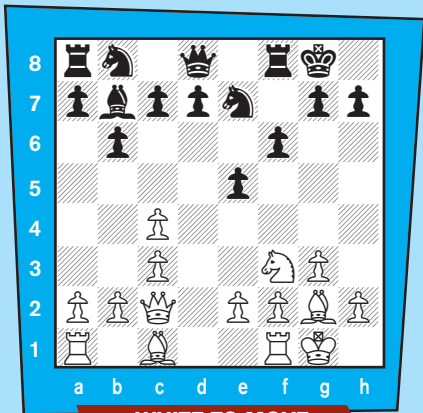


There are a gazillion books on openings. Most of them try to tell you the best move to play in a given variation or position. But do you know what to do if your opponent doesn't play the best move? Test yourself! Find the best moves in the following quiz:

(1) Buckley, Mark - Burkett, Max [A21]

CalChess Masters, Berkeley, 1983

1.c4 e5 The English Opening.
2.Nc3 Bb4 3.Nf3 Bxc3 4.dxc3 f6
5.g3 b6 6.Bg2 Bb7 7.0-0 Ne7
8.Qc2 0-0

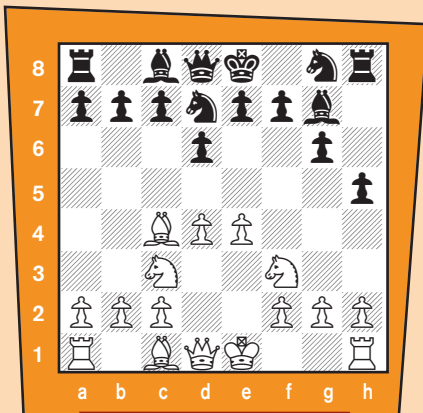


WHITE TO MOVE

(2) Brujic, Bozidar - Asanin, Z [B06]

Bela Crkva op, Bela Crkva, 1983

1.d4 d6 2.e4 Nd7 3.Nc3 g6 4.Nf3
Bg7 The Modern Defense. **5.Bc4**
h5

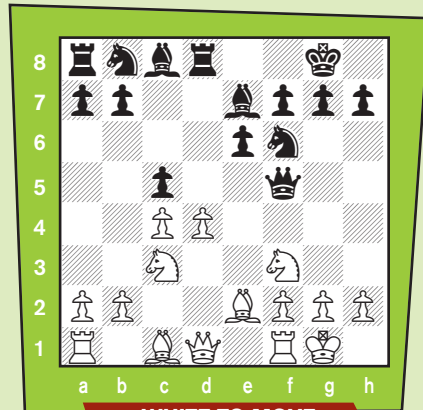


WHITE TO MOVE

(3) Lane, Gary - Flesch, Janos [B22]

Lloyds Bank open, London, 1983

1.e4 c5 2.c3 The Sicilian Defense
 Alapin Variation. **2...d5 3.exd5**
Qxd5 4.d4 e6 5.Nf3 Nf6 6.Be2
Be7 7.0-0 0-0 8.c4 Qf5 9.Nc3
Rd8 [9...cxd4 A much better move.]

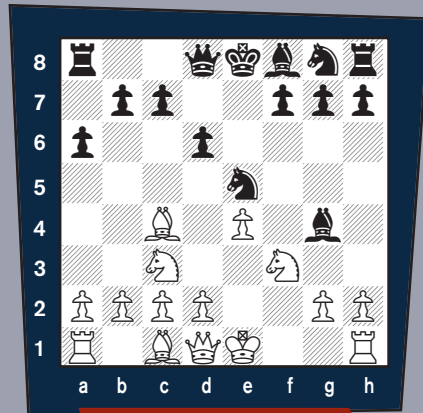


WHITE TO MOVE

(4) Pillsbury, Harry Nelson - Fernandez [C25]

Paris simultaneous, Paris, 1900

1.e4 e5 2.Nc3 Nc6 3.f4 The Vi-
 enna Game. **3...d6 4.Nf3 a6 5.Bc4**
Bg4 6.fxe5 Nxe5

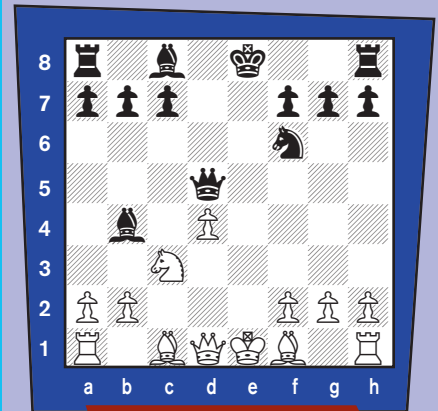


WHITE TO MOVE

(5) Smith, Stephen - Cohn, Erich [C44]

Germany, 1902

1.e4 e5 2.d4 The Danish Gambit.
2...exd4 3.c3 d5 4.exd5 Qxd5
5.Nf3 Nc6 6.Nxd4 Nxd4 7.cxd4
Nf6 8.Nc3 Bb4



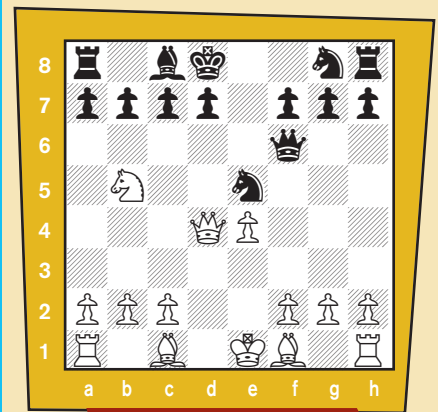
WHITE TO MOVE

(6) Capablanca, Jose Raul - Adams, Edward [C46]

Skittles,

Washington, DC, 1909

1.e4 e5 2.Nf3 Nc6 3.Nc3 The
 Three Knights. **3...Bc5 4.Nxe5**
Nxe5 5.d4! The usual antidote.
5...Bxd4 6.Qxd4 Qf6 [6...d6 is to
 be preferred.] **7.Nb5 Kd8**

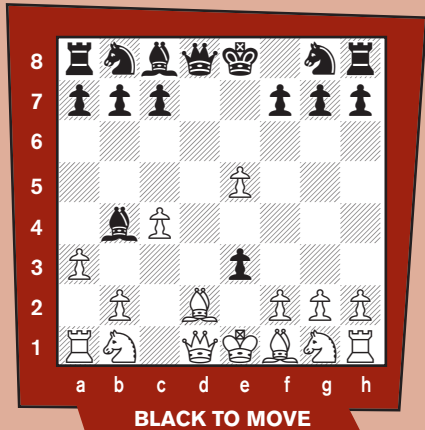


WHITE TO MOVE

(7) White - Black [D08]

A classic Albin win, Timaru (11)

1.d4 d5 2.c4 e5 3.dxe5 d4 4.e3 Bb4+ 5.Bd2 dxe3 6.a3? A classic loser in the Albin Counter Gambit. [6.fxe3 This is better, but it leaves White's pawns a mess.]

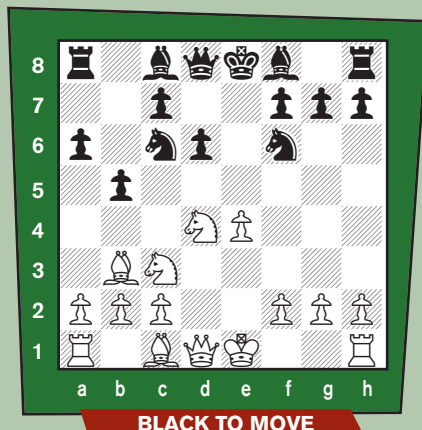


BLACK TO MOVE

(9) White - Black [C77]

Noah's Ark Trap

1.e4 e5 2.Nf3 Nc6 3.Bb5 A Ruy Lopez. **3...a6 4.Ba4 Nf6 5.Nc3** [5.0-0 Probably the most common, but 5. Nc3 is okay if White follows up correctly.] **5...d6 6.d4 b5 7.Bb3** [7.dxe5 Considered "best."] **7...exd4 8.Nxd4?**

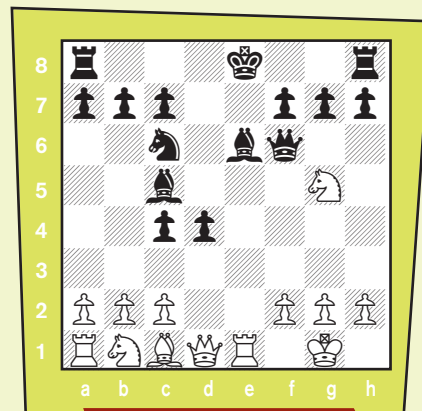


BLACK TO MOVE

(11) White - Black [C56]

Two Knights Defense Trap, The Hague

1.e4 e5 2.Nf3 Nc6 3.Bc4 Nf6 4.d4 exd4 5.0-0 Bc5 The infamous Max Lange Attack! **6.e5 d5 7.exf6 dxc4 8.Re1+ Be6 9.Ng5 Qxf6?**

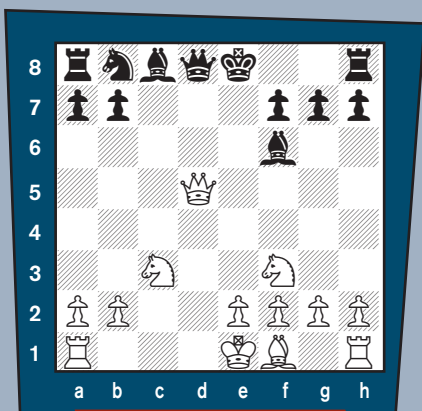


WHITE TO MOVE

(8) Miles,EJ - Gyles,Alfred [D50]

New Zealand Championship, Napier, 1912

1.d4 d5 2.c4 e6 3.Nc3 Nf6 A Queen's Gambit. **4.Nf3 c5 5.Bg5 cxd4 6.Qxd4 Be7 7.cxd5 exd5 8.Bxf6 Bxf6 9.Qxd5?**

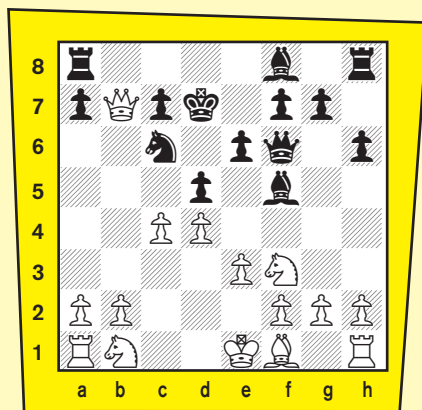


BLACK TO MOVE

(10) Oskam,Gerard - Euwe,Max [D03]

The Hague, 1919

1.d4 d5 2.Bg5 Queen's Pawn Trompowsky. **2...Bf5 3.Nf3 Nf6 4.e3 e6 5.c4 h6 6.Bxf6 Qxf6 7.Qb3 Nc6?** Now the house falls down. Black will be a future world champion! **8.Qxb7 Kd7**

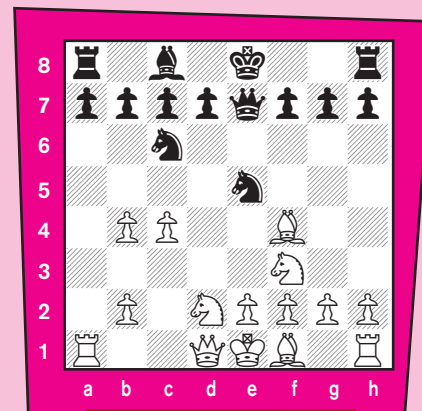


WHITE TO MOVE

(12) White - Black [A52]

The Budapest Gambit, The Hague

1.d4 Nf6 2.c4 e5 The Budapest Gambit. **3.dxe5 Ng4 4.Bf4 Bb4+ 5.Nd2 Nc6 6.Ngf3 Qe7 7.a3 Ngxe5 8.axb4?** Why would Black give up his Bishop so easily?



BLACK TO MOVE

The positions were provided by Bob Long of Thinker's Press (www.chessco.com). When you have all 12 answers (and follow-up moves), send them to: gpetersen@uschess.org. We'll have a drawing and choose five correct entries to receive *The Chess Reports, First Semester*, a 13-week series of online chess lessons.

2008 NATIONAL SCHOLASTIC K-12 CHAMPIONSHIP



DECEMBER 12-14, 2008
DISNEY'S CORONADO RESORT

1000 W. BUENA VISTA DRIVE • LAKE BUENA VISTA, FL 32830
RESERVATIONS: 407-939-1000 • GROUP RESERVATIONS: 407-939-1020

Opening Ceremony 12/12 Friday: 12:30pm

Rounds Friday: 1pm, 6pm
Saturday: 10am, 2pm, 6pm
Sunday: 9am, 1pm

Awards Ceremonies Sunday: 4:30pm (K-1) & 5pm (Approx.)

Special round times for K-1 sections Friday: 1:30pm, 5:30pm
Saturday: 9:30am, 2:30pm, 5:30pm
Sunday: 9:30am, 1:30pm

On-site registration 12/11: 9am-10pm
12/12: 8am-Noon
Players registering late (after 10am Friday) may not be paired for round 1, will receive a 1/2 point bye, and will begin play round 2.

SIDE EVENTS

Bughouse: Thursday: 11am
On-site entry only Thursday, 9am until 10am
\$25 per team.

Blitz: Thursday: 5pm
On-site entry until 4pm • Entry in advance \$15 by 11/28 • \$20 after 11/28 or On-site • Register at www.uschess.org/tournaments/2008/K12

Simul: TBA
Register on-site only.

Team Rooms are limited!
contact Cheryle Bruce
cbruce@uschess.org • 931-787-1234 ext.147

7SS, G/90, 13 sections: Play only in your grade. December Rating Supplement will be used. Team Score = total of top three (minimum two) finishers from each school per grade. First place individual and team will be National Champion for their grade.

Awards: Trophies to top 10 individuals & top five teams in each grade (minimum). Many other class prizes. Every player receives a commemorative item!

Blitz: Trophies in K-6 and K-12 sections, individual and team.

Bughouse: Trophies to be announced.

Name _____ USCF ID # _____ Rating _____

Address _____ City _____ State _____ Zip _____

e-mail Address _____

School _____ Grade _____

Bye Requested: Rd. 1 2 3 4 5 6 1/2-pt bye available if requested in advance (except rd. 7)

USCF Membership Dues: Please go to www.uschess.org for appropriate membership category and rates.

Entry Fees: \$40/participant postmarked by 11/11, \$60/participant postmarked by 11/28, \$75 after 11/28 or \$80 on site. (Add \$5 for phone entry.)

Blitz entry: \$15 until 11/28 or \$20 after 11/28 or on-site.

Amount Enclosed: Entry Fee \$ _____ Blitz \$ _____ USCF Dues \$ _____ Total Enclosed \$ _____

In advance: Make checks payable to: U.S. Chess Federation (USCF).

On site: Make payments in Cash, by Money Order, or Credit Card.

MASTER CARD DISCOVER AMEX VISA V-Code (last 3 digits on the signature line) _____

Number _____ EXP. ____ / ____ SIGNATURE: _____

Registration information: USCF membership is required and must be current. You may pay USCF membership with your entry. Adult: *Please check our website (uschess.org) for Adult and Young Adult options.* Advance entries must include player's name and all fees to be accepted. Roster changes are considered new entries and will be charged according to date received. List name, address, phone, section, grade, school (even if no team), coach's name, e-mail, birth date, USCF ID #, USCF expiration (enclose USCF dues if necessary) and rating. Players must be eligible to play in accordance with USCF Scholastic Regulations. Please bring clocks. Ent: "K-12 Champ.," c/o USCF, PO Box 3967, Crossville, TN 38557-3967. For more info or to register online: www.uschess.org. Please make all checks payable to USCF.

Tournament Life

Tournament Life Announcements

OCTOBER 15 THROUGH DECEMBER 14

Scholastic Members:

As a service to you, we are listing upcoming National USCF rated events, and requested events of possible interest to you. You can always log in to www.uschess.org, and click on "Clubs and Tournaments." Then click on "Upcoming Tournaments" for a complete listing of upcoming rated events and details. As always, you can check out the TLA section of *Chess Life*.

Organizers and Tournament Directors:

If you would like your tournament listed here in *Chess Life* for KIDS for December (events to be held after December 14), the deadline for submitting your announcements is October 10th. The deadline for the February issue is December 10th. The processing fee is \$1.00 per line for the first eight lines, \$2.00 for every line thereafter. Send your announcements to tl@uschess.org. Display advertising is also available. Advertising rates are posted on the USCF website, www.uschess.org, or you may email: tl@uschess.org or rwest@uschess.org for complete details.

NATIONALS

Nov. 7-9, Texas 2008 National Youth Action

95S, G/30, UTB/TSC Fort Brown Memorial Center, 600 International Blvd., Brownsville, Texas 78520. **Four Sections** – K-3, K-6, K-9, K-12. **Entry Fee:** \$40 by Oct. 11; \$60 by Oct. 25; \$75 after Oct 25 or on site. **Awards:** Individual: 1st-25th Place in each section (K-3, K-6, K-9, K-12). Class Awards: 1st-3rd Place, K-3: U800, U600, U400, Unr. K-6: U1000, U800, U600, Unr. K-9: U1200, U1000, U800, Unr. K-12: U1400, U1200, U1000, Unr. **Teams:** 1st-15th Place in each section. **Schedule:** Opening Ceremony Sat., Nov 8 at 9:30 am. Rds. 1-5 Sat., 10 am. **Side Events:** Blitz Tournament – Fri, Nov 7, K-6 & K-12, 6:30 pm, EF \$15 if p/m by Oct 11, \$20 after or on site. Registration closes at 5 pm, Fri, Nov 7. **Bughouse Tournament** – Sat, Nov 8, 6:30 pm. Registration on site only, closes at 5 pm, Sat., Nov 8. One section only, K-12. **Blitz Awards:** Individual: 1st-20th in each section. Team: 1st-10th in each section. **Bughouse Awards:** 1st-10th Place. **Awards Ceremony for Blitz and Bughouse:** Sun, 9 am. **NYA Awards Ceremony:** Sun, Nov 9, 5:30-7 pm. Club Teams allowed! **Hotel Info:** Holiday Inn, 3777 North Expressway, Brownsville, TX 78520, (956) 547-1500, HR \$69!! Homewood Suites, 3759 North Expressway, Brownsville, TX 78520, (956) 574-6900, HR \$99! Mention CHESS. Free shuttle service from/to Brownsville Airport, 10 minutes away. Additional details: www.uschess.org/tournaments/2008/ny/. Enter on line (except Bughouse) at <https://secure.uschess.org/webstore/tournament.php>. Mail entries to: US Chess Federation, Attn: 2008 NYA, PO. Box 3967, Crossville, TN 38555 or to NTD Francisco Guadalupe, 305 Willow Pointe Dr., League City, TX 77573. For info call (281) 557-0242.

Dec. 12-14, Florida

2008 National Scholastic K-12 Championship
75S, G/90, Disney's Coronado Springs Resort, 1000 W. Buena Vista Drive, Lake Buena Vista, FL 32830. 407-939-1020 or 407-939-1000 and ask for the chess rate (\$120). **13 Sections.** Play only in your grade section. December rating supplement will be used. 1/2-point byes available any round (except round seven) if requested in advance of rd. 1. Zero point byes available for any round if requested prior to pairings. Team score = total of top three (minimum two) finishers from each school per grade, first place individual and team, including ties, will be National Champion for their grade. **Schedule:** Opening ceremony Fri. 12:30 pm. **Rds.:** Fri. 1 pm-6 pm, Sat. 10 am-2 pm-6 pm, Sun. 9 am-1 pm. **Awards Ceremony Sun.,** Approx. 5 pm. Special round times for K-1 sections: Fri. 1:30 pm-5:30 pm, Sat. 9:30 am-1:30 pm-5:30 pm, Sun. 9:30 am-1:30 pm. **Awards Ceremony Sun** Approx. 4:30 pm for K-1. **EF:** \$40/participant (postmarked by 11/14), \$60/participant (postmarked by 11/28), \$75 later or \$80 at site, \$5.00 extra for all phone registrations, \$20 change fee for roster or section changes after 11/14 or any onsite changes. Onsite registration Thurs. 9 am-10 pm & Fri. 8 am-noon. After 10 am players may not be paired for round 1. **Awards:** Trophies to top 10 individuals & top five teams (minimum) in each grade. **Class Prizes:** 1st-3rd place K-3: 800-999, 600-799, U600, Unr. 4-6: 1000-1199, 800-999, 600-799, U600 Unr. 7-9: 1200-1399, 1000-1199, 800-999, U800, Unr. 10-12: 1400-1599, 1200-1399, 1000-1199, U1000, Unr. Every player receives a commemorative item! **Side Events:** **Bughouse:** Thurs. 11 am, Reg. onsite only Thurs. 9 am-10 am, \$25/team. **Blitz Sections: K-6 and K-12,** Thurs. 5 pm, Reg. onsite until 4 pm. **Blitz EF:** Onsite-20; Advance/online entry: \$15. **Blitz Awards:** Trophies in K-6 and K-12 sections. **Individual:** TBA, Team: 1st-15th place. K-6 Class: 1000-1199, 800-999, 600-799, U600 Unr. K-12 Class: 1400-1599, 1200-1399, 1000-1199, Unr. **Bughouse Awards:** Trophies for Bughouse, TBA. **Team Rooms** are limited. Contact Cheryl Bruce 931-787-1234 ext.147. **Hotel info:** disneyworld.disney.go.com/wdw/reports/resort/landing/?id=CoronadoSpringsResortLandingPage **Questions:** Cheryl Bruce: 931-787-1234 ext. 147, Email: cbuce@uschess.org or Ent: U.S. Chess, Attn.: K-12 Championship, PO. Box 3967, Crossville, TN 38555 or online at <https://secure.uschess.org/webstore/tournament.php>. **Website:** main.uschess.org/tournaments/2008/k12/. **WCL JGP.**

GRAND PRIX

Oct. 12, New Jersey

World Chess Live Grand Prix Points: 6
ICA Fall 2008 Open Championship
NEW FORMAT & INCREASED PRIZE FUND Bergen Academy, 200 Hackensack Ave., Hackensack, NJ 07601. Open To All Ages With Rating > 1400 4SS G/60 U.S. Chess Federation Membership Required, Prize Fund (\$5 b/40) 1st - 3rd \$300, \$250, \$200, U2000, U1800, U1600 each \$100. Best Under 13 Years Old \$75, Best Over 65 Years Old \$75. Prize Fund Will Not Be Reduced Below 70 %. Reg Ends at 9 Late Entrants Will Receive 1/2 Point Bye For Rnd 1. EF: Adv (pmk. By Oct 8th) \$40, AT Site \$45. GMS Free Entry. Make EF: and/or USCF membership checks payable to: International Chess Academy. INFO 201 287 0250 or 201 833 1741, Email: Diana@icanj.net (Web Site Entries: www.icanj.net). **Rds.:** 9:30 AM, 11:45 AM, 2:15 PM, 4:30 PM. **ENT:** Diana Tulman, 28 Canterbury Lane, New Milford, NJ 07646. NS NC W.

A Heritage Event! A State Championship Event!

Oct. 17-19 or 18-19, Indiana
World Chess Live Grand Prix Points: 10 (enhanced)
67th Indiana State Chess Championship
55S, 40/2 SD/1 (2-day option, rds 1-2 G/75) Ramada Conference Center, 3550 E. Market St. Logansport IN 46947. \$52800 b/80. In 2 Sections **Championship:** EF: \$73 rcdv by 10/14, \$80 at site. \$0% discount off at site EF to former State Champions rcdv by 8/30. **\$\$:** \$500-250. U2300 \$245, U2200 \$240, U2000 \$235, Upset \$50. \$100 State Champion Award. 1st Place Guaranteed. **Reserve:** Open to 1799 & under. **EF:** \$58 rcdv by 10/14, \$65 at site. **\$\$:** \$300-215-210. Class C \$205, Class D & Under \$200, Upset \$50. **ALL:** July discount \$13 off adv EF, August discount \$6 off adv EF. **Memb. Req'd:** ICA. OSA. Reg: Ends Fri. 6: 30pm (2-day option: Regs. ends Sat. 9:30am). Rds: Fri. 7pm, Sat. 10-5, Sun. 9-3:30 (2-day option: Sat. 10-1:30-5, Sun. 9-3:30). **Annual Meeting:** 2:30pm Sunday. Car load discount, sign up in groups of 4 and receive 10% off adv EF excluding discounts, rcdv by 9/26. 10% cancellation fee. **ENT:** Gary J Fox, 134 Wheatland Ave. Logansport, IN 46947. **INFO:** 574-722-4965 info@donleychess.org. HR: \$75 574-753-6351. Reservation by 10/10/08, code CGSCA. www.indianachess.org. NS NC W. **WCL JGP.**

A State Championship Event! Oct. 18, Pennsylvania

World Chess Live Grand Prix Points: 6
2008 PA State Game/60 Championship
45S, G/60. Wm. Pitt Union, Univ. of Pitt., 5th & Bigelow, Pittsburgh PA 15213. 3 Sections, GS (695G): **Championship:** EF: \$30 by 10/10, \$40 later. \$200-100, U2000 \$75, U1800 \$50. **Premier:** U1600. EF: \$25 by 10/10, \$35 later. \$90-60, U1400 \$50, U1200 \$40, U1000 \$30; Trophies to Top 2, Top 2 U1400, Top 2 U1200, Top 2 U1000. **Scholastic:** Grades K-12 U900. EF: \$15 by 10/10, \$25 later. Trophies to Top 7, 1-3 U600. **ALL:** Teams of 4 to 7 combined from all sections, Trophies 1st-2nd schools, clubs. PSCF \$5, OSA. Reg: ends 10am. Rds.: 10:30-1-3:15-5:45. **Ent/Info:** PSCF, c/o Tom Martinak, 25 Freeport St., Pittsburgh, PA 15223, 412-908-0286, martinak_tom@hotmail.com.

A State Championship Event! Oct. 18-19, District of Columbia

World Chess Live Grand Prix Points: 20
Oscar Shapiro D. C. Open
US Chess Center, 1501 M Street, NW, Wash. DC 20005 \$5G 3000. 5 Sections. **Open,** 4-5S, TC: 40/2, SD/1. EF: \$48 by 10/11. \$5500-300-200, U2200 150 - 100. DC Championship title and trophy to top DC resident. Reg: 10 - 11. Rds.: 11:30 - 6, 11 - 5. **Amateur,** open to U2000. 5-SS, TC: 30/90, SD/1. EF: \$43 by 10/11. \$3 300 - 200 - 100, U1800 150 - 100. DC Amateur Championship title and trophy to top DC resident. Reg: 8 - 9. Rds. 9:30-2:45-8, 11-4:30. **Reserve,** open to U1600. 5-SS, TC: 30/90, SD/1. EF: \$43 by 10/11. \$3 300-200-100, U1400 150 - 100. Reg: 8 - 9. Rds.: 9:30-2:45-8, 11-4:30. **Booster,** open to U1200. 4-SS, TC: G/45. EF: \$13 by 10/11. \$50 + Trophy for first, trophies and medallions thru 15 places. Reg: 12 - 1. Rds.: 1:30 - 4 - 6:30 - 8. **Beginner,** open to children (age 11 and younger) rated U800 or unrated. 4-SS, TC: G/30. EF: \$13 by 10/11. Trophies and medallions thru 15 places. Reg: 12 - 1. Rds.: 1:30 - 2:45 - 4:00 - 5:15. **All,** \$7 more after 10/11. **Make checks payable to "DCCL",** mail to U.S. Chess Center, 1501 M St., NW, Washington, DC 20005. Info: 202/857-4922. www.chessctv.org. **WCL JGP.**

Oct. 31-Nov. 2 or Nov. 1-2, Connecticut

World Chess Live Grand Prix Points: 50 (enhanced)
12th annual Northeast Open
See *Chess Life* or <http://www.chesstour.com>.

A State Championship Event! Nov. 8-9, Pennsylvania

World Chess Live Grand Prix Points: 10
2008 Pennsylvania State Championship
Plumbers & Pipefitters Union Hall, 7193 Jonestown Rd., Harrisburg PA 17112. **2-day Sections:** 55S, G/120. Reg: 9-9:30am. Rds: 10-2:30-7, 10-2:30. **Open:** EF: \$40 by 10/23, \$50 later. \$(680G) \$350-150, U2100 \$70, U2000 \$60, U1900 \$50. **U1800:** EF: \$30 by 10/23, \$40 later. \$(420 b/20) \$150-90, U1700 \$70, U1600 \$60, U1500 \$50. **U1400:** EF: \$20 by 10/23, \$30 later. \$(280 b/20) \$100-70, U1200 \$60, U1000 \$50. **Saturday only U1000 Scholastic:** 55S, G/30. Reg: 11-11:30am. Rds: 12-1:15-2:30-3:45-5:30. EF: \$15 by 10/23, \$25 later. Trophies: 1-5, 1-2 U600, 1-2 U300, 1-2 Unrated, 1-2 Schools. **All:** PSCF req'd, \$5 OSA. **Local Info:** siam.dk@verizon.net, 717-730-4461. **Ent/Info:** PSCF, c/o Tom Martinak, 25 Freeport St., Pittsburgh, PA 15223-2245, martinak_tom@hotmail.com, 412-908-0286. **WCL JGP.**

Nov. 14-16 or 15-16, Ohio

World Chess Live Grand Prix Points: 120 (enhanced)
17th annual Kings Island Open
See *Chess Life* Grand Prix or <http://www.chesstour.com>.

Nov. 21-23, Florida

World Chess Live Grand Prix Points: 30 (enhanced)
7th Annual Turkey Bowl
55S, G/120, Sat. (2-day Sch.) Rd. 1 G/60. Hosted by the Student Union at Florida Atlantic University, 777 Glades Road, Boca Raton. \$55,200 b/160 paid entries, 60% min. Gtd. 4 Sections: **Open:** \$800/Trophy-500-300, U2300/Unr \$200-100. **U2100:** \$600/Trophy-300-200. **U1700:** \$600/Trophy-300-200. **U1300:** \$600/Trophy-250-150, top U1000/Unr \$100. Unr. may enter Open or U1300 only. **EF:** \$59 by Nov. 18, \$10 more later and on-site, GMS & IMs free (\$59 deducted from

prize). **Reg.:** ends 1/2 hr before 1st rd. **Rds.:** 3-Day 1st Rd. Fri. 7:15, 2-Day 1st Rd. Sat 10, Rds. 2-5 Sat. 1:15, 6:30, Sun. 9:30, 2:30. 2 1/2 pt. byes, if req'd before rd. 2. **HR:** \$74 by Cut-off Date, Fairfield Inn, 561-47-8585. **Ent:** Boca Raton Chess Club, 2385 Executive Ctr. Dr., Ste. 100, Boca Raton, FL 33431. **Online entry & add'l info:** www.bocachess.com, 561-883-2917. **FIDE. WCL JGP.**

Nov. 28-30 or 29-30, Pennsylvania

World Chess Live Grand Prix Points: 150 (enhanced)
39th annual National Chess Congress
See *Chess Life* or <http://www.chesstour.com>.

Dec. 5-7 or 6-7, Florida

World Chess Live Grand Prix Points: 40 (enhanced)
North Florida Open
See *Chess Life* or www.chesstour.com.

Dec. 7, New Jersey

World Chess Live Grand Prix Points: 6
ICA Early Winter 2008 Open Championship
NEW FORMAT & INCREASED PRIZE FUND Bergen Academy, 200 Hackensack Ave., Hackensack, NJ 07601. Open To All Ages With Rating > 1400 4SS G/60 U.S. Chess Federation Membership Required, Prize Fund (\$5 b/40) 1st - 3rd \$300, \$250, \$200, U2000, U1800, U1600 each \$100. Best Under 13 Years Old \$75, Best Over 65 Years Old \$75. Prize Fund Will Not Be Reduced Below 70 %. Reg Ends at 9 Late Entrants Will Receive 1/2 Point Bye For Rnd 1. EF: Adv (pmk. By Dec 3rd) \$40, AT Site \$45. GMS Free Entry. Make EF: and/or USCF membership checks payable to: International Chess Academy. INFO 201 287 0250 or 201833 1741, Email: Diana@icanj.net (Web Site Entries: www.icanj.net). **Rds.:** 9:30 AM, 11:45 AM, 2:15 PM, 4:30 PM. **ENT:** Diana Tulman, 28 Canterbury Lane, New Milford, NJ 07646. NS NC W.

Dec. 26-28 or 27-28, New York

World Chess Live Grand Prix Points: 40 (enhanced)
4th annual Empire State Open
See *Chess Life* or www.chesstour.com/.

Dec. 26-29 or 27-29, Nevada

World Chess Live Grand Prix Points: 200 (enhanced)
18th annual North American Open
See *Chess Life* or www.chesstour.com/.

Jan. 16-19, 17-19 or 17-18, California Southern

World Chess Live Grand Prix Points: 80 (enhanced)
16th annual Western Class Championships
See *Chess Life* or www.chesstour.com.

A Heritage Event!

Jan. 16-19, 17-19 or 18-19, Pennsylvania
World Chess Live Grand Prix Points: 80 (enhanced)
41st annual Liberty Bell Open
See *Chess Life* or www.chesstour.com.

Mar. 6-8 or 7-8, California Northern

World Chess Live Grand Prix Points: 100 (enhanced)
Western Chess Congress
See *Chess Life* or www.chesstour.com.

REGIONAL

Alabama

Oct. 18, Dancing Knights Scholastic
6 Sections – 55S, TC: G/30. Jefferson State – Shelby Campus 4600 Valleydale Road Birmingham, AL 35242. **EF:** \$20/Rated and \$10/Not Rated - mailed by OCT 11th; (\$10 more at site). **Trophies:** (Rated) Top 3 Individuals; Top 2 Teams. **Medallions:** (Not Rated) Top 3 Individuals. Rds: 9:30-10:45-12:30-1:45-3. **Late REG.:** OCT 18th 8:30-9:10. Checks payable to: **Caesar Lawrence.** Ent: Caesar Lawrence 882 McAllister Drive Calera, AL 35004. Info: ACF - www.alabamachess.com or Email: Caesar.Lawrence@junio.com.

California or Northern

Mar. 6-8 or 7-8, Western Chess Congress
See *Chess Life* or www.chesstour.com.

California Southern

Nov. 29, American Open Scholastic
5-SS, G/45. LAX Renaissance Hotel, 9620 Airport Bl., Los Angeles, CA 90045. Open to HS/below. In 4 sections **K-12:** trophies top 5, 2 each grades 9-12, 1 each K-8. **K-8:** trophies top 5, 2 each K-8. **K-6:** trophies top 5, 2 each K-6. **K-3:** trophies top 4, 2 each K-3. **EF:** \$16 received by 11/25, \$20 at door. Reg: 9-9:45 Rounds: 10-11:30-1-3-4:30. Ent: www.americanopen.org or American Open, PO Box 205, Monterey Park, CA 91754. Info: Randy Hough (626) 282-7412, randal1ough@yahoo.com.

Jan. 16-19, 17-19 or 17-18, 16th annual Western Class Championships
See *Chess Life* or www.chesstour.com.

Colorado

Nov. 8, Boulder Fall Classic RBO
5-SS G/30 University Memorial Center, CU Campus, Boulder, CO Room #415. U1200. **EF:** \$15, \$5 less for Jr/Sr/Unrated. \$5 discount on CSCA with entry. **Prizes:** Trophies to top 3, U1000, U800, and unrated. **Reg.:** 9:00-9:45. **Rds.:** 10:00, 11:15, 1:30, 2:45, 4. **Entries:** Klaus Johnson, 3605 Endicott Dr., Boulder, CO 80305. **Website:** www.geocities.com/boulderchessclub. Email: boulderchessclub@yahoo.com. CO TOUR event. Held concurrently with a two-day open section, see website for details.

Connecticut

Oct. 31-Nov. 2 or Nov. 1-2, Connecticut
World Chess Live Grand Prix Points: 50 (enhanced)
12th annual Northeast Open
See *Chess Life* or <http://www.chesstour.com>.

District of Columbia

Oct. 18-19, Oscar Shapiro D. C. Open
See Grand Prix.

Nov. 2, Metro First Sunday Quads

3-RR, G/90. U.S. Chess Center, 1501 M St. NW. EF: \$20 \$\$ \$40 each quad. **Scholastic sections.** EF: \$10, Trophy prizes. **Both:** Reg.: 9:15 - 9:50. Rds.: 10 - 1 - 4. (202) 857-4922. www.chessctr.org/ quads.php.

Nov. 9, National Capital Scholastic Cup

4-SS, G/30. US Chess Center, 1501 M Street, NW, Washington, DC 20005. **Open to any student in K - 12th grade living in DC, Maryland or Virginia.** EF: \$20 if by 11/2, \$30 at site. **Reg.:** Noon - 12:45. Top 16 players qualify for a series of play-off matches. \$200-100-50-50 savings bonds to champion, finalist and semi-finalists of the play-offs. Trophies to the top 16 and others with the same score as the lowest of the top 16. Champion's name engraved on permanent cup on display at the US Chess Center. www.chessctr.org/Cup.php 202/857-4922.

Dec. 13, Rated Beginners Open (RBO)

4-SS, G/30. US Chess Center, 1501 M St. NW, Washington, DC 20005. Open to players rated under 1200 or unrated. **EF:** \$15 (\$12 if by 12/6). 5 sections by age. **Reg.:** 12-12:45. **Info:** 202/857-4922. www.chessctr.org/rbo.php.

Florida

Palm Beach Gardens Chess Club

Rated tournaments and skittles games every Saturday morning 9:00 am till 4:00 pm. www.palmbeachchessclub.info, (561) 762-3377.

Boca Raton Chess Club Friday nights, Game 90 Tournament, one game a week for 4 weeks. Monday nights, Blitz tourney. www.bocachess.com, 561-883-2917. WCL JGP.

Oct. 18, Orlando Bonus Tornado

4-SS, G/75, Melody Manor, 813 Montana St. EF: \$30, CFCC mbr:\$25, Masters free-EE deducted from prize. **\$\$\$605 b/30:** 200-100-80, U1800, U1600, U1400 \$75 ea. Prize increased 50% for 4-0 score. **Reg.:** 9:30am. **Rds.:** 10-12:30-3-5:30. **Info:** (407)629-6946, centralfchess.org. WCL JGP.

Oct. 19, Tampa Chess Club U600/Unr Sizzles

10936 N 56th, Temple Terrace, 33617. 4SS, G/30 + 5 secs. **Entry:** \$20. Grades K-12 only. U600 & Unrated players. b/20 each sect. \$100, 60, 40. USCF required. Trophies 1-5 plus team. Rd1-1pm, 2-4 asap. No pre-reg. **ENT/INFO:** www.wflachess.org. CoachT Call 813-727-8852. NS, NC.

Nov. 5, St. Petersburg Rated Beginner's Open (RBO)

5rd Swiss G/30 USCF RBO 4 Sect. **K-2U400; K-5U500; K-8U700; & K-12U1000;** top 12 in each get trophy; all others medal. Team (2 or more) - best four scores from all divisions. **EF:** \$18. **1st rd:** 10:15 AM. Sunshine Center, 330 Fifth St. N., St. Petersburg, FL. NS, NC, W. register online at www.stpetersburgchessclub.com. 727-822-1171.

Nov. 15, Orlando Bonus Tornado

4-SS, G/75, Melody Manor, 813 Montana St. EF: \$30, CFCC mbr:\$25, Masters free-EE deducted from prize. **\$\$\$605 b/30:** 200-100-80, U1800, U1600, U1400 \$75 ea. Prize increased 50% for 4-0 score. **Reg.:** 9:30am. **Rds.:** 10-12:30-3-5:30. **Info:** (407)629-6946, centralfchess.org. WCL JGP.

Nov. 21-23, 7th Annual Turkey Bowl

See Grand Prix.

Nov. 23, Tampa Chess Club U600/Unr Sizzles

10936 N 56th, Temple Terrace, 33617. 4SS, G/30 + 5 secs. **Entry:** \$20. Grades K-12 only. U600 & Unrated players. b/20 each sect. \$100, 60, 40. USCF required. Trophies 1-5 plus team. Rd1-1pm, 2-4 asap. No pre-reg. **ENT/INFO:** www.wflachess.org. CoachT Call 813-727-8852. NS, NC.

Dec. 5-7 or 6-7, North Florida Open

See *Chess Life* or <http://www.chesstour.com>.

Dec. 6, St. Petersburg Rated Beginner's Open (RBO)

5rd Swiss G/30 USCF RBO 4 Sect. **K-2U400; K-5U500; K-8U700; & K-12U1000;** top 12 in each get trophy; all others medal. Team (2 or more) - best four scores from all divisions. **EF:** \$18. **1st rd:** 10:15 AM. Sunshine Center, 330 Fifth St. N., St. Petersburg, FL. NS, NC, W. register online at www.stpetersburgchessclub.com. 727-822-1171.

Dec. 12-14, 2008 National Scholastic K-12 Championship

See Nationals.

Dec. 27-29, 11th Annual Jr. Orange Bowl International Scholastic Chess Championship

7SS, G/60, Embassy Suites Hotel, Miami Int'l Airport, 3974 South River Drive, Miami FL 33142. **In 4 Sections: Ages 9 and under, 10-12, 13-15, 16-20.** Players must have a USCF membership **EF:** \$50 individual, \$160 team (4 players in a team). **Prizes:** Trophies to top 10 individuals and top 5 teams. **HR:** \$139.00, 1-800-EMBASSY or 305-634-5000, reserve by 11/26 or rate may increase. **ENT:** Make checks payable to JOB. Send checks and registration forms to Kennedy Chess Association, 6280 Coral Way, Miami FL 33155. For info and registration forms go to www.jrorangebowl.com - chess championship, email to wtkennedy@flash.net or call 305-984-9896, fax 305-666-4031.

Indiana

Oct. 17-19 or 18-19, 67th Indiana State Chess Championship

See Grand Prix.

Nov. 1, Tri-State Fall Chess Open

Evansville Airport Marriott, 7101 Highway 41 North, Evansville IN 47725. In 2 Divisions **Open:** 4SS, G/70, EF: \$40 in advance. NO checks onsite. **Scholastic:** 5SS, G/40, Open to 12th grade or younger. Sections: **3U, 6U, 12U.** Bonus prizes awarded to K-1 players. EF: \$20 in advance. NO checks onsite. **Prizes:** Individual and Parent/Child Team trophies awarded. All round finishing players will receive at least a participation trophy. 8:45 players/parents meeting. **ALL: Reg:** NO ONSITE REGISTRATION. Registration by mail and check must be received by 10:31-08. Registration by email, through our website, and payment by PayPal is encouraged. **Rds.:** first round 9:00am, others ASAP. PayPal to: terry@evansvillescholasticchess.org. ENT: Terry Vibbert, 1125 Suwannee Drive,

Evansville, IN 47725. 812-626-0030 evansvillechess.org. **HR:** \$65 800-853-5728. DIR: see website for directions. NS NC W. WCL JGP.

Kentucky

Dec. 5-6, The Lexington Chess Tournament 2008

The Lexington Convention Center, 430 West Vine Street, Lexington, KY 40507. **Schedule:** GM Gregory Kaidanov SIMUL Friday 12/5 at 6:30 pm (first 50 registered participants only). Saturday 12/6 tournament begins at 8:45 am. All rounds will begin at specific times. **5 Sections - Primary: K-1: 5SS, G30, K-3: 5SS, G30. Elementary: K-5: 5SS, 1-3 G30, 4-5, G45. Middle School: K-8: 5SS, 1-3, G30, 4-5, G45. High School: K-12: 4SS, G60.** Tournament only: \$20 if postmarked by Nov. 28, \$40 thereafter. Tournament and Simul (first 50 registered participants): \$30 if postmarked by Nov. 28, \$50 thereafter (based on availability). Simul only: \$20 (based on availability). NO onsite registration. Send completed registration forms to Vicki Fahmy at vfahmy@qx.net. Make checks payable to **Sayre Chess Club**. Mail entries to: **Vicki Fahmy**, 3129 Althorpe Way, Lexington, KY 40509. Entry fees include a free program and individual score book and a pencil. **Award List: Individual:** K-1: Top 8. K-3, K-5, K-8, K-12: Top 10. **Class Awards:**** K-1: Top 3 U300, Top 5 unrated. K-3: Top 3 U800, U500, Top 5 unrated. K-5: Top 3 U900, U600, Top 5 unrated. K-8: Top 3 U1000, U700, Top 5 unrated. K-12: Top 3 U1000. **Teams:** Top 4. ** Number and category trophies/medals will be adjusted based on entrants. There will be a minimum of 2 class categories per section. All K-1 players will receive a participation medal. Biggest upset medal per section for rated players. **Awards Ceremony:** Sat. 6:00 - 8:00 pm. **INFO:** Larry Bell, lbell3@insightbb.com, 859.338.8293. DIR: See website www.sayrechess.org for more information and directions.

Maryland

Silver Knights Chess Tournaments

We organize USCF-rated tournaments on Saturdays for adults and kids. Free analysis by a National Master at every tournament for the scholastic players. Trophies to top scholastic finishers; 70% of entries returned as prizes in open (adult) sections. To see a list of dates and locations, see our website at www.silverknightschess.com. Phone: 610-446-0818. Email: chess@silverknightschess.com.

Nevada

Dec. 26-29 or 27-29, 18th Annual North American Open

See *Chess Life* or <http://www.chesstour.com>.

New Jersey

Silver Knights Chess Tournaments

2-3 Saturdays per month we run scholastic USCF-rated tournaments throughout the Philadelphia area. Tournament locations include Philadelphia, Mt. Laurel (NJ), Bryn Mawr, Horsham, Colledgeville, and more. Tournaments are open to grades K-12. Free game analysis by a National or International Master at each tournament. We have players of all skill levels compete in our tournaments, from brand-new kindergarteners up through some of the highest-rated scholastic players in the state. To see a list of dates and locations, see our website at www.silverknightschess.com. Phone: 610-446-0818. Email: chess@silverknightschess.com.

Oct. 12, ICA Fall 2008 Open Championship

See Grand Prix.

Oct. 12, ICA Fall 2008 Scholastic Championship

4 SS, EVERYONE PLAYS 4 GAMES, ALL PLAYERS WITH 2.5 POINTS OR MORE WILL RECEIVE A TROPHY!!! Bergen Academy, 200 Hackensack Ave., Hackensack, NJ 07601. U.S. CHESS FEDERATION MEMBERSHIP REQUIRED FOR SECTIONS 1 AND 2. **Info:** 201 287 0250 or 201 833 1741 **E-mail:** Diana@icanj.net. (Web Site Entries: www.icanj.net) EF Adv (pmk by Oct. 8th) \$25 At Site \$30 Reg ends 1/2 hr before 1st rnd. Late entrants will receive 1/2 point bye for rnd 1. In 4 Sections **Section 1:** G/45 Open to players rated below 1200 K through 12th grade. Rds.: 9:45 AM, 11:30, 1:15, 3:00 PM. **Section 2:** G/60 Open to players rated below 1600 K through 12th grade. Rds.: 9:45 AM, 12:00, 2:15, 4:30 PM. **Section 3:** Open to unrated players K through 2nd grade. Rds.: 10:15 AM (tournament will end at approximately 1:00 PM). **Section 4:** Open to unrated players K through 12th grade. Rds.: 10:00 AM (tournament will end at approximately 2:00 PM). **ENT:** Diana Tulman, 28 Canterbury Lane, New Milford, NJ 07646. NS NC W.

Oct. 25, Viking Last Saturday Quads

Somerset Ramada Inn, 60 Cottontail Lane, Somerset Exit 12, Route #287. In 4 player Quads. G/90. **Regs.:** before 9am, **Rds.:** 9-12:3, EF Top quad \$30, lower Quads EF is \$20 or \$30. **Prize:** Top quad is \$80, lower quads between \$40 and \$80. Prize is based on the number of players paying \$30. Player paying \$20 may win only \$40. **Info:** Ken Thomas, acn@goes.com / cell 908-763-6468. No electronic scoresheets. NS, NC, W.

Nov. 8, Princeton Day School

650 The Great Road. Plaques to top 3 school teams and top 6 in each section. Medals to all. Sections: FUTURE MASTERS and CLOSED begin 10:45 (must pre-register). **FUTURE MASTERS** G/60 3 rounds (Players K-12 over 1200), **CLOSED** G/45 4 rounds (over 1000), ALL OTHER SECTIONS **Onsite reg:** 11:30-12:30. **4 Rds.:** 1, 2, 3, 4pm. (times will be accelerated if possible) G/30: OPEN (Players K-12 U-1000), Reserve (K-12 U-800), Novice II (K-8 U-600), Novice I (unrated K-6), K-1 (unrated) NO SCORE K-1 (unrated). PARENTS OF PLAYERS G/30, rated, 3 rounds. **Info and Register online:** www.pds.org/chess. Inquires to Bonnie Waitzkin. Chessteach@gmail.com Registration \$30 > (On-site \$40).

Nov. 9, Wizards of the Mind Chess Tournament

www.wizardsofthemind.com. 15 Center Street, Springfield, NJ 07081. 3 sections. Trophies to top 5 in each section. **Open:** 3 SS rounds, Game/45, Reg. 1-1:20, Rounds start 1:30pm. **U1200:** 4 SS rounds, Game/30, Reg. 1-1:20, Rounds start 1:30pm. **U700:** 4 SS rounds, Game/30, Reg. 9-9:20am, rounds start

9:30am. **EF:** \$25 mailed by 11/01/2008, \$30 on-site. **Mail entries to:** 15 Center Street, Springfield, NJ 07081. Make checks payable to: "Wizards of the Mind." Bring chess sets and clocks.

Nov. 15, King's Chess Club Quads

Morning quads and afternoon quads, G/30, K-12, Bethlehem Church, 758 Route 10, Randolph, NJ 07869. **EF:** None. **Reg.:** 9-9:20 am., 1st rd. 9:40. Medal to each quad winner. **Info:** Bethlehem Church 973-366-3434 or Bob McAdams 973-694-3988, rwm@fambright.com.

A State Championship Event!

Nov. 23, New Jersey K-12 Grade Championship

5SS, G/30. Brookdale College, 765 Newman Springs Road, Lincoln, NJ 07738. Student Life Center, use Parking Lot #7 or #6; 4 miles from Garden State Parkway exit 109. **13 Sections:** Play only in your grade! MORE TROPHIES! **Grades K-6:** Trophies to top 10 individuals, top 5 teams - top 3 from each school/grade; 50% of players receive trophy or medal **Grades 7-12:** Trophies to top 5 individuals, top 5 teams. **Rds.:** 10am and ASAP. **EF:** \$30 by 11/16, \$50 at site. USCF mem req'd. **Reg.:** 8-9:00 am. After 9:00am 1/2 pt bye rd 1. **Info:** 732 259-3881, hsprechman@characterkings.org **Ent:** Please make checks payable to NJSCF and send to NJSCF, PO Box 1511, Jackson, NJ 08527. Entries must include name, grade, school, date of birth, USCF ID # & expiration, mailing address, phone number & nry fee, please include email address. The 1st Place player and team from NJ in each grade will be recognized as the NJ Champion for that grade! Chess sets and boards will be provided!

Dec. 6, The Greater Princeton Championship

Princeton Day School, 650 The Great Road. Trophies to top 3 school teams and top 6 in each section. Trophies to all players. Sections: FUTURE MASTERS and CLOSED begin 10:45 (must preregister). **FUTURE MASTERS** G/60 3 rounds (Players K-12 over 1200), **CLOSED** G/45 (K-12 over 1000) 4 rds, ALL OTHER SECTIONS On Site **Reg.:** 11:30-12:30. **4 Rds.:** 1, 2, 3, 4pm. (times will be accelerated if possible) G/30: OPEN (Players K-12 U-1000), Reserve (K-12 U-800), Novice II (K-8 U-600), Novice I (unrated K-6), K-1 (unrated) NO SCORE K-1 (unrated). PARENTS OF PLAYERS G/30, rated, 3 rounds. **Info and Register online:** www.pds.org/chess. Inquires to Bonnie Waitzkin. Chessteach@gmail.com. Registration \$35 (On-site \$45).

Dec. 7, ICA Early Winter 2008 Open Championship

See Grand Prix.

Dec. 7, ICA Early Winter 2008 Scholastic Championship

4 SS, EVERYONE PLAYS 4 GAMES, ALL PLAYERS WITH 2.5 POINTS OR MORE WILL RECEIVE A TROPHY!!! Bergen Academy, 200 Hackensack Ave., Hackensack, NJ 07601. U.S. CHESS FEDERATION MEMBERSHIP REQUIRED FOR SECTIONS 1 AND 2. **Info:** 201 287 0250 or 201 833 1741 **E-mail:** Diana@icanj.net. (Web Site Entries: www.icanj.net) EF Adv (pmk by Dec. 3rd) \$25 At Site \$30 Reg ends 1/2 hr before 1st rnd. Late entrants will receive 1/2 point bye for rnd 1. In 4 Sections **Section 1:** G/45 Open to players rated below 1200 K through 12th grade. Rds.: 9:45 AM, 11:30, 1:15, 3:00 PM. **Section 2:** G/60 Open to players rated below 1600 K through 12th grade. Rds.: 9:45 AM, 12:00, 2:15, 4:30 PM. **Section 3:** Open to unrated players K through 2nd grade. Rds.: 10:15 AM (tournament will end at approximately 1:00 PM). **Section 4:** Open to unrated players K through 12th grade. Rds.: 10:00 AM (tournament will end at approximately 2:00 PM). **ENT:** Diana Tulman, 28 Canterbury Lane, New Milford, NJ 07646. NS NC W.

New York

Nov. 22, Prove Your Point!

3-SS, G/30, Chess Center at Marshall Chess Club, 23 W 10th St, NYC: 212-477-3716. EF \$20. 3-0 wins \$40, 2.5 wins \$20, 2 wins \$10. Reg ends 7:20 pm. Rds. 7:30-8:30-9:30.

Dec. 26-28 or 27-28, 4th annual Empire State

See *Chess Life* or <http://www.chesstour.com>.

A State Championship Event!

Feb. 28-Mar. 1, New York State Scholastic Championships

Open to grades K-12 in any state (top NYV player & team in each section are NY champions). Saratoga Hilton, 534 Broadway (I-87 Exit 13-N, 4 miles north on US 9), Saratoga Springs NY 12866. Free parking. Team prizes based on top 4 scores from same school; no combined school teams allowed even if one school "feeds" another. Teams of 2 or 3 players allowed, but are at a disadvantage. In 6 sections, each is a 6SS, G/65 except K-1 is 5SS, G/30 playing Mar 1 only. **High School,** grades K-12. EF \$42 mailed by 2/6. Top NYV grade 9-12 qualifies for Denker Tournament of HS Champions (Indianapolis, 8/1-4). **Junior High,** grades K-9. EF \$41.90 mailed by 2/6. **Elementary,** grades K-6. EF \$41.60 mailed by 2/6. **Elementary Novice,** grades K-6 under 800 or unrated. EF \$41.50 mailed by 2/6. **Primary,** grades K-3. EF \$41.30 mailed by 2/6. **K-1,** grades K-1. EF \$41.10 mailed by 2/6. **Postmarked 2/7-17:** All EF \$10 more. Do not mail entry after 2/17. **Online** at chesstour.com, all sections: EF \$43 by 2/6, \$53 by 2/23. No online entry after 2/23. **Phoned** to 406-896-2038, all sections: EF \$45 by 2/6, \$55 by 2/23. Credit cards only, no questions. No phone entry after 2/23. **Entry at site:** all \$60. 1 year NYVCA membership to all NY residents who are not members. **Trophies** to top 20 players, top 3 Unrated, and top 8 teams each section and top each U1400, U1200, U1000 (HS), U1200, U1000, U800 (JHS), U1000, U800 (Elem), U600, U400 (Elem Novice). Speed playoff if perfect score tie. Free entry to NY State Championship, Labor Day weekend 2009 (Albany), to top player each section. **Schedule:** Late reg. ends Sat 11 am, rds Sat 12-3-6, Sun 9-12-2:45. Awards 5:30-6 pm. **K-1 schedule:** Late reg. ends Sun 9 am, rds Sun 10-12-1:30-3-4:30. Half point byes OK all, limit 2, must come before rd 2. **HR:** \$114-114, 888-999-4711, 518-584-4000, reserve by 2/29 or rate may increase. 48 hours notice required for room cancellation. Backup hotel: Courtyard by Marriott, 2 blocks away, 518-226-0538. **Special car rentals:** Avis, 800-331-1600, use AWD #657633. **Mail entry:** Continental Chess, PO Box 249, Salisbury Mills, NY 12577. Include name, rating, USCF ID, USCF expiration (non-members enclose dues), section, school, grade, birth date, address of each player. Checks payable to Continental Chess. \$15 per player service charge for refunds. \$10 extra to switch sections, all substitutions from advance list charged \$60. Questions: chesstour.com, 845-496-9658. Bring set, board, clock if possible- none supplied. WCL JGP.

North Carolina

Nov. 2, 2008 North Carolina Open Championship Scholastics

4-SS, G/30. Clarion Hotel Greensboro Airport, 415 Swing Road (I-40 at Exit 213), Greensboro, North Carolina 27409. (336)-299-7650. **Limit to first 50!** **EF:** \$20 in advance; \$22 at site. In 2 sections: **K-12** and **K-8**. Trophies to top 10 each section. All non-trophy winners get medals. **Reg.:** ends 11 a.m. **Rounds:** 1st at 11:30, then immediately after each round is completed. **Info:** Tadh Rogers (478)-742-5607 or atlantachess@yahoo.com. **Enter:** American Chess Promotions, 3055 General Lee Road, Macon, Georgia 31204-1517.

Ohio

Oct. 25, Cincinnati Scholastic Chess Series

4SS, G/30, Seven Hills School, 5400 Red Bank Road, Cincinnati. First of 5 tournaments in series; others are Nov 7, 2008 - Lakota East High School, Jan 10, 2009 - Milford High School, Feb 7 - Cincinnati Country Day School, Mar 7 - Sycamore High School. **Sections:** K-3, 4-6, 7&8, 9-12. **EF:** Onsite \$20, advance/multiple entry discounts available. **Reg.:** 8:00-8:45 am, **Rd 1:** 9:00 am. **Prizes:** Medals to top 3 finishers in each section each tournament; additional trophies and medals for cumulative series score. Complete information and registration form at www.chessin Cincinnati.com. **Info:** Doug 513-484-3768 or Alan 513-697-0763.

Nov. 14-16 or 15-16, Ohio

World Chess Live Grand Prix Points: 120 (enhanced) 17th annual Kings Island Open

See *Chess Life* Grand Prix or <http://www.chesstour.com>.

Pennsylvania

Silver Knights Chess Tournaments

2-3 Saturdays per month we run scholastic USCF-rated tournaments throughout the Philadelphia area. Tournament locations include Philadelphia, Mt. Laurel (NJ), Bryn Mawr, Horsham, Collegeville, and more. Tournaments are open to grades K-12. Free game analysis by a National or International Master at each tournament. We have players of all skill levels compete in our tournaments, from brand-new kindergartners up through some of the highest-rated scholastic players in the state. To see a list of dates and locations, see our website at www.silverknightschess.com. Phone: 610-446-0818. Email: chess@silverknightschess.com.

Oct. 18, 2008 PA State Game/60 Championship

See Grand Prix.

Oct. 18, State Championship Warm-up

4SS, **Open:** G/70, Shiremanstown United Methodist Church Fellowship Hall (new building behind the church) 125 East Main Street, Shiremanstown, PA 17011. **Reg.:** 8-8:30am. **EF:** \$25 if postmarked by Oct 10, \$32 later, PSCF required \$5, OSA. **Prizes:** (\$150 b/25): 100-50, Free Entry into 2008 PA State Championship (Nov. 8-9) for winner, Class prizes based on entries. Door Prize Drawings, Free Continental Breakfast, Free Lunch, Rds.: 9am (free lunch served at 11:30); 12:00, 2:25pm, 4:45pm. **Scholastic Section:** Open to students in grades K-12 rated under 1000 or unrated. 4SS, G/30, **Reg.:** 11:30-12:00, **Rds.:** 12:20, 1:30, 2:45, 4:00. **EF:** \$12 if postmarked by 10/10, \$17 later, Trophies to top 3 overall, Top U600, Top U300, Top Unrated, door prize drawings between rounds. **Information & Entrees:** Sam Lamonto, 717-580-7492. 1408 Walnut Street, Camp Hill, PA 17011-3966. Email: slam.dk@verizon.net. **WCL JGP for Open section.**

Nov. 2, PCL November Quick Quads (QC)

3RR, G/15. Wm. Pitt Union, Univ. of Pittsburgh, 5th Ave & Bigelow, Pittsburgh, PA 15213. **EF:** \$10, \$7 juniors. \$20 to 1st/quad. **Reg.:** 11-11:15am. Rds.: 11:30am-Noon-12:30pm. **Info:** martinak_tom_m@hotmail.com, 412-908-0286. W.

Nov. 8-9, 2008 Pennsylvania State Championship

See Grand Prix.

Nov. 22, Perkiomen Valley Classic

Perkiomen Valley Middle School East, 100 Kagey Road, Collegeville, PA 19426. **In 3 sections:** K-12 Champ, K-8 U/1000, K-3 U/1000. (Students in grades 8 and below may play in K-12 Champ if rated 800 or higher). **K-12 Champ:** 3SS, G/40. Rds: 10:00-11:20-12:40. **K-8 U/1000 & K-3 U/1000:** 4SS, G/30. Rds: 10:00-11:00-12:00-1:00. **EF:** \$20 online by 11/19; \$30 on-site till 9:30. Trophies to top players and school teams in each section. 1/2 pt. byes available. Free game analysis by a National Master. See www.silverknightschess.com to register or for more information.

A State Championship Event!

Nov. 22-23, 2008 PA State Junior Championships

5SS. 53 Trophies! (49 Individual, 4 Team). Wm Pitt Union, Univ. of Pittsburgh, 5th & Bigelow, Pittsburgh PA 15213. 7 sections: **2-day (Sat & Sun):** Ages 16 to 20 Open, Ages 13 to 15 Open, Ages 9 to 12 Open. **EF:** \$18 by 11/14, \$28 later. TL: G/90. Reg ends 9:30. Rds: 10-1:30-5, 11-2:30. **1-day (Sun only):** Ages 8 & Under Open, Ages 9-20 U900, Ages 9-20 U600, Ages 8 & Under U600. **EF:** \$15 by 11/14, \$25 later. TL: G/40. Reg ends 10:30. Rds: 11-12:30-2-3:30-5. **All:** Trophies 1st-7th, additional medallions, teams of 4 to 7 combined from all sections, Trophies 1st-2nd schools, clubs. PSCF required \$5, OSA. **Info:** 412-908-0286, martinak_tom_m@hotmail.com. **Ent:** PSCF, c/o Tom Martinak, 25 Freeport St, Pittsburgh, PA 15223. W. **WCL JGP (2-day only).**

Nov. 28-30 or 29-30, 39th annual National Chess Congress

See *Chess Life* Grand Prix or <http://www.chesstour.com>.

Dec. 7, PCL December Quick Quads (QC)

3RR, G/15. Wm. Pitt Union, Univ. of Pittsburgh, 5th Ave. & Bigelow, Pittsburgh, PA 15213. **EF:** \$10, \$7 Jrs. \$20 to 1st/quad. **Reg.:** 11-11:15am, Rds.: 11:30am-Noon-12:30pm. **Info:** martinak_tom_m@hotmail.com, 412-908-0286. W.

Jan. 16-19, 17-19 or 18-19, 41st annual Liberty Bell Open

See *Chess Life* or <http://www.chesstour.com>.

Rhode Island

Nov. 1 & Nov. 22, BK Top Sections

4SS, G/30, Trophies top 3 in each Section: 11&U/13&U (unrated), Open (rated). **EF:** \$12 Advance, \$15 at site. See full schedule, register online: www.rhodeislandchess.org, email: rhodeislandchess@yahoo.com, (401)359-1602. See website for venues.

Texas

Nov. 7-9, 2008 National Youth Action

See National.

Nov. 15, Scholastic Turkey Tournament (K-12)

5SS G/30 Sloan Creek Middle School, 440 Country Club Road, Fairview, TX 75069 **EF:** \$10 if registered before 11/01/08. \$20 after 11/01/08. **On-Site Registration:** 8:30-9:00 am. **1st Round:** 9:00 am, all others ASAP. 1st, 2nd, 3rd Place Trophies in U500, 500-800, 800+, and unrated. 4th Place winners receive a frozen turkey! **Email:** SloanCreekChess@aol.com.

A State Championship Event!

Nov. 22-23, 12th Annual Texas Collegiate Championships

5SS, G/90, 30 sec inc. Hilton Americas, 1600 Lamar, Houston TX 77010. **HR:** \$101-\$101-\$101-\$101, mention Texas Grade and Collegiate Championships to get rate. Reserve By 10/19 or rate may increase. College section open to any college player. Only Texas Colleges can be Texas Collegiate Champs. Plaques to top 10 ind. & top 5 teams (top three players added for team scores, no more than 2 teams per school). **EF:** \$33 if postmarked by 11/14, \$49 at site. Do not mail after 11/14 as your entry may not be received. **Entries to:** Dallas Chess Club, c/o Barbara Swafford, 2709 Longhorn Trail, Crowley TX 76036. Entry must include Name, USCF ID (or new/pending), grade & school and school location. Incomplete entries will be charged at site entry fee. No refunds after 11/16. **Email:** info@dallaschess.com 214-632-9000. Do not call after 11/14 as we are travelling. Reg. Fri 11/21 from 7:00 pm-9:00 pm. Reg. Sat 11/22 at 7:30 am-8:30 am. Sat. registration may require a 1/2 pt. 1st rd. bye. Sat. rds 9:11:30-6:00. Sun. rds 9-1:30. One 1/2 pt bye available, any round, if requested before end of rd. 2 and if player has not received a full point bye. Fide rated but uses USCF rules. **Online registration (active.com charges a fee):** www.active.com/event_detail.cfm?event_id=1625966 Limited number of Team rooms available, www.sw.chess.com. **Side events:** 4 rd G/30 open tournament on 11/21 at 7:30 pm. This G/30 tournament has three sections: Open, U1400 and U750. **EF:** \$15, \$\$\$60% of entry fees. Bughouse Open Tournament Sat. 8:35 pm. **EF:** \$20/team. Trophy prizes. Registration for side event online or on-site only. NS, NC, W. FIDE. **WCL JGP.**

A State Championship Event!

Nov. 22-23, 12th Annual Texas K-12 Grade Championships

6SS, Rds 1-3 G/45, Rds 4-6 G/60. Hilton Americas, 1600 Lamar, Houston TX 77010. **HR:** \$101-\$101-\$101-\$101, mention Texas Grade and Collegiate Championships to get rate. Reserve By 10/19 or rate may increase. **The K-12 is Open to TX residents or players attending Texas schools. 13 separate tournaments, one per grade (K-12).** Trophies to top 10 ind. & top 5 teams (top three players added for team scores, no more than 2 teams per school in each grade.) Winner of 12th Grade Section wins a 4 year scholarship to The University of Texas at Dallas, worth up to \$43,000. Scholarship winner must meet UTD entrance requirements and follow team rules. **EF:** \$33 if postmarked by 11/14, \$49 at site. Do not mail after 11/14 as your entry may not be received. **Entries to:** Dallas Chess Club, c/o Barbara Swafford, 2709 Longhorn Trail, Crow-

ley TX 76036. Entry must include Name, USCF ID (or new/pending), grade & school and school location. Incomplete entries will be charged at site entry fee. No refunds after 11/16. **Email:** info@dallaschess.com 214-632-9000. Do not call after 11/14 as we are travelling. Reg. Fri 11/21 from 7:00 pm-9:00 pm. Reg. Sat 11/22 at 7:30 am-8:30 am. Sat. registration may require a 1/2 pt. 1st rd. bye. Sat. rds 9:30-12:00-2:05-4:10. Sun. rds 10-1:15. One 1/2 pt bye available, any round, if requested before end of rd. 2 and if player has not received a full point bye. **Online registration (active.com charges a fee):** www.active.com/event_detail.cfm?event_id=1625920 Limited number of Team rooms available, www.sw.chess.com. **Side events:** 4 rd G/30 open tournament on 11/21 at 7:30 pm. This G/30 tournament has three sections: **Open, U1400 and U750.** **EF:** \$15, \$\$\$60% of entry fees. Bughouse Open Tournament Sat. 8:35 pm. **EF:** \$20/team. Trophy prizes. Parent/Child team tournament Sat. 6:35 pm. **EF:** \$10/team. Trophy prizes. Registration for side event online or onsite only. NS, NC, W.

Vermont

Nov. 8-9, 5th annual New England Scholastic Championships

7SS, G/45, Grand Summit Resort, 89 Grand Summit Way, Mount Snow VT 05356. Free parking. Take Rt 9 west from Brattleboro or east from Bennington to Rt 100, then north 8 miles to Mount Snow (about 90 minutes from Springfield, MA or Albany, NY). Free parking. Open to all K-12 students; New England titles and free entry prizes limited to players & teams from schools in CT, MA, ME, NH, RI, or VT. Team prizes based on top 4 scores from same school combined. Teams of 2 or 3 players allowed, but are at a disadvantage. **In 4 sections: High School (K-12), Middle School (K-8), Elementary (K-5), Primary (K-2).** Players face only those in their section. **EF for USCF members:** HS \$37.75, Middle School \$37.50, Elem \$37.25, Primary \$37 if mailed by 10/31, all \$38 online at chesstour.com by 11/4, \$50 at site. **EF for non-USCF members** (fees include membership), HS \$47.75, Middle School \$47.50, Elem \$47.25, Primary \$47 if mailed by 10/31, \$48 online at chesstour.com by 11/4, \$60 at site. Trophies to top 10 players, top 7 teams, top in each section, top E, U1000, U800 (HS), U1000, U800, U600 (MS), U800, U600, U400 (Elem), U600, U400, U200 (Prim). Free entry in all Continental Chess Association Swiss tournaments until 5/31/09 to top New England player each section. **Late reg.** ends Sat 9 am, rds begin Sat 10 am, 1 pm, 3 pm, and 5:30 pm, Sun 9 am, 11 am, and 1:30 pm. Awards Sun 3:30 pm. Half point byes allowed rds 1-4 only, with at least 1 hour notice. \$10 charge for refunds, all substitutions \$50. **HR:** \$82-89; 800-261-9442, 800-464-6600, reserve by 10/25 or rate may increase. **Ent:** Continental Chess, PO Box 249, Salisbury Mills NY 12577. Questions: www.chesstour.com, 845-496-9658. Include school, grade, birth date, USCF ID, address of each player. Advance entries will be posted at chesstour.com.

Wisconsin

Nov. 8-9, 2008-2009 Wisconsin Junior Open

Gruenhagen Conference Center, UW-Oshkosh, Corner of High and Osceola St., Oshkosh, WI 54901. Open to youth born after 11/8/1987. In 4 Sections **Open Section:** 5SS, G/120, **EF:** \$15 in advance by 11/4; \$20 at site. **Prizes:** Top 5, Top 3 each 1300, 1200 and 1100, Top 4 Under 1100 and Top 3 Unrated. **Reserve (Under 1100 or Unrated):** 5SS, G/120, **EF:** \$14 in advance by 11/4; \$19 at site. **Prizes:** Top 5, Top 3 each 900, 800, 700, Under 700 and top four Unrated. **Non-Rated Beginner's Grade 7-12:** 5SS, G/120, Open to Grades 7-12. **EF:** \$11 in advance by 11/4; \$16 at site. **Prizes:** Top 5 places, Top 3 Grade 7-9. **Non-Rated Beginner's Grade K-6:** 5SS, G/120, Open to Grades K-6. **EF:** \$10 in advance by 11/4; \$15 at site. **Prizes:** Top 5 places, Top 3 Grade K-3. **ALL:** **Reg:** 11/8, 8:45-9:30 AM. **Rds:** 10:15-2:30-7:15; 10:00-3:00. **Ent:** Mike Nietman, 2 Boca Grande Way, Madison, WI 53719. **Info:** Mike Nietman, 608-467-8510 (before 11/7) mike.nietman@charter.net. **HR:** 920-424-1106 \$35 double (dorm room) (Mention Chess). www.wis.chess.org. NS NC W. **WCL JGP.**

Nov. 22-23, 50th North Central Open/Martz Memorial A WCA Tour Event!

Comfort Suite Hotel, N14 W24121 Tower Place, Pewaukee, WI 53072. In 2 Sections, **Open:** 5SS, 30/90 Then SD/1, \$5 Discount to juniors and new members. **EF:** \$35 before 11-22, \$40 at the site. \$\$b/\$50: \$200-150-110. A 90, B 90, C 80, D 80, E 70, Under 1000 70, biggest upset 60. Rds.: ON 11-22, 10, 2:30, 7:30. On 11-23, 10, 3, 1/2 Point byes, 2 at most. 1 FULL POINT BYES FOR MASTERS. **SCHOLASTIC:** 5SS, G/30, **EF:** \$15 Before 11-22, \$20 at the site. **Prizes:** Trophies to the top 3 in K-12, K-8, K-5, & K-3. Rds.: on 11-22, 10, 11:30, 1:30, 3, 4:30. Scholastic players that played in the scholastic section may play in the open section starting in round 3 and will get a \$10 discount for playing in the open section. **Ent:** Ben Corcoran, N68 W24878 Stonegate Ct. #212, Sussex, WI 53089. **Info:** Ben 262-506-4203 Ben3corcoran@yahoo.com. **HR:** \$89/night. Book before 11-7. 262-506-2000. WWW.WAUKEGESHACHESSCLUB.ORG/NCO. HTML. NS NC W. **WCL JGP (Open section).**

CHESS PLAYERS!

We want more of YOU in this magazine. Send us your best game; try to annotate it so that other readers might learn from it. You can ask your coach for help. Did you play a good combination that others might like?

Have your parents send your comments and games to: gpetersen@uschess.org or use snail mail:

Glenn Petersen, 44-D Manchester Court, Freehold, NJ 07728.

This is your magazine, so give us some feedback!

If you liked this issue—or if you didn't care for it, let us know!
Let us know what YOU want to see in *Chess Life for Kids*.

Send us your games!



Let our video training program guide you to tournament success!

Access our online video tutorials and get instruction from National and International Masters, including:



Bryan Smith

is an International Master from Alaska. Bryan now lives in Philadelphia, where he is a full-time chess-player and teacher. He won the 2006 U.S. Masters and is the current Philadelphia champion.



Michael Mulyar

is an International Master from Colorado. Michael has tied for first at two U.S. Opens and is a five-time Colorado champion. He has worked with many successful scholastic players.

An online training center that provides all the tools you need to become a champion.

- Visit www.silverknightschess.com for a free sample lesson!
- For scholastic players rated 100 - 1800!
- Brand-new chess videos added each week!
- Only \$9.95 per month!



Winning the US Open, part II
By IM Michael Mulyar



Good knight vs. bad bishop
By IM Bryan Smith



The Four-move Checkmate
By NM Adam Weissbarth



SILVER KNIGHTS CHESS

ONLINE TRAINING CENTER

WWW.SILVERKNIGHTSCHESS.COM | 1-866-576-8090