

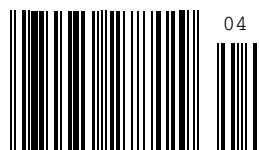
# Chess Life for Kids!

## Basil's the name, Chess is my game!



A USCF Publication

\$3.00



04

0 74470 27842 9



**Fast, Fun, and  
Easy to Use**

In 2006, and again in 2007,  
young Chess Magnet students  
from Portland, OR, scored 7-0 in the  
USCF Spring Nationals.

# ChessMagnetSchool.com

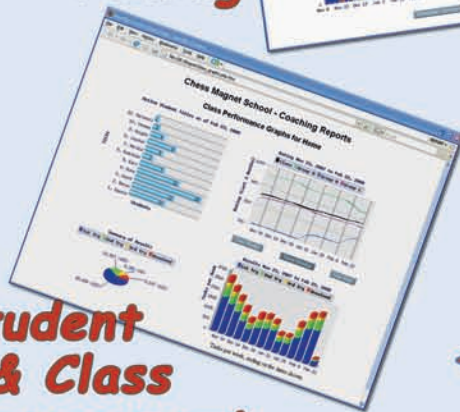
**Better Than Any Textbook for Learning Chess**



**Student  
Training**

**"Great Stuff! I just delivered my first  
Belgian champion under 10 and  
boosted his development  
by using ChessMagnetSchool.com"**

- Ton Montforts, Coach  
Schaakacademie  
Limburg, Belgium



**Student  
& Class  
Management**

**Makes  
a  
GREAT GIFT!**

**"Your website was  
integral to our team's winning."**

-Mike Hosford, Coach  
Alcott Elementary  
2008 Washington State  
Grades 4-6 Champions

**Start Your 30-day Free Trial Today  
at  
www.ChessMagnetSchool.com**

|              | 1 month | 3 months | 1 year  | 1 yr USCF |
|--------------|---------|----------|---------|-----------|
| Individuals  | \$6.95  | \$15.00  | \$29.95 | \$26.95   |
| Class/Family | \$6.00  | \$12.00  | \$25.00 | \$22.00   |

Free to teachers/coaches of at least 5 students  
Includes our powerful, easy-to-use Coaching Tools & Reports

Works on Windows and Macintosh  
computers (requires internet access)

To learn more, call 650-284-5062  
877-378-4319 (US toll-free)  
email [info@ChessMagnetSchool.com](mailto:info@ChessMagnetSchool.com)



# Table of Contents

|  |    |
|--|----|
| HOPELESS CONTEST RESULTS! .....                      | 4  |
| ARABIAN KNIGHTS BY RICK KENNEDY.....                 | 5  |
| ASK GM EVANS BY GM LARRY EVANS.....                  | 6  |
| THE CHESS DETECTIVE BY NM TODD BARDWICK.....         | 7  |
| ATTACKING THE CASTLED KING BY IM LARRY D. EVANS..... | 8  |
| TAKE IT ON THE ROAD.....                             | 10 |
| DEFENDING AGAINST THE COLLE BY PETE TAMBURRO.....    | 12 |
| 2008 FINAL WCL JUNIOR GRAND PRIX STANDINGS .....     | 14 |
| 2009 ALL-AMERICA TEAM.....                           | 16 |
| BOOLA, BOOLA! DO YOU GOOGLE?.....                    | 18 |
| TOURNAMENT LIFE ANNOUNCEMENTS.....                   | 20 |
| ZARIA BY ROZ KATZ.....                               | 23 |

COVER PHOTO COURTESY OF HERBERT VALDSAAR



**Publisher**

**USCF Executive Director: Bill Hall**  
 bhall@uschess.org

**Scholastic Director: Jerry Nash**  
 jnash@uschess.org

**Scholastic Editor: Glenn Petersen**  
 gpetersen@uschess.org

**Art Director: Cat Connor Spradlin**  
 catseyephoto@mac.com

**Editorial Asst./Copy Editor: Alan Kantor**  
 akantor@uschess.org

**Editorial Assistant: Jennifer Pearson**  
 jenpearson@uschess.org

**Advertising Manager: Ray West**  
 rwest@uschess.org

**Tournament Life: Joan DuBois**  
 tla@uschess.org

**Director of Publications: Daniel Lucas**  
 dlucas@uschess.org

**CONTRIBUTORS:** Send your contributions and articles to *Chess Life for KIDS*, PO Box 3967, Crossville, Tennessee 38557 or better yet, e-mail to gpetersen@uschess.org.

**Chess Life for KIDS** (USPS 023-567, ISSN: 1932-5894) is published in February, April, June, August, October, and December of every year by the United States Chess Federation, 137 Obrien Drive, Crossville, Tennessee 38555. Periodic postage paid at Crossville, Tennessee.

**CHANGE OF ADDRESS:** Be sure to notify us at once of any change of address. Please include your old address and your new address, along with your USCF I.D. number.

**POSTMASTER:** Send address changes to USCF, PO Box 3967, Crossville, Tennessee 38557.

**Annual Scholastic Membership**  
 Regular Scholastic Membership (on line version of *Chess Life for Kids*), age 12 or younger, is just \$16 per year. Premium Scholastic Membership (receives *Chess Life for Kids* by mail) is \$23 per year. \$13 of every premium membership goes towards providing *Chess Life for Kids*. Entire contents copyright 2009, United States Chess Federation.

Teachers may photocopy instructional articles for classroom use, but republication or widespread copying without the written consent of the USCF is forbidden.



**Boards of Chess**

- Soft vinyl chess boards
- Tournament and Analysis size
- Great for travel and home use
- Unique variety of styles and colors

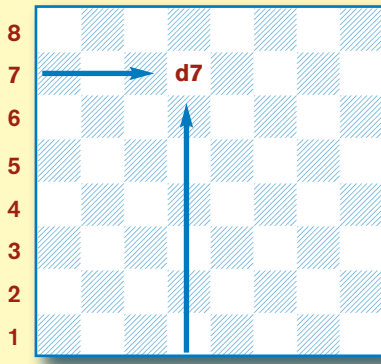
www.BoardsOfChess.com



# HOW TO Read & Write Chess

There are many different ways to write chess moves. The most popular method (described below) is called **algebraic notation**:

Each square has a name, taken from the intersection of the file (vertical or up-and-down rows of squares, which are lettered) and rank (horizontal or side-by-side rows of squares, which are numbered) the square is on. In the diagram the square on the intersection of the 7th rank and the d-file is called d7. Like in battleship!



The pieces are abbreviated **a b c d e f g h** by a capital letter, like this:

**K: King; Q: Queen; R: Rook; B: Bishop; N: Knight.**

Notice that the Knight is N, since K is reserved for the King. Notice also that pawns have no abbreviation.

A move is written by using the abbreviation for the piece that moves, followed by the square the piece moves to (1. ... Nf6). A pawn move is written as the square the pawn has moved to (1. d4). A capture by a piece is written as the abbreviation for the piece that moved, followed by an x, and finally the square the capture takes place on (8. Bxe5). A pawn capture is written as the file the capturing pawn stands on, followed by an x, and finally the square the capture takes place on (3. dxe5).

Other moves are castling kingside, which is written 0-0, and castling queenside, which is written 0-0-0. An *en passant* capture is indicated by *e.p.* after the move. A check is indicated by + after the move, and pawn promotion is indicated by adding () and the abbreviation for the piece the pawn promotes to. Ambiguous moves (where more than one piece or pawn can move to the destination square) are taken care of by putting an extra rank or file in to make it clear which piece or pawn moved.

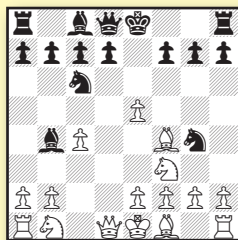
Here is a sample, using the famous smothered mate trap from the Budapest Defense.

**1. d4 Nf6 2. c4 e5 3. dxe5 Ng4**  
**4. Bf4 Nc6 5. Nf3 Bb4+** (diagram A)

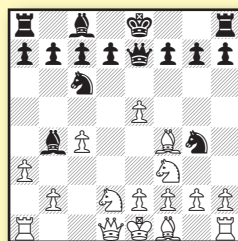
**6. Nbd2 Qe7 7. a3** (diagram B)

**7. ... Ncxe5 8. Bxe5 Nxe5 9. axb4**  
**Nd3 checkmate.** (diagram C)

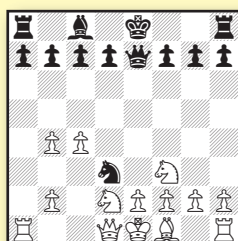
**x: take or capture      #: checkmate**  
**0-0: kingside castle    (:): promotion**  
**0-0-0: queenside castle    !: good move**  
**+: check                    ??: bad move**  
**???: blunder**



**a b c d e f g h**  
diagram A • 5. ... Bb4+



**a b c d e f g h**  
diagram B • 7. a3



**a b c d e f g h**  
diagram C • 8. ... Nd3  
checkmate

# THE SECRET WORD

Winston Chen will never win the Minnesota second grade championship. In 2008 he won the first grade championship. And then the seven year old skipped a grade! Did that stop Winston? Not at all. This year he was the state third grade co-champion!

And he can obviously read, along with the rest of you who answered last issue's "Find the Secret Word" contest. Page 6 was the key and the correct answer was four. The word "hopeless" appeared four times in the February 2009 issue. My faithful gnomes from Outer Mongolia (okay, it's really my sister's second grade class) has chosen and Winston will receive a copy of *Looking for Trouble* by Dan Heisman.

# ON THE COVER

Thanks to photographer and chess teacher Herbert Valdsaar, we have a record of Basil's debut against ten-year-old Hannah of Florida. Basil is a two-year-old Cavalier King Charles spaniel. Rumor has it he is partial to playing the King's Gambit.

Both are home schooled, but Hannah has an advantage: her sister and two brothers also play chess, and she gets help from Jonathan Corb-blah, a senior chess instructor for USA Chess camps ([www.usachess.com](http://www.usachess.com)). And she has the right attitude. "When you make a mistake, you learn from it, and you can try something different next time."

Be sure to check out the chess camp listings on pages 10-11. There might be one near you!

# ERRATA

My gnomes found a mistake on page 11 of the February 2009 issue. WHITE resigned, not BLACK. Our apologies to young Mr. Lohr.

**Todd Bardwick**

*is the author of*

**Teaching Chess  
in the 21st Century  
and**

**Chess Workbook for Children.**

*He can be reached at*

[www.ColoradoMasterChess.com](http://www.ColoradoMasterChess.com)

# TALES OF THE Arabian KNIGHTS

BY RICK KENNEDY Illustrations by Pamela Key



## Comes Into

Do you have another tale for me, the King asked.

"I do," she said, modestly. "It came back to me when you told of your own adventure."

And she began...

The young Prince rode with his advisors to all the ends of his father's kingdom. He was a bright, young man, and he wished to learn all that he could of the world around him.

On one such outing, the Prince arrived at a hard-scrabble land, too arid to allow for much grazing of flocks, and barely able to provide feed for the rare animal that could be caught sight of. The nearby water was brackish, and the inhabitants, as far as the prince could tell, were a proud but rude folk.

Yet he was astonished, upon greeting the local ruler and completing formal introductions, to be immediately challenged to a chess game. A board was found, the pieces set, and with the presentation of an oddly adorned medallion, the game began.

Handing the jewelry to one of his party, the Prince asked them for a translation of the inscription.

The game began, and the Prince met immediate success. His forces on the board were dominating those of his opponent.

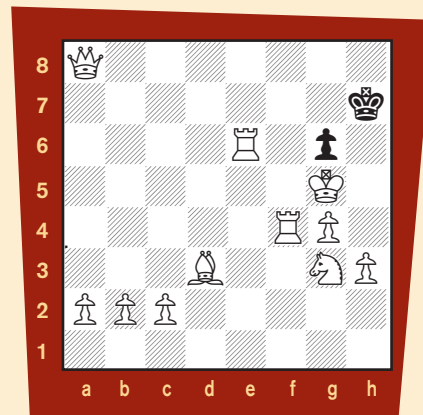
"Excuse me, Your Majesty," an aide whispered, "but our first guess is that the words on the medallion say 'Upon checkmate, the victor comes into the

soils of the land'. That seems a good omen for your play, today—to win the game, and receive the land as your reward."

The Prince nodded, and continued to press forward with his pieces. Soon he had swept away all but one of Black's pawns and his lone king.

"A thousand apologies, Your Majesty," came a hurried, muffled gasp at the Prince's shoulder. "We are now sure that the words of the inscription say this: 'Upset the King, and the victor of the game *will be buried in the soil.*' It appears to be a death threat, Your Majesty."

The Prince looked at the board. How awkward, he thought.



One slip was all that the Prince needed to seal the fate of the black king—and his own. Careful, careful, careful.

**9.Kh4 Kg7 10.Re7+ Kh6 11.a3 g5 checkmate**

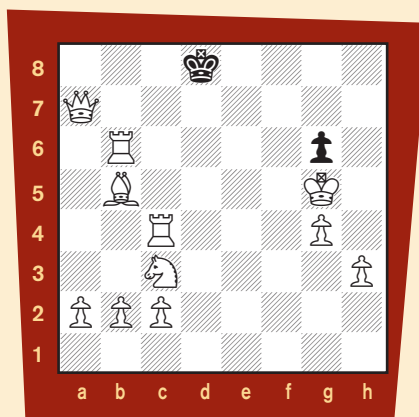
"A brilliant game," the Prince said, nodding his head to his opponent. "A thousand gracious thanks for the opportunity to match wits with and lose to you—and now my party and I must be off."

Never before had the Prince been happier to suffer defeat in a game of chess. He promised himself that this was a lesson that he would never forget.

She smiled. "And you have not forgotten, have you, Your Majesty?"

*"It was many years ago," he said, "but no, I have not forgotten. Thank you for recalling the story."*

(Based on a chess position presented by R. Braunstein in the July 1966 issue of Chess Review)



"I must lose this position?" he asked himself. "Oh, well, then I *must.*"

**1.Rbc6 Ke8 2.Rd4 Kf8 3.Re6 Kg8 4.Rf4 Kh8 5.Qa8+ Kg7**

The Prince's plan was to avoid the many checkmates that beckoned to him.

**6.Ne2 Kh7 7.Ng3 Kg7 8.Bd3 Kh7**



# ASK GM LARRY EVANS!

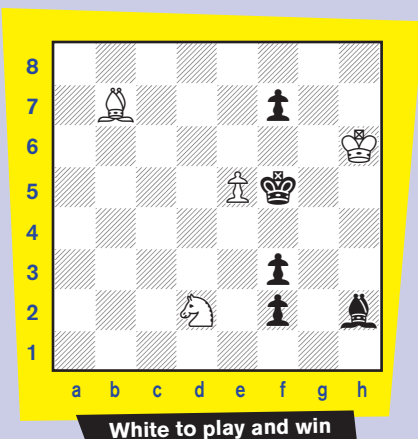
Grandmaster Larry Evans won the U.S. Championship in 1951, 1952, 1961-62, 1968, and again in 1980!

## BEST QUESTION:

### COMPUTER STUMPED

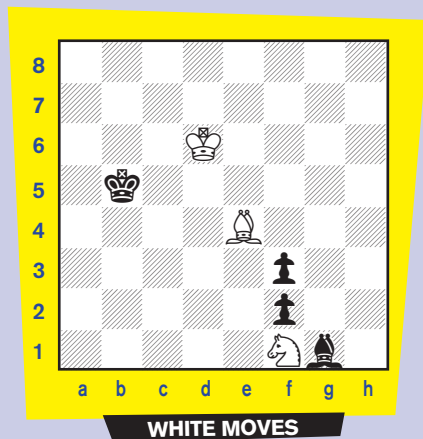
Tantale

**Q:** In this day and age many people think computers can solve just about any position. But perhaps your readers will be interested in this endgame study composed in 1901 by Alexei Troitsky that computers can't yet solve.



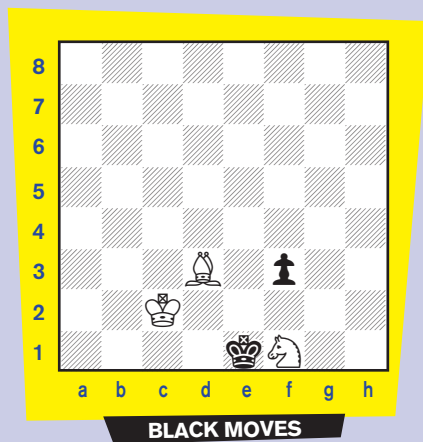
**A:** Pretty amazing. Computers today can crack any position with six or less pieces on the board, but this study has nine. Let's follow the instructive solution.

1. Bc8+! Kf4 (if 1...Kxe5 2.Nxf3+ followed by Nxh2 wins) 2. Nf1 Bg1 (no help is 2...Bg3 3. Kh5!) 3. Kg7 Kxe5 4. Kxf7 Kd6 (other tries also lose: for example, 4...Ke4 5. Ke6 Kf4 6. Bd7 Ke4 7. Bc6+ Kf4 8. Kd5 Kg5 9. Ke5 Kg6 10. Be8+ Kg7 11. Ke6 Kf8 12. Bg6 Kg7 13. Kf5 Kf8 14. Kf6 Kg8 15. Bh5 Kh7 16. Bf7 Kh8 17. Kg6 Bh2 18. Nxh2 f1=Q 19. Nxf1 wins) 5. Be6 Kc7 6. Ke7 Kc6 7. Bg8 Kc7 8. Bd5 Kc8 9. Be6+ Kc7 10. Bd7 Kb6 11. Kd6 Kb7 12. Bf5 Kb6 13. Be4 Kb5



White must resist the temptation to grab the pawn which has to stay on the board for now. Black can draw after 14. Bxf3? Kc4 15. Ke5 Kc5 16. Bg2 Kc4. The elegant winning idea is to stalemate Black's king and then gobble the bishop when it goes to h2, leading to a book win.

The right approach is 14. Bd5! Kb6 15. Bc6 Ka5 16. Kc5 Ka6 17. Bd5 Ka7 18. Kc6 Ka6 19. Bc4+ Ka5 20. Bb5 Kb4 21. Kb6 Ka3 22. Kc5 Kb3 23. Bd7 Kc3 24. Bc6 Kb3 25. Bb5 Kc3 26. Bc4 Kb2 27. Kb4 Kc2 28. Ba6 Kb2 29. Bb5 Kc2 30. Bc4 Kb2 31. Bb3 Ka1 32. Kc3 Kb1 33. Bc4 Kc1 34. Bd3 Kd1 35. Kb2 Ke1 36. Kc2 Bh2 37. Nxh2 f1=Q 38. Nxf1 and wins.



The solution stops here because reaching a theoretical win is sufficient in endgame studies. Bishop and knight vs. king is the hardest elementary mate. The winning method is to force the lone king into a corner which is the same color as the bishop (in this case, either h1 or a8) and then administer mate.

Troitsky (1866-1942) is one of the greatest endgame composers. For more of his work see 360 Brilliant and Instructive End Games (Dover Publications, 1968).

## Announcing Check

Doogie

**Q:** I have a question about the rules for check and checkmate. I've been playing chess with my kids (seven and 11) for the last few weeks and I want to make sure they (and I) play correctly. A few times I overlooked that my king was in check and they also missed it ("check" was never called). When they noticed it on their turn, they took the king and "won the game." Is it required that "check" be called before a king can be taken? And yes, my kids are already better than me at this game.

**A:** The rules don't require us to announce check, though it may be helpful to do so in offhand games. The king can never be captured—we must return to the position before it happened and continue the game from that point.

PSST ...

If you have a question for GM Evans, email it to [gpetersen@uschess.org](mailto:gpetersen@uschess.org)



# The Chess

# Detective

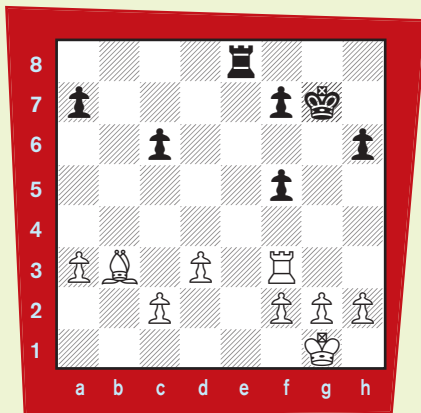
by NM Todd Bardwick

## Forcing a Back Rank Mate

At one time or another (and probably more often than we care to admit!), we have all allowed a rook or queen to come into our territory and deliver back rank mate.

Here is a sad end to one of my games from my second chess tournament, soon after my tenth birthday.

Sara Ann Johnson (736)



Todd Bardwick (935)

Seeing the opportunity to grab a pawn, I quickly played **32.Rxf5??** Of course, I was shocked when she calmly responded, **32...Re1 mate!**

As your chess skills improve, you won't overlook this simple mate as often as you do in the beginning of your chess career.

When you do notice that there is a possible back rank mate, you can't plan on your opponent walking into it, but you can look for ways to make it happen by chasing away your opponent's pieces that defend the key squares.

Here is a position from one of Bobby Fischer's games played in Palma de Mallorca, Spain, in 1970.



Robert Fischer



Samuel Reshevsky

Fischer observed the possibility of a back rank mate and looked for a way to make his dream come true. He played **29...Qd4+ 30.Kh1 30.Rf2 Re1 mate 30...Qf2! 31.Resigns 31.Rxf2** loses to **31...Re1+ 32.Rf1 Rxf1 mate**. If White tries either **31.Rg1** or **31.Qb5**, Black wins by playing **31...Re1**.

Now that you have seen how to force a back rank mate, here is one of the most famous back rank mate positions of all time. This game was said to take place in New Orleans in 1920. Some chess historians are suspicious that this game was actually a forgery. Perhaps it was never played, but it brilliantly shows how to force a back rank mate by chasing away the defenders.

Carlos Torre-Repetto



Edwin Ziegler Adams

Notice that Black's rook on e8 is attacked twice and defended twice. White dreams that if he can chase away the queen or rook on c8, he could capture the e8-rook, followed by checkmate.

White works on luring away the queen with **18.Qg4!** Black can't capture the queen because she has to defend the rook and back rank mate. **18...Qb5 19.Qc4!** Again, White safely attacks the unprotected black lady. Neither the rook or queen can take her, because of the attack on e8. **19...Qd7 20.Qc7!** Again offering a queen on a square where she can't be captured! **20...Qb5 21.a4! Qxa4** Black's queen must stay in contact with the rook on e8. **22.Re4! Qb5 22...Rxe4** loses to **23.Qxc8+ Re8 24.Rxe8+ Qxe8 25.Qxe8 mate**. **22...b6** loses to **23.Qxc8 Rxc8 24.Rxa4. 23.Qxb7! Resigns** Black's queen has run out of moves: **23...Qa4 24.Rxa4** or **23...Qxb7 24.Rxe8+ Rxe8 25.Rxe8 mate** or **23...Rxe4 24.Qxc8+ mating**, like above.

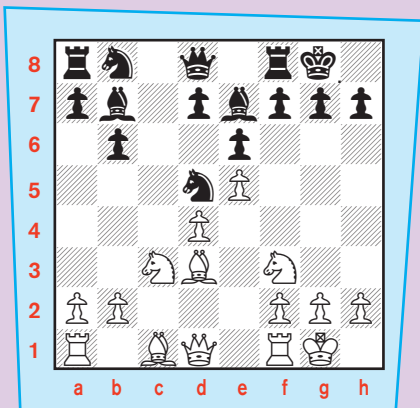
Whenever you observe a potential back rank checkmate by either you or your opponent, be extra careful to make sure the defending pieces can't be chased away to make the mating dream come true.

# Attacking

## the Castled King

You can't attack without focus. Luke Skywalker needs R2D2 to tell him where to focus his torpedo when he attacks the Death Star. Even our powerful sun needs a magnifying glass to focus its rays when it attacks a lowly leaf.

by IM Larry D. Evans



In this position, White focuses his attack against Black's kingside. He doesn't decide this just because Black's king is there. Another major factor is that most of Black's pieces aren't. A queenside rook and knight aren't even developed, while the centralized knight and fianchettoed bishop, normally considered well-placed pieces, can't defend the kingside either. Meanwhile, White's bishops rake the kingside from the alternate wing; one knight is already there while the other transports easily through e4.

The reason for this is White's pawn chain in the center. Control of the center signals an attack on the flank, because White's pieces can get from one side of the board to the other more easily than his opponent's.

The first step in attacking the castled king is to make the opposition move his wall of pawns from its protection. Right now, Black's pawns on f7, g7 and h7 cover every square on the sixth rank; a white knight can't even check without being captured. If White can get Black to move one of

them, penetrating will be easier.

As a rule of thumb: *Make the defender move two pawns in front of his castled king and you've got him!* (But remember to be wary of rules of thumb; chess isn't that easy).

Because of this, 1.Qc2 looks like White's best move. The attack on Black's h-pawn by the queen/bishop battery appears to force the desired pawn move.

If Black plays 1...g6, holes are breached in his pawn wall on f6 and h6, giving White an entry plan like: Qd2, Qh6 and Ng5. The threat of mate on h7 forces ...Bxg5. But then White recaptures with his bishop, chases away Black's queen and pops it into the other hole on f6, mating against the third hole on g7.

The defense 1...h6 is equally instructive. White transfers his queen in front of his bishop with the maneuver Qe2 and Qe4. Then, when Black plays ...g6 to stop the mate on h7, White's bishop munches up the free pawn on h6. Note how badly ...g6 gets clobbered after Black plays ...h6; an excellent illustration of the two-pawn move rule of thumb.

Unfortunately for White, chess isn't all strategy. There's also tactics. Building a battery with the queen on c2 allows Black a knight fork on b4. White saves the bishop by first capturing the pawn on h7 with a check, then retreats his queen back to b1 to keep it defended. But Black, whose fianchettoed bishop was unveiled by his original knight move to b4, uses it to capture the knight on f3, shattering White's kingside when he recaptures with his g-pawn. Black uses this

breach by first trapping White's bishop with his pawn to g6, then pinning it to his king along the open g-file (...Rg8) if White captures g6 with his bishop. Black ends up a bishop ahead while White, who sometimes gets compensation in this pattern by opening Black's kingside, gets none this time because his own kingside is worse.

So if White's going to get away with the strategically desirable battery, he better build it with the queen ahead of the bishop, so the knight fork is answered by Qxh7 *mate* instead of Bxh7 *check*. This suggests a plan like Bc2 or Bb1 followed by Qd3, but which retreat is better?

This question can be answered strategically instead of tactically, so it's easier. Of course White prefers the bishop on c2 to b1; so the a1 rook gets into the attack faster while the bishop has access to b3 and a4. The only downside to Bc2 is that ...Nb4 forces it back to b1 anyway. So White has to make the strategic decision whether he'd rather have his bishop on b1 with black's knight on d5 or b4. Since b4 is further from the focus of White's attack, his obvious preference is for Black's knight to be on b4.

**1.Bc2!                      Nxc3**

Black wants to stop Qd3 with a bishop on a6, but first has to resolve the pressure against d5. An immediate 1...Ba6? 2.Nxd5 exd5 gives him double isolated d-pawns, while 2...Bxf1 3.Nxe7+ Qxe7 4.Qxf1 loses too many pieces for the rook. Speaking of pressure on d5, 1...f5 gets in trouble after 2.exf6 *e.p.* gxf6 (to keep



White's pieces off e5 and g5) 3.Bb3! and 4.d5! after Black moves his knight. A premature demonstration on the flank is refuted by a reaction in the center. Note the advantage of the bishop on c2 over b1 in this example.

**2.bxc3 Ba6**  
**3.Re1 Nc6**

Foiled in his first attempt to post the queen before his bishop, White now decides to move the knight off f3 so he can replace it with his queen en route to e4. But since his attack is focused on the kingside, White has to figure out a way to move his knight to the right rather than the left.

**4.h4! ...**

This creates a support point for the knight on g5, right in the heart of the attack. The pawn shouldn't be taken: After 4...Bxh4? 5.Nxh4 Qxh4 6.Re4 followed by 7.Qh5 and 8.Rh4, Black won't survive long enough to queen it in the endgame. Accepting the sacrifice gives White too much time for his *rook lift* (Re4-h4), a standard attacking motif for bringing heavy artillery into the area of focus.

Aside from that, trading bishop for knight creates its own problems at this point, leaving White with the strategic advantage of the *bishop pair*. Retaining both bishops against different defensive pieces is often a ferocious offensive weapon, compensating for a pawn loss independently of the rook lift.

But White shouldn't play 4.h4 just because it's bad for Black to capture. *Hope Chess*, as I call it, backfires against opposition too smart to bite. The move has to be part of a sound strategic plan: *The maneuver Qf3-e4 requires moving the knight to g5, for which White needs to create a support point with his pawn.* Tactics justify strategy, not vice versa. This way, White doesn't care whether Black takes it or not.

But 4.h4 just looks weird, doesn't it? Who makes that kind of move?

It looks weird because White doesn't usually have a central pawn chain justifying the attack. That's why step one is focus. If Black can dissolve the chain, 4.h4 will be as weird as it

looks; his queenside pieces able to travel through the center to punish it.

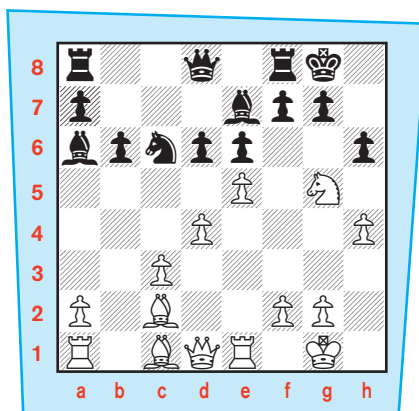
**4... d6!**

So Black correctly reacts to White's attack on the flank with a break in the center. Now the game becomes a race: White needs to mate before Black dissolves the center to embarrass 4.h4.

**5.Ng5 h6**

Capturing the knight surrenders the bishop pair without winning a pawn. The alternative 5...g6 allows a couple of demolition sacrifices: 6.Nxh7! Kxh7 7.Qh5+ Kg7 8.Qh6+ Kg8 9.Bxg6! fxc6 10.Qxg6+ Kh8 followed by another rook lift: 11.Re3 & 12.Rg3 and queen mates on either g7 or h6.

Note in this example how, once focused, the queen and knight comprise the infantry of White's attack, sinking themselves into (fox)holes on the front line, while the bishops and rook act like long-range artillery, supporting the troops from a distance while aimed at the focused area. This is normal. Queens and knights usually work best from up close, bishops and rooks best from far away. By first focusing the attack, White knows "up close to what" and "far away from what."



Whenever I ask students for White's best move in this position, they always say Qh5. Why? So the queen can mate on h7 if Black captures the knight.

Hope chess again; tactics directing strategy. How does this move help the queen to h7 if Black doesn't play the response for which White is hoping?

This reasoning is better: White's plan is to move his queen to e4 via f3, but he doesn't have time to pursue this strategy if Black's h-pawn is attacking his knight. White's first task, therefore, is to determine whether or not that is true. To accomplish this, White should pretend that he doesn't get a 6th move and calculate the tactics after Black captures the knight in the position above. If he wins the variation, White can play the move that strategy suggests.

**6.Qf3! ...**

See the difference? With 6.Qf3, strategy dictates tactics. With 6.Qh5, tactics dictate strategy.

Now White's threat is 7.Qe4 g6 8.Nxe6! fxe6 9.Qxg6+ & 10.Qh7#. Black's f-pawn is overworked because White advanced his knight to the front line (instead of the simpler retreat to d2) back on moves 4 & 5 when he liberated the queen.

**6... hxg5?**

It's Black's turn to play hope chess: hoping that White recaptures on c6, after which 7...d5! cuts his queen out of the attack.

The best try for Black is 6...d5 right away, keeping White's queen off e4. But that takes the race out of the game by removing the pressure from White's center. White would have all the time in the world to pursue the kingside attack at his leisure.

**7.Qh5! g6**  
**8.Bxg6! fxg6**  
**9.Qxg6+ Kh8**  
**10.hxg5 ...**

On the one hand, threatening our old friend the rook lift: 11.Re3 & 12.Rh3#. Hard enough to prevent on its own, but a second white threat is 11.Qh6+ Kg8 12.g6, followed by 13.Qh7+ and mate on f7 or h8.

The combined power of both finally puts Black's defense beyond reach.

**VIRTUAL CHESS OPENINGS**

[www.chessopenings.com](http://www.chessopenings.com)

The most comprehensive chess opening reference in the world!

# Take It On The Road

Once again, it is time to make your plans for the summer. Summer camps are a great way to improve your game and have some fun at the same time. More complete details for each camp can be found at [www.uschess.org](http://www.uschess.org) under Scholastic/College > Chess Camps.

## ARIZONA

**Western Invitational Chess Camp.** Tucson, Arizona, **July 12-16, 2009.** 2008 Instructors included GM Shulman, GM Kaidanov, GM Ramirez, IM Altounian, FM Adamson, FM Danny Rensch, FM Larsen. Instructors for 2009 TBD, but will again have at least 2 GM's. Last year top group: Avg: 2075; Second group: 1875; Third group 1700; Fourth group: 1550. Minimum rating 1500 to be invited. Contact camp director Robby Adamson, 520-577-6799; [robzadamson@msn.com](mailto:robzadamson@msn.com). Check out camp website at [www.westernchesscamp.com](http://www.westernchesscamp.com).

## CALIFORNIA

**Mountain Lake Chess Camp**, now in its 16th year. 9 weekly day camps in Balboa Park, San Diego, **June 22-August 21**, \$109.00/week. One-week overnight camp in Lake Arrowhead, California, August 3-7, \$525.00/week. Parents welcome. Campers learn in an exciting, cumulative merit forum that rewards participation. Every child gets a trophy. Auxiliary activities include swimming, archery, sailing and horseback riding. Hosted by International Master Larry D. Evans. For more information visit [www.chesscamp.net](http://www.chesscamp.net) or call (800) 675-1227.

## COLORADO

**15th Annual Denver Rocky Mountain Chess Camps, June 15-19** (Englewood)

Full and half day options - and **July 13-15** (Denver). All abilities and ages. 8:1 staff-student ratio. Five 2-day chess camps are also offered throughout the summer and winter break. Participants will be taught scorekeeping, etiquette, tournament preparation, logical thinking and strategic planning. Learn personally from nationally-recognized Denver Chess Master and author, Todd Bardwick.

Visit [www.ColoradoMasterChess.com](http://www.ColoradoMasterChess.com) for details. Contact Todd at (303) 770-6696 or [tbardwick@yahoo.com](mailto:tbardwick@yahoo.com)

## DISTRICT OF COLUMBIA

**U.S. Chess Center Day Camps, Washington, DC, June, July, August;** Different levels of instruction different weeks. Contact U.S. Chess Center, 1501

M Street, NW, Washington, DC 20005, (202) 857-4922, [www.chessctr.org](http://www.chessctr.org).

## FLORIDA

**Miami, Florida Summer Chess Camp: Youth and Adult sections, full and half day options, July 20-24, 2009.**

Camp meets for five days, Monday through Friday. Full Day is 9:00 a.m. to 4:00 p.m. Half Day is 9:00 a.m. to Noon. Prizes, trophies, t-shirts included. Intensive chess learning but also fun outdoor activities, chess tournaments, bughouse, other games and activities. Visit our website [www.activityprograms.org](http://www.activityprograms.org) for registration/more information or contact camp director Richard Hornor: [richard@activityprograms.org](mailto:richard@activityprograms.org).

## GEORGIA

**Castle Chess Camp: June 14-21, 2009**

The Castle Chess Camp is a nationally renowned program of chess instruction, recreation and competition that brings together some of the best chess teachers and scholastic players from across the U.S. The Atlanta camp is now recognized as one of the finest (and strongest) chess camps in the country.

The camp concept was developed out of a five-year study of seventh and eighth grade students by **Dr. Robert Ferguson** in Pennsylvania. Those students engaged in chess classes showed dramatic improvement in their schoolwork compared with those students who were engaged in other forms of "enrichment activities." These results prompted Dr. Ferguson to form the American Chess School, which held its first resident "Castle" camp in Pennsylvania in 1982.

**If you have any questions about the camp, please e-mail Mark@castlechess.org.**

## ILLINOIS

**6th annual Grandmaster Yury Shulman's Summer Chess Camps at Barrington High School, Barrington, Illinois (June 15-19 and July**

**27-31, 2009)**

Our staff members include 2008 U.S. Champion GM YURY SHULMAN, 2006 U.S. Champion GM ALEXANDER ONISCHUK, World Team Champion GM GREGORY KAIDANOV, NM ALEX BETANELI. **Location:** Barrington High School, 616 W. Main St., Barrington, IL 60010. **Time & Schedule: June 15-19, 2009** daily from 10 a.m. till 5 p.m. - full day, 10 a.m. to 1p.m. - 1st half-day and 2 p.m. to 5 p.m. - 2nd half-day; **July 27-31, 2009** daily from 10 am till 5 pm - full day, 10 am to 1pm - 1st half-day and 2pm to 5 pm - 2nd half-day. **Please make checks payable to Yury Shulman's International Chess School and mail to 428 Waverly Rd. Barrington, IL 60010.**

Accommodation is available in the local hotel or host families for out of town students. For further information about our full schedule of activities and about the school, visit <http://www.shulmanchess.com>, or contact: Yury Shulman at [yushulman@yahoo.com](mailto:yushulman@yahoo.com), 312-375-7475 or Kiran Frey at [kiran47@hotmail.com](mailto:kiran47@hotmail.com), 847-382-5410.

**Ole Chess Camp with GM Kaidanov, GM Serper & IM Krush: A Premier Chess Camp for Players of all ages, July 19-24, 2009**

OleChess offers a week of quality instruction and chess-related activities featuring some of the world's premier players and teachers. Chess players of all ages, abilities and experience levels will enjoy a week filled with classes, demonstrations, lectures, tournaments and games, games and more games with fellow chess enthusiasts. A rotating instructional schedule allows participants to study with a variety of teachers during the camp.

Special activities include both chess and more varied activities: a movie night, a campfire and recreational opportunities including soccer, bowling, softball and basketball keep things active and interesting at OleChess.

**Intensive Study Option:** For an additional fee, OleChess includes an Intensive Study Option for players rated above 1700 or at least 17 years old. This option is intended for the serious adult student



and involves additional instructional periods and lectures along with greater classroom rigor.

**Also new in 2009:** The camp will host a USCF-rated three-round, sections of 6-11 like rated tournament Monday-Wednesday evenings during the week of camp. This tournament will be open to campers as well as non-campers. Visit our website for details and registration information. For more details see [www.stolaf.edu/camps/chesscamp/](http://www.stolaf.edu/camps/chesscamp/) or e-mail Kevin\_Bachler@cavemanchess.com or summer@stolaf.edu

## KANSAS

**Anatoly Karpov Chess School Chess Camps** - Lindsborg, Kansas - Session I, **July 12-17, 2009**; Session II, **July 19-24, 2009**. Lead instructor GM Varuzhan Akobian. [www.anatolykarpovchessschool.org](http://www.anatolykarpovchessschool.org). E-mail: brownscombe@anatolykarpovchessschool.org. 785-227-2224

## MINNESOTA

**School Chess Association. Summer Chess Day Camp.** Monday through Thursday 8 a.m.-5 p.m. Seven weeks: **June 22-25, July 6-9, July 13-16, July 20-23, July 27-30, Aug. 3-6, Aug. 10-13.**

Professional (licensed) teachers who know children and how to teach them. Chess Instruction tailored to the students' individual needs. Five levels of chess instruction (beginning, advanced beginners, intermediate, advanced and super-advanced) each under the direction of a separate teacher. Variety of optional activities in addition to chess instruction; including swimming, tubing, field ball, Magic the gathering, soccer, fishing, roller skating, bowling, sign language, D&D, and role-playing games. Call for information—Phone: 763-593-1169 or information on website: [www.schoolchess.org](http://www.schoolchess.org) Location: St. Louis Park Recreation Center, 3700 Monterey Drive., St. Louis Park, Minnesota.

## NEW HAMPSHIRE AND NEW JERSEY

### KOPEC'S CHESS CAMPS 2009

**The Hun School of Princeton, NJ: July 14-18**

**The Brewster Academy, Wolfeboro, NH: August 14-22**

There will be a day camp for ages 7 to 17 at the Hun School of Princeton, July 14-18, which will run from 9:00 a.m. to 4:00 p.m. (including a fabulous lunch) with

tennis and other sports (soccer, volleyball, etc) from 3:00 to 4:00 p.m.

We will offer an **overnight program** at the Brewster Academy in Wolfeboro, New Hampshire (on beautiful Lake Winnepesaukee) **August 14-22, 2009**. Programs include:

An **adult weekend program August 14-16.**

An **overnight (and commuter) program for children ages 10 and up** and a very limited number of adults (housed separately) **August 16-22**, a tournament (optional) on **August 22.**

Look for further details on our website: [www.kopecchess.com](http://www.kopecchess.com), e-mail: drk2501@aol.com, Telephone: 516-782-5285 (cell), Bus: 516-705-4335.

**Dean of Chess Academy Summer Camps** in New Jersey. Camps will be held in the following areas: Flemington - **July 6-10th**; Ridgewood - **July 13-17th**; Montgomery - **July 20-24th**; Warren - **July 27-31st**, Branchburg Area - **August 3-7th**. Classes will be running throughout June, July and August in our Branchburg facility. For complete details visit [www.deanofchess.com](http://www.deanofchess.com) or call 908-534-4318.

## OHIO

**2009/10 Season: Vivacity CHESS Camps (Ohio).** Find out what it's like to learn from people who have expertise in chess and a passion for teaching! SPRING, SUMMER and WINTER Chess Camps. More Information and Registration: [www.vivacityinc.com/chess/CheSSCamps.htm](http://www.vivacityinc.com/chess/CheSSCamps.htm) QUESTIONS: Website: [www.vivacityinc.com/chess](http://www.vivacityinc.com/chess); E-mail: chess@vivacityinc.com; Telephone: (440) 461-3634.

## PENNSYLVANIA

**Eastern Invitational Chess Camp**, Philadelphia, Pennsylvania. 2009 Instructors: FM Robby Adamson, Ross Colby, Ian West. Camp will consist of three groups, determined by rating. **June 27-30, 2009**, at The Philadelphia School. Contact camp director, Ross Colby, at [skunkfrog@aol.com](mailto:skunkfrog@aol.com), or Robby Adamson at [robzadamson@msn.com](mailto:robzadamson@msn.com).

## TENNESSEE

**8th Annual Mid-South Chess Camp in Memphis, TN June 7th-12th** at Lausanne Collegiate School featuring GM Alex Stripunsky, GM Melikset Khachiyani, IM Eli Vovsha, FM Jake Kleiman, WIM Iryna

Zenyuk. All levels, all ages. Instructors rotate through all groups. Knowledgeable and experienced college counselors stay with each group during the camp. Residential and commuter. T-shirts, daily souvenirs, trophies, group pictures, tournaments, sports breaks with the GM's and IM's where chess is an art, a science, and a sport. For more information, please visit [www.chesscamp.us](http://www.chesscamp.us) or call 901.276.4663

## VIRGINIA

**K-12 Chess Camp in Virginia Beach, Virginia from June 22-26, 2009.**

The camp will feature a G/30 "New Beginner's Open" on Thursday, June 25, 2009, and every camper will become a USCF member and have a provisional quick and regular USCF rating at the completion of the chess camp. For details, please visit our website at: [www.vabeachchesscamp.com](http://www.vabeachchesscamp.com).

## VIRGINIA PLUS!

Study chess with the **Silver Knights** chess coaches! Our coaching staff includes several national and international masters. We have taught tens of thousands of children, including two national champions in 2008. Campers are broken up into groups by skill level, so we accept anyone from total beginners up through experienced and highly-rated tournament players. Each camper receives a t-shirt and a tournament-style chess set. Activities include learning openings, tactics, endgames, studying master games, playing games against fellow students, and analyzing the students' games. Campers will take breaks for snacks and fresh air every hour, and full-day campers have lunch and recess from 12:00-1:00. Camps will be held in Pennsylvania, Virginia, and New Jersey. For more information and a complete list of dates and locations, or to register, see our website at [www.silverknightschess.com](http://www.silverknightschess.com).

## ALL OVER THE USA!

**USA Chess** is the largest and premier chess camp organizer for children in the United States. The staff is comprised of the best children's chess instructors in North America! These chess camps are uniquely qualified to cater to the needs of beginners through advanced skill levels. The 14th annual National Summer Chess Camp Tour will visit more than 100 U.S. cities in summer 2009. For information please log in to [www.chesscamp.com](http://www.chesscamp.com) or call 888-65-CHESS.

# Defending Against the Colle

(and some of his pals)

by Pete Tamburro

We've talked about using the All-Purpose Defense of C.J.S. Purdy to defend against the Colle. You might remember that normal developing moves were used, but it was a tough game for Black if he made one mistake!

This time out we're going to give you a defense to fight with! Not only that, but we're going to take care of some of Colle's buddies.

Before we start, we have to say something about the opening books that go for about \$25 that show you an opening system using one of the openings below. Too many of these books seem to promise White a sure-fire attack against the black defense with a bunch of moves that seem to work against anything.

There are two things that bother me about this, and it's been going on for a half-century or so. First, they rarely give the best defense. After all, would you buy the book if it said you were going to draw instead of win? Secondly, it doesn't teach you how to play chess. Usually, you get a very narrow choice of moves and a very narrow plan. That's not a lot to grow with.

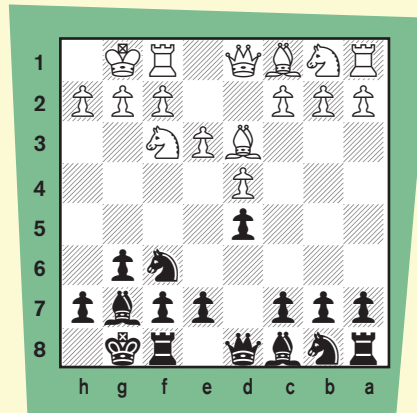
So why do people play this stuff? Well, it works! And it works especially well in scholastic chess because

most players playing black don't know how to defend against these attacks.

Not to worry, because you are going to learn how to meet these attacks right now!

**1.d4 Nf6 2.Nf3 d5 3.e3 g6 4.Bd3 Bg7 5.0-0 0-0**

Diagram A



As you can see, this is quite different from Black's e6, d5, c5 pawn formation. Many players prefer this pawn formation because the Colle bishop on d3 isn't directly attacking h7. The g6-pawn is in the way. Also, at some point, the fianchettoed bishop on g7 will help with Black playing the counter attack with e5.

Let's see what Black can do if White continues with the Colle set-up.

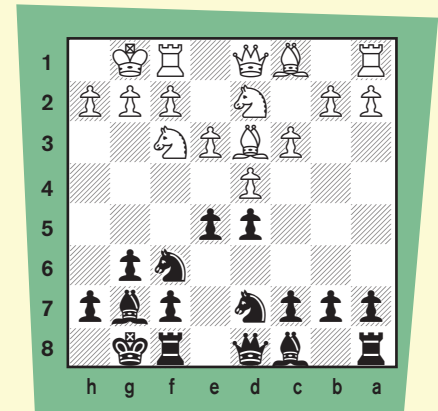
**6.c3 Nbd7**

Black plays the knight to d7 instead of c6 because it gives the defense more choices. With the knight on d7, Black can play either 7...e5 or 7...c5. The e5 move is very safe and leads to an equal position with no problems. The c5 move is a try at winning and has more risk to it. We'll look at both.

## The Safe Way

**7.Nbd2**

Diagram B

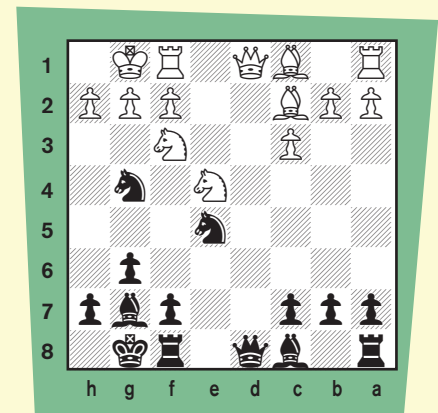


**7. ... e5!**

Pretty cool! The Colle is supposed to get the big e-pawn move in, and here Black does it! White can't hold onto the pawn either. If 8.Nxe5 Nxe5 9.dxe5 Ng4 10.f4 Nxe3 and Black has a big edge. So ...

**8.dxe5 Ng4 9.e4 Ndx5 10.Bc2 dxe4 11.Nxe4**

Diagram C



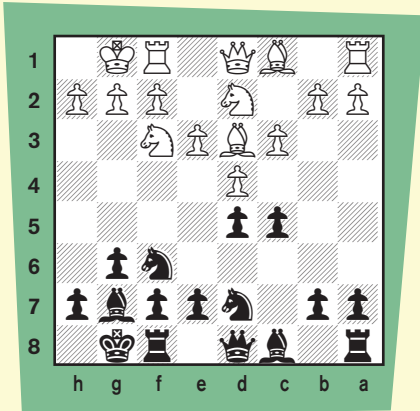


The position is equal and safe for Black. It will be hard for either side to play for a win. However, Black can play for a win with ...c5. Let's look.

Playing for a win! (from Diagram B)

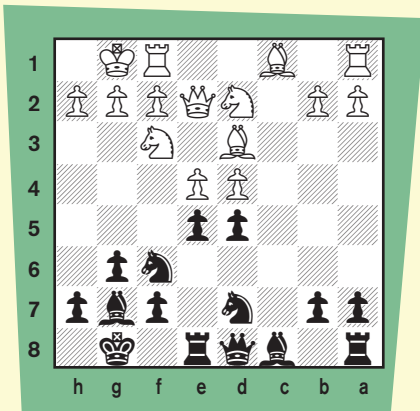
**7. ... c5**

**Diagram D**



**8.Qe2 Re8 9.e4 cxd4 10.cxd4 e5**

**Diagram E**

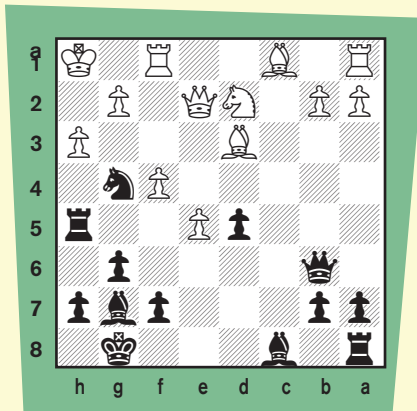


See how much has happened in three moves! White has gone ahead with his plan to push for e4 by putting his queen on e2. Black puts his rook opposite the white queen, a good tip! Then, as soon as White plays e4, Black captures on d4 and counters with ...e5. This is a great position to try for a win!

If White still thinks he has an attack, he is quickly shown that isn't the case:

**11.dxe5 Nxe5 12.Nxe5 Rxe5  
13.f4 Rh5 14.e5 (14.f5 dxe4  
15.Nxe4 Bxf5 16.Nxf6+ Qxf6  
17.Bxf5 Rxf5) 14...Ng4 15.h3  
Qb6+ 16.Kh1**

**Diagram F**



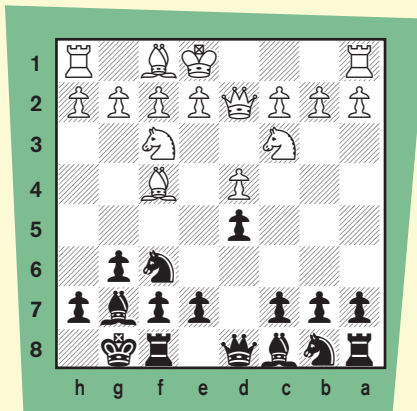
Black to play has about twelve good moves here! His pieces are active and his undeveloped ones will be in the game before White's undeveloped pieces. If you want safety, go for the first line with ...e5. If you want to go for more, use the ...c5 line.

**Colle's Pal, Barry**

Something called the Barry Attack has attracted a lot of attention in recent years as a few English players have scored some pretty quick wins with it. There are several books that deal with it. We are not afraid of it because we know how to play good developing moves! We will be active. We will refuse to just sit there and wait for the attack. That's a good way to lose.

After **1.d4 Nf6 2.Nf3 d5**, White doesn't have to play 3.e3 to go into the Colle System. Instead, he may try the Barry Attack with **3.Nc3 g6 4.Bf4 Bg7 5.Qd2 0-0**

**Diagram G**

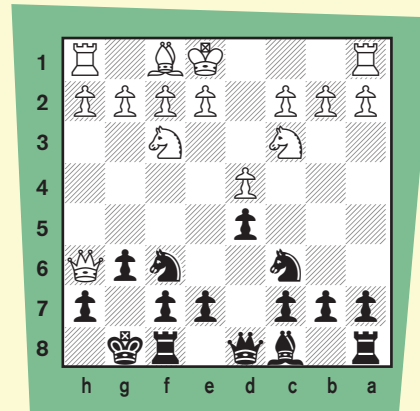


Well, at least White isn't being sneaky about his plans. He's lined up the queen and bishop to head for h6 to try and exchange off the dark squared bishop and play h4 and h5 to hit g6 (he'll be castling queenside) and even get Ng5 in for a mating attack.

We've noticed that many players get scared about the bishop trade because the queen recapturing on h6 looks scary. Be careful, yes; but, scared, no! Look what Black can do:

**6.Bh6 Bxh6 7.Qxh6 Nc6**

**Diagram H**



Now White has two paths to try and Black will be ready for both.

**Beating the All-Out Attack**

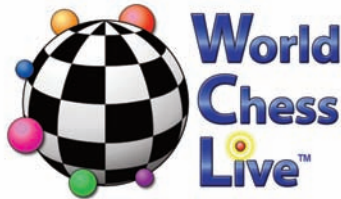
Yes, it's dangerous! You have to keep a cool head. Play through the main line here and you'll see it's the same idea: develop your pieces and be active with them. You also have to know traps you can fall into. Look at the 9...Nhx5 line and see how you can get mated by move 14! Chess isn't easy, but it does reward students who study!

**8.h4 Bf5 9.h5 Nb4** (9...Nhx5 10.Ng5 Nf6 11.Nxh7 Nh5 12.Ng5 Re8 13.Qh7+ Kf8 14.Qxf7#) **10.Rc1 Nxc2+ 11.Kd2 Ng4 12.Qf4 Nb4 13.Ne5** (13.hxg6 fxg6) **13...Nxe5 14.Qxe5 f6 15.Qf4 e5 16.dxe5 d4**

*Continued on page 15*



# 2008 World Chess Live Grand Prix Standings



Our computations from last issue held up and Joel Pena is indeed the winner of the 2008 World Chess Live (WCL) Junior Grand Prix.

The first place JGP winner will receive a free entry into the 2009 U.S. Open in Indianapolis, Indiana and a plaque from the USCF. 1st-10th place winners will receive 2-year WCL junior and USCF Young Adult memberships; 11th-20th place winners will receive 1-year WCL junior and USCF Young Adult memberships. Each state JGP winner will receive 1-year WCL junior and USCF Young Adult memberships and a \$20 WCL store gift certificate.

| NAME                  | STATE | PTS | PLACE     | PRIZE    | NAME                   | STATE | POINTS |
|-----------------------|-------|-----|-----------|----------|------------------------|-------|--------|
| PENA, JOEL ANTHONY U  | NJ    | 250 | 1st       | \$1,000  | LEE, MATTHEW R         | MA    | 85     |
| HEUNG, CHRISTOPHER    | FL    | 220 | 2nd       | \$600    | PINKERTON, JAMES CARL  | MD    | 180    |
| DEJONG, ANDREW        | NC    | 185 | 3rd       | \$300    | FISHBEIN, MATTHEW EVAN | ME    | 35     |
| GIANNATOS, PETER      | NC    | 180 | 4th-6th   | \$150    | VIRKUD, APURVA         | MI    | 140    |
| PINKERTON, JAMES CARL | MD    | 180 | 4th-6th   | \$150    | VOLKER, SONJA          | MIL   | 15     |
| KUTIKOFF, ADAM        | FL    | 180 | 4th-6th   | \$150    | ZAGAR, DANE B          | MN    | 85     |
| HUTTON, JACK          | NY    | 170 | 7th       | \$75     | CAO, KEVIN Y           | MO    | 80     |
| SREENIVASAN, RAMANUJA | MD    | 165 | 8th       | \$50     | DING, JIALIN           | MO    | 80     |
| BODEK, MICHAEL H      | NY    | 160 | 9th-10th  | \$12.50  | HICKS, ALFRED JALADON  | MS    | 40     |
| SINGH, REVA SHREE     | NY    | 160 | 9th-10th  | \$12.50  | FORD, MONQUEZ          | MS    | 40     |
| ROSENTHAL, NICHOLAS   | FL    | 155 | 11th-12th | WCL&USCF | DEJONG, ANDREW         | NC    | 185    |
| TROFF, KAYDEN WILLIAM | UT    | 155 | 11th-12th | WCL&USCF | APTE, MANEESH D        | ND    | 20     |
| ZHAO, SHICHENG        | VA    | 150 | 13th      | WCL&USCF | GAGE, WILLIAM          | NE    | 25     |
| HARMON-VELLOTTI, LUKE | ID    | 145 | 14th      | WCL&USCF | MORAN, HARRISON M      | NH    | 60     |
| CHIANG, MICHAEL       | NY    | 140 | 15th-18th | WCL&USCF | LONG, DAVID            | NH    | 60     |
| CHEN, JEREMY          | NJ    | 140 | 15th-18th | WCL&USCF | BURGER, CAMERON        | NH    | 60     |
| PAPALIA, STEVEN A     | UT    | 140 | 15th-18th | WCL&USCF | PENA, JOEL ANTHONY U   | NJ    | 250    |
| VIRKUD, APURVA        | MI    | 140 | 15th-18th | WCL&USCF | SERNA, JEFFREY MICHAEL | NM    | 75     |
| LARSON, ERIC DANIEL   | MI    | 135 | 19th-22nd | WCL&USCF | SEID, RAYMOND          | NV    | 45     |
| SCHNEIDER, THOMAS G   | WI    | 135 | 19th-22nd | WCL&USCF | HUTTON, JACK           | NY    | 170    |
| KLEINMUNTZ, ROBBIE S  | IL    | 135 | 19th-22nd | WCL&USCF | CLAYTON, RYAN DANIEL   | OH    | 120    |
| SHEINWALD, NOWELL R   | NY    | 135 | 19th-22nd | WCL&USCF | LIN, KENNY L           | OK    | 50     |

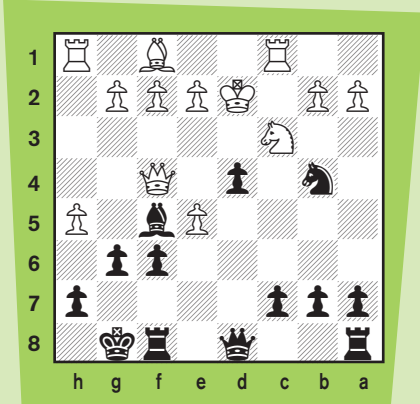
*And here are the state winners:*

| NAME                           | STATE | POINTS |
|--------------------------------|-------|--------|
| PARSHALL, MATTHEW              | AK    | 35     |
| HELLWIG, LUKE                  | AL    | 125    |
| CHIKKALA, SNEHA                | AR    | 50     |
| GURCZAK, JOHN                  | AZ    | 105    |
| AGARWAL, ROHAN                 | CA    | 125    |
| POLSKY, RYAN                   | CA    | 125    |
| HUGHES, TYLER B                | CO    | 50     |
| CHANDRAN, KAPIL                | CT    | 110    |
| DEMCZU, CHE                    | DC    | 30     |
| HAUGE, DAVID RICHEY            | DC    | 30     |
| PERGEORELIS, MICHAEL W         | DE    | 55     |
| HEUNG, CHRISTOPHER             | FL    | 220    |
| GUREVICH, DANIEL               | GA    | 120    |
| KRIENKE, MARISSA M             | HI    | 55     |
| IYER, VENKAT                   | IA    | 110    |
| HARMON-VELLOTTI, LUKE          | ID    | 145    |
| KLEINMUNTZ, ROBBIE S           | IL    | 135    |
| GATER, DANIEL                  | IN    | 70     |
| LATHAM, ANDREW                 | KS    | 95     |
| WHITNEY, RAYSEAN               | KY    | 100    |
| GLORIOSO, VINCENT J            | LA    | 60     |
| HANNIBAL, CARSON J             | OR    | 50     |
| FISHER, WILLIAM                | PA    | 115    |
| FINNEY, STUART S               | RI    | 105    |
| LAURIA, MICHAEL D              | SC    | 60     |
| JAMES, JACOB C                 | SD    | 30     |
| VAZQUEZ MACCARINI, CHRISTOPHER | TERR  | 30     |
| COMAS COLON, ABNELL            | TERR  | 30     |
| MARSH, MATTHEW L               | TN    | 85     |
| WOODBURY, GEORGE               | TN    | 85     |
| BALLOM, STEPHANIE              | TX    | 105    |
| TROFF, KAYDEN WILLIAM          | UT    | 155    |
| ZHAO, SHICHENG                 | VA    | 150    |
| BROOKS, WILL JOSEPH            | VT    | 75     |
| LEHMANN, SPENCER GEORGE        | WA    | 90     |
| LEE, WILLIAM ALEXANDER         | WA    | 90     |
| SCHNEIDER, THOMAS GEORGE       | WI    | 135    |
| WESTERN, CASEY JAMES           | WV    | 35     |

World Chess Live will offer \$10,200 in sponsorship for the 2009 WCL Junior Grand Prix: \$2,000 in cash, \$2,000 in World Chess Live memberships, \$2,000 in USCF memberships, and \$4,200 in special merchandise prizes for the state winners. So if you haven't already started to earn your Junior Grand Prix points, start now!



Diagram I



And the hunter becomes the hunted! White can be more solid with 8.e3 Bf5 9.0-0-0 Ng4 10.Qh4 e5 11.Qg3 exd4 12.exd4 Nf6, but Black is just as developed as White and has just as much a chance of attacking Black's queen as White has in attacking Black's monarch.

**A Really Wrong-Headed Idea!**

There is a book (and even a website) on an old line called the Colle-Zukertort (C-Z) System. Some scholastic players may not notice the difference the fianchetto makes against the queenside fianchetto by White, which is more effective against the e6, d5, c5 defense set-up. You can't just memorize moves. You have to understand ideas!

The C-Z is the Colle without c3. Instead, White plays b3 and Bb2 along with Ne5 and even f4 for a big time attack on the kingside. However, if we use our fianchetto formation, we have little to worry about.

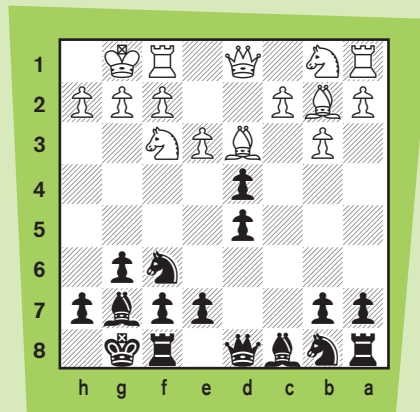
After **1.d4 Nf6 2.Nf3 d5 3.e3 g6 4.Bd3 Bg7 5.0-0 0-0**, White can decide to play a C-Z set-up instead of playing 6.c3 and play 6.b3, but **6.b3 c5 7.Bb2**.

Here is where playing a system against the wrong formation can hurt.

If White tries a Colle-like trick with 7.dxc5 Nfd7! gives Black a great game. If he tries 7.Ba3 (a C-Z type trick) 7...cxd4 8.exd4 Nc6 9.Qe2 Ne4.

**7...cxd4!**

Diagram J

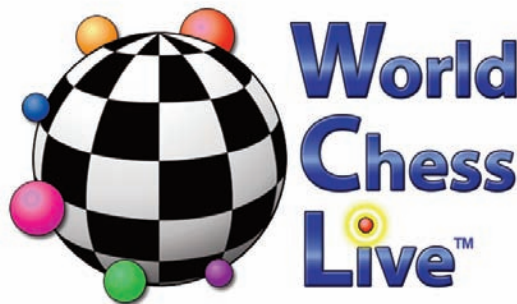


The pawn exchange is a great idea!

Continued on page 18

Prepare to make your best move since joining the USCF...

Don't miss one of this year's top benefits of USCF membership.



Claim your **six-month free trial** now at World Chess Live, the only online chess service offering:

- Weekly USCF quick-rated tournaments
- Chances to earn both Grand Prix and Junior Grand Prix points
- Many other tournament prizes
- Free videos from top instructors
- A welcoming atmosphere for players of all levels

**For details, go to [www.worldchesslive.com/uscf](http://www.worldchesslive.com/uscf)**

# 2009 Trophies Plus All-America Team



The United States Chess Federation announced the 2009 Trophies Plus All-America Team at the National Scholastic K-12 Championship, held December 12-14 in Buena Vista, Florida. Each member of the team received a team jacket and a plaque to commemorate their achievement (based on age and minimum peak rating achieved).

Trophies Plus of Templeton, Iowa, provides all the trophies (hundreds and hundreds!) for all USCF scholastic championships and we are proud to have them as a sponsor for the All-America Team. You can visit them at [www.trophiesplus.com](http://www.trophiesplus.com).

The USCF congratulates all of the members of this year's team for receiving this prestigious award. There were 42 members of the 2009 team:

## Age 15

(Minimum peak rating of 2300)

**Marc Tyler Arnold, NY**

## Age 18

(Minimum peak rating of 2450)

**Salvijus Bercys, NY**  
**Alex Lenderman, NY**

## Age 16

(Minimum peak rating of 2350)

**Robert L. Hess, NY**  
**Daniel A. Yeager, PA**  
**John Daniel Bryant, CA**  
**Samuel L. Shankland, CA**  
**Warren Harper, TX**

## Age 14

(Minimum peak rating of 2250)

**Mark Heimann, PA**  
**Michael Lee, WA**  
**Alexander Heimann, PA**  
**Victor Shen, NJ**  
**Alec Getz, NY**

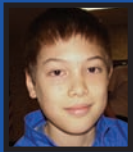
## Age 17

(Minimum peak rating of 2400)

**Daniel J. Ludwig, FL**

## Age 13

(Minimum peak rating 2200)



**Ray S. Robson**  
**FL**



**Jason Altschuler**  
**TX**

## Age 10

(Minimum peak rating 1950)



**Brian J. Luo**  
**WI**



**Parker Bi Guang Zhao**  
**NY**



**Darwin Yang**  
**TX**



**Alexander Velikanov**  
**WI**

## Age 12

(Minimum peak rating 2100)



**Daniel A. Naroditsky**  
**CA**



**Aleksandr Ostrovskiy**  
**NY**



**Jarod M. Pamatmat**  
**TX**



**Gregory Young**  
**CA**



**David Adelberg**  
**AZ**



**Kevin Wang**  
**MD**



**Ryan Joseph Moon**  
**GA**



**Srikar Varadaraj**  
**OH**



**Daniel Gurevich**  
**GA**



**Varun Krishnan**  
**CA**





**Yian Liou**  
CA



**Luke Harmon-Vellotti**  
ID



**Samuel Sevian**  
CA



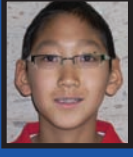
**David A. Hua**  
NJ



**Christopher Wu**  
NJ



**Raymond Sun**  
TX



**Brennen Lee**  
AZ



**Jeevan Karamsetty**  
VA



**Dachey Lin**  
TX

**Age 9**

(Minimum peak rating 1850)

**Age 8 & Under**

(Minimum peak rating 1750)



**Nicolas Nip**  
CA



**Jonathan Chiang**  
TX



**Tommy O He**  
TX

**And keep your eye on ...**

The following youngsters didn't make the Trophies Plus All-America Team this year, but they gained a whole mess of rating points and some of them came close. Watch them take off next year!

| Name                    | Age | Rating | Gain | Name                     | Age | Rating | Gain |
|-------------------------|-----|--------|------|--------------------------|-----|--------|------|
| KUMAR, ARAVIND          | 6   | 1595   | 624  | JIN, DAVID               | 10  | 1913   | 441  |
| ZENG, WINSTON CHING-TZE | 7   | 1515   | 728  | MALHOTRA, AKSHAY         | 10  | 1887   | 327  |
| TANENBAUM, ZACHARY CHEN | 8   | 1410   | 1002 | COLAS, JOSHUA            | 10  | 1922   | 322  |
| ABELLA, CLARISSA LOUISE | 8   | 1170   | 670  | XU, YUE                  | 11  | 1573   | 701  |
| YU, DEREK               | 8   | 1206   | 633  | SREENIVASAN, RAMAN       | 11  | 1693   | 695  |
| KHAMBATI, ALI K         | 8   | 1152   | 599  | DING, JIALIN             | 11  | 1768   | 618  |
| WEI, JAMES              | 8   | 1642   | 572  | ATRIWAL, ANSHUMAAN       | 11  | 1314   | 598  |
| MOY, KEVIN              | 8   | 1097   | 559  | BODEK, MICHAEL H         | 11  | 1831   | 575  |
| MINASYAN, DAVID         | 9   | 1598   | 880  | PRIORE, CLAIRE           | 11  | 1278   | 559  |
| SCHENCK, CORTEZ         | 9   | 1312   | 697  | XIA, YUSHENG             | 11  | 1455   | 554  |
| CHEN, QINHONG           | 9   | 1460   | 649  | PAPALIA, STEVEN A        | 12  | 1498   | 759  |
| OBERHAUS, CONRAD        | 9   | 1608   | 615  | KNEBEL, ERIN MARGARET    | 12  | 1320   | 735  |
| MOUSSERI, DANIEL        | 9   | 1574   | 590  | THOMAS, KATHRYN          | 12  | 1073   | 699  |
| VENKATARAMAN, SARA      | 9   | 1211   | 581  | PATEL, KAJAL             | 12  | 1244   | 651  |
| ADELBERG, STEVEN        | 9   | 936    | 556  | BO, ERIC                 | 12  | 1537   | 610  |
| SWINDELL, SHAWN         | 9   | 1496   | 555  | KRANJC, NATHANIEL AUSTIN | 12  | 1299   | 595  |
| GU, CHRISTOPHER         | 10  | 1617   | 689  | IZEN, LEO                | 12  | 978    | 561  |
| GOLOGORSKY, RACHEL      | 10  | 1656   | 654  | ROSSI, TIAN              | 12  | 1550   | 556  |
| MERZ, DEVON S           | 10  | 1384   | 642  | NESHAM, WILLIAM          | 13  | 1459   | 817  |
| ZHANG, STEPHEN J        | 10  | 1337   | 629  | HIDALGO, JONATHAN        | 13  | 1693   | 622  |
| SUSARLA, ANEESH         | 10  | 1042   | 592  | NEOGY, CHIRANTAN         | 13  | 1383   | 613  |
| KIKUCHI, ALISA          | 10  | 1114   | 575  | NUNEKPEKU, ELVIS         | 13  | 1265   | 563  |
| UNRUH, HARRISON         | 10  | 1449   | 567  | FLORES, BRANDON          | 13  | 1224   | 562  |
| WILLIAMS, JUSTUS D      | 10  | 1691   | 558  | KOONG, JOANNE            | 13  | 1350   | 551  |

# Boola, Boola! Do YOU Google?



[Dr. Root put together a few facts about college chess for the February 2009 issue, but we ran out of pages and couldn't use it then. Even though the SuperNationals will be over by the time you read this, it's a "good read." I've left some of her facts blank. It will be your job, should you accept the challenge, to find the answers and fill in the blanks. Google, use your favorite search engine, or your coaches and parents—anything that works!

The winning entry—chosen by my faithful gnomes from Outer Mongolia—will receive a copy of the latest edition of *Modern Chess Openings*, edited by GM Nick de Firmian. Send your entries to: [gpetersen@uschess.org](mailto:gpetersen@uschess.org) or USCF, 44-D Manchester Court, Freehold, NJ 07728. Good luck!]

## Top Ten Facts about College Chess

by Dr. Alexey Root, WIM, author of *Science, Math, Checkmate: 32 Chess Activities for Inquiry and Problem Solving* (Libraries Unlimited, 2008).

**10.** The first American intercollegiate chess league began in 1892 with Columbia, Harvard, Princeton, and Yale universities.

**Who won?**

**9.** Before he became world champion, Jose Capablanca played chess **and what other sport** \_\_\_\_\_ for Columbia?

**8.** The Pan-American Intercollegiate Team Championship began in 1945, when many college chess players returned from fighting in World War II. The tournament is held every year between Christmas and New Year's Day.

**Which school won in 2008? Who won the most times?**

**7.** Just like for college basketball, there is a Final Four of college chess every spring.

**6.** You can learn chess from college students volunteering in K-12 schools. And lots of college campuses host summer chess camps for children.

**5.** Chess players of all levels (beginners through grandmasters) attend college chess clubs.

**4.** Before he became a grandmaster, Hikaru Nakamura was awarded a college scholarship for winning the National Elementary.

**3.** Cheerleaders and mascots cheer for college chessplayers.

**2.** When you become a high school junior, you can apply for a college chess scholarship at over 30 colleges and universities across the U.S. See <http://main.uschess.org/content/view/8164/131/> for more information.

**1.** You can win college chess scholarships this year at many tournaments, including at SuperNationals.

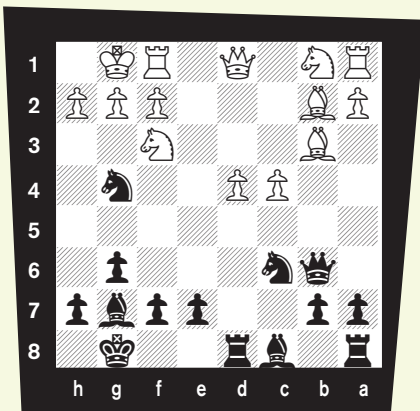
## Defending Against the Colle

*Continued From page 15*

Why? It gives Black three choices, most bad. Two are not good and one is OK. If 8.Bxd4 Nc6 (hitting the bishop) 9.Bb2 Qc7 (putting a major piece on the c-file and supporting an eventual ...e5) 10.Nbd2 e5! and Black has a fine center and development. If 8.Nxd4, Black gets 8...e5 right away. So

**8.exd4 Nc6 9.c4 dxc4 10.bxc4 Ng4 11.Bc2 Qb6 12.Bb3 Rd8**

**Diagram K**



Here we have a perfect position to understand what it means to be active. White's bishops are misplaced and have little room to move. The pawns are known as "hanging pawns." They cause problems if one moves because Black can use the square next to the advanced pawn for a piece that can't be attacked by other pawns. Also, in this position, the d-pawn is pinned because of Black's fianchettoed bishop, the force of which White didn't consider when mindlessly playing b3 and Bb2.

And look at that attack on d4! The black queen, rook, queen knight and king bishop are all attacking it. Even the king knight has a path to join the fun with ...Nh6 and ...Nf5.

You will no doubt have to meet one of these openings, and probably all of

them. It's good to play through all the lines and get a feel for "active" play. You will also notice that key pawn moves like ...c5 and ...e5 come in a lot. The queen ends up on c7 or b6. The knights go to d7 or c6 on the queenside or f6 and g4 on the kingside. The rooks are really useful on the e- and d- files. The queen bishop usually has to wait to find its best spot and the king bishop of course goes to g7. As for the pawns, try to keep it to e5, c5 and g6. Your other moves are for the pieces!

Get developed! Fight it out in the center! As long as you're developing properly, there is no reason any of these attacks should work. GM Walter Browne once said that a strong player was an A-player with no fear. That works at every level! Have no fear!





In association with



Present

## The Sixth Annual All-Girls Open National Championships

April 24 – 26, 2009 – Dallas, Texas

### Awards

The University of Texas at Dallas, [www.utdallas.edu](http://www.utdallas.edu), has established an Academic Distinction Scholarship to the winner of the 18-years-old and younger section. The scholarship is valued at \$80,000 for an out-of-state student.

Trophies to top 15 individuals and top 3 teams in each section. 3 or more players from the same school to make a team (top 3 scores added to give team final standings). Every player receives a souvenir medal.

### Special Appearance by Anna Zatonskih



Reigning U.S. Women's Champion, two-time winner of U.S. Women's Championship; U.S. Olympiad team member since 2004, including Bronze Medal team of 2008, Silver medalist at 2004 Olympiad, Gold Medalist for Board 2 at 2008 Olympiad.

### Main Event

#### Saturday, April 25

9:00 AM–Opening Ceremony  
Rounds 1–4:  
9:30–11:30 AM; 12:00–2:00 PM;  
3:00–5:00 PM; 5:30–7:30 PM

#### Sunday, April 26

Rounds 5–6:  
9:00–11:00 AM;  
11:30 AM–1:30 PM;  
2:30 PM–Closing Ceremony

### Entry Fee

\$45 if postmarked by March 25th, \$70 on-site. USCF membership required. All events will be hosted at Hyatt Regency Dallas at Reunion Blvd.

### Side Events

#### Friday, April 24

3:00 PM– Blitz Tournament (G/5)  
\$15 if postmarked by March 25, \$25 on-site.  
5:00 PM Bughouse Tournament, \$25 per team.  
7:00 PM–Simultaneous Exhibition by WGM Anna Zatonskih.  
Please bring clocks for all the events. Chess sets and score sheets provided for the Main and Side Events.

### 6-SS, G/60, Sections

- 8-years-old and younger
- 10-years-old and younger
- 12-years-old and younger
- 14-years-old and younger
- 16-years-old and younger
- 18-years-old and younger

### Entry & Info

Make check payable to: Dallas Chess Club  
Attn: Barbara Swafford  
2709 Longhorn Trail  
Crowley, TX 76036  
Tel: (214) 632-9000

### Online registration

[www.active.com/event\\_detail.cfm?event\\_id=1643715](http://www.active.com/event_detail.cfm?event_id=1643715)  
[www.kasparovchessfoundation.org](http://www.kasparovchessfoundation.org)

### Hotel

Hyatt Regency Dallas at Reunion Blvd.  
300 Reunion Blvd., Dallas, TX 75207  
Hotel Chess Rate: \$109  
(up to 4 people per room)  
if reserved by April 1, 2009  
Hotel Reservations: Please call  
(800) 233-1234 or (214) 651-1234



## Tournament Life Announcements

APRIL 15 THROUGH JUNE 14

### Scholastic Members:

As a service to you, we are listing upcoming National USCF rated events, and requested events of possible interest to you. You can always log in to [www.uschess.org](http://www.uschess.org), and click on "Clubs and Tournaments." Then click on "Upcoming Tournaments" for a complete listing of upcoming rated events and details. As always, you can check out the TLA section of *Chess Life*.

### Organizers and Tournament Directors:

If you would like your tournament listed here in *Chess Life for KIDS* for June (events to be held after June 14), the deadline for submitting your announcements is April 10th. The deadline for the August issue is June 10th. The processing fee is \$1.00 per line for the first eight lines, \$2.00 for every line thereafter. Send your announcements to [tl@uschess.org](mailto:tl@uschess.org).

Display advertising is also available. Advertising rates are posted on the USCF website, [www.uschess.org](http://www.uschess.org), or you may email: [tl@uschess.org](mailto:tl@uschess.org) or [rwest@uschess.org](mailto:rwest@uschess.org) for complete details.

## NATIONALS

### April 24-26, Texas Kasparov Chess Foundation in Association with UTD, DCC and USCF, Presents All Girls Open National Championships

6SS G/60, Hyatt Regency Dallas, 300 Reunion Blvd., Dallas, TX 75207; Phone: (800) 233-1234 or 214-651-1234 Mention All Girls National Chess Tournament for special **Hotel rate**: \$109 Reserve By 4/1. **6 sections**: 8 years old and younger; 10 years old and younger; 12 years old and younger; 14 years old and younger; 16 years old and younger; 18 years old and younger. Age as of 4/1/2009. USCF rated. USCF membership is required. Winner of 18 years old and younger Section wins an Academic Distinction Scholarship to The University of Texas at Dallas, worth up to \$80,000 for an out-of-state student. **EF**: \$45 if postmarked by 3/25. \$70 at site. Do not mail after 4/16 as your entry may not be received. Trophies to top 15 ind. & top 3 teams (top three players added for team scores) Sat., April 25: **Opening Ceremony**: 9 AM, **Rounds**: 1 - 4; 9:30-11:30 AM; 12:00-2:00 PM; 3:00-5:00 PM; 5:30-7:30 PM. Sun., April 26: **Rounds** 5 - 6; 9:00-11:00 AM; 11:30 AM-1:30 PM. Sun., April 26: **Awards Ceremony**: 2:30 PM One 1/2 pt bye available, any round, if requested before end of rd. 2 and if player has not received a full point bye. **Entries to**: Dallas Chess Club, c/o Barbara Swafford, 2709 Longhorn Trail, Crowley, TX 76036. Entry must include Name, USCF ID (or new/pending), date of birth, grade & school and school location. **Email info** at [dallaschess.com](mailto:dallaschess.com), 214-632-9000. **Side events**: Blitz tournament G/5 Friday April 24 3 pm, **EF**: \$15 by 3-25, \$25 on site. **Simultaneous exhibition** by Anna Zatonskih Fri., April 24 at 7:00 PM. **Bughouse Tournament** Fri April 24 5 pm. **EF**: \$25/team. NS, NC, W.

### May 23-25, Arizona

**2009 U.S. Amateur West Championship**  
Holiday Inn Palo Verde, 4550 S Palo Verde Rd., Tucson, AZ 85714, 520-746-1161. **SECTIONS**: Championship (U2200), Reserve (U1600), Booster (U1200) & Scholastic (must be K-8 and U1000). Scholastic section is 3 separate 1-day tournaments. **SCHEDULE**: (Championship, Reserve, and Booster) 6/SS, 40/2, 25/1. Reg. By mail or 5/23, 8:30 - 9:30 AM. Rds: 10-4, 10-4, 9-3. (Scholastic) 4/SS, G/40. Reg. By mail or 8:30 - 9:30 AM each day. Rds: Round 1 at 10 AM then as available for Rounds 2-4. **PRIZES**: (Championship) Chronos clock + plaque to Top 3; Digital clock + plaque to Top 1900-1999, 1800-1899, 1700-1799, 1600-1699, and U1600; Plaque to top Senior 50+, Junior U19 and Junior U13. (Reserve) Chronos clock + plaque to 1st; Digital clock + plaque to 2nd, 3rd, Top 1300-1399, 1200-1299, and U1200; Plaque to top Senior 50+ and Junior U13. (Booster) Chronos clock + trophy to 1st; Trophy to 2nd - 5th, Top Unrated and Junior U10. (Scholastic, each day) Digital clock + trophy to 1st; Trophy to 2nd - 5th, Top U800, U600, and Unrated. 1-yr USCF membership for perfect scores that don't win the clock. **SPECIAL PRIZES**: Top 2 Family Pairs in the non-scholastic sections. Biggest Upset of each round in the non-scholastic sections. Chronos clock to Scholastic player with the highest combined score over the three 1-day tournaments. **EF**: (Championship & Reserve) \$55 if by 5/20, \$65 if after 5/20. (Booster) \$40 if by 5/20, \$50 if after 5/20. (Scholastic) \$15 for each tournament or \$40 for all three days if by 5/20, additional \$5 if after 5/20. **ALL**: Half-point byes allowed for all rounds but must be requested prior to start of Round 2. **HR**: (if by 5/8): \$64 (single) or \$72 (suite), mention "SACA". **ENT**: Make checks payable to SACA, entry form available at [www.sazchess.org](http://www.sazchess.org). **Info**: Karen Pennock, 520-975-3946, e-mail: [kpenock\\_83@yahoo.com](mailto:kpenock_83@yahoo.com), web: [www.sazchess.org](http://www.sazchess.org). NS, NC, W. **WCL JGP**.

### A Heritage Event!

#### May 23-25, New Jersey

#### 66th Annual U.S. Amateur Championship East

Somerset Ramada Inn, 60 Cottontail Lane, Somerset, Exit 12 off I-287 at Weston Canal Road. (732) 560-9880 Fax (732) 356-7455. **In 3 Sections**: Championship

(U2200), Reserved (U1800), Booster (U1400) with two and three day schedules. **Three Day Schedule**: 6-SS, 50/2, SD1. Registration: Saturday 5/23, 9:30-10:45 am. Rounds 12-6, 11-5, 9-3. **Two Day Schedule**: First three games G/60, round four merges with 3-day schedule. Registration: Sunday 5/24, 8:30-9:30 am. Rounds 10-12:15-2:30. **Championship**: Trophies to top five, top Under 2000, Under 1900, Under 1800, Senior 55/over, Under 16, Under 13. **Reserve**: Trophies to top five, top Under 1600, Under 1500, Under 1400, Senior 55/over, Under 16, Under 13. **Booster**: Trophies to top five, top Under 1200, Under 1100, Under 1000, Under 900, Under 800, Senior 55/over, Under 16, Under 13. **All sections**: **EF**: \$40 if postmarked by 5/20, \$39 if by PayPal at [EntryFeesRus.com](http://EntryFeesRus.com). Pay \$45 at playing site. Two half-point byes allowed in rounds 1-5 if requested before first round. Scholastic U1300 K-8 tournament will be held. April Rating supplement to be used. Hotel rates \$79 with free breakfast, if by 5/10. Mention U.S. Amateur Chess to get rate. Call Ken if you have a problem. Entries: Make checks payable to NJSCF. Indicate clearly the section and playing schedule desired. **Mail advanced entries to**: Ken Thomas 115 West Moore Street Hackensack NJ 07840. **Information**: 908-763-6468 or [acn@goes.com](mailto:acn@goes.com) NC W NS nor using any tobacco products. No ear covering allowed. No computers may be used by players or parents when games are in progress.

### June 4, Nevada

#### World Chess Live Grand Prix Points: 50

#### 2009 U.S. Game/10 Championship (QC)

6SS, G/10. South Point Hotel, Casino and Spa, 9777 Las Vegas Blvd South, Las Vegas, NV 89183. **\$\$B/100 7,000 (\$\$Gid 4,500)**. 2000-1000-700, U2300 600, U2100 550, U1900 500, U1700 450, U1500 400, U1300 350, U1100 300, unrated 150. **EF**: \$79 by 5/19, \$89 by 6/3, \$100 on site. **Late Registration** 4-6:30 p.m. Rds: 7-7:30-8-8:30-9:30. Higher of regular or quick rating used. Bring clocks. 1/2 point bye available in any round (limit 4), must be requested with entry. **HR**: \$65 (not \$75) single or double (\$95 Friday and Saturday nights). 1-866-791-7626 or (702) 796-7111. **ENT**: Las Vegas International Chess Festival, PO Box 90925, Henderson, NV 89009-0925 or [www.VegasChessFestival.com](http://www.VegasChessFestival.com). NS NC W.

### A Heritage Event!

#### An American Classic!

#### June 5-7 or 6-7, Nevada

#### World Chess Live Grand Prix Points: 200 (enhanced)

#### 2009 National Open

6-SS, 40/2, SD/1 (2 day option rds 1-3 G/60). South Point Hotel, Casino and Spa, 9777 Las Vegas Blvd South, Las Vegas, NV 89183. **\$100,000 Prize Fund** based on 850 paid entries (\$70,000 guaranteed). **Championship**. SS: 8000-4000-2000-1000-600-400-400-400-400-400-200-200-200-200-200, under 2500 2000, under 2400 1600, under 2300 1200, Unrated 600-400-200. \$2,000 EXTRA for perfect score. The winner of the Championship section also receives a replica of the Edmondson Cup. **Under 2200**. SS: 5000-2500-1300-600-350-250-250-250-250-100-100-100-100-100. **Under 2000**. SS: 5000-2500-1300-600-350-250-250-250-250-100-100-100-100-100. **Under 1800**. SS: 5000-2500-1300-600-350-250-250-250-250-100-100-100-100-100. **Under 1600**. SS: 5000-2500-1300-600-350-250-250-250-250-100-100-100-100-100. **Under 1400**. SS: 2500-1500-1000-500-250-150-150-150-150-150-100-100-100-100-100. **Under 1200**. SS: 1500-1000-500-250-150-100-100-100-100-100-100-100-100-100-100. **Plus score bonus** (\$16,000) in addition to any other prizes, every player who finishes with 3-1/2 points or better wins a \$50 gift certificate. Plus score certificates will be given on site only. **EF**: \$159 by 1/19, \$179 by 5/19, \$199 by 6/3, \$220 on site. \$41 less for unrated players, \$99 more for players rated under 2100 in the Championship Section. This is an open tournament - you may play in any section at or above your rating level; unrated players may play only in Championship Section. Provisionally rated players may not win more than 3rd prize in any section except Championship. CCA minimum ratings or other ratings may be used if higher than USCF June Supplement. Reg: 4-11 p.m. Thursday, 8-9:30 a.m. **Fridays**: 11-6, 11-6, 10-5. 2-day schedule: Reg: 8-9 a.m. **Saturday Rds**: 10-12:30-3-6; merge with 3-day in round 4. Half point byes available in any round, but round 5 or 6 byes must be requested before the start of round 2. Chess sets and boards provided for tournament play only, not for skittles. Please bring chess clocks! **THE LAS VEGAS INTERNATIONAL CHESS FESTIVAL** features the National Open, the U.S. Game/10 Championship and the Susan Polgar World Chess Championship for Girls and Boys. **Many free extras and surprises!** Free parking. Free raffle with great prizes. Free lectures by GM Susan Polgar and others. Free analysis of your games by GM Arthur Bisguier. **Susan Polgar International Chess Camp** all day Thursday. **Grandmaster Simul** Thursday afternoon. **U.S. Game/10** Thursday night. **Scholastic Tournament** Friday. **LOW room rates!** **HR**: \$65 (not \$75) single or double (\$95 Friday and Saturday nights). 1-866-791-7626 or (702) 796-7111. **Don't be shut out; make your reservations early** and be sure to ask for the chess rates; **South Point sells out most weekends**. Cutoff for special hotel rate is **May 19th**. Rates may be as high as \$150 a night after May 19th. **RESERVE NOW!** Credit card or one night room deposit will be required to hold reservation, may be canceled 72 hours in advance for nominal fee. Tournament Registration: National Open, PO Box 90925, Henderson, NV 89009-0125, on line at [www.VegasFestival.com](http://www.VegasChessFestival.com) or by fax at (702) 933-9112. NS, W, FIDE. **WCL JGP**.

### July 10-12, Wisconsin

#### 2009 U.S. Junior Open Championship

Three sections based on age: **Under 21, Under 15, Under 11**. 5SS, G/90. Milwaukee Marriott West, W231N1600 Corporate Ct, Waukesha, WI 53186. **Chess Rate of \$85.99 is valid until July 1st. Reserve early.** (262)-574-0888. **U21**: \$300+entry to 2010 Junior Closed-\$150. Individual trophies: 1st overall, best player for ages 17-18, 15-16, under 15. Team trophies: top three high schools, top club. **U15**: Individual trophies: top 3 overall, best player for ages 11-13, under 11. Team trophies: top three middle schools, top club. **U11**: Individual trophies: top 3 overall, best player for ages 9, 8, 7, & under. Team trophies: top three elementary schools, top club. All participants receive commemorative medals. **EF**: \$35 (\$30 per player if 4 or more pre-register together) advance; \$50 after July 10th. Cash only at site. **Schedule**: Opening ceremony: Friday at 2:45pm. Rounds: Friday 3:00pm, Saturday 10:00am and 2:00pm, Sunday 10:00am and 2:00pm. Closing ceremony: Sunday 5:30pm. **Side Events**: (\$20/entry) BLITZ: Friday at 7:00pm. BUGHOUSE: Saturday at 7:00pm. SIMUL: Friday at 7:00pm and Saturday at 7:00pm. PARENTS AND COACHES TOURNEY: 3SS G/30 (not rated) Saturday 10:30am, 2:15pm, 3:30pm. **Info/questions**: [ashish@vajachess.com](mailto:ashish@vajachess.com) or 414-234-1005, [abetaneli@hotmail.com](mailto:abetaneli@hotmail.com) or 608-334-2574. **Make Checks Payable to and Send Entries to**: VICA, 6822 North Crestwood Dr., Glendale WI 53209 or **online registration** at [www.wscachess.org](http://www.wscachess.org). **WCL JGP**.

### A Heritage Event!

#### Aug. 1-9, 4-9 or 6-9, Indiana

### World Chess Live Grand Prix Points: 300 (enhanced)

#### 110th annual U.S. Open

CELEBRATE USCF'S 70TH ANNIVERSARY BY PARTICIPATING IN THIS TRADITIONAL EVENT! New features this year include 4-day option requiring only 3 nights hotel stay for most players, and later start for 6-day option so most will need only 5 nights hotel stay. 9SS, 40/2, SD/1 (4 day option, Rds. 1-6, G/60). Indianapolis Marriott Hotel, 7202 East 21st St., Indianapolis IN 46219. Luxurious hotel with great lighting in tournament room! Phone: 317-352-1231. **HR**: \$99 single/quadruple. **\$50,000 in prizes** based on 500 paid entries, else proportional, except \$40,000 (80% of each prize) minimum guarantee. A one section tournament with Class prizes. **Top 5 US players qualify for 2010 US Championship**. Many side events, including US Blitz Championship 8/8. USCF Delegates meeting 8/8-9, workshops 8/5-7, USCF Awards Luncheon 8/8. GM lectures & simul to be announced. Choice of three schedules: **Traditional**: 40/2, SD/1. One round daily at 7 pm, except rd. 9, 8/9 at 3pm. **6-Day Option**: 8/47 pm, 8/5-7 12 noon & 7 pm, 8/8 7 pm, 8/9 at 3pm. **4-Day Option**: 8/6 2 pm, 5 pm & 8 pm; 8/7 10 am, 1 pm, 3:30 pm & 7 pm, 8/8 7 pm, 8/9 3pm. All schedules merge after Round 6 & compete for same prizes. Projected prizes: **Top Places**: \$8000-4000-2000-1500-1000-800-600-500, clear winner \$200 bonus. If tie for first, top two on tiebreak play speed game (white 5 minutes, black 3 minutes and gets draw odds, 5 second delay) for bonus and title. **Class Prizes**: **Top Master (2200-2399)**: \$2500-1200-800-500. **Top Expert (2000-2199)**: \$2500-1200-800-500. **Top Class A (1800-1999)**: \$2500-1200-800-500. **Top Class B (1600-1799)**: \$2500-1200-800-500. **Top Class C (1400-1599)**: \$2000-1000-600-400. **Top Class D (1200-1399)**: \$1500-700-500-300. **Top Class E or below (under 1200)**: \$1500-700-500-300. **Top Unrated**: \$800-400-200. **Half Point Byes**: must commit before round 4; up to 3 byes allowed for 2000/4; up to 2 byes for 1400-1999, one bye for 1400/Unr. Zero point byes are always available in any round. **Entry Fee**: Online, \$135 by 5/15, \$155 by 7/29. By mail, \$137 postmarked by 5/15, \$157 postmarked by 7/23. By phone, \$140 by 5/15, \$160 by 7/29. At site, all \$180. GMs free. August official ratings used; unofficial ratings used if otherwise unrated. CCA ratings used if above USCF. Foreign player ratings: usually 100 points added to FIDE or FQE, 200+ added to most foreign national ratings, no points added to CFC. Highest of multiple ratings generally used. **ENT**: USCF, ATTN: 2009 U.S. Open, PO. Box 3967, Crossville, TN 38557. **Online entry**: [https://secure.uschess.org/webstore/tournaments.php](http://https://secure.uschess.org/webstore/tournaments.php). **Phone entry**: 800-903-8723. Tournament website: [main.uschess.org/tournaments/2009/usopen/](http://main.uschess.org/tournaments/2009/usopen/). FIDE rated, no cell phones. Bring a clock - none supplied. Sets/boards supplied for tournament but not for skittles. **WCL JGP**.

### Aug. 22, Illinois

#### World Chess Live Grand Prix Points: 10

#### 2009 U.S. Game/60 Championship

4R-SS G/60 - \$5000 b/150 fully paid entries. Holiday Inn Chicago - North Shore, 5300 W Touhy Ave, Skokie, IL 60077 (see tournament website for directions). Free Parking. In 6 sections: **M/X**: \$500-300-200-100-Top U2400, U2300, U2200 each \$150. **Class A**: \$350-250-150-75. **Class B**: \$350-250-150-75. **Class C**: \$300-200-100-50. **Class D**: \$300-200-100-50. **Class E/F/U**: \$200-100-50-25. Unrated Prize - Book Prize Only. Unrated must play in M/X or Class E/F/U sections. Trophies for 1st - 3rd place, scholastic players with non-cash prize entry fee. \$10 extra to play 1 class up. **Entry Fee**: \$80 adult, \$40 scholastic (K-12), \$20 anyone but not eligible for cash prizes thru 6pm 8/21. Onsite \$100 adults, \$60 scholastic (K-12), \$20 anyone but not eligible for cash prizes. \$5 refund at tournament with proof of ICA membership (Scholastic entries count as 1/2 entry, No-cash prize entry does not count towards based on) - non-cash prize entry fee not eligible for any discounts. **SPECIAL COMBINED ENTRY FEES**: Discounted Entry fees available for registering for the US G/60 & US G/30 (\$5 off each tournament) - non-cash prize entry fee not eligible for any discounts. **SPECIAL OFFER FOR ILLINOIS OPEN STATE CHAMPIONSHIPS**: Enter either the US G/60 or US G/30 and receive a \$5 rebate for your early registration to the 2009 Illinois Open State Championships. For more information visit [www.chessforlife.com](http://www.chessforlife.com). **Mail payments (made payable to) and registration information to**: North American Chess Association, 2516 North Waukegan Road Suite 342, Glenview, IL 60025. Byes: One 1/2 pt bye allowed. Rd 4 bye must commit by start of Rd 2. Re-enter with 1/2pt bye in Rd 1 for \$50. August Supplement used. **Schedule**: **Reg**: 8:15am - 9:15am. **Rds** 10, 12, 30, 3, 5:30. **Hotel rates**: \$99+tax, 847-679-8900. Mention North American Chess Association rate. Reserve by 8/7 or as available only. **Car rental**: Hertz, 800-654-3131, Hertz CDP#178693. BRING BOARDS, SETS, CLOCKS - NONE PROVIDED. USCF membership required. USCF single tournament membership available (\$12 for adults, \$7 for scholastic). NS, NC, W. **Information**: Sevan A. Muradian 888.80.CHESS or [info@nachess.org](mailto:info@nachess.org). For further information, online registration and payment please visit [www.nachess.org/g60](http://www.nachess.org/g60). Checkmate Chess Supply Co will be bookseller onsite. Support local Illinois Organizers.

### Aug. 23, Illinois

#### World Chess Live Grand Prix Points: 6

#### 2009 U.S. Game/30 Championship

5R-SS G/30 - \$2500 b/150 fully paid entries. Holiday Inn Chicago - North Shore, 5300 W Touhy Ave, Skokie, IL 60077 (see tournament website for directions). Free Parking. In 6 sections: **M/X**: \$250-150-100-50-Top U2400, U2300, U2200 each \$75. **Class A**: \$175-125-75-40. **Class B**: \$175-125-75-40. **Class C**: \$150-100-50-25. **Class D**: \$150-100-50-25. **Class E/F/U**: \$100-50-25-25. Unrated Prize - Book Prize Only. Unrated must play in M/X or Class E/F/U sections. Trophies for 1st - 3rd place, scholastic players with non-cash prize entry fee. \$10 extra to play 1 class up. **Entry Fee**: \$60 adult, \$40 scholastic (K-12), \$20 anyone but not eligible for cash prizes thru 6pm 8/22. Onsite \$80 adults, \$60 scholastic (K-12), \$20 anyone but not eligible for cash prizes. \$5 refund at tournament with proof of ICA membership (Scholastic entries count as 1/2 entry, No-cash prize entry does not count towards based on) - non-cash prize entry fee not eligible for any discounts. **SPECIAL COMBINED ENTRY FEES**: Discounted Entry fees available for registering for the US G/60 & US G/30 (\$5 off each tournament) - non-cash prize entry fee not eligible for any discounts. **SPECIAL OFFER FOR ILLINOIS OPEN STATE CHAMPIONSHIPS**: Enter either the US G/60 or US G/30 and receive a \$5 rebate for your early registration to the 2009 Illinois Open State Championships. For more information visit [www.chessforlife.com](http://www.chessforlife.com). **Mail payments (made payable to) and registration information to**: North American Chess Association, 2516 North Waukegan Road Suite 342, Glenview, IL 60025. Byes: One 1/2 pt bye allowed. Rd 4 bye must commit by start of Rd 2. Re-enter with 1/2pt bye in Rd 1 for \$50. August Supplement used. **Schedule**: **Reg**: 8:15am - 9:15am. **Rds** 10, 12, 30, 3, 5:30. **Hotel rates**: \$99+tax, 847-679-8900. Mention North American Chess Association rate. Reserve by 8/7 or as available only. **Car rental**: Hertz, 800-654-3131, Hertz CDP#178693. BRING BOARDS, SETS, CLOCKS - NONE PROVIDED. USCF membership required. USCF

single tournament membership available (\$12 for adults, \$7 for scholastic). NS,NC,W. **Information:** Sevan A. Muradian 888.80.CHESS or info@nchess.org. For further information, online registration and payment please visit [www.nchess.org/g30](http://www.nchess.org/g30). Checkmate Chess Supply Co will be bookseller onsite. Support local Illinois Organizers.

#### Nov. 20-22, Illinois

##### 2009 National Youth Action

95S, G/30, DoubleTree hotel, 1909 Spring Road, Oak Brook, Illinois, 60523, Tel: 1-630-472-6000 (1.800.222.TREE); \$89 single/double/triple/quad. **Four Sections** – K-3, K-6, K-9, K-12. **Entry Fee:** \$40 by 10/25/09 USPS (or \$40 on-line by 10/25, 6 pm); \$60 by 11/13/09 USPS (or \$60 on-line 10/25/09, after 6 pm - 11/13/09, 6 pm); \$75 USPS 11/13-11/17 (or \$75 on-line 11/13/09, 6:01 pm - 11/19, 6 pm); \$75 by 11/20/09 6 PM on site (on-site entries after 11/20/09 6 PM can not be guaranteed pairing for round 1, instead they may receive 1/2 point bye round 1). **Checks payable only to Chess Central. Awards: Individual:** 1st-20th Place in each section (K-3, K-6, K-9, K-12). Class Awards: 1st-3rd Place, K-3: U800, U600, U400, Unr. K-6: U1000, U800, U600, Unr. K-9: U1200, U1000, U800, Unr. K-12: U1400, U1200, U1000, Unr. **Teams:** 1st-10th Place in each section. **Special Sportsmanship trophy!** **Schedule:** Opening Ceremony Sat., Nov 21 at 9:30 am. Rds. 1-5 Sat., 10 am, 12 noon, 2 pm, 3:30 pm & 5 pm. Rds. 6-9 Sun., 10 am, 12 noon, 2 pm & 3:30 pm. **Side Events: Bughouse Tournament** – Fri, Nov 20, 6:30 pm. EF \$20 per team (\$10 for individuals and we help you create a team). On site registration only. Registration closes at 5 pm, Fri, Nov 20. One section only, K-12. **Bughouse Awards:** 1st-10th Place. **Blitz Tournament** – Sat, Nov 21, K-6 & K-12, 6:30 pm, EF \$15 USPS/on-line by 10/25, 6 pm, \$20 USPS from 10/26-11/17; \$20 on-line 10/26, 6:01 pm-11/19, 6pm; \$25 on site. Registration closes at 5 pm, Sat, Nov 21. **Blitz Awards:** Individual: 1st-20th in each section. Team: 1st-10th in each section. **Awards Ceremony for Blitz and Bughouse:** Sun, 9 am. **NYA Awards Ceremony:** Sun, Nov 22, 5:30-7 pm. **Club Teams allowed!** Master simul and analysis scheduled. **Hotel Info:** DoubleTree hotel, Oakbrook, IL (hotel registration code: NYA). [www.doubletreeoakbrook.com](http://www.doubletreeoakbrook.com), or [doubletree.hilton.com/en/dt/groups/personalized/CHIOADT-NYA-20091120/index.jhtml](http://doubletree.hilton.com/en/dt/groups/personalized/CHIOADT-NYA-20091120/index.jhtml) (630) 472-6020 or 630 472-6000 (1.800.222.TREE), HR single/double/triple/quad \$89. Enter on line (except Bughouse) at [nya2009.com](http://nya2009.com). **Checks payable only to Chess Central (no checks to USCF or Mike Zacate):** Mail registrations with name-contact info-grade-birthday-team/school-uscf ID & exp.-address-city-zip-e-mail address-coach name & contact info to Mike Zacate (**Please, no checks payable to Mike or USCF**), 9401 Birch, Mokena, IL 60448. Updated info/Hotels/On-Line Entries: [nya2009.com](http://nya2009.com). \$10 service charge for on-site section/roster changes, and all refunds. Bookdealers scheduled.

## GRAND PRIX

#### Apr. 19, New Jersey

##### World Chess Live Grand Prix Points: 10 ICA Spring 2009 Open Championship

Bergen Academy, 200 Hackensack Ave., Hackensack, NJ 07601. Open To All Ages With Rating > 1400 45S G/60 U. S. Chess Federation Membership Required, Prize Fund (\$5 b/40) 1st - 3rd \$300, \$250, \$200, U2000, U1800, U1600 each \$100. Best Under 13 Years Old \$75, Best Over 65 Years Old \$75. Prize Fund Will Not Be Reduced Below 70 %. Reg Ends at 9 Late Entrants Will Receive 1/2 Point Bye For Rnd 1. EF: Adv (pmk. By Apr 15th) \$40, At Site \$45. GMS Free Entry. Make EF: and/or USCF membership checks payable to: International Chess Academy, INFO 201 287 0250 or 201 833 1741, Email: [Diana@icanj.net](mailto:Diana@icanj.net) (Web Site Entries: [www.icanj.net](http://www.icanj.net)). **Rds:** 9:30 AM, 11:45 AM, 2:15 PM, 4:30 PM. **ENT:** Diana Tulman, 28 Canterbury Lane, New Milford, NJ 07646. NS NC W.

#### Apr. 26, New Jersey

##### World Chess Live Grand Prix Points: 30 (enhanced) 2009 South Jersey Open

4-SS, G/60, td/5. \$2000 Guaranteed Prizes. Wyndham Hotel, 1111 Rt. 73 N., Mt. Laurel, NJ 08054. Top South Jersey Open to be named South Jersey Champion and receive a 1 year lease on the Hoffman Trophy! **4 Sections, Open:** \$500-250-150-100-50. **U2000:** \$250-100-75-50. **U1400:** \$250-100-75-50. **U1000:** 1st wins a House of Staunton Tournament Pkg. valued at \$175. Trophies to top 4. TD reserves the right to place unr. players at his discretion and/or limit an unr. player's prize to \$75. **EF top 3 sections:** \$49 via mail by 4/20, \$52 online by 4/25, \$59 cash onsite. **U1000 EF:** \$25 via mail by 4/20, \$27 online by 4/25, \$35 cash onsite. **Reg.:** 8:30 – 9:30 AM. **Rds.:** 10 AM, then ASAP Lunch break after rd. #2. Two 1/2 pt. byes allowed (rounds 1-3) if requested with EF. **ENT:** All the King's Men, 62 S. Broadway, Pitman, NJ 08071 or YourChessSet.com/SJopen. **INFO:** Stephen Dick cs@ATKMcchessSets.com or 856-822-8222. **DIR:** Just off the NJ Turnpike exit 4 or 295 exit 36A. **Hotel Ph #:** 856-234-7000. **Must bring your own equipment!** Register online before April 15 and be entered to win a \$70, NY Times Deluxe Handheld Chess Computer by Excalibur. **WCL JGP.**

#### May 22-25, 23-25 or 24-25, Illinois

##### World Chess Live Grand Prix Points: 200 (enhanced) 18th annual Chicago Open

See [ChessLifeGrandPrix.org](http://ChessLifeGrandPrix.org) or [www.chesstour.com](http://www.chesstour.com).

#### June 4, Nevada

##### World Chess Live Grand Prix Points: 50 2009 U.S. Game/10 Championship (QC)

See Nationals.

#### A Heritage Event!

##### An American Classic! June 5-7 or 6-7, Nevada

**World Chess Live Grand Prix Points: 200 (enhanced)  
2009 National Open**  
See Nationals.

#### June 6, North Carolina

##### World Chess Live Grand Prix Points: 15 (enhanced) Orchard Lake Grand Prix

45S, Rd1&2 G/61 Rd 3&4 G/90. Orchard Lake Campground, Saluda, NC. **EF:** \$26.50, Special U1200 EF: \$16.50 (incl \$6.50 cmpgrnd fee). **\$\$\$GTD:** \$200-100-30-30-30-20-20-20. **Rds.:** 9:00-11:30-2:00-5:35. Accel pairings. **ENT:** Kevin Hyde, 705 Old Mtn Pkg Rd, Saluda NC 28773. 828-749-1625 [hyde@ioa.com](mailto:hyde@ioa.com). **HR:** 828-749-390. [www.orchardlakecampground.com](http://www.orchardlakecampground.com). [www.nc-chess.org](http://www.nc-chess.org). NCCP: **WCL JGP.**

#### July 1-5, 2-5, 3-5 or June 29-July 5, Pennsylvania

##### World Chess Live Grand Prix Points: 300 (enhanced)

#### 37th Annual World Open

See [ChessLife.org](http://ChessLife.org) or [www.chesstour.com](http://www.chesstour.com).

#### A Heritage Event!

##### Aug. 1-9, 4-9 or 6-9, Indiana

##### World Chess Live Grand Prix Points: 300 (enhanced) 110th annual U.S. Open

See Nationals.

#### Aug. 22, Illinois

##### World Chess Live Grand Prix Points: 10 2009 U.S. Game/60 Championship

See Nationals.

#### Aug. 23, Illinois

##### World Chess Live Grand Prix Points: 6 2009 U.S. Game/30 Championship

See Nationals.

## REGIONAL

## Alabama

#### May 2, Birmingham City Scholastic Championship

55S, TC: G/30. W. J. Christian School, 725 Mountain Drive Birmingham, AL 35206. **Scholastic (K-12): 6 Sections - Rated and Not Rated. Late REG.:** May 2nd, 8:00-9:00. **Rds.:** 9:30-10:45-12:30-1:45, 3. **EF: \$20/\$10;** if mailed by **04/25/2009. \$10** more at site. **Prizes:** Trophies and Medallions – Top 3 each section. **Checks Payable To:** Magic City Chess U. **ENT:** Magic City Chess U, PO Box 610570, Birmingham, AL 35261. **Info:** [www.Alabamachess.com](http://www.Alabamachess.com) / [MagicCityChessU@yahoo.com](mailto:MagicCityChessU@yahoo.com).

## Arizona

#### May 23-25, 2009 U.S. Amateur West Championship

See Nationals.

## California Northern

#### Aug. 21-23 or 22-23, Central California Open

See [ChessLifeGrandPrix.org](http://ChessLifeGrandPrix.org) or [www.chesstour.com](http://www.chesstour.com).

## California Southern

#### July 16-19, 17-19 or 18-19, 13th annual Pacific Coast Open

See [ChessLifeGrandPrix.org](http://ChessLifeGrandPrix.org) or [www.chesstour.com](http://www.chesstour.com).

## Connecticut

#### July 24-26 or 25-26, 14th Annual Bradley Open

See [ChessLifeGrandPrix.org](http://ChessLifeGrandPrix.org) or [www.chesstour.com](http://www.chesstour.com).

#### Aug. 7-9 or 8-9, 15th Annual Northeast Open

See [ChessLifeGrandPrix.org](http://ChessLifeGrandPrix.org) or [www.chesstour.com](http://www.chesstour.com).

## District of Columbia

#### May 3, Metro First Sunday Quads

3-RR, G/90, US Chess Center, 1501 M St. NW. **EF:** \$20 \$5 \$40 each quad. **Scholastic sections. EF:** \$10, Trophy prizes. **Both: Reg.:** 9:15 - 9:50. **Rds.:** 10 - 1 - 4. (202) 857-4922. [www.chessctr.org/quads.php](http://www.chessctr.org/quads.php).

## Florida

#### Boca Raton Chess Club

**Friday nights, Game 90 Tournament, one game a week for 4 weeks.** [www.bocachess.com](http://www.bocachess.com), 561-883-2917. **WCL JGP.**

#### Apr. 18, Orlando Bonus Tornado

4-SS, G/75, Melody Manor, 813 Montana St. **EF:** \$30, CFCC mbr: \$25, Masters free-EF deducted from prize. **\$\$\$605 b/30:** 200-100-80, U1800, U1600, U1400 \$75 ea. **Prize increased 50% for 4-0 score. Reg.:** 9:30am. **Rds.:** 10-12-30-3-5:30. **Info:** (407) 629-6946, [centralflchess.org](http://centralflchess.org). **WCL JGP.**

#### May 2, St. Petersburg 66 Trophy RBO

5rd Swiss G/30 USCF RBO 4 Sect. **K-2U400; K-5U500; K-8U700; & K-12U1000;** top 12 in each get trophy; all others get medal. Also Trophies to top 12 teams. Team (2 or more) - take best four scores from all divisions. Bughouse at lunch. **EF:** \$18. (SPCC members \$15) Onsite reg. cash or chck 9-10AM. First round 10:15 AM. Sunshine Center, 330 Fifth St., St. Petersburg. 66 trophies every event. [www.stpetersburgchessclub.com](http://www.stpetersburgchessclub.com) for dirctins and Paypal registration. Chief Organizer: Andrew Scherman. 727 822 1171. NS NC W.

#### July 31-Aug. 2 or Aug. 1-2, 17th Annual Southern Open

See [ChessLifeGrandPrix.org](http://ChessLifeGrandPrix.org) or [www.chesstour.com](http://www.chesstour.com).

## Illinois

#### North American Chess Association

Tournaments for kids and adults of all playing strength. Creators of the electronic scoresheet, eNotate. Monthly FIDE title tournaments (WIM, WGM, IM). Sevan A. Muradian, FIDE Arbiter & International Organizer. [www.nachess.org](http://www.nachess.org) | [info@nachess.org](mailto:info@nachess.org) | 888.80.CHESS.

#### May 22-25, 23-25 or 24-25, 18th annual Chicago Open

See [ChessLifeGrandPrix.org](http://ChessLifeGrandPrix.org) or [www.chesstour.com](http://www.chesstour.com).

#### July 17-19 or 18-19, 2nd annual Chicago Class Championships

See [ChessLifeGrandPrix.org](http://ChessLifeGrandPrix.org) or [www.chesstour.com](http://www.chesstour.com).

#### Aug. 22, 2009 U.S. Game/60 Championship

See Nationals.

#### Aug. 23, 2009 U.S. Game/30 Championship

See Nationals.

#### Nov. 20-22, 2009 National Youth Action

See Nationals.

## Indiana

#### May 18, Indianapolis Youth Open (QC)

45S, G/12, Our Lady of Lourdes School Cafeteria, 30 South Downey Avenue, Indianapolis IN 46219. Open to Age 18 and Under. **EF:** \$5 onsite, \$4 in advance. **Unr:** Free. **Prizes:** Trophies for 1st-3rd. **Reg.:** Anytime between 3:05pm and 3:55pm. **Rds:** 4p, 4:30p, 5p, 5:30p. Clocks and boards provided. **ENT:** [www.olchessclub.org](http://www.olchessclub.org). **INFO:** Kieron Mitchell, 317-430-5254. [info@olchessclub.org](mailto:info@olchessclub.org). NS NC.

#### Aug. 1-9, 4-9 or 6-9, 110th annual U.S. Open

See Nationals.

## Maryland

#### Silver Knights Chess Tournaments

We organize USCF-rated tournaments on Saturdays for adults and kids. Free analysis by a National Master at every tournament for the scholastic players. Trophies to top scholastic finishers; 70% of entries returned as prizes in open (adult) sections. To see a list of dates and locations, see our website at [www.silverknightchess.com](http://www.silverknightchess.com). Phone: 610-446-0818. Email: [chess@silverknightchess.com](mailto:chess@silverknightchess.com).

#### May 10, Maryland Scholastic Chess Spectacular

45S, G/20mins in 2 sections. University of Maryland, Baltimore County (UMBC), 1000 Hilltop Circle, Baltimore, MD 21250 (in University Center Ballroom). Open to any student grades 1-12. Coaches welcome to attend free instructional sessions. Spectators free and welcome. **Quick Rated Open:** 45S. For rated and unrated scholastic competitors with prior tournament experience. Trophies to top ten finishers, top individuals (elementary, middle, high, unrated), top schools (elementary, middle, high). Top 10 finishers receive free entry to chess camp. Top four players, and anyone with a perfect score, advance to knockout playoffs. USCF membership required (may be purchased at event). **Unrated Novice:** 35S. For unrated scholastic players with no prior tournament experience. Top 4 finishers receive trophy and free entry to chess camp (G/7mins playoff may be required). Certificate to everyone completing three games. Includes instruction on how to play in tournaments 10-10:45am. USCF membership not required. **Unrated Playoffs (invitational):** For finalists from Quick Rated Open. Single-elimination G/7mins (2-sec delay), two games per match, with move-by-move sports commentary. Ties broken by 5mins-4mins "shootout" in which White with 5mins must win. **Coaches Session:** 12:45-2:15. Advice on how to teach chess. **All: EF:** Free entry to any Maryland student who registers by 4-24 Limit 200. Late entries may be required to take 1/2-bye in Rd1. \$20 per person for non-residents. Bring lunch (none will be provided). Teams: School score is sum of points earned by top four finishers from same school. Home-schooled students may play for their district school. **Reg.:** 8-9am, **Rds.:** 10-11-12-30-1:30, playoffs begin 2:45 ending about 5pm. **Byes:** 1/2 bye avail. in Rd 1 only. **Directions:** Take Exit 47B off I-95 and follow signs to UMBC. **Ent/Info:** Cks payable to UMBC, Dr. Alan T. Sherman, CSE Dept, UMBC, 1000 Hilltop Circle, Baltimore, MD 21250, [sherman@umbc.edu](mailto:sherman@umbc.edu). Register on-line [www.umbc.edu/chess/spectacular.W](http://www.umbc.edu/chess/spectacular.W).

## Massachusetts

#### Aug. 13-16, 14-16 or 15-16, 39th annual Continental Open

See [ChessLifeGrandPrix.org](http://ChessLifeGrandPrix.org) or [www.chesstour.com](http://www.chesstour.com).

## Missouri

#### Friday Action Quads - Every Friday Night (QC)

3RR, G/29 QR, Chess Club & Scholastic Center, 4657 Maryland Ave., St. Louis MO 63108. **EF:** \$10. **Prize Fund \$36 first in each quad.** Club membership req'd. available from 1. **Reg.:** 6:30 - 6:45. Rounds begin at 7:00. Site entries only. **Info:** 314-361-CHESS [info@saintlouischessclub.org](mailto:info@saintlouischessclub.org).

#### Saint Louis Blitz Series - Every Tuesday night (QC)

55S, G/75 QR, Chess Club & Scholastic Center, 4657 Maryland Ave., St. Louis, MO 63108. **EF:** \$5. **Prize fund 100% payout!** First overall will take home 75% of all entry fees, and the highest scoring player in the bottom half takes 25%. Club membership req'd. available from \$1. **Reg.:** 6:30 - 7. **Rds.:** 7, 7:15, 7:30, 7:45, 8. Site entries only. **Info:** 314-361-CHESS. [info@saintlouischessclub.org](mailto:info@saintlouischessclub.org).

#### June 20, 2009 CCSCSL Super Team Championship

45S, G/60, Chess Club & Scholastic Center, 4657 Maryland Ave., St. Louis, MO 63108. **EF:** \$75 for 3 person team, \$60 for 3 person team that are all annual members of club. MCA Membership Req'd from \$5. **OSA. PF (b/15 teams):** \$900: Championship Team = \$500, \$400 1st place team with aggregate rating below 4800. Trophy to top teams in each section. An unrated player will be considered 1100. No alternates. **Reg:** 9:30-10:20. **Rds:** 10:30, 12:45, 3:00, 5:00. No 1/2 point byes allowed. **Ent:** 4657 Maryland Ave., St. Louis, MO 63108. 314-361-CHESS, [info@saintlouischessclub.org](mailto:info@saintlouischessclub.org).

## Nevada

#### June 4, 2009 U.S. Game/10 Championship (QC)

See Nationals.

#### June 5, National Open Scholastic Trophy Tournament

5-SS Game/30. South Point Hotel, Casino and Spa, 9777 Las Vegas Blvd South, Las Vegas, NV 89183. Open to players Uge 20. **In 3 sections. U1800, U1200, and U800.** Unrateds in the U1200 section and all players in the U800 section must be under age 12. Trophies to top 4 in each section, top 1 in each 200 point rating group and unrated. **EF:** \$29 by 5/19, \$35 by 6/3, \$40 on site. **REG:** 9-9:45 a.m. **RDS:** 10-11:15-12:30-1:45-3. **HR:** \$65 (not \$75) single or double (\$95 Fri and Saturday nights). 1-866-791-7626 or (702) 796-7111. **ENT:** Las Vegas International Chess Festival, PO Box 90925, Henderson, NV 89009-0925 or [www.VegasChessFestival.com](http://www.VegasChessFestival.com). NS NC W.

#### June 5-7 or 6-7, 2009 National Open

See Nationals.



# Tournament Life

## June 6-7, Susan Polgar World Open Championship for Girls and for Boys

5-SS, G/45. South Point Hotel, Casino and Spa, 9777 Las Vegas Blvd South, Las Vegas, NV 89183. In 8 sections separate for girls and boys: **under19, under 15, under 11, and under 8** (as of June 7). In each section 1st place receives a MonKoi Personal Chess Manager. \$\$ 200-150-100-50 in chess prizes for 2nd thru 5th. Trophies for top 10 individuals, top 3 (3-player) school/club teams each section, special medals for next 10 individuals and next 3 school/club teams. Every player receives a special hand-signed certificate from Susan Polgar. Perfect score also wins a digital chess clock. **Scholarships to Texas Tech will be awarded based in part on performance in this event.** EF \$45 by 1/19, \$55 by 5/19, \$65 by 6/3, \$75 on site. Reg 4-8 p.m. Friday, 8:30-9:30 a.m. Saturday. Rds 11-1:30-4, 11-1:30. Breakfast with Susan 9 a.m. Sunday. Opening Ceremony 10 a.m. Saturday, Awards Ceremony 4:30 p.m. Sunday. Blitz Championship 7 p.m. Saturday. Susan Polgar lecture 3:30 p.m. Friday, Puzzle Solving Competition 5 p.m. Friday, Simul 6:15 p.m. Friday. Chess Camp 9:00 a.m. Thursday. Part of the **LAS VEGAS INTERNATIONAL CHESS FESTIVAL**; see the National Open TLA for other Thursday and Friday side events. HR **\$65 (not \$75) single or double** (\$95 Fri/Sat). 1-866-791-7626 or (702) 796-1111. REG: Las Vegas International Chess Festival, PO Box 90925, Henderson, NV 89009-0125, on line at [www.VegasChessFestival.com](http://www.VegasChessFestival.com), or by fax at (702) 933-9112. No telephone entries. NS. W. NC.

## New Jersey

### Geller Quads - First Friday Every Month!

New Jersey Children's Chess School, 862 DeGraw Ave., Forest Hill (Newark), NJ 07104. Open to K-8. 3 RR, G/35. Reg.: 6PM. Rds.: 6:30-7:40-8:40PM. Chess classes in NJCCS meet every Friday 6:30-9PM. Chess camp "Geller Kids" meets July & August, day & overnight. Website: [www.kidsshesscamp.com](http://www.kidsshesscamp.com). Email: [chesscamp@hotmail.com](mailto:chesscamp@hotmail.com). Phone: 973-483-7927.

### Silver Knights Chess Tournaments

2-3 Saturdays per month we run scholastic USCF-rated tournaments throughout the Philadelphia area. (Tournament locations include Philadelphia, Mt. Laurel (NJ), Bryn Mawr, Horsham, Collegeville, and more. Tournaments are open to grades K-12. Free game analysis by a National or International Master at each tournament. We have players of all skill levels compete in our tournaments, from brand-new kindergarteners up through some of the highest-rated scholastic players in the state. To see a list of dates and locations, see our website at [www.silverknightschess.com](http://www.silverknightschess.com). Phone: 610-446-0818. Email: [chess@silverknightschess.com](mailto:chess@silverknightschess.com).

### Apr. 19, ICA Spring 2009 Open Championship

See Grand Prix.

### Apr. 19, ICA Spring 2009 Scholastic Championship

4 SS, EVERYONE PLAYS 4 GAMES, ALL PLAYERS WITH 2.5 POINTS OR MORE WILL RECEIVE A TROPHY!!! Bergen Academy, 200 Hackensack Ave., Hackensack, NJ 07601. U.S. CHESS FEDERATION MEMBERSHIP REQUIRED FOR SECTIONS 1 AND 2. **Info:** 201 287 0250 or 201 833 1741 **E-mail:** [Diana@icanj.net](mailto:Diana@icanj.net). (Web Site Entries: [www.icanj.net](http://www.icanj.net)) EF Adv (pmk by Apr 15th) \$25 At Site \$30 Reg ends 1/2 hr before 1st rnd. Late entrants will receive 1/2 point bye for rnd 1. In 4 Sections **Section 1:** G/45 Open to players rated below 1200 K through 12th grade. Rds.: 9:45 AM, 11:30, 1:15, 3:00 PM. **Section 2:** G/60 Open to players rated below 1600 K through 12th grade. Rds.: 9:45 AM, 12:00, 2:15, 4:30 PM. **Section 3:** Open to unrated players K through 2nd grade. Rds.: 10:15 AM (tournament will end at approximately 1:00 PM). **Section 4:** Open to unrated players K through 12th grade. Rds.: 10:00 AM (tournament will end at approximately 2:00 PM). **ENT:** Diana Tulman, 28 Canterbury Lane, New Milford, NJ 07646. NS NC W

### Apr. 26, 2009 South Jersey Open

See Grand Prix.

### May 2, ATKM 1st Saturday Kids G/30 Swiss (K-8)

For info, and registration, go to [YourChessSet.com/KidsSwiss](http://YourChessSet.com/KidsSwiss). For more info e-mail Stephen at [cs@ATKMchessSets.com](mailto:cs@ATKMchessSets.com) or call 856-582-8222.

### May 2, Garden State Scholastic

Prevention First, 1405 Route 35, Ocean, NJ 07712. **Primary: open to K-3:** 4 SS, G/30. Trophies to 1st-5th place; Medals to all others. **Scholastic Swiss:** open to K-12; 4SS, G/30. **Scholastic Quads:** open to K-12 G/60 Quads. Trophies to 1st and 2nd each quad. **All EF:** \$15 if rec'd by 4/25, \$20 on site. **Reg.:** 9-9:45 am. **Rds.:** 10 and ASAP. **Info:** Hal Sprechman, 732 259-3881, [hsprechman@characterkings.org](mailto:hsprechman@characterkings.org). **Ent:** Please make checks payable to Character Kings and send to Hal Sprechman, PO Box 1511, Jackson, NJ 08527. Please indicate section.

### A State Championship Event!

#### May 9-10, New Jersey Junior Championship

5SS, G/100. Brookdale Community College, 765 Newman Springs Road, Lincolnton, NJ 07738, Larrison Hall 116-117, use Parking Lot #2; 4 minutes from Garden State Parkway, Exit # 109. **OPEN:** (K-12) Trophies to top 10. Top High School player from NJ awarded entry to Denker Tournament of HS Champions. Top female player from NJ awarded entry to Polgar Invitational Tournament. **RESERVE:** (U1400) Trophies to top 10, U1300, U1200, U1000, Unr. **All: Entry fee:** \$30 if received by 5/2, \$45 at site. NJSCF memb. reg \$8, OSA. **Reg.:** Sat. 9-10am. **Rds.:** 10:30-2:30-6:15 Sat., 10-2 Sun. **ENT:** NJSCF. PO Box 1511, Jackson, NJ 08527 Make checks payable to NJSCF. **Info:** Hal Sprechman, 732-259-3881, [hsprechman@characterkings.org](mailto:hsprechman@characterkings.org). NS, NC, W. WCL JGP.

**May 23, U.S. Amateur Championship - East U1300 K-8 Scholastic** Somerset Ramada Inn, 60 Cottontail Lane, Somerset, Exit 12 off I-287 at Weston Canal Road, (732) 560-9880, Fax (732) 356-7455. Trophies Galore. In 4 Sections by rating. **Sections:** Hot Shots: U1300, Check Mates: U900, Rising Stars: U500 & Chess Bandits: Beginners/Unrated. Also open to U200. **Details all sections:** 5-SS, G/30, Trophies to Top 10, Others get choice of chess medallions or fun grab bag prizes. Unrated (grade K-4) may play in U500 section. Others may play in the top two Sections. Unrated may not win first prize in rated sections. **Registration:** Saturday 5/23, 11am-12pm. Rounds: 12:30pm, then ASAP with lunch break after round #2. **All sections: EF:** \$20 if mailed by 5/18 or paid online by 5/22 on website [EntryFeesRus.com](http://EntryFeesRus.com), \$30 at site. **Special advanced EF only**

**Combination:** Pay \$50 to play in both Saturday event and U.S. Amateur (2-day Sunday and Monday. This special is not available at site. One half-point byes allowed in rounds 1-4 if requested with EF. April Rating supplement used. **Mail entries:** to Ken Thomas, 115 West Moore Street, Hackettstown NJ 07840-2233. Checks payable to NJSCF. Indicate section desired and your grade level. **Information:** Call 908-763-6468 or [acn@goes.com](mailto:acn@goes.com). NS NC W.

### May 23-25, 66th Annual U.S. Amateur Championship East

See Nationals.

### June 6, ATKM 1st Saturday Kids G/30 Swiss (K-8)

For info, and registration, go to [YourChessSet.com/KidsSwiss](http://YourChessSet.com/KidsSwiss). For more info e-mail Stephen at [cs@ATKMchessSets.com](mailto:cs@ATKMchessSets.com) or call 856-582-8222.

### June 13, Garden State Scholastic

Prevention First, 1405 Route 35, Ocean, NJ 07712. **Primary: open to K-3:** 4 SS, G/30. Trophies to 1st-5th place; Medals to all others. **Scholastic Swiss:** open to K-12; 4 SS, G/30. **Scholastic Quads:** open to K-12 G/60 Quads. Trophies to 1st and 2nd each quad. **All EF:** \$15 if rec'd by 6/6, \$20 on site. **Reg.:** 9-9:45 am. **Rds.:** 10 and ASAP. **Info:** Hal Sprechman, 732 259-3881, [hsprechman@characterkings.org](mailto:hsprechman@characterkings.org). **Ent:** Please make checks payable to Character Kings and send to Hal Sprechman, PO Box 1511, Jackson, NJ 08527. Please indicate section.

## New York

### Apr. 18, NY April Under 1600!

4-SS, G/50, open to U1600 or unr., Chess Center at Marshall Chess Club, 23 W 10th St, bet 5-6 Ave, NYC: 845-569-9969. EF \$40, Club members \$25, specified Greater NY Scholastic prizewinners free. **May be limited to 1st 26 entries.** \$\$ (300 b/20 paid): 150-70-30, top U1300 \$50, \$70 limit to unr. Limit 2 byes, comm by 2:30. Reg. ends 15 min before game. Rds. 12:30-2:30-4:30-6:30 pm. CCA Ratings may be used. **Online entry at [www.chesscenter.cc](http://www.chesscenter.cc) thru 4/16. \$10 extra to "enter" by phone!**

### Apr. 18, Prove Your Point!

3-SS, G/30, Chess Center at Marshall Chess Club, 23 W 10th St, NYC: 212-477-3716. EF \$20. 3-0 wins \$40, 2.5 wins \$20, 2 wins \$10. Reg ends 7:20 pm. Rds. 7:30-8:30-9:30.

### Apr. 26, April Polgar Scholastic Championship G/30

4SS, K-12. Three sections: K-2, K-5 and 6-12. **EF:** \$20 if rec'd by 4/19, after \$30. PCC members \$5 off. Trophies to top 3 in each section. Medals to others. More special prizes! **Reg.:** 12-12:30. **Rds.:** 12:45-2:00-3:30-4:45pm. (Mail checks to: Polgar Chess, 103-10 Queens Blvd. #1C, Forest Hills, NY 11375). 718-897-4600.

### Apr. 26, The 10th Annual Bruce Bowyer Memorial Scholastic Tournament

5SS, G/30. Hotel New Yorker, 8th Avenue & 34th St., NYC, 212-971-0101. Open to all students thru grade 12, **EF:** \$10. **\$\$Gtd:** \$200-\$125-\$75, U1800 \$50, U1600 \$40, U1400 \$30, U1200 \$25. Trophy to winner, tiebreak order: Cumulative, Median, Solkoff. **All players receive a medal and a T-shirt!** **Reg.:** 10:15-10:45, X **Rds.:** 11am-12:30-2:30-4pm-5:30. Entries MUST be received by April 22nd! **ENT:** No door ents. Ck/MO payable to Pat Bowyer c/o PAR Group Inc., 119 N. Park Avenue, Suite 303, Rockville Centre, NY 11570. Limited to first 70 players. Provide name, addr., school, USCF rating, ID#, & exp. **PLEASE NOTE:** Bring clocks and sets, none will be provided. **Info:** [pbowyer@bbowyer.org](mailto:pbowyer@bbowyer.org) or Pat Bowyer 516.371.3717.

### May 3, 18th Annual NY 201 Under 1500 Play!

4-SS, G/30, open to all born after 5/3/96, Chess Center at Marshall Chess Club, 23 West 10th St, bet. 5-6 Ave, NYC: 845-569-9969. May be limited to 1st 52 entries. 2 Sections. **1. Open,** EF: \$32 postmarked by 4/25. **2. Novice,** for Under 1000 or Unrated, EF: \$31 mailed by 4/25. **Both,** EF: \$30 online at [www.chesscenter.cc](http://www.chesscenter.cc) by 4/30, \$35 by phone at 845-496-2191 by 4/30, \$40 at site, Club members \$10 less (\$10 fee for refunds). Trophies to top 10, top Unr, top 3 teams (top 3 scorers from same school) each section. 8 weeks free entry to 1st, 4 weeks free to 2nd each section. Speed playoff for 4-0. Limit of 2 byes, commit by 11:30. On-site reg. ends 9:30 am. Rds 10-11:30-12:45-2:00 pm. **Ent:** Chess Center of NY, PO Box 4615, New Windsor, NY 12553. List USCF ID, rating, section, school/grade, DOB.

### May 3, Sunday Under 1400 Action!

4-SS, G/30, Marshall Chess Club, 23 West 10 St, between 5-6 Ave, NYC: 212-477-3716, for Under 1400 or unrated. EF \$30, Club Members \$20, specified Greater NY Scholastic prizewinners free. **\$\$200 b/20 paid:** \$100-60-40, \$60 limit to unr. Reg. ends 3:45 pm. Rds. 4-5:15-6:45-8 pm. No advance entries.

### May 3, The Right Move #153 Team and Individual Championship FREE EF.

4SS, G/30. Play starts promptly at 10:00. Players must check in by 9:30AM. Brandeis H.S., 145 W. 84th St., 10024 (near Columbus Ave, Manhattan, NYC). Open to gr. K-12. **Five rated sections: Open, Under 1700, Under 1200, Under 800, Under 400.** (May renew or join USCF at tournament). **Non-member** sections by grades: K-3, 4-6, 7-12. Trophies to top 3 in each section except Open (\$50, \$30, \$20 for 1st-3rd); medal to each player with 2.5 or more points. Team plaque to 1st and 2nd each section, with top 4 scores counting in each section (minimum 3 players on team in section). **Non-member** sections offer additional prize of USCF membership to players scoring 4 points. **To register:** use website at [www.therightmove.org](http://www.therightmove.org) or email - [thesstospt@aol.com](mailto:thesstospt@aol.com) or Fax to 718-455-2863 before 6:00 PM. on Fri. Give full name, school, grade, USCF ID#, exp. date, and section. **NO ON-SITE REGISTRATION.**

### May 15-17 or 16-17, 17th annual New York State Open

See *Chess Life* Grand Prix or [www.chesstour.com](http://www.chesstour.com).

### May 17, P.S. 158 Scholastic Chess Championships X

4-SS, G/30. 1458 YORK AVE. BETWEEN E. 77-78 ST. NYC. 4 SECTIONS. **K-1** (grades K-1 only) U1000. **PRIMARY** (grades 5/below) U1100. **UNRATED NOVICE** (grades 2-5 only) U500. **OPEN** (grades 12/below). **AWARDS:** Trophies to top 15 in each section. Top U500 K-1, U400 Novice, U600 Primary, U800 Open. **Special Prizes:** Engraved digital chess clocks to Top Player in each section, all 4-0 scores & Top Unrated in Open Section. Engraved plaque to top UNR player in each section. High Scorer trophy to all who score 2 and do not get into top 15. Engraved medals to all others. **Team Prizes:** Trophies to top 4 teams in each section. Engraved digital chess clock to Top Team in each section. (Team score created by adding top 4 scores from same school). **EARLY EF:** \$39 if received (postmarked by May 11). **LATE EF:** \$45 Phoned, faxed or online thereafter until May 15, 7pm. **Onsite EF:** \$55. Reg. 9-9:30. **Rds:** All 10-11:30-12:45-2. Late entrants may not be paired for the first round. **Mail Entries:** and make check

payable to Tri-State Chess, 1675 York Ave. #2M, N.Y. N.Y. 10128 Phone: (718) 645-5896 Fax: (718) 535-7896 Online Entry: [www.TriStateChess.com](http://www.TriStateChess.com).

### May 23, Prove Your Point!

3-SS, G/30, Chess Center at Marshall Chess Club, 23 W 10th St, NYC: 212-477-3716. EF \$20. 3-0 wins \$40, 2.5 wins \$20, 2 wins \$10. Reg ends 7:20 pm. Rds. 7:30-8:30-9:30.

### June 6, NY June Under 1600!

4-SS, G/50, open to U1600 or unr., Chess Center at Marshall Chess Club, 23 W 10th St, bet 5-6 Ave, NYC: 845-569-9969. EF \$40, Club members \$25, specified Greater NY Scholastic prizewinners free. **May be limited to 1st 26 entries.** \$\$ (300 b/20 paid): 150-70-30, top U1300 \$50, \$70 limit to unr. Limit 2 byes, comm by 2:30. Reg. ends 15 min before game. Rds. 12:30-2:30-4:30-6:30 pm. CCA Ratings may be used. **Online entry at [www.chesscenter.cc](http://www.chesscenter.cc) thru 6/4. \$10 extra to "enter" by phone!**

### June 6, Prove Your Point!

3-SS, G/30, Chess Center at Marshall Chess Club, 23 W 10th St, NYC: 212-477-3716. EF \$20. 3-0 wins \$40, 2.5 wins \$20, 2 wins \$10. Reg ends 7:20 pm. Rds. 7:30-8:30-9:30.

### A State Championship Event!

#### June 13-14 or 14, 14th Annual New York Junior Championship

**(Out-Of-State Players Welcome)** 5-SS, G/90, open to all born after 6/1/89 from any state, beautifully renovated, well-lighted 3rd floor, New Yorker Hotel, 481 8th Ave at 34th St., across from Penn Station, NYC. \$\$ prize fund b/150 total paid entries, minimum half each prize Gtd. **3 sections. Open.** \$\$ 400-200-120, top U2000 \$110, U1800 \$100. **Under 1600.** \$\$ 300-150-110, top U1400 \$100, \$100 limit to Unr. **Under 1200.** \$\$ 300-150-110, top U1000 \$100, \$50 limit to unr, plaques to top 2 each grade, K-4 (OK to win both plaque & trophy). **All, trophies to top 5 each section, free entry to all Chess Center tmts. except quads** thru 9/1/09 to top 3 each section. 2 playing options: **2-day schedule,** reg. ends Sat 9:30 am, rds. Sat 10 am-1:30-4:30 pm, Sun 1:30-4:30 pm. **1-day schedule,** reg. ends Sun 8:30 am, rds. Sun 9:10-30 am-12:13-4:30 pm (rds. 1-3 of 1-day schedule only are G/30) and both merge for ad. 4. **Mail entry fee,** 2-day \$58, 1-day \$57 if postmarked by 6/5, all \$65 at site, mail checks by 6/5 payable to: **Chess Center of NY,** PO Box 4615, New Windsor, NY 12553. List name, address, USCF ID, June rating, grade, birthday, section, schedule. **Phone entries:** 600 thru 6/10. **Questions, [chesscenter@aol.com](mailto:chesscenter@aol.com) or 845-569-9969** (credit card phone entries: 406-896-2191, entries only, no questions). **Online entries, \$56 thru 6/10: [www.chesscenter.cc](http://www.chesscenter.cc)** (no mail after 6/5, no phone or online entries after 6/10). \$10 charge for refunds. All entries \$65 at site (specified Greater NY Scholastic prizewinners free). Limit 2 byes, commit before rd. 2. Re-entry: \$30, counts half. **HR:** 212-971-0101. **Bring sets, clocks, boards—none supplied!** W. WCL JGP.

## North Carolina

### 2009 Raleigh Scholastic Chess Tournaments

**(2nd Sunday each month (except June)** May, 10, Jul, 12, Aug, 9, Sept, 13, Oct, 11, Nov, 8, Dec. 13. USCF Rated and Not Rated Quads, Ages 17 and Under, G/30. 3 Rd. Round Robin, **EF:** \$20 online or mailed 1 week before; \$25 onsite. **PRZ:** 1st Place Trophy, 2nd Place Medal for each Quad. **Reg.:** 1:00 to 1:15. **Rds.:** 1:30, 2:35, & 3:40. **ENT & Checks:** Raleigh Chess Academy, 10930 Raven Ridge Road STE 105, Raleigh, NC 27614. **INFO:** Bill Clausen, (919) 272-8017, [www.CaryChessAcademy.com](http://www.CaryChessAcademy.com), [www.RaleighChessAcademy.com](http://www.RaleighChessAcademy.com).

### June 6, Orchard Lake Blitz (QC)

8RR, G/5. Orchard Lake Campground, Saluda, NC. Between rounds of Orchard Lake Grand Prix. **EF:** \$2. Plaque to 1st in each section. \$10 to random entry. [www.ncchess.org](http://www.ncchess.org).

### June 6, Orchard Lake Grand Prix

See Grand Prix.

### June 6, Orchard Lake RBO (U1000)

5SS, G/30. Orchard Lake Campground, Saluda, NC. **EF:** \$16.50 (incl \$6.50 cpmgrd fee). **Prizes:** Plaques to top 3. **Rds.:** 9:00-10:15-11:30-12:45-2:00. **ENT:** Kevin Hyde, 705 Old Mtn Page Rd., Saluda, NC 28773. 828-749-1625. [hyde@ioa.com](mailto:hyde@ioa.com). HR: 828-749-3901 [www.orchardlakecampground.com](http://www.orchardlakecampground.com) [www.nc-chess.org](http://www.nc-chess.org).

## Ohio

### Apr. 18, 8th Annual Queen City Classic Chess Tournament

5SS, G/30 Paul Brown Stadium, Club West, Downtown Cincinnati, OH. **17 School Sections, includes rated and non-rated.** (Grade K Non-Rated); (Grade 1 Non-Rated); (Grade 2 Non-Rated); (Grade 3 Non-Rated); (Grades K-3 <600); (Grades K-3 Open); (Grade 4 Non-Rated); (Grade 5 Non-Rated); (Grade 6 Non-Rated); (Grades 4-6 <700); (Grades 4-6 Open); (Grades 7-9 Non-Rated); (Grades 7-9 <900); (Grades 7-9 Open); (Grades 10-12 Non-Rated); (K-12 Open); (Collegiate). USCF membership is not required for the non-rated and K-3 rated sections. Registration form online at: [www.queencycityclassic.org](http://www.queencycityclassic.org). **Prizes:** Trophies to all who score 3.5 or higher, top five team trophies awarded medals to all others. **EF:** \$35 early bird fee which includes lunch, t-shirt, program/score book, simul participation. Registration fee increases to \$40 after March 15. After April 1, entry fee is \$50. **Registration closes Wednesday, April 15, 2009. NO SATURDAY REGISTRATIONS.** Checks, VISA, MasterCard, Discover and AmEx accepted. **Schedule:** Friday, April 17, early check is 4-6:00 pm. FREE SIMUL at 6:30 p.m. for tournament participants, \$20 for non-participants. SIMUL features International Master Irina Krush and International Grandmasters Maurice Ashley and Gregory Kaidanov. Saturday, April 18, check in 7:00 a.m. - 8:30 a.m., matches begin at 9:00 a.m. All Grandmasters will be available for questions and instructions in the skillies room all day Saturday. **Entry/Info:** Queen City Classic Chess Tournament; 5400 Kennedy Avenue, Cincinnati, OH 45213 [qcchess@proscan.com](mailto:qcchess@proscan.com). 1.866.772.4377, 513.924.5339 or fax to 513.352.9359. Confirm all registrations at [www.cpu-solutions.com](http://www.cpu-solutions.com).

## Pennsylvania

### Silver Knights Chess Tournaments

2-3 Saturdays per month we run scholastic USCF-rated tournaments throughout the Philadelphia area. Tournament locations include Philadelphia, Mt. Laurel (NJ), Bryn Mawr, Horsham, Collegeville, and more. Tourna-



ments are open to grades K-12. Free game analysis by a National or International Master at each tournament. We have players of all skill levels compete in our tournaments, from brand-new kindergarteners up through some of the highest-rated scholastic players in the state. To see a list of dates and locations, see our website at [www.silverknightschess.com](http://www.silverknightschess.com). Phone: 610-446-0818. Email: [chess@silverknightschess.com](mailto:chess@silverknightschess.com).

**Apr. 18, April Showers**

4SS, G/30. Wayne Elementary School, 651 W. Wayne Avenue, Wayne, PA 19087. Sections: K-6 U/700, K-12 Champ. EF: \$20 online by 4/15; \$30 on-site 9:00-9:30. Rds.: 10-11-12-1. Prizes: trophies to top individuals & schools. Free game analysis by NM Adam Weissbarth. See [www.silverknightschess.com](http://www.silverknightschess.com) to register.

**A State Championship Event!**

**Apr. 18-19, 2009 PA State Amateur Champ.**

Comfort Inn, 58 SR 93, West Hazleton, PA 18202, 1/2 mile from Exit 145 off I81. 2 sections: **Champ (Sat & Sun):** Open to U2200. 5SS. G/90. Rds: 10-1:30-5, 9:30-1. EF: \$20 rec'd by 4/17, \$30 later. Trophies: 1-3, U1800, U1600, U1400, U1200/Unrated, School Team (top 4 scores). Top 2 receive entry into 2009 PA Champ. Title to top PA resident. **Scholastic (Sat only):** unrated or U1400 in grades K-12. 4SS. G/40. Rds.: 10:15-12-1:30-3. EF: \$15 rec'd by 4/17, \$20 later. Trophies: 1-2, U1100, U800/Unrated, School Team (top 4 scores). All: Reg.: 9-9:30am, PSCF \$5, OSA. HR: 570-455-9300, 1-877-424-6423 \$71.95+ tax by 3/18. Ent/Info: GHACC, c/o Michael Jemo, 567 Forest Hills Dr., Hazleton, PA 18201, [jemo023@ptd.net](mailto:jemo023@ptd.net) 570-455-9261. W. WCL JGP Champ section.

**Apr. 19, PCL April Quick Quads (QC)**

3RR, G/15. Wm. Pitt Union, Univ. of Pittsburgh, 5th Ave. & Bigelow, Pittsburgh,

PA 15213. EF: \$10, \$7 Jrs. \$20 to 1st/quad. Reg.: 11-11:15am, Rds.: 11:30am-Noon-12:30pm. Info: [martinak\\_tom\\_m@hotmail.com](mailto:martinak_tom_m@hotmail.com), 412-908-0286. W.

**Apr. 25, Spring Rumble**

4SS, G/30. Perkiomen Valley Middle School West, 220 Big Road, Zieglerville, PA 19492. Sections: K-6 U/700, K-12 Champ. EF: \$20 online by 4/22; \$30 on-site 9:00-9:30. Rds.: 10-11-12-1. Prizes: trophies to top individuals & schools. Free game analysis by NM Adam Weissbarth. See [www.silverknightschess.com](http://www.silverknightschess.com) to register.

**May 30, Silver Knights Team Tournament #2**

4SS, G/30. Wayne Elementary School, 651 W. Wayne Avenue, Wayne, PA 19087. Open to 4-player teams from the same school in K-8. EF: \$60/team online by 5/27; \$100 on-site 9:00-9:30. Rds.: 10-11-12-1. Prizes: trophies to top schools. Free game analysis by NM Adam Weissbarth. See [www.silverknightschess.com](http://www.silverknightschess.com) to register.

**June 27-28, World Open Girls Championship**

See *Chess Life* (Pennsylvania) or [www.chesstour.com](http://www.chesstour.com).

**June 27-28, World Open Under 13 Championship**

See *Chess Life* (Pennsylvania) or [www.chesstour.com](http://www.chesstour.com).

**July 1-5, 2-5, 3-5 or June 29-July 5, 37th Annual World Open**

See *Chess Life* Grand Prix or [www.chesstour.com](http://www.chesstour.com).

**Rhode Island**

**Apr. 11 & May 16, BK Tournaments**

4SS, G/30. Trophies top 3 in each Section: 11&U/13&U (unrated), Open (rated). EF: \$12 Advance, \$15 at site. See full schedule, register online: [www.rhodeislandchess.org](http://www.rhodeislandchess.org), email: [rhodeislandchess@yahoo.com](mailto:rhodeislandchess@yahoo.com), (401)359-1602. See website for venues.

**Texas**

**April 24-26, Kasparov Chess Foundation in Association with UTD, DCC and USCF, Presents All Girls Open National Championships**  
See Nationals.

**Vermont**

**Apr. 24-26 or 25-26, 6th annual Vermont Spring Open**

See *Chess Life* Grand Prix or [www.chesstour.com](http://www.chesstour.com).

**July 31-Aug. 2 or Aug. 1-2, 20th annual Vermont Resort Open**

See *Chess Life* Grand Prix or [www.chesstour.com](http://www.chesstour.com).

**Wisconsin**

**May 9, Madison Spring Rated Beginner Open (RBO)**

D240 Downtown MATC Campus, 211 N Carroll St., Madison, WI 53703. In 2 Sections **Open:** 5SS, G/30, EF: \$13 adv/\$20 at site. \$\$: \$50-20. Trophies 1st/2nd/3rd Overall, 1st/2nd U1000/U800/Unr. **Reserve:** 5SS, G/30, Open to Age 12 or less. EF: \$11 adv/\$20 at site. **Prizes:** Trophies 1st/2nd for ages 11-12/9-10/8 & Under. **ALL:** Open to 1199 & under. **Reg.:** 7:30am. **Rds.:** 8-9-15-10-30-12-1-15. **ENT/INFO:** George Alexander 608-669-3385. [checkmate@tds.net](mailto:checkmate@tds.net). [groups.google.com/group/madison-chess-league](http://groups.google.com/group/madison-chess-league). NS NC W.

**July 10-12, 2009 U.S. Junior Open Championship**

See Nationals.



Now in our 15th great year!



Hosted by International Master  
Larry D. Evans

Lake Arrowhead, CA  
Monday through Friday  
August 3rd-7th, 2008

Mountain Lake  
**Chess  
Camp**

A chess camp for  
children, ages 6-17

1-800-675-1227  
[www.chesscamp.net](http://www.chesscamp.net)

# Summer Chess Camps for Kids!

Learn from National and International Masters  
Our unique curriculum produced two national champions in 2008!



## Washington-Area Camps

June 15 - 19 Oak Marr RECenter, Oakton, VA  
June 22 - 26 Spring Hill Elementary School, McLean, VA  
June 29 - July 2 Oakton Elementary School, Oakton, VA  
July 6 - 10 Sangster Elementary School, Springfield, VA  
July 13 - 17 McLean High School, McLean, VA  
July 20 - 24 Cub Run Elementary School, Centreville, VA  
July 27 - 31 Belle View Elementary School, Alexandria, VA  
August 3 - 7 Providence RECenter, Falls Church, VA  
August 10 - 14 Spring Hill Elementary School, McLean, VA  
August 17 - 21 South Run RECenter, Springfield, VA  
August 24 - 28 Audrey Moore RECenter, Annandale, VA  
August 31 - September 4 Cub Run RECenter, Chantilly, VA

## Philadelphia-Area Camps

June 22 - 26 Woodland Elementary School, Eagleville, PA  
June 22 - 26 Perkiomen Valley Middle School West, Zieglerville, PA  
June 29 - July 2 East Ward Elementary School, Downingtown, PA  
June 29 - July 3 Upper Gwynedd Community Center, North Wales, PA  
July 6 - 10 Horsham Community Center, Horsham, PA  
July 6 - 10 Bryn Mawr Community Center, Lower Merion, PA  
July 13 - 17 East Ward Elementary School, Downingtown, PA  
July 13 - 17 King of Prussia, PA  
July 20 - 24 Carmen Tilelli Community Center, Cherry Hill, NJ  
July 20 - 24 Radnor, PA  
July 27 - 31 Bryn Mawr Community Center, Lower Merion, PA  
August 3 - 7 King of Prussia, PA  
August 10 - 14 Carmen Tilelli Community Center, Cherry Hill, NJ  
August 10 - 14 Marple Newtown Community Center, Newtown Square, PA  
August 17 - 21 Doylestown Activity Center, Doylestown, PA  
August 17 - 21 Bryn Mawr Community Center, Lower Merion, PA  
August 24 - 28 Ardsley Community Center, Abington, PA

Also access our online video tutorials that provides all the tools you need to become a champion.

- Visit [www.silverknightschess.com](http://www.silverknightschess.com) for a free sample lesson!
- For scholastic players rated 100 - 1800!
- Brand-new chess videos added each week!
- Only \$9.95 per month!



The Four-move Checkmate  
By NM Adam Weissbarth



# SILVER KNIGHTS CHESS

[WWW.SILVERKNIGHTSCHESS.COM](http://WWW.SILVERKNIGHTSCHESS.COM) | 1-610-446-0818