

Chess Life for Kids!

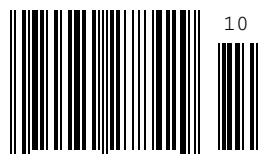


Mr. Perfect!!



A USCF Publication

\$3.00



0 74470 27842 9

**Fast, Fun, and
Easy to Use**

In 2006, and *again* in 2007,
young Chess Magnet students
from Portland, OR, scored 7-0 in the
USCF Spring Nationals.

ChessMagnetSchool.com

Better Than Any Textbook for Learning Chess



**Student
Training**

**"Great Stuff! I just delivered my first
Belgian champion under 10 and
boosted his development
by using ChessMagnetSchool.com"**

- Ton Montforts, Coach
Schaakacademie
Limburg, Belgium



**Student
& Class
Management**

**Makes
a
GREAT GIFT!**

**"Your website was
integral to our team's winning."**

-Mike Hosford, Coach
Alcott Elementary
2008 Washington State
Grades 4-6 Champions

**Start Your 30-day Free Trial Today
at**

www.ChessMagnetSchool.com

	1 month	3 months	1 year	1 yr USCF
Individuals	\$6.95	\$15.00	\$29.95	\$26.95
Class/Family	\$6.00	\$12.00	\$25.00	\$22.00

Free to teachers/coaches of at least 5 students
Includes our powerful, easy-to-use Coaching Tools & Reports

Works on Windows and Macintosh
computers (requires internet access)

To learn more, call 650-284-5062
877-378-4319 (US toll-free)
email info@ChessMagnetSchool.com



USCF

October 2009

Chess Life for Kids!

Vol. 4, No. 5



Publisher

USCF Executive Director: Bill Hall
bhall@uschess.org

Scholastic Editor: Glenn Petersen
gpetersen@uschess.org

Art Director: Cat Connor Spradlin
catseyephoto@mac.com

Editorial Asst./Copy Editor: Alan Kantor
akantor@uschess.org

Editorial Assistant: Jennifer Pearson
jenpearson@uschess.org

Advertising Manager:
tla@uschess.org

Tournament Life: Joan DuBois
tla@uschess.org

Director of Publications: Daniel Lucas
dlucas@uschess.org

CONTRIBUTORS: Send your contributions and articles to *Chess Life for KIDS*, PO Box 3967, Crossville, Tennessee 38557 or better yet, e-mail to gpetersen@uschess.org.

Chess Life for KIDS (USPS 023-567, ISSN: 1932-5894) is published in February, April, June, August, October, and December of every year by the United States Chess Federation, 137 Obrien Drive, Crossville, Tennessee 38555. Periodic postage paid at Crossville, Tennessee.

CHANGE OF ADDRESS: Be sure to notify us at once of any change of address. Please include your old address and your new address, along with your USCF I.D. number.

POSTMASTER: Send address changes to USCF, PO Box 3967, Crossville, Tennessee 38557.

Annual Scholastic Membership
Regular Scholastic Membership (on line version of *Chess Life for Kids*), age 12 or younger, is just \$16 per year. Premium Scholastic Membership (receives *Chess Life for Kids* by mail) is \$23 per year. \$13 of every premium membership goes towards providing *Chess Life for Kids*. Entire contents copyright 2009, United States Chess Federation.

Teachers may photocopy instructional articles for classroom use, but republication or wide-spread copying without the written consent of the USCF is forbidden.



Table of Contents

CONTEST WINNERS BY GNOMES.....	4
ARABIAN KNIGHTS BY RICK KENNEDY.....	5
ASK GM EVANS BY GM LARRY EVANS.....	6
THE CHESS DETECTIVE BY NM TODD BARDWICK.....	7
CHESS OPENING GLOSSARY BY PETE TAMBURRO.....	8
WIN OR DRAW? BY PETE TAMBURRO.....	9
ZARIA BY ROZ KATZ.....	9
2009 WCL JUNIOR GRAND PRIX STANDINGS	10
WHAT'S THE PROBLEM BY STANLEY KRAVITZ.....	14
FAREWELL BY JERRY NASH.....	15
MR. PERFECT	16
SOLUTIONS	18
TOURNAMENT LIFE ANNOUNCEMENTS	19
PAWNMOWER CHESS	21

COVER PHOTO BY TARUN VASUDEVA

PARENTS, TEACHERS & COACHES!



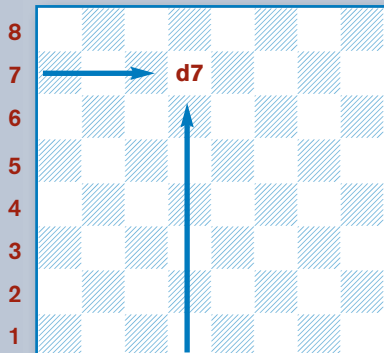
**Check out the
new USCF
Certified Chess
Coach Program
at**

<http://main.uschess.org/content/view/9474/131/>

HOW TO Read & Write Chess

There are many different ways to write chess moves. The most popular method (described below) is called **algebraic notation**:

Each square has a name, taken from the intersection of the file (vertical or up-and-down rows of squares, which are lettered) and rank (horizontal or side-by-side rows of squares, which are numbered) the square is on. In the diagram the square on the intersection of the 7th rank and the d-file is called d7. Like in battleship!



The pieces are abbreviated by a capital letter, like this:

K: King; Q: Queen; R: Rook; B: Bishop; N: Knight.

Notice that the Knight is N, since K is reserved for the King. Notice also that pawns have no abbreviation.

A move is written by using the abbreviation for the piece that moves, followed by the square the piece moves to (1. ... Nf6). A pawn move is written as the square the pawn has moved to (1. d4). A capture by a piece is written as the abbreviation for the piece that moved, followed by an x, and finally the square the capture takes place on (8. Bxe5). A pawn capture is written as the file the capturing pawn stands on, followed by an x, and finally the square the capture takes place on (3. dxe5).

Other moves are castling kingside, which is written 0-0, and castling queenside, which is written 0-0-0. An *en passant* capture is indicated by *e.p.* after the move. A check is indicated by + after the move, and pawn promotion is indicated by adding () and the abbreviation for the piece the pawn promotes to. Ambiguous moves (where more than one piece or pawn can move to the destination square) are taken care of by putting an extra rank or file in to make it clear which piece or pawn moved.

Here is a sample, using the famous smothered mate trap from the Budapest Defense.

1. d4 Nf6 2. c4 e5 3. dxe5 Ng4
4. Bf4 Nc6 5. Nf3 Bb4+ (diagram A)

6. Nbd2 Qe7 7. a3 (diagram B)

7. ... Ncxe5 8. Bxe5 Nxe5 9. axb4 Nd3 checkmate. (diagram C)

x: take or capture #: checkmate
0-0: kingside castle (:): promotion
0-0-0: queenside castle !: good move
+: check ??: bad move
??: blunder



THE GNOMES HAVE SPOKEN!

School is back in session, and my gnomes from Outer Mongolia are back, hard at work! So many of you answered (and we thank you!) that my gnomes decided to reward FIVE winners for "Take out the Trash" (Pawnmower). The answers to the page 14 puzzles in the August issue were:

1. a5-a1-e1-e7-h7
2. a2-g2-g1-f1-f8-h8
3. a6-f6-f3-f8-h8-b8-b2
4. c8-e8-h8-h2-e2-e7-e1-a1

And receiving *Pawnmower* by GM Maurice Ashley will be **William Sanders** of Nashville, TN, **Steven Danko** of Brooklyn, NY, **Ben Adams** of Stamford, CT, **Minna Wang** of Roy, UT, and **Tinglin Shi** of Brookfield, WI.

If you looked closely, at the solutions to "Win or Draw," we asked you to send in your solution to #6. My gnomes randomly chose **Victor Chen** of San Jose, CA, as having the winning entry: #6 Black draws with 1 ... Rh2+, 2.Kg6 Ra2 and White cannot capture the black rook because of the stalemate threat. If White moves his rook to another file, Black follows with his rook (3.Rb1 Rb2; 3.Rd1 Rd2, etc.). Victor will receive a copy of *My Daily Exercises* by Heinz Brunthaler.

And I was absolutely right. **Hannah Pan** of Orinda, CA, should be sending me puzzles to solve! Instead, she will be receiving *Outrageous Chess Problems* and *Award Winning Chess Problems*, both by Burt Hochberg. Hannah solved the two problems in "Arabian Knights" by offering **1.Qb2 f1=N 2.Qg2 mate**. Or **1 ... f1=Q 2.Ng3 mate**. Or **1 ... Bh2 2.Nxf2 mate**. Or **1 ... Kh2 2.Qh8 mate**.

And for the mate in four, the key move is **1.Qd1**. If **1 ... Kxc5, 2.Qb1 Kd5, 3.Qe1 Kc5 (3 ... c5 4.Qe4 mate)** **4.Qa5 mate**. And if **1 ... Kxe5 2.Qf1 Kd5 3.Qc1 Ke5 (3 ... e5 4. Qc4 mate)** **4.Qg5 mate**.

Nice job by one and all! Don't forget to check out the solutions to see how you did in this issue's quizzes on page 18.

TALES OF THE Arabian KNIGHTS

BY RICK KENNEDY Illustrations by Pamela Key



All Just A Dream

“Do you believe that dreams can tell the future?”
the King asked with some uncertainty.

She smiled. “I believe that dreams can sometimes reflect the past,” she said.

The King rubbed his stomach absent-mindedly. “Yesterday’s curry, yes...”

“Does Your Majesty have a dream he wishes to share?”

“I do,” the King said. “It came in the form of a chess game. A very strange one.”

“I would be delighted to hear about it.”

So the King began. “There were pieces. There was a board. The game played out before me, yet there were no players.”

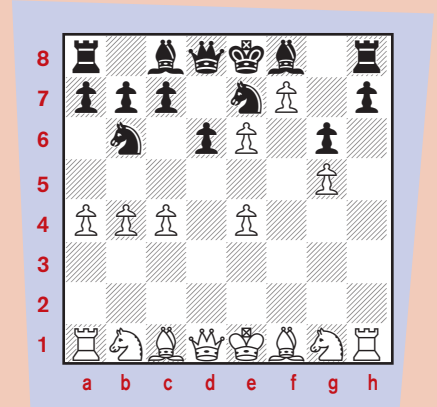
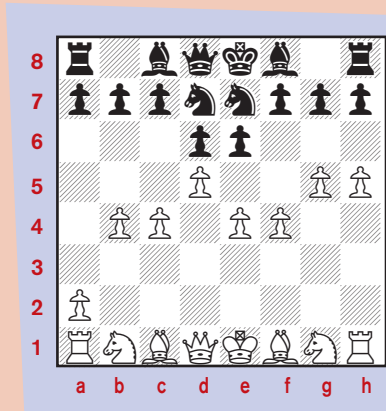
“The pieces moved themselves?”

“Or they were moved by invisible forces.”

“The first moves were not unusual, but things quickly changed.”

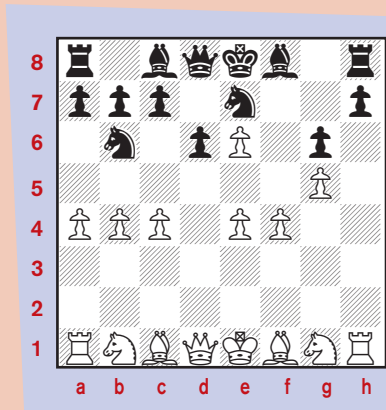
1.d4 Nf6 2.g4 d6 3.g5 Nfd7 4.e4 Nc6 5.d5 Nce5 6.f4 Ng6

“How unearthly,” she said.
7.h4 e6 8.h5 Ne7 9.c4 Nc5 10.b4 Nd7



“I suppose I should have seen that coming,” said the King.

11.a4 g6 12.hxg6 fxg6 13.dxe6 Nb6



“And the king was checkmated,” she said.

“The king was checkmated,” he repeated.

“Please do not tell me,” said the King, after a period of silence, “that my dream was some form of allegory, that it means that the common people will someday rise up against their royalty, and overthrow them. I could not bear it.”

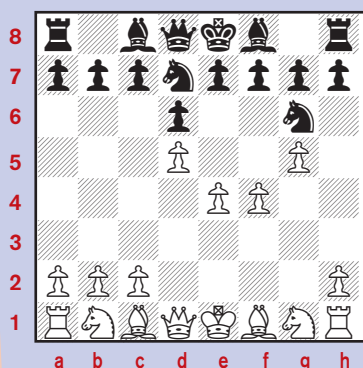
“You are a wise and fair and just ruler,” she said. “Do not be troubled by trifles. It was all just a dream.”

The King slept better that night; but he did not sleep well.

VIRTUAL CHESS OPENINGS

www.chessopenings.com

The most comprehensive chess opening reference in the world!



“Curiouser and curiouser,” she said.
14.f5 Bg7 15.f6 Bf8 16.f7 mate.



ASK GM LARRY EVANS!

Grandmaster Larry Evans won the U.S. Championship in 1951, 1952, 1961-62, 1968, and again in 1980!

BEST QUESTION:

HOW I BEAT SPASSKY!

Al Smart

Delano, California

Q: I got a chance to play former world champion Boris Spassky when he gave a 25 board simultaneous exhibition at the 1980 Paul Masson American Chess Classic in California. He won 23, drew one and lost only this game. Your readers might be interested in an instructive mistake that he made after refusing my offer of a draw on move 24.

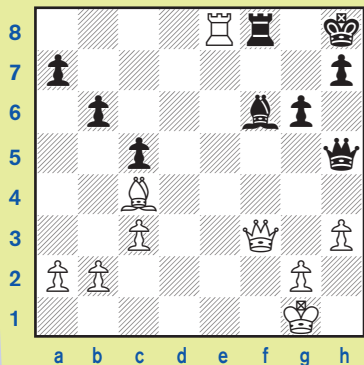
Boris Spassky - Al Smart

Pirc Defense (B09)

1.e4 d6 2.d4 Nf6 3.Nc3 g6 4.f4 Bg7 5.Nf3 0-0 6.Bd3 c6 7.0-0 Bg4 8.h3 Bxf3 9.Qxf3 Nbd7?! 10.e5 dxe5 11.dxe5 Ne8 12.Be3 e6 13.Rad1 Qe7 14.Ne4 Rd8 15.c3 b6 16.Bf2 c5 17.Bb5 f5 18.exf6 e.p. Ndx6 19.Bc4 Nd6 20.Nxd6 Rxd6 21.Bh4 Kh8 22.Rfe1 Rxd1 23.Rxd1 e5 24.fxe5 Qxe5 25.Re1 Qh5

26.Bxf6 Bxf6 27.Re8?...

Hoping for 27...Qxf3? 28.Rxf8+ Kg7 29.Rf7+ followed by 30.gxf3, Spassky now tried a tricky but unsound maneuver. There is one and only one refutation:



Position after 27.Re8?

27...Bd4+! 28.cxd4 Qxf3 29.gxf3 Rxe8 30.dxc5 bxc5 31.Kf2 Kg7 32.f4 Re4, White Resigns

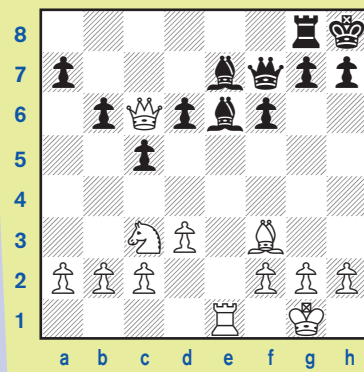
A: Instead of taking the draw or going into an opposite colored bishop ending by 27. Qxh5 gxh5 Spassky lost because he tried too hard to win. He undoubtedly would have seen this in a slow tournament game instead of a simul.

SKEWER SKEWED

James Wade

Seattle, Washington

Q: This is diagram 42 from *Winning Chess Tactics*.



White moves

GM Seirawan writes "White's pieces are more active than Black's, and both Black's Bishops are poorly defended. Creating a skewer with 1.Qe4 is easy! The Bishop on e6 is attacked and if it moves, the poor thing on e7 becomes the sacrifice."

But after 1...Bd7! it's not so easy. If 2.Qxe7? Re8 gains material. My rating is around 1400 and a master told me that my game was improving if I could find a resource like this!

A: Congratulations! The author didn't look far enough ahead. In a skewer (sometimes called an x-ray attack) the real target is not the first piece immediately under attack but the second piece standing behind it. After 1...Bd7 capturing the bishop on e7 leads to disaster, as you point out, because of White's vulnerable back rank. Instead of taking the bishop White still retains the advantage by 2.Qb7!



ASK A QUESTION:

If you have a question for GM Larry Evans, send it to gpetersen@uschess.org. GM Evans will choose the Best Question for the next issue.—The Best Question winner will receive a copy of *Endgame Workshop* by Bruce Pandolfini.

The Chess Detective

by NM Todd Bardwick

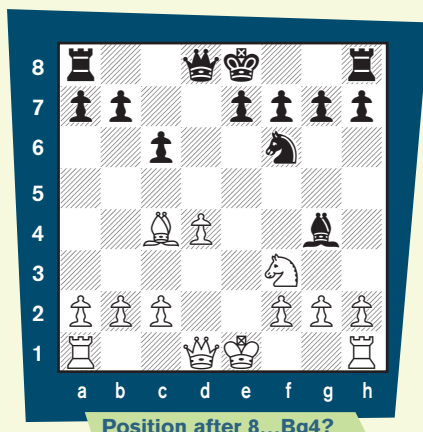


CAN YOU FIGURE OUT HOW TO DRAW OUT THE KING?

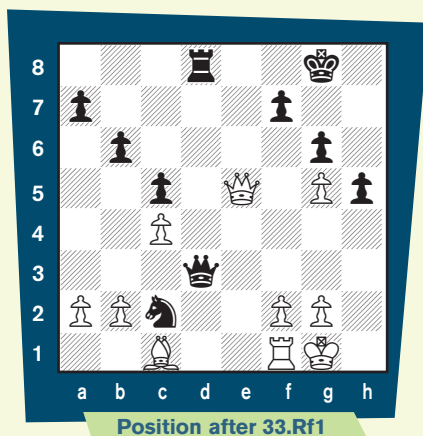
In the August edition of *Chess Life for Kids*, we looked at a couple examples of how a king was drawn out into the center of the board, where he could be easily attacked. By drawing the king toward the center, you can force him into a tactic to win material or checkmate him.

Now it is your turn! Can you figure out how to draw out the king in these positions?

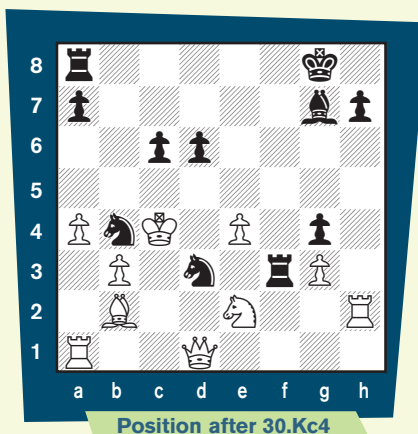
One: White to Move



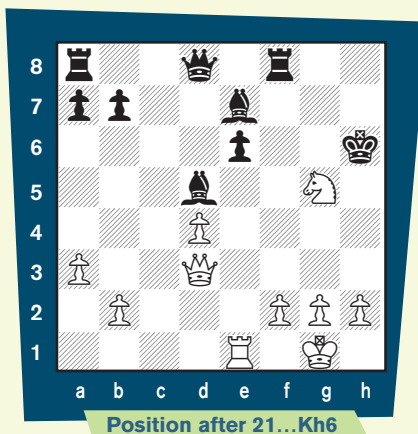
Two: Black to Move



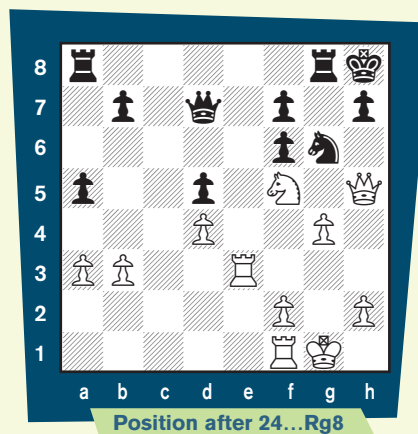
Three: Black to Move



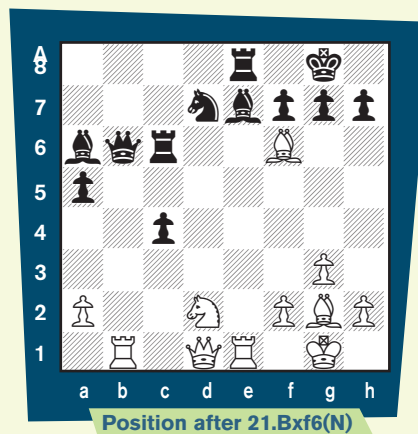
Four: White to Move



Five: White to Move



Six: Black to Move



Answers on page 18



Todd Bardwick

is the author of

**Teaching Chess in the 21st Century
and Chess Workbook for Children.**

He can be reached at www.ColoradoMasterChess.com

A Brief Chess Opening Glossary

Part II

by Pete Tamburro

Last time out we looked at all White's first move possibilities. This time around we'll look at every single move Black can use to reply to 1.e4. There are eight one-step pawn moves, eight two-step pawn moves and four knight moves.

As you go over some of the really "weird" ones, you should learn some key ideas to help you know what to do. They're actually pretty simple.

The one-step pawn moves by Black should be met by White playing 2.d4 to pair up with his 1.e4. You then want to get your pieces into play on good center squares.

You can't treat some of these too lightly. Black will attack your center with bishop fianchettoes, aggressive knights and pesky pawn moves. Don't overextend yourself. Keep it simple. See past *CL4K* issues where we covered how to do this.

A lot of the two-step pawn moves are main line chess openings, and they deserve their own little glossary.

We'll start with the a7-pawn and do the "one-step defenses!"

The One-Step Defenses to 1.e4:

1...a6 The St. George Defense: GM Tony Miles stunned GM Anatoly Karpov in 1980 with this move and won! The idea is to support b5 and Bb7 along with e6 and Nf6. White's best bet is to play the pawns to e4, d4 and c3 with Nf3 and Bd3.

1...b6 Owen's Defense or Queen's Fianchetto Defense: One tricky line White should know is 1.e4 b6 2.d4 Bb7 3.Bd3



f5?! 4.exf5! Bxg2 5.Qh5+ g6 6.fxg6 Bg7! (6...Nf6?? 7.gxh7+ Nxh5 8.Bg6 mate!) and now opinion favors either 7.Qf5 Nf6 8.Bh6 or 7.gxh7+ Kf8 8.Nf3 Nf6 9.Qg6 Bxf3 (9...Bxh1 10.Bh6) 10.Rg1 Rxh7 11.Qg3 Be4 12.Bxe4 Nxe4 13.Qf3+ Nf6 14.Qxa8.

1...c6 Caro-Kann Defense: Favored by Capablanca, Botvinnik and Karpov—not a bad trio! After 2.d4 d5, White usually goes with 3.Nc3, 3.Nd2, 3.e5 or the wild 3.f3.

1...d6 Pirc Defense: Usually the first move leading to the Pirc (by the way, you say it "Peerts"—that's what the man himself asked the chess world!): 2.d4 Nf6 3.Nc3 g6 4.f4 Bg7 6.Nf3 0-0 is a much discussed line.

1...e6 French Defense: Very solid. After 2.d4 d5, White usually goes with 3.Nc3 or 3.Nd2. Sometimes the sharp 3.e5, the Advanced Variation, is played.

1...f6 Nameless! Worthless! The usual recipe: 1.e4 f6 2.d4 works.

1...g6 Modern Defense: The Modern holds back both d6 and Nf6 as in the Pirc or switches into the Pirc on its own terms. Many Modern players like the quick Bg7 and c5 idea, hitting White's center.

1...h6 Carr Defense (according to Eric Schiller): More like a CarCrash Defense. You'll never win cash with this clunker.

1...Nc6 Nimzovich Defense: After 1.e4 Nc6 2.d4, either 2...d5 or 2...e5 are playable. Hugh Myers contributed more to this defense than anyone. Some players duck the above lines with 2.Nf3 or 2.Nc3.

1...Nf6 Alekhine's Defense: Teases White: "C'mon—chase me!" White's most frequent reply is 2.e5 and the fun starts! If you want a wild game, look at the Four Pawns Attack.

The Two-Step Defenses to 1.e4

1...a5 Ware Defense: Yes, someone named Ware played this in the late 1800s. Beware of the flaws in this defense.

1...b5 No Name: At least 1...a5 didn't lose a pawn right off the bat!

1...c5 Sicilian Defense: If you don't know this defense, where HAVE you been?? This defense has its own glossary and sub-glossary...the most complex of openings.

1...d5 Scandinavian or Center Counter Defense: Has gone from not too popular to a little popular. There are two main paths after 1.e4 d5 2.exd5: 2...Qxd5 and 2...Nf6. One tip: If White plays 1.e4 d5 2.d4, you can go into a French Defense with 2...e6 or the dangerous to defend Blackmar-Diemer with 2...dxe4 with 3.f3 or 3.Nc3 and 4.f3.

1...e5 The Open Games. As with the Sicilian, the most complex of openings which needs its own glossary. People who are aggressive generally pick either the Sicilian or Open Games.

1...f5 The Fred: Schiller's comment: "Perhaps the single worst defense at Black's disposal..." He also called it the Duras, but I hate to associate this with such a great player.

1...g5 The Borg Defense (Schiller): It's the Spike, a move down. That should be enough to discourage you!

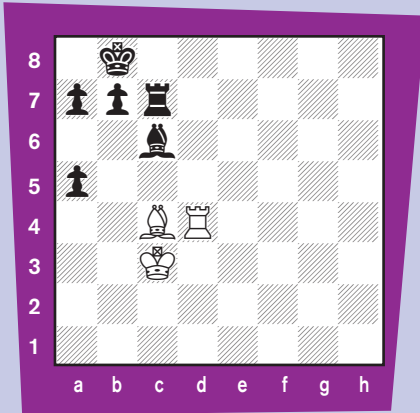
1...h5 Last in Our List! And last in our hearts. Dreadful!

WIN OR DRAW?

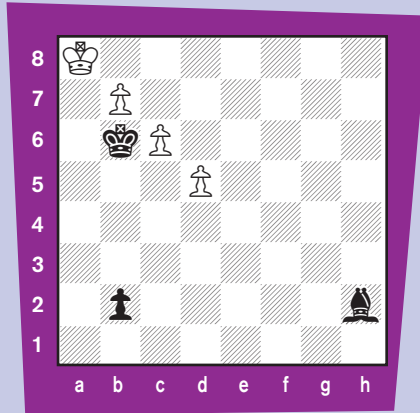
by Pete Tamburro

Take a look at the diagram, see whose move it is and decide whether it's a win or draw. Be careful with some of these problems, because the win doesn't have to be with the side that's moving! We just want to know if **SOMEBODY**, with best play, can win this position: White or Black. If nobody can, then it's a draw. To keep yourself honest, write down the moves for both sides as you see it demonstrates the win or draw. Put **WIN WHITE** or **WIN BLACK** or **DRAW**. Remember: it has to be best play for both sides!

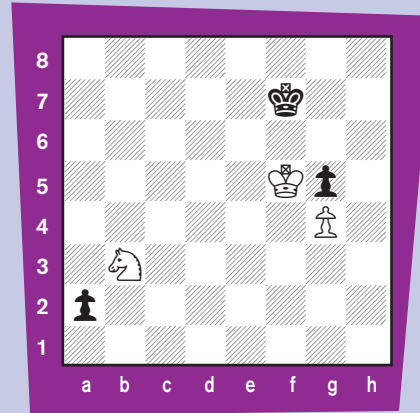
Position One: (White to Play)



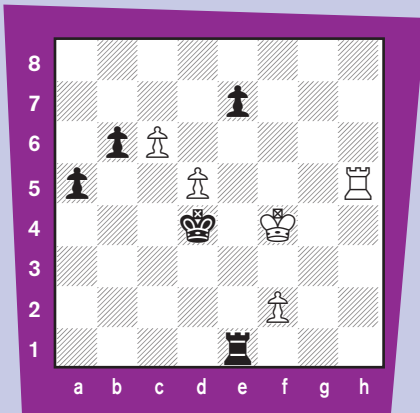
Position Three: (White to Play)



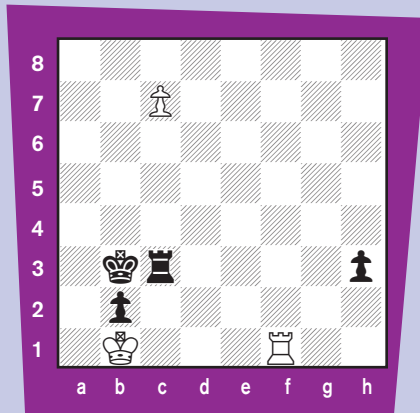
Position Five: (White to Play)



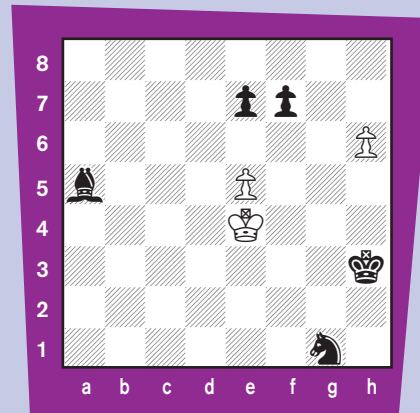
Position Two: (White to Play)



Position Four: (White to Play)



Position Six: (Black to Play)



Answers on page 18 



2009 World Chess Live Junior Grand Prix Standings



2009 World Chess Live Junior Grand Prix

This unofficial list is based on USCF records and TD reports as of Wednesday, September 2, 18:31:18 CDT 2009. There are 4,567 players with JGP points. 312 JGP-eligible events resulted in points earned. Overall leaders will not be eligible for state leader prizes. **Note:** In the state by state standings shown below, a state will only be shown if someone from that state has earned JGP points.

ST=State PTS=Points EV=Events

Top 20 Overall Standings

NAME	ST	PTS	EV
WINTER, CURTIS A	MD	190	12
DOMMALAPATI, ABHINAY	VA	170	15
SREENIVASAN, RAMANUJA	MD	150	14
PISANI, PAUL	WA	145	10
RAJASEKARAN, VIKAS	VA	145	7
PISANI, NICHOLAS	WA	140	6
HUANG, WINSTON	MA	140	11
TROFF, KAYDEN WILLIAM	UT	135	10
SHETTY, ATULYA ARYA	MI	125	6
JOHNSTON, DANIEL F	NY	125	5
HARMON-VELLOTTI, LUKE	ID	115	7
GURCZAK, JOHN	AZ	115	7
RICHMAN, JONATHAN T	N	115	5
SINGH, REVA SHREE	NY	110	9
PILLAI, KADHIR ANDRES	NY	110	6
QU, CHEN	NY	110	6
LATHAM, ANDREW	KS	105	10
ZHOU, JASON	MO	105	5
CHEN, JEREMY	NJ	105	7
VEECH, JOHN	WI	100	7
DANG, MICHAEL	MI	100	6

State Leaders

NAME	ST	PTS	EV	NAME	ST	PTS	EV
PARSHALL, MATTHEW	AK	30	2	PARNON, CALVIN JAY	OR	55	2
PETERSON, ERIC	AL	40	1	KELLY, JACOB	PA	75	4
GUNN, GEORGE HAYDEN	AL	40	1	FINNEY, STUART S	RI	65	4
NELSON, KEVIN J	AL	40	1	TEMPLETON, ZACHARY	SC	50	3
CRAIG, ROBERT S	AR	60	2	STORMENT, EZRA LEE	SD	20	1
SCHUCKER, THOMAS	AZ	60	4	MARIKLE, JOSEPH WALTER	SD	20	1
ADELBERG, DAVID	AZ	60	5	VAZQUEZ, RAUL	TERR	25	1
PEAVY, FLETCHER S	AZ	60	3	FU, JASON	TN	80	5
KUMAR, ADITYA	CA-N	80	7	ESPERICUETA, ELIAS	TX	65	2
POLSKY, RYAN	CA-S	75	6	UNRUH, DAVIS	UT	55	1
YU, ALEXANDER C	CO	45	3	SAPERSTEIN, CRAIG M	VA	85	6
HERBST, RICHARD E	CO	45	2	KATZ, GABRIEL	VT	55	4
FINNERAN, MICHAEL	CT	70	3	DING, JEFFREY	WA	70	1
HAUGE, DAVID RICHEY	DC	30	3	JAMBOR, ALEXANDER	WI	75	4
D'SOUZA, DEAN	DE	45	3	AITES, CALEB I	WV	10	2
DALY, TROY	FL	90	4				
MILLER, GEORGE DAVIS	GA	70	5				
PERRY, PATRICK F	HI	50	1				
NAKAGAWA, ELDON M	HI	50	1				
IYER, VENKAT	IA	70	4				
HARMON-VELLOTTI, CARL	ID	75	6				
SWAN, CHARLES	IL	95	2				
COOKLEV, STEVEN	IN	80	6				
CHENG, TONY R	KS	75	4				
BAGLEY, TAYLOR MICAHAH	KY	55	4				
KORNDORFFER, CHARLES	LA	50	2				
ANGERMEIER, DANNY	MA	85	4				
MIZUSHIMA, DEREK	MD	90	6				
FISHBEIN, MATTHEW E	ME	40	3				
VIRKUD, APURVA	MI	75	3				
HANSEL, PETER WILLIAM	MN	60	1				
DING, JIALIN	MO	90	3				
MADDOX, CONNER	MS	40	1				
GOLDMAN, ADAM	MS	40	1				
HIGH, DAVID L	NC	80	4				
SELVARAJ, JASON	NE	35	2				
MORAN, HARRISON M	NH	20	2				
MA, JENNY	NH	20	2				
MOREAU, ERIC	NH	20	1				
BRETON, ALEX	NJ	95	3				
SERNA, JEFFREY MICHAEL	NM	65	3				
THOMAS, MICHAEL EVAN	NV	25	1				
KORLEY, KASSA	NY	95	3				
HUGHES, JOHN LODGER	OH	95	4				
HUGHES, DEVIN L	OK	70	4				



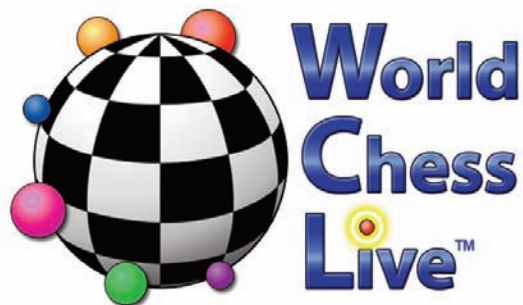
Seven of our Top Ten leaders are Scholastic members, including Vikas Rajasekaran



... and Daniel F. Johnston. We wish all of our CL4K readers good luck in the World Chess Live Junior Grand Prix.

Prepare to make your best move since joining the USCF...

Don't miss one of this year's top benefits of USCF membership.

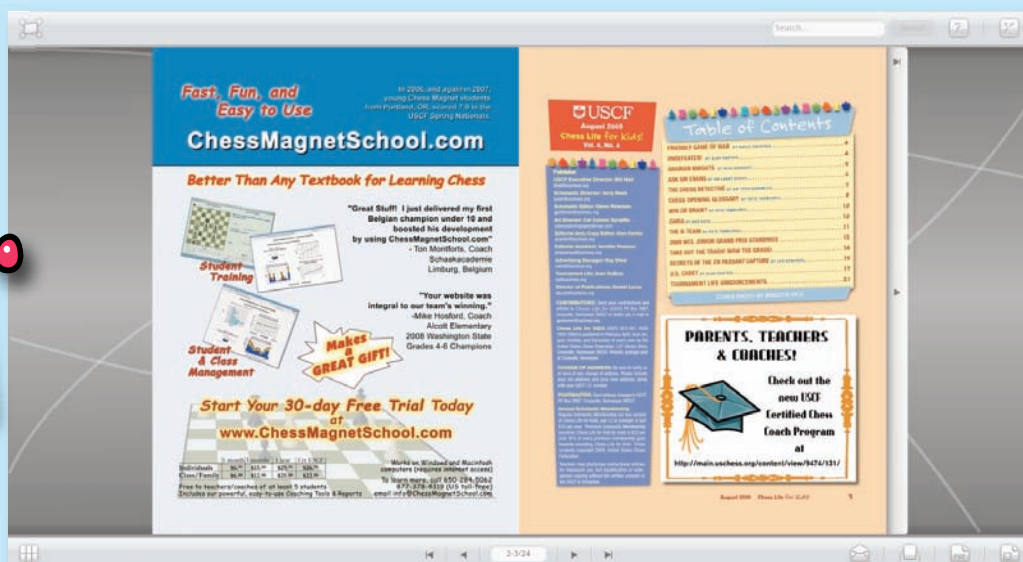
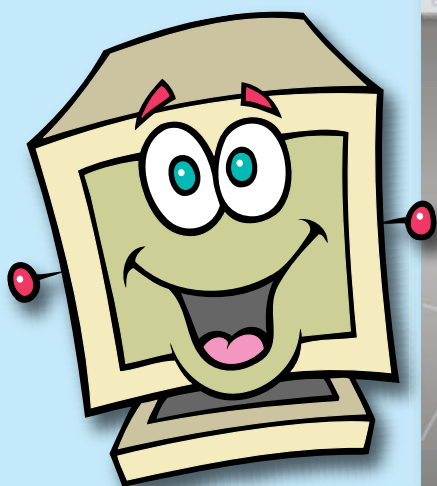


Claim your **six-month free trial** now at World Chess Live, the only online chess service offering:

- Weekly USCF quick-rated tournaments
- Chances to earn both Grand Prix and Junior Grand Prix points
- Many other tournament prizes
- Free videos from top instructors
- A welcoming atmosphere for players of all levels

For details, go to www.worldchesslive.com/uscf

MORE B-A-N-N-N-N-G FOR YOUR BUCK!



Premium Scholastic members get their chess kicks (CL4K) in the mail.

Regular Scholastic members get their chess kicks online.

And now **ALL** scholastic members can "virtually" turn the pages of CL4K online, using the .pdf viewer now available.

Just follow the links (you'll need your user name and password):

www.uschess.org > Chess Life Magazine > Chess Life for Kids > On-Line Viewer.

Looking for quality equipment for your chess club / classroom?



9

QUEENS ACADEMY
EQUIPMENT BY



USCF SALES



Look no further than



USCF SALES

USCF Sales is the Official Chess shop of the US Chess Federation and your source for the finest chess equipment at everyday low prices. No matter what you're looking for, whether it's playing equipment, instructional materials, achievement awards or chess related prizes, you'll find them at USCF Sales!

NEW, LOWER PRICES ~ QUANTITY DISCOUNTS

USCF Sales proudly provided all the equipment shown above to the
9 Queens Academy in Tucson, AZ.

1 800 388 KING (5464)

www.USCFSALES.com

shop • worn (-wôrn')

-adjective

1. Slightly blemished from having been displayed in a shop
2. The opportunity to own great books at unbelievable prices.
3. Limited quantities available. Act fast before they're gone!

~~50~~
75

USCF Sales has over ~~50~~ Shopworn Chess Titles available at savings up to 95% Off MSRP. Here's your chance to own Chess books from such legendary authors as Garry Kasparov, Yasser Seirawan, John Watson, Lev Alburt and Nigel Davies at a tremendous discount. Even though many of these books are passable as new, we refuse to sell these books at normal prices because they aren't in mint condition.

Our loss is your gain!

25 NEW TITLES ADDED

Up To 95% Off

All Purchases Benefit



The US Chess Federation

1-800-388-KING (5464)

WWW.USCFSALES.COM

What's the Problem?

By Stanley Kravitz

I am always amazed at the ingenuity displayed in creating chess problems. Not only do they offer a challenge but they also have an intangible quality called beauty.

When looking at a problem the winning side, which is usually white, can often win in a routine way by making several good moves without worrying about mate in two. Well, that's the problem. Is there any reason to win quickly or is it just a condition required by problems?

One major disadvantage of the slow and steady win is that your opponent may just slip out of trouble or may find a stalemate. There is also the personal satisfaction of finding the fastest winning line. That is exactly where over-the-board play and problems meet.

In general, **a problem is a puzzle**. The composer gives you a position with specific conditions. It may say mate in two or some other number of moves. It may say White to move and draw in three. In any case, a problem is very specific about the number of moves, who moves first and, of course, the outcome.

There is another branch of chess called the "Study." **Studies are a lot closer to actual games** than many problems. Interesting endgames often find their way into the study literature. They always teach the best techniques for winning a won game.

There is no better place to look for endgame studies than in GM Pal Benko's column **Endgame Lab** in *Chess Life*. He is a wizard at dissecting and improving very difficult endgame studies. At the simplest level an endgame study would illustrate the correct technique for winning a game with a few pieces on the board.

Studies may also show how to defend properly. As you can imagine

if you are going to understand a study be prepared for many long variations with different outcomes and different numbers of moves.

There are other types of chess problems. Some of these you may have heard of. Well known are the Knight's Tour and setup positions such as placing many queens on the board without giving mate. There is also retro chess and others but we will leave these for another time.

Let's get back to the neat and precise world of problems. The following positions are arranged in order of difficulty.

You can rate yourself as a problem solver if you have a watch and don't look at the problems until you start.

If you can solve a problem in **under 30 seconds** give yourself 4 points.

Solve in **under 1 minute** give yourself 3 points.

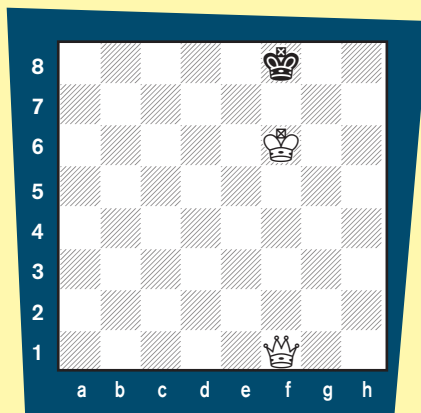
Solve in **under 2 minutes** 2 points.

Over 2 minutes give yourself 1 point.

Master solver 15-20 points, Good solver 10-15 points, Fair solver 5-10 points, Under 5 points, needs work.

Puzzle 1: White to move and mate in two

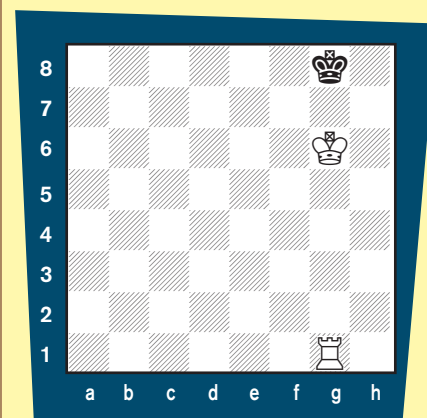
Here is a classic situation. A beginner would learn to mate in maybe 10 moves or so with a queen and king but can you do it in two?



After you have solved this problem decide if there was an extra personal satisfaction from mating in two rather than in three or more moves. Also think about the way the pieces cooperate to give the problem its beauty.

Puzzle 2: White to move and mate in two

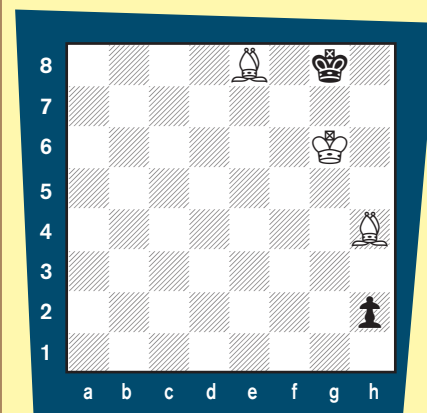
Maybe puzzle 1 was a bit too easy. Here we have another classic situation for you.



I can't count the number of times I have had to mate an obstinate opponent who refused to resign when I was a rook up. That is a good reason why a quick mate is most satisfying.

Puzzle 3: White to move and mate in three

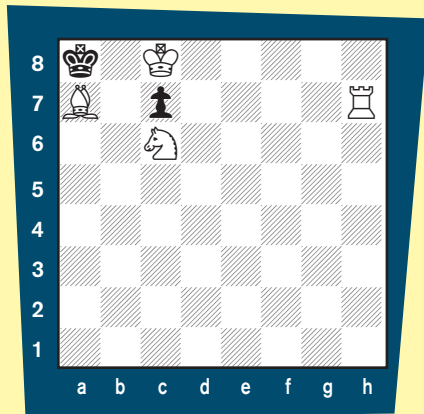
If you know how to mate with two bishops this should be simple. You have to decide what role the h-pawn will have.



Of course you could play Bc6 and win in several moves but chess problems must have no unused pieces and have only one first move and mate in the number of moves specified.

Puzzle 4: White to move and mate in two

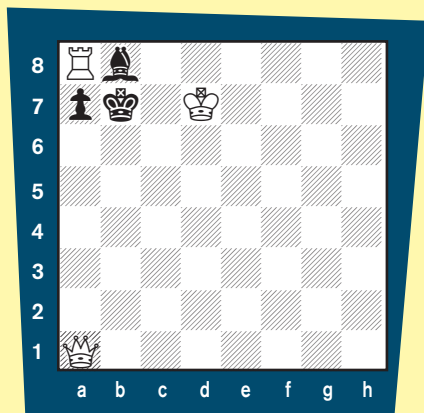
So you think these are too easy! You should try some of the prize winning puzzles in *Chess Life* magazine. These puzzles have kept me up so late that I had to take a peek at the solutions. This puzzle is a step-up in difficulty.



Chess problems are usually composed with a feature called a “try.” The puzzle is designed to make the solver look at possible solutions that do not quite work or mate in too many moves. *Puzzles that have more “tries” get a higher rating from judges and more frustration from solvers.*

Puzzle 5: White to move and mate in two

Now those were not too hard! All the above problems are called “miniatures” as they have less than seven pieces on the board.



This is an example of *Zugzwang* or a waiting move. Often in problems the winning move looks innocuous and so the solver passes over it

because it seems to do nothing. If you can solve this in under a minute you are really good. See page 18 for solutions.



Due to unfortunate but necessary cutbacks, the USCF is cutting the position of Scholastic and FIDE Director. Jerry Nash's last day in the office was Tuesday, August 25th. We are fortunate to be able to announce that Mr. Nash will continue his relationship with the Federation as our National Education Consultant. Jerry's focus will be primarily on working with individuals, schools, and communities in the role of a consultant to assist in the development of local scholastic and collegiate chess programs. He will also promote the training of educators to connect chess with the efforts to improve math skills, critical thinking skills, and life skills. Read his letter to the chess community below, and contact him directly at jerrynash@frontiernet.net.

–Bill Hall, USCF Executive Director

Dear Chess Community,

Since March of 2005 it has been my privilege to serve as the Scholastic and FIDE Director of the United States Chess Federation. While unfortunate circumstances necessitate my leaving this position, I hope to maintain my connections with the chess community. It has been my pleasure to make the acquaintance of so many players, coaches, tournament directors, parents, and students who love the game of chess and use it to impact their communities.

I will continue my relationship with the Federation as National Education Consultant. Working with individuals, schools, and communities, I hope to assist in the development of local scholastic and collegiate chess programs. I also plan to continue helping educators connect chess with the improvement of math skills, critical thinking skills, and life skills.

I would like to thank all those with whom I have worked for having the opportunity to be a part of their efforts to make a difference in the lives of others. I have been blessed by these relationships. My hope and prayer is that we will discover the resources needed to face the challenges and fulfill the opportunities of the days ahead.

Best Regards,

Jerry Nash

Mr. Perfect!

No, I'm not talking about the late WWE wrestler, but I am talking about the youngest member of the U.S. Pan American Youth team.

Our world-weary warriors have returned from Mar del Plata, Argentina, and after nine rounds of top competition, they probably feel as fuzzy as they look in their photo! Our U.S. representatives finished in third place

in the team standings with 98 points, just behind Colombia (100), but well behind Peru (181!) in the 2009 Pan American Youth Championships, held August 16-21.

They were coached by Beatriz Marinello, Aviv Friedman, Armen Ambartsoumian, and Michael Khodarkovsky. Can you find them in the photo?

As you can tell from the chart below, our team won five gold medals (look at RK, which stands for final rank), two silver medals and one bronze medal. No other country won five gold medals. But special recognition, of course, goes

to the medalists:

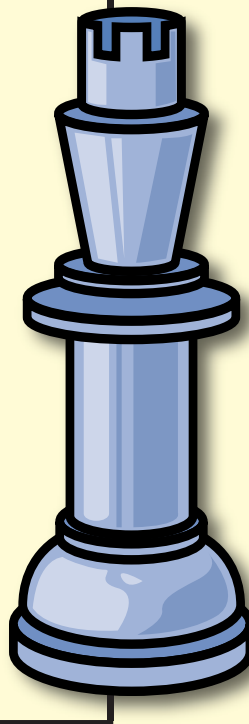
Tanuj Vasudeva (Mr. Perfect! with a 9-0 record!) in the U8 Abs (Age 8 and under Boys and Girls), **Simone Liao** in the U10 Fem (Girls only), **Daniel Rozovsky** in the U14 Abs, **Victor Shen** in the U16 Abs, and **Annie Wang** in the U8 Fem.

The two winning silver medals were **Andrew Shvartsman** (U16 Abs) and **Arthur Shen** (U12 Abs), while **Tommy O. He** took a bronze medal in the U10 Abs.

In addition, Tanuj and Annie were awarded Candidate Master (CM) titles; Daniel and Victor earned FIDE Master (FM) titles, and Victor also earned his first norm towards an International Master (IM) title.



Name	Pts.	Rk.	Group
VASUDEVA Tanuj	9.0	1	U8 Abs
WANG, Annie	7.5	1	U8 Fem
HE Tommy O	6.5	3	U10 Abs
GANDHI Shyam	4.5	16	U10 Abs
LIAO Stan	4.0	23	U10 Abs
LIAO Simone	7.5	1	U10 Fem
ORESHKO Maryia	5.0	12	U10 Fem
SHEN Arthur	7.0	2	U12 Abs
PAMATMAT Jarod M	6.5	5	U12 Abs
BROWN Michael W	5.0	20	U12 Abs
PAMATMAT Jordan J	5.5	13	U12 Abs
WARANCH Samuel	4.0	28	U12 Abs
KARP Justin	4.0	30	U14 Abs
HINSON Miles	5.0	15	U14 Abs
ROZOVSKY Daniel	7.5	1	U14 Abs
SHEN Victor C	7.5	1	U16 Abs
SHVARTSMAN Andrew	6.5	2	U16 Abs
HUANG Vincent	4.5	17	U16 Abs
JAYAKUMAR Adarsh	6.5	5	U16 Abs
MELEKHINA Alisa	6.0	6	U18 Abs
MATLIN Anna	5.0	9	U14 Fem
JAMISON Courtney	5.0	8	U18 Fem
MCVAY Karsten	4.0	12	U18 Fem



MOVE THE PIECES!

Enjoy the games! The first game by Tanuj is from Mar del Plata; the second game was played by Tanuj when he was just six years old!

Pan-American Youth, Mar Del Plata Argentina, 2009

White: Tanuj Vasudeva (USA)

Black: Felipe Alves Da Silva (Brazil)

1.e4 e5 2.Nf3 Nc6 3.Bc4 Be7 4.0-0 Nf6 5.Re1 0-0 6.c3 Bc5 7.d4 exd4 8.cxd4 Bb6 9.e5 Ne8 10.Bg5 Ne7 11.d5 d6 12.exd6 Qxd6 13.Bxe7 Qg6 14.Qe2 Bg4 15.Bxf8 Kxf8 16.Qe7+ Kg8 17.Qxe8+ 1-0

White: Tanuj Vasudeva (1403)

Black: Michael K. Lin (1813)

Donnelly Memorial (3), 09.15.2007

1.e4 c5 2.c3 Nf6 3.e5 Nd5 4.d4 cxd4 5.cxd4 Qc7 6.Nf3 e6 7.Bd3 b6 8.0-0 Bb7 9.Be3 d6 10.Nbd2

dx e5 11.Rc1 Qd8 12.Bb5+ Nd7
 13.Nxe5 N5f6 14.Bg5 Bc8
 15.Rxc8 Rxc8 16.Nxd7 Be7
 17.Nxf6+ Kf8 18.Nd7+ Kg8
 19.Bh6 f5

Do you see why Black can't play
 19 ... gxh6?

20.Qe2 gxh6 21.Qxe6+ Kg7
 22.Re1 Bf6 23.Nxf6 Qxf6
 24.Qd7+ Kg6 25.Re6 Rhd8
 26.Rxf6+ Kxf6 27.Qxh7 Rxd4
 28.Qxh6+ Kf7 29.Nf3 Rd5
 30.Ng5+ Ke7 31.Qe6+ 1-0

Next is a game chosen by Daniel
 Rozovsky for *CL4K* readers. Oscar
 was 7-0 going into this, the eighth
 round. It was Daniel's big chance,
 and he was ready!

White: Oscar Zavarce (Venezuela)
Black: Daniel Rozovsky (USA)

1.e4 e5 2. Nf3 Nc6 3.Bc4 Bc5
 4.d3 Nf6 5.c3 0-0 6. b4 Bb6 7.
 b5 Na5 8.Nbd2 d6 9.a4 Nxc4 10.
 Nxc4 Be6 11. Ne3 a6 12. Bb2
 axb5 13. axb5 Ng4 14. Nxc4
 Bxc4 15. Rxa8 Qxa8 16. Qb3
 Qa7 17. 0-0 Ra8 18. h3 Bxf3 19.
 gxf3 Qb8 20. d4 Qd8 21. Kh2
 Qf6 22. Qd1 exd4 23. cxd4 Qf4+

24. Kg2 Qg5+ 25. Kh2 Qxb5 26.
 Ba1 Qg5 27. Bc3 Qf4+ 28. Kg2
 Qg5+ 29. Kh2 Ba5 30. Qb3 Bxc3
 31. Qxc3 c5 32. dxc5 Qxc5 33.
 Qd2 b5 34. Rg1 Rb8 35. Rg5
 Qc6 36. Qd4 g6 37. Rd5 Qb6 38.
 Qd2 b4 39. Rxd6 Qc7 40. Kg2 b3
 41. Rd7 Qxd7 42. Qxd7 b2 43. e5
 b1=Q 44. e6 Qf5 45. Qc7 Re8
 46. exf7+ Qxf7 47. Qc3 Qe6 48.
 h4 Rf8 49. Qd4 Qf6 50. Qe4 Qf4
 51. Qd5+ Kg7 52. h5 gxh5 53.
 Qb7+ Rf7 54. Qb2+ Qf6 55. Qb3
 h4 56. Qd5 h3+ 57. Kg1 Qg6+
 58. Kf1 Qb1+ 59. Ke2 Re7+ 60.
 Kd2 Qe1+ 61. Kc2 Rc7+ 62. Kd3
 Qd1+ 0-1

And finally, Simone Liao gives us
 some pointers.

White: Simone Liao (USA)
Black: Aylen Strgacich (Argentina)

This was round seven of Pan Am
 Youth 2009. I was white against Ms.
 Strgacich from the hosting country
 Argentina on board one of U10-Fem-
 ale section. The two of us were
 leading the section with 5/6. This
 game would decide who would get
 closer to the gold medal. I had ex-

pected a long battle but it turned out
 to be a very short game in moves and
 in time.

1. e4 e5 2. Nf3 Nc6 3. Bc4 Bb4

I did not understand this move! In
 some openings, White has to sacrifice
 pawns merely to play c3 with a
 tempo. And I got it for free from my
 opponent.

4. c3 Ba5 5. 0-0

5.d4 could have been better, but
 this is also playable: 5. b4 Bb6 6. b5
 Na5 7. Nxe5 {wins a pawn except if
 7 ... Nxc4 8. Nxc4 Qg5, but White is
 still better in the center and with de-
 velopment.

5 ... Nf6 6. d3

Again, d4 or Re1 is more active.
 What was I thinking?

6 ... h6 7. Re1 0-0 8. a4

I miscalculated. I thought it would
 lead to 8 ... a6 9.b4 Bb6 10.b5 here
 and win on e5.

8 ... a6 9. Nbd2 d6 10. Nf1 Bg4

Black pinned the f3-knight but it did
 not help much.

11. h3 Bxf3

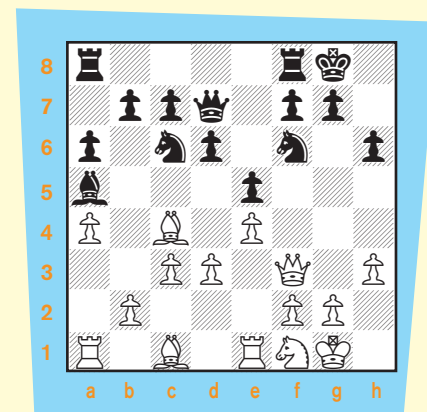
Black had to take the f3-knight.

12. Qxf3 Qd7?

Black obviously did not see what
 was coming her way! Do you?



It's a rule: Open space, in a hotel lobby or at the Mar del Plata
 airport, must be occupied!



13. Bxh6 Nxe4?

I looked to see if Black had a desperado,
 but I did not find one.

14. Qxe4

White's move was okay, but better
 could be 14. Rxe4! which would bring
 in an extra piece to the attack.

14 ... gxh6 15. Qg6+ Kh8 16.

Qxh6+ Kg8 17. Re3 Qg4

Black is desperate now.

18. hxg4 Ne7 19. Qg5+ Ng6 20.

Qxg6+ Kh8 21. Rh3# 1-0

SOLUTIONS

WIN OR DRAW? (pg. 9)

Position One: DRAW! All I kept thinking was, “Oh, boy, are they going to be mad at me!” It looks like a simple win for Black, no matter who moves, BUT: **1.Rd8+ Rc8 2.Rxc8+ Kxc8 3.Ba6!! bxa6** [3...Kc7 4.Bxb7!] **4.Kb2** and it's a draw! The queening square is a different color from the bishop, so the a-pawn(s) can't be pushed through to queen in 99 cases out of a 100. We showed you an exception in the first “Win or Draw.”

Position Two: WIN WHITE! 1.c7 Rc1 2.d6!! (Compare this line with Rh1 and no d6 to the main solution line with d6. Do you see the difference as to why White has to play d6 first? **2.Rh1 Rxc7 3.Rd1+ Kc5 4.Rc1+ Kd6 2...exd6 3.Rh1!! Rxc7** (3...Rxb1 4.c8=Q and the queen is too powerful; 3...Rc4 4.c8=Q Rxc8 5.Rd1+ Kc4 6.Rc1+) **4.Rd1+ Kc4 5.Rc1+ Kb3 6.Rxc7 b5** [6...a4 7.Rb7] **7.Ke3 a4 8.f4 a3 9.f5 a2 10.Ra7 Kb2 11.f6 b4 12.f7 a1=Q 13.Rxa1 Kxa1 14.f8=Q** with an easy win.

Position Three: DRAW! 1.d6 Bxd6 (1...b1=Q?? 2.b8=Q+ The pawn move to d6 blocks the bishop just so Black couldn't queen on the first move AND set up the stalemate to come.) **2.b8=Q+ Bxb8 3.c7 Bxc7** (3...Kxc7 stalemate!) **Stalemate!**

Position Four: NOT SO FAST! This one you'll have to solve on your own! Send in your solution to: Gpetersen@uschess.org. We'll have a drawing and the winning entry will receive a copy of Bruce Pandolfini's *Endgame Workshop*.

Position Five: WIN WHITE! This is a great teaching lesson endgame! Pretty please. Go through this the wrong way, first! It helps you understand the right way. If you got greedy or overconfident with **1.Kxg5 Ke6 2.Kh6 Kd5 3.g5 Kc4 4.Na1 Kc3 5.g6 Kb2 6.g7 Kxa1 7.g8=Q Kb1 8.Qb8+ Ka1 9.Qe5+ Kb1 10.Qe4+ Ka1 11.Qd4+ Kb1 12.Qb4+ Kc1 13.Qc3+ Kb1**

14.Qd3+ Kb2 15.Qb5+ Ka1 and it's a draw. The bishop and rook pawns on the seventh rank are well known as draws with the opposing king far away. The right way is: **1.Na1** (forces the black king to move farther away from a1) **1...Ke7 2.Kxg5 Ke6 3.Kf4** (a great move! Remember what we said above about the white king being too far away?) **3...Kd5 4.g5 Kc4 5.g6 Kc3 6.g7 Kb2 7.g8=Q Kxa1 8.Ke4 Kb2 9.Qg7+ Kb1 10.Qg1+ Kb2 11.Qd4+ Kb1 12.Qb4+ Kc2** (12...Ka1 13.Qd2 Kb1 14.Kd3 a1=Q [14...a1=N 15.Kc3] 15.Qc2#) **13.Qa3 Kb1 14.Qb3+ Ka1 15.Qc3+ Kb1 16.Kd3** (the king being closer than in the first try now creates mate threats, and this idea shows up a lot with a pawn on the seventh rank) **16...a1=Q** (16...a1=N 17.Qa3 Nc2 18.Qb3+ Ka1 19.Kc3 Nd4 20.Qb2#) **17.Qc2#**

Position Six: WIN BLACK! When you play this over, you may very well realize that as great as Black's play is, the moves to get the win are practically forced as the threat of the White pawn queening is very real: **1...Nf3!! 2.Kxf3** (2.Kf4 Nh4 3.h7 Ng6+ 4.Kf5 Bc3 5.e6 Nh4+ 6.Kg5 fxe6 or 2.h7 Ng5+) **2...Bc3 3.Ke4 e6** (3...f6? 4.h7 Bxe5 5.h8=Q+) **4.h7 f5+ 5.Kf4** (5.exf6 e.p. Bxf6 6.Kf4 Kh4 7.Ke4 Kg5 8.Kf3 Kg6 9.Kf4 Kxh7 with an easy win) **5...Kg2 6.h8=Q Bd2# A mate!**

CORRECTION!! A bit of carelessness in the last “Win or Draw.” The USCF office's own Walter Brown spotted it as well as Pete Spizziri's students in Illinois. The Position One solution with **1.Bc3 Kxc3 2.h7 a1=Q 3.h8=Q+** doesn't win as after **3...Kd3 4.Qxa1** is a stalemate. Very alert! Nice catch, people! Happily, it's easy to correct. **3.h8=B+!!** wins because when the smoke clears, White can mate with the two bishops as there is no stalemate.

Answers to What's the Problem (pg. 14)

#1 Qc4

#2 Rf1

#3 Be7 followed by Bf7

#4 Bb6

#5 Qa5

Answers to the Chess Detective (pg. 7)

#1: NOT SO FAST! Ditto above and our gnomes will send the winning entry a copy of Todd Bardwick's *Chess Workbook for Children*.

#2: This position is from Benjamin-deFirmian, 1998 U.S. Championship. Black drew out the king to win an Exchange with a skewer by playing **33...Qxf1+! 34.Kxf1 Rd1+ 35.Ke2 Re1+ 36.Kd2 Rxe5**.

#3: Black has sacrificed his queen to bring White's king into the center, but has to draw him out further to checkmate him. This position is from Polugaevsky- Nezhmetdinov, 1958. Black played **30...d5+ 31.exd5 cxd5+ 32.Kb5 Rb8+ 33.Ka5 Nc6+ 34.Resigns** (34.Ka6 Nc5 mate).

#4: White has sacrificed material to expose the black king. Now he has to draw him out further to checkmate him before Black's pieces can come to the rescue. **22.Qh7+ Kxg5 23.Qg7+**

Kh5 (23...Kf5 24.Re5+ Kf4 25.Qg3 mate) **24.g4+ Kh4 25.Qh6+ Kxg4 26.h3+ Kf5** (26...Kf3 27.Re3 mate) **27.Re5 mate**.

#5: This position is from Albero-de Galway, Spain, 1967. White played **25.Qxh7+! Kxh7 26.Rh3+ Nh4 27.Rxh4+ Kg6 28.Rh6+ Kg5 29.f4+ Resigns** (29...Kxg4 30.Ne3 mate).

#6: This position is from the 2007 Casino de Barcelona tournament between Mikhail Krasenkow and Hikaru Nakamura. Black played the pretty sacrifice: **21...Qxf2+! 22.Kxf2 Bc5+ 23.Kf3** (23.Kf1 c3+ 24.Re2 c2! 25.Qxc2 Bxe2+ 26.Ke1 Bd3+ 27.Kd1 Bf2) **23...Rxf6+ 24.Kg4 Ne5+ 25.Kg5** (25.Rxe5 Bc8+ 26.Kh4 Rxe5 27.Rb6 Rh6+ 28.Rxh6 Be7+ 29.Rf6 Bxf6 mate) **25...Rg6+ 26.Kh5 f6** (Threatening 27...Rh6 mate. If 27.Kh4, Black wins with 27...Rh6+ 28.Qh5 g5+ 29.Kh3 Rxh5 mate.) **27.Rxe5 Rxe5+ 28.Kh4 Bc8 Resigns**.

Tournament Life Announcements

OCTOBER 15 THROUGH DECEMBER 14

Scholastic Members:

As a service to you, we are listing upcoming National USCF rated events, and requested events of possible interest to you. You can always log in to www.uschess.org, and click on "Clubs and Tournaments." Then click on "Upcoming Tourneys" for a complete listing of upcoming rated events and details. As always, you can check out the TLA section of *Chess Life*.

Organizers and Tournament Directors:

If you would like your tournament listed here in *Chess Life* for KIDS for December (events to be held after December 14), the deadline for submitting your announcements is October 10th. The deadline for the February 2010 issue is December 10th. The processing fee is \$1.00 per line for the first eight lines, \$2.00 for every line thereafter. Send your announcements to tl@uschess.org.

Display advertising is also available. Advertising rates are posted on the USCF website, www.uschess.org, or you may email: tl@uschess.org for complete details.

NATIONALS

Nov. 20-22, Illinois

2009 National Youth Action

95S, G/30. DoubleTree hotel, 1909 Spring Road, Oak Brook, Illinois, 60523, Tel: 1-630-472-6000 (L.800.222.TREE); \$89 single/double/triple/quad. **Four Sections** – K-3, K-6, K-9, K-12. **Entry Fee:** \$40 by 10/25/09 USPS (or \$40 on-line by 10/25, 6 pm); \$60 by 11/13/09 USPS (or \$60 on-line 10/25/09, after 6 pm - 11/13/09, 6 pm); \$75 USPS 11/13-11/17 (or \$75 on-line 11/13/09, 6:01 pm - 11/19, 6 pm); \$75 by 11/20/09 6 PM on site (on-site entries after 11/20/09 6 PM can not be guaranteed pairing for round 1, instead they may receive 1/2 point by round 1). **Checks payable only to Chess Central.** **Awards:** Individual: 1st-20th Place in each section (K-3, K-6, K-9, K-12). Class Awards: 1st-3rd Place, K-3: U800, U600, U400, Unr. K-6: U1000, U800, U600, Unr. K-9: U1200, U1000, U800, Unr. K-12: U1400, U1200, U1000, Unr. **Teams:** 1st-10th Place in each section. **Special Sportsmanship trophy!** **Schedule:** Opening Ceremony Sat., Nov 21 at 9:30 am. Rds. 1-5 Sat., 10 am, 12 noon, 2 pm, 3:30 pm & 5 pm. Rds. 6-9 Sun., 10 am, 12 noon, 2 pm & 3:30 pm. **Side Events:** Bughouse Tournament – Fri, Nov 20, 6:30 pm. EF \$20 per team (\$10 for individuals and we help you create a team). On site registration only. Registration closes at 5 pm, Fri, Nov 20. One section only, K-12. **Bughouse Awards:** 1st-10th Place. **Blitz Tournament** – Sat, Nov 21, K-6 & K-12, 6:30 pm, EF \$15 USPS/on-line by 10/25, 6 pm, \$20 USPS from 10/26-11/17; \$20 on-line 10/26, 6:01 pm-11/19, 6pm; \$25 on site. Registration closes at 5 pm, Sat, Nov 21. **Blitz Awards:** Individual: 1st-20th in each section. **Teams:** 1st-10th in each section. **Awards Ceremony for Blitz and Bughouse:** Sun, 9 am. **NYA Awards Ceremony:** Sun, Nov 22, 5:30-7 pm. **Club Teams allowed!** Master simuls and analysis scheduled. **Hotel Info:** DoubleTree hotel, Oakbrook, IL (hotel registration code: NYA) www.doubletreeoakbrook.com, or <http://doubletree.hilton.com/en/dt/groups/personalized/CHIOADT-NYA-20091120/index.html> (630) 472-6020 or 630 472-6000 (L.800.222.TREE), HR single/double/triple/quad \$89. Enter on line (except Bughouse) at <http://nya2009.com>. **Checks payable only to Chess Central (no checks to USCF or Mike Zacate):** Mail registrations with name-contact info-grade-birthdate-team/school-uscf ID & exp.-address-city-zip-e-mail address-coach name & contact info to Mike Zacate (Please, no checks payable to Mike or USCF), 9401 Birch, Mokena, IL 60448. Updated info/Hotels/On-Line Entries: <http://nya2009.com>. \$10 service charge for on-site section/roster changes, and all refunds. Bookdealers scheduled.

Dec. 11-13, Texas

2009 National Scholastic K-12 Championship

7SS, G/90. Hilton Anatole, 2201 Stemmons Freeway, Dallas, TX. 214-748-1200 or 1-800-HILTONS and ask for the chess rate (\$120). **13 Sections.** Play only in your grade section. December rating supplement will be used. 1/2- point by available any round (except round seven) if requested in advance of rd. 1. Team score = total of top three (minimum two) finishers from each school per grade. First place individual and team, including ties, will be National Champion for their grade. **Schedule:** Opening ceremony Fri. 12:30 pm. **Rds.:** Fri. 1 pm-6 pm, Sat. 10 am-2 pm-6 pm, Sun. 9 am-1 pm. **Awards Ceremony** Sun., 9:30 am-1:30 pm. **Special round times for K-1 sections:** Fri. 1:30 pm-5:30 pm, Sat. 9:30 am-1:30 pm-5:30 pm, Sun. 9:30 am-1:30 pm. **Awards Ceremony** Sun. 9:30 am-1:30 pm. **EF:** \$50/participant (postmarked by 11/8 not 11/12), \$70/participant (postmarked by 11/29), \$85 later or \$90 at site, \$5.00 extra for all phone registrations, \$20 change fee for roster or section changes after 11/13 or any onsite changes. Onsite registration Thurs. 9 am-10 pm, Fri. 8 am-10 pm. After 10 am players will have a 1/2-point by rd 1. **Awards:** Trophies to top 10 individuals & top five teams (minimum) in each grade. Class prizes: 1st-3rd place K-3: 800-999, 600-799, U600, Unr. 4-6: 1000-1199, 800-999, 600-799, U600 Unr. 7-9: 1200-1399, 1000-1199, 800-999, U800, Unr. 10-12: 1400-1599, 1200-1399, 1000-1199, U1000, Unr. Every player receives a commemorative item! **Side Events:** Bughouse: Thurs. 11 am, Reg. onsite only Thurs. 8 am-10 am, \$25/team. Blitz

EF: Advance/online entry \$15 by 11/29; Onsite - \$20. Blitz Sections: K-6 and K-12, Thurs. 5 pm, Reg. onsite until 4 pm. Blitz Awards: Trophies in K-6 and K-12 sections. Individual: Top 10, Team: 1st-5th place. K-6 Class: 1000-1199, 800-999, 600-799, U600 Unr. K-12 Class: 1400-1599, 1200-1399, 1000-1199, U1000, Unr. Bughouse Awards: Trophies for Bughouse, TBA. Team Rooms are limited. Contact Cheryl Bruce 931-787-1234 ext.147. **Hotel info:** www.hilton.com/en_US/hi/hotel/DFWANHH-Hilton-Anatole-Texas/index.do **Questions:** Cheryl Bruce: 931-787-1234 ext. 147 or **Ent:** U.S. Chess, Attn.: K-12 Championship, P.O. Box 3967, Crossville, TN 38557 or **online** at: <https://secure.uschess.org/webstore/tournament.php>. **Official webpage for details:** <http://main.uschess.org/tournaments/2009/k12/>. **WCL JGP.**

GRAND PRIX

Oct. 24-25, District of Columbia

World Chess Live Grand Prix Points: 20

Oscar Shapiro D.C. Open

US Chess Center, 1501 M Street, NW, Wash. DC 20005 \$56 3000. 5 Sections. **Open,** 4-SS, TC: 40/2, SD/1. **EF:** \$48 by 10/15. \$550-300-200, U2200 150-100. DC Championship title and trophy to top DC resident. Reg.: 10 - 11. Rds.: 11:30 - 6, 11 - 5. **Amateur, open** to U2000. 5-SS, TC: 30/90, SD/1. **EF:** \$43 by 10/15. \$3 300-200-100, U1800 150-100. DC Amateur Championship title and trophy to top DC resident. Reg.: 8 - 9, Rds. 9:30-2:45-8, 11-4:30. **Reserve, open** to U1600. 5-SS, TC: 30/90, SD/1. **EF:** \$43 by 10/15. \$3 300-200-100, U1400 150-100. Reg.: 8 - 9, Rds. 9:30-2:45-8, 11-4:30. **Booster, open** to U1200. 4-SS, TC: G/45. **EF:** \$13 by 10/15. \$50 + Trophy for first, trophies and medallions thru 15 places. Reg.: 12 - 1. Rds.: 1:30 - 4 - 6:30 - 8. **Beginner, open** to children (age 11 and younger) rated U800 or unrated. 4-SS, TC: G/30. **EF:** \$13 by 10/15. Trophies and medallions thru 15 places. Reg.: 12 - 1. Rds.: 1:30 - 2:45 - 4:00 - 5:15. **All,** \$7 more after 10/15. **Make checks payable** to "DCCL", mail to U.S. Chess Center, 1501 M St, NW, Washington, DC 20005. **Info:** 202/857-4922. www.chessctr.org. **WCL JGP.**

A State Championship Event!

Oct. 31-Nov. 1, Pennsylvania

World Chess Live Grand Prix Points: 10

2009 PA State Championship

5SS, G/120. Wm Pitt Univ, Univ. of Pitt., 5th & Bigelow, Pittsburgh, PA 15213. \$(2510 b/90, 2/3 gtd.) **4 Sections:** **Open:** \$500-250, U2200 \$140. **U2000:** \$300-100, U1850 \$140. **U1700:** \$300-100, U1550 \$140. **U1400:** \$300-100, U1200 \$140. Unr. limited to \$125 in \$2000, \$100 in U1700, \$75 in U1400. Trophies to Top PA & Top PA Junior in each section. **EF:** \$40 by 10/23, \$50 later. Re-entry: \$20. PSCF req'd, USA. Reg.: ends Sat. 9:30am. Rds.: Sat. 10-2:30-7, Sun. 10-2:30. **Info:** 412-908-0286, martink_tom_m@hotmail.com. **Ent:** PSCF, c/o Tom Martink, 25 Freeport St., Pittsburgh, PA 15223. W. **WCL JGP.**

Nov. 13-15, Florida

World Chess Live Grand Prix Points: 40 (enhanced)

8th Annual Turkey Bowl

5SS, G/120, (2-day Option Rd. 1 G/60). New Location: El Palacio Hotel & Conference Center, 4900 Powerline Rd, Ft. Lauderdale. \$56,100 b/200 paid entries, 60% min. Gtd. 4 Sections: **Open:** \$1,000/Trophy-600-400-250, U2300 \$150-100. **U2000:** \$600/Trophy-300-200-100. **U1600:** \$600/Trophy-300-200-100. **U1200:** \$600/Trophy-300-200-100. Unr. may enter Open or U1200 only. **EF:** \$65 by Nov. 10, \$14 more later and on-site. GMS & IMs fee (\$65 deducted from prize). **Reg.:** ends 1/2 hr before 1st rd. **Rds.:** 3-1 Day 1st Rd. Fri. 7:30, 2-Day 1st Rd. Sat. 10, Rds. 2-5 Sat. 1:15, 6:30, Sun. 9:30, 2:30, 2 1/2 pt. byes, if req'd before rd. 2. **Turkey Bowl Scholastic Tournament,** 5SS, G/30, Sat. 11/14. See website for more info. **HR:** \$69 by Cut-off Date, 954-776-4880. **Ent:** Boca Raton Chess Club, 2385 Executive Ct. Dr., Ste. 100, Boca Raton, FL 33431. **Online entry & add'l info:** www.bocachess.com, 561-883-2917. **FIDE.** **WCL JGP.**

Dec. 12-13, Pennsylvania

World Chess Live Grand Prix Points: 20

Delaware Valley Open Championship

5SS, G/90 (U/1000 section: G/40), Rds.: Sat 10-1:30-5, Sun 10-1:30 (U/1000 section: Rds. Sat 10-11:30-1:30-2:50-4:10). The Philadelphia School, 2501 Lombard Street, Philadelphia, PA 19146. 3 Sections (\$52,700). **Championship:** EF \$60 by 12/6; \$70 by noon 12/11; \$80 on-site. \$500-300-200, U2/2200, U/2000, U/1800 each \$150-100. **U/1600:** EF \$50 by 12/6; \$60 by noon 12/11; \$70 on-site. \$300-200-100, U2/1400, U/1200 each \$100-75. **Scholastic U/1000:** Open to players in PK-12 rated under 1000; EF \$35 by 12/6; \$45 by noon 12/11; \$55 on-site. Trophies to top players. All sections: House of Staunton set to top club (see website for rules). On-site registration 9:00-9:30. **Info/online registration** at www.silverknightschess.com, or mail entries to Silver Knights Chess, PO Box 1103, Bryn Mawr, PA 19010. **WCL JGP.**

A Heritage Event!

Dec. 27-30, District of Columbia

World Chess Live Grand Prix Points: 100

36th Annual Eastern Open

8-SS. \$17,000 Unconditionally Guaranteed Prizes. Over 60 prizes! Class prizes for each 100 points! Westin Washington DC City Center Hotel, Thomas Circle, 1400 M St. NW, Washington, DC. TC: 40/2, SD/1. **5 Sections: Open Section:** 2,000-1,250-750, U2400 \$500-250, U2300/Unr \$500-250. **FIDE Rated. Under 2200 Section:** \$1,000-500-250, U2100 \$300, U2000 \$250. **Under 1900 Section:** \$1,000-500-250, U1800 \$300, U1700 \$250. **Under 1600 Section:** \$1,000-500-250, U1500 \$300, U1400 \$250. **Under 1300 section:** \$750-400-200, U1150/Unr \$200. Max prize for unrated players is \$250. **New Special Prizes! Most Improved Player:** \$250-150 in each of the top 3 sections, performance rating versus current rating, and won no other section prize. Play up, play well, and win \$5. **Upset:** \$50 per round in each of the top 4 sections, max 2 prizes per player. **Best Played Game:** Open: \$100 in each of last 2 Rds; U2200: \$50 in each of last 2 Rds. Submitted games must be annotated. **Entry Fee if received by Dec 15:** Open: \$125; U2200: \$110; U1900: \$100; U1600: \$100; U1300: \$80; Unrated: \$50. Entries \$20 more at site! Reentry: \$60 and limited to rounds 2-4. GMS: fee entry, but \$125 deducted from any prize; IMs: \$50 advance entry, but \$75 deducted from any prize. No credit cards accepted. **Site Reg.:** Sun. 12/27: 10-12 noon, 12/26: 5-6pm. **Rds.:** 12/27: 1-7:30, 12/28 & 12/29: 11-6, 12/30: 10-4:30. Byes available any round but rds 6-8 must commit before rd 3. Limit 2 byes for class and improved player prizes. **New Side Event:** Warm up for the tourney by playing GM Alex Ivanov in a Simul on Dec 26 at 6 pm. Only \$20 for registered players, \$30 for non-registered players. You select color and opening. **Quads Side Event:** 3-RR Quads on 12/27, 12/28, & 12/30. **EF:** \$30 \$5 \$80 each quad. **Quad 12/27:** G/60, Reg: 1:30-2:15, Rds:

2:30-5-8. **Quads 12/28 and 12/30:** G/75, Reg: 9:30-10:15, Rds: 10:30-2-5. **HR:** Only \$79! Call 202-429-1700 by 12/4 and ask for this very low rate. **Ent:** Make checks or money orders payable to Eastern Open. **Mail entries to:** Tom Beckman, PO Box 42225, Washington DC 20015-2225. Please include Name, USCF # & Exp. Rating, Section, Entry Fee, Email, and Phone. **Info:** tombekman@rcn.com or http://members.cox.net/tournaments/eo_09.htm. **WCL JGP.**

REGIONAL

Alabama

Oct. 24, Dancing Knights II Scholastic

5SS, TC: G/30. Homewood Community Center, 1632 Oxmoor Road, Homewood, AL 35209. **Scholastic (K-12): Rated and Not Rated Divisions. Late REG.:** Oct 24th, 8:00-9:00. **EF:** \$20 Rated/\$10 Not Rated; if mailed by 10/17/2009. \$10 more at site. **Prizes:** Trophies – Top 3 Individuals each section. **Top 2 Teams** each section. Team is 4+ players from same school/club. **Medals:** 4th-6th Individuals each section. **Rds.:** 9:30-10:45-12:30-1:45, 3. Checks payable to: **Caesar Lawrence. ENT:** Caesar Lawrence, 882 McAllister Dr., Calera, AL 35040. **Info:** info@caesarchess.com. www.caesarchess.com. www.alabamachess.com.

California Northern

Oct. 10, Swiss at O'Connell HS

2355 Folsom St., San Francisco, CA 94110. Organized by #1 USCF affiliate west of Texas! **Rounds:** 10am-4pm. **4 sections:** u500, u800, u1100, u1100+ . u500 & u800 sections, 5SSxG/45. u1100 & u1100+ sections: 4SSxG/45. Adults welcome in u1100 & 1100+ sections only. **EF:** \$33. \$49 onsite. Trophies to all players with more wins than losses. **ENT:** BayAreaChess, 4423 Fortran Ct., Ste. 160, San Jose, CA 95134. **More info:** BayAreaChess.com. Orientation at BayAreaChess.com/events/orientation. **Email:** contact@BayAreaChess.com. NS NCW.

Oct. 11, 24, Swiss at BayAreaChess Center

4423 Fortran Ct., Ste. 160, San Jose 95134. #1 USCF affiliate west of Texas! **Rounds:** 10am-4pm. Free Pizza for lunch – donations welcome. **4 sections:** u500, u800, u1100, 1100+ . u500 & u800 sections 5SSxG/45. u1100 & u1100+ sections: 4SSxG/45. Adults welcome in u1100 & 1100+ sections only. **EF:** \$33. \$49 onsite. Trophies to all players with more wins than losses. **ENT:** BayAreaChess, 4423 Fortran Ct., Ste. 160, San Jose, CA 95134. **More info @** BayAreaChess.com. Orientation at BayAreaChess.com/events/tourney/orientation. **Email:** contact@BayAreaChess.com. NS NCW.

Oct. 17, SCS Weibel Fall Scholastic Chess Quads #1

Weibel Elementary School, 45135 S. Grimmer Blvd., Fremont, CA. **Info & Entry Form** at: www.calnortheyouthchess.org/Applications/FallQuads09-GP/Quads-FALL09-GP.html. Open to all scholastic players who are USCF members. Trophies to winners of each Quad. Chess medals to all who do not win a trophy. **Info:** Alan M. Kirshner, Ph.D., Alan@CalNorthYouthChess.org, (510) 659-0358.

Nov. 14, SCS Weibel Fall Scholastic Chess Quads #2

Weibel Elementary School, 45135 S. Grimmer Blvd., Fremont, CA. **Info & Entry Form** at: www.calnortheyouthchess.org/Applications/FallQuads09-GP/Quads-FALL09-GP.html. Open to all scholastic players who are USCF members. Trophies to winners of each Quad. Chess medals to all who do not win a trophy. **Info:** Alan M. Kirshner, Ph.D., Alan@CalNorthYouthChess.org, (510) 659-0358.

Dec. 5, SCS Weibel Fall Scholastic Chess Quads #3

Weibel Elementary School, 45135 S. Grimmer Blvd., Fremont, CA. **Info & Entry Form** at: www.calnortheyouthchess.org/Applications/FallQuads09-GP/Quads-FALL09-GP.html. Open to all scholastic players who are USCF members. Trophies to winners of each Quad. Chess medals to all who do not win a trophy. **Info:** Alan M. Kirshner, Ph.D., Alan@CalNorthYouthChess.org, (510) 659-0358.

Jan. 15-18, 16-18 or 17-18, Golden State Open

See *Chess Life* or www.chesstour.com.

California Southern

Nov. 28, American Open Scholastic

5-SS, G/45. Open to HS/below. LAX Renaissance Hotel, 9620 Airport Bl., Los Angeles, CA 90045. **In 4 sections K-12:** trophies top 5, 2 each grades 9-12, 1 each K-8. **K-8:** trophies top 5, 2 each K-8. **K-6:** trophies top 5, 2 each K-6. **K-3:** trophies top 4, 2 each K-3. **EF:** \$16 received by 11/25, \$20 at door. Reg: 9-9:45 Rounds: 10-11:30 1-3-4:30. **Enter:** www.americanopen.org or American Open, PO Box 205, Monterey Park, CA 91754. **Info:** Randy Hough (626) 282-7412, randalldough@yahoo.com.

Connecticut

Oct. 31-Nov. 1, 6th annual New England Scholastic Championships Note corrected entry deadlines. 7SS, G/45. Sheraton Hotel, 1 Bradley Airport (visible at airport entrance), Windsor Locks, CT 06096 (I-91 Exit 40 to Rt 20). Free parking, free airport shuttle. Open to all K-12 students; New England titles and free entry prizes limited to players & teams from schools in CT, MA, ME, NH, RI, or VT. Team prizes based on top 4 scores from school combined. Teams of 2 or 3 players allowed, but are at a disadvantage. **In 4 sections:** High School (K-12), Middle School (K-8), Elementary (K-5), Primary (K-2). Players face only those in their section. **EF for USCF members:** HS \$38.75, Middle School \$38.50, Elem \$38.25, Primary \$38 if mailed by 10/23 not 10/31, all \$38 online at chesstour.com by 10/27 not 11/4, \$50 at site. **EF for non-USCF members (fees include membership):** HS \$48.75, Middle School \$48.50, Elem \$48.25, Primary \$48 if mailed by 10/23 not 10/31, all \$48 online at chesstour.com by 10/27 not 11/4, \$60 at site. Memberships include magazine for players scoring at least 3 pts. **Trophies** to top 10 players, top 7 teams, top 3 unrated in each section, top E, U1000, U800 (HS), U1000, U800, U600 (MS), U800, U600, U400 (Elem), U600, U400, U200 (Primary). Free entry in all Continental Chess Association Swiss tournaments until 5/31/10 to top New England player each section. **Late Reg.** ends Sat 9 am, rds Sat 10-1:30-5:30 pm, Sun 9-11:1-3:30 pm. Awards Sun 3:30 pm. Half point byes allowed rds 1-4 only, with at least 1 hr notice. **HR:** \$93-93, 860-627-5311, reserve by 10/17 or rate may increase. Car rental: 800-331-1600, use AWD D657633 or reserve car online through chesstour.com. **Ent:** Continental

Tournament Life

Chess, PO Box 249, Salisbury Mills, NY 12577. November ratings used. Questions: www.chessour.com, 845-496-9658. Include school, grade, birth date, USCF ID, address of each player. Advance entries will be posted at chess-tour.com.

Delaware

Dec. 12-13, Delaware Valley Open Championship (PA)
See Grand Prix.

District of Columbia

Oct. 10, DC Girls Open

4-SS, Game/30. US Chess Center, 1501 M Street, NW, Washington, DC 20005. **EF:** \$15 if by 10/3, \$20 at site. Open to any girl in K-12, not only from DC. \$100 Savings Bond to first place, trophies to top 5 in each of HS, MS and ES. **Reg.:** 12 - 12:45. (202) 857-4922. www.chessctr.org.

Oct. 24-25, Oscar Shapiro D.C. Open
See Grand Prix.

Oct. 31, National Capital Scholastic Cup

4-SS, G/30. US Chess Center, 1501 M Street, NW, Washington, DC 20005. Open to any student in K - 12th grade living in DC, Maryland or Virginia. **EF:** \$20 if by 10/24, \$30 at site. **Reg.:** Noon - 12:45. Top 16 players qualify for a series of play-off matches. \$5200-100-50-50 savings bonds to champion, finalist and semi-finalists of the play-offs. Trophies to the top 16 and others with the same score as the lowest of the top 16. Champion's name engraved on permanent cup on display at the US Chess Center. www.chessctr.org/Cup.php. 202/857-4922.

Nov. 1, Metro First Sunday Quads

3-RR, G/90. U.S. Chess Center, 1501 M St. NW. **EF:** \$20 \$5 \$40 each quad. **Scholastic sections. EF:** \$10, Trophy prizes. **Both:** Reg.: 9:15 - 9:50. Rds.: 10 - 1 - 4. (202) 857-4922. www.chessctr.org/quads.php.

Dec. 12, Rated Beginners Open (RBO)

4-SS, G/30. US Chess Center, 1501 M St. NW, Washington, DC 20005. Open to players rated under 1200 or unrated. **EF:** \$15 (\$12 if by 12/5). 5 sections by age. **Reg.:** 12-12:45. **Info:** 202/857-4922. www.chessctr.org/rbo.php.

Dec. 27-30, 36th Annual Eastern Open
See Grand Prix.

Florida

Boca Raton Chess Club Friday nights, Game 90 Tournament, one game a week for 4 weeks. www.bocachess.com, 561-883-2917. **WCL JGP.**

Miami Country Day

Grand Prix, Scholastic and Non-Scholastic Sections. More info at www.bocachess.com or call 954-421-8222 or 561-883-2917.

Oct. 3, Nov. 7, Dec. 5, Jan. 9, Feb. 6, Mar. 6, Apr. 3, May 1 St. Petersburg Rated Beginner's Opens (RBO's)
5rd Swiss, G/30. USCF RBO 4 Sect. K-2U400; K-5U500; K-8U700; & K-12U1000; top 12 in each get trophy (all K-2 get trophy) all others medal. Team (2 or more) - best four scores from all divisions trophy to top 12. **EF:** \$18. SPCC mem. \$15. 1st rd 10:15 AM. Sunshine Center, 330 Fifth St. N., St. Petersburg, FL. NC. W. register online at www.stpetersburghchessclub.com. 727-822-117L.

Oct. 31, CFCC Bonus Tornado

4-SS, G/75. Orlando Chess & Games Ctr., 8751 Commodity Cir Suite 4, Orlando, 32819. **EF:** \$30, CFCC/OCG mbr: \$25, **Masters free**-EF deducted from prize. **\$605 b/30:** 200-100-80, U1800, U1600, U1400 \$75 ea. **Prize increased 50% for 4-0 score.** Reg.: 9:30am. Rds.: 10-12:30-3-5:30. Info: (407) 629-6946, www.centraiffchess.org. **WCL JGP.**

Nov. 13-15, 8th Annual Turkey Bowl
See Grand Prix.

Georgia

Nov. 13-15, 8th Annual Turkey Bowl (FL)
See Grand Prix.

Illinois

North American Chess Association

Tournaments for kids and adults of all playing strength. Creators of the electronic scoresheet, eNotate. Monthly FIDE title tournaments (WIM, WGM, IM). Sevan A. Muradian, FIDE Arbiter & International Organizer. www.nachess.org | info@nachess.org | 888.80.CHESS

Nov. 1, Knights Quest #47

4ss, Game/30. Renaissance Chicago North Shore Hotel, 933 Skokie Blvd., Northbrook, IL. 4 Sections: **Open** (Juniors & Adults), Juniors only in **U1400, U1200 & U600**. Prizes: Trophies to top five each section, medals all others. **EF:** \$25 by 10/26, \$30 after. **Reg.:** 12:00-12:30 pm. **Rds.:** 1 at 1:00 pm, rest ASAP. **Ent:** Renaissance Knights, PO Box 1074, Northbrook, IL 60065. Online **Ent/Info:** www.rknights.org, Sheila Heiser 847-526-9025.

Nov. 20-22, 2009 National Youth Action
See Nationals.

Dec. 6, Knights Quest #48

4ss, Game/30. Renaissance Chicago North Shore Hotel, 933 Skokie Blvd., Northbrook, IL. 4 Sections: **Open** (Juniors & Adults), Juniors only in **U1400, U1200 & U600**. Prizes: Trophies to top five each section, medals all others. **EF:** \$25 by 11/30, \$30 after. **Reg.:** 12:00-12:30 pm. **Rds.:** 1 at 1:00 pm, rest ASAP. **Ent:** Renaissance Knights, PO Box 1074, Northbrook, IL 60065. Online **Ent/Info:** www.rknights.org, Sheila Heiser 847-526-9025.

Dec. 27, Mayor Daley's Holiday Chess Championship

4ss/ Game/30. McCormick Place, 2301 S. Martin Luther King Dr., Chicago, IL, 60616. Special parking rate. 4 Sections: **Open** (adults & Youths), **Middle** (K-8), **Elementary** (K-5) & **Primary** (K-2). 100+ Team & Individual Trophies & Awards.

EF: \$12 by 12/14, \$17 after. **RDS.:** 10, 11:30, 1:30 & 3:00. **Ent:** Renaissance Knights, PO Box 1074, Northbrook, IL 60065. Online **Ent/Info:** www.rknights.org, Sheila Heiser 847-526-9025. No onsite registration. **HR:** \$109, 312-567-1234 Hyatt McCormick Place.

Iowa

Nov. 14, 2009 Des Moines Fall Classic-IASCA Mini Qualifier

Des Moines Botanical Center, 909 Ray D. Ray Drive, Des Moines, IA 50316. 3 Sections (1) RBO (2) Reserve (3) Open. In 3 Sections: **RBO:** 5SS, G/30 T/D 5, Open to 1199 & under. **EF:** \$10.00 if received by November 12th, \$20.00 at site. Prizes: Trophies: U1200, U1000, U800, U600, U400, U200. **Rds.:** 9:30-10:45-12:30-1:45-3:00. **Reserve:** 4SS, G/75 T/D 5, Open to 1599 & under. **EF:** \$20.00 if received by November 12th, \$30.00 at site. **\$\$b/10:** \$40.00-20.00-10.00. U1400 1st \$20.00, 2nd \$10. **Rds.:** 9:30-1:00-3:45-7:00 (earlier if agreed upon). **Open-IASCA Mini-Qualifier:** 4SS, G/75 T/D 5, **EF:** \$20.00 if received by November 12th, \$30.00 at site. **\$\$b/10:** \$75.00-40.00-20.00. U1800 1st, \$30.00, 2nd \$15.00. **Rds.:** 9:30-1:00-3:45-7:00 (earlier if agreed upon). **ALL: Memb. Req'd:** \$15.00. **OSA. Reg.:** 8:00 to 9:00 am. **Ent:** Bill Broich, 7149 Wilshire Blvd., Windsor Heights, Iowa, 50322. 515-205-8062, broich@yahoo.com. NS NC W. **WCL JGP.**

Massachusetts

Oct. 17, Fall Scholastic Swiss (QC)

4SS, G/25. Palmer Library, 1455 North Main St., Palmer, MA. **EF:** \$7 by 10/12, or \$10 at site. **Prizes:** Trophies for 1st, 2nd & 3rd each section. **Sections:** Grades K-4, 5-6, 7-8 & 9-12. **Reg.:** 10am. **Rds.:** 10:30, 11:30, 12:30 & 1:30. **Ent:** Ed Kostreba, PO Box 1372, Ware, MA 01082, 413-967-3242, e-mail: cad-camsv@bellatlantic.net, www.wmass-chess.us.

Missouri

Friday Action Quads - Every Friday Night (QC)

3RR, G/29 QR. Chess Club & Scholastic Center, 4657 Maryland Ave., St. Louis MO 63108. **EF:** \$10. **Prize fund \$36 first in each quad.** Club membership req'd. available from \$1. **Reg.:** 6:30 - 6:45. Rounds begin at 7:00. Site entries only. **Info:** 314-361-CHESS info@saintlouischessclub.org.

Saint Louis Blitz Series - Every Saturday night (QC)

5SS, G/5 QR. Chess Club & Scholastic Center, 4657 Maryland Ave., St. Louis, MO 63108. **EF:** \$5. **Prize fund 100% payout!** First overall will take home 75% of all entry fees, and the highest scoring player in the bottom half takes 25%. Club membership req'd. available from \$1. **Reg.:** 6:30 - 7. **Rds.:** 7, 7:15, 7:30, 7:45, 8. Site entries only. **Info:** 314-361-CHESS. info@saintlouischessclub.org.

Nov. 28, Thanksgiving Open

4SS, G/75. Chess Club & Scholastic Center, 4657 Maryland Ave., St. Louis, MO 63108. **EF:** \$35, \$30 for annual members of the club. MCA Membership Req'd from \$5. **OSA. PF (b/50):** \$1500: \$200 1st/ \$50 2nd in each M/X, A, B, C, D, U1200. **Reg.:** 9 - 9:50. **Rds.:** 10, 12:45, 3:30, 6. One 1/2 point byie if declared before round 1. **Ent:** 4657 Maryland Ave., St. Louis, MO 63108 314-361-CHESS, info@saintlouischessclub.org.

Nevada

Dec. 26-29 or 27-29, 19th (not 18th) annual North American Open
See *Chess Life* or www.chessour.com.

New Jersey

Oct. 10, Garden State Scholastic

Prevention First, 1405 Route 35, Ocean, NJ 07712. **Primary:** open to K-3: 4 SS, G/30. Trophies to 1st-5th place; Medals to all others. **Scholastic Swiss:** open to K-12: 4 SS, G/30. Trophies to 1st - 5th place; **Scholastic Quads:** open to K-12 G/60 Quads. Trophies to 1st and 2nd each quad. **All EF:** \$20. **Reg.:** 9-9:45 am. **Rds.:** 10 and ASAP. **Info:** Hal Sprechman, 732 259-3881, hsprechman@characterkings.org.

Oct. 17, Jersey Shore K-12 Regionals

The Academy at Grace and Peace, 1563 Old Freehold Rd., Toms River, NJ 08755. **All Sections open to K-12. Section A:** U500, **Section B:** 500-1000, **Section C:** 1000-1500, **Section D:** 1500+. **Section A, B, C 4SS, G/30. Section D: 3 Rounds, G/60.** Trophies to Top 5 in each section, Medals to all others. **EF:** \$25 if rec'd by 10/10, \$30 on site. **Reg.:** 9:00-9:45 AM. **Rds.:** 10:00 AM and ASAP. **Info:** John Burke, 732-714-1544 or johnburke@yahoo.com. **Ent:** Make checks payable to The Academy at Grace and Peace. Please indicate USCF ID# and section.

Oct. 24, King's Chess Club Quads

Morning quads and afternoon quads, G/30, K-12, Bethlehem Church, 758 Route 10, Randolph, NJ 07869. **EF:** None. **Reg.:** 9-9:20 am, 1st rd. 9:40. Arr. by noon to reg. only for afternoon quads. Medal to each quad winner. **Info:** Bethlehem Church 973-366-3434 or Bob McAdams 973-694-3988, rwm@fambright.com.

Oct. 25, ICA FALL 2009 Scholastic Championship in 5 Sections

4SS, EVERYONE PLAYS 4 GAMES, ALL PLAYERS WITH 2.5 POINTS OR MORE WILL RECEIVE A TROPHY! US CHESS FEDERATION MEMBERSHIP REQUIRED FOR SECTIONS 4 AND 5. **Info:** 201 287 0250 or 201 833 1741. **E-mail:** Diana@icanj.net (Web Site Entries: www.icanj.net). **ADV EF:** (pmk Oct 21st) \$25, At Site \$30. Reg ends 1/2 hr before 1st rnd. Late entrants will receive a 1/2 point by for rnd. 1. **Site Address:** Bergen Academy, 200 Hackensack Ave., Hackensack, NJ 07601. In 5 Sections, **Section 1 Junior Novice:** Open to unrated players K through 2nd grade. Rds.: First Round 10:15 AM, then ASAP (tournament will end at approximately 1:00 PM). **Section 2 Novice:** Open to unrated players K through 4th grade. Rds.: First Round 10:00 AM, then ASAP (tournament will end at approximately 2:00 PM). **Section 3 Reserve:** Open to unrated players K through 12th grade. Rds.: First Round 10:00 AM, then ASAP (tournament will end at approximately 2:00 PM). **Section 4 G/45:** Open to players rated below 1200 K through 12th grade. Rds.: 9:45 AM, 11:30, 1:15, 3:00 PM. **Section 5 G/60:** Open to players rated below 1700 K through 12th grade. Rds.: 9:45 AM, 12:00, 2:15, 4:30 PM. **ENT: Make EF and/or USCF Membership checks payable to:** International Chess Academy Mail To: Diana Tulman, 28 Canterbury Lane, New Milford, NJ 07646. NS, NC, W.

Canterbury Lane, New Milford, NJ 07646. NS, NC, W.

Nov. 7, ATKM 1st Saturday Kids G/30 Swiss (K-8)

For info, and registration, go to YourChessSet.com/KidsSwiss. For more info e-mail Stephen at cs@ATKMChessSets.com or call 856-582-8222.

Nov. 7, Garden State Scholastic

Prevention First, 1405 Route 35, Ocean, NJ 07712. **Primary:** open to K-3: 4 SS, G/30. Trophies to 1st-5th place; Medals to all others. **Scholastic Swiss:** open to K-12: 4 SS, G/30. Trophies to 1st - 5th place; **Scholastic Quads:** open to K-12 G/60 Quads. Trophies to 1st and 2nd each quad. **All EF:** \$20. **Reg.:** 9-9:45 am. **Rds.:** 10 and ASAP. **Info:** Hal Sprechman, 732 259-3881, hsprechman@characterkings.org.

Nov. 7, Princeton Day School

650 The Great Road. Plaques to top 3 school teams and top 6 in each section. Medals to all players. Three sections for **OVER 1000** begin at 10:15 and must preregister: **NEAR MASTERS** (K-12 over 1400) and **FUTURE MASTERS** (Players K-12 over 1200) G/60, 3 rds. **CLOSED** (K-12 1000-1200) G/45 4 rds. **ALL OTHER SECTIONS.** G/30 4 rds. beginning at 12:00 noon. (round times will be accelerated if possible): **OPEN** (Players K-12 U-1000), **RESERVE** (K-12 U-800), **NOVICE II** (K-8 U-600), **NOVICE I** (unrated K-6), **K-1** (unrated) **NO SCORE K-1** (unrated). **PARENTS OF PLAYERS** rated G/30 3 rounds. Pre-registration online \$35 (On-site 11-12 noon \$45). **Info and register online:** www.pds.org/chess. Inquires to Bonnie Waitzkin Chessteach@gmail.com.

Nov. 14, Jersey Shore K-12 Regionals

The Academy at Grace and Peace, 1563 Old Freehold Rd., Toms River, NJ 08755. **All Sections open to K-12. Section A:** U500, **Section B:** 500-1000, **Section C:** 1000-1500, **Section D:** 1500+. **Section A, B, C 4SS, G/30. Section D: 3 Rounds, G/60.** Trophies to Top 5 in each section, Medals to all others. **EF:** \$25 if rec'd by 11/7, \$30 on site. **Reg.:** 9:00-9:45 AM. **Rds.:** 10:00 AM and ASAP. **Info:** John Burke, 732-714-1544 or johnburke@yahoo.com. **Ent:** Make checks payable to The Academy at Grace and Peace. Please indicate USCF ID# and section.

A State Championship Event!

Nov. 22, New Jersey K-12 Grand Championship

5SS, G/30. Brookdale College, 765 Newman Springs Road, Lincroft, NJ 07738. Student Life Center, using Parking Lot #7 or #6; 4 miles from Garden State Parkway exit 109. **13 Sections:** Play only in your grade! **MORE TROPHIES!!!** Grades K-6; Trophies to top 15 individuals, top 5 teams - top 3 from each school/grade; 50% of players receive trophy or medal! **Grades 7-12:** Trophies to top 10 individuals, top 5 teams; **Rds.:** 10am and ASAP. **EF:** \$35 by 11/15, \$55 at site. USCF mem req'd. **Reg.:** 8-9:00am After 9:00am 1/2 pt by rd 1. **Info:** 732 259-3881, hsprechman@characterkings.org. **Ent:** Please make checks payable to NJSCF and send to NJSCF, PO Box 1511, Jackson, NJ 08857. **Entries must include** name, grade school, date of birth, USCF ID # & expiration, mailing address, phone number & entry fee, please include email address. The 1st Place player and team from NJ in each grade will be recognized as the NJ Champion for that grade! Chess sets and boards will be provided! Please bring a chess clock!

Dec. 5, ATKM 1st Saturday Kids G/30 Swiss (K-8)

For info, and registration, go to YourChessSet.com/KidsSwiss. For more info e-mail Stephen at cs@ATKMChessSets.com or call 856-582-8222.

Dec. 5, THE GREATER PRINCETON CHAMPIONSHIP

Princeton Day School, 675 The Great Road. Trophies to top 3 school teams and top 6 in each section. Trophies to all players. Three sections for **OVER 1000** begin at 10:15 and must preregister: **NEAR MASTERS** (K-12 over 1400) and **FUTURE MASTERS** (Players K-12 over 1200) G/60, 3 rds. **CLOSED** (K-12 1000-1200) G/45 4 rds. **ALL OTHER SECTIONS.** G/30 4 rds. beginning at 12:00 noon. (round times will be accelerated if possible): **OPEN** (Players K-12 U-1000), **RESERVE** (K-12 U-800), **NOVICE II** (K-8 U-600), **NOVICE I** (unrated K-6), **K-1** (unrated) **NO SCORE K-1** (unrated). **PARENTS OF PLAYERS** rated G/30 3 rounds. **Pre-registration** online \$40 (On-site 11-12 noon \$50). **Info and register online:** www.pds.org/chess. Inquires to Bonnie Waitzkin Chessteach@gmail.com.

Dec. 6, ICA Early Winter 2009 Scholastic Championship in 5 Sections

4SS, EVERYONE PLAYS 4 GAMES, ALL PLAYERS WITH 2.5 POINTS OR MORE WILL RECEIVE A TROPHY! US CHESS FEDERATION MEMBERSHIP REQUIRED FOR SECTIONS 4 AND 5. **Info:** 201 287 0250 or 201 833 1741. E-mail: Diana@icanj.net (Web Site Entries: www.icanj.net) **ADV EF:** (pmk Dec 2nd) \$25 At Site \$30. Reg ends 1/2 hr before 1st rnd. Late entrants will receive a 1/2 point by for rnd. 1. **Site Address:** Bergen Academy, 200 Hackensack Ave., Hackensack, NJ 07601. In 5 Sections, **Section 1 Junior Novice:** Open to unrated players K through 2nd grade. Rds.: First Round 10:15 AM, then ASAP (tournament will end at approximately 1:00 PM). **Section 2 Novice:** Open to unrated players K through 4th grade. Rds.: First Round 10:00 AM, then ASAP (tournament will end at approximately 2:00 PM). **Section 3 Reserve:** Open to unrated players K through 12th grade. Rds.: First Round 10:00 AM, then ASAP (tournament will end at approximately 2:00 PM). **Section 4 G/45:** Open to players rated below 1200 K through 12th grade. Rds.: 9:45 AM, 11:30, 1:15, 3:00 PM. **Section 5 G/60:** Open to players rated below 1700 K through 12th grade. Rds.: 9:45 AM, 12:00, 2:15, 4:30 PM. **ENT: Make EF and/or USCF Membership checks payable to:** International Chess Academy Mail To: Diana Tulman, 28 Canterbury Lane, New Milford, NJ 07646. NS, NC, W.

Dec. 12, Garden State Scholastic

Prevention First, 1405 Route 35, Ocean, NJ 07712. **Primary:** open to K-3: 4 SS, G/30. Trophies to 1st-5th place; Medals to all others. **Scholastic Swiss:** open to K-12: 4 SS, G/30. Trophies to 1st - 5th place; **Scholastic Quads:** open to K-12 G/60 Quads. Trophies to 1st and 2nd each quad. **All EF:** \$20. **Reg.:** 9-9:45 am. **Rds.:** 10 and ASAP. **Info:** Hal Sprechman, 732 259-3881, hsprechman@characterkings.org.

Dec. 12-13, Delaware Valley Open Championship (PA)
See Grand Prix.

New York

Oct. 18, 15th Annual NY October Under 13 Open!

4-SS, G/30, open to all born after 10/18/96, Chess Center at Marshall Chess Club, 23 West 10th St., bet. 5-6 Ave., NYC: 845-569-9969. May be limited to 1st 52 entries. 2 Sections. **1. Open,** EF: \$32 postmarked by 10/9. **2. Novice,** for Under 1000 or Unrated, EF: \$31 mailed by 10/9. **Both,** EF: \$30 online at

www.chesscenter.cc by 10/15, \$35 by phone at 845-496-2191 by 10/15, \$40 at site, Club members \$10 less (\$10 fee for refunds). Trophies to top 10, top Unr, top 3 teams (top 3 scorers from same school) each section. 8 weeks free entry to 1st, 4 weeks free to 2nd each section. Speed playoff for 4-0. Limit of 2 byes, commit by 11:30. On-site reg. ends 9:30 am. Rds 10-11-30-12-45-2 pm. **Ent:** Chess Center of NY, PO Box 4615, New Windsor, NY 12553. List USCF ID, rating, section, school/grade, DOB.

Oct. 18, Sunday Under 1400 Action!

4-SS, G/30. Marshall Chess Club, 23 West 10 St., between 5-6 Ave., NYC: 212-477-3716, for Under 1400 or unrated. EF \$30, Club Members \$20, specified Greater NY Scholastic prizewinners free. **\$\$\$200 b/20 paid:** \$100-60-40, \$60 limit to unr. Reg. ends 3:45 pm. Rds. 4-5:15-6:45-8 pm. No advance entries.

Nov. 13-15, 8th Annual Turkey Bowl (FL)

See Grand Prix.

Nov. 21, Prove Your Point!

3-SS, G/30. Chess Center at Marshall Chess Club, 23 W 10th St., NYC: 212-477-3716. EF \$20. 3-0 wins \$40, 2.5 wins \$20, 2 wins \$10. Reg ends 7:20 pm. Rds. 7:30-8:30-9:30.

Dec. 26-28 or 27-28, 5th annual Empire State Open

See *Chess Life* or www.chesstour.com.

North Carolina

2009 Raleigh Scholastic Chess Tournaments

(2nd Sunday each month) Oct. 11, Nov. 8, Dec. 13. USCF Rated and Not Rated Quads, Ages 17 and Under, G/30. 3 Rd. Round Robin, EF: \$20 online or mailed 1 week before; \$25 onsite. **PRZ:** 1st Place Trophy, 2nd Place Medal for each quad. **Reg:** 1:00 to 1:15. **Rds:** 1:30, 2:35, & 3:40. **ENT & Checks:** Raleigh Chess Academy, 10930 Raven Ridge Road STE 105, Raleigh, NC 27614. **INFO:** Bill Clausen, (919) 272-8017, www.CaryChessAcademy.com, www.RaleighChessAcademy.com.

Dec. 5, QCCA Winter Scholastic

A Queen City Chess Association Sponsored Event! 4-SS, G/45. University of North Carolina at Charlotte (UNCC), 9201 University City Boulevard, Charlotte, NC. **Two Sections:** K-4 and K-12. Trophies to 1st-5th place and medals 6-10th place in each section. **EF:** \$10 if postmarked by 11/25. \$15 later and on site. Registration onsite 8-9AM only! **Schedule:** Rounds at 9:30-Noon-2-4. **Entries:** Send to: Fabio Hurtado, 2269 Elendil Lane, Charlotte, NC 28269. Make checks to "QCCA". **Info:** www.queencitychess.com for registration form and more details.

Ohio

Oct. 10, Third Annual Cincinnati Scholastic Chess Series 2009-2010

4SS, G/30, in 4 sections: **K-3, 4-6, 7&8, 9-12.** **EF:** Onsite \$20, advance/multiple entry discounts available. (No refunds of entry fees paid in advance, but players may switch dates if desired.) **Reg:** 8:00-8:30 am, Rd 1 9:00 am. **6 tournaments in series:** Oct 10, Seven Hills Upper School, 5400 Red Bank Road, Cincinnati, OH 45227 – Nov 7, Highlands Middle School, 2350 Memorial Parkway, Ft. Thomas, KY 41075 – Dec 5, Lakota East High School, 6841 Lakota Lane, Liberty Township, OH 45044 – Jan 9, Sycamore Junior High School, 5757 Cooper Road, Montgomery, OH 45242 – Feb 6, St. Ursula Academy, 1339 E. Mcmillan Street, Cincinnati, OH 45206 – Mar 6, Sycamore High School, 7400 Cornell Road, Montgomery, OH 45242. Medals for top 3 in each section at each tournament; individual (top 3) and team trophies by section, plus individual "plus score" medals for entire series based on best five scores from six tournaments. Complete information and registration form at www.chessinnati.com. **Info:** Doug Dysart, 513-484-3768, dougdysart@hotmail.com, or Alan Hodge, 513-697-0763, ahodge4@cinci.rr.com.

Oct. 23-25 or 24-25, Cleveland Open

See *Chess Life* or www.chesstour.com.

Oct. 24, CWRU Fall Classic

4SS, G/45. Nord Hall, 10900 Euclid Avenue, Cleveland, OH 44106. Located on south side of Euclid, behind street level buildings. Free parking off westbound MLK, go upstairs to site. **EF:** \$25 at site. **Sections: Open, U1600. Prizes (b/30):** Open, 1st 200, 2nd 100, U1900 100, U1600, 1st 100. **Reg:** 9-9:45 AM. **Rds:** 10:00, 12:15, 2:15, 4:00. **Info:** Mike Joelson, mdjoelson@aol.com, 216-321-7000, www.progresswithchess.org.

Nov. 13-15 or 14-15, 18th Annual Kings Island Open

See *Chess Life* or www.chesstour.com.

Nov. 15, Beachwood November Scholastic

4SS, G/30. Beachwood Community Center, 25325 Fairmount Blvd., Beachwood, OH, 44122, 5 minutes west off I-271. **EF:** Free to Beachwood Chess Club students, others \$20 at site. **Sections:** Championship, U1000, U600. **Prizes:** Trophies to all scoring 3 points or higher, participation awards. **Reg:** 12:00-12:45 PM. **Rds:** 1:00 & ASAP. **Info:** Mike Joelson, mdjoelson@aol.com, 216-321-7000, www.progresswithchess.org.

Dec. 5, CWRU Winter Open

4SS, G/45. Nord Hall, 10900 Euclid Avenue, Cleveland, OH 44106. Located on south side of Euclid, behind street level buildings. Free parking off westbound MLK, go upstairs to site. **EF:** \$25 at site. **Sections: Open, U1600. Prizes (b/30):** Open, 1st 200, 2nd 100, U1900 100, U1600, 1st 100. **Reg:** 9-9:45 AM. **Rds:** 10:00, 12:15, 2:15, 4:00. **Info:** Mike Joelson, mdjoelson@aol.com, 216-321-7000, www.progresswithchess.org.

Dec. 20, Beachwood December Scholastic

4SS, G/30. Beachwood Community Center, 25325 Fairmount Blvd., Beachwood, OH, 44122, 5 minutes west off I-271. **EF:** Free to Beachwood Chess Club students, others \$20 at site. **Sections:** Championship, U1000, U600. **Prizes:** Trophies to all scoring 3 points or higher, participation awards. **Reg:** 12:00-12:45 PM. **Rds:** 1:00 & ASAP. **Info:** Mike Joelson, mdjoelson@aol.com, 216-321-7000, www.progresswithchess.org.

Pennsylvania

Oct. 31-Nov. 1, 2009 PA State Championship

See Grand Prix.

A State Championship Event!

Nov. 1, 2009 PA State Championship Scholastics

5SS, G/40. Wm Pitt Union, Univ. of Pitt., 5th & Bigelow, Pittsburgh, PA 15213. **3 Sections: Premier:** U1100 & unr. in grades 9-12. **Reserve:** U900 & unr. in grades 6-8. **Booster:** U700 & unr. in grades K-5. **All:** Trophies to top 7 in each section. Teams of 4 to 7 players from all scholastic and adult sections: Trophies to top 3 schools & top 3 clubs. **EF:** \$15 by 10/23, \$25 later. PSCF req'd, OSA. **Reg:** ends 9:30 am. **Rds:** 10-Noon-1:30-3-5. **Info:** 412-908-0286, martinak_tom_m@hotmail.com. **Ent:** PSCF, c/o Tom Martinak, 25 Freeport St., Pittsburgh, PA 15223. W.

Nov. 8, PCL November Quick Quads (QC)

3RR, G/15. Wm. Pitt Union, Univ. of Pittsburgh, 5th Ave & Bigelow, Pittsburgh, PA 15213. **EF:** \$10, \$7 juniors. \$20 to 1st/quad. **Reg:** 11-11:15am. **Rds:** 11:30am-Noon-12:30pm. **Info:** martinak_tom_m@hotmail.com, 412-908-0286. W.

Nov. 14, MasterMinds CC Swiss/Open Quads

Blair Christian Academy, 220 W. Upsal St., Philadelphia, PA. **2 events:** Quads: 3RR, 40/80, SD/30. **EF:** \$20, Perfect score winner \$60 else \$50. **Rds:** 10-2-5. Scholastic Swiss: **EF:** \$15, **ASAP:** \$5 rec'd by Thursday before, \$25 at the door. **3 sections:** Open 3SS G/60, **Rds:** 10-12:30-3; 1st, 2nd, 3rd, top under 1200, top unrated; U1100 -1st, 2nd, 3rd, top under 800, top unrated & U750K-6 - 1st, 2nd, 3rd, top under 600, top under 400, top unrated 4SS, G/40. **Rds:** 10, 11:45, 2, 3:45. 1st & 2nd school & club trophies. **All Reg.** ends 9:30am. Free parking on site! **Ent:** MasterMinds CC 36 E. Hottter St. Philadelphia, Pa. 19119. Checks made payable to MasterMinds CC **Info:** Bradley Crable, 215-844-3881, info@mastermindschess.org, or www.mastermindschess.org.

A State Championship Event!

Nov. 21-22, 2009 PA State Junior Championships

5SS, 53 Trophies! (49 Individual, 4 Team). Wm Pitt Union, Univ. of Pittsburgh, 5th & Bigelow, Pittsburgh, PA 15213. 7 sections: **2-day (Sat & Sun):** Ages 16 to 20 Open, Ages 13 to 15 Open, Ages 9 to 12 Open. **EF:** \$18 by 11/13, \$28 later. **TL:** G/90. **Reg** ends 9:30. **Rds:** 10-1:30-5, 11-2:30. **1-day (Sun only):** Ages 8 & Under Open, Ages 9-20 U900, Ages 9-20 U600, Ages 8 & Under U600. **EF:** \$15 by 11/13, \$25 later. **TL:** G/40. **Reg** ends 10:30. **Rds:** 11-12:30-2-3:30-5. **All:** Trophies 1st-7th, additional medallions, teams of 4 to 7 combined from all sections, Trophies 1st-2nd schools, clubs. PSCF required \$5, OSA. **Info:** 412-908-0286, martinak_tom_m@hotmail.com. **Ent:** PSCF, c/o Tom Martinak, 25 Freeport St, Pittsburgh, PA 15223. W. **WCL JGP.**

Nov. 27-29 or 28-29, 40th annual National Chess Congress

See *Chess Life* or www.chesstour.com.

Dec. 12-13, Delaware Valley Open Championship

See Grand Prix.

Dec. 13, PCL December Quick Quads (QC)

3RR, G/15. Wm. Pitt Union, Univ. of Pittsburgh, 5th Ave. & Bigelow, Pittsburgh, PA 15213. **EF:** \$10, \$7 Jrs. \$20 to 1st/quad. **Reg:** 11-11:15am, **Rds:** 11:30am-Noon-12:30pm. **Info:** martinak_tom_m@hotmail.com, 412-908-0286. W.

Jan. 15-18, 16-18 or 17-18, 42nd annual Liberty Bell Open

See *Chess Life* or www.chesstour.com.

Texas

Dec. 11-13, 2009 National Scholastic K-12 Championship

See Nationals.

Wisconsin

A State Championship Event!

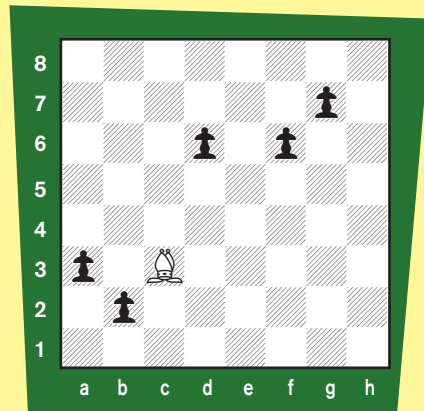
Nov. 7-8, 2009-2010 Wisconsin Junior Open

Gruenhagen Conference Center, UW-Oshkosh, Corner of High and Osceola St., Oshkosh, WI 54901. Open to youth born after 11/7/1988. In 4 Sections, **Open Section:** 5SS, G/120, **EF:** \$15 in advance by 11/3; \$20 at site. **Prizes:** Top 5, Top 3 each 1300, 1200 and 1100, Top 4 Under 1100 and Top 3 Unrated. **Reserve (Under 1100 or Unrated):** 5SS, G/120, **EF:** \$14 in advance by 11/3; \$19 at site. **Prizes:** Top 5, Top 3 each 900, 800, 700, Under 700 and top four Unrated. **Non-Rated Beginner's Grade 7-12:** 5SS, G/120, Open to Grades 7-12. **EF:** \$11 in advance by 11/3; \$16 at site. **Prizes:** Top 5 places, Top 3 Grade 7-9. **Non-Rated Beginner's Grade K-6:** 5SS, G/120, Open to Grades K-6. **EF:** \$10 in advance by 11/3; \$15 at site. **Prizes:** Top 5 places, Top 3 Grade K-3. **ALL: Reg:** 11/7, 8:45-9:30 A.M. **Rds:** 10:15-2:30-7:15; 10:00-3:00. **ENT:** Mike Nietman, 2 Boca Grande Way, Madison, WI 53719. **INFO:** Mike Nietman, 608-467-8510 (before 11/6) mike.nietman@charter.net. **HR:** 920-424-1106 \$35 double (dorm room) (Mention Chess). www.wischess.org. NS NC W. **WCL JGP.**

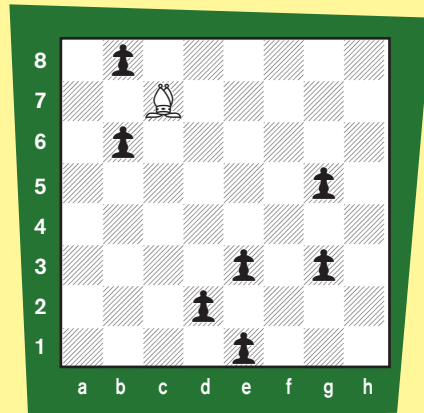
PAWNMOWER CHESS

Okay, so the rook was easy. Let's see how you make out with the bishop! Your goal is to capture all the pawns. You cannot move to an empty square. If there are five pawns on the board, you must capture them in five moves; seven pawns, seven moves, etc. We'll have a drawing and five winners will receive a copy of *Pawnmower* by GM Maurice Ashley. Send your solutions to: gpetersen@uschess.org, or mail to Glenn Petersen, 44-D Manchester Court, Freehold, NJ 07728.

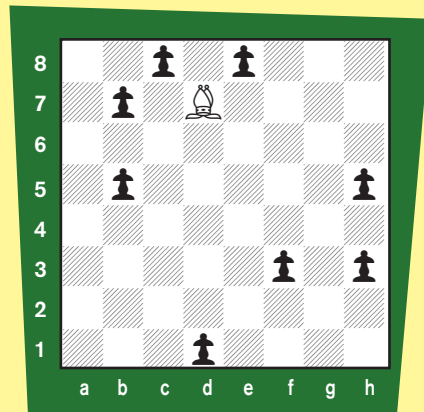
Puzzle Number One



Puzzle Number Two



Puzzle Number Three



NEED SOME PRACTICE?
Go to www.uschess.org and click on "New to Chess" and follow the links to "... play the computer..." (But do your homework first!)

National Youth Action

November 20-22, 2009

Great New Site in Oakbrook, IL

*Come visit Chicago and create a memory
you'll cherish for a Lifetime.*

Doesn't your Family deserve the Best?

Double Tree Hotel

1909 Spring Road

Oak Brook, IL 60513

1-630-472-6000 (1-800-222-TREE)

Chess Rate \$89 (single/double/triple/quad)

<http://www.doubletreeoakbrook.com>

Great Restaurants

World Class Museums

Sporting Events

Entertainment

Woodfield Mall

Magnificent Mile

Water Tower Place

Oakbrook Mall

The Most Fun in Chess you can have in 30 minutes

FOUR SECTIONS to choose from: K-12, K-9, K-6, K-3

CLUB TEAMS WELCOME

National Youth Action Schedule

Saturday, Nov. 21st

Rounds 1-2-3-4-5

10 am, 12 noon, 2 pm, 3:30 pm, 5 pm

Sunday Nov. 22nd

Rounds 6-7-8-9

10 am, 12 noon, 2 pm, 3:30 pm

Sunday Nov. 22nd

Awards Ceremony 5:30 pm - 7 pm

Side Event Schedule

Friday Nov. 20th

Bughouse Tournament @ 6:30 PM

Saturday Nov. 21st

Blitz Tournament K-6 & K-12 @ 6:30 PM

See Chess Life or check <http://nya2009.com>
for complete details

National Youth Action Awards List

Individuals: K-3, K-6, K-9, K-12: 1st—20th place

Teams: K-3, K-6, K-9, K-12: 1st—10th place

Class Awards

1st—3rd place

K-3: U800, U600, U400, unrated

K-6: U1000, U800, U600, unrated

K-9: U1200, U1000, U800, unrated

K-12: U1400, U1200, U1000, unrated

Register ON-LINE @ <http://nya2009.com>



 **USCF**



2009 USCF

NATIONAL SCHOLASTIC K-12 CHAMPIONSHIP

DECEMBER 11-13, 2009
HILTON ANATOLE DALLAS
2201 STEMMONS FREEWAY • DALLAS, TX 75207
RESERVATIONS: 1-800-HILTONS OR 214-748-1200

Opening Ceremony 12/11 Friday: 12:30pm

Rounds Friday: 1pm, 6pm
Saturday: 10am, 2pm, 6pm
Sunday: 9am, 1pm

Awards Ceremonies Sunday: 4:30pm (K-1) & 5pm (Approx.)

Special round times for K-1 sections Friday: 1:30pm, 5:30pm
Saturday: 9:30am, 1:30pm, 5:30pm
Sunday: 9:30am, 1:30pm

On-site registration 12/10: 9am-10pm
12/11: 8am-10am
Players registering after 10am Friday will not be paired for round 1, will receive a 1/2 point bye, and will begin play round 2.

SIDE EVENTS

Bughouse: Thursday: 11am
On-site entry only Thursday, 8am until 10am
\$25 per team.

Blitz: Thursday: 5pm
On-site entry until 4pm • Entry in advance \$15 by 11/29 • \$20 after 11/29 or On-site • Register at <https://secure.uschess.org/webstore/tournament.php>

Simul: TBA

Team Rooms are limited!
contact Cheryle Bruce
cbruce@uschess.org • 931-787-1234 ext.147

7SS, G/90, 13 sections: Play only in your grade. December Rating Supplement will be used. Team Score = total of top three (minimum two) finishers from each school per grade. First place individual and team will be National Champion for their grade.

Awards: Trophies to top 10 individuals & top five teams in each grade (minimum). Many other class prizes. Every player receives a commemorative item!

Blitz: Trophies in K-6 and K-12 sections, individual and team.

Bughouse: Trophies to be announced.

Name _____ USCF ID # _____ Rating _____

Address _____ City _____ State _____ Zip _____

e-mail Address _____

School _____ Grade _____

Bye Requested: Rd. 1 2 3 4 5 6 1/2-pt bye available if requested in advance (except rd. 7)

USCF Membership Dues: Please go to www.uschess.org for appropriate membership category and rates.

Entry Fees: \$50/participant postmarked by 11/8, \$70/participant postmarked by 11/29, \$85 after 11/29 or \$90 on site. (Add \$5 for phone entry.)

Blitz entry: \$15 until 11/29 or \$20 after 11/29 or on-site.

Amount Enclosed: Entry Fee \$ _____ Blitz \$ _____ USCF Dues \$ _____ Total Enclosed \$ _____

In advance: Make checks payable to: U.S. Chess Federation (USCF).
On site: Make payments in Cash, by Money Order, or Credit Card.

MASTER CARD DISCOVER AMEX VISA V-Code (last 3 digits on the signature line) _____

Number _____ EXP. ____/____ SIGNATURE: _____

Registration information: USCF membership is required and must be current. You may pay USCF membership with your entry. Adult: Please check our website (uschess.org) for Adult and Young Adult options. Advance entries must include player's name and all fees to be accepted. Roster changes are considered new entries and will be charged according to date received. List name, address, phone, section, grade, school (even if no team), coach's name, e-mail, birth date, USCF ID #, USCF expiration (enclose USCF dues if necessary) and rating. Players must be eligible to play in accordance with USCF Scholastic Regulations. Please bring clocks. Ent: "K-12 Champ.," c/o USCF, PO Box 3967, Crossville, TN 38557-3967. For more info or to register online: www.uschess.org. Please make all checks payable to USCF.

Let our video training program guide you to tournament success!

Access our online video tutorials and get instruction from National and International Masters, including:



Bryan Smith

is an International Master from Alaska. Bryan now lives in Philadelphia, where he is a full-time chess-player and teacher. He won the 2006 U.S. Masters and is the current Philadelphia champion.



Michael Mulyar

is an International Master from Colorado. Michael has tied for first at two U.S. Opens and is a five-time Colorado champion. He has worked with many successful scholastic players.

An online training center that provides all the tools you need to become a champion.

- Visit www.silverknightschess.com for a free sample lesson!
- For scholastic players rated 100 - 1800!
- Brand-new chess videos added each week!
- Only \$9.95 per month!



Winning the US Open, part II
By IM Michael Mulyar



Good knight vs. bad bishop
By IM Bryan Smith



The Four-move Checkmate
By NM Adam Weissbarth



SILVER KNIGHTS CHESS

ONLINE TRAINING CENTER

WWW.SILVERKNIGHTSCHESS.COM | 1-866-576-8090