

# Chess Life for Kids!



**"I know who you are,  
but who am I?"**



A USCF Publication

\$3.00



0 74470 27842 9

**Fast, Fun, and  
Easy to Use**

In 2006, and again in 2007,  
young Chess Magnet students  
from Portland, OR, scored 7-0 in the  
USCF Spring Nationals.

# ChessMagnetSchool.com

**Better Than Any Textbook for Learning Chess**



**Student  
Training**



**"Great Stuff! I just delivered my first  
Belgian champion under 10 and  
boosted his development  
by using ChessMagnetSchool.com"**

- Ton Montforts, Coach  
Schaakacademie  
Limburg, Belgium



**Student  
& Class  
Management**

**Makes  
a  
GREAT GIFT!**

**"Your website was  
integral to our team's winning."**

-Mike Hosford, Coach  
Alcott Elementary  
2008 Washington State  
Grades 4-6 Champions

**Start Your 30-day Free Trial Today**

at

**www.ChessMagnetSchool.com**

	1 month	3 months	1 year	1 yr USCF
Individuals	\$6.95	\$15.00	\$29.95	\$26.95
Class/Family	\$6.00	\$12.00	\$25.00	\$22.00

Free to teachers/coaches of at least 5 students  
Includes our powerful, easy-to-use Coaching Tools & Reports

Works on Windows and Macintosh  
computers (requires internet access)

To learn more, call 650-284-5062  
877-378-4319 (US toll-free)  
email [info@ChessMagnetSchool.com](mailto:info@ChessMagnetSchool.com)



February 2010  
**Chess Life for Kids!**  
 Vol. 5, No. 1



# Table of Contents

THE GNOMES HAVE SPOKEN! .....	4
ARABIAN KNIGHTS. ....	5
ASK GM EVANS. ....	6
THE CHESS DETECTIVE. ....	7
A BRIEF CHESS OPENING GLOSSARY. ....	8
TIME TO MAKE THE DONUTS! .....	9
2009 WCL JUNIOR GRAND PRIX STANDINGS. ....	10
KINGS AND QUEENS: DIARY OF A CHESS QUEEN. ....	12
ON THE ROAD. ....	14
ZARIA. ....	15
WHAT'S THE PROBLEM? .....	16
WIN OR DRAW? .....	17
TOURNAMENT LIFE ANNOUNCEMENTS. ....	18
THE ANSWERS TO YOUR PROBLEMS. ....	22
SILVER KNIGHTS VIDEO TRAINING. ....	23

COVER DESIGN BY CAT CONNOR SPRADLIN • COVER PHOTOS COURTESY OF ???



**Publisher**

**USCF Executive Director: Bill Hall**  
 bhall@uschess.org

**Scholastic Editor: Glenn Petersen**  
 gpetersen@uschess.org

**Art Director: Cat Connor Spradlin**  
 catseyephoto@mac.com

**Editorial Asst./Copy Editor: Alan Kantor**  
 akantor@uschess.org

**Editorial Assistant: Jennifer Pearson**  
 jenpearson@uschess.org

**Advertising Manager:**  
 tla@uschess.org

**Tournament Life: Joan DuBois**  
 tla@uschess.org

**Director of Publications: Daniel Lucas**  
 dlucas@uschess.org

**CONTRIBUTORS:** Send your contributions and articles to *Chess Life for KIDS*, PO Box 3967, Crossville, Tennessee 38557 or better yet, e-mail to gpetersen@uschess.org.

**Chess Life for KIDS** (USPS 023-567, ISSN: 1932-5894) is published in February, April, June, August, October, and December of every year by the United States Chess Federation, 137 Obrien Drive, Crossville, Tennessee 38555. Periodic postage paid at Crossville, Tennessee.

**CHANGE OF ADDRESS:** Be sure to notify us at once of any change of address. Please include your old address and your new address, along with your USCF I.D. number.

**POSTMASTER:** Send address changes to USCF, PO Box 3967, Crossville, Tennessee 38557.

**Annual Scholastic Membership**

Regular Scholastic Membership (online version of *Chess Life for Kids*), age 12 or younger, is just \$16 per year. Premium Scholastic Membership (receives *Chess Life for Kids* by mail) is \$23 per year. \$13 of every premium membership goes towards providing *Chess Life for Kids*. Entire contents copyright 2010, United States Chess Federation.

Teachers may photocopy instructional articles for classroom use, but republication or wide-spread copying without the written consent of the USCF is forbidden.



## U.S. Chess Trust

### Say Yes to Chess!

The Trust was organized to promote chess as a means of intellectual development. We promote and support chess in the community through our programs & by providing resources that help support our mission.

### Without Your Donations We Don't Exist

*Help us continue to make a difference!*

Mail donations to: U.S. Chess Trust, P.O. Box 838, Walkill, NY 12589. Or, make your donation online at [www.uschesstrust.org](http://www.uschesstrust.org).

All donations are tax-deductible.

The U.S. Chess Trust is an independent 501(c)(3), non-profit organization.

Visit Us at [www.uschesstrust.org](http://www.uschesstrust.org)



### Making a Difference

Need help starting your chess club? Find out how we can help by visiting us online & signing up to receive our e-mail newsletter!

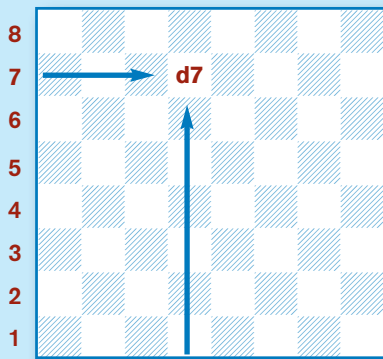
Below is a short list of some of the programs & events we support:

- Chess for Youth Program
- World Youth Championship
- Collegiate Final Four
- Scholar Chess Players Award
- Pan-Am Youth Festival
- World Junior Championship
- Denker Tournament
- The Samford Fellowship
- Chess in Education
- And so much more!

# HOW TO Read & Write Chess

There are many different ways to write chess moves. The most popular method (described below) is called **algebraic notation**:

Each square has a name, taken from the intersection of the file (vertical or up-and-down rows of squares, which are lettered) and rank (horizontal or side-by-side rows of squares, which are numbered) the square is on. In the diagram the square on the intersection of the 7th rank and the d-file is called d7. Like in battleship!



The pieces are abbreviated by a capital letter, like this:

**K: King; Q: Queen; R: Rook; B: Bishop; N: Knight.**

Notice that the Knight is N, since K is reserved for the King. Note also that pawns have no abbreviation.

A move is written by using the abbreviation for the piece that moves, followed by the square the piece moves to (1. ... Nf6). A pawn move is written as the square the pawn has moved to (1. d4). A capture by a piece is written as the abbreviation for the piece that moved, followed by an x, and finally the square the capture takes place on (8. Bxe5). A pawn capture is written as the file the capturing pawn stands on, followed by an x, and finally the square the capture takes place on (3. dxe5).

Other moves are castling kingside, which is written 0-0, and castling queenside, which is written 0-0-0. An *en passant* capture is indicated by *e.p.* after the move. A check is indicated by + after the move, and pawn promotion is indicated by adding ( ) and the abbreviation for the piece the pawn promotes to. Ambiguous moves (where more than one piece or pawn can move to the destination square) are taken care of by putting an extra rank or file in to make it clear which piece or pawn moved.

Here is a sample, using the famous smothered mate trap from the Budapest Defense.

**1. d4 Nf6 2. c4 e5 3. dxe5 Ng4**  
**4. Bf4 Nc6 5. Nf3 Bb4+** (diagram A)

**6. Nbd2 Qe7 7. a3** (diagram B)

**7. ... Ncx5 8. Bxe5 Nxe5 9. axb4**  
**Nd3 checkmate.** (diagram C)

x: take or capture      #: checkmate  
0-0: kingside castle    (:): promotion  
0-0-0: queenside castle    !: good move  
+: check                    ??: blunder



## THE GNOMES HAVE SPOKEN!



My Gnomes from Outer Mongolia got a workout this issue. There were so many correct answers, they had to use two shoeboxes to store them all! The solutions to December's "Pawnmower Chess" problems were:

**PROBLEM ONE: Nd5-e3-c4-b6-a4**

**PROBLEM TWO: Nf4-d5-e3-d1-b2-c4-d6**

**PROBLEM THREE: Nf2-d3-b4-d5-c3-a4-c5-b7**

And the five winners were **Le Do** of Wisconsin, **Maggie Feng** of Ohio, **Fabian Wimmer** of Massachusetts, **Priyo Majumdar** of Louisiana, **Joe Chen** of Virginia, and **Alex Liczwek** of Illinois. Wait, is that six winners? I guess that is why my Gnomes are still in school!

The **WIN OR DRAW** problem was much tougher, but most of you were on the right track. You saw the stalemate threats (and it is a draw), but some of you didn't explore all the lines. What we were looking for was: **1. c7 h1=Q 2. c8=Q Qh8**, winning. And that leads to **1. c7 h1=Q 2. c8=BI** (threatening checkmate) **2...Qh8!**. The same move that wins in one variation must be played to stalemate White in the second variation. **Muneeb Ahmed** of Arizona had the winning entry in our drawing.

Our apologies to **Timothy Martinson**. We incorrectly credited his opponent with a win on page 17 of the December 2009 issue. Gremlins.

**ORGANIZERS:** If you are planning a chess camp this summer, give up a holler! We'll try to list as many as we can in the April issue of *CL4K*: [gpetersen@uschess.org](mailto:gpetersen@uschess.org).

### EXTRA CREDIT:

Who **IS** that on the cover? If you think you know, send your entry to [gpetersen@uschess.org](mailto:gpetersen@uschess.org), and my Gnomes from Outer Mongolia will pick a winner ... or two ... maybe.



# TALES OF THE Arabian KNIGHTS

BY RICK KENNEDY Illustrations by Pamela Key



## The Younger Generation

The King settled comfortably, and she began her tale...

"Ah," the Rajah sighed, "Sometimes I fear for this younger generation."

"I have heard your father share similar thoughts," she said, "and speak of his father before him worrying, also."

The Rajah looked puzzled for a moment, and then asked "Can you speak to this with a story?"

She closed her eyes, and began.

The King called his son. "Young Prince, you are to visit your uncle. You will pay your respects, and learn what you can."

"As you wish," said the Prince, his heart secretly heavy, as he knew his uncle to be a good man, but a vain one, too much in love with the face that he saw in the mirror.

After a delightful feast that lasted several days, the Prince sought his uncle's counsel, and was invited, in turn, to play a game of chess. As expected, the uncle was quickly on the attack, paying more attention to his own pieces than anything else on the board. The Prince sneered secretly.

Unleashing a counterattack, the Prince soon chased the enemy pieces back to their home

squares. Then, he began to face increasing resistance. "There is more to his game than I realized," he thought.

The Prince pressed on, slowly building an attack, as he realized with surprise that hours had passed. Then, he saw it: a piece sacrifice that led without fail to a checkmate in eight moves.

As he reached out, the Prince looked at his uncle's face, which was covered in sweat, and lined with concentration and effort. "What was I thinking?," he asked himself.

The piece made the capture, and it, in turn, was captured. "Oh, woe!" the Prince cried out, gripping his head in horror. "What was I thinking??" He turned over his king, and extended his hand in congratulation to his uncle, who grasped it warmly.

All this the Prince told the King, upon his return. "I am sorry to have learned very little on my visit," he said.

The King smiled warmly. "You have learned and shown more than you realize. You visited your uncle, even though you did not wish to. That is **obedience to authority**.

"You were pleasant with your

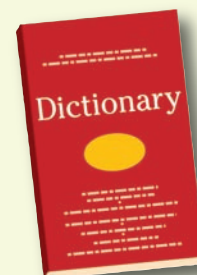
uncle, even though he is often quite full of himself. That is being **respectful** and **diplomatic**. When you began your chess game, your feelings took hold of you, but you did not let them rule you or cause your downfall. That is **self-control**.

"When you saw your uncle's distress as his game crumbled, you did not humble or humiliate him. That is **compassion**. You were willing to surrender a game that you knew in your heart—where much **wisdom** lies—was yours, fairly. That is **humility** and a sense of **what is truly important in the world**.

"Lastly, you shared all of that with me, which shows your **honesty**.

"All of which makes me very proud," said the King.

The Rajah, himself, nodded in agreement.



Having trouble?  
The dictionary  
is your friend!



# ASK GM LARRY EVANS!

**Grandmaster Larry Evans won the U.S. Championship in 1951, 1952, 1961-62, 1968, and again in 1980!**

## BEST QUESTION:

### FINDING MIRACLES

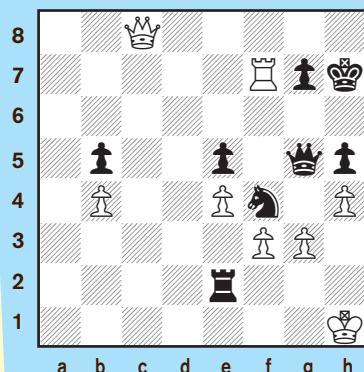
chinguun\_59

Delano, California

**Q:** Can you give me some advice on how to win when you're losing?

**A:** They say the hardest thing to win is a won game because we all tend to relax when victory is within our grasp. That's why we must fight even harder in an inferior position hoping that our opponent will get overconfident and make a mistake.

As I noted in my book *This Crazy World of Chess*: "I subscribe to a theory of the second resource. That is, no matter how bad your position, if it's not totally lost, you will reach a point during the game where you will be presented with an opportunity to draw or win if you take advantage of it."



Position after 47.h4

A swindle is the only form of larceny that's legal over-the-board; it's a clever way to rob an unsuspecting oppo-

nent of a sure win. Frank Marshall, U.S. champion for 25 years, was notorious for extricating himself from lost positions and even entitled a book of his games called "Marshall's Swindles."

We all dream of saving a lost game by a miracle. In today's lingo, swindles are often called "cheapos" because the bait is hidden in plain view.

### SWINDLE OF THE CENTURY

The bigger they are, the harder they fall.

My greatest escape was against Sammy Reshevsky in the 1963 national championship and was dubbed "swindle of the century." My chance came near the end when I played 47.h4 tickling his queen. Instead of simply 47...Qg6! remaining a piece ahead he snatched the bait with 47...Re2+ 48. Kh1 Qxg3?? and still had no inkling of my plot as I reached across the board to pitch my queen. He started to shake my hand and accept my resignation when it dawned on him that after 49.Qg8+!! Kxg8 50.Rxg7+! Kxg7 (if 50...Kf8 51.Rf7+ etc.) is stalemate. Reshevsky blanched and smiled wryly. With unseemly glee, I strained to hear him curse himself under his breath. He uttered just one word: "Stupid!"

The moral of the story is to never give up the ship, to keep laying traps and fight to the bitter end even if you are staring at certain defeat. Only by offering the strongest resistance is there a chance of finding a miracle.

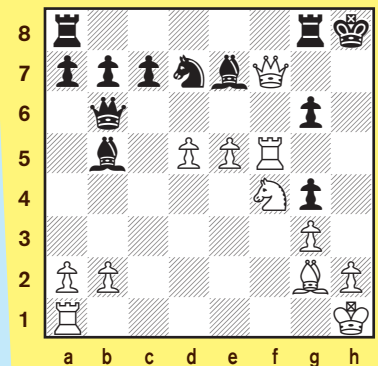
## DEADLY ACCURACY

Stan Vaughan

Las Vegas, Nevada

**Q:** Last June I won the ACA Open in Bullhead City, Arizona, with a perfect score. We played five rounds a day at game 30. In this game I developed a fierce attack with white and wonder if I missed a quicker win.

1.e4 e6 2.d4 d5 3.Be3 dxe4  
4.Nd2 Nf6 5.c3 Bd7 6.Qc2 Bc6  
7.Ne2 Ng4? 8.Nxe4 Nxe3 9.fxe3  
Qh4+ 10.Nf2 Nd7 11.e4 Nf6  
12.g3 Qh6 13.Bg2 Be7 14.0-0 0-0  
15.c4 Rfe8 16.d5 exd5 17.cxd5  
Bb5 18.e5 Nd7 19.Ng4 Qb6+  
20.Kh1 h5 21.Qf5 hxg4 22.Qxf7+  
Kh8 23.Rf5 g6 24.Nf4 Rg8



Position after 24...Rg8

Somehow my opponent managed to hold out until move 61 after 25. Rh5+ (or 25.d6 Rg7 26.Nxg6+ Rxg6 27.Rh5+ Rh6 28.Rxh6 mate) gxh5 26.Qxh5+ Kg7 27.Ne6+ Qxe6 28. dxe6. I wonder if there was a quicker win.

**A:** Yes. The quickest kill is 25.d6! gxf5 26.Qh5+ Kg7 27.Ne6 mate. We must always drive home an advantage mercilessly without ever giving the opponent a chance to escape.

**ASK A QUESTION:** If you have a question for GM Larry Evans, send it to [gpetersen@uschess.org](mailto:gpetersen@uschess.org). GM Evans will choose the Best Question for the next issue. The Best Question winner will receive a copy of *How Good is Your Chess* by GM Larry Evans.

# The Chess Detective

by NM Todd Bardwick



## REMOVING THE GUARD

Chess is a game of attack and counter attack. A master is constantly counting how many times a piece or square is attacked and how many times it is defended as he looks for a way to win the game.

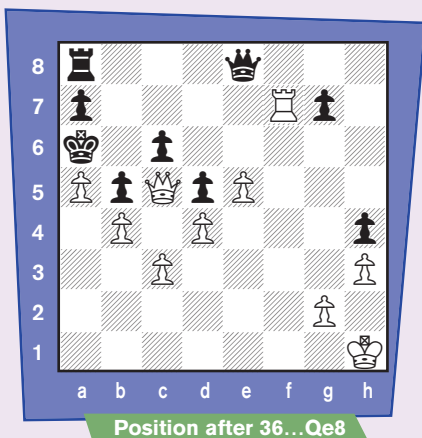
A good player will keep his pieces carefully protected so that the opponent can't find a combination that wins them.

**When you see a piece or a square that you want to go to that is protected, don't give up your idea too quickly. Look for a way to eliminate the protector.**

This type of tactic is called removing the guard. It is also known as overloading or deflection. Maybe you can deflect the guard away from the square you want to attack?

Consider this position from Vienna in 1905.

### Adolf Albin



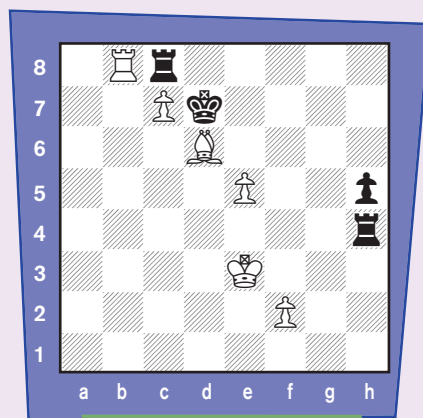
Position after 36...Qe8

### Aron Nimzowitsch

White notices that 37.Qb6 would be checkmate, if not for the pawn on a7. So he looks for a way to remove the a7-pawn (the guard). He plays, **37.Rxa7+! Rxa7 38.Qb6 mate.**

Here is another example from the 14th game of the world championship match between GM Anatoly Karpov and GM Viktor Korchnoi played in Baguio City, Philippines, in 1978.

### Viktor Korchnoi



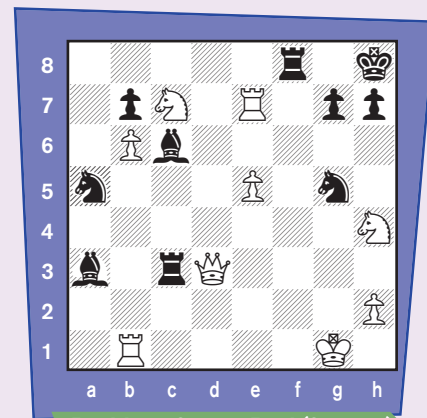
Position after 49...Rx(P)h4

### Anatoly Karpov

Notice that the black king is the only defender of the rook on c8. If White can chase him away, he wins the rook. White played **50.e6+! Black resigned.** 50...Kxd6 51.Rxc8 Rc4 52.Rd8+ Kxc7 53.e7 is winning for White. If Black tries 50...Kxe6 51.Bg3 wins for White because both of Black's rooks are under attack.

Here is probably the most famous removing the guard position that some of you may recognize. Do you know where? It is the position from the Harry Potter and the Sorcerer's Stone movie. Harry Potter is the bishop on a3, Hermione Granger is the rook on f8, and Ron Weasley is the knight on g5. The object of the game for Black is to checkmate White, without getting Harry captured. Notice that the White king has no legal moves. In situations like this, if you can put the king in check, without opening up the mating

net, it may be checkmate. This position was brilliantly designed by IM Jeremy Silman.



Position after 1...Rc3! (from c5)

**2.Qxc3** attacking Harry. Notice that the queen is now protecting against the mate threats of 2...Nh3 and 2...Bc5 mate. The h3 and c5 squares are not on the same line. White's queen is overworked—she can't protect them both. Black wins by playing either **2...Nh3+ 3.Qxh3 Bc5+ 4.Qe3 Bxe3 mate** or **2...Bc5+ 3.Qxc5 Nh3 mate**. Of course, Harry can't be captured, so in the movie, Black played the 2...Nh3+ line, sacrificing Ron. If you watch the movie again, you will notice a chess error that Silman was not consulted on. Black played 3...Bc5 mate, missing that White could interpose the queen and play on for one more move!

### Todd Bardwick

is the author of  
**Teaching Chess in the 21st Century  
and Chess Workbook for Children.**  
He can be reached at  
[www.ColoradoMasterChess.com](http://www.ColoradoMasterChess.com)

# A Brief Chess Opening Glossary

by Pete Tamburro

## Part IV

## The d-pawn Openings, Part II

The Queen's Gambit (1.d4 d5 2.c4) is one of the oldest openings in chess. Most players pick it up later in life as they mature into complete players and they head toward positional chess rather than tactical chess.

However, there are players of the black pieces that don't like to suffer through this difficult opening and just wait for White to slowly crush them. We saw that in Part III as Black can play for an unbalanced game and some winning chances with 1...Nf6.

Black also tries to go down some paths less travelled with the moves we have here for you. As an added bonus, we've included some miniature games that are quick to play through and give you some instant lessons on mistakes you should avoid.

### 2...dxc4

#### The Queen's Gambit Accepted:

A perfectly playable defense, especially since it's not played much and White may not be familiar with it. White's best move is simply 3.Nf3, although some players go with the sharper 3.e4 or 3.e3. After 3.Nf3, then e3 and Bxc4 should follow, along with castling, and White should build his position for an eventual e4. Black should not try to hold onto the pawn: 3.Nf3 b5?? 4.a4! c6 5.axb4 cxb4 and now either 6.Nc3 or 6.b3 gives White an advantage.

In fact, b5, can be dangerous in other ways. Mattison-Tartakower went: 1.d4 d5 2.c4 dxc4 3.Nc3 e6 4.e3 c5 5.Nf3 a6 6.Bxc4 Nf6 7.0-0 b5 8.Be2 Nc6 9.dxc5 Qc7 10.Nd4 Bxc5 11.Nxc6! and the great grandmaster resigned! See why? The right way to play as Black is: 1.d4 d5 2.c4 dxc4 3.Nf3 Nf6 4.e3 e6 5.Bxc4 c5 6.0-0 a6 7.Qe2 Nc6 8.Nc3 b5 9.Bb3 Bb7 10.Rd1 Qb6 11.d5 exd5 12.Nxd5 Nxd5 13.Bxd5 Be7 14.e4 0-0.

### 2...e5

#### The Albin Counter Gambit:

Championed by long time U.S. champion Frank Marshall in the early 20th century and later U.S. master Weaver Adams in mid-century, this aggressive counterattack was again played by a current U.S. champion: GM Hikaru Nakamura.

Every chess player should be shown the most famous trap in the Albin (there are 6(!) actual games in the database with this.): 1.d4 d5 2.c4 e5 3.dxe5 d4 4.e3 Bb4+ 5.Bd2 dxe3 6.Bxb4 (6.fxe3) 6...exf2+ 7.Ke2 (7.Kxf2 Qxd1) 7...fxg1=N+!! 8.Ke1 (8.Rxg1 Bg4+) 8...Qh4+ and wins. After 3.dxe5 d4 4.Nf3 Nc6, White usually fianchettoes with g3 and Bg2 and may even play an early a3 to provoke a5 by Black, which hurts queenside castling plans. Black may even further gambit with f6. It's a wild game!

### 2...Nc6 The Chigorin Defense:

Named after the old Russian grandmaster, Black needs to like to play with two knights versus White's two bishops. White tries to open the position for the bishops and Black tries to keep it closed for the knights to operate. A typical line might be: 1.d4 d5 2.c4 Nc6 3.Nf3 Bg4 4.Nc3 Bxf3 5.gxf3 e6 6.cxd5 exd5 7.Rg1 Qd7 8.Bf4 0-0-0 9.Qd3 Nf6 10.0-0-0 and it's pretty much equal, although it's easier for White to open the position than it is for Black to keep it closed.

### 2...Nf6 The Marshall Defense:

As mentioned in Part III, it never quite caught on. Black may try some funny stuff though. For example, Black may try to transpose into a sort of Scandinavian-like defense with 1.d4 d5 2.c4 Nf6 3.cxd5 Qxd5 4.Nc3 Qa5 or even a Gruenfeld with 3...g6, but

White can force him into a gambit with 4.Qa4+ c6 5.dxc6 Nxc6 6.Nf3 Bg7 7.Nc3 Bf5 8.e3 0-0 9.Be2 a6 10.0-0 b5 11.Qb3 Rc8 12.Bd2 Qd6 13.Rac1 Rc7 and, although Black has fine development, whether it's worth a pawn is another matter. The last words have not been said on this neglected line.

### 2...Bf5 The Baltic Defense:

It used to be just the "Bad Defense." It leaves b7 unprotected. As White has played 2.c4, Qb3 becomes quite a threat. For example, 3.Qb3 dxc4 4.Qxb7 Nd7 5.Nc3 followed by 6.Nf3 leaves White in good shape. For a time, Black got risky with 1.d4 d5 2.c4 Bf5 3.Qb3 e5!? but 4.Qxb7 Nd7 5.Nf3! (5.Qxd5? Ne7!) 5...e4 6.Ne5 Nxe5 7.dxe5 Rb8 8.Qc6+ Qd7 9.Qxd7+ Kxd7 10.cxd5 and White is clearly better.

### 2...c5

#### The Symmetrical Defense:

Copcats are usually a move behind. After 3.cxd5 cxd4 4.Qxd4, Black's imitating is over! That doesn't mean it's a dull game! Look at this line: 3.cxd5 Nf6 4.e4 Nxe4 5.dxc5 Qa5+ 6.Bd2 Nxd2 7.Qxd2 Qxc5 8.Nc3 and you have an interesting battle shaping up. There are some miniatures, though, that show you the pitfalls of being behind in development in this defense:

L. Steiner-Stiassny, 1925: 1.d4 d5 2.c4 c5 3.Nf3 dxc4 4.Nc3 cxd4 5.Qxd4 Qxd4 6.Nxd4 a6 (6...e5 7.Ndb5 Na6 8.Nd5 Kd7 9.e3 Ne7 10.Bxc4 Nxd5 11.Bxd5 Nb4 12.Be4 a6 13.Nc3 Ke6 14.g4) 7.Nd5 Kd8 8.Bd2 Nd7 9.Ba5+ b6 10.Nc6+ Ke8 11.Nc7#

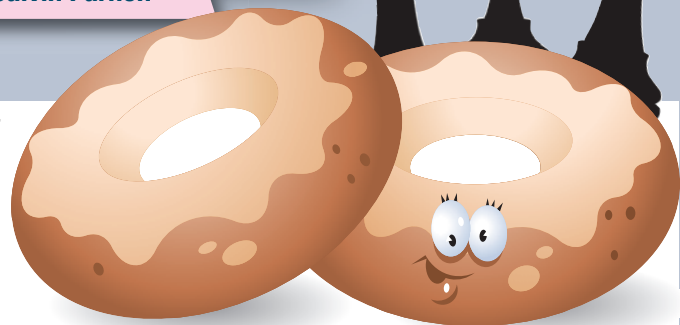
Please turn to page 23 



# TIME TO MAKE THE DONUTS!

by Calvin Parnon

Improving as a player is hard work.



**White:** Calvin Parnon (1206)

**Black:** Dick Banner (1816)

**July 2009, G/60 at the Portland Chess Club**

I am a 14 year old chess player, and I played this game a while ago, when my rating was lower. I find it interesting to look back at my games, and see how much I missed and how I've changed as a player.

This is a game I thought I played pretty well in, back in July. After analyzing it, I realize that both my opponent and I made an abundance of errors, although my analysis may be faulty. I just thought the game was interesting, and it said in the magazine to send in one of your best games to *Chess Life for Kids*.

*[Going over your games—especially your losses—is one of the best ways to improve. But it is hard work. Time to make the donuts! —Editor]*

**1. e4 Nf6 2. e5 Nd5 3. d4 d6 4. Nf3 dxe5**

I think that 4...Bg4 is a better alternative to 4...dxe5, but both are book lines.

**5. Nxe5 c6 6. Bc4 Nd7 7. f4?**

I really don't like my 7. f4. It overextends my position, cuts off my c1-bishop, and weakens e4.

**7...Nxe5 8. fxe5 Bf5 9. 0-0 e6 10. Nc3 Nxc3?**

Of course Black has to meet the threat of 11. Nxd5 exd5 (11... cxd5? Bb5+) 12. Rxf5 dxc4 13. c3 threatening Qf1 and with a clear advantage for White. However, I think that 10...Nb6 is stronger than the text.

**11. bxc3 Be7!**

I give this move an exclamation point not because of what was played in the game, but because of what should have been played in the game. 11...Be7! prepares for a strong undermining with 12...f6! fol-

lowed by 13...Qa5 or 13...Qc7.

**12. Qf3**

I played 12. Qf3 to activate the queen and free her from the defense of the c2-pawn while preventing 12...c5 and 12...b5.

**12...0-0 13. Bd3**

13. Bd3 was the only logical followup to 12. Qf3, and 13...Bg6? is weak as after 14. Bxg6 either the e-pawn is isolated or the h-file is opened.

**13...Bxd3 14. Qxd3 Bg5?**

I would give ...Bg5 two question marks, but it does not hang any material so I can't. I think Black missed 14...f6! 15. Bf4 c5! and after a pawn trade, White's weak c2 and d4 pawns are waiting to be taken. Now White, for the first time after the overextended f4, gets an advantage.

**15. Bxg5 Qxg5 16. Rf3 Qg6 17. Qxg6 hxg6**

And White has a definite advantage, due to his easily activated rooks.

**18. Re1 Rae8 19. c4!? f5?**

The idea behind 19. c4 was to allow transit for the rook along the third rank. I don't see Black's idea behind f5. All it does is isolate and weaken the g6 and g7 pawns, but it does prevent the planned Re4.

**20. Rb1! Re7**

The winning plan here that I missed was to load both rooks onto the b-file. After that, I could push the a-pawn all the way down and Black has no time to recover.

**21. Rg3? Kf7**

Wasting a tempo and helping Black develop.

**22. Rbb3??**

Another awful move! I needed to play 22. Rgb3! and then after 22...Rb8 23. a4! Ke8 24. a5! Kd8 25. Rg3! wins. Black can try sacrificing

the b7-pawn for activity, but this plan doesn't work either: 22. Rgb3 Rb8 23. a4 c5 24. c3 Rd7 25. Rd1 and White wins easily after pushing d5. (not 25. a5? cxd4 26. a6 b6 27. cxd4 Rxd4 as Black is better).

**22...Rh8 23. Rg5?**

Another weak move. All I'm doing is hurting my rooks by doubling them where they have no future, and I'm activating Black's pieces for him.

**23...Rh5 24. Rbg3 Rxg5 25. Rxg5 Rd7 26. c3 c5 27. Rg3 cxd4 28. Rd3 g5 29. cxd4 Rc7 30. c5?! f4?!**

Instead of the text, I think that the interesting pawn sacrifice d5!? is better. After 30...Rxc4 31. d6 Ke8 32. Ra3, Black's best option is to simply return the material with 32...Rb4 followed by 33...Kd7 (*not the overaggressive 32...Re4* 33. Rxa7 Rxe5 34. Rxb7 Ra5 35. Rxg7 Rxa2 36. Re7+ Kd8) and White is a tad stronger due to the possibilities coming from Ra8. I also don't think 30...f4 is very strong. Black is trying to activate his king, but he'd be better off activating it via e7-d7-c6, where it has more of a future.

**31. g3!**

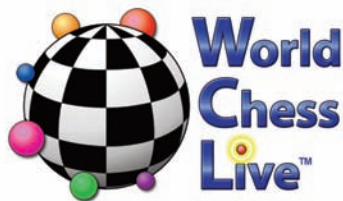
31. g3! cuts off the king. However, I didn't notice this during the game.

**31...Kg6 32. Kf2?? Kf5!**

After this, Black is won. I had to stop the penetration of the king with 32. g4! with an advantage for White. I could have brought in the king to e4, and then executed an undermining with h4, and possibly won the game. However, after the awful 32. Kf2, a few more unnecessary moves were played, and then ...

**White resigned, 0-1.**

# 2009 World Chess Live Junior Grand Prix Standings



## 2009 World Chess Live Junior Grand Prix

This unofficial list is based on the USCF records and TD reports as of January 6, 2010. It's not quite the final standings for 2009, as there are still a number of events that haven't been rated or reported. But we're close! Overall leaders will not be eligible for state leader prizes. **Note:** In the state by state standings shown below, a state will only be shown if someone from that state has earned JGP points.

ST=State PTS=Points EV=Events

### Top 20 Overall Standings

NAME	ST	PTS	EV
WINTER, CURTIS A	MD	305	21
DOMMALAPATI, ABHINAV	VA	290	27
MIZUSHIMA, DEREK	MD	265	24
ATTANAGODA, ISURU A	VA	205	15
MARUPUDI, PRANAV	NJ	195	15
PISANI, NICHOLAS	WA	190	10
RAJASEKARAN, VIKAS	VA	180	9
RICHMAN, JONATHAN	NY	180	9
HUANG, WINSTON	MA	175	15
PISANI, PAUL	WA	175	11
TROFF, KAYDEN W	UT	170	12
SREENIVASAN, RAMANUJA	MD	170	16
CHEN, JEREMY	NJ	160	9
HUGHES, JOHN LODGER	OH	160	7
FISHER, WILLIAM	PA	155	15
KARAMSETTY, JEEVAN	VA	150	13
QU, CHEN	NY	145	8
VIRKUD, APURVA	MI	145	7
DING, JIALIN	MO	135	6
HARMON-VELLOTTI, LUKE	ID	135	10
ZHOU, JASON	MO	135	7
SHETTY, ATULYA ARYA	MI	135	8

### State Leaders

NAME	ST	PTS	EV
PARSHALL, MATTHEW	AK	30	2
HELLWIG, LUKE	AL	45	5
XU, ZHUOWEI	AL	45	3
CRAIG, ROBERT S	AR	60	2
GURCZAK, JOHN	AZ	125	9
SEVIAN, SAMUEL	CA-N	120	7
MCCREARY, TAYLOR	CA-S	110	8
SPANN, NABIL J	CO	50	2
TANENBAUM, ZACHARY C	CT	110	8
HAUGE, DAVID RICHEY	DC	30	3
D'SOUZA, DEAN	DE	55	4
DALY, TROY	FL	90	4
SANJAY, PRAVEEN	GA	85	8
PERRY, PATRICK F	HI	50	1
NAKAGAWA, ELDON M	HI	50	1
IYER, VENKAT	IA	95	7
HARMON-VELLOTTI, CARL	ID	85	7
KOGEN, JONATHAN S	IL	110	7
MANCHANDA, SAMEER	IN	100	5
LATHAM, ANDREW	KS	110	11
BAGLEY, TAYLOR MICAHAH	KY	65	5
CHADHA, SIMARPREET	LA	70	4
ANGERMEIER, DANNY	MA	85	4
MOORTHY, SRINIVAS R	MD	115	7
REALE-HATEM, MATTHEW	ME	55	2
FINEGOLD, SPENCER	MI	125	8
ZANG, KEVIN	MN	65	3
GADSON, ISAIAH	MO	110	5

NAME	ST	PTS	EV
MADDOX, CONNER	MS	40	1
GOLDMAN, ADAM	MS	40	1
KAGIROV, BULAT	MT	5	1
MOODY, CHAD	NC	95	8
KOPPINGER, MATTHEW	ND	10	1
SELVARAJ, JASON	NE	35	2
MA, KEVIN	NH	30	2
MORAN, HARRISON M	NH	30	3
KUMAR, ARAVIND	NJ	130	9
SERNA, JEFFREY MICHAEL	NM	115	7
THOMAS, MICHAEL EVAN	NV	25	1
SINGH, REVA SHREE	NY	130	11
RAMASWAMY, RAHUL	OH	105	5
HUGHES, DEVIN L	OK	85	6
PARNON, CALVIN JAY	OR	65	3
NGUYEN, PHILIP	PA	100	5
DELLOMARGIO, ANGELO	PA	100	5
FINNEY, STUART S	RI	70	5
TEMPLETON, ZACHARY S	SC	60	4
STORMENT, EZRA LEE	SD	20	1
MARIKLE, JOSEPH WALTER	SD	20	1
VAZQUEZ, RAUL	TERR	25	1
FU, JASON	TN	125	8
WANG, ANDY	TX	80	3
UNRUH, DAVIS	UT	60	2
SAPERSTEIN, CRAIG M	VA	95	7
KATZ, GABRIEL	VT	65	5
DING, JEFFREY	WA	70	1
JING, AARON C	WI	110	8
CHEN, KELLY	WV	25	2

### WHAT'S WITH ...

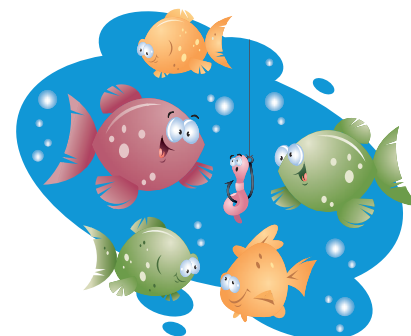


It certainly seems to help the Pisani brothers of Washington, Paul and Nicholas ...

### ... THE FISHING?

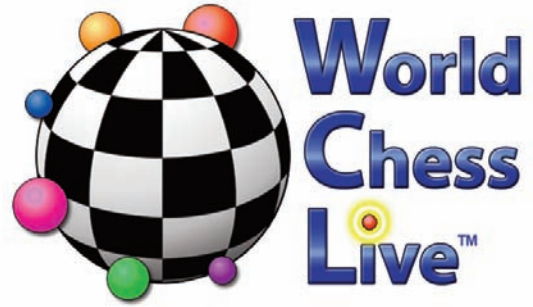


... and Utah State Champ Kayden Troff, as they climb in the WCL JGP standings.



Prepare to make your best move since joining the USCF...

Don't miss one of this year's top benefits of USCF membership.

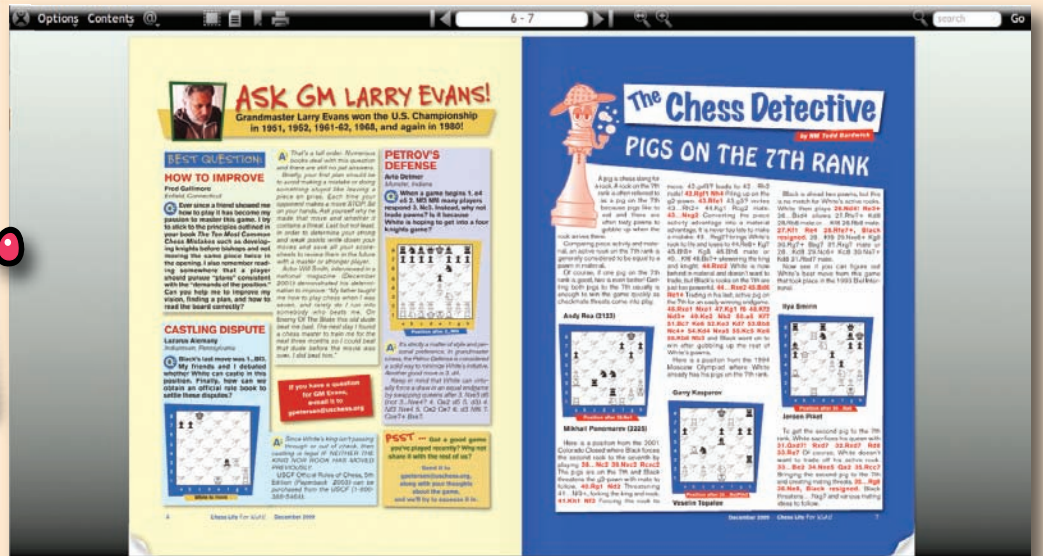
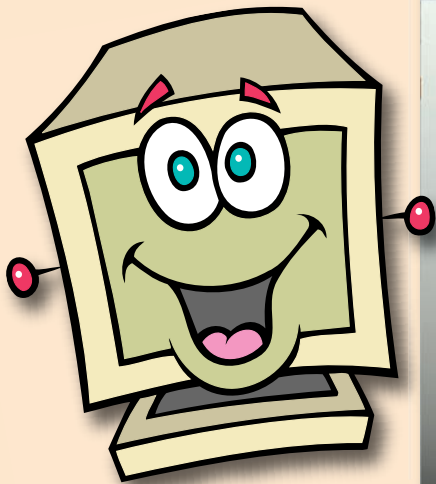


Claim your **six-month free trial** now at World Chess Live, the only online chess service offering:

- Weekly USCF quick-rated tournaments
- Chances to earn both Grand Prix and Junior Grand Prix points
- Many other tournament prizes
- Free videos from top instructors
- A welcoming atmosphere for players of all levels

For details, go to [www.worldchesslive.com/uscf](http://www.worldchesslive.com/uscf)

# MORE B-A-N-N-N-N-G FOR YOUR BUCK!



Premium Scholastic members get their chess kicks (CL4K) in the mail.

Regular Scholastic members get their chess kicks online.

And now **ALL** scholastic members can "virtually" turn the pages of CL4K online, using the .pdf viewer now available.

Just follow the links (you'll need your user name and password):

[www.uschess.org](http://www.uschess.org) > Chess Life Magazine > Chess Life for Kids > On-Line Viewer.

# KINGS AND QUEENS:

## DIARY OF A CHESS QUEEN!

In the foreword to *Diary of a Chess Queen* by Alexandra Kosteniuk, the 12th World Chess Champion (1975) Anatoly Karpov writes: "... A World Chess Champion bears a heavy responsibility: from that day forward, there will be thousands of little boys and girls watching and measuring themselves against her, dreaming of becoming kings and queens themselves ..."

And near the end of her book, the 12th Women's World Champion (2008) writes: "... To conclude, I would like to address the young players reading these lines. Whether you get to be world champion or not is not important. The main thing is to set yourself a goal and to do everything in your power to achieve it. Remember that every moment has value, every minute is important. No one knows what life will bring: but the main thing is that, in the end, you will know that you tried, and that you made the effort to become better every day.

"I will be happy if this book helps you to understand something new about the world of chess. May you find many strong moves, both on the chessboard, and off it!

"Best wishes in chess and in life,"  
—**Alexandra Kosteniuk**

Mongoose Press has given us permission to reprint (from the first chapter of *Diary of a Chess Queen*), a game Alexandra played when she was just 10 years old. Enjoy it, but take notes! There will be a pop quiz for extra credit!

**T. Chalabashvili**

**A. Kosteniuk**

*King's Knight Opening (C40)*

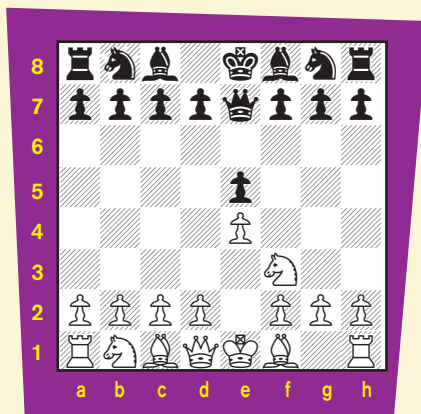
*Baile Herculane 1994*

**1.e4 e5 2.Nf3 Qe7!?**

The chief problem which is often faced by trainers of junior players is not simply how to explain—in the small amount of time that children devote to chess activities—the rules of the game and the basic principles of chess play, but also to find enough time to acquaint the student with theoretical variations.

And with all this, you must also take into account that the opening lines which mainly appear in junior tournaments diverge significantly from established theory. Gambits, traps, and sacrifices are what you see most of all. In fact, it's far easier to show your student three moves with a definite goal—that of giving mate—than it is to spend hours explaining the nuance of the Ruy Lopez.

Since my father and I spent most of our time working on strengthening my play in the middle- and endgame, my opening knowledge was quite limited—I would study a few games right before the round, and that was it. The main idea was for me to get out of the opening without great losses. After 2...Qe7, I at least knew my plan, and that meant I also knew what my next few moves would be. And it was no less important that my opponent would have to start thinking on her own at once.



### 3. Nc3

Black's plan is as follows: ...c7-c6, ...d7-d6, ...g7-g6, ...f7-f6, ...Bg7, ...Nd7, ...Nh6-f7. I recall that, when I was young, I believed the plan of b2-b3, Ba3 and d2-d4 would refute this system.

### 3...c6 4.Bc4

Perhaps White should start fighting for the center at once with 4.d4.

**4...g6 5.d3 Nh6 6.0-0 f6 7.Re1 Nf7 8.d4 d6 9.Be3 Bg7 10.h3 Nd7**

Black has carried out her plan.

### 11.a3

11.a4!? was worth considering. In this kind of position, White can play more aggressively; however, we should not lose sight of the fact that ten-year-old girls are sitting at the board here.

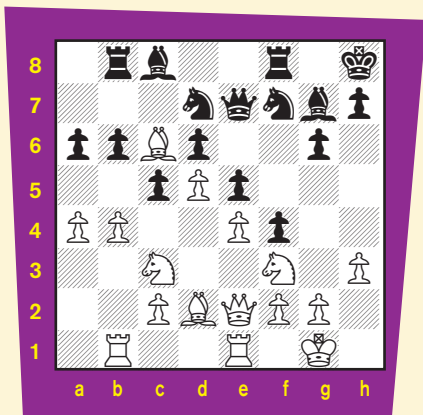
**11...0-0 12.d5 c5 13.b4 b6 14.Bb5 a6 15.Bc6**

Children find it very difficult to play in situations where they see no concrete targets. The only piece which could be attacked was the rook at a8, which is why White makes such a weird maneuver with her bishop.

**15...Rb8 16.Rb1 f5**

Meanwhile, Black has chosen a different target: the white king. In a position with a closed pawn center, this seems logical enough.

**17.a4 f4 18.Bd2 Kh8 19.Qe2**



19...Ng5!?

Removing one of the white monarch's defenders.

20.Kh2 Nxf3+ 21.Qxf3 Kg8?!

Losing the thread. Black should be playing this in sharp King's Indian mode, since her attack on the kingside is clearly going to come in ahead of her opponent's assault on the queenside. For example: 21...cxb4 22.Rxb4 Nc5 (the immediate 22...Qh4 23.Bxd7 Bxd7 24.Reb1 g5 wouldn't be bad either, but the knight move has a better idea: with the white bishop out of play at c6, why allow my opponent to exchange it?)

23.Reb1 Qh4 24.Rxb6 Rxb6 25.Rxb6 g5 with a very strong attack. 22.b5?

Of her own accord, White closes up the game where she is stronger. Now Black has nothing to worry about, and can start active operations on the kingside.

22...a5 23.Qd3?

After this move, Black's attack unfolds by itself.

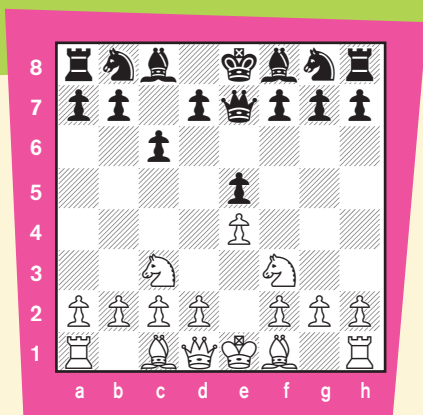
23...f3 24.g4 Qh4 25.Qf1 Nf6 26.g5 Bxh3

White resigns.

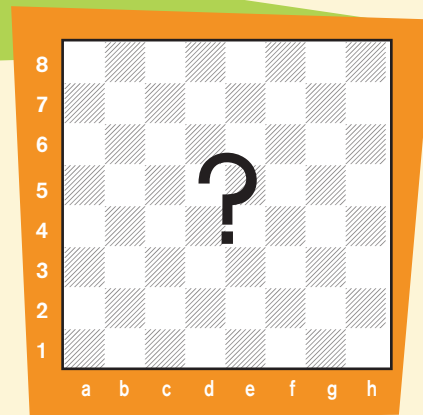
# EXTRA CREDIT



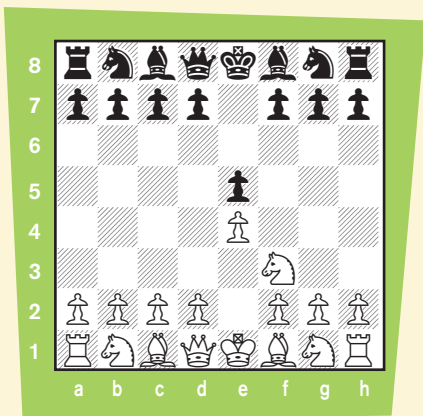
There are no really right or wrong answers here. My Gnomes just want to know what you think, what you would play. Send your answers to [gpetersen@uschess.org](mailto:gpetersen@uschess.org), or to Glenn Petersen, 44-D Manchester Court, Freehold, NJ 07728, and we'll have a drawing and select the best answers. Winners will receive a copy of *Diary of a Chess Queen*.



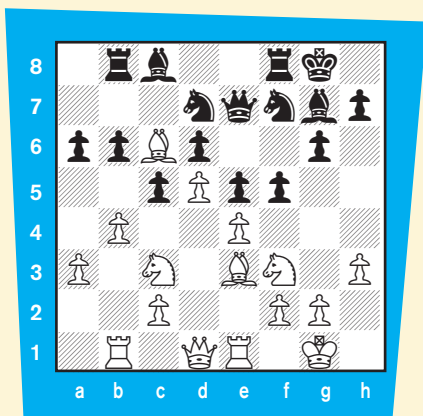
2. Why do YOU think 4.d4 might be a better move to play?



4. In the final position (that's right: you'll have to play through the whole game!), why did White resign? If White plays 27.Qxh3, how should Black reply?



1. As Black, what would YOU play in this position?



3. Black just played 16...f5. Would you consider this to be a lever, and if so, why?

## NEED SOME PRACTICE?

Go to [www.uschess.org](http://www.uschess.org) and click on "New to Chess?" and follow the links to "... play the computer..." (But do your homework first!)



# ON THE ROAD



Congratulations to TEAM USA! for finishing in second place at the

North America Youth Championships, held in Mazatlan, Mexico, October 1-5, 2009. Abed Munoz was the organizer for the delegation which originally included:

Emily Nguyen (Texas), Claudia Munoz (Texas), Madhu Karamsetty (Virginia), Winston Zeng (California), Ian Gilchrist (Illinois), Kayden Troff (Utah), Jeevan Karamsetty (Virginia), Andrew Istafanous (Texas), Stuart Finney (Rhode Island), Deepak Aaron (New York), and Rayan Taghizadeh (California).

**Kayden Troff, Stuart Finney, Deepak Aaron, and Winston Zeng** all won gold medals for their age groups. They are now FIDE candidate masters and have earned the right to represent the USA in the 2010 Pan American Youth Championships, to be held in Brazil.

**Rayan Taghizadeh and Emily Nguyen** helped the team cause by earning bronze medals. For more information, check out:

<http://main.uschess.org/content/view/9760/556/>



In the **World Youth Championship**, two of our youngest competitors, **Tanuj Vasudeva** and **Samritha Palakollu**

scored impressive 8½/11 scores in the Under 8 Open and Under 8 Girls, respectively. Both were on the top boards all event and earned silver medals due to superior tiebreaks! Our other big medal contender, Jarod Pamatmat faltered in the last two rounds to finish with 7½/11, only enough to place in 11th. Alena Kats and Sarah Chiang, who were also in contention for much of the event, finished in 7th and 8th, respectively. Dachey Lin had a strong finish in the Under 10

Open to place in a tie for 9th.

Samritha was on top of the field for much of the event, but lost her final round. As it turns out, she probably would have finished in second even if she won or drew her last game, since the winner scored 9½ and had the best tiebreaks. Tanuj blundered in round nine but came back with a stunning last round attack to push back up in the standings.

Our total tally was 166 out of a maximum of 275 points. Look for more details including photos from the closing ceremony on *Chess Life Online* and coach GM John Fedorowicz's *Chess Life* magazine report. Thanks to the coaches and players for their hard work during this long event.

## USA Coaches

IM Armen Ambartsoumian  
FM Aviv Friedman  
GM John Fedorowicz  
FST (FIDE Senior Trainer)

Michael Khodarkovsky  
GM Sam Palatnik

## US Squad Final Standings

Tanuj Vasudeva (U-8 Open)	8½
Winston Zeng (U-8 Open)	5
Dachey Lin (U-10 Open)	7½
Tommy He (U-10 Open)	7
Jonathan Chiang (U-10 Open)	6½
Jarod Pamatmat (U-12 Open)	7½
Arthur Shen (U-12 Open)	7
Michael Brown (U-12 Open)	6½
Daniel Gurevich (U-12 Open)	6½
Varun Krishnan (U-12 Open)	6½
David Adelberg (U-14 Open)	6
Stuart Finney (U-14 Open)	6
Daniel Rozovsky (U-14 Open)	5½
FM Alec Getz (U-16 Open)	6
Andrew Ng (U-16 Open)	5½
Samritha Palakollu (U-8 Girls)	8½
Alisha Chawla (U-8 Girls)	7
Liza Vigna (U-8 Girls)	7
Annie Wang (U-8 Girls)	7
Simone Liao (U-10 Girls)	7

WCM Sarah Chiang (U-12 Girls)	7½
Alena Kats (U-14 Girls)	7½
Anna Matlin (U-14 Girls)	5
Darrian Robinson (U-16 Girls)	5½
WFM Abby Marshall (U-18 Girls)	6½

For photos and games, check out the *Chess Life Online* link:

<http://main.uschess.org/content/view/9882/562/>



## NATIONAL YOUTH ACTION DRAWS 497 PLAYERS!

### Official Press Release November 30, 2009

A total of 497 player names appeared on the wallcharts for the U.S. Chess Federation's (USCF's) 2009 National Youth Action in Oakbrook, Illinois. Their great chess weekend started on November 20 and lasted through November 22. Sunday's awards ceremony had Canterbury, Fort Wayne, Indiana (Daniel Gater, Daniel Ryker, David Witwer, and Emily Tallo) take home the first place team trophy in the K-12 section. The K-9 top team honors went to CCSCSL, St. Louis, Missouri (Kevin Cao, Jialin Ding, Isaiah Gadson, and William Tong) while the K-6 team glory was claimed by District 103, Lincolnshire, Illinois (James Wei, Alex Bian, Allen Guo, and Conrad Oberhaus). The highest scoring K-3 team was Chess Without Borders (Matthew Stevens, Akhil Kalghatgi, Ranad Tripuraneni, and Jonathan Tan) and they traveled just a few short miles from Barrington, Illinois

to pick up their first place tribute.

Individual first place trophies for excellence were taken home by the 8-1 scoring K-12 champion **Praveen Sanjay** (Georgia) whose tiebreaks put him ahead of 8-1 scoring **Michael Auger** (Illinois). The K-9 top finisher with a score of 7½-1½ was **Kevin Cao** (Missouri) who tied with **Joshua Colas** (New York) and **Jialin Ding** (Missouri). Kevin was awarded the trophy on tiebreaks. The first place K-6 individual honors went to the 8 points accumulated by Jonathan Zhou (Indiana). **Mathew Stevens** (Illinois) went 8½-½ in the K-3 section to capture sole first place honors.

The Bughouse event on Friday night proved fruitful to the team of **Eric Rosen** and **Michael Auger** whose 10 points topped the charts.

In the Saturday Blitz tournament the K-12 section ended with **Joshua Colas** (New York) alone in first place with 8 points while the team glory went to the Chess Club of Minnesota (Zachary Adams, **Andrew Tang**, **Matthew Dahl**, and **Kevin Bu**). The K-6 Blitz section was topped by **Bryce McClanahan** (Illinois) scoring 9½ points while the team honors went to CC SCSL, St. Louis, Missouri (**Stephen Zhang**, **Margaret Hua**, **Michael Yin**, and **Nathan Phan**).

Glenn Panner and Tim Just organized the event while Wayne Clark was the chief tournament director (TD). The TD staff was filled out by Gary Janssen, Jeff Wiewel, Mike Zacate, Orn Backstrom,

Betsy Dynako, Walter Brown, James Aman, Maret Thorpe, Allen Priest, Mike Hoffpauir, and Tom Priest.

No tournament is complete without its helpers at chess control: Andrea Panner, Renee Brands, Elizabeth Vilaflor, and Alice Holt.

For a complete list of finishers please visit us at:

<http://nya2009.com>. Official USCF crosstable can be found at:

<http://www.uschess.org/msa/XtblMain.php?200911223041>



## NATIONAL K-12 CHAMPIONSHIP

By Joan DuBois

Official Press Release

December 16, 2009

Contact: Joan DuBois

[jdubois@uschess.org](mailto:jdubois@uschess.org)

The U.S. Chess Federation Scholastic National K-12 Chess Championship, was held December 11-13, 2009 at the Hilton Anatole Dallas located in Dallas, Texas. 1,211 young chess enthusiasts came from all across the U.S. to participate.

We congratulate all players who participated which includes the following section winners:

Kindergarten: **Joaquin Perkins** (California) rated 1068, 7;

1st grade: **Awonder Liang** (Wisconsin) rated 1617, 6½;

2nd grade: **Rayan Taghizadeh** (California) rated 1567, 7;

3rd grade: **Ruifeng Li** (Texas) rated 1828, 6½;

4th grade: **Jeffery Xiong** (Texas) rated 2072, 6½;

5th grade: **Christopher J. Wu**

(New Jersey) rated 2119, 6½;

6th grade: **James A. Black** (New York) rated 1858, 6½;

7th grade: **Jarod M. Pamatmat** (Texas) rated 2202, 6½;

8th grade: **Vincent Zhang** (Texas) rated 2006, 6½;

9th grade: **Michael Chiang** (New York) rated 1992 and **Justin Karp** (New York) rated 2005, 6;

10th grade: **Matthew Liu** (Texas) rated 1944, 6½;

11th grade: **Marc Tyler Arnold** (New York) rated 2490, 7;

12th grade: **William C. Ong** (Texas) rated 2082, 6½.

Winner of the Blitz K-6 was **James A. Black** of New York with a score of 11 and **Raven M. Sturt** of New York rated 2315 won the Blitz K-12 with a final score of 11½.

**J. Tan** and **J. Williams** took the title of Bughouse champions with a team score of 9.

**Sonny Kamberi** of Louisiana, rated 2380 won the Parents & Friends Rated with a final score of 4; **Daniel E. Collier** of Oklahoma won the Parents & Friends Unrated with a final score of 3. The Parents & Friends Combined was won by the team of **Ruth Fermin** and her mom, **Jasmine**, with a total score of 5 points.

Complete list of all players and teams can be found at:

<http://www.uschess.org/tournaments/2009/k12/?page=RESULTS>.

The official crosstable can be found at:

<http://www.uschess.org/msa/XtblMain.php?200912139131-12770589>.



# What's the Problem?

By Stanley Kravitz

These five problems are all about bishops. Bishops have had a long period of development and change before becoming the modern piece with which we are now familiar.

Each bishop is limited to moving along squares of the same color so two bishops, unlike all the other pieces, are needed to threaten every square on the board.

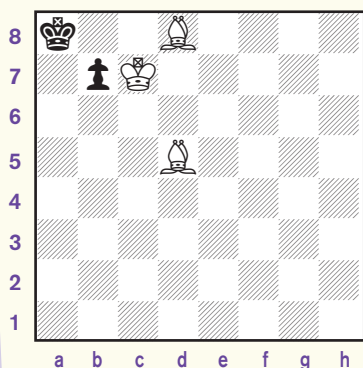
These five puzzles are all miniatures (less than 7 pieces) highlighting the bishop's power to control diagonals. The puzzles are arranged in order so that the easiest is first. If you are familiar with the mating method with only two bishops you will have a good head start.

Get out your watch to time how long it takes you to solve each one.

If you can solve a problem in **less than 30 seconds** give yourself 4 points. Solve in **under one minute** give yourself 3 points. Solve in **less than two minutes** 2 points. **Over two minutes** give yourself 1 point.

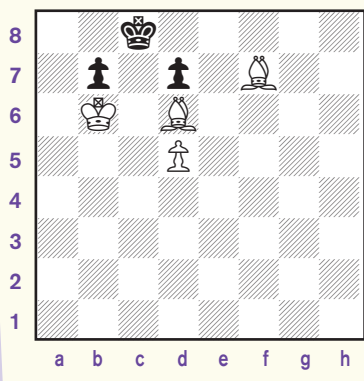
Master Solver 15-20 points. Good Solver 10-14 points. Fair solver 5-9 points. Under 5 points needs work.

## Puzzle 1. White to move and mate in three.



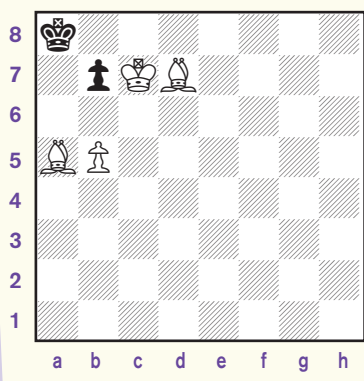
## Puzzle 2. White to move and mate in two.

There are many positions where it is hard to spot the winning move. You have to force your opponent to make a losing move in this problem.



## Puzzle 3. White to move and mate in three.

This is another bishop mate in a corner. Be careful to avoid stalemate.

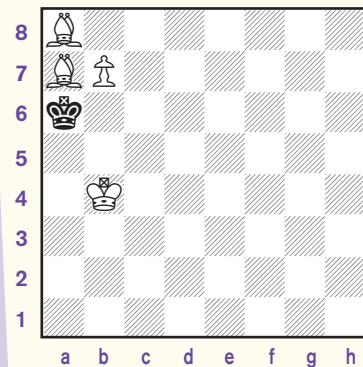


If a problem has more than one key move that results in mate, then the problem is said to be "cooked." This problem has only one first move called a "key" and two variations so it is not cooked. With the use of computers some nice problems have been found to be cooked. With a lot of work chess composers have been able to improve

a lot of problems and remove cooks.

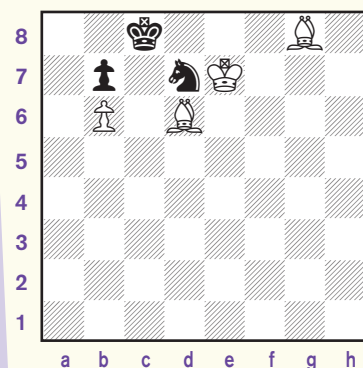
## Puzzle 4. White to move and mate in three.

You probably have noticed by now that in most miniatures with knights and bishops (the minor pieces) the black king is usually placed on the edge of the board. The reason is that with so few pieces on the board it would be difficult to prevent the king's escape. The edge has three less escape squares to worry about. In fact there are so few escape squares in the next puzzle that you may have to make some.



## Puzzle 5. White to move and mate in three.

Before you start, have a quick look at puzzle #2 as it has similarities and may have the same solution. A move that looks promising but does not mate in the required number of moves is called a try. So think about Bc7, the key to puzzle #2...maybe it's the solution. If not, look elsewhere.





# WIN OR DRAW?

by Pete Tamburro

You know the rules: **1.** Is it a win or a draw? **2.** If it's a win, who wins? It doesn't have to be the person with the move! **3.** If it's a win or even a draw, how exactly do you win it or draw it?

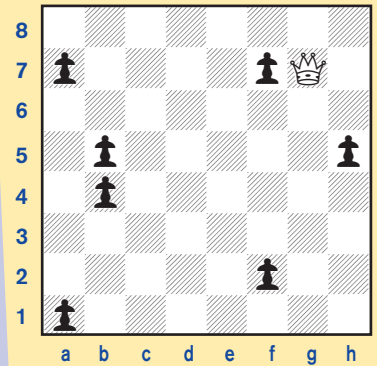
# PAWNMOWER CHESS

by Maurice Ashley

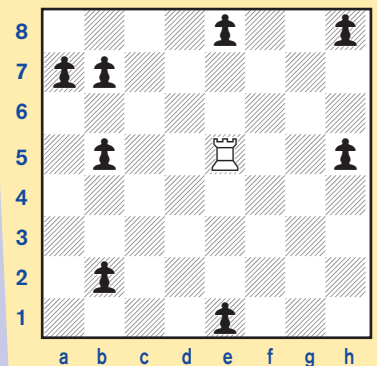
Your goal is to capture all the pawns on the board in just that many moves: five pawns, five moves; seven pawns, seven moves, and so forth. The rook should be easy, but try the queen! The queen will be a challenge!

We'll have a drawing and pick five winning entries, who will receive a copy of *Pawnmower Chess* by Maurice Ashley. Send your entry to: GPetersen@uschess.org, or Glenn Petersen, 44-D Manchester Court, Freehold, NJ 07728. Good luck!

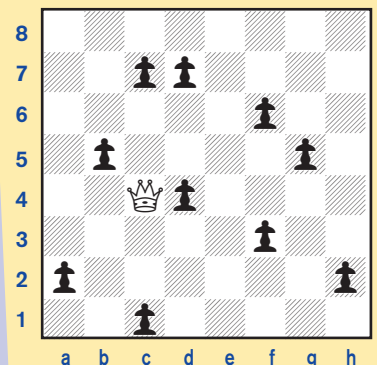
## Problem One



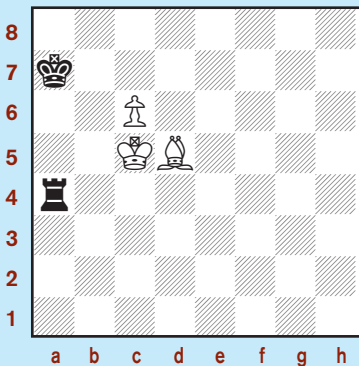
## Problem Two



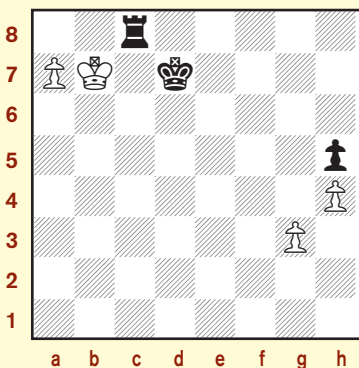
## Problem Three



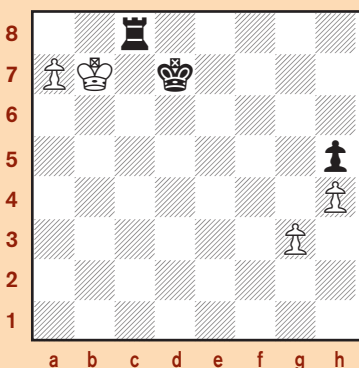
## Position One: White to play



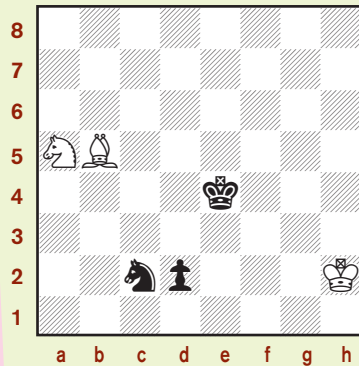
## Position Two: White to play



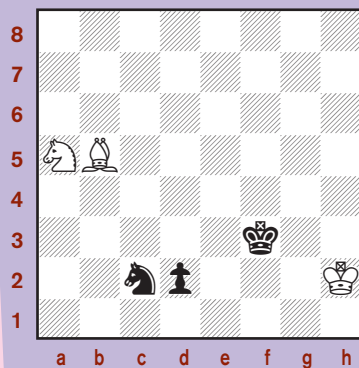
## Position Three: Black to play (Yup, same diagram!)



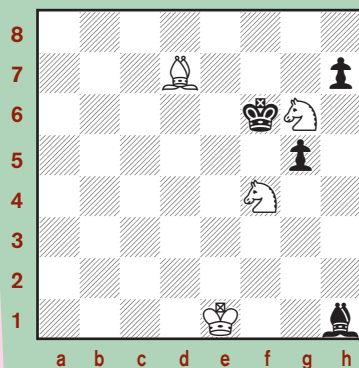
## Position Four: White to play



## Position Five: White to play (One square difference!)



## Position Six: White to play





# Tournament Life

400-200; (1599-1400): \$1000-600-400-200; (U1400): \$1000-600-400-200; (Un-rated): \$1000-600-400-200. **EF:** \$120 by 6pm 02/15, \$150 by 6pm 03/15; \$200 thereafter and onsite. No re-entries allowed. No half-point byes allowed (zero point byes only). **Onsite registration** from 3-5pm 03/19. **Rds.:** 3/19 - 6:30pm; 3/20-21-12pm and 6:30pm per day; 3/22-25 - 6:30pm per night. **Mail entries with registration information** to: North American Chess Association (make checks payable to), 4957 Oakton Street, Suite 113, Skokie, IL 60077. **More information and online registration available** at: www.worldchesschamps.com. Questions via email only: sevam@worldchesschamps.com. No smoking. For more information on additional prizes such as FIDE titles, Scholarships to Texas Tech University, a progressive prize fund, entry fee specials, and more, please visit the tournament website. Boards, sets, clocks provided. Tournament provided equipment must be used. **WCL JGP.**

**Mar. 26-28, Illinois**  
**2010 FIDE Intercontinental School Team Chess Championship - an Official FIDE Intercontinental Chess Championship!**  
7R-SS G/90 w/5-sec delay. Holiday Inn Hotel, 5300 W. Touhy Ave., Skokie, IL 60077. 847.679.8900. **Open to players in 5 age categories in teams of 4:** U10, U12, U14, U16, U18. Please see tournament website for more detailed age and team regulations. **Prizes:** Team-winners of First, Second and Third places in each age category and the members of the teams will be awarded Gold, Silver and Bronze medals, Diplomas and Special Trophies. Team trophies will be awarded also teams finished in 4th - 20th places in each age category. **EF:** \$150 by 6pm 02/01, \$175 by 6pm 03/01; \$200 thereafter. No onsite registrations allowed. No re-entries allowed. No half-point byes allowed (zero point byes only). **Rds.:** 3/26 - 6:00pm; 3/27 & 28 - 9am, 12pm and 6:00pm. **Mail entries with registration information** to: IntECS (make checks payable to), 63 75th Street, Willowbrook, IL 60527. **More information and online registration available** at: www.worldchesschamps.com. Questions via email only: mikhail@worldchesschamps.com. No smoking. Boards, sets, clocks provided. Tournament provided equipment must be used. **WCL JGP.**

## GRAND PRIX

**Feb. 27-28, Florida**  
**World Chess Live Grand Prix Points: 6**  
**Central Florida Chess Club Championship**  
5SS, G/120. Orlando Chess & Games Ctr, 8751 Commodory Cir., Suite 4, Orlando, 32819. **EF:** \$40. CFCC mem req @ \$25 (\$15 Jr/Sr). **\$\$\$ 600:** 190-100-70. **U2000, U1800, U1600, U1400 each 60, plaques (if mem as of Jan 27) to Club Champion, U2200, U2000, U1800, U1600, U1400, & top under age 16. Reg.:** Sat 9:15am. **Rds.:** 10-2-6, 9-2. **CFCC elections 1pm Sun.** Ent: CFCC, 921 N. Thistle Ln., Maitland, FL 32751. **Info:** (407) 629-6946 or www.centralfloridachess.org. **WCL JGP.**

**Feb. 27-28, Maryland**  
**World Chess Live Grand Prix Points: 10**  
**UMBC Open - Alvin S. Mintzes Chess Tournament**  
5SS, 20/1, SD/1. University of Maryland, Baltimore County, 1000 Hilltop Circle, Baltimore (in Commons, 3rd floor). Held concurrently with Maryland "Sweet 16" (Invitational) - winner to receive in-state fixed-dollar tuition scholarship to UMBC. **Open: (All) \$\$\$1050:** \$350-200-100 Gtd., Class prizes \$100 ea. to top U2250, U2150, U2050, U1950. Free ent. to GMs, \$40 deducted from any prizes. U1800: (U1800/Unr.) \$5765 b/40; \$250-175-100, Class prizes \$80 ea. to top U1600, U1400, U1200 (b/4). No Unr. player may win more than \$200 in this section. **All:** EF: \$40 if postmarked by 2/12, \$50 later, \$10 less if under age 20. **Reg.:** 8:30-9:30am Sat., **Rds.:** 10-3-7:30pm Sat, 10:30-3:30pm Sun. **Byes:** Up to three 1/2-pt. byes avail. in Rds. 1-5 if req'd at least 1 hr. before Rd. (before Rd 2 for any Rd. 4-5 bye), but only at most one 1/2-point bye in Rds 4-5. **HR:** La Quinta Inn and Suites, 1734 West Nursery Road, Linthicum, MD 21090, 410-859-2333. Ask for UMBC chess rate. www.lq.com (From I-95, take Exit 47A onto I-195 towards BWI Airport. Take Exit 2A onto 295 north towards Baltimore; take first exit, bearing right onto West Nursery Road.) **Directions to UMBC:** Take Exit 47B off I-95 & follow signs to UMBC. Park in Lot 9 or 16. **Ent:** Dr. Alan T. Sherman, Dept. of CSEE, UMBC, Attn: Championship, 1000 Hilltop Circle, Baltimore, MD 21250. Make out check to UMBC. **For more information:** ChessClub@umbc.edu, (410) 455-8499, www.umbc.edu/chess. NS, W, FIDE. **WCL JGP.**

**A State Championship Event!**  
**Mar. 5, Pennsylvania**  
**World Chess Live Grand Prix Points: 6**  
**2010 PA Quick Chess Championship (QC)**  
6SS, G/10, T/D3. Hotel Carlisle & Embers Convention Center, 1700 Harrisburg Pike, Carlisle, PA 17015, Exit 52A NB/Exit 52 SB off I-81, Exit 226 off PA Turnpike. 3 sections. **EF:** rec'd by 2/16. **Open:** \$12. **U1500:** \$10. **U1100:** \$8. \$5 (730G). **Open:** 175-100-50, U1800 \$40, U1600 \$40. **U1500:** 125-75-50, U1200 \$40, Unr \$30. **U1100:** Trophies: 1-5, U800, U600, 1-2 Unr. **All:** EF: \$20 after 2/16, PSCF \$5 OSA. **Reg.:** 6-6:30pm. Rd 1: 7pm. Feb 2010 Regular ratings used. **Bye:** limit 1, ask by rd 2. **HR:** Mention "PA States" for best rate; 800-692-7315 \$75. **Ent:** PSCF, c/o Tom Martinak, 25 Freeport St., Pittsburgh, PA 15223-2245. **Info:** martinak\_tom\_m@hotmail.com, 412-908-0286. W.

**Mar. 6-7, California Northern**  
**World Chess Live Grand Prix Points: 30 (enhanced)**  
**Spring Open**  
6SS, G/90. Bay Area Chess Center, 4423 Fortran Ct., San Jose, CA 95134. Free parking. **Prizes:** \$3,000 b/77 - \$\$\$60 2,000. 3 Sections. **Open (1800 & up):** \$5 Gtd. 500-200-100-100-100. **1400-1799:** \$500-200-101 (u1600 = 100-66-66). **U1400:** 500-200-101 (u1200:100-66). Unrated prize limit of \$200 in all sections except Open. **Sections EF:** \$66 mail/online by 3/4, Onsite + \$19 Play-up + \$19. GMs & IMs free before 3/4. Re-entry \$33. March 2010 Super, CCA min & TD discretion will be used to place players accurately. **Sched:** Reg. Sat 10-10:30a, Games at Sat 11, 2:15, 5:30; Sun 10, 1:15, 4:30. **Ent:** Bay Area Chess, 4423 Fortran Ct., Ste. 160, San Jose, CA 95134. \$20 charge for refund. **Questions:** contact@BayAreaChess.com, Tel 408-786-5515. **Info & Entries:** BayAreaChess.com/events/10/spring. NS, NC, W. **WCL JGP.**

**Mar. 6-7, Pennsylvania**  
**World Chess Live Grand Prix Points: 6**  
**2010 Carlisle Open & PA Collegiate Championship**  
5SS, G/90, T/D5. Hotel Carlisle & Embers Convention Center, 1700 Harrisburg Pike, Carlisle, PA 17015, Exit 52A NB/Exit 52 SB off I-81, Exit 226 off PA Turnpike. 2 sections: **Open & U1500.** \$5 (L260G): **Open:** 180-120, U2200 \$110, U2000 \$100, U1800 \$90, U1600 \$80. **U1500:** 150-100, U1400 \$90, U1200 \$85,

U1000 \$80, Unr \$75. **All:** College Tr: 1-2 in each section, 1-2 team (top 4 over both sections). **EF:** \$29 rec'd by 2/16, \$39 after, PSCF \$5 OSA. **Reg.:** 8:45-9:30 am. **Rds.:** 10-2-5:30, 9-1. Feb 2010 ratings used. **Bye:** limit 1, ask by rd 2. **HR:** Mention "PA States" for best rate; 800-692-7315 \$75. **Ent:** PSCF, c/o Tom Martinak, 25 Freeport St., Pittsburgh, PA 15223-2245. **Info:** martinak\_tom\_m@hotmail.com, 412-908-0286. W. **WCL JGP.**

**Mar. 13-14, 19-21 or 15-21, North Carolina**  
**World Chess Live Grand Prix Points: 60**  
**2010 U.S. Masters**  
See Nationals.

**A State Championship Event!**  
**Mar. 20, Pennsylvania**  
**World Chess Live Grand Prix Points: 6**  
**2010 PA State Game/29 Championship (QC)**  
5SS, G/29. Wm. Pitt Union, Univ. of Pitt., 5th & Bigelow, Pittsburgh, PA 15213. 2 Sections: **Champ:** EF: \$25 by 3/12, \$35 later. \$5 (690G): \$200-100, U2000 \$90, U1800 \$80, U1600 \$70, U1400 \$60, U1200 \$50, U1000 \$40. Trophies: 1-3 U1400, 1-3 U1200, 1-3 U1000. **Scholastic:** Grades K-12 unrated or U900. **EF:** \$15 by 3/12, \$25 later. Trophies to Top 7, 1-3 U600. **All:** Trophies: 1-2 Schools, 1-2 Clubs, Teams of 4-7 players from both sections. **PSCF \$5, OSA. Reg.:** 10-10:30am. **Rds.:** 11-12:30-1:45-3:45. **Ent/Info:** PSCF, c/o Tom Martinak, 25 Freeport St., Pittsburgh, PA 15223-2245, 412-908-0286. W.

**June 11-13 or 12-13, Nevada**  
**World Chess Live Grand Prix Points: 200 (enhanced)**  
**2010 National Open**  
See Nationals.

## REGIONAL

### Alabama

**Feb. 27, Birmingham Feb Tornado**  
**4SS, TC: 6/75. Homewood Community Center, 1632 Oxmoor Road, Homewood, AL 35209. OPEN (\$375 b/15):** \$200-100-75; **RESERVE (U1500):** \$375 b/15; \$200-100-75; **Late REG:** FEB 27th, 8-8:40am. **Rds.:** 9, 11:30, 2:30, 5. **EF:** \$30, if mailed by FEB 20th; **\$40** at site. **SCHOLASTIC (K-12):** 5SS, TC: G/40 - AMATEUR (UNR-999). **EF:** \$20, if mailed by FEB 20th, \$10 more at site. **Trophy:** Top 3. **Rds.:** 9-10:30-12:30-2, 3:30. Checks payable to: **Caesar Chess. ENT:** Caesar Chess, 4524 Southlake Parkway, Suite 34-PMB 310, Birmingham, AL 35244. **Info:** info@CaesarChess.com, www.CaesarChess.com. **WCL JGP.**

**Mar. 6, Alabaster Scholastic**  
5SS, TC: G/40. Thompson Intermediate School, 10019 Hwy 119, Alabaster, AL 35007. **RATED: (K-12), (K-6), (K-3) - EF:** \$20 and **NOT RATED: (K-8) and (K-3) - EF:** \$10, if mailed by FEB 27th; \$30/\$20 at site. **Trophy:** Top 3; Medals 4th-6th and Team Top 2 ea section. **Rds.:** 9-10:30-12:30-2, 3:30. **Late REG:** MAR 6th from 8-8:40am. **Checks payable to:** Caesar Chess. ENT: Caesar Chess LLC, 4524 Southlake Parkway, Suite 34 - PMB 310, Birmingham, AL 35244. **Info:** info@CaesarChess.com, www.CaesarChess.com.

### Arizona

**May 29-31, 2010 U.S. Amateur West Championship**  
See Nationals.

### California Northern

**Feb. 14, CalNorth Youth Chess Age Level Championships**  
San Mateo Marriott, 1770 South Amphlett Blvd., San Mateo, CA 94402. **Room Rate is \$89.** A \$15 rebate from the tournament will be provided for hotel guests reducing the room cost to \$74. Free shuttle service from the San Francisco Airport. **Info & Entry:** Form at www.calnortheyouthchess.org/AgeLevel2010. Open to 4 through 13 year olds who are USCF members. Competition by age not grade. Minimum of eight trophies to winners of each age group + a special 4 through 9 open group with longer time controls. Ages 4-5, 6, 7, 8, 9 Game/30, 5 Rds.: Ages 10, 11, 12, 13 + Open 4 to 9 Game/60, 4 Rds. Club/School Team trophies. Chess medals to all who do not win a place trophy. **Info:** Alan M. Kirshner, Ph.D., Alan@CalNorthYouthChess.org, (510) 659-0358.

**Feb. 20, Mar. 6, Apr. 10, Spring Swiss**  
at Bay Area Chess Center, 4423 Fortran Ct., Ste. 160, San Jose 95134. **4 sections. u500, 500-799, 800-1099, 1100-.** **EF:** \$33, +\$16 onsite + \$10 play-up. Latest rating supplement avail. used. TD may assign ratings. **Prizes:** Big Trophies to top 5 players & teams. Medals to rest. **Sched:** Reg. 9-9:30a. **u500 & u800:** 5 Games G/30 at 10a-2p. **u1100 & u1400:** 4 Games G/45 10a-4p. **Ent:** Bay Area Chess, 4423 Fortran Ct., Ste. 160, San Jose, CA 95134. **Questions:** contact@BayAreaChess.com, Tel 408-786-5515. **Info & Entries:** BayAreaChess.com/events/regular. NS, NC, W.

**Feb. 20, Mar. 6, Apr. 10, May 22, Scholastic Quads**  
at Bay Area Chess Center, 4423 Fortran Ct., Ste. 160, San Jose 95134. **EF:** \$25, **EF:** \$33 onsite + \$16. Latest available rating used. TD may assign ratings. **Prizes:** Trophies to winners & players with winning record. **Sched:** Regd check-in 4:45. End around 6-7pm. G/30 all rounds. **Ent:** BayAreaChess, 4423 Fortran Ct., Ste. 160, San Jose, CA 95134. **Questions:** contact@BayAreaChess.com, Tel 408-786-5515. **Info & Entries:** BayAreaChess.com/events/regular. NS, NC, W.

**Mar. 6-7, Spring Open**  
See Grand Prix.

**A State Championship Event!**  
**Apr. 16-18, CalChess State Scholastics 2010**  
at Santa Clara Convention Center, 5001 Great America Pkwy., Santa Clara, CA 95054. Free parking. **Hotel:** Hyatt Regency, 5001 Great America Pkwy., Santa Clara, CA 95054. Hotel rate \$99 code G-BACH. **14 sections.** Trophies to top 20 players & top 10 teams in each section. Trophies to all KG players & teams. **Sched:** KG or 1-3 new & under 800+ Sat 9-4:30. 4-6 new & under 600+ Sun 9-4:30. All other sections > Sat & Sun 9-6. Blitz & Bughouse in 4 sections (K-3 4-6 7-8 9-12) on Fri 6-9 & Sat 6-9, respectively. **EF:** 1-day > \$48, 2-day > \$60, Blitz & Bughouse: \$15. 10% discount to first 100 entries, 5% to next 200, 2.5%

to next 200. Register early to save your money & help our planning. **More info** at: CalChessScholastics.org. NS, NC, W.

**May 19-21, Denker Qualifier and Regional Championship Event!**  
Free parking. **Hotel:** Hyatt Regency Santa Clara, 5101 Great America Pkwy., Santa Clara, CA 95054. Hotel rate \$99 code G-BACH. 12 sections. Trophies to top 10 players & top 10 teams in each section. Trophies to all KG players & teams. **Sched:** KG, 1-3 new & under 800, 4-6 new & under 600+ Sat 9-4:30 only \* 7-8 Varsity & 9-12 Varsity\* 6 x G/120 Fri 5:45, Sat 9, 1:15, 5:45, Sun 10, 2:15. **2-day opt.** Sat 9, 12, 3 merges with the 3-day sched in rd 4. All other sections > Sat & Sun 9-6. **Blitz & Bughouse in 4 sections** (K-3 4-6 7-8 9-12) on Fri 6-9 & Sat 6-9, respectively. **EF for sections:** 1-day > \$48, 2-day > \$60, Blitz & Bughouse: \$15. 10% discount to first 100 entries, 5% to next 100, 2.5% to next 100. Register early to save your money & help our planning. **More info** at: CalChessScholastics.org. NS, NC, W.

## California Southern

**Feb. 6/30, Beverly Hills SATURDAY Scholastic Tournament (K-12)**  
5SS, G/30. BHCC, 8950 W. Olympic Blvd., #210, Beverly Hills, CA 90211. **EF:** \$20 if received one week in advance, \$25 after, \$30 at site (Siblings \$5 off). Mail checks to **Beverly Hills Chess Prizes:** Trophies, medals, & gift cert. **Reg.:** 12-12:45 pm. **Rnds.:** 1, 2, 3, 4, & 5 pm. Comp. Lecture 11-12 pm. **Lunch:** \$5 Pizza & Soda. www.bhchessclub.com. **Info:** Robert Minoofar, 888-91-CHESS (24377), or 310-274-7873, bhchessclub@hotmail.com.

**Feb. 7, 14, 21, 28, LACC - Junior Grand Prix Sunday Scholastics**  
5SS, G/30. LACC, 11514 Santa Monica Blvd., LA, 90025, 2nd Fl. 4 blocks 405 West. **EF:** \$25 (\$20 LACC memb, Free for new LACC memb). **Reg.:** 12-1 pm. **Rds.:** 1, 2, 3, 4, 5, 6. **Prizes:** A Disney prize for each player and top 10 qualify for the Junior Grand Prix with trophies, medals distributed at the end of the month. Free BOA or street parking; or underground (\$3). Free refreshments. Free class (12-1 pm). **Info:** (310) 795-5710 or www.LACHessClub.com.

**Feb. 13-15, 27th Annual U.S. Amateur Team West**  
See Nationals.

**Feb. 15, 13th Annual Southern California Scholastic Amateur Team**  
4-5SS, SD/45, Warner Center Marriott, 21850 Oxnard Street, Woodland Hills, CA 91367. Four-player teams plus optional alternate, Grade 12/below, average rating of four highest must be U1200. (Dec. 2009 rating list used. Feb. 2010 used for previously unrated players.) **EF:** \$75 per team received by 2/12, \$85 at site. Trophies (team & individual) to top 3 teams, top U1000, U800, U400/unr. **Reg.:** 9:00-10 a.m. **Rds.:** 10:30-1-2:45-4:30. **Info,** help in forming teams: scholteam@westernchess.com. Web site, advance entry list: www.westernchess.com. **HR:** \$119, 800-228-9290, ask for Western Chess. **Reserve by Jan. 20** or rates may go up. **Parking \$6.** **Ent:** SCCF, c/o John Hillery, 835 N. Wilton Place #1A, Los Angeles, CA 90038. NS, NC, W.

**Feb. 15, AT HEXES**  
3-SS, G/90. Warner Center Marriott, 21850 Oxnard Street, Woodland Hills, CA 91367. Six-player sections by rating. **EF:** \$20 if rec. by 2-12, \$25 door. \$540-20-10 each section. **Reg.:** 9:30-10:15 a.m. **Rds.:** 10:30-1:30-4:30. **Ent:** SCCF, c/o John Hillery, 835 N. Wilton Place #1A, Los Angeles, CA 90038, on line at www.westernchess.com.

**Feb. 21, Beverly Hills AFTERNOON Blitz Tournament (QC)**  
5 DSS, G/5 Q-Rated. BHCC, 8950 W. Olympic Blvd., #210, Beverly Hills, CA 90211. **EF:** \$10 if received one week in advance, \$15 after, \$20 at site (Members \$5 off). Mail checks to **Beverly Hills Chess Prizes:** 80% of EF (\$100 Guaranteed) - 1st/2nd/3rd: 40%,25%,15%. **Reg.:** 1-1:30 pm. **Rnds.:** Starts at 2 pm. Free Parking. www.bhchessclub.com. **Info:** Robert Minoofar, 888-91-CHESS (24377), or 310-274-7873, bhchessclub@hotmail.com.

**Feb. 28, Beverly Hills SUNDAY Scholastic Tournament (K-12)**  
5SS, G/30. BHCC, 8950 W. Olympic Blvd., #210, Beverly Hills, CA 90211. **EF:** \$20 if received one week in advance, \$25 after, \$30 at site (Siblings \$5 off). Mail checks to **Beverly Hills Chess Prizes:** Trophies, medals, & gift cert. **Reg.:** 12-12:45 pm. **Rnds.:** 1, 2, 3, 4, & 5 pm. Comp. Lecture 11-12 pm. **Lunch:** \$5 Pizza & Soda. www.bhchessclub.com. **Info:** Robert Minoofar, 888-91-CHESS (24377), or 310-274-7873, bhchessclub@hotmail.com.

**Mar. 12-14 or 13-14, 17th annual Western Class Championships**  
See Chess Life or www.chessstour.com.

**A State Championship Event!**  
**Mar. 27-28, SCCF Super State Scholastic Championship**  
HS and JH Championship section 6-SS, G/60. Elem and Primary (K-3rd) 6-SS, G/60. K-1 section 5-SS, G/30. OC Great Park, Irvine, Marine Way Irvine, CA 92618. Free parking. La Quinta Inn & Suites \$75 rate code Chess Palace. 14972 Sand Canyon Avenue, Irvine, CAInn - (949) 551-0909. Trophies to top 10 players, top 3 teams, and top 3 clubs in all sections. **9 Sections.** Sat 9a-4:30p only: K-1, Primary Reserve, Elementary Reserve — Sun 9a-4:30p only: Jr. High Reserve, High School Reserve, unrated section. Sat & Sun 9a-6p: all Championship sections (Elementary, Jr. High, and High). Sat 6-9p: Bughouse in 4 sections (K-3, 4-6, 7-8, 9-12). **Entry Fee:** for 1-day sections: \$35, 2-day sections: \$45, Blitz & Bughouse: \$15 each. 10% discount to first 50, 5% to next 50. Register early to save your money and our time. **More info** at: www.chessspalace.com. **WCL JGP** for HS and JH Championship section.

## Connecticut

**Apr. 16-18 or 17-18, Hartford Open**  
See Chess Life or www.chessstour.com.

## District of Columbia

**Mar. 7, Metro First Sunday Quads**  
3-RR, G/90. U.S. Chess Center, 1501 M St. NW. **EF:** \$20 \$\$ \$40 each quad. **Scholastic sections.** **EF:** \$10, Trophy prizes. **Both:** Reg: 9:15 - 9:50. **Rds.:** 10-1-4. (202) 857-4922. www.chessct.org/quads.php.

**Mar. 28, Metro Sunday Quads**  
3-RR, G/90. U.S. Chess Center, 1501 M St. NW. **EF:** \$20 \$\$ \$40 each quad. **Scholastic sections.** **EF:** \$10, Trophy prizes. **Both:** Reg: 9:15 - 9:50. **Rds.:** 10-1-4. (202) 857-4922. www.chessct.org/quads.php.

## Apr. 11, Rated Beginners Open (RBO)

4-SS, G/30, US Chess Center, 1501 M St. NW, Washington, DC 20005. Open to players rated under 1200 or unrated. **EF:** \$20 (\$15 if by 4/3). 5 sections by age. **Reg.:** 12-12:45. **Info:** 202/857-4922. www.chessctr.org/rbo.php.

## Florida

### Boca Raton Chess Club

**Friday nights, Game 90 Tournament, one game a week for 4 weeks.** www.bocachess.com, 561-883-2917. **WCL JGP.**

### Palm Beach Gardens Chess Club

Meets every Saturday 9 am till 4 pm. 4-SS Rated Games G/75 or G/120 (WCL JGP). Also, Scholastic Games G/30, 4-SS. For more info: see www.palm-beachchessclub.info or call President/TD John Dockery at 561-762-3377.

### Feb. 6, Mar. 6, Apr. 3, May 1 St. Petersburg Rated Beginner's Opens (RBO's)

5rd Swiss, G/30. USCF RBO 4 Sect. K-2U400; K-5U500; K-8U700; & K-12U1000; top 12 in each get trophy (all K-2 get trophy) all others medal. Team (2 or more) - best four scores from all divisions trophy to top 12. **EF:** \$18. SPCC mems \$15. 1st rd 10:15 AM. Sunshine Center, 330 Fifth St. N., St. Petersburg, FL. NC, W. pre-register online at www.stpetersburgchessclub.com. 727-822-1171.

### Feb. 12-14 or 13-14, 2010 U.S. Amateur Team South

See Nationals.

### Feb. 20, Palm Beach Day Academy Scholastic

Located at 1901 South Flagler Drive, WPB, FL 33401. **K-12, 15 Divisions, 5-SS, G/30, Saturday, 2/20/10.** Trophies for Top 5 Players and Top 5 Teams in each Division. For more info: see www.palmbeachchessclub.info or call President/TD John Dockery at 561-762-3377.

### Feb. 27-28, Central Florida Chess Club Championship

See Grand Prix.

## Illinois

### North American Chess Association

Tournaments for kids and adults of all playing strength. Creators of the electronic scoresheet, eNotate. Monthly FIDE title tournaments (WIM, WGM, IM). Sevan A. Muradian, FIDE Arbiter & International Organizer. www.na-chess.org | info@nachess.org | 888.80.CHESS

### Feb. 27, Kasparov Chess Foundation & Renaissance Knights Greater Chicago Junior High Championship!

5-SS, G/30, open to all grades 8/below. Crowne Plaza Northbrook, 2875 Milwaukee Ave., Northbrook, IL 60062 (free parking). 2 sections: **1. Varsity:** open to all. Trophies: top 6 players, the top 3 schools, top rated Under 1200 and top 3 unrated. **2. Junior Varsity:** Open to Under 1000 or unrated. Trophies: top 6 players, top 3 schools, top rated Under 700 and top 3 unrated. *Any player who scores 4 or more points and doesn't win a trophy will receive a medal!* **EF:** \$35 per player postmarked by 2/8/10. **All EF \$7 extra per player postmarked 2/9-15 (no mail accepted postmarked after 2/15).** Mailed entries \$5 less per player if 4 or more from same school mailed together in SAME ENVELOPE! **Mail Entries:** list name, rating USCF ID# (proof of current USCF membership required, enclose dues if necessary) school, grade, birth date, address & section. **Checks payable & mailed to:** Renaissance Knights, PO Box 1074, Northbrook, IL 60065. **Online entries at www.rknights.org** \$35 thru 2/15, \$42 2/15-23. No online entries after 2/23. \$5 extra to switch sections. **Refunds:** \$10 service charge for each player refunded. **On-Site entry fee:** \$50. On-site registration: ENDS 9:15 AM. **RDS:** 10-12-2-3-30-5-15. **Byes:** Limit 2. **More info:** www.rknights.org. **Questions:** renknights@aol.com (773) 844-0701. **HR:** \$79 chess rate, reserve by 2/12, may sell out, Tel: 847-298-2525. Sets provided, bring clocks.

### Feb. 27, Kasparov Chess Foundation & Renaissance Knights Greater Chicago Primary Championship!

5-SS, G/30, open to all grades 3/below. Crowne Plaza Northbrook, 2875 Milwaukee Ave., Northbrook, IL 60062 (free parking). 2 sections: **1. Varsity:** open to all. Trophies: top 6 players, top 3 schools, top rated Under 900 and top 3 unrated. **2. Junior Varsity:** Open to Under 700 or unrated. Trophies: top 6 players, top 3 schools, top rated Under 500 and top 3 unrated. **Trophies to the top 3 kindergartners!** *Any player who scores 4 or more points and doesn't win a trophy will receive a medal!* **EF:** \$35 per player postmarked by 2/8/10. **All EF \$7 extra per player postmarked 2/9-15 (no mail accepted postmarked after 2/15).** Mailed entries \$5 less per player if 4 or more from same school mailed together in SAME ENVELOPE! **Mail Entries:** list name, rating USCF ID# (proof of current USCF membership required, enclose dues if necessary) school, grade, birth date, address & section. **Checks payable & mailed to:** Renaissance Knights, PO Box 1074, Northbrook, IL 60065. **Online entries at www.rknights.org** \$35 thru 2/15, \$42 2/15-23. No online entries after 2/23. \$5 extra to switch sections. **Refunds:** \$10 service charge for each player refunded. **On-Site entry fee:** \$50. On-site registration: ENDS 9:15 AM. **RDS:** 10-12-2-3-30-5-15. **Byes:** Limit 2. **More info:** www.rknights.org. **Questions:** renknights@aol.com (773) 844-0701. **HR:** \$79 chess rate, reserve by 2/12, may sell out, Tel: 847-298-2525. Sets provided, bring clocks.

### Feb. 28, Kasparov Chess Foundation & Renaissance Knights Greater Chicago Elementary Championship!

5-SS, G/30, open to all grades 6/below. Crowne Plaza Northbrook, 2875 Milwaukee Ave., Northbrook, IL 60062 (free parking). 2 sections: **1. Varsity:** open to all. Trophies: top 6 players, top 3 schools, top rated Under 1000 and top 3 unrated. **2. Junior Varsity:** Open to Under 800 or unrated. Trophies: top 6 players; top 3 schools, top rated Under 600 and top 3 unrated. *Any player who scores 4 or more points and doesn't win a trophy will receive a medal!* **EF:** \$35 per player postmarked by 2/8/10. **All EF \$7 extra per player postmarked 2/9-15 (no mail accepted postmarked after 2/15).** Mailed entries \$5 less per player if 4 or more from same school mailed together in SAME ENVELOPE! **Mail Entries:** list name, rating USCF ID# (proof of current USCF membership required, enclose dues if necessary) school, grade, birth date, address & section. **Checks payable & mailed to:** Renaissance Knights, PO Box 1074, Northbrook, IL 60065. **Online entries at www.rknights.org** \$35 thru 2/15, \$42 2/15-23. No online entries after 2/23. \$5 extra to switch sections. **Refunds:** \$10 service charge for each player refunded. **On-Site entry fee:** \$50.

On-site registration: ENDS 9:15 AM. **RDS:** 10-12-2-3-30-5-15. **Byes:** Limit 2. **More info:** www.rknights.org. **Questions:** renknights@aol.com (773) 844-0701. **HR:** \$79 chess rate, reserve by 2/12, may sell out, Tel: 847-298-2525. Sets provided, bring clocks.

### Feb. 28, Kasparov Chess Foundation & Renaissance Knights Greater Chicago High School Championship!

5-SS, G/30, open to all grades 12/below. Crowne Plaza Northbrook, 2875 Milwaukee Ave., Northbrook, IL 60062 (free parking). 2 sections: **1. Varsity:** open to all. Trophies to the 6 top-scoring players and the 3 top-scoring schools, the top rated Under 1500, and the top 3 unrated. **2. Junior Varsity:** Open to Under 1200 or unrated. Trophies: top 6 players; top 3 unrated, top 3 schools, top Under 900 and top 3 unrated. *Any player who scores 4 or more points and doesn't win a trophy will receive a medal!* **EF:** \$35 per player postmarked by 2/8/10. **All EF \$7 extra per player postmarked 2/9-15 (no mail accepted postmarked after 2/15).** Mailed entries \$5 less per player if 4 or more from same school mailed together in SAME ENVELOPE! **Mail Entries:** list name, rating USCF ID# (proof of current USCF membership required, enclose dues if necessary) school, grade, birth date, address & section. **Checks payable & mailed to:** Renaissance Knights, PO Box 1074, Northbrook, IL 60065. **Online entries at www.rknights.org** \$35 thru 2/15, \$42 2/15-23. No online entries after 2/23. \$5 extra to switch sections. **Refunds:** \$10 service charge for each player refunded. On-Site entry fee: \$50. **On-site registration:** ENDS 9:15 AM. **RDS:** 10-12-2-3-30-5-15. **Byes:** Limit 2. **More info:** www.rknights.org. **Questions:** renknights@aol.com (773) 844-0701. **HR:** \$79 chess rate, reserve by 2/12, may sell out, Tel: 847-298-2525. Sets provided, bring clocks.

### Mar. 19-25, 2010 FIDE World Amateur Chess Championship

See FIDE.

### Mar. 26-28, 2010 FIDE Intercontinental School Team Chess Championship

See FIDE.

### May 27-31, 28-31, 29-31 or 30-31, 19th annual Chicago Open

See Chess Life or www.chesstour.com.

## Indiana

### Feb. 19-21, 2010 U.S. Jr. Chess Congress

See Nationals.

### Feb. 27-28, Kasparov Chess Foundation & Renaissance Knights present Greater Chicago Scholastic Championships! (IL)

See Illinois.

## Maryland

### Feb. 27-28, UMBG Open - Alvin S. Mintzes Chess Tournament

See Grand Prix.

### Apr. 11, Rated Beginners Open (RBO) (DC)

See District of Columbia.

## Massachusetts

### Mar. 5-7 or 6-7, 19th annual Eastern Class Championships

See Chess Life or www.chesstour.com.

## Michigan

### Feb. 27-28, Kasparov Chess Foundation & Renaissance Knights present Greater Chicago Scholastic Championships! (MI)

See Illinois.

## Missouri

### Mar. 19-21 or 20-21, 14th annual Mid-America Open

See Chess Life or www.chesstour.com.

## Nevada

### June 11-13 or 12-13, 2010 National Open

See Nationals.

## New Jersey

### Feb. 6, Princeton Day School

650 The Great Road. Plaques to top 3 school teams and top 6 in each section. Medals to all players. Four sections for OVER 1000 begin at 10:15 and must preregister: **OVER 1600** (K-12), **NEAR MASTERS** (K-12 over 1400) and **FUTURE MASTERS** (Players K-12 over 1200) G/60, 3 rds. **CLOSED** (K-12 1000-1200) G/45 4 rds. **ALL OTHER SECTIONS.** G/30 4 rds. beginning at 12:00 noon. (round times will be accelerated if possible): **OPEN** (Players K-12 U-1000), **RESERVE** (K-12 U-800), **NOVICE II** (K-8 U-600), **NOVICE I** (unrated K-6), **K-1** (unrated) **NO SCORE K-1** (unrated). **PARENTS OF PLAYERS** rated G/30 3 rounds. Pre-registration online \$35. On-site 11-12 noon \$45. **Info and register online:** www.pds.org/chess. Inquires to Bonnie Waitzkin Chessteach@gmail.com.

### Feb. 7, Monmouth Chess School & Club Anniversary Tournament

51 Monmouth St., Red Bank, NJ directions www.monmouthchess.com. 4SS, G/40. **EF:** \$35/25 members postmarked by 2/1; \$45/35 site. Masters free, EF deducted from winnings. Prizes based on 30 rounds: **OPEN** 150-75; **U1900** 100-50; **U1600** 100-50; **U1300** 80-40; **U1000** 75. **Reg.:** 11:45 - 12:15; **Rds.:** 12:30, 2:00, 3:30, 5:15. **Mail checks to:** MCS&C, c/o Dr. Kolbentz, 9 Rimwood Lane, Colts Neck, NJ 07722. Non-members cash only at site. Questions 732-219-0916.

### Feb. 13-15, World Amateur Team & U.S. Team East

See Nationals.

### Feb. 19, Monmouth Chess School & Club February Scholastic

51 Monmouth St., Red Bank, NJ directions www.monmouthchess.com. 4SS or 5SS if 30 or more entries, G/30. **EF:** \$35/25 members postmarked by 2/1; \$45/35 site. Trophies top 5 in each section, medals for all who complete four rounds. Book/merchandise prizes \$100 for first in each section: **K-12; K-8, K-**

**5, K-2. Reg.:** 11:45-12:15; **Rds.:** 12:30, 1:45, 3:15, 4:30. Accelerated rounds if possible. **Mail checks to:** MCS&C, c/o Dr. Kolbentz, 9 Rimwood Lane, Colts Neck, NJ 07722. Non-members cash only at site. Questions 732-219-0916.

### Feb. 20, Jersey Shore K-12 Regionals

The Academy at Grace and Peace, 1563 Old Freehold Rd., Toms River, NJ 08755. **All Sections open to K-12. Section A:** U500, **Section B:** 500-1000, **Section C:** 1000-1500, **Section D:** 1500+. **Section A, B, C 4SS, G/30. Section D: 3 Rounds, G/60.** Trophies to Top 5 in each section, Medals to all others. **EF:** \$25 if rec'd by 2/13, \$30 on site. **Reg.:** 9:00-9:45 AM. **Rds.:** 10:00 AM and ASAP. **Info:** John Burke, 908-705-7958 or johnburke@yahoo.com. **Ent:** Make checks payable to The Academy at Grace and Peace. Please indicate USCF ID# and section.

### Feb. 27, Super Scholastics Saturday Swiss K-8

Somerset Ramada Inn, 60 Cottontail Ln., Somerset, NJ Exit #12 off I-287. (In 4 Sections/& skillies) Trophies to top 5, others get medals/prizes. **Hot Shots** (always U1700): 4SS G/45, \$150-100-50, b/10. **Checkmates** (always U1300): 4SS G/45, \$100-50 b/10, **New Stars** (always U1000): 5SS G/30, \$100-50 b/10, **Chess Pirates** (always U600): 5SS G/30, \$100-50 b/10. Player's highest life time rating used. **Rds.:** 11am then ASAP lunch break. **EF:** \$27 mailed by 02/22 or paid online, entreeffees.com. **EF** at site \$35. **Cash only. Reg.:** before 10:45am. **Ent:** 115 W. Moore St., Hackettstown, NJ 07840. **Info:** Ken Thomas acn@goes.com or 908-763-6468. NS, NC, W.

### A State Championship Event!

### Feb. 28, New Jersey Junior High School Championships

5SS, G/30. Brookdale College, 765 Newman Springs Road, Lincroft, NJ 07738. Student Life Center, use Parking Lot #7 or #6; 5 minutes from Garden State Parkway exit 109. 5SS, G/30. **Section: JHS (K-9).** **More Trophies! ALL:** Trophies to top = 2 015 individuals, top 5 teams. **Rds.:** 10am then ASAP Top 4 scores constitute team score. **EF:** \$30 before 2/20, \$50 at site. USCF memb. req'd. **EF** includes 1 year memb. to NJSCF for NJ state residents. **Reg.:** 8-9:00 am. After 9:00 am, half-point bye for round one. **Info:** 732-259-3881, hspcrhman@characterkings.org. **ENTRY:** Aaron Kiedes, 4 Seymour Terrace, Hackensack, NJ 07840. Entries must include name, grade, school, date of birth, USCF ID #, & expiration date, mailing address, phone number & entry fee. Checks made out to NJSCF.

### A State Championship Event!

### Feb. 28, New Jersey State Elementary Championships

5SS, G/30. Brookdale College, 765 Newman Springs Road, Lincroft, NJ 07738. Student Life Center, use Parking Lot #7 or #6; 5 minutes from Garden State Parkway exit 109. 2 Sections: **Elementary (K-6) & Primary (K-3).** **All:** Trophies to top 15 individuals, top 5 teams. Elementary & Primary: Top 5 in each grade. **Rds.:** 10am then ASAP Top 4 scores constitute the team score for Elementary; top 3 for Primary. **EF:** \$30 before 2/21, \$50 at site. USCF memb. req'd. **EF** includes 1 year Atlantic Chess News for NJ state residents. **Reg.:** 8-9:00am After 9:00am 1/2 point bye for round 1. **Info:** 732 259-3881, **Ent:** Aaron Kiedes, 4 Seymour Terrace, Hackettstown, NJ 07840. Entries must include name, grade & school, date of birth, USCF ID and expiration date, mailing address, email address, phone number and entry fee. Checks made out to NJSCF.

### Mar. 6, King's Chess Club Quads

Morning quads and afternoon quads, G/30, K-12, Bethlehem Church, 758 Route 10, Randolph, NJ 07869. **EF:** None. **Reg.:** 9-9:20 am., 1st rd. 9:40. Arr. by noon to reg. only for afternoon quads. Medal to each quad winner. **Info:** Bethlehem Church 973-366-3434 or Bob McAdams 973-694-3988, rwm@fambright.com.

### A State Championship Event!

### Mar. 6-7, New Jersey High School Chess Championships

5SS, G/30. Rutgers University - Rutgers Student Center, 126 College Avenue, New Brunswick, NJ 08901. Call (732) 445-6127 for directions. **3 sections: Varsity Championship (9-12):** 5 player teams with one alternate allowed. Coaches set order by player strength. Order must not be changed. Team avg. based on top 5 highest ratings. Trophies to top 10 NJ teams. Trophies for top three players, boards 1-5. **Rds.:** Sat. 10-2-6, Sun. 10-2. **EF:** \$150-/team before 2/27. \$185-/team at site. \$5 per change on site. **Junior Varsity (9-12):** 4 player teams with one alternate allowed. Team avg. based on top 4 highest ratings. Trophies to top 10 NJ teams. Trophies for top 3 players, boards 1-4. **Rds.:** Sat. 10-2-6, Sun. 10-2. **EF:** \$120-/team before 2/27, \$150/individual at site. \$5 per change on site. **Booster (K-12):** Trophies to top 15 individuals, top 5 teams, top 2 JHS, & top 2 elementary (K-6). **Rds.:** Sat. 10-2-6, Sun. 10-2. Top 4 scores constitute team score. **EF:** \$30 before 2/27, \$37 at site. **All:** USCF memb. required. **EF** includes 1 year membership to NJSCF for NJ residents. **Reg.:** Sat. 8-9:00am. After 9:00am, 1/2 Point bye for round one. **Info:** 973-794-4601. **Ent:** Make checks payable to NJSCF and send to Roger Inglis, 49A Mara Rd., Lake Hiawatha, NJ 07034. Entries must include, name, grade & school, date of birth, USCF ID # & exp. date, mailing address, email address, phone number and entry fee. **WCL JGP.**

### Mar. 13, Princeton Day School

650 The Great Road. Plaques to top 3 school teams and top 6 in each section. Medals to all players. Four sections for OVER 1000 begin at 10:15 and must preregister: **OVER 1600** (K-12), **NEAR MASTERS** (K-12 over 1400) and **FUTURE MASTERS** (Players K-12 over 1200) G/60, 3 rds. **CLOSED** (K-12 1000-1200) G/45 4 rds. **ALL OTHER SECTIONS.** G/30 4 rds. beginning at 12:00 noon. (round times will be accelerated if possible): **OPEN** (Players K-12 U-1000), **RESERVE** (K-12 U-800), **NOVICE II** (K-8 U-600), **NOVICE I** (unrated K-6), **K-1** (unrated) **NO SCORE K-1** (unrated). **PARENTS OF PLAYERS** rated G/30 3 rounds. Pre-registration online \$35. On-site 11-12 noon \$45. **Info and register online:** www.pds.org/chess. Inquires to Bonnie Waitzkin Chessteach@gmail.com.

### Mar. 20, Jersey Shore K-12 Regionals

The Academy at Grace and Peace, 1563 Old Freehold Rd., Toms River, NJ 08755. **All Sections open to K-12. Section A:** U500, **Section B:** 500-1000, **Section C:** 1000-1500, **Section D:** 1500+. **Section A, B, C 4SS, G/30. Section D: 3 Rounds, G/60.** Trophies to Top 5 in each section, Medals to all others. **EF:** \$25 if rec'd by 3/13, \$30 on site. **Reg.:** 9:00-9:45 AM. **Rds.:** 10:00 AM and ASAP. **Info:** John Burke, 908-705-7958 or johnburke@yahoo.com. **Ent:** Make checks payable to The Academy at Grace and Peace. Please indicate USCF ID# and section.

### Mar. 21, Westfield Spring Scholastic

Westfield V, 220 Clark Street, Westfield, NJ. **3 Sections:** K-12 full K Open, Under 1250, Under 750. **Open Section:** 3 SS game/45 trophies to top five players in each section. **Entrance Fee:** \$20, \$15 Members at site \$30, \$25 Registration 2-

2:30 p.m. **Rounds:** 2:45-4:25-6:05 p.m. **Under 1250** 4 SS game/30 Trophies to top 5 in each section. **Entrance Fee:** \$20, \$15 Members. Registration 2-2:30 p.m. **Rounds:** 2:45-4:00-5:15-6:30 p.m. **Under 750** trophies to top five players in each section. **Entrance Fee:** \$20, \$15 Members at site \$30, \$25. Registration: 2-2:30 p.m. **Rounds:** 2:45-4:00-5:15-6:30 p.m. Tiebreaks for trophies **Info:** Todd Lunna 732-526-7163, lunnaac@aol.com, www.westfieldchessclub.com. Send Advance Entries to: Todd Lunna, 36 Maple Drive, Colts Neck, NJ 07722 by March 17<sup>th</sup>.

**Mar. 27, Super Scholastics Saturday Swiss K-8**  
Somerset Ramada Inn, 60 Cottontail Ln., Somerset, NJ Exit #12 off I-287. (In 4 Sections/ & skittles) Trophies to top 5, others get medals/prizes. **Hot Shots** (always U1700): 4SS G/45, \$150-100-50 b/10. **Checkmates** (always U1300): 4SS G/45, \$100-50 b/10, **New Stars** (always U1000): 5SS G/30, \$100-50 b/10, **Chess Pirates** (always U600): 5SS G/30, \$100-50 b/10. Player's highest life time rating used. **Rds.:** 11am then ASAP, lunch break. **EF:** \$27 mailed by 03/22 or paid online, entryfeesrus.com. **EF** at site \$35. **Cash only. Reg.:** before 10:45am. **Ent:** 115 W. Moore St., Hackettstown, NJ 07840. **Info:** Ken Thomas acn@goes.com or 908-763-6468. NS, NC, W.

## New York

### Feb. 21, 11th Annual NY February Under 13 Open!

4-SS, G/30, open to all born after 2/21/97. Chess Center at Marshall Chess Club, 23 West 10th St., bet. 5-6 Ave., NYC: 845-569-9969. May be limited to 1st 52 entries. 2 Sections. **1. Open,** EF: \$32 postmarked by 2/12/10. **2. Novice,** for Under 1000 or Unrated, EF: \$31 mailed by 2/12. **Both,** EF: \$30 online at [www.chesscenter.cc](http://www.chesscenter.cc) by 2/18, \$35 by phone at 406-896-2191 by 2/18, \$40 at site. Club members \$10 less (\$10 fee for refunds). Trophies to top 10, top unr, top 3 teams (top 3 scorers from same school) each section. 8 weeks free entry to 1st, 4 weeks free to 2nd each section. Speed playoff for 4-0. Limit of 2 byes, commit by 11:30. On-site reg. ends 9:30 am. Rds 10-11:30-12:45-2 pm. **Ent:** Chess Center of NY, PO Box 4615, New Windsor, NY 12553. List USCF ID, rating, section, school/grade, DOB.

### Feb. 21, Sunday Under 1400 Action!

4-SS, G/30. Chess Center at Marshall Chess Club, 23 West 10 St., between 5-6 Ave., NYC: 212-477-3716, for Under 1400 or unrated. EF \$30, Club Members \$20, specified Greater NY Scholastic prizewinners free. **\$200 b/20 paid:** \$100-60-40, \$60 limit to unr. Reg. ends 3:45 pm. Rds. 4-5:15-6:45-8 pm. No advance entries.

### A State Championship Event!

#### Feb. 27-28, New York State Scholastic Championships

Open to grades K-12 in any state (top NYS player & team in each section are NY champions). Saratoga Hilton, 534 Broadway (I-87 Exit 13-N, 4 miles north on US 9), Saratoga Springs, NY 12866. Team prizes based on top 4 scores from same school; no combined school teams allowed even if one school "feeds" another. Teams of 2 or 3 players allowed, but are at a disadvantage. In 6 sections, each is a 6SS, G/60 except K-1 is 5SS, G/30 playing Feb 28 only. **High School,** grades K-12. EF \$38 mailed by 2/5. Top NYS grade 9-12 qualifies for Denker Tournament of HS Champions. **Junior High,** grades K-9. EF \$37.90 mailed by 2/5. **Elementary,** grades K-6. EF \$37.60 mailed by 2/5. **Elementary Novice,** grades K-6 under 800 or unrated. EF \$37.50 mailed by 2/5. **Primary,** grades K-3. EF \$37.30 mailed by 2/5. **K-1, grades K-1.** EF \$37.10 mailed by 2/5. **Postmarked 2/6-16:** All EF \$10 more. Do not mail entry after 2/17. **Online at chessour.com, all sections:** EF \$40 by 2/6, \$50 by 2/22. No online entry after 2/22. **Phoned to 406-896-2038, all sections:** \$55 by 2/22. No phone entry after 2/22. **Entry at site:** all \$60. Trophies to top 20 players, top 3 Unrated, and top 8 teams each section and top each U1400, U1200, U1000 (H), U1200, U1000, U800 (JHS), U1000, U800 (Elem), U600, U400 (Elem Novice). Speed playoff if perfect score tie. **Free entry** to NY State Championship, Labor Day weekend 2010 (Albany), to top player each section. **Schedule:** Late reg. ends Sat 11 am, rds Sat 12-3-6, Sun 9-12-2:30. **K-1 schedule:** Late reg. ends Sun 9 am, rds Sun 10-12-1:30-3-4:30. **Half point byes** OK all, limit 2, must commit before rd. **HR:** \$117-117, 888-999-4711, 518-584-4000, reserve by 2/13 or rate may increase. 48 hours notice required for room cancellation. Backup hotel: Courtyard by Marriott, 2 blocks away. **Mail entry:** 518-226-0538. **Special car rentals:** Avis, 800-331-1600, use AWD #657633. **518 entry:** Continental Chess, PO Box 249, Salisbury Mills, NY 12577. Include name, rating, USCF ID, USCF expiration (non-members enclose dues), section, school, grade, birth date, address of each player. Checks payable to Continental Chess. **\$15 per player** service charge for refunds. **\$10 extra to switch** sections, all substitutions from advance list charged \$60. **Questions:** chessour.com, 845-496-9658. **Bring set, board, clock** if possible- none supplied.

### Mar. 7, Rodeph Sholom Scholastic Chess Championship III

4-SS, G/30. 7 WEST 83 ST., NYC. 5 SECTIONS. **BEGINNER** (grades K-1 only) Unrated Players Only. **NOVICE** (grades 2/below) U600. **RESERVE** (grades 2-6 only) U500. **PRIMARY** (Grades 5/below) U1000. **CHAMPIONSHIP/OPEN** (grades 12/below). **AWARDS:** Trophies to top 15 in each section. Top U400 NOVICE, U700 PRIMARY, U800 CHAMPIONSHIP. **Special Prizes:** Engraved digital chess clocks to: Top Player in each section, all 4-0 scores & Top Unrated in Open Section. Engraved plaque to top UNR player in each section. High Scorer trophy to all who score 2 and do not get into top 15. Engraved medals to all others. **Team Prizes:** Trophies to top 4 teams in each section. Engraved digital chess clock to Top Team in each section. (Team score created by adding top 4 scores from same school). **EARLY EF:** \$39 if received (postmarked by March 1). **LATE EF:** \$45 Phoned, faxed or online thereafter until March 5, 5pm. **Onsite EF:** \$55. **Reg.:** 9-9:30. **Rds.:** All 10-11:30-12:45-2. Late entrants may not be paired for the first round. **Mail Entries:** and make check payable to Tri-State Chess, 1675 York Ave. #2M, N.Y.N.Y. 10128 Phone: (718) 645-5896 Fax: (718) 535-7896 Online Entry: [www.TriStateChess.com](http://www.TriStateChess.com).

### Mar. 7, The Right Move #160 Team and Individual Championship FREE EF.

4SS, G/30. Play starts promptly at 10:00. Players must check in by 9:15 A.M. (latecomers will not play in round one). Brandeis H.S., 145 W. 84th St., 10024 (near Columbus Ave., Manhattan, NYC). **Open to gr. K-12. Five rated sections: Open, Under 1700, Under 1200, Under 800, Under 600.** (May renew or join USCF at tournament). Non-member sections by grades: K-3, 4-6, 7-12. Trophies to top 3 in each section except Open (\$50, \$30, \$20 for 1st-3rd); medal to each player with 2.5 or more points. Team plaque to 1st and 2nd each section, with top 4 scores counting in each section (minimum 3 players on team in section). **To register:** use website at [www.therightmove.org](http://www.therightmove.org) or email - thechessstop@aol.com or Fax to 718-455-2863 before 6:00PM on Fri. Give full

name, school, grade, USCF ID#, exp. date, and section. **NO ON-SITE REGISTRATION.**

### Mar. 27, Prove Your Point!

3-SS, G/30. Chess Center at Marshall Chess Club, 23 W. 10th St., NYC: 212-477-3716. **EF:** \$20. 3-0 wins \$40, 2.5 wins \$20, 2 wins \$10. Reg ends 7:20 pm. Rds. 7:30-8:30-9:30.

### Apr. 10, NY April Under 1600!

4-SS, G/50, open to U1600 or unr. Chess Center at Marshall Chess Club, 23 W. 10th St., bet 5-6 Ave., NYC: 845-569-9969. **EF** \$40, Club members \$25, specified Greater NY Scholastic prizewinners free. **May be limited to 1st 26 entries.** \$\$ (300 b/20 paid): 150-70-30, top U1300 \$50, \$70 limit to unr. Limit 2 byes, commit by 2:30. Reg. ends 15 min before game. Rds. 12:30-2:30-4:30-6:30 pm. CCA Ratings may be used. **Online entry at [www.chesscenter.cc](http://www.chesscenter.cc) thru 4/8. \$10 extra to "enter" by phone!**

### Apr. 10, Prove Your Point!

3-SS, G/30. Chess Center at Marshall Chess Club, 23 W. 10th St., NYC: 212-477-3716. **EF:** \$20. 3-0 wins \$40, 2.5 wins \$20, 2 wins \$10. Reg ends 7:20 pm. Rds. 7:30-8:30-9:30.

### May 14-16 or 15-16, 18th annual New York State Open

See *Chess Life* or [www.chesstour.com](http://www.chesstour.com).

## North Carolina

### Mar. 13-14, 19-21 or 15-21, 2010 U.S. Masters

See Nationals.

### Mar. 13-14, 19-21 or 15-21, N.C. Sub-Masters

9SS, 40/2, SD/30 Hendersonville, NC. \$13670 b/50. **Rds.:** Concurrent with U.S. Masters. **EF:** \$50 by Feb 13, \$55 by Mar 9, \$60 at site. **HR:** Quality Inn & Suites, 201 Sugarloaf Rd., Hendersonville NC 28792. \$60 or \$68/night with hot breakfast, indoor pool, sauna, jacuzzi, and mini-golf. 800-581-4745, [www.qualityinn-suites.com](http://www.qualityinn-suites.com). **Info and entry:** Kevin Hyde, 705 Old Mountain Page Rd., Saluda, NC 28773. [hyde@ioa.com](mailto:hyde@ioa.com) [www.ncchess.org](http://www.ncchess.org). **WCL JGP.**

### Mar. 13-14, 19-21 or 15-21, Sub-Sub-Masters RBO

9SS, 40/2, SD/30 Hendersonville, NC. Rated U1000 or unrated. Plaque to 1st. **Rds.:** Concurrent with U.S. Masters. **EF:** \$10. **Info and entry:** Kevin Hyde, 705 Old Mountain Page Rd., Saluda, NC 28773. [hyde@ioa.com](mailto:hyde@ioa.com) [www.ncchess.org](http://www.ncchess.org). **WCL JGP.**

## Ohio

### Mar. 13, 9th Annual Queen City Classic Chess Tournament

5SS, G/30. Paul Brown Stadium, Club West, Downtown Cincinnati, OH. **17 School Sections, includes rated and non-rated.** Grade K Non-Rated, Grade 1 Non-Rated, Grade 2 Non-rated, Grade 3 Non-rated, Grades K-3 <600, Grades K-3 Open, Grade 4 Non-Rated, Grade 5 Non-Rated, Grade 6 Non-Rated, Grades 4-6 <700, Grades 4-6 Open, Grades 7-9 Non-Rated, Grades 7-9 <900, Grades 7-9 Open, Grades 10-12 Non-Rated, K-12 Open, Collegiate, USCF membership is not required for the non-rated and K-3 rated sections. Registration form online at [www.queencityclassic.org](http://www.queencityclassic.org). **Prizes:** Trophies to all who score 3.5 points or higher, top five team trophies awarded medals to all others. **EF:** \$35 early bird fee which includes lunch, t-shirt, program/score book, medal, simul participation. **Note correction:** Registration fee increases to \$50 after February 16. **Registration closes Wednesday, March 10, 2010. NO SATURDAY REGISTRATIONS.** Checks, VISA, MasterCard, Discover and AmEx accepted. **Schedule:** Friday, March 12, early check in from 4-6 p.m. FREE SIMUL at 6:30 p.m. for tournament participants, \$20 for non-participants. SIMUL features International Master Irina Krush, International Grandmasters Maurice Ashley and Gregory Kaidanov and special guests. Saturday, March 13, check in 7-8:30 a.m., matches begin at 9:00 a.m. Grandmasters will be available for questions and instructions in the skittles room all day Saturday. **Entry/Info:** Queen City Classic Chess Tournament; 5400 Kennedy Avenue, Cincinnati, OH 45213. 1.866.772.4377, 513.924.5038 or fax to 513.352.9370. Confirm all registrations at [www.cpu-solutions.com](http://www.cpu-solutions.com).

### Apr. 16-18, 2010 All Girls National Championship presented by the Kasparov Chess Foundation in association with the USCF and UTD. See Nationals.

## Pennsylvania

### Feb. 19, Friday Night Action #14

4SS, G/30. Belmont Park Classroom, 200 Anderson Road, King of Prussia, PA 19406. **Sections:** Open, U/1400. **EF:** \$30 online by noon the day of the event; \$10 more on-site 6:30-6:45; \$10 less for players under 18. **Rds.:** 7:00, then ASAP. **Prizes:** \$100 to 1st overall; others per entries. Register at [www.silverknightschess.com](http://www.silverknightschess.com). Registration limited to first 30 players.

### Feb. 21, PCL February Quick Quads (QC)

3RR, G/15. Wm. Pitt Union, Univ. of Pittsburgh, 5th Ave. & Bigelow, Pittsburgh, PA 15213. **EF:** \$10, \$7 Jrs. \$20 to 1st/quad. Reg.: 11-11:15am, Rds.: 11:30am-Noon-12:30pm. **Info:** [martinak\\_tom\\_m@hotmail.com](mailto:martinak_tom_m@hotmail.com), 412-908-0286. W.

### Feb. 27, State Warm-Up

4SS, G/30. Mother of Divine Providence School, 405 Allendale Road, King of Prussia, PA 19406. **Sections:** K-6 U/700, K-12 Champ. **EF:** \$22 online by 2/24; \$27 online by noon 2/26; \$35 on-site 9:00-9:30. **Rds.:** 10:00, then ASAP. **Prizes:** trophies to top individuals & schools. **Free game analysis** by NM Peter Minear. See [www.silverknightschess.com](http://www.silverknightschess.com) to register, or for information about sections for unrated players.

### Mar. 5, 2010 PA Quick Chess Championship (QC)

See Grand Prix.

### Mar. 6-7, 2010 Carlisle Open & PA Collegiate Championship

See Grand Prix.

### A State Championship Event!

#### Mar. 6-7, 2010 PA State Scholastic Championship

5SS. 142 Trophies!! (With 107 Individual & 35 Team). Hotel Carlisle & Embers Convention Center, 1700 Harrisburg Pike, Carlisle, PA 17015, Exit 52A NB/Exit 52 SB off I-81, Exit 226 off PA Turnpike. 8 sections (Sat & Sun 3/6 & 7 unless indicated): **EF:** K-3 Open: (Sat 3/6 only) \$29. K-6 U800: (Sat 3/6 only) \$27. K-9

U1000: (Sun 3/7 only) \$27.25. **K-6 Open:** \$30.50. **K-8 Open:** \$31.50. **7-12 U1000:** \$28.50. **7-12 U1300:** \$29.50. **K-12 Open:** \$32.50. **All:** EFs if rec'd by 2/16, \$10 more rec'd 2/17-3/2, \$20 more after 3/2. Feb 2010 ratings used. **Bye:** limit 1, ask by rd 2. Reg Fri 3/5 6-10 pm, Sat 3/6 9:30-10:15 am, Saturday at site entries get 1/2-by. \$5 charge for changes/refund after 2/16. Rds (Sat 3/6 1-day sections): G/40 T/D5; 10-11:45-2:35-4:50; (Sun 3/7 K-9 U1000): G/40, T/D5; 9-10:30-12:30-2:30; (2-day sections): G/90, T/D5; 10-2-5:30, 9-1. **Bughouse:** Reg on-site only until Sat 3/6 8:30pm. Rds begin Sat 3/6 8:45pm. **EF:** \$20/team. **HR:** Mention "PA States" for best rate; 800-692-7315 \$75. **Ent:** PSCF, c/o Tom Martinak, 25 Freepost St., Pittsburgh, PA 15223-2245. **Info:** Steve: 215-784-5938 [piecebreaker@hotmail.com](mailto:piecebreaker@hotmail.com) Dan: 610-649-0750 [danneisman@comcast.net](mailto:danneisman@comcast.net) [www.pscfchess.org/pascholasticchamp/](http://www.pscfchess.org/pascholasticchamp/). **W. WCL JGP in 2-Day sections.**

### Mar. 20, 2010 PA State Game/29 Championship (QC)

See Grand Prix.

### Mar. 20, Greater Philadelphia Scholastic Championships

Rador Middle School, 150 Louella Avenue, Wayne, PA 19087. **Sections:** K-1, K-3, K-6, K-8, K-12. **Time Control:** K-1, K-3, K-6 5SS, G/30; K-8, K-12 4SS, G/60. **EF:** \$30 online by 3/17; \$35 by noon 3/19; \$40 on-site if at least 30 minutes before round 1. **Rds.:** K-1, K-3, K-6 10-11:05-12:30-1:45-3:00, awards ceremony at 4:00; K-8, K-12 10-12:30-2:35-4:00, awards ceremony at 5:40. **Prizes:** trophies to top individuals & schools. All players in K-1, K-3, and K-6 sections get trophies. **Free game analysis** by NM Peter Minear. **Winner of K-12** is seeded into Greater Philadelphia Junior Invitational. See [www.silverknightschess.com](http://www.silverknightschess.com) to register.

### Mar. 21, PCL March Quick Quads (QC)

3RR, G/15. Wm. Pitt Union, Univ. of Pittsburgh, 5th Ave. & Bigelow, Pittsburgh, PA 15213. **EF:** \$10, \$7 Jrs. \$20 to 1st/quad. Reg.: 11-11:15am, Rds.: 11:30am-Noon-12:30pm. **Info:** [martinak\\_tom\\_m@hotmail.com](mailto:martinak_tom_m@hotmail.com), 412-908-0286. W.

### Mar. 26, Friday Night Action #15

4SS, G/30. Belmont Park Classroom, 200 Anderson Road, King of Prussia, PA 19406. **Sections:** Open, U/1400. **EF:** \$30 online by noon the day of the event; \$10 more on-site 6:30-6:45; \$10 less for players under 18. **Rds.:** 7:00, then ASAP. **Prizes:** \$100 to 1st overall; others per entries. Register at [www.silverknightschess.com](http://www.silverknightschess.com). Registration limited to first 30 players.

### Mar. 31-Apr. 4, Apr. 1-4, 2-4, Philadelphia Open

See *Chess Life* or [www.chesstour.com](http://www.chesstour.com).

### Apr. 11, April Showers

4SS, G/30. Doylestown Activity Center, 425 Wells Road, Doylestown, PA 19801. **Sections:** K-6 U/700, K-12 Champ. **EF:** \$22 online by noon 4/7; \$27 online by noon 4/9; \$35 on-site 12:00-12:30. **Rds.:** 1:00, then ASAP. **Prizes:** trophies to top individuals & schools. **Free game analysis** by NM Peter Minear. See [www.silverknightschess.com](http://www.silverknightschess.com) to register, or for information about sections for unrated players.

### Apr. 11, PCL April Quick Quads (QC)

3RR, G/15. Wm. Pitt Union, Univ. of Pittsburgh, 5th Ave. & Bigelow, Pittsburgh, PA 15213. **EF:** \$10, \$7 Jrs. \$20 to 1st/quad. Reg.: 11-11:15am, Rds.: 11:30am-

## WIN OR DRAW!

If you can figure out this position, you're ready for *Endgame Tactics* by Ger Van Perlo. We'll have a drawing and the winning entry will receive a copy. Send your entry to: [gpetersen@uschess.org](mailto:gpetersen@uschess.org), or to Glenn Petersen, 44-D Manchester Court, Freehold, NJ 07728.

You know the drill. Is it a win or a draw? And be sure to explain your reasons in detail! Inquiring Gnomes want to know! White to move.

**WHITE TO MOVE**

# Tournament Life

Noon-12:30pm. Info: martinak\_tom\_m@hotmail.com, 412-908-0286. W.

**June 26-27, 2nd annual World Open Girls Championship**  
See *Chess Life* or [www.chesstour.com](http://www.chesstour.com).

**June 26-27, World Open Under 13 Championship**  
65S, G/65. Valley Forge Convention Plaza (see World Open). Open to all born after 6/28/97. Trophies to top 5, 1st C, D, E, Under 1000, Under 800, Unrated; free entry in all CCA Swiss tournaments 7/15/09-12/31/09 to 1st. **EF:** \$42 mailed by 6/16, \$43 online at [chesstour.com](http://chesstour.com) by 6/23, \$45 phoned to 406-896-2038 by 6/23, \$50 at site. **Reg.** 6/26 9 to 10:30 am, rds. Sat. 11-2-5, Sun. 10-1-4. One half point bye allowed, must commit before rd 2. **HR & Ent:** See World Open. **WCL JGP.**

**June 29-July 5, July 1-5, 2-5 or 3-5, 38th Annual World Open**  
See *Chess Life* or [www.chesstour.com](http://www.chesstour.com).

## Rhode Island

**Feb. 27 & Mar. 13, BK Tmt for kids**

Register online website: [www.richess.org](http://www.richess.org), email: [rhodeislandchess@yahoo.com](mailto:rhodeislandchess@yahoo.com). (401) 359-1602.

**A State Championship Event!**

**Mar. 27, R.I. Scholastic State Championship**

Open to Out Of State Players. All Sections USCF Rated. Individual & team trophies for top 3 in each section. K-4, Gr 5-6, Gr 7-8, Gr 9-12. **EF** \$20 advance by 3/14, \$25 by 3/19, \$40 at site. **Register online:** [www.richess.org](http://www.richess.org) email: [rhodeislandchess@yahoo.com](mailto:rhodeislandchess@yahoo.com). Phone: (401) 359-1602.

## Tennessee

**Apr. 23-25 or 24-25, 9th Southern Class Championships**  
See *Chess Life* or [www.chesstour.com](http://www.chesstour.com).

## Texas

**A State Championship Event!**

**Feb. 19-21, 2010 Texas State Scholastic Championships**

75S. Sheraton Dallas North (Formerly Adams Mark), 400 North Olive Street, Dallas, TX 75201. **HR:** \$105-\$105-\$105-\$105, 888-627-8191, Mention Texas Chess Association to get Hotel Chess Rate. One night deposit may be required by Hotel. Four championships in one great location: **TX Primary Scholastic Championships; TX Elementary Scholastic Championships; TX Middle School Scholastic Championships; TX High School Scholastic Championships.** **EF:** \$39 by 2/11; \$69 after 2/11 or on site. February Rating Supplement will be used. Current USCF membership required (may be obtained on site). **On Site Registration:** Friday, 7-9pm, Saturday, 7-7:45am. Saturday registrants may receive a 1st Rd. 1/2-pt. bye. One 1/2-pt. bye (for any round) allowed if requested by the end of Rd. 2. **Sections:** K-1 Championship, Primary (K-3) Championship, Primary JV (K-3 w/Ratings Under 700), Elementary (K-5/6) Championship, Elementary JV (K-5/6 Under 800), Elementary Novice (K-5/6 Under 500), Middle School (6-8/9) Championship, MS JV (6-8/9 Under 900), MS Novice (6-8/9 Under 600), High School (9-12) Championship, HS JV (9-12 Under 1000). See Article IX, Section 1E, TCA Bylaws for each section's eligibility requirement, [www.texaschess.org/2007/03/bylaws.html](http://www.texaschess.org/2007/03/bylaws.html). Also [www.swchess.com](http://www.swchess.com) also has eligibility rules. **Four-year scholarship to The University of Texas at Dallas to winner of High School Championship section.** Winner must meet UTD entrance requirement and follow team rules. UTD is sole judge as to who wins the scholarship. Trophies for top 20 individuals and top 15 teams in each section plus participation medals for all, and plus Score Awards for players scoring 4 or more points that do not win an individual trophy. **Schedule:** Round times vary depending on the Championship; Time control also varies. For round times and time control, see: [www.swchess.com](http://www.swchess.com). **Side Events: Blitz Tourney:** K-6 and K-12, Friday 8pm. **EF:** \$15. Trophies to top 15 Individual in each section. **Bughouse Tourney:** K-6 and K-12, Saturday, 8:35pm. **EF:** \$20 Team (On site registration only). trophies to top 10 teams in each section. All registrations (except Bughouse) available on line: see [www.swchess.com](http://www.swchess.com) and you can download flyers and entry forms. Checks payable to Dallas Chess Club. Mail entries to Dallas Chess Club, c/o Barbara Swafford, 2709 Longhorn Trail, Crowley, TX 76036. For tournament info, visit our website or contact Barbara Swafford, [info@dallaschess.com](mailto:info@dallaschess.com) or 214-632-9000. Refunds will be given only

up to 2/17 with a \$10 surcharge for withdrawing, after 2/17 there will be no refunds. There will be no substitution of team members. There will be a \$10 change fee for changes after 2/17. There will be a \$5 surcharge per player for phone registrations USCF membership is required. Proof of membership is required or player must join/renew their memberships. No registration/changes/or withdrawals after 2/17/10. After that date you must make changes at site (Sheraton Dallas North). Chess In Education Conference for coaches, teachers and administrators, contact [Russell.Harwood@utb.edu](mailto:Russell.Harwood@utb.edu) for more info. NS, NC, W.

## Vermont

**Apr. 30-May 2 or May 1-2, 21st annual Vermont Resort Open**  
See *Chess Life* or [www.chesstour.com](http://www.chesstour.com).

**June 11-13 or 12-13, 7th annual Vermont Spring Open**  
See *Chess Life* or [www.chesstour.com](http://www.chesstour.com).

## Virginia

**Feb. 20, February Freeze K-8 Chess Tournament**

45S, G/30. Montessori School of McLean, 1711 Kirby Road, McLean, VA 22101. **Sections:** K-8 Rated, K-8 Unrated. **EF:** \$20 online by 2/17; \$25 online by noon 2/19; \$30 on-site 9:00-9:30. **Rds.:** 10:00, then ASAP. **Prizes:** trophies to top individuals & schools. **Free game analysis** by NM Adam Weissbarth. See [www.silverknightschess.com](http://www.silverknightschess.com) to register.

**Apr. 11, Rated Beginners Open (RBO) (DC)**  
See District of Columbia.

## Wisconsin

**Feb. 12-14 or 13-14, 2010 U.S. Amateur Team Championship – North**  
See Nationals.

**Feb. 27-28, Kasparov Chess Foundation & Renaissance Knights present Greater Chicago Scholastic Championships! (IL)**  
See Illinois.

## SOLUTIONS TO WIN OR DRAW (Page 17)

**Problem One: WIN!!** Even though all Black has to do is give up his rook for the pawn, White prevents this. A study by L. Ehrlich, 1929. **1.c7 Ra5+ 2.Kc4** (2.Kc6 Rxd5 3.Kxd5 [3.c8=Q Rc5+ 4.Kxc5 stalemate) 3...Kb7 4.Kd6 Kc8 5.Kc6 stalemate) **2...Ra1** (2...Rxd5 3.c8=Q Rc5+ 4.Qxc5+ wins) **3.Bc6 Rc1+ 4.Kd5 Rd1+ 5.Ke6 Re1+ 6.Kf7 Rf1+ 7.Kg7 Rg1+ 8.Kh7** and wins because the bishop is covering the check at h1!

**Problem Two: DRAW!!** A study by Polerio in 1590! The next diagram is the same study, but Polerio just had Black moving. **Clever guy! 1.a8=Q**

**Rxa8 2.Kxa8 Ke6 3.Kb7 Kd5 4.Kb6 Kd4 5.Kc6 Ke4 6.Kc5 Ke3 7.Kc4 Ke2 8.Kd4 Kf3 9.Kd3 Kxg3 10.Ke2 Kxh4 11.Kf2 Kh3 12.Kg1** and the king has reaches h1 and g1 where it can't be chased away.

**Problem Three: WIN!! 1...Ra8!! 2.Kxa8 Kc7 3.g4 hxg4 4.h5 g3 5.h6 g2 6.h7 g1=Q 7.h8=Q Qg2#.**

**Problem Four: DRAW!! 1.Be2 Ke3** (1...Nd4 2.Bd1 Nf5 3.Nb3 Kd3 4.Nc5+ Ke3 5.Nb3 Nd6 6.Nxd2) **2.Bd1 Kd3 3.Bxc2+ Kxc2 4.Nc4 d1=Q 5.Ne3+** forks king and queen in the nick of time.

**Problem Five: DRAW!! 1.Be8 Kg4** (1...Kf4 2.Bh5 Ne3 3.Nb3;

1...Nd4 2.Nc4 d1=Q 3.Bh5+) **2.Bd7+ Kf4 3.Bg4 Kxg4 4.Nc4 d1=Q 5.Ne3+** and the knight fork still does it! A study by Jespersen.

**Problem Six: WIN!! 1.Nh5+! Kxg6 2.Be8+ Kh6** (2...Kf5 3.Ng3+ Kg4 4.Nxh1 and the king and two pieces find it easy to block the pawns, take them and then mate with bishop and knight, which you should be able to do if you read the *CL4K* article on it!) **3.Ng3 Bg2** (It would take longer with 3...Be4 4.Nxe4 and it's the same story as in the note to move 2, but we're going for cute!) **4.Nf5#.**

## What's the Problem Solutions (Page 16)

**Puzzle #1: 1.Kb6 Kb8 2.Bc7+ Ka8 (or 2...Kc8 3.Be6 mate) 3.Bxb7 mate.**

**Puzzle #2: 1.Bc7 d6 2.Be6 mate.**

**Puzzle #3: 1.Bc8 Ka7 (or 1...b6 2.Bb7+ Ka7 3.Bxb6 mate) 2.Bb6+ Ka8 3.Bxb7 mate.**

**Puzzle #4: 1.Bb6 Kxb6 2.b8=Q+ 3.Ka6 Qb7 mate.**

**Puzzle #5: 1.Bh7 Nxb6 2.Bf5+ Nd7 3.Bxd7 mate.**

## 2...Be6 NoName Defenses:

What do you do if your opponent plays something you've never seen before. We just made up a second black move here. Then, we found five games in the database! Go figure. So it is possible. What do you do? Play chess! Follow principles.

For example: 1.d4 d5 2.c4 Be6 3.Nc3 Nf6 4.Nf3 g6 5.cxd5 (Or you can remember from above that the absence of the queen bishop leaves b7 unprotected and play 5.Qb3 Nc6 6.Bg5 (6.Qxb7 Na5 7.Qb5+ c6 8.Qa4 Nxc4 9.e3) 6...dxc4 7.Qxb7 Na5 8.Qa6 c6 9.b4 cxb3 e.p. 10.axb3 Nxb3 11.Ra3

Bg7 12.e3 0-0) 5...Nxd5 6.e4 Nxc3 7.bxc3 Bg7 and by just playing simple moves, you find yourself in a Gruenfeld Exchange Variation where Black has played the awkward Be6, certainly not what Gruenfeld players will play in that position.

These are all the less played lines after 1.d4 d5 2.c4. Really big time chess theory starts with 2...e6 and 2...c6, both of which we will cover next.

**(to be continued)**

# Let our video training program guide you to tournament success!

Access our online video tutorials and get instruction from National and International Masters, including:



## Bryan Smith

is an International Master from Alaska. Bryan now lives in Philadelphia, where he is a full-time chess-player and teacher. He won the 2006 U.S. Masters and is the current Philadelphia champion.



## Michael Mulyar

is an International Master from Colorado. Michael has tied for first at two U.S. Opens and is a five-time Colorado champion. He has worked with many successful scholastic players.

An online training center that provides all the tools you need to become a champion.

- Visit [www.silverknightschess.com](http://www.silverknightschess.com) for a free sample lesson!
- For scholastic players rated 100 - 1800!
- Brand-new chess videos added each week!
- Only \$9.95 per month!



Winning the US Open, part II  
By IM Michael Mulyar



Good knight vs. bad bishop  
By IM Bryan Smith



The Four-move Checkmate  
By NM Adam Weissbarth

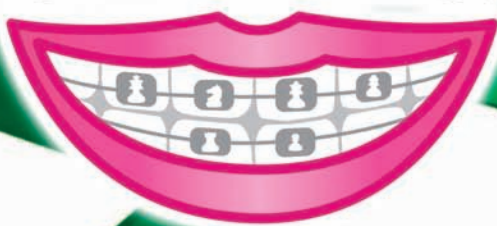


# SILVER KNIGHTS CHESS

ONLINE TRAINING CENTER

[WWW.SILVERKNIGHTSCHESS.COM](http://WWW.SILVERKNIGHTSCHESS.COM) | 1-610-446-0818

**chessmile™**



**“Get your braces in the shapes of chess pieces!” Ask your dentist.**

- Easy to clean
- More retention on the teeth
- Makes your treatment enjoyable

[www.chessmilebraces.com](http://www.chessmilebraces.com)

