

# Chess Life for Kids!



**ALL-STARS,  
ONE  
AND ALL**



A USCF Publication

\$3.00



0 74470 27842 9

**Fast, Fun, and  
Easy to Use**

In 2006, and again in 2007,  
young Chess Magnet students  
from Portland, OR, scored 7-0 in the  
USCF Spring Nationals.

# ChessMagnetSchool.com

**Better Than Any Textbook for Learning Chess**



**Student  
Training**



**Student  
& Class  
Management**

**"Great Stuff! I just delivered my first  
Belgian champion under 10 and  
boosted his development  
by using ChessMagnetSchool.com"**

- Ton Montforts, Coach  
Schaakacademie  
Limburg, Belgium

**"Your website was  
integral to our team's winning."**

-Mike Hosford, Coach  
Alcott Elementary  
2008 Washington State  
Grades 4-6 Champions

**Proud Sponsor  
of the  
2010 USCF  
Junior Grand Prix!**

**Start Your 30-day Free Trial Today  
at**

**www.ChessMagnetSchool.com**

	1 month	3 months	1 year	1 yr USCF
Individuals	\$6.95	\$15.00	\$29.95	\$26.95
Class/Family	\$6.00	\$12.00	\$25.00	\$22.00

Free to teachers/coaches of at least 5 students  
Includes our powerful, easy-to-use Coaching Tools & Reports

Works on Windows and Macintosh  
computers (requires internet access)

To learn more, call 650-284-5062  
877-378-4319 (US toll-free)  
email [info@ChessMagnetSchool.com](mailto:info@ChessMagnetSchool.com)

**Publisher****USCF Executive Director: Bill Hall**

bhall@uschess.org

**Scholastic Editor: Glenn Petersen**

gpetersen@uschess.org

**Art Director: Cat Connor Spradlin**

catseyephoto@mac.com

**Editorial Asst./Copy Editor: Alan Kantor**

akantor@uschess.org

**Editorial Assistant: JoAnne Fatherly**

backtobasics@uschess.org

**Jennifer Pearson**

jenpearson@uschess.org

**Advertising Manager:**

tla@uschess.org

**Tournament Life:**

tla@uschess.org

**Director of Publications: Daniel Lucas**

dlucas@uschess.org

**CONTRIBUTORS:** Send your contributions and articles to *Chess Life for KIDS*, PO Box 3967, Crossville, Tennessee 38557 or better yet, e-mail to gpetersen@uschess.org.

**Chess Life for KIDS** (USPS 023-567, ISSN: 1932-5894) is published in February, April, June, August, October, and December of every year by the United States Chess Federation, 137 Obrien Drive, Crossville, Tennessee 38555. Periodic postage paid at Crossville, Tennessee.

**CHANGE OF ADDRESS:** Be sure to notify us at once of any change of address. Please include your old address and your new address, along with your USCF I.D. number.

**POSTMASTER:** Send address changes to USCF, PO Box 3967, Crossville, Tennessee 38557.

**Annual Scholastic Membership**

Regular Scholastic Membership (online version of *Chess Life for Kids*), age 12 or younger, is just \$16 per year. Premium Scholastic Membership (receives *Chess Life for Kids* by mail) is \$23 per year. \$13 of every premium membership goes towards providing *Chess Life for Kids*. Entire contents copyright 2009, United States Chess Federation.

Teachers may photocopy instructional articles for classroom use, but republication or wide-spread copying without the written consent of the USCF is forbidden.



# Table of Contents

- 4 THE GNOMES HAVE SPOKEN!
- 5 ARABIAN KNIGHTS BY RICK KENNEDY
- 6 ASK GM EVANS BY GM LARRY EVANS
- 7 THE CHESS DETECTIVE BY NM TODD BARDWICK
- 8 WIN OR DRAW BY PETER TAMBURRO
- 8 ZARIA BY ROZ KATZ
- 9 ALL-STARS, ONE AND ALL!
- 10 2009 WCL JUNIOR GRAND PRIX STANDINGS
- 12 THE OVERWORKED SQUARE BY IM LARRY EVANS
- 13 SOLUTIONS TO ALL YOUR PROBLEMS!
- 14 LANYARDS AND POISON IVY!
- 16 TROPHIES PLUS ALL AMERICA TEAM 2010
- 20 TOURNAMENT LIFE ANNOUNCEMENTS

COVER PHOTO COURTESY OF DONNA DENTE



## U.S. Chess Trust

### Say Yes to Chess!

The Trust was organized to promote chess as a means of intellectual development. We promote and support chess in the community through our programs & by providing resources that help support our mission.

### Without Your Donations We Don't Exist

*Help us continue to make a difference!*

Mail donations to: U.S. Chess Trust, P.O. Box 838, Walkill, NY 12589. Or, make your donation online at [www.uschesstrust.org](http://www.uschesstrust.org).

All donations are tax-deductible.

The U.S. Chess Trust is an independent 501(c)(3), non-profit organization.

### Visit Us at

[www.uschesstrust.org](http://www.uschesstrust.org)



### Making a Difference

Need help starting your chess club? Find out how we can help by visiting us online & signing up to receive our e-mail newsletter!

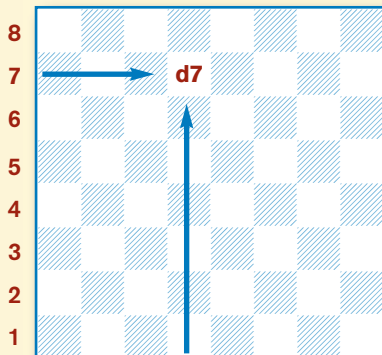
Below is a short list of some of the programs & events we support:

- Chess for Youth Program
- World Youth Championship
- Collegiate Final Four
- Scholar Chess Players Award
- Pan-Am Youth Festival
- World Junior Championship
- Denker Tournament
- The Samford Fellowship
- Chess in Education
- And so much more!

# HOW TO Read & Write Chess

There are many different ways to write chess moves. The most popular method (described below) is called **algebraic notation**:

Each square has a name, taken from the intersection of the file (vertical or up-and-down rows of squares, which are lettered) and rank (horizontal or side-by-side rows of squares, which are numbered) the square is on. In the diagram the square on the intersection of the 7th rank and the d-file is called d7. Like in battleship!



The pieces are abbreviated by a capital letter, like this:

**K: King; Q: Queen; R: Rook; B: Bishop; N: Knight.**

Notice that the Knight is N, since K is reserved for the King. Notice also that pawns have no abbreviation.

A move is written by using the abbreviation for the piece that moves, followed by the square the piece moves to (1. ... Nf6). A pawn move is written as the square the pawn has moved to (1. d4). A capture by a piece is written as the abbreviation for the piece that moved, followed by an x, and finally the square the capture takes place on (8. Bxe5). A pawn capture is written as the file the capturing pawn stands on, followed by an x, and finally the square the capture takes place on (3. dxe5).

Other moves are castling kingside, which is written 0-0, and castling queenside, which is written 0-0-0. An *en passant* capture is indicated by *e.p.* after the move. A check is indicated by + after the move, and pawn promotion is indicated by adding ( ) and the abbreviation for the piece the pawn promotes to. Ambiguous moves (where more than one piece or pawn can move to the destination square) are taken care of by putting an extra rank or file in to make it clear which piece or pawn moved.

Here is a sample, using the famous smothered mate trap from the Budapest Defense.

**1. d4 Nf6 2. c4 e5 3. dxe5 Ng4**  
**4. Bf4 Nc6 5. Nf3 Bb4+** (diagram A)

**6. Nbd2 Qe7 7. a3** (diagram B)

**7. ... Ncxe5 8. Bxe5 Nxe5 9. axb4 Nd3 checkmate.** (diagram C)

**x: take or capture**      **#: checkmate**  
**0-0: kingside castle**    **( ): promotion**  
**0-0-0: queenside castle** **! : good move**  
**+: check**                    **? : bad move**  
**??: blunder**



# THE GNOMES HAVE SPOKEN



Let's get right down to it. My gnomes from Outer Mongolia, temporarily residing in a vacant lot underneath the Bayonne Bridge on Richmond Terrace in Staten Island, New York, have held the drawings for the February issue of *CL4K*.

**Ben Brasic**, 10, of Ohio, correctly identified our cover girl as a very young Alexandra Kosteniuk, the current woman's world champion. He will receive a copy of her book, *Diary of a Chess Queen*.

Also receiving copies of Alexandra's book will be **Austin Mead** of Texas, **Rachel Gita Gologorsky** of Florida, **Muneeb Ahmed** of Arizona, and **Joseph Chen** of Virginia. They were randomly chosen for their "Extra Credit" answers. By the way, in the final position:

If White plays 27. Qxh3, then 27 ... Ng4+ wins the queen.

Mowing down pawns was easy for **Alex Huffine** of Indiana. The fifth grader will receive a copy of *Pawn-*



*mower Chess* by GM Maurice Ashley for posting:

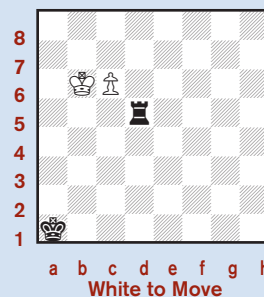
PROBLEM ONE: Qa1-a7-f2-f7-h5-b5-b4.

PROBLEM TWO: Re1-e8-h8-h5-b5-b2-b7-a7.

PROBLEM THREE: Qa2-h2-c7-c1-g5-b5-d7-d4-f6-f3.

Also receiving a copy of *Pawnmower Chess* are **Jeff Bikus** of Illinois, **Weijing Huang** of Kentucky, **Art Zhang** of California, and **Alex Fernandes** of New Jersey.

**Calvin Li** of New Jersey was one of many who correctly reasoned that the WIN OR DRAW position on page 21 is a win for White. He will receive a copy of *Endgame Tactics* by Ger Ban Perlo.



Just consider (as Calvin did) 1.c7 Rd6+, 2.Kb5 Rd5+, 3.Kb4 Rd4+, 4.Kb3 Rd3+, 5.Kc2! Rd4!, 6.c8=R!! (because 6.c8=Q Rc4+ leads to 7.Qxc4 stalemate!). So now 6 ... Ra4 (to stop checkmate), 7.Kb3!! wins by

threatening checkmate on c1 and the rook on a4.

Thanks to everyone who entered our contests. And good luck with the next round of contests!

# TALES OF THE Arabian KNIGHTS

BY RICK KENNEDY Illustrations by Pamela Key



## An Unfortunate Incident

The King settled comfortably, and she began her tale...

Whatever happened, asked the King, to the sultan's monkey who played chess? [August 2009 CL4K] She smiled, and began her story.

There was a sultan, she said, who was very good at chess. This sultan had a pet monkey—a very bright one. So bright, in fact, that the sultan taught the monkey to play the royal game as well.

The King nodded. He was familiar with this part of the story.

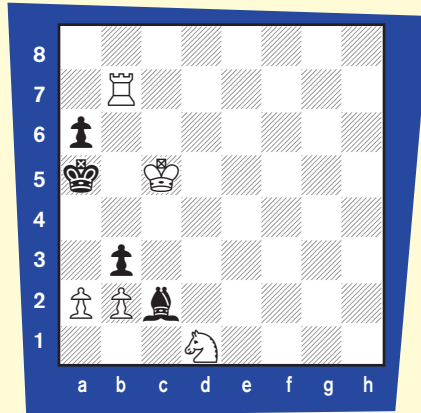
Both the sultan and his pet faced success and failure in their games, sometimes playing against others and sometimes playing against each other. After a rather unfortunate incident, however, the monkey was forced to retire.

The King raised an eyebrow.

The sultan was having a good day, and in one of their games reached the position at the top of the next column against the monkey.

I think I have the better of you, the sultan said with a smile. It is checkmate in three moves.

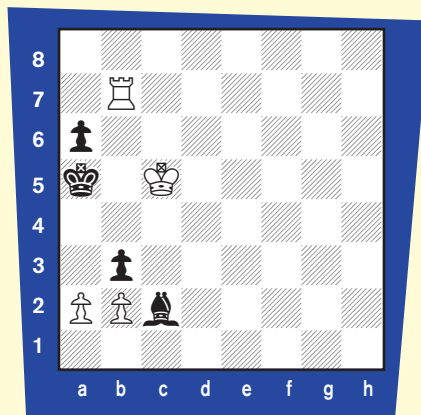
The monkey leaned into the board and stared. He sat back and scratched his head. Then he reached over the board, snatched the sultan's knight—and ate it!



WHITE TO MOVE AND MATE IN THREE MOVES

The sultan laughed. Indeed, he said, that was not a defense that I was expecting. You are crafty, my friend!

After a minute's pause, however, the sultan said, I'm afraid that very little has changed. It is a checkmate in four moves, now.

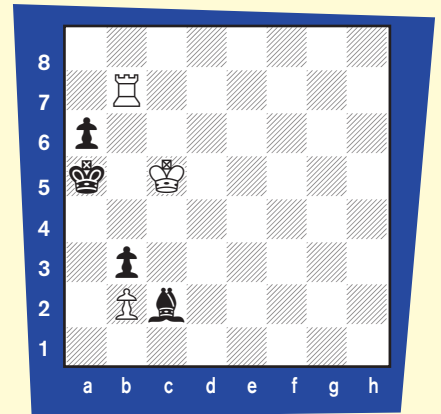


WHITE TO MOVE AND MATE IN FOUR MOVES

The monkey stared at the position, got off of his cushion, hopped up and down, sat down, and again reached over the board. This time, he grabbed a pawn—and ate it!

I see, said the sultan. Is this how it is going to be? We must find another pastime for you. This game has become too much of a, er, consuming, passion.

As the sultan led his pet away, he couldn't help mentioning, by the way, the position is still very good for me. In fact, it is a checkmate in five moves...

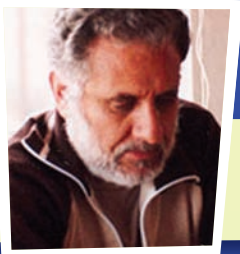


WHITE TO MOVE AND MATE IN FIVE MOVES

[based on a problem by the American chess problem composer Sam Loyd]

Solutions on page 13





# ASK GM LARRY EVANS!

**Grandmaster Larry Evans won the U.S. Championship in 1951, 1952, 1961-62, 1968, and again in 1980!**

## BEST QUESTION:

### IMPROVING WITH AGE

**Chris Mavraedis**  
San Francisco, California

**Q:** Players often get weaker as they get older—so I'm at a loss to explain my sudden increase in chess strength after 30 years of tournament chess. In the past I never won more than four games in a row even against lower rated players. But last year I did it by beating the strongest player in round 10 of the 153rd Monday Knight tournament at Berkeley, California. I just want to tell your readers to keep plugging away and not to be discouraged by losing.

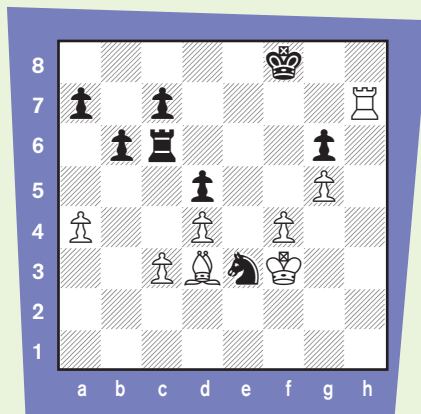
**A:** Once bitten by the chess bug, it lasts forever. That inexpensive little set we bought at the toy store also lasts a lifetime. Many youths give up the game in order to make a living and raise a family, yet they usually return to the game after having achieved their other goals.

### FAMOUS ENDING

**James Schroeder**  
Vancouver, Washington

**Q:** I wonder whether Black could have saved this adjourned position in Capablanca-Tartakower, New York 1924.

Black erred with 33...Nf5? (which seems to lose) 34. Bxf5 gxf5 35. Kg3!

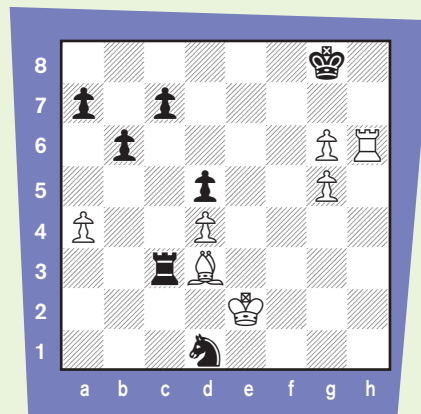


Position after 33. Kf3

Rxc3+ 36. Kh4 Rf3 37. g6 Rxf4+ 38. Kg5 Re4 39. Kf6 Kg8 40. Rg7+ Kh8 41. Rxc7 Re8 42. Kxf5 Re4 43. Kf6 Rf4+ 44. Ke5 Rg4 45. g7+ Kg8 46. Rxa7 Rg1 47. Kxd5 Rc1 48. Kd6 Rc2 49. d5 Rc1 50. Rc7 Ra1 51. Kc6 Rxa4 52. d6 1-0

Alekhine in his book about New York 1924 pays tribute to his great rival's skill with these words, "A really pleasurable game on the part of the Champion, and a fine example of his machine-like precision and superior technique. White sacrifices material in order to obtain the classical position with king on f6, and rook on h7. Although Dr. Tartakower was two pawns ahead, he could not stem the tide. The pawns tumble like ripe apples."

A lot of analysis was lavished on this ending by masters, in awe of Capablanca's reputation, who assumed that Black is lost. Yet it seems to me Black can avert defeat by 33...Nd1! In his annotations Alekhine gave 34 Rh6! Kf7 35. f5 Rxc3 36. fxg6+ Kg8 37. Ke2 leading to the next diagram.



Position after 37. Ke2 (analysis)

Now instead of 37...Nb2 given by Alekhine and other analysts, which appears to lose, doesn't 37...Nf2! 38 Bf5 Ne4 give good drawing chances?

**A:** You have a valid point. This is one of the most famous endings at New York 1924, once hailed as the strongest tournament held on American soil. The time limit of only 16 moves an hour explains why games were adjourned so soon at move 32 after four hours. Today, to stop competitors from getting help from other players or computers, games must be finished in a single session.

Emanuel Lasker of Germany, the oldest contestant at 56, held his rivals at bay by snatching first prize from Jose Capablanca of Cuba and Alexander Alekhine of Russia in a field of 11 stars.

Lasker himself stated this was "surely one of the great Rook-and-Pawn finishes of all time." It certainly makes sense to centralize the knight by 37...Nf2! A possible continuation is 38. Bf5 Ne4 39. Rh7 Nxf2 40. Rd7 Rc6 41. Rxd5 Ne6 42. Rd7 Nf4+ 43. Ke3 Nxf2 44. d5 Rf6 45. Bxf2 Rxf6 46. Rxc7 Rg7 with equality. Of course, there are other possibilities.

Readers are invited to submit analysis showing whether White can win this ending by force.

**READERS:** Don't be afraid to accept the challenge! Send your analysis to Glenn Petersen, 44-D Manchester Court, Freehold, NJ 07728, or to [gpetersen@uschess.org](mailto:gpetersen@uschess.org). Your response just might be selected by my faithful gnomes! And don't forget to send in your "Best Question" for a chance to win a book prize.

# The

# Chess Detective

by NM Todd Bardwick

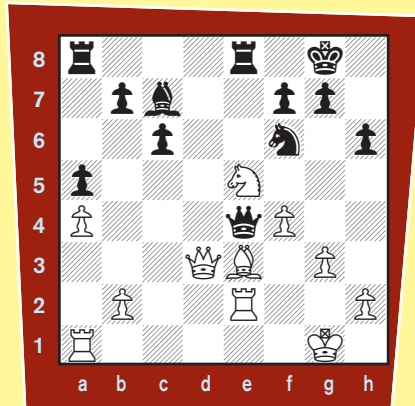
## REMOVING THE GUARD



In the February edition of *Chess Life for Kids*, we looked at several examples of how to remove the guard and deflect your opponent's defenders away. Always be on the lookout for the opportunity to remove an opponent's piece that may be overworked. This will come as a natural result of counting how many times a piece is attacked and how many times it is defended.

Now it is your turn! Can you figure out how to win these positions by removing an opponent's protector?

#3



Position after 20.Qxd3(N)

#1



Position after 31.Re3

#4



Position after 43...Kc6

#6



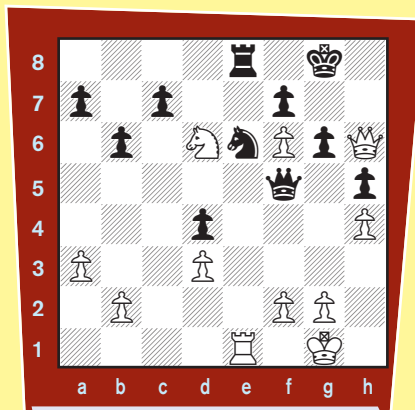
Position after 34.Rb2

#2



Position after 15...Nxd5(B)

#5



White played 28. Nd6 (from e4) and Black resigned. Why?

Solutions on page 13



**Todd Bardwick**

is the author of

Teaching Chess  
in the 21st Century

and

Chess Workbook  
for Children.

He can be reached at

[www.ColoradoMasterChess.com](http://www.ColoradoMasterChess.com)

# WIN

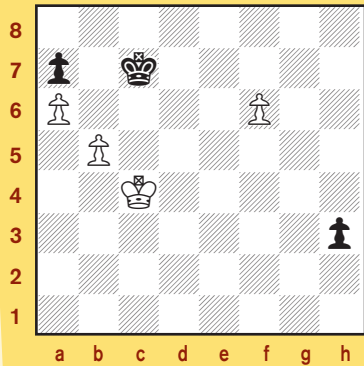
# OR

# DRAW?

Take a look at each diagram, see who's move it is and whether it's a win or a draw. Be careful with some of these positions because the win doesn't have to be with the side moving! We just want to know if, with best play, **SOMEBODY** can win this position: White or Black. If nobody can, then it's a draw. To keep yourself honest, write down the moves for both sides as you see it demonstrating the win or draw. Put **WHITE WINS** or **BLACK WINS** or **DRAW**. Remember: it has to be best play for both sides.

by Peter Tamburro

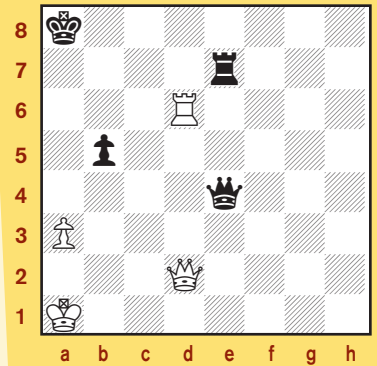
**Position One: White to play**



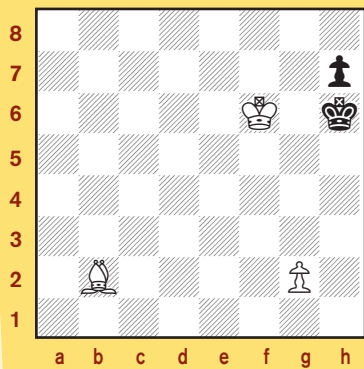
**Position Three: White to play**



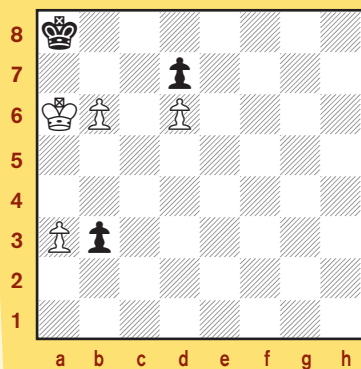
**Position Five: White to play**



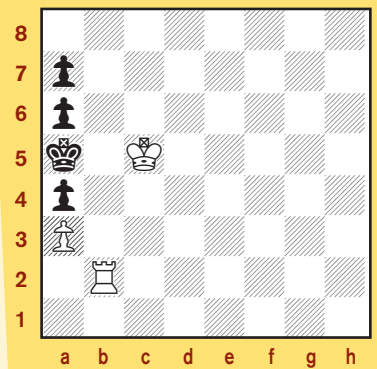
**Position Two: White to play**



**Position Four: White to play**



**Position Six: White to play**



Answers on page 13 





# ALL-STARS ONE AND ALL

In this issue we feature the scholastic members of the 2010 Trophies Plus All America Team, and the winners of the World Chess Live (soon to be Chess MagnetSchool.com) Junior Grand Prix. But they aren't the only stars in scholastic chess.

You are ALL All-Stars, in our opinion. Whether you are a member of a team, or you support your school's club, or you take the time to teach someone else how to play, you are an All-Star. Just playing the game for the fun of it makes you an All-Star—and don't you forget it!

And sometimes, you get a chance to do something a little extra. This is what happened to **Frankie** (age 10) and **Corinne** (age 8) **Dente**. Frankie and Corinne attend Holy Spirit Elementary School in Connecticut, and they have been going to the school chess club, taught by Michael Zadorozny, a well-known chess instructor.

## BLAME MOM!

It was actually their mom's idea. Both Donna and her husband Frank felt it was important for their children to develop a sense of community spirit and service. Little did they know that their kids would also have a ball! Donna contacted Scofield Manor, got the USCF to donate some sets and boards—and Frankie and Corinne have been visiting the assisted living home every week since December.

The kids love teaching chess and

the residents love it also! Maureen, one of the residents, said "It feels good to be with young people again! Chess is a good activity for the brain!"

Maggie is 90 (but doesn't look a day over 65 and don't you dare tell her otherwise!) and attends every session: "I never played before, but it is a lot of fun and I am enjoying it very much. We all look forward to our sessions."

And from another resident, Jamie: "Help me! These kids beat me too quickly! They don't give me time to think. More lessons!" Mike Zadorozny must have heard his plea, as Mike now visits the Manor, so that the residents have a second night of lessons.

## MAKING PROGRESS

In spite of his plea for help, Frankie thinks Jamie will be the first one to "teach" the teacher a lesson. "He makes mistakes, I make mistakes. We all make mistakes. But in another couple of months, I think Jamie will be teaching us."

Why does Frankie look forward to these weekly sessions? After all, he has a full schedule as it is. His travel soccer team won his divisional All Connecticut championship last year, and he also helps coach younger kids on the basketball court. "I like to help other people and I like teaching

them new stuff!!

But maybe Corinne had the best answer, and the simplest: "It makes me feel good inside! I like helping others." I can't think of a better reason to teach chess, can you?

## ALL-STARS, ONE AND ALL

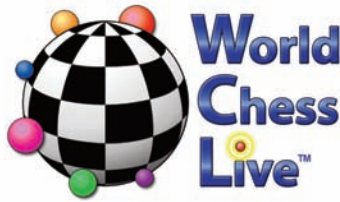
Frankie likes math (Gee, where have I seen that before?) in addition to chess, basketball, and his passion, soccer. In addition to chess, basketball, and knitting, Corinne let it be known that she loves science: "I like blowing things up!" Well, not really blowing things up, but you can get a lot of fizzes, pops and bubbles with a home chemistry lab!

My gnomes from Outer Mongolia (now residing in Staten Island) have spoken once again! In addition to Junior Grand Prix winners, and the elevated Trophies Plus All America Team, the USCF proudly salutes its All-Stars.

Are you an All-Star? You better believe it!



# 2009 World Chess Live Junior Grand Prix Standings



## Final 2009 World Chess Live Junior Grand Prix Standings

ST=State PTS=Points

### Top 20 Overall Standings

NAME	ST	PTS	Place	Prize
WINTER, CURTIS A	MD	325	1ST	\$1,000
DOMMALAPATI, ABHINAY	VA	310	2ND	\$500
MIZUSHIMA, DEREK	MD	265	3RD	\$250
ATTANAGODA, ISURU ADEEPA	VA	245	4TH	\$150
MARUPUDI, PRANAV	NJ	240	5TH	\$100
PISANI, NICHOLAS	WA	230	6TH	\$100
PISANI, PAUL	WA	205	7TH	WCL&USCF
RICHMAN, JONATHAN	NY	180	8TH-9TH	WCL&USCF
RAJASEKARAN, VIKAS	VA	180	8TH-9TH	WCL&USCF
HUANG, WINSTON	MA	175	10TH-11TH	WCL&USCF
FISHER, WILLIAM	PA	175	10TH-11TH	WCL&USCF
TROFF, KAYDEN WILLIAM	UT	170	12TH-13TH	WCL&USCF
SREENIVASAN, RAMANUJA	MD	170	12TH-13TH	WCL&USCF
HARMON-VELLOTTI, LUKE	ID	165	14TH	WCL&USCF
CHEN, JEREMY	NJ	160	15TH-16TH	WCL&USCF
HUGHES, JOHN LODGER	OH	160	15TH-16TH	WCL&USCF
KARAMSETTY, JEEVAN	VA	150	17TH	WCL&USCF
VIRKUD, APURVA	MI	145	18TH-19TH	WCL&USCF
QU, CHEN	NY	145	18TH-19TH	WCL&USCF
TUHRIM, RICHARD JACOB	NY	140	20TH	WCL&USCF

### THANK YOU, WORLD CHESS LIVE!

Your generous support for the last two years has helped establish the Junior Grand Prix as an integral part of the American chess tournament scene for our youngest USCF members. We all look forward to seeing **Curtis Winter** participate in the 2010 U.S. Open in Irvine, California (and we hope he can make it!).

We would also like to welcome Chess Magnet School as our 2010 Junior Grand Prix sponsor. New prizes will be offered throughout the year, in addition to a \$1,000 stipend to attend the 2011 U.S. Open in Florida. Qualifying for JGP points is easy! Just play in an event with a time control slower than Game/60 and beat or draw someone rated 100 points higher than yourself! Ten points for a win, five points for a draw: the points add up quickly!

In June we will announce additional JGP prizes from Chess Magnet School. Meanwhile, check the TLA section for a Chess Magnet School JGP event near you. **CMS JGP** is the key!

### State Leaders

NAME	ST	PTS	NAME	ST	PTS	NAME	ST	PTS
PARSHALL, MATTHEW	AK	30	BAGLEY, TAYLOR MICAJAH	KY	65	PILLAI, KADHIR ANDRES	NY	125
HELLWIG, LUKE	AL	45	CHADHA, SIMARPREET	LA	70	RAMASWAMY, RAHUL	OH	105
XU, ZHUOWEI	AL	45	ANGERMEIER, DANNY	MA	85	HUGHES, DEVIN L	OK	85
CRAIG, ROBERT S	AR	60	MOORTHY, SRINIVAS R	MD	135	PARNON, CALVIN JAY	OR	65
GURCZAK, JOHN	AZ	125	REALE-HATEM, MATTHEW	ME	55	MO, KEVIN	PA	110
SEVIAN, SAMUEL	CA (N)	120	SHETTY, ATULYA ARYA	MI	135	FINNEY, STUART S	RI	70
MCCREARY, TAYLOR	CA (S)	110	ZANG, KEVIN	MN	65	TEMPLETON, ZACHARY S	SC	60
POLSKY, RYAN	CA (S)	110	ZHOU, JASON	MO	135	STORMENT, EZRA LEE	SD	20
SPANN, NABIL J	CO	50	DING, JIALIN	MO	135	MARIKLE, JOSEPH WALTER	SD	20
TANENBAUM, ZACHARY	CT	110	GOLDMAN, ADAM	MS	40	VAZQUEZ, RAUL	TERR	25
HAUGE, DAVID RICHEY	DC	30	MADDOX, CONNER	MS	40	FU, JASON	TN	125
D'SOUZA, DEAN	DE	55	KAGIROV, BULAT	MT	5	WANG, ANDY	TX	80
DALY, TROY	FL	90	MOODY, CHAD	NC	95	UNRUH, DAVIS	UT	60
SANJAY, PRAVEEN	GA	85	KOPPINGER, MATTHEW	ND	10	RAJASEKARAN, VIGNESH	VA	110
NAKAGAWA, ELDON M	HI	50	SELVARAJ, JASON	NE	35	KATZ, GABRIEL	VT	65
PERRY, PATRICK F	HI	50	HILGENDORF, NICCOLO	NH	30	NARAYANAN, MADHAVI	WA	70
IYER, VENKAT	IA	110	MA, KEVIN	NH	30	DING, JEFFREY	WA	70
TYAGI, KUSHAN	IA	110	FREGEAU, HARRISON M	NH	30	DIXON, DAKOTA ELLIS	WA	70
HARMON-VELLOTTI, CARL	ID	100	WANG, XIAOMING TIM	NJ	135	SCHNEIDER, THOMAS G	WI	115
KOGEN, JONATHAN S	IL	110	SERNA, JEFFREY MICHAEL	NM	115	CHEN, KELLY	WV	25
MANCHANDA, SAMEER	IN	100	HALL, MYLAN D	NV	30			
LATHAM, ANDREW	KS	110	JOHNSTON, DANIEL F	NY	125			



## WELCOME CHESSMAGNETSCHOOL.COM !



It is my pleasure to introduce the sponsor for the 2010 edition of the Junior Grand Prix.

The Junior Grand Prix is entering its third year. This competition is designed to encourage young players to seek opportunities to play against stronger competition; thereby to stimulate improvement and life-long excitement about the game. The 2010 ChessMagnetSchool.com Junior Grand Prix will award a \$1,000 stipend to attend the 2011 U.S. Open in Orlando, Florida (including free entry). Also, there will be the opportunity for three students to win a full Chess Magnet School site license for their school. A variety of prizes will be awarded to the top 50 finishers nationally and the top in each state.

Chess Magnet School provides computer-based online chess training for both adults and children, including those who study independently and those who study under the guidance of a coach or teacher, as well as support for chess coaches and others who teach chess.

Chess Magnet School has been a partner with USCF on a number of projects and activities since 2006, and has provided the free program that teaches the rules of chess to newcomers in the "New to Chess?" section of USCF's web-site. USCF members are invited to learn more about Chess Magnet School at [www.ChessMagnetSchool.com](http://www.ChessMagnetSchool.com).

Please join me in welcoming our new sponsors and let the games begin!

Bill Hall  
Executive Director, USCF

**Now in our 17th great year!**



**Prepare for the  
U.S. Open  
at beautiful  
Lake Arrowhead!**



**Hosted by International Master  
Larry D. Evans**

**Lake Arrowhead, CA  
Monday through Friday  
July 26th-30th, 2010**



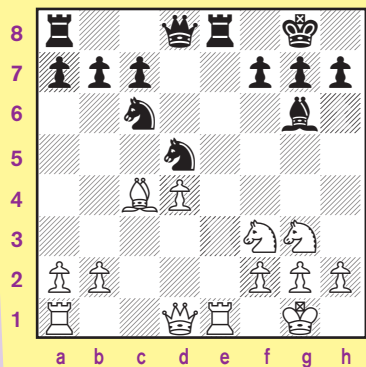
**Mountain Lake  
Chess  
Camp**

**A chess camp for  
children, ages 6-17**

**1-800-675-1227  
[www.chesscamp.net](http://www.chesscamp.net)**

# The Overworked

Most kids know how to recognize and punish an overworked piece. In case you don't yet, it's a piece that has too many jobs. Like this one:



White's bishop is attacking Black's knight and White's rook is attacking Black's rook, both of which are protected by Black's queen. This makes Black's queen *an overworked piece*.

The way that you punish an overworked piece is by making it do one of its jobs. Then, it won't be around to do the other job. If White captures Black's knight and the queen takes back, she won't be around to protect the rook.

But wait a minute. After the queen recaptures on d5, the rook on a8 is unveiled to protect his friend. All White gets out of it is a bunch of trades: **1.Bxd5 Qxd5 2.Rxe8+ Rxe8**, developing Black's queen and rook in the bargain. Maybe there's no way to punish the overworked piece here; that happens sometimes.

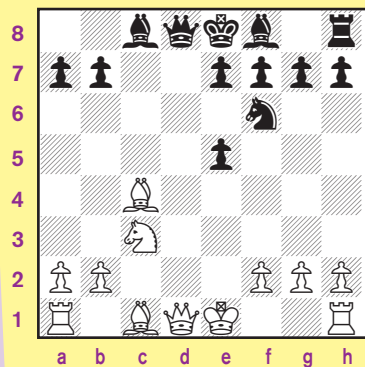
But not this time! The cool thing about an overworked piece is that if you can't punish it in one direction, you still might be able to punish it in the other. If you make an over-

worked piece do one of its jobs it won't be around to do the other. But if you make it do the other job instead, it won't be around to do the first.

*Flip it before you skip it!*

Instead of giving up on the concept, White should try reversing his logic: Taking the knight doesn't win the rook, but taking the rook just might win the knight: **1.Rxe8+ Qxe8 2.Bxd5. Voilà!**

Get in the habit of thinking in both directions whenever your opponent has an overworked piece. Even when the first direction works, the second might work better:



In this position, Black's king is overworked. It's protecting both his queen and f-pawn. If White takes the queen, he wins the pawn: **1.Qxd8+ Kxd8 2.Bxf7**. But White shouldn't rush things, no matter how good they look. If White takes the queen he wins the pawn, but if he takes the pawn he wins the ... that's right, queen! **1.Bxf7+ Kxf7 2.Qxd8**.

But you knew all this already,

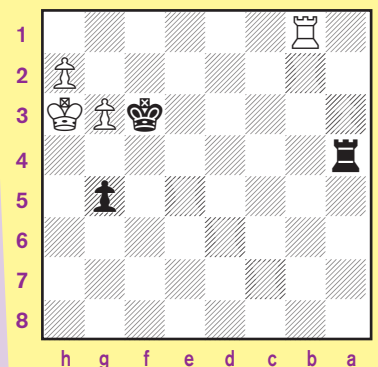
# Square

by IM Larry D. Evans

right? Like I said, most kids know how to recognize and exploit an overworked piece. You must be bored silly; not even reading my article anymore. You've probably moved on to the next article by now.

But wait! Come back! I've got a new wrinkle on this you haven't seen yet. I know because I just made it up!

Squares can be overworked just like pieces. But the best part is, once you spot an overworked square, the formula for exploiting it is the same as for an overworked piece:

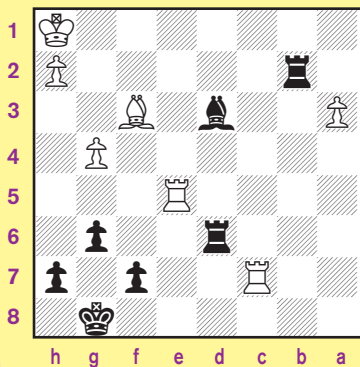


In this position, **1...g4** isn't mate because White's king can go to h4 and **1...Rh4+** isn't mate either because White's pawn can go there. This makes h4 an overworked square. Make it do one of its jobs and it won't be around to do the other: **1...g4+ 2.Kh4** and now

# The solutions to all your problems!

White's pawn can no longer use h4. But who cares? Black's rook can't use it anymore, either. Now is the time to remember our little saying: *Flip it before you skip it.* **1...Rh4+! 2.gxh4 g4 mate. Bingo!**

I may have made the terminology up just now, but the concept's been around for a long time. Here's Bobby Fischer using it before you were born:



**Pilnik – Fischer,  
Mar del Plata, 1959**

**1...Rb1** isn't checkmate because White's king goes to g2 and **1...Rf6** doesn't skewer the bishop to mate on f1 because the bishop goes there. So g2 is the over-worked square. But after **1...Rb1+ 2.Kg2 Rf6** the bishop is protected so there is no skewer. So Fischer flipped it before he skipped it: **1...Rf6!** and Pilnik soon resigned, because **2.Bg2** loses to **2...Rb1+**.

## NEED SOME PRACTICE?

Go to [www.uschess.org](http://www.uschess.org) and click on "New to Chess?" and follow the links to "... play the computer..." (But do your homework first!)



### CHess DETECTIVE

#1 This position is from London, England, in 1864, between Valentine Green and Wilhelm Steinitz. Notice that the white rook defends the queen on b1. Black threatens to remove the guard by playing **31...Rd2+!** **32.** Resigns. If **32.Rxd2** then **32...Qxb1** wins the queen. If **32.Ke1** or **32.Kf1**, then **32...Qh1** mate.

#2 This game from 2000 was between Tomas Oral and Marian Kantotik in Slovakia. Observe that White would like to play **Bb6** and checkmate Black...but the knight on d5 stops the threat. So White removes the guard by playing **16.Qxd5!** Resigns. If **16...Qxd5**, **17.Bb6** is mate because the rook on e1 attacks e7 and e8.

#3 This position occurred in a game between Anton Niedermayer and Petr Haba from Wattens, Austria, in 1996. Notice that the knight on e5 is the only defender of White's queen. Black eliminates it by playing **20...Rxe5!** **21.** Resigns. If **21.fxe5 Qxd3** wins the queen, on **21.Qxe4 Rxe4** and Black is ahead a knight and a pawn, and if White moves the queen somewhere else, Black has time to save his rook.

#4 Black's queen protects his bishop from White's rook. White played **44.Qb7+** Resigns. If Black didn't give up, he would be forced to play **44...Qxb7 45.axb7 Kxb7** (or the pawn would promote) **46.Rxe6** winning the bishop. Notice that **44.Rxe6** also removes the guard since **44...Qxe6 45.Qb7** is mate, but Black can escape by playing **44...Rxd2+!** **45.Kxg2 Qxg5+** with perpetual check in the future. This game took place in 2006 in Wijk aan Zee, Netherlands, between Michael Adams and Vassily Ivanchuk.

#5 This position occurred in a game between Lev Polugaevsky and Boris Gulko in 1975 in Yerevan, Armenia. For starters, White's knight is forking Black's queen and rook. Black's queen can't move and attack anything of great value. Also notice that if it were not for Black's knight, White would love to play **Qg7** mate. If Black captures the knight with **28...cxd6**, White plays **29.Rxe6!** removing the guard and threatening mate with **30.Qg7**.

#6 This game was between George Mickelakis and Vasilios Kotronias in Yerevan, Armenia, in 1996. Black removes the white knight that guards the g3 square by playing **34...Bxe4!** If **34...Ng3+**, then **35.Nxg3 fxg3 36.Qg1** saving the queen and defending the h2-pawn. White recaptures with **35.fxe4** or **35.Rxe4** and invites **35...Ng3+**. This move is a little harder to find since it doesn't fork the king and rook—**36.Kg1 Qxh2+!** **37.Kxh2 Rh6+ 38.Kg1 Rh1** mate.

### WIN OR DRAW!

**One: WHITE WINS!** **Maric-Udzvarlic Vrnjacka Banja, 1958** went: **1.b6+ axb6** (1...Kxb6 **2.f7** h2 **3.f8=Q** h1Q **4.Qc5+** Kxa6 **5.Qb5#**) **2.a7 Kb7 3.f7** (Just as good is: **3.a8=Q+** Kxa8 **4.f7** h2 **5.f8Q+** Kb7 **6.Qh6**) **3...Kxa7 4.f8=Q h2 5.Qh6** wins easily.

**Two: WHITE WINS!** Actually, White mates in five! That's what we mean by best play! Never miss a mate! From the *Chess Amateur* magazine in 1908: **1.Kf5 Kh5 2.Bf6 Kh6** (2...h6 **3.g4#**) **3.g3 Kh5 4.Bg5 h6 5.g4#**

**Three: DRAW!** In fact, White creates his own stalemate! **1.Bd2 g2 2.Ba5 g1=Q 3.b4** and no matter what Black does, White can't move! If you feel you've been tricked, well, you have! Don't blame me! Blame J. G. Campbell who created this crafty conundrum in 1863.

**Four: BLACK WINS!** Yes, we're tricky again! And stalemate is yet again the trick. The only way to win is if you have Black promoting to a knight! **1.b7+ Kb8 2.a4 b2 3.a5 b1=N** (Both rook and queen promotions stalemate immediately and even promoting to a bishop doesn't help: **3...b1=B 4.Kb6 Bd3 5.a6 Bxa6 6.Kxa6** stalemate!) and now the knight gets back in the nick of time to help the white king gobble up all the black pawns. Then he will promote his own pawn that's been sitting on d7 the whole time. From a study by Joseph Krejciak: **4.Kb6 Na3 5.a6 Nc4+ 6.Kb5 Ne5 7.Kb6 Nc6 8.Kc5 Ka7 9.Kb5 Nb8 10.Kc5 Nxa6+**

**Five: WHITE WINS!** Remember the "never miss a mate" tip you got above? It's a mate in three! Everybody in chess has missed a mate at one time or another, and a bunch of us have missed mates quite a few times. That's why we practice! **1.Qa5+ Kb8** (1...Ra7 **2.Qd8+** Kb7 **3.Rb6#**; 1...Kb7 **2.Qb6+** Ka8 **3.Rd8#**) **2.Qb6+ Kc8 3.Rd8#**

**Six: WHITE WINS!** Hopefully, you noticed the stalemate possibilities. Did you catch the mate? Did you figure out that if the Rook moves off the b-file it's stalemate? Did you figure out that although it looks like a stalemate if the rook stays on the b-file, this guy that does these problems likes tricks to keep us alert, so ... is there some place to put the rook so White can win? Big congratulations if you figured out what square worked for the rook! **1.Rb6 axb6+ 2.Kc4 b5+ 3.Kc5 b4 4.axb4#**

**Seven: WHITE WINS!** Hopefully, you noticed the stalemate possibilities. Did you catch the mate? Did you figure out that if the Rook moves off the b-file it's stalemate? Did you figure out that although it looks like a stalemate if the rook stays on the b-file, this guy that does these problems likes tricks to keep us alert, so ... is there some place to put the rook so White can win? Big congratulations if you figured out what square worked for the rook! **1.Rb6 axb6+ 2.Kc4 b5+ 3.Kc5 b4 4.axb4#**

### ARABIAN KNIGHTS

White to move in all cases.

**Solution one (watch the b-pawn):** **1.Rxb3 Bxb3 2.Nc3 Bxa2 3.b4#**

**Solution two (watch the Rook or front b-pawn):** **1.axb3 Bd1** (amongst many) **2.Rb4 Bxb3 3.Rxb3 Ka4 4.Ra3#**. Note, if Black does not plan to capture on b3, and plays instead **1...Bf5**, White wins with **2.Rb4 Bc7 3.Ra4+ Bxa4 4.b4#**. Likewise if **1...axb3 Bd3 2.Rb4 Bb5 3.Ra4+ Bxa4 4.b4#** comes to the same end.

The same ending happens for **1...Bg6** and **2...Be8** and for **1...Be4** and **2...Bc6**

**Solution three (watch the rook or b-pawn):** **1.Rg7 Bb1** (amongst many) **2.Rg1 Ba2 3.Rd1 Bb1 4.Rxb1 Ka4 5.Ra1#** (or **3...Ka4 4.Kb6** and **5...Rd4#** Likewise if **1...Bd3 2.Rg1 Bb5 3.Ra1+ Ba4 4.Ra2 bxa2 5.b4#** The same ending happens for **1...Be4** and **2...Bc6** and for **1...Bf5** and **2...Bd7**. As for **1...Bg6** or **1...Bh7**, White captures the Bishop and continues.



# LANYARDS AND POISON IVY TIME!



## Chess Camps around the country!

### PA, VA, MD, & NJ

#### SILVER KNIGHTS CHESS CAMPS

##### Description for all camps

Spend a week playing and learning about chess from the Silver Knights chess coaches! Our coaches are highly-rated professional chess instructors. We have taught tens of thousands of children, including many state and national champions. Campers are broken up into groups by skill level, so we accept anyone from total beginners up through experienced and highly-rated tournament players. Each camper receives a T-shirt and a tournament-style chess set. Activities include learning openings, tactics, endgames, studying master games, playing games against fellow students, and analyzing the students' games. Campers will take periodic breaks for snacks and fresh air, and full-day campers have lunch and recess from 12:00— 1:00. Most camps feature at least one master or expert instructor for the most advanced students. We have more than 80 week-long camps this year throughout the Washington, DC and Philadelphia metro areas. For more information, see our website at [www.silverknightschess.com](http://www.silverknightschess.com).

**Spring Break Camps in Fairfax and Prince William Counties, VA:** 3/29, 4/5

**Howard County, MD Camps:** 6/28, 7/19, 8/2, 8/16

**Anne Arundel County, MD Camps:** 7/6, 8/9

**Fairfax County, VA Camps:** 6/21, 6/28, 7/6, 7/12, 7/19, 7/26, 8/2, 8/9, 8/16, 8/23, 8/30

**Arlington County, VA Camps:** 7/26, 8/23, 8/30

**Loudoun County, VA Camps:** 6/21, 7/6, 7/12, 8/16, 8/30

**Prince William County, VA Camps:** 6/21, 7/19, 8/2, 8/23

**Stafford County, VA Camp:** 8/9

**Cherry Hill, NJ Camps:** 6/28, 7/19, 8/9

**Philadelphia-area Camps:** 6/21, 6/28, 7/6, 7/12, 7/19, 7/26, 8/2, 8/9, 8/16, 8/23, 8/30

### COLORADO

**16th Annual Denver Rocky Mountain Chess Camps - June 14-18 (Englewood) - full and half day options - and July 12-14 (Denver).**

All abilities and ages. 8:1 Staff-Student ratio. Five 2-day chess camps are also offered throughout the summer and winter break. Participants will be taught scorekeeping, etiquette, tournament preparation, logical thinking and strategic planning. Learn personally from nationally-recognized Denver Chess Master and author, Todd Bardwick. Visit [www.ColoradoMasterChess.com](http://www.ColoradoMasterChess.com) for details. Todd can be contacted at (303) 770-6696 or [tbardwick@yahoo.com](mailto:tbardwick@yahoo.com)

### NEW JERSEY

**Intensive chess training with GM Artur Jussupow, GM Alexander Chernin and GM Alexander Stripunsky**

**Four weeks starting on July 6.** This camp has been running for the last 10 years and attracts the best chess players from all over United States as well as from Europe. Every day activities include: 5 hours of chess training with the world's best coaches, two hours of tennis with professional tennis instructors and soccer matches every night. Rating requirement Group 1 > 2100; Group 2 > 1800. For more information please visit our website at [www.icanj.net](http://www.icanj.net) and look for 2010 summer camp or call / e-mail Diana Tulman (201) 287-0250/[diana@icanj.net](mailto:diana@icanj.net)

**International Chess Academy Summer Chess Camp under IM Sergey Grabuzov and WGM Tatiana Grabuzova management**

**9 weeks from 6/28/2010 to 8/27/2010**, Mondays through Fridays from 9 am to 3:00 pm – half day; or 9 am to 5 pm – full day. We offer 5:1 student – teacher / instructor ratio, prizes and trophies for tournaments and various (including sport!) compe-

titions, camp T-shirts and FUN! Ongoing chess tournaments (USCF-rated) every afternoon. Among our teachers are professional chess coaches from Moscow. Visit our website (look under summer camps) at [www.icanj.net](http://www.icanj.net) for more information, pictures, and registration form.

### ARIZONA

**International School of Tucson - June 7 - July 23, 2010 - 12:30-3:30pm.** Weekly enrollments. Two sections: Ages 5-6 and beginners, and ages 7-10 basic-level players (to about USCF 550). USCF rating not required. International School of Tucson, 1730 North First Avenue, Tucson, AZ 85719. Website: [www.InternationalSchoolofTucson.com](http://www.InternationalSchoolofTucson.com). E-mail: [info@InternationalSchoolofTucson.com](mailto:info@InternationalSchoolofTucson.com).

### KANSAS

**Anatoly Karpov Chess Camp - 106 S. Main, Lindsborg, KS 67456 - 785-227-2224.** E-mail: [info@anatolykarpovchessschool.org](mailto:info@anatolykarpovchessschool.org) - **Additional Camp Information:** [www.anatolykarpovchessschool.org](http://www.anatolykarpovchessschool.org). **Annual Chess Camps held each July.**

The Karpov Chess School summer chess camp was founded by 7-time World Champion Anatoly Karpov in 2000. The week-long camp is designed for chess players of all strengths and levels of experience, ages 6 to adult, who want to improve their game while enjoying the company of fellow chess enthusiasts. After checking in and orientation on Sunday evening, the chess camp will begin with a simultaneous game with Grandmaster Varuzhan Akobian. On Monday through Friday, campers will have two 60-minute sessions. During that time, students will be divided into groups of 8-12 members and assigned a supervising teacher who will be responsible for tracking their progress throughout the camp. A rotating instructional schedule allows

campers to study with several members of the staff during the week. Each camper will be given chess materials to improve their chess knowledge. Every afternoon, participants will be playing one round of a G/30 tournament. Friday afternoon will be devoted to the award ceremony during which prizes for winners in all competitions will be awarded. Every day, 90 minutes will be devoted to supervised free time or swimming pool activities. This may also include basketball and tennis. Students will be supervised throughout the week by an experienced counseling staff. The Karpov Chess School reserves the right to substitute an instructor with one of equal stature in the unlikely event of a conflict of schedules or illness. Chief Instructor: Grandmaster Varuzhan Akobian, winner of the 2007 World Open, was the 2008-2009 instructor, assisted by FIDE Master Tom Brownscombe.

### TENNESSEE

**A Premier Chess Camp: Mid-South Chess announces its 9th annual Summer Chess Camp for all ages and all levels, June 13th-18th, 2010 in Memphis, Tennessee with special guest U.S. Champion Hikaru Nakamura!**

Accepting both residential or commuter students, this camp is centrally located in Memphis, TN and held on the beautiful campus of Lausanne Collegiate School. The camp instructors are GM Alex Stripunsky, GM Josh Friedel, FM Jake Kleiman, WIM Alisa Melekhina, and Eve Litvak. These instructors, who represent years of extensive chess coaching experience, are considered among the best in the country. We divide our campers into small groups according to age and ability with a Counselor to monitor their every move. This is a whirlwind five day, fun and excitement filled chess camp with hours of age and level appropriate instruction, combined with special activities including sports, interactive chess play, and optional evening activities. Each Instructor teaches each group—what a difference this makes! Camp includes Sunday afternoon opening reception and orientation for parents and campers, unique camp designed t-

shirt, trophy, autographed certificate, group photo and daily souvenir. Camp concludes with a USCF-rated tournament and awards ceremony. Come experience the top quality of Mid-South Chess and its 9th Annual Summer Chess Camp. Don't miss out! For more information, visit our website [www.chesscamp.us](http://www.chesscamp.us) or call 901.276.4663.

### VIRGINIA, MARYLAND, NEW YORK

**Maurice Ashley Five-Day Chess Camp: Richmond, Virginia - July 26-30, 2010; Baltimore, Maryland - June 21-25, 2010; Schenectady, New York - July 6-10, 2010**

Mon.-Fri., For Kids, K-8. All Levels Welcome. World-class chess training using renowned Grandmaster Maurice Ashley's revolutionary teaching method. Campers will learn from the Grandmaster and coaches who have been trained in his techniques. Chess activities will be balanced with physical activity, as well as other fun activities designed to supplement the chess curriculum. Training is tailored by skill level. For more information, go to website for details. [www.mauriceashleychampions.com](http://www.mauriceashleychampions.com)

### OHIO

**Cincinnati Summer Chess Camps - July 27-31; Aug. 3-7; Aug. 10-14.**

Detailed information is available from Flier.

### 2009/10 Season: Vivacity CHESS Camps (Ohio).

Find out what it's like to learn from people who have expertise in chess and a passion for teaching! SPRING, SUMMER and WINTER Chess Camps. More Information and Registration: [www.vivacityinc.com/chess/ChessCamps.htm](http://www.vivacityinc.com/chess/ChessCamps.htm). QUESTIONS: Website: [www.vivacityinc.com/chess/](http://www.vivacityinc.com/chess/); E-mail: [chess@vivacityinc.com](mailto:chess@vivacityinc.com); Telephone: (440) 461-3634.

### DISTRICT OF COLUMBIA

**U.S. Chess Center Day Camps, Washington, DC, June, July, August;** Different levels of instruction different weeks. Contact U.S. Chess Center, 1501 M Street, NW, Washington, DC 20005, (202) 857-4922, [www.chessctr.org](http://www.chessctr.org).

### Wizards of the Mind Chess Club

#### 2010 Summer

#### Chess Day Camps

Weekly Day Camps in Springfield, NJ. 6 weeks from 6/28 – 8/6/2010 – pick any week. Daily Lessons with experienced instructors. Week-long Tournaments. Pizza Lunch on Fridays. Camp T-Shirt. Half Day Option available. And Fun, Fun, Fun. For details visit our website at [www.wizardsofthemind.com](http://www.wizardsofthemind.com) and e-mail [info@wizardsofthemind.com](mailto:info@wizardsofthemind.com) or call 973-262-1395.

## Summer Camp 2010

Texas Tech University

Lubbock, Texas

June 20-25, 2010 and July 18-23, 2010

To Register Contact

TTU SPICE

806-742-7742

[spice@ttu.edu](mailto:spice@ttu.edu)

[www.spice.ttu.edu](http://www.spice.ttu.edu)

Texas Tech University

## SPICE



Susan Polgar Institute  
for Chess Excellence



# TROPHIES PLUS ALL AMERICA TEAM 2010



The results are in and it is time to honor our Trophies Plus 2010 All America Team members. Team members are chosen based on achieving a certain rating by a certain age. While my gnomes believe every young USCF member is an all-star, here are the Trophies Plus All America team members for 2010.

Trophies Plus is located in Templeton, Iowa, and they provide the hundreds and hundreds of trophies awarded at all of the USCF national scholastic events. They even provide a shipping service at each event for parents and coaches who just don't have room for those monster trophies on the return trip home!

Each team member receives a commemorative plaque and a Trophies Plus team jacket. The USCF congratulates each team member and thanks Trophies Plus for their continued support. You can thank them as well by visiting [www.trophiesplus.com](http://www.trophiesplus.com).

## AGE 18

(minimum peak rating 2450):  
**Daniel Ludwig** of Florida

## AGE 17

(minimum peak rating 2400)  
**Robert L. Hess** of New York  
**Samuel L. Shankland** of California  
**John Daniel Bryant** of California  
**Daniel A. Yeager** of Pennsylvania

## AGE 16

(minimum peak rating 2350)  
**Marc Tyler Arnold** of New York

## AGE 15

(minimum peak rating 2300)  
**Michael Lee** of Washington  
**Stephen Zierk** of California  
**Conrad Holt** of Kansas  
**Victor Shen** of New Jersey

## AGE 14

(minimum peak rating 2250)  
**Ray S. Robson** of Florida  
**Parker Bi Guang Zhao** of New York

## AGE 13

(minimum peak rating 2200)



**Gregory Young** of California

Greg has had a number of coaches and a number of successes, tying for first in the 2007 National

Junior High (K-9) Championship and in the 2008 U.S. Junior Invitational. Math, science, singing, drama and basketball occupy his free time.



**Daniel Naroditsky** of California

*CL4K* readers know Daniel from his cover photo (Feb. 2008). He has been a FIDE Master since he won the 2007 World Under 12 Championship. Reading, geography, basketball, and writing are his interests. In fact, last month he became the youngest published author on chess when *Mastering Positional Chess: Practical Lessons of a Junior World Champion* was released by New In Chess.

## AGE 12

(minimum peak rating 2100)



**Lucas Van Beuzekom** of Florida

Lucas is a three-time member of the Trophies Plus All America team, and deservedly so, winning many titles at the national and state level. He is a veteran (!) of world competition, having played on the 2005 World Youth team. He recently finished third in the Florida State Championship behind two grandmasters. Basketball is his sport of choice.



**Darwin Yang** of Texas

Darwin is no stranger in the winner's circle, having won more than his

share of national and international titles. He was awarded the title of FIDE master after tying for first in the Under 10 section of the 2006 Pan American Youth Championship. When not studying with Coach Gregory Kaidanov, he enjoys video games, math, and writing.



**David Adelberg** of Arizona

IM Nikolai Andrianov must be very proud of his student, who has already won the Arizona High School Championship (as a fifth grader!). David also achieved a master rating at the age of 12 years and 10 months! And he has a bronze medal in his collection from the World Youth Under 12 Championship. Math competes for his time: he has already achieved high school honors in algebra ... in the sixth grade! Add a little skiing, golf, and tennis, and you've got a fine, young addition to the All America Team.



**Kevin Y. Cao** of Missouri

Kevin has a long string of scholastic successes, the most recent being second place in the 2009 K-6 section of the SuperNationals. But he isn't afraid to mix it up with adults, under the direction of GM Dmitry Gurevich. In 2008 he won



the Class A section of the Midwest Open, and in 2009 he added the expert's title to his collection, in the same event. Violin, basketball, soccer and dreams about being a professional athlete (and a grandmaster!) occupy his spare time.



**Aleksandr Ostrovskiy** of New York

Aleksandr is the 2008 National Elementary K-6 champion, but that is just one of many titles earned, having also won many New York state and city events. This is his fifth time on the All America Team and he has played in the Worth Youth three times. Under the guidance of Vladimir Lymar (and undoubtedly influenced by his Hunter College High School teammates), Alex has begun to make waves at the famed Marshall Chess Club. I think it is a law in New York, if you grow up in Brooklyn, you have to love handball. Alex obeys the law.

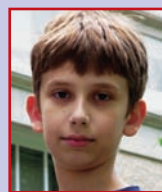


**Sean Vibbert** of Indiana

When he isn't studying with GM Predrag Trajkovic or dreaming about filling cavities (he wants to be a dentist), Sean can be found playing violin with the Evansville Philharmonic Youth Orchestra or sharpening his Taekwondo skills (black belt). Or you can find him striking fear into the hearts of players of all ages in Indiana and Kentucky. His most recent achievement was at the 2009 SuperNationals where he won the K-6 Blitz Championship.

**AGE 11**

(minimum peak rating 2100)



**Daniel Gurevich** of Georgia

What ever happened to growing up to be a fireman? Daniel already has

his goals in place: grandmaster before graduating from college, medical school, and a career in cancer research! And there is every reason to believe he will succeed, if his chess accomplishments are any indication. Most recently, he won the 2009 SuperNational K-6 title. He studies chess with Michael Elkin, but I don't know when he finds the time. Math, science, Latin (!), and writing are his favorite subjects. Daniel also writes a games column for each issue of the *Georgia Chess* magazine. *Adhuc tua messis in herba est.*



**Jarod M. Pamatmat** of Texas

Jarod has not been a stranger to these pages. He was invited to play in the U.S. Cadet Championship, which we covered in the August 2009 issue. Jarod has two national scholastic titles under his belt, and has played on three World Youth teams (2007, 2008, 2009). He loves football and basketball, math and science, and music, playing both the piano and the violin. Career plans: doctor.



**Kevin Wang** of Maryland

Kevin won the 2006 National Youth Action, K-6 section, and has numerous state scholastic titles from Maryland to his credit. Math and reading are his favorite subjects. Throw in a smattering of piano, clarinet, tennis, swimming, and watching movies, and there just might be enough time for what I suspect is every 11 year old's favorite activity: video games!



**Yian Liou** of California

Yian was self-taught, using a DVD by Roman Dzindzichashvili, and then took lessons from

GM Larry Christiansen and Michael Aigner, and now takes private lessons on the Internet Chess Club, using Skype. There are many roads to success! Some of those successes include the 2009 Northern California K-12 Championship, and tying for first in the Under 2300 section of the 2009 Pacific Coast Open. Other interests include math, science, social studies, piano, soccer and tennis. And we have another scientist in the works!



**Arthur Shen** of New Jersey

Arthur is a silver medalist, when he placed second in the Under 12 section of the 2009 Pan Am Youth Championships. He also surprised quite a few people when he won the Under 2200 section of the 2008 National Chess Congress! Some of his favorite things: English, eating!, reading, and basketball.



**Michael William Brown** of California

You can almost always find Michael's name near the top of the list of finishers in any scholastic event he enters. He won the K-6 section of the 2008 National Youth Action, and was a valuable member of the 2009 Worth Youth team when he played in the Under 12 section. Coaches Takashi Iwamoto and Armen Ambartsoumian and parents are justifiably very proud! Math, science, baseball and tennis are some of his interests. He is also an excellent pianist and likes to write science fiction.



**Varun Krishnan** of California

Varun first joined the Trophies Plus All America Team in 2008. Math, economics and social studies are his favorite subjects.

Hobbies include baseball, basketball, tennis, football, Wii and board games. I don't know if he still wants to be an economist (or an inventor), but he is certainly honing his skills, especially in math (San Diego math champion in 2007 and 2009!). He started playing chess in Texas, when he won the 2004 Austin Primary Championship and simply hasn't slowed down, pushing his rating well over 2100. He plays primarily in local events and first pushed his rating over 2100 at the 42nd Gambito Open. He has also represented the U.S. in 2007 and 2009 in the World Youth championships. He has been studying with IM Cyrus Lakdawala.

**AGE 10**

(minimum peak rating 2000)



**Christopher Wu** of New Jersey

I remember this youngster. Such a sad case—to be afflicted with a malady for which there is no known cure, and at such a young age. Christopher, you see, is a super Yankees fan. Luckily he has Dmitry Gurevich and Dean Ippolito to keep him occupied between the end of the World Series and spring training. Christopher has won four national scholastic titles and has won a New Jersey grade school title for six consecutive years. This is the fourth time he has been named to the Trophies Plus All America Team.



**Joshua Colas** of New York

The Westchester Chess Academy (along with coaches Rusudan Goletiani and Mike Amori) can rightfully be proud of Joshua's accomplishments. Joshua tied for first in the 2009 National Youth Action, K-9 section, and took first place in the 2009 K-12 Blitz. And 2010

promises to be just as successful. He recently tied for first in the New York City Championship, Junior High Varsity section. For three years now, he has been the top rated player in New York for his age group. When he isn't adding to his collection of trophies, Joshua enjoys math, science, video games, and playing the cello.



**Kayden Troff** of Utah

When he isn't fishing, swimming, sledding, or just playing Nintendo, you can probably find this energetic youngster running every morning with his dad. Then again, you may find Kayden defending any number of the Utah state titles he has won during the past two years. He is the highest rated, active player in Utah, for both regular and quick ratings. And don't even think about getting into a time scramble with Kayden. He is the only scholastic player to win the Utah State Speed Chess Championship (2009)!



**Luke Harmon-Vellotti** of Idaho

As Kayden Troff is to Utah, so is Luke Harmon-Vellotti to Idaho! Luke is also the highest rated active player in his state! Not that it wasn't predicted by the late Jerry Hanken—he wrote an article about Luke in *CL4K* back in August of 2008 called "The Littlest Warrior." His primary coach is his dad, Daniel Vellotti, assisted by Dr. Michael Gold of Boise. Luke is not afraid to mix it up with adults; he defeated GM Dmitry Gurevich in the 2009 National Open / Game 10 Championship. And at this tender age, he is already enrolled at Boise State University studying engineering and taking pre-med college classes. He still finds time to play center in the Junior Basketball League.



**Justus Williams** of New York

Justus is fresh from his match win against Joshua Colas, which had been arranged by Chess-in-the-Schools (C-I-S). Studying with C-I-S instructors Miron Sher and Shaun Smith has certainly paid off as Justus also won the Empire State Open Championship in Saratoga Springs, New York. Being chosen to be a student at the U.S. Chess School in 2009 also helped. Because Justus is from the Bronx, he is required by law to play handball ... but also enjoys basketball and football. Math and science are his favorite subjects. Where have I read that before?

**AGE 9**

(minimum peak rating 1850)



**Dachey Lin** of Texas

This is Dachey's second time on the Trophies Plus All America Team. He has also been a member of the 2007 and 2009 Worth Youth Championship teams. Math is a favorite subject and interests include guitar, piano, martial arts, Rubik's Cube, and Legos®!



**Alex Liu** of Texas

Alex won the 2007 National Scholastic Second Grade Championship, and quite a few Texas state scholastic titles. Math and science are his favorite subjects. He also enjoys music, playing piano and percussion. Video games and basketball round out a full schedule.



**Michael L. Chen** of Michigan

Michael has only been playing for three years under the guidance of Dr. Tony Palmer, but he has already racked up enough titles at

the state and national levels to fill a trophy room! Is he a dangerous player? Well, he gained a draw against former World Champion Susan Polgar in a simultaneous exhibition last April! Michael loves school activities, is a straight A student, enjoying math, science and reading. In addition to the student council, he plays soccer, tennis and the violin. He plans to be a doctor and a chess master.



**Simone Liao** of California

"Too many hobbies, too little time." That just about sums it up for most of our Trophies Plus All America

Team members. For Simone that means tennis, swimming, reading, art, music ... and a Woman FIDE Master title by age nine! She won a silver medal at the 2008 Pan American Youth Championships, and came home with the gold medal at the 2009 Pan American Youth Championships. And it all started as an after school activity in the second grade!



**William Graif** of New York

A student attending Hunter College Elementary School, under the critical eye of FM Sunil Weeramantry,

William has already won titles in two countries: the 2008 National Scholastic Third Grade Championship, and the 2008 Canadian nationals, under age 10 section. Add a smattering of New York State titles (and a win in a simul over GM Alexander Shabalov), and you know the best is yet to come. Math, soccer, baseball, and following ALL of the New York sports teams are just a few of his interests.

### AGE 8 & UNDER

(minimum peak rating 1800)



**Tanuj Vasudeva** of California

Tanuj graced our cover in October of 2009 as "Mr. Perfect," because of his perfect score at the

2009 Pan American Youth Championship, winning the gold medal. He also won a silver medal at the World Youth Championship the same year. Tanuj proudly displays the 2008 National K-1 Championship trophy on his mantle, as well as three California state scholastic titles. Geography, math and astronomy are his favorite subjects, but I suspect it is only by a matter of degrees, since he has won the Cougar Club award for scholastic achievement in elementary school, three years in a row!



**Cameron Wheeler** of California

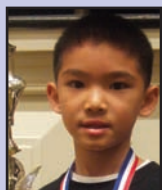
Cameron won the K-3 title at the 2009 SuperNationals—a perfect complement to various second

place finishes at previous national scholastic events, as well as to his two state championships. He plays the guitar, baseball, and basketball.



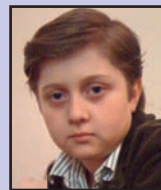
**Tommy O. He** of Texas

When asked about his major chess successes, Tommy responded not with titles, but with "combination and mid-game." The young man is learning—quickly! His favorite subjects are math, science and music. And guess what! After school he plays the violin,—and studies math and science. I don't know how tennis fits in, but he also likes tennis.



**Jeffery Xiong** of Texas

Jeffery tied for second place in the K-3 section of the 2009 SuperNationals, finished tied for fourth place in the K-1 section of the 2007 National Elementary Championship, and also won the 2007 Ohio state second grade championship. Math is his favorite subject and he enjoys football, basketball, and dodgeball. And when he grows up? Banker and grandmaster!



**Samuel Sevian** of California

Samuel is another "local boy." While he has played in a number of scholastic events (he's a former Florida state K-3 champion), he seems to prefer playing in open events. Reaching 1800 was not a problem for Samuel. In fact, he broke the 2100 barrier at the 2009 American Open and peaked early this year at 2160 at the Golden State Open. Under the watchful eye of IM Andranik Matikozian, Samuel became the youngest expert in the USCF, and has the highest FIDE rating in the world (2144) for anyone under 10 years old! In school, his favorite subjects are math and science.



**Jonathan Chiang** of Texas

Coaches GM Gregory Kaidanov and FM Igor Shtern can be very proud of this youngster, as are his parents! Jonathan started off by winning the 2006 National Scholastic First Grade Championship, and hasn't stopped to look back. He placed sixth in 2007 and fifth in 2009 in the World Youth Championships. Math and science are his favorite subjects, and he likes reading books. For exercise, it's Taekwondo two or three times a week!



## Tournament Life Announcements

APRIL 15 THROUGH JUNE 14

### Scholastic Members:

As a service to you, we are listing upcoming National USCF rated events, and requested events of possible interest to you. You can always log in to [www.uschess.org](http://www.uschess.org), and click on "Clubs and Tournaments." Then click on "Upcoming Tournaments" for a complete listing of upcoming rated events and details. As always, you can check out the TLA section of *Chess Life*.

### Organizers and Tournament Directors:

If you would like your tournament listed here in *Chess Life for KIDS* for June (events to be held after June 14), the deadline for submitting your announcements is April 10th. The deadline for the August 2010 issue is June 10th. The processing fee is \$1.00 per line for the first eight lines, \$2.00 for every line thereafter. Send your announcements to [tl@uschess.org](mailto:tl@uschess.org).

**Display advertising is also available.** Advertising rates are posted on the USCF website, [www.uschess.org](http://www.uschess.org), or you may email: [tl@uschess.org](mailto:tl@uschess.org) for complete details.

## NATIONALS

### Apr. 9-11, Minnesota

#### 2010 National Junior High (K-9) Championship (Apr. 8 - Bughouse & Blitz)

7SS, G/120. Hyatt Regency Minneapolis, 1300 Nicollet Mall, Minneapolis, MN 55403, 1-800-233-1234 or 1-612-370-1234, Chess Rate \$125. **6 Sections: K-9 Championship, K-9 Under 1250, K-9 Unrated, K-8 Championship, K-8 Under 1000, K-8 U750. March Rating Supplement will be used.** Unrated players may play in the Championship or Unrated sections only. One 1/2-point bye for any round, except Rd. 7, if requested in advance. EF: \$50 if p/m by 14 March, \$70 if p/m by 28 March, \$85 after 28 March or \$90 at site. Mailed entries must be p/m by 3 April. \$5 extra for all phone registrations, \$20 change fee for roster or section changes after 28 March. **On-site registration:** Thurs. 9am-10pm & Fri. 8am-10am. Players registering after 10am will get 1/2-point for Round 1. **Awards:** A minimum of 1 individual trophy per 10 players and 1 team trophy per 15 players (average attendance in the past two years, not incl. SN IV) plus plaques for 4 players and coach of top five teams in each section. **Class trophies to the top three in the following classes:** K-9 Championship: 1400-1599; 1200-1399; 1000-1199; U1000; Unrated, K-8 Championship: 1500-1599; 1400-1499; 1300-1399; 1200-1299; 1100-1199; 1000-1099. All participants will receive a commemorative medal at the completion of the final round. **Teams:** A team must have at least two players, although no maximum number of players. The top four scores in any section will count for the team score. All on team must attend the same school. **Opening Ceremony:** 12:30pm Friday. **Main Event rounds:** Friday 1pm, 7pm; Saturday 9am, 2pm, 7pm; Sunday 9am, 2pm. **Awards Ceremony:** Approx 7pm Sunday. **Special Events:** National Junior High Bughouse Championship: Thursday 11am; EF: (on site only) \$25 per team. Bughouse registration ends at 10am Thurs. **National Junior High Blitz Championship:** Thursday 5pm; EF: \$15 per player, \$20 after 28 March or on site. **Coaches and Parents Meeting:** 11am Friday. **Scholastic Meeting:** 9:30am Saturday. **Coaches Forum:** 7pm Saturday. **Tournament Feedback Meeting:** 9:30am Sunday. **Parents and Friends Tournament:** 4SS, Saturday 10:30am, 12:30pm, 2:30pm, 4:30pm. On site registration only. Rated and Unrated sections. Trophies for parent and child combined results. **ALL:** Please bring clocks. Sets and score sheets provided. USCF membership required. **Questions and team room requests:** [cbruce@uschess.org](mailto:cbruce@uschess.org), 931-787-1234, Ext 147. **Mail entries to:** U.S. Chess Federation, Attn: Junior High, P.O. Box 3967, Crossville, TN 38557. **Additional details and on-line registration:** [www.uschess.org/tournaments/2010/jhs/](http://www.uschess.org/tournaments/2010/jhs/). CMS JGP.

### Apr. 16-18, Ohio

**2010 All Girls National Championship presented by the Kasparov Chess Foundation in association with the USCF and USD.**  
6SS, G/90. Hyatt Regency Columbus, 350 N. High Street, Columbus, OH 43215, (614) 280-1234, Hotel Rate \$127. **6 Sections:** 8 years old and younger; 10 and younger, 12 and younger, 14 and younger, 16 and younger, 18 and younger. Age as of 4/1/2010. USCF membership required. Winner of 18 years old and younger Section wins an Academic Distinction Scholarship to The University of Texas at Dallas, worth \$80,000 for an out-of-state student. EF: \$50 if postmarked by 3/21; \$70 if by 4/4; \$85 by 4/15 or \$90 on-site. Do not mail after 4/8 as your entry may not be received on time. **Opening Ceremony:** 6pm, Friday. **Rounds:** Rd 1 - 6:30pm Fri; Rounds 2-4 - Sat 10am, 2:30pm, 6:30pm; Rounds 5-6 - Sun 9am & 1pm. **Awards Ceremony:** Sun. 5pm. Trophies to top 15 indiv & top 3 teams (top 3 players added for team scores). **Bye:** One 1/2-pt bye available, any round, if requested before end of Rd. 2 and if player has not received a full-point bye. **Side Events:** Bughouse Tournament - Fri. 1pm, EF \$25/team. **Blitz Tournament - Fri.** 3pm, EF \$15 by 4/4, \$20 after or on site. **Entries:** Mail to USCF, Attn: All Girls, P.O. Box 3967, Crossville, TN 38557 or online at <http://uschess.org/tournaments/2010/allgirls>. NS, NC, W. CMS JGP.

### Apr. 16-18, Ohio

#### 2010 National High School (K-12) Championship (Apr. 15 - Bughouse & Blitz)

7SS, G/120. Hyatt Regency Columbus, 350 N. High Street, Columbus, OH 43215, 1-800-233-1234 or 1-614-463-1234, Chess Rate \$127. **5 Sections: K-12 Championship, K-12 Under 1600, K-12 Under 1200, K-12 Under 800, K-12 Unrated. April Rating Supplement will be used.** Unrated players may play in the Championship or Unrated section only. One 1/2-point bye for any round, except Rd. 7, if requested in advance. EF: \$50 if p/m by 21 March, \$70 if p/m by 4 April, \$85 after 4 April or \$90 at site. Mailed entries must be p/m by 10 April. \$5 extra for all phone registrations, \$20 change fee for roster or section changes after 4 April. **On-site registration:** Thurs. 9am-10pm & Fri. 8am-10am. Players registering after 10am will get 1/2-point for Round 1. **Awards:** A minimum of 1 individual trophy per 10 players and 1 team trophy per 15 players (average attendance in the past two years, not incl. SN IV) plus plaques for 4 players and coach of top five teams in each section. **Class trophies to the top three in the following classes:** K-12 Championship: 1900-1999; 1800-1899; 1700-1799; 1600-1699; 1500-1599; 1400-1499; 1300-1399; 1200-1299; U1200. All participants will receive a commemorative medal at the completion of the final round. **Teams:** A team must have at least two players, although no maximum number of players. The top four scores in any section will count for the team score. All on team must attend the same school. **Opening Ceremony:** 12:30pm Friday. **Main Event rounds:** Friday 1pm, 7pm; Saturday 9am, 2pm, 7pm; Sunday 9am, 2pm. **Awards Ceremony:** Approx 7pm Sunday. **Special Events:** National High School Bughouse Championship: Thursday 11am; EF: (on site only) \$25 per team. Bughouse registration ends at 10am Thurs. **National High School Blitz Championship:** Thursday 5pm; EF: \$15 per player, \$20 after 4 April or on site. **Coaches and Parents Meeting:** 11am Friday. **Scholastic Meeting:** 9:30am Saturday. **Coaches Forum:** 7pm Saturday. **Tournament Feedback Meeting:** 9:30am Sunday. **Parents and Friends Tournament:** 4SS, Saturday 10:30am, 12:30pm, 2:30pm, 4:30pm. On site registration only. Rated and Unrated sections. Trophies for parent and child combined results. **ALL:** Please bring clocks. Sets and score sheets provided. USCF membership required. **Questions and team room requests:** [cbruce@uschess.org](mailto:cbruce@uschess.org), 931-787-1234, Ext 147. **Mail entries to:** U.S. Chess Federation, Attn: High School, P.O. Box 3967, Crossville, TN 38557. **Additional details and on-line registration:** [www.uschess.org/tournaments/2010/hs/](http://www.uschess.org/tournaments/2010/hs/). This event will be held in conjunction with the 2010 All Girls National Championships (See separate TLA). CMS JGP.

### May 7-9, Georgia

#### 2010 Burt Lerner National Elementary (K-6) Championship (May 6 - Bughouse & Blitz)

7SS, G/120. Hyatt Regency Atlanta, 265 Peachtree St. NE, Atlanta, GA 30303, 1-800-233-1234 or 1-404-577-1234, Chess Rate \$125. **9 Sections: K-6 Championship, K-6 Under 1000, K-6 Unrated, K-5 Championship, K-5 Under 900, K-3 Championship, K-3 U800, K-3 Unrated, K-1 Championship. April Rating Supplement will be used.** Unrated players may play in the Championship or Unrated sections only. One 1/2-point bye for any round, except Rd. 7, if requested in advance. EF: \$50 if p/m by 11 April, \$70 if p/m by 25 April, \$85 after 25 April or \$90 at site. Mailed entries must be p/m by 1 May. \$5 extra for all phone registrations, \$20 change fee for roster or section changes after 25 April. **On-site registration:** Thurs. 9am-10pm & Fri. 8am-10am. Players registering after 10am will get 1/2-point for Round 1. **Awards:** A minimum of 1 individual trophy per 10 players and 1 team trophy per 15 players (average attendance in the past two years, not incl. SN IV) plus plaques for 4 players and coach of top five teams in each section. **Class trophies to the top three in the following classes:** K-6 Championship: 1300-1399; 1200-1299; 1100-1199; 1000-1099; 900-999; 800-899. K-5 Championship: 1300-1399; 1200-1299; 1100-1199; 1000-1099; 900-999; 800-899. K-3 Championship: 1100-1199; 1000-1099; 900-999; 800-899; 700-799; 600-699. K-1 Championship: All players in this section receive a trophy. All participants will receive a commemorative medal at the completion of the final round. **Teams:** A team must have at least two players, although no maximum number of players. The top four scores in any section will count for the team score. **All on team must attend the same school. Opening Ceremony:** 12:30pm Friday. **Main Event rounds:** Friday 1pm, 7pm; Saturday 9am, 2pm, 7pm; Sunday 9am, 2pm. **Schedule for K-1:** Friday 1:30pm, 6:30pm; Saturday 9:30am, 1:30pm, 6:30pm; Sunday 9:30am, 1:30pm. **Awards Ceremony:** Approx 7pm Sunday. **Awards Ceremony for K-1:** Approx 5:30pm Sunday. **Special Events:** National Elementary Bughouse Championship: Thursday 11am; EF: (on site only) \$25 per team. Bughouse registration ends at 10am Thurs. **National Elementary Blitz Championship:** Two sections: K-6 and K-3. Thursday 5pm; EF: \$15 per player, \$20 after 25 April or on site. **Coaches and Parents Meeting:** 11am Friday. **Scholastic Meeting:** 9:30am Saturday. **Coaches Forum:** 7pm Saturday. **Tournament Feedback Meeting:** 9:30am Sunday. **Parents and Friends Tournament:** 4SS, Saturday 10:30am, 12:30pm, 2:30pm, 4:30pm. On site registration only. Rated and Unrated sections. Trophies for parent and child combined results. **ALL:** Please bring clocks. Sets and score sheets provided. USCF membership required. **Questions and team room requests:** [cbruce@uschess.org](mailto:cbruce@uschess.org), 931-787-1234, Ext 147. **Mail entries to:** U.S. Chess Federation, Attn: Elementary, P.O. Box 3967, Crossville, TN 38557. **Additional details and on-line registration:** [www.uschess.org/tournaments/2010/elem/](http://www.uschess.org/tournaments/2010/elem/). CMS JGP.

### May 29-31, Arizona

#### 2010 U.S. Amateur West Championship

Holiday Inn Palo Verde, 4550 S. Palo Verde Rd., Tucson, AZ 85714, 520-746-1161. **SECTIONS:** Championship (U2200), Reserve (U1600), Booster (U1200) & Scholastic (must be K-6 and U1000). Scholastic section is 3 separate 1-day tournaments. **SCHEDULE:** (Championship, Reserve, and Booster) 6/SS, 40/2, 25/1. Reg: 5/29, 8:30 - 9:30 AM. Rds: 10-4, 10-4, 9-3. (Scholastic) 4/SS, G/40. Reg: 8:30 - 9:30 AM each day. Rds.: Round 1 at 10 AM then as available for Rounds 2-4. **PRIZES:** (Championship) Chronos clock + plaque to Top 3; Digital clock + plaque to Top 1900-1999, 1800-1899, 1700-1799, 1600-1699, and U1600; Plaque to top Senior 50+, Junior U20 and Junior U14. (Reserve) Chronos clock + plaque to 1st; Digital clock + plaque to 2nd, 3rd, Top 1300-1399, 1200-1299, and U1200; Plaque to top Senior 50+ and Junior U14. (Booster) Chronos clock + trophy to 1st; Trophy to 2nd - 5th, Top Unrated and Junior U11. (Scholastic, each day) Digital clock + trophy to 1st; Trophy to 2nd - 5th, Top U800, U600, and Unrated. 1-yr USCF membership for perfect scores that don't win the clock. **SPECIAL PRIZES:** Top 2 Family Pairs in the non-scholastic sections. Biggest Upset of each round in the non-scholastic sections. Chronos clock to Scholastic player with the highest combined score over the three 1-day tournaments. EF: (Championship & Reserve) \$55 if rec'd by 5/26,

\$65 if after 5/26. (Booster) \$40 if rec'd by 5/26, \$50 if after 5/26. (Scholastic) \$15 each day or \$40 for all three days if by 5/26, additional \$5 if after 5/26. **ALL:** Half-point byes allowed for all rounds but must be requested prior to start of Round 2. **SIDE EVENT:** Blitz tournament Friday 5/28; G/5, 5 Rounds, Double SS; Entry Fee: \$10 (\$15 to non-tournament players); Reg: 6:00-6:45pm at site; Rounds: begin at 7:00pm. Prizes: (\$50/20) \$75-\$45, Top U1600 \$30, Medalion to top K-12, K-8, K-6. **ENTER:** [www.sazchess.org/store/store.php](http://www.sazchess.org/store/store.php) or mail to (make checks payable to "SACA"): SACA, Attn: US Amateur West, PO Box 42407, Tucson, AZ 85733 or at site. HR: \$69 (single/double) or \$85 (suite) if by 5/14, mention "SACA". INFO: Karen Penlock, 520-975-3946, email: [kpenlock\\_83@yahoo.com](mailto:kpenlock_83@yahoo.com), web: [www.sazchess.org](http://www.sazchess.org). NC, NS, W. CMS JGP.

### A Heritage Event!

#### May 29-31, New Jersey 66th Annual U.S. Amateur Championship - East

Somerset Ramada Inn, 60 Cottontail Lane, Somerset, Exit 12 off I-287 at Weston Canal Road. (732) 560-9880, Fax (732) 356-7455. In 3 Sections: Championship (U2200), Reserved (U1800), Booster (U1400) with two and three day schedules. **Three Day Schedule:** 6-SS, 50/2, S01. **3-Day Registration:** Saturday 5/29, 9:30-10:45 am. Rounds 12-6, 11-5, 9-3. **Two Day Schedule:** First three games G/60, round four merges with 3-day schedule. **2-Day Registration:** Sunday 5/30, 8:30-9:30 am. Rounds 10-12:15-2:30. **Championship:** Trophies to top five, top Under 2000, Under 1900, Under 1800, Senior 55+/over, Under 16, Under 13. **Reserve:** Trophies to top five, top Under 1600, Under 1500, Under 1400, Senior 55+/over, Under 16, Under 13. **Booster:** Trophies to top five, top Under 1200, Under 1100, Under 1000, Under 900, Under 800, Senior 55+/over, Under 16, Under 13. **All sections:** EF: \$50 if postmarked by 5/25, \$50 if by PayPal at EntryFeesRus.com. Pay \$60 cash only (no checks) at playing site. Three half-point byes allowed in rounds 1-5 if requested before first round. CMS JGP.

### June 10, Nevada

#### ChessLife.com Grand Prix Points: 50 2010 U.S. Game/10 Championship (GC)

6SS, G/10. South Point Hotel, Casino and Spa, 9777 Las Vegas Blvd. South, Las Vegas, NV 89183. **\$\$\$100 7,000 (\$642,450)**. 2000-1000-700, U2300 600, U2100 550, U1900 500, U1700 450, U1500 400, U1300 350, U1100 300, unrated 150. **EF:** \$89 by 5/19, \$95 by 6/3, \$100 on site. **Late Registration:** 4-6:30 p.m. **Rds.:** 7-7:30-8:30-9:30. Higher of regular or quick rating used. Bring clocks. 1/2 point bye available in any round (limit 4) if requested with entry. **HR:** \$65 single or double (\$95 Friday and Saturday nights). 1-866-791-7626 or (702) 796-7111. **ENT:** Las Vegas International Chess Festival, PO Box 90925, Henderson, NV 89009-0925 or [www.VegasChessFestival.com](http://www.VegasChessFestival.com). NS, NC, W.

### A Heritage Event!

#### June 11-13 or 12-13, Nevada

#### ChessLife.com Grand Prix Points: 200 (enhanced) 2010 National Open

6-SS, 40/2, SD/1 (2 day option rds 1-3 G/60). South Point Hotel, Casino and Spa, 9777 Las Vegas Blvd South, Las Vegas, NV 89183. **\$100,000 Prize Fund** based on 850 paid entries (\$70,000 guaranteed). **Championship.** \$5: 8000-4000-2000-1000-600-400-400-400-200-200-200-200-200-200, under 2500 2000, under 2400 1500, under 2300 1000. \$2,000 EXTRA for perfect score. The winner of the Championship section also receives a replica of the Edmondson cup. **Under 2200.** \$5: 5000-2500-1300-600-350-250-250-250-250-250-100-100-100-100-100-100. **Under 1800.** \$5: 5000-2500-1300-600-350-250-250-250-250-250-100-100-100-100-100. **Under 1600.** \$5: 5000-2500-1300-600-350-250-250-250-250-250-100-100-100-100-100. **Under 1400.** \$5: 5000-2500-1300-600-350-250-250-250-250-250-100-100-100-100-100. **Under 1200.** \$5: 1500-1000-500-250-150-100-100-100-100-100-100-100-100-100. **Unrated.** \$5: 600-400-200-100-100-100. **Plus score bonus** (\$16,000) in addition to any other prizes, every player who finishes with 3-1/2 points or better wins a \$50 gift certificate. Plus score certificates will be given on site only. EF: \$179 by 5/17, \$199 by 6/9, \$220 on site, \$100 more for players rated under 2100 in the Championship Section. This is an open tournament - you may play in any section at or above your rating level; unrated players may play only in Unrated or Championship Section. Provisionally rated players may not win more than 3rd prize in any section except Championship. CCA minimum ratings or other ratings may be used if higher than USCF June Supplement. Reg: 4-11 p.m. Thursday, 8-9:30 a.m. Friday. **Rds.:** 11-6, 11-6, 10-5, 2-day schedule: Reg: 8-9 a.m. Saturday. **Rds.:** 9:30-12-2:30-6: merge with 3-day in round 4. Half point byes available in any round, but round 5 or 6 byes must be requested before the start of round 2. Chess sets and boards provided for tournament play only, not for skillies. Please bring chess clocks! **THE LAS VEGAS INTERNATIONAL CHESS FESTIVAL** features the National Open, the U.S. Game/10 Championship and other championship events. **Many free extras and surprises!** Free parking. Free raffle with great prizes. Free GM Lectures. Free GM analysis of your games. **Chess Camp** for all ages on Thursday. **Grandmaster Simuls** Thursday afternoon. **U.S. Game/10** Thursday night. **Scholastic Tournament** Friday. **Girls & Boys Championships** Saturday & Sunday. **LOW room rates!** HR: \$65 single or double (\$95 Friday and Saturday nights). 1-866-791-7626 or (702) 796-7111. **Don't be shut out; make your reservations early** and be sure to ask for the chess rates; **South Point sells out most weekends.** Cutoff for special hotel rate is May 15th. Rates may be as high as \$150 a night after May 15th. **RESERVE NOW!** Credit card or one night room deposit will be required to hold reservation, may be canceled 72 hours in advance for nominal fee. Tournament Registration: National Open, PO Box 90925, Henderson, NV 89009-0125, on line at [www.VegasChessFestival.com](http://www.VegasChessFestival.com) or by fax at (702) 933-9112. NS, W. FIDE. CMS JGP.

### June 19, Illinois

#### 2010 U.S. G/15 Championship (QC)

6SS, G/15. Joliet Jr. College, Bldg J1215 Houblot Rd., Joliet, IL 60431 (Park in J lot). **\$1,700 by 80 paid entries,** \$225-125, A,B,C,D,E/F each 140-80-50, unrated \$25 book by prize, prizes based on 4 per class. EF: \$30 if by June 16th, \$40 at site (over \$0 \$5 discount E/F), one half pt. bye max. **Reg.:** 9:50am-10:50am. **Rds.:** 11:00-11:45-12:30-2:15-3:00-3:45. **Checks Payable to:** Dennis R. Doyle, c/o JUC Chess Club, 536 Springwood Drive, Joliet, IL 60431 No phone or credit card entries, bring chess sets and clocks, none provided. Bring USCF id card to tournament. NTD: G. Panner. E-mail questions only: [ddoyle@juc.edu](mailto:ddoyle@juc.edu).

### July 31-Aug. 3, California Southern

#### 2010 Trophies Plus U.S. Girls Junior Open Championship

6SS, 40/2, SD/1. Hyatt Regency Irvine (see U.S. Open). Open to all females born after 7/31/89. EF: Free if playing in US Open, otherwise \$50 mailed by 7/22 or online by 7/28, \$60 at site. **Prizes:** 1st Place: \$500.00 Scholarship and Plaque; 2nd Place: \$350.00 Scholarship and Plaque; 3rd Place: \$150.00 Schol-

# Tournament Life

arship and Plaque; Plaques to: Top A, B, C, D, E, Unr. **Reg.** ends Sat 6:30 pm, rds. Sat 7:30 pm, Sun/Mon 12:30 pm & 7:30 pm, Tue 11 am. **Ent:** USCF (Girls Junior Open), PO Box 3967, Crossville, TN 38557. **Online entry:** <https://secure.uschess.org/webstore/tournament.php>. **CMS JGP**

## A Heritage Event! July 31-Aug. 8, Aug. 3-8 or 5-8, California Southern ChessLecture.com Grand Prix Points: 300 Jerry Hanken Memorial - 111th annual US Open

Includes traditional one game per day schedule (9 days), also 6-day slow time control option and 4-day option, initiated last year, requiring only 3 nights hotel stay for most players. **9SS, 40/2, SD/1** (4 day option, Rds. 1-6, G/60). Hyatt Regency Irvine, 17900 Jamboree Road, Irvine CA 92614. **Special parking \$5.** Free shuttle from John Wayne Orange County Airport. **HR:** \$99 single/quad, 949-975-1234, reserve by July 10 or rate may increase. **\$50,000 in prizes** based on 500 paid entries, else proportional, except \$40,000 (80% of each prize) minimum guarantee. **A one section tournament** with Class prizes. **Top U.S. player not otherwise qualified qualifies for 2011 US Championship.** Many side events, including US Blitz Championship 8/7. USCF Delegates meeting 8/7-8, workshops 8/4-6, USCF Awards Luncheon 8/7 noon, GM lectures & simuls to be announced. Choice of three schedules: **Traditional:** 40/2, SD/1. One round daily at 7:30 pm, except rd. 9, 3 pm 8/8. **6-Day Option:** 7:30 pm 8/3, 12:30 pm & 7:30 pm 8/4-6, 7:30 pm 8/7, 3 pm 8/8. **4-Day Option:** 2 pm, 5 pm & 8 pm 8/5; 10 am, 1 pm, 3:30 pm & 7:30 pm 8/6, 7:30 pm 8/7, 3 pm 8/8. All schedules merge after **Round 6 & compete for same prizes. Projected prizes:** Top places \$8000-4000-2000-1500-1000-800-600-500, clear winner \$200 bonus. If tie for first, top two on tiebreak play speed game (white 5 minutes, black 3 minutes and gets draw odds, 5 second delay) for bonus and title. **Class Prizes:** Top Master (2200-2399): \$2500-1200-800-500. Top Expert (2000-2199): \$2500-1200-800-500. Top Class A (1800-1999): \$2500-1200-800-500. Top Class B (1600-1799): \$2500-1200-800-500. Top Class C (1400-1599): \$2000-1000-600-400. Top Class D (1200-1399): \$1500-700-500-300. Top Class E or below (under 1200): \$1500-700-500-300. Top Unrated: \$800-400-200. **Half Point Byes:** must commit before round 4; up to 3 bytes allowed for 2000/up, 2 bytes for 1400-1999, one bye for Under 1400/Unr. Limit one bye in last two rounds. Zero point bytes are always available in any round. **Entry Fee:** Online, \$145 by 5/15, \$165 by 7/28. By mail, \$147 postmarked by 5/15, \$167 postmarked by 7/22. By phone, \$150 by 5/15, \$170 by 7/28. At site, all \$190; entries close 1 hour before your first game. Late entry with round 1 bye accepted until 4 pm 8/1, 11:30 am 8/4, or 4 pm 8/5. USCF full membership required (no tournament members). GMS free. **Official ratings used;** unqualified ratings used if otherwise unrated. CCA ratings used if above USCF. Foreign player ratings: usually 100 points added to FIDE or FQE, 200 + added to most foreign national ratings, no points added to CFC. Highest of multiple ratings usually used. **Ent:** USCF; ATTN: 2010 US Open, PO Box 3967, Crossville, TN 38557. **Online entry:** <https://secure.uschess.org/webstore/tournament.php>. **Phone entry:** 800-903-8723. **Tournament website:** [main.uschess.org/tournaments/2010/usopen/](http://main.uschess.org/tournaments/2010/usopen/). FIDE rated, no cell phones. Bring a clock - none supplied. Sets/boards supplied for tournament but not for skittles. **CMS JGP Note: Golf tournament,** for the US Open Chess Players, morning of Thursday, Aug. 5th. Those eligible will be all US Open Chess Players, side event chess players, and delegates. Please contact Michael Wojcico for more details at, [chessgolfmaraathons@verizon.net](mailto:chessgolfmaraathons@verizon.net).

## Oct. 23, Illinois ChessLecture.com Grand Prix Points: 20 2010 U.S. G/60 Championship

4R-SS. Holiday Inn Hotel, 5300 W. Touhy Ave., Skokie, IL 60077. 847.679.8900. **\$4,000 Guaranteed.** Prizes- in 3 sections: **Open:** \$500-375-250; Top 2299-2200, U2199-2000, 1900-1899 - \$150 each; **Reserve Section (U1800):** \$450-325-200; Top 1699-1600, 1599-1500, 1499-1400 - \$125 each; **Booster (U1400):** \$400-275-150; Top 1399-1300, 1299-1200, 1199-1000 - \$100 each. **EF:** \$60 by 6pm 10/22, \$80 onsite; \$100 Combined EF with US G/30 by 6pm 10/22, \$140 Combined EF with US G/60 onsite. Play Up - \$10 more. \$50 Re-entry (per event). No half-point bytes allowed (zero point bytes only). GM/IM/WGM/WIM/FM/WFM free entry with nothing deducted from winnings. **Onsite Registration:** 8:30-9:30am. **Rds.:** 10am-12:30pm-3pm-5:30pm. Mail entries with registration information to: North American Chess Association (make checks payable to) 4957 Oakton Street, Suite 113, Skokie, IL 60077. **More information and online registration available at:** [www.nachess.org/g60](http://www.nachess.org/g60). Questions via email only: [sevan@nachess.org](mailto:sevan@nachess.org). No smoking. Boards, sets, clocks provided. Tournament provided equipment must be used. No exceptions. October Supplement. USCF Membership Required. Bookseller onsite.

## Oct. 24, Illinois ChessLecture.com Grand Prix Points: 20 2010 U.S. G/30 Championship

5R-SS. Holiday Inn Hotel, 5300 W. Touhy Ave., Skokie, IL 60077. 847.679.8900. **\$4,000 Guaranteed.** Prizes- in 3 sections: **Open:** \$500-375-250; Top 2299-2200, U2199-2000, 1900-1899 - \$150 each; **Reserve Section (U1800):** \$450-325-200; Top 1699-1600, 1599-1500, 1499-1400 - \$125 each; **Booster (U1400):** \$400-275-150; Top 1399-1300, 1299-1200, 1199-1000 - \$100 each. **EF:** \$60 by 6pm 10/22, \$80 onsite; \$100 Combined EF with US G/60 by 6pm 10/22, \$140 Combined EF with US G/60 onsite. Play Up - \$10 more. \$50 Re-entry (per event). No half-point bytes allowed (zero point bytes only). GM/IM/WGM/WIM/FM/WFM free entry with nothing deducted from winnings. **Onsite Registration:** 8:30-9:30am. **Rds.:** 10am-11:30am-1pm-2:30pm-4pm. **Mail entries with registration information to:** North American Chess Association (make checks payable to) 4957 Oakton Street, Suite 113, Skokie, IL 60077. **More information and online registration available at:** [www.nachess.org/g30](http://www.nachess.org/g30). Questions via email only: [sevan@nachess.org](mailto:sevan@nachess.org). No smoking. Boards, sets, clocks provided. Tournament provided equipment must be used. No exceptions. October Supplement. USCF Membership Required. Bookseller onsite.

# GRAND PRIX

## Apr. 23-25 or 24-25, Michigan ChessLecture.com Grand Prix Points: 20 2010 Grrreat Lakes Open

**\$5260 GTD.** 5-SS. MCCAMLY PLAZA HOTEL, 50 Capital Ave. SW, Battle Creek, MI 49017. **HR:** chess rate \$89+tax/night. [www.mccamlyplazahotel.com](http://www.mccamlyplazahotel.com) 269-963-7050. **3 Sections: OPEN** (anyone), **RESERVE (U1600)**, **SCHOLASTIC (U1200)**. **Rds:** (OPEN & RESERVE 3-day) Fri 7pm; Sat noon, 7pm; Sun 9:00am, 3:30pm; (OPEN & RESERVE 2-day) Sat 11:00am, 1:30pm, merge w/ 3-D at 7pm. (SCHOLASTIC U1200 1-day) Sat 9:00am, noon, 2:30pm, 5pm. **TC:** (3-

day) Rnds 1-3 G/120; Rnds 4-5 40/2 G/60. (2-day) Rnds 1,2 G/60 (merge w/ 3-day for rds 3-5); (Scholastic) rds 1-4: G/45. **EF:** IMs and GMS free (subtract advance entry from prize); Advance (by 4/1) **OPEN:** 2-day \$52, 3-day \$53 RESERVE: 3-day \$43, 2-day \$42. SCHOLASTIC: \$15Al \$10 more on-site. \$10 Junior discount for O and R. USCF memb req d. MCA memb req d for Michigan residents. Please make checks payable to Stan Beckwith. **Reg.:** Advance Stan Beckwith, 84 Bond St., Battle Creek, MI 269-964-2927. Jennifer Skidmore, [jmscamelot@gmail.com](mailto:jmscamelot@gmail.com) 734-678-0463. **On-Site (3-day) Fri 5:45-6:30. (2-day) Sat 9:45-10:30am. (S) Sat 7:45-8:30am. \$\$\$:** OPEN: 1st \$650, 2nd \$400, 1st X \$200, 1st A \$200, U1800 \$150, U1600 \$150. RESERVE: 1st \$400, 2nd \$200, 1st D \$150, 1st E \$150, U1000 \$105, UNR \$105. SCHOLASTIC: 1st trophy, 2nd trophy, 3rd trophy, 1st U1000 trophy, 1st U800 trophy, 1st U600 trophy. All players with 3 points get a trophy. **CMS JGP in Open and Reserve Sections.**

## May 1-2, California Northern ChessLecture.com Grand Prix Points: 30 (enhanced) Summer Open

6SS, G/100. Bay Area Chess Center, 4423 Fortran Ct., San Jose, CA 95134. Free parking. **Prizes:** \$3,000 b/77 - \$\$Gtd 2,000. **3 Sections. Open:** \$5 Gtd. 500-200-100-100-100. **1400-1799:** \$500-200-101 (u1600=100-66-66). **u1400:** 500-200-101 (u200-100-66). Unrated prize limit of \$200 in all sections except Open. **Sections EF:** \$66 mail/online by 4/28, onsite + \$19 play-up + \$19. GMS & IMs free before 4/28. Re-entry \$33. May 2010 Supp, CCA min & TD discount will be used to place players accurately. **Sched:** Reg. Sat 10-10:30a, Games- Sat 10:30, 2, 5:30; Sun 10, 1:30, 5. **Ent:** BayAreaChess, 4423 Fortran Ct., Ste. 160, San Jose, CA 95134. \$20 serv charge for refund. **Questions:** contact@BayAreaChess.com, Tel 408-786-5515. **Info & Entries:** BayAreaChess.com/events/10/summer. NS, NC, W. **CMS JGP.**

## June 10, Nevada ChessLecture.com Grand Prix Points: 50 2010 U.S. Game/10 Championship (QC)

See Nationals.

## A Heritage Event! June 11-13 or 12-13, Nevada ChessLecture.com Grand Prix Points: 200 (enhanced) 2010 National Open

See Nationals.

## A Heritage Event! July 31-Aug. 8, Aug. 3-8 or 5-8, California Southern ChessLecture.com Grand Prix Points: 300 Jerry Hanken Memorial - 111th annual U.S. Open

See Nationals.

## Oct. 23, Illinois ChessLecture.com Grand Prix Points: 20 2010 U.S. G/60 Championship

See Nationals.

## Oct. 24, Illinois ChessLecture.com Grand Prix Points: 20 2010 U.S. G/30 Championship

See Nationals.

# REGIONAL

## Alabama

**Apr. 24, Montgomery APR Tornado**  
4SS, TC: G/75. Frazer UMC 6000 Atlanta Hwy., Montgomery, AL 36117. **Open (1500+; b/15):** \$200-100-75; **Reserve (U1500; b/15):** \$200-100-75. **Late REG:** 8-8:40am. **Rds.:** 9, 11:30, 2:30, 5. **EF:** \$30, if rcvd by APR 17th; \$40 at site. **SCH (K-8): NOVICE (Not Rated)**, 5SS, TC: G/30. **EF: \$10; \$20 at site. Trophy: Top 3. Rds.:** 9:15-10:15-11:15-1, 2:30. **Checks payable to:** Caesar Chess. **Ent:** Caesar Chess LLC, 4524 Southlake Parkway, Suite 34 - PMB 310, Birmingham, AL 35244. **Info:** [Info@CaesarChess.com](mailto:Info@CaesarChess.com), [www.CaesarChess.com](http://www.CaesarChess.com). **CMS JGP for Open and Reserve.**

## Arizona

**May 29-31, 2010 U.S. Amateur West Championship**  
See Nationals.

## Arkansas

**Apr. 17, Conway Southern Scholastic Open - Bob Nabholz Memorial**  
10:00 a.m. 5SS, G/30. St. Joseph Catholic School, 818 4th St., Conway, AR 72032. **RATED:** (K-2) (K-5) (K-8) (K-12), **NON RATED:** (K-2) (K-5) (K-8). **EF:** \$20 if by Apr. 13th/\$25 after 13th. Teams and individuals. **INFO:** [www.stjosephconway.org](mailto:www.stjosephconway.org) OR [www.cajunchess.com](http://www.cajunchess.com).

## California Northern

**Apr. 10, Spring Swiss**  
at Bay Area Chess Center, 4423 Fortran Ct., Ste. 160, San Jose 95134. **4 sections. u500, 500-799, 800-1099, 1100+.** **EF:** \$33, +\$16 onsite +10 play-up. Latest rating supplement avail used. TD may assign ratings. **Prizes:** Big Trophies to top 5 players & teams. Medals to rest. **Sched:** Reg. 9-9:30a. **u500 & u800:** 5 Games G/30 at 10a-2p. **u1100 & u1400:** 4 Games G/45 10a-4p. **Ent:** Bay Area Chess, 4423 Fortran Ct., Ste. 160, San Jose, CA 95134. **Questions:** contact@BayAreaChess.com, Tel 408-786-5515. **Info & Entries:** BayAreaChess.com/events/regular. NS, NC, W.

**Apr. 10, May 22, Scholastic Quads**  
at Bay Area Chess Center, 4423 Fortran Ct., Ste. 160, San Jose 95134. **EF:** \$25, **EF:** \$33 onsite +\$16. Latest available rating used. TD may assign ratings. **Prizes:** Trophies to winners & players with winning record. **Sched:** Regd check-in 4:45. End around 6:7pm. G/30 all rounds. **Ent:** BayAreaChess, 4423 Fortran Ct., Ste. 160, San Jose, CA 95134. **Questions:** contact@BayAreaChess.com, Tel 408-786-5515. **Info & Entries:** BayAreaChess.com/events/regular. NS, NC, W.

**A State Championship Event!**  
**Apr. 16-18, CalChess State Scholastics 2010**  
at Santa Clara Convention Center, 5001 Great America Pkwy., Santa Clara, CA 95054. Free parking. **Hotel:** Hyatt Regency, 5001 Great America Pkwy., Santa Clara, CA 95054. **Hotel rate:** \$99 code G-BACH. **14 sections.** Trophies to top 20 players & top 10 teams in each section. Trophies to all KG players & teams. **Sched:** KG or 1-3 new & under 800> Sat 9-4:30. 4-6 new & under 600> Sun 9-4:30. All other sections> Sat & Sun 9-6. Blitz & Bughouse in 4 sections (K-3 4-6 7-8 9-12) on Fri 6-9 & Sat 6-9, respectively. **EF:** 1-day> \$48, 2-day> \$60, Blitz & Bughouse: \$15. 10% discount for first 400 entries, 5% to next 200, 2.5% to next 200. Register early to save your money & help our planning. **More info at:** CalChessScholastics.org. NS, NC, W.

**May 1-2, Summer Open**  
See Grand Prix.

**May 29, Azhar Memorial Regional Grade Level Championship**  
5SS, G/30. **Hotel:** Marriott, 2700 Mission College Blvd., Santa Clara, CA 95054. **Chess rate:** \$79. Trophies to top 15 players & top 5 teams in 7 sections: K-1, 2, 3, 4, 5, 6, & 7-9. Players to just your grade. **EF:** \$39 by 5/26, onsite + \$20. May 10 Supp used. **Sched:** Reg Sat 8-8:30, Rds Sat 9, 10:30, noon, 1:30, 3p. Max two 1/2-pt bytes commit bef 1st round. \$20 chg for refunds. **Blitz:** Trophies to top 5 players & top 3 teams in Sections K-3 & 4-8. **Sched:** Reg 3:30-4p Games 5-6:30pm. **Ent:** Bay Area Chess, 4423 Fortran Ct., Ste. 160, San Jose, CA 95134. **Quest:** contact@BayAreaChess.com, 408-786-5515. **Info/Entries:** BayAreaChess.com/events/10/grade. NS, NC.

**Aug. 19-22, 20-22 or 21-22, 2nd Annual Central California Open**  
See *Chess Life* or [www.chesstour.com](http://www.chesstour.com).

# California Southern

**Apr. 4, Beverly Hills SUNDAY Scholastic Tournament (K-12)**  
5SS, G/30. BHCC, 8950 W. Olympic Blvd., #210, Beverly Hills, CA 90211. **EF:** \$20 if received 4 days in advance, \$25 after, \$30 at site (Siblings \$5 off). **Mail checks to:** Beverly Hills Chess Club. Visa/MC call: 310-274-7873. **Prizes:** Trophies, medals, & gift cert. **Reg.:** 12-12:45 pm. **Rds.:** 1,2,3,4,5 pm. **Comp. Lecture** 11-12 pm. **Lunch:** \$5 Pizza & Soda. [www.bhchessclub.com](http://www.bhchessclub.com). **Info:** Robert Minoofar, 310-274-7873, email: [bhchessclub@hotmail.com](mailto:bhchessclub@hotmail.com).

**Apr. 4, 11, 18, 25, LACC Sunday Junior Grand Prix 4 separate events!** 5SS, G/30. 11514 Santa Monica Blvd., LA, 90025, 2nd Fl. 4 blocks W 405. **EF:** \$25 (\$20 LACC memb, Free for new LACC memb). **Reg.:** 12:30-1 pm. **Rds.:** 1, 2, 3, 4, 5. **Prizes:** Trophies, Medals, Disney prizes (every player receives a prize). Free BOA & street parking; or underground (\$3). Free refreshments. Free class (12-1 pm). **Info:** (310) 795-5710 or [www.LAChessClub.com](http://www.LAChessClub.com).

**Apr. 10, Beverly Hills Saturday Night Blitz Tournament (QC)**  
5 DSS, G/5 Q-Rated. BHCC, 8950 W. Olympic Blvd., #210, Beverly Hills, CA 90211. **EF:** \$10 if received 4 days in advance, \$15 after, \$20 at site (Members \$5 off). **Mail checks to:** Beverly Hills Chess Club. **Prizes:** 80% of EF (\$100 Guaranteed) - 1st/2nd/3rd: 40%,25%,15%. **Reg.:** 6:30-6:45 pm. **Rds:** Starts at 7 pm. Free Parking. [www.bhchessclub.com](http://www.bhchessclub.com). **Info:** Robert Minoofar, 310-274-7873, email: [bhchessclub@hotmail.com](mailto:bhchessclub@hotmail.com).

**Apr. 10, Beverly Hills SATURDAY Scholastic Tournament (K-12)**  
5SS, G/30. BHCC, 8950 W. Olympic Blvd., #210, Beverly Hills, CA 90211. **EF:** \$20 if received 4 days in advance, \$25 after, \$30 at site (Siblings \$5 off). **Mail checks to:** Beverly Hills Chess Club. Visa/MC call: 310-274-7873. **Prizes:** Trophies, medals, & gift cert. **Reg.:** 12-12:45 pm. **Rds.:** 1,11,12,1,2,3 pm. **Comp. Lecture** 10-11 am. [www.bhchessclub.com](http://www.bhchessclub.com). **Info:** Robert Minoofar, 310-274-7873, email: [bhchessclub@hotmail.com](mailto:bhchessclub@hotmail.com).

**July 15-18, 16-18 or 17-18, 14th Annual Pacific Coast Open**  
See *Chess Life* or [www.chesstour.com](http://www.chesstour.com).

**July 31-Aug. 3, 2010 Trophies Plus U.S. Girls Junior Open Championship**  
See Nationals.

**July 31-Aug. 8, Aug. 3-8 or 5-8, Jerry Hanken Memorial - 111th annual U.S. Open**  
See Nationals.

# Connecticut

**Apr. 16-18 or 17-18, Hartford Open**  
See *Chess Life* or [www.chesstour.com](http://www.chesstour.com).

**May 8, Spring 2010 Joseph Platz Scholastic**  
5SS, G/40. Manchester Church of Christ, 595 Tolland Turnpike, Manchester, CT 06042. **Reg.:** 8:30-9:15. **Rds.:** 10, 11:30, 1, 2:30 & 4. **Sections:** Grades K-3, 4&5, 6&7, 8&9, 10-12 Trophies to 1st, 2nd & 3rd in each section. **EF:** \$15 by 5/3, \$20 at site. **Ent:** Edward Kostreba, PO Box 1372, Ware, MA 01082, 413-967-3242, [www.wmass-chess.us](http://www.wmass-chess.us), NS, NC.

**July 23-25 or 24-25, 15th Annual Bradley Open**  
See *Chess Life* or [www.chesstour.com](http://www.chesstour.com).

**Aug. 6-8 or 7-8, 16th Annual Northeast Open**  
See *Chess Life* or [www.chesstour.com](http://www.chesstour.com).

# District of Columbia

**Aug. 27-29 or 28-29, 42nd annual Atlantic Open**  
See *Chess Life* or [www.chesstour.com](http://www.chesstour.com).

# Florida

**Boca Raton Chess Club**  
**Friday nights, Game 90 Tournament, one game a week for 4 weeks.**  
[www.bocachess.com](http://www.bocachess.com), 561-479-0351. **CMS JGP.**

**Palm Beach Gardens Chess Club**  
Meets every Saturday 9 am till 4 pm. 4-SS Rated Games G/75 or G/120 (CMS JGP). Also, Scholastic Games G/30, 4-SS. For more info: see [www.palm-beachchessclub.info](http://www.palm-beachchessclub.info) or call President/TD John Dockery at 561-762-3377.

# Tournament Life

## Apr. 3, May 1 St. Petersburg Rated Beginner's Opens (RBO's)

5rd Swiss, G/30. USCF RBO 4 Sect. K-2U400; K-5U500; K-8U700; & K-12U1000; top 12 in each get trophy (all K-2 get trophy) all others medal. Team (2 or more) - best four scores from all divisions trophy to top 12. **EF:** \$18.SPCC mems \$15.1st rd 10:15 AM. Sunshine Center, 330 Fifth St. N., St. Petersburg, FL. NC, W. register online at [www.stpetersburgchessclub.com](http://www.stpetersburgchessclub.com). 727-822-1171.

## Apr. 10, The Benjamin School Scholastic

Located at 1100 Ellison Wilson Road, NPB, Fl. 33408. **K-12, 5 Divisions, 5-SS, G/30.** Trophies for Top 5 Players and Top 5 Teams in each Division. **For more info, see:** [www.palmbeachchessclub.info](http://www.palmbeachchessclub.info) or call President/TD John Dockery at 561-762-3377.

## July 30-Aug. 1 or July 31-Aug. 1, 18th Annual Southern Open

See *Chess Life* or [www.chesstour.com](http://www.chesstour.com).

## Georgia

### May 7-9, 2010 Burt Lerner National Elementary (K-6) Championship

See Nationals.

## Illinois

### North American Chess Association

USCF and FIDE rated tournaments for amateur players and masters. Creators of eNotate, a USCF approved electronic scoresheet. The only organization that hosts regularly scheduled FIDE title norm tournaments for GM, IM, WGM, and WIM norms. Sevan A. Muradian, International Arbiter & International Organizer. [www.nachess.org](http://www.nachess.org), [sevan@nachess.org](mailto:sevan@nachess.org), 888.80.CHESS.

### May 16, Knights Quest #53

4SS, Game/30. Renaissance Chicago North Shore Hotel, 933 Skokie Blvd., Northbrook, IL. 4 Sections: **Open & U1400** (Juniors & Adults), Juniors only in **U1000 & U600**. **Prizes:** Trophies top five each section, medals all others. **EF:** \$25 by 5/10, \$30 after. \$5 off to siblings and team members when registering together. **Reg:** 12:00-12:30 pm. **Rds.:** 1 at 1:00 pm, rest ASAP. **Ent:** Renaissance Knights, PO Box 1074, Northbrook, IL 60065. **Online Ent/Info:** [www.knights.org](http://www.knights.org), Sheila Heiser 847-526-9025.

### May 27-31, 28-31, 29-31 or 30-31, 19th annual Chicago Open

See *Chess Life* or [www.chesstour.com](http://www.chesstour.com).

### June 19, 2010 U.S. G/15 Championship (QC)

See Nationals.

### July 16-18 or 17-18, 3rd Annual Chicago Class Championships

See *Chess Life* or [www.chesstour.com](http://www.chesstour.com).

### Oct. 23, 2010 U.S. G/60 Championship

See Nationals.

### Oct. 24, 2010 U.S. G/30 Championship

See Nationals.

## Indiana

### Apr. 23-25, 24-25 or 25, Indiana Memorial Open

5SS, 40/2 SD/1 (2-day option, rds 1-2 G/75) (1-day option, rd 1-5pt bye, rds 2-3 G/15-Quick Rtd, paired reg rtd). Clarion Hotel & Conference Center, 2930 Waterfront Pkwy, West Dr., Indianapolis, IN 46214. **EF:** \$60 rcd by 4/20, \$67 at site. (2-day option EF: \$59/\$67 at site) (1-day option EF: \$47/\$57 at site). u1200 EF: \$15/20 at site (1-day option: rd 1-Opt bye EF: \$15/\$27 at site). Memb. Reg'd: ISCA Reg. \$15. OSA. **\$\$b/60:** 1st Place Guaranteed. \$450-200. 2nd A \$160-50. Class B \$155-50. Class C \$145-50. Class D \$140-50. u1200 1st, 2nd, 3rd Trophies only. Upset \$40. Reg: ends Fri. 6:30pm (2-day option: Regs. ends Sat. 9:30am) (1-day option: Regs. ends Sun. 8:15). Rds: Fri. 7pm, Sat. 10-5, Sun. 10-3:30 (2-day option: Sat. 10-1:30-5, Sun. 10-3:30) (1-day option: Sun. 8:30-9-10-3:30). **ENT:** ISCA, c/o Gary Fox, P. O. 114, Logansport, IN 46947. **INFO:** [info@indianachess.org](mailto:info@indianachess.org). **HR:** \$72 (317) 299-8400. [www.indianachess.org](http://www.indianachess.org). NS NC W. **CMS JGP.**

## Maryland

### May 2, Maryland Scholastic Chess Spectacular

4SS, G/20mins in 2 sections. University of Maryland, Baltimore County (UMBC), 1000 Hilltop Circle, Baltimore, MD 21250 (in University Center Ballroom). Open to any student grades 1-12. Coaches welcome to attend free instructional sessions. Spectators free and welcome. **Quick Rated Open:** 4SS. For rated and unrated scholastic competitors with prior tournament experience. Trophies to top ten finishers, top individuals (elementary, middle, high, unrated), top schools (elementary, middle, high). Top 10 finishers receive free entry to chess camp. Top four players, and anyone with a perfect score, advance to knockout playoff. USCF membership required (may be purchased at event). **Unrated Novice:** 3SS. For unrated scholastic players with no prior tournament experience. Players with established ratings not permitted in this section. Top 4 finishers receive trophy and free entry to chess camp (G/7mins playoff may be required). Certificate to everyone completing three games. Includes instruction on how to play in tournaments 10-10:45am. USCF membership not required. **Unrated Playoffs (Invitational):** For finalists from Quick Rated Open. Single-elimination G/7mins (2-sec delay), two games per match, with move-by-move sports commentary. Ties broken by 5mins-4mins "shootout" in which White with 5mins must win. **Coaches Session:** 12:45-2:15. Advice on how to teach chess. **All:** EF: Free entry to any Maryland student who registers by 4-9. Limit 200. Late entries may be required to take 1/2-bye in Rd1. \$20 per person for non-residents. Bring lunch (none will be provided). Teams: School score is sum of points earned by top four finishers from same school. Home-schooled students may play for their district school. Reg.: 8-9am, Check In: Each player must check in by 9:30am (or will be given a 1/2 bye in Rd 1), Rds 10-11-12:30-1:30, playoffs begin 2:45 ending about 5pm. Byes: 1/2 bye avail. in Rd 1 only. **Directions:** Take Exit 47B off I-95 and follow signs to UMBC. **Ent/Info:** Cks payable to UMBC, Dr. Alan T. Sherman, CSEE Dept, UMBC, 1000 Hilltop Circle, Baltimore, MD 21250, ATTN: Spectacular, [sherman@umbc.edu](mailto:sherman@umbc.edu). Register on-line [www.umbc.edu/chess/spectacular](http://www.umbc.edu/chess/spectacular). W. **CMS JGP.**

### May 2, Silver Knights Chess K-8 Team Tournament (VA)

4SS, G/30. Our Lady of Good Counsel School, 8601 Wolfrap Road, Vienna, VA22182. One **Section:** open to four-player teams of players in grades K-8 that attend the same school. **EF:** \$80 per team online by the Wednesday before the event; \$92 per team by noon Friday before the event; \$100 per team on site from 11:00-11:30. **Rds.:** 12-1-2-3. Trophies to top teams and top unrated teams. See [www.silverknightschess.com](http://www.silverknightschess.com) for complete rules and to register.

## Massachusetts

### Apr. 10, Franklin Charter School Open

Reg. online: [www.richess.org](http://www.richess.org), email: [rhodeislandchess@yahoo.com](mailto:rhodeislandchess@yahoo.com). (401) 359-1602.

### May 15, Battleship Cove Chess Tournament For Kids - Fall River

Reg. online: [www.richess.org](http://www.richess.org), email: [rhodeislandchess@yahoo.com](mailto:rhodeislandchess@yahoo.com). (401) 359-1602.

### May 29, 79th Massachusetts Open K-12

Please see [www.MassChess.org](http://www.MassChess.org) for details.

### May 30, 79th Massachusetts Open K-3

Please see [www.MassChess.org](http://www.MassChess.org) for details.

### May 31, 79th Massachusetts Open K-6

Please see [www.MassChess.org](http://www.MassChess.org) for details.

### Aug. 12-15, 13-15 or 14-15, 40th annual Continental Open

See *Chess Life* or [www.chesstour.com](http://www.chesstour.com).

## Michigan

### Apr. 23-25 or 24-25, 2010 Grrreat Lakes Open

See Grand Prix.

## Minnesota

### Apr. 9-11, 2010 National Junior High (K-9) Championship

See Nationals.

## Missouri

### A State Championship Event!

### June 12-13, The Peabody Energy Missouri Junior Championship

Out-of-State Players Welcome! 5SS, G/90, open to all born after 6/14/1989 from any state, **PF:** \$5,050 GTD. **EF:** \$60 (\$55 if received by 6/11), \$50 (\$45 if received by 6/11) for annual members of CCSCSL. Two Sections (Open, U1600). **Open:** 1st overall: \$2,000 scholarship and \$300, 1st X: \$250 2nd X: \$100, 1st A: \$200 2nd A: \$75, 1st B: \$150 2nd B: \$50. **Under 1600:** 1st overall: \$500 scholarship and \$300, 1st C: \$250 2nd C: \$100, 1st D: \$200 2nd D: \$75, 1st E: \$150 2nd E: \$75, 1st U1000: \$125 2nd U1000: \$50. Unrated can play in the open section for 1st place prize, or in U1600 for \$50 max prize. Highest scoring female in each section: \$50. Trophies to 1st in each class. **Reg.:** 8:30-9:30. Registration limited to the first 150 entrants! Pre-register to guarantee your spot. **Rds.:** Sat 10-2-6. Sun: 10-2. One half point bye available, must commit before Round 1. **Entries:** Chess Club & Scholastic Center of Saint Louis, 4657 Maryland Ave., Saint Louis, MO 63108 or 314-361-CHESS (2437) or [info@saintlouis-chessclub.org](mailto:info@saintlouis-chessclub.org). All equipment supplied! **CMS JGP.**

## Nebraska

### A Heritage Event!

### June 26-27, 2010 Cornhusker State Games

NE residents only, 6 sections: **Open:** 5SS 40/75 SD/30, EF: \$30, **Premier** (6/26 only 1200+ up, no UNR): 4SS G/40, EF: \$25, **Reserve:** (6/26 only, U/1800) 5SS G/60, EF: \$25, **Junior:** (6/26 only, U/19) 4SS G/30, EF: \$19, **Scholastic:** (6/26 only, U/13) 5SS G/30 EF: \$19, **Adult/Youth Team** (6/27 only, Adult 20+ Youth U/20) 4SS (Team Pairings) G/30, EF: \$30/team. **See:** [www.cornhusker-stategames.com/](http://www.cornhusker-stategames.com/) for details and to register online. **Early entry deadline is:** May 31, fees \$5 higher after that, no entries after June 7th. **Site:** Southeast Community College, Lincoln, NE. **CMS JGP and NE POY for Open section.**

## Nevada

### June 10, 2010 U.S. Game/10 Championship (QC)

See Nationals.

### June 11, National Open Scholastic Trophy Tournament

5-SS Game/30. South Point Hotel, Casino and Spa, 9777 Las Vegas Blvd. South, Las Vegas, NV 89183. Open to players Uage 20. **In 3 sections. U1800, U1200, and U800.** Unrateds in the U1200 section and all players in the U800 section must be under age 12. Trophies to top 4 in each section, top 1 in each 200 point rating group and unrated. **EF:** \$33 by 5/19, \$39 by 6/3, \$45 on site. **REG.:** 9-9:45 am. **RDS.:** 10-11-15:12-30:1-45-3. **HR:** \$65 single or double (\$95 Friday and Saturday nights). 1-866-791-7626 or (702) 796-7111. **ENT:** Las Vegas International Chess Festival, PO Box 90925, Henderson, NV 89009-0925 or [www.VegasChessFestival.com](http://www.VegasChessFestival.com). NS, NC, W.

### June 11-12, Susan Polgar World Championship for Girls and Boys

5-SS, G/45. South Point Hotel, Casino and Spa, 9777 Las Vegas Blvd. South, Las Vegas, NV 89183. **In 8 sections separate for girls and boys:** under19, under 15, under 11, and under 8 (as of June 11). **Prizes:** In each section 1st place receives a notebook computer loaded with chess programs. \$\$ 200-150-100-50 in chess prizes for 2nd thru 5th. Trophies for top 10 individuals, top 3 (3-player) school/cub/teams each section, special medals for next 10 individuals and next 3 school/cub teams. Perfect score also wins a digital chess clock. Scholarships to Texas Tech will be awarded based in part on performance in this event. **EF:** \$59 by 5/19, \$69 by 6/9, \$75 on site. **Reg.:** 4-8 p.m. Friday, 8:30-9:30 a.m. Saturday. **Rds.:** 11-1:30 a, 11-1:30. Breakfast with Susan 9 a.m. Sunday. **Opening Ceremony:** 10-10 a.m. Saturday. **Awards Ceremony:** 4:30 p.m. Sunday. **Blitz Championship:** 7 p.m. Saturday. Susan Polgar lecture 3:30 p.m. Friday, Puzzle Solving Competition 5 p.m. Friday, Simul 6:15 p.m. Friday. Chess Camp 9:00 a.m. Thursday. **Part of the LAS VEGAS INTERNATIONAL CHESS FESTIVAL;** see the National Open TLA for other Thursday and Friday side events. **HR:** \$65 sin-

gle or double (\$95 Fri/Sat), 1-866-791-7626 or (702) 796-7111. **REG.:** Las Vegas International Chess Festival, PO Box 90925, Henderson, NV 89009-0125, on line at [www.VegasChessFestival.com](http://www.VegasChessFestival.com), or by fax at (702) 933-9112. No telephone entries. NS. W. NC.

### June 11-13 or 12-13, 2010 National Open

See Nationals.

## New Jersey

### Apr. 17, Jersey Shore K-12 Regionals

The Academy at Grace and Peace, 1563 Old Freehold Rd., Toms River, NJ 08755. **All Sections open to K-12. Section A:** U500, **Section B:** 500-1000, **Section C:** 1000-1500, **Section D:** 1500+ . **Section A, B, C 4SS, G/30. Section D: 3 Rounds, G/60.** Trophies to Top 5 in each section, Medals to all others. **EF:** \$25 if rec'd by 4/10, \$30 on site. **Reg.:** 9:00-9:45 AM. **Rds.:** 10:00 AM and ASAP. **Info:** John Burke, 908-705-7958 or [johnburke@yahoo.com](mailto:johnburke@yahoo.com). **Ent:** Make checks payable to: The Academy at Grace and Peace. Please indicate USCF ID# and section.

### Apr. 24, Super Scholastics Saturday Swiss K-8

Somerset Ramada Inn, 60 Cottontail Ln., Somerset, NJ Exit #12 off I-287. (In 4 Sections/8 skittles) Trophies to top 5, others get medals/prizes. **Hot Shots** (always U1700): 4SS G/45, \$150-100-50, b/10. **Checkmates** (always U1300): 4SS G/45, \$100-50 b/10. **New Stars** (always U1000): 5SS G/30, \$100-50 b/10. **Chess Pirates** (always U600): 5SS G/30, \$100-50 b/10. Player's highest life time rating used. **Rds.:** 11am then ASAP lunch break. **EF:** \$27 mailed by 04/20 or paid online, [entryfeesrus.com](mailto:entryfeesrus.com). EF at site \$35. Cash only. **Reg.:** before 10:45am. Ent: 115 W. Moore St., Hackettstown, NJ 07840. **Info:** Ken Thomas [acn@goes.com](mailto:acn@goes.com) or 908-763-6468. NS, NC, W.

### Apr. 25, ICA Spring 2010 Scholastic Championship

**in 5 sections.** 4SS, EVERYONE PLAYS 4 GAMES, ALL PLAYERS WITH 2.5 POINTS OR MORE WILL RECEIVE A TROPHY! US CHESS FEDERATION MEMBERSHIP REQUIRED FOR SECTIONS 3, 4 AND 5. **Info:** 201-287-0250 or 201-833-1741. E-mail: [Diana@icanj.net](mailto:Diana@icanj.net) (Web Site Entries: [www.icanj.net](http://www.icanj.net)) ADV EF (pmk Apr 21st) \$25 At Site \$30. Reg ends 1/2 hr before 1st rd. Late entrants will receive a 1/2 point bye for rd1. Site Address: Bergen Academy, 200 Hackensack Ave, Hackensack NJ 07601. In 5 Sections: **Section 1 Junior Novice:** Open to unrated players K through 2nd grade. **Rds.:** First Round 10:15 AM, then ASAP (tournament will end at approximately 1:00 PM). **Section 2 Novice:** Open to unrated players K through 4th grade. **Rds.:** First Round 10:00 AM, then ASAP (tournament will end at approximately 2:00 PM). **Section 3 G/45 Reserve:** Open to players rated below 800 K through 12th grade. **Rds.:** 9:45 AM, 11:30, 1:15, 3:00 PM. unrated players K through 12th grade. **Section 4 G/45:** Open to players rated below 1200 K through 12th grade. **Rds.:** 9:45 AM, 11:30, 1:15, 3:00 PM. **Section 5 G/60:** Open to players rated below 1700 K through 12th grade. **Rds.:** 9:45 AM, 12:00, 2:15, 4:30 PM. **ENT:** Make EF and/or USCF Membership checks payable to: International Chess Academy. Mail to: Diana Tulman, 28 Canterbury Lane, New Milford, NJ 07646. NS, NC, W.

### May 1, 1st Saturday Scholastic (K-8)

4 RR, G/45 U/5. 1st round 11 AM. All the King's Men Chess & Games Center (Just 20 mins. from Center City Philadelphia), 62 S. Broadway, Pitman, NJ, 856-582-8222. **EF:** Online \$20, members \$18. Onsite: \$22.50, members \$20. Includes FREE pizza & soda. **Prizes:** Trophies top 4, medal top K-3. **Reg.:** 10-10:30 onsite, or pre-register at [www.YourChessSet.com/kidswiss](http://www.YourChessSet.com/kidswiss).

### May 1, Princeton Day School

650 The Great Road. Plaques to top 3 school teams and top 6 in each section. Medals to all players. Four sections for OVER 1000 begin at 10:15 and must preregister: **OVER 1600** (K-12), **NEAR MASTERS** (K-12 over 1400) and **FUTURE MASTERS** (Players K-12 over 1200) G/60, 3 rds. **CLOSED** (K-12 1000-1200) G/45 4 rds. **ALL OTHER SECTIONS, G/30** 4 rds. beginning at 12:00 noon. (round times will be accelerated if possible). **OPEN** (Players K-12 U-1000), **RESERVE** (K-12 U-800), **NOVICE II** (K-8 U-600), **NOVICE I** (unrated K-6), **K-1** (unrated) **NO SCORE K-4** (unrated). **PARENTS OF PLAYERS** rated G/30 3 rounds. Pre-registration online, pay at the door \$35. On-site 11-12 noon \$45. **Info and register online:** [www.pds.org/chess](http://www.pds.org/chess). Inquires to Bonnie Watzkin [Chessteach@gmail.com](mailto:Chessteach@gmail.com).

### May 15, Jersey Shore K-12 Regionals

The Academy at Grace and Peace, 1563 Old Freehold Rd., Toms River, NJ 08755. **All Sections open to K-12. Section A:** U500, **Section B:** 500-1000, **Section C:** 1000-1500, **Section D:** 1500+ . **Section A, B, C 4SS, G/30. Section D: 3 Rounds, G/60.** Trophies to Top 5 in each section, Medals to all others. **EF:** \$25 if rec'd by 5/8, \$30 on site. **Reg.:** 9:00-9:45 AM. **Rds.:** 10:00 AM and ASAP. **Info:** John Burke, 908-705-7958 or [johnburke@yahoo.com](mailto:johnburke@yahoo.com). **Ent:** Make checks payable to: The Academy at Grace and Peace. Please indicate USCF ID# and section.

### A State Championship Event!

### May 15-16, New Jersey Junior Championship

5SS, G/100. Dean of Chess Academy, 3150 Route 22 West, Branchburg, NJ 08876. 908 595-0066. **OPEN:** (K-12) Trophies to top 10. Top High School player from NJ awarded entry to Denker Tournament of HS Champions. **RESERVE:** (U1400) Trophies to top 10, U1300, U1200, U1000, Unr. **ALL:** Entry fee \$35 if received by 5/8, \$45 at site. **Reg.** Sat. 9-10am. **Rds.:** 10am-2pm-6pm Sat., 10am-2pm Sun. **ENT:** NJSCF P.O. Box 1511, Jackson, NJ08527. Make checks payable to NJSCF. **Info:** Hal Sprechman, 732-259-3881, [hsprechman@characterkings.org](mailto:hsprechman@characterkings.org). NS, NC, W. **CMS JGP.**

### May 22, Super Scholastics Saturday Swiss K-8

Somerset Ramada Inn, 60 Cottontail Ln., Somerset, NJ Exit #12 off I-287. (In 4 Sections/8 skittles) Trophies to top 5, others get medals/prizes. **Hot Shots** (always U1700): 4SS G/45, \$150-100-50, b/10. **Checkmates** (always U1300): 4SS G/45, \$100-50 b/10. **New Stars** (always U1000): 5SS G/30, \$100-50 b/10. **Chess Pirates** (always U600): 5SS G/30, \$100-50 b/10. Player's highest life time rating used. **Rds.:** 11am then ASAP lunch break. **EF:** \$27 mailed by 05/17 or paid online, [entryfeesrus.com](mailto:entryfeesrus.com). EF at site \$35. Cash only. **Reg.:** before 10:45am. Ent: 115 W. Moore St., Hackettstown, NJ 07840. **Info:** Ken Thomas [acn@goes.com](mailto:acn@goes.com) or 908-763-6468. NS, NC, W.

### May 29, U.S. Amateur Kids Championship - East U1200 K-8

Somerset Ramada Inn, 60 Cottontail Lane, Somerset, Exit 12 off I-287 at Weston Canal Road. (732) 560-9880, Fax (732) 356-7455. **Trophies Galore.** 5-SS, G/30, Trophies to Top 10, Others get choice of chess medallions or fun grab bag prizes.

# Tournament Life

Unrated may not win first prize. **Registration:** Saturday 5/29, 11am-12pm. **Rounds:** 12:30pm, then ASAP with lunch break after round #2. **EF:** \$30 if mailed by 5/25 or paid online by 5/27 on website EntryFeesRus.com, \$40 cash at site. Trophies to Top 10 & Top U1000, U800, U600, U400 & unrated. One half-point bye in rounds 1-4 if requested with EF: April Rating supplement used. **Mail entries to:** Ken Thomas, 115 West Moore Street, Hackettstown, NJ 07840. Checks payable to NJSCF. Please indicate your grade level. **Information:** Call 908-763-6468 or acn@goes.com. NS, NC, W.

## May 29-31, 66th Annual U.S. Amateur Championship – East See Nationals.

### June 5, 1st Saturday Scholastic (K-8)

4 RR, G/45 t/d5. 1st round 11 AM. All the King's Men Chess & Games Center (Just 20 mins. from Center City Philadelphia), 62 S. Broadway, Pitman, NJ, 856-582-8222. **EF:** Online \$20, members \$18. **Onsite:** \$22.50, members \$20. Includes FREE pizza & soda. **Prizes:** Trophies top 4, medal top K-3. **Reg.:** 10-10:30 onsite, or pre-register at www.YourChessSet.com/kidswiss.

## New York

### Apr. 11, P.S. 9 Scholastic Chess Championships I

4-SS, 100 West 84th Street NYC. 4 SECTIONS. **BEGINNER G/30** (grades K-1 only) Unrated Players Only. **NOVICE G/30** (grades 2/below) U600. **RESERVE G/30** (grades 2-6 only) U600. **CHAMPIONSHIP G/45** (Grade8/below) U1200. **AWARDS:** Trophies to top 15 in each section. Top U300 Novice, U400 Reserve, U700 Championship. **Special Prizes:** Engraved digital chess clocks to Top Player in each section & to all 4-0 scores & Top Unrated in Championship Section. Engraved plaque to top UNR player in each section. High Scorer trophy to all who score 2 points and do not get into top 15. Engraved medals to all others. **Team Prizes:** Trophies to top 4 teams in each section. Engraved digital chess clock to Top Team in each section. (Team score created by adding top 4 scores from same school). **EARLY EF:** \$39 if received (postmarked by April 5). **LATE EF:** \$45 Phoned, faxed or online thereafter until April 9, 5pm. **Onsite EF:** \$55. **Reg.:** 9-9:30. **Rds.:** Beginner Novice, Reserve 10-11:30-12:45-2. Championship 10-11:45-1:15-3:00. Late entrants may not be paired for the first round. **Mail Entries:** and make check payable to: Tri-State Chess, 1675 York Ave. #2M, N.Y. N.Y. 10128. Phone: (718) 645-5896. Fax: (718) 535-7896. Online Entry: www.Tri-StateChess.com.

### May 2, The Right Move #162 Team and Individual Championship FREE EF.

4SS, G/30. Play starts promptly at 10:00. Players must check in by 9:15 A.M. (Latecomers will not play in round one). **Brandeis H.S., 145 W. 84th St., 10024** (near Columbus Ave., Manhattan, NYC). **Open to gr. K-12. Five rated sections: Open, Under 1700, Under 1200, Under 800, Under 600.** (May renege or join USCF at tournament). Non-member sections by grades: K-3, 4-6, 7-12. Trophies to top 3 in each section except Open (\$50, \$30, \$20 for 1st-3rd); medal to each player with 2.5 or more points. Team plaque to 1st and 2nd each section, with top 4 scores counting in each section (minimum 3 players on team in section). **To register:** use website at www.theightmove.org or email - thechesstour@aol.com or Fax to 718-455-2863 before 6:00PM on Fri. Give full name, school, grade, USCF ID#, exp. date, and section. **NO ON-SITE REGISTRATION.**

### May 14-16 or 15-16, 18th annual New York State Open

See Chess Life or www.chesstour.com.

### May 16, P.S. 158 Scholastic Chess Championships XII

4-SS, 1458 YORK AVE. BETWEEN E. 77-78 ST., NYC. 5 SECTIONS. **BEGINNER G/30** (grades K-Lonly) Unrated Players Only. **NOVICE G/30** (grades 2/below) U600. **RESERVE G/30** (grades 2-6 only) U500. **PRIMARY G/45** (K-12) U1000. **CHAMPIONSHIP/OPEN G/50** Minimum 1000 rating! (grades 12/below). **AWARDS:** Trophies to top 15 in each section. Top U400 NOVICE, U700 PRIMARY, U1100 CHAMPIONSHIP. **Special Prizes:** Engraved digital chess clocks to Top Player in each section, all 4-0 scores & Top Unrated in Open Section. **Engraved Chronos Clocks** to winners of Primary and Championship. Engraved plaque to top UNR player in each section. High Scorer trophy to all who score 2 and do not get into top 15. Engraved medals to all others. **Team Prizes:** Trophies to top 4 teams in each section. Engraved digital chess clock to Top Team in each section. (Team score created by adding top 4 scores from same school). **EARLY EF:** \$39 if received (postmarked by May 10). **LATE EF:** \$45 Phoned, faxed or online thereafter until May 14, 5pm. **Onsite EF:** \$55. **Reg.:** 9-9:30. **Rds.:** G/30 Sections 10-11:30-12:45-2. G/45 & G/50 10-11:45-1:30-3:15. Late entrants may not be paired for the first round. **Mail Entries:** and make check payable to: Tri-State Chess, 1675 York Ave. #2M, N.Y. N.Y. 10128. Phone: (718) 645-5896. Fax: (718) 535-7896. Online Entry: www.TriStateChess.com.

### May 22, NY May Under 1600!

4-SS, G/50, open to U1600 or unr., Chess Center at Marshall Chess Club, 23 W. 10th St., bet 5-6 Ave., NYC. 845-569-9969. **EF** \$40, Club members \$25, specified Greater NY Scholastic prizewinners free. **May be limited to 1st 26 entries.** \$\$ (300 b/20 paid): 150-70-30, top U1300 \$50, \$70 limit to unc. Limit 2 byes, commit by 2:30. Reg. ends 15 min before game. Rds. 12:30-2:30-4:30-6:30 pm. CCA Ratings may be used. **Online entry at www.chesscenter.cc thru 5/20. \$10 extra to "enter" by phone!**

### May 22, Prove Your Point!

3-SS, G/30. Chess Center at Marshall Chess Club, 23 W. 10th St., NYC: 212-477-3716. **EF** \$20, 3-0 wins \$40, 2.5 wins \$20, 2 wins \$10. Reg ends 7:20 pm. Rds. 7:30-8:30-9:30.

### May 29, Prove Your Point!

3-SS, G/30. Chess Center at Marshall Chess Club, 23 W. 10th St., NYC: 212-477-3716. **EF** \$20, 3-0 wins \$40, 2.5 wins \$20, 2 wins \$10. Reg ends 7:20 pm. Rds. 7:30-8:30-9:30.

### June 6, 6th Annual NY Under Age 13 Championship!

4-SS, G/30, open to all born after 6/6/97. Chess Center at Marshall Chess Club, 23 West 10th St., bet. 5-6 Ave, NYC: 845-569-9969. May be limited to 1st 52 entries. 2 Sections: **1. Open**, **EF:** \$32 postmarked by 5/28. **2. Novice**, for Under 1000 or Unrated, **EF:** \$31 mailed by 5/28. **Both**, **EF:** \$30 online at www.chesscenter.cc by 6/3, \$35 by phone at 406-896-2191 by 6/3, \$40 at site, Club members \$10 less (\$10 fee for refunds). Trophies to top 10, top Unr, top 3 teams (top 3 scorers from same school) each section. 8 weeks free entry to 1st, 4 weeks free to 2nd each section. Speed playoff for 4-0. Limit of 2 byes, commit by 11:30. On-site reg. ends 9:30 am. Rds 10-11:30-12:45-2 pm. **Ent:** Chess Cen-

ter of NY, PO Box 4615, New Windsor, NY 12553. List USCF ID, rating, section, school/grade, DOB.

### June 6, SAR Academy Scholastic Chess Championship IX

4-SS, G/30.655 W. 254 St., Bronx (RIVERDALE), NY. 5 SECTIONS. **BEGINNER** (grades K-1 only) Unrated Players Only. **NOVICE** (grades 2/below) U600. **RESERVE** (grades 2-6 only) U500. **PRIMARY** (Grades 5/below) U1000 **CHAMPIONSHIP/OPEN** (grades 12/below). **AWARDS:** Trophies to top 15 in each section. Top U400 NOVICE, U700 PRIMARY, U800 CHAMPIONSHIP. **Special Prizes:** Engraved digital chess clocks to Top Player in each section, all 4-0 scores & Top Unrated in Open Section. Engraved plaque to top UNR player in each section. High Scorer trophy to all who score 2 and do not get into top 15. Engraved medals to all others. **Team Prizes:** Trophies to top 4 teams in each section. Engraved digital chess clock to Top Team in each section. (Team score created by adding top 4 scores from same school). **EARLY EF:** \$39 if received (postmarked by June 1). **LATE EF:** \$45 Phoned, faxed or online thereafter until June 4, 5pm. **Onsite EF:** \$55. **Reg.:** 9-9:30. **Rds.:** All 10-11:30-12:45-2. Late entrants may not be paired for the first round. **Mail Entries:** and make check payable to Tri-State Chess, 1675 York Ave. #2M, N.Y. N.Y. 10128. Phone: (718) 645-5896. Fax: (718) 535-7896. Online Entry: www.TriStateChess.com.

### June 6, Sunday Under 1400 Action!

4-SS, G/30. Chess Center at Marshall Chess Club, 23 West 10 St., between 5-6 Ave., NYC: 212-477-3716, for Under 1400 or unrated. **EF** \$30, Club Members \$20, specified Greater NY Scholastic prizewinners free. **\$\$200 b/20 paid:** \$100-60-40, \$60 limit to unc. Reg. ends 3:45 pm. Rds. 4-5:15-6:45-8 pm. No advance entries.

## Ohio

### Apr. 16-18, 2010 All Girls National Championship presented by the Kasparov Chess Foundation in association with the USCF and UTD. See Nationals.

### Apr. 16-18, 2010 National High School (K-12) Championship See Nationals.

### Apr. 17, Cleveland Scholastic South

Sheraton Cleveland Airport Hotel, 5300 Riverside Drive, Cleveland, OH 44135. **OPEN: \$\$\$GTD:** \$200 1st, trophies top 3 under 1200, top 3 under 800. **EF:** \$25 if by 4/10, \$30 on site. (UNR. may not win cash) **NOVICE:** Open to unrated. **EF:** \$15 if by 4/10, \$20 on site. Trophies to top 3. **BOTH:** 4SS, G/30, Open to students in K-12. **Reg.:** 8:45am-9:30am. Rd. 1 at 10. **ENT:** Dan Patterson, 11313 Lake Avenue, Cleveland, Ohio 44102. Info: 216-281-1313. Email: bsq451@sbc-global.net.

### A State Championship Event!

### Apr. 24, 2010 Ohio Elementary Chess Championships

5 Round Swiss, G/30 for rds 1-4, and all rds for unrated sections; G/45 for rd 5 of rated sections. Bexley High School, 326 S. Cassingham Rd., Bexley, Ohio 43209. **Sections: Elementary Championship - Grades K to 6, Elementary Reserve (U750 or unrated) - K to 6, Primary Championship - K to 3, Novice (not USCF rated) - K to 3, Novice (not USCF rated) - 4 to 6.** The individual winners in the Championship Sections declared "Ohio Champion". Trophies to those players who score 3.5 points or more. Trophies also to the 5 top teams, all sections. Rd 1 begins at 10:00 a.m. **Entry fee** \$25 if postmarked by April 17th (\$10 if on free or reduced lunch), \$30 if postmarked after April 17th. **Registrations** must be received by April 22nd. Bexley Ohio Scholastic Chess Club, P.O. Box 091124, Columbus, Ohio 43209. **On-line registration & forms at:** www.BexleyChessClub.com. **Contact:** Esther Gillett, 614-581-1465, esgillett321@gmail.com.

### Apr. 25, Beachwood Scholastic Quads

3RR, G/30. Beachwood Community Center, 25325 Fairmount Blvd., Beachwood, OH, 44122. Players grouped by rating, age if unrated. **EF:** \$10 at site. **Registration:** 1:00-1:45 pm, Rd 1: 2:00 pm. **Awards:** Trophies to 1st each quad, participation awards to all. **Info:** Michael Joelson, 321-7000, mdjoelson@aol.com.

### May 23, Beachwood Scholastic Quads

3RR, G/30. Beachwood Community Center, 25325 Fairmount Blvd., Beachwood, OH, 44122. Players grouped by rating, age if unrated. **EF:** \$10 at site. **Registration:** 1:00-1:45 pm, Rd 1: 2:00 pm. **Awards:** Trophies to 1st each quad, participation awards to all. **Info:** Michael Joelson, 321-7000, mdjoelson@aol.com.

### June 20, Beachwood Scholastic Quads

3RR, G/30. Beachwood Community Center, 25325 Fairmount Blvd., Beachwood, OH, 44122. Players grouped by rating, age if unrated. **EF:** \$10 at site. **Registration:** 1:00-1:45 pm, Rd 1: 2:00 pm. **Awards:** Trophies to 1st each quad, participation awards to all. **Info:** Michael Joelson, 321-7000, mdjoelson@aol.com.

## Pennsylvania

### Apr. 16, Friday Night Action #16

4SS, G/30. Belmont Park Classroom, 200 Anderson Road, King of Prussia, PA 19406. **Sections:** Open, U/1400. **EF:** \$30 online by noon the day of the event; \$10 more on-site 6:30-6:45; \$10 less for players under 18. **Rds.:** 7:00, then ASAP. **Prizes:** \$100 to 1st overall; others per entries. Register at www.silverknightschess.com. Registration limited to first 30 players.

### Apr. 24, Spring Finale

4SS, G/30. Wayne Elementary School, 651 W. Wayne Ave., Wayne, PA 19087. **Sections:** K-6 U/700, K-12 Champ. **EF:** \$22 online by 4/21; \$27 online by noon 4/23; \$35 on-site 9:00-9:30. **Rds.:** 10:00, then ASAP. **Prizes:** trophies to top individuals & schools. **Free game analysis** by NM Peter Minear. See www.silverknightschess.com to register, or for information about sections for unrated players.

### A State Championship Event!

### Apr. 24-25, 2010 PA State Amateur Champ.

Ramada Inn, 1213 N. Church St., SR 309, Hazleton, PA 18202. 2 sections: **Champ (Sat & Sun):** Open to U2200. **5SS, G/90. Rds:** 10-1:30-5, 9:30-1. **EF:** \$20 rec'd by 4/23, \$30 later. Trophies: 1-3, U1800, U1600, U1400, U1200/Unrated, School Team (top 4 scores). Top 2 receive entry into 2010 PA Champ. Title to top PA resident. **Scholastic (Sat only):** unrated or U1400 in grades K-12. **4SS, G/40. Rds:** 10-15-11:45-1:15-2:45. **EF:** \$15 rec'd by 4/23, \$20 later. Trophies: 1-2, U1100, U800/Unrated, School Team (top 4 scores). **All:** Reg: 9-9:30am, PSCF \$5, OSA. **HR:** ramadahazleton@yahoo.com 570-455-2061, 1-800-272-6232

\$60-70. **Ent/Info:** GHACC, c/o Jerry Flynn, 404 Cedar Street, Freeland, PA 18224-1702, gsf2@verizon.net, 570-455-9261. W. **CMS JGP Championship Section.**

### May 15, Silver Knights Cup

4SS, G/45. Radnor Middle School, 150 Louella Avenue, Wayne, PA 19087. **One Section: open to four-player teams** with average rating under 1800. **EF:** \$100 per team by 5/12; \$112 per team by noon on 5/14. \$120 per team on-site from 8:00-8:30. **Rds.:** 9:30-11:15-1:30-3:15. Plaques to top 5 teams, top scholastic team, top team U/1500, U/1200, U/900, U/600. See www.silverknightschess.com for complete rules and to register. Blitz tournament immediately following the main event from 5:00 - 7:30.

### May 21, Friday Night Action #17

4SS, G/30. Belmont Park Classroom, 200 Anderson Road, King of Prussia, PA 19406. **Sections:** Open, U/1400. **EF:** \$30 online by noon the day of the event; \$10 more on-site 6:30-6:45; \$10 less for players under 18. **Rds.:** 7:00, then ASAP. **Prizes:** \$100 to 1st overall; others per entries. Register at www.silverknightschess.com. Registration limited to first 30 players.

### June 26-27, World Open Under 13 Championship

6SS, G/65. Valley Forge Convention Plaza (see World Open). Open to all born after 6/28/97. Trophies to top 5, 1st, C, D, E, Under 1000, Under 800, Unrated; free entry in all CCA Swiss tournaments 7/15/09-12/31/09 to 1st. **EF:** \$42 mailed by 6/16, \$43 online at chesstour.com by 6/23, \$45 phoned to 406-896-2038 by 6/23, \$50 at site. **Reg.:** 6/26 9 to 10:30 am, rds. Sat. 11-2-5, Sun. 10-1-4. One half point bye allowed, must commit before rd 2. **HR & Ent:** See World Open. **CMS JGP.**

### June 26-27, 2nd annual World Open Girls Championship

See chesstour.com or Chess Life.

### June 29-July 5, July 1-5, 2-5 or 3-5, 38th Annual World Open

See Chess Life or www.chesstour.com.

## Rhode Island

### Apr. 15 & May 15, Tmts for Kids

Reg. online: www.richess.org, email: rhodeislandchess@yahoo.com. (401) 359-1602.

## Tennessee

### Apr. 23-25 or 24-25, 9th Southern Class Championships

See Chess Life or www.chesstour.com.

## Texas

### May 8, Ed Gurukul Institute Spring Scholastic

4504 Legacy Drive, Suite 100, Plano, TX 75024, 214-232-4010. **4 rated sections:** K-3, Elem U500, Elem Open, &MS/HS. **Open/5 rounds, Game/30. Trophies:** Individual Top 3 each Section, Team: Top 3 overall. USCF rules, notation not required. **EF:** \$20 if rec by 5/3/10, else \$30. Boards/ssets provided. **On-site registration:** 1:1-45 pm, RI 2:15 pm, RI 2:15 pm, 1/2 pt bye if req in advance, no 1/2 pt byes round 5. **Send registrations to:** Sri Srikanth, at above address. **Questions:** ksrikanth@edgurukul.com.

## Utah

### A State Championship Event!

### June 9, 2010 Utah Quick Championship (QC)

12SS, G/15 Td/3. Southern Utah University, Starlight Room, 602 W 100 South, Cedar City, UT, 84720. Gold, Silver and Bronze medals awarded to overall champions, female, over 60, under 20, under 15, under 10. **EF:** \$25. Unrated section **EF** \$20. **Onsite Reg.:** 8:30-9am. **Round 1** at 10am. Bring sets and clocks. 1/2 point fee available in any round (limit 2). **Utah Random Chess (Chess960) and Bughouse Championships** June 8, 1pm and 7pm, **EF** \$15 and \$10/team. Reg. before 12:30, 6:30. **Prizes:** Many medals. **ENT:** Wendy Hutchison, Utah Summer Games, 351 West University Blvd., Cedar City, Utah 84720. (435) 865-8421 or www.utahsummergames.org/sports/chess.html. NS, NC, W.

## Vermont

### Apr. 30-May 2 or May 1-2, 21st annual Vermont Resort Open

See Chess Life or www.chesstour.com.

### June 11-13 or 12-13, 7th annual Vermont Spring Open

See chesstour.com or Chess Life.

## Virginia

### May 2, Silver Knights Chess K-8 Team Tournament

4SS, G/30. Our Lady of Good Counsel School, 8601 Wolftrap Road, Vienna, VA 22182. **One Section: open to four-player teams** of players in grades K-8 that attend the same school. **EF:** \$80 per team online by the Wednesday before the event; \$92 per team by noon Friday before the event; \$100 per team on site from 11:00-11:30. **Rds.:** 12-1-2-3. Trophies to top teams and top unrated teams. See www.silverknightschess.com for complete rules and to register.

## Wisconsin

### Apr. 24, Madison Spring Rated Beginner Open (RBO)

D240 Downtown MATC Campus, 211 N. Carroll St., Madison, WI 53703. Open to 1199 & under. In 2 Sections, Open & Reserve (age 12 & less), **5SS, G/30. EF:** Open \$13 adv/\$20 at site, Reserve \$11 adv/\$20 at site. **Reg.:** 7:30am. Mail to: 2025 E. Johnson St., Madison, WI 53704. **Rds.:** 8:15-9:25-10:35-12:05-1:15. **INFO:** George Alexander 608-669-3385 or checkmate@tds.net. http://groups.google.com/group/madison-chess-league. NS, NC, W.



**2010  
Burt Lerner  
National Elementary  
(K-6) Championships**

May 7-9, 2010

Hyatt Regency Atlanta  
Atlanta, Georgia 30303

For reservations:  
404-577-1234 or 800-233-1234



For complete details:  
[www.uschess.org](http://www.uschess.org) or page 20!