

August 2010

uschess.org

Chess Life for Kids!

HIP HOP and CHOP CHOP:



Talk, Tell and Tackle



A USCF Publication

\$3.00



0 74470 27842 9

**Fast, Fun, and
Easy to Use**

In 2006, and *again* in 2007,
young Chess Magnet students
from Portland, OR, scored 7-0 in the
USCF Spring Nationals.

ChessMagnetSchool.com

Better Than Any Textbook for Learning Chess



**Student
Training**

**"Great Stuff! I just delivered my first
Belgian champion under 10 and
boosted his development
by using ChessMagnetSchool.com"**

- Ton Montforts, Coach
Schaakacademie
Limburg, Belgium



**Student
& Class
Management**

**"Your website was
integral to our team's winning."**

-Mike Hosford, Coach
Alcott Elementary
2008 Washington State
Grades 4-6 Champions

**Proud Sponser
of the
2010 USCF
Junior Grand Prix!**

Start Your 30-day Free Trial Today

at

www.ChessMagnetSchool.com

	1 month	3 months	1 year	1 yr USCF
Individuals	\$6.95	\$15.00	\$29.95	\$26.95
Class/Family	\$6.00	\$12.00	\$25.00	\$22.00

Free to teachers/coaches of at least 5 students
Includes our powerful, easy-to-use Coaching Tools & Reports

Works on Windows and Macintosh
computers (requires internet access)

To learn more, call 650-284-5062
877-378-4319 (US toll-free)
email info@ChessMagnetSchool.com



August 2010
Chess Life for Kids!
 Vol. 5, No. 4



Table of Contents

- 4 THE GNOMES HAVE SPOKEN
- 5 ARABIAN KNIGHTS
- 6 ASK GM EVANS
- 7 THE CHESS DETECTIVE
- 8 HOW TO SAFELY CHECKMATE A BULLY
- 10 OPENING GLOSSARY
- 12 WIN OR DRAW
- 13 WHAT'S THE PROBLEM?
- 14 GIUOCO PIANO
- 16 THE WORST OPENING
- 18 SOLUTIONS
- 20 TOURNAMENT LIFE ANNOUNCEMENTS

COVER PHOTO COURTESY OF LISA SUHAY

Publisher

USCF Executive Director: Bill Hall
 bhall@uschess.org

Scholastic Editor: Glenn Petersen
 gpetersen@uschess.org

Art Director: Cat Connor Spradlin
 catseyephoto@mac.com

Editorial Asst./Copy Editor: Alan Kantor
 akantor@uschess.org

Editorial Assistant: JoAnne Fatherly
 backtobasics@uschess.org

Jennifer Pearson
 jenpearson@uschess.org

Advertising Manager:
 tla@uschess.org

Tournament Life:
 tla@uschess.org

Director of Publications: Daniel Lucas
 dlucas@uschess.org

CONTRIBUTORS: Send your contributions and articles to *Chess Life for KIDS*, PO Box 3967, Crossville, Tennessee 38557 or better yet, e-mail to gpetersen@uschess.org.

Chess Life for KIDS (USPS 023-567, ISSN: 1932-5894) is published in February, April, June, August, October, and December of every year by the United States Chess Federation, 137 Obrien Drive, Crossville, Tennessee 38555. Periodic postage paid at Crossville, Tennessee.

CHANGE OF ADDRESS: Be sure to notify us at once of any change of address. Please include your old address and your new address, along with your USCF I.D. number.

POSTMASTER: Send address changes to USCF, PO Box 3967, Crossville, Tennessee 38557.

Annual Scholastic Membership

Regular Scholastic Membership (online version of *Chess Life for Kids*), age 12 or younger, is just \$16 per year. Premium Scholastic Membership (receives *Chess Life for Kids* by mail) is \$23 per year. \$13 of every premium membership goes towards providing *Chess Life for Kids*. Entire contents copyright 2009, United States Chess Federation.

Teachers may photocopy instructional articles for classroom use, but republication or wide-spread copying without the written consent of the USCF is forbidden.

PARENTS, TEACHERS & COACHES!



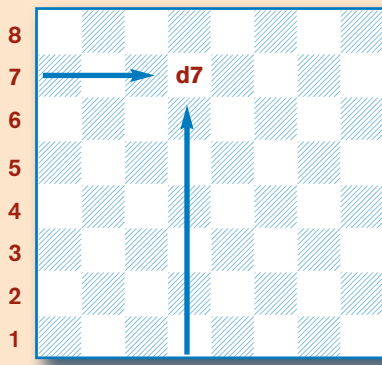
Check out the
 new USCF
**Certified Chess
 Coach Program**
 at

<http://main.uschess.org/content/view/9474/131/>

HOW TO Read & Write Chess

There are many different ways to write chess moves. The most popular method (described below) is called **algebraic notation**:

Each square has a name, taken from the intersection of the file (vertical or up-and-down rows of squares, which are lettered) and rank (horizontal or side-by-side rows of squares, which are numbered) the square is on. In the diagram the square on the intersection of the 7th rank and the d-file is called d7. Like in battleship!



The pieces are abbreviated with a capital letter, like this:

K: King; Q: Queen; R: Rook; B: Bishop; N: Knight.

Notice that the Knight is N, since K is reserved for the King. Notice also that pawns have no abbreviation.

A move is written by using the abbreviation for the piece that moves, followed by the square the piece moves to (1. ... Nf6). A pawn move is written as the square the pawn has moved to (1. d4). A capture by a piece is written as the abbreviation for the piece that moved, followed by an x, and finally the square the capture takes place on (8. Bxe5). A pawn capture is written as the file the capturing pawn stands on, followed by an x, and finally the square the capture takes place on (3. dxe5).

Other moves are castling kingside, which is written 0-0, and castling queenside, which is written 0-0-0. An *en passant* capture is indicated by *e.p.* after the move. A check is indicated by + after the move, and pawn promotion is indicated by adding () and the abbreviation for the piece the pawn promotes to. Ambiguous moves (where more than one piece or pawn can move to the destination square) are taken care of by putting an extra rank or file in to make it clear which piece or pawn moved.

Here is a sample, using the famous smothered mate trap from the Budapest Defense.

1. d4 Nf6 2. c4 e5 3. dxe5 Ng4 4. Bf4 Nc6 5. Nf3 Bb4+ (diagram A)

6. Nbd2 Qe7 7. a3 (diagram B)

7. ... Ncxe5 8. Bxe5 Nxe5 9. axb4 Nd3 checkmate. (diagram C)

x: take or capture #: checkmate
0-0: kingside castle (:): promotion
0-0-0: queenside castle !: good move
+: check ??: blunder



THE GNOMES HAVE SPOKEN



Followers of "What's the Problem?" can check their answers to the June 2010 puzzles (page 14) below.

Puzzle 1

1. Kb6 Kc8 2. Ka7 and the pawn marches in to b8 or 1. Kb6 Ka8 2. Kc7 and the pawn marches in to b8. Bad is 1. b6 Kc8 2. b7+ Kb8 3. Kb6 stalemate.

Puzzle 2

1. Kc2 Kb8 (trying to keep the distant opposition) 2. Kc3 Kb7 3. Kb4 Kb6 4. b3! Kc6 5. Ka5 Kb7 6. Kb5 Kc7 7. Ka6 Kc6 8. b4 Kc7 9. b5 Kb8 ... same position as in puzzle 1.

Puzzle 3

1. Kc3 Kb7 2. Kc4 Kc6, Drawn

Puzzle 4

1. Kd6 Kc8 2. Ke7 Kb8 3. Kd8 Ka8 4. c6 bxc6 5. Kc7 c5 6. b7+ Ka7 7. b8=Q+ Ka6 8. Qb6 mate.

Puzzle 5

1. Kc2 Ke7 2. Kb3 Kd6 3. Ka4 Kc6 4. Ka5 Kb7 5. Kb5 winning the opposition. The rest is another variation on the first puzzle.

Winning a copy of *Chess Endings: Essential Knowledge* by Yuri Averbakh was Maggie Feng of Ohio.

June's "Win or Draw" was a lot more difficult, and it took one of the big kids to get all the solutions correct: Gary Kevin Ware of California. He will also receive a copy of *Chess Endings: Essential Knowledge*.

Check out the positions on June's page 10 against the solutions below.

Position One: WHITE WINS! **1. a5 Bf8 2. Kd5 Bh6 3. g5+ Bxg5 4. Ke4 Bh4 5. Kf3** and the pawn will queen. From James Mason's original edition of *The Art of Chess*, he writes: "The importance of first moving to Queen is evident. If king moves, or Pawn checks at the outset, the game is drawn; in the one case the King can reach b7 in time, and in the other the Pawn can be intercepted by the Bishop."

Position Two: WHITE WINS! Emanuel Lasker, world champ for over a quarter of a century, pointed out the mate to the players in the post-mortem: **1. g8=Q+ Kxg8 2. Ke6 Kh8 3. Kf7 e5 4. Bg7#**

Position Three: DRAW! **1. Bd7 h2 2. Bc6+ Kg1 3. Bh1 Kxh1 4. Kf2** and the king can't be chased off by the knight no matter what the horse does. This is a creation of the legendary problemist, Sam Loyd.

Position Four: DRAW! **1. Bb3 c3 2. Bxa2 c2 3. Bb1 c1=Q Stalemate!** (3...c1=B 4.Be4 and the knight can't move! It would be a draw anyhow.)

Position Five: WHITE WINS! **1. Kh4 Kg2 2. Kg4 Kh1 3. Kg3 Kg1 4. Kh3 Kh1 5. Ng3+ Kg1 6. Nf3#** White had to figure out how to lose a move with his king, so his king could be on h3 when the black king was on h1. Then, Ng3+ would lead to mate.

Position Six: DRAW! **1. Rxc2 dxc2 2. Kb2 Kd3 3. Kc1 Kc3 (3...a3 Stalemate) Stalemate!** If White does not play Rxc2 on move one, then Black in several lines plays Ke3 and wins or there is 1. Kb2 a3+ 2. Kc1 a2 3. Kb2 c1=Q+ 4. Kxc1 a1=Q+ and wins.

TALES OF THE Arabian KNIGHTS

BY RICK KENNEDY Illustrations by Pamela Key



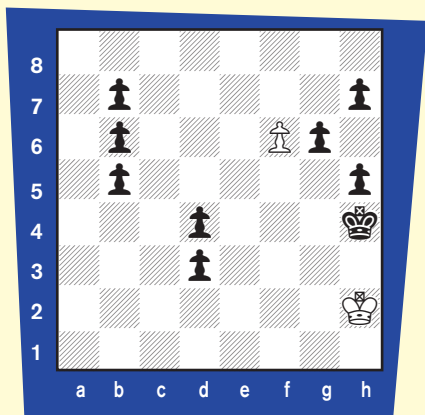
One Against Eight!

The King was very pleased with himself.



Let me show you a game about royalty, he said, and about the common pawn.

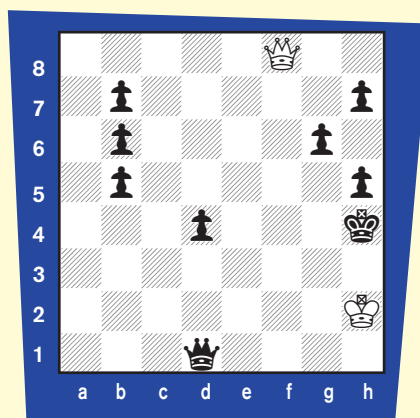
As you wish, she said warily, getting the chess board and pieces...



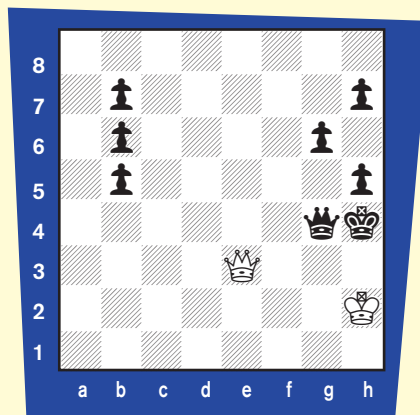
"Here," said the King, "is a game that I recently won."

"Your Majesty" she said, puzzled, "with eight pawns against one, that is not a surprise."

"The surprise," he said, "is that I had the white pieces, and that my one pawn won. The beginning is predictable, as we each promoted a pawn to a queen: 1.f7 d2 2.f8=Q d1=Q."

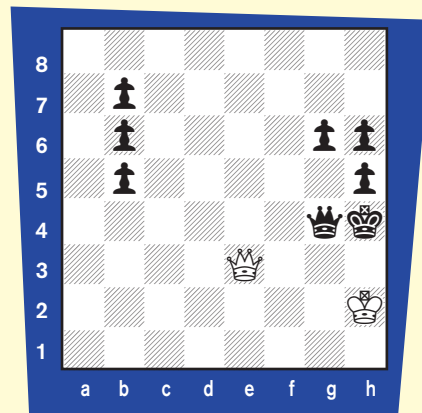


"I then grabbed a pawn and reached a special position where my opponent was forced to move one of his pawns: 3.Qf4+ Qg4 4.Qf6+ Qg5 (moving a pawn allowed 5.Qf2+ and mate) 5.Qxd4+ Qg4 6.Qe3."

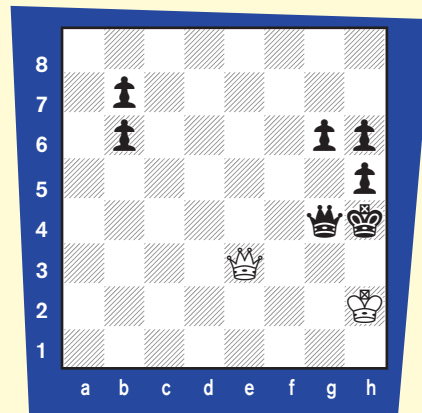


"He chose to move his h-pawn, but it didn't matter, as I could

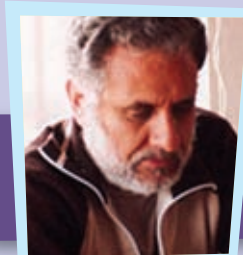
come back to the same position and force him to move again: 6...h6 7.Qe7+ Qg5 8.Qe4+ Qg4 9.Qe3."



"Now there was another pawn to be had: 9...b4 10.Qe7+ Qg5 11.Qxb4+ Qg4 12.Qe7+ Qg5 13.Qe4+ Qg4 14.Qe3."



Please turn to page 19



ASK GM LARRY EVANS!

Grandmaster Larry Evans won the U.S. Championship in 1951, 1952, 1961-62, 1968, and again in 1980!

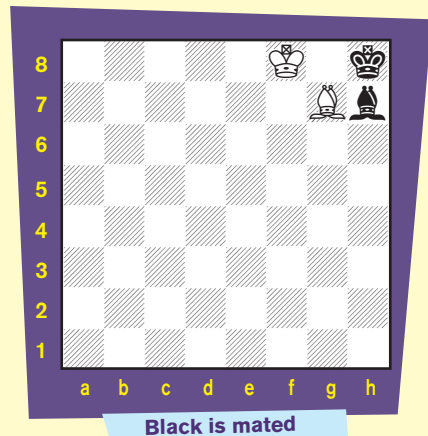
BEST QUESTION:

MATING MATERIAL

Yuanqi Cai (Reggie)
Gainesville, Florida

Q: When your opponent loses on time in a tournament, is it a draw if you do not have enough mating material? If that is true, does two knights count as mating material? Why or why not? Two knights can mate, but they can't force a win.

A: Should a player lose the game by exceeding the time limit when no mate is possible? NO!—provided the tournament director is summoned to the board and is aware of the situation before anyone resigns (because resignation ends the game no matter what). Only four endgames automatically should be declared drawn by the director: (1) king vs. king (2) king + knight vs. king (3) king + bishop vs. king (4) bishops on diagonals of the same color. Bishops of opposite colors don't qualify as a forced draw because mate is still possible, as shown in this diagram.

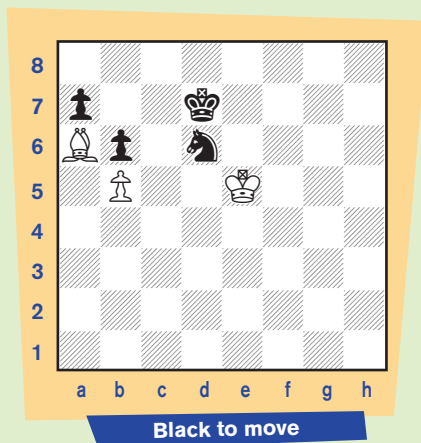


As you point out, two knights vs. king

CAN BLACK WIN?

Chris Mavraedis
San Francisco, California

Q: I wonder if there's some way for Black to win this position.



White's bishop is hemmed in, and if I can exchange it off without moving my king it's an easy win. I burned several hours look-

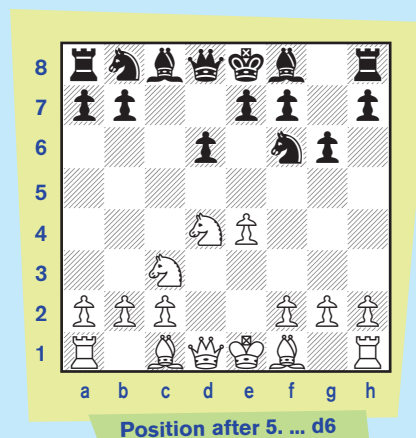
ing for a win and couldn't find a way to force the swap of the knight for the bishop which yields a won king and pawn ending. Please take a quick look and give me your opinion?

A: The key is to bring the knight to c5 either via d7 or b3 and then capture the bishop, but care must be taken. The first step is to entomb the bishop by 1...Kc7 2 Kd5 Nf5 (premature is 2...Nb7? 3 Bxb7! Kxb7 4 Kc4! Kc7 5 Kd5 Kd7 6 Kc4 Kd6 7 Kd4 which draws by maintaining the opposition) 3 Ke4 Ng3+ 4 Kd5 (if 4 Kd3 Nh5 5 Ke4 Nf6+ 6 Kd4 Nd7 7 Kc4 Nc5; or 4 Ke5 Nf1 5 Kd4 Nd2 6 Kd5 Nb3 7 Kc4 Nc5 does the trick) 4...Ne2 5 Kc4 Nf4 6 Kd4 Ne6+ 7 Kc4 Nc5 followed by ...Nxa6 wins.

DRAGON SICILIAN

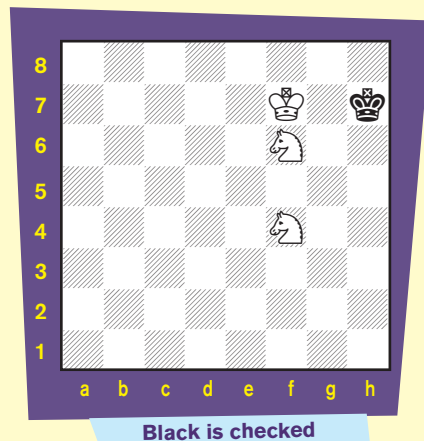
jboetk@yahoo.com

Q: Hi. I'm a 5th grader and my rating is now over 1500. I was wondering how to play against the Dragon Sicilian after 1 e4 c5 2 Nf3 g6 3 d4 cxd4 4 Nxd4 Nf6 5 Nc3 d6.



Please turn to page 19

DO count as mating material because mate is possible in case of a misstep.



It's mate after 1...Kh8?? 2 Ng6—that's why this ending doesn't qualify as an automatic draw. But after 1...Kh6! White can't force mate.

The

Chess

Detective

by NM Todd Bardwick



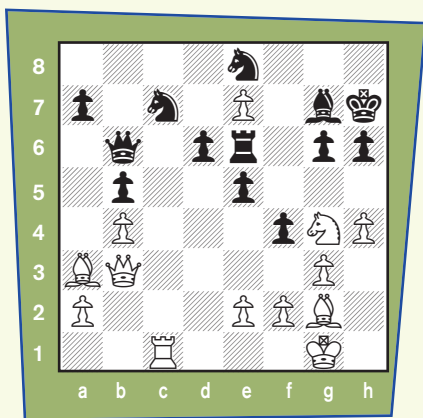
PROMOTING A PAWN



Since bringing the queen back to life is one of the main goals in the endgame, promoting a pawn is a skill that every chess player needs to learn to master. Let's take a look at several examples of how to chase away your opponent's pieces to clear the path for the pawn to promote.

In this game that took place in Gstaad, Switzerland in 1973, White skillfully sacrifices several pieces to clear the path to promotion.

Carlo Micheli



Raymond Keene
Position after 27...Re6

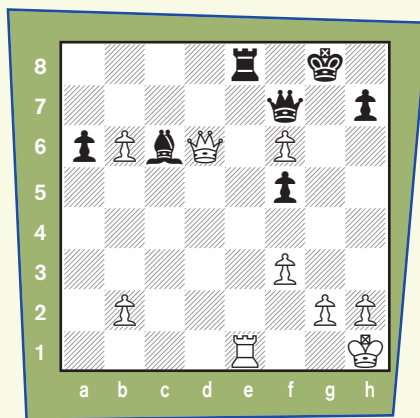
Although White's pawn on e7 is only one square away from promoting, it appears to be going nowhere as it is surrounded by Black's pieces. White plays **28.Rxc7! Nxc7 29.Qxe6!** Black's knight is overworked, protecting both his rook and defending the promotion square. **29...Nxe6**

30.e8=Q Nd4 31.Bd5, Black resigned. White eyes **32.Qg8 mate.** If **31...g5 32.Be4+ Nf5 33.Bxf5 mate.**

In this position from Yerevan, Armenia, in 2006, White has two dangerous passed pawns. Can you figure out how she deflected away the defenders?

(Please see next diagram)
White played **32.Qg3+ Kf8 33.Qg7+, Black resigned.** If Black plays **33...Qxg7**, White can play **34.fxg7+ Kxg7 35.Rxe8 Bxe8 36.b7** and the pawn promotes because the bishop has been deflected away from c6 where it protects the critical b7-square.

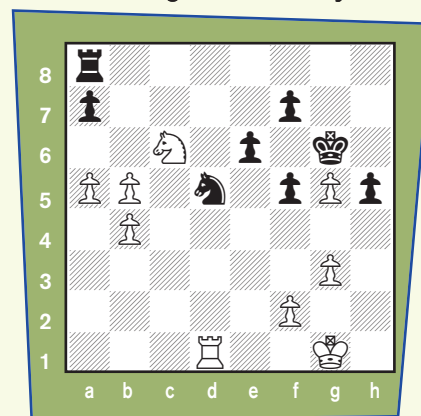
Eesha Karavade



Yang Shen
Position after 31...Re8

Here is a cool example from Bad Neuenahr, Germany, in 1957, where White sacrifices both his pieces and overpowers Black's rook with three(!) passed pawns.

Georg Hodakowsky



Paul Troeger
Position after 41...Kg6

White achieves victory by playing two sacrifices: **42.Rxd5! exd5 43.Nxa7! Rxa7.** White's queenside pawns are mobile and are planning to march up the board together as one big happy family as Black's poor rook is overmatched. The game continued, **44.b6 Rb7 45.b5, Black resigned.** White threatens **46.a6 Rxb6 47.a7** and Black can't stop White's pawn from promoting on a8.

Todd Bardwick

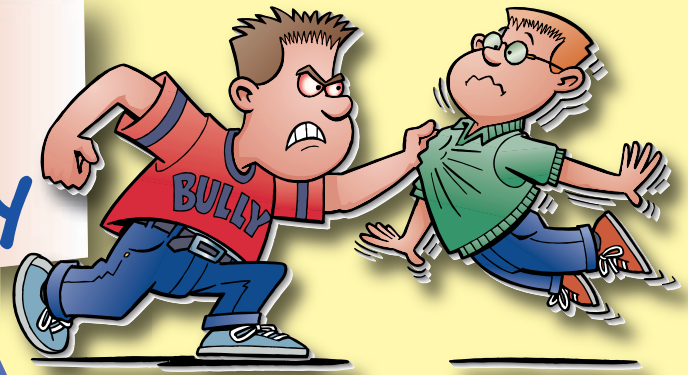
is the author of

Teaching Chess in the 21st Century
and Chess Workbook for Children.

He can be reached at

www.ColoradoMasterChess.com

How to Safely Checkmate a Bully



By Lisa Suhay

School can be harder than just passing tests, especially when you are busy trying to avoid a bully who's making life miserable. The bully seems to spend all of his or her time making you feel bad about yourself, embarrassing you, or even physically shoving and bumping you around.

In school, on the bus, walking home, at lunch, in gym class, or the stairwells and halls, bullies are a dangerous distraction. The biggest danger isn't even physical, but the fact is that bullies make kids hate school.

Some parents and teachers often say, "Just stand up to a bully and he or she will back down." But how, exactly, are you supposed to do that? On the chess board there are moves and counter moves, gambits and defenses. In life there are strategies to use against a bully that are now being taught, along with chess, in a brand new Bullyproof chess program.

Bullyproof chess started in San Francisco, California with, Adisa Banjoko, a competing Brazilian Jiu-Jitsu purple belt and founder of the Hip-Hop Chess Federation (HHCF). He was later joined by the Gracie family who created this "gentle" form of martial arts called Gracie Jiu-Jitsu. Hip-hop chess fuses music, chess and martial arts to promote unity and non-violence. The Gracie family, originally

from Brazil, changed basic Jiu-Jitsu into a way for the smaller, smarter, more patient opponent to win over the bigger, more physically powerful bully. Mixed martial arts (MMA) pioneer, Rickson Gracie, says he draws much of his strength on the mat from the chess games he plays. He often calls Jiu-Jitsu, "a physical game of chess."

You don't have to be an athlete, or beastly big and strong, to do these moves. It's all about *leverage*, patience and strategy. A *lever* is a solid piece on an axis; like a seesaw. *Leverage* is the mechanical advantage gained by being in a

and simple ways because you can pry them off their feet and get them locked down by knowing the right and wrong way for a joint to move. The person being bullied can then patiently wait for the bully to wear him or herself out trying to get out of the physical puzzle.

In school, when the worst moment you can imagine actually comes (someone trying to grab or hurt you) and then trying to defend yourself by throwing a wild punch, or fighting the same way the bully fights will only get you into trouble, hurt or both. The Gracies had a better, safer, more effective strategy.

Bullyproof teaches three Ts: **Talk.** Try and get the bully to leave you alone with words. It's like setting up the pawns.

Tell. Tell a parent, trusted adult or teacher. This is like moving out more powerful pieces to defend.

Tackle (first with verbal Jiu-Jitsu and then physically). Verbal Jiu-Jitsu is

saying, "You keep doing these things to me all the time. Are you challenging me to a fight?" Now no matter what the bully answers, you are going to win. If they say "yes," and you've been Bullyproofed, the bully is going to be finished in less than a minute and in the principal's office. If they say no, then you push your advantage and the endgame is saying, "Then you need to



position to use a lever. Your body has lots of levers that we call joints: elbows, shoulders, knees etc. Just like in chess, a piece can only move in a certain direction. Knowing how pieces are allowed to move helps us create strategy and overcome opponents.

In Bullyproof we learn how to take the other person off balance in quick, safe



stop wasting my time.” You walk away having taken all the bully’s power with you. Tackle is very important because most bullies don’t actually want to get to the point where they have to make a real move. This is where you get the bully into a position where they can forfeit the game.

As in chess, handling a bully is all about positional control. In chess we can begin by taking control of the four center squares and maintaining that control. The endgame is all about pinning down the opponent’s king and letting him wear himself out running all over the board until he has nowhere else to go. The opponent falls over and gives up, gassed-out, exhausted, “checkmate!”

That’s exactly what Gracie Jiu-Jitsu teaches kids to do. Once the 3Ts have happened and the bully still decides to get physical, kids learn how to safely get the bully on the ground and hold him or her down in a locked-up position. The bully is in a human pretzel of pain, but you aren’t in trouble because you waited patiently for the attack to come to you. It doesn’t matter if that bully is towering over you because everyone is the same height lying-down. The ground is exactly where Bullyproof kids want the game to be played out.

It’s really true the bigger they are the harder they fall, and the faster they “gas-out” and give up. It takes about 30-60 seconds of just pinning the other person down Bullyproof-style, before they are

huffing and puffing and the fight is over.

The very first Bullyproof chess sessions are being held this summer at the Lambert’s Point Community Center, Norfolk, Virginia. It’s all part of a 10-week free summer camp for kids run by volunteers from the Norfolk police department, Hip-Hop Chess Federation and Norfolk Karate Academy.

In a large multi-purpose room here, the divider is drawn like a curtain between the two activities: Hip-Hop Chess and Gracie Bullyproof instruction. Approximately 50 children ages 5-12 rotate between the two spaces and the sound generated is a high-energy mix of music, laughter and combat on the boards and mats that mingle in the air.

Tidewater, Virginia chess club instructor Ernie Schlich, took on the task of teaching those children and police officers who had never played chess the fun-

damentals, while more experienced players sharpened their game.

Norfolk Karate Academy founder Bill Odom, Gracie Bullyproof instructor Brad Taylor, his wife and two sons (all karate black belts), along with licensed Gracie Bullyproof instructor Rebecca Sizemore took the children through the basics of Bullyproof’s 3 Ts: Talk. Tell. Tackle. By the end of day one, kids knew how to keep a bully on the ground in a way that keeps them from getting punched or kicked by the bully.

For two hours kids took turns learning the moves on and off the board and mats.

By the end of the summer these students will be ready for back-to-school with a whole new way of handling bullies and chess. They will have confidence in their bodies and minds, to live balanced, happy, safe lives.

CONTACT:

lsuhays2@cox.net/ www.lisasuhay.com / (757) 575-4424

Lisa Suhay is the mother of four boys ages 6, 11, 15 & 16. She and all her sons are enrolled in Gracie Combatives/Bullyproof at Norfolk Karate Academy. Mrs. Suhay is the author of eight children’s books and a Hip-Hop Chess Federation organizer.



A Brief Chess Opening Glossary

by Pete Tamburro

The Queen Pawn Game

There are quite a few players who don't like to play the sharp e-pawn openings and don't want to take the time to study the Queen's Gambit as White with all the possible replies Black can answer to 1.d4 and 2.c4.

Their solution is to have the game either go off in its own direction without 2.c4 or to just set up an attacking formation that they know and can play pretty much without worrying what their opponent does.

This way of doing things has good points and bad points. If you just memorize one series of moves, you may never learn to play chess because you won't understand why you're doing anything. On the other hand, if you have a series of moves that you can rely on, at least you won't get mated for a while if you don't know what you're doing!

It's good for a little while. Sooner or later, in order to get good at the royal game, you will have to move on to other openings.

This group is called the Queen Pawn Game because they start with 1.d4 and avoid 2.c4.

Trompowsky Attack: 1.d4 Nf6 2.Bg5.



Winning With The Trompowsky by Peter Wells has convinced many people to play this move. The idea is to play, after 2...d5, the move 3.Bxf6 and then put pressure on the d5 pawn with c4 and an eventual Bg2. The line Black uses to fight for a win is 2...Ne4, which makes it really wild. An interesting opening for both sides, and you may just need to buy the book!

London System: 1.d4 d5 2.Nf3 Nf6 3.Bf4 e6 4.e3 Be7 5.Nbd2 c5 6.c3



This opening system started out as a defense for Black against the Reti Opening (1.Nf3 d5 2.c4 c6 3.g3 Nf6 4.Bg2 Bf5), but some people decided they could try it as White. White gets the bishop outside the pawn chain, which makes it different from the Colle System. You will also see some players play an early h3 because they don't want to exchange their bishop for a knight if Black goes Nh5. It's very solid.

Colle System: (just the White moves!) 1.d4 2.Nf3 3.e3 4.Bd3 5.c3 6.0-0 7.Nbd2



and now either 8.Qe2 or 8.Re1.

Made famous by Edgar Colle, the Belgian master from the 1920s, this system is very popular among beginners because it almost guarantees you'll make it to move eight! The idea behind the opening is to slowly force e4 and get your pieces to attack the black king's castled position. We did a whole article on it some issues back in *CL4K*. It would be worth looking up!

One of the tips from that article for White was that before you play

e4, you will need to play dxc5 if Black has a pawn on c5 so Black can't play ...cxd4 when you push the e-pawn. There are lots of exciting wins for White with this opening, so if you do decide to play this, make sure you play over some attacking games with the Colle in order to know what to do. One last thing. Everyone pronounces it like "collie" as if it were a dog. It sounds more like "coal" that you dig up from mines; however, in all the years this writer has been pointing that out, the right way of saying it has not caught on.

Colle-Zukertort System: It's the Colle System except at some point, early or late, White, instead of c3, plays b3 and Bb2, followed by a possible Ne5. Actually, this was played before Colle introduced his system. Here, White is not as anxious to play e4 because he has c4 and even, at times, f4 on his mind with a kingside attack to develop.

Stonewall Attack: 1.d4 Nf6 2.e3 d5 3.Bd3 e6 4.Nd2 Nbd7 5.f4 c5 6.c3 b6 7.Qf3 Bb7 8.Nh3.

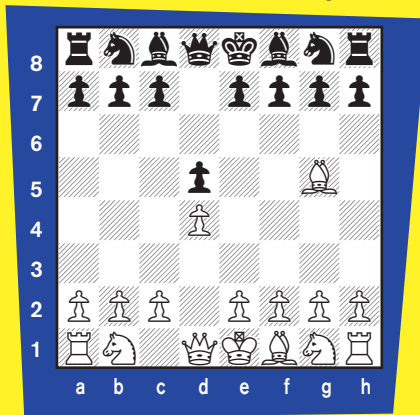


The pawn formation locked in by 5.f4 makes it the Stonewall. When White plays 2.e3, some people go, "Oh, here comes a Colle!"



Then, out comes f4 and it's a completely different game. Oddly enough, White can play against both the idea of ...d5 and ...Nf6-g6-Bg7 as we discussed in an earlier CL4K. Some Stonewall players will avoid Qf3 at first in favor of Nf3 and Ne5, then play Qe1 and Qh4 along with g4. It can be a very dangerous attack, so Black has to play very actively. You can't just sit there!

Ruth Attack: 1.d4 d5 2.Bg5.



Played in the '20s and '30s by Bill Ruth, a man who was champion of New Jersey, Pennsylvania and Ohio! If Black plays ...Nf6, then Bxf6 turns into a Trompowsky.

Torre Attack: 1.d4 Nf6 2.Nf3 e6 3.Bg5.



Named after the Mexican player of the '20s and '30s. Any time White plays Bg5 in the Queen's Pawn Opening, you have to think about ...c5 and ...Qb6 as a possibility as b2 is left unprotected.

Richter Attack: 1.d4 Nf6 2.Nc3 d5 3.Bg5.



Named after the German master during the same time as the Ruth and Torre era. They were pretty aggressive back then! Black's best bet is to play 3...Nbd7 and 4...c5 because White intends to play Qd3 or Qd2, castle queenside and attack like crazy on the kingside.

Hubsch Gambit: 1.d4 Nf6 2.Nc3 d5 3.e4.



There's a bit of a story here. White players started out with the Blackmar-Diemer Gambit (1.d4 d5 2.e4 dxe4 and now either 3.f3 or 3.Nc3). Black then tried to sidestep the 2.e4 move by playing 1...Nf6. White then countered with 2.Nc3 d5 3.e4 because some opening books mistakenly followed a game between two weak players that went 3...Nxe4 (...dxe4 goes into the Blackmar-Diemer) 4.Nxe4 dxe4 5.Bc4 e5 6.Qh5 Qe7 7.Qxe5

Please turn to page 19

WIN

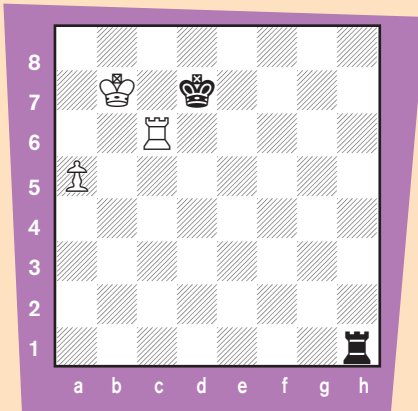
OR

DRAW?

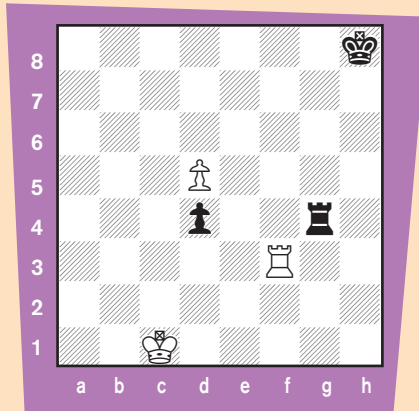
by Pete Tamburro

You know the drill. It is either White or Black to move, and you have to decide which side can win—or is it a draw? You can't just flip a coin! Write down how you think it should go. Let's see if you remember some of the ideas from those rook and pawn endings we did a while back in *Chess Life for Kids!*

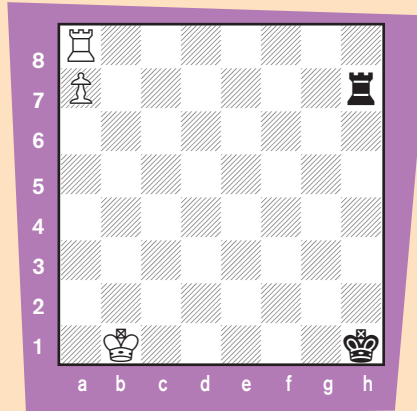
Position One: White to play



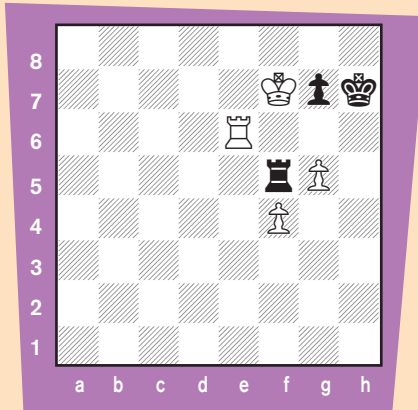
Position Three: White to play



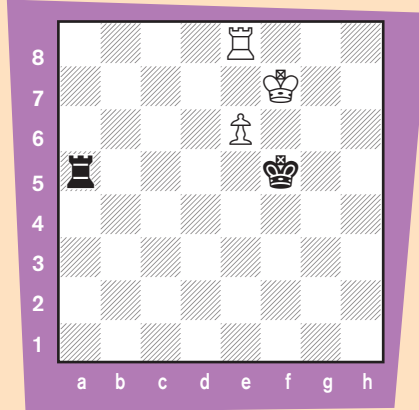
Position Five: White to play



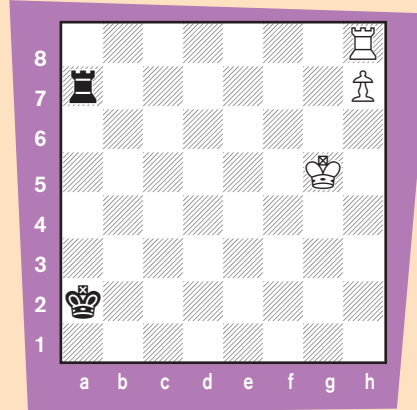
Position Two: White to play



Position Four: Black to play



Position Six: White to play



Answers on page 18 



What's the Problem?

By Stanley Kravitz

The five miniature puzzles shown here are a great way to practice the queen's power.

The queen has by far the greatest power of all the pieces. It can travel in all directions and threaten pieces on squares across the open board. In problems using the queen its power is often limited by carefully placing pieces to block one-move mates or limit access to key squares.

In an older version of chess called Chatrani, the queen was a fairly weak piece called a *fers* or *vivier*, only able to move or capture in a similar way to a pawn. The queen's move that we now use was first played around 500 years ago.

When a pawn reaches the eighth rank it is usually promoted to a queen unless this results in a statemate.

The five miniature puzzles are arranged in order of difficulty so that the easiest is first.

Each puzzle illustrates how the queen controls all the useful squares. Because the puzzles are not too hard they should be attempted without using a board just as in regular play.

Get out your watch to time how long it takes for you to solve each one.

If you can solve a problem or study in **less than one minute** give yourself four points. Solve in **less than two minutes** give yourself three points. Solve in **less than three minutes**, two points. **Over four minutes**, one point.

Master Solver 15-20 points.

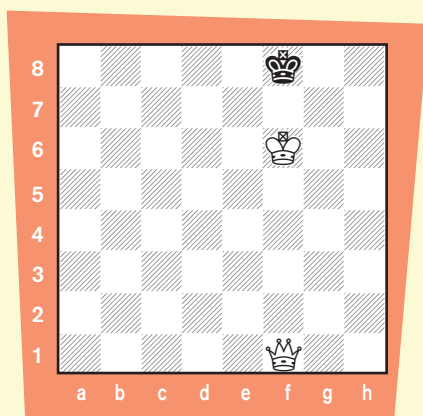
Good Solver 10-14 points.

Fair solver 5-9 points

Under 5 points needs work.

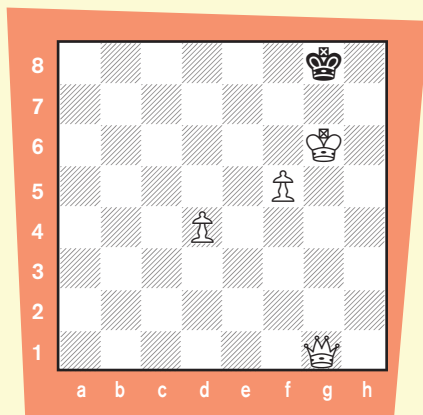
Puzzle 1. White to move and mate in two moves.

Notice that the puzzle is just the two kings and the powerful queen. You have to find the only square that traps the black king.



Puzzle 2. White to move and mate in two moves.

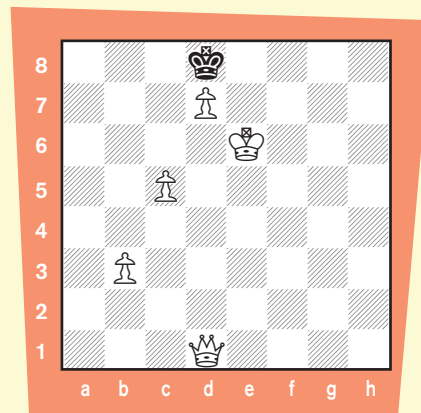
It is important to see that the queen is blocked from the main mating threats by pawns. So you need to find another route to mate around these obstacles.



Puzzle 3. White to move and mate in two moves.

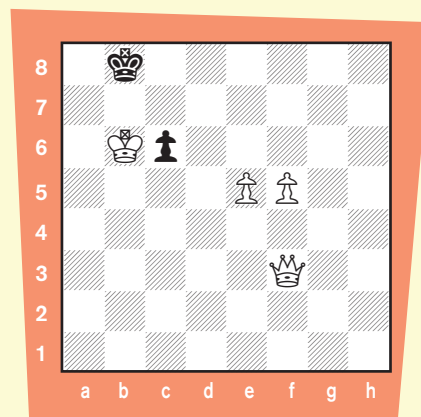
Another pawn is added to reduce the queen's mobility. The queen still has the power to rush across the

board if you can spot the only good square for it.



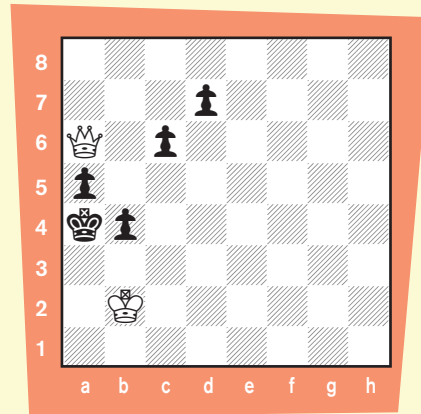
Puzzle 4. White to move and mate in two moves.

By now you should have seen that you have to consider queen moves in all directions. How does the queen get around the blocking pawns in this two mover?



Puzzle 5. White to move and mate in two moves

The queen appears to be very blocked in by the black pawns. There is a killer move to solve this problem.



Please turn to page 18 for solutions

OPENINGS

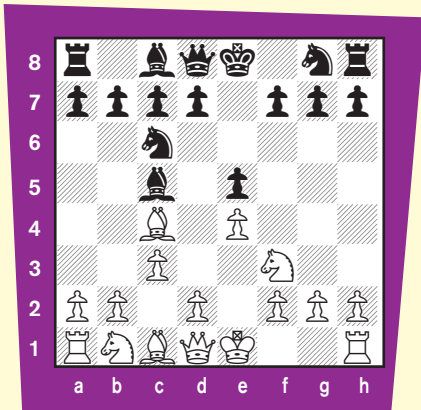
GIUOCO PIANO, MAIN LINE

by Tony Palmer



The Giuoco Piano (“quiet game”) is one of the oldest chess openings, dating back to the fifteenth century in Italy, so it is also called the Italian Game. White aims to dominate the board right from the start by establishing pawns at e4 and d4, which is a classic center; meanwhile, Black aims for counterplay with standard development leading to the freeing ... d5 move. I.A. Horowitz famously branded the Giuoco Piano “wild and woolly” due to the immediate clash in the center with tricks and tactics for both sides. The opening phase begins with 1. e4 e5 2. Nf3 Nc6 3. Bc4 Bc5 which is sound development all around; knights on their best squares, and bishops pointing straight at their opponent’s weakness on f7 & f2. Now 4. c3 leads to the main line Giuoco Piano, while 4. d3 is known as the Giuoco Pianissimo (“very quiet game”) and 4. b4! is the Evans Gambit.

1. e4 e5 2. Nf3 Nc6 3. Bc4 Bc5 4. c3



After 4. c3 White intends to continue 5. d4 trading off Black’s e-pawn which would greatly reduce Black’s control of the center. A similar idea is seen in the Ponziani Opening (1. e4 e5 2. Nf3 Nc6 3. c3), which is rarely played nowadays because this plan is slow; 3. c3 Nf6 4. d4 d5 and Black is already equal. But in the Giuoco Piano, the opposing bishop on c5 allows White to gain time with the d2-d4 advance, which makes all the difference.

Black usually meets 4. c3 with 4 ... Nf6, developing the knight and attacking White’s e-pawn. Another plan for Black is 4 ... Qe7 5. d4 Bb6 where Black maintains the e-pawn as a foothold in the center; this is called a strong point line. On 6. dxe5 Nxe5 the pawn trade helps Black equalize while defeating the purpose of 4. c3; also White’s knight on b1 can’t develop to its ideal square on c3. Or 6. 0-0 d6 7. d5 Nb8/Nd8 and the strong point on e5 is reinforced, plus the closed position benefits Black who would then play for the pawn breaks ... f5 and ... c6. So the best responses to 4. c3 are either 4 ... Nf6 or 4 ... Qe7 anticipating 5. d4 by White; for other fourth moves (like 4 ... h6!?) White continues 5. d4 exd4 6. cxd4 with smooth sailing. Black must contest the center or else get clobbered.

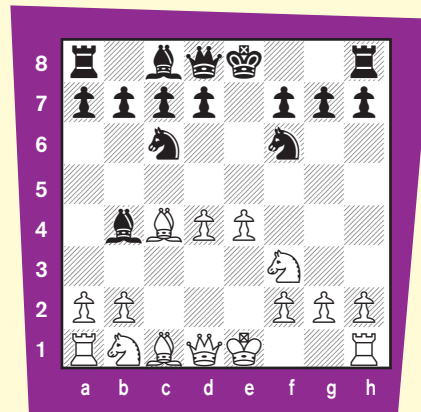
4. c3 Nf6 5. d4 creates an immediate conflict in the center before White deals with the threat against the e-pawn. Not 5. 0-0! Nxe4 6. d4 exd4 7. cxd4 d5 8. dxc5 dxc4 9. Qe2 Qe7 10. Qxc4 Nxc5 (Baird-Marco, Vienna 1898) and Black stands well with a solid pawn plus. This is an example of “mixing systems”—4. c3 is fine, and 4. 0-0 is fine, but 4. c3 plus 5. 0-0! is bad. After 5. d4 Black must respond 5 ... exd4, since 5 ... Bb6? 6. dxe5 Ng8 wins a pawn for White. Note the other options are far worse; 6 ... Nxe4?? 7. Qd5 winning a piece due to the mate threat on f7, or 6 ... Ng4? 7. Bxf7+! Kxf7 8. Ng5+ and 9. Qxg4, or 6 ... Nh5?? 7. Qd5 (better than 7. g4! d5) 0-0/Rf8 8. g4 traps the knight. Lastly 5 ... Nxe4?! 6. dxc5 Nxc5 is an unsound sacrifice for Black, winning only two pawns for the bishop and White stands better.

Continuing 4. c3 Nf6 5. d4 exd4, now 6. cxd4 is a routine recapture for White, yet 6. 0-0!? has been tried before as a gambit. On 6. 0-0!? 0-0?! 7. cxd4 Bb6 8.

e5 d5 9. exf6 dxc4 10. Bg5 (Bird-Pinkertley, London 1850 by transposition) is good for White, while 6. 0-0!? Nxe4 7. cxd4 d5 (the standard freeing move) 8. Re1 Be7 9. Bd3 f5 (From-Neumann, Paris 1867) is better for Black. After 6. cxd4 Black must use the forcing resource 6 ... Bb4+ to hold the balance, as 6 ... Bb6?! is strongly met by 7. d5 gaining space and time:

- 1) 6 ... Bb6?! 7. d5 Ne7 8. e5 Ne4 9. 0-0 d6 10. Qe2 f5 11. e6 (Mortimer-Rosenthal, Paris 1867) and White won.
- 2) 6 ... Bb6?! 7. d5 Ne7 8. e5 Ne4 9. 0-0 0-0 10. Qe2 Nc5 11. b4 Na6 12. d6 cxd6 13. exd6 Ng6 14. Bg5 Qe8 15. Be7 (Euwe-Jutte, Amsterdam 1927) and White won.
- 3) 6 ... Bb6?! 7. d5 Na5?! 8. Bd3 h6 9. b4 (Babic-Wambugu, Calvia 2004) and White won.

1. e4 e5 2. Nf3 Nc6 3. Bc4 Bc5 4. c3 Nf6 5. d4 exd4 6. cxd4 Bb4+



The chessgames.com database of master

games has 366 examples of the Giuoco Piano main line (C54); White responds 7. Bd2 58%, 7. Nc3 40%, and 7. Kf1 2%. These statistics are only for reference to show how often each line is played.

A. 7. Bd2

This is the most common line, expecting a bishop trade with 7 ... Bxd2+ and then recapturing 8. Nbx2 defends the e-pawn, but next Black plays 8 ... d5 to fight for the center and gain space. By this point you know the danger if Black passively allows White to advance d4-d5. From a big picture perspective, note White played 1. e4 with the goal of a later d2-d4, while Black played 1 ... e5 and only now d7-d5 to equalize.

After 7. Bd2, one variation for Black to avoid is 7 ... Nxe4!? 8. Bxb4 Nxb4 9. Bxf7+! Kxf7 10. Qb3+ (Albin-Tarrasch, Dresden 1892) regaining the piece and Black can't castle. Yet after the trade 7 ... Bxd2+ 8. Nbx2, Black could also try 8 ... Nxe4 (rather than 8 ... d5) 9. Qe2 (9. Nxe4 d5 and the fork trick regains the piece next move) d5 10. Nxe4 0-0 11 0-0-0 Bg4 (Mednis-Fischer, U.S. Championship, New York 1963) with equal chances.

Returning to 7. Bd2 Bxd2+ 8. Nbx2 d5, White typically continues 9. exd5 Nxd5 creating an isolated queen pawn (IQP) for White which cannot be defended by other pawns, thus requiring pieces to defend it throughout the game. The IQP can be a middlegame strength but an endgame liability. After 9. exd5 Nxd5 there are three main continuations, all leading to approximate equality:

1) 10. Qb3 Nce7 11. 0-0 0-0 12. Rfe1 c6 13. Ne4 h6 (Van der Wiel-Karpov, Amsterdam 1980) with a level game.

2) 10. Qb3 Na5 11. Qa4+ Nc6 12. Qb3 Na5 13. Qa4+ Nc6 ½-½ (Miles-Korchnoi, South Africa 1979) is a handy draw line, but not 12. Ne5?! 0-0! 13. Nxc6 Qe8+ (Smerdon-Sarfati, Brisbane 1998) and Black is better.

3) 10. 0-0 0-0 11. Re1 Nb6 12. Qb3 Na5 13. Qc3 Naxc4 14. Nxc4 Nxc4 15. Qxc4 Be6 (Khavin-Kholmov, Riga 1954) with an even position.

B. 7. Nc3

A century's analysis of 7. Nc3 has led to an unclear verdict in the key line 7 ... Nxe4 8. 0-0 Bxc3 9. d5 (the Moeller Attack) Bf6! 10. Re1 Ne7 11. Rxe4 d6 12. Bg5 Bxg5 13. Nxc3 h6 (Barczay-Portisch, Ungarn 1969) as Black won that game leaving White to search for improvements. Anyone playing the main line out this far must research the latest theory for both sides.

More fun from White's standpoint are the ancient 7. Nc3 Nxe4 8. 0-0 Nxc3 lines where Black gets greedy, like 9. bxc3 Bxc3? 10. Qb3! Bxa1? 11. Bxf7+ Kf8 12. Bg5 (Greco-NN, Italy 1620) and White won. This rook sacrifice idea ("wild & woolly") always wins for White, so don't try grabbing the rook as Black. A former suggestion for Black to equalize was 8. 0-0 Nxc3 9. bxc3 d5 attacking the bishop on c4, but here White gets very good play with 10. cxb4 dxc4 11. Re1+ Ne7 (11 ... Be6?? 12. d5) 12. Bg5 (Leonhardt-Perlis, Vienna 1908). Thus the current consensus is that 8 ... Bxc3 gives Black better

chances than 8 ... Nxc3.

After 7. Nc3 d5!? is playable for Black as in 8. exd5 Nxd5 9. 0-0 Bxc3 10. bxc3 0-0 (Steinitz-Schiffers, Rostov on Don 1896) giving White the bishop pair, but not 8. exd5 Nxd5 9. 0-0 Be6!? 10. Bg5 Be7 11. Bxd5 Bxd5 12. Nxd5 Qxd5 13. Bxe7 Nxe7 14. Re1 (Steinitz-von Bardeleben, Hasting 1895) and Black's king gets stuck in the center. Track down the brilliant finish to that game.

C. 7. Kf1

7. Kf1!? is an old school line sometimes played for surprise value, and on that level it always works. Black should respond 7 ... d5 8. exd5 Nxd5 9. Nc3 Be6 with an even position. Two reference games:

1) 7. Kf1!? Nxe4 8. d5 Ne7 9. Qd4 Nf6 10. Bg5 Ng6 11. Nbd2 h6 12. Re1+ Kf8 13. Bd3 (Marshall-Burn, Ostend 1905) and White won.

2) 7. Kf1!? d5 8. exd5 Nxd5 9. Nc3 Bxc3 10. bxc3 0-0 (Urusov-Petrov, St. Petersburg 1853) and Black won.

You won't find many recent Giuoco Piano games in your database. At the top level, this opening is widely thought to be played out, and it doesn't grant White enough solid chances for an advantage, provided Black is booked up on theory. But in chess, openings tend to remain dormant, not dead. Next time we'll cover some key alternatives to the Giuoco Piano main line. Good luck!



CHESS PLAYERS!

This is your magazine, so give us some feedback!

If you liked this issue—or if you didn't care for it, let us know!
Let us know what YOU want to see in *Chess Life for Kids*.

Send us your games!

We want more of YOU in this magazine. Send us your best game; try to annotate it so that other readers might learn from it. You can ask your coach for help. Did you play a good combination that others might like?

Have your parents send your comments and games to: gpetersen@uschess.org or use snail mail: **Glenn Petersen, 44-D Manchester Court, Freehold, NJ 07728.**

The Worst

Chess Opening Ever

Part Two

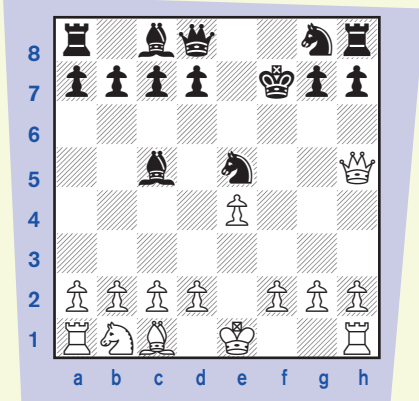
by Rick Kennedy

If the Jerome Gambit 1.e4 e5 2.Nf3 Nc6 3.Bc4 Bc5 4.Bxf7+ Kxf7 5.Nxe5+ Nxe5 is the worst chess opening ever, why do people play it? To understand, read what Rudolf Spielmann wrote in his classic book *The Art of Sacrifice in Chess*:

I cannot emphasize often enough, that in practical play, the scale is turned not by the objective state of affairs, but rather by the relative difficulty of the problem which has to be solved. If the task is particularly arduous, then the player will generally fail, even if, objectively, matters are in his favor.

The Jerome Gambiteer throws problems at his opponent and hopes that they will be difficult or scary enough to give White an advantage. Let's let a couple of young players, Pat Panic and Chris Cool, analyze the Jerome Gambit together.

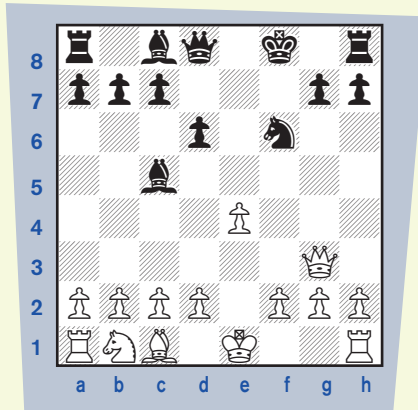
Line A.
6.Qh5+



Pat: Oh no! My king is attacked! Now I can't castle! I've never seen this line before—it's not in my books—I don't know what to do!!

Chris: If it's not in your books, it's probably no good. So far White has moved his bishop twice—and lost it—and moved his knight twice—and lost it. Now he brings out his queen? Black is winning, Pat.

6...Kf8 7.Qxe5 d6 8.Qg3 Nf6



Pat: I get it—Black gives back a piece, and still has a piece for two pawns.

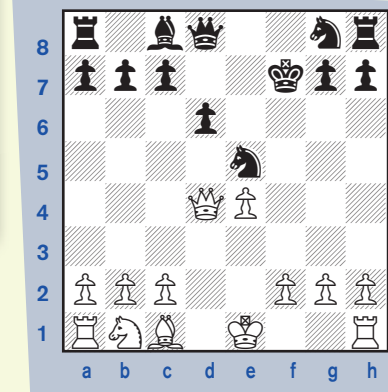
Chris: He can castle-by-hand, too, after ...Kf7 and ...Rf8 or ...Re8 and then ...Kg8.

Line B.
1.e4 e5 2.Nf3 Nc6 3.Bc4 Bc5 4.Bxf7+ Kxf7 5.Nxe5+ Nxe5 6.d4

Pat: Forking two of my pieces! What do I do??

Chris: You have two extra pieces. Give one back.

6...Bxd4 7.Qxd4 d6



Chris: Black has an extra piece, White has an extra pawn. Black develops and castles-by-hand and is fine.

Lines C, D, E, F & G, H, I

Pat: What???

Chris: Sometimes White will sacrifice his bishop, but then get all quiet and play 5.0-0, 5.Nc3, 5.d3 or 5.c3. You still have an extra piece. Just be careful, play 5...Nf6, and get ready to castle-by-hand.

Pat: What's left?

Chris: You answer 5.d4 with 5...exd4. You answer the tricky 5.Qe2 with 5...d6. You answer the wacky 5.Ng5+ with 5...Qxg5.

Pat: The Jerome Gambit doesn't look scary any more. I think you left out all of the exciting lines!

Chris: You're right. Black could answer 6.Qh5+ with 6...Ke6, and if he remembers the next 10 or 15 moves correctly he can win with a queen sacrifice ... or he could try 6.Qh5+ g6 7.Qxe5 Qe7 and offer a rook ...

Pat: Uh ... I don't think so ...

Chris: Or he could answer 6.d4 with 6...Qh4!? and have a wicked counterattack.

Pat: Oh ... I don't know ...

Chris: But the fact is that most of the exciting lines in the Jerome Gambit involve White punishing Black's errors—and we want to avoid that, for sure.

2010 CHESS MAGNET SCHOOL JUNIOR GRAND PRIX STANDINGS

ChessMagnetSchool.com



ST=State PTS=Points EV=Events

This unofficial list is based on the USCF records and TD reports as of July 21, 2010. These are unofficial and subject to correction. Overall leaders will not be eligible for state leader prizes.
Note: In the state by state standings shown below, a state will only be shown if someone from that state has earned JGP points. WCL event results will be included in the next issue.

Top 20 Overall Standings

NAME	ST	PTS	EV
DOMMALAPATI, ABHINAY	VA	250	20
ATTANAGODA, ISURU	VA	205	15
HARMON-VELLOTTI, CARL	ID	170	11
KRAUSE, BENJAMIN	MD	145	7
MIZUSHIMA, DEREK	MD	140	11
SMITH, JAMES LARKIN	MO	115	8
BLAD, ERIK	MD	115	9
WILLIAMS, JUSTUS	NY	115	9
MOORTHY, SRINIVAS	MD	110	6
POULIN, MATHIEU	(CAN)	105	2
FU, JASON	TN	105	9
CHEN, JASMINE	NY	105	6
KUTIKOFF, ADAM	FL	100	9
MARUPUDI, PRANAV	NJ	100	8
KOGEN, JONATHAN	IL	100	4
REIS, ALEXANDER	NY	100	4
JIANG, CHARLES	NJ	100	4
HUANG, DAVID	MS	100	3
DANDU, JNANADEEP	VA	100	8
KATZ, ALEXANDER	NJ	100	8
PENA, JOEL	NJ	95	7
TKACH, GABRIEL	PA	95	4
TALWAI, PREM	CA-N	95	6
CAO, JONATHAN	VA	95	6
PILLAI, KADHIR ANDRES	NY	95	4
HARMON-VELLOTTI, LUKE	ID	95	7
PENNOCK, STEVEN	AZ	95	4

State Leaders

NAME	ST	PTS	EV	NAME	ST	PTS	EV
PARSHALL, MATTHEW	AK	15	1	KRAUSE, BENJAMIN	MD	145	7
MCNAIR, JOHN	AL	60	3	HANSEL, BENJAMINME	40	3	
CHIKKALA, SNEHA	AR	30	2	FISHBEIN, MATTHEW	ME	40	2
PENNOCK, STEVEN	AZ	95	4	SONG, EDWARD	MI	75	3
TALWAI, PREM	CA-N	95	6	STIFFMAN, GEORGE	MN	85	5
GUNAWAN, CHESTON	CA-S	80	6	SMITH, JAMES LARKIN	MO	115	8
CSIMA, AMANDA	CO	35	2	HUANG, DAVID	MS	100	3
TANENBAUM, ZACHARY	CT	90	8	MOODY, CHAD	NC	75	4
DALY, MARCUS	DC	35	1	LIU, AUSTIN	NC	75	2
D'SOUZA, DEAN	DE	55	4	WAN, JOSEPH	NE	30	1
KUTIKOFF, ADAM	FL	100	9	POTORSKI, GERALD	NH	35	2
BALAGA, AINESH	GA	65	2	MARUPUDI, PRANAV	NJ	100	8
KAONOHI, TRISTAN	HI	35	1	JIANG, CHARLES	NJ	100	4
TYAGI, KUSHAN	IA	80	5	KATZ, ALEXANDER	NJ	100	8
HARMON-VELLOTTI, CARL	ID	170	11	LI, TIANGE	NM	30	2
KOGEN, JONATHAN	IL	100	4	MCTEIGUE, WILLIAM	NM	30	1
ERSOY, DEVIN	IN	55	2	ZAVALA, JONATHAN	NV	20	1
HOLT, CONRAD	KS	70	5	HAYASHI, MICHAEL	NV	20	1
ALI, JAMAL	KY	30	2	WILLIAMS, JUSTUS	NY	115	9
LIPMAN, ANDREW	KY	30	1	WRIGHT, MARK	OH	85	2
WEBSTER, DAVID	LA	50	2	HUGHES, DEVIN	OK	40	3
KALRA, AGASTYA	MA	50	1	CHANCELLOR, KEVIN	OK	40	2
				TALYANSKY, SETH	OR	65	1
				TKACH, GABRIEL	PA	95	4
				FINNEY, STUART	RI	60	4
				LAURIA, MICHAEL	SC	75	4
				KNUDSON, MICHAEL	SD	40	1
				VAZQUEZ, RAUL	TERR	10	1
				FU, JASON	TN	105	9
				ATRIWAL, AARYAMAAN	TX	60	3
				TREVINO, EDGAR	TX	60	2
				TREIMAN, SCOTT	UT	35	2
				DOMMALAPATI, ABHINAY	VA	250	20
				KATZ, GABRIEL	VT	20	2
				ZHANG, DEREK	WA	80	2
				SCHNEIDER, THOMAS	WI	85	5
				PARHI, SIDHARTHA	WV	20	2



Abhinay Dommalapati



Benjamin Krause



THE GNOMES HAVE SPOKEN

(AGAIN!)



“WHAT’S THE PROBLEM?”

We all know the brute force method: Check, check, check and mate.

Or Stalemate. Has that ever happened to you? And our chess teachers recite all the right things: Sit on your hands before you move. Look before you leap. Be sure you’re right, then move.

But ultimately, it’s all on you. This month’s exercise is designed for you to find THE move, the move that ends all resistance. My gnomes from Outer Mongolia hope you were successful!

Solutions for page 13

- Puzzle 1: 1. Qc4
- Puzzle 2: 1. Qg5
- Puzzle 3: 1. Qd5
- Puzzle 4: 1. Qh5
- Puzzle 5: 1. Qb7

“WIN OR DRAW”

And for those of you who really like to be challenged, “Win or Draw” (page 12) provides a good way to exercise the “little grey cells.” What good does it do to play a great opening and middle game, only to throw it all away with a careless move in the ending? Identify your strategy (plan) and apply the tactics!

Rf6+ 3.Kg7 Rg6+ 4.Kh7 Kf6
5.Rf8+ Kxe7.

Five: WHITE WINS! There is some common sense needed here. You can’t move your rook or pawn, so White has to get his king up to attack the black rook. Then, the rook will have to either move along the rank and allow a check and a promotion or the rook will have to move along the file, giving up its attack on the pawn. Black thus hustles his king up the h-file (can’t go to the g-file because of the rook check), but White brings his king up to put it in a key spot as 5.Rf8 proves: 1.Kc2 Kh2 2.Kd3 Kh3 3.Ke4 Kh4 4.Kf5 Kh5 5.Rf8 Rxa7 6.Rh8+ Rh7 7.Rxh7 mate.

Six: WHITE WINS! Did you notice that this is pretty much the exact same position as the one before except that it’s been “flipped” to have the action move to the queenside? 1.Kg6 Ra6+ 2.Kf5 Ra7 3.Ke5 Ka3 4.Kd5 Ka4 5.Kc5 Ka5 6.Rc8 Rxh7 7.Ra8+ Ra7 8.Rxa7#.

Answers for page 12:

One: WHITE WINS! 1.a6 Rb1+ 2.Rb6 Rc1 3.a7 Rc7+ 4.Ka6 Rc8 5.Rb8 and the pawn queens.

Two: WHITE WINS! A great rook sacrifice wins this! 1.Rf6 gxf6 (1...Rxf6+ 2.gxf6 gxf6 3.f5 Kh8 4.Kxf6 Kg8 5.Ke7) 2.g6+ Kh6 (2...Kh8 3.g7+ Kh7 4.g8=Q+ Kh6 5.Qg6#) 3.g7 Rxf4 4.g8=Q.

Three: WHITE WINS! 1.d6 Rg7 2.Rh3+ Kg8 3.Rg3!! (A great trick to learn!) 3...Rxg3 4.d7 and the pawn queens. The queen will win against the rook. From a study by Troitzky.

Four: DRAWN! 1...Ra6 2.e7

10th Annual Chess-in-the-Parks Rapid Open

Central Park at the Bethesda Fountain (enter at 72nd Street/5thAve or Central Park West)

Saturday, September 25, 2010
6/SS, G/10, Unrated Event

This is a free event. No entry fees.

Check-in: 9:00am- 10:00am
Rounds at 11:00 AM, 12:00 PM, 1:00, 2:00, 3:00, & 4:00
Bring Chess Sets & Clocks if you own them

To register or for more information, email: tournaments@chessintheschools.org or visit our website: www.chessintheschools.org
You may also register by fax at (212) 564-5523

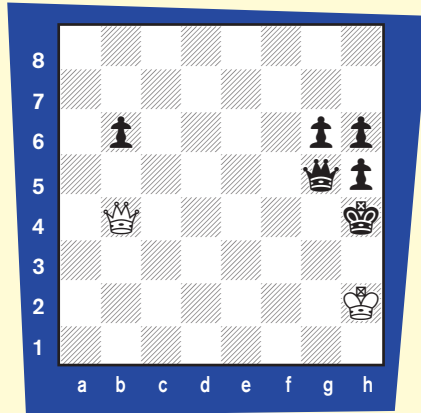
Rain Date: September 26, 2010
Rain Info: Dial 311

Please send name, section, phone number, E-mail address and USCF chess rating (if applicable)

SECTIONS: (subject to change if necessary)
Youth Unrated: open to unrated players under age 10
Teen Unrated: open to unrated players aged 10-15
Adult Unrated: open to unrated players aged 16 & above
Novice: open to players rated under 1000
Intermediate: open to players rated 1000-1399
Open Championship: open to all

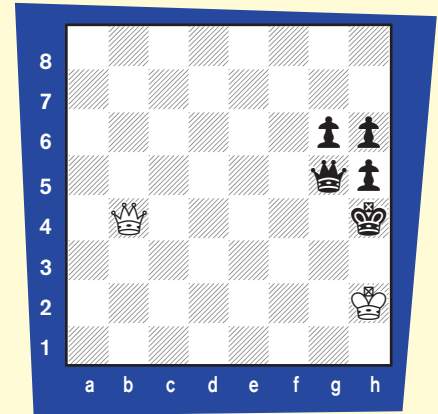
A: The Yugoslav Attack is the sharpest continuation: **6 Bc4 Bg7 7 f3 0-0 8 Be3** followed by **9 Qd2** followed by castling queenside (see game #2 in Bobby Fischer's My 60 Memorable Games). A quieter but solid approach is **6 Be2 Nc6 7 Be3 Bg7 7 8 0-0 0-0 9 Nb3** (to prevent ...d5) retaining a slight pull. The main thing is to choose a line you're comfortable with and is best suited to your style. There are many books devoted to this variation, and you should study one by a reputable author. Beyond that I can't be of much help because there are so many different paths to take.

"Zugzwang," she whispered. "It was possible to repeat this plan to capture the remaining pawns on the b-file: **14...b5 15.Qe7+ Qg5 16.Qe4+ Qg4 17.Qe3 b6 18.Qe7+ Qg5 19.Qe4+ Qg4 20.Qe3 b4 21.Qe7+ Qg5 22.Qxb4+.**"



"22...Qg4 23.Qe7+ Qg5

24.Qe4+ Qg4 25.Qe3 b5 26.Qe7+ Qg5 27.Qe4+ Qg4 28.Qe3 b4 29.Qe7+ Qg5 30.Qxb4+."



"Finally, it was possible to use the same piece arrangement to win my opponent's queen: **30...Qg4 31.Qe7+ Qg5 32.Qe4+ Qg4 33.Qe3**—so he resigned."

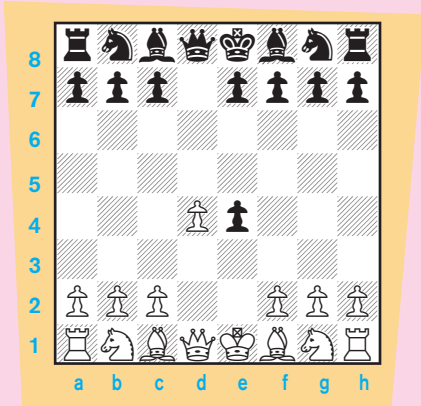
(This game is based on a composition by Daniel Novomesky and Lubomir Siran, 2002)

Opening Glossary

cont'd from p. 11

Qxe5?? 8.dxe5 and White has a fine game. Years ago, I pointed out that Black should simply play 7...Nc6! and Black develops with a great game because if White retreats his queen, ...Qb4+ wins the bishop and a queen exchange just helps Black develop.

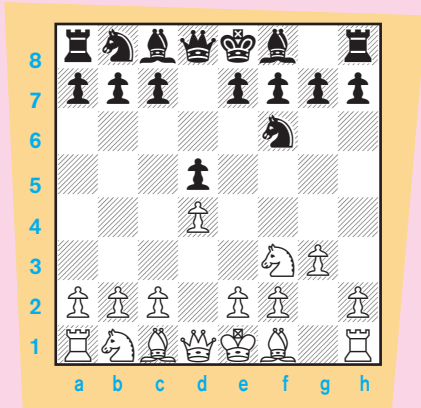
Blackmar-Diemer: 1.d4 d5 2.e4 dxe4.



Although Blackmar originally went with 3.f3, modern players, wishing to avoid 3.f3 e5!, decided to go with 3.Nc3 followed by 4.f3. Although Black can accept the

pawn, you really have to know a good defense. Black can play a kingside fianchetto with ...Nbd7 and ...c5 or ...Nc6. Other tries are with getting the bishop to g4 or f5 and then playing ...e6. It is a very dangerous attack. White has to know how to attack because they are a pawn down, and Black has to know how to keep their king safe against a ferocious assault.

Fianchetto Opening: 1.d4 Nf6 2.Nf3 d5 3.g3



This is usually followed by Bg2 and castling and maybe a fianchetto on the queenside. It's enough to drive Black crazy because nothing happens for a long time! This should be called the I'm Not Going to Get Mated in a Hurry Opening. Black has to be patient. White really doesn't have a strategic plan here, so Black equalizes very quickly. Next, Black needs to put his pieces on good squares, makes sure ...c5 is played, and might even try to build up an ...e5 move to free his game and double his rooks on a file that's opened.

At some point, you will have to face these openings—the sharp,

Please turn to page 23

Tournament Life Announcements

AUGUST 15 THROUGH OCTOBER 14

Scholastic Members:

As a service to you, we are listing upcoming National USCF rated events, and requested events of possible interest to you. You can always log in to www.uschess.org, and click on "Clubs and Tournaments." Then click on "Upcoming Tournaments" for a complete listing of upcoming rated events and details. As always, you can check out the TLA section of *Chess Life*.

Organizers and Tournament Directors:

If you would like your tournament listed here in *Chess Life for Kids* for October (events to be held after October 14), the deadline for submitting your announcements is August 10th. The deadline for the December 2010 issue is October 10th. The processing fee is \$1.00 per line for the first eight lines, \$2.00 for every line thereafter. Send your announcements to tl@uschess.org.

Display advertising is also available. Advertising rates are posted on the USCF website, www.uschess.org, or you may email: tl@uschess.org for complete details.

NATIONALS

A Heritage Event!

July 31-Aug. 8, Aug. 3-8 or 5-8, California Southern ChessLecture.com Grand Prix Points: 300 (enhanced) Jerry Hanken Memorial - 111th annual U.S. Open

Includes traditional one game per day schedule (9 days), also 6-day slow time control option and 4-day option, initiated last year, requiring only 3 nights hotel stay for most players. **9SS, 40/2, SD/1** (4 day option, Rds. 1-6, G/60). Hyatt Regency Irvine, 17900 Jamboree Road, Irvine, CA 92614. **Special parking \$5.** Free shuttle from John Wayne Orange County Airport. **HR:** \$99 single/quad, 949-975-1234, reserve by July 7 not July 10 or rate may increase. **\$50,000 in prizes** based on 500 paid entries, else proportional, except \$40,000 (80% of each prize) minimum guarantee. **A one section tournament** with Class prizes. **Top US player not otherwise qualified qualifies for 2011 US Championship. Additional prizes:** Dr. Neil Berhad is donating in memory of Jerry Hanken: \$125 for largest rating gain and \$125 for most cumulative upset points (both restricted to established players over 1000.) Many side events, including US Blitz Championship 8/7. USCF Delegates meeting 8/7-8, workshops 8/4-6, USCF Awards Luncheon 8/7 noon, GM lectures & simuls to be announced. Choice of three schedules: **Traditional:** 40/2, SD/1. One round daily at 7:30 pm, except rd. 9, 3 pm 8/8. **6-Day Option:** 7:30 pm 8/3, 12:30 pm & 7:30 pm 8/4-6, 7:30 pm 8/7, 3 pm 8/8. **4-Day Option:** 2 pm, 5 pm & 8 pm 8/5, 10 am, 1 pm, 3:30 pm & 7:30 pm 8/6, 7:30 pm 8/7, 3 pm 8/8. All schedules merge after Round 6 & compete for same prizes. **Projected prizes:** Top places \$8000-4000-2000-1500-1000-800-600-500, clear winner \$200 bonus. If tie for first, top two on tiebreak play speed game (white 5 minutes, black 3 minutes and gets draw odds, 5 second delay) for bonus and tie. **Class Prizes:** Top Master (2200-2399): \$2500-1200-800-500. Top Expert (2000-2199): \$2500-1200-800-500. Top Class A (1800-1999): \$2500-1200-800-500. Top Class B (1600-1799): \$2500-1200-800-500. Top Class C (1400-1599): \$2000-1000-600-400. Top Class D (1200-1399): \$1500-700-500-300. Top Class E or below (under 1200): \$1500-700-500-300. Top Unrated: \$800-400-200. **Half Point Byes:** must commit before round 4; up to 3 byes allowed for 2000/up, 2 byes for 1400-1999, one bye for Under 1400/Unr. Limit one bye in last two rounds. Zero point byes are always available in any round. **Entry Fee:** Online, \$165 by 7/28. By mail, \$167 postmarked by 7/22. By phone, \$170 by 7/28. At site, all \$190; entries close 1 hour before your first game. Late entry with round 1 bye accepted until 4 pm 8/1, 11:30 am 8/4, or 4 pm 8/5. USCF full membership required (no tournament members). GMS free. **August official ratings used;** unofficial ratings used if otherwise unrated. CCA ratings used if above USCF Foreign player ratings; usually 100 points added to FIDE or FQE, 200+ added to most foreign national ratings, no points added to CFC. Highest of multiple ratings usually used. **Ent:** USCF, ATTN: 2010 US Open, PO Box 3967, Crossville, TN 38557. **Online entry:** <https://secure.uschess.org/webstore/tournament.php>. **Phone entry:** 800-903-8723. **Tournament website:** main.uschess.org/tournaments/2010/usopen/. FIDE rated, no cell phones. Bring a clock - none supplied. Sets/boards supplied for tournament but not for skittles. **Chess Magnet School JGP. Note: Golf tournament,** for the US Open Chess Players, morning of Friday, Aug. 6 NOT Thursday, Aug. 5th. Those eligible will be all US Open Chess Players, side event chess players, and delegates. Please contact Michael Wojcik for more details at chessgolffmarathons@verizon.net.

Aug. 7, California Southern

ChessLecture.com Grand Prix Points: 15 U.S. Open Blitz Championship (QC)

7-SS (double round, 14 games), 1 section, G/5. Quick rated, higher of regular or quick rating. **Entry fee:** \$40, free to Unrated if paying USCF dues. **Registration:** 9am-11:30am, first round begins at noon. **\$2000 guaranteed prizes!**

\$5400-200-150, Expert \$200-100, U2000 \$200-100, U1800 \$180-90, U1600/Unr \$140-70, U1400 \$100, U1200 \$70. Check www.uschess.org/tournaments/2010/usopen/ for updates.

Oct. 1-3 or 2-3, Texas

ChessLecture.com Grand Prix Points: 50 2010 U.S. Class Championships

5SS, G/120 (2-Day Option, Rd 1, G/60), \$10,750 b/200 full paid entries, 70% Guaranteed. Junior entries, all Class E, and Unrated Section count as 2/3. Free entry for GMS. Free entry for IMs, deducted from winnings. Hilton Hobby Airport, 8181 Airport Blvd, Houston, TX 77061, www.houstonhobbyairport.hilton.com. Free parking! \$89 HR! 713-645-3000, Group Code: USCC. **8 Sections.** Rated players may play up one class only. **MASTER** (2200/up), FIDE Rated, \$1,200-550-300 (U2400: 400-200-100), **EXPERT** (2000-2199), \$800-400-200, **CLASS A** (1800-1999), \$800-400-200, **CLASS B** (1600-1799), \$800-400-200, **CLASS C** (1400-1599), \$800-400-200, **CLASS D** (1200-1399), \$800-400-200, **CLASS E** (U1200), \$300-200-100, **Unrated**, \$300-100. National Class Champion title and plaques to each Class winner. Tie-breaks: MSCO. **EF:** \$75 postmarked or on line by 9/24, \$85 after. **Special EF:** \$45 by 9/24 (\$55 after) for all players in Class E, Unrated Section, and Juniors U18 in Class C or D. No checks on site. **3-Day Schedule:** Registration Fri (10/1) 5-7pm. Rds. Fri 8pm, Sat 1pm & 6:30pm, Sun 9:30am & 2:30pm. **2-Day Schedule:** Registration Sat (10/2) 8-9am. Rds. Sat 10am, 1pm (merges with 3-Day Schedule) & 6:30pm, Sun 9:30am & 2:30pm. Byes for all rounds, must commit before end of Rd 2. **SIDE EVENTS: 5-min BLITZ,** Sat after Rd 3, 2 sections, entries will be split in Upper and Lower, \$10 EF on site, 75% returned in prizes; **SCHOLASTIC TOURNAMENT,** 5SS, G/30, One day only, Sat 10/2, \$20 by 9/24, \$25 after. Sections: K-3, K-6, K-9, K-12. Prizes: Trophies to top 10 in each division. All scholastic players in this side event will receive a commemorative medal. **ENTRIES:** Mail to USCF, ATTN: 2010 US Class, P.O. Box 3967, Crossville, TN 38557. Enter online: <https://secure.uschess.org/webstore/tournaments.php>. Tournament website: www.uschess.org/tournaments/2010/class/. **Info:** flgudalupe@aol.com, (713) 530-7820. **Chess Magnet School JGP.**

Oct. 23, Illinois

ChessLecture.com Grand Prix Points: 20 2010 U.S. G/60 Championship

4R-SS. Holiday Inn Hotel, 5300 W. Touhy Ave., Skokie, IL 60077. 847.679.8900. **\$4,000 Guaranteed.** Prizes in 3 sections: **Open:** \$500-375-250; Top 2299-2200, U2199-2000, 1900-1899 - \$150 each; **Reserve Section (U1800):** \$450-325-200; Top 1699-1600, 1599-1500, 1499-1400 - \$125 each; **Booster (U1400):** \$400-275-150; Top 1399-1300, 1299-1200, 1199-1000 - \$100 each. **EF:** \$60 by 6pm 10/22, \$80 onsite; \$100 Combined EF with US G/30 by 6pm 10/22, \$140 Combined EF with US G/30 onsite. Play Up - \$10 more. \$50 Re-entry (per event). No half-point byes allowed (zero point byes only). GM/IM/WGM/WIM/FM/WFM free entry with nothing deducted from winnings. Cannot withdraw. Must play all rounds. **Onsite Registration:** 8:30-9:30am. **Rds:** 10am-12:30pm-3pm-5:30pm. Mail entries with registration information to: North American Chess Association (make checks payable to) 4957 Oakton Street, Suite 113, Skokie, IL 60077. **More information and online registration available at** www.nacchess.org/g60. Questions via email only: sevan@nacchess.org. No smoking. Boards, sets, clocks provided. Tournament provided equipment must be used. No exceptions. October Supplement. USCF Membership Required. Bookseller onsite.

Oct. 24, Illinois

ChessLecture.com Grand Prix Points: 20 2010 U.S. G/30 Championship

5R-SS. Holiday Inn Hotel, 5300 W. Touhy Ave., Skokie, IL 60077. 847.679.8900. **\$4,000 Guaranteed.** Prizes in 3 sections: **Open:** \$500-375-250; Top 2299-2200, U2199-2000, 1900-1899 - \$150 each; **Reserve Section (U1800):** \$450-325-200; Top 1699-1600, 1599-1500, 1499-1400 - \$125 each; **Booster (U1400):** \$400-275-150; Top 1399-1300, 1299-1200, 1199-1000 - \$100 each. **EF:** \$60 by 6pm 10/22, \$80 onsite; \$100 Combined EF with US G/60 by 6pm 10/22, \$140 Combined EF with US G/60 onsite. Play Up - \$10 more. \$50 Re-entry (per event). No half-point byes allowed (zero point byes only). GM/IM/WGM/WIM/FM/WFM free entry with nothing deducted from winnings. Cannot withdraw. Must play all rounds. **Onsite Registration:** 8:30-9:30am. **Rds:** 10am-11:30am-1pm-2:30pm-4pm. Mail entries with registration information to: North American Chess Association (make checks payable to) 4957 Oakton Street, Suite 113, Skokie, IL 60077. **More information and online registration available at** www.nacchess.org/g30. Questions via email only: sevan@nacchess.org. No smoking. Boards, sets, clocks provided. Tournament provided equipment must be used. No exceptions. October Supplement. USCF Membership Required. Bookseller onsite.

Nov. 5-7, New Jersey

2010 National Youth Action

9SS, G/30. Ocean Place Resort and Spa, One Ocean Boulevard, Long Branch, NJ 07740. HR: \$109 single/double/triple/quad, 732-571-4000 or 800-411-6493. 4 Sections: **High School** (K-12), **Middle School/Junior High** (K-9), **Elementary** (K-6), **Primary** (K-3). **EF:** \$50 by Oct. 9, \$70 by Oct. 23, \$85 after Oct. 23 and onsite. **Awards List:** Individual: K-3, K-6, K-9, K-12: 1st-25th place. Class Awards: 1st-3rd place K-3: U800, U600, U400, Unr. K-6: U1000, U800, U600, Unr. K-9: U1200, U1000, U800, Unr. K-12: U1400, U1200, U1000, Unr. Teams: 1st-15th place. **Schedule:** Opening Ceremony Sat., Nov. 6 at 9:30 am. Rds. 1-5 Sat., Nov. 6: 10 am, 12 noon, 2 pm, 3:30 pm & 5 pm. Rds. 6-9 Sun., Nov. 7: 10 am, 12 noon, 2 pm, & 3:30 pm. **Side Events:** Blitz Tournament- Friday Nov. 5, K-6 & K-12, 6:30 pm, entry fee \$15 if p/m by 11/2, \$20 after or on site. Bughouse Tournament- Sat., Nov. 6, 6:30 pm, entry fee \$25 at site. Registration closes at 5 pm. Blitz Awards: Individual: K-6 and K-12, each section 1st-20th. Team: K-6 and K-12, each 1st-10th. Bughouse Awards: 1st-10th place. Awards Ceremony for Blitz and Bughouse, Sun., 9:00 am. **NYA Awards Ceremony:** Sunday, Nov. 7, 5:30-7 pm. Club teams allowed! All games played in the Ocean Place Resort and Spa. Team rooms are limited, contact Cheryl Bruce, cb Bruce@uschess.org or 931-787-1234 ext.147. **Hotel info:** www.oceanplace.com/. Contact: Assistant Executive Director/Director of National Events: Pat Knight Smith 931-787-1234 ext.133. **Mail entries to:** U.S. Chess, Attn.: NYA, P.O. Box 3967, Crossville, TN 38557. **Additional details and online registration:** www.uschess.org/tournaments/2010/nyaj/.

Dec. 10-12, Florida

2010 National K-12 Championship

7SS, G/90. Disney's Coronado Springs Resort, 1000 West Buena Vista Dr., Lake Buena Vista, FL 32830. 407-939-1000, \$129 single/double/triple/quad. **13 Sections.** Play only in your grade section. December rating supplement will be

used. 1/2- point bye available any round (except round seven) if requested in advance of rd. 1. Team score = total of top three (minimum two) finishers from each school per grade, first place individual and team, including ties, will be National Champion for their grade. **Schedule:** Opening ceremony Fri. 12:30 pm. **Rds.:** Fri. 1 pm-6 pm, Sat. 10 am-2 pm-6 pm, Sun. 9 am-1 pm. Awards Ceremony Sun., approx. 5 pm. **Special round times for K-1 sections:** Fri. 1:30 pm-5:30 pm, Sat. 9:30 am-1:30 pm-5:30 pm, Sun. 9:30 am-1:30 pm. Awards Ceremony Sun. approx. 4:30 pm for K-1. **EF:** \$50/participant (postmarked by 11/14), \$70/participant (postmarked by 11/28), \$85 later or \$90 at site, \$5.00 extra for all phone registrations, \$20 change fee for roster or section changes after 11/14 or any onsite changes. Onsite registration Thurs. 9 am-10 pm & Fri. 8 am-10 am. After 10 am players will have a 1/2-point bye for rd 1. **Awards:** Trophies to top 10 individuals & top five teams (minimum) in each grade. **Class prizes:** 1st-3rd place **K-3:** 800-999, 600-799, U600, Unr. 4-6: 1000-1199, 800-999, 600-799, U600 Unr. **7-9:** 1200-1399, 1000-1199, 800-999, U800, Unr. **10-12:** 1400-1599, 1200-1399, 1000-1199, U1000, Unr. Every player receives a commemorative item! **Side Events:** *Bughouse:* Thurs. 11 am, Reg. onsite only Thurs. 8 am-10 am, \$25/team. *Blitz Sections:* K-6 and K-12, Thurs. 5 pm, Reg. onsite until 4 pm. *Blitz EF:* Onsite - \$20; Advance by 11/28 entry: \$15. *Blitz Awards:* Trophies in K-6 and K-12 sections. *Individual:* Top 10, Team: 1st-5th place. K-6 Class: 1000-1199, 800-999, 600-799, U600 Unr. K-12 Class: 1400-1599, 1200-1399, 1000-1199, U1000, Unr. Bughouse Awards: Trophies for Bughouse, TBA. Team Rooms are limited. Contact Cheryl Bruce 931-787-1234 ext. 147. **Hotel info:** <http://disneyworld.disneygo.com/resorts/coronado-springs-resort/>. **Questions:** Cheryl Bruce: 931-787-1234 ext. 147 or Ent: U.S. Chess, Attn.: K-12 Championship, P.O. Box 3967, Crossville, TN 38557 or online at <https://secure2.uschess.org/webstore/tournament.php>. **Chess Magnet School JGP.**

GRAND PRIX

A Heritage Event!

July 31-Aug. 8, Aug. 3-8 or 5-8, California Southern

ChessLecture.com Grand Prix Points: 300 (enhanced) Jerry Hanken Memorial - 111th annual U.S. Open

See Nationals.

Aug. 7, California Southern

ChessLecture.com Grand Prix Points: 15 U.S. Open Blitz Championship (QC)

See Nationals.

Aug. 21-22, New York

ChessLecture.com Grand Prix Points: 20 (enhanced) 2010 CAN/AM International FIDE Masters Series

Presented by Buffalo Fire Commissioner Garnell W. Whitfield Jr. and The Archangel 8 Chess Academy 5SS, Game/120. Gloria J. Parks Community Center, 3242 Main Street, Buffalo, NY 14215. International Chess Event for established FIDE rated players! FIDE rated. **EF:** \$55.00. **SGTD:** \$350-250-200. U2000 \$175 and U1800 \$150. **Rds.:** Saturday - Rd 1 at 10am, Rd 2 at 2:30pm, Rd 3 at 7pm. Sunday - Rd 4 at 10am, Rd 5 at 2pm. One half point bye available if requested at registration, None in Round 5. Canadians in southern Ontario & The Toronto region are WELCOMED! **ENT:** The Archangel 8 Chess Academy, 60F Guilford Lane, Buffalo, NY 14221, archangel8chess@yahoo.com. **INFO:** M. Duffie, Chess Ambassador. **HR:** www.visitbuffalonia.org. **US Dollars Cash Only, No checks accepted on site.** NS. NC. W. Chess Magnet School JGP.

Aug. 27-28, North Carolina

ChessLecture.com Grand Prix Points: 6 Orchard Lake Campground Action Extravaganza

9SS, G/30. Saluda, NC 28773. Fri night, Sat day, unlimited byes. **EF:** \$17 (includes \$7 campground fee). **SGTD:** \$100-50-30-10-10-10-10-10-10-10-10-10-10-10. **INFO:** Kevin Hyde, 705 Old Mountain Page Rd, Saluda, NC 28773. 828-749-1625 hyde@ioa.com. www.ncchess.org.

A Heritage Event!

A State Championship Event!

Sept. 3-5, Tennessee

ChessLecture.com Grand Prix Points: 20 64th Annual Tennessee Open

5SS, 30/80, SD/60. Clarion Inn, 970 S. Jefferson Avenue, Cookeville, TN 38501. **SGG 4,050.** 3 sections: **Open,** \$500 + plaque-300-200, Expert \$250 + plaque-175, Class A \$250 + plaque-175, Class B & below \$250 + plaque-175. **Amateur (open to U1600),** \$250 + plaque-175-100, Class D & below \$250 + plaque-175. **Novice (open to U1200),** \$250 + plaque-175-100, top below 1000 \$125 + plaque-75, Unrated \$100 + plaque. Unrateds are only eligible for the top three prizes in the Open section and Unrated prize in Novice section. Only Tennessee residents are eligible for plaques. **EF:** \$60 if mailed by 8/28, \$70 later and at site. IMs & GMS free entry (\$60 entry fee deducted from winnings of \$200 or more). Special Scholastic EF: USCF Youth and Scholastic players may enter any section to compete for plaque only (no prize money) for \$30 if mailed by 8/28, \$40 later and at site. USCF & TCA required (TCA for TN residents only). Reg. 3:00-6:00 pm CDT Friday night 9/3 and 7:30-8:30 am CDT Saturday 9/4. **Rd. 1:** Choice of Friday 7:00 pm or Saturday 9:00 am. **Other Rds.:** Saturday 3:00 pm, 8:00 pm; Sunday 9:00 am, 2:00 pm. Byes: 1/2 point bye available for any one (and only one) round if requested at or before registration. **HR:** \$59 + tax for 1-4 people in a room, 931-526-7125, MUST RESERVE ROOMS BY 8/29, you must ask for CHESS RATE. TCA Membership Meeting: 2:00 pm Saturday 9/4.

For more information see: www.tnchess.org. **Entries:** Enter online at www.tnchess.org or mail to Harry D. Sabine, P.O. Box 381, Crossville, TN 38557. Phone: (931) 484-9593. Fax: (931) 456-7624. E-mail (for questions only): hdsabine@citilink.net. **Chess Magnet School JGP.**

A State Championship Event!

Sept. 4-6, Florida

ChessLecture.com Grand Prix Points: 30 2010 Florida State Championship

6SS, G/120. Rosen Shingle Creek, 9939 Universal Blvd., Orlando 32819. **SGTD:** \$1200-600-300, U2300: \$300-200, U2200: \$200-100, **U2000:** \$600-300-200, U1900: \$200-100, **U1800:** \$600-300-200, U1700: \$200-100, **U1600:** \$600-300-200, U1500: \$200-100, **U1400:** \$600-300-200, U1300: \$200-100, **U1200:** \$600-300-200, U1000: \$200-100, U800: \$100. Unrateds can enter any section, but only Unr under age 16 in U1200. Unr. limited to \$50 unless Place Prize in Open. Open section will be FIDE rated if enough qualified. **EF:** \$79; Add \$11 after 8/28. **EF Discount:** \$20 off if under age 16 in **U1200.** **EF Free** for GM, IM, WGM, WIM (\$85 deducted

Tournament Life

from any prize won.) Rated players can "play-up" one section from lowest allowed. **Re-entry:** \$45 by round 3, 1/2-byes for missing rounds. **Byes:** 1/2-pt available all rounds; max 2; Must commit before Round 3 paired. USCF and FCA memberships required; OSA Trophies and Titles to top Florida player in each section. Upsets & other "special awards" TBD. **Reg.:** Sat 10am - 12:15pm. **RNDS.:** Sat. 1 & 7, Sun. 1 & 7, Mon. 9 & 2. **FL Quick Chess (G/29) Championship Playoff** Sat, 10am. (Must have won an FCA QC Regional to play; Free EF) **FL Blitz (G/5) Championship** Sun, 10am at \$15 EF. **FCA: Annual Meeting** Sun. 6pm; **Board Meeting** Sun. 6:30pm. **HR:** \$99 (by Aug. 21st). 866-996-6338 or 407-996-6338. Or use special HR link at centralfchess.org. Departure date reconfirmed at Check-in. Complimentary self-parking. **Ent:** CFCC, c/o Harvey Lerman, 921 N. Thistle Ln., Maitland, FL 32751. Or online 2010fchc.eventbrite.com. Info: 407-629-6946 or centralfchess.org. Chess Magnet School JGP.

A State Championship Event!

Sept. 4-6 or 5-6, New Jersey

ChessLecture.com Grand Prix Points: 50 (enhanced)

2010 New Jersey State Championship

Somerset Ramada Inn, 60 Cottontail Lane, Somerset NJ, Exit 12 off I-287 (Weston Canal Road). **In 4 Sections: Open, Gold U1900 Silver U1600 & Booster U1300.** 6SS, TC: 40/2, SD/1. **Playing Schedules:** 3-day, 9/4-6, 2-day, 9/4-5. All prizes guaranteed. **Open:** \$500-400-300-200-150-150. Bonus cash: \$300 bonus to Top NJ player. \$150 bonus to Top NJ players lower Sections. No Pooling with Bonuses. Top Expert & Class A, B, D. \$100 each. Lower sections \$400-300-200. **Trophies:** Top 3 each section. NJ Champion, Exp, A, B, D, E & Unc. New players may win first prize only in Open Section. **Early EF:** Open: \$75/lower sections \$69. (Former NJ Champs, see below). Entry must be mailed by 8/31 or by 9/02 if paid online EF at site: \$90 /lower sections \$85. All Reentries \$45, but can't be NJ Champ. Join at website entryfeesrus.com via PayPal. **Playing site** **Reg 3-day:** 9/04, 9am-11am. **Rds.** Sat. 12-7, Sun 11-6, Mon. 9-4. **Reg 2-day:** 9/05, 9am-10:30am, Round 1-3 (G/45) starts 11am then ASAP Both schedules merge in Rd 4. **Byes:** 3 byes allowed, 1-5. Hotel Rates \$79 with free continental Breakfast. (732) 560-9880. Mention "NJ Chess" to receive this special hotel rate. You must play Rd #6 to win first in any section online entries. **NOTICE:** Former NJ Champs get early EF of \$35. Late EF is \$75. Former NJ Champs for multiple yrs get early EF of \$1 (One dollar) if paid by 8/31. Late EF is \$75. No exceptions. Only timely payments get get discount. **Ent:** Ken Thomas, 115 West Moore St., Hackettstown, NJ 07840. Make checks payable to NJSCF. **Info:** Ken, acn@goes.com or (908) 763-6468. Players/spectators, no ear covering allowed, Especially cell phones attached to the ear. NS, NC, W. FIDE. Chess Magnet School JGP.

Sept. 18-19, New York

ChessLecture.com Grand Prix Points: 20 (enhanced)

2010 CAN/AM International FIDE Masters Series

Presented by Buffalo Fire Commissioner Garnell W. Whitfield Jr. and The Archangel 8 Chess Academy 5SS, Game/120. Gloria J. Parks Community Center, 3242 Main Street, Buffalo, NY 14215. International Chess Event for established FIDE rated players! FIDE rated. **EF:** \$55.00. **\$\$\$GTD:** \$350-250-200. U2000 \$175 and U1800 \$150. **Rds.:** Saturday - Rd 1 at 10am, Rd 2 at 2:30pm, Rd 3 at 7pm. Sunday - Rd 4 at 10am, Rd 5 at 2pm. One half point bye available if requested at registration, None in Round 5. Canadians in southern Ontario & The Toronto region are WELCOMED! **Ent:** The Archangel 8 Chess Academy, 60F Guilford Lane, Buffalo, NY 14221, arcangel8chess@yahoo.com. **INFO:** Mc Duffie, Chess Ambassador. **HR:** www.visitbuffaloniagara.com. **US Dollars Cash Only, No checks accepted on site.** NS. NC. W. Chess Magnet School JGP.

Sept. 26, Pennsylvania

ChessLecture.com Grand Prix Points: 6

2010 PA State Game/60 Championship

4SS, G/60. Wm. Pitt Union, Univ. of Pitt., 5th & Bigelow, Pittsburgh, PA 15213. 3 Sections, \$\$ (695G): **Championship:** EF: \$30 by 9/18, \$40 later. \$200-100, U2000 \$75, U1800 \$50. **Premier:** U1600. EF: \$25 by 9/18, \$35 later. \$90-60, U1400 \$50, U1200 \$40, U1000 \$30; Trophies to Top 2, Top 2 U1400, Top 2 U1200, Top 2 U1000. **Scholastic:** Grades K-12 U900. EF: \$15 by 9/18, \$25 later. Trophies to Top 7, 1-3 U600. **ALL:** Teams of 4 to 7 combined from all sections, Trophies 1st-2nd schools, clubs. PSCF \$5, OSA. **Reg ends 10am. Rds.:** 10:30-1-3:15-5:45. **Ent/Info:** PSCF, c/o Tom Martinak, 25 Freepost St., Pittsburgh, PA 15223, 412-908-0286, martinak_tom_m@hotmail.com. W.

Oct. 1-3 or 2-3, Texas

ChessLecture.com Grand Prix Points: 30

2010 U.S. Class Championships

See Nationals.

Oct. 23, Illinois

ChessLecture.com Grand Prix Points: 20

2010 U.S. G/60 Championship

See Nationals.

Oct. 24, Illinois

ChessLecture.com Grand Prix Points: 20

2010 U.S. G/30 Championship

See Nationals.

REGIONAL

Alabama

Aug. 14-15, 6th Annual Chris Bond Memorial Classic

5SS, TC: 30/90; SD/30. AUM Taylor Center, 7440 East Drive, Montgomery, AL 36117. **OPEN (\$500 b/20):** \$250-150-100; **RESERVE (U1500) \$450, b/20** \$225-\$125-\$100. **Rds.:** Sat: 9:30-2-6:30; Sun: 9-2. EF: \$30, if mailed by Aug 7; \$40 at site. **AMATEUR (K-12; U1000):** 5SS, TC: G/40. EF: \$20; **NOVICE (K-8; NR)**, 5SS, TC: G/30. EF: \$10, if mailed by Aug 7; \$10 more at site. **Trophy:** Top 3. **Rds.:** 9:15-10:30-12:15-1:30-2:45. **Late REG.:** Aug 14th, 8-9am. GM/IM Free; \$30 deducted from prize. Make checks payable to: **Caesar Chess**, 4524 Southlake Parkway, Suite 34-PMB 310, Birmingham, AL 35244. **Email:** Info@CaesarChess.com, www.AlabamaChess.com. Chess Magnet School JGP.

California Northern

Modesto Round Table Chess Club Monthly (Mondays)

Amateur Rating Tournaments (Under 2000 & Beginners), LOCATION: 3848

McHenry Ave., Modesto (Meeting Room). **ENTRY:** \$15. **GUARANTEED:** 4pts \$60, 3.5 pts \$45, 3 pts \$30, 2.5 pts \$15. **ALL BYES:** Half Pt. **RDS.:** 7pm. **REG.:** 6pm (1st & 2nd Mondays). Modesto Chess School: 6pm. No Club Membership Fee & No Chess Class Fee required. **INFO:** John C. Barnard (209) 450-6133. Chess Magnet School JGP.

Aug. 19-22, 20-22 or 21-22, 2nd Annual Central California Open

See Chess Life or www.chesstour.com.

California Southern

A Heritage Event!

July 31-Aug. 8, Aug. 3-8 or 5-8, Jerry Hanken Memorial - 111th annual U.S. Open

See Nationals.

Aug. 1, 8, 15, 22, 29, LACC Sunday Scholastic Triathlon

5 separate events - each consisting of Chess/Bughouse/Blitz. 3SS, G/30. 11514 Santa Monica Blvd., LA, 90025, 2nd Fl. 4 blocks W 405. **EF:** \$25 (\$20 LACC memb, \$10 off siblings, Free for new LACC memb). **2 sections: K-1 and K-12. Reg.:** 12-1 pm. **Rds.:** 1, 2, 3; then Bughouse (4-5) and Blitz (5-6). **Prizes:** Trophies (Top 3), Medals (next 3) & Disney prizes (every chess player receives a prize). Free BOA & street parking; or basement (\$3). Free refreshments and free class (12-1). **Info:** (310) 795-5710 or www.LAChessClub.com.

Aug. 7, U.S. Open Blitz Championship (QC)

See Nationals.

Connecticut

Sept. 4-6, 70th New England Open Scholastic

Sheraton Bradley Airport Hotel, 1 Bradley International Airport, Windsor Locks, CT 06096. **K-12 U1400:** 4SS, GAME/30, Open to 1399 & under. Open to Players must be in (or entering) grades K-12. **EF:** \$20 in advance \$25 at site. **Prizes:** Trophies to top three. **Note:** This is a one day section, Saturday 4 September only. **Reg.:** 9:00-10:00 4 September. **Rds.:** Round 1 at 10:30 then ASAP One bye any round, must be requested before the start of the tournament. **K-12 U800:** 4SS, GAME/30, Open to 799 & under. Open to Players must be in (or entering) grades K-12. **EF:** \$20 in advance \$25 at site. **Prizes:** Trophies to top three. **Note:** This is a one day section, Saturday 4 September only. **Reg.:** 9:00-10:00 4 September. **Rds.:** Round 1 at 10:30 then ASAP One bye any round, must be requested before the start of the tournament. **K-6 U1350:** 4SS, GAME/30, Open to 1349 & under. Open to Players must be in (or entering) grades K-6. **EF:** \$20 in advance \$25 at site. **Prizes:** Trophies to top three. **Note:** This is a one day section, Sunday 5 September only. **Reg.:** 9:00-10:00 5 September. **Rds.:** Round 1 at 10:30 then ASAP One bye any round, must be requested before the start of the tournament. **K-3 U1200:** 4SS, GAME/30, Open to 1199 & under. Open to Players must be in (or entering) grades K-3. **EF:** \$20 in advance \$25 at site. **Prizes:** Trophies to top three. **Note:** This is a one day section, Monday 6 September only. **Reg.:** 9:00-10:00 6 September. **Rds.:** Round 1 at 10:30 then ASAP One bye any round, must be requested before the start of the tournament. **K-3 U600:** 4SS, GAME/30, Open to 599 & under. Open to Players must be in (or entering) grades K-3. **EF:** \$20 in advance \$25 at site. **Prizes:** Trophies to top three. **Note:** This is a one day section, Monday 6 September only. **Reg.:** 9:00-10:00 6 September. **Rds.:** Round 1 at 10:30 then ASAP One bye any round, must be requested before the start of the tournament. **For open sections, please see Chess Life. ALL:** Advance registration must be postmarked by August 25. **Ent:** Alex Relyea, 49 Technology Dr. #89, Bedford, NH 03110. **Info:** Alex Relyea relyea@operamail.com. **HR:** \$99-\$99 Mention Relyea Chess or web site. (860) 627-5311 Complimentary parking. www.starwoodmeeting.com/StarGroupsWeb/res?id=1002223415&key=4EFBB. NS, W. Chess Magnet School JGP for 3 day sections.

Nov. 12-14 or 13-14, 17th Annual Eastern Chess Congress and Senior

See Chess Life or www.chesstour.com.

Nov. 20-21, 7th annual New England Scholastic Championships

7SS, G/65, Sheraton Hotel, 1 Bradley Airport (visible at airport entrance), Windsor Locks, CT 06096 (I-91 Exit 40 to Rt 20). Free parking, free airport shuttle. Open to all K-12 students; New England titles limited to players & teams from schools in CT, MA, ME, NH, RI, or VT. Team prizes based on top 4 scores from same school. Teams of 2 or 3 players allowed, but are at a disadvantage. **In 4 sections:** High School (K-12), Middle School (K-8), Elementary (K-5), Primary (K-2). Players face only those in their section. **EF:** HS \$42.75, Middle School \$42.50, Elem \$42.25, Primary \$42 if mailed by 11/12, all \$43 online at chesstour.com by 11/16, \$60 at site. **Special 1 year USCF dues with magazine** if paid with entry - online at chesstour.com, Young Adult (age 24/below) \$20, Scholastic (age 12/below) \$12. Mailed, phoned or paid at site, Young Adult \$25, Scholastic \$15. **Trophies** to top 10 players, top 5 teams, top 3 unrated in each section, top D, E, U1000, U800 (HS), E, U1000, U800 (MS), U1000, U800, U600 (Elem), U700, U500, U300 (Primary). **Free entry** in all Continental Chess Association Swiss tournaments until 6/15/11 to top New England player each section, until 3/15/11 to 2nd New England player each section. **Late reg.** ends Sat 9 am, **rds** Sat 10, 1, 3:45 & 6:30, Sun 9, 12 & 2:45. Awards Sun 5:30 pm. **Half point byes** allowed any round, limit 2 byes, must commit before rd 2. **HR:** \$87-\$87, 860-627-5311, reserve by 11/5 or rate may increase. Car rental: 800-331-1600, use AWD D657633 or reserve car online through chesstour.com. **Ent:** Continental Chess, PO Box 249, Salisbury Mills, NY 12577. **Questions:** www.chesstour.com, 845-496-9658. Include school, grade, birth date, USCF ID, address of each player. Advance entries will be posted at chesstour.com. Chess Magnet School JGP.

Delaware

Nov. 20, 2010 Mid-Atlantic Girls Chess Championships (MD)

See Maryland.

District of Columbia

Aug. 27-29 or 28-29, 42nd annual Atlantic Open

See Chess Life or www.chesstour.com.

Nov. 20, 2010 Mid-Atlantic Girls Chess Championships (MD)

See Maryland.

Florida

Boca Raton Chess Club

Friday nights, Game 90 Tournament, one game a week for 4 weeks.

www.bocachess.com, 561-479-0351. Chess Magnet School JGP.

Palm Beach Gardens Chess Club

Meets every Saturday 9 am till 4 pm. 4-SS Rated Games G/75 or G/120 (Chess Magnet School JGP). Also, Scholastic Games G/30, 4-SS. For more info: see www.palmbeachchessclub.info or call President/TD John Dockery at 561-762-3377.

Sept. 4-6, 2010 Florida State Championship

See Grand Prix.

Sept. 18, Tampa Bay Fall Junior Championship

5SS, G/30. Discovery Christian Church, 10902 N. Armenia Ave., Tampa, FL 33612. **EF:** \$30 in advance and for HCA students, \$35 on site: includes pizza & beverage! **\$\$\$b/30:** \$150-90-60. U1000 60; K-5 50; K-2 40. **Reg.:** Saturday, 5/15/10, 10:45-11:15 AM. **Rds.:** Rd. 1 at 11:30; Other rds. follow immediately except for lunch break. Concurrent tournament for adults. Parents welcome! Award ceremony 5:30 PM. Please bring your own clocks and sets if you have them. **Ent:** Michael Hoffer, 10801 Myrtle St., Tampa, FL 33617. **Info:** Coach Mike 813-526-2257, mjh99us@yahoo.com. NS. NC. W.

Sept. 25, Oct. 16, Nov. 13, Dec. 4, CFCC Quick-Chess Quafecta (QC)

4 events, 7SS, G/29 (G/25, T/D5), at Casselberry Chess Club (CCC), Wirc Park, 806 Mark David Blvd, Casselberry, FL 32707. **EF:** \$30/event, CFCC/CCC mbr \$25, Masters free (EF deducted from any prize). **\$\$\$480 b/30,** 160-80-60, Classes B, C, D/under 60 ea. **A fifth \$480 b/30 prize fund given on Dec 4 to cumulative winners. Reg.:** 9:30am. **Rds.:** 10, 11:15, 1, 2:15, 3:30, 4:45, 6. **Ent:** CFCC, 921 N. Thistle Ln., Maitland, FL 32751. **Info:** (407) 629-6946 or www.centralfchess.org.

Oct. 9, The Weiss School 3rd Annual Scholastic

Located at 4176 Burns Road, Palm Beach Gardens, FL 33410. **K-12, 5 Divisions,** 5-SS, G/30. Trophies for Top 5 Players and Top 5 Teams in each Division. **For more info. see:** www.palmbeachchessclub.info or call President/TD John Dockery at 561-762-3377.

Dec. 10-12, 2010 National K-12 Championship

See Nationals.

Illinois

North American Chess Association

USCF and FIDE rated tournaments for amateur players and masters. Creators of eNotate, a USCF approved electronic scoresheet. The only organization that hosts regularly scheduled FIDE title norm tournaments for GM, IM, WGM, and WIM norms. Sevan A. Muradian, International Arbiter & International Organizer. www.na.chess.org, sevan@nachess.org, 888.80.CHESS.

Sept. 11, 2010 St. Matthew Chess Championship

held by GM YURY SHULMAN, (the 2008 US Champion, US team member of the 2008 Olympiad Bronze medal winners, and 2010 World Team Championship Silver medal winners and "Best Game" winner at the U.S. Championship.) 24500 Old McHenry Rd., Hawthorn Woods, IL 60047. Tel. 847-438-7709. G/30, 5rds, **EF:** \$25 postmarked by 8/28, \$30 after, on site \$35 before 9:15. **REG.:** begins at 9:00, Rd. 1 begins 10:00am, no elimination. **4 Sections:** Primary K-3, Elementary 4-5, Middle 6-8, HS 9-12 and adults, Nonrated (all grades and adults). **TROPHY** awards to top 5 individuals in each section, top 3 individuals in each grade K-5, top individuals grade 6-12, top 3 team trophies, top 5 in unrated. Trophy awards at 3:00. **Ent:** checks payable to "Yury Shulman International Chess School", mail w/registration form to 428 Waverly Rd., Barrington, IL 60010, **INFO:** email chesswob@gmail.com or www.shulmanchess.com, Kiran Frey 847-382-5410, GM Yury Shulman 312-375-7475.

Oct. 15, 2nd annual Midwest Rated Beginners Open (RBO)

See Chess Life or www.chesstour.com.

Oct. 15-17 or 16-17, 19th annual Midwest Class Championships

See Chess Life or www.chesstour.com.

Oct. 23, 2010 U.S. G/60 Championship

See Nationals.

Oct. 24, 2010 U.S. G/30 Championship

See Nationals.

Indiana

Aug. 20-22 or 21-22, Indianapolis Open

See Chess Life or www.chesstour.com.

Kentucky

Sept. 24-26 or 25-26, 3rd annual Louisville Open

See Chess Life or www.chesstour.com.

Maryland

Aug. 29, Howard County Chess Tournament

4SS, G/30. Glenwood Community Center, 2400 Route 97, Cooksville, MD 21723. **Sections:** K-5, K-8, K-12. **EF:** \$20 in advance; \$30 on-site 1:00-1:30. **Rds.:** 2:00, then ASAP. **Prizes:** trophies to top individuals & schools. **Free game analysis** by NM Adam Weissbarth. Register at www.howardcountymd.gov/RAP or 410-313-4714.

Tournament Life

Sept. 11, September Storm (VA)

4SS, G/30. Montessori School of McLean, 1711 Kirby Road, McLean, VA 22101. **Sections:** K-8 U/600, K-12 Champ. **EF:** \$25 online by 9/8; \$30 online by noon 9/10; \$35 on-site 10:00-12:30 if space is available. **Rds.:** 1:00, then ASAP. **Prizes:** trophies to top individuals & schools. **Free game analysis** by NM Adam Weissbarth. See www.silverknightschess.com to register, or for info about unrated sections.

Nov. 20, 2010 Mid-Atlantic Girls Chess Championships

Roland Park Country School; 5204 Roland Ave., Baltimore, MD 21210. Come out and play in an all-girl environment. Open to K-12 girls from all states and DC. In 3 sections: **Championship (Open):** 4-SS, G/65; **Reserve (U800):** 4-SS, G/45; **Novice (U400):** 5-SS, G/30. Number of rounds and time control may change based on number of players. **Prizes:** Trophies to top 10 players and top 3 schools in Championship and Reserve; to top 15 players and top 5 schools in Novice. **Check-in:** 9:00-9:50 AM. **Rds.:** Round 1 start: Championship at 9:30, Reserve at 9:45, Novice at 10:00. Subsequent rounds to follow ASAP. **EF:** \$20 by 11/14, \$25 by 11/18, \$30 at door. **Ent:** Online registration at <http://MidAtlanticGirls2010.eventbrite.com>. **Mail registration:** \$20 if received by 11/15; contact Chris Kim for address. USCF membership required - may be purchased at site, or online in advance at www.USChess.org. Sets and boards provided; please bring chess clock. Food available for purchase. **Info:** Chris Kim, cysk@attglobal.net, 410-794-6312. **Chess Magnet School JGP.**

Nevada

Dec. 26-29 or 27-29, 20th annual North American Open
See *Chess Life* or www.chesstour.com.

New Jersey

Geller Quads - First Friday Every Month!

New Jersey Children's Chess School, 862 DeGraw Ave., Forest Hill (Newark), NJ 07104. Open to K-8. 3-RR, G/30. **Reg.:** 6:30PM. **Rds.:** 7-8-8:50PM. Chess classes meet every Friday 6:30-9PM. Chess camp "Geller Kids" meets July & August, day & overnight. **Website:** www.kidsshesscamp.com. **Email:** chesscamp1@hotmail.com. **Phone:** 973-483-7927.

Aug. 2, Dean of Chess Academy Monday Kids Quads

3SS, G/30. Dean of Chess Academy, 3150 Route 22 West, Branchburg, NJ 08876. (908) 595-0066. Trophies to top player in each quad. **EF:** \$20 (\$15 member). **Reg.:** 6:45-7:00pm. **Rds.:** 7:00 & ASAP. See www.deanofchess.com for more details.

Aug. 9, Dean of Chess Academy Monday Kids Quads

3SS, G/30. Dean of Chess Academy, 3150 Route 22 West, Branchburg, NJ 08876. (908) 595-0066. Trophies to top player in each quad. **EF:** \$20 (\$15 member). **Reg.:** 6:45-7:00pm. **Rds.:** 7:00 & ASAP. See www.deanofchess.com for more details.

Aug. 14, Kens Club Quads (some noise) G/60

Adults/teens, Somerset Ramada Inn, 60 Cottontail Ln., Exit 12 off I-287, Somerset. **Reg.:** by 10:45 am. **1st Round** - 11am, then ASAP. **EF:** \$21 early at entryfeesrus.com or \$20 cash at site. **Prizes:** \$50. Ken at acn@goes.com or 908-763-6468.

Aug. 14, Kens Kids Club K-8 Swiss

Somerset Ramada Inn, 60 Cottontail Ln., Somerset, Exit #12 off I-287. All Cash prizes b/10 per section. Prizes per section increase \$20 with each paid entry over 10. **Hot Shots:** U1700, 4SS G/45, \$100-50. **Checkmates:** U1300, 4SS G/45, \$100-50. **New Stars:** U1000, 5SS G/30, \$100-50. **Chess Pirates:** U600, 5SS G/30, \$100-50. Player's highest life-time is used. **EF:** \$29 online at entryfeesrus.com. **EF:** \$35 in cash at Hotel. **Reg.:** by 10:45am. **Rds.:** 11am then ASAP with lunch break. **Info:** Ken at acn@goes.com or 908-763-6468.

Aug. 16, Dean of Chess Academy Monday Kids Quads

3SS, G/30. Dean of Chess Academy, 3150 Route 22 West, Branchburg, NJ 08876. (908) 595-0066. Trophies to top player in each quad. **EF:** \$20 (\$15 member). **Reg.:** 6:45-7:00pm. **Rds.:** 7:00 & ASAP. See www.deanofchess.com for more details.

Aug. 22, Red Bank Scholastic Championship

51 Monmouth St., Red Bank, NJ directions www.monmouthchess.com. 4SS, G/30. **EF:** postmarked by 8/17 \$35/25 members; on site \$45/35. **Trophies** top 5 in each section, medals for all who complete four rounds. Per entries, book/merchandise prize for first in each section: K-8, K-5, K-2. **Reg.:** 11:45-12:15. **Rds.:** 12:30, 1:40, 3:00, 4:10. Accelerated rounds if possible. **Mail checks to:** MCS&C, c/o Dr. Koblentz, 9 Rimwood Lane, Colts Neck, NJ 07722. Non-members cash only at site. **Questions:** 732-219-0916.

Aug. 22, Super Sunday Swiss K-8

Dean of Chess Academy, 3150 Route 22 West, Branchburg, NJ 08876. In 4 Sections: **Hot Shots U1700, Chess Mates U1300, New Stars U1000, Pawn Pirates U0600.** All Sections: 5-SS G/30, \$100-50, b/10 per section. If less than 5 entries in section it will become a G/45 Quad with \$100 Prizes. Player's highest life-time established rating is used. **EF:** \$29 by mail or online at entryfeesrus.com. No online refunds. **EF:** \$35 in cash at Site. **Ent:** 115 W. Moore St., Hackettstown, NJ 07840. **Info:** Ken Thomas, 908-763-6468, acn@goes.com. NS, NC, W.

Aug. 23, Dean of Chess Academy Monday Kids Quads

3SS, G/30. Dean of Chess Academy, 3150 Route 22 West, Branchburg, NJ 08876. (908) 595-0066. Trophies to top player in each quad. **EF:** \$20 (\$15 member). **Reg.:** 6:45-7:00pm. **Rds.:** 7:00 & ASAP. See www.deanofchess.com for more details.

Aug. 28, Super Saturday Swiss K-8

Somerset Ramada Inn, 60 Cottontail Ln., Somerset, Exit #12 off I-287. All Cash prizes b/10 per section. Prizes per section increase \$20 with each paid entry over 10. **Hot Shots:** U1700, 4SS G/45, \$100-50. **Checkmates:** U1300, 4SS G/45, \$100-50. **New Stars:** U1000, 5SS G/30, \$100-50. **Chess Pirates:** U600, 5SS G/30, \$100-50. Player's highest life-time is used. **EF:** \$29 online at entryfeesrus.com. **EF:** \$35 in cash at Hotel. **Reg.:** by 10:45am. **Rds.:** 11am then ASAP with lunch break. **Info:** Ken at acn@goes.com or 908-763-6468.

Aug. 28-29, Red Bank Open Championship

\$1000 Guaranteed based on 30 paid entries. 51 Monmouth St., Red Bank, NJ, directions www.monmouthchess.com. 5SS, G/75. **EF** postmarked by 8/22 \$45/35 members; on site \$55/45. Masters free. **EF** deducted from winnings. **Prizes:** OPEN \$200; U2000 150; U1800 140; U1600 130; U1400 120; U1200 110; U1000 100; U800 or Unrated 50. **Reg.:** Sat 8/28 11:00-11:30; **Rds.:** 11:45, 2:45, 5:30, 8/29. **Rds.:** 1:00, 4:00. **Mail checks to:** MCS&C, c/o Dr. Koblentz, 9 Rimwood Lane, Colts Neck, NJ 07722. Non-members cash only at site. **Questions:** 732-219-0916.

Aug. 30, Dean of Chess Academy Monday Kids Quads

3SS, G/30. Dean of Chess Academy, 3150 Route 22 West, Branchburg, NJ 08876. (908) 595-0066. Trophies to top player in each quad. **EF:** \$20 (\$15 member). **Reg.:** 6:45-7:00pm. **Rds.:** 7:00 & ASAP. See www.deanofchess.com for more details.

Sept. 4, 1st Saturday Scholastic (K-8)

4 RR, G/45 t/d5. 1st round 11 AM. All the King's Men Chess & Games Center (Just 20 mins. from Center City Philadelphia), 62 S. Broadway, Pitman, NJ, 856-582-8222. **EF:** Online \$20, members \$18. Onsite: \$22.50, members \$20. Includes FREE pizza & soda. **Prizes:** Trophies top 4, medal top K-3. **Reg.:** 10-10:30 on-site, or pre-register at www.YourChessSet.com/kidsswiss.

A State Championship Event!

Sept. 4, 2010 New Jersey U1200 K-8 State Championship

Somerset Ramada Inn, 60 Cottontail Lane, Somerset, Exit 12 off I-287 at Weston Canal Road. (732) 560-9880, Fax (732) 356-7455. In 3 Sections. **Hot Shots U1200, Chess Mates U900 & New Stars U600.** All Sections: 5-SS, G/30, G\$5 100 to winner each section. Trophies to Top 10, others get chess awards. **Registration:** Sat. 9/04, 11am-12pm. **Rounds:** 12:30pm-2pm-3pm-4pm-5pm. Lunch break after round #1. **EF:** \$30 if mailed by 8/31 or paid online by 9/02 on website EntryFeesRus.com, no online refunds. \$40 at site. Two half-point bye in Rounds 1-4 if requested with EF. August Rating supplement used. **Mail entries to:** Ken Thomas, 115 West Moore Street, Hackettstown, NJ 07840-2233. Checks payable to NJSCF. Indicate section desired and your grade level. Information: Call 908-763-6468 or acn@goes.com. NS. NC. W.

Sept. 4-6 or 5-6, 2010 New Jersey State Championship

See Grand Prix.

Sept. 12, Super Sunday Swiss K-8

Dean of Chess Academy, 3150 Route 22 West, Branchburg, NJ 08876. In 4 Sections: **Hot Shots U1700, Chess Mates U1300, New Stars U1000, Pawn Pirates U0600.** All Sections: 5-SS G/30, \$100-50, b/10 per section. If less than 5 entries in section it will become a G/45 Quad with \$100 Prizes. Player's highest life-time established rating is used. **EF:** \$29 by mail or online at entryfeesrus.com. No online refunds. **EF:** \$35 in cash at Site. **Ent:** 115 W. Moore St., Hackettstown, NJ 07840. **Info:** Ken Thomas, 908-763-6468, acn@goes.com. NS, NC, W.

Sept. 13, Dean of Chess Academy Monday Kids Quads

3SS, G/30. Dean of Chess Academy, 3150 Route 22 West, Branchburg, NJ 08876. (908) 595-0066. Trophies to top player in each quad. **EF:** \$20 (\$15 member). **Reg.:** 6:45-7:00pm. **Rds.:** 7:00 & ASAP. See www.deanofchess.com for more details.

Sept. 18, Kens Club Quads (some noise) G/60

Adults/teens, Somerset Ramada Inn, 60 Cottontail Ln., Exit 12 off I-287, Somerset. **Reg.:** by 10:45 am. **1st Round** - 11am, then ASAP. **EF:** \$21 early at entryfeesrus.com or \$20 cash at site. **Prizes:** \$50. Ken at acn@goes.com or 908-763-6468.

Sept. 18, Kens Kids Club K-8 Swiss

Somerset Ramada Inn, 60 Cottontail Ln., Somerset, Exit #12 off I-287. All Cash prizes b/10 per section. Prizes per section increase \$20 with each paid entry over 10. **Hot Shots:** U1700, 4SS G/45, \$100-50. **Checkmates:** U1300, 4SS G/45, \$100-50. **New Stars:** U1000, 5SS G/30, \$100-50. **Chess Pirates:** U600, 5SS G/30, \$100-50. Player's highest life-time is used. **EF:** \$29 online at entryfeesrus.com. **EF:** \$35 in cash at Hotel. **Reg.:** by 10:45am. **Rds.:** 11am then ASAP with lunch break. **Info:** Ken at acn@goes.com or 908-763-6468.

Sept. 20, Dean of Chess Academy Monday Kids Quads

3SS, G/30. Dean of Chess Academy, 3150 Route 22 West, Branchburg, NJ 08876. (908) 595-0066. Trophies to top player in each quad. **EF:** \$20 (\$15 member). **Reg.:** 6:45-7:00pm. **Rds.:** 7:00 & ASAP. See www.deanofchess.com for more details.

Sept. 25, 4th Annual Greater Pocono Scholastic Championships (PA)
4SS, G/45. Pocono Mountain East HS, 200 Pocono Mountain School Rd., Swiftwater, PA 18370. **Sections:** K-12 U/1000, K-12 Champ. **EF:** \$22 online by 9/22; \$30 on-site 9:00-9:30. **Rds.:** 10:30-12:30-2:00-3:30. **Prizes:** trophies to top individuals & schools. See www.silverknightschess.com to register.

Sept. 25, Ken's Kids Club K-8 Swiss

Somerset Ramada Inn, 60 Cottontail Ln., Somerset, Exit #12 off I-287. All Cash prizes b/10 per section. Prizes per section increase \$20 with each paid entry over 10. **Hot Shots:** U1700, 4SS G/45, \$100-50. **Checkmates:** U1300, 4SS G/45, \$100-50. **New Stars:** U1000, 5SS G/30, \$100-50. **Chess Pirates:** U600, 5SS G/30, \$100-50. Player's highest life-time is used. **EF:** \$29 online at entryfeesrus.com. **EF:** \$35 in cash at Hotel. **Reg.:** by 10:45am. **Rds.:** 11am then ASAP with lunch break. **Info:** Ken at acn@goes.com or 908-763-6468.

Sept. 26, Westfield Fall Scholastic

Westfield Y, 220 Clark Street, Westfield, NJ. 3 Sections: K-12 Open, Under 1250, under 750. **Open:** 3 SS Game/45. Trophies to top 5 in each section. **EF:** \$20, \$15 members, at site \$30, \$25 Members. **Reg.:** 2-2:30 p.m. **Rds.:** 2:45-4:25-6:05 p.m. **Under 1250:** 4 SS, Game/30. Trophies to top 5 in each section. **EF:** \$20, \$15 Members, at site \$30, \$25 Members. **Reg.:** 2-2:30 p.m. **Rds.:** 2:45-4:00-5:15-6:30 p.m. **Under 750:** 4 SS, Game/30. Trophies to top 5 in each section. **EF:** \$20, \$15 Members, at site \$30, \$25 Members. **Reg.:** 2-2:30 p.m. **Rds.:** 2:45-4:00-5:15-6:30 p.m. Tiebreaks for trophies. **Info:** Todd Lunna 732-526-7163, lunnaco@aol.com, www.westfieldchessclub.com. **Send Advance entries to:** Todd Lunna, 36 Maple Drive, Colts Neck, NJ 07722 by September 23, 2010.

Sept. 27, Dean of Chess Academy Monday Kids Quads

3SS, G/30. Dean of Chess Academy, 3150 Route 22 West, Branchburg, NJ 08876. (908) 595-0066. Trophies to top player in each quad. **EF:** \$20 (\$15 member). **Reg.:** 6:45-7:00pm. **Rds.:** 7:00 & ASAP. See www.deanofchess.com for more details.

Oct. 3, Super Sunday Swiss K-8

Dean of Chess Academy, 3150 Route 22 West, Branchburg, NJ 08876. In 4 Sec-

tions: **Hot Shots U1700, Chess Mates U1300, New Stars U1000, Pawn Pirates U0600.** All Sections: 5-SS G/30, \$100-50, b/10 per section. If less than 5 entries in section it will become a G/45 Quad with \$100 Prizes. Player's highest life-time established rating is used. **EF:** \$29 by mail or online at entryfeesrus.com. No online refunds. **EF:** \$35 in cash at Site. **Ent:** 115 W. Moore St., Hackettstown, NJ 07840. **Info:** Ken Thomas, 908-763-6468, acn@goes.com. NS, NC, W.

Oct. 9, Princeton Day School National Chess Day

650 The Great Road. Plaques to top 3 school teams and top 6 in each section. Medals to all players. Four sections for OVER 1000 begin at 10:15 and must preregister: **OVER 1600 (K-12), NEAR MASTERS (K-12 over 1400) and FUTURE MASTERS (Players K-12 over 1200) G/60, 3 rds. CLOSED (K-12 1000-1200) G/45 4 rds. ALL OTHER SECTIONS. G/30 4 rds. beginning at 12:00 noon.** (round times will be accelerated if possible): **OPEN (Players K-12 U-1000), RESERVE (K-12 U-800), NOVICE II (K-8 U-600), NOVICE I (unrated K-6), K-1 (unrated) NO SCORE K-1 (unrated), PARENTS OF PLAYERS** rated G/30 3 rounds. Pre-registration online, pay at the door \$35. On-site 11-12 noon \$45. **Info and register online:** www.pds.org/chess. Inquires to Bonnie Waltzkin Chessteach@gmail.com.

Oct. 16, Kens Club Quads (some noise) G/60

Adults/teens, Somerset Ramada Inn, 60 Cottontail Ln., Exit 12 off I-287, Somerset. **Reg.:** by 10:45 am. **1st Round** - 11am, then ASAP. **EF:** \$21 early at entryfeesrus.com or \$20 cash at site. **Prizes:** \$50. Ken at acn@goes.com or 908-763-6468.

Oct. 16, Kens Kids Club K-8 Swiss

Somerset Ramada Inn, 60 Cottontail Ln., Somerset, Exit #12 off I-287. All Cash prizes b/10 per section. Prizes per section increase \$20 with each paid entry over 10. **Hot Shots:** U1700, 4SS G/45, \$100-50. **Checkmates:** U1300, 4SS G/45, \$100-50. **New Stars:** U1000, 5SS G/30, \$100-50. **Chess Pirates:** U600, 5SS G/30, \$100-50. Player's highest life-time is used. **EF:** \$29 online at entryfeesrus.com. **EF:** \$35 in cash at Hotel. **Reg.:** by 10:45am. **Rds.:** 11am then ASAP with lunch break. **Info:** Ken at acn@goes.com or 908-763-6468.

Oct. 22-24 or 23-24, Boardwalk Open

See *Chess Life* or www.chesstour.com.

Oct. 30, Kens Club Quads (some noise) G/60

Adults/teens, Somerset Ramada Inn, 60 Cottontail Ln., Exit 12 off I-287, Somerset. **Reg.:** by 10:45 am. **1st Round** - 11am, then ASAP. **EF:** \$21 early at entryfeesrus.com or \$20 cash at site. **Prizes:** \$50. Ken at acn@goes.com or 908-763-6468.

Oct. 30, Kens Kids Club K-8 Swiss

Somerset Ramada Inn, 60 Cottontail Ln., Somerset, Exit #12 off I-287. All Cash prizes b/10 per section. Prizes per section increase \$20 with each paid entry over 10. **Hot Shots:** U1700, 4SS G/45, \$100-50. **Checkmates:** U1300, 4SS G/45, \$100-50. **New Stars:** U1000, 5SS G/30, \$100-50. **Chess Pirates:** U600, 5SS G/30, \$100-50. Player's highest life-time is used. **EF:** \$29 online at entryfeesrus.com. **EF:** \$35 in cash at Hotel. **Reg.:** by 10:45am. **Rds.:** 11am then ASAP with lunch break. **Info:** Ken at acn@goes.com or 908-763-6468.

Nov. 5-7, 2010 National Youth Action

See Nationals.

Nov. 20, 2010 Mid-Atlantic Girls Chess Championships (MD)

See Maryland.

Nov. 21, Super Sunday Swiss K-8

Dean of Chess Academy, 3150 Route 22 West, Branchburg, NJ 08876. In 4 Sections: **Hot Shots U1700, Chess Mates U1300, New Stars U1000, Pawn Pirates U0600.** All Sections: 5-SS G/30, \$100-50, b/10 per section. If less than 5 entries in section it will become a G/45 Quad with \$100 Prizes. Player's highest life-time established rating is used. **EF:** \$29 by mail or online at entryfeesrus.com. No online refunds. **EF:** \$35 in cash at Site. **Ent:** 115 W. Moore St., Hackettstown, NJ 07840. **Info:** Ken Thomas, 908-763-6468, acn@goes.com. NS, NC, W.

New York

Aug. 15, NY Summer Under 1800!

4-SS, G/50. Chess Center at Marshall Chess Club, 23 W 10th St., bet 5-6 Ave., NYC: 845-569-9969. **EF:** \$40, Club members \$30, \$5 less if also entering 8/14 Summer G/45, specified Greater NY Scholastic prizewinners free. **Online entry at www.chesscenter.cc thru 8/12.** \$5 (480 b/32 paid entries): 150-100-50 (\$75 limit to Unr.), top U1600 \$95, top U1400 \$85. Limit 2 byes, commit by 2 pm. **Reg. ends 15 min before game.** **Rds.:** 12-2-4-6 pm. CCA Ratings may be used. **\$10 extra to "enter" by phone!**

Aug. 21, Marshall Saturday U1600

4SS, G/45. Marshall CC, 23 W. 10th St., NYC. 212 477-3716. **(\$300 b/20)** \$120-70-50, U1300 \$60. **EF:** \$40, members \$20. **Reg.:** 12:15-12:45AM. **Rds.:** 1-2:45-4:30-6:15. **Note:** Only one bye available, request at entry.

Aug. 21-22, 2010 CAN/AM International FIDE Masters Series

See Grand Prix.

Aug. 23-Sept. 20, Monday Under 1600

5SS, G/90. Marshall Chess Club, 23 W 10th St., NYC 212 477-3716. **EF:** \$40, members \$20. **(\$300 b/20):** \$120-70-50, U1300 \$60. **Reg.:** 6:15-6:45. **Rds.:** 7 PM each Monday. Byes OK, limit 2, request by rd 3. **Chess Magnet School JGP.**

Sept. 3-6, 4-6 or 5-6, 132nd annual NY State Championship

See *Chess Life* or www.chesstour.com.

Sept. 4, Marshall Saturday U1800

4SS, G/45. Marshall CC, 23 W. 10th St., NYC. 212 477-3716. **(\$300 b/20)** \$120-70-50, U1500 \$60. **EF:** \$40, members \$20. **Reg.:** 12:15-12:45AM. **Rds.:** 1-2:45-4:30-6:15. **Note:** Only one bye available, request at entry.

Sept. 11, NY September Under 1600

4-SS, G/50, open to U1600 or unr., Chess Center at Marshall Chess Club, 23 W 10th St., bet 5-6 Ave., NYC: 845-569-9969. **EF:** \$40, Club members \$25, specified Greater NY Scholastic prizewinners free. **May be limited to 1st 26 entries.** \$5 (\$300 b

Sept. 11, Prove Your Point

3-SS, G/30. Chess Center at Marshall Chess Club, 23 W 10th St., NYC: 212-477-3716. EF: \$20. 3-0 wins \$40, 2.5 wins \$20, 2 wins \$10. Reg ends 7:20 pm. Rds.: 7:30-8:30-9:30.

Sept. 18-19, 2010 CAN/AM International FIDE Masters Series

See Grand Prix.

Sept. 25, Marshall Saturday U1800

4SS, G/45. Marshall CC, 23 W 10th St., NYC: 212 477-3716. (\$300 b/20) \$120-70-50, U1500 \$60. EF: \$40, members \$20. Reg.: 12:15-12:45AM. Rds.: 1-2-45-4:30-6:15. Note: Only one bye available, request at entry.

Sept. 27-Oct. 25, Marshall Monday Under 1600

5SS, G/90. Marshall Chess Club, 23 W 10th St., NYC: 212 477-3716. EF: \$40, members \$20. (\$300 b/20): \$120-70-50, U1300 \$60. Reg.: 6:15-6:45. Rds.: 7 PM each Monday. Byes OK, limit 2, request by rd 3. Chess Magnet School JGP.

Oct. 9, NY October Under 1600!

4-SS, G/50, open to U1600 or unr., Chess Center at Marshall Chess Club, 23 W 10th St., bet 5-6 Ave., NYC: 845-569-9969. EF \$40, Club members \$25, specified Greater NY Scholastic prizewinners free. May be limited to 1st 26 entries. \$\$ (300 b/20 paid): 150-70-30, top U1300 \$50, \$70 limit to unr. Limit 2 byes, commit by 2:30. Reg. ends 15 min before game. Rds.: 12:30-2:30-4:30-6:30 pm. CCA Ratings may be used. Online entry at www.chesscenter.cc thru 10/7. \$10 extra to "enter" by phone!

Oct. 9, Prove Your Point!

3-SS, G/30. Chess Center at Marshall Chess Club, 23 W 10th St., NYC: 212-477-3716. EF \$20. 3-0 wins \$40, 2.5 wins \$20, 2 wins \$10. Reg ends 7:20 pm. Rds.: 7:30-8:30-9:30.

Nov. 20, 2010 Mid-Atlantic Girls Chess Championships (MD)

See Maryland.

North Carolina

Aug. 27-28, Orchard Lake Campground Action Extravaganza

See Grand Prix.

Ohio

Oct. 1-3 or 2-3, Cleveland Open

See Chess Life or www.chesstour.com.

Oct. 3, Cleveland Under 13 Novice

4SS, G/30 in one section, open to under 1000 or unrated born after 10/3/97, Sheraton Cleveland Airport Hotel (see Cleveland Open). EF: \$20, cash at site only. Special 1 year USCF dues if paid with entry, including paper magazine: Scholastic \$15, Young Adult \$20. Trophies to top 5, top Under 800, Under 600, Under 400, Unrated. Reg. ends Sun 9:30 am, rds. 10, 11:15, 12:30, 1:45. Unofficial uschess.org ratings usually used if otherwise unrated. Half point bye available rd 1. Play in both this event and the Cleveland Open by taking a round 4 bye in the Cleveland Open.

Pennsylvania

Aug. 20, Friday Night Action #20

4SS, G/30. Belmont Park Classroom, 200 Anderson Road, King of Prussia, PA 19406. Sections: Open, U/1400. EF: \$30 online by noon the day of the event; \$10 more on-site 6:30-6:45; \$10 less for players under 18. Rds.: 7:00, then ASAP. Prizes: \$100 to 1st overall; others per entries. Register at www.silverknightschess.com. Registration limited to first 30 players.

Aug. 28, August Burn

4SS, G/30. Horsham Community Center, 1025 Horsham Rd, Horsham, PA 19044. Sections: K-6 U/700, K-12 Champ. EF: \$25 online by 8/25; \$30 online by noon 8/27; \$35 on-site 12:00-12:30. Rds.: 1:00, then ASAP. Prizes: trophies to top individuals & schools. Free game analysis by NM Peter Minear. See www.silverknightschess.com to register, or for information about sections for unrated players.

Sept. 19, 51st Pittsburgh Chess League

30/90, SD/1. Wm Pitt Union, Univ. of Pitt., 5th & Bigelow, Pittsburgh, PA 15213. Monthly 4-player team event from Sept. to Apr. EF: \$50/team by 9/16. Rds.: 2pm. Ent/Info: Tom Martinak, 25 Freepoint St., Pittsburgh, PA 15223-2245, martinak_tom_m@hotmail.com, www.pitt.edu/~schach/. W.

Sept. 24, Friday Night Action #21

4SS, G/30. Belmont Park Classroom, 200 Anderson Road, King of Prussia, PA 19406. Sections: Open, U/1400. EF: \$30 online by noon the day of the event; \$10 more on-site 6:30-6:45; \$10 less for players under 18. Rds.: 7:00, then ASAP. Prizes: \$100 to 1st overall; others per entries. Register at www.silverknightschess.com. Registration limited to first 30 players.

Sept. 25, 4th Annual Greater Pocono Scholastic Championships

4SS, G/45. Pocono Mountain East HS, 200 Pocono Mountain School Rd., Swiftwater, PA 18370. Sections: K-12 U/1000, K-12 Champ. EF: \$22 online by 9/22; \$30 on-site 9:00-9:30. Rds.: 10:30-12:30-2:00-3:30. Prizes: trophies to top individuals & schools. See www.silverknightschess.com to register.

Sept. 26, 2010 PA State Game/60 Championship

See Grand Prix.

Oct. 2, Fall Warm-up

4SS, G/30. Mother of Divine Providence School, 405 Allendale Road, King of Prussia, PA 19406. Sections: K-6 U/500, K-12 U/900, K-12 Champ. EF: \$25 online by 9/29; \$35 on-site 12:00-12:30. Rds.: 1:00, then ASAP. Prizes: trophies to top individuals & schools. Free game analysis by NM Peter Minear. See www.silverknightschess.com to register.

Oct. 8, Friday Night Action #22

4SS, G/30. Bryn Mawr Community Center, 9 S. Bryn Mawr Ave., Bryn Mawr, PA 19010. EF: \$20 online; \$30 on-site 6:30-6:45. Rds.: 7:00, then ASAP. Prizes: \$100 to 1st, \$50 to 1st in lower half. Register at www.silverknightschess.com. Registration limited to first 24 players.

Nov. 20, 2010 Mid-Atlantic Girls Chess Championships (MD)

See Maryland.

Nov. 26-28 or 27-28, 41st annual National Chess Congress

See Chess Life or www.chesstour.com.

South Dakota

Oct. 9, National Chess Day Split Rock Scholastic

Garretson School, 505 2nd Street, Garretson, SD. 4-sections, K-3, K-5, K-8, K-12. 5-rounds G/40 except K-12, 4-round G/60. Trophies to top seven individual in K-3, K-5, K-8, top five individual in K-12. Team trophies to top five in K-3, K-5, K-8, top three in K-12. Team scores based on top four players from same school. Tiebreaks for trophies. Reg.: 7:30-8:30 am. EF: \$10 if pre-registered, \$15 on-site. USCF membership required. Rds.: 9, 10:30 am, 12:30, 2, 3:30 pm, for K-3, K-5, K-8, 9, 11 am, 1, 3 pm for K-12. Boards/timers provided. Info: GM Alex Yermolinsky at Yermo@sid.mio.edu, or Bob Boland at ksamaboland@gmail.com, (605) 201-4729. For registration forms/flier "upcoming events" at www.siouxiempirechess.com or www.sdchess.org.

Tennessee

Sept. 3-5, 64th Annual Tennessee Open

See Grand Prix.

A State Championship Event!

Sept. 4, 64th Annual Tennessee Open Scholastic Chess Tournament 4SS, G/30. Clarion Inn, 970 S. Jefferson Avenue, Cookeville, TN 38501. 4 sections: High School (grade 12 & below), Junior High (grade 9 & below), Elementary (grade 6 & below), Primary (grade 3 & below). EF: \$10 if mailed by 8/28, \$20 later and at site. Prizes: Trophies for 1st through 10th place for all sections. Reg. and Check-in: 7:30-8:30 am CDT Saturday, 9/4. Rds. Round 1 at 9:30 am CDT, other rounds ASAP (no break). TCA membership required (available at site), other states accepted. HR: \$59 + tax for 1-4 people in a room, 931-526-7125, MUST RESERVE ROOMS BY 8/20, you must ask for CHESS RATE. For information only: Harry D. Sabine, Phone: (931) 484-9593, Fax: (931) 456-7624, E-mail: hdsabine@citlink.net. Entries: Enter online at www.tnchess.org or mail to Harry D. Sabine, P.O. Box 381, Crossville, TN 38557.

Texas

Oct. 1-3 or 2-3, 2010 U.S. Class Championships

See Nationals.

Vermont

Sept. 17-19 or 18-19, 15th annual Green Mountain Open

See Chess Life or www.chesstour.com.

Sept. 19, Green Mountain Under 13 Novice

4SS, G/30 in one section, open to under 1000 or unrated born after 9/19/97, Stratton Mountain Inn (see Green Mountain Open). EF: \$20, cash at site only. Special 1 year USCF dues if paid with entry, including paper magazine: Scholastic \$15, Young Adult \$20. Trophies to top 3, top Under 700, top Unrated. Reg. ends Sun 8:30 am, rds. 9, 10, 11, 12:15. Unofficial uschess.org ratings usually used if otherwise unrated. Half point bye available rd 1. Play in both this event and the Green Mountain Open by taking a round 4 bye in the GMO.

Virginia

Aug. 29, Howard County Chess Tournament (MD)

4SS, G/30. Glenwood Community Center, 2400 Route 97, Cooksville, MD 21723. Sections: K-5, K-8, K-12. EF: \$20 in advance; \$30 on-site 1:00-1:30. Rds.: 2:00, then ASAP. Prizes: trophies to top individuals & schools. Free game analysis by NM Adam Weissbarth. Register at www.howardcountymd.gov/RAP or 410-313-4714.

Sept. 11, September Storm

4SS, G/30. Montessori School of McLean, 1711 Kirby Road, McLean, VA 22101. Sections: K-8 U/600, K-12 Champ. EF: \$25 online by 9/8; \$30 online by noon 9/10; \$35 on-site 12:00-12:30 if space is available. Rds.: 1:00, then ASAP. Prizes: trophies to top individuals & schools. Free game analysis by NM Adam Weissbarth. See www.silverknightschess.com to register, or for info about unrated sections.

Oct. 7-11, 8-11, 9-11 or 10-11, Continental Class Championships

See Chess Life or www.chesstour.com.

Nov. 20, 2010 Mid-Atlantic Girls Chess Championships (MD)

See Maryland.

West Virginia

A State Championship Event!

Sept. 5, 2010 West Virginia State Junior Championship

4SS, G/75. Bridgeport Benedum Center, 164 W. Main St., Bridgeport, WV 26330. Schedule: Reg.: 8:30-9. Rds.: Sun 9-11:30-2-5. Open to all Chess Players under the age of 18. All games USCF rated. EF: \$20 postmarked by 8/28, \$30 at site, includes WVCA Membership required (\$10) for in-state players, OSA. Prizes: \$125 b/10: \$575, U14-\$30, U10-\$20. Trophy to top WVCA Member and WV resident. Entries: Harrison County Chess Club, c/o Robert Greer, P.O. Box 4338, Clarksburg, WV 26302. Checks payable to "Harrison County Chess Club". Info: Email: HarrisonChess@aol.com. Phone: 304-641-9241. JCF membership required (available onsite). NS. W. Chess Magnet School JGP.

Nov. 20, 2010 Mid-Atlantic Girls Chess Championships (MD)

See Maryland.

Wisconsin

Aug. 28, A Wisconsin Scholastic Chess Federation Event: Fondy Farmers Market Chess Festival

5SS, G30. Divisions: KSU900-unrated, K-8-unrated, Open-unrated, USCF Open. One adult division, non-rated, 4SS, G35/G45. Awards: KSU900 trophies to top 8 players, medals to all. All other divisions trophies to top 5 and medals to all. Scholarships: \$100 scholarship to winners of four scholastic divisions.

Adult/Child Combo division. Trophies to top 5 adult/student pairs. Register on line at www.wisconsinchess.org. Fee: \$10 by August 19, \$15 by August 26. Festival activities: farmers market, food vendors, face painting, balloons, simultaneous chess exhibit. Onsite registration: \$15, 6:45 to 7:30 am. Round 1 begins at 8:00 am. Award Ceremony at 2:15. Location on website.

A State Championship Event!

Sept. 4-6, Rohland Memorial/WI Closed Championship

Howard Johnson Plaza Hotel, 3841 E Washington Ave., Madison, WI 53704. Open to state residents, past champions and students in WI schools. In 3 Sections, Premier*: 6SS, 40/2,SD/1, EF: \$38 by 8/31, \$45 at site, USCF juniors \$5 less. \$\$b/30: \$400-250-200. 'A' \$175, U1800 \$175. Traveling and permanent trophy to winner. \$50 Kittlesy Upset Prize (1 overall). Reg.: 9/4 10:30-11:30am. Rds.: 12-7; 10-7; 10-3:30. Reserve (U1800)*: 6SS, 40/2,SD/1, Open to 1799 & under. EF: \$23 by 8/31, \$30 at site, USCF juniors \$5 less. \$\$b/30: \$300-150. Trophy to 1st, 2nd, 3rd, 1st 'C', 1st 'D', 1st U1200, 1st Unr. \$50 Kittlesy Upset Prize (Overall). Reg.: 9/4 10:30-11:30am. Rds.: 12-7; 10-7; 10-3:30. Junior: 4SS, G/60, Open to under 1800 & under age 19. EF: \$16 by 8/31, \$23 at site. Prizes: Trophies to top 3 and 1st HS, 1st MS and 1st Elementary. Medals to scores of 3 or more. Reg.: 9/4, 8:15-9:15am. Rds.: 9/4: 9:30-12:2:30-5. ALL: Checks payable to WCA. WCA Membership Mtg 9/5, 3:30pm. ENT: Guy Hoffman, PO Box 259822, Madison, WI 53725 Dennis Kosterman 608-277-0451. INFO: schachfuhrer@hotmail.com. HR: \$69 608-244-2481 Mention Chess. NS. NC. W. *Chess Magnet School JGP.

Sept. 18, A Wisconsin Scholastic Chess Federation Event: Boerner Botanical Gardens Fall Festival

5SS, G/30, Divisions: KSU800-unrated, Open-unrated, USCF U900, USCF Open. Awards: In all divisions trophies to top 5 players and medals to all. Three team trophies to the lower divisions and two team trophies to the open divisions. Register and find location on line at www.wisconsinchess.org. Fee: \$10 by Sept 3, \$15 by September 16 and \$15 on site. Registration and check in begins at 8:00 and closes at 8:45. Round 1 will begin at 9:45 or before. Garden tickets are available to chess players and their families at half price. Bring picnic or sack lunches.

Oct. 2, A Wisconsin Scholastic Chess Federation Event: Kenosha Public Museum

5SS, G30, Divisions: KSU800-unrated, Open-unrated, USCF U900, USCF Open. Awards: 5 ind trophies to all divisions and medals to all. 3 team trophies in each division. Registration and location at: www.wisconsinchess.org, www.wisconsinchess.org. Fee: \$10 by Sept 18, \$15 by September 30. No on site registration. More info on WSCF website. Check in is not required but chess control opens at 9:05 am. Museum opens at 9:00 am. First round begins at 9:45 or before. Those arriving after 9:30 can enter in Round 2.


Opening Glossary

cont'd from p. 19

attacking one and the dull, do nothing ones. It would be good to study them and be prepared to meet them rather than be surprised over the board. In all of them, the basic rules are the same: develop all your pieces, get your king castled, fight for the center and watch out for checks, captures and forced moves.

NEED SOME PRACTICE?

Go to www.uschess.org and click on "New to Chess?" and follow the links to "... play the computer..." (But do your homework first!)



2010
National Youth
ACTION!



November 5-7, 2010

Ocean Place Resort and Spa
Long Branch, New Jersey

Over 150 trophies, individual and team!
In four sections: K-12, K-9, K-6 and K-3.

Make your move now!

Complete details on page 20.

Sets and boards are provided.
Just bring your clock - and a friend!