

October 2010

uschess.org

# Chess Life for Kids!



WIN,  
DRAW,  
LEARN!



A USCF Publication

\$3.00



0 74470 27842 9



# ChessKid.com

## Play. Learn. Enjoy.



### PLAY & LEARN ONLINE!

Kids, parents, and coaches come together to play chess and learn with videos, articles, and training tools!

### SAFETY IS OUR #1 PRIORITY!

No contact with strangers. Parents can manage their kids' access, friendships, and online chess activity.

### PERFECT FOR CHESS CLUBS!

Manage your club, have tournaments, and help your players get better with ChessKid.com online clubs!

# Join Today!

Go to [www.ChessKid.com](http://www.ChessKid.com) to register for **FREE!**

# Sleek & Stylin' from Saitek



\*Approved for USCF Tournament Use

Saitek's new Competition Game Clock is sleek, stylish and brightly colored. Its unique Coach's Favorite feature allows you to edit and save your favorite timer mode.

The design is durable and easy to clean and has versatile multiple game options. Two large clear LCD screens display remaining time accurate to the second, as well as countdown and move features etc.

Large, simple controls offer 10 timer modes including Blitz, Tournament, Game and User, plus your Coach's Favorite.

CLK0006D

\$27.95

USCF  
SALES

1.800.388.KING (5464)  
[www.USCFSales.com](http://www.USCFSales.com)

USCF

ALL PURCHASES BENEFIT THE UNITED STATES CHESS FEDERATION



## Table of Contents

- 5 ARABIAN KNIGHTS
- 8 ASK GM EVANS
- 9 THE CHESS DETECTIVE
- 10 WIN, DRAW, LEARN!
- 12 WIN OR DRAW
- 13 WHAT'S THE PROBLEM?
- 14 OPENING GLOSSARY
- 17 THE SWAMP - GASS GAMBIT
- 18 SOLUTIONS
- 19 TOURNAMENT LIFE ANNOUNCEMENTS

COVER PHOTO COURTESY OF BRECK HAINING



### Publisher

**USCF Executive Director: Bill Hall**  
bhall@uschess.org

**Scholastic Editor: Glenn Petersen**  
gpetersen@uschess.org

**Art Director: Cat Connor Spradlin**  
catseyephoto@mac.com

**Editorial Asst./Copy Editor: Alan Kantor**  
akantor@uschess.org

**Editorial Assistant: JoAnne Fatherly**  
backtobasics@uschess.org

**Jennifer Pearson**  
jenpearson@uschess.org

**Advertising Manager:**  
tla@uschess.org

**Tournament Life:**  
tla@uschess.org

**Director of Publications: Daniel Lucas**  
dlucas@uschess.org

**CONTRIBUTORS:** Send your contributions and articles to *Chess Life for KIDS*, PO Box 3967, Crossville, Tennessee 38557 or better yet, e-mail to gpetersen@uschess.org.

**Chess Life for KIDS** (USPS 023-567, ISSN: 1932-5894) is published in February, April, June, August, October, and December of every year by the United States Chess Federation, 137 Obrien Drive, Crossville, Tennessee 38555. Periodic postage paid at Crossville, Tennessee.

**CHANGE OF ADDRESS:** Be sure to notify us at once of any change of address. Please include your old address and your new address, along with your USCF I.D. number.

**POSTMASTER:** Send address changes to USCF, PO Box 3967, Crossville, Tennessee 38557.

### Annual Scholastic Membership

Regular Scholastic Membership (online version of *Chess Life for Kids*), age 12 or younger, is just \$16 per year. Premium Scholastic Membership (receives *Chess Life for Kids* by mail) is \$23 per year. \$13 of every premium membership goes towards providing *Chess Life for Kids*. Entire contents copyright 2009, United States Chess Federation.

Teachers may photocopy instructional articles for classroom use, but republication or wide-spread copying without the written consent of the USCF is forbidden.



## PARENTS, TEACHERS & COACHES!



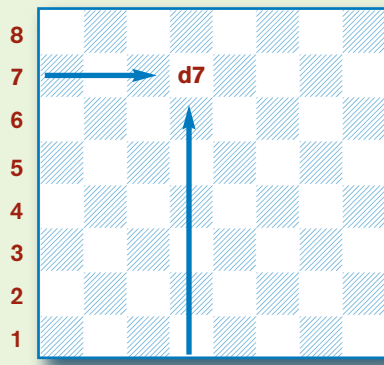
Check out the  
new USCF  
Certified Chess  
Coach Program  
at

<http://main.uschess.org/content/view/9474/131/>

# HOW TO Read & Write Chess

There are many different ways to write chess moves. The most popular method (described below) is called **algebraic notation**:

Each square has a name, taken from the intersection of the file (vertical or up-and-down rows of squares, which are lettered) and rank (horizontal or side-by-side rows of squares, which are numbered) the square is on. In the diagram the square on the intersection of the 7th rank and the d-file is called d7. Like in battleship!



The pieces are abbreviated by a capital letter, like this:

**K: King; Q: Queen; R: Rook; B: Bishop; N: Knight.**

Notice that the Knight is N, since K is reserved for the King. Notice also that pawns have no abbreviation.

A move is written by using the abbreviation for the piece that moves, followed by the square the piece moves to (1. ... Nf6). A pawn move is written as the square the pawn has moved to (1. d4). A capture by a piece is written as the abbreviation for the piece that moved, followed by an x, and finally the square the capture takes place on (8. Bxe5). A pawn capture is written as the file the capturing pawn stands on, followed by an x, and finally the square the capture takes place on (3. dxe5).

Other moves are castling kingside, which is written 0-0, and castling queenside, which is written 0-0-0. An *en passant* capture is indicated by *e.p.* after the move. A check is indicated by + after the move, and pawn promotion is indicated by adding ( ) and the abbreviation for the piece the pawn promotes to. Ambiguous moves (where more than one piece or pawn can move to the destination square) are taken care of by putting an extra rank or file in to make it clear which piece or pawn moved.

Here is a sample, using the famous smothered mate trap from the Budapest Defense.

**1. d4 Nf6 2. c4 e5 3. dxe5 Ng4**  
**4. Bf4 Nc6 5. Nf3 Bb4+** (diagram A)

**6. Nbd2 Qe7 7. a3** (diagram B)

**7. ... Ncxe5 8. Bxe5 Nxe5 9. axb4**  
**Nd3 checkmate.** (diagram C)

x: take or capture      #: checkmate  
0-0: kingside castle    (:): promotion  
0-0-0: queenside castle    !: good move  
+: check                    ? : bad move  
??: blunder



# 2010 National Youth ACTION!



November 5-7, 2010

Ocean Place Resort and Spa  
Long Branch, New Jersey

Over 150 trophies,  
individual and team!

In four sections: K-12,  
K-9, K-6 and K-3.

Make your move now!

Complete details on page 19.

Sets and boards are provided.  
Just bring your clock  
- and a friend!

# TALES OF THE Arabian KNIGHTS

BY RICK KENNEDY Illustrations by Pamela Key

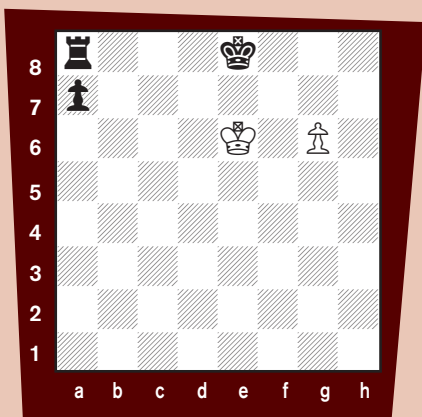


## A Fine Little Mystery

"Would you like a mystery, Your Majesty?" she asked.

The King smiled. He was always ready to solve a little mystery.

The position I place before you, she said, is called "White to move and win." She set up the pieces on the chessboard.



### WHITE TO MOVE AND WIN

The King furrowed his brow and thought. Then he looked up with a smile on his face. "Obviously it is the **title** of the position that is the mystery itself," he said.

How so, Majesty, she asked.

"After White plays 1.g7, Black castles queenside with 1...0-0-0. The **second player** then advances his pawn, promotes it to a queen, and he wins."

Oh, she said.

"If White's king helps his pawn

promote, he **can** win the black rook with 2.Kf7 a5 3.g8=Q Rxg8 4.Kxg8, but it is no help, the King continued. The black pawn advances 4...a4 and can not be caught. It will promote to a queen and then work with Black's king to checkmate."

Oh, she said.

"White can sacrifice his pawn to draw Black's rook away, though, said the King thoughtfully. But after 2.g8=Q Rxg8 3.Kd5 it does not matter if White's king captures the enemy pawn or not—he will be checkmated by Black's rook and king."

Oh, she said.

"**Where** is the mystery?" asked the King.

What if Black does not castle, she asked.

The King looked stern. "But Black **must** castle," he said. "After 1.g7 Kd8 White promotes with 2.g8=Q+ and after 2...Kc7 he wins the rook with 3.Qxa8. He can then checkmate the black king in a few more moves."

Oh, she said. Then she added, what if Black **cannot** castle?

The King raised an eyebrow, questioning.

The position is "White to move" she said. That means that Black

has just moved. What was Black's last move?

The King waited.

Black's pawn has not moved. Black's last move must have been with either his **king** or his **rook**, she said.

Which would mean that Black **can not castle** in response to White's 1.g7, the King said, understanding.

So Black must lose, she continued. Which makes the position "White to move and win," after all, Your Majesty.

"A fine little mystery," the King agreed.

### CHESS PLAYING

by Raven Howell

**Chess is quite a patient game, It's quiet, calm, and really tame Compared to other sports' terrain, It's nice to exercise my brain!**

Raven Howell lives in New York State and is a multiple winner of the Poetry Merit Award competition conducted by SCRIBE magazine.

# 2010 CHESS MAGNET SCHOOL JUNIOR GRAND PRIX STANDINGS

## ChessMagnetSchool.com



ST=State PTS=Points EV=Events

This unofficial list is based on the USCF records and TD reports as of September 8, 2010. These are unofficial and subject to correction. Overall leaders will not be eligible for state leader prizes.

**Note:** In the state by state standings shown below, a state will only be shown if someone from that state has earned JGP points. Over 4,475 players have earned JGP points in just over 370 events.

### Top 20 Overall Standings

NAME	ST	PTS	EV
DOMMALAPATI, ABHINAY	VA	270	22
ATTANAGODA, ISURU	VA	235	17
MIZUSHIMA, DEREK	MD	200	14
HARMON-VELLOTTI, CARL	ID	180	12
KRAUSE, BENJAMIN W	MD	165	8
MARUPUDI, PRANAV	NJ	145	12
SMITH, JAMES LARKIN	MO	145	10
CAO, JONATHAN	VA	140	9
PILLAI, KADHIR ANDRES	NY	130	6
KOGEN, JONATHAN S	IL	125	6
MOORTHY, SRINIVAS	MD	125	8
CHEN, JASMINE	NY	125	7
PENA, JOEL ANTHONY U	NJ	125	9
JIANG, CHARLES	NJ	125	5
TALWAI, PREM	CA-N	120	9
BLAD, ERIK L	MD	120	10
FU, JASON	TN	120	10
TANENBAUM, ZACHARY	CT	120	9
WILLIAMS, JUSTUS D	NY	115	9
HUA, MARGARET M	MO	110	11
CAO, ALVIN	VA	110	8
VISWANADHA, KESAV	CA-N	110	7
GIOVANNETTI, GRANT	FL	110	6
WIENER, ALEXANDRA	CT	105	7
MOODY, CHAD	NC	105	5
POULIN, MATHIEU	(CAN)	105	2
KUTIKOFF, ADAM	FL	105	10

### State Leaders

NAME	ST	PTS	EV	NAME	ST	PTS	EV
PARSHALL, MATTHEW	AK	15	1	SMITH, JAMES LARKIN	MO	145	10
MCNAIR, JOHN THOMAS	AL	60	3	HUANG, DAVID	MS	100	3
WOLF, ALEXANDER	AR	50	2	MOODY, CHAD	NC	105	5
YIM, TONY	AZ	100	11	WAN, JOSEPH CHENG-YUE	NE	30	1
TALWAI, PREM	CA-N	120	9	POTORSKI, GERALD FIELD	NH	35	2
PETERSON, MICK	CA-S	90	5	MARUPUDI, PRANAV	NJ	145	12
GUNAWAN, CHESTON	CA-S	90	7	IONKOV, ALEXANDER L	NM	45	2
BOLSHAKOV, DENNIS	CO	50	3	ZAVALA, JONATHAN	NV	20	1
TANENBAUM, ZACHARY	CT	120	9	HAYASHI, MICHAEL	NV	20	1
DALY, MARCUS ROBERT	DC	35	1	PILLAI, KADHIR ANDRES	NY	130	6
D'SOUZA, DEAN	DE	55	4	WRIGHT, MARK DAVID	OH	95	3
GIOVANNETTI, GRANT	FL	110	6	PARANJPE, ISHAN	OH	95	4
BALAGA, AINESH	GA	85	3	NICKELS, ERIK J	OK	45	4
KAONOHI, TRISTAN K	HI	55	2	TALYANSKY, SETH DAVID	OR	65	1
TYAGI, KUSHAN	IA	80	5	TKACH, GABRIEL USHER	PA	95	4
HARMON-VELLOTTI, CARL	ID	180	12	GU, CHRISTOPHER	RI	80	3
KOGEN, JONATHAN S	IL	125	6	LAURIA, MICHAEL D	SC	75	4
TOOTLE, TIMOTHY RYAN	IN	75	3	KNUDSON, MICHAEL	SD	40	1
HOLT, CONRAD	KS	70	5	VAZQUEZ, RAUL	TERR	10	1
LIPMAN, ANDREW	KY	35	2	FU, JASON	TN	120	10
KORNDORFFER, CHARLES	LA	50	2	ATRIWAL, AARYAMAAN	TX	90	6
WEBSTER, DAVID	LA	50	2	HON, ERIC	UT	55	5
YASINOVSKY, DAVID	MA	60	5	DOMMALAPATI, ABHINAY	VA	270	22
MIZUSHIMA, DEREK	MD	200	14	VOLL, JAMESON	VT	35	2
FISHBEIN, MATTHEW	ME	50	3	DIXON, DAKOTA ELLIS	WA	95	4
CHEN, JOY RONG	MI	80	5	ZHANG, DEREK	WA	95	3
STIFFMAN, GEORGE	MN	85	5	SCHNEIDER, THOMAS	WI	85	5
				PARHI, SIDHARTHA	WV	35	3



*It must be something in the water as both Abhinay Dommalapati ...*

*... and Isuru Attanagoda are 11 years old and live in Virginia, and they lead the JGP!*

**Fast, Fun, and  
Easy to Use**

In 2006, and *again* in 2007,  
young Chess Magnet students  
from Portland, OR, scored 7-0 in the  
USCF Spring Nationals.

# ChessMagnetSchool.com

**Better Than Any Textbook for Learning Chess**



**Student  
Training**

**"Great Stuff! I just delivered my first  
Belgian champion under 10 and  
boosted his development  
by using ChessMagnetSchool.com"**

- Ton Montforts, Coach  
Schaakacademie  
Limburg, Belgium



**Student  
& Class  
Management**

**"Your website was  
integral to our team's winning."**

-Mike Hosford, Coach  
Alcott Elementary  
2008 Washington State  
Grades 4-6 Champions

**Proud Sponser  
of the  
2010 USCF  
Junior Grand Prix!**

**Start Your 30-day Free Trial Today**

at

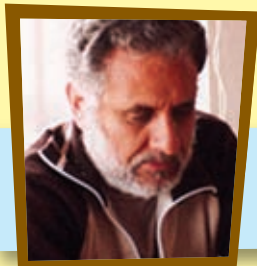
**www.ChessMagnetSchool.com**

	1 month	3 months	1 year	1 yr USCF
Individuals	\$6.95	\$15.00	\$29.95	\$26.95
Class/Family	\$6.00	\$12.00	\$25.00	\$22.00

Free to teachers/coaches of at least 5 students  
Includes our powerful, easy-to-use Coaching Tools & Reports

Works on Windows and Macintosh  
computers (requires internet access)

To learn more, call 650-284-5062  
877-378-4319 (US toll-free)  
email [info@ChessMagnetSchool.com](mailto:info@ChessMagnetSchool.com)



# ASK GM LARRY EVANS!

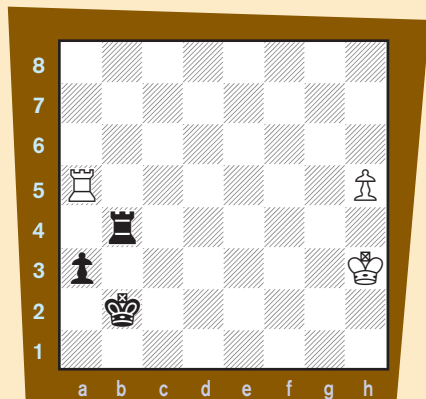
Grandmaster Larry Evans won the U.S. Championship in 1951, 1952, 1961-62, 1968, and again in 1980!

## BEST QUESTION:

### PREMATURE RESIGNATION

Gary Seiver  
Reno, Nevada

**Q:** This is the final position of Tarasch-Blümich, Breslau 1925. Can you explain why White resigned?



White to move, resigned!

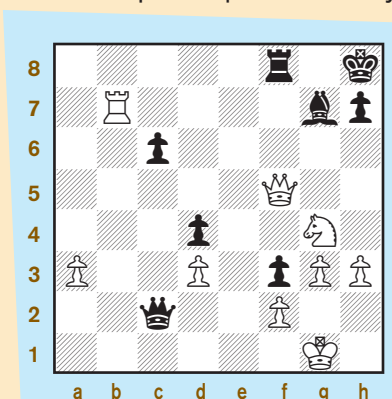
**A:** White erred by resigning prematurely! This illustrates why we should fight each and every game to the bitter end. In his mind's eye Dr. Tarasch possibly calculated the following variation: 1 h6 Rb6 2 Rh5 a2 3 h7 Rb8 4 Ra5 (tougher is 4 h8=Q Rxh8 5 Rxh8 a1=Q but a queen can beat a rook in less than 50 moves with best play) 4...a1=Q 5 Rxa1 Kxa1 6 Kg4 Rh8 and quit.

But White has a simple way to draw: 1 h6 Rb6 (if 1...Rb8 2 Kg4 a2 3 Kf5 a1=Q 4 Rxa1 Kxa1 5 h7 Rh8 6 Kg6) 2 Rh5 a2 3 h7 Rb8 4 Rb5+! Rxb5 5 h8=Q+ Kb1 6 Qh7+ with perpetual check.

### A QUICKER WIN!

Jude Acers  
New Orleans, Louisiana

**Q:** White is a pawn ahead and won with 1 Rf7 in Boskovic-Zhao, Women's Olympiad, Dresden 2010. But I was wondering if there is an even quicker path to victory.



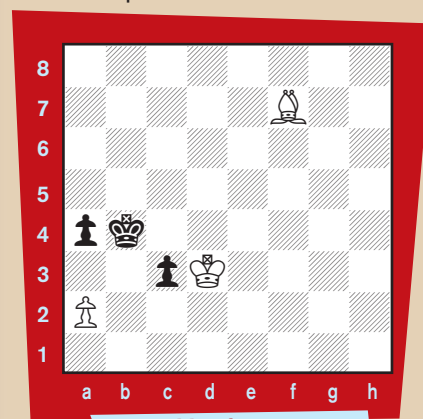
White to move

**A:** Yes. A quicker win is 1 Qg5! Rg8 2 Ne5! threatening Nf7 mate. At first glance 1 Nf6 looks decisive but it's a mistake because 1...Qc1+! (not 1...Rxf6? 2 Rb8+) 2 Kh2 Qh6! wins a piece and turns the tables. Never relax! Always look for the fastest way to end resistance in case your opponent squirms out. "I had a won game!" moaned many a player after tipping over his or her king.

### ASTONISHING STALEMATE

Jim Peele  
Lake Worth, Florida

**Q:** In Alekhine-Flohr a wrong note by Alekhine in his tournament book of Nottingham 1936 could have led to this position.



White to move

Alekhine assumed that White can win because the bishop is the right color to cover the queening square on a8, but after 1 Kc2 Ka3! 2 Kxc3 is stalemate. Do you know if such an astonishing resource ever happened in a real game?

**A:** Alekhine never actually carried his analysis so far, and this stalemate idea is almost impossible to find in a real game—but it really happened

CONT'D ON PG. 23

**ASK A QUESTION:** If you have a question for GM Larry Evans, send it to [gpetersen@uschess.org](mailto:gpetersen@uschess.org). GM Evans will choose the Best Question for the next issue. The Best Question winner will receive a copy of *How Good is Your Chess* by GM Larry Evans.







# The Chess Detective

by NM Todd Bardwick

## PROMOTING A PAWN

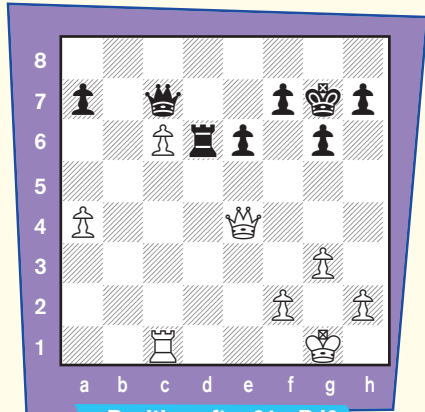
In the August 2010 edition of *Chess Life for Kids*, we looked at several examples of how to promote a pawn.

Promoting a pawn is a major theme in most endgames because the player who promotes usually wins the game quickly because of his big lead in material due to the new queen. The defender often has to sacrifice a piece to prevent the promotion—also leaving him behind in material and in a losing position.

A common way to promote a pawn is to remove your opponent's pieces that attack the squares in the pawn's promotion path.

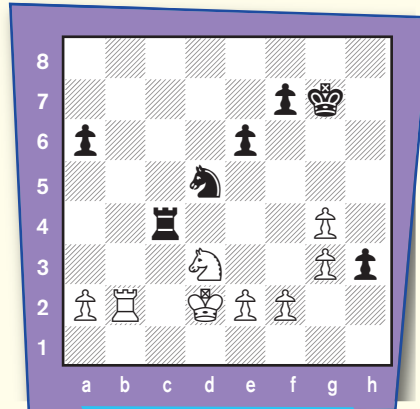
Now it is your turn! Can you figure out how to win these games by promoting or threatening to promote a pawn?

#1



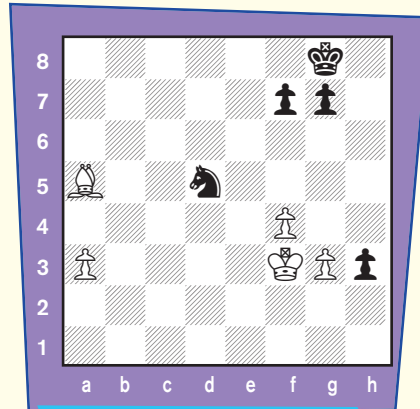
Position after 31...Rd6  
White to move

#2



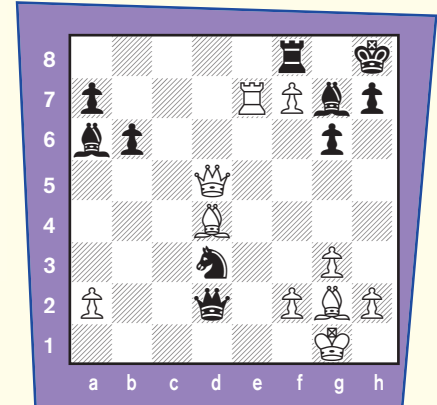
Position after 39. Kd2  
Black to move

#3



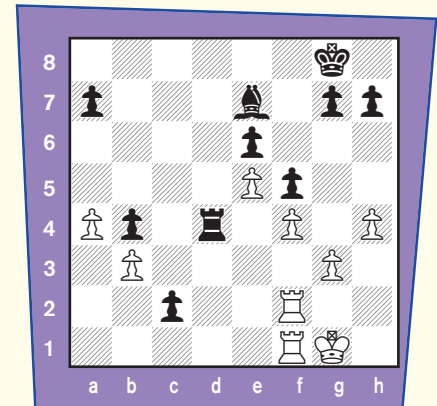
White played 38.  
Kxf3(Q) and resigned. Why?  
What is Black's best move?

#4



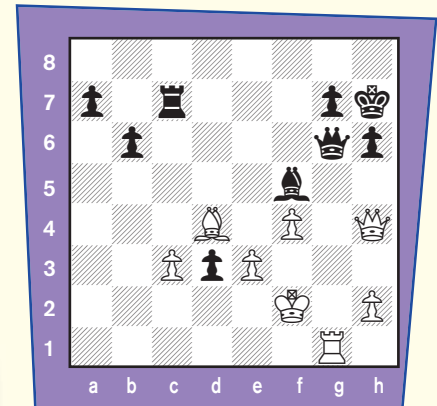
Position after 24...Qxd2(N)  
White to move

#5



Position after 34. Rcx1(B)  
Black to move

#6



Position after 40. Rg1  
Black to move

**Todd Bardwick**

is the author of

**Chess Strategy Workbook:**

**A Blueprint for Developing the Best Plan.**

He can be reached at [www.ColoradoMasterChess.com](http://www.ColoradoMasterChess.com)



Solutions on page 18



# WIN, DRAW, LEARN!

Well, okay, Kyle Haining, unlike a certain WWE superstar, may not be an “All American, American”—yet. But we think he certainly has the potential!

You won’t find Kyle’s name on the Trophies Plus All America Team listing ... his rating hasn’t quite caught up to his achievements. Then again, he is still learning and he knows that ratings aren’t all that important at this point—learning is!

## THE JOURNEY

And he has been learning the game since the first grade. When Kyle expressed an interest in chess, his father, Breck, bought a \$3.00 plastic chess set and a copy of Susan Polgar’s *Chess Tactics for Champions* and the journey began.

As Kyle became more involved



with the game, Matt Fleury and now Ignacio Perez continued to provide some instruction. In the process, Kyle’s dad caught the chess bug and plays in occasional tournaments. Even Kyle’s younger sister, Karen, has taken up the game and is one of the better players at her elementary school. She’s not number one—some guy named Kyle is ...

Kyle’s mom, Li (who as of yet, has not been bitten by the chess bug), took him to his first chess tournament, which he won! It was a lot easier to do when he was told that he didn’t have to warn his opponents about possible mistakes, by asking after each move “Are you sure you want to make that move?”

So now Kyle always finds something nice to say after each game. “Good game,” isn’t always enough. He finds a way to say something that allows his opponent to walk away feeling good.

## SUCCESS!

Kyle improved his game by playing in local weekend events (he is also a member of the Seattle Chess Club). And in 2009, he won the Washington State 3rd Grade Championship. Considering all of the talented kids and ambitious chess programs in Washington, that is quite an accomplishment.

While that success did not lead to national titles (“I made

too many mistakes.”), he returned to win the Washington State 4th Grade Championship this year! Will he see similar success in the 5th grade? We certainly hope so, but we think he has already achieved “All American, American” status.

And it has nothing to do with chess!

## “DISTRACTIONS”

As with many kids, the days just aren’t long enough! Math, “phys ed,” and creative writing help the school day pass quickly, but then there are things like music, archery, swimming, tennis, shooting hoops, soccer, chess lessons and Cub Scouts.

Kyle plays the piano, and that’s about an hour a day for practice. Plus, he has entered a number of





PHOTOS PROVIDED BY BRECK HAINING

competitions (he likes classical music) and has a couple of honorable mention awards to his credit.

Given a choice, Kyle prefers a good soccer game to a chess tournament. And archery? That's his favorite activity at Cub Scout camp. And he is very active with the Cub Scouts. Just look at all those badges on his vest! He even has won for chess—skill in teaching others how to play.

### WIN, DRAW, LEARN

Kyle's dad, Breck, doesn't mind the time Kyle spends on chess. He puts it this way:

*"When Kyle started to learn chess, I quickly saw many benefits. In chess there are many choices. Some are better than others. In chess one must think if I do X, what will my opponent do. One learns that thinking steps through is important, developing a plan is important, re-evaluating the situation as the*

*board changes is important ... One has to learn to deal with one's emotions—with winning and losing. One has to accept that tournaments are not perfect. One has to learn how to deal with those who don't play fair."*

But maybe we should listen to Kyle. This is an essay he wrote in his fourth grade creative writing class:

### Chess

*A battle of brains, who will win?*

*Chessmen attacking, who will be defeated?*

*Pieces flying everywhere, what will happen?*

*I throw my pieces at the king, break through, break out, break up, break in.*

*When I attack, I win! When they attack, I lose. Whoever attacks gets the upper hand.*

*Chess is a hard game. You never know what will happen. I've had some good wins, crush-*

*ing my opponents, winning the state championships and getting 18th place in nationals for my grade. Sometimes, it would seem impossible to lose. But then I'd fall flat on my face and lose a game or two.*

*Chess—crazy, hectic, exciting, super, super.*

*Even grandmasters haven't mastered this game. I've brought home many trophies. Sometimes, I get first place, and sometimes I don't, but I'm still proud of myself for doing my best. I don't care if I get a trophy or not, I'm still proud of myself. Even grandmasters make mistakes and lose games they shouldn't have. Put the bad losses behind you and look forward to great wins.*

*There are three ways a game can end—win, draw, and learn. When you lose, you learn. Don't be sad or ashamed of yourself when you lose. Instead, congratulate your opponent and then put the game behind you, look forward to a new game.*

*I think chess helps you in everything you do. It helps you to concentrate and think, it helps your patience, it helps you practice being of good character, it helps you make new friends, and much more. Even though I am very good at chess, there are people who are better than I, there are people better than the people better than me, and so on. So I learn from those people and become very, very good at chess.*

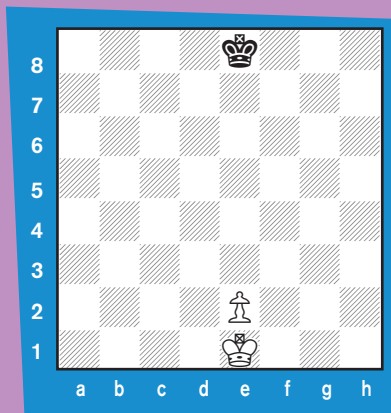
*Chess—a crazy, hectic, exciting, super, super game.*

# WIN OR DRAW?

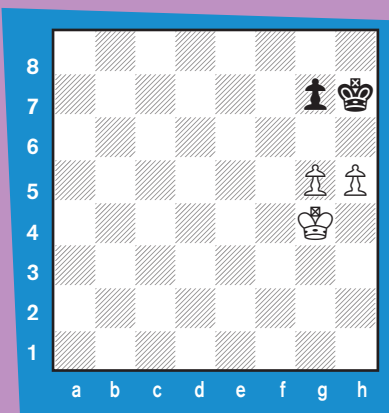
OK, you know what you have to do by now! Say whether it's a win or draw and for whom! No matter whose move it is, it could be a win or draw for either side. Of course, you should also jot down on paper what moves will bring the result you claim. In this set, you'll swear you're seeing double. You are! There are pairs of positions that are exactly the same, but in one White has the move and in the other, Black has the move.

by Pete Tamburro

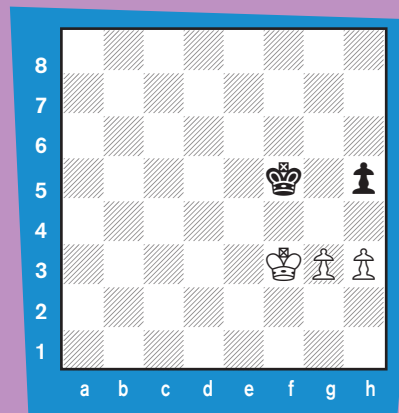
Position One: White to play



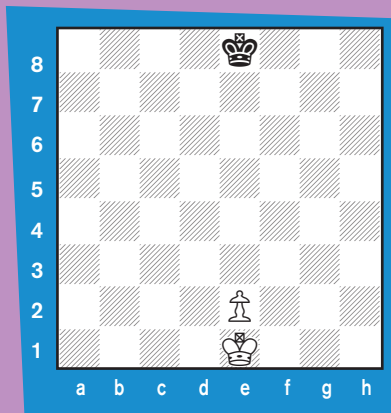
Position Three: White to play



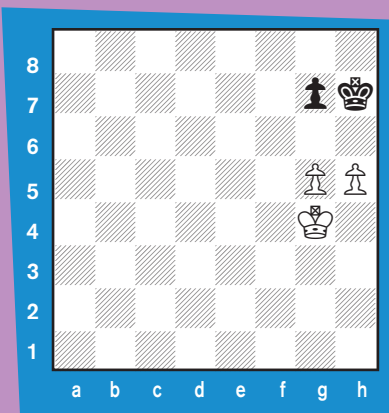
Position Five: White to play



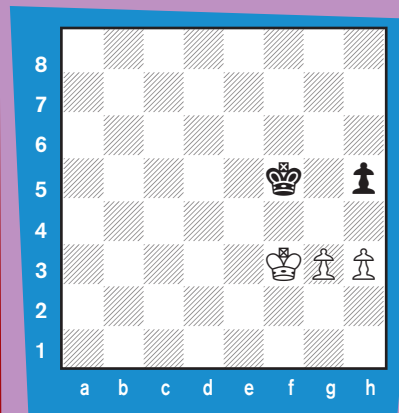
Position Two: Black to play



Position Four: Black to play



Position Six: Black to play



Solutions on page 18



# What's the Problem?

What's the WORST move on the board?

By Stanley Kravitz

There is an annual chess problem solving competition in Europe that will challenge the best solvers in the world with six types of chess problems.

The competition is limited to two-movers, three-movers, more-movers, endgame studies, helpmates and self-mates. Of course there are many other types of chess problems but these forms seem to be most interesting.

Selfmates are the most unusual. The problem is for White to move first and force Black to mate White in some number of moves. This idea may seem a little odd but the first mention of this type of puzzle was about 600 years ago so this puzzle idea has been around for a long time.

As an introduction to selfmates the first three puzzles shown require only one move to solve. Yes, that means White moves and Black is forced to mate immediately!

The first puzzle will help you get the idea clearly in your mind. White is to move and force Black to mate. Another way of looking at these puzzles is to look for White's most horrible move. It is a bit like living in a topsy-turvy world where White wins by forcing Black to deliver mate.

Solving these will improve your ability to look at all the moves on a chess board to find the only one that works.

Get out your watch to time how long it takes for you to solve each one.

If you can solve a problem in **less than two minutes** give yourself 4 points. Solve in **less than five minutes** give yourself 3 points. Solve in **less than 10 minutes** 2 points. **Over 10 minutes** 1 point.

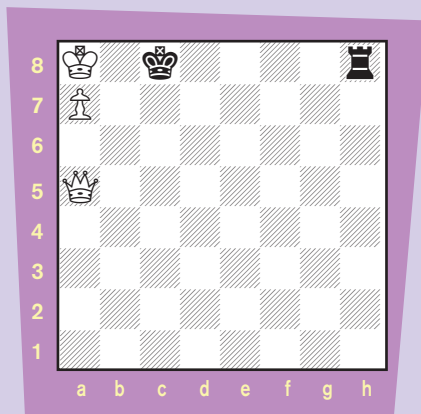
The last problem, #5, has taken some of the better players at my chess club a long time to solve, so if you solve it without looking at the

solution give yourself a bonus of 4 points.

**Master Solver** 15-20 points. **Good Solver** 10-14 points. **Fair solver** 5-9 points. **Under 5 points** needs work.

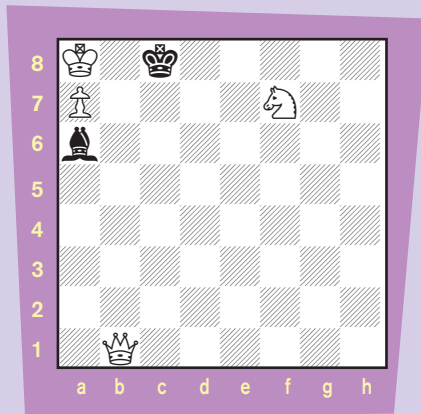
**Puzzle 1. White to move and force Black to mate in one.**

Notice that the white queen has a lot of squares to move to. Only one move will do the trick.



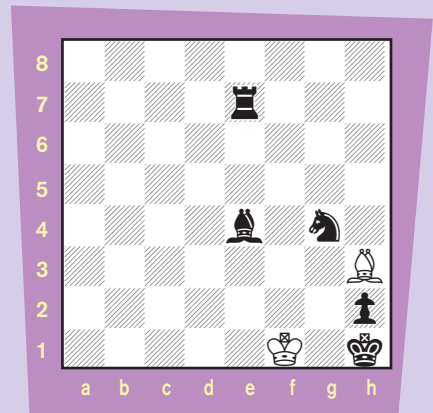
**Puzzle 2. White to move and force Black to mate in one.**

Wouldn't it be nice if all your opponents would find the only move to lose!



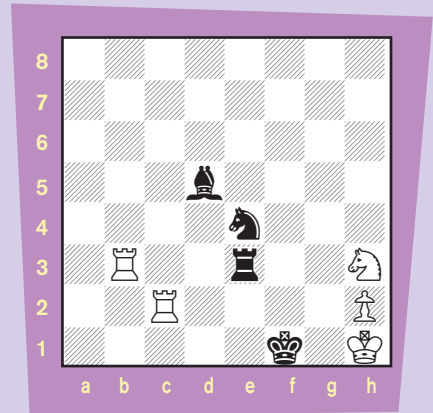
**Puzzle 3. White to move and force Black to mate in one.**

Black was winning anyway so White finds a way to commit suicide. Self-mates were also called Sui-mates (Suicide mates).



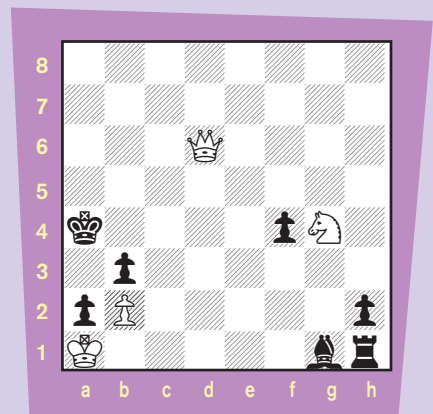
**Puzzle 4. White to move and force Black to mate in two.**

Check this one out carefully



**Puzzle 5. White to move and force Black to mate in two.**

This puzzle shows a common theme or idea in selfmates. Black finds a way of avoiding mating White immediately but White then finds a counter move that forces Black to mate.



Solutions on page 23

# A Brief Chess Opening Glossary

by Pete Tamburro

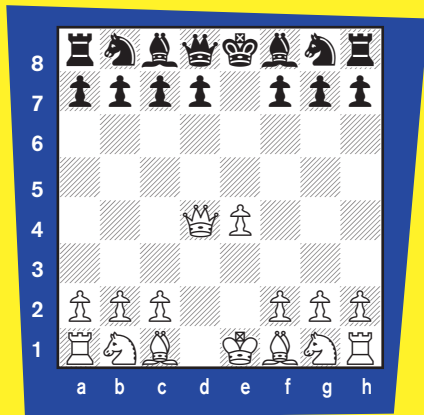
## The King Pawn Opening: Open Games, Part I

We are going to look at the most common of openings played at amateur levels: the Open Games. If Black replies to White's 1.e4 with 1...e5, you've found the Open Games. If Black replies with something else, like 1...c5 or 1...e6, you have the Semi-Open Games. The players of the nineteenth century (the 1800s) loved the Open Games, especially the King's Gambit and Evans Gambit, among other things.

Many chess coaches start their students out with the Open Games because some of your earliest lessons in learning about getting your pieces out to central squares, not moving the same piece twice, getting castled, fighting for control of the center, not losing time, and watching out for checks and captures all happen almost right away in games starting with 1.e4 e5.

Today, the granddaddy of the Open Games is the Ruy Lopez, still favored by grandmasters. It will have its own glossary! We're going to start with some of the less usual Open Games and work our way to the more common ones. Let's get started!

**The Center Game: 1.e4 e5 2.d4 exd4 3.Qxd4**



One grandmaster, Jacques

Mieses, used to play this quite often many years ago. It certainly opens up White's position and his pieces have lots of good squares to go to. Its main problem is that Black can make life difficult for the queen by attacking it with minor pieces.

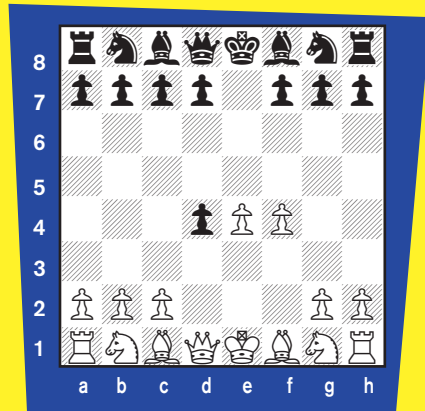
For example: 1.e4 e5 2.d4 exd4 3.Qxd4 Nc6 4.Qe3 Nf6 5.Nc3 (5...e5 Ng4!) 5...Bb4 6.Bd2 0-0 7.0-0 Re8 8.Qg3 Rxe4!! 9.Nxe4 Nxe4 10.Qe3 Bxd2+ 11.Rxd2 Nxd2 12.Qxd2 d5 and Black is a pawn up with a winning position.

**The Danish Gambit: 1.e4 e5 2.d4 exd4 3.c3 dxc3 4.Bc4 cxb2 5.Bxb2**



One of the prettiest pictures in chess is the array of bishops against the black kingside. White has sacrificed two pawns for a lead in development. It looks pretty dangerous; however, Black, following the idea of giving back material to catch up in development, came up with this great counter idea: 5...d5! 6.Bxd5 Nf6 7.Bxf7+ Kxf7 8.Qxd8 Bb4+ 9.Qd2 Bxd2+ 10.Nxd2 Re8 and Black has equalized. There are still tricks and traps, though. For example: 11.Ng3 Nxe4?? 12.Ne5+ and White wins a piece!

**Marshall Gambit: 1.e4 e5 2.d4 exd4 3.f4**



The more you study chess, the more you realize that the word "gambit" and the name "Marshall" go together a lot. The former U.S. champ invented so many gambits that, to avoid confusion, chess people found excuses to name them after something or somebody else! Unfortunately, you probably have to be as good as Marshall to play this: 1.e4 e5 2.d4 exd4 3.f4 Bb4+ 4.c3 dxc3 5.Nxc3 Nf6 6.e5 Ne4 and Black is already better!

**Half-Danish: 1.e4 e5 2.d4 exd4 3.c3 dxc3 4.Nxc3**



Is a half-danish like a half-bagel? Not exactly. It is an attempt by some players to prevent the d5 move by Black in the regular Danish Gambit. Alekhine played it.

1.e4 e5 2.d4 exd4 3.c3 dxc3 4.Nxc3 Nc6 5.Nf3 Bc5 6.Bc4 d6 7.0-0 Nf6 8.Bg5 0-0 9.Nd5 Be6 10.Bxf6 gxf6 is White's attempt to double the black f-pawns, open the king position and keep control of the center. Chances are about equal. It can become a lively game as Black can move his king to h8, play his rook to g8 and start an attack of his own!

**The Goring Gambit: 1.e4 e5 2.Nf3 Nc6 3.d4 exd4 4.c3**



Way back when, people really liked the Danish Gambit, but figured out that it might be better to develop a piece first before giving away pawns! Thus, a Scandinavian name Goring came up with a terrific attack involving not only a sacrificed pawn, but, because the knight was already out, White could sometimes be very threatening with Bc4, Qb3 and Ng5. The players of the black pieces became quite concerned! Again, they relied on basic principles, and decided that where 4...dxc3 looked a little risky, that old reliable 4...d5 looked pretty good! A sample continuation (although there are a lot of different ways to go!) is:

1.e4 e5 2.Nf3 Nc6 3.d4 exd4 4.c3 d5 5.exd5 Qxd5 (Small note: the queen can come out here because the knight can't come right out on c3 to attack it.) 6.cxd4 Bb4+ 7.Nc3 Bg4 8.Be2 0-0-0 9.0-0 Qa5 10.Be3 Nf6 11.h3 Be6 12.Qc2 Bf5 13.Bd3 Bxd3 14.Qxd3 Rhe8 15.a3 Bxc3 16.bxc3 Ne4 17.c4 Qc3 18.Qxc3

Nxc3 and the game is equal, but not necessarily drawn. The whole line can be dangerous for both sides!

**The Ponziani Opening: 1.e4 e5 2.Nf3 Nc6 3.c3**



Not one of the better ideas coming out of Italy. There are many ways to meet this. We'd like to suggest one your opponent, if you're playing the black pieces, may never have seen: 1.e4 e5 2.Nf3 Nc6 3.c3 Nf6 4.d4 d5 5.Nxe5 Nxe5 6.dxe5 Nxe4 7.Bd3 (7.f3 Qh4+) 7...Bc5 8.Bxe4 dxe4 9.Qxd8+ Kxd8 10.0-0 Bf5 11.Re1 Ke7 12.Bg5+ Ke6 and Black has the two bishops along with a king that is rightfully active in the endgame. If White tries to avoid this with: 5.Bb5 then 5...exd4 6.e5 Ne4 7.cxd4 Be7 8.0-0 0-0 9.Bxc6 bxc6 10.Qc2 c5! It's important not to let White take advantage of those doubled pawns.

**The Scotch Game: 1.e4 e5 2.Nf3 Nc6 3.d4 exd4 4.Nxd4**

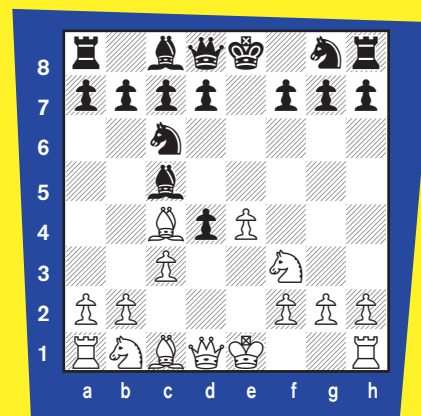


Dating back to the 1830s, this

opening has undergone a revival in recent years and has become very popular. The legendary chess teacher John Collins used to recommend this opening to beginners. When Kasparov played it in a world championship match, it really arrived!

It follows good principles of development and shows you don't have to sacrifice a pawn to get a good attack. Black has a choice between 4...Bc5 (with the trick: 5.Nxc6 Qf6!) or the wild 5...Qh4 (not for beginners, or anyone for that matter!) or the most popular 4...Nf6. It's worth pointing out that Black doesn't play 4...Nxd4 because 5.Qxd4 allows the queen to have an important central square with no knight able to go to c6 to attack it.

**The Scotch Gambit: 1.e4 e5 2.Nf3 Nc6 3.d4 exd4 4.Bc4 Bc5 5.c3**



A brother to the Goring Gambit. White has more pieces out and Black has played his bishop to c5 which means later playing it to b4 or e7 would be a loss of time.

This, too, is wild. *MCO-15* gives a sample line: 1.e4 e5 2.Nf3 Nc6 3.d4 exd4 4.Bc4 Bc5 5.c3 dxc3 6.Bxf7+ Kxf7 7.Qd5+ Kf8 8.Qxc5+ Qe7 (even 8...d6 9.Qe3 cxb2 10.Bxb2 Nf6 11.0-0 Qe7 12.Re1 h6 13.Nbd2 Kf7 14.e5 dxe5 15.Nxe5+ Nxe5 16.Bxe5 Re8 17.Rac1 c6 18.Nc4 is tough for Black) 9.Qxe7+ Ngxe7 10.Nxc3 d5 11.exd5 Nb4 and gives this as equal, but watch what can happen: 12.0-0 Nbx d5

13.Nxd5 Nxd5 14.Re1 b6 15.Bd2 Bb7 16.Rad1 Re8 17.Ne5.

This is not pleasant for Black. This is another dangerous gambit. If you're Black, your best bet is to play 4...Nf6! Head into the Two Knights' Defense, which has yet to be refuted.

**Vienna Game: 1.e4 e5 2.Nc3**



Then, there are those who seem to have no interest in playing d4 right away! This line is probably most famous for what is called the Frankenstein-Dracula Variation. According to Harding, it's what the two monsters would play if they sat down at a chessboard:

1.e4 e5 2.Nc3 Nf6 3.Bc4 Nxe4 4.Qh5 Nd6 5.Bb3 Nc6 6.Nb5 g6 7.Qf3 f5 8.Qd5 Qe7 9.Nxc7+ Kd8 10.Nxa8 b6 where Black will get Bb7 in and the white queen will scamper away. Does Black's hold on the center make up for his being the Exchange down? Nobody knows for sure, not even your chess engine.

**Vienna Gambit: 1.e4 e5 2.Nc3 Nf6 3.f4**



A favorite of the late, great Rudolf Spielmann, the Vienna Gambit must be met by active play! The idea of the Vienna is to get a King's Gambit-like attack and discourage Black from playing d5, the normal freeing move for Black in the Open Games. However, it doesn't work that way: 1.e4 e5 2.Nc3 Nf6 3.f4 d5 4.fxe5 Nxe4 5.Nf3 Be7 6.d4 0-0 7.Bd3 Nxc3 8.bxc3 c5.

**Bishop's Opening: 1.e4 e5 2.Bc4**



Like the Scotch, this has become very popular. It doesn't put as much pressure on Black as the

Ruy Lopez, but an easy development is very attractive, especially for beginners. Black has no real problems either, and just following simple rules of development should keep everybody safe.

**Latvian Gambit: 1.e4 e5 2.Nf3 f5**



This is the first one in our Open Games Glossary where Black gets to have a say in what kind of game it will be. It's the King's Gambit a move down. That's probably not a good idea, but White has to know what he's doing.

The easiest lines to remember for White are: 1.e4 e5 2.Nf3 f5 3.Nxe5 Qf6 4.d4 (4.Nc4 fxe4 5.Nc3 Qg6 [5...Qe6 6.Ne3 Nc6 7.Bc4] 6.d4 d6 [6...exd3 e.p. 7.Bxd3 Qf7 8.Ne5 Qf6 9.0-0] 7.f3 Nf6 8.fxe4 Be7 [8...Nxe4 9.Bd3] 9.e5) 4...d6 5.Nc4 fxe4 6.Nc3 Qg6 7.f3 Be7 8.fxe4 Nh6 9.Qf3 Bg4 10.Qg3 Nc6 11.Bxh6 gxh6 12.Ne3 Bd7 13.0-0-0.

**Elephant Gambit: 1.e4 e5 2.Nf3 d5**





**NEED SOME PRACTICE?**

Go to [www.uschess.org](http://www.uschess.org) and click on "New to Chess?" and follow the links to "... play the computer..." (But do your homework first!)



Why they had to pick on the poor, noble elephant for this defense is beyond understanding. Was jackal already taken? It's a very tricky opening and White can go wrong a number of ways while Black's good moves are almost forced! There are two main lines after 3.exd5

A) 3...e4 4.Qe2 Nf6 5.d3 Qxd5 6.Nbd2 Nc6 (6...Bb4 7.c3) 7.Nxe4 Be6 8.Bg5 Bb4+ 9.c3 Be7 10.Nxf6+ gxf6 11.c4 Qd7 12.Be3 0-0-0 13.0-0-0 Rhg8 14.d4 and White is better.

B) 3...Bd6 4.Bc4 e4 (4...Bg4 5.h3 Bxf3 6.Qxf3 Nf6 7.Nc3) 5.Qe2 Qe7 6.Nd4 Nf6 7.d3 Be5 (7...Bg4 8.f3 exf3 9.Qxe7+ Kxe7 10.gxf3 Bh3 11.Nb5) 8.Be3 c5 9.dxc6 e.p. (9.Bb5+ Kd8 [9...Bd7 10.Nf5] 10.Nb3 Bxb2 11.Bxc5 Qe5 12.0-0 Bxa1 13.d4 Qxd5 14.Nxa1 b6) 9...Nxc6 10.Nxc6 bxc6 11.Nc3 Rb8 12.0-0 Bg4 [12...Rxb2 13.Nxe4] 13.Qd2 Rxb2 14.Bb3 and White's on top.

For our first look at the Open Games, we've covered some really sharp openings. If you decide to defend with 1...e5 or attack with 1.e4, you should be aware of all the possibilities that await you.

If you have played through the lines above you will also realize that both sides have to concentrate on getting their pieces out and fighting for the center. No wasted time! One bad move by Black could mean loss of the game and one bad move by White could mean loss of the initiative. It's a lifetime of study, and you're just beginning!



# The

# Swamp - Gass

# Gambit

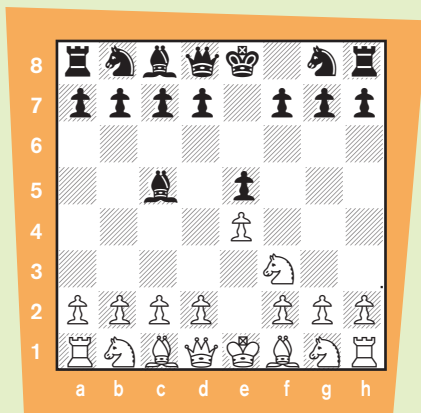
by Rick Kennedy

"Why must I lose to this knuckle-head?!" Pat Panic moaned with resignation.

Later, Chris Cool was there to go over the games.

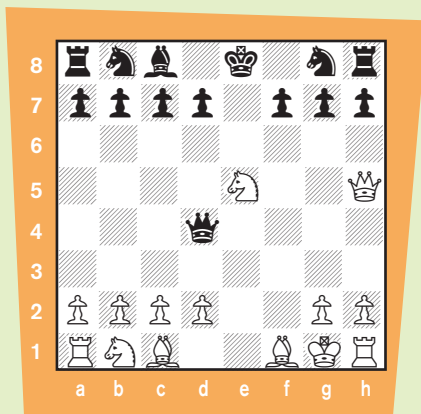
1.e4 e5 2.Nf3 Bc5.

"What kind of opening is that?" asked Pat.

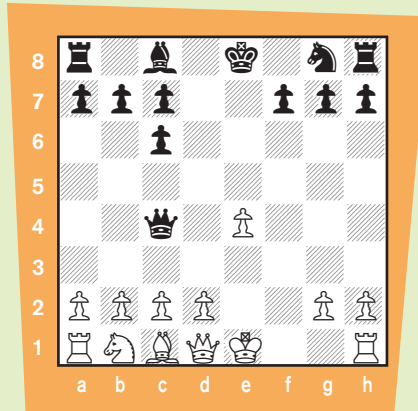


"First game: I grab the pawn, he sacs the bishop and he checks me with the queen. I hide my king, offer back a pawn and then counter-attack—and he checkmates me."

3.Nxe5 Bxf2+ 4.Kxf2 Qh4+ 5.Kg1 Qxe4 6.Qh5 Qd4 checkmate.



"Second Game: I grab the pawn, he develops his queen knight and I trade it off. I develop my bishop, then he sacs his, and in a few moves the material is even again, only my king can't castle and I went to pieces."



Chris smiled. "Remember what Coach says: *It's not a weakness if you don't take advantage of it, it's not a blunder if you don't refute it.*" Let's take another look.

1.e4 e5 2.Nf3 Bc5.

"Don't be in a hurry to take the pawn now," Chris said. "You can play 3.Bc4 then bring out your other knight and castle and all is well."

"But I want to *punish* his opening," said Pat.

"Okay," said Chris. After 3.Nxe5, if he sacs the bishop again, play like you did before, but don't *counter-attack* with 6.Qh5, *consolidate* with 6.d4. You are up a piece for a pawn, and your queen knight will come to c3 and attack the queen. Your king will be okay if you watch out and keep developing.

Please turn to page 23

# SOLUTIONS TO ALL YOUR PROBLEMS

## WIN OR DRAW from page 12

Solutions:

**Position One:** WHITE WINS! Back to basics! White wins because he can get his king in front of the pawn and have a space to spare. Even though Black can get the opposition, White gets it back because he can move his pawn to force Black to move away: **1.Kf2 Ke7 2.Ke3 Kd6 3.Ke4 Ke6 4.e3 Kf7 5.Ke5 Ke7 6.e4 Kf7 7.Kd6 Kf8 8.Kd7 Kf7 9.e5 Kf8 10.e6 Kg7 11.e7 Kf6 12.e8=Q** and wins.

**Position Two:** DRAW! One move makes a difference! Because its Black's move and he can get one step closer to the white king when it steps up. Then, White has no pawn move to help him out. If you don't know this ending as Black, make sure you see how the black king moves straight back when necessary. The key to remember as Black is that you want White checking your king as you go backwards: **1...Ke7 2.Kf2 Ke6 3.Ke3 Ke5 4.Kd3 Kd5 5.e4+ Ke5 6.Ke3 Ke6 7.Kf4 Kf6 8.e5+ Ke6 9.Ke4 Ke7 10.Kd5 Kd7 11.e6+ Ke7 12.Ke5 Ke8 13.Kf6 Kf8 14.e7+ Ke8 15.Ke6 Draw.** It's a stalemate! By the way, if you used a chess engine for this endgame it will tell you at the beginning that White has a decisive win. You have to be careful with computers in endgames. They are often wrong. Positions One and Two were from Lolli in 1763!

**Position Three:** WHITE WINS! White can give up a pawn to force the other pawn through: **1.Kf5 Kh8 (1...g6+ 2.Kf6 gxh5 3.Kf7; 1...Kg8 2.Kg6 Kh8 3.Kf7 Kh7 4.h6 gxh6 5.g6+) 2.Kg6 Kg8 3.h6 Kh8 (3...gxh6 4.Kxh6 Kh8 5.g6 Kg8**

**6.g7 Kf7 7.Kh7) 4.hxg7+ Kg8 5.Kh6 Kf7 6.Kh7 wins.**

**Position Four:** DRAW! Yup ... whose move it is matters! **1...Kg8 2.Kf5 (2.Kf4 Kf8 3.Ke5 Ke7) 2...Kf7 3.g6+ Ke7 4.Ke5 Ke8 5.Ke6 Kf8 6.Kd7 Kg8 7.Ke8 Kh8 8.h6 Kg8.**

**Position Five:** DRAW! White has the move, but can only draw: **1.h4 Ke5 2.g4 (2.Ke3 Kf5 3.Kf3) 2...hxg4+ 3.Kxg4 Kf6 4.h5 Kg7 5.Kg5 Kh8 6.Kg6 Kg8 7.h6 Kh8 8.h7 Draw. Stalemate!** If White tries any king move such as 1.Ke3, then Ke5 keeps the opposition.

**Position Six:** WHITE WINS! Go figure. Same position as Five, but now that White does NOT have the move, he wins! It still matters who has the move, but sometimes having the move is a disadvantage. In this position, Black, by moving, loses the opposition and is forced back. Chess is a funny game! **1...Ke5 2.Ke3 Kf5 (2...Kf6 3.Kf4 Kg6 4.Ke5 Kg5 5.h4+ Kg4 6.Kf6 Kxg3 7.Kg5 Kf3 8.Kxh5 Kf4 9.Kg6 Ke5 [9...Kg4 10.h5] 10.h5 Ke6 11.Kg7) 3.Kd4 Kg5 4.Ke5 Kg6 5.h4 Kh6 6.Kf6 Kh7 7.Kg5 and wins.**

## CHESS DETECTIVE from page 9

Solutions:

**#1** This position occurred in a game between José Raúl Capablanca and Benito Higinio Villegas in Buenos Aires, Argentina, 1914. Black appears to have successfully blocked White's passed c-pawn. With rook power behind the pawn, White cleared the path with **32.Qe5+ f6 33.Qxd6! Qxd6 34.c7** Black resigns.

**#2** This game is from 1965 in Yerevan, Armenia, between Yuri Averbakh and Viktor Korchnoi. Black's h3-pawn is dreaming about becoming a queen. If he plays 39...h2, White can defend the promotion square with 40.Rb1. Black played the incredible **39...Rc1!** and White resigned. If Black plays 40.Nxc1 or 40.Kxc1, White plays 40...h2 and White's rook is now cut off from stopping the pawn from promoting.

**#3** This position occurred in a game between Antonio Median-Garcia and Mikhail Tal in Palma de Mallorca, Spain, in 1966. If Black plays 38...h2, White can play 39.Kg2 and capture the pawn. Black can actually play the brilliant **38...Ne3!**, threatening to push his pawn to h2 by preventing White's king from moving to g2. White's king can't take the knight because he leaves the square of the pawn. Black can now safely play 39...h2.

**#4** White's f7-pawn would love to promote, but the rook is blocking the path. Note that Black's g7-bishop is pinned to his king. White wins by simply playing **25.Re8.** Black then responded **25...h6 (25...Qb4 26.Qd8 wins easily for White) 26.Rxf8+ Kh7 27.Rh8+! Bxh8 (27...Kxh8 28.f8=Q+ Kh7 29.Qxg7 mate or 29.Q [either] g8 mate) 28.f8=N mate!** This game took place in Omaha, Nebraska, in 1949, between Albert Sandrin and Phil Le Cornu.

**#5** This position occurred in a game between A. Yurgis and Mikhail Botvinnik in Leningrad, USSR, in 1931. Black's c2-pawn is one step away from promoting. Black plays the amazing **34...Rc4!**

Cont'd on pg. 23



# Tournament Life

## Tournament Life Announcements

OCTOBER 15 THROUGH DECEMBER 14

### Scholastic Members:

As a service to you, we are listing upcoming National USCF rated events, and requested events of possible interest to you. You can always log in to [www.uschess.org](http://www.uschess.org), and click on "Clubs and Tournaments." Then click on "Upcoming Tournaments" for a complete listing of upcoming rated events and details. As always, you can check out the TLA section of *Chess Life*.

### Organizers and Tournament Directors:

If you would like your tournament listed here in *Chess Life* for KIDS for December (events to be held after December 14), the deadline for submitting your announcements is October 10th. The deadline for the February 2011 issue is December 10th. The processing fee is \$1.00 per line for the first eight lines, \$2.00 for every line thereafter. Send your announcements to [tl@uschess.org](mailto:tl@uschess.org).

Display advertising is also available. Advertising rates are posted on the USCF website, [www.uschess.org](http://www.uschess.org), or you may email: [tl@uschess.org](mailto:tl@uschess.org) for complete details.

## NATIONALS

Oct. 23, Illinois

*ChessLecture.com Grand Prix Points: 20*  
**2010 U.S. G/60 Championship**

4R-SS. Holiday Inn Hotel, 5300 W. Touhy Ave., Skokie, IL 60077. 847.679.8900. **\$4,000 Guaranteed.** Prizes-in 3 sections: **Open:** \$500-375-250; **Top 2299-2200,** U2199-2000, 1900-1899 - \$150 each; **Reserve Section (U1800):** \$450-325-200; **Top 1699-1600,** 1599-1500, 1499-1400 - \$125 each; **Booster (U1400):** \$400-275-150; **Top 1399-1300,** 1299-1200, 1199-1000 - \$100 each. **EF:** \$60 by 6pm 10/22, \$80 onsite; \$100 Combined EF with US G/30 by 6pm 10/22, \$140 Combined EF with US G/30 onsite. Play Up - \$10 more. \$50 Re-entry (per event). No half-point byes allowed (zero point byes only). GM/IM/WGM/WIM/FM/WFM free entry with nothing deducted from winnings. Cannot withdraw. Must play all rounds. **Onsite Registration:** 8:30-9:30am. **Rds.:** 10am-12:30pm-3pm-5:30pm. Mail entries with registration information to: North American Chess Association (make checks payable to) 4957 Oakton Street, Suite 113, Skokie, IL 60077. **More information and online registration available at:** <http://www.nachess.org/g60>. Questions via email only: [sevan@nachess.org](mailto:sevan@nachess.org). No smoking. Boards, sets, clocks provided. Tournament provided equipment must be used. No exceptions. October Supplement. USCF Membership Required. Bookseller onsite.

Oct. 24, Illinois

*ChessLecture.com Grand Prix Points: 20*  
**2010 U.S. G/30 Championship**

5R-SS. Holiday Inn Hotel, 5300 W. Touhy Ave., Skokie, IL 60077. 847.679.8900. **\$4,000 Guaranteed.** Prizes-in 3 sections: **Open:** \$500-375-250; **Top 2299-2200,** U2199-2000, 1900-1899 - \$150 each; **Reserve Section (U1800):** \$450-325-200; **Top 1699-1600,** 1599-1500, 1499-1400 - \$125 each; **Booster (U1400):** \$400-275-150; **Top 1399-1300,** 1299-1200, 1199-1000 - \$100 each. **EF:** \$60 by 6pm 10/22, \$80 onsite; \$100 Combined EF with US G/60 by 6pm 10/22, \$140 Combined EF with US G/60 onsite. Play Up - \$10 more. \$50 Re-entry (per event). No half-point byes allowed (zero point byes only). GM/IM/WGM/WIM/FM/WFM free entry with nothing deducted from winnings. Cannot withdraw. Must play all rounds. **Onsite Registration:** 8:30-9:30am. **Rds.:** 10am-11:30am-1pm-2:30pm-4pm. **Mail entries with registration information to:** North American Chess Association (make checks payable to) 4957 Oakton Street, Suite 113, Skokie, IL 60077. **More information and online registration available at:** <http://www.nachess.org/g30>. Questions via email only: [sevan@nachess.org](mailto:sevan@nachess.org). No smoking. Boards, sets, clocks provided. Tournament provided equipment must be used. No exceptions. October Supplement. USCF Membership Required. Bookseller onsite.

Nov. 5-7, New Jersey

**2010 National Youth Action**

9SS, G/30. Ocean Place Resort and Spa, One Ocean Boulevard, Long Branch, NJ 07740. HR: \$109 single/double/triple/quad, 732-571-4000 or 800-411-6493. 4 Sections: **High School (K-12), Middle School/Junior High (K-9), Elementary (K-6), Primary (K-3).** EF: \$50 by Oct. 9, \$70 by Oct. 23, \$85 after Oct. 23 and on-site. **Awards List:** Individual: K-3, K-6, K-9, K-12: 1st-25th place. Class Awards: 1st-3rd place K-3: U800, U600, U400, Unr. K-6: U1000, U800, U600, Unr. K-9: U1200, U1000, U800, Unr. K-12: U1400, U1200, U1000, Unr. Teams: 1st-15th place. **Schedule:** Opening Ceremony Sat., Nov. 6 at 9:30 am. Rds. 1-5 Sat., Nov. 6: 10 am, 12 noon, 2 pm, 3:30 pm & 5 pm. Rds. 6-9 Sun., Nov. 7: 10 am, 12 noon, 2 pm, & 3:30 pm. **Side Events:** Blitz Tournament-Friday Nov. 5, K-6 & K-12, 6:30 pm, entry fee \$15 if p/m by 11/2, \$20 after or on site. Bughouse Tournament-Sat. Nov. 6, 6:30 pm, entry fee \$25 at site. Registration closes at 5 pm. Blitz

Awards: Individual: K-6 and K-12, each section 1st-20th. Team: K-6 and K-12, each 1st-10th. Bughouse Awards: 1st-10th place. Awards Ceremony for Blitz and Bughouse, Sun., 9:00 am. **NYA Awards Ceremony:** Sunday, Nov. 7, 5:30-7 pm. Club teams allowed! All games played in the Ocean Place Resort and Spa. Team rooms are limited, contact Cheryl Bruce, [cbruce@uschess.org](mailto:cbruce@uschess.org) or 931-787-1234 ext.147. Hotel info: [www.oceanplace.com/](http://www.oceanplace.com/). Contact: Assistant Executive Director/Director of National Events: Pat Knight Smith 931-787-1234 ext.133. **Mail entries to:** U.S. Chess, Attn.: NYA, P.O. Box 3967, Crossville, TN 38557. **Additional details and online registration:** [www.uschess.org/tournaments/2010/nyaj/](http://www.uschess.org/tournaments/2010/nyaj/).

Dec. 10-12, Florida  
**2010 National K-12 Championship**

7SS, G/90. Disney's Coronado Springs Resort, 1000 West Buena Vista Dr., Lake Buena Vista, FL 32830. 407-939-1000, \$120 single/double/triple/quad. **13 Sections.** Play only in your grade section. December rating supplement will be used. 1/2-point bye available any round (except round seven) if requested in advance of rd. 1. Team score = total of top three (minimum two) finishers from each school per grade, first place individual and team, including ties, will be National Champion for their grade. **Schedule:** Opening ceremony Fri. 12:30 pm. **Rds.:** Fri. 1 pm-6 pm, Sat. 10 am-2 pm-6 pm, Sun. 9 am-1 pm. Awards Ceremony Sun., approx. 5 pm. **Special round times for K-1 sections:** Fri. 1:30 pm-5:30 pm, Sat. 9:30 am-1:30 pm-5:30 pm, Sun. 9:30 am-1:30 pm. Awards Ceremony Sun. approx. 4:30 pm for K-1. EF: \$50/participant (postmarked by 11/14), \$70/participant (postmarked by 11/28), \$85 later or \$90 at site, \$5.00 extra for all phone registrations, \$20 change fee for roster or section changes after 11/7 or any onsite changes. Onsite registration Thurs. 9 am-10 pm & Fri. 8 am-10 am. After 10 am players will have a 1/2-point bye for rd 1. **Awards:** Trophies to top 10 individuals & top five teams (minimum) in each grade. **Class prizes:** 1st-3rd place **K-3:** 800-999, 600-799, U600, Unr. 4-6: 1000-1199, 800-999, 600-799, U600 Unr. **7-9:** 1200-1399, 1000-1199, 800-999, U800, Unr. **10-12:** 1400-1599, 1200-1399, 1000-1199, U1000, Unr. Every player receives a commemorative item! **Side Events:** Bughouse: Thurs. 11 am, Reg. onsite only Thurs. 8 am-10 am, \$25/team. **Blitz Sections:** K-6 and K-12, Thurs. 5 pm, Reg. onsite until 4 pm. Blitz EF: Onsite - \$20; Advance by 11/28 entry: \$15. Blitz Awards: Trophies in K-6 and K-12 sections. Individual: Top 10, Team: 1st-5th place. K-6 Class: 1000-1199, 800-999, 600-799, U600 Unr. K-12 Class: 1400-1599, 1200-1399, 1000-1199, U1000, Unr. Bughouse Awards: Trophies for Bughouse, TBA. Team Rooms are limited. Contact Cheryl Bruce 931-787-1234 ext. 147. **Hotel info:** <http://disneyworld.disney.go.com/resorts/coronado-springs-resort/>. **Questions:** Cheryl Bruce: 931-787-1234 ext. 147 or Ent: U.S. Chess, Attn.: K-12 Championship, P.O. Box 3967, Crossville, TN 38557 or online at <https://secure2.uschess.org/webstore/tournament.php>. **Chess Magnet School JGP.**

## GRAND PRIX

A State Championship Event!

Oct. 16-17, Pennsylvania

*ChessLecture.com Grand Prix Points: 15*  
**2010 Ira Lee Riddle Memorial PA State Champ.**

5SS, G/120. Warminster Rec & Educ Ctr, 1101 Little Ln., Warminster, PA 18974. **\$\$(\$2025 b/90, 2/3 gtd.) 3 Sections: Open:** \$500-250, U2000 \$125. **U1800:** \$300-150, U1600 \$125. **U1400:** \$300-150, U1200 \$125. **EF:** \$40 by 10/9, \$50 later. PSCF req'd, OSA. **Reg:** ends Sat. 9:30am. **Rds.:** 10-2:30-7, 10-2:30. **Bye:** limit 2, ask by rd 2. Trophy to top club (2 scores over all sections). **Info:** 267-237-6212, [leeteefes@yahoo.com](mailto:leeteefes@yahoo.com). **Ent:** MasterMinds Chess Club, 6929 Sherman St., Philadelphia, PA 19119. W. Chess Magnet School JGP.

Oct. 23, Illinois

*ChessLecture.com Grand Prix Points: 20*  
**2010 U.S. G/60 Championship**

See Nationals.

Oct. 24, Illinois

*ChessLecture.com Grand Prix Points: 20*  
**2010 U.S. G/30 Championship**

See Nationals.

A Heritage Event!

A State Championship Event!

Oct. 29-31 or Oct. 30-31, Indiana

*ChessLecture.com Grand Prix Points: 15*  
**69th Indiana State Chess Championship**

5SS, 40/2 SD/1 (2-day option, rds 1-2 G/75). Honeywell Center, 275 W. Market St., Wabash, IN 46992. **\$\$3000 b/80.** In 2 Sections, **Championship:** EF: \$70 rcdv by 10/26, \$85 at site. **\$\$:** \$500-300, U2300 \$280, U2100 \$260, U1900 \$240, Upset \$50. \$100 State Champion Award. 1st Place Guaranteed. **Reserve:** Open to 1799 & under. **EF:** \$50 rcdv by 10/26, \$65 at site. **\$\$:** \$350-240, U1700 \$220, U1500 \$210, U1300 \$200, Upset \$50. **ALL: Memb. Req'd:** ISCA. OSA. Reg: Ends Fri. 6:30pm (2-day option: Regs. ends Sat. 9:30am). Rds: Fri. 7pm, Sat. 10-5, Sun. 9-3:30 (2-day option: Sat. 10-1:30-5, Sun. 9-3:30). Annual Meeting 2:30pm Sunday. Car load discount, sign up in groups of 4 and receive 10% off adv EF, rcdv by 10/12. **ENT:** Gary J Fox, 134 Wheatland Ave., Logansport, IN 46947. **INFO:** 574-722-4965 [info@indianachess.org](mailto:info@indianachess.org). [www.indianachess.org](http://www.indianachess.org). NS. NC. W. Chess Magnet School JGP.

Nov. 12-14 or 13-14, Florida

*ChessLecture.com Grand Prix Points: 30 (enhanced)*  
**9th Annual Turkey Bowl**

5SS, G/120, (2-day Option Rd. 1 G/60). El Palacio Hotel & Conference Center, 4900 Powerline Rd., Ft. Lauderdale. **\$\$6,500 b/200** paid entries, 60% min. Gtd. **Open:** \$1,000/Trophy-600-400-200, U2300 \$100. **U2100:** \$500/Trophy-300-150, U1950 \$100. **U1800:** \$500/Trophy-300-150, U1650 \$100. **U1500:** \$500/Trophy-300-150, U1350 \$100. **U1200:** \$500/Trophy-300-150, U1050-100. U900: Trophies for 1st to 5th, Medals for all others. Unr. may enter Open, U2300 or U900 only. **EF:** \$65 by Nov. 9, \$14 more later and on-site, GMs & IMs free (\$65 deducted from prize). U900 section \$30 by Nov. 9, \$10 more later and on-site. Re-entry cash prize sections \$35. **Reg.:** ends 1/2 hr before 1st rd. **Rds.:** 3-Day 1st Rd. Fri. 7:30, 2-Day 1st Rd. Sat. 10, Rds. 2-5 Sat. 1-15, 6:30, Sun. 9:30, 2:30. 2 1/2 pt. byes, if req'd before rd. 2. **HR:** \$69 by Cut-off Date, 954-776-4880. Ent: Boca Raton Chess Club, 2385 Executive Ctr. Dr., Ste. 100, Boca Raton, FL 33431. **Online entry and add'l info:** [www.bocacchess.com](http://www.bocacchess.com), 561-479-0351. FIDE. **Chess Magnet School JGP for G/120 rds.**

Nov. 20, Pennsylvania

*ChessLecture.com Grand Prix Points: 6*  
**2010 PA State Game/15 Championship (QC)**

7SS, G/15. Wm. Pitt Univ., Univ. of Pitt., 5th & Bigelow, Pittsburgh, PA 15213. 2 Sections: **Champ:** EF: \$25 by 11/12, \$35 later. **\$\$ (690G):** \$200-100, U2000 \$90, U1800 \$80, U1600 \$70, U1400 \$60, U1200 \$50, U1000 \$40. Trophies: 1-3 U1400, 1-3 U1200, 1-3 U1000. **Scholastic:** Grades K-12 unrated or U900. EF: \$15 by 11/12, \$25 later. Trophies to Top 7, 1-3 U600. **ALL:** Trophies: 1-2 Schools, 1-2 Clubs, Teams of 4-7 players from both sections. PSCF \$5, OSA. **Reg.:** 11-11:30am. **Rds.:** 12-12:45-1:30-2:15-3:3-45-4:30. **Ent/Info:** PSCF, c/o Tom Martinak, 25 Freeport St., Pittsburgh, PA 15223-2245, 412-908-0286. W.

Dec. 11-12, Pennsylvania

*ChessLecture.com Grand Prix Points: 15*  
**2nd Annual Delaware Valley Open Championship**

The Philadelphia School, 2501 Lombard Street, Philadelphia, PA 19146. **In 5 Sections: Open, U/1600, K-12 U/1000 (Sunday only), K-12 U/700 (Saturday only), K-6 U/400 (Saturday only). Open & U/1600:** 5SS, G/90. Rds.: Sat 10-1:30-5, Sun 10-1:30. **Scholastic sections:** 4SS, G/40. Rds.: 10-11:30-1:15-2:45. EF: \$60 (Open), \$50 (Scholastic); \$10 more if registering after 12/5; \$20 more if registering on-site; \$10 discount for scholastic players in multiple sections. **Prizes: Championship:** (\$50/40, 75%G) \$500-300-200, top U/2200, U/2000, U/1800 each \$150-100. **U/1600:** (\$50/30) \$300-200-100, top U/1400, U/1200 each \$100-75. **Scholastic sections:** Trophies to top 10 in each section; all players get a T-shirt. **All sections:** Plaque to top club (see web site for rules). On-site registration 9:00-9:30. **Info/online registration at:** [www.silverknightschess.com](http://www.silverknightschess.com) or mail entries to Silver Knights Chess, PO Box 1103, Bryn Mawr, PA 19010.

Dec. 28-30, Wisconsin

*ChessLecture.com Grand Prix Points: 15*  
**2010 Pan American Open**

5SS, G/90+30sec/move increment. Open to any individual. FIDE and USCF rated; USCF rules used. **Playing site:** Crowne Plaza Hotel, 6401 South 13th Street, Milwaukee, WI 53207. 1-414-764-5300. Free shuttle from the airport. Free parking and wireless internet. Mention **Special Chess Rate \$78** (single or double). Reserve by December 10th or rate may increase. **Prize Fund (\$2,900 b/80):** \$1,000-\$500, best M, X, A, B, C, D, E & below \$200 each. **Schedule:** late registration 3:00-4:00pm on 12/28, Rds.: 4:30pm on 12/28, 10:00am and 4:00pm on 12/29; 10:00am and 3:00pm on 12/30. Up to two 1/2 byes available. **EF:** \$50 by December 1st, \$70 thereafter. Please make checks payable to Wisconsin Chess Academy and send to Alex Betaneli, PO Box 260122, Madison, WI 53726. All entries will be confirmed over email and posted on [www.wichessacademy.com](http://www.wichessacademy.com) and [www.monroi.com](http://www.monroi.com). **INFO:** [abetaneli@wichessacademy.com](mailto:abetaneli@wichessacademy.com) or [abetaneli@hotmail.com](mailto:abetaneli@hotmail.com), 1-608-334-2574. Boards and sets provided, please bring clocks. **Chess Magnet School JGP.**

## REGIONAL

### Alabama

Oct. 30, Halloween Tornado

4SS, TC: G/75. Frazier UMC, 6000 Atlanta Hwy., Montgomery, AL 36117. **Open (1500+; \$400; b/15):** \$225-100-75; **Reserve (U1500; \$375; b/15):** \$200-100-75. **Late REG:** OCT 30th 8-8:40am. **Rds.:** 9, 11:30, 2:30, 5. **EF:** \$30, if rcdv by OCT 23rd; \$40 at site. **SCH NOVICE (K-8; Not Rated), 5SS, TC: G/20. EF: \$10; \$20 at site. Trophy: Top 3. Rds.:** 9-10-11-12:30-1:30. Checks payable to: Caesar Chess. **ENT:** Caesar Chess LLC, 4524 Southlake Parkway, Suite 34 - PMB 310, Birmingham, AL 35244. **Info:** [Info@CaesarChess.com](mailto:Info@CaesarChess.com), [www.AlabamaChess.com](http://www.AlabamaChess.com).

Nov. 6, Dancing Knights Scholastic

5SS, TC: G/30. Valley Intermediate School, 2200 Hwy 33, Pelham, AL 35124. **OPEN (K-12; Rated):** EF: \$20; **NOVICE (K-8; NR):** EF: \$10; **PRIMARY (K-4; NR):** EF: \$10, if mailed by OCT 30th. **Trophy:** Top 3 Individual, Top Team; Medals 4th - 6th. **Late REG:** NOV. 6th at 8-8:40am. **Rds.:** 9-10-15-12-1:15-2:30. Checks payable to: Caesar Chess. **ENT:** Caesar Chess, 4524 Southlake Parkway, Suite 34-PMB 310, Birmingham, AL 35244. **Info:** [Info@CaesarChess.com](mailto:Info@CaesarChess.com), [www.AlabamaChess.com](http://www.AlabamaChess.com).

## California Northern

Modesto Round Table Chess Club Monthly (Mondays)

Amateur Rating Tournaments (Under 2000 & Beginners), **LOCATION:** 3848 McHenry Ave., Modesto (Meeting Room). **ENTRY:** \$15. **GUARANTEED:** 4pts \$60, 3.5 pts \$45, 3 pts \$30, 2.5 pts \$15. **ALL BYES:** Half Pt. **RDS.:** 7pm. **REG.:** 6pm (1st & 2nd Mondays). **Modesto Chess School:** 6pm. No Club Membership Fee & No Chess Class Fee required. **INFO:** John C. Barnard (209) 450-6133. **Chess Magnet School JGP.**

Oct. 16, SCS Weibel Fall Scholastic Chess Quads #1

Weibel Elementary School, 45135 S. Grimmer Blvd., Fremont, CA. **Info & Entry Form at:** <http://www.calnorthisouthchess.org/Applications/FallQuads10-GP/QuadsFALL10-GP.html>. Open to all scholastic players who are USCF members. Trophies to winners of each Quad. Chess medals to all who do not win a trophy. **Info:** Alan M. Kirschner, Ph.D., [Alan@CalNorthYouthChess.org](mailto:Alan@CalNorthYouthChess.org), (510) 659-0358.

Nov. 20, SCS Weibel Fall Scholastic Chess Quads #2

Weibel Elementary School, 45135 S. Grimmer Blvd., Fremont, CA. **Info & Entry Form at:** <http://www.calnorthisouthchess.org/Applications/FallQuads10-GP/QuadsFALL10-GP.html>. Open to all scholastic players who are USCF members. Trophies to winners of each Quad. Chess medals to all who do not win a trophy. **Info:** Alan M. Kirschner, Ph.D., [Alan@CalNorthYouthChess.org](mailto:Alan@CalNorthYouthChess.org), (510) 659-0358.

Nov. 26, California Class Championship under 1000

5 rounds, G/30. Hyatt Regency SFO Airport, 1333 Bayshore Hwy, Burlingame, CA 94010. **Hotel rate \$89.** **Trophies:** Top 10 players in each section and Top 10 teams in all sections combined (Min. 2 players for a team, top 4 players count for team score). **Onsite Reg.:** 9-9:30a. **Games at 10, 11:30a, Lunch, 1, 2:15, 3:30p. EF:** \$39 mailed by 11/23, online by 11/24, Onsite + \$20, Play-up + \$10.

# Tournament Life

5% off before 10/26. Nov 2010 Supp & TD discretion used to place players accurately. **TD/Org:** McCumiskey, Langland, Azhar. Max two 1/2-pt byes & must commit bef rd 3. **Ent:** Bay Area Chess, 1590 Oakland Rd., Suite B213, San Jose 95131. \$20 for refunds. T: 408-786-5515. E: ask@BayAreaChess.com, **Info/Form/Entries:** BayAreaChess.com/tg10.

**Jan. 14-17 or 15-17, 2nd annual Golden State Open**  
See *Chess Life* or [www.chesstour.com](http://www.chesstour.com).

## California Southern

**Oct. 3, 17, 1st & 3rd Sunday Scholastic Triathlon**  
**2 separate events - each consisting of Chess/Bughouse/Blitz.** 3SS, G/30. 11514 Santa Monica Blvd., LA, 90025, 2nd Fl. 4 blocks W 405. **EF:** \$25 (\$20 LACC memb, \$10 off siblings, Free for new LACC memb). **2 sections:** K-1 and K-12. **Reg.:** 12-1 pm. **Rds.:** 1, 2, 3; then Bughouse (4-5) and Blitz (5-6). **Prizes:** Trophies (Top 3), Medals (next 3) & Disney prizes (every chess player receives a prize). Free BOA & street parking; or basement (\$3). FREE PIZZA & free class (12-1). **Info:** (310) 795-5710 or [www.LACChessClub.com](http://www.LACChessClub.com).

**Nov. 27, American Open Scholastic**  
5-SS, G/45. Open to HS/below. Radisson Hotel LAX, 6225 W Century Blvd., Los Angeles, CA 90045. In 4 sections, **K-12:** trophies top 5, 2 each grades 9-12, 1 each K-8. **K-8:** trophies top 5, 2 each K-8. **K-6:** trophies top 5, 2 each K-6. **K-3:** trophies top 4, 2 each K-3. **EF:** \$16 received by 11/24, \$20 at door. **Reg.:** 9-9:45 **Rds.:** 10-11:30-1-4-30. **Enter:** [www.americanopen.org](http://www.americanopen.org) or American Open, PO Box 205, Monterey Park, CA 91754. **Info:** Randy Hough (626) 282-7412, [randalhough@yahoo.com](mailto:randalhough@yahoo.com).

## Connecticut

**Nov. 12-14 or 13-14, 17th Annual Eastern Chess Congress and Senior**  
See *Chess Life* or [www.chesstour.com](http://www.chesstour.com).

**Nov. 20-21, 7th annual New England Scholastic Championships**  
7SS, G/65. Sheraton Hotel, 1 Bradley Airport (visible at airport entrance), Windsor Locks, CT 06096 (I-91 Exit 40 to Rt 20). Free parking, free airport shuttle. Open to all K-12 students; New England titles limited to players & teams from schools in CT, MA, ME, NH, RI, or VT. Team prizes based on top 4 scores from same school. Teams of 2 or 3 players allowed, but are at a disadvantage. **In 4 sections:** High School (K-12), Middle School (K-8), Elementary (K-5), Primary (K-2). Players face only those in their section. **EF:** HS \$42.75, Middle School \$42.50, Elem \$42.25, Primary \$42 if mailed by 11/12, all \$43 online at [chesstour.com](http://chesstour.com) by 11/16, \$60 at site. **Special 1 year USCF dues with magazine** if paid with entry - online at [chesstour.com](http://chesstour.com), Young Adult (age 24/below) \$20, Scholastic (age 12/below) \$12. Mailed, phoned or paid at site, Young Adult \$25, Scholastic \$15. **Trophies** to top 10 players, top 5 teams, top 3 unrated in each section, top D, E, U1000, U800 (HS), E, U1000, U800 (MS), U1000, U800, U600 (Elem), U700, U500, U300 (Primary). **Free entry** in all Continental Chess Association Swiss tournaments until 6/15/11 to top New England player each section, until 3/15/11 to 2nd New England player each section. **Late reg.** ends Sat 9 am, **rds** Sat 10, 1, 3:45 & 6:30, Sun 9, 12 & 2:45. Awards Sun 5:30 pm. **Half point byes** allowed any round, limit 2 byes, must commit before rd 2. **HR:** 587-87, 860-627-5311, reserve by 11/5 or rate may increase. Car rental: 800-331-1600, use AWD D657633 or reserve car online through [chesstour.com](http://chesstour.com). **Ent:** Continental Chess, PO Box 249, Salisbury Mills, NY 12577. Questions: [www.chesstour.com](http://www.chesstour.com), 845-496-9658. Include school, grade, birth date, USCF ID, address of each player. Advance entries will be posted at [chesstour.com](http://chesstour.com). **Chess Magnet School JGP.**

## Delaware

**Nov. 20, 2010 Mid-Atlantic Girls Chess Championships (MD)**  
See Maryland.

**Dec. 11-12, 2nd Annual Delaware Valley Open Championship (PA)**  
See Grand Prix.

## District of Columbia

**Oct. 23, DC Girls Open**  
4SS, Game/30. US Chess Center, 1501 M St., NW, Washington, DC 20005. **EF:** \$15 if by 10/16, \$20 at site. **Open to any girl in K-12, not only from DC.** \$100 Savings Bond to first place, trophies to top 5 in each of HS, MS and ES. **Reg.:** 12-12:45. (202) 857-4922. [www.chessctr.org](http://www.chessctr.org).

**Oct. 30, National Capital Scholastic Cup**  
4SS, G/30. US Chess Center, 1501 M St., NW, Washington, DC 20005. **Open to any student in K - 12th grade living in DC, Maryland or Virginia.** **EF:** \$20 if by 10/23, \$30 at site. **Reg.:** Noon-12:45. Top 16 players qualify for a series of play-off matches. \$200-100-50-50 savings bonds to champion, finalist and semi-finalists of the play-offs. Trophies to the top 16 and others with the same score as the lowest of the top 16. Champion's name engraved on permanent cup on display at the US Chess Center. <http://www.chessctr.org/Cup.php>. 202/857-4922.

**Nov. 20, 2010 Mid-Atlantic Girls Chess Championships (MD)**  
See Maryland.

**Dec. 11, Rated Beginners Open (RBO)**  
4SS, G/30. US Chess Center, 1501 M St., NW, Washington, DC 20005. Open to players rated under 1200 or unrated. **EF:** \$20 (\$15 if by 12/4). 5 sections by age. **Reg.:** 12-12:45. **Info:** 202/857-4922. [www.chessctr.org/rbo.php](http://www.chessctr.org/rbo.php).

## Florida

**Boca Raton Chess Club**  
**Friday nights, Game 90 Tournament, one game a week for 4 weeks.** [www.bocachess.com](http://www.bocachess.com), 561-479-0351. **Chess Magnet School JGP.**

**Miami Country Day Grand Prix Series**  
Scholastic and Non-Scholastic Sections.  
More info at [www.bocachess.com](http://www.bocachess.com) or call 954-421-8222 or 561-479-0351.

### Palm Beach Gardens Chess Club

Meets every Saturday 9 am till 4 pm. 4-SS Rated Games G/75 or G/120 (Chess Magnet School JGP). Also, Scholastic Games G/30, 4-SS. For more info: see [www.palmbeachchessclub.info](http://www.palmbeachchessclub.info) or call President/TD John Dockery at 561-762-3377.

**Oct. 2, Nov. 6, Dec. 4, St. Petersburg Scholastic**  
5rd Swiss, G/30 USCF RBO 4 Sect. **K-2U400; K-5U500; K-8U700; & K-12U1000;** top 12 in each get trophy; all others get medal. Trophies to top 12 teams. Team (2 or more) - take best four scores from all divisions. **EF:** \$18. SPCC members \$15) Onsite reg. cash or check only 9-10AM. **First round:** 10:15 AM. Sunshine Center, 330 Fifth St. N., St. Petersburg. 60 trophies every event. [www.andrewchess.com](http://www.andrewchess.com) for Paypal preregistration. **Chief Organizer:** Andrew Scherman. 727 822 1171. NS. NC. W.

**Oct. 9, Celebrate National Chess Day at The Weiss School 3rd Annual Scholastic**  
Located at 4176 Burns Rd., Palm Beach Gardens, FL 33410. **K-12, 5 Divisions,** 5-SS, G/30. Trophies for Top 5 Players and Top 5 Teams in each Division. **For more info. see:** [www.palmbeachchessclub.info](http://www.palmbeachchessclub.info) or call President/TD John Dockery at 561-762-3377.

**Oct. 10, Tampa Bay Scholastics**  
1st Church, 2202 E. Busch, Tampa, FL 33617. **Reg.:** 12:30. 4rd, Swiss, G/30 plus 5. **K-1, K-3 EF:** \$10. Top 10 Trophies each. Plus: top 5-FREE entry to next tournament. Team trophies. **K-12 EF:** \$29 or 2-players \$50 (TBCC \$25). \$5 1st-\$150, 2nd-\$100, 3rd-\$75, 4/5th each \$50. Top K-5 \$50. b/20. 1st rd 1pm. Fax, email or call Coach T 813-727-8852.

**Oct. 16, Nov. 13, Dec. 4, CFCC Quick-Chess Quafecta (QC)**  
4 events, 7SS, G/29 (G/25, T/D5), at Casselberry Chess Club (CCC), Wirz Park, 806 Mark David Blvd., Casselberry, FL 32707. **EF:** \$30/event, CFCC/CCC mbr \$25, Masters free (EF deducted from any prize). **\$\$480 b/30,** 160-80-60, Classes B, C, D/under 60 ea. **A fifth \$480 b/30 prize fund given on Dec 4 to cumulative winners.** **Reg:** 9:30am. **Rds.:** 10, 11:15, 1, 2:15, 3:30, 4:45, 6. Ent: CFCC, 921 N. Thistle Ln., Maitland, FL 32751. **Info:** (407) 629-6946 or [www.centralffcc.org](http://www.centralffcc.org). (Past events which are part of this 4 event quafecta occurred on Sept. 25.)

**Nov. 7, Tampa Bay Scholastics**  
1st Church, 2202 E. Busch, Tampa, FL 33617. **Reg.:** 12:30. 4rd, Swiss, G/30 plus 5. **K-1, K-3 EF:** \$10. Top 10 Trophies each. Plus: top 5-FREE entry to next tournament. Team trophies. **K-12 EF:** \$29 or 2-players \$50 (TBCC \$25). \$5 1st-\$150, 2nd-\$100, 3rd-\$75, 4/5th each \$50. Top K-5 \$50. b/20. 1st rd 1pm. Fax, email or call Coach T 813-727-8852.

**Nov. 12-14 or 13-14, 9th Annual Turkey Bowl**  
See Grand Prix.

**Dec. 10-12, 2010 National K-12 Championship**  
See Nationals.

## Illinois

**North American Chess Association**  
USCF and FIDE rated tournaments for amateur players and masters. Creators of eNotate, a USCF approved electronic scoresheet. The only organization that hosts regularly scheduled FIDE title norm tournaments for GM, IM, WGM, and WIM norms. Sevan A. Muradian, International Arbitrator & International Organizer. [www.na chess.org](http://www.na chess.org), [sevan@nachess.org](mailto:sevan@nachess.org), 888.80.CHESS.

**Oct. 15, 2nd annual Midwest Rated Beginners Open (RBO)**  
See *Chess Life* or [www.chesstour.com](http://www.chesstour.com).

**Oct. 15-17 or 16-17, 19th annual Midwest Class Championships**  
See *Chess Life* or [www.chesstour.com](http://www.chesstour.com).

**Oct. 23, 2010 U.S. G/60 Championship**  
See Nationals.

**Oct. 24, 2010 U.S. G/30 Championship**  
See Nationals.

**Nov. 7, 59th Knights Quest**  
4SS, Game/30. Renaissance Chicago North Shore Hotel, 933 Skokie Blvd., Northbrook, IL. Presented by Renaissance Knights Chess Foundation. **USCF Rated Sections: Open** (K-12 & Adults), **U1400** (K-12 & Adults), **U1000** (K-12) & **U600** (K-12). **Awards:** Top five each section, medals all others. **EF:** \$25 by 11/8, \$30 after. \$5 discount to siblings and team members when registering together. **Reg.:** 12:00-12:30 pm. **Rds.:** 1 at 1:00 pm, rest ASAP. **Online Ent/Info:** [www.rknights.org](http://www.rknights.org), David Heiser 773-844-0701. **Mail-in Reg:** Renaissance Knights, PO Box 1074, Northbrook, IL 60065.

**Dec. 12, 60th Knights Quest**  
4SS, Game/30. Renaissance Chicago North Shore Hotel, 933 Skokie Blvd., Northbrook, IL. Presented by Renaissance Knights Chess Foundation. **USCF Rated Sections: Open** (K-12 Adults), **U1400** (K-12 & Adults), **U1000** (K-12) & **U600** (K-12). **Awards:** Top five each section, medals all others. **EF:** \$25 by 12/6, \$30 after. \$5 discount to siblings and team members when registering together. **Reg.:** 12:00-12:30 pm. **Rds.:** 1 at 1:00 pm, rest ASAP. **Online Ent/Info:** [www.rknights.org](http://www.rknights.org), David Heiser 773-844-0701. **Mail-in Reg:** Renaissance Knights, PO Box 1074, Northbrook, IL 60065.

**Dec. 18, Mayor Daley's Holiday Chess Championship**  
Sponsored by Renaissance Knights Chess Foundation. **100 + Trophies & Awards.** 4/SS, Game/30; McCormick Pl., 2301 S. Martin Luther King Dr., Chicago, IL. Come play chess at Mayor Daley's Holiday Sports Festival, America's largest indoor play ground with over one million square feet of fun. This is a great tournament for both beginners & experienced players. **USCF Rated Championship Sections:** Primary (K-2), Elementary (K-5), Middle (K-8), Open (High School, Collegiate & Adults), **Non Rated Reserve Sections:** Primary (K-2), Elementary (K-5), Middle (K-8), Open (High School, Collegiate & Adults). **Awards:** Top 10 individuals each section, Top 2 teams each section (Open: top HS & Collegiate). **EF:** \$14 per player before 11-15; \$17 before 12-1, \$21 after, onsite \$30 (cash only w/ 1st round bye). **Rds.:** 10 AM, 11:30 AM, 1:30 PM & 3:00 PM. **Online Ent/Info:** [www.rknights.org](http://www.rknights.org), David Heiser 773-844-0701. **Mail-in Reg:** Renaissance Knights, PO Box 1074, Northbrook, IL 60065. **HR:** Special discounted at Hyatt Regency McCormick Place (312) 567-1234; men-

tion Mayor's Office of Special Events. **Park:** discounted at McCormick Place lot A.

## Indiana

**Oct. 29-31 or Oct. 30-31, 69th Indiana State Chess Championship**  
See Grand Prix.

## Kentucky

**Oct. 16, The Denny & Susan Sweeney Crum Scholastic Chess Tournament**  
The Potter's House, 314 South Wenzel St., Louisville, KY 40204. Use [www.mapquest.com](http://www.mapquest.com) or call (502) 584-8742 for directions. **SECTIONS:** K/2, K/4, K/6, K/8, K/10 and K/12. The top four winners in each section earn a trophy. This is a rated tournament, four rounds, G/30 and Swiss. U.S.C.F. ([www.uschess.org](http://www.uschess.org)) memberships will be available on site. Please bring your own chess clock and equipment. **EF:** The pre-registration fee is \$15.00 payable to THE POTTER'S HOUSE. The on-site registration fee is \$25.00. Please mail all pre-registration fees to THE POTTER'S HOUSE, 314 South Wenzel Street, Attention: Corbin Seavers, Louisville, KY 40204. All pre-registrations must be post marked October 4, 2010. **START TIME:** Registration is from 9 a.m. to 9:30 a.m. **The first game starts at:** 9:30 a.m. and subsequent rounds as soon as possible. **SCHOLARSHIPS:** Scholastic coaches can contact Mr. Seavers at [urbanlouvillechess@yahoo.com](mailto:urbanlouvillechess@yahoo.com) to apply for a very limited number of free U.S.C.F. scholastic memberships. The application deadline is September 17, 2010.

## Maryland

**Oct. 9, National Chess Day Scholastic Quads (VA)**  
Montessori School of McLean, 1711 Kirby Rd., McLean, VA 22101. **Time Control:** G/30. **EF:** \$20 online by 10/6; \$25 by noon 10/8; \$30 on-site from 1:30-1:45. Check-in is MANDATORY for all pre-registered players, and must be complete by 1:50. Players that have not checked in by 1:50 will not be placed in a quad, even if they signed up in advance. **Rds.:** 2:00pm, then ASAP. **Prizes:** trophy to winner of each quad. See [www.silverknightschess.com](http://www.silverknightschess.com) to register.

**Oct. 30, Halloween Gambit (VA)**  
4SS, G/30. Franklin Sherman Elementary School, 6630 Brawner St., McLean, VA 22101. **Sections:** K-6 U/500, K-12 U/900, K-12 Champ. **EF:** \$25 online by Wed; \$35 on-site 12:00-12:30. **Rds.:** 1:00, then ASAP. **Prizes:** trophies to top individuals & schools; T-shirts to best costumes! **Free game analysis** by NM. See [www.silverknightschess.com](http://www.silverknightschess.com) to register. [cysk@attglobal.net](mailto:cysk@attglobal.net), 410-794-6312. **Chess Magnet School JGP.**

**Nov. 13, Scholastic Quads #2 (VA)**  
Montessori School of McLean, 1711 Kirby Rd., McLean, VA 22101. **Time Control:** G/30. **EF:** \$20 online by Wed; \$30 on-site from 1:30-1:45. Check-in is MANDATORY for all pre-registered players, and must be complete by 1:45. Players that have not checked in by 1:45 will not be placed in a quad, even if they signed up in advance. **Rds.:** 1:45pm, then ASAP. **Prizes:** trophy to winner of each quad. See [www.silverknightschess.com](http://www.silverknightschess.com) to register.

**Nov. 20, 2010 Mid-Atlantic Girls Chess Championships**  
Roland Park Country School, 5204 Roland Ave., Baltimore, MD 21210. Come out and play in an all-girl environment. Open to K-12 girls from all states and DC. In 3 sections: **Championship (Open):** 4-SS, G/65; **Reserve (U800):** 4-SS, G/45; **Novice (U400):** 5-SS, G/30. Number of rounds and time control may change based on number of players. **Prizes:** trophies to top 10 players and top 3 schools in Championship and Reserve; to top 15 players and top 5 schools in Novice. **Check-in:** 9:00-9:50 AM. **Rds.:** Round 1 start: Championship at 9:30, Reserve at 9:45, Novice at 10:00. Subsequent rounds to follow ASAP. **EF:** \$25 by 11/14, \$25 by 11/18, \$30 at door. **Ent:** Online registration at <http://MidAtlanticGirls2010.eventbrite.com>. **Mail** registration: \$20 if received by 11/15; contact Chris Kim for address. USCF membership required - may be purchased at site, or online in advance at [www.USChess.org](http://www.USChess.org). Sets and boards provided; please bring chess clock. Food available for purchase. **Info:** Chris Kim,

**Nov. 21, Silver Knights Chess K-8 Team Tournament (VA)**  
G/30. Our Lady of Good Counsel School, 8601 Wolftrap Rd., Vienna, VA 22182. **Two Sections:** K-8 Rated, K-3 Unrated. **EF:** \$80 per four-player team online by 11/17; \$92 per team by noon 11/19; \$100 on site from 12:00-12:30. **Rds.:** 1-2-3-4. Trophies to top teams in each section. Teams must consist of 4 players from the same school. See [www.silverknightschess.com](http://www.silverknightschess.com) for complete rules and to register.

**Dec. 4, Winter Blast (VA)**  
4SS, G/30. Virginia Run Elementary School, 15450 Martins Hundred Dr., Centreville, VA 20120. **Sections:** K-6 U/500, K-12 U/900, K-12 Champ. **EF:** \$25 online by Wed; \$35 on-site 12:00-12:30. **Rds.:** 1:00, then ASAP. **Prizes:** trophies to top individuals & schools. **Free game analysis** by NM. See [www.silverknightschess.com](http://www.silverknightschess.com) to register.

## Nevada

**Dec. 26-29 or 27-29, 20th annual North American Open**  
See *Chess Life* or [www.chesstour.com](http://www.chesstour.com).

## New Jersey

**Geller Quads - First Friday Every Month!**  
New Jersey Children's Chess School, 862 DeGraw Ave., Forest Hill (Newark), NJ 07104. Open to K-8. 3-RR, G/30. **Reg.:** 6:30PM. **Rds.:** 7-8-8:50PM. Chess classes meet every Friday 6:30-9PM. Chess camp "Geller Kids" meets July & August, day & overnight. **Website:** [www.kidsshesscamp.com](http://www.kidsshesscamp.com). Email: [chesscamp1@hotmail.com](mailto:chesscamp1@hotmail.com). Phone: 973-483-7927.

**Oct. 9, Princeton Day School National Chess Day**  
650 The Great Road. Plaques to top 3 school teams and top 6 in each section. Medals to all players. Four sections for OVER 1000 begin at 10:15 and must preregister: **OVER 1600** (K-12), **NEAR MASTERS** (K-12 over 1400) and **FUTURE MASTERS** (Players K-12 over 1200) G/60, 3 rds. **CLOSED** (K-12 1000-

1200) G/45 4 rds. **ALL OTHER SECTIONS.** G/30 4 rds. beginning at 12:00 noon. (round times will be accelerated if possible): **OPEN** (Players K-12 U-1000), **RESERVE** (K-12 U-800), **NOVICE II** (K-8 U-600), **NOVICE I** (unrated K-6), **K-1** (unrated) **NO SCORE K-1** (unrated). **PARENTS OF PLAYERS** rated G/30 3 rounds. Pre-registration online, pay at the door \$35. On-site 11-12 noon \$45. **Info and register online:** www.pds.org/ chess. Inquires to Bonnie Waitzkin Chessteach@gmail.com.

#### Oct. 16, Kens Club Quads (some noise) G/60

Adults/teens, Somerset Ramada Inn, 60 Cottontail Ln., Exit 12 off I-287, Somerset. **Reg.:** by 10:45 am. **1st Round** - 11am, then ASAP. **EF:** \$21 early at entryfeesrus.com or \$20 cash at site. **Prizes:** \$50. Ken at acn@goes.com or 908-763-6468.

#### Oct. 16, Kens Kids Club K-8 Swiss

Somerset Ramada Inn, 60 Cottontail Ln., Somerset, Exit #12 off I-287. All Cash prizes b/10 per section. Prizes per section increase \$20 with each paid entry over 10. **Hot Shots:** U1700, 4SS G/45, \$100-50. **Checkmates:** U1300, 4SS G/45, \$100-50. **New Stars:** U1000, 5SS G/30, \$100-50. **Chess Pirates:** U600, 5SS G/30, \$100-50. Player's highest life-time is used. **EF:** \$29 online at entryfeesrus.com. **EF:** \$35 in cash at Hotel. **Reg.:** by 10:45am. **Rds.:** 11am then ASAP, with lunch break. **Info:** Ken at acn@goes.com or 908-763-6468.

#### Oct. 16, Saturday Scholastic (K-8)

4 RR, G/45 t/d5. 1st round 11 AM. All the King's Men Chess & Games Center (Just 20 mins. from Center City Philadelphia), 62 S. Broadway, Pitman, NJ, 856-582-8222. **EF:** Online \$20, members \$18. Onsite: \$22.50, members \$20. Includes FREE pizza & soda. **Prizes:** Trophies top 4, medal top K-3. **Reg.:** 10 -10:30 on-site, or pre-register at www.YourChessSet.com/kidswiss.

#### Oct. 22-24 or 23-24, Boardwalk Open

See *Chess Life* or www.chesstour.com.

#### Oct. 23, Super Saturday Swiss K-8 and Adult/HS Quads (some noise)

Holiday Inn, 195 Davidson Ave., Somerset, NJ. Exit #10 off I-287, Easton Ave. **K-8 Swiss:** 5SS, G/30, 4 Sec. K-8, U1500, U1200, U900, U600. \$100-50 b/10, Trophies top 5, Awards to all. If below 5 entries in section it becomes a quad or merges. **EF:** \$29 by mail or online (entryfeesrus.com), \$35 cash at Site. Highest lifetime rating is used. New players age 12 get free USCF dues. All regular players get free USCF dues. (see entryfeesrus.com for details). **Adult Quads:** G/60, **EF:** \$20 cash at site, **GSS:** \$50 to \$80. Details on website. **Reg.:** to 10:45am, starts at 11am. Then ASAP with lunch break.

#### Oct. 30, Kens Club Quads (some noise) G/60

**NOTE VENUE CHANGE:** Holiday Inn, 195 Davidson Ave., Somerset. Exit #10 off I-287 (Easton Ave.). Adults/teens. **Reg.:** by 10:45 am. **1st Round** - 11am, then ASAP. **EF:** \$21 early at entryfeesrus.com or \$20 cash at site. **Prizes:** \$50. Ken at acn@goes.com or 908-763-6468.

#### Oct. 30, Kens Kids Club K-8 Swiss

**NOTE VENUE CHANGE:** Holiday Inn, 195 Davidson Ave., Somerset. (Exit #10 off I-287 (Easton Ave)). All Cash prizes b/10 per section. Prizes per section increase \$20 with each paid entry over 10. **Hot Shots:** U1700, 4SS G/45, \$100-50. **Checkmates:** U1300, 4SS G/45, \$100-50. **New Stars:** U1000, 5SS G/30, \$100-50. **Chess Pirates:** U600, 5SS G/30, \$100-50. Player's highest life-time is used. **EF:** \$29 online at entryfeesrus.com. **EF:** \$35 in cash at Hotel. **Reg.:** by 10:45am. **Rds.:** 11am then ASAP, with lunch break. **Info:** Ken at acn@goes.com or 908-763-6468.

#### Oct. 30, Princeton Day School

650 The Great Road. Plaques to top 3 school teams and top 6 in each section. Medals to all players. Four sections for OVER 1000 begin at 10:15 and must preregister: **OVER 1600** (K-12), **NEAR MASTERS** (K-12 over 1400) and **FUTURE MASTERS** (Players K-12 over 1200) G/60, 3 rds. **CLOSED** (K-12 1000-1200) G/45 4 rds. **ALL OTHER SECTIONS.** G/30 4 rds. beginning at 12:00 noon. (round times will be accelerated if possible): **OPEN** (Players K-12 U-1000), **RESERVE** (K-12 U-800), **NOVICE II** (K-8 U-600), **NOVICE I** (unrated K-6), **K-1** (unrated) **NO SCORE K-1** (unrated). **PARENTS OF PLAYERS** rated G/30 3 rounds. Pre-registration online, pay at the door \$35. On-site 11-12 noon \$45. **Info and register online:** www.pds.org/ chess. Inquires to Bonnie Waitzkin Chessteach@gmail.com.

#### Nov. 5-7, 2010 National Youth Action

See Nationals.

#### Nov. 6, 1st Saturday Scholastic (K-8)

4 RR, G/45 t/d5. 1st round 11 AM. All the King's Men Chess & Games Center (Just 20 mins. from Center City Philadelphia), 62 S. Broadway, Pitman, NJ, 856-582-8222. **EF:** Online \$20, members \$18. Onsite: \$22.50, members \$20. Includes FREE pizza & soda. **Prizes:** Trophies top 4, medal top K-3. **Reg.:** 10 -10:30 on-site, or pre-register at www.YourChessSet.com/kidswiss.

#### Nov. 13, Super Saturday Swiss K-8 and Adult/HS Quads (some noise)

Holiday Inn, 195 Davidson Ave., Somerset, NJ. Exit #10 off I-287, Easton Ave. **K-8 Swiss:** 5SS, G/30, 4 Sec. K-8, U1500, U1200, U900, U600. \$100-50 b/10, Trophies top 5, Awards to all. If below 5 entries in section it becomes a quad or merges. **EF:** \$29 by mail or online (entryfeesrus.com), \$35 cash at Site. Highest lifetime rating is used. New players age 12 get free USCF dues. All regular players get free USCF dues. (see entryfeesrus.com for details). **Adult Quads:** G/60, **EF:** \$20 cash at site, **GSS:** \$50 to \$80. Details on website. **Reg.:** to 10:45am, starts at 11am. Then ASAP with lunch break.

#### Nov. 14, Greater Philadelphia Elementary Championships (PA)

Radnor Middle School, 150 Louella Ave., Wayne, PA 19087. **Sections:** K-1, K-3, K-6; see website for unrated sections. Time Control: 5SS, G/30. **EF:** \$30 online by 11/10; \$35 by noon 11/12; \$40 on-site from 8:45-9:15. **Rds.:** 10-11:15-12:40-1:50-3:00. **Prizes:** trophies to top individuals & schools; all players receive a participation trophy or T-shirt. **Free game analysis** by NM Peter Minear. See www.silverknightschess.com to register.

#### Nov. 20, 2010 Mid-Atlantic Girls Chess Championships (MD)

See Maryland.

#### Nov. 20, Greater Philadelphia Middle School/High School Championships (PA)

Horsham Community Center, 1025 Horsham Rd., Horsham, PA 19044. **Sections:** K-12, K-8, K-12 U/1000. Time Control: 4SS, G/60. **EF:** \$30 online by 11/17; \$35 by noon 11/19; \$40 on-site from 9:00-9:30. **Rds.:** 10-12:15-2:15-4:15. **Prizes:** trophies to top individuals & schools. **Free game analysis** by NM Adam Weissbarth. **Winner of K-12** is seeded into Greater Philadelphia Junior Invitational.

See www.silverknightschess.com to register.

#### Nov. 20, King's Chess Club Quads

Morning quads and afternoon quads. G/30, K-12. Bethlehem Church, 758 Route 10, Randolph, NJ 07869. **EF:** None. **Reg.:** 9:20-2am., 1st rd. 9:40. Arrive by noon to reg. only for afternoon quads. Medal to each quad winner. **Info:** Bethlehem Church 973-366-3434 or Bob McAdams 973-694-3988, rwm@fambright.com.

#### A State Championship Event!

##### Nov. 21, New Jersey K-12 Grade Championship

5SS, G/30. Brookdale College, 765 Newman Springs Rd., Lincoln, NJ 07738. Student Life Center, use Parking Lot #7 or #6; 4 miles from Garden State Parkway exit 109. **13 Sections:** Play only in your grade! **MORE TROPHIES!!!** Grades K-6; Trophies to top 15 individuals, top 5 teams - top 3 from each school/grade; 50% of players receive trophy or medal! Grades 7-12: Trophies to top 10 individuals, top 5 teams; **Rds.:** 10am and ASAP. **EF:** \$35 by 11/13, \$55 at site. USCF mem req'd. **Reg.:** 8-9:00am. After 9:00am 1/2 pt by rd 1. **Info:** 732 259-3881, hsprechman@characterkings.org. **Ent:** Please make checks payable to NJSCF and send to NJSCF, PO Box 1511, Jackson, NJ 08857. Entries must include name, grade school, date of birth, USCF ID # & expiration, mailing address, phone number & entry fee, please include email address. The 1st Place player and team from NJ in each grade will be recognized as the NJ Champion for that grade! Chess sets and boards will be provided! **Please bring a chess clock!**

##### Dec. 4, 1st Saturday Scholastic (K-8)

4 RR, G/45 t/d5. 1st round 11 AM. All the King's Men Chess & Games Center (Just 20 mins. from Center City Philadelphia), 62 S. Broadway, Pitman, NJ, 856-582-8222. **EF:** Online \$20, members \$18. Onsite: \$22.50, members \$20. Includes FREE pizza & soda. **Prizes:** Trophies top 4, medal top K-3. **Reg.:** 10 -10:30 on-site, or pre-register at www.YourChessSet.com/kidswiss.

##### Dec. 4, The Greater Princeton Championship

Princeton Day School, 650 The Great Road. Trophies to top 3 school teams and top 6 in each section. Souvenir trophies to all players. Four sections for OVER 1000 begin at 10:15 and must preregister: **OVER 1600** (K-12), **NEAR MASTERS** (K-12 over 1400) and **FUTURE MASTERS** (Players K-12 over 1200) G/60, 3 rds. **CLOSED** (K-12 1000-1200) G/45 4 rds. **ALL OTHER SECTIONS.** G/30 4 rds. beginning at 12:00 noon. (round times will be accelerated if possible): **OPEN** (Players K-12 U-1000), **RESERVE** (K-12 U-800), **NOVICE II** (K-8 U-600), **NOVICE I** (unrated K-6), **K-1** (unrated) **NO SCORE K-1** (unrated). **PARENTS OF PLAYERS** rated G/30 3 rounds. Pre-registration online, pay at the door \$40. On-site 11-12 noon \$50. **Info and register online:** www.pds.org/chess. Inquires to Bonnie Waitzkin Chessteach@gmail.com.

##### Dec. 11-12, 2nd Annual Delaware Valley Open Championship (PA)

See Grand Prix.

## New York

##### Oct. 16, Marshall Saturday U1800

4SS, G/45. Marshall cc, 23 W. 10th St., NYC. 212 477-3716. **(\$300 b/20)** \$120-70-50, U1500 \$60. **EF:** \$40, members \$20. **Reg.:** 12:15-12:45AM. **Rds.:** 1-2:45-4:30-6:15. **Note:** Only one bye available, request at entry.

##### Nov. 20, 2010 Mid-Atlantic Girls Chess Championships (MD)

See Maryland.

##### Nov. 20, Marshall Saturday U1800

4SS, G/45. Marshall CC, 23 W. 10th St., NYC. 212 477-3716. **(\$300 b/20)** \$120-70-50, U1500 \$60. **EF:** \$40, members \$20. **Reg.:** 12:15-12:45AM. **Rds.:** 1-2:45-4:30-6:15. **Note:** Only one bye available, request at entry.

##### Nov. 27, Marshall Saturday U1600

4SS, G/45. Marshall cc, 23 W. 10th St., NYC. 212 477-3716. **(\$300 b/20)** \$120-70-50, U1300 \$60. **EF:** \$40, members \$20. **Reg.:** 12:15-12:45AM. **Rds.:** 1-2:45-4:30-6:15. **Note:** Only one bye available, request at entry.

##### Dec. 6-Jan. 3, Marshall Monday Under 1600

5SS, G/90. Marshall Chess Club, 23 W 10th St, NYC 212 477-3716. **EF:** \$40, members \$20. **(\$300 b/20):** \$120-70-50, U1300 \$60. **Reg.:** 6:15-6:45. **Rds.:** 7 PM each Monday. Byes OK, limit 2, request by rd 3. **Chess Magnet School JGP.**

##### Dec. 26-28 or 27-28, 29th Empire City Open

See *Chess Life* or www.chesstour.com.

#### A Heritage Event!

##### Feb. 26-27, 44th annual New York State Scholastic Championships

Open to grades K-12 in any state (top NYS player & team in each section are NY champions). Saratoga Hilton, 534 Broadway (I-87 Exit 13-N, 4 miles north on US 9), Saratoga Springs, NY 12866. Team prizes based on top 4 scores from same school; no combined school teams allowed even if one school "feeds" another. Teams of 2 or 3 players allowed, but are at a disadvantage. In 8 sections, each is a 6SS, G/65 except K-1 is 5SS, G/35 playing Feb 27 only. **High School**, open to all in grades K-12. **EF** \$38.20 mailed by 2/4. Top NYS grade 9-12 qualifies for Denker Tournament of HS Champions. **High School Reserve**, open to K-12 under 1200 or unrated. **EF** \$38 mailed by 2/4. **Junior High**, open to all in grades K-9. **EF** \$37.90 mailed by 2/4. **Middle School Reserve**, open to K-8 under 1000 or unrated. **EF** \$37.80 mailed by 2/4. **Elementary**, open to all in grades K-6. **EF** \$37.60 mailed by 2/4. **Elementary Reserve**, open to grades K-5 under 800 or unrated. **EF** \$37.50 mailed by 2/4. **Primary**, grades K-3. **EF** \$37.30 mailed by 2/4. **K-1**, grades K-1. **EF** \$37.10 mailed by 2/4. **Postmarked 2/5-15:** All **EF** \$10 more. Do not mail entry after 2/15. **Online at chesstour.com, all sections:** **EF** \$40 by 2/4, \$50 by 2/21. No online entry after 2/21. **Phoned to 406-896-2038, all sections:** **EF** \$45 by 2/4, \$55 by 2/21. No phone entry after 2/21. **Entry at site:** all \$60. **Trophies** to top 15 players and top 7 teams each section, top 3 unrated in Primary, K-1, and each reserve section, and top U1500, U1300 (HS), U900, U700 (HS Reserve), U1200, U1000 (JHS), U700, U500 (MS Reserve), U1000, U800 (Elem), U500, U300 (Elem Reserve). Speed playoff if perfect score tie. **Free entry** to NY State Championship, Labor Day weekend 2011 (Albany), to top player each section. **Schedule:** Late reg. ends Sat 9 am, rds Sat 10, 1, 4, 7, Sun 10, 1, awards 3:30. **K-1 schedule:** Late reg. ends Sun 9 am, rds Sun 10, 12, 1:30, 3, 4:30, awards 5:45. **Half point byes** OK all, limit 2, must commit before rd 2. **HR:** \$119-119, 888-999-4711, 518-584-4000, reserve by 2/12 or rate may increase. 48 hours notice required for room cancellation. Backup hotel: Courtyard by Marriott, 2 blocks away, 518-226-0538. **Special car rentals:** Avis, 800-331-1600, use AWD #657633. **Mail entry:** Continental Chess, PO Box 249, Salisbury Mills NY 12577. Include name, rating, USCF ID, USCF expiration (non-

members enclose dues), section, school, grade, birth date, address of each player. Checks payable to Continental Chess. **\$15 per player** service charge for refunds. **\$10 extra** to switch sections, all substitutions from advance list charged \$60. **Questions:** chesstour.com, 845-496-9658. Bring set, board, clock if possible- none supplied. **Chess Magnet School JGP (except K-1).**

## North Carolina

##### Feb. 18-20, 2011 NC K-12 & Collegiate Chess Championship

Largest Chess Event in NC, First Time Tournament Players Welcome! **8 Main Event Sections** plus Blitz, Bughouse, Master Simul, and Adult Side Sections. Over 300 **Awards:** Scholarship \$\$\$, H.S. Denker Entry, Section Trophies, Class Trophies, Top Female Trophies, and Metals. **Visit:** ChessAchieves.com. (919) 272-8017. Site: Raleigh Convention Center.

## Ohio

#### A State Championship Event!

##### Nov. 20, 2010 Ohio Grade Level Championships

5-SS, 13 separate sections for each grade. Open to students enrolled in Ohio schools in grades K-12 or home schooled in Ohio in same grades, age 19 and under. **The Bertram Inn and Conference Center, 600 North Aurora Rd., Aurora, OH, 44202. HR:** \$85, up to 4 per room, (330) 995-0200. **EF:** \$25 if received by 11-10, \$35 after. Free and reduced lunch students \$10. **No on-site registrations. Schedule:** Announcements 9:45am, First Rd. 10am all sections. **K-2:** All Rds G/30, est. finish 3:30pm. **3-6:** Rds. 1-4 G/30, Rd 5 G/45, est. finish 6pm. **7-12:** Rds 1-4, G/45, Rd 5 G/60, est. finish 8pm. **Awards:** Trophies to all scoring 3.5 or more, top three teams each section. Medals to non trophy winners, grades K-8. **Contact:** Michael Joelson, 216-321-7000, mdjoelson@aol.com. **Info, forms:** www.progresswithchess.org.

## Pennsylvania

##### Oct. 9, MasterMinds CC Scholastic Swiss

**EF:** \$15, ASAP \$5 rec'd by Thursday before, \$25 at the door. **3 sections: Open** 3SS G/60, **Rds.:** 10-12:30-3; 1st, 2nd, 3rd, top under 1200, top unrated; U1100 -1st, 2nd, 3rd, top under 800, top unrated & **U750K-6** - 1st, 2nd, 3rd, top under 600, top under 400, top unrated 4SS, G/40. **Rds.:** 10, 11:45, 2, 3:45. 1st & 2nd school & club trophies. **All Reg.** ends 9:30am. Free parking on site! **Ent:** MasterMinds CC, 36 E. Hottler St., Philadelphia, PA 19119. Checks made payable to: MasterMinds CC. **Info:** Bradley Crabie, 215-844-3881, info@mastermindchess.org or www.mastermindchess.org.

#### A State Championship Event!

##### Oct. 16, 2010 PA State Championship Scholastics

4SS, G/40. Warminster Rec & Edu Ctr, 1101 Little Ln., Warminster, PA 18974. **2 Sections: K-12 Open. K-6 U700.** All: Trophies to top 5 & top unrated in each section. Trophies to top 2 schools & top 2 clubs (top 4 scores over both sections). **EF:** \$15 by 10/9, \$25 later. PSCF req'd, OSA. **Reg:** ends 9:30 am. **Rds.:** 10-11:30-1-2:30. **Info:** 267-237-6212, letetfs@yahoo.com. **Ent:** MasterMinds Chess Club, 6929 Sherman St., Philadelphia, PA 19119. W.

##### Oct. 16-17, 2010 Ira Lee Riddle Memorial PA State Champ.

See Grand Prix.

##### Oct. 22, Doylestown Scholastic Quads

Doylestown Activity Center, 425 Wells Rd., Doylestown, PA 18901. **Time Control:** G/30. **EF:** \$20 online by the day before the event; \$30 on-site by 5:45pm. Check-in is MANDATORY for all pre-registered players, and must be complete by 5:55pm. Players that have not checked in by 5:55 will not be placed in a quad, even if they signed up in advance. **Rds.:** 6:00pm, then ASAP. **Prizes:** trophy to winner of each quad. See www.silverknightschess.com to register.

##### Oct. 24, PCL October Quick Quads (QC)

3RR, G/15. Wm. Pitt Union, Univ. of Pittsburgh, 5th & Bigelow, Pittsburgh, PA 15213. **EF:** \$10, \$7 juniors. \$20 to 1st/quad **Reg.:** 11-11:15am. **Rds.:** 11:30am-Noon-12:30pm. **Info:** martinak\_tom\_m@hotmail.com, 412-908-0286. W.

##### Oct. 25, Perkiomen Valley Scholastic Quads

PVSD South Elementary School, 200 East Third Ave., Collegeville, PA 19426. **Time Control:** G/30. **EF:** \$20 online by the day before the event; \$30 on-site by 5:45pm. Check-in is MANDATORY for all pre-registered players, and must be complete by 5:55pm. Players that have not checked in by 5:55 will not be placed in a quad, even if they signed up in advance. **Rds.:** 6:00pm, then ASAP. **Prizes:** trophy to winner of each quad. See www.silverknightschess.com to register.

##### Oct. 27, Chadds Ford Scholastic Quads

Chadds Ford Elementary School, 3 Baltimore Pike, Chadds Ford, PA 19317. **Time Control:** G/30. **EF:** \$20 online by the day before the event; \$30 on-site by 5:45pm. Check-in is MANDATORY for all pre-registered players, and must be complete by 5:55pm. Players that have not checked in by 5:55 will not be placed in a quad, even if they signed up in advance. **Rds.:** 6:00pm, then ASAP. **Prizes:** trophy to winner of each quad. See www.silverknightschess.com to register.

##### Oct. 31, Halloween Gambit

4SS, G/30. Wayne Elementary School, 651 W. Wayne Ave., Wayne, PA 19087. **Sections:** K-6 U/500, K-12 U/900, K-12 Champ. **EF:** \$25 online by Wed; \$35 on-site 12:00-12:30. **Rds.:** 1:00, then ASAP. **Prizes:** trophies to top individuals & schools; T-shirts to best costumes! **Free game analysis** by NM. See www.silverknightschess.com to register.

##### Nov. 5, Doylestown Scholastic Quads

Doylestown Activity Center, 425 Wells Rd., Doylestown, PA 18901. **Time Control:** G/30. **EF:** \$20 online by the day before the event; \$30 on-site by 5:45pm. Check-in is MANDATORY for all pre-registered players, and must be complete by 5:55pm. Players that have not checked in by 5:55 will not be placed in a quad, even if they signed up in advance. **Rds.:** 6:00pm, then ASAP. **Prizes:** trophy to winner of each quad. See www.silverknightschess.com to register.

##### Nov. 10, Chadds Ford Scholastic Quads

Chadds Ford Elementary School, 3 Baltimore Pike, Chadds Ford, PA 19317. **Time Control:** G/30. **EF:** \$20 online by the day before the event; \$30 on-site by 5:45pm. Check-in is MANDATORY for all pre-registered players, and must be complete by 5:55pm. Players that have not checked in by 5:55 will not be placed in a quad, even if they signed up in advance. **Rds.:** 6:00pm, then ASAP. **Prizes:** trophy to winner of each quad. See www.silverknightschess.com to register.

# Tournament Life

## Nov. 12, Friday Night Action #23

4SS, G/30. Belmont Park Classroom, 200 Anderson Rd., King of Prussia, PA 19406. **EF:** \$20 online; \$30 on-site 6:30-6:45. **Rds.:** 7:00, then ASAP. **Prizes:** \$100 to 1st, \$50 to 1st in lower half. Register at [www.silverknightschess.com](http://www.silverknightschess.com). Registration limited to first 24 players.

## Nov. 13, 9th Annual Horizons for Youth Scholastic Fall Chess Tournament

5SS, G/30. Northampton Community College, 3835 Green Pond Rd., Main Campus, College Center Building, Bethlehem, PA 18020. **Reg.:** 7:30-8:45am, **Rds.:** 9:30, 11, 12:30, 2, 3:30. Rated Section Age 18 and under. Non-Rated Sections ages 14 and under. **EF:** \$30 postmarked by November 10th, \$35 later & on site. **Prizes:** Rated-Trophies-1st, 2nd, 3rd, 4th U1400, U1200, U1000, U800, U600, UNR. Non-Rated Trophies b/o age. For rated section, please bring chess equipment. Random draw prizes between rounds. **Ent:** Online reg: forms at <http://www.northampton.edu/Community-Programs/Horizons-For-Youth/Special-Events-and-Partnerships.htm> or call Horizons for Youth at 610-861-4120. Please print and mail form with payment (CC or check) to Horizons for Youth, 3835 Green Pond Rd., Bethlehem, PA 18020. **Info:** Maudell 610-861-4120, Scott Zrinski (TD), sazrinski@gmail.com or Bruce Davis (Chief TD), BDavis@lehigh-valleychess.org.

## Nov. 13, MasterMinds CC Scholastic Swiss

**EF:** \$15, ASAP \$5 rec'd by Thursday before, \$25 at the door. **3 sections: Open** 3SS G/60, **Rds.:** 10-12:30-3; 1st, 2nd, 3rd, top under 1200, top unrated; U1100 -1st, 2nd, 3rd, top under 800, top unrated & **U750K-6** -1st, 2nd, 3rd, top under 600, top under 400, top unrated 4SS, G/40. **Rds.:** 10, 11:45, 2, 3:45. 1st & 2nd school & club trophies. **All Reg.** ends 9:30am. Free parking on site! **Ent:** MasterMinds CC, 36 E. Horticter St., Philadelphia, PA 19119. Checks made payable to: MasterMinds CC. **Info:** Bradley Crable, 215-844-3881, info@mastermindchess.org or [www.mastermindchess.org](http://www.mastermindchess.org).

## Nov. 14, Greater Philadelphia Elementary Championships

Radnor Middle School, 150 Louella Ave., Wayne, PA 19087. **Sections:** K-1, K-3, K-6; see website for unrated sections. Time Control: 5SS, G/30. **EF:** \$30 online by 11/10; \$35 by noon 11/12; \$40 on-site from 8:45-9:15. **Rds.:** 10-11:15-12:40-1:50-3:00. **Prizes:** trophies to top individuals & schools; all players receive a participation trophy or T-shirt. **Free game analysis** by NM Peter Minear. See [www.silverknightschess.com](http://www.silverknightschess.com) to register.

## Nov. 14, PCL November Quick Quads (QC)

3RR, G/15. Wm. Pitt Union, Univ. of Pittsburgh, 5th & Bigelow, Pittsburgh, PA 15213. **EF:** \$10, \$7 juniors. \$20 to 1st/quad. **Reg.:** 11-11:15am. **Rds.:** 11:30am-Noon-12:30pm. **Info:** martinak\_tom\_m@hotmail.com, 412-908-0286. W.

## Nov. 15, Perkiomen Valley Scholastic Quads

PVSD South Elementary School, 200 East Third Ave., Collegeville, PA 19426. **Time Control:** G/30. **EF:** \$20 online by the day before the event; \$30 on-site by 5:45pm. Check-in is MANDATORY for all pre-registered players, and must be complete by 5:55pm. Players that have not checked in by 5:55 will not be placed in a quad, even if they signed up in advance. **Rds.:** 6:00pm, then ASAP. **Prizes:** trophy to winner of each quad. See [www.silverknightschess.com](http://www.silverknightschess.com) to register.

## Nov. 20, 2010 Mid-Atlantic Girls Chess Championships (MD)

See Maryland.

## Nov. 20, 2010 PA State Game/15 Championship (QC)

See Grand Prix.

## Nov. 20, Greater Philadelphia Middle School/High School Championships

Horsham Community Center, 1025 Horsham Rd., Horsham, PA 19044. **Sections:** K-12, K-8, K-12 U/1000. Time Control: 4SS, G/60. **EF:** \$30 online by 11/17; \$35 by noon 11/19; \$40 on-site from 9:00-9:30. **Rds.:** 10-12:15-2:15-4:15. **Prizes:** trophies to top individuals & schools. **Free game analysis** by NM Adam Weissbarth. **Winner of K-12** is seeded into Greater Philadelphia Junior Invitational. See [www.silverknightschess.com](http://www.silverknightschess.com) to register.

## Nov. 26, National Chess Congress Under 13 Novice

5SS, G/35 in one section, open to under 1000 or unrated born after 11/26/97. Sheraton Hotel Philadelphia City Center (see National Chess Congress). **EF:** \$25 online at chessour.com by 11/22 or mailed by 11/18, \$40 at site. **Special 1 year USCF dues** if paid with entry, including paper magazine: Scholastic \$15, Young Adult \$20. **Trophies** to top 5, top 2 each Under 800, Under 600, Under 400, Unrated. **Reg.** ends Fri 11 am, rds. 12, 1:45, 3:15, 4:45, 6:30. Unofficial uschess.org ratings usually used if otherwise unrated. Half point bye available rd 1. **Ent:** Continental Chess, PO Box 249, Salisbury Mills, NY 12577. **NO RE-FUNDS:** advance entries who withdraw without play may apply fee towards a future tournament.

## Nov. 26-28 or 27-28, 41st annual National Chess Congress

See *Chess Life* or [www.chessour.com](http://www.chessour.com).

## Dec. 3, Doylestown Scholastic Quads

Doylestown Activity Center, 425 Wells Rd., Doylestown, PA 18901. **Time Control:** G/30. **EF:** \$20 online by the day before the event; \$30 on-site by 5:45pm. Check-in is MANDATORY for all pre-registered players, and must be complete by 5:55pm. Players that have not checked in by 5:55 will not be placed in a quad, even if they signed up in advance. **Rds.:** 6:00pm, then ASAP. **Prizes:** trophy to winner of each quad. See [www.silverknightschess.com](http://www.silverknightschess.com) to register.

## Dec. 5, December Crush

4SS, G/30. Wayne Elementary School, 651 W. Wayne Ave, Wayne, PA 19087. **Sections:** K-6 U/500, K-12 U/900, K-12 Champ. **EF:** \$25 online by Wed; \$35 on-site 12:00-12:30. **Rds.:** 1:00, then ASAP. **Prizes:** trophies to top individuals & schools. **Free game analysis** by NM. See [www.silverknightschess.com](http://www.silverknightschess.com) to register.

## Dec. 5, PCL December Quick Quads (QC)

3RR, G/15. Wm. Pitt Union, Univ. of Pittsburgh, 5th Ave. & Bigelow, Pittsburgh, PA 15213. **EF:** \$10, \$7 Jrs. \$20 to 1st/quad. **Reg.:** 11-11:15am. **Rds.:** 11:30am-Noon-12:30pm. **Info:** martinak\_tom\_m@hotmail.com, 412-908-0286. W.

## Dec. 6, Perkiomen Valley Scholastic Quads

PVSD South Elementary School, 200 East Third Ave., Collegeville, PA 19426. **Time Control:** G/30. **EF:** \$20 online by the day before the event; \$30 on-site by 5:45pm. Check-in is MANDATORY for all pre-registered players, and must be complete by 5:55pm. Players that have not checked in by 5:55 will not be placed in a quad, even if they signed up in advance. **Rds.:** 6:00pm, then ASAP. **Prizes:** trophy to winner of each quad. See [www.silverknightschess.com](http://www.silverknightschess.com) to register.

## Dec. 8, Chadds Ford Scholastic Quads

Chadds Ford Elementary School, 3 Baltimore Pike, Chadds Ford, PA 19317. **Time Control:** G/30. **EF:** \$20 online by the day before the event; \$30 on-site by 5:45pm. Check-in is MANDATORY for all pre-registered players, and must be complete by 5:55pm. Players that have not checked in by 5:55 will not be placed in a quad, even if they signed up in advance. **Rds.:** 6:00pm, then ASAP. **Prizes:** trophy to winner of each quad. See [www.silverknightschess.com](http://www.silverknightschess.com) to register.

## Dec. 11, MasterMinds CC Scholastic Swiss

**EF:** \$15, ASAP \$5 rec'd by Thursday before, \$25 at the door. **3 sections: Open** 3SS G/60, **Rds.:** 10-12:30-3; 1st, 2nd, 3rd, top under 1200, top unrated; U1100 -1st, 2nd, 3rd, top under 800, top unrated & **U750K-6** -1st, 2nd, 3rd, top under 600, top under 400, top unrated 4SS, G/40. **Rds.:** 10, 11:45, 2, 3:45. 1st & 2nd school & club trophies. **All Reg.** ends 9:30am. Free parking on site! **Ent:** MasterMinds CC, 36 E. Horticter St., Philadelphia, PA 19119. Checks made payable to: MasterMinds CC. **Info:** Bradley Crable, 215-844-3881, info@mastermindchess.org or [www.mastermindchess.org](http://www.mastermindchess.org).

## Dec. 11-12, 2nd Annual Delaware Valley Open Championship

See Grand Prix.

## Jan. 14-17, 15-17 or 16-17, 43rd annual Liberty Bell Open

See *Chess Life* or [www.chesstour.com](http://www.chesstour.com).

## Rhode Island

### Oct. 2 & Oct. 30, Cumberland (Oct. 2) & Warwick (Oct. 30) BK Tournaments

4SS, G/30. **Trophies top 3 in each Section:** 11 U & 14 U (unrated), Open (rated). **EF:** \$12 Advance, \$15 at site. **Register online** at [www.richess.org](http://www.richess.org), email: [rhodeislandchess@yahoo.com](mailto:rhodeislandchess@yahoo.com), phone: (401)359-1602.

## South Carolina

### Oct. 30, 2010 Greenville Scholastic Open

(12 trophies and Participation Medal for All) 5 SS, G/30. **EF:** \$10, \$15 if received after Oct 26th. Trophies to 1st-3rd for each 4 divs. K-2; K-4; K-6; K-8. Div. may be adjusted if needed. **Reg.:** 8-8:45. **Rds.:** 5 Rds; Rd1 9:10; Site: St. Mary's Catholic School, 101 Hampden Ave., Greenville, SC 29601. Registration form at [www.greenvillechessopen.info](http://www.greenvillechessopen.info).

## Texas

### Oct. 16-17, Dallas Amateur and Novice

5SS, G/120. Dallas CC, 200 S Cottonwood Dr. Ste B, Richardson, TX 75080. **EF:** \$30 (\$25 Jr/Sr/Hcap), plus \$5 non-DCC mbr fee. **Prizes** based on entries 60 % returned. **Amateur:** Open to U1800. **Novice:** Open to U1400 and unrated. **Reg.:** 9:45-10:15am. **Rds.:** 10:45-3:10-7:16, 10:45-3:10. Two half-point Byes if requested before rd 2 (and if requested before receiving a full point bye). **Ent:** Dallas Chess Club, see address above. **Info:** 214-632-9000, info@dallaschess.com. NS, NC. **Chess Magnet School JGP.**

### Nov. 5-7, SPICE Cup FIDE Rated Open

6SS, G/90 with 30 second increment. Texas Tech University, Lubbock, TX, 806-742-7742. FIDE/USCF rated One Section \$2,000 based on 40 paid entries: **\$1000-\$500-250-150-100** Open to all FIDE rated players and USCF 1600 and higher. **Limit to the first 50 registrants!** **Reg.:** 9-10:30am 11/5. **Rds.:** 11/5 11am and 4pm 11/6 10 am and 3pm 11/7 9 am and 2 pm No byes in the final 2 rounds. Entry Fees: US players with FIDE rating \$50 / without FIDE rating \$75 if rec'd by November 2. \$25 more on site. Titled players and foreign FIDE rated players free, \$50 deducted from prize. Check payable to: Texas Tech SPICE, Box 45080 Lubbock, TX 79409. **Chess Magnet School JGP.**

### Nov. 6, Ed Gurukul-Plano Thanksgiving Scholastic

4504 Legacy Drive, Ste 100, Plano, TX 75024, 214-635-6214, tournament@edgurukul.com. **5 sections:** K-1, K-3 Primary Open, Elem U500, Elem Open, MS-HS Open/USCF Not Required for K-1, K-3 Sections, 5 Rounds-G/30. **EF:** \$20 if received by 11.01.2010, Else \$30. **Trophies:** Top 3 each section, overall teams. Ribbons for Positive Scores. **Reg.:** 9:00-9:45 am, R1 10:00 am, all others ASAP. Mail Registrations to above address.

### Nov. 13, Scholastic Turkey Tournament

5SS, G/30 no delay. **EF:** \$15 if p/m by 11/06/10, after: \$30. Sloan Creek Chess Club, Sloan Creek Middle School, 440 Country Club Rd., Fairview, TX 75069. **Six Sections:** Primary K-3rd U300, Primary K-3rd Open, 4th - 12th U500; 4th - 12th U-800, 4th - 12th Open and Not-to-be Rated Section. **Individual trophies each section:** 1st - 3rd Place Trophies and **4th Place winner in each section receives a frozen Turkey!** 1st - 3rd Place Team Trophies based on cumulative scores of all rated sections. **Reg.:** 8:00 - 8:45 am. Rd. 1 at 9:00 am. All others ASAP. Fun Side Events! Smoked Turkey Drumsticks & Potato Bar! **Contact:** 972-658-8537 or email [SloanCreekChess@aol.com](mailto:SloanCreekChess@aol.com) for more information.

### A State Championship Event!

### Nov. 13-14, 14th Annual Texas K-12 Championships

6SS, Rds 1-3 G/45, Rds 4-6 G/60, Veterans Memorial HS, 4550 US Military Hwy 281, Brownsville, TX 77851. Hotel info will be posted on <http://www.texaschess.org/>. **The K-12 is open to TX residents or players attending Texas schools. 13 separate tournaments, one per grade.** Trophies to top 10 indiv. & top 5 teams (top three players added for team scores, minimum of two, no more than two teams per school per grade). **EF:** \$35 if p/m by 11/5, \$45 after 11/5 or on site. Onsite registration, Sat 11/13 7:30-8:30am may require 1/2-pt by for 1st Rd. **Rds.:** Sat 9:30-12:00-2:00-4:00; Sun 10:00-1:00. One 1/2-pt bye available any round if requested before end of rd 2. **Entries:** Make checks payable to Texas Chess Association, mail to: 305 Willow Pointe Dr., League City, TX 77573. **Info:** [fguadalupe@aol.com](mailto:fguadalupe@aol.com), (713) 530-7820. NS, NC. W.

## Virginia

### Oct. 9, National Chess Day Scholastic Quads

Montessori School of McLean, 1711 Kirby Rd., McLean, VA 22101. **Time Control:** G/30. **EF:** \$20 online by 10/6; \$25 by noon 10/8; \$30 on-site from 1:30-1:45. Check-in is MANDATORY for all pre-registered players, and must be complete by 1:50. Players that have not checked in by 1:50 will not be placed in a quad, even if they signed up in advance. **Rds.:** 2:00pm, then ASAP. **Prizes:** trophy to winner of each quad. See [www.silverknightschess.com](http://www.silverknightschess.com) to register.

### Oct. 30, Halloween Gambit

4SS, G/30. Franklin Sherman Elementary School, 6630 Brawner St., McLean, VA 22101. **Sections:** K-6 U/500, K-12 U/900, K-12 Champ. **EF:** \$25 online by Wed; \$35 on-site 12:00-12:30. **Rds.:** 1:00, then ASAP. **Prizes:** trophies to top individuals & schools; T-shirts to best costumes! **Free game analysis** by NM. See [www.silverknightschess.com](http://www.silverknightschess.com) to register.

### Nov. 13, Scholastic Quads #2

Montessori School of McLean, 1711 Kirby Rd., McLean, VA 22101. Time Control: G/30. **EF:** \$20 online by Wed; \$30 on-site from 1:30-1:45. Check-in is MANDATORY for all pre-registered players, and must be complete by 1:45. Players that have not checked in by 1:45 will not be placed in a quad, even if they signed up in advance. **Rds.:** 1:45pm, then ASAP. **Prizes:** trophy to winner of each quad. See [www.silverknightschess.com](http://www.silverknightschess.com) to register.

### Nov. 20, 2010 Mid-Atlantic Girls Chess Championships (MD)

See Maryland.

### Nov. 21, Silver Knights Chess K-8 Team Tournament

G/30. Our Lady of Good Counsel School, 8601 Wolftrap Rd., Vienna, VA 22182. **Two Sections:** K-8 Rated, K-3 Unrated. **EF:** \$80 per four-player team online by 11/17; \$92 per team by noon 11/19; \$100 on site from 12:00-12:30. **Rds.:** 1-2-3-4. Trophies to top teams in each section. Teams must consist of 4 players from the same school. See [www.silverknightschess.com](http://www.silverknightschess.com) for complete rules and to register.

### Dec. 4, Winter Blast

4SS, G/30. Virginia Run Elementary School, 15450 Martins Hundred Dr., Centerville, VA 20120. **Sections:** K-6 U/500, K-12 U/900, K-12 Champ. **EF:** \$25 online by Wed; \$35 on-site 12:00-12:30. **Rds.:** 1:00, then ASAP. **Prizes:** trophies to top individuals & schools. **Free game analysis** by NM. See [www.silverknightschess.com](http://www.silverknightschess.com) to register.

## West Virginia

### Nov. 20, 2010 Mid-Atlantic Girls Chess Championships (MD)

See Maryland.

## Wisconsin

### Nov. 6-7, 2010-2011 Wisconsin Junior Open

Gruenhagen Conference Center, UW-Oshkosh, Corner of High and Osceola St., Oshkosh, WI 54901. Open to youth born after 11/6/1989. In 4 Sections, **Open:** 5SS, G/120, **EF:** \$15 in advance by 11/2; \$20 at site. **Prizes:** Top 5, Top 3 each 1300, 1200 and 1100, Top 4 Under 1100 and Top 3 Unrated. **Reserve (Under 1100 or Unrated):** 5SS, G/120, **EF:** \$14 in advance by 11/2; \$19 at site. **Prizes:** Top 5, Top 3 each 900, 800, 700, Under 700 and top four Unrated. **Non-Rated Beginner's Grade 7-12:** 5SS, G/120, Open to Grades 7-12. **EF:** \$11 in advance by 11/2; \$16 at site. **Prizes:** Top 5 places, Top 3 Grade 7-9. **Non-Rated Beginner's Grade K-6:** 5SS, G/120, Open to Grades K-6. **EF:** \$10 in advance by 11/2; \$15 at site. **Prizes:** Top 5 places, Top 3 Grade K-3. **ALL Reg.:** 11/6, 8:45-9:30 A.M. **Rds.:** 10:15-2:30-7:15; 10:00-3:00. **ENT:** Mike Nietman, 2 Boca Grande Way, Madison, WI 53719. **INFO:** Mike Nietman, 608-467-8510 (before 11/5) mike.nietman@charter.net. **HR:** 920-424-1106 \$35 double (dorm room) (Mention Chess). **www.wis chess.org.** NS. NC. W. **Chess Magnet School JGP.**

### Dec. 28, 2010 Pan American Blitz Championship (QC)

8SS, G/5. Open to any individual. First round begins at 8:30pm. **Playing site:** Crowne Plaza Hotel, 6401 South 13th St., Milwaukee, WI 53207. 1-414-764-5300. Free shuttle from the airport. Free parking and wireless internet. Mention **Special Chess Rate \$78** (single or double). Reserve by December 10th or rate may increase. **Prize Fund** (75% of the entries): 1st, 2nd and class prizes. **EF:** \$25 by December 1, \$30 thereafter. Please make checks payable to Wisconsin Chess Academy and send to Alex Betaneli, PO Box 260122, Madison, WI 53726. All entries will be confirmed over email and posted on [www.wis chessacademy.com](http://www.wis chessacademy.com) and [www.monroi.com](http://www.monroi.com). **INFO:** [abetaneli@wis chessacademy.com](mailto:abetaneli@wis chessacademy.com) or [abetaneli@hotmail.com](mailto:abetaneli@hotmail.com), 1-608-334-2574. Boards and sets provided, please bring clocks.

### Dec. 28-30, 2010 Pan American Open

See Grand Prix.

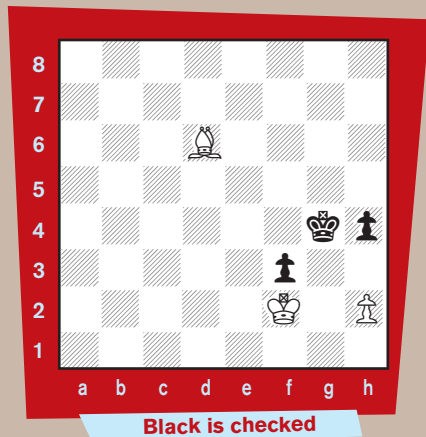
### Dec. 28-30, 2010 Pan American Scholastic

5SS, G/90 + 30sec/move increment. Open to high school students and younger. **Playing site:** Crowne Plaza Hotel, 6401 South 13th St., Milwaukee, WI 53207. 1-414-764-5300. Free shuttle from the airport. Free parking and wireless internet. Mention **Special Chess Rate \$78** (single or double). Reserve by December 10th or rate may increase. **Prizes:** championship trophies based on age; team awards for schools (see website for all prizes). **Schedule:** late registration 3:00-4:00pm on 12/28, Rds.: 4:30pm on 12/28, 10:00am and 4:00pm on 12/29; 10:00am and 3:00pm on 12/30. **EF:** \$40 by December 1st, \$60 thereafter; \$5 off per entry if 4 or more teammates register together in advance. **Scholastic Unrated (12/29, one day only):** 4SS, G/30. Open to high school students and younger. **Prizes:** championship trophies based on age; team awards for schools (see website for all prizes). **Schedule:** late registration 8:30-9:30am on 12/29, Rds.: 10:00am, 11:30am, 1:00pm, 2:30pm. **EF:** \$20 by December 1st, \$30 thereafter; \$5 off per entry if 4 or more teammates register together in advance. Please make checks payable to Wisconsin Chess Academy and send to Alex Betaneli, PO Box 260122, Madison, WI 53726. All entries will be confirmed over email and posted on [www.wis chessacademy.com](http://www.wis chessacademy.com) and [www.monroi.com](http://www.monroi.com). **INFO:** [abetaneli@wis chessacademy.com](mailto:abetaneli@wis chessacademy.com) or [abetaneli@hotmail.com](mailto:abetaneli@hotmail.com), 1-608-334-2574. Boards and sets provided, please bring clocks. **Chess Magnet School JGP for rated sections.**



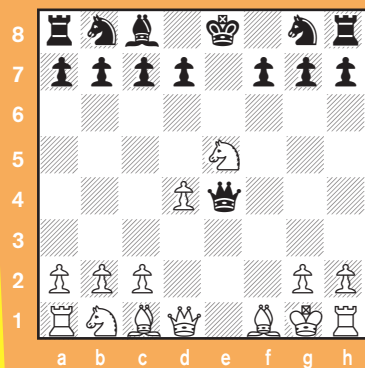
## EVANS! Cont'd. from pg. 8

on the other side of the board in Fichtl-Hort, Czech Championship, 1961.



It was drawn after 46...Kh3! because 47 Kxf3 is stalemate and White can't make progress after 47 Bc7 Kg4, etc.

## Gambit Cont'd. from pg. 17



"If he tries 1.e4 e5 2.Nf3 Bc5 3.Nxe5 Nc6, you can ignore him with 4.Nc3, because 4...Nxe5 5.d4 leads to a regular position where you have an edge. Or you can swap knights and after 4.Nxc6 dxc6 you can consolidate with 5.d3, 6.Be2 and then bring your knight to f3 and castle."

## SOLUTIONS Cont'd. from pg. 18

putting rook power behind the pawn and clearing the c5-square for the bishop. White played 35.bxc4 Bc5 36.Kg2 Bxf2 37.Kxf2 b3 38.White resigns. White can't stop both of Black's advanced pawns.

**#6** This game was between Alexander Onischuk and Magnus Carlsen in Biel, Germany, in 2007. Black wins the game by playing 40...Qxg1+! 41.Kxg1 d2 42.Qh5 protecting the d1-promotion square. 42...Bc2 43.White resigns. The pawn will promote and Black is ahead a rook.

### WHAT'S THE PROBLEM?

from page 13

Solutions:

Puzzle 1

1. Qc7+ Kxc7 mate.

Puzzle 2

1. Qb7+ Bxb7 mate.

Puzzle 3

1. Bg2+ Bxg2 mate.

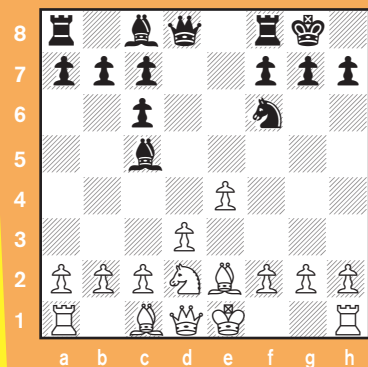
Puzzle 4

1. Rb1+ Re1 2. Rf2+ Nxf2 mate.

Puzzle 5

1. Qb6 f3 2. Nf2 Bxf2 mate. 1.

Qc5 does not work because black can play Bf2 or Be3.



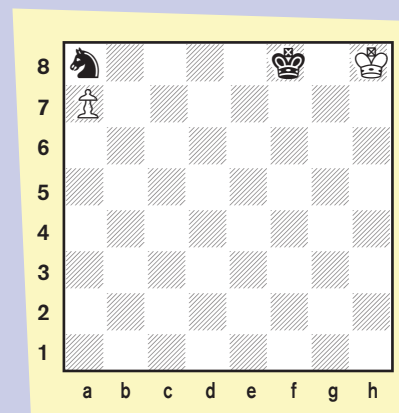
"It doesn't look so scary any more," said Pat.

"Call it the Knucklehead Gambit," said Chris, "Or call it by its other name, the Swamp-Gass Gambit, but it's still mostly a lot of hot air."

## This Game We Call Chess

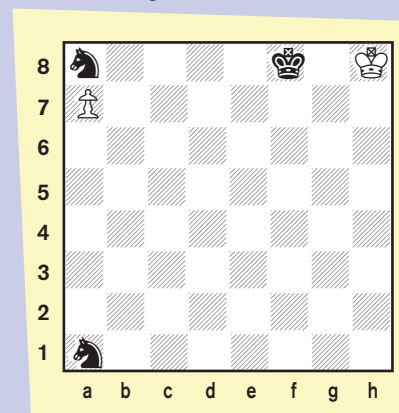
Here is a rule question for you to answer. It is something you can discuss with your teammates and coaches.

The time control is 40 moves in 80 minutes, then 15 moves in 30 minutes. The players are on move 52.



1) What is the result of the game if White's flag falls?

2) What is the result of the game if Black's flag falls?



3) What is the result of the game if White's flag falls?

4) What is the result of the game if Black's flag falls?

Let's hear what you have to say! Send your answers (and reasoning) to: [gpetersen@uschess.org](mailto:gpetersen@uschess.org) and we'll publish the best answers. We may even award a book prize or two!

# CHESS FOR ANYONE

## VOLUMES ONE AND TWO AVAILABLE NOW!

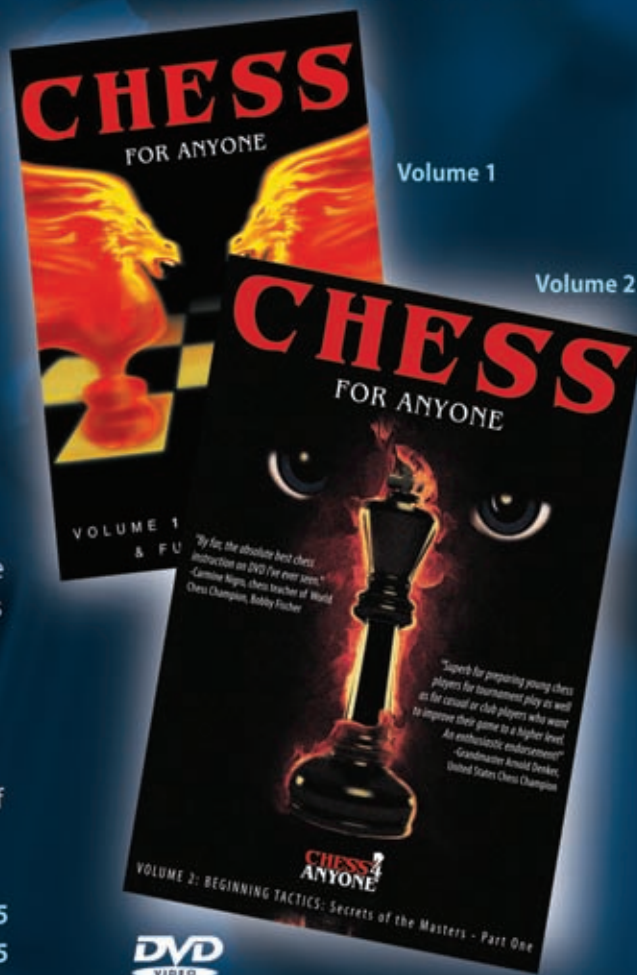
Introducing CHESS4ANYONE's newest addition to its widely successful instructional videos on chess--**BEGINNING TACTICS**.

Tactics are the basic tools that every serious chess player needs to develop game strategy and planning. Easily understood by anyone who wants to raise their chess skills to a higher level, the material is presented in an entertaining format so that even viewers as young as 7 years old will enjoy the process of learning without difficulty.

Older children and adults will find **CHESS FOR ANYONE** instructional DVDs a refreshing alternative to studying chess books which can be both tedious and difficult.

**CHESS FOR ANYONE** is highly recommended by American chess champion, grandmaster Arnold Denker and also by Carmine Nigro, chess teacher of world chess champion, Bobby Fischer.

DVD0002AN (Volume 2) 117 minutes \$24.95  
DVD0001AN (Volume 1) 180 minutes \$29.95



**USCF**  
SALES

1.800.388.KING (5464)  
[www.USCFSales.com](http://www.USCFSales.com)

**USCF**

ALL PURCHASES BENEFIT THE UNITED STATES CHESS FEDERATION