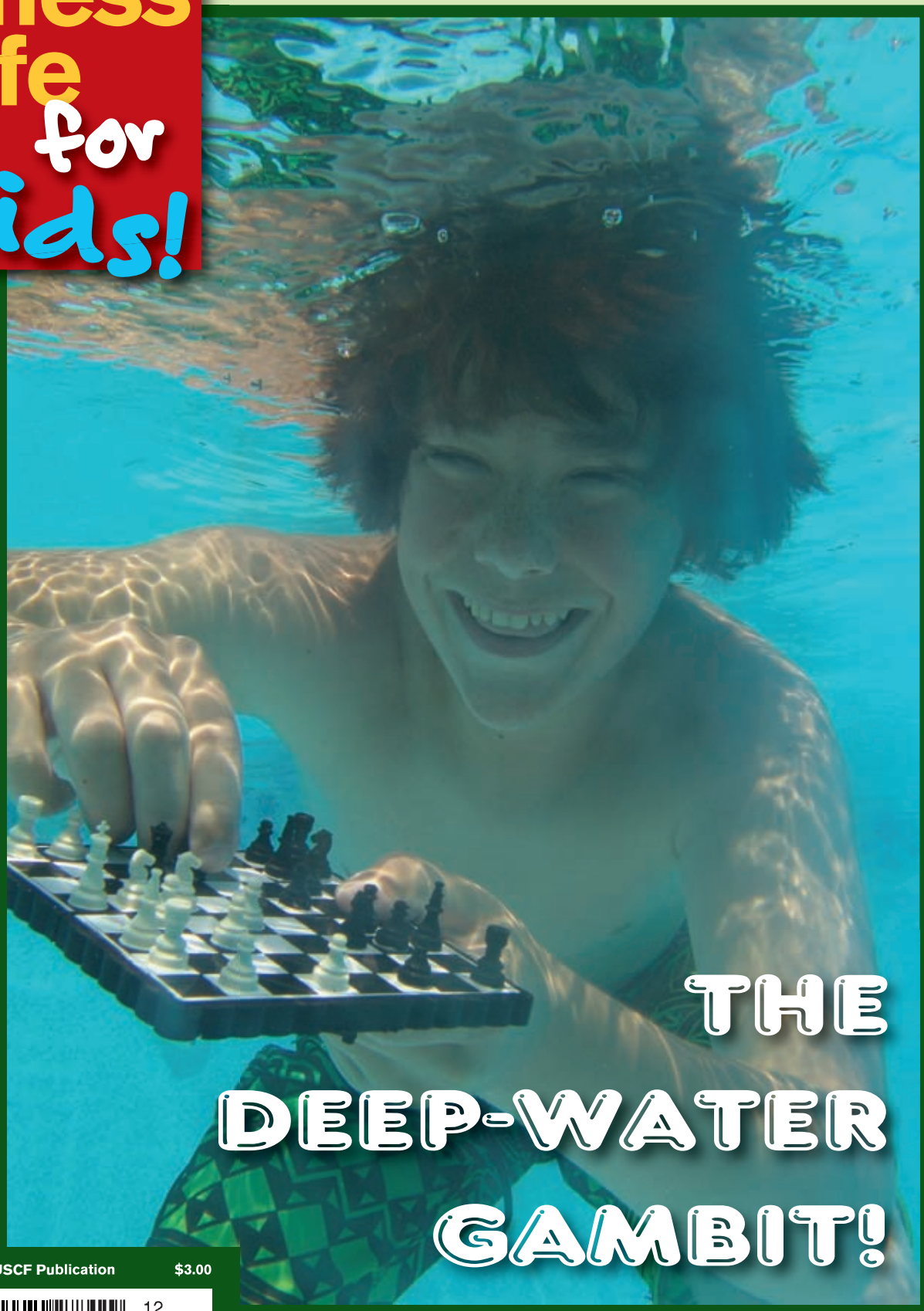


December 2010

uschess.org

Chess Life for Kids!



THE DEEP-WATER GAMBIT!



A USCF Publication

\$3.00



12

**Fast, Fun, and
Easy to Use**

In 2006, and *again* in 2007,
young Chess Magnet students
from Portland, OR, scored 7-0 in the
USCF Spring Nationals.

ChessMagnetSchool.com

Better Than Any Textbook for Learning Chess



**Student
Training**



**Student
& Class
Management**

**"Great Stuff! I just delivered my first
Belgian champion under 10 and
boosted his development
by using ChessMagnetSchool.com"**

- Ton Montforts, Coach
Schaakacademie
Limburg, Belgium

**"Your website was
integral to our team's winning."**

-Mike Hosford, Coach
Alcott Elementary
2008 Washington State
Grades 4-6 Champions

**Proud Sponser
of the
2010 USCF
Junior Grand Prix!**

**Start Your 30-day Free Trial Today
at**

www.ChessMagnetSchool.com

	1 month	3 months	1 year	1 yr USCF
Individuals	\$6.95	\$15.00	\$29.95	\$26.95
Class/Family	\$6.00	\$12.00	\$25.00	\$22.00

Free to teachers/coaches of at least 5 students
Includes our powerful, easy-to-use Coaching Tools & Reports

Works on Windows and Macintosh
computers (requires internet access)

To learn more, call 650-284-5062
877-378-4319 (US toll-free)
email info@ChessMagnetSchool.com



December 2010
Chess Life for Kids!
Vol. 5, No. 6



Table of Contents

- 5 ARABIAN KNIGHTS
- 6 ASK GM EVANS
- 7 THE CHESS DETECTIVE
- 8 WIN OR DRAW
- 8 ZARIA
- 9 WHAT'S THE PROBLEM?
- 10 IT IS INDEED A GLOBAL GAME
- 12 THE "UH-OH" DEFENSE
- 13 NATIONAL CHESS DAY
- 15 JUNIOR GRAND PRIX STANDINGS
- 16 A BRIEF CHESS OPENING GLOSSARY:
THE KING'S GAMBIT DECLINED
- 17 SOLUTIONS
- 18 TOURNAMENT LIFE ANNOUNCEMENTS

COVER PHOTO COURTESY OF JOANNE DOUGHTY



Publisher

USCF Executive Director: Bill Hall
 bhall@uschess.org

Scholastic Editor: Glenn Petersen
 gpetersen@uschess.org

Art Director: Cat Connor Spradlin
 catseyephoto@mac.com

Editorial Asst./Copy Editor: Alan Kantor
 akantor@uschess.org

Editorial Assistant: JoAnne Fotherly
 backtobasics@uschess.org

Jennifer Pearson
 jenpearson@uschess.org

Advertising Manager: Joan Dubois
 jdubois@uschess.org

Tournament Life: Joan Dubois
 tla@uschess.org

Director of Publications: Daniel Lucas
 dlucas@uschess.org

CONTRIBUTORS: Send your contributions and articles to *Chess Life for KIDS*, PO Box 3967, Crossville, Tennessee 38557 or better yet, e-mail to gpetersen@uschess.org.

Chess Life for KIDS (USPS 023-567, ISSN: 1932-5894) is published in February, April, June, August, October, and December of every year by the United States Chess Federation, 137 O'Brien Drive, Crossville, Tennessee 38555. Periodic postage paid at Crossville, Tennessee.

CHANGE OF ADDRESS: Be sure to notify us at once of any change of address. Please include your old address and your new address, along with your USCF I.D. number.

POSTMASTER: Send address changes to USCF, PO Box 3967, Crossville, Tennessee 38557.

Annual Scholastic Membership

Regular Scholastic Membership (online version of *Chess Life for Kids*), age 12 or younger, is just \$16 per year. Premium Scholastic Membership (receives *Chess Life for Kids* by mail) is \$23 per year. \$13 of every premium membership goes towards providing *Chess Life for Kids*. Entire contents copyright 2009, United States Chess Federation.

Teachers may photocopy instructional articles for classroom use, but republication or wide-spread copying without the written consent of the USCF is forbidden.

WHAT'S WRONG WITH THIS PICTURE?



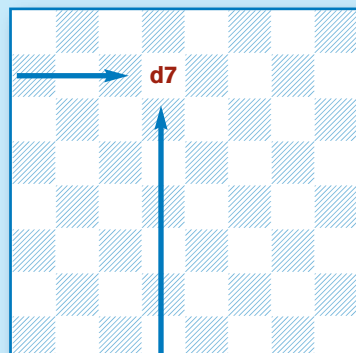
For that matter, what's wrong with our cover? Thanks to Joanne Doughty of Clearwater Photography, we have photos of Jake and Tess ... swimming ... in clear water ... in DECEMBER!

Aside from that, there is something basically wrong with these photographs. If you think you know the answer, send it in to gpetersen@uschess.org and we'll have a drawing. The winning entry will receive a copy of *Tactics for Scholastic Players* by IM Dean Ippolito.

HOW TO Read & Write Chess

There are many different ways to write chess moves. The most popular method (described below) is called **algebraic notation**:

Each square has a name, taken from the intersection of the file (vertical or up-and-down rows of squares, which are lettered) and rank (horizontal or side-by-side rows of squares, which are numbered) the square is on. In the diagram the square on the intersection of the 7th rank and the d-file is called d7. Like in battleship!



The pieces are abbreviated by a capital letter, like this:

K: King; Q: Queen; R: Rook; B: Bishop; N: Knight.

Notice that the Knight is N, since K is reserved for the King. Notice also that pawns have no abbreviation.

A move is written by using the abbreviation for the piece that moves, followed by the square the piece moves to (1. ... Nf6). A pawn move is written as the square the pawn has moved to (1. d4). A capture by a piece is written as the abbreviation for the piece that moved, followed by an x, and finally the square the capture takes place on (8. Bxe5). A pawn capture is written as the file the capturing pawn stands on, followed by an x, and finally the square the capture takes place on (3. dxe5).

Other moves are castling kingside, which is written 0-0, and castling queenside, which is written 0-0-0. An *en passant* capture is indicated by *e.p.* after the move. A check is indicated by + after the move, and pawn promotion is indicated by adding () and the abbreviation for the piece the pawn promotes to. Ambiguous moves (where more than one piece or pawn can move to the destination square) are taken care of by putting an extra rank or file in to make it clear which piece or pawn moved.

Here is a sample, using the famous Smothered mate trap from the Budapest Defense.

1. d4 Nf6 2. c4 e5 3. dxe5 Ng4

4. Bf4 Nc6 5. Nf3 Bb4+ (diagram A)

6. Nbd2 Qe7 7. a3 (diagram B)

7. ... Ncxе5 8. Bxe5 Nxe5 9. axb4 Nd3 checkmate. (diagram C)

x: take or capture #: checkmate
0-0: kingside castle (:): promotion
0-0-0: queenside castle !: good move
+: check ??: blunder



diagram A • 5. ... Bb4+



diagram B • 7. a3



diagram C • 8. ... Nd3 checkmate

ChessMagnetSchool.com JUNIOR GRAND PRIX

As the 2010 season draws to a close, we want to thank ChessMagnetSchool.com for stepping in to sponsor the USCF Junior Grand Prix.

It's easy to earn Junior Grand Prix points. Just play well against higher-rated competition! The top 50 point earners and the top finisher in each state who isn't in the top 50, will receive their choice of either a one year subscription to ChessMagnetSchool.com or a three month subscription to chesslecture.com.

In addition, our first place winner will receive free entry into the 2011 U.S. Open in Orlando, Florida, as well as a \$1,000 stipend to offset expenses after attending.

But most of all, we want to thank YOU for your participation. Your enthusiasm makes it all worthwhile.

U.S. Postal Service. Statement of Ownership, Management, and Circulation (required by 39 U.S.C. 3685). (1) Title of publication: Chess Life For Kids. (2) Publication number: 023-567. (3) Date of filing: September 8, 2010. (4) Frequency of issue: Bi-monthly. (5) No. of issues published annually: 6. (6) Annual subscription price: \$18. (7) Complete mailing address of known office of publication (street, city, county, state, and ZIP code) (Not printers): P.O. Box 3967, 137 Obrien Dr., Crossville, TN 38557 (8) Complete mailing address of the headquarters of general business office of the publisher (Not printers): PO Box 3967, 137 Obrien Dr., Crossville, TN 38557. (9) Full names/complete mailing addresses of publisher, editor, and managing editor (this item must not be blank). Publisher (name/complete mailing address): Bill Hall, USCF, PO Box 3967, 137 Obrien Dr., Crossville, TN 38557. Editor (name/complete mailing address): Glenn Petersen, P.O. Box 3967, 137 Obrien Dr., Crossville, TN 38557. Managing Editor (name and complete mailing address): same as above. (10) Owner. (If owned by a corporation, its name and address must be stated and also immediately there under the names and addresses of stockholders owning or holding 1 percent or more of total amount of stock. If not owned by a corporation, the names and addresses of the individual owners must be given. If owned by a partnership or other incorporated firm, its name and address, as well as that of each individual must be given. If the publication is published by a nonprofit organization, its name and address must be stated.) (Do not leave blank.): United States Chess Federation, PO Box 3967, 137 Obrien Dr., Crossville, TN 38557. (11) Known bondholders, mortgagees, and other security holders owning or holding 1 percent or more of total amount of bonds, mortgages or other securities (if there are none, so state): none. (12) For completion by nonprofit organizations authorized to mail at special rates section 423.12, DMM only). The purpose, function, and nonprofit status of this organization and tax exempt status for Federal income tax purposes (check one): b has not changed during preceding 12 months; " has changed during preceding 12 months. (If changed, publisher must submit explanation of change with this statement.) (13) Publication Name: Chess Life For Kids. (14) Issue Date for Circulation Data Below: August 2010. (15) Extent and nature of circulation. (a) Total number copies printed (net press run): average number copies each issue during preceding 12 months, 10,679; actual number copies of single issue published nearest to filing date, 9,516. (b) Paid and/or requested circulation: (1) Paid/requested outside-county mail subscriptions: average number copies each issue during preceding 12 months, 9,869; actual number copies of single issue published nearest to filing date, 8,576. (2) Paid in-county subscriptions (include advertisers's proof copies/exchange copies): average number copies each issue during preceding 12 months, 0; actual number copies of single issue published nearest to filing date, 0. (3) Sales through dealers and carriers, street vendors, and counter sales (not mailed): average number copies each issue during preceding 12 months, 40; actual number copies of single issue published nearest to filing date, 125. (4) Paid distribution by other classes of mail through the USPS (e.g. First Class Mail): average number copies each issue during preceding 12 months, 0; actual number copies of single issue published nearest to filing date, 0. (C) Total paid and/or requested circulation (sum of 15b (1), (2), (3), and (4)): average number copies each issue during preceding 12 months, 9,909; actual number copies of single issue published nearest to filing date, 8,701. (15d (1), (2), (3). Non requested distribution; average number copies each issue during preceding 12 months, 0; actual number copies of single issue published nearest to filing date, 0. (e) Total non requested distribution (sum of 15d (1), (2), (3); 0; actual number copies of single issue published nearest to filing date, 0. (f) Total distribution (sum of 15c and 15e): average number copies each issue during preceding 12 months, 9,909; average number copies of single issue published nearest to filing date, 8,701. (g) Copies not distributed: average number copies each issue during preceding 12 months, 770; average number copies of single issue published nearest to filing date, 815. (h) Total (sum of 15f and 15g) average number copies each issue during preceding 12 months, 10,679; actual number copies of single issue published nearest to filing date, 9,516. (i) Percent paid. 15c divided by 15f x 100, per cent on average no. copies each issue during preceding 12 months, 100; per cent on actual no. copies of single issue published nearest filing date, 100. 16. Publication of Statement of Ownership. Publication of this statement will be printed in the December 2010 issue of this publication. 17. I certify that the statements made by me above are correct and complete (signature and title of editor, publisher, business manager, or owner): Bill Hall (sig.), Publisher. P.S. Form 3526-R, September 2007.

TALES OF THE Arabian KNIGHTS

BY RICK KENNEDY Illustrations by Pamela Key



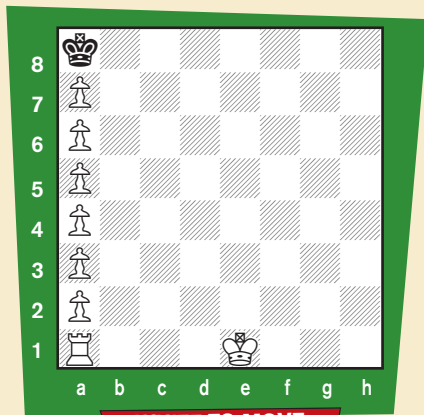
The Thief With a Sweet Tooth

The King was enjoying a piece of cake.
 "Have you heard of the thief with the sweet tooth?" she asked.
 "I have not," the King said, "but it must be an interesting story."
 "Indeed," she said, and began her tale.

There was a man who enjoyed dessert—so much that he sometimes ate dessert instead of breakfast, lunch and dinner. Then, of course, he had dessert.

The man grew angry when he learned that a thief had been taking his sweets. He decided to set a trap. For bait, of course, he used lots and lots of dessert.

The situation looked something like this Your Majesty, she said, setting up the chessboard and pieces.



"I am now ready to capture the thief," the man said. "I will hide in my home."

1. 0-0-0

Soon enough, the thief grabbed the first sweet, for he could not resist.

1. ... Kxa7

The man now knew his plan could not fail, and he quickly played

2. ... Rd8

The thief grabbed another sweet.

2. ... Kxa6

The man then tightened his trap.

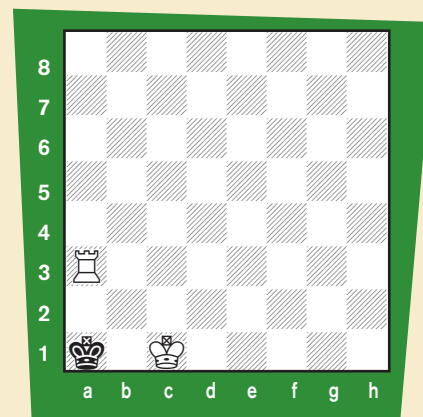
3. Rd7

The thief continued to eat, and the trap grew tighter and tighter.

3. ... Kxa5 4. Rd6 Kxa4 5. Rd5 Kxa3 6. Rd4 Kxa2 7. Rd3

Finally, there was no food left, and the man captured the thief.

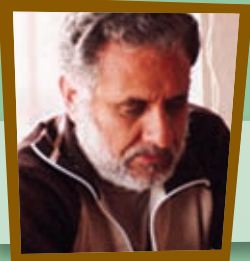
7. ... Ka1 8. Ra3 checkmate.



Delightful, said the King. And I do think that I will have another slice of cake, he added.

(This story is based upon a chess problem created by William Shinkman in 1887).

2011 CHESS CALENDAR
 365 Tactical Puzzles
 From history's greatest games: The perfect desk calendar for any player, student, or coach.
www.chessthings.com



ASK GM LARRY EVANS!

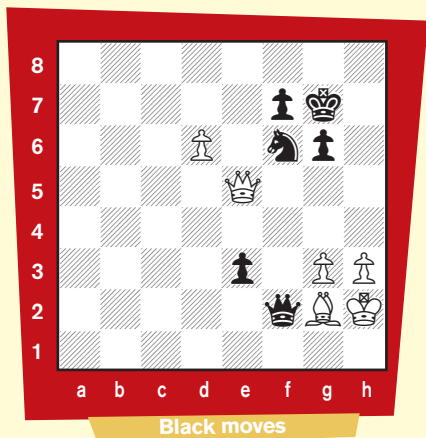
Grandmaster Larry Evans won the U.S. Championship in 1951, 1952, 1961-62, 1968, and again in 1980!

BEST QUESTION:

CORRECTING AN OLD FLAW

Jarod Bryan
Windham, Maine

Q: There are many gems to be found in the classics, and I still enjoy your old books. I don't have access to a chess computer, but I believe that your adjourned position from Addison-Evans (USA Championship 1964) deserves further analysis. In your book *Chess Catechism* (page 177) you show in the note to move 45. d6 (see diagram) how White can draw this position that was never reached in the actual game.



You give 46. ... e2 47. d7 e1=Q 48. Qxe1 Qxe1 49. d8=Q as a draw. But 46. ... Kh7! (instead of 46. ... e2?) seems to win for Black.

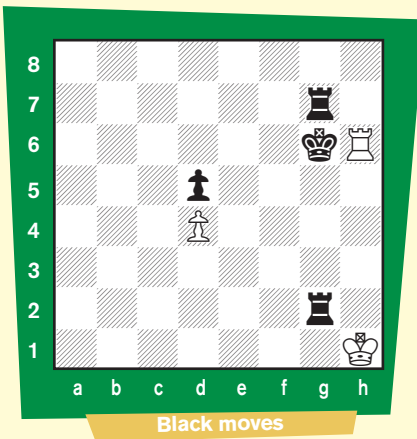
A: Thanks for calling this to my attention, yet a lot of analysis done before computers is fatally flawed. You're right that Black can win by 46. ... Kh7! If 47. Qe7 Kg8! 48. Qa7 (also hopeless is 48. d7 Nxd7

49. Qxd7 e2 50. Qe8+ Kh7 when the checks come to an end) 48. ... Qd2 and White is helpless against the e-pawn queening.

ONLY ONE WAY TO WIN

Jude Acers
New Orleans, Louisiana

Q: (1) I ran across this interesting position from Cesar Corte -Julio Bolbochan in the 1938 Argentine Championship. Black is a rook ahead but he has only one way to avoid a draw by stalemate.



Of course 1. ... Kxh6 is stalemate. And it's Ring Around the Rosie after 1. ... Kf7 2. Rf6+ Kg8 (no escape on 2. ... Ke7 3. Re6+ Kd7 4. Rd6+) 3. Rf8+ Kh7 4. Rh8+ Kg6 5. Rh6+ leads back to the diagram. But Black won, and I wonder if your readers can find the right method.

A: Good question. Hint: Without Black's pawn White's pawn could advance, thus eliminating the danger of stalemate.

Here's the entire game with the solution upside down after 46. Rxf6+ as shown in the diagram.

Corte-Bolbochan, Sicilian Defense [B85]

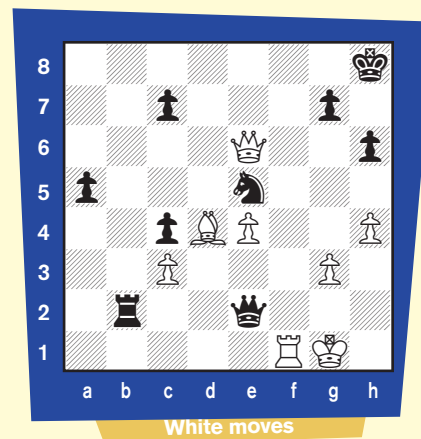
1. e4 c5 2. Nf3 Nc6 3. d4 cxd4 4. Nxd4 Nf6 5. Nc3 e6 6. Be2 Be7 7. 0-0 0-0 8. Be3 Qc7 9. Kh1 Rd8 10. Qe1 d6 11. f4 a6 12. Bf3 Rb8 13. a4 Nxd4 14. Bxd4 b6 15. Qf2 Bd7 16. Rad1 Bc6 17. g4 b5 18. axb5 axb5 19. g5 Nd7 20. h4 b4 21. Ne2 e5 22. Be3 Qb7 23. Qg2 exf4 24. Nxf4 Ne5 25. Nd5 Nxf3 26. Qxf3 Bf8 27. Rd4 Bxd5 28. Rxd5 Re8 29. Rf5? Qxe4 30. Rxf7 d5 31. Qxe4 Rxe4 32. Ba7 Rxf4+ 33. Kg2 Rc8 34. c3 bxc3 35. bxc3 Rg4+ 36. Kh3 Rxf5 37. Bd4 h6 38. Rd7 Bc5 39. Rff7 Bxd4 40. cxd4 Rc1 41. Kh2 Rc2+ 42. Kh1 Rcg2 43. Rf8+ Kh7! 44. Rxf7+ Rxf7! 45. Rh8+ Kg6 46. Rxf6+

SOLUTION

46. ... Kf7 47. Rh5+ Kf6 48. Rf5+ Ke7 49. Re5+ (Forced. Not 49. Rf7+ Ke7 49. Re5+ (if 50. Rxf7 50. Kxg2, releasing the stalemate) 49. ... Kd7 50. Re7+ (if 50. Rxd5+ Ke7, and the d-pawn is free to advance to d5) 50. ... Rxe7, White Resigned

MISSED MATE IN 15

(2) This fantastic position occurred in Rabinovich-Flamberg, Tribberg 1915.





The Chess Detective

Pinned to A Square

by NM Todd Bardwick



A pin is when a long-range piece's powers line up two of the opponent's pieces where the less valuable piece is first in the line of attack.

Did you know that a piece can be pinned to an empty square?

There is an old chess saying, "Amateurs play for pieces, masters play for squares."

The stronger you become at chess, the more you will understand that empty squares can be the key to winning the game.

You may have seen this position before from the most famous chess game in history that took place in Paris in 1858 between Paul Morphy and the Duke of Brunswick and Count Isouard.

The first thing you may notice about this position is that the black king is still in the center of the board. White is behind in material, but has nice attacking chances against the black king. Do you see the square that a piece is pinned to? Look at d8. If Black's knight were to move, Rd8 is checkmate!

So the logical question is, "Can I force the knight to move?" Yes! Morphy plays the brilliant, **16.Qb8+** sacrificing his queen. Black must respond, **16...Nxb8** and White played **17.Rd8** mate.

Here is a position from two of history's greatest players that took place in Kemerli in 1937.

Black is up a pawn in material, but this game may not make it out of the middlegame where he can try to cash in on this advantage. Notice that the players are castled on opposite sides and both kings are in potential danger.

Also note that Black's rooks and queen are on active squares (White must guard g2 against mate) and his knight is pinned to his king.

But there is also a possible pin to a square of which White may be able to take advantage.

Can you find it?

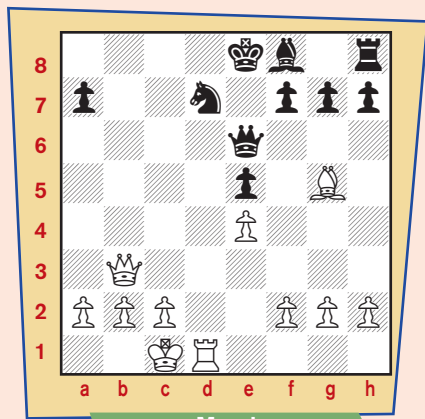
Look at the rook on f1. It would love to move to f8, but the f6-pawn is in the way.

How can White take advantage of this?

First White sacrifices the Exchange with **35. Rxb8+ Kxb8**. If Black plays **35...Kd7** (note that White is ahead a bishop here), White can play **36. Rxb7+ Kc8** (**36...Ke8** **37. Qxe5+ fxe5** **38. Rf8** mate; **36...Ke6** **37. Re7+ Kd5** **38. Rd7+** wins the rook on d2; **36...Kd8** **37. Re7 Rxe7** [**37...Rde2** **38. b7**] **38. Qb8+ Kd7** **39. Qc7+ Ke6** **40. Qxe7+**) **37. Rc7+ Kb8** **38. Bd6!** **Rxd6** **39. Qxe5!** **fxe5** **40. Rf8** leads to mate. **36. Qxe5+**! If Black recaptures with **36...fxe5**, then **37. Rf8+** will lead to a back rank checkmate. The other choices don't work either: **36...Ka8** **37. Ra1+** or **36...Kc8** **37. Qc7** mate.

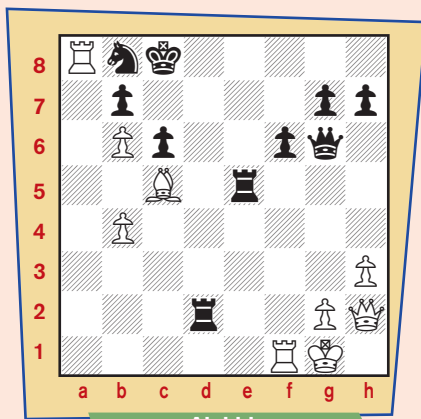
As you become more observant of pins to squares and appreciate how important individual squares can be, you move a step closer to becoming a master.

Duke and Count



Morphy

Reshevsky



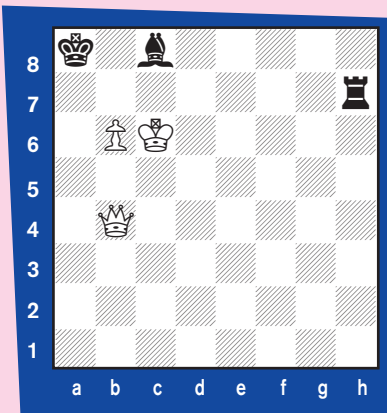
Alekhine

WIN OR DRAW?

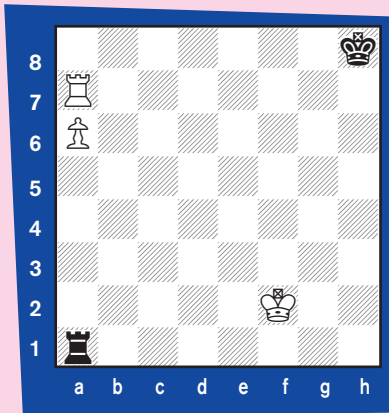
by Pete Tamburro

No matter whose move it is, you have to figure out whether the position is a draw or a win, and, if a win, for which side! Again, we have some identical positions to see if one move can make a difference. By the way, for those who like puzzles of all kinds in chess, you can go to my www.arcamax.com chess puzzle column for three different problems a week!

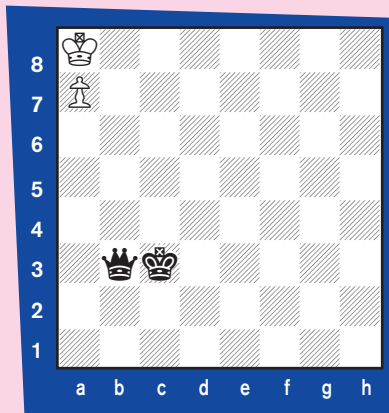
Position One: White to Play



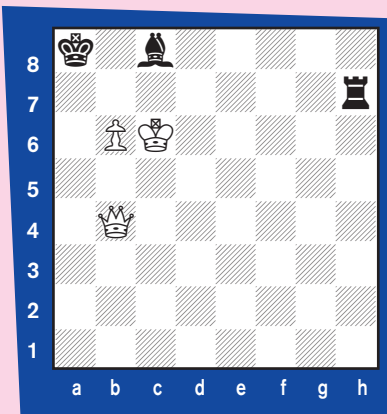
Position Three: White to Play



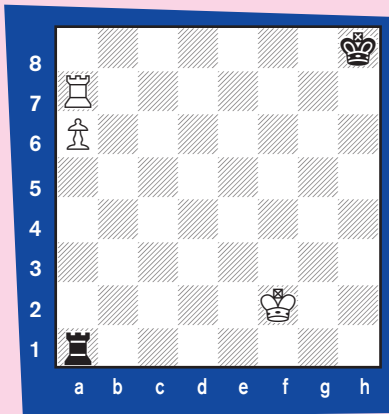
Position Five: Black to Play



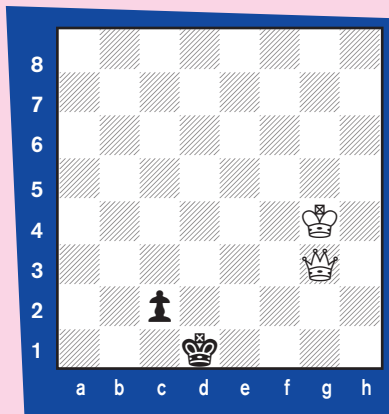
Position Two: Black to Play



Position Four: Black to Play



Position Six: White to Play



Answers on page 17 



What's the Problem?

By Stanley Kravitz

It is very hard to explain what makes any problem beautiful. Some of the characteristics are that the solution is not easy to find but once found gives the solver a feeling of "AHA" or success.

There are other technical reasons such as the number of false leads (tries) or the number of variations after the key or first move is found. These all add to the technical value of a problem but the best problems give the solver a feeling of satisfied victory.

This is hard to do with mate in two problems as there are usually only a few reasonable killer moves. It is even harder with a small number of pieces as in a miniature that has less than seven pieces, so the element of surprise is often used.

One way to improve on a problem is to use a maneuver called *Zugzwang* where an opponent is put at a disadvantage because they have to move. In a chess problem this means that that Black is forced to move into a mating net.

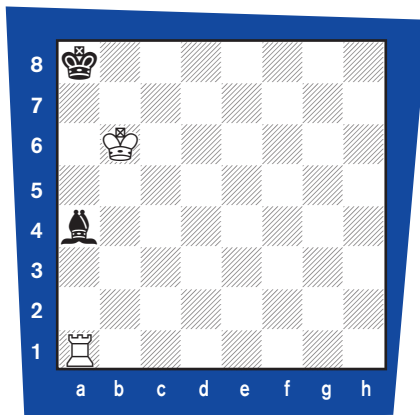
These five miniatures are all two-movers. They all have an element of surprise and they force the black side to move into a mate.

If you can solve a problem in **under one minute** give yourself 4 points. Solve in **under two minutes** give yourself **3 points**. Solve in **under five minutes** 2 points. **Over five minutes** give yourself 1 point.

Master Solver 15-20 points. Good Solver 10-14 points. Fair solver 5-9 points. Under 5 points needs work.

Puzzle 1.

White to move and mate in two.

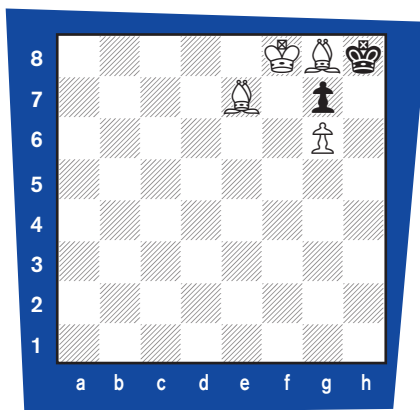


This problem is fairly easy once you see the final position.

Puzzle 2.

White to move and mate in two.

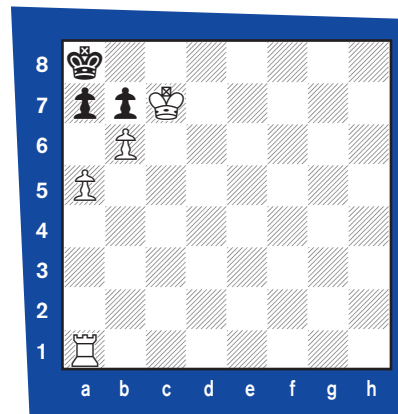
Who said you can make what looks like a bad move and still mate in two?



Puzzle 3.

White to move and mate in two.

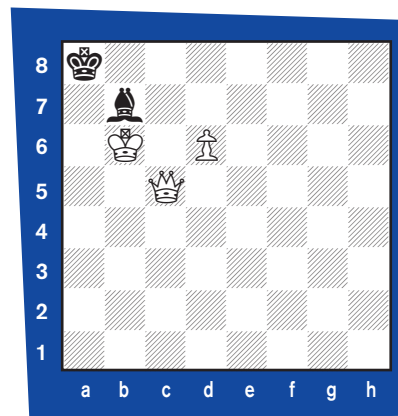
This looks like an endgame study in pawn promotion or stalemate but look closer to find the killer move.



Puzzle 4.

White to move and mate in two.

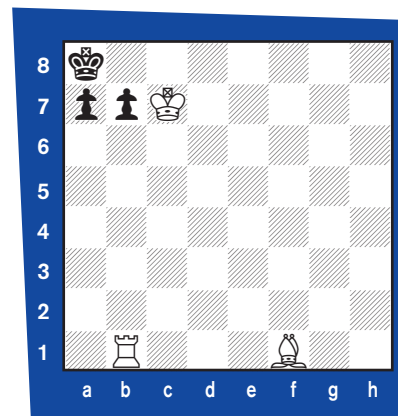
Here there are many choices. Maybe the pawn could queen in two and mate, but this is just trying to distract you from the correct solution.



Puzzle 5.

White to move and mate in two.

Sometimes a little aggression does the trick.



Solutions on page 17

Send your solutions to gpetersen@uschess.org or *Chess Life for Kids*, 44-D Manchester Court, Freehold, NJ 07728. We'll have a drawing and the winning entry will receive a copy of *Pawnmover*.

IT IS INDEED A GLOBAL GAME



by Cecil Dzwowal



[You can read all about the Pan Am Youth and World Youth championships on our website, www.uschess.org, and we'll have a recap in the next issue of Chess Life for Kids. But we thought you might enjoy reading about chess in other countries. -Editor]

If you have some difficulty in locating Zimbabwe on the world map, you are not alone. After all it is a very young country which received its independence from Great Britain in 1980. It is a small country too, roughly the size of Texas. Zimbabwe and the USA are indeed a world apart both in distance as well as the lifestyles of the people.

Most visitors from the USA usually come to Zimbabwe to see tourist attractions like the Vic (Victoria) Falls and watch the local wildlife like these lions.



In the villages kids have a lot of work to do at home. Young boys look after goats, cows and sheep. There is no electricity or piped water. Again the boys have to get firewood from the jungles while the girls fetch water

from the wells.

Despite this busy schedule, many kids in the countryside still find time to play chess. In Mhondoro village in northwestern Zimbabwe, I met



Tinashe (11), and Jonathan (12), two of the few young chess enthusiasts in the village. The boys first saw a chess set about a year ago when their new class teacher brought it to the class. They were eager to know what their teacher was doing.

"At first we wondered what sort of a boring game it was," Jonathan said. "I never thought it would one day become my favorite game."

Things changed when their teacher introduced the game to the kids. Jonathan was very quick to catch the rules and the moves and by the third month he was already giving his teacher a good game. Jonathan introduced the game to

his best friend and neighbor Tinashe. Like his friend, Tinashe claims that he was “quick to learn the rules and tricks of the game.” True to his boasting, Tinashe lost narrowly to the writer who is an experienced player.

games like chess. In places like Mhondoro only a couple schools have chess tournaments for kids. Kids like Tinashe are lucky that they had a teacher like Edison Makuminde who likes to play chess and teach it to others.

duced the game to them,” Makuminde said. “But now they are frustrated because they are always playing against the same people.”

However, the lack of sponsorship does not in anyway deter the kids from playing chess. All over Zimbabwe the number of kids playing chess is increasing. Some kids even design their chessboards on cardboard paper and then sculpt the bishops and castles from wood or stone. At one school kids were busy playing chess in class during break time. Each one of them was eager to have the chance to play before the end of break bell rang.

But not all kids like the idea of waiting to play. Chenai (11-years-old) sold some mango



Today, while their friends are playing soccer, the most popular game in the country, Tinashe will be taking on his rival Jonathan in a game of chess. In Tinashe's class of 42 kids, he said more than a



Mr. Makuminde has been a chess enthusiast since the age of ten. He bemoaned the lack of sponsorship at primary school level. He said many kids like to play the game. But there is a shortage of chess equipment and sponsors. He gave an example of Kudzi and Farai, both 11-years-old. The two boys often walk for more than four miles just to come and play a game of chess at school during weekends.



fruits from his home orchard and saved money for a chess set. Being the only kid in the village with his own chess set, he wishes for more competition. “By playing against different players you learn many tactical combinations,” Chenai said.

In the cities like Harare many more kids play chess than in the countryside. Here the kids have more free time than kids in the villages. Some even have their own chess sets and they sometimes have their own small tournament in their neighborhood.

Simbisai Marinda (12-



quarter are now chess enthusiasts.

During break time, the kids in a class take turns to play using only four chessboards.

In Zimbabwe like in most developing countries there is very little sponsorship for chess especially in rural schools. Many schools lack even the basic necessities like books and chairs leaving little for



“My class was excited when I intro-

Cont'd on page 12 

The "Uh-Oh" Defense

by Rick Kennedy

years-old) is one of the many girls in her neighborhood who enjoys playing chess. At home she always continues her rivalry with her uncle Albert who is also a class player.

Simbisai who is very fluent in



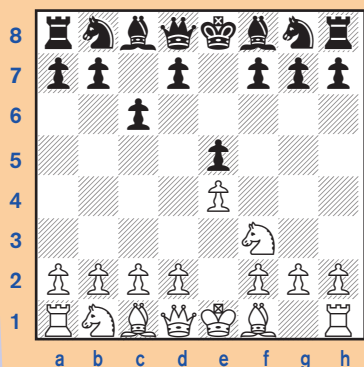
English admitted that she still has a lot to learn about the game. Like many other kids she hopes to represent her school first before she can take her game further. Simbisai said she was inspired by other kids like Mpumelelo Moyo who recently represented Zimbabwe in the African Youth Championships in neighboring Botswana and finished fifth. The 7th grade girl revealed that she developed some successful positional combinations which are giving her opponents at home and school a difficult time.

If Simbisai would one day attach the coveted 'GM' to her name, she would become the first grandmaster from Zimbabwe. But she will not be the last. Presently there are a couple of rated players in Zimbabwe including one international master. Nevertheless, if a team would represent Zimbabwe at the

"I did it!" said Pat Panic. "I created my own chess opening!"

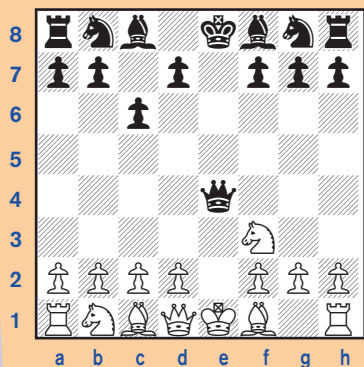
Chris Cool wandered over to see what the fuss was about.

"See," said Pat, "After 1.e4 e5 2.Nf3 I play 2...c6!? I call it the 'Uh-Oh Defense'."



"Doesn't that leave the pawn on e5 unprotected?" asked Chris.

"That's the whole point," said Pat. "My opponent thinks 'Uh-Oh, he goofed' and plays 3.Nxe5, when I surprise him with 3...Qe7. After 4.Nf3 Qxe4+ I've got my pawn back and I'm attacking his king, too!"



"Even if he protects his knight, instead, with 4.d4," Pat continued, "I

kick it away with 4...d6 and then 5.Nf3 Qxe4+. What do you think?"

Chris Cool wandered over to see what the fuss was about.

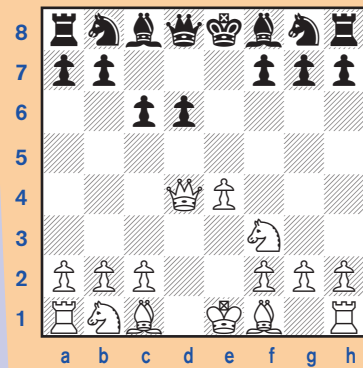
"See," said Pat, "After 1.e4 e5 2.Nf3 I play 2...c6!? I call it the 'Uh-Oh Defense'."

"You're just jealous," said Pat. "You don't have an opening of your own."

"I'm all for creativity," said Chris. "It's part of what makes chess so much fun. But, look: in your line, White blocks the check with Be2 and is ready to castle or hit back at the queen with Nc3. That's a development advantage."

"True ..."

"And what does Black do against 1.e4 e5 2.Nf3 c6 3.d4, instead of taking the e-pawn with the knight?" asked Chris. "Defending with 3...d6 loses a pawn, and look at what you have after 3...exd4 4.Qxd4."



"Not so cool," admitted Pat. "So, should I give up on the defense?"

"No way," said Chris. "For fun games—it's just the thing. Keep exploring, too. I'm sure the Uh-Oh de-

Cont'd on page 14

chess Olympiad, the players will come from Simbisai's generation.

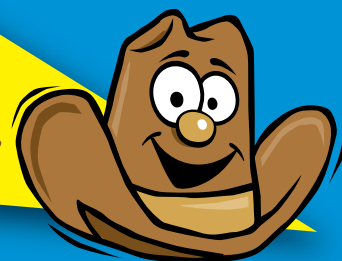
Visitors coming to Zimbabwe for the first time, are sometimes surprised when they see people playing chess on sidewalks.

But they shouldn't be. Chess is a global game.

Photo Credit:
Cecil Dzwoval



NATIONAL CHESS DAY TEXAS STYLE...



[You can read about all the National Chess Day events by searching the October archives of *Chess Life Online* at www.uschess.org. –Editor]

SCOTT WATSON MEMORIAL CHESS TOURNAMENT

By Alexey Root

On National Chess Day 2010, before 108 children began the first round of the Scott Watson Memorial Chess Tournament, Jack E. Singley Academy (JESA) teacher John Smith IV told me about his chess past. He said, "I've been intrigued with chess since my dad taught me the rules of the game around age seven, but my discovery of the world of scholastic chess came into full view at a Texas Chess Association conference in 2007. The conference was hosted by The University of Texas at Dallas, where I was fascinated to learn that my college alma mater had earned its reputation for being a "chess school" since my graduation in 1994."

Smith also honored his former colleague Scott Watson, with whom he had run a chess club at Sam Houston Middle School (Irving Independent School District). Smith said, "During our time as chess sponsors, Scott and I enjoyed the accolade of a chess team who returned from two major scholastic tournaments with trophies: a first in the thirty-year history of our school." Watson died in August of 2009. Watson's parents, Nancy Bauer and John Watson, donated two \$500 scholarships. A complete list of prize winners is available at <http://www.irvingisd.net/~jsmith/Index.html>.

October 11, 2010 was JESA's first time hosting a chess tournament. Smith co-sponsored the club with McCalip in 2008-2009 and 2009-2010. For 2010-2011, Smith is the sponsor and April Hooper is co-sponsor.

In the elementary school open, Cole Blakeman was clear first with 5-

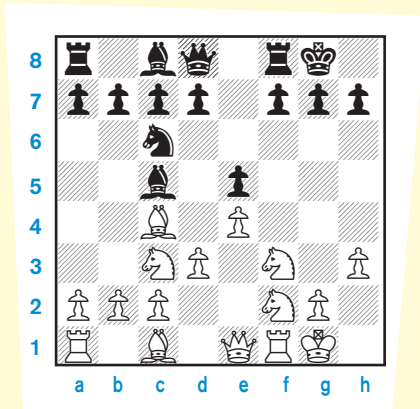
0. His coach, FM Keaton Kiewra, said that Blakeman is "very sharp tactically." Can you find the continuation that Blakeman played after move 8?

Round 1

White: Shriya Senapathi (551)

Black: Cole Blakeman (982)

1. e4 e5 2. Nf3 Nc6 3. Nc3 Bc5 4. Bc4 Nf6 5. d3 0-0 6. 0-0 Ng4 7. h3 Nxf2 8. Qe1?



8...Nxd3+ 9. Kh1 Nxe1 10. Nxe1 d6 11. Bd2 Bxh3 12. a4 Bxg2+ 13. Kxg2 Qd7 14. Nf3 Qg4+ 15. Kh1 Qh3+ 16. Nh2 Nd4 17. Rg1 Nf3 18. Rf1 Qxh2#. 0-1

William Root scored 5-0 to top the 18-player HS Open. In Root's fourth round game, Black is slightly worse until White blunders just before the

players went under seven minutes each. Time control was Game/30. Root's dad and chess coach, IM Doug Root, provided the following annotations.

White: Vamshi Guju (1291)

Black: William Root (1464)

1. e4 e6 2. d4 d5 3. Nc3 Nf6 4. Bg5 h6?

Normal is 4...Be7.

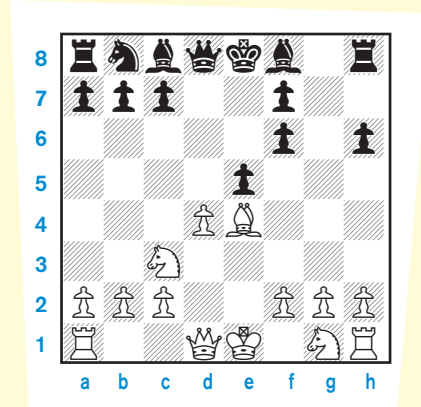
5. Bxf6 gxf6 6. Bd3

White should trade on d5.

6...dxe4

Now Black is okay, with possible plans of ...Bg7 and ...f5.

7. Bxe4 e5



Better was 7...Bg7. Now White should capture with 8. dxe5 or play 8. Qe2 (which sacrifices a pawn).



TEXASI

Both moves would give White an advantage in development.

8. Nf3 f5! 9. Bd5 Bb4?

Now 10. dxe5 wins a pawn. Black should have played 9...c6.

10. Bb3 e4 11. Ne5

White has a lot of pressure on Black's f7.

11...Rf8 12. Qh5 Qf6

More daring was 12...Qxd4 13. Bxf7+ Ke7 14. Ng6+ Kxf7 15. Nxf8+ Kxf8 16. Qxh6+ Qg7.

13. 0-0-0

Kingside castling was safer. Queenside castling also allows Black to trade queens.

13...Bxc3 14. bxc3 Qg5+

Now White's attack is gone, though White is still better.

15. Qxg5 hxg5 16. f3

Better was 16. h4, to activate the h1-rook or create a passed pawn,

depending on how Black responds.

16...Nd7

Now White should play 17. Nxd7 Kxd7 18. Rde1 and Black's chessmen are tangled. 17...Bxd7 fails to 18. Rde1 Bc6 19. d5 and White wins a pawn.

17. fxe4 Nxe5 18. dxe5 fxe4

19. Rhf1 may be best for White, to prevent Black's ...Bf5.

19. Rhe1 Rh8 20. h3 Bf5 21. Bd5 c6

21...Rh4 22. Bxb7 Rb8 23. Bd5 Rb6 and Black has some activity for the pawn. Also White's extra pawn is doubled.

22. Bxe4 Be6 23. Bf3

White may have been worried about Black playing g4. But White should have defended his a2-pawn.

23...Bxa2 24. Rd6 Rd8 25. Bg4 Ke7 26. Red1 Bd5 27. c4 Be6

Had Black taken either the g- or c-pawn then White would have played Rd7+.

28. Bxe6 fxe6 29. c5 Rhf8 30. Kd2 Rxd6+ 31. exd6+

31...cxd6+ is much better to get rid of White's doubled c-pawns.

31...Kd7

The players then stopped taking notation. White must fight for a draw because his c5-pawn is vulnerable. After many moves in time pressure **White resigned.**

Dr. Alexey Root, WIM, is the author of The Living Chess Game: Fine Arts Activities for Kids 9-14 (Libraries Unlimited, Santa Barbara, CA; 2010).

...AND FLORIDA STYLE The Weiss School Third Annual Rated Scholastic Chess Tournament

By John Dockery

The Weiss School celebrated National Chess Day by hosting its Third Annual Rated Scholastic Chess Tournament on Saturday, October 9, 2010. The tournament was organized and directed by John Dockery, president/tournament director of Palm Beach Gardens Chess Club. Since this was a special occasion to celebrate National Chess Day, Dockery gave out ten trophies for each division instead of the usual five trophies.

There were a total of 57 children participating in the tournament as well as several schools competing for team trophies. There were 75 trophies available to individual and team winners. Several schools participated and top honors went to Elbridge Gale Elementary, The Weiss School, Boca Raton Community High School, Freedom Shores Elementary, Equestrian Trails Elementary and The Benjamin School.

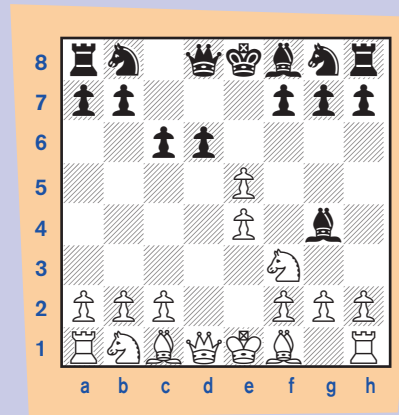


FLORIDA!

“Uh-Oh” from pg. 12

fense has a lot of wild lines hidden in it.”

Pat thought for a minute. “How about 1.e4 e5 2.Nf3 c6 3.d4 d6 4.dxe5 Bg4, making a gambit out of it?”



“That’s the idea,” said Chris. “Just remember what Garry Kasparov once wrote: Chess isn’t skittles.”

“Ha,” said Pat. “He’s never seen any of my games.”

“Maybe so,” said Chris with a laugh. “I think he meant that we should leave the fun stuff for the fun games, and use the serious stuff in the serious games.”

“I guess that’s good advice for everyone,” said Pat.

2010 CHESS MAGNET SCHOOL JUNIOR GRAND PRIX STANDINGS

ChessMagnetSchool.com



ST=State PTS=Points EV=Events

This unofficial list is based on the USCF records and TD reports as of November 15, 2010. These are unofficial and subject to correction. Overall leaders will not be eligible for state leader prizes. **Note:** In the state by state standings shown below, a state will only be shown if someone from that state has earned JGP points. Over 4,475 players have earned JGP points in just over 370 events.

Top 50 Overall Standings

NAME	ST	PTS	EV
DOMMALAPATI, ABHINAY	VA	275	23
MIZUSHIMA, DEREK	MD	210	16
ATTANAGODA, ISURU	VA	210	15
HARMON-VELLOTTI, CARL	ID	195	13
SMITH, JAMES LARKIN	MO	180	12
RICHMAN, JONATHAN	NY	175	12
KRAUSE, BENJAMIN	MD	165	8
PILLAI, KADHIR ANDRES	NY	155	8
TANENBAUM, ZACHARY	CT	155	11
CHEN, JASMINE	NY	150	8
CAO, JONATHAN	VA	150	10
MOON, KYLE	NY	145	12
MOORTHY, SRINIVAS	MD	135	9
ALTMAN-DESOLE, BEN	NY	135	10
MARUPUDI, PRANAV	NJ	130	12
TALWAI, PREM	CA-N	130	10
JIANG, CHARLES	NJ	130	6
KOGEN, JONATHAN S	IL	125	6
KUTIKOFF, ADAM	FL	125	11
PENNOCK, STEVEN G	AZ	125	5
HARMON-VELLOTTI, LUKE	ID	125	8
PENA, JOEL ANTHONY U	NJ	120	9
DIXON, DAKOTA ELLIS	WA	120	5
BLAD, ERIK L	MD	120	10
KHATTAR, TANMAY	VA	120	9
PETERSON, MICK	CA-S	120	7
WILLIAMS, JUSTUS D	NY	115	9
HUA, MARGARET M	MO	115	12
YIM, TONY	AZ	115	13
MOAZAMI, AMIR	NY	115	6
ULRICH, THOMAS MIL		115	7
HUANG, DAVID	MS	115	5
ATRIWAL, AARYAMAN	TX	115	7
CAO, ALVIN	VA	115	9
MCMAMARA, TANNER	MD	110	6
PARANJPE, ISHAN	OH	110	4
VISWANADHA, KESAV	CA-N	110	7
SCHNEIDER, THOMAS	WI	110	7
TYAGI, KUSHAN	IA	110	7
REGAM, JESSICA	PA	110	9
POULIN, MATHIEU	(CAN)	105	2
TSAI, AMY	FL	105	7

NAME	ST	PTS	EV
MOODY, CHAD	NC	105	5
CHIANG, JONATHAN	TX	105	7
WIENER, ALEXANDRA	CT	105	7
PETERSON, DANTE	CA-S	105	5
CHAKRABORTY, DIPRO	AZ	105	4
JACOBS, CASEY	NY	100	9
PERSHAD, YASH	AZ	100	8
TAM, CALVIN	CA-N	100	4
SINHA, SAHIL	MD	100	6
COOKLEV, STEVEN	IN	100	8
REIS, ALEXANDER	NY	100	4

State Leaders

NAME	ST	PTS	EV
PARSHALL, MATTHEW	AK	15	1
JIAO, KENNETH	AL	80	7
WOLF, ALEXANDER	AR	60	3
PENNOCK, STEVEN G	AZ	125	5
TALWAI, PREM	CA-N	130	10
PETERSON, MICK	CA-S	120	7
CSIMA, AMANDA	CO	55	3
TANENBAUM, ZACHARY	CT	155	11
DALY, MARCUS ROBERT	DC	35	1
D'SOUZA, DEAN	DE	55	4
KUTIKOFF, ADAM	FL	125	11
BALAGA, AINESH	GA	90	4
KAONOHI, TRISTAN K	HI	55	2
TYAGI, KUSHAN	IA	110	7
HARMON-VELLOTTI, CARL	ID	195	13
KOGEN, JONATHAN S	IL	125	6
COOKLEV, STEVEN	IN	100	8
HOLT, CONRAD	KS	70	5
LIPMAN, ANDREW	KY	35	2
ALI, JAMAL	KY	35	3
WEBSTER, DON	LA	55	4
YASINOVSKY, DAVID	MA	60	5
MIZUSHIMA, DEREK	MD	210	16
FISHBEIN, MATTHEW	ME	50	3
CHEN, JOY RONG	MI	80	5
STIFFMAN, GEORGE E	MN	85	5
SMITH, JAMES LARKIN	ME	180	12

NAME	ST	PTS	EV
HUANG, DAVID	MS	115	5
MOODY, CHAD	NC	105	5
WAN, JOSEPH CHENG-YUE	NE	30	1
POTORSKI, GERALD FIELD	NH	35	2
MARUPUDI, PRANAV	NJ	130	12
JIANG, CHARLES	NJ	130	6
EWING, GABRIEL	NM	50	4
HAYASHI, MICHAEL	NV	20	1
ZAVALA, JONATHAN	NV	20	1
RICHMAN, JONATHAN	NY	175	12
PARANJPE, ISHAN	OH	110	4
NICKELS, ERIK J	OK	45	4
TALYANSKY, SETH DAVID	OR	65	1
REGAM, JESSICA	PA	110	9
GU, CHRISTOPHER	RI	80	3
LAURIA, MICHAEL D	SC	75	4
KNUDSON, MICHAEL	SD	40	1
VAZQUEZ, RAUL	TERR	10	1
LEVINE, BENJAMIN	TN	95	8
FU, JASON	TN	95	7
ATRIWAL, AARYAMAAN	TX	115	7
HON, ERIC	UT	55	5
DOMMALAPATI, ABHINAY	VA	275	23
VOLL, JAMESON	VT	35	2
DIXON, DAKOTA ELLIS	WA	120	5
SCHNEIDER, THOMAS	WI	110	7
PARHI, SIDHARTHA	WV	35	3

NOTE: The Junior Grand Prix point totals have been adjusted slightly this month, to correct a glitch in the software program used to tabulate the results. These point totals are correct as of November 15, 2010.

A Brief Chess Opening Glossary

The King's Gambit Declined

by Pete Tamburro

In the late 19th century, the King's Gambit was the most dangerous opening for Black to face when he played 1.e4 e5. By the second decade of the 20th century, it was "solved." Black could relax. Rudolf Spielmann, one of the great attacking masters of the 20th century wrote about the opening being on its sickbed. Bobby Fischer, in the 1960s, declared it was "busted."

There are two things wrong with all this. First, it is playable. Secondly, at scholastic and amateur levels, it's still very hard to defend against it. Because of this, a good many chess coaches (this writer included!), tell their students to decline it.

Thus, we are going to start with the King's Gambit Declined lines. One warning is necessary. The King's Gambit lines can be very complicated, so a glossary is hardly the place to feel like you know the King's Gambit. Grab a book on it. Much of the analysis is based on what you can find in Thomas Johansson's two books on the King's Gambit. He's a real fan and has written two very enjoyable books on the opening!

Falkbeer Counter Gambit:
1. e4 e5 2. f4 d5



Some books, because of general usage, call this the Falkbeer, and others insist it's only with 3. exd5 e4. It's not that important. There are four main choices for White:

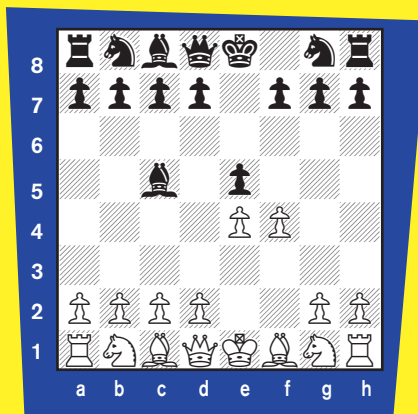
3. Nf3 dxe4 4. Nxe5—White avoids the counter gambit and concentrates developing his king-side pieces quickly.

3. exd5 e4 4. d3! Nf6 5. dxe4 Nxe4 6. Nf3 Bc5 7. Qe2 Bf5 8. Nc3 Qe7 9. Be3 Bxe3 10. Qxe3 Nxc3 11. Qxe7+ Kxe7 12. bxc3 Be4 13. Ng5!

3. exd5 c6 4. dxc6 Nxc6 with a lively game. A warning: 5. fxe5 Qh4+ either mates or wins the white rook.

3. exd5 exf4 (a very solid line) 4. Nf3 Nf6

Classical Defense:
1. e4 e5 2. f4 Bc5

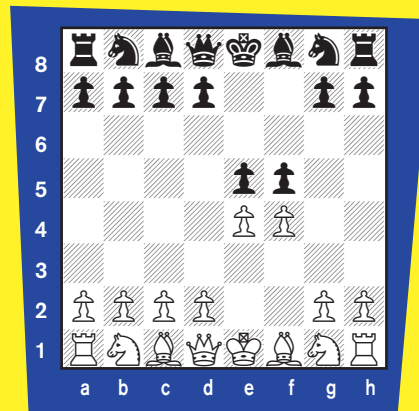


Not only is this solid, but Black can often play for a win if White tries too much. Of course, that also works the other way around:

3. Nf3 d6 4. Nc3 (4. c3 is a very risky line for both sides) 4. ... Nf6 5. Bc4 Nc6 6. d3 and now Black can play 6. ... Be6, 6. ... 0-0, 6. ... Bg4, 6. ... a6 or the poor 6. ...

Ng4. Get that book!

Counter Gambit:
1. e4 e5 2. f4 f5



If you're White, smile at your opponent and say thank you! OK, we're just kidding, but it's not such a hot move: 3. exf5 exf4 4. Qh5+ g6 5. fxc6 Nf6 6. g7+ or 3. ... Qh4+ 4. g3 Qe7 5. fxe5 Qxe5+ 6. Qe2! or 3. ... e4 4. Qh5+ Ke7 5. d3 Nf6 6. Qg5 h6 7. Qh4 d5 8. dxe4.

Less Common Lines: They're not bad, but they don't show up too much. That could be good for Black to surprise White, but not so hot if it isn't a surprise.

2. ... d6 3. Nf3 and Black should probably now learn the Fischer Defense to the King's Gambit Accepted with 3. ... exf4.

2. ... Nf6 3. Nf3 Nxe4 4. fxe5 d5 5. d3 Nc5 6. d4 Ne6 7. c4 Bb4+ 8. Bd2 Bxd2+ 9. Qxd2 c6 10. Nc3.

2. ... Qh4+ (Keene's Defense) 3. g3 Qe7 4. d3 or 4. Nc3.

2. ... Qf6 (should be called the Dreadful Defense). This deserves a miniature game: Jorge Sanchez Almeyra-Blas Lugo, Matanzas,

1992: 3. Nc3 Qxf4 4. Nf3 Bb4 5. Bc4 Bxc3 6. 0-0 Ba5 7. d4 Qxe4 8. Bxf7+! Kd8 9. Bxg8! Rxg8 10. Bg5+ Ke8 11. Nxe5 h6 12. Qh5+ g6 13. Qxh6 Qxd4+ 14. Kh1 Qxe5 15. Qh7 Qg7 16. c3!! d6 17. Rae1+ Kd7 18. Rf7+ Kc6 19. Rxg7 Rxg7 20. Qxg7 Bf5 1-0.

2. ... Nc6 3. Nf3 f5 (The Adelaide Counter Gambit) 4. exf5 e4 (4. ... exf4 is possible) 5. Ne5 Nf6 6. Nc3 and it gets really complicated. White should be better, but needs to be prepared.

Nobody should play the King's Gambit on either side without studying all the possibilities. It is exciting chess, even when declined!

THIS GAME WE CALL CHESS

Do you remember the positions and conditions? If not, please refer to page 23 in the October 2010 issue of *CLAK*. The winning entry is from Howard Feng of Massachusetts. He wrote:

1. Draw, because Black does not have enough mating material.
2. White wins, because White has a pawn that can be promoted to a queen and can checkmate Black.
3. Black wins, because Black has two knights which can checkmate but cannot force a win. [and White has a pawn on the board.]
4. White wins, because White can promote its pawn to a queen and checkmate.

Howard will receive a copy of *Endgame Tactics* by Van Perlo, from USCFSales.



SOLUTIONS

Win or Draw! (from page 8)

Solutions:

Position One: WHITE WINS! 1. Qf8 Kb8 2. Qd6+ Ka8 3. Qa3+ Kb8 4. Qg3+ Ka8 5. Qg8 and mates or wins the rook. An extraordinary example of the power of the queen and the helplessness of the king. P. Tamburro, 2010 (based on a study by Horwitz and Kling, 1851).

Position Two: DRAW!! What a difference a move makes! 1. ... Rb7 or Rd7 draw and now White is the helpless one!

Position Three: WHITE WINS!! This one is tough but interesting. If White plays 1. Ke3 Re1+ 2. Kd4 Re6 and the rook on the third rank keeps the king out long enough for Black to travel along his first rank to draw. But, if White plays 1. Ke2!!, there is no rook check on e1: 1. ... Kg8 2. Kd3 Rd1+ 3. Kc4 Rc1+ 4. Kb5 Rb1+ 5. Kc6 Rc1+ 6. Kb6 Rb1+ 7. Kc7 Rc1+ 8. Kb8 Ra1 9. Ra8 Kg7 10. Kb7 Rb1+ 11. Ka7 Rf1 12. Rb8 Ra1 13. Kb7 Rb1+ 14. Ka8 Re1 15. a7 Re2 16. Rb7+ and finally wins. White

has to work hard, but it teaches you how you can get a point if you understand there is a way to win.

Position Four: DRAW!! Because Black has the move, he can play 1. ... Ra5 2. Ke3 Re5+ 3. Kd4 Re6 and we have what we mentioned in Position Three.

Position Five: BLACK WINS!! 1. ... Kb4 (lifting the stalemate and advancing toward the pawn and king) 2. Kb7 Kc5+ 3. Ka8 Kb6 4. Kb8 Kc6+ and mate in two. Lolli, 1763.

Position Six: WHITE WINS!! Even though the c-pawn on the 7th rank can often draw, if the king is close enough the superior side can win: 1. Qb3 (the pin is very important) 1. ... Kd2 2. Qb2 Kd1 3. Kf3 Kd2 (3. ... c1=Q 4. Qe2 mate) 4. Kf2 Kd1 5. Qd4+ Kc1 6. Qb4 Kd1 7. Qe8 mate. Lolli, 1763.

What's the Problem (from page 9)

- Solutions:
1. Kc7
 2. Bf6
 3. Pa6
 4. Qc7
 5. Ba6

EVANS! *Cont'd from pg. 6*

White resigned after 1. Qc8+?? Kh7 2. Qf5+ g6. But Amos Burn in the *London Illustrated News* long ago discovered that White missed a mate in 15 moves. Once again I wonder if your readers can find it without using a computer?

Once again the solution is upside down:

1. Rf8+ Kh7 2. Qg8+ Kg6 3. Rf6+!! Kxf6 (if 3. ... Kh5 4. Qe8+ Kg4 5. Qe6+ Kxg3 6. Bxe5+ Kxh4 7. Rf4+ Kg3 8. Rg4+ Kh3 9. Rg3+ Kh4 10. Qh3 mate) 4. Qf8+ Ke6 5. Qe8+ Kd6 6. Bxe5+ Kc5 7. Bd4+ Kd6 8. Qd8+ Ke6 9. Qd5+ Ke7 10. Bc5+ Ke8 11. Qe6+ Kd8 12. Be7+ Ke8 13. Bd6+ Kd8 14. Qe7+ Kc8 15. Qxc7 mate.



Tournament Life

Tournament Life Announcements

DECEMBER 15 THROUGH FEBRUARY 14

Scholastic Members:

As a service to you, we are listing upcoming National USCF rated events, and requested events of possible interest to you. You can always log in to www.uschess.org, and click on "Clubs and Tournaments." Then click on "Upcoming Tournaments" for a complete listing of upcoming rated events and details. As always, you can check out the TLA section of *Chess Life*.

Organizers and Tournament Directors:

If you would like your tournament listed here in *Chess Life for Kids* for February (events to be held after February 14), the deadline for submitting your announcements is December 10th. The deadline for the April 2011 issue is February 10th. The processing fee is \$1.00 per line for the first eight lines, \$2.00 for every line thereafter. Send your announcements to tl@uschess.org.

Display advertising is also available. Advertising rates are posted on the USCF website, www.uschess.org, or you may email: tl@uschess.org for complete details.

NATIONALS

Dec. 10-12, Florida 2010 National K-12 Championship

7SS, G/90. Disney's Coronado Springs Resort, 1000 West Buena Vista Dr., Lake Buena Vista, FL 32830. 407-939-1000, \$129 single/double/triple/quadruple. **13 Sections.** Play only in your grade section. December rating supplement will be used. 1/2-point bye available any round (except round seven) if requested in advance of rd. 1. Team score = total of top three (minimum two) finishers from each school per grade, first place individual and team, including ties, will be National Champion for their grade. **Schedule:** Opening ceremony Fri. 12:30 pm. **Rds.:** Fri. 1 pm-6 pm, Sat. 10 am-2 pm-6 pm, Sun. 9 am-1 pm. Awards Ceremony Sun., approx. 5 pm. **Special round times for K-1 sections:** Fri. 1:30 pm-5:30 pm, Sat. 9:30 am-1:30 pm-5:30 pm, Sun. 9:30 am-1:30 pm. Awards Ceremony Sun. approx. 4:30 pm for K-1. EF: \$50/participant (postmarked by 11/7), \$70/participant (postmarked by 11/28), \$85 later or \$90 at site, \$5.00 extra for all phone registrations, \$20 change fee for roster or section changes after 11/28 (not 11/7) or any on site changes. On site registration Thurs. 9 am-10 pm and Fri. 8 am-10 am. After 10 am players will have a 1/2-point bye for rd 1. **Awards:** Trophies to top 10 individuals & top five teams (minimum) in each grade. **Class prizes:** 1st-3rd place **K-1:** 800-999, 600-799, U600, Unr. 2-6: 1000-1199, 800-999, 600-799, U600 Unr. **7-9:** 1200-1399, 1000-1199, 800-999, U800, Unr. **10-12:** 1400-1599, 1200-1399, 1000-1199, U1000, Unr. Every player receives a commemorative item! **Side Events:** *Bughouse:* Thurs. 11 am, Reg. on site only Thurs. 8 am-10 am, \$25/team. *Blitz Sections:* K-6 and K-12, Thurs. 5 pm, Reg. on site until 4 pm. *Blitz EF:* On site - \$20; Advance by 11/28 entry: \$15. *Blitz Awards:* Trophies in K-6 and K-12 sections. Individual: Top 10, Team: 1st-5th place. K-6 Class: 1000-1199, 800-999, 600-799, U600 Unr. K-12 Class: 1400-1599, 1200-1399, 1000-1199, U1000, Unr. *Bughouse Awards:* Trophies for Bughouse: top 5 teams. Team Rooms are limited. Contact Cheryl Bruce 931-787-1234 ext. 147. **Hotel info:** <http://disneyworld.disney.go.com/resorts/coronado-springs-resort/>. **Questions:** Cheryl Bruce: 931-787-1234 ext. 147 or Ent: U.S. Chess, Attn.: K-12 Championship, P.O. Box 3967, Crossville, TN 38557 or on line. Official web page and on line registration at www.uschess.org/tournaments/2010/k12/. **Chess Magnet School JGP.**

Feb. 18-20 or 19-20, Florida 2011 U.S. Amateur Team – South

5SS, G/120 (2-day option, rd 1 G/60). **Sonesta Hotel Orlando Downtown**, 60 South Ivanhoe Blvd., Orlando, FL 32804. 4-player teams (plus optional alternate). 2 Sections (using Jan. ratings not Yr-end Dec-ratings): **OPEN**, Team Avg rting <2200. **SCHOLASTIC**, Game/60, Team avg <1200. **Players need not be from the same school. Teams can be formed on-site. Winning OPEN team competes in national playoff online.** EF per player: **OPEN** \$39 by 2/11, \$45 later. **SCHOLASTIC** \$29 by 2/11, \$35 later. **SPECIAL EF:** 5-player team \$175 by 2/11, \$200 later. **PRIZES:** **OPEN** 1st, 2nd teams: plaques and four Excalibur Clocks, 3rd: plaques; **SCHOLASTIC** 1st, 2nd teams: plaques and four Excalibur Clocks, 3rd: trophies; **Board Prizes:** each section: Boards 1-4, Excalibur Clocks. **Class Prizes:** **OPEN:** U2000, U1800, U1600, U1400; **Scholastic:** U1000, U800. Trophies. Other awards TBD. **Schedule:** OPEN 3-day: rds 8, 1-7, 9-3, 2-day: rds 10-1-7, 9-3; **SCHOLASTIC (Sat & Sun):** 10-1-4, 9-12, Awards 2:30. **HR: \$79** (800)SONESTA or (407)313-6040; (Mention "Chess") Hot Breakfast Buffet @ \$5/person with room. Complimentary parking voucher, Fitness Center & internet with sleeping rooms; Other covered day parking at \$5 per day. Reserve ASAP. **ALL HOTELS FILL UP USATS WEEKEND!** ENT: FCCC, 921 N. Thistle Ln, Maitland, FL 32751 or online usats2011.eventbrite.com. See www.centralchess.org for details or call (407)629-6946. **Chess Magnet School JGP.**

Feb. 19-21, California Australia 28th Annual U.S. Amateur Team Championship – West

6-SS, 40/2, SD.1. Warner Center Marriott, 21850 Oxnard St., Woodland Hills, CA 91367. Four-player teams plus optional alternate, average rating of four highest must be U/2200, diff. between bds. 3 & 4 may not exceed 1000. **Jan. list used.** EF: \$132 per team if received by 2/18, \$36 individual (online only), \$148 at site, age 18 or HS/below \$96 by 2/18, \$110 site. Trophies and 4 clocks to top 3 teams, U2100, U2000, U1800, U1600, U1400/unr. Trophies (1 large, 4 small) to top college, industrial, junior (U18), Senior (over 50), U1200. Clocks to best score each board, alternate, and any 6-0. Gift certificate prizes for best team name (1st/2nd). **Reg.:** 9-10 am 2/19. **Rds.:** 11-6, 11-6, 10-4:30. Online entry: www.chesspalace.com/amateurteam.htm. **HR:** \$119, 800-228-9290, ask for chess. Reserve by Jan. 19 or rates may increase. Parking \$6. **Ent:** SCCF, PO Box 205, Monterey Park, CA 91754. **Info, help in forming teams:** Randy Hough 626-282-7412 or randallhough@yahoo.com. NS, NC, W, F. **Chess Magnet School JGP.**

A Heritage Event! Feb. 19-21, New Jersey 2011 World Amateur Team & U.S. Team East 41st Annual!

6SS, 40/2, SD/1. Parsippany Hilton, 1 Hilton Ct., Parsippany, NJ 07054. **Chess Rate valid until 1/16. Reserve early 973-267-7373 or 1-800-HILTONS.** Morris/Essex train to Morris Plains 1.5 miles. Open to 4-player teams with one optional alternate. Team average (4 highest ratings - 2010 Decem ber AnnualRating list will be used, not January Rating list) must be under 2200. EF: \$145 postmarked by 2/5/11. Scholastic teams College and below \$140 per team, ALL-\$180 after or at door— all teams, any changes at site \$25 change. Check out official website www.njcsf.org. **Prizes:** 1-5th Place teams, plaque and 4 digital clocks; Top Team (Denis Barry Award) U2100, 2000, 1900, 1800, 1700, 1600, 1500, 1400, 1300, 1200, 1000 each plaque and 4 Digital Clocks; Top college team (same school) 4 Digital Clocks & plaque; Top HS team (grades 9-12 same school), Top Middle School (grades 5-9 same school), Top Elementary School (grades K-6 same school), Top 2 Scholastic Teams (mixed schools okay) (Collins Award), Mixed Doubles (2 males, 2 females-no alternates), Seniors (all players over age 50), Military, each plaque & 4 Digital Clocks to top team; Company Team (same employer) Old Timers Trophy (all players over 65), Family (4 family members), State teams— CT, DE, MD, MA, NJ, NY (Benjamin Award), PA, VA, NC, RI, OH, Canada, each plaque top team; team traveling longest distance—entry refunded. Special Plaque to Top College (NJ, NY, Pennsylvania), Best Player 1-4 and top alternate, All 6-0 scores each Digital clock. Biggest Individual upset each round Engraved Cross pen; Entry fee refunded to team with Best "Chess related" name, Sunday night—Best "Chess Related" costumes or gimmick— gourmet dinner for four. **Reg.:** 9-12 Sat 2/19. **Rds.:** 1-7:30, 11-6, 9-3:30. **Special Events!! Surprises and special give-aways each round. Sunday night - Bughouse** \$20 per team. Cash prizes. **HR:** Parsippany Hilton, chess rates expire 1/16/2011. Rates \$119 (up to 4 in room) 2nd hotel now attached to Hilton also up to 4 in room \$121 per night Hampton Inn—includes breakfast for 4 each day. For help forming teams and more information contact esdoyle@aol.com: **Chks payable to NJSCF**, mail by 2/05 to: **E.Steven Doyle, 17 Stonehenge Road, Morristown, NJ 07960.** (Include Team name, Captain, players full names, USCF Expiration, ID numbers and ratings in board order). No team can include more than two GM's. Include SASE for confirmation if wanted, No registered or certified mail accepted. **NS. Chess Magnet School JGP.**

Apr. 8-10, Illinois 2011 All Girls National Championship by the Kasparov Chess Foundation in association with the Renaissance Knights Chess Foundation, UTD & USCF

6SS, G/90. Doubletree Chicago Magnificent Mile, 300 East Ohio St., Chicago, IL 60611, (312) 787-6100, Hotel Rate \$139, **6 Sections:** 8 years old and younger; 10 and younger, 12 and younger, 14 and younger, 16 and younger, 18 and younger. Age as of 4/1/2011. USCF membership required. Winner of 18 years old and younger Section wins an Academic Distinction Scholarship to The University of Texas at Dallas, worth \$68,000 for an out-of-state student. EF: \$50 if postmarked/online by 3/13; \$70 if by 3/27; \$85 by 4/7 or \$90 on-site. Do not mail after 4/1 as your name may not be received on time. **Opening Ceremony:** 6pm, Friday. **Rounds:** Rd. 1 - 6:30pm Fri; Rounds 2-4 - Sat 10am, 2:30pm, 6:30pm; Rounds 5-6 - Sun 9am & 1pm. **Awards Ceremony:** Sun. 5pm. Trophies to top 15 indiv & top 3 teams (top 3 players added for team scores). **Bye:** One 1/2-pt bye available, any round, if requested before end of Rd.2 and if player has not received a full-point bye. **Side Events:** *Bughouse Tournament - Fri.* 1pm, EF \$25/team. *Blitz Tournament - Fri.* 3pm, EF \$15 by 3/27, \$20 after or on site. **HR:** \$139-139-139-139, (312) 787-6100, reserve by 3/1 or rate may increase. **Entries:** mail to RKnight, Attn: ALL Girls ID#, date of birth, grade, school name city & state, or online/ info at: www.renaissanceknights.org/event/all-girls. **Chess Magnet School JGP.**

A Heritage Event! An American Classic! June 10-12 or June 11-12, Nevada

ChessLecture.com Grand Prix Points: 200 (enhanced)
2011 National Open
6-SS, 40/2, SD/1 (2 day option rds 1-3 G/45). South Point Hotel, Casino and Spa, 9777 Las Vegas Blvd South, Las Vegas, NV 89183. **\$100,000 Prize Fund** based on 850 paid entries (\$80,000 guaranteed). **Championship.** SS: 8000-4000-2000-1000-600-400-400-400-200-200-200-200-200-200, under 2500 2000, under 2400 1500, under 2300 1000. \$2,000 EXTRA for perfect score. The winner of the Championship section also receives a replica of the Edmondson Cup. **Under 2200.** SS: 4500-2000-1000-750-500-350-350-350-350-200-200-200-200-200. **Under 2000.** SS: 4500-2000-1000-750-500-350-350-350-200-200-200-200. **Under 1800.** SS: 4500-2000-1000-750-500-350-350-350-200-200-200-200. **Under 1600.** SS: 4500-2000-1000-750-500-350-350-350-200-200-200-200. **Under 1400.** SS: 2500-1500-1000-500-300-300-250-250-200-200. **Under 1200.** SS: 1500-900-500-250-250-200-200-200-200. **Unrated.** SS: 600-400-200-150-150. **Plus score bonus** (\$16,000) in addition to any other prizes, every player who finishes with 3-1/2 points or better wins a \$50 gift certificate. Plus score certificates will be awarded on site only. Top 2 sections FIDE rated. EF: \$159 by 1/18, \$179 by 5/18, \$199 by 6/8, \$220 on site. Add \$100 for adults rated under 2100 or juniors under 2000 playing in the Championship Section. This is an open tournament - you may play in any section at or above your rating level; unrated players may play only in Unrated or Championship Section. Provisionally rated players may not win more than 3rd prize in any section except Championship. CCA minimum ratings or other ratings may be used if higher than USCF June Supplement. **Reg.:** 11 a.m.-10 p.m. Thursday, 8-8:30 a.m. Friday, Rds.: 10-5, 10-5, 10-5, 2-day (in a separate room) schedule: **Reg.:** 8-8:30 a.m. Saturdays. **Rds.:** 9:30-11:30-1:30-5: merge with 3-day in round 4. Half point byes available in any round, but

round 5 or 6 byes must be requested before the start of round 2. Chess sets and boards provided for tournament play only, not for skillies. Please bring chess clocks! The **LAS VEGAS INTERNATIONAL CHESS FESTIVAL** features the National Open, the U.S. Game/10 Championship and other championship events. **Many free extras and surprises! Free parking. Free raffle with great prizes. Free GM Lectures.** Free GM analysis of your games. **Grandmaster Chess Camp** for all ages on Thursday. **Grandmaster Simuls** Thursday afternoon. **U.S. Game/10 and National Open Blitz** Thursday. **Poker Tournament** Monday morning. **Scholastic Tournaments** Friday, Saturday & Sunday. **LOW room rates! HR: \$55 single or double (\$95 Friday and Saturday nights).** 1-866-791-7626 or (702) 796-7111. **Don't be shut out; make your reservations early and be sure to ask for the chess rates;** South Point sells out most weekends. Cutoff for special hotel rate is **May 18th.** Rates may be as high as \$150 a night later. **RESERVE NOW!** Credit card or one night room deposit will be required to hold reservation, may be canceled 72 hours in advance for nominal fee. Tournament Registration: National Open, PO Box 90925, Henderson, NV 89009-0125, on line at www.VegasChessFestival.com or by fax at (702) 933-9112. NS. W. FIDE. **Chess Magnet School JGP.**

GRAND PRIX

Dec. 11-12, Pennsylvania ChessLecture.com Grand Prix Points: 15

2nd Annual Delaware Valley Open Championship
The Philadelphia School, 2501 Lombard Street, Philadelphia, PA 19146. **In 5 Sections: Open, U/1600, K-12 U/1000 (Sunday only), K-12 U/700 (Saturday only), K-6 U/400 (Saturday only). Open & U/1600:** 5SS, G/90. Rds.: Sat 10-1:30-5, Sun 10-1:30. **Scholastic sections:** 4SS, G/40. Rds.: 10-11:30-1:15-2:45. EF: \$60 (Open), \$50 (U/1600), \$35 (Scholastic); \$10 more if registering after 12/5; \$20 more if registering on-site; \$10 discount for scholastic players in multiple sections. **Prizes: Championship:** U/1600, 75%(G) \$500-300-200, top U/2200, U/2000, U/1800 each \$150-100. **U/1600:** (\$50) \$300-200-100, top U/1400, U/1200 each \$100-75. **Scholastic sections:** Trophies to top 10 in each section; all players get a T-shirt. **All sections:** Info to top club (see website for rules). On-site registration 9:00-9:30. On/online registration at www.silverknightschess.com or mail entries to Silver Knights Chess, PO Box 1103, Bryn Mawr, PA 19010.

A Heritage Event! Dec. 27-30, District of Columbia

ChessLecture.com Grand Prix Points: 120 (enhanced)
37th Annual Eastern Open
8 round-SS. TC: 40/2, SD/1 (3-day option, rds 1-4, G/45). Westin Washington DC City Center Hotel, 1400 M St. NW, Washington, DC. **\$17,500 in Guaranteed Prizes. 100 prizes!** Class prizes for each 100-point interval! **4 Sections – Open Section:** \$2,000-1,250-750, U2400 \$500, U2300 \$500. FIDE rated. **Under 2200 Section:** \$1,000-750-500, U2100 \$500, U2000 \$400. **Under 1900 Section:** \$1,000-750-500, U1800 \$500, U1700 \$400. **Under 1600 Section:** \$750-500-250, U1500 \$250, U1400 \$250, U1300 \$250, U1150 \$250, U1000 \$250. Max prize for UR \$200. **New Special Prizes! Upset:** Each rd in each section: 1st \$50 & 2nd book prize. Max 2 prizes per player. **Best Played Game:** In each of last 2 rds, Open \$200-100 & U2200 \$50. Submitted games must be annotated by winners. **Brilliance:** From any rd, Open \$100-75-50-25 & U2200 \$50-25. **Opening Innovation:** From any rd, Open \$75-50-25 & U2200 \$50-25. **Reg & Sched: 4-Day – Reg.:** Mon 12/27: 10am-12:00noon. **Rds.:** 12/27: 1-7:30, 12/28-12/30: 10-5. On 12/28-12/30, make Metro connections after evening rd. **3-day – Reg.:** Tue 12/28: 3-5pm. **Rds. 1-4:** Tue 12/28: 5:30pm, 7:15, 9:00, 10:45. **Byes** available any rd but rds 6-8 must commit before rd 3. Limit 3 byes for class prizes. Free GM lecture on 12/27 at 10:30am. **Blitz Championship:** 12/28 at 10pm, see separate TLA. **HR:** Only \$79! Call 1-888-627-9035 by 12/15 and request this very low rate. **Entries:** If postmarked by Dec 17: Open \$125; U2200 \$110; U1900 \$100; U1600 \$100; U1300&UR \$75. Entries \$25 more at site! Rentry \$60 and limited to rounds 2-4. **GMS:** free entry, but \$125 deducted from any prize; **IMS:** \$50 advance entry, but \$75 deducted. No credit cards accepted. \$10 service charge for refunds. **Make checks or money orders payable to:** Eastern Open. Mail entries to Tom Beckman, PO Box 42225, Washington, DC 20015-2225. For entry forms and info, easternopenchess.com or tombeckman@rcn.com. **Chess Magnet School JGP.**

Dec. 28, District of Columbia ChessLecture.com Grand Prix Points: 10

Eastern Open Blitz Championship (OQ)
5-Rd Double Swiss. TC: G/5 in **One Section: \$51200** based on 40 entries; 90% payout if less than 40 entries. **Open** \$350-250-100 (G), U2200 \$150; U1900 \$150; U1600 \$100; U1300 \$100. **EF:** \$35 if received by 12/22. \$45 at site, only cash entries. **Site Reg:** At any time during tournament and 12/28 until 10:10pm. **Rds** begin at 10:30pm promptly and successive rds posted as soon as ready. For late entry, one bye allowed for two-1/2 points. Higher of USCF and Quick used for pairings and prizes. **See Eastern Open TLA** or easternopenchess.com for location, entry, and hotel details.

Dec. 28-30, Wisconsin ChessLecture.com Grand Prix Points: 15

2010 Pan American Open
5SS, G/90+30sec/move increment. Open to any individual. FIDE and USCF rated; USCF rules used. **Playing site:** Crowne Plaza Hotel, 6401 South 13th Street, Milwaukee, WI 53207. 1-414-764-5300. Free shuttle from the airport. Free parking and wireless internet. Mention **Special Chess Rate \$78** (single or double). Reserve by December 10th or rate may increase. **Prize Fund (\$2,900 b/80 or else proportional):** \$1,000-\$500, best M, X, A, B, C, D, E & below \$200 each. **Schedule:** late registration 3:00-4:00pm on 12/28, Rds.: 4:30pm on 12/28, 10:00am and 4:00pm on 12/29; 10:00am and 3:00pm on 12/30. Up to two 1/2 byes available. **EF:** \$50 by December 1st, \$70 thereafter. Please make checks payable to Wisconsin Chess Academy and send to Alex Betaneli, PO Box 260122, Madison, WI 53726. All entries will be confirmed over email and posted on www.wichessacademy.com and www.monroi.com. **INFO:** abetaneli@wichessacademy.com or abetaneli@hotmail.com; 1-608-334-2574. Boards and sets provided, please bring clocks. **Chess Magnet School JGP.**

Jan. 14-16 or 15-16, Florida ChessLecture.com Grand Prix Points: 20

Central Florida Class Championships
G/120 (2-day; Rd.1 G/60). **Wyndham Orlando Resort**, 8001 International Dr., Orlando, FL 32819 (Corner of Sand Lake Rd.). **\$77000/ b130, 70% Guaranteed.** 6 Sections: **OPEN:** \$1000-400-200, U2200 \$150, U2100 \$100. **Class A:** \$600-300, U1900 \$150. **Class B:** \$600-300, U1700 \$150. **Class C:** \$600-300, U1500 \$150. **Class D:** \$600-300, U1300 \$150. **U1200:** \$500-300, U1000 \$100, U800 \$50. Rated players may play up one class only. Unrateds limited to \$50 un-

Tournament Life

Feb. 6, Greater Chicago High School Championship!

Presented by Kasparov Chess Foundation & Renaissance Knights. 5-SS, G/30, open to all grades 12/below. Westin Chicago North Shore, 601 N. Milwaukee Ave., Wheeling, IL. 3 Sections: **1. Varsity**: open to all. Trophies: top 5 players, top rated Under 1600, top 2 schools. **2. Junior Varsity**: open to Under 1400. Trophies: top 5 players, top rated Under 1200, top 2 schools. **3. Novice**: open to Under 1000 & Unrated players. Trophies: top 5 players, top 2 rated Unrated, top 2 schools. *Any player who scores 4 or more points and doesn't win a trophy will receive a medal!* **EF**: \$35 if postmarked/online by 1/14; \$42 if by 1/28; \$49 by 2/3 or \$55 on-site. Do not mail after 1/28, no online after 2/3, on-site entry receives 1/2 point 1st round bye. *All entries \$5 less per player if 4 or more from same school registered at same time.* **RDS.**: 10, 11:30, 1:00, 2:30 & 4:00. **Awards Ceremony**: 5:30pm. **Byes**: One 1/2-pt bye available, any round, if requested before end of Rd. 2 and if player has not received a full-point bye. **HR**: \$119, 847-777-6500 reserve by 1/7 or rate may increase. **Entries**: mail to RKnights, Attn: All Girls, PO Box 1074, Northbrook, IL 60065; include name, section, rating, USCF ID#, date of birth, grade, school name city & state, or online/info at: www.renaissanceknights.org/event/greaterchicago.

Apr. 8-10, 2011 All Girls National Championship by the Kasparov Chess Foundation in association with the Renaissance Knights Chess Foundation, UTD & USCF
See Nationals.

May 26-30, 27-30, 28-30 or 29-30, 20th annual Chicago Open
See Chess Life or www.chesstour.com.

Kansas

Dec. 18, 10th Annual Lindsborg Open
5-SS, G/60. Karpov Chess School, 106 S. Main St., Lindsborg, KS 67456. One section, open to all. **EF**: \$15 if playing only for trophies, \$35 if playing only for cash prizes, \$45 if playing for both cash prizes and trophies. All \$10 more on-site. **Reg.**: 8-8:30. **Rds.**: 9, 11:30, 2, 4:30, 7. **Cash prizes**: \$150, \$100, U1800, U1500, U1200 each \$100. Cash prizes based on 20 cash prize entries. KCA memb req (OSA). **Ent/info**: brownscombe@anatomykarpovchessschool.org, www.anatomykarpovchessschool.org, 785-227-2224.

Maryland

Dec. 18, Scholastic Quads #3 (VA)
Montessori School of McLean, 1711 Kirby Rd., McLean, VA 22101. Time Control: G/30. **EF**: \$20 online by Wed; \$30 on-site from 1:30-1:45. Check-in is MANDATORY for all pre-registered players, and must be complete by 1:45. Players that have not checked in by 1:45 will not be placed in a quad, even if they signed up in advance. **Rds.**: 1:45pm, then ASAP. **Prizes**: trophy to winner of each quad. See www.silverknightschess.com to register.

Jan. 22, Scholastic Quads #4 (VA)
Montessori School of McLean, 1711 Kirby Rd., McLean, VA 22101. **Time Control**: G/30. **EF**: \$20 online by Wed; \$30 on-site from 1:30-1:45. Check-in is MANDATORY for all pre-registered players, and must be complete by 1:45. Players that have not checked in by 1:45 will not be placed in a quad, even if they signed up in advance. **Rds.**: 1:45pm, then ASAP. **Prizes**: trophy to winner of each quad. See www.silverknightschess.com to register.

Jan. 29, January Joust (VA)
4SS, G/30. Franklin Sherman Elementary School, 6630 Brawner St., McLean, VA 22101. **Sections**: K-6 U/500, K-12 U/900, K-12 Champ. **EF**: \$25 online by Wed; \$35 on-site 12:00-12:30. **Rds.**: 1:00, then ASAP. **Prizes**: trophies to top individuals & schools; **Free game analysis**. See www.silverknightschess.com to register.

Jan. 30, Howard County Chess Tournament #2
4SS, G/30. Glenwood Community Center, 2400 Route 97, Cooksville, MD 21273. **Sections**: K-5 Unrated, 6-12 Unrated, K-12 Rated. **EF**: \$25 in advance; \$35 on-site 1:00-1:30. **Rds.**: 2:00, then ASAP. **Prizes**: trophies to top individuals & schools. **Free game analysis**. Register at www.howardcountymd.gov/RAP or 410-313-4714.

Feb. 5, Kasparov Chess Foundation and UMBC presents 3rd Annual Greater Mid-Atlantic Scholastic Championships
5-SS, G/30. UMBC, University Center 1000 Hilltop Circle, Baltimore, MD 21250. 6 sections: **1. Primary Varsity**, open to all grades 3/ below. **2. Primary Novice**, grades 3/ below, rated under 700 or Unrated. **3. Elementary Varsity**, open to all grades K-6/below. **4. Elementary Novice**, grades 6/ below, rated under 800 or Unrated. **5. Junior High/ High School Varsity** open to all grades K-12. **6. Junior High/ High School Novice**, grades K-12, rated under 1000 or Unrated. Entry Fee (EF): \$30 per player postmarked by 1/24/11. Trophies to the 6 top-scoring players, the 3 top-scoring schools and the top 2 Unrated in each section. Special Trophies to the top rated Under 900, Under 500, Under 1000, Under 600, Under 1300, Under 800. **Trophies to the top 3 Kindergartners!** Any player who scores 4 or more points and doesn't win a trophy will receive a medal! **Championships Program includes a meeting with grandmasters from UMBC Team, champions of the last three Pan-American Championships and Final Four!** All entry fees \$5 less per player if 4 or more from same school mailed together in SAME ENVELOPE! Refunds: \$10 service charge for each player refund. Current USCF Membership is required to participate. TO REGISTER, list each player's name, USCF ID# and expiration (new players write "NEW") address, e-mail, birth date, school and grade. BE SURE TO INDICATE THE CORRECT SECTION. Make checks for entry fees + all USCF dues (1 check for total amount is best) payable and mail to: **CHESSPRO, P.O. Box 30006, Bethesda, MD 20824-0006**. Questions: (901)-550-0265. **All entry fees \$5 extra per player postmarked January 25-31** (no mail accepted postmarked after Jan. 31. On-Site Entry Fee: \$40 per player at the tournament! On-site registration ends 9:30AM. 1st round starts at 10:00AM.

Feb. 5, Scholastic Quads #5 (VA)
Montessori School of McLean, 1711 Kirby Rd., McLean, VA 22101. **Time Control**: G/30. **EF**: \$20 online by Wed; \$30 on-site from 1:30-1:45. Check-in is MANDATORY for all pre-registered players, and must be complete by 1:45. Players that have not checked in by 1:45 will not be placed in a quad, even if they signed up in advance. **Rds.**: 1:45pm, then ASAP. **Prizes**: trophy to winner of each quad. See www.silverknightschess.com to register.

Massachusetts

Mar. 4-6 or 5-6, 20th annual Eastern Class Championships
See Chess Life or www.chesstour.com.

Missouri

Mar. 18-20 or 19-20, 15th annual Mid-America Open
See Chess Life or www.chesstour.com.

Nevada

June 10-12 or June 11-12, 2011 National Open
See Nationals.

Dec. 26-29 or 27-29, 20th annual North American Open
See Chess Life or www.chesstour.com.

New Jersey

Dec. 4, The Greater Princeton Championship
Princeton Day School, 650 The Great Road. Trophies to top 3 school teams and top 6 in each section. Souvenir trophies to all players. Four sections for OVER 1000 begin at 10:15 and must preregister: **OVER 1600** (K-12), **NEAR MASTERS** (K-12 over 1400) and **FUTURE MASTERS** (Players K-12 over 1200) G/60, 3 rds. **CLOSED** (K-12 1000-1200) G/45 4 rds. **ALL OTHER SECTIONS**. G/30 4 rds. beginning at 12:00 noon. (round times will be accelerated if possible): **OPEN** (Players K-12 U-1000), **RESERVE** (K-12 U-800), **NOVICE II** (K-8 U-600), **NOVICE I** (unrated K-6), **K-1** (unrated) **NO SCORE K-1** (unrated). **PARENTS OF PLAYERS** rated G/30 3 rounds. Pre-registration online, pay at the door \$40. On-site 11-12 noon \$50. **Info and register online**: www.pds.org/chess. Inquires to Bonnie Waitzkin Chessteach@gmail.com.

Dec. 11-12, 2nd Annual Delaware Valley Open Championship (PA)
See Grand Prix.

Dec. 26, Super "No-Skip" Swiss K-8 and Adult/HS Quads
Holiday Inn, 195 Davidson Ave., Somerset. (Exit #10 off I-287, Easton Ave.) **Super "No-Skip" Swiss**: K-8, 5SS, G/30. In 3 Sections. U1300, U900, U600. G\$100(to \$200)-50 b/10, Trophies top 5, Awards to all. **EF**: \$29 by mail or online (entryfeerus.com), \$35 cash at Site. Highest lifetime rating is used in K-8 section. **Adult/HS "No-Skip" Quads**: G/60, **EF**: \$20 cash at site, G\$5: \$50 (to \$80). **Reg.**: 10:45am, Starts at 11am. Then ASAP with lunch break. **Special prize details**: Top prize increases by \$10 monthly if you played in last event. (Maximum, K-8 \$200 and Quad \$80). **Special USCF dues details**: Free USCF dues to beginners under age 12. Free USCF dues to all regular players. (see details in entryfeerus.com). **Special early EF details**: If you scored 3-0 in December anywhere, you play for \$10. Kids above 1300 play in quads. Below 5 entries in section becomes a quad or is merges. **Info**: Ken at 908-763-6468 or acn@goes.com. NC, W.

Jan. 8, 1st Saturday Scholastic (K-9)
4 RR, G/45 t/d5. 1st round 11 AM. All the King's Men Chess & Games Center (Just 20 mins. from Center City Philadelphia), 62 S. Broadway, Pitman, NJ, 856-582-8222. **EF**: Online \$20, members \$18. Onsite: \$22.50, members \$20. Includes FREE pizza & soda. **Prizes**: Trophies top 4, medal top K-3. **Reg.**: 10-10:30 onsite, or pre-register at www.YourChessSet.com/kidsswiss.

Jan. 8, Princeton Day School
650 The Great Road. Plaques to top 3 school teams and top 6 in each section. Medals to all players. Four sections for OVER 1000 begin at 10:15 and must preregister: **OVER 1600** (K-12), **NEAR MASTERS** (K-12 over 1400) and **FUTURE MASTERS** (Players K-12 over 1200) G/60, 3 rds. **CLOSED** (K-12 1000-1200) G/45 4 rds. **ALL OTHER SECTIONS**. G/30 4 rds. beginning at 12:00 noon. (round times will be accelerated if possible): **OPEN** (Players K-12 U-1000), **RESERVE** (K-12 U-800), **NOVICE II** (K-8 U-600), **NOVICE I** (unrated K-6), **K-1** (unrated) **NO SCORE K-1** (unrated). **PARENTS OF PLAYERS** rated G/30 3 rounds. **Pre-registration** online, pay at the door \$35. On-site 11-12 noon \$45. **Info and register online**: www.pds.org/chess. Inquires to Bonnie Waitzkin, Chessteach@gmail.com. (snowdate Jan 15).

Jan. 16, Westfield Winter Scholastic
Westfield Y, 220 Clark St., Westfield, NJ. **3 Sections**: K-12 Open, Under 1250, Under 750. **Open**, 3 SS, Game/45. Trophies to top 5 in each section. **EF**: \$20, \$15 Members, at site \$30, \$25 Members. **Reg.**: 2-2:30 p.m. **Rds.**: 2:45-4:25-6:05 p.m. **Under 1250**: 4 SS, Game/30. Trophies to top 5 in each section. **EF**: \$20, \$15 Members, at site \$30, \$25 Members. **Reg.**: 2-2:30 p.m. **Rds.**: 2:45-4:00-5:15-6:30 p.m. **Under 750**: 4 SS, Game/30. Trophies to top 5 in each section. **EF**: \$20, \$15 Members, at site \$30, \$25 Members. **Reg.**: 2-2:30 p.m. **Rds.**: 2:45-4:00-5:15-6:30p.m. Tiebreaks for trophies. **Info**: Todd Lunna 732-526-7163, lunna@aol.com, www.westfieldchessclub.com. **Send Advance entries to**: Todd Lunna, 36 Maple Dr., Colts Neck, NJ 07722 by January 13, 2011. Make checks payable to: Westfield Chess Club.

Jan. 29, Last Saturday U2200 Quads
Holiday Inn, 195 Davidson Ave., Somerset. (Exit #10 off I-287, Easton Ave.) G/60, **EF**: \$10, Trophy to winner. (Open to adults, HS players and K-8 rated above 1300) **Reg.**: 10:45am, Starts at 11am. Then ASAP with lunch break. **Info**: Ken at 908-763-6468 or acn@goes.com. NC, W.

Jan. 29, Super "No-Skip" Swiss K-8
Holiday Inn, 195 Davidson Ave., Somerset. (Exit #10 off I-287, Easton Ave.) 5SS, G/30. **In 3 Sections. U1300, U1000, U600.** G\$100(to \$200)-50 b/10, Trophies top 5, Awards to all. **\$10 "No-Skip" bonus** is added each event. **EF**: \$29 online (entryfeerus.com), \$35 cash at Site. **Dues Deal**: New players age 12 get free USCF dues. All regular players get free USCF dues. See entryfeerus.com for details. Highest lifetime rating is used. If below 5 entries in a section it becomes a quad or is merges. **Info**: Ken at 908-763-6468 or acn@goes.com. NC, W.

Feb. 5, 1st Saturday Scholastic (K-9)
4 RR, G/45 t/d5. 1st round 11 AM. All the King's Men Chess & Games Center (Just 20 mins. from Center City Philadelphia), 62 S. Broadway, Pitman, NJ, 856-582-8222. **EF**: Online \$20, members \$18. Onsite: \$22.50, members \$20. Includes FREE pizza & soda. **Prizes**: Trophies top 4, medal top K-3. **Reg.**: 10-10:30 onsite, or pre-register at www.YourChessSet.com/kidsswiss.

Feb. 19-21, 2011 World Amateur Team & U.S. Team East
See Nationals.

Feb. 26, Last Saturday U2200 Quads
Holiday Inn, 195 Davidson Ave., Somerset. (Exit #10 off I-287, Easton Ave.) G/60, **EF**: \$10, Trophy to winner. (Open to adults, HS players and K-8 rated above 1300) **Reg.**: 10:45am, Starts at 11am. Then ASAP with lunch break. **Info**: Ken at 908-763-6468 or acn@goes.com. NC, W.

Feb. 26, Super "No-Skip" Swiss K-8
Holiday Inn, 195 Davidson Ave., Somerset. (Exit #10 off I-287, Easton Ave.) 5SS, G/30. **In 3 Sections. U1300, U1000, U600.** G\$100(to \$200)-50 b/10, Trophies top 5, Awards to all. **\$10 "No-Skip" bonus** is added each event. **EF**: \$29 online (entryfeerus.com), \$35 cash at Site. **Dues Deal**: New players age 12 get free USCF dues. All regular players get free USCF dues. See entryfeerus.com for details. Highest lifetime rating is used. If below 5 entries in a section it becomes a quad or is merges. **Info**: Ken at 908-763-6468 or acn@goes.com. NC, W.

A State Championship Event!
Feb. 27, New Jersey Elementary Championships
5SS, G/30. Brookdale College, 765 Newman Springs Rd., Lincroft, NJ 07738. Student Life Center, use Parking Lot #7 or #6; 5 minutes from Garden State Parkway exit 109. **2 Sections**: Elementary (K-6) & Primary (K-3). **All**: Trophies to top 15 individuals, top 5 teams. Elementary & Primary: top 5 in each grade. **Rds.**: 10am then ASAP. Top 4 scores constitute the team score for Elementary; top 3 for Primary. **EF**: \$30 before 2/20, \$50 at site. USCF memb. req'd. EF includes 1 year Atlantic Chess News for NJ state residents. **Reg.**: 8-9:00am. After 9:00am 1/2 point bye for round 1. **Info**: 732-259-3881, Ent: Hal Sprechman, P.O. Box 1511, Jackson, NJ 08527 or online at www.characterkings.org. Entries must include name, grade, school, date of birth, USCF ID and expiration date, mailing address, email address, phone number and entry fee. Checks made out to NJSCF.

A State Championship Event!
Mar. 6, New Jersey High School Chess Championships
5SS, G/45. Brookdale College, 765 Newman Springs Rd., Lincroft, NJ 07738. Student Life Center, use Parking Lot #7 or #6; 5 minutes from Garden State Parkway exit 109. **3 sections: Varsity Championship (9-12)**: 5 player teams with one alternate allowed. Coaches set order by player strength. Order must not be changed. Team avg. based on top 5 highest ratings. Trophies to top 10 NJ teams. Trophies for top three players, boards 1-5. **Rds.**: 10am and ASAP. **EF**: \$150-/team before 2/27. \$185-/team at site. \$5 per change on site. **Junior Varsity (9-12)**: 4 player teams with one alternate allowed. Team avg. based on top 4 highest ratings. Trophies to top 10 NJ teams. Trophies for top 3 players, boards 1-4. **Rds.**: 10am and ASAP. **EF**: \$120-/team before 2/27, \$150-/team on site. \$5 per change on site. **Booster (K-12)**: Trophies to top 15 individuals, top 5 teams, top 2 JHS, & top 2 elementary (K-6). **Rds.**: 10am and ASAP. Top 4 scores constitute team score. **EF**: \$30 before 2/27, \$37 at site. **All**: USCF memb. required. EF includes 1 year membership to NJSCF for NJ residents. **Reg.**: 8-9:00am. After 9:00am, 1/2 Point bye for round one. **Info**: 732-259-3881. **Ent**: Hal Sprechman P.O. Box 1511, Jackson, NJ 08527 or online at www.characterkings.org. Checks made out to NJSCF. Entries must include name, grade & school, date of birth, USCF ID# & exp. date, mailing address, email address, phone number and entry fee.

A State Championship Event!
Mar. 6, New Jersey Junior High School Championships
5SS, G/45. Brookdale College, 765 Newman Springs Rd., Lincroft, NJ 07738. Student Life Center, use Parking Lot #7 or #6; 5 minutes from Garden State Parkway exit 109. 5SS, G/45. **Section**: JHS (K-9). **All**: Trophies to top 15 individuals, top 5 teams. **Rds.**: 10am then ASAP. Top 4 scores constitute team score. **EF**: \$30 before 2/27, \$50 at site. USCF memb. req'd. EF includes 1 year memb. to NJSCF for NJ state residents. **Reg.**: 8-9:00 am, half-point bye for round one. **INFO**: 732-259-3881, hsprechman@characterkings.org. **ENT**: Hal Sprechman, P.O. Box 1511, Jackson, NJ 08527 or online at www.characterkings.org. Entries must include name, grade, school, date of birth, USCF ID #, & expiration date, mailing address, phone number & entry fee. Checks made out to NJSCF.

New York

Dec. 5, 8th Annual NY December Under 13 Open!
4-SS, G/30, open to all born after 12/5/97. Chess Center at Marshall Chess Club, 23 West 10th St., bet. 5-6 Ave., NYC: 845-569-9969. May be limited to 1st 52 entries. 2 Sections. **1. Open**, EF: \$32 postmarked by 11/26. **2. Novice**, for Under 1000 or Unrated, EF: \$31 mailed by 11/26. **Both**, EF: \$30 online at www.chesscenter.cc by 12/2, \$35 by phone at **845-496-2191** by 12/2, \$40 at site, Club members \$10 less (\$10 fee for refunds). Trophies to top 10, top Unr, top 3 teams (top 3 scorers from same school) each section. 8 weeks free entry to 1st, 4 weeks free to 2nd each section. Speed play for 4-0. Limit of 2 byes, commit by 11:30. On-site reg. ends 9:30 am. **Rds.**: 10-11:30-12:45-2 pm. **Ent**: Chess Center of NY, PO Box 4615, New Windsor, NY 12553. List USCF ID, rating, section, school/grade, DOB.

Dec. 5, Sunday Under 1400 Action!
4-SS, G/30. Marshall Chess Club, 23 West 10 St., between 5-6 Ave., NYC: 212-477-3716, for Under 1400 or unrated. EF \$30, Club Members \$20, specified Greater NY Scholastic prizewinners free. **\$200 b/20 paid**: \$100-60-40, \$60 limit to unr. Reg. ends 3:45 pm. **Rds.**: 4-5:15-6:45-8 pm. No advance entries.

Dec. 5, The Right Move #165 Team and Individual Championship FREE EF. 4SS, G/30. Play starts promptly at 10:00. Players must check in by 9:15 A.M. (Latecomers will not play in round one). Brandeis H.S., 145 W. 84th St., 10024 (near Columbus Ave., Manhattan, NYC). Open to gr K-12. **Five rated sections**: Open Under 1700, Under 1200, Under 800, Under 600. (May renew or join USCF at tournament). **Non-member sections by grades**: K-4, 5-9. Trophies to top 3 in each section except Open (\$50, \$30, \$20 for 1st-3rd); medal to each player with 2.5 or more points. Team plaque to 1st and 2nd each section, with top 4 scores counting in each section (minimum 3 players on team in section). **To register**: use website at www.therightmove.org or email - thechessstop@aol.com or Fax to 718-455-2863 before 6:00PM on Fri. Give full name, school, grade, USCF ID# , exp. date, and section. NO ON-SITE REGISTRATION.

Dec. 18, Marshall Saturday U1800
4SS, G45. Marshall CC, 23 W. 10th St., NYC. 212 477-3716. **(\$300 b/20)** \$120-70-50, U1500 \$60. **EF**: \$40, members \$20. **Reg.**: 12:15-12:45AM. **Rds.**: 1-2-4:45-6:15. **Note**: Only one bye available, request at entry.

Dec. 26-28 or 27-28, 29th Empire City Open
See Chess Life or www.chesstour.com.

Jan. 2, Happy New Year Rated Beginners' Open! (RBO)

4-SS, G/50. Chess Center at Marshall Chess Club, 23 West 10 St., between 5-6 Ave., NYC: 845-569-9969, for Under 1200 or those not rated in any country. EF: \$30. Club Members \$20. Specified Greater NY Scholastic prizewinners free. **\$\$\$200 b/20 paid:** \$100-60-40. Reg. ends 11:45 am. Rds.: 12-2-4-6 pm. No advance entries.

Jan. 9, NY Winter Under 1800!

4-SS, G/50. Chess Center at Marshall Chess Club, 23 W 10th St., bet 5-6 Ave., NYC: 845-569-9969. EF: \$40. Club members \$30, \$5 less if also entering 1/8 Winter G/45, specified Greater NY Scholastic prizewinners free. **Online entry at www.chesscenter.cc thru 1/6.** \$\$ (480 b/32 paid entries): 150-100-50 (\$75 limit to Unr.), top U1600 \$95, top U1400 \$85. Limit 2 byes, commit by 2 pm. Reg. ends 15 min before game. Rds.: 12-2-4-6 pm. CCA Ratings may be used. **\$10 extra to "enter" by phone!**

Jan. 9, The Right Move #166 Team and Individual Championship

FREE EF: 4SS, G/30. Play starts promptly at 10:00. Players must check in by 9:15 A.M. (Latecomers will not play in round one). Brandeis H.S., 145 W. 84th St., 10024 (near Columbus Ave., Manhattan, NYC). Open to gr. K-12. **Five rated sections: Open, Under 1700, Under 1200, Under 800, Under 600.** (May renew or join USCF at tournament). **Non-member sections by grades:** K-4, 5-9. Trophies to top 3 in each section except Open (\$50, \$30, \$20 for 1st-3rd); medal to each player with 2.5 or more points. Team plaque to 1st and 2nd each section, with top 4 scores counting in each section (minimum 3 players on team in section). **To register:** use website at www.therightmove.org or email - theschsttop@aol.com or Fax to 718-455-2863 before 6:00PM on Fri. Give full name, school, grade, USCF ID#, exp. date, and section. NO ON-SITE REGISTRATION.

Jan. 10-Feb. 7, Marshall Monday Under 1600

5SS, G/90. Marshall Chess Club, 23 W 10th St, NYC 212 477-3716. **EF:** \$40, members \$20. (**\$\$\$00 b/20**): \$120-70-50, U1300 \$60. **Reg.:** 6:15-6:45. **Rds.:** 7 PM each Monday. Byes OK, limit 2, request by rd 3. **Chess Magnet School JGP.**

Jan. 15, Marshall Saturday U1600

4SS, G45. Marshall CC, 23 W. 10th St., NYC. 212 477-3716. (**\$\$\$00 b/20**) \$120-70-50, U1300 \$60. **EF:** \$40, members \$20. **Reg.:** 12:15-12:45AM. **Rds.:** 1-2:45-4:30-6:15. **Note:** Only one bye available, request at entry.

Jan. 29, Kasparov Chess Foundation presents the 45th Annual Greater NY Junior High Championship—USCF's Longest-Running Scholastic!

5-SS, G/30, open to all born after 1/29/95 not yet in 10th grade. New Yorker Hotel, 481 8th Ave & 34th St, NYC. **3 sections: Varsity**, open to all. EF: \$48.60 postmarked by 1/07/11. Trophies to top 12, top U1500, top 3 unrated, top 6 school teams. Free entry to all Chess Center tmnts. except quads thru 8/1/11 to 1st, thru 7/1 to 2nd, thru 6/1 to 3rd. **Junior-Varsity:** open to **Under 1200** or unrated. EF: \$48.50 postmarked by 1/7. Trophies to top 12, top 3 unrated, top 6 schools. Free entry to all Chess Center tmnts. except quads thru 7/1/11 to 1st, thru 6/1 to 2nd, thru 5/1 to 3rd. **Novice**, open to Under 700 or unrated. EF: \$48.40 postmarked by 1/7. Trophies to top 12, top 3 unrated, top 6 schools. Plaques to top 2 each grade: 4-6 (you can win both plaque & trophy). Free entry to all Chess Center tmnts. except quads thru 6/1/11 to 1st, thru 5/1 to 2nd, thru 4/1 to 3rd. **All:** EF's \$7 extra per player postmarked 1/8-14, all \$65 at site. **Mail entries \$5 less per player if 4 or more from same school in SAME ENVELOPE!** All substitutions from advance entry list charged late fee. \$15 extra to switch sections, \$15 charge for each player refund. All players scoring 4 or more who don't win a trophy will receive a medal! 8 weeks free entry, except quads, to 1st team each section, 4 weeks free, except quads, to 2nd team (top 4 scores from same school = team score). Speed playoff for 5-0. Limit 2 byes (rds. 4-5 commit before rd. 3). **Mail entries:** list name, rating, ID# (proof of current USCF membership required, enclose dues if necessary), school, grade, birthdate, address. Checks to (specify section): Chess Center of NY, PO Box 4615, New Windsor, NY 12553. To confirm receipt, enclose SASE. No mail postmarked after 1/14. **Phone entries:** \$59 by credit card thru 1/24: 845-569-9969 (or 406-896-2191, 24 hours, entries only). **Online entries at www.chesscenter.cc:** \$46 thru 1/14, \$53 1/15-1/24. No phone or on-line entries after 1/24. **On-site entry fee:** \$65. On-site reg. ends 9:15 am. Rds. 10-12-2-3-30-5:15. **Questions, team rooms: chesscenter@aol.com** (Jan 28-29 only: 212-971-0101). Bring sets, clocks, boards— **NONE SUPPLIED!**

Jan. 29, Kasparov Chess Foundation presents the 32nd Annual Greater NY Primary Championship!

5-SS, G/30, open to all born after 1/29/01 in grades 3/below. New Yorker Hotel, 481 8th Ave & 34th St, NYC. **3 sections: Varsity**, open to all. EF: \$46.60 postmarked by 1/07/11. Trophies to top 12, top rated U900, top 3 unrated, top 6 school teams. Free entry to all Chess Center tmnts. except quads thru 8/1/11 to 1st, thru 7/1 to 2nd, thru 6/1 to 3rd. **Novice:** open to Under 700 or unrated. EF: \$46.50 postmarked by 1/7. Trophies to top 12, top 3 unrated. Free entry to all Chess Center tmnts. except quads thru 7/1/11 to 1st, thru 6/1 to 2nd, thru 5/1 to 3rd. **K-1**, open to grade 1/below. EF: \$46.40 postmarked by 1/7. Trophies to top 12, top rated U500, top 3 unrated, top 6 schools. Free entry to all Chess Center tmnts. except quads thru 7/1/11 to 1st, thru 6/1 to 2nd, thru 5/1 to 3rd. **All:** EF's \$7 extra per player postmarked 1/8-14, all \$65 at site. **Mail entries \$5 less per player if 4 or more from same school in SAME ENVELOPE!** All substitutions from advance entry list charged late fee. \$15 extra to switch sections, \$15 charge for each player refund. All players scoring 4 or more who don't win a trophy will receive a medal! 8 weeks free entry, except quads, to 1st team each section, 4 weeks free, except quads, to 2nd team (top 4 scores from same school = team score). Speed playoff for 5-0. Limit 2 byes (rds. 4-5 commit before rd. 3). **Mail entries:** list name, rating, ID# (proof of current USCF membership required, enclose dues if necessary), school, grade, birthdate, address. Checks to (specify section): Chess Center of NY, PO Box 4615, New Windsor, NY 12553. To confirm receipt, enclose SASE. No mail postmarked after 1/14. **Phone entries:** \$59 by credit card thru 1/24: 845-569-9969 (or 406-896-2191, 24 hours, entries only). **Online entries at www.chesscenter.cc:** \$46 thru 1/14, \$53 1/15-1/24. No phone or on-line entries after 1/24. **On-site entry fee:** \$65. On-site reg. ends 9:15 am. Rds. 10-12-2-3-30-5:15. **Questions, team rooms: chesscenter@aol.com** (Jan 28-29 only: 212-971-0101). Bring sets, clocks, boards— **NONE SUPPLIED!**

Jan. 29, Marshall Saturday U1800!

4SS, G45. Marshall CC, 23 W. 10th St., NYC. 212 477-3716. (**\$\$\$00 b/20**) \$120-70-50, U1500 \$60. **EF:** \$40, members \$20. **Reg.:** 12:15-12:45AM. **Rds.:** 1-2:45-4:30-6:15. **Note:** Only one bye available, request at entry.

Jan. 30, Kasparov Chess Foundation presents the 45th Annual Greater NY Elementary Championship—USCF's Longest-Running Scholastic!

5-SS, G/30, open to all born after 1/30/98 not yet in 7th grade. New Yorker Hotel, 481 8th Ave & 34th St, NYC. **3 sections: Varsity**, open to all. EF: \$47.60 postmarked by 1/07/11. Trophies to top 12, top U1200, top 3 unrated, top 6 school teams. Free entry to all Chess Center tmnts. except quads thru 8/1/11 to 1st, thru 7/1 to 2nd, thru 6/1 to 3rd. **Junior-Varsity:** open to Under 1000 or unrated. EF: \$47.50 postmarked by 1/7. Trophies to top 12, top 3 unrated, top 6 schools. Free entry to all Chess Center tmnts. except quads thru 7/1/11 to 1st, thru 6/1 to 2nd, thru 5/1 to 3rd. **Novice**, open to Under 700 or unrated. EF: \$47.40 postmarked by 1/7. Trophies to top 12, top 3 unrated, top 6 schools. Free entry to all Chess Center tmnts. except quads thru 6/1/11 to 1st, thru 5/1 to 2nd, thru 4/1 to 3rd. **All:** EF's \$7 extra per player postmarked 1/8-14, all \$65 at site. **Mail entries \$5 less per player if 4 or more from same school in SAME ENVELOPE!** All substitutions from advance entry list charged late fee. \$15 extra to switch sections, \$15 charge for each player refund. All players scoring 4 or more who don't win a trophy will receive a medal! 8 weeks free entry, except quads, to 1st team each section, 4 weeks free, except quads, to 2nd team (top 4 scores from same school = team score). Speed playoff for 5-0. Limit 2 byes (rds. 4-5 commit before rd. 3). **Mail entries:** list name, rating, ID# (proof of current USCF membership required, enclose dues if necessary), school, grade, birthdate, address. Checks to (specify section): Chess Center of NY, PO Box 4615, New Windsor, NY 12553. To confirm receipt, enclose SASE. No mail postmarked after 1/14. **Phone entries:** \$59 by credit card thru 1/24: 845-569-9969 (or 406-896-2191, 24 hours, entries only). **Online entries at www.chesscenter.cc:** \$46 thru 1/14, \$53 1/15-1/24. No phone or on-line entries after 1/24. **On-site entry fee:** \$65. On-site reg. ends 9:15 am. Rds. 10-12-2-3-30-5:15. **Questions, team rooms: chesscenter@aol.com** (Jan 28-30 only: 212-971-0101). Bring sets, clocks, boards— **NONE SUPPLIED!**

Jan. 30, Kasparov Chess Foundation presents the 45th Annual Greater NY High School Championship—USCF's Longest-Running Scholastic!

5-SS, G/30, open to all grades 12/below born after 1/30/91. New Yorker Hotel, 481 8th Ave & 34th St, NYC. **3 sections: Varsity**, open to all. EF: \$49.60 postmarked by 1/07/11. Trophies to top 12, top U1700, top 3 unrated, top 6 school teams. Free entry to all Chess Center tmnts. except quads thru 8/1/11 to 1st, thru 7/1 to 2nd, thru 6/1 to 3rd. **Junior-Varsity:** open to Under 1600 or unrated. EF: \$49.50 postmarked by 1/7. Trophies to top 12, top U1400, top 3 unrated, top 6 schools. Free entry to all Chess Center tmnts. except quads thru 7/1/11 to 1st, thru 6/1 to 2nd, thru 5/1 to 3rd. **Novice**, open to Under 1000 or unrated. EF: \$49.40 postmarked by 1/7. Trophies to top 12, top 3 unrated, top 6 schools. Plaques to top 2 each grade: 7-9 (you can win both plaque & trophy). Free entry to all Chess Center tmnts. except quads thru 6/1/11 to 1st, thru 5/1 to 2nd, thru 4/1 to 3rd. **All:** EF's \$7 extra per player postmarked 1/8-14, all \$65 at site. **Mail entries \$5 less per player if 4 or more from same school in SAME ENVELOPE!** All substitutions from advance entry list charged late fee. \$15 extra to switch sections, \$15 charge for each player refund. All players scoring 4 or more who don't win a trophy will receive a medal! 8 weeks free entry, except quads, to 1st team each section, 4 weeks free, except quads, to 2nd team (top 4 scores from same school = team score); no combined schools, even if one school "feeds" another. Speed playoff for 5-0. Limit 2 byes (rds. 4-5 commit before rd. 3). **Mail entries:** list name, rating, ID# (proof of current USCF membership required, enclose dues if necessary), school, grade, birthdate, address. Checks to (specify section): Chess Center of NY, PO Box 4615, New Windsor, NY 12553. To confirm receipt, enclose SASE. No mail postmarked after 1/14. **Phone entries:** \$59 by credit card thru 1/24: 845-569-9969 (or 406-896-2191, 24 hours, entries only). **Online entries at www.chesscenter.cc:** \$46 thru 1/14, \$53 1/15-1/24. No phone or on-line entries after 1/24. **On-site entry fee:** \$65. On-site reg. ends 9:15 am. Rds. 10-12-2-3-30-5:15. **Questions, team rooms: chesscenter@aol.com** (Jan 28-30 only: 212-971-0101). Bring sets, clocks, boards— **NONE SUPPLIED!**

Feb. 6, Super Sunday (Pre) Game/60 Quad!

3-RR, G/60. Chess Center at the Marshall Club, 23 W. 10th St., bet. 5-6th Ave., NYC: 845-569-9969. EF: \$30. Club memb. \$25— **NO FREE ENTRIES! \$\$ (60 to 1st each quad, b/4 per quad)**. Reg. ends 11:50 am. Rds.: 12-2-4. **All players must agree to play ALL 3 games! NO PHONE ENTRIES!**

Feb. 6, The Right Move #167 Team and Individual Championship

FREE EF: 4SS, G/30. Play starts promptly at 10:00. Players must check in by 9:15 A.M. (Latecomers will not play in round one). Brandeis H.S., 145 W. 84th St., 10024 (near Columbus Ave., Manhattan, NYC). Open to gr. K-12. **Five rated sections: Open, Under 1700, Under 800, Under 600.** (May renew or join USCF at tournament). **Non-member sections by grades:** K-4, 5-9. Trophies to top 3 in each section except Open (\$50, \$30, \$20 for 1st-3rd); medal to each player with 2.5 or more points. Team plaque to 1st and 2nd each section, with top 4 scores counting in each section (minimum 3 players on team in section). **To register:** use website at www.therightmove.org or email - theschsttop@aol.com or Fax to 718-455-2863 before 6:00PM on Fri. Give full name, school, grade, USCF ID#, exp. date, and section. NO ON-SITE REGISTRATION.

Feb. 12, Prove Your Point!

3-SS, G/30. Chess Center at Marshall Chess Club, 23 W 10th St., NYC: 212-477-3716. EF: \$20. 3-0 wins \$40, 2.5 wins \$20, 2 wins \$10. Reg ends 7:20 pm. Rds.: 7:30-8:30-9:30.

Feb. 14-Mar. 14, Marshall Monday Under 1600

5SS, G/90. Marshall Chess Club, 23 W 10th St, NYC 212 477-3716. **EF:** \$40, members \$20. (**\$\$\$00 b/20**): \$120-70-50, U1300 \$60. **Reg.:** 6:15-6:45. **Rds.:** 7 PM each Monday. Byes OK, limit 2, request by rd 3. **Chess Magnet School JGP.**

A Heritage Event!

Feb. 26-27, 44th annual New York State Scholastic Championships

Open to grades K-12 in any state (top NYS player & team in each section are NY champions). Saratoga Hilton, 534 Broadway (1-87 Exit 13-N, 4 miles north on US 9), Saratoga Springs, NY 12866. Team prizes based on top 4 scores from same school; no combined school teams allowed even if one school "feeds" another. Teams of 2 or 3 players allowed, but are at a disadvantage. In 8 sections, each is a 6SS, G/65 except K-1 is SSS, G/35 playing Feb 27 only. **High School**, open to all in grades K-12. EF \$38.20 mailed by 2/4. Top NYS grade 9-12 qualifies for Denker Tournament of HS Champions. **High School Reserve**, open to K-12 under 1200 or unrated. EF \$38 mailed by 2/4. **Junior High**, open to all in grades K-9. EF \$37.90 mailed by 2/4. **Middle School Reserve**, open to K-8 under 1000 or unrated. EF \$37.80 mailed by 2/4. **Elementary**, open to all in grades K-6. EF \$37.60 mailed by 2/4. **Elementary Reserve**, open to grades K-5 under 800 or unrated. EF \$37.50 mailed by 2/4. **Primary**, grades K-3. EF \$37.30 mailed by 2/4. **K-1**, grades K-1. EF \$37.10 mailed by 2/4. **Postmarked 2/5-15:** All EF \$10 more. Do not mail entry after 2/15. Online at chessstour.com, all sections: EF \$40 by 2/4, \$50 by 2/21. No online entry after 2/21. **Phoned to 406-896-2038,**

all sections: EF \$45 by 2/4, \$55 by 2/21. No phone entry after 2/21. **Entry at site:** all \$60. **Trophies** to top 15 players and top 7 teams each section, top 3 unrated in Primary, K-1, and each reserve section, and top U1500, U1300 (HS), U900, U700 (HS Reserve), U1200, U1000 (JHS), U700, U500 (MS Reserve), U1000, U800 (Elem), U500, U300 (Elem Reserve). Speed playoff if perfect score tie. **Free entry** to NY State Championship, Labor Day weekend 2011 (Albany), to top player each section. **Schedule:** Late reg. ends Sat 9 am, rds Sat 10, 1, 4, 7, Sun 10, 1, awards 3:30. **K-1 schedule:** Late reg. ends Sun 9 am, rds Sun 10, 12, 1:30, 3, 4:30, awards 5:45. **Half point byes** OK all, limit 2, must commit before rd 2. **HR:** \$119-119, 888-999-4711, 518-584-4000, reserve by 2/12 or rate may increase. 48 hours notice required for room cancellation. Backup hotel: Court-yard by Marriott, 2 blocks away, 518-226-0538. **Special car rentals:** Avis, 800-331-1600, use AWD #657633. **Mail entry:** Continental Chess, PO Box 249, Salisbury Mills, NY 12577. Include name, rating, USCF ID, USCF expiration (non-members enclose dues), section, school, grade, birth date, address of each player. Checks payable to Continental Chess. **\$15 per player** service charge for refunds. **\$10 extra to switch** sections, all substitutions from advance list charged \$60. **Questions:** chesstour.com, 845-496-9658. Bring set, board, clock if possible- none supplied. **Chess Magnet School JGP (except K-1).**

North Carolina

Jan. 28-30, Land of the Sky XXIV

See Grand Prix.

Feb. 18-20, 2011 NC K-12 & Collegiate Chess Championship

Largest Chess Event in NC, First Time Tournament Players Welcome! **8 Main Event Sections** plus Blitz, Bughouse, Master Simul, and Adult Side Sections. Over 300 **Awards:** Scholarship \$\$\$, H.S. Denker Entry, Section Trophies, Class Trophies, Top Female Trophies, and Metals. **Visit:** ChessAchieves.com. (919) 272-8017. Site: Raleigh Convention Center.

Pennsylvania

Dec. 11-12, 2nd Annual Delaware Valley Open Championship

See Grand Prix.

Dec. 17, Friday Night Action #24

4SS, G/30. Belmont Park Classroom, 200 Anderson Rd., King of Prussia, PA 19406. **EF:** \$20 online; \$30 on-site 6:30-6:45. **Rds.:** 7:00, then ASAP. **Prizes:** \$100 to 1st, \$50 to 1st in lower half. Register at www.silverknightschess.com. Registration limited to first 24 players.

Jan. 14-17, 15-17 or 16-17, 43rd annual Liberty Bell Open

See Chess Life or www.chesstour.com.

Jan. 30, Silver Knights Team League #1

Wayne Elementary School, 651 W. Wayne Ave., Wayne, PA 19087. **Sections:** K-8 Rated, K-3 Unrated. Must enter as a team of 4 players from same school. **EF:** \$80/team online by Wed; \$100 on-site. See www.silverknightschess.com for round times and league rules. **Free game analysis** by NM.

Feb. 12, Silver Knights Team League #2

Wayne Elementary School, 651 W. Wayne Ave., Wayne, PA 19087. **Sections:** K-8 Rated, K-3 Unrated. Must enter as a team of 4 players from same school. **EF:** \$80/team online by Wed; \$100 on-site. See www.silverknightschess.com for round times and league rules. **Free game analysis** by NM.

Mar. 20, Silver Knights Team League #3 (Playoffs)

Radnor Middle School, 150 Lovella Ave., Wayne, PA 19087. **Sections:** K-8 Rated, K-3 Unrated. Must enter as a team of 4 players from same school. **EF:** \$80/team online by Wed; \$100 on-site. See www.silverknightschess.com for round times and league rules. **Free game analysis** by NM.

Apr. 20-24, 21-24, 22-24 or 23-24, 2nd Annual Philadelphia Open

See Chess Life or www.chesstour.com.

June 28-July 4, June 30-July 4, July 1-4 or 2-4, 39th Annual World Open

See Chess Life or www.chesstour.com.

Rhode Island

Dec. 11, RI Chess Association - Central Falls BK Tournament

4SS, G/30. Trophies top 3 in each Section: 11 & U and U (Unrated), Open (Rated). **EF:** \$12 Advance, \$15 at site. **Register online:** www.richess.org, email: rhodeslandchess@yahoo.com, phone: (401)359-1602.

Jan. 8, Cumberland Chess Fest

4SS, G/30. Cumberland Library. Sections: 9 & U, 11 & U, 14 & U - Unrated. Open - Rated. Trophies to top 3 in each section. **EF:** \$14 Advance, \$19 at site. **Register online at:** www.richess.org email: rhodeslandchess@yahoo.com. Phone: (401) 359-1602.

Texas

Dec. 4, 2010 Ed Gurukul Irving/Valley Ranch Winter Scholastic Chess Championships

9400 N. MacArthur, Ste 140, Irving, TX 75063. 214-235-6214, 1-877-923-GURU. All Sections USCF Rated. 4 Rounds, G/30/5. **Rated Sections:** K-1, K-3 Primary Open, Elem U500, Elem Open, MSHS. Open/Trophies: Top 3 Ind at Section/Top 3 Teams Overall. **EF:** \$15 if received by 11-29-2010 else \$25, CC Payments add \$2.50. **Reg.:** 1-1:45PM, Rd. 1: 2:00PM, All Others ASAP. **Reg Forms:** PlanoChess.com, email forms to: tournament@edgurukul.com, chess@edgurukul.com or mail to: Ed Gurukul Institute, 4054 Legacy, Suite 100, Plano, TX 75024.

Jan. 8, 2011 Ed Gurukul-Plano New Year's Scholastic Classic Chess Championships

4054 Legacy, Ste 100, Plano, TX 75024. 214-235-6214/1-877-923-GURU. All Sections USCF Rated. 4 Rounds, G/30/5. **Rated Sections:** K-1, K-3 Primary Open, Elem U500, Elem Open, MSHS. **Open/Trophies:** Top 3 Ind at Section/Top 3 Teams Overall. **EF:** \$15 if received by 11-29-2010 else \$25, CC Payments add \$2.50. **Reg.:** 1-1:45PM, Rd.1: 2:00PM, All Others ASAP. **Reg Forms:** PlanoChess.com, email forms to: tournament@edgurukul.com, chess@edgurukul.com, or mail to above address.

Jan. 8, Dallas Junior Open

5-SS, (rds 1-3 G/35, rds 4-5 G/50). Dallas CC, 200 S. Cottonwood Dr. #B, Richardson, TX 75080. **EF:** \$25 if received by 1/3, \$30 at site. Reg. 9-9:30 am. 4

Tournament Life

sections: Champ (opened to 20 yrs old and under), Cadet (opened to 14 yrs old and under), Youth (opened to 10 yrs old and under), Juvenile (opened to 8 years old and younger). Ages as of 1/1/10. Sections may be combined if less than 8 players in section, even if other section has more than 8. **Round 1** pairings at 9:40 am rest ASAP with small lunch break. \$550% of entry fees. One half-point Bye if requested before end of rd 2 (and if requested before receiving a full point bye). **Ent:** Dallas Chess Club, see address above. Info: 214-632-9000, info@dallaschess.com. NS, NC.

Jan. 15, For the Love and Joy of Chess: Region III Championships! **EF:** \$25 if p/m by 1-07-11; \$45 afterwards. Lovejoy High School, 2350 Estates Parkway, Allen, TX 75002. **Onsite registration:** \$45 begins at 8:00 am and onsite registration may result in 1/2 point bye. **Round 1 Begins at 9:00 am;** all others ASAP. **10 Sections:** Primary K-1, Primary K-3, Elem. K-5/6 U300, Elem. K-5/6 U800, Elem. K-5/6 Open, Middle School 6-8/9 U600, Middle School 6-8/9 Open, High School U800, High School Open, and a Not to be Rated Section G/30; **Trophies:** Top 5 Individual Trophies in each section and top 3 Team Trophies in each rated section; Champion Trophies in all Open sections except Primary and Not to be Rated Section. Medals to all pre-registered who do not win trophies. Primary & Elem sections G/30; Middle School and High School Sections R1, R2, R3 = G/30 and R4, R5 = G/45. **Contact:** CheckmateThis@gmail.com for registration form with specific details. Special guest: Susan Polgar & many other side events.

A State Championship Event!

Feb. 12-13, 2011 Texas State Scholastic Championships
7SS. Hilton Americas, 1600 Lamar St., Houston, TX 77010. **HR:** \$111-\$111-\$111-\$111, 713-739-8000, Mention Dallas Chess Club to get Hotel Chess Rate. Reserve by 1/27/11 or rate may go up. One night deposit may be required by Hotel. **Four championships in one great location:** TX Primary Scholastic Championships; TX Elementary Scholastic Championships; TX Middle School Scholastic Championships; TX High School Scholastic Championships. **EF:** \$41 by 2/03; \$69 after 2/03 or on site. February Rating Supplement will be used. Current USCF membership required (may be obtained on site). **On Site Registration:** Friday, 7-9pm, Saturday, 7-7:45am. Saturday registrants may receive a 1st Rd. 1/2-pt. bye. One 1/2-pt. bye (for any round) allowed if requested by the end of Rd. 2. **Sections:** K-1 Championship, Primary (K-3) Championship, Primary JV (K-3 w/Ratings Under 700), Elementary (K-5/6) Championship, Elementary JV (K-5/6 Under 800), Elementary Novice (K-5/6 Under 500), Middle School (6-8/9) Championship, MS JV (6-8/9 Under 900), MS Novice (6-8/9 Under 600), High School (9-12) Championship, HS JV (9-12 Under 1000). See Article IX, Section 1E, TCA Bylaws for each section's eligibility requirement, www.texaschess.org/2007/03/bylaws.html. Also www.swchess.com also has eligibility rules. **Four-year scholarship** to The University of Texas at Dallas to winner of High School Championship section. Winner must meet UTD entrance requirement and follow team rules. UTD is sole judge as to who wins the scholarship. **Trophies** for top 20 individuals and top 15 teams in each section plus participation medals for all, and plus Score Awards for players scoring 4 or more points that do not win an individual trophy. **Schedule:** Round times vary depending on the Championship; Time control also varies. For round times and time control, see: www.swchess.com. **Side Events: Blitz Tourney:** K-6 and K-12, Friday 8pm. **EF:** \$20. Trophies to top 15 individual in each section. **Bughouse Tourney:** K-6 and K-12, Saturday, 8:35pm. **EF:** \$30 Team (On site registration only). trophies to top 10 teams in each section. All registrations (except Bughouse) available on line: see www.swchess.com and you can download flyers and entry forms. **Checks payable to:** Dallas Chess Club. Mail entries to Dallas Chess Club, c/o Barbara Swafford, 2709 Longhorn Trail, Crowley, TX 76036. **For tournament info:** visit our website or contact Barbara Swafford, info@dallaschess.com or 214-632-9000. Refunds will be given only up to 2/10 with a \$10 surcharge for withdrawing, after 2/10 there will be no refunds. There will be no substitution of team members. There will be a \$10 change fee for changes after 2/10. There will be a \$5 surcharge per player for phone registrations USCF membership is required. Proof of membership is required or player must join/renew their memberships. No registration/changes or withdrawals after 2/10/11. After that date you must make changes at site (Hilton Americas). NS, NC, W.

Feb. 12-13, Southwest Collegiate Championships

5-SS, G/90 with 30 sec inc. 7SS. Hilton Americas, 1600 Lamar St., Houston, TX 77010. **HR:** \$111-\$111-\$111-\$111, 713-739-8000, Mention Dallas Chess Club to get Hotel Chess Rate. Reserve by 1/27/11 or rate may go up. One night deposit may be required by Hotel. Top 4 count for team score. USCF membership required. Fide rated but uses USCF rules. Fide pairing rules may be used. Monroi devices may be provided and their use is mandatory. **EF:** \$49 by 2/03/11, \$69 thereafter. Don't mail after 2/03, entry may not be received. Online/Credit Card registration link at www.swchess.com Note that active.com charges a small fee. **Reg.:** Fri 7-9 pm, Sat 7-7:45am. Saturday registrants may receive a 1st rd. 1/2 pt. bye. One 1/2 pt. bye allowed if requested by end of rd. 2. **Rds.:** Sat 9-1:30-6, Sun 9-1:45. **SS** \$500-\$250-\$125, 1st U2000 \$150, 1st U1600 \$150, 1st U1200 \$150, Unrated eligible for U1200 prize. Plaques to top 10 Individuals, Plaques to top 5 Teams. **Ent:** Barbara Swafford, 2709 Longhorn Trail, Crowley, TX 76036. (Make Checks payable to Dallas Chess Club. One check can be sent for multiple players.) Entries must include name, USCF ID or new/pending (include a copy of the receipt), rating, USCF expiration date & school. All incomplete registrations will be charged the late EF, additionally there will be a \$5 per player surcharge on registration received without payment, these players could possibly not be paired for round 1 and not be paired until payment is received. Refunds will be given only up to 2/10 with a \$10 surcharge for withdrawing, after 2/10 there will be no refunds. There will be no substitution of team members. There will be a \$10 change fee for changes after 2/10. There will be a \$5 surcharge per player for phone registrations. USCF membership is required. Proof of membership is required or player must join/renew their memberships. No registration/changes or withdrawals after 2/10/11. After that date you must make changes at site (Hilton Americas). February Supplement will be used. **Tournament Info:** Barbara Swafford, 214.632.9000 please do not call after 2/10, info@dallaschess.com. **Website:** www.swchess.com. NS. NC. W. FIDE. **Chess Magnet School JGP.**

Feb. 26, 2011 Ed Gurukul Irving/Valley Ranch George Washington Scholastic Chess Championships

9400 N. MacArthur, Ste 140, Irving, TX 75063. 214-235-6214, 1-877-923-GURU. All Sections USCF Rated. 4 Rounds, G/30/5. **Rated Sections:** K-1, K-3 Primary Open, Elem U500, Elem Open, MSHS. **Open/Trophies:** Top 3 Ind at Section/Top 3 Teams. **Overall/EF:** \$15 if received by 11-29-2010 else \$25 CC Payments add \$2.50. **Reg.:** 1-1:45PM, Rd. 1 2:00PM, All Others ASAP. **Reg Forms:** PlanoChess.com, email forms to: tournament@edgurukul.com, chess@edgurukul.com or mail to: Ed Gurukul Institute, 4054 Legacy, Suite 100, Plano, TX 75024.

Vermont

Mar. 25-27 or 26-27, 22nd annual Vermont Resort Open
See *Chess Life* or www.chesstour.com.

Virginia

Dec. 18, Scholastic Quads #3

Montessori School of McLean, 1711 Kirby Rd., McLean, VA 22101. **Time Control:** G/30. **EF:** \$20 online by Wed; \$30 on-site from 1:30-1:45. Check-in is MANDATORY for all pre-registered players, and must be complete by 1:45. Players that have not checked in by 1:45 will not be placed in a quad, even if they signed up in advance. **Rds.:** 1:45pm, then ASAP. **Prizes:** trophy to winner of each quad. See www.silverknightschess.com to register.

Jan. 15, Liberty Scholastic #1

4SS, G/30. Liberty Elementary School, 25491 Riding Center Dr., South Riding, VA 20152. **Sections:** K-6 U/500, K-12 U/900, K-12 Champ. **EF:** \$25 online by Wed; \$35 on-site 12:00-12:30. **Rds.:** 1:00, then ASAP. **Prizes:** trophies to top individuals & schools; **Free game analysis.** See www.silverknightschess.com to register.

Jan. 22, Scholastic Quads #4

Montessori School of McLean, 1711 Kirby Rd., McLean, VA 22101. **Time Control:**

G/30. **EF:** \$20 online by Wed; \$30 on-site from 1:30-1:45. Check-in is MANDATORY for all pre-registered players, and must be complete by 1:45. Players that have not checked in by 1:45 will not be placed in a quad, even if they signed up in advance. **Rds.:** 1:45pm, then ASAP. **Prizes:** trophy to winner of each quad. See www.silverknightschess.com to register.

Jan. 29, January Joust

4SS, G/30. Franklin Sherman Elementary School, 6630 Brawner St., McLean, VA 22101. **Sections:** K-6 U/500, K-12 U/900, K-12 Champ. **EF:** \$25 online by Wed; \$35 on-site 12:00-12:30. **Rds.:** 1:00, then ASAP. **Prizes:** trophies to top individuals & schools; **Free game analysis.** See www.silverknightschess.com to register.

Feb. 5, Scholastic Quads #5

Montessori School of McLean, 1711 Kirby Rd., McLean, VA 22101. **Time Control:** G/30. **EF:** \$20 online by Wed; \$30 on-site from 1:30-1:45. Check-in is MANDATORY for all pre-registered players, and must be complete by 1:45. Players that have not checked in by 1:45 will not be placed in a quad, even if they signed up in advance. **Rds.:** 1:45pm, then ASAP. **Prizes:** trophy to winner of each quad. See www.silverknightschess.com to register.

Wisconsin

Dec. 28, 2010 Pan American Blitz Championship (QC)

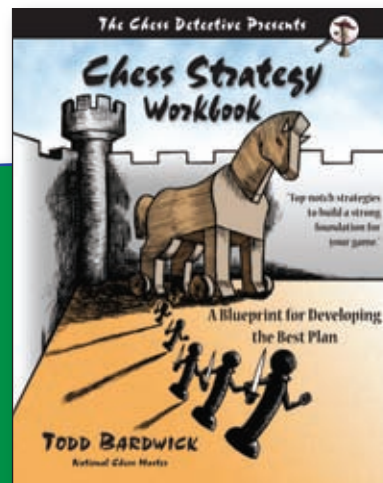
8SS, G/5. Open to any individual. First round begins at 8:30pm. **Playing site:** Crowne Plaza Hotel, 6401 South 13th Street, Milwaukee, WI 53207. 1-414-764-5300. Free shuttle from the airport. Free parking and wireless internet. Mention **Special Chess Rate \$78** (single or double). Reserve by December 10th or rate may increase. **Prize Fund** (75% of the entries): 1st, 2nd and class prizes. **EF:** \$25 by December 1, \$30 thereafter. Please make checks payable to Wisconsin Chess Academy and send to Alex Betaneli, PO Box 260122, Madison, WI 53726. All entries will be confirmed over email and posted on www.wichessacademy.com and www.monroi.com. **INFO:** abetaneli@wichessacademy.com or abetaneli@hotmail.com, 1-608-334-2574. Boards and sets provided, please bring clocks.

Dec. 28-30, 2010 Pan American Open

See Grand Prix.

Dec. 28-30, 2010 Pan American Scholastic

5SS, G/90+30sec/move increment. Open to high school students and younger. **Playing site:** Crowne Plaza Hotel, 6401 South 13th St., Milwaukee, WI 53207. 1-414-764-5300. Free shuttle from the airport. Free parking and wireless internet. Mention **Special Chess Rate \$78** (single or double). Reserve by December 10th or rate may increase. **Prizes:** championship trophies based on age; team awards for schools (see website for all prizes). **Schedule:** late registration 3:00-4:00pm on 12/28, Rds.: 4:30pm on 12/28, 10:00am and 4:00pm on 12/29; 10:00am and 3:00pm on 12/30. **EF:** \$40 by December 1st, \$60 thereafter; \$5 off per entry if 4 or more teammates register together in advance. **Scholastic Unrated (12/29, one day only):** 4SS, G/30. Open to high school students and younger. **Prizes:** championship trophies based on age; team awards for schools (see website for all prizes). **Schedule:** late registration 8:30-9:30am on 12/29, Rds.: 10:00am, 11:30am, 1:00pm, 2:30pm. **EF:** \$20 by December 1st, \$30 thereafter; \$5 off per entry if 4 or more teammates register together in advance. Please make checks payable to Wisconsin Chess Academy and send to Alex Betaneli, PO Box 260122, Madison, WI 53726. All entries will be confirmed over email and posted on www.wichessacademy.com and www.monroi.com. **INFO:** abetaneli@wichessacademy.com or abetaneli@hotmail.com, 1-608-334-2574. Boards and sets provided, please bring clocks. **Chess Magnet School JGP for rated sections.**



Todd Bardwick
is the author of
Chess Strategy Workbook:

A Blueprint for Developing the best plan.
He can be reached at www.ColoradoMasterChess.com

WHAT IS YOUR GIFT GIVING STRATEGY THIS YEAR? GIVE CHESS.



USCF Sales is the Official Chess shop of the US Chess Federation and your source for the finest chess equipment at everyday low prices. No matter what you're looking for, whether it's playing equipment, instructional material, achievement awards or chess related prizes, you will find them at USCF Sales!

**New, Lower Prices
Quantity Discounts**



**USCF
SALES**

1.800.388.KING (5464)
www.USCFSales.com

USCF

ALL PURCHASES BENEFIT THE UNITED STATES CHESS FEDERATION

WORLD AMATEUR TEAM & U.S. AMATEUR TEAM EAST

FEBRUARY 19-21, 2011

Parsippany Hilton, Parsippany, New Jersey

By plane, train or...



Just get me to the teams on time!

January 2011 Rating List to be used

Brought to you by The United States Chess Federation & The New Jersey State Chess Federation

NJSCF  **USCF**

Need help forming a team? Contact esdoyle@aol.com

SEE TLA NATIONAL EVENTS FOR COMPLETE DETAILS!