

April 2011

uschess.org

Chess Life *for* Kids!



The Upset King!

Abhinay Dommalapati



A USCF Publication

\$3.00



04

0 74470 27842 9

**Fast, Fun, and
Easy to Use**

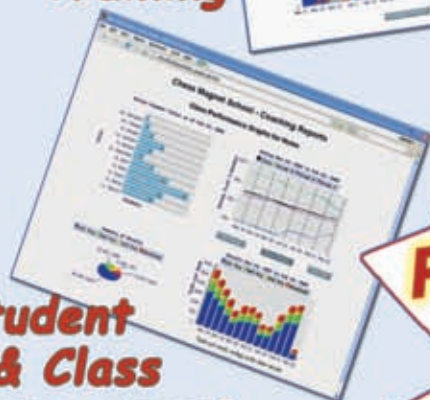
In 2006, and *again* in 2007,
young Chess Magnet students
from Portland, OR, scored 7-0 in the
USCF Spring Nationals.

ChessMagnetSchool.com

Better Than Any Textbook for Learning Chess



**Student
Training**



**Student
& Class
Management**

**"Great Stuff! I just delivered my first
Belgian champion under 10 and
boosted his development
by using ChessMagnetSchool.com"**

- Ton Montforts, Coach
Schaakacademie
Limburg, Belgium

**"Your website was
integral to our team's winning."**

-Mike Hosford, Coach
Alcott Elementary
2008 Washington State
Grades 4-6 Champions

**Proud Sponsor
of the
2011 USCF
Junior Grand Prix!**

Start Your 30-day Free Trial Today

at

www.ChessMagnetSchool.com

	1 month	3 months	1 year	1 yr USCF
Individuals	\$6.95	\$15.00	\$29.95	\$26.95
Class/Family	\$6.00	\$12.00	\$25.00	\$22.00

Free to teachers/coaches of at least 5 students
Includes our powerful, easy-to-use Coaching Tools & Reports

Works on Windows and Macintosh
computers (requires internet access)

To learn more, call 650-284-5062
877-378-4319 (US toll-free)
email info@ChessMagnetSchool.com



Publisher

USCF Executive Director: Bill Hall
bhall@uschess.org

Scholastic Editor: Glenn Petersen
gpetersen@uschess.org

Art Director: Cat Connor Spradlin
catseyephoto@mac.com

Editorial Asst./Copy Editor: Alan Kantor
akantor@uschess.org

Editorial Assistants:

Jo Anne Fatherly
backtobasics@uschess.org

Jennifer Pearson
jenpearson@uschess.org

Advertising Manager: Joan DuBois
jdubois@uschess.org

Tournament Life: Joan DuBois
tla@uschess.org

Director of Publications: Daniel Lucas
dlucas@uschess.org

CONTRIBUTORS: Send your contributions and articles to *Chess Life for KIDS*, PO Box 3967, Crossville, Tennessee 38557 or better yet, e-mail to gpetersen@uschess.org.

Chess Life for KIDS (USPS 023-567, ISSN: 1932-5894) is published in February, April, June, August, October, and December of every year by the United States Chess Federation, 137 Obrien Drive, Crossville, Tennessee 38555. Periodic postage paid at Crossville, Tennessee.

CHANGE OF ADDRESS: Be sure to notify us at once of any change of address. Please include your old address and your new address, along with your USCF I.D. number.

POSTMASTER: Send address changes to USCF, PO Box 3967, Crossville, Tennessee 38557.

Annual Scholastic Membership
Regular Scholastic Membership (online version of *Chess Life for Kids*), age 12 or younger, is just \$16 per year. Premium Scholastic Membership (receives *Chess Life for Kids* by mail) is \$23 per year. \$13 of every premium membership goes towards providing *Chess Life for Kids*. Entire contents copyright 2011, United States Chess Federation.

Teachers may photocopy instructional articles for classroom use, but republication or wide-spread copying without the written consent of the USCF is forbidden.

Table of Contents

- 4 JUNIOR GRAND PRIX
- 5 ARABIAN KNIGHTS
- 6 WHAT'S THE QUESTION?
- 8 WIN OR DRAW
- 8 ZARIA
- 9 WHAT'S THE PROBLEM?
- 10 CHESS GLOSSARY: THE ITALIAN GAME
- 12 CHESS DETECTIVE
- 14 THE STEAMROLLER
- 16 2010 JGP FINAL STANDINGS
- 19 TOURNAMENT LIFE ANNO UNCEMENTS
- 23 ANSWERS, WE'VE GOT ANSWERS

COVER PHOTO COURTESY OF ANAND DOMMALAPATI

I DARE YA!

Nine year old Daphne Quint of Nevada and Lawrence Wong of California were among the many who took up our double-dog dare and solved the Pawnmower problems from the February 2011 issue. They were randomly chosen by our Gnomes from Outer Mongolia to receive a copy of *Pawnmower, Vol. 3*, by GM Maurice Ashley.



The solutions were:

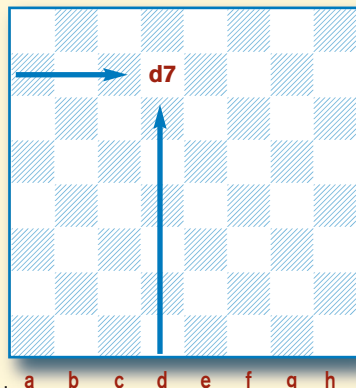
- #1 (rook): g4, g6, g1, h1, h3, e3, d3, c3, c8, a8, d8, d1, b1, e1, e7
- #2 (bishop): c5, b6, d8, f6, g7, h8, e5, h2, g1, f2, e1, b4, a3, f8, h6
- #3 (knight): d2, f3, d4, b3, c5, d7, f6, d5, c7, a8, b6, c8, e7, c6, d8
- #4 (queen): e1, a1, a3, d3, f5, c8, h3, g2, h2, h6, e3, f3, f7
- #5 (rook): d4, a4, a5, b5, b6, c6, c8, d8, d7, e7, h7, b7, b3, e3, g3, g2

Lawrence and Daphne will also receive copies of *Play Like a Girl!* by CLO editor Jennifer Shahade.

HOW TO Read & Write Chess

There are many different ways to write chess moves. The most popular method (described below) is called **algebraic notation**:

Each square has a name, taken from the intersection of the file (vertical or up-and-down rows of squares, which are lettered) and rank (horizontal or side-by-side rows of squares, which are numbered) the square is on. In the diagram the square on the intersection of the 7th rank and the d-file is called d7. Like in battleship!



The pieces are abbreviated by a capital letter, like this:

K: King; Q: Queen; R: Rook; B: Bishop; N: Knight.

Notice that the Knight is N, since K is reserved for the King. Notice also that pawns have no abbreviation.

A move is written by using the abbreviation for the piece that moves, followed by the square the piece moves to (1. ... Nf6). A pawn move is written as the square the pawn has moved to (1. d4). A capture by a piece is written as the abbreviation for the piece that moved, followed by an x, and finally the square the capture takes place on (8. Bxe5). A pawn capture is written as the file the capturing pawn stands on, followed by an x, and finally the square the capture takes place on (3. dxe5).

Other moves are castling kingside, which is written 0-0, and castling queenside, which is written 0-0-0. An *en passant* capture is indicated by *e.p.* after the move. A check is indicated by + after the move, and pawn promotion is indicated by adding () and the abbreviation for the piece the pawn promotes to. Ambiguous moves (where more than one piece or pawn can move to the destination square) are taken care of by putting an extra rank or file in to make it clear which piece or pawn moved.

Here is a sample, using the famous smothered mate trap from the Budapest Defense.

1. d4 Nf6 2. c4 e5 3. dxe5 Ng4 4. Bf4 Nc6 5. Nf3 Bb4+ (diagram A)

6. Nbd2 Qe7 7. a3 (diagram B)

7. ... Ncxe5 8. Bxe5 Nxe5 9. axb4 Nd3 checkmate. (diagram C)

x: take or capture #: checkmate
0-0: kingside castle (:): promotion
0-0-0: queenside castle !: good move
+: check ??: blunder



ChessMagnetSchool.com

JUNIOR GRAND PRIX

We've already entered the second year of ChessMagnetSchool.com sponsorship of the Junior Grand Prix (JGP), with some exciting changes to be implemented.

As you know, everyone is automatically entered into the Junior Grand Prix as soon as they play in any event with a time control slower than Game/60. You earn points by winning or drawing against someone rated at least 100 points higher than you are rated.

Last year you earned 10 points for a win and five points for a draw. This year (and you will see the changes in the June standings, or you can look online at www.uschess.org), you will earn full credit for the difference in ratings over 100 points, up to 350 points.

If you have a rating of 900 and you win against someone rated 1050, you will earn 300 points! If you draw, you will earn 150 points! So, if you upset a 1050 (300) and you upset a 1250 (700), you earn a total of 1,000 Junior Grand Prix points. Full credit for your achievements!

Online events will no longer be included (too fast!). We firmly believe the best way to improve is to play against stronger players, and the ChessMagnetSchool.com Junior Grand Prix is one way to reward our scholastic members for striving to improve.

SECOND TIME IS A CHARM!

Abhinay Dommalapati finished second in the 2009 competition. He thought he could do better—and he did! Thanks to his father, Anand, who played chauffeur, and the support of his mother, Santhi, and sister Aasa, age 7, Abhinay did do better ... he won in 2010!

A brief **Question & Answer** follows:

How old are you? What grade are you in? What school?

Age: 12

Grade: 6th

School: Greenbriar West Elementary, Fairfax, Virginia

Please turn to page 17

National Master Daniel Gurevich is ready, willing, and able to answer all your questions about chess! Make him work!

Send your questions to: gpetersen@uschess.org.

TALES OF THE Arabian KNIGHTS

BY RICK KENNEDY Illustrations by Pamela Key



Djin

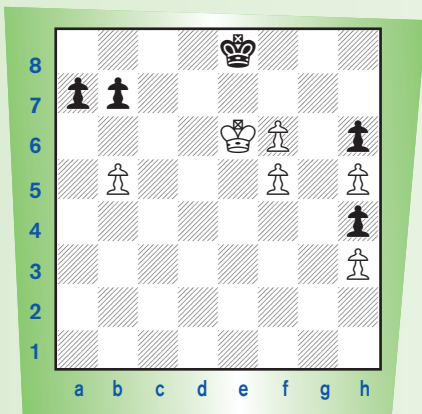
"What do you think of djin?" the King asked, a bit nervously.

"Powerful beings, sometimes full of mischief," she said slowly, raising an eyebrow in curiosity.

"Of course, of course." ... came the reply.

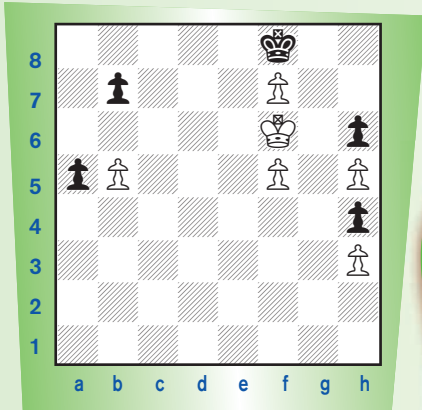
Wishing to set His Majesty at ease, she began her story.

"Long ago, in a land far away, a King was in a difficult situation—perhaps like this one.



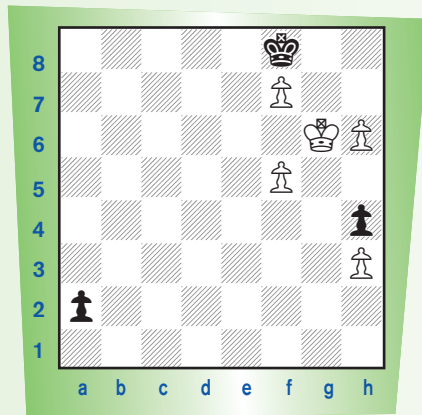
He knew that he had to play forcefully, if there was going to be a chance to hold the game.

1. f7+ Kf8 2. Kf6 a5



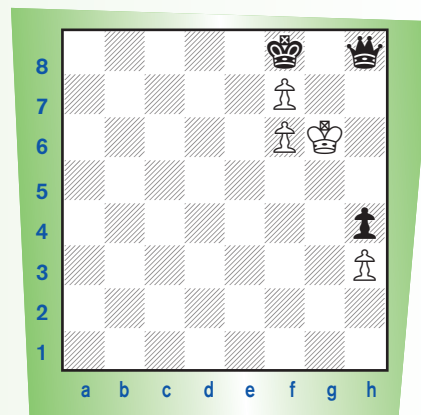
This move, however, looked like it would bring disaster.

3. bxa6 e.p. bxa6 4. Kg6 a5 5. Kxh6 a4 5. Kg6 a3 7. h6 a2



His opponent's pawn would queen first. Was this the end? The King did not think so. He had prepared a surprise.

8. h7 a1=Q 9. h8=Q+ Qxh8 10. f6



With this last move the King had trapped the dangerous piece. Struggle as she might, she could not get out. The game would stay even.

A djin in a bottle, said the King with wonder.

Or a lamp, she said.

(This position was based on a study by Laszlo Linder. To keep our narrator "honest," it may be helpful to mention that the fifth move alternative, 5. ... Kxf7, only leads to a draw, as well, but not to nearly as good a story: 6. Kg5 a4 7. h6 a3 8. f6 a2 9. h7 a1=Q 10. h8=Q Qe5+ 11. Kxh4 Qxf6+ 12. Qxf6+ Kxf6 and Black will be able to prevent White's pawn from queening.)

WHAT'S THE QUESTION?

by National Master Daniel Gurevich

Q: Samuel He
When I see games of the best chessplayers in the world, they always beat people with 2600- over-the-board (OTB!!) I don't get this because the 2600-OTB is still VERY good! Why do the best players in the world ALWAYS beat worse players? I saw a game Karpov was playing Korchnoi. It was like Korchnoi didn't even try to win! He just lost quickly!!!

A: *Certainly, this happens often. A world champion is usually much stronger than a 2600-strength player, just as the average grandmaster is stronger than the average international master. However, on any level, there are always upsets. Even the great GM Garry Kasparov, while in his prime and rated over 2800, lost a tournament game against a grandmaster rated almost 300 points lower.*

**Shneider, Aleksandr (2535)
Kasparov, Garry (2805)
EUCup final Lyon, 1994**

1. d4 Nf6 2. c4 g6 3. Nf3 Bg7 4. g3 c5 5. Bg2 cxd4 6. Nxd4 0-0 7. 0-0 Nc6 8. Nc3 Nxd4 9. Qxd4 d6 10. Qd3 a6 11. Bd2 Rb8 12. Rac1 b5 13. b3 Bf5 14. e4 Bd7 15. h3 bxc4 16. Qxc4 Qa5 17. Qd3 Qa3 18. Rc2 Bb5 19. Nxb5 axb5 20. Rc7 e6 21. Be3 Rbc8 22. Ra7 Qb4 23. Rd1 Ne8 24. a3 Qc3 25. Qxb5 Qb2 26. Qd3 Rc3 27. Qb1 Qxb3 28. Qxb3 Rxb3 29. a4 h5 30. a5 Ra3 31. a6 Be5 32. Bh6 Bg7 33. Bg5 Bf6 34. Bxf6 Nxf6 35. Rxd6 Ra1+ 36. Kh2 Ra2 37. e5 Nh7 38. Rad7 Rxf2 39. Rd2 1-0

There is also a moral to this story: you too can win a game against a much higher-rated opponent. If the world champion can lose against an opponent rated two hundred seventy points lower, so can anybody else!

Q: Daniel He
My question is after 1. d4 Nf6 2. c4 g6 3. Nc3 d5, is 4. cxd5 Nxd5 5. e4 Nxc3 6. bxc3 better for White or Black? Are there better fourth moves?

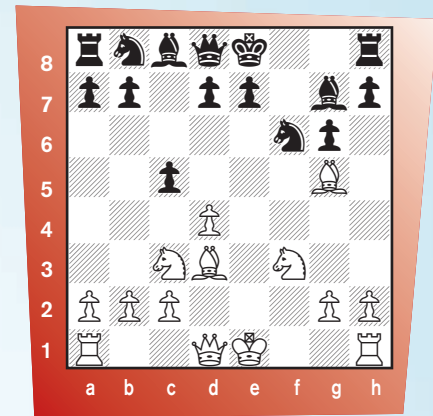
A: *There is no right or wrong answer. The world's best players have debated whether White is better in the main line of the Grunfeld for decades, and still, nobody knows. Similarly, humankind is yet to find out whether White has any better options on move 4. For example, Kasparov preferred 4. Nf3, while GM Veselin Topalov's favorite is 4. cxd5. One thing is certain: many lines are playable for both White and Black, and the choice should be based on your style.*

The Immortal Game—With a Twist
Here is a game that is sure to remind most of the Immortal Game, with its beautiful double-rook sacrifice and attack on the centralized enemy king. Richard Reti instructively proves that a few active pieces are stronger than many completely inactive ones:

**Reti, Richard
Euwe, Max
Rotterdam, 1920**

1. d4 f5 2. e4!? fx4 The Staunton Gambit in the Dutch De-

fense. White sacrifices a pawn for development, a risky move. 3. Nc3 Nf6 4. Bg5 g6 5. f3 exf3 6. Nxf3 Bg7 7. Bd3 Now, although White is down a pawn, it is very hard for Black to defend; his pieces have only just started their development. Black offers a counter-sacrifice. 7. ... c5!?



8. d5 If White had accepted the sacrifice with 8. dxc5, 8. ... Qa5 9. Qd2 0-0 10. 0-0-0 Nc6, also with quick development, would equalize. Although White is still slightly more developed, the difference is not significant. 8. ... Qb6 9. Qd2! "Ignoring" the threat. 9. ... Qxb2? The future world champion greedily takes the pawn, with a trap in mind.

9. ... 0-0 was necessary. 10. Rb1!? White purposefully walks into the trap, in reality setting his own trap. White could also have played 10. 0-0, transposing to the correct game continuation. 10. ... Nxd5!? The exclamation point is for ingenuity; the question mark is for the actual value of this move. It wasn't too late to play 10. ... Qa3! 11. 0-0 0-0, worse for Black, but not immediately losing. 11. Nxd5!! Who needs rooks?

Please turn to page 18

NYCHESSKIDS



SUMMER CHESS CAMP 2011



WEEK	DATE
Week 1	July 5 to July 8 (4 Days!)
Week 2	July 11 to July 15
Week 3	July 18 to July 22
Week 4	July 25 to July 29
Week 5	August 1 to August 5
Week 6	August 8 to August 12
Week 7	August 15 to August 19
Week 8	August 22 to August 26
Week 9	August 29 to September 2

Location



P.S. 116
The Mary Lindley Murray School

210 East 33rd Street (between 2nd & 3rd Ave.) New York, NY 10016

Time

Full Day: 10:00 AM - 5:00 PM

Half Day: 10:00 AM - 1:00 PM

-Early drop at 9:00AM free of charge-

For more information visit
www.nychesskids.com, send an e-mail to
nychesskids@gmail.com or call
315-849-3332 or 646-807-9236



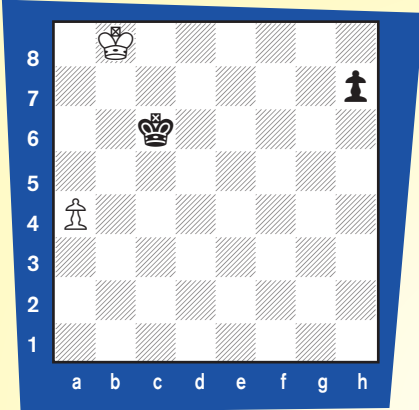
WIN OR DRAW?



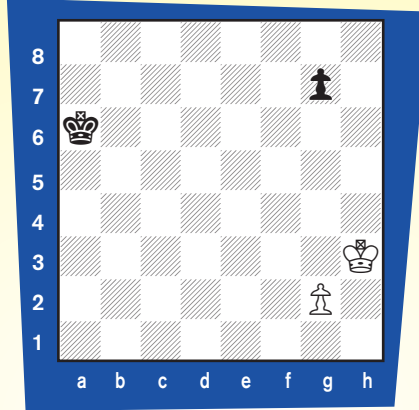
by Pete Tamburro

You know the drill! Is this position a win or a draw? If it's a win, who's it a win for—White or Black? It's even possible that it could be White's move and a win for Black or vice versa. Jot down what you think the best continuation would be right after you put down whether White wins, Black wins or draw!

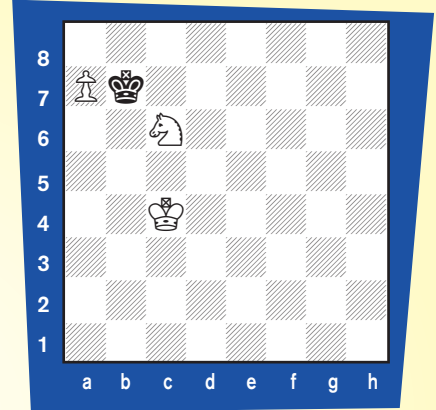
Position One: White to Play



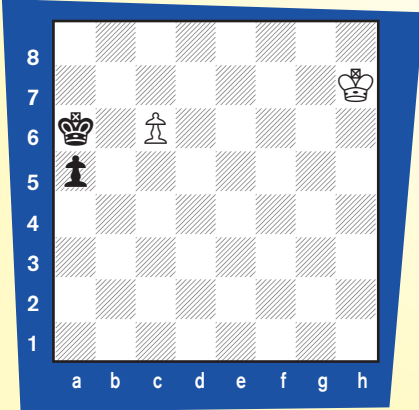
Position Three: White to Play



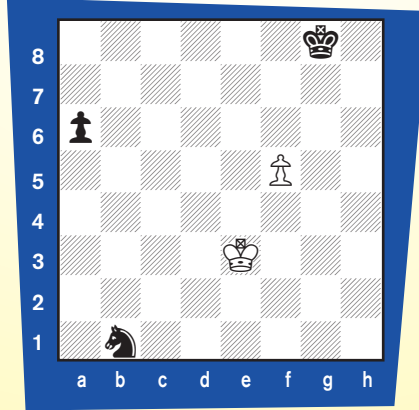
Position Five: White to Play



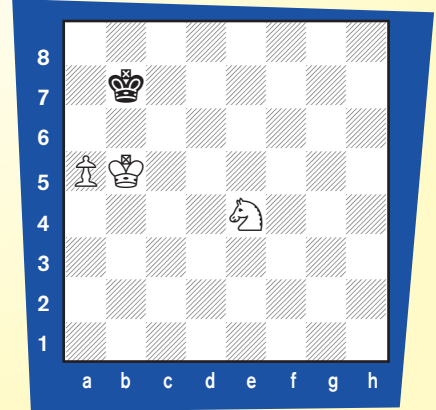
Position Two: White to Play



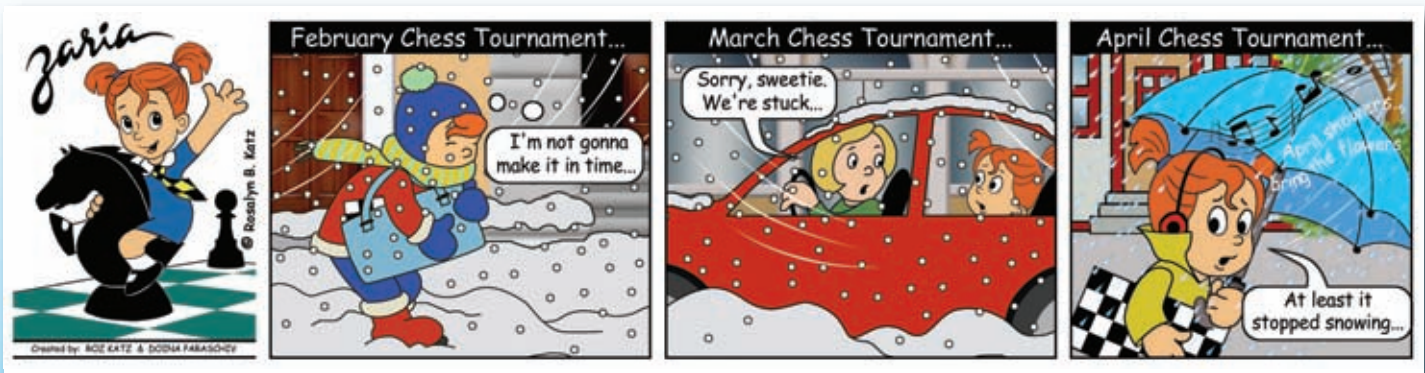
Position Four: White to Play



Position Six: White to Play



Answers on page 23



What's the Problem?

By Stanley Kravitz

About 500 years ago a pawn that marched to the eighth rank was promoted to the weakest piece that was called the farzin or queen. When the queen's move was changed to make it the strongest piece there was a lot of discussion about promotion, since a player could now have two queens on the board.

Under current rules when a pawn reaches the eighth rank it can be replaced with any piece except another king. You can have two queens on the board and even two bishops of the same color. However you cannot promote to one of your opponents pieces! When the pawn is replaced by a queen the words usually used are "queening a pawn." Promotion to the other pieces is called "underpromotion."

The new piece starts out on the same square that the pawn has reached on the eighth rank. Since the queen is the most powerful piece, over 90% of all promotions in practical play are to a queen.

The question really is why would anyone underpromote the hard working pawn to a minor piece. It may be that the minor piece can deliver a mate while the queen would end the game in stalemate. Sometimes a knight underpromotion is the best, as it might be able to fork the opponent's king and one of his pieces.

These puzzles all require a promotion and four of them are positions where underpromoting does the trick.

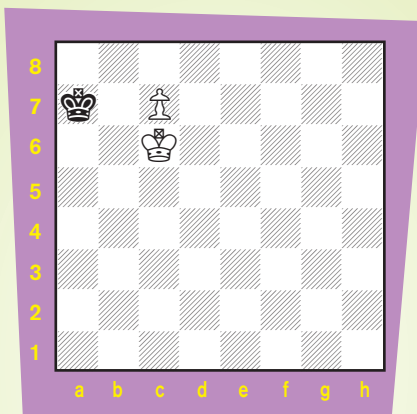
These puzzles are all miniatures with less than seven pieces on the board.

If you can solve a problem in **under one minute** give yourself 4 points.

Solve in **under two minutes** give yourself **3 points**. Solve in **under five minutes** 2 points. **Over five minutes** give yourself 1 point.

Master Solver 15-20 points. Good Solver 10-14 points. Fair solver 5-9 points. Under 5 points needs work.

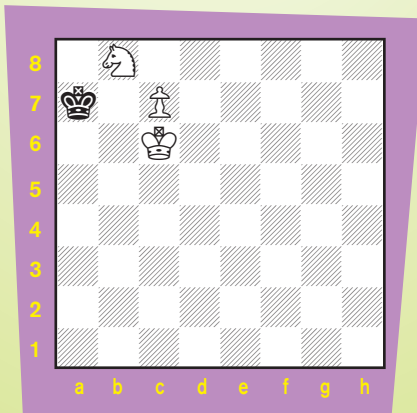
Puzzle 1. White to move and mate in two.



This problem is fairly easy once you see the final position

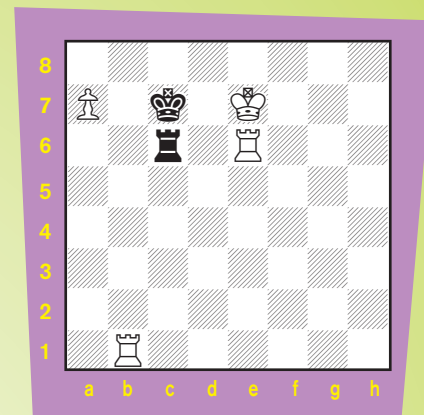
Puzzle 2. White to move and mate in two.

This solution would not have been possible 500 years ago.



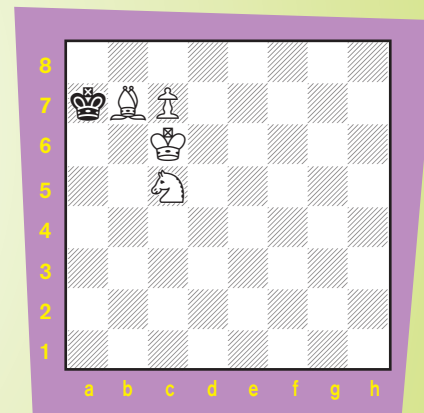
Puzzle 3. White to move and mate in two.

Be careful to avoid stalemate.



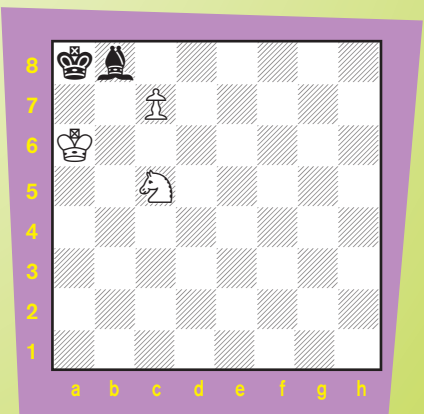
Puzzle 4. White to move and mate in two.

Here there are a few choices. Maybe the pawn could queen in and mate in 2, but this is just trying to distract you from the correct solution.



Puzzle 5. White to move and mate in three

Be careful to pick the correct piece to end the game.



Solutions on page 23 

A Brief Chess Opening Glossary

by Pete Tamburro



THE ITALIAN GAME

When White decides to play, with the cooperation of his opponent, 1. e4 e5 2. Nf3 Nc6, White has all sorts of choices. White can play 3. Nc3 and, after 3. ... Nf6, one finds oneself in the Four Knights Game. It's also possible to play 3. c3, which is Ponziani's Opening.

However, the two major choices over the years have been the Ruy Lopez with 3. Bb5 and the Italian Game with 3. Bc4. The Ruy Lopez is an opening you start to play when you get better at chess and can start to make big plans in your head. It's what "positional" chess is all about: pawn structure, piece placement, attacking and counterattacking formations, weak squares and strong squares. It's better if you wait a while for that.

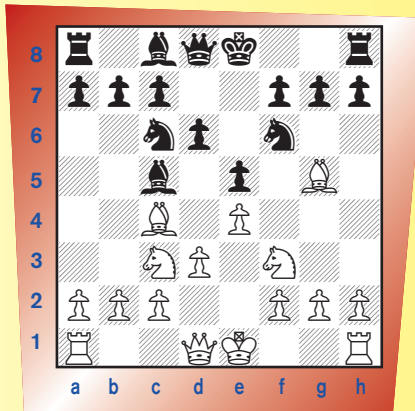
The Italian Game is another story. The Bc4 move attacks f7 right away, giving Black an urge to castle right away. In many of the Italian lines, d4 comes pretty soon, and the theme of the game pretty much revolves around who's better developed and can take over the center.

The attack gets going pretty quickly. This is good for younger players because it teaches you the value of not losing time in the opening. This is very important for Black as well because one hesitant step can often lead to a quick loss.

We're going to cover the four main Italian Game attacks: The Canal Variation, The Giuoco Piano (Zheeko Peeahno), Evans Gambit and the Max Lange Attack, all of whom can be very dangerous attacking lines.

The Canal Variation:

1. e4 e5 2. Nf3 Nc6 3. Bc4 Bc5
4. d3 Nf6 5. Nc3 d6 6. Bg5!



This starts out slowly and looks harmless, but, with 6. Bg5, that all changes. The first time Black sees this there is a temptation to play 6. ... h6, but after 7. Bxf6 Qxf6 (7. ... gxf6 8. Nh4! with a grip on f5) 8. Nd5 Qd8 (knight fork threat on c7) 9. c3 0-0 10. b4! Bb6 11. a4 a5 12. Nxb6 cxb6 13. bxa5! bxa5 14. 0-0 and White has an easy target with the black b-pawn which will have great difficulty playing b5, especially when White puts the rook on b1.

The move that slowed the Canal line down was 6. ... Na5. Black equalizes after: 7. Bb3 (7. Bxf6 Qxf6 8. Nd5 Qd8 9. b4 Nxc4 10. bxc5 c6 11. dxc4 cxd5 12. Qxd5 [12. cxd5 Qa5+ 13. Nd2 Qxc5 14. 0-0 0-0] 12. ... Qa5+ 13. Kf1 Qxc5 14. Qxc5 dxc5 15. Nxe5 Be6) 7. ... Nxb3 8. axb3 c6 9. Qd2 Bb6 10. h3 0-0.

The reason Black can get away with Na5 (moving the same piece twice in the opening) is that White has played d3, which doesn't put

any pressure on the center.

All the other Italian lines do!

The Giuoco Piano:

1. e4 e5 2. Nf3 Nc6 3. Bc4 Bc5
4. c3 Nf6 5. d4 exd4 6. cxd4
Bb4+



White supports his d4 move with c3, and, after the exchange of pawns, we have a lively chess game! The main line goes something like this:

1. e4 e5 2. Nf3 Nc6 3. Bc4 Bc5
4. c3 Nf6 5. d4 exd4 6. cxd4 Bb4+
7. Bd2 (The Moeller Attack should be avoided unless you study a book for weeks! 7. Nc3 Nxe4 8. 0-0 Bxc3 9. d5 Bf6 [Relatively unexplored is: 9. ... Ne5 10. Qe2 {10. bxc3 Nxc4 11. Qd4 Ncd6 12. Qxg7 Qf6} 10. ... 0-0 11. Qxe4 Nxf3+ 12. Qxf3 Be5] 10. Re1 Ne7 11. Rxe4 d6 12. Bg5 Bxg5 13. Nxg5 0-0) 7. ... Bxd2+ 8. Nbx2 d5 9. exd5 Nxd5 10. Qb3 Na5 11. Qa4+ Nc6 12. Bb5 Bd7 13. 0-0 0-0 14. Qc4 Nce7 15. Bxd7 Qxd7 16. Rfe1 Rfe8—White and Black can repeat moves with 12. Qb3 Na5, draw early, and go play

bughouse in the skittles room.

In the main line, White has good squares for his pieces and open lines for his rooks and Black has a nice outpost on d5 for his knights right in front of the isolated white d-pawn, and can challenge White on the e-file with the black rooks. Chances are even.

There is an interesting line that doesn't draw so easily for either side, so, if you like a fight you might try a continuation suggested by legendary New Orleans master Jude Acers in his book, *The Italian Gambit System*. He calls it the Steinitz-Sveshnikov Attack:

1. e4 e5 2. Nf3 Nc6 3. Bc4 Bc5 4. c3 Nf6 5. d4 exd4 6. e5 d5 7. Bb5 Ne4 8. cxd4 Bb4+ 9. Bd2 Nxd2 10. Nbx d2 0-0 11. Bxc6 bxc6 12. 0-0 c5 (or else Nb3 could fix the doubled c-pawns) 13. a3 Bxd2 14. Qxd2 cxd4 15. Qxd4 ...



and White still has an "iron grip on the c-file and a direct attack on the d-pawn to keep Black busy" according to Acers.

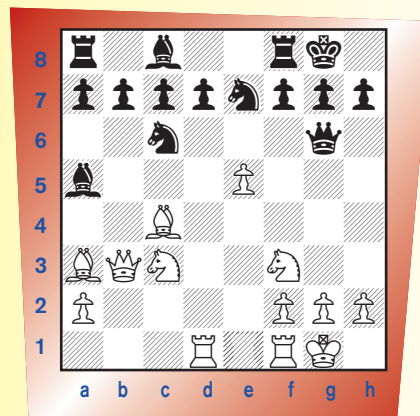
The Evans Gambit:


Named after Captain Evans in the 19th century, this became the darling of all the attacking players of that century, and many brilliant games were played with it. Over the years, defense has gotten better, but Garry Kasparov trotted it out in

recent years in a famous game, so it's still alive and kicking!

Here's the line that drove both sides crazy in that first century of play. It's called the Compromised Defense. Black takes the offered pawns and White's pieces are wonderfully placed. We couldn't tell you how it ends if we wanted to!

1. e4 e5 2. Nf3 Nc6 3. Bc4 Bc5 4. b4 Bxb4 5. c3 Ba5 6. d4 exd4 7. 0-0 dxc3 8. Qb3 Qf6 9. e5 Qg6 10. Nxc3 Nge7 11. Ba3 0-0 12. Rad1



Please turn to page 18 



ChessKid.com

Play. Learn. Enjoy.

PLAY & LEARN ONLINE!

Kids, parents, and coaches come together to play chess and learn with videos, articles, and training tools!

SAFETY IS OUR #1 PRIORITY!

No contact with strangers. Parents can manage their kids' access, friendships, and online chess activity.

PERFECT FOR CHESS CLUBS!

Manage your club, have tournaments, and help your players get better with ChessKid.com online clubs!



Join Today!

Go to www.ChessKid.com to register for FREE!



The Chess Detective

CLEARANCE SACRIFICE

by NM Todd Bardwick

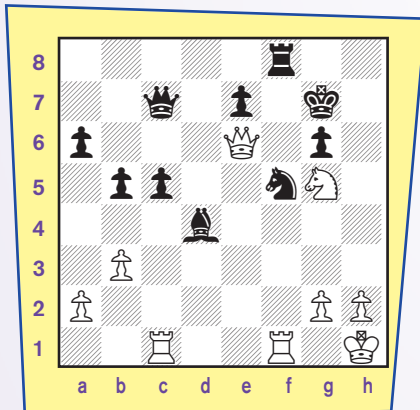
Have you ever had a position where you found a great attacking idea, but one of your own pieces blocked another one from getting to a key square?

Sacrificing the blocking piece to clear a path for the other piece to attack (freeing up a file, rank, diagonal, or square) is called a clearance sacrifice.

Here are some examples:

This position occurred in Bled in 1961 between the great tactician, Mikhail Tal, and Bruno Parma.

Parma



Tal

Position after 28. ... Rf8

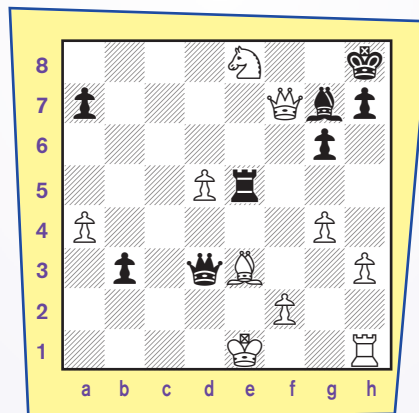
White is ahead the Exchange to a

pawn and has attacking chances against the black king. The key observation is that if White could get a knight to e6, he would fork the black king and queen. But White's queen is sitting in the way on e6.

White played, 29. Qxf5! and after either 29. ... Rxf5 or 29. ... gxf5, 30. Ne6+, White wins the Black queen, leaving White ahead with clear material advantage.

Here is a position from the 2008 Vladimir Nabokov Memorial.

Pavlov



Shishkin

Black to move

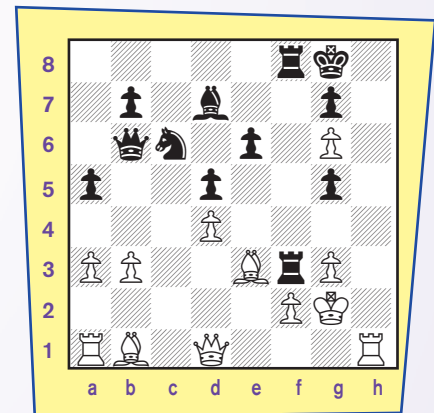
Both kings are exposed: White's king is stuck in the center and Black's king is threatened with mate if White has time to play Qxg7. With Black to

move, he wishes that his bishop could go to c3, but his rook is in the way.

Black played the nice move, 27. ... Re7! and White resigned because of 28. Qxe7 Bc3+ 29. Bd2 Bxd2+ 30. Kd1 Be3+ 31. Ke1 Qd2+ 33. Kf1 Qxf2 mate.

A Damiano's mate occurred in this position from a tournament in Dortmund in 1987. Damiano's mate, characterized by the pawn on g6 and queen mating on h7, was first published by Pedro Damiano in 1512.

Stefan Inhoven



Zivko Belic

Position after 24. ... Rf3

White clears the path for his queen to reach h7 by playing 25. Rh8+! and Black resigned. After 25. ... Kxh8 26. Qh1+ Kg8 27. Qh7 is mate.

The clue of when to look for clearance sacrifices is when you dream up a winning position that would work, if not for one of your pieces blocking another from getting to a key square.

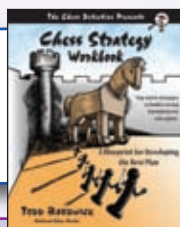
Todd Bardwick

is the author of

Chess Strategy Workbook:

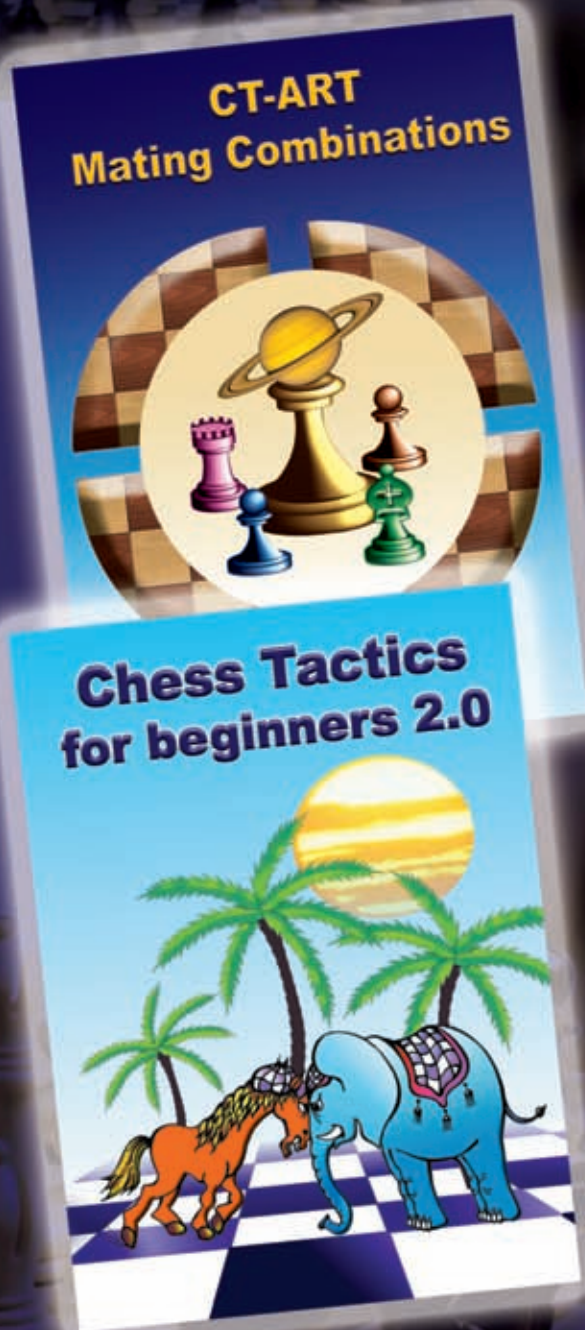
A Blueprint for Developing the best plan.

He can be reached at www.ColoradoMasterChess.com



TACTICAL EXERCISES

NEW FROM CONVEKTA



CT-ART Mating Combinations

With absolutely new theoretical and practical material, this is a perfect sequel to the CT-ART 4.0 program. *CT-ART Mating Combinations* program is the unique tool for chess tactics studies. The most interesting positions can be viewed on the additional board and played against the integrated chess program. The course was prepared by the famous coach Victor Khenkin and includes 1200 instructive examples on 14 themes, each illustrating the peculiarities of using certain pieces for mating combinations, and includes 700 exercises for you to solve.

WIN0113CV

\$31.95

Chess Tactics for Beginners 2.0

Finally a new and improved version of the legendary Chess Tactics for Beginners has been released. This new version sports a convenient user interface and adds 918 training exercises. The training program is designed for teaching children, either in groups with a teacher or at home guided by parents. There are more than 2200 tactical exercises classified by theme and difficulty which ensure variety and a good understanding of basic tactics.

WIN0115CV

\$31.95

USCF
SALES

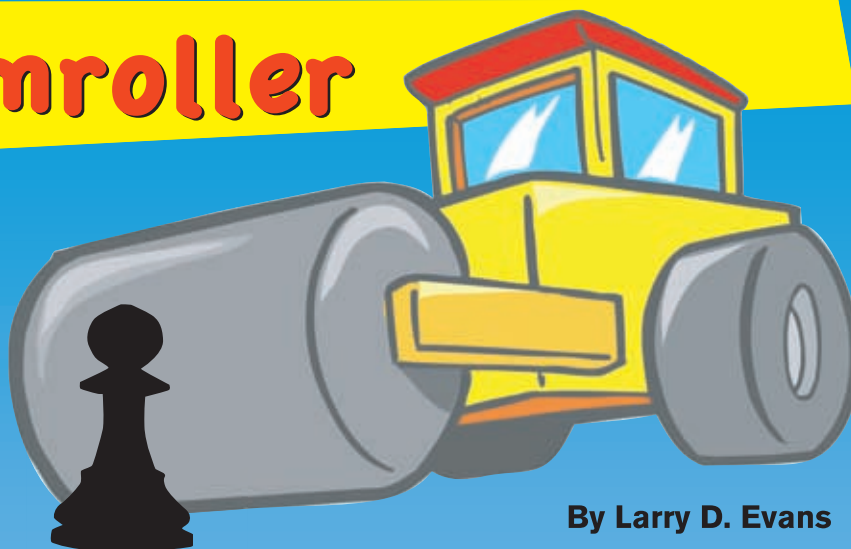
1.800.388.KING (5464)
www.USCFSales.com

USCF

ALL PURCHASES BENEFIT THE UNITED STATES CHESS FEDERATION

The Steamroller

Control the center
with your pawns.



By Larry D. Evans

I'm sure you've heard that before. But have you ever wondered why? What do you do after your pawns are controlling the center?

Usually, you leave them there and try to beat the guy on the flank. First figure out which side is his weakest, and then rush your pieces over to attack it. He'll find it more difficult to bring his pieces to the defense, because they have to pass through the center you control.

But sometimes the best course is to roll your center right down his throat. You have to be careful with this one, because his pieces won't have to get through your center to stop it, and when the pawns get down there they're going to get traded. *Poof!* Your center disappears and along with it goes your advantage.

That's why this plan usually doesn't work. But when it does, it's a killer. You won't want to miss it. So now let's take a look at the conditions under which it's most likely to succeed.

STEAMROLLER!

We'll start by dividing the plan into three basic steps, beginning with placing your pawns in the center. The next two are harder, so we'll use metaphors to make them easier to visualize. Step Two reminds me of a steamroller. That's the truck with the big concrete cylinder instead of two front wheels that flattens Wile E. Coyote when he's chasing the Roadrunner.

Now picture that truck rolling down the street. Everything in its path gets pushed off to the side. That's the way your pawns are supposed to work when they're rolling down the center. If they're pushing your opponent's pieces into the center instead of away, it's more likely that the plan really won't be effective.

1. Nf3 Nc6 2. e4 Nf6

Transposing into Alekhine's Defense, but why would World Champion Alexander Alekhine allow the steamroller?

3. e5 Nd5

Well here's one reason: because it's pushing Black's knight into the center instead of out of it. White's next move, however, pushes it back out.

4. c4 Nb6

Should White continue the steamroller now with 5. c5? Probably not, as that would just push Black's knight back into d5. White needs to first control d5 with one of his pieces for the steamroller to work the way that he wants.

5. d4 Rb8?

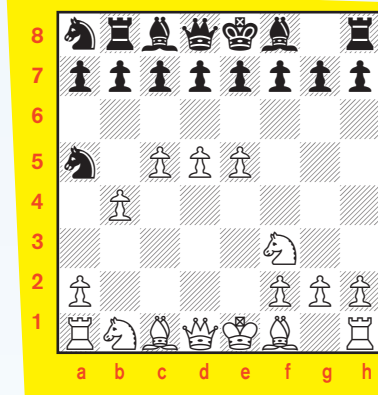
Black really needed to start deploying his own center pawns here. Now his knights get steamrolled off the board.

6. d5 Na5

Now White's queen controls d5.

7. c5 Na8 8. b4 ...

That's what I call a steamroller:



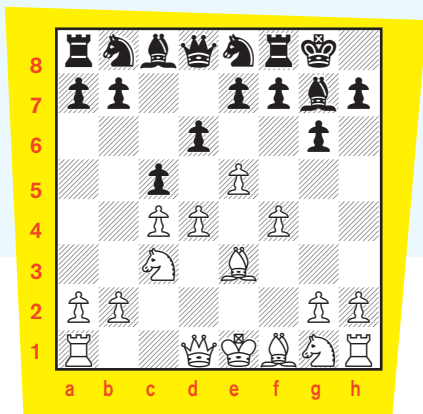
BE CAREFUL!

Looks great, right? Be careful! It's not always that easy. Sometimes it looks like you're pushing pieces away when what you're really doing is making your center more vulnerable. Here's what happened when a Chilean international master thought he could steamroll another world champion:

Rene Letelier Martner - Bobby Fischer, Leipzig, 1960: 1. d4 Nf6 2. c4 g6 3. Nc3 Bg7 4. e4 0-0 5. e5?

Very tempting to any student of the steamroller. Indeed, if Black's knight were driven to, say, g8 or h5, the concept would be better. But e8 isn't as bad a place as it looks, and now White's pawns are too far advanced and easy to trade off.

5. ... Ne8 6. f4 d6 7. Be3 c5!



White's center disappears, leaving a bunch of holes where the pawns used to be. Fischer checkmated Letelier's king in one of those holes 16 moves later.

So when does the steamroller work? Accomplishing that third step provides one of the answers. This time, let's use the metaphor of a wedge: that triangular piece of wood that you hammer into a log to split it open for easier burning. Sometimes, the steamroller culmi-

nates in a pawn on the 6th rank, so far buried into the opponent's position that it splits his defenses in half.

Alekhine - NN, Moscow, 1911: 1. e4 e5 2. Nf3 Nc6 3. Bc4 Bc5

In this opening, called the Giuoco Piano, Black violates opening principles. The rule is to develop knights *before* bishops. White conforms, waiting for 2. ... Nc6 before committing his bishop. But Black is afraid to play 3. ... Nf6 because it allows White's knight access to g5 before he is ready to protect f7 by castling. So Black plays 3. ... Bc5 instead (before White's Nc3) so he can still capture the other knight with his queen if it ventures to g5.

4. c3 Nf6 5. d4 exd4

IT'S NOT A TOOTH!

This attempt to punish Black for not waiting for White to clog c3 with a knight is called the Möller Attack, named for a German chess

player, not a tooth. Those two little dots over the "o" (called an umlaut) tell your voice to say "e" while your lips form an "o". The result is a sound that doesn't exist in English; the closest phonetic spelling is Mueller.

Whatever it's called, White intends to recapture on d4 with his pawn, chasing away the prematurely developed bishop, and then roll his pawns down the center until they culminate into a wedge on d6.

The reason this plan doesn't refute the Giuoco Piano is because Black's bishop escapes with a check on b4, giving him time to prevent the steamroller by capturing on e4 or playing ... d5, depending upon how White answers. So Alekhine tries a different route, hoping to exploit his opponent's inexperience.

Please turn to page 22

NOW IN OUR 18th YEAR!



**Weekly Day
Camps start June
20th at Balboa
Park, San Diego**



**GM John Fedorowicz returns to join
IM Larry D. Evans as camp instructors!**

**Lake Arrowhead, CA
Monday through Friday
August 1st - August 5th, 2011**

**Mountain Lake
Chess
Camp**

**A chess camp for
children, ages 6-17**

**1-800-675-1227
www.chesscamp.net**

2010 CHESS MAGNET SCHOOL JUNIOR GRAND PRIX STANDINGS



ST=State PTS=Points



~ Congratulations ~

to Abhinay Dommalapati of Virginia! He is the official winner of the 2010 ChessMagnetSchool.com Junior Grand Prix, with 310 points earned in 23 events.

ChessMagnetSchool.com will award Abhinay \$1,000 to participate in the 2011 U.S. Open in Orlando, Florida. And you know what that means: DISNEY WORLD!

The top 50 finishers and the top state winners (not in the top 50), will receive their choice of either a free one year membership to ChessMagnetSchool.com, or a three month membership to ChessLecture.com.

There are some changes planned for the 2011 campaign and we hope you share Abhinay's enthusiasm for the new rules (see page 4).

Top 50 Overall Standings

NAME	STATE	PTS	STANDING
DOMMALAPATI, ABHINAY	VA	310	1st
MIZUSHIMA, DEREK	MD	270	2nd
ATTANAGODA, ISURU ADEEPA	VA	240	3rd
HARMON-VELLOTTI, CARL HONOR	ID	210	4th
RICHMAN, JONATHAN	NY	195	5th-6th
CHEN, JASMINE	NY	195	5th-6th
MOON, KYLE	NY	190	7th
SMITH, JAMES LARKIN	MO	185	8th
CAO, ALVIN	VA	165	9th-13th
ALTMAN-DESOLE, BENJAMIN	NY	165	9th-13th
TANENBAUM, ZACHARY CHEN	CT	165	9th-13th
KRAUSE, BENJAMIN	MD	165	9th-13th
CAO, JONATHAN	VA	165	9th-13th
PILLAI, KADHIR ANDRES	NY	160	14th
JIANG, CHARLES	NJ	155	15th-16th
ULRICH, THOMAS M	IL	155	15th-16th
REGAM, JESSICA	PA	150	17th
YIM, TONY SUNG	AZ	145	18th-21st
MARUPUDI, PRANAV	NJ	145	18th-21st
SCHNEIDER, THOMAS GEORGE	WI	145	18th-21st
TYAGI, KUSHAN	IA	145	18th-21st
TALWAI, PREM	CA-N	140	22nd-23rd
WIENER, ALEXANDRA	CT	140	22nd-23rd
KUTIKOFF, ADAM	FL	135	24th-25th
MOORTHY, SRINIVAS RAMANUJA	MD	135	24th-25th
DIXON, DAKOTA ELLIS	WA	130	26th-28th
KHATTAR, TANMAY	VA	130	26th-28th
TKACH, GABRIEL USHER	PA	130	26th-28th
PETERSON, DANTE	CA-S	125	29th-39th
WINTER, CURTIS A	MD	125	29th-39th
SANT, AMIT	CA-N	125	29th-39th
HARMON-VELLOTTI, LUKE	ID	125	29th-39th

NAME	STATE	PTS	STANDING
SINGH, REVA SHREE	NY	125	29th-39th
PENNOCK, STEVEN G	AZ	125	29th-39th
MOAZAMI, AMIR	NY	125	29th-39th
CHINCHWADKAR, OM	CA-N	125	29th-39th
LIU, DANIEL	CA-N	125	29th-39th
COOKLEV, STEVEN	IN	125	29th-39th
KOGEN, JONATHAN	IL	125	29th-39th
HUA, MARGARET M	MO	120	40th-47th
GAN, ERIC	VA	120	40th-47th
PETERSON, MICK	CA-S	120	40th-47th
PENA, JOEL ANTHONY	NJ	120	40th-47th
HAN, JOSEPH	CT	120	40th-47th
BLAD, ERIK L	MD	120	40th-47th
VISWANADHA, KESAV	CA-N	120	40th-47th
KNOFF, THOMAS	NY	120	40th-47th
ZHOU, JASON	MO	115	48th-52nd
WILLIAMS, JUSTUS D	NY	115	48th-52nd
SUSARLA, ANEESH	VA	115	48th-52nd
HUANG, DAVID	MS	115	48th-52nd
ATRIWAL, AARYAMAAN	TX	115	48th-52nd

State Leaders

NAME	ST	PTS
PARSHALL, MATTHEW	AK	15
JIAO, KENNETH	AL	90
WOLF, ALEXANDER PATRICK	AR	65
CHAKRABORTY, DIPRO	AZ	105
PERSHAD, YASH	AZ	105
IYENGAR, UDIT	CA-N	105
TAM, CALVIN	CA-N	105
GUNN, JONATHAN	CA-S	100
CSIMA, AMANDA	CO	70
SEGALL, ETHAN R	CT	80
HAUGE, DAVID RICHEY	DC	35
DALY, MARCUS ROBERT	DC	35
D'SOUZA, DEAN	DE	55
TSAI, AMY	FL	105
GIOVANNETTI, GRANT	FL	105
GOLOGORSKY, RACHEL	FL	105
BALAGA, AINESH	GA	100
KAONOHI, TRISTAN K	HI	55

NAME	ST	PTS
IYER, VENKAT	IA	45
ABERNATHY, CALEB PATRICK	ID	75
RUAN, GEORGE	IL	85
TOOTLE, TIMOTHY RYAN	IN	90
HOLT, CONRAD	KS	70
LIPMAN, ANDREW JOSEPH	KY	35
ALI, JAMAL	KY	35
KORNDORFFER, CHARLES	LA	65
YASINOVSKY, DAVID	MA	80
MCMANARA, TANNER AUSTIN	MD	110
FISHBEIN, MATTHEW EVAN	ME	50
VIRKUD, APURVA	MI	100
STIFFMAN, GEORGE ERIC	MN	85
SMITH, JACOB LEE	MO	110
MEJIA, SEBASTIAN	MS	60
MOODY, CHAD	NC	105
WAN, JOSEPH CHENG-YUE	NE	30
POTORSKI, GERALD FIELD	NH	35
KUMAR, ARAVIND	NJ	110
EWING, GABRIEL RANDOLPH	NM	60

NAME	ST	PTS
ZAVALA, JONATHAN E	NV	60
STEINBERG, MAX	NY	105
CHIANG, MICHAEL	NY	105
PARANJIPE, ISHAN DHANANJAY	OH	110
NICKELS, ERIK J	OK	55
TALYANSKY, SETH DAVID	OR	65
SAKAI, HIBIKI	PA	95
FINNEY, STUART S	RI	100
LAURIA, MICHAEL D	SC	75
KNUDSON, MICHAEL	SD	40
VAZQUEZ, RAUL	TERR	10
LEVINE, BENJAMIN	TN	105
CHIANG, JONATHAN	TX	105
HON, ERIC	UT	55
SHIH, MATTHEW	VA	105
VOLL, JAMESON	VT	35
ZHANG, DEREK	WA	100
LIANG, AWONDER	WI	90
VEECH, JOHN	WI	90
PARHI, SIDHARTHA	WV	35

How did you learn the game and at what age?

I learned the game by joining my school chess club at age eight in 2nd grade. They would only allow kids to join when you're in at least 2nd grade. So I joined when I was in 2nd grade.

Who taught you?

My parents taught me the game and the basics. Until at least I reached around 1000, my dad worked with me almost every day on improving my tactics and getting advice from a local area senior TD [tournament director], Coach Bruce George. Once I reached to around 1200, I took lessons from an online coach from India through MyChessGuru.com on Skype. His name is Vempati Kameswara Rao.

Currently, I have been taking lessons from IM Oladapo Adu, one-on-one. Apart from the fact of getting lessons and advice, the most important thing that helped me improve and get experience was to keep playing at several tournaments—scholastic as well as open tournaments with adults.

What is your current rating?

Around 1700.

Do you play for your school team?

Yes. I play for the Greenbriar West chess club. Our chess club has been the K-5 state champions for the past four years in a row. We have also won national titles during the past few years.

What made you pursue for the JGP title?

The fact that I could improve by winning and drawing with higher rated chess players. Last year I tried for the title but I could only get to 2nd and missed by five points! I wanted to get to 1st, and I wasn't satisfied with my result. So, I worked so hard for one more year and won the JGP title.

How many points did you gain from online play?

I got 75 points from online, the maximum. There were many other JGP pursuers who played online and were competing with me. Isuru Attanagoda and Derek Mizushima are some of them, who were very close to me at several occasions. The National Grade Championship at Orlando, Florida was my best during the end of the year, in which I gained 20 JGP points; that was a big advantage.

What did you enjoy more, winning JGP points online or over the board?

Over the board; it seemed more real. And it was with an actual reasonable time control, other than the 3 2 time control.

In 2010, you got 10 points for a win and five points for a draw against players rated at least 100 points higher in rating. In 2011, the program will give full credit for wins, up to 350 points.

In other words, if you beat someone rated 150 points higher rated, you will receive 300 points; a draw earns 150 points. If you upset someone rated 350 points higher, you get 700 points!

Do you think this will make the contest more exciting?

Definitely! There will be more competition which will make more people improve and go to more tournaments. Also this idea is fairer because earlier you had to play with 100 points more in a higher section, which made it really tough. But now, regardless of how high your opponent is than you, you could still get points. That means you don't have to play one-level up as I used to play in the past two years to gain JGP points.

What other interests do you have? Sports? Music? Video Games? Tiddly-Winks?

I'm interested in math, football, music (the French horn), and the video game—Call of Duty: Black Ops. I play football every day with my friends at school. There is a

band in my school where people can pick their own instrument. And Black Ops is my most favorite game.

Any comments you might want to make?

Because of the JGP I have really improved a lot, and I have so much experience. It's also a lot of fun to travel several places and make more friends, like my friend Isuru Attanagoda who was also trying for the JGP, during the challenging race.

A FAMILY AFFAIR

Abhinay's sister, Aasa, has taken up the game and travels to open chess events on the weekends with her brother. Their father, Anand, recently became a local TD, and runs scholastic tournaments in the area, with the proceeds going to the Parent Teacher Association to benefit Greenbriar West Elementary School. He also teaches chess at the school's chess club, an after school program run entirely by volunteers.

At the risk of sounding ... hokie ... (after all, this is Virginia), a family that plays chess together, stays together.

There. I said it. Blame the gnomes.



Glossary Cont'd from pg. 11

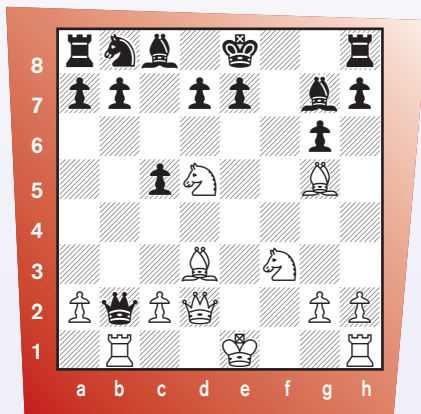
In recent years, Black has leaned toward 5...Be7 6. d4 Na5 and players like Shirov and Kasparov started playing an old move Arthur Bisguier played a half-century ago: 7. Be2. That can go like this:

1. e4 e5 2. Nf3 Nc6 3. Bc4 Bc5 4. b4 Bxb4 5. c3 Be7 6. d4 Na5 7. Be2 exd4 8. Qxd4 d6 (8. ... Nf6 9. e5 Nc6 10. Qh4 Nd5 11. Qg3—Kasparov) 9. Qxg7 Bf6 10. Qg3 Qe7 11. 0-0 Bd7 12. Nd4 0-0-0 13. Nd2 Nc6 14. Qe3 h5 15. Rb1 and both sides get to have at each other (Shirov-Timman, 1995).

Another choice for players with black is to decline the gambit, and that will be a tough battle as well:

QUESTION

Cont'd from pg. 6



11. ... Qxb1+ 12. Kf2 Qxh1? Taking this rook brings a swift end to Black's king. He will be overwhelmed by White's extremely active pieces. However, even 12. ... Qb2!, the strongest continuation, still leads to a bad position after 13. Nxe7!, with White winning back material, but keeping the attack. 13. Bxe7?! In these complications, it is harder to find a clear win for White. Another move, 13. Nc7+!? Kd8 14. Bxe7+! was a clearer win: 14. ... Kxc7 (14. ... Kxe7 15. Qg5+ Kd6 16. Qf4+ Kc6 17. Nb5 also

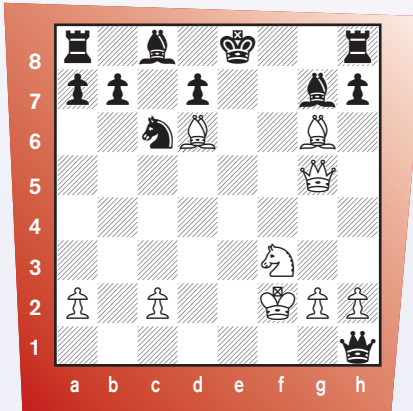
1. e4 e5 2. Nf3 Nc6 3. Bc4 Bc5 4. b4 Bb6 5. a4 (Pawn grabbing allows a draw: 5. b5 Na5 6. Nxe5 Bxf2+ 7. Kxf2 Nxc4 8. Nxc4 Qf6+ 9. Qf3 Qd4+ 10. Qe3 Qf6+ 11. Qf3 drawn by repetition as 11. ... Qxa1 12. Bb2 Qxa2 13. Qe2 wins for White.) 5. ... a6 6. Nc3 Nf6 (6. ... Nxb4 7. Nxe5) 7. Nd5 Nxd5 8. exd5 Nxb4 9. 0-0 c6 10. d6 0-0 11. Ba3 and yet another jolly fight on the board!

The Max Lange Attack:

Oh, how your writer loves this! It could be the nastiest attack of the bunch at scholastic levels. It's so easy for Black to get in trouble! Interestingly enough, it looks pretty harmless in the beginning, and THEN comes 5. d4! Let's look:

1. e4 e5 2. Nf3 Nc6 3. Bc4 Bc5

wins quickly.) 15. Qf4+ Kb6 16. Qd6+ Nc6 17. Qxc5+ Kc7 18. Bd6+ Kd8 19. Qg5+ Ke8 20. Bxg6+! White's win is striking.



(Analysis Diagram)

20. ... hxg6 21. Qxg6+ Kd8 22. Qxg7 Re8 23. Qf6+ Re7 24. Ne5! Black's king will be smothered among his own pieces. 13. ... d6?! 13. ... Qa1!?, the move suggested by the computer, loses in a hellishly complicated way; 14. Bd6 Bd4+ 15. Kg3 Nc6 16. Nc7+ Kf7 17. Qh6—To make a long story short, White's pieces triumph. 14. Bxd6 Nc6 15. Bb5 Bd7 16. Bxc6 bxc6 17. Qe2+

4. 0-0 Nf6 5. d4 exd4 (A mistake is: 5. ... Nxd4 6. Nxe5 0-0 7. Be3! Ne6 8. Bxe6 Bxe3 9. Bxf7+ Rxf7 10. Nxf7 Kxf7 11. fxe3) 6. e5 d5 (6. ... Ng4 7. Bf4 0-0 8. h3 Nh6 9. Bxh6 gxh6 10. c3 dxc3 11. Nxc3 with a nice attack; 6. ... Ng8 7. Re1 and lastly, 6. ... Ne4 7. Bd5 f5 8. exf6 e.p. Nxf6 9. Bg5 Be7 10. Bxf6 Bxf6 11. Re1+) 7. exf6 dxc4 8. fxg7 Rg8 9. Bg5 Be7 (9. ... Qd5 10. Nc3 Qf5 11. Ne4 Rxg7 12. Re1 Be6 13. Nh4 Rxg5 14. Nxf5 Rxf5 15. g4 Re5 16. f4; After 9. ... f6 a fun drawing line against a stronger player is 10. Re1+ Kf7 11. Ne5+ Nxe5 12. Rxe5 Bd6 [12. ... fxe5 13. Qh5+ Ke6 14. Bxd8; 12. ... Kxg7 13. Rxc5 fxg5 14. Rxc4] 13. Qh5+ Kxg7 14. Qh6+ Kf7 15. Qxh7+ Rg7 16. Qh5+ Rg6 17. Qh7+) 10. Bxe7 Kxe7 (10. ... Qxe7 11. Nxd4) 11. Re1+ Be6 12. Re4 f5 13. Rh4 Kf7 14. Rxh7 Rxg7 15. Rxg7+ Kxg7 and White's a bit better because of the exposed black king.

The best line for Black is to play 5...Bxd4! 6. Nxd4 Nxd4 (6. ... exd4 7. e5 Nxe5 8. Re1 d6 9. f4) 7. f4 d6 (7. ... Nc6 8. Bxf7+ Kxf7 9. fxe5 Nxe5 10. Qd5+) 8. fxe5 dxe5 9. Bg5 Qe7 10. Na3 Be6 11. c3 Bxc4 12. Nxc4 Ne6 13. Bxf6 gxf6 with an equal game, but not necessarily a drawn game!

These are just the basics. There are other lines as well. You really have to study these moves if you want to play them as White or defend them as Black.

That's why we call this opening glossary "brief." You have the starting points. Which path you take to study further is up to you. Good luck!

Kd8 18. Bc7+ Kc8 19. Qa6 checkmate. On 17. ... Kf7 18. Ng5+ Kg8 19. Ne7+ Kf8 20. Nxc6+ Kg8 21. Qc4+ Be6 22. Qxe6 mate. 1-0

Send your questions for NM Daniel Gurevich to gpetersen@uschess.org. Give his little gray cells a workout.

Tournament Life Announcements

APRIL 15 THROUGH JUNE 14

Scholastic Members:

As a service to you, we are listing upcoming National USCF rated events, and requested events of possible interest to you. You can always log in to www.uschess.org, and click on "Clubs and Tournaments." Then click on "Upcoming Tournaments" for a complete listing of upcoming rated events and details. As always, you can check out the TLA section of *Chess Life*.

Organizers and Tournament Directors:

If you would like your tournament listed here in *Chess Life for KIDS* for June (events to be held after June 14), the deadline for submitting your announcements is April 10th. The deadline for the August 2011 issue is June 10th. The processing fee is \$1.00 per line for the first eight lines, \$2.00 for every line thereafter. Send your announcements to tl@uschess.org.

Display advertising is also available. Advertising rates are posted on the USCF website, www.uschess.org, or you may email: tl@uschess.org for complete details.

June 25-29 2011 FIDE EVENT North American Youth Championship! see New York

NATIONALS

Apr. 15-17, Ohio

2011 National Junior High (K-9) Championship

(Apr. 14 – Bughouse & Blitz) 7SS, G/120. Hyatt Regency Columbus, 350 North High Street, Columbus, OH 43215, 1-614-463-1234 or 1-800-233-1234, Chess Rate \$125. **6 Sections: K-9 Championship, K-9 Under 1250, K-9 Unrated, K-8 Championship, K-8 Under 1000, K-8 U750.** April Rating Supplement will be used. Unrated players may play in the Championship or Unrated sections only. One 1/2-point bye for any round, except Rd. 7, if requested in advance. **EF:** \$50 if by March 13, \$70 if by March 27, \$85 after April 10 or \$90 at site. Mailed entries must be p/m by April 10. \$5 extra for all phone registrations, \$20 change fee for roster or section changes after March 27. On-site registration: Thurs. 9am-10pm & Fri. 8am-10am. Players registering after 10am will get 1/2-point for Round 1. **Awards:** A minimum of 1 individual trophy per 10 players and 1 team trophy per 15 players (average attendance in the past two years, not incl. SN IV) plus plaques for 4 players and coach of top five teams in each section. **Class trophies to the top three in the following classes: K-9 Championship:** 1400-1599; 1200-1399; 1000-1199; U1000; Unrated. **K-8 Championship:** 1500-1599; 1400-1499; 1300-1399; 1200-1299; 1100-1199; 1000-1099; U1000; UNR. All participants will receive a commemorative medal at the completion of the final round. **Teams:** A team must have at least two players, although no maximum number of players. The top four scores in any section will count for the team score. All on team must attend the same school. **Opening Ceremony:** 12:30pm Friday. **Main Event rounds:** Friday 1pm, 7pm; Saturday 9am, 2pm, 7pm; Sunday 9am, 2pm. **Schedule for K-1:** Friday 1:30pm, 6:30pm; Saturday 9:30am, 1:30pm, 6:30pm; Sunday 9:30am, 1:30pm. **Awards Ceremony:** Approx 7pm Sunday. **Special Events: National Junior High Bughouse Championship:** Thursday 11am; EF (on site only) \$25 per team. Bughouse registration ends at 10am Thurs. **National Junior High Blitz Championship:** Thursday 5pm; EF \$15 per player, \$20 after April 10 or on site. **Coaches and Parents Meeting:** 11am Friday. **Scholastic Meeting:** 3pm Saturday. **Coaches Forum:** 7pm Saturday. **Tournament Feedback Meeting:** 9:30am Sunday. **Parents and Friends Tournament:** 4SS, G/30, Saturday 10:30am, 12:30pm, 2:30pm, 4:30pm. Onsite registration only. Rated and Unrated sections. Trophies for Parents/Friends participant and student combined results. **ALL:** Please bring clocks. Sets and score sheets provided. USCF membership required. **Mail entries to:** U.S. Chess Federation, Attn: Junior High, P.O. Box 3967, Crossville, TN 38557. **Additional details, updates, corrections and on-line registration:** <http://www.uschess.org/tournaments/2011/jhs>. **Chess Magnet School JGP.**

Apr. 29 – May 1, Tennessee

2011 National High School (K-12) Championship

(Apr. 28 – Bughouse & Blitz) 7SS, G/120. Gaylord Opryland Resort and Convention Center, 2800 Opryland Drive, Nashville, TN 37214, (615) 889-1000 or (888) 777-6779. Chess Rate \$129. **5 Sections: K-12 Championship, K-12 Under 1600, K-12 Under 1200, K-12 Under 800, K-12 Unrated.** April Rating Supplement will be used. Unrated players may play in the Championship or Unrated section only. One 1/2-point bye for any round, except Rd. 7, if requested in advance. **EF:** \$50 if by March 27, \$70 if by April 10, \$85 after April 24 or \$90 at site. Mailed entries must be p/m by April 24. \$5 extra for all phone registrations, \$20 change fee for roster or section changes after April 12. **Onsite registration:** Thurs. 9am-10pm & Fri. 8am-10am. Players registering after 10am will get 1/2-point for Round 1. **Awards:** A minimum of 1 individual trophy per 10 players and 1 team trophy per 15 players (average attendance in the past two years, not incl. SN IV) plus plaques for 4 players and coach of top five teams in each section. **Class trophies to the top three in the following classes: K-12 Championship:** 1900-1999; 1800-1899; 1700-1799; 1600-1699; 1500-1599; 1400-1499; 1300-1399; 1200-1299; U1200, K-12 UNR. All participants will receive a commemorative medal at the completion of the final round. **Teams:** A team must have at least two players, although no maximum number of players. The top four scores in any section will count for the team score. All on team must attend the same school. **Opening Ceremony:** 12:30pm Friday. **Main Event rounds:** Friday 1pm, 7pm; Saturday 9am, 2pm, 7pm; Sunday 9am, 2pm. **Awards Ceremony:** Approx 7pm Sunday. **Special Events: National High School Bughouse Championship:** Thursday 11am; EF (on site only) \$25 per team. Bughouse registration ends at 10am Thurs. **National High School Blitz Championship:** Thursday 5pm; EF: \$15 per player, \$20 after Apr. 24 or on site. **Coaches and Parents Meeting:** 11am Friday. **Scholastic Meeting:** 3pm Saturday. **Coaches Forum:** 7pm Saturday. **Tournament Feedback Meeting:** 9:30am Sunday. **Parents and Friends Tournament:** 4SS, G/30, Saturday 10:30am, 12:30pm, 2:30pm, 4:30pm. Onsite registration only. Rated and Unrated sections. Trophies for Parents/Friends, participant and student combined results. **ALL:** Please bring clocks. Sets and score sheets provided. USCF membership required. **Mail entries to:** U.S. Chess Federation, Attn: High School, P.O. Box 3967, Crossville, TN 38557. **Additional details, updates, corrections and on-line registration:** <http://www.uschess.org/tournaments/2011/hs>. **Chess Magnet School JGP.**

May 6-8, Texas

2011 National Elementary (K-6) Championship

(May 5 – Bughouse & Blitz) 7SS, G/120, K-1 G/90. Hilton Anatole, 2201 Stemmons Freeway, Dallas, TX, 75207. Guest rooms must be booked online; please check the tmtt. info. page to book your room: <http://www.uschess.org/tournaments/2011/Elem>. Chess Rate \$120. **9 Sections: K-6 Championship, K-6 Under 1000, K-6 Unrated, K-5 Championship, K-5 Under 900, K-3 Championship, K-3 U800, K-3 Unrated, K-1 Championship.** April Rating Supplement will be used. Unrated players may play in the Championship or Unrated sections only. One 1/2-point bye for any round, except Rd. 7, if requested in advance. **EF:** \$50 by April 3, \$70 if by April 17, \$85 after May 1 or \$90 at site. Mailed entries must be p/m by May 1. \$5 extra for all phone registrations, \$20 change fee for roster or section changes after April 17. On-site registration: Thurs. 9am-10pm & Fri. 8am-10am. Players registering after 10am will get 1/2-point for Round 1. **Awards:** A minimum of 1 individual trophy per 10 players and 1 team trophy per 15 players (average attendance in the past two years, not incl. SN IV) plus plaques for 4 players and coach of top five teams in each section. **Class trophies to the top three in the following classes: K-6 Championship:** 1300-1399; 1200-1299; 1100-1199; 1000-1099; 900-999; 800-899; U800; UNR. **K-5 Championship:** 1300-1399; 1200-1299; 1100-1199; 1000-1099; 900-999; 800-899; U800; UNR. **K-3 Championship:** 1100-1199; 1000-1099; 900-999; 800-899; 700-799; 600-699; U600; UNR. **K-1 Championship:** All players in this section receive a trophy. All participants will receive a commemorative medal at the completion of the final round. **Teams:** A team must have at least two players, although no maximum number of players. The top four scores in any section will count for the team score. All on team must attend the same school. **Opening Ceremony:** 12:30pm Friday. **Main Event rounds:** Friday 1pm, 7pm; Saturday 9am, 2pm, 7pm; Sunday 9am, 2pm. **Schedule for K-1:** Friday 1:30pm, 6:30pm; Saturday 9:30am, 1:30pm, 6:30pm; Sunday 9:30am, 1:30pm. **Awards Ceremony:** Approx 7pm Sunday. **Awards Ceremony for K-1:** Approx 5:30pm Sunday. **Special Events: National Elementary Bughouse Championship:** Thursday 11am; EF (on site only) \$25 per team. Bughouse registration ends at 10am Thurs. **National Elementary Blitz Championship:** two sections: K-6 and K-3. Thursday 5pm; EF \$15 per player, \$20 after April 17 or on site. **Coaches and Parents Meeting:** 11am Friday. **Scholastic Meeting:** 3pm Saturday. **Coaches Forum:** 7pm Saturday. **Tournament Feedback Meeting:** 9:30am Sunday. **Parents and Friends Tournament:** 4SS, G/30, Saturday 10:30am, 12:30pm, 2:30pm, 4:30pm. Trophies for Parents/Friends, participant and student combined results. **Mail entries to:** U.S. Chess Federation, Attn: Elementary, P.O. Box 3967, Crossville, TN 38557. **Additional details, updates, corrections and on-line registration:** <http://www.uschess.org/tournaments/2011/Elem>. **Chess Magnet School JGP.**

May 28-30, Arizona

2011 U.S. Amateur West Championship

Holiday Inn Palo Verde, 4550 S Palo Verde Rd., Tucson, AZ 85714, 520-746-1161. **SECTIONS: Championship (U2200), Reserve (U1600), Booster (U1200), Scholastic I (must be K-6 and U1000) and Scholastic II (must be K-6 and U600).** Scholastic sections are 6 separate 1-day tournaments. **SCHEDULE:** (Championship, Reserve, and Booster) 6/SS, 40/2, 25/1. Reg: 5/28, 8:30 - 9:30 AM. Rds: 10-4, 10-4, 9-3. (Scholastic I and II) 4/SS, G/40. Reg: 8:30 - 9:30 AM each day. Rds: Round 1 at 10 AM then as available for Rounds 2-4. **PRIZES:** (Championship) Chronos clock + plaque to Top 3; Digital clock + plaque to Top 1900-1999, 1800-1899, 1700-1799, 1600-1699, and U1600; Plaque to top Senior 50+, Junior U20 and Junior U14. (Reserve) Chronos clock + plaque to 1st; Digital clock + plaque to 2nd, 3rd, Top 1300-1399, 1200-1299, and U1200; Plaque to top Senior 50+ and Junior U14. (Booster) Chronos clock + trophy to 1st; Trophy to 2nd - 5th, Top Unrated and Junior U11. (Scholastic I each day) Digital clock + trophy to 1st; Trophy to 2nd - 5th. (Scholastic II each day)

Trophy to 1st - 5th. **SPECIAL PRIZES:** 1st Place in Championship and Reserve will receive a FREE ENTRY to the 2011 National Open, Top 2 Family Pairs in the non-scholastic sections. Biggest Upset of each round in the non-Scholastic sections. Chronos clock to Scholastic I player with the highest combined score over the three 1-day tournaments. **EF:** (Championship & Reserve) \$60 if rec'd by 5/25, \$70 if after 5/25. (Booster) \$40 if rec'd by 5/25, \$50 if after 5/25. (Scholastic I and II) \$15 each day or \$40 for all three days if by 5/25, additional \$10 if after 5/25. **ALL:** Half-point byes allowed for all rounds but must be requested prior to start of Round 2. **SIDE EVENT:** Blitz tournament Friday 5/27; G/5, 5 Rounds, Double SS; Entry Fee: \$10 (\$15 to non-tournament players); **Reg.:** 6:00-6:45pm at site; Rounds: begin at 7:00pm Prizes: (\$50/20) \$75-\$45, Top U1600 \$30, Medallion to top K-12, K-8, K-6. **ENTER:** <http://www.sazchess.org/store/store.php> or mail to (make checks payable to "SACA"): SACA, Attn: US Amateur West, PO Box 36149, Tucson, AZ 85740 or at site. **HR:** \$70 (single/double) or \$85 (suite) if by 5/14, mention "SACA". **INFO:** Karen Penneck, 520-261-6149, email: kpenneck_83@yahoo.com, web: www.sazchess.org. NC. NS. W. **Chess Magnet School JGP.**

A Heritage Event!

May 28-30, New Jersey

67th Annual U.S. Amateur East Championship

6-SS, 50/2, SD/1. Holiday Inn Somerset, 195 Davidson Ave., Somerset, NJ 08873. Telephone: (732) 356-1700, Fax: (732) 356-0939 NYC train to Bound Brook 1 miles away. In 3 Sections: Championship (U2200), Reserved (U1800), Booster (U1400). 2-day & 3-day schedules. **Three Day Registration:** Saturday May 28, 9:30-10:45 am. **Schedule:** Rounds 12-6, 11-5, 9-3. **Two Day Registration:** Sunday May 29, 8:30-9:30 am. **Schedule:** First 3 games, 5/29, 6/6. Rounds 10-12:15-2:30. All schedules merge in round four. **Each Section:** Trophies to top five and top Senior 55/over and Jr's under ages 16 & 13. **Championship:** Trophies to top U2000, U1900 and U1850. **Reserve:** Trophies to top U1600 and U1500. **Booster:** Trophies to top U1200, U1100, U1000, U900 and U800. **EF:** \$49 if postmarked by May 25, or paid online via EntryFeesRus.com. **EF:** at site \$60 cash. **Byes:** Three 1/2-point byes allowed (not last round). **Ent:** Ken Thomas, 115 West Moore St., Hackensack, NJ 07604. Checks to NJSCF. **Info:** 908-763-6468 or acn@goes.com. NS. NC. W. **Chess Magnet School JGP.**

June 4-5, Tennessee

2011 U.S. Amateur South Championship

University of Memphis, University Center, 499 University St., Memphis, TN 38152, 901-678-2042. **Dorm room rates:** Adults \$39 single, \$33 double; Students \$27 single, \$31 double. **2 SECTIONS:** Championship (U2200) & Reserve (U1600). **SCHEDULE:** 5/SS, G/90. **Reg.:** 6/4, 9:00-9:45AM. **Rds:** 6/4, 10-2-6; 6/5, 9-12-30. **PRIZES:** \$650 cash prizes based on 60 entries + \$450 of non-cash prizes. **Championship:** 1st-"River Cup" trophy + \$200, 2nd-plaque + \$100, 3rd-plaque + \$50; U2000 1st-digital clock. **Reserve:** 1st-large plaque + \$150, 2nd-plaque + \$100, 3rd-plaque + \$50; U1400 1st-digital clock. **EF:** \$40 (\$10 less to juniors under age 18), \$50 on-site. **MISC:** One requested half-point bye allowed, any round, must request before the start of Round 3. Games broadcast online via MonRoi where able. **ADD'L DETAILS:** www.shelbycountyChess.org. **HR:** Hampton Inn Memphis-Poplar, 5320 Poplar Avenue, Memphis, TN 38119, 901-683-8500, \$74 + tax. **ENTRY:** Shelby County Chess, ATTN: Amateur South, 1614 Vance Ave., Memphis, TN 38104. **INFO:** Arlene Kleiman, midsouthchess@hotmail.com; Korey Kormick, kjkormick@hotmail.com. **Chess Magnet School JGP.**

June 9, Nevada

Grand Prix Points: 60 (enhanced)

2011 U.S. Game/10 Championship (QC)

6SS, G/10. South Point Hotel, Casino and Spa, 9777 Las Vegas Blvd. South, Las Vegas, NV 89183. **\$\$b/100 7,000 (\$\$gtd 4,500)** 2000-1000-700, U2300 600, U2100 550, U1900 500, U1700 450, U1500 400, U1300 350, U1100 300, unrated 150. There must be 3 players eligible for each prize to be awarded. **EF:** \$79 by 5/19, \$89 by 6/8, \$100 on site. **REG:** 12-1 p.m. **Rds:** 2-2:30-3:30-4:4-3:40. Higher of regular or quick rating used. Bring clocks. 1/2 point bye available in any round (limit 2). **HR:** \$55 single or double (\$95 Friday and Saturday nights). 1-866-791-7626 or (702) 796-7111. **ENT:** National Open, PO Box 90925, Henderson, NV 89009-0125, on line at www.VegasChessFestival.com or by fax at (702) 933-9112. NS. NC. W.

A Heritage Event!

An American Classic!

June 10-12 or 11-12, Nevada

Grand Prix Points: 200 (enhanced)

2011 National Open

6-SS, 40/2, SD/1 (2 day option rds 1-3 G/45). South Point Hotel, Casino and Spa, 9777 Las Vegas Blvd South, Las Vegas, NV 89183. **\$100,000 Prize Fund** based on 850 paid entries (\$80,000 guaranteed). **Championship.** \$\$: 8000-4000-2000-1000-600-400-400-400-400-200-200-200-200, under 2500 2000, under 2400 1500, under 2300 1000, \$2,000 EXTRA for perfect score. The winner of the Championship section also receives a replica of the Edmondson Cup. **Under 2200.** \$\$: 4500-2000-1000-750-500-350-350-350-350-200-200-200-200. **Under 2000.** \$\$: 4500-2000-1000-750-500-350-350-350-350-200-200-200-200. **Under 1800.** \$\$: 4500-2000-1000-750-500-350-350-350-350-200-200-200-200. **Under 1600.** \$\$: 4500-2000-1000-750-500-350-350-350-350-200-200-200-200. **Under 1400.** \$\$: 2500-1500-1000-500-300-300-250-250-200-200. **Under 1200.** \$\$: 1500-900-500-250-250-200-200-200-200. **Unrated.** \$\$: 600-400-200-150-150. **Plus score bonus** (\$16,000) in addition to any other prizes, every player who finishes with 3-1/2 points or better wins a \$50 gift certificate. Plus score certificates will be awarded on site only. Best game by a player under age 15 wins the new Freddie award plus \$200 (donated by Fred Gruenberg). Top 2 sections FIDE rated. **EF:** \$179 by 5/18, \$199 by 6/8, \$220 on site. Add \$100 for adults rated under 2100 or juniors under 2000 playing in the Championship Section. This is an open tournament - you may play in any section at or above your rating level; unrated players may play in Unrated or Championship Section. Provisionally rated players may not win more than 3rd prize in any section except Championship. CCA minimum ratings or other ratings may be used if higher than USCF June Supplement. **Reg.:** 11 a.m.-10 p.m. Thursday, 8-8:30 a.m. Friday. **Rds.:** 10-5,

Tournament Life

10-5, 10-5, 2-day (in a separate room) schedule: **Reg.**: 8-8:30 a.m. Saturday. **Rds.**: 9:30-11:30-1:30-5: merge with 3-day in round 4. Half point byes available in any round, but round 5 or 6 byes must be requested before the start of round 2. Chess sets and boards provided for tournament play only, not for skittles. Please bring chess clocks! The **LAS VEGAS INTERNATIONAL CHESS FESTIVAL** features the National Open, the U.S. Game/10 Championship and other championship events. **Many free extras and surprises!** Free parking. Free raffle with great prizes. Free GM Lectures. Free GM analysis of your games. **Grandmaster Chess Camp** for all ages on Thursday. **Grandmaster Simuls** Thursday afternoon. **U.S. Game/10** and **National Open Blitz** Thursday. **Poker Tournament** Monday morning. **Scholastic Tournaments** Friday, Saturday & Sunday. **LOW room rates!** **HR: \$55 single or double (\$95 Friday and Saturday nights)**. 1-866-791-7626 or (702) 796-7111. **Don't be shut out; make your reservations early and be sure to ask for the chess rates;** South Point sells out most weekends. Cutoff for special hotel rate is **May 18th**. Rates may be as high as \$150 a night later. **RESERVE NOW!** Credit card or one night room deposit will be required to hold reservation, may be canceled 72 hours in advance for nominal fee. **Tournament Registration:** National Open, PO Box 90925, Henderson, NV 89009-0125, on line at www.VegasChessFestival.com or by fax at (702) 933-9112. NS, W. FIDE. **Chess Magnet School JGP.**

Jul. 22-24, Texas

2011 U.S. Junior Open

6SS, G/120. Hilton Hobby Airport, 8181 Airport Blvd., Houston, TX 77061, www.houstonhobbyairport.hilton.com. Free parking! \$89 HR valid until 7/15. Reserve early! 713-645-3000, Group Code: USJO. **4 Sections based on age: Under 21, Under 15, Under 11 and Under 8. July Rating Supplement.** Ages for entry and prizes as of 1/1/2011. **U21:** \$500+ entry to 2012 U.S. Junior Closed - \$250-\$125-\$75-\$50. Individual plaques to top three overall, plaques for best player age 18, 17, 16, 15, Under 15, and for ratings U1600, U1400, U1200. **U15:** Individual trophies to top five overall, trophies for best player age 14, 13, 12, 11, Under 11, and for ratings U1400, U1200, U1000. **U11:** Individual trophies to top five overall, trophies to best player age 10, 9, 8, 7, Under 7, and for ratings U1200, U1000, U800. **U8:** Individual trophies to top five overall, best player 7, 6 & Under, and for ratings U1000, U800, U600; honorable mention trophies for all others U8. Commemorative medals for all participants. **Teams:** Trophies to top three school teams and top club team in each of the four sections. Top four scores, minimum of three, count towards team score in each section. Byes: One half-point bye, any round except Rd 6, if requested before Rd 1. **EF:** \$35 postmarked or on line by 7/9, \$50 after 7/9; no checks on site. **Schedule:** Onsite registration, Fri 8:30 - 11:00am. Opening Ceremony, Fri 12:30pm. Rounds, Fri 1pm & 6pm; Sat 9:30am & 2:15pm; Sun 9am & 1:30pm. Awards Ceremony 6:00pm (approx). **Side Events:** Blitz, U21 & U11. Sat 6:30pm, **EF:** \$15 by 7/9, \$20 on site. **Bughouse:** One section, Sat ASAP after blitz, **EF:** \$25 per team, on site only. **Parents and Friends Tournament (not rated):** 3SS, G/30, Sat, Rds 10:30, 2:30 & 4:00pm. **EF:** \$10, on site only. Prizes: Trophies to top three plus one USCF Premium membership for each five participants. **ENTRIES (Note Correction):** Mail to Francisco Guadalupe, 305 Willow Pointe Dr., League City, TX. **Info:** figuadalupe@aol.com, (713) 530-7820. Tournament website link at uschess.org. **Chess Magnet School JGP.**

Oct. 1, California, Northern

Grand Prix Points: 20 (enhanced)

2011 U.S. Game/60 Championship

4SS G/60 - \$4,000 b/117 fully paid entries - 75% guaranteed. Hotel rate \$99 by 9/16: Hyatt Regency, 5101 Great America Pkwy, Santa Clara, CA 95054. Free Parking. In 3 sections. **Open Section:** \$500-201-105, u2300 \$200-110, u2100 \$150, u2000 \$130, u1900 \$100. **1400-1799 Section:** \$500-201-100, u1700 \$200, u1600 \$150, u1500 \$100. **Under 1400 Section:** \$500-201-100, u1300 \$200, u1200 \$150, u1100 \$100. Unrated may play in any section but maximum prize is \$100 except no limit in the Open Section. Trophies for top 3 places in each section. **Entry Fee:** Mailed by Mon 9/26 or online by Tue 9/27: \$60. Online 9/28-29 or onsite: \$75. Add \$20 to play-up in a higher section. **DISCOUNTS:** \$10 off each event if also registering for G/30 on Oct 2. \$10 cash rebate onsite if staying at the hotel under chess rate. Byes: One 1/2 pt bye allowed must commit by start of Rd 2. Reenter with 1/2pt bye in Rd 1 for \$39. September 2011 Supp, CCA min, TD discretion used to place players accurately. **SIDE KIDS EVENT** for K-12 students rated under 1000: 4SSxG/60 in 2 sections, 600-999 and under 600. **Prizes:** Trophies to Top 10 players and Top 5 teams in each section. Best 4 players count for team score. Also trophies to top u800, top u700 in 600-999 section and top u400, top u300, and top u200 in u600 section. **EF** by Mon 9/26 or online by Tue 9/27: \$39. Online 9/28-29 or onsite: \$54. Add \$10 to play-up in a higher section. **Schedule:** Onsite Registration 8:30-9:30am; Round Times: 10:00am, 12:30, 3:00, and 5:30pm. **Mail payments to:** Bay Area Chess, 1590 Oakland Rd., Suite B213, San Jose 95131. \$20 for refunds. T: 408-786-5515. E: ask@BayAreaChess.com, **Info/Form/Entries:** BayAreaChess.com/usg60g30. NS, NC, W.

Oct. 2, California, Northern

Grand Prix Points: 15 (enhanced)

2011 U.S. Game/30 Championship

4SS, G/30 - \$3,006 b/88 fully paid entries - 75% guaranteed. Hotel rate \$99 by 9/16: Hyatt Regency, 5101 Great America Pkwy, Santa Clara, CA 95054. Free Parking. In 3 sections. **Open Section:** \$400-200-102, u2300 \$101, u2100 \$101, u2000 \$100, u1900 \$99. **1400-1799 Section:** \$400-200-102, u1700 \$101, u1600 \$100, u1500 \$99. **Under 1400 Section:** \$400-200-102, u1300 \$101, u1200 \$100, u1100 \$99. Unrated may play in any section but maximum prize is \$100 except no limit in the Open Section. Trophies for top 3 places in each section. **Entry Fee** mailed by Mon 9/26 or online by Tue 9/27: \$60. Online 9/28-29 or onsite: \$75. Add \$20 to play-up in a higher section. **DISCOUNTS:** \$10 off each if also registering for G/60 on Oct 1. \$10 cash rebate onsite if staying at the hotel. **Byes:** One 1/2 pt bye allowed must commit by start of Rd 2. Reenter with 1/2pt bye in Rd 1 for \$39. September 2011 Supp, CCA min, TD discretion used to place players accurately. **SIDE KIDS EVENT** for K-12 students rated under 1000: 5SSxG/30 in 2 sections, 600-999 and under 600. Trophies to Top 10 players and Top 5 teams in each section. Best 4 players count for team score. Also trophies to top u800, top u700 in 600-999 section and top u400, top u300, and top u200 in u600 section. **EF** by Mon 9/26 or online

by Tue 9/27: \$39. Online 9/28-29 or onsite: \$54. Add \$10 to play-up in a higher section. **Schedule:** Onsite Registration 8:30-9:30am; Round Times: 10:00am, 12:30, 3:00, and 5:30pm. **Mail payments to:** Bay Area Chess, 1590 Oakland Rd., Suite B213, San Jose 95131. \$20 for refunds. T: 408-786-5515. E: ask@BayAreaChess.com, **Info/Form/Entries:** BayAreaChess.com/usg60g30. NS, NC, W.

GRAND PRIX

May 27-30, 28-30 or 29-30, New York

Grand Prix Points: 30 (enhanced)

The New Yorker Open!

7-SS, 40/2, SD/1 (3-Day option, rds. 1-2 G/75; 2-Day, rds. 1-4 G/50). New Yorker Hotel, 481 Eighth Ave at 34th St, across from Penn Station, New York. **Note changes, including increased \$10,000 prize fund b/250 paid entries** (U1200 Section & Unr. in U1600 & re-entries count 1/2), **minimum half of each prize Guaranteed!** 5 sections. **Open:** \$1,200-600-300-200. **FIDE. Under 2400:** \$1,000-500-250-150, top U2200 \$400-200. **FIDE. Under 2000:** \$1,000-500-250-150, top U1800 \$400-200. \$300 limit to Unr. **Under 1600:** \$850-400-200-100, top U1400 \$300-150, \$200 limit to Unr. **Under 1200:** \$400-200-100, \$100 limit to Unr. **EF:** 4-Day \$97, 3-Day \$98, 2-Day \$97, if postmarked by 5/19, \$100 **on-line thru 5/24** at www.chesscenter.cc, \$110 by phone thru 5/24, \$120 at site; all EF \$20 less to players rated U1400 in U1600 Section, \$60 less to unrated players in Under 1600 Section (only players with 3 games or less are unrated), \$60 less to all in Under 1200 Section, \$10 less to Marshall CC members who enter by mail or at site (must show current Club membership card to TD; this tournament is not affiliated with Marshall CC; the \$10 discount is a friendly gesture and a remembrance of happy times), GMs free (\$80 from prize), free to specified Greater NY Scholastic prizewinners. Re-entry \$70. **4-Day Schedule:** reg. ends Fri 6 pm. Rds Fri 7, Sat 11 & 6, Sun 11 & 6, Mon 10 & 4:30. **3-Day Schedule:** Reg. ends Sat 10 am. Rds. Sat 11, 2:30 & 6, Sun 11 & 6, Mon 10 & 4:30. **2-Day Schedule:** Reg. ends Sun 9:30 am. Rds. Sun 10, 12, 2, 4, 6, Mon 10 & 4:30. All schedules merge and compete for same prizes. Limit 3 byes, Open must commit before rd. 2, others before rd. 4. \$15 charge for changes. **HR:** 212-971-0101. **Questions, chesscentr@aol.com** or 845-569-9969, **credit card phone entries** (but no questions) thru 5/24: **406-896-2191**. After 5/24, enter at site only (no checks, credit cards OK). CCA ratings may be used. **Ent: Chess Center of NY, PO Box 4615, New Windsor, NY 12553. Bring sets, clocks, boards-- none supplied!** **W. Chess Magnet School JGP.**

A State Championship Event!

May 28-30 or 29-30 or 28-29, California, Northern

Grand Prix Points: 80 (enhanced)

CalChess Open State & Class Championship

6SS, 30/90 G/60 (2-day opt rds 1-3 G/60). Sections D/E 6SS G/90 only. **Hotel:** Marriott, 46100 Landing Pkwy, Fremont, CA 94539. Chess rate \$89. **Prizes:** \$13,000 b/207. 80% guaranteed. 6 sections. **Open** (2200+ & FIDE rated): 2000-1000-400-200-100-100. **Expert** (2000-2199), A (1800-1999), B (1600-1799), C (1400-1599): \$1000-400-200-100-100-100. **Section D/E (u1400):** 600-300-100-u1200-300-200-100. Unr prize limit \$300 except in Open. **EF** mail/online by 5/24: 3day--99 2day--98 onsite+25 Play-up+20. GMs/IMs free-EEF subtr from prize. Re-entry \$40. Saver EF = EF-\$20 & 2/3 of calc. prize. Refunds: \$20 fee. May 2011 Supp, CCA min, TD desc to place players accurately. **Sched:** 3day: Reg Sat10-10:30, Rds Sat/Sun 11 5:15, Mon 10 3:30. **2day:** Reg Sun9-9:30, Rds Sun 10 12:25 2:40 5:15, Mon 10 3:30. **D/E 2-day only:** Reg Sat9-9:30, Rds Sat/Sun 10 1:30 5. Max two 1/2-pt byes - must commit bef rd 3. **Quest:** ask@BayAreaChess.com. **More Info/Ent:** BayAreaChess.com/memo. NS, NC, W. **Chess Magnet School JGP.**

June 4, North Carolina

Grand Prix Points: 10

Porter Evette Memorial

4SS, G/70. Orchard Lake Campground, Saluda, NC. **Porter:** \$SGTD: \$150-100-100-100-50. U1800, U1600, U1400, U1200, U1000 \$50 each, **EF:** \$23. **Evette (U1000):** Plaque to first. **EF:** \$8. **ALL:** Unrateds free, non-campers pay \$7 day-use fee. **ENT:** Calanda Chess, c/o Klaus Pohl, 9 Bridgeton Ct., Greenville, SC 29615 kapohl@junco.com www.ioa.com/~hyde/ /porter11.pdf. **Chess Magnet School JGP.**

June 9, Nevada

Grand Prix Points: 60 (enhanced)

2011 U.S. Game/10 Championship (QC)

See Nationals.

A Heritage Event!

An American Classic!

June 10-12 or 11-12, Nevada

Grand Prix Points: 200 (enhanced)

2011 National Open

See Nationals.

Oct. 1, California, Northern

Grand Prix Points: 20 (enhanced)

2011 U.S. Game/60 Championship

See Nationals.

Oct. 2, California, Northern

Grand Prix Points: 15 (enhanced)

2011 U.S. Game/30 Championship

See Nationals.

REGIONAL

Arizona

May 28-30, 2011 U.S. Amateur West Championship

See Nationals.

California Northern

Capital City Chess Club Monthly (Sundays)

4-ss (Var. 29L1), G/120. Open, One Section. LOCATION: Thee Upper Crust Pizza, 1200 "K" Street # 10, Hyatt Regency Retail Plaza, Sacramento. **ENTRY:** \$25. **GUARANTEED:** 4 pts \$100, 3.5 pts \$75, 3 pts \$50, 2.5 pts \$25. **ALL BYES:** Half pt. **BYES:** Two Max. **RDS:** Last Four Sundays at 1PM & You must be present at 12:45 PM of each round to be paired. **REG.:** 12-12:45 PM. (First Three Rounds). **INFO:** John C. Barnard, (209)450-6133. **Chess Magnet School JGP.**

Modesto Round Table Chess Club Monthly (Thursdays)

4-SS (Var. 29L1), G/90. Amateur Rating Tournaments (Under 2000 & Beginners), LOCATION: 3848 McHenry Ave., Modesto (Meeting Room). **ENTRY:** \$15. **GUARANTEED:** 4pts \$60, 3.5 pts \$45, 3 pts \$30, 2.5 pts \$15. **ALL BYES:** Half Pt. **RDS.:** 7pm. **REG.:** 6pm (1st, 2nd & 3rd Thursdays). Modesto Chess School: 6pm. No Club Membership Fee & No Chess Class Fee required. **INFO:** John C. Barnard (209) 450-6133. **Chess Magnet School JGP.**

Apr. 10, Atherton Quads

Trophies: Players w/ winning record. Check-in 4p. **Games:** 4:30-6:30p. 3xG/30. Encinal Elem, 195 Encinal Ave., Atherton. **EF:** \$25 by 4/7, Onsite \$41. **Info:** BayAreaChess.com/kids. NS. NC.

Apr. 10, Atherton SuperSwiss

\$1,000 b/44. 4SS, G/60. **Rds.:** 10, 12:30, 2:45, 5, 2 Sec: 1700+, U1700. Encinal Elem, 195 Encinal Ave., Atherton. **EF by 4/7:** \$44, onsite: \$60. Play-up: +\$10. **Info:** BayAreaChess.com/reg. NS, NC, W.

Apr. 10, Atherton Swiss

Trophies: Players w/ winning record & teams w/ 2+ players. Games 10a-2p. **3 Sec:** U500, U900, 900+, U900: 5xG/30, 900+ : 4xG/45. Encinal Elem, 195 Encinal Ave., Atherton. **EF:** \$33 by 4/7, Onsite \$49. **Info:** BayAreaChess.com/kids. NS. NC.

Apr. 16, Fremont Hexes

3SSxG/60. Groups of b by rating. \$66 to winner, \$33 to top in bottom 3. Marriott, 46100 Landing Pkwy, Fremont. **Info:** BayAreaChess.com/reg. **EF by 4/7:** \$33, onsite \$49. NS, NC, W.

Apr. 16, Sequoia Regional Championship

McCabe Jr HS, 1258 East Belmont, Mendota, CA 93640. In 3 Sections, 9-12 USCF Rated: 5SS, Game/30, 7-8 USCF Rated: 5SS, Game/30, K-6 USCF Rated: 5SS, Game/30, ALL. **EF:** \$15 pre-registered by mail or fax; \$20 at the door. Individual and Team Trophies. **Reg.:** 8:30-9:20 AM. **Rds.:** Games start at 10; Rounds thereafter ASAP. **ENT:** Chess for Kids, PO Box 27, Visalia, CA 93279. Fax 559-636-8045 sequoiachess@sbcglobal.net. **INFO:** Allan Fifeild 559-734-2784; Cell 559-967-3379. <http://SequoiaChess.Com>. Event includes Non Rated K-2, 3-4 and 5-6 sections. Food & chess vendor at site. Note: School is 25 miles west of Fresno near I-5. NS. W.

Apr. 16, Weibel Spring Scholastic Chess Quads #2

Marriott, 46100 Landing Pkwy, Fremont, CA 94539. For Scholastics USCF members. Trophies to winners of each quad. Medals to all others. **EF by 4/11:** \$25, onsite +\$15. Check-in reqd by 8:45a. **More Info/Ent:** BayAreaChess.com/weibel. NS, NC, W.

May 7, San Lorenzo Quads

Trophies: Players w/ winning record. Check-in 4p. **Games:** 4:30-6:30p. 3xG/30. Grant Elem, 879 Grant Ave., San Lorenzo. **EF:** \$25 by 5/5, Onsite \$41. **Info:** BayAreaChess.com/kids. NS. NC.

May 7, San Lorenzo Swiss

Trophies: Players w/ winning record & teams w/ 2+ players. **Games:** 10a-2p. **3 Sec:** U500, U900, 900+, U900: 5xG/30, 900+ : 4xG/45. Grant Elem, 879 Grant Ave., San Lorenzo. **EF:** \$33 by 5/5, Onsite \$49. **Info:** BayAreaChess.com/kids. NS. NC.

A State Championship Event!

May 28-30 or 29-30 or 28-29, CalChess Open State & Class Championship

See Grand Prix.

May 30, 2nd Annual Nor Cal Regional Grade Level C.M. Azhar Memorial Championship

KG-Grd3: 5SS, G/30. **Grd4-12:** 4SS, G/45. **Hotel rate \$89:** Marriott, 46100 Landing Pkwy, Fremont, CA 94539. Chess rate \$89. Trophies to top 15 players & top 5 teams in 8 sections based on grade: KG 1 2 3 4 5 6 7-12. **EF** by 5/24: \$39, onsite+\$20. **Sched:** Reg 8-8:30, Games 9am-3:30/4pm. Refunds: \$20 fee. **Side Event Bughouse:** Trophy prizes. **EF:** \$12. Games 5-6:45pm. **Quest:** ask@BayAreaChess.com. **More Info/Ent:** BayAreaChess.com/grade. NS, NC, W.

June 11, San Jose Quads

Trophies: Players w/ winning record. Check-in 4p. **Games:** 4:30-6:30p. 3xG/30. 1590 Oakland Rd., Ste B213, San Jose. **EF:** \$25 by 6/9, Onsite \$41. **Info:** BayAreaChess.com/kids. NS. NC.

June 11, San Jose Swiss

Trophies: Players w/ winning record & teams w/ 2+ players. **Games:** 10a-2p. **3 Sec:** U500, U900, 900+, U900: 5xG/30, 900+ : 4xG/45. Chess Center, 1590 Oakland Rd., Ste B213, San Jose. **EF:** \$33 by 6/9, Onsite \$49. **Info:** BayAreaChess.com/kids. NS. NC.

Aug. 12-14 or 13-14, 3rd annual Central California Open

See Chess Life or www.chesstour.com.

Oct. 1, 2011 U.S. Game/60 Championship

See Nationals.

Oct. 2, 2011 U.S. Game/30 Championship

See Nationals.

California Southern

BHCC Scholastic Tournaments

5SS, G/30. 8950 W. Olympic Blvd., #210, Beverly Hills, CA 90211. **EF:** \$15 one week in advance, \$20 on site (Cash Only on site). Mail checks to Beverly Hills Chess Club. Visa/MC call: 310-274-7873. Prizes: Trophies & medals. Reg. 12:00-12:45 pm. Starts: 1 pm. www.bhccschess.com. **Info:** Robert Minofar, 310-274-7873 or 888-91CHESS, email: bhccschess@hotmail.com.

Tournament Life

Apr. 3, 17, LACC - 1st & 3rd Sunday Scholastic Triathlon
2 separate events - Chess/Bughouse/Blitz. 4SS, G/30. 11514 Santa Monica Blvd., LA, 90025, 2nd floor. 4 blocks W 405. **EF:** \$25 (\$20 LACC memb, \$10 off siblings, 10% off SCCF members. Free new LACC memb). **Reg.:** 12-1 pm. **Rds.:** 1, 2, 3, 4 pm; then Bughouse & Blitz (5-6). **Prizes:** Trophies (Top 3) & Medals (rest); each player receives a prize! **Parking:** Free at BoA and streets. Free Pizza/soda/cookie & free class (12-1). **Info:** (310) 795-5710 or Mick@LACessClub.com.

May 29, MDC Scholastics
5-SS, G/30. LAX Hilton, 5711 W Century Blvd., Los Angeles, CA 90045. Open to gr. 12-below. **In two sections: Open:** Trophies to top 5, top 3 U1200, top 2 Unrated. **Grade 6/below U1000:** Trophies to top 5, top 3 U700, top 2 Unrated. **Reg.:** 8:30-9. **Rds.:** 9:30-11-12:15-1:45-3. **EF:** \$16 if received by 5/27, \$20 door. **Info:** chesspalace2000@yahoo.com. On-line ent: www.chesspalace/mdc.htm. **Ent:** SCCF, PO Box 205, Monterey Park, CA 91754.

Jul. 14-17, 15-17 or 16-17, 16th annual Pacific Coast Open
See *Chess Life* or www.chesstour.com.

Connecticut

Apr. 8-10 or 9-10, 2nd annual Hartford Open
See *Chess Life* or www.chesstour.com.

May 27-30, 28-30 or 29-30, The New Yorker Open! (NY)
See Grand Prix.

Jul. 22-24 or 23-24, 16th Annual Bradley Open
See *Chess Life* or www.chesstour.com.

Aug. 5-7 or 6-7, 17th Annual Northeast Open
See *Chess Life* or www.chesstour.com.

Delaware

May 27-30, 28-30 or 29-30, The New Yorker Open! (NY)
See Grand Prix.

District of Columbia

Aug. 26-28 or 27-28, 43rd annual Atlantic Open
See *Chess Life* or www.chesstour.com.

Florida

Boca Raton Chess Club

Friday nights, Game 90 Tournament, one game a week for 4 weeks. www.bocachess.com, 561-479-0351. **Chess Magnet School JGP.**

Apr. 9, Second Annual The Benjamin School Scholastic
Located at 11000 Ellison Wilson Road, NPB, FL 33408. **K-12, 5 Divisions,** 5-SS, G/30. Trophies for Top 5 Players and Top 5 Teams in each Division. **For more info, see:** www.palmbeachchessclub.info or call President/TD John Dockery at 561-762-3377.

Illinois

May 26-30, 27-30, 28-30 or 29-30, 20th annual Chicago Open
See *Chess Life* or www.chesstour.com.

Jul. 15-17 or 16-17, 4th annual Chicago Class
See *Chess Life* or www.chesstour.com.

Indiana

Aug. 12-14 or 13-14, 6th annual Indianapolis Open
See *Chess Life* or www.chesstour.com.

Maryland

Apr. 17, Howard County Chess Tournament #5
4SS, G/30. Glenwood Community Center, 2400 Route 97, Cooksville, MD 21723. **Sections:** K-5 Unrated, 6-12 Unrated, K-12 Rated. **EF:** \$25 in advance; \$35 on-site 1:00-1:30. **Rds.:** 2:00, then ASAP. **Prizes:** trophies to top individuals & schools. **Free game analysis.** Register at www.howard-countymd.gov/RAP or 410-313-4714.

May 7, Silver Knights Team Tournament #3 (VA)
Our Lady of Good Counsel School, 8601 Wolftrap Rd., Vienna, VA 22182. 4SS, G/30. Open to 4-player teams from same school in grades K-8. See www.silverknightschess.com for complete information or to register.

May 8, Howard County Chess Tournament #6
4SS, G/30. Glenwood Community Center, 2400 Route 97, Cooksville, MD 21723. **Sections:** K-5 Unrated, 6-12 Unrated, K-12 Rated. **EF:** \$25 in advance; \$35 on-site 1:00-1:30. **Rds.:** 2:00, then ASAP. **Prizes:** trophies to top individuals & schools. **Free game analysis.** Register at www.howard-countymd.gov/RAP or 410-313-4714.

Massachusetts

May 27-30, 28-30 or 29-30, The New Yorker Open! (NY)
See Grand Prix.

Aug. 11-14, 12-14 or 13-14, 41st annual Continental Open
See *Chess Life* or www.chesstour.com.

Nevada

June 9, 2011 U.S. Game/10 Championship (QC)
See Nationals.

June 10, National Open Scholastic Trophy Tournament

5-SS, Game/30. South Point Hotel, Casino and Spa, 9777 Las Vegas Blvd. South, Las Vegas, NV 89183. Open to players 18 and under. **In 3 sections:** U1800, U1200, and U800. Unrateds in the U1200 section and all players in the U800 section must be age 11 or under. Trophies to top 5 in each section, top 1 in each odd 200 point rating group and unrated. **EF:** \$33 by 5/18, \$39 by 6/8, \$45 on site. **REG.:** 9:9:45 a.m. **RDS.:** 10-11:15-12:30-1:45-3. **Blitz:** 6:30 p.m. **HR:** \$55 single or double (\$95 Friday and Saturday nights). 1-866-791-7626 or (702) 796-7111. **ENT:** National Open, PO Box 90925, Henderson, NV 89009-0125, on line at www.VegasChessFestival.com or by fax at (702) 933-9112. NS. NC. W.

A Heritage Event!
An American Classic!
June 10-12 or 11-12, 2011 National Open
See Nationals.

June 11-12, International Youth Championship
5SS, Game/65. South Point Hotel, Casino and Spa, 9777 Las Vegas Blvd. South, Las Vegas, NV 89183. **In 4 Sections by age:** 14 and Under, 14 and Under Reserve (rated below 1100), 9 and Under, 9 and Under Reserve (rated below 900). **Trophies** to top 10 in each section plus 9 class trophies per section. 1st Place in each section wins a **Netbook Computer** loaded with Chess Software, 2-4 win Chess prizes valued at 250-150-100. Unrated players may not win 1st in Reserve sections. **EF:** \$49 by 5/18, \$59 by 6/8, \$70 on site. 1/2 point bye in any round (limit 2) if requested in advance. **REG.:** 8-9 a.m. **RDS.:** 10-1-4, 10-1. **Blitz:** 6/10 at 6:30 p.m. **HR:** \$55 single or double (\$95 Friday and Saturday nights). 1-866-791-7626 or (702) 796-7111. **ENT:** National Open, PO Box 90925, Henderson, NV 89009-0125, on line at www.VegasChessFestival.com or by fax at (702) 933-9112. NS. NC. W. **Chess Magnet School JGP.**

New Jersey

Apr. 16, Princeton Day School

650 The Great Road. Plaques to top 3 school teams and top 6 in each section. Medals to all players. Sections for **OVER 1000** begin at 10:15 and must preregister: **NEAR MASTERS** (K-12 over 1400) and **FUTURE MASTERS** (Players K-12 over 1200) G/60, 3 rds. **CLOSED** (K-12 1000-1200) G/45 4 rds. **ALL OTHER SECTIONS.** G/30 4 rds. beginning at 12:00 noon. (round times will be accelerated if possible): **OPEN** (Players K-12 U-1000), **RESERVE** (K-12 U-800), **NOVICE II** (K-8 U-600), **NOVICE I** (unrated K-6), **K-1** (unrated) **NO SCORE K-1** (unrated). **PARENTS OF PLAYERS** rated G/30 3 rounds. **Pre-registration online,** pay at the door \$35. On-site 11-12 noon \$45. **Info and register online:** www.pds.org/chess. Inquires to Bonnie Waitzkin, Chessteach@gmail.com.

May 7, Princeton Day School

650 The Great Road. Plaques to top 3 school teams and top 6 in each section. Medals to all players. Sections for **OVER 1000** begin at 10:15 and must preregister: **NEAR MASTERS** (K-12 over 1400) and **FUTURE MASTERS** (Players K-12 over 1200) G/60, 3 rds. **CLOSED** (K-12 1000-1200) G/45 4 rds. **ALL OTHER SECTIONS.** G/30 4 rds. beginning at 12:00 noon. (round times will be accelerated if possible): **OPEN** (Players K-12 U-1000), **RESERVE** (K-12 U-800), **NOVICE II** (K-8 U-600), **NOVICE I** (unrated K-6), **K-1** (unrated) **NO SCORE K-1** (unrated). **PARENTS OF PLAYERS** rated G/30 3 rounds. **Pre-registration online,** pay at the door \$35. On-site 11-12 noon \$45. **Info and register online:** www.pds.org/chess. Inquires to Bonnie Waitzkin, Chessteach@gmail.com.

A State Championship Event!

May 14-15, New Jersey Junior Championship

5SS, G/100. Brookdale Community College, 765 Newman Springs Rd., Lincroft, NJ 07738, Harrison Hall 116-117, use Parking Lot #2; 4 minutes from Garden State Parkway, Exit# 109. **OPEN:** (K-12) Trophies to top 10. Top High School player from NJ awarded entry to Denker Tournament of HS Champions. **RESERVE:** (U1400) Trophies to top 10, U1300, U1200, U1000, Unr. **ALL:** Entry fee \$35 if received by 5/7, \$50 at site. **Reg.:** Sat. 9-10am. **Rds.:** 10:30-2:30-6:15 Sat., 10-2 Sun. **ENT:** NJSCF P.O. Box 1511, Jackson, NJ 08527. Make checks payable to NJSCF or online at www.characterkings.org. **Info:** Hal Sprechman, 732-259-3881, hsprechman@characterkings.org. **Chess Magnet School JGP.**

May 27-30, 28-30 or 29-30, The New Yorker Open! (NY)
See Grand Prix.

May 28, U.S. Amateur K-8 East U1200

5-SS, G/30. Holiday Inn Somerset, 195 Davidson Ave., Somerset, NJ 08873. Telephone: (732) 356-1700. **In 3 Sections (U1200, U900, & U600).** Trophies to Top 10, Others get chess medallions. Unrated may not win first prize. **Registration:** Saturday May 28, 11am-12pm. Rounds: 12:30pm, then ASAP with lunch break after round #2. **EF:** \$29 if mailed by May 25 or paid online via EntryFeesRus.com, **EF:** \$40 cash at site. One 1/2 -point bye allowed if requested with EF. April Rating supplement used. **Ent:** Ken Thomas, 115 West Moore Street, Hackettstown, NJ 07840. Checks to NJSCF. Please indicate your grade level. **Info:** 908-763-6468 or acn@goes.com. NS. NC. W.

A Heritage Event!

May 28-30, 67th Annual U.S. Amateur East Championship
See Nationals.

New York

Apr. 15-17 or 16-17, 6th annual Empire State Open
See *Chess Life* or www.chesstour.com.

Apr. 16, Marshall CC Saturday U1600

4SS, G/45. Marshall CC, 23 W. 10th St., NYC. 212 477-3716. **(\$300 b/20)** \$120-70-50, U1300 \$60. **EF:** \$40, members \$20. **Reg.:** 12:15-12:45AM. **Rds.:** 1-2:45-4:30-6:15. **Note:** Only one bye available, request at entry.

Apr. 25-May 23, Marshall Monday Under 1600

5SS, G/90. Marshall Chess Club, 23 W 10th St, NYC 212 477-3716. **EF:** \$40, members \$20. **(\$300 b/20):** \$120-70-50, U1300 \$60. **Reg.:** 6:15-6:45. **Rds.:** 7 PM each Monday. Byes OK, limit 2, request by rd 3. **Chess Magnet School JGP.**

Apr. 30, Marshall CC Saturday U1800

4SS, G/45. Marshall CC, 23 W. 10th St., NYC. 212 477-3716. **(\$300 b/20)** \$120-70-50, U1500 \$60. **EF:** \$40, members \$20. **Reg.:** 12:15-12:45AM. **Rds.:** 1-2:45-4:30-6:15. **Note:** Only one bye available, request at entry.

May 8, The Right Move #170 Team and Individual Championships FREE EF. 4SS, G/30. Play starts promptly at 10:00. Players must check in by 9:15 A.M. (Latecomers will not play in round one). Brandeis H.S., 145 W. 84th St., 10024 (near Columbus Ave., Manhattan, NYC). Open to gr. K-12. **Five rated sections: Open, Under 1700, Under 1200, Under 800, Under 600.** (May renew or join USCF at tournament). **Non-member sections by grades:** K-4, 5-9. Trophies to top 3 in each section except Open (\$50, \$30, \$20 for 1st-3rd); medal to each player with 2.5 or more points. Team plaque to 1st and 2nd each section, with top 4 scores counting in each section (minimum 3 players on team in section). **To register:** use website at www.therightmove.org or email - thechessstop@aol.com or Fax to 718-455-2863 before 6:00PM on Fri. Give full name, school, grade, USCF ID # , exp. date, and section. NO ON-SITE REGISTRATION.

May 14, Marshall CC Saturday U1600

4SS, G/45. Marshall CC, 23 W. 10th St., NYC. 212 477-3716. **(\$300 b/20)** \$120-70-50, U1300 \$60. **EF:** \$40, members \$20. **Reg.:** 12:15-12:45AM. **Rds.:** 1-2:45-4:30-6:15. **Note:** Only one bye available, request at entry.

May 20-22 or 21-22, 19th annual New York State Open

See *Chess Life* or www.chesstour.com.

May 21, Marshall Saturday U1800

4-SS, G/45. Marshall CC, 23 W. 10th St., NYC. 212 477-3716. **(\$300 b/20):** \$160-80, U1500 \$60. **EF:** \$40, members \$20. **Reg.:** 12:15-12:45. **Rds.:** 1-2:45-4:30-6:15PM. One bye available, request at entry.

May 27, New Yorker Rated Beginners Tournament!

4-SS, G/30. Chess Center at New Yorker Hotel, 481 Eighth Ave at 34th St, across from Penn Station, NYC, for Under 1200 or those not rated in any country. **EF:** \$30, free to players who join or re-join USCF with magazine, free to players also entering New Yorker Open, 5/27-30 (3-Day or 2-Day schedule), specified Greater NY prizewinners free! **\$\$\$220 b/20 paid:** \$120-60-40. 2 byes OK, commit by 8:15. **Reg. ends:** 6:30 pm. **Rds.:** 7:8-15-9:30-10:45 pm. No advance entries.

May 27, Point Me To The New Yorker!

3-SS, G/30. Chess Center at New Yorker Hotel, 481 Eighth Ave at 34th St, across from Penn Station, NYC. **EF:** \$20. 3-0 wins \$40, 2.5 wins \$20, 2 wins \$10. **Reg. ends:** 7:15 pm. **Rds.:** 7:30-8:30-9:30.

May 27-30, 28-30 or 29-30, The New Yorker Open!

See Grand Prix.

May 29, Marshall May Super Sunday Action

5-SS, G/30. Marshall CC, 23 W. 10th St., NYC. 212 477-3716. Two sections!
A. Open: (\$360 b/24): \$160-80, U2100 \$65, U1800 \$55. **B. Under 1500:** (\$240 b/16): \$120-65, U1200 \$55. **EF:** \$40, members \$20. **Reg.:** 12:15-12:45. **Rds.:** 1-2:45-4:30-6:15PM. One bye available, request at entry.

June 4, Marshall Saturday U1600

4-SS, G/45. Marshall CC, 23 W. 10th St., NYC. 212 477-3716. **(\$300 b/20):** \$160-80, U1300 \$60. **EF:** \$40, members \$20. **Reg.:** 12:15-12:45. **Rds.:** 1-2:45-4:30-6:15PM. One bye available, request at entry.

June 5, The Right Move #171 Team and Individual Championships FREE EF. 4SS, G/30. Play starts promptly at 10:00. Players must check in by 9:15 A.M. (Latecomers will not play in round one). Brandeis H.S., 145 W. 84th St., 10024 (near Columbus Ave., Manhattan, NYC). Open to gr. K-12. **Five rated sections: Open, Under 1700, Under 1200, Under 800, Under 600.** (May renew or join USCF at tournament). **Non-member sections by grades:** K-4, 5-9. Trophies to top 3 in each section except Open (\$50, \$30, \$20 for 1st-3rd); medal to each player with 2.5 or more points. Team plaque to 1st and 2nd each section, with top 4 scores counting in each section (minimum 3 players on team in section). **To register:** use website at www.therightmove.org or email - thechessstop@aol.com or Fax to 718-455-2863 before 6:00PM on Fri. Give full name, school, grade, USCF ID # , exp. date, and section. NO ON-SITE REGISTRATION.

June 6, Marshall Monday Under 1600 Action

3-SS, G/30. Marshall CC, 23 W 10th Street, NYC. 212 477-3716. **EF:** \$25, members \$15. **(\$200/20):** \$105-50, U1300 \$45. **Reg.:** 6:15-6:45PM. **Rds.:** 7-8-9PM. 1 byes available, request at entry.

June 12, Marshall June Super Sunday Action

5-SS, G/30. Marshall CC, 23 W. 10th St., NYC. 212 477-3716. Two sections!
A. Open: (\$360 b/24): \$160-80, U2100 \$65, U1800 \$55. **B. Under 1500:** (\$240 b/16): \$120-65, U1200 \$55. **EF:** \$40, members \$20. **Reg.:** 12:15-12:45. **Rds.:** 1-2:45-4:30-6:15PM. One bye available, request at entry.

June 12, Schenectady Open

See *Chess Life* or www.chesstour.com.

June 25-29, 2011 FIDE EVENT: North American Youth Championship! Open to players from USA, Bahamas, Bermuda, Canada and Mexico. Organized by Chess Educators, LLC. 7R-SS, G/90 + 30/sec increment. Doubletree Tarrytown Hotel, 455 South Broadway, Tarrytown, NY 10591 USA. **This Championship will be rated by the US Chess Federation (USCF) and the World Chess Federation (FIDE). FIDE rules will apply.** Official players from each National Federation qualify for special conditions. **The top boy and the top girl in each section will qualify to play in the 2012 Pan American Youth Championship.** These players will be considered official players, and the accommodation and meals will be provided by the local organizer at no cost. **The top player in each section will receive the FIDE Candidate Master Title,** which will be officially approved at the **FIDE Congress in October 2011.** Trophies for the top five (5) players in each section, (age as of Jan 1, 2011). **Open Sections and Girls Sections for players ages under 8, 10, 12, 14, 16 & 18.** **EF:** \$75 received by 5/24, \$100 received by 6/13, \$125 thereafter onsite. No half-points byes, only zero-point byes. **On-site registration on June 25 from 6-8pm & June 26 from 8-9:30 am.** Opening Ceremony and Technical Meeting June 26 at 9:30am. Rounds 6/26-6/29 10am-3pm. **LODGING: DOUBLETREE TARRYTOWN HOTEL,** 455 South Broadway, Tarrytown, NY 10591, USA. \$119, plus taxes. This hotel is located in Westchester County in New York, and is only 35 minutes away from Grand Central Station in New York City by Metro North Train. Each

room has 2 double beds, and the price is the same for 1-4 people in the same room. **This is special rate and you must mention "Chess" when you make the reservation. You must make your reservation by Thursday, May 26, 2011 (Cutoff Date).** Call 1-914-631-5700. **Free Parking and Free Internet Connection.** Mail entries with registration form (available on-line) to: Chess Educators LLC, PO Box 160, New York, NY 10028, USA. FOR MORE INFORMATION AND REGISTRATION VISIT: www.chesseducators.com/northamericanyouth or contact the Organizer, Beatriz Marinello by e-mailing Beatriz@chesseducators.com or calling 917-553-4522. **Chess Magnet School JGP.**

Aug. 17-21, 18-21, 19-21 or 20-21, Manhattan Open
See *Chess Life* or www.chesstour.com.

North Carolina

June 4, Porter Evette Memorial
See Grand Prix.

Ohio

A State Championship Event!
Apr. 9-10, 2011 Ohio High School Middle School Chess Championship

6 Rd Swiss, G/60 for all rds for Reserve Sections; G/60 for rds 1-3 and G/90 for rds 4-6 for Championship Sections. Bexley High School, 326 S. Cassingham Rd., Bexley, OH 43209. **Sections:** HS Championship, Gr. 9-12; HS Reserve, (U1000 or unrated) 9-12; MS Championship, K-8; MS Reserve, (U800 or unrated) K-8. **Trophies** to players with 4 points or more. **\$500 scholarship to HS Champ; MS Champ gets \$200 scholarship and chance to represent Ohio at Natl. K-8 Championship in Orlando in August.** Trophies also to the 5 top teams, all sections. **Rd 1** begins at 10:00 a.m. **Entry fee** \$30 if postmarked by March 30th (\$10 if on reduced lunch), \$35 (\$15 on reduced lunch) if postmarked after March 30th. **Registrations** must be received by April 7th. Bexley Ohio Scholastic Chess Club, P.O. Box 091124, Columbus, OH 43209. **On-line registration & forms at:** www.BexleyChessClub.com. **Contact:** Gary Gillett: 614-440-9154, gillett@garygillett.com. **Chess Magnet School JGP.**

Apr. 15-17, 2011 National Junior High (K-9) Championship
See Nationals.

Pennsylvania

Apr. 11, Plymouth Meeting Quads #4 (K-12)
Colonial Elementary School, Plymouth Meeting, PA. See www.silverknightschess.com for complete information or to register.

Apr. 13, Chadds Fords Quads #7 (K-12)
Chadds Ford Elementary School, Chadds Ford, PA. See www.silverknightschess.com for complete information or to register.

Apr. 16, Central Bucks Scholastic Championship
Mill Creek Elementary School, Warrington, PA. See www.silverknightschess.com for complete information or to register.

Apr. 17, Bryn Mawr Quads #4 (K-12)
Bryn Mawr Community Center, Bryn Mawr, PA. See www.silverknightschess.com for complete information or to register.

Apr. 20-24, 21-24, 22-24 or 23-24, 5th annual Philadelphia Open
See *Chess Life* or www.chesstour.com.

May 8, Bryn Mawr Quads #5 (K-12)
Bryn Mawr Community Center, Bryn Mawr, PA. See www.silverknightschess.com for complete information or to register.

May 9, Collegeville Quads #8 (K-12)
South Elementary School, Collegeville, PA. See www.silverknightschess.com for complete information or to register.

May 11, Chadds Ford Quads #8 (K-12)
Chadds Ford Elementary School, Chadds Ford, PA. See www.silverknightschess.com for complete information or to register.

May 13, Doylestown Quads #9 (K-12)
Doylestown Activity Center, Doylestown, PA. See www.silverknightschess.com for complete information or to register.

May 15, Spring Finale (K-12)
Wayne Elementary School, Wayne, PA. See www.silverknightschess.com for complete information or to register.

May 16, Plymouth Meeting Quads #5 (K-12)
Colonial Elementary School, Plymouth Meeting, PA. See www.silverknightschess.com for complete information or to register.

May 27-30, 28-30 or 29-30, The New Yorker Open! (NY)
See Grand Prix.

June 25-26, 3rd annual World Open Girls Championship
See *Chess Life* or www.chesstour.com.

June 25-26, 3rd annual World Open Under 13 Championship
6SS, G/65. Sheraton Philadelphia City Center Hotel (see World Open). **Open to all born after 6/26/98.** In 2 sections. **Open Section:** Trophies to top 5, 1st C, D, E; free entry in all CCA tournaments 7/14/11-11/30/11 to 1st. **Under 1200 Section:** Trophies to top 5, 1st Under 1000, Under 800, Under 600, Unrated; free entry in all CCA tournaments 7/14/11-8/31/11 to 1st. **EF:** \$42 mailed by 6/15, \$43 online at chesstour.com by 6/22, \$45 phoned to 406-896-2038 by 6/23, \$50 at site. **Reg.** 6/26 9 to 10:30 am, rds. Sat. 11-2-5, Sun. 10-1-4. One half point bye allowed, must commit before rd 2. **HR & Ent:** See World Open. **Chess Magnet School JGP.**

June 28-Jul. 4, June 30-July 4, July 1-4 or 2-4, 39th Annual World Open
See *Chess Life* or www.chesstour.com.

Rhode Island

Apr. 10, Providence Hebrew Day School Tnmt & Apr. 30 Paul Taylor Classic
4SS, G/30. Trophies top 3 in each Section: 11&U and 14&U (unrated), Open (rated). **EF:** \$14 Advance, \$18 at site. **Reg.:** www.richess.org, rhodeislandchess@yahoo.com, (401)359-1602.

May 21, Battleship Cove Tnmt on the USS Massachusetts in Fall River, MA
4SS, G/30. Trophies top 3 in each Section: 11&U and 14&U (unrated), Open (rated). **EF:** \$8 Advance, \$13 at site. **Reg.:** www.richess.org, rhodeislandchess@yahoo.com, (401) 359-1602.

Tennessee

Apr. 29-May 1, 2011 National High School (K-12) Championship
See Nationals.

June 4-5, 2011 U.S. Amateur South Championship
See Nationals.

Texas

May 6-8, 2011 National Elementary (K-6) Championship
See Nationals.

Jul. 22-24, 2011 U.S. Junior Open
See Nationals.

Vermont

Jul. 29-31 or 30-31, 16th annual Green Mountain Open
See *Chess Life* or www.chesstour.com.

Virginia

May 7, Silver Knights Team Tournament #3
Our Lady of Good Counsel School, 8601 Wolftrap Rd., Vienna, VA 22182. 4SS, G/30. Open to 4-player teams from same school in grades K-8. See www.silverknightschess.com for complete information or to register.

May 15, Scholastic Quads

Franklin Sherman Elementary School, 6630 Brawner St., McLean, VA 22101. See www.silverknightschess.com for complete information or to register.

National Master Daniel Gurevich is ready, willing, and able to answer all your questions about chess! Make him work!

Send your questions to: gpetersen@uschess.org.



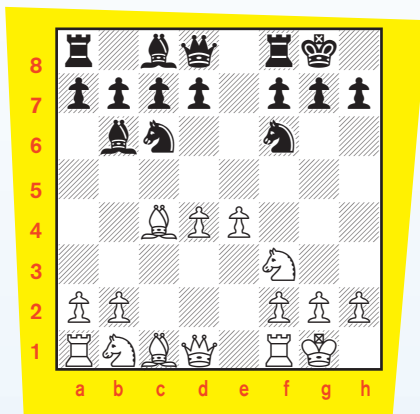
Steamroller

Cont'd. from pg. 15

6. 0-0!? 0-0??

And it works! Without the time-gaining check on b4, Black has to find another way to prevent the steamroller. 6. ... Nxe4! is the best response.

7. cxd4 Bb6



Now the steamroller rolls down the center.

8. d5!

NN allows this because the move, by itself, looks silly: White is freeing Black's bishop while blocking his own. It's only because Alekhine ap-

preciates the steamroller that he plays it anyway. The better looking start 8. e5? is answered by 8. ... d5! and the truck's out of gas.

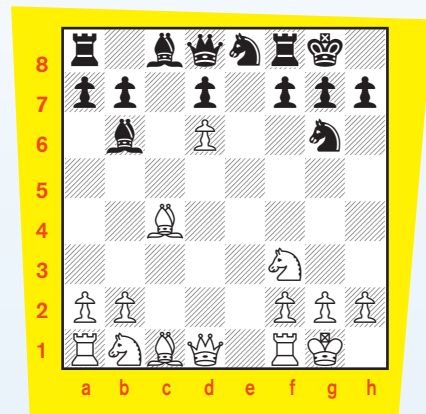
8 ... Ne7

The attempt to stem the tide by attacking the bishop isn't any better. After 8. ... Na5 9. Bd3 Black has to worry about 10. b4 trapping his knight, so there is still has no time to impede the advance.

9. e5 Ne8 10. d6! ...

Creating the wedge.

10. ... cxd6 11. exd6 Ng6



Please turn to page 23

Answers, We've got Answers.

WIN OR DRAW?

(page 8)

Position One: DRAW! As bad as it looks for White it's a draw: **1.a5 Kb5 2.Kb7 Kxa5 3.Kc6 h5** (3...Kb4 4.Kd5 Kc3 5.Ke4 Kd2 6.Kf4 h6 7.Kf3 Ke1 8.Kg4 Kf2 9.Kh5 Kg3 10.Kxh6) **4.Kd5 h4 5.Ke4 h3 6.Kf3 h2 7.Kg2 h1=Q+ 8.Kxh1**. It's just a version of the classic Reti composition (White: K at h8; P at c6; Black: K at a6; P at h7). Study by L. Prokes, 1937.

Position Two: DRAW! **1.Kg6 a4** (1...Kb6 2.Kf5 Kxc6 3.Ke4 Kb5 4.Kd3 Kb4 5.Kc2 Ka3 6.Kb1 Kb3 7.Ka1 a4 8.Kb1 a3 9.Ka1 a2) **2.Kf5 a3 3.Ke6 a2 4.c7 a1=Q** (4...Kb7 5.Kd7 a1=Q 6.c8=Q+) **5.c8=Q+** Yup! Another version of the Reti study. That's why it's so important to know it. Even though the black pawn is on the other side of the board, the white king still catches it! If Black grabs the pawn, White gets to the drawing square at a1. Study by H.A. Adamson, 1922.

Position Three: WHITE WINS! You had to be careful, especially around move two!

1.Kg4 Kb6 2.Kf5 (The wrong square draws: 2.Kg5 Kc6 3.Kg6 Kd6 4.Kxg7 Ke5 5.g3 Ke4 6.Kg6 Kf3) **2...Kc5 3.Ke5 Kc6 4.Ke6 Kc7 5.g4 Kd8 6.Kf7 g5 7.Kg6 Ke7 8.Kxg5 Kf8 9.Kg6 Kg8 10.g5 Kf8 11.Kh7** and the pawn is escorted in to queen. Study by R. Fontana. A great learning study! White uses the opposition to keep Black out while he advances his pawn.

Position Four: DRAW! Back to the Reti-inspired studies! At first glance, it looks like all Black has to

do is get the pawn to a3 or even move the knight to a3, then b5 and c7 to hold the pawn until the king can come over to help. It's not so simple. Watch: **1.Kd4 Na3** (1...a5 2.Kc4 a4 [2...Nd2+ 3.Kb5 Nb3 4.Ka4] 3.Kb4 a3 4.Kb3 Kg7 5.Ka2) **2.Kc5 Nb5 3.Kb6 Nc7 4.Kxc7 a5 5.Kd6 a4** (5...Kf7 6.Kc5) **6.Ke7 a3 7.f6 a2 8.f7+ Kh7 9.f8=Q a1=Q** Study by J. van der Ende.

Position Five: DRAWN! And all because the pawn is on the seventh rank. Your writer is including this because he had to remember this little detail to win a game in the U.S. Amateur Team East in February. If you have a knight and rook pawn against the lone king, don't be in a hurry to push the pawn to the seventh! **If the knight moves away the pawn is lost, and if the king moves up, you get a stalemate: 1.Kb5 Ka8 2.Kb6 stalemate.**

Position Six: WHITE WINS! The companion piece to number five. You can see the difference as there is no stalemate looming. There are many ways to win, but a useful tip is to keep the move **Na7+** in mind once you get the pawn to a6 and the king to b6:

1.Nc5+ Ka7 2.a6 Ka8 3.Kb6 Kb8 4.Ne6 Ka8 5.Nc7+ Kb8 6.a7+ Kc8 7.a8=Q+ and wins.

WHAT'S THE PROBLEM?

(page 9)

1. P-c8=R (promote to rook)
2. P-c8=Q (promote to queen)
3. P-a8=N+ (promote to knight)
4. P-c8=N+ (promote to knight)
5. P-c8=B

Steamroller

Cont'd. from pg. 22

On 11. ... Nf5 12. Bg5! pulls the e8-knight away from attacking the wedge. Then after 12. ... Nf6 13. Qd3 sends the other one back to h6. **12. Bg5!** ...

This move looks strange because normally Black would just run away with his queen or block with his pawn, in either case misplacing White's bishop. But this isn't most positions. White has a wedge, so neither is possible. In unusual positions, unusual moves might also be correct.

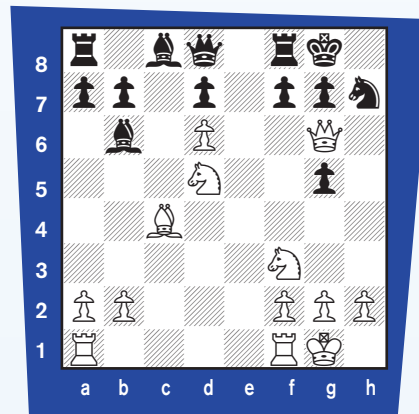
12. ... Nf6 13. Nc3 h6 14. Qc2! hxg5

14. ... Kh7 15. Bxf7! Rxf7 16. Ne5 is no better.

15. Qxg6 Nh7

To prevent 16. Nxg5.

16. Nd5!! ...



And Black is checkmated after 16. ... fxg6 17. Ne7+ Kh8 18. Nxg6#, or 16. ... Re8 17. Rae1 fxg6 18. Ne7+ Kf8 19. Nxg6#. In both cases White's a full queen behind, but Black is helpless because the wedge is cutting his entire queen-side off from the defense.

To recap, here's the plan:

- Step One: Control the Center**
- Step Two: Roll the Steamroller**
- Step Three: Create a Wedge**

Accumulate enough middlegame plans like that and you could play like a world champion also.

Plan now for the Spring Nationals!

NATIONAL JUNIOR HIGH (K-9) CHAMPIONSHIP

April 15-17, 2011

Hyatt Regency Columbus

350 North High Street

Columbus, Ohio 43215

614-463-1234 or 800-233-1234

Chess Rate: \$125 per night for up to four in a room

NATIONAL ELEMENTARY (K-6) CHAMPIONSHIP

May 6-8, 2011

Hilton Anatole

2201 Stemmons Freeway

Dallas, Texas 75207

214-748-1200

Chess Rate: \$120 per night



For more details visit www.uschess.org