

Chess Life for Kids!



**ANASTASIA
ELEMENTARY**



A USCF Publication

\$3.00



02

0 74470 27842 9

**Fast, Fun, and
Easy to Use**

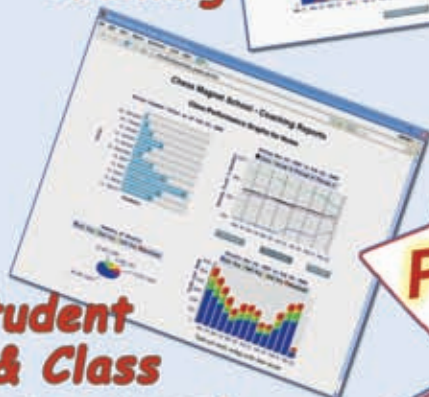
In 2006, and *again* in 2007,
young Chess Magnet students
from Portland, OR, scored 7-0 in the
USCF Spring Nationals.

ChessMagnetSchool.com

Better Than Any Textbook for Learning Chess



**Student
Training**



**Student
& Class
Management**

**"Great Stuff! I just delivered my first
Belgian champion under 10 and
boosted his development
by using ChessMagnetSchool.com"**

- Ton Montforts, Coach
Schaakacademie
Limburg, Belgium

**"Your website was
integral to our team's winning."**

-Mike Hosford, Coach
Alcott Elementary
2008 Washington State
Grades 4-6 Champions

**Proud Sponsor
of the
2012 USCF
Junior Grand Prix!**

**Start Your 30-day Free Trial Today
at
www.ChessMagnetSchool.com**

	1 month	3 months	1 year	1 yr USCF
Individuals	\$6.95	\$15.00	\$29.95	\$26.95
Class/Family	\$6.00	\$12.00	\$25.00	\$22.00

Free to teachers/coaches of at least 5 students
Includes our powerful, easy-to-use Coaching Tools & Reports

Works on Windows and Macintosh
computers (requires internet access)

To learn more, call 650-284-5062
877-378-4319 (US toll-free)
email info@ChessMagnetSchool.com



Table of Contents

- 
- 4 OPERATION PAWN STORM PART 2
 - 6 WHAT'S THE QUESTION?
 - 7 WIN OR DRAW?
 - 7 ZARIA
 - 8 YOU CAN DO IT: ANASTASIA'S MATE
 - 10 THE CHESS DETECTIVE
 - 11 WHAT'S THE PROBLEM?
 - 12 EFFICIENCY!
 - 15 TALES OF THE ARABIAN KNIGHTS
 - 16 2011 JUNIOR GRAND PRIX STANDINGS
 - 17 ANSWERS, WE'VE GOT ANSWERS.
 - 18 TOURNAMENT LIFE ANNOUNCEMENTS

COVER ILLUSTRATION BY MIKE MAGNAN

Publisher

USCF Executive Director: Bill Hall
bhall@uschess.org

Scholastic Editor: Glenn Petersen
gpetersen@uschess.org

Art Director: Cat Connor Spradlin
catseyephoto@mac.com

Editorial Asst./Copy Editor: Alan Kantor
akantor@uschess.org

Editorial Assistants:
Jo Anne Fatherly
backtobasics@uschess.org

Jennifer Pearson
jenpearson@uschess.org

Advertising Manager: Joan DuBois
jdubois@uschess.org

Tournament Life: Joan DuBois
tla@uschess.org

Director of Publications: Daniel Lucas
dlucas@uschess.org

CONTRIBUTORS: Send your contributions and articles to *Chess Life for KIDS*, PO Box 3967, Crossville, Tennessee 38557 or better yet, e-mail to gpetersen@uschess.org.

Chess Life for KIDS (USPS 023-567, ISSN: 1932-5894) is published in February, April, June, August, October, and December of every year by the United States Chess Federation, 137 Obrien Drive, Crossville, Tennessee 38555. Periodic postage paid at Crossville, Tennessee.

CHANGE OF ADDRESS: Be sure to notify us at once of any change of address. Please include your old address and your new address, along with your USCF I.D. number.

POSTMASTER: Send address changes to USCF, PO Box 3967, Crossville, Tennessee 38557.

Annual Scholastic Membership

Regular Scholastic Membership (online version of *Chess Life for Kids*), age 12 or younger, is just \$17 per year. Premium Scholastic Membership (receives *Chess Life for Kids* by mail) is \$24 per year. \$13 of every premium membership goes towards providing *Chess Life for Kids*. Annual subscription rate is \$18. Entire contents copyright 2012, United States Chess Federation.

Teachers may photocopy instructional articles for classroom use, but republication or wide-spread copying without the written consent of the USCF is forbidden.



MyChessGuru
Learn Chess Online

Learn winning chess openings, tactics, and endgame technique from the masters one-to-one in the comforts of your own home.

Choose from a variety of experienced online coaches from India to match your level. Prices starting at \$9 per hour.

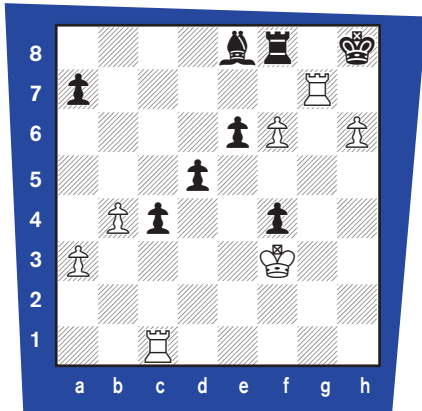
Visit www.mychessguru.com and sign-up for a free try today. Contact us at mychessguru@gmail.com or (732) 207-6203.

Operation Pawn Storm: Part 2 Cont'd from last issue

by Jon Edwards

Thomas, Mark (2049)
 Simmons, Matthew (2071)
 Sicilian Defense (B30)
 England, 2010

1. e4 c5 2. Nf3 Nc6 3. c3 e6 4. Bd3 d5 5. e5 Qc7 6. Qe2 Nge7 7. 0-0 Ng6 8. Bb5 Bd7 9. d4 Be7 10. Be3 c4 11. Bxc6 Bxc6 12. Nbd2 h6 13. g3 b5 14. h4 Rb8 15. h5 Nf8 16. Bf4 b4 17. Rfb1 Nh7 18. Qe3 Qd8 19. cxb4 Ng5 20. Bxg5 Bxg5 21. Nxg5 Qxg5 22. Qxg5 hxg5 23. g4 Rxb4 24. a3 Rb6 25. b4 Ba4 26. Rc1 0-0 27. Rc3 f5 28. gxf5 Rxf5 29. Kg2 Rf4 30. Rg3 g4 31. Nf1 Rxd4 32. Ne3 Rf4 33. Rc1 Rb7 34. Nxg4 Kh8 35. h6 g5 36. Nf6 Rxf6 37. exf6 Rf7 38. f4 gxf4 39. Rg6 Rf8 40. Kf3 Be8 41. Rg7

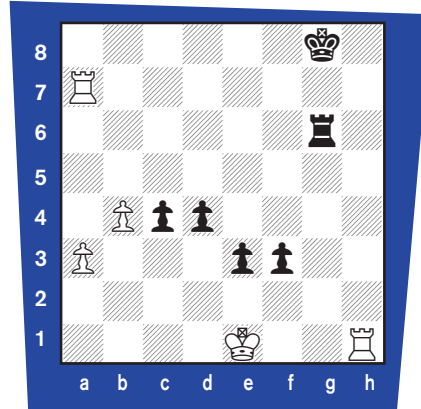


White is up the Exchange for a pawn and has a powerful rook on the seventh rank and the possibility of two outside passed pawns. But Black has the makings of a powerful pawn mass with aid from the rook and active bishop.

41. ... e5 Holding on to the f4 pawn. The threat is now ... Bh5+. 42. Rxa7 Making room for White's passed pawns. 42. ... Bh5+ Back, back, back. 43. Kf2 e4 Ever forward, now with the threat of ... e3+, using the bishop to maintain control over the light-squares.

44. Rg1 The best defense is a good offense, rushing the rook to the open file and the promise of further activity on g7. 44. ... e3+ 45.

Ke1 The defensive try 45. Kf1 meets 45. ... Bf3 46. Rd7 c3. 45. ... Rxf6?! More accurate is 45. ... f3. 46. Rgg7 Rxf6 47. Rge7 Missing 47. Rgd7 Rg6 48. Ra8+ Rg8 49. Rxg8+ Kxg8 50. b5. 47. ... Rg6 48. Rh7+ Kg8 49. Rxf5 f3 The obvious threat is Rg1#. 50. Rh1 d4



Black has only two pawns for the rook, but look at those pawns! 51. b5 Crumbling under the pressure. It's tough to defend in such positions, but White can hold with 51. Ra8+ Kg7 52. Ra7+ Kf6 53. Ra6+ Kf5 54. Rxg6 Kxg6 55. Rh4 d3 56. Rxc4 d2+ 57. Kd1 f2 58. Rf4 Kg5 59. Rf8 Kg4 60. b5 Kg3 61. b6 Kg2 62. Ke2 d1=Q+ 63. Kxd1 f1=Q+ 64. Rxf1 Kxf1 65. b7.

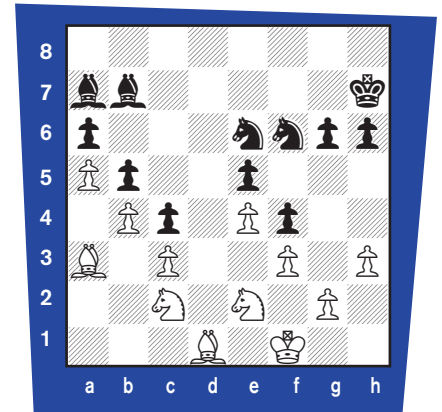
51. ... d3 Missing 51. ... Rg2 when the checks will only drive the king towards d3. 52. Ra6? Giving Black a clear path to the win. Once again, White had to try 52. Ra8+.

52. ... f2+ 53. Kf1 Rg1+! 54. Rxf1+ fxf1=Q+ 55. Kxg1 d2, White resigned. On 56. Rd6, Black pushes e2.

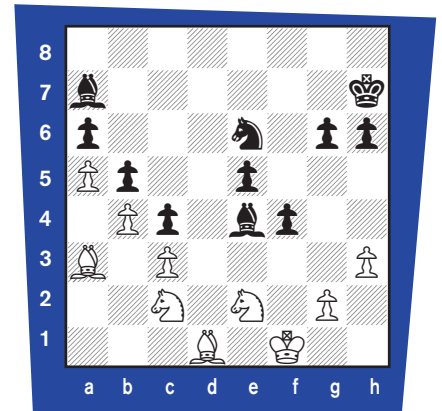
Van Beek, Alexander
 Wortel, Marten (2250)
 Pirc Defense (B08)
 Leiden, 1997

1. e4 d6 2. d4 Nf6 3. Nc3 g6 4. Nf3 Bg7 5. h3 0-0 6. Be3 c6 7. a4 Nbd7 8. a5 Qc7 9. Be2 e5 10. dxe5 dxe5 11. Bc4 h6 12. 0-0 Nh5

13. Qd2 Kh7 14. Rfd1 f5 15. Qd6 Qxd6 16. Rxd6 f4 17. Bc1 Nhf6 18. b4 Re8 19. Ba3 Bf8 20. Rd2 b5 21. Bd3 a6 22. Na2 c5 23. c3 Bb7 24. Ne1 Nb8 25. f3 Nc6 26. Nc2 Rad8 27. Rad1 c4 28. Bf1 Rxd2 29. Rxd2 Rd8 30. Rxd8 Nxd8 31. Nc1 Bd6 32. Be2 Bb8 33. Bd1 Ba7+ 34. Kf1 Ne6 35. Ne2



As we saw in the last game, a piece sacrifice against a closed structure can significantly alter the character of the game by releasing the pawns. 35. ... Nxe4 Here's the piece sacrifice. 36. fxe4 Bxe4



For the knight, Black gets two pawns and a very active collection of pieces. By clear contrast, check out the Ba3. 37. Bc1 Bd3 38. Ke1 g5 And the pawns begin their march. 39. Bd2 Kg6 Once again, the king plays its part. 40. Na3

A sad state of affairs. The knight has nowhere else to go. 40. ... e4 41. Nc1 h5 Imagine playing White

watching as the pawns advance move by move.

42. Nxd3 Seeking to relieve the pressure, but the exchange only brings another pawn towards the mass. **42. ... cxd3** **43. Bb3**

Here's White's defensive idea, to activate the light-squared bishop and to push the queenside pawn majority. **43. ... Kf5** **44. Bxe6+ Kxe6** Another exchange brings us closer to having to confront the basic question.

Which is more powerful, the extra piece or the frightening pawn mass? **45. c4** Threatening to win a pawn on b5. **45. ... bxc4** **46. Nxc4 Kd5** Correctly moving forward to assist the advance of the mass. **47. Nb6+ Kd4** Avoiding the tempting **47. ... Bxb6** **48. axb6 Kc6** **49. h4** undermining the mass. **48. b5?!**

White misses an opportunity to disintegrate part of the mass: **48. h4 gxh4** **49. Bxf4 e3** **50. Kd1 Ke4** **51. Bd6 e2+** **52. Kd2 h3** **53. gxh3 Kf3** **54. Be7 Bb8** **55. Bh4 Ke4** **56. Be1 Bd6** **57. Kc3 Be5+** **58. Kd2** equalizing. **48. ... e3** **49. bxa6** Now the tide rushes in. And here too, White misses a chance to draw: **49. Nc8 Bb8** **50. bxa6 g4** **51. a7 Bxa7** **52. Nxa7 exd2+** **53. Kxd2 f3** **54. gxf3 g3** **55. Nb5+ Kc4** **56. Nd6+ Kb3**.

49. ... g4 **50. Nc8 f3** **51. gxf3 gxf3** **52. Nxa7 f2+** **53. Kf1 exd2** It's not about regaining the piece but rather acquiring a new queen. **54. Nb5+ Kc4** **55. Nd6+ Kb4** **56. a7 d1=Q+** **57. Kxf2 Qc2+** **58. Kg3 Qc6**, **White resigned.** Preventing White from queening, threatening the knight (with check), and giving the d-pawn room to run.

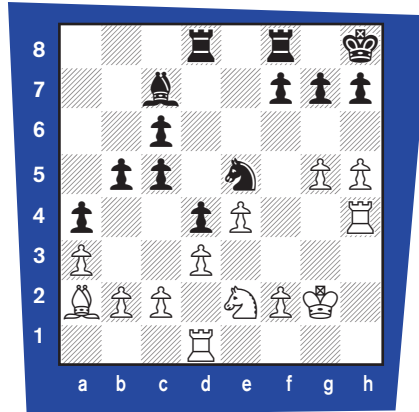
Van den Berg, Adrianus MJ
(2248)

Vijayalakshmi, Subbaraman
(2435)

Ruy Lopez (C77)
Vlissingen, 2003

1. e4 e5 2. Nf3 Nc6 3. Bb5 a6 4. Ba4 Nf6 5. Nc3 Bc5 6. d3 d6 7.

Be3 b5 8. Bb3 Nd4 9. Bxd4 exd4 10. Nd5 c6 11. Nf4 Bb4+ 12. Kf1 Bg4 13. h3 Bxf3 14. Qxf3 0-0 15. g4 Nd7 16. h4 a5 17. a3 a4 18. Ba2 Bd2 19. Ne2 Qb6 20. Rd1 Ba5 21. Qf5 Rad8 22. h5 Qc5 23. Qxc5 dxc5 24. g5 Ne5 25. Kg2 Bc7 26. Rh4 Kh8



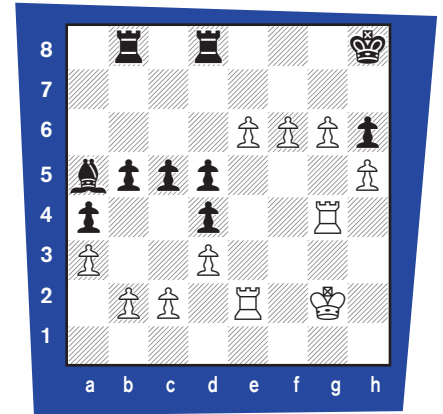
It's White to move and so, **27. f4** will mobilize the mass. What's especially interesting here is that both sides have masses in motion. **27. f4** Gaining time against the knight to keep the pawns moving forward.

27. ... Nd7 An awkward retreat, although the knight can head to b6 in support of ... c4. **28. g6** The best move. Black dare not open the h-file, and ... fxc6 opens the center of the board for the advance of the d- and e-pawns.

28. ... f5 A good try, with the aim of sealing the kingside and taking the punch out of the mass. **29. e5 h6** Sealing the kingside. **30. Bf7** Preventing the rooks from defending on e8 and blocking the Rf8's defense of f5.

30. ... Nb6 **31. Ng3** Ouch. Once the f-pawn goes, the mass will once again press forward. **31. ... Rb8** Unable to slow down White's pawns, Black aims to get his mass rolling. **32. Nxf5 Nc8** Better is **32. ... Nd5**.

33. Rg4 Bd8 **34. Re1** Rooks belong behind the passers. **34. ... Ne7** **35. Nxe6 Ba5** **36. Re2 Rfd8** **37. f5** Forward, ever forward. **37. ... gxh6** Black might as well take the piece. **38. f6 Nd5** **39. Bxd5 cxd5** **40. e6**

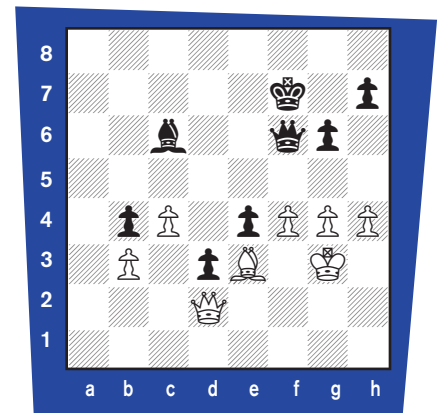


Those pawns are lovely, no? **40. ... Bc3** A bit of desperation. **41. bxc3 b4** **42. cxb4 cxb4** **43. g7+ Kh7** On **43. ... Kg8** **44. f7+ Kh7** **45. e7**—a lovely picture, with three connected passers on the seventh! **44. e7**, **Black resigned.** **f7** is next.

Wenger, Anton
Sigl, Martin
(C50)

Schwarzach, 2002

1. e4 e5 2. Nf3 Nc6 3. Bc4 d6 4. h3 Na5 5. Bb3 Nxb3 6. axb3 Nf6 7. d3 Be7 8. Nc3 c6 9. Be3 a6 10. Na4 Nd7 11. c4 b5 12. Nc3 b4 13. Ne2 Bb7 14. Ng3 d5 15. exd5 cxd5 16. Nf5 0-0 17. Nxe7+ Qxe7 18. 0-0 d4 19. Bd2 a5 20. Ne1 f5 21. f4 e4 22. dxe4 fxe4 23. Bc1 Qd6 24. Nc2 d3 25. Be3 Nc5 26. Nd4 Ne6 27. Nxe6 Qxe6 28. Qd2 Bc6 29. Rf2 Rf7 30. g4 g6 31. Rff1 Qe7 32. Qf2 Qd7 33. Kh2 a4 34. bxa4 Rxa4 35. b3 Rxa1 36. Rxa1 Qc7 37. Ra7 Qb8 38. Rxf7 Kxf7 39. Qd2 Qd6 40. h4 Qf6 41. Kg3



Please turn to page 14



What's the Question?

by National Master Daniel Gurevich

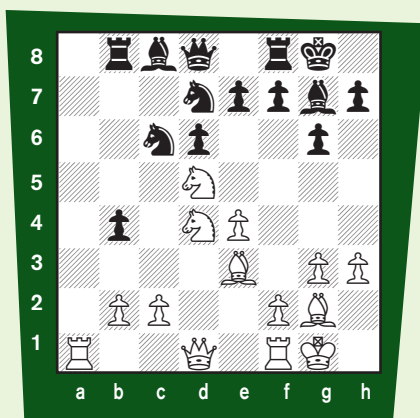
Q: Dipro Chakraborty
Scottsdale, Arizona

I know that, in general, you should not trade a fianchettoed bishop for a knight. Are there any counter-examples?

A: Yes, there are a few famous counter-examples. Sometimes, there are other factors that far outweigh the disadvantages associated with exchanging the bishop. That said, only experienced players should consider using this idea for positional gain. From a positional point of view, exchanging a fianchettoed bishop weakens squares around the fianchetto, so the pros and cons should be weighed carefully. Here is an example of a tactical reason to exchange the fianchettoed bishop for a knight, in a game played at the highest level!

Gata Kamsky – Sergei Tiviakov
Daugavpils 1986

1. e4 c5 2. Nf3 d6 3. d4 cxd4 4. Nxd4 Nf6 5. Nc3 g6 6. g3 Nc6 7. Nde2!? The 6. g3 variation is one of the rarer replies to the Sicilian Dragon, but if Kamsky has played it, there is probably nothing wrong with it. 7. ... Bg7 8. Bg2 0-0 9. 0-0 The position is balanced, and both sides have fianchettoed a bishop each. Which of the bishops will be exchanged? We will soon find out. 9. ... Rb8 10. a4 a6 11. Nd5 b5 12. axb5 axb5 13. h3 b4 14. Be3 Nd7 15. Nd4??



This is the big blunder of the game. Believe it or not, this move loses a piece. Here's why. 15. ... **Bxd4!** This was such an unexpected exchange for Gata Kamsky that he simply did not calculate the lines after 15. ... Bxd4. If he had, Kamsky would have seen that White is already lost. 16. **Bxd4** Recapturing is forced. 16. ... **e6!** This is the point of the combination. The knight has two escape squares. If it moves to f4, 16. ... e5 will result in a winning fork. In the game, White played 17. **Ne3 e5** 18. **Ba7**, and found his bishop trapped after 18. ... **Rb7** 19. **Qxd6 Nxa7**. Black eventually won. 0-1

Here is my advice for such situations: try to always stay alert for your unconventional ideas like the exchanging of the fianchettoed bishop for an inferior knight, but never underestimate your opponent's ideas! Sometimes, you may win a pawn, but then weaken your position so much that it just isn't worth it.

Andrew Kehoe
Marietta, Georgia

Q: Who was the first world champion?

A: Wilhelm Steinitz is widely regarded as the first official world chess champion, winning a match against Johannes Zukertort in 1886. It was agreed in advance that the first player to score ten wins would be named the world champion. Besides his ten wins, Steinitz lost five games and drew five more. The final game was just 19 moves long and took slightly over an hour to play:

W. Steinitz – J. Zukertort
World Championship 1886

1. e4 e5 2. Nc3 Nc6 3. f4!? A weird gambit that you will not see played in the 21st century. 3. ... **exf4** 4. **d4 d5!** Zukertort decides on a counter-gambit, hoping to equalize. However, Black can already think about winning: 4. ... **Qh4+!** 5. Ke2, as played in Steinitz-Chigorin three years earlier. Chigorin won that game after 5. ... **d5!**?, transposing to this game, but Black could also play 5. ... **b6**, followed by 6. ... **Ba6+**, probably with an advantage. 5. **exd5** 5. Nxd5 was another possibility, with similar play after 5. ... **Qh4+** 6. **Kd2 Nf6!**, offering the rook on a8 after 7. **Nxc7+**, with active play for both sides. 5. ... **Qh4+** 6. **Ke2 Qe7+** 7. **Kf2 Qh4+** Here Zukertort was eager to draw by repetition as another loss would cost him the match and the title. However, Steinitz had something else in mind. 8. **g3!**? This move



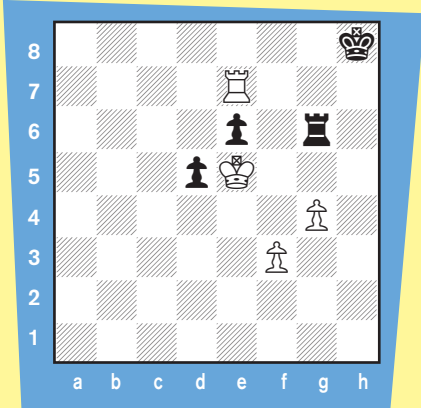
Continued on page 14

WIN OR DRAW?

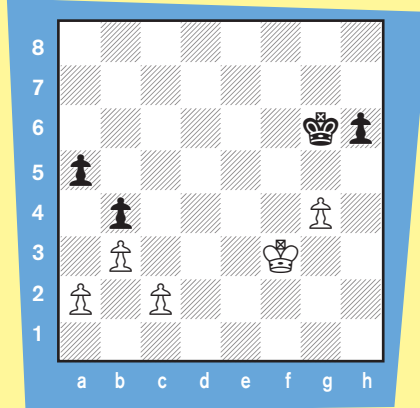
by Pete Tamburro

It's really simple: figure out whether the position is a win or a draw, if a win, for what side! You should write down the moves that will get the result you think it is and then check them all later in the answer section.

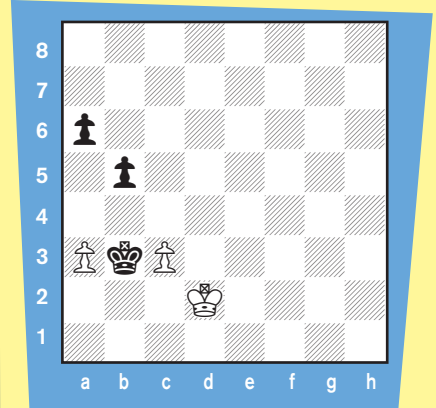
Position One: White to Play



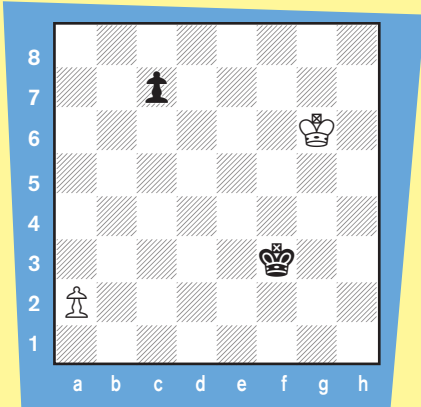
Position Three: White to Play



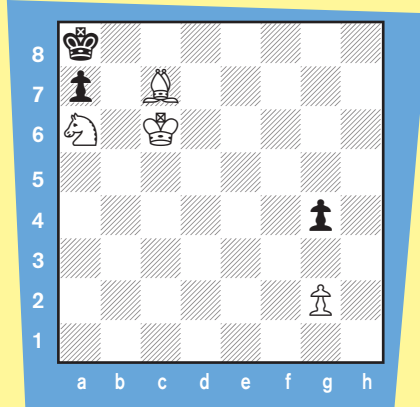
Position Five: White to Play



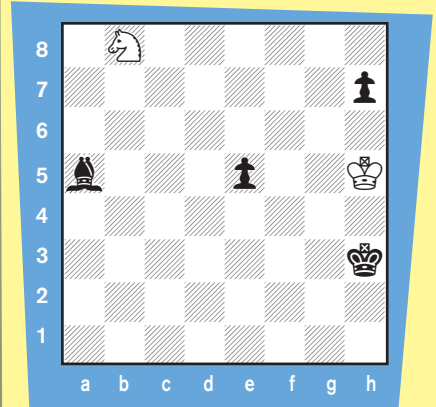
Position Two: White to Play



Position Four: White to Play



Position Six: White to Play



Answers on page 17





YOU CAN DO IT!

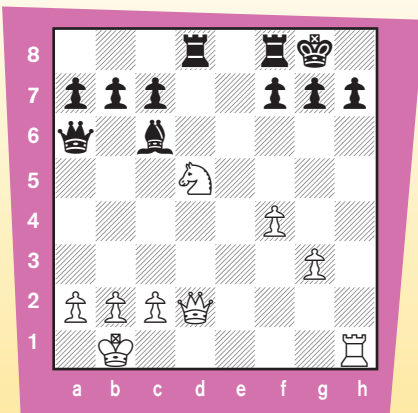
ANASTASIA'S MATE

by Jon Edwards

Jon Edwards won the 10th U.S. Correspondence Championship in 1997 and the 8th North American Invitational Correspondence Chess Championship in 1999. He is the author of *Teach Yourself Visually: Chess* (Wiley, 2006), a photographically based chess primer, *Sacking the Citadel: The History, Theory, and Practice of the Classic Bishop Sacrifice* (Russell Enterprises, 2011), and 20 instructional Kindle chess e-books (www.amazon.com/author/jonedwards). Jon provides chess instruction in the Princeton, New Jersey area.

Anastasia and her Mate

Here's our first simple example of Anastasia's Mate:



1. Ne7+

We begin with 1. Ne7+, a square that is remarkably unguarded here.

1. ... Kh8

The king is forced to retreat into the corner. Like so many mates, there's a very simple principle: When your opponent's king cannot move, all you need is check!

2. Rxh7+

A nice rook sacrifice. Beginners to chess rarely consider moves that sacrifice material. Masters know to check out such forcing sequences.

2. ... Kxh7

Under attack, the king must recapture.

3. Qh2#

And there's the checkmate. It's quite a bit like a back rank mate except that the mate occurs here on the side of the board with the knight so nicely covering the escape squares on g8 and g6.

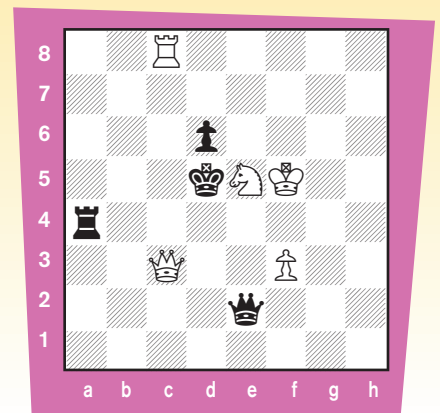
This first simple example gives us an opportunity to make a few observations. The combination requires that the attacker be able to park a knight on e7 (e2 for Black), forcing the defending king into the corner where it has no moves. White is able to provide the final check and mate by sacrificing on h7, opening the mating file, an idea made possible by the absence of a defending knight on f6 or a bishop on the b1-h7 diagonal.

It's important to add that the final mate might occur on any edge of the board and, as we shall see under the right circumstances, even off the edge!

The original Anastasia's mate

Anastasia's checkmate obtained its name not from a Russian princess but from the 1803 novel *Anastasia und das Schachspiel* (*Anastasia and the Game of Chess*). In the novel, author Johann Heinse offered the name for the checkmate. Heinse suggested that a "Turin officer" composed this problem. It does not appear as simple and satisfying as our other examples, but it is indeed the same

theme. This problem, with White to move and deliver checkmate in two moves, is the first known example of what we have come to call Anastasia's Mate.

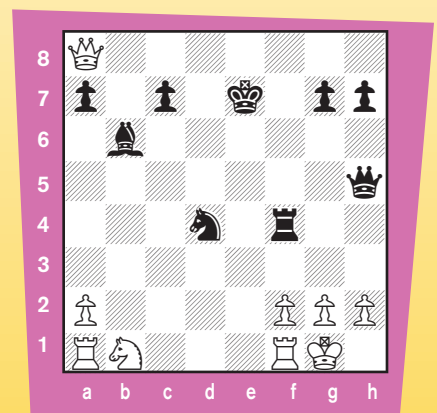


1. Qc5+ dxc5 2. Rd8#

The knight prevents the black king's escape to c4 and c6. With help from the white king, Black is mated as if his king were up against the edge of the board.

Here are six examples of Anastasia's mate. They start easy, but just as you're sure that you've mastered the idea, they get a bit harder.

#1 Bayer, Conrad Falkbeer, Ernst Karl Vienna, 1852



21. ... Ne2+

Here's our mate!

22. Kh1 Qxh2+

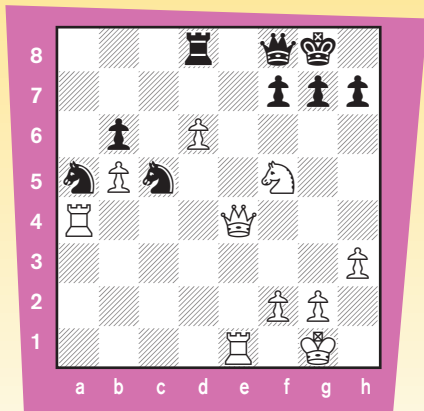
With a nice queen sacrifice.

23. Kxh2 Rh4# 0-1

#2 Lasker, Emanuel

Fortuijn

Netherlands simul, 1908



At first glance, it may appear that Lasker has walked into a simple knight fork.

29. Ne7+ Kh8 30. Qxh7+

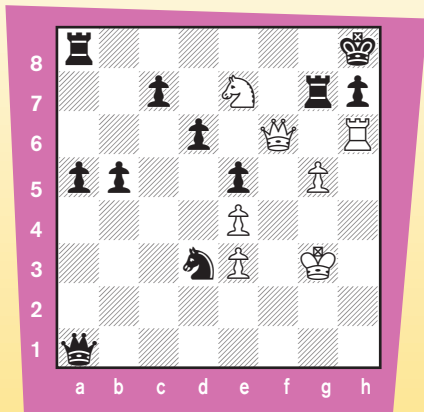
A beautiful queen sacrifice worthy of a world champion.

30. ... Kxh7 31. Rh4# 1-0

#3 Pitschel, Claus

Anderssen, Adolf

Leipzig, 1851

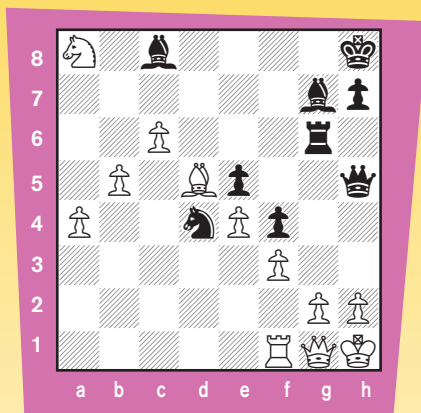


32. Rxh7+ Kxh7 33. Qh6# 1-0

#4 Andruet, Gilles

Van der Wiel, John

Montpellier, 1985



32. ... Ne2

Threatening the queen as well as ... Ng3. The king is already on h1 and so the knight on e2 attacks the queen rather than the king. The effect, remarkably, is the same.

33. Qb6

The queen has moved and, once again, the king cannot move. Black only needs to find a safe check. There's no point in trying 33. g3 Nxg3+ 34. Kg2 Nxe4+ 35. Kh1 Rxg1+.

33. ... Qxh2+

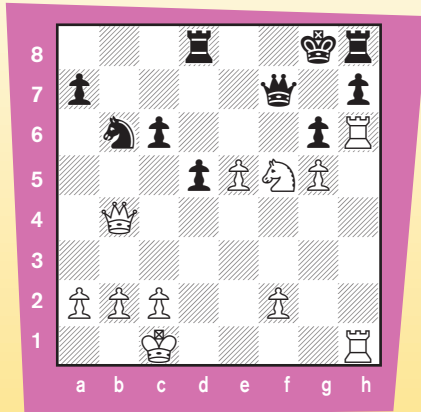
With our thematic mate.

34. Kxh2 Rh6#

#5 Capablanca, José Raúl

Prestes, A

Sao Paulo, 1927



24. Ne7+ Kg7

And a variant of Anastasia's Mate comes into play.

24. ... Kf8 walks into discoveries, the best of which is 25. Nxd5+ Ke8 26. Nf6+ winning the queen.

25. Rxh7+

Another example of a move that must be examined ... and played if, as here, it works.

25. ... Rxh7 26. Rxh7+ Kxh7 27. Qh4+

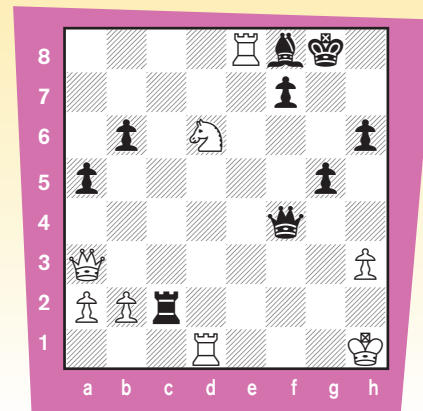
The queen swings to the now open h-file and works harmoniously with the Ne7.

It's mate in one: 27. ... Kg7 28. Qh6# 1-0

#6 Vidmar, Milan

Euwe, Max

Karlsbad, 1929



35. Rxf8+!

Sacrificing the Exchange in order to bring the king into a discovered check from the knight.

35. ... Kxf8

Recapturing but walking into a powerful discovered check. King moves to g7 or h7 meet 36. Rxf7.

36. Nf5+

Anastasia's Mate is almost always along the rim, but it doesn't have to be. As in Anastasia's Mate, the knight covers the e7 and g7 escape squares.

36. ... Kg8

Seeking safety on the kingside.

37. Qf8+

A spectacular game-ending queen sacrifice.

It's mate in two with 37. Qf8+ Kxf8 (There's no salvation in trying to run away. 37. ... Kh7 38. Qg7#) 38. Rd8# with Anastasia's Mate along the top edge of the board.

1-0



The

Chess Detective

by NM Todd Bardwick

FORCING A DRAW –

ON THE COMEBACK TRAIL

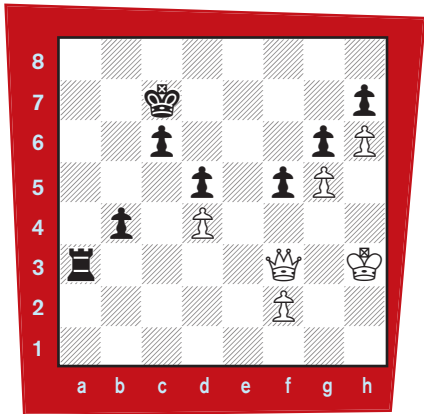
There will be times in your chess career when your position is worse and you are hoping to get a draw. Of course, these aren't happy times!

It is important to be mentally tough when you play chess and dig in when presented with adversity.

When you are losing, any type of draw works. Look to see if you can force a stalemate or find a perpetual check. Perhaps you can steer your opponent into a position he can't win.

As long as you are still playing, there is a chance for your opponent to make a mistake. If you hang in tough and try to complicate the position, sometimes the tide will turn.

Here is an interesting endgame position from the 1951 U.S. Championship between Israel Horowitz and Max Pavey.

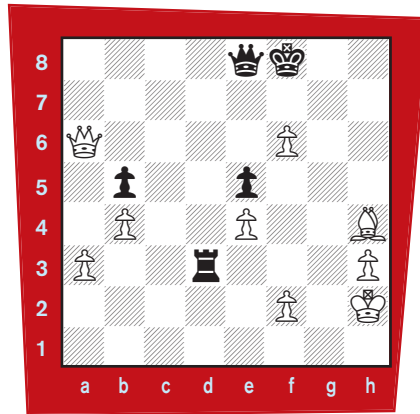


Horowitz-Pavey
Position after 77. ... Ra3

Black has had control of this game

and just sacrificed his queen to line up White's king and queen and played 77. ... Ra3, pinning the queen. Black figures he is simplifying the position and is on his way to victory with his passed queenside pawn. But White shocks him with the surprising 78. Kh4! Rxf3 Stalemate. Any move other than 78. ... Rxf3 allows White's queen to live and Black would be in trouble. Never give up!

Here is another example of a surprise stalemate from a position that occurred in Gyor, Hungary in 1924 between Max Walter and Geza Nagy.

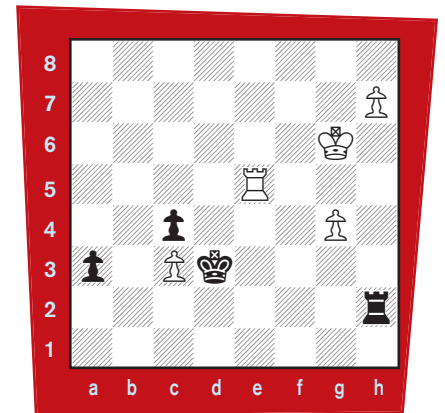


Walter-Nagy
Position after 57. Qxa6(P)?

White is busy adding to his material lead, unaware of the shot that is coming.

Black sacrifices both pieces and draws by playing 57. ... Rxf3+! 58. Kxf3 Qe6+! 59. Qxe6 Stalemate

Here is a complicated rook and pawn ending between Loek van Wely and Peter Leko in 1996 played in Fontys (near Tillburg, The Netherlands).



van Wely-Leko
Position after 53. Rxe5

Black figures that he is in danger of losing and counts out the pawn race to a drawn position after sacrificing his rook. He plays, 53. ... Rxf3! 54. Kxf3 Kxc3 55. Ra5 Kb2 56. g5 a2 57. g6 a1=Q 58. Rxa1 Kxa1 59. g7 c3 60. g8=Q c2, Draw agreed. The bishop pawn on the seventh rank against a queen is a draw because the queen cannot force the black king in front of the pawn to gain a tempo for his king to approach since the black king can move to a1 and taking the pawn on c2 with the queen would result in a stalemate.

Todd Bardwick

is the author of

**Chess Strategy Workbook:
A Blueprint for Developing
the Best Plan.**

He can be reached at
www.ColoradoMasterChess.com

What's the Problem?

By Stanley Kravitz

The Knight's move has survived since the seventh century. It is surprising that the piece with the strangest move has been around the longest. It used to be called a horse, and still is in many countries, but the name became a knight in most European countries when chess moved to medieval Europe with its many kings, queens, and of course, knights.

Since the knight can jump over other pieces it acts a bit like a spy who can infiltrate an enemy camp which makes it ideal for a position with lots of pieces. Its disadvantage in play is its limited range which often makes it the weakest piece (excluding the pawn) on the board. Sometimes the knight can be just in the right place to make it very powerful.

A knight and a queen are a powerful combination. This is because the knight can cover squares the queen does not and it can support a queen in a closed position. Some of the most beautiful chess combinations involve these two pieces as they cover a lot of squares without duplication. (See Anastasia's Mate on page 8!).

These five problems are all mini-miniatres with just four pieces on the board. In fact they all have the same pieces, the two kings, a white queen and white knight only.

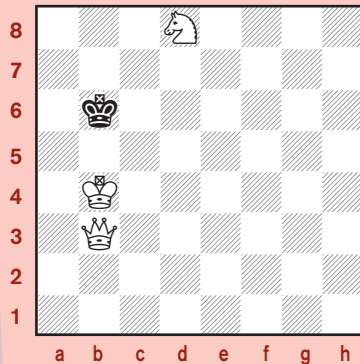
If you can solve a problem in **under 1 minute** give yourself 4 points. Solve in **under 2 minutes** give yourself 3 points. Solve in **under 5 minutes** 2 points. **Over 5 minutes** give yourself 1 point.

Master Solver 15-20 points. Good Solver 10-14 points. Fair solver 5-9 points. Under 5 points needs work.

Puzzle 1.

White to move and mate in two.

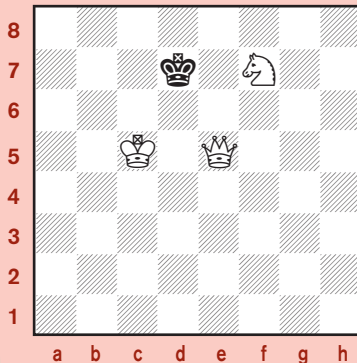
It looks as though the black king can run away, so you have to find a way to stop him.



Puzzle 2.

White to move and mate in two.

The black king does has only one move. See if you can make that move fatal.



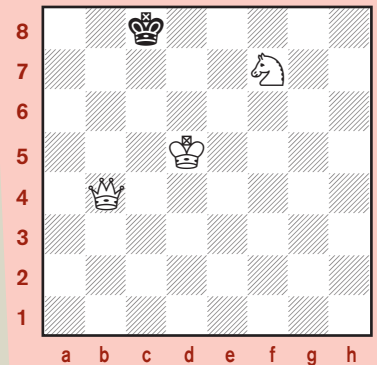
Puzzle 3.

White to move and mate in two.

This is a classic mating net. Be careful not to stalemate with a bad white king move.

See diagram, top of next column.

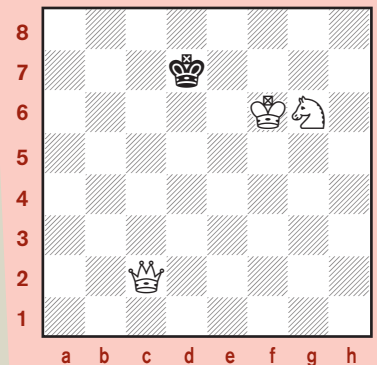
Solutions on page 17



Puzzle 4.

White to move and mate in two.

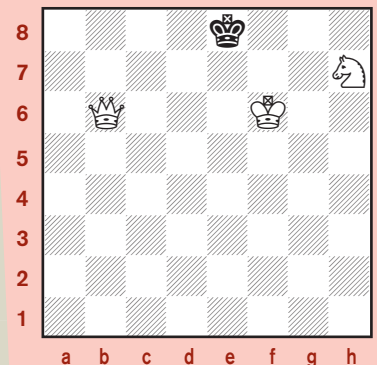
An old chess proverb is "A knight on the rim is grim." See if you can improve the situation.



Puzzle 5.

White to move and mate in two

This is the odd man out in this set of puzzles. Can you see why?



Efficiency!

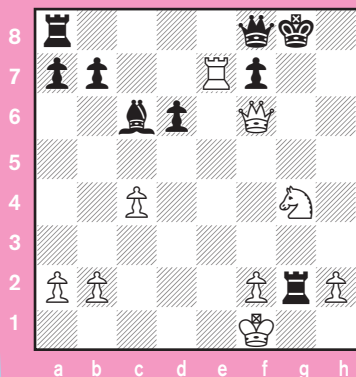
by Peter Webster

As chessplayers grow in strength, their play becomes more efficient. An elementary way to measure this is to compare a beginner's attempt to use king and queen to checkmate a lone king by constantly checking it to a more experienced player's method of keeping the queen a knight's move away from the king (unless the king goes to a corner square; you don't want to stalemate him!) and herding the king to the edge of the board where he is easy to checkmate.

In some positions the player with the queen may not check at all until the final move. Increased efficiency in chess indicates that your planning, judgement of positions, and tactics are now becoming even more accurate.

But there are penalties for inefficient play! Not official ones; the tournament director will not fine you if you miss the best move. The penalties can be severe, though; consider this position from the 1974 World Junior Championship.

Schneider vs. Dieks



White to Move

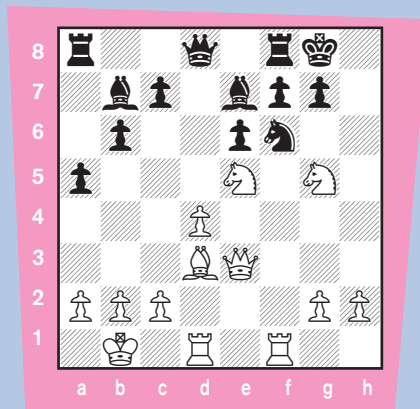
White has a winning position after 1. Nh6+ Kh7 2. Rxf7+ Qxf7 3. Nxf7 and Black cannot save himself

with 3. ... Rg8 because of 4. Qh6 mate. Therefore, when White plays 4. Ng5+ Black will have to give up the Exchange by 4. ... Rxf7 to prevent mate; then eventually Black will have to exchange rook and bishop for queen and one passed pawn, and the white king will invade the black queenside while the black king chases the other passed pawn. But White was not paying attention to the position, and tried 1. Nh6+ Kh7 2. Nxf7?? (thinking he had found a faster win) 2. ... Qxe7! 3. Qxe7 Re8 4. Qh4+ Kg7 5. Nxd6 (If White doesn't save the knight he is losing on material, but now he just loses.) 5. ... Rg1+! and mates by 6. ... Re1.

This was White's only loss in the tournament finals, and it cost him clear second place. A stiff penalty for one inefficient move!

Failure to examine alternative possibilities can result in less efficient play. The saying attributed to world champion Emanuel Lasker is appropriate here: "When you see a good move, look around for a better one!"

Webster vs. Dandridge Wisconsin 1982



White to Move

(Put on your thinking cap and get ready to exercise those little grey cells! And then set up your chessboard and begin to move the pieces! Some of the lines are not easy to follow in your head, so if you associate a physical action (moving the pieces!), with efficient thinking, you will improve your overall approach to the game! – The Editor)

1. Rxf6! gxf6 2. Nxe6! (White follows a plan prepared before the Exchange sacrifice, but annotator Tim Sawyer in his book *Alapin French* found 2. Bh7+! Kg7 3. Ngxf7! This move, which threatens 4. Qh6+, seems absurd at first because of the optical illusion that removing the guard from the white bishop can't be right! 3. ... Rxf7 4. Qg3+ Kh8 [since 4. ... Kxh7 5. Qg6+ Kh8 6. Nxf7 mate, and 4. ... Kf8 5. Qg8 mate] 5. Nxf7+ Kxh7 6. Nxd8 Bxd8 [to defend the c-pawn] 7. Qe3 with a winning position).

2. ... fxe6 3. Qg3+ Kh8 4. Qg6 f5 5. Qh6+ Kg8 6. Qg6+ Kh8 7. Qh6+ Kg8 (White is not playing for perpetual check; this game was played with a classical chess time limit, and White saw a chance to get two moves closer to the time control so that if he did get into time pressure he would have fewer moves to make in a hurry. Of course this allows the opponent to do so as well, so you must really consider who is likely to benefit more. White could have done this again on several of the following moves, but decided it wasn't necessary. It is nice to have perpetual check available when you are investing a rook in the attack, just in case you have miscalculated).

8. Qxe6+ Kg7 9. Qg6+ Kh8 10. Qh6+ Kg8 11. Bc4+ Bd5 12. Rd3! Bh4 (If 12. ... f4 13. Rh3) 13. Bxd5+ Qxd5 14. Qxh4 Rf7 (14. ... Qxg2 doesn't really help; 15. Rg3+

Qxg3 16. Qxg3+ Kh7 17. Qh4+ Kg7 18. Qg5+ Kh7 19. Qg6+ Kh8 20. Nf7+).

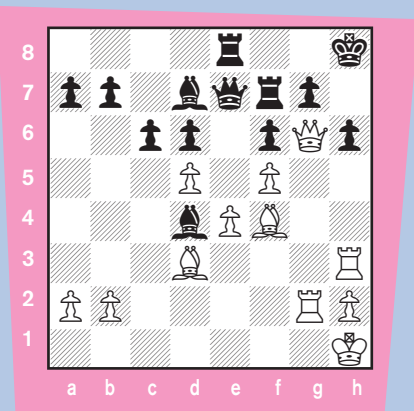
15. Nxf7 Kxf7 (With 15. ... Qxf7 16. Rg3+ Kf8 17. Qh8+ wins the rook. This was as far as White had calculated, having decided that the advantage of two pawns, one of which is a protected passed pawn, was an easy win. But as the TV salespeople say, "Wait, there's more!!").

16. Re3! (When examining this position, White realized that Black cannot develop his rook to the kingside! 16. ... Re8 17. Qh5+; 16. ... Rf8 17. Qe7+; 16. ... Rg8 17. Qe7+ and mate in two moves).

16. ... Qd8 17. Qh7+ Kf6 18. Qh6+ 1-0 (18. ... Kf7 19. Qe6+ Kf8 20. Rg3) This is a minimum penalty; a few extra moves don't tax the players' stamina much, especially since nearly all of White's moves were worked out beforehand and Black's were forced, so he didn't have to think much about them. But if it had turned out that White had calculated his combination incorrectly, missing the forced win found by Reverend Sawyer would be a saddening penalty.

The prospect of material gain is a temptation which lures many players into inefficient lines of play, as in this position from the Championship of New Zealand, 1937-38.

Hunter vs. Lynch



White to Move

White played **1. Bxd6? Qxd6 2. Qxf7 Qe7 3. Qxe7? Rxe7** and discovered that the position is very hard to win despite his material advantage. Black finally threw away his drawing chances 15 moves later, on the 43rd move of the game, and White forced a resignation on the 62nd move.

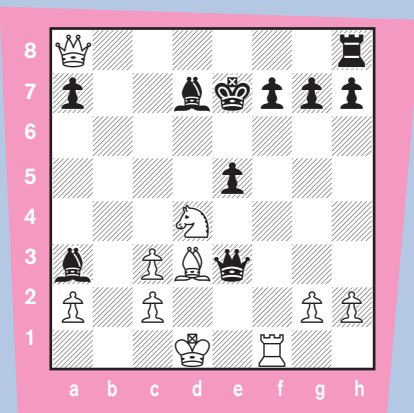
C. J. S. Purdy showed that White had a forced win with **1. Rg4! cxd5 2. Rgh4 Bxf5 3. Bxh6!! Kg8 4. Bf4!** and mate cannot be prevented. This would have saved both players about 30 moves. The penalty here is fatiguel Playing so many extra moves saps a player's strength and stamina. Chess lore is filled with anecdotes about players who were so exhausted by a long game that they were beaten easily in the next round.

Why was 3. Qxe7 bad? Because after **1. Bxd6? Qxd6 2. Qxf7 Qe7 3. Qg6! cxd5 4. Rg4! Rc8 5. Kg2! dxe4 6. Rgh4 Qf8 7. Rxh6+ gxh6 7. Rxh6+ Qxh6 8. Qxh6+** White has an easy win in the endgame.)

Purdy wrote that it is always good to remember that the object of chess is to checkmate the opposing king. He would have approved of the following middlegame in which White twice refuses to be distracted from a king hunt by winning material.

Webster vs. Likens

Janesville, Wisconsin, 1981



White to Move

1. Qxa7! (Now the bishop on d7 is pinned, the bishop on a3 is *en prise*, and the threat of 2. Nf5+ forces Black to offer the sacrifice of his queen. After 1. Qxh8? Bg4+ 2. Nf3 Bc1! White must give back the Exchange by 3. Rf2 to prevent mate and has a harder win).

1. ... exd4 (If 1. ... Kd8 2. Qa5+ and drives the king back to the e-file or mates as in the game).

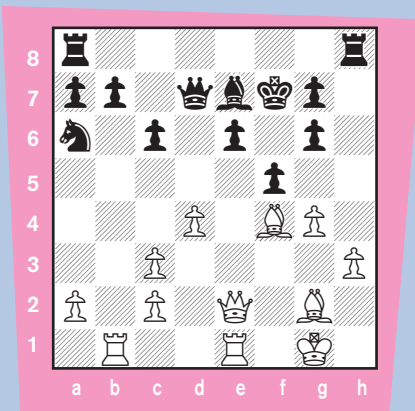
2. Qxa3+! (Simpler than 2. Re1? Qxe1+! 3. Kxe1 Bd6 and again White has made his task harder). **2. ... Kd8 3. Qa5+ Kc8?** (If 3. ... Ke7 4. Re1 Bg4+ 5. Be2 Be6 6. Qc5+ Kd8 [He must stay off the white squares, otherwise 7. Bb5+ wins, and if 6. ... Kf6 7. Rf1+ Kg6 8. Qh5 mate.] 7. Qd6+ Bd7 8. Bb5 and White finally has to settle for a winning material advantage after 8. ... Qxe1+ 9. Kxe1 Re8+ 10. Kf2 Re7).

4. Ba6+ 1-0.

Of course it is necessary to judge accurately whether the mate possibility exists! In the next position White fails to do this and winds up having to win the game twice.

Webster vs. Hoffman

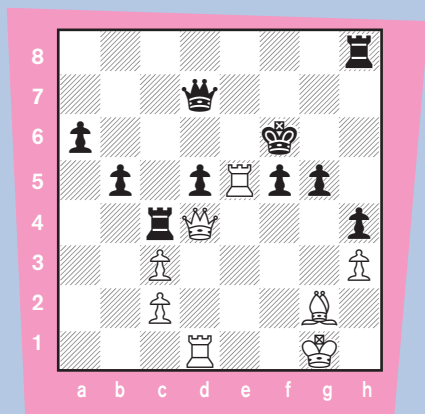
Wisconsin Championship, 1980



White to Move

White was under the illusion that mate was possible by keeping pressure on e6, and missed a win by **1. Rxb7! Qxb7 2. Qxe6+ Kf8 3. Bxc6** and Black must lose material; if 3. ... Qb6 4. Qxe7+ Kg8 5. Bd5+!

Kh7 6. Qh4 mate. White actually played 1. Qc4??, and was fortunate enough to reach this position later:



Black has just played ... Rc4?? (c4 seems to be an unfortunate square in this game!).

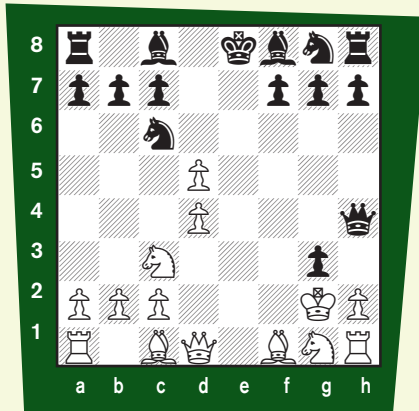
White continued 1. Rxf5+! Kxf5 2. Rf1+ Kg6 3. Be4+! dxe4 4. Qxd7 Rh7 5. Qe8+ 1-0 since mate is unavoidable.

These days a best game prize, when it exists, is often presented to the most efficient game rather than the most brilliant one, therefore recognizing that "sacrifices only prove that someone has blundered" as in the game above. So strive to win one of them!

What's the Question?

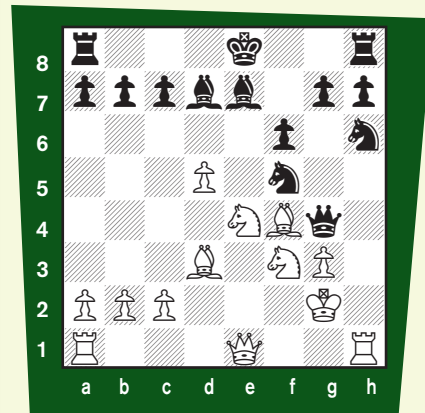
Continued from pg. 6

further complicates the position. 8. ... fxc3+ 9. Kg2



9. ... Nxd4?! This is not an accurate move. Instead, Black should have played Chigorin's move, 9. ... Bd6!, with a very strong attack for the piece. 10. hxg3 Qg4 11. Qe1+ Be7 12. Bd3 Here White has a solid advantage. His king is much more safe than Black's, and Steinitz has more than enough compensation for the pawn he has sacrificed for active piece play. 12. ... Nf5? This is a mistake. Now White should be close to winning. Black's best move was the unexpected 12. ... Kf8! 13. Nf3 Bd7 14. Bf4 White

is developing his pieces very quickly and it is clear that Zukertort is in trouble. 14. ... f6 This is the only way to prevent the decisive threat of 15. Ne5, winning the queen. 15. Ne4 Ngh6?



This move is a blunder, losing a piece. 16. Bxh6! Isn't the knight defended? It is. 16. ... Nxb6 17. Rxh6! This knight is defended too, right? It is. 17. ... gxh6 18. Nxf6+ This is the point of the combination. Black loses his queen because his bishop on e7 is pinned. Black's king, stuck in the center forever, has cost him the game. 18. ... Kf8 19. Nxc4 Black resigned here. 1-0

Operation Pawn Storm: Continued from pg. 5

White's hopes to press forward on the kingside have been dashed. Now it's Black's turn to move the mass. 41. ... Qc3 42. Qxc3 White may have thought that the bishops of opposite color would guarantee a draw, and that at best, he might be able to count on having passed pawns on the wings. There are more chances to hold with 42. Qa2. 42. ... bxc3 43. Kf2 Rushing the king back in the event of ... d2.

43. ... Bd7 The move that White underestimated or missed. The bishop threatens to enter the position at g4, preventing the king from

stopping the advance of the d3-pawn. 44. f5 Ditching a pawn in the hope of erecting a blockade of the mass. 44. ... gxf5 45. Bd4

White's clever plan. If Black now plays ... c2, White will be able to blockade the entire mass with Be3. 45. ... f4! Black is clever too. 46. Bxc3 Bxg4 and the mass is alive and well.

47. b4 With nothing better to do, White pushes his connected outside passers, but they have a longer journey to make. 47. ... Ke6 Keeping the passers under observation. 48. b5 e3+ 49. Ke1 f3, White resigned.

The power of the mass. White cannot now prevent ... f2 and ... Bh3.

About the author:

Jon Edwards won the 10th U.S. Correspondence Championship in 1997 and the 8th North American Invitational Correspondence Chess Championship in 1999.

He has written more than a dozen chess books, notably including *The Chess Analyst* (Thinkers Press, 1999) which chronicles the success in the U.S. championship,

Please turn to page 22

TALES OF THE ARABIAN KNIGHTS

BY RICK KENNEDY ILLUSTRATIONS BY PAMELA KEY



The Valiant Pawn

THE KING AWOKE WITH A START.
FROM ACROSS THE ROOM, SHE ASKED, YOUR
MAJESTY, ARE YOU UNWELL?
THE KING RUBBED HIS EYES. A DREAM, HE SAID. THEN
HE SIGHED. IT WAS ONLY A DREAM.



"Yet, you look troubled."

"It was a chess dream," said the king. "It is slipping from my memory—I faced an entire army of pieces with only my king and a pawn."

"Some water, perhaps?" she asked, offering him a drink.

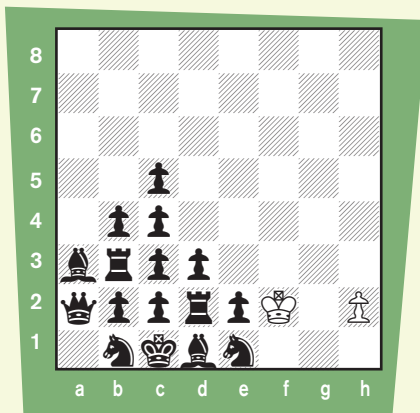
"No ... no ..." the king said frantically, "First, I need a chess set—quickly—ah, here we are now."

The king arranged the pieces on the board in a way that surely could only happen in a dream.

See diagram, top of next column.

"How—odd," she said.

"Yet I was able to prevail," said the king, taking a thoughtful swallow. "It was a matter of thought and planning."



He played out the moves of the phantasmagorical game:

1. Kxe1 Qa1 2. h3

"Just so," said the king.

2. ... Qa2 3. h4 Qa1 4. h5 Qa2 5. h6 Qa1 6. h7 Qa2 7. h8=N

"Brilliant," she murmured.

7. ... Qa1 8. Nf7 Qa2 9. Nd8

"The knight must arrive at just the right time," said the king.

9. ... Qa1 10. Ne6 Qa2 11. Nxc5 Qa1 12. Ne4 Qa2 13. Nd6 Qa1 14. Nxc4 Qa2 15. Na5 Qa1 16. Nxb3 checkmate.

She clapped with appreciation. "Still," said the king, with a bit of chagrin, "Perhaps I should avoid spicy foods before sleeping and dreaming again."

(The game is based on a problem by Ottó Bláthy.)

National Master Daniel Gurevich is ready, willing, and able to answer all your questions about chess!

Send your questions to:
gpetersen@uschess.org

2011 Junior Grand Prix (JGP) Standings



This unofficial list is based on USCF records and TD reports as of Wednesday, January 4, 2012. There are 6,279 players with JGP points and 508 JGP-eligible events have resulted in points earned. For a complete list of overall leaders, go to www.uschess.org.

Top 25 Overall Standings

NAME	STATE	PTS	EVENTS
KORBA, NICKY	CA-S	11735	20
SHUBEN, MATTHEW	CA-S	10888	18
MIZUSHIMA, DEREK	MD	8556	17
ROACH, ANDREW	UT	8512	11
ZHONG, HOWARD	OK	8437	5
BANERJEE, ABHIMANYU	FL	7848	8
KUMAR, ARAVIND	NJ	7712	22
SOHAL, TANRAJ S		7152	3
CAO, ALVIN	VA	6909	13
VISWANADHA, KESAV	CA-N	6700	14
MOTURI, SOUREESH	PA	6650	11
REEDER, CHARLIE PARKER	NY	6649	7
SETIADIKURNIA, SLOAN	WA	6525	4
RICHMAN, JONATHAN	NY	6373	14
LIANG, ADREAM	WI	6345	10
ATTANAGODA, ISURU ADEEPA	VA	6261	14
SCHEIN, AARON O	NY	6207	13
KADAVERU, AJIT	VA	6128	9
WIENER, ALEXANDRA	CT	6120	8
SCHNEIDER, THOMAS G	WI	6120	9
YAN, KEVIN	NY	6086	12
CHEN, JASMINE	NY	6066	10
KOENIG, JAKE	MD	5907	10
ZHAO, CHENYI	CA-N	5728	5
GORTI, AKSHITA	VA	5698	18

For the top 50 overall, see www.uschess.org

State Leaders

NAME	STATE	PTS	EVENTS
CHEN, STEVE MENGXI	AL	3405	4
BROCK, DAMON	AR	2328	1
ENG, RACHAEL	AZ	4277	8
BEILIN, ALLAN	CA-N	4531	10
PETERSON, MICK	CA-S	4681	10
HONEYCUTT, SAMUEL RHEA	CO	3980	2
TANENBAUM, ZACHARY CHEN	CT	3726	11
HAUGE, DAVID RICHEY	DC	2533	4
KAMARA, ABUBAKARR	DE	2844	1
RIEGELHAUPT, CORY	FL	4148	8
AVIRNENI, SAITHANUSRI	GA	3586	7
MAU, STEPHEN LI JIAN	HI	2043	2
LEE, GORDON S ARAI	IA	2953	4
HARMON-VELLOTTI, LUKE	ID	4147	4
KOGEN, JONATHAN S	IL	3909	6
MC DONALD, ALEX K	IN	3066	2
JIANG, BRYAN LIU	KS	4289	6
HAMILTON, ALEX	KY	2152	4
WIETFELDT, AUGUST	LA	3527	2
GROSSACK, ADAM	MA	4060	2
OFFERTALER, BENDEGUZ	MD	4594	6
REYNOLDS, AVERY	ME	2100	1
KULKARNI, SOUMYA	MI	4734	9
TADESSE, MICHAEL	MN	3567	3
HUA, MARGARET M	MO	4552	9
HUANG, DAVID	MS	1568	8
LEE, CONRAD	MT	1400	2
MADIRAJU, SURAJ	NC	3198	5
KOPPINGER, MATTHEW	ND	876	1
LI, BRANDON	NE	776	3
WELLING, POOJA	NH	3777	2
ZACK, DANIEL	NJ	4769	6
ROJAS-GRAINGER, ORION	NM	3135	3
BAROZZI, MICHELANGELO	NV	3177	2
QI, HENRY	NY	4513	11
XIANG, JOHN	OH	4413	5
YIN, ANNIE	OK	4114	3
TALYANSKY, SETH DAVID	OR	3545	2
BUDEJEN-JEREZ, ALEJANDRO	PA	4560	5
FINNEY, STUART S	RI	2039	7
DIAS, NEHA	SC	4068	4
RYSAVY, LUKE T	SD	242	1
CANEZAL, JENJOE CABANGAN	TERR	2902	1
PAO, LUCAS	TN	3351	4
LUDINGTON, FOSTER	TX	4273	7
MASON, SAMUEL REED	UT	3393	7
NGUYEN, TRUNG	VA	4775	11
RO, DAVID	VT	1652	1
FARNY, ANDREAS PAUL	WA	4684	3
ULRICH, RACHEL J	WI	4438	7
PATEL, ADVAIT	WV	2013	5
ANDREWS, CHRIS R	WY	350	1



DEREK MIZUSHIMA, 10, is making his move, having gained almost 2,000 points to move from seventh place to third place in the JGP standings.



Win or Draw (page 7)

Position One Solution: WHITE WINS!! If you shied away from White's first move because the black pawn would queen first, then you have learned an important lesson on why this is not always so: **1. Rxe6! Rxe6+** (A tougher, but still losing defense would be: 1. ... Rg5+ 2. Kf4 Rg7 3. Rd6 Rf7+ 4. Kg3 Kg7 5. f4 Rc7 6. Rxd5 Rc1 7. Kh4 Kf6 8. Rd6+ Kf7 9. Kg5 Rc7 10. f5 Ke7 11. Re6+ Kf7 12. Re5 Rc4 13. f6 Rd4 14. Re7+ Kg8 15. Kf5 Rd2 16. Kg6 Kf8 17. Rh7 Ke8 [17. ... Kg8 18. f7+] 18. Ra7 Rd6 19. Kg7 Kd8 20. f7) **2. Kxe6 d4** (2. ... Kg7 3. Kxd5) **3. Kf7 d3 4. g5 d2 5. g6 d1=Q 6. g7+ Kh7 7. g8=Q+ Kh6 8. Qg6#.**

Position Two Solution: WHITE WINS!! A study by Gregoriev. Here's another "truism" that goes down the drain. A c-pawn on the seventh rank with its king close by is not always a draw against a queen. **1. Kf5 Ke3 2. Ke5 c6** (2. ... Kd3 3. Kd5 Kc3 4. Kc5 c6 5. a4) **3. a4 Kd3** (3. ... c5 4. Kd5) **4. a5 c5 5. a6 c4 6. a7 c3 7. a8=Q c2 8. Qd5+ Ke2** (8. ... Kc3 9. Qd4+ Kb3 10. Qa1; 8. ... Ke3 9. Qg2 Kd3 [9. ... c1=Q 10. Qg5+] 10. Qg5 Kc3 11. Qc1) **9. Qa2 Kd1 10. Kd4 c1=Q 11. Kd3** Quite a few tricks with the queen worth remembering here!

Position Three Solution: WHITE WINS!! White gives Black three passed pawns, but queening first counts big time in this position! **1. c4! bxc3 e.p. 2. Ke3 Kg5 3. a4 Kxg4 4. b4 axb4 5. Kd3 h5 6. a5 h4 7. a6 h3 8. a7 h2 9. a8=Q and wins.** From a real game, Berger-Bauer, in the 19th century.

Position Four Solution: WHITE WINS!! You were right if you worried about stalemate. Were you alert enough to figure out it's a mate in four?? There are longer mates,

but the mate in four uses the stalemate idea to actually make the mate happen sooner! A clever composition by Dr. J. J. O'Keefe: **1. Bh2!! g3 2. Kc7! gxh2 3. Kc8 h1=Q 4. Nc7#**

Position Five Solution: DRAWN!!! This was from a real game where White resigned in this position. Every move loses except one! He missed a great saving move based on the idea of king and a-pawn being a draw against a lone king: **1. a4!! Kxa4** (1. ... bxa4 2. Kc1 a3 [2. ... Ka2 3. c4 Kb3 4. c5 a3 5. Kb1] 3. Kb1 a5 4. Ka1; 1. ... b4 2. cxb4 Kxb4 3. a5 Kxa5 4. Kc2 Kb4 5. Kb2 a5 6. Ka1) **2. Kc2 Ka3 3. c4 b4** (3. ... bxc4 4. Kc3 a5 5. Kxc4 a4 6. Kc3) **4. Kb1 Ka4 5. Kc2 b3+ 6. Kb2 Kb4 7. c5 Kxc5 8. Kxb3 DRAW DRAW DRAW!!!**

Position Six Solution: DRAWN!!! Never underestimate a knight or a stalemate possibility!! A great lesson composed by Rinck. **1. Nd7 e4** (1. ... Bc3 2. Nxe5 Bxe5 3. Kh6 Kg4 4. Kxh7) **2. Nf6 e3 3. Nd5 Bd2** (3. ... Bb6 4. Nxe3 Bxe3) **4. Nxe3 Bxe3 Stalemate!!** A small note: 1. Nc6 doesn't work. **1. Nc6 e4 2. Nd4 Bd2 3. Nf5** (3. Ne2 Kg2 4. Kg4 Kf2 5. Nd4 e3 6. Kh3 Bc3 7. Nc2 e2) **3. ... Kg2** (3. ... e3 4. Nxe3 Bxe3) **4. Kg4 e3 5. Nxe3+ Bxe3 6. Kh5 h6 7. Kh4 Bd2 8. Kg4 Bg5 9. Kh5 Kh3 10. Kg6 Kg4 11. Kf7 h5 and Black wins.**

What's the Problem! (page 11)

- Solutions:
1. Qf7
 1. Kb6
 1. Qb6
 1. Ne7
 1. Nf8. It is the only puzzle ending with fewer pieces at the end.



PLAY & LEARN ONLINE!

Kids, parents, and coaches come together to play chess and learn with videos, articles, and training tools!

SAFETY IS OUR #1 PRIORITY!

No contact with strangers. Parents can manage their kids' access, friendships, and online chess activity.

PERFECT FOR CHESS CLUBS!

Manage your club, have tournaments, and help your players get better with ChessKid.com online clubs!

Go to www.ChessKid.com to register for FREE!



Join Today!

Tournament Life Announcements

FEBRUARY 15 THROUGH APRIL 14

Scholastic Members:

As a service to you, we are listing upcoming National USCF rated events, and requested events of possible interest to you. You can always log in to www.uschess.org, and click on "Clubs and Tourneys." Then click on "Upcoming Tourneys" for a complete listing of upcoming rated events and details. As always, you can check out the TLA section of *Chess Life*.

Organizers and Tournament Directors:

If you would like your tournament listed here in *Chess Life for KIDS* for April (events to be held after April 14), the deadline for submitting your announcements is February 10th. The deadline for the June 2012 issue is April 10th. The processing fee is \$1.00 per line for the first eight lines, \$2.00 for every line thereafter. Send your announcements to Joan DuBois, tda@uschess.org.

Display advertising is also available. Advertising rates are posted on the USCF website, www.uschess.org, or you may email: tda@uschess.org for complete details.

NATIONALS

Feb. 17-19 or 18-19, Florida

2012 U.S. Amateur Team Championship - South
55S, G/120 (2-day option, Rd. 1 G/60). Universal Palms Hotel, 4900 Powerline Rd., Fort Lauderdale, FL 33309. **Only 10 mins. to the Beach. HR:** \$69 hotel chess rate expires Dec. 14, then \$89 is the hotel chess rate, 954-776-4880. 4-player teams (with one optional alternate). Team average (4 highest ratings - January rating list) must be under \$200. Winning team qualifies for National playoff online. **EF:** per player by 2/10, \$49 later. **SPECIAL EF:** Team (one entry must be made for all players) \$150 by 2/10, \$190 later (any team changes \$10). Teams from outside Florida will receive \$25 off team entry. **PRIZES:** Top 1-3rd place teams; Top class teams: U2000, U1800, U1600, U1400, U1000, U800; Top Senior team (all 50 & above), Top Female team, Top College team (same school), Top High School team (same school), Top Middle School team (same school, grades 6-8), Top Elementary School team (same school); Top Boards 1-4. **Schedule:** 3-day: 1st Rd. Fri. 7:30, 2-Day 1st Rd. Sat. 10; Rds. 2-5 Sat. 1:30, 6:45, Sun. 9:30, 2:45. Free parking and Free Internet. **Ent:** Boca Raton Chess Club, 2385 Executive Ctr. Dr., Ste. 100, Boca Raton, FL 33431. **Online entry & add'l info:** www.bocachess.com, 561-479-0351. **Chess Magnet School JGP.**

Feb. 17-19 or 18-19, Illinois

2012 U.S. Amateur Team Championship - North
One section: Open. Sets-Boards-Clocks provided for USAT only by North American Chess Association. Open: 55S, G/90+30/increment, 2-day; rd.1-2 G/60. Crowne Plaza Hotel, 2875 N. Milwaukee Ave., Northbrook, IL 60062. 847-298-2525. \$83.00 chess rate single-double-triple quad until 2/3/12, FREE BREAKFAST BUFFET INCLUDED WITH ROOM! Please reserve early. Open to 4 player teams with one optional alternate. **Team average (4 highest ratings - January Rating List) must be under \$200.** **EF:** 3-day \$140, per team if received USPS or on-line 6 PM by February 4th, \$160 if received USPS or on-line 6 PM by Feb. 14th, \$180 on-line until Feb. 16th 6 PM and at door. Individuals wishing to play, send \$35 and request to be put on a team by USPS (received by 2/14) or on-line by 2/16 6 PM, \$45 thereafter. Team changes on site or after 2/16 6 PM \$20. **Check out official website www.chessweekend.com for more info and complete prize list.** **Prizes:** Awards to top two teams, top teams with average rating u1900, u1600, and u1300. Award for Best Team Name. Winning team qualifies for national play-offs. Prizes to best team composed of juniors (high school and younger-must declare eligibility to win prize). Prizes to top score on each board. **Rounds: 3-day:** on-site registration/check-in 5:30-6:30pm, rds.: 7pm, 10:00am & 4:00pm, 10:00am & 3:30pm. **2-day:** on-site registration/check-in from 8:00-9:30am, rds. 10:00am & 1:00pm then merge with 3-day. **Illinois Blitz Championship on Saturday night,** \$25 received by 2/14 USPS or on-line (2/17), \$30 at site. Illinois FIDE titled players get free entry-contact us for more info. First round 8 PM, 2 games with each opponent, 5 rounds, bring sets, clock, & boards for Blitz. See www.chessweekend.com for details. **All:** Checks made payable to and sent to: Chess Central, 37165 Willow, Gurnee, IL 60031. Please include Team's name and roster (plus ID#s), captain's email and phone number, and desired schedule. **Info:** www.chessweekend.com, 847-773-7706 before 6 PM. North American Chess Association will provide Sets-Boards-Clocks for USAT only. **Chess Magnet School JGP for U.S. Amateur Team - North, Open Section.**

Feb. 18-20, California, Northern

29th Annual U.S. Amateur Team Championship West (Blitz/Scholastic Feb. 20 only.) Main event: 6SS, 30/90 sd/60. Hyatt

Regency, 5101 Great America Pkwy., Santa Clara, CA 95054. Free Parking! Hotel: Free Parking! \$109 call 800-233-1234 for chess rate. Reserve by Feb. 4 or rates may increase. Four-player teams plus optional alternate, average rating of four highest must be under 2200, difference between ratings of board 3 & 4 must be less than 1000. January 2012 Supp, CCA min & TD discretion to place players accurately. **Main Event Prizes:** Exclusive commemorative inscribed digital clocks to each player and trophy to the team for top 3 overall teams, top team u2000, u1800, u1600, u1400, and u1200; top "industry" team (all players from the same company), top "family" team (siblings, cousins, parents, uncle/aunts, grandparents), top junior team, and top school team; top scorer on each board (1-4). Gift certificates for best 3 team names. **Main Event EF:** \$188/team or \$47/player by 2/14, 2/15-17: \$197/team, \$56/player, Onsite: \$217/team, \$66/player. **Main Event Sched: Registration:** Sat 9:30-10:30am. **Rounds:** Sat 11:30 5, Sun 11:30 5, Mon 10, 3:30. **Info/flyer:** BayAreaChess.com/usatw12. **Scholastic Side Event:** 55S G/30. Four-player teams plus optional alternate, may be from same or different schools. Jan 2012 Supp, CCA min & TD discretion to place players accurately. **Prizes:** Trophies to each player in Top 3 teams overall, Top team u900, u800, u700, u600, u500, u400, u300, u200. Top scorer on each board (1-4). **EF:** \$156/team or \$39/player by 2/14, 2/15-17: \$175/team, \$48/player, Onsite: \$185/team, \$58/player. **Registration:** Mon 8-9am. **Rounds:** 10am, 11:30am, 1pm, 2:30pm, 4pm. **Info/flyer:** BayAreaChess.com/usatw12. **Blitz Event:** Registration Mon 7-8pm, Rounds 8:30-10:30pm. **EF:** 12%. 75% of entry fees returned as prizes. **Info/flyer:** BayAreaChess.com/usatw12. Help in forming teams: a player and see bayareachess.com/events/12/usatw or email teamhelp@BayAreaChess.com for teams seeking players & players seeking teams. **Contact:** For all these events, online entry at BayAreaChess.com/my/usatw12 and contact Bay Area Chess, 1590 Oakland Rd., Ste B213, San Jose 95131. T: 408-786-5515. E: ask@BayAreaChess.com. NS, NC, W. **Chess Magnet School JGP.**

A Heritage Event!

Feb. 18-20, New Jersey

42nd Annual World Amateur Team & U.S. Team East
6SS, 40/2, SD/1. Parsippany Hilton, 1 Hilton Ct., Parsippany, NJ 07054. **Chess Rate valid until 1/16. Reserve early 973-267-7373 or 1-800-HILTONS.** Morris/Essex train to Morris Plains 1.5 miles. Open to 4-player teams with one optional alternate. Team average (4 highest ratings - 2012 January Rating list) must be under 2200. **EF:** \$150 postmarked by 2/5/12. Scholastic teams College and below \$145 per team, ALL-\$185 after or at door - all teams, any changes at site \$25 charge. Check out official website www.njscf.org. **Prizes:** 1-5th Place Teams, plaque and 4 digital clocks; Top Team (Genius Barry Award) U2100, 2000, 1900, 1800, 1700, 1600, 1500, 1400, 1300, 1200, 1000 each plaque and 4 Digital Clocks; Top college team (same school) 4 Digital Clocks & plaque; Top HS team (grades 9-12 same school), Top Middle School (grades 5-9 same school), Top Elementary School (grades K-6 same school), Top 2 Scholastic Teams (mixed schools okay) (Collins Award), Mixed Doubles (2 males, 2 females-no alternates), Seniors (all players over age 50), Military, each plaque & 4 Digital Clocks to top team; Company Team (same employer) **Old Timers Trophy** (all players over 65), Family (4 family members), State teams - CT, DE, MD, MA, NJ, NY (Benjamin Award), PA, VA, NC, RI, OH, Canada, each plaque top team; Special Plaque to Top College (NJ, NY, Pennsylvania), **Best Player 1-4 and top alternate**, All 6-0 scores each Digital clock. Biggest Individual upset each round Engraved Cross pen; Entry fee refunded to team with Best "Chess related" game, Sunday night - Best "Chess Related" costumes or gimmick - gourmet dinner for four. **Reg. 9-12 Sat 2/18: Rds. 1-7:30, 11-6, 9-3:30. Special Events!! Surprises and special give-aways each round. Mystery Guest and special Sunday morning panel on 72 match!** Sunday night - Bughouse \$20 per team. Cash prizes. **HR:** Parsippany Hilton, chess rates expire 1/16/2012. Rates \$119 (up to 4 in room) 2nd hotel note attached to Hilton also up to 4 in room \$126 per night-Hampton Inn - includes breakfast for 4 each day. Back up hotel - Sheraton Parsippany-about 2 miles. 973-515-2000. \$99 per night. For help forming teams and more information contact: noreen@deanofchess.com or Facebook: **ATE-Team**. Chks payable to **NJSCF**, mail by 2/05 to: **E. Steven Doyle, 17 Stonehenge Rd., Morristown, NJ 07960.** (Include Team Name, Captain, players full names, USCF Expiration, ID numbers and ratings in board order). No team can include more than two GM's. Include SASE for confirmation if wanted, No registered or certified mail accepted. NS, NC, W. **Chess Magnet School JGP.**

Feb. 26, New Mexico

Trophies Plus Grand Prix Points: 10 (enhanced)

2012 U.S. G/15 Championship (C)
6SS, G/15. University of New Mexico - Student Union Building, Albuquerque, NM 87131. USCF Membership required - available onsite. **One section, all players have an opportunity to win a U.S. Championship!** \$5400-200-100 (B/50) U2400, U2200, U2000, U1800, U1600, U1400, U1200: \$100 each, unrated: \$50. Higher of regular or quick rating used for prize eligibility. **EF:** \$39. \$10 late fee if after 1/23. Free entry to GMs, IMs, and WGMs. **Rds.:** 6:30pm, 7:10pm, 7:50pm, 8:30pm, 9:10pm, 9:50pm. Up to 2 half point byes upon req. before rd 1. NS NC W. **ENT:** Wired Kings CC, 12004 Prospect Ave NE; Albuquerque, NM 87112. **HR:** 571 505-944-2599 Hilton Homewood Suites - ABQ Airport, available until 2/1/12 or room block full. Online Entry & add'l info: www.SouthernRockyOpen.com, WiredKingsCC@gmail.com, 505-550-4654. **Part of the 2012 Southern Rocky FIDE Open Chess Festival. See 2012 Southern Rocky FIDE Open in Grand Prix for more information.**

Mar. 3-4, California, Northern

2012 U.S. Junior Chess Congress (Blitz on Mar. 2) San Francisco Airport Hyatt Regency, 1333 Bayshore Highway, Burlingame, CA 94010. Experience Spring in San Francisco! Hotel rate \$99 only **8 sections based on age:** 6 & under, 8 & under, 10 & under, 12 & under, 14 & under, 16 & under, 18 & under, 20 & under. **Individual Trophies!** 16 (6 & under), top 20 (8 & under, 10 & under, 12 & under), top 15 (14 & under), or top 10 (16 & under, 18 & under, 20 & under). "Super Performance" trophies to players tied for last place with a trophy award and the top player(s) in each rating class who did not get a place trophy. Participation medals to all entrants. **Team Trophies:** Top 10 (6 & under, 8 & under, 10 & under, 12 & under) or top 5 (14 & under, 16 & under, 18 & under, 20 & under) based on section. Winning record required for all tro-

phies. **Time control:** G/90 except G/30 for Ages 6 & under and Ages 8 & under) **Schedule:** Onsite Registration: Saturday 7:30-8:30am. **Rounds:** Saturday 9am, 12:45, 4:30pm, and Sun 9, 12:45pm. Ages 6 & under: Saturday 9:00am, 10:45am, 12:30pm, 2:00pm, 3:30pm. Ages 8 & under: Onsite Registration: Sunday 7:30-8:30am. Round: Sunday 9:00am, 10:45am, 12:30pm, 2:00pm, 3:30pm. **Byes:** Max one 1/2-point bye except last round (must request before start of 1st round). **Entry Fees by 2/18:** 1-day \$48, 2-day \$60, Add \$10 (2/19-25), \$20 (2/26-3/1), \$40 (3/2-3 & onsite). **Blitz:** Friday Registration: 5-5:30pm, Games 6-8pm. 2 sections (11 & under, 20 & under). **Bughouse:** Sunday Registration: 5-5:30pm, Games 6-8pm. 1 section. **Side Event Prizes:** Blitz \$15, Bughouse \$15, Bughouse team \$25. Onsite +\$2. **Side Event Prizes:** Top 3 players and top 3 teams in each section. USCF Membership required for all events except bughouse. March 2012 Supplement & TD discretion to place players accurately. Commemorative T-shirts: \$15 pre-order, \$20 onsite. Organizers/TDs: S. Azhar, R. Koepcke, T. Langland, & J. McCumiskey. Sponsored by CalChess and Bay Area Chess. **More info & flyer:** BayAreaChess.com/usjr12.php. Register online at BayAreaChess.com/my/usjr12.php. Mail entries to Bay Area Chess, 1639A S. Main St., Milpitas, CA 95035. Register early to save. **Questions:** ask@BayAreaChess.com. NS, NC, W. **Chess Magnet School JGP for G/90 rounds.**

Apr. 13-15, Minnesota

2012 National High School (K-12) Championship (Apr. 12 - Bughouse & Blitz) 7SS, G/120. Hyatt Regency Minneapolis, 1300 Nicollet Mall, Minneapolis, MN 55403, 612-370-1234. **Chess Rate \$125. 5 Sections: K-12 Championship, K-12 Under 1600, K-12 Under 1200, K-12 Under 800, K-12 Unrated. April Rating Supplement will be used.** Unrated players may play in the Championship or Unrated section only. One 1/2-point bye for any round, except Rd. 7, if requested in advance. **EF:** \$50 if by March 25, \$70 if by April 8, \$85 by 6 PM CDT on April 12 or \$90 at site. Mailed entries must be p/m by April 8. \$5 extra for all phone registrations, \$20 change fee for roster or section changes after April 8. **Onsite registration:** Thurs. 9am-10pm & Fri. 8am-10am. Players registering after 10am will get 1/2-point for Round 1. **Awards:** A minimum of 1 individual trophy per 10 players and 1 team trophy per 15 players (average attendance in the past two years, not incl. SN IV) plus plaques for 4 players and coach of top five teams in each section. **Class trophies to the top three in the following classes:** K-12 Championship: 1900-1999; 1800-1899; 1700-1799; 1600-1699; 1500-1599; 1400-1499; 1300-1399; 1200-1299; U1200, K-12 UNR. All participants will receive a commemorative medal at the completion of the final round. Teams: A team must have at least two players, although no maximum number of players. The top four scores in any section will count for the team score. All on team must attend the same school. **Opening Ceremony:** 12:30pm Friday. **Main Event rounds:** Friday 1pm, 7pm; Saturday 9am, 2pm, 7pm; Sunday 9am, 2pm. **Awards Ceremony:** Approx 7pm Sunday. **Special Events: National High School Bughouse Championship:** Thursday 11am; **EF:** (On site only) \$25 per team. Bughouse registration ends at 10am Thurs. **National High School Blitz Championship:** Thursday 5pm; **EF:** \$15 per player, \$20 after April 8 or on site. **Scholastic Meeting:** 3pm Saturday. **Parents and Friends Tournament:** 4SS, G/30, Saturday 10:30am, 12:30pm, 2:30pm, 4:30pm. Onsite registration only. Rated and Unrated sections. Trophies for Parents/Friends, participant and student combined results. **ALL:** Please bring clocks. Sets and score sheets provided. USCF membership required. **Mail entries to:** U.S. Chess Federation, Attn: High School, P.O. Box 3967, Crossville, TN 38557. **Additional details, updates, corrections and on-line registration:** www.uschess.org/tournaments/2012/hs. **Chess Magnet School JGP.**

Apr. 20-22, Illinois

2012 All-Girls National Championships presented by the Kasparov Chess Foundation in association with the Renaissance Knights Chess Foundation & USCF
6SS, G/90 5. Swissotel, 323 E. Wacker Dr., Chicago, IL 60601, 888-737-9477. **Hotel Rate includes full breakfast & children under 18 stay free. 6 Sections:** 8 years old and younger; 10 and younger, 12 and younger, 14 and younger, 16 and younger, 18 and younger. Age as of 4/1/2011. USCF membership required. **EF:** \$50 if postmarked/online by 3/25; \$70 if by 4/8; \$85 by 4/19; \$90 after/on-site Do not mail after 4/13 as your entry may not be received on time. **Opening Ceremony:** 6pm, Friday. **Rounds:** Rd. 1 - 6:30pm Fri; Rounds 2-4 - Sat 10am, 2:30pm, 6:30pm; Rounds 5-6 - Sun 9am & 1pm. **Awards Ceremony:** Sun. 5pm. Trophies to top 15 indiv & top 3 teams (top 3 players added for team scores). **Bye:** One 1/2-pt bye available, any round, if requested before end of Rd. 2 and if player has not received a full-point bye. **Side Events: Bughouse Tournament - Fri. 1pm, EF \$25/team. Blitz Tournament - Fri. 3pm, EF \$15 by 4/19, \$20 after on site. HR:** \$169-169 includes full breakfast, children under 18 stay free, 888-737-9477, reserve by 3/15 or rate may increase. **Entries:** online/info at: www.renaissanceknights.org/allgirls or mail to RKnights, Attn: All Girls, PO Box 1074, Northbrook, IL 60065, include name, section, rating, USCF ID#, date of birth, grade, school name city & state. **Chess Magnet School JGP.**

Apr. 27-29, California, Southern

2012 National Junior High (K-9) Championship (Apr. 26 - Bughouse & Blitz) 7SS, G/120. Town and Country, 500 Hotel Circle North, San Diego, CA 92108, 1-619-291-7131 or 800-772-8527. **Chess Rate \$125. 6 Sections: K-9 Championship, K-9 Under 1250, K-9 Unrated, K-8 Championship, K-8 Under 1000, K-8 U750. April Rating Supplement will be used.** Unrated players may play in the Championship or Unrated sections only. One 1/2-point bye for any round, except Rd. 7, if requested in advance. **EF:** \$50 if by April 8, \$70 if by April 22, \$85 by 6 PM PDT on April 26 or \$90 at site. Mailed entries must be p/m by April 22. \$5 extra for all phone registrations, \$20 change fee for roster or section changes after April 22. **On-site registration:** Thurs. 9am-10pm & Fri. 8am-10am. Players registering after 10am will get 1/2-point for Round 1. **Awards:** A minimum of 1 individual trophy per 10 players and 1 team trophy per 15 players (average attendance in the past two years, not incl. SN IV) plus plaques for 4 players and coach of top five teams in each section. **Class trophies to the top three in the following classes:** K-9 Championship: 1400-1599; 1200-1399; 1000-1199; U1000; Unrated. K-8 Championship: 1500-1999; 1400-1499; 1300-1399; 1200-1299; 1100-1199; 1000-1099; U1000; UNR. All participants will receive a commemorative medal at the completion of the final round. **Teams:** A team must have at least two players, although no maximum

number of players. The top four scores in any section will count for the team score. All on team must attend the same school. **Opening Ceremony:** 12:30pm Friday. **Main Event rounds:** Friday 1pm, 7pm; Saturday 9am, 2pm, 7pm; Sunday 9am, 2pm. **Awards Ceremony:** Approx 7pm Sunday. **Special Events:** National Junior High Bughouse Championship: Thursday 11am; EF (on site only) \$25 per team. Bughouse registration ends at 10am Thurs. **National Junior High Blitz Championship:** Thursday 5pm; EF \$15 per player, \$20 after April 22 or on site. **Scholastic Meeting:** 3pm Saturday. **Parents and Friends Tournament:** 4:55, 6/30, Saturday 10:30am, 12:30pm, 2:30pm, 4:30pm. Onsite registration only. Rated and Unrated sections. Trophies for Parent/Friends participant and student combined results. ALL: Please bring clocks. Sets and score sheets provided. USCF membership required. **Main entries to:** U.S. Chess Federation, Attn: Junior High, PO. Box 3967, Crossville, TN 38557. **Additional details, updates, corrections and on-line registration:** www.uschess.org/tournaments/2012/jhs. Chess Magnet School JGP.

May 11-13, Tennessee
2012 National Elementary (K-6) Championship
(May 10 - Bughouse & Blitz) 7SS, G/120, K-1 G/90. Gaylord Opryland, 2800 Opryland Dr., Nashville, TN 37214. 615-889-1000 or 888-777-6779 Chess Rate \$139. **9 Sections: K-6 Under Championship, K-6 Under 1000, K-6 Unrated, K-5 Championship, K-5 Under 900, K-3 Championship, K-3 U800, K-3 Unrated, K-1 Championship.** May Rating Supplement will be used. Unrated players may play in the Championship or Unrated sections only. One 1/2-point by for any round, except Rd. 7, if requested in advance. **EF:** \$50 if by April 22, \$70 if by May 6, \$85 by 6 PM CDT on May 10 or \$90 at site. Mailed entries must be p/m by May 6. \$5 extra for all phone registrations, \$20 change fee for roster or section changes after May 6. **On-site registration:** Thurs. 9am-10pm & Fri. 8am-10am. Players registering after 10am will get 1/2-point for Round 1. **Awards:** A minimum of 1 individual trophy per 10 players and 1 team trophy per 15 players (average attendance in the past two years, not incl. SN IV) plus plaques for 4 players and coach of top five teams in each section. **Class trophies to the top three in the following classes:** K-6 Championship: 1300-1399; 1200-1299; 1100-1199; 1000-1099; 900-999; 800-899; U800; UNR. K-5 Championship: 1300-1399; 1200-1299; 1100-1199; 1000-1099; 900-999; 800-899; U800; UNR. K-4 Championship: 1100-1199; 1000-1099; 900-999; 800-899; 700-799; 600-699; U600; UNR. K-1 Championship: All players in this section receive a trophy. All participants will receive a commemorative medal at the completion of the final round. **Teams:** A team must have at least two players, although no maximum number of players. The top four scores in any section will count for the team score. **All on team must attend the same school. Opening Ceremony:** 12:30pm Friday. **Main Event rounds:** Friday 1pm, 7pm; Saturday 9am, 2pm, 7pm; Sunday 9am, 2pm. Schedule for K-1: Friday 1:30pm, 6:30pm; Saturday 9:30am, 1:30pm, 6:30pm; Sunday 9:30am, 1:30pm. **Awards Ceremony:** Approx 7pm Sunday. **Awards Ceremony for K-1:** Approx 5:30pm Sunday. **Special Events:** National Elementary Bughouse Championship: Thursday 11am; EF (on site only) \$25 per team. Bughouse registration ends at 10am Thurs. **National Elementary Blitz Championship:** Two sections: K-6 and K-3. Thursday 5pm; EF \$15 per player, \$20 after May 6 or on site. **Scholastic Meeting:** 3pm Saturday. Saturday. **Parents and Friends Tournament:** 4:55, 6/30, Saturday 10:30am, 12:30pm, 2:30pm, 4:30pm. Trophies for Parents/Friends, participant and student combined results. **Main entries to:** U.S. Chess Federation, Attn: Elementary, PO. Box 3967, Crossville, TN 38557. **Additional details, updates, corrections and on-line registration:** www.uschess.org/tournaments/2012/elem. Chess Magnet School JGP.

A Heritage Event!
May 26-28 or 27-28, New Jersey
68th Annual U.S. Amateur East Championship
6-SS, 50/2, SD/1. Crowne Plaza Hotel, 110 Davidson Ave., Somerset, NJ, Telephone 732-560-0500 (NYC train to Bound Brook 1 miles away). **In 3 Sections:** Championship (U2200), Reserved (U1800), Booster (U1400). 2-day & 3-day schedules. **3-Day Registration:** Saturday May 26, 9:30-10:45 am. **Schedule:** Rounds 12-6, 11-5, 9-3. **2-Day Registration:** Sunday May 27, 8:30-9:30 am. **Schedule:** First 3 games, 5/27, 6/4, 6/10. Rounds 10-12:15-2:30. All schedules merge in round four. **Each Sections:** Trophies to top five and top Senior 55/over and Jr's under age 16 & 13. **Championship:** Trophies to top U2000, U1900 and U1850. **Reserve:** Trophies to top U1600 and U1500. **Booster:** Trophies to top U1200, U1100, U1000, U900 and U800. **EF:** \$49 if postmarked by May 23, or paid online via EntryFeesRus.com. **EF:** at site \$60 cash. **Byes:** Three 1/2 point byes allowed in rounds 1-5. **Ent:** Ken Thomas, 115 W. Moore St., Hackettstown, NJ 07840. Checks to NJSCF. **Info:** 908-619-8621 or acn@goes.com. NS. NC. W. Chess Magnet School JGP.

June 9-10, Tennessee
2012 U.S. Amateur South Championship
University of Memphis, University Center, 499 University St., Memphis, TN 38152. **SECTIONS:** Championship (U2200) & Reserve (U1600). **SCHEDULE:** 5/SS, G/90 td/5. **Reg.:** Sat. 9:00-9:45AM. **Rds.:** Sat. 10-2+6; Sun. 9:30-1:30. **PRIZES:** \$1000 of Gift Certificates and awards based on 60 paid entries. **(Championship):** 1st-"River Cup" + \$150 GC, 2nd-plateau + \$100 GC, 3rd-plateau + \$75 GC; U2000 1st-small trophy + \$50 GC. **(Reserve):** 1st-large plateau + \$125 GC, 2nd-plateau + \$75 GC, 3rd-plateau + \$50 GC; U1400 1st-small trophy + \$50 GC; Unrated 1st-\$50 GC. **EF:** \$40 \$10 less to Juniors under age 18 or Seniors over age 60, \$50 on-site. **MISC:** One requested half-point bye allowed, any round, must request before the start of Round 3. **SIDE EVENT:** SATURDAY ONLY—Scholastic (K-12) sections in a separate room from main tournament: U1000, U550, & Unrated. 4/SS, G/30 td/5. Reg. 11-11:45AM. Rd. 1 at 12PM, rest ASAP EF-\$15 by two days before the event, \$20 after & on-site. Trophies or Medals for All Side Event players! **ADDL. DETAILS:** www.shelbycountychess.org. **ENTRY:** Online entry at www.cajunchess.com or mail registration to Shelby County Chess, ATTN: Amateur South, 1614 Vance Ave., Memphis, TN 38104. **INFO:** Arlene Kleinman, mid-southchess@hotmail.com; Korey Kormick, kjkormick@hotmail.com. **Chess Magnet School JGP for main event.**

June 14, Nevada
Trophies Plus Grand Prix Points: 80 (enhanced)
2012 U.S. Game/10 Championship (QC)
6SS, G/10. Riviera Hotel and Casino, 2901 Las Vegas Boulevard South,

Las Vegas 89109. **\$\$\$ 5,000.** 1500-800-500, U2300 450, U2100 400, U1900 350, U1700 300, U1500 250, U1300 200, U1100 150, unrated 100. There must be 3 players eligible for each prize to be awarded. **EF:** \$69 by 5/28, \$79 by 6/13 \$100 on site. **REG.:** 2-4 p.m. **Rds.:** 5-5:30-6-6:30-7-7:30. Higher of regular or quick rating used. Bring clocks. 1/2 point by available in any round (limit 2). **HR:** \$59 single or double (\$89 Friday and Saturday nights), 1-800-634-6753 or (702) 734-5110. **ENT:** National Open, PO Box 90925, Henderson, NV 89009-0125, on line www.VegasChessFestival.com or fax at (702) 933-9112. NS. NC. W.

A Heritage Event!
An American Classic!
June 15-17 or 16-17, Nevada
Trophies Plus Grand Prix Points: 200 (enhanced)
2012 National Open
6-SS, 40/2, SD/1 (2 day option rds 1-3 G/45). Riviera Hotel and Casino, 2901 Las Vegas Boulevard South, Las Vegas 89109. **\$\$\$80,000 Guaranteed Prize Fund** will not be reduced. **Championship. \$\$\$:** 6400-3200-1600-800-500-300-300-300-300-200-200-200-200-200, under 2500 1600, under 2400 1200, under 2300 1000. \$2,000 EXTRA for perfect score. The winner of the Championship section also receives a replica of the Edmondson Cup. **Under 2200. \$\$\$:** 3200-1600-800-500-400-250-250-250-250-200-200-200-200. **Under 2000. \$\$\$:** 3200-1600-800-500-400-250-250-250-250-200-200-200-200. **Under 1800. \$\$\$:** 3200-1600-800-500-400-250-250-250-250-200-200-200-200. **Under 1600. \$\$\$:** 3200-1600-800-500-400-250-250-250-250-200-200-200-200. **Under 1400. \$\$\$:** 2000-1000-700-400-300-250-250-250-250-200-200-200. **Under 1200. \$\$\$:** 1200-600-400-300-250-200-200-200. **Unrated, \$\$\$:** 500-300-200. **Plus Score Bonus** (\$14,000 guaranteed) in addition to any other prizes, every player who finishes with 3-1/2 points or better wins a \$50 gift certificate. Plus score certificates will be awarded on site only. Players under age 15 are eligible for best game prizes including the Freddie award plus \$200 donated by Fred Gruenberg. Top 2 sections FIDE rated. **EF:** \$169 by 2/29, \$199 by 5/28, \$219 by 6/13, \$240 on site. \$40 discount for seniors 65 and over. Add \$120 for adults rated under 2100 or juniors under 2000 playing in the Championship Section. This is an open tournament - you may play in any section at or above your rating level; unrated players may play only in Unrated or Championship Section. Provisionally rated players may not win more than 3rd prize in any section except Championship. CCA minimum ratings or other ratings may be used if higher than USCF June Supplement. **Reg.:** 3 p.m.-10 p.m. Thursday, 8-8:30 a.m. Friday. **Rds.:** 11-6, 10-5, 10-5. 2-day schedule: **Reg.:** 8-9 a.m. Saturday. **Rds.:** 10-12:2-5: merge with 3-day in round 4. Half point byes available in any round, but round 5 or 6 byes must be requested before the start of round 2. Chess sets and boards provided for tournament play only, not for skittles. Please bring chess clocks! **The LAS VEGAS INTERNATIONAL CHESS FESTIVAL** features the National Open, the U.S. Game/10 Championship, the International Youth Championship and other events. **Many free extras and surprises! Free parking.** Free raffle with great prizes. **Free GM Lectures.** Free GM analysis of your games. **Grandmaster Chess Camp** for all ages on Thursday, U.S. Game/10 and Saturday Simuls Thursday afternoon. **Youth Tournaments** Friday, Saturday & Sunday. **Poker Tournament** Monday morning. **LOW room rates!** **HR: \$59 single or double (\$89 Friday and Saturday nights),** 1-800-634-6753 or (702) 734-5110. **Don't be shut out; make your reservations early and be sure to ask for the chess rates;** The Riviera sells out most weekends. Cutoff for special hotel rate is **May 28th.** Rates may be as high as \$150 a night later. **RESERVE NOW!** Credit card or one night room deposit will be required to hold reservation, can be canceled 72 hours in advance for nominal fee. **Tournament Registration:** National Open, PO Box 90925, Henderson, NV 89009-0125, on line at www.VegasChessFestival.com or by fax at (702) 933-9112. **Info:** (702) 560-0955 and leave a message. NS. W. FIDE. **Chess Magnet School JGP.**

GRAND PRIX

Feb. 11, New York
Trophies Plus Grand Prix Points: 10 (enhanced)
New Yorker Winter Game/75!
4-SS, G/75 + td/5. Chess Center at the New Yorker Hotel, 481 8th Ave at 34th St., across from Penn Station, NYC. 845-569-9969. **EF:** \$40, \$33 postmarked by 2/3, \$35 phoned with credit card by 2/8 to 406-896-2191 (credit card entries only), \$33 online at www.chesscenter.com thru 2/8, GMs free (\$25 from prize), free to specified Greater NY Scholastic prizewinners! **\$\$\$1,200 b/60** paid entries, minimum half each prize Gtd: \$300-200-100, top U2200/Unr. \$150, U2000 \$130, U1800 \$120; **Mixed Doubles Bonus Prizes:** best male/female duo combined score (must declare by 1:30pm): \$125-75. Limit 2 byes (1 by e if U2000), commit by 2 pm. Re-entry \$20. **Ent** (mail by 2/3): **Chess Center of NY**, PO Box 4615, New Windsor, NY 12553. CCA ratings may be used. Reg. ends 30 min before game. Rds. 11 am-2:45-7:45 pm. **Bring sets, clocks! Chess Magnet School JGP.**

Feb. 24-26, Iowa
Trophies Plus Grand Prix Points: 6
Quad Cities Chess Championship at The Lodge
5SS, 30/60, SD/60. The Lodge, 900 Spruce Hills Dr., Bettendorf, IA 52722. **Info:** www.lodgehotel.com. **EF:** \$500 gtd. \$150-100-50, U1600, U1400, U1200, U1000 \$50 each. **EF:** \$20 by Feb 22 (\$5 more if on-site). **Rds.:** 1st rd either Fri 8pm or Sat 9am, then Sat 2:30pm-8pm, Sun 9am-2:30pm. **Info:** Kevin Hyde, hyde@ioa.com, 828-674-6073. **HR:** \$89 www.lodgehotel.com. **Chess Magnet School JGP.**

Feb. 25-26, Maryland
Trophies Plus Grand Prix Points: 10
UMBC Open - Alvin S. Mintzes Chess Tournament
5SS, 20/1, SD/60/D/5. University of Maryland, Baltimore County, 1000 Hilltop Circle, Baltimore (in Commons, 3rd floor). Held concurrently with Maryland "Sweet 16" (Invitational) - winner to receive in-state fixed-dollar tuition scholarship to UMBC. **Open:** (All) \$51050: \$350-200-100 Gtd., Class prizes \$100 ea. To top U2250, U2150, U2050, U1950. Free ent to GMs, \$40 deducted from any prizes. **U1800:** (U1800/Unr.) \$5765 b/40: \$250-175-100, Class prizes \$80 ea. to top U1600, U1400, U1200 (b/4). No Unr. player may win more than \$200 in this section. **All: EF:** \$40 if postmarked by 2/10, \$50 later, \$10 less if under age 20. **Reg.:** 8:30-

9:30am Sat., **Rds.:** 10-3-7:30pm Sat, 10:30-3:30pm Sun. Byes: Up to three 1/2-pt. byes avail. in Rds. 1-5 if req'd at least 1 hr. before Rd. (before Rd 2 for any Rd. 4-5) bye, but only at most one 1/2-point bye in Rds. 4-5. **HR:** La Quinta Inn and Suites, 1734 West Nursery Rd., Linthicum, MD 21090, 410-859-2333, Ask for UMBC chess rate. www.iq.com (From I-95, take Exit 47A onto I-195 towards BWI Airport. Take Exit 2A onto 295 north towards Baltimore; take first exit, bearing right onto West Nursery Road.) **Directions to UMBC:** Take Exit 47B off I-95 & follow signs to UMBC. Park in Lot 9 or 16. **Ent:** Dr. Alan T. Sherman, Dept. of CSEE, UMBC, Attn: Open, 1000 Hilltop Circle, Baltimore, MD 21250. Make out check to UMBC. For more information: ChessClub@umbc.edu, (410) 455-8499, www.umbc.edu/chess. NS, W. Chess Magnet School JGP.

Feb. 26, New Mexico
Trophies Plus Grand Prix Points: 10 (enhanced)
2012 U.S. G/15 Championship (QC)
See Nationals

Mar. 2, Pennsylvania
Trophies Plus Grand Prix Points: 6
2012 PA Quick Chess Champ (QC)
6SS, G/7d3. Hotel Carlisle & Embers Convention Center, 1700 Harrisburg Pike, Carlisle, PA 17015, Exit 52A NB/Exit 52 SB off I-81, Exit 226 off PA Turnpike. 3 sections. EF rec'd by 2/13. **Open:** \$12. **U1500:** \$10. **U1100:** \$8. **\$\$\$ (730G):** **Open:** 175-100-50, U1800 \$45, U1600 \$40. **U1500:** 125-75-50, U1200 \$40, Unr \$30. **U1100:** Trophies: 1-10, U800, U600, 1-2 Unr. **All: EF:** \$20 after 2/13, PSCF \$5 OSA. **Reg.:** 6-6:30pm. Rd 1: 7pm. Feb 2012 Regular ratings used. Byes: limit 1, ask by rd 2. **HR:** Mention "PA States" for best rate; 800-692-7315 \$75. **Ent:** PSCF, c/o Tom Martinak, 25 Freepost St., Pittsburgh, PA 15223-2245. **Info:** martinak_tom_m@hotmail.com, 412-908-0286. W.

Mar. 3-4, Pennsylvania
Trophies Plus Grand Prix Points: 6
2012 Carlisle Open & PA Collegiate Championship
5SS, G/90d5. Hotel Carlisle & Embers Convention Center, 1700 Harrisburg Pike, Carlisle, PA 17015, Exit 52A NB/Exit 52 SB off I-81, Exit 226 off PA Turnpike. 2 sections: **Open & U1500. \$\$\$ (1260G):** **Open:** 180-120, U2200 \$110, U2000 \$100, U1800 \$90, U1600 \$80. **U1500:** 150-100, U1400 \$90, U1200 \$85, U1000 \$80, Unr \$75. **All:** College Tr: 1-2 in each section, 1-2 team (top 4 over both sections). **EF:** \$29 rec'd by 2/13, \$39 after, PSCF \$5 OSA. **Reg.:** 8:45-9:30 am. Rds. 10-2:50, 9-1. Feb 2012 ratings used. Bye: limit 1, ask by rd 2. **HR:** Mention "PA States" for best rate; 800-692-7315 \$75. **Ent:** PSCF, c/o Tom Martinak, 25 Freepost St., Pittsburgh, PA 15223-2245. **Info:** martinak_tom_m@hotmail.com, 412-908-0286. W. **Chess Magnet School JGP.**

Mar. 16-18 or 17-18, California, Northern
Trophies Plus Grand Prix Points: 6
Bay Area Chess Spring Open
5SS, G/120 (2day rds 1-2 G/45). 1639A S. Main St., Milpitas. Park free. **Prize:** \$2,400 b/55. **3 Sections.** 1900+ \$300-200-100 u2100-100-80. 1500-1899 \$300-200-100 u700-100-70-70. U1500 \$300-200-70 u1300: 100-70-70. Unr max \$100 exc Open. **EF:** \$67 (2d \$66) by 3/14, Onsite +15 Playup +20, r/e \$3 EconOpt: EF-20, 1/2 of calc prize. GMs/IMs free: prize/EF Mar 12 Supp, CCA min & TD disc used. **Sched:** Reg F 6-6:30p, Rds F 7, Sa/Su 9-30. 2 (2 day Reg Sa 8:30-9a Rds Sa 9:30, 11:30 merge rd3). Max two 1/2-pt byes commit bef rd3. **Info:** BayAreaChess.com/spring12. E: ask@BayAreaChess.com. NS, NC, W. **Chess Magnet School JGP.**

A State Championship Event!
Mar. 31, Connecticut
Trophies Plus Grand Prix Points: 10
2012 CT Open State Championship
\$\$\$2000 b/60. 4-SS, G/60. Hopkins School, 986 Forest Rd., New Haven, CT 06515. Two Sections: **OPEN, U1600. EF:** \$60 Online or mail, \$100 at site. **Prizes:** Open \$500-\$300-\$200 3x\$100, 5x\$50, U1600 \$300-\$100-\$50. **Trophies:** CT Open Champion, U1600 Champion, **ONE DAY Reg.:** 8:00-8:45. **Rds.:** 9-11-1-3. **Register Online:** www.edutechchess.com or www.CTChess.com.

Apr. 1, Pennsylvania
Trophies Plus Grand Prix Points: 6
2012 PA State Game/29 Champ. (QC)
5SS, G/29d0. O'Hara Student Center, Univ. of Pitt., 4024 O'Hara St., Pittsburgh, PA 15213. 2 Sections: **Champ: EF:** \$25 by 3/24, \$35 later. \$5 (690G): \$200-100, U2000 \$90, U1800 \$80, U1600 \$70, U1400 \$60, U1200 \$50, U1000 \$40. Trophies: 1-3 U1400, 1-3 U1200, 1-3 U1000. **Scholastic:** Grades K-12 unrated or U900. **EF:** \$15 by 3/24, \$25 later. Trophies to Top 7, 1-3 U600. **All:** Trophies: 1-2 Schools, 1-2 Clubs, Teams of 4-7 players from both sections. PSCF \$5, OSA. **Reg.:** 10-10:30am. **Rds.:** 11-12-30: 1:45-3:45. **Ent/Info:** PSCF, c/o Tom Martinak, 25 Freepost St., Pittsburgh, PA 15223-2245, 412-908-0286, W.

May 26-28 or 27-28, California, Northern
Trophies Plus Grand Prix Points: 100 (enhanced)
Best of the West Class Championship
6SS, 30/90 sd/60 (2-day rds 1-3 G/60 merge in rd4). Marriott, 2700 Mission College Blvd., Santa Clara, CA. Hotel \$89. **Prize: \$17,000 b/264** (2/3rd guaranteed). 6 sections. **Open** (2200 + FIDE rated 82% Gtd): 2500-1200-600-200, top u2300 300-100. **Expert/A/B/C:** 1200-600-300-100-100-100. **D/E/Unr:** 1000-400-200-100, top u2100 600-300-100. Unr max \$300 exc in Open. **EF by 5/22:** \$99. Onsite + \$25, Play-up + \$20. r/e \$40. Econ Opt: EF-20 & 2/3 calc prize (not avail in Open). GMs/IMs free: prize/EF May 2012 Supp, CCA min, & TD disc to place players. **Sched:** 3-day Reg Sa 10-11, Rds Sa 10-11:30-3:30, Mo 10-3:30, Mo 10-3:30; 2-day Reg Su 9-9:30, Rds Su 10-10:12:30-2:50-5:30, Mo 10-3:30. Max two 1/2-pt byes, commit bef rd 3. Parking \$5. **Ent:** Bay Area Chess, 1639A S. Main St., Milpitas, CA 95035. Rfnd fee \$20. **Info:** BayAreaChess.com/bestwest. E: ask@BayAreaChess.com. f: 408.786.5515. NS, NC, W. **Chess Magnet School JGP.**

June 14, Nevada
Trophies Plus Grand Prix Points: 80 (enhanced)
2012 U.S. Game/10 Championship (QC)
See Nationals.

A Heritage Event!
An American Classic!

Tournament Life

June 15-17 or 16-17, Nevada

Trophies Plus Grand Prix Points: 200 (enhanced)
2012 National Open
See Nationals.

REGIONAL

Alabama

A Heritage Event!

Feb. 18-19, Queen of Hearts - 40th Annual

5SS, TC: 30/90; SD/30. AUM Taylor Center. 7401 East Dr., Montgomery, AL 36117. **OPEN (\$5b/25):** \$325-200-150-A:125-U1800: \$100; **RESERVE (\$5 b/25):** \$275-150-125-E:100-U1000: \$75. **Late REG.:** FEB 18th, 8-8:45am. **Rds.:** 9-2-7; 9-2-30. **EF: \$40;** if mailed by FEB 11th; **\$50** at site. **SCHOLASTIC (K-12):** 5SS, TC: G/30. **PREMIER (UNR-1200) and NOVICE (K-8; Not Rated): EF: \$20/\$10;** if mailed by FEB 11th, **\$10 more** at site. **Trophy:** Top 3; Medals 4th-6th. **Rds.:** 9-10:15-12-1:15; 2:30. Checks payable to: **Montgomery Chess Club. ENT:** Montgomery Chess Club, 2625 Burkelaun Dr., Montgomery, AL 36111. **Info:** ChessClubMontgomery@gmail.com/www.AlabamaChess.com. Chess Magnet School JGP.

Mar. 3, Alabaster Scholastic

5SS, TC: G/30. **Thompson Intermediate School**, 10019 Hwy 119, Alabaster, AL 35007. **Open (K-12): EF: \$20;** Middle (K-8), Elementary (K-4): **EF: \$10;** if mailed by FEB 25th. **Trophy:** Top 3 Individual, Medals 4th-6th. **Late REG.:** MAR 3rd at 8AM. **Rds.:** 9-10:15-12-1:15-2:30. Checks payable to: **Caesar Chess. ENT:** Caesar Chess LLC, 5184 Caldwell Mill Rd., Suite 204 - 202, Birmingham, AL 35244. **Info:** CaesarChess@yahoo.com/www.AlabamaChess.com.

California, Northern

Capital City C. C. Sundays Chess for Kids

Round Table Pizza, 3005 Freepoint Blvd., Sacramento. Quads (3/RR). T/C: G/30 w/5 Second Delay. **RDS.:** 12pm/Ongoing. **PRIZES:** 1st - Trophy or Inscribed Chess Clock, 1st thru 4th - Medals or Pins. **TIE-BREAK:** G/7 w/3 Second Delay. **EF:** \$20 (Includes \$5 Food Gift Certificate). **REG.:** 11am at Site Only. **DIRECTOR:** John C. Barnard 209-450-6133. JohnCharlesBarnard@gmail.com, capitalcitychessclub.com.

Feb. 11, Pleasanton Taco Bell Quads at Hilton

Hilton, 7050 Johnson Dr., Pleasanton. **Trophies:** Players w/winning record. **Sched:** Check-in 4p, Games 4:30-6:30p. 3xG/30. **EF:** \$25 by 2/9, Onsite +\$15. **Info/flyer:** BayAreaChess.com/tacobell12. NS. NC.

Feb. 11, Pleasanton Taco Bell SuperSwiss at Hilton

Hilton, 7050 Johnson Dr., Pleasanton. **Prize:** \$1000 b/44. **Sched:** Reg 9-9:30 4ssxg60 10 12:30 2:50 5:10. **2 Sects:** u1700, 1700 +. **EF:** \$44 by 2/9. **Info:** BayAreaChess.com/superswiss12. NS, NC, W.

Feb. 11, Pleasanton Taco Bell Swiss at Hilton

Hilton, 7050 Johnson Dr., Pleasanton. **Trophies:** Players w/winning record, teams w/2+ players. **Sched:** Reg 9-9:30a. Games 10a-2p. **3 Sections:** u500 5xG30, u900 5xG30, 900+ 4xG45. **EF:** \$33 by 2/9, Onsite +\$15. **Info/flyer:** BayAreaChess.com/tacobell12. NS. NC.

Feb. 18-20, 29th Annual U.S. Amateur Team Championship West

See Nationals.

Mar. 3-4, 2012 U.S. Junior Chess Congress

See Nationals.

Mar. 16-18 or 17-18, Bay Area Chess Spring Open

See Grand Prix.

Mar. 31, Santa Clara County Elementary Championship

Harker Middle, 3800 Blackford Ave., San Jose. **Trophies:** Top 7 players & Top 5 teams in each section. 7 sections based on grade KG-6. **Sched:** Reg. 8:30-9a. **KG, Gr 1 2 3:** 5xG/30 games 9:30, 10:45, 12:30; 1:45; 3. **Gr 4 5 6:** 4xG/45 games 9:30, 11:15, 1:15; 3. **EF:** \$37 by 3/28. **Info/flyer:** BayAreaChess.com/santaclarac12. NS, NC, W.

Apr. 7, May 6, Bay Area Chess 4Less Quads

1639A S. Main St., Milpitas. **Trophies:** Players w/winning record. **Sched:** Check-in by: 3:15p, 3xG/30. **Games:** 3:45-6. **EF:** \$19 by Wed before tourney. **Info/flyer:** BayAreaChess.com/chess4less. NS. NC.

Apr. 7, May 6, Bay Area Chess 4 Less Swiss

1639A S. Main St., Milpitas. **Trophies:** Players w/winning record, teams w/2+ players. **Sched:** Reg. 8:30-9a. **Games:** 9:30a-2p. 3 Sections: u500 5xG/30, u900 5xG/30, 900+ 4xG/45. **EF:** \$27 by Wed before tourney. **Info/flyer:** BayAreaChess.com/chess4less. NS. NC.

A State Championship Event!

Apr. 20 or 21 or 22 or 21-22, CalChess State Scholastics Championship 2012

Note corrections: Santa Clara Convention Center, 5001 Great America Pkwy. Park free. Hotel \$109: Hyatt Regency, 5101 Great America Pkwy., Santa Clara. **Main Event:** Trophies to all KG & top 20 players (winning record) in each section. Medals to others. K-3 u900 sections: Sat 9a, K & 4-6 u750: Sun 9a. **Blitz Fr 6-8:30p. Bughouse Sa 6-8:30p.** **EF:** by 4/10: 1-day \$48, 2-day \$60. Onsite +\$40. **Apr. Supp & TD** disc to place players. **Info/Reg:** CalChessScholastics.org. **Quest:** ask@BayAreaChess.com. USCF + CalChess Mem reqd. NS, NC, W.

May 26-28 or 27-28, Best of the West Class Championship

See Grand Prix.

May 27, Azhar Memorial NorCal Grade Level Champ

Marriott, 2700 Mission College Blvd., Santa Clara, CA. Hotel \$89. **Trophies:** Top 20 players & Top 10 teams in ea section. **8 sections:** KG 1 2 3 4 5 6 7-12. **Sched:** Reg. 8:30-9a. **K-3:** 5xG/30 games 9:30 11 12:30 1:50 3:15. **Gr 4-12:** 4xG/45 games 9:30 11:20 1:15 3:15. **EF:** by 5/22: \$39. **Info:** BayAreaChess.com/grade12. NS, NC, W.

California, Southern

Feb. 5, 12, 19, 26, LACC - Every Sunday Chess 4 Jrs.

4 separate events - 2 Sections: 1000+ & U1000 (latest ratings used),

5SS, G/30. 11514 Santa Monica Blvd., LA, 90025, 2nd fl. 4 blocks W 405. **EF:** \$25 (\$20 LACC memb, \$10 off siblings, Free new LACC memb). **REG.:** 12-1 pm. **Rds.:** 1, 2, 3, 4 pm; **Prizes:** Trophies (Top 3) & Medals (rest); each player receives a prize! **Parking:** Free at BoA and streets. Free snacks & free class (12-1). **Info:** (310) 795-5710 or Mick@LACCChess-Club.com.

Mar. 9-11 or 10-11, 19th annual Western Class Championships

See Chess Life or www.chesstour.com.

Apr. 27-29, 2012 National Junior High (K-9) Championship

See Nationals.

May 4-6 or 5-6, Western Amateur

See Chess Life or www.chesstour.com.

Connecticut

A State Championship Event!

Mar. 31, 2012 CT Open State Championship

See Grand Prix.

Mar. 31, 2012 New Haven Scholastic Championship

5-SS, G/30. Hopkins School, 986 Forest Rd., New Haven, CT. 06515. Three Sections: **U1200, U1000, U800/unrated. EF:** \$50 Online or mail, \$100 at site. **Trophies:** Top 5 each section, Top 3 Scholastic Teams. **ONE DAY Reg.:** 9:00-9:45. Rd. 1 10am then asap. **Register Online:** www.edutechchess.com or www.CTChess.com.

Florida

Boca Raton Chess Club

Friday nights, Game 90 Tournament, one game a week for 4 weeks. www.bocacchess.com, 561-479-0351. **Chess Magnet School JGP.**

Feb. 17-19 or 18-19, 2012 U.S. Amateur Team Championship - South

See Nationals.

Mar. 30-Apr. 1 or Mar. 31-Apr. 1, 10th Annual Southern Class Championships

See Chess Life or www.chesstour.com.

Illinois

Feb. 12, Knights Quest #74

4SS, G/30, d5. Renaissance Chicago North Shore Hotel, 933 Skokie Blvd., Northbrook, IL. Presented by Renaissance Knights Chess Foundation. **USCF Rated Sections: Open (K-12 & Adults), U1400 (K-12 & Adults), U1000 (K-8) & U600 (K-8). Awards:** Top 5 each section, Top 2 teams (except open), medals all others. **Reg.:** 12:00-12:30 pm. **Rds.:** 1 at 1:00 pm, rest ASAP. **EF:** \$25 by 2/6, \$30 after, \$35 on-site. **Online Registration:** http://events.r20.constantcontact.com/register/event?llr=mlwzh4bab&oidk=a07e5a1217j49897fla. **Mail-in Reg:** Renaissance Knights, PO Box 1074, Northbrook, IL 60065. \$5 discount to siblings and team members when registering together. **Info:** www.rknights.org, 773-844-0701.

Feb. 17-19 or 18-19, 2012 U.S. Amateur Team Championship - North

See Nationals.

Feb. 24-26, Quad Cities Chess Championship at The Lodge (IA)

Across the river from Moline, IL. See Grand Prix.

Mar. 18, Knights Quest #75

4SS, G/30, d5. Renaissance Chicago North Shore Hotel, 933 Skokie Blvd., Northbrook, IL. Presented by Renaissance Knights Chess Foundation. **USCF Rated Sections: Open (K-12 & Adults), U1400 (K-12 & Adults), U1000 (K-8) & U600 (K-8). Awards:** Top 5 each section, Top 2 teams (except open), medals all others. **Reg.:** 12:00-12:30 pm. **Rds.:** 1 at 1:00 pm, rest ASAP. **EF:** \$25 by 3/12, \$30 after, \$35 on-site. **Online Registration:** http://events.r20.constantcontact.com/register/event?oidk=a07e5a13w1a2054394&llr=mlwzh4bab. **Mail-in Reg:** Renaissance Knights, PO Box 1074, Northbrook, IL 60065. \$5 discount to siblings and team members when registering together. **Info:** www.rknights.org, 773-844-0701.

Apr. 20-22, 2012 All-Girls National Championships presented by the Kasparov Chess Foundation in association with the Renaissance Knights Chess Foundation & USCF

See Nationals.

May 24-28, 25-28, 26-28 or 27-28, 21st annual Chicago Open

See Chess Life or www.chesstour.com.

Iowa

Feb. 24-26, Quad Cities Chess Championship at The Lodge

See Grand Prix.

Kentucky

Mar. 24, Knights of Northern Kentucky Scholastic Chess Tournament

5 Rounds, G/30 Rounds 1-3, G/45 Rounds 4-5. Rated (USCF member) \$15 and Non-rated/Novice \$10 before 3/17/2012. RD 1 starts at 9:30 AM, RD 2-5 ASAP. **Prizes:** Top 25% of each section get trophies in both rated and non-rated/novice, sections are K-1, K-3, K-5, K-8, K-12 and will combine and divide depending on entries. All participants get a memento of the day. **Location:** Walton-Verona High School/Middle School, 30 School Rd., Walton, KY 41094. **Contact:** Linda Fritz, fritzlinda@aol.com, 859.630.2694. See website for more info: www.knightchess.org.

Maryland

Feb. 25-26, UMBG Open - Alvin S. Mintzes Chess Tournament

See Grand Prix.

Massachusetts

Mar. 2-4 or 3-4, 21st annual Eastern Class Championships

See Chess Life or www.chesstour.com.

Mar. 31, 2012 CT Open State Championship (CT)

See Grand Prix.

Mar. 31, 2012 New Haven Scholastic Championship (CT)

See Connecticut.

Minnesota

Apr. 13-15, 2012 National High School (K-12) Championship

See Nationals.

Missouri

Mar. 16-18 or 17-18, 16th annual Mid-America Open

See Chess Life or www.chesstour.com.

Nevada

June 14, 2012 U.S. Game/10 Championship (QC)

See Nationals.

June 15, National Open Scholastic Trophy Tournament

5-SS, Game/30. Riviera Hotel and Casino, 2901 Las Vegas Boulevard South, Las Vegas 89109. Open to players 18 and under. **In 3 sections:** U1800, U1200, and U800. Unrateds in the U1200 section and all players in the U800 section must be age 11 or under. **Trophies:** to top 5 in each section, top 2 in each odd 200 point rating group and unrated. **EF:** \$33 by 5/28, \$39 by 6/13, \$45 on site. **REG.:** 9-9:30 a.m. **RDS.:** 10-11:15-12:15-3:30. **Blitz:** 6:30 p.m. (\$15 by 5/28 \$20 on site) **HR:** \$59 single or double (\$89 Friday and Saturday nights). 1-800-634-6753 or (702) 734-5110. **ENT:** National Open, PO Box 90925, Henderson, NV 89009-0125, on line www.VegasChessFestival.com or fax at (702) 933-9112. NS. NC. W.

A Heritage Event!

An American Classic!

June 15-17 or 16-17, 2012 National Open

See Nationals.

June 16-17, International Youth Championship

5SS, Game/60. Riviera Hotel and Casino, 2901 Las Vegas Boulevard South, Las Vegas 89109. **In 4 Sections by age:** 14 and Under, 14 and Under Reserve (rated below 1100), 9 and Under, 9 and Under Reserve (rated below 900). **Trophies:** to top 10 in each section plus class trophies and team trophies. 1st Place in each section wins a **Computer** loaded with Chess Software, 2nd-4th win chess prizes valued at 250-150-100. Unrated players may not win 1st in Reserve sections. **EF:** \$59 by 5/27, \$69 by 6/13, \$80 on site. 1/2 point bye in any round (limit 2) if requested in advance. **REG.:** 8-9 a.m. **RDS.:** 10-1-4, 10-1. **Blitz:** 6/15 at 6:30 p.m. (\$15 by 5/28 \$20 on site) **HR:** \$59 single or double (\$89 Friday and Saturday nights). 1-800-634-6753 or (702) 734-5110. **ENT:** National Open, PO Box 90925, Henderson, NV 89009-0125, on line www.VegasChessFestival.com or fax at (702) 933-9112. NS. NC. W.

New Jersey

Feb. 6, 13, 27, Sunday Camp and Scholastic Tournament

Sunday Chess Camp: 10am - 6pm. **Registration fee:** \$85 members / \$95 Non-members. Snacks and lunch included. **Quad G/30:** 3pm-6pm **EF:** \$15/non-member and \$10/member. **Prize per Quad:** 1st Place: Trophy or \$25. Chess Mates Corporation, 1531 Irving St., Rahway, NJ. **Info:** Arthur Macaspac (760)583-8429/(732)499-0118. www.chessmatesnj.com.

A Heritage Event!

Feb. 18-20, 42nd Annual World Amateur Team & U.S. Team East

See Nationals.

A State Championship Event!

Feb. 26, New Jersey State Elementary Championships

5SS, G/30. Brookdale College, 765 Newman Springs Rd., Lincroft, NJ 07738. Student Life Center, use Parking Lot #7 or #6; 5 minutes from Garden State Parkway exit 109. **2 Sections:** Elementary (K-6) & Primary (K-3). **All:** Trophies to top 15 individuals, top 5 teams. Elementary & Primary: Top 5 in each grade. **Rds.:** 10am then ASAP. Top 4 scores constitute the team score for Elementary; top 3 for Primary. **EF:** \$30 before 2/18, \$45 at site. USCF memb. req'd. **Reg.:** 8-9:00am After 9:00am 1/2 point bye for round 1. **Info:** 732-259-3881. **Ent:** Hal Sprechman, PO. Box 1511, Jackson, NJ 08527 or online at www.characterkings.org. Entries must include name, grade, school, date of birth, USCF ID and expiration date, mailing address, email address, phone number and entry fee. Checks made out to NJSCF.

A State Championship Event!

Feb. 26 NOT Mar. 4, New Jersey Junior High School Championships

NOTE DATE CORRECTION. 5SS, G/30. Brookdale College, 765 Newman Springs Rd., Lincroft, NJ 07738. Student Life Center, use Parking Lot #7 or #6; 5 minutes from Garden State Parkway exit 109. 5SS, G/30. **Section: JHS (K-9). ALL:** Trophies to top 15 individuals, top 5 teams. **Rds.:** 10am then ASAP. Top 4 scores constitute team score. **EF:** \$30 before 2/18, \$45 at site. USCF memb. req'd. **Reg.:** 8-9:00 am. After 9:00 am, half-point bye for round one. **INFO:** 732-259-3881, hsprechman@characterkings.org. **ENT:** Hal Sprechman, PO. Box 1511, Jackson, NJ 08527 or online at www.characterkings.org. Entries must include name, grade, school, date of birth, USCF ID #, & expiration date, mailing address, phone number & entry fee. Checks made out to NJSCF.

A State Championship Event!

Mar. 3-4, New Jersey High School Chess Championships

5SS, G/90. Union County Vocational - Technical School, 1776 Raritan Rd., Scotch Plains, NJ 07076. 3 sections: **Varsity Championship (9-12):** 5 player teams with one alternate allowed. Coaches set order by player strength. Order must not be changed. Team avg. based on top 5 highest ratings. Trophies to top 10 NJ teams. Trophies for top three players, boards 1-5. **Rds.:** Sat. 10-2-6, Sun. 10-2. **EF:** \$150-/team before 2/25. \$185/team at site. \$5 per change on site. **Junior Varsity (9-12):** 4 player teams with one alternate allowed. Team avg. based on top 4 highest ratings. Trophies to top 10 NJ teams. Trophies for top 3 players, boards 1-4. **Rds.:** Sat. 10-2-6, Sun. 10-2. **EF:** \$120/team before 2/25, \$150/team on

site. \$5 per change on site. **Booster (K-12):** Trophies to top 15 individuals, top 5 teams, top 2 **JHS** teams, & top 2 **elementary** teams (K-6). **Rds.:** Sat. 10-2-6, Sun 10-2. Top 4 scores constitute team score. **EF:** \$30 before 2/25, \$37 at site. **All:** USCF memb. required. **Reg.:** Sat. 8-9:00am. After 9:00am, 1/2 point bye for round one. **Ent:** Hal Sprechman, P.O. Box 1511, Jackson, NJ 08527 or online at www.characterkings.org. Entries must include name, grade, school, date of birth, USCF ID and expiration date, mailing address, email address, phone number and entry fee. Checks made out to NJSCF. **Chess Magnet School JGP.**

Mar. 6, 13, 20, 27, Sunday Camp and Scholastic Tournament Sunday Chess Camp: 10am – 6pm. **Registration fee:** \$85 members / \$95 Non-members. Snacks and lunch included. **Quad G/30:** 3pm-6pm **EF:** \$15/non-member and \$10/member. **Prize per Quad:** \$10. **Prize per Team:** \$25. Chess Mates Corporation, 1531 Irving St., Rahway, NJ. **Info:** Arthur Macaspac (760)583-8429/(732)499-0118. www.chessmatesnj.com.

Mar. 10, King's Chess Club Quads

Morning quads and afternoon quads, G/30, Kindergarten-undergraduate (scholastic, youth, and young adult memberships). Bethlehem Church, 758 Route 10, Randolph, NJ 07869. **EF:** None. **Reg.:** 9-9:20 am., 1st rd. 9:40. Arr. by noon to reg. only for afternoon quads. Medal to each quad winner. **Info:** Bethlehem Church 973-366-3434 or Bob McAdams 973-694-3988, rwm@fambright.com. Weather closings will be posted on church homepage at www.bethlehemchurch.org by 7:30am.

Mar. 10, Princeton Day School

650 The Great Road. Plaques to top 3 school teams and top 6 in each section. Medals to all players. Four sections for OVER 1000 begin at 10:15 and must preregister: **OVER 1600** (K-12), **NEAR MASTERS** (K-12 over 1400) and **FUTURE MASTERS** (Players K-12 over 1200) G/60, 3 rds. **CLOSED** (K-12 1000-1200) G/45 4 rds. **ALL OTHER SECTIONS.** G/30 4 rds. Beginning at 12:00 noon. (round times will be accelerated if possible): **OPEN** (Players K-12 U-1000), **RESERVE** (K-12 U-800), **NOVICE II** (K-8 U-600), **NOVICE I** (unrated K-6), **K-1** (unrated) **NO SCORE K-1** (unrated). **PARENTS OF PLAYERS** rated G/30 3 rounds. Pre-registration online, pay at the door \$35. Parents play free. On-site 11-12 noon **\$45.** **Info and register online:** www.pds.org/chess. Inquires to Bonnie Waitzkin Chesscoach@gmail.com.

Mar. 25, Westfield Spring Scholastic

Westfield Y, 220 Clark St., Westfield, NJ 07090. **K-12 3 Sections:** Open, Under 1250, Under 750. **Open:** 3 SS, G/40T/D 5 s, G/45. Trophies to top 5 in each section. **EF:** \$20, \$15 at site \$30, \$25 members. **Reg.:** 2-2:30 p.m. **Rds.:** 2:45-4:25-6:05 p.m. **Under 1250:** 4 SS, G/25T/D 5s, G/30. Trophies to top 5 in each section. **EF:** \$20, \$15 Members at site \$30, \$25 members. **Reg.:** 2-2:30 p.m. **Rds.:** 2:45-4:00-5:15-6:30 p.m. **Under 750:** 4 SS, G/25T/D 5s, G/30. Trophies to top 5 in each section. **EF:** \$20, \$15 Members at site \$30, \$25 Members. **Reg.:** 2-2:30 p.m. **Rds.:** 2:45-4:00-5:15-6:30 p.m. Tiebreaks for trophies. **Info:** Todd Lunna 732-526-7163, lunnaco@aol.com, www.westfieldchessclub.com. Send advance entries to: Todd Lunna, 36 Maple Dr., Colts Neck, NJ 07722 by March 21, 2012. Make checks payable to Westfield Chess Club.

May 26, U.S. Amateur K-8 East U1200

5-SS, G/30. Crowne Plaza Hotel, 110 Davidson Ave., Somerset, NJ, Telephone 732-560-0500. In 3 Sections (U1200, U900, & U600). Trophies to Top 10, Others win chess medallions. Unrated may not win first. **Registration:** Saturday May 26, 11am-12pm. **Rounds:** 12:30pm, then ASAP with lunch break after round #2. **EF:** \$29 if mailed by May 25 or paid online via EntryFeesRus.com. **EF:** \$40 cash at site. One 1/2 point bye allowed if requested with **EF:** April Rating supplement used. **Ent:** Ken Thomas, 115 W. Moore St., Hackettstown, NJ 07840. Checks to NJSCF. Indicate grade level. **Info:** 908-619-8621 or acn@goes.com. NS. NC. W.

May 26-28 or 27-28, 68th Annual U.S. Amateur East Championship
See Nationals.

New Mexico

Feb. 26, 2012 U.S. G/15 Championship (QC)

See Nationals.

New York

Feb. 11, New Yorker Winter Game/75!

See Grand Prix.

Feb. 18, Marshall Saturday G/60!

4-SS, G/55d5. Marshall CC, 23 W. 10th St., NYC. 212-477-3716. **(\$360/24):** \$160-80, U2000 \$65, U1700 \$55. **EF:** \$40, members \$20. **Reg.:** 11-15:11:45 am. **Rds.:** 12-2:30-4:45-7. One bye available, request at entry. www.marshallchessclub.org.

Feb. 19, Marshall Open & U1500 Sunday Game/45!

4-SS, G/40d5. Marshall CC, 23 W. 10th St., NYC. 212-477-3716. **Two sections-**you play only those in your section: **A. Open (\$360/24):** \$160-80, U2100 \$65, U1800 \$55. **B. U1500 (\$240/16):** \$120-65, U1200 \$55. **EF:** \$40, members \$20. **Reg.:** 11-15:11:45 am. **Rds.:** 12-1:45-4:00-5:45. One bye available, request at entry. www.marshallchessclub.org.

Feb. 19, Mar. 18, 25, NY Chess Kids

Open: Open to K-12. USCF Rating 1300-1599. 3 Rounds, Game/75. **Feb. 19 location:** PS116 - 210 East 33rd St., (between 2nd & 3rd Ave.), New York, NY 10016. **Mar. 25 location:** P577 - 1700 3rd Ave., (between 95th & 96th Street), New York, NY 10016. Trophies to Top 10, then medals to all. If 2 players are tied for first place there will be a "blitz" play off to determine the winner of this section. **K-1:** Open to K-1. USCF Rating before 600. 4 Rounds, Game/45. Trophies to Top 10, then medals to all. If 2 players are tied for first place there will be a "blitz" play off to determine the winner of this section. **Primary:** Open to K-3. USCF Rating before 800. 4 Rounds, Game/45. Trophies to Top 10, then medals to all. If 2 players are tied for first place there will be a "blitz" play off to determine the winner of this section. **Reserve:** Open to K-12. USCF Rating before 1000. 4 Rounds, Game/45. Trophies to Top 10, then medals to all. If 2 players are tied for first place there will be a "blitz" play off to determine the winner of this section. **Classic:** Open to K-12. USCF Rating 1000-1299. 4

Rounds, Game/60. Trophies to Top 10, then medals to all. If 2 players are tied for first place there will be a "blitz" play off to determine the winner of this section. **Open:** Open to K-12. USCF Rating 1300-1599. 3 Rounds, Game/75. Trophies to Top 10, then medals to all. If 2 players are tied for first place there will be a "blitz" play off to determine the winner of this section. **Championship:** Open to K-12. USCF Rating 1600 +. 3 Rounds, Game/75. Free entry with 2000 + rating. If 2 players are tied for first place there will be a "blitz" play off to determine the winner of this section. Prizes to Top 10. **Schedule:** 8:00 AM-9:00 PM. Onsite registration for people who did not register online. 9:00 AM **Registration** for round 1 closes. Non-registered players arriving after 9:00 will be paired for round 2 and will receive a half point bye for round 1. Registrations for rounds 2-4 will still be accepted after 9:00 AM. 9:30 AM Parents & kids who registered online arrive. Sections will be posted on wall charts. 9:45 AM Opening Ceremony. Round 1 of each section will be called and children gather in the tournament hall. 10:00 AM Start of the tournament. **Entry Fee:** \$35 by Monday 11:59 p.m. before event, \$45 by 11:59 p.m. the day before event, \$55 on site from 8:00 a.m. to 9:00 a.m. (cash or check only). **For more information:** 315-849-3332. Email: nycchesskids@gmail.com.

Feb. 20, Presidents' Day Madness

6-SS, G/25d5. Marshall CC, 23 W. 10th St., NYC. 212-477-3716. **EF:** \$45, members \$25. **(\$480/24):** \$200-100, U2000 \$70, U1700 \$60, U1400 \$50. **Reg.:** 10-15:10:45. **Rds.:** 11-12:15-1:30-3:00-4:15-5:30. Two byes available, request at entry. www.marshallchessclub.org.

Feb. 20-Mar. 19, Marshall Monday U1600!

PRIZES INCREASED BY 50%! 5-SS, G/85d5. Marshall CC, 23 W. 10th St., NYC. 212-477-3716. **EF:** \$50, members \$30. **(\$675/30):** \$360-180, U1300 \$135. **Reg.:** 6:15-6:45pm. **Rds.:** 7 pm each Monday. Limit 2 byes, request by Rd 3. www.marshallchessclub.org. **Chess Magnet School JGP.**

Feb. 25, Marshall Saturday U1600!

4-SS, G/40d5. Marshall CC, 23 W. 10th St., NYC. 212-477-3716. **(\$300 b/20):** \$160-80, U1300 \$60. **EF:** \$40, members \$20. **Reg.:** 12-15:12:45. **Rds.:** 1-2:45-4:30-6:15PM. One bye available, request at entry. www.marshallchessclub.org.

Mar. 3, Marshall Saturday U1800!

4-SS, G/40d5. Marshall CC, 23 W. 10th St., NYC. 212-477-3716. **(\$300 b/20):** \$160-80, U1500 \$60. **EF:** \$40, members \$20. **Reg.:** 12-15:12:45. **Rds.:** 1-2:45-4:30-6:15PM. One bye available, request at entry. www.marshallchessclub.org.

A Heritage Event!

A State Championship Event!

Mar. 3-4, 45th annual New York State Scholastic Championships

Open to grades K-12 in any state (top NYS player & team in each section are NY champions). Saratoga Hilton, 534 Broadway (I-87 Exit 13-N, 4 miles north on US 9), Saratoga Springs, NY 12866. Free parking. Team prizes based on top 4 scores from same school; no combined school teams allowed even if one school "feeds" another. Teams of 2 or 3 players allowed, but are at a disadvantage. In 8 sections, each is a 6SS, G/61 except K-1 is 5SS, G/30 playing Mar 4 only. No 5 minute time control deduction. **High School,** open to all in grades K-12. **EF:** \$38.20 mailed by 2/10. Top NYS grade 9-12 qualifies for Denker Tournament of HS Champions. High School Reserve, open to K-12 under 1200 or unrated. **EF:** \$38 mailed by 2/10. **Junior High,** open to all in grades K-9. **EF:** \$37.90 mailed by 2/10. The higher rated (post-tournament) of the top NYS K-8 in JHS or top NYS K-8 in HS qualifies for Barber Tournament of K-8 Champions. **Middle School Reserve,** open to K-8 under 1000 or unrated. **EF:** \$37.80 mailed by 2/10. **Elementary,** open to all in grades K-6. **EF:** \$37.60 mailed by 2/10. **Elementary Reserve,** open to grades K-5 under 800 or unrated. **EF:** \$37.50 mailed by 2/10. **Primary,** grades K-3. **EF:** \$37.30 mailed by 2/10. **K-1,** grades K-1. **EF:** \$37.10 mailed by 2/10. **Postmarked 2/11-21:** All **EF:** \$10 more. Do not mail entry after 2/21. **Online at chessstour.com, all sections:** **EF:** \$40 by 2/10, \$50 by 2/27. No online entry after 2/27. **Phoned to 406-896-2038, all sections:** **EF:** \$55 per player by 2/27. No phone entry after 2/27. **Entry at site:** all \$60. **Trophies** to top 15 players and top 7 teams each section, top 3 unrated in Primary, K-1, and each reserve section, and top U1500, U1300 (HS), U900, U700 (HS Reserve), U1200, U1000 (JHS), U700, U500 (MS Reserve), U1000, U800 (Elem), U500, U300 (Elem Reserve). Speed playoff if perfect score tie. **Free entry** to NY State Championship, Labor Day weekend 2012 (Albany), to top player each section. **Schedule:** Late reg. ends Sat 10 am, rds Sat 11, 2, 5, Sun 9, 12, 2:30, awards 5 p.m. **K-1 schedule:** Late reg. ends Sun 9 am, rds Sun 10, 12, 1:30, 3, 4:30, awards 5:45. **Half point byes** OK all, limit 2, must commit before rd 2. **HR:** 11:17-117, 888-999-4711, 518-584-4000, reserve by 2/18 or rate may increase. 48 hours notice required for room cancellation. Backup hotel: Courtyard by Marriott, 2 blocks away, 518-226-0538. **Special car rentals:** Avis, 800-331-1600, use AWD #657633. **Mail entry:** Continental Chess, PO Box 249, Salisbury Mills, NY 12577. Include name, rating, USCF ID, USCF expiration (non-members enclose dues), section, school, grade, birth date, address of each player. Checks payable to Continental Chess. **\$15 per player** service charge for refunds. **\$10 extra to switch** sections, all substitutions from advance list charged \$60. Special 1 year USCF dues with magazine if paid with entry. Online at chessstour.com, Young Adult \$20, Scholastic \$15. Mailed, phones or paid at site, Young Adult \$30, Scholastic \$20. **Questions:** chessstour.com, 845-496-9658. **Bring set, board, clock** if possible- none supplied. **Chess Magnet School JGP (except K-1).**

Mar. 7-Apr. 4, Marshall Wednesday U1400!

A NEW REGULAR MARSHALL CHESS CLUB TOURNAMENT! 5-SS, G/85d5. Marshall CC, 23 W. 10th St., NYC. 212-477-3716. **EF:** \$50, members \$30. **(\$450/20):** \$240-120, U1100 \$90. **Reg.:** 6:15-6:45pm. **Rds.:** 7 pm each Wednesday. Limit 2 byes, request by Rd 3. www.marshallchessclub.org. **Chess Magnet School JGP.**

Mar. 7-Apr. 4, Marshall Wednesday U2000!

PRIZES INCREASED BY 50%! 5-SS, 30/85d5, SD/1d5. Marshall CC, 23 W. 10th St., NYC. 212-477-3716. **EF:** \$50, members \$30. **(\$450/20):** \$240-120, U1700 \$90. **Reg.:** 6:15-6:45 pm. **Rds.:** 7 pm each Wednesday. Limit 2 byes, request by Rd 3. www.marshallchessclub.org. **Chess Magnet School JGP.**

Mar. 10, Marshall Saturday U1400!

4-SS, G/40d5. Marshall CC, 23 W. 10th St., NYC. 212-477-3716. **(\$300 b/20):** \$160-80, U1100 \$60. **EF:** \$40, members \$20. **Reg.:** 12-15:12:45.

Rds.: 1-2:45-4:30-6:15PM. One bye available, request at entry. www.marshallchessclub.org.

Mar. 10-11 or 11, Marshall March U2100!

4SS, 30/85d5, SD/1d5. Marshall CC, 23 W. 10th St., NYC. 212-477-3716. **EF:** \$45, Members \$25. **(\$540 b/36):** \$240-120, U1850 \$95, U1600 \$85. **Reg.:** ends 12:15PM. **Rds.:** 2 schedules: **2 day, Rds.** 12:30-5:30 PM each day; **1 day, (Rds 1-2 G/35) 9:40-11:05AM-12:30-5:30 PM Sun;** both merge rd.3. Limit 2 byes, request at entry. NO RE-ENTRY. www.marshallchessclub.org. **Chess Magnet School JGP.**

Mar. 16-18 or 17-18, Long Island Open

See *Chess Life* or www.chessstour.com.

Mar. 17, Marshall Saturday G/60!

4-SS, G/55d5. Marshall CC, 23 W. 10th St., NYC. 212-477-3716. **(\$360/24):** \$160-80, U2000 \$65, U1700 \$55. **EF:** \$40, members \$20. **Reg.:** 11-15:11:45 am. **Rds.:** 12-2:30-4:45-7. One bye available, request at entry. www.marshallchessclub.org.

Mar. 18, Marshall Open & U1500 Sunday Game/45!

5-SS, G/40d5. Marshall CC, 23 W. 10th St., NYC. 212-477-3716. **Two sections-**you play only those in your section: **A. Open (\$360/24):** \$160-80, U2100 \$65, U1800 \$55. **B. U1500 (\$240/16):** \$120-65, U1200 \$55. **EF:** \$40, members \$20. **Reg.:** 11-15:11:45 pm. **Rds.:** 12-1:45-4:00-5:45. One bye available, request at entry. www.marshallchessclub.org.

Mar. 23, Marshall Friday Quads!

3-RR, G/40d5. Open to all levels; Quads formed by rating. Marshall CC, 23 W. 10th St., NYC. 212-477-3716. **EF:** \$25, members \$20. \$50 for each winner. **Reg.:** 5:15-5:45. **Rds.:** 6-7:30-9PM.

Mar. 24, Marshall Saturday U1600!

4-SS, G/40d5. Marshall CC, 23 W. 10th St., NYC. 212-477-3716. **(\$300 b/20):** \$160-80, U1300 \$60. **EF:** \$40, members \$20. **Reg.:** 12-15:12:45. **Rds.:** 1-2:45-4:30-6:15PM. One bye available, request at entry. www.marshallchessclub.org.

Mar. 26-Apr. 23, Marshall Monday U1600!

5-SS, G/85d5. Marshall CC, 23 W. 10th St., NYC. 212-477-3716. **EF:** \$50, members \$30. **(\$450/20):** \$240-120, U1300 \$90. **Reg.:** 6:15-6:45pm. **Rds.:** 7 pm each Monday. Limit 2 byes, request by Rd 3. www.marshallchessclub.org. **Chess Magnet School JGP.**

Mar. 31, 2012 CT Open State Championship (CT)

See Grand Prix.

Mar. 31, 2012 New Haven Scholastic Championship (CT)

See Connecticut.

Mar. 31, Marshall Saturday U1800!

4-SS, G/40d5. Marshall CC, 23 W. 10th St., NYC. 212-477-3716. **(\$300 b/20):** \$160-80, U1500 \$60. **EF:** \$40, members \$20. **Reg.:** 12-15:12:45. **Rds.:** 1-2:45-4:30-6:15PM. One bye available, request at entry. www.marshallchessclub.org.

Apr. 7, Marshall Saturday G/60!

4-SS, G/55d5. Marshall CC, 23 W. 10th St., NYC. 212-477-3716. **(\$360/24):** \$160-80, U2000 \$65, U1700 \$55. **EF:** \$40, members \$20. **Reg.:** 11-15:11:45 am. **Rds.:** 12-2:30-4:45-7. One bye available, request at entry. www.marshallchessclub.org.

Apr. 8, Marshall Open & U1500 Sunday Game/45!

5-SS, G/40d5. Marshall CC, 23 W. 10th St., NYC. 212-477-3716. **Two sections-**you play only those in your section: **A. Open (\$360/24):** \$160-80, U2100 \$65, U1800 \$55. **B. U1500 (\$240/16):** \$120-65, U1200 \$55. **EF:** \$40, members \$20. **Reg.:** 11-15:11:45 pm. **Rds.:** 12-1:45-4:00-5:45. One bye available, request at entry. www.marshallchessclub.org.

Apr. 11-May 8, Marshall Wednesday U1400!

5-SS, G/85d5. Marshall CC, 23 W. 10th St., NYC. 212-477-3716. **EF:** \$50, members \$30. **(\$450/20):** \$240-120, U1100 \$90. **Reg.:** 6:15-6:45pm. **Rds.:** 7 pm each Wednesday. Limit 2 byes, request by Rd 3. www.marshallchessclub.org. **Chess Magnet School JGP.**

Apr. 13, Marshall Friday Quads!

3-RR, G/40d5. Open to all levels; Quads formed by rating. Marshall CC, 23 W. 10th St., NYC. 212-477-3716. **EF:** \$25, members \$20. \$50 for each winner. **Reg.:** 5:15-5:45. **Rds.:** 6-7:30-9PM.

Apr. 14, Marshall Saturday U1400!

4-SS, G/40d5. Marshall CC, 23 W. 10th St., NYC. 212-477-3716. **(\$300 b/20):** \$160-80, U1100 \$60. **EF:** \$40, members \$20. **Reg.:** 12-15:12:45. **Rds.:** 1-2:45-4:30-6:15PM. One bye available, request at entry. www.marshallchessclub.org.

May 18-20 or 19-20, 20th annual New York State Open

See *Chess Life* or www.chessstour.com.

Ohio

A State Championship Event!

Apr. 14, Ohio Elementary Championships

5-SS; **Sections:** Primary Championship (K-3), Elementary Championship (K-6), Elementary Reserve (K-6 U750), plus K-6 Non-Rated section. G/30 d5 except Championship sections round 5 G/45 d5. Open to K-6 students enrolled in Ohio schools or home-schooled in Ohio. Sycamore High School, 7400 Cornell Rd., Montgomery (Cincinnati), OH 45242. **EF:** \$25 through Mar. 31, then \$35 through Apr 11. (\$10/\$15 for federal lunch program students.) No onsite registration. **Awards:** Individual trophies to top 10 places in each section, and all scoring at least 3.5 and top five K-3 Non-Rated who do not win a place trophy; team trophies to top 5 teams in each section. **Complete information at:** www.Chessinnati.com. **Contact:** Alan Hodge 513-697-6930, a.hodge195@gmail.com.

Pennsylvania

Feb. 19, PCL February Quick Quads (QC)

3RR, G/15d3. Wm. Pitt Union, Univ. of Pittsburgh, 5th Ave. & Bigelow, Pittsburgh, PA 15213. **EF:** \$10, \$7 Jrs. \$20 to 1st/quad. **Reg.:** 11-11:15am. **Rds.:** 11:30am-Noon-12:30pm. **Info:** martinak_tom_m@hotmail.com, 412-908-0286. W.

Tournament Life

Mar. 2, 2012 PA Quick Chess Champ (QC)

See Grand Prix.

Mar. 3-4, 2012 Carlisle Open & PA Collegiate Championship

See Grand Prix.

Mar. 3-4, 2012 PA State Scholastic Championships

55S. 184 Trophies!! (With 128 Individual & 56 Team). Hotel Carlisle & Embers Convention Center, 1700 Harrisburg Pike, Carlisle, PA 17015, Exit 52A NB/Exit 52 SB off I-81, Exit 226 off PA Turnpike. 8 sections (Sat & Sun 3/3 & 4 unless indicated): **EF: K-3 Open:** (Sat 3/3 only) \$29. **K-6 U800:** (Sat 3/3 only) \$27. **K-9 U1000:** (Sun 3/4 only) \$27.25. **K-6 Open:** \$30.50. **K-8 Open:** \$31.50. **7-12 U1000:** \$28.50. **7-12 U1300:** \$29.50. **K-12 Open:** \$32.50. **All:** Efs if rec'd by 2/13, \$10 more rec'd 2/14-2/27, \$20 more after 2/27. Feb 2012 ratings used. **Bye:** limit 1, ask by rd 2. Reg Fri 3/2 6-10 pm, Sat 3/3 9:30-10:15 am, Saturday at site entries get 1/2-bye. \$5 charge for changes/refund after 2/13. Rds. (Sat 3/3 1-day sections): G/40ds; 10-11:45-2:30-4:55:30; (Sun 3/4 K-9 U1000): G/40ds; 9-10:30-12:30-2:30; (2-day sections): G/90ds; 10-2-5:30, 9-1. **Bug-house:** Reg on-site only until Sat 3/3 8:30 pm. Rds. begin Sat 3/3 8:45 pm. **EF:** \$20/team. **HR:** Mention "PA States" for best rate; 800-692-7315 \$75. **Ent:** PSCF, c/o Tom Martinak, 25 Freepoint St., Pittsburgh, PA 15223-2245. **Info:** 412-908-0286, martinak_tom_m@hotmail.com. **Chess Magnet School JGP for 2-day sections.**

Mar. 18, PCL March Quick Quads (QC)

3RR, G/15d3. Wm. Pitt Union, Univ of Pittsburgh, 5th Ave. & Bigelow, Pittsburgh, PA 15213. **EF:** \$10, \$7 Jrs. \$20 to 1st/quad. **Reg:** 11-11:15 am. **Rds.:** 11:30 am-Noon-12:30 pm. **Info:** martinak_tom_m@hotmail.com, 412-908-0286. W.

Mar. 23-25 or 24-25, 13th annual Pittsburgh Open

See *Chess Life* or www.chesstour.com.

Mar. 24, 11th Annual Horizons for Youth Scholastic Spring Chess Tournament

55S, G/30, d/5. Northampton Community College, 3835 Green Pond Rd., Main Campus, College Center Building, Bethlehem, PA 18020. **Reg.:** 7:30-8:45 am. **Rds.:** 9:30, 11, 12:30, 2, 3:30. Rated Section Age 18 and under. Non-Rated Sections ages 14 and under. **EF:** \$30 postmarked by March 22nd, \$35 later & on site. **Prizes:** Rated-Trophies-1st, 2nd, 3rd, 4th U1400, U1200, U1000, U800, U600, UNR. Non-Rated Trophies b/o age. For rated section, please bring chess equipment. Random draw prizes between rounds. Sudden death, if necessary for 1st-4th - Non-Rated G/7, d/3, G/6vG/4.5, d/0 Armageddon if necessary, tie breaks determines color and clock placement. **Ent:** Online reg: forms at www.northampton.edu/Community-Programs/Horizons-For-Youth/Special-Events-and-Partnerships.htm or call Horizons for Youth at 610-861-4120. **Please print and mail form with payment (GC or check) to:** Horizons for Youth, 3835 Green Pond Rd., Bethlehem, PA 18020. **Info:** Jan 610-861-4120, Scott Zrinski (TD), sazrinski@gmail.com or Bruce Davis (Chief TD), BDavis@lehighighvalleychess.org.

Apr. 1, 2012 PA State Game/29 Champ. (QC)

See Grand Prix.

Apr. 4-8, 5-8, 6-8 or 7-8, 6th annual Philadelphia Open

See *Chess Life* or www.chesstour.com.

July 4-8, 5-8, 6-8, 2-8, 1-3 or 4-5, 40th Annual World Open

See *Chess Life* or www.chesstour.com.

Rhode Island

Mar. 31, 2012 CT Open State Championship (CT)

See Grand Prix.

Mar. 31, 2012 New Haven Scholastic Championship (CT)

See Connecticut.

Tennessee

A State Championship Event!

Apr. 14, Tennessee All-Girls Scholastic State Championship 55S, G/40. 3rd Floor, Keathley University Center, MTSU 1301 E. Main St., Murfreesboro, TN 37132. **Two Sections:** Championship Section open to all TN girls ages 18 & under. **EF:** \$20 postmkd by 4/10/12, \$25 later. Competition Section open to all TN girls ages 12 & under. **EF:** \$15.00 if postmkd by 4/10/12, \$20.00 later, USCF and TCA membership req'd, Trophies 1st-6th place, medals 7th-10th place, plus prizes to 1st-3rd place in each section. **Rds.** both sections: 9:00, 10:30, 12:00, 1:30 3:00, Playoff if needed: G/10, G/5, Coin toss, Winner of Championship Section will be crowned TN All-Girls State Champion and receive **Grand Prize** of partial scholarship to college of choice. **Special events:** Exhibits & Seminars for players and Parents from WISTEM, GRITS, NCGP, MTSU, Free games analysis by NM. **Inq.:** clarksvilchessclub@charter.net. **Ent:** Clarksville Chess Club, c/o Roy Manners, 1215 Cumberland Heights Rd., Clarksville, TN 37040. **Online:** www.tnchess.org.

May 11-13, 2012 National Elementary (K-6) Championship

See Nationals.

June 9-10, 2012 U.S. Amateur South Championship

See Nationals.

Texas

Feb. 18-19, Southwest Collegiate Championships

5-SS, G/90 inc/30. 55S. Sheraton Dallas Hotel, 400 North Olive St., Dallas, TX 75201. **HR:** \$109-\$109-\$109-\$109, 214-922-8000 or 888-627-8191, Mention Texas Chess Association to get Hotel Chess Rate. Reserve by 1/27/12 or rate may go up. One night deposit may be required by Hotel. Top 4 count for team score. USCF membership required. Fide rated but uses USCF rules. Fide pairing rules may be used. Monroi devices may be provided and their use is mandatory. **EF:** \$49 by 2/03/12, \$69 thereafter. Don't mail after 2/03, entry may not be received. Online/Credit Card registration link at www.swchess.com Note that active.com charges a small fee. **Reg.:** Fri 7-9 pm, Sat 7-7:45 am. Saturday registrants may receive a

1st rd. 1/2 pt. bye. One 1/2 pt. bye allowed if requested by end of rd. 2. **Rds.:** Sat 9-1:30-6, Sun 9-1:45. **\$\$ \$500-\$250-\$125, 1st U2000 \$150, 1st U1600 \$150, 1st U1200 \$150, Unrated eligible for U1200 prize.** Plaques to top 10 Individuals, Plaques to top 5 Teams. **Ent:** Barbara Swafford, 2709 Longhorn Trail, Crowley, TX 76036. (Make Checks payable to Texas Chess Association. One check can be sent for multiple players.) Entries must include name, USCF ID or new/pending (include a copy of the receipt), rating, USCF expiration date & school. All incomplete registrations will be charged the late EF, additionally there will be a \$5 per player surcharge on registration received without payment, these players may possibly not be paired for round 1 and not be paired until payment is received. Refunds will be given only up to 2/15 with a \$10 surcharge for withdrawing, after 2/15 there will be no refunds. There will be no substitution of team members. There will be a \$10 change fee for changes after 2/15. There will be a \$5 surcharge per player for phone registrations. USCF membership is required. Proof of membership is required or player must join/renew their memberships. No registration/changes/or withdrawals after 2/15/12. After that date you must make changes at site (Sheraton Dallas Hotel). February Supplement will be used. **Tournament Info:** Barbara Swafford, 214.632.9000 please do not call after 2/15, info@dallaschess.com. Website: www.swchess.com. NS. NC. W. FIDE. **Chess Magnet School JGP.**

A State Championship Event!

Feb. 18-19, 2012 Texas State Scholastic Championships

7SS. Sheraton Dallas Hotel, 400 North Olive St., Dallas, TX 75201. **HR:** \$109-\$109-\$109-\$109, 214-922-8000 or 888-627-8191, Mention Texas Chess Association to get Hotel Chess Rate. Reserve by 1/27/12 or rate may go up. Four championships in one great location: **TX Primary Scholastic Championships; TX Elementary Scholastic Championships; TX Middle School Scholastic Championships; TX High School Scholastic Championships.** **EF:** \$41 by 2/03/12; \$69 after 2/03 or on site. February Rating Supplement will be used. Current USCF membership required (may be obtained on site). **On Site Registration:** Friday, 7-9 pm, Saturday, 7-7:45 am. Saturday registrants may receive a 1st Rd. 1/2-pt. bye. One 1/2-pt. bye (for any round) allowed if requested by the end of Rd. 2. **Sections:** K-1 Championship, Primary (K-3) Championship, Primary JV (K-3 w/Ratings Under 700), Elementary (K-5/6) Championship, Elementary JV (K-5/6 Under 800), Elementary Novice (K-5/6 Under 500), Middle School (6-8/9) Championship, MS JV (6-8/9 Under 900), MS Novice (6-8/9 Under 600), High School (9-12) Championship, HS JV (9-12 Under 1000). See Article IX, Section 1E, TCA Bylaws for each section's eligibility requirement, www.texaschess.org/2007/03/bylaws.html. Also www.swchess.com has eligibility rules. Four-year Chess II scholarship to The University of Texas at Dallas to winner of High School Championship section. Winner must meet UTD entrance requirement and follow team rules. UTD is sole judge as to who wins the scholarship. For more information on UTDallas Scholarships see: www.utdallas.edu/chess/scholarships/chess-program-scholarships.html Trophies for top 20 individuals and top 15 teams in each section plus participation medals for all, and plus Score Awards for players scoring 4 or more points that do not win an individual trophy. **Schedule:** Round times vary depending on the Championship; Time control also varies. For round times and time control, see: www.swchess.com. **Side Events: Blitz Tourney:** K-6 and K-12, Friday 8 pm. **EF:** \$20. Trophies to top 15 Individual in each section. **Bug-house Tourney:** K-6 and K-12, Saturday, 8:35 pm. **EF:** \$30 Team (On site registration only). trophies to top 10 teams in each section. All registrations (except Bughouse) available on line: see www.swchess.com and you can download flyers and entry forms. Checks payable to Texas Chess Association. **Mail entries to:** Texas Chess Association, c/o Barbara Swafford, 2709 Longhorn Trail, Crowley, TX 76036. **For tournament info, visit our website or contact:** Barbara Swafford, info@dallaschess.com or 214-632-9000. Refunds will be given only up to 2/15 with a \$10 surcharge for withdrawing, after 2/15 there will be no refunds. There will be no substitution of team members. There will be a \$10 change fee for changes after 2/15. There will be a \$5 surcharge per player for phone registrations USCF membership is required. Proof of membership is required or player must join/renew their memberships. No registration/changes/or withdrawals after 2/15/12. After that date you must make changes at site (Sheraton Dallas Hotel). NS, NC, W.

Vermont

Apr. 27-29 or 28-29, 23rd annual Vermont Resort Open

See *Chess Life* or www.chesstour.com.

Virginia

Mar. 3, Virginia Queens Scholastic Championship (QC)

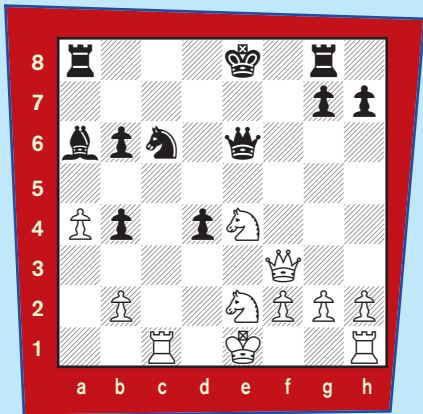
55S, G/25. Norfolk State University Student Center. **Virginia Girls Only** Rated & Unrated Sections. **Reg.:** 9-9:30. **Rd. 1** at 10. Then ASAP. K-12 Rated Section. \$1000 scholarship & trophies. Unrated Section \$1000 scholarship & trophies. Unrated section is only for those who have never been USCF members. **EF:** FREE! **Info/Reg:** Ernest Schlich, 1370 S. Braden Cres., Norfolk, VA 23502, www.nicchess.net/ or eschlich@verizon.net. Please e-mail the entry information from the website to enter. All players MUST check in during registration to be paired for the first round. Single half-pt. bye available. **Friday 3/2.** Free GM Susan Polgar exhibition match and simultaneous exhibition 4-6 PM Chrysler Museum, Norfolk. Visit the website for details.

National Master Daniel Gurevich is ready, willing, and able to answer all your questions about chess! Make him work! Send your questions to: gpetersen@uschess.org.

The Gremlins Strike Again!

In the December 2011 *Chess Life for Kids*, the Gremlins decided to completely destroy the position in the The Chess Detective problem #3. The Gnomes felt really bad about it and have reconstructed the position.

#3



Position after 17. ... Ke8 White to Move

#3 Shakhriyap Mamedyarov was playing White against Gennadi Ginsburg in this game from the 2007 Ordix Open. Again, both kings are in the center. Black can't castle because his king has moved. He also has potential problems along the h1-a8 diagonal. White sacrifices the Exchange to set up a combination to win material by playing 18. Rxc6! Qxc6 19. Nf6+ Qxf6 20. Qxa8+ Kf7 21. Qxa6, leaving White up a piece.

Operation Pawn Storm: Continued from pg. 14

Teach Yourself Visually: Chess (Wiley, 2006), a photographically based chess primer, and Sacking the Citadel (Russell Enterprises, 2011). He is also webmaster of Chess is Fun (www.queensac.com), a popular site for chess instruction. Jon provides chess instruction in Pennington, New Jersey.

Power Up Your Student's Chess Game

New from

NEW IN CHESS

By Award-winning author
Charles Hertan

You will learn how to weed out silly moves and just consider a few important ones.

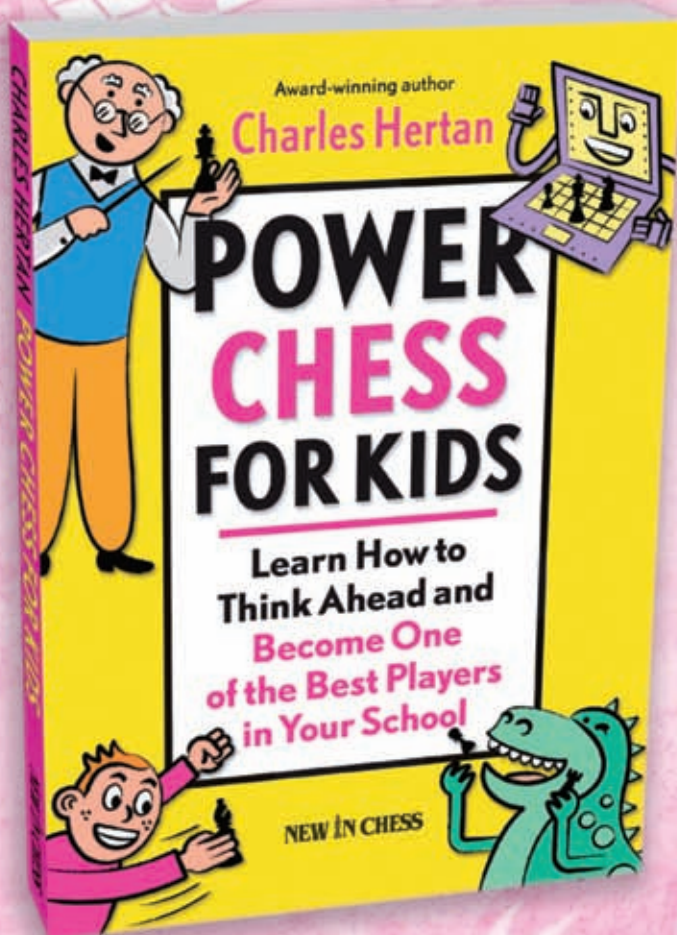
You will learn how to start seeing great moves you never thought of before.

You will learn the two easiest ways to think one-and-a-half moves ahead:

1. Takes Takes Bang!
2. Check Moves Bang!

B0104NIC

\$16.95



For both children *and* parents

**USCF
SALES**

1.800.388.KING (5464)
www.USCFSales.com

USCF

ALL PURCHASES BENEFIT THE UNITED STATES CHESS FEDERATION



U.S. Junior Congress

A National Championship Event!

March 3-4, 2012

(Blitz on March 2)

San Francisco Airport Hyatt Regency

Chess rate \$99 only - free airport shuttle



It is already spring in San Francisco... come experience it!

Winner(s) will be crowned National Champion(s)!

Main Event

8 sections based on age from "6 & under" to "20 & under"

Entry Fee: \$48 & up

Trophies

Top 20 players & Top 10 teams in most sections (and all players & teams in "6 & under") - Medals to all player

Side Events

Blitz on Mar 2 - Bughouse on Mar 4.

Trophies to Top 3 players/teams in each section

Entry Fee: \$15 (1 free entry/night of hotel stay)

Register & get info at: BayAreaChess.com/usjr12

Organizer: Dr. Salman Azhar - Chief TD: John McCumiskey

Sponsors: CalChess and Bay Area Chess

