

June 2012

uschess.org

Chess Life for Kids!



A USCF Publication

\$3.00



06

0 74470 27842 9

Three Little Pigs!

**Fast, Fun, and
Easy to Use**

In 2006, and *again* in 2007,
young Chess Magnet students
from Portland, OR, scored 7-0 in the
USCF Spring Nationals.

ChessMagnetSchool.com

Better Than Any Textbook for Learning Chess



**Student
Training**

**"Great Stuff! I just delivered my first
Belgian champion under 10 and
boosted his development
by using ChessMagnetSchool.com"**

- Ton Montforts, Coach
Schaakacademie
Limburg, Belgium



**Student
& Class
Management**

**"Your website was
integral to our team's winning."**

-Mike Hosford, Coach
Alcott Elementary
2008 Washington State
Grades 4-6 Champions

**Proud Sponsor
of the
2012 USCF
Junior Grand Prix!**

**Start Your 30-day Free Trial Today
at**

www.ChessMagnetSchool.com

	1 month	3 months	1 year	1 yr USCF
Individuals	\$6.95	\$15.00	\$29.95	\$26.95
Class/Family	\$6.00	\$12.00	\$25.00	\$22.00

Free to teachers/coaches of at least 5 students
Includes our powerful, easy-to-use Coaching Tools & Reports

Works on Windows and Macintosh
computers (requires internet access)

To learn more, call 650-284-5062
877-378-4319 (US toll-free)
email info@ChessMagnetSchool.com

**Publisher****USCF Executive Director: Bill Hall**
bhall@uschess.org**Scholastic Editor: Glenn Petersen**
gpetersen@uschess.org**Art Director: Cat Connor Spradlin**
catseyephoto@mac.com**Editorial Asst./Copy Editor: Alan Kantor**
akantor@uschess.org**Editorial Assistants:****Jo Anne Fatherly**
backtobasics@uschess.org**Jennifer Pearson**
jenpearson@uschess.org**Advertising Manager: Joan DuBois**
jdubois@uschess.org**Tournament Life: Joan DuBois**
tla@uschess.org**Director of Publications: Daniel Lucas**
dlucas@uschess.org**CONTRIBUTORS:** Send your contributions and articles to *Chess Life for KIDS*, PO Box 3967, Crossville, Tennessee 38557 or better yet, e-mail to gpetersen@uschess.org.**Chess Life for KIDS** (USPS 023-567, ISSN: 1932-5894) is published in February, April, June, August, October, and December of every year by the United States Chess Federation, 137 O'Brien Drive, Crossville, Tennessee 38555. Periodic postage paid at Crossville, Tennessee.**CHANGE OF ADDRESS:** Be sure to notify us at once of any change of address. Please include your old address and your new address, along with your USCF I.D. number.**POSTMASTER:** Send address changes to USCF, PO Box 3967, Crossville, Tennessee 38557.**Annual Scholastic Membership**Regular Scholastic Membership (online version of *Chess Life for Kids*), age 12 or younger, is just \$17 per year. Premium Scholastic Membership (receives *Chess Life for Kids* by mail) is \$24 per year. \$13 of every premium membership goes towards providing *Chess Life for Kids*. Annual subscription rate is \$18. Entire contents copyright 2012, United States Chess Federation.

Teachers may photocopy instructional articles for classroom use, but republication or widespread copying without the written consent of the USCF is forbidden.

HAVE YOU HEARD ABOUT
The #1 Chess Player in the world?
GM MAGNUS CARLSEN?
Coming to NYC- August 20th 2012
For a very special week of Chess!**LEARN
MORE TODAY**
www.chessnyc.com

230 Thompson St. New York NY | info@chessnyc.com | 212.475.8130



Table of Contents

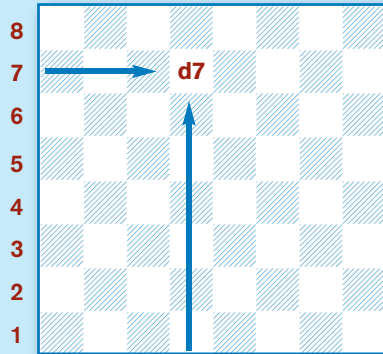
- 5 TALES OF THE ARABIAN KNIGHTS
- 6 WHAT'S THE QUESTION?
- 7 THE CHESS DETECTIVE
- 8 WIN OR DRAW?
- 8 ZARIA
- 9 BOOK IT!
- 10 YOU CAN DO IT!: THE THREE LITTLE PIGS
- 12 THE OTHER MARSHALL ATTACK
- 16 2012 JUNIOR GRAND PRIX STANDINGS
- 19 ANSWERS, WE'VE GOT ANSWERS.
- 20 TOURNAMENT LIFE ANNOUNCEMENTS

COVER ILLUSTRATION BY MIKE MAGNAN

HOW TO Read & Write Chess

There are many different ways to write chess moves. The most popular method (described below) is called **algebraic notation**:

Each square has a name, taken from the intersection of the file (vertical or up-and-down rows of squares, which are lettered) and rank (horizontal or side-by-side rows of squares, which are numbered) the square is on. In the diagram the square on the intersection of the 7th rank and the d-file is called d7. Like in battleship!



The pieces are abbreviated by a capital letter, like this:

K: King; Q: Queen; R: Rook; B: Bishop; N: Knight.

Notice that the Knight is N, since K is reserved for the King. Notice also that pawns have no abbreviation.

A move is written by using the abbreviation for the piece that moves, followed by the square the piece moves to (1. ... Nf6). A pawn move is written as the square the pawn has moved to (1. d4). A capture by a piece is written as the abbreviation for the piece that moved, followed by an x, and finally the square the capture takes place on (8. Bxe5). A pawn capture is written as the file the capturing pawn stands on, followed by an x, and finally the square the capture takes place on (3. dxe5).

Other moves are castling kingside, which is written 0-0, and castling queenside, which is written 0-0-0. An *en passant* capture is indicated by *e.p.* after the move. A check is indicated by + after the move, and pawn promotion is indicated by adding () and the abbreviation for the piece the pawn promotes to. Ambiguous moves (where more than one piece or pawn can move to the destination square) are taken care of by putting an extra rank or file in to make it clear which piece or pawn moved.

Here is a sample, using the famous smothered mate trap from the Budapest Defense.

1. d4 Nf6 2. c4 e5 3. dxe5 Ng4 4. Bf4 Nc6 5. Nf3 Bb4+ (diagram A)

6. Nbd2 Qe7 7. a3 (diagram B)

7. ... Ncxe5 8. Bxe5 Nxe5 9. axb4 Nd3 checkmate. (diagram C)

x: take or capture #: checkmate
0-0: kingside castle (:): promotion
0-0-0: queenside castle !: good move
+: check ??: bad move
?: blunder



ChessKidsNation

Where Chess Champions come from...

Learn Chess openings, Middle game (Tactics, Strategies), and Endgame Techniques from a variety of experienced Chess Coaches from the comfort of your home.

Contact us to schedule a **FREE** evaluation and choose an online Chess Coach to match your level.

Visit www.ChessKidsNation.com to learn more about us and our students' achievements.

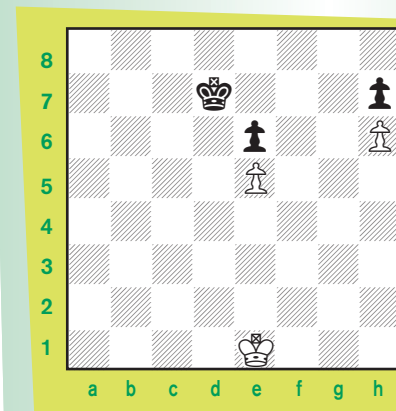
Subha Balagee
Contact@ChessKidsNation.com
205.421.1523

OOPS!

The Gremlins were working overtime last month. We neglected to print the solution to the first position of WIN OR DRAW. If you weren't able to come up with the right answer, we give it here.



Position One: White to Play



WIN OR DRAW!
Position One Solution: DRAWN!!
 1. Kf2!! (1. Kd2 [or Ke2]?? Kc6 2. Ke3 Kd5 3. Kf4 Kd4 4. Kg4 Ke4 5. Kh5 Kf5 6. Kh4 Kg6 7. Kg4 Kxh6 8. Kf4 Kg6 Black wins.)
 1. ... Kc6 2. Kg3 Kd5 3. Kh4 Kxe5 4. Kg5 Kd4 5. Kf6 e5 6. Kg7 e4 7. Kxh7 e3 8. Kg7 e2 9. h7 e1=Q 10. h8=Q Drawn!

Congratulations to **William Nowak** of Crossville, Tennessee. He correctly surmised there were 74 eggs in the April issue of *CL4K*. There was some dissent amongst the Gnomes from Outer Mongolia as to whether or not to count the undecorated egg in the ChessNYC.com ad on page 3. So they decided to accept either 73 eggs or 74 eggs as a correct answer.

Please turn to page 17

TALES OF THE ARABIAN KNIGHTS

BY RICK KENNEDY ILLUSTRATIONS BY PAMELA KEY



Talk

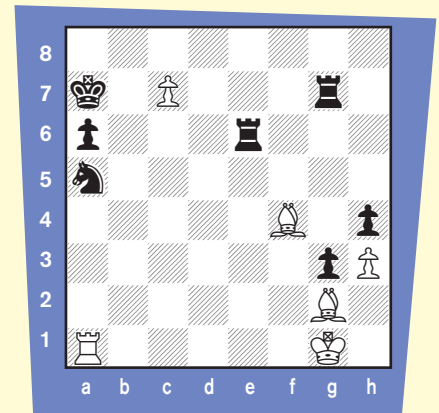
THE KING SAT AT THE CHESSBOARD.

“SO,” SAID HIS BROTHER, “YOU’RE STILL PLAYING WITH LITTLE WOODEN MEN, EH? I WOULD HAVE THOUGHT YOU WOULD HAVE OUTGROWN THAT BY NOW.”

a noble knight, or even royalty itself—a queen? It kind of undermines the natural order of things, wouldn’t you say?”

The King leaned forward, moved a piece, and announced “Checkmate.”

“Ooooooh, I *hate* when you talk to me that way.” said his brother.



WHITE TO MOVE AND CHECKMATE BLACK

The King smiled.

“Odd,” said the brother again, “I always thought that you and Father got on quite well. Yet, here you are, chasing after him, as it were—symbolically, of course. Trying to defeat the King on the board.”

The King raised an eyebrow in response.

“Still, it probably is a whole lot better that you take your aggressions out on the board, instead of rounding up your armies and attacking some neighboring state or country.”

The King silently raised a second eyebrow.

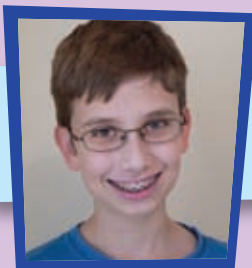
“Tell me, though,” the brother continued, “doesn’t it secretly bother you that something as lowly as a pawn can, through its own efforts, mind you, rise to become



Learn winning chess openings, tactics, and endgame technique from the masters one-to-one in the comforts of your own home.

Choose from a variety of experienced online coaches from India to match your level. Prices starting at \$9 per hour.

Visit www.mychessguru.com and sign-up for a free try today.
Contact us at mychessguru@gmail.com or (732) 207-6203.



What's the Question?

by National Master Daniel Gurevich

Q: Ilyusha Belegradek
Marietta, Georgia

In the movie *Sherlock Holmes: A Game of Shadows*, Sherlock and evil Dr. Moriarty play a game of chess before their final fight.

Is this game known?

A: **Yes and no.** The movie closely—but incompletely—follows an old, instructive tournament game. That game is one of Bent Larsen's brilliant wins against Tigran Petrosian in 1966. In the movie, Sherlock/Larsen was Black. Now here's where it gets complicated. Larsen's win against Petrosian with black was a positional masterpiece; however, it is clear from the movie that Sherlock's game was quick and exciting, ending in checkmate. In fact, the game in the movie features the game where Larsen, with white, showed his tactical strength against Petrosian.

To recap our Holmesian deduction so far, the game is Larsen-Petrosian, Santa Monica 1966, with colors reversed. However, there are more problems ahead. Sherlock Holmes, as Black, was missing the vital tempo that Bent Larsen had as White. Just where did Professor Moriarty lose that tempo? I cannot tell for sure. However, I do have a hypothesis. Let's begin analyzing the game from the movie and try to find a solution to the mystery of Moriarty-Holmes:

1. c3!? e5 2. c4!?

Why did White "waste" a tempo? I imagine that Moriarty went with this unusual start to surprise his opponent. This move isn't all that bad: the Sicilian is a very good opening when played with black, and if you add to

that the element of surprise, it's clear why Moriarty might have played this. 2. ... Nf6 3. Nc3 d5 4. cxd5 Nxd5 5. g3

White (yes, White!) has played the Accelerated Dragon.

5. ... Be6 6. Bg2 c5 7. Nf3 Nc6 8. Ng5!

This is a famous trick for the "black side" (now the white side!) of the Maroczy. White gains control of the central light squares through this exchange of knights.

8. ... Qxg5

8. ... Nxc3, hoping to win the knight on g5, just gets into more trouble after 9. Nxe6 Nxd1 10. Nxd8 Nxd8 11. Kxd1 and White has the two bishops along with the advantage.

9. Nxd5

9. Bxd5?! is a standard positional mistake. In fact, White should not trade the light-squared bishops because the trade weakens the light squares around the king.

9. ... Qd8 10. Ne3 Qd7 11. d3 Be7 12. Bd2 0-0 13. 0-0

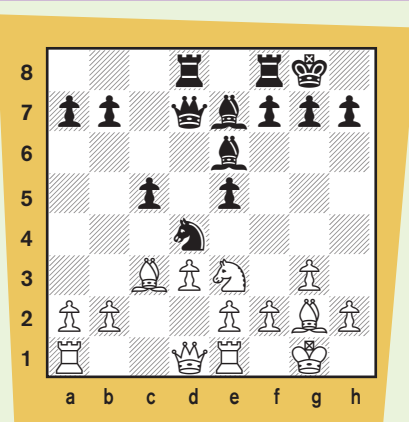
The game is now past the opening, with a slight advantage for Black given his well-developed pieces. However, White has very good control of the light squares, giving him some play as well. By the way, the game continues to exactly follow Larsen-Petrosian with colors reversed until move 25. We'll see why the two games diverge after that.

13. ... Rad8 14. Bc3 Nd4 15. Re1?!

GET YOUR RED HOTS HERE!

Or at least get your chess questions answered!

Send your questions for Daniel to:
Gpetersen@uschess.org.
Or write to: What's the Answer!, c/o
Glenn Petersen,
44-D Manchester Court, Freehold,
NJ 07728.



White's first error of the game. White should have played 15. Nc4 immediately.

15. ... f5!

There's trouble ahead.

16. Nc2?!

Of course, it's still not too late to play 16. Nc4 here. Instead, Moriarty/Petrosian's knight goes for a detour.

16. ... f4 17. Na3 Bg5 18. Nc4 fxc3 19. hxc3 Qf7 20. Rf1

Here, most players would be tempted to take the knight and win a pawn or a queen for a rook and piece. Larsen, however, saw through it all.

20. ... e4!

Attack above all! 20. ... Bxc4?! 21. dxc4 Qxc4 (21. ... Nf3+ 22. Bxf3 Rxd1 23. Raxd1 Only White can have an advantage here! Let's count up the points: bishop+rook=3+5=8, while queen=9, right? However, White's pieces are extremely active here. His two bishops and two rooks are ripping through the position, so there's no reason to worry just because of the material. **Remember: often, material doesn't really matter at all. In the short-term, it's the quality of your pieces, not the quantity.**) 22. Bxd4 Rxd4 23. Qb3

Please turn to page 19



The Chess Detective

by NM Todd Bardwick

CLEARING A PATH TO THE KING

I often get asked the question, "Are masters always looking for checkmates?"

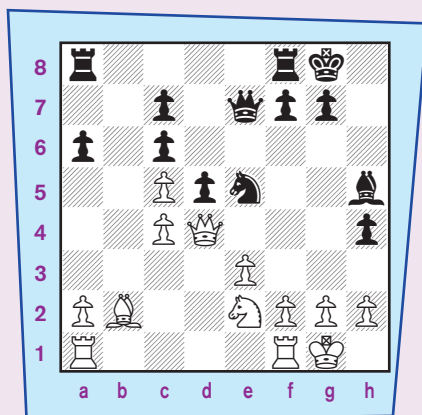
In positions where the king is safely tucked away, the answer is "no."

But when a king is even a little bit exposed, you absolutely must look for possible mate threats.

Usually the king has some form of protection in front of him. The secret to a successful attack is by clearing a path to him by trading away the pieces protecting him or sacrificing your pieces to eliminate these defenders. Sometimes you can force his pieces to different squares, giving your pieces a path

to invade.

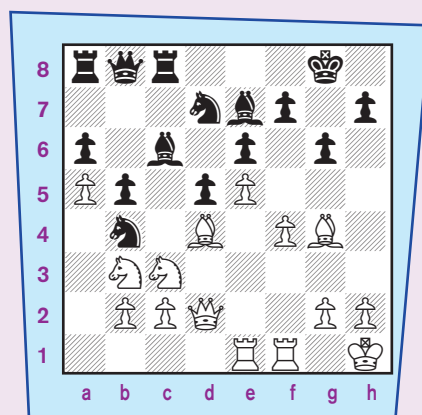
Here is an example from Leningrad, Russia, in 1934, between Max Euwe and Peter Romanovsky.



Romanovsky-Euwe
Position after 18. ... Bh5

endgame.

Here is a position between Anatoly Karpov and Eldis Arteaga from Skopje, Republic of Macedonia, 1972.



Arteaga-Karpov
Position after 19. ... Rc8

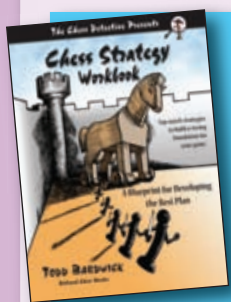
Black has several pieces hovering around White's king and there is a possibly crushing knight fork on f3. Black's knight is pinned to a checkmate on g7. In the actual game, White defended his knight with 19. Rfe1 and eventually the game ended in a draw.

But what if White had played the natural 19. Nf4?

Black could respond 19. ... Nf3+!! 20. gxf3 Qg5+ 21. Ng2 h3 22. Qxg7+ Qxg7 23. Bxg7 hxg2 24. Kxg2 Kxg7 leaving Black ahead in material. In this case, Black's knight would have cleared the path for a sequence of moves that would lead to a winning

One of the most common ways to clear a path to the king is by moving and exchanging pawns. Karpov played 20. f5! gxf5 21. Bxf5! Nf8 22. Qh6 Ng6 (Black tries to cover up his king with the knight, but it is now exchanged.) 23. Bxg6 hxg6 24. Re3 (The rook-lift theme is a common way to bring the rook into the attack.) 24. ... Bf8 25. Qh4 Bg7 26. Rh3 Be8 27. Qh7+ Kf8 28. Qxg6 f6 29. Rxf6+!, Black resigned.

Karpov eliminated three pawns and a knight on his way to Black's king!



Todd Bardwick

is the author of

Teaching Chess

in the 21st Century

and

Chess Workbook for Children.

He can be reached at

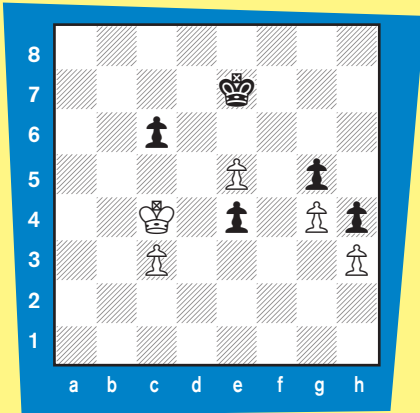
www.ColoradoMasterChess.com

WIN OR DRAW?

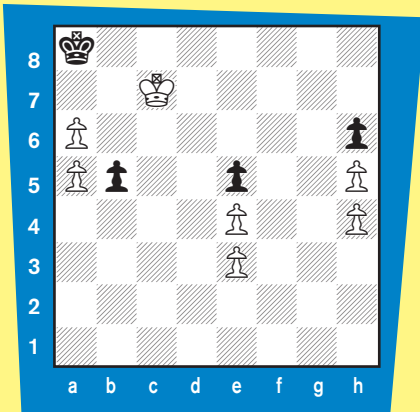
by Pete Tamburro

You know the drill. No matter whose move it is, you decide whether it's a win or draw and for whom! You should also write down what you think the winning or drawing moves are. By the way if you like middlegame puzzles you can check out my column under games and chess at www.arcamax.com.

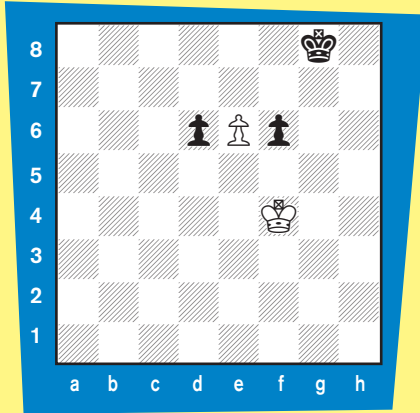
Position One: Black to Play



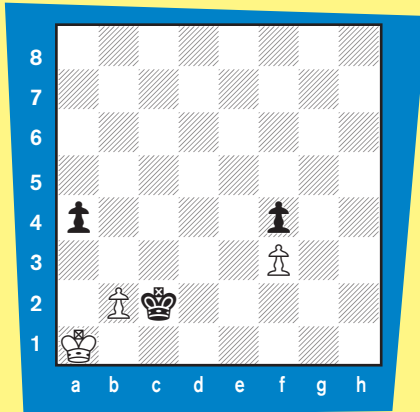
Position Two: White to Play



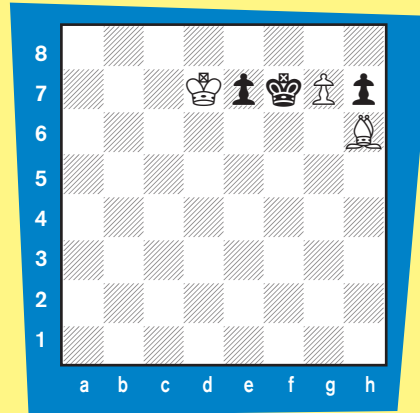
Position Three: White to Play



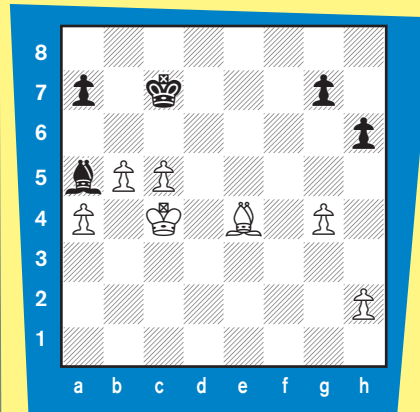
Position Four: White to Play



Position Five: White to Play



Position Six: White to Play



Answers on page 19 





BOOK IT!

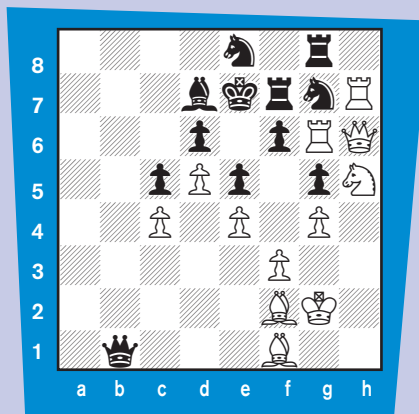
By NM Daniel Gurevich

A chess book about computers and dinosaurs? *Power Chess for Kids* is just that! Charles Hertan masterfully weaves Zort, the teenage computer from planet Zugzwang, and the “dinosaurs,” players from more than 150 years ago, into a story-like tactics book for kids, as well as their parents and coaches. It’s all about how forcing moves such as checks and captures can make longer tactics easier to see.

The book begins with an illustration of basic chess notation and ends with a helpful list of chess terms and their definitions. The first chapters cover the importance of forcing moves, also known as “Checks Moves Bang!” and “Takes Takes Bang.” In later chapters, you can see patterns of forcing moves for forks, pins, skewers, and interference moves. Tricks to make finding tactics quicker and less exhausting can be found throughout the book. Here is an illuminating excerpt showing one of those tricks:

“How to See Far Ahead and Figure Out If You (or Your Opponent) Can Win A Piece

Here’s another key tool pros use all the time to figure out combinations. There are many situations in chess where you attack a piece a whole bunch of times, and he defends it a bunch. How can you figure out who’s winning, without having to calculate in your head, ‘I take him, he takes me, then I take him, he takes me, takes, takes, takes ...’ It can get confusing pretty fast!



Okay, now here’s the quick count rule: **In order to win his piece, you must have at least one more attacker than he has defenders.** So if it were your move here, you would win the Ng7 because you have one more attacker—four against three.”

A really simple way of putting it, right?

The book is probably best used by parents and coaches to illustrate key tactical ideas and examples in small chunks. However, the background storyline, never dull and always filled with humor, makes it the rare chess book kids will want to read on their own.

Readers need to not only know the rules but also to be quick in seeing the basic checkmates and hanging pieces to really benefit from this book. However, I don’t think there is any upper limit; even some very strong players can enjoy solving the puzzles and reading the instructional material.

All of the chess examples within

Please turn to page 23

2012 U.S. OPEN

AUGUST 4-12, 7-12 or 9-12, 2012

Hilton Vancouver Washington

301 West 6th Street, Vancouver, WA 98660

See TLA for details!

SIDE EVENTS *May register online except for the Bughouse which is on-site only.*

4 – 5 August: U.S. Open Weekend Swiss. GPP:6. 5-SS, G/60. \$\$1,000 guaranteed prizes. \$200-100-50, U2200/Unr \$160, U1800 \$140, U1600 \$120, U1400 \$100, U1200 \$80, Unr \$50. Entry fee \$40, Unr free if paying USCF dues. On-Site Registration 8:30-9:30 am 8/4, Rds: Sat 10-1-3:30, Sun 10-1.

5 August: U.S. Open Bughouse. G/5. Entry fee \$20 per team. 80% of entry fees in cash prizes. Registration ends at 6:30 pm, first round begins at 7:00 pm.

6, 7, 8, 9, 10 August: U.S. Open Quads. G/30. Entry fee \$20. Registration 9 am-11:30 am, Rds. 12-1:30-2:30. \$50 to first in each quad.

8 August: U.S. Open G/15 Championship. 5-SS, G/15. Quick rated, higher of regular or quick rating. Entry fee \$40. Registration 9 am-11:30 am. Rds: noon, 1:00, 2:00, 3:00, 4:00. 80% of entries returned as cash prizes. First 30%, second 15%, U2100 12%, U1800 10%, U1500/Unr 8%, U1200 5%.

11 August: U.S. Open Blitz Championship. GPP: 15. 7-SS (double round, 14 games), 1 section, G/5. Quick rated, higher of regular or quick rating. Entry fee \$40, free to Unrated if paying USCF dues. Registration 9 am-11:30 am, first round begins at noon. \$2000 guaranteed prizes! \$\$400-200-150, Expert \$200-100, U2000 \$200-100, U1800 \$180-90, U1600/Unr \$140-70, U1400 \$100, U1200 \$70.

You can do it!

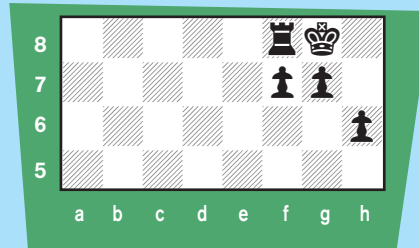
The Three Little Pigs

by Jonathan Edwards

Once upon a time there were three little pigs: Horace, Henry, and Herman. All three went off to college and, after they graduated, each built a house.



When Horace graduated from Harvard, he built a house that looked like this.



Again came the big bad wolf, this time the rook on g1, and blew the house in with g2-g4-g5.

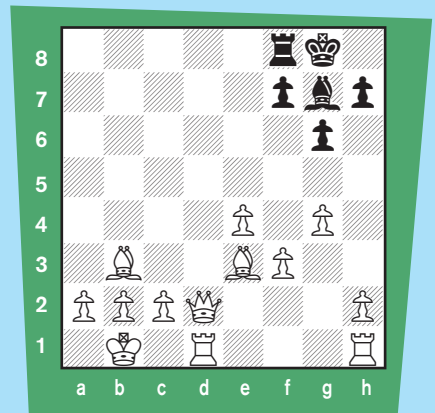
The moral of the story?

Don't go to Harvard or Yale. Make sure you go to Princeton!

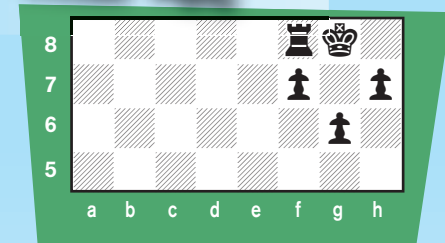
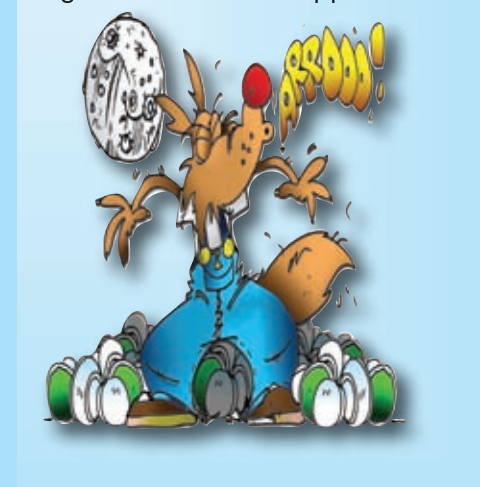
No seriously, the moral of the story is that it's dangerous to advance the pawns in front of your king. Every time you do so, you create weaknesses that your opponents can use to blow apart your king's house.

Attacking a fianchetto

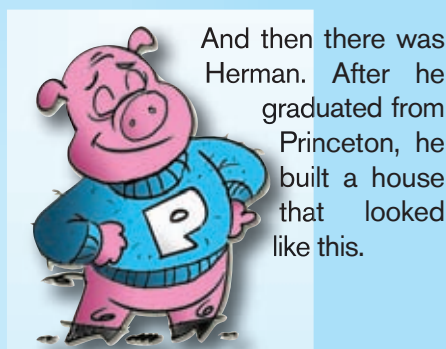
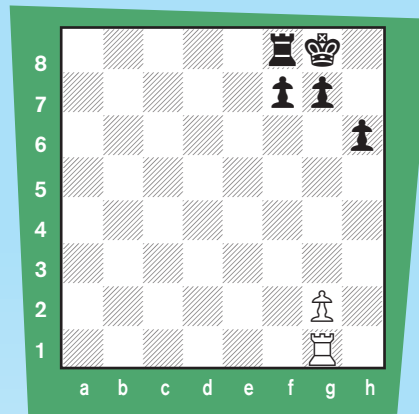
Of course, attacking such pawn weaknesses is a bit harder than just advancing a pawn with a rook behind it. In this position, Black has a king-side fianchetto, and White's forces are very well organized for the king-side attack.



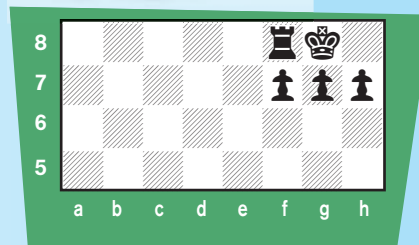
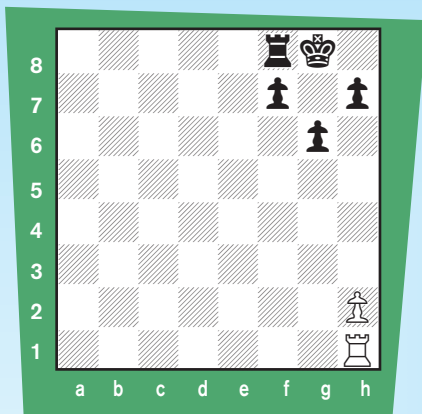
The bishop on e3 and the queen on d2 are preparing Bh6, the h-pawn is aiming for h4-h5 with support from



Along came the big bad wolf, the rook on h1, and blew the house in with h2-h4-h5.



And then there was Herman. After he graduated from Princeton, he built a house that looked like this.



The big bad wolf huffed and puffed, and huffed and puffed, but could not blow Herman's house in.

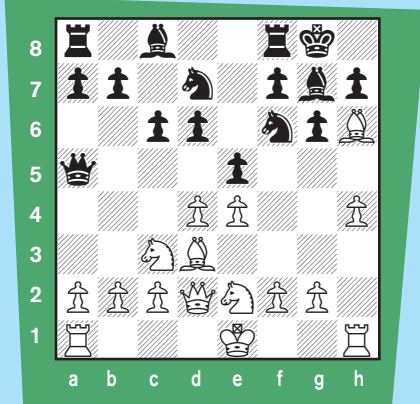


When Henry graduated from Yale, he built a house that looked like this.

the pawn on g4, and even the light-squared bishop on b3 helps by pinning Black's f7-pawn.

World Champion Bobby Fischer described the winning method here as sac, sac, sac, mate. Here are some positions to test you.

#1



White to move

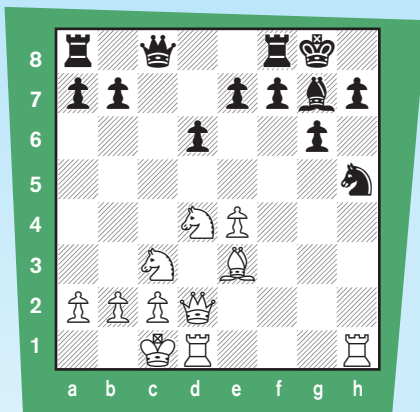
Solution #1

Pavel Hase (2133) - Zdenek Havluj, (2044)

Czechia, 2007

10. h5 Nxh5 11. Rxh5 gxh5 12. Qg5 1-0

#2



White to move

Solution #2

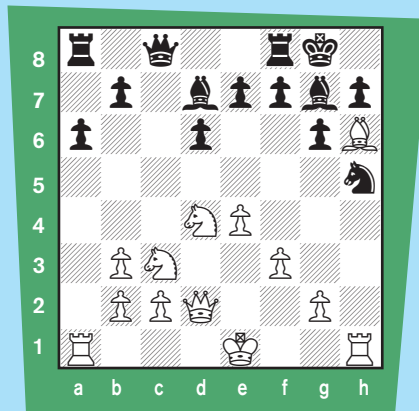
V. Wilson - T. Burke

Detroit, 1991

16. Rxh5 gxh5 17. Nf5 Re8 18. Qg2 1-0

#3

White has already played Bh6 and h5. Should White now sacrifice the Exchange on h5?



White to move

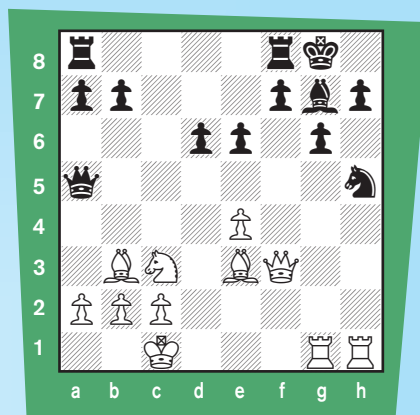
Solution #3

Nicolas Rossolimo - Siegfried Langer

U.S. Open Atlanta, 1967

15. Rxh5 Bxd4 16. Qxd4 e5 17. Qxd6 gxh5 18. Qf6 1-0

#4



White to move

Solution #4

Sergio Montes Vazquez - Heather Bleazard

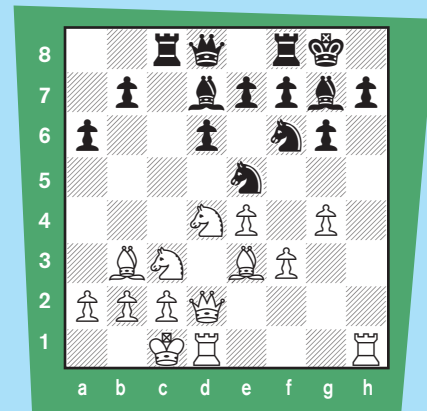
San Agustin, 2003

19. Rxh5 Qxh5 20. Qxh5 gxh5 21. Bh6 Rac8 22. Bxg7 Rfe8 23. Be5+ Kf8 24. Bxd6+ 1-0

#5

Here too, White has already played h4-h5 and, after ... Nxh5, continued

with g4 to open both the h-file and the c1-h6 diagonal.



White to move

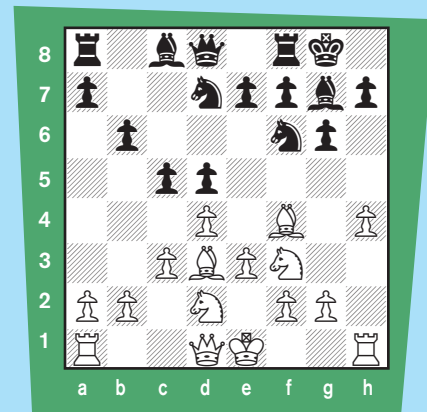
Solution #5

Nicholas Arsenault - Michel Gagnon (2033)

Montreal, 2003

15. Nd5! e6 16. Nxf6+ Qxf6 17. g5 Qe7 18. Qh2+-

#6



White to move

Solution #6

A. Tanguay - Ignas Zalys

Montreal, 1952

9. h5 Nxh5 10. Rxh5 gxh5 11. Bxh7+ Kxh7 12. Ng5+ Kg6 13. Ndf3 Rh8 14. Nh4+ Kf6 15. Qf3 1-0



The OTHER Marshall Attack

by Pete Tamburro

The legendary U.S. champion of the first three decades of the 20th century has many openings named after him. His most famous is the Marshall Attack in the Ruy Lopez (1. e4 e5 2. Nf3 Nc6 3. Bb5 a6 4. Ba4 Nf6 5. O-O Be7 6. Re1 b5 7. Bb3 O-O 8. c3 d5!).

When your writer was a young boy he bought a book, *My Fifty Years of Chess*. It had the best games of Frank Marshall, and each game seemed more thrilling than the previous one.

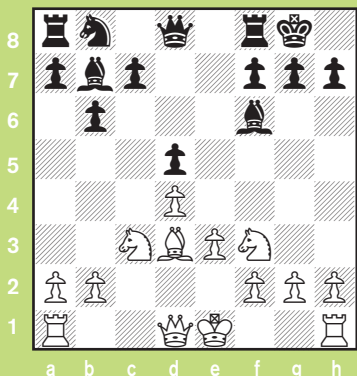
Two of the early games in the book showed Marshall winning with a very instructive attack in the first game and then winning with the very same attack from the same tournament in the next game! And the way he did it! Here's the game that started everything and ended up being the basis for many attacks I played later in chess.

Marshall-Burn, Paris, 1900

1. d4 d5 2. c4 e6 3. Nc3 Nf6 4. Bg5 Be7 5. e3 O-O 6. Nf3 b6 7. Bd3 Bb7

To be honest, I wasn't all that interested in the Queen's Gambit. I loved the Vienna Gambit at the time, BUT I was about to learn a lesson!

8. cxd5 exd5 9. Bxf6 Bxf6



Now, here, I set to wondering. Wasn't swapping a bishop for a knight not such a hot idea? Now Black has the two bishops.

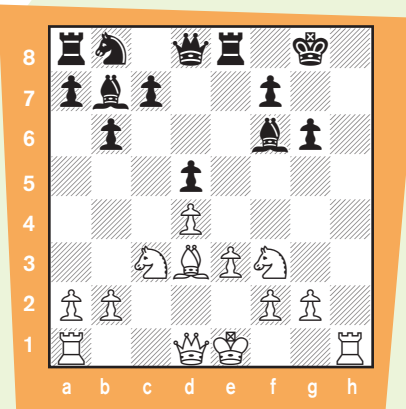
10. h4 ...

Whoa! You can do this?? You haven't castled and you're moving your h-pawn! What's going on here?

10. ... g6

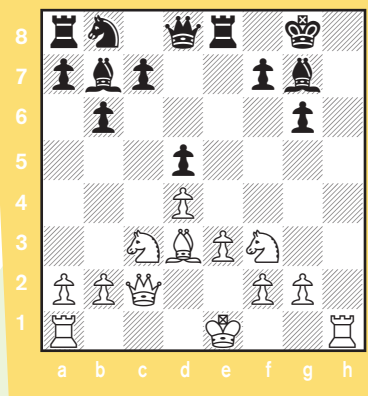
Burn was making a target with that pawn on g6. It was my first lesson in using the h-pawn to attack that target. Later, I found out that Black should have countered the White flank attack with one of his own with 10. ... c5.

11. h5 Re8 12. hxg6 hxg6



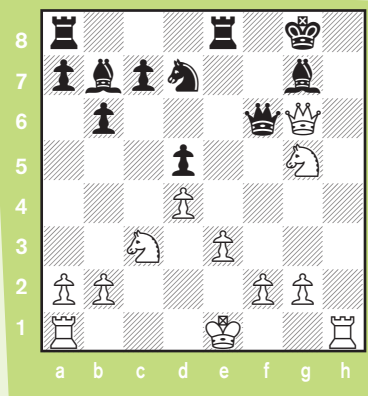
I could understand the h-pawn attack now. Look at that rook file! At this point, I figured he would play 13. Qe2 and 14. O-O-O and double the rooks on that file. Marshall had something else in mind.

13. Qc2 Bg7



OH! 13. Qc2 was much better! Now even I could see the Bxg6 threat. It would completely wipe out his kingside pawns for a piece. But, how do you follow it up?

14. Bxg6 fxg6 15. Qxg6 Nd7 16. Ng5 Qf6



Black seemed to think he had it covered as the king could scoot out through f8 and e7, but I was to learn my last lesson of the game and a great sacrifice to know!

17. Rh8+, Black resigned.

The king is drawn back to h8 and he is mated next move.

Now, what was really funny is that two days later in this tournament another great master Georg Marco played into the same line, but with

what he thought was an improvement! Let's look:

Marshall-Marco, Paris, 1900

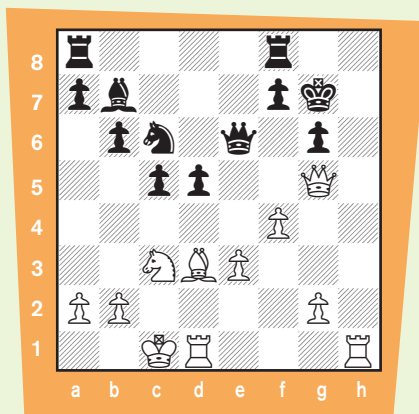
1. d4 d5 2. c4 e6 3. Nc3 Nf6 4. Bg5 Be7 5. e3 b6 6. Nf3 Bb7 7. Bd3 0-0 8. cxd5 exd5 9. Bxf6 Bxf6 10. h4 g6 11. h5 c5

The "c5" idea mentioned earlier, and Marshall adapts!

12. hxg6 hxg6

Notice that he still opened the h-file, and now he was going to castle queenside and double on the open file.

13. Ne5 Bxe5 14. dxe5 Qg5 15. Qf3 Qxe5 16. 0-0-0 Kg7 17. Qh3 Nc6 18. f4 Qe6 19. Qh6+ Kf6 20. Qg5+ Kg7



A very different position from the first game, but I learned that the ideas were similar in certain ways. Black had an open file to defend. His g6-pawn was a target. White was about to use another can-opener on the black pawn shield. Instead of h5 (been there, done that), we have another way to pry open the position:

21. f5 Qe5 22. f6+ Qxf6 23. Qh6+ and mate to follow.

This was exciting to me because I learned an attacking idea. As more and more people began playing "finchetto" defenses, I always remembered what Marshall did with that h-pawn.

I also learned another couple of lessons. It doesn't always work. When it doesn't work, sometimes it works!!

A few years after the Marshall games, the famous attacking grandmaster Rudolf Spielmann went after the similarly legendary Akiba Rubinstein. Rubinstein finds a winning defense and loses!! Why? Because Spielmann just keeps attacking. It's hard to defend:

Rudolf Spielmann
Simon Rubinstein (D55)

Trebitsch Memorial, 16th Vienna, 1933

1. d4 Nf6 2. c4 e6 3. Nc3 d5 4. Nf3 Be7 5. Bg5 0-0 6. e3 b6 7. Bd3 Bb7 8. Bxf6 Bxf6 9. cxd5 exd5 10. h4 c5 (that c5 move again!)



PLAY & LEARN ONLINE!

Kids, parents, and coaches come together to play chess and learn with videos, articles, and training tools!

SAFETY IS OUR #1 PRIORITY!

No contact with strangers. Parents can manage their kids' access, friendships, and online chess activity.

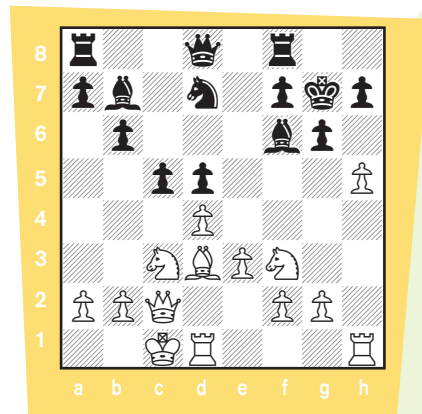
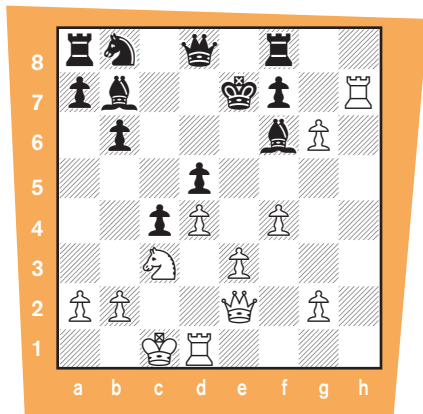
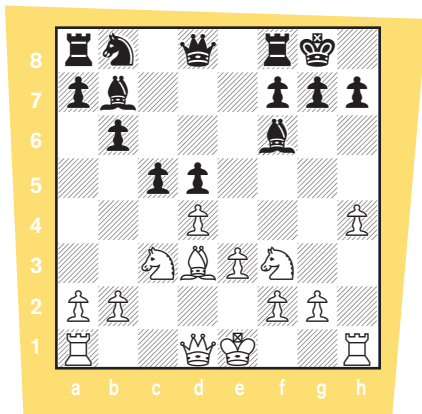
PERFECT FOR CHESS CLUBS!

Manage your club, have tournaments, and help your players get better with ChessKid.com online clubs!



Join Today!

Go to www.ChessKid.com to register for FREE!

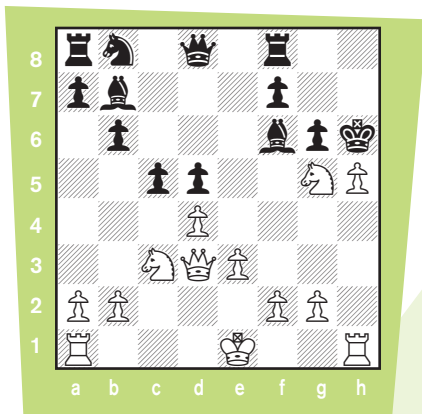


Over the years, here in *Chess Life for Kids*, the Bxh7+ sacrifice has been shown to you. If you remember Jon Edwards' recent article, a familiar pattern has arisen here. Remember, Spielmann is a grandmaster, and HE thinks it works here. It doesn't. Can you see why? Sometimes it's good to know when NOT to play a move!

11. Bxh7+ Kxh7 12. Ng5+ Kh6

White wins if Black goes back: 12. ... Kg8 13. Qh5 Re8 14. Qxf7+ Kh8 15. Qxb7 Qd7 16. Qxd7 Nxd7 17. Nxd5 cxd4 18. Nc7 dxe3 19. Nxa8 exf2+ 20. Kxf2 Rxa8 21. Rad1.

13. Qd3 g6 14. h5



14. ... Bxg5

Even better was the brave 14. ... Kxg5 15. hxg6 Bg7 16. gxf7 Kf6 17. dxc5 Kxf7 18. 0-0-0 bxc5, but how many of us have that kind of courage if a grandmaster doesn't?

15. hxg6+ Kg7 16. Rh7+ Kf6 17. 0-0-0 c4 18. Qe2 Ke7 19. f4 Bf6

Another great lesson for me at the time. Spielmann is losing. He is down a piece. Black can get away. He doesn't resign. He uses the pawns to pry open the black position. Hopefully, Black won't find the best defense. He doesn't!

20. e4 dxe4 21. Nxe4 Kd7 22. d5 Na6 23. g7 Rg8 24. Rh6 Bxg7 25. Rd6+ Kc7 26. Qxc4+ Kb8 27. Rxd8+ Rxd8 28. Kb1 Nc7 29. d6 Ne6 30. f5 Bxe4+ 31. Qxe4 Nc5 32. Qc6 Rc8 33. Qd5 Rd8 34. Qxf7 Rd7 35. Qg8+ Kb7 36. Qd5+ Kb8 37. Qc6 a5 38. Qxb6+ Nb7 39. Qc6 Rd8 40. Qc7+ Ka7, Black resigned.

Would you believe that in 1975 and 2004 the same Bxh7+ sacrifice was played and both times Black lost!

Of course, I wondered if the old Marshall attacking idea was still played, and, sure enough, I found this game from 2007! Over one hundred years later!

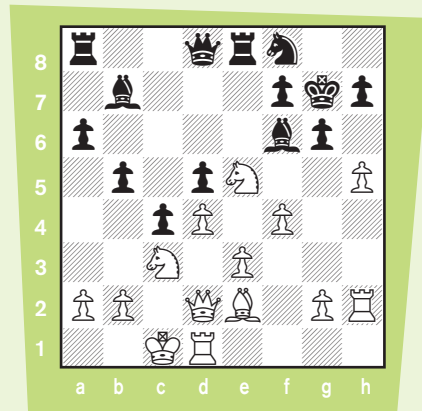
Petra Schuurman (2295) - Talitha Munnik (D55)

Vlissingen HZ Open, 11th Vlissingen (2), 05.08.2007

1. d4 d5 2. c4 e6 3. Nc3 Nf6 4. Bg5 Be7 5. Nf3 b6 6. cxd5 exd5 7. e3 Bb7 8. Bd3 0-0 9. Bxf6 Bxf6 10. h4 Nd7 11. Qc2 g6 12. h5 Kg7 13. 0-0-0 c5

It seems that Black has learned as well! He's a little smarter about his defense and about counter-attacking. White is following the Marshall idea of queenside castling and prying open the h-file. He also takes a page out of Spielmann's attacking idea with f4 and e4.

14. Rh2 c4 15. Be2 Re8 16. Qd2 16. Rdh1 would also be good here. 16. ... Nf8 17. Ne5 a6 18. f4 b5



19. a3

There is room for a variety of styles. Here, White is careful with 19. a3 One gets the impression Marshall would have played 19. hxg6 fxe6 20. a3 Kg8 21. g4 Rb8 22. g5 Bg7 23. Bg4 Think about this position, though. Black has improved the defense on what Burn played back in 1900. Chess grows up just like chessplayers.

19. ... Qd6 20. Bf3 Red8 21. e4

Using Spielmann's idea. Marshall's hxg6 is good as well: 21. hxg6 fxe6



Please turn to page 24

Power Up Your Student's Chess Game

New from

NEW IN CHESS

By Award-winning author
Charles Hertan

You will learn how to weed out silly moves and just consider a few important ones.

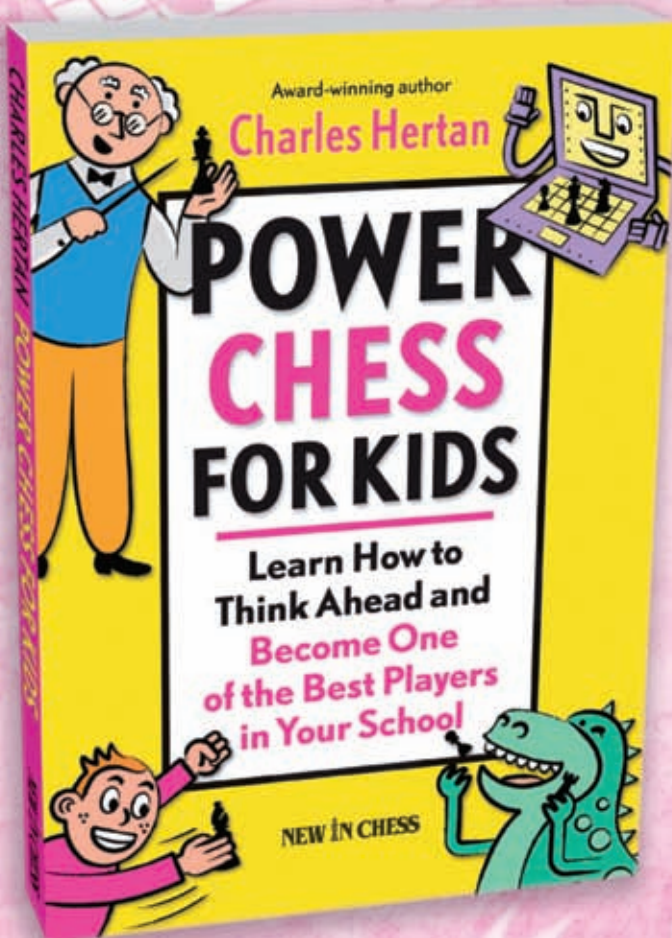
You will learn how to start seeing great moves you never thought of before.

You will learn the two easiest ways to think one-and-a-half moves ahead:

1. Takes Takes Bang!
2. Check Moves Bang!

B0104NIC

\$16.95



For both children *and* parents

**USCF
SALES**

1.800.388.KING (5464)
www.USCFSales.com

USCF

ALL PURCHASES BENEFIT THE UNITED STATES CHESS FEDERATION

OOPS!

Continued from pg. 4



Brandon Nydick

Also, we wish to apologize to Brandon Nydick, a member of the 2012 Trophies Plus All-America team. It turns out he isn't camera-shy. His photo was misfiled.

Brandon, who lives in New York City, learned to play in kindergarten and credits his first coach, Marcus Mairena, for developing his love for the game. He now takes lessons from ("He is amazing!") Varuzhan Akobian, who lives in Los Angeles. He was first grade champion in New York City, and New York State, and then national third grade champion. He was also a member of the U.S. team at the 2011 World Youth Chess Championships in the Under 10 section.

Other than that, he seems to be a normal kid! His interests include tennis, football, skiing, math, social studies and science.

But judging from the photo, we still think he is a little camera-shy!

BROOKLYN CASTLE

This isn't an oops or an owey. It's a wowser! If you have been following *Chess Life Online* at www.uschess.org, you know that *Brooklyn Castle* is the name of a movie which traces the progress of Brooklyn's I.S. 318 and its very successful chess program, beginning in 2009 and going through 2011. There have been screenings in Texas, Minnesota, Georgia, Tennessee and New Jersey. At the Montclair Film Festival in New Jersey, the show was sold out!

Plans are now being made for general distribution in the fall. So check your local movie listings when you go back to school. *Brooklyn Castle* could be showing at a movie theater near you!

And if it is, don't be afraid to ask your teachers and principals and school board members to go see it. Afterschool programs are being cut back all across the country, and this film will show how important such programs are.

The old Rolling Stones hit "You can't always get what you want," is certainly true in life. And the kids at I.S. 318 certainly had their share of disappointments as well as successes. How they handled those setbacks is a testimony to good parenting and to a fine staff of teachers and administrators at I.S. 318.

But let's concentrate on their successes!

NATIONAL HIGH SCHOOL CHAMPIONSHIPS

Let's start with the National High School Championships, which were held in Minneapolis, Minnesota in April. For the first time ever, a junior high school team won the K-12 title. You guessed it: **I.S. 318!** The school's achievement received national coverage through Fox News and *The New York Times*.

The Spring Nationals, as they are called (High School, Junior High School, Elementary) are individual-team events. That means students are paired as individuals and the top four scorers from the same school can win the team title. The top four scorers from I.S. 318 were Justus Williams, Isaac Barayev, Matthew Kluska, and James Black. They scored 20 points out of a possible 28, and just edged out another fine group of students from Manhattan's Hunter College Campus School, by a single median tiebreak point. Playing for Hunter were Alec Getz, Aleksandr Ostrovskiy, Aaron Landesman, and Lilia Poteat.

The overall winner with 6½ points out of 7, was **Ben Gershenov** from Solomon Schlechter HS in New York. He finished half a point ahead of Eric Rosen, Dipro Chakraborty, Jason Altschuler, Atulya Shetty, Bryan Hu, Michael Vilenchuk, and Andrew Ng.

Class winners were Maximilian Zinski, Darcy Linde, Bryan Kapke, Jack Heublum, Haik Der Manuelian, Peter Hansel, Anthony Wong, Michael Izaguirre, Jonah Butler, and Albert Tarczon.

In the K-12 Under 1600 section, it was a local boy who triumphed: **Donald Hooker** of Minneapolis South HS scored a perfect 7-0. Team honors went to Miami Senior High (FL): Orestes Ordonez, Raul Rodriguez, Jossie Calderon, Matthew Solis. They just squeaked by—you guessed it—I.S. 318: Otto Schatz, Jack Wen, Vaughn Soso and Mariah McGreen.

In the K-12 Under 1200 section, **Kaustubh Sanja Nimkar** scored a clean 7-0 for top honors. The team title went to **Abington HS** of Pennsylvania: Eric Goldsborough, Ben Kruger, Ryan Klasky, and Andrew Weinrich.

The K-12 Under 800 section also had an undefeated winner: **Brock Morris** of Sibley HS in Minneapolis. Team honors went to **M.S. 118** of the Bronx, New York City: Mohinur Miah, Abdullah Ridwan, Darron McMorries and Kevin Singh.

The K-12 Unrated section was won by **Andrew Hanson** and **David Ma**, both from Minnesota. **Hinsdale Central HS** from Illinois, won the team prize: Arthar Qureshi, Naveen Balaji, Michael Ren, and Alan Chen.

All the individual and team winners can be found at www.uschess.org.

NATIONAL JUNIOR HIGH SCHOOL CHAMPIONSHIPS

From Brooklyn to Minneapolis to San Diego—the odyssey continues for I.S. 318. **James Black** tied for first place with **Michael Brown** (CA) and **Bryan Hu** (AZ), and led the **I.S. 318** squad to team honors.



From left to right, Bryan Hu, Michael Brown, and James Black

Other team members were Justus Williams, Isaac Barayev, Kenneth Martin, Brian Arthur, and Matthew Kluska.

But it didn't end there! In the K-9 Under 1250 section, teammates **Jamyé Moya** and **William Yu**



I.S. 318 Squad

tied for first place with **William Santos** (FL) and **Abubakar Kamara** (DE). Other members of the I.S. 318 squad were Austin Tang, Isaiah Lewis, and Stefek Yurgel.



Tracy Shaffer

Stars of tomorrow?

Tracy Shaffer (MN) and **Wun-Shen Chen** (HI) may qualify.

They won the K-9 Unrated section. Team honors went to Florida's **Aspira RAM Charter School**, represented by Eddy Gedeon, Stephon Sawyer, Edgar Gonzalez, and Ricardo Gaspari.

The Junior High K-8 section was the largest of all the sections, with over 170 players. **Christopher Wu** of New Jersey and **Kapil Chandran** of Connecticut traveled all the way to San Diego to tie for the title.



Christopher Wu



Kapil Chandran

The **Kennedy Middle School** of Cupertino, California, ran away with the team honors—4½ points ahead of their closest competitor. Teammates were Udit Iyengar, Kesav Viswanadha, Cameron Wheeler, and Neel Apte.

The K-8 Under 1000 section had a three way tie for first place between **Desi Hutson** (MI), **Matthew Helke** (MN), and **Nicholas Kinzel** (AZ). The **Washington Parks Academy** of Michigan just squeaked by Rockway MS (FL) and Sparta MS (NJ). Team members were Branden Davis, Alanna Munson, Robert Lewis, Joshua Harper and Lauren Bradford.

There was also a K-8 Under 750 section, won by **Hao-Rui Xia** with a perfect 7-0 score.

See photo top of next column



From left to right, Hao-Rui Xia (first), Luis David Piedad (second), and Dariel Frias (third)

Bordering on perfect were his teammates from **Mott Hall (NY)**: Dariel Frias, Nicole Zukowski, and Jailine Grullon. All together they scored 24-4.

In the K-9 Blitz, **Justus Williams** and **James Black** had to share the spotlight with **Sean Vibbert** of Indiana. All finished 11-1. With Williams and Black leading the way, it is no surprise that **I.S. 318** won team honors in the ever-popular blitz event. Joining Williams and Black were Kenneth Martin and Isaac Barayev.

We started our little recap with I.S. 318, and we end with I.S. 318. We hope New York City restores the budget cuts which threaten this excellent school program.

2,234 PLAYERS JAM OPRYLAND!

It was a sad weekend in Nashville. No Grand Ol' Opry on the radio. Guitars were being pawned all over town. Banjos were being used for firewood.

Actually, that didn't happen. But it could have and 2,234 kids with accompanying parents and coaches probably wouldn't have noticed. They were in Nashville to play chess! The 2012 National Elementary (K-6) Championships were held May 11-13 at the Gaylord Opryland Resort and Convention Center.

And play they did, from the moment they arrived on Friday until the awards ceremony on Sunday. If the music had died in Nashville, they wouldn't have noticed!

The top section, the K-6 Championship saw a five way tie for first place at 6-1. **Amir Moazami (NY)** led the pack on tiebreaks, but also going home with the hardware (trophies from Trophies Plus) were **Vignesh Panchanatham (CA)**, **Alex Bian**



Amir Moazami



Vignesh Panchanatham

(IL), **Roland Feng (WA)**, and **Kevin Moy (CA)**.

Winning class prizes were Sailesh Sitaram, Milton Lee, Rahul Reddy, Anjali Toly, Phillip Silva, Ethan Solomon, Chloe Wong, Chirag Jain. For a complete list of trophy winners, you can check it out at www.uschess.org.

The hotly contested team title saw a three-way tie for first place. Listed in tiebreak order are the **Weibel Elementary School** of California (Kevin



Alex Bian



Ronald Feng



Kevin Moy

Moy, Michael Wang, Anthony Zhou, Steven Li), the **NYC Lab Middle School** (Adrian Durkin, Sean Chung, Spencer Ha, Jonathan Chan) and New York's **Dalton School** (Reddy Lee, Jacob Ehrenkranz, Oliver Neubauer, Ben Goldstein).

Each team scored 18½-9½, just edging out the Churchill Road School (VA) at 17½-10½.

In the K-6 Under 1000 section, **Justin Braswell** of Detroit, Michigan made it to the top of the heap with a perfect 7-0 score, edging out Marc Metcalf (GA) and Kyle Kras (IL), both just a half a point behind Justin.

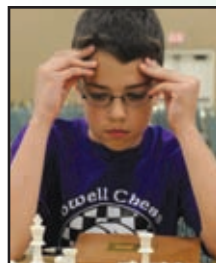
Team honors went to New York's **P.S. 503** (Brooklyn). They finished half a point up on Rockway Middle School of Miami, Florida. Playing for P.S. 503 were Li Heng Wang, Nancy Wang, Joshen Zhang, Wang Chen, Steven Xue, and Helen Xue.

There was a clear winner in the K-6 Unrated section—**Sean Innes** of Scottsdale, Arizona. And four New York teams finished at the top of the team competition, with P.S.-I.S. 180 (Hugo Newman) outdistancing Success Academy (Harlem), Community Partnership Charter School, and a second team from Success Academy. Playing for Hugo Newman were Juliana Lopez, Jeffrey Santana, Dante Mason, and Derrell Keys.

Also hotly contested was the K-5 Championship section, with no less than nine (!) kids tying for first place at 6-1. In tiebreak order, they were **Bryce Tiglon (WA)**, **Marcell Szabo (WA)**, **Daniel Asaria (CA)**, **Advait Patel (WV)**, **Dex Webster (LA)**, **Andrew Zheng (MD)**, **Thomas Knoff (NY)**, **Zachary Tanenbaum (CT)**, and **Luke Xie (OH)**. Nine kids



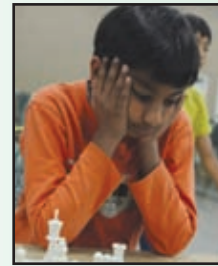
Bryce Tiglon



Marcell Szabo

from eight states!

On tiebreaks, the class prize winners were Reece Iriye (NV), Nicholas Miklauccic (NC),



Danial Asaria



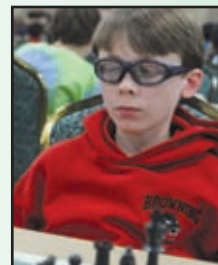
Advait Patel



Dex Webster



Andrew Zheng



Thomas Knoff



Zachary Tanenbaum



Luke Bohua Xie

Ranadheer Tripuraneni (IL), Adrian Gellert (TN), Zachary Zhang (WA), Andrew Oliver (CT), and Harrison Lewis (GA). Those who tied on tiebreaks who are not listed here, can be found at www.uschess.org.

The team title in the K-5 section went to the **Greenbriar West Elementary School (VA)**. Representing Greenbriar were Pranav Karthik, Vivian Cao-Dao, Ryan Xu, and Revanth Vajju. They finished just ahead of two New York schools, Browning and Hunter College.

In the K-5 Under 900 section, there was another log jam of winners. Five finished just a half point shy of perfection. They were **Patrick Barner (IN)**, **Steve Silverberg (WA)**, **Joshua Werth (WI)**, **Nithik Balachandran (GA)**, and **Jeremy Rodriguez (NY)**.

The top team was **P.S. 139**—from Brooklyn, New York. They outdistanced three other teams from New York—P.S. 160 (Brooklyn), Bronxville School, and P.S. 6 (Manhattan). Playing on the winning team were Ishmael Bento-Simon, Jayvon Bullock, Kian Fallon, and Aaron Idemudia.

The K-3 Championship section also had a tie for first place, but this time, only two were involved: **Tan**

Please turn to page 23

Answers, We've got Answers.

Win or Draw (page 8)

Diagram One Solution: **BLACK WINS!** From a game, Adolf Olland-Paul Leonhardt, Carlsbad, 1907. Black played the astonishing **43. ... c5!** And White resigned as he realized he could not capture or advance because the e-pawn would advance to e1 and promote. Then, the black king just waltzes up, snatches the white e-pawn and wins.

Diagram Two Solution: **DRAWN!** Thought that b-pawn would promote and win, huh? Watch! **1. Kc6 b4 2. Kb6 b3 3. a7 b2 4. Ka6 b1=N** (4. ... b1=B 5. Kb6 Bxe4 6. Kc7 Bf3 7. Kd6 e4 8. Ke5 Kxa7 9. Kf6 Bxh5 10. Kg7 Ka6 11. Kxh6 Bf3 12. h5 Kxa5 13. Kg5 Bxh5 14. Kxh5 Kb5 15. Kg4 Kc4 16. Kf5 [16.

Kf4?? Kd3!] 16. ... Kd5) **5. Kb5 Nd2 6. Kc5 Kxa7 7. Kd5 Nf3 8. Ke6 Ka6 9. Kf5 Nh2 10. Kxe5 Kxa5 11. Kd6 Ng4 12. e5 Nxe3 13. e6 Kb6 14. Kd7** (14. e7 Nf5+ 15. Kd7 Nxe7 16. Kxe7 Kc6 17. Kf6 Kd5 18. Kg6 Ke6 19. Kxh6 Kf6) **14. ... Nf5 15. Kd8 Ng7 16. e7 Kc6 17. e8=Q+ Nxe8 18. Kxe8 Kd6 19. Kf7 Kd7 20. Kg6 Ke6 21. Kxh6 Kf6.**

Diagram Three Solution: **DRAWN!** 1. Kf5 Kg7 2. e7 Kf7 3. e8=Q+ Kxe8 4. Ke6 f5 5. Kxf5 Kd7 6. Ke4 Kc6 7. Kd4 d5 8. Kd3 Kc5 9. Kc3 d4+ 10. Kd3 Kd5 11. Kd2 Kc4 12. Kc2 d3+ 13. Kd2 Kd4 14. Kd1 Kc3 15. Kc1 d2+ 16. Kd1 Kd3 Stalemate.

Diagram Four Solution: **DRAWN!** 1. b4! axb3 Stalemate! 1. Ka2 doesn't work because Black heads for the f3-pawn (Count:

it takes Black seven moves to capture and queen and White, too, but there's a trick at the end ... 1. Ka2 Kd3 2. Ka3 Ke2 3. Kxa4 Kxf3 4. b4 Ke4 5. b5 f3 6. b6 f2 7. b7 f1=Q 8. b8=Q Qa1+ 9. Kb5 Qb1+ and Black wins!).

Diagram Five Solution: (An old favorite!) **WHITE WINS!** In fact, he mates! 1. g8=Q+!! Kxg8 2. Ke6 Kh8 3. Kf7 e5 4. Bg7#.

Diagram Six Solution: **WHITE WINS!** Bishops of opposite colors aren't always a draw. 1. b6+ axb6 2. Kb5! wins. Either the bishop goes or the white pawn or pawns break through: **1. b6+ axb6** (1. ... Bxb6 2. cxb6+ Kxb6 3. Kb4 a6 4. a5+ Ka7 5. Kc5 Kb8 6. Kb6) **2. Kb5 Bd2 3. cxb6+ Kb8 4. a5.**

What's the Question?

Continued from pg. 6

with a drawish opposite-colored bishop position.

21. Bxe4 Qh5 22. Bxd4 Rxd4

White's up a pawn, but what matters most now is that his king is about to be in trouble; the white pieces are barely developed and the king's position is already opening.

23. Ne3?

Moriarty/Petrosian is losing the thread of the game now. The power of Black's attack is not to be underestimated. White should have played 23. e3! Qxd1 24. Rfxd1 Rxe4 25. dxe4 Bxc4 26. Rac1, with an approximately even position.

23. ... Rf6!

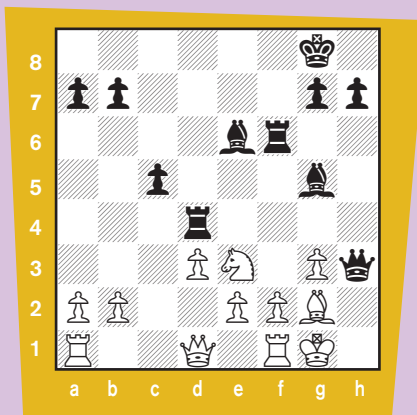
Black brings the rook into the attack.

24. Bf3?

Now White just loses. There was just one last chance of survival. 24. f4! Rh6 25. Ng2! White can still hide for a while, and possibly survive the whole thing.

24. ... Qh3 25. Bg2

This was White's idea when he played 24. Bf3. However, Petrosian was not prepared for Black's incredible response. Can you see it?



25. ... Qxg3!!

Who needs queens, anyway? Black has checkmate coming!

Now, Moriarty and Petrosian chose different moves. First, let's look at the continuation from Petrosian's game.

(a)

26. Nf5

Everything is hanging! Now watch Black's "ultra-high-quality" pieces finish off the white king.

26. ... Rxf5 27. fxx3 Be3+ 28. Rf2

What would have happened if White had moved the king? Something similar to the line in Moriarty's game, which we will see just a bit later.

28. ... Rxf2 29. Kh1 Rg4

White's queen and rook are simply powerless: it's over.

30. b4 Rg6

Petrosian **resigned** here, since

Black's mating threats are basically unstoppable. **0-1**

Now here is Moriarty-Holmes again.

(b)

26. fxx3 Bxe3+ 27. Kh2 Rh6+ 28. Bh3 Bxh3

White can sacrifice as much material as he wants, but it's now too late to defend the king.

29. Rf4!

White has found the very last fighting chance. There is just one winning move for Black here. Can you find it?

29. ... Rxf4! 30. gxf4 Bf2!

Now Black is threatening checkmate, and there's no way to stop it.

31. Qb3+

Now Sherlock Holmes could win back the queen with 31. ... Be6+, but do you think he did? No, of course not! Black has sacrificed almost everything for the initiative, so why turn back now?

31. ... Kh8 32. Qxb7 Bf1#

A great finish for a great game. **0-1**

We have reconstructed the game between Sherlock Holmes and Professor Moriarty, but more importantly, we have seen the importance of the quality of your pieces, the power of the initiative. **In chess as in life, quality almost always trumps quantity.**

Tournament Life Announcements

JUNE 14 THROUGH AUGUST 14

Scholastic Members:

As a service to you, we are listing upcoming National USCF rated events, and requested events of possible interest to you. You can always log in to www.uschess.org, and click on "Clubs and Tournaments." Then click on "Upcoming Tournaments" for a complete listing of upcoming rated events and details. As always, you can check out the TLA section of *Chess Life*.

Organizers and Tournament Directors:

If you would like your tournament listed here in *Chess Life for KIDS* for August (events to be held after August 14), the deadline for submitting your announcements is June 10th. The deadline for the October 2012 issue is August 10th. The processing fee is \$1.00 per line for the first eight lines, \$2.00 for every line thereafter. Send your announcements to Joan DuBois, tda@uschess.org.

Display advertising is also available. Advertising rates are posted on the USCF website, www.uschess.org, or you may email: tda@uschess.org for complete details.

NATIONALS

June 14, Nevada

Trophies Plus Grand Prix Points: 80 (Enhanced)
2012 U.S. Game/10 Championship (OC)

6SS, G/10. FIDE Rated. Riviera Hotel and Casino, 2901 Las Vegas Boulevard South, Las Vegas 89109. **\$56 5,000.** 1500-800-500, U2300 450, U2100 400, U1900 350, U1700 300, U1500 250, U1300 200, U1100 150, unrated 100. There must be 3 players eligible for each prize to be awarded. **EF:** \$69 by 5/28, \$79 by 6/13 \$100 on site. **REG.:** 2-4 p.m. **Rds.:** 5:30-6:30-7:30. Higher of regular or quick rating used. Bring clocks. 1/2 point by available in any round (limit 2). **HR:** \$59 single or double (\$89 Friday and Saturday nights). 1-800-634-6753 or (702) 734-5110. **ENT:** National Open, PO Box 90925, Henderson, NV 89009-0925, on line www.VegasChessFestival.com or fax at (702) 933-9112. **NS. NC. W.**

A Heritage Event!
An American Classic!
June 15-17 or 16-17, Nevada

Trophies Plus Grand Prix Points: 200 (Enhanced)
2012 National Open

6-SS, 40/2, SD/1 (2 day option rds 1-3 G/45). Riviera Hotel and Casino, 2901 Las Vegas Boulevard South, Las Vegas 89109. **\$80,000 Guaranteed Prize Fund** will not be reduced. **Championship. SS:** 6400-3200-1600-800-500-300-300-300-300-200-200-200-200, under 2500 1600, under 2400 1200, under 2300 1000. \$2,000 EXTRA for perfect score. The winner of the Championship section also receives a replica of the Edmondson Cup. **Under 2200. SS:** 3200-1600-800-500-400-250-250-250-250-200-200-200-200. **Under 2000. SS:** 3200-1600-800-500-400-250-250-250-250-200-200-200-200. **Under 1800. SS:** 3200-1600-800-500-400-250-250-250-250-200-200-200-200. **Under 1600. SS:** 3200-1600-800-500-400-250-250-250-250-200-200-200-200. **Under 1400. SS:** 2000-1000-700-400-300-250-250-250-250-200-200. **Under 1200. SS:** 1200-600-400-300-250-200-200-200. **Unrated, SS:** 500-300-200. **Plus Score Bonus** (\$14,000 guaranteed) in addition to any other prizes, every player who finishes with 3-1/2 points or better wins a \$50 gift certificate. Plus score certificates will be awarded on site only. Players under age 15 are eligible for best game prizes including the Freddie award plus \$200 (donated by Fred Gruenberg). Top 2 sections FIDE rated. **EF:** \$169 by 2/29, \$199 by 5/28, \$219 by 6/13, \$240 on site. \$40 discount for seniors 65 and over. Add \$120 for adults rated under 2100 or juniors under 2000 playing in the Championship Section. This is an open tournament - you may play in any section at or above your rating level; unrated players may play only in Unrated or Championship Section. Provisionally rated players may not win more than 3rd prize in any section except Championship. CCA minimum ratings or other ratings may be used if higher than USCF June Supplement. **Reg.:** 3 p.m.-10 p.m. Thursday, 8-9:30 a.m. Friday. **Rds.:** 11-6, 10-5, 10-5. 2-day schedule. **Reg.:** 8-9 a.m. Saturday. **Rds.:** 10-12-2-5: merge with 3-day in round 4. Half point byes available in any round, but round 5 or 6 byes must be requested before the start of round 2. Chess sets and boards provided for tournament play only, not for skittles. Please bring chess clocks! The **LAS VEGAS INTERNATIONAL CHESS FESTIVAL** features the National Open, the U.S. Game/10 Championship, the International Youth Championship and other events. **Many free extras and surprises!** Free parking. Free raffle with great prizes. **Free GM Lectures.** Free GM analysis of your games. **Grandmaster Chess Camp** for all ages on Thursday. **U.S. Game/10 and Grandmaster Simuls** Thursday afternoon. **Youth Tournaments** Friday, Saturday & Sunday. **Poker Tournament** Monday morning. **LOW room rates!** **HR:** \$59 single

or double (\$89 Friday and Saturday nights). 1-800-634-6753 or (702) 734-5110. **Don't be shut out; make your reservations early and be sure to ask for the chess rates;** The Riviera sells out most weekends. Cutoff for special hotel rate is **May 28th**. Rates may be as high as \$150 a night later. **RESERVE NOW!** Credit card or one night room deposit will be required to hold reservation, may be canceled 72 hours in advance for nominal fee. **Tournament Registration:** National Open, PO Box 90925, Henderson, NV 89009-0925, on line at www.VegasChessFestival.com or by fax at (702) 933-9112. **Info:** (702) 560-0955 and leave a message. **NS. W. FIDE. Chess Magnet School JGP.**

July 13-15, Texas

2012 U.S. Junior Open

6SS, G/120,d5. Marriott Houston South at Hobby Airport, 9100 Gulf Freeway, Houston, TX 77017. www.marriott.com/hotels/travel/houhh-houston-hobby-airport-marriott/. Free parking! \$79 HR valid until 6/30 (includes free hot breakfast buffet!). Reserve early! 713-943-7979, Group Code: CHESS. **4 Sections based on age as of 1/1/2012: Under 21, Under 15, Under 11 and Under 8. July Rating Supplement. U21:** \$500+ entry to 2013 US Junior Closed - \$250-\$125-\$75-\$50. Individual plaques to top five overall, plaques for best player age 18, 17, 16, 15, Under 15, and for ratings U1600, U1400, U1200. U21 is also FIDE rated. **U15:** Individual trophies to top ten overall, trophies for best player age 14, 13, 12, 11, Under 11, and for ratings U1400, U1200, U1000. **U11:** Individual trophies to top ten overall, trophies for best player age 10, 9, 8, 7, Under 7, and for ratings U1200, U1000, U800. **U8:** Individual trophies to top ten overall, best player age 7, 6 & Under, and for ratings U1000, U800, U600; honorable mention trophies for all others U8. Commemorative medals for all participants. **Teams:** Trophies to top three school teams and top club team in each of the four sections. Top four scores, minimum of three, count towards team score in each section. **Byes:** One half-point bye, any round except Rd. 6, if requested before Rd 1. **EF:** \$35 postmarked on or line by 7/2, \$50 after 7/2, no checks on site. **Schedule:** Onsite registration, Fri 8:30-11:00am. Opening Ceremony, Fri 12:45pm. Rounds, Fri 1pm & 6pm; Sat 9:30am & 2:15pm; Sun 9am & 1:30pm. Awards Ceremony 6:00pm (approx). **Side Events: Blitz, U21 & U11.** Sat 6:30pm, **EF:** \$15 by 7/2, \$20 on site. **Bughouse:** One section, Sat ASAP after Blitz, **EF:** \$25 per team, on site only. **Parents and Friends Tournament (not rated):** 3SS, G/30, Sat, Rds. 10:30, 2:30 & 4:00pm. **EF:** \$20, on site only. **Prizes:** Trophies to top three plus one USCF Premium membership for each five participants. **ENTRIES:** Mail to Francisco L. Guadalupe, 305 Willow Pointe Dr., League City, TX 77573. **Info:** figuadalupe@aol.com. Enter online at: www.active.com/event_detail.cfm?event_id=2015371. Note: Active.com charges a small fee. Phone entries: (713) 530-7820. Add \$3 (per player) for phone entries. Tournament website link at <http://main.uschess.org/content/view/10014/95>. **Chess Magnet School JGP.**

Aug. 4-8, Washington

2012 Trophies Plus U.S. Girls Junior Open Championship

6SS, G/90+30 seconds. Hilton Vancouver Washington (see U.S. Open). Open to all females born after 08/04/91. Must be US resident to qualify for Scholarship money. **EF:** Free if playing in U.S. Open (must play in 6-Day or 4-Day Schedule), otherwise \$50 mailed by 7/29 or on line by 7/29, \$60 at site. **Prizes:** 1st Place: \$500 Scholarship and Plaque; 2nd Place: \$350 Scholarship and Plaque; 3rd Place: \$150 Scholarship and Plaque; Plaques to Top A, B, C, D, E, and Unr. Registration ends Sat 6 pm. Rds. Sat 7 pm, Sun/Mon 12 noon & 7 pm, Tue 11 am. **Ent:** USCF (Girls Junior Open), PO Box 3967, Crossville, TN 38557. **Online entry:** <https://secure.uschess.org/webstore/tournaments.php?wkevent=2012GirlsJrOpen>. **Chess Magnet School JGP.**

A Heritage Event!

Aug. 4-12, 7-12 or 9-12, Washington

Trophies Plus Grand Prix Points: 300
113th annual U.S. Open

Includes traditional one game per day schedule (9 days), also 6-day slow time control option, and 4-day option requiring only 3 nights hotel stay for most players. 9SS, 40/2, SD/1, D5 (4 day option), Rds. 1-6, G/60, D5, Hilton Vancouver Washington, 301 W. 6th St., Vancouver, WA 98660. Self Parking \$13.00, valet \$17.00 per night. **HR:** \$110 single/quad, 360-993-4500, reserve by July 12 or rate may increase. \$50,000 in prizes based on 500 paid entries, else proportional, \$40,000 (80% of each prize) minimum guaranteed. A one section tournament with Class prizes. Top US player not otherwise qualified qualifies for 2013 US Championship. **Choice of three schedules: Traditional:** 40/2, SD/1, D5. One round daily at 7 pm, except Rd 9, 3 pm 8/12. **6-Day Option:** 7 pm 8/7, 12 noon & 7 pm 8/8-10, 7 pm 8/11, 3 pm 8/12. **4-Day Option:** 1 pm, 4 pm & 7 pm 8/9; 10 am, 1 pm, 3:30 pm & 7 pm 8/10, 7 pm 8/11, 3 pm 8/12. **All schedules merge after Round 6 & compete for same prizes. Projected prizes:** Top places: \$8000-4000-2000-1500-1000-700-500-400, clear winner or playoff \$200 bonus. If tie for first, top two on tiebreak play speed game (White 5 minutes, Black 3 minutes and gets draw odds, 5 second delay) for bonus and title. Class Prizes: Top Master (2200-2399) \$2400-1200-600-300, Expert (2000-2199) \$2400-1200-600-300, Class A (1800-1999) \$2400-1200-600-300, Class B (1600-1799) \$2400-1200-600-300, Class C (1400-1599) \$2000-1000-500-300, Class D (1200-1399) \$1500-700-400-200, Class E or below (under 1200) \$1200-600-400-200, Unrated \$700-400-200. Special prizes for Life Titles: Top Life Senior Master Under 2500: \$600. Top Life Master (or Original Life Master) Under 2300: \$600. Top Candidate Master (or higher title) Under 2100: \$500. Top First Category (or higher title) Under 1900: \$500. Top Second Category (or higher title) Under 1700: \$500. Top Third Category (or higher) Under 1500: \$400. Top Fourth Category (or higher) Under 1300: \$300. Life Titles must be established by August 1, 2012. Special life title prizes will be calculated and awarded August 24, 2012. Half Point Byes: must commit before Round 4; up to 3 byes allowed for 2000/Up, 2 byes for 1400-1999, one bye for Under 1400/Unr. Limit 1 bye in last two rounds. Zero point byes are always available in any round. **Entry Fee:** Online, \$145 by 6/17, \$165 by 7/29, \$185 after 7/29. By mail, \$147 postmarked by 6/17, \$167 postmarked by 7/29; do not mail after 7/29! By phone, \$150 by 6/17, \$170 by 7/29, \$185 after. No phone entries after 8/2 (close of business at the Office) At site, all \$190; GMs free. All entries must be made at least 2 hours prior to your first game. Current USCF membership required. **August official ratings used;** unofficial ratings used if otherwise unrated. CCA ratings used if above USCF. Foreign player ratings: usually 100 points added to FIDE or FQE, 200+ added to most foreign national ratings, no points added to CFC. Highest of multiple ratings generally used. **Entries:** USCF, ATTN: 2012 U.S. Open, PO Box 3967, Crossville, TN 38557. Online entry: <https://secure.uschess.org/webstore/tournaments.php?wkevent=2012USOpen>. **Chess Magnet School JGP.**

to FIDE or FQE, 200+ added to most foreign national ratings, no points added to CFC. Highest of multiple ratings generally used. **Entries:** USCF, ATTN: 2012 U.S. Open, PO Box 3967, Crossville, TN 38557. Online entry: <https://secure2.uschess.org/webstore/tournament.php?wkevent=2012USOPEN>. Phone entry: 800-903-8723. **FIDE rated, No cell phones.** Bring a clock -- none supplied. Sets/boards supplied for tournament but not for skittles. Many meetings, workshops and seminars, including: **USCF Committee Meetings** 8/8-10, **USCF Awards Luncheon** 8/11 noon, **USCF Delegates Meeting** 8/11-12. Many side events and other championships, including: **Women's US Open** (see separate TLA for the Women's event), **U.S. Open Blitz Championship** 7SS, Double, 12noon 8/11; **Weekend Swiss** 5SS, G/60, 10-1-3:30 Sat 8/4, 10 & 1 Sun 8/5; **U.S. Open Scholastic** (see separate TLA for the Scholastic event); **U.S. Open Quads G/30** 12-1-3:30-2:30 Mon, Wed, Thu, Fri; **U.S. Open G/15 Championship** 12-1-2-3-4 Wed 8/8; **U.S. Open Bughouse** Sun. 7:00 pm 8/6. **16th Annual Golf Tournament for the U.S. Open Chess Players**, (see tournament website for details). **U.S. Open Tennis Tournament** (see tournament website for details). In addition, three other championships will also take place: the **2012 Denker Tournament of HS Champions**, the **2012 Barber Tournament of K-8 Champions**, and the **2012 Trophies Plus U.S. Girls Junior Open** (see separate TLA for the Girls event). **Please check the U.S. Open website often for updates, new information and corrections!** www.uschess.org/tournaments/2012/usopen/. **FIDE. Chess Magnet School JGP for U.S. Open.**

Aug. 8-12, Washington

2012 Women's U.S. Open

5SS, Game 90 + 30 Seconds. Hilton Vancouver Washington, 301 W. 6th St., Vancouver, WA 98660. Self Parking \$13.00, valet \$17.00 per night. **HR:** \$110 single/quad, 360-993-4500, reserve by July 12 or rate may increase. \$2000 Guaranteed. **EF:** \$50. One section with class prizes. **Prizes:** \$500 (+ trophy), \$300, \$200. Class Prizes: U2000, U1800, U1600, U1400, U1200: \$200 each. **Rounds:** 8/8 to 8/11, 11:00 am, 8/12, 10:00 am. Half point byes: Limit 1, must commit before Round 2. Entry Fee: Online, \$50 by August 7th. By mail, \$50 postmarked by 7/29; do not mail after 7/29! By phone, \$50 by 8/7. No phone entries after 8/7 (close of business at the Office) At site, all \$50. Registration At site closes August 8 at 10:00 AM. **August official ratings used;** unofficial ratings used if otherwise unrated. CCA ratings used if above USCF. Foreign player ratings: usually 100 points added to FIDE or FQE, 200+ added to most foreign national ratings, no points added to CFC. Highest of multiple ratings generally used. **Entries:** USCF, ATTN: 2012 U.S. Women's Open, PO Box 3967, Crossville, TN 38557. Online entry: <https://secure.uschess.org/tournaments/2012/womens/>. Phone entry: 800-903-8723. **No cell phones.** Bring a clock -- none supplied. Sets/boards supplied for tournament but not for skittles. **Please see the US Open TLA for side events, committee meetings, delegate meetings and other events held during the Open. Please check the U.S. Open website often for updates, new information and corrections!** www.uschess.org/tournaments/2012/womens/. **Chess Magnet School JGP.**

Sept. 21-23 or 22-23, Texas

Trophies Plus Grand Prix Points: 50 (Enhanced)
2012 U.S. Class Championships

5SS, G/120, d5 (2-Day Option, Rd 1, G/60, d5), \$11,000 b/200 full paid entries, 70% guaranteed. Junior entries in Class C and D, All Class E, and Unrated Section count as 2/3. Free entry for GMs. Free entry for IMs, deducted from winnings. July Rating Supplement used. Houston Marriott South at Hobby Airport, 9100 Gulf Freeway, Houston, TX 77017. www.marriott.com/hotels/travel/houhh-houston-hobby-airport-marriott/. Free parking! \$87 Hotel! 713-943-7979, Group Code: CHESS. **8 Sections.** Rated players may play up one class only. **MASTER** (2200/up), FIDE Rated, \$1,250-650-400 (U2400: 400-200-100), **EXPERT** (2000-2199), \$800-400-200, **CLASS A** (1800-1999), \$800-400-200, **CLASS B** (1600-1799), \$800-400-200, **CLASS C** (1400-1599), \$800-400-200, **CLASS D** (1200-1399), \$800-400-200, **CLASS E** (U1200), \$300-200-100, **Unrated**, \$300-100. National Class Champion title and plaques to each Class winner. Tie-breaks: MSCO. **EF:** \$75 postmarked or on line by 9/14, \$85 after. **Special EF:** \$45 by 9/14 (\$55 after) for all players in Class E, Unrated Section, and Juniors U18 in Class C or D. **3-Day Schedule:** Registration Fri (10/1) 5-7pm. Rds. Fri 8pm, Sat 1pm & 6:30pm, Sun 9:30am & 2:30pm. **2-Day Schedule:** Registration Sat (10/2) 8-9am. Rds. Sat 10am, 1pm (merges with 3-Day Schedule) & 6:30pm, Sun 9:30am & 2:30pm. Byes for all rounds, must commit before end of Rd 2. **SIDE EVENTS: 5-min BLITZ,** Sat after Rd 3, 2 sections, Open and U1800 (uses Regular USCF ratings). \$10 EF on site, 75% returned in prizes; **SCHOLASTIC TOURNAMENT,** 5SS, G/30, d5, One day only, Sat 10/2, \$20 by 9/24, \$25 after. **Sections:** K-3, K-6, K-9, K-12. **Prizes:** Trophies to top 15 individuals and plaques to top 3 teams in each division, top four players from one school count for team score, minimum of two. Scholastic players will receive a commemorative medal. **ENTRIES:** Check payable to Francisco L. Guadalupe and mail to 305 Willow Pointe Dr., League City, TX 77573. On line: www.active.com/more-sports-tournament/houston-tx/us-class-chess-championships-2012. Tournament website link at <http://main.uschess.org/content/view/10014/95>. **Info:** figuadalupe@aol.com. Phone Entries (713) 530-7820. **Chess Magnet School JGP.**

Grand Prix

June 9-10, Texas

Trophies Plus Grand Prix Points: 20 (Enhanced)
2012 DCC Fide Open IV

5SS, G/90 with 30 sec inc. Dallas Chess Club, 200 S. Cottonwood Dr. #C, Richardson, TX 75080. Two sections: Open and Reserve. **Open Section** \$5750G. This section is FIDE rated but uses USCF Rules. \$500-\$250. **EF:** \$75, Senior/Hcap/Additional Family Member \$50, plus \$5 non-DCC membership fee if applicable. Small appearance fee to the First two GM/IM who apply. GM/IM must play all rounds to get appearance fee. **Reserve section:** Open to players rated below 1800 USCF. This section is not FIDE Rated but is USCF rated. **EF:** For U1800: \$30 plus \$5 non Dallas Chess Club membership fee if applicable. The U1800 give back 10% in prizes and if there is a clear winner, then that winner receives free entry to next DCC Fide Open. Both: **Registration:** 9:45-10:15 am. **Rds.:** Sat 10:45-3:10-7:16, Sun 10:45-3:10. One Bye allowed if requested before rd 2, with-

drawals and zero point last round byes are not eligible for prizes. **Ent:** Dallas Chess Club, see address above. **Info:** 214-632-9000, info@dallaschess.com. NS. NC. FIDE. **Chess Magnet School JGP.**

June 14, Nevada

Trophies Plus Grand Prix Points: 80 (Enhanced)

2012 U.S. Game/10 Championship (QC)

See Nationals.

A Heritage Event!

An American Classic!

June 15-17 or 16-17, Nevada

Trophies Plus Grand Prix Points: 200 (Enhanced)

2012 National Open

See Nationals.

A State Championship Event!

June 16, Pennsylvania

Trophies Plus Grand Prix Points: 6

2012 PA State Game/45 Championship

4SS, G/45d5. Wm. Pitt Union, Univ. of Pitt., 5th & Bigelow, Pittsburgh, PA 15213. 3 Sections, \$\$\$ (695G): **Championship:** EF: \$30 by 6/8, \$40 later. \$200-100, U2000 \$75, U1800 \$50. **Premier:** U1600. EF: \$25 by 6/8, \$35 later. \$90-60, U1400 \$50, U1200 \$40, U1000 \$30; Trophies to Top 2, Top 2 U1400, Top 2 U1200, Top 2 U1000. **Scholastic:** Grades K-12 U900. EF: \$15 by 6/8, \$25 later. Trophies to Top 7, 1-3 U600. **ALL:** Teams of 4 to 7 combined from all sections, Trophies 1st-2nd schools, clubs. PSCF \$5, OSA. **Reg ends: Noon. Rds.:** 12:30-2:15-4-6. **Ent/Info:** PSCF, c/o Tom Martinak, 25 Freepoint St., Pittsburgh, PA 15223, 412-908-0286, martinak_tom_m@hotmail.com. W.

June 22-24 or 23-24, California, Northern

Trophies Plus Grand Prix Points: 15 (Enhanced)

Summer Open

6SS, G/90 (2 day rds 1-2 G/40). 1639A S. Main St., Milpitas, CA 95035. Park free. **Prize** \$2,400b/55. 3 sects. **1900+:** guar 85% \$300 200 100 u2100: 100 80. **1500-1899:** \$300 200 70 u1700:100 70 70. **U1500:** \$300 200 70 u1300: 100 70 70. Unr max \$100 exc Open. **EF:** \$67 by 6/20, On-site +15 Playup +20. **Con:** EF-20, 1/2 prize. GMs/IMs free: prize-EF. Jun 12 Supp, CCA min & TD discr. **Sched:** Reg. F 6-6:30p, Rds. F, 7, Sa 9 12:15 3:30, Su 9 12:15 (2 day Reg. Sa 8-8:30am rds Sa 9 10:35 merge rd3). Max 2 1/2pt byes by rd 3. **Info:** BayAreaChess.com/summer12. E: ask@BayAreaChess.com, NS, NC. **Chess Magnet School JGP.**

A Heritage Event!

June 28, New York

Trophies Plus Grand Prix Points: 40 (Enhanced)

25th Annual Thursday Night Action Championship - Join Us In Celebrating 25 Years Of The USCF's Longest-Running Action Tournament, Now At The New Yorker Hotel!!

The June 28 Thursday Night Championship has been rescheduled for two weeks later, July 12 at the same New Yorker Hotel: with a much bigger \$4,000 Guaranteed Prize Fund!

A Heritage Event!

July 12, New York

Trophies Plus Grand Prix Points: 10 (Enhanced)

10 Grand Prix Points Tonight, Now At The New Yorker Hotel-USCF's Longest-Running Action Tournament!!

The "10 Grand Prix Points Tonight!" tournament originally scheduled for July 12 has been replaced with the 25th Annual Thursday Night Action Championship at the same New Yorker Hotel with a much bigger \$4,000 Guaranteed Prize Fund!

A State Championship Event!

July 14, Pennsylvania

Trophies Plus Grand Prix Points: 6

2012 PA State Action Championship

5SS, G/30d5. Wm. Pitt Union, Univ. of Pitt., 5th & Bigelow, Pittsburgh PA 15213. 2 Sections: **Championship:** EF: \$25 by 7/6, \$35 later. \$\$\$ (690G): \$200-100, U2000 \$90, U1800 \$80, U1600 \$70, U1400 \$60, U1200 \$50, U1000 \$40. Trophies: 1-3 U1400, 1-3 U1200, 1-3 U1000. **Scholastic:** Grades K-12 U900. EF: \$15 by 7/6, \$25 later. Trophies to Top 7, 1-3 U600. **ALL: Trophies:** 1-2 Schools, 1-2 Clubs. PSCF \$5, OSA. **Reg ends: Noon. Rds.:** 12:30-1:45-3-4:15-5:45. **Ent/Info:** PSCF, c/o Tom Martinak, 25 Freepoint St., Pittsburgh, PA 15223. 412-908-0286. martinak_tom_m@hotmail.com. W.

July 20-22 or 21-22, California, Northern

Trophies Plus Grand Prix Points: 40 (Enhanced)

People's Tournament

5SS, 30/90 sd60, 2-day rds 1-2 g/90 merge rd3. Hilton, 7050 Johnson Dr., Pleasanton. Hotel \$79. Free parking. **Prizes:** \$8,000 b/133 (75% guar). 5 sections. **MX (2000+ FIDE rated):** 1000-500-200, top u2300 300, u2100 100. **A/B/C:** 800-400-200-100 ea. **DE:** 600-300-100, top u1200 300-100. Unr max \$300 exc in Open. **EF by 7/17:** \$99. Onsite +25, Play-up +20. r/e 40. Econ Opt: EF-20 & 2/3 calc prize (not avail in Open). GMs/IMs free: prize-EF. Jul 12 Supp, CCA min, TD disc to place players. **Sched:** 3-day Reg. F 6-6:30, Rds. F, 7, Sa 11:30 5:15, Su 10 3:30; 2-day Reg. Sa 9-9:30, Rds. Sa 10 1:30 5:15, Su 10 3:30. Max two 1/2-pt byes, commit bef rd 3. **Ent:** BAC, 1639A S. Main St., Milpitas, CA 95035. Rfnd fee 20. E: ask@BayAreaChess.com. **Info:** BayAreaChess.com/peoples. NS, NC, W. **Chess Magnet School JGP.**

July 21-22, Texas

Trophies Plus Grand Prix Points: 20 (Enhanced)

2012 DCC Fide Open V

5SS, G/90 with 30 sec inc. Dallas Chess Club, 200 S. Cottonwood Dr. #C, Richardson, TX 75080. Two sections: Open and Reserve. **Open Section** \$5750G. This section is FIDE rated but uses USCF Rules. \$500-\$250. **EF:** \$75, Senior/Hcap/Additional Family Member \$50, plus \$5 non-DCC membership fee if applicable. Small appearance fee to the First two GM/IM who apply. GM/IM must play all rounds to get appearance fee. **Reserve section:** Open to players rated below 1800 USCF. This section is not Fide Rated but is USCF rated. EF for U1800: \$30 plus \$5 non Dallas Chess Club membership fee if applicable. The U1800 gives back 10% in prizes and if there is a clear winner, then that winner receives free entry to next DCC Fide Open. Both: **Registration:** 9:45 -10:15 am. **Rds.:** Sat 10:45-3:10-

7:16, Sun 10:45-3:10. One Bye allowed if requested before rd 2, with-drawals and zero point last round byes are not eligible for prizes. **Ent:** Dallas Chess Club, see address above. **Info:** 214-632-9000, info@dallaschess.com. NS. NC. FIDE. **Chess Magnet School JGP.**

July 28-29, Texas

Trophies Plus Grand Prix Points: 6

DCC Summer Insanity

10 Rd. 2-SS, G/30, d/5 (Play white and black against each opponent), Dallas Chess Club, 200 S. Cottonwood Dr., #C, Richardson, TX 75080. **EF:** \$50. \$30 Junior/Senior/Hcapp. Limited number of House players welcome for \$1 per game. Dallas Chess Club membership required or pay \$5 non member fee. **\$\$\$GTD:** \$300-150. Class prizes (if any) depends on entries. **Reg.:** 7/28 at 11:45 am - 12:10 pm. **Rds.:** Round 1 at 12:30 pm rest ASAP with hour breaks at around 6:30 pm, 12:30 am and 7:30 am. 4 points of 1/2 point byes allowed. Byes for round 9 and 10 must be requested before round 6. **Ent:** Dallas Chess Club, C/O Barbara Swafford, 2709 Longhorn Trail, Crowley, TX 76036. **Info:** Barbara Swafford, 214-632-9000 info@dallaschess.com. www.dallaschess.com. NS. NC.

Aug. 4-5, Washington

Trophies Plus Grand Prix Points: 6

2012 U.S. Open Weekend Swiss

5-SS, G/60. **\$\$\$1,000 guaranteed prizes.** \$200-100-50, U2200/Unr \$160, U1800 \$140, U1600 \$120, U1400 \$100, U1200 \$80, Unr \$50. **Entry fee** \$40, Unr free if paying USCF dues. **On-Site Registration:** 8:30-9:30am 8/4. **Rds.:** Sat 10-1:30, Sun 10-1. **See U.S. Open Side Events display ad for more details on all 2012 U.S. Open Side Events.**

A Heritage Event!

Aug. 4-12, 7-12 or 9-12, Washington

Trophies Plus Grand Prix Points: 300

113th annual U.S. Open

See Nationals.

Aug. 11, Washington

Trophies Plus Grand Prix Points: 15

2012 U.S. Open Blitz Championship (QC)

7-SS (double round, 14 games), 1 section, G/5. Quick rated, higher of regular or quick rating. **Entry fee** \$40, free to Unrated if paying USCF dues. **Registration:** 9am-11:30am, first round begins at noon. **\$2000 guaranteed prizes!** \$5400-200-150, Expert \$200-100, U2000 \$200-100, U1800 \$180-90, U1600/Unr \$140-70, U1400 \$100, U1200 \$70. **See U.S. Open Side Events display ad for more details on 2012 U.S. Open Side Events.**

Aug. 25-26, Texas

Trophies Plus Grand Prix Points: 20 (Enhanced)

2012 DCC Fide Open VI

5SS, G/90 with 30 sec inc. Dallas Chess Club, 200 S. Cottonwood Dr. #C, Richardson, TX 75080. Two sections: Open and Reserve. **Open Section** \$5750G. This section is FIDE rated but uses USCF Rules. \$500-\$250. **EF:** \$75, Senior/Hcap/Additional Family Member \$50, plus \$5 non-DCC membership fee if applicable. Small appearance fee to the First two GM/IM who apply. GM/IM must play all rounds to get appearance fee. **Reserve section:** Open to players rated below 1800 USCF. This section is not Fide Rated but is USCF rated. EF for U1800: \$30 plus \$5 non Dallas Chess Club membership fee if applicable. The U1800 gives back 10% in prizes and if there is a clear winner, then that winner receives free entry to next DCC Fide Open. Both: **Registration:** 9:45 -10:15 am. **Rds.:** Sat 10:45-3:10-7:16, Sun 10:45-3:10. One Bye allowed if requested before rd 2, with-drawals and zero point last round byes are not eligible for prizes. **Ent:** Dallas Chess Club, see address above. **Info:** 214-632-9000, info@dallaschess.com. NS. NC. FIDE. **Chess Magnet School JGP.**

A Heritage Event!

Aug. 31-Sept. 3 or Sept. 1-3, Texas

Trophies Plus Grand Prix Points: 40 (Enhanced)

78th Annual Southwest Open

7SS. Sheraton Dallas North Hotel, 4801 Lyndon B. Johnson Fwy, Dallas, TX 75244. **\$\$\$ 8,950** b/175 full entries, 75% Gtd. 3 Sections and scholastic side events: **Open:** (This section is FIDE rated but uses USCF rules. G/90 with 30 sec. increment: \$5 1,000-500-250, 2200-2399 \$700, U2200 \$700-350. **Reserve:** U2000. Rds. 1-7 30/90 SD/1, rd. 1 of three day is G/115, d/5. \$5 800-400-200. B \$5 600-300-150, U1600 500-250-125. **Novice:** U1400 and Unrated. Rds. 1-7 30/90 SD/1, d/5, rd. 1 of three day is G/115, d/5. \$5 500-250-125, E \$5 400-200, U1000 \$300-150 Unrated \$200. All 3: TCA membership required. Other states accepted. **EF:** \$88 if received by 8/22, else \$99. \$80 Junior(U19) if received by 8/22 else \$90 (juniors count as 90% toward base), Senior(over 65)/Handicapped/additional family participant \$52 if receive by 8/22 else \$65 (Senior/Handicap/Additional family participant counts 60% toward base). Add \$5 for CC phone entries; pre-reg requires pre-payment. After 8/29/12 all registration and changes on site only; all changes including withdrawals, \$10 after 8/29/12. **4 day:** Reg. Friday 8/31, 6:15 pm-7:15. Rds. Fri: 7:45, Sat: 2:30 pm - 8:00, Sun: 12:00 pm - 6:15 pm, Mon: 9:30 am - 3:15 pm. **3 day:** Reg. Sat. 9/1, 9-9:30 am, Rd. 1 at 10 am then merge with 4 day. Foreign Unrated must play in Open section. Registrations that do not indicate 4 or 3 day schedule will be put in the 3 day. **HR:** \$75/75/75/75, 972-661-3600 or 888-627-8436 reserve by 8/17 and ask for Dallas Chess Club rate. \$75 rate includes full breakfast buffet. Free Parking. Up to two 1/2 pt byes available if requested before end of rd. 2, but byes for both rd. 6 AND 7 not permitted. Texas Chess Association meeting on Sunday 9/2 at 9:30 am. **K-12 Scholastic on Saturday,** 9/1. 5-SS, Rds. 1-3 G/30, d/5, rds. 4-5 G/45, d/5. **EF:** \$29 by 8/22, \$43 after; Pre-reg. requires pre-payment. After 8/29/12 all registration and changes on site only; all changes \$10 after 8/29/12. No refunds after 8/29/12, \$10 handling fee for refunds before 8/29/12. Entries do not count toward base in Open, Reserve and Novice. **Registration:** 8:00-8:30 am, Rd. 1 pairings at 9:15 am, rest ASAP with small lunch break. **Sections:** K-12 Championship and K-12 U800. **Prizes:** Trophies to top 12 individuals, five teams in each section. K-12 U800 also top three unrated. Medals to those who do not win a trophy. **Ent:** Dallas Chess Club, C/O Barbara Swafford, 2709 Longhorn Trail, Crowley, TX 76036. **Info:** Barb Swafford, 214-632-9000, info@dallaschess.com, www.dallaschess.com. NS. NC. W. FIDE. **Chess Magnet School JGP for all but side events.**

Sept. 21-23 or 22-23, Texas

Trophies Plus Grand Prix Points: 50 (Enhanced)

2012 U.S. Class Championships

See Nationals.

Regional

California, Northern

Capital City C. C. Sundays Chess for Kids

Round Table Pizza, 3005 Freepoint Blvd., Sacramento. FREE CHESS CLASS: 11am (Kids & Families). EVENTS: Quads: (3/RR) &/or Swisses (3 Rds.). T/C: G/30 w/5 Second Delay. RDS.: 1pm/Ongoing. PRIZES: 1st - Trophy or Inscribed Digital Delay Clock & Chess Medals or Pins for all. TIE-BREAK: G/7 w/3 Second Delay. EF: \$15. REG.: Site & Noon. DIRECTOR: John C. Barnard 209-450-6133. JohnCharlesBarnard@gmail.com, capitalcitychessclub.com.

Apr. 29, June 3, July 8, Aug. 5, Seasons MarketPlace Quads

1535 Landess Ave., Milpitas, CA 95035. **Trophies:** Players w/winning record. **Sched:** Check-in 4p. **Games:** 4:30-6:30p. G/30. **EF:** \$25, Onsite +15. Big Trophies to top 10 players in Apr-Aug tourneys. **Info:** BayAreaChess.com/seasons12. NS. NC. W.

May 12, June 9, July 21, Pleasanton Grand Prix Quads

Hilton, 7050 Johnson Dr., Pleasanton, CA 94588. **Trophies:** Players w/winning record. **Sched:** Check-in 4p. **Games:** 4:30-6:30p. 3xG/30. **EF:** \$25, Onsite +\$15. Big Trophies to top 10 players in May-July tourneys. **More Info:** BayAreaChess.com/tacobell12. NS. NC. W.

May 12, June 9, July 21, Pleasanton Grand Prix Swiss

Hilton, 7050 Johnson Dr., Pleasanton, CA 94588. **Trophies:** Players w/winning record, teams w/2+ players. **Sched:** Reg. 9-9:30a. **Games:** 10a-2p. **EF:** \$33, Onsite +\$15. Big Trophies to top 10 players in May-July tourneys. **More Info:** BayAreaChess.com/tacobell12. NS. NC.

June 22-24 or 23-24, Summer Open

See Grand Prix.

July 20-22 or 21-22, People's Tournament

See Grand Prix.

Aug. 17-19 or 18-19, 4th annual Central California Open

See Chess Life or www.chesstour.com.

California, Southern

Beverly Hills Chess Club

Join the elite group of chess enthusiasts! Curriculum based instruction from ages 3 and above, Privates, Lectures, Blitz, Simuls, Open & Scholastic tournaments, Camps, Adult events, Member-only events and more... Open T, Th, F, Sat, Sun (hours vary). 8950 W. Olympic Blvd., #210, Beverly Hills, CA 90211. In the Beverly Hills Plaza (Corner of Lapeer Dr. & Olympic) 310-274-7873, email us at info@bhchessclub.com, website www.bhchessclub.com.

June 3, 10, 17, 24, LACC - Every Sunday Chess 4 Jrs.

4 separate events - 3 Sections: K-1, K-3, K-6, 5SS, G/30. 11514 Santa Monica Blvd., LA, 90025, 2nd fl. 4 blocks W 405. **EF:** \$30 (\$20 LACC memb, \$10 off siblings, Free new LACC memb). **Reg.:** 12-1 pm. **Rds.:** 1pm & asap; **Prizes:** Trophies (Top 3) & medals; each player receives a prize! **Parking:** Free at BoA and streets or building basement (\$5). Free snacks & free class (12-1). **Info:** (310) 795-5710 or www.LAChessClub.com or Mick@LAChessClub.com.

June 16, Tournament of Kings & Queens 2012

STAR Education Convention Center, 10117 Jefferson Blvd., Culver City, CA 90232. 5SS, G/30. Rated & Unrated Sections - Unrated is unlimited. **Rds.:** 10, 11, 12, 1:45 & 2:45 - Awards at 3:45. Trophies for winners & gift for all players. Food, drinks and fun activities! Grades K-6 (must be 12 and under by event.) **EF:** \$27 by 6/13 & \$35 after. Limited space so register early! **Online Reg.:** chesstourney.starinc.org. **Info:** chess@starinc.org or 310.736.8577.

June 16, July 14, Aug. 25, Bay Area Chess4Less Quads

1639A S. Main St., Milpitas, 95035. **Trophies:** For winning record. **Sched:** Check-in by: 3:15p, 3xG/30. **Games:** 3:45-6. **EF:** \$19 by Wed before tourney. **Info/flyer:** BayAreaChess.com/chess4less. NS. NC.

July 1, PSW Scholastics

5-SS, G/30. Warner Center Marriott, 21850 Oxnard St., Woodland Hills, CA 91367. **Open to gr. 12/below.** In two sections: **Open:** Trophies to top 5, top 3 U1200, top 2 Unrated. **Grade 6/below U1000:** Trophies to top 5, top 3 U700, top 2 Unrated. **Reg.:** 8:30-9-15. **Rds.:** 9:30-11-12:15-1:45-3. **EF:** \$16 if received by 6/29, \$20 door. **Inf:** (626) 282-7412 or randallhough@yahoo.com. **Ent:** SCCF, PO Box 205, Monterey Park, CA 91754, online at www.schess.com.

July 19-22, 20-22 or 21-22, 17th annual Pacific Coast Open

See Chess Life or www.chesstour.com.

July 21, Young People's Quads

Hilton, 7050 Johnson Dr., Pleasanton, CA 94588. **Trophies:** Players w/winn rec. **Sched:** Checkin 4p. **Games:** 4:30-6:30p. 3xG30. **EF:** \$25, Onsite +\$15. **More Info:** BayAreaChess.com/youngppl. NS. NC. W.

July 21, Young People's Swiss

Hilton, 7050 Johnson Dr., Pleasanton, CA 94588. **Trophies:** Players w/winn rec & teams. **Sched:** Reg. 9-9:30a. **Games:** 10a-2p. **EF:** \$33, Onsite +\$15. **More Info:** BayAreaChess.com/youngppl. NS. NC. W.

Oct. 5-7 or 6-7, 9th annual Los Angeles Open

See Chess Life or www.chesstour.com.

Connecticut

June 8-10 or 9-10, 18th Annual Northeast Open

See Chess Life or www.chesstour.com.

July 27-29 or 28-29, 17th Annual Bradley Open

See Chess Life or www.chesstour.com.

Tournament Life

Sept. 14-16 or 15-16, 3rd annual Hartford Open & Scholastics
See *Chess Life* or www.chesstour.com.

Nov. 2-4 or 3-4 (Open), Nov. 3-4 (Booster), 3rd annual Eastern Team Championship
See *Chess Life* or www.chesstour.com.

District of Columbia

Aug. 24-26 or 25-26, 44th annual Atlantic Open
See *Chess Life* or www.chesstour.com.

Florida

Boca Raton Chess Club

Friday nights, Game 90 Tournament, one game a week for 4 weeks.
www.bocachess.com, 561-479-0351. **Chess Magnet School JGP.**

June 23, Central FL Tornado

4SS, G/75. Casselberry CC, Wirz Park, 806 Mark David Blvd., Casselberry, FL 32707. **EF:** \$30, CFCC/CCC mbr \$25, Masters free (EF deducted from any prize). **\$\$480 b/25**, 160-80-60, U1800, U1600, U1400 \$60 ea. **Reg.:** 9:30am. **Rds.:** 10, 1, 3:30, 6. **Info:** (407) 629-6946 or www.centralflchess.org. **Chess Magnet School JGP.**

July 14, Central FL Tornado

4SS, G/75. Casselberry CC, Wirz Park, 806 Mark David Blvd., Casselberry, FL 32707. **EF:** \$30, CFCC/CCC mbr \$25, Masters free (EF deducted from any prize). **\$\$480 b/25**, 160-80-60, U1800, U1600, U1400 \$60 ea. **Reg.:** 9:30am. **Rds.:** 10, 1, 3:30, 6. **Info:** (407) 629-6946 or www.centralflchess.org. **Chess Magnet School JGP.**

July 27-29 or 28-29, 20th Annual Southern Open

See *Chess Life* or www.chesstour.com.

Georgia

June 30, North Georgia Chess Center Scholastic Tournament
5-SS, G/30. Holiday Inn Express & Suites, 870 Buford Hwy (Ga Hwy 20), Cumming, GA 30041. **Exit 14 off Ga 400 Next to Lowes On Market Place Blvd.** 678-845-7100, For Directions Only! **Sections: Open and U800.** **EF:** \$22.00 (NGCC Members) \$24.00 (Online Registration). \$27.00 (Non NGCC Members) \$29.00 (Online Registration). Entry For Late Registration: \$27.00 (NGCC Members). \$32.00 (Non NGCC Members). **Reg.:** Sat. 8:30am - 9:30am. **Rounds:** 1st-10am, 2nd-11:30am, 3rd-1pm, 4th-2:30pm, 5th-4pm. **Tmmt. Info:** 770-844-9204, northgachesscenter@gmail.com, northgachesscenter.com.

July 28, North Georgia Chess Center Scholastic Tournament
5-SS, G/30. Holiday Inn Express & Suites, 870 Buford Hwy (Ga Hwy 20), Cumming, GA 30041. **Exit 14 off Ga 400 Next to Lowes On Market Place Blvd.** 678-845-7100, For Directions Only! **Sections: Open and U800.** **EF:** \$22.00 (NGCC Members) \$24.00 (Online Registration). \$27.00 (Non NGCC Members) \$29.00 (Online Registration). Entry For Late Registration: \$27.00 (NGCC Members). \$32.00 (Non NGCC Members). **Reg.:** Sat. 8:30am - 9:30am. **Rounds:** 1st-10am, 2nd-11:30am, 3rd-1pm, 4th-2:30pm, 5th-4pm. **Tmmt. Info:** 770-844-9204, northgachesscenter@gmail.com, northgachesscenter.com.

Illinois

June 23, Chicago All Stars

Team up with your friends and play in our new 4-player school & club team tournament; minimum 3 players to form a team. Hilton Hotel, 2855 N. Milwaukee Ave., Northbrook, IL. Presented by Renaissance Knights Chess Foundation. **Sections: Open - 3 rd G/40, d5, K-8, K-6 & K-3 4 rd G/25, d5.** **Awards:** Trophies top player each board, Medals top 3 teams (Gold, Silver & Bronze). **Reg.:** 12:00-12:30 pm. **Rds.:** 1 at 1:00 pm, rest ASAP. **EF:** \$25 per player by 6/18, \$30 after, \$35 on-site. **Registration/Info:** www.rknights.org.

July 8, 79th Knights Quest

4ss, Game/30. Hilton Hotel, 2855 N. Milwaukee Ave., Northbrook, IL. Presented by Renaissance Knights Chess Foundation. **USCF Rated Sections: Open (K-12 & Adults), U1400 (K-12 & Adults), U1000 (K-8) & U600 (K-8).** **Awards:** Top 5 each section, Top 2 teams (except open), medals all others. **Reg.:** 12:00-12:30 pm. **Rds.:** 1 at 1:00 pm, rest ASAP. **EF:** \$30 by 7/2, \$35 after, \$40 on-site. **Registration/Info:** www.rknights.org.

July 20-22 or 21-22, 5th annual Chicago Class

See *Chess Life* or www.chesstour.com.

Oct. 12-14 or 13-14, 21st annual Midwest Class Championships

See *Chess Life* or www.chesstour.com.

Indiana

Aug. 17-19 or 18-19, 7th annual Indianapolis Open

See *Chess Life* or www.chesstour.com.

Kentucky

Sept. 21-23 or 22-23, 5th Annual Louisville Open

See *Chess Life* or www.chesstour.com.

Massachusetts

Aug. 9-12, 10-12 or 11-12, 42nd annual Continental Open

See *Chess Life* or www.chesstour.com.

Nevada

June 14, 2012 U.S. Game/10 Championship (QC)

See Nationals.

June 15, National Open Scholastic Trophy Tournament
5-SS, Game/30. Riviera Hotel and Casino, 2901 Las Vegas Boulevard South, Las Vegas 89109. Open to players 18 and under. **In 3 sections:** U1800, U1200, and U800. Unrateds in the U1200 section and all players in the U800 section must be age 11 or under. **Trophies** to top 5 in each section, top 2 in each odd 200 point rating group and unrated. **EF:** \$33 by 5/28, \$39 by 6/13, \$45 on site. **REG.:** 9-9:30 a.m. **RDS.:** 10-11:30-1-2:30-4. Blitz 6:30 p.m. (\$15 by 5/28 \$20 on site) **HR:** \$59 single or double (\$89

Friday and Saturday nights). 1-800-634-6753 or (702) 734-5110. **ENT:** National Open, PO Box 90925, Henderson, NV 89009-0925, on line www.VegasChessFestival.com or fax at (702) 933-9112. NS. NC. W.

A Heritage Event!

An American Classic!

June 15-17 or 16-17, 2012 National Open

See Nationals.

June 16-17, International Youth Championship

5SS, Game/60. Riviera Hotel and Casino, 2901 Las Vegas Boulevard South, Las Vegas 89109. **In 4 Sections by age:** 14 and Under, 14 and Under Reserve (rated below 1100), 9 and Under, 9 and Under Reserve (rated below 900). **Trophies** to top 10 in each section plus class trophies and team trophies. 1st Place in each section wins a **Computer** loaded with Chess Software, 2nd-4th win chess prizes valued at 250-150-100. Unrated players may not win 1st in Reserve sections. **EF:** \$59 by 5/27, \$69 by 6/13, \$80 on site. 1/2 point bye in any round (limit 2) if requested in advance. **REG.:** 8-9 a.m. **RDS.:** 10-1-4, 10-1. Blitz 6/15 at 6:30 p.m. (\$15 by 5/28 \$20 on site) **HR:** \$59 single or double (\$89 Friday and Saturday nights). 1-800-634-6753 or (702) 734-5110. **ENT:** National Open, PO Box 90925, Henderson, NV 89009-0925, on line www.VegasChessFestival.com or fax at (702) 933-9112. NS. NC. W.

New Jersey

June 16, King's Chess Club Quads

Morning quads and afternoon quads, G/30, Kindergarten-undergraduate (scholastic, youth, and young adult memberships). Bethlehem Church, 758 Route 10, Randolph, NJ 07869. **EF:** None. **Reg.:** 9-9:20 am., 1st rd. 9:40. Arr. by noon to reg. only for afternoon quads. Medal to each quad winner. **Info:** Bethlehem Church 973-366-3434 or Bob McAdams 973-694-3988, rwm@fambright.com.

July 22, Westfield Summer Scholastic

Westfield Y, 220 Clark St., Westfield, NJ 07090. **K-12 3 Sections:** Open, Under 1250, Under 750. **Open:** 3 SS G/40 t/d 5s, G/45 Trophies to top 5 in each section. **EF:** \$20, \$15 members at site \$30, \$25 members. **Reg.:** 2-2:30 p.m. **Rds.:** 2:45-4:25-6:05. **Under 1250:** 4 SS G/25 t/d 5s, G/30 Trophies to top 5 in each section. **EF:** \$20, \$15 members at site \$30, \$25 members. **Reg.:** 2-2:30 p.m. **Rds.:** 2:45-4:00-5:15-6:30 p.m. **Under 750:** 4 SS G/25 t/d 5s, G/30 Trophies to top 5 in each section. **EF:** \$20, \$15 members at site \$30, \$25 members. **Reg.:** 2-2:30 p.m. **Rds.:** 2:45-4:00-5:15-6:30 p.m. Tiebreaks for trophies. **Info:** Todd Lunna 732-726-7163, lunnaco@aol.com, www.westfieldchessclub.com. **Send advance entries** to: Todd Lunna, 36 Maple Dr., Colts Neck, NJ 07722 by July 19, 2012. Make checks payable to Westfield Chess Club.

Aug. 12, Westfield Swiss #73 (QC)

5SS, G/15 (QC). Westfield Y, 220 Clark St., Westfield, NJ 07090. **\$425 Guaranteed:** \$125, \$60, under 2150, under 1800, under 1550, under 1300 \$60 each. **Entrance Fee:** \$35, \$25 Members. **Reg.:** 2-2:30 p.m. **Rds.:** 2:45-3:25-4:05-4:45-5:30 p.m. **Info:** Todd Lunna 732-526-7163, lunnaco@aol.com, www.westfieldchessclub.com.

New York

A Heritage Event!

June 14, 4 Rated Games Tonight At The New Yorker Hotel- USCF's Longest-Running Action Tournament!

4-SS, G/25 + d/5 or G/30 + d/0. Chess Center at the New Yorker Hotel, 481 Eighth Ave at 34th St, across from Penn Station, NYC. 845-569-9969. **EF:** \$30, GMs \$25 from prize, free to specified Greater NY Scholastic Prizewinners! **Good Customer Loyalty Discounts:** \$5 less to those who played in at least 4 "4 Rated Games Tonight!" Thursday Night Actions since Jan. 2011, \$10 less to those who played in at least 10 4RGTs since 1987—**Thank You So Much For Your Support Of This Tournament These Past 25 Years!** \$5 (480 b/32 paid): 150-100-50, Top U2200/unr \$95, U2000 \$85. **NEW!! \$150 GUARANTEED In Mixed Doubles Bonus Prizes!** Best male/female 2-player team combined score: \$100-50 (teammates' average rating must be Under 2200; teammate pairings avoided but possible, teams must declare by 8:15). **Choice of 2 schedules! 7:00 Schedule,** rds. 7-8:15-9:30-10:45 pm. **7:30 schedule,** rd. 1 (G/15 + td/3) at 7:30 pm, score carries over into round 2 of 7:00 schedule at 8:15 pm. Limit 2 byes (1 bye if U2000), commit by 8:15. Re-entry \$15, counts half. **Reg.** ends 10 min. before game.

June 16, Marshall Saturday U1800!

4-SS, G/40d5. Marshall CC, 23 W. 10th St., NYC. 212 477-3716. **(\$300 b/20):** \$160-80, U1500 \$60. **EF:** \$40, members \$20. **Reg.:** 12:15-12:45. **Rds.:** 1-2:45-4:30-6:15PM. One bye available, request at entry. www.marshallchessclub.org.

June 20-July 18, Marshall Wednesday U1400!

5-SS, G/85d5. Marshall CC, 23 W. 10th St., NYC. 212-477-3716. **EF:** \$50, members \$30. **(\$450/20):** \$240-120, U1100 \$90. **Reg.:** 6:15-6:45pm. **Rds.:** 7 pm each Wednesday. Limit 2 byes, request by Rd 3. www.marshallchessclub.org. **Chess Magnet School JGP.**

June 20-July 18, Marshall Wednesday U2000!

5-SS, 30/85d5, SD/1d5. Marshall CC, 23 W. 10th St., NYC. 212-477-3716. **EF:** \$50, members \$30. **(\$450/20):** \$240-120, U1700 \$90. **Reg.:** 6:15-6:45 pm. **Rds.:** 7 pm each Wednesday. Limit 2 byes, request by Rd 3. www.marshallchessclub.org. **Chess Magnet School JGP.**

A Heritage Event!

July 21, 4 Rated Games Tonight, Now At The New Yorker Hotel - USCF's Longest-Running Action Tournament!

4-SS, G/25 + d/5 or G/30 + d/0. Chess Center at the historic New Yorker Hotel, 481 8th Ave at 34th St., across from Penn Station, NYC. 845-569-9969. **EF:** \$30, GMs \$25 from prize, free to specified Greater NY Scholastic Prizewinners! **Good Customer Loyalty Discounts:** \$5 less to those who played in at least 4 "4 Rated Games Tonight!" Thursday Night Actions since Jan. 2011, \$10 less to those who played in at least 10 4RGTs since 1987—**Thank You So Much For Your Support Of This Tournament These Past 25 Years!** \$5 (480 b/32 paid): 150-100-50, Top U2200/unr \$95, U2000 \$85. **NEW!! \$150 GUARANTEED In Mixed Doubles Bonus Prizes!** Best male/female 2-player team combined score: \$100-50 (teammates' average rating must be Under 2200; teammate pair-

ings avoided but possible, teams must declare by 8:15). **Choice of 2 schedules! 7:00 Schedule,** rds. 7-8:15-9:30-10:45 pm. **7:30 schedule,** rd. 1 (G/15 + td/3) at 7:30 pm, score carries over into round 2 of 7:00 schedule at 8:15 pm. Limit 2 byes (1 bye if U2000), commit by 8:15. Re-entry \$15, counts half. **Reg.** ends 10 min. before game. CCA Minimum Ratings may be used.

June 24, 2nd annual Schenectady Open

See *Chess Life* or www.chesstour.com.

A Heritage Event!

June 28, 25th Annual Thursday Night Action Championship - Join Us In Celebrating 25 Years Of The USCF's Longest-Running Action Tournament. Now At The New Yorker Hotel!!

The June 28 Thursday Night Championship has been rescheduled for two weeks later, July 12 at the same New Yorker Hotel: with a much bigger \$4,000 Guaranteed Prize Fund!
See Grand Prix.

A Heritage Event!

June 28 (NOTE CHANGES IN THE NEW TLA), The Original "4 Rated Games Tonight!" Now At The New Yorker Hotel - USCF's Longest-Running Action Tournament!

4-SS, G/25 + d/5 or G/30 + d/0. Chess Center at the historic New Yorker Hotel, 481 8th Ave at 34th St., across from Penn Station, NYC. 845-569-9969 (www.chesscenter.cc). **EF:** \$30, GMs \$25 from prize, free to specified Greater NY Scholastic Prizewinners! **Good Customer Loyalty Discounts:** \$5 less to those who played in at least 4 "4 Rated Games Tonight!" Thursday Night Actions since Jan. 2011, \$10 less to those who played in at least 10 4RGTs since 1987—**Thank You So Much For Your Support Of This Tournament These Past 25 Years!** \$5 (480 b/32 paid): 150-100-50, Top U2200/unr \$95, U2000 \$85. **NEW!! \$150 GUARANTEED In Mixed Doubles Bonus Prizes!** Best male/female 2-player team combined score: \$100-50 (teammates' average rating must be Under 2200; teammate pairings avoided but possible, teams must declare by 8:15). **Choice of 2 schedules! 7:00 Schedule,** rds. 7-8:15-9:30-10:45 pm. **7:30 schedule,** rd. 1 only is Quick-rated (G/15 + td/3) at 7:30 pm, score carries over into round 2 of 7:00 schedule at 8:15 pm. Limit 2 byes (1 bye if U2000), commit by 8:15. Re-entry \$15, counts half. **Reg.** ends 10 min. before game. Help with NYC street parking: www.primospot.com.

June 30, Marshall Saturday U1600!

4-SS, G/40d5. Marshall CC, 23 W. 10th St., NYC. 212 477-3716. **(\$300 b/20):** \$160-80, U1300 \$60. **EF:** \$40, members \$20. **Reg.:** 12:15-12:45. **Rds.:** 1-2:45-4:30-6:15PM. One bye available, request at entry. www.marshallchessclub.org.

July 4, Independence Day Madness:

6-SS, G/25d5. Marshall CC, 23 W. 10th St., NYC. 212-477-3716. **EF:** \$45, members \$25. **(\$480/24):** \$200-100, U2000 \$70, U1700 \$60, U1400 \$50. **Reg.:** 10:15-10:45. **Rds.:** 11-12:15-1:30-3:00-4:15-5:30. Two byes available, request at entry. www.marshallchessclub.org.

A Heritage Event!

July 5, 4 Rated Games Tonight, Now At The New Yorker Hotel - USCF's Longest-Running Action Tournament!

4-SS, G/25 + d/5 or G/30 + d/0. Chess Center at the historic New Yorker Hotel, 481 8th Ave at 34th St., across from Penn Station, NYC. 845-569-9969. **EF:** \$30, GMs \$25 from prize, free to specified Greater NY Scholastic Prizewinners! **Good Customer Loyalty Discounts:** \$5 less to those who played in at least 4 "4 Rated Games Tonight!" Thursday Night Actions since Jan. 2011, \$10 less to those who played in at least 10 4RGTs since 1987—**Thank You So Much For Your Support Of This Tournament These Past 25 Years!** \$5 (480 b/32 paid): 150-100-50, Top U2200/unr \$95, U2000 \$85. **NEW!! \$150 GUARANTEED In Mixed Doubles Bonus Prizes!** Best male/female 2-player team combined score: \$100-50 (teammates' average rating must be Under 2200; teammate pairings avoided but possible, teams must declare by 8:15). **Choice of 2 schedules! 7:00 Schedule,** rds. 7-8:15-9:30-10:45 pm. **7:30 schedule,** rd. 1 (G/15 + td/3) at 7:30 pm, score carries over into round 2 of 7:00 schedule at 8:15 pm. Limit 2 byes (1 bye if U2000), commit by 8:15. Re-entry \$15, counts half. **Reg.** ends 10 min. before game. CCA Minimum Ratings may be used.

July 7, Marshall Saturday G/60!

4-SS, G/55d5. Marshall CC, 23 W. 10th St., NYC. 212-477-3716. **(\$360/24):** \$160-80, U2000 \$65, U1700 \$55. **EF:** \$40, members \$20. **Reg.:** 11:15-11:45 am. **Rds.:** 12-2:30-4:45-7. One bye available, request at entry. www.marshallchessclub.org.

July 8, Marshall Open & U1500 Sunday G/45!

4-SS, G/40d5. Marshall CC, 23 W. 10th St., NYC. 212-477-3716. Two sections-you play only those in your section: **A. Open (\$360/24):** \$160-80, U2100 \$65, U1800 \$55. **B. U1500 (\$240/16):** \$120-65, U1200 \$55. **EF:** \$40, members \$20. **Reg.:** 11:15-11:45 pm. **Rds.:** 12-1:45-4:00-5:45. One bye available, request at entry. www.marshallchessclub.org.

A Heritage Event!

July 12, 10 Grand Prix Points Tonight, Now At The New Yorker Hotel - USCF's Longest-Running Action Tournament!

The "10 Grand Prix Points Tonight!" tournament originally scheduled for July 12 has been replaced with the 25th Annual Thursday Night Action Championship at the same New Yorker Hotel with a much bigger \$4,000 Guaranteed Prize Fund!
See Grand Prix.

July 14, Marshall Saturday U1400!

4-SS, G/40d5. Marshall CC, 23 W. 10th St., NYC. 212 477-3716. **(\$300 b/20):** \$160-80, U1100 \$60. **EF:** \$40, members \$20. **Reg.:** 12:15-12:45. **Rds.:** 1-2:45-4:30-6:15PM. One bye available, request at entry. www.marshallchessclub.org.

July 14-15 or 15, CANCELLED - Marshall June U2100!

July 16-Aug. 13, Marshall Monday U1600!

5-SS, G/85d5. Marshall CC, 23 W. 10th St., NYC. 212-477-3716. **EF:** \$50, members \$30. **(\$675/30):** \$250-150-100, U1400 \$100, U1200 \$75. **Reg.:** 6:15-6:45pm. **Rds.:** 7 pm each Monday. Limit 2 byes, request by Rd 3. www.marshallchessclub.org. **Chess Magnet School JGP.**

July 21, Marshall Saturday U1800!

4-SS, G/40d5. Marshall CC, 23 W. 10th St., NYC. 212 477-3716. **(\$300**

b/20): \$160-80, U1500 \$60. **EF:** \$40, members \$20. **Reg.:** 12:15-12:45. **Rds.:** 1-2:45-4:30-6:15PM. One bye available, request at entry. www.marshallchessclub.org.

July 25-Aug. 22, Marshall Wednesday U1400!

5-SS, G/85d5. Marshall CC, 23 W. 10th St., NYC. 212-477-3716. **EF:** \$50, members \$30. **(\$450/20):** \$240-120, U1100 \$90. **Reg.:** 6:15-6:45pm. **Rds.** 7 pm each Wednesday. Limit 2 byes, request by Rd 3. www.marshallchessclub.org. **Chess Magnet School JGP.**

July 28, Marshall Saturday U1600!

4-SS, G/40d5. Marshall CC, 23 W. 10th St., NYC. 212-477-3716. **(\$300 b/20):** \$160-80, U1300 \$60. **EF:** \$40, members \$20. **Reg.:** 12:15-12:45. **Rds.:** 1-2:45-4:30-6:15PM. One bye available, request at entry. www.marshallchessclub.org.

Aug. 4, Marshall Saturday G/60!

4-SS, G/55d5. Marshall CC, 23 W. 10th St., NYC. 212-477-3716. **(\$540/32):** \$240-120, U2000 \$95, U1700 \$85. **EF:** \$40, members \$20. **Reg.:** 11:15-11:45 am. **Rds.** 12-2:30-4:45-7. One bye available, request at entry. www.marshallchessclub.org.

Aug. 5, Marshall Open & U1500 Sunday Game/45!

4-SS, G/40d5. Marshall CC, 23 W. 10th St., NYC. 212-477-3716. **Two sections**-you play only those in your section: **A. Open (\$360/24):** \$160-80, U2100 \$65, U1800 \$55. **B. U1500 (\$240/16):** \$120-65, U1200 \$55. **EF:** \$40, members \$20. **Reg.:** 11:15-11:45 pm. **Rds.** 12-1:45-4:00-5:45. One bye available, request at entry. www.marshallchessclub.org.

Aug. 11, Marshall Saturday U1400!

4-SS, G/40d5. Marshall CC, 23 W. 10th St., NYC. 212-477-3716. **(\$300 b/20):** \$160-80, U1100 \$60. **EF:** \$40, members \$20. **Reg.:** 12:15-12:45. **Rds.:** 1-2:45-4:30-6:15PM. One bye available, request at entry. www.marshallchessclub.org.

Aug. 17-19 or 18-19, 11th annual Manhattan Open

See [Chess Life](http://ChessLife.com) or www.chesstour.com.

Aug. 31-Sept. 3, Sept. 1-3 or 2-3, 134th annual NY State Championship

Out of state welcome. See [Chess Life](http://ChessLife.com) or www.chesstour.com.

Ohio

Aug. 3-5 or 4-5, Cleveland Open

See [Chess Life](http://ChessLife.com) or www.chesstour.com.

Nov. 9-11 or 10-11, 21st annual Kings Island Open

See [Chess Life](http://ChessLife.com) or www.chesstour.com.

Pennsylvania

A State Championship Event!

June 16, 2012 PA State Game/45 Championship

See Grand Prix.

July 4-8, 5-8, 6-8, 2-8, 1-3 or 4-5, 40th Annual World Open

See [Chess Life](http://ChessLife.com) or www.chesstour.com.

A State Championship Event!

July 14, 2012 PA State Action Championship

See Grand Prix.

Aug. 5, 10th Holly Heisman Memorial Fundraiser

JCC Kaiserman Branch, Haverford Rd. & City Ave., Wynnewood. **FREE entry!** Advance entry strongly suggested. Optional tax-deductible donation to the Holly Heisman Memorial Fund at the Philadelphia Foundation to benefit women in need, \$25+ per entry encouraged. **Reg.:** 9:15-10. **All:** G/30 Rds. 10:30-11:45-1:30-2:45-4 or earlier. **3 Sections: Open 5SS & U1500 5SS** (both open to all ages) and **K-8 U900 4SS**. **Many donated prizes (\$1,000+/yr!)** Prize sponsors encouraged & honored at event. email Dr. Ramachandra, pramachandra@mercyhealth.org. **Ent:** click "tournaments" at www.silverknightschesspa.com. **Inf:** 484-948-5692, Joshua Anderson: joshuamiltonanderson@gmail.com, W.

Texas

June 9-10, 2012 DCC Fide Open IV

See Grand Prix.

July 13-15, 2012 U.S. Junior Open

See Nationals.

July 21-22, 2012 DCC Fide Open V

See Grand Prix.

July 28-29, DCC Summer Insanity

See Grand Prix.

Aug. 25-26, 2012 DCC Fide Open VI

See Grand Prix.

A Heritage Event!

Aug. 31-Sept. 3 or Sept. 1-3, 78th Annual Southwest Open

See Grand Prix.

Sept. 21-23 or 22-23, 2012 U.S. Class Championships

See Nationals.

Oct. 13, 3rd Annual Scott Watson Memorial Chess Classic

A Major USCF Rated College Scholarship Chess Tournament Lively Youth Center, 909 North O'Connor, Irving, TX 75063. In 8 Sections **K-3 Primary U400:** 5SS, Game/30, Open to 399 & under. Trophies Top 3 Individuals per Section, Top 3 Teams per Section. **K-3 Primary Open:** 5SS, Game/30, Trophies Top 3 Individuals per Section, Top 3 Teams per Section. **Elementary U600:** 5SS, Game/30, Open to 599 & under. Trophies Top 3 Individuals per Section, Top 3 Teams per Section. **Elementary Open:** 5SS, Game/30, Trophies Top 3 Individuals per Section, Top 3 Teams per Section. **Middle School U700:** 5SS, Game/30, Open to 699 & under. Trophies Top 3 Individuals per Section, Top 3 Teams per Section. **Middle School Open:** 5SS, Game/30, Trophies Top 3 Individuals per Section, Top 3 Teams per Section. **High School Open:** 5SS, Game/30, **Prizes:** Trophies Top 3 Individuals per Section, Top 3 Teams per Section. \$1,000 Top Finishing Player attending HS within Irving City Limits, \$1,000 Top Finishing Player attending HS outside of Irving City Limits. **Not To Be Rated 4th-8th Grade**

Open: 5SS, Game/30, **Prizes:** Trophies Top 3 Individuals ONLY-No Team Trophies This Section. **All:** \$ 25.00 After 10.08.2012 and On-Site. USCF Membership Required for Elementary, Middle School, and High School Sections. Will Be Provided with Paid EF for HS section ONLY. **Reg.:** 10.013.2012, 8-8:30 AM. \$15.00 B/4 10.08.2012, Thereafter and On-Site \$25.00. **Rds.:** Round 1, 9:00 AM, All others ASAP 1/2 Point for any round if requested at registration, HS Section No 5th Round Byes. **ENT:** Nancy H. Bauer, 1807 Pueblo Pl. Irving, Texas 75061-2243. **INFO:** nancybauer223@tx.rr.com, jonesoc@juno.com. NS. NC. W.

Virginia

Oct. 4-8, 5-8, 6-8 or 6-7, 3rd annual Continental Class Championships

See [Chess Life](http://ChessLife.com) or www.chesstour.com.

Washington

Aug. 4-5, 2012 U.S. Open Weekend Swiss

See Grand Prix.

Aug. 4-5, 2012 U.S. Open Scholastic Tournament

5SS, Game 90, d/5 in Championship Sections, Game 30, d/5 in under sections. Hilton Vancouver Washington, 301 W 6th St., Vancouver, WA 98660. Self Parking \$13.00, valet \$17.00 per night. **HR:** \$110 single/quad, 360-993-4500, reserve by July 12 or rate may increase. **Four sections:** High School/Junior High Championship Section and U2000 Section, Elementary Championship Section and U1000 Section. Elementary is considered Grade 6 or under, Junior High, grades 7 to 9 and High School grades 10 to 12. Your grade is considered as of the school year just completed. **Please note:** If High School/Junior High section are larger than expected, sections may be split to make two sections instead of one. **EF:** \$25 before 7/29, \$35 after or on site. **Prizes:** At least 5 trophies in each section: High School Championship, High School Under 1200, Junior High Championship, Junior High Under 1200, Elementary Championship, Elementary Under 1000, Elementary top grade 4 to 6, Elementary top grades 3 and under. Trophies may increase based on entries. **Rounds:** Please note that the Championship sections play both the 4th and 5th and the under sections play only on the 4th. **Sections:** 8/4 at 9:30 AM, 2:30 PM and 7:00 PM, 8/5 at 9:00 AM and 1:30 PM. Awards 8/5 at 5:30 PM. Under sections: 8/4 at 9:30 and 11:00 AM, 1:00, 2:30 and 4:00 PM. **Awards:** 8/4 at 6:00 PM. Half point byes: Limit 1, must commit before Round 2. **Entry Fee:** Online, \$25 by July 29th, \$35 after or on site. By mail,

\$25 postmarked by 7/29; do not mail after 7/29! By phone, \$25 by 7/29, \$35 by 8/3. No phone entries after 8/3 (close of business at the Office)! Registration At site closes August 4 at 8:30 AM. **August official ratings used;** unofficial ratings used if otherwise unrated. CCA ratings used if above USCF. Foreign player ratings: usually 100 points added to FIDE or FQE, 200+ added to most foreign national ratings, no points added to CFC. Highest of multiple ratings generally used. **Entries:** USCF, ATTN: 2012 US Open Scholastic, PO Box 3967, Crossville, TN 38557. Online entry: www.uschess.org/tournaments/2012/scholastic/. Phone entry: 800-903-8723. **No cell phones.** Bring a clock -- none supplied. Sets/boards supplied for tournament but not for skittles. Please see the US Open TLA for side events, committee meetings, delegate meetings and other events held during the Open. **Please check the U.S. Open website often for updates, new information and corrections!** www.uschess.org/tournaments/2012/scholastic/. **Chess Magnet School JGP for U.S. Open Scholastic Championship section.**

Aug. 4-8, 2012 Trophies Plus U.S. Girls Junior Open Championship

See Nationals.

A Heritage Event!

Aug. 4-12, 7-12 or 9-12, 113th annual U.S. Open

See Nationals.

Aug. 8-12, 2012 Women's U.S. Open

See Nationals.

Aug. 11, 2012 U.S. Open Blitz Championship (QC)

See Grand Prix.

PHOTO CREDITS:

NATIONAL JUNIOR HIGH PHOTOS BY: JANELLE LOSOFF

NATIONAL ELEMENTARY PHOTOS BY:

CHRISTOPHER OQUENDO / MYCHESSPHOTOS.COM

PHOTO OF PANCHANATHAM BY: SUBJECT

BOOK IT!

Continued from pg. 9

the book are short and clear; almost all of the longer variations are given extra diagrams, provided by Zort's unique visualization skills, referred to as his "computer vision." This book can be used as a great introduction to learning chess tactics. Expect

OOPS!

Continued from pg. 18

Nguyen (VA) and Marcus Miyasaka (NY). First on tiebreaks for the class prizes, or in clear first, were Estella Song (GA), Nathyn Fine (MN), Andreas Farry (WA), Robin Patel (TX), Franklin Zhang (TN), Brian Chen (WA), Alexander Pierson (NY), and Gokul Premkumar (GA).



Tan Nguyen in deep thought

The Dalton School of New York won the K-3 team title, just edging out another New York entry, the NEST+m School. Playing for Dalton were Hudson Beaudoin, Mateos Haile-Manas, Nicolas Civantos, Atticus Lee, and Sam Pozner.

Don't give up yet! We're almost done! The K-3 Under 800 section had two clear winners, both with 7-0 scores. **Krish Kumar** (OK) and **Jeffrey Tignon** (WA) never got a chance to play each other. They ran out of rounds!

The **NEST+m School** (NY) took team honors. Playing for them were Jonathan Waldorf, Jordan Leung, David Wu, and Charles Hua.

Five tied for 1st place in the K-3 Unrated section:

Please turn to page 24

OOPS!

Continued from pg. 23

Aiden Lawler (WA), Ruthvik Ayyagari (WA), Jeremy Minikes (NY), Alex Wei (WA), and Advait Bulusu (WA). Lawler, Wei and Bulusu all play for Spiritridge Elementary School. Add Nandini Daga to the mix and you've got the winning team.



Anthony Bi He



Logan Wu

Finally, (maybe), we have the 2012 National K-1 Championship section. **Anthony Bi He** (WA) and **Logan Wu** (TN) were both perfect through seven rounds.

Team honors were shared by **Mission San Jose Elementary** (CA) and **Hunter College Campus School** (NY), both with 19½ points, but with Mission San Jose ahead on tiebreaks. Both finished just ahead of a team from Dalton, and the Avery Coonley School from Downer's Grove, Illinois.

The K-6 Blitz was won by **Kyle Haining** of Washington. Kyle was on the cover of *CL4K* back in October of 2011. The team title went to the Church Hill Road School (VA). Representing their school were Maxwell Ward, Akhil Goel, Sean Senft, and Arman Moon Parastaran.

NOW we're done ... no, wait! The K-3 Blitz was won by **Trung Nguyen** of Leesburg, Virginia. And team honors went to New Mexico's **Aspen Elementary**. Playing for Aspen were Andrew Corliss, Phillip Ionkov, Maximilian Corliss, and Ming-Yuan Lo.

NOW we're done. Until next year. And remember, you can always check www.uschess.org for complete standings and results for all three of the Spring Nationals.

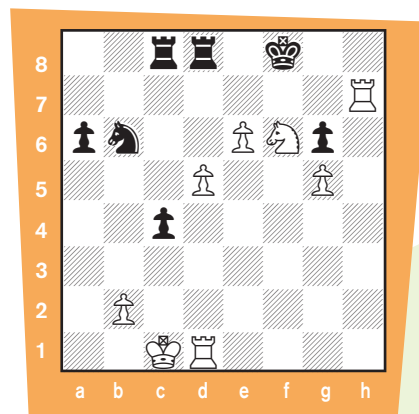
The OTHER Marshall Attack

Continued from pg. 14

22. g4 Kg8 23. g5 Bg7 24. Rdh1 Rac8 25. Qg2.

21. ... dxe4 22. Bxe4 Qb6 23. hxg6 fxg6 24. Qe3 Rac8 25. g4 b4 26. axb4 Qxb4 27. Bxb7 Qxb7 28. g5 Bxe5 29. Qxe5+ Kg8 30. Ne4 Qb8 31. d5 Qxe5 32. fxе5 Nd7 33. e6 Nb6 34. Nf6+ Kf8 35. Rxh7, Black Resigned.

This game is over:



Despite the better Black defense, that open h-file allows the rook to get

onto the seventh rank and the hole at f6 created by the fianchetto (that's why you try to get rid of the Bg7) gives a nice nesting place for the knight. The connected passed and protected pawns are from the breakthrough in the center.

It is hoped you remember the ideas that came up in these games because they will come in handy in all sorts of positions: opening h-files, sacrificing on g6, not sacrificing on h7 (!), prying open the position with f5 or e4 moves, and, never, ever, giving up!