

October 2012

uschess.org

Chess Life for Kids!

Build it,



and they will come



A USCF Publication

\$3.00



0 74470 27842 9

**Fast, Fun, and
Easy to Use**

In 2006, and *again* in 2007,
young Chess Magnet students
from Portland, OR, scored 7-0 in the
USCF Spring Nationals.

ChessMagnetSchool.com

Better Than Any Textbook for Learning Chess

**"Great Stuff! I just delivered my first
Belgian champion under 10 and
boosted his development
by using ChessMagnetSchool.com"**

- Ton Montforts, Coach
Schaakacademie
Limburg, Belgium

**"Your website was
integral to our team's winning."**

-Mike Hosford, Coach
Alcott Elementary
2008 Washington State
Grades 4-6 Champions

**Proud Sponsor
of the
2012 USCF
Junior Grand Prix!**

Start Your 30-day Free Trial Today

at

www.ChessMagnetSchool.com



**Student
Training**



**Student
& Class
Management**

	1 month	3 months	1 year	1 yr USCF
Individuals	\$6.95	\$15.00	\$29.95	\$26.95
Class/Family	\$6.00	\$12.00	\$25.00	\$22.00

Free to teachers/coaches of at least 5 students
Includes our powerful, easy-to-use Coaching Tools & Reports

Works on Windows and Macintosh
computers (requires internet access)

To learn more, call 650-284-5062
877-378-4319 (US toll-free)
email info@ChessMagnetSchool.com



Table of Contents

- 5 ARABIAN KNIGHTS
- 6 WHAT'S THE QUESTION?
- 7 THE CHESS DETECTIVE
- 8 WIN OR DRAW?
- 8 ZARIA
- 10 GAMBITS
- 12 2012 JUNIOR GRAND PRIX STANDINGS
- 14 YOU CAN DO IT!
- 18 KING AND PAWN
- 19 TOURNAMENT LIFE ANNOUNCEMENTS
- 23 ANSWERS, WE'VE GOT ANSWERS

COVER PHOTO COURTESY OF TODD BARDWICK

THANK YOU, MAGNUS!



Marcus Miyasaka (1957), age 10, appears satisfied at the beginning of his game against world number one rated GM Magnus Carlsen, who defeated his other 25 opponents in a simul hosted by Chess NYC in August. Marcus earned a draw! Thanks to Chess NYC, for bringing Carlsen to New York City for a full week of lessons, simuls, lectures, and schmoozing. ~ Photo by Alex Ky.



Publisher

USCF Executive Director: Bill Hall
bhall@uschess.org

Scholastic Editor: Glenn Petersen
gpetersen@uschess.org

Art Director: Cat Connor Spradlin
catseyephoto@mac.com

Editorial Asst./Copy Editor: Alan Kantor
akantor@uschess.org

Editorial Assistants:
Jo Anne Fatherly
backtobasics@uschess.org
Jennifer Pearson
jenpearson@uschess.org

Advertising Manager: Joan DuBois
jdubois@uschess.org

Tournament Life: Joan DuBois
tla@uschess.org

Director of Publications: Daniel Lucas
dlucas@uschess.org

CONTRIBUTORS: Send your contributions and articles to *Chess Life for KIDS*, PO Box 3967, Crossville, Tennessee 38557 or better yet, e-mail to gpetersen@uschess.org.

Chess Life for KIDS (USPS 023-567, ISSN: 1932-5894) is published in February, April, June, August, October, and December of every year by the United States Chess Federation, 137 O'Brien Drive, Crossville, Tennessee 38555. Periodical postage paid at Crossville, Tennessee, and additional mailing offices.

CHANGE OF ADDRESS: Be sure to notify us at once of any change of address. Please include your old address and your new address, along with your USCF I.D. number.

POSTMASTER: Send address changes to USCF, PO Box 3967, Crossville, Tennessee 38557.

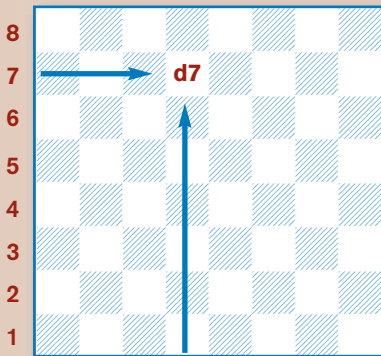
Annual Scholastic Membership
Regular Scholastic Membership (online version of *Chess Life for Kids*), age 12 or younger, is just \$18 per year. Premium Scholastic Membership (receives *Chess Life for Kids* by mail) is \$24 per year. \$13 of every premium membership goes towards providing *Chess Life for Kids*. Annual subscription rate is \$18. Entire contents copyright 2012, United States Chess Federation.

Teachers may photocopy instructional articles for classroom use, but republication or wide-spread copying without the written consent of the USCF is forbidden.

HOW TO Read & Write Chess

There are many different ways to write chess moves. The most popular method (described below) is called **algebraic notation**:

Each square has a name, taken from the intersection of the file (vertical or up-and-down rows of squares, which are lettered) and rank (horizontal or side-by-side rows of squares, which are numbered) the square is on. In the diagram the square on the intersection of the 7th rank and the d-file is called d7. Like in battleship!



The pieces are abbreviated by a capital letter, like this:

K: King; Q: Queen; R: Rook; B: Bishop; N: Knight.

Notice that the Knight is N, since K is reserved for the King. Notice also that pawns have no abbreviation.

A move is written by using the abbreviation for the piece that moves, followed by the square the piece moves to (1. ... Nf6). A pawn move is written as the square the pawn has moved to (1. d4). A capture by a piece is written as the abbreviation for the piece that moved, followed by an x, and finally the square the capture takes place on (8. Bxe5). A pawn capture is written as the file the capturing pawn stands on, followed by an x, and finally the square the capture takes place on (3. dxe5).

Other moves are castling kingside, which is written 0-0, and castling queenside, which is written 0-0-0. An *en passant* capture is indicated by *e.p.* after the move. A check is indicated by + after the move, and pawn promotion is indicated by adding () and the abbreviation for the piece the pawn promotes to. Ambiguous moves (where more than one piece or pawn can move to the destination square) are taken care of by putting an extra rank or file in to make it clear which piece or pawn moved.

Here is a sample, using the famous smothered mate trap from the Budapest Defense.

1. d4 Nf6 2. c4 e5 3. dxe5 Ng4

4. Bf4 Nc6 5. Nf3 Bb4+ (diagram A)

6. Nbd2 Qe7 7. a3 (diagram B)

7. ... Ncxe5 8. Bxe5 Nxe5 9. axb4 Nd3 checkmate. (diagram C)

x: take or capture **#:** checkmate
0-0: kingside castle **():** promotion
0-0-0: queenside castle **!:** good move
+: check **?:** bad move
??: blunder



GET YOUR RED HOTS HERE!

Or at least get your chess questions answered!

Send your questions for Daniel to:
gpetersen@uschess.org.

Or write to:
What's the Question?
c/o Glenn Petersen
44-D Manchester Court
Freehold, NJ 07728

OOPS!



IT WASN'T THE GREMLINS!

We can't even blame the Gremlins this time, and yet, two bad diagrams appeared in Todd Bardwick's Chess Detective column, last issue. The positions and solutions for positions #3 and #6 should have been:



#3 White sacrificed a pawn for this nice attack. Black would like to tuck his king away after say ... Rf8 and ... Kg8 and hope to survive. White doesn't give him the time by playing **24. Nxf6! gxf6 25. Qg6+ Kf8 26. Bc1 d5 27. Rd4** (The rook-lift idea to bring the rook into the attack.) **27. ... Nd6 28. Rg4 Nf7 29. Bxh6+ Ke8 30. Bg7, Black resigned.** This game took place in Tilburg, The Netherlands, in 1981 between Garry Kasparov and Ulf Andersson.



#6 Jules De Riviere was White against Paul Morphy in this game from Paris, France, in 1863. Morphy broke in with a couple nice sacrifices by playing **14. ... Bxh2+! 15. Kxh2 f4 16. Qxe4 Ng5 17. Qd4 Nf3+! 18. gxf3 Qh4 19. Rh1 Bxh3 20. Bd2 Rf6, White resigned.**

We want to thank Justin and Deanne Alter (Colorado) for being the first to point out the error of our ways.

TALES OF THE ARABIAN KNIGHTS

BY RICK KENNEDY ILLUSTRATIONS BY PAMELA KEY



Unheard Melody

"I SUPPOSE THAT IT BOTHERS YOU," SAID THE KING, WITH A FACE THAT SPOKE OF MISCHIEF, "THAT THERE HAS NEVER BEEN A GREAT WOMAN CHESSPLAYER."

"WHY DO YOU SAY THAT?" SHE RESPONDED, CAUTIOUSLY GATHERING HER WITS ABOUT HER.

"You have a fascination with the minor pieces, I have noticed," the King said with a smile, "to the exclusion of the royal ones."

"Except the queen, of course" she agreed.

"Except the queen, yes," he then admitted.

"Your brother," she wondered, apparently changing topics, "How do you think he reacted after the last defeat you visited upon him?"

The King grinned broadly.

"Did he, perhaps, tell every kinsman and servant, loudly, 'Hear this! Again I have lost, pitifully, to my brother, who is master of me at the royal game!'"

"Far from it," the King chuckled. "More likely he told no one, and swore the rest to secrecy."

"And," she continued, "Had / the

audacity, that day, to challenge him *myself*, and wrestle a draw—or a win!—from his grasp?"

The King guffawed loudly, and she tried not to take offense. "My brother? How would he deal with losing a chess game to a *woman*?" The King snorted. "He would pass an edict for a hundred years of silence! Not a person would dare speak a word of it."

"So," she then smiled, knowingly, "How do we not know if women have been beating men at chess for some time now—just, no one has ever said anything."

The King sat, suddenly silent.

"Imagine, game after game, player after player," she continued, "great women chessplayers beating great men chessplayers, all tales untold ..."

"I ... I have never heard of such a thing!" sputtered the King, who suddenly left the room to do something royal, elsewhere.

"Indeed," she smiled.

Mir Sultan Khan – Vera Menchik Hastings, 1931

1. d4 Nf6 2. c4 e6 3. Nc3 d5 4. cxd5 exd5 5. Nf3 c6 6. Qc2 Bd6 7. e3 Nbd7 8. Bd3 O-O 9. Bd2 Re8 10. h4 Nf8 11. O-O-O b5 12. Ng5 a5 13. e4 b4 14. Na4 dxe4 15. Nxe4 Nxe4 16. Bxe4 Be6 17. Kb1 b3 18. axb3 Rb8 19. Nc5 Bxc5 20. Qxc5 Bxb3 21. Rde1 Ne6 22. Qc3 Qxd4 23. Qxd4 Nxd4 24. f3 a4 25. Bf4 Rbc8 26. Bd3 Ne6 27. Be5 c5 28. Bb5 Red8 29. Re4 Nd4 30. Bxd4 cxd4 31. Bd3 Rb8 32. Ka1 Rb4 33. Rhe1 Be6 34. Re5 a3 35. b3 Rxb3 36. Bc4 Rb2 37. Bxe6 fxe6 38. Ra5 d3 39. Rxa3 d2 40. Rd1 Rc2, White resigned.

B. Janeckova – Vera Menchik Buenos Aires, 1939

1. d4 d5 2. Nf3 Nf6 3. c4 c6 4. Nc3 e6 5. Bg5 Nbd7 6. e3 Qa5 7. Nd2 Bb4 8. Qc1 Ne4 9. Ncxe4 dxe4 10. a3? (10. Bh4) 10. ... Bxd2+ 11. Qxd2 Qxg5, White resigned.



What's the Question?

by National Master Daniel Gurevich

Justin Zhou
Marietta, Georgia

Q: Why do people use heavy pieces to attack little pawns?

A: Heavy pieces are valuable ... and powerful! Sending the queen and the rooks into the attack can be the best way to crush an opponent.

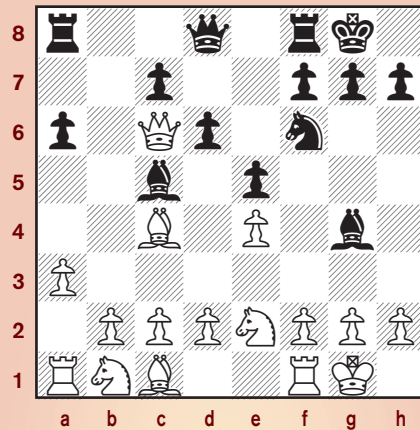
The flip side of the coin is that nobody wants to lose one of these weapons. Be careful with your heavy pieces! Sending your queen on an early pawn hunt will usually get you in trouble—you should get the rest of your pieces to active squares first.

Here is an example of how to use the queen in the attack and *not* to use it. Playing White is Napoleon Bonaparte; the Turk (more about that later!) plays Black.

Napoleon Bonaparte - the Turk

Schoenbrunn Vienna, 1809

1. e4 e5 2. Qf3? White has not developed any of his minor pieces yet. Why not develop the queen instead? 2. ... Nc6 3. Bc4 Haha! Of course, now White is threatening to take the f7-pawn with checkmate! 3. ... Nf6 That's strange ... Black didn't fall for it. 4. Ne2 Bc5 5. a3? The great French emperor now sees the need to activate his pawns. Instead, White should just castle: the position would still be about equal. 5. ... d6 6. 0-0 Bg4 Notice how all of Black's moves have a clear purpose. Right now, he is bringing yet another piece into the game, while also attacking the enemy queen. 7. Qd3 White could also try the pawn-grabbing move 7. Qb3. Here is one possible continuation: 7. ... 0-0! 8. Qxb7 a6!! Black sacrifices his knight. White's queen will run into trouble soon. 9. Qxc6.

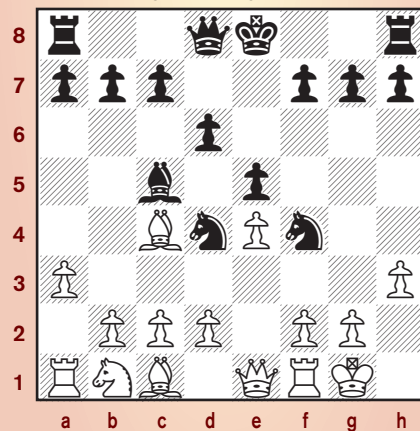


(Analysis after 9. Qxc6)

9. ... Bd7 Black brings back more pieces for the queen hunt. 10. Qb7 Bb6! Now, no matter what White does, Black traps his queen with 11. ... Ra7! White is in a lot of trouble.

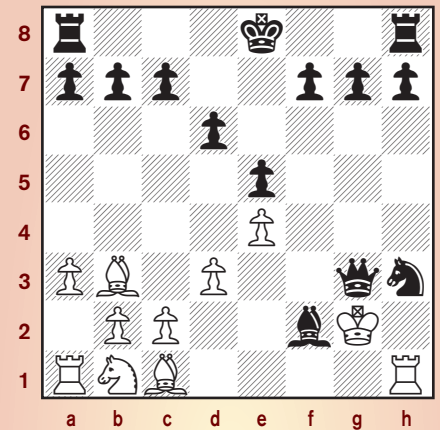
What happened to White in the game was even worse.

7. ... Nh5 8. h3 Bxe2 Black secures a future outpost for his extremely active knights. 9. Qxe2 White is forced to move his queen again 9. ... Nf4 10. Qe1 ... and again 10. ... Nd4 ... until Black's minor pieces occupy the very best squares.



11. Bb3 Nxh3+! White can't take the knight without losing his queen to 12. ... Nf3+! 12. Kh2 Qh4! It is now correct for Black to develop his queen. White comes under heavy fire from the heavy piece! By

the way, Black's knight on h3 is still safe because of the Nf3+ fork. 13. g3 Nf3+ 14. Kg2 Nxe1+ 15. Rxe1 Qg4! 16. d3 Bxf2 17. Rh1 Qxg3+! Black's queen can mop up all of the pawns in this completely winning position. White cannot do anything to stop the disaster.



18. Kf1 Bd4 19. Ke2 Qg2+ 20. Kd1 Qxh1+ 21. Kd2 Qg2+ 22. Ke1 Ng1 23. Nc3 Bxc3+ 24. bxc3 Qe2# 0-1

Napoleon lost the battle of Waterloo in 1815. This 1809 game of chess must have been a taste of his military failures to come. He was facing a strong opponent, Johann Allgaier, the writer of the first German book on chess. To support his struggling finances, Allgaier played many games disguised as a chess-playing machine, the Turk.

There are many interesting legends about this encounter. According to one, Napoleon made the same illegal move three times during a game! The first time, the Turk put the piece back on its starting square. The second time, the Turk removed the piece from the board entirely. On Napoleon's third attempt, the Turk supposedly swept all of the pieces off the board!

Let's not get carried away with this chess history lesson. Here is a review of

Please turn to page 16



The Chess Detective

by NM Todd Bardwick

OPPOSITE SIDE CASTLING

Some of the most interesting chess games occur when the players castle on opposite sides of the board.

These types of positions are typically a race to the king. The player who seizes the initiative and arrives first, usually wins the game.

Several general rules apply to opposite side castling.

First, it is generally a bad idea to move pawns in front of your own king because it takes time away from your attack and moves your pawns closer to your opponent's attacking forces. Also note that you cannot move a pawn backwards to cover up weaknesses created by the pawn move.

Secondly, the player with more minor pieces in front of the pawns in front of their king will lose time having to move them when the opponent's pawns march forward toward the king. You want the action to take place in front of your opponent's king, not yours.

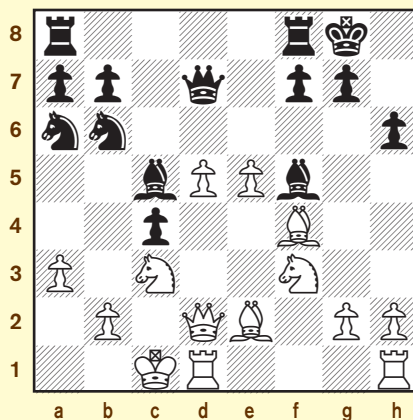
If your opponent has already castled, you should, of course, avoid castling on the opposite side if you think his attack will arrive first.

Here is an example from 1986 be-

Todd Bardwick
is the author of
Chess Strategy Workbook:
A Blueprint for
Developing the Best Plan.
He can be reached at
www.ColoradoMasterChess.com

tween Juri Vetemaa and Alexander Shabalov that was played in Haapsalu, Estonia.

Shabalov



Vetemaa

Position after 16. 0-0-0
Black to move

White just castled queenside. Who do you think will get to the king first?

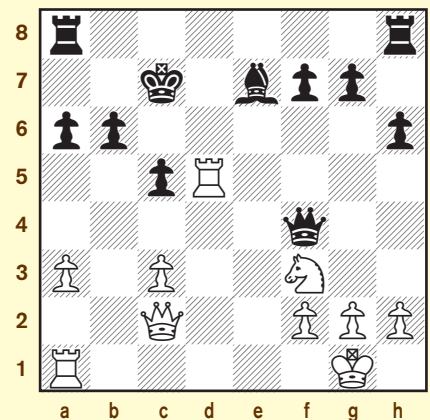
White has a nice pawn center, but with the exception of the potential bishop sacrifice on h6, it looks like it will take a while to get his attack going toward the black king. Note that White also has a hole on b3 and his king can't run to the corner because of the bishop on f5.

Black continued to build up pressure by playing 16. ... Rac8. White played 17. h3 to support a g2-g4-g5 pawn push in an attempt to open up Black's king. Black seizes the initiative by playing 17. ... Na4 18. Nd4 Bxd4 19. Qxd4 N6c5 20. Bxc4 Qb5! 21. Rd2. If White captures the queen with 21. Bxb5 or 21. Nxb5, then 21. ... Nb3 is mate! 21. ... Nxc3, White resigned.

Nothing else works: 22. bxc3 Qb1 mate or 22. Bxb5 Nb3 mate or 22. Qxc3 Nb3+ 23. Kd1 Rxc4.

Here is a position between Garry Kasparov and Florin Gheorghiu that was played in Moscow in 1982.

Gheorghiu



Kasparov

Position after 19. ... Kc7
White to move

Black didn't castle in this game, but with Black's king running toward the queenside, the strategy is the same as an opposite side castling game. Black is ahead a pawn, but with an exposed king therefore White's attack will easily arrive first.

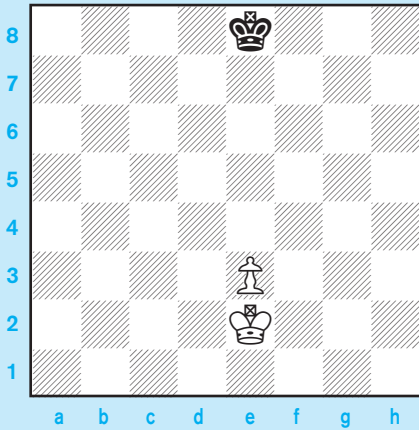
The game continued, 20. Re1, bringing the only undeveloped piece into the game. 20. ... Bd6 21. Rf5 Qc4 22. Re4 Chasing the queen away from protecting the f7-pawn. 22. ... Qb5 23. Rxf7+ Kb8 24. Re6 The only thing White has to be mindful of is a potential back rank mate. 24. ... Rd8 25. c4 Qc6 26. Ne5 Qc8 27. Qb1, Black resigned.

WIN OR DRAW?

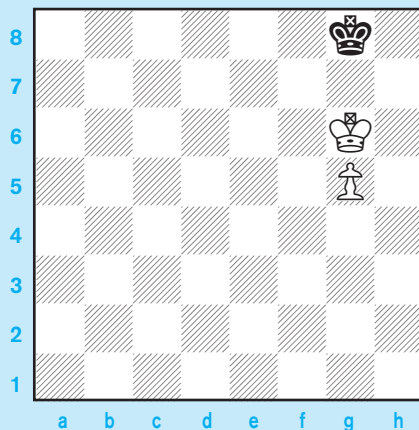
by Pete Tamburro

This set is a real "back to basics" on king and pawn endings. If you have never done king and pawn endings, then this will be a good start. In either case, you have to know what "the opposition" is. These endings are very important to know because, sooner or later, we are all a pawn up or a pawn down! As usual, look at the position and decide whether it is a win or a draw and write down the moves that you think make it so.

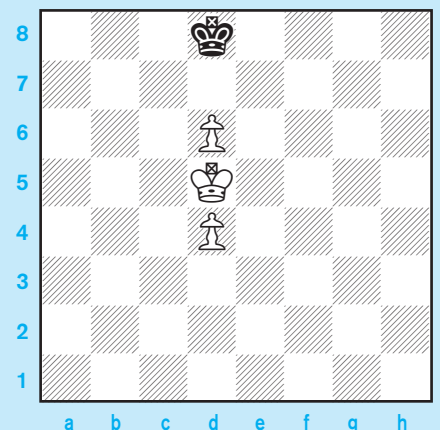
Position One: Black to Play



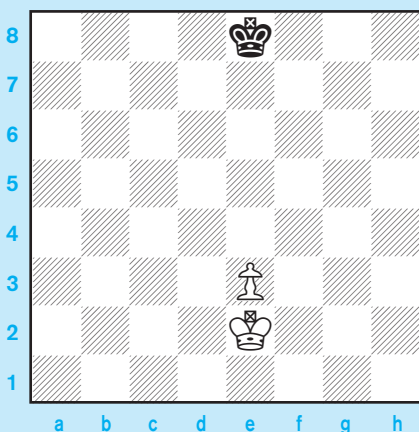
Position Three: White to Play



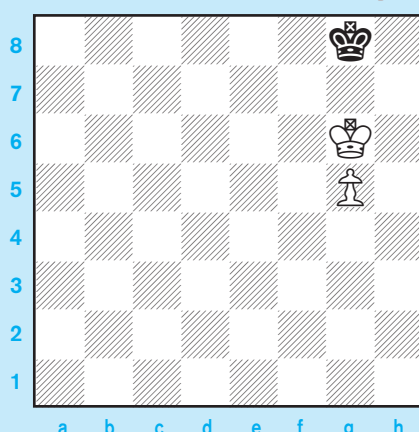
Position Five: White to Play



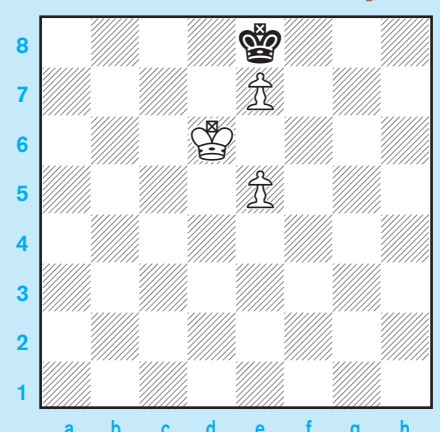
Position Two: White to Play



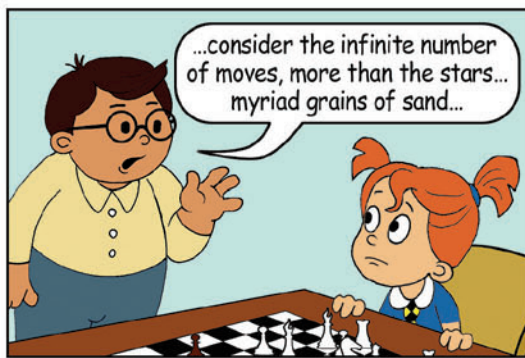
Position Four: Black to Play



Position Six: White to Play



Answers on page 23 





TROPHIES • RIBBONS • MEDALS • CHENILLE • PLAQUES

Show Off.



Show It Off.

Official *Awards* Provider of the



UNITED STATES CHESS FEDERATION

315 W. 1ST STREET • TEMPLETON, IOWA 51463
800-397-9993 • WWW.TROPHIESPLUS.COM • TROPHYMAN@TROPHIESPLUS.COM

Quick Tips for Meeting Gambits

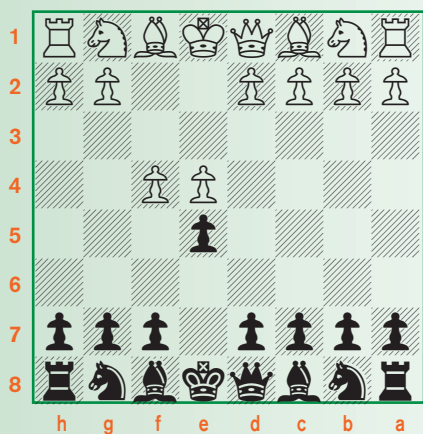
by Pete Tamburro

Everybody playing the black pieces runs into a gambit from time to time. At scholastic levels, it happens a lot. Why? Players have learned that if you study a gambit a good many scholastic players have no idea how to meet it. What happens is that the gambit player often gets a great position and a win because the game is decided in the first few moves.

In this series we will look at some common gambits (there are so many!) with some quick tips on how to meet them.

King's Gambit:

DIAGRAM ONE



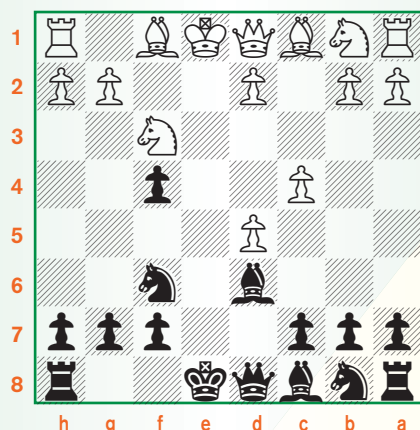
If you play 2. ... exf4 here, you are playing right into White's hands. Your opponent probably knows all the attacking lines and defense is difficult. You can decline it with 2. ... Bc5 as this is a solid move, but "white" books on the opening have made it a hard line to defend as well. Other moves like 2. ... d6 or 2. ... Nc6 or 2. ... Nf6 are not that promising either.

We suggest you try 2. ... d5! It's good for a number of reasons. You're counterattacking. King's Gambit players don't like defense. They want to attack. Make them uncomfortable! It also gives you a simple, solid way to go, or, if you're an attacking player yourself, it gives you a gambit line to play. Turn the

tables on White!

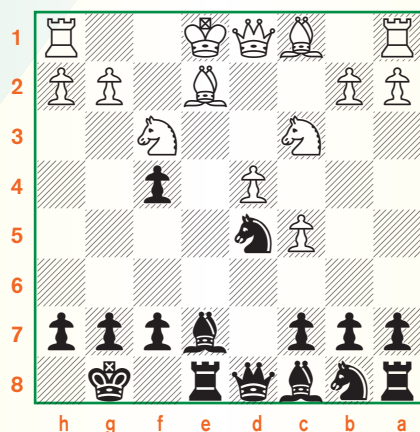
Let's look at the solid way: 1. e4 e5 2. f4 d5 3. exd5 exf4 4. Nf3 Nf6 5. c4 Bd6.

DIAGRAM TWO



You're defending the f-pawn and ready to castle. If White tries to get aggressive with 6. d4 0-0 7. c5 Re8+ 8. Be2 Be7 9. Nc3 Nxd5 ...

DIAGRAM THREE

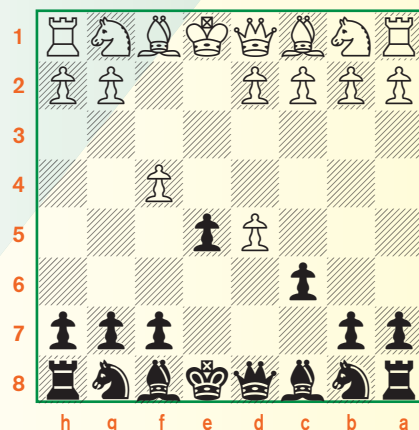


You have a nice game here. Developing with Nc6 and Bg4 or Bf5 and bringing the queen to d7 and the queen rook to d8 to put pressure on the d-pawn will give Black something to think about aside from getting his pawn back.

And if you like more aggressive play, then you can try another way: 1. e4 e5

2. f4 d5 3. exd5 c6.

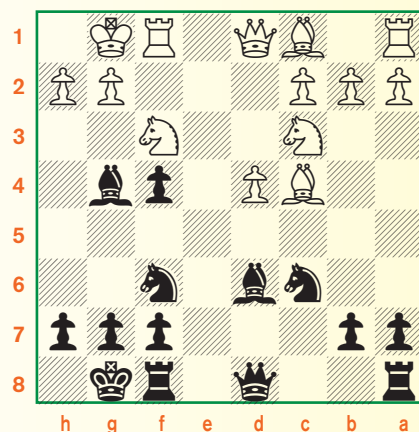
DIAGRAM FOUR



The fun part of this is that you set a trap which more than a few people fall into! 4. fxe5?? Qh4+ 5. Ke2 (5. g3 Qe4+ 6. Qe2 Qxh1 7. Nf3 Bh3) 5. ... Qe4+ 6. Kf2 Bc5+ 7. d4 Bxd4+ 8. Kg3 Qg6+ 9. Kh4 Bf2+ 10. g3 Qe4+ 11. Kh5 g6+ 12. Kg5 h6# Wasn't that fun?

The main idea is: 1. e4 e5 2. f4 d5 3. exd5 c6 4. dxc6 Nxc6 5. Nc3 exf4 6. Nf3 Bd6 7. d4 Nf6 (even 7. ... Nge7 followed by ... Ng6 is good) 8. Bc4 0-0 9. 0-0 Bg4 with this position:

DIAGRAM FIVE



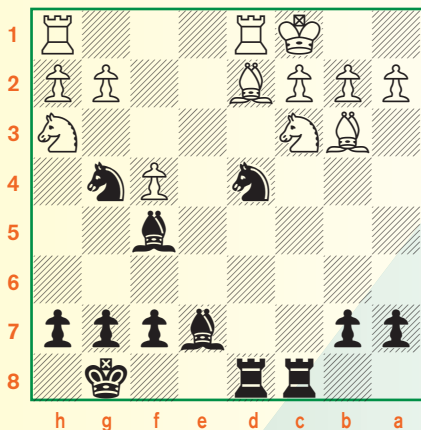
Again, you are well-developed. Your queen can go to c7 after a preparatory ... a6 and your rooks can go to e8 and

d8. If White tickles your bishop with h3, you just go back to h5. After the ... a6 move, you can hit the bishop with b5. If you choose the 7. ... Nge7 line mentioned above, you would be going to g6 with the knight and maybe even h4 to pile on the knight on f3. Of course, White would take advantage of the Nge7 move to play 8. ... Ne4, and you would have to retreat your bishop to c7, but you're OK there, too. You would want to hit the white bishop when it goes to c4 in this line, too, with a6 and b5. You're in the game either way!

White might try to avoid all this in a number of ways (See DIAGRAM FOUR): **4. Qe2 e4 5. d3** (5. Qxe4+ Be7 6. Nf3 Nf6 7. Qa4 0-0 8. dxc6 Nxc6 9. d4 Bg4 10. c3 Bxf3 11. gxf3 Bd6 12. Nd2 Re8+ 13. Kd1 Bxf4) **5. ... cxd5 6. dxe4 dxe4 7. Qxe4+ Be7 8. Nc3 Nf6 9. Qd3 0-0 10. Qxd8 Rxd8 11. Bd2 Nc6 12. 0-0-0 Ng4 13. Nh3 Bf5 14. Bc4 Rac8 15. Bb3 Nd4.**

If you pick this c6-line this position is one you have to be comfortable with. Some players might not like playing without their queen and playing a pawn down all at the same time, so look at this position and ask yourself, "Am I comfortable here?"

DIAGRAM SIX



Aggressive players like the active piece play. They can play Bd6 or Bf6 to improve the bishop's range. The pawn attack with b5 and the possible exchange of the knight for the bishop is always under consideration, especially if White plays a3 to prevent b4. If you are not comfortable with this, go

back to the solid line!

White may even try funny ways to avoid the c6-line. The three most popular are 3. d4, 3. Nf3 and 3. Nc3.

If **1. e4 e5 2. f4 d5 3. d4 exd4 4. Qxd4 Nf6 5. exd5** (Really bad is 5. e5 Ne4 6. Nf3 Bc5) **5. ... Qxd5** and you have not a care in the world.

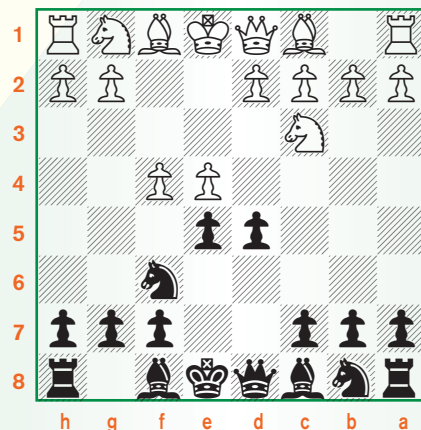
If **1. e4 e5 2. f4 d5 3. Nf3 exf4 4. exd5 Nf6 5. d4** (5. c4 Bd6 6. d4 0-0 and we're in the solid line above) **5. ... Nxd5** with an easy game.

If **1. e4 e5 2. f4 d5 3. Nc3 d4 4. Nce2 Nc6 5. Nf3 exf4 6. Nxf4 Bd6 7. d3 Nf6 8. Be2 0-0** and you're good.

Thus, you need never fear the King's Gambit. Just remember the common theme in all these lines: get your pieces out on good central squares, get castled and centralize your rooks on the e, d and even c-files.

This very last line has one other alternative that leads to our next gambit line—the Vienna Gambit. Instead of playing 3. ... d4, you have the alternative of playing 3. ... Nf6 with a position that normally comes about after 1. e4 e5 2. Nc3 Nf6 3. f4 d5! Notice that we didn't take the pawn in this line, either. Here, it's even worse: 1. e4 e5 2. Nc3 Nf6 3. f4 exf4 4. e5 Qe7 5. Qe2 Ng8 6. Nf3 and White's advantage is big.

DIAGRAM SEVEN

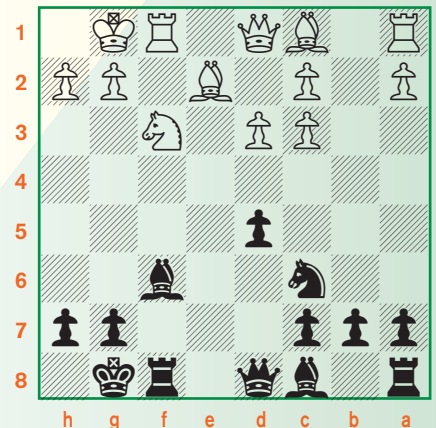


White has tried a lot here, but if you just go over these few lines, you can see that Black can hold his own:

1. e4 e5 2. Nc3 Nf6 3. f4 d5 4. fxe5 (4. exd5 exf4 5. Bc4 [5. Bb5+ c6 6. dxc6 Nxc6 7. d4 Bd6 8. d5 a6 9. Ba4 b5 10. dxc6 bxa4 11. Nge2 Qc7] 5. ...

c6 6. dxc6 Nxc6 7. Nf3 Bd6) There is a real similarity with the King's Gambit line here: **4. ... Nxe4 5. Nf3** (5. d3 Nxc3! [don't fall for 5. ... Qh4+] 6. bxc3 Nc6 7. Nf3 f6 8. d4 fxe5 9. Bb5 Be7 10. Bxc6+ bxc6 11. 0-0 [11. Nxe5 0-0] 11. ... 0-0; 5. Qf3 Nc6 6. Bb5 [6. Nxe4 Nd4!] 6. ... Nxc3 7. bxc3 Be7 8. Ne2 0-0) **5. ... Nc6 6. Be2** (6. d4 Bb4) **6. ... Be7 7. d3 Nxc3 8. bxc3 0-0 9. 0-0 f6 10. exf6 Bxf6.**

DIAGRAM EIGHT



Black is fine. If White doesn't play d4 then you should! Get your queen bishop out to f5 or g4. Centralize the rooks on f8 and e8. Be aware of White playing a4 and Ba3 or just Ba3 right away, but that is pretty easy to handle if you see it coming. Remember that first idea with ... Be7, castling and ... f6. That's the great equalizing idea against the Vienna Gambit. In both the King's Gambit and the Vienna Gambit, Black has to remember the importance of good piece placement and castling. That will take the sting out of both of these f4-attacks.



2012 Junior Grand Prix Standings



This unofficial list is based on USCF records and TD reports as of Wednesday, September 12, 2012. There are 5,720 players with JGP points and 358 JGP-eligible events have resulted in points earned. For a complete list of overall leaders, go to www.uschess.org.

Top 25 Overall Standings

NAME	STATE	PTS	EVENTS
ULRICH, ANNE E	WI	9607	8
HOFFMAN, EVAN	CA-S	8199	13
ABE, MAHIRO	NY	8097	6
PAPAGEORGIOU, EFTHYMIOS	NY	6796	3
MADDEN, KERRIGAN	CA-S	6578	14
YU, JENNIFER R	VA	6509	13
LIANG, AWONDER	WI	6102	7
HARI, YASASVI	PA	5889	11
GUO, MAXIMILLIAN	OH	5583	6
TAYLOR-BRILL, SETH	NC	5536	8
SRINIVAS, RAHUL	CA-N	5491	10
PATEL, ADVAIT	WV	5410	15
MEHTA, MOULIK A	WI	5378	6
HEUBLUM, JACK E	NY	5363	5
TAO, RACHEL		5265	3
DASARI, SRIHITHA	GA	5227	7
DOMMALAPATI, ABHINAY	VA	5143	14
TANENBAUM, ZACHARY CHEN	CT	5103	12
BUZEK, JAN	WA	5024	3
LIANG, ADREAM	WI	4975	7
TANG, CHARLES	CA-N	4941	9
AVIRNENI, SAITHANUSRI	GA	4864	9
KRISHNAN, AJAY	CA-S	4822	6
ULRICH, THOMAS M	WI	4771	5
GHATTI, SANJAY	GA	4762	7

For the top 50 overall, see www.uschess.org

State Leaders

NAME	STATE	PTS	EVENTS
MILLER, TRAVIS JAMES	AK	956	1
WANG, KEVIN	AL	2107	2
CHIKKALA, SRIKAR	AR	1977	7
PENNOCK, JOSHUA D	AZ	3269	4
CHOW, COLIN	CA-N	4716	8
ALVARADO, OSCAR	CA-S	4282	2
HERMAN, REBECCA	CO	2986	4
IELUSIC, MATTHEW	CT	3890	2
CLARE, ZACHARY A	DC	3448	6
KAMARA, ABUBAKARR	DE	4200	1
WU, HENGYI	FL	4180	7
BALACHANDRAN, NITHIK	GA	4550	1
AIPA, LIKEKE	HI	1290	1
SALEEM, ARSHAQ	IA	3731	7
HARMON-VELLOTTI, CARL HONOR	ID	3614	5
BALA, SHASHANK	IL	3918	4
SHAH, RITIK	IN	2190	1
ZENG, SHEENA	KS	4635	7
BAGLEY, TAYLOR MICAJAH	KY	2113	3
SCHNEIDER, IAN HUNTER	LA	2524	2
ELBIEH, ERIK M	MA	4568	2
ZHENG, ANDREW	MD	4325	8
VAUGHN, ORLY	ME	1706	1
SONG, EDWARD	MI	4288	9
ZHOU, FRANKLIN PUYANG	MN	3539	7
PROLEIKO, JULIAN	MO	4494	7
HINTON, JAMES WADE, II	MS	3408	1
LEE, CONRAD	MT	2644	2
PATEL, SAHIL S	NC	2993	4
POTINENI, SHASHANK	NE	886	1
WELLING, POOJA	NH	2614	7
DER MANUELIAN, HAIK OLIVER	NJ	3912	5
VELARDE, ALEX	NM	2854	2
BANERJI, NEIL	NV	2100	1
REAVES, JAYDEN	NY	4654	3
BAUMGARTNER, BLAKE K	OH	3370	6
ZHONG, HOWARD	OK	3237	4
MOLCHANOV, VALENTIN	OR	3150	1
AZVOLINSKY, ARTHUR	PA	4590	3
GU, CHRISTOPHER	RI	2836	6
DIAS, ADITYA	SC	2278	3
JOENBY, JOSIAH	SD	324	1
WILKINSON, MATTHEW	TERR	3658	2
CHANDRA, DHRUV	TN	4388	2
BANDI, ROHIT CHOUDARY	TX	3248	4
MASON, SAMUEL REED	UT	2581	4
KOBLA, VISHAL	VA	4250	6
KATZ, GABRIEL	VT	620	3
ZHANG, ZACHARY	WA	4321	2
KROUPA, AARON JOSEPH	WI	3500	1
CRAIG, JOHN H	WV	1558	1



JENNIFER YU, 10, climbed all the way to number six on the Chess Magnet School Junior Grand Prix standings and is having fun along the way.



ZoomChess!

by Jill Keto

BELLEVUE-seven year-old boy with curls falling out of his backward baseball cap is in front of a laptop. A friendly, female voice asks him, "Make a move for White that would allow Black to capture *en passant*."

"WHAT?" he yells at the laptop. He has no idea what *en passant* is, but he's about to learn the concept in less than two minutes from an online chess technology, called **Zoom Chess**. Moments later, he will zip through *en passant* puzzles and master the concept.

ZoomChess is a full online chess curriculum, where kids can learn at their own pace. Any child with computer access, in the classroom or at home, will be able to learn chess utilizing the Adaptive Learning Engine and fully animated kid-friendly lessons. Zoom learning utilizes the Socratic method of learning by doing.

Zoom's co-founder, Jill Keto, directs the Medina Elementary School chess program. As a parent volunteer, she oversees 140 students (half of whom

are girls) playing chess after school. At the recommendation of a coach, she tried Chess Magnet School for her own children. Seeing the potential, she bought a license for the school chess club. After witnessing the rapid gains in chess learning, she was convinced, "Every child should have access to this, like the kids at our school."

In Microsoft's backyard, it's no surprise that these students have access to technology at home and in the classroom. "I've seen many kids software products that look great, but are ineffective. This chess software was the complete opposite. Like an unpolished diamond, ready to shine."

Busy, Busy, Busy

Keto got busy morphing the Chess Magnet platform to create kid appeal. "Like *Diary of a Wimpy Kid* meets Khan Academy, plus a virtual tutor that interacts with you and helps you solve problems." The transformation began by narrating thousands of interactive puzzles, including hints and answers.

The chess "teacher" is a friendly, enthusiastic female voice. She talks the child through the training, offering instructions, verbal hints, congratulatory statements, and solutions. Even the earliest readers will have no trouble navigating the software, because of the strong visual and audio cues.

The second step was to

transform the lessons of Harlan Lee, USCF senior master and trainer of national scholastic champions, into kid-friendly motion graphics. 25 years in the making, Harlan's curriculum is widely accepted as the best available online.

Easy on the eyes!

Zoom's graphics are kid-friendly but not dumbed down. The sound effects, narration, and graphics are current and fun. The user experience is comparable to online learning systems for other subjects, like MathWhizz, DreamBox, and BrainPOP.

Available September 2012, ZoomChess (ZoomChess.com) will be offered as a subscription service, users will pay a monthly, or annual, fee for unlimited access. The ZoomChess mobile device app (available in late 2012) will be a convenient, portable supplement to the full online version, for kids' chess play, tactics learning, and practice.

At the end of the day, practice makes perfect. Says Keto, "The kids in our chess club went from spending a few minutes doing six puzzles on paper, to spending an hour and completing 40 or 50 puzzles. More practice meant an explosion in learning ..."



You can do it!

The Double Bishop Sacrifice

by
Jon Edwards

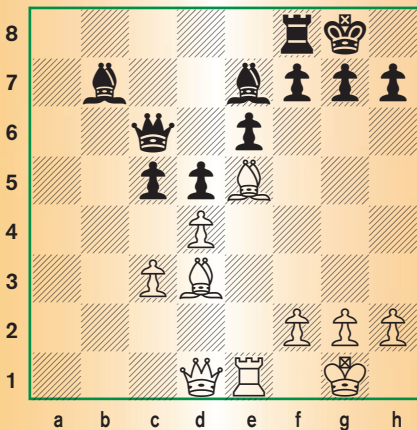


It was Amos Burn (with the black pieces!) and a young Emanuel Lasker (playing White) who first uncorked the double bishop sacrifice.

The sacrifice is lovely, and indeed quite instructive. In my book on the Greco sacrifice, I promised a similar look at other sacrifices. So here's my effort on the double bishop "sac." As you see, it looks easy but contains a number of fascinating surprises.

The first five numbered positions are the building blocks of the sacrifice. Review these and then try the six diagrams in the quiz. You will be amazed how far ahead you will quickly be able to see!

Position #1: The basic double bishop sacrifice



Here's a basic position to introduce the double bishop sacrifice.

1. Bxh7+

To succeed, the successful sacrifice requires a light-squared bishop that can reach h7 (or h2 for Black), a dark-squared bishop that attacks g7, a queen that can reach h5, and one other powerful asset, most typically a rook that can quickly swing to the kingside to assist the mopping up operation.

It is important that Black's king

rook rest on f8. Otherwise, the king has an easy time escaping towards the center.

And of course, all of Black's kingside pawns must be on the original squares when the sacrifice begins.

1. ... Kxh7

Declining the sacrifice would simply cede the pawn and invite White to continue the attack with Qh5.

2. Qh5+

The queen is best when it can reach h5 since other squares permit Black to consider ... Kg6.

2. ... Kg8 3. Bxg7

In for a penny, in for a pound. The bishop must be captured to prevent Bxf8 and Qh8#.

3. ... Kxg7

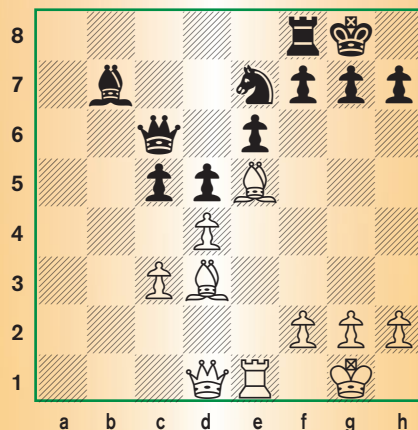
White can now complete the attack with two moves, Qg4+ (with the idea of a rook swing via e3-h3) or simply Rg3 with a crushing attack.

3. ... f6 meets 4. Bh6! The important thematic continuation. (Not 4. Qg6 Qe8).

Also winning for White is 3. ... f5 4. Be5.

4. Qg4+ Kh7 5. Re3 When Black can avoid the mate only by giving up the queen with ... e5 and ... Qh6.

Position #2: Black defends with Ne7-g6

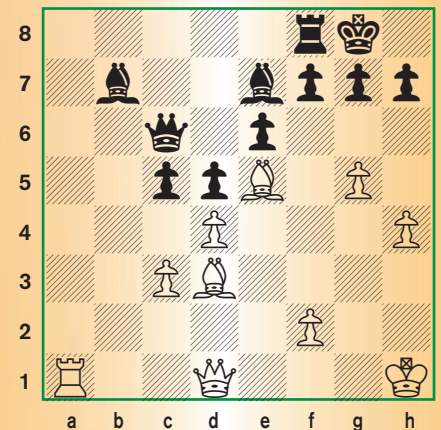


The only change here, of course, is that the knight replaces the bishop on e7.

1. Bxh7+ Kxh7 2. Qh5+ Kg8 3. Bxg7 Kxg7

And there's no reasonable follow-up for White with the Ne7 able to gum up the g-file with ... Ng6. The sacrifices here fail.

Position #3: White has a kingside pawn storm



Once again we have the makings of a successful double bishop sacrifice. The bishops are aiming towards h7 and g7 and the queen can reach h5. White does not have a rook that can swing in the usual manner to the kingside, but instead White has an advancing kingside pawn storm.

1. Bxh7+

The first sacrifice.

1. ... Kxh7 2. Qh5+ Kg8 3. Bxg7

And now the second sacrifice.

3. ... Kxg7

On the movement forward of the f-pawn, White simply advances the g-pawn to g6 with devastating effect.

4. Qh6+

The g5-pawn plays a key role, first assisting the queen to progress to the h6-entry square.

4. ... Kg8 5. g6

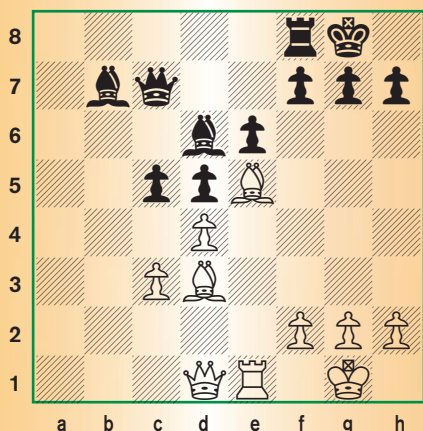
And now the *coup de grâce*. The immediate threat, of course, is Qh7# and on the capture, White gains an open g-file for the rook.

5. ... fxg6 6. Qxg6+ Kh8 7. Qh6+

Forcing the king back to the now open g-file.

7. ... Kg8 8. Rg1+ Kf7 9. Qg6#

Position #4: Black has an anchored queen on c7.



Here's another key consideration. The bishops are bearing down on h7 and g7, the queen can reach h5, and the rook is ready to advance and swing to the kingside. But note Black's queen on c7. It rests there with an anchor, ready to swing across the board to g7 or h7.

1. Bxh7+ Kxh7 2. Qh5+ Kg8 3. Bxg7

All as we have previously seen.

3. ... Kxg7

There's no point here in 3. ... Bxh2+ 4. Kh1 when the bishop on h2 will hang in later lines.

4. Qg5+ Kh8!

Making sure to leave h7 for the queen.

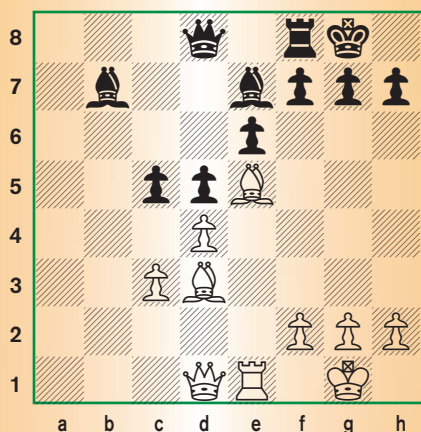
5. Re3

Of course White has a perpetual check for the taking, but if White tries to swing the rook for the mate, Black delivers a terrible surprise.

5. ... f6! 6. Rh3+ Qh7

We are dealing here with a positional fragment, but keep in mind that Black is essentially trading the queen and two pawns for a rook and two bishops, a relatively even trade. Such positions are very difficult to evaluate and should be carefully considered before embarking on the double bishop sacrifices.

Position #5: Black defends with a diagonal battery



Here's our final introductory position. Note that the main difference here is Black's diagonal battery with the queen on d8 and the bishop on e7. With both of them there, the bishop sacrifices will fail!

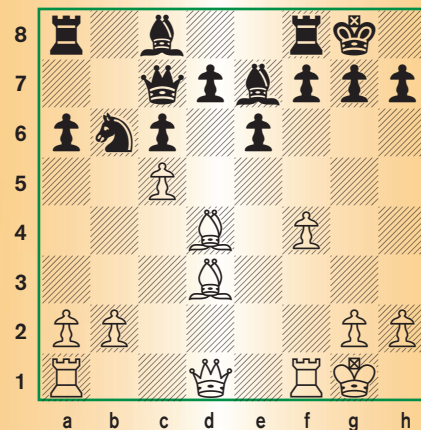
1. Bxh7+ Kxh7 2. Qh5+ Kg8 3. Bxg7 Kxg7 4. Qg4+ Bg5

Or 4. ... Kf6 5. Re3 Bd6 and the king escapes.

5. f4

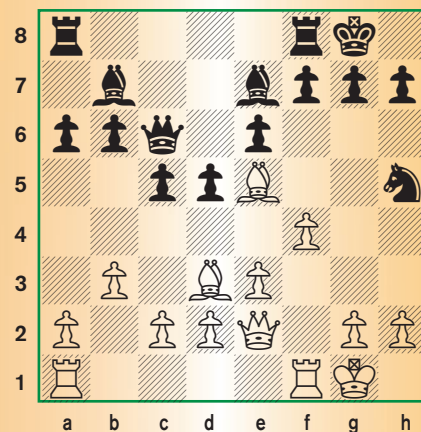
The point. No matter how White now captures on g5, the attack will quickly end. On Qxg5+, the queens will come off the board. On fxg5, the g5-pawn closes down White's pressure down the g-file.

Quiz #1



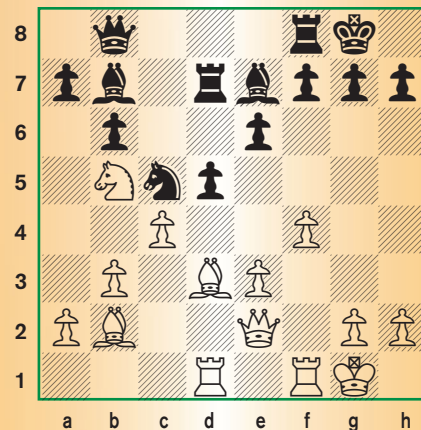
White to play

Quiz #2



White to play

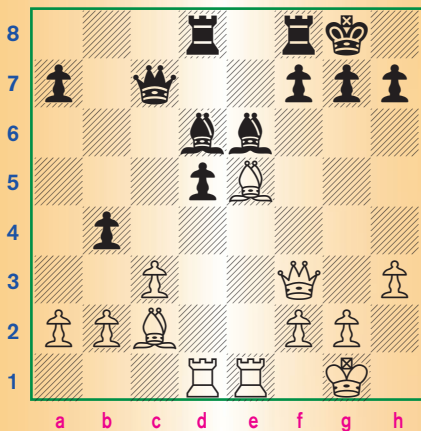
Quiz #3



White to play

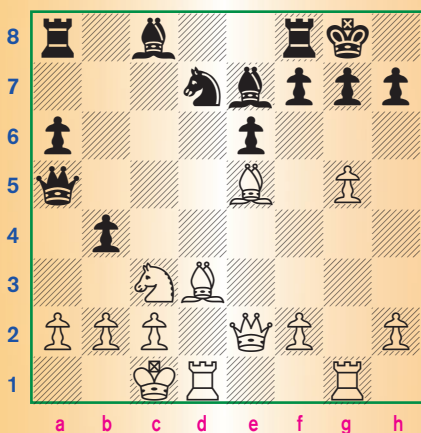


Quiz #4



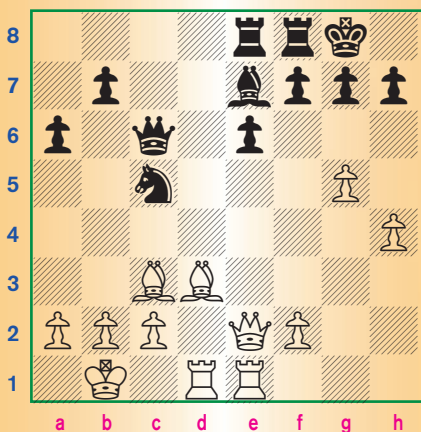
White to play

Quiz #5



White to play

Quiz #6



White to play



Todd Bardwick, who writes "The Chess Detective" for *Chess Life for Kids*, has a hobby. Besides chess, that is. He likes to garden. Or he likes to build gardens.

In any event, he found a way to combine the two—by holding chess tournaments in his backyard, around his "pawn" garden. It looks like a gingerbread man by itself, but add a few kids and parents, and you've got a real pawn!

In case you are thinking of building something like this yourself, here are the details:

- Height:** 26 feet
- Outside diameter of the head:** nine and a half feet
- Base width:** 13½ feet
- Total number of 23.75" blocks:** 506, weighing in at about 12,000 pounds!
- Two foot pathway around the pawn:** 4,000 pounds of red pebbles
- Dirt:** 15,000 pounds
- Crushed granite for base and drainage:** 9,000 pounds
- Flagstone on top of dirt:** 600 pounds
- Total weight:** Just over 40,000 pounds, or 20 tons!

Now that's a dedicated gardener!

What's the Question?

continued from pg. 6

what we have learned about the heavy pieces' attacking power and how to use it:

When enemy pieces and pawns cannot easily attack your queen and rooks, they (queen and rooks) are extremely powerful attackers.

If your opponent can harass your heavy pieces, they will have to run and hide. In this case, avoid bringing them out to the battlefield.

Remember: Napoleon never fought the war from the very front ranks of his army: he commanded his troops from behind. That strategy usually works best for kings, queens, and rooks as well.

Visit www.USCFSales.com

USCF SALES

Save on your entire purchase!

10%
OFF!

Coupon code: CHESSLIFE

Excludes Shipping Charges and Taxes • Offer Expires November 30, 2012

1.800.388.KING (5464)
www.USCFSales.com

All Purchases Benefit



The US Chess Federation

King and Pawn Endings

by IM Dr. Danny Kopec
and Hal Terrie

Hal Terrie and I have nearly finished preparing the third edition of our book *Test, Evaluate and Improve Your Chess: a knowledge-based approach*.

It will include five new tests comprising over 300 positions. The second edition (USCF Publications, 2003, 312 pages edited by Glenn Petersen) had seven tests and 182 positions. The five tests being added include four tests on the openings (Novice, Intermediate, Advanced, and Super-advanced), and a test that Hal and I had already developed in 2006, the King and Pawn Endings Test.

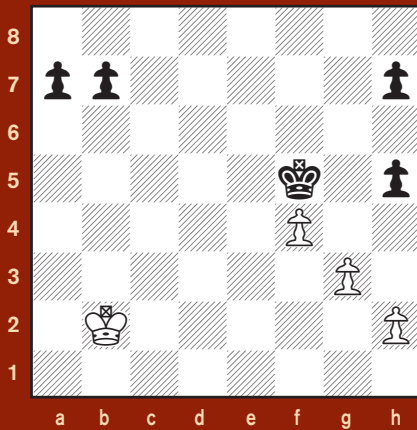
I have become very fond of king and pawn endings because 1) they are the basis for nearly all endgame play and 2) they embody a fair amount of knowledge and beauty.

The primary concepts in king and pawn endings are: 1) the activity of the kings, 2) the pawn structure, and 3) the pawn mobility.

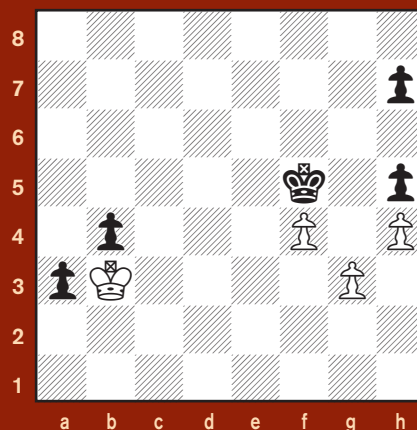
Some of the important concepts that these positions will illustrate are the importance of king activity, the importance of pawn structure, the importance of having spare tempi, as well as notions of breakthrough, king centrality, *Zugzwang*, opposition of various kings, passed pawns, outside passed pawns, protected passed pawns, and relatively outside passed pawns, chains, levers, domination, outflanking and more.

Here is a small sampling of what to expect: The first six positions in the King and Pawn Test. Solutions will be published next issue.

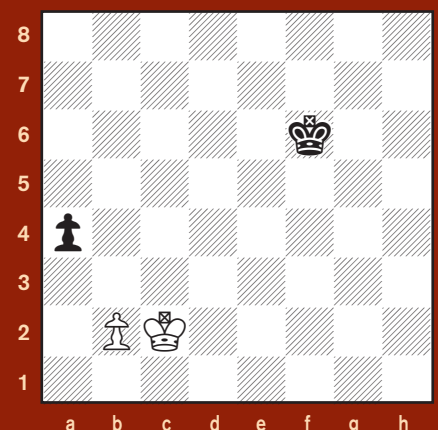
Position One: Black to Play



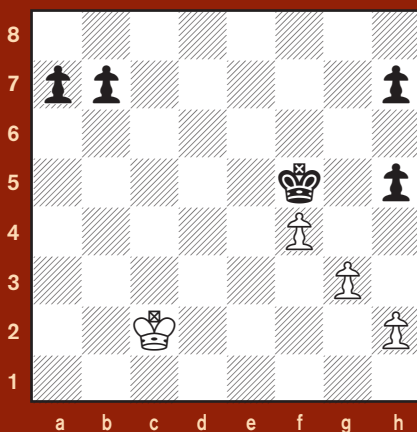
Position Three: Black to Play



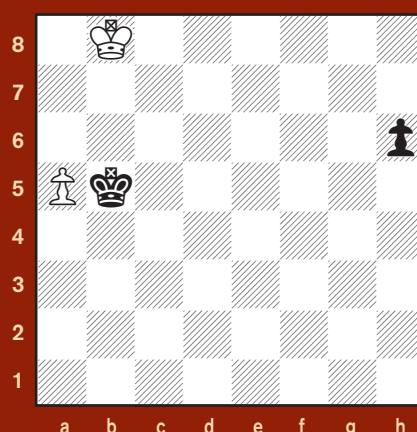
Position Five: White to Play



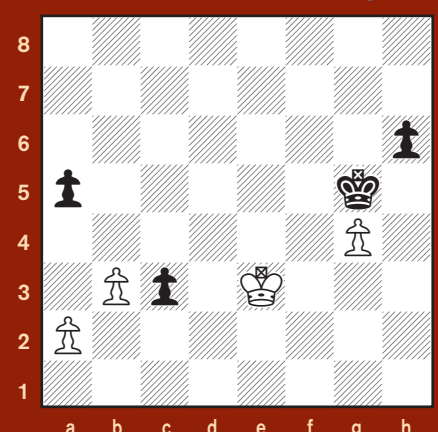
Position Two: White to Play



Position Four: White to Play



Position Six: White to Play



Tournament Life Announcements

OCTOBER 15 THROUGH DECEMBER 14

Scholastic Members:

As a service to you, we are listing upcoming National USCF rated events, and requested events of possible interest to you. You can always log in to www.uschess.org, and click on "Clubs and Tourneys." Then click on "Upcoming Tourneys" for a complete listing of upcoming rated events and details. As always, you can check out the TLA section of *Chess Life*.

Organizers and Tournament Directors:

If you would like your tournament listed here in *Chess Life for KIDS* for December (events to be held after December 14), the deadline for submitting your announcements is October 10th. The deadline for the February 2013 issue is December 10th. The processing fee is \$1.00 per line for the first eight lines, \$2.00 for every line thereafter. Send your announcements to Joan DuBois, tda@uschess.org.

Display advertising is also available. Advertising rates are posted on the USCF website, www.uschess.org, or you may e-mail: tda@uschess.org for complete details.

NATIONALS

Oct. 27, California, Northern

Trophies Plus Grand Prix Points: 40 (Enhanced)
2012 U.S. Game/30 Championship

5SS, G/30 - \$5,000 b/108 fully paid entries - 80% guaranteed. Hotel rate \$79 by Oct 12: Hilton at the Club, 7050 Johnson Dr., Pleasanton, CA 94588. Free Parking. In 4 sections: **Open Section (1900+):** Guaranteed \$800, 400, 100, Top u2300 \$6td 200, Top u2100 \$100. **1600-1899 Section:** \$600, 300, 100 Top u1700 \$200. **1300-1599 Section:** \$600, 300, 100 Top u1500 \$200. **Under 1300 Section:** \$600, 300, 100 Top u1100 \$100. Unrated may play in any section but maximum prize is \$100 except there is no limit in the Open Section. **Entry Fee** mailed by 10/20 or online by 10/22: \$66. Add \$15 onsite (\$8 online 10/23-24). Play-up: \$20. **DISCOUNT:** \$33 off if registering for U.S. G/30 on October 27 & U.S. G/60 on October 28. **Byes:** One 1/2 pt bye allowed must commit by start of Rd 2. Reenter with 1/2 pt bye in Rd 1 for \$33. October 2012 Supp. CCA min, TD discretion used to place players accurately. **SIDE KIDS EVENT for K-12 students rated under 1000:** 5SSxG/30 in 4 sections based on rating: 800-999, 600-799, 400-599, under 400. **Prizes:** Trophies to Top 15 players in each section and Top 10 teams in 600-799 & 800-999 sections combined & Top 10 teams in under 400 & 400-599 combined. Best 4 players count for team score. **Entry Fee** mailed by 10/20 or online by Tue 10/22: \$44. **DISCOUNT:** \$22 off if registering for U.S. G/30 on October 27 & U.S. G/60 on October 28. Add \$15 onsite (\$8 online 10/23-24). Play-up: \$10. **Schedule for all sections:** Onsite Registration: 8-9am. Round Times: 9:30am, 11am, 1pm, 2:30pm, 4pm. Register online at BayAreaChess.com/my/usg60g30.php or mail payments to Bay Area Chess, 1639 A South Main St., Milpitas, CA 95035. \$20 for refunds. **Info/Form/Entries:** BayAreaChess.com/usg60g30. E: ask@BayAreaChess.com. T: 408-786-5515. NS, NC, W.

Oct. 28, California, Northern

Trophies Plus Grand Prix Points: 50 (Enhanced)
2012 U.S. Game/60 Championship

4SS, G/60 - \$10,000 b/216 fully paid entries - 80% guaranteed. Hotel rate \$79 by Oct 12: Hilton at the Club, 7050 Johnson Dr., Pleasanton, CA 94588. Free Parking. In 6 sections: **Open Section (2000+):** Guaranteed \$1,200, 600, 200 Top u2300 \$100, Top u2200 \$100, Top u2100 \$100. **1800-1999 Section:** \$1,000 400 200 100. **1600-1799 Section:** \$1,000 400 200 100. **1400-1599 Section:** \$1,000 400 200 100. **1200-1399 Section:** \$800 300 200 100. **Under 1200 Section:** \$800 300 200 100. Unrated may play in any section but maximum prize is \$100 except there is no limit in the Open Section. **Entry Fee** mailed by 10/20 or online by 10/22: \$66. Add \$15 onsite (\$8 online 10/23-24). Play-up: \$20. **DISCOUNT:** \$33 off if registering for U.S. G/30 on October 27 & U.S. G/60 on October 28. **Byes:** One 1/2 pt bye allowed must commit by start of Rd 2. Reenter with 1/2 pt bye in Rd 1 for \$33. October 2012 Supp. CCA min, TD discretion used to place players accurately. **SIDE KIDS EVENT for K-12 students rated under 1000:** 4SSxG/60 in 4 sections based on rating: 800-999, 600-799, 400-599, under 400. **Prizes:** Trophies to Top 15 players in each section and Top 10 teams in 600-799 & 800-999 sections combined & Top 10 teams in under 400 & 400-599 combined. Best 4 players count for team score. **Entry Fee** mailed by 10/20 or online by Tue 10/22: \$44. **DISCOUNT:** \$22 off if registering for U.S. G/30 on October 27 & U.S. G/60 on October 28. Add \$15 onsite (\$8 online 10/23-24). Play-up: \$10. **Schedule for all sections:** Onsite Registration: 8-9am. Round Times: 9:30am, 12:15pm, 2:45pm, 5:15pm. **Register online**

at BayAreaChess.com/my/usg60g30.php or mail payments to Bay Area Chess, 1639 A South Main St., Milpitas, CA 95035. \$20 for refunds. **Info/Form/Entries:** BayAreaChess.com/usg60g30. E: ask@BayAreaChess.com. T: 408-786-5515. NS, NC, W.

Feb. 16-18 or 17-18, California, Northern

30th Annual U.S. Amateur Team Championship West

Scholastic on Feb. 16 and **Blitz** on Feb. 18 only. Hilton at the Club, 7050 Johnson Dr., Pleasanton, CA 94588. Free Parking! **Hotel: \$79** - call 925-463-8000 or 800-774-1500 for chess rate. Reserve by Feb. 1 or rates may increase. **Teams:** Four-player teams plus optional alternate, average rating of four highest must be under 2200, difference between ratings of board 3 & 4 must be less than 1000. January 2013 Supplement, CCA min, & TD discretion used to place players accurately. **Main Event Prizes:** Special commemorative clocks to each player and trophy to the team for top 3 overall teams, top team u2000, u1800, u1600, u1400, and u1200; top "industry" team (all players from the same company), top "family" team (siblings, cousins, parents, uncle/aunts, grandparents), top junior team, and top academic team; top 2 scorers on each board (1-4). Gift certificates for best 3 team names. **Main Event EF:** \$188/team or \$47/player by 2/12. 2/13-15: \$10 extra per player or team. Onsite only after 2/15: \$20 extra per player (\$80 extra per team). **3-day Sched:** Onsite Registration at Sat 9:30-10:30a, Round Times at Sat & Sun 11:30a-5:30p | Mon 10a-3:30p. Time Control: 30/90 SD/60. **2-day Sched:** Onsite Registration at Sun 8:30-9am. Round Times: Sun 10am, 12:30pm, 2:50pm, 5:30pm; Mon 10am, 3:30pm. Time Control: G/60 in Rounds 1-3, 30/90 SD/60 in Rounds 4-6 (merge in Round 4 with 3-day schedule). **Info/flyer:** BayAreaChess.com/usatw. **Scholastic Event Prizes:** Trophies to each player in Top 3 teams overall, Top team u900, u800, u700, u600, u500, u400, u300, u200, Top scorer on each board (1-4). **Scholastic Event EF:** \$148/team or \$37/player by 2/12. 2/13-15: \$10 extra per player or team. Onsite only after 2/15: \$20 extra per player (\$80 extra per team). Discount: \$10/player if registering for 2-day and scholastic event. **Sched:** Onsite Registration: Sat 8:30-9am. Games at Sat 10am, 11:30am, 1pm, 2:30pm, 4pm. **Info/flyer:** BayAreaChess.com/usatws. **Blitz Event:** Registration Mon 7-8pm, Rounds 8:30-10:30pm. EF: \$12. 75% of entry fees returned as prizes. **Contact:** Organized and directed by the KALM team of organizers from Bay Area Chess and CalChess (Richard Koepcke, Salman Azhar, Tom Langland, John McCumiskey). Online entry at BayAreaChess.com/my/usatw or mail to Bay Area Chess, 1639A South Main St., Milpitas, CA 95035. For questions or help in forming teams email ask@BayAreaChess.com. NS. NC. W. **Chess Magnet School JGP.**

Grand Prix

Oct. 12-14 or 13-14, Florida

Trophies Plus Grand Prix Points: 20

Orlando Autumn Open & National Chess Day Scholastics

5SS, G/120 (2-day: Rd.1 G/60). International Palms Resort, 6515 International Dr., Orlando, FL 32819. **\$7,000/b130** (Scholastic = 1/2-entry), 70% Guaranteed. **6 Sections: Premier:** \$1000-500-300, U2200 \$200. **Under 2100:** \$600-300-200. **Under 1900:** \$600-300-200. **Under 1700:** \$600-300-200. **Under 1500:** \$600-300-200. **Scholastic Under 1300:** \$250-150, U1100 \$100, U900 \$100. Rated players may play up one section only. Unrated limited to \$70 unless placed in Premier. **EF:** \$75 (Scholastic U1300 \$35) by October 1; \$80 later (Scholastic \$45) and on-site. Re-entry \$40. CFCC member discount: \$10 (\$5 for Jr/Sr memb). Trophies in Scholastic to top U1300, U1100, and U900. **Reg.:** ends 1/2 hr before 1st rd. Rd.1: 7pm Fri (2-day and Scholastic); 10am Sat at G/60. **Rds.:** 2-5: Sat 1 & 6, Sun 9 & 2. 1/2 pt. byes if req'd before rd. 2 (max 2). **HR:** \$75 (No Resort Fee) (407) 351-3500; (Mention "Chess"); or online <http://tinyurl.com/october2012hotel>; Free Shuttle, Parking & Internet. **Ent:** CFCC, C/O Harvey Lerman, 921 N. Thistle Ln., Maitland, FL 32751; or online <http://2012Autumn.eventbrite.com> by Oct 11. **Info:** 407-629-6946 or www.centralflchess.org. **Chess Magnet School JGP.**

Oct. 18, New York

Trophies Plus Grand Prix Points: 10 (Enhanced)

Marshall Thursday Game 30 Grand Prix!

Prizes include two Full Year Marshall Chess Club Memberships!! 4-SS, G/25d5. Marshall CC, 23 W. 10th St., NYC. 212-477-3716. **EF:** \$40, members \$20, GMs and IMs free (no deduction from prize). **(\$605 based on 32 players; first two prizes guaranteed.)** \$200-100-50, U2200 \$95, U2000 \$85. **NEW!** U1700 \$75. **PLUS:** Full Year MCC Membership for the highest scoring player 21 or younger! In case of tie, memberships will be divided (two 6-month MS's, etc.) **Reg.:** 6:15-6:45 pm. **Rds.:** 7-8:15-9:30-10:45. One bye available, request at entry. www.marshallchessclub.org.

Oct. 21, New Jersey

Trophies Plus Grand Prix Points: 15 (Enhanced)

Dr. David Ostfeld Memorial ICA Fall 2012 Open Championship

Bergen Academy, 200 Hackensack Ave., Hackensack, NJ 07601. Open To All Ages With Rating above 1400. 4SS, G/60. USCF Membership Required, **Prize Fund (\$5 b/40)** 1st - 3rd \$300, \$250, \$200, U2000, U1800, U1600 each \$100. Best Under 13 Years Old \$75. Best Over 55 Years Old \$75. Prize Fund Will Not Be Reduced Below 70%. **Reg** Ends at 9 AM Only one 1/2-pt bye allowed, if requested before the start of round two. **EF:** Adv (pmk. By Oct 17th) \$40, AT Site \$45. GMs Free Entry. **INFO:** 201 287 0250 or diana@icaj.net. **Rds.:** 9:30 AM, 11:45 AM, 2:15 PM, 4:30 PM. **ENT:** Make EF and/or USCF Membership checks payable to: International Chess Academy. Mail To: Diana Tulman, 28 Canterbury Ln., New Milford, NJ 07646. **INFO:** www.icaj.net. NS. NC. W.

Oct. 25, New York

Trophies Plus Grand Prix Points: 10 (Enhanced)

Marshall Thursday Game 30 Grand Prix!

Prizes include two Full Year Marshall Chess Club Memberships!! 4-SS, G/25d5. Marshall CC, 23 W. 10th St., NYC. 212-477-3716. **EF:** \$40, members \$20, GMs and IMs free (no deduction from prize). **(\$605 based on 32 players; first two prizes guaranteed.)** \$200-100-50, U2200 \$95, U2000 \$85. **NEW!** U1700 \$75. **Reg.:** 6:15-6:45 pm. **Rds.:** 7-8:15-9:30-10:45. One bye available, request at entry. www.marshallchessclub.org

based on 32 players; first two prizes guaranteed.) \$200-100-50, U2200 \$95, U2000 \$85. **NEW!** U1700 \$75. **PLUS:** Full Year MCC Membership for highest scoring Non-GM/IM. **PLUS:** Full Year MCC Junior Membership for the highest scoring player 21 or younger! In case of tie, memberships will be divided (two 6-month MS's, etc.) **Reg.:** 6:15-6:45 pm. **Rds.:** 7-8:15-9:30-10:45. One bye available, request at entry. www.marshallchessclub.org.

A State Championship Event!

A Heritage Event!

Oct. 26-28, Indiana

Trophies Plus Grand Prix Points: 20 (Enhanced)

71st Indiana State Chess Championship

5SS, 40/2 SD/1 + 5del (2-day option, rd 1-G/45 + 5del). Clarion Hotel & Conference Center, 2930 Waterfront Pkwy, West Dr. Indianapolis, IN 46214. \$1275 (all prizes Guaranteed Open & Reserve). In 2 Sections, **Championship (Open):** \$350-250-150. **Reserve u1900:** Open to 1899 & under. **EF:** \$225-125. U1600 \$100, U1300 \$75, (all prizes Guaranteed). **ALL:** **EF:** \$50 rcvd by 10/23, \$65 at site. \$15 discount to ISCA members. **Reg:** Ends Fri. 6:30pm (2-day option): **Regs.** ends Sat. 10-12:30am. **Rds:** Fri. 7pm, Sat. 12-6:30, Sun. 9:30-4 (2-day option): Sat. 9:30-6:30, Sun. 9:30-4. 2 half point bye limit. Annual Meeting 3pm Sunday. **ENT:** ISCA, C/O Gary J Fox, P.O. Box 114, Logansport, IN 46947. **INFO:** 574-722-4965, info@indianachess.org. **HR:** \$69 317-299-8400. www.indianachess.org. **Enter online, login to get discount.** NS. NC. W. **Chess Magnet School JGP.**

Oct. 27, California, Northern

Trophies Plus Grand Prix Points: 40 (Enhanced)

2012 U.S. Game/30 Championship

See Nationals.

Oct. 28, California, Northern

Trophies Plus Grand Prix Points: 50 (Enhanced)

2012 U.S. Game/60 Championship

See Nationals.

Nov. 1, New York

Trophies Plus Grand Prix Points: 10 (Enhanced)

Marshall Thursday Game 30 Grand Prix!

Prizes include two Full Year Marshall Chess Club Memberships!! 4-SS, G/25d5. Marshall CC, 23 W. 10th St., NYC. 212-477-3716. **EF:** \$40, members \$20, GMs and IMs free (no deduction from prize). **(\$605 based on 32 players; first two prizes guaranteed.)** \$200-100-50, U2200 \$95, U2000 \$85. **NEW!** U1700 \$75. **PLUS:** Full Year MCC Membership for highest scoring Non-GM/IM. **PLUS:** Full Year MCC Junior Membership for the highest scoring player 21 or younger! In case of tie, memberships will be divided (two 6-month MS's, etc.) **Reg.:** 6:15-6:45 pm. **Rds.:** 7-8:15-9:30-10:45. One bye available, request at entry. www.marshallchessclub.org.

A State Championship Event!

Nov. 3-4, Pennsylvania

Trophies Plus Grand Prix Points: 10

2012 Ira Lee Riddle Memorial PA State Championship

5SS, G/120d5. O'Hara Student Cntr, Univ. of Pitt., 4024 O'Hara St., Pittsburgh, PA 15213. **EF:** \$2025 b/90, 2/3 gtd) **3 Sections: Open:** \$500-250, U2000 \$125. **U1800:** \$300-150, U1600 \$125. **U1400:** \$300-150, U1200 \$125. Trophies to Top PA & Top PA Junior in each section. Teams of 4 to 7 players from all scholastic and adult sections: Trophies to top 3 schools & top 3 clubs. **EF:** \$40 10/26, \$50 later. PSCF req'd, OSA. **Reg.:** ends Sat. 9:30am. **Rds.:** Sat. 10-2:30-7, Sun. 10-2:30. **Info:** martinak_tom_m@hotmail.com 412-908-0286. **Ent:** PSCF, C/O Tom Martinak, 25 Freepost St., Pittsburgh, PA 15223. **Chess Magnet School JGP.**

Nov. 4, New Jersey

Trophies Plus Grand Prix Points: 10 (Enhanced)

Westfield Fall Grand Prix

4-SS, G/25 t/d 5s. Westfield Y, 220 Clark St., Westfield, NJ 07090. **Prize Fund:** \$1000 b/30 entries. 70% guaranteed. \$250-\$150-\$100, U2200, U1800, U1600 \$100 each, Best age 16 or under, Best age 55 or over \$50 each. **EF:** Advance \$40, \$30 members, at site \$50, \$40 members. Send advance entries to: John Moldovan, 510 4th Ave., Garwood, NJ 07027 by November 1. Make checks payable to: Westfield Chess Club. **Reg.:** 1:30-2:00 pm. **Rds.:** 2:15-3:30-4:45-6:00 pm. **Info:** John Moldovan: westfieldchessclub@gmail.com, Bill Cohen: 732-548-8432 or 848-219-1358, westfieldchessclub.blogspot.com and www.westfieldchessclub.com.

Nov. 8, New York

Trophies Plus Grand Prix Points: 10 (Enhanced)

Marshall Thursday Game 30 Grand Prix!

Prizes include two Full Year Marshall Chess Club Memberships!! 4-SS, G/25d5. Marshall CC, 23 W. 10th St., NYC. 212-477-3716. **EF:** \$40, members \$20, GMs and IMs free (no deduction from prize). **(\$605 based on 32 players; first two prizes guaranteed.)** \$200-100-50, U2200 \$95, U2000 \$85. **NEW!** U1700 \$75. **PLUS:** Full Year MCC Membership for highest scoring Non-GM/IM. **PLUS:** Full Year MCC Junior Membership for the highest scoring player 21 or younger! In case of tie, memberships will be divided (two 6-month MS's, etc.) **Reg.:** 6:15-6:45 pm. **Rds.:** 7-8:15-9:30-10:45. One bye available, request at entry. www.marshallchessclub.org.

Nov. 15, New York

Trophies Plus Grand Prix Points: 10 (Enhanced)

Marshall Thursday Game 30 Grand Prix!

4-SS, G/25d5. Marshall CC, 23 W. 10th St., NYC. 212-477-3716. **EF:** \$40, members \$20, GMs and IMs free (no deduction from prize). **(\$605 based on 32 players; first two prizes guaranteed.)** \$200-100-50, U2200 \$95, U2000 \$85. **NEW!** U1700 \$75. **Reg.:** 6:15-6:45 pm. **Rds.:** 7-8:15-9:30-10:45. One bye available, request at entry. www.marshallchessclub.org for special unadvertised weekly prizes.

Nov. 16-18 or 17-18, Florida

Trophies Plus Grand Prix Points: 30 (Enhanced)

11th Annual Turkey Bowl

55S, G/120,d5 (2-day Option Rd. 1 G/60,d5). La Quinta Inn and Suites, 3701 N. University Dr., Coral Springs. **\$\$\$700** b/200 paid entries, 60% min. Gtd. **Open:** \$1,000/Trophy-600-400, U2300 \$250-150. **FIDE: U2100:** \$600/Trophy-300-150, U1950 \$100. **U1800:** \$600/Trophy-300-150, U1650 \$100. **U1500:** \$600/Trophy-300-150, U1350 \$100. **U1200:** \$600/Trophy-300-150, U1050-100. **U1000:** Trophies for 1st to 5th, Medals for all others. Unr. may enter Open, U1200 or U1000 only. **EF:** \$69 by Nov. 13, \$10 more later and on-site, GMs & IMs free (\$69 deducted from prize). U1000 section \$35 by Nov. 13, \$10 more later and on-site. Re-entry cash prize sections \$40. **Reg.:** Ends 1/2 hr before 1st rd. **Rds.:** 3-Day 1st Rd. Fri. 7:30, **2-Day 1st Rd.** Sat. 10, Rds. 2-5 Sat. 1:15, 6:30, Sun. 9:30, 2:30. 2 1/2 pt. byes, if req'd before rd. **HR:** \$67.50 by Cut-off Date, Includes free breakfast & Internet, 954-753-9000. **Ent:** Boca Raton Chess Club, 2385 Executive Cir. Dr., Ste. 100, Boca Raton, FL 33431. **Online entry & add'l info:** www.bocachess.com, 561-479-0351. **Chess Magnet School JGP for G/120 rds.**

A State Championship Event!

Nov. 17, Pennsylvania

Trophies Plus Grand Prix Points: 6 2012 PA State Game/15 Championship (QC)

75S, G/15d3. Wm. Pitt Union, Univ. of Pitt., 5th & Bigelow, Pittsburgh, PA 15213. 2 Sections: **Champ:** EF: \$25 by 11/9, \$35 later. \$\$ (690G): \$200-100, U2000 \$90, U1800 \$80, U1600 \$70, U1400 \$60, U1200 \$50, U1000 \$40. Trophies: 1-3 U1400, 1-3 U1200, 1-3 U1000. **Scholarship:** Grades K-12 unrated or U900. EF: \$15 by 11/9, \$25 later. Trophies to Top 7, 1-3 U600. **ALL:** Trophies: 1-2 Schools, 1-2 Clubs, Teams of 4-7 players from both sections. PSCF \$5, OSA. **Reg.:** 11-11:30am. **Rds.:** 12-12:45-1:30-2:15-3:3-4:5-4:30. **Ent/Info:** PSCF, C/O Tom Martinak, 25 Freepoint St., Pittsburgh, PA 15223-2245, 412-908-0286. W.

Nov. 23-25 or 24-25, California, Northern

Trophies Plus Grand Prix Points: 60 (Enhanced) California Class Championship

65S, 30/90 sd60 (2-day rd1-3 G60 merge in rd4). Hyatt Reg, 5101 Gr America Pkwy, Santa Clara, CA 95134. Hotel \$99. Park free. **Prize:** \$12,000 b/197 (75% guaranteed). 6 sections: **Open (2200+ FIDE rated):** 2000-1000-400-100. **Expert/A/B/C:** 1000-400-200-100 ea. **D/E/unr:** 700-300-100, u1200 300-200-100. Unr max \$200 exc in Open. **EF** by 11/20: \$99. Onsite +\$25, Play-up +\$20. r/e \$40. Econ Opt: EF-20 & 2/3 calc prize (not avail in Open). GMs/IMs free by 11/13; prize-EF: Nov 2012 Supp, CCA min, & TD disc to place players. **Sched:** 3-day Reg Fr 10-11, Rds Fr/Sa 11:30-5:30, Su 10-3:30; 2-day Reg Sa 9-9:30, Rds Sa 10-12:30-2:50-5:30, Su 10-3:30. Max two 1/2-pt byes, commit bef rd 3. **Ent:** Online or mail to Bay Area Chess, 1639A S. Main St., Milpitas, CA 95035. Rfnd fee \$20. **Info:** BayAreaChess.com/tg. E: ask@BayAreaChess.com. T: 408.786.5515. NS, NC, W. **Chess Magnet School JGP.**

Nov. 29, New York

Trophies Plus Grand Prix Points: 10 (Enhanced) Marshall Thursday Game 30 Grand Prix!

4-5S, G/25d5. Marshall CC, 23 W. 10th St., NYC. 212-477-3716. **EF:** \$40, members \$25, GMs and IMs free (no deduction from prize). **(\$605 based on 32 players; first two prizes guaranteed.)** \$200-100-50, U2200 \$95, U2000 \$85. **NEW!** U1700 \$75. **Reg.:** 6:15-6:45 pm. **Rds.:** 7-8:15-9:30-10:45. One bye available, request at entry. Check www.marshallchessclub.org for special unadvertised weekly prizes.

Dec. 2, New Jersey

Trophies Plus Grand Prix Points: 15 (Enhanced) Dr. David Ostfeld Memorial ICA Early Winter 2012 Open Championship

Bergen Academy, 200 Hackensack Ave., Hackensack, NJ 07601. Open To All Ages With Rating above 1400. 45S, G/60. USCF Membership Required, **Prize Fund** (\$\$ b/40) 1st - 3rd \$300, \$250, \$200, U2000, U1800, U1600 each \$100. Best Under 13 Years Old \$75, Best Over 55 Years Old \$75. Prize Fund Will Not Be Reduced Below 70%. Reg ends at 9 AM Only one 1/2-point bye allowed, if requested before the start of round two. **EF:** Adv (pmk. By Nov 28th) \$40, At Site \$45. GMs Free Entry. **INFO** 201 287 0250 or diana@icanj.net. **Rds:** 9:30 AM, 11:45 AM, 2:15 PM, 4:30 PM. **ENT:** Make EF and/or USCF Membership checks payable to: International Chess Academy. Mail To: Diana Tulman, 28 Canterbury Ln., New Milford, NJ 07646. **INFO:** www.icanj.net. NS. NC. W.

Dec. 2, New York

Trophies Plus Grand Prix Points: 15 (Enhanced) 1st Annual Marshall Chess Club Speed Chess Championship! (QC)

9-5S, G/5. Marshall CC, 23 W. 10th St., NYC. 212-477-3716. **\$\$\$Gtd** 1:000: \$300-200-100, top U2400/unr, U2200, U2000, U1800: \$50 each, Best Senior born in or before 1952: \$100, Best Junior born in or after 1998: \$100. Title of 2012 Marshall Chess Club Speed Champion to highest-scoring Club member. **EF:** \$35, members \$25. Quick-rated, but higher of regular or quick USCF rating used for pairings & prizes. **Reg.** ends 12:45 pm. **Rds.:** 1-1:30-1:50-2:10-2:40-3:20-3:40-4 pm. Three byes available, request at entry. www.marshallchessclub.org.

Dec. 6, New York

Trophies Plus Grand Prix Points: 10 (Enhanced) Marshall Thursday Game 30 Grand Prix!

4-5S, G/25d5. Marshall CC, 23 W. 10th St., NYC. 212-477-3716. **EF:** \$40, members \$25, GMs and IMs free (no deduction from prize). **(\$605 based on 32 players; first two prizes guaranteed.)** \$200-100-50, U2200 \$95, U2000 \$85. **NEW!** U1700 \$75. **Reg.:** 6:15-6:45 pm. **Rds.:** 7-8:15-9:30-10:45. One bye available, request at entry. Check www.marshallchessclub.org for special unadvertised weekly prizes.

Dec. 13, New York

Trophies Plus Grand Prix Points: 10 (Enhanced) Marshall Thursday Game 30 Grand Prix!

4-5S, G/25d5. Marshall CC, 23 W. 10th St., NYC. 212-477-3716. **EF:** \$40, members \$25, GMs and IMs free (no deduction from prize). **(\$605 based on 32 players; first two prizes guaranteed.)** \$200-100-50, U2200 \$95, U2000 \$85. **NEW!** U1700 \$75. **Reg.:** 6:15-6:45 pm. **Rds.:** 7-

8:15-9:30-10:45. One bye available, request at entry. Check www.marshallchessclub.org for special unadvertised weekly prizes.

Dec. 21-23 or 22-23, California, Northern

Trophies Plus Grand Prix Points: 30 (Enhanced) Winter Open

65S, G/90 (2day rds1-2 G/40). Open 55S, G/90+30incr (2day rds 1-2 G/60). 1639A South Main St., Milpitas, CA 95035. Park free. **Prize:** \$4,000 guar. 3 sects: **1900+ FIDE rated:** \$700 300 100 u1200:200 100. **1500-1899:** 700 300 100 u1700:200 100. **u1500:** 500 200 100 u1300:200 100 u1100:100. Unr max \$100 exc Open. Dec '12 Supp, CCA min & TD disc. **EF:** \$77 by 12/19, Onsite +\$15 Playup +\$20. Econ: EF-20 w/ 60% prize. GMs/IMs \$0 by 12/14; prize-EF. **Reg.:** F 6-6:45p & Sa 8-8:45. **u1900 rounds:** F 7 Sa 9 12:15-3:30, Su 9 1 (2d Sa 9 10:35 12:15 3:30, Su 9 1). **1900+ rounds:** F 7 Sa/Su 9 2 (2-day Sa 9 11:30 2, Su 9 2) **Info:** BayAreaChess.com/winter. NS. NC. **Chess Magnet School JGP.**

Jan. 4-6 or 5-6, California, Northern

Trophies Plus Grand Prix Points: 50 (Enhanced) New Year Open

65S, 30/90 sd60 (2-day rd1-3 G/60 merge rd4). Marriott, 2700 Mission College Blvd., Santa Clara, CA 95134. **Prize** \$10,000 60% guar. 3 sects: **2000+ FIDE rated:** \$1500 700 300 u2300:700 300 100 u2100:300 100. **1500-1999:** 1000 500 200 u1800:600 200 100 u1600:300 100. **u1500:** 1000 500 200 u1300:600 200 100 u1100:300 100. Unr max \$200 exc Open. Jan '13 Supp, CCA min & TD disc. **EF:** \$99 by 1/2, Onsite +\$25 Playup +\$20. Econ: EF-20 w/ 2/3prize. GMs/IMs \$0 by 12/26; prize-EF. **Sched:** 3-day Reg F 10 11, Rds F/Sa 11:30 5:30, Su 10 3:30; 2day Reg Sa 9-9:30, Rds Sa 10-12:30-2:50-5:30, Su 10-3:30. Max two 1/2-pt byes, commit bef rd 3. **Ent:** Online or mail to Bay Area Chess, 1639A S. Main St., Milpitas, CA 95035. Rfnd fee \$20. **Info:** BayAreaChess.com/my. E: ask@BayAreaChess.com. T: 408.786.5515. NS, NC, W. **Chess Magnet School JGP.**

Regional Alabama

Oct. 27, Halloween Classic

45S, TC: G/75. Birmingham Bridge Club, 144 Business Center Dr., Birmingham, AL 35244. **Open (PF: \$\$\$/15):** \$225-125-U1900:75-U1700:75; **Reserve (PF: \$\$\$/15):** \$175-100-U1400:75-U1200:75; **Rds.:** 9, 11:30, 2:30, 5. **EF:** \$30; if mailed by OCT 20th; \$40 at site. **Scholarship:** 55S, TC: G/30. **EF:** \$20. **Trophy:** Top 3. **Rds.:** 9:15-10:30-12:15-2:30. **Late REG: OCT 27th:** 8-8:40am. Make checks payable to: **Caesar Chess.** **ENT:** Caesar Chess LLC, 5184 Caldwell Mill Rd., Suite 204-202, Birmingham, AL 35244. **Info:** CaesarChess@yahoo.com; www.CaesarChess.com or www.AlabamaChess.com. **Chess Magnet School JGP.**

Nov. 3-4, East Alabama Open

55S, TC: G/120;d5. Hampton Inn & Suites, 4210 Phillips Rd., Lanett, AL. GM/IM Free. **Open (\$\$\$/15):** \$300-175-U2000:150-U1800:100; **Reserve (\$\$\$/15):** \$200-150-U1400:100-U1200:100; **Rds. (ETZ) - Sat:** 10, 2:30, 7:30; Sun: 10, 2:30. **EF:** \$40; if mailed by OCT 27th; \$55 at site. **Late REG: NOV 3rd:** 8-8:40am. **HR: \$\$\$/550** * Reserve by OCT 13th. Make checks payable to: **Caesar Chess.** **ENT:** Caesar Chess LLC, 5184 Caldwell Mill Rd., Suite 204-202, Birmingham, AL 35244. **Info:** CaesarChess@yahoo.com; www.CaesarChess.com. **Chess Magnet School JGP.**

California, Northern

Capital City C. C. Sundays Chess for Kids

Round Table Pizza, 3005 Freepoint Blvd., Sacramento. FREE CHESS CLASS: 11am (Kids & Families). **EVENTS:** Quads: (3/RR) &/or Swisses (3 Rds.). T/C: G/30 w/5 Second Delay. **RDS:** 1pm/Ongoing. **PRIZES:** 1st - Trophy or Inscribed Digital Delay Clock & Chess Medals or Pins for all. **TIE-BREAK:** G/7 w/3 Second Delay. **EF:** \$15. **REG.:** Site & Noon. **DIRECTOR:** John C. Barnard 209-450-6133. JohnCharlesBarnard@gmail.com, capitalcitychessclub.com.

Oct. 13, National Chess Day: Weibel Fall Scholastic Chess Quads #1

Weibel Elementary School, 45135 S. Grimmer Blvd., Fremont, CA. **Info & Entry Form:** at: www.CalNorthYouthChess.org/Applications/FallQuads12-GP/. Open to all scholastic players who are USCF members. Trophies to winners of each Quad. Chess medals to all who do not win a trophy. **Info:** Alan M. Kirshner, Ph.D., Alan@CalNorthYouthChess.org, (510) 659-0358.

Oct. 27, 2012 U.S. Game/30 Championship

See Nationals.

Oct. 28, 2012 U.S. Game/60 Championship

See Nationals.

Nov. 17, Weibel Fall Scholastic Chess Quads #2

Weibel Elementary School, 45135 S. Grimmer Blvd., Fremont, CA. **Info & Entry Form:** at: www.CalNorthYouthChess.org/Applications/FallQuads12-GP/. Open to all scholastic players who are USCF members. Trophies to winners of each Quad. Chess medals to all who do not win a trophy. **Info:** Alan M. Kirshner, Ph.D., Alan@CalNorthYouthChess.org, (510) 659-0358.

Nov. 23, California Kids Class Championship

55S, G/30. Hyatt Reg, 5101 Grt America Pkwy., Santa Clara, CA 95134. Hotel \$99. Park free. **Prizes:** Top 10 players in ea section. Top 5 clubs & Top 5 schools in all sections combined (min 2/team, top 5 count). K-12 kids only. 5 sections based on rating: **F** (800-999); **G** (600-799); **H** (400-599); **I** (200-399); **J** (under 200). **Sched:** Reg 9-9:30am, G 10ms 11:30 1 2:20 3:45. **EF:** \$37 mail by 11/20, online by 11/22, Onsite +\$20, Playup +\$10. Nov 2012 Supp & TD disc to place players. **Ent:** Online or mail to Bay Area Chess, 1639A S. Main St., Milpitas, CA 95035. Rfnd fee \$20. T: 408-786-5515. **Info/Form:** BayAreaChess.com/tgs. E: ask@BayAreaChess.com, NS, NC, W.

Nov. 23-25 or 24-25, California Class Championship

See Grand Prix.

Dec. 8, Weibel Fall Scholastic Chess Quads #3

Weibel Elementary School, 45135 S. Grimmer Blvd., Fremont, CA. **Info & Entry Form:** at: www.CalNorthYouthChess.org/Applications/FallQuads12-GP/. Open to all scholastic players who are USCF members. Trophies to winners of each Quad. Chess medals to all who do not win a trophy. **Info:** Alan M. Kirshner, Ph.D., Alan@CalNorthYouthChess.org, (510) 659-0358.

Dec. 15-16 (Gr. 4-12) or Dec. 16 (KG-3), CalChess State Scholastics Grand Prix Championship

Hilton, 7050 Johnson Dr., Pleasanton, CA 94588. Hotel \$74. **Prizes:** Trophies to top 20 players w/ winning record & top 10 teams in each section of Grades 1-12. Trophies to all in KG. Medals to others. 13 sections based on grade. **KG-3:** Sun 55SxG/30. Reg: 8-8:30am. Games 9 10:30 12 1:30 3. **Grd 4-12:** Sat/Sun, 65SxG/60. Reg Sa 8-8:30am. Games Sa/Su 9 12 2:45. **Blitz (Sat)** in 3 sects (K-3 4-6 7-12). **EF:** by 12/10, K-3 \$39, 4-12 \$49, Blitz \$12. Add \$20 12/11-on-site, \$40 12/13-on-site. USCF + CalChess Mem reqd. Dec 2012 Supp used. **Register online or mail to:** BCSS, PO Box 10073, Berkeley, CA 94709. **More Info:** CalChessScholastics.org. NS, NC, W.

Dec. 21-23 or 22-23, Winter Open

See Grand Prix.

Jan. 4, NorCal Team Championship

55S, G/30. Marriott, 2700 Mission College Blvd., Santa Clara, CA 95134. Hotel \$99, park free! **Prizes:** Trophies to ea player in top 3 teams, top school, top club, & top u1000, u800, u600, u400 (based on top 4 avg rating), & top player on each board. Team is 4 or 5 players (12/team round). **EF:** \$33/player, \$132/team mail by 12/26, online by 12/28, Onsite +\$16/player +\$32/team. Jan 2013 Supp & TD discretion for rating. **Sched: Reg.:** 9-9:30. **Rds.:** 10, 11:30, 1, 2:30, 4. **Ent:** Bay Area Chess, 1639A S. Main St., Milpitas, CA 95035. Rfnd fee \$20. **Info:** BayAreaChess.com/nyteam. E: ask@BayAreaChess.com. T: 408.786.5515. NS, NC, W.

Jan. 4-6 or 5-6, New Year Open

See Grand Prix.

Jan. 17-21, 18-21, 19-21 or 20-21, 4th annual Golden State Open

See Chess Life or www.chesstour.com.

Feb. 16-18 or 17-18, 30th Annual U.S. Amateur Team Championship West

See Nationals.

California, Southern

Beverly Hills Chess Club

Join the elite group of chess enthusiasts! Curriculum based instruction from ages 3 and above, Privates, Lectures, Blitz, Simuls, Open & Scholastic tournaments, Camps, Adult events, Member-only events and more... Open T, H, F, Sat, Sun (hours vary). 8950 W. Olympic Blvd., #210, Beverly Hills, CA 90211. In the Beverly Hills Plaza (Corner of Lapeer Dr. & Olympic) 310-274-7873, email us at info@bhchessclub.com, website www.bhchessclub.com.

Cancelled: Dec. 15, Pleasanton Quads at Hilton

Cancelled: Dec. 15, Pleasanton Swiss at Hilton

Cancelled: Dec. 15, Pleasanton SuperSwiss at Hilton

Oct. 7, 14, 21, 28, LACC - Every Sunday Chess 4 Jrs.

4 separate events - 3 Sections: K-1, K-3, K-6. 55S, G/30. 11514 Santa Monica Blvd., LA, 90025. 2nd fl. 4 blocks W 405. **EF:** \$30 (\$20 LACC memb, siblings 1/2, Free new LACC memb). **Reg.:** 12-1 pm. **Rds.:** 1pm & asp. **Prizes:** Trophies (Top 6) & medals; each player receives a prize! **Parking:** Free at BoA and streets or building basement (\$7). Free Pizza & Soda. **Info:** (310) 795-5710 or www.LAChessClub.com or Mick@LAChessClub.com.

Oct. 7, Nov. 18, Dec. 9, Cupertino Grand Prix Quads

Courtyard Marriott, 10605 N. Wolfe Rd., Cupertino, CA 95014. **Trophies:** Players w/winning record. **Sched:** Check-in 4p. **Games:** 4:30-6:30p. 3xG/30. **EF:** \$25. Big Trophies to top 10 players in Jul-Sep & Oct-Dec events. **Info:** BayAreaChess.com/cupertino12. NS. NC. W.

Oct. 7, Nov. 18, Dec. 9, Cupertino Grand Prix Swiss

Courtyard Marriott, 10605 N. Wolfe Rd., Cupertino, CA 95014. **Trophies:** Players w/winning record & teams. **Sched:** Reg. 9-9:30. **Games:** 10a-2p. **EF:** \$33. Big Trophies to top 10 players in Jul-Sep & Oct-Dec events. **Info:** BayAreaChess.com/cupertino12. NS. NC. W.

Oct. 20, Nov. 3, Dec. 1, Bay Area Chess4Less Quads

1639A S. Main St., Milpitas, CA 95035. **Trophies:** for winning record. **Sched:** Check-in by: 3:15p. 3xG/30. **Games:** 3:45-6. **EF:** \$19 by Wed before tourney. **Info/flyer:** BayAreaChess.com/chess4less. NS. NC.

Oct. 20, Nov. 3, Dec. 1, Bay Area Chess4Less Swiss

1639A S. Main St., Milpitas, CA 95035. **Trophies:** Players w/ plus score, teams w/2+ players. **Sched:** Reg. 8:30-9a. **Games:** 9:30a-2p. **EF:** \$25, \$40 onsite. **Info:** BayAreaChess.com/chess4less. NS. NC.

Nov. 11, Alameda County Elem School Champ

Hilton, 7050 Johnson Dr., Pleasanton, CA 94588. **Trophies:** Top 7 players & Top 5 teams in ea section. Top player in each grade earns a free entry to CalChess Grade Level Champ. **4 sections:** KG-1, 2-3, 4-5, 6-12. **Sched:** Reg. 8:30-9am. **KG-Gr3:** 5xG/30 games 9:30, 10:45, 12:30, 1:45, 3:00. **Gr4-12:** 4xG/45 games 9:30, 11:15, 1:15, 3:00. **EF:** \$37 by 11/7. **Info:** BayAreaChess.com/alameda12. NS, NC, W.

Nov. 11, Contra Costa County Elem School Champ

Hilton, 7050 Johnson Dr., Pleasanton, CA 94588. **Trophies:** Top 7 players & Top 5 teams in ea section. Top player in each grade earns a free entry to CalChess Grade Level Champ. **4 sections:** KG-1, 2-3, 4-5, 6-12. **Sched:** Reg. 8:30-9am. **KG-Gr3:** 5xG/30 games 9:30, 10:45, 12:30, 1:45, 3:00. **Gr4-12:** 4xG/45 games 9:30, 11:15, 1:15, 3:00. **EF:** \$37 by 11/7.

Info: BayAreaChess.com/alameda12.NS, NC, W.

Connecticut

Nov. 2-4 or 3-4 (Open), Nov. 3-4 (Booster), 3rd Annual Eastern Team Championship

See *Chess Life* or www.chesstour.com.

Nov. 17, 3rd Annual Mid-Atlantic Girls Chess Championship (MD)
See Maryland.

Delaware

Nov. 17, 3rd Annual Mid-Atlantic Girls Chess Championship (MD)
See Maryland.

District of Columbia

Oct. 13, National Chess Day Capital Scholastic Cup Qualifier
4-SS, G/30. US Chess Center, 412 8th Street, NW, Washington, DC 20004.
Note new playing site after 20 years. Open to any student in K-12 grade living in DC, Maryland or Virginia. **EF:** \$20 if by 10/6, \$30 at site. **Reg.:** Noon-12:45. Top 16 players qualify for play-off matches. \$5200-100-50-50 to champion, finalist and semi-finalists of the play-offs. Trophies to the top 16 and others with the same score as the lowest of the top 16. www.chessctr.org/Cup.php, 202/857-4922.

Florida

Boca Raton Chess Club

Friday nights, Game 90 Tournament, one game a week for 4 weeks. www.bocachess.com, 561-479-0351. **Chess Magnet School JGP.**

Oct. 6, Celebrate National Chess Day at The Weiss School 5th Annual Scholastic

Located at: 4176 Burns Rd., Palm Beach Gardens, FL 33410. **K-12, 5 Divisions, 5-SS, G/30.** Trophies for Top 10 Players and Top 10 Teams in each Division. ALL NON-TROPHY WINNERS WILL RECEIVE A COMMEMORATIVE MEDAL. **For more info see:** www.palmbeachchessclub.info or call President/TD John Dockery at 561-762-3377.

Oct. 12-14 or 13-14, Orlando Autumn Open & National Chess Day Scholastics
See Grand Prix.

Oct. 20, Gulf Coast Classic

4SS, TC: G/75. Ransom Middle School, 1000 W. Kingsfield Rd., Cantonment, FL 32533. Open (PF: \$5b/15): \$225-125-U2000:100-U1800:100; **Reserve (PF: \$5b/15):** \$175-125-U1400:75-U1200:75; **Rds.:** 9-11:30-2:30-5:15. **EF:** \$30; if mailed by OCT 13th; **\$40** at site. **Scholastic: 5SS, TC: G/30. EF: \$20. Trophy:** Top 3. **Rds.:** 9:15-10:30-12-1:15-2:30. **Late REG.:** OCT 20th: 8-8:40am. Checks payable to: **Caesar Chess. ENT:** Caesar Chess LLC, 5184 Caldwell Mill Rd., Suite 204-202, Birmingham, AL 35244. **Info:** CaesarChess@yahoo.com; www.CaesarChess.com. **Chess Magnet School JGP.**

Nov. 16-18 or 17-18, 11th Annual Turkey Bowl
See Grand Prix.

Georgia

Oct. 27, North Georgia Chess Center Scholastic Tournament
5-SS, G/30. Holiday Inn Express & Suites, 870 Buford Hwy (Ga Hwy 20), Cumming, GA 30041. **Exit 14 off Ga 400 Next to Lowes On Market Place Blvd.** 678-845-7100, For Directions Only! **Sections: Open and UB80. EF:** \$22.00 (NGCC Members) \$24.00 (Online Registration). \$27.00 (Non NGCC Members) \$29.00 (Online Registration). Entry For Late Registration: \$27.00 (NGCC Members). \$32.00 (Non NGCC Members). **Reg.:** Sat. 8:30am - 9:30am. **Rounds:** 1st-10am, 2nd-11:30am, 3rd-1pm, 4th-2:30pm, 5th-4pm. **Tnmt. Info:** 770-844-9204, northgachesscenter@gmail.com, northgachesscenter.com.

Nov. 16-18 or 17-18, 11th Annual Turkey Bowl (FL)
See Grand Prix.

Nov. 17, North Georgia Chess Center Scholastic Tournament
5-SS, G/30. Holiday Inn Express & Suites, 870 Buford Hwy (Ga Hwy 20), Cumming, GA 30041. **Exit 14 off Ga 400 Next to Lowes On Market Place Blvd.** 678-845-7100, For Directions Only! **Sections: Open and UB80. EF:** \$22.00 (NGCC Members) \$24.00 (Online Registration). \$27.00 (Non NGCC Members) \$29.00 (Online Registration). Entry For Late Registration: \$27.00 (NGCC Members). \$32.00 (Non NGCC Members). **Reg.:** Sat. 8:30am - 9:30am. **Rounds:** 1st-10am, 2nd-11:30am, 3rd-1pm, 4th-2:30pm, 5th-4pm. **Tnmt. Info:** 770-844-9204, northgachesscenter@gmail.com, northgachesscenter.com.

Illinois

Oct. 12-14 or 13-14, 21st annual Midwest Class Championships
See *Chess Life* or www.chesstour.com.

Nov. 3, National Gaming Day Celebration at the Skokie Public Library and the North Shore Chess Center (QC)
Join us at the Skokie Public Library from 9am-12pm for open chess, followed by tournament action and games analysis at the North Shore Chess Center with a 5R-SS, G/15, Game-3+2 blitz, and Seirawan Chess! Light food, snacks, and drinks during the event at the North Shore Chess Center. **For more info –** www.nachess.org/nscc.

Nov. 9-12, Veterans Weekend Chess at The Lodge (IA)
Across the river from Moline, IL. See Iowa.

Indiana

A State Championship Event!

A Heritage Event!

Oct. 26-28, 71st Indiana State Chess Championship
See Grand Prix.

A State Championship Event!

Oct. 27, Indiana State U1300 Chess Championship
5SS, Game/25 + 5del. Clarion Hotel & Conference Center, 2930 Waterfront Pkwy, West Dr., Indianapolis, IN 46214. Open to 1299 & under. **EF:** \$15 rcvd by 10/23, \$20 at site. **Mem. Req'd:** ISCA. OSA. **Prizes:** Trophies 1st-5th, Top unrated. **Reg.:** ends Sat. 12:30pm. **Rds.:** 1, 2, 3, 4, 5. **ENT:** ISCA, C/O Gary J Fox, P.O. Box 114, Logansport, IN 46947. **INFO:** 574-722-4965 info@indianachess.org. www.indianachess.org. Enter online. NS. NC. W.

Iowa

Nov. 9, Veterans Friday Afternoon Quick (QC)
2pm, 3SS, G/26;d3, free entry. See Veterans Weekend TLA.

Nov. 9-12, Veterans Weekend Chess at The Lodge
5SS, 30/90, SD/30; d5. 900 Spruce Hills, Bettendorf, IA. Iowa Qualifier. Three sections: **Duty** (open), **Honor** (U1600), **Country** (U1000). Main tournament: Fri to Sun or Sat to Sun. **Side events:** Fri to Mon. **Info:** <http://quacitychess.com>. **Side Event 11/9:** Veterans Friday Night Chess 960, 10pm, 4RR, G/15;d3. Free entry. **Chess Magnet School JGP.**

Nov. 11, Veterans Sunday Night Blitz (QC)
8pm, 8RR or 7SS, G/5;d0, free entry. See Veterans Weekend TLA.

Nov. 12, Veterans Monday Morning Action
9am, 3SS, G/25;d5, free entry, See Veterans Weekend TLA.

Maryland

Nov. 17, 3rd Annual Mid-Atlantic Girls Chess Championship
Roland Park Elementary/Middle School (**NEW SITE**), 5207 Roland Ave., Baltimore, MD 21210. Play in an all-girls tournament. Open to K-12 girls. **4 Sections: Championship** (K-12, 1100+); 3-SS, G/45 inc/30, highest finishing MD resident is 2012 MD Girl Champion and receives up to \$500 stipend to national all-girls tournament; **Advanced** (K-12, U1100 or unrated): 4-SS, G/60 d/5; **Intermediate** (K-12, U700 or unrated): 5-SS, G/45 d/5; **Novice** (K-5, U300 or unrated): 5-SS, G/30 d/5. Trophies to top players & teams in all sections. Team score is top 3 players. **Rds.:** Rd 1 for all sections: 9:30 AM; subsequent rds **ASAP EF:** \$20, by 11/13 (online or received mail); \$30, by 7 PM, 11/15 (online); \$40, 8:30-9 AM, 11/17 (probable 1/2 point bye in Rd 1). **Entry:** register at www.MD-Chess.com/TourneyReg. Sets, boards, & score sheets provided; bring chess clock & pencil. Food available for purchase. **Info:** www.MDChess.com, Tournaments@MDChess.com & 410-794-6312 (M). **Chess Magnet School JGP.**

Massachusetts

Jan. 11-13 or 12-13, Boston Chess Congress
See *Chess Life* or www.chesstour.com.

Nevada

Dec. 26-30, 26-29 or 27-29, 22nd annual North American Open
See *Chess Life* or www.chesstour.com.

New Jersey

NJCCS Quads - First Friday Every Month!
New Jersey Children's Chess School, 862 DeGraw Ave., Forest Hill (Newark), NJ 07104. Open to K-8. 3-RR, G/35. **EF:** \$20 for rated above 1400, \$25 for R>1200, \$30 for others. \$5 off for registration by mail one week in advance. **Reg.:** 6-6:50PM. **Rds:** 7-8-8:50 PM. **Awards:** Trophies to ALL. Chess classes meet every Friday 6:30-9PM. **Website:** www.kidsscamps.com. **Info:** Arkady Geller, 973-483-7927 or chesscamp1@yahoo.com.

Oct. 19-21 or 20-21, 3rd annual Boardwalk Open
See *Chess Life* or www.chesstour.com.

Oct. 21, Dr. David Ostfeld Memorial ICA Fall 2012 Open Championship
See Grand Prix.

Oct. 21, Dr. David Ostfeld Memorial ICA Fall 2012 Scholastic Championship in 5 sections

SITE: BERGEN ACADEMY, 200 HACKENSACK AVE., HACKENSACK, NJ 07601. 4SS, EVERYONE PLAYS 4 GAMES, ALL PLAYERS WITH 2.5 PTS OR MORE WILL RECEIVE A TROPHY! USCF Memb Req'd For Sections 3, 4 AND 5. **Info:** 201 287 0250 or diana@icanj.net ADV EF (pmk by Oct 17th) \$25 At Site \$30 Reg ends 1/2 hr before 1st rd Late entrants will receive a 1/2 pt bye for rd 1. In 5 Sections, **Section 1 Junior Novice (not USCF rated):** Open to unr players K thru 2nd grade. **Rds.:** First Round 10:15 AM then ASAP. **Section 2 Novice (not USCF rated):** Open to unr players K thru 4th grade. **Rds.:** First Round 10:00 AM then ASAP. **Section 3 G/45 UB80:** Open to players rated below 800 and unr players K thru 12th grade. **Rds.:** 9:45 AM, 11:30, 1:15, 3:00 PM. **Section 4 G/45 U1200:** Open to players rated below 1200 and unr players K thru 12th grade. **Rds.:** 9:45 AM, 11:30, 1:15, 3:00 PM. **Section 5 G/60 U1600:** Open to players rated below 1600 and unr players K thru 12th grade. **Rds.:** 9:30 AM, 11:45, 2:00, 4:30 PM. **ENT:** Make EF and/or USCF Memb chks payable To: International Chess Academy. Mail To: Diana Tulman, 28 Canterbury Ln., New Milford, NJ 07646. **INFO:** www.icanj.net.

Nov. 4, Westfield Fall Grand Prix
See Grand Prix.

Nov. 10, Princeton Day School
650 The Great Road. Plaques to top 3 school teams and top 6 in each section. Medals to all players. Four sections for OVER 1000 begin at 10:15 and must preregister: **OVER 1600** (K-12), **NEAR MASTERS** (K-12 over 1400) and **FUTURE MASTERS** (Players K-12 over 1200) G/60, 3 rds. **CLOSED** (K-12 1000-1200) G/45 4 rds. **ALL OTHER SECTIONS.** G/30 4 rds. Beginning at 12:00 noon. (round times will be accelerated if possible): **OPEN** (Players K-12 U-1000), **RESERVE** (K-12 U-800),

NOVICE II (K-8 U-600), **NOVICE I** (unrated K-6), **K-1** (unrated) **NO SCORE K-1** (unrated). **PARENTS OF PLAYERS** rated G/30 3 rounds. Pre-registration online, pay at the door \$35. Parents play free. On-site 11-12 noon \$45. **Info and register online:** www.pds.org/chess. Inquiries to Bonnie Waitzkin Chessteach@gmail.com.

Nov. 17, 3rd Annual Mid-Atlantic Girls Chess Championship (MD)
See Maryland.

Nov. 17, King's Chess Club Quads

Morning quads and afternoon quads, G/30, Kindergarten-undergraduate (scholastic, youth, and young adult memberships). Bethlehem Church, 758 Route 10, Randolph, NJ 07869. **EF:** None. **Reg.:** 9-9:20 am, 1st rd. 9:40. Arr. by noon to reg. only for afternoon quads. Medal to each quad winner. **Info:** Bethlehem Church 973-366-3434 or Bob McAdams 973-694-3988, rwm@fambright.com. Weather closings will be posted on church homepage at www.bethlehemchurch.org by 7:30am.

A State Championship Event!

Nov. 18, New Jersey K-12 Grade Championship

5SS, G/30. Brookdale College, 765 Newman Springs Rd., Lincoln, NJ 07738. Student Life Center, use Parking Lot #7 or #6; 4 miles from Garden State Parkway exit 109. **13 Sections:** Play only in your grade! **Grades K-12:** Trophies to top 10 individuals, top 3 teams - top 3 from each school/grade; 50% of players receive trophy or medal; **Rds.:** 10am and ASAP. **EF:** \$35 by 11/10, \$55 at site. USCF memb req'd. **Reg.:** 8-9:00am After 9:00am 1/2 pt bye rd 1. **Info:** 732 259-3881, hsprechman@characterkings.org. **Ent:** Please make checks payable to NJSCF and send to NJSCF, PO Box 1511, Jackson, NJ 08527. Entries must include name, grade school, date of birth, USCF ID # & expiration, mailing address, phone number & entry fee, please include email address. **Register online at:** www.characterkings.org until 11/17.

Dec. 2, Dr. David Ostfeld Memorial ICA Early Winter 2012 Open Championship
See Grand Prix.

Dec. 2, Dr. David Ostfeld Memorial ICA Early Winter 2012 Scholastic Championship in 5 Sections

BERGEN ACADEMY, 200 HACKENSACK AVE., HACKENSACK, NJ 07601. 4SS, EVERYONE PLAYS 4 GAMES, ALL PLAYERS WITH 2.5 PTS OR MORE WILL RECEIVE A TROPHY! USCF Memb Req'd For Sections 3, 4 AND 5. **Info:** 201 287 0250 or diana@icanj.net ADV EF (pmk by Nov 28th) \$25 At Site \$30 Reg ends 1/2 hr before 1st rd Late entrants will receive a 1/2 pt bye for rd 1. In 5 Sections, **Section 1 Junior Novice (not USCF rated):** Open to unr players K thru 2nd grade. **Rds.:** First Round 10:15 AM then ASAP. **Section 2 Novice (not USCF rated):** Open to unr players K thru 4th grade. **Rds.:** First Round 10:00 AM then ASAP. **Section 3 G/45 UB80:** Open to players rated below 800 and unr players K thru 12th grade. **Rds.:** 9:45 AM, 11:30, 1:15, 3:00 PM. **Section 4 G/45 U1200:** Open to players rated below 1200 and unr players K thru 12th grade. **Rds.:** 9:45 AM, 11:30, 1:15, 3:00 PM. **Section 5 G/60 U1600:** Open to All Ages rated below 1600 or unrated. **Rds.:** 9:30 AM, 11:45, 2:00, 4:30 PM. **ENT:** Make EF and/or USCF Memb chks payable To: International Chess Academy Mail To: Diana Tulman, 28 Canterbury Ln., New Milford, NJ 07646. **INFO:** www.icanj.net.

New York

Oct. 18, Marshall Thursday Game 30 Grand Prix!
See Grand Prix.

Oct. 19, Marshall October Friday Quads!
3rd Friday of every month! 3-RR, G/40d5. Open to all levels; Quads formed by rating. Marshall CC, 23 W. 10th St., NYC. 212 477-3716. **EF:** \$25, members \$20. \$50 for winner of each quad. **Reg.:** 5:15-5:45. **Rds.:** 6-7:30-9PM. www.marshallchessclub.org.

Oct. 20, Marshall Saturday U1200!

4-SS, G/40d5. Marshall CC, 23 W. 10th St., NYC. 212 477-3716. (**\$300 b/20**): \$160-80, U1000 \$60. **EF:** \$40, members \$20. **Reg.:** 12:15-12:45. **Rds.:** 1-2:45-4:30-6:15PM. One bye available, request at entry. www.marshallchessclub.org.

Oct. 20-21, 7th Marshall CC Amateur Team Championship!
4SS, G/115;d5; Marshall CC, 23 W. 10 St., NYC, 212-477-3716. **EF:** \$35 per player, Members \$25. All, \$5 less if played in any of the first six MCC Amateur Team Championships. 2 player teams with ratings averaging under 2200. **\$\$** (b/15 teams): 150-75, U1800 team \$90, top scores b/d. 1 & 2 \$90 each. **Reg.** ends 15 min. before game. **Rds.:** 12:50 pm each day; Limit 1 team bye, request with entry. Replacement player must have same or lower rating, must play same board. **Chess Magnet School JGP.**

A Heritage Event!

Oct. 25, The Original "4 Rated Games Tonight!" Now At The New Yorker Hotel - USCF's Longest-Running Action Tournament - with FREE Women's Under 1200 Section!

4-SS, G/25 + d/5 or G/30 + d/0. Chess Center at the historic New Yorker Hotel!, 481 8th Ave at 34th St., across from Penn Station, NYC: 347-201-CCNY (347-201-2269; Thursdays after 6 pm: 212-971-0101; www.chesscenter.cc). **NOW IN 2 SECTIONS! Open Section. EF:** \$30, GMs \$25 from prize, free to the player returning after longest lapse since last tournament, free to specified Greater NY Scholastic Prizewinners! **Good Customer Loyalty Discounts:** \$5 less to those who played in at least 4 "4 Rated Games Tonight!" Thursday Night Actions since Jan. 2011, \$10 less to those who played in at least 10 4RGTS since 1987—**Thank You So Much For Your Support Of This Tournament These Past 25 Years!** \$5 (480 b/32 paid): 150-100-50, Top U2200/unr \$95, U2000 \$85. **Women's Under 1200 Section**, open to all women and girls rated Under 1200 or unr. (if under 6 players this section may be combined with Open Section). **EF: FREE!** Trophies to top 3! **Both Sections: \$150 GUARANTEED In Mixed Doubles Bonus Prizes!** Best male/female 2-player team combined score in either section: \$100-50 (teammates' average rating must be Under 2200); teammates may play in different sections, teammate pairings avoided but possible, teams must declare by 8:15. **Choice of 2 schedules! 7:00 Schedule, rds. 7-8:15-**

Tournament Life

9:30-10:45 pm. **7:30 schedule**, rd. 1 only is Quick-rated (G/15 + td/3) at 7:30 pm, score carries over into round 2 of 7:00 schedule at 8:15 pm. Limit 2 byes (1 bye if U2000), commit by 8:15. Re-entry \$15, counts half. Reg. ends 10 min. before game. Help with NYC parking: www.primospot.com, www.iconparkingsystems.com. **Sponsorship opportunities:** Name one of the 4RGTs after yourself, and you'll see your name listed in uschess.org! **Info: www.chesscenter.cc.**

Oct. 25, Marshall Thursday Game 30 Grand Prix!
See Grand Prix.

Oct. 27, Marshall Saturday U1400!
4-SS, G/40d5. Marshall CC, 23 W. 10th St., NYC. 212-477-3716. **(\$300 b/20):** \$160-80, U1100 \$60. **EF:** \$40, members \$20. **Reg.:** 12:15-12:45. **Rds.:** 1-2:45-4:30-6:15PM. One bye available, request at entry. www.marshallchessclub.org.

Oct. 27-28 or 28, Marshall October U2100!
4SS, 30/85d5, SD/1d5. Marshall CC, 23 W. 10th St., NYC. 212-477-3716. **EF:** \$45, Members \$25. **(\$540 b/36):** \$240-120, U1850 \$95, U1600 \$85. **Reg:** ends 12:15PM. **Rds.:** 2 schedules: **2 day**, Rds. 12:30-5:30 PM each day; **1 day**, (Rds. 1-2 G/25;d5) 10-11:15AM-12:30-5:30 PM Sun; both merge rd.3. Limit 2 byes, request at entry. NO RE-ENTRY. www.marshallchessclub.org. **Chess Magnet School JGP.**

Oct. 29-Nov. 26, Marshall Monday U1600!
5-SS, G/85d5. Marshall CC, 23 W. 10th St., NYC. 212-477-3716. **EF:** \$50, members \$30. **(\$675/30):** \$250-150-100, U1400 \$100, U2000 \$75. **Reg.:** 6:15-6:45pm. **Rds.:** 7 pm each Monday. Limit 2 byes, request by Rd 3. www.marshallchessclub.org. **Chess Magnet School JGP.**

A Heritage Event!

Nov. 1, The Original "4 Rated Games Tonight!" Now At The New Yorker Hotel - USCF's Longest-Running Action Tournament - with FREE Women's Under 1200 Section!

4-SS, G/25 + d/5 or G/30 + d/0. Chess Center at the historic New Yorker Hotel, 481 8th Ave at 34th St., across from Penn Station, NYC: 347-201-CCNY (347-201-2269); Thursdays after 6 pm: **212-971-0101**; www.chesscenter.cc. **NOW IN 2 SECTIONS!** Open Section. **EF:** \$30, GMs \$25 from prize, free to the player returning after longest lapse since last tournament, free to specified Greater NY Scholastic Prizewinners! **Good Customer Loyalty Discounts:** \$5 less to those who played in at least 4 "4 Rated Games Tonight!" Thursday Night Actions since Jan. 2011, \$10 less to those who played in at least 10 4RGTs since 1987—**Thank You So Much For Your Support Of This Tournament These Past 25 Years!** \$\$ (480 b/32 paid): 150-100-50, Top U2000/unr \$95, U2000 \$85. **Women's Under 1200 Section**, open to all women and girls rated Under 1200 or unr. (if under 6 players this section may be combined with Open Section). **EF: FREE!** Trophies to top 3! **Both Sections: \$150 GUARANTEED In Mixed Doubles Bonus Prizes!** Best male/female 2-player team combined score in either section: \$100-50 (teammates' average rating must be Under 2200; teammates may play in different sections, teammate pairings avoided but possible, teams must declare by 8:15). **Choice of 2 schedules! 7:00 Schedule**, rds. 7:8-15:9-30-10:45 pm. **7:30 schedule**, rd. 1 only is Quick-rated (G/15 + td/3) at 7:30 pm, score carries over into round 2 of 7:00 schedule at 8:15 pm. Limit 2 byes (1 bye if U2000), commit by 8:15. Re-entry \$15, counts half. Reg. ends 10 min. before game. Help with NYC parking: www.primospot.com, www.iconparkingsystems.com. **Sponsorship opportunities:** Name one of the 4RGTs after yourself, and you'll see your name listed in uschess.org! **Info: www.chesscenter.cc.**

Nov. 1, Marshall Thursday Game 30 Grand Prix!
See Grand Prix.

Nov. 3, Marshall Saturday U1800!
4-SS, G/40d5. Marshall CC, 23 W. 10th St., NYC. 212-477-3716. **(\$300 b/20):** \$160-80, U1500 \$60. **EF:** \$40, members \$20. **Reg.:** 12:15-12:45. **Rds.:** 1-2:45-4:30-6:15PM. One bye available, request at entry. www.marshallchessclub.org.

Nov. 3, TRM67
4SS, G/25;d5. Montessori MS, Albany 12203. **EF:** Free Scholastic. 7 sections. Must pre-register by Thursday for Saturday. Round begins at 10:00. **Prizes:** Trophies (Team & Individual) and Medals. **Visit:** www.maketherightmove.org for registration and details.

Nov. 4, TRM182
4SS, G/25;d5. Riverbank State Park, 479 Riverside Dr., NY 10031. **EF:** Free Scholastic. **5 sections.** Must pre-register by Friday for Sunday and check in by 9:15 AM for round 1 at 10:00. **Prizes:** Trophies (Team & Individual) and Medals. **Visit** www.theightmove.org for registration and details.

Nov. 7-Dec. 5, Marshall Wednesday U1400!
5-SS, G/85d5. Marshall CC, 23 W. 10th St., NYC. 212-477-3716. **EF:** \$50, members \$30. **(\$450/20):** \$240-120, U1100 \$90. **Reg.:** 6:15-6:45pm. **Rds.:** 7 pm each Wednesday. Limit 2 byes, request by Rd 3. www.marshallchessclub.org. **Chess Magnet School JGP.**

A Heritage Event!

Nov. 8, The Original "4 Rated Games Tonight!" Now At The New Yorker Hotel - USCF's Longest-Running Action Tournament - with FREE Women's Under 1200 Section!

4-SS, G/25 + d/5 or G/30 + d/0. Chess Center at the historic New Yorker Hotel, 481 8th Ave at 34th St., across from Penn Station, NYC: 347-201-CCNY (347-201-2269); Thursdays after 6 pm: **212-971-0101**; www.chesscenter.cc. **NOW IN 2 SECTIONS!** Open Section. **EF:** \$30, GMs \$25 from prize, free to the player returning after longest lapse since last tournament, free to specified Greater NY Scholastic Prizewinners! **Good Customer Loyalty Discounts:** \$5 less to those who played in at least 4 "4 Rated Games Tonight!" Thursday Night Actions since Jan. 2011, \$10 less to those who played in at least 10 4RGTs since 1987—**Thank You So Much For Your Support Of This Tournament These Past 25 Years!** \$\$ (480 b/32 paid): 150-100-50, Top U2000/unr \$95, U2000 \$85. **Women's Under 1200 Section**, open to all women and girls

rated Under 1200 or unr. (if under 6 players this section may be combined with Open Section). **EF: FREE!** Trophies to top 3! **Both Sections: \$150 GUARANTEED In Mixed Doubles Bonus Prizes!** Best male/female 2-player team combined score in either section: \$100-50 (teammates' average rating must be Under 2200; teammates may play in different sections, teammate pairings avoided but possible, teams must declare by 8:15). **Choice of 2 schedules! 7:00 Schedule**, rds. 7:8-15:9-30-10:45 pm. **7:30 schedule**, rd. 1 only is Quick-rated (G/15 + td/3) at 7:30 pm, score carries over into round 2 of 7:00 schedule at 8:15 pm. Limit 2 byes (1 bye if U2000), commit by 8:15. Re-entry \$15, counts half. Reg. ends 10 min. before game. Help with NYC parking: www.primospot.com, www.iconparkingsystems.com. **Sponsorship opportunities:** Name one of the 4RGTs after yourself, and you'll see your name listed in uschess.org! **Info: www.chesscenter.cc.**

Nov. 8, Marshall Thursday Game 30 Grand Prix!
See Grand Prix.

Nov. 15, Marshall Thursday Game 30 Grand Prix!
See Grand Prix.

Nov. 16-18 or 17-18, 11th Annual Turkey Bowl (FL)
See Grand Prix.

Nov. 17, 3rd Annual Mid-Atlantic Girls Chess Championship (MD)
See Maryland.

Nov. 17, Marshall Saturday G/60!
4-SS, G/55d5. Marshall CC, 23 W. 10th St., NYC. 212-477-3716. **(\$540/36):** \$240-120, U2000 \$95, U1700 \$85. **EF:** \$40, members \$20. **Reg.:** 11:15-11:45 am. **Rds.:** 12-2:30-4:45-7. One bye available, request at entry. www.marshallchessclub.org.

Nov. 17-18 or 18, Marshall Club Championship Pre-Qualifier!
4SS, 30/85;d5, SD/60;d5. Open to U1700. Marshall CC, 23 W. 10th St., NYC. 212-477-3716. **EF:** \$50, members \$30. **1st-5th place finishers (plus ties) with plus scores:** Free Entry to FIDE rated Marshall Amateur Championship/Jerry Simon Memorial! on December 7-9 or 8-9. **Reg.:** 11:15-11:45am. **2 options: 2-day**, rds 12:30, 5:30pm Sat & Sun; **1-day** (rd.1 G/25;d5). **Reg.:** 9:15-9:45am, Rd.1&2 10-11:15am Sunday, merge rd. 3. One bye avail, request by rd. 2. No re-entries. www.marshallchessclub.org. **Chess Magnet School JGP.**

Nov. 18, Marshall Sunday Game/45!
4-SS, G/40d5. Marshall CC, 23 W. 10th St., NYC. 212-477-3716. **(\$540/36):** \$240-120, U2100 \$95, U1800 \$85. **EF:** \$40, members \$20. **Reg.:** 11:15-11:45 am. **Rds.:** 12-1:45-4:00-5:45. One bye available, request at entry. www.marshallchessclub.org.

Nov. 24, Marshall Open & U1500 Saturday Game/45!
4-SS, G/40d5. Marshall CC, 23 W. 10th St., NYC. 212-477-3716. **Two sections** you play only those in your section: **A. Open (\$360/24):** \$160-80, U2100 \$65, U1800 \$55. **B. U1500 (\$240/16):** \$120-65, U1200 \$55. **EF:** \$40, members \$20. **Reg.:** 11:15-11:45 pm. **Rds.:** 12-1:45-4:00-5:45. One bye available, request at entry. www.marshallchessclub.org.

Nov. 25, Marshall Sunday Madness:
6-SS, G/25d5. Marshall CC, 23 W. 10th St., NYC. 212-477-3716. **EF:** \$45, members \$25. **(\$480/24):** \$200-100, U2000 \$70, U1700 \$60, U1400 \$50. **Reg.:** 11:15-11:45. **Rds.:** 12-1:15-2:30-4:00-5:15-6:30. Two byes available, request at entry. www.marshallchessclub.org.

Nov. 29, Marshall Thursday Game 30 Grand Prix!
See Grand Prix.

Dec. 1, Marshall Saturday G/60!

4-SS, G/55d5. Marshall CC, 23 W. 10th St., NYC. 212-477-3716. **(\$540/36):** \$240-120, U2000 \$95, U1700 \$85. **EF:** \$40, members \$20. **Reg.:** 11:15-11:45 am. **Rds.:** 12-2:30-4:45-7. One bye available, request at entry. www.marshallchessclub.org.

Dec. 2, 1st Annual Marshall Chess Club Speed Chess Championship! (QC)
See Grand Prix.

Dec. 3-17, Marshall 3-Mondays Game 45 Open and U1600!
6-SS, G/40d5. Marshall CC, 23 W. 10th St., NYC. 212-477-3716. **Two sections** you play only those in your section: **A. Open (\$360/24):** \$160-80, U2100 \$65, U1800 \$55. **B. U1500 (\$240/16):** \$120-65, U1200 \$55. **EF:** \$45, members \$25. **Reg.:** 6:15-6:45 pm. **Rds.:** 7 & 8:45PM each Monday. Two byes available, request before round 3. www.marshallchessclub.org.

Dec. 6, Marshall Thursday Game 30 Grand Prix!
See Grand Prix.

Dec. 7-9 or 8-9, Marshall Amateur Championship/Jerry Simon Memorial! FIDE rated!

5SS, 30/85;d5, SD/60;d5. Open to U2200 (except former masters, FIDE titleholders and 2011 qualifiers who scored 50% or higher in the 2011 Championship). Minimum Rating 1700 unless qualified through November 17-18 pre-qualifier. Marshall CC, 23 W. 10th St., NYC. 212-477-3716. **EF:** \$50, members \$30. 1st-3rd, Top U1900: Free Entry into MCC Championship! 4th-10th place finishers (plus ties) with plus scores will be eligible to pay for and enter the Marshall CC Championship on December 14. **Reg.:** 6:15-6:45pm. **2 options:** 3-day, rds 7pm Fri., 12n, 5:30pm Sat., 12n, 5:30pm Sun; 2-day (rd.1 G/40;d5), **Reg.:** 9:15-9:45am, Rd. 1 10am Saturday, merge rd. 2. One bye avail, request by rd. 3. No re-entries. FIDE rated (G/40;d5 not FIDE ratable). www.marshallchessclub.org. **Chess Magnet School JGP.**

Dec. 12-Jan. 9, Marshall Wednesday U1400!
5-SS, G/85d5. Marshall CC, 23 W. 10th St., NYC. 212-477-3716. **EF:** \$50, members \$30. **(\$450/20):** \$240-120, U1100 \$90. **Reg.:** 6:15-6:45pm. **Rds.:** 7 pm each Wednesday. Limit 2 byes, request by Rd 3. www.marshallchessclub.org. **Chess Magnet School JGP.**

Dec. 13, Marshall Thursday Game 30 Grand Prix!
See Grand Prix.

Dec. 28-30 or 29-30, 31st annual Empire City Open
See Chess Life or www.chesstour.com.

A State Championship Event!
A Heritage Event!

Feb. 23-24, 46th annual New York State Scholastic Championships Open to grades K-12 in any state (top NYS player & team in each section are NY champions). Saratoga Hilton, 534 Broadway (I-87 Exit 13-N, 4 miles north on US 9), Saratoga Springs, NY 12866. Team prizes based on top 4 scores from same school; no combined school teams allowed even if one school "feeds" another. Teams of 2 or 3 players allowed, but are at a disadvantage. In 8 sections; each is a 6SS, G/61, d5 except K-1 is 5SS, G/25, d5 playing Feb 24 only. **Online entry fee at chessaction.com, all sections:** \$40 by 2/2, \$50 by 2/19, \$60 2/20 to 2 hours before first game. **Entry fee at site**, all sections: \$60. **High School**, open to all in grades K-12. **EF:** \$43.20 mailed by 2/2. Top NYS grade 9-12 qualifies for Denker Tournament of HS Champions. **High School Reserve**, open to K-12 under 1200 or unrated. **EF:** \$43 mailed by 2/2. **Junior High**, open to all in grades K-9. **EF:** \$42.90 mailed by 2/2. The higher rated (post-tournament) of the top NYS K-8 in JHS or top NYS K-8 in HS qualifies for Barber Tournament of K-8 Champions. **Middle School Reserve**, open to K-8 under 1000 or unrated. **EF:** \$42.80 mailed by 2/2. **Elementary**, open to all in grades K-6. **EF:** \$42.60 mailed by 2/2. **Elementary Reserve**, open to grades K-5 under 800 or unrated. **EF:** \$42.50 mailed by 2/2. **Primary**, grades K-3. **EF:** \$42.30 mailed by 2/2. **K-1**, grades K-1. **EF:** \$42.10 mailed by 2/2. **Postmarked 2/3-13:** All EF \$10 more. Do not mail entry after 2/13. **Entry at site:** all \$60. **Special 1 year USCF dues** with magazine if paid with entry. Online at chess-tour.com, Young Adult \$20, Scholastic \$15. Mailed, phoned or paid at site, Young Adult \$30, Scholastic \$20. **Trophies** to top 15 players and top 7 teams each section, top 3 unrated in Primary, K-1, and each reserve section, and top U1500, U1300 (HS), U900, U700 (HS Reserve), U1200, U1000 (JHS), U700, U500 (MS Reserve), U1000, U800 (Elem), U500, U300 (Elem Reserve). Speed playoff if perfect score tie. **Free entry** to NY State Championship, Labor Day weekend 2013 (Albany), to top player each section. **Schedule:** Late reg. ends Sat 10 am, rds Sat 11, 2, 5, Sun 9, 12, 2:30, awards 5 pm. **K-1 schedule:** Late reg. ends Sun 9 am, rds Sun 10, 12, 1:30, 3, 4:30, awards 5:45. **Half point byes** OK all, limit 2, must commit before rd. 2. **HR:** \$119-119, 888-999-4711, 518-584-4000, reserve by 2/2 or rate may increase. Free parking for overnight guests. 48 hours notice required for room cancellation. Backup hotel: Courtyard by Marriott, 2 blocks away, 518-226-0538. **Special car rentals:** Avis, 800-331-1600, use AWD #657633. **Mail entry:** Continental Chess, PO Box 249, Salisbury Mills, NY 12577. Include name, rating, USCF ID, USCF expiration (non-members enclose dues), section, school, grade, birth date, address of each player. Checks payable to Continental Chess. **\$15 per player** service charge for refunds. **\$10 extra to switch sections**, all substitutions from advance list charged \$60. **Questions:** DirectorAtChess.US (At = @), 845-496-9658. **Bring set, board, clock** if possible—none supplied. **Chess Magnet School JGP (except K-1).**

Mar. 1-3 or 2-3, 7th annual Long Island Open
See Chess Life or www.chesstour.com.

Ohio

Nov. 9-11 or 10-11, 21st annual Kings Island Open
See Chess Life or www.chesstour.com.

Pennsylvania

Oct. 19, Downingtown Fall Scholastic Chess
Food and Drink Available. 4SS, G/30, d/5 - 2 sections, U600, Open. Glenmoore United Methodist Church, 1920 Creek Rd., Glenmoore, PA 19343. **EF:** \$25 online, \$30 onsite. Credit cards accepted for online entry. Checks accepted onsite if pre-registered. **Prizes:** Trophies are given to the top four in each section, awards given to beginners. **Reg.:** closes at 5 pm. One 1/2 pt. bye okay. Register online until noon on 10/19. **Rds.:** 5:30, 6:30, 7:30, 8:30. **ENT:** Wood Entrance Services LLC, 238 Del Rd., Lancaster, PA 17601, 717-475-6473. **INFO:** Mark M. Wood, mwood@wood-services.org, http://chess.woodservices.org. **Free game analysis provided by NM Peter Minear.** NS, W.

A State Championship Event!
Nov. 3-4, 2012 Ira Lee Riddle Memorial PA State Championship
See Grand Prix.

A State Championship Event!
Nov. 4, 2012 PA State Championship Scholastics
5SS, G/40d5. O'Hara Student Center, Univ. of Pitt., 4024 O'Hara St., Pittsburgh, PA 15213. **2 Sections: Premier:** U1100 & unr. in grades 8-12. **Reserve:** U700 & unr. in grades K-7. **All:** Trophies to top 7 in each section. Teams of 4 to 7 players from all scholastic and adult sections: Trophies to top 3 schools & top 3 clubs. **EF:** \$15 by 10/26, \$25 later. PSCF req'd. **OSA. Reg.:** ends 9:30 am. **Rds.:** 10-Noon-1:30-3:5. **Info:** martinak_tom_m@hotmail.com, 412-908-0286. **Ent:** PSCF, C/O Tom Martinak, 25 Freeport St., Pittsburgh, PA 15223.

Nov. 11, PCL November Quick Quads (QC)
3RR, G/15d3. Wm. Pitt Union, Univ. of Pittsburgh, 5th Ave & Bigelow, Pittsburgh, PA 15213. **EF:** \$10, \$7 juniors. \$20 to 1st/quad. **Reg.:** 11-11:15am. **Rds.:** 11:30am-Noon-12:30pm. **Info:** martinak_tom_m@hotmail.com, 412-908-0286. W.

Nov. 17, 3rd Annual Mid-Atlantic Girls Chess Championship (MD)
See Maryland.

A State Championship Event!
Nov. 17, 2012 PA State Game/15 Championship (QC)
See Grand Prix.

Nov. 23, Black Friday Open
See Chess Life and www.chesstour.com.

Nov. 23-25 or 24-25, 43rd annual National Chess Congress

See Chess Life or www.chesstour.com.

Nov. 30, November Evening Scholastic Chess

Food and Drink Available. 4SS, G/30, d/5 - 2 sections, U600, Open. Glenmoore United Methodist Church, 1920 Creek Rd., Glenmoore, PA 19343. **EF:** \$25 online, \$30 onsite. Credit cards accepted for online entry. Checks accepted onsite if pre-registered. **Prizes:** Trophies are given to the top four in each section, awards given to beginners. **Reg.:** closes at 5 pm. One 1/2 pt. bye okay. Register online until noon on 11/30. **Rds.:** 5:30, 6:30, 7:30, 8:30. **ENT:** Wood Enrichment Services LLC, 238 Delp Rd., Lancaster, PA 17601, 717-475-6473. **INFO:** Mark M. Wood, mwood@wood-services.org, http://chess.woodservices.org. **Free game analysis provided by NM Peter Minear.** NS. W.

Dec. 2, PCL December Quick Quads (QC)

3RR, G/15d3. Wm. Pitt Union, Univ. of Pittsburgh, 5th Ave. & Bigelow, Pittsburgh, PA 15213. **EF:** \$10, \$7 Jrs. \$20 to 1st/quad. **Reg.:** 11-11:15am. **Rds.:** 11:30am-Noon-12:30pm. **Info:** martinak_tom_m@hotmail.com, 412-908-0286. W.

Jan. 18-21, 19-21 or 20-21, 45th annual Liberty Bell Open

See Chess Life or www.chesstour.com.

Texas

Oct. 13, 3rd Annual Scott Watson Memorial Chess Classic

A Major USCF Rated College Scholarship Chess Tournament Lively Youth Center, 909 North O'Connor, Irving, TX 75063. In 8 Sections, **K-3 Primary U400:** 5SS, Game/30, Open to 399 & under. Trophies Top 3 Individuals per Section, Top 3 Teams per Section. **K-3 Primary Open:** 5SS, Game/30, Trophies Top 3 Individuals per Section, Top 3 Teams per Section. **Elementary U600:** 5SS, Game/30, Open to 599 & under. Trophies Top 3 Individuals per Section, Top 3 Teams per Section. **Elementary Open:** 5SS, Game/30, Trophies Top 3 Individuals per Section, Top 3 Teams per Section. **Middle School U700:** 5SS, Game/30, Open to 699 & under. Trophies Top 3 Individuals per Section, Top 3 Teams per Section. **Middle School Open:** 5SS, Game/30, Trophies Top 3 Individuals per Section, Top 3 Teams per Section. **High School Open:** 5SS, Game/30, **Prizes:** Trophies Top 3 Individuals per Section, Top 3 Teams per Section. \$1,000 Top Finishing Player attending HS within Irving City Limits, \$1,000 Top Finishing Player attending HS outside of Irving City Limits. **Not To Be Rated 4th-8th Grade Open:** 5SS, Game/30. **Prizes:** Trophies Top 3 Individuals ONLY—No Team Trophies This Section. **ALL:** \$ 25.00 After

10.08.2012 and On-Site. USCF Membership Required for Elementary, Middle School, and High School Sections, Will Be Provided with Paid EF for HS section ONLY. **Reg.:** 10.13.2012, 8-8:30 AM. \$15.00 B/4 10.08.2012, Thereafter and On-Site \$25.00. **Rds.:** Round 1, 9:00 AM, All others ASAP 1/2 Point for any round if requested at registration, HS Section NO 5th Round Bys. **ENT:** Nancy H. Bauer, 1807 Pueblo Pl. Irving, Texas 75061-2243. Register & Pay On-Line at www.Chess4Champs.com. **INFO:** nancybauer223@tx.rr.com, jonessoc@juno.com. NS. NC. W.

Oct. 20-21, Dallas Amateur and Novice

5SS, G/90 with 30 second increment. Dallas CC, 200 S Cottonwood Dr. Ste C, Richardson, TX 75080. **EF:** \$30 (\$25 Jr/Sr/Hcap), plus \$5 non-DCC mbr fee if applicable. \$\$ Prizes based on entries 60 % returned. **Amateur:** Open to U1800. **Novice:** Open to U1400 and unrated. **Reg.:** 9:45-10:15am. **Rds.:** 10:45-3:10-7:16, 10:45-3:10. Two half-point Bys if requested before rd 2 (and if requested before receiving a full point bye). **Ent:** Dallas Chess Club, C/O Barbara Swafford, 2709 Longhorn Trail, Crowley, TX 76036. **Info:** 214-632-9000, info@dallaschess.com, www.dallaschess.com NS. NC. **Chess Magnet School JGP.**

Nov. 3, Scholastic Turkey Tournament

5SS, G/30 no delay. Sloan Creek Middle School, 440 Country Club Rd., Fairview, TX 75069. **EF:** \$20 if postmarked by 10/26/12, \$50 after. On site (\$50). **Reg.:** 8:00-8:30 AM. **R1** at 9:00 AM, all others ASAP. For complete details/registration form go to www.LoveJoyChess.org. **Checks payable to:** Sloan Creek Chess. **Sections:** Primary PreK-3rd U300; Primary PreK-3rd U600; Primary PreK-3rd Open; 4th-8th Grades U400, 4th-8th Grades U800; 4th-8th Grades Open; 9th-12th Grades Open. 1st, 2nd & 3rd place individual trophies each section & 4th place receives frozen turkey. 1st & 2nd place team trophies in each section. Side events: Donuts, pizza, baked potatoes, drinks. **More info call:** Debbie 972-658-8708.

Virginia

Nov. 17, 3rd Annual Mid-Atlantic Girls Chess Championship (MD)

See Maryland.

West Virginia

A State Championship Event!

Nov. 10, 2012 West Virginia Chess Association Junior Championship

4 round Swiss System, G/60 no delay. Open to all Chess Players under

the age of 18. All games will be rated by USCF. Notre Dame High School, 127 E Pike St., Clarksburg, WV 26301. **Schedule: Registration:** 9:00. **Rounds:** First Round - 10 am subsequent rounds to follows as announced at the site. **Entry Fee:** \$10 and membership in the WVCA (\$5 for junior membership) or OSA. **Sections: Beginner** - For Unrated Players or Players Rated Under 400; **Intermediate** - For Players Rated 400 to 699; **Championship** - For Players Rated 700 & Over. Trophy to top Individual in each section. There will also be a team trophy awarded to the Top school team. To qualify as a team, your school must have 4 or more entrants. Team score is the sum of the results of the 4 highest scoring members on the team irrespective of section. **The top placed WV resident in the Championship division will be the 2012 WVCA Junior Champion.** **Entries:** Harrison County Chess Club, C/O Robert Greer, P. O. Box 4338, Clarksburg, WV 26302. (Checks payable to "Harrison County Chess Club"). **Info:** Email: greerlaw@aol.com. Phone: 304-641-9241. USCF & WVCA membership required (available onsite). NS.

Wisconsin

A State Championship Event!

Oct. 27-28, 2012-2013 Wisconsin Junior Open

Gruenhagen Conference Center, UW-Oshkosh, Corner of High and Oscola St., Oshkosh, WI 54901. 2013 Denker/Girls qualifier; Open to youth born after 10/27/1991. In 5 Sections, **Open:** EF: \$16 in advance by 10/23; \$21 at site. **Prizes:** Top 5, Top 3 each 1500, 1400, 1300, 1200, 1100, Under 1100 and Unrated. **Girl's Junior Open:** EF: \$15 in advance by 10/23; \$20 at site. **Prizes:** Top 3 and top ages 15-16, 13-14, 11-12, 9-10 and Under 9. **Reserve (Under 1100 or Unrated):** EF: \$15 in advance by 10/23; \$20 at site. **Prizes:** Top 5, Top 3 each 900, 800, 700, 600 and Under 600 and top 4 Unrated. **Non-Rated Beginner's Grade 7-12:** Open to Grades 7-12. **EF:** \$12 in advance by 10/23; \$17 at site. **Prizes:** Top 5 and top 3 Grade 7-9. **Non-Rated Beginner's Grade K-6:** Open to Grades K-6. **EF:** \$11 in advance by 10/23; \$16 at site. **Prizes:** Top 5 and top 3 Grade K-3. **ALL:** 5SS, G/120; TD/5. **Reg.:** 10/27 8:45-9:30 AM. **Rds.:** 10:15-2:30-7:15; 10:00-3:00. **ENT:** Mike Nietman, 2 Boca Grande Way, Madison, WI 53719. **INFO:** Mike Nietman, 608-467-8510 (before 10/26) mike.nietman@charter.net. **HR:** 920-424-1106 \$40 double (dorm room) (Mention Chess). www.wischess.org. NS. NC. W. **Chess Magnet School JGP.**

Answers, We've got Answers.

Win or Draw (page 8)

Position One Solution: DRAWN!! The black king keeps the opposition. You must notice how the black king chooses to move backwards when the pawn advances and the white king moves up. The defending king always wants to be in a position when the pawn advances, it's a check! Here's one example: 1. ... Ke7 2. Kd3 Kd7 3. Kd4 Kd6 4. e4 Ke6 5. e5 Ke7 6. Kd5 Kd7 7. e6+ Ke7 8. Ke5 Ke8 9. Kd6 Kd8 10. e7+ Ke8 11. Ke6 Stalemate.

Position Two Solution: DRAWN!! Yup, it's still a draw, no matter whose move it is! Black makes sure he gets the opposition as with Position One.

Position Three Solution: WHITE WINS!! An easy one, maybe: 1. Kh6 Kh8 2. g6 Kg8 3. g7 Kf7 4. Kh7. HOWEVER, it can get tricky here. If you thought it didn't matter whether you went 1. Kh6 or 1. Kf6, then you would be wrong! It could cost you or save you a game (if you're Black) if you know this. Look: 1. Kf6 Kh7 2. g6+ (2. Kf7 Kh8 3. g6 [3. Kf8 Kh7 4. Kf7 Kh8]; 2. Kf5 Kg7 3. g6 Kg8 4. Kf6 Kf8 5. g7+ Kg8 6. Kg6) 2. ... Kh8 3. Kg5 Kg7 and every line is a draw!

Position Four Solution: WHITE WINS!! This is what is meant by losing the opposition. When the kings are an odd number of squares apart (1, 3, 5) the king who has the move loses the opposition and usually loses. That's what happens here. 1. ... Kh8 2. Kf7 Kh7 3. g6+ Kh8 4. g7+ Kh7 5. g8=Q+ or 1. ... Kf8 2. Kh7.

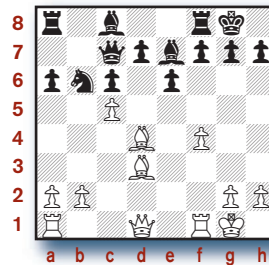
Problem Five Solution: WHITE WINS!! 1. Ke6 Ke8 2. d7+ Kd8 3. d5 Kc7 4. Ke7 and will queen the pawn. Having that extra tempo with the second pawn is a big help! By the way, the game is won without the second pawn moving if it is Black to move in the diagram.

Problem Six Solution: DRAWN!! You can see that 1. Ke6 would be stalemate and a draw. So, all White can try is 1. Kd5 Kxe7 2. e6 (2. Ke4 Ke6 is equal) 2. ... Ke8 (Losing for Black would be 2. ... Kd8 3. Kd6 Ke8 4. e7 Kf7 5. Kd7 and the pawn queens) 3. Kd6 Kd8 4. e7+ Ke8 5. Ke6 stalemate.

YOU CAN DO IT! (page 16)

Quiz #1: Gennadi Kuzmin - Evgeny Sveshnikov, Evgeny (B49) Moscow, 1973

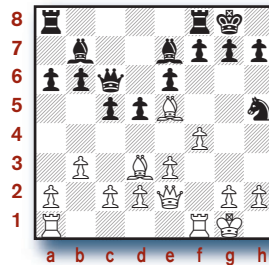
1. e4 c5 2. Nf3 e6 3. d4 cxd4 4. Nxd4 Nc6 5. Nc3 Qc7 6. Be2 a6 7. O-O Nf6 8. Be3 Bb4 9. Nxc6 bxc6 10. Na4 O-O 11. c4 Bd6 12. f4 Nxe4 13. Bd3 Nf6 14. c5 Be7 15. Bd4 Nd5 16. Nb6 Nxb6



The double sacrifice is devastating here. 17. Bxh7+ Kxh7 18. Qh5+ Kg8 19. Bxg7 Kxg7 (White also wins if 19. ... f6 20. Qg6 and 19. ... f5 20. Qg6) 20. Qg4+! (Not 20. Rf3 Bxc5+) 20. ... Kh7 21. Rf3, Black resigned. (21. ... Bxc5+ 22. Kh1 when Black must begin ditching pieces to delay the mate.)

Quiz #2: Emanuel Lasker - Johann Hermann Bauer (A03) Amsterdam, 1889

1. f4 d5 2. e3 Nf6 3. b3 e6 4. Bb2 Be7 5. Bd3 b6 6. Nc3 Bb7 7. Nf3 Nbd7 8. O-O O-O 9. Ne2 c5 10. Ng3 Qc7 11. Ne5 Nxe5 12. Bxe5 Qc6 13. Qe2 a6 14. Nh5 Nxb5



This was the second known game that involved a double bishop sacrifice.

15. Bxh7+ (The first bishop sacrifice.) 15. ... Kxh7 16. Qxh5+ (The queen arrives on h5 capturing a piece.) 16. ... Kg8 17. Bxg7 (The second bishop sacrifice.) 17. ... Kxg7 18. Qg4+! (18. Rf3 Rh8 19. Rg3+ Bg5 20. Qxg5+ [Not

Please turn to page 24

Answers continued from pg. 23

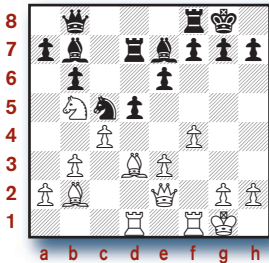
20. Rxb5+ Kf6 holding] 20. ... Kf8 and Black is surviving the onslaught. 20. ... Kh7 invites mate in one from the rook or the queen.) 18. ... Kh7 19. Rf3 e5 (Needed to avoid immediate mate from the rook swing to h3.) 20. Rh3+ Qh6 21. Rxb6+ Kxh6 22. Qd7

Most efficient, picking up one of the two unanchored bishops. The rest is well played and an illustration of careful technique.

22. ... Bf6 23. Qxb7 Kg7 24. Rf1 Rab8 25. Qd7 Rfd8 26. Qg4+ Kf8 27. fxe5 Bg7 28. e6 Rb7 29. Qg6 f6 30. Rxf6+ Bxf6 31. Qxf6+ Ke8 32. Qh8+ Ke7 33. Qg7+ Kxe6 34. Qxb7 Rd6 35. Qxa6 d4 36. exd4 cxd4 37. h4 d3 38. Qxd3, Black resigned.

Quiz 3: Klaus Junge - Cenek Kottnauer (D46)
Prague, 1942

1. d4 d5 2. c4 e6 3. Nc3 c6 4. e3 Nd7 5. Bd3 Ngf6 6. Nf3 Be7 7. 0-0 0-0 8. b3 b6 9. Bb2 Bb7 10. Qe2 c5 11. Rad1 Qc7 12. Ne5 Rad8 13. f4 Ne4 14. Nb5 Qb8 15. Nxd7 Rxd7 16. dxc5 Nxc5



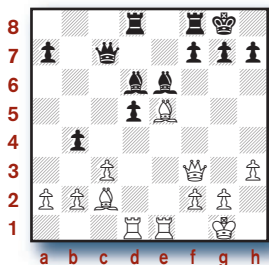
The conditions are all set. The bishops reach their key squares, so does the queen, and the Rf1 can swing. One of the keys is the placement here of the black queen, well out of play and unable to assist the defense.

17. Bxb7+! Kxh7 (Black cannot long survive by declining the bishop. 17. ... Kh8 18. Qh5 Bg5 19. Be4+ Bh6 20. Qxh6+ Kg8 21. Qxg7#) 18. Qh5+ (The obvious second move of the combination.) 18. ... Kg8 19. Bxg7! (The

second bishop sacrifice.) 19. ... f5 (On 19. ... Kxg7 The best defense. 20. Qg4+ Bg5 [20. ... Kh8 and White finishes up with the familiar rook swing. 21. Rf3; 21. Qxg5+ Kh8 22. Qh6+! Preparing rather than executing the rook swing. Or on 19. ... f6 20. Bh6 wins.]) 20. Be5 (With two powerful threats, the capture of the queen and Qg6#. Black defended the mate with ... Bf6 and played on for a while a queen down. Resignation was a fine alternative.) 20. ... Bf6 21. Bxb8 Rh7 22. Qe2 Rxb8 23. Nd6 Ba6 24. b4 Na4 25. b5 Nc3 26. Qc2 Nxd1 27. Rxd1 Rd8 28. Nxf5 Bb7 29. Nd4 dxc4 30. Qg6+ Bg7 31. Qxe6+ Kh8 32. Qe7, Black resigned.

Quiz #4: George Koltanowski - Marcel Defosse (D05)
Belgium, 1936

1. d4 Nf6 2. Nf3 d5 3. e3 e6 4. Bd3 c5 5. c3 Nc6 6. Nbd2 Bd6 7. 0-0 0-0 8. dxc5 Bxc5 9. e4 Qc7 10. Qe2 Bd6 11. Re1 Ng4 12. h3 Nge5 13. Nxe5 Nxe5 14. exd5 exd5 15. Nf3 Nxf3+ 16. Qxf3 Be6 17. Be3 Rad8 18. Bc2 b5 19. Bd4 Bc5 20. Rad1 b4 21. Be5 Bd6



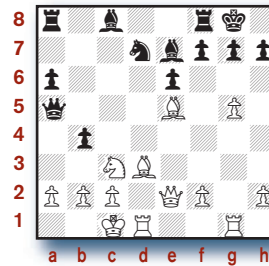
For White, the bishops and queen are on target, and two rooks are ready to swing, but the h3-pawn prevents the white rooks from gaining access to h3. Black can proudly point to an anchored queen on the seventh rank, but movement of the f-pawn will leave the Be6 unanchored.

22. Bxb7+! Kxh7 23. Qh5+ Kg8 24. Bxg7! (Not 24. Bf6 gxf6 25. Rd4 The

rook must swing to h4. 25. ... Rfe8) 24. ... Kxg7 (White is better in both instances: 24. ... f6 25. Qh8+ Kf7 26. Bxf8 Rxf8 27. Qh7+ Ke8 28. Rxe6+ Kd8; 24. ... f5 25. Bd4 Qh7 26. Qg5+ Kf7 27. Qf6+) 25. Qg5+ Kh7 (Moving in for the kill is 25. ... Kh8 26. Rd4 swinging to h4!) 26. Rd4 Bh2+ (Black can resign.) 27. Kh1 Qf4 28. Rxf4 Bxf4 29. Qxf4 Rg8 30. Re5, Black resigned.

Quiz #5: Walter Browne (2530) - Rainer Knaak (2478) (B89)
1985

1. e4 c5 2. Nf3 Nf6 3. d4 cxd4 4. Nxd4 Nc6 5. Nc3 d6 6. Bc4 e6 7. Be3 Be7 8. Qe2 0-0 9. 0-0-0 a6 10. Rhg1 Qc7 11. g4 Nxd4 12. Bxd4 b5 13. Bd3 b4 14. e5 dxe5 15. Bxe5 Qa5 16. g5 Nd7

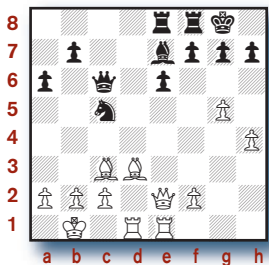


With the Nd7 bearing down on White's dark-squared bishop and the Nc3 en prise, it's now or never for the double sacrifice.

17. Bxb7+ (Also strong is 17. Bxg7 Kxg7 18. Qh5) 17. ... Kxh7 18. Qh5+ Kg8 19. Bxg7 Kxg7 (On 19. ... f5 20. Bf6 exploiting the activity of the Rg1.) 20. Qh6+ Kg8 21. Nd5! (Knowing that after 21. g6, Black can counter by occupying g5, Browne first blocks the queen's access to g5.) 21. ... exd5 22. g6 Nf6 23. g7 (With two threats, gxf8=Q double checkmate, and Qh8#.) 23. ... Nh7 24. gxf8=Q#

Quiz #6: Aleksander Delchev (2587) - Philippe Collet (C10)
Creon, 2001

1. e4 e6 2. d4 d5 3. Nd2 dxe4 4. Nxe4 Nd7 5. Bd3 Ngf6 6. Qe2 Be7 7. Nf3 c5 8. Nxc5 Nxc5 9. dxc5 Bxc5 10. Bg5 Be7 11. 0-0-0 Qa5 12. Kb1 a6 13. h4 Bd7 14. Ne5 Bc6 15. Rhe1 0-0 16. g4 Rae8 17. Bd2 Qc7 18. g5 Nd7 19. Bc3 Nc5 20. Nxc6 (Making room for the dark-squared bishop) 20. ... Qxc6



This position is unusual because White's additional attacking asset is the kingside pawn storm. There will be no rook advance and swing, but rather the use of the pawns to open a file for the rooks.

21. Bxb7+ Kxh7 22. Qh5+ (The queen still reaches h5) 22. ... Kg8 23. Bxg7 Kxg7 (Now on 23. ... f6 or 23. ... f5, the advanced pawn decides. 24. g6) 24. Qh6+ (First using the g-pawn to support the queen's entry on h6) 24. ... Kg8 25. g6, Black resigned. (25. ... fxf6 26. Qxg6+ Kh8 27. Qh6+ Forcing the king on to the open g-file. 27. ... Kg8 28. Rg1+ Kf7 and it's checkmate in one in several ways. 29. Qg7#).

