

February 2013

uschess.org

# Chess Life for Kids!

# Seven in one Blow!



A USCF Publication

\$3.00

Akshat Chandra  
makes his move!



**Fast, Fun, and  
Easy to Use**

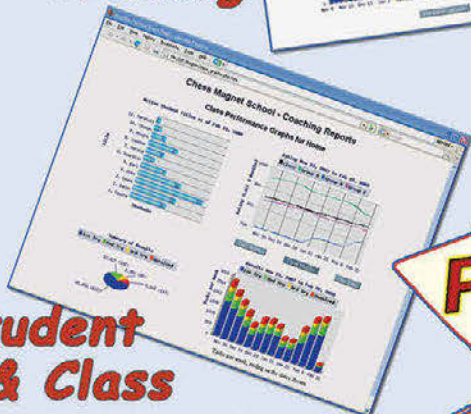
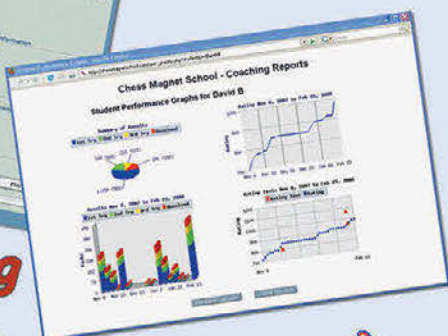
In 2006, and again in 2007,  
young Chess Magnet students  
from Portland, OR, scored 7-0 in the  
USCF Spring Nationals.

# ChessMagnetSchool.com

**Better Than Any Textbook for Learning Chess**



**Student  
Training**



**Student  
& Class  
Management**

**"Great Stuff! I just delivered my first  
Belgian champion under 10 and  
boosted his development  
by using ChessMagnetSchool.com"**

- Ton Montforts, Coach  
Schaakacademie  
Limburg, Belgium

**"Your website was  
integral to our team's winning."**

-Mike Hosford, Coach  
Alcott Elementary  
2008 Washington State  
Grades 4-6 Champions

**Proud Sponsor  
of the  
2013 USCF  
Junior Grand Prix!**

**Start Your 30-day Free Trial Today  
at  
www.ChessMagnetSchool.com**

	1 month	3 months	1 year	1 yr USCF
Individuals	\$6.95	\$15.00	\$29.95	\$26.95
Class/Family	\$6.00	\$12.00	\$25.00	\$22.00

Free to teachers/coaches of at least 5 students  
Includes our powerful, easy-to-use Coaching Tools & Reports

Works on Windows and Macintosh  
computers (requires internet access)

To learn more, call 650-284-5062  
877-378-4319 (US toll-free)  
email [info@ChessMagnetSchool.com](mailto:info@ChessMagnetSchool.com)





# Table of Contents

4	WHAT'S THE QUESTION?
6	WIN OR DRAW?
6	ZARIA
7	THE CHESS DETECTIVE
8	2012 JUNIOR GRAND PRIX STANDINGS
10	YOU CAN DO IT!
12	SEVEN IN ONE BLOW!
15	ARABIAN KNIGHTS
16	TROPHIES PLUS ALL AMERICA TEAM
19	ANSWERS, WE'VE GOT ANSWERS
21	TOURNAMENT LIFE ANNOUNCEMENTS

COVER PHOTO BY TARUN CHANDRA



#### Publisher

**USCF Executive Director: Bill Hall**  
bhall@uschess.org

**Scholastic Editor: Glenn Petersen**  
gpetersen@uschess.org

**Art Director: Cat Connor Spradlin**  
catseyephoto@mac.com

**Editorial Asst./Copy Editor: Alan Kantor**  
akantor@uschess.org

**Editorial Assistants:**  
**Jo Anne Fatherly**  
backtobasics@uschess.org  
**Jennifer Pearson**  
jenpearson@uschess.org

**Advertising Manager: Joan DuBois**  
jdubois@uschess.org

**Tournament Life: Joan DuBois**  
tla@uschess.org

**Director of Publications: Daniel Lucas**  
dlucas@uschess.org

**CONTRIBUTORS:** Send your contributions and articles to *Chess Life for KIDS*, PO Box 3967, Crossville, Tennessee 38557 or better yet, e-mail to gpetersen@uschess.org.

**Chess Life for KIDS** (USPS 023-567, ISSN: 1932-5894) is published in February, April, June, August, October, and December of every year by the United States Chess Federation, 137 O'Brien Drive, Crossville, Tennessee 38555. Periodical postage paid at Crossville, Tennessee, and additional mailing offices.

**CHANGE OF ADDRESS:** Be sure to notify us at once of any change of address. Please include your old address and your new address, along with your USCF I.D. number.

**POSTMASTER:** Send address changes to USCF, PO Box 3967, Crossville, Tennessee 38557.

**Annual Scholastic Membership**  
Regular Scholastic Membership (online version of *Chess Life for Kids*), age 12 or younger, is just \$18 per year. Premium Scholastic Membership (receives *Chess Life for Kids* by mail) is \$24 per year. \$13 of every premium membership goes towards providing *Chess Life for Kids*. Annual subscription rate is \$18. Entire contents copyright 2013, United States Chess Federation.

Teachers may photocopy instructional articles for classroom use, but republication or wide-spread copying without the written consent of the USCF is forbidden.



## MyChessGuru

Learn Chess Online

Learn winning chess openings, tactics, and endgame technique from the masters one-to-one in the comforts of your own home.

Choose from a variety of experienced online coaches from India to match your level. Prices starting at \$9 per hour.

Visit [www.mychessguru.com](http://www.mychessguru.com) and sign-up for a free try today. Contact us at [mychessguru@gmail.com](mailto:mychessguru@gmail.com) or (732) 207-6203.



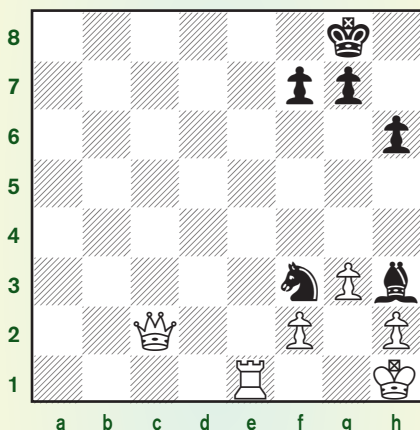
# What's the Question?

by National Master Daniel Gurevich

**Jackson Cloud**  
Sandy Springs, Georgia

**Q:** How was the attraction tactical motif invented?

**A:** Most likely, the inventor of attraction was the first player to wonder what would happen if one of the opponent's pieces was actually somewhere else. Here is a neat example from Murray Chandler's new book *Chess Puzzles for Kids*:



White to move? No, that would be too easy. 1. Re8 is checkmate! It is actually Black to move. You must be asking how Black could possibly survive here; even if he takes the rook on e1, he will still be down a queen. The worst part is that his position is completely hopeless after 1. ... Nxe1 2. Qe2 Ng2 3. Qh5, and Black loses a piece.

Now maybe you are starting to look for tricks; what if White's queen were on f5? Then we could take it! What if we had an

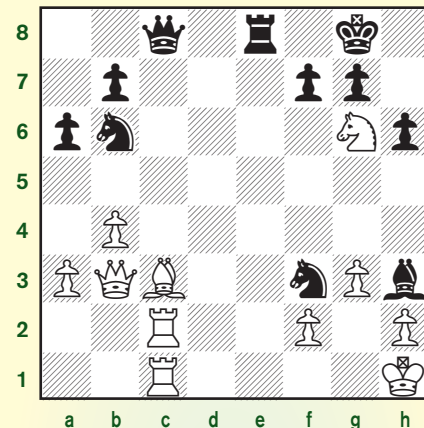
extra knight on f4? Then we could checkmate in one move with 1. ... Bg2! Of course, that is not how it works.

There is one case when imagination can give you many unexpected wins, though. That is when you are using attraction. Do you wish you could fork the White's king and queen here? You can!

1. ... Bg2+!! 2. Kxg2 Nxe1+ Dreams do come true! By attracting the king to g2, we have created a fork that was impossible before. Now Black will easily win the endgame up a piece.

By the way, sometimes this kind of combination is called a decoy. My take is that you do not have to memorize fancy names; after all, in the universal language of chess, a player from any country can look at this position and understand that this is an attraction combination.

Attraction combinations can be more complicated. Let us look at a more complicated problem. (You might want to keep a chessboard by your side to set up the position and move the pieces around a bit.)



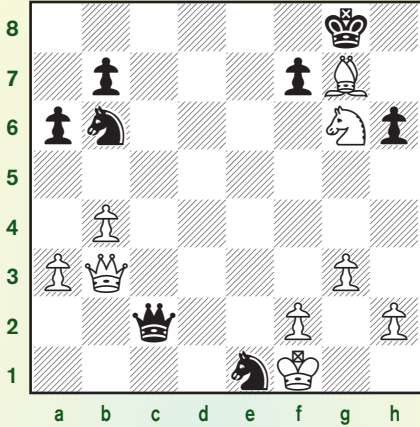
This time it is White to move. Your task is to figure out whether 1. Bxg7 is a good move. You should not worry: this is anything but easy, and we will go through this together. When I first put this position on my computer, even the silicon monster did not know the answer.

Here is your first hint: normal moves for Black do not lead to an advantage. For example, 1. ... Qe6? 2. Qxe6 Bxe6 3. Nf4 Kxg7 4. Nxe6+ Rxe6 5. Rc7 leads to an endgame that is about equal. Hopefully you noticed how similar the kingside position here is to the first position we looked at.

Are you looking at 1. ... Bg2+? If so, you are onto the right idea, but your execution is off. After 2. Kxg2 Ne1+ 3. Rxe1, Black is dead lost. It would be much better if the knight were taking a piece on e1 when delivering this fork. What about 1. ... Re1+, another attraction idea? Notice my train of thought here: what if White's rook were already on e1 so we could

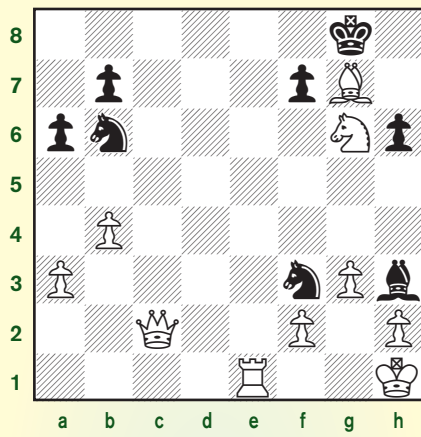


take it with check after 2. ... Bg2+? Well, let's look at it. 1. ... Re1+ 2. Rxe1 Bg2+ 3. Kxg2 Nxe1+ 4. Kf1 Qxc2 (4. ... Nxc2 loses the queen after 5. Ne7+!).

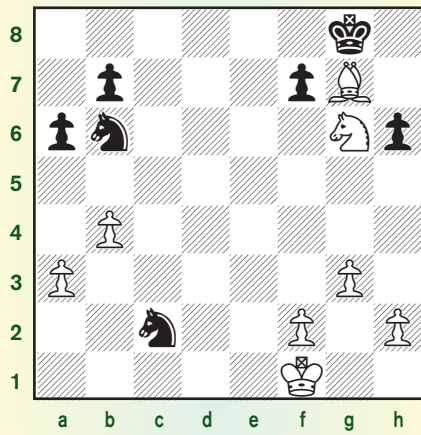


Not too shabby. All of White's pieces are hanging, so he will definitely lose one of them, right? I am afraid I have to disappoint you: 5. Qe3! keeps the material even. The point is that after 5. ... Qxg6, defending the knight on b6, White has 6. Bd4! attacking two knights and winning one of them.

Back to the position after 1. Bxg7. Do we have any other decoys? Again, let us think about what our perfect fork would be like. If only the white king were on g2, the rook on e1, and the queen on c2, like in the first example! But that is just crazy, right? The idea of doing three attractions is really pushing it! Wait a second. We can force the white queen to go to c2. 1. ... Qxc2!! White cannot take the queen with the rook because of Re1#. 2. Qxc2 Now what? 2. ... Re1+! The rook is attracted to e1. 3. Rxe1

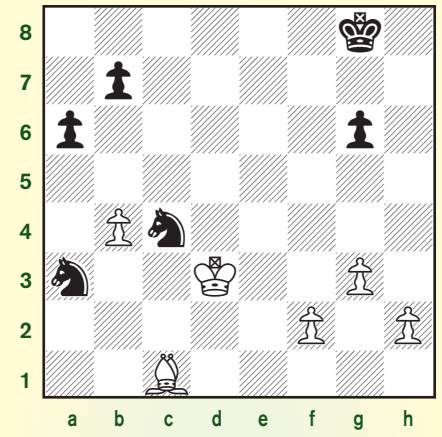


Do you recognize this position? Of course you do! Without giving it a second thought, let us play it out: 3. ... Bg2+! 4. Kxg2 Nxe1+ 5. Kf1 Nxc2



White has two pieces hanging, and he cannot complete a Hou-dini-like escape with 6. Bd4 because of 6. ... Nxd4. So everything has worked out great, right? Not so fast. We should look just a tiny bit deeper. 6. Bxh6 fxg6 7. Bc1 (defending a3) Now you must make sure not to play the horrible blunder 7. ... Nd4?!, after which Black wins a piece and the game after 8. Be3! It is clear that the knight is in some danger! Precise play is still necessary to play for a win. In fact, this endgame is very instructive and you might want to analyze it on your own. 7. ... Nc4! How about we grab a pawn? 8. Ke2 N2xa3 9. Kd3

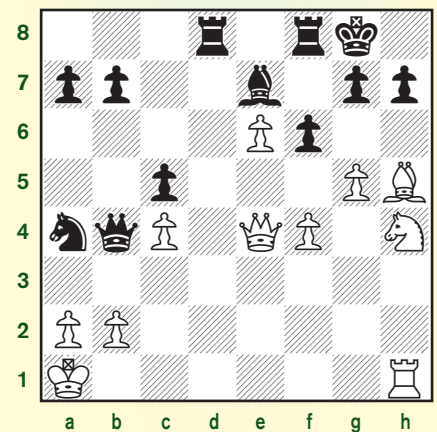
Solution on page 19



How inconvenient! The clingy king is trying to grab one of our knights. 9. ... Ne5+ 10. Kd4! (10. Ke4? Nac4 11. Kd5 b5! and the knights are free to roam.) 10. ... Nc6+ 11. Kc5 Nb5 Black has good winning chances and absolutely cannot lose.

Here I will end my own analysis, but I do suggest that you look at this position some more. Maybe you can find a win or prove that the position is a draw.

*When you wish one of your opponent's pieces were somewhere else, you should search for an attraction tactic to make it happen.* This is especially important when attacking the king: decoys can lure it out of its shelter or into a dangerous corner. Here is one more problem on the attraction theme; you can find the solution on page 19.



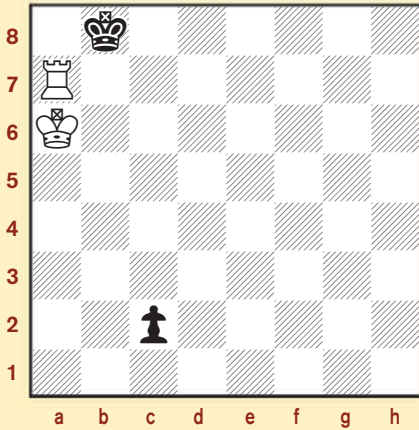
White to move

# WIN OR DRAW?

by Pete Tamburro

This set of problems is devoted to the "attraction" theme that young master Gurevich explains elsewhere in this issue. Make sure you write down whether you think it's a win or draw and jot some moves down.

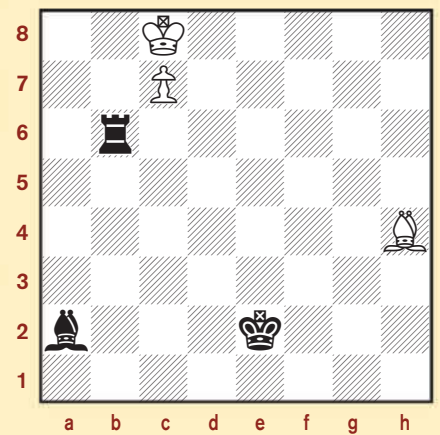
Position One: White to Play



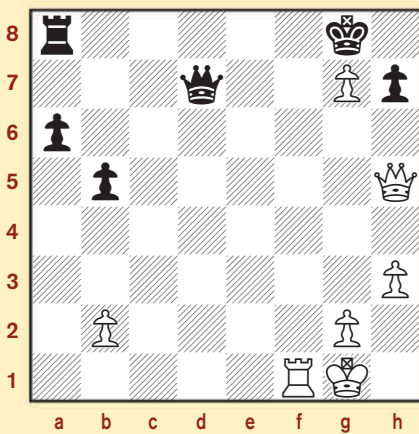
Position Three: White to Play



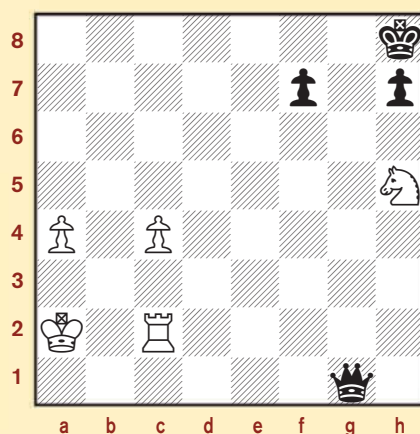
Position Five: White to Play



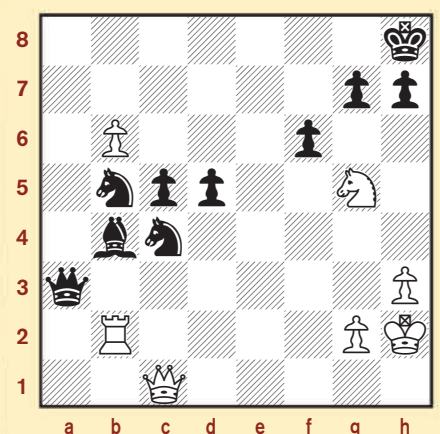
Position Two: White to Play



Position Four: White to Play



Position Six: White to Play



Answers on page 19 



# The

# Chess Detective

by NM Todd Bardwick



## PERPETUAL CHECK

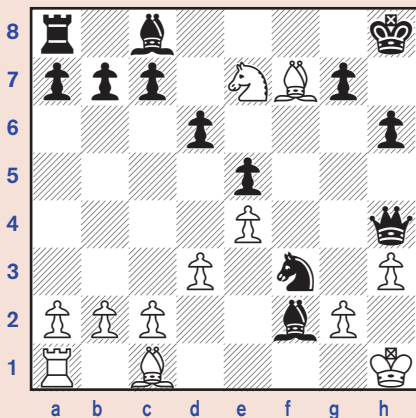
When your position looks like the game will end in defeat, it is important to look for a way to somehow salvage a draw. You may also look to draw if you are much lower rated than your opponent or all you need is a draw to win a tournament.

Of the different types of draws, perpetual check often offers the best prospect.

Perpetual check is a special type of threefold repetition where the player who is losing can force an unending series of checks. The player forcing the perpetual check normally falls just short of forcing a checkmate (which, of course, would be preferable!).

Usually when the player demonstrates that he can draw by perpetual check, his opponent agrees to the draw.

According to the *Oxford Encyclopedia of Chess Games, Volume 1*, the earliest known recorded perpetual check was between two unknown players in 1750.



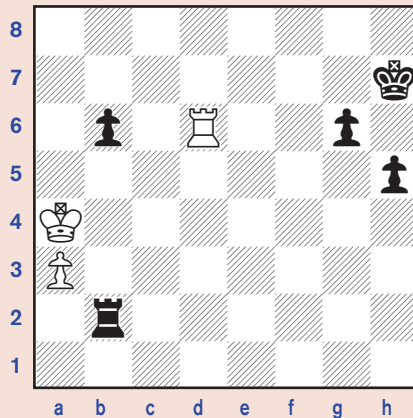
Position after 14. ... Nxf3 (capturing White's queen)

White is behind in material and forces a draw by playing 15. Ng6+ Kh7, Draw

**agreed.** White can repeat the position by playing 16. Nf8+ Kh8 17. Ng6+. Note that 16. Nxh4 would lose to 16. ... Nxh4 because Black would be ahead a knight in material.

Here is an endgame position from 1925 between David Janowski and Ernst Gruenfeld.

### Gruenfeld



### Janowski

Position after 59. ... Rxb2 (P) White to move

The position looks bad for White as he is behind two connected passed pawns. He did, however, make a key observation to salvage a draw: He notices that his king cannot move and is blocking his pawn. Without the rook, it would be a stalemate with White to move.

Janowski draws by perpetual check by trying to give away his rook by playing 60. Rd7+ Kh6 61. Rh7+! Kg5 62. Rxh5+ Kf6 63. Rf5+ Kg7 64. Rf7+ Kh6 65. Rh7+ Kg5 66. Rh5+ gxh5 Stalemate

Black's king cannot escape the annoying checks.

### GET YOUR RED HOTS HERE!

Or at least get your chess questions answered!

Send your questions for Daniel (pages 4-5) to: Gpetersen@uschess.org.

Or write to:  
What's the Answer!  
c/o Glenn Petersen  
44-D Manchester Court  
Freehold, NJ 07728

**Todd Bardwick is the author of Chess Strategy Workbook: A Blueprint for Developing the Best Plan. He can be reached at www.ColoradoMasterChess.com**



## 2012 Junior Grand Prix Standings



This unofficial list is based on USCF records and tournament director reports as of Wednesday, January 9, 2013. There are 6,815 players with JGP points and 539 JGP-eligible events have resulted in points earned. For a complete list of overall leaders, go to [www.uschess.org](http://www.uschess.org).

### Top 25 Overall Standings

NAME	STATE	PTS	EVENTS
ULRICH, ANNE E	WI	12608	14
HOFFMAN, EVAN	CA-S	12229	22
MADDEN, KERRIGAN	CA-S	10137	23
ABE, MAHIRO	NY	9255	11
PATEL, ADVAIT	WV	7690	22
YU, JENNIFER R	VA	7518	18
ASARIA, DANIAL	CA-S	7267	11
KOBLA, VISHAL	VA	7262	14
LIANG, AWONDER	WI	6926	9
PROLEIKO, JULIAN	MO	6924	11
MEHTA, MOULIK A	WI	6915	9
GHATTI, SANJAY	GA	6898	12
HARI, YASASVI	PA	6894	13
GORTI, AKSHITA	VA	6864	19
PAPAGEORGIOU, EFTHYMIOS	NY	6796	3
CAO-DAO, VIVIAN	VA	6698	11
DOMMALAPATI, ABHINAV	VA	6557	18
SRINIVAS, RAHUL	CA-N	6497	12
GUO, MAXIMILLIAN	OH	6355	8
PATTANAIAK, NEHA	VA	6023	14
AVIRNENI, SAITHANUSRI	GA	5888	11
POPKIN, SIMON	NY	5788	8
WANG, ANDREW	VA	5762	11
LIANG, ADREAM	WI	5753	8
TAYLOR-BRILL, SETH	NC	5694	9

For the top 50 overall, see [www.uschess.org](http://www.uschess.org)

### State Leaders

NAME	STATE	PTS	EVENTS
KING, KENNY PAUL	AK	2422	1
MARKIN, ARDEN QUINLAN	AL	3749	4
CHIKKALA, SRIKAR	AR	4534	9
ENG, RACHAEL	AZ	4299	9
TANG, CHARLES	CA-N	5628	11
KRISHNAN, AJAY	CA-S	5146	8
HERMAN, REBECCA	CO	2986	4
TANENBAUM, ZACHARY CHEN	CT	5284	13
GLICKMAN, DANNY	DC	1323	1
LI, HENRY	DE	5479	3
WU, HENGYI	FL	4354	9
DASARI, SRIHITHA	GA	5227	7
WONG, NICHOLAS NAINOA	HI	3150	2
SALEEM, ARSHAQ	IA	4576	9
HARMON-VELLOTTI, CARL HONOR	ID	5282	7
TURGUT, AYDIN	IL	4711	9
EGAN, MAX	IN	4838	5
ZENG, SHEENA	KS	5507	9
BAGLEY, TAYLOR MICAHAH	KY	2943	5
SNEE, LUKE DAVIDSON	LA	3331	2
ELBIEH, ERIK M	MA	4882	3
SINHA, SAHIL	MD	5104	13
VAUGHN, ORLY	ME	1718	1
SONG, EDWARD	MI	3869	11
ZHOU, FRANKLIN PUYANG	MN	3887	10
BERRY, CLARK ZHANG	MO	4210	9
HINTON, JAMES WADE, II	MS	3408	1
LEE, CONRAD	MT	2644	2
SHUFORD, WILLIAM	NC	5076	4
POTINENI, SHASHANK	NE	886	1
O'YOUNG, ANSON	NH	2755	6
DER MANUELIAN, HAIK OLIVER	NJ	5579	9
VAUGHN, HELEN	NM	3218	3
BANERJI, NEIL	NV	2318	2
HEUBLUM, JACK E	NY	5363	5
HUANG, KEVIN	OH	3745	9
ZHONG, HOWARD	OK	3255	5
GRABINSKY, AARON	OR	3773	3
WLEZIEN, ALEXANDER	PA	4687	13
GU, CHRISTOPHER	RI	2841	6
DIAS, ADITYA	SC	2278	3
CASTEEL, JERRY JOHN, III	SD	532	2
WILKINSON, MATTHEW	TERR	3658	2
KOTHAPALLE, TANISH	TN	5624	10
OBILI, ABHISHEK	TX	5191	7
RAGULA, KANU	UT	4350	4
DOMMALAPATI, AASA	VA	5547	12
KATZ, GABRIEL	VT	794	4
LIU, BRIAN	WA	5419	3
ULRICH, THOMAS M	WI	5119	6
CRAIG, JOHN H	WV	1558	1



From 22nd place last month to seventh place in late December, DANIAL ASARIA, 11, is making his move!





# Free Ground Shipping on all orders over \$99!



 **USCF SALES**

(888) 512-4377 (CHESS)  
[www.USCFSales.com](http://www.USCFSales.com)

Free Ground Shipping applies only in contiguous 48 states. Hawaii, AK and US territories not eligible  
Total excludes shipping charge, sales tax and coupon discounts



You can do it!

# Moving Damiano's Mate One File Over

by Jon Edwards

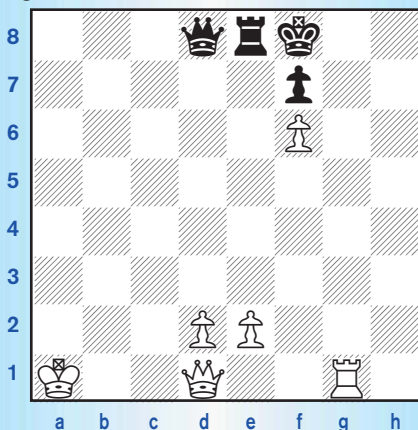
Those of you who mastered Damiano's Mate in last month's issue will have little trouble with the first three positions. But the fourth position this month contains quite a surprise.

## Position #1:

### Switching the attack to the g-file

In the last issue of *CL4K*, we took a long look at Damiano's checkmate. There, White set up a rook sacrifice down the h-file by maneuvering a pawn to g6 and sacrificing the rook on h8.

Of course, the mate can also occur when the g-file is open with a pawn on f6. Many players find this mating pattern even easier to achieve ... simply advance the f-pawn to f6, pry open the g-file, and then sacrifice the rook on g8.



**White to move**

*This time, White will sacrifice on g8 rather than h8. There's a quick mate after Black captures.*

Here, White has a pawn on f6, the rook can reach g8, the queen can

reach the open g-file, and the king's escape to the queenside is blocked, here by the rook on e8.

1. Rg8+ Kxg8 2. Qg1+ Kf8
2. ... Kh7 3. Qg7#
3. Qg7#

Those of you who worked through the conditions for the regular Damiano sacrifice in the last issue will quickly recognize the similarities here. All we have done is move the entire sacrifice over one file. This modified Damiano sacrifice works and the following four observations are very similar to last month's:

1. White has a pawn on f6 controlling both g7 (to support Qg7 mate) as well as the escape square on e7. Black has a pawn on f7 which prevents Black's king from escaping after the rook offer to g8.
2. Black has a piece on e8 (other than a knight) that blocks the king from escaping towards the queenside. If Black has a knight on e8, the sacrifice fails because the queen will not then be able to use g7 for the checkmate.
3. White has at least one rook able to sacrifice itself on g8 in order to draw the king to g8.
4. White's queen, after the rook sacrifice(s), has access to the g-file in order to check and immediately thereafter checkmate Black's king on g7. As we shall see, the queen will reach the g-file at many of the squares on the g-file, even g6 if the f7-pawn is pinned by a light-squared bishop on the a2-g8 diagonal. We

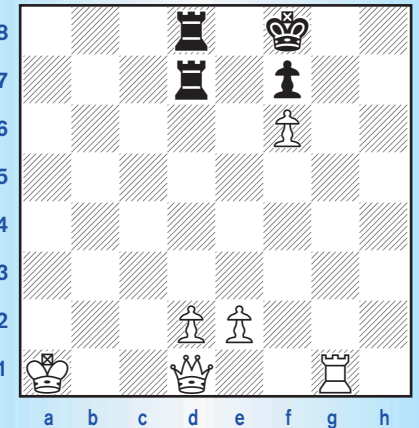
can add here the possibility of the queen safely reaching squares like h6, h7, and h8.

As we saw last month, the attacking side may have to ready the rook sacrifice(s) on the g-file with another sacrifice aimed at providing the queen with access to the key g-file.

## Position #2:

### When e8 is unoccupied

When e8 is unoccupied, the defending king, after the capture of the rook on g8, may have an opportunity to escape to safety on the queenside.



**White to move**

*The sacrifice works here despite the absence of a piece on e8 because the king's escape square on d7 is blocked by a rook.*

1. Rg8+ Kxg8 2. Qg1+ Kf8 3. Qg7+ Ke8 4. Qg8#

Note that if the Rd7 were instead a knight, Black would be able to defend successfully with ... Nd7-f8.

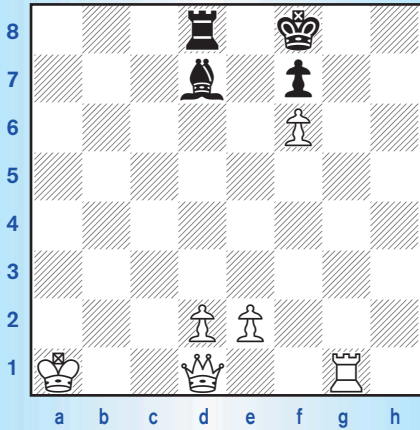
## Position #3:

### A Bishop occupies d7

The sacrifice comes under fire when d7 is open, or when a bishop (or a



knight) occupies d7. Note that White's queen will enter the g-file behind g4, the square that the bishop can use to block the queen's check, opening d7.



White to move

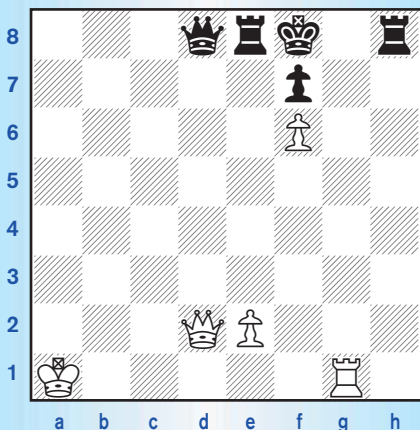
1. Rg8+ Kxg8 2. Qg1+ Bg4! 3. Qxg4+

But now d7 is available to the king.  
 3. ... Kf8 4. Qg7+ Ke8  
 ... and the king escapes.

**Position #4:**

**There's a defending rook on h8**

Here's a remarkable new feature. The position is very similar to what we have worked through, but here, we have added a black rook on h8 to defend g8. Note that White's queen now has access to the g-file only at g5 and, importantly, access to the h-file at h6.



White to move

*The sacrifice works here too despite the presence of the rook on h8!*

When White sacrifices the rook here on g8, Black has a choice of capturing the rook with the king or with the Rh8. The capture with the king meets a quick, familiar mate with Qg5-g7. The capture with the rook also meets a quick mate because White has Qh6+.

1. Rg8+ Kxg8

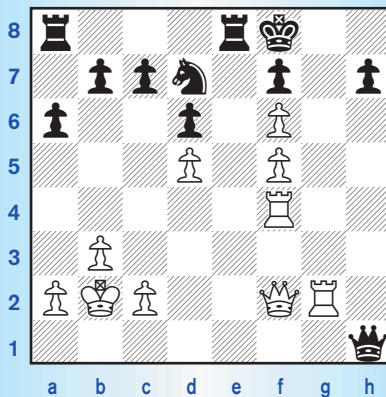
1. ... Rxg8 2. Qh6+ with mate next on g7.

2. Qg5+ Kf8 3. Qg7#

Here, once again, the king's escape is blocked by the Re8.

In the following quiz, all six solutions again contain the complete games. To improve more quickly, play through the entire game. All the top players do that! Be sure to watch how the pawn arrives on f6, how the files open, and how the pieces reach their attacking squares.

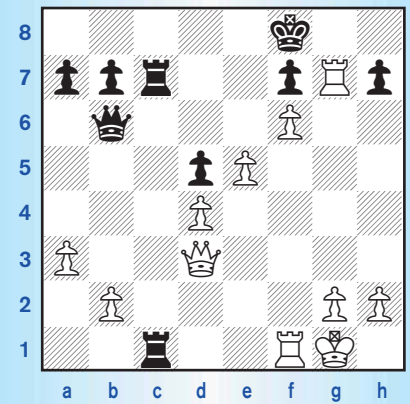
**Quiz #1: White to move**



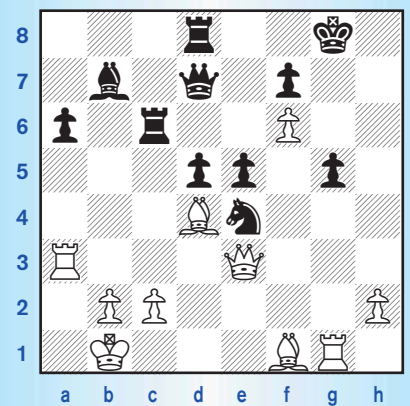
**Quiz #2: White to move**



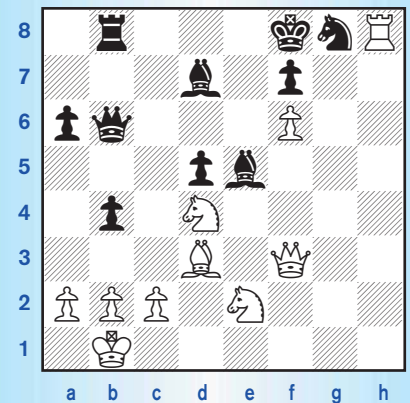
**Quiz #3: White to move**



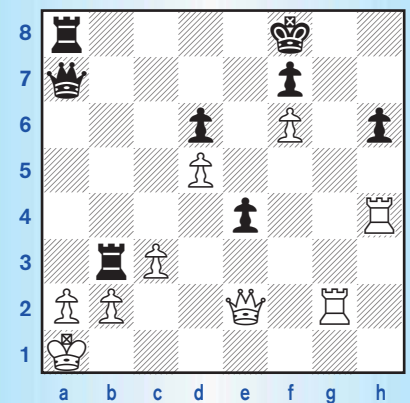
**Quiz #4: White to move**



**Quiz #5: White to move**



**Quiz #6: White to move**



# Seven in one blow

## My First Win with a Grandmaster

-----Well, okay, it was only one. And it wasn't a fly, it was a grandmaster, and this is no fairy tale! And 13-year-old Akshat isn't a brave, little tailor. He is quite serious about becoming a grandmaster. Judging from his blog, <http://QuestToGM.blogspot.com>, he's going to make it sooner than later!

Below, he annotates his first win against a grandmaster. -Editor

I just finished playing in one of the strongest tournaments I've played—The Rose Valley Open 2200 and above, an 11 round tournament held in the east coast city of Kolkata, India. It reminded me of the awesome Czech Open tournament, but this one had fewer players. My starting rank was 77 out of 100, so there were many opportunities to play higher rated players.

In the first round I was paired with an international master (IM) rated 2480. The game was rather quiet, and pretty soon I found myself not able to construct a good plan. I probably should have just played "common" moves. Instead, I ended up consuming a lot of time trying to figure out how I can open the position. But the opponent defended solidly, and suddenly his pieces started becoming active and I was finding it hard to ward off the attack. After hanging a pawn, I had a chance to balance out the game again, but I missed it and lost. I kept close in the game, but as we know by now, close doesn't cut it at the end.

### BIG FISH

In the next round I was paired with a grandmaster (GM), who had just won the Commonwealth Championship a few days ago. So I was going to play with a "Big Fish!" It was a "Nimzo" and the game was fairly balanced throughout. We both made some mistakes, and soon found ourselves low on time in an endgame. He was slightly better due to my pawn structure, but I was confident I could draw. Then for a poorly thought

through move, I let him take my pawn and lost promptly after that. It was just something I couldn't explain. I think I moved my king away, thus losing the pawn, because I tried to get my king to be "active."

There was a clear lesson for me—if you're going to get active and start throwing material, make sure there's a forced way to get it back. Another game with an experience player where I hung close, but lost on something silly and self-inflicted.

### SALVATION

I muddled through the next rounds, losing to a lower rated, but managing to beat an IM also. In the final 11th round, fate gave me a chance to salvage something memorable from this tournament. I found myself seated across GM Marani Rajendran Venkatesh for what was to be my last game of 2012. It was a Kings Indian Reverse and I got a favorable position out of the opening due to my well-developed pieces.

I didn't play accurately after that, and the GM took the upper hand. But I managed to stay in the game, and just kept shuffling around waiting patiently for an opportunity. But before I could get my opportunity, the GM received his! Luckily for me he missed it! Instead of playing Rxe5, Qxe5, Qxc6, he played the developing Be3.

### THAT WAS CLOSE!

Boy, was I relieved. Subsequently, I found a nice tactical break in the center. Now it was suddenly me who was playing for the win! However things were not so easy still. I had about 12 minutes on my clock while the GM had 37. My heart was pounding, as my eyes darted back and forth all over the board, searching desperately for the move that strengthened my chance to win. Four minutes ... three minutes ... I had to move something.

I quickly moved Ne5, forcing his next move. Thereafter, I attacked the GM's rook with my queen. But as soon as I re-



by Akshat Chandra

leased the queen piece, I realized the GM has an option which neutralizes my advantage which puts him in a stronger position.

My heart sank like a stone in a well, as I realized I'd bungled the advantage due to an incorrect sequence. All that euphoria vanished in an instant. I was kicking myself for blowing the one chance I got to win this game. As expected the GM found the appropriate move, and now it was the GM back in the driver's seat.

He took a lot of time, but still made some strange decisions. I had about three minutes and the GM was down to nine minutes now. I played Qe1+ expecting an exchange of queens. But GM Venkatesh played Kg2. That was a very weak move.

My heart started pumping ferociously as I looked at him wondering was he serious!! Could there be something I missed? The clock steadily blinked down to two minutes ... one minute ... I had to move now. The time was slipping away. I couldn't see the GM's move in any other way but as a blunder.

### MOVE IT!

With seconds left, I made my move Ne3+, a simple but efficient tactic. Realizing his blunder, the GM took the knight piece and offered a draw. My decision was instant—I declined his offer.

If I wished for a draw, I had the option for a perpetual check. But I'd already thought this through sufficiently enough to recognize that I was in a very favorable position. From thereon, I simply executed the winning moves and concluded the



game with finesse. When GM Venkatesh was about to get mated, he resigned. Yes, the GM resigned!

My first win over a GM! I was ecstatic and a big smile broke out. It took me all of three years of playing chess to finally beat a GM. My last game of the year 2012 ended with a win over a GM. Those great, wily fishes always had gotten away in the past. At best I'd draw. This time the hook was sunk. I had finally come out on top.

**White: GM M. R. Venkatesh (2520)**

**Black: Akshat Chandra (2294)**

**Rose Valley Open International, Kolkata, India**

December 13, 2012

My last game of 2012 and it is against a GM. It was also the last round of this very strong open.

**1. Nf3 Nf6 2. g3 g6 3. Bg2 Bg7 4. d3 d5 5. 0-0 0-0 6. Nbd2**

The Reversed Kings Indian, I expected him to do this and my intuition was correct. **6. ... c5 7. e4 Nc6 8. Re1 e5**

I knew it until here. Black usually gets a Maroczy setup, and tries to put pressure on the d3-pawn.

**9. c3 h6**

This seemed logical enough since the bishop is usually headed to e6.

**10. exd5**

If 10. Qb3 dxe4 11. dxe4 (Generally these type of positions favor White due to the c4-square, and my dark-squared bishop. But here, he doesn't have enough time to consolidate, and Black reaches a comfortable game after ... Be6 and ... a6. If White plays a4, then the b3-square would be weakened, and Black can make use of that by ... Na5).

**10. ... Nxd5 11. Nc4**

The right move. 11. Qb3 crossed my mind during the game, but Black can simply play 11. ... b6 12. Nxe5 Nxe5 13. Bxd5 Bf5.

**11. ... Re8 12. Nfd2**

Played immediately, however this isn't the most common move. Theory suggests 12. a4 which anchors the c4-knight. But Black simply continues 12. ... Bf5 with a comfortable game.

**12. ... Be6 13. Ne4 b6**

13. ... Qe7 is better. For some reason this top choice of the computer didn't cross my mind despite its simplicity. I wanted to defend c5 with a piece of

lesser value. Sometimes our mechanical friends can be wrong too.

**14. a4 Bf8**

For some reason I overreacted about the d6-square. Some lines which I considered during the game:

14. ... Qc7: I rejected this because of 15. a5 Rad8 16. Qa4 (But, there is no real threat for Black here and I can simply continue with doubling on the d-file by means of ... Re7).

14. ... Qd7 15. a5 also didn't look good to me, but 15. ... Rab8 16. Ned6 Red8 17. axb6 axb6 18. Qa4 Nde7 and Black is better. Perhaps I was under the impression that White must be having something, however Black can defend with a couple of precise moves, and then proceed to carry on with his own agenda.

**15. a5 b5**

A very risky plan. 15. ... f5 16. Ned2 Bg7 17. axb6 axb6 18. Rxa8 Qxa8 19. Bxd5 Bxd5 20. Nxb6 and basically Black just loses a pawn for nothing, which is not to be recommended!

15. ... Rb8 16. axb6 axb6 17. Ne3 Bg7 18. Nxd5 Bxd5 19. Be3 (19. c4 Bxe4 [19. ... Be6 20. Nxc5 bxc5 21. Bxc6] 20. Bxe4 Nb4 21. Ra3 f5 22. Bg2 Re7 23. Bd2 Rd7 24. Bxb4 cxb4 25. Rb3 e4 26. Bf1 exd3 27. Bxd3 Kh7) 19. ... Na5. As mentioned before, moving a4 weakens b3, and Black's knight and bishop look to sink their teeth in it.

**16. Ne3**

The problem with the retreat of the bishop from g7. The f6-square becomes a constant pain, and I need to watch out for forks.

**16. ... f5 17. Nxd5 Bxd5 18. Nf6+ Qxf6 19. Bxd5+ Kh7**

So I have managed to trade down, but White has the two bishops, and the better pawn structure. Also my f8-bishop isn't seeing any light. However White has no way to really press his advantage.

**20. Qf3 Rac8 21. a6**

Now b5 can't be protected by a6, and also freeing the a1-rook.

**21. ... Red8**

Inverting the move order with 21. ... Qd6 is more accurate.

**22. Be3**

22. Bxc6 Rxc6 23. Rxe5 Qxe5 24. Qxc6 Qe1+ 25. Kg2 Rxd3 (While calculating, I thought about this line and assumed it's fine for me. However White wins with 26. Bxh6. I had seen this idea, but in a different line.) 26. Qb7+ Kg8

(26. ... Bg7 27. Bxh6) 27. Bxh6 Qxa1 28. Qb8 Kh7 29. Qxf8 Rd7 30. Bf4 Qxa6 31. Be5 Qc6+ 32. f3 g5 33. Qxf5+ Kg8 34. Qxg5+ Kf8 35. h4.

**22. ... Qd6**

Now Black is back in the game.

**23. Bb3**

Black as a lot of pressure after 23. c4 Nb4.

**23. ... Qf6 24. Red1**

24. Rad1 (Why not this rook?) 24. ... Rc7 (I can't play 24. ... c4 because of 25. dxc4 e4 26. Qe2 Ne5 27. Rxd8 Rxd8 28. cxb5 Nf3+ 29. Kf1 Nxe1 30. Kxe1).

**24. ... Rc7 25. h4 Rcd7 26. Bc2 Kh8 27. h5**

Obviously he either missed or underestimated my 28th move.

**27. ... g5**

27. ... gxh5 28. Qxh5 f4 29. Bc1 Rg7 30. Kg2 is what the computer recommends, but I disagree.

**28. g4 e4 29. Qe2**

Loses immediately. But it is his best shot since 29. dxe4 f4 30. Rxd7 Rxd7 31. Bc1 Ne5 32. Qe2 c4 33. f3 Bc5+ 34. Kg2 Qb6 and now White is condemned to passivity.

**29. ... f4 30. Bc1 exd3 31. Rxd3 Re7 32. Qd1 Rde8**

In time pressure I make a hasty reflex move. (32. ... Rxd3 33. Qxd3 [Just as good for Black is 33. Bxd3 Qd6 34. Qf1 Ne5] 33. ... Re1+ 34. Kh2 [Even worse for White is 34. Kg2 f3+ 35. Qxf3 Rg1+] 34. ... Qf7 35. Qf5 Qxf5 36. Bxf5 c4).


**33. Bd2 Ne5**

33. ... Qe6 still retains a major portion of the advantage according to the engines but it's not such an obvious move when one is short on time. 34. Rh3 Ne5 35. Bf5 Qc6 36. c4 Nxc4 37. Bc3+ Bg7 38. Bg6 Rf8 39. Rd3 Bxc3 40. Rxc3 Ne5 (Not as good is 40. ... Nxb2) 41. Bf5 Rxf5 (41. ... b4 42. Rh3 Rxf5 [42. ... Kg7 43. b3 Rxf5 44. gxf5 Qf6] 43. gxf5 g4 [Almost as good is 43. ... Qf6] 44. Rd3 Nxd3 45. Qxd3 g3 46. Rd1 gxf2+ 47. Kxf2 Qf6 48. Kf1).

Decisive is 33. ... Re2 34. Be3 (The move 34. Re3 works but not as strong).

**34. Rd5 Qe6 35. c4 Nxc4 36. Bc3+ Bg7 37. Bf5 Qe2**

37. ... Qg8 38. Qd3 Bxc3 39. Qxc3+ Qg7 40. Rxc5 Nxb2 41. Qxg7+ Kxg7

Please turn to page 14 

42. Rc6 Nc4 43. Rg6+ Kf7 44. Rxh6 Re1+ 45. Rxe1 Rxe1+ 46. Kg2 Ne5 47. Rh7+ Ke8 48. Rxa7 b4 49. Rb7 and the a-pawn provides game-winning pressure. **38. Bxg7+**

38. Qxe2 Rxe2 39. Rxc5 Bxc3 40. bxc3 Nd2 41. Rxb5 Nf3+ 42. Kg2 Nh4+ 43. Kf1 Nf3. I might be able to salvage a draw here but it's not exactly where I want to be after I was playing for a win a couple moves ago.

White is better after 38. Rxc5 Bxc3 39. bxc3 Qd2 40. Qxd2 Nxd2 41. Rxb5 Re1+ (White weathers the storm after 41. ... Nf3+ 42. Kg2 Nh4+ 43. Kf1 f3 44. Rd1 Ng2 45. Kg1) 42. Rxe1 Rxe1+ 43. Kg2 f3+ 44. Kh3 Rh1+ 45. Kg3 Rg1+ 46. Kh2 Rg2+ 47. Kh1 Rxf2 48. Bd3.

**38. ... Kxg7 39. b3 Qe1+**

39. ... Qxd1+ 40. Raxd1 Na5. This rather queer series of moves is once again the engine's recommendation. However I disagree, once again.

**40. Kg2**

Suicide. White gets no more chances.

**40. ... Ne3+**

This natural sacrifice doesn't even need an exclamation mark. I just made this move without thinking too much because it was just too obvious, and at least it secured a draw, which was a lesson from the past.

**41. fxe3 Qg3+ 42. Kf1 Qh3+**

If 42. ... f3, then 43. Qd2 Rxe3 is a draw.

**43. Kg1 Qxe3+ 44. Kg2 Qg3+ 45. Kf1 Qh3+**

Just repeating for some time.

**46. Kg1 Qg3+ 47. Kf1 Re1+**

The last finesse.

**48. Qxe1 Rxe1+ 49. Rxe1 Qf3+ 50. Kg1 Qxd5 51. Re7+ Kf6 52. Rxa7 Qd1+ 53. Kf2 Qd2+, 0-1.**

And White resigned. It was a thrilling game with chances for both sides, but luckily I came out on top. My first win over a GM!! About time. Finally these wily guys didn't slip away like fish out of a net.

So to recap, despite my horrendous start of 0/3, I managed to recover and even beat my first GM. A truly memorable experience. Let's hope this GM victory is the first of many to come!

## Tournament Life

continued from pg. 23

### Mar. 30, Marshall Saturday U1400!

4-SS, G/40d5. Marshall CC, 23 W. 10th St., NYC. 212 477-3716. **(\$300 b/20):** \$160-80, U1100 \$60. **EF:** \$40, members \$20. **Reg.:** 12:15-12:45. **Rds.:** 1-2:45-4:30-6:15PM. One bye available, request at entry. [www.marshallchessclub.org](http://www.marshallchessclub.org).

### Mar. 31, Marshall Sunday G/60!

4-SS, G/55d5. Marshall CC, 23 W. 10th St., NYC. 212-477-3716. **(\$540/40):** \$240-120, U2000 95, U1700 85. **EF:** \$40, members \$20. **Reg.:** 11:15-11:45. **Rds.:** 12-2:30-4:45-7. One bye available, request at entry. [www.marshallchessclub.org](http://www.marshallchessclub.org).

### Apr. 2, NEW! Marshall Tuesday Action!

4-SS, G/25d5. Marshall CC, 23 W. 10th St., NYC. 212-477-3716. **EF:** \$40, members \$20. **(\$360/24):** \$160-80, U2100 \$65, U1800 \$55. **Reg.:** 6:15-6:45. **Rds.:** 7-8:15-9:30-10:45. One bye available, request at entry. [www.marshallchessclub.org](http://www.marshallchessclub.org).

### Apr. 4, Marshall Thursday Game 30 Grand Prix!

See Grand Prix.

### Apr. 5, NEW! Marshall Friday U2000 Action!

4-SS, G/25d5. Marshall CC, 23 W. 10th St., NYC. 212-477-3716. **EF:** \$40, members \$20. **(\$360/24):** \$160-80, U1800 \$65, U1600 \$55. **Reg.:** 6:15-6:45. **Rds.:** 7-8:15-9:30-10:45. One bye available, request at entry. [www.marshallchessclub.org](http://www.marshallchessclub.org).

### Apr. 6, Marshall Saturday U1800

4-SS, G/40d5. Marshall CC, 23 W. 10th St., NYC. 212-477-3716. **(\$300/24):** \$160-80, U1300 \$60. **EF:** \$40, members \$20. **Reg.:** 12:15-12:45. **Rds.:** 1-2:45-4:30-6:15. One bye available, request at entry. [www.marshallchessclub.org](http://www.marshallchessclub.org).

### Apr. 11, Marshall Thursday Game 30 Grand Prix!

See Grand Prix.

### Apr. 13, Marshall Saturday U1600!

4-SS, G/40d5. Marshall CC, 23 W. 10th St., NYC. 212 477-3716. **(\$300 b/24):** \$160-80, U1300 \$60. **EF:** \$40, members \$20. **Reg.:** 12:15-12:45. **Rds.:** 1-2:45-4:30-6:15PM. One bye available, request at entry. [www.marshallchessclub.org](http://www.marshallchessclub.org).

### May 17-19 or 18-19, 21st annual New York State Open

See *Chess Life* or [www.chesstour.com](http://www.chesstour.com).

## Ohio

### Chess Magnet School Junior Grand Prix!

#### A State Championship Event!

**Apr. 13-14, Ohio High School and Middle School Championships**  
6SS; **Sections:** High School Championship (9-12), High School Reserve (9-12 U1000), Middle School Championship (K-8), Middle School Reserve (K-8 U800). Championship sections: rounds 1-3 G/60 d5, rounds 4-6 G/90 d5. Reserve sections: all rounds G/60 d5. Championship sections restricted to players residing or attending school in Ohio. **Site:** Sycamore High School, 7400 Cornell Rd., Montgomery (Cincinnati), OH 45242. **EF:** \$35 through Mar 31, then \$40 through Apr 11. (\$10/\$15 for federal lunch program students.) All registrations must be received by April 11. No on-site registration. **Awards:** Individual trophies to top 10 places in each section and all others scoring 4.0 or more; team trophies to top 5 teams in each section. **Complete information at:** [www.chessinnati.com](http://www.chessinnati.com). **Contact:** Alan Hodge 513-697-6930, [a.hodge195@gmail.com](mailto:a.hodge195@gmail.com).

## Pennsylvania

### Maryland Chess Association (MD)

See Maryland.

### Feb. 24, PCL February Quick Quads (QC)

3RR, G/15d3. Wm. Pitt Union, Univ. of Pittsburgh, 5th Ave. & Bigelow, Pittsburgh, PA 15213. **EF:** \$10, \$7 Jrs. \$20 to 1st/quad. **Reg.:** 11-11:15am. **Info:** [martinak\\_tom\\_m@hotmail.com](mailto:martinak_tom_m@hotmail.com), 412-908-0286. W.

### Mar. 8, 2013 PA Quick Chess Champ. (QC)

See Grand Prix.

### Mar. 9-10, 2013 Carlisle Open & PA Collegiate Championship

See Grand Prix.

#### A State Championship Event!

#### Chess Magnet School Junior Grand Prix!

#### Mar. 9-10, 2013 PA State Scholastic Championship

5SS. 192 Trophies! (With 136 Individual & 56 Team). Hotel Carlisle, 1700 Harrisburg Pike, Carlisle, PA 17015, Exit 52A NB/Exit 52 SB off I-81, Exit 226 off PA Turnpike. 8 sections (Sat & Sun 3/9 & 10 unless indicated): **EF:** K-3 Open: (Sat 3/9 only) \$29. K-6 U800: (Sat 3/9 only) \$27. K-9 U1000: (Sun 3/10 only) \$27.25. K-6 Open: \$30.50. K-8 Open: \$31.50. 7-12 U1000: \$28.50. 7-12 U1300: \$29.50. K-12 Open: \$32.50. **All:** EFs if rec'd by 2/18, \$10 more rec'd 2/19-3/4, \$20 more after 3/4. Feb 2013 ratings used. **Bye:** limit 1, ask by rd 2. **Reg Fri** 3/8 6-10 pm, Sat 3/9 9:30-10:15 am, Saturday entries get 1/2-bye. \$5 charge for changes/refund after 2/18. **Rds (Sat 3/9 1-day sections):** G/40d5; 10-11:45-2:30-4:55-5:30; **(Sun 3/10 K-9 U1000):** G/40d5; 9-10:30-12:30-2-3:30; **(2-day sections):** G/90d5; 10-2-5:30, 9-1. **Bughouse:** Reg on-site only until Sat 3/9 8:30pm. Rds begin Sat 3/9 8:45pm. **EF:** \$20/team. **HR:** Mention "PA States" for best rate; 800-692-7315 \$75. **Ent:** PSCF, c/o Tom Martinak, 25 Freepost St., Pittsburgh, PA 15223-2245. **Info:** 412-908-0286 [martinak\\_tom\\_m@hotmail.com](mailto:martinak_tom_m@hotmail.com), [www.pscfchess.org/pascholasticchamp/](http://www.pscfchess.org/pascholasticchamp/). W. 2-day sections are JGP.

### Mar. 24, PCL March Quick Quads (QC)

3RR, G/15d3. Wm. Pitt Union, Univ. of Pittsburgh, 5th Ave. & Bigelow Blvd., Pittsburgh, PA 15213. **EF:** \$10, \$7 Jrs. \$20 to 1st/quad. **Reg.:** 11-11:15am. **Info:** [martinak\\_tom\\_m@hotmail.com](mailto:martinak_tom_m@hotmail.com), 412-908-0286. W.

### Apr. 6, 2013 PA State Game/29 Championship (QC)

See Grand Prix.

### Apr. 7, PCL April Quick Quads (QC)

3RR, G/15d3. Wm. Pitt Union, Univ. of Pittsburgh, 5th Ave. & Bigelow Blvd., Pittsburgh, PA 15213. **EF:** \$10, \$7 Jrs. \$20 to 1st/quad. **Reg.:** 11-11:15am. **Info:** [martinak\\_tom\\_m@hotmail.com](mailto:martinak_tom_m@hotmail.com), 412-908-0286. W.

## Rhode Island

### Mar. 9, 2013 CT State Open & Scholastic Championships (CT)

See Grand Prix.

## Tennessee

### Apr. 5-7, SuperNationals V

See National.

## Texas

#### A State Championship Event!

#### Mar. 23-24, 2013 Texas State Scholastic Championships

7SS. 700 Convention Center Blvd., McAllen, TX 78501. **HR:** see website for hotel information. **Four championships in one great location:** TX Primary Scholastic Championships; TX Elementary Scholastic Championships; TX Middle School Scholastic Championships; TX High School Scholastic Championships. **EF:** \$41 by 3/06; \$69 after 3/06 or on site. On Site Registration: Friday, 7-9pm, Saturday, 7-7:45am. Saturday registrants may receive a 1st Rd. 1/2-pt. bye. One 1/2-pt. bye (for any round) allowed if requested by the end of Rd. 2. **Sections:** K-1 Championship, Primary (K-3) Championship, Primary JV (K-3 w/Ratings Under 700), Elementary (K-5/6) Championship, Elementary JV (K-5/6 Under 800), Elementary Novice (K-5/6 Under 500), Middle School (6-8/9) Championship, MS JV (6-8/9 Under 900), MS Novice (6-8/9 Under 600), High School (9-12) Championship, HS JV (9-12 Under 1000). See Article IX, Section 1E, TCA Bylaws for each section's eligibility requirement, [www.texaschess.org/2007/03/bylaws.html](http://www.texaschess.org/2007/03/bylaws.html). Also [www.swchess.com](http://www.swchess.com) also has eligibility rules. Four-year chess II scholarship to The University of Texas at Dallas to winner of High School Championship section. Winner must meet UTD entrance requirement and follow team rules. UTD is sole judge as to who wins the scholarship. For more information on UTDallas Scholarships see [www.utdallas.edu/chess/scholarships/chess-program-scholarships.html](http://www.utdallas.edu/chess/scholarships/chess-program-scholarships.html) Trophies for top 20 individuals and top 15 teams in each section plus participation medals for all, and plus Score Awards for players scoring 4 or more points that do not win an individual trophy. **Schedule:** Round times vary depending on the Championship; Time control also varies. For round times and time control, see: [www.swchess.com](http://www.swchess.com). **Side Events:** See website for side event. Side event registration on site only. All registrations (except Side events) available on line: [www.swchess.com](http://www.swchess.com) and you can download flyers and entry forms. Checks payable to Dallas Chess Club. Mail entries to Dallas Chess Club, c/o Barbara Swafford, 2709 Longhorn Trail, Crowley, TX 76036. For tournament info, visit our website or contact Barbara Swafford, [info@dallaschess.com](mailto:info@dallaschess.com) or 214-632-9000. Refunds will be given only up to 3/18 with a \$10 surcharge for withdrawing, after 3/18 there will be no refunds. There will be no substitution of team members. There will be a \$10 change fee for changes after 3/18. There will be a \$5 surcharge per player for phone registrations USCF membership is required. Proof of membership is required or player must join/renew their memberships. No registration/changes/or withdrawals after 3/18/13. After that date you must make changes at site (McAllen Convention Center). NS, NC, W.

## Utah

### June 8-9, International Youth Championship (NV)

See Nevada.

## Vermont

### May 3-5 or 4-5, 24th annual Vermont Resort Open

See *Chess Life* or [www.chesstour.com](http://www.chesstour.com).

## Virginia

### Maryland Chess Association (MD)

See Maryland.

### July 3-7, 4-7, 5-7 or 1-7, 41st Annual World Open

See *Chess Life* or [www.chesstour.com](http://www.chesstour.com).

## Wisconsin

#### Chess Magnet School Junior Grand Prix!

#### Mar. 2, 2013 March Madness!

Olympia Resort, 1350 Royale Mile Rd., Oconomowoc, WI 53066. **In 4 Sections:** (Open, K-12, K-6 & K-3). USCF rated! Four rd swiss, G/60 d/5. **Rds.:** 10-1-4-7. **Reg.:** 3/2 8:30-9:30 AM. **EF:** \$15 by 2/28, after 2/28 \$18; new members \$3 less. **Prizes, Open:** Donated Books. K-12, K-6, & K-3: Trophies to Top 3 players and Overall best team. All others in K-12, K-6 & K-3 will receive participant medals. **ENT:** Ben Corcoran, 2711 N. University Dr. #64, Waukesha, WI 53188. **Questions:** [benzochess@chess.com](mailto:benzochess@chess.com) or 262-506-4203. **INFO:** [www.benzochess.com](http://www.benzochess.com).

Practice makes perfect ...





# TALES OF THE ARABIAN KNIGHTS

BY RICK KENNEDY ILLUSTRATIONS BY PAMELA KEY



## Knights vs. Bishops

"IS YOUR MAJESTY ALL RIGHT?" SHE ASKED WITH CONCERN. "I THOUGHT I HEARD A MOAN ..."

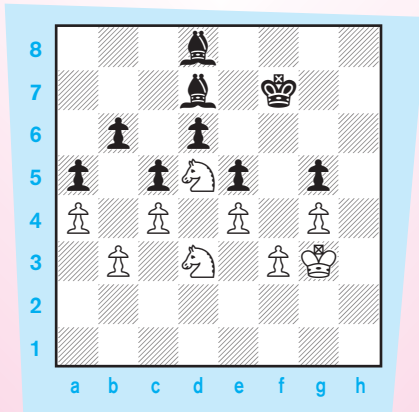
THE KING SHOOK HIS HEAD, SMILING. "NO," HE SAID. "MY BROTHER AND I WERE JUST HAVING ANOTHER ONE OF OUR CHESS, ER, DISCUSSIONS. HE LEFT RATHER HURRIEDLY."

SHE RAISED HER EYEBROWS.

"My brother protested that, as well, wondering where I got such ideas."

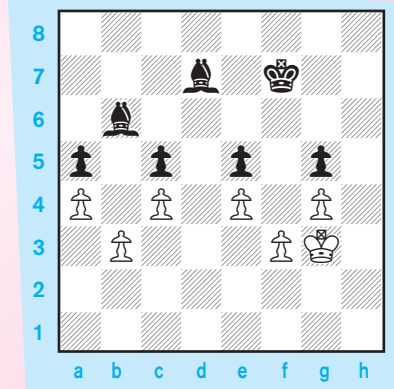
Silence ruled the room for a few moments.

The King then set up a position on the chessboard.



"We had come this far in our game, when I pointed out that my brother's two bishops were still no better than my two knights. To further my point, I played 1. Nxe5+ dxe5 and then 2. Nxb6 Bxb6 and then challenged him, with two extra bishops, to do any bet-

ter than draw against the ghosts of my knights."



"I suppose he could not," she said. "Indeed, he could not," he said with finality.

(The position in this story is based on one reached in the game Augustin Neumann-Aron Nimzowitsch, Vienna, 1905 in which White had a bishop on c3 instead of a knight on d3, but still demonstrated the draw with 51. Bxe5 dxe5 52. Nxb6 Bxb6).

"We were discussing," he continued, "Which piece is stronger, the knight or the bishop." The King smiled with a look of mischief. "Which would *you* choose?"

"I find," she said, trying to be polite and choosing her words wisely, "that when I have a knight, I would much rather have a bishop, and when I have a bishop, my game seems far better suited for a knight."

This was met with a chuckle. "My brother was convinced that the bishop is *always* the better piece. In contrast, I put forth the notion that it depends on how well the pieces coordinate with the foot soldiers—the pawns—as to which is the stronger. It could be the bishop. It could also be the knight."

She smiled. "That is quite an egalitarian notion, Your Majesty."

# 2013 Trophies Plus All America Team



Once again, it is time to recognize some of our members who have achieved rating milestones in their young careers. And thanks to Trophies Plus of Templeton, Iowa, we can do it every year. Trophies Plus provides the trophies for all of USCF's scholastic events, and for each team member, an All America jacket.

You can check them out on their website, [www.trophiesplus.com](http://www.trophiesplus.com). You'll see that their motto is "A Champion Defined." And that certainly describes our 2013 team members, champions one and all.

Sponsored by  TROPHIES PLUS  
A Champion Defined

## AGE 8 & BELOW

(Minimum peak rating of 1800)



**Awonder Liang**  
Wisconsin  
2126

**David Tianjian Peng**  
Illinois  
2030

**Tan Nguyen**  
Virginia  
1981

**Christopher Yo-Shuo Shen**  
Ohio  
1921

**Brian Fanyuan Gu**  
Texas  
1864

**Thomas Elberling**  
New Jersey  
1834

**Carissa Shiwen Yip**  
Massachusetts  
1810

## AGE 9

(Minimum peak rating 1900)



**Praveen Balakrishnan**  
New Jersey  
2098

**Trung Nguyen**  
Virginia  
2011

**Rayan Taghizadeh**  
California  
2006

**Aravind Kumar**  
New Jersey  
2001

**Andrew Lewis Titus**  
Minnesota  
1981

**Annie Wang**  
California  
1938

**Advait Patel**  
West Virginia  
1916

**Luke Bohua Xie**  
Ohio  
1911

**Andrew Zheng**  
Maryland  
1908

**David Brodsky**  
New York  
1907

**Marcus Ming Miyasaka**  
New York  
1902

## AGE 10

(Minimum peak rating 2050)



**Ruifeng Li**  
Texas  
2179

**Albert Lu**  
California  
2173

**Bovey Liu**  
Texas  
2073

**Tanuj Vasudeva**  
California  
2062

**Brandon Nydick**  
New York  
2058

**Nicolas De T Checa**  
New York  
2052

## AGE 11

(Minimum peak rating 2100)



**Jeffery Xiong**  
Texas  
2394

**Samuel Sevia**  
California  
2360

**Jonathan Chiang**  
Texas  
2216

**Tommy O. He**  
Texas  
2202

**Cameron Wheeler**  
California  
2190

**Roland Feng**  
Washington  
2179

**Kiana Arab**  
Arizona  
2168

Please turn to page 18





**TROPHIES**  **PLUS**  
*A Champion Defined.*

TROPHIES • RIBBONS • MEDALS • CHENILLE • PLAQUES

Show Off.



Show It Off.

Official *Awards* Provider of the



UNITED STATES CHESS FEDERATION

315 W. 1ST STREET • TEMPLETON, IOWA 51463  
800-397-9993 • [WWW.TROPHIESPLUS.COM](http://WWW.TROPHIESPLUS.COM) • [TROPHYMAN@TROPHIESPLUS.COM](mailto:TROPHYMAN@TROPHIESPLUS.COM)



## ALL AMERICA

continued from pg. 16

### AGE 12

(Minimum peak rating 2200)



Andrew Tang  
Minnesota  
2208

Dachey Lin  
Texas  
2183

Kesav Viswanadha  
California  
2169

Simone Liao  
California  
2163

### AGE 13

(Minimum peak rating 2250)



Kayden W. Troff  
Utah  
2395

Christopher Gu  
Rhode Island  
2369

Luke Harmon-Vellotti  
Idaho  
2349

Christopher Wu  
New Jersey  
2322

James A. Black, Jr.  
New York  
2322

Justus D. Williams  
New York  
2318

Joshua Colas  
New York  
2309

Mika Andrew Brattain  
Massachusetts  
2265

Kapil Chandran  
Connecticut  
2257

### AGE 14

(Minimum peak rating 2250)



Michael H. Bodek  
New York  
2407

Arthur Shen  
New Jersey  
2381

Yian Liou  
California  
2379

Michael William Brown  
California  
2351

Kevin Wang  
Maryland  
2334

Varun Krishnan  
California  
2307

David Hua  
New Jersey  
2305

Daniel Gurevich  
Georgia  
2294

Sarah Chiang  
Texas  
2257

### AGE 15

(Minimum peak rating 2300)



Darwin Yang  
Texas  
2562

Aleksandr Ostrovskiy  
New York  
2416

Atulya Arya Shetty  
Michigan  
2379

David Todd Adelberg  
Arizona  
2371

Sean Vibbert  
Indiana  
2305

### AGE 16

(Minimum peak rating 2350)



Daniel A. Naroditsky  
California  
2552

Robert Perez  
Florida  
2519

### AGE 17

(Minimum peak rating 2400)



Ray Robson  
Florida  
2692

William Fisher  
New York  
2436

### AGE 18

(Minimum peak rating 2450)



Conrad Holt  
Kansas  
2606

Victor C. Shen  
New Jersey  
2532



# Answers, We've got Answers.

## What's the Question? (from page 5)

If only there were not so many pieces blocking the h-file ...

1. **Qxh7+!!** Attracting the king to h7. 1. ... **Kxh7** 2. **Bg6+ Kg8**  
3. **Bh7+!!** Attracting the king to h7 again and getting rid of the bishop. 3. ... **Kxh7** 4. **Nf5+ K-any** 5. **Nxe7#**

## Win or Draw (from page 6)

**Position One Solution: DRAWN!!** 1. **Rb7+ Kc8** 2. **Rb5 c1=Q**  
3. **Rc5+** (a great attraction move!) 3. ... **Qxc5** Stalemate! A study by E.B. Cook in *Bilguer's Handbuch*, 1864

**Position Two Solution: WHITE WINS!!** 1. **Rf8+ Rxf8** 2. **Qxh7+** (the attraction sacrifice) 2. ... **Kxh7** 3. **gxf8=N+ Kg7** 4. **Nxd7** and wins—a piece up. From an 1887 off-hand game.

**Position Three Solution: DRAWN!!** 1. **Rcg1 Bxg1** (Not following the lure of attraction also leads to a draw: 1. ... **Nf4** 2. **Rxg7 Bxg1** 3. **Kxg1 b5** 4. **Kf2 Kd5** 5. **Rh7 h5** 6. **Kf3 Nd3** 7. **Rxh5+ Kc4** 8. **Rxb5**) 2. **Rxg6+ Rxg6** Stalemate! A composition by Lucchese, from Lolli's work in 1763 (Yes, it's an old theme!)

**Position Four Solution: WHITE WINS!!** This is one of my favorite problems, composed by David Przepiorka in 1920. When told that neither Tarrasch nor Lasker could solve it, irate *British Chess Magazine (BCM)* readers said that it was a joke as it was an obvious draw (see the note after move 2) 1. **Re2 Qg8** (1. ... **h6** 2. **Re8+ Kh7** 3. **Nf6+ Kg7** 4. **Rg8+**) 2. **Ng7** (an attraction for two pieces! This is where a lot of 1920s *BCM* readers thought it was a draw after 2. **Nf6 Qg1** 3. **Re8+ Kg7** 4. **Rg8+ Kh6** 5. **Rxg1** Stalemate) 2. ... **Qxg7** (2. ... **Kxg7** 3. **Rg2+ Kf8** 4. **Rxg8+ Kxg8** 5. **a5**; 2. ... **f5** 3. **Re8 Kxg7** [3. ... **Qxe8** 4. **Nxe8 f4** 5. **Nd6 f3** 6. **Ne4**] 4. **Rxg8+ Kxg8** 5. **a5 f4** 6. **a6 f3** 7. **a7 f2** 8. **a8=Q+**) 3. **Re8+ Qg8** 4. **Rxg8+ Kxg8** 5. **a5 h5** 6. **a6 h4** 7. **a7 h3** 8. **a8=Q+** White wins all the pawn races!

**Position Five Solution: DRAWN!!** 1. **Kd8 Rd6+ 2. Ke7 Rc6** 3. **Kd7 Rh6** 4. **Bf6** (just the first attraction move!) 4. ... **Bb1** (Black can't take it if he wants to keep trying to win: 4. ... **Rxf6** 5. **c8=Q** **Be6+** 6. **Ke7 Bxc8** 7. **Kxf6**) 5. **Ke6 Rh5** 6. **Bg5** (6. **c8=Q** **Bf5+**) 6. ... **Rh8** 7. **Bd8 Rh5** 8. **Bg5** (8. **c8=Q** **Bf5+**) and drawn by repetition! A composition by J.E. Peckover, 1958-59.

**Position Six Solution: WHITE WINS!!** With a double attraction, no less!! 1. **Ra2 Qxa2** 2. **Qb1 Qxb1** 3. **b7 g6** 4. **b8=Q+ Kg7** 5. **Qb7+ Kh6** 6. **Ne6 f5** 7. **Qg7+ Kh5** 8. **Qxh7#** A composition by A.F. Mackenzie, 1885. Mackenzie lost his sight in 1896 and still went on to compose chess problems!

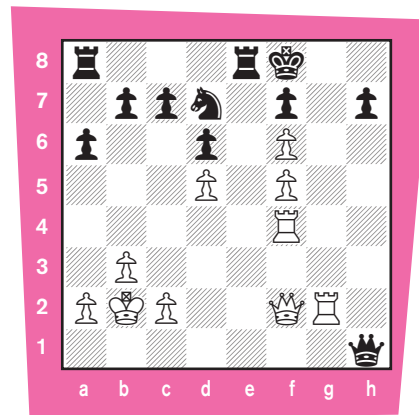
## YOU CAN DO IT! (from page 11)

Solution #1

Ove Weiss Hartvig (2300) - Carsten Juul Nielsen (2080) (B00)

Copenhagen, 1996

1. **e4 Nc6** 2. **Nc3 Nf6** 3. **d4 d6** 4. **Nf3 Bg4** 5. **Be3 a6** 6. **Be2 e6** 7. **h3 Bh5** 8. **d5 exd5** 9. **exd5 Bxf3** 10. **Bxf3 Ne5** 11. **Be2 Be7** 12. **g4 Nfd7** 13. **Qd2 Nb6** 14. **b3 Ng6** 15. **0-0-0 Nh4** 16. **Rhg1 Qd7** 17. **Bg5 Bxg5** 18. **Oxg5 Ng6** 19. **Bd3 0-0** 20. **Qd2 Rfe8** 21. **f4 Qe7** 22. **f5 Ne5** 23. **Be4 Qh4** 24. **Rdf1 Nbd7** 25. **Rf4 Nc5** 26. **g5 Qh5** 27. **Qf2 Qxh3** 28. **Rg3 Nxe4** 29. **Nxe4 Qh1+** 30. **Rg1 Qh5** 31. **Rg2 Qh1+** 32. **Kb2 Nd7** 33. **Nf6+ gxf6** 34. **gxf6+ Kf8**

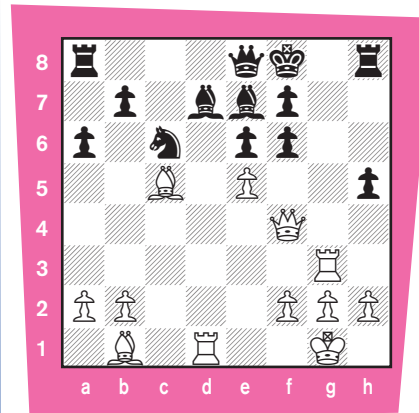


### Solution #2

B. Moroff - Kindl (C02)

1976

1. **e4 e6** 2. **d4 d5** 3. **e5 c5** 4. **c3 Qb6** 5. **Bd3 cxd4** 6. **cxtd4**  
**Nc6** 7. **Nf3 Bd7** 8. **0-0 Nxd4** 9. **Nxd4 Qxd4** 10. **Nc3 a6** 11.  
**Qe2 Ne7** 12. **Rd1 Qb6** 13. **Be3 d4** 14. **Bxd4 Qc7** 15. **Rac1**  
**Nc6** 16. **Bb1 Be7** 17. **Qg4 Kf8** 18. **Ne4 h5** 19. **Qf4 Qd8** 20.  
**Bc5 Kg8** 21. **Rc3 Qe8** 22. **Rg3 Kf8** 23. **Nf6 gxf6**  
24. **exf6**



### Solution #3

Hristina Ilieva (2145) - Liliana Ivanova (D30)

Pernik, 1992

1. **d4 d5** 2. **Nf3 e6** 3. **c4 c6** 4. **cxtd5 exd5** 5. **Qc2 Bd6** 6. **Bg5**  
**Ne7** 7. **e3 Qc7** 8. **Bd3 Bg4** 9. **Nc3 Nd7** 10. **Bxe7 Bxe7** 11. **Nxd5**  
**Qa5+** 12. **Nc3 Nb6** 13. **Ne5 Bh5** 14. **0-0 Bd6** 15. **f4 Bg6** 16.  
**a3 Nd5** 17. **Nc4 Qd8** 18. **Nxd5 Bxd3** 19. **Qxd3 cxd5** 20. **Nxd6+**  
**Qxd6** 21. **e4 0-0** 22. **e5 Qb6** 23. **f5 Rac8** 24. **f6 Rc6** 25. **Rf4**  
**Rfc8** 26. **Raf1 R8c7** 27. **Rg4 Rc1** 28. **Rxg7+ Kf8**

Here, the **Re8** blocks the escape.

35. **Rg8+ 1-0**

35. ... **Kxg8** 36. **Qg3+** with mate next move on g7.

The pawn arrives on f6, offering up the **Bc5**.

24. ... **Bxc5** 25. **Rg8+!**

White's queen has access to g5 and h6, and the king's escape is blocked.

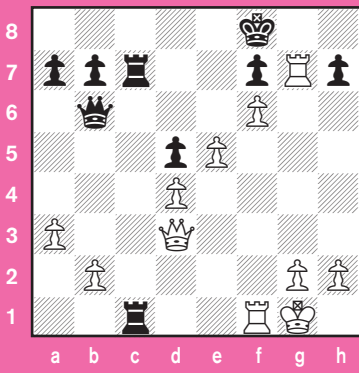
25. ... **Kxg8**

25. ... **Rxg8** 26. **Qh6+** is mate in one.

26. **Qg5+ 1-0**

... with **Qg7#** on the next move.





The critical feature is the black king's possible escape to d7.

**29. Rg8+ Kxg8 30. Qg3+ Kf8 31. Qg7+ Ke8 32. Qg8+ Kd7**

There it is.

**33. Qxf7+**

Here, the free pawn is on f7.

**33. ... Kd8**

Surely not **33. ... Kc6**

**34. Rxc1+.**

**34. Qf8+**

Triangulating to e7.

**34. ... Kd7 35. Qe7+ 1-0**

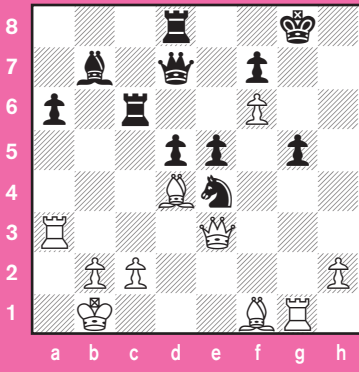
**35. ... Kc8 (35. ... Kc6 36. Rxc1+) 36. Qe8#**

#### Solution #4

Aidyn Guseinov - Ruslan Kadyrov (B66)

1984

**1. e4 c5 2. Nf3 Nc6 3. d4 cxd4 4. Nxd4 Nf6 5. Nc3 d6 6. Bg5 e6 7. Qd2 a6 8. 0-0-0 h6 9. Be3 Nxd4 10. Qxd4 Qc7 11. Rg1 b5 12. f3 Bb7 13. g4 d5 14. e5 Nd7 15. f4 Rc8 16. Qd2 Bb4 17. Bd4 Nc5 18. Qe2 Ba5 19. a3 b4 20. axb4 Bxb4 21. Kb1 Rb8 22. Qe3 Qa5 23. Na2 Ne4 24. Nxb4 Qxb4 25. Ba7 Rc8 26. Rd4 Qe7 27. Ra4 0-0 28. f5 Qd7 29. Ra3 Rfd8 30. Bd4 Rc6 31. g5 hxg5 32. f6 gxg6 33. exf6 e5**



White's pawn is on f6, the rook will be able to reach g8 after an obvious sacrifice on g5, the queen will have access to the g-file at g1, and Black's queen on d7 blocks the king's escape.

**34. Rxg5+ Kf8**

It's very easy after **34. ... Nxd7**

**35. Qxg5+ Kf8 36. Qg7+ Ke8 37. Qg8#.**

**35. Rg8+**

There's our sacrifice.

**35. ... Kxg8 36. Qg1+ 1-0**

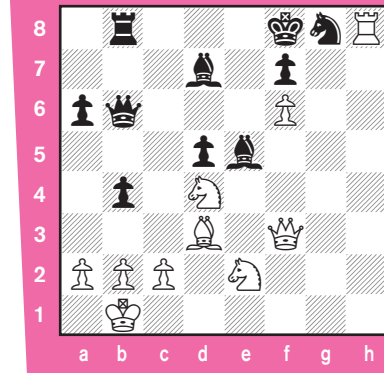
**36. ... Kf8 Otherwise Qg7+ is mate. 37. Qg7+ Ke8 38. Qg8#.**

#### Solution #5

Sigurbjorn Bjornsson (2335) - Hjorvar Stein Gretarsson (2087) (B66)

Reykjavik, 2006

**1. e4 c5 2. Nf3 Nc6 3. d4 cxd4 4. Nxd4 Nf6 5. Nc3 d6 6. Bg5 e6 7. Qd2 a6 8. 0-0-0 h6 9. Be3 Qc7 10. f3 Rb8 11. Kb1 Be7 12. g4 Ne5 13. h4 b5 14. Bd3 b4 15. Nce2 d5 16. g5 Ng8 17. exd5 exd5 18. Bf4 Bd6 19. Qe3 Kf8 20. Bxe5 Bxe5 21. f4 Bd6 22. f5 hxg5 23. hxg5 Rxh1 24. Rxh1 Bd7 25. Qf3 Qb7 26. Rh8 Be5 27. f6 gxg6 28. gxg6 Qb6**



Here, the key appears to be that the queen has access to the g-file below g4, so that Black can sacrifice back the bishop.

**29. Rxg8+**

However, the sacrifice begins as an Exchange sacrifice. White already has a piece for the rook.

**29. ... Kxg8 30. Qg2+ Bg4 31. Qxg4+ Kf8**

Obviously not allowing **Qg7#.**

**32. Qg7+ Ke8 33. Qg8+ Kd7**

The king escapes to d7, and there are no unanchored pieces on the queenside.

**34. Qxf7+**

... and Black's king is in a mating net.

**34. ... Kc8**

**34. ... Kd8 35. Qe7+ Kc8 36. Bf5+ Qe6 37. Bxe6#.**

And not **34. ... Kd6** when White has a pretty mate in one!

**35. Qe7#.**

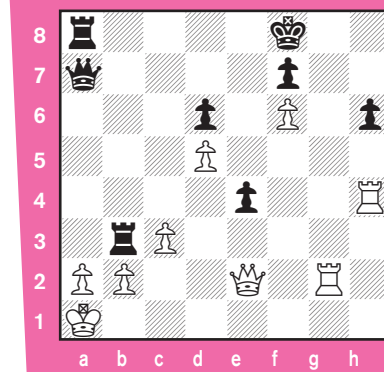
**35. Bf5+ Qe6 36. Bxe6+ Kd8 37. Nc6# 1-0**

#### Solution #6

Eduard Gufeld (2545) - Joaquin Carlos Diaz (2385) (B66)

Vrnjacka Banja, 1976

**1. e4 c5 2. Nf3 d6 3. d4 cxd4 4. Nxd4 Nf6 5. Nc3 Nc6 6. Bg5 e6 7. Qd2 a6 8. 0-0-0 h6 9. Be3 Bd7 10. f4 b5 11. Bd3 Nxd4 12. Bxd4 Bc6 13. Rhe1 Be7 14. Kb1 b4 15. Bxf6 Bxf6 16. Nd5 Bxd5 17. exd5 e5 18. Qxb4 0-0 19. Qe4 g6 20. f5 g5 21. h4 gxh4 22. Rh1 Re8 23. g3 Rb8 24. c3 Qa5 25. Rc1 Rec8 26. Ka1 Qb6 27. Rc2 a5 28. Rg2 a4 29. gxh4+ Kf8 30. Qxa4 e4 31. Bc4 Qe3 32. Qa6 Rd8 33. Bb3 Bxh4 34. Qe2 Qa7 35. Rxh4 Rxb3 36. f6 Ra8**



Here's a good test of your ability to calculate long, forced sequences. The pawn on f6, the rook can reach g8, the queen has access to the g-file, but Black's king can escape via e8 and d7.

**37. Rg8+! Kxg8 38. Qg4+ Kf8 39. Qg7+ Ke8**

Arriving at an interesting crossroads.

**40. Rxe4+!**

Not **40. Qg8+? Kd7 41. Qxf7+ Kd8** when Black's mating threat requires White to force a perpetual.

And not **41. ... Kc8? 42. Qxa7 Rxa7 43. Rxe4 Kd8 44. f7** and White queens.

**40. ... Kd8**

Not **40. ... Kd7 41. Re7+** mates in one.

**41. Qf8+ Kc7**

**41. ... Kd7 42. Re7#.**

**42. Rc4+ Kb7 43. Qe7+ Kb6 44. Qxd6+ Kb5 45. Qc6+ Ka5 46. Ra4#**





## Tournament Life Announcements

FEBRUARY 15 THROUGH APRIL 14

### Scholastic Members:

As a service to you, we are listing upcoming National USCF rated events, and requested events of possible interest to you. You can always log in to [www.uschess.org](http://www.uschess.org), and click on "Clubs and Tourneys." Then click on "Upcoming Tourneys" for a complete listing of upcoming rated events and details. As always, you can check out the TLA section of *Chess Life*.

### Organizers and Tournament Directors:

If you would like your tournament listed here in *Chess Life for KIDS* for April (events to be held after April 14), the deadline for submitting your announcements is February 10th. The deadline for the June 2013 issue is April 10th. The processing fee is \$1.00 per line for the first eight lines, \$2.00 for every line thereafter. Send your announcements to Joan DuBois, [tda@uschess.org](mailto:tda@uschess.org).

**Display advertising is also available.** Advertising rates are posted on the USCF website, [www.uschess.org](http://www.uschess.org), or you may email: [tda@uschess.org](mailto:tda@uschess.org) for complete details.

## NATIONALS

### Chess Magnet School Junior Grand Prix! Mar. 23-24, California, Northern 2013 U.S. Junior Chess Congress

5-SS. **Site:** San Francisco Airport Hyatt Regency, 1333 Bayshore Highway, Burlingame, CA 94010. Experience Spring in San Francisco! Hotel rate \$99 only. **8 sections based on age:** 6 & under, 8 & under, 10 & under, 12 & under, 14 & under, 16 & under, 18 & under, 20 & under. **Individual Trophies:** All (6 & under), top 30 (8 & under, 10 & under) top 20 (12 & under), top 10 (14 & under, 16 & under, 18 & under, 20 & under). "Super Performance" trophies to players tied for last place with a trophy award and the top player(s) in each rating class who did not get a place trophy. Winning record required for all place trophies. Commemorative participation medals to all entrants. **Team Trophies:** Top 10 (6 & under, 8 & under, 10 & under, 12 & under) or top 5 (14 & under, 16 & under, 18 & under, 20 & under) based on section. **Time control:** G/90 except G/30 for Ages 6 & under and Ages 8 & under. **Schedule:** Onsite Registration: Saturday & Sunday 7:30-8:15am. Rounds: Saturday 9am, 12:45pm, 4:30pm, and Sun 9am, 12:45pm. Ages 6 & under: Saturday 9:00am, 10:45am, 12:15pm, 1:45pm, 3:15pm. Ages 8 & under: Sunday 9:00am, 10:45am, 12:15pm, 1:45pm, 3:15pm. **Byes:** Max one 1/2-point bye except last round (must request before start of 1st round). **Entry Fees by 3/9:** 1-day \$48, 2-day \$60, Add \$10 (G/10-16), Add \$20 (3/17-19), Add \$30 (3/20-21), Add \$40 (3/22 & onsite), \$20 for any changes after 3/19. **Blitz:** Sunday Registration: 4:40-3pm, Games 5-7pm. 2 sections (11 & under, 20 & under). **Side Event Fees:** Blitz \$14. Onsite + \$2. **Side Event Prizes:** Top 3 players and top 3 teams in each section. March 2013 Supplement & TD discretion to place players accurately. **Commemorative T-shirts:** \$15 pre-order, \$20 onsite. **Organizers/TDs:** S. Azhar, R. Koepcke, T. Langland, S. Mason & J. McCumiskey. Sponsored by CalChess and Bay Area Chess. More info & flyer: [BayAreaChess.com/usjr13](http://BayAreaChess.com/usjr13). Register online at [BayAreaChess.com/my/usjr13](http://BayAreaChess.com/my/usjr13). Mail entries to Bay Area Chess, 1639A South Main St., Milpitas, CA 95035. Register early to save. Questions: [ask@BayAreaChess.com](mailto:ask@BayAreaChess.com). NS, NC, W.

### Chess Magnet School Junior Grand Prix! Apr. 5-7, Tennessee SuperNationals V

2013 Elementary, Junior High and High School National Championships in one great event! 7SS, G/120 (K-1: G/90), Gaylord Opryland Hotel and Convention Center, 2800 Opryland Dr., Nashville, TN 37214. 615.889.1000 HR: \$149 single-quad. All under one roof! **20 Sections** (Select only one): **High School:** K-12 Championship; K-12 U1600; K-12 U1200; K-12 U800; K-12 Unrated. **Junior High:** K-9 Championship; K-8 Championship; K-9 U1250; K-8 U1000; K-8 U750; K-9 Unrated. **Elementary:** K-6 Championship; K-5 Championship; K-6 U1000; K-5 U900; K-3 Championship; K-3 U800; K-1 Championship; K-6 Unrated; K-3 Unrated. **EF:** \$50 postmarked, faxed or online by 3/17/2013, \$70 postmarked, faxed or by 3/31/2013, \$85 after 3/31/2013, \$90 on site. **DO NOT** mail entries after March 31 - they will not be received in time. **\$5 extra** for all phoned registrations. \$20 change fee for roster or section changes after March 31. USCF membership is required (may be paid with entry). **AWARDS:** Trophies awarded in accordance with Scholastic Regulations and based on number of participants. Team score = total of top four (min. two) finishers from each section. **March 2013 rating supplement** will be used. **BYES:** One 1/2-pt. bye available in rounds 1-6 if requested prior to 10am, Fri (4/5). **On site entries after 10 AM, Fri 4/5 will receive a**

1/2-point bye for the first round and begin play in round 2. **SCHEDULE:** Rounds 1-2: Friday (4/5) 1:00 PM & 7:00 PM [K1 at 1:30 PM & 6:30 PM] Rounds 3-5: Saturday (4/6) 9:00 AM, 2:00 PM, & 7:00 PM [K1 at 9:30 AM, 1:30 PM and 6:30 PM], Sunday (4/7) Rounds 6-7 9:00 AM, & 2:00 PM [K1 at 9:30 AM and 1:30 PM]. Awards Ceremonies, Sunday (4/7); approximately 7 PM [K1 at approx. 5:30 PM]. **SIDE EVENTS:** **Bughouse Championships:** Thursday (4/4) 11:00 AM, Register ON SITE ONLY by 10:00 AM. EF: \$25 per team of 2. **Blitz Championships:** Thursday (4/4) 5:00 PM. EF \$15 postmarked, faxed or online by 3/31, \$20 after 3/31 or on site. On site registration ends at 4 PM. [The Blitz tournament will be playing 'Touch-Move' - see Blitz rules on the web page.] Please refer to the website: [www.uschess.org/tournaments/2013/snv](http://www.uschess.org/tournaments/2013/snv) to register on-line, see up-to-the-minute registrations, for more information, updated details, corrections, any added events and other activities. Advance entries must include player's name/information and all fees to be accepted. **Roster changes are considered new entries and will be charged according to date received.** List name, address, phone, section, grade, school (even if no team), email, birthdate, USCF ID number (enclose USCF dues if necessary). Players must be eligible to play in accordance with USCF Scholastic Regulations. Entries may be faxed to: 931.787.1238. Mail Entries To: US Chess Federation ATTN: SuperNationals V, P.O. Box 3967, Crossville, TN 38557. Please note: Rule 12.5 has been replaced with Rule 12.6: Players entering an "Under" section in a USCF National Scholastic tournament shall disclose at the time of registration whether they have one or more ratings in another over-the-board rating system(s). The USCF may use this rating information to determine section and prize eligibility in accordance with USCF rules 28D and 28E. This rule will be in effect for the 2013 SuperNationals and future USCF National Scholastic Tournaments that have one or more "Under" sections.

### Chess Magnet School Junior Grand Prix!

**Apr. 26-28, Illinois  
2013 All-Girls National Championships presented by the Kasparov Chess Foundation in association with the Renaissance Knights Chess Foundation & USCF**

**First place winners of each section will qualify to play at the 2013 World Youth Championships.** 6SS, G/90. Swissotel, 323 E. Wacker Dr., Chicago, IL 60601, 888-737-9477, **Hotel Rate breakfast included** for the number based on the room rate paid. **7 Sections:** Under 8, Under 10, Under 12, Under 14, Under 16, Under 18, Under 20. **Age as of 1/1/2013.** USCF membership required. **EF:** \$50 postmarked by 3/25, \$70 by 4/15, \$90 after/on-site. Do not mail after 4/18 as your entry will not be received on time. **Opening Ceremony:** 6pm, Friday. **Rounds:** Rd. 1 - 6:30pm Fri; Rounds 2-4 - Sat 10am, 2:30pm, 6:30pm; Rounds 5-6 - Sun 9am & pm. **Awards Ceremony:** Sun. 5pm. Trophies top 15 individual players and top 3 teams in the Under 8, 10, 12 & 14 Sections; top 10 individual players and top 3 teams in the Under 16, 18 & 20 Sections. (top 3 players added for team scores). **Bye:** One 1/2-pt bye available, any round, if requested before end of Rd. 2 and if player has not received a full-point bye. **Side Events: Bughouse Tournament** - Fri. 1pm, EF \$30/team. **Blitz Tournament** - Fri. 3pm, EF \$20 by 4/15, \$25 after or on site. **HR:** single \$169, Double \$169, Triple \$189, Quad \$209 **breakfast included for the number based on the room rate paid: 1-2-3 or 4 people.** Reserve early rate may increase 888-737-9477. **Entries:** online/info at: [www.renaissanceknights.org/allgirls](http://www.renaissanceknights.org/allgirls) or mail to RKnights, Attn: All Girls, PO Box 1074, Northbrook, IL 60065, include name, section, rating, USCF ID#, date of birth, grade, school name city & state.

### June 6, Nevada

**Trophies Plus Grand Prix Points: 80 (Enhanced)  
2013 U.S. Game/10 Championship (QC)**  
8SS, G/10. Riviera Hotel and Casino, 2901 Las Vegas Boulevard South, Las Vegas 89109. **\$56,000 Guaranteed Prize Fund.** \$1700-850-500, U2300 \$500, U2100 \$500, U1900 \$450, U1700 \$400, U1500 \$350, U1300 \$300, U1000 \$250, unrated \$200. There must be 3 players eligible for each prize to be awarded. **FIDE Blitz rated.** **EF:** \$69 by 5/21, \$79 by 6/3, \$100 on site. **REG** 2-4 p.m. Rds: 5-5:30-6-6:30-7-7:30-8-8:30. Higher of regular or QR rating used. Bring clocks. 1/2 point bye available in any round (limit 2). **HR:** \$62 single or double (\$89 Friday and Saturday nights). (800) 634-6753 or (702) 734-5110 - be sure to ask for the **CHESS** rates. **ENT** Vegas Chess Festivals, PO Box 90925, Henderson, NV 89009-0925, on line [www.VegasChessFestival.com](http://www.VegasChessFestival.com) or fax at (702) 933-9112. NS. NC. W.

### An American Classic!

**A Site Event!  
Chess Magnet School Junior Grand Prix!  
June 7-9 or 8-9, Nevada**

**Trophies Plus Grand Prix Points: 200 (Enhanced)  
2013 National Open**  
6-SS, 40/90, Game/30 + 30 second increment (2 day option rds 1-3 G/45). Riviera Hotel and Casino, 2901 Las Vegas Boulevard South, Las Vegas 89109. **\$80,000 Guaranteed Prize Fund** will not be reduced. **Championship:** \$6500-3300-1600-800-500-350-350-350-350-250-250-250-250, under 2500 1600, under 2400 1200, under 2300 1000, \$2,000 **EXTRA** for perfect score. The winner of the Championship section also receives a replica of the Edmondson Cup. **Under 2200:** \$3500-1800-900-500-400-250-250-250-250-200-200-200-200. **Under 2000:** \$3500-1800-900-500-400-250-250-250-250-200-200-200-200. **Under 1800:** \$3500-1800-900-500-400-250-250-250-250-200-200-200-200. **Under 1600:** \$3000-1500-800-500-400-250-250-250-250-200-200-200. **Under 1400:** \$2000-1000-500-350-250-200-200-200-200-200. **Under 1200:** \$1200-600-400-300-200-200. **Unrated:** \$500-300-200. **Plus Score Bonus** (\$14,000 guaranteed) in addition to any other prizes, every player with 3-1/2 points or more wins a \$50 gift certificate. Plus score certificates will be awarded on site only. Players age 14 and under are eligible for best game prizes including the Freddie Award plus \$200 (donated by Fred Gruenberg). Top 2 sections FIDE rated. **EF:** \$169 by 1/21, \$199 by 5/21, \$219 by 6/3, \$240 on site. \$40 less for seniors 65 and over. Add \$120 for adults rated under 2100 or juniors under 2000 playing in the Championship Section. This is an open tournament - you

may play in any section at or above your rating level; unrated players may play only in Unrated or Championship Section. Provisionally rated players may not win more than the amount of 3rd prize in any section except Championship. CCA minimum ratings or other ratings may be used if higher than USCF June Supplement. **Reg.:** 2 p.m.-10 p.m. Thursday, 8-9:30 a.m. Friday. **Rds.:** 11-5, 10-4:30, 10-4:30, 2-day schedule: **Reg.:** 8-9 a.m. Saturday. **Rds.:** 10-12-2-4:30 merge with 3-day in round 4. Half point byes available in any round, but round 5 or 6 byes must be requested before the start of round 2 and may not be cancelled. Chess sets and boards provided for tournament play only, not for skillies. Please bring chess clocks! The **LAS VEGAS INTERNATIONAL CHESS FESTIVAL** features the National Open, the U.S. Game/10 Championship, the International Youth Championship, and other events. **Many free extras and surprises!** Free parking. Free raffles with great prizes. Free GM Lectures. Free GM analysis of your games. **Grandmaster Chess Camp** for all ages on Thursday. **U.S. Game/10 Championship and Grandmaster Simuls** Thursday afternoon. **Youth Tournaments** Friday, Saturday & Sunday. **Blitz Tournaments** Saturday & Sunday. **Poker Tournament** Monday morning. **Don't be shut out** - make your reservations early and be sure to ask for the **CHESS** rates - \$62 single or double (\$89 Friday and Saturday nights) guarantees a *Signature* or re-modeled room with new furniture, flat screen TV and more. The complimentary resort package includes access to the Fitness Center, free WI-FI, discounts on selected show tickets and more with no additional cost only if you are in our group. Cutoff for special hotel rate is **May 20th**. 1-800-634-6753 or (702) 734-5110 or online at [www.vegaschessfestival.com/hotel/](http://www.vegaschessfestival.com/hotel/). **ENT:** Vegas Chess Festivals, PO Box 90925, Henderson, NV 89009-0925, on line at [www.VegasChessFestival.com](http://www.VegasChessFestival.com) or by fax at (702) 933-9112. **Info:** (702) 560-0955 and leave a message. NS. W. FIDE

## Grand Prix

### A Heritage Event!

**Chess Magnet School Junior Grand Prix!  
Feb. 16-17, Alabama**

**Trophies Plus Grand Prix Points: 6  
Queen of Hearts - 41st Annual**  
5SS, TC: 30/90; SD/30. AUM Taylor Center, 7401 East Dr., Montgomery, AL 36117. **OPEN (\$50/25):** \$325-200-150-A:125-U1800: \$100; **RESERVE (\$5 b/25):** \$275-150-125-E:100-U1000: \$75. **EF:** \$40; if mailed by FEB 11th; \$50 at site. **Late REG.:** FEB 16th, 8-8:40am. **Rds.:** 9-2-7; 9-2-30. **SCHOLASTIC (K-12):** 5SS, TC: G/30. **PREMIER (UNR-1200) and NOVICE (K-6, Not Rated):** EF: \$20/\$10; if mailed by FEB 9th, \$10 more at site. **Trophy:** Top 3; Medals 4th-6th. **Rds.:** 9-10:15-12-1:15, 2:30. Checks payable to: **Montgomery Chess Club.** **ENT:** Montgomery Chess Club, 2625 Burkelaun Dr., Montgomery, AL 36111. **Info:** [ChessClub-Montgomery@gmail.com](mailto:ChessClub-Montgomery@gmail.com), [www.AlabamaChess.com](http://www.AlabamaChess.com). **JGP not for Scholastic K-12 section.**

### Feb. 21, New York

**Trophies Plus Grand Prix Points: 10 (Enhanced)  
Marshall Thursday Game 30 Grand Prix!**  
4-SS, G/25d5. Marshall CC, 23 W. 10th St., NYC. 212-477-3716. **EF:** \$40, members \$25, GMs and IM's free (no deduction from prize!). **Prizes:** (\$530 based on 32 players; first two prizes guaranteed:) \$200-100-50, U2100 \$95, U1900 \$85. **Reg.:** 6:15-6:45 pm. **Rds.:** 7-8:15-9:30-10:45. One bye available, request at entry.

### Feb. 22, New York

**Trophies Plus Grand Prix Points: 10 (Enhanced)  
NEW! Marshall \$500 FIDE Blitz! (QC)**  
Last Friday of every month. 9-SS, G/5. **Marshall CC**, 23 W. 10th St., NYC. 212-477-3716. **\$500:** \$200-100, top U2400/unr, U2200, U2000, U1800: \$50 each, **EF:** \$30, members \$20. Quick-rated, but higher of regular or quick USCF rating used for pairings & prizes. **FIDE Blitz Rated!** **Reg.** ends 6:45 pm. **Rds.:** 7-7:30-7:50-8:10-8:40-9-9:20-9:40-10 pm. Three byes available, request at entry, [www.marshallchessclub.org](http://www.marshallchessclub.org).

### Feb. 28, New York

**Trophies Plus Grand Prix Points: 10 (Enhanced)  
Marshall Thursday Game 30 Grand Prix!**  
4-SS, G/25d5. Marshall CC, 23 W. 10th St., NYC. 212-477-3716. **EF:** \$40, members \$25, GMs and IM's free (no deduction from prize!). **Prizes:** (\$530 based on 32 players; first two prizes guaranteed:) \$200-100-50, U2100 \$95, U1900 \$85. **Reg.:** 6:15-6:45 pm. **Rds.:** 7-8:15-9:30-10:45. One bye available, request at entry.

### Chess Magnet School Junior Grand Prix!

**Mar. 2-3, Maryland  
Trophies Plus Grand Prix Points: 10  
UMBC Open - Alvin S. Mintzes Chess Tournament**  
5SS, 20/1, SD/60; D/5. University of Maryland, Baltimore County, 1000 Hilltop Circle, Baltimore (in Commons, 3rd floor). Held concurrently with Maryland "Sweet 16" (Invitational) - winner to receive in-state fixed-dollar tuition scholarship to UMBC. **Open:** (All) \$51050: \$350-200-100 Gtd., Class prizes \$100 ea. to top U2250, U2150, U2050, U1950. Free ent. to GMs, \$40 deducted from any prizes. **U1800:** (U1800/Unr.) \$5765 b/40: \$250-175-100, Class prizes \$80 ea. to top U1600, U1400, U1200 (b/4). No Unr. player may win more than \$200 in this section. **AII:** EF: \$40 if postmarked by 2/22, \$50 later, \$10 less if under age 20. **Reg.:** 8:30-9:30am Sat., **Rds.:** 10-3-7:30pm Sat, 10:30-3:30pm Sun. **Byes:** Up to three 1/2-pt. byes avail. in Rds. 1-5 if req'd at least 1 hr. before Rd. (before Rd 2 for any Rd. 4-5 bye), but only at most one 1/2-point bye in Rds 4-5. **HR:** La Quinta Inn and Suites, 1734 West Nursery Rd., Linticum, MD 21090, 410-859-2333. Ask for UMBC chess rate. [www.lq.com](http://www.lq.com) (From I-95, take Exit 47A onto I-195 towards BWI Airport. Take Exit 2A onto 295 north towards Baltimore; take first exit, bearing right onto West Nursery Road.) Directions to UMBC: Take Exit 47B off I-95 & follow signs to UMBC. Park in Lot 9 or 16. **Ent:** Dr. Alan T. Sherman, Dept. of CSEE, UMBC, Attn: Open, 1000 Hilltop Circle, Baltimore, MD 21250. Make out check to UMBC. For more information: [ChessClub@umbc.edu](mailto:ChessClub@umbc.edu), (410)

455-8499, www.umbc.edu/chess. NS, W.

### Mar. 7, New York

**Trophies Plus Grand Prix Points: 10 (Enhanced)**  
**Marshall Thursday Game 30 Grand Prix!**  
4-SS, G/25d5. Marshall CC, 23 W. 10th St., NYC. 212-477-3716. **EF:** \$40, members \$25, GMs and IM's free (no deduction from prize). **Prizes:** (\$530 based on 32 players; first two prizes guaranteed.) \$200-100-50, U2100 \$95, U1900 \$85. **Reg.:** 6:15-6:45 pm. **Rds.:** 7-8:15-9:30-10:45. One bye available, request at entry.

### A State Championship Event!

#### Mar. 8, Pennsylvania

**Trophies Plus Grand Prix Points: 6**  
**2013 PA Quick Chess Champ. (QC)**  
6SS, G/7d3. Hotel Carlisle, 1700 Harrisburg Pike, Carlisle, PA 17015, Exit 52A NB/Exit 52 SB off I-81, Exit 226 off PA Turnpike. **3 sections, EF** rec'd by 2/18: **Open:** \$12. **U1500:** \$11. **U1100:** \$10. \$5 (750G): **Open:** 175-100-50, U1800 \$45, U1600 \$40. **U1500:** 125-75-50, U1300 \$40, U1200 \$30, Unr \$20. **U1100:** Trophies: 1-12, U800, U600, U400, 1-2 Unr. **All:** **EF:** \$20 after 2/18, PSCF \$5 OSA. **Reg.:** 6-6:30pm. **Rd 1:** 7pm. Feb 2013 Reg rating used. **Bye:** limit 1, ask by rd 2. **HR:** Mention "PA States" for best rate; 800-692-7315 \$75. **Ent:** PSCF, c/o Tom Martinak, 25 Freeport St., Pittsburgh, PA 15223. **Info:** martinak\_tom\_m@hotmail.com, 412-908-0286. W.

### A State Championship Event!

#### Mar. 9, Connecticut

**Trophies Plus Grand Prix Points: 20**  
**2013 CT State Open & Scholastic Championships**  
**OPEN, U1800:** 4SS, G/60. Rds. 9PM, 12PM, 2:30PM, 5PM. **\$\$\$2000 b/60:** Open \$500, \$300; \$200, 3 x \$100, 5 x \$50, U1800 \$300, \$100, \$50 Kindergarten, 1st Grade, K-3, K-6, K-8 Championship sections, all 5SS, G/30, **K-12 Championship:** 4SS, G/60. Trophies: Top 5 Individual in scholastic sections, Top 3 Teams each section. CT Champion and U1800 Champion. Individual awards for CT Grade Champions K-12. **EF:** \$55 by 2/25, \$75 by 3/4, \$100 site. GMs free. Check www.edutechchess.com or www.ctchess.com for registration flyer & more info.

### A State Championship Event!

#### Chess Magnet School Junior Grand Prix!

#### Mar. 9-10, Pennsylvania

**Trophies Plus Grand Prix Points: 6**  
**2013 Carlisle Open & PA Collegiate Championship**  
5SS, G/90d5. Hotel Carlisle & Embers Convention Center, 1700 Harrisburg Pike, Carlisle, PA 17015, Exit 52A NB/Exit 52 SB off I-81, Exit 226 off PA Turnpike. **3 sections: \$\$ (1400G):** **Open:** 180-120, U2200 \$100, U2000 \$90. **U1800:** 150-110, U1650 \$100, U1500 \$95. **U1400:** 150-110, U1200 \$80, U1000 \$65, Unr \$50. **All:** College Tr: 1-2 in each section, 1-2 team (top 4 over all sections). **EF:** \$30 rec'd by 2/18, \$40 after, PSCF \$5 OSA. **Reg.:** 8:45-9:30 am. **Rds.:** 10-2-5:30, 9-1. Feb 2013 ratings used. **Bye:** limit 1, ask by rd 2. **HR:** Mention "PA States" for best rate; 800-692-7315 \$75. **Ent:** PSCF, c/o Tom Martinak, 25 Freeport St., Pittsburgh, PA 15223-2245. **Info:** martinak\_tom\_m@hotmail.com, 412-908-0286. W.

### Mar. 14, New York

**Trophies Plus Grand Prix Points: 10 (Enhanced)**  
**Marshall Thursday Game 30 Grand Prix!**  
4-SS, G/25d5. Marshall CC, 23 W. 10th St., NYC. 212-477-3716. **EF:** \$40, members \$25, GMs and IM's free (no deduction from prize). **Prizes:** (\$530 based on 32 players; first two prizes guaranteed.) \$200-100-50, U2100 \$95, U1900 \$85. **Reg.:** 6:15-6:45 pm. **Rds.:** 7-8:15-9:30-10:45. One bye available, request at entry.

### Mar. 21, New York

**Trophies Plus Grand Prix Points: 10 (Enhanced)**  
**Marshall Thursday Game 30 Grand Prix!**  
4-SS, G/25d5. Marshall CC, 23 W. 10th St., NYC. 212-477-3716. **EF:** \$40, members \$25, GMs and IM's free (no deduction from prize). **Prizes:** (\$530 based on 32 players; first two prizes guaranteed.) \$200-100-50, U2100 \$95, U1900 \$85. **Reg.:** 6:15-6:45 pm. **Rds.:** 7-8:15-9:30-10:45. One bye available, request at entry.

### Mar. 22, New York

**Trophies Plus Grand Prix Points: 10 (Enhanced)**  
**NEW! Marshall \$500 FIDE Blitz! (QC)**  
Last Friday of every month. 9-SS, G/5. **Marshall CC**, 23 W. 10th St., NYC. 212-477-3716. **\$\$\$Gtd 500:** \$200-100, top U2400/unr, U2200, U2000, U1800: \$50 each, **EF:** \$30, members \$20. Quick-rated, but higher of regular or quick USCF rating used for pairings & prizes. **FIDE Blitz Rated!** **Reg.** ends 6:45 pm. **Rds.:** 7-7:30-7:50-8:10-8:40-9-9:20-9:40-10 p.m. Three byes available, request at entry. www.marshallchessclub.org.

### Mar. 28, New York

**Trophies Plus Grand Prix Points: 10 (Enhanced)**  
**Marshall Thursday Game 30 Grand Prix!**  
4-SS, G/25d5. Marshall CC, 23 W. 10th St., NYC. 212-477-3716. **EF:** \$40, members \$25, GMs and IM's free (no deduction from prize). **Prizes:** (\$530 based on 32 players; first two prizes guaranteed.) \$200-100-50, U2100 \$95, U1900 \$85. **Reg.:** 6:15-6:45 pm. **Rds.:** 7-8:15-9:30-10:45. One bye available, request at entry.

### Apr. 4, New York

**Trophies Plus Grand Prix Points: 10 (Enhanced)**  
**Marshall Thursday Game 30 Grand Prix!**  
4-SS, G/25d5. Marshall CC, 23 W. 10th St., NYC. 212-477-3716. **EF:** \$40, members \$25, GMs and IM's free (no deduction from prize). **Prizes:** (\$530 based on 32 players; first two prizes guaranteed.) \$200-100-50, U2100 \$95, U1900 \$85. **Reg.:** 6:15-6:45 pm. **Rds.:** 7-8:15-9:30-10:45. One bye available, request at entry.

### A State Championship Event!

#### Apr. 6, Pennsylvania

**Trophies Plus Grand Prix Points: 6**  
**2013 PA State Game/29 Championship (QC)**

5SS, G/29d0. O'Hara Student Center, University of Pittsburgh, 4024 O'Hara St., Pittsburgh, PA 15213. **2 Sections: Champ:** EF: \$25 by 3/29, \$35 later. \$5 (690G): \$200-100, U2000 \$90, U1800 \$80, U1600 \$70, U1400 \$60, U1200 \$50, U1000 \$40. Trophies: 1-3 U1400, 1-3 U1200, 1-3 U1000. **Scholastic:** Grades K-12 unrated or U900. EF: \$15 by 3/29, \$25 later. Trophies to Top 7, 1-3 U600. **ALL:** Trophies: 1-2 Schools, 1-2 Clubs, Teams of 4-7 players from both sections. PSCF \$5, OSA. **Reg.:** 10-10:30am. **Rds.:** 11-12:30-1:45-3:4-15. Ent/Info: PSCF, c/o Tom Martinak, 25 Freeport St., Pittsburgh, PA 15223-2245, 412-908-0286, W.

### Apr. 11, New York

**Trophies Plus Grand Prix Points: 10 (Enhanced)**  
**Marshall Thursday Game 30 Grand Prix!**  
4-SS, G/25d5. Marshall CC, 23 W. 10th St., NYC. 212-477-3716. **EF:** \$40, members \$25, GMs and IM's free (no deduction from prize). **Prizes:** (\$530 based on 32 players; first two prizes guaranteed.) \$200-100-50, U2100 \$95, U1900 \$85. **Reg.:** 6:15-6:45 pm. **Rds.:** 7-8:15-9:30-10:45. One bye available, request at entry.

### June 6, Nevada

**Trophies Plus Grand Prix Points: 80 (Enhanced)**  
**2013 U.S. Game/10 Championship (QC)**  
See Nationals.

### June 7-9 or 8-9, Nevada

**Trophies Plus Grand Prix Points: 200 (Enhanced)**  
**2013 National Open**  
See Nationals.

### June 9, Nevada

**Trophies Plus Grand Prix Points: 60 (Enhanced)**  
**2013 National Open Blitz (QC)**

7 D-SS (14 games), G/5. Riviera Hotel and Casino, 2901 Las Vegas Boulevard South, Las Vegas 89109. **\$\$\$ 3,000.** 2 Sections: Open \$600-400-200. U2300, U2100 \$200-100 each. Amateur (under 1900) \$400-200-100, U1700, U1500, U1200 125-75 each. There must be 3 players eligible for each prize to be awarded. **EF** \$40. **REG** by 9 p.m. Round 1 at 9:30 p.m. Higher of regular or quick rating used. **HR** \$62 single or double (\$89 Friday and Saturday nights). (800) 634-6753 or (702) 734-5110 – be sure to ask for the **CHESSE** rates. **ENT** Vegas Chess Festivals, PO Box 90925, Henderson, NV 89009-0925, on line at [www.VegasChessFestival.com](http://www.VegasChessFestival.com) or fax at (702) 933-9112. NS. NC. W.

## Regional

### Alabama

**Feb. 16-17, Queen of Hearts - 41st Annual**

See Grand Prix.

### Arizona

**June 8-9, International Youth Championship (NV)**

See Nevada.

### California, Northern

**Feb. 23, Bay Area Chess4Less Quads**  
3xG/30. 1639A S. Main St., Milpitas, CA 95035. **Trophies:** Players w/plus score. **Sched:** Check-in by 3p. **Games:** 3:20-6p. **EF:** \$19 by 2/21, \$34 onsite. **Info:** BayAreaChess.com/chess4less. NS. NC.

**Feb. 23, Bay Area Chess4Less Swiss**  
4SS, G/30. 1639A S. Main St., Milpitas, CA 95035. **Trophies** for plus score & teams. **Sched:** Reg. 9-10a. **Games:** 10:15a-2p. **Special EF:** \$19 by 2/21, \$34 onsite. **Info:** BayAreaChess.com/chess4less. NS. NC.

### Chess Magnet School Junior Grand Prix!

**Mar. 2, Saturday Night Marathon**  
5SSxG/90 (+30s for 1800+). 1639A S. Main St., Milpitas, CA 95035. **Sched:** Sats 6:30p (exc Feb 16). **Prizes:** 60% of Efs. **EF:** \$35 mem, \$47 non-mem. \$0 NMs & higher. **Sections:** 1800+ (FIDE rated), u1800, u1200. **Info:** BayAreaChess.com/weekly. NS. NC.

**Mar. 16, Bay Area Chess4Less Quads**  
3xG/30. 1639A S. Main St., Milpitas, CA 95035. **Trophies:** Players w/plus score. **Sched:** Check-in by 3p. **Games:** 3:20-6p. **EF:** \$19 by 3/21, \$34 onsite. **Info:** BayAreaChess.com/chess4less. NS. NC.

**Mar. 16, Bay Area Chess4Less Swiss**  
4SS, G/30. 1639A S. Main St., Milpitas, CA 95035. **Trophies** for plus score & teams. **Sched:** Reg. 9-10a. **Games:** 10:15a-2p. **Special EF:** \$19 by 3/21, \$34 onsite. **Info:** BayAreaChess.com/chess4less. NS. NC.

### Mar. 23-24, 2013 U.S. Junior Chess Congress

See Nationals.

**Mar. 30, East Bay Chess4Less Quads**  
3xG/30. Hillside Elem., 5980 Marcella St., San Leandro, CA 94578. **Trophies** for plus score. **Sched:** Check-in 3p. **Games:** 3-6p. **EF:** \$19 by 3/28, \$34 onsite. **Info:** BayAreaChess.com/chess4less. NS. NC. W.

**Mar. 30, East Bay Chess4Less Swiss**  
4SS, G/30. Hillside Elem., 5980 Marcella St., San Leandro, CA 94578. **Trophies** for + score. **Sched:** Reg. 9-10. **Games:** 10:15-2. **EF:** \$19 by 3/28, \$34 onsite. **Info:** BayAreaChess.com/chess4less. NS. NC. W.

**Chess Magnet School Junior Grand Prix!**  
**A State Championship Event!**  
**Apr. 27-28, CalChess State Scholastics Championship 2013**  
Convention Ctr, 5001 Grt America Pkwy., Santa Clara, CA 95054. Park free. **Hotel \$99:** Hilton, 4949 Grt America Pkwy., Santa Clara. **Main Event:** Trophies to top 10 teams & max 40 players w/plus score (in ea section). Medals to all. **16 sections:** Gr1-3 <800: Sat 5xG/30. KG & Gr4-12 <800: Sun 5xG/30. K-12 800+ : Sat+Sun 6xG/75 (except 9-12 1600+ is FIDE rated 5xG/90+30s). **Blitz** Fri 6-8p. **Bughouse** Sat 6-8p. **EF** by 4/19: 1day \$48, 2day \$60. **Blitz/Bugh:** \$12. Apr 13 Supp & TD dis-

cretion to place players. **Info:** CalChessScholastics.org. **Quest:** ask@BayAreaChess.com. CalChess Mem reqd. NS, NC, W.

### June 8-9, International Youth Championship (NV)

See Nevada.

## California, Southern

### The Los Angeles Chess Club

(The premier chess club in Southern California) (310) 795-5710 \* [www.LAChessClub.com](http://www.LAChessClub.com) **Beginner/Novice Class:** Sundays: 12-1 pm **Intermediate Class:** Saturdays: 10:30 am – noon **Advanced Lecture:** Tuesdays: 7:30-9:30 pm **Tournaments every Saturday and Sunday Every Sunday Chess 4 Juniors Tournament - 3 Sections:** >1000, <1000, <600. Everybody receives a prize (trophies & medals) + Free pizza & juices. **Details:** [www.laChessClub.com](http://www.laChessClub.com). 11514 Santa Monica Blvd., Los Angeles, CA 90025 (4 blocks 405 West, SW corner of Santa Monica & Butler \* 2nd Floor) **Group Classes \* Tournaments \* Private (1:1) Lessons.**

**Feb. 3, 10, 17, 24, LACC - Every Sunday Chess 4 Jrs.**  
**4 separate events - 3 Sections:** >1000, <1000, <600, 5SS, G/30. 11514 Santa Monica Blvd. & Butler LA, 90025, 2nd fl. 4 blocks W 405. **EF:** \$30 (\$20 LACC memb, siblings 1/2, Free new LACC memb). **Reg.:** 12-1 pm. **Rds.:** 1pm & asap; **Prizes:** Trophies (Top 6) & medals; each player receives a prize! **Parking:** Free on streets or in basement. Free Pizza & juices. **Info:** (310) 795-5710 or [www.LAChessClub.com](http://www.LAChessClub.com) or [Mick@LAChessClub.com](http://Mick@LAChessClub.com).

**Feb. 24, Jimmy Quon Scholastic**  
5SS, G/30. San Diego Chess Club (619) 239-7166, 2225 Sixth Ave., San Diego, CA 92101. In 3 Sections: **Advanced** (over 1000 USCF), **Intermediate** (600 to 1000 USCF), **Novice** (under 600 USCF and unrated). **ALL:** **EF:** \$12 if received by 1/31; \$17 if received by 02/22; \$20 at site. Trophies to top five. All participants will receive metals. **Reg.:** 9am to 9:45am. After 9:45am, entrées will be given a half point bye for the first round. **Rds.:** 10am; 11:15am; 12:30pm; 1:45pm; 3pm. Half point byes available for all rounds. **NOTE:** must be requested before the start of the previous round. **ENT:** Olympic Chess, 2106 S. Atlantic Blvd. #46, Monterey Park, CA 91754 **INFO:** Michael Belcher (323) 522-4174 td@chess.com. [www.jimmyquonscholastic.com](http://www.jimmyquonscholastic.com). Make checks payable to Olympic Chess. **The James Quon Chess Foundation is currently offering a three-month trial membership to the USCF (United States Chess Federation) for all interested scholastics.** NS. NC. W.

### Chess Magnet School Junior Grand Prix!

**A State Championship Event!**  
**Mar. 2-3, Southern California Super States Scholastics 2013**  
Hyatt Regency, 24500 Town Center Dr., Valencia, CA 91355. Free parking! **Main Event:** Trophies to top 10 players in all sections and to top 5 school and club teams in all K-1, K-3, K-6 sections. Top 3 teams in K-8 and K-12 sections. Medals to others. **Sat., 3/2 Only: K-6 U500** (5SS, G/30, 10-11:30-1-2:15-3:30). **Sun., 3/3 Only: K-1 U200 & K-3 U300:** 5SS, G/30, 10-11:30-1-2:15-3:30 **Sat. & Sun. 3/02-03:** All other sections. **K-1 Champ:** 6SS, G/60, Rds: 9:30-12:30-3:30 Sat; 9:30-12-3 Sun. **K-3 U600, K-6 U800, K-8 U800, K-12 U1200:** 6x2SS – Six double-rounds – G/30, Rds. Sat 9:30-12:30-3:30, Sun 9-12-3. **K-3 Champ, K-6 Champ, K-8 Champ, K-12 Champ:** 6SS, G/80, Rds: 9-12:10-3:20 each day. **EF: 1-day Sections:** \$37 by 2/15, \$47 by 2/22, \$57 by 3/01, \$67 day of event by 8:30am. **2-day Sections:** \$47 by 2/15, \$57 by 2/22, \$67 by 3/1, \$77 day of event by 8:30am. Ent: Cal Youth Chess League, 25405 Via Nautica, Valencia, CA 91355, or online <http://superstates.cycl.org>. **HR:** \$109, (889)421-1442, mention Super States. Request 4-page flyer: [coachjay@cycl.org](http://coachjay@cycl.org). NS, NC, W.

### June 8-9, International Youth Championship (NV)

See Nevada.

## Connecticut

**Mar. 9, 2013 CT State Open & Scholastic Championships**

See Grand Prix.

**A State Championship Event!**  
**Mar. 9, 2013 CT State Scholastic Championships**  
Kindergarten, 1st Grade, K-3, K-6, K-8 Championship sections, all 5SS, G/30, K-12 Championship 4SS, G/60. **Trophies:** Top 5 Individual in scholastic sections, Top 3 Teams each section. Individual awards for CT Grade Champions K-12. **EF:** \$55 by 2/25, \$75 by 3/4, \$100 site. Check [www.edutechchess.com](http://www.edutechchess.com) or [www.ctchess.com](http://www.ctchess.com) for registration flyer & more info.

## Illinois

**Apr. 26-28, 2013 All-Girls National Championships presented by the Kasparov Chess Foundation in association with the Renaissance Knights Chess Foundation & USCF**  
See Nationals.

**May 23-27, 24-27, 25-27 or 26-27, 22nd annual Chicago Open**

See *Chess Life* or [www.chesstour.com](http://www.chesstour.com).

## Louisiana

**Mar. 1-3, SPNO Boys & Girls Scholastic**  
at Holiday Inn Downtown/Superdome, New Orleans, LA. 6 Rd. SS G/45 d/5 scholastic up to 9 sections: USCF Rated Secs. grades K-2, 3-5, 6-8 & 9-12, sep. for Girls & Boys; 1 Unrated K-12 Reserve sec. Side events: 3 hour chess camp (max. 30); GM Polgar Simul (max 25 bds.); Blitz Championship, 2 secs., K-6 and 7-12; Bughouse; Puzzle Solving Championship; "Breakfast with Susan" at Brennan's Restaurant (former home of World Champ. Paul Morphy). **Schedule:** Rds. Sat., 3/2 - 10 a.m., 12, 2 p.m.; Sun 3/3 - 11 a.m., 1 p.m., 3 p.m.; **Side events:** Fri 3/1 - Camp 2-5 p.m.; Puzzles, 6 p.m., Bughouse 7 p.m.; Sat. 3/2 - Blitz 4 p.m., Simul



# Tournament Life

7 p.m.; Sun. 3/3 - Breakfast 8:30 a.m.; side event awards before rds 4 & 5; main event awards 4:45 p.m. **Prizes:** Over \$100,000 in Webster U. Scholarships, tablet computers & chess prizes; Trophies to top 5 ea. sec. (more poss. in lg secs.; top 20% based on pre-reg. as of 2/10); Side event awards: Blitz - top 3 boys & top 3 girls ea. sec. Bughouse - top 3 teams. Puzzles - top 3 Boys & Girls in rating gps. Under 800, Under 1500 & Open. All players receive commemorative medals. Team awards: top 3 school & top club team ea. sec. of main event & blitz (Student may rep. only 1 team; commit by rd 2). **Reg. fees:** All secs. of G/45 Main Event: \$45 by 1/10/13; then \$55 by 2/1/13; \$65 thereafter. Camp - \$40 by 1/10/13; then \$50. Puzzles \$10 by 2/1/13; then \$15. Bughouse - \$20/team by 2/1/13; then \$30. Blitz - \$15 by 2/1/13; then \$20. Simul - \$25: "Breakfast with Susan" Sunday Brunch at Brennan's Rest. (Paul Morphy home) \$55 adults; \$30 children. **Host hotel:** Holiday Inn Downtown Superdome, King or 2 Doubles \$149/nt, 2 night min. til sold out or 1/18/13. Overnight Parking \$15; free wi-fi, fitness center, pool; 10% food & bev. disc. if staying on-site. To reserve call 1-800-535-7830 & request Polgar Chess Rate. Alt./Overflow hotel: SpringHill Suites downtown, 301 St. Joseph St., (1 mile off Holiday Inn): King + sofa sleeper or 2 Queens + sleeper, \$209/nt. til sold out or 2/8/13. To reserve call 1-888-364-1200 & request Polgar Chess Rate. **Details and registration available soon at** [www.polgarevents.com](http://www.polgarevents.com) and [www.cajunchess.com](http://www.cajunchess.com). **Email questions to:** [ChessNOLA@yahoo.com](mailto:ChessNOLA@yahoo.com).

## Maryland

### Maryland Chess Association

Open & scholastic tournaments in Maryland listed at [www.mdchess.com](http://www.mdchess.com).

### Mar. 2-3, UMBC Open - Alvin S. Mintzes Chess Tournament

See Grand Prix.

## Massachusetts

### Mar. 9, 2013 CT State Open & Scholastic Championships (CT)

See Grand Prix.

## Nevada

### A State Championship Event!

#### Mar. 16, Nevada State Scholastic Championship

**K-3 and K5:** 6-SS, G/30, d5. **K-8 and K-12:** 5-SS, G/30, d5 round 1-2, G/45, d5 round 3-5. Las Vegas Day School, 3275 Red Rock, Las Vegas, NV 89146 and is open to any Nevada school age resident. Trophies for top players, top teams, top girl, biggest upset in each section. Medals for 3 or more points and souvenirs for all participants. **EF:** \$30 received by 3/4, \$40 by 3/15, \$60 on site. **Reg.:** Nevada Chess, PO Box 90925, Henderson, NV 89009, online at [www.nevadachess.org](http://www.nevadachess.org) or Fax 702-933-9112. On site by 8:30. Late registrants may not be paired in round 1. Round 1 at 9:30. **INFO:** Gale W/Winds, gwinds@lvds.com.

### June 6, 2013 U.S. Game/10 Championship (QC)

See Nationals.

### June 7, National Open Scholastic Trophy Tournament

5-SS, Game/30, Riviera Hotel and Casino, 2901 Las Vegas Boulevard South, Las Vegas 89109. Open to players 18 and under. **In 3 sections:** U1800, U1200, and U800. Unrated players in the U1200 section and all players in the U800 section must be age 11 or under. **Trophies** to top 5 in each section, top 2 in each odd 200 point rating group and unrated. There must be 3 players eligible for each prize to be awarded. **EF:** \$39 by 5/21, \$44 by 6/3, \$50 on site. **REG.:** 9-9:30 a.m. **RDS:** 10-11:30-1-2:30-4. Blitz 6:30 p.m. (\$15 by 5/21 \$20 on site) **HR:** \$62 single or double (\$89 Friday and Saturday nights). (800) 634-6753 or (702) 734-5110 - be sure to ask for the **CHESS** rates. **ENT:** Vegas Chess Festivals, PO Box 90925, Henderson, NV 89009-0925, on line [www.VegasChessFestival.com](http://www.VegasChessFestival.com) or fax at (702) 933-9112. NS. NC. W.

### June 7-9 or 8-9, 2013 National Open

See Nationals.

### June 8, National Open Blitz Sectionals (QC)

12-RR, G/5, Riviera Hotel and Casino, 2901 Las Vegas Boulevard South, Las Vegas 89109. Sections of 12-15 players with rating range less than 200 points whenever possible. \$100-60, 2nd half \$40, in each section. **EF:** \$20. **REG.:** by 9 p.m. Round 1 at 9:30 p.m. Higher of regular or quick rating used. **HR:** \$62 single or double (\$89 Friday and Saturday nights). (800) 634-6753 or (702) 734-5110 - be sure to ask for the **CHESS** rates. **ENT:** Vegas Chess Festivals, PO Box 90925, Henderson, NV 89009-0925, on line at [www.VegasChessFestival.com](http://www.VegasChessFestival.com) or fax at (702) 933-9112. NS. NC. W.

### Chess Magnet School Junior Grand Prix!

#### June 8-9, International Youth Championship

5SS, Game/60, d5, Riviera Hotel and Casino, 2901 Las Vegas Boulevard South, Las Vegas 89109. **In 4 Sections by age:** 14 and Under, 14 and Under Reserve (rated below 1000), 9 and Under, 9 and Under Reserve (rated below 800). **Trophies** to top 10 in each section plus class trophies and team trophies. 1st Place in each section wins a **Computer** loaded with valuable Chess Software and hundreds of Videos, 2nd-4th win chess prizes valued at \$250-150-100. Unrated players may not win 1st in Reserve sections. **EF:** \$69 by 5/27, \$79 by 6/3, \$90 on site. 1/2 point bye in any round (limit 2) if requested in advance. **REG.:** 8-9 a.m. **RDS.:** 10-1-4, 10-1. Blitz 6/7 at 6:30 p.m. (\$15 by 5/21 \$20 on site) **HR:** \$62 single or double (\$89 Friday and Saturday nights). (800) 634-6753 or (702) 734-5110 - be sure to ask for the **CHESS** rates. **ENT:** Vegas Chess Festivals, PO Box 90925, Henderson, NV 89009-0925, on line [www.VegasChessFestival.com](http://www.VegasChessFestival.com) or fax at (702) 933-9112. NS. NC. W.

### June 9, 2013 National Open Blitz (QC)

See Grand Prix.

## New Jersey

### NJCCS Quads - First Friday Every Month!

New Jersey Children's Chess School, 862 DeGraw Ave.,

Forest Hill (Newark), NJ 07104. Open to K-8. 3-RR, G/35. **EF:** \$20 for rated above 1400. \$25 for R=1200, \$30 for others. \$5 off for registration by mail one week in advance. **Reg.:** 6-6:50PM. **Rds:** 7-8-8:50 PM. **Awards:** Trophies to ALL. Chess classes meet every Friday 6:30-9PM. **Website:** [www.kidsscamps.com](http://www.kidsscamps.com). **Info:** Arkady Geller, 973-483-7927 or [chesscamp@yahoo.com](mailto:chesscamp@yahoo.com).

### Mar. 9, King's Chess Club Quads

Morning quads and afternoon quads, G/30, Kindergarten-undergraduate (scholastic, youth, and young adult memberships). Bethlehem Church, 758 Route 10, Randolph, NJ 07869. **EF:** None. **Reg.:** 9-9:20 a.m., 1st rd. 9:40. Arr. by noon to reg. only for afternoon quads. Medal to each quad winner. **Info:** Bethlehem Church 973-366-3434 or Bob McAdams 973-694-3988, [rwm@fambright.com](mailto:rwm@fambright.com). Weather closings will be posted on church homepage at [www.bethlehemchurch.org](http://www.bethlehemchurch.org) by 7:30am.

### Mar. 16, St. Patts Day Swiss

(2-Sections). Somerset Holiday Inn, 195 Davidson Ave., Somerset (exit 10 off I-287), U1400 K-12, 5-SS, G/30, d5. **EF:** \$15. U0700 K-7, 5-SS, G/30, d5. **EF:** \$100. **Both Sections, EF:** \$22 early, \$30 at site. Trophies top 10. Enter at [entryfeesrus.com](http://entryfeesrus.com). **Reg.:** 9-10am Sat. **1st Round:** 10am then ASAP with lunch break. See special \$5 refunds to VPLM members on entryfeesrus.com. **Info:** Ken 908-619-8621 or [acn@goes.com](mailto:acn@goes.com). NC, W.

### Apr. 14, Westfield Spring Scholastic

Westfield Y, 220 Clark St., Westfield, NJ 07090. **K-12 3 Sections:** Open, U1250, U750. **Open:** 3-SS. G/40, d5. **Rds.:** 2:45, 4:25, 6:05 p.m. **U1250:** 4-SS. G/25, d5. **Rds.:** 2:45, 4:00, 5:15, 6:30 p.m. **U750:** 4-SS. G/25, d5. **Rds.:** 2:45, 4:00, 5:15, 6:30 p.m. **Prizes:** Trophies to Top 5 in each section. Tiebreaks used. **EF:** Advance \$20, \$15 members. At site \$30, \$25 members. Send advance entries to John Moldovan, 510 4th Ave., Garwood, NJ 07027 by April 11. Make checks payable to Westfield Chess Club. **Reg.:** 2:00-2:30 p.m. **Info:** Please present identification on entering the building. John Moldovan: [westfieldchessclub@gmail.com](mailto:westfieldchessclub@gmail.com), Bill Cohen: 732-548-8432 or 848-219-1358, [westfieldchessclub.blogspot.com](http://westfieldchessclub.blogspot.com) and [www.westfieldchessclub.com](http://www.westfieldchessclub.com).

## New York

### Feb. 15, Marshall February Friday Quads

3rd Friday every month. 3-RR, G/40d5. Open to all; quads formed by rating. Marshall CC, 23 W. 10th St., NYC. 212-477-3716. **EF:** \$30, members \$20, \$50 for each winner. **Reg.:** 5:15-5:45. **Rds.:** 6-7:30-9. [www.marshallchessclub.org](http://www.marshallchessclub.org).

### Feb. 16, NEW! Marshall Saturday Quads!

3-RR, G/70d5. Open to all; quads formed by rating. Marshall CC, 23 W. 10th St., NYC. 212-477-3716. **EF:** \$35, members \$25, \$60 for each winner. **Reg.:** 10:15-10:55AM. **Rds.:** 11AM-1:30-4PM. [www.marshallchessclub.org](http://www.marshallchessclub.org).

### Feb. 16, Marshall Saturday G/60!

4-SS, G/55d5. Marshall CC, 23 W. 10th St., NYC. 212-477-3716. **(\$40/40):** \$240-120, U2000 95, U1700 85. **EF:** \$40, members \$20. **Reg.:** 11:15-11:45. **Rds.:** 12-2:30-4:45-7. One bye available, request at entry. [www.marshallchessclub.org](http://www.marshallchessclub.org).

### Feb. 17, Marshall Sunday G/45!

4-SS, G/40d5. Marshall CC, 23 W. 10th St., NYC. 212-477-3716. **Two sections:** A. **Open** (\$360/26): \$160-80, U2100 65, U1800 55. B. **U1500** (\$240/18): \$120-65, U1200 55. **EF:** \$40, members \$20. **Reg.:** 11:15-11:45. **Rds.:** 12-1:45-4:00-5:45. One bye available, request at entry. [www.marshallchessclub.org](http://www.marshallchessclub.org).

### Feb. 18, Marshall Presidents' Day Madness!

6-SS, G/25d5. Marshall CC, 23 W. 10th St., NYC. 212-477-3716. **(\$480/28):** \$200-100, U 2000 \$70, U1700 \$60, U1400 \$50. **EF:** \$45, members \$25. **Reg.:** 11:15-11:45. **Rds.:** 12-1:15-2:30-4:15-6:30. Two byes available, request at entry. [www.marshallchessclub.org](http://www.marshallchessclub.org).

### Chess Magnet School Junior Grand Prix!

#### Feb. 20, 27, Mar. 6, 13, 20, Marshall Wednesday U1400!

5-SS, G/85d5. Marshall CC, 23 W. 10th St., NYC. 212-477-3716. **EF:** \$50, members \$30. **(\$450/24):** \$240-120, U1100 \$90. **Reg.:** 6:15-6:45. **Rds.:** 7 pm each Wed. Limit two byes, request by Rd 3. [www.marshallchessclub.org](http://www.marshallchessclub.org).

### Chess Magnet School Junior Grand Prix!

#### Feb. 20, 27, Mar. 6, 13, 20, Marshall Wednesday U2000!

5-SS, G/85d5, SD/1d5. Marshall CC, 23 W. 10th St., NYC. 212-477-3716. **EF:** \$50, members \$30. **(\$450/24):** \$240-120, U1700 \$90. **Reg.:** 6:15-6:45. **Rds.:** 7 pm each Wed. Limit two byes, request by Rd 3. [www.marshallchessclub.org](http://www.marshallchessclub.org).

### Chess Magnet School Junior Grand Prix!

#### Feb. 20, 27, Mar. 6, 13, 20, 27, Marshall Scholastic U1400 Wednesdays!

6 rounds Swiss, G/60d5. Open to players rated Under1400, grades K-8. **EF:** \$50, members \$30. **Prizes:** Trophies to top 3, best U1200, best U1000, best unrated. One year Marshall Chess Club Jr. Memberships to winner and highest scoring player U1200 (\$160 value each). **Rounds:** 4 pm each Wed. Limit two byes, request by Rd 4. Marshall CC, 23 W. 10th St., NYC. 212-477-3716. [www.marshallchessclub.org](http://www.marshallchessclub.org). USCF rated.

### Feb. 21, Marshall Thursday Game 30 Grand Prix!

See Grand Prix.

### A Heritage Event!

**Feb. 21, The Original "4 Rated Games Tonight!" Now At The New Yorker Hotel - USCF's Longest-Running Action Tournament - with FREE Under 1200 Section! - Canceled**

### Feb. 22, NEW! Marshall \$500 FIDE Blitz! (QC)

See Grand Prix.

### Feb. 23, Marshall Saturday U1600!

4-SS, G/40d5. Marshall CC, 23 W. 10th St., NYC. 212-477-3716. **(\$300**

**b/24):** \$160-80, U1300 \$60. **EF:** \$40, members \$20. **Reg.:** 12:15-12:45. **Rds.:** 1-2:45-4:30-6:15PM. One bye available, request at entry. [www.marshallchessclub.org](http://www.marshallchessclub.org).

### Feb. 28, Marshall Thursday Game 30 Grand Prix!

See Grand Prix.

### A Heritage Event!

**Feb. 28, The Original "4 Rated Games Tonight!" Now At The New Yorker Hotel - USCF's Longest-Running Action Tournament - with FREE Under 1200 Section! - Canceled**

### Mar. 1, NEW! Marshall Friday U2000 Action!

4-SS, G/25d5. Marshall CC, 23 W. 10th St., NYC. 212-477-3716. **EF:** \$40, members \$20. **(\$360/24):** \$160-80, U1800 \$65, U1600 \$55. **Reg.:** 6:15-6:45. **Rds.:** 7-8:15-9:30-10:45. One bye available, request at entry. [www.marshallchessclub.org](http://www.marshallchessclub.org).

### Mar. 2, NEW! Marshall Saturday Quads!

3-RR, G/70d5. Open to all; quads formed by rating. Marshall CC, 23 W. 10th St., NYC. 212-477-3716. **EF:** \$35, members \$25, \$60 for each winner. **Reg.:** 10:15-10:55AM. **Rds.:** 11AM-1:30-4PM. [www.marshallchessclub.org](http://www.marshallchessclub.org).

### Mar. 2, Marshall Saturday G/60!

4-SS, G/55d5. Marshall CC, 23 W. 10th St., NYC. 212-477-3716. **(\$540/40):** \$240-120, U2000 95, U1700 85. **EF:** \$40, members \$20. **Reg.:** 11:15-11:45. **Rds.:** 12-2:30-4:45-7. One bye available, request at entry. [www.marshallchessclub.org](http://www.marshallchessclub.org).

### Mar. 3, Marshall Sunday G/45!

4-SS, G/40d5. Marshall CC, 23 W. 10th St., NYC. 212-477-3716. **Two sections:** A. **Open** (\$360/26): \$160-80, U2100 65, U1800 55. B. **U1500** (\$240/18): \$120-65, U1200 55. **EF:** \$40, members \$20. **Reg.:** 11:15-11:45. **Rds.:** 12-1:45-4:00-5:45. One bye available, request at entry. [www.marshallchessclub.org](http://www.marshallchessclub.org).

### Mar. 5, NEW! Marshall Tuesday Action!

4-SS, G/25d5. Marshall CC, 23 W. 10th St., NYC. 212-477-3716. **EF:** \$40, members \$20. **(\$360/24):** \$160-80, U2100 \$65, U1800 \$55. **Reg.:** 6:15-6:45. **Rds.:** 7-8:15-9:30-10:45. One bye available, request at entry. [www.marshallchessclub.org](http://www.marshallchessclub.org).

### Mar. 7, Marshall Thursday Game 30 Grand Prix!

See Grand Prix.

### Mar. 9, Marshall Saturday U1800

4-SS, G/40d5. Marshall CC, 23 W. 10th St., NYC. 212-477-3716. **(\$300/24):** \$160-80, U1500 \$60. **EF:** \$40, members \$20. **Reg.:** 12:15-12:45. **Rds.:** 1-2:45-4:30-6:15. One bye available, request at entry. [www.marshallchessclub.org](http://www.marshallchessclub.org).

### Mar. 9, 2013 CT State Open & Scholastic Championships (CT)

See Grand Prix.

### Mar. 14, Marshall Thursday Game 30 Grand Prix!

See Grand Prix.

### A Heritage Event!

**Mar. 14, The Original "4 Rated Games Tonight!" Now At The New Yorker Hotel - USCF's Longest-Running Action Tournament - with FREE Under 1200 Section! - Canceled**

### Mar. 15, Marshall Friday G/45 Quads

3rd Friday every month. 3-RR, G/40d5. Open to all; quads formed by rating. Marshall CC, 23 W. 10th St., NYC. 212-477-3716. **EF:** \$30, members \$20, \$50 for each winner. **Reg.:** 5:15-5:45. **Rds.:** 6-7:30-9. [www.marshallchessclub.org](http://www.marshallchessclub.org).

### Mar. 16, Marshall Saturday U1600 G/45

4-SS, G/40d5. Marshall CC, 23 W. 10th St., NYC. 212-477-3716. **(\$300 b/24):** \$160-80, U1300 \$60. **EF:** \$40, members \$20. **Reg.:** 12:15-12:45. **Rds.:** 1-2:45-4:30-6:15PM. One bye available, request at entry. [www.marshallchessclub.org](http://www.marshallchessclub.org).

### Chess Magnet School Junior Grand Prix!

#### Mar. 18, 25, Apr. 1, 8, 15, Marshall Monday U1600

5-SS, G/85d5. Marshall CC, 23 W. 10th St., NYC. **(\$450/20):** \$240-120, U1300 \$90. **Reg.:** 6:15-6:45. **Rds.:** 7 pm each Mon. Two byes available, request by Round 3. [www.marshallchessclub.org](http://www.marshallchessclub.org).

### Mar. 21, Marshall Thursday Game 30 Grand Prix!

See Grand Prix.

### Mar. 22, NEW! Marshall \$500 FIDE Blitz! (QC)

See Grand Prix.

### Mar. 23, Marshall Saturday U1500

4-SS, G/40d5. Marshall CC, 23 W. 10th St., NYC. 212-477-3716. **(\$300/20):** \$160-80, U1200 \$60. **EF:** \$40, members \$20. **Reg.:** 12:15-12:45. **Rds.:** 1-2:45-4:30-6:15. One bye available, request at entry. [www.marshallchessclub.org](http://www.marshallchessclub.org).

### Chess Magnet School Junior Grand Prix!

#### Mar. 27, Apr. 3, 10, 17, 24, Marshall Wednesday U1400!

5-SS, G/85d5. Marshall CC, 23 W. 10th St., NYC. 212-477-3716. **EF:** \$50, members \$30. **(\$450/24):** \$240-120, U1100 \$90. **Reg.:** 6:15-6:45. **Rds.:** 7 pm each Wed. Limit two byes, request by Rd 3. [www.marshallchessclub.org](http://www.marshallchessclub.org).

### Chess Magnet School Junior Grand Prix!

#### Mar. 27, Apr. 3, 10, 17, 24, Marshall Wednesday U2000!

5-SS, G/85d5, SD/1d5. Marshall CC, 23 W. 10th St., NYC. 212-477-3716. **EF:** \$50, members \$30. **(\$450/24):** \$240-120, U1700 \$90. **Reg.:** 6:15-6:45. **Rds.:** 7 pm each Wed. Limit two byes, request by Rd 3. [www.marshallchessclub.org](http://www.marshallchessclub.org).

### Mar. 28, Marshall Thursday Game 30 Grand Prix!

See Grand Prix.

Please turn to page 14 



**It's Coming.**

**SuperNationals V**

**April 5-7 2013  
Nashville TN**

**See Tournament Life section for more details**