

February 2014

uschess.org

Chess Life for Kids!

I Did It!



A USCF Publication

\$3.00



0 74470 27842 9

**Fast, Fun, and
Easy to Use**

In 2006, and again in 2007,
young Chess Magnet students
from Portland, OR, scored 7-0 in the
USCF Spring Nationals.

ChessMagnetSchool.com

Better Than Any Textbook for Learning Chess



**Student
Training**



**Student
& Class
Management**

**"Great Stuff! I just delivered my first
Belgian champion under 10 and
boosted his development
by using ChessMagnetSchool.com"**

- Ton Montforts, Coach
Schaakacademie
Limburg, Belgium

**"Your website was
integral to our team's winning."**

-Mike Hosford, Coach
Alcott Elementary
2008 Washington State
Grades 4-6 Champions

**Proud Sponsor
of the
2014 USCF
Junior Grand Prix!**

**Start Your 30-day Free Trial Today
at
www.ChessMagnetSchool.com**

	1 month	3 months	1 year	1 yr USCF
Individuals	\$6.95	\$15.00	\$29.95	\$26.95
Class/Family	\$6.00	\$12.00	\$25.00	\$22.00

Free to teachers/coaches of at least 5 students
Includes our powerful, easy-to-use Coaching Tools & Reports

Works on Windows and Macintosh
computers (requires internet access)

To learn more, call 650-284-5062
877-378-4319 (US toll-free)
email info@ChessMagnetSchool.com



Table of Contents

4	WHAT'S THE QUESTION?
5	WHAT'S THE BEST MOVE?
6	THE CHESS DETECTIVE
8	AVAST, MATEY!
9	ARABIAN KNIGHTS
11	I DID IT!
12	ALL AMERICA TEAM
16	2013 JUNIOR GRAND PRIX STANDINGS
17	TOURNAMENT LIFE ANNOUNCEMENTS
23	ANSWERS, WE'VE GOT ANSWERS
23	ZARIA

COVER PHOTO COURTESY OF GREG JOHNSTON

**Publisher****USCF Executive Director:****Jean Hoffman**

Jean.Hoffman@uschess.org

Scholastic Editor: Glenn Petersen

gpetersen@uschess.org

Art Director: Cat Connor

catseyephoto@mac.com

Editorial Asst./Copy Editor: Alan Kantor

akantor@uschess.org

Editorial Assistants:**Jo Anne Fatherly**

backtobasics@uschess.org

Jennifer Pearson

jenpearson@uschess.org

Advertising Manager: Joan DuBois

jdubois@uschess.org

Tournament Life: Joan DuBois

tla@uschess.org

Director of Publications: Daniel Lucas

dlucas@uschess.org

CONTRIBUTORS: Send your contributions and articles to *Chess Life for KIDS*, PO Box 3967, Crossville, Tennessee 38557 or better yet, e-mail to gpetersen@uschess.org.

Chess Life for KIDS (USPS 023-567, ISSN: 1932-5894) is published in February, April, June, August, October, and December of every year by the United States Chess Federation, 137 O'Brien Drive, Crossville, Tennessee 38555. Periodical postage paid at Crossville, Tennessee, and additional mailing offices.

CHANGE OF ADDRESS: Be sure to notify us at once of any change of address. Please include your old address and your new address, along with your USCF I.D. number.

POSTMASTER: Send address changes to USCF, PO Box 3967, Crossville, Tennessee 38557.

Annual Scholastic Membership

Regular Scholastic Membership (online version of *Chess Life for Kids*), age 12 or younger, is just \$17 per year. Premium Scholastic Membership (receives *Chess Life for Kids* by mail) is \$24 per year. \$13 of every premium membership goes towards providing *Chess Life for Kids*. Annual subscription rate is \$18. Entire contents copyright 2014, United States Chess Federation.

Teachers may photocopy instructional articles for classroom use, but republication or wide-spread copying without the written consent of the USCF is forbidden.



Learn winning chess openings, tactics, and endgame technique from the masters one-to-one in the comforts of your own home.

Choose from a variety of experienced online coaches from India to match your level. Prices starting at \$9 per hour.

Visit www.mychessguru.com and sign-up for a free try today. Contact us at mychessguru@gmail.com or (732) 207-6203.



What's the Question?

by National Master Daniel Gurevich

Vishruth Madhusudhan

Q: What do you do to become a GM?

A: The grandmaster (GM) title is at the very top of the international chess title system – there are only about 1400 of these elite players in the world! Very few players ever reach this level, which requires becoming an exceptional player. While there may not be a simple recipe for reaching grandmaster level, I will share a few general tips with you on how you can improve your chess.

The most important thing to remember is that becoming a grandmaster takes lots of hard work! Even the most talented player must spend many hours a day on chess, for many years, to reach such a high level. Becoming a strong player requires serious commitment.

So what should an ambitious player aspiring to become a grandmaster work on? Openings? Tactics? Strategy? The answer is all of the above! In general, a strong player may not be exceptional in any one area of chess, but he has no clear weakness; a grandmaster is comfortable in a calm maneuvering position but does not mind an exciting tactical battle, either.

Here are my tips on what to do to improve at chess:

1. Solve tactical puzzles, especially difficult ones! Honing your tactics is a must for improvement.

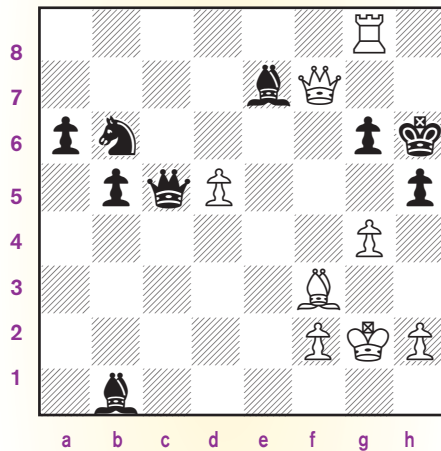
2. Analyze many grandmaster games. To become a grandmaster, you probably need to look at thousands or even tens of thousands of high-quality games.

3. Develop a solid opening repertoire that fits your style. It is very hard to become a grandmaster without

grandmaster-level opening knowledge.

4. Do not forget about endgames! Basic endgames like king and pawn versus king are extremely important, but you should also hone your technique in more complicated endgames, too.

It is far from easy to master the diverse aspects of the game, but we can all work on becoming better chess players! It is a long and difficult road to grandmaster, but do not get discouraged if you mess up. Remember that even grandmasters are only human and also make mistakes, even blunders. Here is an example:



Samuel Reshevsky – Vladimir Savon
Petropolis 1973

It is White to move. The black king is cornered and there should be a way to finish him off. Take a minute to find a solution. (There are quite a few.)

Okay, ready? The quickest win is mate in three after 40. g5+! Kxg5 41. h4+! Kxh4 42. Qf4#. However, there are other winning moves, such as 40. Rh8+, 40. gxh5, 40. Qf4+, 40. Qg7+, etc.

So which of these options did the great American grandmaster Reshev-

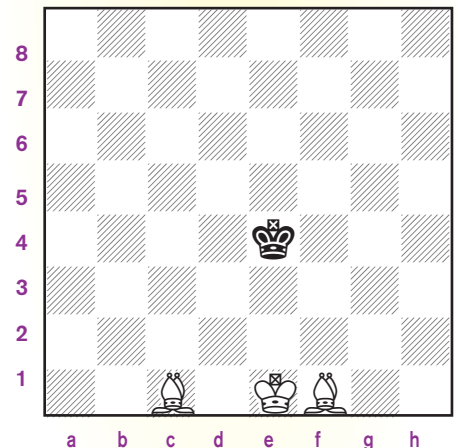
sky pick? None – in fact, he blundered his queen with 40. Qxg6+?!, thinking it was checkmate! Of course, he resigned immediately after 40. ... Bxg6.

Reshevsky was no ordinary grandmaster. He was one of the world's best players at the time and an eight-fold U.S. Championship winner, earning this title as many times as Bobby Fischer! So when you make a mistake, remember: you are in good company.

Ridwan Azam

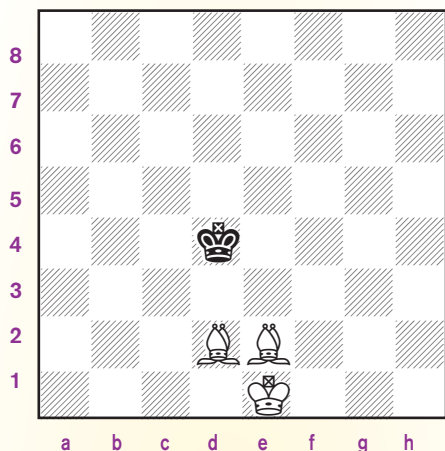
Q: How do you checkmate with two bishops?

A: The easiest way to checkmate with king and two bishops against king is using what I call the wall of doom. What is the wall of the doom?! How do you use it? Well, let me show you an example that illustrates the answers to both of these questions. You should set up a board, and you will need 14 coins. (You will find out why in a minute!)

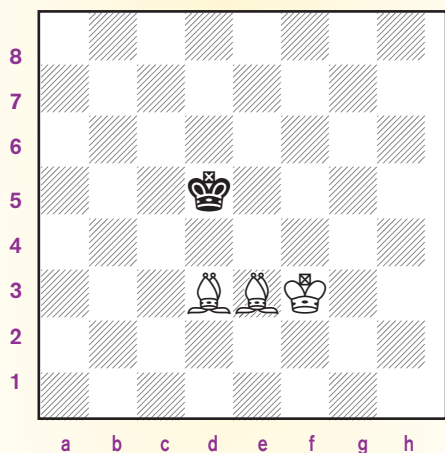


It is White to move. Our goal is to push the black king back to the very edge of the board, corner him, and checkmate him. First, let us stop him from moving forward. 1. Be2! (con-

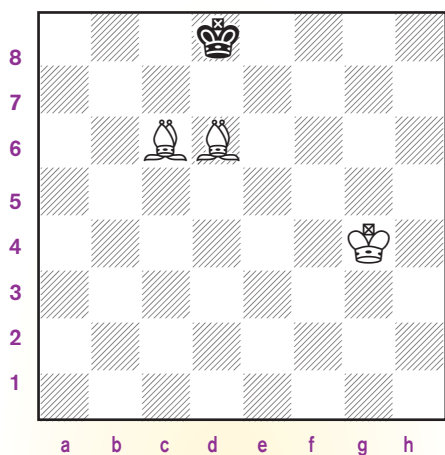
trolling f3) 2. ... Kd4 2. Bd2!



Now look carefully at the position. The bishops control a lot of squares: a6, a5, b5, b4, c4, c3, d3, e3, f3, f4, g4, g5, h5, h6. Now place your coins on these squares. Do you see a pattern? This is the wall of doom, a barrier the black king can never cross. 2. ... **Ke4** Now White brings the king into the game: 3. **Kf2 Kd4** 4. **Kf3**. Black is forced to retreat to the fifth rank with 4. ... **Ke5**. And now is time to advance the wall of doom: 5. **Be3 Kd5** 6. **Bd3**



Now move your coins to a7, a6, b6, b5, c5, c4, d4, e4, f4, f5, g5, g6, h6, and h7. The wall has moved one square forward! Black plays 6. ... **Ke5**. Now we can advance the wall again: 7. **Be4 Kf6** 8. **Bf4!** Be sure to always keep at least one of the bishops lined up with the king, two squares in front of it. 8. ... **Ke6** 9. **Kg4** You know the drill! 9. ... **Kd7** 10. **Bd5! Kc8** (This move is not forced, but after 10. ... **Ke7** 11. **Be5 Kd7** 12. **Kf5**, the white pieces close in on the king anyway.) 11. **Bc6 Kd8** 12. **Bd6**

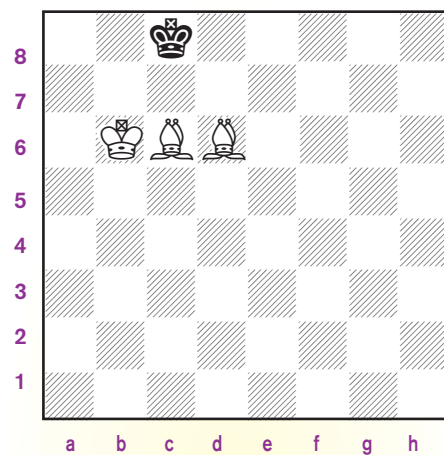


The black king is stuck in a tiny cage: he can only move between c8 and d8. So the only legal move is 12. ... **Kc8**. Now comes the most difficult part. To checkmate the king, we need to corral it in a corner. But how do we force it to go there?

I suggest you use this three-step process:

1. **Pick a corner.**
2. **Bring your king over.**
3. **Push the enemy king!**

How does this work? First, we pick a corner. The corner closest to the black king is a8, so that is our pick. Next, what you want to do is move your king towards the corner: 13. **Kf5 Kd8** 14. **Ke5 Kc8** 15. **Kd5 Kd8** 16. **Kc5 Kc8** 17. **Kb6** This is the best square for the king. From there, it controls the most important squares: a7, b7, and c7.



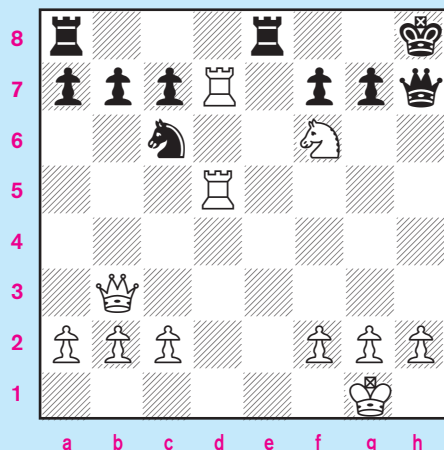
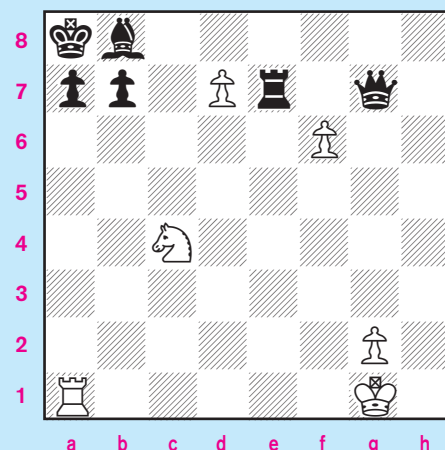
17. ... **Kd8** Now we begin the final step: we *push the enemy king* towards the corner, with a waiting move. 18. **Bb5! Kc8** Now we cannot allow the king to return to d8. 19. **Bc7??** is stalemate, so we play 19. **Be7! Kb8** 20. **Ba6! Ka8** We are in the home stretch. Here is an exercise for you to solve: how do you finish Black off? The solution is 21. **Bb7+ Kb8** 22. **Bd6#**.

There are quite a few traps, but if you use the wall of doom and watch out for stalemate, you will discover that it is pretty easy to checkmate with two bishops! I hope you have a chance to use this method in a game; even if you do not, remember that studying endgames will definitely pay off.

WHAT'S THE BEST MOVE?

Pick the best move for White. Write down the name of the piece (you can use the abbreviations: Q, R, B, N, K, P) and what square it should move to (letter and number).

Solutions on page 23



The Chess Detective

TRAPPING THE LADY



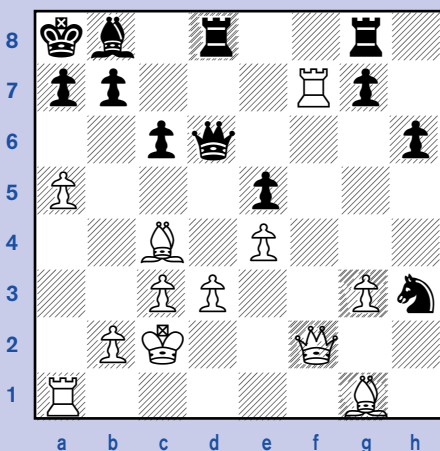
by **NM Todd Bardwick**

The next best thing to finding a checkmate, or trapping the king, is to trap the queen.

Because of the queen's long-range abilities, this is a much more difficult task.

Of course, when you notice that the queen doesn't have a lot of available squares, this is the clue to look for ways to surround her and try to close in for the kill.

Here is a position between Akiba Rubinstein and Karel Hromadka from the 1923 Maerisch-Ostrau Tournament in the Czech Republic.



Rubinstein-Hromadka
Position after 24. ... Qd6
White to Move

Starting to pick up clues in the position, we first observe that material is even.

White's king is near the center, but seems safe at the moment. White has control of the f-file, a rook on the seventh rank, a bishop pair, and potential mate threats on the g1-a7 diagonal and perhaps along the a-file, should the a5 pawn make a capture. If the rook on f7 should move, there would be a discovered attack by the bishop on Black's g8 rook.

Black, on the other hand, has some pressure on d3 and is forking the queen and bishop with his knight. If Black could reach the endgame, he has the potential to create an outside passed pawn on the kingside.

White played the pretty 25. Qb6! threatening mate on b7. 25. ... axb6 is met by 26. axb6+ Ba7 27. Rxa7+ Kb8 28. Rxb7+ Kc8 29. Ba6 threatening Ra8 mating.

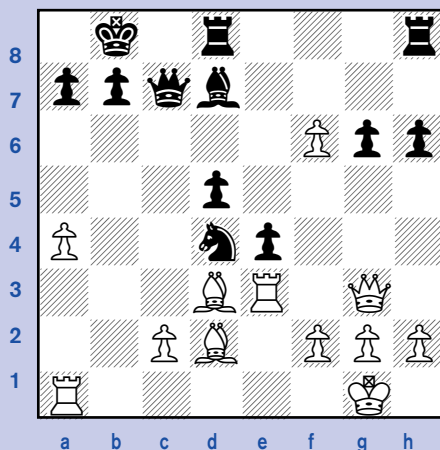
25. ... Rd7 26. Bc5!

Essentially trapping the queen since she can't move away and leave rook on d7 unprotected.

26. ... Rxf7 27. Bxd6 Rf2+ 28. Qxf2 Nxf2 29. Bc5, Black resigns.

as both the black rook and knight are under attack.

Here is a position between Bobby Fischer and Samuel Schweber in a game that was played in Buenos Aires, Argentina, in 1970.



Fischer-Schweber
Position after 22. ... e4
White to Move

Black looks like he is taking over the center and if the bishop on d3 moves,

there is a knight fork on c2.

Fischer played the surprising 23. Rxe4! It looks like White is blundering away his rook, but he actually is looking at a clever way to trap the Black queen after Black's next move. 24. Bf4 is one of his threats.

23. ... Qxg3 24. Rxd4

Black's queen has nowhere to go as 25. Bf4 is threatened if the queen stays on the h2-b8 diagonal.

24. ... Qg4

Getting as much material as possible for the queen.

25. Rxg4 Bxg4 26. Bxg6

White's passed pawn is a big problem for Black.

26. ... Rhg8 27. Bh7 Rh8 28. Bd3 Rde8 29. f7 Re7 30. f8=Q+ Rxf8 31. Bb4 Rff7 32. Bxe7 Rxe7 33. f3 and White went on to win with his kingside pawn majority.

Todd Bardwick
is the author of
Chess Strategy
Workbook:
A Blueprint for
Developing the
Best Plan.

He can be reached at
www.ColoradoMasterChess.com



KASPAROV
CHESS FOUNDATION

USCF

RENAISSANCE KNIGHTS



present

KCF'S Eleventh Annual All-Girls Open National Championships

April 11 - 13, 2014 - Northbrook, IL



First place winners of each section will qualify to play at the 2014 World Youth Championships

MAIN EVENT 6-SS, G/90

Sections (age as of 1/1/14)

- Under 8
- Under 10
- Under 12
- Under 14
- Under 16
- Under 18

Friday April 11

6:00 PM Opening Ceremony
6:30 PM Round 1

Saturday April 12

10:00 AM Round 2
2:30 PM Round 3
6:30 PM Round 4

Sunday April 13

9:00 AM Round 5
1:00 PM Round 6
5:00 PM Awards Ceremony

Entry Fee

\$55 postmarked by 3/17, \$75 by 3/31 \$95 after/on-site.
USCF membership required

Entry & Info

Make checks payable to:
RKnight's, Attn: All Girls,
PO Box 1074
Northbrook, IL 60065
Tel: (773) 844-0701
E-mail: d.heiser@renaissanceknights.org

AWARDS

Trophies will be awarded to top 15 individual players and top four teams in the Under 8, 10, 12 & 14 Sections; top 10 individual players and top three teams in the Under 16 & 18 Sections. Three or more players from the same school to make a team (team scores will be calculated based on the top 3 scores to give teams their final standings). All players will receive a souvenir to honor their participation.

All events held at the Crowne Plaza Hotel
2875 Milwaukee Ave Northbrook, IL



SIDE EVENTS

Bughouse Tournament

Fri. April 26 1:00 PM
Entry fee: \$30 per team

Blitz Tournament (G/5)

Fri. April 26 3:00 PM
Entry fee: \$20 by 4/4, \$25 after/on-site.

Crowne Plaza

2875 Milwaukee Ave Northbrook, IL 60062
Hotel Reservations Call (847) 493-6929
www.crowneplaza.com/northbrookchi and use Group code Kf4.

Chess Rate single -quad \$103 **breakfast included** -Reserve early rate may increase

Online Registration www.rknight's.org/allgirls

www.kasparovchessfoundation.org



Avast, Matey, It's Plunderchess![®]



If you have ever been to any of the National Scholastic Championships during the last nine years, chances are you have seen, or maybe even played Plunderchess[®]. It's that table where they play chess with those funny, colored rings around the bases of certain pieces.

The rules are a little detailed, but once learned, can provide hours of fun – and a different way of looking at chess, especially when it comes to appreciating what the pieces are capable of doing in regular chess.

And now they have an app for that! What follows is a brief introduction to Plunderchess[®], and a couple of problems for you to solve. Enjoy!

INTRODUCING PLUNDERCHESS[®]

Imagine playing chess like you always do, HOWEVER, this time, upon making a capture, the chess piece doing the capture is then allowed to “take on” added moving capabilities directly from its spoils, and use those newly acquired capabilities on one future move.

The BASIC Rules of PlunderChess[®] Play:

1) “Plundering” occurs when a chess piece captures an opposing piece and “plunders” or “acquires” additional moving capabilities directly from the piece it just captured, hence, strengthening the capturing piece! This plundering is illustrated by the overlaying of a colored banner (called

“vests”) on the piece that made the capture.

2) The added moving capability provided by a plundered vest may be used *one time only on any future move*. (i.e., the plundered vest may be used on it's very next move or carried around on the board and used later in the game, but only once.)

3) Plundering is optional and may be declined by the player making the capture. YES, sometimes you do NOT want to plunder a vest from the spoils of the kill!! The case for NOT plundering would be if you suspect your opponent will *immediately* capture you back (making a “trade”) and acquire the vest you just plundered! (See rule #9)

4) When plundering is elected, a “colored vest banner” that corresponds to the moving capabilities being plundered, gets overlaid upon the chess piece that made the kill. This vest banner signifies to both players that the piece wearing it now has extra moving capabilities for one future move.

5) When a capture takes place, in order for the “capturing” chess piece to plunder a vest, *the vest must offer some type of additional moving benefit* or it will *not* be allowed to plunder that vest. (i.e., you will never see a queen wearing a rook vest because a queen already possesses the moving capabilities of a rook and a rook vest provides NO additional moving ben-

efits to the queen.)

6) After a vest is used (one time) to move a chess piece on the board, it is *immediately* rendered powerless and *immediately* expunged from play.

7) No more than one plundered vest is allowed to be worn on any one chess piece at a time. (i.e., you will never see a piece wearing two or more vests.)

8) If a chess piece wearing a plundered vest makes another capture (assuming capture was NOT due to its vest power), it may swap out its unused vest for a freshly captured vest.

9) If you capture a piece that is wearing a plundered vest, you may plunder the vest it wears or a vest that represents the captured piece that it is or altogether decline to plunder a vest ... your choice.

10) Vests check *automatically and* have *unlimited* checking capabilities! For instance, if a chess piece wearing a vest is moved on the board (by the power of its traditional moves) to a new position whereby the power from the vest is now attacking the opposing king, this is an *automatic* check. Additionally, the vest that is “automatically checking” the opposing king IS NOT SURRENDERED because vests have unlimited checking privileges.

11) “Pawn vests” are NOT promotable, only the actual pawn chess pieces are.

Whew! Do you think you have the basics? Want to give it a try? Here are a couple of problems for your consideration. The chess notation is a little different. RB stands for a rook that has plundered a bishop is one example.

Please turn to page 9 

TALES OF THE ARABIAN KNIGHTS

BY RICK KENNEDY

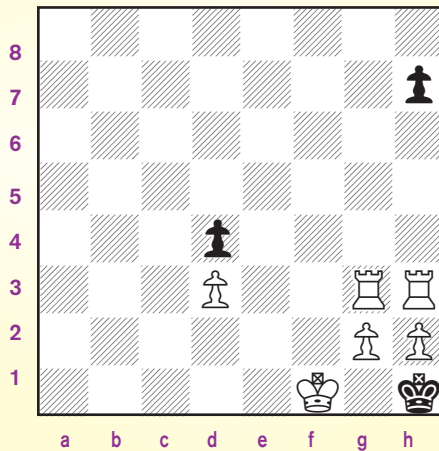


Open Sesame

The King sat quietly and listened closely as she told the story. He imagined himself to be the hero – brave, strong, quick, bright. His foes were tricky, but they did not have a chance against him.

When the tale came to an end, the King sighed. “What a courageous young man that Ali Baba was! To defeat forty thieves!”

She smiled, and reached for the chessboard. “These adventures come with a modest chess problem,” she said. “It is a checkmate in three moves.



The king studied the position, trying a few ideas out in his head. Suddenly, he had it. “Open Sesame!” he cried, repeating the command that Ali Baba had learned to use to open the thieves’ cave.

1. Rh5 h6 2. h4

“And now the cave is open,” she said.

2. ... Kh2 3. Rh3 checkmate.

“How fitting,” said the King.

(The problem is based on one by O. Dehler, 1911.)

Plunderchess! Continued from pg. 8

Plunderchess®. White to Move. Mate in One Move!



A basic explanation is on page 23, with the answers.

Plunderchess®. White to Move. Mate in Three Moves



TROPHIES  **PLUS**
A Champion Defined.

TROPHIES • RIBBONS • MEDALS • CHENILLE • PLAQUES

Show Off.



Show It Off.

Official *Awards* Provider of the



UNITED STATES CHESS FEDERATION

315 W. 1ST STREET • TEMPLETON, IOWA 51463
800-397-9993 • WWW.TROPHIESPLUS.COM • TROPHYMAN@TROPHIESPLUS.COM

I DID IT!



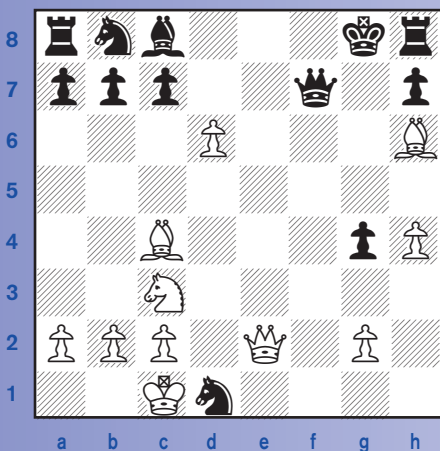
More Mates in One this month with checkmates delivered by queens. Once again, in each position, there are two or more possible checks, but only one of them is mate. As you can see, the queen is a very powerful piece in the open board, and its mates often come as surprises. Probably every player who got mated here failed to see that mate was on the doorstep.

When you have found the solutions, also be sure that you see why the other queen checks do not deliver checkmate. There's no rush, and that kind of care will help your chess.

You can do it!

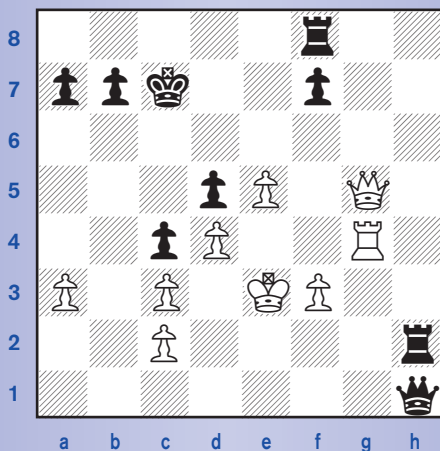
by Jonathan Edwards

#1



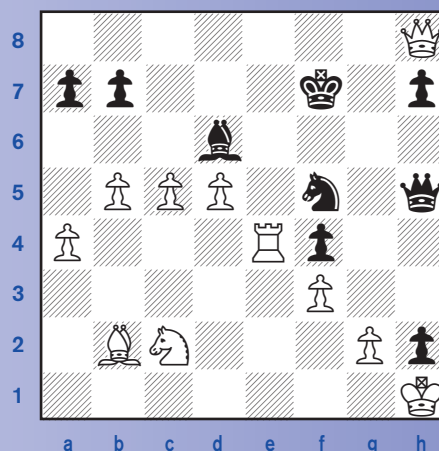
White to Move

#3



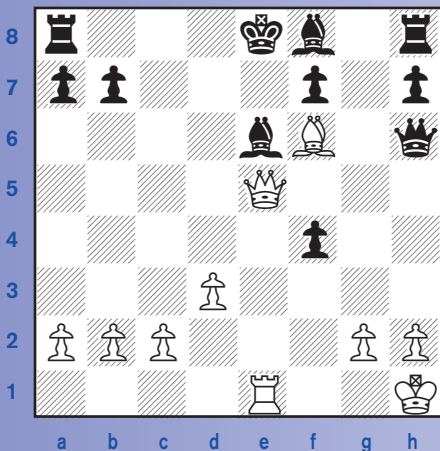
Black to Move

#5



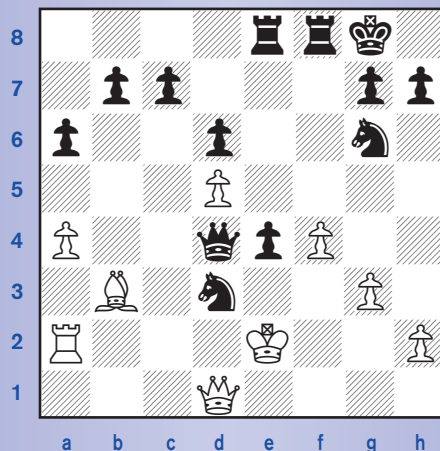
White to Move

#2



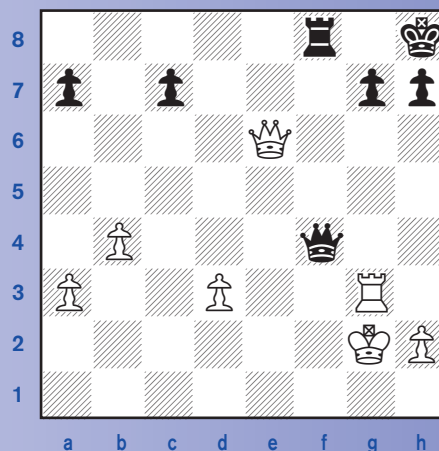
White to Move

#4



Black to Move

#6



Black to Move

Solutions on page 23

2014 Trophies Plus All America Team



Sponsored by



Once again, it is time to recognize some of our members who have achieved rating milestones in their young careers. And thanks to Trophies Plus of Templeton, Iowa, we can do it every year. Trophies Plus provides the trophies for all of USCF's scholastic events, and for each team member, an All America jacket.

You can check them out on their website, www.trophiesplus.com. You'll see that their motto is "A Champion Defined." And that certainly describes our 2014 team members, champions one and all.

AGE 8 & BELOW

(1800)



Tan Nguyen
Virginia – 1993

Christopher Yu-Shuo Shen
Ohio – 1965



Aydin Turgut
Illinois – 1911

Joaquin K. Perkins
California – 1893



Milind Maiti
California – 1885



Kevin D. Chor
Arizona – 1877



Daniel Levkov
New York – 1861

Ben Rood
California – 1857



Andrew Zhang Hong
California – 1830



Jason Metpally
Texas – 1815



Anish Vivekananthan
Texas – 1801

AGE 9

(1900)

Awonder Liang
Wisconsin – 2273

David Tianjian Peng
Illinois – 2140



Thomas Elberling
New Jersey – 2093



Carissa Shiwen Yip
Massachusetts – 2007



Alexander Costello
California – 1995



Josiah Stearman
California – 1951



Justin Paul
Virginia – 1932

Brian Fanyuan Gu
Texas – 1928

Brandon Jacobson
New Jersey – 1928

Anthony Ge
California – 1900

AGE 10

(2050)

Praveen Balakrishnan
New Jersey – 2253

Aravind Kumar
New Jersey – 2181



Andrew Zheng
Maryland – 2171



Advait Patel
West Virginia – 2115



Marcus Miyashaka
New York – 2090

Rayan Taghizadeh
California – 2083



Annie Wang
California – 2083



Andrew Titus
Minnesota – 2077



Luke Xie
Ohio – 2076



David Brodsky
New York – 2052

AGE 11

(2150)

Rufeng Li
Texas – 2330

Nicolas Checa
New York – 2255



Albert Lu
California – 2193

Bovey Liu
Texas – 2183

Michael Wang
California – 2163

Tanuj Vasudeva
California – 2160

AGE 12

(2150)



Jeffery Ziong
Texas – 2506

Samuel Sevian
Massachusetts – 2491



Cameron Wheeler
California – 2335



Jonathan Chiang
Texas – 2316



Tommy O He
Texas – 2311



Bhaskar Gupta
New Jersey – 2280



Vignesh Panchanatham
California – 2275



Roland Feng
Washington – 2269



John Ludwig
Florida – 2223

Please turn to page 14

AGE 12



Craig Hilby
California -2219



Joshua Sheng
California – 2204



Siddharth Banik
California -2191



Udit Iyengar
California – 2189



Jason Shi
Connecticut – 2173



Ashritha Eswaran
California -2155



Alexander Crump
New York – 2150



Akshat Chandra
New Jersey – 2383



Dache Lin
Texas – 2292



Andrew Tang
Minnesota – 2283



Kesav Viswanadha
California – 2279



Colin Chow
California – 2252



Edward Song
Michigan – 2250

AGE 13

(2250)

AGE 14

(2250)

Kayden Troff
Utah – 2542

Luke Harmon-Vellotti
Idaho – 2469

Joshua Colas
New York – 2403

Christopher Gu
Rhode Island – 2385

Christopher Wu
New Jersey – 2375

Justus Williams
New York – 2374

Mika Brattain
Massachusetts – 2363

James Black
New York – 2335

Kapil Chandran
Connecticut – 2330

Safal Bora
Michigan – 2323

Andrew Liu
Massachusetts – 2283

AGE 15

(2300)

Michael H. Bodek
New York – 2487

Yian Liou
California – 2470

Kevin Wang
Maryland – 2417

Arthur Shen
New Jersey – 2414

David Hua
New Jersey – 2402

Varun Krishnan
California – 2399

Michael Brown
California – 2389

Jarod Pamatmat
Texas – 2336

Alexander Velikanov
Wisconsin – 2324

Bryan Hu
Arizona – 2302

AGE 16

(2350)

Darwin Yang
Texas – 2587

Aleksandr Ostrovskiy
New York – 2481

Atulya Shetty
Michigan – 2465

Sean Vibbert
Indiana – 2395

Alexander Ross Katz
New Jersey – 2366

AGE 17

(2400)

Daniel Naroditsky
California – 2574

Robert Perez
Florida – 2533

AGE 18

(2450)

Ray Robson
Missouri – 2713

William Fisher
New York - 2494



ChessKid.com

PLAY LEARN



#1 Chess Site for Kids!
100% Safe and Kid-Friendly!
100,000+ Kids, Parents, & Coaches!

2013 Junior Grand Prix Standings



This unofficial list is based on USCF records and tournament director reports as of Wednesday, January 8, 2014. There are 7,342 players with JGP points and 569 JGP-eligible events have resulted in points earned. For a complete list of overall leaders, go to www.uschess.org.

Top 50 Overall Standings

NAME	STATE	PTS	EVENTS
PETERSON, GIA	CA-S	12767	20
DASIKA, ARCHIT	CA-N	9291	17
HOFFMAN, EVAN	CA-S	9270	23
GORTI, AKSHITA	VA	8735	17
KOTHAPALLE, TANISH	TN	8387	18
DAVYDOV, ALEXANDER	MD	8254	12
SINHA, SAHIL	MD	8063	14
ULRICH, ANNE	WI	7911	13
WU, OLIVER	CA-N	7900	13
PATEL, ADVAIT	WV	7724	17
GUO, ARTHUR	GA	7596	12
DASARI, SRIHITHA	GA	7473	11
YE, GRANT	CA-N	7378	11
LIANG, AWONDER	WI	7334	14
TRIFALE, SHARVIL	PA	7114	10
ROLDAN-LEVCHENKO, NIKITA	MA	7044	10
DUTTA, ISHAN	CA-N	7008	7
PRASAD, ARVIND	OH	6970	14
DOMMALAPATI, ABHINAY	VA	6942	15
ABAYANATHAN, SHIRAJA	GA	6930	12
MUSTAFA, SIRAAAT	NY	6858	6
SAMADASHVILI, MARTHA	NY	6791	14
PALUSA, MAURYA	CA-N	6768	11
VENKATARAJA, TRIYAKSHARI	NC	6692	10
NIEMANN, HANS	CA-N	6648	15
GREGORA, JAMES	CA-S	6646	5
SODEM, VISHAL	CA-N	6433	8
INDUSEKAR, AKSHAY	IL	6335	9
AVIRNENI, SAITHANUSRI	GA	6318	19
SRINIVAS, RAHUL	CA-N	6292	10
ULRICH, RACHEL	WI	6249	10
PARKER, JACKSON	MA	6244	8
SONG, NOLAN	OH	6139	14
LALWANI, JAY	VA	6110	14
ZENG, SHEENA	KS	6109	13
MULLER II, RAYMOND	CA-N	6102	17
KOBLA, VISHAL	VA	6078	20
GUO, INGRID	GA	6067	10
KULKARNI, SOUMYA	MI	6059	12
VARADARAJAN, VIGNESH	CA-N	5995	14
NIETO, MANUEL		5989	4
SUGANRAJ, BRIAN	OH	5923	10
POTULA, KAPISH	GA	5845	15
BORDE, KUNAL	OH	5843	9
QU, JAMES	SC	5838	7
GHOSH, SHOURJYA	OH	5815	14
LI, JASON	NY	5811	13
CAO, YUTONG	OH	5804	10
METPALLY, JASON	TX	5782	10
UGRINOVSKIY, GARY	MI	5772	9

For the top 200 overall, see www.uschess.org

State Leaders

NAME	STATE	PTS	EVENTS
MILLER, TRAVIS	AK	4339	4
WU, SIJING	AL	5386	8
WOLF, ALEXANDER	AR	2079	6
MARTINEZ, JONATHAN	AZ	5166	8
ATHIKAYALA, AYRUSH	CA-N	5688	7
FUTTERER, ALLEN	CA-S	4660	7
HEMMAT, ALEXANDER	CO	4895	8
WANG, GEORGE	CT	5238	5
PAN, ZACHARY	DC	4677	3
DAVIS, JAYVON	DE	3423	2
TEIXEIRA, JOSEPH	FL	4550	2
KANAPARTI, SREYAS	GA	5090	10
WONG, NICHOLAS	HI	2983	2
KALIL, VICTOR	IA	4485	7
DEANGELIS, OLIVIA	ID	4278	2
HORVATH, STEPHEN	IL	5714	3
COOKLEV, STEVEN	IN	4005	10
LEE, GORDON	KS	4311	5
LANGHALS, DAKOTA	KY	3186	4
WEBSTER, DON	LA	4883	7
WEI, EDDIE	MA	4201	5
CARR, NATE	MD	4946	14
SANOKKLIS, MILO	ME	1625	1
HENRY, TORRANCE, JR.	MI	5440	7
TEMPLETON, CHRISTOPHER	MIL	2100	1
BURRIS-BROWN, SPENCER	MN	4512	3
ZHOU, IRIS	MO	4625	9
FOREMAN, CHRISTOPHER	MS	2100	1
LEE, CONRAD	MT	1518	2
BODDUCHERLA, RITVIK	NC	4160	7
WOLF, STUART	ND	2100	1
MCFAYDEN, ALEXANDER	NE	1710	1
WELLING, AASHISH	NH	2762	1
KUMAR, ARAVIND	NJ	5720	15
EWING, GABRIEL	NM	3117	5
ZHOU, RICHARD	NV	1810	2
ABE, MAHIRO	NY	5559	12
WANG, JASON	OH	5563	9
NICKELS, ERIK J	OK	3530	5
TALYANSKY, SETH	OR	3081	4
HARI, YASASVI	PA	5133	12
DELGADO, NAYTHAN	RI	2248	1
DIAS, NEHA	SC	3240	3
CASTEEL III, JERRY	SD	1808	4
VAN RENSSLAER, WILLIAM	TERR	319	1
WU, LOGAN	TN	5571	13
LE, COLLIN	TX	5300	10
LEE, ANNA	UT	3463	2
SRINIAIYER, SUDARSHAN	VA	5620	9
KATZ, GABRIEL	VT	3076	5
CHEREPAKHIN, OLGA	WA	3808	7
MA, LEO	WI	5559	10
LOPEZ, MIGUEL	WV	4650	2



Tournament Life Announcements

FEBRUARY 15 THROUGH APRIL 14

Scholastic Members:

As a service to you, we are listing upcoming National USCF rated events, and requested events of possible interest to you. You can always log in to www.uschess.org, and click on "Clubs & Tournaments." Then click on "Upcoming Tournaments" for a complete listing of upcoming rated events and details. As always, you can check out the TLA section of *Chess Life*.

Organizers and Tournament Directors:

If you would like your tournament listed here in *Chess Life for Kids* for April (events to be held after April 14), the deadline for submitting your announcements is February 10th. The deadline for the June 2014 issue is April 10th. The processing fee is \$1.00 per line for the first eight lines, \$2.00 for every line thereafter. Send your announcements to Joan DuBois, tla@uschess.org.

Display advertising is also available. Advertising rates are posted on the USCF website, www.uschess.org, or you may email: tla@uschess.org for complete details.

ABBREVIATIONS & TERMS

All tournaments are non-smoking with no computers allowed unless otherwise advertised.

BLZ:	Blitz rated.
QC:	Quick Chess events.
\$\$\$Gtd:	Guaranteed prizes.
\$\$b/x:	Based-on prizes, x = number of entries needed to pay full prize fund. At least 50% of the advertised prize fund of \$501 or more must be awarded.
Bye:	Indicates which rounds players who find it inconvenient to play may take 1/2-point byes instead. For example, Bye 1-3 means 1/2-point byes are available in Rounds 1 through 3.
CC:	Chess club.
dx:	Time delay, x = number of seconds.
+xx:	Time increment, xx = number of seconds added after each move.
EF:	Entry fee.
Ent:	Where to mail entries.
FIDE:	Results submitted to FIDE for possible rating.
G/:	Game in. For instance, G/75 means each side has 75 minutes for the entire game.
GPP:	Grand Prix Points available.
HR:	Hotel rates. For example, 60-65-70-75 means \$60 single, \$65 twin, \$70/3 in room, \$75/4 in room.
JGP:	Junior Grand Prix.
Memb. req'd:	Membership required; cost follows. Usually refers to state affiliate.
Open:	A section open to all. Often has very strong players, but some eligible for lower sections can play for the learning experience.
Quad:	4-player round robin sections; similar strength players.
RBO:	Rated Beginner's Open.
Rds:	Rounds; scheduled game times follow. For example, 11-5, 9-3 means games begin 11 a.m. & 5 p.m. on the first day, 9 a.m. & 3 p.m. on the second day.
Reg:	Registration at site.
RR:	Round robin (preceded by number of rounds).
SD/:	Sudden-death time control (time for rest of game follows). For example, 30/90, SD/1 means each player must make 30 moves in 90 minutes, then complete the rest of the game in an hour.
SS:	Swiss-System pairings (preceded by number of rounds).
Unr:	Unrated.
W:	Site is accessible to wheelchairs.
WEB:	Tournaments that will use a player's online rating.

NATIONALS

Chess Magnet School Junior Grand Prix!
Feb. 14-16 or 15-16, Georgia

2014 U.S. Amateur Team Championship - South
5-SS, G/120 d5 (2-day Option Rd. 1 G/60 d5). Garden Plaza Hotel, 6050 Peachtree Industrial Blvd., Norcross, GA 30071. (Norcross is 5 miles Northeast of Atlanta perimeter) 4-player teams (with one optional alternate). Team average (4 highest ratings - January rating list) must be under 2200. Winning team qualifies for National playoff online. **EF per player:** \$45 by 2/9, \$54 later. **Special EF:** Team (one entry must be made for all players) \$170 by 2/9; \$195 later. (any team changes \$10) Scholastic teams receive \$15 off team entry fee. **Prizes:** Top 1st-3rd place teams; Top class teams: U2000, U1800, U1600, U1400, U1100, U800. Top Senior Team (all 50+ above), Top Female Team, Top College Team (same school), Top High School Team (same school) Top Middle School Team (same school, grades 6-8), Top Ele-mentary School (same school); Top Boards 1-3. Limit to 1st 50 Teams!! Schedule: 3-day: 1st round Fri. 7:30 p.m., 2-day 1st round 10, Rounds 2-5: Sat. 1:30, 6:45, Sun. 9:30, 2:45. **HR:** \$59.95! Free parking and Free internet. 1-(770)-448-4000. Mention Chess. Tm. **Info:** L. Thad Rogers 1-478-973-9389 or info@americanchesspromotions.com. **Enter:** American Chess Promotions, 3055 General Lee Rd., Macon, GA 31204. Online entry: Go to www.onlineregistration.cc and use info@americanchesspromotions.com. NS. NC. W. G/120 rounds are JGP

A Heritage Event!

Chess Magnet School Junior Grand Prix!
Feb. 15-17, New Jersey

World Amateur Team & U.S. Team East - 44th Annual CELEBRATE COUNTRY MUSIC & USCF 75th! 6SS, 40/2, SD/1 d5. Parsippany Hilton, 1 Hilton Ct., Parsippany, NJ 07054. **Chess Rate valid until 1/16. Reserve early 973-267-7373 or 1-800-HILTONS.** Morris/Essex train to Morris Plains 1.5 miles. Open to 4-player teams with one optional alternate. Team average (4 highest ratings—2014 January Rating list) must be under 2200. **EF:** \$160 postmarked by 2/5/14. **ALL-\$200** after or at door—all teams, any changes at site \$25 charge. **FREE ENTRY to TEAMS from West Virginia, South Carolina, North Carolina.** Check out official website www.njsoc.org. **Prizes:** 1-5th Place teams, plaque and **4 Digital Clocks;** Top Team (**DenisBarry Award**) U2100, 2000, 1900, 1800, 1700, 1600, 1500, 1400, 1300, 1200, 1000 each plaque and **4 Digital Clocks;** Top college team (same school) **4 Digital Clocks & plaque;** Top HS team (grades 9-12 same school), Top Middle School (grades 5-9 same school), Top Elementary School (grades K-6 same school), Top 2 Scholastic Teams (mixed schools okay) (**Collins Award**), Mixed Doubles (2 males, 2 females-no alternates), Seniors (all players over age 50), Military, each plaque & **4 Digital Clocks** to top team; Company Team (same employer), Family (4 family members), State teams—CT, DE, MD, MA, NJ, NY (**BenjaminAward**), PA, VA, NC, RI each plaque top team; Special Plaque to **Top College** (NJ, NY, Pennsylvania) Special Plaque **Top High School** NJ, NY, PA, Plaque **Top Coaches** (four chess teachers), **Top Blind team**, **Top England team**, (all players under age 10), **Top Military College**, **Top New England team** (mixed players CT, MA, ME, VT, NH, RI. **Top Parent/Child** (2 pairs, one parent, one child), **TopHistoric Club** (four members on team from Boylston, Franklin Mercantile, Marshall). **Best Player 1-4 and top alternate**. All 6-0 scores each Digital clock. Biggest Individual upset each round Engraved Cross pen; Entry fee refunded to team with Best "Chess related" name, Sunday night—Best "Chess Related costumes or gimmick"—1st-gourmet dinner for four. 2nd—Gourmet dinner for 4. **Reg. 9-12. Sat 2/15: Rds. 1-7:30, 11-6, 9-3:30. Special Events!! Surprises and special give-aways each round.** Sunday night—Bughouse \$20 per team. Cash prizes. **HR:** Parsippany Hilton **NEWLY RENOVATED!** chess rates expire 1/16/2014. Rates \$119 (up to 4 in room) 2nd hotel attached to Hilton also up to 4 in room \$126 per night-Hampton Inn—includes breakfast for 4 each day. **Valentines Blitz 2/14-7pm. G/5** 0d. \$20 entry fee 2 person team team—prizes per entries. **FREE!** Cake and Coffee for USCF 75th Diamond Anniversary. For help forming teams and more information contact: noren@deanofchess.com. Chks payable to **NJSCF**, mail by 2/05 to: **E. Steven Doyle, 17 Stonehenge Rd., Morristown, NJ 07960.** (Include Team name, Captain, players full names, USCF Expiration, ID numbers and ratings in board order). No team can include more than two GM's. Include SASE for confirmation if wanted, No registered or certified mail accepted. NS. NC. W. FIDE.

A Heritage Event!

Chess Magnet School Junior Grand Prix!
Feb. 15-17 or 16-17, California, Northern

31st Annual (2014) U.S. Amateur Team Championship West
NOTE: Scholastic on Feb. 15 only, Blitz on Feb. 17 only. Santa Clara Convention Center, 5001 Great America Pkwy. Free Parking! **Hotel: \$79** (single/double) or **\$89** (Triple/Quad). Biltmore Hotel & Suites, 2151 Laurelwood Rd., Santa Clara, CA 95054. Call 408.988.8411 or 800.255.9925 (booking id 29049). Reserve by Jan. 31 or rates may increase. **Teams:** Four-player teams plus optional alternate, average rating of four highest must be under 2200, difference between ratings of board 3 & 4 must be less than 1000. January 2014 Supplement, CCA min, & TD discretion used to place players accurately. **Main Event Prizes:** Special 4 commemorative clocks (trophy for the reserve) and team trophy to the team for top 3 overall teams, top team u2000, u1800, u1600, u1400, and u1200. Trophies to all players of the top "industry" team (currently at the same company), top "female" team, top "college" team (students/alumni of a college), top "high school" team (students/alumni of a 7-12 school), top "elementary school" team (students/alumni of a K-6 school), top "club" team, and top "family" team (related by blood or marriage within 3 generations). Clocks to top scorer on each board (1-4), trophy to top reserve as well as second and third scorers on each board (1-4). Gift certificates for best 3 team names. **Main Event EF:** \$220/team or \$55/player by 2/10. 2/11-13: \$10 extra per player or team. Onsite or after 2/13: \$20 extra per player (\$80 extra per team). **3-day Sched:** Onsite Registration at Sat 9:30-10:30a, RoundTimes at Sat & Sun 11:30a

5:30p, Mon 10a 3:30p. Time Control: 40/120 SD/30 d5. **2-day Sched:** Onsite Registration at Sun 8:30-9a, Round Times at Sun 10a 12:30p 2:50p 5:30p, Mon 10a 3:30p. Time Control: G/61 d5 in Rounds 1-3, 40/120 SD/30 d5 in Rounds 4-6 (merge in Round 4 with 3-day schedule). **Info/flyer:** www.BayAreaChess.com/usatw. **Scholastic Event Prizes:** Trophies to each player in Top 3 teams overall, Top u800 team, u600 team, u400 team, and u200 team. Trophies to top "female" team, top "academic" team, and top "club" team. Trophies to top two scorers on each board (1-4). Commemorative medals to all participants. **Scholastic Event EF:** \$148/team or \$37/player by 2/10. 2/11-13: \$10 extra per player or team. Onsite or after 2/13: \$20 extra per player (\$80 extra per team). **Discount:** \$10/player (\$40/team) if registering for 2-day schedule and scholastic event. **Sched:** Onsite Registration: Sat 8:30-9a | Games at Sat 10a 11:30a 1p 2:30p 4:15p. **Info/flyer:** www.BayAreaChess.com/usatws. **Blitz Event:** Registration Mon 7-8pm, G/5 d0, Rounds 8:30-10:30pm. EF: \$14, \$16 onsite. 75% of entry fees returned as prizes. **Contact:** Organized by Salman Azhar and Amir Azhar. Directed by Tom Langland, John McCumiskey, Jordan Langland, and others. Sponsored by Bay Area Chess. Online entry at www.BayAreaChess.com/my/usatw or mail to Bay Area Chess, 1639A South Main St., Milpitas, CA 95035. For questions or help in forming teams email ask@BayAreaChess.com. NS. NC. W.

Chess Magnet School Junior Grand Prix!

Feb. 21-23 or 22-23, Illinois

2014 U.S. Amateur Team North

Open: 5SS, G/90+30/increment, 2-day: rd.1-2 G/60 d5. Hyatt Regency Schaumburg, 1800 E. Golf Rd., Schaumburg, IL 60173. 847-605-1234 \$89.00 chess rate single-double-triple-quad until 2/7/14, Free WiFi included with Room! Please reserve early. Open to 4 player teams with one optional alternate. **Team average (4 highest ratings - January Rating List) must be under 2200.** EF: 3-day \$160, per team if received USPS or on-line 6 PM by February 7th, \$180 if received USPS or on-line 6 PM by Feb. 15th, \$200 on-line until Feb. 20th 6 PM and at door. Individuals wishing to play, send \$40 and request to be put on a team by USPS and on-line by 2/15 6 PM, \$50 thereafter. Team changes on site or after 2/20 6 PM \$20. **Check out official website www.chessweekend.com for more info and complete prize list.** Prizes: Awards to top two teams, top teams with average rating u900, u600, and u1300. Winning team qualifies for national play-offs. Awards for Best Team Name, best team composed of juniors (high school and younger), Top College team, Top HS team, Top Senior team (50 and over), Best Coach and Students team, Best costume. Prizes to top score on each board. Prizes are players choice of a selected clock or equivalent book store credit. **Rounds: 3-day;** on-site registration/check-in 5:30-6:30pm, rds.: 7pm, 10:00am & 4:00pm, 10:00am & 3:30pm. **2-day;** on-site registration/check-in from 8:00-9:30am, rds. 10:00am & 1:00 pm then merge with 3-day. **Illinois Blitz Championship on Saturday night,** G/3 +2 inc., \$25 by 2/20 USPS or on-line, \$30 at site. First round 8 PM, 2 games with each opponent, 5 rounds, see www.chessweekend.com for details. **ALL:** Checks made payable to and sent to: ChessWeekend, 21694 Doud Ct., Frankfort, IL 60423. Please include Team's name and roster (plus ID#), captain's email and phone number, and desired schedule. **Info:** www.chessweekend.com, 815-955-4793 before 8 PM. ChessIQ will provide Sets-Boards-Clocks.

Chess Magnet School Junior Grand Prix!

Feb. 28-Mar. 2, California, Southern

2014 U.S. Junior Chess Congress

5-SS, G/90 d5 (5-SS G/45 d5 & under, 8 & under - 2 games each round for a total of 10 games: not JGP). Orange County Great Park, 6990 Marine Way, Irvine, CA. 92612 and Irvine Spectrum Doubletree Hotel, 90 Pacifica, Irvine, CA 92618, 949-471-8888, 9/5/night (*When booking, please mention "Chess Congress"*). **7 Sections (by age):** 6 & under, 8 & under, 10 & under, 12 & under, 14 & under, 16 & under, 20 & under. **TROPHIES:** Top 10 individuals and Top 5 clubs in each section. **EF:** \$55 by 1/20, \$65 by 2/20, \$75 after. **RD:** Sat: 10-2-6, Sun: 9-1. **Ent:** www.hanleychessacademy.com (flyer available for download). **SIDE EVENTS:** 1. Top 100 USCF List Scholastic Invitational, 2/27-28, (This event at same site). 5-RR, G/75 d5 (top 2 sections 3-RR, G/120 d5). 2. Chess Camp 2/28 9-noon (Under 1000 and 1000 & Above); Chief instructor - NM Joe Hanley. \$30 by 2/20, \$40 after. 3. Bughouse (12 & under, 20 & under) 2/28 starting at 1pm, trophies to top 3 teams each section. \$20/team by 2/20, \$25 after. 4. Blitz G/5 0d (12 & under, 20 & under) 2/28 starting at 6:30pm (not 5pm), trophies to top 5 in each section. \$10 by 2/21, \$15 after. **INFO:** Joe Hanley, 714-925-3195 or hanleychessacademy@gmail.com or Dewain Barber, 714-998-5508 or amchesse@aol.com. Orange County John Wayne Airport (SNA) 15 minutes from site. Free shuttle to and from Irvine Spectrum Doubletree Hotel. Advanced Entries, Pairings, Standings and all information at www.hanleychessacademy.com. NS. NC. W.

Chess Magnet School Junior Grand Prix!

Apr. 6-6, California, Southern

2014 National High School (K-12) Championship

(Apr. 3 - Bughouse & Blitz) 7SS, G/120 d5. Town and Country Resort, 500 Hotel Circle North, San Diego, CA 92108, 619.291.7131 or 800.772.8527. Chess Rate \$125 until 12 March 2014. **5 Sections: K-12 Championship, K-12 Under 1600, K-12 Under 1200, K-12 Under 800, K-12 Unrated.** March 2014 Rating Supplement will be used. Unrated players may play in the Championship or Unrated section only. One half-point bye for any round, except Rd. 7, if requested before Round One. **EF:** \$50 if by March 2, \$70 if by March 23, \$85 if by 9 PM CDT on April 2 or 90 at site. Mailed entries must be p/m by March 30. \$5 extra for all phone registrations, \$20 change fee for roster or section changes after March 23. **Onsite registration:** Thurs. 9 AM - 10 PM & Fri. 8 AM - 10 AM. Players registering after 10 AM will get half-point for Round 1. **Awards:** Please see the Information Page on the web site for a complete list of all the trophies. All participants will receive a commemorative medal at the completion of the final round. **Teams:** A team must have at least two players, although no maximum number of players. The top four scores in any section will count for the team score. **All on**

team must attend the same school. Opening Ceremony: 12:30 PM Friday. **Main Event rounds:** Friday 1 PM, 7 PM; Saturday 9 AM, 2 PM, 7 PM; Sunday 9 AM, 2 PM. **Awards Ceremony:** Approx. 7 PM Sunday. **Special Events:** National High School Bughouse Championship: Thursday 11 AM; EF: (Onsite only) \$25 per team. Bughouse registration ends at 10 AM Thurs. **National High School Blitz Championship:** G/5 d0; Thursday 5 PM; EF: \$15 per player, \$20 after Mar. 23 or on site. **Scholastic Meeting:** 3 PM Saturday. **Parents and Friends Tournament:** 4:55, G/30 d5, Saturday 10:30 AM, 12:30 PM, 2:30 PM, 4:30 PM. [Onsite registration only - by Sat. 10 AM.] Rated and Unrated sections. Trophies for Parents/Friends - participant and student combined results. Please see the Tournament Information Page on the web site to see when Team Rooms become available and for Team Room contact information. **ALL:** Please bring clocks. Sets and score sheets provided. USCF membership required. **Questions:** Ashley Knight aknight@uschess.org or at 931.787.1234 ext 138. **Mail entries to:** U.S. Chess Federation, Attn: 2014 High School, P.O. Box 3967, Crossville, TN 38557. **Additional details, updates, corrections and on-line registration:** www.uschess.org/tournaments/2014/h.s.

Chess Magnet School Junior Grand Prix! Apr. 11-13, Illinois

2014 All-Girls National Championships presented by the Kasparov Chess Foundation in association with the Renaissance Knights Chess Foundation & USCF
First place winners of each section will qualify to play at the 2014 World Youth Championships. 6SS, G/90 d5. Crown Plaza Hotel, 2875 Milwaukee Ave., Northbrook, IL (free WI-FI). **6 Sections:** Under 8, Under 10, Under 12, Under 14, Under 16 & Under 18. **Age as of 1/1/2014.** **EF:** \$55 postmarked/online by 3/17, \$75 by 3/31, \$95 after/on-site. Do not mail after 4/4. **Opening Ceremony:** 6pm, Friday. **Rounds:** Rd. 1 - 6:30pm Fri; Rounds 2-4 - Sat 10am, 2:30pm, 6:30pm; Rounds 5-6 - Sun 9am & pm. **Awards Ceremony:** Sun, 5pm. Trophies top 15 individual players and top 4 teams in the Under 8, 10, 12 & 14 Sections; top 10 individual players and top 3 teams in the Under 16 & 18 Sections; (top 3 players added for team scores). **Bye:** One 1/2-pt bye available, any round, if requested before end of Rd. 2 and if player has not received a full-point bye. **Side Events:** Bughouse Tournament - Fri. 4pm, EF \$30/team. **Blitz Tournament -** Fri. 3pm, G/5 d0, EF \$20 by 4/4, \$25 after or on site. **HR:** single - quad \$103 Reservations: (847) 493-6929. **breakfast included.** Reserve early rate may increase (847) 493-6929. **Entries:** online/info at: www.rknights.org/allgirls or mail to RKnights, Attn: All Girls, PO Box 1074, Northbrook, IL 60065, include name, section, rating, USCF ID#, date of birth, grade, school name city & state.

Chess Magnet School Junior Grand Prix! Apr. 25-27, Georgia

2014 National Junior High (K-9) Championship
(Apr. 24 - Bughouse & Blitz) 7SS, G/120 d5. Hyatt Regency Atlanta, 265 Peachtree Street NE, Atlanta, GA 30303, 404.557.1234 or 800.233.1234. Chess Rate \$125 until 3 April 2014. **6 Sections: K-9 Championship, K-9 Under 1250, K-9 Unrated, K-8 Championship, K-8 Under 1000, K-8 U750. April Rating Supplement will be used.** Unrated players may play in the Championship or Unrated sections only. One half-point bye for any round, except Rd. 7, if requested before Round One. **EF:** \$50 if by 23 March, \$70 if by 13 April, \$85 if by 6 PM CDT on 24 April or \$90 at site. Mailed entries must be p/m by 20 April. \$5 extra for all phone registrations, \$20 change fee for roster or section changes after 13 April. **Onsite registration:** Thurs. 9 AM - 10 PM & Fri. 8 AM - 10 AM. Players registering after 10 AM will get half-point for Round One. **Awards:** Please see the Information Page on the web site for a complete list of trophies. All participants will receive a commemorative medal at the completion of the final round. **Teams:** A team must have at least two players, although no maximum number of players. The top four scores in any section will count for the team score. **All on team must attend the same school. Opening Ceremony:** 12:30 PM Friday. **Main Event rounds:** Friday 1 PM, 7 PM; Saturday 9 AM, 2 PM, 7 PM; Sunday 9 AM, 2 PM. **Awards Ceremony:** Approx. 7 PM Sunday. **Special Events:** National Junior High Bughouse Championship: Thursday 11 AM; EF: (Onsite only) \$25 per team. Bughouse registration ends at 10 AM Thurs. **National Junior High Blitz Championship:** G/5 d0; Thursday 5 PM; EF: \$15 per player, \$20 after 13 April or onsite. **Scholastic Meeting:** 3 PM Saturday. **Parents and Friends Tournament:** 4:55, G/30 d5, Saturday 10:30 AM, 12:30 PM, 2:30 PM, 4:30 PM. [Onsite registration only - by Sat. 10 AM.] Rated and Unrated sections. Trophies for Parent/Friends - participant and student combined results. Please see the Tournament Information Page on the web site to see when Team Rooms become available and for Team Room contact information. **ALL:** Please bring clocks. Sets and score sheets provided. USCF membership required. **Questions:** Ashley Knight aknight@uschess.org or at 931.787.1234 ext. 138. **Mail entries to:** U.S. Chess Federation, Attn: 2014 Junior High, P.O. Box 3967, Crossville, TN 38557. **Additional details, updates, corrections and on-line registration:** www.uschess.org/tournaments/2014/jhs.

Chess Magnet School Junior Grand Prix! May 9-11, Texas

2014 National Elementary (K-6) Championship
(May 8 - Bughouse & Blitz) 7SS, G/120 d5, K-1 G/90 d5. Hilton Anatole Dallas, 2201 Stemmons Freeway, Dallas, TX 75207. 214.748.1200 or 888.370.0980. Chess Rate \$120 until 16 April 2014. **9 Sections: K-6 Championship, K-6 Under 1000, K-6 Unrated, K-5 Championship, K-5 Under 900, K-3 Championship, K-3 U800, K-3 Unrated, K-1 Championship. April Rating Supplement will be used.** Unrated players may play in the Championship or Unrated sections only. One half-point bye for any round, except Rd. 7, if requested before Round One. **EF:** \$50 if by April 6, \$70 if by April 27, \$85 by 7 PM CDT on May 8 or \$90 at site. Mailed entries must be p/m by May 4. \$5 extra for all phone registrations, \$20 change fee for roster or section changes after 27 April. **Onsite registration:** Thurs. 9 AM-10 PM & Fri. 8 AM-10 AM. Players registering after 10 AM will get half-point for Round One. **Awards:** Please see the Information Page on the web site for a complete

list of trophies. **K-1 Championship:** All players in this section receive a trophy. All participants will receive a commemorative medal at the completion of the final round. **Teams:** A team must have at least two players, although no maximum number of players. The top four scores in any section will count for the team score. **All on team must attend the same school. Opening Ceremony:** 12:30 PM Friday. **Main Event rounds:** Friday 1 PM, 7 PM; Saturday 9 AM, 2 PM, 7 PM; Sunday 9 AM, 2 PM. **Schedule for K-1:** Friday 1:30 PM, 6:30 PM; Saturday 9:30 AM, 1:30 PM, 6:30 PM; Sunday 9:30 AM, 1:30 PM. **Awards Ceremony:** Approx. 7 PM Sunday. **Awards Ceremony for K-1:** Approx. 5:30 PM Sunday. **Special Events:** National Elementary Bughouse Championship: Thursday 11 AM; EF: (Onsite only) \$25 per team. Bughouse registration ends at 10 AM Thurs. **National Elementary Blitz Championship:** Two sections: K-6 and K-3. G/5 d0; Thursday 5 PM; EF \$15 per player, \$20 after April 27 or onsite. **Scholastic Meeting:** 3 PM Saturday. **Parents and Friends Tournament:** 4:55, G/30 d5, [Onsite registration only - by Sat. 10 AM.] Rounds Saturday: 10:30 AM, 12:30 PM, 2:30 PM, 4:30 PM. Rated and Unrated sections. Trophies for Parents/Friends - participant and student combined results. Please see the Tournament Information Page on the web site to see when Team Rooms become available and for Team Room contact information. **ALL:** Please bring clocks. Sets and score sheets provided. USCF membership required. **Questions:** Ashley Knight aknight@uschess.org or at 931.787.1234 ext. 138. **Mail entries to:** U.S. Chess Federation, Attn: 2014 Elementary, P.O. Box 3967, Crossville, TN 38557. **See the Information Page for additional details, updates, corrections and on-line registration:** www.uschess.org/tournaments/2014/elem.

June 12, Nevada

Trophies Plus Grand Prix Points: 80 (Enhanced)
2014 U.S. Game/10 Championship (GC)
8SS, G/10 d2. Riviera Hotel and Casino, 2901 Las Vegas Boulevard South, Las Vegas 89109. **\$\$\$600 Guaranteed Prize Fund.** \$1700-850-500, U2300 \$500, U2100 \$500, U1900 \$450, U1700 \$400, U1500 \$350, U1300 \$300, U1100 \$250, unrated \$200. Must be 3 players eligible for each prize awarded. **EF:** \$69 by 5/22, \$79 by 6/9, \$100 later. **REG:** 2-4 p.m. **Rds:** 5-5:30-6:30-7-7:30-8:30. Higher of regular or quick rating used. Please bring digital chess clocks. 1/2 point bye available in any round (limit 2). **HR:** \$65 single or double (\$89 Friday and Saturday nights). (800) 634-6753 or (702) 794-9412 - be sure to ask for the **CHESSE** rates. **ENT:** Vegas Chess Festivals, PO Box 90925, Henderson, NV 89009-0925, on line www.VegasChessFestival.com or fax (702) 933-9112. NS. NC. W. FIDE.

Chess Magnet School Junior Grand Prix! June 12-13, Nevada

Trophies Plus Grand Prix Points: 30 (Enhanced)
2014 U.S. Women's Open
5SS, G/90, inc 30. Riviera Hotel and Casino, 2901 Las Vegas Boulevard South, Las Vegas 89109. **\$\$\$2,000 Guaranteed Prize Fund.** \$500-300-200, U2000 \$200, U1800 \$200, U1600 \$200, U1400 \$200, U1200 \$200. **EF:** \$50. **REG:** 8-9 a.m. **Rds:** 10-2:30-7, 9-1:30. 1/2 point bye available in any round (limit 1). **HR:** \$65 single or double (\$89 Friday and Saturday nights). (800) 634-6753 or (702) 794-9412 - be sure to ask for the **CHESSE** rates. **ENT:** Vegas Chess Festivals, PO Box 90925, Henderson, NV 89009-0925, on line www.VegasChessFestival.com or fax (702) 933-9112. NS. NC. W.

An American Classic! A Heritage Event!

Chess Magnet School Junior Grand Prix!
June 13-15 or 14-15, Nevada
Trophies Plus Grand Prix Points: 200 (Enhanced)
2014 National Open
6-SS, 40/90, SD/30, inc 30 (2 day option rounds 1-3 G/45 d5). Riviera Hotel and Casino, 2901 Las Vegas Boulevard South, Las Vegas 89109. **\$\$\$80,000 Guaranteed Prize Fund** will not be reduced. **Championship:** \$6500-3300-1600-800-500-350-350-350-350-350-250-250-250-250, under 2500 1600, under 2400 1200, under 2300 1000, \$2,000 **EXTRA** for perfect score. The winner of the Championship section also receives a replica of the Edmondson Cup. **Under 2200:** \$3500-1800-900-500-400-250-250-250-200-200-200-200-200. **Under 2300:** \$3500-1800-900-500-400-250-250-250-200-200-200-200-200. **Under 1800:** \$3500-1800-900-500-400-250-250-250-200-200-200-200. **Under 1600:** \$3000-1500-800-500-400-250-250-250-200-200. **Under 1400:** \$2000-1000-500-350-250-200-200-200-200. **Under 1200:** \$1200-600-400-300-200-200. **Unrated:** \$500-300-200. **Plus Score Bonus** (\$14,000 guaranteed) in addition to any other prizes, every player with 3-1/2 points or more wins a \$50 gift certificate. Plus score certificates will be awarded on site only. Players age 14 and under are eligible for best game prizes including the Freddie Award and \$350 in cash prizes (donated by Fred Gruenberg). Top 2 sections FIDE rated: USCF rules will be used. **EF:** \$179 by 1/22, \$199 by 2/22, \$229 by 6/9, \$250 later. \$40 less for seniors 65 and over. Add \$125 for adults rated under 2100 or juniors under 2000 playing in the Championship Section. This is an open tournament - you may play in any section at or above your rating level; unrated players may play only in Unrated or Championship Section. Provisionally rated players may not win more than the amount of 3rd prize in any section except Championship. CCA minimum ratings or other ratings may be used if higher than USCF June Supplement. **Reg:** 2 p.m.-10 p.m. Thursday, 8-9:30 a.m. Friday. **Rds:** 11-5, 10-4:30, 10-4:30. 2-day schedule: **Reg:** 8-9 a.m. Saturday. **Rds:** 10-12-2-4:30 merge with 3-day in round 4. Half point byes available in any round, but round 5 or 6 byes must be requested before the start of round 2 and may not be cancelled. Chess sets and boards provided for tournament play only, not for skillies. Please bring digital chess clocks! **The LAS VEGAS INTERNATIONAL CHESS FESTIVAL** features the National Open, the U.S. Game/10 Championship, the U.S. Women's Open, the International Youth Championship, and other events. **Many free extras and surprises!** **Free** parking. **Free** raffles with great prizes. **Free** GM Lectures. **Free** GM analysis of your games. **Free** Daily Bulletins. **Grandmaster Chess Camp** for all ages on Thursday. **U.S. Women's Open** Thursday and

Friday. **U.S. Game/10 Championship** and **Grandmaster Simuls** Thursday afternoon. **Youth Tournaments** Friday, Saturday & Sunday. **Blitz** Tournaments Saturday & Sunday. **Poker Tournament** Monday morning. **Don't be shut out** - make your reservations early and be sure to ask for the **CHESSE rates** - \$65 single or double (\$89 Friday and Saturday nights) guarantees a *Signature* or remodeled room with new furniture, flat screen TV and more. The complimentary resort package includes access to the Fitness Center, free WI-FI, discounts on selected show tickets and more with no additional cost (only if you are in our group. Cutoff for special hotel rate is **May 22nd**, (800) 634-6753 or (702) 794-9412 or online at www.VegasChessFestival.com. **ENT:** Vegas Chess Festivals, PO Box 90925, Henderson, NV 89009-0925, on line at www.VegasChessFestival.com or by fax at (702) 933-9112. **Info:** (702) 560-0955 and leave a message. NS. W. FIDE.

GRAND PRIX

Chess Magnet School Junior Grand Prix! Feb. 14-16 or 15-16, Florida

Trophies Plus Grand Prix Points: 30 (Enhanced)
Presidents Weekend Championship
5SS, G/120 d5 (2-day Option Rd. 1 G/60 d5). La Quinta Inn and Suites, 3701 N. University Dr., Coral Springs. **\$\$\$6,700** b/200 paid entries, 60% min. Gtd. **Open:** \$800/Trophy-500-400, U2300 \$300, U2200/UNR. \$200. FIDE rated, USCF rules used. **U2100:** \$600/Trophy-400-300, U2000 \$200. **U1800:** \$600/Trophy-400-300, U1700 \$200. **U1500:** \$600/Trophy-400-300, U1400 \$200. **U1000:** Trophies for 1st to 4th & 1st U850, Medals to all others. Unr. may enter Open or U1000 only. **EF:** \$69 by Feb. 11, \$10 more later and on-site, GMs & IMs free (\$69 deducted from prize). U1000 section \$35 by Feb. 11, \$10 more later and on-site. Re-entry cash prize sections \$35. **Reg:** Ends 1/2 hr before 1st rd. **Rds:** 3-Day 1st Rd. Fri. 7:30, 2-Day 1st Rd. Sat. 10, Rds. 2-5 Sat. 1-15, 6:30, Sun. 9:30, 2:30, 2 1/2 pt. byes, if req'd before rd. 2. **Blitz** Turn: G/5 d0, Sunday at 7:45 p.m.; EF: \$10 for those in main tour, \$20 for all others. **HR:** \$116.10 by Cut-off Date, includes free breakfast & Internet, 954-753-9000, Ext. 6. **ENT:** Boca Raton Chess Club, 2385 Executive Ctr. Dr., Ste. 100, Boca Raton, FL 33431. \$10 service charge for refunds. **Online entry & add'l info:** www.bocachess.com, 561-479-0351. **Chess Magnet School JGP** for G/120 rds.

Feb. 17, New York

Trophies Plus Grand Prix Points: 10 (Enhanced)
President's Day Action GP!
5-SS, G/25 d5. Marshall CC, 23 W. 10th St., NYC. 212-477-3716. **EF:** \$45, members \$25. (**\$600 GTD:** \$250-125, U2000 \$85, U1700 \$75, U1400 \$65. **Reg:** 11:15-11:45. **Rds:** 12-1:25-2:30-4:5. Two byes available, request at entry. www.marshallchessclub.org.

Feb. 28, New York

Trophies Plus Grand Prix Points: 10 (Enhanced)
Marshall \$500 FIDE Blitz! (BLZ)
9-SS, G/5 d0. Marshall CC, 23 W. 10th St., NYC. 212-477-3716. **\$\$\$6TD 500:** \$200-100, top U2400/unr, U2200, U2000, U1800: \$50 each; **EF:** \$30, members \$20. **Blitz-rated,** but the higher of regular, quick or blitz used for pairings & prizes. **FIDE Blitz Rated!** **Reg:** ends 6:45 pm. **Rds:** 7-7:30-7:50-8:10-8:40-9-9:20-9:40-10 pm. Three byes available, request at entry. www.marshallchessclub.org.

Chess Magnet School Junior Grand Prix! Mar. 1, California, Northern

Trophies Plus Grand Prix Points: 10 (Enhanced)
Bay Area Chess Grand Prix SuperSwiss (4SS, G/61 d5)
1639A S. Main St., Milpitas, CA 95035. **Prize:** \$1,500 b/50. 70% guar. **1800+:** \$300-200-100, u2000 150-50. **u1800:** \$200-100-50, u1600 150-50, u1400 150 u1200 50. Mar 14 Supp & TD disc. **Sched:** Reg. 8-9. Rds. 9:30-12-2:30-5. **EF:** \$45, Econ \$35 2/3 prz. after 2/26 + 15, playcup \$15, Rated 2200+ = \$0 by 2/19. **Info:** BayAreaChess.com/grandprix. NS. NC.

Chess Magnet School Junior Grand Prix! Mar. 1-2, Maryland

Trophies Plus Grand Prix Points: 15
UMBC Open - Alvin S. Mintzes Chess Tournament
5SS, 20/1, SD/60 d5. University of Maryland, Baltimore County, 1000 Hilltop Cir., Baltimore (in Commons, 3rd floor). Held concurrently with Maryland "Sweet 16" (Invitational) - winner to receive in-state fixed-dollar tuition scholarship to UMBC. **Open:** (All) **\$\$\$1260:** \$400-300-200 Gtd., Class prizes \$120 ea. to top U2300, U2100, U1900. Free ent. to GMs, \$50 deducted from any prizes. U1800: (U1800/Unr.) **\$\$\$1080 b/40:** \$350-250-150, Class prizes \$110 ea. to top U1600, U1400, U1200 (b/4). No Unr. player may win more than \$250 in this section. **All:** **EF:** \$50 if postmarked by 2/15, \$60 later, \$10 less if under age 20. **Reg:** 8:30-9:30am Sat., **Rds:** 10-3-7:30pm Sat, 10:30-3:30pm Sun. **Byes:** Up to three 1/2-pt. byes avail. in Rds. 1-5 if req'd at least 1 hr. before Rd. (before Rd. 2 for any Rd. 4-5 bye), but only at most one 1/2-point bye in Rds. 4-5. **HR:** La Quinta Inn and Suites, 1734 West Nursery Rd., Linthicum, MD 21090, 410-859-2333, Ask for UMBC chess rate. www.lq.com (From I-95, take Exit 47A onto I-195 towards BWI Airport. Take Exit 2A onto 295 north towards Baltimore; take first exit, bearing right onto West Nursery Road.) **Directions to UMBC:** Take Exit 47B off I-95 & follow signs to UMBC. Park in Commons Drive garage. **Ent:** Dr. Alan T. Sherman, Dept. of CSEE, UMBC, Attn: Open, 1000 Hilltop Cir., Baltimore, MD 21250. Make out check to UMBC. For more information: ChessClub@umbc.edu, (410) 455-8499, www.umbc.edu/chess. NS. W.

Mar. 2, California, Northern

Trophies Plus Grand Prix Points: 10 (Enhanced)
Cupertino Grand Prix DuperSwiss (3SS x G/75 d5)
Court yard Marriott, Cupertino, CA 95014. **Prize:** \$1,500 b50. 70% guar. **1900 and up:** \$300-200, u2100 100. **1500-1899:** \$200-100, u1600 100-50. **u1500:** \$200-100, u1300 100-50. Mar 14 Supp & TD disc. **Sched:** Reg. 8-8:30a. Rds. 9-11:45-2:40. **EF:** 45, Econ 35 2/3 prz. after 2/27 + 15, playcup 15, Rtd. 2200+ = \$0 by 2/20. **Info:** BayAreaChess.com/grandprix. NS, NC. W.

A State Championship Event!

Mar. 7, Pennsylvania

Trophies Plus Grand Prix Points: 6
2014 PA Quick Chess Championship (QC)
6SS, G/8 d3. Hotel Carlisle, 1700 Harrisburg Pike, Carlisle, PA 17015, Exit 52A NB/Exit 52 SB off I-81, Exit 226 off PA Turnpike. **3 sections**, EF rec'd by 2/18: **Open:** \$12. **U1500:** \$11. **U1100:** \$10. \$\$ (750G): **Open:** 175-100-50, U1800 \$45, U1600 \$40. **U1500:** 125-75-50, U1300 \$40, U1200 \$30, Unr \$20. **U1100:** Trophies: 1-12, U800, U600, U400, 1-2 Unr. **All:** \$20 after 2/18, PSCF \$5 OSA. **Reg.:** 6-6:30pm. **Rd 1:** 7pm. Feb 2014 Reg rating used. **Bye:** limit 1, ask by rd 2. **HR:** Mention "PA States" for best rate; 800-692-7315 \$75. **Ent:** PSCF, c/o Tom Martinak, 25 Freeport St., Pittsburgh, PA 15223-2245. **Info:** martinak_tom_m@hotmail.com, 412-908-0286. W.

Chess Magnet School Junior Grand Prix!

A State Championship Event!

Mar. 8-9, Pennsylvania

Trophies Plus Grand Prix Points: 10
2014 Ira Lee Riddle Memorial PA State Championship & PA Collegiate Championship

5SS, G/90 d5. Hotel Carlisle & Embers Convention Center, 1700 Harrisburg Pike, Carlisle, PA 17015, Exit 52A NB/Exit 52 SB off I-81, Exit 226 off PA Turnpike. **3 sections:**\$ (1875G): **Open:** 350-150, U2200 \$125, U2000 \$100. **U1800:** 200-150, U1650 \$125, U1500 \$100. **U1400:** 200-150, U1200 \$90, U1000 \$75, Unr \$60. **All:** College Tr: 1-2 in each section, 1-2 team (top 4 over all sections). **EF:** \$40 rec'd by 2/18, \$50 after, PSCF \$5 OSA. **Reg.:** 8:45-9:30 am. **Rds.:** 10-2-5:30, 9-1. Feb 2014 ratings used. **Bye:** limit 1, ask by rd 2. **HR:** Mention "PA States" for best rate; 800-692-7315 \$75. **Ent:** PSCF, c/o Tom Martinak, 25 Freeport St., Pittsburgh, PA 15223-2245. **Info:** martinak_tom_m@hotmail.com, 412-908-0286. W.

Mar. 13, New York

Trophies Plus Grand Prix Points: 10 (Enhanced)

Marshall Thursday Action Grand Prix!

4-SS, G/25 d5. Marshall CC, 23 W. 10th St., NYC. 212-477-3716. **EF:** \$40, members \$25, GMS free. **Prizes:** (\$8530 based on 32 paid entries; first two prizes guaranteed) \$200-100-50, U2200 \$95, U2000 \$85. **Reg.:** 6:15-6:45 pm. **Rds.:** 7-8:15-9:30-10:45. One bye available, request at entry.

Chess Magnet School Junior Grand Prix!

Mar. 14-16 or 15-16, California, Northern

Trophies Plus Grand Prix Points: 50 (Enhanced)

Bay Area Chess FM Eric Schiller Championship

6SS, G/90 +30 (u1600 G/90 d5) 2day rds. 1-2 G/55 d5. 1639A S. Main St., Milpitas, CA 95035. Park free. **Prize:** 6,000 b/89 (5/6 guar). 3 sects: **2000 and up (FIDE rated)** \$1,000-500-200, u2300: 300-100. **1600-1999:** \$800-400-200, u1800: 300-100, **u1600:** \$800-300-100 u1400: 200-100, u1200: 200-100. Unr max \$100 exc Open. Apr 14 Supp & TD disc. **Reg.:** F 6-6:45p & Sa 9-9:15a. **Rds.:** F 7p, Sa 9:30 2 6:30, Su 10 2:30. (u1600: F 7p, Sa 9:30 2:50, Su 10 1:30p). 2-day Rds. 1-2: Sa 9:30 11:45 & merge. **EF:** 99, after 3/11 +20. Playup +20. Econ EF: 66 w/50% prz: Rated 2250+ \$0 by 3/4. **Info:** http://BayAreaChess.com/champs. NS. NC.

Chess Magnet School Junior Grand Prix!

Mar. 21-23, 22-23 or 23, New York

Trophies Plus Grand Prix Points: 15 (Enhanced)

NEW! Marshall March Super FIDE GP!

5-SS, 40/2 d5 SD/30 d5. Marshall CC, 23 W. 10th St., NYC. 212-477-3716. **EF:** \$60, members \$40. **\$\$\$820 gtd:** \$300-150-100, U2200 \$145, U2000 \$125. Reg ends 15 min before Rd. **3 schedules:** **3 day 3/21 6pm, 3/22-23 12:30-5:30. 2 day 3/22 11am**, then merge with 3 day (Rd. 1 G/25 d5). **1 day 3/23 9:10-11:20**, then merge with 2 & 3 day (Rd. 1-3 G/25 d5) Limit 2 byes, request at entry. USCF & FIDE rated. www.marshallchessclub.org.

A State Championship Event!

Mar. 22, Pennsylvania

Trophies Plus Grand Prix Points: 6

2014 PA State Game/29 Championship (QC)

5SS, G/29 d0. Wm. Pitt Union, Univ. of Pitt., 5th & Bigelow, Pittsburgh, PA 15213. **2 Sections: Champ:** EF: \$25 by 3/14, \$35 later. \$\$ (690G): \$200-100, U2000 \$90, U1800 \$80, U1600 \$70, U1400 \$60, U1200 \$50, U1000 \$40. Trophies: 1-3 U1400, 1-3 U1200, 1-3 U1000. **Scholastic:** Grades K-12 unrated or U900. **EF:** \$15 by 3/14, \$25 later. Trophies to Top 7, 1-3 U600. **All:** Trophies: 1-2 Schools, 1-2 Clubs, Teams of 4-7 players from both sections. PSCF \$5, OSA. **Reg.:** 10-10:30am. **Rds.:** 11-12:30-1:45-3:4:15. Ent/Info: PSCF, c/o Tom Martinak, 25 Freeport St., Pittsburgh, PA 15223, 412-908-0286, martinak_tom_m@hotmail.com. W.

Mar. 27, New York

Trophies Plus Grand Prix Points: 10 (Enhanced)

Marshall Thursday Game 30 Grand Prix!

4-SS, G/25 d5. Marshall CC, 23 W. 10th St., NYC. 212-477-3716. **EF:** \$40, members \$25, GMS free. **Prizes:** (\$530 based on 32 paid entries; first two prizes guaranteed) \$200-100-50, U2200 \$95, U2000 \$85. **Reg.:** 6:15-6:45 pm. **Rds.:** 7-8:15-9:30-10:45. One bye available, request at entry.

Mar. 28, New York

Trophies Plus Grand Prix Points: 10 (Enhanced)

Marshall \$500 FIDE Blitz! (BLZ)

9-SS, G/5 d0. Marshall CC, 23 W. 10th St., NYC. 212-477-3716. **\$\$\$6td 500:** \$200-100, top U2400/unr, U2200, U2000, U1800: \$50 each, **EF:** \$30, members \$20. Blitz-rated, but the higher of regular, quick or blitz used for pairings & prizes. **FIDE Blitz Rated!** Reg. ends 6:45 pm. **Rds.:** 7-7:30-7:50-8:10-8:40-9:20-9:40-10 pm. Three byes available, request at entry. www.marshallchessclub.org.

Chess Magnet School Junior Grand Prix!

Apr. 4-6 or 5-6, California, Northern

Trophies Plus Grand Prix Points: 50 (Enhanced)

Bay Area Chess NM Michael Aigner Spring Championship

6SS, G/90 +30 (u1600 G/90 d5) 2day rds. 1-2 G/55 d5. 1639A S. Main St., Milpitas, CA 95035. Park free. **Prize:** 6,000 b/89 (5/6 guar). 3 sects: **2000+ (FIDE rated)** \$1,000-500-300-200, u2300: 300-100. **1600-1999:** \$800-400-200, u1800: 300-100, **u1600:** \$800-300-100 u1400: 200-100, u1200: 200-100. Unr max \$100 exc Open. Apr 14 Supp & TD disc. **Reg.:** F 6-6:45p & Sa 9-9:15a. **Rds.:** F 7p, Sa 9:30 2 6:30, Su 10 2:30. (u1600: F 7p, Sa 9:30 2:50, Su 10 1:30p). 2-day Rds. 1-2: Sa 9:30 11:45 & merge. **EF:** 99, after 4/1 +20. Playup +20. Econ EF: 66 w/50% prz: Rated 2250+ \$0 by 3/25. **Info:** http://BayAreaChess.com/champs. NS. NC.

June 12, Nevada

Trophies Plus Grand Prix Points: 80 (Enhanced)

2014 U.S. Game/10 Championship (QC)

See Nationals.

June 12-13, Nevada

Trophies Plus Grand Prix Points: 30 (Enhanced)

2014 U.S. Women's Open

See Nationals.

June 13-15 or 14-15, Nevada

Trophies Plus Grand Prix Points: 200 (Enhanced)

2014 National Open

See Nationals.

REGIONAL Arizona

Feb. 27-28, Top 100 USCF List Scholastic Invitational (CA-S)
See California, Southern.

Feb. 28-Mar. 2, 2014 U.S. Junior Chess Congress (CA-S)

See Nationals.

California, Northern

Feb. 15-17 or 16-17, 31st Annual (2014) U.S. Amateur Team Championship West
See Nationals.

Feb. 22, Bay Area Chess4Less Kids Quads (PK-12; 3xG/30 d5)

1639A South Main St., Milpitas, CA 95035. **Trophies:** Players w/plus score. **Sched:** Check-in by 2:30p. **Games:** 3-5p. **EF:** 19 by 2/19, 34 onsite. **Info:** http://BayAreaChess.com/chess4less. NS. NC.

Feb. 22, Bay Area Chess4Less Kids Swiss (PK-12; 4SS, G/30 d5)

1639A South Main St., Milpitas, CA 95035. **Trophies:** to all teams & players w/plus score. **Reg.** 9-9:45a. **Games:** 10a-2p. **Disc EF:** 19 by 2/19, 34 onsite. **Info:** http://BayAreaChess.com/chess4less. NS. NC.

Feb. 23, Bay Area Cupertino Quads (PK-12; 3xG/30 d5)

Courttyard Marriott, Cupertino, CA 95014. **Trophies:** Players w/plus score. **Sched:** Check-in by 2:30p. **Games:** 3-5p. **EF:** 25 by 2/20, 40 onsite. **Info:** http://BayAreaChess.com/cupertino. NS. NC. W.

Feb. 23, Bay Area Cupertino Swiss (PK-12; 4SS, G/30 d5)

Courttyard Marriott, Cupertino, CA 95014. **Trophies:** all teams & players w/plus score. **Sched:** Reg. 9-9:45a. **Games:** 10a-2p. **EF:** 33 by 2/20, 48 onsite. **Info:** http://BayAreaChess.com/cupertino. NS. NC. W.

Feb. 23, Bay Area Foster City Quads (PK-12; 3xG/30 d5)

Courttyard Marriott, Foster City, CA 94404. **Trophies:** Players w/plus score. **Sched:** Check-in by 2:30p. **Games:** 3-5p. **EF:** 25 by 2/20, 40 onsite. **Info:** http://BayAreaChess.com/fostercity. NS. NC. W.

Feb. 23, Bay Area Foster City Swiss (PK-12; 4SS, G/30 d5)

Courttyard Marriott, Foster City, CA 94404. **Trophies:** all teams & players w/plus score. **Sched:** Reg. 9-9:45a. **Games:** 10a-2p. **EF:** 33 by 2/20, 48 onsite. **Info:** http://BayAreaChess.com/fostercity. NS. NC. W.

Feb. 27-28, Top 100 USCF List Scholastic Invitational (CA-S)

See California, Southern.

Feb. 28-Mar. 2, 2014 U.S. Junior Chess Congress (CA-S)

See Nationals.

Mar. 1, Bay Area Chess Grand Prix SuperSwiss (4SS, G/61 d5)

See Grand Prix.

Mar. 2, Alameda County Championship (PK-12)

Courttyard Marriott, Fremont, CA 94538. **Trophies:** Top 10 players w/plus score & Top 5 teams in 6 sects b/grade. **Sched:** Reg. 8-9. **K-1 2 3** rounds (5SS, G/30 d5): 9:30 11 12:30 2 3:30. **4 5 6-12** rounds (4SS, G/45 d5): 9:30 11:20 1:10 3. **EF:** \$39 by 2/26, 2/27-28 +10, after 2/28 +20. Open to all USCF mems. **Info:** BayAreaChess.com/alameda. NS. NC. W.

Mar. 2, Alameda County Quads (PK-12; 3xG/30 d5)

Courttyard Marriott, Fremont, CA 94538. **Trophies:** Players w/plus score. **Sched:** Check-in by 4:45p. **Games:** 5-7p. **EF:** 25 by 2/27, 40 onsite. **Info:** http://BayAreaChess.com/alameda. NS. NC. W.

Mar. 2, Cupertino Grand Prix DuperSwiss (3SS x G/75 d5)

See Grand Prix.

Mar. 8, Bay Area Sacramento Quads (PK-12; 3xG/30 d5)

Courtyard Marriott, Rancho Cordova, CA 95670. **Trophies:** Players w/plus score. **Sched:** Check-in by 2:30p. **Games:** 3-5p. **EF:** 25 by 3/5, 40 onsite. **Info:** http://BayAreaChess.com/sacramento. NS. NC. W.

Mar. 8, Bay Area Sacramento Swiss (PK-12; 4SS, G/30 d5)

Courttyard Marriott, Rancho Cordova, CA 95670. **Trophies:** all teams & players w/plus score. **Reg.** 9-9:45a. **Games:** 10a-2p. **EF:** 33 by 3/5, 48 onsite. **Info:** http://BayAreaChess.com/sacramento. NS. NC. W.

Mar. 8, CalNorth Weibel Chess Youth Quads

Weibel Elementary School, 45135 S. Grimmer Blvd., Fremont, CA. **Two Sections:** U900 G/30 d0, Over 900 G/45 d5. **Info & Entry Form at:**

www.CalNorthYouthChess.org/Applications/SpringQuads2014. Open to all scholastic players who are USCF members. Trophies to all winners of each Quad. Chess medals to all who do not win a trophy. **Info:** Alan M. Kirshner, Ph.D., Alan@CalNorthYouthChess.org, (510) 659-0358.

Mar. 9, Bay Area Cupertino Quads (PK-12; 3xG/30 d5)

Courtyard Marriott, Cupertino, CA 95014. **Trophies:** Players w/plus score. **Sched:** Check-in by 2:30p. **Games:** 3-5p. **EF:** 25 by 3/6, 40 onsite. **Info:** http://BayAreaChess.com/cupertino. NS. NC. W.

Mar. 9, Bay Area Cupertino Swiss (PK-12; 4SS, G/30 d5)

Courtyard Marriott, Cupertino, CA 95014. **Trophies:** all teams & players w/plus score. **Sched:** Reg. 9-9:45a. **Games:** 10a-2p. **EF:** 33 by 3/6, 48 onsite. **Info:** http://BayAreaChess.com/cupertino. NS. NC. W.

Mar. 14-16 or 15-16, Bay Area Chess FM Eric Schiller Championship

See Grand Prix.

Mar. 16, Bay Area Chess Milpitas Blitz (BLZ)

10x G/4 d1. 1639A S. Main St., Milpitas, CA 95035. **Reg.:** 5-5:45p, Games 6-8. 2 Sects: **Prizes:** Regular: 75% of EFs; Kids: trophies for plus score. **EF:** \$10, after 3/12 \$15. **Info:** http://BayAreaChess.com/blitz. NS. NC.

Mar. 16, San Mateo County Championship (PK-12)

Courttyard Marriott, Foster City, CA 94404. **Trophies:** Top 10 players w/plus score & Top 5 teams in 6 sects b/grade. **Sched:** Reg. 8-9. sections **K-1, 2, 3** rounds are (5SS, G/30 d5): 9:30 11 12:30 2 3:30. sections **4, 5, 6-12** are rounds (4SS, G/45 d5): 9:30 11:20 1:10 3. **EF:** \$39 by 3/12, 3/13-14 +10, after 3/14 +20. Open to all USCF mems. **Info:** BayAreaChess.com/sanmateo. NS. NC. W.

Mar. 16, San Mateo County Quads (PK-12; 4SS, G/30 d5)

Courttyard Marriott, Foster City, CA 94404. **Trophies:** Players w/plus score. **Sched:** Check-in by 4:45p. **Games:** 5-7p. **EF:** 25 by 3/13, 40 onsite. **Info:** http://BayAreaChess.com/sanmateo. NS. NC. W.

Mar. 22, Bay Area Chess4Less Kids Swiss (PK-12; 4SS, G/30 d5)

1639A South Main St., Milpitas, CA 95035. **Trophies:** to all teams & players w/plus score. **Sched:** Reg. 9-9:45a. **Games:** 10a-2p. **Disc EF:** 19 by 3/19, 34 onsite. **Info:** http://BayAreaChess.com/chess4less. NS. NC.

Mar. 22, Chess4Less Kids Bay Area Quads (PK-12; 3xG/30 d5)

1639A South Main St., Milpitas, CA 95035. **Trophies:** Players w/plus score. **Sched:** Check-in by 2:30p. **Games:** 3-5p. **EF:** 19 by 3/19, 34 onsite. **Info:** http://BayAreaChess.com/chess4less. NS. NC.

Mar. 23, Bay Area Cupertino Quads (PK-12; 3xG/30 d5)

Courttyard Marriott, Cupertino, CA 95014. **Trophies:** Players w/plus score. **Sched:** Check-in by 2:30p. **Games:** 3-5p. **EF:** 25 by 3/20, 40 onsite. **Info:** http://BayAreaChess.com/cupertino. NS. NC. W.

Mar. 23, Bay Area Cupertino Swiss (PK-12; 4SS, G/30 d5)

Courttyard Marriott, Cupertino, CA 95014. **Trophies:** all teams & players w/plus score. **Sched:** Reg. 9-9:45a. **Games:** 10a-2p. **EF:** 33 by 3/20, 48 onsite. **Info:** http://BayAreaChess.com/cupertino. NS. NC. W.

Mar. 30, Contra Costa County Championship (PK-12)

Courttyard Marriott, San Ramon, CA 94583. **Trophies:** Top 10 players w/plus score & Top 5 teams in 6 sects b/grade. **Sched:** Reg. 8-9. sections **K-1, 2, 3** are rounds (5SS, G/30 d5): 9:30 11 12:30 2 3:30. sections **4, 5, 6-12** rounds are (4SS, G/45 d5): 9:30 11:20 1:10 3. **EF:** \$39 by 3/26, 3/27-28 +10, after 3/28 +20. Open to all USCF mems. **Info:** BayAreaChess.com/contracosta. NS. NC. W.

Mar. 30, Contra Costa County Quads (PK-12; 3xG/30 d5)

Courttyard Marriott, San Ramon, CA 94583. **Trophies:** Players w/plus score. **Sched:** Check-in by 2:30p. **Games:** 3-5p. **EF:** 25 by 3/27, 40 onsite. **Info:** http://BayAreaChess.com/sanramon. NS. NC. W.

Apr. 4-6 or 5-6, Bay Area Chess NM Michael Aigner Spring Championship

See Grand Prix.

Apr. 5, Bay Area Foster City Quads (PK-12; 3xG/30 d5)

Courttyard Marriott, Foster City, CA 94404. **Trophies:** Players w/plus score. **Sched:** Check-in by 2:30p. **Games:** 3-5p. **EF:** 25 by 4/2, 40 onsite. **Info:** http://BayAreaChess.com/fostercity. NS. NC. W.

Apr. 5, Bay Area Foster City Swiss (PK-12; 4SS, G/30 d5)

Courttyard Marriott, Foster City, CA 94404. **Trophies:** all teams & players w/plus score. **Sched:** Reg. 9-9:45a. **Games:** 10a-2p. **EF:** 33 by 4/2, 48 onsite. **Info:** http://BayAreaChess.com/fostercity. NS. NC. W.

Apr. 5, CalNorth Tierra Linda Chess Youth Quads

Tierra Linda Middle School, 750 Dartmouth Ave., San Carlos, CA. **Two Sections:** U900 G/30 d0, Over 900 G/45 d5. **Info & Entry Form at:** www.CalNorthYouthChess.org/Applications/SpringQuads2014. Open to all scholastic players who are USCF members. Trophies to all winners of each Quad. Chess medals to all who do not win a trophy. **Info:** Alan M. Kirshner, Ph.D., Alan@CalNorthYouthChess.org, (510) 659-0358.

Apr. 6, Bay Area Fremont Quads (PK-12; 3xG/30 d5)

Courttyard Marriott, Fremont, CA 94538. **Trophies:** Players w/plus score. **Sched:** Check-in by 2:30p. **Games:** 3-5p. **EF:** 25 by 4/3, 40 onsite. **Info:** http://BayAreaChess.com/fremont. NS. NC. W.

Apr. 6, Bay Area Fremont Swiss (PK-12; 4SS, G/30 d5)

Courttyard Marriott, Fremont, CA 94538. **Trophies:** all teams & players w/plus score. **Sched:** Reg. 9-9:45a. **Games:** 10a-2p. **EF:** 33 by 4/3, 48 onsite. **Info:** http://BayAreaChess.com/fremont. NS. NC. W.

Tournament Life

on site. **Info:** <http://BayAreaChess.com/sacramento>. NS. NC. W.

**Chess Magnet School Junior Grand Prix!
A State Championship Event!**
Apr. 12-13 or 13, CalChess Grades 6-8 State Championship 2014
SFO Airport Hyatt, 1333 Bayshore Hwy., Burlingame, CA 94010. Disc parking. **Prizes:** Trophies to top 40 players w + score & top 12 teams (in ea section). Medals to all. Sections: **K-8<800:** Sa 5xG/30 d5. **K-8 800-1199:** Sa 4xG/45 d5. **K-8 1200 and up:** Sa+Su 6xG/75 d5. **EF by 4/4:** 1-day \$48, 2-day \$60. Apr 14 Supp & TD disc used. **Info:** www.CalChessScholastics.org. CalChess Mem reqd. NS. NC. W.

Apr. 13, Bay Area Cupertino Quads (PK-12: 3xG/30 d5)
Courtyard Marriott, Cupertino, CA 95014. **Trophies:** Players w/plus score. **Sched:** Check-in by 2:30p. **Games:** 3-5p. **EF:** 25 by 4/10, 40 onsite. **Info:** <http://BayAreaChess.com/cupertino>. NS. NC. W.

Apr. 13, Bay Area Cupertino Swiss (PK-12: 4SS, G/30 d5)
Courtyard Marriott, Cupertino, CA 95014. **Trophies:** all teams & players w/plus score. **Sched:** Reg. 9-9:45a. **Games:** 10a-2p. **EF:** 33 by 4/10, 48 onsite. **Info:** <http://BayAreaChess.com/cupertino>. NS. NC. W.

**Chess Magnet School Junior Grand Prix!
A State Championship Event!**
Apr. 26-27 or 27 (Blitz on Apr. 25), CalChess Scholastic State Championship 2014

Convention Ctr., 5001 Great America Pkwy., Santa Clara, CA 95054. Park free. **Prizes:** Trophies to top 40 players w + score & top 12 teams (in ea section). Medals to all. Sections b/ grades/rating. **G1-3 <800 Sects:** Sa 5xG/30 d5. **KG & Gr4-12 <800 Sects:** Su 5xG/30 d5. **K-12 800+ Sects:** Sa+Su 6xG/75 d5 (9-12 1600+; FIDE rated 5xG/90+30), 6-8 State Champ on Apr 12-13. **Blitz/Bugh:** G/5 d0; F 6-8p. **Bughouse Sa 6-8p. EF by 4/18:** 1-day \$48, 2-day \$60. **Blitz/Bugh:** \$12. Apr 14 Supp & TD disc used. **Info:** www.CalChessScholastics.org. **Quest:** ask@BayAreaChess.com. USCF/CalChess Mem reqd. NS. NC. W.

May 17, CalNorth Weibel Chess Youth Quads
Weibel Elementary School, 45135 S. Grimmer Blvd., Fremont, CA. **Two Sections:** U900 G/30 d0, Over 900 G/45 d5. **Info & Entry Form at:** www.CalNorthYouthChess.org/Applications/SpringQuads2014. Open to all scholastic players who are USCF members. Trophies to all winners of each Quad. Chess medals to all who do not win a trophy. **Info:** Alan M. Kirshner, Ph.D., Alan@CalNorthYouthChess.org, (510) 659-0358.

California, Southern

The Los Angeles Chess Club
The Most Active Club on the West Coast! (310) 795-5710 * www.LAChessClub.com. Saturdays: 10am-10pm (Intermediate class + 2 Tournaments). Sundays: 11-7 & 1-5 pm (Junior class + 2 Tournaments) - Details on our web site. Tuesdays: 7:30-9:30 pm (Intermediate/Advanced Lecture). 11514 Santa Monica Blvd., Los Angeles, CA 90025. (4 blocks W of 405, SW corner of Santa Monica & Butler * 2nd Floor - above Javan Restaurant). Group Classes * Tournaments * Private (1:1) Lessons.

Feb. 2, 9, 16, 23, LACC - Every Sunday Chess 4 Drs.
4 separate events - 3 Sections: >900, <900, <500. 5SS, G/30 d5. 11514 Santa Monica Blvd. & Butler, LA, 90025, 2nd fl. 4 blocks West of 405. **EF:** \$30 (\$20 LACC memb, siblings 1/2, Free new LACC members). **Reg.:** 12-1 pm. **Rds.:** 1pm & asap; **Prizes:** Trophies (top 3 each section) & medals; each player receives a prize! **Parking:** Free on streets & basement. Free pizza & juices. **Info:** (310) 795-5710 or www.LAChessClub.com or Mick@LAChessClub.com.

Feb. 9, February Boys Scholastic Championship
3 Sections: >900, <900, <500. 5SS, G/30 d5. 11514 Santa Monica Blvd. & Butler, LA, 90025, 2nd fl. 4 blocks West of 405. **EF:** \$35 (\$25 LACC memb, siblings 1/2, Free new LACC memb). **Reg.:** 12-1 pm. **Rds.:** 1pm & asap; **Prizes:** Trophies (top 3 each section) & medals; each player receives a prize! **Parking:** Free on streets & basement. Free Pizzas & Juices. **Info:** (310) 795-5710 or www.LAChessClub.com or Mick@LAChessClub.com.

Feb. 9, February Girls Scholastic Championship
3 Sections: >500, <500, <300. 5SS, G/30 d5. 11514 Santa Monica Blvd. & Butler, LA, 90025, 2nd fl. 4 blocks West of 405. **EF:** \$35 (\$25 LACC memb, siblings 1/2, Free new LACC memb). **Reg.:** 12-1 pm. **Rds.:** 1pm & asap; **Prizes:** Trophies (top 3 each section) & medals; each player receives a prize! **Parking:** Free on streets & basement. Free Pizzas & Juices. **Info:** (310) 795-5710 or www.LAChessClub.com or Mick@LAChessClub.com.

**Chess Magnet School Junior Grand Prix!
Feb. 27-28, Top 100 USCF List Scholastic Invitational**
NOTE CHANGES: (Open to 200 Paid Players). 5-RR, G/75 d5 (top 2 sections 3-RR, G/120 d5) Orange County Great Park Hangar 244 (Same site as US Junior Congress), Irvine, CA. 92612. Open to players on a USCF Top 100 list (On January or February 2014 List). Players will be divided into sections by rating - top 2 sections are 4 players quads and the rest are 6 players hexes. **RDS.:** Hexes Thurs: 10am-1:30pm, Fri: 9am-12:30pm-3:30pm, Quads Thurs: 10am Fri: 9am-2pm. **EF:** \$45 by 2/26, \$25 less if also playing in the National Chess Congress. **PRIZES:** Chess merchandise valued at \$100 1 st, \$75 2nd in each Hex or Quad from vendor at Congress. **ENT:** www.hanleychessacademy.com. **INFO:** Joe Hanley, 714-925-3195 or hanleychessacademy@gmail.com.

Feb. 28-Mar. 2, 2014 U.S. Junior Chess Congress
See Nationals.

**Chess Magnet School Junior Grand Prix!
Mar. 7-9 or 8-9, 21st annual Western Class Championships**
See Chess Life or www.chesstour.com.

Apr. 4-6, 2014 National High School (K-12) Championship
See Nationals.

Florida

**Chess Magnet School Junior Grand Prix!
Boca Raton Chess Club**
Friday nights, G/85 d5 Tournament, one game a week for 4 weeks. www.bocachess.com, 561-479-0351.

Epicure Grand Prix Series at Miami Country Day
Scholastic and Non-Scholastic Sections. More info at: www.bocachess.com or call 561-479-0351.

Pine Crest School Grand Prix Series in Boca Raton
Scholastic and Non-Scholastic Sections. More info at: www.bocachess.com or call 561-479-0351.

Feb. 14-16 or 15-16, Presidents Weekend Championship
See Grand Prix.

Mar. 28-30 or 29-30, 12th annual Southern Class Championships
See Chess Life or www.chesstour.com.

Georgia

Feb. 14-16 or 15-16, 2014 U.S. Amateur Team Championship - South
See Nationals.

Apr. 25-27, 2014 National Junior High (K-9) Championship
See Nationals.

Idaho

Vellotti's Chess School
We Make Chess Fun!® Students ages 3-17 can learn to play and Master chess with tricks, traps, and sneak attacks. Our Success in Chess Training System is offered both in-person and live online through group Skype lessons. Based in Boise and Sun Valley, ID with a growing expansion into Los Angeles, CA, we offer camps, classes, tournaments, private lessons, simuls, and lectures by International Master Luke Vellotti. Enchanted Chess online classes are a great way to master chess from the comfort of your own home. Contact us today! Phone: (208) 713-2486. E-mail: info@SuccessInChess.com. Online: www.SuccessInChess.com.

Illinois

ChessIQ Academy & Chess Center
a friendly environment to learn and play chess! USCF rated tournaments every week, Grandmaster lectures and simuls monthly, team events, and scholastic camps. Private and group lessons available onsite and at your location. Contact us at 847.423.8626 or sevan@chessiq.com. Visit our website at www.chessiq.com for our full schedule of events. Located at 5500 W Touhy Ave., Suite A, Skokie, IL 60077 across the street from the Village Crossing Shopping Center.

Feb. 16, 98th Knights Quest
Come join the monthly Quest - now in its 9th year with prize\$ and free wi-fi. Crowne Plaza Hotel, 2875 Milwaukee Ave, Northbrook, IL. **Sections:** Open & U1400 (K-12 & Adults), 4 rds. G/45 (G/40 d5); **U1000 & U600** (K-8) 4 rds. G/30 (G/25 d5). **EF:** \$30 by 2/10, \$35 by 2/14, \$40 after. **Awards:** Open \$50 - 40 - 30, Trophies top 6 U1400, U1000 & U600, Top Team in U1000 & U600, participation award all U600. **On-site Reg:** 11:00-11:30 am. **Rds:** 1 at 12:00 pm, rest ASAP. **Online Reg/info:** www.rknights.org.

Feb. 21-23 or 22-23, 2014 U.S. Amateur Team North
See Nationals.

Mar. 9, 99th Knights Quest
Come join the monthly Quest - now in its 9th year with prize\$ and free wi-fi. Crowne Plaza Hotel, 2875 Milwaukee Ave, Northbrook, IL. **Sections:** Open & U1400 (K-12 & Adults), 4 rds. G/45 (G/40 d5); **U1000 & U600** (K-8) 4 rds. G/30 (G/25 d5). **EF:** \$30 by 3/3, \$35 by 3/7, \$40 after. **Awards:** Open \$50 - 40 - 30, Trophies top 6 U1400, U1000 & U600, Top Team in U1000 & U600, participation award all U600. **On-site Reg:** 11:00-11:30 am. **Rds:** 1 at 12:00 pm, rest ASAP. **Online Reg/info:** www.rknights.org.

A State Championship Event!
Mar. 14-16, 2014 Illinois K-8 State Championships
7SS. Hyatt Regency Schaumburg, 1800 E. Golf Rd., Schaumburg, IL 60173, (847)605-1234, rooms: \$95 (single-quad), Free Wi-Fi at hotel, free parking, Near Woodfield Mall. **Four Sections - K-1 (G/25 d5),** Grades 2-3 (G/40 d5), Grades 4-5 (G/55 d5), Grades 6-8 (G/55 d5). **Entry Fee:** \$35 postmarked by 2/24/14 USPS (or \$35 on-line by 2/24, 6 pm); \$50 postmarked 3/11/14 or On-Line by 3/13/14, 6 pm, or on-site by 3/14/14 (on-site entries after 3/14/14 cannot be guaranteed pairing for round 1, instead they may receive 1/2 point by round 1). Must be current USCF member by 8:30 am, 3/15 to be paired. **Checks payable only to Chess Weekend. Awards: Individual:** 1st - 25th Place in each section (K-1, 2-3, 4-5, 6-8) INDIVIDUAL SECTION WINNER WILL ALSO RECEIVE AN IPAD MINI. Grade Awards: 1st-2nd each grade. Class Awards: 1st-2nd Place with several classes per section. Commemorative medal or ribbon to all players. **Teams:** 1st-10th Place in each section. **Special Sportsmanship trophy!** **Schedule:** Opening Ceremony Sat., 3/15/14 at 9 am. **K-1:** Sat. 10-12:30-2:30-3:30, Sun. 9-10:30-12:30; **Grades 2-3:** Sat. 10-12:30-2:30-4:30 Sun. 9-11-1; **Grades 4-5 & Grades 6-8:** Sat. 10-12:45-3:15-5:45 Sun. 9-11:30-2. **Side Events:** Bughouse Tournament - Fri, 3/14/14, 6:15 - 7:45 pm. **EF** at site only: \$20 per team (\$10 for individuals and we help you create a team) **FREE** INDIVIDUAL BUGHOUSE ENTRY WITH RECEIPT FOR BOTH BLITZ & PUZZLE SOLVING! Registration closes at 6 pm, Fri, 3/14/14. One section only.

K-8. Bughouse Awards: 1st-3rd Place. **Blitz Tournament -** 5 SS, G/5 d0, Fri, 3/14/14, 8-9:30 pm, \$15 postmarked by 2/24/14 or on-line 2/24/14 until 6 pm, \$20 on-site or on-line until 3/14/14. Registration on site closes at 7:30 pm, 3/14/14. **Blitz Awards:** Individual: 1st-5th plus class awards. **Puzzle Solving Contest:** Sat. 3/15/14, 6:30 pm, **Puzzle Solving Prizes:** 1st-5th overall; 1st-5th U1000, EF: USPS: \$15 postmarked by 2/24/14 or On-line until 2/24/14, 6 pm. \$20 on-line by 3/15/14, 6pm or at site. **Awards Ceremony for Blitz/Bughouse/Puzzle Solving:** Sun, 9 am. **K-8 Awards Ceremony:** Sun, 3/16/14, 5:30-7 pm. Enter tournament on line (except Bughouse) at <http://chessweekend.com>. **Checks payable only to Chess Weekend (no checks to USCF):** Mail registrations with name-contact info-grade-birthday-team/school-uscf ID & exp.-address-city-zip-e-mail address-coach name & contact info to: Glenn Panter, 21694 Douc Ct., Frankfurt, IL 60423. Updated info/Hotels/On-Line Entries: <http://chessweekend.com>. \$10 service charge for on-site changes, and all refunds. Book Vending by Rochester Chess.

Apr. 6, 100th Knights Quest
Come help us celebrate the 100th edition of Illinois' longest and most successful monthly tournament - see our website for details and announcements on the festivities. Crowne Plaza Hotel, 2875 Milwaukee Ave., Northbrook, IL. **Sections:** Open & U1400 (K-12 & Adults), 4 rds. G/45 (G/40 d5); **U1000 & U600** (K-8) 4 rds. G/30 (G/25 d5). **EF:** \$30 by 4/1, \$35 by 4/4, \$40 after. **Awards:** Open \$50 - 40 - 30, Trophies Top 6 U1400, U1000 & U600, Top Team in U1000 & U600, participation award all U600. **On-site Reg:** 11:00-11:30 am. **Rds:** 1 at 12:00 pm, rest ASAP. **Online Reg/info:** www.rknights.org.

Apr. 11-13, 2014 All-Girls National Championships presented by the Kasparov Chess Foundation in association with the Renaissance Knights Chess Foundation & USCF
See Nationals.

May 22-26, 23-26, 24-26 or 25-26, 23rd annual Chicago Open
See Chess Life or www.chesstour.com.

Louisiana

Mar. 21-23, Susan Polgar New Orleans Boys & Girls Scholastic
Hilton Garden Inn, 1001 South Peters St., New Orleans, LA 70130. 6 Rd. SS G/45 d5 scholastic up to 8 sections: USCF Rated Secs. grades K-2, 3-5, 6-8 & 9-12, sep. for Girls & Boys (T.D. may combine any sec. w/ < 10 players); **Side events:** 3 hour chess camp (max. 30); GM Polgar Simul (max 20 bds.); Blitz Championship, G/5 d0, K-6 and 7-12; Bughouse; Puzzle Solving Championship; "Breakfast with Susan". **Schedule:** Rds. Sat., 3/22: 10-12-2, Sun 3/23: 10-12-2:15. **Side events:** Fri 3/21 - Camp 2-5 p.m.; Puzzles, 6 p.m., Bughouse 7 p.m.; Sat. 3/22 - Simul 4 p.m., Blitz 7 p.m.; Sun 3/23 - Breakfast 8:30 a.m. **Awards:** side event awards before rds 4 & 5; main event awards 4 p.m. **Prizes:** Over \$100,000 in Webster U. Scholarships, tablet computers & chess prizes; Trophies to at least top 5 ea. sec. (more poss. in lg secs.; top 20% based on pre-reg. as of 2/21); **Side event awards:** Blitz - top 3 boys & top 3 girls ea. sec.; Bughouse - top 3 teams. Puzzles - top 3 in rating gps. Under 800, Under 1500 & Open. All players receive commemorative medals. **Team awards:** top 2 school or club teams ea. sec. of main event & blitz (Student may rep. only 1 team; commit by rd 2). **Reg. fees:** All secs. of G/45 Main Event: \$45 by 1/31/14; then \$55 by 3/20/14; \$65 on site. Camp - \$40 by 1/31/14; then \$50. Puzzles \$10 by 1/31/14; then \$15. Bughouse - \$20/team by 1/31/14; then \$30. Blitz - \$15 by 1/31/14; then \$20. Simul - \$25; "Breakfast with Susan" \$35 adults; \$15 children under 12. **Host Hotel:** Hilton Garden Inn Convention Center, King or 2 Doubles \$149/nt, 2 night min. til sold out or 2/18/14. Limited King suites available w/ \$40 upgrade. Free wi-fi, microwave & mini-fridge in every room; business center, fitness center, pool. To reserve call 1-877-782-9444 & request Chess Rate. Alternative/Overflow hotel (15-20 min. drive from tourney site): Hampton Inn Elmwood, 5150 Mounes St., Harahan, LA 70123, \$109/nt, tel: 1-504-733-5646. Details and tournament & host hotel registration links available at www.polgarevents.com and www.cajunchess.com. Email questions to ChessNOLA@yahoo.com.

Maryland

Mar. 1-2, UMBC Open - Alvin S. Mintzes Chess Tournament
See Grand Prix.

Massachusetts

Mar. 9, Gus Gosselin Grade Championship
Open to Massachusetts residents/students in grades K-12. 4-SS, G/45 d5. Best Western Royal Plaza Hotel, 181 Boston Post Road West, Marlboro, MA (I-495, exit 24B, Rt. 20 west, one mile from exit). 508-460-0700. 8 sects.: **Grades 8-12, 7, 6, 5, 4, 3, 2, K-1.** Trophies to top 3 each sect., top Grade 8 and Grade 9 in Grades 8-12 Sect., top Kindergarten in Grades K-1 sect. Medals to players scoring 3+ points and not winning a trophy. **EF:** \$20 mailed by 3/4 or on-line by 3/7, \$25 at site. **MACA** memb. req. (\$6/yr for U18, \$14 with Chess Horizons magazine). **REG:** 8:15-8:45 am. 1st round at 9:30 a.m., others ASAP By: none. **Ent:** payable to MACA and mail to Robert Messenger, 4 Hamlett Dr., Apt. 12, Nashua, NH 03062 or online at www.MassChess.org. **Info:** email to info@masschess.org or phone 603-891-2494.

Mar. 14-16 or 15-16, 23rd annual Eastern Class Championships
See Chess Life or www.chesstour.com.

**A State Championship Event!
Apr. 13, Hurvitz Cup**
Massachusetts scholastic team championship. Open to teams of 4 players plus one alternate (optional) from the same Massachusetts school. See www.MassChess.org for feeder school and other grades. **4-SS.** Time control is G/60 d5 in Grades 9-12 and 6-8, G/45 d5 in Grades K-5 and K-3. Holiday Inn Boxborough, 242 Adams Pl., Boxborough MA, 978-263-8701. 4 sects.: **Grades 9-12, 6-8, K-3.** Trophies (team and individual) to top 3 teams each sect. Medals to players scoring 3+ points who do

not win a team trophy. **EF:** \$80 per team if mailed by 4/8 or online by 4/11, \$100 at site. **MACA** memb. (\$6/year for U18, \$14 with Chess Horizons magazine) req. for all players. **Reg.:** 8:00-8:45 a.m. **1st round** at 9:30 a.m., others ASAP. **Bye:** none. **Ent:** payable to MACA, mail to Robert Messenger, 4 Hamlett Dr., Apt. 12, Nashua, NH 03062 or online at www.MassChess.org. **Info:** info@masschess.org or phone 603-891-2484.

Missouri

Mar. 14-16 or 15-16, 18th annual Mid-America Open
See Chess Life or www.chesstour.com.

Nevada

Feb. 27-28, Top 100 USCF List Scholastic Invitational (CA-S)
See California, Southern.

Feb. 28-Mar. 2, 2014 U.S. Junior Chess Congress (CA-S)
See Nationals.

June 12, 2014 U.S. Game/10 Championship (QC)
See Nationals.

June 12-13, 2014 U.S. Women's Open
See Nationals.

June 13-15 or 14-15, 2014 National Open
See Nationals.

New Jersey

Feb. 15-17, World Amateur Team & U.S. Team East - 44th Annual
See Nationals.

A State Championship Event!

Feb. 23, New Jersey Junior High School Championships

5SS, G/30 d5. Brookdale College, 765 Newman Springs Rd., Lincroft, NJ 07738. Student Life Center, use Parking Lot #7 or #6; 5 minutes from Garden State Parkway exit 109. **Section:** JHS (K-9). **ALL:** Trophies to top 15 individuals, top 5 teams. **Rds.:** 10am then ASAP. Top 4 scores constitute team score. **EF:** \$30 before 2/16, \$45 at site. USCF memb. req'd. **Reg.:** 8:9-00 am. After 9:00 am, half-point bye for round one. **INFO:** 732-259-3881, hsprechman@characterkings.org. **ENT:** Hal Sprechman, P.O. Box 1511, Jackson, NJ 08527 or online by Feb 22 at www.characterkings.org. Entries must include name, grade, school, date of birth, USCF ID #, & expiration date, mailing address, phone number & entry fee. Checks made out to NJSCF.

A State Championship Event!

Feb. 23, New Jersey State Elementary Championships

5SS, G/30 d5. Brookdale College, 765 Newman Springs Rd., Lincroft, NJ 07738. Student Life Center, use Parking Lot #7 or #6; 5 minutes from Garden State Parkway exit 109. **2 Sections:** Elementary (K-6) & Primary (K-3). **All:** Trophies to top 15 individuals, top 5 teams. Elementary & Primary: Top 5 in each grade. **Rds.:** 10am then ASAP. Top 4 scores constitute the team score for Elementary; top 3 for Primary. **EF:** \$30 before 2/16, \$45 at site. USCF memb. req'd. **Reg.:** 8:9-00am After 9:00am 1/2 point bye for round 1. **Info:** 732-259-3881, **Ent:** Hal Sprechman, P.O. Box 1511, Jackson, NJ 08527 or online by Feb 23 at www.characterkings.org. Entries must include name, grade, school, date of birth, USCF ID and expiration date, mailing address, email address, phone number and entry fee. Checks made out to NJSCF.

Feb. 23, Sunday Afternoon Scholastic

3-RR, G/25 d5. 1531 Irving St., Rahway, NJ 07065. **Prizes:** \$30 to first in each section. **EF:** \$10. **Reg.:** 3:00-3:25 p.m. **Rds.:** 3:30, 4:40, 5:50 p.m. **Info:** chessmates@chessmatesnj.com, 732-499-0118.

Mar. 2, Sunday Afternoon Scholastic

3-RR, G/25 d5. 1531 Irving St., Rahway, NJ 07065. **Prizes:** \$30 to first in each section. **EF:** \$10. **Reg.:** 3:00-3:25 p.m. **Rds.:** 3:30, 4:40, 5:50 p.m. **Info:** chessmates@chessmatesnj.com, 732-499-0118.

Mar. 8, King's Chess Club Quads

Morning quads and afternoon quads, G/30 d5, Kindergarten-through-graduate (scholastic, youth, and young adult memberships). Bethlehem Church, 758 Route 10, Randolph, NJ 07869. **EF:** None. **Reg.:** 9:9-20 am, 1st rd. 9:40. Arr. by noon to reg. only for afternoon quads. Medal to each quad winner. **Info:** Bethlehem Church 973-366-3434 or Bob McAdams 973-694-3988, rwm@fambright.com.

Mar. 9, Sunday Afternoon Scholastic

3-RR, G/25 d5. 1531 Irving St., Rahway, NJ 07065. **Prizes:** \$30 to first in each section. **EF:** \$10. **Reg.:** 3:00-3:25 p.m. **Rds.:** 3:30, 4:40, 5:50 p.m. **Info:** chessmates@chessmatesnj.com, 732-499-0118.

Apr. 13, Westfield Spring Scholastic

Westfield Y, 220 Clark St., Westfield, NJ 07090. K-12. **3 Sections:** Open, U1250, U750. **Open:** 3-SS, G/40 d5. **Rds.:** 2:30, 4:15, 6:00 p.m. **U1250:** 4-SS, G/25 d5. **Rds.:** 2:30, 3:45, 5:00, 6:15 p.m. **U750:** 4-SS, G/25 d5. **Rds.:** 2:30, 3:45, 5:00, 6:15 p.m. **Prizes:** Trophies to Top 5 in each section. Tiebreaks used. **EF:** Advance \$20, \$15 members. At site \$30, \$25 members. Send advance entries to John Moldovan, 510 4th Ave., Garwood, NJ 07027 by Apr. 10. Make checks payable to Westfield Chess Club. **Reg.:** 1:30-2:15 p.m. **Info:** www.westfieldchessclub.com, John Moldovan: westfieldchessclub@gmail.com, Bill Cohen: 732-548-8432 or 848-219-1358.

A State Championship Event!

Apr. 27, NJ State Girls Championship

4SS, G/45 d5. International Chess Academy, 9-10 Saddle River Rd., Fairlawn, NJ 07410. (973) 219-6877. **2 Sections. Open:** Trophies to Top 10 players. Highest placing New Jersey player will be New Jersey's representative for the National Invitational Girls Tournament and receive a \$150 stipend, if she plays in the NGIT 2014. **U1400:** Trophies to Top 10 players. Entries postmarked by 4/17/14 to Dean of Chess Academy, 3150 Route 22 West, Branchburg, NJ 08876. Entry fee: \$35, onsite: \$45 **Registration:** 9:00-9:45am. **Rounds:** 10:00am & ASAP. Email Noreen@

deanoffchess.com for more information.

New York

Feb. 14-16 or 15-16, Presidents Weekend Championship (FL)
See Grand Prix.

Feb. 15, Marshall Saturday G/60!

4-SS, G/55 d5. Marshall CC, 23 W. 10th St., NYC. 212-477-3716. **(\$540/40):** \$240-120, U2000 95, U1700 85. **EF:** \$40, members \$20. **Reg.:** 11:15-11:45. **Rds.:** 12-1:45-4:00-5:45. One bye available, request at entry. www.marshallchessclub.org.

Feb. 16, Marshall Sunday G/45!

4-SS, G/40 d5. Marshall CC, 23 W. 10th St., NYC. 212-477-3716. **Two sections: A. Open** (\$360/26): \$160-80, U2100 65, U1800 55. **B. U1800** (\$240/18): \$120-65, U1500 55. **EF:** \$40, members \$20. **Reg.:** 11:15-11:45. **Rds.:** 12-1:45-4:00-5:45. One bye available, request at entry. www.marshallchessclub.org.

Feb. 17, President's Day Action GP!

See Grand Prix.

Feb. 20, Marshall 4 Rated Games Tonight!

4-SS, G/25 d5. Marshall CC, 23 W. 10th St., NYC. 212-477-3716. **EF:** \$40, members \$25, GMs free. **Prizes:** (\$530 based on 32 paid entries: \$200-100-50, U2200 \$95, U2000 \$85. **Reg.:** 6:15-6:45 pm. **Rds.:** 7-8:15-9:30-10:45. One bye available, request at entry. NOW ALSO FIDE RAPID RATED!

Feb. 22, Marshall Saturday U1800

4-SS, G/40 d5. Marshall CC, 23 W. 10th St., NYC. 212-477-3716. **(\$300/24):** \$160-80, U1500 \$60. **EF:** \$40, members \$20. **Reg.:** 12:15-12:45. **Rds.:** 1-2:45-4:30-6:15. One bye available, request at entry. www.marshallchessclub.org.

Feb. 27, Marshall 4 Rated Games Tonight!

4-SS, G/25 d5. Marshall CC, 23 W. 10th St., NYC. 212-477-3716. **EF:** \$40, members \$25, GMs free. **Prizes:** (\$530 based on 32 paid entries: \$200-100-50, U2200 \$95, U2000 \$85. **Reg.:** 6:15-6:45 pm. **Rds.:** 7-8:15-9:30-10:45. One bye available, request at entry. NOW ALSO FIDE RAPID RATED!

Feb. 28, Marshall \$500 FIDE Blitz! (BLZ)

See Grand Prix.

Mar. 1, Marshall Saturday G/45!

4-SS, G/40 d5. Marshall CC, 23 W. 10th St., NYC. 212-477-3716. **Two sections: A. Open** (\$360/26): \$160-80, U2100 65, U1800 55. **B. U1500** (\$240/18): \$120-65, U1200 55. **EF:** \$40, members \$20. **Reg.:** 11:15-11:45. **Rds.:** 12-1:45-4:00-5:45. One bye available, request at entry. www.marshallchessclub.org.

A Heritage Event!

Chess Magnet School Junior Grand Prix!

A State Championship Event!

Mar. 1-2, 47th annual New York State Scholastic Championships
6SS, G/60 d10, open to grades K-12 in any state (top NYS player & team in each section are NY champions). Saratoga Hilton, 534 Broadway (I-87 Exit 13-N, 4 miles north on US 9), Saratoga Springs, NY 12866. Team prizes based on top 4 scores from same school; no combined school teams allowed even if one school "feeds" another. Teams of 2 or 3 players allowed, but are at a disadvantage. In 9 sections. **Online entry fee at chessaction.com, all sections:** \$43 12/1-2/8, \$53 2/9-2/25, \$60 2/26 to 9 am 3/1. **Entry fee at site,** all sections: \$60. **High School**, open to all in grades K-12. **EF** \$46.20 mailed by 2/8. Top NYS grade 9-12 qualifies for Denker Tournament of HS Champions, top NYS grade K-12 girl qualifies for National Girls Invitational. **High School Reserve**, open to K-12 under 1200 or unrated. **EF** \$46 mailed by 2/8. **Junior High**, open to all in grades K-9. **EF** \$45.90 mailed by 2/8. Top NYS grade K-8 qualifies for Barber tournament of K-8 Champions. **Middle School Reserve**, open to K-8 under 1000 or unrated. **EF** \$45.80 mailed by 2/8. **Elementary**, open to all in grades K-6. **EF** \$45.60 mailed by 2/8. **Elementary Reserve**, open to grades K-5 under 800 or unrated. **EF** \$45.50 mailed by 2/8. **Primary**, open to grades K-3. **EF** \$45.30 mailed by 2/8. **Primary Reserve**, open to grades K-3 under 600 or unrated. **EF:** \$45.20 mailed by 2/8. **K-1**, open to grades K-1. **EF** \$45.10 mailed by 2/8. **Postmarked 2/9-19:** All **EF** \$10 more. Do not mail entry after 2/9. **Entry at site:** all \$60. **Special 1 year USCF dues** with magazine if paid with entry. Online at chessaction.com, Young Adult \$20, Scholastic \$15. Mailed, phoned or paid at site, Young Adult \$30, Scholastic \$20. **Trophies** to top 15 players and top 7 teams each section, top 3 unrated in Primary, K-1, and each reserve section, and top U1500, U1300 (HS), U900, U700 (HS Reserve), U1200, U1000 (JHS), U700, U500 (MS Reserve), U1000, U800 (Elem), U500, U300 (Elem Reserve), U500 (Primary), U200 (Primary Reserve, K-1). Speed playoff if perfect score tie. **Free entry** to NY State Championship, Labor Day weekend 2014 (Albany), to top player each section. **Schedule:** Late reg. ends Sat 10 am, rds. Sat 11, 2, 5, Sun 9, 12, 3, awards 5:30 pm. **Half point byes** OK all, limit 2, must commit before rd. **HR:** \$129-129, 888-999-4711, 518-584-4000, reserve by 2/14 or rate may increase. Free parking for overnight guests. 48 hours notice required for room cancellation. Backup hotel: Courtyard by Marriott, 2 blocks away, 518-226-0538. **Special car rentals:** Avis, 800-331-1600, use AWD #657633. **Online entry:** www.chessaction.com, beginning 12/1. **Mail entry:** Continental Chess, PO Box 249, Salisbury Mills, NY 12577. Include name, rating, USCF ID, USCF expiration (non-members enclose dues), section, school, grade, birth date, address of each player. Checks payable to Continental Chess. **\$15 per player** service charge for refunds. **\$10 extra to switch** sections, all substitutions from advance list charged \$60. **Questions:** DirectorAtChess.US (AT=@), 347-201-2269. **Bring set, board, clock** if possible- none supplied.

Mar. 2, Marshall Sunday G/60!

4-SS, G/55 d5. Marshall CC, 23 W. 10th St., NYC. 212-477-3716. **(\$540/40):** \$240-120, U2000 95, U1700 85. **EF:** \$40, members \$20. **Reg.:** 11:15-

11:45. **Rds.:** 12-2:30-4:45-7. One bye available, request at entry. www.marshallchessclub.org.

Chess Magnet School Junior Grand Prix!

Mar. 3, 10, 17, 24, 31, Marshall Monday U1600

5-SS, G/85 d5. Marshall CC, 23 W. 10th St., NYC. **(\$450/20):** \$240-120, U1300 \$90. **Reg.:** 6:15-6:45. **Rds.:** 7 pm each Mon. Two byes available, request by Round 3. www.marshallchessclub.org.

Mar. 4, Marshall Tuesday FIDE Action!

4-SS, G/25 d5. Marshall CC, 23 W. 10th St., NYC. 212-477-3716. **EF:** \$40, members \$20. **(\$360/24):** \$160-80, U2100 \$65, U1800 \$55. **Reg.:** 6:15-6:45. **Rds.:** 7-8:15-9:30-10:45. One bye available, request at entry. www.marshallchessclub.org. NOW ALSO FIDE RAPID RATED!

Mar. 6, Marshall 4 Rated Games Tonight!

4-SS, G/25 d5. Marshall CC, 23 W. 10th St., NYC. 212-477-3716. **EF:** \$40, members \$25, GMs free. **Prizes:** (\$530 based on 32 paid entries: \$200-100-50, U2200 \$95, U2000 \$85. **Reg.:** 6:15-6:45 pm. **Rds.:** 7-8:15-9:30-10:45. One bye available, request at entry. NOW ALSO FIDE RAPID RATED!

Chess Magnet School Junior Grand Prix!

Mar. 7-9, 8-9 or 9, Marshall March Super FIDE U2300!

5-SS, 40/2 d5 SD/30 d5. Open to players rated below 2300 USCF. Marshall CC, 23 W. 10th St., NYC. 212-477-3716. **EF:** \$60, members \$40. **\$\$\$820 gtd:** \$300-150-100, U2100 \$145, U1800 \$125. Reg ends 15 min before Rd. **3 schedules: 3 day 3/7 6pm, 3/8-9 12:30-5:30. 2 day 3/8 11am, then merge with 3 day (Rd. 1 G/25 d5). 1 day 3/9 9-10:10-11:20, then merge with 2&3 day (Rd. 1-3 G/25 d5) Limit 2 byes, request at entry. USCF & FIDE rated. www.marshallchessclub.org.**

Mar. 8, Marshall Saturday U1600!

4-SS, G/40 d5. Marshall CC, 23 W. 10th St., NYC. 212 477-3716. **(\$300 b/24):** \$160-80, U1300 \$60. **EF:** \$40, members \$20. **Reg.:** 12:15-12:45. **Rds.:** 1-2:45-4:30-6:15PM. One bye available, request at entry. www.marshallchessclub.org.

Mar. 13, Marshall Thursday Action Grand Prix!

See Grand Prix.

Mar. 15, Marshall Saturday G/60!

4-SS, G/55 d5. Marshall CC, 23 W. 10th St., NYC. 212-477-3716. **(\$540/40):** \$240-120, U2000 95, U1700 85. **EF:** \$40, members \$20. **Reg.:** 11:15-11:45. **Rds.:** 12-2:30-4:45-7. One bye available, request at entry. www.marshallchessclub.org.

Mar. 16, PS 77 Lower Lab Chess Tournament - All proceeds go to school.

1700 3rd Ave., New York, NY. **Starter (unrated):** 4-SS, G/25 d5 open to unrated in K-1. Trophies to all. **Learner (unrated):** 4-SS, G/25 d5 open to unrated in K-5. Trophies to top quarter, medals to others. **Achiever:** 4-SS, G/25 d5 open to U400 in K-3. Trophies to top quarter, medals to others. **Expander:** 4-SS, G/25 d5 open to U700 in K-5. Trophies to top quarter, medals to others. **Sharper:** 4-SS, G/40 d5 open to U1000 in K-8. Trophies to top quarter, medals to others. **Leader:** 4-SS, G/55 d5-open to 900 to 1299 in K-12. Trophies to top quarter, medals to others. **Advancer:** 3-SS, G/70 d5 open to 1200 to 1699 in K-12. Trophies to top quarter, medals to others. **Master:** 3-SS, G/70 d5 open to 1600+ in K-12. \$\$ prizes. **All:** Round 1 at 10:00am, then ASAP. **Entry Fee:** Online \$35 by 9PM by Wednesday before, \$45 by 6PM on day before, \$55 at site. Free entry to 1800+. Team plaque for each section except Starter and Master. Blitz playoff for perfect scores. Free Team rooms for schools with most players. More info Email: ps77chess@gmail.com. Register at https://lowerlabpta.wufoo.com/forms/z7xm9/.

Mar. 16, Marshall Sunday G/45!

4-SS, G/40 d5. Marshall CC, 23 W. 10th St., NYC. 212-477-3716. **Two sections: A. Open** (\$360/26): \$160-80, U2100 65, U1800 55. **B. U1800** (\$240/18): \$120-65, U1500 55. **EF:** \$40, members \$20. **Reg.:** 11:15-11:45. **Rds.:** 12-1:45-4:00-5:45. One bye available, request at entry. www.marshallchessclub.org.

Chess Magnet School Junior Grand Prix!

Mar. 19, 26, Apr. 2, 9, 16, Marshall Wednesday U1400!

5-SS, G/85 d5. Marshall CC, 23 W. 10th St., NYC. 212-477-3716. **EF:** \$50, members \$30. **(\$450/24):** \$240-120, U1100 \$90. **Reg.:** 6:15-6:45. **Rds.:** 7 pm each Wed. Limit two byes, request by Rd 3. www.marshallchessclub.org.

Chess Magnet School Junior Grand Prix!

Mar. 19, 26, Apr. 2, 9, 16, Marshall Wednesday U2000!

5-SS, 30/85 d5, SD/1 d5. Marshall CC, 23 W. 10th St., NYC. 212-477-3716. **EF:** \$50, members \$30. **(\$450/24):** \$240-120, U1700 \$90. **Reg.:** 6:15-6:45. **Rds.:** 7 pm each Wed. Limit two byes, request by Rd. 3. www.marshallchessclub.org.

Mar. 20, Marshall 4 Rated Games Tonight!

4-SS, G/25 d5. Marshall CC, 23 W. 10th St., NYC. 212-477-3716. **EF:** \$40, members \$25, GMs free. **Prizes:** (\$530 based on 32 paid entries: \$200-100-50, U2200 \$95, U2000 \$85. **Reg.:** 6:15-6:45 pm. **Rds.:** 7-8:15-9:30-10:45. One bye available, request at entry.

Mar. 21-23, 22-23 or 23, NEW! Marshall March Super FIDE GP!

See Grand Prix.

Mar. 22, Marshall Saturday U1800!

4-SS, G/40 d5. Marshall CC, 23 W. 10th St., NYC. 212-477-3716. **(\$300/24):** \$160-80, U1500 \$60. **EF:** \$40, members \$20. **Reg.:** 12:15-12:45. **Rds.:** 1-2:45-4:30-6:15. One bye available, request at entry. www.marshallchessclub.org.

Mar. 27, Marshall Thursday Game 30 Grand Prix!

See Grand Prix.

Mar. 28, Marshall \$500 FIDE Blitz! (BLZ)

See Grand Prix.

Mar. 28-30 or 29-30, 8th annual Long Island Open

See Chess Life or www.chesstour.com.

Tournament Life

Mar. 29, Marshall Saturday G/60!

4-5S, G/55 d5. Marshall CC, 23 W. 10th St., NYC. 212-477-3716. **(\$540/40):** \$240-120, U2000 95, U1700 85. **EF:** \$40, members \$20. **Reg.:** 11:15-11:45. **Rds.:** 12-2:30-4:45-7. One bye available, request at entry. www.marshallchessclub.org.

Mar. 30, Marshall Sunday G/45!

4-5S, G/40 d5. Marshall CC, 23 W. 10th St., NYC. 212-477-3716. **Two Sections:** **A. Open** (\$360/26): \$160-80, U2100 65, U1800 55. **B. U1800** (\$240/18): \$120-65, U1500 55. **EF:** \$40, members \$20. **Reg.:** 11:15-11:45. **Rds.:** 12-1:45-4:00-5:45. One bye available, request at entry. www.marshallchessclub.org.

Apr. 1, Marshall Tuesday FIDE Action!

4-5S, G/25 d5. Marshall CC, 23 W. 10th St., NYC. 212-477-3716. **EF:** \$40, members \$20. **(\$360/24):** \$160-80, U2100 65, U1800 55. **Reg.:** 6:15-6:45. **Rds.:** 7-8:15-9:30-10:45. One bye available, request at entry. www.marshallchessclub.org. NOW ALSO FIDE RAPID RATED!

Apr. 3, Marshall 4 Rated Games Tonight!

4-5S, G/25 d5. Marshall CC, 23 W. 10th St., NYC. 212-477-3716. **EF:** \$40, members \$25, G/MS free. **Prizes:** (\$530 based on 32 paid entries: \$200-100-50, U2200 \$95, U2000 \$85. **Reg.:** 6:15-6:45 pm. **Rds.:** 7-8:15-9:30-10:45. One bye available, request at entry. NOW ALSO FIDE RAPID RATED!

Apr. 5, Marshall Saturday U1600!

4-5S, G/40 d5. Marshall CC, 23 W. 10th St., NYC. 212-477-3716. **(\$300 b/24):** \$160-80, U1300 \$60. **EF:** \$45, members \$25. **Reg.:** 12:15-12:45. **Rds.:** 1-2:45-4:30-6:15PM. One bye available, request at entry. www.marshallchessclub.org. Limited to 30 players!

Apr. 6, Marshall Sunday G/60!

4-5S, G/55 d5. Marshall CC, 23 W. 10th St., NYC. 212-477-3716. **(\$540/40):** \$240-120, U2000 95, U1700 85. **EF:** \$45, members \$25. **Reg.:** 11:15-11:45. **Rds.:** 12-2:30-4:45-7. One bye available, request at entry. www.marshallchessclub.org. Limited to 30 players!

Chess Magnet School Junior Grand Prix!

Apr. 7, 14, 21, 28, May 5, Marshall Monday U1600!
5-SS, G/85 d5. Marshall CC, 23 W. 10th St., NYC. **(\$450/20):** \$240-120, U1300 \$90. **Reg.:** 6:15-6:45. **Rds.:** 7 pm each Mon. Two byes available, request by Round 3. www.marshallchessclub.org.

Chess Magnet School Junior Grand Prix!

Apr. 7, 14, 21, 28, May 5, 12, Marshall FIDE Mondays!
6-SS, G/120 d5. Marshall CC, 23 W. 10th St., NYC. 212-477-3716. Open to all players 1600 or above. **EF:** \$50, Members \$30. **(\$500 b/28):** \$175-125-100, U2000 \$100. 2 byes OK, commit before round 4. **Reg.:** 6:15-6:45. **Rds.:** 7PM each Monday. FIDE rated. FIDE ratings used for pairings and prizes. Players w/o FIDE rating: USCF rating used for prizes. Limit 2 byes, request by rd. 4. www.marshallchessclub.org.

Apr. 10, Marshall 4 Rated Games Tonight!

4-5S, G/25 d5. Marshall CC, 23 W. 10th St., NYC. 212-477-3716. **EF:** \$40, members \$25, G/MS free. **Prizes:** (\$530 based on 32 paid entries: \$200-100-50, U2200 \$95, U2000 \$85. **Reg.:** 6:15-6:45 pm. **Rds.:** 7-8:15-9:30-10:45. One bye available, request at entry. NOW ALSO FIDE RAPID RATED!

Chess Magnet School Junior Grand Prix!

Apr. 11, 18, 25, May 2, 9, Marshall Friday Afternoon FIDE!
5-SS, G/120 d5. Marshall CC, 23 W. 10th St., NYC. 212-477-3716. **EF:** \$30, Members \$20. **(\$300 b/24):** \$150-75, U2000 \$75. 2 byes OK, commit before round 3. **Reg.:** 12:15-12:45. **Rds.:** 1PM each Friday. FIDE rated. Limit 2 byes, request by rd. 3. www.marshallchessclub.org.

Apr. 12, Marshall Saturday U1800!

4-5S, G/40 d5. Marshall CC, 23 W. 10th St., NYC. 212-477-3716. **(\$300/24):** \$160-80, U1500 \$60. **EF:** \$45, members \$25. **Reg.:** 12:15-12:45. **Rds.:** 1-2:45-4:30-6:15. One bye available, request at entry. www.marshallchessclub.org. Limited to 30 players!

Apr. 13, Marshall Sunday G/60!

4-5S, G/55 d5. Marshall CC, 23 W. 10th St., NYC. 212-477-3716. **(\$540/40):** \$240-120, U2000 95, U1700 85. **EF:** \$45, members \$25. **Reg.:** 11:15-11:45. **Rds.:** 12-2:30-4:45-7. One bye available, request at entry. www.marshallchessclub.org. Limited to 30 players!

May 16-18 or 17-18, 22nd annual New York State Open

See Chess Life or www.chesstour.com.

Oregon

Feb. 27-28, Top 100 USCF List Scholastic Invitational (CA-S)
See California, Southern.

Feb. 28-Mar. 2, 2014 U.S. Junior Chess Congress (CA-S)
See Nationals.

Pennsylvania

Feb. 16, PCL February Quick Quads (QC)
3RR, G/15 d3. Wm. Pitt Union, Univ. of Pittsburgh, 5th Ave. & Bigelow Blvd., Pittsburgh, PA 15213. **EF:** \$10, \$7 Jrs. \$20 to 1st/quad. **Reg.:** 11-11:15am. **Info:** martinak_tom_m@hotmail.com, 412-908-0286. W.

Mar. 7, 2014 PA Quick Chess Championship (QC)
See Grand Prix.

Mar. 8-9, 2014 Ira Lee Riddle Memorial PA State Championship & PA Collegiate Championship
See Grand Prix.

A Heritage Event!
Chess Magnet School Junior Grand Prix!
A State Championship Event!

Mar. 8-9, 2014 PA State Scholastic Championship
5SS. 216 Trophies!! (With 153 Individual & 63 Team). Hotel Carlisle, 1700 Harrisburg Pike, Carlisle, PA 17015, Exit 52A NB/Exit 52 SB off I-81,

Exit 226 off PA Turnpike. 8 sections (Sat & Sun 3/8 & 9 unless indicated):
EF: K-3 Open: (Sat 3/8 only) \$29. K-6 U800: (Sat 3/8 only) \$28. K-6 Unrated: (Sat 3/8 only) \$27. K-9 U1000: (Sun 3/9 only) \$27.25. K-6 Open: \$30.50. K-8 Open: \$31.50. 7-12 U1000: \$28.50. 7-12 U1300: \$29.50. K-12 Open: \$32.50. **All:** Efs if rec'd by 2/18, \$10 more rec'd 2/19-3/1, \$20 more after 3/2. Feb 2014 ratings used. **Bye:** limit 1, ask by rd 2. **Reg.:** Fri 3/7 6-10 pm, Sat 3/8 10-11 am, Saturday entries get 1/2-bye. \$5 charge for changes/refunds after 2/18. **Rds.:** (Sat. 3/8 1-day sections): G/40 d5; 10-Noon-2-4-6; (Sun 3/9 K-9 U1000): G/40 d5; 9-10:45-12:30-2:15-4; (2-day sections): G/90 d5; 10-2:5-30, 9-1. **Bughouse:** Ref on-site only until Sat 3/8 8:30pm. **Rds. begin:** Sat 3/8 8:45pm. **EF:** \$20/team. **HR:** Mention "PA States" for best rate; 800-692-7315 \$75. **Ent:** PSCF, c/o Tom Martinak, 25 Freeport St., Pittsburgh, PA 15223. **Info:** martinak_tom_m@hotmail.com, 412-908-0286, www.pscfchess.org/pascholasticchamp/ W.

Mar. 22, 2014 PA State Game/29 Championship (QC)
See Grand Prix.

Mar. 30, PCL March Quick Quads (QC)
3RR, G/15 d3. Wm. Pitt Union, Univ. of Pittsburgh, 5th Ave. & Bigelow Blvd., Pittsburgh, PA 15213. **EF:** \$10, \$7 Jrs. \$20 to 1st/quad. **Reg.:** 11-11:15am. **Info:** martinak_tom_m@hotmail.com, 412-908-0286. W.

Apr. 6, PCL April Quick Quads (QC)
3RR, G/15 d3. Wm. Pitt Union, Univ. of Pittsburgh, 5th Ave. & Bigelow Blvd., Pittsburgh, PA 15213. **EF:** \$10, \$7 Jrs. \$20 to 1st/quad. **Reg.:** 11-11:15am. **Info:** martinak_tom_m@hotmail.com, 412-908-0286. W.

Apr. 16-20, 17-20, 18-20 or 19-20, 8th annual Philadelphia Open
See Chess Life or www.chesstour.com.

Chess Magnet School Junior Grand Prix!
May 2-4 or 3-4, 15th annual Pittsburgh Open
See Chess Life or www.chesstour.com.

Texas

Chess Magnet School Junior Grand Prix!
Feb. 15, Houston Chess Club - February
Prizes: 50% Returned. \$120 (Top 1 Prizes Guaranteed.) **Format:** 5 Round SS, Sat schedule 3 rounds G/90 d5; Sun 2 rounds G/120 d5. **EF:** \$50 + \$10 club maintenance contribution; \$50 HCC member. Maint Contri waived for those traveling more than 75 miles one way. Free entry for Masters and above. **Entries To:** HCC, 9000 Southwest Freeway, Ste. 120, Houston, TX 77074. **Telephone:** 713-773-2437. **Online entries to:** www.houstonchessclub2000.com/. **E-mail:** TheLeonRuiz@yahoo.com. **Directions to site:** Going South along US 59 (Southwest Freeway) feeder, between S. Gessner and Bissonnet. Turn right at 1st intersection (in front of the Olive Garden Restaurant). We are on the right in the center of the building facing the Olive Garden. **Side Events:** Puzzle contest.

Feb. 22, Region VI Scholastic Chess Championship
5SS, 12 scholastic sections with varied time controls G/30 d5 to G/60 d5. Ralph Langley Elementary, 14185 Bella Vista Pl., San Antonio, TX. Scholastic sections are opened to all Pre-K - 12 players who reside in Texas Region VI. There is also an open adult section, 4SS, G/45 d5 to G/60 d5. **Sections:** Unrated scholastic players may register in any section appropriate to their grade. K-1 Varsity (Pre-K - 1, open), Primary Championship (Pre-K - 3, open), Primary JV (Pre-K - 3, U400), Primary Novice (Pre-K - 3, U200), Elementary Championship (Pre-K - 5/6, open), Elementary Varsity (Pre-K - 5/6, U600), Elementary JV (Pre-K - 5/6, U400), Elementary Novice (Pre-K - 5/6, U200), Middle School Championship (6 - 8/9, open), Middle School JV (6 - 8/9, U800), High School Championship (9 - 12, open), High School JV (9 - 12, U1000) **Trophies:** Each scholastic section will award 8 individual trophies, and 3 team trophies. 3 parent Parent/child trophies awarded in conjunction with the Adult/Open section. **Rds.:** All championship sections will play G/45 d5 for rounds 1-3, and G/60 d5 for rounds 4-5, scheduled at 8:30, 10:30, 12:35, 2:35, 5:15. All other scholastic sections will play G/30 d5 for rounds 1-3, and G/45 d5 for rounds 4-5, scheduled at 9:00, 10:25, 12:10, 1:35, and 3:30. Afternoon start times may be accelerated; check on-site announcements on game day. **Reg.:** Please register online or by mail and send payment to Ralph Langley Elementary, Attn: Chess Tournament, 14185 Bella Vista Pl., San Antonio, TX 78253, make check payable to Ralph Langley ES. Please include the following with your payment: Complete name, USCF #, section you are participating in, grade level, age, gender, School/team name, email address. If you make your payment and register before February 1, 2014 the early entry fee for all scholastic sections is \$20. If you make your payment and register after February 1, 2014 and before February 20, 2014 the fee will be \$25.00—Late entry or onsite fee is \$30. DO NOT MAIL your entry or check after February 13th—we may not receive it in time! Onsite registration is from 7:30am-8:30am. Early payment and registration deadline is February 20, 2014. Online registration is at www.homemail.org/chess-tournaments/. Onsite registration is available 7:30am to 8:30am at the late price, but 1st round pairing may not be possible. Any registration received after Thursday February 20th or onsite may receive a 1/2 point bye in round 1. All entries are subject to residency restrictions in Region VI. For more information, tournament flyer, and online registration, visit www.homemail.org/chesstournaments/. **Adult/Open section:** 4SS. Rounds 1-2, G/45 d5. Rounds 3-4, G/60 d5. Rounds scheduled at 9:15am, 11:00am, 1:00pm, 3:20pm. Prizes based on 50% of entry fees collected. **Reg:** \$25 before Feb 1, \$30 before Feb 20, \$35 late or on-site. Please register online or by mail and send payment to Ralph Langley Elementary, Attn: Chess Tournament, 14185 Bella Vista Pl., San Antonio, TX 78253, make check payable to Ralph Langley ES. Please include the following with your payment: Complete name, USCF #, section you are participating in, grade level, age, gender, will you have a child playing in the tournament (if so provide their name and USCF #), email address. There are no residency restrictions in the open section. More info, tournament flyer, and online registration at www.homemail.org/chesstournaments/. **Contacts:** Robert Green (Host Site/Registration Information) robert.green@

nisd.net, 210 854-3048. Ross Johnson (Registration Information) ross@homemail.org, J. P. Hytlin (Tournament Director Information) jphytlin@yahoo.com.

Feb. 27-28, Top 100 USCF List Scholastic Invitational (CA-S)
See California, Southern.

Feb. 28-Mar. 2, 2014 U.S. Junior Chess Congress (CA-S)
See Nationals.

May 9-11, 2014 National Elementary (K-6) Championship
See Nationals.

Virginia

Mar. 1, 4th Annual State Warm-Up
West Springfield HS, 6100 Rolling Rd., Springfield, VA 22152. **In 6 Sections:** K-1 U400, 2-3 U400, 4-8 U400, K-8 U700, K-8 U1000, K-8 Champ. 4SS, G/25 d5. **EF:** \$22 online by noon 1/29; \$27 online by noon 1/31; \$32 on-site until half-hour before first round. **Rds.:** 1:00-2:00-3:00-4:00. Trophies to top individuals and teams. Free game analysis. Space is limited to first 240 players that register, so check website for availability of on-site registration. See www.silverknightschess.com for complete information or to register.

Chess Magnet School Junior Grand Prix!
June 28-29, 6th annual World Open Under 13 Championship
6SS, G/60 d10. Hyatt Regency Crystal City, Arlington (see World Open for location, rates). Open to all born after 6/29/01. In 4 sections. **Open Section:** Trophies to top 10, 1st C, Under 1400/U700; free entry in all CCA tournaments 7/17/14-12/31/14 to 1st. **Under 1400 Section:** Trophies to top 10, 1st Under 1200, Unrated; free entry in all CCA tournaments 7/17/14-9/30/14 to 1st. **Under 1000 Section:** Trophies to top 10, 1st Under 800, Unrated; free entry in all CCA tournaments 7/17/14-9/30/14 to 1st. **Under 600 Section:** Trophies to top 10, 1st Under 400, top 3 Unrated; free entry in all CCA tournaments 7/17/14-9/30/14 to 1st. **EF:** \$42 online at chessaction.com by 6/23, \$44 mailed by 6/17, \$45 phoned to 406-896-2038 by 6/17, \$50 at site. **Reg.:** 6/28 to 10 am, rds. Sat. 11-2-5, Sun. 10-1-4. 2 half point byes allowed, must commit before rd. 3. **Ent:** chessaction.com or Continental Chess, PO Box 8482, Pelham, NY 10803. **Questions:** chesstour.com, chesstourinfo, Director@Chess.US, 347-201-2269. \$15 service charge for refunds.

July 2-6, 3-6, 4-6 or June 30-July 6, 42nd Annual World Open
See Chess Life or www.chesstour.com.

Washington

Feb. 27-28, Top 100 USCF List Scholastic Invitational (CA-S)
See California, Southern.

Feb. 28-Mar. 2, 2014 U.S. Junior Chess Congress (CA-S)
See Nationals.

Wisconsin

ChessIQ Academy & Chess Center (IL)
Tournaments, lectures, simul, and camps located in northern Illinois. Visit www.chessiq.com for a full schedule of events.

WHAT'S THE BEST MOVE #3

Pick the best move for White. Write down the name of the piece (you can use the abbreviations: Q, R, B, N, K, P) and what square it should move to (letter and number).

Answers on facing page
(Don't Peek!)

Answers, We've got Answers.

What's The Best Move? (from page 5, 22)

One: 1. Nb6 Mate. It's always better to checkmate!

Two: 1. Nxe8 is better than 1. Nxe7, winning the queen, because if 1. Nxe7 Re1 and you're mated!

Three: 1. Kh6! Kg8 2. Kxg6 Kf8 3. f7 and the pawn will queen. If 2. ... Kh8 3. Kf7! (not 3. f7 stalemate!) 3. ... Kh7 4. Ke7 and the pawn gets to queen.

I Did It! (from page 10)

#1 19. Qe8#

Dubois-Vitzthum von Eckstaedt, 1857

#2 23. Qb5#

Zukertort-Anderssen, 1865

#3 24. ... Qc1#

Stanley-Horwitz, 1861

#4 25. ... Qf2#

McLean- Sidney, 1865

#5 39. Qe8#

Owen- Wisker, 1872

#6 35. ... Qf1#

Harding- Mackenzie, 1871

AVAST, MATEY! (from page 8)

Key for PlunderChess notation: **Basically it is the same as used in traditional chess with the added symbols/notations to accommodate for the plundering features.**

KEY:

RB "RookBishop" i. e. RB simply refers to a Rook chess piece that wears a Bishop vest. Another example might be NP, which refers to a Knight chess piece that wears a Pawn vest, etc. , etc... Both letters are *always*

uppercase and the first letter references the chess piece, while the second letter references the vests worn.

x "captures" (lowercase "x") i. e. RBxc5; Rook-Bishop captures opposing piece on square c5.

***** "plunders ____" i. e. RBxc5*N; RookBishop captures opposing piece on square c5, plunders Knight vest.

(NOTE: In the example I used above, it would be assumed that the opposing piece on c5 was either a Knight or a different piece *wearing* a Knight vest. Either way, the RookBishop "plundered" the Knight vest **and became a RN, RookKnight.**)

= "pawn promoted to ____" i. e. Pd8=Q; Pawn moves to square d8, Pawn is promoted to Queen.

+ "check" i. e. RBc5+; RookBishop moves to square c5, checks opposing King.

"checkmate" i. e. RBc5# RookBishop moves to square c5, checkmate.

; "notation of move is complete, transition to notation of opponent's followup move" i. e. RBxc5*N; Bb4

Puzzle #1:

Answer in Notation: 1. PRxf7*N#

Answer in Words: White privileged PawnRook (uses Rook vest power) captures f7 (opponent's Knight), plunders Knight vest, checkmate.

Puzzle #2:

Answer in Notation: 1. RBc6+ Kb8, 2. PRh8=Q Nc8, 3. Qxc8#.

Answer in Words: White privileged RookBishop moves to square c6, Bishop vest worn by Rook on c6 automatically "checks" Black King. Black King has no other choice but to escape check by moving to b8. White then responds by moving PawnRook (using it's Rook vest power) to h8, promotes to Queen and delivers checkmate after ... Nc8.



USCF
SALES

The Official Shop
of the U.S. Chess Federation

Looking for Houdini 4?
We've got you covered.

**Houdini 4
Standard**
WIN0364CB
\$99.95



**Houdini 4
Professional**
WIN0364CB
\$129.95



**Chess King 4
Standard**
WIN0019AK
\$69.95



**Chess King 4
Professional**
WIN0020AK
\$99.95

**Houdini 4
Extreme**
WIN0133CV
\$69.95



**Chess Assistant 14
Professional**
WIN0071CV
\$149.95



**Chess Assistant 14
Standard**
WIN0069CV
\$99.95



The Official Chess Shop
USCF
of the US Chess Federation

888.51.CHESS (512.4377)
www.USCFSales.com