

April 2014

uschess.org

# Chess Life for Kids!

# We Did It!



A USCF Publication

\$3.00



0 74470 27842 9



**Fast, Fun, and  
Easy to Use**

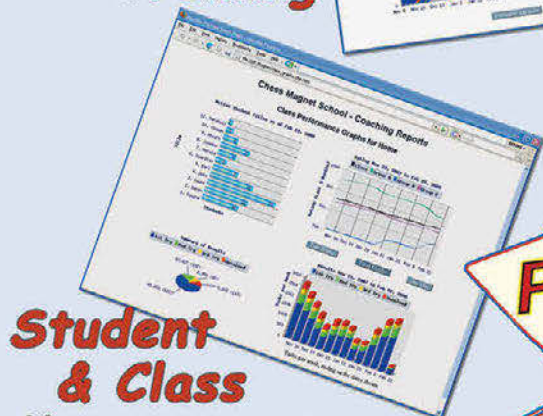
In 2006, and again in 2007,  
young Chess Magnet students  
from Portland, OR, scored 7-0 in the  
USCF Spring Nationals.

# ChessMagnetSchool.com

**Better Than Any Textbook for Learning Chess**



**Student  
Training**



**Student  
& Class  
Management**

**"Great Stuff! I just delivered my first  
Belgian champion under 10 and  
boosted his development  
by using ChessMagnetSchool.com"**

- Ton Montforts, Coach  
Schaakacademie  
Limburg, Belgium

**"Your website was  
integral to our team's winning."**

-Mike Hosford, Coach  
Alcott Elementary  
2008 Washington State  
Grades 4-6 Champions

**Proud Sponsor  
of the  
2014 USCF  
Junior Grand Prix!**

**Start Your 30-day Free Trial Today  
at  
www.ChessMagnetSchool.com**

	1 month	3 months	1 year	1 yr USCF
Individuals	\$6.95	\$15.00	\$29.95	\$26.95
Class/Family	\$6.00	\$12.00	\$25.00	\$22.00

Free to teachers/coaches of at least 5 students  
Includes our powerful, easy-to-use Coaching Tools & Reports

Works on Windows and Macintosh  
computers (requires internet access)

To learn more, call 650-284-5062  
877-378-4319 (US toll-free)  
email [info@ChessMagnetSchool.com](mailto:info@ChessMagnetSchool.com)





# Table of Contents

4	<b>WHAT'S THE QUESTION?</b>
5	<b>ARABIAN KNIGHTS</b>
6	<b>THE CHESS DETECTIVE</b>
8	<b>2014 JUNIOR GRAND PRIX STANDINGS</b>
10	<b>THE BIG Z</b>
11	<b>ZARIA</b>
12	<b>YOU MOVE ... I WIN!</b>
15	<b>MY FAVORITE ZUGZWANG</b>
16	<b>WE DID IT!</b>
18	<b>TOURNAMENT LIFE ANNOUNCEMENTS</b>
23	<b>ANSWERS, WE'VE GOT ANSWERS</b>

Cover and interior photos courtesy of Gregory Johnston Photography, [www.gjohnstonphoto.com](http://www.gjohnstonphoto.com), with a special shout out to Reena and Jay Johnston for being such good sports!

**Publisher****USCF Executive Director:****Jean Hoffman**

jean.hoffman@uschess.org

**Scholastic Editor: Glenn Petersen**

gpetersen@uschess.org

**Art Director: Cat Connor**

catseyephoto@mac.com

**Editorial Asst./Copy Editor: Alan Kantor**

akantor@uschess.org

**Editorial Assistants:****Jo Anne Fatherly**

backtobasics@uschess.org

**Jennifer Pearson**

jenpearson@uschess.org

**Advertising Manager: Joan DuBois**

jdubois@uschess.org

**Tournament Life: Joan DuBois**

tla@uschess.org

**Director of Publications: Daniel Lucas**

dlucas@uschess.org

**CONTRIBUTORS:** Send your contributions and articles to *Chess Life for KIDS*, PO Box 3967, Crossville, Tennessee 38557 or better yet, e-mail to gpetersen@uschess.org.

**Chess Life for KIDS** (USPS 023-567, ISSN: 1932-5894) is published in February, April, June, August, October, and December of every year by the United States Chess Federation, 137 O'Brien Drive, Crossville, Tennessee 38555. Periodical postage paid at Crossville, Tennessee, and additional mailing offices.

**CHANGE OF ADDRESS:** Be sure to notify us at once of any change of address. Please include your old address and your new address, along with your USCF I.D. number.

**POSTMASTER:** Send address changes to USCF, PO Box 3967, Crossville, Tennessee 38557.

**Annual Scholastic Membership**

Regular Scholastic Membership (online version of *Chess Life for Kids*), age 12 or younger, is just \$17 per year. Premium Scholastic Membership (receives *Chess Life for Kids* by mail) is \$24 per year. \$13 of every premium membership goes towards providing *Chess Life for Kids*. Annual subscription rate is \$18. Entire contents copyright 2014, United States Chess Federation.

Teachers may photocopy instructional articles for classroom use, but republication or wide-spread copying without the written consent of the USCF is forbidden.

**MyChessGuru**

Learn Chess Online

Learn winning chess openings, tactics, and endgame technique from the masters one-to-one in the comforts of your own home.

Choose from a variety of experienced online coaches from India to match your level. Prices starting at \$12 per hour.

Visit [www.mychessguru.com](http://www.mychessguru.com) and sign-up for a free try today. Contact us at [mychessguru@gmail.com](mailto:mychessguru@gmail.com) or (732) 207-6203.

# What's the Question



by National Master  
Daniel Gurevich

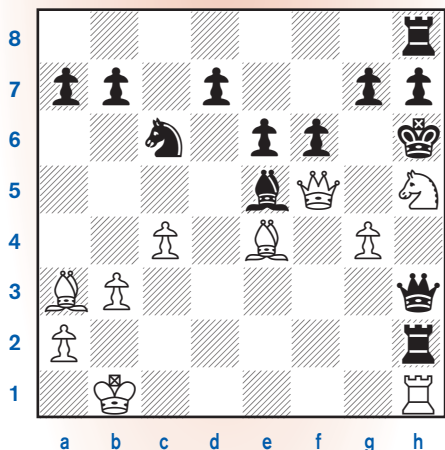
This month, in celebration of April Fools' Day, I am going to answer a question that illustrates the humorous side of chess. This question may seem a bit silly at first, but there is plenty you can learn from it.

**Neha Anand**

**Q:** Can a pawn be stronger than a queen?

**A:** Surprisingly, in very unusual cases, a pawn can be more powerful than even a queen. Now, you may be wondering how that is even possible. Sure, a pawn that is about to promote can be worth almost a queen. But it seems that Her Majesty can do anything a lowly pawn can, so a pawn cannot be any better than a queen.

Well, that is not exactly right. A few of the weirder rules of chess ensure that, in some positions, the weakest piece can be more useful than the one that is supposed to be the strongest. Here is an example that shows how this can happen:



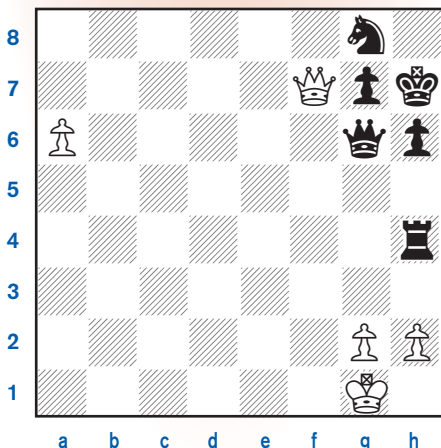
It is clear that Black's king is in danger, but fortunately for Black, he is up the Exchange and three pawns. White is in fact losing here. If White tries 1. Bc1+, then Black defends easily after 1. ... g5. The best chance is 1. g5+! Kxh5 2. Bf3+,

forcing the king to go out into the open. Then 2. ... Kh4 3. Qe4+ Kg3 4. Rg1+ Kf2, and while it may look like Black should be getting checkmated, he is not. For example, 5. Bc1 Bd4! (the only way to stop the mating threat of 6. Be3+) 6. Bf4 Qf5! 7. Rc1 Qxe4+ 8. Bxe4 Nb4! White was threatening a perpetual check with Rc1-c2-c1+, but now Black reaches a winning endgame up a few pawns after 9. Bxh2 f5.

Now here is an unusual question: what if, in the starting position, the queen on f5 were not a queen ... what if it were a pawn? In that case, White has a mate in 5! Can you spot it? Take some time to figure it out.

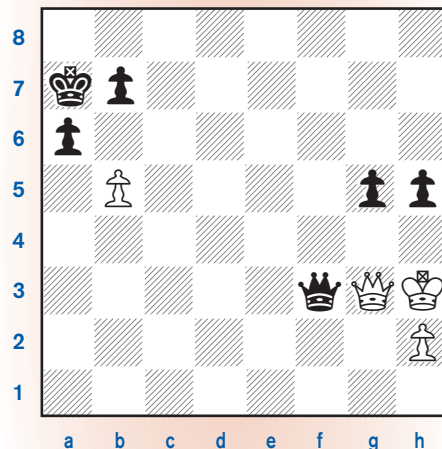
The key is *en passant*. White wins with 1. Bc1+ g5 2. fxc6+! *e.p.* and Black is powerless against the dark-squared bishop's wrath: 2. ... Rd2 3. Bxd2+ Qe3 4. Bxe3+ Bf4 5. Bxf4#.

White loses with a queen but wins very quickly if the queen is replaced with a pawn! That certainly does not happen every day. But if you still think that a pawn is almost never better than a queen, here are three more positions for you to consider. The last one is from a tournament game, where the French grandmaster Eloi Relange played Black. In all of them, White is to move.



In this position, White is simply down a rook and a knight and losing. But what happens if the queen on f7 is replaced with a pawn? The difference is that a queen cannot promote to a knight, but a pawn can: 1. f8=N+! Kh8 2. Nxc6+ Kh7 3. Nxc4 and in just two moves Black's heavy pieces have disappeared. White's passed pawn cannot be stopped, so it is an easy win.

Sometimes having a queen instead of a pawn is worse because the queen is more powerful. How could that be bad? Maybe you want to get into stalemate, like in this example:



If only the queen on g3 were a pawn! Then White would be stalemated after 1. b6+! no matter what Black does. But White has a queen, so he has to instead play 1. Qxf3, even winning another queen, but losing the game after 1. ... g4+ 2. Qxg4 hxc4+ 3. Kxc4 a5 and Black promotes first, stopping the h-pawn from becoming a queen in the process.

And here is the end of the incredible tournament game that provides proof of the power of pawns:

Please turn to page 9





# TALES OF THE ARABIAN KNIGHTS

BY RICK KENNEDY ILLUSTRATIONS BY PAMELA KEY



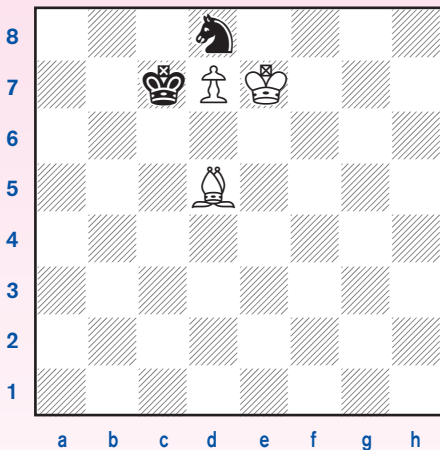
## An Unfortunate Need to Move

The King was enjoying the battle—on the chessboard.

It was a hard-fought game, and his opponent, playing the black pieces, resisted the attack with all of his forces. Still, even as pieces were exchanged, the King kept his pawn-extra advantage, and slowly moved it toward the queening square.

Then, adversity struck—twice. Black placed a knight, just in time, blocking the pawn from its final advance. Worse, before the game could be concluded, the King's advisor rushed in with important news: both men were required to leave, immediately, on a diplomatic mission of great importance.

The game was left, so



When the players returned, sometime later, they could not agree as to whose move it was.

"Certainly it was *your* move," said the King, sternly. He knew if his opponent had to move, the game would be lost for Black.

"Most certainly, it was *yours*," said his opponent, even louder.

Both players eyed their swords uneasily.

"*Majesty*," she said soothingly, after entering the room to see what the commotion was about, "*certainly you can afford to lose the argument. Lose that, and lose again*," she said quietly "*and your opponent will then certainly be lost.*"

The King puzzled over her words, and then considered the game. He decided that if he was the player on the move in the game, he should play to *lose a move*.

- 1. Be4 Nf7 2. Bf3 Nd8 3. Bd5

The King had arrived at the exact same position that was on the board when they had resumed play—but now it was *Black's*

turn to move, not White's.

Black is fine, as long as he does not have to move. Moving will cost him his knight, either to the bishop or to the monarch on the board and then White will queen his pawn and win the game.

"Indeed, I am lost," said his opponent, conceding the point.

Based on a practice position from *You Move ... I win!* by Alex Angos, Thinker's Press, 2005.

### Kopec's Chess Camps - 2014

New Hampton School

New Hampton, NH



July 6 - 12



We are back!

Now in our 17th year of operation, Kopec's Chess Camps offers a balanced program featuring intense chess instruction and competition, completed with recreational activities, in an ideal setting.

For Ages 7 through 17

"First Rate Instruction in a First Rate Setting"

- Top Chess Instructors including: IM Dr. Danny Kopec and GM Gennady Sagalchik
- Diverse Commuter and Boarding Program
- Great Location, Superb Facilities in a Beautiful setting
- Children will be supervised by our Experienced Staff

Visit Our Website: [www.kopecchess.com/camps](http://www.kopecchess.com/camps)

10 % Discount for Registrations received by April 15th

E-mail: IM Dr. Danny Kopec: [DrK2501@aol.com](mailto:DrK2501@aol.com)

Phone: 516-782-5285



# The

# Chess Detective

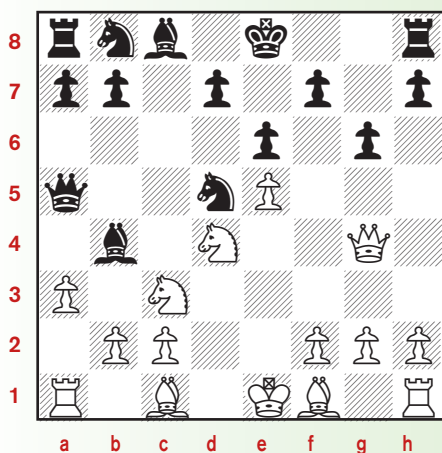
by NM Todd Bardwick



## TRAPPING THE LADY—PROBLEMS

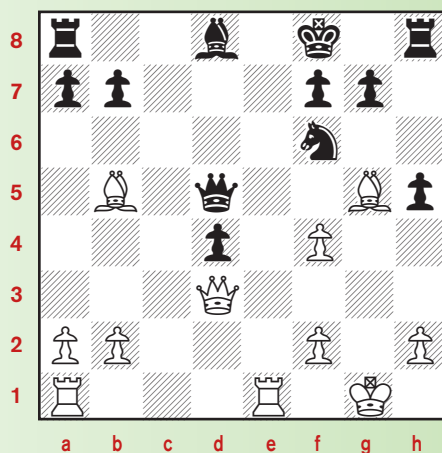
In the February 2014 edition of *Chess Life for Kids*, we looked at some examples of where a queen was running out of available squares and was trapped by the opponent's pieces. Now it is your turn to trap the queen.

#1



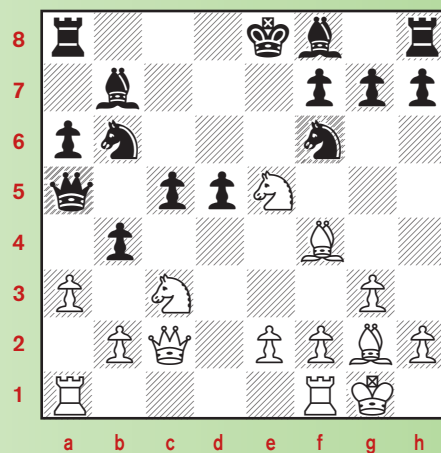
Position after 8... Qa5  
White to move

#3



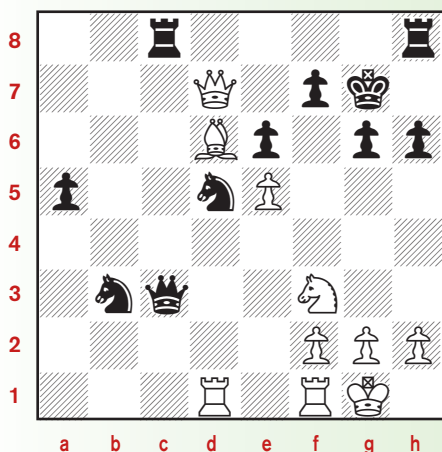
Position after 20... Bd8  
White to move

#5



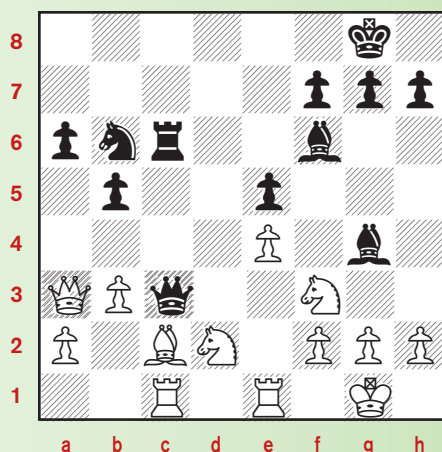
Position after 14... b4  
White to move

#2



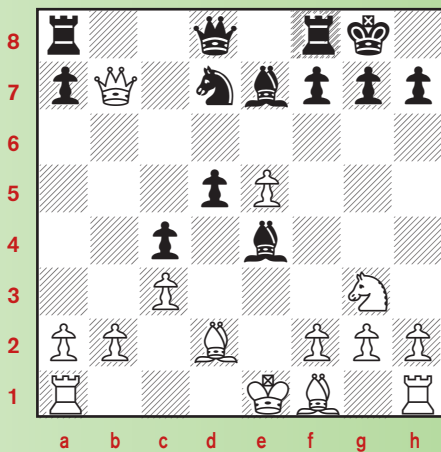
Position after 29. Qd7  
Black to move

#4



Position after 20. Qa3  
Black to move

#6



Position after 13. Qxb7?  
Black to move



**TROPHIES**  **PLUS**  
*A Champion Defined.*

TROPHIES • RIBBONS • MEDALS • CHENILLE • PLAQUES

Show Off.



Show It Off.

Official *Awards* Provider of the



UNITED STATES CHESS FEDERATION

315 W. 1ST STREET • TEMPLETON, IOWA 51463  
800-397-9993 • [WWW.TROPHIESPLUS.COM](http://WWW.TROPHIESPLUS.COM) • [TROPHYMAN@TROPHIESPLUS.COM](mailto:TROPHYMAN@TROPHIESPLUS.COM)



## 2014 Junior Grand Prix Standings



This unofficial list is based on USCF records and tournament director reports as of Wednesday, March 12, 2014. There are 2,342 players with JGP points and 102 JGP-eligible events have resulted in points earned. For a complete list of overall leaders, go to [www.uschess.org](http://www.uschess.org).

### Top 25 Overall Standings

NAME	STATE	PTS	EVENTS
PENG, ANDREW	CA-N	3620	4
DOMMALAPATI, AASA	VA	2921	4
XUE, CHARLES	NY	2800	1
GEZALYAN, ZACK	CA-S	2800	1
SENTHIL KUMAR, PRANAV	NY	2776	1
HALL, IAN SIGOURNEY	TX	2772	1
SHAH, OHM RAJAN	PA	2744	2
MENON, VISHAL	VA	2719	4
GLEE, RAVION LETRE	TX	2705	1
SHLIONSKY, ISRAEL MOSHE	NJ	2668	1
HE, ERIC SIYUAN	MD	2632	3
TEJADA, EDGARDO G	TX	2624	1
WHEELER, CAMERON	CA-N	2619	4
THEODAT, JAYDEN JEFFERY	NY	2600	1
THAIPARAMBIL, RAHUL	PA	2556	2
VISWANATHAN, ARUL	CA-N	2533	3
SANTHOSH, DEON	VA	2486	1
BOLLES, TRAVIS	TX	2450	1
MIRANDA, EDWIN	TX	2450	1
KIRBY, DYLAN BLAIR	AZ	2450	2
VERA, HECTOR	TX	2366	1
SUSARLA, RISHITH	CA-N	2363	4

DAILEY, BRENDAN	NJ	2348	1
TAKEO, HARU	NY	2344	1
LEGGE, CHARLES ALEXANDER	CA-N	2310	1

For the top 200 overall, see [www.uschess.org](http://www.uschess.org)

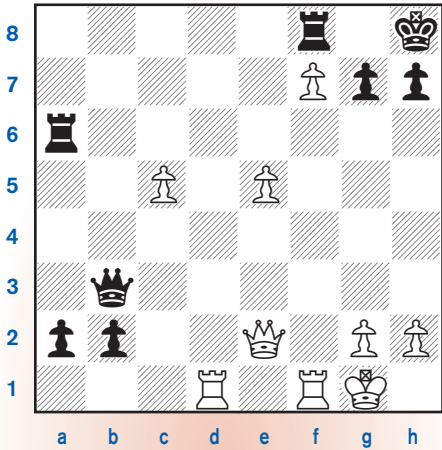
### State Leaders

NAME	STATE	PTS	EVENTS
WU, ROCHELLE	AL	1398	1
WOLF, ALEXANDER PATRICK	AR	16	1
CINDRICH, ELI	AZ	1740	1
IBRAHIM, SHAFIEEN	CA-N	2278	3
SHI, AHAN	CA-S	1904	3
GREENWALD, MAX	CO	1354	1
VATTIGUNTA, VIGNESH	CT	2160	1
GRIFFEN, HENRY MILLS	DC	1405	1
LENHARD, NICHOLAS	DE	1004	2
KUMAR, NAMAN	FL	1516	2
KUMAR, ANISH	GA	1774	2
SALEEM, ARSHAQ	IA	424	2
PEMSLER, CARMEN	ID	1594	1
MALLADI, VARUN	IL	1867	2
EGAN, MAX	IN	1304	1
JIANG, CAROLINE LI	KS	542	1
HEREFORD, LIAM	KY	1045	1
ROBINSON, TY	LA	1382	1
SEVIAN, SAMUEL	MA	1135	2
HE, HARVEY WEI	MD	1559	3
WADSWORTH, GREG	ME	1050	1
MOTLEY, GISELE	MI	1758	2
JOHNSON, DAREK L	MN	1951	1
ZHOU, IRIS YI-XIAN	MO	1198	2
HAYES, MARSHAL DON	MS	752	1
LEE, CONRAD CHRISTOPHER	MT	148	1
BARNETT, ANDREW JEFFREY	NC	2054	1
FREGEAU, HARRISON	NH	1794	2
LAGHATE, SHANTANU RAJEEV	NJ	2280	1
POPA-SIMIL, ANDREI	NM	751	1
PATEL, ARYA C	NY	2114	2
KANOUS, JOE	OH	2308	1
TOPHAM, JOSHUA	OK	894	1
PARNON, CALVIN JAY	OR	1246	2
PARK, TATE	PA	2152	2
SOWA, RYAN	RI	730	2
DIAS, ADITYA N	SC	1243	1
WU, LOGAN	TN	1532	2
PEREZ, EMILIANO	TX	2282	1
BOLEN, JAKE	UT	1522	1
WANG, ANDREW	VA	2250	5
YANG, ANDY	VT	1318	1
CLARK, RYAN P	WA	2100	1
HEMMILA, RYAN JAMES	WI	1804	1
PATEL, ADVAIT	WV	1039	3



Three-time Polgar World Open winner and muchly decorated state champion, Gia Peterson of Palmdale, California, set a new record for Junior Grand Prix points earned, on her way to winning the 2013 JGP competition. Way to go, Gia!

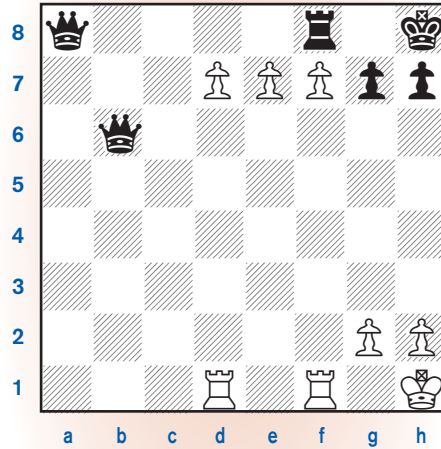




Detlev Birnbaum – Eloi Relange, 1995

Both sides have put all of their efforts into pushing their passed pawns, and it looks like Black will cash in first. But it is not so simple. The game continued **35. Qxa6 b1=Q 36. Qd6 Qb8** (that is the only way to prevent back-rank checkmate) **37. e6 Qxd6 38. cxd6 a1=Q 39. e7** After 39. Rxb1 Qd4+ **40. Kh1 Qa8** Black has two extra queens, but surprisingly enough he is the one fighting for a draw. White's three connected passed pawns are extremely powerful. **41. d7!**

tage of a pin) **44. Rxe7 Rxe7**, with a drawn rook endgame. **39. ... Qb6+** **40. Kh1 Qa8** Black has two extra queens, but surprisingly enough he is the one fighting for a draw. White's three connected passed pawns are extremely powerful. **41. d7!**



A beautiful position. Black can do nothing to stop the white pawns lined up on the seventh rank. But Black found a counterattack that is just enough for a draw: **41. ... Qxg2+!!** Yes, even the little g2-pawn, whose

only purpose is to defend the white king, is worth a queen! The players agreed to a draw after **42. Kxg2 Qg6+** **43. Kh1 Qe4+**, with perpetual check.

So what can we learn from these examples of powerful pawns? First, remember that a queen is not worth exactly nine pawns, or eight pawns, or eight and a half pawns. Sometimes, a pawn is even stronger than a queen, which is usually the strongest of all pieces.

But there is a general lesson, too: the value of any piece depends on how well it is placed and the pieces that surround it. There is more to chess than simple arithmetic; often, in chess, two plus two is not four. It all depends on the position. Although the first thing beginners are taught is that a rook is worth five pawns and a bishop or knight is worth three, an advanced player knows that a well-placed knight or bishop is often worth more than a bad rook.

Please turn to page 17 



# ChessKid.com

## PLAY

## LEARN

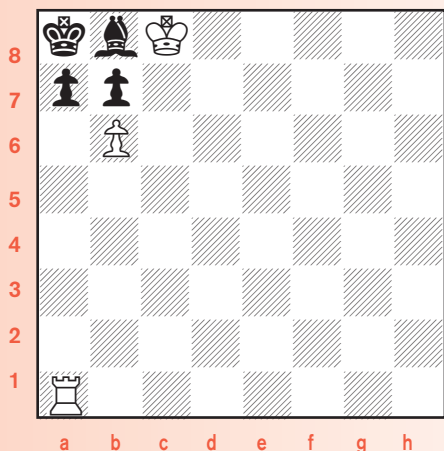


**#1 Chess Site for Kids!**  
**100% Safe and Kid-Friendly!**  
**100,000+ Kids, Parents, & Coaches!**



# The Big Z!

by International Master Larry Evans



## White to play and win.

Aw c'mon. How hard can this be? There are only a few pieces left! Why can't you solve it?

Why? I'll tell you why: Because when I asked you to find White's best move, you made the mistake of looking for White's best move! That kind of convoluted thinking may work in the opening or middlegame, but in an endgame like this it's often the wrong way to go. Look how hard you made things for yourself:

*"Now let's see ... I could move my rook along the rank. No, then he just takes my pawn. Maybe I should keep him pinned by moving my rook up the file. Nah, then he moves his pawn up one and his bishop back and forth till the end of time. Perhaps a king move. Nope, ... a6 again. Take his pawn? Hard to believe I can win after he recaptures with his bishop. Wait a minute; that's every move I have! They must have the wrong position!"*

When you're looking for your best move in the endgame, it is often the case that you should be trying to find your opponent's best move instead. Look how

easy it is to solve the same problem thinking about it that way:

*"OK, let's pretend it's Black's move instead of mine. What would he do? He can't move his king or b-pawn. If he moves his bishop my rook is free to checkmate by capturing the a-pawn, and the same thing happens if he moves that pawn to a5. So the only move he has that doesn't lose immediately is ... a6. All I have to do is prevent his pawn from moving to a6 and he's toasted like a marshmallow! Well, he can't put his pawn on a6 if my rook is there. **Ra6!** Bingo!"*

This tactic, called *Zugzwang*, works for two reasons:

1. Black only has two legal things to do: move his bishop or take the rook, and both of them are bad! A bishop move allows  $Rxa7\#$  while capturing the rook clears the path for  $b7\#$ .

2. Black has to make a move whether he wants to or not; he's not allowed to pass.

In other words, White doesn't have to beat Black after 1.  $Ra6!$ ; he's forcing Black to beat himself!

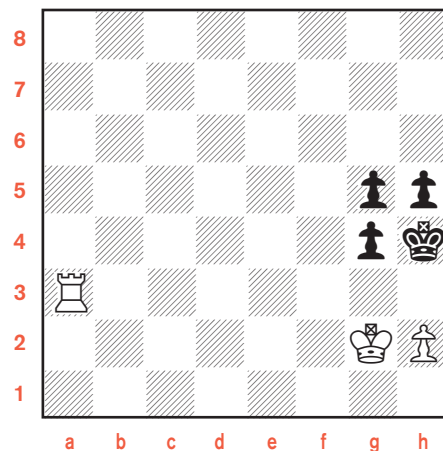
## Zillions!

It's always better and safer to get your opponent to beat himself than you having to do it. Every boxer wishes he could stay in his corner, eating a salami sandwich, while his opponent punches himself silly until the bell ends the round. The reason it's not more common is because it's hard to satisfy both conditions.

During the opening and middlegame, for example, your opponent has zillions of alternatives to every move he makes. It's extremely unlikely that all of them are bad. But in the endgame he only has a

handful of options. It's often easier to eliminate his one or two good moves than trying to find one for yourself. How often? I'd venture to say that virtually every endgame involves some form of *Zugzwang* in the winning technique. This makes *Zugzwang* the most important tactical trick to master in all of chess!

And it is the inexorable force of the game moving forward—the fact that you must make a move whenever it's your turn—that makes *Zugzwang* a weapon uniquely powerful to chess over other forms of competition. Our boxer could always pass on the opportunity to beat himself up and enjoy his own salami sandwich while we're having lunch. In chess, he's not allowed to pass. Our next endgame demonstrates just how powerful this force can be:



The best move for White here is 1.  $Rh3+!!$ , giving his only piece away and leaving himself with one measly pawn that can't even move! The reason is because after 1. ...  $gxh3+$  2.  $Kf3$  Black cannot pass. He must punch himself right in the nose with 2. ...  $g4+$ . Then, after 3.  $Kf4$ , he's got to deliver a knockout blow to his own chin with 3. ...  $g3$  and listen to the countdown when White takes the pawn.

It's important to note that my formula would not help White find his brilliant first move in this particular example: *"OK, let's pretend it's Black's move. My guess is he'll put his pawn on g3. I've got it! I'll just put my rook there first."*



21<sup>st</sup>  
Anniversary

International Master Larry Evans and the

# Mountain Lake Chess Camp

*proudly celebrate*  
*their 21<sup>st</sup> anniversary*  
in Lake Arrowhead, CA  
**July 27 - August 1, 2014**

For details & registration visit:  
[www.chesscamp.net](http://www.chesscamp.net)  
or call: (800) 675-1227

Two 300 ft.  
waterslides  
into the lake

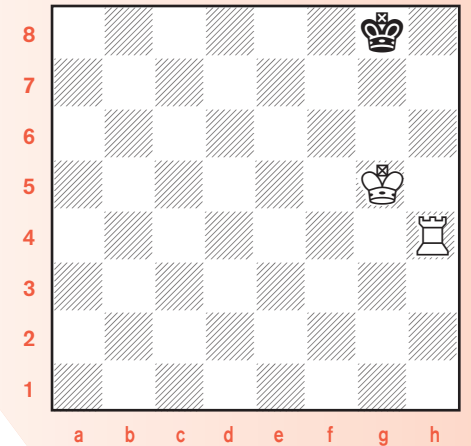
Stalemate! You've got to be careful; *Zugzwang* and stalemate are very close to each other. In the first case, you're running him out of his good moves only; in the latter it's all his moves good and bad. The big difference, of course, is that *Zugzwang* is a win while stalemate is a draw.

To see how close the two are, notice that any safe move by White's rook along the third rank other than 1. Rg3?? wins Black's g-pawn by *Zugzwang* rather than stalemating him. He must move his pawn to g3 and let White capture with his pawn. Then, after 2. ... Kg4, White's job is to use his extra rook to force Black to trade both his pawns for White's one, reducing things down to the textbook king + rook versus king ending. Can you figure out the best way to do this?

### Not your best move ...

I hope you're not looking for White's best move! Just because the formula didn't apply to 1. Rh3!! doesn't mean you should forget about it. Here's the way you should be thinking (after 1. Rb3 g3 2. hxg3+ Kg4): "He only has two moves here, 3. ... h4 and 3. ... Kf5. Larry says the goal is to trade my g-pawn for both of his pawns, so if I can *Zugzwang* him into playing 3. ... h4 he'll be doing half my job for me. All I have to do is prevent the other move. The conclusion is obvious: 3. Rb5!"

All right, now let's take it a little further to make sure you've got the idea. After 3. ... h4 4. gxh4 gxh4 5. Rb4+ Kg5 6. Kh3 Kh5 7. Rxh4+Kg6 8. Kg4 Kg7 9. Kg5 Kg8 what's the fastest way to finish?



That's right, 10. Kf6! making Black checkmate himself after 10. ... Kf8 11. Rh8#. Why should you work for checkmate when *Zugzwang* forces Black to do it for you?





# You Move ... I Win!



By Pete Tamburro

One of the odd little things you learn in chess is that you pick up words or phrases from other languages. The first phrase you probably learn is *en passant*. The first time you learn this really cool move of taking the pawn with your pawn by moving behind it, there's a little "Wow, you can really do that!?" going through your head.

There's a really cool move for which we have a German word, *Zugzwang*, that is also really special. Why? The best explanation I ever saw was by two British authors, Jonathan Levitt and David Friedgood, in *Secrets of Spectacular Chess*.

They remind us that all our chess training teaches us how important time is, how important having the first move is, and how important it is to be able to do something before our opponent can. It's always best to have the move.

*Zugzwang* (by the way, you pronounce it zoogszvahng), however, turns this idea upside down. Levitt and Friedgood call it a "paradox." Instead of having the move, you give up the move—you pass, so to speak—to make your opponent move.

## You Move ... I Win!

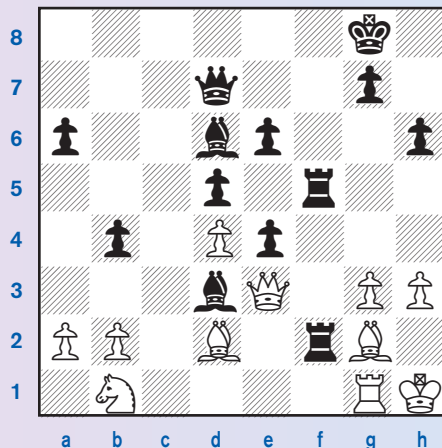
Now, why on earth would you want to do that? The former Greek champion, Alex Angos, has the best answer for that question as the title of his book: *You Move ... I Win!*:

*Yes, you lose a move so your opponent loses the game.*

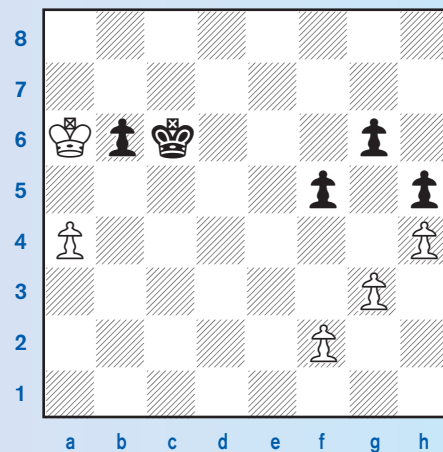
*It's not all about you losing a move, though. You're trying to create a position where your opponent's only move is a losing move. That's more important.*

When I was growing up, the great example all of us were taught was from a game, Samisch-Nimzowitsch, Copenhagen, 1923. Samisch resigned in this position, after Nimzowitsch had just played 25. ... h6!! White is so tied up that any move he plays loses material:

## Immortal Zugzwang game



dlegame, most of the time, in over-the-board chess, you see it in the endgame where it becomes a handy weapon to have in your mind. Take this example:



White to move

If you know the idea of *Zugzwang*, you will win rather than just draw this endgame as White. You would draw if you tried a king move right away: 1. Ka7 b5 2. axb5+ Kxb5 3. Kb7 Kc5 4. Kc7 Kd5 5. Kd7 Ke4 6. Ke6 Kf3 7. Kf6 Kxf2 8. Kxg6 Kxg3 9. Kxf5 Kxh4.

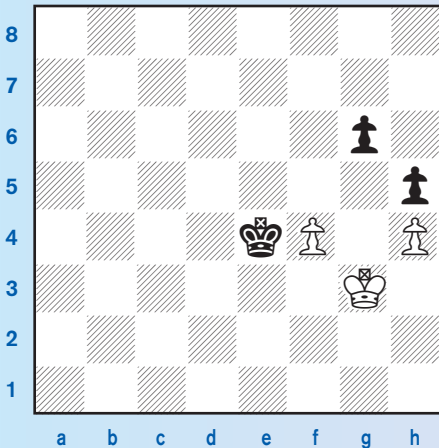
However, if you "pass" on the king move with 1. f4, it's now Black's turn to move his king. He can't leave the pawn, so he tries to stall, but two can play that game. 1. f4 Kc5 (1. ... Kc7 2. Ka7 Kc6 3. Kb8 Kd6 4. Kb7 Kc5 5. Kc7 Kb4 6. Kxb6 Kxa4) 2. Kb7 Kb4 3. Kxb6 Kxa4 4. Kc6 Kb4 5. Kd6 Kc4 6. Ke6 Kd4 7. Kf6 and, by forcing Black to move his king, White gets to gobble up the pawns first.

Nimzo was really happy about playing such a tiny pawn move. It wasn't the typical sacrificial attack with pieces flying everywhere. He considered that "an act of violence." To him "Brutality is out of date." He gives up his move. He passes! His opponent can't pass. All his moves lose something.

Although Nimzo got to do it in a mid-



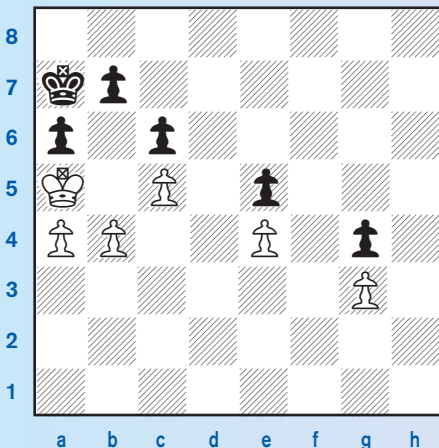
One of the most important tools for *Zugzwang* in the endgame is opposition. This example below is pretty simple. Black plays 1. ... Ke3 and White is forced to move and lose:



**Black to move**

1. ... Ke3 2. Kg2 Kxf4 3. Kh3 Kf3 4. Kh2 Kg4 5. Kg2 Kxh4

Of course, not all king and pawn endings are simple. You are Black, what would you do?

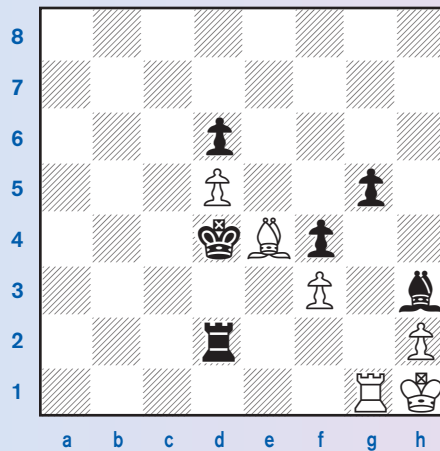


**Black to move**

This win is really clever. Black starts with a check! He loses a pawn with check and "has to" move his king: 1. ... b6+ 2. cxb6+ Kb7, but now White is forced to move:

3. b5 axb5 4. axb5 (4. Kb4 bxa4 5. Kxa4 Kxb6) 4. ... c5 5. Ka4 Kxb6 6. Ka3 Kxb5 and Black ends up winning the pawns!

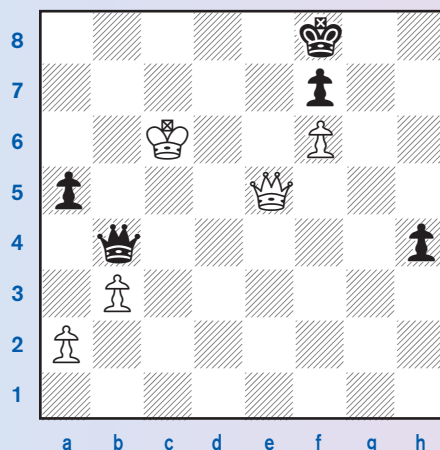
Try the next position as Black. White is tied up. Can you figure out how to force White into a position where he gets mated?



**Black to move**

White's restricted position allows the black king to march down and participate in the festivities: 1. ... Ke3 2. Rxf2 (2. Bg6 Kf2 3. Be4 Rd1 4. Rxd1 Bg2#; 2. Ra1 Kf2 3. Rg1 Rd1 4. Rxd1 Bg2#) 2. ... Rd1+ 3. Rg1 Kf2 4. Rxd1 Bg2# While the king just wandered down, all White could do was move his rook around until his last move allowed a mate.

All of us, though, would still like to play that Nimzo move. One simple one square pawn move. Tiviakov got a chance against Arbakov in 1989 and nailed it. He noticed that the black queen had to stay on b4 to protect against a queen check on b8 or a check on the a3-f8 diagonal. So, White tickles the black queen, and she's forced to move ... and lose!

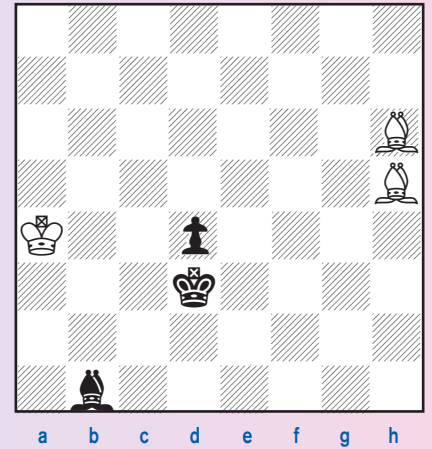


**White to move**

1. a3 Qxa3 (1. ... Qxb3 2. Qc5+ Kg8 3. Qg5+ Kf8 4. Qg7+ Ke8 5. Qg8#)

2. Qb8# Tiviakov-Arbakov, 1989.

Understanding how to use *Zugzwang* can make the difference in even what seems like simple positions. The position below is an example of that. The tempting win of the bishop with Bg6+ is a draw. Play this line as you look at the diagram: 1. Bg6+ Ke2 2. Bxb1 d3 3. Kb3 d2 and a bishop has to be given up and White only draws.



**White to move**

Instead of a direct check, White just moves his king one square closer, and Black is stuck for a move: 1. Kb3 Ba2+ (1. ... Ke4 2. Bg6+; 1. ... Bc2+ 2. Kb4 Ke4 3. Bg6+ Kd5 4. Bxc2) 2. Kxa2 Kc2 3. Bg7 d3 4. Bg6 Kd2 (4. ... Kd1 5. Bxd3) 5. Bd4 Ke2 6. Bh5+ Ke1 7. Kb2 d2 8. Kc2 and wins!

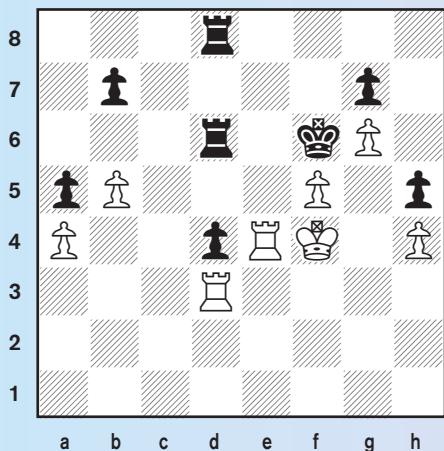
Our next position is one Gerald Abrahams won in a real game. Make believe you're playing it, too. What's your plan to win this? A hint: If White can play Re6+ without being taken, it's mate! How do you put Black in *Zugzwang*?

(see diagram next page)

You move backwards! Not only that, but it threatens Rde1 which does threaten mate on e6. Black just runs out of moves: 1. Rd1 d3 (1. ... Rc8 2. Rde1 Rb6 3. Re6+ Rxe6 4. Rxe6#) 2. Rxd3! (2. Rde1 Rd4) 2.

Please turn to page 14

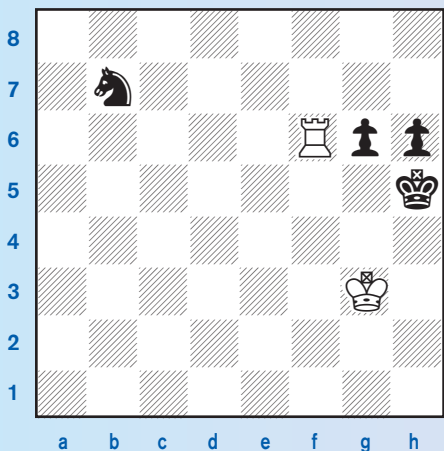




**White to move**

... b6 (2. ... Rd4 3. Rdx4 Rxd4 4. Rxd4 Ke7 5. Ke5 Ke8 6. Ke6 b6 7. Rd6 Kf8 8. Rd8#) 3. Rd5 R8d7 4. Rde5 Rd8 5. Re6+ Rxe6 6. Rxe6#.

Here's another puzzle for you. How do you move your rook so the knight has no choice, but to move to a square where it can be taken?

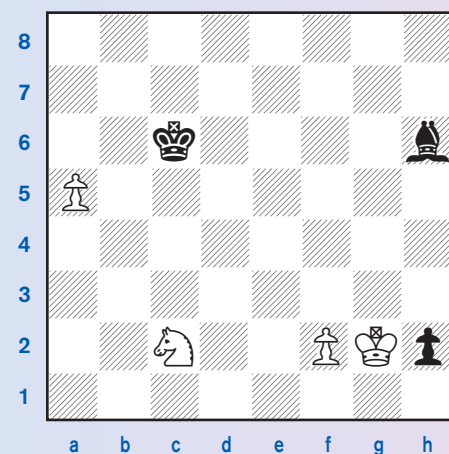


**White to move**

1. Rb6 Nd8 2. Rd6 Nf7 (2. ... Nb7 3. Rd7) 3. Rd7 Ng5 4. Re7 and the knight has to give itself up.

Aside from cute pawn moves, cute king moves are just as much fun. Next is a very famous Reti study. Before his cute king move, he checks with the knight, and there is a reason!

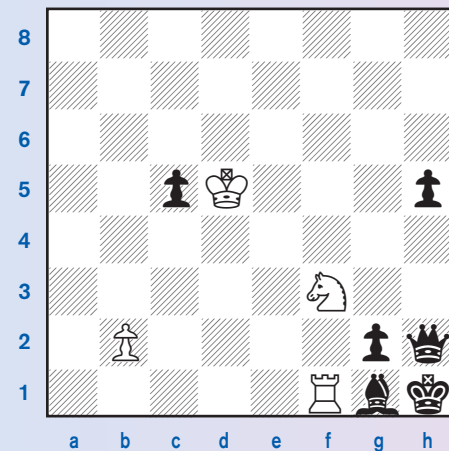
**Move the pieces!**  
Set up each position on your chessboard and play through the lines. It's just like batting practice. The more you swing the bat, the better you get!



**White to move**

1. Nd4+ Kc5 2. Kh1! Kxd4 The reason for the knight check is now clear. Bishop moves lose the bishop: 2. ... Bg7 3. Ne6+; 2. ... Bc1 3. Nb3+, but taking the knight is all that's left and that allows the pawn to queen with 3. a6. By the way, if 1. ... Kb7 2. Kxh2 Ka6 3. Nb3.

Let's close with one of the wildest composed problems ever to illustrate *Zugzwang*: (by D. Gurgenzidze and Mitrofanov, 1982).



**White to move**

Black's king is indeed cornered, but how do you get Black into a *Zugzwang* with that queen roaming around? White has one thing going for him. If the queen moves, it had better be a check because Rxf1 would be mate if it weren't. Black has only pawn moves left, so White plays a really neat rook move that first looks silly: 1. Rb1. By going behind the pawn it's like losing a move and forcing Black to

actually come down to c3 and allow the rook to spring to life to b8 and h8.

This is one of those creations that you just play through to see the beauty of it, and not worry about whether you could solve it or not. Here's the whole solution. Play it out on a board to see it unfold: 1. Rb1 c4 2. Kc6 h4 3. Kb7 h3 4. Ka8 c3 5. bxc3 Qb8+ 6. Rxb8 h2 7. Rh8 Bf2 8. Rxh2#.

**What did we learn?**

So, what do we learn from these positions and this idea of *Zugzwang*?

First, if you played through all these on your chessboard, you learn how beautiful chess can be and how wonderful the imaginations that create these solutions can be. Never forget that you should enjoy chess, too.

Secondly, you should learn that you will find it helpful to change how you look at any position you're playing. Right now you probably look at moves you want to play and moves your opponent might threaten you with, but now you have something else to look at. How can you limit the number of moves your opponent can make?

Some chess teachers use an idea that leads to *Zugzwang*. They talk about taking away squares. That's a first step to *Zugzwang*. You might think about asking yourself that question while thinking during your game. "How can I limit the number of squares my opponent can go to?"

As I did this article, I came to understand that this really is about the next level of chess thinking. You might not be ready for it, but it will open your mind to new possibilities, and that's what makes chess a challenge for a lifetime.

*You Move ... I Win!* (Thinker's Press, 2005) is out of print, and that's a shame. You might be able to find a copy at [Amazon.com](http://Amazon.com).

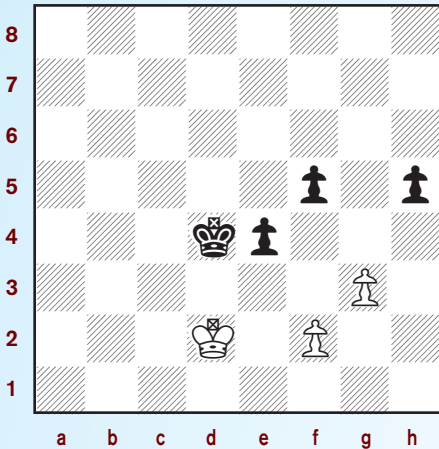
Better yet, send Bob Long an e-mail at [Info@chessbutler.com](mailto:Info@chessbutler.com). If enough people show an interest, he may be convinced to come out with a second edition, or an ebook, or book-on-demand. Or something! Because this little gem should really be part of your library.



# My Favorite Zugzwang

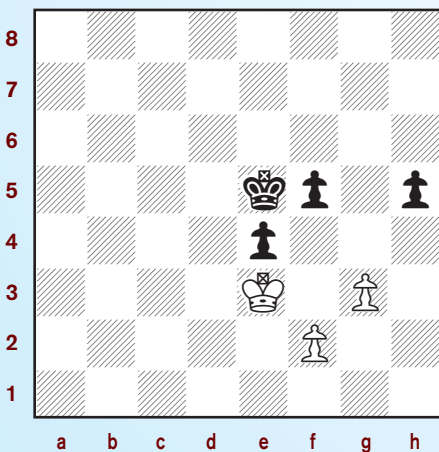
by Jon R. Edwards

I reached this amazing position with the black pieces 25 years ago. Black is a clear pawn ahead, but there's nothing especially easy about this endgame. Take a few minutes and consider your choices. It is indeed Black to move and win.



One of the most common mistakes by young players is to make the first move they consider. Masters just don't do that! In most positions, they like to look at two or three moves, or two or three plans, and they like to think long and hard about where their pieces belong! In this case, on what square does the black king belong?

The secret to understanding this endgame is to analyze the following position. Yes, we must understand a different position from the one on the board in order to win!



There are many ways in which this position can be reached in this endgame and indeed, the verdict here depends very much upon whose move it is. If it's Black's move, Black's king will have to retreat, permitting White's

king to reach f4. There's a draw also after 56. ... f4+ 57. gxf4+ Kf5 58. f3 exf3 59. Kxf3.

If it's White's move, every move loses. It's a real *Zugzwang*!

Here are the lines. By all means set up a board and play through these lines:

White cannot retreat his king (... f4 would then win) and so, 57. f3 Kd5! and now ...

A. 58. fxe4+ fxe4 and Black wins easily by patiently advancing the e-pawn and then picking up the g-pawn.

B. 58. g4 hxg4 59. fxe4+ Ke6 and Black's outside passers will cost White the e-pawn.

C. 58. Kf4 Kd4 and Black's passer will fly.

D. 58. f4 Kc5 and Black's passed e-pawn once again makes the rest easy.

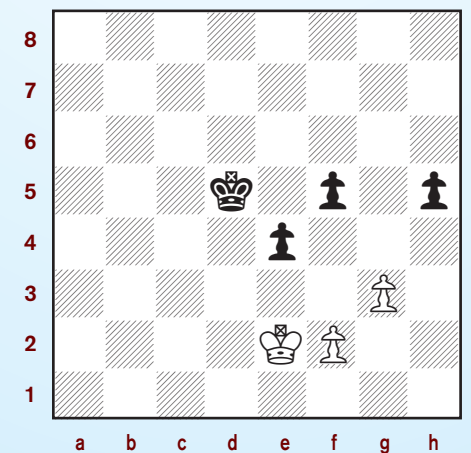
You've heard it often enough. Chess is not math class. In math class, the questions are mostly pretty easy, and so you often raise your hand as quickly as possible. In chess, we know how important it is not to move quickly.

Once you understand the importance of this key position, the real strategy unfolds.

From our starting diagram, Black does not want to move the king to e5, because then White will play Ke3 reaching the position we just discussed with Black to move. That would be a draw.

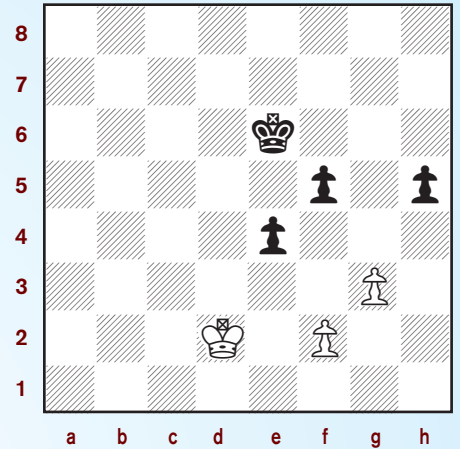
And so I played 55. ... Kd5!, avoiding the e5-square and inviting White to play Ke3.

Of course, my opponent must avoid the losing position after 56. Ke3 Ke5, and so my opponent played 56. Ke2.

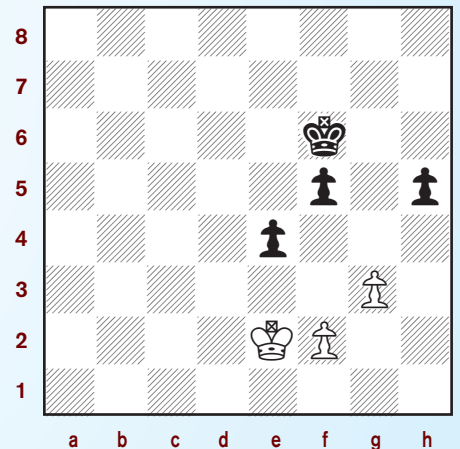


Once again, I must avoid the very tempting move 56. ... Ke5 when 57. Ke3 will be a draw. Instead, I played 56. ... Ke6, staying in contact with e5 and yet also heading towards the kingside. And the dance continued, with my opponent playing 57. Kd2. Once again, both players have avoided the *Zugzwang*.

Had my opponent instead played 57. f3 the win is easy indeed: 57. ... Kd5 58. Kd2 (58. Ke3 Ke5++) 58. ... Kd4++.



I now continued with 57. ... Kf6, yet again avoiding ... Ke5? and my opponent continued to wait, with 58. Ke2.



Have you figured out where Black's king is really headed? I now played 58. ... Kg5 with the idea of ... Kg4. My opponent resigned, since 59. Ke3 Kg4 is once again a *Zugzwang* (... Kf3 or ... f4 will be next) and after other king moves, ... f4 is crushing.

The most careful readers will have found an alternative solution. 55. ... f4 is also winning after 56. gxf4 h4 57. Ke2 Kc5! (and not 57. ... Kd5? 58. f3 because White can now capture on e4 with check!) and Black will race his king to f5 with the win. These lines are wonderfully instructive. Spend the time to understand them and you will have an easier time with your next endgame!



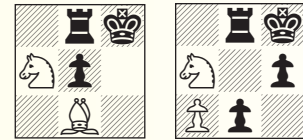
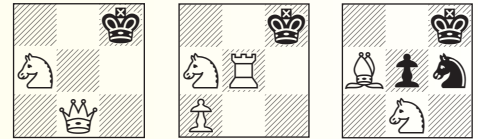
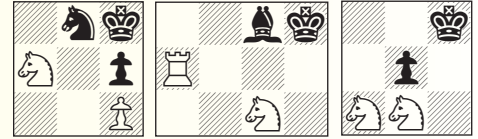
# WE DID IT!

by Jonathan Edwards



This first example is the most famous, a smothered checkmate. The knight mates the king, whose own pieces block his escape. Here are other examples of the same theme. Play over thousands of masters' games and you will, from time to time, see all of these ideas. Better yet, use these ideas in your own games. You can do it!

Notice in all of these examples, some easy, some funny, some beautiful, White's knight delivers the mate from f7 or g6 and gets some help from his own pieces as well as Black's. In each example, take note of which squares White controls and which squares are blocked by Black's own pieces.



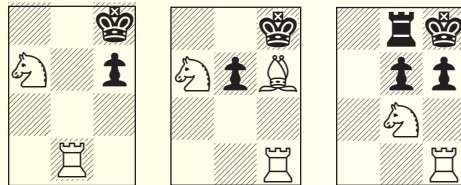
A little checkmate theory, if you please.

Perhaps the simplest mates are those when the enemy king is in the corner of the board. There, you have to attack the king and cover only three possible escape squares.



In some cases, you will control those squares ... in other cases, your opponent's pieces will block the king's escape.

The quiz today involves smothered mates by knights, but in the center of the board rather than the corner of the board. These are tougher, because we must account for eight possible escape squares by the king! As you hunt for the mate, be sure to account for all eight of the squares around the king.



**#1**

White to move

**#2**

Black to move (There are two solutions, and only one involves the knight! Can you find them both?)

**#3**

White to move



But that is no reason to abandon the 1-3-3-5-9 point system entirely. On average, the pieces are worth about as much, so giving up your queen for a pawn in a typical situation is definitely not a good idea. A typical rook really is worth about five times as much as a typical pawn and

almost twice as much as a typical knight. Just remember that, as with any rule, there are exceptions, and you should look out for them. Maybe you, too, will one day play a game where your pawn is better than the opponent's queen.



#4



Black to move

#5



White to move

#6



White to move

Solutions on page 23

**ICC**  
Internet Chess Club

**Chess at ICC Universal: Pure iOS7**  
The brand new ICC app: Clean, brilliant & smart.

Download on the **App Store**

**ICC**  
Internet Chess Club

[www.chessclub.com](http://www.chessclub.com)  
Where the GrandMasters play!

## Tournament Life Announcements

APRIL 15 THROUGH JUNE 14

### Scholastic Members:

As a service to you, we are listing upcoming National USCF rated events, and requested events of possible interest to you. You can always log in to [www.uschess.org](http://www.uschess.org), and click on "Clubs & Tournaments." Then click on "Upcoming Tournaments" for a complete listing of upcoming rated events and details. As always, you can check out the TLA section of *Chess Life*.

### Organizers and Tournament Directors:

If you would like your tournament listed here in *Chess Life for Kids* for June (events to be held after June 14), the deadline for submitting your announcements is April 10th. The deadline for the August 2014 issue is June 10th. The processing fee is \$1.00 per line for the first eight lines, \$2.00 for every line thereafter. Send your announcements to Joan DuBois, [tl@uschess.org](mailto:tl@uschess.org).

Display advertising is also available. Advertising rates are posted on the USCF website, [www.uschess.org](http://www.uschess.org), or you may email: [tl@uschess.org](mailto:tl@uschess.org) for complete details.

## ABBREVIATIONS & TERMS

All tournaments are non-smoking with no computers allowed unless otherwise advertised.

<b>BLZ:</b>	Blitz rated.
<b>QC:</b>	Quick Chess events.
<b>\$\$\$Gtd:</b>	Guaranteed prizes.
<b>\$\$b/x:</b>	Based-on prizes, x = number of entries needed to pay full prize fund. At least 50% of the advertised prize fund of \$501 or more must be awarded.
<b>Bye:</b>	Indicates which rounds players who find it inconvenient to play may take 1/2-point byes instead. For example, Bye 1-3 means 1/2-point byes are available in Rounds 1 through 3.
<b>CC:</b>	Chess club.
<b>dx:</b>	Time delay, x = number of seconds.
<b>+xx:</b>	Time increment, xx = number of seconds added after each move.
<b>EF:</b>	Entry fee.
<b>Ent:</b>	Where to mail entries.
<b>FIDE:</b>	Results submitted to FIDE for possible rating.
<b>G/:</b>	Game in. For instance, G/75 means each side has 75 minutes for the entire game.
<b>GPP:</b>	Grand Prix Points available.
<b>HR:</b>	Hotel rates. For example, 60-65-70-75 means \$60 single, \$65 twin, \$70/3 in room, \$75/4 in room.
<b>JGP:</b>	Junior Grand Prix.
<b>Memb. req'd:</b>	Membership required; cost follows. Usually refers to state affiliate.
<b>Open:</b>	A section open to all. Often has very strong players, but some eligible for lower sections can play for the learning experience.
<b>Quad:</b>	4-player round robin sections; similar strength players.
<b>RBO:</b>	Rated Beginner's Open.
<b>Rds:</b>	Rounds; scheduled game times follow. For example, 11-5, 9-3 means games begin 11 a.m. & 5 p.m. on the first day, 9 a.m. & 3 p.m. on the second day.
<b>Reg:</b>	Registration at site.
<b>RR:</b>	Round robin (preceded by number of rounds).
<b>SD/:</b>	Sudden-death time control (time for rest of game follows). For example, 30/90, SD/1 means each player must make 30 moves in 90 minutes, then complete the rest of the game in an hour.
<b>SS:</b>	Swiss-System pairings (preceded by number of rounds).
<b>Unr:</b>	Unrated.
<b>W:</b>	Site is accessible to wheelchairers.
<b>WEB:</b>	Tournaments that will use a player's online rating.

## NATIONALS

**Chess Magnet School Junior Grand Prix!**  
Apr. 11-13, Illinois

**2014 All-Girls National Championships** presented by the Kasparov Chess Foundation in association with the Renaissance Knights Chess Foundation & USCF

**First place winners of each section will qualify to play at the 2014 World Youth Championships.** 6SS, G/90 d5. Crowne Plaza Hotel, 2875 Milwaukee Ave., Northbrook, IL (free Wi-Fi). **6 Sections:** Under 8, Under 10, Under 12, Under 14, Under 16 & Under 18. **Age as of 1/1/2014.** **EF:** \$55 postmarked/online by 3/17, \$75 by 3/31, \$95 after/on-site. Do not mail after 4/4. **Opening Ceremony:** 6pm, Friday. **Rounds:** Rd. 1 - 6:30pm Fri; Rounds 2-4 - Sat 10am, 2:30pm, 6:30pm; Rounds 5-6 - Sun 9am & pm. **Awards Ceremony:** Sun. 5pm. Trophies top 15 individual players and top 4 teams in the Under 8, 10, 12 & 14 Sections; top 10 individual players and top 3 teams in the Under 16 & 18 Sections, (top 3 players added for team scores). **Bye:** One 1/2-pt bye available, any round, if requested before end of Rd. 2 and if player has not received a full-point bye. **Side Events: Bughouse Tournament** - Fri. 1pm, EF \$30/team. **Blitz Tournament** - Fri. 3pm, G/5 d0, EF \$20 by 4/4, \$25 after or on site. **HR:** single - quad \$103 Reservations: (847) 493-6929. **breakfast included,** Reserve early rate may increase (847) 493-6929. **Entries:** online/info at: [www.rknights.org/allgirls](http://www.rknights.org/allgirls) or mail to RKnights, Attn: All Girls, PO Box 1074, Northbrook, IL 60065, include name, section, rating, USCF ID#, date of birth, grade, school name city & state.

**Chess Magnet School Junior Grand Prix!**  
Apr. 25-27, Georgia

**2014 National Junior High (K-9) Championship**

**(Apr. 24 - Bughouse & Blitz)** 7SS, G/120 d5. Hyatt Regency Atlanta, 265 Peachtree Street NE, Atlanta, GA 30303, 404.557.1234 or 800.233.1234, Chess Rate \$125 until 3 April 2014. **6 Sections: K-9 Championship, K-9 Under 1250, K-9 Unrated, K-8 Championship, K-8 Under 1000, K-8 U750.** April Rating Supplement will be used. Unrated players may play in the Championship or Unrated sections only. One half-point bye for any round, except Rd. 7, if requested before Round One. **EF:** \$50 if by 23 March, \$70 if by 13 April, \$85 if by 6 PM CDT on 24 April or \$90 at site. Mailed entries must be p/m by 20 April. \$5 extra for all phone registrations, \$20 change fee for roster or section changes after 13 April. **Onsite registration:** Thurs. 9 AM - 10 PM & Fri. 8 AM - 10 AM. Players registering after 10 AM will get half-point for Round One. **Awards:** Please see the Information Page on the website for a complete list of trophies. All participants will receive a commemorative medal at the completion of the final round. **Teams:** A team must have at least two players, although no maximum number of players. The top four scores in any section will count for the team score. **All on team must attend the same school.** **Opening Ceremony:** 12:30 PM Friday. **Main Event rounds:** Friday 1 PM, 7 PM; Saturday 9 AM, 2 PM, 7 PM; Sunday 9 AM, 2 PM. **Awards Ceremony:** Approx. 7 PM Sunday. **Special Events: National Junior High Bughouse Championship:** Thursday 11 AM; **EF:** (Onsite only) \$25 per team. Bughouse registration ends at 10 AM Thurs. **National Junior High Blitz Championship:** G/5 d0; Thursday 5 PM; **EF:** \$15 per player, \$20 after 13 April or onsite. **Scholastic Meeting:** 3 PM Saturday. **Parents and Friends Tournament:** 4SS, G/30 d5, Saturday 10:30 AM, 12:30 PM, 2:30 PM, 4:30 PM. [Onsite registration only - by Sat. 10 AM.] Rated and Unrated sections. Trophies for Parent/Friends - participant and student combined results. Please see the Tournament Information Page on the web site to see when Team Rooms become available and for Team Room contact information. **ALL:** Please bring clocks. Sets and score sheets provided. USCF membership required. **Questions:** Ashley Knight [aknight@uschess.org](mailto:aknight@uschess.org) or at 931.787.1234 ext. 138. **Mail entries to:** U.S. Chess Federation, Attn: 2014 Junior High, P.O. Box 3967, Crossville, TN 38557. **Additional details, updates, corrections and on-line registration:** [www.uschess.org/tournaments/2014/jhs](http://www.uschess.org/tournaments/2014/jhs).

**Chess Magnet School Junior Grand Prix!**  
May 9-11, Texas

**2014 National Elementary (K-6) Championship**

**(May 8 - Bughouse & Blitz)** 7SS, G/120 d5, K-1 G/90 d5. Hilton Anatole Dallas, 2201 Stemmons Freeway, Dallas, TX 75207. 214.748.1200 or 888.370.0980. Chess Rate \$120 until 16 April 2014. **9 Sections: K-6 Championship, K-6 Under 1000, K-6 Unrated, K-5 Championship, K-5 Under 900, K-3 Championship, K-3 U800, K-3 Unrated, K-1 Championship.** April Rating Supplement will be used. Unrated players may play in the Championship or Unrated sections only. One half-point bye for any round, except Rd. 7, if requested before Round One. **EF:** \$50 if by April 6, \$70 if by April 27, \$85 by 7 PM CDT on May 8 or \$90 at site. Mailed entries must be p/m by May 4. \$5 extra for all phone registrations, \$20 change fee for roster or section changes after 27 April. **Onsite registration:** Thurs. 9 AM-10 PM & Fri. 8 AM-10 AM. Players registering after 10 AM will get half-point for Round One. **Awards:** Please see the Information Page on the web site for a complete list of trophies. **K-1 Championship:** All players in this section receive a trophy. All participants will receive a commemorative medal at the completion of the final round. **Teams:** A team must have at least two players, although no maximum number of players. The top four scores in any section will count for the team score. **All on team must attend the same school.** **Opening Ceremony:** 12:30 PM Friday. **Main Event rounds:** Friday 1 PM, 7 PM; Saturday 9 AM, 2 PM, 7 PM; Sunday 9 AM, 2 PM. **Schedule for K-1:** Friday 1:30 PM, 6:30 PM; Saturday 9:30 AM, 1:30 PM, 6:30 PM; Sunday 9:30 AM, 1:30 PM. **Awards Ceremony:** Approx. 7 PM Sunday. **Awards Ceremony for K-1:** Approx. 5:30 PM Sunday. **Special Events: National Elementary Bughouse Championship:** Thursday 11 AM; **EF:** (Onsite only) \$25 per team. Bughouse registration ends at 10 AM Thurs. **National Elementary Blitz Championship:** Two sections: K-6 and K-3. G/5 d0. Thursday 5 PM; **EF:** \$15 per player, \$20 after April 27 or onsite. **Scholastic Meeting:** 3 PM Saturday. **Parents and Friends Tournament:** 4SS, G/30 d5, [Onsite registration only - by Sat. 10 AM.] Rounds Saturday: 10:30 AM, 12:30

PM, 2:30 PM, 4:30 PM. Rated and Unrated sections. Trophies for Parents/Friends - participant and student combined results. Please see the Tournament Information Page on the web site to see when Team Rooms become available and for Team Room contact information. **ALL:** Please bring clocks. Sets and score sheets provided. USCF membership required. **Questions:** Ashley Knight [aknight@uschess.org](mailto:aknight@uschess.org) or at 931.787.1234 ext. 138. **Mail entries to:** U.S. Chess Federation, Attn: 2014 Elementary, P.O. Box 3967, Crossville, TN 38557. **See the Information Page for additional details, updates, corrections and on-line registration:** [www.uschess.org/tournaments/2014/elem](http://www.uschess.org/tournaments/2014/elem).

**Chess Magnet School Junior Grand Prix!**  
May 23-26, Arizona

**2014 U.S. Amateur West Championship**

Hilton Tucson El Conquistador Golf & Tennis Resort, 10000 N. Oracle Rd., Tucson, AZ 85704, 1-800-325-7832. **SECTIONS:** Championship (U2200), Reserve (U1600), Booster (U1200). **SCHEDULE:** (Championship & Reserve) 6/SS; 40/90, G/30, Inc/30; Rds.: 10-4, 10-4, 9-3, (Booster) 6/SS, Game/60, Inc/30; Rds.: (Sat) 10-1:30-5, (Sun) 10-1:30-5. **PRIZES:** (Championship) Digital Clock + plaque to Top 3; Digital clock to 1st + Plaque to Top 2 1800-1999, 1600-1799, and U1600; Plaque to top Senior 50+, Junior U20 and Junior U14. (Reserve) Digital clock + plaque to Top 3, Digital clock to 1st + Plaque to Top 2 1200-1399 and U1200; Plaque to top Senior 50+ and Junior U14. (Booster) Digital clock + trophy to 1st; Trophy to 2nd - 5th, Top Unrated and Junior U11. **SPECIAL PRIZES:** 1st Place in Championship and Reserve will receive a FREE ENTRY to the 2014 National Open. Top 2 Family Pairs in combined sections. Biggest Upset of each round (Rds 1-5). **EF:** (Championship & Reserve) \$60 if rec'd by 5/21, \$70 if after 5/21. (Booster) \$40 if rec'd by 5/21, \$50 if after 5/21. **SIDE EVENTS:** 2100+ section 5/SS, TC: 40/90, G/30, Inc/30, Rds.: 10-4, 10-4, 9, EF: \$40, Prizes: 300-200-150; Blitz tournament Friday 5/23 at 6:00pm. (\$15 to 5:00 - 5:45 at site, G/5 d0, 5 Rounds, Double SS; Entry Fee: \$10 (Res: 10-0 - unrated players); Saturday Scholastic tournament (K-6 and U1000 rating), Saturday 5/24 at 10:00am, Reg.: 8:30 - 9:30, GAME/40 d5; 4 rounds, Entry fee \$15; Sunday Scholastic tournament (K-6 and U1000 rating), Sunday 5/25 at 10:00am, Reg.: 8:30 - 9:30, GAME/40 d5; 4 rounds, Entry fee \$15; Quick tournament Monday 5/27 at noon, Reg.: 10:30 - 11:30, GAME/10 d2; 5 rounds, Entry Fee: \$10 (\$15 to non-tournament players). **ENTER:** <http://events4chess.com> or mail to (make checks payable to "SACA"): SACA, Attn: US Amateur West, PO Box 40663, Tucson, AZ 85717 or at site. **HR:** 1-800-325-7832, West (2 Queen), \$139 (jr. suite), or \$178 (casita), mention "Amateur West". **INFO:** Karen Pennock, 520-261-6149, email: [kpenock\\_83@yahoo.com](mailto:kpenock_83@yahoo.com), web: [www.sazchess.org](http://www.sazchess.org). NC. NS. W.

**A Heritage Event!**

**Chess Magnet School Junior Grand Prix!**  
May 24-26 or 25-26, New Jersey

**70th Annual U.S. Amateur East Championship**

6-SS, 50/2 d5, SD-1. Hyatt Morristown, 3 Speedwell Ave., Morristown, NJ 07960. For chess rate (\$109 per night), please make reservations at <https://resweb.paskey.com/go/NJChessMay2014>. Phone: 973-647-1234, mention NJ Chess. Free parking, public transportation to NYC, Philadelphia, walking distance, 30 restaurants, shops and parks within 5 minute stroll. In 3 sections: Championship (under 2200); Reserve (under 1800); Booster (under 1400); 2-day and 3-day schedules available. **3-Day Registration:** Saturday, May 24, 9:30-10:45 am. Rounds: 12-6:15, 11-5:15, 9-3:15. **2-Day Registration:** Sunday, May 25, 8:30-9:30 am. **2-day Schedule:** First 3 games, May 25, G/60 d5. Rounds: 10, 12:15, 2:30. All schedules merge in round 4. **Prizes for each section:** trophies to top 5 and top Senior 55/over and Juniors under 16 and 13. **Additional Prizes**—Championship Section: Trophies to top Under 2000, Under 1900, Under 1800. Reserve Section: Trophies to top Under 1600, Under 1500. Booster Section: Trophies to top Under 1200, Under 1100, Under 1000, Under 900, Under 800. **EF:** \$49, if postmarked by May 18. **EF** at site \$60 cash. Byes: 3 half-point byes allowed in rounds 1-5. **Entries:** to Aaron Kiedes, 4 Seymour Terrace, Hackettstown, NJ 07840. Entries must include name, USCF ID and expiration date, mailing address, email address, phone number, Section and entry fee. Checks made out to NJSCF. NS. NC. W.

**Chess Magnet School Junior Grand Prix!**  
May 24-26, Idaho

**2014 U.S. Amateur North Championship**

5-SS. **TL:** G/90, w/30 second increment (or G/100 d5). Jordan Hall, Boise State U, Boise, ID. In 2 Sections. **OPEN** (to U2200) 1st Trophy, Book, and 2014 U.S. AMATEUR NORTH CHAMPION title; 2nd, 3rd, Top U1800 engraved Plaque. **RESERVE** (Open to U1600 & Unr) 1st Trophy and Book; 2nd, 3rd, Top U1300, Top U1000 engraved Plaque; Top Unrated Book. **BOTH EF:** \$44 if by 5/06/14, \$52 if by 5/15, \$60 at site. **Reg.:** 1:30-2pm on 5/24. Mailed entries to: Lawrence Cohen, P.O. Box 6632, Villa Park, IL 60181 (put ATTN: U.S. Amateur bottom right corner). Online entry at [onlineregistration.cc](http://onlineregistration.cc). **Rounds:** 2:30-7, 11-3:30, 10. NC, NS, W. FREE RAFFLE PRIZES (3) Choice of Free entry to 2014 Eastern Idaho Open or Free entry to Western Idaho Open; Choice of Free entry to 2014 Oregon Open or Free entry to 2014 Southern Idaho Open; Free entry (in 2015) to 23rd Dave Collyer Memorial Open or entry to 2015 Idaho Closed State Championship. Winners for 2014 must choose event by 5/26/14, Winner of 2015 event must choose by 12/01/14. 1/2 point bye is available for any round, but must be requested before 4pm 5/24. **Sunday:** AMATEUR G/15 SWISS Side Event (open to U2200) 4-SS, **TL:** G/15 d5. **EF:** \$10 at site only. (\$200 b/20) \$50-45, U1900 \$40, U1600 \$35, U1300/Unr \$30. Reg. until 7pm. Rds.: 7:30-4:45 AM thereafter (8:10-8:50-9:30). **Information on both events:** e-mail [allamericas-chess@gmail.com](mailto:allamericas-chess@gmail.com) or call (630) 834-2477. NS. NC. W.

**Chess Magnet School Junior Grand Prix!**  
June 7-8, Tennessee

**2014 U.S. Amateur South Championship**

5SS, G/90 d5, University of Memphis, University Center, 499 University St., Memphis, TN 38152. **2 Sections: Championship (U2200), 1st:** "River Cup" Championship trophy plus commemorative clock, 2nd: plaque plus commemorative hat, 3rd: plaque plus commemorative hat,



4th: plaque plus commemorative hat, 5th: plaque plus commemorative hat; U2000: 1st: plaque plus commemorative clock. **Reserve (U1600)**, 1st: "River Cup" Championship trophy plus commemorative clock, 2nd: plaque plus commemorative hat, 3rd: plaque plus commemorative hat, 4th: plaque plus commemorative hat, 5th: plaque plus commemorative hat; U1400: 1st: plaque plus commemorative hat. **EF:** \$40, \$10 less to juniors under age 18 or seniors over age 60, \$50 at site. **Reg.:** 9-9:45 a.m. **Rds.:** Sat. 10-2-6, Sun. 9-1. One requested half-point bye allowed, any round, must request before start of round 2. **Side Event:** Saturday, June 7 (1-day ONLY) - Scholastic (K-12) sections in a separate room from main tournament. Sections: U1000, U550, Unr. 4SS, G/30 d5. **EF:** \$15 by June 1, \$20 after and at site. Trophies or medals for ALL side event players! **Reg.:** 11-11:30 a.m. Rd. 1 at noon, remaining rounds ASAP. **HR:** Fogelman Executive Conference Center and Hotel (at the University of Memphis, across the street from the Holiday Inn), \$79, if reserved by May 7th, (901) 678.8200; or Holiday Inn (an all suite hotel), 3700 Central Ave., Memphis, TN 38111, \$109 if reserved by May 7th, (901) 678.8200. For both hotels, mention chess rate. **Additional details:** www.shelbycountychess.com or www.cajunchess.com. **Info:** Email Arlene Kleiman at midsouthchess@hotmail.com. **Entry:** Online entry at www.cajunchess.com or mail registration to Shelby County Chess, Attention: Amateur South, 1614 Vance Ave., Memphis, TN 38104. Complete chess shop onsite. **Special Appearances by GM Alex Stripunsky, GM Alex Onischuk, GM Joel Benjamin, WGM Anna Sharevich, IM Teddy Coleman and more. NS. W.**

#### June 12, Nevada

**Trophies Plus Grand Prix Points: 80 (Enhanced)**  
**2014 U.S. Game/10 Championship (QC)**

8SS, G/10 d2. Riviera Hotel and Casino, 2901 Las Vegas Boulevard South, Las Vegas 89109. **\$\$\$6,000 Guaranteed Prize Fund.** \$1700-850-500, U2300 \$500, U2100 \$500, U1900 \$450, U1700 \$400, U1500 \$350, U1300 \$300, U1000 \$200, unrated \$200. Must be 3 players eligible for each prize awarded. **EF:** \$69 by 5/22, \$79 by 6/9, \$100 later. **REG.:** 2-4 p.m. **Rds.:** 5-5:30-6-6:30-7-7:30-8-8:30. Higher of regular or quick rating used. Please bring digital chess clocks. 1/2 point bye available in any round (limit 2). **HR:** \$65 single or double (\$89 Friday and Saturday nights). (800) 634-6753 or (702) 794-9412 - be sure to ask for the **CHESS** rates. **ENT:** Vegas Chess Festivals, PO Box 90925, Henderson, NV 89009-0925, on line [www.VegasChessFestival.com](http://www.VegasChessFestival.com) or fax (702) 933-9112. NS. NC. W. FIDE.

#### Chess Magnet School Junior Grand Prix! June 12-13, Nevada

**Trophies Plus Grand Prix Points: 30 (Enhanced)**  
**2014 U.S. Women's Open**

5SS, G/90, inc 30. Riviera Hotel and Casino, 2901 Las Vegas Boulevard South, Las Vegas 89109. **\$\$\$2,000 Guaranteed Prize Fund.** \$500-300-200, U2000 \$200, U1800 \$200, U1600 \$200, U1400 \$200, U1200 \$200. **EF:** \$50. **REG.:** 8-9 a.m. **Rds.:** 10-2:30-7, 9-1:30. 1/2 point bye available in any round (limit 1). **HR:** \$65 single or double (\$89 Friday and Saturday nights). (800) 634-6753 or (702) 794-9412 - be sure to ask for the **CHESS** rates. **ENT:** Vegas Chess Festivals, PO Box 90925, Henderson, NV 89009-0925, on line [www.VegasChessFestival.com](http://www.VegasChessFestival.com) or fax (702) 933-9112. NS. NC. W.

#### An American Classic!

#### A Heritage Event! Chess Magnet School Junior Grand Prix! June 13-15 or 14-15, Nevada

**Trophies Plus Grand Prix Points: 200 (Enhanced)**  
**2014 National Open**

6-SS, 40/90, SD/30, inc 30 (2 day option rounds 1-3 G/45 d5). Riviera Hotel and Casino, 2901 Las Vegas Boulevard South, Las Vegas 89109. **\$\$\$8,000 Guaranteed Prize Fund** will not be reduced. **Championship:** \$6500-3300-1600-800-500-350-350-350-350-250-250-250-250-250, under 2500 1600, under 2400 1200, under 2300 1000, \$2,000 **EXTRA** for perfect score. The winner of the Championship section also receives a replica of the Edmondson Cup. **Under 2200:** \$3500-1800-900-500-400-250-250-250-250-250-200-200-200-200. **Under 2000:** \$3500-1800-900-500-400-250-250-250-250-250-200-200-200-200. **Under 1800:** \$3500-1800-900-500-400-250-250-250-250-250-200-200-200-200. **Under 1600:** \$3000-1500-800-500-400-250-250-250-250-250-200-200. **Under 1400:** \$2000-1000-500-350-250-200-200-200-200. **Under 1200:** \$1200-600-400-300-200-200. **Unrated:** \$500-300-200. **Plus Score Bonus** (\$14,000 guaranteed) in addition to any other prizes, every player with 3-1/2 points or more wins a \$50 gift certificate. Plus score certificates will be awarded on site only. Players age 14 and under are eligible for best game prizes including the Freddie Award and \$350 in cash prizes (donated by Fred Gruenberg). Top 2 sections FIDE rated: USCF rules will be used. **EF:** \$199 by 5/22, \$229 by 6/9, \$250 later. \$40 less for seniors 65 and over. Add \$125 for adults rated under 2100 or juniors under 2000 playing in the Championship Section. This is an open tournament - you may play in any section at or above your rating level; unrated players may play only in Unrated or Championship Section. Provisionally rated players may not win more than the amount of 3rd prize in any section except Championship. CCA minimum ratings or other ratings may be used if higher than USCF June Supplement. **Reg.:** 2 p.m.-10 p.m. Thursday, 8-9:30 a.m. Friday. **Rds.:** 11-5, 10-4:30, 10-4:30. 2-day schedule: **Reg.:** 8-9 a.m. Saturday. **Rds.:** 10-12-2-4:30 merge with 3-day in round 4. Half point byes available in any round, but round 5 or 6 byes must be requested before the start of round 2 and may not be cancelled. Chess sets and boards provided for tournament play only, not for skilltles. Please bring digital chess clocks! **THE LAS VEGAS INTERNATIONAL CHESS FESTIVAL** features the National Open, the U.S. Game/10 Championship, the U.S. Women's Open, the International Youth Championship, and other events. **Many free extras and surprises!** Free parking. Free raffles with great prizes. Free GM Lectures. Free GM analysis of your games. Free Daily Bulletins. **Grandmaster Chess Camp** for all ages on Thursday. **U.S. Women's Open** Thursday and Friday. **U.S. Game/10 Championship** and **Grandmaster Simuls** Thursday afternoon. **Youth Tournaments** Friday, Saturday & Sunday. **Blitz** Tour-

naments Saturday & Sunday. **Poker Tournament** Monday morning. **Don't be shut out** - make your reservations early and **be sure to ask for the CHESS rates** - \$65 single or double (\$89 Friday and Saturday nights) guarantees a *Signature* or remodeled room with new furniture, flat screen TV and more. The complimentary resort package includes access to the Fitness Center, free WI-FI, discounts on selected show tickets and more with no additional cost only if you are in our group. Cutoff for special hotel rate is **May 22nd.** (800) 634-6753 or (702) 794-9412 or online at [www.VegasChessFestival.com](http://www.VegasChessFestival.com). **ENT:** Vegas Chess Festivals, PO Box 90925, Henderson, NV 89009-0925, on line at [www.VegasChessFestival.com](http://www.VegasChessFestival.com) or by fax at (702) 933-9112. **Info:** (702) 560-0955 and leave a message. NS. W. FIDE.

#### Chess Magnet School Junior Grand Prix! July 11-13, Texas

**2014 U.S. Junior Open**  
 6SS, G/120 d5. Marriott Houston South at Hobby Airport, 9100 Gulf Freeway, Houston, TX 77017. [www.marriott.com/hotels/travel/houhouston-hobby-airport-marriott/](http://www.marriott.com/hotels/travel/houhouston-hobby-airport-marriott/) Free parking! Free Internet in guest rooms! \$90 HR valid until 6/27, Reserve early! 713-943-7979. **4 Sections based on age as of 1/1/2014:** **Under 21, Under 15, Under 11 and Under 8. July Rating Supplement. U21:** \$500 + entry to 2015 US Junior Closed - \$250-\$125-\$75-\$50. Individual plaques to top five overall, plaques for best player age 18, 17, 16, 15, Under 15, and for ratings U1600, U1400, U1200. **U15:** Individual trophies to top 15 overall, trophies for best player age 14, 13, 12, 11, Under 11, and for ratings U1400, U1200, U1000. **U11:** Individual trophies to top 15 overall, trophies to best player age 10, 9, 8, 7, Under 7, and for ratings U1200, U1000, U800. **U8:** Individual trophies to top 15 overall, best player age 7, 6 & Under, and for ratings U1000, U800, U600; honorable mention trophies for all other U8. Commemorative medals for all participants. **Teams:** Trophies to top three school teams and top club team in each of the four sections. Top four scores, minimum of three, count towards team score in each section. **Byes:** One half-point bye, any round except Rd. 6, if requested before Rd. 1. **EF:** \$45 postmarked by or on line by 6/30, \$55 after 6/30, no checks on site. **Schedule:** Onsite registration, Fri 8:30 - 11:00am. Opening Ceremony, Fri 12:45pm. Rounds, Fri 1pm & 6pm; Sat 9:30am & 2:15pm; Sun 9am & 1:30pm. Awards Ceremony 6:00pm (approx). **Side Events:** Blitz (G/5 d0), U21 & U11. Sat 6:30pm, EF: \$15 by 6/30, \$20 on site. **Bughouse (G/5 d0):** One section, Sat ASAP after Blitz, EF: \$25 per team, on site registration only. **ENTRIES:** Mail to Francisco L. Guadalupe, 305 Willow Pointe Dr., League City, TX 77573. **Info:** fguadalupe@aol.com. Phone entries: (713) 530-7820. Add \$3 (per player) for phone entries. Tournament website link at <http://main.uschess.org/content/view/10014/95>.

#### A Heritage Event!

#### Chess Magnet School Junior Grand Prix! July 26-Aug. 3, July 29-Aug. 3 or July 31-Aug. 3, Florida

**Trophies Plus Grand Prix Points: 300**  
**115th annual U.S. Open**

Includes traditional one game per day schedule (9 days), also 6-day slow time control option, and 4-day option requiring only 3 nights hotel stay for most players. 9SS, 40/120, SD/60 d5 (4 day option, Rds. 1-6, G/60 d5). Rosen Centre Hotel, 9840 International Dr., Orlando, FL 32819. **HR:** \$109 single/quad with 2 complimentary breakfast tickets daily, \$119 single/quad with 3 complimentary breakfast tickets daily, \$129 single/quad with 4 complimentary breakfast tickets daily; 800.204.7234; reserve by July 2 or rate may increase. \$50,000 in prizes based on 500 paid entries, else proportional, \$40,000 (80% of each prize) minimum guaranteed. A one section tournament with Class prizes. Top US player not otherwise qualified qualifies for 2015 U.S. Championship. **Choice of three schedules:** **Traditional:** 40/120, SD/60 d5. One round daily at 7 PM, except Rd. 9, 3 PM 8/3. **6-Day Option:** 40/120, SD/60 d5. 7 PM 7/29, 12 NOON & 7 PM 7/30-8/1, 7 PM 8/2, 3 PM 8/3. **4-Day Option:** Rds. 1-6: G/60 d5; then 40/120, SD/60 d5. 12 NOON, 3 PM, 7 PM, 10 PM 7/31; 12 NOON, 3 PM, 7 PM 8/1; 7 PM 8/2; 3 PM 8/3. All schedules merge after Round 6 & compete for same prizes. **Projected prizes:** Top 2 places \$8000-4000-2000-1500-1000-800-600-500, clear winner or playoff \$200 bonus. If tie for first, top two on tiebreak play speed game (White 5 minutes, Black 3 minutes and gets draw odds) for bonus and title. **Class Prizes:** Top Master (2200-2399) \$2500-1200-800-500, Expert (2000-2199) \$2500-1200-800-500, Class A (1800-1999) \$2500-1200-800-500, Class B (1600-1799) \$2500-1200-800-500, Class C (1400-1599) \$2000-1000-600-400, Class D (1200-1399) \$1500-700-500-300, Class E or below (under 1200) \$1500-700-500-300, Unrated \$800-400-200. **Half-Point Byes:** must commit before Round 4; up to 3 byes allowed for 2000/up, 2 byes for 1400-1999, one bye for Under 1400/Unr. Limit 1 bye in last two rounds. Zero-point byes are always available in any round if requested at least two hours before the round(s) in question. **Delay:** All US Open side events use 5 sec. delay except the Blitz [d0] and Bughouse [d0]. **Entry FE:** Online, \$145 by 6/15, \$165 by 7/13, \$185 after 7/13. By mail, \$147 postmarked by 6/15, \$167 postmarked by 7/13, \$187 after 7/13; do not mail after 7/20! By phone, \$150 by 6/15, \$170 by 7/13, \$185 after. No phone entries after 7/26 (by the close of business at the Office) At site, all \$190; GMs and WGMs free. All entries must be made at least 2 hours prior to your first game. Current USCF membership required. **July Rating Supplement** used; unofficial ratings used if otherwise unrated. CCA ratings used if above USCF. Foreign player ratings: usually 100 points added to FIDE or FQE, 200+ added to most foreign national ratings, no points added to CFC. Highest of multiple ratings generally used. **ENTRIES:** USCF, ATTN: 2014 U.S. Open, PO Box 3967, Crossville, TN 38557. Online entry: <https://secure2.uschess.org/webstore/tournament.php?wkevent=2014USOPEN>. Phone entry: 800.903.8723. **NOT FIDE rated, NO cell phones.** Bring a clock - none supplied. Sets/boards supplied for tournament but not for skilltles. Many meetings, workshops and seminars, including: **USCF Committee Meetings** 7/30-8/1, **USCF Awards Luncheon** 8/2 NOON, **USCF Delegates Meeting** 8/2-3. Many side events and other championships, including: **U.S. Open Blitz Championship** 7SS Double, G/5, Rd. 1 at 12 NOON 8/2; **Weekend Swiss** 5SS, G/60, 12-3 Sat 7/26, 10-

12:30-3 Sun 7/27; **U.S. Open Scholastic** (see separate TLA for the Scholastic event); **G/15 Open Quads** G/30 12-1:30-3 Mon, Tue, Wed, Thu, Fri; **U.S. Open G/15 Championship** 12-1-2-3-4 Wed 7/30; **U.S. Open Bughouse** Sat. 7:30 pm 7/26. **17th Annual Golf Tournament for the U.S. Open Chess Players**, (see tournament website for details). **U.S. Open Tennis Tournament** (see tournament website for details). In addition, three other championships will also take place: the **2014 Denker Tournament of HS Champions** (see website for a participant list), the **2014 Barber Tournament of K-8 Champions Champions** (see website for a participant list), and the **2014 National Girls' Invitational Tournament** (see separate TLA for the Girls event. **Please check the U.S. Open website often for updates, new information and corrections and other useful documents!** [www.uschess.org/tourname/2014/usopen/](http://www.uschess.org/tourname/2014/usopen/). Chess Magnet School JGP for U.S. Open.

## GRAND PRIX

#### Apr. 12-13, Texas

**Trophies Plus Grand Prix Points: 20 (Enhanced)**  
**2014 DCC Fide Open II**

5SS, G/90 inc/30. Dallas Chess Club, 200 S. Cottonwood Dr. #C, Richardson, TX 75080. **Two sections:** Open and Reserve. **Open:** \$\$\$875G. FIDE and USCF rated but uses FIDE rules. Will use USCF ratings and rules for pairings and for awarding prizes. Default late forfeiture time is one hour. TD may extend this time at TD's discretion. \$\$ \$500-\$250-\$125. **EF:** \$80, Senior/Hcap/Additional Family Member \$55. Small appearance fee to the First three GM/IM's who apply. GM/IM must play all rounds to get appearance fee. Reserve section: Open to players rated below 1800 USCF. This section is not Fide Rated but is USCF rated and uses USCF rules. **Reserve:** Open to USCF U1800. **EF:** \$35. The Reserve give back 10% in prizes and if at least 8 paid entries and if there is a clear winner, then that winner receives free entry to next DCC Fide Open. **Both:** **Reg.:** 4/12 from 9:45 - 10:15. **Rds.:** Sat 10:45am/3:10 pm/7:16pm, Sun 10:45 am/3:10pm. One half point Bye allowed if requested before end of round rd. 2 and before getting full point bye. Withdrawals and zero point last round byes are not eligible for prizes. **Ent:** Dallas Chess Club, see address above. **Info:** 214-632-9000, info@dallaschess.com. NS. NC. FIDE.

#### Apr. 20, California, Northern

**Trophies Plus Grand Prix Points: 10 (Enhanced)**  
**Cupertino Grand Prix DuperSwiss (3SS x G/75 d5)**

Courtyard Marriott, Cupertino, CA 95014. **Prize:** \$1,500 b/50. 70% guar. **1900+:** \$300-200, u1200 100. **1500-1899:** \$200-100, u1700 100-50. **u1500:** \$200-100, u1300 100-50. Apr 14 Supp & TD disc. **Sched:** Reg.: 8-8:30. Rds.: 9-11:45-2-40. **EF:** 45, econ 35 2/3 prz. after 4/17 +15, Rtd 2200+ \$0 by 4/10. **Info:** BayAreaChess.com/grandprix. NS. NC. W.

#### Apr. 25, New York

**Trophies Plus Grand Prix Points: 10 (Enhanced)**  
**Marshall \$500 FIDE Blitz! (BLZ)**

9-SS, G/3 +2 sec increment. **Marshall CC**, 23 W. 10th St., NYC. 212-477-3716. **\$\$\$Gtd 500:** \$200-100, top U2400/unr, U2200, U2000, U1800: \$50 each, **EF:** \$30, members \$20. Blitz-rated, but the higher of regular, quick or blitz used for pairings & prizes. **FIDE Blitz Rated!** **Reg.** ends 6:45 pm. **Rds.:** 7-7:30-7:50-8:10-8:40-9-9:20-9:40-10 pm. Three byes available, request at entry. [www.marshallchessclub.org](http://www.marshallchessclub.org).

#### Chess Magnet School Junior Grand Prix! May 3-4, Texas

**Trophies Plus Grand Prix Points: 20 (Enhanced)**  
**2014 DCC Fide Open IV**

5SS, G/90 inc/30. Dallas Chess Club, 200 S. Cottonwood Dr. #C, Richardson, TX 75080. **Two sections:** Open and Reserve. **Open:** \$\$\$875G. FIDE and USCF rated but uses FIDE rules. Will use USCF ratings and rules for pairings and for awarding prizes. Default late forfeiture time is one hour. TD may extend this time at TD's discretion. \$\$ \$500-\$250-\$125. **EF:** \$80, Senior/Hcap/Additional Family Member \$55. Small appearance fee to the First three GM/IM's who apply. GM/IM must play all rounds to get appearance fee. Reserve section: Open to players rated below 1800 USCF. This section is not Fide Rated but is USCF rated and uses USCF rules. **Reserve:** Open to USCF U1800. **EF:** \$35. The Reserve give back 10% in prizes and if at least 8 paid entries and if there is a clear winner, then that winner receives free entry to next DCC Fide Open. **Both:** **Reg.:** 5/3 from 9:45 - 10:15. **Rds.:** Sat 10:45am/3:10 pm/7:16pm, Sun 10:45 am/3:10pm. One half point Bye allowed if requested before end of round rd. 2 and before getting full point bye. Withdrawals and zero point last round byes are not eligible for prizes. **Ent:** Dallas Chess Club, see address above. **Info:** 214-632-9000, info@dallaschess.com. NS. NC. FIDE.

#### May 10, California, Northern

**Trophies Plus Grand Prix Points: 10 (Enhanced)**  
**Foster City Grand Prix LuperSwiss (3 x G/90 d5)**

Courtyard Marriott, Foster City, CA 94404. **Prize:** \$1,500 b/50. 70% guar. **1900+:** \$300-200, u1200 100. **1500-1899:** \$200-100, u1700 100-50. **u1500:** \$200-100, u1300 100-50. May 14 Supp & TD disc. **Sched:** Reg.: 9-9:15. Rds.: 9:30-1-4:30. **EF:** 45, econ 35 2/3 prz. after 5/7 +15, Rtd 2200+ \$0 by 4/30. **Info:** BayAreaChess.com/grandprix. NS. NC. W.

#### May 20, New York

**Trophies Plus Grand Prix Points: 15 (Enhanced)**  
**Marshall Masters!**

4-SS, G/25 d5. Third Tuesday of every month. Marshall CC, 23 W. 10th St., NYC. 212-477-3716. Open to players rated over 2000 (plus all players scoring over 50% in any MCC Open or U2300 event since the prior month's Masters). **EF:** \$40, members \$30, GMs free. **\$\$\$G250-150-100.** Prizes to U2400, U2300 and biggest upset. **Reg.:** 6:15-6:45 pm. **Rds.:** 7-8:15-9:30-10:45. One bye available (Rd. 1 or 4 only), request at entry. [www.marshallchessclub.org](http://www.marshallchessclub.org). NOW ALSO FIDE RAPID RATED!

#### May 23, New York

**Trophies Plus Grand Prix Points: 10 (Enhanced)**

# Tournament Life

**Marshall \$500 FIDE Blitz! (BLZ)**  
9-SS, G/3 +2 sec inc. **Marshall CC**, 23 W. 10th St., NYC. 212-477-3716. **US\$615**: \$200-100, u2200/unr, U2200, U2000, U1800: \$50 each, **EF**: \$30, members \$20. Blitz-rated, but the higher of regular, quick or blitz used for pairings & prizes. **FIDE Blitz Rated! Reg.** ends 6:45 pm. **Rds.**: 7-7:30-7:50-8:10-8:40-9:20-9:40-10 pm. Three byes available, request at entry. [www.marshallchessclub.org](http://www.marshallchessclub.org).

**A Heritage Event!**  
**Chess Magnet School Junior Grand Prix!**  
**A State Championship Event!**  
**May 23-26 or 24-26, Texas**

**Trophies Plus Grand Prix Points: 30 (Enhanced)**  
**Texas State and Amateur Championships**  
75S. DFW Airport Marriott South, 4151 Centreport Dr., Fort Worth, TX 76155. \$8,350 b/175, full entries in Championship and Amateur sections, 2 scholastic side events that do not count toward base. **Championship**: (This section is FIDE rated but uses USCF rules. Must be rated 2000 or above by either USCF or Fide to play in this section. Defending Amateur Champion may also play in this section. Texas Scholastic High School Champions may also play in this section. Foreign unrated may play in this section.) G/90 with 30 sec. increment: \$5,1000-500-250, 2200-2399 \$700, U2200 \$800. **Amateur**: U2000 & unrated. Rds. 1-7 30/90 d5, SD/1 d5, rd. 1. of three day is G/115 d5. \$5 800-400-200. B \$5 600-300-150, C 500-250-125, U1400 \$500-250-125, U1200 \$400, U1000 \$300 Unrated \$200. Both: TCA membership required. Other states accepted. **EF**: \$88 if received by 5/15, else \$99. \$80 Junior (U19) if received by 5/15 else \$90 (juniors count as 90% toward base), Senior (over 65)/Handicapped/ additional family participant \$52 if receive by 5/15 else \$65 (Senior/Handicap/ Additional family participant counts 60% toward base). Add \$5 for CC phone entries; pre-reg requires pre-payment. After 5/21/14 all registration and changes on site only; all changes including withdrawals, \$10 after 5/21/14. 4 day: Reg. Friday 5/23, 6:15 pm-7:15. Rds. Fri.: 7:45, Sat: 2:30 pm - 8:00, Sun.: 11:00 am - 5:15 pm, Mon.: 9 am - 2:45 pm. 3 day: Reg. Sat. 5/24, 9-9:30 am, Rd. 1 at 10 am then merge with 4 day. Foreign Unrated must play in Championship section. Registrations that do not indicate 4 or 3 day schedule will be put in the 3 day. HR: \$89/89/89/89, \$89 rate includes up to four continental breakfast per room, can upgrade to full breakfast for \$4 per person, 817-358-1700 or 800-228-9290 reserve by 5/9/14 and ask for Dallas Chess Club rate. After 5/9 chess rate may not be honored. Free Parking. Up to two 1/2 pt byes available if requested before end of rd. 2 and before receiving full point bye, but byes for both rds. 6 AND 7 not permitted. **K-12 Scholastic** on Saturday, 5/24. 5-SS, Rds. G/30 d5, **EF**: \$29 by 5/17, \$45 after; Pre-reg. requires pre-payment. After 5/21/14 all registration and changes on site only; all changes \$10 after 5/21/14. No refunds after 5/21/14, \$10 handling fee for refunds before 5/21/14. Entries do not count toward base in Championship and Amateur. Registration 8:15-8:45 am, Rd. 1 at 9:30 am, rest ASAP with small lunch break. Sections: **K-12 Championship** and **K-12 U800**. 5/24. 5-SS, Rds. G/30 d5. Prizes: Trophies to top 12 individuals, five teams in each section. K-12 U800 also top three unrated. Medals to those who do not win a trophy. Ent: Dallas Chess Club, C/O Barbara Swafford, 2709 Longhorn Trail, Crowley, TX 76036. Info: Barb Swafford, 214-632-9000, [info@dallaschess.com](http://info@dallaschess.com), [www.dallaschess.com](http://www.dallaschess.com) NS. NC. W. FIDE.

**May 26, New York**  
**Trophies Plus Grand Prix Points: 10 (Enhanced)**  
**Memorial Day Action GP!**  
5-SS, G/25 d5. Marshall CC, 23 W. 10th St, NYC. 212-477-3716. **EF**: \$45, members \$25. (**\$600 GTD**): \$250-125, U2000 \$85, U1700 \$75, U1400 \$65. **Reg.**: 11:15-11:45. **Rds.**: 12-1:15-2:30-4-5:15. Two byes available, request at entry. [www.marshallchessclub.org](http://www.marshallchessclub.org).

**June 12, Nevada**  
**Trophies Plus Grand Prix Points: 80 (Enhanced)**  
**2014 U.S. Game/10 Championship (QC)**  
See Nationals.

**June 12-13, Nevada**  
**Trophies Plus Grand Prix Points: 30 (Enhanced)**  
**2014 U.S. Women's Open**  
See Nationals.

**June 13-15 or 14-15, Nevada**  
**Trophies Plus Grand Prix Points: 200 (Enhanced)**  
**2014 National Open**  
See Nationals.

**June 15, California, Northern**  
**Trophies Plus Grand Prix Points: 10 (Enhanced)**  
**Foster City Grand Prix LuperSwiss (3 x G/90 d5)**  
Court yard Marriott, Foster City, CA 94404. **Prize**: \$1,500 b50. 70% guar. **1900+**: \$300-200, u2100 100. **1500-1899**: \$200-100, u1700 100-50. **u1500**: \$200-100, u1300 100-50. Jun 14 Supp & TD disc. **Sched**: Reg.: 9-9:15. Rds.: 9:30-1-4:30. **EF**: \$45, econ \$35 2/3 prz. after 6/12 +15, Rtd 2200+ \$0 by 6/5. **Info**: [BayAreaChess.com/grandprix](http://BayAreaChess.com/grandprix). NS. NC. W.

**July 26-Aug. 3, July 29-Aug. 3 or July 31-Aug. 3, Florida**  
**Trophies Plus Grand Prix Points: 300**  
**115th annual U.S. Open**  
See Nationals.

## REGIONAL Arizona

**Apr. 19, 2nd Annual Chess & Science Festival and All-Girls Tournament!**  
**Tucson, AZ** - Flandrau Science Center and Planetarium, 1601 E. University Blvd., Tucson, AZ 85719. Event includes: various chess activities, science exhibits, museum admission, laser shows and more! Participants and their families (up to 4 people) receive FREE museum admission. Special

Reduced Fee admissions for visitors: \$5 adult, \$3 child. All-Girls: 4-SS, G/40 d5. USCF rated. **Open to girls in K-12. 3 sections: Open, U800 & U400**. Trophies to top 5 in each section. Certificates to all. Special prizes - books, medals, etc. **EF**: Early Bird - \$20 by 3/15; \$25 by 4/1; \$35 by 4/15; \$50 & 1/2 point bye in the 1st round onsite. Online registration: [www.events4chess.com/](http://www.events4chess.com/). Questions: Anjelina Belakovskaia (520)370-0700, [anjelina@gmail.com](mailto:anjelina@gmail.com). Please bring chess sets and clocks, if possible. More info: [ChessforParents.com](http://ChessforParents.com).

**May 23-26, 2014 U.S. Amateur West Championship**  
See Nationals.

## California, Northern

**Apr. 12, Bay Area Sacramento Quads (PK-12; 3xG/30 d5)**  
Court yard Marriott, Rancho Cordova, CA 95670. **Trophies**: Players w/ plus score. **Sched**: Check-in by 2:30p. **Games**: 3-5p. **Special EF**: 20 by 4/9, 25 onsite. **Info**: <http://BayAreaChess.com/sacramento>. NS. NC. W.

**Apr. 12, Bay Area Sacramento Swiss (PK-12; 4SS, G/30 d5)**  
Court yard Marriott, Rancho Cordova, CA 95670. **Trophies**: all teams & players w/ plus score. **Sched**: Reg. 9-9:45a. **Games**: 10a-2p. **EF**: 27 by 4/9, 42 onsite. **Info**: <http://BayAreaChess.com/sacramento>. NS. NC. W.

**Chess Magnet School Junior Grand Prix!**  
**Apr. 12, Sacramento Junior Grand Prix Super Swiss (4SS, G/61 d5)**

Court yard Marriott, Rancho Cordova, CA 95670. **Prize**: \$1,000 b/30. 70% guar. **1800+**: \$200-100, u2000 100-50. **u1800**: \$200-100-50, u1600 100, u1400 50 u1200 50. Apr 14 Supp & TD disc. **Sched**: Reg. 9-9:15. Rds. 9:30 11:50 2:40 5. **EF**: \$45, Econ \$35 2/3 prz. after 4/9 +15, plus **Info**: <http://BayAreaChess.com/grandprix>. NS. NC. W.

**Chess Magnet School Junior Grand Prix!**  
**A State Championship Event!**

**Apr. 12-13 or 13, CalChess Grades K-8 State Championship 2014**  
SFO Airport Hyatt, 1333 Bayshore Hwy., Burlingame, CA 94010. Disc parking. **Prizes**: Trophies to top 40 players w/ + score & top 12 teams (in ea section). Medals to all. Sections: **K-8 <800**: Sa 5xG/30 d5. **K-8 800-1199**: Su 4xG/45 d5. **K-8 1200+**: Sa+Su 6xG/75 d5. **EF** by 4/4: 1-day \$48, 2-day \$60. Apr 14 Supp & TD disc used. **Info**: [www.CalChessScholastics.org](http://www.CalChessScholastics.org). CalChess Mem reqd. NS, NC, W.

**Apr. 13, Bay Area Cupertino Quads (PK-12; 3xG/30 d5)**  
Court yard Marriott, Cupertino, CA 95014. **Trophies**: players w/ plus score. **Sched**: Check-in by 2:30p. **Games**: 3-5p. **EF**: 25 by 4/10, 40 onsite. **Info**: <http://BayAreaChess.com/cupertino>. NS. NC. W.

**Apr. 13, Bay Area Cupertino Swiss (PK-12; 4SS, G/30 d5)**  
Court yard Marriott, Cupertino, CA 95014. **Trophies**: all teams & players w/ plus score. **Sched**: Reg. 9-9:45a. **Games**: 10a-2p. **EF**: 33 by 4/10, 48 onsite. **Info**: <http://BayAreaChess.com/cupertino>. NS. NC. W.

**Apr. 19, Bay Area Chess4Less Kids Quads (PK-12; 3xG/30 d5)**  
1639A South Main St., Milpitas, CA 95035. **Trophies**: Players w/ plus score. **Sched**: Check-in by 2:30p. **Games**: 3-5p. **EF**: 20 by 4/16, 35 onsite. **Info**: <http://BayAreaChess.com/signature>. NS. NC.

**Apr. 19, Bay Area Chess4Less Kids Swiss (PK-12; 4SS, G/30 d5)**  
1639A South Main St., Milpitas, CA 95035. **Trophies**: to all teams & players w/ + score. **Sched**: Reg.: 9-9:45a. **Games**: 10a-2p. **Disc EF**: 20 by 4/16, 35 onsite. **Info**: <http://BayAreaChess.com/signature>. NS. NC.

**Apr. 20, Bay Area San Ramon Quads (PK-12; 3xG/30 d5)**  
Court yard Marriott, San Ramon, CA 94583. **Trophies**: Players w/ plus score. **Sched**: Check-in by 2:30p. **Games**: 3-5p. **EF**: 20 by 4/17, 35 onsite. **Info**: <http://BayAreaChess.com/signature>. NS. NC. W.

**Apr. 20, Bay Area San Ramon Swiss (PK-12; 4SS, G/30 d5)**  
Court yard Marriott, San Ramon, CA 94583. **Trophies**: all teams & players w/ plus score. **Sched**: Reg.: 9-9:45a. **Games**: 10a-2p. **EF**: 27 by 4/17, 42 onsite. **Info**: <http://BayAreaChess.com/signature>. NS. NC. W.

**Apr. 20, Cupertino Grand Prix DuperSwiss (3SS x G/75 d5)**  
See Grand Prix.

**Apr. 25, Santa Clara Blitz G/5 (BLZ)**  
8xG/5 d0. Convention Ctr., 5001 Great America Pkwy., Santa Clara, CA 95054. Park free. Reg.: 5-5:45p, Games 6-8. 2 Sects: **Prizes**: Regular: 75% of EFs; Kids: trophies for plus score. **EF**: \$14, after 4/22 \$17. **Info**: <http://BayAreaChess.com/blitz>. NS. NC.

**Chess Magnet School Junior Grand Prix!**  
**A State Championship Event!**  
**Apr. 26-27 or 27 (Blitz on Apr. 25), CalChess Scholastic State Championship 2014**

Convention Ctr, 5001 Great America Pkwy., Santa Clara, CA 95054. Park free. **Prizes**: Trophies to top 40 players w/ + score & top 12 teams (in ea section). Medals to all. Sections: b/ grades/rating. **G1-3 <800 Sects**: Sa 5xG/30 d5. **K6 & G4-12 <800 Sects**: Su 5xG/30 d5. **K-12 800+** Sects: Sa+Su 6xG/75 d5 (9-12 1600+ : FIDE rated 5xG/90 +30). 6-8 State Champ on Apr 12-13. **Blitz**, G/5 d0; F-6 bp. **Bughouse** Sa 6-8p. **EF** by 4/18: 1-day \$48, 2-day \$60. **Blitz/Bugh**: \$12. Apr 14 Supp & TD disc used. **Info**: [www.CalChessScholastics.org](http://www.CalChessScholastics.org). Quest: ask@BayAreaChess.com. USCF/CalChess Mem reqd. NS. NC. W.

**May 3, Success Chess Cupertino Youth Quads PK-12**  
G/30 d0. Bethel Lutheran Church, 10181 Finch Ave., Cupertino, CA 95014. **Info and Entry Form** at: [www.successchess.com/Tournaments/](http://www.successchess.com/Tournaments/). Open to all scholastic players who are USCF members. Trophies to winners of each Quad. Chess medals to all who do not win a trophy. **Info**: [Info@SuccessChess.Com](mailto:Info@SuccessChess.Com), 510-657-1586.

**May 4, Bay Area Fremont Quads (PK-12; 3xG/30 d5)**  
Court yard Marriott, Fremont, CA 94538. **Trophies**: Players w/ plus score. **Sched**: Check-in by 2:30p. **Games**: 3-5p. **EF**: 25 by 5/1, 40 onsite. **Info**: <http://BayAreaChess.com/signature>. NS. NC. W.

**May 4, Bay Area Fremont Swiss (PK-12; 4SS, G/30 d5)**

Court yard Marriott, Fremont, CA 94538. **Trophies**: all teams & players w/ plus score. **Sched**: Reg.: 9-9:45a. **Games**: 10a-2p. **EF**: 33 by 5/1, 48 onsite. **Info**: <http://BayAreaChess.com/signature>. NS. NC. W.

**May 10, Bay Area Foster City Quads (PK-12; 3xG/30 d5)**  
Court yard Marriott, Foster City, CA 94404. **Trophies**: Players w/ plus score. **Sched**: Check-in by 2:30p. **Games**: 3-5p. **EF**: 27 by 5/7, 35 onsite. **Info**: <http://BayAreaChess.com/signature>. NS. NC. W.

**May 10, Bay Area Foster City Swiss (PK-12; 4SS, G/30 d5)**  
Court yard Marriott, Foster City, CA 94404. **Trophies**: all teams & players w/ plus score. **Sched**: Reg.: 9-9:45a. **Games**: 10a-2p. **EF**: 25 by 5/7, 40 onsite. **Info**: <http://BayAreaChess.com/signature>. NS. NC. W.

**May 10, Foster City Grand Prix LuperSwiss (3 x G/90 d5)**  
See Grand Prix.

**Chess Magnet School Junior Grand Prix!**  
**May 10, Sacramento Junior Grand Prix Super Swiss (4SS, G/61 d5)**

Court yard Marriott, Rancho Cordova, CA 95670. **Prize**: \$1,000 b30. 70% guar. **1800+**: \$200-100, u2000 100-50. **u1800**: \$200-100-50, u1600 100, u1400 50 u1200 50. Apr 14 Supp & TD disc. **Sched**: Reg.: 9-9:15. Rds.: 9:30-11:50-2:40-5. **EF**: \$45, Econ \$35 2/3 prz. after 5/7 +15, plus \$15. Rated 2200+ \$0 by 5/1. **Info**: [BayAreaChess.com/grandprix](http://BayAreaChess.com/grandprix). NS. NC. W.

**May 11, Bay Area Cupertino Quads (PK-12; 3xG/30 d5)**  
Court yard Marriott, Cupertino, CA 95014. **Trophies**: Players w/ plus score. **Sched**: Check-in by 2:30p. **Games**: 3-5p. **EF**: 25 by 5/8, 40 onsite. **Info**: <http://BayAreaChess.com/signature>. NS. NC. W.

**May 11, Bay Area Cupertino Swiss (PK-12; 4SS, G/30 d5)**  
Court yard Marriott, Cupertino, CA 95014. **Trophies**: all teams & players w/ plus score. **Sched**: Reg.: 9-9:45a. **Games**: 10a-2p. **EF**: 33 by 5/8, 48 onsite. **Info**: <http://BayAreaChess.com/signature>. NS. NC. W.

**May 17, Bay Area Chess4Less Kids Quads (PK-12; 3xG/30 d5)**  
1639A South Main St., Milpitas, CA 95035. **Trophies**: Players w/ plus score. **Sched**: Check-in by 2:30p. **Games**: 3-5p. **EF**: 20 by 5/14, 35 onsite. **Info**: <http://BayAreaChess.com/signature>. NS. NC.

**May 17, Bay Area Chess4Less Kids Swiss (PK-12; 4SS, G/30 d5)**  
1639A South Main St., Milpitas, CA 95035. **Trophies**: to all teams & players w/ + score. **Sched**: Reg.: 9-9:45a. **Games**: 10a-2p. **Disc EF**: 20 by 5/14, 35 onsite. **Info**: <http://BayAreaChess.com/signature>. NS. NC.

**May 17, CalNorth Weibel Chess Youth Quads**  
Weibel Elementary School, 45135 S. Grimmer Blvd., Fremont, CA. **Two Sections**: U900 G/30 d0, Over 900 G/45 d5. **Info & Entry Form** at: [www.CalNorthYouthChess.org/Applications/SpringQuads2014](http://www.CalNorthYouthChess.org/Applications/SpringQuads2014). Open to all scholastic players who are USCF members. Trophies to all winners of each Quad. Chess medals to all who do not win a trophy. **Info**: Alan M. Kirshner, Ph.D., Alan@CalNorthYouthChess.org, (510) 659-0358.

**May 18, Bay Area San Ramon Quads (PK-12; 3xG/30 d5)**  
Court yard Marriott, San Ramon, CA 94583. **Trophies**: Players w/ plus score. **Sched**: Check-in by 2:30p. **Games**: 3-5p. **EF**: 20 by 5/15, 35 onsite. **Info**: <http://BayAreaChess.com/signature>. NS. NC. W.

**May 18, Bay Area San Ramon Swiss (PK-12; 4SS, G/30 d5)**  
Court yard Marriott, San Ramon, CA 94583. **Trophies**: all teams & players w/ plus score. **Sched**: Reg.: 9-9:45a. **Games**: 10a-2p. **EF**: 27 by 5/15, 48 onsite. **Info**: <http://BayAreaChess.com/signature>. NS. NC. W.

**May 24, CM Azhar Memorial NorCal Grade Level Champ**  
Marriott, 2700 Mission College Bl., Santa Clara, CA 95054. **Hotel \$89**  
**Trophies**: Top 10 schools & Top 10 clubs in all sections combined & Top 20 players w/ + score in ea section. **7 sects** KG 1 2 3 4 5 6-12. **Sched**: Reg.: 8:30-9a. K+3: 5xG/30 d5, 9:30-11-12:30-1:50-3:15. Gr 4-12: 4xG/45 d5, 9:30-11-20-1:10-3. **EF**: \$39. After 5/21 +15 **Info**: <http://BayAreaChess.com/grade>. NS. NC. W.

**June 1, Bay Area Fremont Quads (PK-12; 3xG/30 d5)**  
Court yard Marriott, Fremont, CA 94538. **Trophies**: Players w/ plus score. **Sched**: Check-in by 2:30p. **Games**: 3-5p. **EF**: 25 by 5/29, 40 onsite. **Info**: <http://BayAreaChess.com/signature>. NS. NC. W.

**June 1, Bay Area Fremont Swiss (PK-12; 4SS, G/30 d5)**  
Court yard Marriott, Fremont, CA 94538. **Trophies**: all teams & players w/ plus score. **Sched**: Reg.: 9-9:45a. **Games**: 10a-2p. **EF**: 33 by 5/29, 48 onsite. **Info**: <http://BayAreaChess.com/signature>. NS. NC. W.

**Chess Magnet School Junior Grand Prix!**  
**June 6-8 or 7-8, CalChess Barber Qualifier (Grades K-8 only)**  
5SS, G/90 + 30. 1639A S. Main St., Milpitas, CA 95035. **Prize \$650**  
**Guar.** \$300 to CalChess Barber rep & 200-100-50 to others. 1 sect: **1800+** (FIDE rated). Jun 14 Supp. **Reg.**: F 6-6:45p & Sa 8-8:45a. **Rds.**: F 7p, Sa 9 2 6:30, Su 9. (2-day G/61 d5 Rds. 1-2: Sa 9 11:30). **EF**: for 1800+ +50, after 6/4 +20. Rtd 1500-1799 +20. **Info**: <http://BayAreaChess.com/barber>. NS. NC.

**Chess Magnet School Junior Grand Prix!**  
**June 6-8 or 7-8, CalChess Denker Qualifier (Grades 9-12 only)**  
5SS, G/90 + 30. 1639A S. Main St., Milpitas, CA 95035. **Prize \$650**  
**Guar.** \$300 to CalChess Denker rep & 200-100-50 to others. 1 sect: **1800+** (FIDE rated). Jun 14 Supp. **Reg.**: F 6-6:45p & Sa 8-8:45a. **Rds.**: F 7p, Sa 9 2 6:30, Su 9. (2-day G/61 d5 Rds. 1-2: Sa 9 11:30). **EF**: for 1800+ +50, after 6/4 +20. Rtd 1500-1799 +20. **Info**: <http://BayAreaChess.com/denker>. NS. NC.

**June 8, Bay Area Cupertino Quads (PK-12; 3xG/30 d5)**  
Court yard Marriott, Cupertino, CA 95014. **Trophies**: Players w/ plus score. **Sched**: Check-in by 2:30p. **Games**: 3-5p. **EF**: 25 by 6/5, 40 onsite. **Info**: <http://BayAreaChess.com/signature>. NS. NC. W.

**June 8, Bay Area Cupertino Swiss (PK-12; 4SS, G/30 d5)**  
Court yard Marriott, Cupertino, CA 95014. **Trophies**: all teams & players w/ plus score. **Sched**: Reg.: 9-9:45a. **Games**: 10a-2p. **EF**: 33 by 6/5, 48 onsite. **Info**: <http://BayAreaChess.com/signature>. NS. NC. W.



**June 15, Bay Area Foster City Quads (PK-12; 3xG/30 d5)**  
Court yard Marriott, Foster City, CA 94404. **Trophies:** Players w/plus score. **Sched:** Check-in by 2:30p. **Games:** 3-5p. **EF:** 27 by 6/12, 35 onsite. **Info:** <http://BayAreaChess.com/signature>. NS. NC. W.

**June 15, Bay Area Foster City Swiss (PK-12; 4SS, G/30 d5)**  
Court yard Marriott, Foster City, CA 94404. **Trophies:** all teams & players w/plus score. **Sched:** Reg: 9-9:45a. **Games:** 10a-2p. **EF:** 27 by 6/12, 40 onsite. **Info:** <http://BayAreaChess.com/signature>. NS. NC. W.

**June 15, Foster City Grand Prix LuperSwiss (3 x G/90 d5)**  
See Grand Prix.

**June 21, Bay Area Chess4Less Kids Quads (PK-12; 3xG/30 d5)**  
1639A South Main St., Milpitas, CA 95035. **Trophies:** Players w/plus score. **Sched:** Check-in by 2:30p. **Games:** 3-5p. **EF:** 20 by 6/18, 35 onsite. **Info:** <http://BayAreaChess.com/signature>. NS. NC.

**June 21, Bay Area Chess4Less Kids Swiss (PK-12; 4SS, G/30 d5)**  
1639A South Main St., Milpitas, CA 95035. **Trophies:** to all teams & players w/plus score. **Sched:** Reg: 9-9:45a. **Games:** 10a-2p. **Disc EF:** 20 by 6/18, 35 onsite. **Info:** <http://BayAreaChess.com/signature>. NS. NC.

**June 22, Bay Area Cupertino Quads (PK-12; 3xG/30 d5)**  
Court yard Marriott, Cupertino, CA 95014. **Trophies:** Players w/plus score. **Sched:** Check-in by 2:30p. **Games:** 3-5p. **EF:** 25 by 6/19, 40 onsite. **Info:** <http://BayAreaChess.com/signature>. NS. NC. W.

**June 22, Bay Area Cupertino Swiss (PK-12; 4SS, G/30 d5)**  
Court yard Marriott, Cupertino, CA 95014. **Trophies:** all teams & players w/plus score. **Sched:** Reg: 9-9:45a. **Games:** 10a-2p. **EF:** 33 by 6/19, 48 onsite. **Info:** <http://BayAreaChess.com/signature>. NS. NC. W.

**July 6, Bay Area Fremont Quads (PK-12; 3xG/30 d5)**  
Court yard Marriott, Fremont, CA 94538. **Trophies:** Players w/plus score. **Sched:** Check-in by 2:30p. **Games:** 3-5p. **EF:** 25 by 7/3, 40 onsite. **Info:** <http://BayAreaChess.com/signature>. NS. NC. W.

**July 6, Bay Area Fremont Swiss (PK-12; 4SS, G/30 d5)**  
Court yard Marriott, Fremont, CA 94538. **Trophies:** all teams & players w/plus score. **Sched:** Reg: 9-9:45a. **Games:** 10a-2p. **EF:** 33 by 7/3, 48 onsite. **Info:** <http://BayAreaChess.com/signature>. NS. NC. W.

**July 13, Bay Area Cupertino Quads (PK-12; 3xG/30 d5)**  
Court yard Marriott, Cupertino, CA 95014. **Trophies:** Players w/plus score. **Sched:** Check-in by 2:30p. **Games:** 3-5p. **EF:** 25 by 7/10, 40 onsite. **Info:** <http://BayAreaChess.com/signature>. NS. NC. W.

**July 13, Bay Area Cupertino Swiss (PK-12; 4SS, G/30 d5)**  
Court yard Marriott, Cupertino, CA 95014. **Trophies:** all teams & players w/plus score. **Sched:** Reg: 9-9:45a. **Games:** 10a-2p. **EF:** 33 by 7/10, 48 onsite. **Info:** <http://BayAreaChess.com/signature>. NS. NC. W.

## California, Southern

### The Los Angeles Chess Club

The Most Active Club on the West Coast! (310) 795-5710 • [www.LAChessClub.com](http://www.LAChessClub.com). Saturdays: 10am-10 pm (Intermediate class + 2 Tournaments). Sundays: 11-7 & 1-5 pm (Junior class + 2 Tournaments) – Details on our web site. Tuesdays: 7:30-9:30 pm (Intermediate/Advanced Lecture). 11514 Santa Monica Blvd., Los Angeles, CA 90025. (4 blocks W of 405, SW corner of Santa Monica & Butler \* 2nd Floor – above Javan Restaurant). Group Classes \* Tournaments \* Private (1-1) Lessons.

**Apr. 6, 13, 20, 27, LACC - Every Sunday Chess 4 JRS**  
4 separate events – 3 Sections: >900, <900, <500, 5SS, G/25 d5. 11514 Santa Monica Blvd. & Butler, LA, 90025, 2nd fl. 4 blocks West of 405. **EF:** \$30 (\$20 LACC memb, siblings 1/2, Free new LACC members). **Reg:** 12-1 pm. **Rds:** 1pm & asap. **Prizes:** Trophies (top 3 each section) & medals; each player receives a prize! **Parking:** Free on streets & basement. Free pizza & juices. **Info:** (310) 795-5710 or [www.LAChessClub.com](http://www.LAChessClub.com) or [Mick@LAChessClub.com](mailto:Mick@LAChessClub.com).

**Apr. 27, April LA Boys & Girls (<120) Championship**  
4 Sections: >900, <900, <500, <300. 5SS, G/25 d5. 11514 Santa Monica Blvd. & Butler, LA, 90025, 2nd fl. 4 blocks West of 405. **EF:** \$35 (\$25 LACC memb, siblings 1/2, Free new LACC memb). **Reg:** 12-1 pm. **Rds:** 1pm & asap. **Prizes:** Trophies (top 3 each section) & medals; each player receives a prize! **Parking:** Free on streets & basement. Free Pizzas & Juices. **Info:** (310) 795-5710 or [www.LAChessClub.com](http://www.LAChessClub.com) or [Mick@LAChessClub.com](mailto:Mick@LAChessClub.com).

**May 17, Palm Springs Chess Festival: (all ages allowed)**  
5SS, G/30 d5. Palm Springs Pavilion, CA 92262. **Cash** or **Trophy** sections. **Cash Prize** b/16 player sect (**EF** \$43): \$200-100-50-50. **Trophy Prize (EF \$29):** Players w/+ score. **Sched:** Reg: 10-10:30. **Rds:** 11a-5p. **After 5/14 +10, after 5/16 +20.** **Info:** [BayAreaChess.com/palms](http://BayAreaChess.com/palms). NS. NC. W.

**May 17, Palm Springs Chess Festival: Youth (under 18)**  
5SS, G/30 d5. Palm Springs Pavilion, CA 92262. **Trophies:** All teams & players w/plus score (medals to others). 4 sects b/age: 4-8, 9-10, 11-12, 13-18. **Sched:** Reg: 10-10:30. **Rds:** 11a-5p. **EF:** \$29, after 5/14 +10, after 5/16 +20. **Info:** [BayAreaChess.com/palms](http://BayAreaChess.com/palms). NS. NC. W.

**July 17-20, 20-20 or 19-20, 19th Annual Pacific Coast Open**  
See [Chess Life](http://www.chesstour.com) or [www.chesstour.com](http://www.chesstour.com).

## Connecticut

**June 6-8 or 7-8, 20th Annual Northeast Open**  
See [Chess Life](http://www.chesstour.com) or [www.chesstour.com](http://www.chesstour.com).

**July 18-20 or 19-20, 19th Annual Bradley Open**  
See [Chess Life](http://www.chesstour.com) or [www.chesstour.com](http://www.chesstour.com).

## Florida

**Chess Magnet School Junior Grand Prix!**  
**Boca Raton Chess Club**  
Friday nights, G/85 d5 Tournament, one game a week for 4 weeks. [www.bocachess.com](http://www.bocachess.com), 561-479-0351.

**July 26-Aug. 3, July 29-Aug. 3 or July 31-Aug. 3, 115th annual U.S. Open**  
See Nationals.

## Georgia

**Apr. 12, 2014 Southeast Junior Chess Championship**  
**Note Reduced EF.** 4SS, G/35 d5. Cox Hall Ballroom, Emory University, 569 Asbury Circle, Atlanta. 5 Sections separated by grade. **Pre K-2, 3-4, 5-6, 7-8th, HS.** Awards per section: Trophies to top 5, plus score trophies to players who score 2.5 or more (not in top 5), medals to all else, team plaque to top school team. The winner of each section will be the 2014 Southeast Junior Chess Champion for that division. **EF:** \$30 pre-reg. online at [southeastchess.com](http://southeastchess.com) before midnight 4/10. **No on-site reg.** Arrive by 10am. **Rds:** 10:30-12-2-3:30. **Byes:** max 1, request at reg. Players must play in their grade's section. April official rating supplement used. Venue: Cox Hall Ballroom, 3rd floor of Cox Hall (569 Asbury Circle), park at Peavine Parking Lot (29 Eagle Row). Please bring chess sets & clocks. More info & pre-reg: [southeastchess.com](http://southeastchess.com).

**Apr. 19, Southeast Chess Scholastic**  
**Note Reduced EF.** 4SS, G/35 d5. Candler Library, Emory University, 540 Asbury Circle, Atlanta. 3 Sections, open to all K-12. **Open, U1200, U800:** Trophies to top 3 in each section, medals to all else. **EF:** \$25 pre-reg online at [southeastchess.com](http://southeastchess.com) before midnight 4/17. \$30 on-site: 9-9:30am. **Rds:** 10-11:15-1:00-2:15. **Byes:** max 2, request at reg. Players must play in their appropriate section, unrateds must play U800, April official rating supplement used. Venue: Candler Library ground floor (540 Asbury Circle), park at Peavine Parking Lot (29 Eagle Row). Please bring a chess clock. More info & pre-reg: [southeastchess.com](http://southeastchess.com).

**Apr. 25-27, 2014 National Junior High (K-9) Championship**  
See Nationals.

## Idaho

### Vellotti's Chess School

We Make Chess Fun!® Students ages 3-17 can learn to play and Master chess with tricks, traps, and sneak attacks. Our Success in Chess Training System is offered both in-person and live online through group Skype lessons. Based in Boise and Sun Valley, ID with a growing expansion into Los Angeles, CA, we offer camps, classes, tournaments, private lessons, simuls, and lectures by International Master Luke Vellotti. Enchanted Chess online classes are a great way to master chess from the comfort of your own home. Contact us today! Phone: (208) 713-2486. E-mail: [info@SuccessInChess.com](mailto:info@SuccessInChess.com). Online: [www.SuccessInChess.com](http://www.SuccessInChess.com).

**May 24-26, 2014 U.S. Amateur North Championship**  
See Nationals.

## Illinois

**Apr. 11-13, 2014 All-Girls National Championships presented by the Kasparov Chess Foundation in association with the Renaissance Knights Chess Foundation & USCF**  
See Nationals.

**May 22-26, 23-26, 24-26 or 25-26, 23rd annual Chicago Open**  
See [Chess Life](http://www.chesstour.com) or [www.chesstour.com](http://www.chesstour.com).

**July 18-20 or 19-20, 7th annual Chicago Class**  
See [Chess Life](http://www.chesstour.com) or [www.chesstour.com](http://www.chesstour.com).

## Iowa

**May 17-18, 2014 Ice Harbor Scholastic Open**  
Grand River Center & Grand Harbor Resort and Water Park, 500 Bell St., Dubuque, IA 52001. A weekend **Scholastic Open Tournament with Five Sections:** Grades K-3 Open, K-6 Open, K-6 U800, K12 Open, and K-12 U1200 with 80 Individual trophies, 15 Team x 3 players (45 total), 20 Chess960, & 30 Bughouse trophies. **TROPHIES (Main Event):** Top 10 Individuals Overall all sections; K-3 Open Top 2 U600, U300, & UNR; K-6 Open Top 3 U1200 & U1000; K-6 U800 Top 2 U600, U300 & UNR; K-12 Open Top 3 U1600 & U1400; K-12 U1200 Top 2 U900, U600, and UNR. Top 3 teams in each section (plaques for each player). **RDS:** **K-3 Open, K-6 U800 & K-12 U1200:** 7S, G/45 d5, Sat 10, 12:30, 2:30, 4:30 pm, Sun 9:00, 11:00, 1:30; 3 byes available w/registration. **K-6 & K-12 Open, 5SS, G/75 d5, Sat 10, 1:30, 4:30, Sun 9, 12:30; 2 byes available w/registration. TEAMS:** Sum of top 3 players' scores from same school/club by section (cannot count teammates from other sections). **EF:** \$45 if postmarked/online by 4/17, \$50 by 5/7, \$55 after 5/7 or on site. **SIDE EVENTS:** \$5 per player/event. **Chess960:** Fri 7:00 pm, 2 Sections: K-6 & K-12. 4 Rds, G/10 d5. **Trophies K-12 & K-6:** 1st-10th. **Bughouse:** Sat 7:30 pm, One section, 5 Rds., 2 Games/Rd., G/5 d0, **Trophies:** K-12: 1st-10th & K-6: 1st-5th each player. **Friends & Parents:** Free Entry. 4 Rds., G/60 d5. 2 Sections, Rated and Unrated. **RDS:** Sat 1:30 & 4:30, Sun 9 & 1. **REG:** 5/16: 6:00 pm - 7:00 pm; 5/17: 8:00 a.m. - 9:30 a.m. **ENT:** Online: [www.onlineregistration.cc](http://www.onlineregistration.cc). Mail: Chess in Iowa, c/o James Hodina, 3411 Blue Pointe Ct. SW, Cedar Rapids, IA 52404. **HOTEL:** Grand Harbor Resort and Waterpark, \$99 chess rate includes passes to waterpark. Rate guaranteed through 4/16. Reservations: (866) 690-4006, Ask for the Ice Harbor Chess Group rate. **INFO:** Sets provided. Players should provide chess clocks if available. Email questions [james.hodina@chessiowa.org](mailto:james.hodina@chessiowa.org). Visit [www.iceharborchess.com](http://www.iceharborchess.com) for photos, links, hotel info, & 2013 highlights.

## Kentucky

**Apr. 26, The Do Well, Do Good Chess Open**  
3 rds., G/30 d5. **Location:** 4th Ave. UMC, 318 West Saint Catherine St., Louisville, KY 40203. **Entry Fee:** \$30. **Reg:** 10:30 a.m. – 11 a.m. **5 Sections:** Open, Under 1600, Under 1200, Under 800, Unrated. **Prizes:** The top 4 winners in each section earn a cash prize based on a percentage of the paid in full entries. The first place winner in the under 1200 section is guaranteed an \$80 dollar cash prize based on 10 paid in full entries. The first place winner in the Open section is guaranteed \$100 dollar cash prize based on 10 paid in full entries. Check out [www.potterhousechess.com](http://www.potterhousechess.com) to learn how you can earn some money for your favorite charity. Bring your own board and clock if possible. Contact information: [urbanlouisvillechess@yahoo.com](mailto:urbanlouisvillechess@yahoo.com).

## Massachusetts

**May 24, 25, 26, 83rd Massachusetts Open - Scholastic Sections**  
Best Western Royal Plaza Hotel, 181 Boston Post Road West, Marlboro (I-495, exit 24B, Rt. 20W, one mile from exit). See [Chess Life](http://www.MassChess.org) or [www.MassChess.org](http://www.MassChess.org) for details of the main tournament. **Scholastic Sections:** K-12 U1500 and K-12 U800 on Sat. 5/24, K-3 U1200 and K-3 U400 on Sun. 5/25, K-6 U1400 and K-6 U600 on Mon. 5/26. Each is 4SS, G/30 d5. **EF:** \$20 if mailed by 5/19 or online by 5/22, \$25 at site. **Reg:** 9:30-10:30 a.m., 1st round at 11 a.m., others ASAP. **Trophies:** to top 3 in each sect. Medals to players scoring 3+ points and not winning a trophy. **MACA membership required for Mass. residents** (\$12 adult, \$6 jr. U18, add \$8 for optional Chess Horizons subscription). **Ent:** payable to MACA and mail to Robert Messenger, 4 Hamlett Dr. Apt. 12, Nashua NH 03062, or enter online (PayPal) at [www.MassChess.org](http://www.MassChess.org). **Info:** send email to [info@masschess.org](mailto:info@masschess.org) or phone 603-891-2484.

**Aug. 7-10, 8-10 or 9-10, 44th annual Continental Open**  
See [Chess Life](http://www.chesstour.com) or [www.chesstour.com](http://www.chesstour.com).

## Nevada

**June 12, 2014 U.S. Game/10 Championship (QC)**  
See Nationals.

**June 12-13, 2014 U.S. Women's Open**  
See Nationals.

### June 13, Youth Trophy Tournament

5-SS, G/30 d5. Riviera Hotel and Casino, Las Vegas. Open to players age 14 & under. **3 sections:** Open, U1000, U700. **Trophies** top 5 in each section, top 2 in each 200 point rating group and unrated. Must be 3 players eligible for each prize to be awarded. **EF:** \$39 by 5/22, \$50 later. **REG:** 9-9:30 a.m. **RDS:** 10-11:30-1-2:30-4. **www.VegasChessFestival.com**. NS. NC. W.

**June 13-15 or 14-15, 2014 National Open**  
See Nationals.

### June 14-15, International Youth Championship

5SS, G/60 d5. Riviera Hotel and Casino, 2901 Las Vegas Boulevard South, Las Vegas 89109. **In 4 Sections by age:** 14 & Under, 14 & Under Reserve (under 1000), 9 & Under, 9 & Under Reserve (under 800). **Trophies** to top 10 in each section plus class and team trophies. 1st Place in each section wins a **Computer** loaded with valuable Chess Software and hundreds of Videos, 2nd-4th win chess prizes valued at \$250-150-100. Unrated players may not win 1st in Reserve sections. **EF:** \$79 by 5/22, \$89 by 6/9, \$99 later. 1/2 point bye in any round (limit 2) if requested in advance. **REG:** 8-9 a.m. **RDS:** 10-1-4, 10-1. Blitz 6/13 at 6:30 p.m. (\$20 by 5/22 \$25 later). Guest Host GM Irina Krush Simul 6/14 7 p.m. (\$20 by 5/22 \$25 later). **HR:** \$65 \$89 Friday and Saturday. (800) 634-6753 or (702) 794-9412 – be sure to ask for the **CHESSTOUR** rates. **ENT:** Vegas Chess Festivals, PO Box 90925, Henderson, NV 89009-0925 or on line [www.VegasChessFestival.com](http://www.VegasChessFestival.com). NS. NC. W.

## New Jersey

### A State Championship Event!

**Apr. 27, NJ State Girls Championship**  
4SS, G/45 d5. International Chess Academy, 9-10 Saddle River Rd., Fair-lawn, NJ 07410. 973-219-6877. 2 Sections. **Open:** Trophies to Top 10 players. Highest placing New Jersey player will be New Jersey's representative for the National Invitational Girls Tournament and receive a \$150 stipend, if she plays in the NGIT 2014. **U1400** Trophies to Top 10 players. Entries postmarked by 4/17/14 to Dean of Chess Academy, 3150 Route 22 West, Branchburg, NJ 08876. Entry fee: \$35, onsite: \$45 **Registration:** 9:00-9:45am. **Rounds:** 10:00am & ASAP. Email [Noreen@deanofchess.com](mailto:Noreen@deanofchess.com) for more information.

### Chess Magnet School Junior Grand Prix!

**A State Championship Event!**  
**May 17-18, New Jersey Junior Championship**  
5SS, G/90 d5. ICA, 9-10 Saddle River Rd., Fair Lawn, NJ 07410. Phone: 201-797-0330. **High School Championship:** (9-12) Trophies to top 10. Top High School player from NJ awarded entry to Denker Tournament of HS Champions. **K-8 Championship:** (K-8) Trophies to top 10, U1300, U1200, U1000, Unr. Top K-8 from NJ awarded entry to Dewain Barber Tournament of K-8 State Champions. **ALL:** Entry fee \$35 if received by 5/10, \$50 at site. **Reg:** Sat. 8-9:30am. **Rds:** Sat: 10am 2pm 6pm Sun. 10am 2pm. **ENT:** NJSCF. PO. Box 1511, Jackson, NJ 08527. Make checks payable to NJSCF or online at [www.characterkings.org](http://www.characterkings.org). **Info:** Hal Sprechman, 732-259-3881, [hsprechman@characterkings.org](mailto:hsprechman@characterkings.org).

### May 24, U.S. Amateur K-8 East Under 1200

5-SS, G/30 d5. Hyatt Morristown, 3 Speedwell Ave., Morristown, NJ 07960. If staying, for chess rate (\$109 per night), please make reservations at <http://resweb.passkey.com/go/NJChessMay2014>. Phone: 973-647-1234, mention NJ Chess. Free parking, public transportation to NYC, Philadelphia, walking distance, 30 restaurants, shops and parks within 5 minute stroll. In three sections: Under 1200, Under 900, Under 600.

# Tournament Life

Trophies to Top Ten. Others win chess medallions. Unrated may not win first place. **Registration:** Saturday, May 24, 11am-12noon. **Rounds:** 12:30pm, then ASAP with lunch break after Round Two. **EF:** \$25 if post-marked by May 18th. \$40 cash at site. One 1/2 point bye allowed if requested with entry fee. April Rating Supplement used. **Entries:** to Aaron Kiedes, 4 Seymour Terrace, Hackettstown, NJ 07840. Entries must include name, USCF ID and expiration date, mailing address, email address, phone number, section, grade level and entry fee. Checks made out to NUSCF. NS. NC. W.

**May 24-26 or 25-26, 70th Annual U.S. Amateur East Championship**  
See Nationals.

## New York

### Apr. 12, Scholastic Chess Team League East

United Nations International School "UNIS" Manhattan Campus, NYC. Official Website: ChessEducators.com. 4R-5S, G/55 d5. Open to all players Grades K-12 to 4-player teams from the same school. Team rating Average April 2014. **EF per team:** \$100 by 3/08; \$120 by 4/4 & \$140 after 4/4. Only advanced registrations and must be made online at Chesseducators.com, **deadline Thursday, April 10 at 9pm.** Registrations include: Team name and School, Captain, players full names, USCF Expiration, ID numbers and ratings in board order. **USCF rated & FIDE rapid rated. Schedule:** Rd. 1 9am, Rd. 2. 11:15am, Rd. 3. 1:30 pm & Rd. 4. 3:45pm. Award 6:15-7 pm. **Awards:** Medals for all players, Trophies winning teams- plaques for Schools and Coaches. Prizes: 1-3 Place teams overall; Top HS team (grades 9-12 same school); Top Middle School (grades 6-8 same school); Top Elementary School (grades 3-5 same school); Top Primary School (grades K-2); Top Girls School Team & Best Player 1-4 Boards overall. Contact: International Organizer: Beatriz Marinello. Email: Info@chesseducators.com. Tel. 917-553-4522.

### Apr. 17, Marshall 4 Rated Games Tonight!

4-SS, G/25 d5. Marshall CC, 23 W. 10th St., NYC. 212-477-3716. **EF:** \$40, members \$25, GMs free. **Prizes:** (\$5530 based on 32 paid entries: \$200-100-50, U2200 \$95, U2000 \$85. **Reg.:** 6:15-6:45 pm. **Rds.:** 7-8:15-9:30-10:45. One bye available, request at entry. NOW ALSO FIDE RAPID RATED!

### Apr. 18, Marshall Friday U2000 Action!

4-SS, G/25 d5. Marshall CC, 23 W. 10th St., NYC. 212-477-3716. **EF:** \$40, members \$20. **(\$360/24):** \$160-80, U1800 \$65, U1600 \$55. **Reg.:** 6:15-6:45. **Rds.:** 7-8:15-9:30-10:45. One bye available, request at entry. NOW ALSO FIDE RAPID RATED!

### Apr. 19, Marshall Saturday G/60!

4-SS, G/55 d5. Marshall CC, 23 W. 10th St., NYC. 212-477-3716. **(\$540/40):** \$240-120, U2000 95, U1700 85. **EF:** \$40, members \$20. **Reg.:** 11:15-11:45. **Rds.:** 12-2:30-4:45-7. One bye available, request at entry. www.marshallchessclub.org.

### Apr. 20, Marshall Sunday G/45!

4-SS, G/40 d5. Marshall CC, 23 W. 10th St., NYC. 212-477-3716. **Two sections: A. Open (\$360/26):** \$160-80, U2100 65, U1800 55. **B. U1600 (\$240/18):** \$120-65, U1200 55. **EF:** \$40, members \$20. **Reg.:** 11:15-11:45. **Rds.:** 12-1:45-4:00-5:45. One bye available, request at entry. www.marshallchessclub.org.

### Chess Magnet School Junior Grand Prix!

**Apr. 23, 30, May 7, 14, 21, Marshall Wednesday U1400!**  
5-SS, G/85 d5. Marshall CC, 23 W. 10th St., NYC. 212-477-3716. **EF:** \$50, members \$30. **(\$450/24):** \$240-120, U1100 \$90. **Reg.:** 6:15-6:45. **Rds.:** 7 pm each Wed. Limit two byes, request by Rd. 3. www.marshallchessclub.org.

### Chess Magnet School Junior Grand Prix!

**Apr. 23, 30, May 7, 14, 21, Marshall Wednesday U2000!**  
5-SS, 30/85 d5, SD/1 d5. Marshall CC, 23 W. 10th St., NYC. 212-477-3716. **EF:** \$50, members \$30. **(\$450/24):** \$240-120, U1700 \$90. **Reg.:** 6:15-6:45. **Rds.:** 7 pm each Wed. Limit two byes, request by Rd. 3. www.marshallchessclub.org.

### Apr. 24, Marshall 4 Rated Games Tonight!

4-SS, G/25 d5. Marshall CC, 23 W. 10th St., NYC. 212-477-3716. **EF:** \$40, members \$25, GMs free. **Prizes:** (\$5530 based on 32 paid entries: \$200-100-50, U2200 \$95, U2000 \$85. **Reg.:** 6:15-6:45 pm. **Rds.:** 7-8:15-9:30-10:45. One bye available, request at entry. NOW ALSO FIDE RAPID RATED!

### Chess Magnet School Junior Grand Prix!

**Apr. 24, May 1, 8, 15, 22, Marshall FIDE Thursdays!**  
5-SS, G/120 d5. Marshall CC, 23 W. 10th St., NYC. 212-477-3716. **EF:** \$50, members \$30. **(\$500 b/28):** \$175-125-100, U2000 \$100. 2 byes OK, commit before round 4. **Reg.:** 6:15-6:45. **Rds.:** 7PM each Monday. FIDE rated. Limit 2 byes, request by rd. 3. www.marshallchessclub.org.

### Apr. 25, Marshall \$500 FIDE Blitz! (BLZ)

See Grand Prix.

### Apr. 26, Marshall Saturday U1800!

4-SS, G/40 d5. Marshall CC, 23 W. 10th St., NYC. 212-477-3716. **(\$300/24):** \$160-80, U1500 \$60. **EF:** \$40, members \$20. **Reg.:** 12:15-12:45. **Rds.:** 1-2:45-4:30-6:15. One bye available, request at entry. www.marshallchessclub.org.

### May 1, Marshall 4 Rated Games Tonight!

4-SS, G/25 d5. Marshall CC, 23 W. 10th St., NYC. 212-477-3716. **EF:** \$40, members \$25, GMs free. **Prizes:** (\$5530 based on 32 paid entries: \$200-100-50, U2200 \$95, U2000 \$85. **Reg.:** 6:15-6:45 pm. **Rds.:** 7-8:15-9:30-10:45. One bye available, request at entry. NOW ALSO FIDE RAPID RATED!

### Chess Magnet School Junior Grand Prix!

**May 2-4, 3-4 or 4, NEW! Marshall May Super FIDE U2300!**  
Open to players rated below 2300 USCF. 5-SS, 40/2 d5 SD/30 d5. Marshall CC, 23 W. 10th St., NYC. 212-477-3716. **EF:** \$60, members

\$40. \$820 gtd: \$300-150-100, U2000 \$145, U1700 \$125. **Reg. ends 15 min before Rd. 3 schedules: 3 day 8/9 6pm, 8/10-11 12:30-5:30. 2 day 8/10 11am,** then merge with 3day (Rd. 1 G/25 d5). **1 day 8/11 9-10:10-11:20,** then merge with 2&3 day (Rd. 1-3 G/25 d5) Limit 2 byes, request at entry. USCF & FIDE rated. www.marshallchessclub.org.

### May 6, NEW! Marshall Tuesday FIDE Action!

4-SS, G/25 d5. Marshall CC, 23 W. 10th St., NYC. 212-477-3716. **EF:** \$40, members \$20. **(\$360/24):** \$160-80, U2100 \$65, U1800 \$55. **Reg.:** 6:15-6:45. **Rds.:** 7-8:15-9:30-10:45. One bye available, request at entry. www.marshallchessclub.org. NOW ALSO FIDE RAPID RATED!

### May 8, Marshall 4 Rated Games Tonight!

4-SS, G/25 d5. Marshall CC, 23 W. 10th St., NYC. 212-477-3716. **EF:** \$40, members \$25, GMs free. **Prizes:** (\$5530 based on 32 paid entries: \$200-100-50, U2200 \$95, U2000 \$85. **Reg.:** 6:15-6:45 pm. **Rds.:** 7-8:15-9:30-10:45. One bye available, request at entry. NOW ALSO FIDE RAPID RATED!

### May 9, Marshall Friday U2000 Action!

4-SS, G/25 d5. Marshall CC, 23 W. 10th St., NYC. 212-477-3716. **EF:** \$40, members \$20. **(\$360/24):** \$160-80, U1800 \$65, U1600 \$55. **Reg.:** 6:15-6:45. **Rds.:** 7-8:15-9:30-10:45. One bye available, request at entry. www.marshallchessclub.org.

### May 10, Marshall Saturday G/60!

4-SS, G/55 d5. Marshall CC, 23 W. 10th St., NYC. 212-477-3716. **(\$540/40):** \$240-120, U2000 95, U1700 85. **EF:** \$40, members \$20. **Reg.:** 11:15-11:45. **Rds.:** 12-2:30-4:45-7. One bye available, request at entry. www.marshallchessclub.org.

### May 11, Marshall Sunday G/45!

4-SS, G/40 d5. Marshall CC, 23 W. 10th St., NYC. 212-477-3716. **Two sections: A. Open (\$360/26):** \$160-80, U2100 65, U1800 55. **B. U1600 (\$240/18):** \$120-65, U1300 55. **EF:** \$40, members \$20. **Reg.:** 11:15-11:45. **Rds.:** 12-1:45-4:00-5:45. One bye available, request at entry. www.marshallchessclub.org.

### Chess Magnet School Junior Grand Prix!

**May 12, 19, 26, June 2, 9, Marshall Monday U1600!**  
5-SS, G/85 d5. Marshall CC, 23 W. 10th St., NYC. **(\$450/20):** \$240-120, U1300 \$90. **Reg.:** 6:15-6:45. **Rds.:** 7 pm each Mon. Two byes available, request by Round 3. www.marshallchessclub.org.

### May 15, Marshall 4 Rated Games Tonight!

4-SS, G/25 d5. Marshall CC, 23 W. 10th St., NYC. 212-477-3716. **EF:** \$40, members \$25, GMs free. **Prizes:** (\$5530 based on 32 paid entries: \$200-100-50, U2200 \$95, U2000 \$85. **Reg.:** 6:15-6:45 pm. **Rds.:** 7-8:15-9:30-10:45. One bye available, request at entry. NOW ALSO FIDE rated.

### May 16-18 or 17-18, 22nd Annual New York State Open

See Chess Life or www.cheststour.com.

### Chess Magnet School Junior Grand Prix!

**May 16, 23, 30, June 6, 13, Marshall Friday Afternoon FIDE!**  
5-SS, G/120 d5. Marshall CC, 23 W. 10th St., NYC. 212-477-3716. **EF:** \$30, Members \$20. **(\$300 b/24):** \$150-75, U2000 \$75. 2 byes OK, commit before round 3. **Reg.:** 12:15-12:45. **Rds.:** 1PM each Friday. FIDE rated. Limit 2 byes, request by rd. 3. www.marshallchessclub.org.

### May 17, Marshall Saturday G/60!

4-SS, G/55 d5. Marshall CC, 23 W. 10th St., NYC. 212-477-3716. **Two sections: A. Open (\$360/26):** \$160-80, U2200 65, U2000 55. **B. U1800 (\$240/18):** \$120-65, U1500 55. **EF:** \$40, members \$20. **Reg.:** 11:15-11:45. **Rds.:** 12-2:30-4:45-7. One bye available, request at entry. www.marshallchessclub.org.

### May 18, Marshall Sunday G/45!

4-SS, G/40 d5. Marshall CC, 23 W. 10th St., NYC. 212-477-3716. **Two sections: A. Open (\$360/26):** \$160-80, U2100 65, U1800 55. **B. U1500 (\$240/18):** \$120-65, U1200 55. **EF:** \$40, members \$20. **Reg.:** 11:15-11:45. **Rds.:** 12-1:45-4:00-5:45. One bye available, request at entry. www.marshallchessclub.org.

### May 20, Marshall Masters!

See Grand Prix.

### May 22, Marshall 4 Rated Games Tonight!

4-SS, G/25 d5. Marshall CC, 23 W. 10th St., NYC. 212-477-3716. **EF:** \$40, members \$25, GMs free. **Prizes:** (\$5530 based on 32 paid entries: \$200-100-50, U2200 \$95, U2000 \$85. **Reg.:** 6:15-6:45 pm. **Rds.:** 7-8:15-9:30-10:45. One bye available, request at entry. NOW ALSO FIDE rated.

### May 23, Marshall \$500 FIDE Blitz! (BLZ)

See Grand Prix.

### May 24, Marshall Saturday U1800!

4-SS, G/40 d5. Marshall CC, 23 W. 10th St., NYC. 212-477-3716. **(\$300/24):** \$160-80, U1500 \$60. **EF:** \$40, members \$20. **Reg.:** 12:15-12:45. **Rds.:** 1-2:45-4:30-6:15. One bye available, request at entry. www.marshallchessclub.org.

### May 26, Memorial Day Action GP!

See Grand Prix.

### Chess Magnet School Junior Grand Prix!

**May 28, June 4, 11, 18, 25, Marshall Wednesday U1400!**  
5-SS, G/85 d5. Marshall CC, 23 W. 10th St., NYC. 212-477-3716. **EF:** \$50, members \$30. **(\$450/24):** \$240-120, U1100 \$90. **Reg.:** 6:15-6:45. **Rds.:** 7 pm each Wed. Limit two byes, request by Rd. 3. www.marshallchessclub.org.

### Chess Magnet School Junior Grand Prix!

**May 28, June 4, 11, 18, 25, Marshall Wednesday U2000!**  
5-SS, 30/85 d5, SD/1 d5. Marshall CC, 23 W. 10th St., NYC. 212-477-3716. **EF:** \$50, members \$30. **(\$450/24):** \$240-120, U1700 \$90. **Reg.:** 6:15-6:45. **Rds.:** 7 pm each Wed. Limit two byes, request by Rd. 3. www.marshallchessclub.org.

### May 29, Marshall 4 Rated Games Tonight!

4-SS, G/25 d5. Marshall CC, 23 W. 10th St., NYC. 212-477-3716. **EF:** \$40, members \$25, GMs free. **Prizes:** (\$5530 based on 32 paid entries:

\$200-100-50, U2200 \$95, U2000 \$85. **Reg.:** 6:15-6:45 pm. **Rds.:** 7-8:15-9:30-10:45. One bye available, request at entry. NOW ALSO FIDE rated.

### Chess Magnet School Junior Grand Prix!

**May 29, June 5, 12, 19, 26, Marshall FIDE Thursdays!**  
5-SS, G/120 d5. Marshall CC, 23 W. 10th St., NYC. 212-477-3716. **EF:** \$50, Members \$30. **(\$500 b/28):** \$175-125-100, U2000 \$100. 2 byes OK, commit before round 4. **Reg.:** 6:15-6:45. **Rds.:** 7PM each Thursday. FIDE rated. Limit 2 byes, request by rd. 3. www.marshallchessclub.org.

### May 31, The Right Move Foundation Presents: Make Your First Right Move To Newburgh!

4-SS, G/30 d/5, open to all born after 5/31/94. O'Connor Hall, St. Francis of Assisi Church, 145 Benkard Ave. (corner of Avoca & Benkard), Newburgh, NY 12550. **3 sections. Varsity,** open to all. Free Entry to 2014 NYS Championship in Albany to 1st (courtesy of Continental Chess). **Junior-Varsity,** U1400 or Unr. **Novice,** U1000 or unr. **All: Free Entry!** Trophies: top 3, top unr. & top 2 teams (top 4 scores from same school) each section. Medals to 2.5/more not winning trophy. Speed playoff for 4-0. **Mixed Doubles Bonus prizes** (best male/female 2 player "team" combined score among all sections): \$30-20-10. **Mixed Doubles** do not have to attend same school, average rating must be U1800 and may play in different sections, M.D. "teammate" pairings avoided but possible, must declare by 12 pm. **Mail entries by 5/23:** list name, ID# (USCF membership required), section, school, grade, D.O.B, address, email, phone: **Chess Center of NY, PO Box 4615, New Windsor, NY 12553. Online entries at www.chesscenter.org** thru 6 pm 5/29. **NO ONSITE REGISTRATION** except at TD discretion before 9:15 am. **Players not present by 9:30 am may be removed from pairings. Rounds:** 10 am-12:10-30-3 pm. Limit 2 byes, commit by 12 pm. **Info:** www.chesstrm.org. **Questions:** chesscenter@gmail.com, 347-201-2269. Bring clocks!

### May 31, Marshall Saturday G/60!

4-SS, G/55 d5. Marshall CC, 23 W. 10th St., NYC. 212-477-3716. **Two sections: A. Open (\$360/26):** \$160-80, U2200 65, U2000 55. **B. U1800 (\$240/18):** \$120-65, U1500 55. **EF:** \$40, members \$20. **Reg.:** 11:15-11:45. **Rds.:** 12-2:30-4:45-7. One bye available, request at entry. www.marshallchessclub.org.

### June 1, Marshall Sunday G/45!

4-SS, G/40 d5. Marshall CC, 23 W. 10th St., NYC. 212-477-3716. **Two sections: A. Open (\$360/26):** \$160-80, U2100 65, U1800 55. **B. U1500 (\$240/18):** \$120-65, U1200 55. **EF:** \$40, members \$20. **Reg.:** 11:15-11:45. **Rds.:** 12-1:45-4:00-5:45. One bye available, request at entry. www.marshallchessclub.org.

### June 3, Marshall Tuesday FIDE Action!

4-SS, G/25 d5. Marshall CC, 23 W. 10th St., NYC. 212-477-3716. **EF:** \$40, members \$20. **(\$360/24):** \$160-80, U2100 \$65, U1800 \$55. **Reg.:** 6:15-6:45. **Rds.:** 7-8:15-9:30-10:45. One bye available, request at entry. www.marshallchessclub.org. NOW ALSO FIDE RAPID RATED!

### June 5, Marshall 4 Rated Games Tonight!

4-SS, G/25 d5. Marshall CC, 23 W. 10th St., NYC. 212-477-3716. **EF:** \$40, members \$25, GMs free. **Prizes:** (\$5530 based on 32 paid entries: \$200-100-50, U2200 \$95, U2000 \$85. **Reg.:** 6:15-6:45 pm. **Rds.:** 7-8:15-9:30-10:45. One bye available, request at entry. NOW ALSO FIDE rated.

### Chess Magnet School Junior Grand Prix!

**June 6-8, 7-8 or 8, NEW! Marshall June Super FIDE U2300!**  
Open to players rated below 2300 USCF. 5-SS, 40/2 d5 SD/30 d5. Marshall CC, 23 W. 10th St., NYC. 212-477-3716. **EF:** \$60, members \$40. \$820 gtd: \$300-150-100, U2000 \$145, U1700 \$125. **Reg. ends 15 min before Rd. 3 schedules: 3 day 8/9 6pm, 8/10-11 12:30-5:30. 2 day 8/10 11am,** then merge with 3day (Rd. 1 G/25 d5). **1 day 8/11 9-10:10-11:20,** then merge with 2&3 day (Rd. 1-3 G/25 d5) Limit 2 byes, request at entry. USCF & FIDE rated. www.marshallchessclub.org.

### June 7, Marshall Saturday U1600!

4-SS, G/40 d5. Marshall CC, 23 W. 10th St., NYC. 212-477-3716. **(\$300 b/24):** \$160-80, U1300 \$60. **EF:** \$40, members \$20. **Reg.:** 12:15-12:45. **Rds.:** 1-2:45-4:30-6:15PM. One bye available, request at entry. www.marshallchessclub.org.

### June 12, Marshall 4 Rated Games Tonight!

4-SS, G/25 d5. Marshall CC, 23 W. 10th St., NYC. 212-477-3716. **EF:** \$40, members \$25, GMs free. **Prizes:** (\$5530 based on 32 paid entries: \$200-100-50, U2200 \$95, U2000 \$85. **Reg.:** 6:15-6:45 pm. **Rds.:** 7-8:15-9:30-10:45. One bye available, request at entry. NOW ALSO FIDE rated.

### Chess Magnet School Junior Grand Prix!

**June 12-16, 2014 North American Youth Championship**  
9SS, G/90 + 30-sec. Inc., Doubletree Tarrytown Hotel, 455 South Broadway, Tarrytown, NY 10591, USA. Hotel Rate: \$139, mention CHESS. Reserve by May 10, 2014, 1-914-631-5700. Free Parking, Free Internet and Complementary Shuttle Service within a 5-mile radius. **FIDE Titles and Norms Awarded! 12 Sections:** Under 18, 16, 14, 12, 10 and 8, both Open and Girls. Age as of January 1, 2014. Trophies to Top 5 in each Section. **Titles and Norms Awarded: U18:** Gold (1st, on Tie-Breaks, if Necessary) – IM/WIM Title; 1st Equal (down to 3rd place on tie-breaks) – IM/WIM Norm; Silver & Bronze (2nd and 3rd on Tie-Breaks, if Necessary) – FM Title. **U16:** Gold – IM/WIM Norm; 1st Equal (down to 3rd place on tie-breaks) – FM Title; Silver & Bronze – CM Title. **U14 & U12:** Gold – FM Title; Silver & Bronze – CM Title. **U10 & U8** – First Equal (down to 3rd place on tie-breaks) – Silver Title. **U10 & U8** – CM Title. Sections with less than 8 players may be combined. FIDE Rules. USCF and FIDE rated. Highest Rating (FIDE, USCF, Canadian, Mexican) used for pairing purposes, June Rating Lists. **Tournament Entry Fee: \$100** Per Player by April 11, \$115 by May 16, \$135 after May 16. USCF Membership is required for USA Players. No half-points byes, only zero-point byes. **On-site registration** June 12 from 9:30am-4pm. Players registering after 4pm will receive a zero-point bye for Rd. 1 and will commence play on Rd. 2. **Schedule: Thursday, June 12:** Check-In starts at 9:30am, Round 1 – 6pm. **Friday:** Round 2 – 11am, Round 3 – 5pm, **Saturday:** Round 4 – 10am, Round 5 – 6pm. **Sunday:** Round 6 – 11am, Round 7 – 5pm. **Monday:** Round 8 – 8:30am, Round 9 – 1:30pm. Awards Ceremony – 6pm. **Blitz:** Thursday,



June 12 at 11am (Onsite registration until 10am). Countries may register only one official player in each of the 12 main event sections but may register any number of additional players. **For more information** please visit the official event website: [www.chesseducators.com/2014/01/09/the-north-american-youth-chess-championship-returns-to-the-usa/](http://www.chesseducators.com/2014/01/09/the-north-american-youth-chess-championship-returns-to-the-usa/). Contact: 10 Beatriz Marinello, [info@chesseducators.com](mailto:info@chesseducators.com), (917) 553-4522.

#### June 13, Marshall Friday U2000 Action!

4-SS, G/25 d5. Marshall CC, 23 W. 10th St., NYC. 212-477-3716. **EF:** \$40, members \$20. **(\$360/24):** \$160-80, U1800 \$65, U1600 \$55. **Reg.:** 6:15-6:45. **Rds.:** 7-8:15-9:30-10:45. One bye available, request at entry. [www.marshallchessclub.org](http://www.marshallchessclub.org).

#### June 14, Marshall Saturday G/60!

4-SS, G/55 d5. Marshall CC, 23 W. 10th St., NYC. 212-477-3716. **Two sections: A. Open** (\$360/26): \$160-80, U2200 65, U2000 55. **B. U1800** (\$240/18): \$120-65, U1500 55. **EF:** \$40, members \$20. **Reg.:** 11:15-11:45. **Rds.:** 12-2:30-4:45-7. One bye available, request at entry. [www.marshallchessclub.org](http://www.marshallchessclub.org).

#### June 15, Marshall Sunday G/45!

4-SS, G/40 d5. Marshall CC, 23 W. 10th St., NYC. 212-477-3716. **Two sections: A. Open** (\$360/26): \$160-80, U2100 65, U1800 55. **B. U1500** (\$240/18): \$120-65, U1200 55. **EF:** \$40, members \$20. **Reg.:** 11:15-11:45. **Rds.:** 12-1:45-4:00-5:45. One bye available, request at entry. [www.marshallchessclub.org](http://www.marshallchessclub.org).

#### July 25-27 or 26-27, 13th annual Manhattan Open

See *Chess Life* or [www.chesstour.com](http://www.chesstour.com).

## North Carolina

#### May 3, Southern Girls Regional Chess Championship

Open to girls ages 4-19 residing in NC, SC, GA, TN, VA and AL. **EF:** \$25 through 4/19. \$30 plus online fees after 4/19. \$35 on-site. All participants in Championship, U1000 and U500 are required to be members of the US Chess Federation (USCF), [www.uschess.org](http://www.uschess.org). **Location:** Providence Day School, 5800 Sardis Rd., Charlotte, NC 28270. **Sections & Prizes: Championship:** Winner: \$500 cash college scholarship. Trophies: Top 5 ind & top 2 teams. Medals: 6-10 ind. 3-SS, G/60 d5. **Rds.:** 9:30, 12:30, 3. **U1000:** Trophies: Top 8 ind & top 2 teams. Medals: 9-12 ind. 4-SS,

G/45 d5. **Rds.:** 9:30, 11:15, 1:30, 3:15. **U500:** Trophies: Top 8 ind & top 2 teams. Medals: 9-12 ind. 4-SS, G/30 d5. **Rds.:** 9:30, 11:15, 1:30, 3:15. **Unrated:** Trophies: Top 5 ind. Medals: 6-10 ind. **Rds.:** 9:30, 11:15, 1:30, 3:15. **Contact:** Elena Salazar (704) 840-5622 or Jessica Prescott: [jprescott@overthechessboard.com](mailto:jprescott@overthechessboard.com). **Online reg.:** [www.overthechessboard.com/online-registration](http://www.overthechessboard.com/online-registration).

## Pennsylvania

#### Apr. 16-20, 17-20, 18-20 or 19-20, 8th annual Philadelphia Open

See *Chess Life* or [www.chesstour.com](http://www.chesstour.com).

#### Chess Magnet School Junior Grand Prix! A State Championship Event!

#### Apr. 26-27, 2014 PA State Amateur Championship

Comfort Inn, 58 SR 93, West Hazleton, PA 18202, 1/2 mile from Exit 145 off I81. **2 Sections: Champ (Sat & Sun):** Open to U2200. 5SS, G/90 d5. **Rds.:** 10-1:30-5, 9:30-1. **EF:** \$20 rec'd by 4/22, \$30 later. Trophies: 1-3, U1800, U1600, U1400, U1200/Unrated, School Team (top 4 scores). Top 2 receive free entry into 2015 PA State Amateur Champ. Title to top PA resident. **Scholastic (Sat only):** unrated or U1400 in grades K-12. 4SS, G/40 d5. **Rds.:** 10-11:30-1-2:30. **EF:** \$15 rec'd by 4/22, \$20 later. Trophies: 1-2, U1000, U800/Unrated, School Team (top 4 scores). **ALL:** Reg.: 9-9:45am, PSCF \$5, OSA. **HR:** 570-455-9300, 1-877-424-6423, \$70. Ent/Info: GHACC, c/o Michael Jemo, 128 Forest Hills Acres, Hazle Twp., PA 18201-9601, [jem023@ptd.net](mailto:jem023@ptd.net), 570-455-9261.

#### Chess Magnet School Junior Grand Prix!

#### May 2-4 or 3-4, 15th annual Pittsburgh Open

See *Chess Life* or [www.chesstour.com](http://www.chesstour.com).

## Tennessee

#### June 7-8, 2014 U.S. Amateur South Championship

See Nationals.

## Texas

#### Apr. 12-13, 2014 DCC Fide Open III

See Grand Prix.

#### May 3-4, 2014 DCC Fide Open IV

See Grand Prix.

#### May 9-11, 2014 National Elementary (K-6) Championship

See Nationals.

#### May 23-26 or 24-26, Texas State and Amateur Championships

See Grand Prix.

#### July 11-13, 2014 U.S. Junior Open

See Nationals.

## Virginia

#### Chess Magnet School Junior Grand Prix!

#### June 28-29, 6th annual World Open Under 13 Championship

6SS, G/60 d10. Hyatt Regency Crystal City, Arlington (see World Open for location, rates). Open to all born after 6/29/01. In 4 sections. **Open Section:** Trophies to top 10, 1st C, Under 1400/Unr; free entry in all CCA tournaments 7/17/14-12/31/14 to 1st. **Under 1400 Section:** Trophies to top 10, 1st Under 1200, Unrated; free entry in all CCA tournaments 7/17/14-9/30/14 to 1st. **Under 1000 Section:** Trophies to top 10, 1st Under 800, Unrated; free entry in all CCA tournaments 7/17/14-9/30/14 to 1st. **Under 600 Section:** Trophies to top 10, 1st Under 400, top 3 Unrated; free entry in all CCA tournaments 7/17/14-9/30/14 to 1st. **EF:** \$42 online at [chessaction.com](http://chessaction.com) by 6/23, \$44 mailed by 6/17, \$45 phoned to 406-896-2038 by 6/17, \$50 at site, or online until 9 am 6/28. Special 1 year USCF dues with magazine if paid with entry: Online at [chessaction.com](http://chessaction.com), \$20 with Chess Life, \$15 with Chess Life for Kids. Mailed, phoned or at site, \$30 with Chess Life, \$20 with Chess Life for Kids. **Reg.:** 6/28 to 10 am, rds. Sat. 11-2-5, Sun. 10-1-4. 2 half point byes allowed, must commit before rd. 3. **Ent:** [chessaction.com](http://chessaction.com) or Continental Chess, PO Box 8482, Pelham, NY 10803. Questions: [chesstour.com](http://chesstour.com), [chesstour@chessaction.com](mailto:chesstour@chessaction.com), DirectorAtChess.US, 347-201-2269. \$15 service charge for refunds.

#### July 2-6, 3-6, 4-6 or June 30-July 6, 42nd Annual World Open

See *Chess Life* or [www.chesstour.com](http://www.chesstour.com).

# Answers, We've got Answers.

## Chess Detective (from page 6)

**#1** This position is from a 1928 correspondence game that is between Walkerling and Hanssen. **9. axb4** doesn't look good on the surface because the pawn is pinned to the rook on a1. But after **9. ... Oxa1 10. Nb3** the queen has no escape!

**#2** Since Black is ahead in material with an extra outside passed a-pawn, Black is fine with trading material. He plays **29. ... Qc6** offering to trade queens. If White plays **30. Qa7**, after **30. ... Ra8** she is trapped. The game continued, **30. Qxc6 Rxc6** and Black went on to eventually win. This position occurred in a game between Randy Canney and Todd Bardwick in the 1994 Colorado Closed.

**#3** This is a position from the 2009 Karpov Tournament between Emil Sutovsky and Ernesto Inarkiev. White takes away the remaining escape

squares and traps the black queen in the middle of the board by playing, **21. Qa3+ Kg8 22. Re5, Black resigned.**

**#4** This position occurred in 1948 in Budapest, Hungary, in a game between Jozsef Szily and Svetozar Gligoric. Black traps White's queen by playing, **20. ... Bxf3! 21. Nxf3** (21. gxf3 Qxd2 wins the knight on d2) **21. ... Nc4, White resigned.**

**#5** White traps Black's lady by playing, **15. axb4! Qxb4 16. Nd3 Qd4 17. e3 Qc4 18. b3, Black resigned.** This position occurred between Aleksandr Lenderman and Mikhail Ivanov in Reykjavik, Iceland, 2010.

**#6** This position is from the 2009 World Cup between Baadur Jobava and Alexander Grischuk. White gets caught pawn grabbing. Black traps the queen by playing, **13. ... Nc5 14. Qc6 Rc8 15. Qb5 Rb8 16. Qc6**

**Rb6, White resigned.** After 12. ... c4, White should have saved his queen with 13. Qd1.

## We Did It! (from page 16)

**#1** 26. Nxe4#  
McDonnell- Finch, London 1830

**#2** 23. ... Nh6# and 23. ... Qg6#  
Fraenkel-Von Bilguer, Berlin 1839

**#3** 20. Na4#  
Von Heydebrand und der L, Tassilo-NN, Berlin 1842

**#4** 24. ... Ng4#  
Johnston-Judd, Cleveland 1871

**#5** 24. Nf4#  
Tarrasch-Eckart, Nuremberg 1892

**#6** 29. Nxh8#  
Marshall-Moreau, Monte Carlo, 1903

# USCF SALES

The United States' Largest Chess Specialty Retailer



## User Friendly. Full Featured. Affordable.



### Zmart Fun II Digital Chess Clock

Made in the USA by ZmartFun

The Zmart Fun II Digital Chess Clock was designed from the ground up to offer the features that all chess players both demand and need, all at an unbelievably low price.

CLKDZMII-BLK  
CLKDZMII-CLR

\$59.95  
\$59.95

- Customizable Presets
- Blitz and Single Time Control Modes
- Programmable 2 and 3 Time Control Tournament Modes
- Optional Move Counter
- Supports both Delay and Increments - Fischer and Bronstein
- Plus support for other games, including Scrabble®, Shogi and Go (byoyomi), hourglass, and unique dual count

The Official Chess Shop



888.51.CHESS (512.4377)

[www.USCFSales.com](http://www.USCFSales.com)