

Chess Life for Kids!

Winnsboro, SC Pumpkin Festival: A Smash Success!



A USCF Publication

\$3.00



1 2 >

0 74470 27842 9

**Fast, Fun, and
Easy to Use**

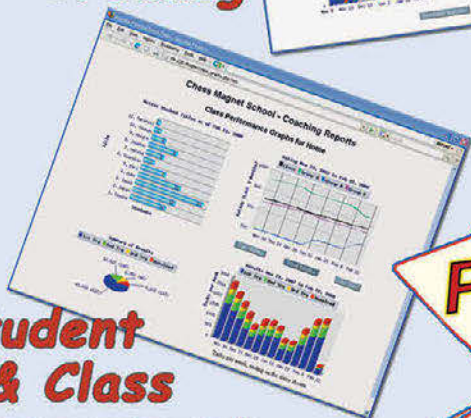
In 2006, and *again* in 2007,
young Chess Magnet students
from Portland, OR, scored 7-0 in the
USCF Spring Nationals.

ChessMagnetSchool.com

Better Than Any Textbook for Learning Chess



**Student
Training**



**Student
& Class
Management**

**"Great Stuff! I just delivered my first
Belgian champion under 10 and
boosted his development
by using ChessMagnetSchool.com"**

- Ton Montforts, Coach
Schaakacademie
Limburg, Belgium

**"Your website was
integral to our team's winning."**

-Mike Hosford, Coach
Alcott Elementary
2008 Washington State
Grades 4-6 Champions

**Proud Sponsor
of the
2014 USCF
Junior Grand Prix!**

**Start Your 30-day Free Trial Today
at
www.ChessMagnetSchool.com**

	1 month	3 months	1 year	1 yr USCF
Individuals	\$6.95	\$15.00	\$29.95	\$26.95
Class/Family	\$6.00	\$12.00	\$25.00	\$22.00

Free to teachers/coaches of at least 5 students
Includes our powerful, easy-to-use Coaching Tools & Reports

Works on Windows and Macintosh
computers (requires internet access)

To learn more, call 650-284-5062
877-378-4319 (US toll-free)
email info@ChessMagnetSchool.com



Table of Contents


Publisher
USCF Executive Director:
Jean Hoffman

Jean.Hoffman@uschess.org

Scholastic Editor: Glenn Petersen

gpetersen@uschess.org

Art Director: Cat Connor

catseyephoto@mac.com

Editorial Asst./Copy Editor: Alan Kantor

akantor@uschess.org

Editorial Assistants:
Jo Anne Fatherly

backtobasics@uschess.org

Jennifer Pearson

jenpearson@uschess.org

Advertising Manager: Joan DuBois

jdubois@uschess.org

Tournament Life: Joan DuBois

tla@uschess.org

Director of Publications: Daniel Lucas

dlucas@uschess.org

CONTRIBUTORS: Send your contributions and articles to *Chess Life for KIDS*, PO Box 3967, Crossville, Tennessee 38557 or better yet, e-mail to gpetersen@uschess.org.

Chess Life for KIDS (USPS 023-567, ISSN: 1932-5894) is published in February, April, June, August, October, and December of every year by the United States Chess Federation, 137 O'Brien Drive, Crossville, Tennessee 38555. Periodical postage paid at Crossville, Tennessee, and additional mailing offices.

CHANGE OF ADDRESS: Be sure to notify us at once of any change of address. Please include your old address and your new address, along with your USCF I.D. number.

POSTMASTER: Send address changes to USCF, PO Box 3967, Crossville, Tennessee 38557.

Annual Scholastic Membership

Regular Scholastic Membership (online version of *Chess Life for Kids*), age 12 or younger, is just \$17 per year. Premium Scholastic Membership (receives *Chess Life for Kids* by mail) is \$24 per year. \$13 of every premium membership goes towards providing *Chess Life for Kids*. Annual subscription rate is \$18. Entire contents copyright 2014, United States Chess Federation.

Teachers may photocopy instructional articles for classroom use, but republication or widespread copying without the written consent of the USCF is forbidden.

- 5 THE CHESS DETECTIVE
- 6 WHAT'S THE QUESTION?
- 7 ARABIAN KNIGHTS
- 8 YOU CAN DO IT!
- 10 ALL AMERICA TEAM
- 14 THE BRIDGE
- 17 S.T.E.M. CHESS CLUB
- 18 TOURNAMENT TROUBLES
- 19 TOURNAMENT LIFE ANNOUNCEMENTS
- 23 ANSWERS, WE'VE GOT ANSWERS.

COVER PHOTO COURTESY OF MIKE MOORE.
 Eli Moore took on all comers (15-1-0) for Midlands S.T.E.M. Institute at the Winnsboro Pumpkin Festival


MyChessGuru.com

Chess Coaching Online

Learn winning chess openings, tactics, and endgame technique from the masters one-to-one in the comforts of your own home.

Started in 2009 and completed more than 15,000 hours of online coaching to over 600 students in the USA.

FIDE certified chess coaches including Grand Masters. Prices starting at \$12 per hour.

Visit www.mychessguru.com and sign-up for a free try today. Contact us at mychessguru@gmail.com or (732) 207-6203.

U.S. Postal Service. Statement of Ownership, Management, and Circulation (required by 39 U.S.C. 3685). (1) Title of publication: Chess Life For Kids. (2) Publication number: 023-567. (3) Date of filing: September 26, 2014. (4) Frequency of issue: Bi-monthly. (5) No. of issues published annually: 6. (6) Annual subscription price: \$18. (7) Complete mailing address of known office of publication (street, city, county, state, and ZIP code) (Not printers): P.O. Box 3967, 137 Obrien Dr., Crossville, TN 38557 (8) Complete mailing address of the headquarters of general business office of the publisher (Not printers): PO Box 3967, 137 Obrien Dr., Crossville, TN 38557. (9) Full names/complete mailing addresses of publisher, editor, and managing editor (this item must not be blank). Publisher (name/complete mailing address): Jean Hoffman, USCF, PO Box 3967, 137 Obrien Dr., Crossville, TN 38557. Editor (name/complete mailing address): Glenn Petersen, P.O. Box 3967, 137 Obrien Dr., Crossville, TN 38557. Managing Editor (name and complete mailing address): same as above. (10) Owner. (If owned by a corporation, its name and address must be stated and also immediately there under the names and addresses of stockholders owning or holding 1 percent or more of total amount of stock. If not owned by a corporation, the names and addresses of the individual owners must be given. If owned by a partnership or other incorporated firm, its name and address, as well as that of each individual must be given. If the publication is published by a nonprofit organization, its name and address must be stated.) (Do not leave blank.): United States Chess Federation, PO Box 3967, 137 Obrien Dr., Crossville, TN 38557. (11) Known bondholders, mortgagees, and other security holders owning or holding 1 percent or more of total amount of bonds, mortgages or other securities (if there are none, so state): none. (12) For completion by nonprofit organizations authorized to mail at special rates section 423.12, DMM only). The purpose, function, and nonprofit status of this organization and tax exempt status for Federal income tax purposes (check one): \square has not changed during preceding 12 months; \square has changed during preceding 12 months. (If changed, publisher must submit explanation of change with this statement.) (13) Publication Name: Chess Life For Kids. (14) Issue Date for Circulation Data Below: August 2014. (15) Extent and nature of circulation. (a) Total number copies printed (net press run): average number copies each issue during preceding 12 months, 9,968; actual number copies of single issue published nearest to filing date, 10,267. (b) Paid and/or requested circulation: (1) Paid/requested outside-county mail subscriptions: average number copies each issue during preceding 12 months, 8,781; actual number copies of single issue published nearest to filing date, 8,680. (2) Paid in-county subscriptions (include advertisers's proof copies/exchange copies): average number copies each issue during preceding 12 months, 0; actual number copies of single issue published nearest to filing date, 0. (3) Sales through dealers and carriers, street vendors, and counter sales (not mailed): average number copies each issue during preceding 12 months, 29; actual number copies of single issue published nearest to filing date, 32. (4) Paid distribution by other classes of mail through the USPS (e.g. First Class Mail): average number copies each issue during preceding 12 months, 3; actual number copies of single issue published nearest to filing date, 3. (C) Total paid and/or requested circulation (sum of 15b (1), (2), (3), and (4)): average number copies each issue during preceding 12 months, 8,813; actual number copies of single issue published nearest to filing date, 8,715. (15d (1), (2), (3). Non requested distribution; average number copies each issue during preceding 12 months, 0; actual number copies of single issue published nearest to filing date, 0. (e) Total non requested distribution (sum of 15d (1), (2), (3): 0; actual number copies of single issue published nearest to filing date, 0. (f) Total distribution (sum of 15c and 15e): average number copies each issue during preceding 12 months, 8,813; actual number copies of single issue published nearest to filing date, 8,715. (g) Copies not distributed: average number copies each issue during preceding 12 months, 1,155; actual number copies of single issue published nearest to filing date, 1,552. (h) Total (sum of 15f and 15g) average number copies each issue during preceding 12 months, 9,968; actual number copies of single issue published nearest to filing date, 10,267. (i) Percent paid. 15c divided by 15f \times 100, per cent on average no. copies each issue during preceding 12 months, 100; per cent on actual no. copies of single issue published nearest filing date, 100. 16. Publication of Statement of Ownership. Publication of this statement will be printed in the December 2014 issue of this publication. 17. I certify that the statements made by me above are correct and complete (signature and title of editor, publisher, business manager, or owner): Jean Hoffman (sig.), Publisher. P.S. Form 3526-R, July 2014.

A match made in heaven!
Play Online USCF Rated Chess!

www.chessclub.com/uscf
Because we care about your rating!

USCF

ICC
Internet Chess Club



The Chess Detective

by NM Todd Bardwick

CHESS BLINDNESS LEADING TO RESIGNATION - PROBLEMS

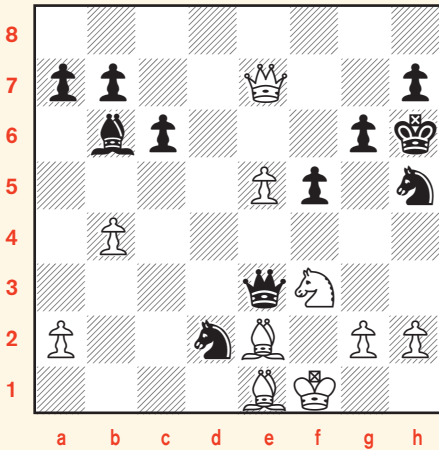
In the October 2014 edition of *Chess Life for Kids*, we looked at some examples where a player resigned in a position he was actually winning!

In these positions from actual games below, the player with the move resigned.

Can you find the hidden resource to save these positions?

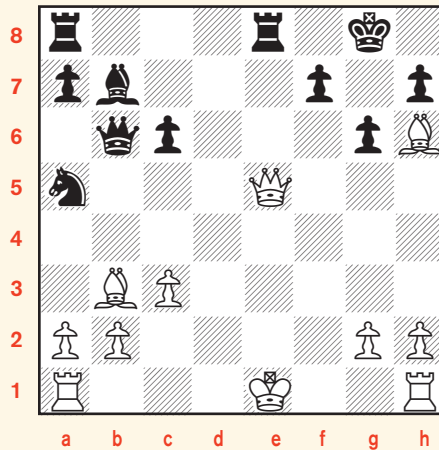
Solutions on page 23

#1



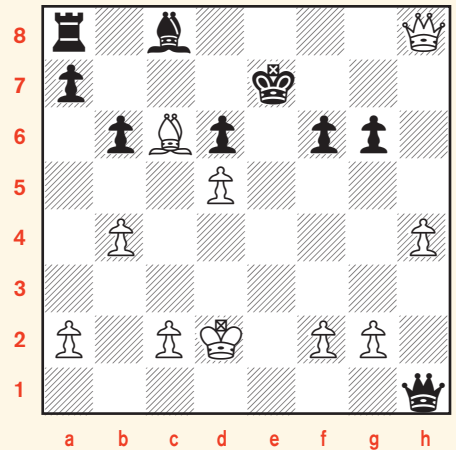
Black's last move was 38. ... N (from e4) d2+
White to move

#3



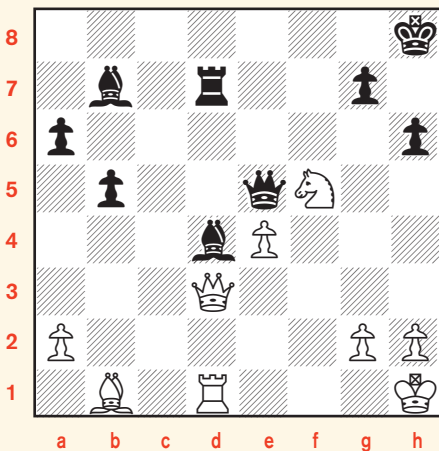
White to move

#5



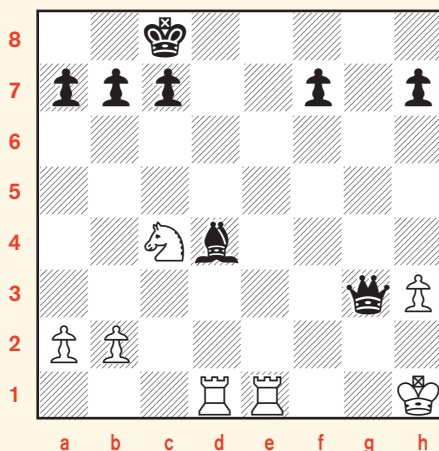
Position after Bc6? (from e8)
Black to move

#2



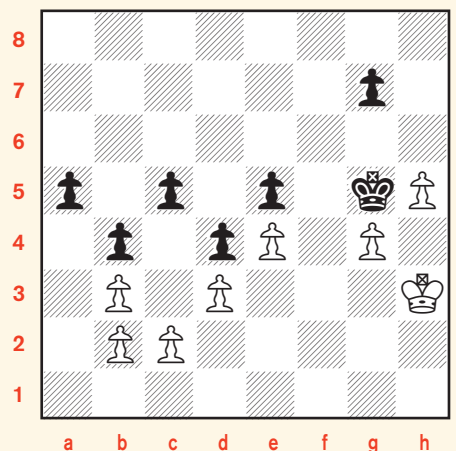
Position after 36. Rd1
Black to move

#4



White to move

#6



Black to move



What's the Question?

by FIDE Master Daniel Gurevich

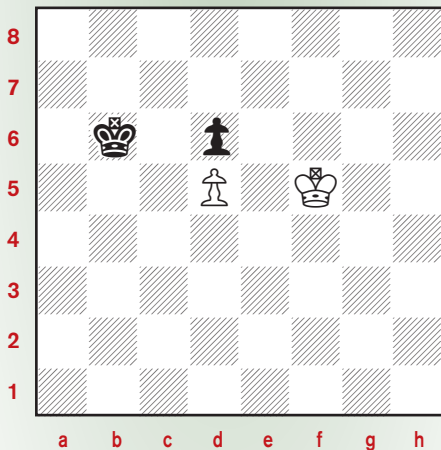
Q: Lucy

What is *Zugzwang*?

A: The word “*Zugzwang*” was invented by German chess players in the mid-19th century, but the idea of *Zugzwang* is much older. Zairab Katai published a shatranj study illustrating a win using *Zugzwang* over 1,000 years earlier.

When a player is in *Zugzwang*, it means that making any move is worse than playing nothing at all. Since passing is never an option in chess, the player is forced to move one of his pieces to a worse square. In positions where the placement of every piece is crucial, *Zugzwang* can be fatal.

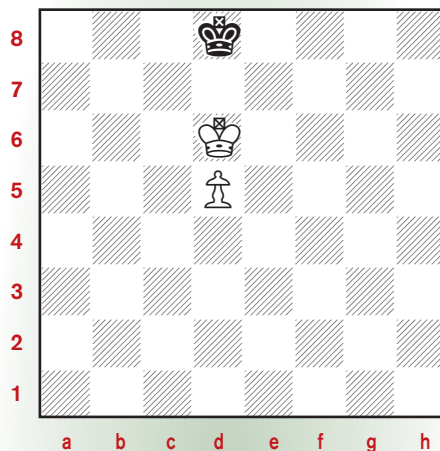
Zugzwang usually occurs in simple endgames. When there are few pieces on the board, each one has an important role and often cannot make waiting moves. Here is an example of a basic endgame where *Zugzwang* decides the game:



Let's say White is to move. Of course, he wants to capture the black pawn, but how? If White attacks it immediately with 1. Ke6??, he ends up in *Zugzwang* after 1. ... Kc5!. A

better idea is 1. Kf6!, threatening 2. Ke7! Kc5 3. Ke6 *Zugzwang*. (Note how the position with kings on e6 and c5 is *Zugzwang* for whichever side is to move, or *mutual Zugzwang*.)

Black can try to defend with 1. ... Kb7 2. Ke6 Kc7 3. Ke7 (*Zugzwang* again) 3. ... Kc8 4. Kxd6 Kd8.



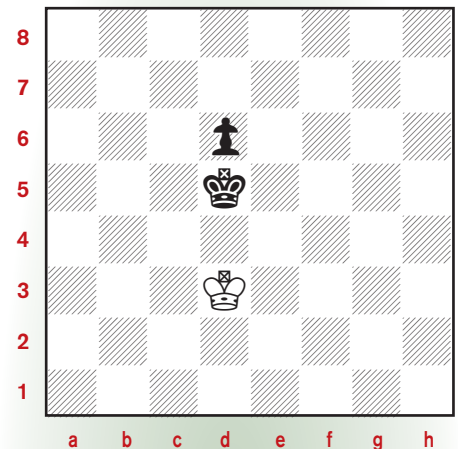
This important theoretical position is winning for White, even though Black has the opposition. When the pawn has reached the fifth rank and the white king is in front of it, it does not matter where the black king is; White can win by using *Zugzwang* to get the enemy king out of the way of the pawn. (On the other hand, with an a- or h-pawn, the king would get stalemated in the corner.)

5. Ke6 Ke8 6. d6 Kd8 7. d7 (*Zugzwang*) 7. ... Kc7 8. Ke7 and White promotes. 1-0

So White to move wins in the original position. What would happen if initially it were Black's move? Take some time and try to figure it out: does Black win, lose, or draw?

Hopefully you saw that 1. ... Kb5! wins the d5-pawn. However, Black's

pawn has not reached the fourth rank, so now White can draw: 2. Ke4 Kc5 3. Ke3! (3. Kd3? Kxd5-+ is mutual *Zugzwang*, so White wants to reach this position with Black to move.) 3. ... Kxd5 4. Kd3



Compare this position to the last diagram. As before, Black cannot make progress without leaving his king behind the pawn. However, since there is more space behind White's king, now he will not have to get out of the way of the pawn. Instead, he can keep blockading until the game ends in stalemate:

4. ... Ke5 5. Ke3 d5 6. Kd3 d4 7. Kd2! 7. Ke2 draws as well, but it is simpler and safer never to retreat diagonally. 7. ... Ke4 8. Ke2 d3+ 9. Kd2 Kd4 10. Kd1 Careful: 10. Ke1?? loses to 10. ... Ke3! (*Zugzwang*). 10. ... Ke3 11. Ke1 d2+ 12. Kd1 Kd3 Stalemate!

You may also come across *Zugzwang* with more pieces on the board. This is less likely because it means more pieces must be defending against threats and thus unable to budge. However, every once in a while, *Zugzwang* can even pop up in the late middlegame, like in the following game

Please turn to page 7



TALES OF THE ARABIAN KNIGHTS

BY RICK KENNEDY ILLUSTRATIONS BY PAMELA KEY



Three Riders

The King looked in on his friend, who was busy painting.

"Two horses ..." he said. "Two riders ...?"

She looked up from the canvas.

"Eventually there will be three horses, and three riders," she said.

Putting down her paintbrush, she continued. "Many years ago, when I was a little girl, my father and my brother rode out to help capture our neighbor's bull that had wandered away. I was certain that they needed my help in such a great adventure, so I ran to my pony and followed them. The three of us were able to capture the beast and

return it."

"Excellent!" said the King, who always had an appreciation for a good tale and a brave undertaking.

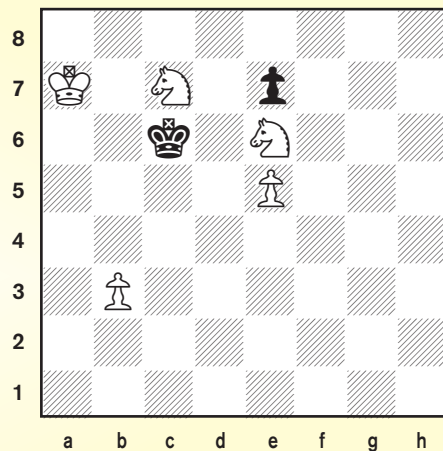
Later on in the day, the King returned, carrying his chessboard and pieces.

"I have always thought of myself as an artist, too," he said, "although my tools are the chess pieces and my canvas is the chess board."

"How true," she said, turning away from her painting.

"I have created a small reminder of your exciting day," continued the King, setting up a position. "It is

also a checkmate in five moves."



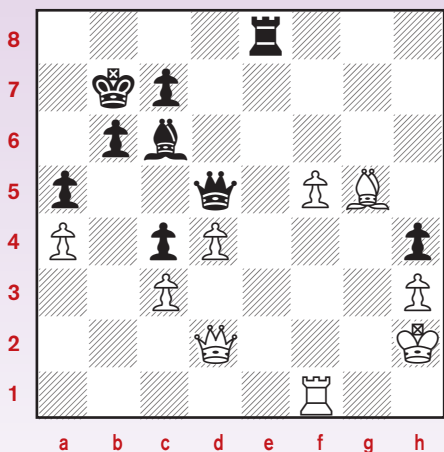
"Excellent!" she said, as she sat down to solve the problem.

Solution on page 23

Question?

Continued from pg. 6

from the 1896-7 world championship match between Wilhelm Steinitz and Emanuel Lasker:



Wilhelm Steinitz – Emanuel Lasker, 1896

Black has a clear advantage. His rook dominates on the open e-file while his queen and bishop create powerful threats against the weak white king. However, White has a strong passed pawn, so Black must be careful not to allow too much counterplay.

Lasker found a surprising *Zugzwang* that wins quickly and decisively.

34. ... Rg8! At first, this move does not look so devastating, but let us consider White's options one by one. He cannot move the f-pawn because his bishop hangs. In turn, the bishop cannot move because of ... Rg2+. The white queen must keep defending the bishop and the g2-square from checkmate. Finally, the rook cannot leave

the first rank because of Qh1#, so White has nothing left but to give up the crucial f5-pawn:

35. Re1 Qxf5 Now White's position is completely hopeless, but Steinitz decided to play on for another few moves. **36. Re5 Qf3 37. d5 Qg3+ 38. Kh1 Qxe5 39. dxc6+ Kxc6 0-1**

If you would like to see some more examples of *Zugzwang*, check out my other *Chess Life for Kids* columns.

[And it is worth the search if you can find a copy of *You Move ... I Win* by Alex Angos, Thinkers' Press, 2005. —Editor]

YOU CAN DO IT!

Alekhine did it. So can you!

by Jon Edwards

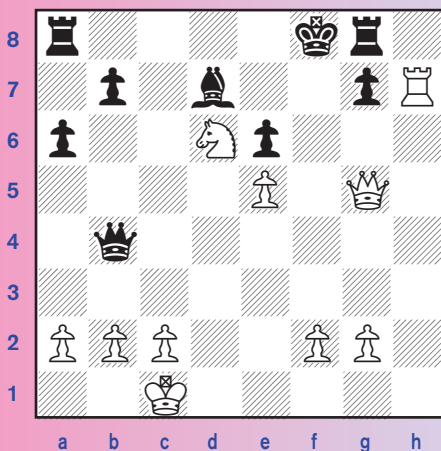
In the last two issues, we reviewed mates that masters missed. Of course, masters become masters because they are usually successful at building and finishing such attacks.

Born in 1892, Alexander Alekhine became the fourth world chess champion. At the young age of 16, he was already among Russia's very top players. At St. Petersburg in 1914, Tzar Nicholas II referred to him and the other top competitors, Emanuel Lasker, José Raúl Capablanca, Frank James Marshall, and Siegbert Tarrasch, as grandmasters, a title that is very much now a fundamental part of our ranking system.

Alekhine became world champion in 1927 by defeating Capablanca in Buenos Aires. Alekhine defended his title twice against Bogolyubov, but a rematch against Capablanca never occurred, much to the regret of the chess world.

Here are six positions in which the great Alekhine found forced mates in two moves. Your task is simple enough. In most of these examples, the enemy king cannot move. Find the forced sequence that ends in mate. The final position is a bit tougher because his opponent's king has an escape square on h5. But I know that you can do it!

#1



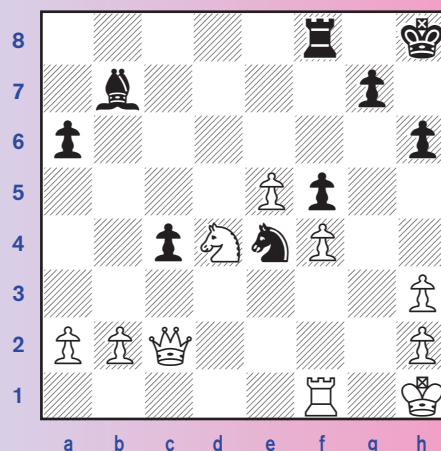
White to move

#3



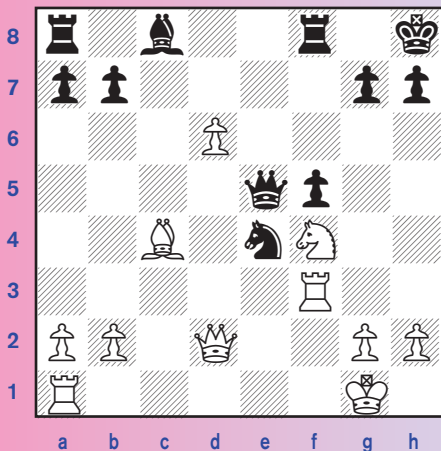
White to move

#5



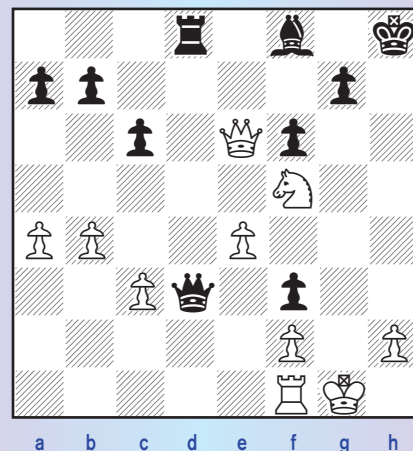
Black to move

#2



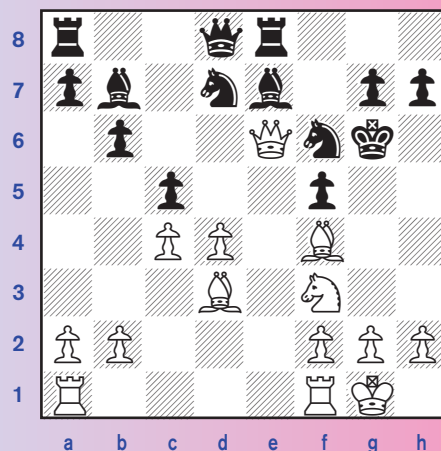
White to move

#4



Black to move

#6



White to move

Solutions on page 23

TROPHIES  **PLUS**
A Champion Defined.

TROPHIES • RIBBONS • MEDALS • CHENILLE • PLAQUES

Show Off.



Show It Off.

Official *Awards* Provider of the



UNITED STATES CHESS FEDERATION

315 W. 1ST STREET • TEMPLETON, IOWA 51463
800-397-9993 • WWW.TROPHIESPLUS.COM • TROPHYMAN@TROPHIESPLUS.COM

2015 Trophies Plus All America Team



Sponsored by 

Once again, it is time to recognize some of our members who have achieved rating milestones in their young careers. And thanks to Trophies Plus of Templeton, Iowa, we can do it every year. Trophies Plus provides the trophies for all of USCF's scholastic events, and each team member receives an All America jacket.

The Trophies Plus motto is "A Champion Defined" and that certainly describes our 2015 All America Team members.

Champions, one and all!

AGE 8 & YOUNGER

(minimum peak rating 1900)



Anthony Bi He
Washington – 1998



Balaji Daggupati
California – 1973



Kevin D. Chor
Arizona – 2110
Candidate Master



Justin Wang
Texas – 1916

Maximillian Lu
Connecticut – 2033
Candidate Master

Logan Wu
Tennessee – 1926



Attreya Vaidya
Texas – 1944



Henry Hawthorn
Texas – 1922

Arthur Guo
Georgia – 1955
Candidate Master



Gabriel Eidelman
California – 1934

Benjamin Medina
New York – 1910



Milind Maiti
California – 1924

AGE 9

(minimum peak rating 2000)



Andrew Zhang Hong
California – 2114



Christopher Yu-Shuo Shen
Ohio – 2070
Candidate Master



David Tianjian Peng
Illinois – 2241
Candidate Master

AGE 12

(minimum peak rating 2250)



Ruifeng Li
Texas – 2425
FIDE Master

Aydin Turgut
Illinois – 2062



Carissa Shiwen Yip
Massachusetts – 2174

Nicolas Checa
New York – 2398



Tan Nguyen
Virginia – 2039
FIDE Master

Thomas Elberling
New Jersey – 2150
(posthumous)
Candidate Master



John Michael Burke
New Jersey – 2280

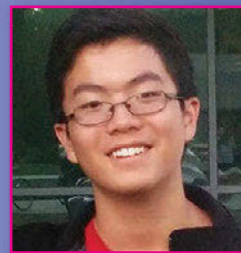


Joaquin K. Perkins
California – 2012
Candidate Master

AGE 11

(minimum peak rating 2250)

Praveen Balakrishnan
New Jersey – 2297



Albert Lu
California – 2302

AGE 10

(minimum peak rating 2150)



Advait Patel
West Virginia – 2258

Michael Wang
California – 2276

Awonder Liang
Wisconsin – 2367
FIDE Master

Please turn to page 12

AGE 13

(minimum peak rating 2300)

Samuel Sevian
Massachusetts – 2558
International Master

Jeffery Xiong
Texas – 2533
International Master



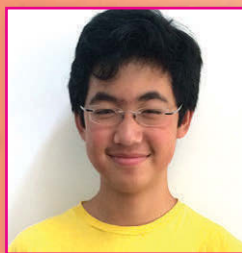
Cameron Wheeler
California – 2395
FIDE Master

Craig Hilby
California – 2354

Jonathan Chiang
Texas – 2337
FIDE Master



Vignesh Panchanatham
California – 2328
FIDE Master



Joshua Sheng
California – 2318



John Gabriel Ludwig
Florida – 2325



Tommy O. He
Texas – 2316
FIDE Master



Roland Feng
Washington – 2319

AGE 14

(minimum peak rating 2350)



Akshat Chandra
New Jersey – 2530
International Master



Kesav Viswanadha
California – 2373
FIDE Master

Edward Song
Michigan – 2378
FIDE Master



Andrew Tang
Minnesota – 2392
International Master

AGE 15

(minimum peak rating 2400)

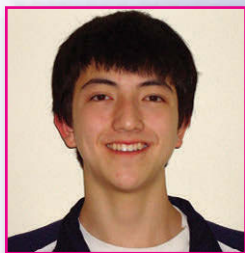


Kayden Troff
Utah – 2606
International Grandmaster

Luke Harmon-Vellotti
Idaho – 2526
International Master

Joshua Colas
New York – 2430

Christopher Gu
Rhode Island – 2435



Mika Andrew Brattain
Massachusetts – 2437

AGE 16

(minimum peak rating 2450)



Michael H. Bodek
New York – 2488
FIDE Master



Yian Liou
California – 2491
FIDE Master

Arthur Shen
New Jersey – 2458
FIDE Master

AGE 17

(minimum peak rating 2500)



Darwin Yang
Texas – 2594
International Master

Champions
defined,
one
and
all.

Aleksandr Ostrovskiy
New York – 2535
International Master

AGE 18

(minimum peak rating 2550)



Daniel Naroditsky
California – 2654
International Grandmaster in
2013
4th in 2014 U.S. Championship

A FIDE WORLD YOUTH QUALIFIER



Susan Polgar Foundation's
Nationwide Open
for Girls and Boys

**FEBRUARY 28TH
& MARCH 1ST**

Over \$100,000 in
Scholarships and prizes

San Mateo Event Center
1346 Saratoga Drive, San Mateo, CA

MAIN EVENT SECTIONS:
U8, U10, U12, U14, U16/18
in separate sections for Girls and Boys
6 Rounds G/80 d/5 10 Sections
Side events include Blitz, Puzzles & Simul
All players **MUST** be current USCF Members

For Details & to Apply Online:
www.chessandmusic.com

Note: Players who qualify for the World Youth
Championship but represent a FIDE Academy are
not included in the official USCF delegation.





THE BRIDGE



GOOD CHESS MAKES GOOD NEIGHBORS

By Don Maddox, Chess Coach, Madison City Schools, Alabama
Ranae Bartlett, Board Member, Madison City Schools

On October 18, 2014, 12 kids in Madison, Alabama, paired with 12 kids in Xiamen, China, to build an 8,000-mile bridge between their cities, a bridge that dwarfs the Great Wall itself. Chess is that bridge.

From the outside, the only thing remarkable about these kids is the fact that they play chess, religiously and relentlessly—and that they, their parents, their schools, and their communities reached out—and continue to reach out—to kids worlds away.

As *Chess Life* Editor 25 years ago, I teamed with my editorial staff—GM Arthur Bisguier, IM Vince McCambridge, and Assistant Editor Julie Desch—to play a series of remote consultation games with chess clubs across the country (one in Mexico). I don't remember the outcomes (they are preserved in the pages of *Chess Life*), but I remember how much fun we had before, after, and during the games interacting with our readers. The common thread between then and now, is FUN!

FUN!

What I remember from Newburgh, New York, all those years ago is the delight and exhilaration we felt reaching out and touching people we could not have met in any other way.

I watched the same delight and exhilaration last week in Madison, Alabama, and via Skype in Xiamen, China. And it

made me glad to be a chessplayer—and it made me wish I were a kid again.

We will get to the chess shortly, but first I want to talk to you a little bit about how this match came about and what it means for you.

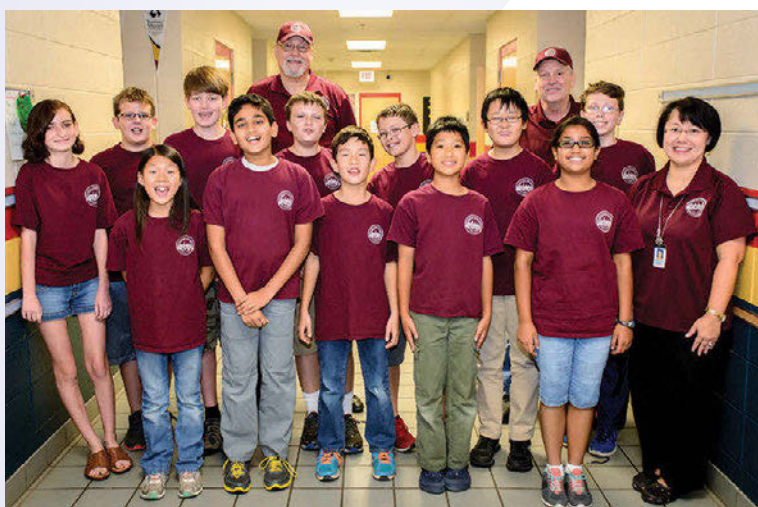
First, you're lucky enough to be a kid who loves chess, and—I suspect—lucky enough to belong to a chess team in a school with access to a com-

puter lab and the Internet. provides the brick and mortar to build the bridge; chess provides the language to communicate across borders and cultures.

THE HOW

Before the school year started in August, Madison City School Board member Ranae Bartlett asked whether I thought we could arrange a match with a school from another country. I went on the Internet and contacted several international chess clubs, and Ms. Bartlett polled our own diverse student body.

The father of one of our elementary school players, Dr. Yeqing Bao, offered to contact an old college friend in Xiamen. With Dr. Bao's help, we were able to organize the October 18th match with the Chess Ocean School.



The Madison team.

puter lab and the Internet.

I will share a secret with you. I believe team play is the highest form of chess. Why? Because the game matters more with the weight of teammate and community expectations on our shoulders. Your responsibility to your team adds another dimension to this ultimate individual sport.

This match matters to you because you have the power to make it happen for your own team, in your own school, in your own community. The world is filled with folks like us who are willing to build bridges and delight in the people on the other side. The Internet

Connecting

The next step was to make sure both teams shared an Internet connection. Earlier this year, Ms. Bartlett had selected *ChessKid.com* as the internet home for all Madison city schools as a student and coach friendly site. Madison players have been practicing, training, and studying on the site ever since.

Xiamen Coach Xu Huahua quickly embraced the site and set about training her kids to use it. By match time both teams were comfortable online.

Xiamen is 13 hours ahead of our

time, explaining the 8:00 am start time on our end. Both country's schools were in session so we chose a Saturday to play.

Finally, for purposes of our first match together and due to the unpredictability of the Internet connection, we did not place time limits on the students. Most of the games concluded in an hour, with our longest game lasting just over three hours. Keeping things simple is very important, especially the first time you meet a new opponent. The emphasis should always be on meeting new friends, solving new problems, and sharing new experiences.

THE WHAT

So what happened? A clash of minds and wills across the Internet. Rainbow Elementary's Jenson Wilhelm scored the first point when his opponent Wan Lexuan allowed a classic bishop-sacrifice on the f7-square. The match score seesawed back and in spite of winning the last two games to finish (Boards one and two), Xiamen prevailed.

But when Michael Guthrie finally recorded his win against Sun Yucan (the last game to finish), no one was thinking about the match result. Kids on both sides were lining up for their first look at the anonymous person across the board from them, via Skype. Smiles, waves, giggles—the same delight and exhilaration I remember from my *Chess Life* crew and our readers 25 years ago. Only we didn't have Skype.

Coaches Xu Huahua and Bradley Denton have each chosen one game from their team wins to kick off a series of instructional notes. We will lead off next issue with Lawrence Zhang-Chen Juchen followed by interesting examples of other games. For now here is the match's first decisive game:

Giuoco Piano (C50)

Jenson Wilhelm

Wan Lexuan

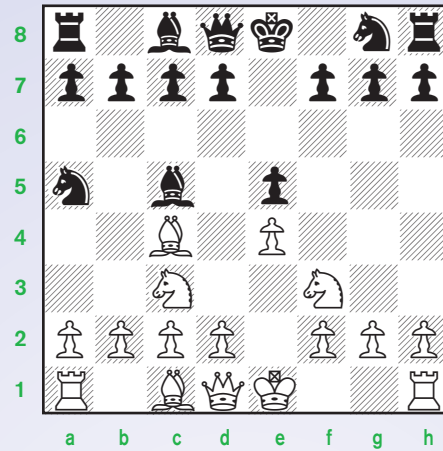
October 18, 2014

Notes by FM Bradley Denton.

This game shows that tactics do not

happen only in the middlegame or endgame, but also in the opening.

1. e4 e5 2. Nf3 Nc6 3. Bc4 Bc5 4. Nc3 Na5?



Black ignores several opening principles with just this one move. First, Black has moved his knight twice in the first four moves (not to mention putting it on the edge of the board where it does not belong). Second, Black has left his pawn and developed pieces all unprotected.

5. Bxf7+! ...

Why would White give up his bishop for a pawn ... because he is getting a strong attack where White will get more than the bishop back.

5. ... Kxf7 6. Nxg5+ Ke8

The king is a little better placed on f8, where Qh5 does not come with check, as occurred in the game. After 6. ... Kf8 7. Qh5 Qe8 8. Nxd7+ Bxd7 9. Qxc5+ Ne7 10. Qxa5, White still finds a way to gobble up those unprotected pieces and has three more pawns than Black.

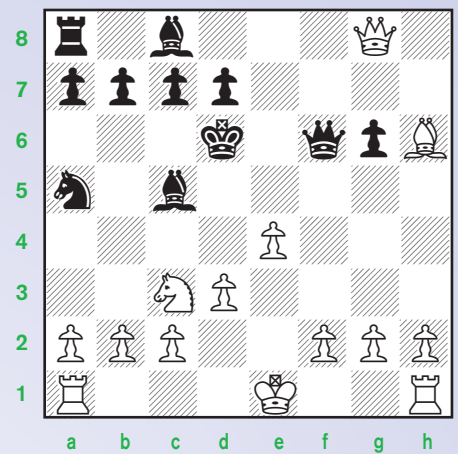
7. Qh5+ g6

This is the only move for Black that does not lead directly to checkmate. White mates after both 7. ... Kf8 8. Qf7# and 7. ... Ke7 8. Qf7+ Kd6 9. Nb5+ Kxe5 10. Qf5#.

8. Nxg6 hxg6 9. Qxh8 Kf8 10. d3 Qf6 11. Bh6+ Kf7 12. Qh7+ Ke6 13. Qxg8+ Kd6



The Skype experience.



Here, White has more material: rook plus three pawns versus bishop. Generally, when ahead material, you want to trade down to win with your extra material.

However, in this position, White misses a chance to win even more material with 14. Bf8+! If Black does not take the bishop, then he will get checkmated after 14. ... Qe7 15. Qd5#; 14. ... Kc6 15. Qd5+ Kb6 16. Qxc5+ Ka6 17. Qb5#, or 14. ... Ke5 15. Qd5+ Kf4 16. Ne2+ Kg4 17. h3+ Kh4 18. g3#. So, 14. ... Qxf8 15. Qxf8+ Kc6 with queen plus rook plus three pawns versus two bishops when White has more than enough material to win.

14. Qf8+ Qxf8 15. Bxf8+ Kc6 16. Bxc5 Kxc5

White pushed his pawns to create and promote a passed pawn, eventually winning the game.

17. 0-0 d6 18. f4 Bd7 19. f5 gxf5 20. exf5 Rf8 21. f6 Nc6 22. Rae1 Nd4 23. Re7 Kc6 24. Rg7 Nxc2 25. f7?! Be6 26. Rf6 Bc4? 27. dxc4 Nb4 28. Rg8 Rxc8 29. fxc8=Q Na6 30. Qd5+ Kd7 31. Rf7+ Kc8 32. Qe6+ Kd8 33. Qd7#, 1-0.

When I look over my students' games with them, we focus on mistakes. At first, players wince at having their mistakes identified and explained. Eventually, almost all of them learn one of the key themes in our classroom practice—"Even good players make mistakes." Chess, in fact, is a game of mistakes. I think it was GM Tartakower who once wrote, "The winner

Please turn to page 16



of a chess game is the player who makes the next to last mistake.”

It’s amazing how fast kids get better once they learn to respect and learn from their own mistakes.

THE WHY

Team chess is about building relationships and sharing responsibility. Madison city schools believe that “Empowering Students for Global Success” is our primary mission. I believe that learning to live together, play together, and solve problems together is a giant step toward becoming global citizens who do not see geography or nationality as a limitation to learning.

Via Skype, not a child or an adult in either location could resist smiling across the ocean between us. There was no doubt in any of our minds that the match was worth all the time and effort it had taken to pull it off—or that we would be back soon to do it again, with Xiamen, with Wellington, New Zealand, with Hamburg, Germany, or with any number of other amazing countries and cultures.

Our fondest hope is to run into you someday on one of the bridges we are building to places we might otherwise never visit.

THE WHO

Think about it. 24 kids between the ages of eight and 13 conquering time and space to play chess. Undreamed of when I was a kid. Incredible even today when it is—incredibly—becoming routine.

The Player

Madison	Result	Xiamen
Michael Guthrie	1-0	Sun Yucan
Angela Kinsey	1-0	Fu Ruayu
Vishay Ram	0-1	Chen Yuang
Lawrence Zhang	0-1	Zhang Juchen
Jenson Wilhelm	1-0	Wan Lexuan
Hayden Billman	0-1	Xie Zifan
Constance Wang	0-1	Qui Junang
Will Bao	0-1	Hong Xinjie
Jonah Tuttle	1-0	Zhang Kangzhe
Maanasi Limaye	1-0	Wang Hamlin
Alex Edwards	0-1	Huang Keyang
Edward Calinsky	$\frac{1}{2}$ - $\frac{1}{2}$	Zhou You
	$5\frac{1}{2}$ - $6\frac{1}{2}$	

Madison Coaches:

Rainbow Elementary: Bill Nash, Ranae Bartlett

Discovery & Liberty Middle Schools: Don Maddox, FM Bradley Denton (annotator)

Xiamen Chess Ocean School Coach:

WIM Huahua Xu (annotator)

Intermediary and Translator:

Dr. Yeqing Bao, Associate Dean of International Studies, University of Alabama in Huntsville

Recipe for a Chess Outreach

Step 1 – Establish an Internet presence.

Step 2 – Define the scale of the match your team can support. At this stage, Madison assessed available players and computer resources to support up to 20 boards.

Step 3 – Decide what sort of opponents you’re interested in—e.g., international, local, university, clubs, schools, etc. Madison chose to reach out to international school kids their own ages by contacting chess clubs in other countries and canvassing their own diverse membership for contacts.

Step 4 – Formulate and execute a plan to reach out to your target opponents. Be patient and persistent—we contacted five clubs before we found one ready to commit. Don’t forget to negotiate differences in schedule and time zones. Make sure both sides have shared access to an Internet venue. For this match, Madison used *ChessKid.com*, but we have also explored the Free Internet Chess Server (FICS) (www.freechess.org) and ChessBase’s PlayChess (www.playchess.com).

Step 5 – Work out the logistics for your team or school in advance—and help your new partners work theirs out. Share problems and meet challenges together.

Step 6 – Be fair and ‘up front.’ The Madison - Xiamen match began with an act of sportsmanship. The Chess Ocean School’s top 20 players ranged between 1600-2000 ratings. Madison’s top player was just over 1400. Ms. Bartlett provided Coach Xu with a roster of Madison players and ratings. Coach Xu promised to field a fair and competitive roster. Her success is clear in the games and match results.

Step 7 – Play chess!!

Science ... Technology ... Engineering ... Mathematics

MIDLANDS S.T.E.M. INAUGURAL CHESS CLUB OFFERS PROMISE OF ENRICHING YOUNG MINDS

Fairfield County's (SC) new public charter school, Midlands S.T.E.M. Institute (MSI) has raised the educational enrichment ante by offering a very special hands-on learning opportunity. Now, interested second through fifth grade students at the school can choose to learn and play the ancient game of CHESS!

Not only will these kids learn and play perhaps the oldest and greatest skill game ever invented, they will also enjoy the unique advantage of being the inaugural members of the first scholastic chess club of its kind in Fairfield County—one with a membership exclusively limited to elementary school students at the school!



Midlands S.T.E.M. Institute Executive Director Marie Milam firmly believes that the MSI Chess Club will mesh wonderfully with the school's existing curriculum model which already emphasizes a "hands on approach" to learning. During her 30 some years of experience as an educator, Milam has already helped to launch chess programs at other schools. She remains positive that the MSI Chess Club will serve as an invaluable enrichment activity where academic concepts, such as abstract reasoning and critical thinking, will be enhanced

by virtue of the high degree of interaction and project focus necessarily involved with chess club activities.

Milam points out: "The common theme is that academic concepts should be taught through a fun, engaging activity rather than by direct instruction alone, and therein lies the success of the present educational model."

This year, Saturday, October 11 was officially recognized by our federal government as National Chess Day. Midlands S.T.E.M. Institute celebrated this very special day by challenging other primary/elementary schools in our area to start a chess club of their own.

Perhaps, a local scholastic chess league for our young children might be just around the corner!



Tournament Troubles

I love to play chess!
Sometimes though, my tournaments are a mess.
Those tournaments always make me stress.
Why I play badly is anybody's guess.

I know I'm in trouble if I lose my first game.
When I lose, I become filled with shame.
In the chess community, I am a respected name,
But losing the first game wrecks my chance to get fame!

Losing fills me with disgrace.
I become too embarrassed to show my face.
I worry that I will come in last place.
The memory of this tournament is one that I want to erase.

I am told that losing is fine.
"The sun will still shine,"
I am told by some friends of mine.
I lose the second match; it must be a sign.
My parents tell me that I will win the next one.
"The tournament has only just begun.
In our minds you have already won."
I cannot wait until their lecture is done.

The tournament has finally passed.
I'm sad to say that I finished in last.
I feel awful, and want to get home, fast!
At least this tournament is now in my past.

~ Camden Wiseman



ChessKid.com

PLAY

LEARN



#1 Chess Site for Kids!

100% Safe and Kid-Friendly!

100,000+ Kids, Parents, & Coaches!

Tournament Life Announcements

DECEMBER 15 THROUGH FEBRUARY 14

Scholastic Members:

As a service to you, we are listing upcoming National USCF rated events, and requested events of possible interest to you. You can always log in to www.uschess.org, and click on "Clubs & Tournaments." Then click on "Upcoming Tournaments" for a complete listing of upcoming rated events and details. As always, you can check out the TLA section of *Chess Life*.

Organizers and Tournament Directors:

If you would like your tournament listed here in *Chess Life for Kids* for February 2015 (events to be held after February 14), the deadline for submitting your announcements is December 10th. The deadline for the April 2015 issue is February 10th. The processing fee is \$1.00 per line for the first eight lines, \$2.00 for every line thereafter. Send your announcements to Joan DuBois, tda@uschess.org.

Display advertising is also available. Advertising rates are posted on the USCF website, www.uschess.org, or you may email: tda@uschess.org for complete details.

ABBREVIATIONS & TERMS

All tournaments are non-smoking with no computers allowed unless otherwise advertised.

BLZ:	Blitz rated.
QC:	Quick Chess events.
\$\$\$Gtd:	Guaranteed prizes.
\$\$b/x:	Based-on prizes, x = number of entries needed to pay full prize fund. At least 50% of the advertised prize fund of \$501 or more must be awarded.
Bye:	Indicates which rounds players who find it inconvenient to play may take 1/2-point byes instead. For example, Bye 1-3 means 1/2-point byes are available in Rounds 1 through 3.
CC:	Chess club.
dx:	Time delay, x = number of seconds.
+xx:	Time increment, xx = number of seconds added after each move.
EF:	Entry fee.
Ent:	Where to mail entries.
FIDE:	Results submitted to FIDE for possible rating.
G/:	Game in. For instance, G/75 means each side has 75 minutes for the entire game.
GPP:	Grand Prix Points available.
HR:	Hotel rates. For example, 60-65-70-75 means \$60 single, \$65 twin, \$70/3 in room, \$75/4 in room.
JGP:	Junior Grand Prix.
Memb. req'd:	Membership required; cost follows. Usually refers to state affiliate.
Open:	A section open to all. Often has very strong players, but some eligible for lower sections can play for the learning experience.
Quad:	4-player round robin sections; similar strength players.
RBO:	Rated Beginner's Open.
Rds:	Rounds; scheduled game times follow. For example, 11-5, 9-3 means games begin 11 a.m. & 5 p.m. on the first day, 9 a.m. & 3 p.m. on the second day.
Reg:	Registration at site.
RR:	Round robin (preceded by number of rounds).
SD/:	Sudden-death time control (time for rest of game follows). For example, 30/90, SD/1 means each player must make 30 moves in 90 minutes, then complete the rest of the game in an hour.
SS:	Swiss-System pairings (preceded by number of rounds).
Unr:	Unrated.
W:	Site is accessible to wheelchairs.
WEB:	Tournaments that will use a player's online rating.

NATIONALS

Chess Magnet School Junior Grand Prix! Dec. 12-14, Florida

2014 National K-12 Grade Championships
7SS, G/90 d5. Rosen Shingle Creek, 9939 University Blvd., Orlando, FL 32819. Guest rooms can be booked, NLT 11/17/2014, by calling (866) 996-6338, mention "USCF" or online at: <https://bookings.ihotelier.com/Rosen-Shingle-Creek/bookings.jsp?themeId=12821&hotelID=6840&groupID=1288956>. **HR:** \$125 Single/Quad. **13 Sections.** Play only in your grade section. December Rating Supplement will be used. One 1/2-point bye available (limit one) any round (except Round 7) if requested prior to the start of Rd. 1. Team score = total of top three (minimum two) finishers from each school per grade. First place individual and team, including ties, will be the National Champion for their grade. **Schedule:** Opening ceremony Fri. 12:30 pm. Rds.: Fri. 1 pm-6 pm, Sat. 10 am-2 pm-6 pm, Sun. 9 am-1 pm. Awards Ceremony Sun., approx. 5 pm. Special round times for K-1 sections: Fri. 1:30 pm-5:30 pm, Sat. 9:30 am-1:30 pm-5:30 pm, Sun. 9:30 am-1:30 pm. K-1 Awards Ceremony Sun. approx. 4:30 pm. **EF:** \$50/participant postmarked or online by 11/10, \$70 postmarked or online by 12/1, \$85 by 12/11, \$90 on site; \$5.00 extra for all phone registrations; \$20 fee for roster or section changes after 12/7 or any onsite changes. Onsite registration Thurs. 9 AM - 9 PM & Fri. 8 AM - 11 AM. Players who register or change sections after 11 am on Friday will receive a 1/2-point bye for Rd. 1. **Awards:** Trophies to top individuals & top teams in each grade. Every player receives a commemorative item! Full list of trophies on tournament Info Page. **Side Events:** Bughouse: Thurs. 11 am, Reg. onsite only Thurs. 9-10 am, \$25/team. Blitz Sections: K-6 and K-12, G/5 d0, Thurs. 5 pm, Reg. onsite until 4 pm. Blitz EF: \$15 by 12/1, \$20 after or at site. Blitz Awards: Trophies in K-6 and K-12 sections. Full list of trophies on tournament Info Page. Bughouse Awards: Top 5 Teams. Team Rooms are limited. Contact Susan Houston at 931.787.1234 ext. 136 or by email: shouston@uschess.org. Questions: Susan Houston at 931.787.1234 ext. 136. **Entries:** U.S. Chess Federation, Attn.: 2014 K-12 Championship, P.O. Box 3967, Crossville, TN 38557 or online at <https://secure2.uschess.org/webstore/tournament.php?wkevent=2014K12>. **See website for additional information** about the event, advance entries, awards, meetings, updates, corrections, and registration forms, www.uschess.org/tournaments/2014/k12/.

Chess Magnet School Junior Grand Prix!

Jan. 24 and/or 25, California, Northern
2015 U.S. Junior Chess Congress
Santa Clara Convention Center, 5001 Great America Pkwy., Santa Clara, CA 95054. Hotel Biltmore \$95/105/115 (408-988-8411 or 800-255-9925, code 30221). Experience Early Spring in California! **8 sections based on age:** 6 & under, 8 & under, 10 & under, 12 & under, 14 & under, 16 & under, 18 & under, 20 & under. **Individual Trophies:** All (6 & under), Top 20 (8 & under, 10 & under, 12 & under, 14 & under), Top 5 (16 & under, 18 & under, 20 & under). "Super Performance" trophies to players tied for last place with a trophy award and the top player(s) in each rating class who did not get a place trophy. Winning record required for all place trophies. Commemorative participation medals to all entrants. **Team Trophies:** Top 10 (6 & under, 8 & under, 10 & under, 12 & under, 14 & under) or Top 5 (16 & under, 18 & under, 20 & under) based on section. **Time control:** G/90 d5 (except G/30 d5 for Ages 6 & under and Ages 8 & under) **Schedule:** Onsite Registration: Saturday & Sunday 7:30-8:15am. Rounds: Saturday 9am, 1pm, 5pm, and Sun 9am, 12:30pm. (Ages 6 & under and Ages 8 & under: Sunday 9:00am, 10:45am, 12:15pm, 1:45pm, 3:15pm). **Byes:** Max one 1/2-point bye except last round (must request before start of 1st round). **Entry Fees by 1/10:** 1-day sections (Ages 6/8 & under): \$48, 2-day sections (Ages 10/12/14/16/18/20 & under): \$63, Add \$5 (1/11-17), Add \$10 (1/18-20), Add \$25 (1/21-23), Add \$40 (1/24 & onsite). A change fee equal to the late fee will apply for any changes, other than by requests with less than one week before the tournament. Out of state entries 20% off (mail entry or email ask@bayareachess.com with USCF ID for online entry coupon code). **Blitz:** Onsite Registration: Sunday 5-5:15pm, Games 5:45-7:45pm. 2 sections (10 & under, 20 & under). **Side Event Fees:** Blitz \$14. Onsite +\$2. **Side Event Prizes:** Trophies to Top 5 individual players including ties and Top 3 teams including ties in each section. January 2015 Supplement & TD discretion to place players accurately. **Commemorative T-shirts:** \$16 pre-order, \$20 onsite. Chief Organizer: J. Sztaray. Organizers/TDs: S. Azhar, Y. Azhar, R. Koepcke, T. Langland, S. Mason, J. McCumiskey. Sponsored by CalChess and Bay Area Chess. More info & flyer: BayAreaChess.com/usjr. Register online at BayAreaChess.com/my/usjr. Mail entries to Bay Area Chess, 1639A S. Main St., Milpitas, CA 95035. Register early to save. Questions: ask@BayAreaChess.com. W.

Chess Magnet School Junior Grand Prix! Feb. 6-8 or 7-8, Georgia

2015 U.S. Amateur Team South Championship
Crowne Plaza Atlanta-Airport, 1325 Virginia Ave., Atlanta, GA 30344. Right off of I-85, 1-404-768-6660. **Rate:** \$89 per room. **Parking:** \$6 a day, unlimited in and out privileges for all guests and players. **Main Event:** 5-SS, G/120 d5 (2-day Rd. 1. G/60 d5. 4-player teams with one optional alternate. Team average (4 highest ratings-January list) must be under 2200. Winning team qualifies for National Online Playoff. Entry Fee: per player \$45 by 2/02; \$54 later. Special Entry Fee: \$170 by 2/02; \$195 later (any team changes \$10). Scholastic teams \$15 less. **Prizes:** Top 1st - 3rd place teams, Top class teams, under 2000, under 1800, under 1600, under 1400, under 1200, under 1000, top Senior team, top Female team, top College Team, top High School team, top Middle School team, top Elementary team receives a trophy plus plaques to each board plus alternate. (Same School) Digital Clocks awarded to top two overall teams. A trophy to the top four boards. **3-day schedule:** Reg.: ends 6:45 p.m. on 2/06. Rounds: 7:30 p.m., 1:30 - 6:45, 10 - 2:45. **2-day schedule:** Reg.: ends 9:30 a.m. Rd. 1 at 10, then merges with 3-day. **Scholastic Event:** (February 7th only) 5-SS, G/25 d5. Entry Fee: \$140 per team by 2/02; \$155 later (any team changes \$10). (4-player teams,

same school). Must average under 1100. Trophies to top 3 teams, top under 900 team, under 700 team, under 500 team. Trophy to each board on each winning team. Registration: 8:30 - 9:45 a.m. Rounds: 10:30 - 12 - 1:30 - 3:30 - 5:15. **Info:** (478)-973-9389 or www.americanchesspromotions.com/. **Enter:** American Chess Promotions, 3055 General Lee Rd., Macon, GA 31204 or at website above.

A Heritage Event! Chess Magnet School Junior Grand Prix!

Feb. 14-16, New Jersey
World Amateur Team & U.S. Team East - 45th Annual CELEBRATE 45 Years of Chess! 6SS, 40/2, SD/1 d5. Parsippany Hilton, 1 Hilton Ct., Parsippany, NJ 07054. **Chess Rate valid until 1/16. Reserve early 973-267-7373 or 1-800-HILTONS.** Morris/Essex train to Morris Plains 1.5 miles. Open to 4-player teams with one optional alternate. Team average (4 highest ratings—2015 January Rating list) must be under 2200. EF: \$160 postmarked by 2/5/15. ALL-\$200 after or at door.—all teams, any changes at site \$25 change. **FREE ENTRY TEAMS from West Virginia, South Carolina, North Carolina.** Check out official website www.njscf.org. **Prizes:** 1-5th Place teams, plaque and 4 digital clocks; Top Team (**Denis Barry Award**) U2100, 2000, 1900, 1800, 1700, 1600, 1500, 1400, 1300, 1200, 1000 each plaque and 4 Digital Clocks; Top college team (same school) 4 Digital Clocks & plaque; Top HS team (grades 9-12 same school), Top Middle School (grades 5-9 same school), Top Elementary School (grades K-6 same school), Top 2 Scholastic Teams (mixed schools okay) (**Collins Award**), Mixed Doubles (2 males, 2 females-no alternates), Seniors (all players over age 50), Military, each plaque & 4 Digital Clocks to top team; Company Team (same employer), Family (4 family members), State teams—CT, DE, MD, MA, NJ, NY (**Benjamin Award**), PA, VA, NC, RI each plaque top team; Special Plaque to Top College (NJ, NY, Pennsylvania) Special Plaque Top High School NJ, NY, PA, Plaque Top Coaches (four chess teachers), Top Blind team, Top Future team, (all players under age 10), Top Military College, Top New England team (mixed players CT, MA, ME, VT, NH, RI. Top Parent/Child (2 pairs, one parent, one child), Top Historic Club (four members on team from Boyleston, Franklin Mercantile, Marshall). **Best Player 1-4 and top alternate.** All 6-0 scores each Digital clock. Biggest individual upset each round Engraved Cross pen; Entry fee refunded to team with Best "Chess related" name, Sunday night—Best "Chess Related costumes or gimmick"—1st-gourmet dinner for four. 2nd—Gourmet dinner for 4. **Reg.: 9-12. Sat 2/14: 11-7:30, 11-6, 9-3:30. Special Events!! Surprises and special give-aways each round.** Sunday night—Bughouse \$20 per team. Cash prizes. HR: Parsippany Hilton **NEWLY RENOVATED!** NEW LIGHTS! chess rates expire 1/16/2015. Rates \$119 (single double) \$121 (Triple, Quad) 2nd hotel attached to Hilton \$126 per night (single-double) \$128 (triple, Quad)-Hampton Inn—includes breakfast each day. For help forming teams and more information contact: noreen@deanofchess.com. Chks payable to NJSF, mail by 2/05 to: **E.Steven Doyle, 17 Stonehenge Road, Morristown, NJ 07960.** (Include Team name, Captain, players full names, USCF Expiration, ID numbers and ratings in board order). No team can include more than two GM's. Include SASE for confirmation if wanted, No registered or certified mail accepted. W.

Chess Magnet School Junior Grand Prix! Feb. 20-22 or 21-22, Illinois

2015 U.S. Amateur Team North Championship
Open: 5SS, G/90 +30/increment, 2-day: rd.1-2 G/60 d5. Hyatt Regency Schaumburg, 1800 E. Golf Rd., Schaumburg, IL 60173. 847-605-1234 \$89.00 chess rate single-double-triple-quad until 2/6/15, Free WiFi included with Room! Please reserve early. Open to 4 player teams with one optional alternate. **Team average (4 highest ratings - January Rating List) must be under 2200.** EF: 3-day \$160, per team if received USPS or on-line 6 PM by February 6th, \$180 if received USPS or on-line 6 PM by Feb. 14th, \$200 on-line until Feb. 19th 6 PM and at door. Individuals wishing to play, send \$45 and request to be put on a team by USPS and on-line by 2/14 6 PM, \$50 thereafter. Team changes on site or after 2/19 6 PM \$20. **Check out official website www.chessweekend.com for more info and complete prize list.** Prizes: Awards to top two teams, top teams with average rating u1900, u1600, and u1300. Winning team qualifies for national play-offs. Awards for Best Team Name, best team composed of juniors (high school and younger), Top College team, Top HS team, Top Senior team (50 and over), Best Coach and Students team, Best costume. Prizes to top score on each board. Prizes are players choice of a selected clock or equivalent book store credit. **Rounds: 3-day:** on-site registration/check-in 5:30-6:30pm, rds.: 7pm, 10:00am & 4:00pm, 10:00am & 3:30pm. **2-day:** on-site registration/check-in from 8:00-9:30am, rds. 10:00am & 1:00pm then merge with 3-day. **Northern Blitz Championship on Saturday night,** Game 3 with 2 second increment, \$25 by 2/14 USPS or on-line, \$30 at site. First round 8 PM, 2 games with each opponent, 5 rounds, see www.chessweekend.com for details. **All:** Checks made payable to and sent to: ChessWeekend, 21694 Doud Ct., Frankfort, IL 60423. Please include Team's name and roster (plus ID#), captain's email and phone number, and desired schedule. **Info:** www.chessweekend.com, 815-955-4793 before 8 PM. ChessIQ will provide Sets-Boards-Clocks.

June 18, Nevada

Trophies Plus Grand Prix Points: 80 (Enhanced)
2015 U.S. Game/10 Championship (QC)
8SS, G/10 +2. Riviera Hotel and Casino, 2901 Las Vegas Boulevard South, Las Vegas 89109. **\$\$\$60 Guaranteed Prize Fund.** \$1700-850-500, U2300 \$500, U2100 \$500, U1900 \$450, U1700 \$400, U1500 \$350, U1300 \$300, U1000 \$250, unrated \$200. Must be 3 players eligible for each prize awarded. **EF:** \$69 by 5/25, \$79 by 6/9, \$100 later. **REG.:** 2-4 p.m. **Rds.:** 5-5:40-6:15-6:50-7:25-8:35-9:10. Higher of regular or quick rating used. Please bring digital chess clocks. 1/2 point bye available in any round (limit 2). **HR:** \$65 single or double (\$89 Friday and Saturday nights). (800) 634-6753 or (702) 794-9412—be sure to ask for the **CHESS** rates. **ENT:** Vegas Chess Festivals, PO Box 90925, Henderson, NV 89009-0925 or www.VegasChessFestival.com. W.

Chess Magnet School Junior Grand Prix!

June 18-19, Nevada

Trophies Plus Grand Prix Points: 30 (Enhanced)
2015 U.S. Women's Open

55S, G/90 +30. Riviera Hotel and Casino, 2901 Las Vegas Boulevard South, Las Vegas 89109. **\$\$2,000 Guaranteed Prize Fund.** \$500-300-200, U2000 \$200, U1800 \$200, U1600 \$200, U1400 \$200, U1200 \$200. **EF:** \$50 by 5/25, \$70 later. **REG:** 8-9 a.m. **Rds.:** 10-2:30-7, 9-1:30. 1/2 point bye available in any round (limit 1). **HR:** \$65 single or double (\$89 Friday and Saturday nights). (800) 634-6753 or (702) 794-9412 – be sure to ask for the **CHESS** rates. **ENT:** Vegas Chess Festivals, PO Box 90925, Henderson, NV 89009-0925 or www.VegasChessFestival.com. W. FIDE.

An American Classic!

A Heritage Event!
Chess Magnet School Junior Grand Prix!

June 19-21 or 20-21, Nevada

Trophies Plus Grand Prix Points: 200 (Enhanced)
2015 National Open

6-SS, 40/90, SD/30 +30 (2 day option rounds 1-3 G/40 +5). Riviera Hotel and Casino, 2901 Las Vegas Boulevard South, Las Vegas 89109. **\$80,000 Guaranteed Prize Fund** will not be reduced. **Open:** \$6500-3300-1600-800-500-350-350-350-350-250-250-250-250-250, under 2500 1600, under 2400 1200, under 2300 1000, **\$2,000 EXTRA** for perfect score. The winner of the Open section also receives a replica of the Edmondson Cup. **Under 2200:** \$3500-1800-900-500-400-250-250-250-250-250-200-200-200-200. **Under 2000:** \$3500-1800-900-500-400-250-250-250-250-250-200-200-200-200. **Under 1800:** \$3500-1800-900-500-400-250-250-250-250-250-200-200-200-200. **Under 1600:** \$3000-1500-800-500-400-250-250-250-250-250-200-200-200-200. **Under 1400:** \$2000-1000-500-350-250-200-200-200-200-200. **Under 1200:** \$1200-600-400-300-200-200. **Unrated:** \$500-300-200. **Plus Score Bonus** (\$14,000 guaranteed) in addition to any other prizes, every player with 3-1/2 points or more wins a \$50 gift certificate. Plus score certificates will be awarded on site only. Players age 14 and under are eligible for best game prizes including the Freddie Award and \$400 in cash prizes (donated by Fred Gruenberg). Top 2 sections FIDE rated. **EF:** \$179 by 1/20, \$199 by 5/25, \$239 by 6/15, \$260 later. \$40 less for seniors 65 and over. Add \$125 for adults rated under 2100 or juniors under 2000 playing in the Open Section. This is an open tournament - you may play in any section at or above your rating level; unrated players may play only in Unrated or Open Section. Provisionally rated players may not win more than the amount of 3rd prize in any section except Open. CCA minimum ratings or other ratings may be used if higher than USCF June Supplement. **Reg.:** 2 p.m.-10 p.m. Thursday, 8-9-30 a.m. Friday. **Rds.:** 11-5:30, 10-4:30, 10-4:30. 2-day schedule: **Reg.:** 8-9 a.m. Saturday. **Rds.:** 10-12-2-4:30 merge with 3-day in round 4. Half point byes available in any round, but round 5 or 6 byes must be requested before the start of round 2 and may not be cancelled. Chess sets and boards provided for tournament play only, not for skillies. Please bring digital chess clocks! The **LAS VEGAS INTERNATIONAL CHESS FESTIVAL** features the National Open, the U.S. Game/10 Championship, the U.S. Women's Open, the International Youth Championship, and other events. **Many free extras and surprises!** **Free parking. Free raffles** with great prizes. **Free GM Lectures. Free GM analysis** of your games. **Free Daily Bulletins. Grandmaster Chess Camp** for all ages on Thursday. **U.S. Women's Open** Thursday and Friday. **U.S. Game/10 Championship and Grandmaster Simuls** Thursday afternoon. **Youth Tournaments** Friday, Saturday & Sunday. **Blitz** Tournaments Saturday & Sunday. **Poker Tournament** Monday morning. **Don't be shut out** — make your reservations early and be sure to ask for the **CHESS** rates — \$65 single or double (\$89 Friday and Saturday nights) guarantees a *Signature* or remodeled room with new furniture, refrigerator, flat screen TV and more. The complimentary resort package includes access to the Fitness Center, free WI-FI, discounts on selected show tickets and more with no additional cost only if you are in our group. Cutoff for special hotel rate is **May 25th**. (800) 634-6753 or (702) 794-9412 or www.VegasChessFestival.com/hotel. **ENT:** Vegas Chess Festivals, PO Box 90925, Henderson, NV 89009-0925, on line at www.VegasChessFestival.com. **Info:** (702) 560-0955 and leave a message. W. FIDE.

GRAND PRIZ

Chess Magnet School Junior Grand Prix!
Dec. 13, California, Northern

Trophies Plus Grand Prix Points: 10 (Enhanced)
Bay Area Chess Grand Prix SuperSwiss (4SS, G/61 d5)

1639A S. Main St., Milpitas, CA 95035. **Prize:** \$1,500 b/55. 70% guar. **1800+:** \$300-200-100, u2000 150-50. **u1800:** \$200-100-50, u1600 150-50, u1400 100 u1200 50. Dec 14 Supp & TD disc. **Sched:** Reg. 8-9. **Rds.:** 9:30-12:30-5. **EF:** \$45, Econ \$35 2/3 prz. after 12/11 + \$15, playup \$15, Rated 2200+ \$0 by 12/3 (Prize - EF). **Info:** <http://BayAreaChess.com/grandprix>.

Chess Magnet School Junior Grand Prix!
Dec. 19-21 or 20-21, California, Northern

Trophies Plus Grand Prix Points: 40 (Enhanced)
Bay Area Chess Lawless Winter Championship

6SS, G/90 +30 (u1600 G/90 d5) 2day rds. 1-3 G/70 d5. 1639A S. Main St., Milpitas, CA 95035. **Park free. Prize:** \$5,000 b/93 (70% guar). 3 sects: **2000+ (FIDE)** \$1,000-500-200, u2300: \$200-125-100. **1600-1999:** \$700-300-100, u1800: 200-100, **u1600:** \$700-300-100 u1400: 125-100, u1200: 100. Unr max \$100 exc Open. Dec 14 Supp & TD disc. **Reg:** F 6-6:45p & Sa 8-8:45a. **Rds.:** F 7p, Sa 9 1:20, Su 9 1:30 6. (u1600: Su 9 1 5). 2-day Rds. 1-3: Sa 9 11:50-2:40 & merge. **EF:** \$89, after 12/16 + \$20. Playup + \$20. Econ EF: \$69 w/ 2/3 prz: Rated 2250+ \$0 by 12/9 (Prize - EF). **Info:** <http://BayAreaChess.com/champs>.

A Heritage Event!
Chess Magnet School Junior Grand Prix!

Dec. 26-29 or 27-29 or 26-28, Maryland

Trophies Plus Grand Prix Points: 100 (Enhanced)

41st Annual Eastern Open: 7-Rd SS in 5 Sections

Over \$14,000 prize fund! Over 30 prizes! Class prizes at 150-point interval within each section! Convenient Location: Doubletree Hotel, 8120 Wisconsin Ave., Bethesda MD (just 2 mi. S from I-495 and 4 blks N of Metro). Open: \$2,000-1,000-600-400; U2300: \$400. FIDE Rated. Open section prizes guaranteed. Other section prizes based on 40 paid entries for each section. **Under 2200:** \$1,000-600-300; U2050: \$400. **Under 1900:** \$1,000-600-300; U1750: \$400. **Under 1600:** \$1,000-600-300; U1450: \$300. **Under 1300:** \$1,000-500-250; U1150: \$300; UR max: \$150. **Special Prizes!** Best Fighting Spirit/Best Played Game: \$200-100-50. Brilliance: \$100-50. Opening Innovation: \$100-50. Selected winning games, positions, and openings must be annotated and will be submitted for publication in Chess Life. Upset: For U1300, Rds. 1-6, \$25 book prize; max 2 prizes per player. **4-day Schedule for Open, U2200, U1900, & U1600:** 12/26-12/29 Rd. 1: Fri 12/26 at 6 pm; Rds. 2-3, 4-5, 6-7: Sat 12/27 - Mon 12/29 at 11 am & 5:30 pm. **TC:** 40/120, SD/30 d10. **On-Site Reg:** Fri 12/26 at 4-5:30. **3-day Schedule for U2200, U1900, & U1600:** 12/27-12/29 Rds. 1-3: Sat 12/27 at 12, 3, 6 pm. **TC:** G/75 d10. Players join 4-day schedule in Rd. 4. **On-Site Reg:** Sat 12/27: 10-11:30 am. **Weekend Schedule for U1300 Section:** 12/28-12/28 Rd. 1: Fri 12/26 at 6 pm; Rds. 2-4 & 5-7: Sat 12/27 & Sun 12/28 at 10 am, 2 pm, 6 pm. **TC:** G/90 d10. **Byes:** 1/2-pt byes available for any round, but Rds. 5-7 must commit before Rd. 4. Limit 2 byes for class prizes. **Free Lecture:** 12/26 at 4-5:30 pm. **Blitz Championship:** 5-Rd Dbl Swiss. Sat 12/28 at 9:30 pm-12 am/Midnight. \$800 based on 40 paid entries. **TC:** G/7 d0. **Advance EF:** \$35. See Web site for details. **Quads:** Daily 12/27-12/29: 3 Rds. at 10 am, 1 pm, 4 pm. **TC:** G/75 d10. **EF = \$50:** 1st = \$90, 2nd = \$50. **HR:** Amazing, only \$79!! To reserve online, go to easternopenchess.com or call 1-800-955-7359 by 12/20 request chess rate. **Pkg:** Hotel valet is free if guest or \$8/day! Free pkg on wkend 1 blk away in garage or lot. **Entries:** If postmarked by Dec 20: **Open:** \$125; U2200: \$120; U1900 & U1600: \$110; U1300/UR: \$100. **Entries \$25 more at site!** Entrance \$100 and limited to rounds 1-4. **GMs:** free entry, but \$125 deducted from prize; **IMs:** \$65 advance entry, but \$60 deducted. **FMs:** \$90 advance entry, but \$35 deducted; \$10 service charge for refunds. **Please make checks or money orders payable to:** Eastern Open. Mail entries to Tom Beckman, 3731 Kanawha St. NW, Washington, DC 20015-1809. For entry forms and info, easternopenchess.com or tombeckman@rcn.com.

Chess Magnet School Junior Grand Prix!

Jan. 2-4 or 3-4, Florida

Trophies Plus Grand Prix Points: 50 (Enhanced)
Gulf Coast New Year's Open

55S, **Open section** G/90+30 sec. incr., **All other sections** but U1100 G/120 d5, **U1100 section** G/90 d5 (2-day Option all sections Rd. 1 G/60 d5). Holiday Inn Fort Myers Airport at Town Center, 9931 Interstate Commerce Dr., Fort Myers. **\$\$15,000** b/200 paid entries, 50% min. Gtd. **Open:** \$1600/Trophy-1000-700, U2400 \$500, U2300 \$400, U2200/Unr. \$200. **FIDE:** U2100:\$1100/Trophy-800-500, U2000 \$400, U1900 \$200. **U1800:** \$1000/Trophy-700-500, U1700 \$400. **U1600:** \$1000/Trophy-700-500, U1500 \$400. **U1350:** \$900/Trophy-600-400, U1250 \$300. **U1100:** Trophies for all 1st to 3rd & 1st U900, 1st U700, Medals to all others. **Top Senior Prize** (among all sections, must be at least 50 on Jan. 2): \$200. Unr. may enter Open, U1350 or U1100 only. **EF:** \$99 by Dec. 30, \$10 more later and on-site, **GMs & IMs** free (\$99 deducted from prize). U1100 section \$39 by Dec. 30, \$10 more later and onsite. Re-entry cash prize sections \$49. **Reg.:** Ends 1/2 hr before 1st rd. **Rds.:** 3-Day 1st Rd. Fri. 7:30; 2-Day 1st Rd. Sat 10; 2nd Rd. Sat. 1:15; 3rd Rd. all sections but U1100 6:30, 3rd Rd. U1100 5:45; 4th Rd. Sun. 9:30; 5th Rd. all sections but U1100 2:30, 5th Rd. U1100 1:45. With inc. Open section start times could be delayed. 2 1/2 pt. byes, if req'd before rd. 2. **Blitz** Tournament: G/5 d0, Friday at 2:00 pm.; **EF:** \$15 for those in main tournament, \$25 for all others. **HR:** \$89, \$99 with breakfast, reserve by 12/12 or rate may increase, includes free Internet, refrigerator & microwave, 239-561-1550. **Car Rental:** Lower rates are available at Firefly Car Rental at the Hotel, 239-415-1380. **Ent:** Boca Raton Chess Club, 2385 Executive Ctr. Dr., Ste. 100, Boca Raton, FL 33431. \$10 service charge for refunds. **Online entry & add'l info:** www.bocachess.com, 561-479-0351.

Chess Magnet School Junior Grand Prix!

Jan. 2-4 or 3-4, California, Northern

Trophies Plus Grand Prix Points: 80 (Enhanced)
2015 New Year Championship

6SS, 40/120 sd30 d5 (2-day opt rounds 1-3 G/61 d5). SFO Airport Hyatt Regency, 1333 Old Bayshore Hwy., Burlingame, CA 94010. \$119/night. **Prize:** \$18,000 b/257 (60% Guar). 5 sections. **Open** (2000+) FIDE rated: \$2500-1200-600-300, u2300 300-150, u2200 300-150, u2100 200-150. **A:** 1,500-700-300-200-150-140. **B:** 1,500-700-300-200-150-140. **C:** 1,500-700-300-200-150-140. **DEU:** \$1,000-500-200-140 u1200 \$700-300-200-140. Unr capped at 300 exc in Open. **EF:** 117 by 12/30. Econ 87 w 60% prz. After 12/30 + 25. Playup + 25. Rfnd fee 25. GM/IM free by 12/23 (prz-EF). USCF mem reqrd. **Reg:** Fr 9-9:30am, Sa 8:30-9am. **Rds:** Fr/Sa 11 5; Mo 10 3:30 (2-day Su 9:30 12 2:30 & merge Rd. 4). **Rds.:** 5/6 byes locked bef Rd. 1. Jan 15 Supp & TD disc to place players accurately. Bring clocks. **Info/Flyer/Reg:** <http://BayAreaChess.com/ny.W>.

Jan. 11, California, Northern

Trophies Plus Grand Prix Points: 10 (Enhanced)
Bay Area Chess Grand Prix Luper Swiss (3SS, G/90 d5)

1639A S. Main St., Milpitas, CA 95035. **Prizes:** \$1,500 b/55. 60% guar. **1900+:** \$300-100-100, u2000 50-50. **1500-1899:** \$200-100-50, u1600 50-50. **u1500:** \$200-100-50, u1200 50-50. Jan 15 Supp & TD disc. **Reg:** 9-9:15. **Rds.:** Rds. 1-3: F 4:30. **EF:** 43, Econ 29 w/ 1/2 prz. after 1/8 + 15, playup + 15, Rtd 2200+ \$0 by 1/1. **Info:** <http://BayAreaChess.com/grandprix>.

Chess Magnet School Junior Grand Prix!

Jan. 23-25 or 24-25, Florida

Trophies Plus Grand Prix Points: 20

Central Florida Class Championships

55S, G/120 d5 (2-day: Rd.1 G/60 d5). DoubleTree by Hilton Orlando at SeaWorld, 10100 International Dr., 32821. **\$\$7,500** b/150, 60% Guaranteed. 6 Sections: **Mast/Exp:** \$1000-400-200, U2200 \$350. **Class A:**

\$700-300, U1900 \$150. **Class B:** \$700-300, U1700 \$150. **Class C:** \$700-300, U1500 \$150. **Class D:** \$700-300, U1300 \$150. **U1200:** \$500-300, U1000 \$100, U800 \$50. Rated players may play up one class only. Unrateds limited to \$100 unless Place prize in Mast/Exp. **Event part of CFCC GP with \$600 additional prizes.** Trophies to top in each section (& Class X), also Class F, G, H, I, J & Unr in U1200 having more than one entry. Trophies and titles limited to Florida residents. **Special OCA Random Awards TBD.** **EF:** 3-day \$79, 2-day \$78 by Jan 14, both \$90 later; plus \$5 if paid on-site. \$20 less to students in grades K-8 in U1200 section. **CFCC memb discount:** \$10 (\$5 for Jr/Sr memb). Re-entry \$40. **Reg.:** ends 1/2 hr before 1st rd. **Rd.1:** 7pm Fri (2-day: 10am Sat at G/60 d5). **Rds.:** 2-5: Sat 1 & 6, Sun 9 & 2. 1/2-pt. byes if committed before rd. 2 (max 2). **HR:** \$105 (No Resort Fee) (407) 352-1100; (Mention "Chess"); or at <http://tinyurl.com/Jan2015Hotel>. (72-hr Cancellation fee.) **Reserve by Jan 10.** Free Shuttle, Parking & WiFi with sleeping room; other self-parking at \$5/day/exit. **Ent:** CFCC, c/o Harvey Lerman, 921 N. Thistle Ln., Maitland, FL 32751; or online: <https://online-registration.com/CFCC/CFCL15> by Jan 22. **Info:** Call 407-629-6946, (407-670-9304 for onsite cell) or www.centraflchess.org.

Jan. 25, California, Northern

Trophies Plus Grand Prix Points: 10 (Enhanced)
Cupertino Grand Prix DuperSwiss (3SS, G/75 d5)

Court yard Marriott, Cupertino, CA 95014. **Prizes:** \$1,500 b/55. 60% guar. **1900+:** \$300-100-100, u2000 50-50. **1500-1899:** \$200-100-50, u1600 50-50. **u1500:** \$200-100-50, u1200 50-50. Jan 15 Supp & TD disc. **Reg:** 8:30-8:45. **Rds.:** 9-12:45-2-40. **EF:** 47, Econ 32 w 1/2 prz. after 1/22 + 15, playup + 15, Rtd 2200+ \$0 by 1/15. **Info:** <http://BayAreaChess.com/grandprix>.

Chess Magnet School Junior Grand Prix!

Jan. 30-Feb. 1 or Jan. 31-Feb. 1, California, Northern

Trophies Plus Grand Prix Points: 40 (Enhanced)
Bay Area Chess CM Azhar Memorial Championship

1639A S. Main St., Milpitas, CA 95035. 55S, 40/90 sd30 d5. 2-day rds. 1-2 G/50 d5. **Park free. Prize:** \$5,000 b/94 (70% guar). 3 sects: **2000+ (FIDE)** \$1,000-500-200, u2300: 250-125-100. **1600-1999:** \$700-300-100, u1800: 200-100, **u1600:** \$700-300-100 u1400: 125-100, u1200: 100. Unr max \$100 exc Open. Jan 15 Supp & TD disc. **Reg:** F 6-6:45p & Sa 8-8:45a. **Rds.:** F 7p, Sa 9 1:20, Su 10 1:30. (2-day Sa 9 11:10 & merge). **EF:** 89, Econ EF: 69 w/ 2/3 prz. after 1/27 + 20. Playup + 20. Rated 2250+ \$0 by 1/20 (prize - EF). **Info:** <http://BayAreaChess.com/champs>.

Feb. 8, California, Northern

Trophies Plus Grand Prix Points: 10 (Enhanced)
Cupertino Grand Prix DuperSwiss (3SS, G/75 d5)

Court yard Marriott, Cupertino, CA 95014. **Prizes:** \$1,500 b/55. 60% guar. **1900+:** \$300-100-100, u2000 50-50. **1500-1899:** \$200-100-50, u1600 50-50. **u1500:** \$200-100-50, u1200 50-50. Jan 15 Supp & TD disc. **Reg:** 8:30-8:45. **Rds.:** 9-12:45-2-40. **EF:** 47, Econ 32 w 1/2 prz. after 2/5 + 15, playup + 15, Rtd 2200+ \$0 by 1/29. **Info:** <http://BayAreaChess.com/grandprix>.

A Heritage Event!

Chess Magnet School Junior Grand Prix!

Feb. 14-16 or 15-16, California, Northern

Trophies Plus Grand Prix Points: 80 (Enhanced)
2015 Peoples Tournament (Presidents Day Weekend)

6SS, 40/120 sd30 d5 (2-day opt rounds 1-3 G/61 d5). Convention Center, 5001 Great America Pkwy., Santa Clara, CA 95054. **Biltmore \$95/night. Prize:** \$20,000 b/273 (60% Guar). 5 sections. **Open** (2100+) FIDE rated: \$3000-1500-700-300-150, u2200 \$500-200. **1900-2099:** \$1,500-700-300-200-150-140, u2000: 140. **1700-1899:** \$1,500-700-300-200-150-140, u1800: 140. **1500-1699:** \$1,500-700-300-200-150-140, u1600: 140. **1300-1499:** \$1,000-500-200-150-140-140. **u1300:** \$1,000-500-200-150-140-140. Unr capped at 300 exc in Open. **EF:** 123 by 2/11. Econ 85 w 50% prz. After 2/11 + 25. Playup + 25. Rfnd fee 25. GM/IM free by 2/4 (prz-EF). USCF mem reqrd. **Reg:** Sa 9-9:30am, Su 8:30-9am. **Rds:** Sa/Su 11 5; Mo 10 3:30 (2-day Su 9:30 12 2:30 & merge Rd. 4). **Rds.:** 5/6 byes locked bef Rd. 1. Feb 15 Supp & TD disc to place players accurately. Bring clocks. **Info/Flyer/Reg:** <http://BayAreaChess.com/ppl.W>.

June 18, Nevada

Trophies Plus Grand Prix Points: 80 (Enhanced)
2015 U.S. Game/10 Championship (QC)

See Nationals.

June 18-19, Nevada

Trophies Plus Grand Prix Points: 30 (Enhanced)
2015 U.S. Women's Open

See Nationals.

June 19-21 or 20-21, Nevada

Trophies Plus Grand Prix Points: 200 (Enhanced)
2015 National Open

See Nationals.

REGIONAL

Alabama

Chess Magnet School Junior Grand Prix!

Dec. 20, Magic City Classic - 7th Annual
4SS, TC: G/70 d5. Asbury UMC, 6690 Cahaba Valley Rd., Birmingham, AL 35242. Classic (PF: \$750, \$b/20): \$250-150-A/B; 150-C/D; 125-U1200:75. **Rds.:** 9, 12, 3, 5:30. **EF:** \$40; if mailed by **DEC 13th:** \$50 at site. **Scholastic:** 55S, TC: G/30 d5. **EF:** \$20. **Flyer:** Top 3. **Rds.:** 9:15-10:30-12:15-1:30-2:30. **Late Reg:** DEC 20th at 8am. Make checks payable to: **Caesar Chess, ENT:** Caesar Chess LLC, 5184 Caldwell Mill Rd., Suite 204-202, Birmingham, AL 35244. **Info:** CaesarChess@yahoo.com, www.CaesarChess.com or www.AlabamaChess.com.

California, Northern

Dec. 13, Bay Area Chess Grand Prix Super\$wiss (4SS, G/61 d5)
See Grand Prix.

Dec. 13, Bay Area Sacramento Quads (PK-12; 3xG/30 d5)
Court yard Marriott, Rancho Cordova, CA 95670. **Trophies:** Players w/plus score. **Sched:** Check-in by 2p. **Games:** 2:30-5p. **EF:** \$20, after 12/9 \$35. **Info:** <http://BayAreaChess.com/signature>. W.

Chess Magnet School Junior Grand Prix!

Dec. 13, Sacramento Junior Grand Prix Super \$wiss (4SS, G/61 d5)

Court yard Marriott, Rancho Cordova, CA 95670. **Prize:** \$1,000 b/35. 70% guar. **1800+:** \$200-100, u2000 100-50. **u1800:** \$200-100-50, u1600 100, u1400 50 u1200 50. Dec 14 Supp & TD disc. Reg. 9-9:15. Rds. 9:30 11:50 2:40 5. **EF:** 45, Econ 35 2/3 prz. after 12/9 +15, playoff +15, Rated 2200+ \$0 by 12/1 (Prize - EF). **Info:** <http://BayAreaChess.com/grandprix>. W.

Dec. 13, Weibel Fall Scholastic Chess Youth Awards #3

Weibel Elementary School, 45135 S. Gimmer Blvd., Fremont, CA. **Two Sections:** U900 G/30 d0; Over 900 G/45 d5. **Info & Entry Form at:** www.CalNorthYouthChess.org/Applications/FallQuads14-GP. Open to all scholastic players who are USCF members. Trophies to winners of each Quad. Chess medals to all who do not win a trophy. **Info:** Alan M. Kirshner, Ph.D., Alan@CalNorthYouthChess.org, (510) 659-0358.

Dec. 14, Bay Area Cupertino Quads (PK-12; 3xG/30 d5)

Court yard Marriott, Cupertino, CA 95014. **Trophies:** Players w/plus score. **Sched:** Check-in by 2p. **Games:** 2:30-5p. **EF:** \$25, after 12/10 \$40. **Info:** <http://BayAreaChess.com/signature>. W.

Dec. 14, Bay Area Cupertino Swiss (PK-12; 4SS, G/30 d5)

Court yard Marriott, Cupertino, CA 95014. **Trophies:** all teams & players w/plus score. **Sched:** Reg. 9-9:45a. **Games:** 10a-2p. **EF:** \$33, after 12/10 \$48. **Info:** <http://BayAreaChess.com/signature>. W.

Dec. 19-21 or 20-21, Bay Area Chess Lawless Winter Championship
See Grand Prix.

Dec. 21, Bay Area Fremont Quads (PK-12; 3xG/30 d5)

Court yard Marriott, Fremont, CA 94538. **Trophies:** Players w/plus score. **Sched:** Check-in by 2p. **Games:** 2:30-5p. **EF:** \$25, after 12/18 \$40. **Info:** <http://BayAreaChess.com/signature>. W.

Dec. 21, Bay Area Fremont Swiss (PK-12; 4SS, G/30 d5)

Court yard Marriott, Fremont, CA 94538. **Trophies:** all teams & players w/plus score. **Sched:** Reg. 9-9:45a. **Games:** 10a-2p. **EF:** \$33, after 12/18 \$48. **Info:** <http://BayAreaChess.com/signature>. W.

Dec. 27, Bay Area Chess4Less Kids Quads (PK-12; 3xG/30 d5)

1639A South Main St., Milpitas, CA 95035. **Trophies:** Players w/plus score. **Sched:** Check-in by 2p. **Games:** 2:30-5p. **EF:** \$20, after 12/24 \$35. **Info:** <http://BayAreaChess.com/signature>.

Dec. 27, Bay Area Chess4Less Kids Swiss (PK-12; 4SS, G/30 d5)

1639A South Main St., Milpitas, CA 95035. **Trophies:** all teams & players w + score. **Sched:** Reg. 9-9:45a. **Games:** 10a-2p. **Disc EF:** \$20, after 12/24 \$35. **Info:** <http://BayAreaChess.com/signature>.

Jan. 2, Bay Area New Year Quads (PK-12; 3xG/30 d5)

SFO Airport Hyatt Regency, 1333 Old Bayshore Hwy., Burlingame, CA 94010. **Trophies:** Winning rec. **Sched:** Reqr. Check-in 4-4:45p. **Games:** 5-7. **EF:** 27, after 12/30 +15. **Info:** <http://BayAreaChess.com/young>. W.

Jan. 2, New Year Youth Championship (PK-12; 5SS, G/30 d5)

SFO Airport Hyatt Regency, 1333 Old Bayshore Hwy., Burlingame, CA 94010. **Prizes:** Top 10 w/plus score in ea sec, Top 10 schools & clubs (combined). **5 Secs:** 800-999, 600-799, 400-599, 200-399, u200. **Sched:** Reg 9-9:15. **Games:** 10 11:30 1 2:20 3:40. **EF:** 39, after 12/30 +15, Playoff +10. Jan 15 Supp. Rfnd fee 15. **Info/Flyer/Reg:** <http://BayAreaChess.com/nykids>. W.

Jan. 2-4 or 3-4, 2015 New Year Championship

See Grand Prix.

Jan. 10, Chess4Less Kids Quads (PK-12; 3xG/30 d5)

1639A South Main St., Milpitas, CA 95035. **Trophies:** Players w/plus score. **Sched:** Reqr. Check-in by 2p. **Games:** 2:30-5p. **EF:** 22 by 1/7, 37 after 1/7. **Info:** <http://BayAreaChess.com/signature>.

Jan. 10, Chess4Less Kids Swiss (PK-12; 4SS, G/30 d5)

1639A South Main St., Milpitas, CA 95035. **Trophies:** to players w + score & all teams. **Sched:** Reg 9-9:45a. **Games:** 10a-2p. **Disc EF:** 22 by 1/7, 37 after 1/7. **Info:** <http://BayAreaChess.com/signature>.

Jan. 10, Sacramento Chess4Less Quads (PK-12; 3xG/30 d5)

Court yard Marriott, Rancho Cordova, CA 95670. **Trophies:** Players w/plus score. **Sched:** Reqr. Check-in by 2p. **Games:** 2:30-5p. **EF:** 22 by 1/7, 37 after 1/7. **Info:** <http://BayAreaChess.com/signature>.

Chess Magnet School Junior Grand Prix!

Jan. 10, Sacramento Junior Grand Prix Super \$wiss (4SS, G/61 d5)

Court yard Marriott, Rancho Cordova, CA 95670. **Prize:** \$900 b36. **1700+:** \$200-100, u1900 100-50. **u1700:** \$200-100, u1600 100, u1400 50. Jan 15 Supp & TD disc. Reg. 9-9:15. Rds. 9:30 11:50 2:30 5. **EF:** 43, Econ 29 1/2 prz., after 1/8 +15, playoff +15, Rated 2200+ \$0 by 1/1. **Info:** <http://BayAreaChess.com/grandprix>. W.

Jan. 11, Bay Area Chess Grand Prix Luper Swiss (3SS, G/90 d5)

See Grand Prix.

Jan. 11, Bay Area Cupertino Quads (PK-12; 3xG/30 d5)

Court yard Marriott, Cupertino, CA 95014. **Trophies:** Players w/plus score. **Sched:** Reqr. Check-in by 2p. **Games:** 2:30-5p. **EF:** 27 by 1/8, 42 after 1/8. **Info:** <http://BayAreaChess.com/signature>. W.

Jan. 11, Bay Area Cupertino Swiss (PK-12; 4SS, G/30 d5)

Court yard Marriott, Cupertino, CA 95014. **Trophies:** to players w + score & all teams. **Sched:** Reg. 9-9:45a. **Games:** 10a-2p. **EF:** 34 by 1/8,

49 after 1/8. **Info:** <http://BayAreaChess.com/signature>. W.

Jan. 16-19, 17-19 or 18-19, 6th annual Golden State Open

See *Chess Life* or www.chesstour.com.

Jan. 17, Chess4Less Kids Quads (PK-12; 3xG/30 d5)

1639A South Main St., Milpitas, CA 95035. **Trophies:** Players w/plus score. **Sched:** Reqr. Check-in by 2p. **Games:** 2:30-5p. **EF:** 22 by 1/14, 37 after 1/14. **Info:** <http://BayAreaChess.com/signature>.

Jan. 17, Chess4Less Kids Swiss (PK-12; 4SS, G/30 d5)

1639A South Main St., Milpitas, CA 95035. **Trophies:** to players w + score & all teams. **Sched:** Reg. 9-9:45a. **Games:** 10a-2p. **Disc EF:** 22 by 1/14, 37 after 1/14. **Info:** <http://BayAreaChess.com/signature>.

Jan. 18, Bay Area Cupertino Quads (PK-12; 3xG/30 d5)

Court yard Marriott, Cupertino, CA 95014. **Trophies:** Players w/plus score. **Sched:** Reqr. Check-in by 2p. **Games:** 2:30-5p. **EF:** 27 by 1/15, 42 after 1/15. **Info:** <http://BayAreaChess.com/signature>. W.

Jan. 18, Bay Area Cupertino Swiss (PK-12; 4SS, G/30 d5)

Court yard Marriott, Cupertino, CA 95014. **Trophies:** to players w + score & all teams. **Sched:** Reg. 9-9:45a. **Games:** 10a-2p. **EF:** 34 by 1/15, 49 after 1/15. **Info:** <http://BayAreaChess.com/signature>. W.

Jan. 24 and/or 25, 2015 U.S. Junior Chess Congress

See Nationals.

Jan. 25, Cupertino Grand Prix Duper\$wiss (3SS, G/75 d5)

See Grand Prix.

Jan. 30-Feb. 1 or Jan. 31-Feb. 1, Bay Area Chess CM Azhar Memorial Championship

See Grand Prix.

Feb. 1, Bay Area Fremont Quads (PK-12; 3xG/30 d5)

Court yard Marriott, Fremont, CA 94538. **Trophies:** Players w/plus score. **Sched:** Reqr. Check-in by 2p. **Games:** 2:30-5p. **EF:** 27 by 1/29, 42 after 1/29. **Info:** <http://BayAreaChess.com/signature>. W.

Feb. 1, Bay Area Fremont Swiss (PK-12; 4SS, G/30 d5)

Court yard Marriott, Fremont, CA 94538. **Trophies:** to players w + score & all teams. **Sched:** Reg. 9-9:45a. **Games:** 10a-2p. **EF:** 34 by 1/29, 49 after 1/29. **Info:** <http://BayAreaChess.com/signature>. W.

Chess Magnet School Junior Grand Prix!

Feb. 7-8 or 8, 8th Annual CalNorth Youth Chess Age Level plus Age Level FIDE-Rated Invitational

Location: Ohlone College Newark Center For Health Science and Technology, 39399 Cherry St., Newark, CA 94560. **Sponsored by Success Chess. Info & Entry Form at** www.calnorthyouthchess.org/AgeLevel2015. **Special chess rate of \$89 per night at the Marriott TownePlace Suites Newark Silicon Valley, 39802 Cedar Blvd., Newark, CA - a 2 minute drive to Ohlone College. Free parking, free internet, free breakfast. 510-657-4600, ask for the chess rate. Reserve by 1/17 or rate may increase. Contact: Carl Moy, calnorthyouthchess@gmail.com, 8th Annual CalNorth Youth Chess Age Level Tournament- Sunday, February 8:** Open to all scholastic players 13 and under who are USCF members. Age levels are 4-5, 6, 7, 8, 9, 10, 11, 12, 13. 1st Place through 15th Place trophies, plus those who tie for 15th. Three extra trophies in each section for unrated players. You must play in your own age group. Age determination is based as of February 1. \$40 online until 2/6. \$25 additional charge for registration on 2/7 and onsite. 5 Rounds, G/30 d5 for those 9 and under. Ages 10 to 13 is 4 Rounds, G/60 d5. Round times for 9 and under is 9:30, 11:30, 1:00, 2:15, 3:30. Round times for Ages 10-13 is 9:30, 12:15 and 4:30. Three academic school team trophies in each age level except 4-5 and 4-9. Open. Chess medals to all who do not win a trophy. For scholastic players ages 4-9 who are rated above 1000, or ages 10-13 and rated above 1300, please consider playing in the CalNorth Youth Chess Age Level FIDE-Rated Invitational tournament, which will be held February 7-8 at this same location (see below). **CalNorth Youth Chess Age Level FIDE-Rated Invitational Tournament - Saturday February 7 and Sunday February 8:** Eligibility - Ages 4-9, USCF Rating over 1000; Ages 10-13, USCF Rating over 1300. FIDE Rated and FIDE rules will be in use. You must play in your age group. \$65 online until 2/6. \$25 additional charge for registration on 2/7 and onsite. 5 Rounds, G/90 +30 sec increment. Round Times: 2/7-9am, 1:30pm, 6pm; 2/8-9am, 1:30pm. 1st Place through 15th Place trophies, plus those who tie for 15th. The First Place Winner in the 4-9 Section will also receive the Kirshner Cup; the First Place Winner in the 10-13 Section also receives the Orwig Cup.

Feb. 8, Cupertino Grand Prix Duper\$wiss (3SS, G/75 d5)

See Grand Prix.

Feb. 14, Young People's Quads (PK-12; 3xG/30 d5)

Conv. Cent, 5001 Great America Pkwy., Santa Clara, CA 95054. **Trophies:** Winning rec. **Sched:** Reqr. Check-in 4-4:45p. **Games:** 5-7. **EF:** 27, after 2/11 +15. **Info:** <http://BayAreaChess.com/young>.

Feb. 14, Young People's Swiss (PK-12; 4SS, G/30 d5)

Santa Clara Convention Center, 5001 Great America Pkwy., Santa Clara, CA 95054. **Prizes:** Top 10 w/plus score in ea sec, Top 10 schools & clubs (combined). **5 Secs:** 800-999, 600-799, 400-599, 200-399, u200. **Sched:** Reg. 9-9:15. **Games:** 10 11:30 1 2:20 3:40. **EF:** 39, after 2/11 +15, Playoff +10. Feb 15 Supp. & TD disc. Rfnd fee 15. **Info/Flyer/Reg:** <http://BayAreaChess.com/young>. W.

Feb. 14-16 or 15-16, 2015 Peoples Tournament (Presidents Day Weekend)

See Grand Prix.

Feb. 15, Bay Area Cupertino Quads (PK-12; 3xG/30 d5)

Court yard Marriott, Cupertino, CA 95014. **Trophies:** Players w/plus score. **Sched:** Reqr. Check-in by 2p. **Games:** 2:30-5p. **EF:** 27 by 2/12, 42 after 2/12. **Info:** <http://BayAreaChess.com/signature>. W.

Feb. 15, Bay Area Cupertino Swiss (PK-12; 4SS, G/30 d5)

Court yard Marriott, Cupertino, CA 95014. **Trophies:** to players w + score & all teams. **Sched:** Reg. 9-9:45a. **Games:** 10a-2p. **EF:** 34 by 2/12, 49 after 2/12. **Info:** <http://BayAreaChess.com/signature>. W.

Feb. 28-Mar. 1, Susan Polgar Foundation Nationwide Open for Girls and Boys

6SS, G/60 d5. Qualifier for the SPF Girls Invitational, and FIDE World Youth Chess Championship 2015. **MAIN EVENT:** San Mateo Event Center, 1346 Saratoga Dr., San Mateo. Free Parking. \$100,000+ in prizes (trophies, chess prizes, & scholarships) to individuals. School team trophies awarded to top 3 teams in each section. **10 SECTIONS** based on age and gender: Boys and Girls- U8, U10, U12, U14, U16/18. **ROUND TIMES:** Saturday & Sunday 9am, 11:30am, 2:30pm. **TIME CONTROLS:** All games will be G/60 d5. **ENTRY FEES:** \$45 if registered by 12/10. \$60 if by 2/1. \$80 after 2/1. **SIDE EVENTS: 2/27- Q & A and 25 board Simul** against GM Susan Polgar 6:30pm \$25 if by 12/10, \$40 by 2/1, \$50 after 2/1. **2/28- Puzzle Competition** (one section). 5-5:30pm Top 10 get trophies. \$10 if by 12/10, \$15 by 2/1, \$20 after 2/1. **Blitz Tournament. G/5 +0** From 5:45pm Top 10 get trophies. \$10 if by 12/10, \$15 by 2/1, \$20 after 2/1. USCF Membership required for all sections and blitz tournament. January 2015 Supplement used. TD discretion to place players accurately. **HOTEL:** Special Room Rate \$129. Sofitel San Francisco Bay, 223 Twin Dolphin Dr., Redwood City. Call (650) 598-9000 for reservations. **\$1,000 Triple Crown Bonus for World Youth Qualifiers!** - Please check for details on our website. **ORGANIZER:** Chris Torres chesslessons@aol.com. **More Info & Flyer or Register Online: chesssandmusic.com** Or mail to: TCAMA, 16691 Colonial Trail, Lathrop, CA 95330.

Note: Players who qualify for the World Youth Championship but represent a FIDE Academy are not included in the official USCF delegation.

California, Southern

The Los Angeles Chess Club

The Most Active Club on the West Coast! (310) 795-5710 • www.LAChessClub.com; Contact: Mick@LAChessClub.com; Saturdays: 10am-10 pm (Beg & Intern. classes + 2 Tournaments). Sundays: 11-7 & 1-5 pm (Junior class + 2 Tournaments) - Details on our web site. Tuesdays: 7:30-9:30 pm (Advance Lecture). 11514 Santa Monica Blvd., Los Angeles, CA 90025. (4 blocks W of 405, SW corner of Santa Monica & Butler * 2nd Floor - above Javan Restaurant) Group Classes * Tournaments * Private (1:1) Lessons.

Dec. 6, 13, 20, 27, LACC - Every Saturday Chess 4 Js.

3 separate events- 5SS, G/30 d0. 11514 Santa Monica Blvd. & Butler, LA, 90025, 2nd fl. 4 blocks West of 405. **EF:** \$30 (\$20 LACC memb. No prize 1/2, sibsings 1/2, Free new LACC members). **Reg.:** 12-1 pm. **Rds.:** 1pm & asap; done by 5. **Prizes:** Trophies & medals; everyone receives a prize! **Parking:** Free on streets & BoA. Free pizzas & juices. **Info:** (310) 795-5710 or www.LAChessClub.com or Mick@LAChessClub.com.

Dec. 7, 14, 21, 28, LACC - Every Sunday Chess 4 Js.

3 separate events- 5SS, G/30 d0. 11514 Santa Monica Blvd. & Butler, LA, 90025, 2nd fl. 4 blocks West of 405. **EF:** \$30 (\$20 LACC memb. No prize 1/2, sibsings 1/2, Free new LACC members). **Reg.:** 12-1 pm. **Rds.:** 1pm & asap; done by 5. **Prizes:** Trophies & medals; everyone receives a prize! **Parking:** Free on streets & BoA. Free pizzas & juices. **Info:** (310) 795-5710 or www.LAChessClub.com or Mick@LAChessClub.com.

Dec. 28, December LA Boys & Girls Championship (K-12)

9 Sections: 02000, U2000, U1800, U1600, U1400, U1200, U900, <500, <300. 5SS, G/30 d0. 11514 Santa Monica Blvd. & Butler, LA, 90025, 2nd fl. 4 blocks West of 405. **EF:** \$35 (\$25 LACC memb, sibsings 1/2, Free new LACC memb). \$5 off in notified by 12/27. **Reg.:** 12-1 pm. **Rds.:** 1pm & asap; done by 5. **Prizes:** Encyclopedias (worth \$60) to each of the top 6 sections leaders. Trophies & medals to the rest; each player receives a prize! **Parking:** Free on st & basement. Free Pizzas & Juices. **Info:** (310) 795-5710 or www.LAChessClub.com or Mick@LAChessClub.com.

Mar. 20-22 or 21-22, 22nd annual Western Class Championships
See *Chess Life* or www.chesstour.com.

Connecticut

Feb. 28-Mar. 1, 48th annual New York State Scholastic Championships (NY)
See New York.

Florida

Chess Magnet School Junior Grand Prix!

Boca Raton Chess Club

Friday nights, G/85 d5 Tournament, one game a week for 4 weeks. www.bocachess.com, 561-479-0351.

Epicure Grand Prix Series at Miami Country Day

Scholastic and Non-Scholastic sections. More info at www.bocachess.com or call 561-479-0351.

Franklin Academy Grand Prix Series in Boynton Beach

More info at www.bocachess.com or call 561-479-0351.

The Stormont Kings Chess Center in Miami, FL

Conducts Private and Group Lessons, Homeschool Activities, Tournaments, Camps, Family Game Nights, Parents Night Out, Casual Chess Play and more! Complimentary Refreshments, Ample Parking, Comfortable Waiting Room, and more! Located at 8353 SW 124 St., Suite 201-A, Miami, FL 33156. Contact Chris Stormont, 786-303-2437, chris@stormontkingschess.com, www.StormontKingsChess.com.

Tournament Life

Dec. 12-14, 2014 National K-12 Grade Championships
See Nationals.

Jan. 2-4 or 3-4, Gulf Coast New Year's Open
See Grand Prix.

Jan. 23-25 or 24-25, Central Florida Class Championships
See Grand Prix.

Mar. 27-29 or 28-29, 13th annual Southern Class Championships
See *Chess Life* or www.chesstour.com.

Georgia

Dec. 29, George Chess Festival Scholastic

4-SS, G/30 d5. Interactive College of Technology, 5303 New Peachtree Rd., Chamblee, GA 30341. In 4 sections: High School: 9-12, Middle School: K-8, Elementary: K-6, and Primary: K-3. **Entry Fee:** \$23 if received by 12/26; \$28 at site. Trophies to top 5, top girl, top unrated, top team of 3 same school. Medals to every participant who doesn't get a trophy. **Registration:** 9:30 to 10:30 am. **Rounds:** 1st at 11 am, then as soon as possible. Awards right after last round is completed. Should be over at 6:00 pm. **Special:** A master or expert will be on hand for FREE analysis. **Info:** info@americanchesspromotions.com or (478)-973-9389. **Enter:** American Chess Promotions, 3055 General Lee Rd., Macon, GA 31204 or americanchesspromotions.com.

Feb. 6-8 or 7-8, 2015 U.S. Amateur Team South Championship
See Nationals.

Idaho

Vellotti's Chess School

We Make Chess Fun!® Students ages 3-17 can learn to play and Master chess with tricks, traps, and sneak attacks. Our Success in Chess Training System is offered both in-person and live online through group Skype lessons. Based in Boise and Sun Valley, ID with a growing expansion into Los Angeles, CA, we offer camps, classes, tournaments, private lessons, simuls, and lectures by International Master Luke Vellotti. Enchanted Chess online classes are a great way to master chess from the comfort of your own home. Contact us today! Phone: (208) 713-2486. E-mail: info@SuccessInChess.com. Online: www.SuccessInChess.com.

Illinois

Jan. 18, 109th Knights Quest

Come join the monthly Quest – now in its 10th year. Crowne Plaza Hotel, 2875 Milwaukee Ave., Northbrook, IL (free Wi-Fi). **Sections:** U600 (K-8), U1000 (K-8), U1400 (K-12 & Adults) & Open (K-12 & Adults). **Awards:** Top 6 U600, U1000 & U1400 Sections, Open \$50 – 40 - 30 (based on 8 players). Top Team U600 & U1000. Players in U600 receive participation award. **Time Control:** U600 & U1000 4 Rds. G/25 d5; Open & U1400 4 Rds. G/40 d5. **Reg.:** 11:00-11:30am. **Rds.:** 1 at 12:00 pm, rest ASAP. **EF:** \$30 early, \$35 after Monday before, \$45 after Friday before. **Online Reg/Info:** www.rknights.org.

Feb. 7, Greater Chicago K-12 Championship! Presented by Kasparov Chess Foundation & Renaissance Knights - Sponsored by SBB Global Research Group

Chicago's Official Scholastic Championship 5-SS, G/30 (G/25 d5), open to all grades 12 & below. McCormick Place - West Building 2301 S. Dr. Martin Luther King Jr. Dr., Chicago, IL. **PRIMARY (K-3)** Varsity: open to all. Junior Varsity: open to Under 600. **ELEMENTARY (K-6)** Varsity: open to all. Junior Varsity: open to Under 800. **JUNIOR HIGH (K-9)** Varsity: open to all. Junior Varsity: open to Under 1000. **HIGH SCHOOL (K-12)** Varsity: open to all. Junior Varsity: open to Under 1200. **Trophies:** top 7 players, top 3 schools each section, plus trophies: top rated Under 800 & top kindergartner (K-3 Varsity), top Unrated & top kindergartner (K-3 JV), top rated Under 1000 (K-6 Varsity), top Unrated (K-6 JV), top rated Under 1200 (K-8 Varsity), top Unrated (K-8 JV), top rated Under 1400 (K-12 Varsity), top Unrated (K-12 JV). **Entry Fee:** \$35 by 1/26; \$40 by 2/2; \$45 by 2/5 or \$50 on-site. On-site entry receives 1/2 point 1st round bye. All entries \$5 off when siblings & team members register together. **RDS.:** 10:00, 11:30, 1:00, 2:30 & 4:00. **Awards:** 5:30pm. **Byes:** One 1/2-pt bye available, any round, if requested before end of Rd.2 and if player has not received a full-point bye. **Hotel:** Hyatt Regency McCormick Place, 2233 S. Martin Luther King Dr., Chicago, IL, (888) 421-1442. Rate: single – double \$144. **Entries:** mail to RKnights, PO Box 1074, Northbrook, IL 60065, include name, section, rating, USCF ID#, grade, school name city & state, or **Online Reg/Info:** www.rknights.org.

Feb. 20-22 or 21-22, 2015 U.S. Amateur Team North Championship
See Nationals.

May 21-25, 22-25, 23-25 or 24-25, 24th annual Chicago Open
See *Chess Life* or www.chesstour.com.

Maryland

Maryland Chess Association Tournaments

MCA runs several scholastic & open tournaments throughout Maryland each month. Listings & online registration at www.MDChess.com. Maryland scholastic players can qualify for a \$41,000 scholarship awarded each year that covers 4 years of tuition & fees at UMBC (University of Maryland, Baltimore County).

Dec. 26-29 or 27-29 or 26-28, 41st Annual Eastern Open: 7-Rd SS in 5 Sections
See Grand Prix.

Jan. 31, Kasparov Chess Foundation Presents 7th Annual Greater Mid-Atlantic Scholastic Chess Championships

Baltimore Polytechnic Institute & Western High School, 1400 W. Cold Spring Ln., Baltimore, MD 21209. Open to K-12 players. 104 Trophies: 83 Individual & 21 Team. **8 Sections.** 4 sections are 4-SS, G/45 d5: **K-12 Championship** (rated 1000+, grades K-12, trophies to top 8 players & 2 teams), **K-8 Championship** (rated 1000+, grades K-8, trophies to top 10 players & 2 teams), **K-5 Championship** (rated 600+, grades K-5, trophies to top 9 players & 2 teams), **K-3 Championship** (rated 600+, grades K-3, trophies to top 5 players & 1 team). 4 sections are 5-SS, G/30 d5: **K-12 U1000** (grades K-12, rated under 1000 or unrated, trophies to top 10 players & 2 teams), **K-8 U800** (grades K-8, rated under 800 or unrated, trophies to top 13 players & 4 teams), **K-5 U600** (grades K-5, rated under 600 or unrated, trophies to top 17 players & 5 teams), **K-3 U400** (grades K-3, rated under 400 or unrated, trophies to top 11 players & 3 teams). **Rds.:** Rd. 1 for all sections: 9:30 AM; subsequent rounds ASAP. # of rds., # of sections, time control, & # of trophies might change, based on # of players. **EF:** \$30, by 11:59 PM, 1/25 (online or received mail); \$40, by 7 PM, 1/29 (online); \$50, by 6 AM, 1/31 (online) (half-point bye possible in Round 1); \$60, 8:30-9 AM, 1/31 (only if space available; half-point bye likely in Round 1). **Entry:** Online registration at www.mdchess.com/tourneyreg. **Mail registration:** include player's name, USCF ID #, USCF exp. date, section, grade, school, mobile phone #, email address, & check (in ink & made payable to Maryland Chess Association). Mail to: MCA, 1827 Thornton Ridge Rd., Towson, MD 21204-1841. Sets, boards, & sheets provided; bring chess clock & pencil. Food available for purchase. **Info:** www.mdchess.com, tournaments@mdchess.com.

Massachusetts

Dec. 14, Harry Nelson Pillsbury Memorial

See *Chess Life* or www.MassChess.org.

Jan. 9-11 or 10-11, 3rd annual Boston Chess Congress

See *Chess Life* or www.chesstour.com.

Feb. 28-Mar. 1, 48th annual New York State Scholastic Championships (NY)
See New York.

Missouri

Mar. 13-15 or 14-15, 19th annual Mid-America Open

See *Chess Life* or www.chesstour.com.

Nevada

Dec. 26-30, 26-29 or 27-29, 24th annual North American Open

See *Chess Life* or www.chesstour.com.

June 18, 2015 U.S. Game/10 Championship (QC)

See Nationals.

June 18-19, 2015 U.S. Women's Open

See Nationals.

June 19-21 or 20-21, 2015 National Open

See Nationals.

New Jersey

Jan. 18, Westfield Winter Scholastic

Westfield Y, 220 Clark St., Westfield, NJ 07090. K-12. **3 Sections:** Open, U1250, U750. **Open:** 3-SS. G/40 d5 Rds.: 2:15, 4:00, 5:45 p.m. **U1250:** 4-SS. G/25 d5. Rds.: 2:15, 3:30, 4:45, 6:00 p.m. **U750:** 4-SS. G/25 d5. Rds.: 2:15, 3:30, 4:45, 6:00 p.m. **EF:** \$25, \$20 members. **Prizes:** Trophies to Top 5 in each section. Tiebreaks used. See USCF Rule 34E. **Reg.:** 1:15-2:00 p.m. **Info:** www.westfieldchessclub.com, John Moldovan: westfieldchessclub@gmail.com, Bill Cohen: 732-548-8432 or 848-219-1358.

Feb. 14-16, World Amateur Team & U.S. Team East - 45th Annual
See Nationals.

A State Championship Event!

Feb. 22, New Jersey Junior High School Championships
5SS, G/30 d5. Brookdale College, 765 Newman Springs Rd., Lincroft, NJ 07738. Student Life Center, use Parking Lot #7 or #6; 5 minutes from Garden State Parkway exit 109. Section: JHS (K-9). **ALL:** Trophies to top 15 individuals, top 5 teams. **Rds.:** 10am then ASAP. Top 4 scores constitute team score. **EF:** \$30 before 2/15, \$45 at site. USCF memb. req'd. **Reg.:** 8-9:00 am. After 9:00 am, half-point bye for round one. **INFO:** 732-259-3881, hsprechman@characterkings.org. **ENT:** Hal Sprechman, 66 Cromwell Ln., Jackson, NJ 08527 or online by Feb 22 at www.NJSCF.org. Entries must include name, grade, school, date of birth, USCF ID #, & expiration date, mailing address, phone number & entry fee. Checks made out to NJSCF.

A State Championship Event!

Feb. 22, New Jersey State Elementary Championships

5SS, G/30 d5. Brookdale College, 765 Newman Springs Rd., Lincroft, NJ 07738. Student Life Center, use Parking Lot #7 or #6; 5 minutes from Garden State Parkway exit 109. **2 Sections:** Elementary (K-6) & Primary (K-3). **ALL:** Trophies to top 15 individuals, top 5 teams. Elementary & Primary: Top 5 in each grade. **Rds.:** 10am then ASAP. Top 4 scores constitute the team score for Elementary; top 3 for Primary. **EF:** \$30 before 2/15, \$45 at site. USCF memb. req'd. **Reg.:** 8-9:00am After 9:00am 1/2 point bye for round 1. **Info:** 732-259-3881. **Ent:** Hal Sprechman, 66 Cromwell Ln., Jackson, NJ 08527 or online by Feb 22 at www.NJSCF.org. Entries must include name, grade, school, date of birth, USCF ID and expiration date, mailing address, email address, phone number and entry fee. Checks made out to NJSCF.

Feb. 28-Mar. 1, 48th annual New York State Scholastic Championships (NY)
See New York.

Chess Magnet School Junior Grand Prix!

A State Championship Event!

Mar. 7-8, New Jersey High School Chess Championship

5SS, G/90 d5. Union County Vocational-Technical School, 1776 Raritan Rd., Scotch Plains, NJ 07076. 3 sections: **Varsity Championship (9-12):** 5 player teams with one alternate allowed. Coaches set order by player strength. Order must not be changed. Team avg. based on top 5 highest ratings. Trophies to top 10 NJ teams. Trophies for top three players, boards 1-5. **Rds.:** Sat. 10-2-6, Sun. 10-2. **EF:** \$150/Team before 3/2. \$185/Team at site. \$5 per change on site. **Junior Varsity (9-12):** 4 player teams with one alternate allowed. Team avg. based on top 4 highest ratings. Trophies to top 10 NJ teams. Trophies for top 3 players, boards 1-4. **Rds.:** Sat. 10-2-6, Sun. 10-2. **EF:** \$120/team before 3/2, \$150/team on site. \$5 per change on site. **Booster (K-12):** Trophies to top 15 individuals, top 5 teams, top 2 JHS teams, & top 2 elementary teams (K-6). **Rds.:** Sat. 10-2-6, Sun 10-2. Top 4 scores constitute team score. **EF:** \$30 before 2/25, \$37 at site. **ALL:** USCF memb. required. **Reg.:** Sat. 8-9:00am. After 9:00am, 1/2 Point bye for round one. **Ent:** Noreen Davission, 6 Red Barn Ln., Randolph, NJ 07869. Entries must include name, grade, school, date of birth, USCF ID and expiration date, mailing address, email address, phone number and entry fee. Checks made out to NJSCF. Email inquiries: Noreen@deanofchess.com.

New York

Dec. 26-28 or 27-28, 33rd annual Empire City Open

See *Chess Life* or www.chesstour.com.

A Heritage Event!

Chess Magnet School Junior Grand Prix!

Jan. 10 or 11 or 10-11, Kasparov Chess Foundation presents the 49th Annual Greater NY Scholastic Championship - USCF's Longest-Running Scholastic!

Beautiful hotel site: NY Marriott Hotel At Brooklyn Bridge, 333 Adams Street (near Borough Hall), Brooklyn, NY. **Nearby subway stations: Jay Street Metrotech** (A, C, F & R trains), **Hoyt Street** (2 & 3 trains), **Borough Hall** (4 & 5 trains), **Court Street** (R train). **HR \$169**, call 877-513-6305 or 718-246-7000 by 12/19 (rooms may sell out early), mention chess. **Now in 14 sections!** Each section has its own age, grade and rating requirements (Varsity sections open to all who are under grade and age limits). The **5 Varsity sections** are each **2 days**, 6-SS, G/60 d10, Rounds 10 am-1-4 pm Sat-Sun. Awards ceremonies about 6:30 pm Sun (possibly earlier). The **9 non-Varsity sections** are each 1-day, G/30 d5: Junior High Under 1300, Junior High Under 700, Primary Under 1000, Primary Under 400, and K-1 Under 500 are **Saturday**: 10 am-12:1:30-3:40 pm; Awards ceremonies about 6 pm. High School Under 1900, High School Under 1400, Elementary Under 1200 and Elementary Under 700 are **Sunday**: 10 am-12:1:30-3:40 pm, Awards ceremonies about 6 pm. **All 3 Primary sections** open to grades 3/below born after 1/10/05. **1. Primary Varsity** (Sat-Sun), EF: \$55.30 postmarked by 12/19/14. **2. Primary Under 1000** (Sat), EF: \$55.20 postmarked by 12/19/14. **3. Primary Under 400** (Sat), EF: \$55.10 postmarked by 12/19/14. **Both K-1 sections** open to grade 1/below born after 1/10/07. **4. K-1 Varsity** (Sat-Sun), EF: \$56.30 postmarked by 12/19/14. **5. K-1 Under 500** (Sat), EF: \$56.20 postmarked by 12/19/14. **All 3 Junior High sections** open to grades 9/below born after 1/10/99. **6. JHS Varsity** (Sat-Sun), EF: \$53.30 postmarked by 12/19/14. **7. JHS Under 1300** (Sat), EF: \$53.20 postmarked by 12/19/14. **8. JHS Under 700** (Sat), EF: \$53.10 postmarked by 12/19/14. **All 3 Elementary sections** open to grades 6/below born after 1/10/02. **9. Elementary Varsity** (Sat-Sun), EF: \$54.30 postmarked by 12/19/14. **10. Elementary Under 1200** (Sun), EF: \$54.20 postmarked by 12/19/14. **11. Elementary Under 700** (Sun), EF: \$54.10 postmarked by 12/19/14. **All 3 High School sections** open to grades 12/below born after 1/10/95. **12. High School Varsity** (Sat-Sun), EF: \$52.30 postmarked by 12/19/14. **13. High School Under 1900** (Sun), EF: \$52.20 postmarked by 12/19/14. **14. High School Under 1400** (Sun), EF: \$52.10 postmarked by 12/19/14. **Trophies** each section to Top 12, top 3 Unrateds and Top 6 teams (top 4 scores from same school = team, all on team must attend same school: no combined teams, even if one school "feeds" another). In High School U1400, plaques also to top 2 each grade: 4-6. In K-1 Varsity, plaques also to top 6 K/below (you can win both plaque + trophy). All players scoring 4 or more (5 or more in Varsity) who *don't* win a trophy receive a medal! Speed playoff for 5-0 or 6-0. **Individual free entry prizes** (each Varsity section): **Free entry** to specified Continental Chess tournaments thru 2/1/16 to 1st, thru 11/1/15 to 2nd, thru 9/1 to 3rd, thru 7/1 to 4th. **Individual free entry prizes** (each non-Varsity section): Free entry to specified Continental Chess tmnts, thru 12/1/15 to 1st, thru 9/1 to 2nd, thru 7/1 to 3rd, thru 5/1 to 4th. **Team free entry prizes:** free entry to specified CCA tmnts, thru 9/1/15 to 1st team, thru 7/1 to 2nd team each section! Free entries courtesy of Continental Chess and are valid for CCA tmnts. with unconditionally guaranteed prize funds; partial EF rebates to some other CCA tmnts. Free entries do not include NYS Scholastics in Saratoga. See www.chesscenter.cc or www.gnysccc.com or www.chesstour.com for complete details and restrictions. **High School Mixed Doubles** (best male/female 2-player "team" combined score among all 3 High School sections after 5 rounds) **Bonus Prizes:** free entry to specified CCA tmnts, thru 9/1/15 to 1st team, thru 7/1 to 2nd. Team average must be under 2000; Mixed Doubles teammates may play in different sections and may attend different schools; teams must register on-site (no extra charge) before rd. 2; teammate pairings avoided but possible. **All:** January 2015 official ratings used, except unofficial ratings at uschess.org usually used if otherwise unrated. TD reserves right to assign estimated ratings to players with non-USCF ratings. **EFs \$7 extra per player** postmarked 12/20-26. **Entries \$5 less per player if 4 or more from same school in SAME ENVELOPE!** Mailed entries: list name, rating, ID# (non-USCF members enclose dues), school, grade, DOB, address, (specify section!). Checks to: **Chess Center of NY, PO Box 4615, New Windsor, NY 12553**. If necessary to confirm receipt, enclose SASE. **No mail postmarked after 12/26/14!** All substitutions from advance entry list charged late fee. Switching sections subject to \$15 extra charge. \$15 service charge for each player refund. TD reserves

right to reassess sections for advance entries with incorrect or unclear registrations. Limit 2 byes (limit 3 in Varsity), commit before rd. 3. **Phone entries:** \$69 by credit card thru 1/5: 406-896-2191 (24 hours: entries only, no questions), no phone entries after 1/5. **Online entries** at www.gnyscc.com: \$50 thru 12/26/14, \$57 12/27-1/5, \$70 1/6-1/8. **Online team entry discounts** thru 1/5 only, no team discounts by phone or at site. **On-site entry fee:** \$80 until 8:30 am, \$100 after 8:30 am; after 9 am you risk not playing rd. 1. Good luck attempting to change entries after 9am. Help with parking: <http://nyc.bestparking.com/neighborhoods/downtown-brooklyn-parking> and www.parkingpanda.com/brooklyn-parking. **Questions, team rooms:** chesscentr@gmail.com, littlehouseofchess@gmail.com or **347-201-2269** (leave message if no answer, email is better). Jan 9-11 only: **718-246-7000**. Sets provided by Little House of Chess—**bring clocks!** **W. Info:** www.chesscenter.cc, www.gnyscc.com. **Chess Magnet School Junior Grand Prix (Varsity Sections).**

A Heritage Event!

Chess Magnet School Junior Grand Prix! A State Championship Event!

Feb. 28-Mar. 1, 48th annual New York State Scholastic Championships

6SS, G/60 d10, open to grades K-12 in any state (top NYS player & team in each section are NY champions). Saratoga Hilton, 534 Broadway (I-87 Exit 13-N, 4 miles north on US 9), Saratoga Springs, NY 12866. Team prizes based on top 4 scores from same school; no combined school teams allowed even if one school "feeds" another. Teams of 2 or 3 players allowed, but are at a disadvantage. In 9 sections. **Online entry fee at chessaction.com, all sections:** \$43 until 2/7, \$53 2/8-2/24, \$60 2/25 to 9 am 2/28. **Entry fee at site, all sections:** \$60. **High School**, open to all in grades K-12. EF \$46.20 mailed by 2/7. Top NYS grade 9-12 qualifies for Denker Tournament of HS Champions, top NYS grade K-12 girl qualifies for National Girls Invitational. **High School Reserve**, open to K-12 under 1200 or unrated. EF \$46 mailed by 2/7. **Junior High**, open to all in grades K-9. EF \$45.90 mailed by 2/7. Top NYS grade K-8 qualifies for Barber tournament of K-8 Champions. **Middle School Reserve**, open to K-8 under 1000 or unrated. EF \$45.80 mailed by 2/7. **Elementary**, open to all in grades K-6. EF \$45.60 mailed by 2/7. **Elementary Reserve**, open to grades K-5 under 800 or unrated. EF \$45.50 mailed by 2/7. **Primary**, open to grades K-3. EF \$45.30 mailed by 2/7. **Primary Reserve**, open to grades K-3 under 600 or unrated. EF: \$45.20 mailed by 2/7. **K-1**, open to grades K-1. EF \$45.10 mailed by 2/7. **Postmarked 2/8-18:** All EF \$10 more. Do not mail entry after 2/18. **Special 1 year USCF dues** with magazine if paid with entry.

Online at chessaction.com, Young Adult \$20, Scholastic \$15. Mailed, phoned or paid at site, Young Adult \$30, Scholastic \$20. **Trophies** to top 15 players and top 7 teams each section, top 3 unrated in Primary, K-1, and each reserve section, and top U1500, U1300 (HS), U900, U700 (HS Reserve), U1200, U1000 (JHS), U700, U500 (MS Reserve), U1000, U800 (Elem), U500, U300 (Elem Reserve), U500 (Primary), U200 (Primary Reserve, K-1). Speed playoff if perfect score tie. **Free entry** to NY State Championship, Labor Day weekend 2015 (Albany), to top player each section, if not already qualified for free entry from another event. **Schedule:** Late reg. ends Sat 10 am, rds. Sat 11, 2, 5, Sun 9, 12, 3, awards 5:30 pm. **Half point byes** OK all, limit 2, must commit before rd. 2. **HR:** \$129-129, 888-999-4711, 518-584-4000, two nights minimum, reserve by 2/6 or rate may increase. Free parking for overnight guests. 7 days notice required for room cancellation. Backup hotel: Courtyard by Marriott, 2 blocks away, 518-226-0538. **Special car rentals:** Avis, 800-331-1600, use AWD #657633. **Online entry:** www.chessaction.com. **Mail entry:** Continental Chess, PO Box 249, Salisbury Mills, NY 12577. Include name, rating, USCF ID, USCF expiration (non-members enclose dues), section, school, grade, birth date, address of each player. Checks payable to Continental Chess. **\$15 per player** service charge for refunds. **\$10 extra to switch** sections, all substitutions from advance list charged \$60. **Questions:** DirectorAtChess.US (At = @), 347-201-2269. **Bring set, board, clock** if possible- none supplied.

North Carolina

A Heritage Event!

Jan. 10, PawnDemonium XXVI

Asheville, NC. G/60 d5 or G/30 d5. **5 sections:** K-12 Championship, K-8 Under 1000, K-5 Under 900, K-3 Under 800, Rated Adult. 50 trophies and 100 t-shirts! Details at <http://kiwanisofashville.org/>.

Jan. 23-25, Land of the Sky XXVIII

See *Chess Life* - Grand Prix; uschess.org or nchess.org for more details.

Ohio

Chess Magnet School Junior Grand Prix!

Jan. 24-25, Jr. Cardinal G/75 Scholastic, Columbus

K-12/U1400 only, 1 section. 5-SS, G/75 d5. Sets provided, must bring clocks. 1 bye any round. **Prizes** b/20, may add if more: \$100-80-60-50, U1200 \$40, U1000 \$30. **EF:** \$35 if received by 1/10, then \$45, deadline for all 1/16, advance entries only! **Schedule:** Must check-in Sat 9-10am to be paired for 1st round. Rds. 10:45-2-5:45, Sun 1-4:45. **Blitz tourney:**

Sat eve, G/5 d0. **Enter** online or FOTK Chess Club, 2720 Airport Dr., Columbus, OH 43219. **Embassy Suites Hotel**, 2886 Airport Dr., Columbus, OH 43219, 614-536-0209, \$109/night chess rate thru Jan 17, 4/room, incl full bkfst & mgr reception. **Full details, entry form & online entry** www.neilley.com/chess, info: grant@neilley.com, 614-314-1102, leave message. W.

Pennsylvania

Jan. 16-19, 17-19 or 18-19, 47th annual Liberty Bell Open

See *Chess Life* or www.chesstour.com.

Jan. 31, Kasparov Chess Foundation Presents 7th Annual Greater Mid-Atlantic Scholastic Chess Championships (MD)

See Maryland.

Feb. 28-Mar. 1, 48th annual New York State Scholastic Championships (NY)

See New York.

Mar. 6-8 or 7-8, 16th annual Pittsburgh Open

See *Chess Life* or www.chesstour.com.

Apr. 1-5, 2-5, 3-5 or 4-5, 9th annual Philadelphia Open

See *Chess Life* or www.chesstour.com.

Texas

Feb. 13-16, 14-16 or 15-16, Southwest Class Championships

See *Chess Life* or www.chesstour.com.

Vermont

Feb. 28-Mar. 1, 48th annual New York State Scholastic Championships (NY)

See New York.

Virginia

Jan. 31, Kasparov Chess Foundation Presents 7th Annual Greater Mid-Atlantic Scholastic Chess Championships (MD)

See Maryland.

June 30-July 5, July 1-5, 2-5 or 3-5, 43rd Annual World Open

See *Chess Life* or www.chesstour.com.

Answers, We've got Answers.

CHESSE DETECTIVE (from page 5)

#1 This position is from the 1963 Pan American Championship in Havana, Cuba, between Rogelio Ortega and Eduardo Etchevery. **White resigned**, because he saw 39. Nxd2 Qg1 mate and 39. Bxd2 Qf2 mate.

However, **39. Bxd2!** wins because Black's queen is pinned to his king!

#2 This position is from the a game in 1902 from Monte Carlo between Ignatz Von Popiel and Georg Marco. After 36. Rd1, **Black resigned** because he thought he would lose his d4 bishop.

He missed **36. ... Bg1!** with the discovered attack on White's queen and mate threat on h2.

#3 This game is from Berlin, Germany, in 1937, between NN and Sonnenschein. NN is for No Name ... we don't know his actual name (a good reason you should write your and your opponent's name on your score sheet!). With his queen pinned to his king, **White resigned**.

White missed the opportunity to win the game by playing **1. Bxf7+ Kxf7 2. Rf1+ Kg8 3. Rf8+ Rxf8 4. Qg7 mate**.

#4 This position is from a 1948 game in Bucarest, Romania, between Kofman and

Sacchetti. **White resigned** because he did not see a way to avoid the ... Qxh3 mate threat.

White wins with **1. Re8+ Kd7 2. Re3! Qh4** (or 2. ... Qf4 or 2. ... Qg7) **3. Rxd4+ Qxd4 4. Rd3! Qxd3 5. Ne5+** forking the king and queen.

#5 Black resigned in this position in this game between Lothar Zinn and Christian Syre from 1977 in Dresden, Germany, because of the threats of Qe8 mate and Bxa8.

Black missed the clever, **1. ... Qd1+! 2. Ke3** (2. Kxd1 Bg4+ 3. f3 Rxf8 4. fxf4 and Black is up the Exchange or 2. Kc3 Qxc2+ 3. Kd4 Qd3+ and White must take the queen and leave his king on a white square for a bishop check with the discovery on the queen) **2. ... Qe2+** and after 3. Kd4 Qd2+ or 3. Kf4 Qxf2+, White's king must move to a white square, where the c8-bishop can check him.

#6 Black resigned in this position from Budapest, Hungary, in 1976 between Havasi and Reko.

He missed the winning pawn break though with **1. ... c4! 2. bxc4** (2. Kg3 c3 3. bxc3 a4 4. bxa4 dxc3 followed by 5. ... b3 or 2. dxc4 a4 3. c5 [3. bxa4 b3 4. cxb3 d3] 3. ... axb3 4. cxb3 d3 5. c6 d2 6. c7 d1=Q 7. c8=Q

Qxb3+ 8. Kg2 Qxb2+ winning) **2. ... a4 3. c5 a3 4. bxa3 bxa3 5. c6 a2 6. c7 a1=Q 7. c8=Q Qf1+ 8. Kg3 Qf4+ 9. Kh3 Qf3+ 10. Kh2 Qf2+ 11. Kh3 Qh4+ 12. Kg2 Qxg4+ 13. Qxg4 Kxg4** and Black wins the king and pawn ending.

ARABIAN KNIGHTS (From page 7)

White checkmates with 1. b4 Kd7 2. b5 Kc8 3. b6 Kd7 4. b7 Kc6 5. b8=N checkmate.

YOU CAN DO IT! (from page 8)

#1 Alekhine-Asgeirsson, Reykjavik, 1931: 25. Qf6+ gxf6 26. Rf7#.

#2 Alekhine-Stephan, Czechoslovakia, 1925: 20. Ng6+ hxg6 21. Rh3#.

#3 Alekhine-Vasic, Banja Luka, 1931: 10. Qxe6+ fxe6 (10. ... Qe7 11. Qxe7#) 11. Bg6#.

#4 Blumenfeld-Alekhine, Moscow, 1908: 32. ... Qxf1+ 33. Kxf1 Rd1#.

#5 Torres Caravaca-Alekhine, Spain, 1922: 29. ... Nf2+ 30. Kg1 Nxf3#.

#6 Alekhine-von Feldt, Tamopol, 1916: 17. g4 Be4 (17. ... Bxf3 18. Bxf5#) 18. Nh4#.

USCF
SALES

The 2015 Annual Buying Guide is Now Available!



**CHESS
EQUIPMENT**

**BOOKS/DVDs
SOFTWARE**



**OVER 5,000
CHESS PRODUCTS
IN STOCK**

**LOW PRICES
& SAME DAY
SHIPPING**

**USCF
SALES**

2015 Annual Buying Guide

888.51CHESS (512.4377)

www.USCFSales.com

Request Your Free Copy TODAY!

www.USCFSales.com

