

April 2015

uschess.org

# Chess Life for Kids!

## Chess in the Motor City!



A USCF Publication

\$3.00



0 74470 27842 9



**KASPAROV**  
CHESS FOUNDATION

**USCF**



present

# KCF's 12th Annual All-Girls Open National Championships

April 17 - 19, 2015 - Chicago, IL



First place winners of each section will qualify to play at the 2015 World Youth Championships

## MAIN EVENT 6-SS, G/90

**Sections** (age as of 1/1/15)

- Under 8
- Under 10
- Under 12
- Under 14
- Under 16
- Under 18

### Friday April 17

6:00 PM Opening Ceremony  
6:30 PM Round 1

### Saturday April 18

10:00 AM Round 2  
2:30 PM Round 3  
6:30 PM Round 4

### Sunday April 19

9:00 AM Round 5  
1:00 PM Round 6  
5:00 PM Awards Ceremony

### Entry Fee

\$55 postmarked by 3/23, \$75 by 4/6, \$95 after/on-site.  
USCF membership required

### Entry & Info

Make checks payable to:  
RKnight's, Attn: All Girls,  
PO Box 1074  
Northbrook, IL 60065  
Tel: (773) 844-0701  
E-mail: d.heiser@renaissanceknights.org

## AWARDS

Trophies will be awarded to top 15 individual players and top four teams in the Under 8, 10, 12 & 14 Sections; top 10 individual players and top three teams in the Under 16 & 18 Sections. Three or more players from the same school to make a team (team scores will be calculated based on the top 3 scores to give teams their final standings). All players will receive a souvenir to honor their participation.

**All events held at the Hyatt Regency McCormick Place  
2233 S Martin Luther King Dr, Chicago, IL**



## SIDE EVENTS

**Bughouse Tournament**  
Fri. April 17 1:00 PM  
Entry fee: \$30 per team

**Blitz Tournament (G/5)**  
Fri. April 17 3:00 PM  
Entry fee: \$20 by 4/6, \$25 after/on-site.

## Hyatt McCormick Place

2233 S Martin Luther King Dr, Chicago, IL  
60616

**Hotel Reservations** Call (888) 421-1442  
www.crowneplaza.com/northbrookchi and  
use Group code Kf4.

**Chess Rate** single - quad \$144 - Reserve  
early rate may increase

Online Registration [www.rknights.org/allgirls](http://www.rknights.org/allgirls)

[www.kasparovchessfoundation.org](http://www.kasparovchessfoundation.org)





# Table of Contents

- 4 WHAT'S THE QUESTION?
- 5 ARABIAN KNIGHTS
- 6 WHAT WAS THAT QUESTION?
- 8 YOU CAN DO IT!
- 10 END OF THE LINE
- 11 THE CHESS DETECTIVE®
- 12 THE SQUISHED BISH
- 14 JGP CHAMPION NAMAN KUMAR
- 16 "WHERE ARE WE GOING TO PLAY CHESS?"
- 18 SIT ON YOUR HANDS!
- 19 TOURNAMENT LIFE ANNOUNCEMENTS
- 23 ANSWERS, WE'VE GOT ANSWERS.

COVER PHOTO COURTESY OF KWABENA SHABU

## ON THE COVER

If you live in or near Detroit, you can play chess in Campus Martius (cover) or close to it (1001 Woodward - First Federal Building at right). Or if you are between the ages of 8 and 18 ...

(continued on page 16)



**Publisher**

**USCF Executive Director:**  
Jean Hoffman

Jean.Hoffman@uschess.org

**Scholastic Editor:** Glenn Petersen  
gpetersen@uschess.org

**Art Director:** Cat Connor  
catseyephoto@mac.com

**Editorial Asst./Copy Editor:** Alan Kantor  
akantor@uschess.org

**Editorial Assistants:**  
**Jo Anne Fatherly**  
backtobasics@uschess.org  
**Jennifer Pearson**  
jenpearson@uschess.org

**Advertising Manager:** Joan DuBois  
jdubois@uschess.org

**Tournament Life:** Joan DuBois  
tla@uschess.org

**Director of Publications:** Daniel Lucas  
dlucas@uschess.org

**CONTRIBUTORS:** Send your contributions and articles to *Chess Life for KIDS*, PO Box 3967, Crossville, Tennessee 38557 or better yet, e-mail to gpetersen@uschess.org.

**Chess Life for KIDS** (USPS 023-567, ISSN: 1932-5894) is published in February, April, June, August, October, and December of every year by the United States Chess Federation, 137 Obrien Drive, Crossville, Tennessee 38555. Periodical postage paid at Crossville, Tennessee, and additional mailing offices.

**CHANGE OF ADDRESS:** Be sure to notify us at once of any change of address. Please include your old address and your new address, along with your USCF I.D. number.

**POSTMASTER:** Send address changes to USCF, PO Box 3967, Crossville, Tennessee 38557.

**Annual Scholastic Membership**  
Regular Scholastic Membership (online version of *Chess Life for Kids*), age 12 or younger, is just \$17 per year. Premium Scholastic Membership (receives *Chess Life for Kids* by mail) is \$24 per year. \$13 of every premium membership goes towards providing *Chess Life for Kids*. Annual subscription rate is \$18. Entire contents copyright 2015, United States Chess Federation.

Teachers may photocopy instructional articles for classroom use, but republication or widespread copying without the written consent of the USCF is forbidden.



# What's the Question?

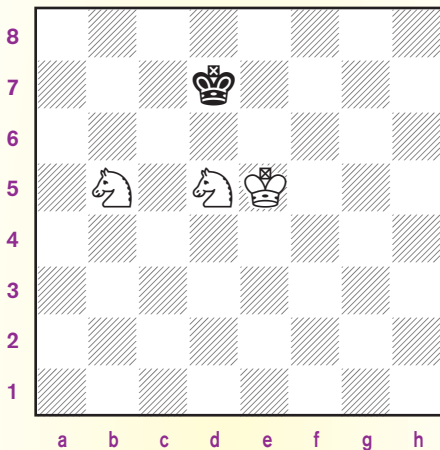
by FIDE Master Daniel Gurevich

## Ada Gurkas

**Q:** Is it possible to checkmate with only a king and two knights?

**A:** In most cases, the king and two knights cannot force checkmate. However, when they can, the result is often stunning.

Let's start by considering the simplest situation, when White has the two knights and Black has only his king left.

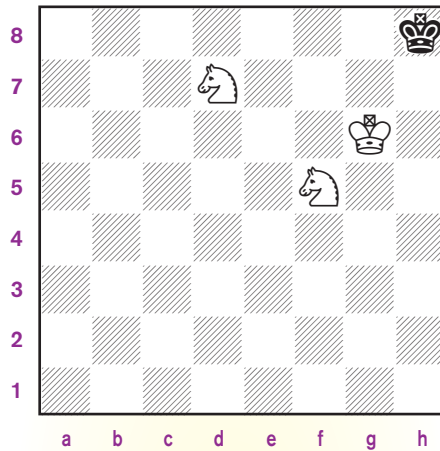


Working together, the king and pair of knights can slowly but surely push the enemy king into one of the corners:

**1. Nd4 Kd8 2. Ke6 Ke8** If 2. ... Kc8, running towards a8, it takes White slightly fewer moves to force the black king into the corner. **3. Nc6 Kf8 4. Kf6 Ke8 5. Nb6 Kf8 6. Nd7+ Ke8 7. Nde5 Kf8 8. Nf7 Ke8 9. Nce5 Kf8 10. Nd6 Kg8 11. Nd7 Kh7 12. Nf5 Kg8 13. Kg6 Kh8**

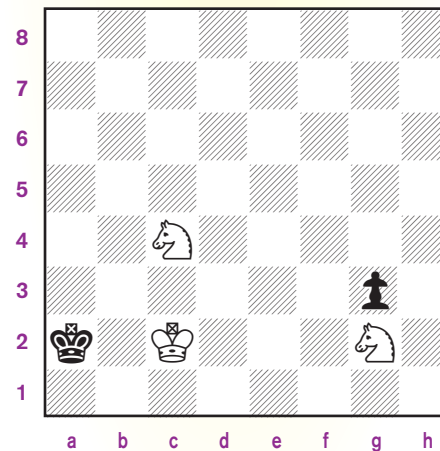
(See diagram, next column.)

Mission accomplished? Not quite. It is impossible to make further progress unless Black blunders a mate into a mate in one. For example, after **14. Nd6 Kg8 15. Nf6+ Kf8** (but not 15. ... Kh8 16. Nf7 checkmate) **16. Nd5 Kg8 17. Ne7+ Kf8**, it is clear that White is getting nowhere. He could also try 14. Kf7 Kh7 15. Nf8+ Kh8 16. Ne7, with



the idea of 17. Ne6#. Unfortunately, 16. Ne7 is stalemate!

As we saw in the previous position, a king and two knights simply cannot force checkmate against a lone king. Surprisingly, they often can win against a king and a pawn, though. The pawn prevents stalemate, allowing the two knights to form a mating net. Therefore the side with the pawn wants to get rid of it as soon as possible, while the knights try to avoid capturing it. Here is a study by the French composer André Chéron that illustrates some important ideas in this kind of endgame:

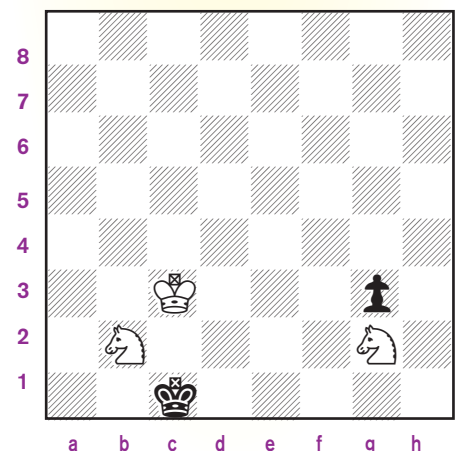


At first, it seems that White should just bring in his knight from g2 to b4 and then finish off the opponent with Nd2 and Nb3#. However, this idea

proves to be too slow. For instance, if 1. Ne3, Black plays 1. ... g2!, threatening to queen, and White has nothing better than to take the pawn with a theoretical draw.

Instead, White keeps blocking the pawn with the knight and uses the rest of his pieces to gradually herd the black king to a more vulnerable position. As we will see, White's main winning tool is *Zugzwang*, although he must be careful not to put himself in *Zugzwang*!

The first step of White's plan is to achieve the starting position with Black to move. **1. Kc3! Kb1** After 1. ... Ka1?! **2. Kb3**, we get the position after 5. Kb3 in the main line of the solution. **2. Kd2!** 2. Nb2? Kc1! puts White in *Zugzwang*—any move he makes allows the g-pawn to advance or the black king to escape. **2. ... Ka1 3. Kc1!** Not 3. Kc2 Ka2, after which White would have to start over. **3. ... Ka2 4. Kc2!** *Zugzwang!* After **4. ... Ka1 5. Kb3 Kb1 6. Nb2! Kc1** (or 6. ... Ka1 7. Nd3 Kb1 8. Kc3, transposing to the main line) **7. Kc3**, we reach the position after 2. Nb2? Kc1, with the important difference that here it is Black's move.



Please turn to page 5





# TALES OF THE ARABIAN KNIGHTS

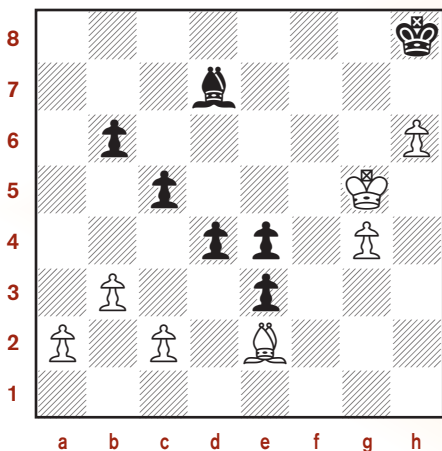
BY RICK KENNEDY ILLUSTRATIONS BY PAMELA KEY



## What A Useless Piece

The King sat at his chessboard, late into the night. The candle at his side guttered and threatened to go out. His friend entered the room, a long taper in her candlestick. "Are you all right, Your Majesty?" she asked, bringing more light to the table.

The King gestured toward the chess position in front of him.



"In my last game against my brother, I had the black pieces," he sighed, "and I was sure that my advanced pawns would

win the game for me." The King made a few moves on the board, continuing "After 1. ... d3 2. cxd3 exd3 3. Bxd3, I discovered that there was no win for me—in fact, I was *lost*."

The King's friend nodded silently.

The King set the pieces back in place. "Afterward, when I looked at the position, I thought I had something with 1. ... d3 2. cxd3 and then the tricky 2. ... Bb5!?, but then his king could sweep in with 3. Kf4 and after 3. ... exd3 4. Bxd3 Bxd3 5. Kxe3 I could not make anything of my extra piece.

"I spent hours looking," the King moaned. "What a useless piece!"

A smile brightened the room further. "I

am certain that you are correct," she said, examining the board. "In fact, I do believe that your "tricky" move wins for you—if you play it first, with 1. ... Bb5! Why not just get rid of that useless piece?"

The King played her move, then followed with 2. Bxb5 d3 3. cxd3 e2 with a laugh. "Now White's extra bishop is the *useless piece!*"

"White's king has no time to rush in, instead of capturing the bishop," she concluded. "2. Kf4 simply allows 2. ... Bxe2, and that would be a very useful piece."

The King smiled broadly.

### Question?

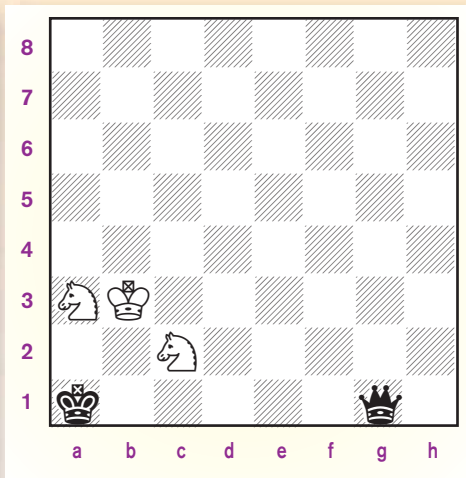
Continued from pg. 4

After 7. ... Kb1, White takes the c1-square away from the king with 8. Nd3. Next, White wants to reach a position with the white king on b3, the black king on b1, and Black to move. Using *Zugzwang*, he does just that: 8. ... Ka1 9. Kb4 Also correct is 9. Kc4 Ka2 10. Kb4. However, White should not play 9. Kb3?! Kb1, reaching the desired position but with White to move. 9. ... Ka2 10. Ka4 Ka1 11. Ka3 Kb1 12. Kb3 Done! After 12. ... Ka1, White can finally bring the g2-knight into the action with just enough time to checkmate. 13. Ne3! g2 14. Nc2+ Kb1 15.

**Na3+** Note how White can keep improving his knight with check—setting this up was the whole point of the first 12 moves of the solution. 15. ... Ka1 16. Nb4 g1=Q Finally, Black queens ... 17. Nbc2# ... only to be checkmated immediately! The final position is especially nice.

SEE DIAGRAM NEXT COLUMN

The theory of the two knights versus pawn endgame is exceptionally complex: it took decades of analysis by the world's foremost chess analysts to work it out. However, this endgame is



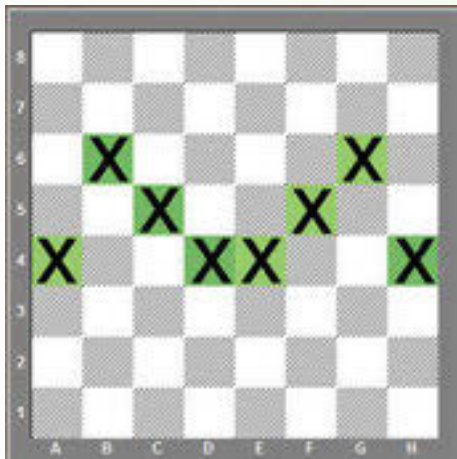
Please turn to page 6

# What Was That Question?

by Jon Edwards

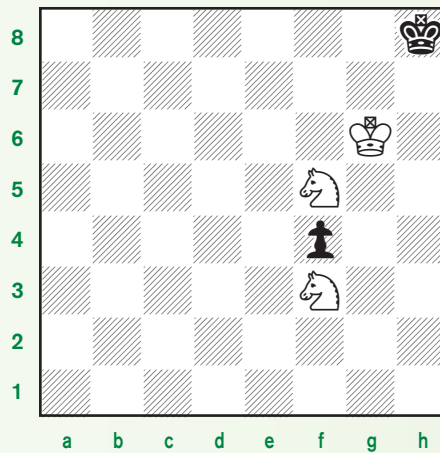
## Quiz

Alexei Troitsky extensively analyzed the two knights versus a pawn endgame and established the "Troitsky line." Two white knights can deliver checkmate if the black pawn is blocked on or before the green squares.

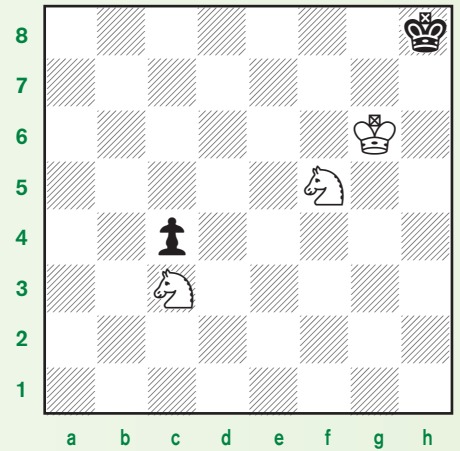


Of course, the line may move depending upon the position of the kings and the knights. Here are four positions. In each case, it's **White to move and deliver mate**. Can you work it out?

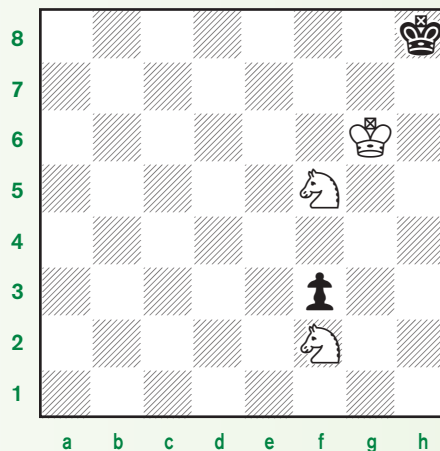
#1



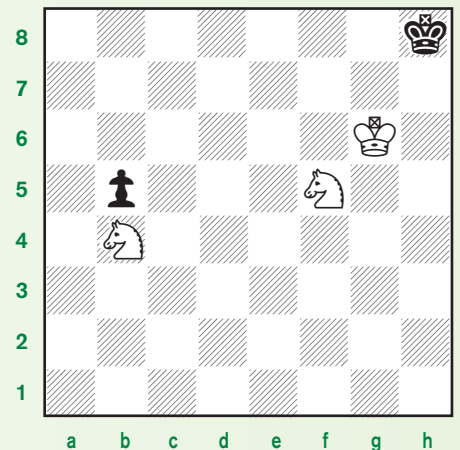
#3



#2



#4



Solutions on page 23 

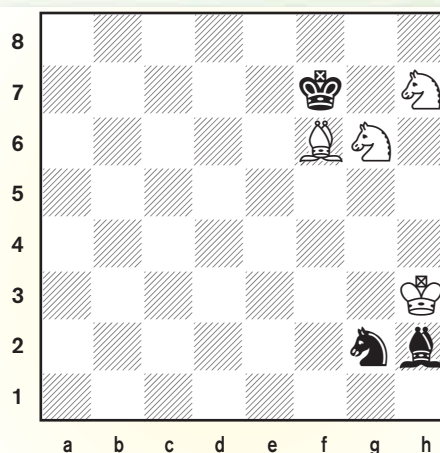
## Question?

Continued from pg. 5

also very rare (in ChessBase's Mega Database 2014, only 370 out of about 5.8 million games reached it), so I suggest that you focus on studying, say, the much more common pawn endgames and rook endgames.

In conclusion, I would like to show you one of my favorite studies, composed by Petr Sobleovsky.

SEE DIAGRAM NEXT COLUMN



White to move and win

The white king threatens to take both of Black's minor pieces, but first White needs to get his own pieces out of danger. Since 1. Ngf8? or 1. Ne7? allows 1. ... Bd6, after which White would not have enough extra material to win, White's first move must be 1. **Nh8+**. If Black now plays 1. ... Ke6, 2. Kxh2 is easily winning (however, 2. Kxg2? Be5! lets Black trade off the bishops, with a draw). So Black must respond with 1. ... Kg8.

Please turn to page 10 



**TROPHIES**  **PLUS**  
*A Champion Defined.*

TROPHIES • RIBBONS • MEDALS • CHENILLE • PLAQUES

Show Off.



Show It Off.

Official *Awards* Provider of the



UNITED STATES CHESS FEDERATION

315 W. 1ST STREET • TEMPLETON, IOWA 51463  
800-397-9993 • [WWW.TROPHIESPLUS.COM](http://WWW.TROPHIESPLUS.COM) • [TROPHYMAN@TROPHIESPLUS.COM](mailto:TROPHYMAN@TROPHIESPLUS.COM)

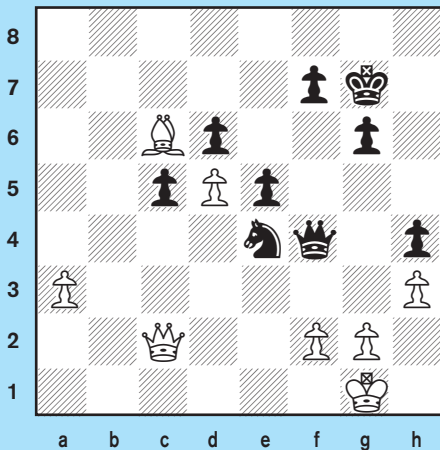


# YOU CAN DO IT!

by Jon Edwards

It is well known, and worth knowing, that queens and knights generally work together better than do queens and bishops. That might surprise some of you because we know that bishops are generally better than knights on the open board.

Here's a fun example from the recent 11th Moscow Open played between Konstantin Nikologorskiy and Anton Korobov. It is Black to move.



There are many paths to the win here, but Black set about to win as efficiently as possible.

**40. ... c4**

White would like to use the Bc6 to help guide the a-pawn to the queening square on a8, but that plan is slow. Black sets his own pawn in motion. But can't White's queen just capture the pawn on c4?

**41. Bb5**

Trying to bring the bishop back into play, here challenging Black's advancing c-pawn.

After 41. Qxc4 Black would show off the harmony of an active queen and knight: 41. ... Qxf2+ 42. Kh2 Qg3+ 43. Kg1 Qe1+ 44. Kh2 Ng3 45. Qxh4 Nf1+ winning White's queen.

**41. ... Nd2**

It's fun to see how well the queen and knight work together here. The knight now defends the c-pawn.

**42. a4**

Advancing the a-pawn towards its queening square.

**42. ... Qd4**

Continuing to defend the c4-pawn and the knight, but here also with the threat of ... Qa1+ and the idea of assisting the advance of the c-pawn to c3.

**43. Qd1**

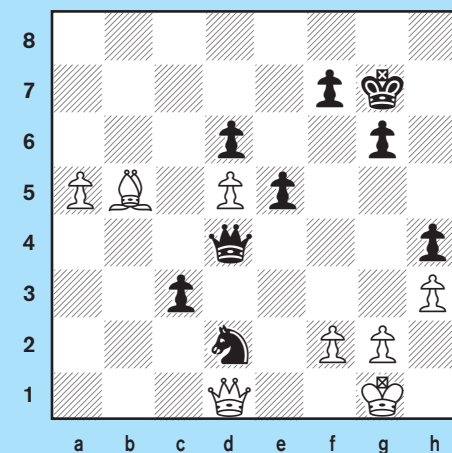
Preventing ... Qa1+.

**43. ... c3**

Advancing the pawn and further anchoring the knight.

**44. a5**

Sensing no danger, White presses forward on the queenside. Black now has a shot. Can you do it?



**44. ... Nf3+**

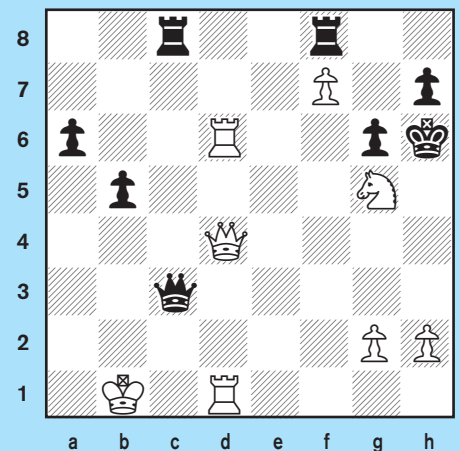
And White resigned. Take full credit if you favored 44. ... Ne4, but this knight check certainly is beautiful. White cannot capture the knight with the pawn because he would then lose his queen. And if 45. Qxf3 Black wins quickly with 45. ... c2 and a second black queen will appear on the board after 46. Qe3 Qd1+.



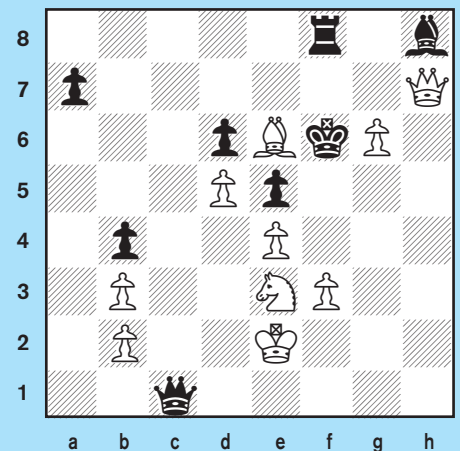
## Quiz

All positions are White to move and deliver checkmate in two moves.

**#1**

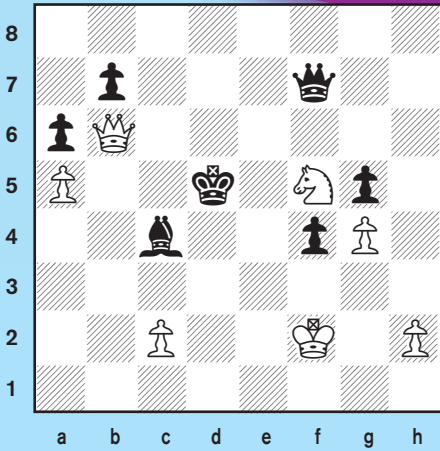


**#2**

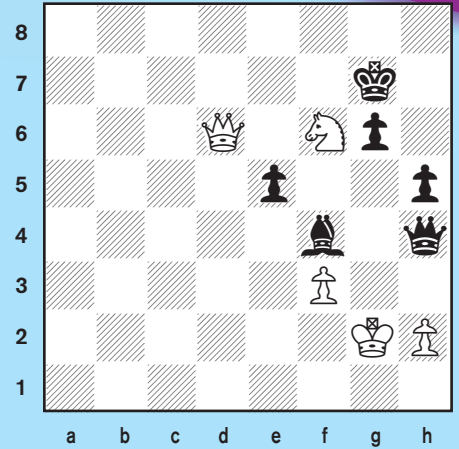




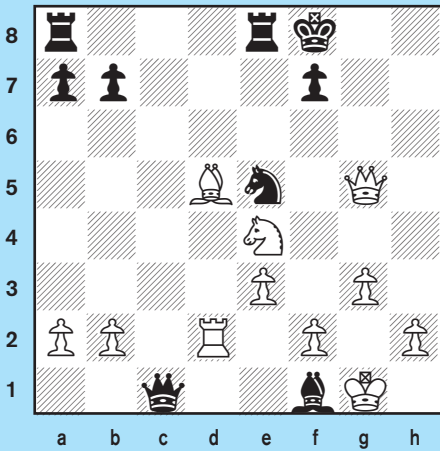
#3



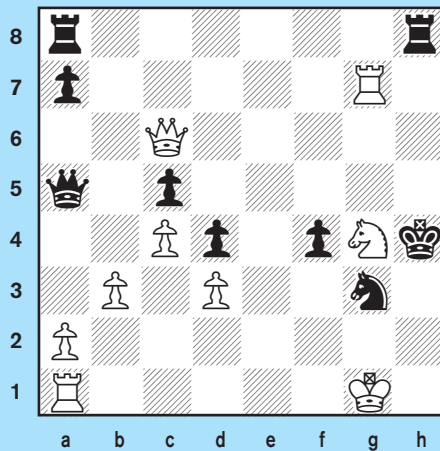
#6



#4



#5



Solutions on page 23 

# GM Yury Shulman's 12th Summer Chess Camp



## CAMP BENEFITS

- Small groups of around 10 students.
- Grandmasters and instructors rotate between groups.
- Students will play in a tournament.
- Special Events such as: bughouse, blitz, puzzle contest and outdoors!
- Beginners are welcome!
- The last day of camp: Pizza for everyone and Awards!
- Earlier drop off and later pick up available for an additional \$10/hour.

## Previous Years Instructors

- GM Yury Shulman
- GM Alex Onischuk
- GM Gregory Kaidanov
- GM Boris Avrukh
- GM Var Akobian
- GM Alex Goldin
- GM Dmitry Gurevich
- GM Mesgen Amanov
- GM Igor Novikov

### Dates & Location

- June 8-12; St. Nectarios Church
- June 15-19; St. Nectarios Church
- July 13-17; Barrington High School
- July 20-24; Barrington High School

### Times

- 9 am - 4 pm: Full Day
- 9 am - 12 pm: 1st Session Half-Day
- 1 pm - 4 pm: 2nd Session Half-Day

### Addresses

- St. Nectario's Church:** 133 S Roselle Rd, Palatine IL 60067
- Barrington High School:** 616 West Main Street, Barrington, IL 60010

### Registration Fees

**Full Day:** \$369 by May 5th, \$399 by June 5th. **Half Day:** \$254 by May 5th, \$274 by June 5th. **10% discount** for sibling registration or for two or more camp registrations.

Register Online: [www.shulmanchess.com](http://www.shulmanchess.com)

# END OF THE LINE

## EASY AS 1... 2... 3...



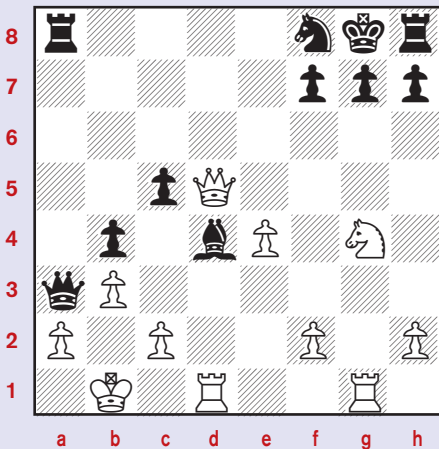
Here are six puzzles where two will be mate in one, two will be mate in two, and two will be mate in three.

Good luck and good skill.

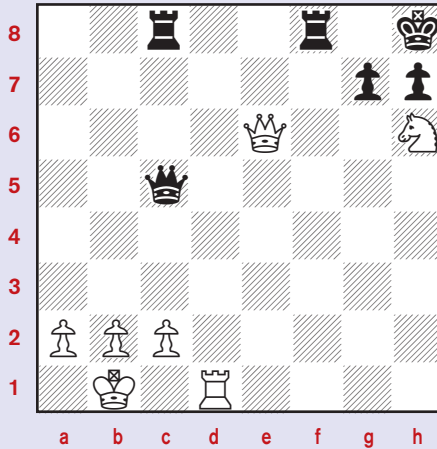
All puzzles are White to move.

by  
NM Atulya Vaidya

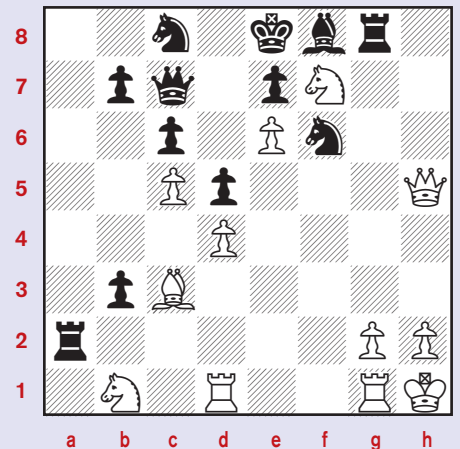
#1



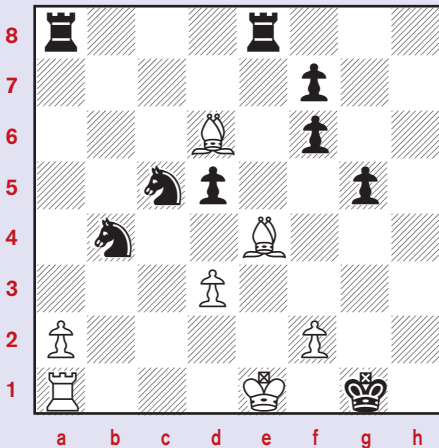
#3



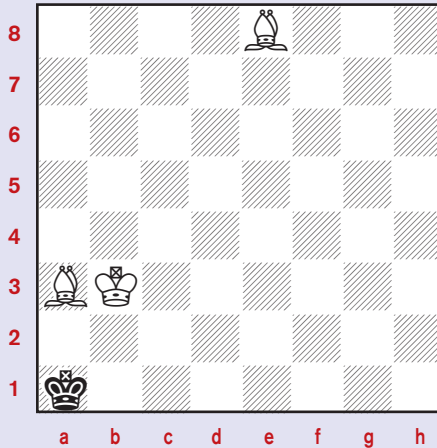
#5



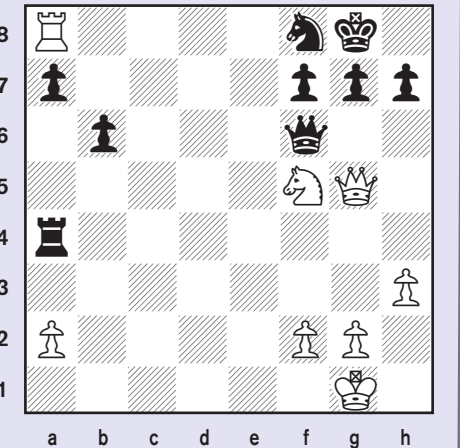
#2



#4



#6



Solutions on page 23

### Question?

Continued from pg.6

2. Kxg2 (but not 2. Kxh2? Ne3!, threatening both Ng4+ and Kxh7) 2. ... Bf4! Black defends tenaciously, avoiding the losing king, bishop, and knight versus king endgame after 2. ... Kxh7 3. Kxh2.

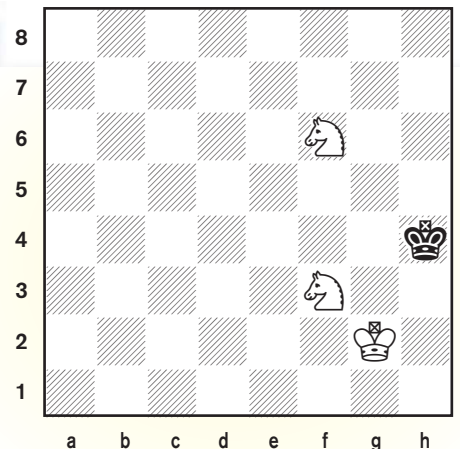
3. Ng6! Bh6 4. Ng5 Bg7! Setting a clever trap: after 5. Bd8? (or 5.

Be7?) 5. ... Bf6!, 6. Bxf6 is stalemate and 6. Ne7+ Kf8 7. Nh7+ Ke8 8. Nxf6+ Kxd8 is also a draw.

5. Ne7+! Kh8 6. Nf7+ Kh7 It does not look like White has made any progress, since 7. Bh4 again fails to 7. ... Bf6 ... or does it?

7. Bh4! Bf6! 8. Ng5+! Kh6 Isn't this just like the 5. Bd8? Bf6! line?

9. Ng8+ Kh5 10. Nxf6+ Kxh4 11. Nf3#! No, it is checkmate!







# The Chess Detective®

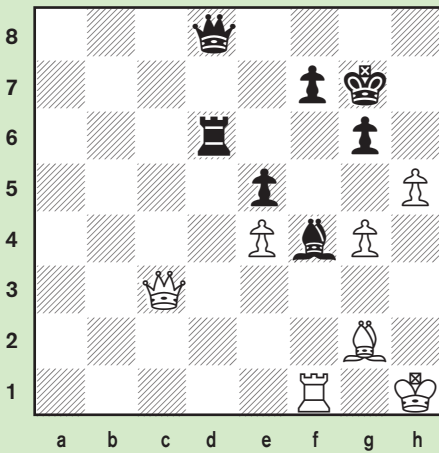
by NM Todd Bardwick

## OPPOSITE COLOR BISHOPS IN THE MIDDLEGAME PROBLEMS

In the February 2015 edition of *Chess Life for Kids*, we looked at some examples of opposite color bishop middlegames.

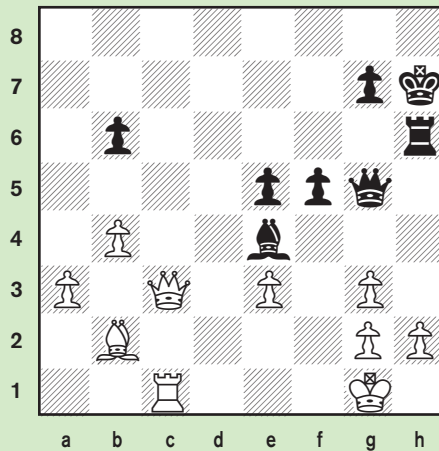
Now it's your turn to figure out how to win some of these exciting positions. Remember to keep the initiative—the player with the more active bishop as it is aimed at the opposing king usually wins.

#1



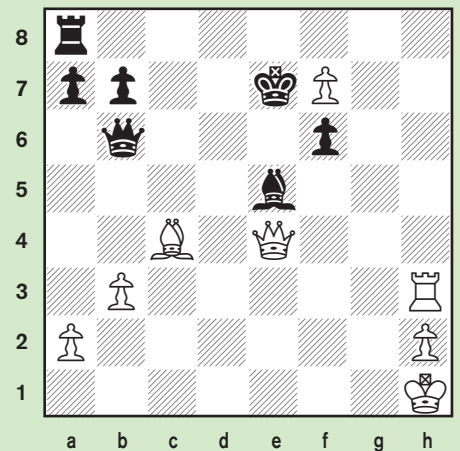
Position after 44. Qc3  
Black to move

#3



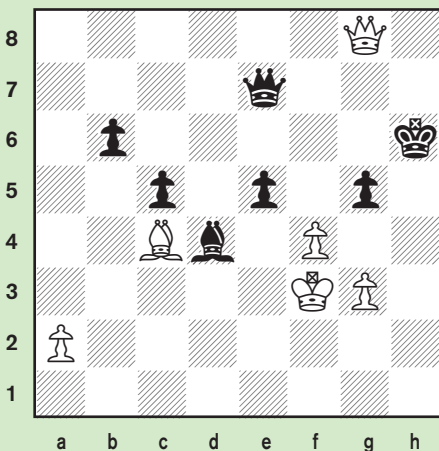
Position after 34. Qc3  
Black to move

#5



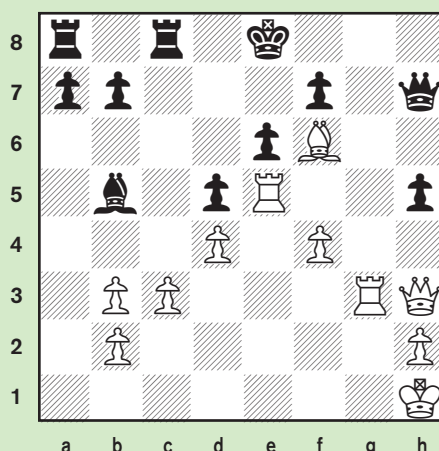
Position after 40. ... Ke7  
White to move

#2



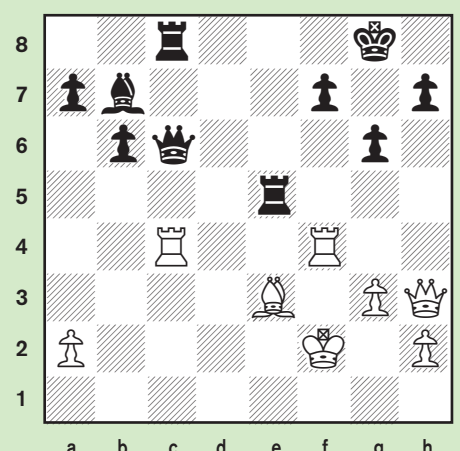
Position after 36. ... fxe5  
White to move

#4



Position after 39. ... Ke8  
White to move

#6



Position after 27. Rxc4  
Black to move

Solutions on page 23

# The Squished Bishop



Have you ever noticed, after **1. e4 e5**, that good players don't usually follow with **2. d3**?

I can see why they don't play **2. d4**. Black will take it. But why not **2. d3**?

For that matter, if White attacks the e-pawn instead with **2. Nf3**, Black rarely protects it with **2. ... d6**. Most people play **2. ... Nc6**.

Is there something wrong with linking pawns so they protect each other?

Absolutely not. Pawns are the best protectors in chess. Pieces have better things to do with their lives than protecting measly pawns.

In fact, when pawns protect each other, it's such a good thing it gets a name. It's called a pawn chain. White's chain of linked pawns from **c2-d3-e4** is a good thing.

A good thing, but not the best thing.

## Pawns are best abreast

That means side by side. The problem with pawn chains is that they're rigid. It's hard to unchain them. It's much easier to make a pawn chain than to unmake one.

Keep pawns flexible and you can decide later to make this chain, or that chain, or no chain at all. It keeps your opponent guessing.

But once you lock into a specific chain your opponent knows exactly what to expect. It makes his job easier.

After **1. e4 e5 2. d3**, Black already knows that White's pawns are in the way of his light-squared bishop and can develop a plan against that. Because White made the chain so early, he's blocking his bishop inside the chain.

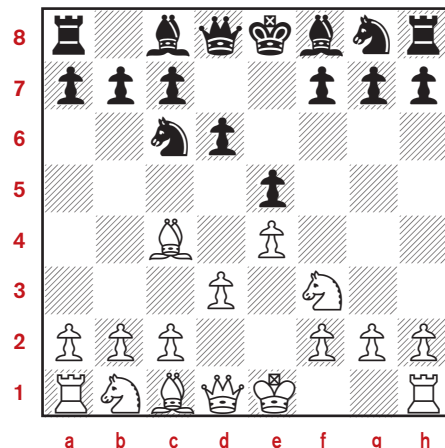
But even if he had developed the bishop first with **2. Bc4** and then

played **3. d3**, he'd be locking the bishop outside the chain. It could get trapped out there by a plan like ... **Nc6** followed by ... **Na5**. Instead of inside and can't get out, it would be outside and can't get back in. There are problems to solve in both situations.

But for inexperienced chess players, I think it's usually better to activate the bishop before locking the pawns. To bring this point home, I label the bishop blocked in by its own pawns with a pejorative name. I call it ... *The Squished Bishop*.

Not that there's anything wrong with squishing your bish. It's just passive and not as much fun. Let's say both sides settle for identical pawn chains, but White develops his bishop outside the chain, while Black squishes his by making the chain first.

**1. e4 e5 2. Nf3 d6 3. Bc4 Nc6 4. d3**



Black isn't in trouble because of this. He's on the defensive and has to be careful. But suppose he isn't, with a move like **4. ... Nf6**? Then White does gain a significant advantage with **5. Ng5!** White's active bishop, outside the chain, is joined by the knight in an attack



by International Master  
Larry Evans

against the pawn on **f7**. A pawn, by the way, that Black has no satisfactory way to defend.

And if the situation is reversed? If White plays **5. Nc3** instead of **5. Ng5!** and gives his opponent the first shot with **5. ... Ng4**? Then Black's passively placed bishop, hiding on **f8**, no longer cooperates with the aggressively placed knight. White's **f**-pawn isn't even attacked.

Black's mistake was **4. ... Nf6**?, not **2. ... d6**. Squishing the bish put him in a passive, defensive position. As the defender, Black needed to realize that he had to defend. He should have foreseen **5. Ng5** with **4. ... Be7!**, using the squished bish to protect **g5**. Next move, he could have played **5. ... Nf6**, ready to answer **6. Ng5** with **6. ... O-O!**, protecting the **f7**-target with his rook. This option wasn't previously available because the undeveloped bishop interfered with castling.

So Black wasn't losing before the mistake, but White was certainly having more fun. That's why I teach my beginning students not to squish their bish.



ChessMagnetSchool.com is the sponsor of the 2014 Junior Grand Prix (JGP). The method for calculating points has been modified; see [uschess.org](http://uschess.org) for the most up-to-date information. Chess Magnet School provides computer-based online chess training for both adults and children, including those who study independently and those who study under the guidance of a coach or teacher, as well as support for chess coaches and others who teach chess. Chess Magnet School has been a partner with USCF on a number of projects and activities since 2006, and has provided the free program that teaches the rules of chess to newcomers in the New to Chess section of USCF's website. USCF members are invited to learn more about Chess Magnet School at [www.ChessMagnetSchool.com](http://www.ChessMagnetSchool.com).

## 2014 CHESSMAGNETSCHOOL.COM JUNIOR GRAND PRIX FINAL STANDINGS

Name	State	Pts.	Name	State	Pts.	Name and State Winners	State	Pts.
KUMAR, NAMAN	FL	10958	RAJ, AKSHAY	GA	5840	MAXWELL, JAMES	LA	2912
DOMMALAPATI, AASA	VA	10198	BAYARAA, CHINGUUN	CA-N	5759	PARKER, JACKSON BOGDAN	MA	3856
GUO, INGRID	GA	9660	VISWANATHAN, ARUL	CA-N	5734	HE, ERIC SIYUAN	MD	5155
DASARI, SRIHITHA	GA	9531	NIEMANN, HANS MOKE	CA-N	5730	ALLEN, PARKER S	ME	2402
PREM, PRANAV	VA	9494	MENON, VISHAL	VA	5721	OUYANG, NATHAN J	MI	4633
YOO, CHRISTOPHER WOJIN	CA-N	9212	LYONS, BENJAMIN CARTER	VA	5688	ROBINSON, SPENCER C	MN	2486
GUO, ARTHUR	GA	9169	LE, COLLIN KHOI	TX	5687	ZHOU, IRIS YI-XIAN	MO	4321
PENG, ANDREW	CA-N	8627	MOHANRAM, ATHUL	TX	5681	BARTLETT, BRYNNA	MS	2044
WU, OLIVER	CA-N	8022	LI, JASON Y	NY	5678	LEE, CONRAD CHRISTOPHER	MT	775
ALAMPALLI, SANDEEP	NY	7964	MOTLEY, GISELE	MI	5668	DESHPANDE, NEIL	NC	5213
GU, ETHAN	NY	7367	AVIRNENI, SAITHANUSRI	GA	5651	SOORI, ISAIHAH C	ND	1050
SINHA, SAHIL	MD	7300	NAYLOR, JONATHAN	VA	5638	LE, HARRY	NE	1400
SOMALWAR, ANAIY	CA-N	7188	SMITH, RICKY	TN	5615	VIJAY, UDHAY	NH	4278
SHLYAKHTENKO, ROBERT	CA-S	7045	PANDEY, RITIKA	WI	5607	DER MANUELIAN, HAIK OLIVER	NJ	4704
NAIR, SIDDHANT	VA	6924	PAN, KEVIN	CA-N	5574	ROMERO, JONAH ANTHONY	NM	3258
KAO, SIMONA Y	TX	6799				MIKOLIC, JONATHAN C	NV	3117
WU, LOGAN	TN	6698	<b>Name and State Winners</b>	<b>State</b>	<b>Pts.</b>	RIVES, HAL DIFEDE	NY	5212
VONTERU, VARUN REDDY	VA	6682	WU, ROCHELLE	AL	5092	WANG, JASON YUYANG	OH	4972
GORTI, AKSHITA	VA	6653	SHE, CHENG YUE	AR	2446	DUNBAR, KALEB	OK	3414
MIYASAKA, MATTHEW SHOJI	NY	6625	CANCIO, ZAK	AZ	3944	PARNON, CALVIN JAY	OR	3938
KUMAR, ARAVIND	NJ	6614	MULLER, RAYMOND WJAYA, II	CA-N	5545	HERNANDEZ-CAMEN, ANGEL	PA	4487
GHATTI, SANJAY	GA	6555	PATIBANDLA, KSHITIJ	CA-S	5198	LIU, MINGYANG	RI	3588
TRIFALE, SHARVIL	PA	6401	HEMMAT, ALEXANDER	CO	3735	DIAS, ADITYA N	SC	4108
KUMAR, NIKHIL	FL	6353	BOWMAN, JOSEPH, JR	CT	5143	FUHS, ALEXANDER	SD	1123
BARADARAN HOSSEINI, ARMAN	CA-S	6191	ZHURAVSKIY, SEVA	DC	3143	VAZQUEZ MACCARINI, DANITZA	TERR	3895
LOHR, GIDEON	VA	6173	HIGGIN, SHANEA	DE	2598	KOTHAPALLE, TANISH	TN	5571
ORTOLANO, ALDEN	WA	6153	BANERJEE, ABHIMANYU	FL	5378	VAIDYA, ATREYA	TX	5389
QIAN, BILL NINGYUAN	KS	6115	JUSTICE, DREW	GA	5423	ROACH, ANDREW	UT	4361
PISINI, DAKSHIN	OH	6090	OSHIRO, COEL TADASHI	HI	2118	NAYLOR, NICHOLAS	VA	5467
MARUVADA, SHAUNAK	CA-N	6064	TYAGI, KUSHAN	IA	2514	YANG, ANDY	VT	3312
GORTI, ATMIKA	VA	5969	HARMON-VELLOTTI, CARL HONOR	ID	3320	PETROV, OSCAR	WA	4455
DUBBAKA, SRIAMSHA	MI	5946	VENKAT, ABHYUDHAYA	IL	4466	LIANG, AWONDER	WI	5275
PARASURAMAN, SURYA	MI	5883	GODDIN, BOBBY	IN	4406	TUSTIN, JASMINE RUTH	WV	972
GHOSH, HIYA	CA-N	5876	FALBO, PAUL	KS	5472			
DASARI, SAMHITHA	GA	5852	CREECH, AUSTIN MURPHY	KY	2045			




International Master Larry Evans and the

# Mountain Lake Chess Camp

proudly celebrate  
their 22<sup>nd</sup> anniversary  
in Lake Arrowhead, CA  
**July 26 - July 31, 2015**

For details & registration visit:  
[www.chesscamp.net](http://www.chesscamp.net)  
or call: (619) 585-1050



Two 300 ft.  
waterslides  
into the lake



## NAMAN KUMAR

### 2014 JUNIOR GRAND PRIX CHAMPION

Naman Kumar is an eight-year-old chess player from Miami, Florida. He was born in Austin, Texas and is currently a third-grader at Alexander Montessori School in Miami. He started playing chess about two years ago. He learned chess from his elder brother (Nikhil Kumar) and is coached by GM Lars Bo Hansen. Naman's favorite chess players are Vishy Anand and Garry Kasparov. Beyond chess, Naman enjoys basketball, swimming, tennis, and video games. He also enjoys playing the bass guitar and the piano. He loves Mexican and Italian food! Should Naman go to the U.S. Open in August, he will receive \$1,000 for expenses from *ChessMagnetSchool.com*.

We wish to thank *ChessMagnetSchool.com* for their support of the Junior Grand Prix for the past four years. Over \$20,000 in prizes and expense money have been donated by *ChessMagnetSchool.com*. *ChessMagnetSchool.com* was also responsible for organizing and sponsoring the Earth versus Space matches in 2008 and 2011.



# ChessKid

.com

## PLAY



## LEARN



**#1 Chess Site for Kids. 200,000+ Kids, Parents, & Coaches!**  
**100% Safe and Kid-Friendly! Signup Today - it's FREE!**



# Chess.com Donating Prizes to USCF JGP

The top prize for 2015 will be a *Chess.com* one-year Diamond membership valued at \$100, a *Chess.com* gear/merchandise package valued at \$100, a USCF plaque, free entry into the 2016 U.S. Open, and \$1,000 of expense money from the USCF to offset the trip.

For the top five players on the overall list and to each state winner, *Chess.com* will also award a choice of a one-year *ChessKid.com* Gold membership (valued at \$50/annually) or a one-year *Chess.com* Gold membership (valued at \$40/annually).

*The USCF gratefully acknowledges the participation of Chess.com!*

A promotional graphic for USCF and ICC. On the left, a hot air balloon with a black and white checkered pattern and the USCF logo is floating. In the background, a city skyline is visible. The central text reads "A match made in heaven!" and "Play Online USCF Rated Chess!". Below this, a map of the United States is shown with several blue chess piece icons connected by white lines, representing online play. In the bottom left corner, the ICC logo (a blue chess piece on a checkered sphere) and the text "ICC Internet Chess Club" are displayed. In the bottom right corner, the website "www.chessclub.com/uscf" and the slogan "Because we care about your rating!" are shown.

A match made in heaven!  
Play Online USCF Rated Chess!

www.chessclub.com/uscf  
Because we care about your rating!

ICC  
Internet Chess Club

# “Where are we going to play chess...?”

Photos by Kwabena Shabu

## That started the ball rolling ...

### DETROIT CITY CHESS CLUB (DCCC) FACT SHEET

- Started in 2003 because of the success of the Detroit Duffield & Middle chess team. Markiya Alexander, an eighth grade girl, asked me “Where are we going to play chess if our high school doesn’t have chess.” I didn’t know what to tell her so I sent an e-mail out to everyone on my e-mail list and one of my friends said “what about the Detroit Institute of Arts (DIA).” I didn’t think we would set up shop at a museum but we met with the DIA and the rest is history.
- DCCC has brought in some of the world’s best chess players: **GM Maurice Ashley**, Russia’s **GM Alexandria Kosteniuk** (former Women’s World Champion), **International GM Irina Krush**, **GM Gregory Kaidanov** (Former World Open Chess Champion), **National Master Dr. David Allen**, **Dr. Daaim Shabazz** (founder of [www.thechessdrum.net](http://www.thechessdrum.net)), Ecuador’s **IM Martha Fierro**, **GM Ben Finegold**, **GM Alex Lenderman**.
- UAW-Ford Vice-President James “Jimmy” Settles has been DCCC’s biggest supporter and sponsor over the last decade. Mr. Settles has sponsored several national tournaments for DCCC students.
- Many of DCCC members are now in colleges and universities all over the United States such as University of Michigan, Michigan State University, Kentucky Christian, Howard University, Indiana Bible College, Alabama A & M, Alabama State University, Bowling Green University, Wayne State University, Tennessee State University, Eastern Michigan University, Ferris State University and many more.



... You can play at the Detroit Institute of Art under the watchful eye of Kevin Fite



All you need is a generous sponsor (UAW-Ford Vice President Jimmy Settles ...



## Where? *Continued from pg. 16*

- DCCC averages over 200 students per practice session (during the school year) and averages about 70 students per practice session (during the summer practices). Practice sessions are held Friday evenings from 4 pm-8 pm at the DIA.
- DCCC has impacted well over 500 students since the beginning.
- The Young Detroit Thinker (YDT) (DCCC's 501[c][3]) was formed out of the Detroit City Chess Club.
- YDT and DCCC have hosted over 25 chess tournaments in the city.
- DCCC has hosted several chess camps over the years.
- DCCC & YDT host the annual ALL-CITY CHESS program at the DIA featuring the top chess players from Detroit.
- Work, Rewards, and Fun! Chess is alive and well in Detroit!



... mix in a little fun ...



... work a little more ...



... the will to work



... work a little more ...



... and there will be rewards and a solid program.

This is the first in a series of articles intended to inspire kids to play chess by tapping into the stories and wisdom of our best players. I've watched many generations of young players emerge and leave their marks on American chess. In many ways, their stories are your stories—learning to play, finding mentors, building confidence, and gradually learning to excel.

I'm asking our strongest players to reach back and remember the moments, people, games, and turning points that made them into chessplayers. I reached out to someone I've known for a very long time—former U.S. Champion and International Master Stuart Rachels, now teaching philosophy at the University of Alabama, a couple hours from my home.

## Alabama Gold

Stu is the strongest chessplayer ever produced by Alabama. Shortly after I moved here for the first time in 1980, he broke Bobby Fischer's record as the youngest chess master in U.S. history—11 years and 10 months. He won the U.S. Junior Invitational in 1988 and shared the U.S. Championship with GMs Roman Dzindzichashvili and Yasser Seirawan in 1989.

I had not seen or spoken with Stu for a very long time—since the 1992 U.S. Open in Los Angeles—but his response to my proposal was warm and spontaneous. He offered to share a story from his early days in Alabama chess.

What strikes me most from this story is how much the game *mattered* to this young player. Over the years I've interviewed many strong players—the one thing they all have in common is how much chess matters to them—and how hard they've worked to learn what they know about the game.

## Best Lesson

This is an excerpt from "Blunders," a chapter in Stuart Rachels' as-yet unpublished book, *The Best I Saw in Chess: Games, Combinations, and Stories from an Alabama Prodigy Who Became U.S. Champion*. Stuart Rachels retains all rights.

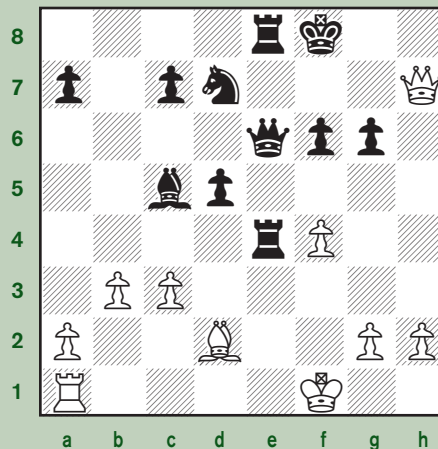
When you see a good move, sit on your hands. So goes the saying from the Soviet school of chess—and so true! The best lesson I ever got was when I was nine. I had known the moves for only a year, but I

was beating Birmingham, Alabama's fifth-best player in the city championship round-robin tournament.

W: Michael Thornton

B: Stuart Rachels

Birmingham, Alabama, 1979



"Troton" threw everything at my king, but his attack fell short. The sacrifices had been exciting, so all the best players in my city had gathered around our board. Desperately, White tried **31. f5**.

Now 31. ... Qxf5+ is mate in two, but I was so excited that I didn't even look at White's move. [If you see a good move, look for a better one!] Instead, I dashed out **31. ... Qa6+ 32. c4 dxc4**. After punching the clock, I glanced up at Kyle Therrell—his approval meant the most to me. But Kyle was turning away and shaking his head. What's that all about? **33. Bh6 mate**.

## Out of Nowhere

White's bishop seemed to come zooming out of nowhere. It shattered me. I'm not sure when I wrote "B-R6 mate!" in jagged letters on my scoresheet, but seconds after the blow, I jumped up and ran outside. I was crying hysterically and was as angry as a nine-year-old can be. My father, who was directing the event, hustled out after me.

As I stormed down the sidewalk, he managed to catch up with me, but I was unfit for human company. He had to shout just to be heard over my hysterics. At one point, he got a step ahead of me and turned around—jogging backwards past the concrete streetlights on University Boulevard—and held up his hands, displaying his palms, so I could punch at them like a little boxer.

"Sometimes winning feels bad," Michael Thornton said to the other players after I ran out. But within a few months, I understood that this was the best thing that had happened to me as a player. Before this game, I often moved impulsively; I was an energetic little boy. But afterwards, I never did. One trauma cured me.

Post-Thornton, I always performed a *neurotic last-moment blunder check*. If I wasn't in time trouble or playing prepared moves, I would try to clear my head after deciding on my move—but before playing it—and ask myself, "Is there anything obvious I'm missing?" Thanks to this habit, I almost never hung pieces in rated games. And I never again got checkmated—not once.

I always resigned first.



Left to right: Famed chess coach and mentor Jack Collins with Stuart Rachels, John Litvinchuk and David Peters, boards 1-3 of "Collins Kids Varsity," winners of the 1984 Amateur Team (Not pictured: board 4, Marco Robert).



## Tournament Life Announcements

APRIL 15 THROUGH JUNE 14

### Scholastic Members:

As a service to you, we are listing upcoming National USCF rated events, and requested events of possible interest to you. You can always log in to [www.uschess.org](http://www.uschess.org), and click on "Clubs & Tournaments." Then click on "Upcoming Tournaments" for a complete listing of upcoming rated events and details. As always, you can check out the TLA section of *Chess Life*.

### Organizers and Tournament Directors:

If you would like your tournament listed here in *Chess Life for Kids* for June 2015 (events to be held after June 14), the deadline for submitting your announcements is April 10th. The deadline for the August 2015 issue is June 10th. The processing fee is \$1.00 per line for the first eight lines, \$2.00 for every line thereafter. Send your announcements to Joan DuBois, [tda@uschess.org](mailto:tda@uschess.org).

**Display advertising is also available.** Advertising rates are posted on the USCF website, [www.uschess.org](http://www.uschess.org), or you may email: [tda@uschess.org](mailto:tda@uschess.org) for complete details.

## ABBREVIATIONS & TERMS

All tournaments are non-smoking with no computers allowed unless otherwise advertised.

<b>BLZ:</b>	Blitz rated.
<b>QC:</b>	Quick Chess events.
<b>\$\$\$Gtd:</b>	Guaranteed prizes.
<b>\$\$b/x:</b>	Based-on prizes, x = number of entries needed to pay full prize fund. At least 50% of the advertised prize fund of \$501 or more must be awarded.
<b>Bye:</b>	Indicates which rounds players who find it inconvenient to play may take 1/2-point byes instead. For example, Bye 1-3 means 1/2-point byes are available in Rounds 1 through 3.
<b>CC:</b>	Chess club.
<b>dx:</b>	Time delay, x = number of seconds.
<b>+xx:</b>	Time increment, xx = number of seconds added after each move.
<b>EF:</b>	Entry fee.
<b>Ent:</b>	Where to mail entries.
<b>FIDE:</b>	Results submitted to FIDE for possible rating.
<b>G/:</b>	Game in. For instance, G/75 means each side has 75 minutes for the entire game.
<b>GPP:</b>	Grand Prix Points available.
<b>HR:</b>	Hotel rates. For example, 60-65-70-75 means \$60 single, \$65 twin, \$70/3 in room, \$75/4 in room.
<b>JGP:</b>	Junior Grand Prix.
<b>Memb. req'd:</b>	Membership required; cost follows. Usually refers to state affiliate.
<b>Open:</b>	A section open to all. Often has very strong players, but some eligible for lower sections can play for the learning experience.
<b>Quad:</b>	4-player round robin sections; similar strength players.
<b>RBO:</b>	Rated Beginner's Open.
<b>Rds:</b>	Rounds; scheduled game times follow. For example, 11-5, 9-3 means games begin 11 a.m. & 5 p.m. on the first day, 9 a.m. & 3 p.m. on the second day.
<b>Reg:</b>	Registration at site.
<b>RR:</b>	Round robin (preceded by number of rounds).
<b>SD/:</b>	Sudden-death time control (time for rest of game follows). For example, 30/90, SD/1 means each player must make 30 moves in 90 minutes, then complete the rest of the game in an hour.
<b>SS:</b>	Swiss-System pairings (preceded by number of rounds).
<b>Unr:</b>	Unrated.
<b>W:</b>	Site is accessible to wheelchairs.
<b>WEB:</b>	Tournaments that will use a player's online rating.

## NATIONALS

### USCF Junior Grand Prix!

Apr. 10-12, Ohio

### 2015 National High School (K-12) Championship

7SS, G/120 d5. Hyatt Regency Columbus, 350 N. High St., Columbus, OH 43215. Hotel Chess Rate \$127. Guest rooms can be booked, NLT 3/13/2015 by calling (888) 421-1442 or (402) 592-6464, mention "USCF" or online at: <https://resweb.passkey.com/go/USChessFederation2015>. **5 Sections:** K-12 Championship, K-12 U1600, K-12 U1200, K-12 U800 and K-12 Unrated. April Rating Supplement will be used. One1/2-point bye available (limit one) any round (except Round 7) if requested prior to the start of Rd. 1. Team score = total of top four (minimum two) finishers from each school per section. K-12 Championship first place individual and team, including ties, will be the National High School Champion. **Schedule:** Opening ceremony Fri. 12:30 pm. Rds.: Fri. 1 pm and 7 pm, Sat. 9 am, 2 pm and 7 pm, Sun. 9 am-2 pm. Awards Ceremony Sun., approx. 7 pm. **EF:** \$50/participant postmarked or online by 3/9, \$70 postmarked or online by 3/30, \$85 by 4/8, \$90 on site; \$5.00 extra for all phone registrations; \$20 fee for roster or section changes after 3/30 or any onsite changes. Onsite registration Thurs. 9 AM - 9 PM & Fri. 8 AM -11 AM. Players who register or change sections after 11 am on Friday will receive a 1/2-point bye for Rd. 1. Players must disclose any other, non-USCF, over-the-board (OTB) ratings. **Awards:** Trophies to top individuals & top teams in each section. Every player receives a commemorative item! Full list of trophies on tournament Info Page. **Side Events:** Bughouse: Thurs. 11 am, Reg. onsite only Thurs. 9 -10 am, \$25/team. Blitz Section: K-12, Thurs. 5 pm, Reg. onsite until 4 pm. Blitz EF: \$15 by 3/30, \$20 after or at site. Blitz time control: G/5 d0. Class trophies will be awarded in main event and in Blitz. Full list of trophies on tournament Info Page. Team Rooms are limited. Contact Susan Houston at 931.787.1234 ext. 136 or by email: [shouston@uschess.org](mailto:shouston@uschess.org). Questions: Susan Houston at 931.787.1234 ext. 136. **Entries:** U.S. Chess Federation, Attn.: 2015 HS Championship, P.O. Box 3967, Crossville, TN 38557 or online at [www.uschess.org/tournaments/2015/hs/](http://www.uschess.org/tournaments/2015/hs/). See web site for additional information about the event, advance entries, awards, meetings, updates, corrections, and registration forms.

### USCF Junior Grand Prix!

Apr. 17-19, Illinois

### 2015 All-Girls National Championships presented by the Kasparov Chess Foundation in association with the Renaissance Knights Chess Foundation & USCF

**First place winners of each section will qualify to play at the 2015 World Youth Championships.** 6SS, G/90 d5. Hyatt Regency McCormick Place, 2233 S. Martin Luther King Dr., Chicago, IL 60616, (free Wi-Fi). **6 Sections:** Under 8, Under 10, Under 12, Under 14, Under 16 & Under 18. **Age as of 1/1/2015.** **EF:** \$55 postmarked/online by 3/23, \$75 by 4/6, \$95 after/on-site. Do not mail after 4/10. **Opening Ceremony:** 6pm, Friday. **Rounds:** Rd. 1 - 6:30pm Fri; Rounds 2-4 - Sat 10am, 2:30pm, 6:30pm; Rounds 5-6 - Sun 9am & pm. **Awards Ceremony:** Sun. 5pm. Trophies top 15 individual players and top 4 teams in the Under 8, 10, 12 & 14 Sections; top 10 individual players and top 3 teams in the Under 16 & 18 Sections. (top 3 players added for team scores). **Bye:** One 1/2-pt bye available, any round, if requested before end of Rd. 2 and if player has not received a full-point bye. **Side Events:** Bughouse tournament - Fri. 1pm, EF \$30/team. **Blitz Tournament** - Fri. 3pm, G/5 d0, EF \$20 by 4/6, \$25 after or on site. **HR:** single - quad \$144 Reservations: (888) 421-1442. Reserve early rate may increase. **Entries:** online/info at: [www.rknight.org/allgirls](http://www.rknight.org/allgirls) or mail to RKnight, Attn: All Girls, PO Box 1074, Northbrook, IL 60065, include name, section, rating, USCF ID#, date of birth, grade, school name city & state.

### USCF Junior Grand Prix!

Apr. 24-26, Kentucky

### 2015 National Junior High School (K-9) Championship

7SS, G/120 d5. Galt House, 140 North Fourth St., Louisville, KY 40202. Hotel Chess Rate \$125. Guest rooms can be booked, NLT 3/30/2015 by calling (800) 843-4258 or (502) 589-5200, mention "USCF" or online at: <https://resweb.passkey.com/go/USCF15>. **6 Sections:** K-9 Championship, K-9 U1250, K-9 Unrated, K-8 Championship, K-8 U1000 and K-8 U750. April Rating Supplement will be used. One1/2-point bye available (limit one) any round (except Round 7) if requested prior to the start of Rd. 1. Team score = total of top four (minimum two) finishers from each school per section. K-9 Championship first place individual and team, including ties, will be the National Junior High School Champion. **Schedule:** Opening ceremony Fri. 12:30 pm. Rds.: Fri. 1 pm and 7 pm, Sat. 9 am, 2 pm and 7 pm, Sun. 9 am-2 pm. Awards Ceremony Sun., approx. 7 pm. **EF:** \$50/participant postmarked or online by 3/23, \$70 postmarked or online by 4/13, \$85 by 4/22, \$90 on site; \$5.00 extra for all phone registrations; \$20 fee for roster or section changes after 4/13 or any onsite changes. Onsite registration Thurs. 9 AM - 9 PM & Fri. 8 AM -11 AM. Players who register or change sections after 11 am on Friday will receive a 1/2-point bye for Rd. 1. Players must disclose any other, non-USCF, over-the-board (OTB) ratings. **Awards:** Trophies to top individuals & top teams in each section. Every player receives a commemorative item! Full list of trophies on tournament Info Page. **Side Events:** Bughouse: Thurs. 11 am, Reg. onsite only Thurs. 9 -10 am, \$25/team. Blitz Section: K-9, Thurs. 5 pm, Reg. onsite until 4 pm. Blitz EF: \$15 by 4/13, \$20 after or at site. Blitz time control: G/5 d0. Class trophies will be awarded in main event and in Blitz. Full list of trophies on tournament Info Page. Team Rooms are limited. Contact Susan Houston at 931.787.1234 ext. 136 or by email: [shouston@uschess.org](mailto:shouston@uschess.org). Questions: Susan Houston at 931.787.1234 ext. 136. **Entries:** U.S. Chess Federation, Attn.: 2015 JHS Championship, P.O. Box 3967, Crossville, TN 38557 or online at [www.uschess.org/tournaments/2015/jhs/](http://www.uschess.org/tournaments/2015/jhs/). See web site for additional information about the event, advance entries, awards, meetings, updates, corrections, and registration forms.

### USCF Junior Grand Prix!

May 8-10, Tennessee

### 2015 National Elementary (K-6) Championship

7SS, G/120 d5 (K-1 G/90 d5). Gaylord Opryland Resort and Convention Center, 2800 Opryland Dr., Nashville, TN 37214. Hotel Chess Rate \$152. Guest rooms can be booked, NLT 4/16/2015 by calling (888) 777-6779 or (615) 889-1000, mention "US Chess Federation or UCL" or online at: [https://resweb.passkey.com/Resweb.do?mode=welcome\\_el\\_new&eventID=11337636](https://resweb.passkey.com/Resweb.do?mode=welcome_el_new&eventID=11337636). **9 Sections:** K-6 Championship, K-6 U1000, K-6 Unrated, K-5 Championship, K-5 U900, K-3 Championship, K-3 U800, K-3 Unrated, K-1 Championship. April Rating Supplement will be used. One1/2-point bye available (limit one) any round (except Round 7) if requested prior to the start of Rd. 1. Team score = total of top four (minimum two) finishers from each school per section. K-6 Championship first place individual and team, including ties, will be the National Elementary School Champion. **Schedule:** Opening ceremony Fri. 12:30 pm. Rds.: Fri. 1 pm and 7 pm, Sat. 9 am, 2 pm and 7 pm, Sun. 9 am-2 pm. Awards Ceremony Sun., approx. 7 pm. **Special Schedule for K-1 Rounds:** Fri. 1:30 pm and 6:30 pm, Sat. 9:30 am, 1:30 pm and 6:30 pm, Sun. 9:30 am and 1:30 pm. Awards Ceremony Sun., approx. 5:30 pm. **EF:** \$50/participant postmarked or online by 4/6, \$70 postmarked or online by 4/27, \$85 by 5/6, \$90 on site; \$5.00 extra for all phone registrations; \$20 fee for roster or section changes after 4/27 or any onsite changes. Onsite registration Thurs. 9 AM - 9 PM & Fri. 8 AM -11 AM. Players who register or change sections after 11 am on Friday will receive a 1/2-point bye for Rd. 1. Players must disclose any other, non-USCF, over-the-board (OTB) ratings. **Awards:** Trophies to top individuals & top teams in each section. Every player receives a commemorative item! Full list of trophies on tournament Info Page. **Side Events:** Bughouse: Thurs. 11 am, Reg. onsite only Thurs. 9 -10 am, \$25/team. Blitz Sections: K-6 and K-3, Thurs. 5 pm, Reg. onsite until 4 pm. Blitz EF: \$15 by 4/27, \$20 after or at site. Blitz time control: G/5 d0. Class trophies will be awarded in main event and in Blitz. Full list of trophies on tournament Info Page. Team Rooms are limited. Contact Susan Houston at 931.787.1234 ext. 136 or by email: [shouston@uschess.org](mailto:shouston@uschess.org). Questions: Susan Houston at 931.787.1234 ext. 136. **Entries:** U.S. Chess Federation, Attn.: 2015 Elem Championship, P.O. Box 3967, Crossville, TN 38557 or online at [www.uschess.org/tournaments/2015/elem/](http://www.uschess.org/tournaments/2015/elem/). See web site for additional information about the event, advance entries, awards, meetings, updates, corrections, and registration forms.

### USCF Junior Grand Prix!

May 23-25, Arizona

### 2015 U.S. Amateur West Championship

Hilton Tucson El Conquistador Golf & Tennis Resort, 10000 N. Oracle Rd., Tucson, AZ 85704, 1-800-325-7832. **SECTIONS:** Championship (U2200), Reserve (U1600), Booster (U1200). **SCHEDULE:** (Championship & Reserve) 6/SS, 40/90, G/30, Inc/30; Rds.: 10-4, 10-4, 9-3. (Booster) 6/SS, Game/60, Inc/30; Rds.: (Sat) 10-1:30-5, (Sun) 10-1:30-5. **PRIZES:** (Championship) Digital clock + plaque to Top 3; Digital clock to 1st + Plaque to Top 2 1800-1999, 1600-1799, and U1600; Plaque to top Senior 50+, Junior U20 and Junior U14. (Reserve) Digital clock + plaque to Top 3, Digital clock to 1st + Plaque to Top 2 1200-1399 and U1200; Plaque to top Senior 50+ and Junior U14. (Booster) Digital clock + trophy to 1st; Trophy to 2nd - 5th, Top Unrated and Junior U11. **SPECIAL PRIZES:** 1st Place in Championship and Reserve will receive a FREE ENTRY to the 2015 National Open. Top 2 Family Pairs in combined sections. Biggest Upset of each round (Rds. 1-5). **EF:** (Championship & Reserve) \$60 if rec'd by 5/20, \$70 if after 5/20. (Booster) \$40 if rec'd by 5/20, \$50 if after 5/20. **SIDE EVENTS:** Blitz tournament Friday 5/22 at 6:00pm; Reg. 5:00 - 5:45 at site, G/5 d0, 5 Rounds, Double SS; Entry Fee: \$10 (\$15 to non-tournament players); Saturday Scholastic tournament (K-6 and U1000 rating), Saturday 5/23 at 10:00am; Reg: 8:30 - 9:30, GAME/40 d5; 4 rounds, Entry fee \$15; Sunday Scholastic tournament (K-6 and U1000 rating), Sunday 5/24 at 10:00am; Reg: 8:30 - 9:30, GAME/40 d5; 4 rounds, Entry fee \$15; Quick tournament Monday 5/25 at noon, Reg 10:30 - 11:30, GAME/10 d2; 5 rounds, Entry Fee: \$10 (\$15 to non-tournament players). **ENTER:** <http://events4chess.com> or mail to (make checks payable to "SACA"): SACA, Attn: US Amateur West, PO Box 40663, Tucson, AZ 85717 or at site. **HR:** 1-800-325-7832, \$99 (2 Queen), \$139 (jr. suite), or \$178 (casita), mention "Amateur West" by May 4. **INFO:** Karen Pennock, 520-261-6149, email: [kpennock\\_83@yahoo.com](mailto:kpennock_83@yahoo.com), web: [www.sazchess.org](http://www.sazchess.org). W.

### A Heritage Event!

### USCF Junior Grand Prix!

May 23-25 or 24-25, New Jersey

### 71st Annual U.S. Amateur East Championship

6-SS, 50/2 d5, SD-1. Hyatt Morristown, 3 Speedwell Ave., Morristown, NJ 07960. For chess rate (\$99 per night for first 40 room nights reserved, \$115 after), please make reservations at <https://resweb.passkey.com/go/NJChess2015>. Phone: 973-647-1234, mention NJ Chess. Free parking, public transportation to NYC, Philadelphia, walking distance, 30 restaurants, shops and parks within 5 minute stroll. In 3 sections: Championship (under 2200); Reserve (under 1800); Booster (under 1400); 2-day and 3-day schedules available. **3-Day Registration:** Saturday, May 2, 9:30-10:45 am. Rounds: 12-6:15, 11-5:15, 9-3:15. **2-Day Registration:** Sunday, May 24, 8:30-9:30 am. **2-day Schedule:** First 3 games, May 25, G/60 d5. Rounds: 10, 12:15, 2:30. All schedules merge in round 4. **Prizes for each section:** trophies to top 5 and top Senior 55/over and Juniors under 16 and 13. **Additional Prizes**—Championship Section: Trophies to top Under 2000, Under 1900, Under 1800. Reserve Section: Trophies to top Under 1600, Under 1500. Booster Section: Trophies to top Under 1200, Under 1100, Under 1000, Under 900, Under 800. **EF:** \$55, if post-marked by May 18. EF at site \$65 cash. Byes: 3 half-point byes allowed in rounds 1-5. **Entries:** to Aaron Kiedes, 4 Seymour Terrace, Hackettstown, NJ 07840. Call 973-343-3260 for information or email [akiedes@gmail.com](mailto:akiedes@gmail.com). Entries must include name, USCF ID and expiration date, mailing address, email address, phone number, Section and entry fee. Checks made out to NJSCF. Online entries \$57 at [www.njscf.org](http://www.njscf.org) after 4-15-15 until 5-21-14 at midnight. W.

### USCF Junior Grand Prix!

June 6-7, Tennessee

### 2015 U.S. Amateur South Championship

5SS, G/90 d5. Lausanne Collegiate School, 1381 W. Massey Rd., Memphis, TN 38120. **2 Sections: Championship (U2200)**, 1st: "River Cup" Championship trophy plus commemorative watch, 2nd-5th places: plaque plus commemorative hat; U2000: 1st: plaque plus commemorative watch. **Reserve (U1600)**, 1st: Reserve Championship trophy plus commemorative watch, 2nd-5th places: plaque plus commemorative hat; U1400: 1st: plaque plus commemorative watch. **EF:** \$40, \$10 less to juniors under age 18 or seniors over age 60, \$50 at site. **Reg.:** 9-9:45 am. **Rds.:** Sat. 10-2-6, Sun. 9:30-1:30. One requested half-point by allowed, any round, must request before start of round 2. **Side Event:** Saturday, June 6 (1-day ONLY) - Scholastic (K-12) sections in a separate room from main tournament. Sections: U1000, U550, Unr. 4SS, G/30 d5. **EF:** \$15 by June 4, \$20 after and at site. Trophies or medals for ALL side event players! **Reg.:** 11-11:30 am. R. 1 at noon, remaining rounds ASAP. **Suggested Hotel:** Homewood Suites, 7855 Wolf River Blvd., Germantown, TN 38138, (901) 751.2500. \$119/night either King Suite or Double Suite. **Additional details:** www.shelbycountychess.com or www.cajunchess.com. **Info:** Email Arlene Kleiman at midsouthchess@hotmail.com. **Entry:** Online entry at www.cajunchess.com or mail registration to Shelby County Chess, Attention: Amateur South, 1614 Vance Ave., Memphis, TN 38104. Complete chess shop onsite. **Special Appearances by GM Alex Stripunsky, GM Alex Onischuk, GM Joel Benjamin, IM Jake Kleiman, and more. W.**

## USCF Junior Grand Prix! June 12-14, Illinois

**Trophies Plus Grand Prix Points: 15**  
**2015 U.S. Junior Open**

6SS, G/90 +30/increment. Hyatt Regency Schaumburg, 1800 E. Golf Rd., Schaumburg, IL 60173. 847-605-1234 \$89.00 chess rate single-double-triple-quad until 5/15/15, Free WiFi included with Room! Please reserve early. **4 Sections based on age as of 1/1/2015: Under 21, U15, Under 11 and Under 8. June Rating Supplement used. U21:** \$500 + entry to 2016 US Junior Championship, if still eligible by age, - \$250-125-75-50. Individual plaques to top five overall, plaques for best player age 18, 17, 16, 15, Under 15, and for ratings U1600, U1400, U1200. **U105:** Individual trophies to top 15 overall, trophies for best player age 14, 13, 12, 11, Under 11 and for ratings U1400, U1200, U1000. **U11:** Individual trophies to top 15 overall, trophies to best player age 10, 9, 8, 7, Under 7, and for ratings U1200, U1000, U800. **U8:** Individual trophies to top 15 overall, best player age 7, 6 & under, and for ratings U1000, U800, U600; Commemorative medals for all participants. **Teams:** Trophies to top three school teams and top club team in each of the four sections. Top four scores, minimum of three, count towards team score in each section. **Byes:** One half-point by, any round except Rd. 6, if requested before Rd. 1. **EF:** \$50 postmarked or online by 5/23, \$70 thereafter - credit cards ok onsite. **Schedule:** Onsite registration: Thurs 7-9pm or Fri 8-9am. **Rds.:** Fri, Sat 10am & 4pm, Sun 9am & 3pm. **Side Events:** Friday Night Blitz (8:30pm) and Saturday Night Puzzle Solving (8:30pm) - \$15 each by 5/23, \$20 each onsite. **Entries:** Mail to ChessIQ (checks payable to) 4957 Oakton St., Suite 113, Skokie, IL 60077 or online at www.chessiq.com/junior2015. **Info:** sevan@chessiq.com. On tournament day only: 847.274.1352. Sets, Boards and Clocks provided. Must use organizer provided equipment. USCF and FIDE rated. FIDE Laws of Chess to be used.

## June 18, Nevada

**Trophies Plus Grand Prix Points: 80 (Enhanced)**  
**2015 U.S. Game/10 Championship (QC)**

8SS, G/10 +2. Westgate Resort & Casino, 3000 Paradise Rd., Las Vegas 89109. **\$56,000 Guaranteed Prize Fund.** \$1700-850-500, U2300 \$500, U2100 \$500, U1900 \$450, U1700 \$400, U1500 \$350, U1300 \$300, U1000 \$250, unrated \$200. Must be 3 players eligible for each prize awarded. **EF:** \$69 by 5/25, \$79 by 6/9, \$100 later. **REG.:** 2-4 p.m. **Rds.:** 5-5:40-6:15-6:50-7:25-8-8:35-9-10. Higher of regular or quick rating used. Please bring digital chess clocks. 1/2 point bye available in any round (limit 2). **HR:** \$69 single or double (\$89 Friday and Saturday nights). (800) 732-7117 - be sure to ask for the **CHESS** rates. **ENT:** Vegas Chess Festivals, PO Box 90925, Henderson, NV 89009-0925 or **www.VegasChessFestival.com. W.**

## USCF Junior Grand Prix! June 18-19, Nevada

**Trophies Plus Grand Prix Points: 30 (Enhanced)**  
**2015 U.S. Women's Open**

5SS, G/90 +30. Westgate Resort & Casino, 3000 Paradise Rd., Las Vegas 89109. **\$52,000 Guaranteed Prize Fund.** \$500-300-200, U2000 \$200, U1800 \$200, U1600 \$200, U1400 \$200, U1200 \$200. **EF:** \$50 by 5/25, \$70 later. **REG.:** 8-9 a.m. **Rds.:** 10-2:30-7, 9-1:30. 1/2 point bye available in any round (limit 1). **HR:** \$69 single or double (\$89 Friday and Saturday nights). (800) 732-7117 - be sure to ask for the **CHESS** rates. **ENT:** Vegas Chess Festivals, PO Box 90925, Henderson, NV 89009-0925 or **www.VegasChessFestival.com. W. FIDE.**

## An American Classic!

### A Heritage Event! USCF Junior Grand Prix!

**June 19-21 or 20-21, Nevada**

**Trophies Plus Grand Prix Points: 200 (Enhanced)**  
**2015 National Open**

6-SS, 40/90, SD/30 +30 (2 day option rounds 1-3 G/40 +5). Westgate Resort & Casino, 3000 Paradise Rd., Las Vegas 89109. **\$80,000 Guaranteed Prize Fund** will not be reduced. **Open:** \$6500-3300-1600-800-500-350-350-350-350-250-250-250-250-250. **Under 2000:** under 2400 1200, under 2300 1000, \$2,000 **EXTRA** for perfect score. The winner of the Open section also receives a replica of the Edmondson Cup. **Under 2200:** \$3500-1800-900-500-400-250-250-250-250-250-200-200-200-200. **Under 2000:** \$3500-1800-900-500-400-250-250-250-250-250-200-200-200-200. **Under 1800:** \$3500-1800-900-500-400-250-250-250-250-250-200-200-200-200. **Under 1600:** \$3000-1500-800-500-400-250-250-250-250-250. **Under 1400:** \$2000-1000-500-350-250-200-200-200-200. **Under 1200:** \$1200-600-400-300-200-200. **Unrated:** \$500-300-200. **Plus Score Bonus** (\$14,000 guaranteed) in

addition to any other prizes, every player with 3-1/2 points or more wins a \$50 gift certificate. Plus score certificates will be awarded on site only. Players age 14 and under are eligible for best game prizes including the Freddie Award and \$400 in cash prizes (donated by Fred Gruenberg). Top 2 sections FIDE rated. **EF:** \$179 by 1/20, \$199 by 5/25, \$239 by 6/15, \$260 later. \$40 less for seniors 65 and over. Add \$125 for adults rated under 2100 or juniors under 2000 playing in the Open Section. This is an open tournament - you may play in any section at or above your rating level; unrated players may play only in Unrated or Open Section. Provisionally rated players may not win more than the amount of 3rd prize in any section except Open. CCA minimum ratings or other ratings may be used if higher than USCF June Supplement. **Reg.:** 2 p.m.-10 p.m. Thursday, 8-9:30 a.m. Friday. **Rds.:** 11-5:30, 10-4:30, 10-4:30. 2-day schedule: **Reg.:** 8-9 a.m. Saturday. **Rds.:** 10-12-2-4:30 merge with 3-day in round 4. Half point byes available in any round, but round 5 or 6 byes must be requested before the start of round 2 and may not be cancelled. Chess sets and boards provided for tournament play only, not for skilltes. Please bring digital chess clocks! The **LAS VEGAS INTERNATIONAL CHESS FESTIVAL** features the National Open, the U.S. Game/10 Championship, the U.S. Women's Open, the International Youth Championship, and other events. **Many free extras and surprises!** **Free parking. Free raffles with great prizes. Free GM Lectures. Free GM analysis of your games. Free Daily Bulletins. Grandmaster Chess Camp** for all ages on Thursday. **U.S. Women's Open** Thursday and Friday. **U.S. Game/10 Championship and Grandmaster Simuls** Thursday afternoon. **Youth Tournaments** Friday, Saturday & Sunday. **Blitz Tournaments** Saturday & Sunday. **Poker Tournament** Monday morning. **Don't be shut out** - make your reservations early and be sure to ask for the **CHESS** rates - \$69 single or double (\$89 Friday and Saturday nights) guarantees a *Signature* or remodeled room with new furniture, refrigerator, flat screen TV and more. The complimentary resort package includes access to the Fitness Center, free WI-FI, discounts on selected show tickets and more with no additional cost only if you are in our group. Cutoff for special hotel rate is **May 25th**. (800) 732-7117 or **www.VegasChessFestival.com/hotel**. **ENT:** Vegas Chess Festivals, PO Box 90925, Henderson, NV 89009-0925, on line at **www.VegasChessFestival.com. Info:** (702) 560-0955 and leave a message. W. FIDE.

## A Heritage Event!

### USCF Junior Grand Prix!

**Aug. 1-9, 4-9 or 6-9, Arizona**

**Trophies Plus Grand Prix Points: 150**  
**116th Annual U.S. Open**

Includes Traditional one game per day schedule (9 days), also 6-day slow time control option, and 4-day option. **9SS, 40/120, SD/60 d5 (4 day option, Rds. 1-6: G/60 d5). Arizona Biltmore, 2400 E. Missouri Ave., Phoenix, AZ 85016. HR:** \$99 single/quad, No resort fee, complimentary self-parking; Reservations 800.445.8667; Reserve by July 9 or rate may increase. \$50,000 in prizes based on 500 paid entries, else proportional, 40,000 (80% of each prize) minimum guaranteed. A one-section tournament with Class prizes. Top US player not otherwise qualified qualifies for 2016 US Championship. **Choice of three schedules: Traditional:** 40/120, SD/60 d5. One round daily at 7 PM, except Rd. 9, 3 PM 8/9. **6-Day Option:** 40/120, SD/60 d5, 7 PM 8/4, 12 NOON 8/7, 7 PM 8/8, 3 PM 8/9. **4-Day Option:** Rds. 1-6: G/60 d5; then 40/120, SD/60 d5, 12 NOON, 3 PM, 7 PM, 10 PM 8/6; 12 NOON, 3 PM, 7 PM 8/7; 7 PM 8/8; 3 PM 8/9. **All** schedules merge after Round 6 & compete for same prizes. **Projected prizes:** Top places \$8000-4000-2000-1500-1000-800-600-500, clear winner or playoff \$2000. If tie for first, top two on tiebreak play Armageddon game (White 5 minutes, Black 3 minutes and gets draw odds) for bonus and title. **Class Prizes:** Top Master (2200-2399) \$2500-1200-800-500, Expert (2000-2199) \$2500-1200-800-500, Class A (1800-1999) \$2500-1200-800-500, Class B (1600-1799) \$2500-1200-800-500, Class C (1400-1599) \$2000-1000-600-400, Class D (1200-1399) \$1500-700-500-300, Class E or below (under 1200) \$1500-700-500-300, Unrated \$800-400-200. **Half-Point Byes:** must commit before Round 4; up to 3 byes allowed for 2000/up, 2 byes for 1400-1999, one bye for Under 1400/Unr. Limit 1 bye in last two rounds. Zero-point byes are always available in any round if requested at least two hours before the round(s) in question. **Delay:** All US Open side events use 5 sec. delay except the Blitz [d0] and Bughouse [d0]. **Entry Fee:** Online, \$145 by 6/22, \$165 by 7/20, \$185 after 7/20. By mail, \$147 postmarked by 6/22, \$167 postmarked by 7/20, \$187 after 7/20; do not mail after 7/27! By phone, \$150 by 6/22, \$170 by 7/20, \$185 after. No phone entries after 7/31 (by the close of business at the Office)! At site, all \$190; GMs and WGMs receive free entry. All entries must be made at least two (2) hours prior to the player's first game. Current USCF membership required. **August Rating Supplement** used; unofficial ratings used if otherwise unrated. CCA ratings used if above USCF. Foreign player ratings: usually 100 points added to FIDE or FQE, 200+ added to most foreign national ratings, no points added to CFC. Highest of multiple ratings generally used. **Entries:** USCF, ATTN: 2015 U.S. Open, PO Box 3967, Crossville, TN 38557. Online entry: https://secure2.uschess.org/webstore/tournament.php?wkevent=2015USOPEN. Phone entry: 800.903.8723. **NO FIDE rated, No cell phones.** Bring a clock - none supplied. Sets/boards supplied for tournament but not for skilltes. Many meetings, workshops and seminars, including: **USCF Committee Meetings** 8/5-8/7, **USCF Awards Luncheon** 8/8 NOON, **USCF Delegates Meeting** 8/8-9. Many side events and other championships, including: **U.S. National Blitz Championship** 7SS Double, G/5 d0, Rd. 1 at 12 NOON 8/8; **Weekend Swiss** 5SS, G/60 d5, 12-3 Sat 8/1, 10-12:30-3 Sun 8/2; **U.S. Open Scholastic** (see separate TLA for the Scholastic event); **U.S. Open Quads** G/30 d5 12-1:30-3 Mon, Tue, Wed, Thu, Fri; **U.S. Open G/15 Championship** 12-1-2-3-4 Wed 8/5; **U.S. Open Bughouse** Sat. 10:30 AM 8/1. **18th Annual Golf Tournament for the U.S. Open Chess Players**, (see tournament website for details). **U.S. Open Tennis Tournament** (see tournament website for details). In addition, three other championships will also take place: the **2015 Denker Tournament of HS Champions** (see website for a participant list), the **2015 Barber Tournament of K-8 Champions** (see website

for a participant list), and the **2015 National Girls' Invitational Tournament** (see separate TLA for the Girls event). **Please check the U.S. Open website often for updates, new information and corrections and other useful documents! www.uschess.org/tournament/2015/usopen/. USCF Junior Grand Prix for U.S. Open.**

# GRAND PRIX

## USCF Junior Grand Prix!

**Apr. 17-19 or 18-19, California, Northern**

**Trophies Plus Grand Prix Points: 40 (Enhanced)**

### Bay Area Chess GM Jesse Kraai Championship

1639A S. Main St., Milpitas, CA 95035. 5SS, 40/90 sd30 d5. 2-day rds. 1-2 G/50 d5. Park free. **Prize:** 5,000 b/94 (70% guar). 3 sets: **2000+** (FIDE) \$1,000-500-200, u2300: 250-125-100. **1600-1999:** \$700-300-100, u1800: 200-100, **u1600:** \$700-300-100 u1400: 125-100, u1200: 100. Unr max: \$100 exc Open. Apr 15 Supp & TD disc. **Reg.:** F 6-6:45p & Sa 8-8:45a. **Rds.:** F 7p, Sa 9 1:20, Su 10 2:30 (u1600 1:30). (2-day Sa 9 11:10 & merge). **EF:** \$89, Econ EF: 69 w/ 2/3 prz, after 4/14 +20. **Playup** +20. Rated 2250+ \$0 by 4/7 (prize - EF). **Info:** http://BayAreaChess.com/champs.

## USCF Junior Grand Prix!

**Apr. 18-19, Texas**

**Trophies Plus Grand Prix Points: 20 (Enhanced)**

### 2015 DCC Fide Open V

5SS, G/90 inc/30. Dallas Chess Club, 200 S. Cottonwood Dr. #C, Richardson, TX 75080. **Two sections:** Open and Reserve. **Open:** \$8875G. FIDE and USCF rated but uses FIDE rules. Will use USCF ratings and rules for pairings and for awarding prizes. Default late forfeiture time is one hour. TD may extend this time at TD's discretion. Note that Foreign players must disclose their FIDE ID number before first round in order to play. \$5 \$500-\$250-\$125. **EF:** \$80, Senior/Hcap/Additional Family Member \$55. Small appearance fee to the First three GM/IM's who apply. GM/IM must play all rounds to get appearance fee. **Reserve:** Open to players rated below 2000 USCF. This section is not FIDE Rated but is USCF rated and uses USCF rules. **EF:** \$40. The Reserve give back 10% in prizes and if at least 8 paid entries and if there is a clear winner, then that winner receives free entry to next DCC Fide Open. In the reserve section, Tournament reserves the right to use Fide rules on electronic devices and on starting White's clock at start of a round. **Both: Reg.:** 4/18 from 9:45-10:15am. **Rds.:** Sat. 10:45am-3:10pm-7:16pm, Sun 9:45 am-2:10pm. One half point Bye allowed if requested before end of round rd. 2 and before getting full point bye. Withdrawals and zero point last round byes are not eligible for prizes. Note that house players (if required) must pay \$2 per round and be USCF members.. **ENT:** Make/mail checks payable to Dallas Chess Club, C/O Barbara Swafford, 2709 Longhorn Trail, Crowley, TX 76036-4719. **Info:** 214-632-9000, info@dallaschess.com. FIDE.

## USCF Junior Grand Prix!

### A State Championship Event!

**Apr. 24-26 or 25-26, Georgia**

**Trophies Plus Grand Prix Points: 50**

### Phillip Taylor 2015 Georgia State Championship

5SS, G/90 + 30s. Hotel Wyndham Atlanta Galleria, 6345 Powers Ferry Rd. NW, Atlanta, GA 30339. **\$6,600 guaranteed.** 3 sections. **Championship (2000 and above - FIDE rated/FIDE rules):** \$1500-750-350-200, U2200: \$450-200. Trophy to top GA resident. **Amateur (1999 and below/Unrated):** \$450-\$300-\$200; U1800: \$400-\$200-\$100; U1600: \$350-\$200-\$100; U1400: \$350-\$200-\$100. Trophy to top GA resident. **Scholastic/Unrated:** Open to players in grades K-12 rated under 1200. Trophies top U1200, U1000, U800, U600. **Uprize set:** 2000. Eligible to play in any section. **EF:** \$95 for Championship and Amateur sections if received by April 23rd. \$30 for Scholastic section. \$10 more on-site for all sections. Unrated pay entry fee for section they play in. **GM/IM/WIM/WGM Free.** No re-entry in any section. Ratings based on April supplement. On-site reg. Fri 6-7pm, Sat 8:30-9:30am. **Rounds: 3-day:** Fri 7:30pm, Sat 3-8, Sun 10-4. **2-day:** rd. 1 Sat 10am, then merge. One 1/2 point bye available in rounds 1-4, zero point bye available round 5, must commit when entering, no changes after close of registration. USCF membership required for all players, GCA membership required for GA residents. **Reg/Info:** www.georgiachess.org. Call 678-400-9016 for game-day changes. **Meeting:** GCA general membership meeting at 2:30pm on Sunday, April 26th. Election for President, Secretary, and 2nd Member-at-Large. **Information:** statechamp@georgiachess.org.

## Apr. 26, California, Northern

**Trophies Plus Grand Prix Points: 10 (Enhanced)**

### Cupertino Grand Prix DuperSwiss75 (3SS, G/75 d5)

Courtyard Marriott Cupertino, CA 95014. **Prizes:** \$1,500 b/55. 60% guar. **1900+:** \$300-100-100, u2000 50-50. **1500-1899:** \$200-100-50, u1600 50-50. **u1500:** \$200-100-50, u1200 50-50. Apr 15 Supp & TD disc. **Reg.:** 8-8:45. **Rds.:** 9-12:45-2:40. **EF:** 47, Econ 32 w/ 1/2 prz. after 4/23 +15, **playup** +15, Rtd 2200+ \$0 by 4/19. **Info:** BayAreaChess.com/grandprix. W.

## May 9, California, Northern

**Trophies Plus Grand Prix Points: 10 (Enhanced)**

### Foster City Grand Prix Luper Swiss (3SS, G/90 d5)

Courtyard Marriott, Foster City, CA 94404. **Prizes:** \$1,200 b/36. 60% guar. **1900+:** \$200-100-50, u2100 50-50. **1500-1899:** \$200-100, u1700 50-50. **u1500:** \$200-100, u1250 50-50. May 15 Supp & TD disc. **Reg.:** 9-9:15. **Rds.:** 9:30-1-4:30. **EF:** 43, Econ 29 w/ 1/2 prz. after 5/6 +15, **playup** +15, Rtd 2200+ \$0 by 5/1. **Info:** BayAreaChess.com/grandprix.

## USCF Junior Grand Prix!

**May 9-10, Texas**

**Trophies Plus Grand Prix Points: 20 (Enhanced)**

### 2015 DCC Fide Open VI

5SS, G/90 inc/30. Dallas Chess Club, 200 S. Cottonwood Dr. #C, Richardson, TX 75080. **Two sections:** Open and Reserve. **Open:** \$8875G. FIDE and USCF rated but uses FIDE rules. Will use USCF ratings and rules



for pairings and for awarding prizes. Default late forfeiture time is one hour. TD may extend this time at TD's discretion. Note that Foreign players must disclose their FIDE ID number before 1st round in order to play. \$\$ \$500-\$250-\$125. **EF:** \$80, Senior/Hcap/Additional Family Member \$55. Small appearance fee to the first three GM/IM's who apply. GM/IM must play all rounds to get appearance fee. **Reserve:** Open to players rated below 2000 USCF. This section is not Fide Rated but is USCF rated and uses USCF rules. **EF:** \$40. The Reserve give back 10% in prizes and if at least 8 paid entries and if there is a clear winner, then that winner receives free entry to next DCC Fide Open. In the reserve section, Tournament reserves the right to use Fide rules on electronic devices and on starting White's clock at start of a round. **Both: Reg.:** 5/9 from 9:45-10:15am. **Rds.:** Sat 10:45am-3:10pm-7:16pm, Sun 9:45 am-2:10pm. One half point Bye allowed if requested before end of round rd. 2 and before getting full point bye. Withdrawals and zero point last round byes are not eligible for prizes. Note that house players (if required) must pay \$2 per round and be USCF members.. **ENT:** Make/mail Checks payable to Dallas Chess Club, C/O Barbara Swafford, 2709 Longhorn Trail, Crowley, TX 76036-4719. **Info:** 214-632-9000, info@dallaschess.com. FIDE.

#### USCF Junior Grand Prix!

May 17, California, Northern

**Trophies Plus Grand Prix Points: 10 (Enhanced)**

**Bay Area Chess Grand Prix Super Swiss (4SS, G/61 d5)**

1639A S. Main St., Milpitas, CA 95035. **Prizes:** \$1,500 b/55. 60% guar. **1900+:** \$300-100-100, u2100 50-50. **1500-1899:** \$200-100-50, u1700 50-50. **u1500:** \$200-100-50, u1250 50-50. May 15 Supp & TD disc. **Reg.:** 9-9:15. **Rds.:** 9:30 11:50 2:40 5 **EF:** 43, Ecn 29 w 1/2 prz. after 5/14 +15, playup +15, Rtd 2200+ \$0 by 5/10. **Info:** BayAreaChess.com/grandprix.

#### A Heritage Event!

USCF Junior Grand Prix!

A State Championship Event!

May 22-25 or 23-25, Texas

**Trophies Plus Grand Prix Points: 30 (Enhanced)**

**70th Annual Texas State and Amateur Championships**

75S. DW Airport Marriott South, 4151 Centreport Dr., Fort Worth, TX 76155. \$ 8,350 b/175, full entries in Championship and Amateur sections, 2 scholastic side events that do not count toward base. **Championship:** This section is FIDE rated and uses FIDE rules. The tournament will use USCF ratings for pairings and prize purposes. Must be rated 2000 or above by either USCF or Fide to play in this section. Defending Texas State Amateur Champion may also play in this section. Texas Scholastic High School Champions may also play in this section. Foreign unrateds may play in this section and at TDs discretion may be required to play in Championship section. G/90 with 30 sec. increment. Foreign players must disclose their FIDE ID number before 1st round in order to play in Championship section. Default late forfeiture time is one hour. TD may extend this time at TD's discretion. \$ 1,000-500-250, 2200-2399 \$750, U2200 \$750. **Amateur:** U2000 & unrated. Rds. 1-7 G/90 with 30 sec increment. \$ 800-400-200. B \$ 600-300-150, C 500-250-125, U1400 \$500-250-125, U1200 \$400, U1000 \$300 Unrated \$200. Both: TCA membership required. Other states accepted. **EF:** \$88 if received by 5/14, else \$99. \$80 Junior(U19) if received by 5/14 else \$90 (juniors count as 90% toward base), Senior (over 65)/Handicapped/additional family participant \$52 if receive by 5/14 else \$65 (Senior/Handicapped/ Additional family participant counts 60% toward base). Add \$5 for CC phone entries; pre-reg requires pre-payment. After 5/20/15 all registration and changes on site only; all changes including withdrawals, \$10 after 5/20/15. 4 day. **Reg.** Friday 5/22, 6:15 pm-7:15. **Rds. Fri.:** 7:45, Sat: 2:45 pm - 7:30, Sun.: 11:00 am - 5:15 pm, Mon.: 9:30 am - 2:15 pm. 3 day. **Reg. Sat. 5/23, 9:30-30 am, Rd. 1** at 10 am then merge with 4 day. Foreign Unrated must play in Championship section. Registrations that do not indicate 4 or 3 day schedule will be put in the 3 day. **HR:** \$94/94/94/94, \$94 rate includes up to four continental breakfast per room per day, can upgrade to full breakfast for \$5 per person, 817-358-1700 or 800-228-9290 reserve by 5/14/15 and ask for Dallas Chess Club rate. After 5/14 chess rate may not be honored. Free Parking. Up to two 1/2 pt byes available if requested before end of rd. 2 and before receiving full point bye, but byes for both rds. 6 AND 7 not permitted. **K-12 Scholastic on Saturday, 5/23, 5-SS, Rds. G/30 d5, EF:** \$29 by 5/14, \$45 after; Pre-reg. requires pre-payment. After 5/20/15 all registration and changes on site only; all changes \$10 after 5/20/15. No refunds after 5/20/15, \$10 handling fee for refunds before 5/20/15. Entries do not count toward base in Championship and Amateur. Registration 8:15-8:45 am, Rd. 1 at 9:30 am, rest ASAP with small lunch break. Sections: **K-12 Championship** and **K-12 U1000**. 5/23, 5-SS, Rds. G/30 d5. Prizes: Trophies to top 12 individuals, top five teams in each section. K-12 U1000 also top three unrateds. Medals to those who do not win a trophy. Ent: Dallas Chess Club, C/O Barbara Swafford, 2709 Longhorn Trail, Crowley, TX 76036. **Info:** Barb Swafford, 214-632-9000, info@dallaschess.com www.dallaschess.com. W. FIDE.

#### USCF Junior Grand Prix!

May 22-25 or 23-25, Virginia

**Trophies Plus Grand Prix Points: 50 (Enhanced)**

**3rd Cherry Blossom Classic**

Marriott Dulles Airport Hotel, 45020 Aviation Dr., Dulles, VA 20166. **A VCF Cup Event.** 5 Sections - 7-SS in 4 sections (4-day or 3-day): Open (FIDE Rated), U2200 (FIDE Rated), U1900 and U1600. 6-SS in U1300 (2-day only - Sat and Sun). Open & U2200 FIDE Rated - FIDE Laws of Chess will be followed, but USCF Ratings used for Pairings and Prizes. **Prizes \$57500** b/140 (re-entries count as half, U1300 count as 3/4 entry), **Open Section \$2400** Unconditionally Guaranteed, **Minimum \$5970 GTD** (70% each prize gtd in Other Sections). **Open:** (100% GTD) \$1000-500-300-150 Top U2300 \$300-150. **U2200:** \$800-400-200 Top U2000 \$300-150. **U1900:** \$600-300-150 Top U1700 \$200-100 Unrated limit \$200. **U1600:** \$500-250-125, Top U1400 \$150-75 Unrated limit \$150. **U1300:** \$400-200-100 Top \$100 \$100 Unrated limit \$100. **Entry Fee:** All Sections except U1300 \$84 if rec'd by May 15, \$89 by May

21, \$95 later and at site. Re-entry \$45 for all players, except no re-entry in FIDE Sections - Open to Open or U2200 to U2200. GMS/IMS/WGMS free; Deducted from prize - \$40 for GMS & \$50 for IMS/WGMS. \$10 less to seniors age 65/over, except in U1300 Section. **U1300 Section** entry fee \$20 less. **Time control:** Open/U2200/U1900/U1600: 4-day Schedule: May 22-25: 7SS 40/90;SD/30; +30sec inc. 3-day Schedule: May 23-25 Rd. G/45; +30, Rds. 2-3 Sat G/90; +30, Rds. 4-7 Sun/Mon 40/90;SD/30; +30sec inc. U1300 plays only 2-day G/90 d5. **Round times: 4-day schedule:** Reg. ends Fri 7 pm, Rds. Fri 8 pm, Sat 11am-5:30pm, Sun 10am-4:30pm, Mon 9:30am-3:30pm. **3-day schedule:** Reg. ends Sat 10am, Rds. 1-3 Sat 11am-2pm-7pm and Rd. 4-7 follows 4-day schedule. **Under 1300 2-day schedule only (Reg. ends 10am, Rds. Sat 11am-3pm-7pm, Sun 9:30am-1:30pm-5:30pm).** **Byes:** Up to two 1/2pt byes available in all sections, must commit 1 hour before start of rd. 4 (by Sun 8:30am). **HR** \$79/night if reserved by Apr 24th. Reservations 703-471-9500, mention chess tournament. More information/Online registration: www.cherryblossomchess.com. Mail checks (payable to Capital Area Chess.) to CHERRY BLOSSOM CLASSIC/ Attn. Capital Area Chess, PO Box 223582, Chantilly, VA 20171. Email info only: Anand Dommalapati, cbc2015@capitalareachess.com. Boards and sets provided in ALL sections. Clocks supplied in the Open/U2200 section. **Four Side Events: Sat May 23. Cherry Blossom Classic Scholastic.** 5-SS G/30 d5. Sections: Pre-K/K-1, K-3 U600, K-5 U800, K-8 U1000, K-12 U1200. \$25 by May 15 online, \$30 by May 21, \$35 after May 21 and onsite. Trophies to Top 3 in each section, Medals to 2.5 points and above. Onsite Reg. closes 9am. Rounds 10am-11:30pm-1pm-2:30pm-4pm. Awards 5:30pm. **Sat Night Scholastic Blitz May 23: Sections:** K-5 and K-12. Enter onsite by 6:30pm. 5-Round Double Swiss G/5 d0. Rounds Start 7pm. **EF:** \$15. Prizes b/30: \$160-\$80-\$40-\$20. **Sun Quads May 24 G/75 d5.** Register onsite by 9:30am. Rounds 10am-1pm-4pm **EF:** \$30. Prizes: \$60 to 1st in each quad. **Sun Night Blitz May 24 - Cherry Blossom Classic FIDE Blitz** (see also TLA for this Cherry Blossom Classic Grand Prix 10 Enhanced tmt.) G/3; +2; 9-SS. \$5200-100 Top U2400/U2200/U2000/U1800: \$50 each. Highest rating (regular, quick or blitz) used for pairings & prizes. **EF:** Enter online \$25 by May 23 or \$30 after and onsite by 9:15pm. Rounds start 9:30pm Max 3 byes allowed, req at entry.

#### USCF Junior Grand Prix!

May 23-25 or 24-25, California, Northern

**Trophies Plus Grand Prix Points: 80 (Enhanced)**

**Best of the West Class Championship**

6SS, 40/120 sd30 d5 (2-day rds. 1-3 G/61 d5 merge in rd.4). Marriott 2700 Mission College Bl., Santa Clara, CA 95054. **Prize: \$20,000** b/274 (60% Guar). 6 sections. **Open** (2000+ FIDE rated): 3000 1500 700 300 150, u2300 500 300 150. **1800-1999, 1600-1799:** 2,000-800-500-200-150. **1400-1599:** 1,500-700-500-200-150. **u1400:** \$1,000, 500, 300, 150, 150 u1200 \$500-300-150. Unr capped at 300 exc in Open. **EF** by 5/20: 129, Onsite +25, Play-up +25, Reentry: 50. Econ Opt: 89 & 50% calc prize (not avail in Open). GMS/IMS free: 3-day Reg. May 2015 Supp, CCA min & TD disc to place players. **Sched: 3-day Reg.** Sa 10-10:45a, Rds. Sa/Su 11a 5p, M 10a 3:30p; **2-day Reg.** Su 8:30-9a, Rds. Su 9:30a 12n 2:30p 5p M 10a, 3:30p. unlimited 1/2-pt byes, Rd. 5-6 byes must commit bef rd. 1. **Ent:** Bay Area Chess, 1639A S. Main St., Milpitas, CA 95035. Rfnd fee 20. **Info:** BayAreaChess.com/bestwest. Email: ask@BayAreaChess.com. W.

#### May 24, Virginia

**Trophies Plus Grand Prix Points: 10 (Enhanced)**

**Cherry Blossom Classic FIDE Rated Blitz! (BLZ)**

**Side Event to 3rd Cherry Blossom Classic (May 22-25).** Marriott Dulles Airport Hotel. 45020 Aviation Dr., Dulles, VA 20166. Sunday May 24th. G/3; +2; 9-SS. \$2200-100 Top U2400, U2200, U1800, U1000: \$50. Highest rating (regular, quick or blitz) used for pairings & prizes. **EF:** Enter online \$25 by May 23 or \$30 after and onsite by 9:15pm. Rounds start 9:30pm Max 3 byes allowed, req at entry. More information/Online registration: www.cherryblossomchess.com. Mail checks (payable to Capital Area Chess) to Cherry Blossom Classic, Attn. Capital Area Chess, PO Box 223582, Chantilly, VA 20171. Email info only: Anand Dommalapati, cbc2015@capitalareachess.com.

#### June 12-14, Illinois

**Trophies Plus Grand Prix Points: 15**

**2015 U.S. Junior Open**

See Nationals.

#### June 18, Nevada

**Trophies Plus Grand Prix Points: 80 (Enhanced)**

**2015 U.S. Game/10 Championship (QC)**

See Nationals.

#### June 18-19, Nevada

**Trophies Plus Grand Prix Points: 30 (Enhanced)**

**2015 U.S. Women's Open**

See Nationals.

#### June 19-21 or 20-21, Nevada

**Trophies Plus Grand Prix Points: 200 (Enhanced)**

**2015 National Open**

See Nationals.

#### Aug. 1-9, 4-9 or 6-9, Arizona

**Trophies Plus Grand Prix Points: 150**

**116th Annual U.S. Open**

See Nationals.

## REGI NAL Alabama

**Apr. 25, Tuscaloosa Scholastic Chess Championship (5SS, G/30 d5)**

First Presbyterian Church, 900 Greensboro Ave., Tuscaloosa, AL 35401. **EF:** \$20 by April 20, on site \$30. **Sections:** k-3, k-6, k-12. Prizes: Trophies

for 1st, 2nd, 3rd in each section. **Reg.:** 8:15 - 8:45 am; **Rds.:** 9:10-10:20-12:30-1:45-3:00. **Ent:** Online at www.freedomchessacademy.org or mail to Freedom Chess Academy, PO Box 2356, Tuscaloosa, AL 35403. **Info:** www.freedomchessacademy.org. All proceeds to charity.

## Arizona

**USCF Junior Grand Prix!**

May 3, 10, 17, 24, 31, Phoenix May Swiss

5SS, G/90 d5. Starbucks, 13240 N. 7th St., Phoenix, AZ 85022. **EF:** \$20 if 1600+; \$30 if U1600. \$0. for GMS, IMS and top rated 2200+ . Unr: \$0. Cash only onsite. **\$\$\$90% Rtd:** 1st 50% - 2nd 25% - Best U2000: 15%. **Reg.:** Until 2:50 pm Sundays. **Rds.:** 3:00 pm Sundays, 2 byes o.k.; must determine last round bye before round 2. **INFO:** rama.chess@yahoo.com **DIR:** Near the SouthWest corner of 7th & Thunderbird. **ID required. Please bring sets and clocks if possible. W.**

**May 23-25, 2015 U.S. Amateur West Championship**

See Nationals.

**Aug. 1-9, 4-9 or 6-9, 116th Annual U.S. Open**

See Nationals.

## California, Northern

**Apr. 17-19 or 18-19, Bay Area Chess GM Jesse Kraai Championship**  
See Grand Prix.

**Apr. 19, Bay Area Cupertino Quads (PK-12; 3xG/30 d5)**

Courtyard Marriott, Cupertino, CA 95014. **Trophies:** Players w/plus score. **Sched:** Reqr. Check-in 1:30-2p. **Games:** 2:30-5p. **EF:** 27 by 4/16, 42 after 4/16. **Info:** http://BayAreaChess.com/signature. W.

**Apr. 19, Bay Area Cupertino Swiss (PK-12; 4SS, G/30 d5)**

Courtyard Marriott, Cupertino, CA 95014. **Trophies** to players w + score & all teams. **Sched:** Reg. 9:30-9:45a. **Games:** 10a - 1:30p. **EF:** 34 by 4/16, 49 after 4/16. **Info:** http://BayAreaChess.com/signature. W.

**Apr. 25, Chess4Less Kids Quads (PK-12; 3XG/30 d5)**

1639A South Main St., Milpitas, CA 95035. **Trophies:** Players w/plus score. **Sched:** Required Check-in 1:30-2p. **Games:** 2:30-5p. **EF:** 27 by 4/22, 42 after 4/22. **Info:** http://BayAreaChess.com/signature. W.

**Apr. 25, Chess4Less Kids Swiss (PK-12; 4SS, G/30 d5)**

1639A South Main St., Milpitas, CA 95035. **Trophies** to players w + score & all teams. **Sched:** Reg. 9:30-9:45a. **Games:** 10a - 1:30p. **EF:** 34 by 4/22, 49 after 4/22. **Info:** http://BayAreaChess.com/signature. W.

**Apr. 26, Cupertino Grand Prix DuperSwiss75 (3SS, G/75 d5)**

See Grand Prix.

#### A Heritage Event!

USCF Junior Grand Prix!

A State Championship Event!

**May 2-3, 40th CalChess State Scholastics Championship 2015**

Santa Clara Convention Center, 5001 Great America Pkwy., Santa Clara, CA 95054. Park free. **Prizes:** Trophies to top 40 players w + score & top 10 teams (in ea section). Medals to all. sections b/ grades/rating. **Sched: 1-day event** for all u800 sections (KG, Gr1-3 Rookie(unr), Gr1-3 Beginner(u500), Gr1-3 JV(500-799), Gr4-6 Rookie(unr), Gr4-6 Beginner(u800), Gr4-6 JV(500-799), Gr6-8 Beginner(u800), Gr9-12 Beginner(u800)): Su only 5SSxG/30 d5. Rds: 10a, 12n, 1:30p, 3p, 4:30p. **2-day event** for sections: Gr1-3 Champ (800+) +, Gr4-5 Champ (800+) +, Gr4-6 Champ (800+) +, Gr6-8 JV (800-1199), Gr6-8 Champ (1200+) +, Gr9-12 JV (800-1599): Sa + Su 6SSxG/75 d5. Rds: Sat & Sun 9a, 12n, 3p. **Special FIDE Rated section:** Gr9-12 Champ (1600+) +: Sa + Su 5SSxG/90 +30s: Rds.: Sat 9a, 1:30p, 6p, Sun 9:30a, 2p. **Side-event: Blitz:** KG-Gr3, Gr4-6, Gr 6-8, Gr 9-12: G/5 d0; Fri 6-8p. **Bughouse (G/5 d0)** Sa 6-8p. **EF:** by 4/20: 1-day \$49, 2-day \$63. Playup: +15, Late Fee: +10 after 4/20, +20 after 4/26, Onsite: +\$40. **Change Fee:** \$10 after 4/26, +20 onsite. **Blitz/Bughouse:** \$12. Tshirt: \$15 preordered. CalChess & USCF membership reqd except KG, Gr1-3 Rookie. May 15 Supp & TD disc to place players. **Info:** reg: www.bayareachess.com/status. Q: ask@BayAreaChess.com. USCF + CalChess Mem reqd except KG, Gr1-3Rookie. W.

**May 9, Chess4Less Kids Quads (PK-12; 3XG/30 d5)**

1639A South Main St., Milpitas, CA 95035. **Trophies:** Players w/plus score. **Sched:** Required Check-in 1:30-2p. **Games:** 2:30-5p. **EF:** 27 by 5/6, 42 after 4/22. **Info:** BayAreaChess.com/signature. W.

**May 9, Chess4Less Kids Swiss (PK-12; 4SS, G/30 d5)**

1639A South Main St., Milpitas, CA 95035. **Trophies** to players w + score & all teams. **Sched:** Reg. 9:30-9:45a. **Games:** 10a - 1:30p. **EF:** 34 by 5/6, 49 after 5/6. **Info:** BayAreaChess.com/signature. W.

**May 9, Foster City Grand Prix Luper Swiss (3SS, G/90 d5)**

See Grand Prix.

**May 9, Sacramento Chess4Less Quads (PK-12; 3xG/30 d5)**

Courtyard Marriott, Rancho Cordova, CA 95670. **Trophies:** Players w/plus score. **Sched:** Reqr. Check-in 1:30-2p. **Games:** 2:30-5p. **EF:** 22 by 5/6, 37 after 5/6. **Info:** BayAreaChess.com/signature.

**USCF Junior Grand Prix!**

**May 9, Sacramento Junior Grand Prix Super Swiss (4SS, G/61 d5)**

Courtyard Marriott, Rancho Cordova, CA 95670. **Prize:** \$900 b/36. **1700+:** \$200-100, u1900 100-50. **u1700:** \$200-100, u1600 100, u1400 50. May 15 Supp & TD disc. **Reg.:** 9-9:15. **Rds.:** 9:30-11:50-2:40-5. **EF:** 43, Ecn 29 5/6 prz. after 5/8 +15, playup +15, Rated 2200+ \$0 by 1/1. **Info:** BayAreaChess.com/grandprix. W.

**May 10, Bay Area Fremont Quads (PK-12; 4SS, G/30 d5)**

Courtyard Marriott, Fremont, CA 94538. **Trophies:** Players w/plus score. **Sched:** Required Check-in 1:30-2p. **Games:** 2:30-5p. **EF:** 27 by 5/8, 42 after 5/8. **Info:** http://BayAreaChess.com/signature. W.

**May 10, Bay Area Fremont Swiss (PK-12; 4SS, G/30 d5)**

Courtyard Marriott, Fremont, CA 94538. **Trophies** to players w + score & all teams. **Sched:** Reg. 9:30-9:45a. **Games:** 10a - 1:30p. **EF:** 34 by

# Tournament Life

5/8, 49 after 4/8. **Info:** <http://BayAreaChess.com/signature.W>.

## May 16, Chess4Less Kids Quads (PK-12; 3XG/30 d5)

1639A South Main St., Milpitas, CA 95035. **Trophies:** Players w/plus score. **Sched:** Required Check-in 1:30-2p. **Games:** 2:30-5p. **EF:** 22, 37 after 5/14. **Info:** <http://BayAreaChess.com/signature>.

## May 16, Chess4Less Kids Swiss (PK-12; 4SS, G/30 d5)

1639A South Main St., Milpitas, CA 95035. **Trophies:** to players w + score & all teams. **Sched:** Reg. 9:30-9:45a. **Games:** 10a - 1:30p. **EF:** 22, 37 after 5/14. **Info:** <http://BayAreaChess.com/signature>.

## May 17, Bay Area Chess Grand Prix Super Swiss (4SS, G/61 d5)

See Grand Prix.

## May 17, Bay Area Cupertino Quads (PK-12; 3xG/30 d5)

Courtyard Marriott, Cupertino, CA 95014. **Trophies:** Players w/plus score. **Sched:** Regrd. Check-in 1:30-2p. **Games:** 2:30-5p. **EF:** 27, 42 after 5/15. **Info:** <http://BayAreaChess.com/signature.W>.

## May 17, Bay Area Cupertino Swiss (PK-12; 4SS, G/30 d5)

Courtyard Marriott, Cupertino, CA 95014. **Trophies:** to players w + score & all teams. **Sched:** Reg 9:30-9:45a. **Games:** 10a - 1:30p. **EF:** 34, 49 after 5/15. **Info:** <http://BayAreaChess.com/signature.W>.

## May 23, Best of the West Kids' Class Championship

Marriott, 2700 Mission College Blvd., Santa Clara, CA 95054. **Trophies:** Top 10 schools & Top 10 clubs in all sections combined & Top 10 players w + score in ea section. **5 sects based on rating:** 999-800, 799-600, 599-400, 399-200, u200 & unr. **Sched:** Reg. 8:30-9a 5xG/30 d5, 9:30-11:12:50-2:10:30. **EF:** \$39. After 5/21 +15 **Info:** <http://BayAreaChess.com/kidsclass.W>.

## May 23-25 or 24-25, Best of the West Class Championship

See Grand Prix.

## May 30, Chess4Less Kids Quads (PK-12; 3XG/30 d5)

1639A South Main St., Milpitas, CA 95035. **Trophies:** Players w/plus score. **Sched:** Required Check-in 1:30-2p. **Games:** 2:30-5p. **EF:** 22, 37 after 5/28. **Info:** <http://BayAreaChess.com/signature>.

## May 30, Chess4Less Kids Swiss (PK-12; 4SS, G/30 d5)

1639A South Main St., Milpitas, CA 95035. **Trophies:** to players w + score & all teams. **Sched:** Reg. 9:30-9:45a. **Games:** 10a - 1:30p. **EF:** 22, 37 after 5/28. **Info:** <http://BayAreaChess.com/signature>.

## May 31, Bay Area Cupertino Quads (PK-12; 3xG/30 d5)

Courtyard Marriott, Cupertino, CA 95014. **Trophies:** Players w/plus score. **Sched:** Regrd. Check-in 1:30-2p. **Games:** 2:30-5p. **EF:** 27, 42 after 5/29. **Info:** <http://BayAreaChess.com/signature.W>.

## May 31, Bay Area Cupertino Swiss (PK-12; 4SS, G/30 d5)

Courtyard Marriott, Cupertino, CA 95014. **Trophies:** to players w + score & all teams. **Sched:** Reg. 9:30-9:45a. **Games:** 10a - 1:30p. **EF:** 34, 49 after 5/29. **Info:** <http://BayAreaChess.com/signature.W>.

## June 7, Bay Area Cupertino Quads (PK-12; 3xG/30 d5)

Courtyard Marriott, Cupertino, CA 95014. **Trophies:** Players w/plus score. **Sched:** Regrd. Check-in 1:30-2p. **Games:** 2:30-5p. **EF:** 27, 42 after 6/5. **Info:** <http://BayAreaChess.com/signature.W>.

## June 7, Bay Area Cupertino Swiss (PK-12; 4SS, G/30 d5)

Courtyard Marriott, Cupertino, CA 95014. **Trophies:** to players w + score & all teams. **Sched:** Reg. 9:30-9:45a. **Games:** 10a - 1:30p. **EF:** 34, 49 after 6/5. **Info:** <http://BayAreaChess.com/signature.W>.

## California, Southern

### The Los Angeles Chess Club

The Most Active Club on the West Coast! (310) 795-5710 \* [www.LAChessClub.com](http://www.LAChessClub.com); Contact: [Mick@LAChessClub.com](mailto:Mick@LAChessClub.com); Saturdays: 10am-10 pm (Beg & Interm. classes + 2 Tournaments). Sundays: 11-7 & 1-5 pm (Junior class + 2 Tournaments) - Details on our web site. Tuesdays: 7:30-9:30 pm (Advance Lecture). 11514 Santa Monica Blvd., Los Angeles, CA 90025. (4 blocks W of 405, SW corner of Santa Monica & Butler \* 2nd Floor - above Javan Restaurant) Group Classes \* Tournaments \* Private (1:1) Lessons.

### Apr. 4, 5, 18, 19, LACC - Every Saturday & Sunday Chess 4 JRS.

4 separate events- 5SS, G/30 d0. 11514 Santa Monica Blvd. & Butler, LA, 90025, 2nd fl. 4 blocks West of 405. **EF:** \$30 (\$20 LACC memb, No prize 1/2, siblings 1/2, Free new LACC members). **Reg.:** 12-1 pm. **Rds.:** 1pm & asap; done by 5. **Prizes:** Trophies & medals; everyone receives a prize! **Parking:** Free on streets & BoA. Free pizzas & juices. **Info:** (310) 795-5710 or [www.LAChessClub.com](http://www.LAChessClub.com) or [Mick@LAChessClub.com](mailto:Mick@LAChessClub.com).

### July 16-19, 17-19 or 18-19, 20th annual Pacific Coast Open

See *Chess Life* or [www.chesstour.com](http://www.chesstour.com).

## Connecticut

### June 5-7 or 6-7, 21st Annual Northeast Open

See *Chess Life* or [www.chesstour.com](http://www.chesstour.com).

### July 17-19 or 18-19, 20th Annual Bradley Open

See *Chess Life* or [www.chesstour.com](http://www.chesstour.com).

## District of Columbia

### June 13, Rated Beginners Open (RBO)

4-SS, G/25 d5. US Chess Center, 410 8th St. NW, Washington, DC 20004. Open to players rated under 1200 or unrated. **EF:** \$30 (\$20 if by 6/6), 5 sections by age. **Reg.:** 12-12:45. **Info:** 202/857-4922. [www.chessctr.org/rbo.php](http://www.chessctr.org/rbo.php).

## Florida

### USCF Junior Grand Prix!

### Boca Raton Chess Club

Friday nights, G/85 d5 Tournament, one game a week for 4 weeks. [www.bocachess.com](http://www.bocachess.com), 561-479-0351.

### July 24-26 or 25-26, 23rd annual Southern Open

See *Chess Life* or [www.chesstour.com](http://www.chesstour.com).

## Georgia

### Apr. 24-26 or 25-26, Phillip Taylor 2015 Georgia State Championship

See Grand Prix.

## Illinois

### Apr. 17-19, 2015 All-Girls National Championships presented by the Kasparov Chess Foundation in association with the Renaissance Knights Chess Foundation & USCF

See Nationals.

### May 21-25, 22-25, 23-25 or 24-25, 24th annual Chicago Open

See *Chess Life* or .

### June 12-14, 2015 U.S. Junior Open

See Nationals.

### July 17-19 or 18-19, 8th annual Chicago Class

See *Chess Life* or [www.chesstour.com](http://www.chesstour.com).

## Iowa

### USCF Junior Grand Prix!

### May 16-17, 2015 Ice Harbor Scholastic Open

A weekend Scholastic Open Tournament with five sections, Friday night Blitz, and Saturday night bughouse. Individual and Team Awards. Sections: K-12, K-6: 5 Round Swiss, G/75 d5. K-3, K-6 U800, K-12 U1200: 7 Round Swiss, G/45 d5. **Where:** The Grand River Center, 500 Bell St., Dubuque, IA 52001. Hotel: Grand Harbor Resort and Waterpark 350 Bell St., Dubuque, IA 52001. **Reg.:** Online at [www.onlineregistraton.cc](http://www.onlineregistraton.cc). On-Site Registration: 8:00 a.m. - 9:30 a.m. **Rds.:** **Sections with G/45 TC:** Rd. 1: 10:00 am, Lunch: Rd. 2: 12:30 pm, Rd. 3: 2:30 pm, Rd. 4: 4:30 pm, Rd. 5: 9:00 am, Rd. 6: 11:00 am, Lunch: Rd. 7: 1:30 pm; **Sections with G/75 TC:** Rd. 1: 10:00 am, Lunch: Rd. 2: 1:30 pm, Rd. 3: 4:30 pm, Rd. 4: 9:00 am, Lunch: Rd. 5: 12:30 pm. **Entry Fee:** \$45 if postmarked by April 15, \$50 if postmarked by May 1, \$55 postmarked after 5/1, \$60 on site. **Prize Info:** **Trophies for Top 10 Individuals all sections** (Unrated players in Open section cannot qualify for class prizes). **Class Trophies (9 each section)** *K-12 Open:* Top 3 U1600, U1400, U1200 each. K-12 U1200: Top 3 U900, U600, Unrated each. *K-6 Open* Top 3 U1000, U800, U600, K-6 U800 Top 3 U 600 U400 Unrated, each. *K-3 Open* Top 3 U400, U200, Unrated, each. **Team Awards** (total of top 3 individual scores): Plaques for Top 3 Teams K-3, K-6 Open & Reserve, K-12 Open & Reserve. Teams may be of common school or chess club per USCF current regulations. **Send Entry Fee to:** Checks payable to "Chess in Iowa," c/o James Hodina, 3411 Blue Pt. Ct. SW, Cedar Rapids, IA 52404. Include name, USCF ID, Section, Team, phone #, email address. You may register in advance for main event, and bughouse. **Hotel:** Grand Harbor Resort and Waterpark, \$119 chess rate includes 4 passes to waterpark. Rate guaranteed through April 14. Reservations: Phone (866) 690-4006 and ask for the Ice Harbor Chess Group rate. **Side Events:** Unrated Scholastic for K-3, 4-6, and 7-12 (same registration details as open). Blitz Chess Tournament Friday Night; Bughouse Tournament Saturday Night; Saturday - Sunday Friends and Family Rated & Unrated. Entry Fee: \$5.00 per player/event. **Additional Info:** Visit [www.iceharborchess.com](http://www.iceharborchess.com) for details on tournament, playing site, hotel, and area attraction or email: james.hodina@chessiniowa.org.

## Kentucky

### Apr. 24-26, 2015 National Junior High School (K-9) Championship

See Nationals.

## Louisiana

### A State Championship Event!

### May 2, 2015 Louisiana State Scholastic Team & Individual Championships

**Site:** Woodlawn Middle School, 14939 Tiger Bend Rd., Baton Rouge, LA 70817. **7 USCF rated sects:** K-2, K-4, K-6, K-8-under-800, K-8-Open, K-12-under-1000, K-12-Open (ratings used will be from May 2015 supplement). **Format:** First 4 sections listed above will play 5SS, G/30 d5, with on-site registration from 9-9:30am and first round at 10am; remaining 3 sections will play 5SS, Rds. 1-3 G/30 d5 and Rds. 4-5 G/45 d5 with on-site registration from 8-8:30am and first round at 9am. All sects. except K-2 will be required to play with a clock. **Team info:** Minimum of 3 players from same school or home-school district to make a team with the top 4 scores counting as final total team score. No limit on number of entries or teams from same school, but team members must all register in the same section. **Prizes:** Minimum of 5 individual trophies and top team trophy for each sect. (more trophies awarded depending on number of pre-entries). **Byes:** 1/2-point bye available for any one round, must notify director of requested bye prior to Rd. 2. **EF:** \$30 if rec'd by 4/25; \$40 at site. Nearby Hotels (please make your own reservation): Microtel Inn & Suites, \$64 (225-291-6200); Siegen Inn, \$79 (866-460-7456); Courtyard by Marriott, \$95 (225-293-7200); Fairfield Inn & Suites, \$109 (225-766-9493). Players should bring their own chess boards, sets and clocks; chess vendor will be on site. **For further details and On-line Entries:** [www.cajunchess.com](http://www.cajunchess.com). Phone entries: 504-208-9596 or 504-905-2971. For questions or more info, email [cajunchess@yahoo.com](mailto:cajunchess@yahoo.com).

## Maryland

### Maryland Chess Association Tournaments

MCA runs several scholastic & open tournaments

throughout Maryland each month. Listings & online registration at [www.MDChess.com](http://www.MDChess.com). Maryland scholastic players can qualify for a \$41,000 scholarship awarded each year that covers 4 years of tuition & fees at UMBC (University of Maryland, Baltimore County).

## Massachusetts

### Apr. 24-26 or 25-26, 24th annual Eastern Class Championships

See *Chess Life* or [www.chesstour.com](http://www.chesstour.com).

### May 23-25 or 24-25, 84th Massachusetts Open

See *Chess Life* or [www.MassChess.org](http://www.MassChess.org).

### Aug. 13-16, 14-16 or 15-16, 45th annual Continental Open

See *Chess Life* or [www.chesstour.com](http://www.chesstour.com).

## Nevada

### Reno Scholastic Chess Quadz

University of Nevada, Reno FH19 PK-College. G/30 d5 **Sched:** 12:00-3pm. **EF:** 10. Weekly event on designated Saturdays. **Info:** [www.chesskidz.org/quadz.html](http://www.chesskidz.org/quadz.html) or [chesskidz@chesskidz.org](http://chesskidz@chesskidz.org)

### June 18, 2015 U.S. Game/10 Championship (QC)

See Nationals.

### June 18-19, 2015 U.S. Women's Open

See Nationals.

### June 19, Youth Trophy Tournament

5-SS, G/25 d5. Westgate Resort & Casino, 3000 Paradise Rd., Las Vegas 89109. Hotel reservation: 800-732-7117. Open to players age 14 & under. **3 sections:** Open, U1000, U700. **Trophies:** top 5 in each section, top 2 in each 200 point rating group and unrated. Must be 3 players eligible for each prize to be awarded. **EF:** \$39 by 5/25, \$50 later. **REG.:** 9-9:30 a.m. **RDS.:** 10-11:30-1-2:30-4. [www.VegasChessFestival.com](http://www.VegasChessFestival.com). W.

### June 19-21 or 20-21, 2015 National Open

See Nationals.

### June 20-21, International Youth Championship

5SS, G/60 d5. Westgate Resort & Casino, 3000 Paradise Rd., Las Vegas 89109. **In 4 Sections by age:** 14 & Under, 14 & Under Reserve (under 1000), 9 & Under, 9 & Under Reserve (under 800). **Trophies:** to top 10 in each section plus class and team trophies. 1st Place in each section wins a Computer loaded with valuable Chess Software and hundreds of Videos, 2nd-4th win chess prizes valued at 250-150-100. Unrated players may not win 1st in Reserve sections. **EF:** \$89 by 5/25, \$99 by 6/15, \$120 later. 1/2 point bye in any round (limit 2) if requested in advance. **REG.:** 8-9 a.m. **RDS.:** 10-1-4, 10-1. Youth Blitz 6/19 6:30 p.m. (\$20 by 5/25 \$25 later). **HR:** \$69, \$89 Friday and Saturday. (800) 732-7117 - be sure to ask for the **CHES** rates. **ENTG:** Vegas Chess Festivals, PO Box 90925, Henderson, NV 89009-0925 or [www.VegasChessFestival.com](http://www.VegasChessFestival.com). W.

## New Hampshire

### May 9, Goshen Lempster Cooperative Scholastic (K-12)

4SS, G/30 d5. 29 School Rd., Lempster, NH 03605. **3 Sections:** Novice, Intermed., Open. Trophies to top 3 in each section, medals. **Sched:** Reg. 9:00-9:45am. Round 1: 10:00am. **EF:** \$5 if info recd by 5/8, \$9 at door. **Ent/info:** [vbradleychess@gmail.com](mailto:vbradleychess@gmail.com), [www.nhchess.org](http://www.nhchess.org). Affiliate: Tournament in a Box.

### May 16, Londonderry High School Scholastic (K-12)

4SS, G/30 d5. 295 Mammoth Rd., Londonderry, NH 03053. **4 Sections:** Novice, Beginner, Intermed., Open. Trophies to top 3 in each section, medals. **Sched:** Reg. 9:00-9:45am. Round 1: 10:00am. **EF:** \$5 if info recd by 5/15. \$9 at door. **Ent/info:** [vbradleychess@gmail.com](mailto:vbradleychess@gmail.com), [www.nhchess.org](http://www.nhchess.org). Affiliate: Tournament in a Box.

### June 6, The Well School Scholastic (K-12)

4SS, G/30 d5. 36 Well School Rd., Peterborough, NH 03458. **3 Sections:** Novice, Intermed., Open. Trophies to top 3 in each section, medals. **Sched:** Reg. 9:00-9:45am. Round 1: 10:00am. **EF:** \$5 if info recd by 6/5, \$9 at door. **Ent/info:** [vbradleychess@gmail.com](mailto:vbradleychess@gmail.com), [www.nhchess.org](http://www.nhchess.org). Affiliate: Tournament in a Box.

## New Jersey

### Apr. 19, Westfield Spring Scholastic

Westfield Y, 220 Clark St., Westfield, NJ 07090. K-12. **3 Sections:** Open, U1250, U750. **Open:** 3-SS. G/40 d5 Rds.: 2:15, 4:00, 5:45 p.m. **U1250, U750:** 4-SS. G/25 d5. Rds.: 2:15, 3:30, 4:45, 6:00 p.m. **EF:** \$25, \$20 members. **Prizes:** Trophies to top 5 in each section. Tiebreaks used. See USCF Rule 34E. **Reg.:** 1:15-2:00 p.m. **Info:** [www.westfieldchessclub.com](http://www.westfieldchessclub.com), John Moldovan: [westfieldchessclub@gmail.com](mailto:westfieldchessclub@gmail.com), Bill Cohen: 732-548-8432 or 848-219-1358.

### A State Championship Event!

### May 3, 2015 NJ State Girls Championship

4SS, G/55 d5. Kings & Queens Chess Academy, 1030 Stelton Rd., Piscataway, NJ (973)219-6877. **2 Sections. Open:** Trophies to Top 8 players. First place player is New Jersey's representative for the National Invitational Girls Tournament during the U.S. Open 2015. NJSCF will provide a stipend to defray the costs of the attendee if she plays in the NGIT 2015. **U1400:** Trophies to Top 8 players. Entries postmarked by 4/17/15 to Noreen Davison, 6 Red Barn Ln., Randolph, NJ 07869. **Entry fee:** \$35, onsite: \$45. **Registration:** 9:00-9:45am. **Rounds:** 10:00am & ASAP. Email [Noreen@deanofchess.com](mailto:Noreen@deanofchess.com) for more information.

### May 23-25 or 24-25, 71st Annual U.S. Amateur East Championship

See Nationals.

### May 24, U.S. Amateur K-8 East Under 1200

5-SS, G/30 d5. Hyatt Morristown, 3 Speedwell Ave., Morristown, NJ 07960. If staying, for chess rate (\$99 per night for first 40 room nights



reserved, \$115 after), please make reservations at <https://resweb.passkey.com/go/NJChess2015>. Phone: 973-647-1234, mention NJ Chess. Free parking, public transportation to NYC, Philadelphia, walking distance, 30 restaurants, shops and parks within 5 minute stroll. In three sections: Under 1200, Under 900, Under 600. Trophies to Top Ten. Others win chess medallions. Unrated may not win first place. **Registration:** Saturday, May 24, 11am -12noon. **Rounds:** 12:30pm, then ASAP with lunch break after Round Two. **EF:** \$30 if postmarked by May 18th. \$40 cash at site. One 1/2 point bye allowed if requested with entry fee. April Rating Supplement used. **Entries:** to Aaron Kiedes, 4 Seymour Terrace, Hackettstown, NJ 07840. Call 973-343-3260 for information or email [akiedes@gmail.com](mailto:akiedes@gmail.com). Entries must include name, USCF ID and expiration date, mailing address, email address, phone number, section, grade level and entry fee. Checks made out to NJSCF. Online entries \$32 at [www.njscf.org](http://www.njscf.org) after 4-15-15 until 5-21-14 at midnight. W.

**USCF Junior Grand Prix!**  
**A State Championship Event!**  
**May 30-31, 2015 NJ State Junior Championship**  
 555, G/75 d5. ICA Fair Lawn, 9-10 Saddle River Rd., Fair Lawn, NJ (973) 219-6877. **2 Sections. Grades 9-12:** Trophies to Top 8 players. First place player is New Jersey's representative for the Denker Tournament during the U.S. Open 2015. **Grades K-8:** Trophies to Top 8 players. First place player is New Jersey's representative for the Dewain Barber Tournament during the U.S. Open 2015. Entries postmarked by 5/17/15 to Noreen Davisson, 6 Red Barn Ln., Randolph, NJ 07869. **Entry fee:** \$35, onsite: \$45. **Registration:** 9:00-9:45am. **Rounds:** 10:00am, 1:00pm and 5:00pm Saturday, 10:00am and 1:00pm Sunday. Email [Noreen@deanofchess.com](mailto:Noreen@deanofchess.com) for more information.

## New York

**May 15-17 or 16-17, 23rd annual New York State Open**  
 See *Chess Life* or [www.chesstour.com](http://www.chesstour.com).

## Ohio

**Apr. 10-12, 2015 National High School (K-12) Championship**  
 See Nationals.

**Aug. 7-9 or 8-9, Cleveland Open**  
 See *Chess Life* or [www.chesstour.com](http://www.chesstour.com).

## Pennsylvania

**MasterMinds Scholastic Summer League**  
 Info at [www.mastermindschess.org](http://www.mastermindschess.org).

## Tennessee

**May 8-10, 2015 National Elementary (K-6) Championship**  
 See Nationals.

**June 6-7, 2015 U.S. Amateur South Championship**  
 See Nationals.

## Texas

**Apr. 18-19, 2015 DCC Fide Open V**  
 See Grand Prix.

**May 9-10, 2015 DCC Fide Open VI**  
 See Grand Prix.

**May 22-25 or 23-25, 70th Annual Texas State and Amateur Championships**  
 See Grand Prix.

## Utah

**Apr. 18, Dixie Red Rooks Scholastic Open**  
 4-SS, G/25 d5. Sunbrook Event Center, St. George, UT. **3 sections:** 9 & under and 14 & under, adult 14+. **EF:** \$29 by 4/13 \$36 later. **REG.:** 8-8:30 rd 1 at 9. Trophies for kids cash (70% of EF) for adults. **ENT:** Michael J. Kruse, 2139 W. Cougar Rock Circle, Lot 128, St. George, UT 84770. [dixieredrooks@gmail.com](mailto:dixieredrooks@gmail.com) 435-703-8001.

## Virginia

**May 22-25 or 23-25, 3rd Cherry Blossom Classic**  
 See Grand Prix.

**May 24, Cherry Blossom Classic FIDE Rated Blitz! (BLZ)**  
 See Grand Prix.

**USCF Junior Grand Prix!**  
**June 27-28, 7th annual World Open Under 13 Championship**  
 (Note corrections.) 6SS, G/60 d10. Hyatt Regency Crystal City, Arlington (see World Open for location, rates). Open to all born after 6/28/02. In 4 sections. **Open Section:** Trophies to top 10, 1st C, Under 1400/Unr; free entry in all CCA tournaments 7/16/15-12/31/15 to 1st. **Under 1400 Section:** Trophies to top 10, 1st Under 1200, Unrated; free entry in all CCA tournaments 7/16/15-9/30/15 to 1st. **Under 1000 Section:** Trophies to top 10, 1st Under 800, Unrated; free entry in all CCA tournaments 7/16/15-9/30/15 to 1st. **Under 600 Section:** Trophies to top 10, 1st Under 400, top 3 Unrated; free entry in all CCA tournaments 7/16/14-9/30/15 to 1st. **EF:** \$42 online at [chessaction.com](http://chessaction.com) by 6/23, \$45 mailed by 6/17 or phoned to 406-896-2038 by 6/22, \$50 at site, or online until 9 am 6/27. **Reg.** 6/27 to 10 am, rds. Sat. 11-2-5, Sun. 10-1-4. Up to 2 half point byes allowed, must commit before rd. 3. **Ent:** [chessaction.com](http://chessaction.com) or Continental Chess, PO Box 8482, Pelham, NY 10803. Questions: [chesstour.com](http://chesstour.com), [chestour.info](http://chestour.info), [DirectorAtChess.US](mailto:DirectorAtChess.US), 347-201-2269. \$15 service charge for refunds.

**June 30-July 5, July 1-5, 2-5 or 3-5, 43rd Annual World Open**  
 See *Chess Life* or [www.chesstour.com](http://www.chesstour.com).

## Wisconsin

**USCF Junior Grand Prix!**  
**May 2-3, 2015 Arpad Elo Open**  
 Olympia Resort, 1350 Royale Mile Rd., Oconomowoc, WI 53066. In 3 Sections, **Open:** EF \$35 by 4-30, \$5 more at site. **\$\$B/30** \$300-\$175-A \$110-U1800 \$110. **Reserve(U1800):** EF \$25 by 4-30, \$5 more at site. **\$\$B/30** \$90-\$75-C50-U1400 \$50. **TC:** Open & Reserve, 40/120 d5, SD/60 d5. **RDS.:** 10-2:30-7:30, 10-3:30. **RBO: (U1200)** \$12 by 4-30, \$3 more at site. 1st \$50, trophies to 1-2-3-U1000-U800-U600. **TC:** G/60 d5. **RDS.:** 10-1-3:30-6 Saturday only. **Reg.:** 830-930am 5-2. **ENT:** Guy Hoffman, 1305D Tompkins Dr., Madison, WI 53716, 920-279-0701. **INFO:** [schachfuhrer@hotmail.com](mailto:schachfuhrer@hotmail.com). **HR:** \$99 single/Double, \$109 Triple/Quad 262-369-4999 (mention chess). [www.wischess.org](http://www.wischess.org). WCA Tour Event! W.

# Answers, We've got Answers.

## WHAT WAS THAT QUESTION? (From page 6)

- #1**  
 1. Kf7 Kh7 2. Ng5+ Kh8 3. Ne7 f3 4. Ng6#
- #2**  
 1. Kf7 Kh7 2. Ne4 (2. Ng4 f2 3. Nf6+ Kh8 4. Ne7 f1=Q 5. Ng6#) 2. ... f2 3. Nf6+ Kh8 4. Ne7 f1=Q 5. Ng6#
- #3**  
 1. Kf7 Kh7 2. Ne4 (2. Nd5 c3 3. Nf6+ Kh8 4. Ne7 c2 5. Ng6#) 2. ... c3 3. Nf6+ Kh8 4. Ne7 c2 5. Ng6#
- #4**  
 1. Kf7 Kh7 2. Nd5 b4 3. Nf6+ Kh8 4. Ne7 (4. Nh4 b3 5. Ng6#) 4. ... b3 5. Ng6#

## YOU CAN DO IT! (from page 9)

- #1**  
 1. Qh4+ Kg7 2. Qxh7#
- #2**  
 1. Ng4+ Kg5 2. Qh6#
- #3**  
 1. Qd6+ Ke4 2. Qd4#
- #4**  
 1. Qh6+ Ke7 (1. ... Kg8 2. Nf6#) 2. Qd6#
- #5**  
 1. Qf6+ Kh3 (1. ... Kh5 2. Qg5#) 2. Nf2#
- #6**  
 1. Qe7+ Kh6 (1. ... Kh8 2. Qh7# or 2. Qf8#) 2. Ng8#

## END OF THE LINE (From page 10)

- #1** - 1. Nh6#
- #2** - 1. Ke2#
- #3** - 1. Qg8+ Rxg8 2. Nf7#

**#4** - 1. Bb2+ Kb1 2. Bg6#

**#5** - 1. Nd6+ Kd8 2. Qe8+ Nxe8 3. Nf7# - Similar to the game Ruslan Nigmatdianov versus Leonid Kaplin

**#6** - 1. Nh6+ Qxh6 (if 1. ... Kh8 then 2. Rxf8#) 2. Rxf8+ Kxf8 3. Qd8# - Similar to the game Alekhine versus Freeman

## THE CHESS DETECTIVE (From page 11)

**#1** This position occurred in the 2008 Amber Blindfold Tournament in Monte Carlo, Monaco, between Boris Gelfand and Sergey Karjakin. Black has the more active bishop. He played 44. ... Rd3 (This is stronger than 44. ... Qh4+ 45. Qh3) 45. Qe1 Bg3 46. h6+ Kh8, White resigned (Along with the queen, 47. ... Qh4+ is threatened.) Open tactical positions are difficult to play blindfolded!

**#2** White played 37. Bd3! (Black will have problems defending his light squares.) 37. ... e4+ (To open up the a1-h8 diagonal for the bishop to help defend.) 38. Bxe4 Qg7 39. Qe6+ Qf6 (If 39. ... Kh5 or 39. ... Bf6, then 40. Qh3 mate) 40. Qd7, Black resigned (40. ... Qg7 41. Qh3 mate or 40. ... Qh8 41. fxe5+ Kxg5 42. Qf5+ Kh6 43. Qg6 mate. 40. ... g4+ 41. Qxg4 likely followed by 42. Qd7 renewing the mate threats on h7) Levon Aronian played white in this position against Vassily Ivanchuk in the 4th FIDE Grand Prix in 2009 in Nalchik, Kabardino-Balkar Republic, Russia.

**#3** This position is from a game between Igers Rausis and Matthew Sadler played in Enghien-les-Bains (Paris), France in 1999. Black played 34. ... Qh5 35. Kf2 (If 35. h3 or 35. h4, then 35. ... Qe2) 35. ... Qxh2 36. Rg1 Rc6 37. Qxe5 (At least creating a mate threat in a losing cause—note that it is on the dark squares.) 37. ... Rc2+ 38. Kf1 Bd3+, White resigned.

**#4** White sacrificed his rook with 40. Rxe6+! fxe6 41. Qxe6+ Kf8 42. Rg8+ Qxg8 43. Qe7 mate. A pretty finish with mate on the dark squares. This position is from the Rice Memorial Tournament, New York in 1926

between Abraham Kupchik and Isaac Kashdan.

**#5** Aron Nimzowitsch was white against Alexander Alekhine in this game from Semmering, Austria in 1926. Nimzowitsch won this game on the light squares against the soon-to-be world champion after playing 41. f8=Q+ Rxf8 42. Qd5 Qd6 43. Qxb7+ Kd8 44. Rd3 Bd4 45. Qe4 Re8 46. Rxd4, Black resigned.

**#6** This position was between Magnus Carlsen and Andrei Volokitin played in 2006 in Biel, Switzerland. Volokitin successfully won with the two rooks versus queen and opposite color bishop middlegame against the future world champ by playing 27. ... Oxc4! 28. Rxc4 Rxc4 29. Qd7 (With the dark-squared bishop, White would love to get an attack going on the dark squares in front of the black king, but he never gets the time.) 29. ... Rc2+ 30. Kg1 Bc6 31. Qd4 (31. Qd8+ Re8 32. Qd4 Rg2+ is also good for Black.) 31. ... Rd5 32. Qg4 h5, White resigned.



**Did I mention the fun part!**

What's New In The Library!

USCF  
SALES

## Check out these new offerings from the WORLD'S LARGEST CHESS RETAILER!



### Dvoretsky Endgame Manual - Fourth Edition B0007RE - \$34.95

When you are serious about improving your endgame skills, you need this book. It is a comprehensive work on the endgame that will reward players of all strengths. Even if you do not play at master level, the book has been designed to help your endgame too. Basic theories and "must-know" concepts are highlighted in blue. You may skip the more complex analysis, focus on the text in blue, and still improve your endgame technique.



### The Modern Bogo 1. d4 e6 B0148NIC - \$29.95

The Modern Bogo covers all the possibilities for White after 1. d4 e6... except for 2. e4, after which you should play the French! Dejan Antic and Branimir Maksimovic have created a complete chess opening repertoire for Black players. You will find that this opening not only gives you good chances to equalize as Black, but also many opportunities to play for a win.



### Chess Developments - Sicilian Najdorf 6. Bg5 B0400EM - \$29.95

The Sicilian Najdorf is undoubtedly one of the most popular chess openings. IM Kevin Goh Wei Ming examines the most theoretically important and instructive games in recent years, highlighting the main developments and novelties for both sides. Whether playing White or Black, this book provides you with essential knowledge of an important opening.



### Magnus Carlsen - Vishwanathan Anand B0268IS - \$25.95

Including all games from the 2014 World Chess Championship Match, plus previous games between Anand and Carlsen. All games have been highly annotated by Grandmaster Raymond Keene, CBE.



### The Inner Game of Chess B0107EU - \$19.95

Andy Goltz shows that the key to good calculation is good visualization of the position in front of us and then after the moves we're considering. Being aware of tactical motifs; knowing when to stop looking; and verifying your chosen move are essential, but they all depend on the basic requirement to see clearly what's going on.



### The Czech Benoni in Action / B108EU - \$24.95

Had enough of the same old queen's pawn openings? Afraid of losing just because you forgot White's latest move 23 novelty in the main line? In The Czech Benoni in Action, two practitioners of this little-known but sound counterattacking system join forces to show how you can pose novel problems for opponents of all strengths, leaving them to fend for themselves as early as move 3.



### Bologan's Black Weapons / B0147NIC - \$34.95

If you are ready to play the Ruy Lopez with Black, you also need to be prepared if White avoids the Ruy. In this book Victor Bologan covers all relevant lines with a well laid-out, clearly explained and eminently playable set of responses. But Bologan's Black Weapons in the Open Games is not just another chess opening repertoire book. Bologan presents TWO different options against every main line: a common sense approach and an aggressive weapon. It's actually two books in one.



### The Classical French - Move by Move B0397EM - \$29.95

IM Cyrus Lakdawala invites you to join him in studying the French Defence, Classical Variation. He examines, in detail, the important and commonly played lines, including the Gienitz, McCutcheon and Burn Variations. He explains the main positional and tactical ideas for both sides, provides answers to all the key questions and tells you everything you need to know about successfully playing the Classical French.



### The Liberated Bishop Defence B0151NIC - \$28.95

In many 1. d4 openings, Black has trouble getting his bishop on c8 into play. This book presents a radical solution to this nagging problem: liberate your bishop right away and put it on f5 on the second move. Play 2... Bf5! against either 2. c4 or 2. Nf3 will surprise your opponent and is also a great way to support your development, because the bishop takes control of the important square e4.



### Tactics Time 2 B0150NIC - \$16.95

Thousands of beginners and casual chess players have improved by studying the tactical examples in Tactics Time 1. The authors are back with more real chess tactics from the games of players like you. It offers 1001 fresh and instructive positions. This big will show you not only how to easily spot tactical shots, but you will also improve your game generally, gain confidence, use less time on the clock and start beating more opponents.

Visit [www.USCFSales.com](http://www.USCFSales.com) to buy these and MORE!

Or call us at (888) 512-4377 (CHESS)

