

June 2015

uschess.org

Chess Life for Kids!

Lonely are the brave,
but...



A USCF Publication

\$3.00



(see page 12)

TROPHIES  **PLUS**
A Champion Defined.

TROPHIES • RIBBONS • MEDALS • CHENILLE • PLAQUES

Show Off.



Show It Off.

Official *Awards* Provider of the



UNITED STATES CHESS FEDERATION

315 W. 1ST STREET • TEMPLETON, IOWA 51463
800-397-9993 • WWW.TROPHIESPLUS.COM • TROPHYMAN@TROPHIESPLUS.COM



Table of Contents

| | |
|----|--|
| 4 | WHAT'S THE QUESTION? |
| 5 | BODEN AND HIS MATES |
| 7 | THE CHESS DETECTIVE® |
| 8 | YOU CAN DO IT! |
| 9 | CHESS CAN MAKE YOU SLEEP THE BEST |
| 10 | END OF THE LINE |
| 10 | CHESSTOWN USA. |
| 11 | ARABIAN KNIGHTS |
| 12 | ... NOT FOR LONG |
| 14 | HOLY CROSS |
| 16 | CHECK, MATEY! |
| 18 | SEE YOU IN THE FUNNY PAGES! |
| 19 | JUNIOR GRAND PRIX STANDINGS |
| 20 | TOURNAMENT LIFE ANNOUNCEMENTS |
| 23 | ANSWERS, WE'VE GOT ANSWERS. |

COVER PHOTO COURTESY OF VANESSA ERLICHSON


Publisher
USCF Executive Director:
Jean Hoffman

Jean.Hoffman@uschess.org

Scholastic Editor: Glenn Petersen

gpetersen@uschess.org

Art Director: Cat Connor

catseyephoto@mac.com

Editorial Asst./Copy Editor: Alan Kantor

akantor@uschess.org

Editorial Assistants:
Jo Anne Fatherly

backtobasics@uschess.org

Jennifer Pearson

jenpearson@uschess.org

Advertising Manager: Joan DuBois

jdubois@uschess.org

Tournament Life: Joan DuBois

tla@uschess.org

Director of Publications: Daniel Lucas

dlucas@uschess.org

CONTRIBUTORS: Send your contributions and articles to *Chess Life for KIDS*, PO Box 3967, Crossville, Tennessee 38557 or better yet, e-mail to gpetersen@uschess.org.

Chess Life for KIDS (USPS 023-567, ISSN: 1932-5894) is published in February, April, June, August, October, and December of every year by the United States Chess Federation, 137 O'Brien Drive, Crossville, Tennessee 38555. Periodical postage paid at Crossville, Tennessee, and additional mailing offices.

CHANGE OF ADDRESS: Be sure to notify us at once of any change of address. Please include your old address and your new address, along with your USCF I.D. number.

POSTMASTER: Send address changes to USCF, PO Box 3967, Crossville, Tennessee 38557.

Annual Scholastic Membership

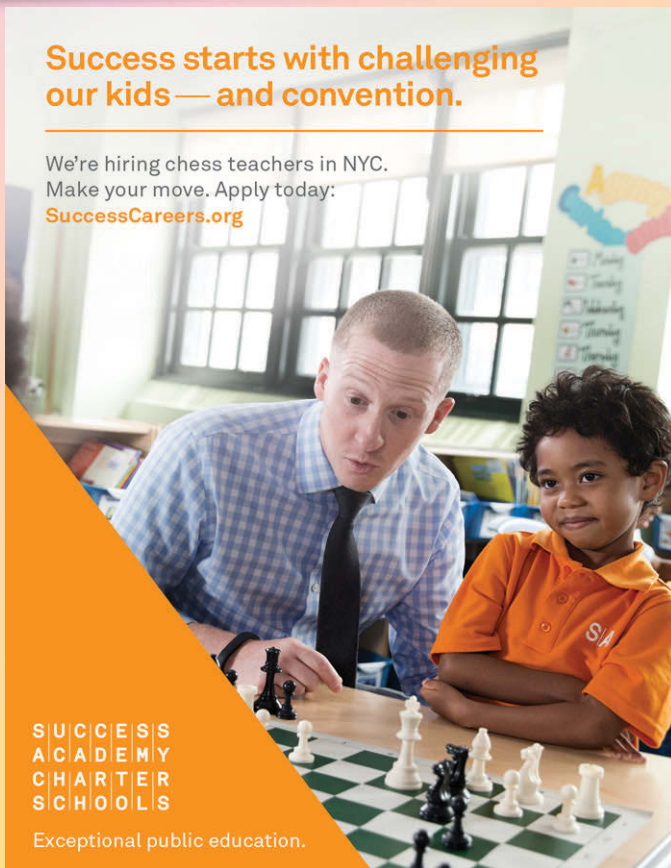
Regular Scholastic Membership (online version of *Chess Life for Kids*), age 12 or younger, is just \$17 per year. Premium Scholastic Membership (receives *Chess Life for Kids* by mail) is \$24 per year. \$13 of every premium membership goes towards providing *Chess Life for Kids*. Annual subscription rate is \$18. Entire contents copyright 2015, United States Chess Federation.

Teachers may photocopy instructional articles for classroom use, but republication or widespread copying without the written consent of the USCF is forbidden.

Success starts with challenging our kids — and convention.

We're hiring chess teachers in NYC.

Make your move. Apply today:

SuccessCareers.org

**SUCCESS
ACADEMY
CHARTER
SCHOOLS**

Exceptional public education.



What's the Question?

by National Master Daniel Gurevich

Mason

Q: What is Boden's checkmate?

A: I love Boden's mate! Here is how it works:

Your opponent's king seems completely safe, but you notice that one of your bishops is controlling all of his possible escape squares. Realizing that any check might be mate, you sacrifice a piece (usually the queen!) for a measly pawn. The opponent is forced to accept the sacrifice and open up a diagonal to his king. Your other bishop swoops in, with checkmate! Game over.

This pattern is named after Samuel Boden, one of the first players to execute it, in this famous game:

Schulder-Boden

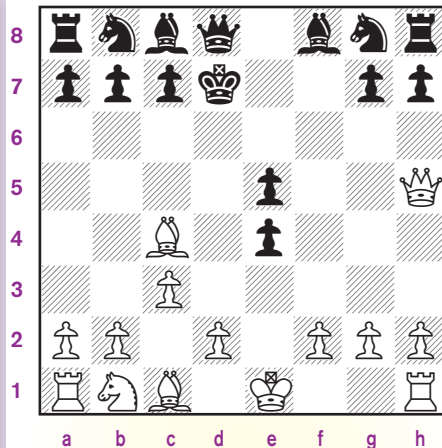
London, 1853 (or 1860, according to some sources)

1. e4 e5 2. Nf3 d6 3. c3!?

Hardly anyone plays this move nowadays, but back in the mid-19th century, most chess players had a more creative approach to openings. 3. ... f5 4. Bc4? The more cautious 4. exf5 was stronger. White plans to sacrifice the knight after 4. ... fxe4! 5. Nxe5!?, but I doubt he has enough compensation for the piece after 5. ... dxe5 6. Qh5+ Kd7. (After all, such early attacks usually flame out—you need more than just a queen to create a strong attack!)

See diagram, top of next column

For example, White can try 7. Bxg8 Rxg8 8. Qf7+ Be7 (defending the rook) 9. Qd5+ Bd6 10. Qf7+, hoping

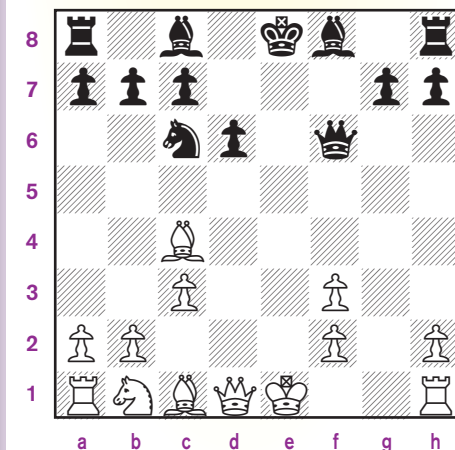


(Analysis)

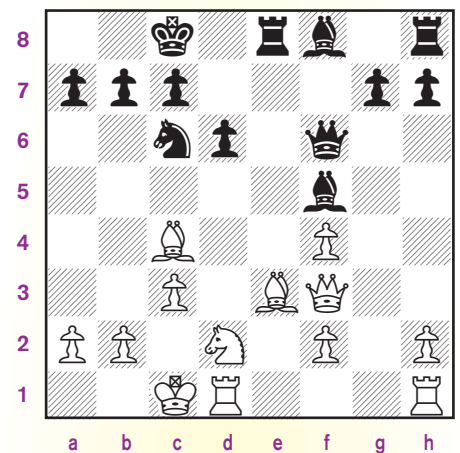
for a draw by repetition after 10. ... Be7. However, Black should instead play 10. ... Kc6! 11. Qc4+ Bc5! 12. b4 Qd5, giving back the piece and converting to a pawn-up endgame. Therefore White should have chosen the more cautious 4. exf5.

(Back to the game)

4. ... Nf6? Black returns the favor. 5. d4 A sharp alternative was 5. Ng5!?, threatening 6. Nf7. 5. ... fxe4 6. dxe5? Here 6. Ng5!, with a double-edged position, was definitely stronger. The move in the game allows Black to obtain a stable positional advantage. 6. ... exf3 7. exf6 Qxf6 8. gxf3 Nc6



White's kingside pawn structure is ruined, and a long painful defense likely awaits him. But who could imagine the game would be over in just seven more moves? 9. f4 Bd7 10. Be3 O-O-O 11. Nd2 Re8 12. Qf3 Bf5!? Black sets a cunning trap. Amazingly, the most natural move loses by force! 13. O-O-O??



13. ... d5! First, Black clears the path for his bishop. 14. Bxd5 Oxc3+!! Now it is time for the decisive queen sacrifice. 15. bxc3 Ba3# And that's Boden's mate, folks.

Usually, when the king falls victim to Boden's mate, it is castled queenside and the c-pawn is advanced, as in Schulter-Boden. However, in the following game, fourth World Champion Alexander Alekhine found a way to set up Boden's mate in a different context:

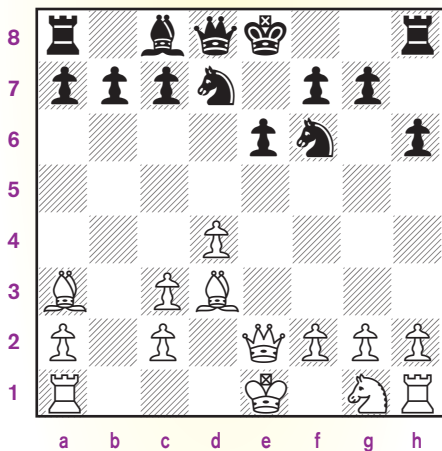
Alekhine-Vasic

Banja Luka, 1931

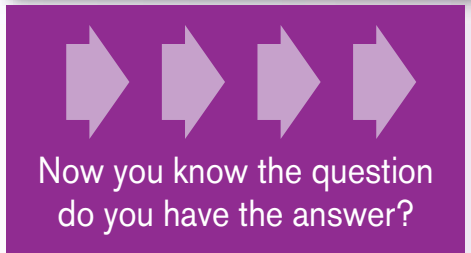
1. e4 e6 2. d4 d5 3. Nc3 Bb4 4. Bd3 Bxc3+?! In the French Winawer, Black normally gives up the dark-squared bishop only after White attacks it with a3, and there is a good

reason for that. By waiting for White to play a2-a3, Black wins a tempo and prevents White from developing his own bishop to the a3-f8 diagonal. **5. bxc3 h6?** In the opening, every tempo counts, and this move shows that Black did not understand that. Now White already has a clear advantage. (Better was 5. ... dxe4 6. Bxe4 Nf6 7. Bd3 0-0, developing the kingside.)

6. Ba3! Alekhine stops his opponent from castling any time soon. **6. ... Nd7**
7. Qe2 Even stronger was 7. exd5! exd5 8. Qg4!, and Black's position is a mess: while Black struggles to develop, White's attack will eventually crash through on the open e-file. Keep in mind, though, that Alekhine played this game as part of a simultaneous exhibition, so he had to concentrate on other games as well. **7. ... dxe4**
8. Bxe4 Ngf6
9. Bd3 This move seems purely positional, with the idea of keeping the bishop pair. In fact, White has a dangerous threat. What is it?

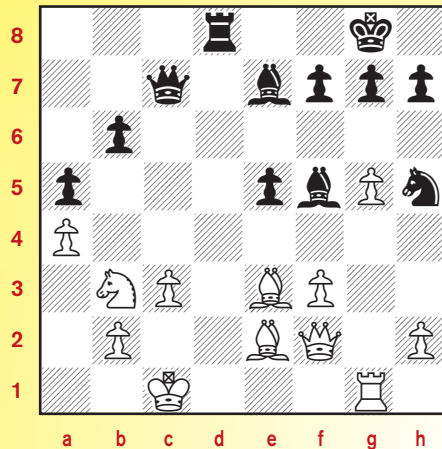


9. ... b6?? Black should have played 9. ... c5! 10. dxc5 Qc7 (but not 10. ... 0-0? 11. c6!, winning the Exchange), blocking the a3-f8 diagonal and defending against the threat. **10. Qxe6+!!** Boden's mate strikes again!
10. ... fxe6
11. Bg6#



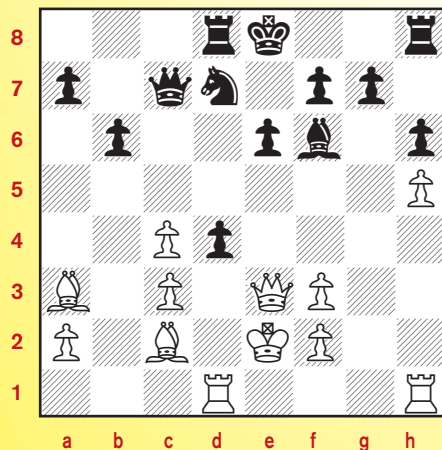
Time to be Puzzled!

#1



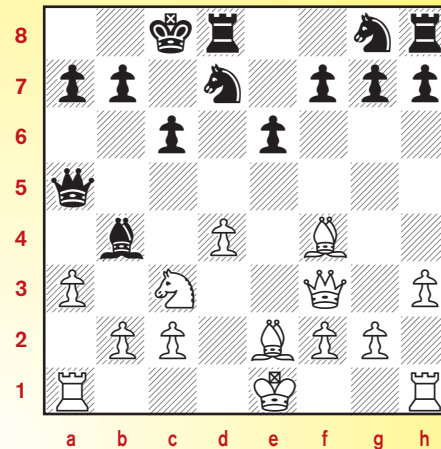
Black to move

#2



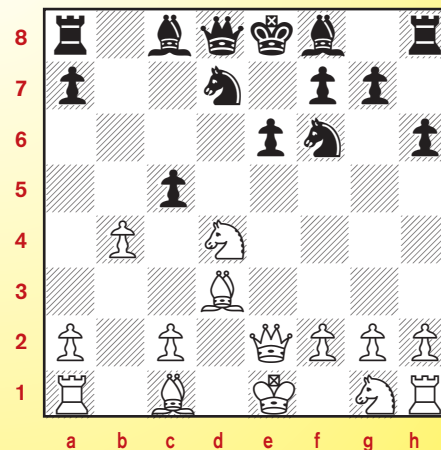
White to move

#3



White to move

#4



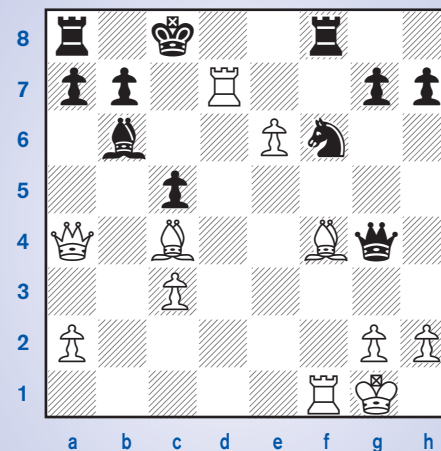
White to move

BODEN AND HIS MATES

by Jon Edwards

Samuel Standidge Boden (1826-1882) was a professional English chess master. He was the first to play the mate that now bears his name. Here are six more examples. In each case, it is mate in two moves.

#1



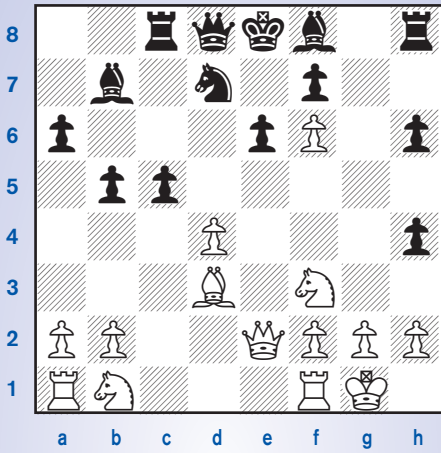
White to move

Please turn to page 6

Black to move

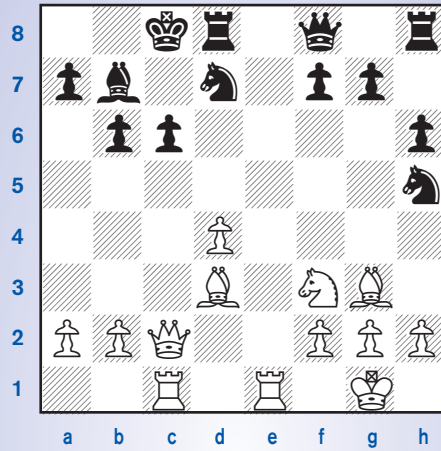
Black to move

#2



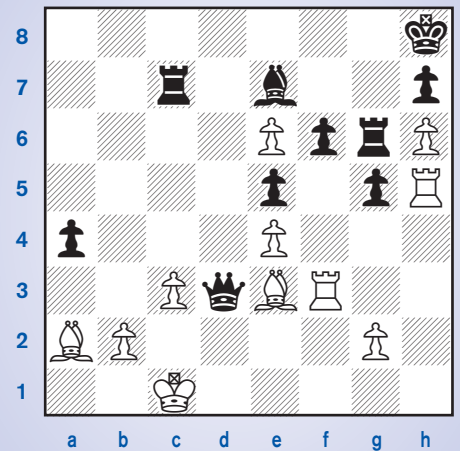
White to move

#4



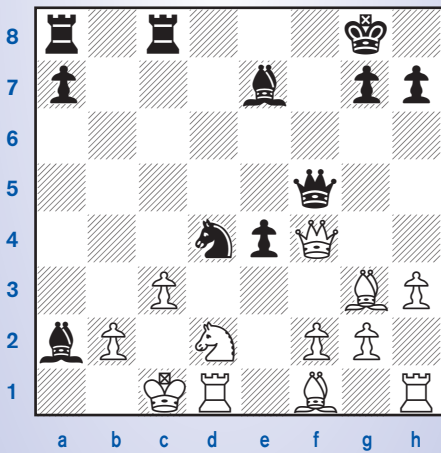
White to move

#6



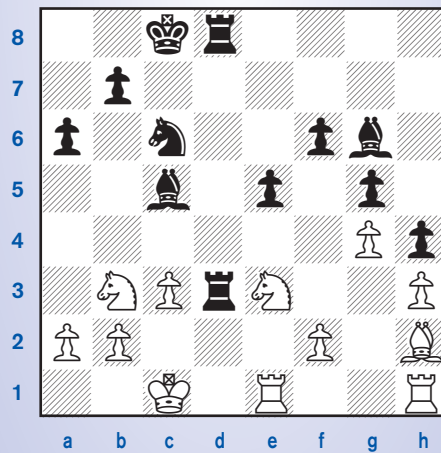
Black to move

#3



White to move

#5



White to move

2015 Chess Life for Kids Survey!

Give us your thoughts about your favorite chess magazine by answering a few short questions here:
<http://surveymonkey.com/r/chesslifeforkids>
 Your opinion matters!

A match made in heaven!
 Play Online USCF Rated Chess!

USCF

ICC
 Internet Chess Club

www.chessclub.com/uscf
 Because we care about your rating!



The Chess Detective®

by NM Todd Bardwick

WINNING OPPOSITE COLOR BISHOP ENDGAMES

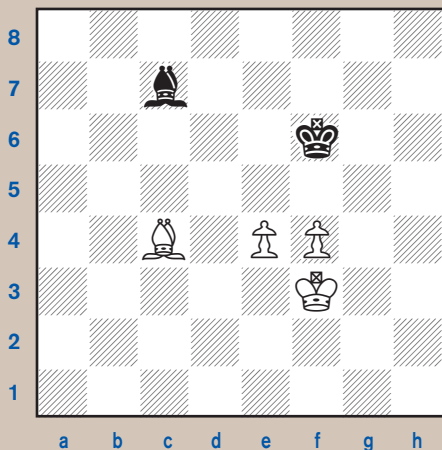
In the last couple of columns, we looked at opposite color bishops in the middlegame.

Now we will examine them in the endgame where draws are common.

Often, a one-pawn advantage is not enough to win an opposite color bishop ending ... sometimes a two-pawn advantage is not enough.

If you are losing the game, steering toward an opposite color bishops in the endgame generally gives you the best chances to draw. The opposite is also true, if you are ahead, it is usually best to try to avoid an opposite color bishop endgame.

The defending player will try to block the advance of pawns on the color of his bishop. If successful, a pawn cannot promote, and without a queen, checkmate won't be possible.



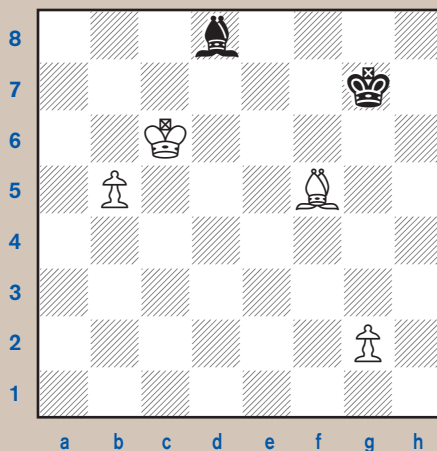
White to move

This position is drawn, despite White's two pawn lead in material. If he tries 1. f5, all Black needs to do is keep his bishop attacking e5 and not move his king so White can never safely push his e-pawn. The other

pawn push, 1. e5+ Bxe5 2. fxe5+ Kxe5 results in a draw by insufficient mating material. White cannot protect e5 with his king by playing Ke3-d4 because of ... Bxf4. As long as Black keeps his king on f6 and bishop on b8, c7, or d6, White cannot make progress.

You can win opposite color bishop endings—but the exact positioning of the pieces is critical.

Winning often requires a *Zugzwang*, blocking out the defending bishop with a pawn, or getting the king around the blockade. It is more difficult for the defending bishop if he has to defend two diagonals at the same time, not just one.

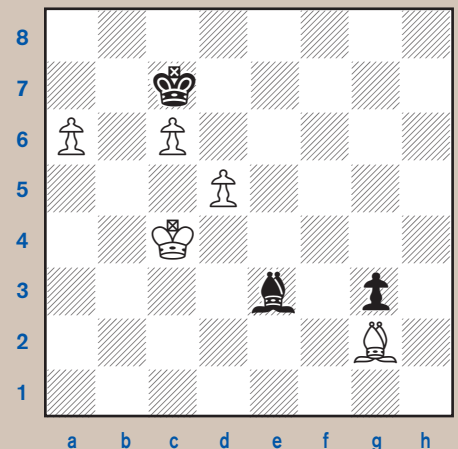


White to move

In this position with the pawns spread out, White can simply advance his b-pawn. Black will have to sacrifice his bishop for it and White will win with his g-pawn.

Note that if the pawn on g2 was on h2 instead, the game would be drawn as Black would leave his king in front of the h-pawn, sacrifice his bishop for the b-pawn, and draw because White's bishop is the opposite color of the h8 promotion square.

White's king outmaneuvered Black in this position that occurred between Borislav Kostic and Savielly Tartakower in Bled, Slovenia, 1931.



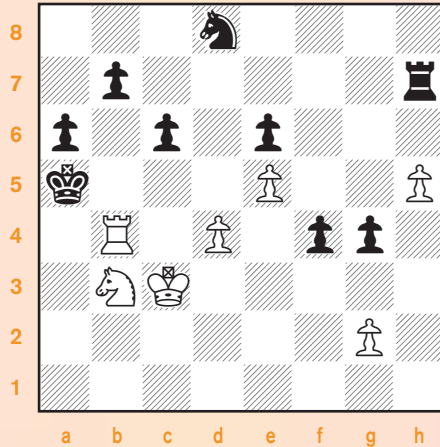
Position after 58... Be3
White to move

Please turn to page 9

YOU CAN DO IT!

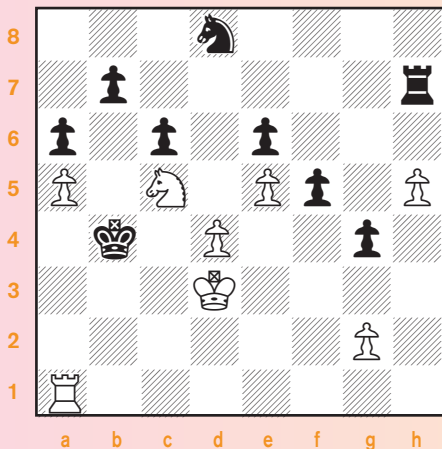
by Jon Edwards
10th United States
Correspondence Chess Champion

The final position deserves a diagram:



In the last issue, we looked at how well queens and knights work together. This month, let's look at the interplay of rooks and knights.

Here's the finale of a game played way back in 1953, the year of my birth. Two German masters, Peter Wiese and Wilhelm Kuppe reached the following position. It's White to move and deliver checkmate in four moves. You are welcome to try to solve it, but by all means be sure to enjoy the solution.

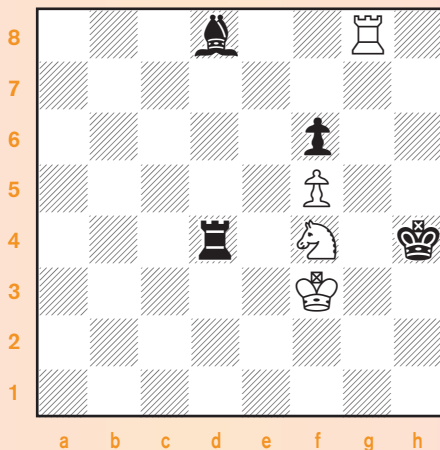


The game ended: **36. Ra4+**, forcing Black's king to b5 **36. ... Kb5** **37. Kc3** and White's king joins the hunt, here preparing **Rb4+** **37. ... f4** (There's simply no way to prevent the mate in two moves. **37. ... Rxh5** **38. Rb4+** **Kxa5** **39. Nb3#**) **38. Rb4+** **Kxa5** **39. Nb3#**

The rook has trapped Black's king against its own a6-pawn, and the knight delivers the final blow with a smothered mate. It's fun to see that, in the middle of the combination, White's king calmly joins the mating combination by sliding to c3 in order to anchor the rook.

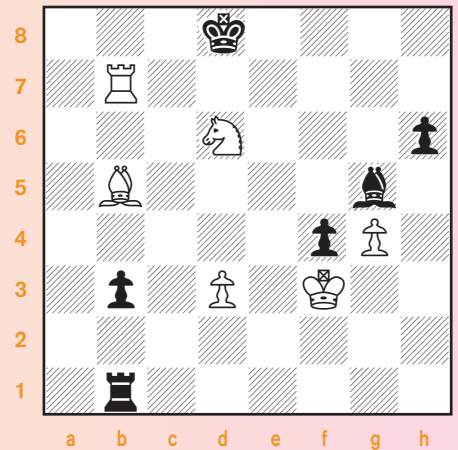
In the six quiz positions that follow, it is White to move and deliver checkmate in one move. In each example, White's knight and rook join forces to end the game quickly.

Quiz #1



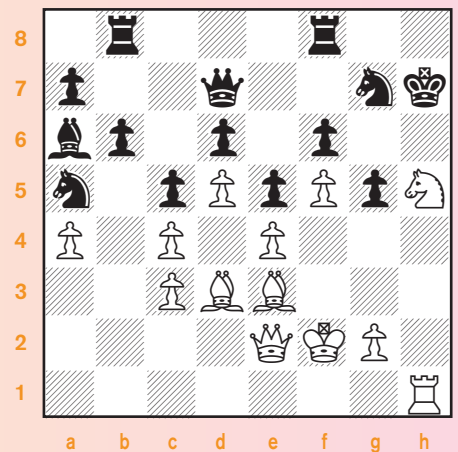
White to move

Quiz #2



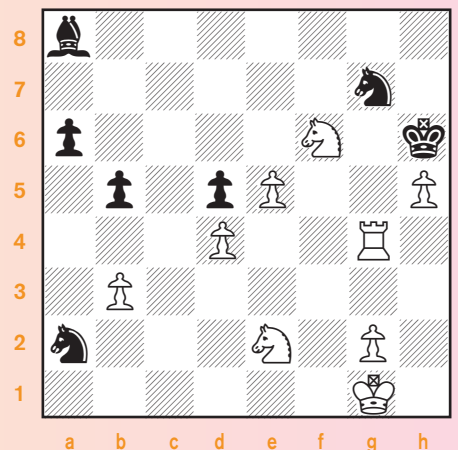
White to move

Quiz #3



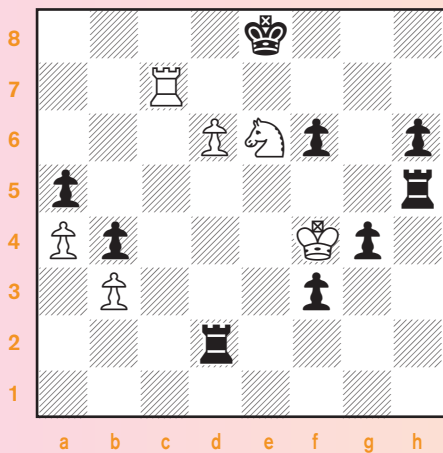
White to move

Quiz #4



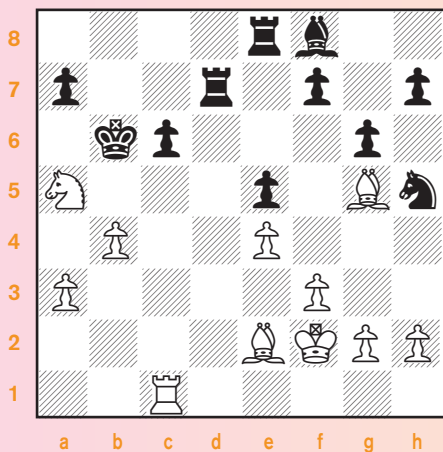
White to move

Quiz #5



White to move

Quiz #6



White to move

Solutions on page 23 

Chess Detective®

Continued from page 7

Down two pawns in material, Black attempts to blockade White's passed pawns on the dark squares. **59. Kd3** (White's king goes on a long journey as Black must defend against the advancing pawns.) **59. ... Ba7 60. Ke4 Kd6 61. Kf5 Bc5 62. Kf6 Be3 63. Kf7 Bc5 64. Ke8 Kc7** (64. ... Bb6 65. Bf3 and 65. ... Kc7 loses to 66.

Ke7 Bc5+ 67. Ke6 *Zugzwang* or Black's bishop moving off the a5-d8 diagonal allows Kd8 and Kc8.) **65. Bf3 Ba7 66. Ke7 Bc5+ 67. Ke6** (Black is in *Zugzwang* and one of White's pawns will advance.) **67. ... Kb6 68. d6 Kxa6 69. c7 Ka7 70. c8=Q, Black resigned.**

Chess Can Make You Sleep Better

by Ambarish Rao

I always wanted to find out how mental and physical activities impact my life style. Sleep is an important aspect of our life style. I have been playing chess and tennis for almost three years, and I like reading books.

So I decided to find out the effect on these activities on my sleep. I like tennis because it keeps me physically active and fit. I like chess because it gives me mental strength and teaches me to focus.

In chess when you play a long match you need physical stamina. In tennis you need mental strength when hearing the crowd cheering and clapping for the opponent. Many

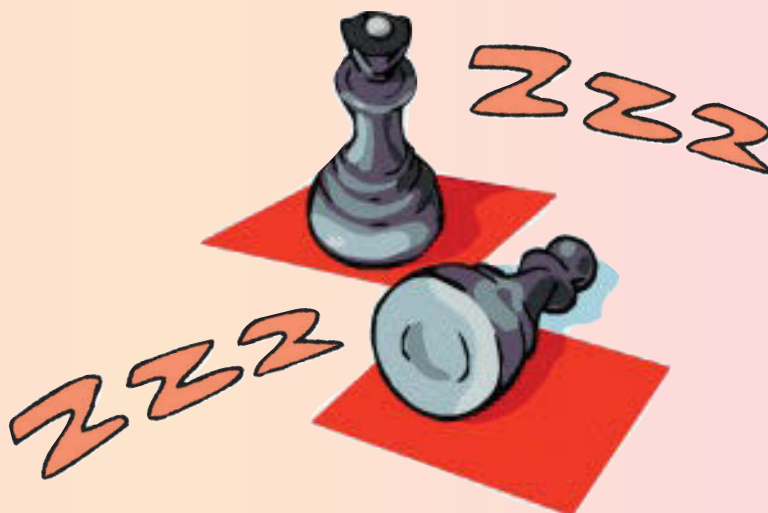
people say that both games go hand in hand. I thought that tennis was going to give me the best sleep because you are fatigued and tired after you have played.

So I decided to perform a scientific experiment, using Sleeptracker's device. After a couple months, I came to an astounding conclusion. Chess made you sleep the best!!! This experiment goes to show that chess is a really good activity and can help you sleep properly as well as give you a boost in your lifestyle. So remember, always play before you go to sleep.

2015 Chess Life for Kids Survey!

Give us your thoughts about your favorite chess magazine by answering a few short questions here:
<http://surveymonkey.com/r/chesslifeforkids>

Your opinion matters!



END OF THE LINE

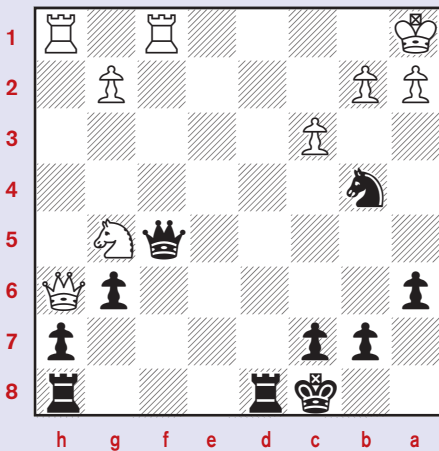
EASY AS 1... 2... 3...



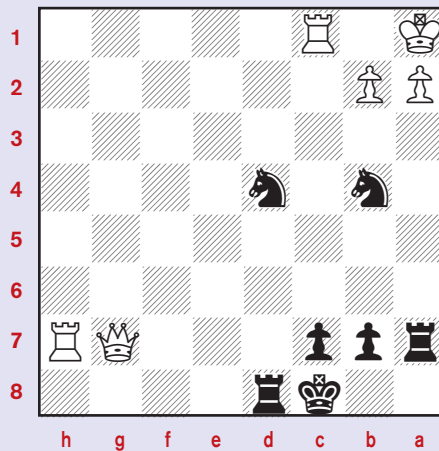
The knights are worth three pawns, but sometimes they can be worth much, much more!
All puzzles are Black to move

by
NM Atulya Vaidya

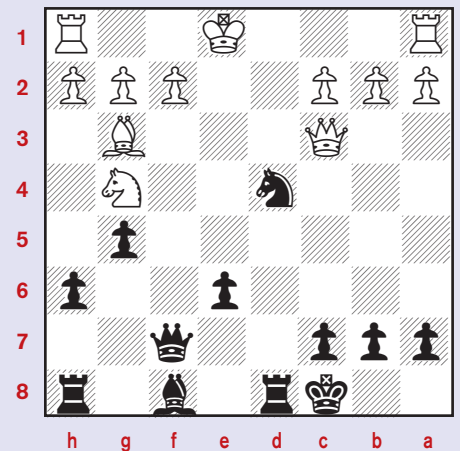
#1



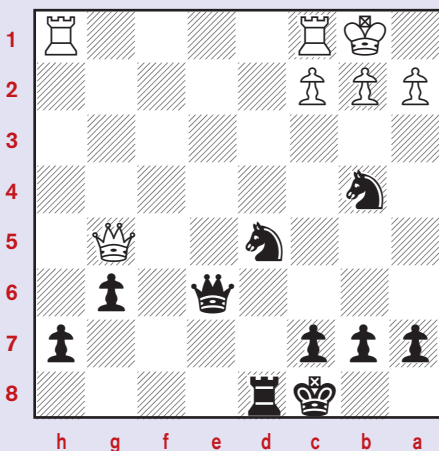
#3



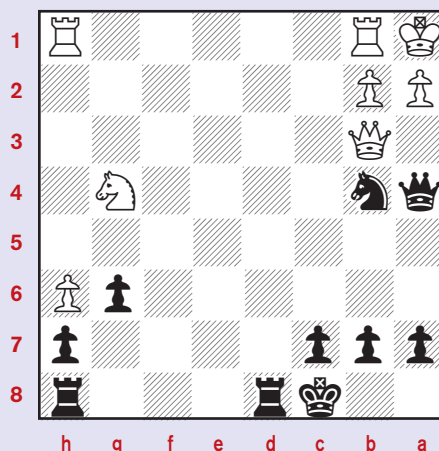
#5



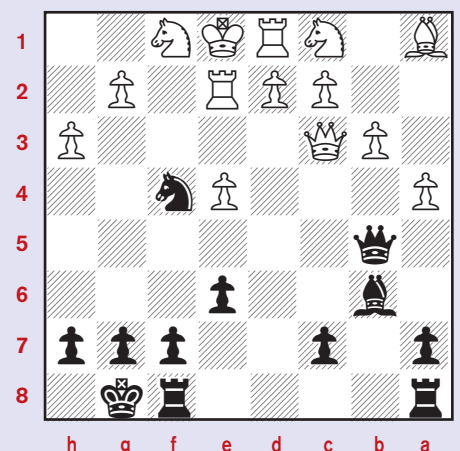
#2



#4



#6



Solutions on page 23



Sammi Pan was nine years old when she drew her "ChessTown by the Sea" for a class assignment, which was to design a place you dreamed about. It was inspired by Revere Beach, Massachusetts.



TALES OF THE ARABIAN KNIGHTS

BY RICK KENNEDY ILLUSTRATIONS BY PAMELA KEY



Reflecting

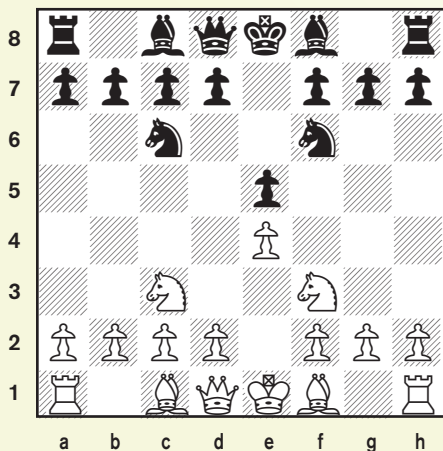


The King looked into his friend's room and was surprised at what he saw. She was peering into a mirror, again, and again. This was puzzling to him, as the King did not know her to be a vain young person.

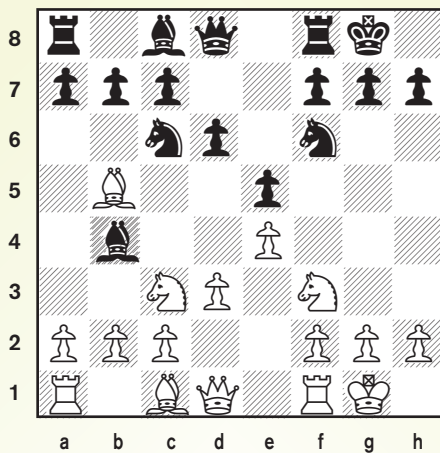
The King advanced a few steps, to better his view. In front of his friend he saw not only the mirror, but a chessboard, and, upon it, chess pieces.

"Oh, Your Majesty," she said, in surprise. "It is easy to explain." She yawned. "Last night I dreamed that I was playing a most peculiar chess game. My opponent was me, in the mirror. For every move I made," she continued, "My mirror self made the same move. It was quite strange." She demonstrated the game for the King on the chessboard.

1. e4 e5 2. Nf3 Nf6 3. Nc3 Nc6



4. Bb5 Bb4 5. 0-0 0-0 6. d3 d6

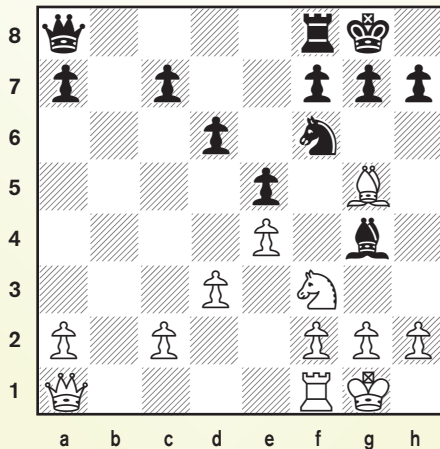


"So far, not too extreme," the King mumbled.

7. Bxc6 Bxc3 8. Bxb7 Bxb2 9. Bxa8 Bxa1

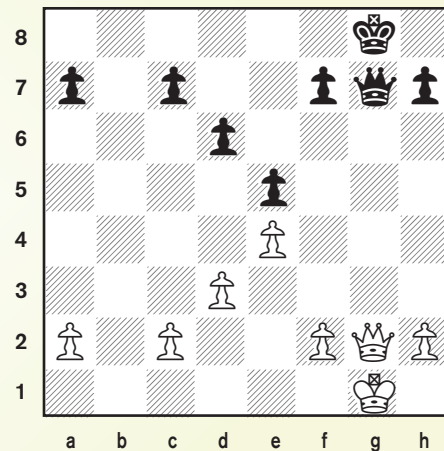
"I spoke too soon," he said.

10. Bg5 Bg4 11. Qxa1 Qxa8



12. Bxf6 Bxf3 13. Bxg7 Bxg2 14.

Bxf8 Bxf1 15. Qxf1 Qxf8 16. Qg2+ Qg7



"The game was drawn then," she sighed.

"Indeed it was," comforted the King, "As well should a game between two such evenly matched players."

(Based on the game Georg Rotlewi-Moisei Zakharovich Elyashov, All Russian Amateur tournament, St. Petersburg, 1909).

Lonely are the brave, but . . .

NOT FOR LONG!

You would never be alone for very long at the National Elementary School Championships, which were held May 8-10 in Nashville, Tennessee, which drew over 2,--200 players.

And you would never be alone for very long if you were part of the Chess NYC group, which did very well in the event:

HUGE NATIONAL SUCCESS!

The 2015 Elementary Nationals were a huge success "across the board" for Chess NYC programs. Chess NYC team training methods over the past year, along with strong individual development proved effective landing four schools placement in the top 10 nationally for their respective sections!

I.S. 318 set the pace once again, claiming the K-6 co-championship. Right behind them, the strong Chelsea Prep

team placed in the top five in the heated K-5 Championship section, while P.S. 11 joined the ranks with a strong showing in the K-3 Championship sections securing the eighth spot.

Finally, in their first ever team nationals, Lower Lab shocked the K-3 Under 800 section with a dominant 21½ points, claiming clear second place in the nation.

I.S. 318 K-6 Champions!

The team from Brooklyn wins again! Capping off a season including first place seventh grade, first place eighth grade city champions, state champions, junior high national champions, and now they can claim the National K-6 Elementary Championship! We take our hats off to I.S. 318 for one incredible season.

Chelsea Prep returns to the Nationals

Chelsea Prep placed in the top five in their first year of





competing in the National Elementary. This year they returned, deeper, stronger, and better prepared!

They placed in the top five in the K-5 Championship and in the top 20 in the K-1 Championship and the K-6 Under 1000 sections.

P.S. 11 Performs Again!

The P.S. 11 Chelsea ChessMates had another fine showing, living up to their reputation as a national competitor. Once again, they placed in the top 10 in the K-3 Championship section, along with a strong presence in the K-3 Under 800 and the K-5 Championship sections.

Lower Lab Shocks the Doubters!

In their first time out in the K-3 Under 800 section, Lower Lab scored 21 1/2 points out of 24 for clear second place. Their hard work paid dividends for this incredible group of kids.

Chess NYC

Our philosophy is to emphasize sport and fun and provide as much chess instruction as a child can bear ... but not overload ... by providing supervised, spirited play, each student associates chess with fun, and therefore larger numbers of them ultimately excel or at least become proficient in the great, significant game of chess.

Established in 2007, Chess NYC strongly believes in creating a "chess culture" where each player improves by virtue of being a part of a greater social chess network and team. To that end, we provide enthusiastic and qualified coaches to not only be chess educators, but motivators and friends. We create learning environments where our students thrive together, and the goal is always team success!



Clockwise: Team Success, Individual Success, Team Pride!

HOLY CROSS ENDS SECOND YEAR WITH ACCOMPLISHMENTS AND AN EYE TO THE FUTURE

[As exciting as the National Tournaments can be, you can have just as much fun at the local level. Ron Poliquin reports from Dover, Delaware. – ED.]

The Holy Cross Elementary School Chess Club (Dover, DE) has flourished in its second year of existence under the tutelage of coaches Ron Poliquin, Robert Raczynski, and Steve Holfeld. Coach Ron Poliquin started the club after he taught his own son, Ronin, then age 5, to play.

“I saw the impact chess had on my own son’s progress as a student and a competitor and it only made sense that this would work for other kids at Holy Cross”, said Poliquin.

When the club started in November 2013, the coaches expected that maybe five or 10 students would show up and that would be it. Instead, 40 students quickly signed up for the new program. Since then, the club has met every Monday and Wednesday afternoons, where about 35 students total-from second through eighth grade meet for an hour to practice and play. The



“I saw the impact chess had on my own son’s progress as a student and a competitor and it only made sense that this would work for other kids at Holy Cross”



club also meets every Saturday for several hours.

“We emphasize strong fundamentals to ensure every player has a chance to win,” said Coach Bob Raczynski whose own chess experience includes playing Bobby Fischer in the heart of New York City’s Greenwich Village in the 70s.

USCF Events

This year, the club has garnered significant accomplishments participating in USCF sanctioned tournaments sponsored by the newly formed Delaware Youth Chess Organization. The team earned first place finishes in both the K-8 U1000 Division and K-4

U600 Division at the Tri-State Scholastic Spring Open.

In addition, Holy Cross earned first place in the Tri-State Scholastic Winter Open in the K-4 U600 Division and second place in the K-8 U1000 Division. The team earned first place in the Knights of Columbus Catholic School Chess Tournament.

Holy Cross also earned a third place finish in the Mid-Atlantic Youth Chess Championship (Cherry Hill, NJ). The team has the distinction of signing up the most new USCF members for



any school in the State of Delaware.

Holy Cross' top ranked player is a second grader, 8 year old Ronin Poliquin who went undefeated in two tournaments this year. Other top players include 8th graders Daniel Lin and Nnaeto Umobi, 3rd graders Nwakoby Onugu and Koisonna Umobi, and 2nd graders Sage Sawhney, Javen Kwok, and Nicholas Kosior.

This summer, the club is hosting a week-long chess camp. Building on its success, the team plans on attending a national tournament next year.

"We emphasize strong fundamentals to ensure every player has a chance to win".





Check, Matey!

“Do you play chess?”

Be careful how you answer that question, or someday you may be asked to run a chess program! That’s what happened to Jim Doyle of Chambersburg, PA. He’s a substitute teacher in Washington County, MD. He said yes, but I don’t think he regrets it at all!

But if he was going to do it, he was going to do it right. He went to New York City and became a certified coach through the Chess-in-Schools program before settling down to the job at hand. As Jim tells it:



- We started a free chess club/program for kids K-12 at the Alice Virginia and David W. Fletcher Branch of the Washington County Free Library in Hagerstown, Md.

works as a substitute teacher for several school districts in the area.

- The program was organized by Jim Doyle, who

- The program began on Feb. 1 and ran for 14 weeks.



- On April 7th, 2015 - we took the kids down to the US Naval Academy to play the Midshipmen.▪

- We had children ranging in ages from Pre-K through Middle School from both public schools and home schools.

- We were given a tour of the Naval Academy before sitting down to play the matches.

- Several of the kids actually won their games!

- The kids actually received a chess lesson from the Midshipmen.

- This was the first time that the Naval Academy ever hosted such an event but were so pleased that they’re interested in making this an annual event!

- The Midshipmen commented on how well behaved all the children were.

- Three of the children that participated have already told their parents that they’d like to go to the Naval Academy in the future.



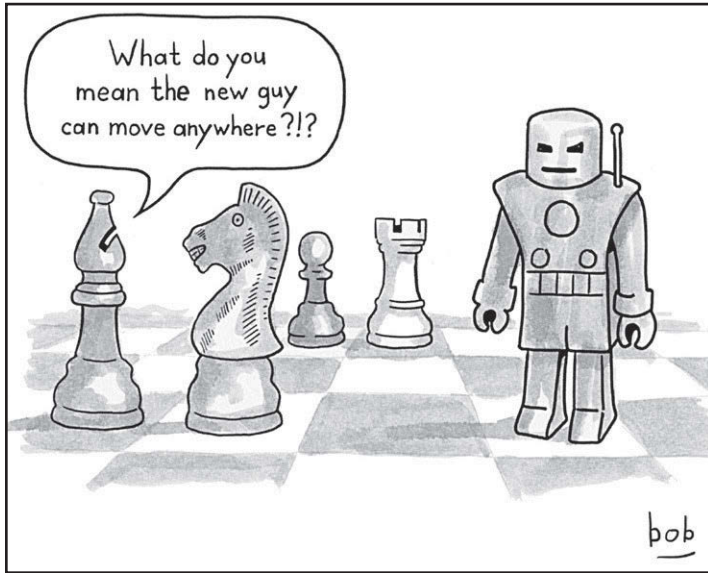
This wasn't the only trip the group took. They also visited a local opera performance and played chess with the cast of performers!

I'm beginning to think Chess NYC is right: chess IS a culture, which includes all ethnic diversities, all ages, and all walks of life.



“When you do the research, the results are there: across the board academic improvement, increased cognitive abilities and development, increased social maturity and self-confidence.”-Jim Doyle

See you in the funny pages!



ChessKid

.com

PLAY



LEARN



**#1 Chess Site for Kids. 200,000+ Kids, Parents, & Coaches!
100% Safe and Kid-Friendly! Signup Today - it's FREE!**

USCF JUNIOR GRAND PRIX

2015 Junior Grand Prix Standings



Official standings for events received and processed by May 12, 2015 are unofficial and subject to change during the year or until year-end tabulation is complete. The top prize for 2015 will be a Chess.com one-year Diamond membership valued at \$100, a Chess.com gear/merchandise package valued at \$100, a USCF plaque, free entry into the 2016 U.S. Open, and \$1,000 of expense money from the USCF to offset the trip. For the top five players on the overall list and to each state winner, Chess.com will also award a choice of a one-year ChessKid.com gold membership (valued at \$50/annually) or a one-year Chess.com Gold membership (valued at \$40/annually) The USCF gratefully acknowledges the participation of Chess.com!

Top 50 Overall Standings

| NAME | STATE | PTS | EVENTS |
|---------------------------|-------|------|--------|
| PINNINTI, SAHAS R | NJ | 5319 | 2 |
| PATEL, ANUJ | CA-N | 4427 | 3 |
| WONG, NATHANIEL | MD | 4064 | 2 |
| CHANG, ELIAM HUAI-YANG | CA-N | 3993 | 6 |
| YE, LUKE SICONG | NE | 3858 | 2 |
| GORTI, AKSHITA | VA | 3548 | 8 |
| SERGOTT, LUKE CHRISTOPHER | MI | 3438 | 1 |
| RUNNELS, WESLEY | MA | 3414 | 3 |
| GUO, ARTHUR | GA | 3235 | 6 |
| TAKAHASHI, MICHAEL JOHN | IA | 3061 | 4 |
| MALINSKY, ANDREW P | PA | 2989 | 1 |
| DOMMALAPATI, AASA | VA | 2963 | 5 |
| VALLABHANENI, SUNITH | CA-N | 2944 | 2 |
| ZHAO, CHENYI | CA-N | 2923 | 3 |
| SINGHAL, SANAT, JR | CA-S | 2920 | 5 |
| KOBLA, VISHAL | VA | 2894 | 4 |
| EIDELMAN, GABRIEL | CA-S | 2891 | 9 |
| MORRIS, MARK D | TX | 2867 | 1 |
| AQUINO, ETHAN CONNOR | CA-S | 2842 | 4 |
| RULLAN, FRANCO RENE | TX | 2827 | 1 |
| CHEN, DAVID | PA | 2800 | 1 |
| CASTILLO, ANDREW | TX | 2790 | 1 |
| MOPURU, RANESH | VA | 2752 | 1 |
| GHATTI, SANJAY | GA | 2747 | 6 |
| WEFER, AUSTIN S | NY | 2745 | 1 |
| NAIR, SIDDHANT | VA | 2739 | 4 |
| POLAVARAM, RITHIK SAI | TX | 2736 | 5 |
| SWAFFORD, ELIAS | GA | 2724 | 1 |
| ASIEDU, ELIANA | NY | 2677 | 1 |
| MERCHANT, ALI ARMAAN | MD | 2659 | 2 |
| ARRIAGA, LUIS OOKIE | TX | 2658 | 1 |
| OLGUIN, EDWIN | TX | 2620 | 1 |
| RENTMEESTER, KYLE | WI | 2606 | 2 |
| ESWARAN, AKSITHI | CA-N | 2597 | 4 |
| YOMTOBIAN, YOSEF | NY | 2592 | 1 |
| KRISHNA, RAM | TX | 2525 | 8 |
| RAMOS, LUIGI | TX | 2522 | 1 |
| WAGNER, NICHOLAS R | PA | 2482 | 2 |
| DEVALAPALLI, PRANAV | GA | 2479 | 4 |
| YBARRA, JAYDEN | TX | 2474 | 1 |
| KAKULAMARRI, PRANAV | CA-N | 2471 | 6 |
| MA, DYLAN | NY | 2464 | 3 |
| TRAN, AN RICCARDO | HI | 2450 | 1 |
| BERCUVITZ, TANI | | 2450 | 1 |
| GAO, CHRISTINE | | 2450 | 1 |
| TANAKA, TYLER TAIRA | | 2450 | 1 |
| PAXTON, SHIMERA | TN | 2450 | 3 |
| DAVILA BLANCO, JUAN JOSE | TERR | 2445 | 2 |
| XU, WINSTON M | CA-N | 2434 | 3 |
| SCHINDLER, ERIC CHARLES | NJ | 2423 | 2 |

For the top 200 overall, see www.uschess.org

State Leaders

| NAME | STATE | PTS | EVENTS |
|----------------------------|-------|------|--------|
| MILLER, TRAVIS JAMES | AK | 344 | 1 |
| FELLOWS, SAMUEL BRYANT | AL | 1694 | 1 |
| BALLINGER, NOAH HENRY | AR | 1666 | 1 |
| HUDSON, QUINN DYLAN | AZ | 1973 | 1 |
| KOLAY, ALEX | CA-N | 2372 | 5 |
| KOPELIOVICH, JONATHAN | CA-S | 1970 | 4 |
| BHAVIKATTI, NEIL | CO | 1976 | 1 |
| LOMELI, CHRISTOPHER | CT | 1710 | 3 |
| STIER, NOAH PAN | DC | 1244 | 2 |
| SNYDER, COLE | DE | 1646 | 1 |
| VARAK, VANSH | FL | 2415 | 2 |
| LIANG, ALBERT | GA | 2410 | 3 |
| WHITE, GABRIEL | HI | 2210 | 1 |
| CHEN, NATHAN | IA | 1809 | 3 |
| NACCARATO, SAVANNA | ID | 2100 | 1 |
| ROLBIECKI, RICHARD ARTHUR | IL | 1948 | 1 |
| BHOWMIK, AKASH | IN | 1556 | 1 |
| LEE, GORDON S ARAI | KS | 1458 | 3 |
| BAGLEY, TAYLOR MICAJAH | KY | 350 | 2 |
| BRICKMAN, DHIREN | LA | 1602 | 1 |
| KATSMAN, DAVID | MA | 1475 | 2 |
| VELUVOLU, VINAY DATA | MD | 2180 | 4 |
| HARTT, BILL | ME | 2016 | 1 |
| SOBH, MAHMOUB | MI | 1449 | 2 |
| FALK, SEBASTIAN C | MN | 1514 | 1 |
| PUJARI, ANURAAG | MO | 1602 | 1 |
| SNODGRASS, BENJAMIN | NC | 2244 | 2 |
| LE, HARRY | NE | 700 | 1 |
| WELLING, AASHISH | NH | 1219 | 2 |
| KALIYAPERUMAL, ASHWIN | NJ | 2345 | 2 |
| SLOUGH, DANIELLE AI | NM | 1237 | 1 |
| GIOVANNETTI, GRANT | NV | 86 | 1 |
| KALDEN, TENZIN | NY | 2352 | 2 |
| RAGHUKANTH, UDBHAV | OH | 2340 | 2 |
| PATEL, ADAVIT | OK | 1258 | 4 |
| WINKLER, JAKE | OR | 92 | 1 |
| PATIENCE, JAMES | PA | 2306 | 1 |
| SOWA, RYAN | RI | 275 | 1 |
| QU, JAMES | SC | 1099 | 1 |
| JORENBY, JOSIAH ISRAEL | SD | 1290 | 1 |
| VAZQUEZ MACCARINI, DANITZA | TERR | 546 | 2 |
| DODGE, JALLEN DALLO | TN | 2368 | 3 |
| NIETO, ALVARO | TX | 2381 | 1 |
| ROACH, AUSTIN | UT | 2082 | 1 |
| LALWANI, JAY | VA | 2334 | 1 |
| CAFIERO, MICHAEL | VT | 1330 | 1 |
| RACE, ADAM | WA | 2100 | 1 |
| LIANG, AWONDER | WI | 2382 | 6 |
| TUSTIN, JASMINE RUTH | WV | 570 | 2 |



Tournament Life Announcements

JUNE 15 THROUGH AUGUST 14

Scholastic Members:

As a service to you, we are listing upcoming National USCF rated events, and requested events of possible interest to you. You can always log in to www.uschess.org, and click on "Clubs & Tournaments." Then click on "Upcoming Tournaments" for a complete listing of upcoming rated events and details. As always, you can check out the TLA section of *Chess Life*.

Organizers and Tournament Directors:

If you would like your tournament listed here in *Chess Life for Kids* for August 2015 (events to be held after August 14), the deadline for submitting your announcements is June 10th. The deadline for the October 2015 issue is August 10th. The processing fee is \$1.00 per line for the first eight lines, \$2.00 for every line thereafter. Send your announcements to Joan DuBois, tda@uschess.org.

Display advertising is also available. Advertising rates are posted on the USCF website, www.uschess.org, or you may email: tda@uschess.org for complete details.

ABBREVIATIONS & TERMS

All tournaments are non-smoking with no computers allowed unless otherwise advertised.

| | |
|---------------------|--|
| BLZ: | Blitz rated. |
| QC: | Quick Chess events. |
| \$\$\$Gtd: | Guaranteed prizes. |
| \$\$b/x: | Based-on prizes, x = number of entries needed to pay full prize fund. At least 50% of the advertised prize fund of \$501 or more must be awarded. |
| Bye: | Indicates which rounds players who find it inconvenient to play may take 1/2-point byes instead. For example, Bye 1-3 means 1/2-point byes are available in Rounds 1 through 3. |
| CC: | Chess club. |
| dx: | Time delay, x = number of seconds. |
| +xx: | Time increment, xx = number of seconds added after each move. |
| EF: | Entry fee. |
| Ent: | Where to mail entries. |
| FIDE: | Results submitted to FIDE for possible rating. |
| G/: | Game in. For instance, G/75 means each side has 75 minutes for the entire game. |
| GPP: | Grand Prix Points available. |
| HR: | Hotel rates. For example, 60-65-70-75 means \$60 single, \$65 twin, \$70/3 in room, \$75/4 in room. |
| JGP: | Junior Grand Prix. |
| Memb. req'd: | Membership required; cost follows. Usually refers to state affiliate. |
| Open: | A section open to all. Often has very strong players, but some eligible for lower sections can play for the learning experience. |
| Quad: | 4-player round robin sections; similar strength players. |
| RBO: | Rated Beginner's Open. |
| Rds: | Rounds; scheduled game times follow. For example, 11-5, 9-3 means games begin 11 a.m. & 5 p.m. on the first day, 9 a.m. & 3 p.m. on the second day. |
| Reg: | Registration at site. |
| RR: | Round robin (preceded by number of rounds). |
| SD/: | Sudden-death time control (time for rest of game follows). For example, 30/90, SD/1 means each player must make 30 moves in 90 minutes, then complete the rest of the game in an hour. |
| SS: | Swiss-System pairings (preceded by number of rounds). |
| Unr: | Unrated. |
| W: | Site is accessible to wheelchair. |
| WEB: | Tournaments that will use a player's online rating. |

NATIONALS

USCF Junior Grand Prix!

June 12-14, Illinois

Trophies Plus Grand Prix Points: 15

2015 U.S. Junior Open

6SS, G/90+30/increment. Hyatt Regency Schaumburg, 1800 E. Golf Rd., Schaumburg, IL 60173. 847-605-1234 **\$99.00** chess rate single-double-triple-quad until 5/15/15. Free WiFi included with Room! Please reserve early. **4 Sections based on age as of 1/1/2015: Under 21, U15, Under 11 and Under 8. June Rating Supplement used. U21:** \$500+entry to 2016 US Junior Championship, if still eligible by age, - \$250-125-75-50. Individual plaques to top five overall, plaques for best player age 18, 17, 16, 15, Under 15, and for ratings U1600, U1400, U1200. **U15:** Individual trophies to top 15 overall, trophies for best player age 14, 13, 12, 11, Under 11 and for ratings U1400, U1200, U1000. **U11:** Individual trophies to top 15 overall, trophies to best player age 10, 9, 8, 7, Under 7, and for ratings U1200, U1000, U800. **U8:** Individual trophies to top 15 overall, best player age 7, 6 & under, and for ratings U1000, U800, U600; Commemorative medals for all participants. **Teams:** Trophies to top three school teams and top club team in each of the four sections. Top four scores, minimum of three, count towards team score in each section. **Bye:** One half-point bye, any round except Rd. 6, if requested before Rd. 1. **EF:** \$50 postmarked or online by 5/23, \$70 thereafter - credit cards ok onsite. **Schedule:** Onsite registration: Thurs 7-9pm or Fri 8-9am. Rds.: Fri, Sat 10am & 4pm, Sun 9am & 3pm. **Side Events:** Friday Night Blitz (8:30pm) and Saturday Night Puzzle Solving (8:30pm) - \$15 each by 5/23, \$20 each onsite. **Entries:** Mail to ChessIQ (checks payable to) 4957 Oakton St., Suite 113, Skokie, IL 60077 or online at www.chessiq.com/junior2015. **Info:** sevan@chessiq.com. On tournament day only: 847.274.1352. Sets, Boards and Clocks provided. Must use organizer provided equipment. USCF and FIDE rated. FIDE Laws of Chess to be used.

June 18, Nevada

Trophies Plus Grand Prix Points: 80 (Enhanced)

2015 U.S. Game/10 Championship (QC)

8SS, G/10 +2. Westgate Resort & Casino, 3000 Paradise Rd., Las Vegas 89109. **\$\$\$6,000 Guaranteed Prize Fund.** \$1700-850-500, U2300 \$500, U2100 \$500, U1900 \$450, U1700 \$400, U1500 \$350, U1300 \$300, U1000 \$250, unrated \$200. Must be 3 players eligible for each prize awarded. **EF:** \$69 by 5/25, \$79 by 6/9, \$100 later. **REG.:** 2-4 p.m. **Rds.:** 5-5:40-6:15-6:50-7:25-8-8:35-9:10. Higher of regular or quick rating used. Please bring digital chess clocks. 1/2 point bye available in any round (limit 2). **HR:** \$69 single or double (\$89 Friday and Saturday nights). (800) 732-7117 - be sure to ask for the **CHESSE** rates. **ENT:** Vegas Chess Festivals, PO Box 90925, Henderson, NV 89009-0925 or www.VegasChessFestival.com. W. FIDE.

USCF Junior Grand Prix!

June 18-19, Nevada

Trophies Plus Grand Prix Points: 30 (Enhanced)

2015 U.S. Women's Open

5SS, G/90 +30. Westgate Resort & Casino, 3000 Paradise Rd., Las Vegas 89109. **\$\$\$2,000 Guaranteed Prize Fund.** \$500-300-200, U2000 \$200, U1800 \$200, U1600 \$200, U1400 \$200, U1200 \$200. **EF:** \$50 by 5/25, \$70 later. **REG.:** 8-9 a.m. **Rds.:** 10-2:30-7, 9-1:30. 1/2 point bye available in any round (limit 1). **HR:** \$69 single or double (\$89 Friday and Saturday nights). (800) 732-7117 - be sure to ask for the **CHESSE** rates. **ENT:** Vegas Chess Festivals, PO Box 90925, Henderson, NV 89009-0925 or www.VegasChessFestival.com. W. FIDE.

An American Classic!

A Heritage Event!

USCF Junior Grand Prix!

June 19-21 or 20-21, Nevada

Trophies Plus Grand Prix Points: 200 (Enhanced)

2015 National Open

6-SS, 40/90, SD/30 +30 (2 day option rounds 1-3 G/40 +5). Westgate Resort & Casino, 3000 Paradise Rd., Las Vegas 89109. **\$\$\$80,000 Guaranteed Prize Fund** will not be reduced. **Open:** \$6500-3300-1600-800-500-350-350-350-350-250-250-250-250-250-250. Under 2500 1600, under 2400 1200, under 2300 1000, \$2,000 **EXTRA** for perfect score. The winner of the Open section also receives a replica of the Edmondson Cup. **Under 2200:** \$3500-1800-900-500-400-250-250-250-250-200-200-200-200. **Under 2000:** \$3500-1800-900-500-400-250-250-250-250-200-200-200-200. **Under 1800:** \$3500-1800-900-500-400-250-250-250-250-200-200-200-200. **Under 1600:** \$3000-1500-800-500-400-250-250-250-250. **Under 1400:** \$2000-1000-500-350-250-200-200-200-200. **Under 1200:** \$1200-600-400-300-200-200. **Unrated:** \$500-300-200. **Plus Score Bonus** (\$14,000 guaranteed) in addition to any other prizes, every player with 3-1/2 points or more wins a \$50 gift certificate. Plus score certificates will be awarded on site only. Players age 14 and under are eligible for best game prizes including the Freddie Award and \$400 in cash prizes (donated by Fred Gruenberg). Top 2 sections FIDE rated. **EF:** \$179 by 1/20, \$199 by 5/25, \$239 by 6/15, \$260 later. \$40 less for seniors 65 and over. Add \$125 for adults rated under 2100 or juniors under 2000 playing in the Open Section. This is an open tournament - you may play in any section at or above your rating level; unrated players may play only in Unrated or Open Section. Provisionally rated players may not win more than the amount of 3rd prize in any section except Open. CCA minimum ratings or other ratings may be used if higher than USCF June Supplement. **Reg.:** 2 p.m.-10 p.m. Thursday, 8-9:30 a.m. Friday. **Rds.:** 11-5:30, 10-4:30, 10-4:30. 2-day schedule. **Reg.:** 8-9 a.m. Saturday. **Rds.:** 10-12-2-4:30 merge with 3-day in round 4. Half point byes available in any round, but round 5 or 6 byes must be requested before the start of round 2 and may not be cancelled. Chess sets and boards provided for tournament play only, not for skittles. Please bring digital chess clocks! The **LAS VEGAS INTERNATIONAL CHESS FESTIVAL** features the National Open, the U.S. Game/10 Championship, the U.S. Women's Open, the International Youth Championship, and other events. **Many free extras and surprises!**

Free parking. Free raffles with great prizes. Free GM Lectures. Free GM analysis of your games. Free Daily Bulletins. Grandmaster Chess Camp for all ages on Thursday, U.S. Women's Open Thursday and Friday. **U.S. Game/10 Championship** and **Grandmaster Simuls** Thursday afternoon. **Youth Tournaments** Friday, Saturday & Sunday. **Blitz** Tournaments Saturday & Sunday. **Poker Tournament** Monday morning. **Don't be shut out** - make your reservations early and be sure to ask for the **CHESSE** rates - \$69 single or double (\$89 Friday and Saturday nights) guarantees a *Signature* or remodeled room with new furniture, refrigerator, flat screen TV and more. Cutoff for special hotel rate is **May 25th**. (800) 732-7117 or www.VegasChessFestival.com. **ENT:** Vegas Chess Festivals, PO Box 90925, Henderson, NV 89009-0925, on line at www.VegasChessFestival.com. **Info:** (702) 560-0955 and leave a message. W. FIDE.

A Heritage Event!

USCF Junior Grand Prix!

Aug. 1-9, 4-9 or 6-9, Arizona

Trophies Plus Grand Prix Points: 150

116th Annual U.S. Open

Includes Traditional one game per day schedule (9 days), also 6-day slow time control, and 4-day option. 9SS, 40/120, SD/60 d5 (4 day option, Rds. 1-6, G/60 d5). Arizona Biltmore, 2400 E. Missouri Ave., Phoenix, AZ 85016. **HR:** \$99 single/quad, No resort fee, complimentary self-parking; Reservations 800.445.8667; Reserve by July 9 or rate may increase. \$50,000 in prizes based on \$60 paid entries, else proportional, \$40,000 (80% of each prize) minimum guaranteed. A one-section tournament with Class prizes. Top US player not otherwise qualified qualifies for 2016 US Championship. **Choice of three schedules: Traditional:** 40/120, SD/60 d5. One round daily at 7 PM, except Rd. 9, 3 PM 8/9. **6-Day Option:** 40/120, SD/60 d5. 7 PM 8/4, 12 NOON & 7 PM 8/5-8/7, 7 PM 8/8, 3 PM 8/9. **4-Day Option:** Rds. 1-6: G/60 d5; then 40/120, SD/60 d5. 12 NOON, 3 PM, 7 PM, 10 PM 8/6; 12 NOON, 3 PM, 7 PM 8/7; 7 PM 8/8; 3 PM 8/9. **All** schedules merge after Round 6 & compete for same prizes. **Projected prizes:** Top places \$8000-4000-2000-1500-1000-800-600-500, clear winner or playoff \$200 bonus. If tie for first, top two on tiebreak play Armageddon game (White 5 minutes, Black 3 minutes and gets draw odds) for bonus and title. **Class Prizes:** Top Master (2200-2299) \$2500-1200-800-500, Expert (2000-2199) \$2500-1200-800-500, Class A (1800-1999) \$2500-1200-800-500, Class B (1600-1799) \$2500-1200-800-500, Class C (1400-1599) \$2000-1000-600-400, Class D (1200-1399) \$1500-700-500-300, Class E or below (under 1200) \$1500-700-500-300, Unrated \$800-400-200. **Half-Point Byes:** must commit before Round 4; up to 3 byes allowed for 2000/up, 2 byes for 1400-1999, one bye for Under 1400/Unr. Limit 1 bye in last two rounds. Zero-point byes are always available in any round if requested at least two hours before the round(s) in question. **Delay:** All US Open side events use 5 sec. delay except the Blitz [d0] and Bughouse [d0]. **Entry Fee:** Online, \$145 by 6/22, \$165 by 7/20, \$185 after 7/20. By mail, \$147 postmarked by 6/22, \$167 postmarked by 7/20, \$187 after 7/20; do not mail after 7/21! By phone, \$150 by 6/22, \$170 by 7/20, \$185 after. No phone entries after 7/31 (by the close of business at the Office)! At site, all \$190; GMs and WGMs receive free entry. All entries must be made at least two (2) hours prior to the player's first game. Current USCF membership required. **August Rating Supplement** used; unofficial ratings used if otherwise unrated. CCA ratings used if above USCF. Foreign player ratings: usually 100 points added to FIDE or FGE, 200+ added to most foreign national ratings, no points added to CFC. Highest of multiple ratings generally used. **Entries:** USCF, ATTN: 2015 U.S. Open, PO Box 3967, Crossville, TN 38557. Online entry available soon: <https://secure2.uschess.org/webstore/tournament.php?wkevent=2015USOPEN>. Phone entry: 800.903.8723. **NO FIDE** rated, **No cell phones.** Bring a clock - none supplied. Sets/boards supplied for tournament but not for skittles. Many meetings, workshops and seminars, including: **USCF Committee Meetings** 8/5-8/7, **USCF Awards Luncheon** 8/8 NOON, **USCF Delegates Meeting** 8/8-9. Many side events and other championships, including: **U.S. National Blitz Championship** 7SS Double, G/5 d0, Rd. 1 at 12 NOON 8/8; **Weekend Swiss** 5SS, G/60 d5, 12-3 Sat 8/1, 10-12:30-3 Sun 8/2; **U.S. Open Scholastic** 4SS, G/30 d5, Sun 8/2, 12-1:30-3-4:30; Awards 6pm; **U.S. Open Quads** G/30 d5 12-1:30-3 Mon, Tue, Wed, Thu, Fri; **U.S. National G/15 Championship** 12-1-2-3-4 Wed 8/5; **U.S. Open Bughouse** Sat. 10:30 AM 8/1. **18th Annual Golf Tournament for the U.S. Open Chess Players**, (see tournament website for details). **U.S. Open Tennis Tournament**, (see tournament website for details). In addition, three other championships will also take place: the **2015 Denker Tournament of HS Champions** (see website for a participant list), the **2015 Barber Tournament of K-8 Champions** (see website for a participant list), and the **2015 National Girls' Invitational Tournament** (see website for a participant list). **Please check the U.S. Open website often for updates, new information and corrections and other useful documents! (Coming soon) www.uschess.org/tournaments/2015/usopen/. USCF Junior Grand Prix for U.S. Open.**

USCF Junior Grand Prix!

Aug. 27-31, North Carolina

Trophies Plus Grand Prix Points: 200 (Enhanced)

2015 U.S. Masters Championship

9-SS, 40/90, G/30, inc.30. Embassy Suites Airport, 204 Centreport Dr., Greensboro, NC 27409, (336) 668-4535, mention chess tournament for discounted hotel rate. GM, IM, WGM, and WIM norms may be possible. 2014 tournament was a super swiss with 12 norms achieved! \$17000 in prizes **UNCONDITIONALLY GUARANTEED!** \$5000-3000-1800-1100-650-550-500-450-400-350 U2400 500-300 U2300 500-300 U2200 500-300 U2100 500-300. **EF:** \$249 if received by August 14 \$299 later on site. \$50 discount off either for NC residents. GM's and foreign IM's free. No money taken out of winnings to reimburse for EF. This tournament is open only to players who have ratings 2200 or above, those who have ever been so rated, all foreign FIDE-rated players and juniors (under age 21) rated after 2000. **RDS.:** Aug 27 7:00PM: then 12-7, 12-7, 12-7. **HR:** \$99 All rooms are suite style. Free made to order breakfast

daily, free manager's reception nightly, and free airport shuttle available for all guests. Hotel reservation: https://resweb.passkey.com/Resweb.do?mode=welcome_ei_new&eventID=13620024 **Advance Entry:** Registration is available at www.carolinasschessinitiative.com. Alternately, checks can be sent to: Walter High, 105 North Crabtree Knoll, Chapel Hill, NC 27514. Make checks payable to: Carolinas Chess Initiative (CCI). On site entry will be available on August 27 from 2-6:30PM. **BYES:** A maximum of two byes allowed. Byes must be requested before round 2 is paired. **INFORMATION:** Walter High wmhigh@nc.rr.com, or Gary Newsom, gary.newsom@charlottechesscenter.org. More info including pre-entry lists may be available at: carolinasschessinitiative.com. FIDE rated. Hotel has a no smoking policy including electronic cigarettes. FIDE electronic device rules in effect.

GRAND PRIX

June 12-14, Illinois

Trophies Plus Grand Prix Points: 15
2015 U.S. Junior Open
See Nationals.

USCF Junior Grand Prix!

June 12-14 or 13-14, Florida

Trophies Plus Grand Prix Points: 20

Sunshine Summer Open & Scholastic

DoubleTree by Hilton Orlando at Sea World. 10100 International Dr., 32821. \$8,000/b140 (Scholastic=1/2). 60% Guaranteed. 5SS, G/120 d5 (2-day. Rnd 1 G/60 d5). **4 Sections: Premier:** \$1000-700-400, U2200 \$400-300; **U2000:** \$700-400-300, U1800 \$400-300; **U1600:** \$700-400-300, U1400 \$400-300; **Scholastic U1200:** \$400-300-150, U1000 \$100, U800 \$50. Trophy to top each age "7 & under" thru 14 with at least 2 players. Unrateds limited to \$100, unless Place prize in Premier. Rated players can play-up one section. Special OCA Awards TBD. **EF: 3-day \$85, 2-day \$84, Scholastic U1200:** EF: \$45; After June 7, EF: \$95 (\$55 for Scholastic), **plus \$5 if paid onsite; FREE EF for GMs** (\$90 deducted from any prize won); **CFCC Memb EF discount:** \$10 (\$5 for Jr/Sr) and part of **CFCC Grand Prix** with \$600 additional prizes. **Reg.:** ends 1/2 hr. before 1st Rd. **Scholastic (Sat & Sun only). Rnd. 1:** 7pm Fri (or 10am Sat at G/60;d5). Re-entry \$40. **Rds. 2 thru 5:** Sat 1 & 6, Sun 9 & 2. 1/2-pt. byes if req'd before Rnd. 2 (max 2). **HR:** \$105 (40/7) 352-1100; (Mention "CCS", No Resort Fee), or <http://tinyurl.com/June2015Hotel>. Reserve by May 25. (72-hr Cancellation penalty.) Free Parking, local shuttle and WiFi with sleeping rooms; or Self-Parking: \$5/day/exit. **Ent:** CFCC, c/o Harvey Lerman, 921 N. Thisle Ln., Maitland, FL 32751 or online at <https://onlineregistration.cc> (by 6/11). Info: call (407)629-6946 (407-670-9304 onsite cell) or www.centralflchess.org.

June 13, California, Northern

Trophies Plus Grand Prix Points: 10 (Enhanced)
Foster City Grand Prix Luper\$wiss (3SS, G/90 d5)

Courtyard Marriott, Foster City, CA 94404. **Prizes:** \$1,500 b/55 60% guar. **1900+:** \$300-150-50, u2100 50-50. **1500-1899:** \$200-100-50, u1700 50-50. **u1500:** \$200-100-50, u1250 50-50. Jun 15 Supp & TD disc. Reg.: 9-9:15. Rds.: 9:30-1:4:30. **EF:** 43, Ecn 29 w 1/2 prz. after 6/10 +15, playup +15, Rtd 2200+ \$0 by 6/7. **Info:** <http://BayAreaChess.com/grandprix>. W.

USCF Junior Grand Prix!

June 13-14, Texas

Trophies Plus Grand Prix Points: 20 (Enhanced)
2015 DCC Fide Open VII

5SS, G/90 inc/30. Dallas Chess Club, 200 S. Cottonwood Dr. #C, Richardson, TX 75080. **Two sections:** Open and Reserve. **Open:** \$875G. FIDE and USCF rated but uses FIDE rules. Will use USCF ratings and rules for pairings and for awarding prizes. Default late forfeiture time is one hour. TD may extend this time at TD's discretion. Note that Foreign players must disclose their FIDE ID number before 1st round in order to play. Note that USA Players with no FIDE ID must disclose their email address. \$\$ \$500-\$250-\$125. **EF:** \$80, Senior/Hcap/Additional Family Member \$55. Small appearance fee to the First three GM/IM's who apply. GM/IM must play all rounds to get appearance fee (appearance fee might be deducted from prize). **Reserve:** Open to players rated below 2000 USCF. This section is not FIDE Rated but is USCF rated and uses USCF rules. **EF:** \$40. The Reserve give back 10% in prizes and if at least 8 paid entries and if there is a clear winner, then that winner receives free entry to next DCC Fide Open. In the reserve section, Tournament reserves the right to use Fide rules on electronic devices and on starting White's clock at start of a round and to use FIDE pairing rules. **Both: Reg.:** 6/13 from 9:45-10:15am. **Rds.:** Sat 10:45am-3:10pm-7:16pm, Sun 9:45 am-2:10pm. One half point Bye allowed if requested before end of round rd. 2 and before getting full point bye. Withdrawals and zero point last round byes are not eligible for prizes. Note that house players (if required) must pay \$2 per round and be USCF members. ENT: Make/mail Checks payable to Dallas Chess Club, C/O Barbara Swafford, 2709 Longhorn Trail, Crowley, TX 76036-4719. **Info:** 214-632-9000, info@dallaschess.com. FIDE.

June 18, Nevada

Trophies Plus Grand Prix Points: 80 (Enhanced)
2015 U.S. Game/10 Championship (QC)
See Nationals.

June 18-19, Nevada

Trophies Plus Grand Prix Points: 30 (Enhanced)
2015 U.S. Women's Open
See Nationals.

June 19-21 or 20-21, Nevada

Trophies Plus Grand Prix Points: 200 (Enhanced)
2015 National Open
See Nationals.

June 21, California, Northern

Trophies Plus Grand Prix Points: 10 (Enhanced)

Bay Area Chess Grand Prix Luper Swiss (3SS, G/90 d5)
1639A S. Main St., Milpitas, CA 95035. **Prizes:** \$1,500 b/55 60% guar. **1900+:** \$300-150-50, u2100 50-50. **1500-1899:** \$200-100-50, u1700 50-50. **u1500:** \$200-100-50, u1250 50-50. Jun 15 Supp & TD disc. Reg.: 9-9:15. Rds.: 9:30-1:4:30. **EF:** 43, Ecn 29 w 1/2 prz. after 6/18 +15, playup +15, Rtd 2200+ \$0 by 6/14. **Info:** BayAreaChess.com/grandprix.

June 28, California, Northern

Trophies Plus Grand Prix Points: 10 (Enhanced)
Cupertino Grand Prix DuperSwiss75 (3SS, G/75, d5)
Courtyard Marriott, Cupertino, CA 95014. **Prizes:** \$1,500 b/55 60% guar. **1900+:** \$300-100-100, u2000 50-50. **1500-1899:** \$200-100-50, u1600 50-50. **u1500:** \$200-100-50, u1200 50-50. Jun 15 Supp & TD disc. Reg.: 8-8:45. Rds.: 9-12:45-2:40. **EF:** 47, Econ 32 w 1/2 prz. after 6/25 +15, playup +15, Rtd 2200+ \$0 by 6/21. **Info:** <http://BayAreaChess.com/grandprix>. W.

USCF Junior Grand Prix!

July 2-5 or 3-5, Texas

Trophies Plus Grand Prix Points: 20 (Enhanced)

2015 DCC Fide Open VIII

7SS, G/90 inc/30. Dallas Chess Club, 200 S. Cottonwood Dr. #C, Richardson, TX 75080. **Two sections:** Open and Reserve. **Two schedules:** 4 day and 3 day. **Open:** \$875G. FIDE and USCF rated but uses FIDE rules. Will use USCF ratings and rules for pairings and for awarding prizes. Default late forfeiture time is one hour. TD may extend this time at TD's discretion. Note that Foreign players must disclose their FIDE ID number before 1st round in order to play. Note that USA Players with no FIDE ID must disclose their email address. \$\$ \$500-\$250-\$125. **EF:** \$80, Senior/Hcap/Additional Family Member \$55. Small appearance fee to the First three GM/IM's who apply. GM/IM must play all rounds to get appearance fee (appearance fee might be deducted from prize). **Reserve:** Open to players rated below 2000 USCF. This section is not FIDE Rated but is USCF rated and uses USCF rules. **EF:** \$40. The Reserve give back 10% in prizes and if at least 8 paid entries and if there is a clear winner, then that winner receives free entry to next DCC Fide Open. In the reserve section, Tournament reserves the right to use Fide rules on electronic devices and on starting White's clock at start of a round and to use FIDE pairing rules. **Both: Reg.:** 4day: 7/2 from 6-7:45pm. 3day: 7/3 from 9:45-10:15am. **Rds.:** Rd.1 4day Thurs 7/2 at 7:16pm then merge with 3day rd. 2. 3day rds: Fri 10:45am-3:10pm-7:16pm, Sat 10:45 am-3:10pm. Sun 9:45am-2:10pm. Two half point Byes allowed if requested before end of round rd. 2 and before getting full point bye. Byes for both rds 6 and 7 not allowed. Withdrawals and zero point last round byes are not eligible for prizes. Note that house players (if required) must pay \$2 per round and be USCF members. ENT: Make/mail Checks payable to Dallas Chess Club, C/O Barbara Swafford, 2709 Longhorn Trail, Crowley, TX 76036-4719. **Info:** 214-632-9000, info@dallaschess.com. FIDE.

USCF Junior Grand Prix!

July 5, California, Northern

Trophies Plus Grand Prix Points: 10 (Enhanced)

Bay Area Chess Grand Prix Super Swiss (4SS, G/61 d5)
1639A S. Main St., Milpitas, CA 95035. **Prizes:** \$1,500 b/55 60% guar. **1900+:** \$300-100-100, u2100 50-50. **1500-1899:** \$200-100-50, u1700 50-50. **u1500:** \$200-100-50, u1250 50-50. July 15 Supp & TD disc. Reg.: 9-9:15. Rds.: 9:30-11:50-2:40-5 **EF:** 43, Ecn 29 w 1/2 prz. after 7/2 +15, playup +15, Rtd 2200+ \$0 by 6/28. **Info:** <http://BayAreaChess.com/grandprix>.

USCF Junior Grand Prix!

July 17-19 or 18-19, California, Northern

Trophies Plus Grand Prix Points: 40 (Enhanced)

Bay Area Chess GM Melikset Khachiyan Championship
1639A S. Main St., Milpitas, CA 95035. 5SS, G90 +30 2-day rds. 1-2 G/50 d5. Park free. **Prize:** 5,000 b/94 (70% guar). 3 sects: **2000+ (FIDE)** \$1,000-500-200, u2300: 250-125-100. **1600-1899:** \$700-300-100, u1800: 200-100, **u1600:** \$700-300-100 u1400: 125-100, u1200: 100. Unr max \$100 exc Open. Jul 15 Supp & TD disc. **Reg.:** F 6-6:45p & Sa 8:30-8:45a. **Rds.:** F 7p, Sa 9-1:20, Su 10-2:30. (2-day Sa 9-11:10 & merge). **EF:** 89, Ecn 29 w 1/2 prz. after 7/13 +20. Playup +20. Rated 2250+ \$0 by 7/7 (prize / EF). **Info:** <http://BayAreaChess.com/champs>.

July 26, California, Northern

Trophies Plus Grand Prix Points: 10 (Enhanced)

Cupertino Grand Prix DuperSwiss75 (3SS, G/75 d5)
Courtyard Marriott, Cupertino, CA 95014. **Prizes:** \$1,500 b/55. 60% guar. **1900+:** \$300-100-100, u2000 50-50. **1500-1899:** \$200-100-50, u1600 50-50. **u1500:** \$200-100-50, u1200 50-50. Jul 15 Supp & TD disc. Reg.: 8-8:45. Rds.: 9-11:45-2:40. **EF:** 47, Econ 32 w 1/2 prz. after 7/23 +15, playup +15, Rtd 2200+ \$0 by 7/19. **Info:** BayAreaChess.com/grandprix. W.

Aug. 1-9, 4-9 or 6-9, Arizona

Trophies Plus Grand Prix Points: 150

116th Annual U.S. Open

See Nationals.

USCF Junior Grand Prix!

Aug. 2, California, Northern

Trophies Plus Grand Prix Points: 10 (Enhanced)

Bay Area Chess Grand Prix Super Swiss (4SS, G/61 d5)
1639A S. Main St., Milpitas, CA 95035. **Prizes:** \$1,500 b/55. 60% guar. **1900+:** \$300-100-100, u2100 50-50. **1500-1899:** \$200-100-50, u1700 50-50. **u1500:** \$200-100-50, u1250 50-50. Aug 15 Supp & TD disc. Reg.: 9-9:15. Rds.: 9:30-11:50-2:30-5. **EF:** 43, Ecn 29 w 1/2 prz. after 7/29 +15, playup +15, Rtd 2200+ \$0 by 7/23. **Info:** BayAreaChess.com/grandprix.

Aug. 27-31, North Carolina

Trophies Plus Grand Prix Points: 200 (Enhanced)

2015 U.S. Masters Championship

See Nationals.

USCF Junior Grand Prix!

Aug. 28-30 or 29-30, North Carolina

Trophies Plus Grand Prix Points: 60 (Enhanced)

The 2015 North Carolina Open

This tournament is being held in conjunction with the U.S. Masters. Come watch the stars of the chess world compete while playing in the NC Open! 5-SS, G/120 d5; 2-day schedule: Rd. 1 G/90 d5 then merges with 3- day Embassy Suites Airport, 204 Centreport Dr., Greensboro, NC 27409, (\$36) 668-4535, mention chess tournament for discounted hotel rate. **\$13000 in prizes UNCONDITIONALLY GUARANTEED! In 4 sections,** OPEN \$1000-500-300-250-150-125-125-100-100-100 U2100 250-150-100; U2000 \$1000-500-300-250-150-125-125-100-100-100 U1850 250-150-100; U1700 \$1000-500-300-250-150-125-125-100-100-100 U1550 250-150-100; U1400 \$1000-500-300-250-150-125-125-100-100-100 U1200 250-150-100. **EF:** \$69 if received by August 14. \$85 if received later or onsite. \$2 discount to NCCA members. **SCHEDULE: 3-Day** registration ends at 7PM on 8/28 Round at 7:30PM. **2-Day** registration ends at 9:30AM on 8/29 Round at 10AM. Subsequent rounds are 8/29 at 2PM- 7PM and 8/30 at 9AM-2PM. **HR:** \$99 All rooms are suite style. Free made to order breakfast daily, free manager's reception nightly, and free airport shuttle available for all guests. Hotel booking link: https://resweb.passkey.com/Resweb.do?mode=welcome_ei_new&eventID=13620024. **ADVANCE ENTRY** Registration is available at www.carolinasschessinitiative.com. Alternately, checks can be sent to Walter High, 105 North Crabtree Knoll, Chapel Hill, NC 27514. Make checks payable to Carolinas Chess Initiative (CCI). **OTHER:** One half-point bye available. Byes must be requested before round 2 is paired. Open section FIDE rated. **INFO:** Walter High wmhigh@nc.rr.com or Gary Newsom gary.newsom@charlottechesscenter.org. More info including pre-entry lists may be available at carolinasschessinitiative.com. Hotel has a no smoking policy including electronic cigarettes. **Special Saturday-only U1000 Scholastic Tournament:** Saturday, August 29 4SS, G/30 d5. Rounds 10:30-12-2-3:30. In two sections, determined on-site based on entries. Trophies to top 10 in each section. USCF rated. **EF:** \$20 in advance \$25 onsite.

REGIONAL Arizona

Aug. 1-9, 4-9 or 6-9, 116th Annual U.S. Open

See Nationals.

California, Northern

June 13, Chess4Less Kids Quads (PK-12; 4SS, G/30 d5)

1639A South Main St., Milpitas, CA 95035. **Trophies:** Players w/plus score. **Sched:** Required Check-in 1:30-2p. **Games:** 2:30-5p. **EF:** 22 by 6/11, 37 after 6/11. **Info:** <http://BayAreaChess.com/signature>.

June 13, Chess4Less Kids Swiss (PK-12; 4SS, G/30 d5)

1639A South Main St., Milpitas, CA 95035. **Trophies:** to players w + score & all teams. **Sched:** Reg. 9:30-9:45a. **Games:** 10a - 1:30p. **EF:** 22 by 6/11, 37 after 6/11. **Info:** <http://BayAreaChess.com/signature>.

June 13, Foster City Grand Prix Luper\$wiss (3SS, G/90 d5)

See Grand Prix.

June 13, Sacramento Chess4Less Quads (PK-12; 3xG/30 d5)

Courtyard Marriott, Rancho Cordova, CA 95670. **Trophies:** Players w/plus score. **Sched:** Regrd. Check-in 1:30-2p. **Games:** 2:30-5p. **EF:** 22 by 6/11, 37 after 6/11. **Info:** <http://BayAreaChess.com/signature>. W.

June 13, Sacramento Luper Swiss (3SS, G/90 d5)

Courtyard Marriott, Rancho Cordova, CA 95670. **Prize:** \$900 b/36 **1700+:** \$200-100, u1900 100-50. **u1700:** \$200-100, u1600 100, u1400 50. Jun 15 Supp & TD disc. Reg.: 9-9:15. Rds.: 9:30-1:4:30. **EF:** 43, Ecn 29 w 1/2 prz. after 6/10 +15, playup +15, Rated 2200+ \$0 by 6/5. **Info:** <http://BayAreaChess.com/grandprix>. W.

June 14, Bay Area Fremont Quads (PK-12; 4SS, G/30 d5)

Courtyard Marriott, Fremont, CA 94538. **Trophies:** Players w/plus score. **Sched:** Required Check-in 1:30-2p. **Games:** 2:30-5p. **EF:** 27 by 6/12, 42 after 6/12. **Info:** <http://BayAreaChess.com/signature>. W.

June 14, Bay Area Fremont Swiss (PK-12; 4SS, G/30 d5)

Courtyard Marriott, Fremont, CA 94538. **Trophies:** to players w + score & all teams. **Sched:** Reg. 9:30-9:45a. **Games:** 10a - 1:30p. **EF:** 34 by 6/12, 49 after 6/12. **Info:** <http://BayAreaChess.com/signature>. W.

June 20, Chess4Less Kids Quads (PK-12; 4SS, G/30 d5)

1639A South Main St., Milpitas, CA 95035. **Trophies:** Players w/plus score. **Sched:** Required Check-in 1:30-2p. **Games:** 2:30-5p. **EF:** 22 by 6/18, 37 after 6/18. **Info:** <http://BayAreaChess.com/signature>.

June 20, Chess4Less Kids Swiss (PK-12; 4SS, G/30 d5)

1639A South Main St., Milpitas, CA 95035. **Trophies:** to players w + score & all teams. **Sched:** Reg. 9:30-9:45a. **Games:** 10a - 1:30p. **EF:** 22 by 6/18, 37 after 6/18. **Info:** <http://BayAreaChess.com/signature>.

June 21, Bay Area Chess Grand Prix Luper Swiss (3SS, G/90 d5)

See Grand Prix.

June 21, FATHER'S DAY Special: Daddy, Daughter/Son Championship (5SS, G/30 d5)

Courtyard Marriott, Cupertino, CA 95014. **Trophies:** to players w + score & all teams. **Sched:** Reg. 9:30-9:45a. **Games:** 10a - 5p. **EF:** 39, 54 after 6/19. Fathers/Brothers get free entry! **Info:** <http://BayAreaChess.com/signature>. W.

June 27, Chess4Less Kids Quads (PK-12; 4SS, G/30 d5)

1639A South Main St., Milpitas, CA 95035. **Trophies:** Players w/plus score. **Sched:** Required Check-in 1:30-2p. **Games:** 2:30-5p. **EF:** 22 by 6/25, 37 after 6/25. **Info:** <http://BayAreaChess.com/signature>.

June 27, Chess4Less Kids Swiss (PK-12; 4SS, G/30 d5)

Tournament Life

1639A South Main St., Milpitas, CA 95035. **Trophies** to players w + score & all teams. **Sched:** Reg. 9:30-9:45a. **Games:** 10a - 1:30p. **EF:** 22 by 6/25, 37 after 6/25. **Info:** <http://BayAreaChess.com/signature>.

June 28, Cupertino Grand Prix DuperSwiss75 (3SS, G/75, d5)
See Grand Prix.

July 5, Bay Area Chess Grand Prix Super Swiss (4SS, G/61 d5)
See Grand Prix.

July 5, Bay Area Cupertino Quads (PK-12; 3xG/30 d5)
Court yard Marriott, Cupertino, CA 95014. **Trophies:** Players w/plus score. **Sched:** Regrd. Check-in 1:30-2p. **Games:** 2:30-5p. **EF:** 27, 42 after 7/3. **Info:** <http://BayAreaChess.com/signature>. W.

July 5, Bay Area Cupertino Swiss (PK-12; 4SS, G/30 d5)
Court yard Marriott, Cupertino, CA 95014. **Trophies:** to players w + score & all teams. **Sched:** Reg. 9:30-9:45a. **Games:** 10a - 1:30p. **EF:** 34, 49 after 7/3. **Info:** <http://BayAreaChess.com/signature>. W.

July 11, Chess4Less Kids Quads (PK-12; 4SS, G/30 d5)
1639A South Main St., Milpitas, CA 95035. **Trophies:** Players w/plus score. **Sched:** Required Check-in 1:30-2p. **Games:** 2:30-5p. **EF:** 22 by 7/9, 37 after 7/9. **Info:** <http://BayAreaChess.com/signature>.

July 11, Chess4Less Kids Swiss (PK-12; 4SS, G/30 d5)
1639A South Main St., Milpitas, CA 95035. **Trophies:** to players w + score & all teams. **Sched:** Reg. 9:30-9:45a. **Games:** 10a - 1:30p. **EF:** 22 by 7/9, 37 after 7/9. **Info:** <http://BayAreaChess.com/signature>.

July 11, Sacramento Chess4Less Quads (PK-12; 3xG/30 d5)
Court yard Marriott, Rancho Cordova, CA 95670. **Trophies:** Players w/plus score. **Sched:** Regrd. Check-in 1:30-2p. **Games:** 2:30-5p. **EF:** 22 by 7/9, 37 after 7/9. **Info:** <http://BayAreaChess.com/signature>. W.

USCF Junior Grand Prix!

July 11, Sacramento Junior Grand Prix Super Swiss (4SS, G/61 d5)
Court yard Marriott, Rancho Cordova, CA 95670. **Prize:** \$900 b/36 **1700+:** \$200-100, u1900 100-50. **u1700:** \$200-100, u1600 100, u1400 50. Jun 15 Supp & TD disc. Reg.: 9-9:15. Rds.: 9:30-11:50-2:40-5. **EF:** 43, Econ 29 1/2 prz., after 7/8 +15, play up +15, Rated 2200+ \$0 by 7/8. **Info:** <http://BayAreaChess.com/grandprix>. W

July 12, Bay Area Fremont Quads (PK-12; 4SS, G/30 d5)
Court yard Marriott, Fremont, CA 94538. **Trophies:** Players w/plus score. **Sched:** Required Check-in 1:30-2p. **Games:** 2:30-5p. **EF:** 27 by 7/10, 42 after 7/10. **Info:** <http://BayAreaChess.com/signature>. W.

July 12, Bay Area Fremont Swiss (PK-12; 4SS, G/30 d5)
Court yard Marriott, Fremont, CA 94538. **Trophies:** to players w + score & all teams. **Sched:** Reg. 9:30-9:45a. **Games:** 10a - 1:30p. **EF:** 34 by 7/10, 49 after 7/10. **Info:** <http://BayAreaChess.com/signature>. W.

July 12, Fremont DuperSwiss75 (3SS, G/75 d5)
Court yard Marriott, Cupertino, CA 95014. **Prizes:** \$1,250 b/40. 60% guar. **1900+:** \$200-100-50, u2100 50-50. **1500-1899:** \$200-100, u1700 50-50. **u1500:** \$200-100, u1200 50-50. Jul 15 Supp & TD disc. Reg.: 8:30-8:45. Rds.: 9-11:45-2:40. **EF:** 47, Econ 32 w 1/2 prz. after 7/9 +15, play up +15, Rtd 2200+ \$0 by 7/2. **Info:** <http://BayAreaChess.com/grandprix>. W.

July 17-19 or 18-19, Bay Area Chess GM Melikset Khachiyani Championship
See Grand Prix.

July 19, Bay Area Cupertino Quads
Court yard Marriott, Cupertino, CA 95014. **Trophies:** Players w/plus score. **Sched:** Regrd. Check-in 1:30-2p. **Games:** 2:30-5p. **EF:** 27, 42 after 7/17. **Info:** <http://BayAreaChess.com/signature>. W.

July 19, Bay Area Cupertino Swiss (PK-12; 4SS, G/30 d5)
Court yard Marriott, Cupertino, CA 95014. **Trophies:** to players w + score & all teams. **Sched:** Reg. 9:30-9:45a. **Games:** 10a - 1:30p. **EF:** 34, 49 after 7/17. **Info:** <http://BayAreaChess.com/signature>. W.

July 25, Chess4Less Kids Quads (PK-12; 4SS, G/30 d5)
1639A South Main St., Milpitas, CA 95035. **Trophies:** Players w/plus score. **Sched:** Required Check-in 1:30-2p. **Games:** 2:30-5p. **EF:** 22, 37 after 7/23. **Info:** <http://BayAreaChess.com/signature>.

July 25, Chess4Less Kids Swiss (PK-12; 4SS, G/30 d5)
1639A South Main St., Milpitas, CA 95035. **Trophies:** to players w + score & all teams. **Sched:** Reg. 9:30-9:45a. **Games:** 10a - 1:30p. **EF:** 22, 37 after 7/23. **Info:** <http://BayAreaChess.com/signature>.

July 26, Cupertino Grand Prix DuperSwiss75 (3SS, G/75 d5)
See Grand Prix.

Aug. 2, Bay Area Chess Grand Prix Super Swiss (4SS, G/61 d5)
See Grand Prix.

Aug. 2, Bay Area Cupertino Quads (PK-12; 3xG/30 d5)
Court yard Marriott, Cupertino, CA 95014. **Trophies:** Players w/plus score. **Sched:** Regrd. Check-in 1:30-2p. **Games:** 2:30-5p. **EF:** 27, 42 after 7/29. **Info:** <http://BayAreaChess.com/signature>. W.

Aug. 2, Bay Area Cupertino Swiss (PK-12; 4SS, G/30 d5)
Court yard Marriott, Cupertino, CA 95014. **Trophies:** to players w + score & all teams. **Sched:** Reg. 9:30-9:45a. **Games:** 10a - 1:30p. **EF:** 34, 49 after 7/29. **Info:** <http://BayAreaChess.com/signature>. W.

Aug. 8, Chess4Less Kids Quads (PK-12; 4SS, G/30 d5)
1639A South Main St., Milpitas, CA 95035. **Trophies:** Players w/plus score. **Sched:** Required Check-in 1:30-2p. **Games:** 2:30-5p. **EF:** 22, 37 after 8/6. **Info:** <http://BayAreaChess.com/signature>.

Aug. 8, Chess4Less Kids Swiss (PK-12; 4SS, G/30 d5)
1639A South Main St., Milpitas, CA 95035. **Trophies:** to players w + score & all teams. **Sched:** Reg. 9:30-9:45a. **Games:** 10a - 1:30p. **EF:** 22, 37 after 8/6. **Info:** <http://BayAreaChess.com/signature>.

Aug. 8, Foster City LuperSwiss (3SS, G/90 d5)
Court yard Marriott, Foster City, CA 94404. **Prizes:** \$1,250 b/40. 60% guar.

1900+: \$200-100-50, u2100 50-50. **1500-1899:** \$200-100, u1700 50-50. **u1500:** \$200-100, u1200 50-50. Aug 15 Supp & TD disc. Reg.: 9-9:15. Rds.: 9:30-12:50-4:15. **EF:** 43, Econ 29 w 1/2 prz. after 8/5 +15, play up +15, Rtd 2200+ \$0 by 8/1. **Info:** <http://BayAreaChess.com/grandprix>. W.

Aug. 8, Sacramento Chess4Less Quads (PK-12; 3xG/30 d5)
Court yard Marriott, Rancho Cordova, CA 95670. **Trophies:** Players w/plus score. **Sched:** Regrd. Check-in 1:30-2p. **Games:** 2:30-5p. **EF:** 22, 37 after 8/6. **Info:** <http://BayAreaChess.com/signature>. W.

Aug. 8, Sacramento Luper Swiss (3SS, G/90 d5)
Court yard Marriott, Rancho Cordova CA 95670. **Prize:** \$900 b/36. **1700+:** \$200-100, u1900 100-50. **u1700:** \$200-100, u1600 100, u1400 50. Aug 15 Supp & TD disc. Reg.: 9-9:15. Rds.: 9:30-12:50-4:15. **EF:** 43, Econ 29 1/2 prz., after 8/5 +15, play up +15, Rated 2200+ \$0 by 8/1. **Info:** <http://BayAreaChess.com/grandprix>. W.

Aug. 9, Bay Area Fremont Quads (PK-12; 4SS, G/30 d5)
Court yard Marriott, Fremont, CA 94538. **Trophies:** Players w/plus score. **Sched:** Required Check-in 1:30-2p. **Games:** 2:30-5p. **EF:** 27, 42 after 8/7. **Info:** <http://BayAreaChess.com/signature>. W.

Aug. 9, Bay Area Fremont Swiss (PK-12; 4SS, G/30 d5)
Court yard Marriott, Fremont, CA 94538. **Trophies:** to players w + score & all teams. **Sched:** Reg. 9:30-9:45a. **Games:** 10a - 1:30p. **EF:** 34, 49 after 8/7. **Info:** <http://BayAreaChess.com/signature>. W.

Aug. 14-16 or 15-16, 6th annual Central California Open
See *Chess Life* or www.chesstour.com.

California, Southern

The Los Angeles Chess Club

The Most Active Club on the West Coast! (310) 795-5710 * www.LAChessClub.com; Contact: Mick@LAChessClub.com; Saturdays: 10am-10 pm (Beg & Interm. classes + 2 Tournaments). Sundays: 11-7 & 1-5 pm (Junior class + 2 Tournaments) - Details on our web site. Tuesdays: 7:30-9:30 pm (Advance Lecture). 11514 Santa Monica Blvd., Los Angeles, CA 90025. (4 blocks W of 405, SW corner of Santa Monica & Butler * 2nd Floor - above Javan Restaurant) Group Classes * Tournaments * Private (1:1) Lessons.

June 6, 13, 20, 27, LACC - Every Saturday Chess 4 JRS
4 separate events- 5SS, G/30 d0. 11514 Santa Monica Blvd. & Butler LA, 90025, 2nd fl. 4 blocks West of 405. **EF:** \$30 (\$20 LACC memb, No prize 1/2, siblings 1/2, Free new LACC members). **Reg.:** 12-1 pm. **Rds.:** 1pm & asap; done by 5; **Prizes:** Trophies & medals; everyone receives a prize! **Parking:** Free on streets & BoA. Free pizzas & juices. **Info:** (310) 795-5710 or www.LAChessClub.com or Mick@LAChessClub.com.

June 7, 14, 21, 28, LACC - Every Sunday Chess 4 JRS
4 separate events- 5SS, G/30 d0. 11514 Santa Monica Blvd. & Butler LA, 90025, 2nd fl. 4 blocks West of 405. **EF:** \$30 (\$20 LACC memb, No prize 1/2, siblings 1/2, Free new LACC members). **Reg.:** 12-1 pm. **Rds.:** 1pm & asap; done by 5; **Prizes:** Trophies & medals; everyone receives a prize! **Parking:** Free on streets & BoA. Free pizzas & juices. **Info:** (310) 795-5710 or www.LAChessClub.com or Mick@LAChessClub.com.

July 16-19, 17-19 or 18-19, 20th annual Pacific Coast Open
See *Chess Life* or www.chesstour.com.

Connecticut

July 17-19 or 18-19, 20th Annual Bradley Open
See *Chess Life* or www.chesstour.com.

Sept. 25-27 or 26-27, 6th Annual Hartford Open
See *Chess Life* or www.chesstour.com.

District of Columbia

Aug. 28-30 or 29-30, 47th annual Atlantic Open
See *Chess Life* or www.chesstour.com.

Florida

USCF Junior Grand Prix!
Boca Raton Chess Club

Friday nights, G/85 d5 Tournament, one game a week for 4 weeks. www.bocachess.com, 561-479-0351.

The Stormont Kings Chess Center in Miami, FL
Conducts Private and Group Lessons, Homeschool Activities, Tournaments, Camps, Family Game Nights, Parents Night Out, Chess Play and more! Complimentary Refreshments, Ample Parking, Comfortable Waiting Room, and more! Located at 8353 SW 124 St., Suite 201-A, Miami, FL 33156. Contact Chris Stormont, Phone: 786-303-2437, Email Chris at: chris@stormontkingschess.com, Web: www.StormontKingsChess.com.

June 12-14 or 13-14, Sunshine Summer Open & Scholastic
See Grand Prix.

July 24-26 or 25-26, 23rd annual Southern Open
See *Chess Life* or www.chesstour.com.

Illinois

June 12-14, 2015 U.S. Junior Open
See Nationals.

July 17-19 or 18-19, 8th annual Chicago Class
See *Chess Life* or www.chesstour.com.

Oct. 9-11 or 10-11, 24th annual Midwest Class Championships
See *Chess Life* or www.chesstour.com.

Indiana

Aug. 28-30 or 29-30, 10th annual Indianapolis Open
See *Chess Life* or www.chesstour.com.

Maryland

Maryland Chess Association Tournaments

MCA runs several scholastic & open tournaments throughout Maryland each month. Listings & online registration at www.MDChess.com. Maryland scholastic players can qualify for a \$41,000 scholarship awarded each year that covers 4 years of tuition & fees at UMBC (University of Maryland, Baltimore County).

Massachusetts

Aug. 13-16, 14-16 or 15-16, 45th annual Continental Open
See *Chess Life* or www.chesstour.com.

Nevada

June 18, 2015 U.S. Game/10 Championship (QC)
See Nationals.

June 18-19, 2015 U.S. Women's Open
See Nationals.

June 19, Youth Trophy Tournament
5-SS, G/25 d5. Westgate Resort & Casino, 3000 Paradise Rd., Las Vegas 89109. Hotel reservation: 800-732-7117. Open to players age 14 & under. **3 sections:** Open, U1000, U700. **Trophies:** top 5 in each section, top 2 in each 200 point rating group and unrated. Must be 3 players eligible for each prize to be awarded. **EF:** \$39 by 5/25, \$50 later. **REG.:** 9-9:30 a.m. **RDS.:** 10-11:30-1-2:30-4. **Info:** www.VegasChessFestival.com. W.

June 19-21 or 20-21, 2015 National Open
See Nationals.

June 20-21, International Youth Championship
5SS, G/60 d5. Westgate Resort & Casino, 3000 Paradise Rd., Las Vegas 89109. **In 4 Sections by age:** 14 & Under, 14 & Under Reserve (under 1000), 9 & Under, 9 & Under Reserve (under 800). **Trophies:** to top 10 in each section plus class and team trophies. 1st Place in each section wins a Computer loaded with valuable Chess Software and hundreds of Videos, 2nd-4th win chess prizes valued at 250-150-100. Unrated players may not win 1st in Reserve sections. **EF:** \$89 by 5/25, \$99 by 6/15, \$120 later. 1/2 point bye in any round (limit 2) if requested in advance. **REG:** 8-9 a.m. **RDS.:** 10-1-4, 10-1. Youth Blitz 6/19 6:30 p.m. (no prize by 5/25 \$25 later). **HR:** \$69, \$89 Friday and Saturday. (800) 732-7117 - be sure to ask for the **CHESSTOUR** rates. **ENT:** Vegas Chess Festivals, PO Box 90925, Henderson, NV 89009-0925 or **www.VegasChessFestival.com**. W.

New Jersey

June 20, King's Chess Club Quads

Morning quads and afternoon quads, G/30 d5, Kindergarten-undergraduate (scholastic, youth, and young adult memberships). Bethlehem Church, 758 Route 10, Randolph, NJ 07869. **EF:** None. **Reg.:** 9-9:20 a.m., 1st rd. 9:40. Arr. by noon to reg. only for afternoon quads. Medal to each quad winner. **Info:** Bethlehem Church 973-366-3434 or Bob McAdams 973-694-3988, rwm@fambright.com.

July 19, Westfield Spring Scholastic
Westfield Y, 220 Clark St., Westfield, NJ 07090. K-12. **3 Sections:** Open, U1250, U750. **Open:** 3-SS. G/40 d5 Rds.: 2:15, 4:00, 5:45 p.m. **U1250, U750:** 4-SS. G/25 d5. Rds.: 2:15, 3:30, 4:45, 6:00 p.m. **EF:** \$25, \$20 members. **Prizes:** Trophies to Top 5 in each section. Tiebreaks used. See USCF Rule 34E. **Reg.:** 1:15-2:00 p.m. **Information:** John Moldovan email: westfieldchessclub@gmail.com, Bill Cohen: 732-548-8432 or 848-219-1358, www.westfieldchessclub.com and westfieldchessclub.blog spot.com.

New York

Aug. 21-23 or 22-23, 14th annual Manhattan Open
See *Chess Life* or www.chesstour.com.

Sept. 4-7, 5-7 or 6-7, 137th annual NY State Championship
Out of state welcome. See *Chess Life* or www.chesstour.com.

North Carolina

Aug. 27-31, 2015 U.S. Masters Championship
See Nationals.

Aug. 28-30 or 29-30, The 2015 North Carolina Open
See Grand Prix.

Ohio

Aug. 7-9 or 8-9, Cleveland Open
See *Chess Life* or www.chesstour.com.

Pennsylvania

MasterMinds Scholastic Summer League
Info at www.mastermindschess.org.

Texas

June 13-14, 2015 DCC Fide Open VII
See Grand Prix.

July 2-5 or 3-5, 2015 DCC Fide Open VIII
See Grand Prix.

Virginia

USCF Junior Grand Prix!

June 27-28, 7th annual World Open Under 13 Championship (Note corrections.) 6SS, G/60 d10. Hyatt Regency Crystal City, Arlington (see World Open for location, rates). Open to all born after 6/28/02. In 4 sections. **Open Section:** Trophies to top 10, 1st C, Under 1400/Unr; free entry in all CCA tournaments 7/16/15-12/31/15 to 1st. **Under 1400 Section:** Trophies to top 10, 1st Under 1200, Unrated; free entry in all CCA tournaments 7/16/15-9/30/15 to 1st. **Under 1000 Section:**

Trophies to top 10, 1st Under 800, Unrated; free entry in all CCA tournaments 7/16/15-9/30/15 to 1st. **Under 600 Section:** Trophies to top 10, 1st Under 400, top 3 Unrated; free entry in all CCA tournaments 7/16/14-9/30/15 to 1st. **EF:** \$42 online at chessaction.com by 6/23, \$45 mailed by 6/17 or phoned to 406-896-2038 by 6/22, \$50 at site, or online until 9 am 6/27. **Reg.** 6/27 to 10 am, rds. Sat. 11-2-5, Sun. 10-1-4. Up to 2 half point byes allowed, must commit before rd. 3. **Ent:** chessaction.com or Continental Chess, PO Box 8482, Pelham, NY 10803.

Questions: chesstour.com, chesstour.info, DirectorAtChess.US, 347-201-2269. \$15 service charge for refunds.

June 30-July 5, July 1-5, 2-5 or 3-5, 43rd Annual World Open
See *Chess Life* or www.chesstour.com.

Oct. 7-12, 9-12 or 10-12, 2nd annual Washington Chess Congress
See *Chess Life* or www.chesstour.com.

Answers, We've got Answers.

What's the Question?

(from page 5)

#1. In the game Dochev-Ermenkov, Borovec 2002, this position occurred after White blundered with 25. Qf2??, overlooking 25. ... **Oxc3+!**, and White resigned because of 26. bxc3 Ba3#. Note how Black's rook conveniently controls the d-file.

#2. Black's last move was 22. ... cxd4??, allowing 23. **Oxe6+! fxe6** 24. **Bg6#** in Rowson-Richardson, Walsall 1997.

#3. This is the critical position of a very famous game known as the Peruvian Immortal, played in 1934 between future Grandmaster Esteban Canal (with the white pieces) and an unknown player in a simultaneous exhibition (!). Enjoy the brilliant finish: 11. **axb4!! Qxa1+** 12. **Kd2! Qxh1** A less pretty variation is 12. ... Ne5 13. Bxe5 Qxh1 14. Qxf7 (since Boden's mate no longer works: 14. Qxc6+ bxc6 15. Ba6+ Kd7) 14. ... Rd7 15. Qe8+ Rd8 16. Qxe6+ Rd7 17. Qe8+ Rd8 18. Bg4#. 13. **Oxc6+! bxc6** 14. **Ba6#** White sacrificed two rooks and a queen in the space of three

moves and checkmated on move 14. Wow!

#4. Did you find the forced win for White? GM Alexander Finkel, playing black, did not! Future GM Alik Gershon won after 13. **Nc6! Qc7** (13. ... Qb6 loses the same way) 14. **Oxe6+!!** Black resigned, as 14. ... fxe6 15. Bg6# is similar to Boden's mate.

Boden's Mates (from page 6)

Solution #1

Morphy versus Thompson, New York, 1859: 1. **Qc6+ bxc6** 2. **Ba6#**

Solution #2

Dmitrenko-Khizmer, Rodatycki, 2006: 1. ... Be7 is the best defense but 1. **Oxe6+ fxe6** 2. **Bg6#**

Solution #3

Reinharst-Voeller, Porz, 1989: 1. ... **Rxc3** 2. **bxc3** 3. **Ba3#**

Solution #4

Bekker-Olsen, Denmark, 2002: 18. **Oxc6+ Bxc6** 19. **Ba6#**

Solution #5

Makovetskyi-Rosenbaum, Brno, 2003: 1. ... **Rxc3** 2. Nc2 would have avoided 2. **bxc3** 3. **Ba3#**

Solution #6

Bene-Kopasov, St. Petersburg, 2008: 1. ... **Rxc3+** 2. **bxc3** 3. **Ba3#**

You Can Do It!

(from page 9)

Solution #1: 1. **Rg4** checkmate

Solution #2: 1. **Rd7** checkmate

Solution #3: 1. **Nxf6** checkmate

Solution #4: 1. **Rg6** checkmate

Solution #5: 1. **Re7** checkmate

Solution #6: 1. **Rxc6** checkmate

End of the Line! (from page 10)

#1: 1. ... Nc2+ 2. Kb1 Na3+ 3. Ka1 (3. Kc1 Qc2#) 3. ... Qb1+ 4. Rxb1 Nc2#

#2: 1. ... Nc3+ 2. bxc3 or 2. Ka1 Qxa2#

#3: 1. ... Nb3+ 2. Kb1 Nd2+ 3. Ka1 Rxa2#

#4: 1. ... Qxa2+ (1. ... Nc2+ wins the queen but Black has something even better) 2. Qxa2 Nc2#

#5: 1. ... Bb4! pinning the queen 2. Qxb4 Nxc2+ wins the queen.

#6: 1. ... Qxe2+!! 2. Nxe2 Nxc2#

3rd Annual Fourth of July Open Leon Shulman Liberty Cup July 4-5, 2015

\$15,000 projected prizes, \$10,000 minimum guaranteed!

Trophies Plus Grand Prix: 60 (Enhanced)
USCF Junior Grand Prix

5 rounds, G/90, d5, Holiday Inn, 2175 Marlton Pike W, Cherry Hill, NJ 08002, across from Garden State Park – 5 miles from Philadelphia City Center.

Prizes \$15,000 based on 160 paid entries \$10,000 minimum guaranteed.

In 5 sections:

Open Section: \$1500-700-400-300, top Under 2300/Unr \$800-400.

Under 2100 Section: \$1200-500-300-200, top Under 1900 \$600-300.

Under 1800 Section: \$1200-500-300-200, top Under 1600 \$500-250.

Under 1500 Section: \$1200-500-300-200, top Under 1300 \$500-250.

Under 1200 Section: \$1000-500-300-100, trophies to 1st, top Under 1000, Under 800, Under 600, Unrated.

Entry fee: Online \$95 by 6/13 \$105 by 6/27, \$120 at site. GMs, IMs free; \$100 deducted from prize. Registration: <https://shulmancup2015.eventbrite.com>

Under 1200 Section entry fee: all \$20 less than above.

Schedule: Reg. ends Saturday 9:45 am, rds. Sat 10:00 am, 2:00 pm, 6:00, Sun 10:00 am & 2:00 pm.

All: Half point byes OK all, limit 2, must commit before rd. 2.

Hotel rates: \$109 – “Chess Rate”, 1-(856) 663-5300; reserve by 6/15 or rate may increase.

Bring set, board, clock if possible- none supplied.

Ratings: June official USCF rating list used. Unofficial uschess.org ratings usually used if otherwise unrated.

Contact: dgorman@darsemail.com (703) 989-6867

Liberty Cup Youth Championship

DATE: Saturday, July 4, 2015

TIME: 11 AM – 4 PM

FORMAT: 4 SS, G/25;d5

REGISTRATION/CHECK IN: 10-10:45

ROUNDS: 11, 12, 1:30, 2:30. **Award ceremony** 3:45 PM

EF: \$20 Individuals

Location:

Holiday Inn Philadelphia-Cherry Hill

Route 70 & Sayer Avenue, Cherry Hill, NJ, US, 08002

Phone: (856) 873-5000

Sections:

Booster K-6 U500. Open to players in grades K-6 rated under 500.

Reserve K-12 U800. Open to players in grades K-12 rated under 800.

Championship K-12 Open to players in grades K-12 rated 800 and up.

Entry fee: Online \$20 by 6/27, \$25 at site.

Registration: <https://libertycupyouth.eventbrite.com>

Prizes: Medal to all participants, Trophies top 4 individuals, top school teams and top club team in each section. Team scores based on top 4 scores of players from the team (no limit to team size). Standard tie breaks used to determine team and individual trophies in case of tie.

Contact for questions: dgorman@darsemail.com 703-989-6867

CHESS KING **NEW 2015 VERSIONS!**

Compatible with Windows (incl. 8.1) and Mac (incl. 10.10), both versions on disk.



Only \$34.95

STANDARD

Most affordable
Complete program
1-core Houdini 2



Only \$79.95

SILVER

Most popular Complete program
Includes Houdini 4 up to 6 cores



Only \$109.95

GOLD

Top of the line
With Houdini 4 Pro
Chess Engine up to 32 cores

• All versions allow 4 activations/installs

- Play, Learn, Analyze with the world's top engine Houdini
- Includes GigaKing 2015 Games Database 6 million games
- Huge Opening Tree to help learn variations
- Hundreds of puzzles, quest games
- Store your own games, prepare for opponents
- Easy-to-use, suitable for beginners and masters alike



All new 2015 versions include Houdini and the new GigaKing 2015 database. All versions allow for both PC and Mac versions and 4 activations/installs. Compatible with Windows (incl. 8.1) and Mac (incl. 10.10), both versions on disk.

 **USCF SALES**

888.51.CHESS (512.4377)
www.USCFSales.com

ALL PURCHASES BENEFIT THE UNITED STATES CHESS FEDERATION