

December 2015

uschess.org

Chess Life for Kids!

Dream Big,
Play Tough!



A US Chess Publication

\$3.00



0 74470 27842 9

1 2 >

CLASSY. COLORFUL. WELL-CRAFTED.

Our trophies are an
**ICON OF
ACHIEVEMENT.**



- Walnut, Solid Marble, and Marble-look bases and lids.
- Many colors to choose from.
- Choose from a large collection of figurine toppers.

TROPHIES  **PLUS**
A Champion Defined.

Official
Awards
Provider for the

US CHESS
FEDERATION

315 West 1st St. P.O. Box 115, Templeton, IA 51463
800-397-9993 * fax: 712-669-3851
email: trophyman@trophiesplus.com * www.trophiesplus.com



US CHESS

December 2015

Chess Life for Kids

Vol. 10, No. 6



Table of Contents

- 5 ARABIAN KNIGHTS
- 6 WHAT'S THE QUESTION?
- 8 END OF THE LINE
- 9 THE CHESS DETECTIVE®
- 10 YOU CAN DO IT!
- 12 ALL-AMERICA TEAM
- 17 JUNIOR GRAND PRIX STANDINGS
- 18 TOURNAMENT LIFE ANNOUNCEMENTS
- 23 ANSWERS, WE'VE GOT ANSWERS.



Publisher

USCF Executive Director:

Jean Hoffman

Jean.Hoffman@uschess.org

Scholastic Editor: Glenn Petersen

gpetersen@uschess.org

Art Director: Cat Connor

catseyephoto@mac.com

Editorial Asst./Copy Editor: Alan Kantor

akantor@uschess.org

Editorial Assistants:

Jo Anne FATHERLY

backtobasics@uschess.org

Jennifer Pearson

jenpearson@uschess.org

Advertising Manager: Joan DuBois

jdubois@uschess.org

Tournament Life: Joan DuBois

tla@uschess.org

Director of Publications: Daniel Lucas

dilucas@uschess.org

CONTRIBUTORS: Send your contributions and articles to *Chess Life for KIDS*, PO Box 3967, Crossville, Tennessee 38557 or better yet, e-mail to gpetersen@uschess.org.

Chess Life for KIDS (USPS 023-567, ISSN: 1932-5894) is published in February, April, June, August, October, and December of every year by US Chess, 137 Obrien Drive, Crossville, Tennessee 38555. Periodical postage paid at Crossville, Tennessee, and additional mailing offices.

CHANGE OF ADDRESS: Be sure to notify us at once of any change of address. Please include your old address and your new address, along with your USCF I.D. number.

POSTMASTER: Send address changes to US Chess, PO Box 3967, Crossville, Tennessee 38557.

Annual Scholastic Membership

Regular Scholastic Membership (online version of *Chess Life for Kids*), age 12 or younger, is just \$17 per year. Premium Scholastic Membership (receives *Chess Life for Kids* by mail) is \$25 per year. \$13 of every premium membership goes towards providing *Chess Life for Kids*. Annual subscription rate is \$18. Entire contents copyright 2015, US Chess.

Teachers may photocopy instructional articles for classroom use, but republication or widespread copying without the written consent of US Chess is forbidden.

COVER COURTESY OF JIM DOYLE

"DREAM BIG, PLAY TOUGH"

by Jim Doyle

Chess Girls DC is a non-profit organization dedicated to using chess as a tool to improve the self-confidence of girls. The group meets every Saturday afternoon on the campus of Catholic University and "is dedicated to promoting the appreciation of the intellectual sport of chess by exposing girls to the many cognitive benefits and resources associated with the game of chess."



According to their newsletter, "The vision of the Chess Girls DC program is to teach chess education to girls who have never played chess, support girls who currently play with resources, transportation, coaches, equipment and activities that build confidence, improve science, technology, engineering, mathematics (STEM) learning and direct girls toward chess scholarship opportunities."

Please turn to page 7

Statement Of Ownership

U.S. Postal Service. Statement of Ownership, Management, and Circulation (required by 39 U.S.C. 3685). (1) Title of publication: Chess Life For Kids. (2) Publication number: 023-567. (3) Date of filing: September 25, 2015. (4) Frequency of issue: Bi-monthly. (5) No. of issues published annually: 6. (6) Annual subscription price: \$18. (7) Complete mailing address of known office of publication (street, city, county, state, and ZIP code) (Not printers): P.O. Box 3967, 137 Obrien Dr., Crossville, TN 38557 (8) Complete mailing address of the headquarters of general business office of the publisher (Not printers): PO Box 3967, 137 Obrien Dr., Crossville, TN 38557. (9) Full names/complete mailing addresses of publisher, editor, and managing editor (this item must not be blank). Publisher (name/complete mailing address): Jean Hoffman, US Chess, PO Box 3967, 137 Obrien Dr., Crossville, TN 38557. Editor (name/complete mailing address): Glenn Petersen, P.O. Box 3967, 137 Obrien Dr., Crossville, TN 38557. Managing Editor (name and complete mailing address): same as above. (10) Owner. (If owned by a corporation, its name and address must be stated and also immediately there under the names and addresses of stockholders owning or holding 1 percent or more of total amount of stock. If not owned by a corporation, the names and addresses of the individual owners must be given. If owned by a partnership or other incorporated firm, its name and address, as well as that of each individual must be given. If the publication is published by a nonprofit organization, its name and address must be stated.) (Do not leave blank.): United States Chess Federation, PO Box 3967, 137 Obrien Dr., Crossville, TN 38557. (11) Known bondholders, mortgagees, and other security holders owning or holding 1 percent or more of total amount of bonds, mortgages or other securities (if there are none, so state): none. (12) For completion by nonprofit organizations authorized to mail at special rates section 423.12, DMM only). The purpose, function, and nonprofit status of this organization and tax exempt status for Federal income tax purposes (check one): has not changed during preceding 12 months; has changed during preceding 12 months. (If changed, publisher must submit explanation of change with this statement.) (13) Publication Name: Chess Life For Kids. (14) Issue Date for Circulation Data Below: August 2015. (15) Extent and nature of circulation. (a) Total number copies printed (net press run): average number copies each issue during preceding 12 months, 10,109; actual number copies of single issue published nearest to filing date, 10,266. (b) Paid and/or requested circulation: (1) Paid/requested outside-county mail subscriptions: average number copies each issue during preceding 12 months, 8,711; actual number copies of single issue published nearest to filing date, 8,710. (2) Paid in-county subscriptions (include advertisers's proof copies/exchange copies): average number copies each issue during preceding 12 months, 0; actual number copies of single issue published nearest to filing date, 0. (3) Sales through dealers and carriers, street vendors, and counter sales (not mailed): average number copies each issue during preceding 12 months, 31; actual number copies of single issue published nearest to filing date, 31. (4) Paid distribution by other classes of mail through the USPS (e.g. First Class Mail): average number copies each issue during preceding 12 months, 5; actual number copies of single issue published nearest to filing date, 5. (c) Total paid and/or requested circulation (sum of 15b (1), (2), (3), and (4)); average number copies each issue during preceding 12 months, 8,747; actual number copies of single issue published nearest to filing date, 8,746. (15d (1), (2), (3). Non requested distribution; average number copies each issue during preceding 12 months, 0; actual number copies of single issue published nearest to filing date, 0. (e) Total non requested distribution (sum of 15d (1), (2), (3): 0; actual number copies of single issue published nearest to filing date, 0. (f) Total distribution (sum of 15c and 15e): average number copies each issue during preceding 12 months, 8,747; actual number copies of single issue published nearest to filing date, 8,746. (g) Copies not distributed: average number copies each issue during preceding 12 months, 1,362; actual number copies of single issue published nearest to filing date, 1,520. (h) Total (sum of 15f and 15g) average number copies each issue during preceding 12 months, 10,109; actual number copies of single issue published nearest to filing date, 10,266. (i) Percent paid. 15c divided by 15f x 100, per cent on average no. copies each issue during preceding 12 months, 100; per cent on actual no. copies of single issue published nearest filing date, 100. 16. Publication of Statement of Ownership. Publication of this statement will be printed in the December 2015 issue of this publication. 17. I certify that the statements made by me above are correct and complete (signature and title of editor, publisher, business manager, or owner): Jean Hoffman (sig.), Publisher. P.S. Form 3526-R, July 2014.



The graphic features a hot air balloon with the US Chess Federation logo on the left. In the center, a map of the United States is shown with blue chess pieces and white connecting lines, symbolizing a national network of tournaments. The background includes a city skyline and a chess knight. Text elements include the title 'OFFICIAL US CHESS RATED TOURNAMENTS', the slogan 'Competitive and fun! US CHESS play at its best!', the ICC logo and 'chessclub.com' in the bottom left, and the website 'www.chessclub.com/uschess' with the tagline 'Because we care about your rating!' in the bottom right.

OFFICIAL US CHESS RATED TOURNAMENTS
Competitive and fun! US CHESS play at its best!

ICC
chessclub.com

www.chessclub.com/uschess
Because we care about your rating!



TALES OF THE ARABIAN KNIGHTS

BY RICK KENNEDY ILLUSTRATIONS BY PAMELA KEY



Silly Chess

"WHEN I STARTED TO PLAY CHESS," THE KING'S FRIEND SAID, "NO ONE WOULD TAKE ME SERIOUSLY."

"I began to play 'silly chess', making moves that looked like errors but were not. This led my opponents to play to punish my 'mistakes', and that would work against them."

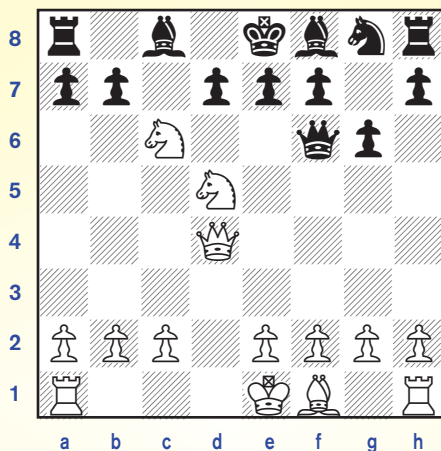
"Show me a game," said the King.

She set up the pieces and began to move them.

1. Nc3 c5 2. Nf3 Nc6 3. d4 cxd4 4. Nxd4 g6

"It looks like you are playing an e-pawn opening, but you forgot to play e4," the King chuckled.

5. Bg5 Qa5 6. Nxc6 Qxg5 7. Qd4 Qf6 8. Nd5



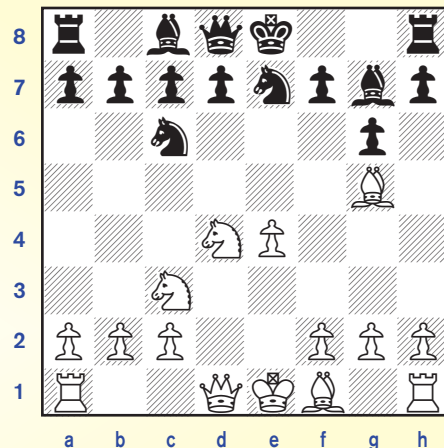
"How silly of me to leave my Queen unprotected" she said.

"A moment or two of thought would protect your opponent from underestimating you," said the King.

8. ... Qxd4 9. Nc7 checkmate.

"Oooops," she said, smiling. "Later, my chess grew more serious, but I was still willing to make my pretend errors."

1. e4 e5 2. Nf3 Nc6 3. d4 exd4 4. Nxd4 Nge7 5. Nc3 g6 6. Bg5 Bg7



7. Nd5 Bxd4 8. Qxd4 Nxd4

"Oooops, again," said the King. "How silly!"

9. Nf6+ Kf8 10. Bh6 checkmate.

The King and his friend agreed that there was much to learn from these silly encounters.





What's the Question

by FIDE Master Daniel Gurevich



Jackson

Q: *There's this kid at my chess club who keeps crushing me but usually loses to some other players I have a good score against. What's going on?*

A: It sounds like you are suffering from Difficult Opponent Syndrome (DOS). When you have DOS, you keep losing to a certain opponent, even though you know you aren't a weaker player. At the beginning, the symptoms are relatively mild. During your first few games against the difficult opponent, you might become aware that his style of play is a bit annoying and that you are somehow getting outplayed. But soon, it gets much worse. You start blundering even when you reach a good position against him, turning wins into draws and draws into losses. Eventually, the thought that you just cannot beat this difficult opponent can stick, and then you have a full-blown case of DOS.

You should know that you are not alone; almost every chessplayer at every level has experienced this malady. The 10th world champion, Boris Spassky, had a particularly bad case of DOS: he was surprisingly helpless against the 12th world champion, Anatoly Karpov. In tournament games (excluding rapid and blitz), Spassky lost to Karpov 15 times, drew 21 games, and won only two! Nobody, not even Bobby Fischer, could crush Spassky like Karpov did. Spassky once even admitted to Karpov, "I can't play with you because I don't understand the way you play or your train of thought."

Here is Spassky's last and probably most devastating loss against Karpov:

Spassky – Karpov

World Cup, 1988

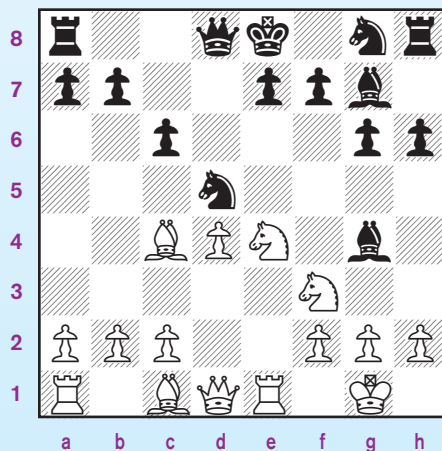
1. e4 c6 2. d4 d5 3. Nd2 dxe4 4. Nxe4 Nd7 5. Ng5

The most aggressive response against this variation of the Caro-Kann. One of White's ideas is to meet 5. ... h6 with 6. Ne6!, and the knight cannot be captured due to 7. Qh5+ with mate next move. If instead Black moves the queen away with 6. ... Qb6, the white knight will snatch Black's dark-squared bishop, with a slight advantage for White as he has the two bishops.

5. ... Ndf6?!

Karpov played this uncommon move more than once, but the main line, 5. ... Ngf6, seems much more solid.

6. Bc4 Nd5 7. N1f3 g6 8. 0-0 Bg7 9. Re1 h6 10. Ne4 Bg4



Black's unconventional opening play has led to a very dangerous position. White has a significant lead in development and Black's kingside already looks weak. Generally, Spassky, an exceptional attacker as well as an excellent strategist, would not give his

opponent any chance to survive such a position. Let's see what happened instead in this game.

11. a4?!

White's idea is to gain space on the queenside while preparing to activate the rook via a3. In principle, this is a good plan, but *in a position with an advantage in development, you should look for forcing continuations first!*

Black would have been in trouble after 11. h3!. Then 11. ... Bf5 would allow 12. Ng3, forcing the bishop away to a much worse position (or else trading off an important bishop and ruining Black's pawn structure after Nx5). Meanwhile, after 11. ... Bxf3 12. Qxf3, White's attack is very strong—12. ... Ngf6 13. Nxf6+ Nxf6 (13. ... Bxf6?? 14. Bxd5 cxd5 15. Qxf6!) 14. Qb3! wins a pawn, and 12. ... Qc7 13. Bb3!, followed by 14. c4 and 15. Bf4, is also crushing. (It should be clear that the greedy 12. ... Bxd4?! cannot possibly be good when Black has only two pieces developed.)

After 11. a4, Black gains some time to develop his pieces.

11. ... Ngf6 12. Nxf6+ Bxf6

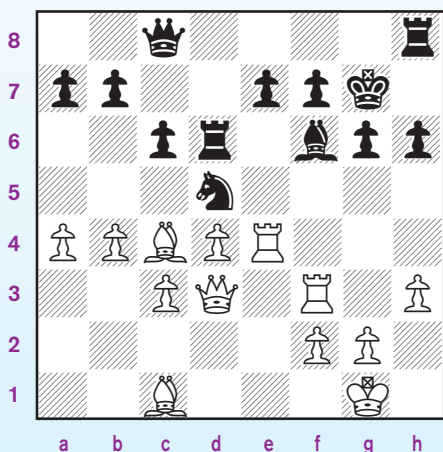
Of course not 12. ... Nxf6? 13. Bxf7+! Kxf7 14. Ne5+.

13. Ra3 Kf8!

Sometimes, castling by hand is the best option even when normal castling is available. Black will thoroughly

defend the weak h6-pawn after ... Kg7; White is now only slightly better, but Spassky slowly turns up the pressure over the next few moves.

14. h3 Bxf3 15. Rxf3 Kg7 16. c3 Qd7 17. Qd3 Rad8 18. Re4 Qc8 19. b4 Rd6



This is another critical point in the game. Although Black's pieces are more active now than they were ten moves ago, his position is still cramped and passive. One good idea for White here is 20. Qe2!? in order to prevent 20. ... Re6, which exchanges a pair of rooks and makes it a bit easier for Black to defend (generally, the side with less space should try to trade pieces). Then, White could attack on the queenside by playing b5 and Ba3

and maybe attack on the kingside later, too. Perhaps Karpov could have saved the game with diligent defense, but it would not have been easy.

Instead, Spassky chose to go after the king immediately; too soon.

20. Rg3?! Re6 21. Reg4??

A calm move such as 21. Bb3 would let White keep his advantage, but Spassky had a different idea.

21. ... Re1+ 22. Kh2 Rxc1, 0-1

Of course, Spassky had considered this simple tactic when he played 21. Reg4. He had probably planned to respond now with 23. Rxg6+ fxg6 24. Qxg6+ Kf8 25. Bxh6+ Rxh6 26. Qg8#. But Boris Spassky resigned here after realizing the fatal flaw in his calculations: 25. Bxh6+ is illegal because the bishop on c1 has already been captured!

This game may have been played near the end of Spassky's chess career, but at the time he was still the 42nd-highest rated player in the world and an extremely dangerous opponent. So why did it end in disaster for Spassky, even though he had a great position and excellent winning chances throughout?

The explanation is simple: his severe case of Difficult Opponent Syndrome

struck again.

DOS seems quite scary by now, doesn't it? Well, here is a bit of good news for you—it can be treated and often even cured. Pay attention to how exactly you tend to lose against the difficult opponent. If you keep blundering tactical tricks, for instance, it can help to stay extra alert for tactics and double-check all of your calculations during the next game. Your difficult opponent's style can also provide clues about the areas you should work on. If he is, say, a tactician, you probably need to improve your combinational skills; once you have addressed your weaknesses, you may discover that this player is not such a difficult opponent after all!

Finally, keep in mind that the psychological symptoms of DOS—fear that you will somehow mess up, the feeling of helplessness—are not always permanent. Once you do manage to beat your difficult opponent once or twice, you will realize that **you can do it!** And who knows, maybe one day you will become his own difficult opponent!

DREAM BIG Continued from page 3

The program is unique in that “it changes the environment in which chess is presented.” In addition to the beautiful pink table coverings, chess boards, and pieces, beginners enjoy supervised games with adult volunteers in small groups (4:1). They also receive weekly instruction and have the opportunity to meet outstanding professional women from the community that serve as positive role models for the girls. Recently, they had the privilege of being visited by Donna M. Cooper, the president of Pepco.

Robin Floyd-Ramson, Executive Director of Chess Girls DC, launched the program in response to scientific evidence that self-confidence plays a tremendous role in a girl's approach to course work that requires higher level thinking skills and challenging circumstances.

Chess Girls DC will be competing in the upcoming grade nationals in Orlando, Florida.



END OF THE LINE

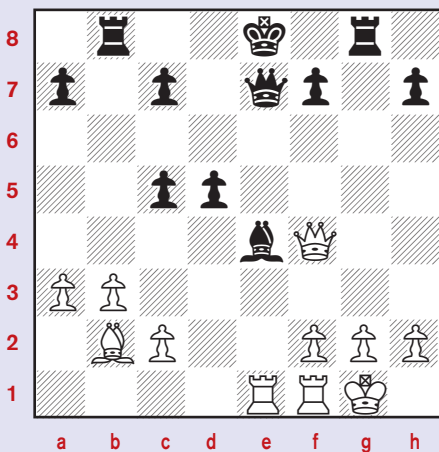
Round and Round

Often, when a bishop can deliver a discovered check to the opposing king, there is a chance for a windmill tactic. See if you can find a way to use this tactic to full advantage!



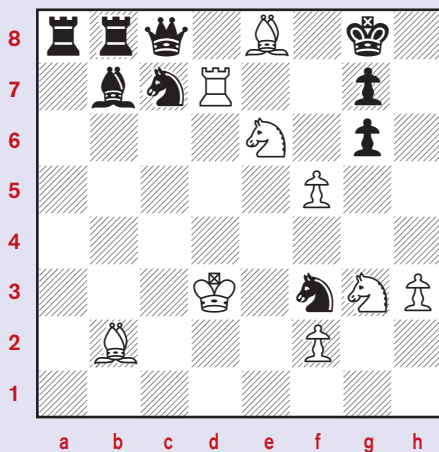
by NM Atulya Vaidya

#1



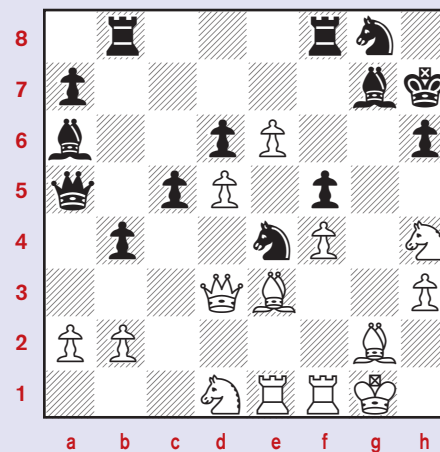
Black to move

#3



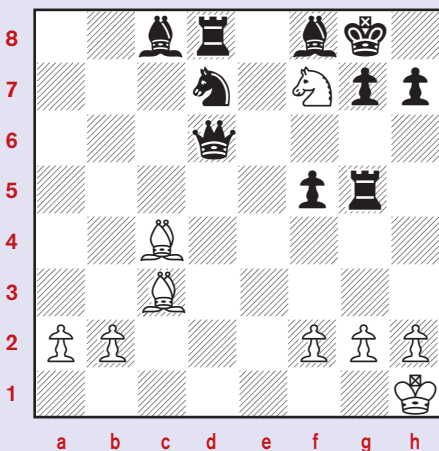
White to move

#5



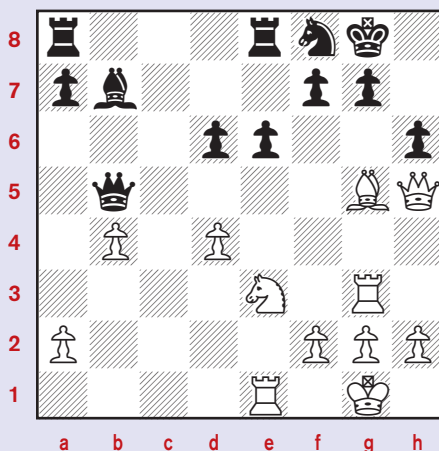
White to move

#2



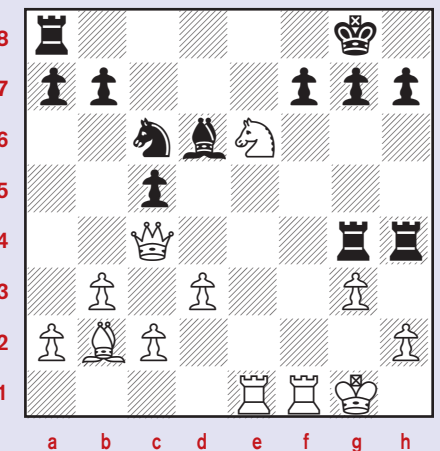
White to move

#4



White to move

#6



White to move

Pin It and Win it!

Solutions on page 23



That's the theme for the next issue of *Chess Life for Kids*. If you used a pin or skewer in one of your games, send it to us! We'll try to use as many of your examples as possible. Send your games or positions to: *Chess Life for Kids*, c/o Glenn Petersen, 44-D Manchester Court, Freehold, NJ 07728, or if you can, send an email to: chesslies@aol.com. We may even hold a drawing and offer a book prize or two!



The Chess Detective®

by NM Todd Bardwick

INTERFERENCE PROBLEMS

We looked at some examples of smothered mates where a knight checkmated the opposing king when he was trapped by his own pieces in the October edition of *Chess Life for Kids*.

Now it's your turn to find the smothered mate. Remember smothered mates often involve double checks and sacrifices.

#1



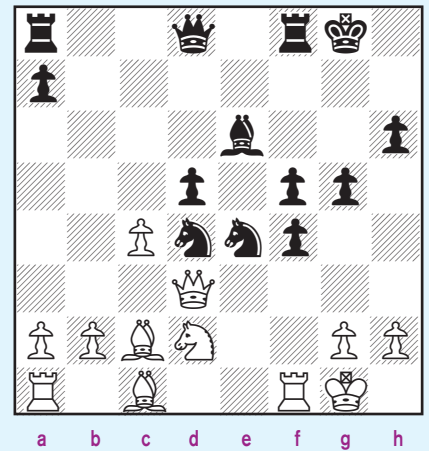
Position after 13. Be2
Black to move

#3



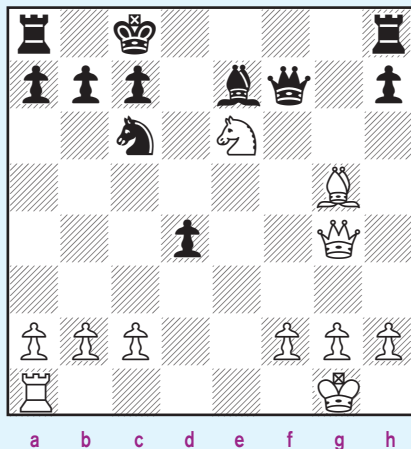
Position after 20. Og3
Black to move

#5



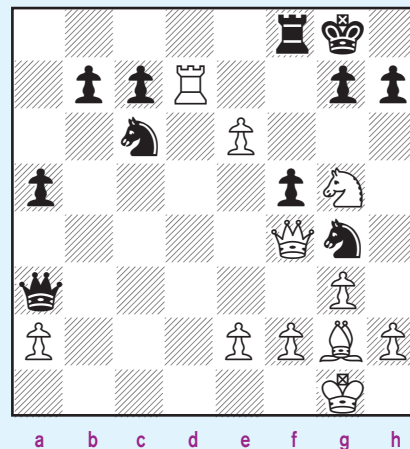
Position after 18. Qd3
Black to move

#2



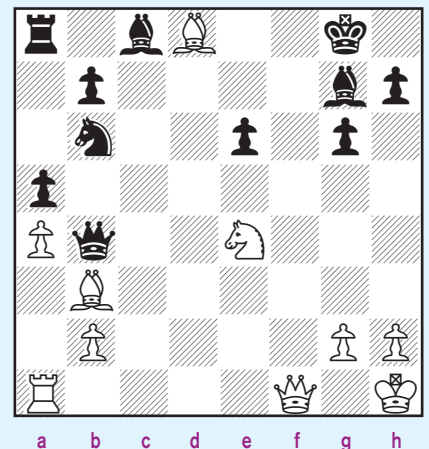
Position after 19. ... Kc8
White to move

#4



Position after 23. ... Nc6
White to move

#6



Position after 22. ... Qb4
White to move

Solutions on page 23

YOU CAN DO IT!

by Jon Edwards
10th United States Correspondence
Chess Champion

François Antoine de Legall de Kermeur (1702-1792) was a French master best known as Philidor's teacher and a regular competitor at Paris' famous Café de la Regence.

He is also remembered for a most memorable queen sacrifice. Here's a very common example:

1. e4 e5 2. Nf3 d6

The first "error," choosing Philidor's Defense which involves a pawn move, blocking the dark-squared bishop, rather than developing a knight.

3. Bc4

3. d4 is a better move, but then the sacrifice would not have a chance to transpire.

3. ... a6

The second error, and this one is more serious. Black had eight pieces "in the box" and instead makes his third pawn move.

4. Nc3

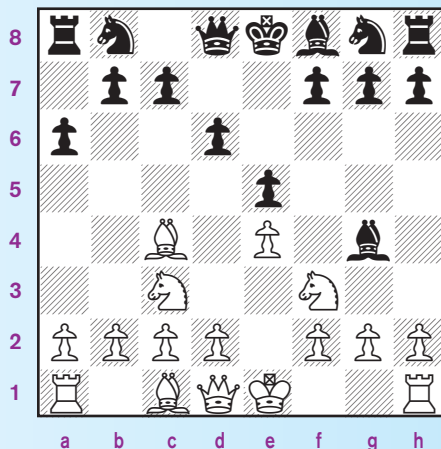
The sacrifice is in motion. It needs only a third mistake.

4. ... Bg4

And here it is. Black's last move, Bc8-g4, has broken the time-honored principle of developing knights before bishops.

White already has a pronounced advantage in this early position. White has developed three pieces, the two knights and the light-squared bishop, while Black has only brought out the Bg4 in order to pin the Nf3. Of course,

it is a relative pin because the Nf3 is able to move.



It may well have been Legall who first played the next move than 250 years ago. White begins with Nxe5, breaking the pin on the Nf3.

5. Nxe5! Bxd1

The fourth error in just five moves. Black could simply capture the knight with ... dxe5, but White would then be able to emerge a pawn ahead with Qxg4. Black instead captures White's queen with ... Bxd1.

White has sacrificed the queen, but there is nothing unclear about the compensation. White has a checkmate in just two moves. First, White uses the Ne5's control over the key f7-square to play Bxf7 check. The black king has only one legal move, to move forward from e8 to e7. Here, White has a lovely checkmate in one move with Nd5. The Nd5 attacks the Ke7 and covers the f6-escape-square. The Bf7 controls e8 and e6. The Ne5 defends the Bf7 and controls d7. It's checkmate, and quite a lovely one!

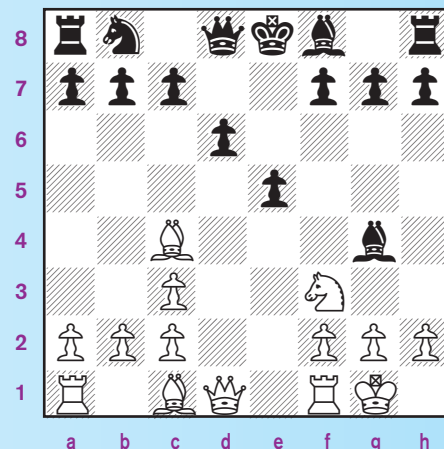
6. Bxf7+

It's mate in two.

6. ... Ke7 7. Nd5#.

Many of you are familiar with this Legall trap but perhaps not with its many different forms.

Here's a neat example that involves both of White's bishops:



White to move

Surely without the Nc3, the trap won't work, right?

7. Nxe5

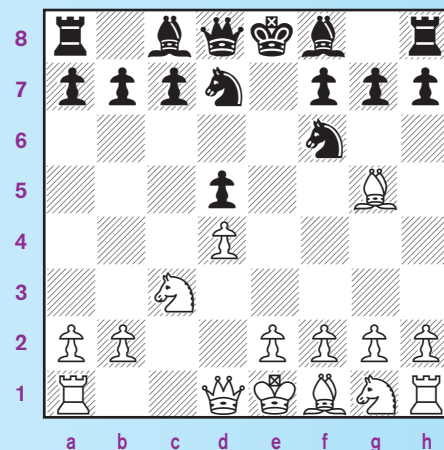
But it works indeed.

7. ... Bxd1 8. Bxf7+ Ke7 9. Bg5#.

The active bishops fill the role of the missing knight.

Finally, here's an example in the Queen's Gambit Declined in which Black pulls off a comparable trap:

1. d4 d5 2. c4 e6 3. Nc3 Nf6 4. Bg5 Nbd7 5. cxd5 exd5



White sees that the Nf6 is pinned and surges forward to capture on d5.

6. Nxd5? Nxd5! 7. Bxd8

Unaware of any danger, White glee-



fully captures the queen.

7. ... Bb4+

And suddenly, White must return the queen.

8. Qd2 Bxd2+

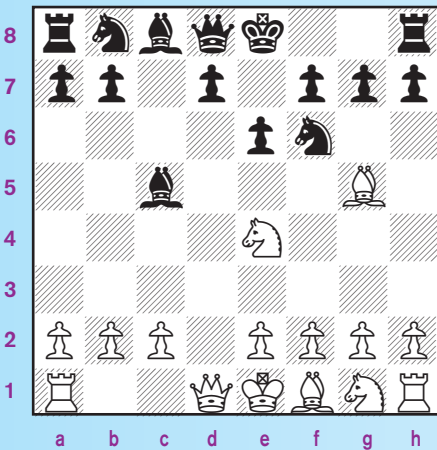
Even here, a slight inaccuracy. Better for Black simply to capture first on d8.

9. Kxd2 Kxd8

Here's the quiz...

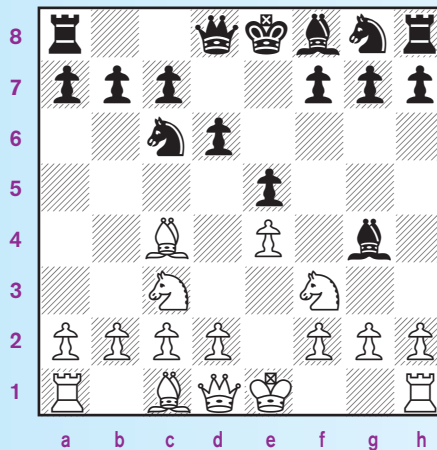


Quiz #1



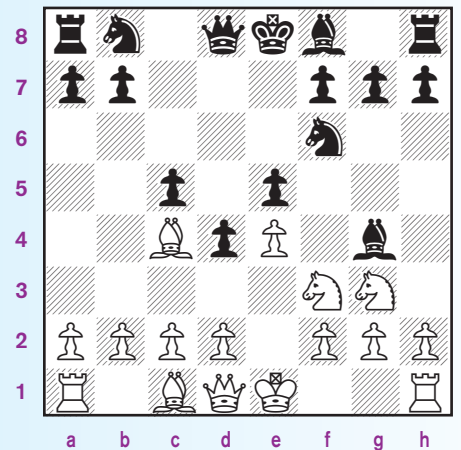
Black to move

Quiz #3



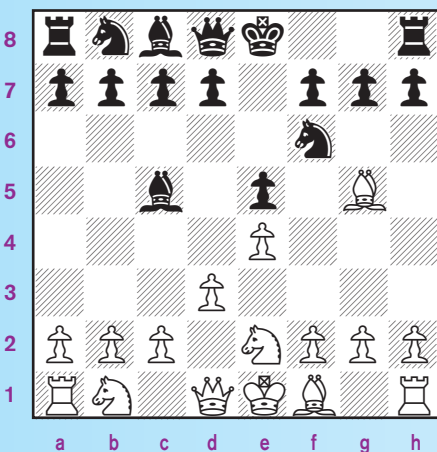
White to move

Quiz #5



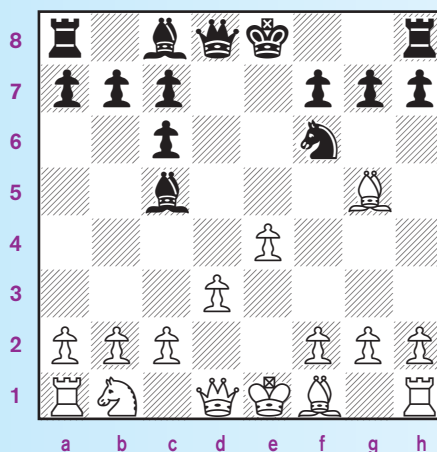
White to move

Quiz #2



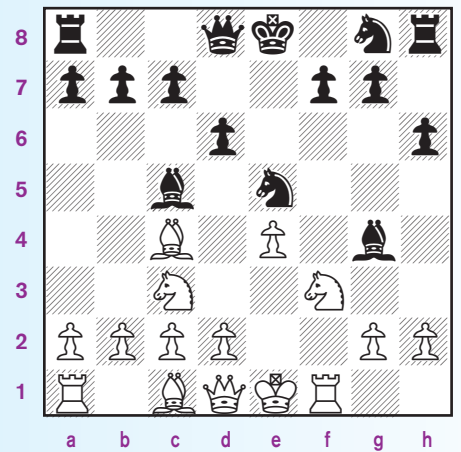
Black to move

Quiz #4



Black to move

Quiz #6



White to move

Solutions on page 23

2016 Trophies Plus All-America Team



64 of our most promising young members

Once again it is time to announce the current members of the Trophies Plus All-America Team. Members were selected based on their peak ratings between July 1, 2014 and June 30, 2015, along with activity (at least 30 games played).

US Chess is proud to have Trophies Plus (Templeton, Iowa) as a partner. They have been sponsoring the All-America Team since 2004, providing each team member with a personalized team jacket, usually presented at the national grade championship in December.

Owner Jim Jenson proudly provides all the trophies and awards at our national scholastic events throughout the year. You can visit the Trophies Plus website at: www.trophiesplus.com.

The Trophies Plus motto is "A Champion Defined," and that certainly describes the 64 members of the 2016 squad. We also included those who were on the brink of making this year's team, no less deserving of recognition.

Champions, one and all!



Jason Yuyang Wang (OH) 2060

With a number of strong finishes in national and state events, Jason earned his spot on the All-America Team under the wing of his coach, Goran Vojinovic.



Jason Yu (WA) 1982

Strong finishes in national and World Youth events earned Jason a spot on the All-America Team. Emil Anka is his coach. The Bellevue Youth Symphony (violin), soccer, science and the Seahawks keep him well grounded.



Rithik Polavaram (TX) 2028

Rithik recently won the National Elementary (K-3 section) and in 2014 he finished seventh in the World Youth. He enjoys playing piano and hopes to become a chemist.



Nathaniel Lande Shuman (NY) 1955

With nine pets, a younger sister, his interest in fantasy sports teams, and anything to do with a ball and keeping score, it's a wonder he had any time for chess! But under the coaching of former World Junior Champion Maxim Dlugy, Nate has a long list of strong results in world and national youth events.

AGE 8 and Under

Minimum Rating: 1950



8

Arthur Guo (GA) 2076

Are there stars in this youngster's future? He enjoys reading about the universe and space. In the chess world he's already a star, having won both the Pan American and North American Youth Championships in 2014, and is currently the highest rated FIDE player under age 9. His coach is GM Alonso Zapata.



Nico Werner Chasin (NY) 2004

With a number of local, state and national titles to his credit, Nico is a good example of well-coached talent. The Marshall Chess Camp and the Grandmaster Chess School can share some of the credit. The rest belongs to Nico!

On the cusp:

Ruhun Trakru (1920), Andrew Tang (1920), and Christopher Yoo (1917).



AGE 9

Minimum Rating: 2000



9



Chinguun Bayaraa (CA) 2073

Chinguun has had a lot of coaches, but his dad was the first and gets the credit! Four national titles, twice an online champ and a silver medal at the North American Youth: not bad at all! Reading, science, and fishing with his dad takes up his spare time.



Benjamin Medina (NY) 2024

Benjamin enjoys math puzzles, science fiction, fantasy books, video games, biking, math and hopes to become a scientist studying chemistry. And he obviously likes studying chess with GM Miron Sher.

Kevin D. Chor (AZ) 2149

A string of good results in Arizona, Nevada, California and New Mexico has placed Kevin on the All-America Team for the second year in a row.



Justin Wang (TX) 2126

First place in the 2015 North American U10 Championship probably helped him attain his peak (2126) by June 30, 2015. But his real talent came to light the very next weekend at the World Open Under 2200 section when his rating shot up to master level, where it remains.



Logan Wu (TN) 2060

GM Predrag Trajkovic can be rightfully proud of his student Logan, who has qualified for the World Youth in 2012, 2013 and 2015. Earlier this year, Logan won the U.S. Amateur Championship South. He's a straight A student, and enjoys soccer, swimming, reading, math, science and playing the piano.



Balaji Daggupati (CA) 2029

Plays primarily in his home state, and obviously, with success!

On the cusp:

Daniel Hung (2013), Milind Maiti (1995), and Winston Ni (1981).

AGE 10

Minimum Peak Rating: 2100



Maximillan Lu (CT) 2085

While his peak rating for the 2015 All-America Team is 2085, activity after June 30 propelled him to 2207 and is currently the youngest to ever reach master class.



Anthony Bi He (WA) 2041

Playing primarily in state events, Anthony is already ranked 38th by US Chess rating in Washington.



10

Andrew Zhang Hong (CA) 2284

Following up on his third place finish in the 2014 North American Youth, Andrew took first place in the 2015 National Elementary (K-6 section). Having a coach here (Melik Khachiyani) and in China (Wenliang Li) obviously doesn't hurt! Andrew also enjoys math, soccer and basketball.

Sponsored by



Atreya Vaidya (TX) 2031



Christopher Yu-Shuo Shen (OH) 2215

Christopher is already a veteran of the World Youth (bronze medalist in 2012 and the Pan American Youth (gold medalist in 2014). As a result, he is a FIDE candidate master. Math, music, soccer and swimming are also of interest. Not bad for a 10-year-old US Chess master!



Andy Huang (VA) 2137

Playing in his own backyard, Andy won the Under 2200 section of the World Open this year. His coach, Andranik Matkozyan, however, is in California! Math and science also keeps Andy occupied.



Wesley Wang (NY) 2122

Under the watchful eye of GM Gennady Sagalchik, Wesley has done quite well, qualifying in 2014 and 2015 for the World Youth and Cadet Championships. He's no stranger to the New York State scholastics, winning the K-1 section in 2011 and the K-6 section in 2015. Soccer and tennis are his sports of choice, but what he really likes is learning new card tricks!

On the cusp: Tan Ngyuyen (2084), Daniel Levkov (2079) and Aydin Turgut (2079).

AGE 11

Minimum Peak Rating: 2200



11

Awonder Liang (WI) 2483

At age 11, Awonder is already a veteran in World Youth and international competitions and is recognized as a FIDE master. He is already a US Chess life master and well on his way to becoming a senior life master, the highest title awarded by US Chess. At age 11. How bright is his future!



Hans Moke Niemann (CT) 2322

Hans learned how to play chess while living in the Netherlands. His current coach is GM Yaroslav Zhrebukh. In just one year (2013), he gained over 1,000 rating points and is a life master. Speed is the name of his game, with a peak blitz rating of 2440. He is currently the top rated blitz player in the U.S. under the age of 13. He likes math in school and sports, playing soccer, basketball, water polo and table tennis.



David Tianjian Peng (IL) 2320

Studying with GM Dmitry Gurevich has certainly helped David's game. He won a silver medal in the World Youth U10 in 2013, and never looked back. Math is one of his favorite subjects in school.



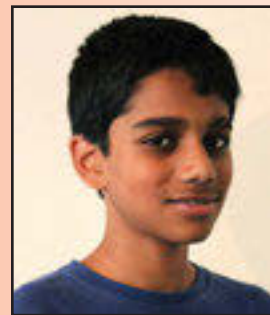
Carissa Shiwen Yip (MA) 2260

Carissa Yip was nice enough to annotate one of her games for *CL4K* when she became the youngest female in the country to become an expert. Now she is the youngest female master in the country. Maybe she'll favor us with another annotated game!

On the cusp: Josiah Stearman (2215), Brandon Jacobson (2209), and Anthony Ge (2182).

AGE 12

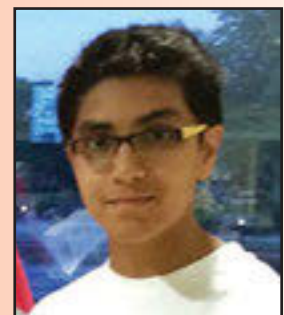
Minimum Peak Rating: 2200



12

Praveen Balakrishnan (NJ) 2437

Praveen's current coach is GM Joel Benjamin. Praveen is also the current fifth grade national champion and has represented the USA three times at the World Youth. Math and science are his subjects of choice and he enjoys reading and watching movies.



Advait Patel (OK) 2368

Parents and coach (GM Boris Avrukh) are rightfully proud of Advait. He is a two-time winner of the Barber K-8 Championships, and Oklahoma champion in 2014 and 2015. Swimming and cricket (!) take up his spare time.



David Brodsky (NY) 2327

David is another student with a long-distance coach—GM Alex Yermolinsky in South Dakota. David became a master last year at 11, and won the U12 section of the North American Youth.

David enjoys math and computer programming and holds a brown belt in karate! He was accepted to Study of Exceptional Talent (SET) and he has already taken his SAT, scoring 800 on the math section!



Jennifer R. Yu (VA) 2285

So many titles, so little space! Coaches Andranik Matikozyan, Larry Christiansen, and Ben Deng are rightfully proud of their student. In addition to national and international titles and accomplishments, Jennifer has found the time to be the 2015 co-champion of Maryland, and recently won the Virginia Closed Championship, the first female to do so in the 80 year history of the event! She plays the flute in the school band, enjoys math, drawing, reading, music and volleyball.



Annie Wang (CA) 2281

Annie was the first to break Irina Krush's record for becoming the youngest female master in US Chess history, a record which stood for two decades! She also

holds a women's international master title, having won the 2014 North American Youth for her age group. She was the youngest participant in the 2015 U.S. Women's Championship. Drawing, history and science, and tennis take time away from her friends. That and reading. Avidly!



Marcus Ming Miyasaka (NY) 2269

Marcus is another coast-to-coast student, with coaches in New York (GM Miron Sher) and California (IM Armen Ambartsoumian). He already has international (Pan American U14 Gold), national (National Junior High School K-8 champion) and state (New York State Junior High School champion) titles to his credit. He enjoys math and reading, running and—I never met this guy but I admire him already—the sport of squash.



Ben Li (MI) 2282

Ben makes the best of the opportunities he has to play locally. He is ranked seventh in Michigan and is in the 99th percentile of all US Chess rated players! He loves to read and in school he enjoys humanities.



Aravind Kumar (NJ) 2287

Can you call a 12-year-old a seasoned veteran? I guess you can if he has been competing (and winning) since the age of five! He started off with the national kinder-

garten title in 2007 and most recently won the U2200 section at the U.S. Masters in North Carolina. He studies with GM Alexander Stripunsky. Aravind has a thing for racquets—racquetball and tennis, and also enjoys playing the clarinet.



Akshita Gorti (VA) 2272

Having coaches in New Jersey (GM Magesh Panchanathan) and Illinois (GM Boris Avrukh) hasn't hurt Akshita at all. She has a string of titles after her name, including the U.S. Junior Girls Closed in 2014.



Andrew Zheng (MD) 2287

Jennifer Skidmore, Enkhbat Tegshsuren and Larry Christiansen can share a little bit of the credit, Andrew now studies on his own. He recently won the Maryland Sweet 16 Championship and if I recall correctly, a chance at a nice scholarship to UMBC. Andrew also enjoys playing ice hockey.



Rayan Taghizadeh (CA) 2258

A student of IM Armen Ambartsoumian, Rayan has three state titles, three national titles and a bronze medal in the 2014 World Youth under his belt. He enjoys math, soccer, tennis, filming, and reading on his Kindle. Rayan says he hasn't decided on a career goal yet. Hey Rayan—you've got time!

Aaron Shlionsky (NJ) 2225



Andrew Titus (MN) 2217

Andrew was chosen to play in the U.S. Chess League for the Minnesota Blizzard, and participated in this year's World Youth Championships. To say that he loves math is an understatement. He is already doing calculus in a program at the University of Minnesota. And he likes to make noise, in a good way, playing percussion instruments, especially drums.



Luke Bohua Xie (OH) 2203

I think Luke likes math. In addition to a string of Ohio State chess titles, too numerous to list here, Luke finished in third place in the Ohio Dublin District Math Count competition for seventh graders. He helped his team finish first in this year's Franklin County Math Counts competition, and third place in the Ohio State competition. Luke has also won awards for writing non-fiction and enjoys soccer, track and field, swimming, robotics, skiing and videos games.

On the cusp: Gabriel Sam (2196), Rick Sun (2170), and Joanna Liu (2151).

AGE 13

Minimum Peak Rating: 2300



Ruifeng Li (TX) 2548

13

Ruifeng, a long time member of the All-America Team, didn't just meet the minimum rating requirement, he blew the top off of it! He finished fourth in this year's super-strong U.S. Junior Invitational and most deservedly received his international master title in October. Parents, and coaches (GMs Julio Sadorra and Babakuli Annakov) are proud of this accomplished teenager.



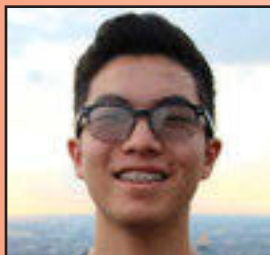
Nicolas Checa (NY) 2440

This past summer, Nicolas earned two international master (IM) norms at the Washington International and the U.S. Masters. He needs just one more for his IM title! He enjoys mathematics, history, and competitive soccer.



John Michael Burke (NJ) 2408

John reached master class in 2013 and despite very few opportunities, was awarded the FIDE master title this year, achieving a FIDE rating of 2603! He finished second in this year's U.S. Cadet Championship.



Albert Lu (CA) 2372

This is Albert's seventh time as a member of the Trophies Plus All America Team. He has played twice for the USA in the World Youth. He also won the K-8 section of the National Youth Action in 2014, and played first board for his second place team at the U.S. Amateur Team West. He enjoys all sports (except baseball!). Math and science hold sway in the classroom.

On the cusp: Michael Wang (2269), Brandon Nydick (2253), and Jacob Furfine (2248).

AGE 14

Minimum Peak Rating: 2350

- Samuel Sevia (MA) 2685**
- Jeffery Xiong (TX) 2624**
- Cameron Wheeler (CA) 2440**
- John Gabriel Ludwig (FL) 2395**
- Joshua Sheng (CA) 2391**
- Vignesh Panchanatham (CA) 2383**
- Craig Hilby (CA) 2376**
- Roland Feng (WA) 2365**
- Ethan Li (NY) 2364**

On the cusp: Jonathan Chiang (2344), Zhaozhi Li (2318) and Siddharth Banik (2308).

AGE 15

Minimum Peak Rating: 2400

- Akshat Chandra (NJ) 2589**
- Andrew Tang (MN) 2459**
- Kesav Viswanadha (CA) 2430**
- Edward Song (MI) 2417**

On the cusp: Dache Lin (2337), Colin Chow (2305), and Danile Mousseri (2295).

AGE 16

Minimum Peak Rating: 2400

- Kayden Troff (UT) 2649**
- Luke Harmon-Vellotti (ID) 2545**
- Mika Andrew Brattain (MA) 2473**
- Safal Bora (MI) 2463**
- Joshua Colas (NY) 2430**
- Christopher Wu (NJ) 2426**

On the cusp: Christopher Gu (2463; not enough activity), Justus Williams (2397), and Kapil Chandran (2394).

AGE 17

Minimum Peak Rating: 2450

- Michael H. Bodek (NY) 2538**
- Arthur Shen (NJ) 2477**
- Michael Brown (CA) 2468**

On the cusp: Daniel Gurevich (2449), Kevin Wang (2437), and David Hua (2435).

AGE 18

Minimum Peak Rating: 2550

- Darwin Yang (TX) 2580**

On the cusp: Aleksandr Ostrovskiy (2494), Atulya Shetty (2466), and Alexander Katz (2456).

US CHESS JUNIOR GRAND PRIX

2015 Junior Grand Prix Standings



Official standings for events received and processed by November 3, 2015 are unofficial and subject to change during the year or until year-end tabulation is complete. The top prize for 2015 will be a *Chess.com* one-year Diamond membership valued at \$100, a *Chess.com* gear/merchandise package valued at \$100, a US Chess plaque, free entry into the 2016 U.S. Open, and \$1,000 of expense money from US Chess to offset the trip. For the top five players on the overall list and to each state winner, *Chess.com* will also award a choice of a one-year *ChessKid.com* gold membership (valued at \$50/annually) or a one-year *Chess.com* Gold membership (valued at \$40/annually). US Chess gratefully acknowledges the participation of *Chess.com*!

Top 25 Overall Standings

NAME	STATE	PTS	EVENTS
GUO, ARTHUR	GA	9236	16
SILVER, JACK	NJ	8170	11
NAIR, SIDDHANT	VA	8100	12
TRIFALE, SHARVIL	PA	7306	13
SINGHAL, SANAT, JR	CA-S	7288	10
CHINNAMBETI, ABHINAV SAI	NJ	6737	11
CHANG, ELIAM HUAI-YANG	CA-N	6619	12
ORTEGA, VALENTINA LARA	FL	6556	9
KUMAR, ARAVIND	NJ	6147	15
KRUNZ, EYAD	AZ	6106	3
DOMMALAPATI, AASA	VA	6060	13
LALWANI, JAY	VA	6043	6
GHATTI, SANJAY	GA	5912	11
GORTI, AKSHITA	VA	5785	13
KONDAKOV, ADRIAN	CA-N	5771	13
PATEL, ANUJ	CA-N	5726	8
BOJJA, DINESH	OH	5635	8
JACOBSON, BRANDON	NJ	5612	15
TAKAHASHI, MICHAEL JOHN	IA	5601	10
POLAVARAM, RITHIK SAI	TX	5551	12
XU, ARTHUR ZIHAN	IL	5520	10
TANG, PATRICK Y	NY	5512	9
PINNINTI, SAHAS R	NJ	5500	3
KATZ, JORIS	NY	5486	6
KANAPARTI, SREYAS	GA	5468	4

State Leaders

NAME	STATE	PTS	EVENTS
AGARWALLA, MOHAK	AL	3048	5
SHE, CHENGYUE	AR	3730	8
WEI, QIYAO	AZ	4138	3
PENG, ANDREW	CA-N	5315	11
EIDELMAN, GABRIEL	CA-S	5190	15
MARTINEZ, TARA R	CO	4759	5
LOMELI, CHRISTOPHER	CT	4075	8
PAN, ZACHARY STIER	DC	2654	3
IRVING, NICHOLAS	DE	2034	1
LIU, JACKIE	FL	4786	10
GADI, VARUN	GA	5281	8
KIM, GYUYUN	HI	3818	2
CHEN, NATHAN	IA	4232	9
RIPLEY, RYAN DANIEL	ID	2324	1
CHIRUKANDATH, ASWIN	IL	4955	3
XU, GRACE D	IN	4612	4
JOSEPH, RITA MARY	KS	4407	5
COLE, CHRISTOPHER J	KY	2215	3
WEBSTER, DAVID C	LA	2498	3
SU, CARAH	MA	3871	4
MERCHANT, ALI ARMAAN	MD	4984	6
HENDRIX, WYATT MICHAEL	ME	2854	2
NARAYANAN, AKASH L	MI	5351	11
WEBER, SHANE MATHIAS	MN	3941	1
DIWAN, AARADHYA	MO	3511	3
JOHNSON, JORDAN	MS	1908	1
MCGLENN, SIMON BLAISE	MT	700	1
VENKATARAJA, TRIYAKSHARI	NC	3440	8
WOLF, STUART	ND	1886	1
YE, LUKE SICONG	NE	5347	4
GOVINDARAJU, ABHINAV	NH	2704	4
ARAYATH, NIKHIL	NJ	5204	10
ROMERO, JONAH ANTHONY	NM	3237	5
ESTAVILLO, JESSTIN	NV	2450	1
HU, WILLIAM	NY	5352	15
PADHYE, ROHAN	OH	5224	6
PATEL, ADVAIT	OK	3965	9
ROMERO, HENRY G	OR	1614	1
CAO, CLAIRE	PA	5099	14
LIN, ETHAN	RI	1735	1
DIAS, NEHA ALISHA	SC	3331	3
JORENBY, JOSIAH ISRAEL	SD	1290	1
DAVILA BLANCO, JUAN JOSE	TERR	4325	4
WU, LILLIAN	TN	5161	6
LI, RUIFENG	TX	5337	18
BINGHAM, NATHAN	UT	2450	1
KOBLA, VISHAL	VA	4609	8
MONTFORT, JOHN A	VT	1398	1
RACE, ADAM	WA	4780	2
ULRICH, RACHEL J	WI	5106	9
MALE, PRESTON JOSEPH	WV	2100	1
MC LNERNEY, BRYAN C	WY	1070	1



"The best part for **JACK SILVER** about the Junior Grand Prix is that we didn't even know that it existed until around September 9th of this year! He started playing tournament chess in the last year and a half and was hit with the chess bug very quickly. He happened to see his name in an issue of *Chess Life for Kids* in September stating that he was third in the country on the Junior Grand Prix.

"We then had to look up what that actually was—and it turned out he was second in the country. This was very exciting—as he just happened to like the longer time controls from early on, and happened to like playing up a section—also from very early on in his "chess life!" It made sense when we realized what the yearly contest was about and why he happened to be high on the list!" ~ Francine Silver

Tournament Life Announcements

DECEMBER 15 THROUGH FEBRUARY 14

Scholastic Members:

As a service to you, we are listing upcoming National US Chess rated events, and requested events of possible interest to you. You can always log in to www.uschess.org, and click on "Clubs & Tournaments." Then click on "Upcoming Tournaments" for a complete listing of upcoming rated events and details. As always, you can check out the TLA section of *Chess Life*.

Organizers and Tournament Directors:

If you would like your tournament listed here in *Chess Life for Kids* for February 2016 (events to be held after February 14), the deadline for submitting your announcements is December 10th. The deadline for the April 2016 issue is February 10th. The processing fee is \$1.00 per line for the first eight lines, \$2.00 for every line thereafter. Send your announcements to Joan DuBois, tda@uschess.org. **Display advertising is also available.** Advertising rates are posted on the US Chess website, www.uschess.org, or you may email: tda@uschess.org for complete details.

ABBREVIATIONS & TERMS

All tournaments are non-smoking with no computers allowed unless otherwise advertised.

BLZ:	Blitz rated.
QC:	Quick Chess events.
\$\$\$Gtd:	Guaranteed prizes.
\$\$b/x:	Based-on prizes, x = number of entries needed to pay full prize fund. At least 50% of the advertised prize fund of \$501 or more must be awarded.
Bye:	Indicates which rounds players who find it inconvenient to play may take 1/2-point byes instead. For example, Bye 1-3 means 1/2-point byes are available in Rounds 1 through 3.
CC:	Chess club.
dx:	Time delay, x = number of seconds.
+xx:	Time increment, xx = number of seconds added after each move.
EF:	Entry fee.
Ent:	Where to mail entries.
FIDE:	Results submitted to FIDE for possible rating.
G/:	Game in. For instance, G/75 means each side has 75 minutes for the entire game.
GPP:	Grand Prix Points available.
HR:	Hotel rates. For example, 60-65-70-75 means \$60 single, \$65 twin, \$70/3 in room, \$75/4 in room.
JGP:	Junior Grand Prix.
Memb. req'd:	Membership required; cost follows. Usually refers to state affiliate.
Open:	A section open to all. Often has very strong players, but some eligible for lower sections can play for the learning experience.
Quad:	4-player round robin sections; similar strength players.
RBO:	Rated Beginner's Open.
Rds:	Rounds; scheduled game times follow. For example, 11-5, 9-3 means games begin 11 a.m. & 5 p.m. on the first day, 9 a.m. & 3 p.m. on the second day.
Reg:	Registration at site.
RR:	Round robin (preceded by number of rounds).
SD/:	Sudden-death time control (time for rest of game follows). For example, 30/90, SD/1 means each player must make 30 moves in 90 minutes, then complete the rest of the game in an hour.
SS:	Swiss-System pairings (preceded by number of rounds).
Unr:	Unrated.
W:	Site is accessible to wheelchairers.
WEB:	Tournaments that will use a player's online rating.

NATIONALS

US Chess Junior Grand Prix! Jan. 23 and/or 24, California, Northern 2016 U.S. Junior Chess Congress

Livermore Community Center, 4444 East Ave., Livermore, CA 94550. Experience Early Spring in California! **8 sections based on age:** 6 & under, 8 & under, 10 & under, 12 & under, 14 & under, 16 & under, 18 & under, 20 & under. **Individual Trophies:** All (6 & under), Top 20 (8 & under, 10 & under, 12 & under, 14 & under), Top 5 (16 & under, 18 & under, 20 & under). "Super Performance" trophies to players tied for last place with a trophy award and the top player(s) in each rating class who did not get a place trophy. Winning record required for all place trophies. Commemorative participation medals to all entrants. **Team Trophies:** Top 10 (6 & under, 8 & under, 10 & under, 12 & under, 14 & under) or Top 5 (16 & under, 18 & under, 20 & under) based on section. **Time control:** G/90 d5 (except G/30 d5 for Ages 6 & under and Ages 8 & under) **Schedule:** Onsite Registration: Saturday & Sunday 7:30-8:15am. Rounds: Saturday 9am, 1pm, 5pm, and Sun 9am, 12:30pm. (Ages 6 & under and Ages 8 & under: Sunday 9:00am, 10:45am, 12:30pm, 2pm, 3:30pm). **Byes:** Rd. 4&5 byes must be requested before Rd. 1. **Entry Fees by 1/9:** 1-day sections (Ages 6/8 & under): \$48, 2-day sections (Ages 10/12/14/16/18/20 & under): \$63, Add \$5 (1/10-16), Add \$10 (1/17-19), Add \$25 (1/20-22), Add \$40 (1/23 & onsite). A change fee equal to the late fee will apply for any changes, other than byes requests with less than one week before the tournament. Out of state entries 20% off (mail entry or email ask@bayareachess.com with USCF ID for online entry coupon code). **Blitz:** Onsite Registration: Sunday 5-5:15pm, Games 5:45-7:45pm. 2 sections (10 & under, 20 & under). **Side Event Fees:** Blitz \$14. Onsite +\$2. **Side Event Prizes:** Trophies to Top 5 individual players including ties and Top 3 teams including ties in each section. Jan 2016 Supplement & TD discretion to place players accurately. **Commemorative T-shirts:** \$16 pre-order, \$20 onsite. Chief Organizer: J. Sztaray. Organizers/TDs: J. Langland, R. Koepcke, J. McCumiskey, S. Mason. Sponsored by CalChess and Bay Area Chess. More info & flyer: BayAreaChess.com/usjr. Register online at BayAreaChess.com/my/usjr. Mail entries to Bay Area Chess, 1639A S. Main St., Milpitas, CA 95035. Register early to save. Questions: ask@BayAreaChess.com, 408-409-6596. W.

US Chess Junior Grand Prix! Feb. 12-14 or 13-14, Florida

2016 U.S. Amateur Team Championship South
SSS, G/120 d5 (2-day Option Rd. 1 G/60 d5). Ramada Westshore Tampa Airport, 1200 North Westshore Blvd., Tampa, FL 33607. 4-player teams (with one optional alternate). **Two sections** (each paired separately & with their own prizes). Team average (4 highest ratings - January Supplement) must be under 2200 for Open section and under 1500 for U1500 section. Winning team in Open section qualifies for National playoff online. **EF:** per player: \$49 by 2/5, \$58 later. **SPECIAL EF:** Team (one entry must be made for all players) \$180 by 2/5, \$210 later (any team changes \$10). Teams from outside Florida will receive \$25 off team entry fee. Scholastic teams receive \$10 off team entry fee. **PRIZES:** Top 1-3rd place teams & Top Boards 1-4 in each section; Top teams: Open section: U2000 & U1800; U1500 section: Top U3000 & U1100. Also in Open section: Top Senior team (all 50 & above as of 2/12), Top College team (same school), Top High School team (same school). Also in U1500 section: Top Female team, Top Middle School team (same school, grades 6-8), Top Elementary School team (same school). **Schedule:** 3-day: 1st Rd. Fri. 7:30, 2-Day 1st Rd. Sat. 10; Rds. 2-5 Sat. 1:30, 6:45, Sun. 9:30, 2:45. **Blitz Tourn.:** G/5 d0, Sunday at 8:00 p.m.; EF \$15 for those in main event, \$25 for all others. **HR:** \$99 until cut-off date, 813-282-3636, ext. 0. Free parking, Internet, refrigerator & Free Airport shuttle. **Ent:** Boca Raton Chess Club, 2385 Executive Ctr. Dr., Ste. 100, Boca Raton, FL 33431. **Online entry & add'l info:** www.bocachess.com, 561-479-0351.

US Chess Junior Grand Prix! Feb. 13-15 or 14-15, California, Northern 32nd Annual U.S. Amateur Team Championship West

Scholastic on Feb. 13 only, Blitz on Feb. 15 only. Santa Clara Convention Center, 5001 Great America Pkwy. Free Parking! **Teams:** Four-player teams plus optional alternate, average rating of four highest must be under 2200, difference between ratings of board 3 & 4 must be less than 1000. January 2016 Supplement, CCA min, & TD discretion used to place players accurately. **Main Event Prizes:** Special 4 commemorative clocks (trophy for the reserve) and team trophy to the team for Top 3 overall teams, top team u2000, u1800, u1600, u1400, and u1200. Trophies to all players of the top "industry" team (currently at the same company), top "female" team, top "college" team (students/alumni of a college), top "high school" team (students/alumni of a 7-12 school), top "elementary school" team (students/alumni of a K-6 school), top "club" team, and top "family" team (related by blood or marriage within 3 generations). Clocks to top scorer on each board (1-4), trophy to top reserve as well as second and third scorers on each board (1-4). Gift certificates for best 3 team names. **Main Event EF:** \$243/team or \$63/player by 2/8. 2/9-11: \$10 extra per player or team. Onsite or after 2/11: \$20 extra per player (\$80 extra per team). **3-day Sched:** Onsite Registration at Sat 9:30-10:30a, Round Times at Sat & Sun 11:30a-5:30p, Mon 10a 3:30p. Time Control: 40/120 SD/30 d5. **2-day Sched:** Onsite Registration at Sun 8:30-9a, Round Times at Sun 10a 12:30p-2:50p 5:30p, Mon 10a 3:30p. Time Control: G/61 d5 in Rounds 1-3, 40/120 SD/30 d5 in Rounds 4-6 (merge in Round 4 with 3-day schedule). **Info/flyer:** www.BayAreaChess.com/usatw. **Scholastic Event Prizes:** Trophies to each player in Top 3 teams overall, top u800 team, u600 team, u400 team, and u200 team. Trophies to top "female" team, top "academic" team, and top "club" team. Trophies to top two scorers on each board (1-4). Commemorative medals to all participants. **Scholastic Event EF:** \$149/team or \$39/player by 2/8. 2/9-11: \$10 extra per player or team. Onsite or after 2/11: \$20 extra per player (\$80 extra per team). **Discount:** \$10/player (\$40/team) if registering for 2-day

schedule and scholastic event. **Sched:** Onsite Registration: Sat 8:30-9a | Games at Sat 10a 11:30a 1p 2:30p 4:15p. **Info/flyer:** www.BayAreaChess.com/usatw. **Blitz Event:** Registration Mon 7-9pm, Rounds 8:30-10:30pm. EF: \$14, \$16 onsite. 75% of entry fees returned as prizes. **Contact:** Organized by Judit Sztaray. Directed by Tom Langland, John McCumiskey, Jordan Langland, and others. Sponsored by Bay Area Chess. Online entry at www.BayAreaChess.com/my/usatw or mail to Bay Area Chess, 1639A South Main St., Milpitas, CA 95035. For questions or help in forming teams email ask@BayAreaChess.com. W.

A Heritage Event!

US Chess Junior Grand Prix!

Feb. 13-15, New Jersey

World Amateur Team & U.S. Team East

CELEBRATE JAZZ AND CHESS. 6SS, 40/2, SD/1 d5. Parsippany Hilton, 1 Hilton Ct., Parsippany, NJ 07054. **Chess Rate valid until 1/16. Reserve early 973-267-7373 or 1-800-HILTONS.** Morris/Essex train to Morris Plains 1.5 miles. Open to 4-player teams with one optional alternate. Team average (4 highest ratings—2016 January Rating list) must be under 2200. EF: \$160 postmarked by 2/5/16. ALL-\$200 after or at door.—all teams, any changes at site \$25 charge. **FREE ENTRY TEAMS from West Virginia, South Carolina, North Carolina.** Check out official website www.njssf.org. **Prizes:** 1-5th Place teams, plaque and 4 digital clocks; Top Team (**Denis Barry Award**) U2100, 2000, 1900, 1800, 1700, 1600, 1500, 1400, 1300, 1200, 1000 each plaque and 4 Digital Clocks; Top college team (same school) 4 Digital Clocks & plaque; Top HS team (grades 9-12 same school), Top Middle School (grades 5-9 same school), Top Elementary School (grades K-6 same school), Top 2 Scholastic Teams (mixed schools okay) (**Collins Award**), Mixed Doubles (2 males, 2 females-no alternates), Seniors (all players over age 50), Military, each plaque & 4 Digital Clocks to top team; Company Team (same employer), Family (4 family members), State teams—CT, DE, MD, MA, NJ, NY (**Benjamin Award**), PA, VA, NC, RI each plaque top team; Special Plaque: **Top Future team**, (all players under age 10), **Top Military College, Top Parent/Child** (2 pairs, one parent, one child), **Best Player 1-4 and top alternate**, All 6-0 scores each Digital clock. Biggest Individual upset each round Engraved Cross pen; Entry fee refunded to team with Best "Chess related" name, Sunday night—Best "Chess Related costumes or gimmick"—1st-gourmet dinner for four, 2nd—Gourmet dinner for 4. **Reg.: 9-12. Sat 2/13. Rds. 1-7:30, 11-6, 9-3:30. Special Events!! Surprises and special give-aways each round.** Sunday night—Bughouse \$20 per team. Cash prizes. HR: Parsippany Hilton **NEWLY RENOVATED! NEW LIGHTS! HEATING AND AIR CONDITIONING!** Chess rates expire 1/16/2016. Rates \$119 (single double) \$121 (Triple, Quad) 2nd hotel attached to Hilton \$126 per night (single-double) \$128 (triple, Quad) Hampton Inn—includes breakfast each day. For help forming teams and more information contact: noreen@deanofchess.com. Chks payable to NJSSF, mail by 2/05 to: **E.Steven Doyle, 17 Stonehenge Rd., Morristown, NJ 07960.** (Include Team name, Captain, players full names, USCF Expiration, ID numbers and ratings in board order). No team can include more than two GM's. Include SASE for confirmation if wanted, No registered or certified mail accepted. W.

US Chess Junior Grand Prix!

Feb. 19-21, Illinois

2016 U.S. Amateur Team Championship North

Open: SSS, G/90+30/increment, 2-day: rd.1-2 G/60 d5. Hyatt Regency Schaumburg, 1800 E. Golf Rd., Schaumburg, IL 60173. 847-605-1234 \$89.00 chess rate single-double-triple-quad until 2/5/15, Free WiFi included with Room! Please reserve early. Open to 4 player teams with one optional alternate. **Team average (4 highest ratings - January Rating List) must be under 2200.** EF: 3-day \$160, per team if received USPS or on-line 6 PM by February 5th, \$180 if received USPS or on-line 6 PM by Feb. 14th, \$200 on-line until Feb. 19th 6 PM and at door. Individuals wishing to play, send \$50 and request to be put on a team by USPS and on-line by 2/14 6 PM, \$60 thereafter. Team changes on site or after 2/19 6 PM \$20. **Check out official website www.chessweekend.com for more info and complete prize list.** **Prizes:** Awards to top two teams, top teams with average rating u1900, u1600, and u1300. Winning team qualifies for national play-offs. Awards for Best Team Name, best team composed of juniors (high school and younger), Top College team, Top HS team, Top Senior team (50 and over), Best Coach and Students team, Best costume. Prizes to top score on each board. Prizes are players choice of a selected clock or equivalent book store credit. Event will be FIDE rated. **Rounds: 3-day:** on-site registration/check-in 5:30-6:30pm, rds.: 7pm, 10:00am & 4:00pm, 10:00am & 3:30pm. **2-day:** on-site registration/check-in from 8:00-9:30am, rds. 10:00am & 1:00pm then merge with 3-day. **Midwest Blitz Championship on Saturday night,** \$25 by 2/13 USPS or on-line, \$30 at site. First round 8 PM, 2 games with each opponent, 5 rounds, see www.chessweekend.com for details. **All:** Checks made payable to and sent to: ChessWeekend, 21694 Doud Ct., Frankfort, IL 60423. Please include Team's name and roster (plus ID#), captain's email and phone number, and desired schedule. **Info:** www.chessweekend.com, 815-955-4793 before 8 PM. ChessIQ will provide Sets-Boards-Clocks.

US Chess Junior Grand Prix!

Apr. 1-3, Georgia

2016 National High School (K-12) Championship

7SS, G/120 d5. Hyatt Regency Atlanta, 265 Peachtree Street NE, Atlanta, GA 30303. Hotel Chess Rate \$125. Guest rooms may be booked, NLT 3/9/2016 by calling (404) 577-1234 or (888) 421-1442, mention "US Chess." **6 Sections:** K-12 Championship, K-12 U1900, K-12 U1600, K-12 U1200, K-12 U800 and K-12 Unrated. March Rating Supplement will be used. One 1/2-point bye available (limit one) any round (except Round 7) if requested prior to the start of Rd. 1. Team score = total of top four (minimum two) finishers from each school per section. K-12 Championship first place individual and team, including ties, will be the National High School Champion. **Schedule:** Opening ceremony Fri. 12:45 pm. Rds.: Fri. 1 pm and 7 pm, Sat. 9 am, 2 pm and 7 pm, Sun. 9 am-2 pm. Awards Ceremony Sun., approx. 7 pm. **EF:** \$50/participant postmarked

or online by 2/29, \$70 postmarked or online by 3/21, \$85 online by 3/30, \$90 on site; \$5.00 extra for all phone registrations; \$20 fee for roster or section changes after 3/21 or any onsite changes. Onsite registration Thurs. 9 AM - 9 PM & Fri. 8 AM -11 AM. Players who register or change sections after 11 am on Friday will receive a 1/2-point bye for Rd. 1. Players must disclose any other, non-USCF, over-the-board (OTB) ratings. **Awards:** Trophies to top individuals & top teams in each section. Every player receives a commemorative item! Full list of trophies on tournament Info Page. **Side Events:** Bughouse: Thurs. 11 am, Reg. onsite only Thurs. 9-10 am, \$25/team. Blitz Section: K-12, Thurs. 5 pm, Reg. onsite until 4 pm. Blitz EF: \$15 by 3/21, \$20 after or at site. Class trophies will be awarded in main event and in Blitz. Full list of trophies on tournament Info Page. Team Rooms are limited. Contact Susan Kantor at 931.787.1234 ext. 136 or by email: skantor@uschess.org. Questions: Susan Kantor at 931.787.1234 ext. 136. **Entries:** US Chess Federation, Attn.: 2016 HS Championship, P.O. Box 3967, Crossville, TN 38557 or online at www.uschess.org/tournaments/2016/hs/. See web site for additional information about the event, advance entries, awards, meetings, updates, corrections, and registration forms.

US Chess Junior Grand Prix! Apr. 15-17, Indiana

2016 National Junior High School (K-9) Championship
75S, G/120 d5. Indianapolis Marriott East, 7202 East 21st St., Indianapolis, IN 46219. Hotel Chess Rate \$119. Guest rooms may be booked, NLT 3/18/2016 by calling (800) 228-9290 or (317) 352-1231, mention "US Chess." **6 Sections:** K-9 Championship, K-9 U1250, K-9 Unrated, K-8 Championship, K-8 U1000 and K-8 U750. April Rating Supplement will be used. One1/2-point bye available (limit one) any round (except Round 7) if requested prior to the start of Rd. 1. Team score = total of top four (minimum two) finishers from each school per section. K-9 Championship first place individual and team, including ties, will be the National Junior High School Champion. **Schedule:** Opening ceremony Fri. 12:30 pm. Rds.: Fri. 1 pm and 7 pm, Sat. 9 am, 2 pm and 7 pm, Sun. 9 am-2 pm. Awards Ceremony Sun., approx. 7 pm. **EF:** \$50/participant postmarked or online by 3/21, \$70 postmarked or online by 4/4, \$85 online by 4/13, \$90 on site; \$5.00 extra for all phone registrations; \$20 fee for roster or section changes after 4/4 or any onsite changes. Onsite registration Thurs. 9 AM - 9 PM & Fri. 8 AM -11 AM. Players who register or change sections after 11 am on Friday will receive a 1/2-point bye for Rd. 1. Players must disclose any other, non-USCF, over-the-board (OTB) ratings. **Awards:** Trophies to top individuals & top teams in each section. Every player receives a commemorative item! Full list of trophies on tournament Info Page. **Side Events:** Bughouse: Thurs. 11 am, Reg. onsite only Thurs. 9-10 am, \$25/team. Blitz Section: K-9, Thurs. 5 pm, Reg. onsite until 4 pm. Blitz EF: \$15 by 4/4, \$20 after or at site. Class trophies will be awarded in main event and in Blitz. Full list of trophies on tournament Info Page. Team Rooms are limited. Contact Susan Kantor at 931.787.1234 ext. 136 or by email: skantor@uschess.org. Questions: Susan Kantor at 931.787.1234 ext. 136. **Entries:** US Chess Federation, Attn.: 2016 JHS Championship, P.O. Box 3967, Crossville, TN 38557 or online at www.uschess.org/tournaments/2016/jhs/. See web site for additional information about the event, advance entries, awards, meetings, updates, corrections, and registration forms.

US Chess Junior Grand Prix! May 6-8, Tennessee

2016 National Elementary (K-6) Championship
75S, G/120 d5 (K-1 G/90 d5). Gaylord Opryland Resort and Convention Center, 2800 Opryland Dr., Nashville, TN 37214. Hotel Chess Rate \$148. Guest rooms may be booked, NLT 4/11/2016 by calling (888) 777-6779 or (615) 889-1000, mention "US Chess." **9 Sections:** K-6 Championship, K-6 U1000, K-6 Unrated, K-5 Championship, K-5 U900, K-3 Championship, K-3 U800, K-3 Unrated, K-1 Championship. April Rating Supplement will be used. One1/2-point bye available (limit one) any round (except Round 7) if requested prior to the start of Rd. 1. Team score = total of top four (minimum two) finishers from each school per section. K-6 Championship first place individual and team, including ties, will be the National Elementary School Champion. **Schedule:** Opening ceremony Fri. 12:30 pm. Rds.: Fri. 1 pm and 7 pm, Sat. 9 am, 2 pm and 7 pm, Sun. 9 am-2 pm. Awards Ceremony Sun., approx. 7 pm. **Special Schedule for K-1 Rounds:** Fri. 1:30 pm and 6:30 pm, Sat. 9:30 am, 1:30 pm and 6:30 pm, Sun. 9:30 am and 1:30 pm. Awards Ceremony Sun., approx. 5:30 pm. **EF:** \$50/participant postmarked or online by 4/4, \$70 postmarked or online by 4/25, \$85 online by 5/4, \$90 on site; \$5.00 extra for all phone registrations; \$20 fee for roster or section changes after 4/25 or any onsite changes. Onsite registration Thurs. 9 AM - 9 PM & Fri. 8 AM -11 AM. Players who register or change sections after 11 am on Friday will receive a 1/2-point bye for Rd. 1. Players must disclose any other, non-USCF, over-the-board (OTB) ratings. **Awards:** Trophies to top individuals & top teams in each section. Every player receives a commemorative item! Full list of trophies on tournament Info Page. **Side Events:** Bughouse: Thurs. 11 am, Reg. onsite only Thurs. 9-10 am, \$25/team. Blitz Section: K-6 and K-3, Thurs. 5 pm, Reg. onsite until 4 pm. Blitz EF: \$15 by 4/25, \$20 after or at site. Class trophies will be awarded in main event and in Blitz. Full list of trophies on tournament Info Page. Team Rooms are limited. Contact Susan Kantor at 931.787.1234 ext. 136 or by email: skantor@uschess.org. Questions: Susan Kantor at 931.787.1234 ext. 136. **Entries:** U.S. Chess Federation, Attn.: 2016 Elem Championship, P.O. Box 3967, Crossville, TN 38557 or online at www.uschess.org/tournaments/2016/elem/. See web site for additional information about the event, advance entries, awards, meetings, updates, corrections, and registration forms.

GRAND PRIX

Dec. 12, Connecticut

Trophies Plus Grand Prix Points: 6
2015 Greater New Haven Open!

at Foote School, **\$S1000 Prize Fund b/30. Open, U1700:** 4/SS, G/60 d5. Rds.: 9-11-1:30-3:30, Rds. 1 & 2 accl/rtd pairings if necessary. **U1000,**

U1000, U800/UNR: 5SS, G/30 d5, Rds.: 10am then ASAP **Prizes:** Open: \$300 + trophy, \$200, \$100, \$100, 2 x \$50. U1700 \$100 + trophy, \$50, \$50 b/30. Trophies to top 5 U1200, U1000, U800/Unrated, top 3 school teams. **EF:** \$40 Online, \$50 by 12/4, \$80 on site. **Reg.:** 8:30-9:30 or EF to: Educational Technologies, 343 Beach St. #404, West Haven, CT. 06516. Online EF: www.edutechchess.com or www.CTChess.com.

US Chess Junior Grand Prix! Dec. 12-13, Texas

Trophies Plus Grand Prix Points: 20 (Enhanced)
2015 DCC Fide Open XIV

55S, G/90 inc/30. Dallas Chess Club, 200 S Cottonwood Dr. #C, Richardson, TX 75080. **Two sections:** Open and Reserve. **Open:** \$88/75G. FIDE and US Chess rated but uses FIDE rules. Use US Chess ratings and rules for pairings and for awarding prizes. Default late forfeiture time is one hour. TD may extend this time at TD's discretion. Note that Foreign players must disclose their FIDE ID number before 1st round in order to play. Note that USA Players with no FIDE ID must disclose their email address. \$S \$500-\$250-\$125. **EF:** \$80, Senior/Hcap/Birthday during tournament/Additional Family Member \$55. Small appearance fee to the First three GM/IM's who apply. GM/IM must play all rounds to get appearance fee (appearance fee might be deducted from prize). **Reserve:** Open to players rated below 2000 US Chess. This section is not Fide Rated but is US Chess rated and uses US Chess rules. **EF:** \$40. The Reserve give back 10% in prizes and if at least 8 paid entries and if there is a clear winner, then that winner receives free entry to next DCC Fide Open. In the reserve section, Tournament reserves the right to use Fide rules on electronic devices and on starting White's clock at start of a round and to use FIDE pairing rules. **Both: Reg.:** 12/12 from 9:45-10:15am. **Rds.:** Sat 10:45 am-3:10pm-7:16pm, Sun 9:45 am-2:10pm. One half point Bye allowed if requested before end of round rd. 2 and before getting full point bye. Withdrawals and zero point last round byes are not eligible for prizes. Note that house players (if required) must pay \$2 per round and be US Chess members. ENT: Make/mail Checks payable to Dallas Chess Club, C/O Barbara Swafford, 2709 Longhorn Trail, Crowley, TX 76036-4719. **Info:** 214-632-9000, info@dallaschess.com. FIDE.

US Chess Junior Grand Prix! Dec. 18-20 or 19-20, California, Northern

Trophies Plus Grand Prix Points: 40 (Enhanced)
Bay Area Chess GM Sam Sevan Championship
1639A S. Main St., Milpitas, CA 95035. 55S, G/90 +30, 2-day rds. 1-2 G/50 d5. Park fee. **Prize:** 5,000 b/94 (70% guar). 3 sects: **2000+ (FIDE)** \$1,000-500-200, u2300: 250-125-100. **1600-1999:** \$700-300-100, u800: 200-100, u1600: \$700-300-100 u1400: 125-100, u1200: 100. Unr max \$100 exc Open. Dec 15 Supp & TD disc. **Reg.:** F 6-6:45p & Sa 8:30-8:45a. **Rds.:** F 7p, Sa 9 1:20, Su 10 2:30. (2-day Sa 9 11:10 & merge). **EF:** 89, Econ: F: 69 w 60% prz, after 12/15 +20. Playaug +20. Rate 2250 + \$0 by 12/4 (prize - EF). **Info:** http://BayAreaChess.com/champs.

US Chess Junior Grand Prix! Dec. 19-21, Texas

Trophies Plus Grand Prix Points: 50 (Enhanced)
2015 Dallas Absolute

55S, G/90 with 30 sec increment. Dallas Chess Club, 200 S. Cottonwood Dr. #C, Richardson, TX 75080. FIDE and US Chess rated but uses FIDE rules. Use US Chess ratings and rules for awarding prizes. Note that Foreign players must disclose their FIDE ID number before 1st round in order to play. Note that USA Players with no FIDE ID must disclose their email address. Default late forfeiture time is one hour. TD may extend this time at TD's discretion. **EF:** US Chess +2400 \$90, US Chess 2200-2400 (or if you ever been rated 2200 US Chess) \$105, Fide rated 2000 and above is \$120, U2200 US Chess/U2000Fide \$150. US Chess Membership Required. Dallas Chess Club membership required, but players can pay a \$10 tournament membership. Note that highest finishing Dallas Chess Club member is \$500. **Reg.:** 12/19: 11:00am-12:01 pm. **Rds.:** 12/19 12:30pm, 5:30 pm. 12/20: 11am, 4:30 pm. 12/21 9:30 am. 1 bye if requested before end of round 2. Players who withdraw or take a last round zero point bye are ineligible for prizes. **ENT:** Make/mail Checks payable to Dallas Chess Club, C/O Barbara Swafford, 2709 Longhorn Trail, Crowley, TX 76036-4719. **INFO:** Barb Swafford, 214-632-9000 info@dallaschess.com, www.dallaschess.com. FIDE.

A Heritage Event!

US Chess Junior Grand Prix! Dec. 26-29, 27-29, 26 or 27, Maryland

Trophies Plus Grand Prix Points: 100 (Enhanced)
42nd Annual Eastern Open

7-Rd SS in 5 Sections + New U1000 and Scholastic Sections! Over \$14,000 prize fund! Over 50 prizes! Class prizes at 150-point interval within each section! Convenient Location: Doubletree Hotel, 8120 Wisconsin Ave., Bethesda MD (just 2 mi. S from I-495 and 4 bids N of Metro). **Open: \$2,000-1,000-500; U2350: \$500. FIDE Rated. Open section prizes guaranteed. Other section prizes based on 40 paid entries for each section. **Under 2200:** \$1,000-500-250; U2050: \$400. **Under 1900:** \$1,000-500-250; U1750: \$400. **Under 1600:** \$1,000-500-250; U1450: \$400. **Under 1300:** \$400-200-100 & Upsets; U1150: \$300; UR max: \$150. **Under 1000:** \$400-200-100 & Upsets; U800: \$100. Unr max: \$100. **Scholastic:** Trophies, book prizes, and memberships. **Special Prizes:** Best Fighting Spirit/Best Played Game: \$200-100. Brilliance: \$100-50. Opening Innovation: \$100-50. Selected winning games, positions, and openings must be annotated and will be submitted for publication in Chess Life. Upset: For U1300, Rds. 1-6, \$25 book credit prize. For U1000, Rds. 1-4, \$25 book credit prize. Max 2 prizes per player. **4-day Schedule for Open, U2200, U1900, U1600, U1300: 12/26-12/29** Rd. 1: Sat 12/26 at 6 pm; Rds. 2-3, 4-5, 6-7, Sun 12/27 - Tue 12/29 at 11 am & 5:30 pm. **On-Site Reg:** Sat 12/26 at 4-5:30. **TC:** 40/120, SD/30 d10. **3-day Schedule for U2200, U1900, U1600, U1300: 12/27-12/29** Rds. 1-3: Sun 12/27 at 12, 4, 8 pm. **On-Site Reg:** Sun 12/27: 10-11:30 am. **TC:** G/90 d10. Players join 4-day schedule in Rd. 4. **Byes for Open-U1300 Sections:** 1/2-pt byes available for any round, but Rds. 5-7 must commit before Rd. 4. Limit 2 byes for class prizes.**

***New* U1000 Section (Sat 12/26 in 5 rds):** Rds. 1-5 at 12, 2, 4, 6, 8 pm. **On-Site Reg:** Sat 12/26: 11-11:45 pm. **TC:** G/45 d10. ***New* Scholastic Tourney (Sun 12/27 in 4 rds) in 3 sections: K-12 Open, K-8 U1000, K-5 U700.** Rds. 1-4 at 11 am, 1 pm, 3 pm, 5 pm. **On-Site Reg:** Sun 12/26: 10-10:45 pm. **TC:** G/45 d10. **Blitz Championship (new time):** 5-Rd Dbl Swiss. Sat 12/26 at 1-4:30 pm. 75% of paid entries returned in prizes. **TC:** G/7 d0. Advance EF: \$30; on-site EF: \$40. See Web site for details. **Free Lecture:** 12/26 at 4-5:30 pm. **HR:** Amazing, only \$79!! To reserve online, go to easternopenchess.com or call 301-652-2000 or 888-370-0998 by 12/20 request chess rate. **Pkg:** Hotel valet is \$10 if overnight or \$5 if for day! Free pkg on weekend 1 blk away in garage or lot! **Entries:** If postmarked by Dec. 19: Open: \$125; U2200: \$120; U1900 & U1600: \$110; U1300: \$100; U1000: \$60; Scholastic: \$30. Entries after 12/19: \$25 more for Open-U1300; \$15 more for U1000; \$10 more for Scholastic! Reentry \$100 and limited to rounds 1-4. **GMs:** free entry, but \$125 deducted from prize; **IMs:** \$65 advance entry, but \$60 deducted. **FMs:** \$90 advance entry, but \$35 deducted; \$10 service charge for refunds. **Please make checks or money orders payable to:** Eastern Open. Mail entries to Tom Beckman, 3731 Kanawha St. NW, Washington, DC 20015-1809. For entry forms and info, easternopenchess.com or tombeckman@rcn.com.

Dec. 30-31, Texas

Trophies Plus Grand Prix Points: 10 (Enhanced)
DCC New Year's Eve Insanity

10 Rd. 2-SS (Play white and black against each opponent) G/30 d5. Dallas Chess Club, 200 S. Cottonwood Dr. #C, Richardson, TX 75080. **EF:** \$40. \$25 Junior/Senior/Hcap. Limited number of House players welcome for \$1 per game. Dallas Chess Club membership required or pay \$10 non member fee. **\$\$\$TD:** \$200-100. Class prizes (if any) depend on entries. **Reg.:** 12/30 at 5pm - 5:45 pm. **Rds.:** Round 1 at 6:05 pm rest ASAP with hour breaks at around 12:30 am, 7:30 am and 12:30 pm. 4 points of 1/2 point Byes allowed. Byes for round 9 and 10 must be requested before round 6. **ENT:** Dallas Chess Club, C/O Barbara Swafford, 2709 Longhorn Trail, Crowley, TX 76036. **INFO:** Barbara Swafford, 214-632-9000, info@dallaschess.com, www.dallaschess.com.

US Chess Junior Grand Prix! Jan. 1-3 or 2-3, California, Northern

Trophies Plus Grand Prix Points: 60 (Enhanced)
2016 New Year Open Championship

6SS, 40/120 sd30 d5 (2-day rd.1-3 G/61 d5 merge rd.4). Oakland City Center Marriott, 1001 Broadway, Oakland, CA 94607. Rooms \$119. **Prize** \$14,000 b/187 60% guar. **2000+:** \$2,500-1000-600-300 u2300: 300-150. **1800-1999:** 1,200-700-300-150. **1600-1799:** 1,200-600-300-150. **1400-1599:** 1,200-700-300-150. **u15000:** 1,000-500-200-150. **u1200:** 300-100. Unr max \$200 exc Open. Jan 16 Supp, CCA min & TD disc. **EF:** \$119 by 12/29, Onsite +25 Playaug +20. Econ: \$89 w 60% prize. **GMs/IMs** \$0 by 12/21; prize-**EF:** \$ched: 3-day Reg. F 10 11, Rds. F/Sa 11:30 5:30, Su 10 3:30; 2day Reg. Sa 9-9:30, Rds. Sa 10-12:30-2:50-5:30, Su 10-3:30. Bye for Rd. 5&6 must com bef rd. 1. **ENT:** Online or mail to Bay Area Chess, 1639A S. Main St., Milpitas, CA 95035. Rfnd fee \$20. **Info:** BayAreaChess.com/ny. E: ask@BayAreaChess.com. T: 408.409.6596. W.

US Chess Junior Grand Prix! Jan. 8-10 or 9-10, Florida

Trophies Plus Grand Prix Points: 60 (Enhanced)
2nd Gulf Coast New Year's Open

(In honor of Eric Rosenthal, a charismatic, beloved young expert from South Florida, whose delight in the game was infectious and who left us much too soon.) **5SS, Open section** G/90 +30 sec incr., **All sections but U1100** G/120 d5, **U1100 section** G/90 d5 (2-day) Option all sections Rd. 1 G/60 d5). Holiday Inn Fort Myers Airport at Town Center, 9931 Interstate Commerce Dr., Fort Myers. **\$\$15,000** b/200 paid entries; 50% min. **Gtd. Open:** \$2000/Trophy-1200-1000, U2400 \$600, U2300 \$500, U2200/Unr. \$400. **FIDE, U2050:** \$1100/Trophy-700-600, U1950 \$500-300. **U1750:** \$1100/Trophy-700-600, U1650 \$500-300. **U1450:** \$1000/Trophy-600-500, U1350/Unr. \$400-200. **U1100:** Trophies for 1st to 3rd & 1st U900, 1st U700, Medals to all others. **Top Senior Prize** (among all cash prize sections, must be at least \$5 on Jan. 8) \$200. Unr. may enter Open, U1450 or U1100 only. Unr. only eligible for Unr. Prizes in Open & U1450. **EF:** \$99 by Jan. 5, \$10 more later and on-site, **GMs & IMs** free (\$99 deducted from prize). U1100 section \$39 by Jan. 5, \$10 more later and onsite. Re-entry cash prize sections \$49. **Reg.:** Ends 1/2 hr before 1st rd. **Rds.:** 3-Day 1st Rd. Fri. 7:30; 2-Day 1st Rd. Sat. 10; 2nd Rd. Sat. 1:15; 3rd Rd. Sat. all sections but U1100 6:30, 3rd Rd. **U1100** 5:45; 4th Rd. Sun. 9:30; 5th Rd. all sections but U1100 2:30, 5th Rd. **U1100** 1:45. With incrr. Open section start times could be delayed. 2 1/2 pt. byes, if req'd before rd. 2. **Blitz Tourn:** G/5 d0, Sunday at 8:00 p.m.; EF \$15 for those in main tourn., \$25 for all others. **HR:** \$99, \$109 with breakfast, reserve by 12/20 or rate may increase, includes free Internet, refrigerator & microwave, free airport shuttle, free parking for all, 239-561-1550. **Ent:** Boca Raton Chess Club, 2385 Executive Ctr. Dr., Ste. 100, Boca Raton, FL 33431. \$10 service charge for refunds. **Online entry & add'l info:** www.bocachess.com, 561-479-0351.

US Chess Junior Grand Prix! Jan. 9-10, Texas

Trophies Plus Grand Prix Points: 20 (Enhanced)
2016 DCC Fide Open I

55S, G/90 inc/30. Dallas Chess Club, 200 S. Cottonwood Dr. #C, Richardson, TX 75080. **Two sections:** Open and Reserve. **Open:** \$88/75G. FIDE and US Chess rated but uses FIDE rules. Use US Chess ratings and rules for pairings and for awarding prizes. Default late forfeiture time is one hour. TD may extend this time at TD's discretion. Note that Foreign players must disclose their FIDE ID number before 1st round in order to play. Note that USA Players with no FIDE ID must disclose their email address. \$S \$500-\$250-\$125. **EF:** \$80, Senior/Hcap/Birthday during tournament/Additional Family Member \$55. Small appearance fee to the First three GM/IM's who apply. GM/IM must play all rounds to get appearance fee (appearance fee might be deducted from prize). **Reserve:** Open to players rated below 2000 USCF. This section is not Fide Rated but is US Chess rated and uses US Chess rules. **EF:** \$40. The Reserve give back

Tournament Life

10% in prizes and if at least 8 paid entries and if there is a clear winner, then that winner receives free entry to next DCC FIDE Open. In the reserve section, Tournament reserves the right to use FIDE rules on electronic devices and on starting White's clock at start of a round and to use FIDE pairing rules. **Both: Reg:** 1/9 from 9:45–10:15am. **Rds.:** Sat 10:45 am-3:10pm-7:16pm, Sun 9:45 am-2:10pm. One half point Bye allowed if requested before end of round rd. 2 and before getting full point bye. Withdrawals and zero point last round byes are not eligible for prizes. Note that house players (if required) must pay \$2 per round and be US Chess members. **ENT:** Make/mail Checks payable to Dallas Chess Club, C/O Barbara Swafford, 2709 Longhorn Trail, Crowley, TX 76036-4719. **Info:** 214-632-9000, info@dallaschess.com. FIDE.

US Chess Junior Grand Prix!

Jan. 16-18, Texas

Trophies Plus Grand Prix Points: 50 (Enhanced)

Texas Masters

5SS, G/90 inc/30. Dallas Chess Club, 200 S. Cottonwood Dr. #C, Richardson, TX 75080. FIDE and US Chess rated but uses FIDE rules. Will use US Chess ratings and rules for awarding prizes. Default late forfeiture time is one hour. TD may extend this time at TD's discretion. **EF:** US Chess +2400 \$90, US Chess 2200-2400 (or if you ever been rated 2200 US Chess) \$105, Fide rated 2000 and above is \$140, U2200US Chess/U2000Fide \$175. US Chess Membership Required. **\$\$\$25/25: 70% Guaranteed.** \$1600-800-400-200. U2400 \$50. **Reg:** 1/16: 10:00-10:55 am. **Rds.:** Sat 11:30am, 5 pm; Sun 11:30am, 5 pm; Mon 10 am. One bye if requested before end of round 2 and before given a full point bye or forfeit win. Players who withdraw or take a last round zero point bye are ineligible for prizes. **ENT:** Make/mail Checks payable to Dallas Chess Club, C/O Barbara Swafford, 2709 Longhorn Trail, Crowley, TX 76036-4719. **INFO:** Barb Swafford, 214-632-9000, info@dallaschess.com, www.dallaschess.com. FIDE.

US Chess Junior Grand Prix!

Jan. 29-31 or 30-31, Florida

Trophies Plus Grand Prix Points: 15

Central Florida Class Championships

5SS, G/120 d5 (2-day: Rd.1 G/60 d5). International Palms Resort, 6515 International Dr., Orlando, FL 32819. **\$\$7,500 b/150, 60% Guaranteed.** 6 Sections: **Mast/Exp:** \$1000-400-200, U2200 \$350. **Class A:** \$700-300, U1900 \$150. **Class B:** \$700-300, U1700 \$150. **Class C:** \$700-300, U1500 \$150. **Class D:** \$700-300, U1300 \$150. **U1200:** \$500-300, U1000 \$100, U800 \$50. Rated players may play up one class only. Unrateds limited to \$100 unless Place prize in Mast/Exp. **Event part of CFCC GP with \$600 additional prizes.** Trophies to top in each section (& Class X), also Class F, G, H, I, J & Unr in U1200 having more than one entry. Trophies/Titles to Rated Florida Residents. **Special OCA Random Awards TBD.** \$F: \$80 by Jan 22, \$90 later; plus \$5 if paid on-site. **\$20 less to students in grades K-8 in U1200 section.** CFCC memb discount: **\$10 (\$5 for Jr/Sr memb). Re-entry \$40.** **Reg:** ends 1/2 hr before 1st rd. **Rd.1:** 7pm Fri (2-day: 10am Sat at G/60 d5). **Rds.:** 2-5: Sat 1 & 6, Sun 9 & 2-1/2-pt. **byes** if committed before rd. 2 (max 2). **HR:** \$84 (No Resort Fee) (407) 351-3500; (Mention "Chess"); or at <http://tinyurl.com/Jan2016Hotel>. (1-day Cancellation fee). **Reserve by Jan 10.** Free Parking & WiFi. **Ent:** CFCC, c/o Harvey Lerman, 921 N. Thistle Ln., Maitland, FL 32751; or online at website: <https://onlineregistration.cc/fccf/cfcl16> by Jan 28. **Info:** Call 407-629-6946, (407-670-9304 for onsite cell) or www.centralffchess.org.

Feb. 6, Connecticut

Trophies Plus Grand Prix Points: 15

2016 Greater New Haven Winter Open!

at Foote School. **Open, U1700:** 4/SS, G/60 d5. **Rds.:** 9-11:1-30:3:30, Rds. 1 & 2 accl'rd prngs. **U1200, U1000, U800/UNR:** 5SS, G/30 d5. **Rds.:** 1:0am then ASAP. **Open:** \$300 + trophy, \$200, \$100, \$100, 2 x \$50. **U1700 \$100 + trophy,** \$50, \$50 b/30. Trophies to top 5 U1200, U1000, U800/Unrated, top 3 school teams. **EF:** \$40 online, \$50 by 3/4 or mail, \$80 on site. **Reg.:** 8:30-9:30. **EF:** Educational Technologies, 343 Beach St. #404, West Haven, CT 06516. Register online and save! www.edutechchess.com or www.CTChess.com.

REGIONAL California, Northern

Dec. 12, Foster City LuperSwiss (3SS, G/90 d5)

Courtyard Marriott, Foster City, CA 94404. **Prizes:** \$1,250 b/40. 60% guar. **1900+:** \$200-100-50, u2100 50-50. **1500-1899:** \$200-100, u1700 50-50. **u1500:** \$200-100, u1200 50-50. Dec15 Supp & TD disc. Reg: 9-9:15. **Rds.:** 9:30 11:50 2:40 5. **EF:** 43, Econ 29 w/1/2 prz. after 12/9 +15, play up +15, Rtd 2200+ \$0 by 12/2. **Info:** BayAreaChess.com/grandprix. W

Dec. 12, Sacramento Chess4Less Quads (PK-12; 3xG/30 d5)

Courtyard Marriott, Rancho Cordova, CA 95670. **Prize:** \$900 b/36. **1700+:** \$200-100, u1900 100-50. **u1700:** \$200-100, u1600 100, u1400 50. Dec 15 Supp & TD disc. Reg: 9-9:15. **Rds.:** 9:30 11:50 2:40 5. **EF:** 43, Econ 29 1/2 prz., after 12/9 +15, play up +15, Rated 2200+ \$0 by 12/2. **Info:** <http://BayAreaChess.com/grandprix>. W

US Chess Junior Grand Prix!

Dec. 12, Sacramento Junior Grand Prix Super Swiss (4SS, G/61 d5)
Courtyard Marriott, Rancho Cordova, CA 95670. **Prize:** \$900 b/36. **1700+:** \$200-100, u1900 100-50. **u1700:** \$200-100, u1600 100, u1400 50. Dec 15 Supp & TD disc. Reg: 9-9:15. **Rds.:** 9:30 11:50 2:40 5. **EF:** 43, Econ 29 1/2 prz., after 12/9 +15, play up +15, Rated 2200+ \$0 by 12/2. **Info:** <http://BayAreaChess.com/grandprix>. W

Dec. 13, Bay Area Fremont Quads (PK-12; 4SS, G/30 d5)
Courtyard Marriott, Fremont, CA 94538. **Trophies:** Players w/plus score. **Sched:** Required Check-in 1:30-2p. **Games:** 2:30-5p. **EF:** 27, 42 after 12/10. **Info:** <http://BayAreaChess.com/signature>. W

Dec. 13, Bay Area Fremont Swiss (PK-12; 3SS, G/30 d5)
Courtyard Marriott, Rancho Cordova, CA 95670. **Trophies:** Players w/plus score. **Sched:** Reqr. Check-in 1:30-2p. **Games:** 2:30-5p. **EF:** 27, 42 after 12/9. **Info:** <http://BayAreaChess.com/signature>. W

w/plus score. **Sched:** Reqr. Check-in 1:30-2p. **Games:** 2:30-5p. **EF:** 22, 37 after 12/9. **Info:** <http://BayAreaChess.com/signature>. W

Dec. 13, Fremont DuperSwiss75 (3SS, G/75 d5)
Courtyard Marriott, Fremont, CA 94538. **Prizes:** \$1,250 b/40. 60% guar. **1900+:** \$200-100-50, u2100 50-50. **1500-1899:** \$200-100, u1700 50-50. **u1500:** \$200-100, u1200 50-50. Dec 15 Supp & TD disc. Reg: 8:30-8:45. **Rds.:** 9-11:45-2:40. **EF:** 47, Econ 32 w/1/2 prz. after 12/10 +15, play up +15, Rtd 2200+ \$0 by 12/3. **Info:** BayAreaChess.com/grandprix. W

Dec. 18-20 or 19-20, Bay Area Chess GM Sam Sevan Championship
See Grand Prix.

Dec. 20, Bay Area Cupertino Quads (PK-12; 3xG/30 d5)
Courtyard Marriott, Cupertino, CA 95014. **Trophies:** Players w/plus score. **Sched:** Reqr. Check-in 1:30-2p. **Games:** 2:30-5p. **EF:** 27, 42 after 12/17. **Info:** <http://BayAreaChess.com/signature>. W

Dec. 20, Bay Area Cupertino Swiss (PK-12; 4SS, G/30 d5)
Courtyard Marriott, Cupertino, CA 95014. **Trophies:** to players w + score & all teams. **Sched:** Reg: 9:30-9:45a. **Games:** 10a - 1:30p. **EF:** 34, 49 after 12/17. **Info:** <http://BayAreaChess.com/signature>. W

Dec. 20, Bay Area San Ramon Quads (PK-12; 3xG/30 d5)
Courtyard Marriott, 18090 San Ramon Valley Blvd., San Ramon, CA 94583. **Info:** BayAreaChess.com/signature. **Trophies:** Players w/plus score. **Sched:** Required check-in 1:30-2p. **Games:** 2:30-5p. **EF:** 27, 37 after 12/18. W

Dec. 20, Bay Area San Ramon Swiss (PK-12; 4SS, G/30 d5)
Courtyard Marriott, 18090 San Ramon Valley Blvd., San Ramon, CA 94583. **Trophies:** all teams & players w/plus score. **Sched:** Reg: 9:30-9:45a. **Games:** 10a - 1:30p. **EF:** 34, 42 after 12/18. **Information-website:** <http://BayAreaChess.com/signature>. W

Dec. 27, Bay Area Cupertino Quads (PK-12; 3xG/30 d5)
Courtyard Marriott, Cupertino, CA 95014. **Trophies:** Players w/plus score. **Sched:** Reqr. Check-in 1:30-2p. **Games:** 2:30-5p. **EF:** 27, 42 after 12/24. **Info:** <http://BayAreaChess.com/signature>. W

Dec. 27, Bay Area Cupertino Swiss (PK-12; 4SS, G/30 d5)
Courtyard Marriott, Cupertino, CA 95014. **Trophies:** to players w + score & all teams. **Sched:** Reg: 9:30-9:45a. **Games:** 10a - 1:30p. **EF:** 34, 49 after 12/24. **Info:** <http://BayAreaChess.com/signature>. W

Jan. 1-3 or 2-3, 2016 New Year Open Championship

See Grand Prix.

Jan. 3 (not Jan. 2), New Year Youth Championship

NOTE Venue & Date Change: 5SS, G/30 d5. BayAreaChess Center, 1639 A South Main St., Milpitas, CA 95035 (not Oakland City Center Marriott, 1001 Broadway, Oakland, CA 94607). Room \$119. **Prizes:** Top 10 w/plus score in ea sec, Top 5 schools & clubs (combined). **5 Secs:** 800-999, 600-799, 400-599, 200-399, u200. **Sched:** Reg: 9-9:15. Games 10 11:30 1 2:20 3:40. **EF:** 39, after 12/28 +15, Play up +10. Jan 16 Supp. Rnd fee 15. **Information/Flyer/Reg:** <http://BayAreaChess.com/nkykids>. E: ask@BayAreaChess.com. T. 408.409.6596. W

US Chess Junior Grand Prix!

Jan. 9, Sacramento SuperSwiss61 (4SS, G/61 d5)

Courtyard Marriott, Rancho Cordova, CA 95670. **Prizes:** \$600 b/36. **1700+:** \$150-100, u1900 50. **u1700:** \$150-100, u1600 50. Jan 16 Supp & TD disc. **Info:** <http://BayAreaChess.com/grandprix>. Reg: 9-9:15. **Rds.:** 9:30 11:50 2:40 5. **EF:** 45, Econ 29 1/2 prz., after 1/7 +15, play up +15, Rated 2200+ \$0 by 1/1. W

Jan. 9, Sacramento Chess4Less Quads (PK-12; 3xG/30 d5)

Courtyard Marriott, Rancho Cordova, CA 95670. **Trophies:** Players w/plus score. **Sched:** Reqr. Check-in 1:30-2p. **Games:** 2:30-5p. **EF:** 24, 39 after 1/7. **Info:** <http://BayAreaChess.com/signature>. W

Jan. 10, Bay Area Fremont Quads (PK-12; 4SS, G/30 d5)

Courtyard Marriott, Fremont, CA 94538. **Trophies:** Players w/plus score. **Sched:** Required Check-in 1:30-2p. **Games:** 2:30-5p. **EF:** 29, 44 after 1/8. **Info:** <http://BayAreaChess.com/signature>. W

Jan. 10, Bay Area Fremont Swiss (PK-12; 4SS, G/30 d5)

Courtyard Marriott, Fremont, CA 94538. **Trophies:** to players w + score & all teams. **Sched:** Reg: 9:30-9:45a. **Games:** 10a - 1:30p. **EF:** 35, 49 after 1/8. **Info:** <http://BayAreaChess.com/signature>. W

Jan. 10, Fremont DuperSwiss75 (3SS, G/75 d5)

Courtyard Marriott, Fremont, CA 94538. **Prizes:** \$1,250 b/40. 50% guar. **1900+:** \$200-100-50, u2100 50-50. **1500-1899:** \$200-100, u1700 50-50. **u1500:** \$200-100, u1200 50-50. Jan 16 Supp & TD disc. Reg: 8:30-8:45. **Rds.:** 9-11:45-2:40. **EF:** 49, Econ 33 w/1/2 prz. after 1/7 +15, play up +15, Rtd 2200+ \$0 by 1/1. **Info:** BayAreaChess.com/grandprix. W

Jan. 15-18, 16-18 or 17-18, 7th annual Golden State Open

See Chess Life or www.chesstour.com.

Jan. 23 and/or 24, 2016 U.S. Junior Chess Congress

See Nationals.

Feb. 13-15 or 14-15, 32nd Annual U.S. Amateur Team Championship West

See Nationals.

Feb. 27 or 27-28, 11th SPF Nationwide Open for Girls and Boys
6SS, G/60 d5. Official Qualifier for the SPF Girls' Invitational & FIDE World Youth 2016. **MAIN EVENT:** San Mateo Event Center, 1346 Saratoga Dr., San Mateo. Free Parking, \$100,000+ in prizes (lots of trophies, chess prizes & scholarships). **\$1,000 Triple Crown Bonus!** - All details on www.SPFNO.com. **CHAMPIONSHIP SECTIONS:** U8, U10, U12, U14, U16/18 in separate sections for Girls and Boys. **TIME CONTROLS:** All games will be G/60 d5. **ROUND TIMES:** Sat & Sun 9am, 11:30am, 2:30pm. **EF:** \$39 UNTIL 12/1, \$59 until 1/20, \$69 until 2/20, \$89 after. **Unrated Reserve Sections:** K-2 < 500 or UNR / 3-6 < 800 or UNR. **Rds.:** 2/27: 9, 10:30, 1, 3:30 & 5. **Reserve Sections Time Control:** G/25 d5 **EF:** \$29 UNTIL 2/20, \$49 after. **ADDITIONAL EVENTS: Q & A and 25 board Simul** against GM Susan Polgar 2/26 6:30pm (venue

TBA) **EF** \$29 UNTIL 12/1, \$49 after. **2/27- Puzzle Solving Championship** (one section) 5-5:30pm. **EF** \$19 UNTIL 12/1, \$29 until 2/20, \$39 after. **Blitz Championship. G/5+0** starts at 5:45pm. **EF** \$19 UNTIL 12/1, \$29 until 2/20, \$39 after. USCF Membership required for all championship sections & blitz. January 2016 Supplement used. TD discretion to place players accurately. **HOTEL:** Special Room Rate. Sofitel San Francisco Bay, 223 Twin Dolphin Dr., Redwood City. Call (650) 598-9000 for reservations. **ORGANIZER:** Chris Torres chessloss@aol.com **Or mail to: TCAMA, 16691 Colonial Trail, Lathrop, CA 95330. More Info & Flyer or Register Online: www.SPFNO.com.**

NOTE: Players who qualify for the World Youth Championship but represent a FIDE Academy are not included in the official US Chess Federation Delegation.

California, Southern

The Los Angeles Chess Club

The Most Active Club on the West Coast! (310) 795-5710. * LACC: www.LAChessClub.com; VCC: www.ValleyChessClub.com; Contact email: [Mick@LAChessClub.com](mailto: Mick@LAChessClub.com); Saturdays: 10am-10 pm (Beg & Intern. classes + 3 Tournaments). Sundays: 11 am - 7 pm (Junior class + 2 Tournaments) - Details on our web site. Tuesdays: 7:30-9:30 pm (Advance Lecture). 11514 Santa Monica Blvd., Los Angeles, CA 90025. (4 blocks W of 405, SW corner of Santa Monica & Butler * 2nd Floor - above Javan Restaurant) **Group Classes * Tournaments * Private (1:1) Lessons.** Note: We added a new club in the valley!

Dec. 5, 12, 19, 26, LACC - Every Saturday Chess 4 JRS

4 separate events- 5SS, G/30 d0. 11514 Santa Monica Blvd. & Butler LA, 90025, 2nd fl. 4 blocks West of 405. **EF:** \$30 (\$20 LACC memb, No prize 1/2, siblings 1/2, Free new LACC members). **Reg.:** 12-1 pm. **Rds.:** 1pm & asap; done by 4; **Prizes:** Trophies & medals; All players receive prizes! **Parking:** Free on streets & BoA. Free pizzas & juices. **Info:** (310) 795-5710 or www.LAChessClub.com or Mick@LAChessClub.com.

Dec. 6, 13, 20, 27, LACC - Every Sunday Chess 4 JRS

4 separate events- 5SS, G/30 d0. 11514 Santa Monica Blvd. & Butler LA, 90025, 2nd fl. 4 blocks West of 405. **EF:** \$30 (\$20 LACC memb, No prize 1/2, siblings 1/2, Free new LACC members). **Reg.:** 12-1 pm. **Rds.:** 1pm & asap; done by 4; **Prizes:** Trophies & medals; All players receive prizes! **Parking:** Free on streets & BoA. Free pizzas & juices. **Info:** (310) 795-5710 or www.LAChessClub.com or Mick@LAChessClub.com.

Mar. 4-6 or 5-6, 23rd annual Western Class Championships

See Chess Life or www.chesstour.com.

Connecticut

Dec. 12, 2015 Greater New Haven Open!

See Grand Prix.

Feb. 6, 2016 Greater New Haven Winter Open!

See Grand Prix.

Mar. 5, 2016 Fairfield County Scholastic Championships!

Parkway School, 141 Lower Cross Rd., Greenwich, CT. Sections K-8, K-12: 4-SS, G/45 d5; K/1: 5-SS, G/30 d5. Top 5 individual trophies all sections, Top 3 teams each section. **EF:** \$40 online by 2/13, \$60 thereafter or mail, onsite \$100 9-9:30. Rd.1 10am then asap. More info and Register online: www.edutechchess.com. Edutech, 343 Beach St., West Haven, CT 06516.

Mar. 6, 2016 Fairfield County Scholastic Championships!

Parkway School, 141 Lower Cross Rd., Greenwich, CT. Sections K/3, K/6, 5-SS, G/30 d5. Top 5 trophies all sections, Top 3 teams. Chess medals all entries. **EF:** \$40 online by 2/13, \$60 thereafter or mail, onsite \$100 9-9:30. Rd.1 10am then asap. More info and Register online www.edutechchess.com, or Edutech, 343 Beach St., West Haven, CT 06516.

Florida

South Florida Grand Prix Series

This is the former Epicure Grand Prix that took place at Miami Country Day. Scholastic and Non-Scholastic sections. More information at website: www.bocachess.com or call 561-479-0351.

The Stormont Kings Chess Center in Miami, FL

Conducts Private and Group Lessons, Homeschool Activities, Tournaments, Camps, Family Game Nights, Parents Night Out, Casual Chess Play and more! Complimentary Refreshments, Ample Parking, Comfortable Waiting Room, and more! Located at 8353 SW 124 St., Suite 201-A, Miami, FL 33156. Contact Chris Stormont, Phone: 786-303-2437, Email: chris@stormontkingschess.com, Web: www.stormontkingschess.com.

Jan. 8-10 or 9-10, 2nd Gulf Coast New Year's Open

See Grand Prix.

Jan. 29-31 or 30-31, Central Florida Class Championships

See Grand Prix.

Feb. 12-14 or 13-14, 2016 U.S. Amateur Team Championship South

See Nationals.

Georgia

Dec. 30, Georgia Chess Festival Scholastic

4-SS, G/30 d5. Interactive College of Technology, 5227 New Peachtree Rd., Chamblee, GA 30341. **In 3 sections:** Middle School: K-8, Elementary: K-6, and Primary: K-3. **Entry Fee:** \$23 if received by 12/28; \$28 at site. Trophies to top 5, top girl, top unrated, top team of 3 same school. Medals to every participant who doesn't get a trophy. **Registration:** 9:30 to 10:30 a.m. **Rounds:** 1st at 11 a.m., then as soon as possible.

Awards right after last round is completed. Should be over by 6:00 p.m. **Special:** A master or expert will be on hand for FREE analysis. **Info:** americanchesspromotions.com or (478)-973-9389. **Enter:** American Chess Promotions, 3055 General Lee Rd., Macon, GA 31204 or preferred Register Online.

Apr. 1-3, 2016 National High School (K-12) Championship
See Nationals.

Illinois

Jan. 10, 121st Knights Quest

NEW HOTEL NOW WITH 5 SECTIONS (U600, U1000, U1400, U1700 & OPEN). Hyatt Hotel, 1750 Lake Cook Rd., Deerfield, IL (free Wi-Fi). **USCF Rated Sections: U600 (K-8), U1000 (K-8), U1400 (K-12 & Adults) U1700 (K-12 & Adults) & Open (K-12 & Adults).** **Awards:** Top 6 U600, U1000 & U1400 Sections, \$60 – 40 U1700, \$75 - 50 Open Sections (based on 6 players). Top Team U600 & U1000. Players in U600 receive participation award. **Time Control:** U600 & U1000 4 Rounds Game 30 (G/25 d5); U1400, U1700 & Open 4 Rounds Game 45 (G/40 d5). **Reg.:** 11:00-11:30 am. **Rds.:** 1 at 12:00 pm, rest ASAP **EF:** \$30 early, \$35 after Monday before, \$45 after Friday before. \$5 discount to siblings and team members when registering together. **Online Registration:** <http://rknights.org/registration/tournaments/> **Mail-in Reg:** Renaissance Knights, PO Box 1074, Northbrook, IL 60065. **Info:** www.rknights.org, 773-844-0701.

Feb. 6, Greater Chicago K-12 Championship!

Chicago's Official Scholastic Championship* 5-SS, G/30 (G/25 d5), open to all grades 12 & below. McCormick Place - West Building 2301 S. Dr. Martin Luther King Jr. Dr., Chicago, IL. **PRIMARY (K-3):** Varsity: open to all. Trophies: top 5 players, top rated Under 800, top 2 schools. Junior Varsity: open to Under 600. Trophies: top 15 players, top Unrated & top kindergartner, top 4 schools. **ELEMENTARY (K-6):** Varsity: open to all. Trophies: top 5 players, top rated Under 1000, top 2 schools. Junior Varsity: open to Under 800. Trophies: top 15 players, top Unrated, top 4 schools. **JUNIOR HIGH (K-9):** Varsity: open to all. Trophies: top 4 players, top rated Under 1200, top school. Junior Varsity: open to Under 1000. Trophies: top 8 players, top Unrated, top 2 schools. **HIGH SCHOOL (K-12):** Varsity: open to all. Trophies: top 4 players, top rated Under 1400, top school. Junior Varsity: open to Under 1200. Trophies: top 8 players, top Unrated, top 2 schools. **Entry Fee:** \$40 by 1/18; \$50 by 2/1; \$60 after 2/1. On-site entries receive 1/2 point bye for round 1. All entries \$5 off when siblings & team members register together. **Check-In/Onsite Reg.:** 8:30 - 9:15. **RDS.:** 10:00, 11:30, 1:00, 2:30 & 4:00. **Awards Ceremony:** 5:30pm. **Byes:** One 1/2-pt bye available, any round, if requested before end of Rd.2 and if player has not received a full-point bye. **Entries:** mail to RKnights, PO Box 1074, Northbrook, IL 60065, include name, section, rating, USCF ID#, grade, school name city & state. **Online/Info at:** www.rknights.org/greaterchicago. **Questions:** info@renaissanceknights.org or 773.844.0701. * The City of Chicago will recognize the top individual & team from Chicago in each Varsity section as the City Champions.

Feb. 19-21, 2016 U.S. Amateur Team Championship North
See Nationals.

May 26-30, 27-30, 28-30 or 29-30, 25th annual Chicago Open
See *Chess Life* or www.chesstour.com.

Indiana

Apr. 15-17, 2016 National Junior High School (K-9) Championship
See Nationals.

Maryland

Maryland Chess Association Tournaments

MCA runs scholastic tournaments (almost every other Saturday from mid-September to late May) & open tournaments (usually 10+ annually) throughout Maryland. Listings & online registration at www.MDChess.org. Maryland scholastic players who compete in the Varsity section (which has a floor of 1600) of a Maryland-Sweet-16 Qualifier can qualify for the \$44,000 scholarship to UMBC (University of Maryland, Baltimore County) awarded each year.

Dec. 26-29, 27-29, 26 or 27, 42nd Annual Eastern Open
See Grand Prix.

Feb. 6, Kasparov Chess Foundation Presents 8th Annual Greater Mid-Atlantic Scholastic Chess Championships
Baltimore Polytechnic Institute & Western High School, 1400 W. Cold Spring Ln., Baltimore, MD 21209. Open to K-12 players. 122 Trophies: 93 Individual & 29 Team. **8 Sections:** 4 sections are 4-SS, G/45 d5: **Championship K-12 (1000+)**, K-12, trophies to top 8 players & 2 teams), **Championship K-8 (1000+)**, K-8, trophies to top 10 players & 3 teams), **Championship K-5 (600+)**, K-5, trophies to top 10 players & 3 teams), **Championship K-3 (600+)**, K-3, trophies to top 4 players & 1 team). 4 sections are 5-SS, G/30 d5: **U1000 K-12** (under 1000 or unrated, K-12, trophies to top 14 players & 5 teams), **U800 K-8** (under 800 or unrated, K-8, trophies to top 16 players & 5 teams), **U600 K-5** (under 600 or unrated, K-5, trophies to top 20 players & 7 teams), **U400 K-3** (under 400 or unrated, K-3, trophies to top 11 players & 3 teams). **Rounds:** Round 1 for all sections: 9:30 AM; subsequent rounds ASAP # of rounds, # of sections, time control, & # of trophies might change, based on # of players. **EF:** \$30, by 11:59 PM, 01.31 (online or received mail); \$40, by 7 PM, 02.04 (online); \$60, by 6 AM, 02.06 (online) (half-point bye possible in Round 1); \$70, 8:30 - 9 AM, 02.06 (only if space available; half-point bye likely in Round 1). **Entry:** Online registration at www.mdchess.com/tourneyreg. Mail registration: include player's name, US Chess ID #, US Chess exp. date, section, grade, school, mobile phone #, email address, & check (in ink & made payable to

MCA). Mail to: MCA, 1827 Thornton Ridge Rd., Towson, MD 21204. Sets, boards, & scoresheets provided; bring chess clock & pencil. Food available for purchase. **Information website & email:** www.mdchess.com, tournaments@mdchess.com.

Massachusetts

Jan. 8-10 or 9-10, 4th annual Boston Chess Congress
See *Chess Life* or www.chesstour.com.

Feb. 6, 2016 Greater New Haven Winter Open! (CT)
See Grand Prix.

Mar. 5, 2016 Fairfield County Scholastic Championships! (CT)
See Connecticut.

Mar. 6, 2016 Fairfield County Scholastic Championships! (CT)
See Connecticut.

Missouri

Mar. 18-20 or 19-20, 20th annual Mid-America Open
See *Chess Life* or www.chesstour.com.

Nevada

Dec. 26-30, 26-29 or 27-29, 25th annual North American Open
See *Chess Life* or www.chesstour.com.

New Jersey

Jan. 17, Westfield Winter Scholastic

Westfield V, 220 Clark St., Westfield, NJ 07090. K-12. **3 Sections:** Open, U1250, U750. **Open:** 3-SS, G/40 d5. **Rounds:** 2:00, 3:45, 5:30 p.m. **U1250 & U750:** 4-SS, G/25 d5. **Rounds:** 2:00, 3:15, 4:30, 5:45 p.m. **EF:** \$25, \$20 members. **Prizes:** Trophies to Top 5 in each section. Tiebreaks used. See USCF Rule 34E. **Register:** 1:15-2:00 p.m. **Information:** John Moldovan: westfieldchessclub@gmail.com, Bill Cohen: 732-548-8432 or 848-219-1358, www.westfieldchessclub.com and westfieldchessclub.blogspot.com.

Jan. 23, Princeton Charter School

Princeton Charter School at: 100 Bunn Dr., Princeton, NJ 08540. **TIME CONTROL:** G/30 d0 Swiss to 4 rounds. **SECTIONS:** Open above 1000; U1000; U700; U500/Unrated (sections might be combined when necessary for pairings). **Parental Supervision Required:** The parents or another adult must be designated to supervise the student player between rounds. **Schedule** (will be accelerated if possible). **First Round:** 12:01 PM; **Second Round:** ASAP; **Third Round:** ASAP; **Fourth Round:** ASAP; **Award Ceremony:** ASAP (4:05 the latest). Schedule will be accelerated if possible (*) **Online Registration \$30 only if register one week before: www.ChessKidsNY.com/PCSChessProgram.htm (*) Fee will increase automatically to \$35 if register later.** On site registration the date of the event: \$40 from 11:45 am to 12:00 noon. **Information:** email to Miguel Iniguez at: migini@gmail.com **Results will be posted online the same day of the event!**

Feb. 13-15, World Amateur Team & U.S. Team East
See Nationals.

A State Championship Event!

Feb. 21, New Jersey Junior High School Championships
5SS, G/30 d5. Brookdale College, 765 Newman Springs Rd., Lincroft, NJ 07738. Student Life Center, use Parking Lot #7 or #6; 5 minutes from Garden State Parkway exit 109. **Section:** JHS (K-9). **ALL:** Trophies to top 15 individuals, top 5 teams. **Rds.:** 10am then ASAP. Top 4 scores constitute team score. **EF:** \$30 before 2/14, \$45 at site. USCF memb. req'd. **Reg.:** 8-9:00 am. After 9:00 am, half-point bye for round one. **INFO:** 732-259-3881, hsprechman@characterkings.org. **ENT:** Hal Sprechman, 66 Cromwell Ln., Jackson NJ 08527 or online by Feb 19 at www.NJSCF.org. Entries must include name, grade, school, date of birth, USCF ID #, & expiration date, mailing address, phone number & entry fee. Checks made out to NJSCF.

A State Championship Event!

Feb. 21, New Jersey State Elementary Championships
5SS, G/30 d5. Brookdale College, 765 Newman Springs Rd., Lincroft, NJ 07738. Student Life Center, use Parking Lot #7 or #6; 5 minutes from Garden State Parkway exit 109. **2 Sections: Elementary (K-6) & Primary (K-3).** **All:** Trophies to top 15 individuals, top 5 teams. Elementary & Primary: Top 5 in each grade. **Rds.:** 10am then ASAP. Top 4 scores constitute the team score for Elementary; top 3 for Primary. **EF:** \$30 before 2/14, \$45 at site. USCF memb. req'd. **Reg.:** 8-9:00am After 9:00am 1/2 point bye for round 1. **Info:** 732 259-3881, Ent: Hal Sprechman, 66 Cromwell Ln., Jackson, NJ 08527 or online by Feb 19 at www.NJSCF.org. Entries must include name, grade, school, date of birth, USCF ID and expiration date, mailing address, email address, phone number and entry fee. Checks made out to NJSCF.

US Chess Junior Grand Prix!

A State Championship Event!

Mar. 12-13, New Jersey High School Chess Championship
5SS, G/20 d5. Union County Vocational-Technical School, 1776 Raritan Rd., Scotch Plains, NJ 07076. 3 sections: **Varsity Championship (9-12):** 5 player teams with one alternate allowed. Coaches set order by player strength. Order must not be changed. Team avg. based on top 5 highest ratings. Trophies to top 10 NJ teams. Trophies for top 3 players, boards 1-5. **Rds.:** Sat. 10-2-6, Sun. 10-2. **EF:** \$150/team before 3/2. \$185/team at site. \$5 per change on site. **Junior Varsity (9-12):** 4 player teams with one alternate allowed. Team avg. based on top 4 highest ratings. Trophies to top 10 NJ teams. Trophies for top 3 players, boards 1-4. **Rds.:** Sat. 10-2-6, Sun. 10-2. **EF:** \$120/team before 3/7, \$150/team on site. \$5 per change on site. **Booster (K-12):** Trophies to top 15 individuals. **Rds.:** Sat. 10-2-6, Sun. 10-2. **EF:** \$30 before 3/7, \$37 at site. **All:** USCF memb. required. **Reg.:** Sat. 8-9:00am. After 9:00am, 1/2 Point bye for round one. **Ent:** Noreen Davison, 6 Red Barn Ln., Randolph, NJ 07869. Entries must include name, grade, school, date of

birth, USCF ID and expiration date, mailing address, email address, phone number and entry fee. Checks made out to NJSCF. Email inquiries: Noreen@deanofchess.com.

New York

Dec. 26-28 or 27-28, 34th annual Empire City Open
See *Chess Life* or www.chesstour.com.

Jan. 8, Greater NY Scholastics Friday Night Blitz Booster! (BLZ)
4SS, G/5 d0, double-round, 8 games, NY Marriott At Brooklyn Bridge, 333 Adams St., Brooklyn (see Greater NY Scholastics: 1/9-10). **EF:** \$30, parents, alumni & those with greater NY Scholastics \$20. Trophies: top 3, Top U1800, U1500, Unr. Reg. on-site 6-6:45 pm. **Rds.:** 7-7:30-8-8:30 pm. Bye OK rd. 1. Blitz-rated, but higher of regular or blitz used for pairings, prizes. W.

An American Classic!

A Heritage Event!

US Chess Junior Grand Prix!

Jan. 9 or 10 or 9-10, Kasparov Chess Foundation presents the 50th Annual Greater NY Scholastic Championships - Since 1966, US Chess Longest-Running Scholastic!

Beautiful hotel site: NY Marriott Hotel At Brooklyn Bridge, 333 Adams Street (near Borough Hall), Brooklyn, NY. Nearby subway stations: Jay Street Metrotech (A, C, F & R trains), Hoyt Street (2 & 3 trains), Borough Hall (4 & 5 trains), Court Street (R train). HR \$149, call 877-513-6305 or 718-246-7000 by 12/18 (rooms may sell out early), mention chess. In 14 sections! Each section has its own age, grade and rating requirements (Championship sections open to all who are under grade and age limits). **The 5 Championship sections** are each **2 days**, 6-SS, G/60 d/10, Rounds 10 am-1-4 pm Sat-Sun. Awards ceremonies about 6:30 pm Sun. **The 9 non-Championship sections** are each 1-day, G/30 d10: Junior High Under 1000, Primary Under 1000, Primary Under 500, and K-1 Under 400 are **Saturday:** 10 am-12-1:30-3-4:30 pm; Awards ceremonies about 6 pm. High School Under 1900, High School Under 1200, Elementary Under 1400, Elementary Under 1000 and Elementary Under 600 are **Sunday:** 10 am-12-1:30-3-4:30 pm, Awards ceremonies about 6 pm. **All 3 Primary sections** open to grades 3/below born after 1/9/06. **1. Primary Championship** (Sat-Sun), EF \$58.30 postmarked by 12/18/15. **2. Primary Under 1000** (Sat), EF \$58.20 postmarked by 12/18/15. **3. Primary Under 500** (Sat), EF \$58.10 postmarked by 12/18/15. **Both K-1 sections** open to grade 1/below born after 1/9/08. **4. K-1 Championship** (Sat-Sun), EF \$59.30 postmarked by 12/18/15. **5. K-1 Under 400** (Sat), EF \$59.20 postmarked by 12/18/15. **Both Junior High sections** open to grades 9/below born after 1/9/00. **6. JHS Championship** (Sat-Sun), EF \$56.30 postmarked by 12/18/15. **7. JHS Under 1000** (Sat), EF \$56.20 postmarked by 12/18/15. **All 4 Elementary sections** open to grades 6/below born after 1/9/03. **8. Elementary Championship** (Sat-Sun), EF \$57.40 postmarked by 12/18/15. **9. Elementary Under 1400** (Sun), EF \$57.30 postmarked by 12/18/15. **9. Elementary Under 1000** (Sun), EF \$57.20 postmarked by 12/18/15. **11. Elementary Under 600** (Sun), EF \$57.10 postmarked by 12/18/15. **All 3 High School sections** open to grades 12/below born after 1/9/96. **12. High School Championship** (Sat-Sun), EF \$55.30 postmarked by 12/18/15. **13. High School Under 1900** (Sun), EF \$55.20 postmarked by 12/18/15. **Trophies** each section to Top 12, top 3 Unrateds and Top 6 teams (top 4 scores from same school = team, all on team must attend same school: no combined teams, even if one school "feeds" another). In High School U1200, plaques also to top 2 each grade: 7-9. In Junior High U1000, plaques also to top 2 each grade: 4-6. In K-1 Championship, plaques also to top 6 K/below (you can win both plaque + trophy). All players scoring 4 or more (5 or more in Championship) who don't win a trophy receive a medal! Speed playoff for 5-0 or 6-0. **Individual free entry prizes** (each Championship section): **Free entry to specified** Continental Chess tournaments thru 1/20/17 to 1st, thru 10/10/16 to 2nd, thru 8/25 to 3rd, thru 6/15 to 4th. **Individual free entry prizes** (each non-Championship section): **Free entry to specified** Continental Chess tmts. thru 12/1/16 to 1st, thru 8/25 to 2nd, thru 6/15 to 3rd, thru 4/25 to 4th. **Team free entry prizes:** free entry to specified CCA tmts. thru 8/25/16 to 1st team, thru 6/15 to 2nd team each section! Free entries courtesy of Continental Chess and are valid for CCA tmts. with 100% unconditionally guaranteed prize funds. Free entries do not include NYS Scholastics in Saratoga. See www.chesscenter.cc or www.gnysccc.com or www.chesstour.com for complete details and restrictions. **High School Mixed Doubles** (best male/female 2-player "team") combined score among all 3 High School sections after 5 rounds) **Bonus Prizes:** free entry to specified CCA tmts. thru 8/25/16 to 1st team, thru 6/15 to 2nd. Team average must be under 2200; Mixed Doubles teammates may play in different sections and may attend different schools; teams must register on-site (no extra charge) before rd. 2; teammate pairings avoided but possible. **All:** January 2016 official ratings used, except unofficial ratings at uschess.org usually used if otherwise unrated. TD reserves right to assign estimated ratings to players with non-USCF ratings. **EFs \$10 extra per player** postmarked 12/19-26. **Entries \$5 less per player if 4 or more from same school in SAME ENVELOPE! Mailed entries:** list name, rating, ID# (non-USCF members enclose dues), school, grade, DOB, address, (specify section!). Checks to: **Chess Center of NY, PO Box 4615, New Windsor, NY 12553.** If necessary to confirm receipt, enclose SASE. **No mail postmarked after 12/26/15!** All substitutions from advance entry list charged late fee. Switching sections subject to \$15 extra charge. \$15 service charge for each player refund. TD reserves right to reassign sections for advance entries with incorrect or unclear registrations. Limit 2 byes (limit 3 in Championship), commit before rd. 3. **Phone entries:** \$74 by credit card thru 1/4: 406-896-2191 (24 hours: entries only, no questions), no phone entries after 1/4. **Online entries** at www.gnysccc.com: \$55 thru 12/26/15, \$65 12/27-1/4, \$75 1/5-1/7. **Online team entry discounts** thru 1/4 only, no team discounts by phone or at site. **On-site entry fee:** \$85 until 8:30 am, \$100 after 8:30 am; after 9 am you risk not playing rd. 1. Good luck attempting to change

Tournament Life

entries after 9am. Help with parking: <http://nyc.bestparking.com/> neighborhoods/downtown-brooklyn-parking and <https://www.parkingpanda.com/brooklyn-parking> **Questions, team rooms:** chesscentr@gmail.com, littlehouseofchess@gmail.com or **347-201-2269** (leave message, email is better). Jan 9-10 only: **718-246-7000**. Sets provided by Little House of Chess— **bring clocks!**W. **Info:** www.chesscenter.cc, www.gnyscc.com. **Note:** Only Championship Sections qualify for US Chess Junior Grand Prix.

Feb. 6, 2016 Greater New Haven Winter Open! (CT)
See Grand Prix.

Mar. 5, 2016 Fairfield County Scholastic Championships! (CT)
See Connecticut.

Mar. 6, 2016 Fairfield County Scholastic Championships! (CT)
See Connecticut.

A Heritage Event!
US Chess Junior Grand Prix!
A State Championship Event!

Mar. 12-13, 49th annual New York State Scholastic Championships (out of state welcome)

Note corrected time control and schedule. GSS, G/60 d10, open to grades K-12; top NYS player & team in each section are NY champions. In 10 sections. **HS & JHS Championships** at Courtyard by Marriott, 11 Excelsior Ave., Saratoga Springs, NY 12866 (2/5 mile from Saratoga Hilton). **Other sections** at Saratoga Hilton, 534 Broadway (I-87 Exit 13-N, 4 miles north on US 9), Saratoga Springs, NY 12866. **Team prizes** based on top 4 scores from same school; no combined school teams allowed even if one school "feeds" another. Teams of 2 or 3 players allowed, but are at a disadvantage. **Online entry fee at chessaction.com, all sections:** \$44 by 2/19, \$54 2/20-3/5, \$60 3/6 to 3/11. **Entry fee at site,** all sections: \$70. **High School,** open to grades K-12 born after 9/1/96. EF \$48.20 mailed by 2/19. Top NYS grade 9-12 qualifies for Denker Tournament of HS Champions, top NYS grade K-12 girl qualifies for National Girls Invitational. **High School Reserve,** open to K-12 under 1200 or unrated. EF \$48 mailed by 2/19. **Junior High,** open to all in grades K-9. EF \$47.90 mailed by 2/19. Top NYS grade K-8 born after 9/1/00 qualifies for Barber tournament of K-8 Champions. **Middle School Reserve,** open to K-8 under 1000 or unrated. EF \$47.80 mailed by 2/19. **Elementary,** open to all in grades K-6. EF \$47.60 mailed by 2/19. **Elementary Intermediate,** open to grades K-6 under 1200 or unrated. EF \$47.50 mailed by 2/19. **Elementary Reserve,** open to grades K-5 under 800 or unrated. EF \$47.40 mailed by 2/19. **Primary,** open to grades K-3. EF \$47.30 mailed by 2/19. **Primary Reserve,** open to grades K-3 under 600 or unrated. EF: \$47.20 mailed by 2/19. **K-1,**

open to grades K-1. EF \$47.10 mailed by 2/19. **Postmarked 2/20-3/2:** All EF \$10 more. Do not mail entry after 3/2. **Special 1 year US Chess dues** with magazine if paid with entry. Online at chessaction.com, Young Adult \$22, Scholastic \$15. Mailed or paid at site, Young Adult \$25, Scholastic \$17. **Trophies** to top 15 players and top 7 teams each section, top 3 unrated in K-1 and each Reserve section, and top U1600, U1400, U1200 (HS), U900, U700 (HS Reserve & Elem Intermediate), U1400, U1200, U1000 (JHS), U700, U500 (MS Reserve), U1300, U1100 (Elem), U500, U300 (Elem Reserve), U500 (Primary), U200 (Primary Reserve, K-1). Speed playoff if perfect score tie. **Free entry** to NY State Championship, Labor Day weekend 2016 (Albany), to top player each section, if not already qualified for free entry from another event. **Schedule:** Reg. ends Sat 10 am, rds. Sat 11, 2, 5, Sun 9, 12, 3, **Awards** 5:30 pm. **Half point byes** OK all, limit 2, must commit before rd. 2. **HR:** \$129-129 at either hotel, Courtyard 866-210-9325, Hilton 888-999-4711, 518-584-4000, two nights minimum, reserve by 2/6 or rate may increase; hotels often sell out a few months before the deadline. Free parking at Courtyard; free parking for overnight guests at Hilton. 7 days notice required for room cancellation. **Special car rentals:** Avis, 800-331-1600, use AWD #657633. **Online entry:** www.chessaction.com. **Mail entry:** Continental Chess, PO Box 249, Salisbury Mills, NY 12577. Include name, rating, US Chess ID, USCF expiration (non-members enclose dues), section, school, grade, birth date, address of each player. Checks payable to Continental Chess. **\$15 per player** service charge for refunds. **\$10 extra to switch** sections, all substitutions from advance list charged \$70. **Questions:** DirectorAtChess.US (At = @), 347-201-2260. **Bring set, board, clock** if possible- none supplied. **March official ratings used** (except unofficial web ratings usually used if otherwise unrated). TD reserves right to assign estimated rating to players with non-US Chess ratings.

Pennsylvania

Jan. 15-18, 16-18 or 17-18, 48th annual Liberty Bell Open
See *Chess Life* or www.chesstour.com.

Feb. 6, Kasparov Chess Foundation Presents 8th Annual Greater Mid-Atlantic Scholastic Chess Championships (MD)
See Maryland.

Mar. 11-13 or 12-13, 17th annual Pittsburgh Open
See *Chess Life* or www.chesstour.com.

Mar. 23-27, 24-27, 25-27 or 26-27, 10th annual Philadelphia Open
See *Chess Life* or www.chesstour.com.

June 30-July 4, July 1-4 or 2-4, 44th Annual World Open
See *Chess Life* or www.chesstour.com.

Rhode Island

Feb. 6, 2016 Greater New Haven Winter Open! (CT)
See Grand Prix.

Mar. 5, 2016 Fairfield County Scholastic Championships! (CT)
See Connecticut.

Mar. 6, 2016 Fairfield County Scholastic Championships! (CT)
See Connecticut.

Tennessee

May 6-8, 2016 National Elementary (K-6) Championship
See Nationals.

Texas

Dec. 12-13, 2015 DCC Fide Open XIV
See Grand Prix.

Dec. 19-21, 2015 Dallas Absolute
See Grand Prix.

Dec. 30-31, DCC New Year's Eve INSANITY
See Grand Prix.

Jan. 9-10, 2016 DCC Fide Open I
See Grand Prix.

Jan. 16-18, Texas Masters
See Grand Prix.

Feb. 11-15, 12-15, 13-15 or 14-15, 7th annual Southwest Class Championships
See *Chess Life* or www.chesstour.com.

Virginia

Feb. 6, Kasparov Chess Foundation Presents 8th Annual Greater Mid-Atlantic Scholastic Chess Championships (MD)
See Maryland.

Feb. 26-28 or 27-28, George Washington Open
See *Chess Life* or www.chesstour.com.



ChessKid

.com

PLAY

LEARN



#1 Chess Site for Kids. 200,000+ Kids, Parents, & Coaches!
100% Safe and Kid-Friendly! Signup Today - it's FREE!

Answers, We've got Answers.

End of the Line (from page 8)

#1 - 1. ... Rg2+ 2. Kh1 Rxf2+ and now Black is winning; if 3. Rxe4 Rxf1+ 4. Qxf1 Qxe4+ and Black wins.

#2 - 1. Nxd6+! (taking either rook wins too) 1. ... Kh8 2. Nf7+ Kg8 3. Nxc6+ Kh8 4. Nf7+ Kg8 5. Nxd8+ Kh8 6. Nf7+ Kg8 7. Nd6+ Kh8 8. Nxc8 and White will win.

#3 - 1. Rg7+! Kh8 2. Rg6+ (Also equally as good is 2. Rf7+ followed by Rf8+ and Rh8#) 2 ... Kh7 3. Rg7+ Kh8 (if 3. ... Kh6 4. Bc1+ with mate to follow) 4. Rg5+ Kh7 5. Rh5+ Kg8 6. Rh8#.

#4 - 1. Bf6!! Qxh5 2. Rg7+ Kh8 3. Rxf7+ Kg8 4. Rg7+ Kh8 5. Rxb7+ Kg8 6. Rg7+ Kh8 7. Rg5+ Kh7 8. Rxb7+ Kg8 9. Rh3 and White is up by two pawns.

#5 - 1. Qxe4!! Alexander Alekhine crushes his opponent with a beautiful use of the windmill idea: 1. ... fxe4 2. Bxe4+! Kh8 3. Ng6+ Kh7 4. Nxf8+ Kh8 5. Ng6+ Kh7 6. Ne5+ Kh8 7. Nf7#.

#6 - 21. Rxf7!! Brilliant shot by GM Tamaz Gelashvili. 21. ... Rxc4 22. Rxc4 Kh8 and now the calm 23. bxc4! and the windmill threat is decisive; Black went for 23. ... Qh3 24. Rg5+ Nd4 25. Nxd4 Be5 26. Rxe5 h6 27. Re7 hxg5 28. Ne6+ Kg8 29. Rg7+ and Black resigned.

The Chess Detective

(from page 9)

#1 This position was from a game between Schaff and Carl Hartlaub in Bremen, Germany in 1907. Black finished White off with 13. ... Nf2+ 14. Ke1 Nd3+ (double check) 15. Kd1 Qe1+ (a queen sacrifice!) 16. Nxe1 Nf2 mate. **#2** 20. Nc5+ Kb8 (20. ... Kd8 21. Qd7 mate) 21. Nd7+ Kc8 22. Nb6+ (double check) 22. ... Kb8 23. Qc8+ Rxc8 24. Nd7 mate. This position is from Paul Morphy versus Schrufer in Paris, France, 1859.

#3 This position occurred in 1906 in London, England, between Oscar Conrad Muller and Henry Vincent Crane. Black won quickly by sacrificing his rooks with 20. ... Rxh2+ 21. Nxh2 Rxh2+ 22. Qxh2 Nf2 mate.

#4 Jan Timman played white against Nigel Short in this 1990 game in Tilburg, Netherlands. White played the nice sequence of moves: 24. Bxc6 bxc6 25. e7 Re8 26. Qc4+ Kh8 27. Nf7+ (forcing the black king in line with the white queen) 27. ... Kg8 28. Nh6+ Kh8 29. Qg8+ Rxg8 30. Nf7 mate.

#5 Black sets up a discovered check and smothered mate by playing 18. ... Qb6 19. Kh1 Nxc2 20. Qxc2 Nf2+ 21. Kg1 (Of course, 21. Rxf2 Qxf2 is better and keeps White alive, but leaves him down in material.) 21. ... Nh3+ 22. Kh1 Qg1+ 23. Rxc1 Nf2 mate. This posi-

tion is from a game that took place in 1849 in New Orleans between James McConnell and Paul Morphy.

#6 This position from 2000 is between Alexander Grischuk and Ruslan Ponomarev played in Torshavn, Faroe Islands. 23. Ng5! Kh8 (23. ... Qf8 24. Qxf8+ Bxf8 25. Bxb6) 24. Qf7 Bd7 25. Bxe6! Rxd8 (25. ... Qf8 26. Qxf8+ Bxf8 27. Bxb6 Bxe6 28. Nxe6 Ra6 29. Bd4+ saves the piece.) 26. Qg8+ Rxg8 27. Nf7 mate. *Todd Bardwick is the author of Chess Strategy Workbook: A Blueprint for Developing the Best Plan. He can be reached at www.ColoradoMasterChess.com*

You Can Do It! (from page 11)

Solution #1

Hoang Thanh Trang (2476)

Gabriele Franchini (2309)

Budapest

Perhaps you think that only a beginner might fall for this trap:

1. d4 Nf6 2. Bg5 e6 3. Nd2 c5 4. dxc5 Bxc5 5. Ne4

Unaware of the danger, White moves the knight a second time to attack the undefended Bc5 and to apply more pressure on the Nf6.

The sacrifice works with Black too. Here, a wonderful brevity.

5. ... Nxe4!, 0-1

Black need not capture the queen and face 6. ... Bxf2#, but White's knight is now lost.

Solution #2

Alapin Opening

1. e4 e5 2. Ne2

Already a dangerous sign. The knight move blocks development of the Bf1 and the queen, and leaves the white king with no air to breathe.

2. ... Nf6 3. d3

Defends the e-pawn but, in the long term, impedes developing of the light-squared bishop.

3. ... Bc5

Black's development far surpasses White's.

4. Bg5

Breaking the rule "knights before bishops."

4. ... Nxe4! 5. Bxd8

White need not succumb to mate. 5. dxe4 loses only a pawn after 5. ... Qxg5

5. ... Bxf2#, 0-1

Solution #3

Bayardo Jose Ramirez Rivas

Thomas Schapmann

Canarias en Red, 2004

1. e4 e5 2. Nf3 Nc6 3. Bc4 d6

For the mate to work, or even be considered, Black must make some sub-standard moves. Here, the advance of the d-pawn blocks the free development of the Bf8.

4. Nc3 Bg4

Not the best move, but it does not deserve to lose instantly. The sacrifice should not suc-

ceed here.

5. Nxe5? Bxd1?

Of course, Black should play 5. ... Nxe5 winning a piece! But now it's mate in two.

6. Bxf7+ Ke7 7. Nd5#, 1-0.

Solution #4

Petroff's Defense

1. e4 e5 2. Nf3 Nf6 3. Nxe5 Nc6 4. Nxc6 dxc6

5. d3

Holding on to the extra pawn.

5. ... Bc5

Preparing to castle.

6. Bg5

Once again, a relative pin. Of course, 6. Nc3 is much better.

6. ... Nxe4!

A nice variant. There's no knight on c6 to help on d4.

7. Bxd8

And on 7. Be3 Bxe3 8. fxe3 Qh4+-- 9. g3 Nxg3. Here, the knight remains immune: 7. dxe4 Bxf2+ 8. Ke2 Bg4+.

7. ... Bxf2+ 8. Ke2 Bg4#, 0-1.!

Solution #5

Mario Vieten (1606)

Alexander Kimmel (1440)

Leipzig, 2003

1. Nc3

The Dunst!

1. ... d5 2. e4 d4

Trying to close down the position.

3. Nce2 c5 4. Ng3

It would be hard to imagine here how critical a role that the knight will have in just five moves.

4. ... e5 5. Bc4 Nf6 6. Nf3

With rapid development.

6. ... Bg4 7. Nxe5!

7. Bxf7+ also wins. 7. ... Kxf7 8. Nxe5+--.

7. ... Bxd1

With mate in two. 7. ... Be6 saves mate, but White is still winning with 8. f4.

8. Bxf7+ Ke7 9. Nf5#, 1-0.

Covering the king and d6.

Solution #6

Pa Shields

Howard Gaba

Lansing, 1985

1. e4 e5 2. f4 Bc5 3. Nf3 d6 4. Bc4 h6 5.

Nc3 Bg4 6. fxe5

But not 6. Nxe5 Bxd1 7. Bxf7+ Kf8--.

6. ... Nc6

Not 6. ... dxe5 7. Bxf7+ Kxf7 8. Nxe5+--.

7. Rf1

Putting the final preparations in place.

7. ... Nxe5 8. Nxe5! Bxd1

8. ... dxe5 9. Qxg4+-- More important than the extra material are the multiple threats against Black's kingside.

9. Bxf7+ 9. Bxf7+ Ke7 10. Nd5+ Kf8 11. Ng6#, 1-0.

On 9 ... Kf8 10. Ng6#.



Fritz 15



New Fritz, new friend

The completely reworked “friend” mode makes Fritz 15 the ideal training partner. During the course of a game, Fritz is able to constantly tailor its level to your playing strength and how much time you are using. The program can give you a sign when a tactical opportunity presents itself or point out typical mistakes to help you improve. Another exciting element is the new evaluation function that analyzes your playing strength throughout the game. Where are your strengths – where are your weaknesses? The opening? Middle-game? Or perhaps the endgame? Fritz 15 gives you an ELO rating for all three phases! You definitely need to see this!

Improve your conversion technique

“I should have won that!” How often have you been frustrated after playing a good game of blitz on playchess.com that somehow went wrong? Stoke your curiosity and find out what

could have been with Fritz 15 – Fritz can now show you what you missed right after the game. You can, of course, also try to find the way to win yourself using the handy exercise function – an approach certain to boost your own conversion technique and playchess ELO!

New author, new engine

Vasik Rajlich is new to the Fritz team. The American shook up the world of computer chess just a few years ago, reaching the top with his program, “Rybka”. He is the author of the new Fritz 15 engine, so there’s no question that it will be one of the world’s strongest!

Excellent overview, better access

If you watch a lot of training videos or work extensively with databases, the revamped database window is something you’ll love. It doesn’t just automatically display all the Fritztrainer or other courses installed on your hard drive, the improved game list also offers enhanced access options and sorting functions – in a manner similar to the original ChessBase software!

One program, many facets

Fritz 15 doesn’t just offer direct access to playchess.com – it also opens the door to the world of the new ChessBase web tools:

- “On-demand video” – unlimited access to our comprehensive database with training videos on every aspect of the royal game, recorded shows, interviews etc.
- “Live Database” – access the ChessBase online database with 8 million games.



- “My Games Cloud” – access your server games collection at the click of a mouse!
- “Training” - test, train, and improve your tactical skills at any time. More than 34,000 training tasks are waiting for you!
- “Let’s Check” – access our unique analysis database with over 200 million deeply analyzed positions and much more!

Fritz 15 comes with Premium access to the new ChessBase web tools for over six months!



FRITZ 15

\$ 89,95

- New 64 Bit –Fritz multiprocessor engine
- Improved 64 Bit- and 32 Bit program interface
- Premium membership to the new ChessBase Accounts and to Playchess.com (six months)
- Database with over 1.5 million games etc.

System requirements: Minimum:

Pentium III 1 GHz, 2 GB RAM, Windows 7/8, DirectX9, 256 MB graphics card, DVD-ROM drive, Windows Media Player 9 and Internet access for program activation, access to Playchess.com, Let’s Check and program updates.

Recommended: PC Intel i7 (Quadcore), 4 GB RAM, Windows 8.1/10, DirectX10, 512 MB graphics card, 100% DirectX10-compatible sound card, Windows Media Player 11, DVD-ROM drive and Internet access for program activation, access to Playchess.com, Let’s Check and program updates.



888.51.CHESS (512.4377)
www.USCFSales.com