

CHESS LIFE Kids



**Pin it and
WIN IT!**

**All you need to know about
Pins & Skewers**

 US CHESS

\$3.00
0 2 >



0 74470 27842 9

CLASSY. COLORFUL. WELL-CRAFTED.

Our trophies are an
**ICON OF
ACHIEVEMENT.**



- Walnut, Solid Marble, and Marble-look bases and lids.
- Many colors to choose from.
- Choose from a large collection of figurine toppers.

TROPHIES  **PLUS**
A Champion Defined.

Official
Awards
Provider for the

US CHESS
FEDERATION

315 West 1st St. P.O. Box 115, Templeton, IA 51463
800-397-9993 * fax: 712-669-3851
email: trophyman@trophiesplus.com * www.trophiesplus.com



February 2016



Vol. 11, No. 1



Publisher

USCF Executive Director: Jean Hoffman
Jean.Hoffman@uschess.org

Director of Publications: Daniel Lucas
dlucas@uschess.org

Scholastic Editor: Glenn Petersen
gpetersen@uschess.org

Cover Design and Feature
Francesca Butler
Frankiebutler11@gmail.com

Art Director: Cat Connor
catseyephoto@mac.com

Editorial Asst./Copy Editor: Alan Kantor
akantor@uschess.org

Editorial Assistants: Jo Anne Fatherly
backtobasics@uschess.org
Natasha Roberts
nroberts@uschess.org

Advertising Manager: Joan DuBois
jdubois@uschess.org

Tournament Life: Joan DuBois
tla@uschess.org

CONTRIBUTORS: Send your contributions and articles to *Chess Life Kids*, PO Box 3967, Crossville, Tennessee 38557 or better yet, e-mail to gpetersen@uschess.org.

Chess Life KIDS (USPS 023-567, ISSN: 1932-5894) is published in February, April, June, August, October, and December of every year by US Chess, 137 O'Brien Drive, Crossville, Tennessee 38555. Periodical postage paid at Crossville, Tennessee, and additional mailing offices.

CHANGE OF ADDRESS: Be sure to notify us at once of any change of address. Please include your old address and your new address, along with your USCF I.D. number.

POSTMASTER: Send address changes to US Chess, PO Box 3967, Crossville, Tennessee 38557.

Annual Scholastic Membership
Regular Scholastic Membership (online version of *Chess Life Kids*), age 12 or younger, is just \$17 per year. Premium Scholastic Membership (receives *Chess Life Kids* by mail) is \$25 per year. \$13 of every premium membership goes towards providing *Chess Life Kids*. Annual subscription rate is \$18. Entire contents copyright 2015, United States Chess Federation.

Teachers may photocopy instructional articles for classroom use, but republication or widespread copying without the written consent of US Chess is forbidden.

Table of Contents

- 4 FORSYTH - EDWARDS NOTATION
- 5 WHAT'S THE QUESTION?
- 6 ARABIAN KNIGHTS
- 6 ZARIA
- 7 END OF THE LINE
- 8 YOU CAN DO IT!
- 9 THE CHESS DETECTIVE®
- 10 "A LAKOTA WIN!"
- 12 PINS THAT DON'T WORK!
- 17 2015 JUNIOR GRAND PRIX
- 18 TOURNAMENT LIFE ANNOUNCEMENTS
- 22 ANSWERS, WE'VE GOT ANSWERS.
- 23 IT'S YOUR MOVE!

COVER ARTWORK BY JEREMY KOSTES



It's a new year, and your magazine has a new name—*Chess Life Kids*, a new look, and over the next couple of issues, new features. We want your feedback, so make sure you check out page 23.

This issue is the first of what we hope will be a number of theme issues. This month we examine Pins and Skewers as a winning tactic—and maybe as a not-so-winning tactic (“Pins That Don’t Work!”). Our next theme issue will deal with temporary sacrifices, or as the great Rudolf Spielmann **G** called it, the pseudo-sacrifice.

It's going to be an exciting ride as we plunge ahead! We hope you like the results.

Look for:
G: Google it for more information.
D: Discuss with your friends and coach.

FORSYTH - EDWARDS NOTATION

Since I'm not very good at reading inaccurate game scores and I don't always interpret diagrams drawn in crayon ... that doesn't mean we don't want to hear from you! For those of you who don't have a chess program to create diagrams, consider using Forsyth Notation, also known as Forsyth - Edwards Notation:



1. Always start with White's eighth rank, left to right;
2. Use small letters (prnbkq) for black pieces.
3. Use capital letters (PRNBKQ) for white pieces.
4. Use numbers to indicate blank squares or consecutive blank squares.
5. All combinations of letters and numbers should equal 8 for each rank.

Got it? **Test yourself by writing the position on our cover in Forsyth Notation.** Send it to Glenn Petersen, 44-D Manchester Court,

Freehold, NJ 07728 or e-mail it to gpetersen@uschess.org. We'll have a drawing for a nice give-a-way.

N1bk3r = 8	
p5pp = 8	
3b1p2 = 8	
8 = 8	
2BnP2K = 8	
3Pn3 = 8	
PPP4P = 8	
R1B1Q2R = 8	
And it looks like this:	



ChessKid

.com

PLAY



LEARN



#1 Chess Site for Kids. 200,000+ Kids, Parents, & Coaches!
100% Safe and Kid-Friendly! Signup Today - it's FREE!



What's the Question

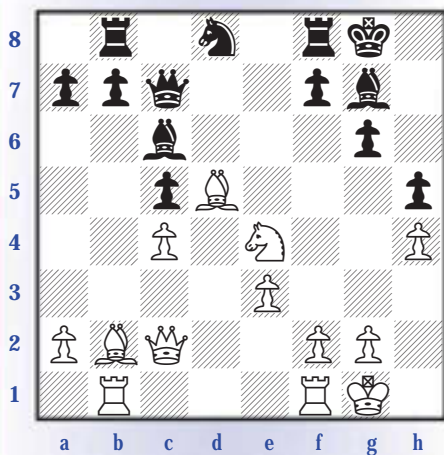
by International Master Daniel Gurevich

Jackson

Q: What's the difference between a pin and a skewer?

A: In both a pin and a skewer, a bishop, rook, or queen attacks a piece that cannot move without exposing the piece behind it to attack. Here is the difference: it is called a skewer if the piece in front is more valuable and a pin if it is less valuable. Let's look at some examples.

Samuel Reshevsky



**Laszlo Szabo
Zurich, 1953**

White to move

Clearly Black is not doing so well. His pieces are very passive (just look at the poor knight on d8!) while White's forces are already nicely centralized. Black's biggest problem, though, is that his king will always be in danger. His dark squares on the kingside are so weak that he cannot even stop the white knight from occupying the outpost on f6.

Now, White could just play 20. Bxg7 Kxg7 21. Nxc5, winning a pawn, since after 21. ... Bxd5?! 22. cxd5 b6? (a

pin that doesn't quite work), 23. Qb2+! breaks the pin and 24. Na6 will be a deadly fork. Grandmaster Szabo chose the more aggressive 20. Nf6+!?, which was met with the blunder 20. ... Bxf6??.

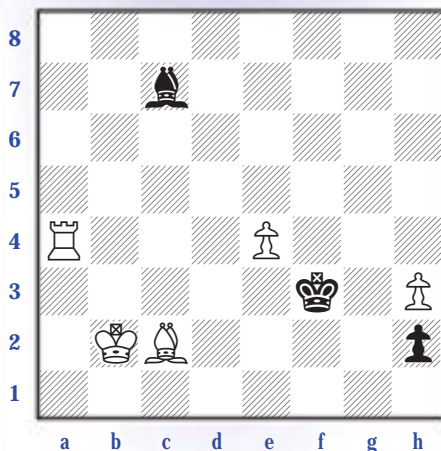
Blunderoo!

Why is this a mistake? Take a minute to find what GM Reshevsky missed! Ready?

The key in this position is that the bishop on d5 pins the f7-pawn to the king, which does not seem too important until you notice 21. Qxg6!+. Since ... fxg6 is illegal, it is mate next move.

Shockingly, Szabo also overlooked this checkmate and simply recaptured: 21. Bxf6??. By the time this game was played in round 19 (out of 30!) of the extremely strong Zurich Candidates Tournament, the players must have been exhausted! Although White's advantage is still huge, the game ended in a draw after a few more mutual blunders.

For comparison, here is a 1964 endgame study by Vladimir Korolkov that features no pins but tons of skewers! It is White to move and win.



At first, it looks like White is in trouble—if he tries to stop the h-pawn

from promoting by playing 1. Ra1, Black wins after 1. ... Be5+!, skewering the king and the rook. But there is one defense:

1. e5!

Since White wins the queen using another skewer after 1. ... h1=Q 2. Be4+, Black has to try something else.

1. ... Bxe5+ 2. Ka2!

You will soon find out why this is the only winning move!

2. ... Bd4!

Notice that 3. Rxd4? h1=Q 4. Be4+ Ke3 5. Bxh1 Kxd4 is now a draw, since White has the wrong bishop and the black king easily stops the pawn.

3. Bb3!

Preparing a new skewer from d5! This would have been impossible if White had played 2. Kb3.

3. ... Ke4! 4. Ra5 Bc5!

Black is not giving up! Now, if White had played 2. Ka3?, this would be a check, forcing 5. Rxc5 h1=Q 6. Bd5+ Kd4 with a draw after all. However, White's careful king placement ensures a win here:

5. Ba4! Kd5 6. Ra6 Bb6 7. Rxb6 h1=Q 8. Bc6+ Kc5 9. Bxh1 Kxb6

Wait, how is this different from the other variations? Black's king cannot catch the pawn in time after **10. h4!**, so White finally wins.

END OF THE LINE

SKEWERED

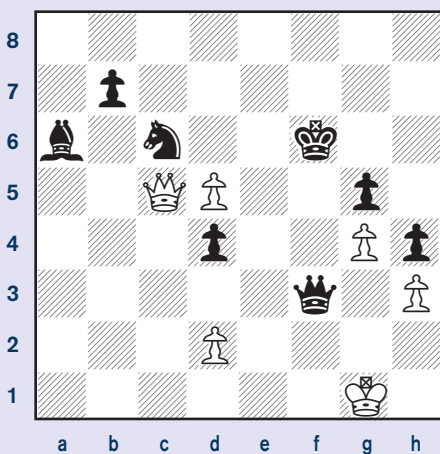


By National Master
Atulya Vaidya

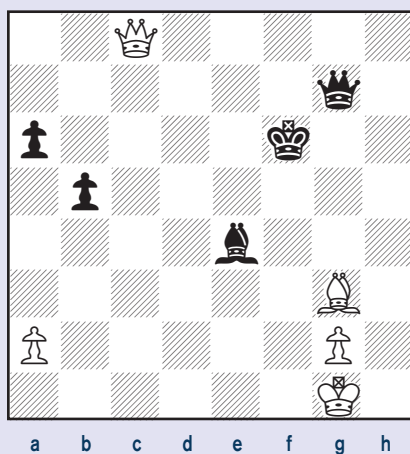
Here all six puzzles will be over the topic of Skewers. A skewer is very similar to a pin except the piece of higher worth is "skewered" to a piece of lower worth as opposed to a pin where the weaker piece is in front.

All puzzles are White to move.

#1



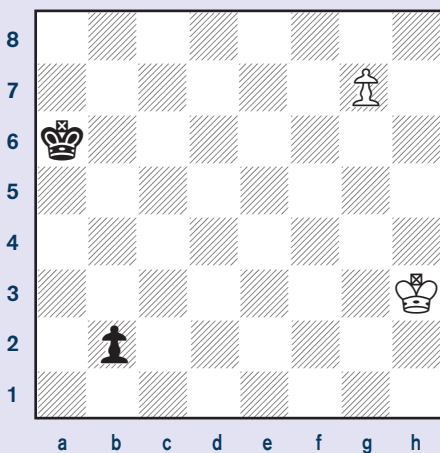
#3



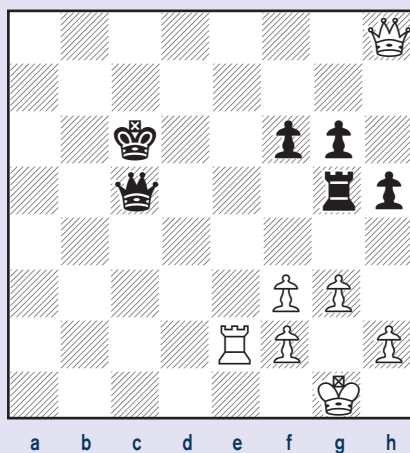
#5



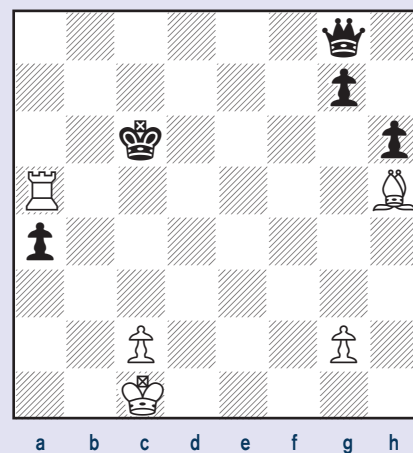
#2



#4



#6



Please turn to page 22



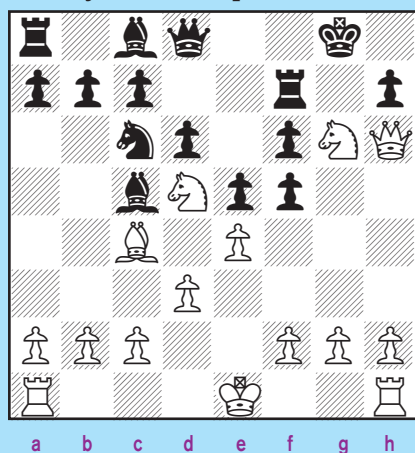
YOU CAN DO IT!

by International Correspondence Chess
Master Jon Edwards

In every position, there's a mate in two or three moves and every solution involves at least one pin.

Quiz #1

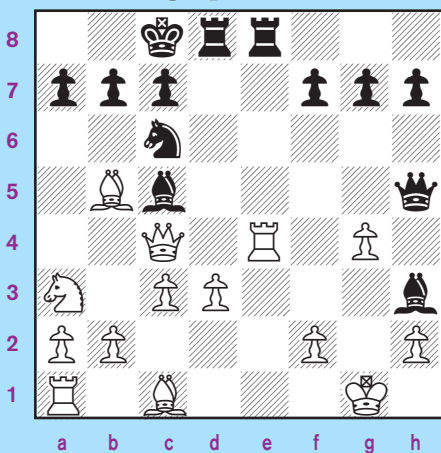
Hint: When the knight on d5 moves, the rook on f7 will be pinned by the bishop on c4.



White to move

Quiz #2

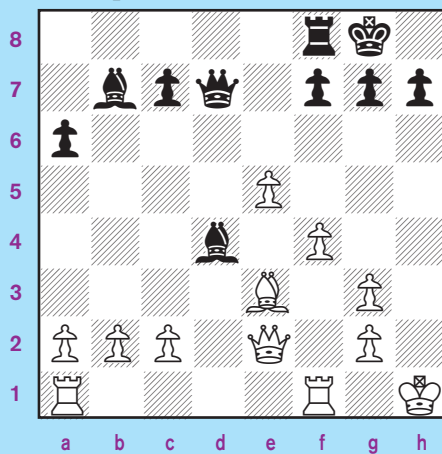
Hint: The rook on e4 is pinned to the e1-mating square!



Black to move

Quiz #3

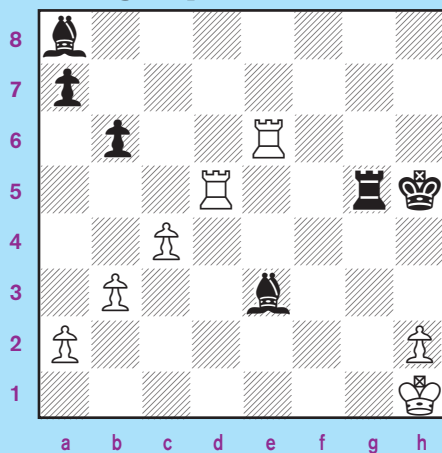
Hint: The g-pawn is pinned and White's queen is overloaded



Black to move

Quiz #4

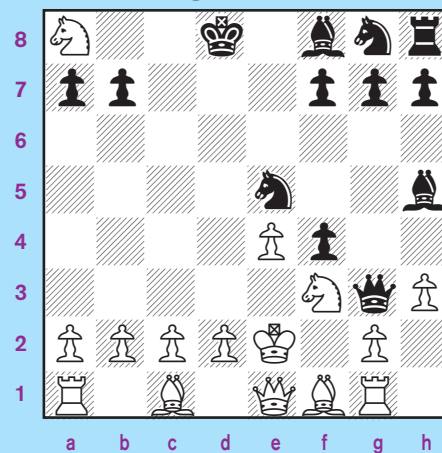
Hint: Black wants to play ... Rg1# but the Rg5 is pinned.



Black to move

Quiz #5

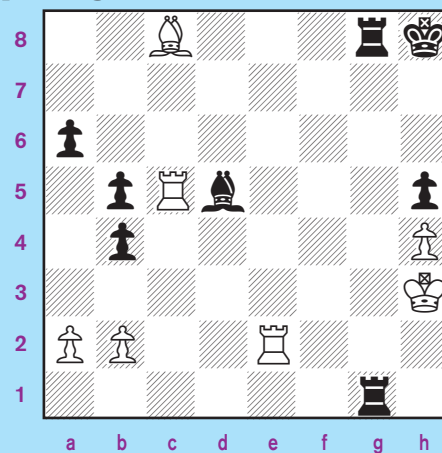
Hint: Black has pinned the Nf3 and then pressured it with the Ne5 and the Qg3.



Black to move

Quiz #6

Hint: After ... Rh1 check, White must prevent mate with Rh2, pinning the rook.



Black to move

Solutions on page 22





The

Chess Detective

by NM Todd Bardwick

PINS AND SKEWERS

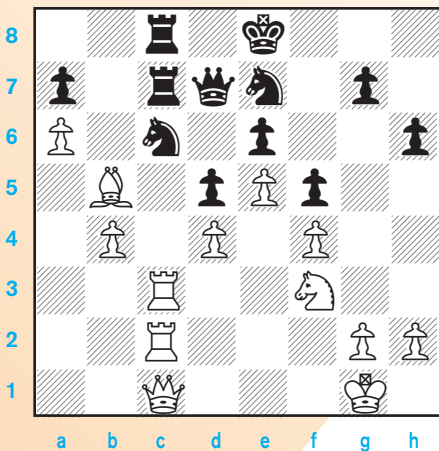
The secret to finding pins and skewers is being a good detective and noticing when the pieces are lined up or could be potentially lined up on a file, rank, or diagonal.

When you think about it, your entire life revolves about lining things up. For example, when getting dressed, you line up your feet with your socks and then line up your socks with your shoes. When you eat your cereal in the morning, you pour your cereal into your bowl, then you pour your milk onto the cereal (not the table!). After that, you line up your spoon with your cereal and then the spoon with your mouth (you don't dump it on your head!).

So looking to line up pieces for pins and skewers should come quite naturally.

Here is one of my favorite pinning positions that occurred in a game between Alexander Alekhine and Aron Nimzowitsch in San Remo, Italy, in 1930.

Nimzowitsch



Alekhine

Position after 28. ... Ke8
White to move

Black's knight on c6 is pinned two different ways: the bishop pins it to the queen (and the king behind her) and the rooks and queen on the c-file, pin the knight to the rook on c7, who is only protected

twice. Note that the knight is attacked four times and defended four times.

Even though he is a pawn ahead in material, note that White does not want to relieve the tension of the pins and trade all the pieces on c6 because afterwards the black king is in position to gobble up White's queenside pawns.

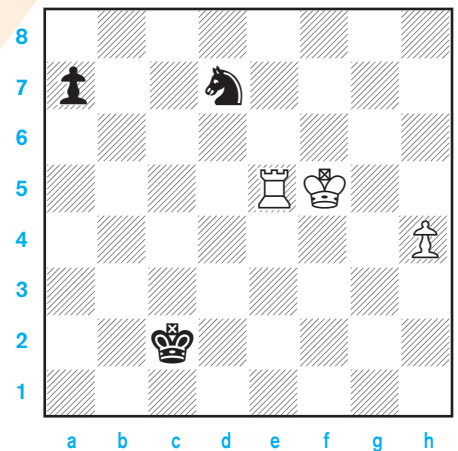
White plans to bring another attacker, a less valuable pawn, by it pushing to b5 and plays **29. Ba4!** taking advantage of the pin on the c-file. Black defends his rook on c7 a third time with the king by playing **29. ... Kd8**. Notice how all of Black's pieces are tied up in defense of the pinned knight!

But White has one extra piece that is not yet involved in attacking the pinned knight ... his knight on f3. He plays, **30. h4** and **Black resigned**. White threatens **31. h5**, followed by **Nh4-g6**, trading for the knight on e7 which removes a defender of the pinned knight on c6, collapsing Black's defense. If Black plays **31. ... h5**, White can play **Ng5-f7(+)-d6**, again removing a critical defender of the c6-knight.

Here is the famous skewer at the end of the game in the chess movie, *Searching*

for Bobby Fischer.

Josh Waitzkin, the movie's hero, is playing Black.



Position after 1. Kf5 (from f6)

Black plays **1. ... Nxe5**. What is White's best move? Although White's pawn is a move closer to promoting, the best move is not the obvious **2. Kxe5??**, which was played in the movie, because White's king is now lined up for a skewer on the long diagonal after **2. ... a5** **3. h5** **a4** **4. h6** **a3** **5. h7** **a2** **6. h8=Q** **a1=Q+** **7. Kf5** **Qxh8**, White resigned.

White should play **2. h5!** **Nf7** **3. Kg6** **Ne5+** **4. Kf5** to obtain a draw by three-move repetition (the knight can prevent the pawn from advancing by jumping around on the e5, f7, h6, and g4 squares).

It is important to always take the time to look and see if the pieces are lined up in any way at the end of any variation you just calculated just to be sure there aren't any possible pins or skewers, so as to avoid unexpected surprises!

“A Lakata Win!”

by Jim Doyle

“Let’s go for a Lakata win!” was the challenge this chess family would issue to each other as they competed in various regional tournaments. The Lakata family has been involved in chess since Robert Lakata and his wife Anamarija’s children Elizabeth and David first got interested in chess. Both children would later graduate valedictorians and go on to attend the University of Pennsylvania.

On November 14, 2015, they all took on the task as tournament directors (TDs) at the 9th Annual Philadelphia Metropolitan Grade/HS Chess Championship. It was a truly family affair as the three ran the floor while Anamarija, who works as a Financial Analyst for the Federal Reserve in Philadelphia, diligently attended to all of the other administrative details in the TD room.

20 Years And Counting

They’ve both been involved in chess for over 20 years. According to Anamarija, Elizabeth, who is currently rated at 1995, learned how to play chess when she was five years old.

By the time she was in second grade, she was playing with the local high school on their chess team.

David’s introduction to the game started even earlier. As the family tells it, Elizabeth was being interviewed by a local reporter and when they looked away, David, who was only a toddler at the time, but who had obviously been watching his father and older sister play, had completely set up the chess board!

David, who is currently rated at 1801, would grow up playing basketball, soccer, and baseball, with his father often coaching the team. Elizabeth got a perfect score on the SATs, David’s score was only 50 points lower. Growing up, their mother Ana-

York Times, and David’s was *The New Yorker* and *The Economist*.

Founded in 1978, The Huntingdon Valley Chess Society Juniors (HVCSJ) is “the country’s oldest continuously operated, community-based, US Chess-affiliated, scholastic chess club.” This past November, they hosted the 9th Annual Philadelphia Metropolitan Grade/High School Chess Championship at The Meadowbrook School.

A New Champion

The tournament attracted 85 players from around the Philadelphia area. In addition to the Huntingdon Valley Chess Society Juniors, other local chess clubs included The Chess Wizards, Meadowbrook, and the Philachesters.

32 trophies were awarded with special Drexel University’s LeBow College of Business prize to the top sophomore/junior valued at \$750 going to **Christopher Yang**. This 10-day and one night summer program at Summer Economics Institute is a prize that David Lakata also won when he was



marija subscribed to 28 different magazines and newspapers.

They also were members of every single museum in town. Both are voracious readers: Elizabeth’s favorite was *The New*



game, Daniel, age 10, said, "It takes time. You have to be patient." What do you like about chess? "When you win, you win. When you lose, you lose," he answered.

Jennifer, the mother of 10-year old Logan said, "It keeps them constantly challenged." When they started a chess club at the West Oaks Charter School, 106 children walked in. Unfortunately, they could only accommodate half that number.

Philadelphia has a very active scholastic chess scene. The Checkmate Violence Chess Marathon will be held some time in 2016 as well as an event that will include players from the Philadelphia Eagles.

in high school.

One of the things that make HVCSJ unique and so successful is that club membership includes registration to all the tournaments the club plays in! "If we pay for the tournaments, we

know that they'll come," says Anna Maraga.

From all of the smiles and laughter in the skittles room, it was apparent that everyone was having a great time.

When asked how he improved his





Pins that Don't Work!

BY
PETE
TAMBURRO

Pins are annoying things.

The most common, of course, is the pin of a knight by a bishop. Quite often, the threat is simple: if you move the pinned knight, your opponent's bishop takes your queen.

If you're going to become a good chess player, you cannot be afraid of all pins. Sometimes pins lose!

As you go through the positions below, try and figure out what move you would play and what the follow-up moves would be. After a few, you will start seeing patterns and typical moves. Each position has a little twist to it, so even though, after a while, you may know the first few moves like $Nxe5$ or $Bxf7+$ (or $Nxe4$ and $Bxf2+$) or $Bb5+$ or sacrificing one rook or even two rooks (!) or even just chasing the bishop with pawns. Whichever it is, these are all great patterns to learn to combat pins when it's possible.

The $Nxe5$ and $Bxf7+$ Moves:

1. $e4 e5$ 2. $Nf3 d6$ 3. $Bc4 Bg4$ 4. $Nc3 a6$

(see diagram top of next column)

5. $Nxe5 Bxd1$ (5. ... $dxe5$ 6. $Qxg4 Nf6$ 7. $Qg3$) 6. $Bxf7+ Ke7$ 7. $Nd5\#$ Most players, even young ones, know this mate; however, last year a reader of my *British Chess Magazine* column sent this position in from a game played a few years back:

(see diagram to the right)

WHITE TO PLAY



Inglis-Hickmott
United Kingdom, 2001-2002

1. $e4 e5$ 2. $Nf3 Nc6$ 3. $Bc4 d6$ 4. $d4 Bg4$ 5. $dxe5 Nxe5$ 6. $Nxe5!!$

BLACK TO PLAY



(My first thought when I saw this was, "Wait there's no knight on c3 to get to d5.") **6. ... Bxd1 7. Bxf7+ Ke7 8. Bxg8! dxe5** If 8. ... Qb8 9. Bg5+ Ke8 10. Bf7#; or 8. ... h6 9. Nf7 Qe8 10. Nxh8 Bh5 11. Nc3! Kd8 12. g4! Bxg4 13. Bf7 Qd7 14. Bg6 c6 15. f3 Be7 (15. ... Bxf3 16. Bf5) 16. fxc4 Bh4+ 17. Kd2 Qxg4 18. Bf5 Bg5+ 19. Kd3 Qf3+ 20. Kc4 Bf6 21. Bd2 and White has a rook and two more pieces for the queen and should win. **9. Bg5+ Ke8 10. Bxd8 Rxd8 11. Bb3 Bh5** and now White castled which led to a draw. He should have played 12. Nd2 to bring the knight to c4 and put his pawn on f3, keeping his king in the center for the endgame with good winning chances. An amazing game!

1. d4 d5 2. c4 dxc4 3. e4 e5 4. Nf3 exd4 5. Bxc4 Bb4+ 6. Nbd2 Nc6 7. O-O Qe7 8. Nb3 Bg4 9. Nbx4 Ne5



10. Nxe5 Bxd1 11. Bxf7+ Kf8 12. Ne6+ Qxe6 13. Bxe6 wins.
1. e4 c5 2. Nc3 e6 3. Bc4 Nf6 4. d3 d5 5. exd5 exd5 6. Bb3 Nc6 7. Nf3 d4 8. Ne2 Bg4 9. Ng3 Ne5
 (see diagram top of next column)
10. Nxe5 Bxd1 (10. ... Qe7 11. Bxf7+ Kd8 12. f3 Qxe5+ 13. Kf2 Bd7

WHITE TO PLAY



14. Re1 Qd6 15. c3 11. Bxf7+ Ke7 12. Nf5# (A game won by author Fred Wilson in Washington Square Park.)

1. e4 c6 2. d4 d5 3. f3 dxe4 4. fxe4 e5 5. Nf3 exd4 6. Bc4 Bg4

WHITE TO PLAY



7. Bxf7+ Kxf7 8. Ne5+ Ke7 9. Qxg4 Nf6 10. Qg3 (An opening trap in the Fantasy Variation of the Caro-Kann). Another little trap in that line is Burovic-Arino, France, 1991: **1. e4 c6 2. d4 d5 3. f3 dxe4 4. fxe4 e5 5. Nf3 Bg4 6. Bc4 f6 7. c3 Nd7 8. Qb3** and wins a piece. A very tricky opening!

Imbaud-Strumilo Correspondence, 1922

1. e4 d5 2. exd5 Nf6 3. Nc3 Nxd5 4. Bc4 Nb6 5. Bb3 Nc6 6. Nf3 e5 7. d3 Bg4 8. h3 Bh5

WHITE TO PLAY



9. Nxe5 Bxd1 10. Bxf7+ Ke7 11. Bg5+ Kd6 12. Ne4+ Kxe5 13. f4+ Kd4 14. Rxd1 Ke3 15. O-O Nd4 16. Rde1+ Ne2+ 17. Rxe2+ Kxe2 18. Bh5+ Ke3 19. Rf3+ Kd4 20. Bf7 Nd5 21. c3+ Nxc3 22. bxc3#

What a great king hunt! Worth playing all the way through. This also shows you that these types of games can go quite a few moves before mate. It's important for you to see just how White brings that black king closer and closer to the white side to mate.

Berger-Frohlich Graz, 1888

1. e4 e5 2. Nc3 Nc6 3. Nf3 d6 4. Bb5 Bg4 5. Nd5 Nge7 6. c3 a6 7. Ba4 b5 8. Bb3 Na5

WHITE TO PLAY



9. Nxe5 Bxd1 10. Nf6+ gxf6 11. Bxf7# Did you see the Nf6+ twist?

Horwitz-Bledow Berlin, 1837

1. e4 e5 2. Nf3 Nc6 3. Bc4 Bc5 4. c3 Bb6 5. d4 Qe7 6. d5 Nd8 7. Be2 d6 8. h3 f5 9. Bg5 Nf6 10. Nbd2 O-O 11. Nh4 fxe4 12. Nxe4

BLACK TO PLAY



12. ... Nxe4 13. Bxe7 Bxf2+ 14. Kf1 Ng3# That was different, too! The rook got involved and an unusual mate resulted.

A Very Different Knight Move!

Kurschner-Tarrasch Nuremberg, 1890

1. e4 e5 2. Nc3 Nc6 3. g3 Nf6 4. Bg2 Bc5 5. d3 a6 6. f4 d6 7. f5 g6 8. g4 h5 9. Bg5 Nd4 10. Nd5

BLACK TO PLAY



10. ... Nxd5 11. Bxd8 Ne3 12. Qd2 (12. Bf6 Nxd1 13. Kxd1 Rg8) 12. ... Ndxc2+ 13. Ke2 Nd4+ 14. Kf2 Nxc4+ 15. Kg3 gxf5 16. Qg5 h4+ 17. Qxh4 f4+ 18. Kh3 Nf2#

Using Nxe5 with a Bb5+

1. e4 Nc6 2. Nf3 d6 3. d4 Bg4 4. d5 Ne5

WHITE TO PLAY



5. Nxe5 Bxd1 6. Bb5+ c6 7. dxc6 a6 (7. ... Qa5+ 8. Nc3 O-O-0 9. Nc4 Qc7 10. Nd5 Bxc2 11. Nxc7) 8. c7+ axb5 (8. ... Qd7 9. Bxd7#) 9. cxd8=Q+ Rxd8 10. Nxf7 Kxf7 11. Kxd1 and wins. A complicated opening trap idea, but it pops up in real games, as you will see below.

Potter-Mattjews, 1900

1. e4 e5 2. d4 exd4 3. Nf3 c5 4. Bc4 d6 5. O-O Nc6 6. c3 d3 7. Re1 Bg4 8. e5 Nxe5

WHITE TO PLAY



9. Nxe5 Bxd1 10. Bb5+ Ke7 11. Bg5+ f6 12. Ng6+ Kf7 13. Nxe8# A great mating position!

Thelen-Anonymous, 1930

1. e4 c5 2. Nf3 Nc6 3. c3 d5 4. e5 d4 5. Bd3 Bg4 6. Be4 Nxe5 7. Bxb7 Rb8

WHITE TO PLAY



8. Nxe5, Black resigned, because he would be lost after 8. ... Bxd1 9. Bc6+ Qd7 10. Bxd7+ Kd8 11. Kxd1 f6 12. Nc6+ Kxd7 13. Nxb8+ Kc7 14. Na6+ Kb6 15. cxd4 Kxa6 16. dxc5. Sometimes, you just win material.

Saulson-Phillips Chicago, 1907

1. e4 Nc6 2. d4 e5 3. d5 Nce7 4. f4 d6 5. Nf3 Bg4 6. Nc3 Ng6

WHITE TO PLAY



7. h3 Bxf3 8. Bb5+ c6 9. dxc6 Bxd1 10. cxb7+ Ke7 (10. ... Qd7 11. bxa8=Q+ Ke7 12. Nd5+ Ke6 13. f5#) 11. Nd5+ Ke6 12. f5# Mate with a pawn! A very famous miniature immortalized in *An Invitation to Chess* by Harkness and

Chernev. A great example of the power of the Bb5+ move.

Breaking a pin with h3 and g4 or g5

1. d4 Nf6 2. c4 e6 3. Nf3 b6 4. Bg5 Bb7 5. e3 h6 6. Bh4 Bb4+ 7. Nc3



7. ... g5 8. Bg3 Ne4 9. Rc1 h5 10. h3 Nxc3 11. fxc3 and White has some important pawn weaknesses and Black is fine. You will find that h3 and g4 or h6 and g5 can be played more than you think (rule of thumb: don't do it if you're castled on that side, and there are exceptions to that, too). I devote a chapter to that in my book, *Openings for Amateurs*.

Alekhine-Schroeder, New York, 1929

1. e4 d5 2. exd5 Qxd5 3. Nc3 Qa5 4. Nf3 Bg4 5. h3 Bh5 6. d4 Nf6

(see diagram top of next column)

7. g4 Bg6 8. Ne5 Nbd7 9. Nc4 Qa6 10. Bf4 Qe6+ 11. Ne3 0-0-0 12. d5 Qb6 13. Nc4 Qb4 14. a3 Qc5 15. Be3 and you've "checkmated" the queen!

WHITE TO PLAY



The Pin that Wins One Rook, But...

Walkerling-Hanstein Correspondence, 1928

1. e4 c5 2. Nf3 e6 3. d4 cxd4 4. Nxd4 Nf6 5. Nc3 Bb4 6. e5 Nd5 7. Qg4 g6 8. a3 Qa5

WHITE TO PLAY



9. axb4 Qxa1 10. Nb3 Win a rook. Lose a queen!

The Pin That Wins Two Rooks, But ...

Canal-Amateur Budapest, 1934

1. e4 d5 2. exd5 Qxd5 3. Nc3 Qa5 4. d4 c6 5. Nf3 Bg4 6. Bf4 e6 7. h3 Bxf3 8. Qxf3 Bb4 9. Be2 Nd7 10. a3 0-0-0

WHITE TO PLAY



11. axb4 Qxa1+ 12. Kd2 Qxh1 13. Qxc6+ bxc6 14. Ba6# By the way, that last mating position is worth knowing: the Boden mate—note the placement of the two white bishops, the queen sacrifice and the black knight being at d7 and the black rook at d8.

Miscellaneous

Blum-Bender, 1934

BLACK TO PLAY



12. ... Nxd4 13. Bxd7 Ne2+ 14. Kf2 Nxc3 15. Kxc3 Bxd7. This position doesn't have an easy category, but it shows that you should always consider breaking a pin when thinking about a move.

Work on remembering these patterns so you can recognize them in your games!



KASPAROV
CHESS FOUNDATION



US CHESS
FEDERATION



present

KCF's 13th Annual All-Girls Open National Championships

April 22 - 24, 2016 - Chicago, IL

First place winners of each section will qualify to play at the 2016 World Youth/Cadets Championships

MAIN EVENT **6-SS, G/90,d5**

Sections (age as of 1/1/16)

- Under 8
- Under 10
- Under 12
- Under 14
- Under 16
- Under 18

Friday April 22

2:30 PM Opening Ceremony
3:00 PM Round 1

Saturday April 23

10:00 AM Round 2
2:30 PM Round 3
6:30 PM Round 4

Sunday April 24

9:00 AM Round 5
1:00 PM Round 6
5:00 PM Awards Ceremony

Entry Fee

\$55 postmarked by 3/28, \$75 by 4/11, \$95 after/on-site.
USCF membership required

Entry & Info

Make checks payable to:
RKnights, Attn: All Girls,
PO Box 1074
Northbrook, IL 60065
Tel: (773) 844-0701
E-mail: d.heiser@
renaissanceknights.org

AWARDS

Trophies will be awarded to top 15 individual players and top four teams in the Under 8, 10, 12 & 14 Sections; top 8 individual players and top three teams in the Under 16 & 18 Sections. Three or more players from the same school to make a team (team scores will be calculated based on the top 3 scores to give teams their final standings). All players will receive a souvenir to honor their participation.

**All events held at the Hyatt Regency McCormick Place
2233 S Martin Luther King Dr, Chicago, IL**



SIDE EVENTS

Bughouse Tournament
Fri. April 22 11:00 AM
Entry fee: \$30 per team

Blitz Tournament (G/5)
Fri. April 22 7:00 PM
Entry fee: \$20 by 4/11, \$25 after/on-site.

Hyatt McCormick Place 2233 S
Martin Luther King Dr, Chicago, IL 60616

Hotel Reservations (888) 421-1442,
online at www.rknights.org/allgirls

Chess Rate single - quad \$149
Reserve early hotel may sell out / raise rates

Online Registration www.rknights.org/allgirls

www.kasparovchessfoundation.org

US CHESS JUNIOR GRAND PRIX



While we are doing some “number crunching” and double-checking of the 2015 final standings, we have recapped the announced prizes for 2015 and the Rules in effect for 2016.

The top prize for 2015 will be a *Chess.com* one-year Diamond membership valued at \$100, a *Chess.com* gear/merchandise package valued at \$100, a US Chess plaque, free entry into the 2016 U.S. Open, and \$1,000 of expense money from US Chess to offset the trip.

For the top five players on the overall list and to each state winner, *Chess.com* will also award a choice of a one-year *ChessKid.com* gold membership (valued at \$50/annually) or a one-year *Chess.com* Gold membership (valued at \$40/annually). US Chess gratefully acknowledges the participation of *Chess.com*!

What do I get with *chess.com*?

Unlimited chess games and free tournaments;
Challenge your friends and meet new players;
Improve your rating with training videos.

US Chess Junior Grand Prix Rules

Last Updated in January 2016

The purpose of the US Chess Junior Grand Prix is to encourage young players to face higher-rated competition in 'slow' chess events. We believe that playing stronger players in events with longer time controls is the best way to improve one's chess, the Junior Grand Prix encourages and rewards that.

Player Eligibility:

Every US Chess member who is under 21 throughout the calendar year (e.g., for the 2016 Junior Grand Prix was born after 12/31/1995) is automatically eligible for the Junior Grand Prix (JGP).

Event Eligibility:

- A Junior Grand Prix event must have a Tournament Life Announcement (TLA) in *Chess Life* and be a regular rated only section of that event. Blitz, Quick-Rated only or Dual rated sections may not earn JGP points.
- A Junior Grand Prix event must have four or more rounds with the total time* slower than 65 minutes per player to be eligible.

For details on how the time control affects which rating systems a section is eligible for, see the document 'Rulebook Changes since the Publication of the 5th Edition' at <http://www.uschess.org/docs/gov/reports/RulebookChanges.pdf>.

- A Junior Grand Prix eligible section does not have to be the top or open section of that event, players can earn JGP points in 'under' sections, providing the section is regular-rated only.

- The event must end in the calendar year, eg, 2016. For example, an event that begins in December of 2012 and ends in January of 2016 is a 2016 JGP event, but an event that begins in December of 2016 and ends in January of 2017 is a 2017 JGP event.

How to earn Points:

Eligible US Chess members earn points by winning or drawing against higher rated players, based on the pre-event ratings for both players. (If a player does not have a US Chess rating yet, or has a provisional rating based on less than 4 games, that player's post-event rating from that event is used to compute JGP points.)

For a win against a higher rated player, the number of JGP points earned is 2X the ratings difference, up to a maximum of 700 points per game.

Example: A 1200 player who defeats a 1350 player earns 2X the difference in ratings (150) or 300 points.

For a draw, the number of JGP points earned is the ratings difference, up to a maximum of 350 points per game.

Example: A 1200 player who draws a 1350 player earns the difference in ratings, or 150 points.

The US Chess Executive Director has the authority to review events for compliance with these rules.

* The TOTAL TIME is defined as the number derived by adding the total amount of time per player [in minutes] with the amount of delay or increment [in seconds]. For example, G/61;d5 gives 61 + 5 = 66 and would be eligible. G/60;d3 gives 60 + 3 = 63 and would not be eligible.

Tournament Life Announcements

FEBRUARY 15 THROUGH APRIL 14

Scholastic Members:

As a service to you, we are listing upcoming National US Chess rated events, and requested events of possible interest to you. You can always log in to www.uschess.org, and click on "Clubs & Tournaments." Then click on "Upcoming Tournaments" for a complete listing of upcoming rated events and details. As always, you can check out the TLA section of *Chess Life*.

Organizers and Tournament Directors:

If you would like your tournament listed here in *Chess Life Kids* for April 2016 (events to be held after April 14), the deadline for submitting your announcements is February 10th. The deadline for the June 2016 issue is April 10th. The processing fee is \$1.00 per line for the first eight lines, \$2.00 for every line thereafter. Send your announcements to Joan DuBois, tda@uschess.org. **Display advertising is also available.** Advertising rates are posted on the US Chess website, www.uschess.org, or you may email: tda@uschess.org for complete details.

ABBREVIATIONS & TERMS

All tournaments are non-smoking with no computers allowed unless otherwise advertised.

BLZ:	Blitz rated.
QC:	Quick Chess events.
\$\$\$Gtd:	Guaranteed prizes.
\$\$b/x:	Based-on prizes, x = number of entries needed to pay full prize fund. At least 50% of the advertised prize fund of \$501 or more must be awarded.
Bye:	Indicates which rounds players who find it inconvenient to play may take 1/2-point byes instead. For example, Bye 1-3 means 1/2-point byes are available in Rounds 1 through 3.
CC:	Chess club.
dx:	Time delay, x = number of seconds.
+xx:	Time increment, xx = number of seconds added after each move.
EF:	Entry fee.
Ent:	Where to mail entries.
FIDE:	Results submitted to FIDE for possible rating.
G/:	Game in. For instance, G/75 means each side has 75 minutes for the entire game.
GPP:	Grand Prix Points available.
HR:	Hotel rates. For example, 60-65-70-75 means \$60 single, \$65 twin, \$70/3 in room, \$75/4 in room.
JGP:	Junior Grand Prix.
Memb. req'd:	Membership required; cost follows. Usually refers to state affiliate.
Open:	A section open to all. Often has very strong players, but some eligible for lower sections can play for the learning experience.
Quad:	4-player round robin sections; similar strength players.
RBO:	Rated Beginner's Open.
Rds:	Rounds; scheduled game times follow. For example, 11-5, 9-3 means games begin 11 a.m. & 5 p.m. on the first day, 9 a.m. & 3 p.m. on the second day.
Reg:	Registration at site.
RR:	Round robin (preceded by number of rounds).
SD/:	Sudden-death time control (time for rest of game follows). For example, 30/90, SD/1 means each player must make 30 moves in 90 minutes, then complete the rest of the game in an hour.
SS:	Swiss-System pairings (preceded by number of rounds).
Unr:	Unrated.
W:	Site is accessible to wheelchairs.
WEB:	Tournaments that will use a player's online rating.

Nationals

US Chess Junior Grand Prix!

Feb. 12-14 or 13-14, Florida

2016 U.S. Amateur Team Championship South

55S, G/120 d5 (2-day Option Rd. 1 G/60 d5). Ramada Westshore Tampa Airport, 1200 North Westshore Blvd., Tampa, FL 33607. 4-player teams (with one optional alternate). **Two sections** (each paired separately & with their own prizes). Team average (4 highest ratings - January Supplement) must be under 2200 for Open section & under 1500 for U1500 section. Winning team in Open section qualifies for National playoff online. **EF:** per player: \$49 by 2/5, \$58 later. **SPECIAL EF:** Team (one entry must be made for all players) \$180 by 2/5, \$210 later (any team changes \$10). Teams from outside Florida will receive \$25 off team entry fee. Scholastic teams receive \$10 off team entry fee. **PRIZES:** Top 1-3rd place teams & Top Boards 1-4 in each section; Top teams: Open section: U2000 & U1800; U1500 section: Top U1300 & U1100. Also in Open section: Top Senior team (all 50 & above as of 2/12), Top College team (same school), Top High School team (same school). Also in U1500 section: Top Female team, Top Middle School team (same school, grades 6-8), Top Elementary School team (same school). **Schedule:** 3-day: 1st Rd. Fri. 7:30, 2-Day 1st Rd. Sat. 10; Rds. 2-5 Sat. 1:30, 6:45, Sun. 9:30, 2:45. **Blitz Tourn.:** G/5 d0, Sunday at 8:00 p.m.; EF \$15 for those in main event, \$25 for all others. **HR:** \$99 until cut-off date, 813-282-3636, ext. 0. Free parking, Internet, refrigerator & Free Airport shuttle. **Ent:** Boca Raton Chess Club, 2385 Executive Ct. Dr., Ste. 100, Boca Raton, FL 33431. **Online entry & add'l info:** www.bocachess.com, 561-479-0351.

US Chess Junior Grand Prix!

Feb. 13-15 or 14-15, California, Northern

32nd Annual U.S. Amateur Team Championship West

Scholastic on Feb. 13 only, Blitz on Feb. 15 only. Santa Clara Convention Center, 5001 Great America Pkwy. Free Parking! **Teams:** Four-player teams plus optional alternate, average rating of four highest must be under 2200, difference between ratings of board 3 & 4 must be less than 1000. January 2016 Supplement, CCA min, & TD discretion used to place players accurately. **Main Event Prizes:** Special 4 commemorative clocks (trophy for the reserve) and team trophy to the team for Top 3 overall teams, top team u2000, u1800, u1600, u1400, and u1200. Trophies to all players of the top "industry" team (currently at the same company), top "female" team, top "college" team (students/alumni of a college), top "high school" team (students/alumni of a 7-12 school), top "elementary school" team (students/alumni of a K-6 school), top "club" team, and top "family" team (related by blood or marriage within 3 generations). Clocks to top scorer on each board (1-4), trophy to top reserve as well as second and third scorers on each board (1-4). Gift certificates for best 3 team names. **Main Event EF:** \$243/team or \$63/player by 2/8. 2/9-11: \$10 extra per player or team. Onsite after 2/11: \$20 extra per player (\$80 extra per team). **3-day Sched:** Onsite Registration at Sat 9:30-10:30a, Round Times at Sat & Sun 11:30a-5:30p, Mon 10a-3:30p. Time Control: G/40/120 SD/30 d5. **2-day Sched:** Onsite Registration at Sun 8:30-9a, Round Times at Sun 10a-12:30p 2:50p-5:30p, Mon 10a-3:30p. Time Control: G/61 d5 in Rounds 1-3, 40/120 SD/30 d5 in Rounds 4-6 (merge in Round 4 with 3-day schedule). **Info/flyer:** www.BayAreaChess.com/usatw. **Scholastic Event Prizes:** Trophies to each player in Top 3 teams overall, top u800 team, u600 team, u400 team, and u200 team. Trophies to top "female" team, top "academic" team, and top "club" team. Trophies to top two scorers on each board (1-4). Commemorative medals to all participants. **Scholastic Event EF:** \$149/team or \$39/player by 2/8. 2/9-11: \$10 extra per player or team. Onsite after 2/11: \$20 extra per player (\$80 extra per team). **Discount:** \$10/player (\$40/team) if registering for 2-day schedule and scholastic event. **Sched:** Onsite Registration: Sat 8:30-9a | Games at Sat 10a-11:30a 1p-2:30p 4:15p. **Info/flyer:** www.BayAreaChess.com/usatws. **Blitz Event:** Registration Mon 7-8pm, Rounds 8:30-10:30pm. EF: \$14, \$16 onsite. 75% of entry fees returned as prizes. **Contact:** Organized by Judit Sztaray. Directed by Tom Langland, John McCumiskey, Jordan Langland, and others. Sponsored by Bay Area Chess. Online entry at www.BayAreaChess.com/usatw or mail to Bay Area Chess, 1639A South Main St., Milpitas, CA 95035. For questions or help in forming teams email ask@BayAreaChess.com. W.

A Heritage Event!

US Chess Junior Grand Prix!

Feb. 13-15, New Jersey

World Amateur Team & U.S. Team East

CELEBRATE JAZZ AND CHESS. 6SS, 40/2, SD/1 d5. Parsippany Hilton, 1 Hilton Ct., Parsippany, NJ 07054. **Chess Rate valid until 1/16. Reserve early** 973-267-7373 or 1-800-HILTONS. Morris/Essex train to Morris Plains 1.5 miles. Open to 4-player teams with one optional alternate. Team average (4 highest ratings—2016 January Rating list) must be under 2200. **EF:** \$160 postmarked by 2/5/16. ALL-\$200 after or at door.—all teams, any changes at site \$25 charge. **FREE ENTRY TEAMS from West Virginia, South Carolina, North Carolina.** Check out official website www.njscf.org. **Prizes:** 1-5th Place teams, plaque and 4 digital clocks; Top Team (**Denis Barry Award**) U2100, 2000, 1900, 1800, 1700, 1600, 1500, 1400, 1300, 1200, 1000 each plaque and 4 Digital Clocks; Top college team (same school) 4 Digital Clocks & plaque; Top HS team (grades 9-12 same school), Top Middle School (grades 5-9 same school), Top Elementary School (grades K-6 same school), Top 2 Scholastic Teams (mixed schools okay) (**Collins Award**), Mixed Doubles (2 males, 2 females-no alternates), Seniors (all players over age 50), Military, each plaque & 4 Digital Clocks to top team; Company Team (same employer), Family (4 family members), State teams—CT, DE, MD, MA, NJ, NY (**Benjamin Award**), PA, VA, NC, RI each plaque top team; Special Plaque: **Top Future team**, (all players under age 10), **Top Military College, Top Parent/Child** (2 pairs, one parent, one child), **Best Player 1-4 and top alternate.** All 6-0 scores each Digital clock. Biggest Individual upset each round Engraved Cross pen; Entry fee refunded to team with Best "Chess related" name, Sunday night—Best "Chess Related costumes or gimmick"—1st-gourmet dinner for four. 2nd—

Gourmet dinner for 4. **Reg.:** 9-12, Sat 2/13: Rds. 1-7:30, 11-6, 9-3:30. **Special Events! Surprises and special give-aways each round.** Sunday night—Bughouse \$20 per team. Cash prizes. **HR:** Parsippany Hilton **NEWLY RENOVATED!** NEW LIGHTS! HEATING AND AIR CONDITIONING! Chess rates expire 1/16/2016. Rates \$119 (single double) \$121 (Triple, Quad) 2nd hotel attached to Hilton \$126 per night (single-double) \$128 (triple, quad)-Hampton Inn—includes breakfast each day. For help forming teams and more information contact: noreen@deanofchess.com. Chks payable to **NJSCF**, mail by 2/05 to: **E.Steven Doyle, 17 Stonehenge Rd., Morristown, NJ 07960.** (Include Team name, Captain, players full names, USCF Expiration, ID numbers and ratings in board order). No team can include more than two GM's. Include SASE for confirmation if wanted, No registered or certified mail accepted. W.

US Chess Junior Grand Prix!

Feb. 19-21, Illinois

2016 US Amateur Team Championship North

Open: 55S, G/90+30/increment, 2-day: rd.1-2 G/60 d5. Hyatt Regency Schaumburg, 1800 E. Golf Rd., Schaumburg, IL 60173. 847-605-1234 \$89.00 chess rate single-double-triple-quad until 2/5/15, Free WiFi included with Room! Please reserve early. Open to 4 player teams with one optional alternate. **Team average (4 highest ratings - January Rating List) must be under 2200.** **EF:** 3-day \$160, per team if received USPS or on-line 6 PM by February 5th, \$180 if received USPS or on-line 6 PM by Feb. 14th, \$200 on-line until Feb. 19th 6 PM and at door. Individuals wishing to play, send \$50 and request to be put on a team by USPS and on-line by 2/14 6 PM, \$60 thereafter. Team changes on site or after 2/19 6 PM \$20. **Check out official website www.chessweekend.com for more info and complete prize list.** **Prizes:** Awards to top two teams, top teams with average rating u1900, u1600, and u1300. Winning team qualifies for national play-offs. Awards for Best Team Name, best team composed of juniors (high school and younger), Top College team, Top HS team, Top Senior team (50 and over), Best Coach and Students team, Best costume. Prizes to top score on each board. Prizes are players choice of a selected clock or equivalent book store credit. Event will be FIDE rated. **Rounds: 3-day:** on-site registration/check-in 5:30-6:30pm, rds.: 7pm, 10:00am & 4:00pm, 10:00am & 3:30pm. **2-day:** on-site registration/check-in from 8:00-9:30am, rds. 10:00am & 1:00pm then merge with 3-day. **Midwest Blitz Championship on Saturday night,** \$25 by 2/13 USPS or on-line, \$30 at site. First round 8 PM, 2 games with each opponent, 5 rounds, see www.chessweekend.com for details. **All:** Checks made payable to and sent to: ChessWeekend, 21694 Doud Ct., Frankfort, IL 60423. Please include Team's name and roster (plus ID#), captain's email and phone number, and desired schedule. **Info:** www.chessweekend.com, 815-955-4793 before 8 PM. ChessIQ will provide Sets-Boards-Clocks.

US Chess Junior Grand Prix!

Apr. 1-3, Georgia

2016 National High School (K-12) Championship

7SS, G/120 d5. Hyatt Regency Atlanta, 265 Peachtree Street NE, Atlanta, GA 30303. Hotel Chess Rate \$125. Guest rooms may be booked, NLT 3/9/2016 by calling (404) 577-1234 or (888) 421-1442, mention "US Chess." **6 Sections:** K-12 Championship, K-12 U1900, K-12 U1600, K-12 U1200, K-12 U800 and K-12 Unrated. March Rating Supplement will be used. One1/2-point bye available (limit one) any round (except Round 7) if requested prior to the start of Rd. 1. Team score = total of top four (minimum two) finishers from each school per section. K-12 Championship first place individual and team, including ties, will be the National High School Champion. **Schedule:** Opening ceremony Fri. 12:45 pm. Rds.: Fri. 1 pm and 7 pm, Sat. 9 am, 2 pm and 7 pm, Sun. 9 am-2 pm. Awards Ceremony Sun., approx. 7 pm. **EF:** \$50/participant postmarked or online by 2/29, \$70 postmarked or online by 3/21, \$85 online by 3/30, \$90 on site; \$5.00 extra for all phone registrations; \$20 fee for roster or section changes after 3/21 or any onsite changes. Onsite registration Thurs. 9 AM - 9 PM & Fri. 8 AM -11 AM. Players who register or change sections after 11 am on Friday will receive a 1/2-point bye for Rd. 1. Players must disclose any other, non-USCF, over-the-board (OTB) ratings. **Awards:** Trophies to top individuals & top teams in each section. Every player receives a commemorative item! Full list of trophies on tournament Info Page. **Side Events:** Bughouse: Thurs. 11 am, Reg. onsite until Thurs. 9-10 am, \$25/team. Blitz Section: K-12, Thurs. 5 pm, Reg. onsite until 4 pm. Blitz EF: \$15 by 3/21, \$20 after or at site. Class trophies will be awarded in main event and in Blitz. Full list of trophies on tournament Info Page. Team Rooms are limited. Contact Susan Kantor at 931.787.1234 ext. 136 or by email: skantor@uschess.org. Questions: Susan Kantor at 931.787.1234 ext. 136. **Entries:** US Chess Federation, Attn.: 2016 HS Championship, P.O. Box 3967, Crossville, TN 38557 or online at www.uschess.org/tournaments/2016/hs/. See web site for additional information about the event, advance entries, awards, meetings, updates, corrections, and registration forms.

US Chess Junior Grand Prix!

Apr. 15-17, Indiana

2016 National Junior High School (K-9) Championship

7SS, G/120 d5. Indianapolis Marriott East, 7202 East 21st St., Indianapolis, IN 46219. Hotel Chess Rate \$119. Guest rooms may be booked, NLT 3/18/2016 by calling (800) 228-9290 or (317) 352-1231, mention "US Chess." **6 Sections:** K-9 Championship, K-9 U1250, K-9 Unrated, K-8 Championship, K-8 U1000 and K-8 U750. April Rating Supplement will be used. One1/2-point bye available (limit one) any round (except Round 7) if requested prior to the start of Rd. 1. Team score = total of top four (minimum two) finishers from each school per section. K-9 Championship first place individual and team, including ties, will be the National Junior High School Champion. **Schedule:** Opening ceremony Fri. 12:30 pm. Rds.: Fri. 1 pm and 7 pm, Sat. 9 am, 2 pm and 7 pm, Sun. 9 am-2 pm. Awards Ceremony Sun., approx. 7 pm. **EF:** \$50/participant postmarked or online by 3/21, \$70 postmarked or online by 4/4, \$85 online by 4/13, \$90 on site; \$5.00 extra for all phone registrations; \$20 fee for roster or section changes after 4/4 or any onsite changes. Onsite registration Thurs. 9 AM - 9 PM & Fri. 8 AM -11 AM. Players who register or change sections after 11 am on Friday will receive a 1/2-point bye

for Rd. 1. Players must disclose any other, non-USCF, over-the-board (OTB) ratings. **Awards:** Trophies to top individuals & top teams in each section. Every player receives a commemorative item! Full list of trophies on tournament Info Page. **Side Events:** Bughouse: Thurs. 11 am, Reg. onsite until Thurs. 9-10 am, \$25/team. Blitz Section: K-9, Thurs. 5 pm, Reg. onsite until 4 pm. Blitz EF: \$15 by 4/4, \$20 after or at site. Class trophies will be awarded in main event and in Blitz. Full list of trophies on tournament Info Page. Team Rooms are limited. Contact Susan Kantor at 931.787.1234 ext. 136 or by email: skantor@uschess.org. Questions: Susan Kantor at 931.787.1234 ext. 136. **Entries:** U.S. Chess Federation, Attn.: 2016 JHS Championship, P.O. Box 3967, Crossville, TN 38557 or online at www.uschess.org/tournaments/2016/jhs/. See web site for additional information about the event, advance entries, awards, meetings, updates, corrections, and registration forms.

US Chess Junior Grand Prix!

Apr. 22-24, Illinois

2016 All-Girls National Championships presented by the Kasparov Chess Foundation in association with the Renaissance Knights Chess Foundation & US Chess

First place winners of each section will qualify to represent the USA at the 2016 World Youth/Cadets Championships. 6SS, G/90 d5, Hyatt Regency McCormick Place, 2233 S. Martin Luther King Dr., Chicago, IL 60616, (free Wi-Fi). **6 Sections:** Under 8, Under 10, Under 12, Under 14, Under 16 & Under 18. **Age as of 1/1/2016.** EF: \$55 mail/online by 3/28, \$75 by 4/11, \$95 after. Do not mail after 4/15. \$20 fee for roster or section changes after April 15. \$10 fee for refunds. **Opening Ceremony:** 2:30pm, Friday. **Rounds:** Rd. 1 – 3:00pm Fri; Rounds 2-4 – Sat 10am, 2:30pm, 6:30pm; Rounds 5-6 – Sun 9am & pm. **Awards Ceremony:** Sun. 5pm. **Trophies:** top 15 individual players and top 4 teams in the Under 8, 10, 12 & 14 Sections; top 8 individual players and top 3 teams in the Under 16 & 18 Sections. (top 3 players added for team scores). **Bye:** One 1/2-pt bye available, any round, if requested before end of Rd. 2 and if player has not received a full-point bye. **Side Events:** Bughouse Tournament – Fri. 11:00 am, EF \$30/team. **Blitz Tournament – Fri. 7pm, G/5 d0, EF \$20 by 4/11, \$25 after or on site.** **HR:** single - quad \$149 Reservations: (888) 421-1442. Reserve early rate may increase. **Entries:** online/info at: <http://rknights.org/registration/tournaments/all-girls-nationals/> or mail to RKnights, Attn: All-Girls, PO Box 1074, Northbrook, IL 60065, include name, section, rating, USCF ID#, date of birth, grade, school name city & state.

US Chess Junior Grand Prix!

May 6-8, Tennessee

2016 National Elementary (K-6) Championship

7SS, G/120 d5 (K-1 G/90 d5). Gaylord Opryland Resort and Convention Center, 2800 Opryland Dr., Nashville, TN 37214. Hotel Chess Rate \$148. Guest rooms may be booked, NLT 4/11/2016 by calling (888) 777-6779 or (615) 889-1000, mention "US Chess." **9 Sections:** K-6 Championship, K-6 U1000, K-6 Unrated, K-5 Championship, K-5 U900, K-3 Championship, K-3 U800, K-3 Unrated, K-1 Championship. April Rating Supplement will be used. One 1/2-point bye available (limit one) any round (except Round 7) if requested prior to the start of Rd. 1. Team score = total of top four (minimum two) finishers from each school per section. K-6 Championship first place individual and team, including ties, will be the National Elementary School Champion. **Schedule:** Opening ceremony Fri. 12:30 pm. Rds.: Fri. 1 pm and 7 pm, Sat. 9 am, 2 pm and 7 pm, Sun. 9 am-2 pm. **Awards Ceremony Sun., approx. 7 pm.** **Special Schedule for K-1** Rounds: Fri. 1:30 pm and 6:30 pm, Sat. 9:30 am, 1:30 pm and 6:30 pm, Sun. 9:30 am and 1:30 pm. **Awards Ceremony Sun., approx. 5:30 pm.** **EF:** \$50/participant postmarked or online by 4/4, \$70 postmarked or online by 4/25, \$85 online by 5/4, \$90 on site; \$50 extra for all phone registrations; \$20 fee for roster or section changes after 4/25 or any onsite changes. Onsite registration Thurs. 9 AM - 9 PM & Fri. 8 AM - 11 AM. Players who register or change sections after 11 am on Friday will receive a 1/2-point bye for Rd. 1. Players must disclose any other, non-USCF, over-the-board (OTB) ratings. **Awards:** Trophies to top individuals & top teams in each section. Every player receives a commemorative item! Full list of trophies on tournament Info Page. **Side Events:** Bughouse: Thurs. 11 am, Reg. onsite until Thurs. 9-10 am, \$25/team. Blitz Sections: K-6 and K-3, Thurs. 5 pm, Reg. onsite until 4 pm. Blitz EF: \$15 by 4/25, \$20 after or at site. Class trophies will be awarded in main event and in Blitz. Full list of trophies on tournament Info Page. Team Rooms are limited. Contact Susan Kantor at 931.787.1234 ext. 136 or by email: skantor@uschess.org. Questions: Susan Kantor at 931.787.1234 ext. 136. **Entries:** U.S. Chess Federation, Attn.: 2016 Elem Championship, P.O. Box 3967, Crossville, TN 38557 or online at www.uschess.org/tournaments/2016/elem/. See web site for additional information about the event, advance entries, awards, meetings, updates, corrections, and registration forms.

US Chess Junior Grand Prix!

May 28-30, Arizona

2016 U.S. Amateur Championship West

Hilton Tucson El Conquistador Golf & Tennis Resort, 10000 N. Oracle Rd., Tucson, AZ 85704, 1-800-325-7832. **SECTIONS:** Championship (U2200), Reserve (U1600), Booster (U1200). **SCHEDULE:** (Championship & Reserve) 6/5S; 40/90, G/30, Inc/30; Rds.: 10-4, 10-4, 9-3. (Booster) 6/5S, Game/60, Inc/30; Rds.: (Sat) 10-1:30-5, (Sun) 10-1:30-5 **PRIZES:** (Championship) Digital Clock + plaque to Top 3; Digital clock to 1st + Plaque to Top 2 1800-1999, 1600-1799, and U1600; Plaque to top Senior 50+, Junior U20 and Junior U14. (Reserve) Digital clock + plaque to Top 3, Digital clock to 1st + Plaque to Top 2 1200-1399 and U1200; Plaque to top Senior 50+ and Junior U14. (Booster) Digital clock + trophy to 1st; Trophy to 2nd - 5th, Top Unrated and Junior U11. **SPECIAL PRIZES:** 1st Place in Championship and Reserve will receive a FREE ENTRY to the 2016 National Open. Top 2 Family Pairs in combined sections. Biggest Upset of each round (Rds. 1-5). **EF:** (Championship & Reserve) \$60 if rec'd by 5/25, \$70 if after 5/25. (Booster) \$40 if rec'd by 5/25, \$50 if after 5/25. **SIDE EVENTS:** **Blitz tournament** Friday 5/22 at 6:00pm, Reg. 5:00 - 5:45 at site, G/5 d0, 5 Rounds, Double SS; Entry Fee: \$10 (\$15 to non-tournament players); **Saturday Scholastic tournament** (K-6 and U1000 rating), Saturday 5/28 at 10:00am, Reg:

8:30 - 9:30, GAME/40 d5; 4 rounds, Entry fee \$15; **Sunday Scholastic tournament** (K-6 and U1000 rating), Sunday 5/29 at 10:00am, Reg: 8:30 - 9:30, GAME/40 d5; 4 rounds, Entry fee \$15; **Quick tournament Monday** 5/30 at noon, Reg: 10:30 - 11:30, GAME/10 d2; 5 rounds, Entry Fee: \$10 (\$15 to non-tournament players). **ENTER:** <http://events4chess.com> or mail to (make checks payable to "Rookery Chess"): 2016 US Amateur West, PMB 215, 4729 E. Sunrise Dr., Tucson, AZ 85718 or at site. **HR:** 1-800-325-7832, \$99 (2 Queen), \$139 (jr. suite), or \$179 (casita), mention "Amateur West!". **INFO:** Karen Pennock, 520-261-3176, email: kpennock_83@yahoo.com. W.

GRAND PRIX

US Chess Junior Grand Prix!

A State Championship Event!

Feb. 13, Pennsylvania

Trophies Plus Grand Prix Points: 6

2016 PA State Game/75 Championship

4SS, G/75 d5. Wm. Pitt Union, Univ. of Pitt., 5th & Bigelow, Pittsburgh, PA 15213. 3 Sections, **\$\$ (695G):** **Championship:** EF: \$30 by 2/5, \$40 later. \$200-100, U2000 \$75, U1800 \$50. **Premier:** U1600. EF: \$25 by 2/5, \$35 later. \$90-60, U1400 \$50, U1200 \$40, U1000 \$30; Trophies to Top 2, Top 2 U1400, Top 2 U1200, Top 2 U1000. **Scholastic:** Grades K-12 U900. EF: \$15 by 2/5, \$25 later. Trophies to Top 7, 1-3 U600. **ALL:** Teams of 4 to 7 combined from all sections, Trophies 1st-2nd schools, clubs. PSCF \$5, OSA. **Reg ends:** 9:30am. **Rds.:** 10-1-4-7. **Ent/Info:** PSCF, c/o Tom Martinak, 25 Freepoint St., Pittsburgh, PA 15223, 412-908-0286.

US Chess Junior Grand Prix!

Feb. 27-28, Florida

Trophies Plus Grand Prix Points: 10

Central Florida Chess Club Championship

5SS, G/120 d5. **University Unitarian Universalist Society, 11648 McCulloch Rd., Orlando 32817.** EF: \$40. CFCC mem reg to \$20 (\$10 Jr/Sr). **\$\$SGTD 800:** 250-150-100, **U2000, U1800, U1600, U1400 each 75; Plaques** (if mem as of Jan 31) to Club Champion, U2000, U1800, U1600, U1400, & top under age 16. **Reg.:** Sat 9:30am. **Rds.:** 10-2-30-7, 10:30-3. **CFCC elections** 2:30pm Sun. **Adv Ent:** CFCC, 921 N. Thistle Ln., Maitland, FL 32751. **Info:** (407) 629-6946 (407-670-9304 on site), or www.centralflchess.org.

A State Championship Event!

Mar. 4, Pennsylvania

Trophies Plus Grand Prix Points: 6

2016 PA Quick Chess Championship (QC)

6SS, G/8 d3. Lancaster Host Resort and Conference Center, 2300 Lincoln Highway East (Route 30), Lancaster, PA 17062. **3 sections:** Open in Lampeter Playing Hall spectators allowed; U1500 and U1100 in downstairs ballroom with no spectators. EF: rec'd by 2/21: Open: \$12. U1500: \$11. U1100: \$10. \$5 (750G). **Open:** \$175-\$100-\$50, U1800 \$45, U1600 \$40. **U1500:** \$125-\$75-\$50, U1300 \$40, U1200 \$30, U100 \$20. **U1100:** Trophies: 1-10, U800, U600, U400, 1-2 Unr. **All:** EF: \$20 after 2/28, PSCF \$5 OSA. **Reg.:** 5:30-6:15 pm. **Rd. 1:** 7pm. Mar 2015 Reg rating used. Byes: limit 1, ask before rd. 2 begins. **HR:** Mention "Chess Tournament" for best rate: 1-800-233-0121 \$75 - \$75 - \$80 - \$85. **Ent:** PSCF, c/o Joshua Anderson, 206 Locust Ln., Exton, PA 19341 or go to <http://minds-eyepress.webs.com/past-scholasticchamp.htm> for online sign up (using Paypal or credit card through Paypal). No online sign up after 3/3. **Info:** joshuamiltonanderson@gmail.com, 484-948-5692 (email preferred). W.

US Chess Junior Grand Prix!

Mar. 5-6, Maryland

Trophies Plus Grand Prix Points: 15

UMBC Open - Alvin S. Mintzes Chess Tournament

5SS, G/90, +30inc. University of Maryland, Baltimore County, 1000 Hilltop Circle, Baltimore (in Commons, 3rd floor). Held concurrently with Maryland "Sweet 16" (Invitational)—winner to receive in-state fixed-dollar tuition scholarship to UMBC. **Open:** (All) \$21260: \$400-300-200 Gtd., Class prizes \$120 ea. to top U2300, U2100, U1900. Free ent. to GMs, \$50 deducted from any prizes. **U1800:** (U1800/Unr.) \$31080 b/40: \$350-250-150, Class prizes \$110 ea. to top U1600, U1400, U1200 (b/4). No Unr. player may win more than \$250 in this section. **All:** EF: \$50 if postmarked by 2/19, \$60 later, \$10 less if under age 20. **Reg.:** 8:30-9:30am Sat, Rds: 10-3-7:30pm Sat, 10:30-3:30pm Sun. **Byes:** Up to three 1/2-pt. byes avail. in Rds. 1-5 if req'd at least 1 hr. before Rd. (before Rd. 2 for any Rd. 4-5 bye), but only at most one 1/2-point bye in Rds. 4-5. **HR:** La Quinta Inn and Suites, 1734 West Nursery Road, Linthicum, MD 21090, 410-859-2333, www.lq.com (From I-95, take Exit 47A onto I-195 towards BWI Airport. Take Exit 2A onto 295 north towards Baltimore; take first exit, bearing right onto West Nursery Road). **Directions to UMBC:** Take Exit 47B off I-95 & follow signs to UMBC. Park in Commons Drive garage. **Ent:** NEW! Register online at <http://mdchess.com> (email questions to dewyerj@umbc.edu), or mail to Dr. Alan T. Sherman, Dept. of CSEE, UMBC, Attn: Open, 1000 Hilltop Circle, Baltimore, MD 21250. Make out check to UMBC. **For more information:** ChessClub@umbc.edu, www.umbc.edu/chess. W.

Apr. 2, Pennsylvania

Trophies Plus Grand Prix Points: 6

2016 PA State Game/29 Championship (QC)

5SS, G/29 d0. Wm. Pitt Union, Univ. of Pitt., 5th & Bigelow, Pittsburgh, PA 15213. **2 Sections:** **Championship:** EF: \$25 by 3/25, \$35 later. \$5 (690G): \$200-100, U2000 \$90, U1800 \$80, U1600 \$70, U1400 \$60, U1200 \$50, U1000 \$40. Trophies: 1-3 U1400, 1-3 U1200, 1-3 U1000. **Scholastic:** Grades K-12 unrated or U900. EF: \$15 by 3/25, \$25 later. Trophies to Top 7, 1-3 U600. **ALL:** Trophies: 1-2 Schools, 1-2 Clubs, Teams of 4-7 players from both sections. PSCF \$5, OSA. **Reg.:** 10-10:30am. **Rds.:** 11-12:30-1:45-3-4:15. **Ent/Info:** PSCF, c/o Tom Martinak, 25 Freepoint St., Pittsburgh, PA 15223, martinak_tom_m@hotmail.com.

Regional Alabama

A Heritage Event!

US Chess Junior Grand Prix!

Feb. 20-21, Queen of Hearts - 44th Annual

5SS, TC: G/120 d5. AUM Taylor Center, 7401 East Dr., Montgomery, AL 36117. **Premier (1700+), PF: \$1000 - \$b/20):** \$300-200-X-200-U2000-200-100; **Reserve (U1700, PF: \$800 - \$b/20):** \$250-175-150-U1400-150-75; **Amateur (U1300, PF: \$775 - \$b/20):** \$225-175-150-U1000-150-75. **EF:** \$50; if mailed by FEB 13th; \$60 at site. **Late REG.:** FEB 20th, 8-8:30am. **Rds.:** 9-2-7; 9-2:30. **SCHOLASTIC (K-12):** 6SS, TC: G/20; d0. **NOVICE (K-12; Not Rated):** EF: \$15; if mailed by FEB 13th, \$10 more at site. **Trophy:** Top 3; Medals 4th-6th. **Rds.:** 9-10-11-12:30-1:30, 2:30. Checks payable to: **Caesar Chess. ENT:** Caesar Chess LLC, 5184 Caldwell Mill Road, Suite 204 - 202, Birmingham, AL 35244 or email your entry forms information before FEB 17th. **Info:** CaesarChess@gmail.com; www.AlabamaChess.com.

Arizona

May 28-30, 2016 U.S. Amateur Championship West

See Nationals.

California, Northern

Feb. 13-15 or 14-15, 32nd Annual U.S. Amateur Team Championship West

See Nationals.

Feb. 15, Bay Area Fremont Quads (PK-12; 4SS, G/30 d5)

Courtyard Marriott, Fremont, CA 94538. **Trophies:** Players w + score. **Sched:** Reqr. Check-in 1:30-2p. **Games:** 2:15-5p. **EF:** 29, 44 after 2/13. **Info:** <http://BayAreaChess.com/signature>. W.

Feb. 15, Bay Area Fremont Swiss (PK-12; 4SS, G/30 d5)

Courtyard Marriott, Fremont, CA 94538. **Trophies:** players w + score. **Sched:** Reg. 9:30-9:45a. **Games:** 10a - 1:30p. **EF:** 34, 49 after 2/13. **Info:** <http://BayAreaChess.com/signature>. W.

Feb. 21, Bay Area Cupertino Quads (PK-12; 3xG/30 d5)

Courtyard Marriott, Cupertino, CA 95014. **Trophies:** Players w + score. **Sched:** Reqr. Check-in 1:30-2p. **Games:** 2:15-5p. **EF:** 29, 44 after 2/19. **Info:** <http://BayAreaChess.com/signature>. W.

Feb. 21, Bay Area Cupertino Swiss (PK-12; 4SS, G/30 d5)

Courtyard Marriott, Cupertino, CA 95014. **Trophies:** players w + score. **Sched:** Reg. 9:30-9:45a. **Games:** 10a - 1:30p. **EF:** 34, 49 after 2/19. **Info:** <http://BayAreaChess.com/signature>. W.

Feb. 27 or 27-28, 11th SPN Nationwide Open for Girls and Boys

6SS, G/60 d5. Official Qualifier for the SPF Girls' Invitational & FIDE World Youth 2016. **MAIN EVENT:** San Mateo Event Center, 1346 Saratoga Dr., San Mateo. Free Parking. \$100,000+ in prizes (lots of trophies, chess prizes & scholarships). **\$1,000 Triple Crown Bonus!** — All details on www.SPFFNO.com. **CHAMPIONSHIP SECTIONS:** U8, U10, U12, U14, U16/18 in separate sections for Girls and Boys. **TIME CONTROLS:** All games will be G/60 d5. **ROUND TIMES:** Sat & Sun 9am, 11:30am, 2:30pm. **EF:** \$39 UNTIL 12/1, \$59 until 1/20, \$69 until 2/20, \$89 after. **Unrated Reserve Sections:** K-2 < 500 or UNR / 3-6 < 800 or UNR. **Rds. 2/27-9:** 9, 10:30, 1, 3:30 & 5. **Reserve Sections Time Control:** G/25 d5 EF: \$29 UNTIL 2/20, \$49 after. **ADDITIONAL EVENTS: Q & A and 25 board Simul** against GM Susan Polgar 2/26 6:30pm (venue TBA) EF \$29 UNTIL 12/1, \$49 after. **2/27- Puzzle Solving Championship** (one section) 5-5:30pm. EF \$19 UNTIL 12/1, \$29 until 2/20, \$39 after. **Blitz Championship. G/5+0** starts at 5:45pm. EF \$19 UNTIL 12/1, \$29 until 2/20, \$39 after. USCF Membership required for all championship sections & blitz. January 2016 Supplement used. TD discretion to place players accurately. **HOTEL:** Special Room Rate. Sofitel San Francisco Bay, 223 Twin Dolphin Dr., Redwood City. Call (650) 598-9000 for reservations. **ORGANIZER:** Chris Torres chesslessons@aol.com **Or mail to:** TCAMA, 16691 Colonial Trail, Lathrop, CA 95330. **More Info & Flyer or Register Online:** www.SPFFNO.com

NOTE:

Players who qualify for the World Youth Championship but represent a FIDE Academy are not included in the official US Chess Federation Delegation.

Feb. 28, San Jose Kids Quads (PK-12; 3xG/30 d5)

2050 Concord Drive #42, San Jose, CA 95131. **Trophies:** Players w/plus score. **Sched:** Required Check-in 1:30-2p. **Games:** 2-5p. **EF:** 29, 44 after 2/26 **Info:** BayAreaChess.com/signature.

Mar. 5, Bay Area Counties Championship (PK-12; 5SS, G/30 d5)

Sheraton Pleasanton, 5990 Stoneridge Mall Rd., Pleasanton, CA 94588. **Trophies:** Top 5 Players w/plus score. Top 3 Teams/Clubs in sections combined. **Sched:** Reg. 8:30-9am. KG, Gr 1 2 3: 5xG/30 games 9:30, 10:45, 12:30, 1:45, 3:00. Gr 4 5 6: 4xG/45 games 9:30, 11:15, 1:15, 3:00. **EF:** \$39 by 3/1. **Info/Flyer:** BayAreaChess.com/counties. W.

Mar. 12, Bay Area KIPP Heartwood Quads (PK-12; 3xG/30 d5)

KIPP Heartwood Academy, 1250 S. King Rd., San Jose, CA 95122. **Trophies:** Players w + score. **Sched:** Reqr Check-in 9:30-10a. **Games:**

Tournament Life

10a-2p. **EF:** 25, 40 after 3/10. **Info:** <http://BayAreaChess.com/signature.W>.

Mar. 12, Sacramento Chess4Less Quads (PK-12; 3xG/30 d5)
Court yard Marriott, Rancho Cordova, CA 95670. **Trophies:** Players w/plus score. **Sched:** Reqr. Check-in 1:30-2p. **Games:** 2:30-5p. **EF:** 24, 39 after 3/10. **Info:** <http://BayAreaChess.com/signature.W>.

Mar. 13, Bay Area Fremont Swiss (PK-12; 4SS, G/30 d5)
Court yard Marriott, Fremont, CA 94538. **Trophies:** players w + score. **Sched:** Reg. 9:30-9:45a. **Games:** 10a - 1:30p. **EF:** 34, 49 after 3/11. **Info:** <http://BayAreaChess.com/signature.W>.

Mar. 13, Bay Area Fremont Quads (PK-12; 4SS, G/30 d5)
Court yard Marriott, Fremont, CA 94538. **Trophies:** Players w + score. **Sched:** Reqr. Check-in 1:30-2p. **Games:** 2:15-5p. **EF:** 29, 44 after 3/11. **Info:** <http://BayAreaChess.com/signature.W>.

Mar. 13, Fremont DuperSwiss75 (3SS, G/75 d5)
Court yard Marriott, Fremont, CA 94538. **Prizes:** \$1,250 b/40. 50% guar. 1900+: \$200-100-50, u2100 50-50. 1500-1899: \$200-100, u1700 50-50. u1500: \$200-100, u1200 50-50. Mar 16 Supp & TD disc. **Reg.:** 8:30-8:45. **Rds.:** 9-11:45-2:40. **EF:** 49, Econ 33 w 1/2 pr. after 3/10 +15, playup +15, Rtd 2200+ \$0 by 3/3. **Info:** BayAreaChess.com/grandprix.W.

A Heritage Event!

**US Chess Junior Grand Prix!
A State Championship Event!**

Mar. 19-20, 41st CalChess State Scholastics Championship 2016
Santa Clara Convention Center, 5001 Great America Pkwy., CA 95054. **Park free. Prizes:** Trophies to top 20 players w + score & top 5 teams and top 5 clubs (in ea section). Medals to all. In case of ties, tiebreaks will set place. Sections based on grades and rating. **Sched: 1-day event** for all u800 sections: KG, K-Gr3 Rookie(unr), K-Gr3 Beginner(u500), K-Gr3 JV(500-799); Sa only 5SSxG/30 d5: Rds: 9:30a, 11:30a, 1:30p, 3p, 4:30p. K-Gr6 Rookie(unr), K-Gr6 Beginner(u500), K-Gr6 JV(500-799), K-Gr8 Beginner(u800), K-Gr12 Beginner(u800): Su only 5SSxG/30 d5: Rds.: 9:30a, 11:30a, 1:30p, 3p, 4:30p. **2-day event** for sections: K-Gr3 Champ (800+), K-Gr5 Champ (800+), K-Gr6 Champ (800+), K-Gr8 JV (800-1199), K-Gr8 Champ (1200+), K-Gr12 JV (800-1599), K-Gr12 Champ (1600+): Sa+Su 6SSxG/75 d5. Rds.: Sat & Sun 9a, 12n, 3p. **Side-event:** Blitz: KG-Gr3, Gr4-6, Gr 6-8, Gr 9-12: G/5 d0; Sat 6-8p. **Bughouse:** (G/5 d0) Su 6-8p. **EF** by 3/1: 1-day \$52, 2-day \$65. **Playup:** +20, Late Fee: +10 after 3/1, +20 after 3/14, 3/14, Onsite: +\$40. **Change Fee:** \$10 after 3/1, \$20 after 3/14, \$30 onsite. **Blitz/Bughouse:** \$12. **Tshirt:** \$15 preorder. **Register:** Online: www.bayareachess.com/my/states until Friday 3/18 noon! Onsite 7:30-8am! No on-site registration after 8AM. CalChess & USCF membership reqrd except KG, Gr1-3 Rookie. Mar 16 Supp & TD disc to place players. **Info/req:** bayareachess.com/states. **Quest:** ask@BayAreaChess.com. USCF + CalChess Mem reqd. W.

California, Southern

The Los Angeles Chess Club

The Most Active Club on the West Coast! (310) 795-5710. * LACC: www.LAChessClub.com; VCC: www.ValleyChessClub.com; Contact email: [Mick@LAChessClub.com](mailto: Mick@LAChessClub.com); Saturdays: 10am-10 pm (Beg & Intern. classes + 3 Tournaments). Sundays: 11 am -7 pm (Junior class + 2 Tournaments) - Details on our web site. Tuesdays: 7:30-9:30 pm (Advance Lecture). 11514 Santa Monica Blvd., Los Angeles, CA 90025. (4 blocks W of 405, SW corner of Santa Monica & Butler * 2nd Floor - above Javan Restaurant) Group Classes * Tournaments * Private (1:1) Lessons. Note: We added a new club in the valley!

Alec's Chess Club

www.alecsschessclub.com. 818-220-0257. Tournaments for KIDS on Saturdays or Sundays 12-4pm weekly. Includes free class! Tournaments for ADULTS on Saturdays 5-9pm (G/30 d5) and 9-11pm (Blitz). Private Classes available by appointment. Located at 4418 Simpson Ave., #5, Valley Village, CA 91607. YOUR FIRST TOURNAMENT IS FREE! Please contact Alec with any questions at alecspencer@hotmail.com or on our website at www.alecsschessclub.com.

Feb. 6, 13, 20, 27, LACC - Every Saturday Chess 4 JRS
5 separate events- 5SS, G/30 d0. 11514 Santa Monica Blvd. & Butler LA, 90025, 2nd fl. 4 blocks West of 405. **EF:** \$30 (\$20 LACC memb, No prize 1/2, siblings 1/2, Free new LACC members). **Reg.:** 12-1 pm. **Rds.:** 1pm & asap; done by 4. **Prizes:** Trophies & medals; All players receive prizes! **Parking:** Free on streets & BoA. Free pizzas & juices. **Info:** (310) 795-5710 or www.LAChessClub.com or Mick@LAChessClub.com.

Feb. 7, 14, 21, 28, LACC - Every Sunday Chess 4 JRS
5 separate events- 5SS, G/30 d0. 11514 Santa Monica Blvd. & Butler LA, 90025, 2nd fl. 4 blocks West of 405. **EF:** \$30 (\$20 LACC memb, No prize 1/2, siblings 1/2, Free new LACC members). **Reg.:** 12-1 pm. **Rds.:** 1pm & asap; done by 4. **Prizes:** Trophies & medals; All players receive prizes! **Parking:** Free on streets & BoA. Free pizzas & juices. **Info:** (310) 795-5710 or www.LAChessClub.com or Mick@LAChessClub.com.

Mar. 4-6 or 5-6, 23rd annual Western Class Championships
See *Chess Life* or www.chesstour.com.

Connecticut

Mar. 5, 2016 Fairfield County Scholastic Championships! (K-8, K-12, K-1)
Parkway School, 141 Lower Cross Rd., Greenwich, CT. Sections K-8, K-12: 4-SS, G/45 d5; K/1: 5-SS, G/30 d5. Top 5 individual trophies all sections, Top 3 teams each section. **EF:** \$40 online by 2/13. \$60 thereafter or mail, onsite \$100 9-9:30. Rd.1 10am then asap. More info and Register online: www.edutechchess.com. Edutech, 343 Beach St., West Haven, CT 06516.

Mar. 6, 2016 Fairfield County Scholastic Championships! (K-3, K-

6)
Parkway School, 141 Lower Cross Rd., Greenwich, CT. Sections K-3, K-6, 5-SS, G/30 d5, Top 5 trophies all sections, Top 3 teams. Chess medals all entries. **EF:** \$40 online by 2/13, \$60 thereafter or mail, onsite \$100 9-9:30. Rd.1 10am then asap. More info and Register online: www.edutechchess.com. Edutech, 343 Beach St., West Haven, CT 06516 .

Florida

South Florida Grand Prix Series

This is the former Epicure Grand Prix that took place at Miami Country Day. Scholastic and Non-Scholastic sections. More information at website: www.bocachess.com or call 561-479-0351.

The Stormont Kings Chess Center in Miami, FL

Conducts Private and Group Lessons, Homeschool Activities, Tournaments, Camps, Family Game Nights, Parents Night Out, Casual Chess Play and more! Complimentary Refreshments, Ample Parking, Comfortable Waiting Room, and more! Located at 8353 SW 124 St., Suite 201-A, Miami, FL 33156. Contact Chris Stormont, Phone: 786-303-2437, Email: chris@stormontkingschess.com, Web: www.StormontKingsChess.com.

Feb. 12-14 or 13-14, 2016 U.S. Amateur Team Championship South
See Nationals.

Feb. 27-28, Central Florida Chess Club Championship
See Grand Prix.

Georgia

Apr. 1-3, 2016 National High School (K-12) Championship
See Nationals.

Illinois

Feb. 19-21, 2016 US Amateur Team Championship North
See Nationals.

Mar. 6, 123rd Rknight's Quest
NEW HOTEL NOW WITH 5 U600, U1000, U1400, U1700 & OPEN. Hyatt Hotel, 1750 Lake Cook Rd., Deerfield, IL (free Wi-Fi). **USCF Rated Sections:** U600 (K-8), U1000 (K-8), U1400 (K-12 & Adults) U1700 (K-12 & Adults) & Open (K-12 & Adults). **Awards:** Top 6 U600, U1000 & U1400 Sections, \$60 - 40 U1700, \$75 - 50 Open Sections (based on 6 players). Top Team U600 & U1000. Players in U600 receive participation award. **Time Control:** U600 & U1000 4 Rounds Game 30 (G/25 d5); U1400, U1700 & Open 4 Rounds Game 45 (G/40 d5). **Reg.:** 11:00-11:30 am. **Rds.:** 1 at 12:00 pm, rest ASAP. **EF:** \$30 early, \$35 after Monday before, \$45 after Friday before. \$5 discount to siblings and team members when registering together. **Online Registration:** <http://rknights.org/registration/tournaments/> **Mail-in Reg:** Renaissance Knights, PO Box 1074, Northbrook, IL 60065. **Info:** www.rknights.org, 773-844-0701.

Apr. 22-24, 2016 All-Girls National Championships presented by the Kasparov Chess Foundation in association with the Renaissance Knights Chess Foundation & US Chess
See Nationals.

May 26-30, 27-30, 28-30 or 29-30, 25th annual Chicago Open
See *Chess Life* or www.chesstour.com.

Indiana

Apr. 15-17, 2016 National Junior High School (K-9) Championship
See Nationals.

Maryland

Maryland Chess Association Tournaments
MCA runs scholastic tournaments (almost every other Saturday from mid-September to late May) & open tournaments (usually 10+ annually) throughout Maryland. Listings & online registration at www.MDChess.org. Maryland scholastic players who compete in the Varsity section (which has a floor of 1600) of a Maryland-Sweet-16 Qualifier can qualify for the \$44,000 scholarship to UMBC (University of Maryland, Baltimore County) awarded each year.

Mar. 5-6, UMBC Open - Alvin S. Mintzes Chess Tournament
See Grand Prix.

Massachusetts

Mar. 5, 2016 Fairfield County Scholastic Championships! (K-8, K-12, K-1) (CT)
See Connecticut.

Mar. 6, 2016 Fairfield County Scholastic Championships! (K-3, K-6) (CT)
See Connecticut.

Apr. 10, 26th Massachusetts G/60 Championship
See *Chess Life* or www.MassChess.org.

Apr. 22-24 or 23-24, 25th annual Eastern Class Championships
See *Chess Life* or www.chesstour.com.

Missouri

Mar. 18-20 or 19-20, 20th annual Mid-America Open
See *Chess Life* or www.chesstour.com.

Nevada

Reno Scholastic Chess Quadz
University of Nevada, Reno FH19 PK-College. G/30 d5 Sched: 12:00-3pm. **EF:** 10. Weekly event on designated Saturdays. **Info:** [\[kidz.org/quadz.html\]\(http://kidz.org/quadz.html\) or \[chesskidz@chesskidz.org\]\(http://chesskidz@chesskidz.org\)](http://www.chess</p></div><div data-bbox=)

June 25-26, International Youth Championship
6-SS, G/60 d5. Westgate Las Vegas Resort, 3000 Paradise Road, 89109. **In 4 Sections by age:** 14 & Under, 14 & Under Reserve (under 1000), 9 & Under, 9 & Under Reserve (under 800). **Trophies** to top 10 in each section plus class and team trophies. 1st Place in each section wins a **Computer** loaded with valuable Chess Software and hundreds of Videos, 2nd-4th win chess prizes valued at 250-150-100. Unrated players may not win 1st in Reserve sections. **EF:** \$89 by 6/3, \$99 by 6/22, \$120 later. 1/2 point bye in any round (limit 2) if requested in advance. **Reg.:** 8:30-9 a.m. **Rds.:** 10-1-3:30, 10-1-3:30. Youth Blitz 6/24 6:00 p.m. (\$20 by 6/3 \$25 later). **HR:** \$69, \$89 Friday and Saturday. (800) 732-7117 - be sure to ask for the **CHESS** rates. **ENT:** Vegas Chess Festivals, PO Box 90925, Henderson, NV 89009-0925 or www.VegasChessFestival.com.

New Jersey

Feb. 13-15, World Amateur Team & U.S. Team East
See Nationals.

Feb. 20, Princeton Charter School
Princeton Charter School at: 100 Bunn Dr., Princeton, NJ 08540. **TIME CONTROL:** G/30 d0 Swiss to 4 rounds. **SECTIONS:** Open above 1000; U1000; U700; U500/Unrated (sections might be combined when necessary for pairings). **Parental Supervision Required:** The parents or another adult must be designated to supervise the student player between rounds. **Schedule** (will be accelerated if possible). **First Round:** 12:01 PM; **Second Round:** ASAP; **Third Round:** ASAP; **Fourth Round:** ASAP; **Award Ceremony:** ASAP (4:05 the latest). **Schedule** will be accelerated if possible (*) **Online Registration \$30 Only if register one week before:** www.ChessKidsNY.com/PCSChessProgram.htm (*) **Fee will increase automatically to \$35 if register later.** On site registration the date of the event: \$40 from 11:45 am to 12:00 noon. **Information:** email to Miguel Iniguez at: migini@gmail.com **Results will be posted online the same day of the event!**

A State Championship Event!

Feb. 21, New Jersey Junior High School Championships
5SS, G/30 d5. Brookdale College, 765 Newman Springs Rd., Lincroft, NJ 07738. Student Life Center, use Parking Lot #7 or #6; 5 minutes from Garden State Parkway exit 109. **Section:** JHS (K-9). **ALL:** Trophies to top 15 individuals, top 5 teams. **Rds.:** 10am then ASAP Top 4 scores constitute team score. **EF:** \$30 before 2/14, \$45 at site. USCF memb. req'd. **Reg.:** 8-9:00 am. After 9:00 am, half-point bye for round one. **INFO:** 732-259-3881, hsprechman@characterkings.org. **ENT:** Hal Sprechman, 66 Cromwell Ln., Jackson, NJ 08527 or online by Feb 19 at www.NJSCF.org. Entries must include name, grade, school, date of birth, USCF ID #, & expiration date, mailing address, phone number & entry fee. Checks made out to NJSCF.

A State Championship Event!

Feb. 21, New Jersey State Elementary Championships
5SS, G/30 d5. Brookdale College, 765 Newman Springs Rd., Lincroft, NJ 07738. Student Life Center, use Parking Lot #7 or #6; 5 minutes from Garden State Parkway exit 109. **2 Sections: Elementary (K-6) & Primary (K-3).** **All:** Trophies to top 15 individuals, top 5 teams. Elementary & Primary: Top 5 in each grade. Rds.: 10am then ASAP Top 4 scores constitute the team score for Elementary; top 3 for Primary. **EF:** \$30 before 2/14, \$45 at site. USCF memb. req'd. **Reg.:** 8-9:00am After 9:00am 1/2 point bye for round 1. **Info:** 732 259-3881, Ent: Hal Sprechman, 66 Cromwell Ln., Jackson, NJ 08527 or online by Feb 19 at www.NJSCF.org. Entries must include name, grade, school, date of birth, USCF ID and expiration date, mailing address, email address, phone number and entry fee. Checks made out to NJSCF.

Mar. 5, King's Chess Club Quads

Morning quads and afternoon quads, G/30 d5, Kindergarten-undergraduate (scholastic, youth, and young adult memberships). Bethlehem Church, 758 Route 10, Randolph, NJ 07869. **EF:** None. **Reg.:** 9-9:20 am, 1st rd. 9:40. Arr. by noon to reg. only for afternoon quads. Medal to each quad winner. **Info:** Bethlehem Church 973-366-3434 or Bob McAdams 973-694-3988, rwm@fambright.com.

US Chess Junior Grand Prix!

A State Championship Event!
Mar. 12-13, New Jersey High School Chess Championship
5SS, G/90 d5. Union County Vocational-Technical School, 1776 Raritan Rd., Scotch Plains, NJ 07076. 3 sections: **Varsity Championship (9-12):** 5 player teams with one alternate allowed. Coaches set order by player strength. Order must not be changed. Team avg. based on top 5 highest ratings. Trophies to top 10 NJ teams. Trophies for top three players, boards 1-5. **Rds.:** Sat. 10-2-6, Sun. 10-2. **EF:** \$150-/team before 3/2. \$185/team at site. \$5 per change on site. **Junior Varsity (9-12):** 4 player teams with one alternate allowed. Team avg. based on top 4 highest ratings. Trophies to top 10 NJ teams. Trophies for top 3 players, boards 1-4. **Rds.:** Sat. 10-2-6, Sun. 10-2. **EF:** \$120-/team before 3/7, \$150-/team on site. \$5 per change on site. **Booster (K-12):** Trophies to top 15 individuals. **Rds.:** Sat. 10-2-6, Sun. 10-2. **EF:** \$30 before 3/7, \$37 at site. **All:** USCF memb. required. **Reg.:** Sat. 8-9:00am. After 9:00am, 1/2 Point bye for round one. **Ent:** Noreen Davison, 6 Red Barn Ln., Randolph, NJ 07869. Entries must include name, grade, school, date of birth, USCF ID and expiration date, mailing address, email address, phone number and entry fee. Checks made out to NJSCF. Email inquiries: Noreen@deanofchess.com.

Mar. 19, Princeton Charter School
Princeton Charter School at: 100 Bunn Dr., Princeton, NJ 08540. **TIME CONTROL:** G/30 d0 Swiss to 4 rounds. **SECTIONS:** Open above 1000; U1000; U700; U500/Unrated (sections might be combined when necessary for pairings). **Parental Supervision Required:** The parents or another adult must be designated to supervise the student player between rounds. **Schedule** (will be accelerated if possible). **First Round:** 12:01 PM; **Second Round:** ASAP; **Third Round:** ASAP; **Fourth Round:** ASAP; **Award Ceremony:** ASAP (4:05 the latest). **Schedule** will be accelerated

if possible (*) Online Registration \$30 Only if register one week before: www.ChessKidsNY.com/PCSSchessProgram.htm (*) Fee will increase automatically to \$35 if register later. On site registration the date of the event: \$40 from 11:45 am to 12:00 noon. Information: email to Miguel Iniguez at: migini@gmail.com Results will be posted online the same day of the event!

New York

Mar. 5, 2016 Fairfield County Scholastic Championships! (K-8, K-12, K-1) (CT)
See Connecticut.

Mar. 6, 2016 Fairfield County Scholastic Championships! (K-3, K-6) (CT)
See Connecticut.

**A Heritage Event!
US Chess Junior Grand Prix!
A State Championship Event!**

Mar. 12-13, 49th annual New York State Scholastic Championships (out of state welcome)

Note corrected time control and schedule. 6SS, G/60 d10, open to grades K-12; top NYS player & team in each section are NY champions. In 10 sections. **HS & JHS Championships** at Courtyard by Marriott, 11 Excelsior Ave., Saratoga Springs, NY 12866 (2/5 mile from Saratoga Hilton). **Other sections** at Saratoga Hilton, 534 Broadway (I-87 Exit 13-N, 4 miles north on US 9), Saratoga Springs, NY 12866. **Team prizes** based on top 4 scores from same school; no combined school teams allowed even if one school "feeds" another. Teams of 2 or 3 players allowed, but are at a disadvantage. **Online entry fee at chessaction.com, all sections:** \$44 by 2/19, \$54 2/20-3/5, \$60 3/6 to 3/11. **Entry fee at site,** all sections: \$70. **High School**, open to grades K-12 born after 9/1/96. EF \$48.20 mailed by 2/19. Top NYS grade 9-12 qualifies for Denker Tournament of HS Champions, top NYS grade K-12 girl qualifies for National Girls Invitational. **High School Reserve**, open to K-12 under 1200 or unrated. EF \$48 mailed by 2/19. **Junior High**, open to all in grades K-9. EF \$47.90 mailed by 2/19. Top NYS grade K-8 born after 9/1/00 qualifies for Barber tournament of the K-8 Champions. **Middle School Reserve**, open to K-8 under 1000 or unrated. EF \$47.80 mailed by 2/19. **Elementary**, open to all in grades K-6. EF \$47.60 mailed by 2/19. **Elementary Intermediate**, open to grades K-6 under 1200 or unrated. EF \$47.50 mailed by 2/19. **Elementary Reserve**, open to grades K-5 under 800 or unrated. EF \$47.40 mailed by 2/19. **Primary**, open to grades K-3. EF \$47.30 mailed by 2/19. **Primary Reserve**, open to grades K-3 under 600 or unrated. EF: \$47.20 mailed by 2/19. **K-1**, open to grades K-1. EF \$47.10 mailed by 2/19. **Postmarked 2/20-3/2:** All EF \$10 more. Do not mail entry after 3/2. **Special 1 year US Chess dues** with magazine if paid with entry. Online at chessaction.com, Young Adult \$22, Scholastic \$15. Mailed or paid at site, Young Adult \$25, Scholastic \$17. **Trophies** to top 15 players and top 7 teams each section, top 3 unrated in K-1 and each Reserve section, and top U1600, U1400, U1200 (HS), U900, U700 (HS Reserve & Elem Intermediate), U1400, U1200, U1000 (JHS), U700, U500 (MS Reserve), U1300, U1100 (Elem), U500, U300 (Elem Reserve), U500 (Primary), U200 (Primary Reserve, K-1). Speed playoff if perfect score tie. **Free entry** to NY State Championship, Labor Day weekend 2016 (Albany), to top player each section, if not already qualified for free entry from another event. **Schedule:** Reg. ends Sat 10 am, rds. Sat 11, 2, 5, Sun 9, 12, 3, **Awards** 5:30 pm. **Half point byes** OK all, limit 2, must commit before rd. 2. **HR:** \$129-129 at either hotel, Courtyard 866-210-9325, Hilton 888-999-4711, 518-584-4000, two nights minimum, reserve by 2/6 or rate may increase; hotels often sell out a few months before the deadline. Free parking at Courtyard; free parking for overnight guests at Hilton. 7 days notice required for room cancellation. **Special car rentals:** Avis, 800-331-1600, use AWD #657633. **Online entry:** www.chessaction.com. **Mail entry:** Continental Chess, PO Box 249, Salisbury Mills, NY 12577. Include name, rating, US Chess ID, USCF expiration (non-members enclose dues), section, school, grade, birth date, address of each player. Checks payable to Continental Chess. **\$15 per player** service charge for refunds. **\$10 extra to switch** sections, all substitutions from advance list charged \$70. **Questions:** DirectorAtChess.US (At = @), 347-201-2260. **Bring set, board, clock** if possible- none supplied. **March official ratings used** (except unofficial web ratings usually used if otherwise unrated). TD reserves right to assign estimated rating to players with non-US Chess ratings.

Apr. 1-3 or 2-3, Bill Little Memorial
See *Chess Life* or www.chesstour.com.

May 20-22 or 21-22, 24th annual New York State Open
See *Chess Life* or www.chesstour.com.

Pennsylvania

Feb. 13, 2016 PA State Game/75 Championship
See Grand Prix.

Feb. 14, PCL February Quick Quads (QC)
3RR, G/15 d3. Wm. Pitt Union, Univ. of Pittsburgh, 5th Ave. & Bigelow Blvd., Pittsburgh, PA 15213. EF: \$10, \$7 Jrs. \$20 to 1st/quad. **Reg.:** 11-11:15am. **Info:** martinak_tom_m@hotmail.com, 412-908-0286. W.

Mar. 4, 2016 PA Quick Chess Championship (QC)
See Grand Prix.

**A Heritage Event!
US Chess Junior Grand Prix!
A State Championship Event!**

Mar. 5-6, PA State Scholastic Championship
5SS, 250+ Trophies!! (With 175+ Individual & 75+ Team) + Scholarships. Lancaster Host Resort and Conference Center, 2300 Lincoln Highway East (Route 30), Lancaster, PA 17062. 12 sections (Sat & Sun 3/5 & 6 unless indicated): EF-K-3 U500: (Sat 3/5 only) \$22. K-3 Open (Championship): (Sat 3/5 only) \$30. K-6 U600: (Sat 3/5 only) \$23; K-6 U700: (Sun 3/6 only) \$24; K-12 One Day Scholastic: (Sun 3/6 only) \$25, (the

rest: **Sat & Sun**) K-6 U1000: \$26, K-6 Open (Championship): \$31. K-8 Open (Championship): \$32. 7-12 Unrated: \$27. 7-12 U1000: \$28. (7-12 Unrated and 7-12 U1000 scores combined for school and club trophies.); 7-12 U1300: \$29. **K-12 Open (Championship):** \$33. All: **EFs if rec'd by 2/21**, \$10 more rec'd 2/22-2/28, \$20 more after 3/1. Mar 2016 ratings used. Bye: limit 1, ask before rd. 2 begins. Reg.: Fri 3/4 6-10 pm, Sat 3/5 10-11 am, Saturday entries get rd. 1 bye. \$5 charge for changes/refunds after 2/28. Rds.: (Sat. 3/5 1-day sections): G/40 d5; 10-Noon-2-4-6; (Sun 3/6 1-day sections): G/40 d5; 9-10:45-12:15-2:15-4; (2-day sections): G/90 d5; 10-2-5:30, 9-1. Bughouse: Reg on-site only until Sat 3/5 8:30pm. Rds. begin Sat 3/5 8:45pm. EF: \$20/team. HR: Mention "chess tournament" for best rate, 1-800-233-0121, \$75-\$75-\$80-\$85 (Breakfast included.) Ent: PSCF, c/o Joshua Anderson, 206 Locust Ln., Exton, PA 19341 or go to <http://mindseyepress.webs.com/pastscholasticchamp.htm> for online sign up (using Paypal or credit card through Paypal). No online sign up after 3/3. Info: joshuamiltonanderson@gmail.com, 484-948-5692, www.pscfchess.org/pastscholasticchamp/ or www.mindseyepress.com/pastscholchamp.htm. W.

Mar. 11-13 or 12-13, 17th annual Pittsburgh Open
See *Chess Life* or www.chesstour.com.

Mar. 23-27, 24-27, 25-27 or 26-27, 10th annual Philadelphia Open
See *Chess Life* or www.chesstour.com.

Mar. 26, PCL March Quick Quads (QC)
3RR, G/15d3. Wm. Pitt Union, Univ. of Pittsburgh, 5th Ave. & Bigelow Blvd., Pittsburgh, PA 15213. EF: \$10, \$7 Jrs. \$20 to 1st/quad. **Reg.:** 11-11:15am. **Info:** martinak_tom_m@hotmail.com, 412-908-0286. W.

Apr. 2, 2016 PA State Game/29 Championship (OC)
See Grand Prix.

June 30-July 4, July 1-4 or 2-4, 44th Annual World Open
See *Chess Life* or www.chesstour.com.

**US Chess Junior Grand Prix!
July 9-10, 8th annual World Open Under 13 Championship**
6SS, G/60 d10. Philadelphia Marriott Downtown (see World Open for location, rates). Open to all born after 7/10/03. In 4 sections. **Open Section:** Trophies to top 10, 1st C, Under 1400/Unr; free entry in all CCA tournaments 7/15/16-12/31/16 to 1st. **Under 1400 Section:** Trophies to top 10, 1st Under 1200, Unrated; free entry in all CCA tournaments 7/15/16-9/30/16 to 1st. **Under 1000 Section:** Trophies to top 10, 1st Under 800, Unrated; free entry in all CCA tournaments 7/15/16-9/30/16 to 1st. **Under 600 Section:** Trophies to top 10, 1st Under 400, top 3 Unrated; free entry in all CCA tournaments 7/15/16-9/30/16 to 1st. **EF:** \$42 online at chessaction.com by 7/7, \$45 mailed by 6/15, \$50 at site. **US Chess membership required.** Special 1 year dues with magazine: Online with entry, \$22 with Chess Life, \$15 with Chess Life for Kids. Mailed or at site, \$25 with Chess Life, \$17 with Chess Life for kids. **Reg:** 7/9 to 10 am, rds. Sat. 11-2:5, Sun. 10-1-4. Up to 2 half point byes allowed, must commit before rd. 3. **Ent:** chessaction.com or Continental Chess, PO Box 8482, Pelham, NY 10803. Questions: chesstour.com, chesstourinfo@directortatChess.US, 347-201-2269. \$15 service charge for refunds.

Rhode Island

Mar. 5, 2016 Fairfield County Scholastic Championships! (K-8, K-12, K-1) (CT)
See Connecticut.

Mar. 6, 2016 Fairfield County Scholastic Championships! (K-3, K-6) (CT)
See Connecticut.

Tennessee

May 6-8, 2016 National Elementary (K-6) Championship
See Nationals.

Texas

Feb. 11-15, 12-15 or 14-15, 7th annual Southwest Class Championships
See *Chess Life* or www.chesstour.com.

Feb. 20, Region VI Scholastic Chess Championship
5SS, 16 scholastic sections with varied time controls G/30 d5 to G/60 d5. One adult section, 4SS, G/45 d5 to G/60 d5. Southwest High School, 11914 Dragon Ln., San Antonio, TX 78252. Scholastic sections are opened to players in all grades up to 12 who reside in Texas Region VI. The adult section is open to all others, including scholastic players outside region VI. **IMPORTANT SECTION NOTES:** TCA rules will be in use for this tournament. Sections with fewer than 17 players may be merged with neighboring grades or ratings. All sections are USCF rated. Unrated scholastic players may register in any section appropriate to their grade. UNR sections are rated, but are open to players who do not yet have a rating. **Sections:** Sprout K-1 Championship, Sprout UNR, Primary K-3 Championship, Primary U600, Primary U400, Primary UNR, Elementary K-5/6 Championship, Elementary U800, Elementary U600, Elementary U400, Elementary UNR, Middle School 6-8/9 Championship, Middle School U1000, Middle School U700, High School 9-12 Championship, High School U1000. **\$\$Trophies:** Each scholastic section will award individual trophies; score awards for 3 or more points if no trophy. School team trophies for separate teams in championship sections; combined team trophies across other scholastic sections in same grade range. Top 4 scoring players counted per team; minimum 2 players per team. Team blocks applied at TD discretion. Adult/child family trophies must have at least one of each (adult and child). Cash awards (50% payout) for adult section only. All awards given, even if small sections are combined. **Rds:** Time controls and schedule: All Championship sections (except K-1): G/45 d5 for rounds 1-3 and G/60 d5 for rounds 4-5. Round start times: 8:30am, 10:30am, 12:30pm, 2:30pm, and 5:15pm. Rounds 4-5 may begin early.

Awards after last round for each section. Non-championship (and all K-1): G/30 d5 for all 5 rounds (and 6th round for large sections). Round start times: 9:00am, 10:30am, 12:00pm, 1:30pm, 3:00pm, and (if needed) 4:30pm. Rounds 4-6 may begin early. Awards after last round as soon as can be computed. Adult or Not TX region VI: G/45 d5 for rounds 1-2 and G/60 d5 for rounds 3-4. Rounds 3-4 may begin early. Awards after last round. **Reg:** All scholastic sections, \$15 if received/postmarked by Nov 30, \$20 by Dec 31, \$25 by Jan 31, \$30 by Feb 12, \$35 by Feb 18 (PayPal only), \$40 on site (cash or check). Adult section (or not region VI) \$25 anytime before close of registration at 8:30am on Feb 20. Incomplete entries or entries submitted without payment may be charged a later fee. Last day to request a refund is Feb 12. No on-site substitutions. Payments received after Feb 18 may receive a 1st round 1/2 point bye. USCF membership is required for all players. PayPal payments preferred. Do not mail payments after Feb 12. **Info:** Tournament flyer and online registration at <http://homemail.org/chesstournaments>.

Virginia

Feb. 26-28 or 27-28, George Washington Open
See *Chess Life* or www.chesstour.com.

**US Chess Junior Grand Prix!
A State Championship Event!**

Mar. 5-6, Virginia Scholastic & College Championships
6SS, Rds. 1-3 G/60 d5; Rds. 4-6 G/90 d5. Organized by the VA Chess Federation and hosted by Rock Ridge HS in Ashburn, Va. **Blitz and Bughouse Championships** Friday March 4 at 6PM. **Main tournament** Saturday and Sunday, March 5-6. Players must be K-12 or College players attending school or college full time in Virginia as of Jan. 2016, or must be Virginia residents. Virginia residency NOT REQUIRED for the Blitz or Bughouse Tournaments. Family & Friends Tournament on Sat & Sun. **On-line registration, eligibility, hotel info and other details** at: www.vachess.org. **Info:** Mike Hoffpauir, mhoffpauir@aol.com, or 757-846-4805.

June 17-19 or 18-19, 5th annual Continental Class Championships
See *Chess Life* or www.chesstour.com.

West Virginia

**A State Championship Event!
Mar. 5, WVCA Scholastic Chess Championship**
Wilson Student Union, WV State University, Institute, WV 25112. **Sections** K-3(G/30 d5), K-5(G/30 d5), K-8(G/60 d5), K-12(G/60 d5). Trophies to top players and Teams. **K-8 winner Barber Rep, K-12 Winner Denker Rep, Top Girl NGIT Rep.** Location at WV State College Wilson Student Union. **Check-in 7:45-8:30. No Onsite Registration. Reg closes Mar 1.** **EF \$25.** May register at www.wvcca.com/registration details at <https://wvcca.com/events/16champ.pdf>. **Rounds begin at 9Am and complete round times announced week before.**

Wisconsin

Mar. 12, Rated Beginners Open (RBO)
4SS, G/60 d5. Dual rated. USCF rated; for USCF membership see uschess.org. Olympia Resort Hotel, 1350 Royale Mile Rd., Oconomowoc, WI (1-800-558-9573); Exit 282, I-94 and Hwy 67. Open to players rated under 1200 or unrated. **Prizes:** Trophies to top 3, book prizes for class winners. **EF:** \$20 (9:10 by 3/11). **Reg:** 8:00-9:15, 1/2 point bye if registered after 9:15; pre-registrants check in by 9:30 to assure pairing. **Rds.:** 10:00; 1:00; 3:30; 6:00. **Mail entries to:** Waukesha CC, 1911 Stardust Dr., Waukesha, WI 53186. Phone info: Jim Nickell (262) 544-6266. **Online info, email:** jnickell@wlr.com.

**A Heritage Event!
Mar. 12, Waukesha Memorial (35th Annual)
A Wisconsin Tour Event!** 4SS, G/60 d5. Dual rated. USCF rated; for USCF membership, see uschess.org. Olympia Resort Hotel, 1350 Royale Mile Rd., Oconomowoc, WI (1-800-558-9573); Exit 282, I-94 and Hwy 67; N 1 mile to Regent Rd. \$\$\$Non-monetary, traveling trophy to First, books for class winners. Open to all. **EF:** \$20 (9:10 by 3/11). **Reg.:** 8:00-9:15; 1/2 point bye if registered after 9:15; groups of 4 or more must pre-register; pre-registrants check in by 9:30 to assure pairing. **Rds.:** 10:00; 1:00; 3:30; 6:00. No state memb. req'd. OSA. **Mail entries to:** Waukesha CC, 1911 Stardust Dr., Waukesha, WI 53186. Phone info: Jim Nickell (262) 544-6266. **Online info, email:** jnickell@wlr.com.

**ONCE RATED,
ALWAYS RATED**

You never lose your rating, no matter how long it has been since you last played.

If you return to tournament play after a long absence, please tell the director your approximate rating and year of play.

If you rejoin US CHESS after many years without being a member, please provide this information to the TD and to US CHESS as well.

Answers, We've got Answers.

End of the Line

(from page 6)

- #1 – 1. Qf8+ wins the queen on f3.
 #2 – 1. g8=Q b1=Q 2.Qa8+ Kb6 (or Kb5) 3. Qb8+ wins the queen.
 #3 – 1. Be5+!! Kxe5 2. Qc3+ and the skewer picks off the queen on g7.
 #4 – 1. Rc2!! draws out the queen Qxc2 2. Qc8+ and Qxc2 is next
 #5 – White wins the queen after 1. Rg8!! Qxg8 2. Qa8+ Kc7 3. Qxg8.
 #6 – 1. Ra8!! Qa2 (1. ... Qxa8 2. Bf3+ wins the queen) 2. Rxa4! Qg8 (2. ... Qxa4 3. Be8+ wins the queen) 3. Ra8!! Qh7 4. Bg6! the

queen is trapped as 4. ... Qxg6 is met with 5. Ra6+ and the queen is lost.

You Can Do It!

(from page 8)

Solution #1

1. Nxf6+ Qxf6 2. Qf8#

Solution #2

1. ... Qxg4! 2. Rxg4 (otherwise, ... Qg2#) 2. ... Re1#

Solution #3

1...Qh3+ (the g-pawn cannot capture on h3 because it is pinned) 2. Kg1 Bxe3+ 3. Rf2 and now the Rf2

is pinned (3. Qf2 Qxg2#; 3. Qxe3 Qxg2#) 3. ... Qxg2#

Solution #4

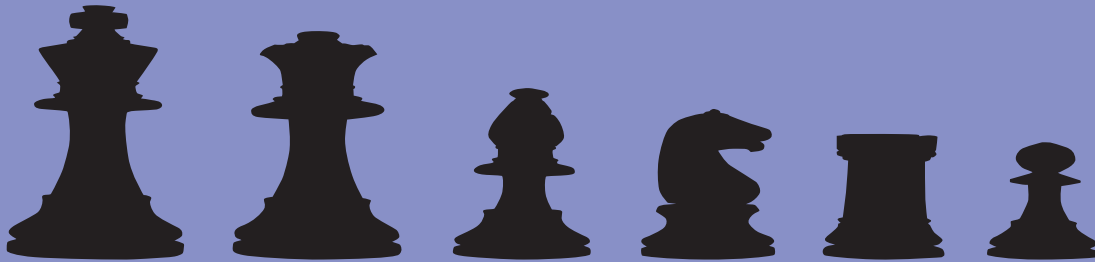
1. ... Bxd5+ 2. cxd5 (on 2. Re4 Bxe4# or 2. ... Rg1#) 2. ... Rg1#

Solution #5

1. ... Bxf3+ 2. gxf3 Qxf3#

Solution #6

1. ... Rh1+ 2. Rh2 Bg2# (the rook on h2 is pinned!)



Official US Chess online rated!
 No entry fees » No hotel costs » Free parking

20% off ICC membership

Bonus



www.chessclub.com/uschess



It's Your Move!

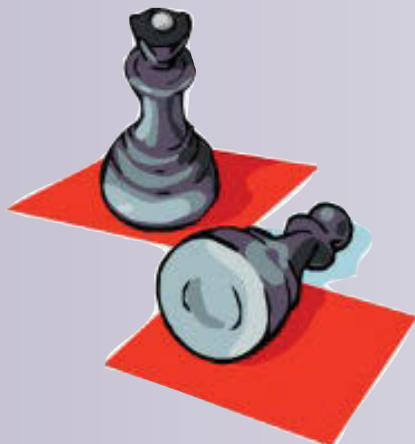
We definitely have a talented and enthusiastic readership! First we start with talent away from the chessboard.

CHESS

Staring at the chessboard
With its complex self
Pieces scattered across the board
All with their own power
Attacking the enemy
Facing the opponent with an
expressionless face
Giving no hint to my plan
Thinking,
Waiting

But the opponent always finds ways
to manipulate my moves
Winning the battle slowly
Closing in with a intensity
Always ahead of me
Taunting
But the times that my tactics prevail,
Happiness and relief
Relief that the game will end,
That the thinking and struggling for
the win will end
But with one move,
I lose the game.

Deniz Gulecyuz
8th grader at Morgan Park
Academy, Chicago, Illinois



And for enthusiasm, just read Greta's letter:

Editor:

I just love your *Chess Life for Kids*. I am a girl and I love to play chess ... Let me say I play aggressive and attacking ways. I love to live life on the edge and attack the other player. It's my chess style and I care nothing for how even the game is. I don't want any of the pieces but the king. I love nothing more in chess than to attack and make my opponent suffer. I was White.

1. e4 e5 2. Nf3 d6 3. Bc4 Bg4 4. d4 Nd7 5. h3 Bxf3 6. Qxf3 Ngf6 7. 0-0 exd4 8. Re1 Ne5 9. Qf4 Nxc4 (I told you I care nothing for how even the game is) **10. b3 Ne5 11. Bb2 c5 12. Qf5 Qa5 13. Na3 Be7 14. f4 Ned7 15. e5 g6 16. Qg5 h6 17. Qh4 Ne4 18. Qg4 Nef6 19. exf6** (I took, not because I wanted to get back my bishop or win stuff but because it opens up the e-file where the black king lay on the other side) **19. ... h5 20. Rxe7+ Kf8 21. Qxd7 Rd8** (The end is near!) **22. Rxf7+ Kg8 23. Rg7+ Kf8 24. Qe7 checkmate!**

- Greta Bentrup

FINAL POSITION

3r1k1r
pp2Q1R1
3p1Pp1
q1p4p
3p1P2
NP5P
PBP3P1
R5K1
(see page 4)

And here's a game from 13-year-old Joseph Bentley, rated 1117. He played online at *chess.com*, against Paul Duncannon, rated 1312. Joseph sacrifices a piece for a nice attack,



but what is really neat is that Joseph was in Ohio and Paul was in Scotland! The wonder of the Internet!

1. e4 e6 2. Nf3 h6 3. d4 d6 4. Nc3 a6 5. Bd3 Qf6 6. e5 dxe5 7. dxe5 Qd8 8. 0-0 Nc6 9. Be3 Bb4 10. Qd2 b6 11. a3 Bxc3 12. Qxc3 Nge7 13. Be4 Bb7 14. Rad1 Qc8 15. Bxc6+ Bxc6 16. Nd4 Bd5 17. b4 0-0 18. Qd2 Qb7 19. f7 Rfd8 20. Bxh6 gxh6 21. Qxh6 Ng6 22. Ne2 Bc4 23. Ng3 Nf4 24. Ne4 Qxe4 25. fxe4 Bxf1 26. Rxf1 Ng6 27. h4 Nxe5 28. Qf6 Kf8 29. Qxe5 Rd7 30. Qxe6 Re7 31. Qh6+ Ke8 32. Qh8+, 1-0.

D

Postmortem

Now that you know everything you will ever need to know about pins and skewers, and you've entered our little give-away contest (page 4), it's time to play the chess detective.

*Looking at our cover (Pin it and Win it), can you tell if it is White to move or Black to move? Tell us what you think and **WHY**.*

EXTRA CREDIT: Can you add pieces (we won't tell you which ones) to the board so that Black cannot "win it"?

Send your answer(s) to:
gpetersen@uschess.org or Glenn Petersen, 44-D Manchester Ct., Freehold, NJ 07728. We'll have book prizes for the best answers, so don't miss out!

The Official Chess Shop of the
 US Chess Federation

Check out these new offerings from the WORLD'S LARGEST CHESS RETAILER!



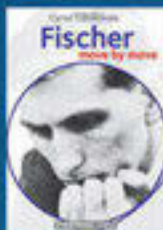
100 Endgames You Must Know - NEW EDITION
 B0009NIC - \$24.95

Most players tend to neglect the endgame, many even dodge the endgame by taking extreme risks in the middlegame, simply because they feel uncertain about the final phase. There are, contrary to what most amateurs believe, relatively few endgames one must know. Here the 100 endgames are presented that show up most frequently in practice are easy to learn and contain ideas and concepts useful in more difficult positions.



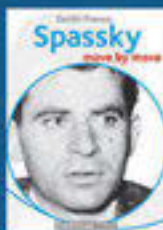
Bologan's Ruy Lopez for Black
 B0164NIC - \$34.95

The Ruy Lopez remains one of the most popular chess openings, both at club level and among top players. In this book, Victor Bologan presents a cutting-edge repertoire for Black based on the favorite lines of Magnus Carlsen and Levon Aronian. Bologan's Ruy Lopez for Black is more than just a well laid-out, clearly explained and eminently playable set of responses against the Spanish Opening.



Fischer Move by Move
 B0417EM - \$29.95

Bobby Fischer is a legendary chess figure, and many consider him to be the greatest chess player of all time. Fischer was a child prodigy who later developed into a phenomenal force. In this book, former American Open Champion Cyrus Lakdawala studies his favorite Fischer games. Lakdawala examines Fischer's renowned skills in attack, defense, counterattack, exploiting imbalances, dynamic elements, accumulating advantages and endgame play.



Spassky Move by Move
 B0419EM - \$29.95

Boris Spassky is one of the greatest chess players in the history of the game. He was the World Champion for three years, after winning the title by beating Tigran Petrosian. His name is forever linked with his great rival Bobby Fischer and their epic 1972 'Match of the Century'.

In this book, Grandmaster Franco examines in detail Spassky's chess style, selects and studies his favorite games, and demonstrates how we can all improve our chess by learning from Spassky.



Chess Informant #126 - Hand-Knitted
 B0126INF - \$39.95

This is the Periodical the Pros Use and all the entertainment and fun a true chess fan could want is inside: the games, the openings – the variations, the combinations and endgames – all furnished with the creative insights of our grandmaster contributors, supported by an international team of experienced chess editors. Chess Informant brings tons of valuable resources for months of reading pleasure, all written in easy-to-understand English and presented with the learning curve in mind!



Pawn Sacrifice
 DVD0008MV - \$29.95

In a gripping true story set during the height of the Cold War, American chess prodigy Bobby Fischer (Tobey Maguire) finds himself caught between two superpowers when he challenges the Soviet Empire. Also starring Liev Schreiber and Peter Sarsgaard, PAWN SACRIFICE chronicles Fischer's terrifying struggles with genius and madness, and the rise and fall of a kid from Brooklyn who captured the imagination of the world.



Master Class - Anatoly Karpov
 WIN0476CB - \$36.95

On this DVD, a team of experts looks closely at the secrets of Karpov's games. In more than 7 hours of video, the authors examine four essential aspects of Karpov's superb play. Nicolas Huschenbeth takes a look at Karpov's openings. Our tactics expert Oliver Reeh tests your skills with interactive exercises, challenging you to find Karpov's brilliant moves. Mihai Marin sees in Karpov's play great similarities to Magnus Carlsen. For endgame expert Dr. Karsten Müller, Anatoly Karpov is "a living legend that has "an incredible feeling for the coordination and harmony of his pieces", something which also shows in his endgames.



King's Indian - A Modern Approach - Victor Bologan
 WIN0475CB - \$36.95

With this DVD, GM Bologan expresses his gratitude to Bobby Fischer, for his great contribution to chess in general and because he helped to make the King's Indian more popular in particular. If you study this DVD carefully and solve the interactive exercises you will also enrich your chess vocabulary, your King's Indian vocabulary, build up confidence in the King's Indian and your chess and win more games.

www.USCFSales.com

888.51.CHESS (512.4377)

Announcing the USCF Sales Price Match Guarantee

We will not be undersold.

Visit www.USCFSales.com for Terms and Conditions