

**CHESS  
LIFE**

**Kids**



**Meet  
ROOK-E!**





# CLASSY. COLORFUL. WELL-CRAFTED.

Our trophies are an  
**ICON OF  
ACHIEVEMENT.**



- Walnut, Solid Marble, and Marble-look bases and lids.
- Many colors to choose from.
- Choose from a large collection of figurine toppers.



**TROPHIES**  **PLUS**  
*A Champion Defined.*

Official  
*Awards*  
Provider for the  
  
**US CHESS**  
FEDERATION

315 West 1st St. P.O. Box 115, Templeton, IA 51463  
800-397-9993 \* fax: 712-669-3851  
email: [trophyman@trophiesplus.com](mailto:trophyman@trophiesplus.com) \* [www.trophiesplus.com](http://www.trophiesplus.com)



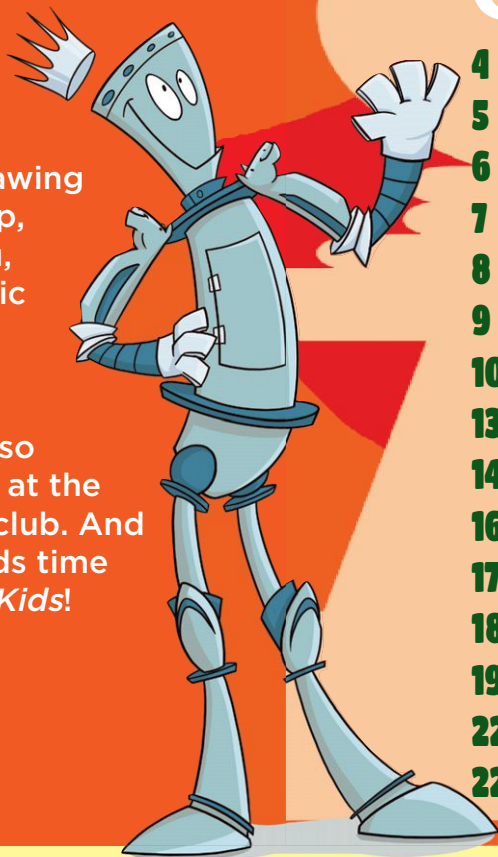
August 2016  
Vol. 11, No. 4

## Contents

- 4** What's The Question?
- 5** Pay It Forward
- 6** Arabian Knights
- 7** Move The Pieces
- 8** You can DO IT!
- 9** THE CHESS DETECTIVE®
- 10** Chess is important to me because...
- 13** Bravo Zulu
- 14** Play | Learn | Have Fun!
- 16** A Chess Lesson at Fort Belvoir
- 17** 2016 Junior Grand Prix
- 18** Answers, We've Got Answers.
- 19** Tournament Life Announcements
- 22** It's Your Move!
- 22** Zaria

### ON THE COVER

Home schooled Izak Bulten, winner of our NAME THE BOT contest (see page 23), likes writing mystery novels, playing at Scrabble(R) clubs, making movies, drawing a daily cartoon strip, and writing sudoku, crossword, and logic puzzles. He takes lessons from GM Gildardo Garcia on and off, and Izak also assists the director at the local library chess club. And we're happy he finds time to read *Chess Life Kids*!



## US CHESS

Publisher

USCF Executive Director:

Jean Hoffman

Jean.Hoffman@uschess.org

Director of Publications: Daniel Lucas

dllucas@uschess.org

Scholastic Editor: Glenn Petersen

gpetersen@uschess.org

Art Director: Cat Connor

catseyephotography@mac.com

Character Designer and Illustrator: Chandler Ellison

Editorial Asst./Copy Editor: Alan Kantor

akantor@uschess.org

Editorial Assistants:

Jo Anne Fatherly

backtobasics@uschess.org

Natasha Roberts

nroberts@uschess.org

Advertising Manager: Joan DuBois

jdubois@uschess.org

Tournament Life: Joan DuBois

tla@uschess.org

**CONTRIBUTORS:** Send your contributions and articles to *Chess Life Kids*, PO Box 3967, Crossville, Tennessee 38557 or better yet, e-mail to [gpetersen@uschess.org](mailto:gpetersen@uschess.org).

*Chess Life KIDS* (USPS 023-567, ISSN: 1932-5894) is published in February, April, June, August, October, and December of every year by US Chess, 137 Obrien Drive, Crossville, Tennessee 38555. Periodical postage paid at Crossville, Tennessee, and additional mailing offices.

**CHANGE OF ADDRESS:** Be sure to notify us at once of any change of address. Please include your old address and your new address, along with your US Chess I.D. number.

**POSTMASTER:** Send address changes to US Chess, PO Box 3967, Crossville, Tennessee 38557.

Annual Scholastic Membership

Regular Scholastic Membership (online version of *Chess Life Kids*), age 12 or younger, is just \$17 per year. Premium Scholastic Membership (receives *Chess Life Kids* by mail) is \$25 per year. \$13 of every premium membership goes towards providing *Chess Life Kids*. Annual subscription rate is \$18. Entire contents copyright 2016, US Chess.

Teachers may photocopy instructional articles for classroom use, but republication or widespread copying without the written consent of US Chess is forbidden.



# What's the Question?

by International Master Daniel Gurevich

**Q:** What are the weirdest rules in chess?

**A:** The basic rules of chess are simple enough. Except for the knight, all of the pieces move only in straight lines. There are only two players, and they take turns moving a single piece. To capture something, all you have to do is move your own piece on top of it. And there is no element of chance in chess: what you see is what you get. This simplicity is a huge part of what makes chess special—a game for everybody.

While a beginner can pick up most chess rules in a day, let us go beyond the basics. It is in fact possible to move two pieces at once, by castling!

**You can sometimes take the opponent's pawn without moving onto it—remember about *en passant*.**

And, well, if we move past just the rules and try to learn to

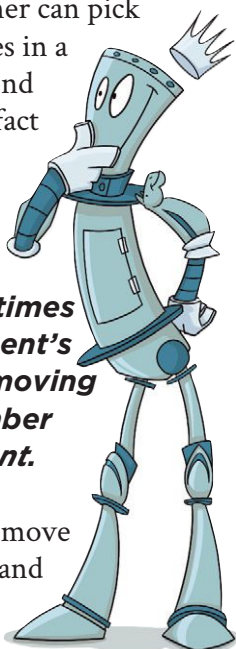
always play the best move, that's a skill you can work on your whole life.

*En passant* is unusual, but is there something ... stranger? For casual players, the answer is no. However, some of the US Chess tournament rules are complicated and weird, and worst of all, important to know! They have cost many tournament players wins and draws, so we better take a closer look.

Have you ever started a game with the king and queen accidentally swapped? It's okay, it happened to me when I was already a 2100-rated expert! Eventually, you or your opponent notice it, and then you probably just swap them back and keep playing—that is what I did, too. What you are supposed to do, if it has been 10 moves or fewer from the beginning of the game, is go back and restart the game with the correct starting position. What if it has been more than 10 moves? This is the most bizarre part: the US Chess rules require you to just keep playing (and yes, you do lose the right to castle).

Here is another example. You have probably been told that, if either player has less than five minutes on his clock, both are allowed to stop recording their moves. That is not the whole story; this rule applies only if the game is in the final time control, also known as "sudden death." In a time control such as two hours for 40 moves and 30 minutes for the remainder of the game, until the second time control (in this case, for the first 40 moves), you are not allowed to stop notating. The weirdest thing? If you do stop and you are missing more than three move pairs (White and Black's moves), your opponent is even allowed to let his time run out without losing! This is exactly what happened to me in the same tournament as the previous situation.

Now, pay close attention, as the next rule is probably the one that players most often get wrong. How exactly do you claim a draw by three-fold repetition? Most people try to do it when the



**Please turn to page 23**



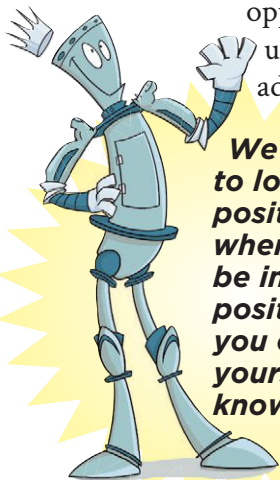
# Pay It FORWARD

by Pete Tamburro

I belonged to chess clubs when I was young. I got to learn a lot from older players who taught me some “tricks” that might come in handy. One of the tricks they taught me was about rook pawns (a- and h-pawns, for you readers) in the endgame.

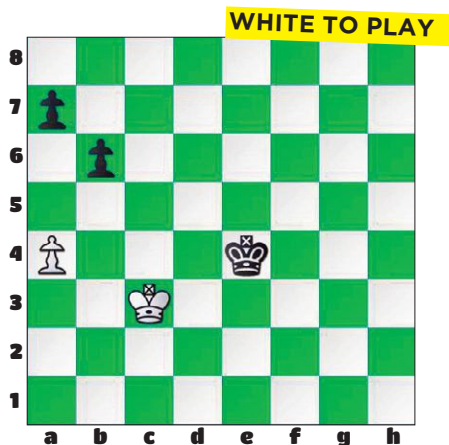
Just yesterday, one of my third grade students who had been playing for years told me he didn’t know that a king and rook pawn vs. a king was a draw. That’s why I asked the question! What those club players passed along to me a long time ago, I would like to pass along to you because, more than once in my chess life, positions like these actually happened!

When I was a young chess player, I loved to play gambits. As I progressed, my opponents got stronger, and I often found myself just a pawn down with no attack. I learned how not to lose! I knew every king and pawn ending I could find so I could prevent my opponent from using his pawn advantage.



**We are going to look at positions where you will be in a tough position, but you can save yourself if you know how.**

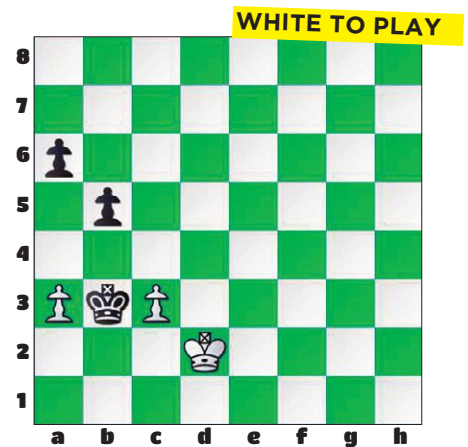
Hopefully, this will start you on the road to learning how not to lose. We will start with—you guessed it!—your being a pawn down.



Solution: You might initially think that moving your king over quickly toward the pawns will help, but it loses as you find that Black has lots of waiting moves to play and you have very few, and as a result your king gets pushed back: 1. Kb4 a6 2. Kc4 Ke5 3. Kc3 Kd5 4. Kb4 Kd4 5. Kb3 a5 6. Kb2 Kc4 7. Ka3 Kc3 8. Ka2 Kb4 9. Kb2 Kxa4 and it’s an easy win for Black. However, the way to draw is by offering up your pawn: **1. a5! Kd5** (1. ... b5 2. a6! Kd5 3. Kb4 Kc6 4. Ka5 Kc5—stalemate! Now that’s a trick to remember!; 1. ... bxa5 2. Kb2 Kd4 3. Ka1 and the a-pawn can’t be forced in to queen) **2. Kb4 Kc6 3. axb6 axb6 4. Kc4** (and you now should know how to defend this. As long as the opponent’s king is not in front of the pawn, it’s a draw) **4. ... Kc7 5. Kb5 Kb7 6. Kb4 Kc6 7. Kc4** (Maintaining the opposition. It’s

helpful to remember that you want your opponent to check you with the pawn.) **7. ... b5+ 8. Kb4 Kb6 9. Kb3 Kc5 10. Kc3 b4+ 11. Kb3 Kb5 12. Kb2 Kc4 13. Kc2 b3+ 14. Kb2** (14. Kc1?? Kc3 and Black gets the opposition and wins.) **14. ... Kb4 15. Kb1 Kc3 16. Kc1 b2+ 17. Kb1 Kb3 Stalemate.** All the little side variations are important as well, so make sure you study everything!

For our next position, White seems to be in worse shape. The last problem was a pawn down position. In this one you’re about to be a pawn down. How do you salvage a draw here?



Solution: It’s all about the king and rook pawn versus king being a draw. You always have to be alert to that as White, in a real tournament game (!), resigned in this position rather than play these possibilities: **1. a4 Kxa4** (Taking with the pawn doesn’t work: 1. ... bxa4 2. Kc1 a3 [2. ... Ka2 3. c4] 3. Kb1 a2+ 4. Ka1 Kxc3) **2. Kc2 Ka3 3. c4 b4** (3. ... bxc4 4. Kc3 a5 5. Kxc4 a4 6. Kc3 Ka2 7. Kc2) **4. Kb1 Ka4 5. Kc2 b3+** (5. ... a5 6. Kb2 b3 7. c5 Kb5 8. Kxb3 Kxc5) **6. Kb2 Kb4 7. c5 Kxc5** (7. ... a5? 8. c6 a4 9. c7 a3+ 10. Kb1 b2 11. c8=Q Kb3 12. Qc2+) **8. Kxb3**—all drawn if White remembered this simple rule.





# Arabian Knights

By Rick Kennedy

## Only the Beginning

The King watched as a large tear rolled down his nephew's cheek. "Are you not well?" he asked. "Should I call for the physician?"

"No, Your Majesty," the young boy sniffled. "I lost another chess game to my sister. I always lose to her." He hung his head.

"I see," said the King, gravely.

"I am sure there is a way to fix this situation," said the King's friend, entering the room.

The nephew brightened. "You are the King. You can command her to lose to me. That would make everything better."

The King hid a smile behind his hand. His friend swallowed a giggle.

"That is one possibility," the King said. "You could also decide never to play her again—so you would never lose to her again. Would that work? In fact, if you never play anyone ever again, you will always go undefeated."

The boy wrinkled up his nose at the suggestion. He liked playing chess. "How do you deal with losing?"

The King coughed loudly, as if something were caught in his throat.

"His Majesty—if he were to ever

lose a game, which I doubt he ever has—probably has many ideas how someone else could better his game.

"You could talk with your opponent after each game" she continued, "and see what advice she has: where you did well, where you could have made a better choice.

"You should keep playing against your sister, and many others, too, as practice will help you improve.

"You could watch others play, and guess how they will move, and learn from their wins and losses.

"You could work with a chess teacher or read one or two chess books."

"All very wise suggestions," said the King, who had found his voice again. "Getting better at anything takes time."

"I must be very childish, crying over a chess game," said the nephew.

The King put his arms around the boy. "When you feel hurt, you

cry. That is normal. You love chess, and losing hurts. That means that chess is important to you."

"Your tears are not the end," said the King's friend, kindly. "They are only the beginning. Working hard at something shows that you value it. Keep at it."

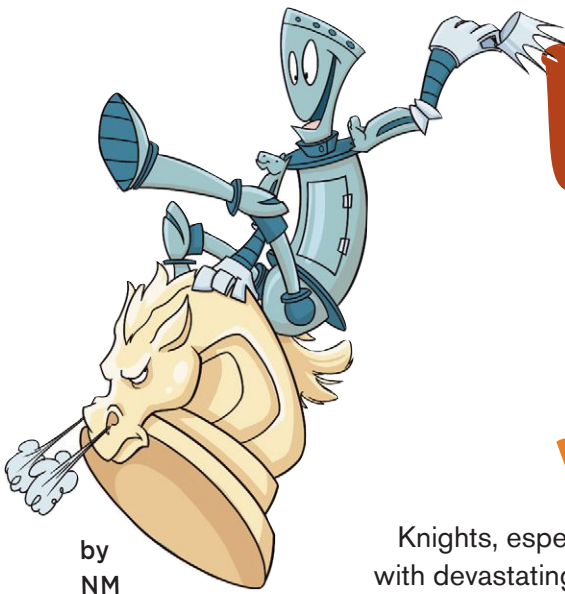
The boy smiled. "If I keep playing chess with my sister, and she keeps telling me what I could do better—she might be teaching me how to beat her!"

With that, he skipped out of the room.



***"Working hard at something shows you value it."***



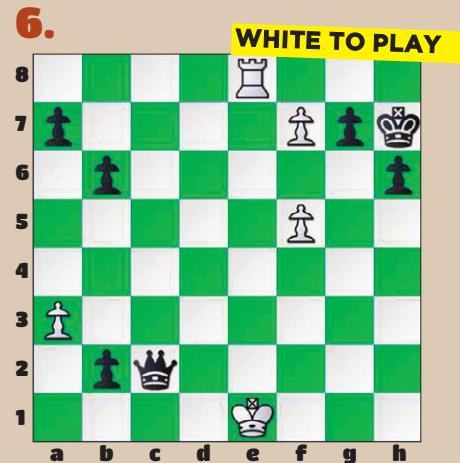
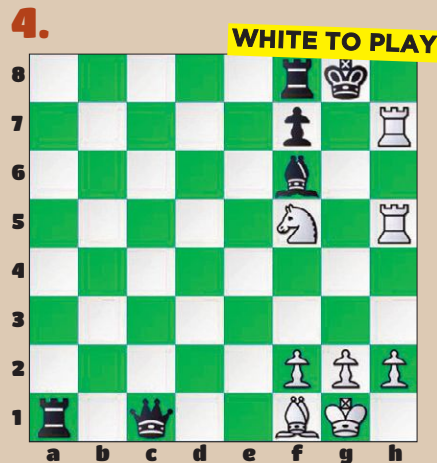
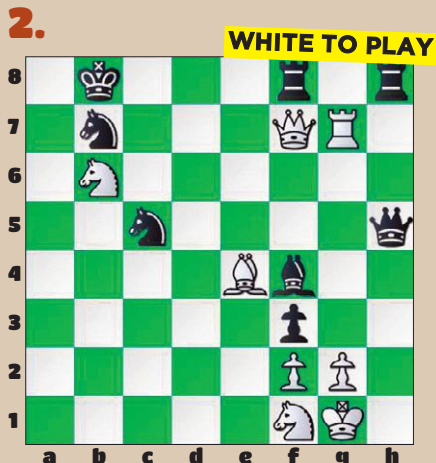
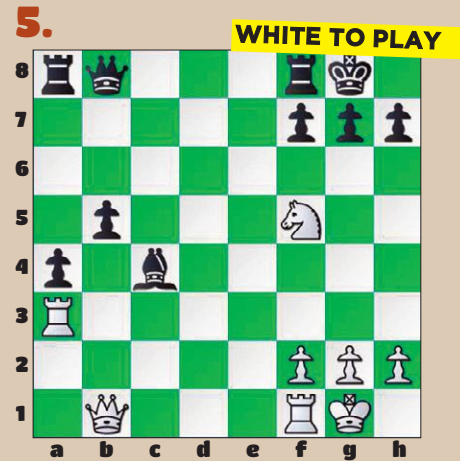


by  
NM  
Atulya Vaidya

# MOVE THE PIECES

## Working Together

Knights, especially, have the ability to work together with any other pieces with devastating effect. This is mainly because of the knight's unique attacking ability. The following six puzzles are all White to move, with the knight working with a rook to deliver mate.



Solutions on page 18



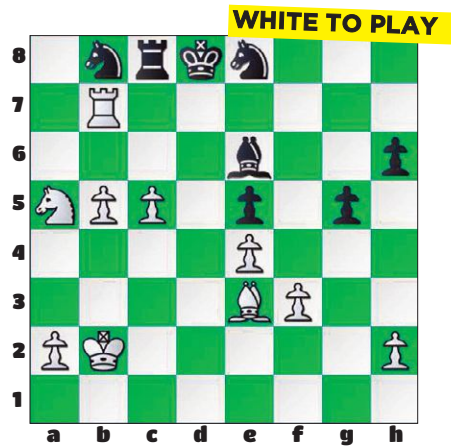
# YOU can DO IT!

by Jon Edwards

10th United States Correspondence Chess Champion

My chess friends, who know me primarily as a correspondence player, were shocked that I played last month in the U.S. Amateur Championship. They and I are very pleased that I tied for first place. In an age when young people are competing so very well in every tournament, it was much fun to show that we older folks can still play well from time to time.

My second round game against a 10-year-old young man ended in a pretty mate. Here's the finale:



As you can see, Black's king cannot move, but White's rook on b7 blocks the nice mate with Nb7.

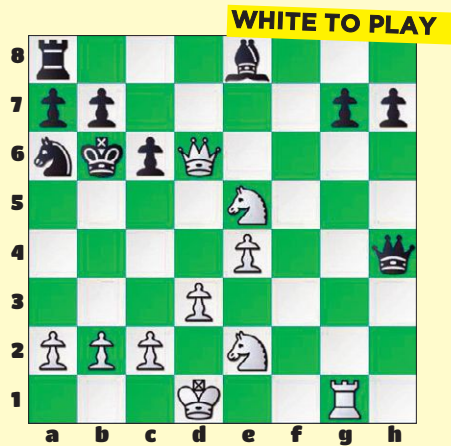
So I played **30. Rh7**, threatening Black's h6-pawn but more importantly threatening Nb7#. I do not know if my opponent simply missed the mate, but the game ended quickly after **30. ... g4 31. Nb7#**.

In honor of my victory, I have assembled a quiz in which each position involves a mate from a knight. All are mates in two moves. Just remember: You Can Do It!

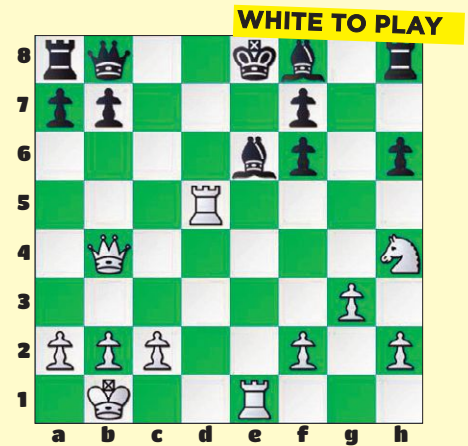
## Quiz #1



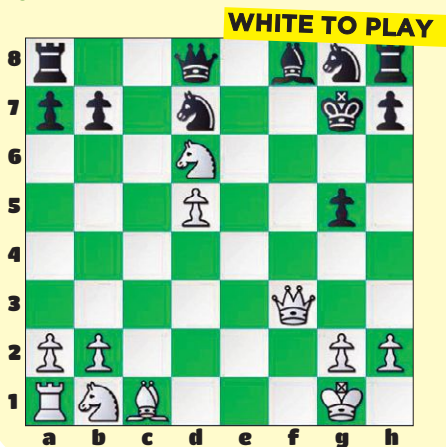
## Quiz #3



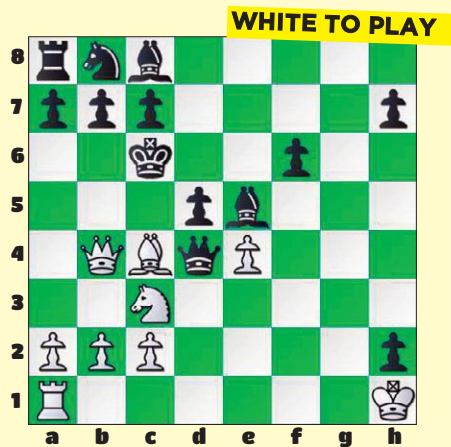
## Quiz #5



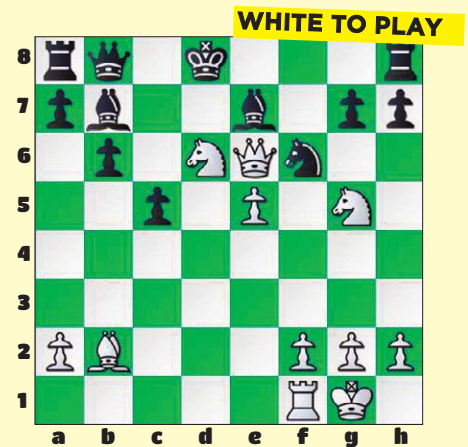
## Quiz #2



## Quiz #4



## Quiz #6



Solutions on page 18



# THE CHESS DETECTIVE®



## TEMPORARY SACRIFICES PROBLEMS

by NM Todd Bardwick

In the June 2016 edition of *Chess Life Kids*, we looked at some examples where a player temporarily sacrificed a piece having calculated a way to regain the material back in a few moves.

Can you find the temporary sacrifice that works in these positions?

#1

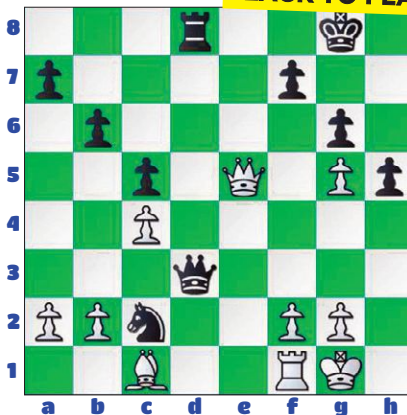
BLACK TO PLAY



Position after 23. Ng3

#3

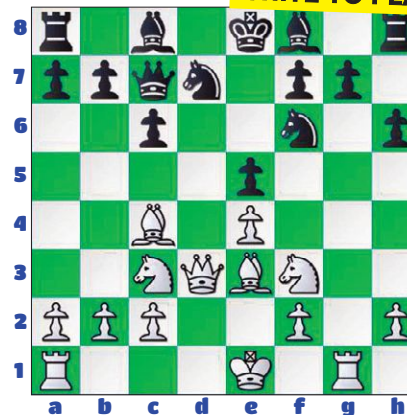
BLACK TO PLAY



Position after 33. Rf1

#5

WHITE TO PLAY



Position after 10. ... Qc7

#2

BLACK TO PLAY



Position after 12. Qf3 (from e4)

#4

WHITE TO PLAY



Position after 17. ... d6

#6

WHITE TO PLAY



Position after 26. ... Nd5

Solutions on page 18



# Chess is Important to me because...

The Antelope Valley (AV) Chess House and its non-profit, Say Yes to Chess, provide classes, clubs, camps, workshops, and events for all ages and skill levels. One of our main goals is to have a chess program in every school in the Antelope Valley (Los Angeles County, California), including preschools.

One of the ways to do this is to have a contest, open to every K-8 student who resides in the Antelope Valley area. According to Director Daa Mahowald, 93 students took part in writing a short essay, "Chess is important to me because ...".

First place won five 45 minute private lessons.

Second place won a chess clock.

Third place won a tournament quality chess set.

Honorable mention received a certificate, and everyone else won the admiration of parents and teachers, for their thoughtfulness and effort.

There were three categories: K-2 (50 words), Grades 3-5 (100 words), and Grades 6-8 (140 word minimum).

## The Winning K-2 Grade Essays



**1st Place, K-2  
Curtis Pearson,  
Noah's Ark**

Chess is valuable because it helps me to get smarter.

Learning to play chess benefits me by helping me to spend time practicing to get better. My favorite time playing chess is

when I play my sister at home.



We have a lot of fun playing against each other.

**2nd Place, K-2  
Sean Hall,  
iLEAD**

Chess is valuable

because of its learning benefits. Some benefits gained from learning and playing chess is it helps with math, thinking and reading.

A positive experience I had from chess was at my first tournament and I contributed to my team in winning our team trophy. This is why I love chess.



**3rd Place, K-2  
Brodie Rosing,  
Behtel**

Chess is valuable because its fun. Chess also helps me think before I act. Once when I played my aunt in chess and she didn't remember how to play, I taught her then I beat her. She also told me I was very good for my age. It made me happy to hear that.

Honorable Mention: Akanei Casuncad, Vivian Thompson

## The Winning 3-5 Grade Essays



**1st Place, 3-5  
Athena Adams,  
Cottonwood**

Chess is valuable because it helps you with patterns, it

helps you with reading, it also helps you with thinking beforehand.

A benefit that I gained was that it helped me become quicker. Another benefit that I gained from chess is that it helped me beat my aunt in chess and in far more things.

A positive experience is that I got to show my baby cousin Jezreal how to play chess.

Another positive experience is that someone asked me "I forgot how to play chess" and I was able to explain it to her and that made me happy.



**2nd Place, 3-5  
Euan Dandurand,  
Gorman**

Chess is a game that helps you with math, problem solving, and it



improves your reading skills. It also helps you improve your memory.

Chess is valuable because it teaches you good sportsmanship. In chess you must have good sportsmanship. Some examples are: not crying when you lose a game, saying good luck when you begin a game, and not boasting when you win a game. I got to practice these skills at the Super States tournament in April. It was two days long! I didn't win, but I still had fun. Even when you lose a game you can still learn something and get better.



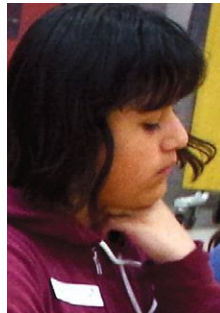
**3rd Place, 3-5 Nelida Willis, Dos Caminos**

Chess is valuable because chess teaches you stuff and it is good when chess teaches you. I gained friends, smartness, and help from learning and playing chess. When I first started to play chess I started when I was seven years old on New Years; it was so awesome. Now I am nine years old, about to turn 10 years old this year and the experience I had from chess is that I had more fun playing it, and I want to play it more and more and now I want buy everything (!) of chess and I love playing chess. I have friends in chess, I am real good at chess and I have chess on the computer and my computer always wins me. I always say "It not fair because it is smarter than me" and then someone always says "No its not you, just have to work hard" and that helps me and I love chess

and I am in a chess club and I am cool/good.

Honorable Mention: Dash Danderand, Marnecia Mann

**The Winning 6-8 Grade Essays**



**1st Place, 6-8 Vicky Lizardi, Ocotillo**

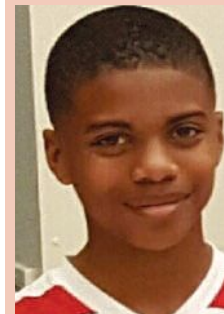
Chess is valuable because it has helped me with part of my young life. It has helped me gain valuable things, and here are a few reasons why.

The first reason is that it helped me gain confidence. I learned that I shouldn't be afraid to go against other people. This has also helped me with performing in front of other people. I've learned that if someone beats me, it doesn't mean that I'm not a good player. This is how chess has made me realize that I'm never not good enough.

The second reason is about knowledge. I am smart. I have a 3.67 GPA and chess lets me use my smartness. The only thing that is different is that it helps me gain knowledge that I never knew I could have before. It has also helped me by teaching me how to think ahead of my actions. This was another reason how chess has helped me in life.

My final reason is that throughout the school year, I have met and got close to many people. I am so glad that I have met so many amazing people. I will never forget all the memories we have all created here. This is an important part of chess and my

personal life. This is the final reason about why chess is important.



**2nd Place, 6-8 Mareion Mann, Piute**

Chess is valuable because it helps you with math and sharpening your reflexes, thinking, using patterns, reading, planning ahead. The benefits I have gained is I have gotten smarter and better at math and chess plus I got better at thinking and lots of other stuff like thinking, math, reading and seeing patterns. A positive experience I had in chess was that my first time playing chess I beat my sister in four moves. Another experience I had was I met one of the best 1,000 men in chess and one of the best 100 women in chess. Another one I had was being a helper at a spectacular chess tournament and I was doing pretty good. I got to play a really good person but sadly I lost but it was still a blast of fun. I also played one of the people who won a trophy but I won him.



**3rd Place, 6-8 Vanessa Hall, iLEAD**

Chess is valuable because of the many benefits one can gain from learning and playing it often. Chess improves reading, math, and thinking skills.

Chess allows you to identify patterns and plan ahead. Playing

chess often helps stimulate brain cells which prevents Alzheimers, and improves memory. Chess enables you to be able to think for yourself. Introducing chess to children at young ages makes math and reading comprehension easier for them to understand in the future. Playing chess allowed me to understand more complex situations, and also helped me to logically think.

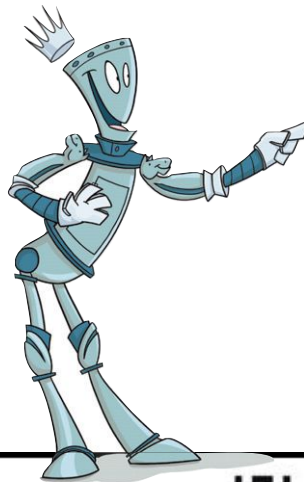
A positive experience I've had because of chess was being able to win first place in a chess tournament. Winning a tournament instilled in me a new confidence.

I love chess because of the benefits I gain every time I play, and just because how fun it is!

Honorable Mention: Theresa Hall

And with the 5th Annual Essay Contest "in the books," Antelope Valley kids were ready for a full schedule of summer activities: camps, classes, clubs, more contests, field trips, tournaments, workshops and just hangin' out!

Chess in the Antelope Valley publishes a newsletter each month. You can contact Editor Daa (Day) Mahowald for more details: [daa@mahowald.org](mailto:daa@mahowald.org).



**ROOK-E says: "Below is a list of benefits from playing chess. I think they missed one: Playing chess is fun!"**



# The Benefits of Chess



<http://Chess4.Us>

Math Development  
 Science Achievement  
 English Skills  
 Communication Abilities  
 Creativity  
 Concentration  
 Logical Reasoning  
 Critical Thinking  
 Memory  
 Problem Solving  
 Intellectual Maturity  
 Self Esteem  
 Analyzing Actions  
 & Consequences  
 Planning Ahead  
 Complex Decision Making  
 Pattern Recognition

Sportspeopleship  
 Dealing With  
 Undesirable Situations  
 Learning from Mistakes  
 Responsibility for Actions  
 Discipline  
 Measurable Individual  
 Accomplishments  
 Team Spirit  
 Commitment  
 Academic Competition for All  
 Belonging to a Good  
 and Diverse Crowd  
 Cultural Enrichment  
 Social Skills  
 Empathetic Awareness  
 Improved Attendance





# Bravo Zulu

## Hosts the D.C. Citywide K-12 Scholastic Chess Championship

by Jim Doyle

On Saturday, June 18, the DC Citywide K-12 Scholastic Chess Championship was held at the Elsie Whitlow Stokes PCS. It was an unrated tournament consisting of five rounds with K-5 and 6-12 sections. This was the first year that the event was hosted by Bravo Zulu Chess, a local chess program led by Coach Shaka Greene that draws from four different schools and the homeschool community in the District of Columbia.

William Carter II, a rising seventh grader at DCI took first place and won \$300.

Emily Scherer, whose four-year-old son, Luke, attends the school found out about the event in an e-mail and decided to register her two sons in their first tournament. She taught them to play chess only six months earlier but, "He comes to school every day and wants to play chess. He has three chessboards and his Star Wars chessboard is his favorite. He also has a play alone chess thing with drills. He takes that to the restaurant," she explains. Luke even taught his grandmother

how to play.

What did Luke think of his first tournament? "Well, I wish if I like lose a piece, we can go again," Luke said. "Do you want to go to more tournaments?" I ask. "Yeah," he says with a demurred smile. His mother then asks, "Do you want to go outside?" Luke quickly answers, "No, I just want to play chess."

I asked his mother how Luke was dealing with losses at his first tournament? "We play a lot of games and he knows how to win and how to lose."

And that's a good start for everyone, not just a four year old!

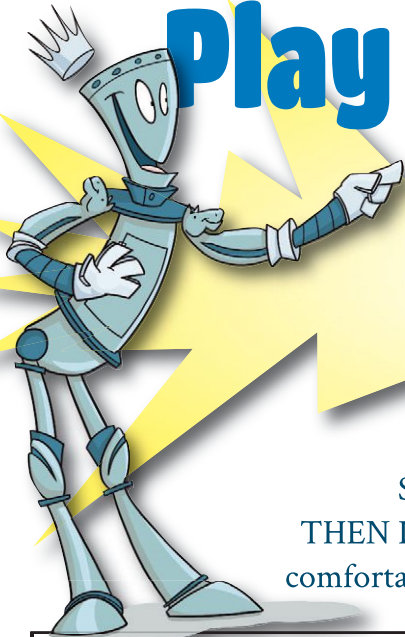


William Carter II



Luke Scherer takes the game seriously!

# Play | Learn | Have Fun!



**Did you know ... as a US Chess member, you can play chess online**

So start enjoying ICC and REGISTER your account!  
THEN DOWNLOAD our playing software or simply login via our comfortable and easy web-based interface at: <https://play.chessclub.com>

Welcome to the Internet Chess Club (ICC), a world leader in Internet chess and a great place where kids can learn, play and improve their chess game! The ICC offers a wide variety of possibilities. From the basic rules and information about the game, all the way to practice drills, video lessons, private coaches, team tournaments and much more!

ICC is also SAFE! The ICC offers a special chat system, which only allows predetermined chat phrases like: "Nice move", "Good game", etc. You can rest assured your child will not be exposed to any unwanted chatter.

## Chess Clubs, Coaches and Schools

If you're a school, chess club or coach, ICC now offers club packages! Package includes:

Complimentary ICC membership for up to 25 students/coaches for one year (Additional one year student memberships available at a discounted price)

Teacher/Coach has access to all online offerings including:

- Online exercises for ongoing practice and training
- Review student's games online
- Have students participate in individual or group lessons
- Intra-school and team tournaments
- Over 2000+ free instructional videos
- Hundreds of online tournaments weekly
- Participate in official US Chess Federation online rating tournaments

No download necessary to play! Just go to: [play.chessclub.com](https://play.chessclub.com).

ICC offers a child-safe environment with limited chat.

As policy, the ICC will double the amount of time purchased to all students or users under the age of 21. Please note certain restrictions apply. For more information read: <https://www.chessclub.com/students>.

### ICC FEATURES

- Over 2000 instructional videos and growing every week
- Multiple chess ratings to measure your chess strength
- Private lessons with world class chess coaches
- Many training tools and robots to perform drills and improve
- Chess tournaments
- Team events
- Kids safe accounts with limited chat capability
- and more!

Have a question that you can't find the answer or want to get an ICC group discount? Contact ICC's Director of Online Events, Patricia K. Smith for all the details!  
[Patricia.Smith@chessclub.com](mailto:Patricia.Smith@chessclub.com) or 865-320-4390.

### USEFUL LINKS


- One Month Free!—<https://store.chessclub.com/customer/account/create/>
- ICC Learning Center—<https://learn.chessclub.com/>
- Renew/pay for ICC membership—<https://store.chessclub.com/>
- Start Playing—<https://www.chessclub.com/get-started>
- Benjamin for Beginners—<https://www.chessclub.com/how-to-play>
- ICC Store—<https://store.chessclub.com/>
- School/Club Group Rates—e-mail to: [Patricia.Smith@chessclub.com](mailto:Patricia.Smith@chessclub.com)
- Frequently Asked Questions—<https://internetchessclub.zendesk.com/home>
- Find an Instructor—<https://store.chessclub.com/teachers>
- Software Download—<https://www.chessclub.com/download-software>
- Team Play—<http://apps.chessclub.com/teamplay/>
- HELP—<https://www.chessclub.com/sitehelp>
- Student Membership Bonus—<https://www.chessclub.com/students>



# Welcome to ICC!

## Play rated games 24x7 against the world!

- » *Enjoy online USCF rated tournaments every week!*
- » *Special prices for USCF members.*
- » *Get an online rating and practice chess positions with ICC's learning center.*

A man and a woman with backpacks are looking out over a city skyline at sunset. The man is standing on the left, and the woman is sitting on the right. A seagull is flying in the sky above them. The city skyline is visible in the background, with the Statue of Liberty and a chess knight silhouette.

20% off ICC membership

Bonus



[www.chessclub.com/uschess](http://www.chessclub.com/uschess)



**US CHESS**  
FEDERATION



## Paying it Forward

# A Chess Lesson at Fort Belvoir

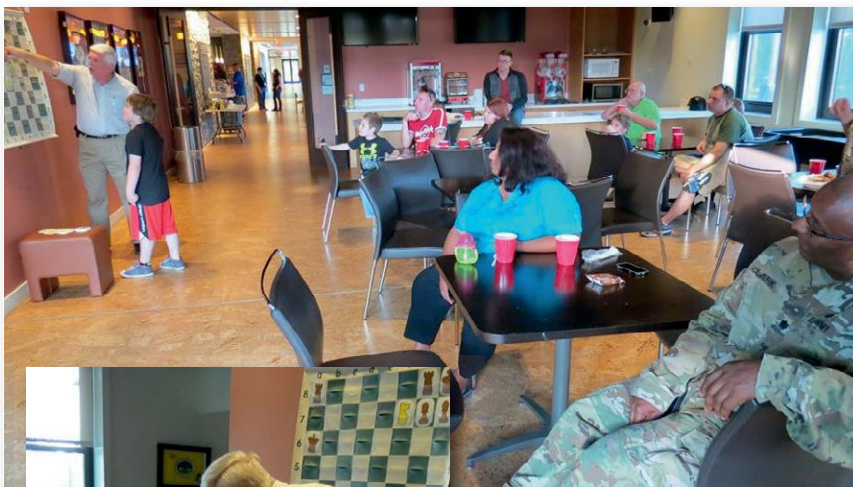
by Jim Doyle

On Wednesday, May 25, 2017, Bruce Till, a three-time Maryland state champion, was kind enough to volunteer his time to introduce chess to the soldiers and their families at Fort Belvoir during the USO's monthly family night dinner. Of the 190 people that attended, about 40 participated in the chess lesson that Bruce gave.

According to Wikipedia, Fort Belvoir was originally founded as a base during World War I and now has twice as many employees working there as the Pentagon, making it the largest employer in Fairfax County, Virginia. It is the home to many important U.S. military organizations.

Bruce Till learned chess at age eight from a 10-year-old neighbor

and began playing at a chess club at 13. During that time, the 1972 World Chess Championship between Bobby Fischer and Boris Spassky was being held (a period known in chess circles as the "Fischer Boom" when interest in



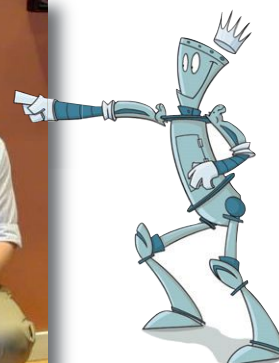
In 2012, he won with a perfect 5-0 score.

*[Bruce passed away just a few weeks after Family Night at Fort Belvoir. He was a good friend, adversary and*

*chess in the U.S. was high for the first time in decades).*

*He is a four-time Maryland Amateur champion (1989, 2002, 2003, 2012).*

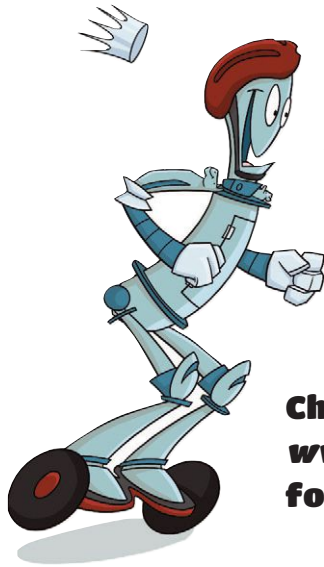
*then teammate, spanning a period of 40 years. He told his son Chris that he enjoyed his experience at Fort Belvoir and the opportunity to give back to the chess community some of the joy he derived from his favorite hobby.—Editor]*





# US Chess Junior Grand Prix

## 2016 Junior Grand Prix Standings



**It's a race for first place!**

**Check out [www.uschess.org](http://www.uschess.org) for rules and prizes.**

Official standings for events received and processed by July 5, 2016 are unofficial and subject to change during the year or until year-end tabulation is complete. The top prize for 2016 will be a Chess.com one-year Diamond membership valued at \$100, a Chess.com gear/merchandise package valued at \$100, a US Chess plaque, free entry into the 2016 U.S. Open, and \$1,000 of expense money from US Chess to offset the trip. For the top five players on the overall list and to each state winner, Chess.com will also award a choice of a one-year ChessKid.com gold membership (valued at \$50/annually) or a one-year Chess.com Gold membership (valued at \$40/annually). US Chess gratefully acknowledges the participation of Chess.com!

### Top 5 Overall Standings

NAME	STATE	PTS	EVENTS
PARK, EVAN	PA	6343	8
STEINER, ADAMSON	DC	6304	8
YE, LUKE SICONG	MO	5585	5
PREM, PRANAV	VA	5575	9
SANCHEZ, JOHN Y	FL	5548	2

For the top 200 overall, see [www.uschess.org](http://www.uschess.org)



EVAN PARK

### State Leaders

NAME	STATE	PTS	EVENTS
GUTHRIE, MICHAEL BARTLETT	AL	2845	5
SHE, CHENGYUE	AR	2654	5
WAITT, JACOB TYLER	AZ	3197	2
NATH, NAVEEN	CA-N	4851	7
SILVESTRE, CHRISTIAN	CA-S	3179	3
HEMMAT, ALEXANDER	CO	3341	5
LUMELSKY, SAMUEL MICHAEL	CT	3460	3
SHAPIRO, NATHAN B	DC	2290	1
LUO, RYAN	DE	2864	4
OLALDE, STEFANO N	FL	3924	1
PARASHAR, DHEEMANT SAUMIL	GA	5138	6
MATSUBA, YUTO	HI	2288	1
TAKAHASHI, MICHAEL JOHN	IA	2599	6
NATHAN, JACOB ARI	ID	2335	3
XU, ARTHUR ZIHAN	IL	5391	8
DATAR, NIKHIL MILIND	IN	3258	3
GLASHAUSSER, SHO	KS	2999	4
CARY, GEORGE	KY	2100	1
TISSERAND, MILES	LA	1611	2
TU, LEWIS	MA	2213	5
VELUVOLU, VINAY D	MD	2873	5
BROWER, DANIEL	ME	2776	1
ZHENG, MICHAEL ZIHAN	MI	4115	8
KINGMAN, SHAWN ROBERT	MIL	5037	6
MIDDEN, DANIEL P	MN	3386	1
MARKS, GRAYSON	MO	2880	1
FERRELL, BRADEN	MS	5431	4
RAELUND, ANTHONY BROOKS	MT	2042	3
STOWE, NATHENE APOLLO WAYNE	NC	3144	1
LE, HARRY	NE	2089	5
ROGERS, NOAH	NH	2186	2
CHINNAMBETI, ABHINAV SAI	NJ	4648	14
PEREA, ESTEVAN MELCOR	NM	1661	3
NICOLETTI, TYLER J	NV	700	1
HETMAN, JACOB JAMAL	NY	5531	5
PADHYE, ROHAN	OH	3865	8
HUANG, JIM YI	OK	2362	2
PATEL, KIAN	OR	1561	2
PARKER, THOMAS	PA	4296	3
SOWA, RYAN	RI	624	3
WEBB, ROBERT BURNEY, III	SC	1910	4
TAO, CHRISTOPHER	SD	962	1
BERRY, BENJAMIN	TERR	3116	1
GOUGH, TURNER CHRISTIAN	TN	3256	5
ALMEIDA, DERECK	TX	3904	2
WATANABE, BENJAMIN	UT	1420	2
BISHT, SHYLA SINGH	VA	4305	5
VELEA, STEPHANIE	WA	3618	5
KAUR, ARADH	WI	3572	6
GROVES, STEPHEN E, II	WV	999	1
MORROW, RICKY	WY	590	1

# Answers, We've got Answers.

## Move The Pieces (from page 7)

#1 – 1. **Qg8+!!** (Due to the assistance of the rook, the smothered mate is successful) 1. ... **Rxg8** 2. **Nf7#**.

#2 – 1. **Qxb7+!! Nxb7** 2. **Rxb7#** (Although Black has a mate in one, White's rook, knight, and bishop win first).

#3 – 1. **Qxh6+!! gxh6** 2. **Rg8#**

#4 – 1. **Rg7+! Bxg7** 2. **Ne7#**

#5 – 1. **Ne7+! Kh8** 2. **Qxh7+!! Kxh7** 3. **Rh3#** Anastasia's Mate

#6 – This puzzle is similar to one that occurred in the game Marshall-Napier (1898). 1. **f8=N+!! Kg8** (if 1. ... **Kh8** 2. **Ng6+ Kh7** 3. **Rh8#**) 2. **Ng6+ Kf7** 3. **Rf8#**

## You Can Do It! (from page 8)

Solution #1: 1. **Qc7+ Nc6** (1. ... **Qc6** 2. **Nb3#**; 1. ... **Kd4** 2. **Nb3#** [2. **Qb6#**]) 2. **Nb3#**

Solution #2: 1. **Qf7+ Kh6** 2. **Nf5#**

Solution #3: 1. **Nc4+ Kb5** 2. **Nc3#**

Solution #4: 1. **Bb5+ Kb6** 2. **Na4#**

Solution #5: 1. **Qb5+ Ke7** 2. **Nf5#**

Solution #6: 1. **Ngf7+ Kc7** 2. **Nb5#**

## CHess DETECTIVE

(from page 9)

#1 – Black temporarily sacrificed his queen and recovered it a move later along with an extra knight by playing 23. ... **Qxg3+!** 24. **Kxg3 Ne4+**, **White resigned**.

This position is from a game in 1946 between Mikhail Botvinnik and Alexander Kotov in Groningen, Netherlands.

#2 – This position is from a blindfold game played between Michael Sayyah and ex-World Champion Boris Spassky while taking a morning walk during the 1987 American Open.

Spassky played 12. ... **Rxg5!** The game continued, 13. **hxxg5 Nd4** 14. **Qxb7 Nc2+** 15. **Kd1 Nxa1** and Black went on to win.

#3 – Black temporarily sacrificed his

queen by playing 33. ... **Qxf1+!** 34. **Kxf1 Rd1+** 35. **Ke2 Re1+** Skewering the king and queen. 36. **Kd2 Rxe5** 37. **Kxc2 Re2+**, **White resigned**.

This position is from a game between Joel Benjamin and Nick de Firmian in Denver in 1998.

#4 – White saw a winning position by sacrificing his bishop with 18. **Bxf6** (18. **Nd5** is also good.) 18. ... **gxf6** 19. **Rae1 Be6** (Black has to give back the piece to survive a little longer.) 20. **Rxe6 Bxc3** 21. **bxcc3 a5** 22. **Qf3**, **Black resigned** (Lots of moves work here.) (22. ... **Kf7** 23. **Qe4**)

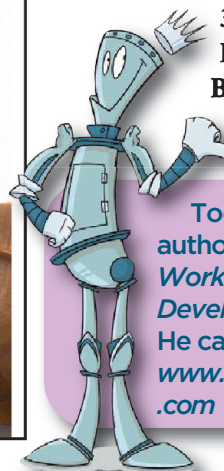
Jan Cervenka was White against Jan Volek in this position from their game in 1996 in the Czech Republic.

#5 – Alexey Shirov played White in this game against Masha Klinova in 2006 in Gibraltar.

Shirov played 11. **Bxf7+ Kxf7** 12. **Qc4+ Ke7** 13. **Nh4 Nb6** (13. ... **Kd8** 14. **Ng6 Rg8** 15. 0-0-0 is better for Black, but White has compensation for the piece which he wins back quickly in many possible resulting variations.) 14. **Ng6+ Ke8** 15. **Bxb6 axb6** 16. **Nxh8 g5** 17. **Ng6 Bc5** 18. **0-0-0**, **Black resigned**.

#6 – Garry Kasparov played White in this game against Vladimir Kramnik in Novgorod, Russia, in 1994.

Kasparov shows why he was the world champion by playing the nice queen sacrifice 27. **h5!** **Nxf4** 28. **hxxg6 Qxd6** 29. **Rxh7+ Kg8** 30. **gxf7+ Kxh7** 31. **fxe8=Q Nxe6** 32. **Bf5+ Kg7** 33. **Qg6+ Kf8** 34. **Qxf6+ Ke8** 35. **Bxe6 Qf8** 36. **Bd7+**, **Black resigned**.



Todd Bardwick is the author of *Chess Strategy Workbook: A Blueprint for Developing the Best Plan*. He can be reached at [www.ColoradoMasterChess.com](http://www.ColoradoMasterChess.com)



Grandmaster Lessons for 18.75/hour

Online Chess Camps

Openings, Discussions, Articles,  
and Homework

Learn chess fundamentals and advanced  
techniques to become a stronger player!

[chessunleashed.com](http://chessunleashed.com)

[chessunleashed@gmail.com](mailto:chessunleashed@gmail.com)



## Tournament Life Announcements

AUGUST 15 THROUGH OCTOBER 14

### Scholastic Members:

As a service to you, we are listing upcoming National US Chess rated events, and requested events of possible interest to you. You can always log in to [www.uschess.org](http://www.uschess.org), and click on "Clubs & Tournaments." Then click on "Upcoming Tournaments" for a complete listing of upcoming rated events and details. As always, you can check out the TLA section of *Chess Life*.

### Organizers and Tournament Directors:

If you would like your tournament listed here in *Chess Life Kids* for October 2016 (events to be held after October 14), the deadline for submitting your announcements is August 10th. The deadline for the December 2016 issue is October 10th. The processing fee is \$1.00 per line for the first eight lines, \$2.00 for every line thereafter. Send your announcements to Joan DuBois, [tda@uschess.org](mailto:tda@uschess.org). **Display advertising is also available.** Advertising rates are posted on the US Chess website, [www.uschess.org](http://www.uschess.org), or you may email: [tda@uschess.org](mailto:tda@uschess.org) for complete details.

## ABBREVIATIONS & TERMS

All tournaments are non-smoking with no computers allowed unless otherwise advertised.

<b>BLZ:</b>	Blitz rated.
<b>QC:</b>	Quick Chess events.
<b>\$\$\$Gtd:</b>	Guaranteed prizes.
<b>\$\$b/x:</b>	Based-on prizes, x = number of entries needed to pay full prize fund. At least 50% of the advertised prize fund of \$501 or more must be awarded.
<b>Bye:</b>	Indicates which rounds players who find it inconvenient to play may take 1/2-point byes instead. For example, Bye 1-3 means 1/2-point byes are available in Rounds 1 through 3.
<b>CC:</b>	Chess club.
<b>dx:</b>	Time delay, x = number of seconds.
<b>+xx:</b>	Time increment, xx = number of seconds added after each move.
<b>EF:</b>	Entry fee.
<b>Ent:</b>	Where to mail entries.
<b>FIDE:</b>	Results submitted to FIDE for possible rating.
<b>G/:</b>	Game in. For instance, G/75 means each side has 75 minutes for the entire game.
<b>GPP:</b>	Grand Prix Points available.
<b>HR:</b>	Hotel rates. For example, 60-65-70-75 means \$60 single, \$65 twin, \$70/3 in room, \$75/4 in room.
<b>JGP:</b>	Junior Grand Prix.
<b>Memb. req'd:</b>	Membership required; cost follows. Usually refers to state affiliate.
<b>Open:</b>	A section open to all. Often has very strong players, but some eligible for lower sections can play for the learning experience.
<b>Quad:</b>	4-player round robin sections; similar strength players.
<b>RBO:</b>	Rated Beginner's Open.
<b>Rds:</b>	Rounds; scheduled game times follow. For example, 11-5, 9-3 means games begin 11 a.m. & 5 p.m. on the first day, 9 a.m. & 3 p.m. on the second day.
<b>Reg:</b>	Registration at site.
<b>RR:</b>	Round robin (preceded by number of rounds).
<b>SD/:</b>	Sudden-death time control (time for rest of game follows). For example, 30/90, SD/1 means each player must make 30 moves in 90 minutes, then complete the rest of the game in an hour.
<b>SS:</b>	Swiss-System pairings (preceded by number of rounds).
<b>Unr:</b>	Unrated.
<b>W:</b>	Site is accessible to wheelchairs.
<b>WEB:</b>	Tournaments that will use a player's online rating.

## NATIONALS

### US Chess Junior Grand Prix!

Aug. 25-29, North Carolina

**Trophies Plus Grand Prix Points: 200 (Enhanced)**

### 2016 U.S. Masters Championship

9-SS, 40/90; G/30, inc.30 from move one. Embassy Suites Hotel, 204 Centreport Dr., Greensboro, NC 27409, (336) 668-4535, mention chess tournament (code CCC) for discounted hotel rate of \$100 until Aug. 10, 2016. Reserve hotel online: <http://embassysuites.hilton.com/en/es/groups/personalized/G/GSOGBES-CCC-20160824/index.jhtml> GM, IM, WGM, and WIM norms may be possible. 2013-15 tournaments were super swiss with 13 norms achieved! **\$17000** in prizes **UNCONDITIONALLY GUARANTEED!** \$5000-3000-1800-1100-650-550-500-450-400-350 Class prizes: U2400 500-300 U2300 500-300 U2200 500-300 U2100 500-300. **EF:** \$249 if received by August 21, 2016, \$299 later or on site. \$50 discount for NC residents. GM's and foreign IM's Free with no deduction from winnings for entry fee (contact organizer for possible additional conditions). This tournament is open only to players who have ratings 2200 or above, those who have ever been so rated, and all foreign FIDE-rated players and U.S. juniors (under age 21) rated over 2000. **RDS:** Aug 25th: 7:00PM then 11-6, 11-6, 11-6, 11-6. **HR:** \$100 all rooms are suite style. Free made to order breakfast daily, free manager's reception nightly, and free airport shuttle available. **Advance Entry:** [www.carolinasschessinitiative.com/USMasters](http://www.carolinasschessinitiative.com/USMasters). Alternately, checks may be sent to: CCI, c/o Walter High, 105 North Crabtree Knoll, Chapel Hill, NC 27514. Make checks payable to: Carolinas Chess Initiative (CCI). On site entry will be available on August 25 from 2-6:30PM. **BYES:** A maximum of two byes allowed. Byes must be requested before round 2 is paired. **INFO:** Walter High (Organizer) [wmhigh@nc.rr.com](mailto:wmhigh@nc.rr.com). More info including pre-entry lists may be available at: [carolinasschessinitiative.com](http://carolinasschessinitiative.com). FIDE rated. Hotel has a no smoking policy which includes electronic cigarettes. FIDE electronic device rules in effect.

### US Chess Junior Grand Prix!

Sept. 17-18, Minnesota

### 2016 U.S. Amateur North Championship

5SS, G/90 + 30 second increment. Crowne Plaza Minneapolis West, 3131 Campus Dr., Plymouth, MN 55141. **2 Sections: Championship (U2200)**, 1st: Championship plaque plus Amazon gift card, 2nd-3rd places: Amazon gift cards; **U2000 1st:** Amazon gift card; **U1800 1st:** Amazon gift card. **Reserve (U1600)**, 1st: Reserve Championship plaque plus Amazon gift card, 2nd-3rd places: Amazon gift cards; **U1400 1st:** Amazon gift card; **U1200 1st:** Amazon gift card; **U1000 1st:** Trophy. **EF:** \$60, by 9/12 \$40 at site. **Reg.:** 9 - 9:45 am. **Rds.:** Sat. 10-2:30-7:30, Sun. 10-3. One requested half-point bye allowed, any round, must request before start of round. **Additional details:** [www.chessweekend.com](http://www.chessweekend.com). **Info:** Email Glenn Panner at [glenn@chessweekend.com](mailto:glenn@chessweekend.com) no phone calls, please. **Entry:** Online entry at [www.onlineregistration.cc](http://www.onlineregistration.cc) or mail registration to Chess Weekend, 21694 Doud Ct., Frankfort, IL 60423. **W.**

### US Chess Junior Grand Prix!

Sept. 23-24 (Fri & Sat), Pennsylvania

### 2016 U.S. Blind Chess Championship

US Chess & U.S. Braille Chess Association (USBCA) are sponsoring this US Chess National event. 4 SS or 4 RR (depends on # of players), G/135 d0. Holiday Inn Express Hotel (newly renovated), 5311 Campbells Run Road (near airport), Pittsburgh, PA 15277, (412) 788-8400. Free shuttle to/from airport. **EF:** Free. **Reg.:** Onsite - Thurs. Sept. 22: 6-8pm, Fri. Sept. 23: 9-9:30am. **Rds.:** Fri. Sept. 23: 10-4, Sat. Sept. 24: 9-3. **Prize Fund:** \$1,400 GTD: 1st: \$400, 2nd: \$300, 3rd: \$200, 4th: \$100, \$100-Best player U1400, \$100- Class E (1000-1199), \$100- Class F (800-999), \$100-Upper Prize. **NOTE:** All players must be classified as Legally Blind and bring proof. You must also be a current member of US Chess for \$18 a year. You can join US Chess at the event! **HR:** \$130 night + tax; code: USB. **Contact:** Rick Varchetto, [richard521@suddenlink.net](mailto:richard521@suddenlink.net). Phone: (h) 304-636-4034, (c) 304-614-4034 or Joan DuBois, [tda@uschess.org](mailto:tda@uschess.org), (c) 931-200-3412.

### US Chess Junior Grand Prix!

Sept. 24, California, Northern

**Trophies Plus Grand Prix Points: 40 (Enhanced)**

### 2016 U.S. Game/30 Championship

5SS, G/30 d5 - \$8,000 b/199 fully paid entries - 60% guaranteed. San Mateo County Event Center, 2495 S. Delaware St., San Mateo, CA 94403. Park free. **Info:** <http://BayAreaChess.com/usg60g30>. In 4 sections: **Open Section (1900+):** \$1,500, 700, 300, 100, top u2100 \$200 100. **1600-1899 Section:** \$1,000, 400, 200, 100. **1300-1599 Section:** \$1,000, 400, 200, 100. **Under 1300 Section:** \$1,000, 400, 200, 100. Unr capped at 200 exc in Open. **EF:** \$82, after 9/20 \$107. Play-up: \$35. GM free, IM free before 9/14 (EF subtr from prize for all free entries). **DISCOUNT:** \$134 if registering for both U.S. G/30 (9/24) and U.S. G/60 (9/25). **Byes:** One 1/2 pt bye allowed must commit by start of Rd. 2. Reenter with 1/2pt bye in Rd. 1 for \$44. Sept 2016 Supp, CCA min, TD discr used to place players accurately. **SIDE EVENT for KIDS** for K-12 students rated under 1000: 5SSxG/30 d5 in 4 sections based on rating: 800-999, 600-799, 400-599, 200-399, u200. **Prizes:** Trophies to Top 10 players in each section and Top 5 Clubs & Top 5 Schools in each section. Min 2, Top 3 players count for team score **EF:** \$54, after 9/17 \$69. **DISCOUNT:** \$94 if registering for both U.S. G/30 (9/24) and U.S. G/60 (9/25). Play-up: \$10. **Schedule for all sections:** On-site Reg: Sat 9/24 Reg: 4:30-5pm, Rounds 5:30-7p, total 8-10 rounds. **EF:** \$14, \$16 onsite. 75% of EFs returned as prizes. **Reg. online:** <http://BayAreaChess.com/my/usg60g30> or **Mail** payments to BayAreaChess, 2050 Concourse Drive #42, San Jose, CA 95131. Rfnd fee: \$25. **Organizer:** Dr. Judit Sztaray. **Email:** [ask@BayAreaChess.com](mailto:ask@BayAreaChess.com). T. 408-409-6596. W.

### US Chess Junior Grand Prix!

Sept. 25, California, Northern

**Trophies Plus Grand Prix Points: 30 (Enhanced)**

### 2016 U.S. Game/60 Championship

4SS, G/60 d6 - \$10,500 b/240 fully paid entries - 60% guaranteed. San

Mateo County Event Center, 2495 S. Delaware St., San Mateo, CA 94403. Park free. **Info:** <http://BayAreaChess.com/usg60g30>. In 6 sections: **Open Section (2000+):** \$1,200 600 300 100 100 top u2200 \$200, 100. **1800-1999 Section:** \$1,000 400 200 100. **1600-1799 Section:** \$1,000 400 200 100. **1400-1599 Section:** \$1,000 400 200 100. **1200-1399 Section:** \$800 400 200 100. **Under 1200 Section:** \$700 300 200 100. Unr capped at 300 exc in Open. **EF:** \$82, after 9/17 \$107. Play-up: \$35. GM free, IM free before 9/15 (EF subtr from prize for all free entries). **DISCOUNT:** \$134 if registering for both U.S. G/30 (9/24) and U.S. G/60 (9/25). **Byes:** One 1/2 pt bye allowed must commit by start of Rd. 2. Reenter with 1/2pt bye in Rd. 1 for \$44. Sept 2016 Supp, CCA min, TD discr used to place players accurately. **SIDE EVENT for KIDS** for K-12 students rated under 1000: 4SSxG/60 d5 in 5 sections based on rating: 800-999, 600-799, 400-599, 200-399, u200. **Prizes:** Trophies to Top 10 players in each section and Top 5 Clubs & Top 5 Schools in each section. Min 2, Top 3 players count for team score. **EF:** \$54, after 9/17 \$69. **DISCOUNT:** \$94 if registering for both U.S. G/30 (9/24) and U.S. G/60 (9/25). Play-up: \$10. **Schedule for all sections:** On-site Reg: 8-8:30am. Rounds: 9a, 12p, 2:30p, 5p. **Blitz Event:** Reg: Sat 9/24 Reg: 4:30-5pm, Rounds 5:30-7p, total 8-10 rounds. **EF:** \$14, \$16 onsite. 75% of EFs returned as prizes. **Reg. online:** <http://BayAreaChess.com/my/usg60g30> or **mail** payments to BayAreaChess, 2050 Concourse Drive #42, San Jose, CA 95131. Rfnd fee: \$25. **Organizers:** Dr. Judit Sztaray. **Email:** [ask@BayAreaChess.com](mailto:ask@BayAreaChess.com). T. 408-409-6596. W.

### US Chess Junior Grand Prix!

Nov. 11-13 or 12-13, California, Northern

**Trophies Plus Grand Prix Points: 40 (Enhanced)**

### 2016 U.S. Class Championship

5SS, 40/120 G/30+30 (2-day opt rounds 1-2 G/75 d5). SFO Airport Hyatt Regency, 1333 Bayshore Hwy., Burlingame, CA 94010. \$145/night. **Info:** <http://BayAreaChess.com/usclass>. **Prize:** \$17,000 b/257 (60% Guar). 6 sections. **Open** (2200+) FIDE rated: \$3000-1500-700-300 **Expert:** 1,500-700-300-200. **A:** 1,200-550-250-150. **B:** 1,200-550-250-150. **C:** 1,000-400-150-100. **D:** \$1,000-400-150-100. **Eu:** \$700-400-150-100. Unr capped at 300 exc in Open. **EF:** \$119 by 11/3. Econ 99 w 60% pr. After 11/3 +25. Play-up +35. Change fee: +20. Rfnd fee 25. GM/IM free by 11/1 (prz-ef). USCF mem req. **Reg.:** Fr 5-5:30pm, Sa 9-9:30am. Rds: Fr: 6p, Sa: 11a, 5p Su: 10a 3:30p (2-day Sa 10a 1:30p & merge fr Rd 3). Rds 5/6 byes locked bef Rd 1. **Reg. online:** <http://BayAreaChess.com/my/usclass>. **Blitz Event:** Reg: Sun 11/13 Reg: 7:30-8pm, Rounds 8:30-10:30p, total 8-10 rounds. **EF:** \$14, \$16 onsite. 75% of EFs returned as prizes. **SIDE EVENT for KIDS** at BAC Office 2050 Concourse Dr. #42, San Jose, CA 95131. For K-12 students rated under 1000: 5SSxG/30 d5; Sections based on rating: 800-999, 600-799, 400-599, 200-399, u200. On-site Reg: Sun 8:30-9am. Rounds: 9:30a, 11a, 12:30p, 2p, 3:30p. **Prizes:** Trophies to Top 10 players in each section and Top 5 Clubs & Top 5 Schools in each section. Min 2, Top 3 players count for team score. **EF:** \$43, after 11/3 \$58. Play-up +10. **Reg. online:** <http://BayAreaChess.com/my/usclasskids>. Nov 16 Supp & TD disc to place players accurately. Bring clocks. **Organizers:** Dr. Judit Sztaray. **Email:** [ask@BayAreaChess.com](mailto:ask@BayAreaChess.com). T. 408-409-6596. W.

## GRAND PRIX

### US Chess Junior Grand Prix!

Aug. 19-21 or 20-21, California, Northern

**Trophies Plus Grand Prix Points: 30 (Enhanced)**

### IM Tate Memorial Championship

1639A S. Main St., Milpitas, CA 95035. 5SS, G/90+30, 2-day rds. 1-2 G/60 d5. Park free. **Prize:** 5,000 b/90 (60% guar). 3 sects: **2000+ (FIDE)** \$1,000-500-200, u2300: 250-125-100. **1600-1999:** \$700-300-100, u1800: 200-100, **u1600:** \$700-300-100 u1400: 125-100, u1200: 100. Unr max \$100 exc Open. Aug 16 Supp & TD disc. **Reg.:** F 6:30-6:45p & Sa 9:30-9:45a. **Rds.:** F 7p, Sa 10a, 3p Su 10a 2:30p. (2-day Sa 10a 12:30 & merge). **EF:** 99, Econ EF: 79 w 60% prz, after 8/15 +20. Play-up +35. Rated 2250+ \$0 by 8/9 (prize - EF). **Info:** <http://BayAreaChess.com/champs>.

### Aug. 25-29, North Carolina

**Trophies Plus Grand Prix Points: 200 (Enhanced)**

### 2016 U.S. Masters Championship

See Nationals.

### US Chess Junior Grand Prix!

Aug. 26-28 or 27-28, North Carolina

**Trophies Plus Grand Prix Points: 60 (Enhanced)**

### North Carolina Open

5-SS, G/120 d5; 2-day schedule: Rd. 1: G/90 d5. Embassy Suites Hotel, 204 Centreport Dr., Greensboro, NC 27409, (336) 668-4535, mention chess for \$100 rate (code CCC) until Aug. 10, 2016. Reserve hotel online: <http://embassysuites.hilton.com/en/es/groups/personalized/G/GSOGBE-S-CCC-20160824/index.jhtml> 4 sections: Open, U2000, U1700, U1400, plus Saturday scholastic (U1000) see below. Open section is FIDE rated. **\$12,000** in total prizes **UNCONDITIONALLY GUARANTEED!** Prizes in all 4 sections: \$1,000-500-300-250-150-125-125-100-100-100; Class prizes (U2100, U1850, U1550, U1250): \$150-100 each section. Can play up if within 100 points of next section in Aug. 2016 supplement. **EF:** \$69 if received by Aug. 21; \$85 thereafter; GM-IM free with no deduction from winnings for EF. **RDS:** Round 1: Friday at 7:00 pm or Saturday at 10:00 am (G/90 d5); then Saturday 2-7, Sunday 10-3. One half-point bye allowed, must be requested before Rd. 2 is paired. **Advance Entry:** Online registration available at [www.carolinasschessinitiative.com/NC](http://www.carolinasschessinitiative.com/NC). Alternately: mail checks to CCI, c/o Walter High, 105 N. Crabtree Knoll, Chapel Hill, NC 27514. Onsite entry: Aug. 26 from 5-6:30 pm and Aug. 27 from 8:00-9:30 am. No smoking including electronic cigarettes. **Saturday Scholastic** Open to K-12 rated U1000. 4 Rds-SS, G/30 d5. **EF:** \$20 by Aug. 21, \$25 thereafter. Rounds: 10:30 am-12:30 pm-1:45 pm-3:00 pm. Trophies: top 5 in two sections. Sections based on rating. **INFO:** Walter High [wmhigh@nc.rr.com](mailto:wmhigh@nc.rr.com).

## A Heritage Event! US Chess Junior Grand Prix! A State Championship Event! Sept. 2-4, Alabama

**Trophies Plus Grand Prix Points: 20**  
**Alabama State Chess Championship - 63rd Annual**  
6SS, G/120 d5. University of Alabama in Huntsville, 4705 Holmes Ave., Huntsville, AL 35899. **PREMIERE (1600+/UNR, \$2,000 \$\$\$Gtd):** \$500-325-250-175, A: 225-150, B: 225-150. **RESERVE (U1600; \$1,200 \$\$\$Gtd):** \$350-200-150-100, D: 150-100, U1200: 100-50. **EF: \$50**, if Postmarked by **August 26, 2016**. Onsite **Reg: \$70**. **Rds.:** Fri: 6:30pm; Sat: 9-2-7; Sun: 8:30-2. **Byes:** Rds 1-5; request before Rd. 2. **Register online:** <http://madisonchess.com/products/20>. **UAH Scholastic Side Events: Individual Tmnt: 3 Sections, Trophies:** Top 3 Individuals; **Medals:** 4th-5th; **EF: \$20**. **Team Tmnt: 3 Sections, Trophies:** Top 3 Teams. **EF: \$40**, Late/On-Site: **\$20 more**, **Rds.:** 9:15-10:45-1-2:30-4 (Sat G/30 d5); **Rds.:** 10-12-2-3:45 (Sun G/45 d5). Register online: <http://madisonchess.com/products/21> (indiv) <http://madisonchess.com/products/22> (team). **Info:** [mccldirector@gmail.com](mailto:mccldirector@gmail.com); [www.madisonchess.com](http://www.madisonchess.com); [www.AlabamaChess.org](http://www.AlabamaChess.org).

## US Chess Junior Grand Prix! A State Championship Event!

### Sept. 3-5 or 4-5, California, Northern Trophies Plus Grand Prix Points: 80 (Enhanced) 2016 CalChess State Championship (Labor Day)

6SS 40/120 sd30 d5 (2-day opt rounds 1-3 G/61 d5). Santa Clara Convention Center, 5001 Great America Pkwy., CA 95054. Park free. **Prize:** \$20,000 b/249 (60% Guar). 6 sections. **Open (2200+)** **FIDE Rated:** \$2500-1500-800-300-200, u2300 200 100. **Expert:** 1,500-1,000-600-200. **A:** 1,200-900-500-200. **B:** 1,200-900-500-200. **C:** 1,200-900-500-200. **DE:** \$1,000-500-300-100 u1200 \$500-200-100. Unr capped at 300 except in Open. Unr: Trophy 1st. Trophy to top finisher (State Champion) in ea section. **EF: \$134** by 8/28. 154 on site. Unr EF \$50 in DE or in the Master section for reg EF. \$5 disc to CalChess mems. USCF mem read. Play-up fee: \$35 per section above rating. Reentry fee: \$50. Refund fee: \$25. GM/IM free by 8/18 (EF subtr from prize). **Sched:** Reg: Sat 9-9:30am, Sun 8:30-9am. **Rds.:** 3day Sat 10 3:30; Sun 11 5; Mon 10 3:30. 2-day Sun 9:30 12 2:30 5; Mon 10 3:30. Merge at Rd. 4. All compete for the same prizes. 1/2 pt bye(s) in any round(s) if requested in advance (byes Rds. 5-6 must be requested bef Rd. 1). 2016 Sept Supp, CCA min, & TD discretion will be used to place players as accurately as possible. Bring clocks. **Info:** <http://BayAreaChess.com/labor>, Richard Koepcke 650-224-4938, Judit Zstary 408-409-6596. Ent: Online @ BayAreaChess.com/my/labor or mail BayAreaChess 2050 Concourse Drive #42, San Jose, CA 95131. No Phone entries. W.

## A State Championship Event! Sept. 17, Pennsylvania

**Trophies Plus Grand Prix Points: 6**  
**2016 PA State Game/60 Championship**  
4SS, G/60 d5. Wm. Pitt Union, Univ. of Pitt., 5th & Bigelow, Pittsburgh, PA 15213. 3 Sections, \$\$ (695G). **Champ:** EF: \$30 by 9/9, \$40 later. \$200-100, U2000 \$75, U1800 \$50. **Premier:** U1600. **EF:** \$25 by 9/9, \$35 later. \$90-60, U1400 \$50, U1200 \$40, U1000 \$30. Trophies to Top 2, Top 2 U1400, Top 2 U1200, Top 2 U1000. **Scholastic:** Grades K-12 U900. **EF:** \$15 by 9/9, \$25 later. Trophies to Top 7, Top 3 U600. **All:** Trophies: Top 2 Schools, Top 2 Clubs. PSCF \$5, OSA. Reg ends 10am. **Rds.:** 10:30-1-3:15-5:45. Ent/Info: PSCF, c/o Tom Martinak, 25 Freeport St., Pittsburgh, PA 15223, 412-908-0286, martinak\_tom\_m@hotmail.com. W.

### Sept. 24, California, Northern Trophies Plus Grand Prix Points: 40 (Enhanced) 2016 U.S. Game/30 Championship

See Nationals.

### Sept. 25, California, Northern Trophies Plus Grand Prix Points: 30 (Enhanced) 2016 U.S. Game/60 Championship

See Nationals.

### Nov. 11-13 or 12-13, California, Northern Trophies Plus Grand Prix Points: 40 (Enhanced) 2016 U.S. Class Championship

See Nationals.

## REGIONAL Alabama

### Sept. 2-4, Alabama State Chess Championship - 63rd Annual

See Grand Prix.

## California, Northern

**Aug. 14, Bay Area Fremont Quads (PK-12; 3RR, G/30 d5)**  
Court yard Marriott, Fremont, CA 94538. **Trophies:** Players w + score. **Sched:** Reqr. Check-in 1:30-2p. **Games:** 2:15-5p. **EF:** 29, 44 after 8/10. **Info:** <http://BayAreaChess.com/signature>. W.

**Aug. 14, Bay Area Fremont Swiss (PK-12; 4SS, G/30 d5)**  
Court yard Marriott, Fremont, CA 94538. **Trophies:** players w + score. **Sched:** Reg: 9:30-9:45a. **Games:** 10a - 1:30p. **EF:** 34, 49 after 8/10. **Info:** <http://BayAreaChess.com/signature>. W.

**Aug. 14, Fremont DuperSwiss75 (3SS, G/75 d5)**  
Court yard Marriott, Fremont, CA 94538. **Prizes:** \$1,300 b/50. 60% guar. 1900+: \$200-100-100, u2000 50-50. 1500-1899: \$200-100, u1600 50-50. u1500: \$200-100, u1200 50-50. Aug 16 Supp & TD disc. **Reg.:** 8:30-8:45. **Rds.:** 9-11:45-2:40. **EF:** 49, Econ 33 w 1/2 prz. after 8/10 +15, playup +15, Rtd 2200+ \$0 by 8/4. **Info:** <http://BayAreaChess.com/grandprix>. W.

**Aug. 19-21 or 20-21, 7th annual Central California Open**  
See *Chess Life* or [www.chesstour.com](http://www.chesstour.com).

### Aug. 19-21 or 20-21, IM Tate Memorial Championship

See Grand Prix.

**Aug. 21, Bay Area San Ramon Quads (PK-12; 3xG/30 d5)**  
Court yard Marriott, 18090 San Ramon Valley Blvd., San Ramon, CA 94583. **Trophies:** Players w + score. **Sched:** Reqr. Check-in 1:30-2p. **Games:** 2:15-5p. **EF:** 29, 44 after 8/17. **Info:** <http://BayAreaChess.com/signature>. W.

**Aug. 21, Bay Area San Ramon Swiss (PK-12; 4SS, G/30 d5)**  
Court yard Marriott, 18090 San Ramon Valley Blvd., San Ramon, CA 94583. **Trophies:** players w + score. **Sched:** Reg: 9:30-9:45a. **Games:** 10a - 1:30p. **EF:** 34, 42 after 8/17. **Info:** <http://BayAreaChess.com/signature>. W.

**Aug. 28, Bay Area Cupertino Quads (PK-12; 3xG/30 d5)**  
Court yard Marriott, Cupertino, CA 95014. **Trophies:** Players w + score. **Sched:** Reqr. Check-in 1:30-2p. **Games:** 2:15-5p. **EF:** 29, 44 after 8/24. **Info:** <http://BayAreaChess.com/signature>. W.

**Aug. 28, Bay Area Cupertino Swiss (PK-12; 4SS, G/30 d5)**  
Court yard Marriott, Cupertino, CA 95014. **Trophies:** players w + score. **Sched:** Reg: 9:30-9:45a. **Games:** 10a - 1:30p. **EF:** 34, 49 after 8/24. **Info:** <http://BayAreaChess.com/signature>. W.

## US Chess Junior Grand Prix!

**Aug. 28, Pleasanton Pawn Promotion (G/61 (4SS, G/61 d5))**  
Sheraton Pleasanton, 5990 Stoneridge Mall Rd., Pleasanton, CA 94588. **Prizes:** \$1,300 b/50. 60% guar. 1900+ : \$200-100-100, u2000 50-50. 1500-1899: \$200-100, u1600 50-50. u1500: \$200-100, u1200 50-50. Aug 16 Supp & TD disc. **Sched:** Reg: 9-9:15. **Rds.:** 9:30a-12:50p-4:15p. **EF:** 48, Econ 33 w 1/2 prz. after 8/24 +15, playup +25, Rtd 2200+ \$0 by 8/18. **Info:** <http://BayAreaChess.com/grandprix>. W.

**Sept. 3, CalChess California Kids State u1000 Class Championship 5SS, G/30 d5.** Santa Clara Convention Center, 5001 Great America Pkwy., Santa Clara, CA 95054. Park free. **Prizes:** Top 10 players in ea section. Top 5 clubs & Top 5 schools in all sections combined (min 2/team, top 4 count). K-12 kids only. 5 sections based on rating: F(800-999) G(600-799) H(400-599) J(200-399) J(under200). **Sched:** Reg: 9-9:30a. **Games:** 10 11:30 1-2:20 3:45. **EF:** \$44 by 8/28, Onsite +\$20, Playup +\$10. **Sept 2016 Supp & TD disc** to place players. **Info/Flyer/Reg:** [www.BayAreaChess.com/laborkids](http://www.BayAreaChess.com/laborkids). 2050 Concourse Drive #42, San Jose, CA 95131. W.

### Sept. 3-5 or 4-5, 2016 CalChess State Championship (Labor Day)

See Grand Prix.

**Sept. 10, Sacramento Chess4Less Quads (PK-12; 3xG/30 d5)**  
Court yard Marriott, Rancho Cordova, CA 95670. **Trophies:** players w + score. **Sched:** Reqr. Check-in 1:30-2p. **Games:** 2:15-5p. **EF:** 24, 39 after 9/7. **Info:** <http://BayAreaChess.com/signature>. W.

**Sept. 11, Bay Area Fremont Quads (PK-12; 3xG/30 d5)**  
Court yard Marriott, Fremont, CA 94538. **Trophies:** Players w + score. **Sched:** Reqr. Check-in 1:30-2p. **Games:** 2:15-5p. **EF:** 29, 44 after 9/7. **Info:** <http://BayAreaChess.com/signature>. W.

**Sept. 11, Bay Area Fremont Swiss (PK-12; 4SS, G/30 d5)**  
Court yard Marriott, Fremont, CA 94538. **Trophies:** players w + score. **Sched:** Reg: 9:30-9:45a. **Games:** 10a - 1:30p. **EF:** 34, 49 after 9/7. **Info:** <http://BayAreaChess.com/signature>. W.

**Sept. 11, Fremont DuperSwiss75 (3SS, G/75 d5)**  
Court yard Marriott, Fremont, CA 94538. **Prizes:** \$1,300 b/50. 60% guar. 1900+: \$200-100-100, u2000 50-50. 1500-1899: \$200-100, u1600 50-50. u1500: \$200-100, u1200 50-50. Sep 16 Supp & TD disc. **Reg.:** 8:30-8:45. **Rds.:** 9-11:45-2:40. **EF:** 49, Econ 33 w 1/2 prz. after 9/6 +15, playup +15, Rtd 2200+ \$0 by 9/1. **Info:** <http://BayAreaChess.com/grandprix>. W.

**Sept. 17, Fresno Chess4Less Quads (PK-12; 3xG/30 d5)**  
140 E. Shaw Ave., Fresno, CA 93710. **Trophies:** players w + score. **Sched:** Reqr. Check-in 1:30-2p. **Games:** 2:15-5p. **EF:** 24, 39 after 9/13. **Info:** <http://BayAreaChess.com/signature>. W.

## US Chess Junior Grand Prix!

**Sept. 17, Fresno LuperSwiss (4SS, G/61 d5)**  
140 E. Shaw Ave., Fresno, CA 93710. **Prize:** \$600 b/36. 1700+: \$150-100, u1900 50. u1700: \$150-100, u1600 50. Sep 16 Supp & TD disc. **Reg.:** 9-9:15. **Rds.:** 9:30 11:50 2:30 5. **EF:** 45, Econ 29 1/2 prz., after 9/13 +15, playup +15, Rated 2200+ \$0 by 9/6. **Info:** <http://BayAreaChess.com/grandprix>. W.

**Sept. 18, Bay Area Cupertino Quads (PK-12; 3xG/30 d5)**  
Court yard Marriott, Cupertino, CA 95014. **Trophies:** Players w + score. **Sched:** Reqr. Check-in 1:30-2p. **Games:** 2:15-5p. **EF:** 29, 44 after 9/14. **Info:** <http://BayAreaChess.com/signature>. W.

**Sept. 18, Bay Area Cupertino Swiss (PK-12; 4SS, G/30 d5)**  
Court yard Marriott, Cupertino, CA 95014. **Trophies:** players w + score. **Sched:** Reg: 9:30-9:45a. **Games:** 10a - 1:30p. **EF:** 34, 49 after 9/14. **Info:** <http://BayAreaChess.com/signature>. W.

**Sept. 18, Bay Area San Ramon Quads (PK-12; 3xG/30 d5)**  
Court yard Marriott, 18090 San Ramon Valley Blvd., San Ramon, CA 94583. **Trophies:** Players w + score. **Sched:** Reqr. Check-in 1:30-2p. **Games:** 2:15-5p. **EF:** 29, 44 after 9/14. **Info:** <http://BayAreaChess.com/signature>. W.

**Sept. 18, Bay Area San Ramon Swiss (PK-12; 4SS, G/30 d5)**  
Court yard Marriott, 18090 San Ramon Valley Blvd., San Ramon, CA 94583. **Trophies:** players w + score. **Sched:** Reg: 9:30-9:45a. **Games:** 10a - 1:30p. **EF:** 34, 42 after 9/14. **Info:** <http://BayAreaChess.com/signature>. W.

**Sept. 18, Cupertino DuperSwiss75 (3SS, G/75 d5)**  
Court yard Marriott, Cupertino, CA 95014. **Prizes:** \$1,300 b/50. 60% guar. 1900+ : \$200-100-100, u2000 50-50. 1500-1899: \$200-100, u1600 50-50. u1500: \$200-100, u1200 50-50. Sep 16 Supp & TD disc. **Reg.:** 8-8:45. **Rds.:** 9-11:45-2:40. **EF:** 48 Econ 33 w 1/2 prz. after 9/13 +15, playup +25, Rtd 2200+ \$0 by 9/7. **Info:** <http://BayAreaChess.com/grandprix>. W.

### Sept. 24, 2016 U.S. Game/30 Championship

See Nationals.

### Sept. 25, 2016 U.S. Game/60 Championship

See Nationals.

**Oct. 2, Bay Area Cupertino Quads (PK-12; 3xG/30 d5)**  
Court yard Marriott, Cupertino, CA 95014. **Trophies:** Players w + score. **Sched:** Reqr. Check-in 1:30-2p. **Games:** 2:15-5p. **EF:** 29, 44 after 9/28. **Info:** <http://BayAreaChess.com/signature>. W.

**Oct. 2, Bay Area Cupertino Swiss (PK-12; 4SS, G/30 d5)**  
Court yard Marriott, Cupertino, CA 95014. **Trophies:** players w + score. **Sched:** Reg: 9:30-9:45a. **Games:** 10a - 1:30p. **EF:** 34, 49 after 9/28. **Info:** <http://BayAreaChess.com/signature>. W.

**Oct. 2, Pleasanton Pawn Promotion - G/90 (3SS, G/90 d5)**  
Sheraton Pleasanton, 5990 Stoneridge Mall Rd., Pleasanton, CA 94588. **Prizes:** \$1,300 b/50. 60% guar. 1900+ : \$200-100-100, u2000 50-50. 1500-1899: \$200-100, u1600 50-50. u1500: \$200-100, u1200 50-50. Oct 16 Supp & TD disc. **Sched:** Reg: 9-9:15. **Rds.:** 9:30a-12:50p-4:15p. **EF:** 48, Econ 33 w 1/2 prz. after 9/28 +15, playup +25, Rtd 2200+ \$0 by 9/21. **Info:** <http://BayAreaChess.com/grandprix>. W.

**Oct. 8, Milpitas LuperSwiss (3SS, G/90 d5) - National Chess Day**  
1639A S. Main St., Milpitas, CA 95035. **Prizes:** \$1,300 b/50. 60% guar. 1900+ : \$200-100-100, u2000 50-50. 1500-1899: \$200-100, u1600 50-50. Oct 16 Supp & TD disc. **Sched:** Reg: 9-9:15. **Rds.:** 9:30-12:50-4:15. **EF:** 48, Econ 33 w 1/2 prz. after 10/5 +15, playup +25, Rtd 2200+ \$0 by 10/1. **Info:** <http://BayAreaChess.com/grandprix>. W.

**Oct. 8, Sacramento Chess4Less Quads (PK-12; 3xG/30 d5) - National Chess Day**  
Court yard Marriott, Rancho Cordova, CA 95670. **Trophies:** players w + score. **Sched:** Reqr. Check-in 1:30-2p. **Games:** 2:30-5p. **EF:** 24, 39 after 10/5. **Info:** <http://BayAreaChess.com/signature>. W.

**Oct. 8, Sacramento LuperSwiss (3SS, G/90 d5) - National Chess Day**  
Court yard Marriott, Rancho Cordova, CA 95670. **Prize:** \$600 b/36. 1700+ : \$150-100, u1900 50. u1700: \$150-100, u1600 50. Aug 16 Supp & TD disc. **Reg.:** 9-9:15. **Rds.:** 9:30-12:50-4:15. **EF:** 45, Econ 29 1/2 prz., after 10/5 +15, playup +15, Rated 2200+ \$0 by 9/28. **Info:** <http://BayAreaChess.com/grandprix>. W.

**Oct. 9, Bay Area Fremont Quads (PK-12; 3xG/30 d5)**  
Court yard Marriott, Fremont, CA 94538. **Trophies:** Players w + score. **Sched:** Reqr. Check-in 1:30-2p. **Games:** 2:15-5p. **EF:** 24, 39 after 10/5. **Info:** <http://BayAreaChess.com/signature>. W.

**Oct. 9, Bay Area Fremont Swiss (PK-12; 4SS, G/30 d5)**  
Court yard Marriott, Fremont, CA 94538. **Trophies:** players w + score. **Sched:** Reg: 9:30-9:45a. **Games:** 10a - 1:30p. **EF:** 34, 49 after 10/5. **Info:** <http://BayAreaChess.com/signature>. W.

### Nov. 11-13 or 12-13, 2016 U.S. Class Championship

See Nationals.

## California, Southern

**The Los Angeles Chess Club**  
The Most Active Club on the West Coast! (310) 795-5710. \* LACC: [www.LAChessClub.com](http://www.LAChessClub.com); VCC: [www.ValleyChessClub.com](http://www.ValleyChessClub.com); Contact email: [Mike@LAChessClub.com](mailto:Mike@LAChessClub.com); Saturdays: 10am-10 pm (Beg & Intern. classes + 3 Tournaments). Sundays: 11 am -7 pm (Junior class + 2 Tournaments) - Details on our web site. Tuesdays: 7:30-9:30 pm (Advance Lecture). 11514 Santa Monica Blvd., Los Angeles, CA 90025. (4 blocks W of 405, SW corner of Santa Monica & Butler \* 2nd Floor - above Javan Restaurant) Group Classes \* Tournaments \* Private (1:1) Lessons. Note: We added a new club in the valley!

**Alec's Chess Club**  
[www.alectschessclub.com](http://www.alectschessclub.com) 818-220-0257 Tournaments for KIDS on Saturdays or Sundays 12-4pm weekly. Includes free class! YOUR FIRST TOURNAMENT IS FREE! (Applies to KIDS tournaments only) Tournaments for ADULTS on Saturdays 5-9pm (4 Rounds, G/30 d5). ADULTS: please connect with us on [www.meetup.com/alectschessclub/](http://www.meetup.com/alectschessclub/). Private Classes available by appointment. Located at 4418 Simpson Ave., #5, Valley Village, CA 91607. Please contact Alec with any questions at [alectschessclub@hotmail.com](mailto:alectschessclub@hotmail.com) or on our website at [www.alectschessclub.com](http://www.alectschessclub.com)

**Aug. 6, 7, 13, 14, 20, 21, 27, 28, LACC - Every Saturday & Sunday Chess 4 JRS.**  
**8 separate events-** 5SS, G/30 d0. 11514 Santa Monica Blvd. & Butler LA, 90025, 2nd fl. 4 blocks West of 405. **EF:** \$30 (S20 LACC mem. No prize 1/2, siblings 1/2, Free new LACC members). **Reg:** 12-1 pm. **Rds.:** 1pm& asok; done by 4. **Prizes:** Trophies & medals; All players receive prizes! **Parking:** Free on streets & BoA. Free healthy refreshments. **Info:** (310) 795-5710 or [www.LAChessClub.com](http://www.LAChessClub.com) or [Mike@LAChessClub.com](mailto:Mike@LAChessClub.com).

**Aug. 12-14 or 13-14, 21st annual Pacific Coast Open**  
See *Chess Life* or [www.chesstour.com](http://www.chesstour.com).

**Nov. 4-6 or 5-6, 11th annual Los Angeles Open**  
See *Chess Life* or [www.chesstour.com](http://www.chesstour.com).

## Connecticut

**Sept. 23-25 or 24-25, 7th Annual Hartford Open**  
See *Chess Life* or [www.chesstour.com](http://www.chesstour.com).

**Nov. 4-6 or 5-6, Stamford Open**  
See *Chess Life* or [www.chesstour.com](http://www.chesstour.com).



## Florida

**Sept. 23-25 or 24-25, 14th annual Southern Class Championships**  
See *Chess Life* or [www.chesstour.com](http://www.chesstour.com).

## Georgia

**Aug. 19-21 or 20-21, 47th annual Southern Chess Congress**  
See *Chess Life* or [www.chesstour.com](http://www.chesstour.com).

**Sept. 4, 2016 Labor Day Weekend Scholastic**  
4-5S, G/30 d5. Interactive College of Technology, 5227 New Peachtree Rd., Chamblee, GA 30341. In 3 sections: Middle School K-8, Elementary K-6, Primary K-3. **Entry Fee:** \$28 by 9/02. NO ONSITE. Trophies to top 5, top girl, top unrated each section. Medals to every participant who doesn't get a trophy. Registration: 9:30-10:30 a.m. Rounds: 1st at 11 a.m., then as soon as possible. Awards right after last round is completed. Special: A master or expert will be on hand for FREE analysis. Info: [americanchesspromotions.com](mailto:americanchesspromotions.com) or (478) 973-9389. Enter: [americanchesspromotions.com](http://americanchesspromotions.com).

## Illinois

**Oct. 7-9 or 8-9, 25th annual Midwest Class Championships**  
See *Chess Life* or [www.chesstour.com](http://www.chesstour.com).

## Indiana

**Aug. 26-28 or 27-28, 11th annual Indianapolis Open**  
See *Chess Life* or [www.chesstour.com](http://www.chesstour.com).

## Iowa

**US Chess Junior Grand Prix!**  
**Open 27, Rated Beginner Open (RBO)**  
Open to U1200 or Unrated. 5-SS, G/30 d5. Marriott Hotel and Conference Center, 300 E 9th St. (I-80, SE side of Exit 242), Coralville, IA 52241. **Reg:** 8:30-10 am **Rds:** 10:30, 12, 1:30 and ASAP **EF:** \$19 if posted by 8/22 \$26 on site. \$5 off for out of state. **Prize Info:** Trophies top 5 overall, U1000, U800, U600, U400 and Unrated 1st and 2nd. **US Chess Federation (USCF) membership required.** On-Site Available. **Send Entry Fee to:** IASCA, c/o Mark Capron, 3123 Juniper Dr., Iowa City, IA 52245 or register online at [www.onlineregistration.cc](http://www.onlineregistration.cc) Additional Info: Chess rate available, \$112 (INCLUDES PARKING) only until 8/5/15, rates may increase after this date. Pool, restaurant, more restaurants in walking distance. 319-688-4000.

## Maryland

**Maryland Chess Association Tournaments**  
MCA runs scholastic tournaments (almost every other Saturday from mid-September to late May) & open tournaments (usually 10+ annually) throughout Maryland. Listings & online registration at [www.MDChess.org](http://www.MDChess.org). Maryland scholastic players who compete in the Varsity section (which has a floor of 1600) of a Maryland-Sweet-16 Qualifier can qualify for the \$44,000 scholarship to UMBC (University of Maryland, Baltimore County) awarded each year.

**Sept. 17, UMBC Rated Beginner's Championship (RBO)**  
5S, G/25 d5. UMBC, 1000 Hilltop Circle, Baltimore (in Commons, 3rd floor). Open to U1200/Unr. USCF membership required. Free USCF memb. to anyone scoring at least 3.5 pts. Certificate to anyone completing 5 rds. Top UMBC student awarded trophy & title of 2016-2017 UMBC Amateur Chess Champ. **EF:** \$20 if postmarked by 9/1, \$25 later. **Reg.:** 8:30-9:30am. **Rds.:** 10-11:30-1:30-3:40 Sat. 1/2 pt. bye avail. in any rd. if req'd before rd. 1. Held concurrently w/UMBC Champ. 9/17-18/16 (see separate TLA). **Ent:** NEW! Register online at <http://mdchess.com> (email questions to [dewyerj@umbc.edu](mailto:dewyerj@umbc.edu)), or mail to Dr. Alan T. Sherman, Dept. of CSEE, UMBC, 1000 Hilltop Circle, Baltimore, MD 21250, ATTN: Beginners Champ. Cks payable to Maryland Chess Association. Dir: Exit 47B off I95 & follow signs to UMBC. Park in Commons Drive garage. **For more info:** [ChessClub@umbc.edu](mailto:ChessClub@umbc.edu), [www.umbc.edu/chess.W](http://www.umbc.edu/chess.W).

## Minnesota

**Sept. 17-18, 2016 U.S. Amateur North Championship**  
See Nationals.

## Nevada

**Reno Scholastic Chess Quadz**  
University of Nevada, Reno FH19 PK-College. G/30 d5 Sched: 12:00-3pm. **EF:** 10. Weekly event on designated Saturdays. Info: [www.chesskidz.org/quadz.html](http://www.chesskidz.org/quadz.html) or [chesskidz@chesskidz.org](mailto:chesskidz@chesskidz.org)

**Dec. 26-30, 26-29 or 27-29, 26th annual North American Open**  
See *Chess Life* or [www.chesstour.com](http://www.chesstour.com).

## New Jersey

**Sept. 3, New Jersey Scholastic K-8 Championship**  
5-SS, G/30 d5. Hyatt Morristown, 3 Speedwell Ave., Morristown, NJ 07960. If staying, for chess rate, please make reservations at <https://aws.passkey.com/event/14285144/owner/1459369/rooms/list?srt=default>. Phone: 973-647-1234, mention NJ Chess. Free parking, public transportation to NYC, Phila. walking distance, 30 restaurants, shops and parks within 5 minute stroll. In three sections: Under 1200, Under 900, Under 600. Trophies to Top Ten in each section. **Registration:** Saturday, September 3, 11am -12noon. **Rounds:** 12:30pm, then ASAP **EF:** \$30 if postmarked by August 30. \$40 cash at site. One 1/2 point bye allowed if requested with entry fee. September Rating Supplement used. **Entries:** Noreen Davisson, 6 Red Barn Ln., Randolph, NJ 07869. Entries must include name, USCF ID and expiration date, mailing address, email

address, phone number, grade level and entry fee. Checks made out to NJSCF. Register online at [register.njscf.org](http://register.njscf.org) for \$32 by September 1, 2016. Questions to [noreen@deanofchess.com](mailto:noreen@deanofchess.com). W.

**Oct. 28-30 or 29-30, 20th annual Eastern Chess Congress**  
See *Chess Life* or [www.chesstour.com](http://www.chesstour.com).

**A State Championship Event!**  
**Nov. 20, New Jersey K-12 Grade Championship**  
5SS, G/30 d5. Brookdale College, 765 Newman Springs Rd., Lincoln, NJ 07738. Student Life Center, use Parking Lot #7 or #6; 4 miles from Garden State Parkway exit 109. **13 Sections:** Play only in your grade! Grades K-12: Trophies to top 10 individuals, top 3 teams - top 3 from each school/grade; 50% of players receive trophy or medal! **Rds.:** 10am and ASAP **EF:** \$35 by 11/13, \$55 at site. USCF mem req'd. **Reg.:** 8-9:00am After 9:00am 1/2 pt bye rd 1. **Info:** 732 259-3881 [Halsprechman@gmail.com](mailto:Halsprechman@gmail.com) **Ent:** Please make checks payable to NJSCF and send to Hal Sprechman, 66 Cromwell Ln., Jackson, NJ 08527. Entries must include name, grade school, date of birth, USCF ID # & expiration, mailing address, phone number & entry fee, please include email address. Register online at: [www.njscf.org](http://www.njscf.org) until 11/18.

## New York

**Sept. 2-5, 3-5 or 4-5, 138th annual NY State Championship**  
See *Chess Life* or [www.chesstour.com](http://www.chesstour.com).

**Oct. 15-16, 3rd annual Central New York Open**  
See *Chess Life* or [www.chesstour.com](http://www.chesstour.com).

## North Carolina

**Aug. 20, ACC All-star Quads (PK-12; 3xG/30 d5)**  
Courtyard Durham RTP, 301 Residence Inn Blvd., Durham, NC 27713. **Trophies:** Players w plus score. **Check-in:** Reqr'd 10-10:15a. Games 10:30a-4p. **EF:** 11, 14 onsite. **Info:** <http://bachess.org/durham.W>.

**Aug. 25-29, 2016 U.S. Masters Championship**  
See Nationals.

**Aug. 26-28 or 27-28, North Carolina Open**  
See Grand Prix.

**Sept. 24, ACC All-star Quads (PK-12; 3xG/30 d5)**  
Courtyard Durham RTP, 301 Residence Inn Blvd., Durham, NC 27713. **Trophies:** Players w plus score. **Check-in:** Reqr'd 10-10:15a. Games 10:30a-4p. **EF:** 11, 14 onsite. **Info:** <http://bachess.org/durham.W>.

## Ohio

**Aug. 12-14 or 13-14, Cleveland Open**  
See *Chess Life* or [www.chesstour.com](http://www.chesstour.com).

**Nov. 11-13 or 12-13, 25th annual Kings Island Open**  
See *Chess Life* or [www.chesstour.com](http://www.chesstour.com).

**A State Championship Event!**  
**Nov. 19, Ohio Grade Level State Championship**  
Site: Newark High School, 314 Granville St., Newark, OH 43055. Food service on site. **13 sections.** 1 per grade K-12. 5-SS, time controls vary by section and round, see website for details. Accelerated pairings possible. One 1/2-pt bye rounds 1-4. Check in 8:30-9:30am, rounds begin 10am. **Trophies:** to all scoring 3.5+ and top 3 teams each section, medals to all others. **EF:** \$30 postmarked by 11/5, \$35 after, final deadline 11/17; limited number of \$15/\$20 EFs for low income students, call for availability. Refund less \$7 admin fee if w/d by noon 11/17, no refunds after. Advance registration only. [neilley.com/chess](http://neilley.com/chess) for entry form, hotel info and complete details. **Contact:** Tim Beltz, [beltz94@yahoo.com](mailto:beltz94@yahoo.com) or 740-745-2875.

## Pennsylvania

**MasterMinds Scholastic Summer League**  
Info at [www.mastermindschess.org](http://www.mastermindschess.org).

**Aug. 30, Berks End of Summer Scholastic Quads**  
**A Wood Services National Fundraiser Tournament.**  
Queen City Restaurant, 100 Lancaster Ave., Reading, PA. 3-RR G/25 d5 **Games:** Tues. 5:30, 6:30, 7:30 pm. **EF:** \$20 for 2 Events, Single event \$25 by 8/29. **Register Online** at <http://woodservices.org>. **PRIZES:** Undeclared Trophies, Quad winner medals.

**Sept. 10, Lancaster Sept Scholastic Quads**  
**A Wood Services National Fundraiser Tournament.**  
Uncommon Pizza, Kissel Hill Commons, Lititz, PA. 3-RR G/25 d5. **Games:** Sat. 9:30, 10:30, 11:30 am. **EF:** \$20 for 2 events, \$25 for 1 event by 9/16. **Register Online** at <http://woodservices.org>. **PRIZES:** Undeclared Trophies, Quad winner medals.

**A Heritage Event!**  
**Sept. 11, 57th Annual Pittsburgh Chess League**  
30/90, SD/60 d5. Wm. Pitt Union, Univ. of Pittsburgh, 5th Ave. & Bigelow Blvd., Pittsburgh, PA 15213. Monthly 4-player team event from Sept. to Apr. **EF:** \$50/team by 9/8. Rds: 2pm. **Info:** 412-908-0286, [martinak\\_tom\\_m@hotmail.com](mailto:martinak_tom_m@hotmail.com), [www.pitt.edu/~schach/W](http://www.pitt.edu/~schach/W). Note: one game - rated each month so this cannot be a US Chess Junior Grand Prix.

**Sept. 17, 2016 PA State Game/60 Championship**  
See Grand Prix.

**Sept. 23-24 (Fri & Sat), 2016 U.S. Blind Chess Championship**  
See Nationals.

**Sept. 28, Lionville Sept Scholastic Quads**

**A Wood Services National Fundraiser Tournament.** 3-RR G/25 d5. Pizza Uno, Route 100, Lionville, PA. **Games:** Wed. 5:30, 6:30, 7:30 pm. **EF:** \$20 for 2 events, \$25 for 1 event by 9/27. **Register Online** at <http://woodservices.org>. **PRIZES:** Undeclared Trophies, Quad winner medals.

**Oct. 2, PCL October Quick Quads (QC)**  
3RR, G/15 d3. Wm. Pitt Union, Univ. of Pittsburgh, 5th Ave. & Bigelow Blvd., Lionville, PA 15213. **EF:** \$10, \$7 Jrs. \$20 to 1st/quad. **Reg.:** 11-11:15am. **Info:** [martinak\\_tom\\_m@hotmail.com](mailto:martinak_tom_m@hotmail.com), 412-908-0286. W.

**Oct. 8, MasterMinds National Chess Day Quads**  
Lenfest Center, 3890 N. 10th St., Philadelphia, PA 19140. **Quads:** 3RR, G/85 d5. **EF:** \$30 cash; winner \$100. Reg. ends 9AM. Rds. 9:30, 1, 4. For info email [brad@mastermindschess.org](mailto:brad@mastermindschess.org). Info: [mastermindschess.org](http://mastermindschess.org)

**Oct. 8, MasterMinds National Chess Day Scholastic**  
Carver HS of Engineering and Science, 1600 W. Norris St., Phila., PA 19121. **Scholastic** 4SS, K-12 Open, K-8 U1200, K-3 U500 G/40 d5. Entries rec'd after 10/6/16 will receive half point first round bye. On site reg. ends 9AM. Rds. 10, 12, 2, 4. Trophies to top 10 in each section, 1 & 2 Team across all sections! **Mail Ent:** MasterMinds CC, 36 E. Horter St., Philadelphia, PA 19119 or email to [brad@mastermindschess.org](mailto:brad@mastermindschess.org). **Info:** [mastermindschess.org](http://mastermindschess.org)

**Oct. 11, Berks Oct Scholastic Quads**  
Queen City Restaurant, 100 Lancaster Ave., Reading, PA. 3-RR G/25 d5 **Games:** Tues. 5:30, 6:30, 7:30 pm. **EF:** \$20 for 2 Events, Single event \$25 by 10/10. **Register Online** at <http://woodservices.org>. **PRIZES:** Undeclared Trophies, Quad winner medals.

**Nov. 25-27 or 26-27, 47th annual National Chess Congress**  
See *Chess Life* or [www.chesstour.com](http://www.chesstour.com).

## Tennessee

**Oct. 8, 2016 National Chess Day Tournament - Fall Open**  
Cumberland Co. Community Complex, 1398 Livingston Rd., Crossville, TN 38555. \$420 Guaranteed prize fund. In 2 Sections, **Open:** 4SS, G/60 d5, **\$\$:** \$75. 30-X,A,B,C,D/Below. **Amateur U1200:** 4SS, G/60 d5, **\$\$:** \$75. 30-F, G, H/Below, UNR UNR eligible for unrated prize only. **AL:** **EF:** \$15 if mailed by 10/3, \$20 at site. **Memb. Req'd:** TCA \$10 TN residents only. **ENT:** Harry D Sabine, P.O. Box 381, Crossville, TN 38557. **INFO:** [www.cumberlandcountychess.org](http://www.cumberlandcountychess.org) or Susan at 931-287-3765. W.

## Virginia

**Aug. 26-28 or 27-28, 48th annual Atlantic Open**  
See *Chess Life* or [www.chesstour.com](http://www.chesstour.com).

**A Heritage Event!**  
**US Chess Junior Grand Prix!**  
**A State Championship Event!**  
**Sept. 3-5, 80th Annual Virginia Closed**  
6 Rounds with play in 3 Sections (Open, Amateur / U1800, and U1200 / Unrated). Blitz tournament on Friday evening, Sept 2nd. Details at [www.vachess.org](http://www.vachess.org) or TLA in August CL issue or posted at uschess.org.

**Oct. 5-10, 7-10 or 8-10, 3rd annual Washington Chess Congress**  
See *Chess Life* or [www.chesstour.com](http://www.chesstour.com).

## Wisconsin

**Sept. 3, 6th BC Open**  
Country Inn & Suites Brookfield, 1250 South Moorland Rd., Brookfield, WI 53005, (262)782-1400. All Sections, **TC:** G/60 d5. **Rds.:** 10-1-3:30-6. **EF:** Open: \$35 by 9-1, Reserve (U1600) & RBO (U1000) \$25 by 9-1, Non Rated \$10 by 9-1, all entries \$5 more after 9-1. **Open:** (b/30) 1st \$350 - 2nd \$200 - A \$125 - U1800 \$125. **Reserve (U1600):** (b/20) 1st \$110 - 2nd \$75. **RBO (U1000):** (b/20) 1st \$100 + trophy - 2nd \$50 + trophy. Non rated section 1st \$50, book prizes for others. **Reg.:** September 3rd, 8:30am - 9:30am. **Entries to:** Ben Corcoran, 2711 N. University Dr. #64, Waukesha, WI 53188. **Q&A:** Ask for Ben 262-506-4203 or [benzochess@gmail.com](mailto:benzochess@gmail.com) also more info at [www.benzochess.com](http://www.benzochess.com).

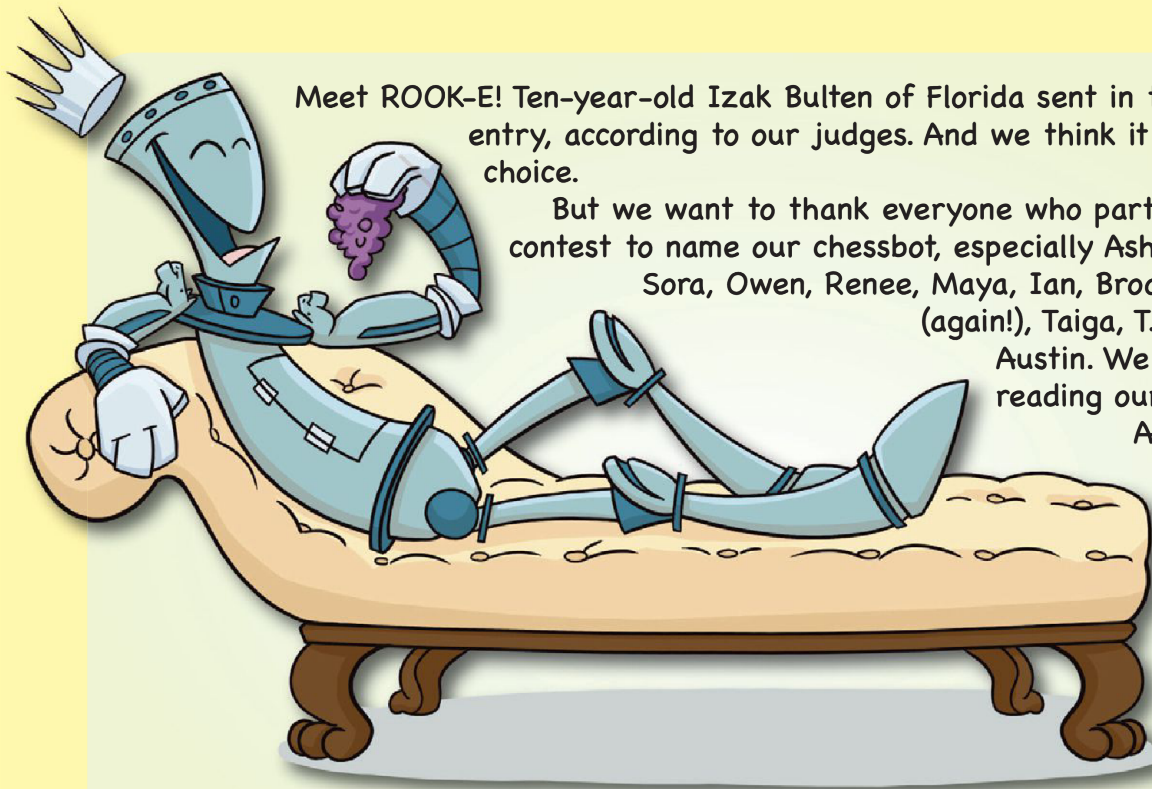


**Wood Chess Services**

Hands-on Workshops for Kids  
Complete Tournament Services  
Specializing in Beginner Lessons for ages 5 - 17

Certified Teachers at Your Location  
<http://woodservices.org> 717-475-6473

# It's Your Move!



Meet ROOK-E! Ten-year-old Izak Bulten of Florida sent in the winning entry, according to our judges. And we think it is a good choice.

But we want to thank everyone who participated in the contest to name our chessbot, especially Asher, Mihir, Klaus, Sora, Owen, Renee, Maya, Ian, Brooks, Jake, Mihir (again!), Taiga, T.J., Sarah, and Austin. We really enjoyed reading our mail!

According to Izak, not all kids are rookies (although we all start out that way), but ROOK-E brings to mind the rook (chess) and the

Disney/Pixar animation WALL-E (bot). And the judges thought that was a winning combination!

Everyone who entered will receive a small gift, courtesy of US Chess.

Well, it isn't always that easy. One of the first things you learn is the value of each piece (force) and if you lose too much force (even a pawn can be too much), you're likely to lose the game. And then you have to learn all about sacrifices! Sometimes you sacrifice

material for stuff you can't count, like space, or time, or king safety.

You have to learn to think outside the box. Normally, you wouldn't trade a one dollar candy bar for three 25 cent candies. But if you knew you could sell each candy for 50 cents, you'd make the

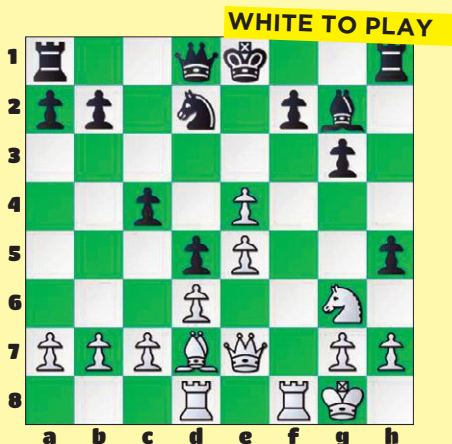
trade in a second. That's how you have to think about sacrifices.

Have you played any good sacrifices lately? Send your game to ROOK-E, c/o [gpetersen@uschess.org](mailto:gpetersen@uschess.org) or snail mail it to ROOK-E, c/o US Chess, P.O. Box 3967, Crossville, TN 38557.





We'll try to print them next issue. Meanwhile, you can consider the following position. What would you play as White?



Talk it over with your coach, or your teammates. Move the pieces! When you think you have an answer and you can give us supporting analysis (include a few sample lines), send it to ROOK-E at the address above. We have some great book prizes for the best answers.

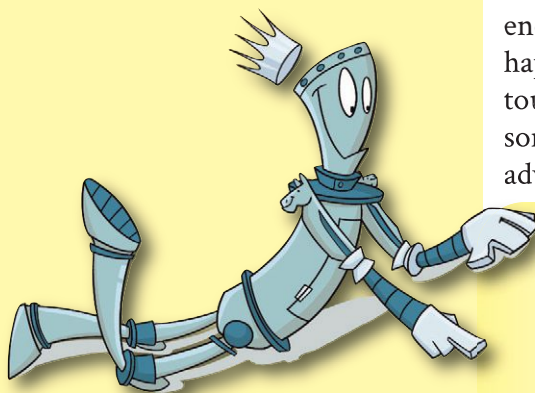
## Question?

Continued from pg. 4

position has already repeated three times, which makes sense. But it's wrong. According to official tournament rules, if that happens, the opponent can treat the claim as a simple draw offer and decline it! The only correct way to claim a draw by repetition

is to first write down on your scoresheet the move that leads to the third repetition, stop the clock (very important!), and call the tournament director to verify the claim. Do not actually play the move at any point! I once missed out on a half point by playing the move—don't make the same mistake I once made, as have many of my opponents.

I cannot emphasize this enough: these situations really do happen all the time in tournaments! So, as strange as some of these rules might be, my advice is to remember them all.



### Got a question?

Send it to Daniel, care of [gpetersen@uschess.org](mailto:gpetersen@uschess.org), or Scholastic Editor, P.O. Box 3967, Crossville, TN 38557.



# ChessKid

.com

## PLAY



## LEARN



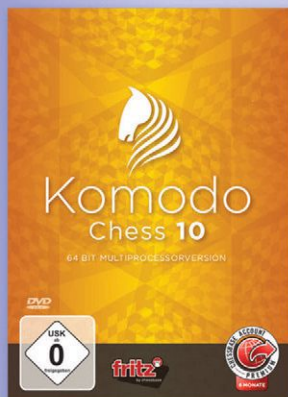
**#1 Chess Site for Kids. 200,000+ Kids, Parents, & Coaches!**  
**100% Safe and Kid-Friendly! Signup Today - it's FREE!**

# USCF SALES

## The Official Chess Shop of the US Chess Federation

Reigning World Computer Chess Champion

# Komodo Chess 10



### Komodo Chess 10

The new number one has arrived! Thanks to a host of extensive improvements and fine tweaking, the latest version of Komodo has again gained over 60 Elo points on its predecessor. The changes cover several areas: the evaluation function has been significantly sharpened, particularly with respect to king safety and endgame positions, and the search algorithm has been improved and optimized to run on multiple processors. Komodo 10 is also better at managing its time, and just generally calculates faster.

The result is an unbeatable combination - the strongest chess engine ever running on the best and most popular user interface around. As it comes with the Fritz 15 GUI,

Komodo, as well as chess prowess, offers all the training and playing functions you know from Fritz, including direct access to the ChessBase Web Apps such as Live Database, the ChessBase video portal, our tactics server and more!

Komodo's intelligent and results-driven evaluations have also proven extremely effective in practice and are reflected in the engine's playing style. If Komodo 10 considers its position to be advantageous, it avoids exchanges and seeks to open the position, but when defending a worse position, it strives to exchange pieces and block the position, in an attempt to push the game towards a draw.

It also recently demonstrated its exceptional playing strength in a series of matches against grandmasters, including the current world #6, Hikaru Nakamura. Komodo remained unbeaten in over 50 games in which it gave its human opponents a material advantage or several free moves (with the exception of only a few games in which the handicap consisted of two important pawns or the f7 pawn and three free moves) - Komodo even beat Nakamura 2.5 to 1.5!

This ultra-strong engine has won three of the last four TCEC championships, making it a multiple winner of the most prestigious prize

in computer chess. What is more, at tournament time controls, Komodo is #1 in the majority of rating lists.

### Komodo Chess 10 comes with:

- New 64-bit multi-processor engine
- Latest Fritz 15 64-bit user interface (optionally 32-bit)
- Premium membership for the all new ChessBase Web Apps and playchess.com (six months)

**Komodo Chess 10** **\$99.95**

### System requirements:

**Minimum:** Pentium III 1 GHz, 2 GB AM, Windows XP (Service Pack 3), 7/8, DirectX9, graphics card with 256 MB RAM, DVD-ROM drive, Windows Media Player 9 and internet access for program activation. Playchess.com access, Let's Check and updates.

**Recommended:** PC Intel i5 (Quadcore), 4 GB RAM, Windows 8.1/10, DirectX10, graphics card with 512 MB RAM or more, 100% DirectX10- compatible sound card, Windows Media Player 11, DVD ROM drive and internet access for program activation, Let's Check, ChessBase Live Database, Engine Cloud, Tactics Training and updates.

All Purchases Benefit



The US Chess Foundation

[www.USCFSales.com](http://www.USCFSales.com)

888-512-4377 (CHESS)