


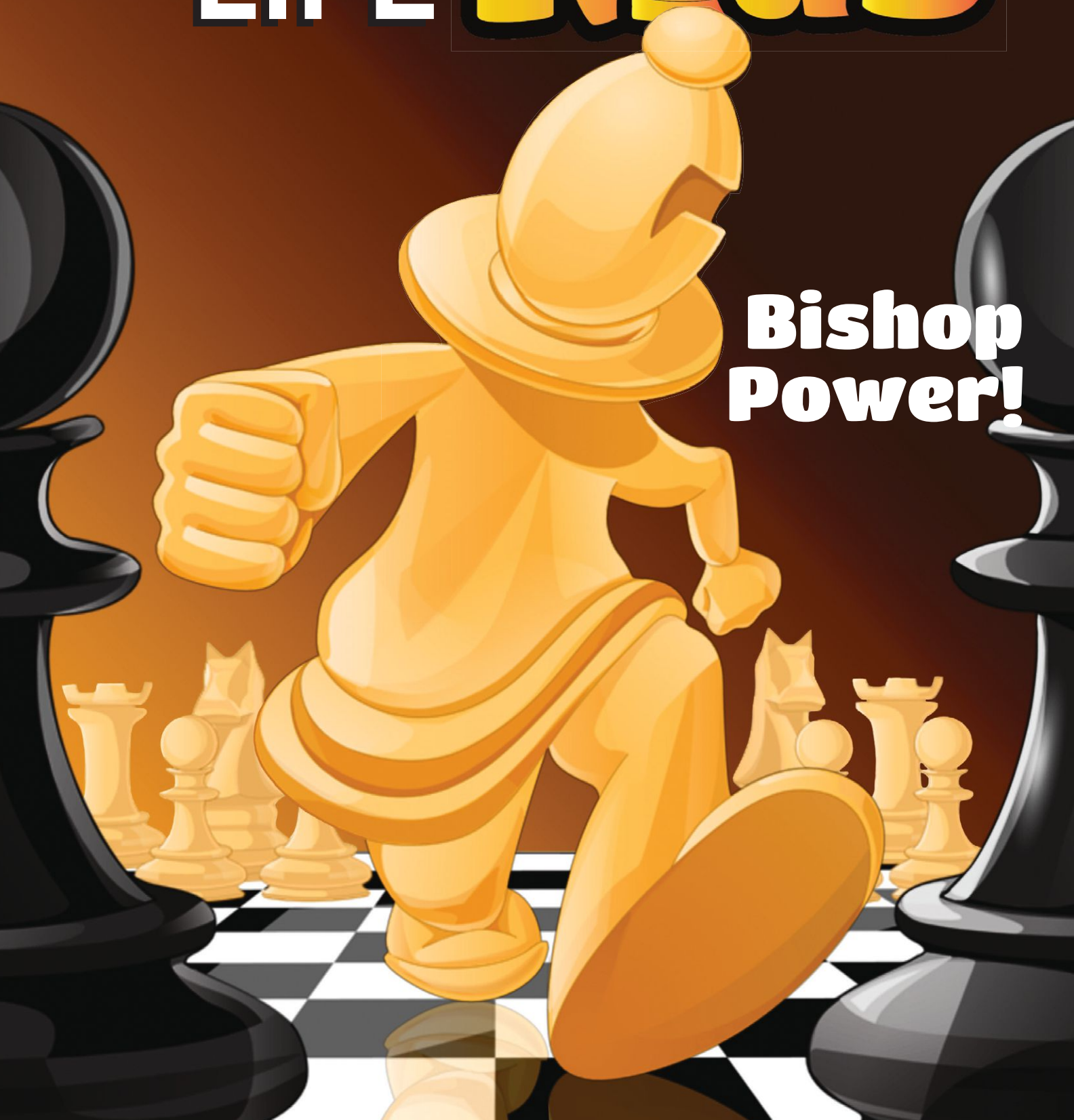
FEBRUARY 2017


Official Scholastic Publication of US Chess  uschess.org

CHESS LIFE

Kids

Bishop Power!





Many toppers and figurines to choose from.

Amazing column color choices.

WOW.

Make sure your trophy is worthy of the accomplishment!

Solid Marble, Marble-look and Walnut bases available.

TROPHIES  **PLUS**
A Champion Defined.

Official
Awards
Provider
for the

US CHESS
FEDERATION

315 West 1st St. P.O. Box 115, Templeton, IA 51463
800-397-9993 * fax: 712-669-3851
email: trophyman@trophiesplus.com
www.trophiesplus.com

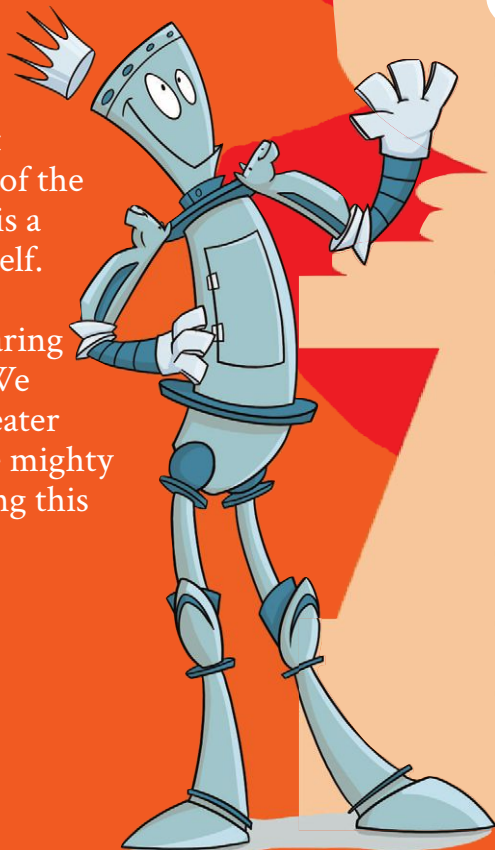
**February 2017
Vol. 12, No. 1**

Contents

- 4** What's The Question?
- 5** *Arabian Knights*
- 6** You can DO IT!
- 7** Move The Pieces
- 8** THE CHESS DETECTIVE®
- 9** 2016 Junior Grand Prix
- 9** *Zaria*
- 10** The Power of the First Estate
- 17** Answers, We've Got Answers.
- 18** Tournament Life Announcements
- 22** It's Your Move!

ON THE COVER

"The Power of the First Estate" aptly describes the theme of this issue. The journey of this elephant-counselor-jester-runner-bishop, as it races from one end of the board to the other, is a history lesson by itself. We thank all of our contributors for sharing their experiences. We hope you have a greater appreciation for the mighty bishop after digesting this issue.

**US CHESS**

Publisher

US Chess Executive Director: Jean Hoffman
Jean.Hoffman@uschess.orgDirector of Publications: Daniel Lucas
dlucas@uschess.orgScholastic Editor: Glenn Petersen
letters@uschess.orgArt Director: Cat Connor
cconnor@uschess.org

Character Designer and Illustrator: Chandler Ellison

Editorial Asst./Copy Editor: Alan Kantor
akantor@uschess.orgEditorial Assistant: Natasha Roberts
nroberts@uschess.orgAdvertising Manager: Joan DuBois
jdubois@uschess.orgTournament Life: Joan DuBois
tla@uschess.org

CONTRIBUTORS: Send your contributions and articles to *Chess Life Kids*, PO Box 3967, Crossville, Tennessee 38557 or better yet, e-mail to gpetersen@uschess.org.

Chess Life KIDS (USPS 023-567, ISSN: 1932-5894) is published in February, April, June, August, October, and December of every year by US Chess, 137 Obrien Drive, Crossville, Tennessee 38555. Periodical postage paid at Crossville, Tennessee, and additional mailing offices.

CHANGE OF ADDRESS: Be sure to notify us at once of any change of address. Please include your old address and your new address, along with your US Chess I.D. number.

POSTMASTER: Send address changes to US Chess, PO Box 3967, Crossville, Tennessee 38557.

Annual Scholastic Membership: Regular Scholastic Membership (online version of *Chess Life Kids*), age 12 or younger, is just \$17 per year. Premium Scholastic Membership (receives *Chess Life Kids* by mail) is \$25 per year. \$13 of every premium membership goes towards providing *Chess Life Kids*. Annual subscription rate is \$18. Entire contents copyright 2016, US Chess.

Teachers may photocopy instructional articles for classroom use, but republication or widespread copying without the written consent of US Chess is forbidden.

Cover Illustration by Alex Krivenda



What's the Question?

by International Master Daniel Gurevich

Q: What is the history behind the bishop?

A: The earliest known ancestor of chess was an ancient Indian war game called Chaturanga. Although it is over a thousand years old, this game was very similar to the chess we play today. It featured a set of pieces modeled after a balanced army. Each side had eight foot soldiers, two chariots, two horses, two elephants (war elephants!), and a king and a minister. Today we call the foot soldiers pawns; the minister eventually became the queen. The chariots and horses even moved the exact same way as modern rooks and knights do!

But let's talk about the elephant, the piece that would eventually become the bishop. It is not as easily recognizable as the king or the horse. It had a strange way of getting around the board. Like the bishop, it moved along the diagonals, but it could only hop a distance of exactly two squares, jumping over any piece in the way. And of course, the elephant's name changed significantly over the years. (Except in Russia,



where the bishop is still called an elephant!)

The Persians really liked Chaturanga, so they decided that they wanted to play it too. The name of the game was tweaked to "Shatranj" and the pieces also got new names. The elephant's was *pil*. In Arabic, "the elephant" was translated as *al-fil*, which is why, when Muslims conquered Spain, the bishop's name in Spanish became *alfil*. (In Italian, it is similar: *alfiere*, which actually means "flag-bearer.") In French, *fil* became *fol*, meaning "foolish," which morphed into the bishop's current French name, *fou*, or "jester." [and some manufacturers of magnetic pocket sets still use a jester to represent the bishop. – Editor]

However, even in early European chess, the bishop and the queen kept their old Chaturanga moves. (The queen could still only move one square diagonally at a time.) This all changed when, somewhere in southwestern Europe and some time late in the 15th century, a new idea arose. Why not let the queen move any number of squares in any direction and the bishop move any number of squares diagonally? These fun new rules for chess soon became extremely popular all over Europe, and so the bishop and queen went from being two of the worst pieces to



two of the best. As you know, that is still the situation today.

At this point, the Germans came up with their version of the bishop's name: *Läufer*, or "runner", since it could move so far and so quickly. In contrast, the knight was called the *Springer* or "leaper." That approach made so much sense that the modern Dutch, Danish, Norwegian, and Swedish names are just slight variations on those same words.

"Wait a second!" you say. "What about the word bishop itself?" I was just getting to that. Buckle up—here is the story. In Chaturanga, the pieces looked like the things they represented. For instance, the elephant was just that, a little carved elephant. But the Persians were Muslims, and it was not allowed to show living things in their art. So the *pil* was just a cone with a notch at the top, which was perhaps a hidden reference to the elephant's tusks. (Yes, the bishop in your chess set probably looks the same.) Europeans had no restrictions on depicting men and animals, so their chess pieces were similar to Indian Chaturanga pieces in that way.

However, through the centuries and continents chess crossed in order to finally reach Europe, the original identity of the bishop—an elephant—was lost. When the ornate European chessmen were being carved, players of the game needed all of their

Please turn to page 23 ➡



Tales of The Arabian Knights

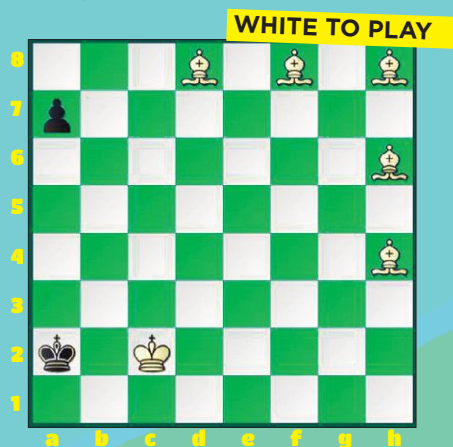
A Taller Tale

By Rick Kennedy

"It seems that every time you play chess with your brother," said the King's friend, "You always have a tale to tell."

"True," he said, "And this one is a taller tale than usual." He set up a position with the chess pieces on the chessboard. He then began to explain, "It was one of those games where I reduced my brother to just a king and a pawn, but he was not ready to resign. I was ready to promote one of my pawns, but he still wanted to play on. I actually promoted four of my pawns, but, still, he resisted."

The King shared the position in their game.

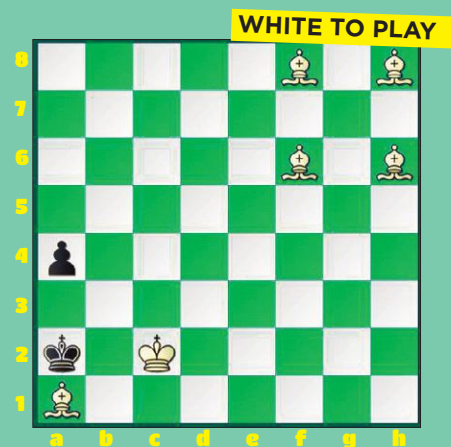


She laughed out loud. "No wonder your brother was so stubborn! He did not take you seriously." Then, she paused. "Should he have?"

The King nodded. "Even though all five of my Bishops are on the same color, I found a forced checkmate for White. The key was in controlling the moves of Black's pawn and Black's king—who, for now, is stalemated."

1. Ba5 a6 2. Bac3 a5 3. Ba1 a4 4. B4f6

The winning moves are all there on the chessboard, just waiting to be discovered.

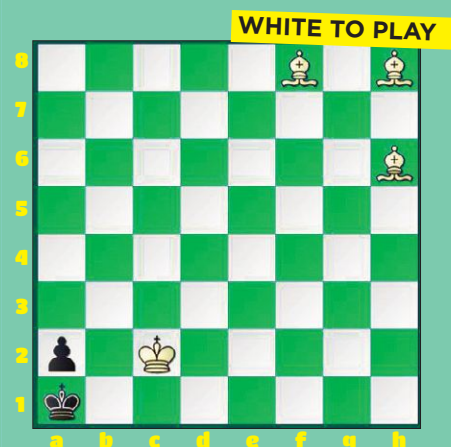


"Tripling bishops on the a1-h8 diagonal," the King chuckled.

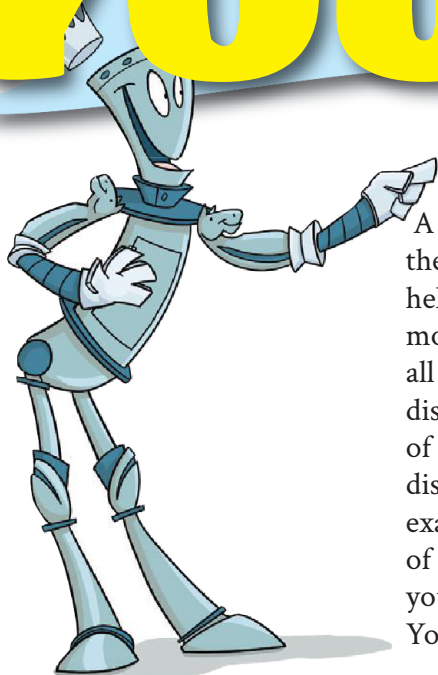
4. ... a3 5. Kc3 Kxa1

"If he avoids taking the bishop, the end is similar to that of the game—but faster."

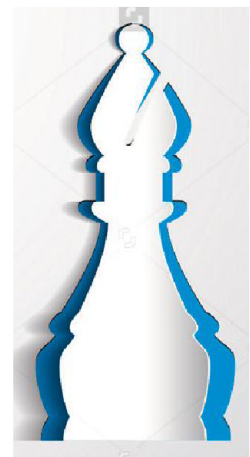
6. Kb3+ Kb1 7. Ba1 a2 8. Kc3 Kxa1 9. Kc2 checkmate.



YOU can DO IT!



A king and a bishop cannot deliver mate by themselves. But the bishop can be a very useful helper in delivering mate. Consider the bishop for a moment as an attacking piece. It can deliver a check all by itself. By moving, it can bring about a discovered check. And by moving another piece out of the way, the bishop itself can deliver the discovered check. Our quiz this month provides examples of checkmates that show off these powers of the bishop. Settle down in a quiet place, put on your thinking caps, and give these a try. I know that You Can Do It!



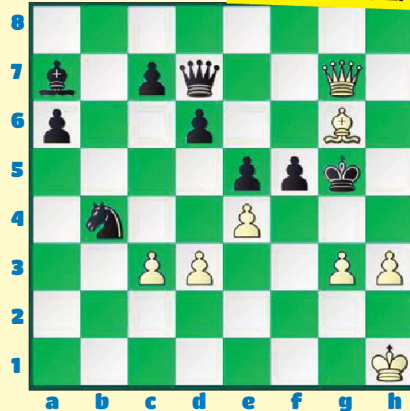
Quiz #1

WHITE TO PLAY



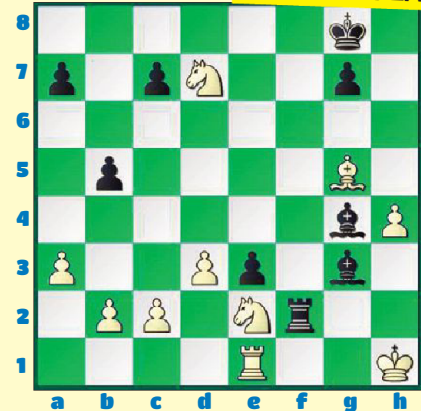
Quiz #3

WHITE TO PLAY



Quiz #5

BLACK TO PLAY



Quiz #2

WHITE TO PLAY



Quiz #4

WHITE TO PLAY



Quiz #6

WHITE TO PLAY

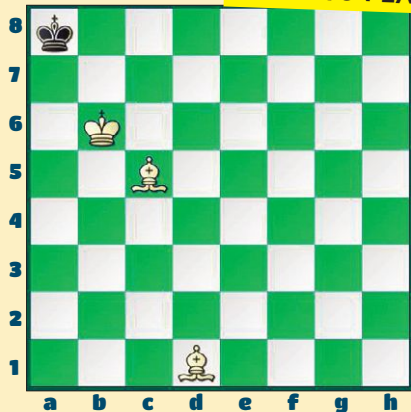


Solutions on page 17 ➡

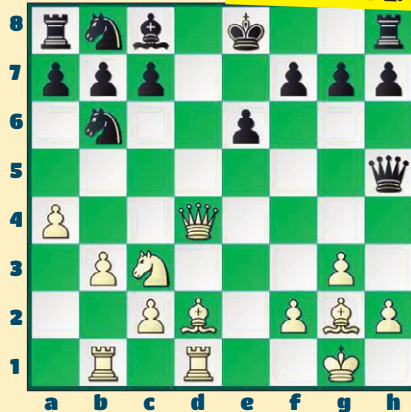


Power of the 1st Estate

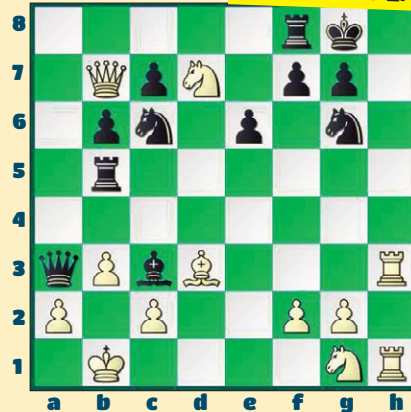
1. WHITE TO PLAY



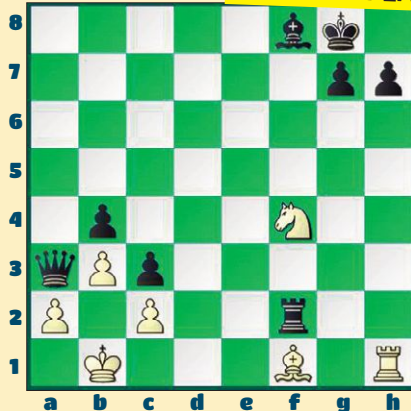
3. WHITE TO PLAY



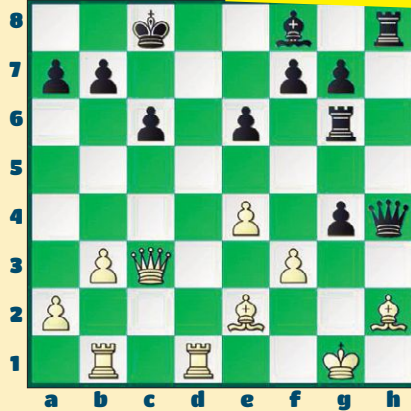
5. WHITE TO PLAY



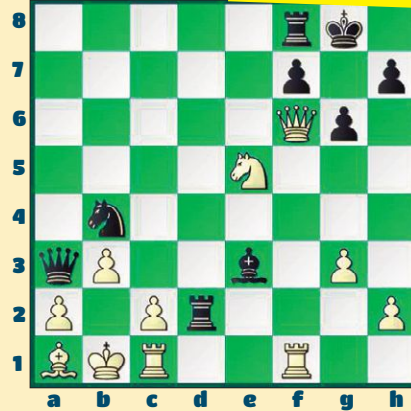
2. WHITE TO PLAY



4. WHITE TO PLAY



6. WHITE TO PLAY



Solutions on page 17

THE CHESS DETECTIVE®



RAKING BISHOPS

by NM Todd Bardwick

Most chess players understand the power of the bishop pair.

When the light- and dark-squared bishops are on diagonals next to each other, they can be quite a powerful attacking force, and are also called Harrwitz bishops, named for German chess master Daniel Harrwitz (1821-1884). (Some sources give "Horrwitz" or "Horwitz." ~editor)

A common position for Harrwitz bishops occur in the Danish Gambit after 1. e4 e5 2. d4 exd4 3. c3 dxc3 4. Bc4 cxb2 5. Bxb2.

Raking bishops work together similar to that of a rook-rook roller when checkmating a lone king.

Here is a position from Reykjavik, Iceland, in 1987 between grandmasters Nigel Short and Jan Timman that shows the power of raking bishops.



Todd Bardwick is the author of *Chess Strategy Workbook: A Blueprint for Developing the Best Plan*. He can be reached at www.ColoradoMasterChess.com

33. Rxe4! dxe4 34. d5 Nd8 35. Qe5 (The diagonal powers of the queen act as a third bishop!) **35. ... Rf5 36. dxe6 Qd2** (36. ... Rxe5 loses to 36. exd7+ followed by 37. dxe8=Q) **37. Qxe4 Rd5 38. e7+ Kc7 39. f5+, Black resigned.**

Probably the most famous game of all time that demonstrates the power of raking bishops is Akiba Rubinstein's masterpiece while playing black in a game against George Rotlewi in Lodz, Poland, 1907.



19. ... Bb6+ 20. Kh1 Ng4! 21. Be4 Qh4 22. g3 Rxc3!! (Sacrificing the queen while reducing the protection of the

bishop on e4) **23. gxh4 Rd2!!** (A second sacrifice, chasing the queen away from protecting the e4-bishop.) **24. Qxd2 Bxe4+ 25. Qg2 Rh3!, White resigned.** (26. ... Rxb2 mate cannot be stopped).

Black's awesome bishops created the opportunities for the successful piece sacrifices.



Raking bishops are way cool!

US Chess Junior Grand Prix

While we are doing some “number crunching” and double-checking of the 2016 final standings, we have recapped the announced prizes below. The April issue will have final results.

What do I get with *chess.com*?
Unlimited chess games and free tournaments;
Challenge your friends and meet new players;
Improve your rating with training videos.

The top prize for 2016 will be a *Chess.com* one-year Diamond membership valued at \$100, a *Chess.com* gear/merchandise package valued at \$100, a US Chess plaque, free entry into the 2017 U.S. Open, and \$1,000 of expense money from US Chess to offset the trip. For the top five players on the overall list and to each state winner, *Chess.com* will also award a choice of a one-year *ChessKid.com* gold membership (valued at \$50/annually) or a one-year *Chess.com* Gold membership (valued at \$40/annually). US Chess gratefully acknowledges the participation of *Chess.com*!



ChessKid

.com

PLAY



LEARN



#1 Chess Site for Kids. 200,000+ Kids, Parents, & Coaches!
100% Safe and Kid-Friendly! Signup Today - it's FREE!



The Power of the First Estate

What Does a Bishop Do?

by Pete Tamburro

The poor bishop is the only piece (a pawn is not a piece) that is only allowed on half of the squares on the board. The queen and rooks all have big and powerful moves. Even the pawn gets to promote to a piece, usually a queen. The knight gets to jump all over the place. In France, the bishop is called the Fool (after the court jesters of old). When I used to hand out chess piece key chains to my students, I always had lots of bishops left over. Shouldn't the bishop get more respect?

After you get better at chess, you pick up some good news about bishops. Two bishops are better than two knights on an open board. A lot of mating attacks start with Bxf7+ if the king isn't castled or Bxh7+ if the king is castled on the kingside. A fianchettoed bishop is cool in the Sicilian Dragon or Gruenfeld for Black and in the Catalan or English openings for White.

However, you still keep hearing about little difficulties. For example, if your passed a- or h-pawn wants to queen and you have the wrong "color" bishop that

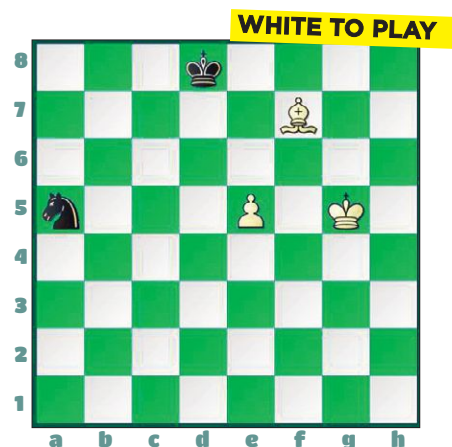
doesn't match the queening square, even being a bishop up doesn't help. Bishops of opposite colors cause problems, too.

We're going to talk about all the good things bishops can do. Hopefully, by the end of this article, you will realize that the bishop is a really important piece that helps to win lots of games in the opening, the middle game and endgame. We even have a little treat at the end where two chess problem composers show you things you can do with bishops that you didn't know could be done!

The Bishop in the Endgame

The diagram at the top of the next column is the simplest example of how a bishop can completely corner a knight. After **1. Bd5**, White wins easily because the knight can't move without being taken, and the king will escort the pawn in to promote.

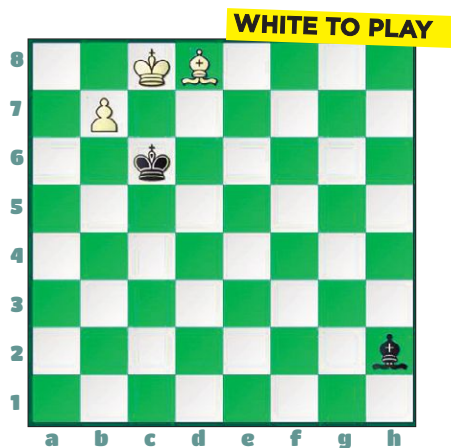
While handling a knight may be easy on an open board, going up against an opposing bishop needs more of an effort. In the diagram at the top of the next page, there is



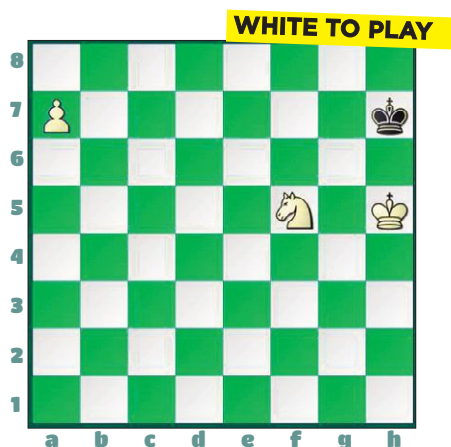
only one way to this game—to promote the pawn. Black's bishop will give himself up if the pawn queens, and White can't oppose the bishop on c7. Gee, if White could only get his bishop to b8! Even then it wouldn't be over! Play out the solution below—several times, because you may very well run into this some day.

(See diagram top of next page)

1. Bh4 Kb6 2. Bf2+ Ka6 3. Bc5 Bg3 4. Be7 Kb6 5. Bd8+ Kc6 6. Bh4 Bd6 7. Bf2 Bh2 8. Ba7 Bd6 9. Bb8 Bc5 10. Bh2 Ba7 11. Bg1 and finally wins!



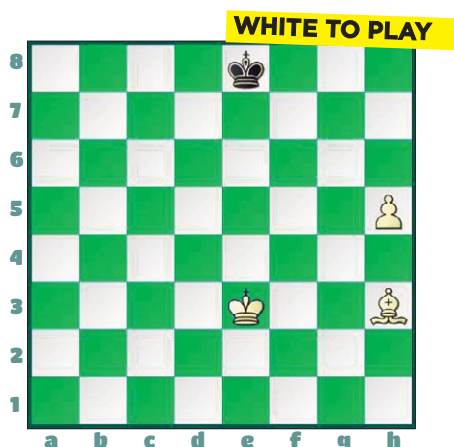
Speaking of promoting, can you think of any time or any reason you would promote to a bishop? Take a look:



1. a8=B! Think about it. Promoting to a queen or rook or knight would lead to stalemate in the first two instances and an inability to force mate with two knights.

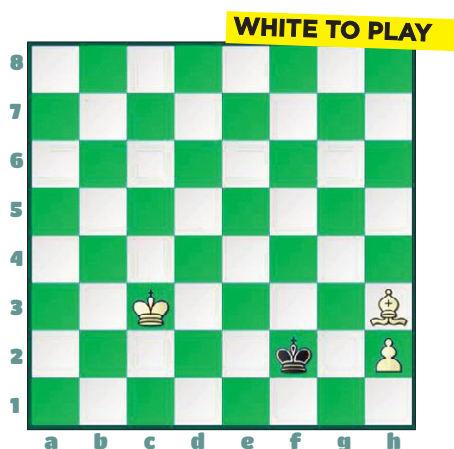
Remember when we mentioned the wrong colored bishop situation above? Well, you might want to take another look as sometimes, if you know what to

do with a bishop, you can win!



In a study by Alexey Troitsky, in 1896, the composer showed that lining up the bishop and h-pawn in a certain way can actually win:
1. Be6 Ke7 (1. ... Kf8 2. h6 Ke7 3. h7) **2. h6 Kf6 3. Bf5 Kf7 4. Bh7 Kf6 5. Kf4 Kf7 6. Kf5 Kf8 7. Kf6**

This next one along the same idea is really simple and really tough. Klaus Darga used to enjoy challenging grandmasters with this problem, and, more often than not, the grandmasters couldn't figure it out. Can you?

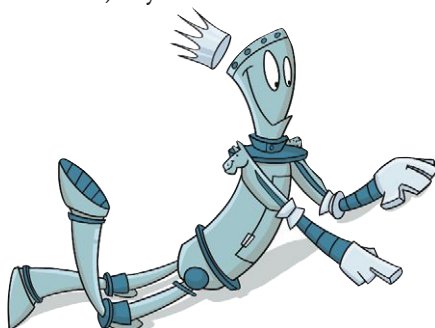
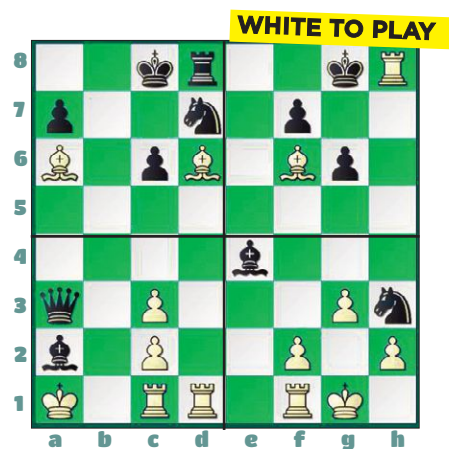


If you immediately tried **1. Bg2 Kxg2 2. h4** and said, "Well, that was easy," you missed **1. ... Ke3!** The black king then gets to h8, and you have the wrong color bishop to try and force him out. It's a draw even with the white king moving up. You were getting warmer if you tried **1. Be6 Ke3 2. h4 Ke4** (2. ... Kf4 3. Kd4) **3. h5 Ke5 4. h6 Kf6 5. Bf5 Kf7 6. Bh7 Kf6 7. Kd4 Kg5**, but still no win.

The only winning line is: **1. Bd7! Ke3 2. h4 Ke4 3. h5 Ke5** (3. ... Kf4 4. h6) **4. h6** (4. Be8 Kf6 5. h6 just transposes into the same line.) **4. ... Kf6 5. Be8 Ke7 6. h7** and queens.

The Bishop in the Middlegame

The diagram below looks a little weird. Maybe it's the four kings! Use your imagination and divide the board into four quarters. Each quarter shows you different ways the bishop gets involved in mating the opposing king.



What is the "First Estate"? Before the French Revolution, France was divided into three societies. The clergy made up the first of these divisions, and bishops are part of the clergy.

What's important to notice is that the bishop works well with a different piece in each of the four cases.

In the upper left, the two bishops work well together.

In the upper right, because of the absence of his opponent's bishop from g7, the bishop aids the rook coming down the h-file.

In the lower right, the absence of the Bg2 allows Black to mate, so it's good to be alert when an opportunity arises to get rid of a fianchettoed bishop.

The lower left shows the queen and bishop working well as Bb3+ and Qa2+ will end it quickly.

Those are pretty easy to remember and have been shown many times in the pages of *Chess Life Kids*. Let's take a look at some positions that make you see even more possibilities to improve your play.

Below, the bishop is restricting the king, but how do you take advantage of this? White notices, because he looks at all checks and captures, that if he plays **1. Qxh5**, after **1. ... gxh5 2. Rg1+ Kh8 3. Bg7+ Kg8 4. Nf6** is mate. But, what if Black doesn't cooperate? Can you see a better Black defense and how you might meet it as White?

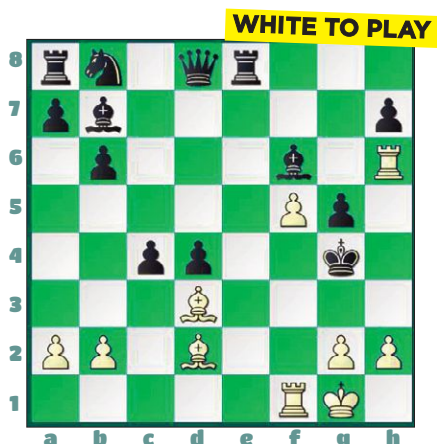


Here's how it's done:

1. ... Bxe4 2. Bxe4 gxh5 3. Rg1+ Kh8 4. Bg7+ Kg8 5. Bf6+ Kf8 6. Rg2 Re7 7. Rag1 Ke8 8. Bc6+

Notice how both bishops prevented the king from escaping. Did you see this line? If not, play it out in your mind until you can do the whole thing. It's a good way to improve your thinking!

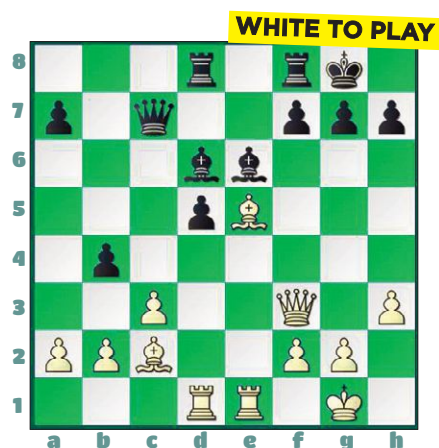
Here's another tricky position where the two bishops work together, but one has to give itself up to help mate a black king who has wandered too far from home:



White wants to check with h3, but if he does that first and then plays **2. Be1+**, Black will play **2. ... Rxe1** because Black still has his queen. White makes a great bishop move that allows mate in two different ways by simply getting in the way!

1. Be4 Bxe4 (1. ... Rxe4 2. h3+ Kg3 3. Rf3#) **2. h3+ Kg3 3. Be1#**

We saw one bishop give itself up. When two bishops give themselves up to destroy a castled position, people take notice!



A Koltanowski blindfold game ended this way:

1. Bxh7+ Kxh7 2. Qh5+ Kg8 3. Bxg7 Kxg7 4. Qg5+ Kh8 5. Rd4 Bh2+ 6. Kh1 Qf4 7. Rxf4 Bxf4 8. Qxf4 Rg8 9. Re5

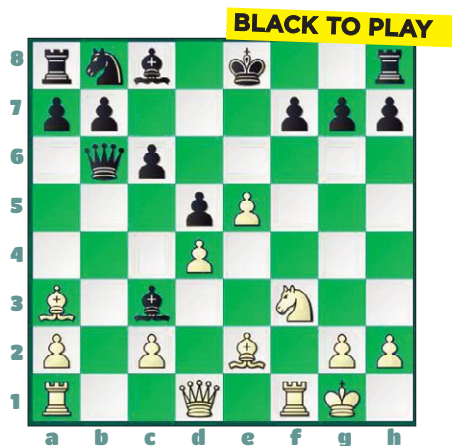
The two bishops did their job and exposed the king. Then, the two rooks did "rook lifts" to continue the mating attack. This idea goes back to Emanuel Lasker-Johann Hermann Bauer in 1889. Siegbert Tarrasch, as Black, did it to Aron Nimzowitsch in 1914. Maybe, you'll get a chance!

What's really neat is that a bishop can be the most important piece in the king's army—by simply being on a square on the right diagonal and not moving much or taking anything!

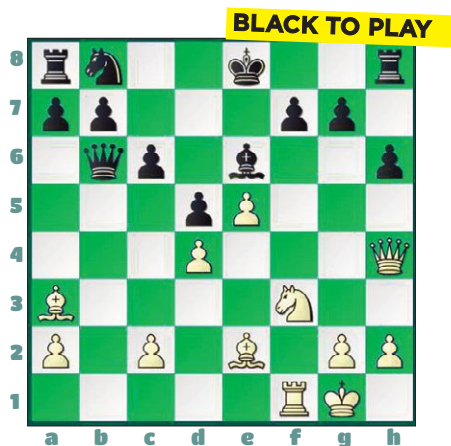
This time you're going to see the bishop dominating or ruling the dark squares. It may not be able to go to the light squares, but I'd bet Black wished he would!

Kohnlein-Eljaschoff, 1906

1. e4 e5 2. Nc3 Nf6 3. f4 d5 4. fxe5 Nxe4 5. Nf3 Bb4 6. Be2 c6 7. O-O Qb6+ 8. d4 Nxc3 9. bxc3 Bxc3 10. Ba3



That bishop on a3 is like a laser shooting all the way down to f8, and now Black can't castle.
10. ... Bxa1 11. Qxa1 h6 12. Qe1 Be6 13. Qh4



Now the queen gets into the act and threatens 14. Qe7 mate.
13. ... Qd8 14. Qg3 g5 15. Bd6 Kd7 16. Nd2 Kc8 17. Rb1 b6 18. Qa3 Kd7 19. c4 h5 20. c5 b5



The bishop at d6 is huge and now White figures maybe another bishop over there would be twice as much fun!
21. Rxb5!! cxb5 22. Bxb5+ Nc6



Official US Chess online rated!

No entry fees » No hotel costs » Free parking

20% off ICC membership

Bonus



www.chessclub.com/uschess



US CHESS
FEDERATION

WHITE TO PLAY



The second bishop has arrived and now does something bishops are often asked to do: give itself up to draw the king out where it can be attacked by more pieces.

23. Bxc6+ Kxc6 24. Qa4+ Kb7 25. Qb5+ Qb6 26. cxb6 axb6 27. Nb3 Rxa2 28. Bc5 Ra6 29. Na5+ Ka7 30. Qc6 Rb8 31. Qc7+ Ka8 32. Bd6

BLACK TO PLAY



The bishop on d6 just wrecked Black, and the final position is the final blow on the dark squares. Mate is next move. Not bad for a piece that can just go on half the squares! As promised, our hero bishop moved very little.

The next position is where a bishop moved just once to b2 and then never moved again.

Let's take a closer look. The bishop is a long way away from the black king, but it is indirectly

attacking the king.

The legendary Alekhine won this game because he thought to himself something like this: "If I just look at the board with only my e5-knight and b2-bishop being on it with Black just having his king and queen, I could play 1. Nc6+ and win the queen. So, is there a way I can open the line to the king?" How would you open the line to the king?

WHITE TO PLAY



Here's how he opened the line:
1. c5 bxc5 2. dxc5 Bxc5+ 3. Rxc5 Rxc5 4. g5 Nd7 5. Nc6+

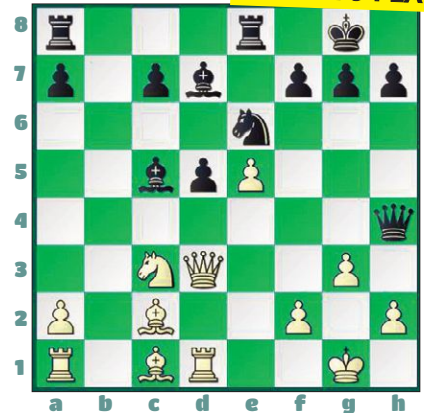
The bishop, just sitting there, now has a deadly discovered check that wins the queen. If you break a position down as Alekhine did, you can find moves like this.

We've had bishops that don't move too much and get the job done. We've had bishops that didn't move at all and got the job done. Now, we'll look at a bishop that moves backwards and gets the job done!

Black has an attacking position here (Axelson-Fridlitzius, Correspondence, 1898-99) and goes after White with a typical f2 sacrifice with the bishop.

(See diagram top of next column)

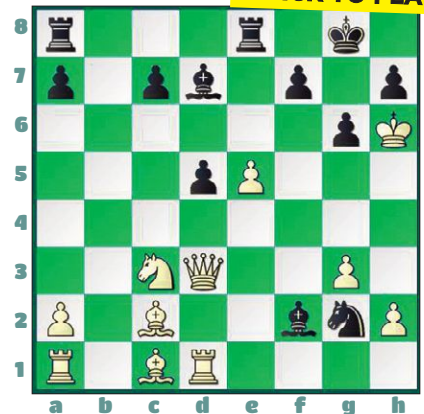
BLACK TO PLAY



1. ... Bxf2+ 2. Kg2 (Not liking the looks of 2. Kxf2 Qxh2+) **2. ... Qh3+ 3. Kxh3 Nf4+ 4. Kh4 Ng2+ 5. Kh5 g6+ 6. Kh6**

Talk about drawing the king out! Now the bishop shows its skill at attack by moving backwards!

BLACK TO PLAY



6. ... Bc5! (The first backward move.) **7. Qxg6+** (White also is victim to a backward move with 7. Qxd5 Bf8+ 8. Kg5 h6+ 9. Kf6 Bg7#) **7. ... fxcg6 8. Rxd5 Bf8+** (The second backward move—a retreat from f2 to c5 to f8 that will lead to mate.) **9. Kg5 Be6 10. Be4 Be7+ 11. Kh6 Rf8 12. a4 Rf2 13. Rd7 Bf8+** (a third backward move after which White resigned and now there is a mate with) **14. Kg5 Bxd7 15. Bc6 Be7+ 16. Kh6 Rf5 17. Bd5+ Kh8 18. g4 Bf8#**

The best final move. The bishop

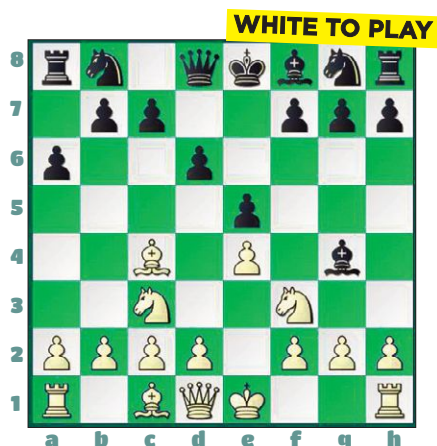
returns home to mate the enemy king.

So, in the middle game, you should always be aware of putting your bishop in a position where it can indirectly attack a greater piece, or where it can draw a king into a more dangerous position. Lastly, if you can take advantage of your opponent's weak dark (or light) squares, do it.

The Bishop in the Opening

Even beginners know that the bishop can be dangerous in the opening. When you first played chess, you probably ran into 1. e4 e5 2. Bc4 Bc5 3. Qh5 Nf6 4. Qxf7 mate. There's also a good chance you ran into this:

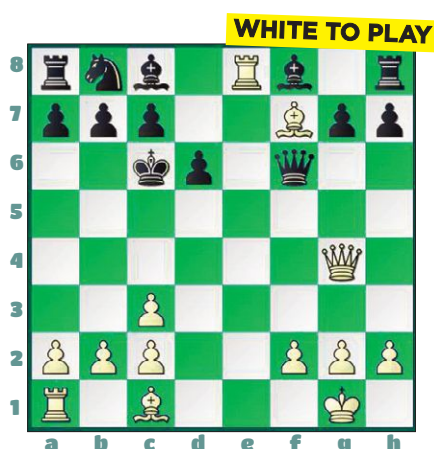
1. e4 e5 2. Nf3 d6 3. Bc4 Bg4 4. Nc3 a6



5. Nxe5 Bxd1 6. Bxf7+ Ke7 7. Nd5#

Those are pretty simple and well known. What is less well-known is an opening like this, called the Boden-Kieseritsky Gambit:

1. e4 e5 2. Nf3 Nf6 3. Bc4 Nxe4 4. Nc3 Nxc3 5. dxc3 d6 6. Nxe5 Qe7 7. Bxf7+ (Unlike most Bxf7+ moves, this bishop has more duties ahead) 7. ... Kd8 8. O-O Qxe5 9. Re1 Qf6 10. Re8+ Kd7 11. Qg4+ Kc6



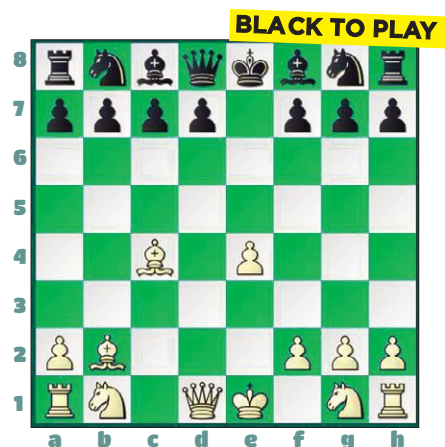
The bishop checked and then supported the rook's check at e8. Now the bishop has another job: lure the king more into the open and even get his brother bishop into the attack:

12. Bd5+ Kxd5 13. Qe4+ Kc5 14. Be3+ Kb5 15. a4+ Ka6 16. Qc4+ Ka5 17. b4#

There are all sorts of openings that highlight dangerous bishops.

In the Danish Gambit, this formation can look pretty threatening, but Black can defend. Still, it's a pretty sight!

1. e4 e5 2. d4 exd4 3. c3 dxc3 4. Bc4 cxb2 5. Bxb2



It works with counter-gambits as well. A master friend of mine playing against me decided to play a King's Gambit. I played a counter gambit. Then, three bishop moves in a row he didn't



Grandmaster Lessons for **18.75/hour**

Online Chess Camps

Openings, Discussions, Articles,
and Homework

Learn chess fundamentals and advanced
techniques to become a stronger player!

chessunleashed.com

chessunleashed@gmail.com

consider led to his resignation on move seven!

1. e4 e5 2. f4 d5 3. exd5 c6 4. Qe2 cxd5 5. Qxe5+ Be7 6. Qxg7

(He figured he would just retreat to g3 after Bf6, but he underestimated that bishop.)

BLACK TO PLAY



6. ... Bf6 7. Qg3 Bh4, White resigned.

Another popular bishop trick to embarrass a queen is often seen in the opening. Here's one of the more well known ones:

1. e4 e6 2. d4 d5 3. e5 c5 4. c3 Nc6 5. Bd3 Qb6 6. Nf3

BLACK TO PLAY



Should Black win the d4-pawn? Three attacking. Only two defending. The answer, however, is NO!

6. ... cxd4 7. cxd4 Nxd4 8. Nxd4 Qxd4 9. Bb5+ and the

queen is lost.

Annoying bishop checks come in other forms. Take this Queen's Gambit:

1. d4 d5 2. c4 e6 3. Nc3 Nf6 4. Bg5 Nbd7

If White thinks he can win a pawn, he is met with a surprise bishop check and loss of a piece:

WHITE TO PLAY

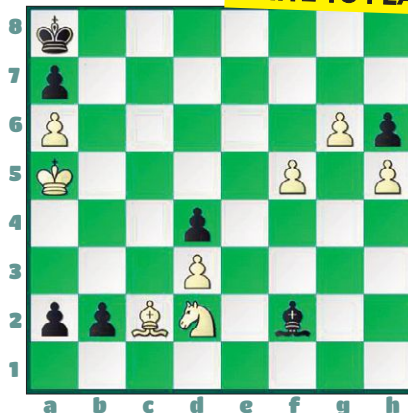


5. cxd5 exd5 6. Nxd5 Nxd5 7. Bxd8 Bb4+ 8. Qd2 Bxd2+ 9. Kxd2 Kxd8 and Black wins.

The Bishop in Composed Problems

Let's close with the art and fantasy of chess with two puzzles. The first was created by Vasily Smyslov, the former world champion. You're a chess genius if you can solve it. If you're like the rest of us, just watch the dance of the bishops (including an underpromotion to one) and enjoy it as it unfolds.

WHITE TO PLAY



1. Bb1!! a1=Q+ 2. Kb5 Bg3 3. g7 Bb8! 4. g8=B!! (4. g8=Q Qa5+ 5. Kxa5 Stalemate!) 4. ... Bf4 5. Bga2!! Bxd2 6. f6 Bf4 7. f7 Bd6 8. Kc6 Be7 9. Kc7 Qxa2 10. Bxa2 Bd6+ 11. Kc8 b1=Q 12. Bd5+ Qb7+ 13. Bxb7#

Our last position is perhaps the greatest triumph of the humble bishop. The bishop is facing a rook, two knights, a bishop and five pawns and wins single-handedly! A study by Dr. A. Kramer:

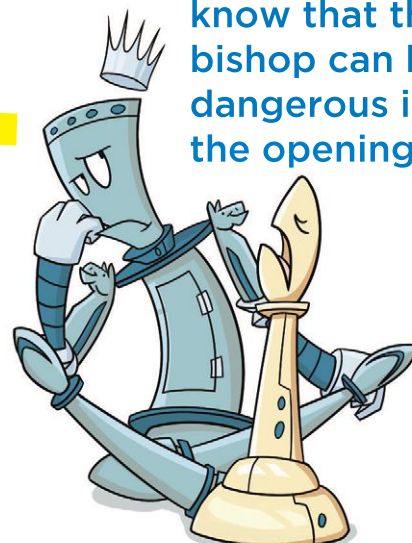
WHITE TO PLAY



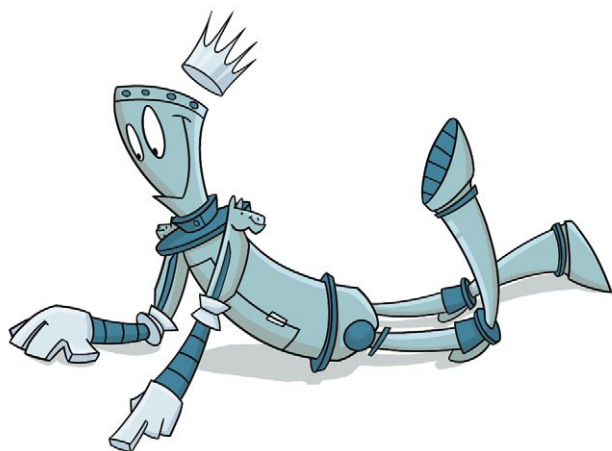
1. Bf8 Rg3 2. Bd6 Nf3 3. Ba3 and mate at b2 can't be stopped.

Let's hope you now have a better opinion of what a bishop can do, even on just half the board!

Even beginners know that the bishop can be dangerous in the opening.



Answers, We've got Answers.



You Can Do It! (from page 6)

Solution #1: White mates with a double check and mate. **1. Bb5#**

Kg1 Bh2#

Solution #6: **1. Bh6+ Kh8** (or Kh7) **2. Bf8#**

Solution #2: **1. Nc4**, another double check and mate. Note that Black cannot capture the Nc4 or the Bf4 because Black's king is in double check.

Solution #3: **1. Bf7#** The bishop move delivers a discovered check from the queen and blocks Black from defending with 1. ... Qxg7.

Solution #4: **1. Bf4#**

Solution #5: **1. ... Bf3+ 2.**

Move The Pieces (from page 7)

#1 – The fastest way to mate is **1. Bg4 Kb8 2. Bd6+ Ka8 3. Bf3#**.

#2 – **1. Bc4+ Kh8 2. Ng6#**

#3 – **1. Qd8+!! Kxd8 2. Bg5+ 3. Ke8 4. Rd8#**

#4 – **1. Qxc6+!! bxc6** The bishop on h2 and the rook on d1 team up to cut off the king's squares. **2. Ba6#!**

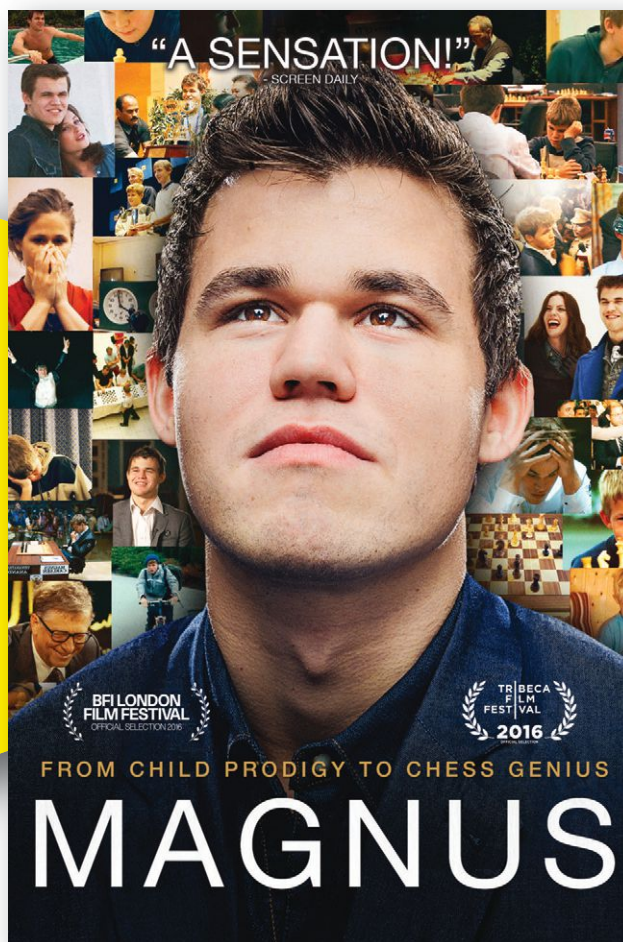
#5 – **1. Rh8+!!** Brings the d3-bishop into the game. **1. ... Nxh8 2. Bh7#**

#6 – **1. Qh8+!! Kxh8 2. Nxg6+!** (NOTE: 2. Nxf7+ loses because of Kg8 and 3. Nh6+ is met with 3. ... Bxh6.) **2. ... Kg8 3. Ne7#**

Can You Be World Champ Too?

MAGNUS is the stunning exploration into the mind of child prodigy and reigning World Chess Champion Magnus Carlsen. In 2004, at 13-years-old, Magnus became the third youngest chess grandmaster in history. This coming-of-age story unfolds as we follow the "Mozart of chess" as he battles his way through the ranks—guided along by personal sacrifices, special friendships and a caring, supportive family. An inspirational and eye-opening testament to the powers of the human mind, **MAGNUS** shines a spotlight on this frequently overlooked sport.

Available at USCFSales.com on DVD and Blu-ray beginning 2/28/2017. DVD SRP: \$24.95; BLU-RAY SRP: \$29.95



Tournament Life Announcements

FEBRUARY 15 THROUGH APRIL 14

Scholastic Members:

As a service to you, we are listing upcoming National US Chess rated events, and requested events of possible interest to you. You can always log in to www.uschess.org, and click on "Clubs & Tournaments." Then click on "Upcoming Tournaments" for a complete listing of upcoming rated events and details. As always, you can check out the TLA section of *Chess Life*.

Organizers and Tournament Directors:

If you would like your tournament listed here in *Chess Life Kids* for April 2017 (events to be held after April 14), the deadline for submitting your announcements is February 10th. The deadline for the June 2017 issue is April 10th. The processing fee is \$1.00 per line for the first eight lines, \$2.00 for every line thereafter. Send your announcements to Joan DuBois, tda@uschess.org. Display advertising is also available. Advertising rates are posted on the US Chess website, www.uschess.org, or you may email: tda@uschess.org for complete details.

ABBREVIATIONS & TERMS

All tournaments are non-smoking with no computers allowed unless otherwise advertised.

BLZ:	Blitz rated.
QC:	Quick Chess events.
\$\$Gtd:	Guaranteed prizes.
\$\$b/x:	Based-on prizes, x = number of entries needed to pay full prize fund. At least 50% of the advertised prize fund of \$501 or more must be awarded.
Bye:	Indicates which rounds players who find it inconvenient to play may take 1/2-point byes instead. For example, Bye 1-3 means 1/2-point byes are available in Rounds 1 through 3.
CC:	Chess club.
dx:	Time delay, x = number of seconds.
+xx:	Time increment, xx = number of seconds added after each move.
EF:	Entry fee.
Ent:	Where to mail entries.
FIDE:	Results submitted to FIDE for possible rating.
G/:	Game in. For instance, G/75 means each side has 75 minutes for the entire game.
GPP:	Grand Prix Points available.
HR:	Hotel rates. For example, 60-65-70-75 means \$60 single, \$65 twin, \$70/3 in room, \$75/4 in room.
JGP:	Junior Grand Prix.
Memb. req'd:	Membership required; cost follows. Usually refers to state affiliate.
Open:	A section open to all. Often has very strong players, but some eligible for lower sections can play for the learning experience.
Quad:	4-player round robin sections; similar strength players.
RBO:	Rated Beginner's Open.
Rds:	Rounds; scheduled game times follow. For example, 11-5, 9-3 means games begin 11 a.m. & 5 p.m. on the first day, 9 a.m. & 3 p.m. on the second day.
Reg:	Registration at site.
RR:	Round robin (preceded by number of rounds).
SD/:	Sudden-death time control (time for rest of game follows). For example, 30/90, SD/1 means each player must make 30 moves in 90 minutes, then complete the rest of the game in an hour.
SS:	Swiss-System pairings (preceded by number of rounds).
Unr:	Unrated.
W:	Site is accessible to wheelchairs.
WEB:	Tournaments that will use a player's online rating.

NATIONALS

US Chess Junior Grand Prix!

Feb. 17-19 or 18-19, Florida

2017 U.S. Amateur Team Championship - South

SSS, G/120 d5 (2-day Option Rd. 1 G/60 d5). Holiday Inn Orlando SW Celebration Area, 5711 W. Irlo Bronson Memorial Hwy, Kissimmee, FL 34746. 4-player teams (with one optional alternate). **Minutes away** from Disney, Universal, etc. **Temperature** mid-70's. **Two sections** (each paired separately & with their own prizes). Team average (4 highest ratings - January Supplement) must be under 2200 for Open section & under 1500 for U1500 section. Winning team in Open section qualifies for National playoff online. **EF:** Per player: \$49 by 2/12, \$59 later. **SPECIAL EF:** Team (one entry must be made for all players) \$180 by 2/12, \$210 later (any team changes \$10). Teams from outside Florida will receive \$25 off team entry fee. Scholastic teams receive \$10 off team entry fee. **PRIZES:** Top 1st-3rd place teams & Top Boards 1-4 in each section; Top teams: Open section: U2000 & U1800; U1500 section: Top U1300 & U1000. Also in Open section: Top Senior team (all 50 & above as of 2/17), Top College team (same school), Top High School team (same school). Also in U1500 section: Top Female team, Top Middle School team (same school, grades 6-8), Top Elementary School team (same school). **Schedule:** 3-day: 1st Rd. Fri. 7:30, 2-day 1st Rd. Sat. 10; Rds. 2-5 Sat. 1:30, 6:45, Sun. 9:30, 2:45. **Blitz Turn:** G/5 d0, Sunday at 8:00 p.m.; EF \$15 for those in main event, \$25 for all others. **HR:** \$75 until cut-off date. Reservations can be made online (link on website) or by calling 800-465-4359 (group code "CHE"). Free parking, Internet & refrigerator. \$15 resort fee has been waived. Full breakfast buffet \$6 (must email organizer for this special deal). **Ent:** Boca Raton Chess Club, 2385 Executive Ctr. Dr., Ste. 100, Boca Raton, FL 33431. **Online entry & add'l info:** www.bocachess.com, 561-479-0351.

US Chess Junior Grand Prix!

Feb. 17-19 or 18-19, Illinois

2017 U.S. Amateur Team Championship - North

Open: SSS, G/90+30/increment, Choice of 2-day or 3-day schedule, 2-day: rds. 1-2 G/60 d5, Hyatt Regency Schaumburg, 1800 E. Golf Rd., Schaumburg, IL 60173. 847-605-1234. \$89.00 chess rate single-double-triple-quad until 2/3, Free WiFi included with hotel booking! Please reserve early. Open to four-player teams with one optional alternate. Team average (4 highest ratings - January Rating Supplement) must be under 2200. **EF:** \$160, per team if received USPS or online by 6 PM on 2/1, \$180 if received USPS or online by 6 PM 2/10, \$200 online until 2/17 6 PM and at door. Individuals wishing to play, send \$50 and request to be put on a team by USPS or online by 2/14 6 PM, \$60 thereafter. Team changes on-site or after 2/17 6 PM are \$20. Check out official website www.chessweekend.com for more info and complete prize list. **Prizes:** Awards to top two teams. Winning team qualifies for national play-offs. Also awards to top teams with average rating U1900, U1600, U1300, and U1000, and for Top Juniors Team (high school and younger), Top College team, Top High School Team, Top Senior team (all 50 & over), Top Coach and Student team, Top Mixed Doubles team (must have 2 females), Best Costume and Best Team Name. Prizes to Top Score on each board. All prizes are Amazon gift cards. **Rounds:** 3-day: on-site registration/check-in Fri. 5:30-6:30 PM, rds.: Fri. 7 PM, Sat. 10 AM & 4 PM, Sun. 10 AM & 3:30 PM. 2-day: on-site registration/check-in Sat. from 8:00-9:30 AM, rds. 10 AM & 1 PM then merge with 3-day. **Midwest Blitz Championship** on Saturday night, \$25 by 2/14 USPS or online, \$30 on-site. First round 8 PM, two games with each opponent, five rounds. **All:** Register online at www.onlineregistration.cc. Checks made payable to and sent to: ChessWeekend, 21694 Doud Ct., Frankfort, IL 60423. Please include Team name and roster (including US Chess ID #s), captain's email and phone number, and desired schedule. **Info:** www.chessweekend.com, for questions, email glenn@chessweekend.com, no phone calls please. Sets & Boards provided, please bring Clocks.

US Chess Junior Grand Prix!

Feb. 18-20, New Jersey

World Amateur Team & U.S. Team East

6SS, 40/2, SD/1. Parsippany Hilton, 1 Hilton Ct., Parsippany, NJ 07054. **Chess Rate valid until 1/17. Reserve early** 973-267-7373 or 1-800-HILTONS. Morris/Essex train to Morris Plains 1.5 miles. Open to 4-player teams with one optional alternate. Team average (4 highest ratings—2017 January Rating list) must be under 2200. **EF:** \$170 postmarked by 2/5/17. ALL-\$210 after or at door.—all teams, any changes at site \$25 charge. Check out official website www.njscf.org. **Prizes:** 1-5th Place teams, plaque and 4 **digital clocks**; Top Team (**Denis Barry Award**) U2100, 2000, 1900, 1800, 1700, 1600, 1500, 1400, **1300**, 1200, 1000 each plaque and 4 **Digital Clocks**; Top college team (same school) 4 **Digital Clocks & plaque**; Top HS team (grades 9-12 same school), Top Middle School (grades 5-9 same school), Top Elementary School (grades K-6 same school), Top 2 Scholastic Teams (mixed schools okay) (**Collins Award**), Mixed Doubles (2 males, 2 females-no alternates), Seniors (all players over age 50), Military, each plaque & 4 **Digital Clocks** to top team; Company Team (same employer), Family (4 family members), State teams—CT, DE, MD, MA, NJ, NY (**Benjamin Award**), PA, VA, NC, RI each plaque top team; Special Plaque: **Top Future team**, (all players under age 10), **Top Military College**, **Top Parent/Child** (2 pairs, one parent, one child), **Best Player 1-4 and top alternate**, All 6-0 scores each Digital clock. Biggest Individual upset each round Engraved Cross pen; Entry fee refunded to team with Best "Chess related" name, Sunday night—Best "Chess Related costumes or gimmick"—1st-gourmet dinner for four, 2nd—Gourmet dinner for 4. **Reg. 9-12. Sat 2/18. Rds. 1-7:30, 11-6, 9-3:30. Surprises and special give-aways each round.** Sunday night—Bughouse \$20 per team. Cash prizes. **Classical Chess-Best game awards to Vienna, Queen and King Gambits, Ruy Lopez, and Petroff and Durkin Attack! FREE LECTURES LOBBY DAILY!!** TITLED PLAYER IN LOBBY to VIEW YOUR GAMES DAILY!!! **HR:** Parsippany Hilton **NEWLY RENOVATED!** NEW LIGHTS! HEATING AND AIR CONDITIONING! Chess rates expire 1/17/2017. Rates \$119 (single double) \$121 (Triple, Quad) 2nd hotel attached to Hilton \$126 per night (single-double) \$128 (triple, Quad)-Hampton Inn—includes breakfast each day. For help forming teams and more information contact: noreen@deanofchess.com. Chks payable to **NJSCEF**, mail by 2/05/17 to: **E. Steven Doyle, 17 Stonehenge Rd., Morristown, NJ 07960**. (Include Team name, Captain, players full names, USCF Expiration, ID numbers and ratings in board order). No team can include more than two GM's. Include SASE for confirmation if wanted, No registered or certified mail accepted. W.

A Heritage Event!

US Chess Junior Grand Prix!

Feb. 18-20 or 19-20 (Blitz Feb 20), California, Northern 2017 (33rd) U.S. Amateur Team Championship West

Santa Clara Convention Center, 5001 Great America Pkwy. Free Parking! **Teams:** Four-player teams plus optional alternate, average rating of four highest must be under 2200, difference between ratings of board 3 & 4 must be less than 1000. January 2017 Supplement, CCA min., & TD discretion used to place players accurately. **Main Event Prizes:** Special 4 commemorative clocks and team trophy to the team for Top 3 overall teams, top team u2000, u1800, u1600, u1400, and u1200. Trophies to all players of the top "Female" team, top "College" team (students/alumni of a college), top "High School" team (students/alumni of a 7-12 school), top "Elementary School" team (students/alumni of a K-6 school), top "Club" team, and top "Family" team (related by blood or marriage within 3 generations). Clocks to top scorer on each board (1-4), trophy to top reserve as well as second and third scorers on each board (1-4). Gift certificates for best 3 team names. **Main Event EF:** \$249/team or \$64/player by 2/10. 2/11-17: \$10 extra per player or \$40 per team. Onsite: \$20 extra per player, \$80 extra per team. A change fee equal to the late fee will apply for any changes, other than bye requests within 3 days of the tournament. **3-day Sched:** Onsite Registration @ Sat 9-10a, Round Times at Sat & Sun 11a-5p, Mon 10a 3:30p. Time Control: 40/120 SD/30 d5. **2-day Sched:** Onsite Registration: Sun 8-8:30a, Round Times: Sun 9:30a 12p 2:20p 5p, Mon 10a 3:30p. Time Control: G/61 d5 in Rounds 1-3, 40/120 SD/30 d5 in Rounds 4-6 (merge in Round 4 with 3-day schedule). **Info/flyer:** <http://www.BayAreaChess.com/events/17/usatw/>. **Scholastic Event Prizes:** Trophies to each player in Top 3 teams overall, Top u1200 team, u900 team, u600 team, u300 team. Trophies to top "Girls" team, top "School" team, and top "Club" team. Trophies to top two scorers on each board (1-4). Commemorative medals to all others. **Scholastic Event EF:** \$159/team or \$43/player by 2/10. 2/11-17: \$10 extra per player or \$40 per team. Onsite: \$20 extra per player or \$80 extra per team. **Discount:** \$10/player (\$40/team) if registering for 2-day schedule and scholastic event. **Sched:** Onsite Registration: Sat 8:30-9a. Games at Sat 10a 11:30a 1p 2:30p 4:15p. **Info/flyer:** <http://www.BayAreaChess.com/events/17/usatw/>. **Blitz Event:** Registration Mon 7-8pm, Rounds 8:30-10:30pm. **EF:** \$14, \$16 onsite. 75% of entry fees returned as prizes. **Contact:** Organized by Judith Sztary. Directed by Tom Langland, John McCumiskey, Jordan Langland, and others. Sponsored by Bay Area Chess. Online entry at <http://www.BayAreaChess.com/my/usatw/> or mail to Bay Area Chess, 2050 Concourse Drive #42, San Jose, CA 95131. For questions or help in forming teams email ask@BayAreaChess.com. W.

US Chess Junior Grand Prix!

April 7-9, Illinois

2017 All-Girls National Championships presented by the Kasparov Chess Foundation in association with the Renaissance Knights Chess Foundation & US Chess

Any player that achieves a perfect 6-0 score or wins the first place trophy, in each age category, qualifies to represent the USA at the 2017 World Cadets (U/8, U/10, U/12) and World Youth (U/14,U/16, U/18) Championships. 6SS, G/90 d5. Hyatt Regency McCormick Place, 2233 S. Martin Luther King Dr., Chicago, IL 60616, (free Wi-Fi). **6 Sections:** Under 8, Under 12, Under 14, Under 16 & Under 18. **Age as of 1/1/2017.** **EF:** \$55 mail/online by 3/6 \$75 by 3/27, \$95 after. Do not mail after 3/31. \$20 fee for roster or section changes after 3/31. \$10 fee for refunds. **Opening Ceremony:** 2:30pm, Friday. **Rounds:** Rd 1 – 3:00pm Fri; Rounds 2-4 – Sat 10am, 2:30pm, 6:30pm; Rounds 5-6 – Sun 9am & pm. **Awards Ceremony:** Sun. 5pm. **Trophies** top 15 individual players and top 4 teams in the Under 8, 10, 12 & 14 Sections; top 8 individual players and top 3 teams in the Under 16 & 18 Sections. (top 3 players added for team scores). **Bye:** One 1/2 point bye available for any round, except round 6, if requested at least 2 hours before the start of the round 1. **Side Events:** **Bughouse Tournament** – Fri. 11:00 am, EF \$30/team. **Blitz Tournament** – Fri. 7pm, G/5 d0, EF \$20 by 3/27, \$25 after or on site. **HR:** single - quad \$153. Reservations: (888) 421-1442. Reserve early rate may increase. **Entries:** online/info at: www.rnknight.org/allgirls or mail to RKnights, Attn: All-Girls, PO Box 1074, Northbrook, IL 60065, include name, section, rating, USCF ID#, date of birth, grade, school name city & state.

US Chess Junior Grand Prix!

May 12-14, Tennessee

SUPERNATIONALS VI

2017 Elementary, Junior High and High School National Championships in one great event! Gaylord Opryland Resort and Convention Center, 2800 Opryland Dr., Nashville, TN 37214. 615.889.1000 or online at <https://aws.passkey.com/event/15611400/owner/7600/landing>. **HR:** \$161 single-quad. All under one roof! **25 Sections** (Select only one): **High School:** 7-SS, G/120 d5. K-12 Championship; K-12 U1900; K-12 U1600; K-12 U1200; K-12 U800; K-12 Unrated. **Junior High:** 7-SS, G/120 d5. K-9 Championship; K-8 Championship; K-9 U1250; K-8 U1000; K-8 U750; K-9 Unrated. **Elementary:** 7-SS, G/90 d5. K-6 Championship; K-5 Championship; K-6 U1400; K-6 U1000; K-5 U1200; K-5 U900; K-6 Unrated; K-3 Championship; K-3 U1000; K-3 U700; K-3 Unrated; K-1 Championship; K-1 U500. **EF:** \$50 postmarked, faxed or online by 4/24/2017, \$70 postmarked, faxed or online by 5/5/2017, \$85 after 5/5/2017, \$90 on site. DO NOT mail entries after May 5 as they may not be received in time. \$5 extra for all phone registrations. \$20 change fee for roster or section changes after May 5. US Chess membership is required (may be paid with entry). **AWARDS:** Trophies awarded in accordance with Scholastic Regulations and based on number of participants. Team score = total of top four (minimum two) finishers from each section. **May 2017 Rating Supplement** will be used. **BYES:** One 1/2-pt. bye available in rounds 1-6 if requested prior to 11 AM, Fri (5/12). **On site entries after 11 AM, Fri 5/12 will receive a 1/2-point bye for the first round and begin play in round 2. SCHEDULE for K-12, K-9 and K-8 Sections:** Rounds 1-2: Friday (5/12) 1:00 PM & 7:00 PM, Rounds 3-5: Saturday (5/13) 9:00 AM, 2:00 PM, & 7:00 PM, Sunday (5/14) Rounds 6-7 9:00 AM, & 2:00 PM. **SCHEDULE for K-6, K-5 and K-3 Sections:** Rounds 1-2: Friday (5/12) 1:00 PM & 6:00 PM, Rounds 3-5: Saturday (5/13) 10:00 AM, 2:00 PM, & 6:00 PM, Sunday (5/14) Rounds 6-7 10:00 AM, & 2:00 PM. **SCHEDULE for K-1 Sections:** Rounds 1-2: Friday (5/12) 1:30 PM & 5:30 PM, Rounds 3-5: Saturday (5/13) 9:30 AM, 1:30 PM, & 5:30 PM, Sunday (5/14) Rounds 6-7 9:30 AM, & 1:30 PM. **AWARDS CEREMONIES, Sunday (5/14):** K-12, K-9 and K-8 Sections at approximately 7 PM; K-6, K-5 and K-3 Sections at approximately 6 PM; K-1 Sections at approximately 5:30 PM. **SIDE EVENTS:** Bughouse Championships (Three Sections: K-12, K-9 and K-6): Thursday (5/11) 11:00 AM, Register ON SITE ONLY by 10:00 AM. EF: \$25

per team of 2. **Blitz Championships (Four Sections: K-12, K-9, K-6 and K-3):** Thursday (5/11) 5:00 PM. EF \$15 posted/matched, faxed or online by 5/5, \$20 after 5/5 or on site. On-site registration ends at 4 PM. **Many GM simul, workshops and lectures planned!** Please refer to the SuperNationals VI website: www.uschess.org/tournaments/2017/snvi (coming soon) to register on-line, see up-to-the-minute registrations, for more information, updated details, corrections, any added events and other activities. Advance entries must include player's name/information and all fees to be accepted. **Roster changes are considered new entries and will be charged according to date received.** List name, address, phone, section, grade, school (even if no team), email, birthdate, US Chess ID number (enclose US Chess dues if necessary). Players must be eligible to play in accordance with US Chess Scholastic Regulations. Entries may be faxed to: 931.787.1238. Mail Entries To: US Chess Federation, ATTN: SuperNationals VI, P.O. Box 3967, Crossville TN 38557. **Please note that US Chess Scholastic Regulations Rule 12.4** requires players who enter an "Under" or "Unrated" section to disclose at the time of registration whether they have one or more ratings in another over-the-board rating system(s). US Chess may use this rating information to determine section and prize eligibility in accordance with US Chess Rules 28D and 28E.

GRAND PRIX

US Chess Junior Grand Prix!

Feb. 11-12, Texas

US Chess Grand Prix Points:20 (Enhanced)

2017 DCC FIDE Open II underwritten by Ruifeng/Xiong

SSS, G/90 inc/30. Dallas Chess Club, 200 S. Cottonwood Dr. #C, Richardson, TX 75080. Two sections: Open and Reserve. **Open:** \$5875G. FIDE and US Chess rated but uses FIDE rules. Use US Chess ratings and rules for pairings and for awarding prizes. Default late forfeiture time is one hour. TD may extend this time at TD's discretion. Note that Foreign players must disclose their FIDE ID number before 1st round in order to play. Note that USA Players with no FIDE ID must disclose their email address. \$5 \$500-\$250-\$125. EF: 2400+ \$125, 2000-2399 \$90, 1600 -1999 \$99, U1600 \$125, Senior/Birthday during tournament/Additional Family Member \$55. For DFW area players, Dallas Chess Club membership required or pay \$20 non member fee. Small Minimum prize to the First three GM/IM's who apply. GM/IM must play all rounds to get minimum prize (entry fee may be deducted from prize). **Reserve:** Open to players rated below 2000 USCF. This section is not Fide Rated but is US Chess rated and uses US Chess rules. EF: \$40. The Reserve give back 10% in prizes and if at least 8 paid entries and if there is a clear winner, then that winner receives free entry to next DCC Fide Open. In the reserve section, Tournament reserves the right to use Fide rules on electronic devices and on starting White's clock at start of a round and to use FIDE pairing rules. Both: Reg.: Saturday from 9:45-10:15 am. Rds.: Sat 10:45 am-3:10pm-7:16pm, Sun 9:45 am-2:10pm. One half point Bye allowed if requested before end of round 2 and before getting full point bye. Withdrawals and zero point last round byes are not eligible for prizes. Note that house players (if required) must pay \$5 per round and be US Chess members. ENT: Make/mail Checks payable to Dallas Chess Club, C/O Barbara Swafford, 2709 Longhorn Trail, Crowley, TX 76036-4719. Info: 214-632-9000. FIDE.

A State Championship Event!

Mar. 10, Pennsylvania

US Chess Grand Prix Points:6

2017 PA Quick Chess Championship (QC)

6SS, G/8 d3. Lancaster Host Resort and Conference Center, 2300 Lincoln Hwy East (Rt 30), Lancaster, PA 17602. **3 sections, EF rec'd by 2/25: **Open:** \$12. **U1500:** \$11. **U1100:** \$10. \$5 (750G): **Open:** 175-100-50, U1800 \$45, U1600 \$40. **U1500:** 125-75-50, U1300 \$40, U1200 \$30, Unr 2:50. **U1100:** Trophies: 1-12, U800, U600, U400, 1-2 Unr. **Alf:** EF: \$20 after 2/25, PSCF \$5 OSA. **Reg:** 5:30-6:15pm. **Rd 1:** 7pm. Feb 2017 Reg rating used. **Bye:** limit 1, ask by rd. 2. HR: Mention "chess tourney": 800-233-0121 \$82-\$82-\$87-\$92. **Ent:** PSCF, c/o Tom Martinak, 25 Freeport St., Pittsburgh, PA 15223-2245. **Info:** martinak_tom_m@hotmail.com, 412-908-0286, pscfchess.org/pascholasticchamp/.**

US Chess Junior Grand Prix!

A State Championship Event!

Mar. 11-12, Pennsylvania

US Chess Grand Prix Points:10

2017 Ira Lee Riddle Memorial PA State Championship & PA Collegiate Championship

SSS, G/90 d5. Lancaster Host Resort and Conference Center, 2300 Lincoln Hwy East (Rt 30), Lancaster, PA 17602. **3 sections: \$5 (1875G): **Open:** 350-150, U2200 \$125, U2000 \$100. **U1800:** 200-150, U1600 \$125, U1500 \$100. **U1400:** 200-150, U1200 \$90, U1000 \$75, Unr \$60. **Alf:** College Tr: 1-2 in each section, 1-2 team (top 4 over all sections). **EF:** \$40 rec'd by 2/25, \$50 after. PSCF \$5 OSA. **Reg:** 8:45-9:30 am. **Rds.:** 10:2-5:30, 9-1. Feb 2017 ratings used. **Bye:** limit 1, ask by rd. 2. HR: Mention "chess tourney": 800-233-0121 \$82-\$82-\$87-\$92. **Ent:** PSCF, c/o Tom Martinak, 25 Freeport St., Pittsburgh, PA 15223-2245. **Info:** 412-908-0286, martinak_tom_m@hotmail.com, pscfchess.org/pascholasticchamp/.**

US Chess Junior Grand Prix!

Mar. 11-12, Texas

US Chess Grand Prix Points:20 (Enhanced)

2017 DCC FIDE Open III

SSS, G/90 inc/30. Dallas Chess Club, 200 S. Cottonwood Dr. #C, Richardson, TX 75080. Two sections: Open and Reserve. **Open:** \$5875G. FIDE and US Chess rated but uses FIDE rules. Use US Chess ratings and rules for pairings and for awarding prizes. Default late forfeiture time is one hour. TD may extend this time at TD's discretion. Note that Foreign players must disclose their FIDE ID number before 1st round in order to play. Note that USA Players with no FIDE ID must disclose their email address. \$5 \$500-\$250-\$125. EF: 2400+ \$125, 2000-2399 \$90, 1600 -1999 \$99, U1600 \$125, Senior/Birthday during tournament/Additional Family Member \$55. For DFW area players, Dallas Chess Club membership required or pay \$20 non member fee. Small Minimum prize to the First three GM/IM's who apply. GM/IM must play all rounds to get minimum prize (entry fee may be deducted from prize). **Reserve:** Open to players rated below 2000 USCF. This section is not Fide Rated but is US Chess rated and uses US Chess rules. EF: \$40. The Reserve give back 10% in prizes and if at least 8 paid entries and if there is a clear winner, then that winner receives free entry to next DCC Fide Open. In the

reserve section, Tournament reserves the right to use Fide rules on electronic devices and on starting White's clock at start of a round and to use FIDE pairing rules. Also clocks will be set to 'halt at end'. Both: Reg.: Saturday from 9:45-10:15 am. Rds.: Sat 10:45 am-3:10pm-7:16pm, Sun 9:45 am-2:10pm. One half point Bye allowed if requested before end of round 2 and before getting full point bye. Withdrawals and zero point last round byes are not eligible for prizes. Note that house players (if required) must pay \$5 per round and be US Chess members. ENT: Make/mail Checks payable to Dallas Chess Club, C/O Barbara Swafford, 2709 Longhorn Trail, Crowley, TX 76036-4719. Info: 214-632-9000. FIDE.

US Chess Junior Grand Prix!

Mar. 24-26 or 25-26, California, Northern

US Chess Grand Prix Points:30 (Enhanced)

Bay Area Chess Spring Championship

1639A S. Main St., Milpitas, CA 95035. SSS, G/90+30 2-day rds. 1-2 G/60 d5. Park free. **Prize:** 5,000 b/90 (60% guar). 3 sects: **2000+** (FIDE) \$1,000-500-200, u2300: 250-125-100. **1600-1999:** \$700-300-100, u1800: 200-100, **u1600:** \$700-300-100 u1400: 125-100, u1200: 100. Unr max \$100 exc Open. Mar 17 Supp & TD disc. **Reg:** F 6:30-6:45p & Sa 9:30-9:45a. **Rds.:** F 7p, Sa 10a, 3p Su 10a 2:30p, (2-day Sa 10a 12:30 & merge). **EF:** 99, Econ EF: 79 w 60% prz, after 3/17 + 20. Playup + 25. Rated 2250+ \$0 by 3/8 (prize - EF). **Info:** <http://BayAreaChess.com/champs>.

A State Championship Event!

Mar. 25, Pennsylvania

US Chess Grand Prix Points:6

2017 PA State Game/29 Championship (QC)

SSS, G/29 d0. O'Hara Student Center, Univ. of Pitt., 4024 O'Hara St., Pittsburgh PA 15213. **2 Sections: Championship:** EF: \$25 by 3/17, \$35 later. \$5 (690G): \$200-100, U2000 \$90, U1800 \$80, U1600 \$70, U1400 \$60, U1200 \$50, U1000 \$40. Trophies: 1-3 U1400, 1-3 U1200, 1-3 U1000. **Scholastic:** Grades K-12 unrated or U900. EF: \$15 by 3/17, \$25 later. Trophies to Top 7, 1-3 U600. **ALL:** Trophies: 1-2 Schools, 1-2 Clubs, Teams of 4-7 players from both sections. PSCF \$5, OSA. **Reg:** 10-10:30am. **Rds.:** 11-12:30-1:45-3:4-15. Ent: PSCF, c/o Tom Martinak, 25 Freeport St., Pittsburgh, PA 15223, martinak_tom_m@hotmail.com

US Chess Junior Grand Prix!

Apr. 1-2, Texas

US Chess Grand Prix Points:20 (Enhanced)

2017 DCC FIDE Open IV

SSS, G/90 inc/30. Dallas Chess Club, 200 S. Cottonwood Dr. #C, Richardson, TX 75080. Two sections: Open and Reserve. **Open:** \$5875G. FIDE and US Chess rated but uses FIDE rules. Use US Chess ratings and rules for pairings and for awarding prizes. Default late forfeiture time is one hour. TD may extend this time at TD's discretion. Note that Foreign players must disclose their FIDE ID number before 1st round in order to play. Note that USA Players with no FIDE ID must disclose their email address. \$5 \$500-\$250-\$125. EF: 2400+ \$125, 2000-2399 \$90, 1600 -1999 \$99, U1600 \$125, Senior/Birthday during tournament/Additional Family Member \$55. For DFW area players, Dallas Chess Club membership required or pay \$20 non member fee. Small Minimum prize to the First three GM/IM's who apply. GM/IM must play all rounds to get minimum prize (entry fee may be deducted from prize). **Reserve:** Open to players rated below 2000 USCF. This section is not Fide Rated but is US Chess rated and uses US Chess rules. EF: \$40. The Reserve give back 10% in prizes and if at least 8 paid entries and if there is a clear winner, then that winner receives free entry to next DCC Fide Open. In the reserve section, Tournament reserves the right to use Fide rules on electronic devices and on starting White's clock at start of a round and to use FIDE pairing rules. Also clocks will be set to 'halt at end'. Both: Reg.: Saturday from 9:45-10:15 am. Rds.: Sat 10:45 am-3:10pm-7:16pm, Sun 9:45 am-2:10pm. One half point Bye allowed if requested before end of round 2 and before getting full point bye. Withdrawals and zero point last round byes are not eligible for prizes. Note that house players (if required) must pay \$5 per round and be US Chess members. ENT: Make/mail Checks payable to Dallas Chess Club, C/O Barbara Swafford, 2709 Longhorn Trail, Crowley, TX 76036-4719. Info: 214-632-9000. FIDE.

US Chess Junior Grand Prix!

May 13-14, Texas

US Chess Grand Prix Points:20 (Enhanced)

2017 DCC FIDE Open V

SSS, G/90 inc/30. Dallas Chess Club, 200 S. Cottonwood Dr. #C, Richardson, TX 75080. Two sections: Open and Reserve. **Open:** \$5875G. FIDE and US Chess rated but uses FIDE rules. Use US Chess ratings and rules for pairings and for awarding prizes. Default late forfeiture time is one hour. TD may extend this time at TD's discretion. Note that Foreign players must disclose their FIDE ID number before 1st round in order to play. Note that USA Players with no FIDE ID must disclose their email address. \$5 \$500-\$250-\$125. EF: 2400+ \$125, 2000-2399 \$90, 1600 -1999 \$99, U1600 \$125, Senior/Birthday during tournament/Additional Family Member \$55. For DFW area players, Dallas Chess Club membership required or pay \$20 non member fee. Small Minimum prize to the First three GM/IM's who apply. GM/IM must play all rounds to get minimum prize (entry fee may be deducted from prize). **Reserve:** Open to players rated below 2000 USCF. This section is not Fide Rated but is US Chess rated and uses US Chess rules. EF: \$40. The Reserve give back 10% in prizes and if at least 8 paid entries and if there is a clear winner, then that winner receives free entry to next DCC Fide Open. In the reserve section, Tournament reserves the right to use Fide rules on electronic devices and on starting White's clock at start of a round and to use FIDE pairing rules. Also clocks will be set to 'halt at end'. Both: Reg.: Saturday from 9:45-10:15 am. Rds.: Sat 10:45 am-3:10pm-7:16pm, Sun 9:45 am-2:10pm. One half point Bye allowed if requested before end of round 2 and before getting full point bye. Withdrawals and zero point last round byes are not eligible for prizes. Note that house players (if required) must pay \$5 per round and be US Chess members. ENT: Make/mail Checks payable to Dallas Chess Club, C/O Barbara Swafford, 2709 Longhorn Trail, Crowley, TX 76036-4719. Info: 214-632-9000. FIDE.

REGIONAL California, Northern

Feb. 18-20 or 19-20 (Blitz Feb 20), 2017 (33rd) U.S. Amateur Team

Championship West

See Nationals.

Feb. 25, Bay Area San Ramon Quads (PK-12; 3xG/30 d5)

Courtyard Marriott, 18090 San Ramon Valley Blvd., San Ramon, CA 94583. **Trophies:** Players w + score. **Sched:** Reqr Check-in 1:30-2p. Games: 2:15-5p. **EF:** 29, 44 after 2/19. Info: <http://BayAreaChess.com/signature.W>.

Feb. 25, Bay Area San Ramon Swiss (PK-12; 4SS, G/30 d5)

Courtyard Marriott, 18090 San Ramon Valley Blvd., San Ramon, CA 94583. **Trophies:** players w + score. **Sched:** Reg 9:30-9:45a. Games: 10a - 1:30p. **EF:** 34, 49 after 2/19. Info: <http://BayAreaChess.com/signature.W>.

Feb. 26, Bay Area Cupertino Quads (PK-12; 3xG/30 d5)

Courtyard Marriott, Cupertino, CA 95014. **Trophies:** Players w + score. **Sched:** Reqr. Check-in 1:30-2p. Games: 2:15-5p. **EF:** 29, 44 after 2/21. Info: <http://BayAreaChess.com/signature.W>.

Feb. 26, Bay Area Cupertino Swiss (PK-12; 4SS, G/30 d5)

Courtyard Marriott, Cupertino, CA 95014. **Trophies:** players w + score. **Sched:** Reg 9:30-9:45a. Games: 10a - 1:30p. **EF:** 34, 49 after 2/21. Info: <http://BayAreaChess.com/signature.W>.

Feb. 26, Pleasanton Luper\$wiss - G/60 (3SS, G/90 d5)

Sheraton Pleasanton, 5990 Stoneridge Mall Rd., Pleasanton, CA 94588. **Prizes:** \$1,300 b/50. 60% guar. 1900+ : \$200-100-100, u2000 50-50. 1500-1899: \$200-100, u1600 50-50. u1500: \$200-100, u1200 50-50. Feb 17 Supp & TD disc. **Sched:** Reg 8:30-8:45. Rds. 9a, 11:30a, 2p-4:30p. EF: 49, Econ 34 w 1/2 prz. after 2/10 +15, playup +25, Rtd 2200+ \$0 by 2/12. **Info:** <http://BayAreaChess.com/grandprix.W>.

Mar. 4, Foster City Luper\$wiss90 (3SS, G/90 d5)

Foster City Courtyard Marriott, 550 Shell Blvd., 94404. **Prizes:** \$1,300 b/50. 60% guar. 1900+ : \$200-100-100, u2000 50-50. 1500-1899: \$200-100, u1600 50-50. u1500: \$200-100, u1200 50-50. Mar 17 Supp & TD disc. **Reg:** 9-9:15. Rds. 9:30-1-4:30. **EF:** 48, Econ 33 w 1/2 prz. after 2/27 +15, playup +25, Rtd 2200+ \$0 by 2/19. Info: <http://BayAreaChess.com/grandprix.W>.

Mar. 5, Bay Area Pleasanton Quads (PK-12; 3xG/30 d5)

Pleasanton Courtyard, 5059 Hopyard Rd., Pleasanton, CA 94588. **Trophies:** Players w + score. **Sched:** Reqr. Check-in 1:30-2p. Games: 2:15-5p. **EF:** 29, 44 after 2/28. Info: <http://BayAreaChess.com/signature.W>.

Mar. 5, Bay Area Pleasanton Swiss (PK-12; 4SS, G/30 d5)

Pleasanton Courtyard, 5059 Hopyard Rd., Pleasanton, CA 94588. **Trophies:** players w + score. **Sched:** Reg 9:30-9:45a. Games: 10a - 1:30p. **EF:** 34, 49 after 2/28. Info: <http://BayAreaChess.com/signature.W>.

Mar. 5, Cupertino DuperSwiss75 (3SS, G/75 d5)

Courtyard Marriott, Cupertino, CA 95014. **Prizes:** \$1,300 b/50. 60% guar. 1900+ : \$200-100-100, u2000 50-50. 1500-1899: \$200-100, u1600 50-50. u1500: \$200-100, u1200 50-50. Mar 17 Supp & TD disc. **Reg:** 8-8:45. **Rds.:** 9-11:45-2:40. **EF:** 48 Econ 33 w 1/2 prz. after 2/28 +15, playup +25, Rtd 2200+ \$0 by 2/19. **Info:** <http://BayAreaChess.com/grandprix.W>.

Mar. 24-26 or 25-26, Bay Area Chess Spring Championship

See Grand Prix.

California, Southern

The Los Angeles Chess Club

The Most Active Club on the West Coast! (310) 795-5710. * LACC: www.LAChessClub.com; VCC: www.ValleyChessClub.com; Contact: Mick@LAChessClub.com; Saturday & Sundays: 10 am-9 pm (Beginner/Novice & Intermediate classes + 3 Tournaments each day – Details on our web site. Tuesdays: 7:30-9:30 pm (Advance lecture). 11514 Santa Monica Blvd., Los Angeles, CA 90025. (4 blocks W of 405, SW corner of Santa Monica & Butler * 2nd Floor + above Java Restaurant) Group Classes * Tournaments * Private (1:1) Lessons.

Mar. 3-5 or 4-5, 24th annual Western Class Championships

See Chess Life or www.chesstour.com.

Florida

Boca Raton Chess Club

Friday night tournament games, one game a week for 4 weeks. www.boca-chess.com, 561-479-0351.

Feb. 17-19 or 18-19, 2017 U.S. Amateur Team Championship - South

See Nationals.

Mar. 24-26 or 25-26, 15th annual Southern Class Championships

See Chess Life or www.chesstour.com.

Idaho

Vellotti's Chess School

We make chess Fun! Vellotti's Chess School, established in 2004, is a comprehensive children's coaching company. We have developed very fun and original kid-friendly curriculum for every age group from preschoolers through teens! Our popular chess programs are offered in a variety of venues from preschool elective classes to elementary and after school enrichment programs. Centrally located in Boise, we also offer events in Meridian, Eagle, and Sun Valley, ID with a growing expansion into the Los Angeles area. For more info on all of our fun classes, camps, and tournaments- call (208) 713-2486 or email us at info@SuccessInChess.com. You may also visit our website at www.SuccessInChess.com.

Illinois

Feb. 17-19 or 18-19, 2017 U.S. Amateur Team Championship - North

Tournament Life

See Nationals.

April 7-9, 2017 All-Girls National Championships presented by the Kasparov Chess Foundation in association with the Renaissance Knights Chess Foundation & US Chess

See Nationals.

May 25-29, 26-29, 27-29 or 28-29, 26th annual Chicago Open
See *Chess Life* or www.chesstour.com.

Maryland

Maryland Chess Association Tournaments

MCA runs scholastic tournaments (almost every other Saturday from mid-September to late May) & open tournaments (usually 10+ annually) throughout Maryland. Listings & online registration at www.MDChess.org. Maryland scholastic players who compete in the Varsity section (which has a floor of 1600) of a Maryland-Sweet-16 Qualifier can qualify for the \$44,000 scholarship to UMBC (University of Maryland, Baltimore County) awarded each year.

Feb. 25, 2017 Mid-Atlantic Scholastic Team Championships

4SS, Baltimore Polytechnic Institute, 1400 W. Cold Spring Ln., Baltimore, MD 21209. 4-player, fixed-roster teams. 7 Sections: **High School Championship** (9-12) G/45 d5, trophies to top 3. **High School Under 1000** (9-12, all players rated under 1000) G/30 d5, trophies to top 5. **Middle School Championship** (6-8) G/45 d5, trophies to top 3. **Middle School Under 1000** (6-8, all players rated under 1000) G/30 d5, trophies to top 7. **Elementary School Championship** (K-5) G/45 d5, trophies to top 5. **Elementary School Under 1000** (K-5, all players rated under 1000) G/30 d5, trophies to top 10. **Elementary School under 500** (K-5, all players rated under 500) G/30 d5, trophies to top 10. **Sets and board provided. Pairings can be texted to your phone.** **EF:** \$80/team by 2/18, \$100/team by 2/21, \$120/team by 1/23, \$160/team at the door (1/2 point bye likely in rnd 1). \$20 off all team entrance fees for Title I schools. More info, rules and online registration at <http://midatlteam.mdchess.com>. Ent: MCA, 1827 Thornton Ridge Rd., Towson, MD 21204.

Massachusetts

Apr. 28-30 or 29-30, 26th annual Eastern Class Championships
See *Chess Life* or www.chesstour.com.

Missouri

Mar. 24-26 or 25-26, 21st annual Mid-America Open
See *Chess Life* or www.chesstour.com.

Nevada

A State Championship Event!

Mar. 18, Nevada State Scholastic Girls' Championship

5-SS, G/25 d5 round 1-3, G/45 d5 round 4-5. Las Vegas Chess Academy, 2560 Montessouri St., Suite 206, Las Vegas, NV 89117. Open to any Nevada school age girl. Trophies for top players and teams. Every player wins a medal! Winner represents Nevada in National Tournaments of Champions. **EF:** \$30 if received by 3/10, \$40 later. **Registration:** Address above or www.lasveg-aschesscenter.com. On site by 8:30. Late registrants may not be paired in round 1. Round 1 at 9:30. **INFO:** td0317@nevadachess.org.

A State Championship Event!

Mar. 25, Nevada State Scholastic Championship

K-8 and K5: 6-SS, G/25 d5. **K-8 and K-12:** 5-SS, G/25 d5 round 1-2, G/45 d5 round 3-5. Las Vegas Day School, 3275 Red Rock, Las Vegas. Open to any Nevada school age resident. Trophies for top players, top teams, and more. Every player wins a medal! Winners of K-8 and K-12 represent Nevada in National Tournaments of Champions. **EF:** \$35 received by 3/10, \$45 by 3/24, \$60 on site. **Reg.:** Las Vegas Chess Academy, 2560 Montessouri St., Suite 206, Las Vegas, NV 89117 or www.nevadachess.org. On site by 8:30. Late registrants may not be paired in round 1. Round 1 at 9:30. **INFO:** td0317@nevadachess.org.

June 25-26, International Youth Championship

6-SS, G/60 d5. Westgate Las Vegas Resort, 3000 Paradise Rd., 89109. In 4 Sections by age: 14 & Under, 14 & Under Reserve (under 1000), 9 & Under, 9 & Under Reserve (under 800). **Trophies** to top 10 in each section plus class and team trophies. 1st place in each section wins a **Computer** loaded with valuable Chess Software and hundreds of Videos, 2nd-4th win chess prizes valued at 250-150-100. Unrated players may not win 1st in Reserve sections. **EF:** \$89 by 6/3, \$99 by 6/22, \$120 later. 1/2 point bye in any round (limit 2) if requested in advance. **Reg.:** 8:30-9 a.m. **Rds.:** 10-1-3:30, 10-1-3:30. Youth Blitz 6/24 6:00 p.m. (\$20 by 6/3 \$25 later). **HR:** \$69, \$89 Friday and Saturday. (800) 732-7117 — be sure to ask for the **CHESSTRESS** rates. **ENT:** Vegas Chess Festivals, PO Box 90925, Henderson, NV 89009-0925 or www.VegasChessFestival.com.

New Jersey

Feb. 5, Children's Chess - First Sunday Quads

3-RR, G/35 d0. NJ Children's Chess School, 862 DeGraw Ave., Newark, NJ 07104. **Rds.:** 3:41:5-3:30. **EF:** \$20, free to members. **Prizes:** Trophies to ALL. **Reg.:** 2-2:50. **Info:** Arkady Geller chesscamp1@yahoo.com, Website: kidschesscamp.com, 973-483-7927.

Feb. 18, Princeton Charter School

TOURNAMENT LOCATION: Princeton Charter School at 100 Bunn Dr., Princeton, NJ 08540. **TIME CONTROL:** G/30 d0 Swiss to 4 rounds. **SECTIONS:** Open above 1000; U1000; U700; U300/Unrated (sections might be combined. Awards will be given to the top 3 in each section) **Parental Supervision Required:** The parents or another adult must be designated to supervise the student player between rounds. **Schedule** (will be accelerated if possible): **First Round:** 12:01 PM; **Second thru Fourth Rounds ASAP Award Ceremony:** ASAP (4:05 the latest). (*) **Online Registration \$30 Only if register one week before:** www.ChessKidsNY.com/PCSSchessProgram.htm (*) **Fee will increase automatically to \$35 if register later.** On site registration the date of the event: \$40 from 11:45 am to 12:00 noon. Restocking fee of \$4 for can-

cellation. Restocking waived if we are forced to cancel due to tournament site weather conditions. **Information:** email to Miguel Iniguez at: migini@gmail.com. **Results will be posted online the same day of the event!**

Feb. 18-20, World Amateur Team & U.S. Team East
See Nationals.

Feb. 25, King's Chess Club Quads

Morning quads and afternoon quads, G/30 d5, Kindergarten-undergraduate (scholastic, youth, and young adult memberships). Bethlehem Church, 758 Route 10, Randolph, NJ 07869. **EF:** None. **Reg.:** 9-9:20 am., 1st rd. 9:40. Arr. by noon to reg. only for afternoon quads. Medal to each quad winner. **Info:** Bethlehem Church 973-366-3434 or Bob McAdams 973-694-3988.

A State Championship Event!

Feb. 26, New Jersey State Elementary Championships

5SS, G/30 d5. Brookdale College, 765 Newman Springs Rd., Lincroft, NJ 07738. Student Life Center, use Parking Lot #7 or #6; 5 minutes from Garden State Parkway exit 109. **2 Sections:** Elementary (K-6) & Primary (K3). **ALL:** Trophies to top 15 individuals, top 5 teams. Elementary & Primary: Top 5 in each grade. **Rds.:** 10am then ASAP Top 4 scores constitute the team score for Elementary; top 3 for Primary. **EF:** \$30 before 2/19, \$45 at site. **USCF** member. req'd. **Reg.:** 8-9:00am After 9:00am 1/2 point bye for round 1. **Info:** 732 259-3881. **Ent:** Hal Sprechman, 66 Cromwell Ln., Jackson, NJ 08527 or online by Feb 25 at www.NJSCF.org. Entries must include name, grade, school, date of birth, USCF ID and expiration date, mailing address, email address, phone number and entry fee. Checks made out to NJSCF.

A State Championship Event!

Feb. 26, New Jersey Junior High School Championship

5SS, G/30 d5. Brookdale College, 765 Newman Springs Rd., Lincroft, NJ 07738. Student Life Center, use Parking Lot #7 or #6; 5 minutes from Garden State Parkway exit 109. **Section:** JHS (K-9). **ALL:** Trophies to top 15 individuals, top 5 teams. **Rds.:** 10am then ASAP Top 4 scores constitute team score. **EF:** \$30 before 2/19, \$45 at site. **USCF** member. req'd. **Reg.:** 8-9:00 am. After 9:00 am, half-point bye for round one. **INFO:** 732-259-3881, hapsprechman@gmail.com. **ENT:** Hal Sprechman, 66 Cromwell Ln., Jackson, NJ 08527 or online by Feb 25 at www.NJSCF.org. Entries must include name, grade, school, date of birth, USCF ID #, & expiration date, mailing address, phone number & entry fee. Checks made out to NJSCF.

US Chess Junior Grand Prix!

A State Championship Event!

Mar. 4-5, New Jersey High School Chess Championship

5SS, G/90 d5. Union County Vocational-Technical School, 1776 Raritan Rd., Scotch Plains, NJ 07076. 3 sections: **Varsity Championship (9-12):** 5 player teams with one alternate allowed. Coaches set order by player strength. Order must not be changed. Team avg. based on top 5 highest ratings. Trophies to top 10 NJ teams. Trophies for top three players, boards 1-5. **Rds.:** Sat. 10-2-6, Sun. 10-2. **EF:** \$150-/team before 3/2. \$185/team at site. \$5 per change on site. **Junior Varsity (9-12):** 4 player teams with one alternate allowed. Team avg. based on top 4 highest ratings. Trophies to top 10 NJ teams. Trophies for top 3 players, boards 1-4. **Rds.:** Sat. 10-2-6, Sun. 10-2. **EF:** \$120/team before 2/25, \$150/team on site. \$5 per change on site. **Booster (K-12):** Trophies to top 15 individuals. **Rds.:** Sat. 10-2-6, Sun 10-2. Top 4 scores constitute team score. **EF:** \$30 before 2/25, \$40 at site. **ALL:** USCF member. required. **Reg.:** Sat. 8-9:00am. After 9:00am, 1/2 Point bye for round one. **Ent:** Noreen Davisson, c/o Dean of Chess Academy, 3322 Route 22 West, Suite 1501, Branchburg, NJ 08876. Entries must include name, grade, school, date of birth, USCF ID and expiration date, mailing address, email address, phone number and entry fee. Checks made out to NJSCF. Email inquiries: Noreen@deanofchess.com.

Mar. 5, Children's Chess - First Sunday Quads

3-RR, G/35 d0. NJ Children's Chess School, 862 DeGraw Ave., Newark, NJ 07104. **Rds.:** 3:41:5-3:30. **EF:** \$25, free to members. **Prizes:** Trophies to ALL. **Reg.:** 2-2:50. **Info:** Arkady Geller chesscamp1@yahoo.com, Website: kidschesscamp.com, 973-483-7927.

New York

US Chess Junior Grand Prix!

A State Championship Event!

Feb. 25-26 or 26, The First NY State Girls Championship!

Open to all girls. The Hewitt School, 45 East 75th Street (bet. Madison & Park), NYC. **Near 77th St. subway** (6 train). **Online entries at www.littlehouseofchess.org:** \$48 thru 2/20/17, \$60 2/21-23, \$80 later or at site, at least 1 hour before game. **For details on mail or phone entries see www.littlehouseofchess.com or www.chesscenter.cc.** In 7 sections. Each section has its own age, grade and rating requirements (Championship sections open to all who are under grade and age limits; unrated allowed all sections). K-12 Championship, K-6 Championship and K-3 Championship are each **2-days:** 6-SS, G/60 d10. **Rounds:** 10 am-1-4 pm each day. K-12 Under 1200, K-6 Under 900, K-3 Under 600 and K-1 Championship are each 5-SS, G/30 d5. **Rounds:** 10 am-12-1:30-3:45 pm **Sunday. K-1** open to grades 1/below born after 2/26/09. **Both K-3 sections** open to grades 3/below born after 2/26/07. **Both K-6 sections** open to grades 6/below born after 2/26/04. **Both K-12 sections** open to grades 12/below born after 2/26/97. **Trophies** to top 12 each section and top 3 Unr. in each 1-Day section. **Grade plaques:** top 3 K/below in K-1 section, top 3 scorers below 9th Grade in K-12 U1200, top 3 below 4th grade in K-6 U900, and top 3 below 2nd grade in K-3 U600 (you can win both plaque + trophy). All players scoring 4 or more (5 or more in 2-Day sections) who *don't* win a trophy receive a medal! Speed playoff for 5-0 or 6-0. **Plaques also** to top 4 teams each section (top 3 scorers from same school = team, all on team must attend same school: no combined teams, even if one school "feeds" another). **Individual free entry prizes** (in each 2-Day Championship section): **Free entry** to 2 specified Continental Chess tournaments thru 12/31/17 to 1st Free entries courtesy of Continental Chess and are valid for CCA tmts. with 100% unconditionally guaranteed prize funds. Free entries do not include NYS Scholastics in Saratoga. See www.chesscenter.cc or www.chesstour.com for complete details and restrictions. **Alt:** February 2017 official ratings used, except unofficial ratings at uschess.org usually used if otherwise unrated. TD reserves right to assign estimated ratings to players with non-USCF ratings. All substitutions from advance entry list charged late fee. Section switches subject to \$10 extra charge per player after 2/23. \$15 service charge for each player refund. TD reserves right to reassign sections for advance entries with incorrect or unclear registrations. Limit 2 byes (limit

3 in 2-Day sections), commit before rd. 3. **HR:** see travel websites for nearby hotels in NYC. Help with entries, parking, etc: www.littlehouseofchess.com. **Questions:** chessentr@gmail.com, littlehouseofchess@gmail.com or 347-201-2269 (leave message but email is better). **Team rooms:** littlehouseofchess@gmail.com. Sets provided by Little House of Chess—**bring clocks!** **Info:** www.littlehouseofchess.com. To contact us by mail: **Chess Center of NY**, PO Box 4615, New Windsor, NY 12553. **US Chess Junior Grand Prix - Top 3 Championship Sections.**

An American Classic!

A Heritage Event!

US Chess Junior Grand Prix!

A State Championship Event!

Mar. 11-12, 50th annual New York State Scholastic Championships (out of state welcome)

6SS, G/60 d10, open to grades K-12; top NYS player & team in each section are NY champions. In 11 sections. HS Championship and HS Reserve at Courtyard by Marriott, 11 Excelsior Ave., Saratoga Springs NY 12866. Other 9 sections 2/5 mile away at Saratoga Hilton and adjacent Saratoga City Center (connected by indoor walkway), 534 Broadway (I-87 Exit 13-N, 4 miles north on US 9), Saratoga Springs, NY 12866. **Team prizes** based on top 4 scores from same school; no combined school teams allowed even if one school "feeds" another. Teams of 2 or 3 players allowed, but are at a disadvantage. **Online entry fee** at chessaction.com, all sections: \$45 by 2/18, \$55 2/19-3/4, \$70 3/5 to 3/10. **Entry fee at site**, all sections: \$70. **High School**, open to grades K-12 born after 9/1/97. **EF** \$48.20 mailed by 2/18. Top NYS grade 9-12 qualifies for Denker Tournament of HS Champions, top NYS grade K-12 girl qualifies for National Girls Tournament of Champions. **High School Reserve**, open to K-12 under 1200 or unrated. **EF** \$48 mailed by 2/18. **Junior High**, open to all in grades K-9. **EF** \$47.90 mailed by 2/18. Top NYS grade K-8 born after 9/1/01 qualifies for Barber tournament of K-8 Champions. **Middle School Reserve**, open to K-8 under 1000 or unrated. **EF** \$47.80 mailed by 2/18. **Elementary**, open to all in grades K-6. **EF** \$47.60 mailed by 2/18. **Elementary Intermediate**, open to grades K-6 under 1200 or unrated. **EF** \$47.50 mailed by 2/18. **Elementary Reserve**, open to grades K-5 under 800 or unrated. **EF** \$47.40 mailed by 2/18. **Primary**, open to grades K-3. **EF** \$47.30 mailed by 2/18. **Primary Reserve**, open to grades K-3 under 600 or unrated. **EF:** \$47.20 mailed by 2/18. **K-1**, open to grades K-1. **EF** \$47.10 mailed by 2/18. **K-1 Reserve**, open to grades K-1 under 400 or unrated. **EF** \$47 mailed by 2/18. **Postmarked 2/19-3/1:** All **EF** \$10 more. Do not mail entry after 3/1. **Special 1 year USCF dues** with magazine if paid with entry. Online at chessaction.com, Young Adult \$22, Scholastic \$15. Mailed, phoned or paid at site, Young Adult \$25, Scholastic \$17. **Trophies** to top 10 players and top 7 teams each section, top 2 unrated in each reserve section, and top 2 each U1900, U1700, U1500, U1300 (HS), U1000, U800, U600 (HS Reserve), U1800, U1600, U1400 (JHS), U900, U800, U600, U400 (MS Reserve), U1700, U1500, U1300 (Elem), U1100, U1000, U900, U800 (Elem Intermediate), U700, U600, U500, U400, U300 (Elem Reserve), U1400, U1200, U1000 (Primary), U500, U400, U300, U200 (Primary Reserve), U800, U600, U400 (K-1), U300, U200 (K-1 Reserve). Speed playoff if perfect score tie. **Free entry** to NY State Championship, Labor Day weekend 2017 (Albany), to top player each section, if not already qualified for free entry from another event. **Mixed doubles prizes** for HS Championship/Reserve combined. **Schedule:** Reg. ends Sat 10 am, rds. Sat 11, 2, 5, Sun 9, 12, 3. **Awards:** 5:30 pm. **Half point byes** OK all, limit 2, must commit before 2/18. **KR:** Hilton 1129-129, 888-999-4711, 518-584-4000, or use link at chesstour.com. Courtyard \$132-132, 866-210-9325, or use link at chesstour.com. Two nights minimum at both hotels. 7 days notice required for room cancellations. Both hotels will sell out a few months before the tournament, but may again have availability in the final week before the event due to late cancellations. For other backup hotels see chesstour.com. Free parking at Courtyard; free parking for overnight guests at Hilton. 7 days notice required for room cancellation at both. **Special car rentals:** Avis, 800-331-1600, use AWD #657633. **Online entry:** www.chessaction.com. **Mail entry:** Continental Chess, PO Box 249, Salisbury Mills, NY 12577. Include name, rating, USCF ID, USCF expiration (non-members include dues), section, school, grade, birth date, address of each player. Checks payable to Continental Chess. **\$15 per player** service charge for refunds. **\$10 extra to switch** sections, all substitutions from advance list charged \$60. **Questions:** DirectorATChess.US (At = @)), 347-201-2269. **Bring clock** if possible- none supplied. **Bring set & board** for HS Championship, HS Reserve & JHS Championship; set & board supplied for other sections. **March official ratings** used (except unofficial web ratings usually used if otherwise unrated). TD reserves right to assign estimated rating to players with non-USCF ratings.

May 19-21 or 20-21, 25th annual New York State Open

See *Chess Life* or www.chesstour.com.

Pennsylvania

Feb. 5, Main Line Chess and Games Super Sunday Quads

3 RR, Game/30 d5. Main Line Chess & Games, 7 South Valley Rd., Paoli, PA 19301. **EF:** \$20. \$40 to first, \$50 for 3-0 result. **Reg.:** 11:45-12:15 p.m. **Rounds:** 12:25, 1:40, 2:55 PM. **Info:** Bring a chess clock, mainlinechess-sandgames@gmail.com, mainlinechesssandgames.net, Tom Bartell 610-240-8900.

Feb. 12, Main Line Chess and Games G/45 Quads

3 RR, Game/40 d5. Main Line Chess and Games, 7 South Valley Rd., Paoli, PA 19301. **EF:** \$20. \$40 to first, \$50 for 3-0 result. **Reg.:** 11:45-12:15 p.m. **Rounds:** 12:25, 2:10, 3:55 PM. **Info:** Bring a chess clock, mainlinechess-sandgames@gmail.com, mainlinechesssandgames.net, Tom Bartell 610-240-8900.

Feb. 26, Main Line Chess and Games G/45 Quads

3 RR, Game/40 d5. Main Line Chess and Games, 7 South Valley Rd., Paoli, PA 19301. **EF:** \$20. \$40 to first, \$50 for 3-0 result. **Reg.:** 11:45-12:15 p.m. **Rounds:** 12:25, 2:10, 3:55 PM. **Info:** Bring a chess clock, mainlinechess-sandgames@gmail.com, mainlinechesssandgames.net, Tom Bartell 610-240-8900.

Feb. 26, PCL February Quick Quads (QC)

3RR, G/15 d3. Wm. Pitt Union, Univ. of Pittsburgh, 5th Ave. & Bigelow Blvd., Pittsburgh, PA 15213. **EF:** \$10, \$7 Jrs. \$20 to 1st w/quad. **Reg.:** 11-11:55am. **Info:** martinak_tom_m@hotmail.com, 412-908-0286. W.

Mar. 3-5 or 4-5, 18th annual Pittsburgh Open

See *Chess Life* or www.chesstour.com.

Mar. 5, Main Line Chess and Games G/45 Quads

3 RR, Game/40 d5. Main Line Chess and Games, 7 South Valley Rd., Paoli, PA

19301. **EF:** \$20. \$40 to first, \$50 for 3-0 result. **Reg.:** 11:45-12:15 p.m. **Rounds:** 12:25, 2:10, 3:55 PM. **Info:** Bring a chess clock, mainlinechesssandgames@gmail.com, mainlinechesssandgames.net, Tom Bartell 610-240-8900.

Mar. 10, 2017 PA Quick Chess Championship (QC)

See Grand Prix.

Mar. 11-12, 2017 Ira Lee Riddle Memorial PA State Championship & PA Collegiate Championship

See Grand Prix.

US Chess Junior Grand Prix!

A State Championship Event!

Mar. 11-12, 2017 PA State Scholastic Championship

555. 226 Trophies!! (163 Individual & 63 Team). Lancaster Host Resort and Conference Center, 2300 Lincoln Hwy East (Rt 30), Lancaster, PA 17602. 10 sections (Sat & Sun 3/11 & 12 unless indicated): **EF:** K-3 Open: (Sat 3/11 only) \$30. K-6 U500: (Sat 3/11 only) \$26. K-6 U800: (Sat 3/11 only) \$27. K-9 U1000: (Sun 3/12 only) \$27.50. K-6 Open: \$31. K-8 Open: \$32. 7-12 U1000 & 7-12 Unrated: \$28. 7-12 U1300: \$29. K-12 Open: \$33. **All:** EFs if rec'd by 2/25, \$10 more rec'd 2/26-3/4, \$20 more after 3/4. Feb 2017 ratings used. **Bye:** limit 1, ask by rd. 2. **Reg.:** Fri 3/10 6-10 pm, Sat 3/11 10-11 am, Saturday entries get 1/2-bye. \$5 charge for changes/refunds after 2/25. **Rds.:** (Sat 3/11 1-day sections): G/40 d5; 10-Noon-2-4-6; (Sun 3/11 K-9 U1000): G/40 d5; 9-10:45-12:30-2:15-4; (2-day sections): G/90 d5; 10-2-5:30, 9-1. **Bug-house:** Reg on-site only until Sat 3/11 8:30pm. Rds begin Sat 3/11 8:45pm. **EF:** \$20/team. **HR:** Mention "chess tourney": 800-233-0121 \$82-\$87-\$92. **Info:** 412-908-0286, martinak_tom_m@hotmail.com, pschfchess.org/pascholas-ticchamp/. **Ent:** PSCF, c/o Tom Martinak, 25 Freepoint St., Pittsburgh, PA 15223.

Mar. 12, Main Line Chess and Games G/45 Quads

3 RR, Game/40 d5. Main Line Chess and Games, 7 South Valley Rd., Paoli, PA 19301. **EF:** \$20. \$40 to first, \$50 for 3-0 result. **Reg.:** 11:45-12:15 p.m. **Rounds:** 12:25, 2:10, 3:55 PM. **Info:** Bring a chess clock, mainlinechesssandgames@gmail.com, mainlinechesssandgames.net, Tom Bartell 610-240-8900.

Mar. 19, Main Line Chess and Games G/45 Quads

3 RR, Game/40 d5. Main Line Chess and Games, 7 South Valley Rd., Paoli, PA 19301. **EF:** \$20. \$40 to first, \$50 for 3-0 result. **Reg.:** 11:45-12:15 p.m. **Rounds:** 12:25, 2:10, 3:55 PM. **Info:** Bring a chess clock, mainlinechesssandgames@gmail.com, mainlinechesssandgames.net, Tom Bartell 610-240-8900.

Mar. 19, PCL March Quick Quads (QC)

3RR, G/15 d3. Wm. Pitt Union, Univ. of Pittsburgh, 5th Ave. & Bigelow Blvd., Pittsburgh, PA 15213. **EF:** \$10, \$7 Jrs. \$20 to 1st/quad. **Reg.:** 11-11:15 am. **Info:** martinak_tom_m@hotmail.com, 412-908-0286. W.

Mar. 25, 2017 PA State Game/29 Championship (QC)

See Grand Prix.

Mar. 26, Main Line Chess and Games G/45 Quads

3 RR, Game/40 d5. Main Line Chess and Games, 7 South Valley Rd., Paoli, PA 19301. **EF:** \$20. \$40 to first, \$50 for 3-0 result. **Reg.:** 11:45-12:15 p.m. **Rounds:** 12:25, 2:10, 3:55 PM. **Info:** Bring a chess clock, mainlinechesssandgames@gmail.com, mainlinechesssandgames.net, Tom Bartell 610-240-8900.

Apr. 2, PCL April Quick Quads (QC)

3RR, G/15 d3. O'Hara Student Center, Univ. of Pitt., 4024 O'Hara St., Pittsburgh PA 15213. **EF:** \$10, \$7 Jrs. \$20 to 1st/quad. **Reg.:** 11-11:15am. **Info:** martinak_tom_m@hotmail.com, 412-908-0286. W.

Apr. 12-16, 13-16, 14-16 or 15-16, 11th annual Philadelphia Open

See Chess Life or www.chesstour.com.

June 23-25, 6th annual World Open Women's Championship

See Chess Life or www.chesstour.com.

June 26-28, World Open Warmup

See Chess Life or www.chesstour.com.

US Chess Junior Grand Prix!

June 28-29, 9th annual World Open Under 13 Championship 6SS, G/60 d10. Philadelphia Marriott Downtown (see World Open for location, rates). Open to all born after 6/29/04. In 4 sections. **Open Section:** Trophies to top 7, top 2 Under 1600/Unr; free entry in all CCA tournaments 7/14/17-12/31/17 to 1st. **Under 1400 Section:** Trophies to top 7, top 2 Under 1200, free entry in all CCA tournaments 7/14/17-9/30/17 to 1st. **Under 1000 Section:** Trophies to top 7, top 2 Under 800, free entry in all CCA tournaments 7/14/17-9/30/17 to 1st. **Under 600 Section:** Trophies to top 7, top 2 Under 400, top Unrated; free entry in all CCA tournaments 7/14/17-9/30/17 to 1st. **EF:** \$43 online at chessaction.com by 6/26, \$48 mailed by 6/12, \$60 at site. **Late reg.** 6/28 to 10 am, rds. Wed 11-2-5, Thu 10-1-4. Up to 2 half point byes allowed, must commit before rd. 3. **Ent:** chessaction.com or Continental Chess, PO Box 8482, Pelham, NY 10803. Questions: chesstour.com, chesstour.info, DirectorAtChess.US, 347-201-2269. \$15 service charge for refunds.

June 29-July 4, June 30-July 4, July 1-4 or 2-4, 45th Annual World Open

See Chess Life or www.chesstour.com.

Tennessee

May 12-14, SUPERNATIONALS VI

See Nationals.

Texas

Feb. 11-12, 2017 DCC FIDE Open II underwritten by Ruifeng/Xiong

See Grand Prix.

Feb. 16-20, 17-20, 18-20 or 19-20, 8th annual Southwest Class Championships

See Chess Life or www.chesstour.com.

US Chess Junior Grand Prix!

Mar. 3-5, 2017 North/Central Texas State Scholastic Championships

Arlington Convention Center, 1200 Ballpark Way, Arlington, TX 76011. **Primary**

Hotel: Sheraton Arlington Hotel, 1500 Convention Center Drive, Arlington Texas \$129,\$129,\$129,\$129 Call 1-800-442-7275 and say you are with Chess Championship to make reservations or register online thru link on web page. Other hotels available on web page at www.dallaschess.com/2017 Texas Scholastic/index.htm. Tournament is open to any K-12 living in Texas or going to school in Texas. Note that players may play in either the South or the North Central Championships or they may also play in both. **Four championships:** TX North/Central Primary Scholastic Championships; TX North/Central Elementary Scholastic Championships; TX North/Central Middle School Scholastic Championships; TX North/Central High School Scholastic Championships. Note that the High School will be played at the Sheraton Arlington Hotel while the Primary/Elementary/Middle School will be played at the Arlington Convention Center. **EF:** \$43 by 2/1; \$72 after 2/1 or on site. **On Site Registration:** Friday, 5:30-6:15pm, Saturday, 8-8:30am. Saturday registrants will receive a 1st Rd. 1/2-pt. bye. Two 1/2-pt. bye allowed as long as one of the byes is for round 1, if requested by the end of Rd. 2. Sections: K-1 Championship, Primary (K-3) Championship, Primary JV (K-3 w/Ratings Under 600), Elementary (K-5/6) Championship, Elementary JV (K-5/6 Under 800), Elementary Novice (K-5/6 Under 500), Middle School (6-8/9) Championship, MS JV (6-8/9 Under 900), MS Novice (6-8/9 Under 600), High School (9-12) Championship, HS JV (9-12 Under 1000). See Article IX, Section 1E, TCA Bylaws for each section's eligibility requirement, www.texaschess.org/2007/03/bylaws.html. Note that 2017 February Supplement will be used. Trophies for top 15 individuals and top 10 teams in each section plus participation medals for all, and plus Score Awards for players scoring 4 or more points that do not win an individual trophy. Top 5 Grand Champion trophies. The 3 Primary sections will be merged and using the top 15 players, a grand champion will be crowned. This will also be done for the 3 Elementary sections and the 3 Middle School Sections. For the High School the two sections will be merged and the top 10 players will be used to determine the grand champions. Note that trophies will not be given out in advance and must be picked up at awards ceremony. Please make arrangements for picking up trophies at award ceremony or to get trophy shipped. Schedule: Round times vary depending on the Section. For round times check website. **Time controls:** All High School Sections: Rds. 1 G/45 d5; Rounds 2-4 G/60 d5, Rds. 5-7 G/75 d5. **All Middle School and Elementary and Primary and K-1 sections:** Rds. 1-4 G/45 d5, rds. 5-7 G/60 d5. For round times see: www.dallaschess.com. **Side Events:** See website for side events. Side event registration on site only. **All registrations (except Side events) available on line:** see www.dallaschess.com and you can download flyers and entry forms. Checks payable to Dallas Chess Club. Mail entries to Dallas Chess Club, c/o Barbara Swafford, 2709 Longhorn Trail, Crowley, TX 76036. For tournament info, visit our website or contact Barbara Swafford, info@dallaschess.com or 214-632-9000. Refunds will be given only up to 3/1 with a \$10 surcharge for withdrawing, after 3/1 there will be no refunds. There will be no substitution of team members. There will be a \$10 change fee for changes after 3/1. There will be a \$5 surcharge per player for phone registrations USCF membership is required. Proof of membership is required or player must join/renew their memberships. No registration/changes or withdrawals by phone or email after 3/1/17 as we are driving to the site; after that date you must make changes at site (Arlington Convention Center). Note that the Arlington Convention Center has a strict policy of no outside food and beverages allowed. They also have a 10 pm curfew. W.

Mar. 11-12, 2017 DCC FIDE Open III

See Grand Prix.

Apr. 1-2, 2017 DCC FIDE Open IV

See Grand Prix.

May 13-14, 2017 DCC FIDE Open V

See Grand Prix.

Virginia

Feb. 24-26 or 25-26, 2nd annual George Washington Open

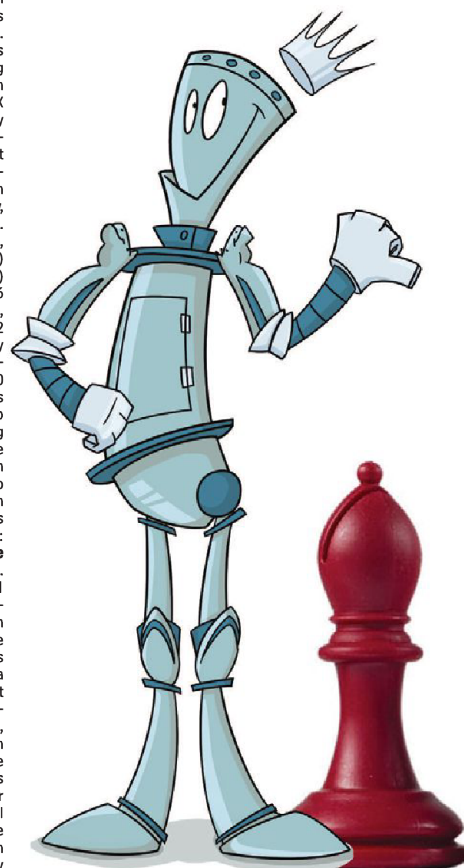
See Chess Life or www.chesstour.com.

US Chess Junior Grand Prix!

A State Championship Event!

Mar. 11-12, Virginia Scholastic & College Championships

6SS, Rds. 1-3 G/60 d5; Rds. 4-6 G/90 d5. Organized by the VA Scholastic Chess Assn at the Holiday Inn Virginia Beach-Norfolk. Blitz and Bughouse Championships Friday March 10 at 6PM. Main tournament Saturday and Sunday, March 11-12. Players must be K-12 or College players attending school or college full time in Virginia as of Jan. 2017, or must be Virginia residents. Virginia residency NOT REQUIRED for Blitz or Bughouse on Friday night. **Tournament schedule, Online registration, player eligibility, hotel info and other details at:** www.vachess.org. Questions to: Mike Hoffpauir, mhoffpauir@aol.com, or 757-846-4805.



AN INTERNET CHESS SCHOOL THAT SETS A NEW STANDARD!

A comprehensive, individualized student driven curriculum with between lesson assignments. Parents and students have a role in shaping the program and individual progress.

- For students of all ages and strengths
- International Grandmaster and International Master coaches
- Exceptional results
- Produced many masters, national and international champions
- Competitive pricing
- No initiation fee and no commitment



The CCL Chess School
Choose your own coach
<http://cclchess.com>
(614) 561-2718

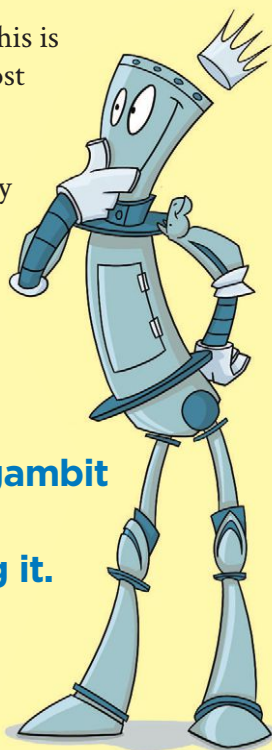
It's Your Move!

By Tony Palmer

KING'S GAMBIT in a nutshell

The King's Gambit (1. e4 e5 2. f4) is a sharp and enterprising opening where the better tactical player usually wins, since both kings may endure major safety issues. Whether or not to accept the King's Gambit with 2. ... exf4 is a matter of taste and style; Black gets more potential play by capturing the gambit pawn, and usually the best way to refute a gambit is by accepting it, yet declining may be safer and easier. Boris Spassky, David Bronstein and Rudolf Spielmann had many smashing wins with the King's Gambit, and the Immortal Game Anderssen-Kieseritzky (London, 1851) was a King's Gambit classic. From Black's perspective, this is one of the most dangerous openings to face, especially

Usually the best way to refute a gambit is by accepting it.



when unprepared, so you must learn a defense that works for you.



The *chessgames.com* online database has 8,419 King's Gambit games: 5,400 (64 percent) with 2. ... exf4 (Accepted), and 3,019 (36 percent) without (Declined). Don't try to memorize such statistics, but they help you study openings by indicating the relative frequency of responses.

For the King's Gambit Declined, 2. ... d5 is most common (49 percent) followed by 2. ... Bc5 (34 percent). Surely the safest course for Black is 2. ... Bc5 anticipating 3. Nf3 d6 and the dark square bishop is developed outside of the pawn chain, actively pointing at White's kingside. After 2. ... Bc5, note 3. fxe5?? Qh4+ wins instantly for Black (4. g3 Qxe4+ and 5. ... Qxh1; 4. Ke2? Qxe4#) so White must be on their toes as well.

The game typically continues 3. Nf3 d6 and now 4. c3 Nf6 5. d4 fights for the center, while 4. Nc3

Nf6 5. Bc4 transposes to the Vienna Gambit. White does not want 4. fxe5 dxe5 5. Nxe5? Qh4+ again.

1. e4 e5 2. f4 d5 is the Falkbeer Counter Gambit, creating an immediate clash in the center. The main line is 3. exd5 e4 (preventing Nf3) 4. d3 Nf6 5. dxe4 Nxe4 and now White scores very well with 6. Nf3 or 6. Be3. Spassky suggested 6. Be3 Qh4+ 7. g3 Nxe3 8. Nf3 Qe7 9. hxg3 Qxe3+ 10. Qe2 Qxe2+ 11. Bxe2 with the better endgame for White. The number of Black games featuring 3. ... e4 have drastically waned over time, with only a handful of new examples every year. For Black, Eric Schiller recommends 1. e4 e5 2. f4 d5 3. exd5 exf4 and White can't attack Black on f7 as both the a2-g8 diagonal and the f-file are blocked.

Other Black moves declining the King's Gambit (2. ... d6, 2. ... Nc6, 2. ... Qh4+) are fairly rare and score poorly. Note 1. e4 e5 2. f4 Nc6 3. Nf3 f5!? is the Adelaide Counter Gambit, playable for

Tony Palmer is a chess coach in Michigan and frequent writer for CLK. Here he gives us a brief survey of what to expect if you gambit a pawn. Exciting stuff!

Black but mostly useful for surprise value.

The King's Gambit Accepted is far more fun, with White launching an immediate attack on the enemy king while Black wants to consolidate the gambit pawn. After **2. ... exf4**, White primarily chooses **3. Nf3** (76 percent) over **3. Bc4** (19 percent), as the Little Bishop's Gambit with **3. Bc4** allows **3. ... Qh4+** and White cannot castle; **4. g3?! fxg3 5. Nf3?? g2+! 6. Nxh4 gxh1=Q+** is a stock trap winning material for Black, so **4. Kf1** is mandatory, then **4. ... g5 5. Nf3 Qh5** is one continuation. Rather than answering **3. Bc4** with **3. ... Qh4+**, Black could try **3. ... Nf6** or **3. ... d5** instead.

After **1. e4 e5 2. f4 exf4 3. Nf3**, now **3. ... g5** is the old Kieseritzky line clutching the gambit pawn on f4 while weakening Black's kingside and delaying piece development. Then **4. Bc4 g4 5. O-O!? gxf3 6. Qxf3** is the Muzio Gambit, where White sacrifices a piece to attack Black on f7, while **4. Bc4 g4 5. Nc3!?** is the MacDonnell Gambit also giving up a knight for quick attacking chances (here **5. ... gxf3 6. O-O** scores even better for White than **6. Qxf3**).

Instead of **4. Bc4**, White could try **4. h4** to challenge the pawn on g5. **4. h4 g4 5. Ne5 h5** is the Long Whip Line with Black already making many weakening pawn moves in the opening phase trying to hold the extra pawn. **4. h4 g4 5. Ng5 h6 6. Nxf7!? Kxf7** is the Allgaier Gambit investing a piece to ruin Black's king safety.

Another speculative sacrifice by White is the Rosentreter Gambit with **4. d4 g4 5. Bxf4!? gxf3 6.**

Qxf3. These systems are all extremely dangerous for Black despite the material plus, due to the open lines on the kingside while White has a big lead in development.

The Fischer Defense **1. e4 e5 2. f4 exf4 3. Nf3 d6** aims for a dark square blockade (... d6 along with ... h6) preventing White's knights from reaching e5 or g5 where they would target f7. Play often continues **4. Bc4 h6 5. d4 g5 6. O-O Bg7** and here Black has excellent chances to keep the extra pawn, albeit with substantial king safety issues in the middlegame. Another main line is **4. d4 g5 5. h4 g4 6. Ng1 Bh6** with a tense position.

The Abbazia Defense **1. e4 e5 2. f4 exf4 3. Nf3 d5** opens up Black's game immediately, similar to the Falkbeer Counter Gambit (**1. e4 e5 2. f4 d5**); they commonly transpose, but the Modern Abbazia does not have ... e4 by Black. If White captures **4. exd5** then Black should reply **4. ... Nf6** intending ... Nxd5 over **4. ... Qxd5!? 5. Nc3** which helps White develop with tempo. Black often plays ... Bd6 guarding the pawn on f4 to buy time.

The Cunningham Defense **1. e4 e5 2. f4 exf4 3. Nf3 Be7** intends **4. ... Bh4+** and White cannot castle. Typically Black's bishop is misplaced on e7 (better posted on g7) unless White has advanced h2-h4. The main line continues **4. Bc4 Nf6 5. e5 Ng4 6. O-O** with chances for both sides. On **4. Bc4 Bh4+**, White could respond **5. Kf1** foregoing castling, or there is a three pawn sacrifice line (Cunningham Gambit) with **5. g3!? fxg3 6. O-O gxh2+ 7. Kh1** which requires nerves of steel, but

Black could improve with **6. ... d5 7. Bxd5 Nf6**. Fischer believed **4. ... Bh4+** was wrong since Black can't develop the king knight to f6 or e7 as the bishop would be lost.

Besides **3. Nf3** and **3. Bc4**, other third move options for White in the King's Gambit Accepted are **3. Nc3** (Mason-Keres Gambit), **3. Be2** (Tartakower Gambit), **3. Qf3** (Breyer Gambit), **3. d4** (Polerio Gambit), and **3. Kf2!?** (Tumbleweed), all leading to very sharp play after **3. ... Qh4+**.

The King's Gambit went way down in popularity for White after 1900 as defensive technique improved, also more **1. d4** games and less **1. e4** games. Yet it remains a highly potent attacking weapon, especially for faster time controls and online blitz games. Good luck!

Question? Continued from pg. 4

hard, and some players decided that the notched top of this cone looked a lot like a mitre, the cap worn by a certain kind of Christian priest. What were these priests called? Bishops! When the chess players of England needed a name for this piece, this was it. The bishop!

[A more romantic version is that the Pope considered banning the game of chess because the first estate was not represented and so many people were playing a game so very popular in Islamic lands. Thus, the elephant-runner-jester became a bishop and the church was appeased. -Editor]

Chess made a long and complicated trek across the world, but the ingenious rules and endless popularity of the game of chess allowed it to reach us safe and sound. I think the story of the bishop, whatever you choose to call it, is a perfect symbol of this wonderful journey.

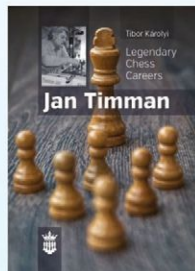


The Official Chess Shop of the US Chess Federation



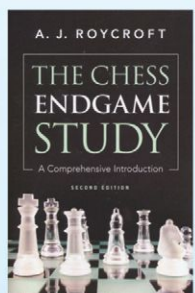
Lajos Portisch - Legendary Chess Careers
B0027EV - \$21.95

In this book, the author drives you through the very rich chess career of Lajos Portisch while interviewing him. This unique concept makes the book easy to read and gives the reader some inside information about what is happening also off the board, things you normally don't get to know about.



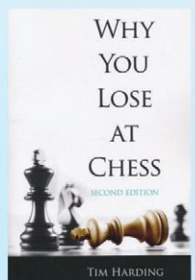
Jan Timman - Legendary Chess Careers
B0028EV - \$21.95

In this book, the author drives you through the very rich chess career of Jan Timman while interviewing him. This unique concept makes the book easy to read and gives the reader some inside information about what is happening also off the board, things you normally don't get to know about.



The Chess Endgame Study
B0057DV - \$16.95

This is the complete introduction to the endgame study. Roycroft writes the history of endgame study with its international roster of great theorists and composers; he directs an encyclopedic discourse to all varieties of chess lovers — casual solvers, composers and connoisseurs, analysts and judges.



Why you Lose at Chess - 2nd Edition
B0056DV - \$9.95

This updated chess classic demonstrates how to learn from your losses by recognizing the warning signs as they develop and by analyzing games gone wrong. In addition to expert analysis of each stage of the game, this guide offers insights into why players lose from good positions as well as weak ones, and how the pressures of time can be a problem.

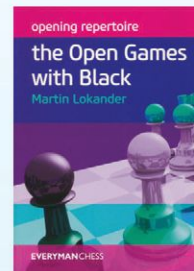
The Modern Endgame Manual - Volume 2
B0025EV - \$27.95

Mastering Minor Piece Endgames 2 - This is the Third of 3 Volumes from the first FIDE-approved endgame manual, written by 3 of the world leading experts. This volume is dedicated to knight and knight vs bishop endgames. The authors have collected the most important theoretical positions and combined them with many different practical examples.



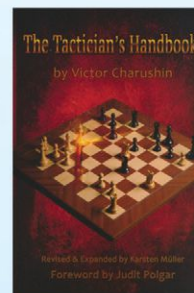
Opening Repertoire - The Open Games with Black
B0442EM - \$29.95

This collection includes not only popular choices such as the Italian Game, Scotch Game, Bishop's Opening, King's Gambit, Vienna Game and Four Knights, but also many tricky sidelines and some wild and wacky gambits. In this book, the author tackles all these lines head on and presents a practical repertoire for Black in the Open Games.



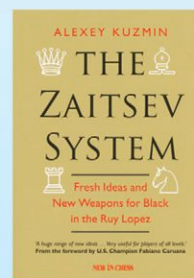
The Tactician's Handbook
B0101RE - \$24.95

In the late 1990s, five books, each dedicated to a unique tactical theme were published by the late Russian correspondence master Victor Charushin. All seven titles were then combined into one comprehensive volume - The Tactician's Handbook. GM Karsten Müller has carefully reviewed and then selected the material he thought most enlightening, creating this must-have book for chess players of all skill levels.



The Zaitsev System
B0179NIC - \$29.95

The Zaitsev System is one of the most dynamic setups for Black in the ever popular Ruy Lopez chess opening. When Alexey Kuzmin joined the coaching staff of World Champion Anatoly Karpov in the 1980s he started analysing the Zaitsev System. For this book he has updated and improved his analysis, and found countless innovations that change the assessments of many lines.



www.USCFSales.com
888.512.4377 (CHESS)