

DECEMBER 2017

CHESS LIFE Kids



Donate to US Chess!

Your Tax-Deductible Donation Will
Help Grow Chess In The U.S.!



We need your support. Please consider making a tax-deductible donation to support US Chess, a 501(c) (3) organization. While your membership dues service all of the benefits that you currently enjoy, your further donation will help us do what we do best: promote chess in the United States through programs like our National tournaments, World Youth Teams, and the U.S. Olympiad.

Every dollar counts:

Make a donation today!

uschess.org/donate

Official US Chess online rated!

No entry fees » No hotel costs » Free parking

20% off ICC membership

Bonus



www.chessclub.com/uschess



US CHESS

CHESS LIFE Kids

US Chess Executive Director: Carol Meyer
carol.meyer@uschess.org

Director of Publications/*Chess Life Kids* Editor:
Daniel Lucas
dlucas@uschess.org

Assistant Editor: Melinda Matthews
mmatthews@uschess.org

Art Director: Cat Connor
catseyephography@mac.com

Character Designer and Illustrator:
Chandler Ellison

Editorial Asst./Copy Editor: Alan Kantor
akantor@uschess.org

Editorial Assistant: Natasha Roberts
nroberts@uschess.org

Tournament Life: Joan DuBois
tla@uschess.org

CONTRIBUTORS: Send your contributions and articles to *Chess Life Kids*, PO Box 3967, Crossville, Tennessee 38557 or e-mail to dlucas@uschess.org.

Chess Life KIDS (USPS 023-567, ISSN: 1932-5894) is published in February, April, June, August, October, and December of every year by US Chess, 137 Obrien Drive, Crossville, Tennessee 38555. Periodical postage paid at Crossville, Tennessee, and additional mailing offices.

CHANGE OF ADDRESS: Be sure to notify us at once of any change of address. Please include your old address and your new address, along with your US Chess I.D. number.

POSTMASTER: Send address changes to US Chess, PO Box 3967, Crossville, Tennessee 38557.

Annual Scholastic Membership: Regular Scholastic Membership (online version of *Chess Life Kids*), age 12 or younger, is just \$17 per year. Premium Scholastic Membership (receives *Chess Life Kids* by mail) is \$25 per year. \$13 of every premium membership goes towards providing *Chess Life Kids*. Annual subscription rate is \$18. Entire contents copyright 2017, US Chess.

Teachers may photocopy instructional articles for classroom use, but republication or widespread copying without the written consent of US Chess is forbidden.



CONTENTS

04

AVOID THE TRAP
By Bruce Pandolfini

06

CHESS KIDS
By Al Lawrence

08

SMOTHERED WAFFLES
By FM Mike Klein

13

IT'S YOUR MOVE

14

YOU CAN DO IT!
By ICCM Jon Edwards

15

JUNIOR GRAND PRIX

16

TOURNAMENT LIFE

21

ANSWERS

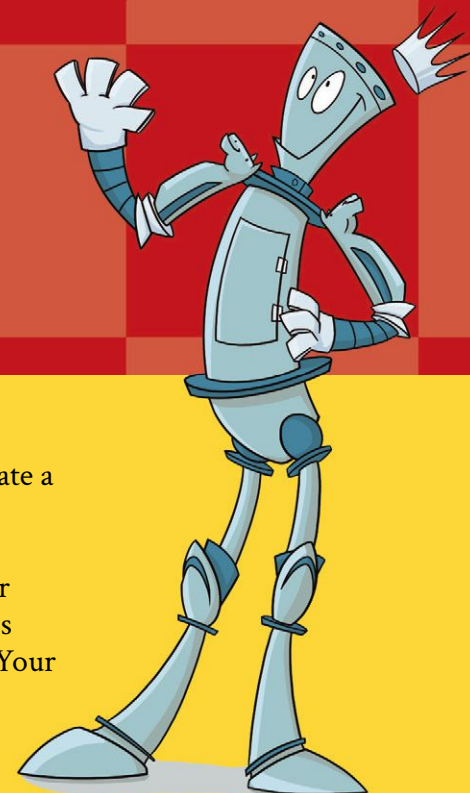
22

MY FIRST MOVE
This month:
GM Fabiano Caruana

ON THE COVER

For this issue, we decided to just create a fun winter chess scene. But what is happening in this somewhat strange image? Get creative and tell us in our cover contest sponsored by US Chess Federation Sales—see details in “It’s Your Move” on page 13.

Cover art by Elif Balta Parks /
Lemonadeillustration.com





AVOID THE by Bruce Pandolfini TRAP!

Legal's Sacrifice

This column teaches you openings by helping you learn to avoid opening traps. Set up your board and pieces and play through the game below. Have paper and pen by your side. When you reach a question, write down your answer. After you are done with all 10 questions, check your answers at the end of the column. Total your points and see how you did against the scoring scale at the end!

Let's start with Legal. Who was he? According to the lore of chess, he was François-André Danican Philidor's chess teacher. Who was Philidor? Let's save that for another column, especially one on chess and music. Anyway, possibly in the 1740s or 1750s, François Antoine de Legall de Kermeur (we're all chess friends here, so let's just call him Legal), played a trap that exploited a premature development of the queen's bishop. In it, Legal, as

White, ignored a pin, offered his queen, and the rest is "chesstory."

1. e4 e5

A double king-pawn defense.

2. Nf3 d6

Philidor's Defense. Philidor gets credit for something he possibly never played in a serious game.

Q1) What is the main advantage to this move and what is its main drawback? **(10 points)**

3. Bc4

This is certainly a useful developing move. Its basic purpose is to zero in on f7. The move also clears the home rank, making kingside castling straightaway available. But, though it attacks d5, it doesn't place as much pressure on Black's center as another move.

Q2) Instead of 3. Bf1-c4, what was White's more active

alternative? **(10 points)**

Q3) If White had played 3. d2-d4, would 3. ... Bc8-g4 have defended the e5-pawn? **(10 points)**

3. ... Bg4

This pin is not quite right. The queen-bishop is developed a bit too early.

Q4) What is the potential problem with this early development of the queen-bishop? **(10 points)**

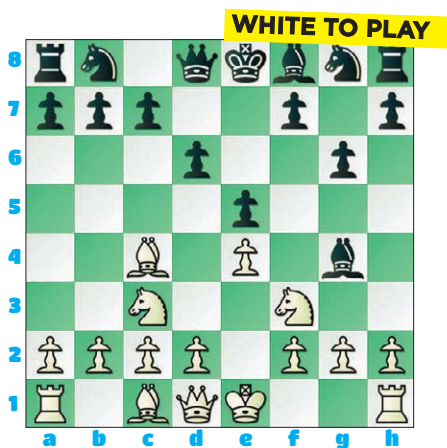
4. Nc3

White develops a third minor piece.

4. ... g6?

(see diagram next page)

This game has appeared with different fourth moves for Black. Versions of it exist with 4. ... g7-g6, 4. ... h7-h6, and 4. ... a7-a6. All three of these weak pawn moves



come to the same thing.

Q5) What is wrong with 4. ... g7-g6? (10 points)

5. Nxe5!

Legal's sacrifice!

Q6) Has White just left his queen unprotected (hung the piece)? (10 points)

5. ... Bxd1??

Q7) Is 5. ... d6xe5 a better response, and, if so, why? (10 points)

6. Bxf7+ Ke7

Legal knew that this was Black's only legal move.

7. Nd5 mate!

White is down a queen, but his three minor pieces gather in the black king. In the end, Black had only one developed piece—the queen-bishop, which he shouldn't have brought out when he did.

Q8) After 4. Nb1-c3 how could Black have avoided the trap? (10 points)

Q9) In the illustrative game that follows, Pillsbury versus Fernandez, after 6. f4xe5, how could Black have answered without getting mated or losing material? (10 points)

Q10) In the illustrative game that follows, after 7. Nf3xe5, can

Black hold the position with 7. ... Qd8-h4+? (10 points)

Illustrative Game:

Pillsbury versus Fernandez - Havana, Cuba, 1900 (C25)

1. e4 e5 2. Nc3 Nc6 3. f4 d6 4. Nf3 a6 5. Bc4 Bg4 6. fxe5 Nxe5 7. Nf3xe5 Bxd1 8. Bxf7+ Ke7 9. Nd5 mate.

Answers

A1) The main advantage of 2. ... d7-d6 is that it solidifies the king-pawn immediately. The main disadvantage is that it blocks the a3-f8 diagonal, limiting the scope of the king-bishop.

A2) The more active third move for White is 3. d2-d4, pressuring e5 and opening the center for the pieces to come out more quickly.

A3) If 3. d2-d4, then 3. ... Bc8-g4 does defend e5 indirectly, by pinning the f3-knight. But there are consequences. After 4. d4xe5, Black would have been forced into 4. ... Bg4xf3, with White obtaining the superior game after 5. Qd1xf3. The celebrated Morphy Opera Game, perhaps the most famous chess game of all-time, is a case in point.

A4) Whenever the queen-bishop

is developed too early, it leaves the queen-knight pawn potentially vulnerable to tactics, especially if combined with an attack from the queen moving to b3 focusing on the a2-g8 diagonal.

A5) The move 4. ... g7-g6 is certainly weakening to the kingside dark squares, but worse is the fact that it ignores White's threat to win at least a pawn.

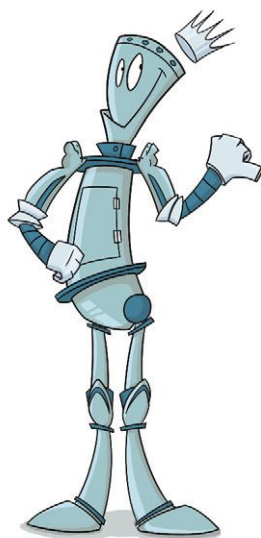
A6) No, White has not hung his queen. White's fifth move is called a pseudo sacrifice or sham sacrifice. If the queen is taken, White forces mate.

A7) Yes! The reply 5. ... d6xe5 is a better reply. It winds up losing a pawn after 6. Qd1xg4, but at least it avoids mate.

A8) After 4. Nb1-c3, Black could have avoided the trap in several useful ways. The replies 4. ... Ng8-f6, 4. ... Nb8-c6, 4. ... Bf8-e7, 4. ... Bg4xf3 all would have worked (and there are other moves that also would have avoided the trap without losing material).

A9) After 6. f4xe5, either 6. ... d6xe5, 6. ... Bg4xf3 7. Qd1xf3 Nc6xe5, or even 6. ... Nc6-d4 (with counterplay) would have solved the immediate problems.

A10) After 7. ... Qd8-h4+, White would still come away with a big advantage after 8. g2-g3.



How Did You Score?

100: 1800+

90: 1600

80: 1400

70: 1200

60 or lower: 1000

The score is based on the US Chess rating system and is intended only as a fun way to monitor your progress each issue as you Avoid The Trap!

Chess Kids Across the Board

By Al Lawrence

Celebrating Chess Life Kids from across the country.



Benjamin Shoykhet

City of Crystal Lake Park,
Missouri

When is a bad Rook a dog?

Chess can bring you trophies. But have you ever heard of a chess player winning a dog?

The story goes back to when Ben was only eight. Ben got tired of waiting for his parents to teach him chess. He

heard about the chess club at his school and was eager to join. But his parents didn't know how to play either. They had to learn the game before they could teach him. So Ben got a book from the library. "I taught myself at night with a flashlight." For a chess set, he lined up "military men versus Lego figures."

Years later, Ben and his brothers had their hearts set on a dog. But his parents didn't think it was a good idea. "I begged and begged, but they still said no," Ben said. So Ben made

a deal with them. What if he could win enough money at chess in one month to buy the dog he wanted? Then would Mom say yes? His mom agreed. "She didn't think I could do it," Ben said.

Ben's brothers did his chores so he could spend extra time studying chess. He studied hard. He played well and won enough money in prizes to buy the dog they wanted. "Now we have a black standard poodle named Rook," Ben said. "We have lots of jokes in the house. If you jump over the dog, you can



scream out, ‘Castle!’ and when she does something wrong, we have ‘a bad rook.’”

Ben also likes fencing, running, reading, playing the piano, and acting—he’s even had a role on TV. But chess has made the biggest impact. “It teaches me how to work and how to study. It also teaches me to be patient. Sometimes I can lose for a silly reason. But chess is a long-term sport—not a sprint! My rating will go up and down.”

Nowadays Ben is number 38 on the US Chess Under-12 rating list.

Dad and Mom never learned to play. But now they at least “know not to call the knight a ‘horse.’”

Ben attends Ladue Middle School in the morning but in the afternoon trains with GM Susan Polgar at her SPICE program. “I’ve been lucky enough to have been taught by several of the Webster University team members,” including several grandmasters. “They know so much, and are patient with me.”

Do you know someone who should be featured in this column? Maybe yourself? Write to us at dluca@uschess.org.



Ben acting in the TV short *The Adventures of Time Slot*

Chess kids in history

Bobby Fischer



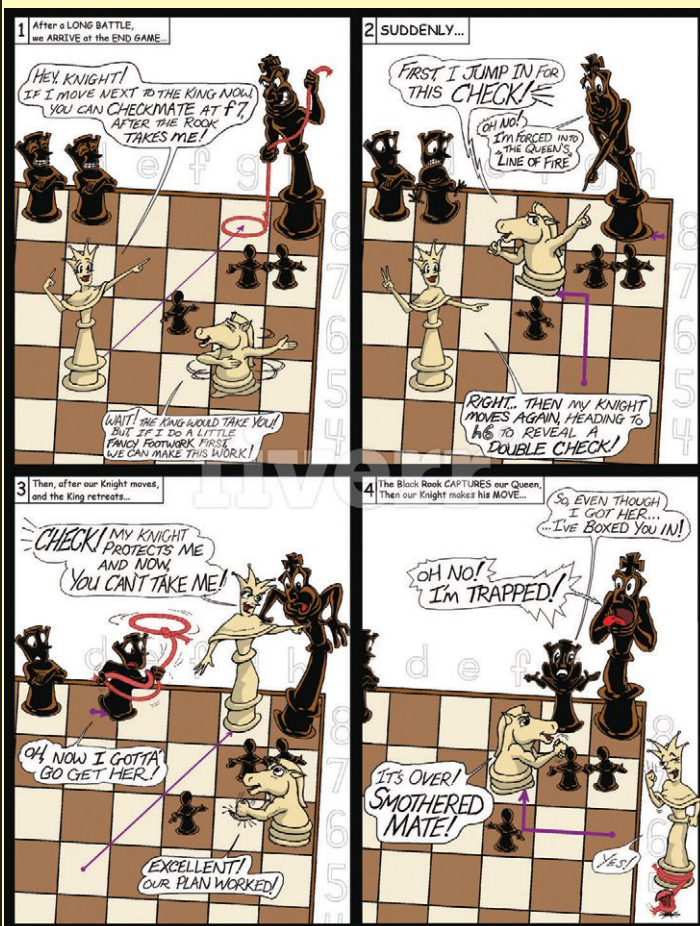
Bobby Fischer (right) with his teacher Jack Collins (center) and William Lombardy.

Bobby Fischer is widely recognized as one of the most talented, creative, and enigmatic chess players in history. Born on March 9, 1943, he began playing chess at age six after his sister Joan gave him a board and taught him the basic moves. When he was 13, Bobby defeated IM Donald Byrne in a match so brilliant that it was dubbed, “The Game of the Century.” Bobby shot to fame in 1972 when he overcame the Soviet Union’s domination in chess by defeating their world champion, Boris Spassky, to become the first American-born world champion. He won despite his unusual demands: he even forfeited a game because television cameras were in the room! After returning to a hero’s welcome in the U.S., Bobby became increasingly bizarre and reclusive. He seemed to prefer obscurity and eventually emigrated to Iceland, where he died in 2008 at age 64—coincidentally the numbers of squares on a chess board.

Smothered Waffles!

by FM Mike "FunMaster" Klein

A smothered mate is one of the most satisfying maneuvers in chess.



Courtesy of Jay Stallings

Did you know you can order chess tactics 24 hours a day from a famous restaurant's menu? It's true! Not only does the diner Waffle House serve delicious eggs and pecan waffles, but you can also

get hash browns "smothered"! Now, while the waitress will explain that's just company lingo for "onions" on your potatoes, we chess players know the truth. "Smothered" may mean onions to Waffle House, but for us it means you've been diced up by your own pieces! "Smothered mate" on the chessboard might be the most beautiful thing on the tactics menu. It's a rarity because it can only be performed by one piece—the knight. That's right, three pieces can perform pins, all six can

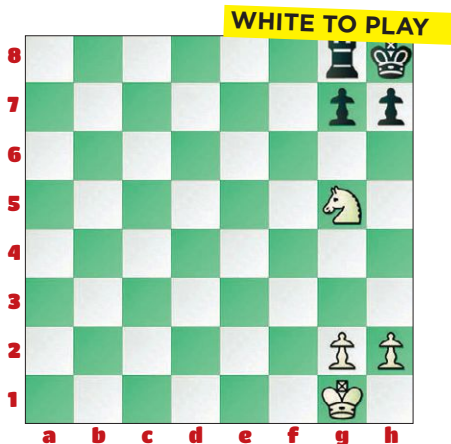


What does a waffle have in common with chess?

make a double attack, but only the knight can serve up those piping hot chess hash browns.

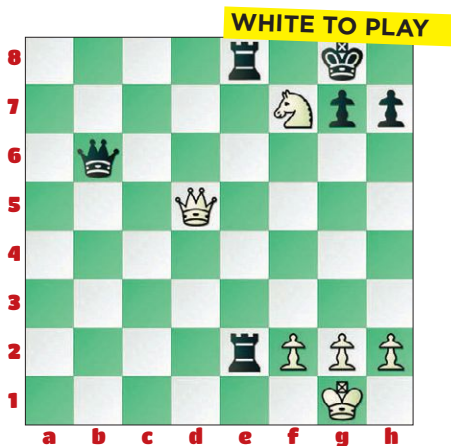
Smothered mate occurs when a king is surrounded by his own pieces. While this blanket keeps him safe from most threats, sometimes the blanket is too tight and he can't breathe! That's when the enemy knight hops in and checkmates all by himself.

As if it can't get any better, the most common form of smothered mate actually involves a queen sacrifice, too! Let's first see the final move, then we will work backward to show you how to order it on the menu.

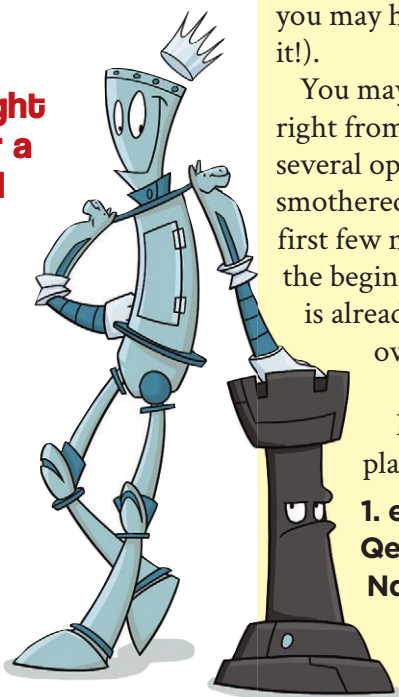


1. Nf7 mate.

Now here's how the two previous moves usually unfold to create that pretty checkmate:



Only a knight can deliver a smothered mate!



1. Nh6+

Any other knight move would allow Black to block on e6, but you can't block a double check!

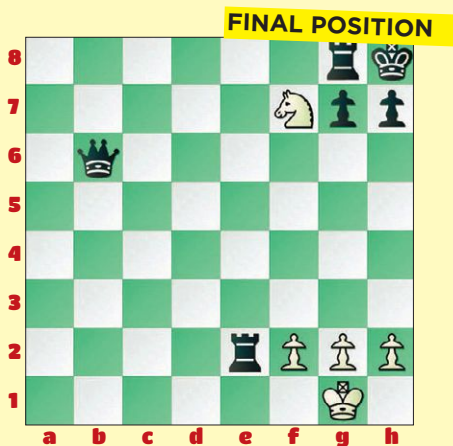
1. ... Kh8

If 1. ... Kf8, then 2. Qf7 mate.

2. Qg8+!

Forcing Black to trap his own king in the corner!

2. ... Rxd8 3. Nf7 mate



This combination may seem crazy, but "FunMaster" Mike can pretty much guarantee you that it will come up in your games at some point (although I can't promise that you'll get to use it; you may have to defend against it!).

You may have to watch for it right from the get-go. There are several openings where a smothered mate can happen in the first few moves! That's because at the beginning of the game, a king is already surrounded by his own pieces.

Here's a game that's been played many times:

- 1. e4 c6 2. Nc3 d5 3. Qe2 dxe4 4. Nxe4 Nd7??**

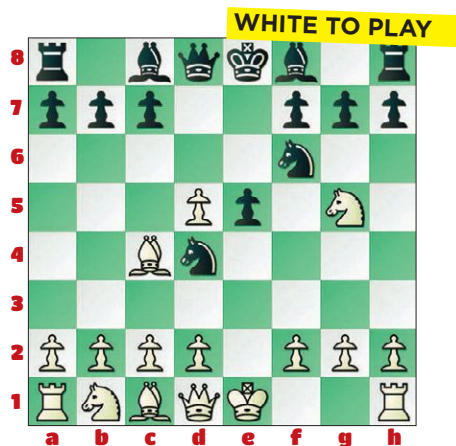
Black's idea is to play his other knight to f6 and not get stuck with doubled pawns, but this is actually the worst move on the board!

5. Nd6 mate.

Black's last move blocks both an escape square for the king and the ability for the queen to capture!

The smothered mate is not just on the menu for White. Kids playing Black can also sometimes enjoy the meal. Take a look at this famous trap that many coaches teach kids:

- 1. e4 e5 2. Nf3 Nc6 3. Bc4 Nf6 4. Ng5 d5 5. exd5 Nd4**



6. d6?!

6. c3 is the safest move, getting that strong knight out of the center. But many kids can't resist the chance to re-open the attack on f7!

6. ... Qxd6 7. Nxf7

It sure looks like White's quick attack has worked, but there's a surprise in store!

7. ... Qc6 8. Nxf7 Qxg2 9. Rf1

The only move to save the rook also boxes in White's king.

9. ... Qe4+ 10. Be2 Nf3 mate.

You might be thinking that since you're a 1. d4 player, none of this applies to you. Not true! Everyone eats at the Waffle House at some point in his life! Check out this example of a smothered mate on the queenside:

1. d4 d5
2. Nc3 Bf5
3. e3 Nc6
4. Bd2 Nf6
5. Nge2?



White's moves may not be best, but they seemed reasonable until this last move. The white king is now without any air, so the time is right to think about smothered mate.

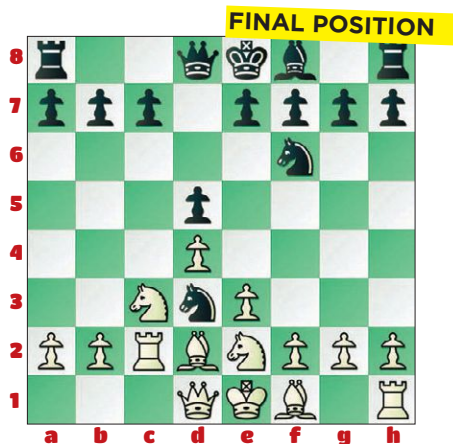
5. ... Nb4!

Usually these two-piece attacks don't work, but this is a special case. There's only one way for White to guard c2.

6. Rc1

Now Black would love to hop into d3, but first, she must remove the guard!

6. ... Bxc2!
7. Rxc2 Nd3 mate.



Although the knight may be the finishing hero, don't neglect other active pieces that are required for a smothered mate.

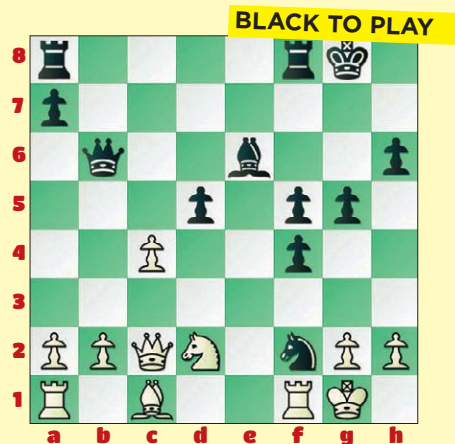
If you know your chess history, you might guess who was the king of smothered mates a long time

ago. He's a chess champion whose appetite for smothering made him a typical Waffle House regular—Paul Morphy. OK, technically, the first unofficial world champion reigned about 100 years before Waffle House became a thing, but it's a pretty good guess that he would have eaten his hash browns smothered.

Here are three examples from Morphy's games.

The first one you'll recognize as that familiar pattern from the beginning of the article.

**James McConnell
Paul Morphy**



"Smothered" may mean onions to Waffle House, but for us it means you've been diced up by your own pieces!



21. ... Nh3+

21. ... Ng4+ Or other knight moves don't work. It needs to be double check! Now White can defend with 22. c5.

22. Kh1 Qg1+!

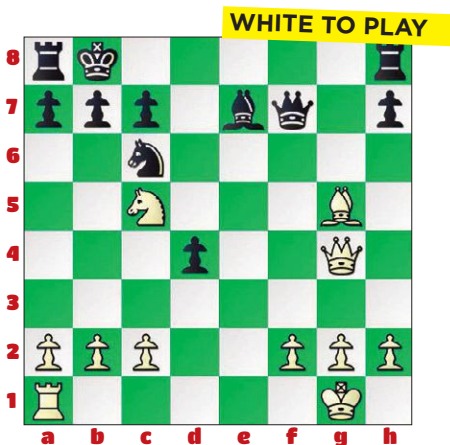
Now we are reminded of the other reason the knight needed to be on h3. Without it, White could escape the corner with 23. Kxg1.

23. Rxc8 Nf2 mate.



Now let's make it a little bit harder. This time Morphy's opponent's king is not in the corner. In addition, it's mate in four instead of mate in three.

Paul Morphy Schrufer



21. Nd7+

21. Qc8+ would be far too early

since Black doesn't have to take with the rook and sandwich his own king. 21. ... Kxc8 and Black can breathe again.

21. ... Kc8 22. Nb6+

There's that double check we know and love!

22. ... Kb8

22. ... Kd8 23. Qd7 mate is not as fun, but mate is mate!

23. Qc8+

See the difference? Now that we've routed the knight to b6, Black must take with the rook.

23. ... Rxc8 24. Nd7 mate.



And this time Black is blocked by both rooks!

For dessert, Morphy ordered the smothered mate à la mode, meaning you have a smothered mate, topped with discovered attack!



Both chess and hash browns can get complicated.

Paul Morphy Anonymous



White actually began this "odds" game without one of his rooks, but it is Black who would like one of his rooks to go missing after ...

19. Ne5!

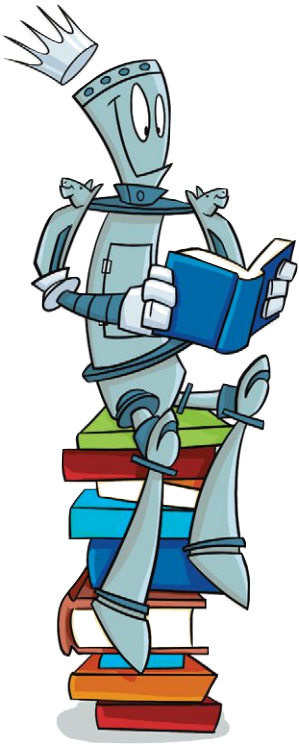
... which discovers an attack on Black's queen. There's no way to save her, while having her keep an eye on the deadly f7-square.

19. ... Qxe2

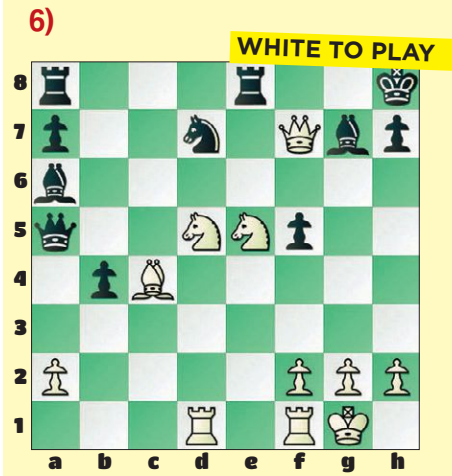
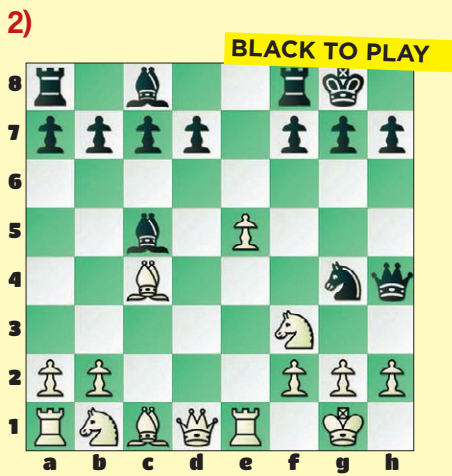
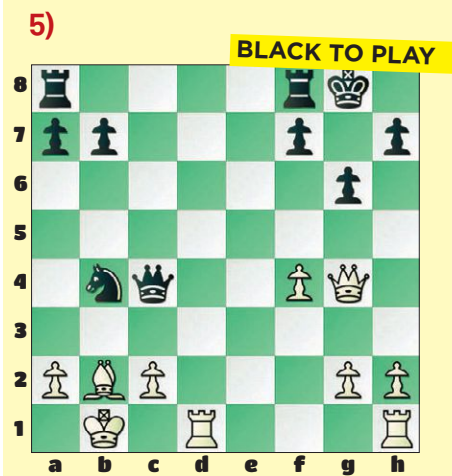
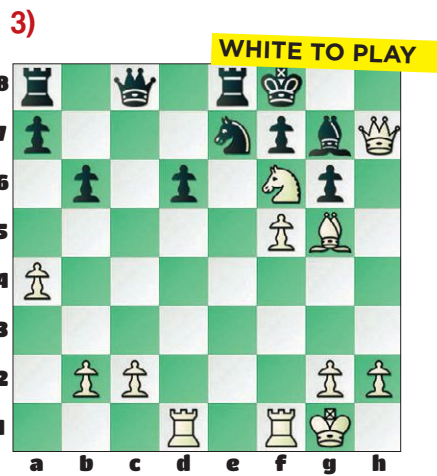
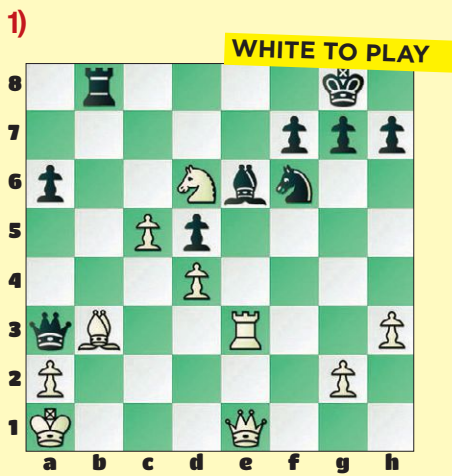
19. ... Bxe5 20. Qxh5 would have at least kept the game going, but back then it was considered "sportsmanly" to allow your opponent to finish off a pretty combination!

20. Nf7 mate.

Before you go begging your parents to take you to Waffle House, you should know that, like in chess, those hash browns can get complicated! Besides "smothered," the real-life menu at the restaurant also allows you to get your fried potatoes "scattered," "covered," "chunked," "diced," "peppered," "capped," or "topped." Or, be daring and top your potatoes "all the way!"



Now see if you can combine all your other tactical chess knowledge and solve these “all the way” smothered-mate puzzles. They all come from real master games, and they get harder as you move down the menu! See the solutions on page 21.



It's Your Move!

Story Contest

Sponsored by US Chess Federation Sales

December is a magical month. Many of us will spend holidays with our families and enjoy time off from school. Also, the first day of winter falls on December 21st this year. To celebrate the season, we thought we'd provide a fun wintertime chess cover for this month's issue.

But what's the story behind the image on this cover? Why don't you take advantage of your time off from school and let your imagination run wild! Tell us what you think is happening in this image. Write us a short story (keep it to under 500 words—all word processing programs have a "word count" feature) and email your entry to dluca@uschess.org. Include your name, your parents' or guardians' name(s), and their phone number.

Entries will be judged on creativity and writing style. We will print the winning entry in our April 2018 issue. Three winners will be selected, with US Chess Federation Sales gift certificates awarded to first place (\$50), second place (\$20), and third place (\$10).



YOU can DO IT!

By ICCM Jon Edwards
10th United States Correspondence Chess Champion

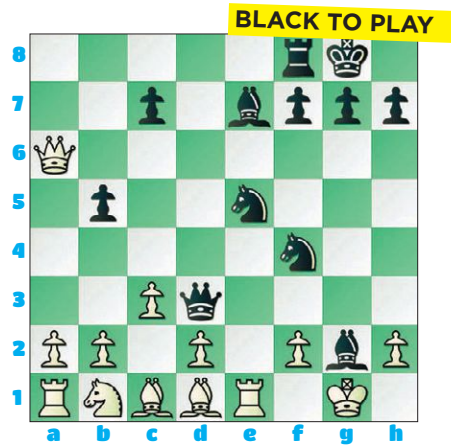
In the movie *2001: A Space Odyssey*, the Hal 9000 supercomputer defeats astronaut Frank Poole in a game that was actually played in 1910:

Roesch, A - Schlage, Willi

Hamburg, 1910

1. e4 e5 2. Nf3 Nc6 3. Bb5 a6
4. Ba4 Nf6 5. Qe2 b5 6. Bb3
- Be7 7. c3 O-O 8. O-O d5 9. exd5
- Nxd5 10. Nxe5 Nf4 11. Qe4
- Nxe5 12. Qxa8 Qd3 13. Bd1 Bh3
14. Qxa6 Bxg2 15. Re1

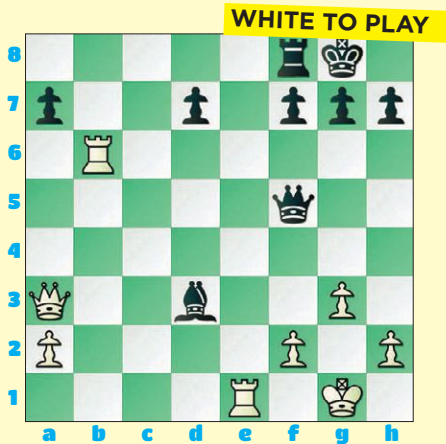
(see diagram to the right)



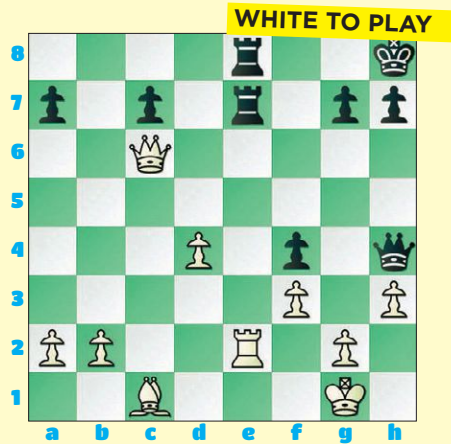
15. ... Qf3 16. Bxf3 Nxf3 mate.

It's a very pretty checkmate but, of course, White did not have to capture the queen on f3. He might instead have delayed the end with 16. Qh6. And so, when Hal announced mate in two in the movie, perhaps he was providing a key clue that there was something wrong with his programming! Well, there's nothing wrong with the following positions. All are mate in two, involve a cool first move, and in each case, a fully operating computer has checked the results. Are these too hard? Nah! You Can Do It!

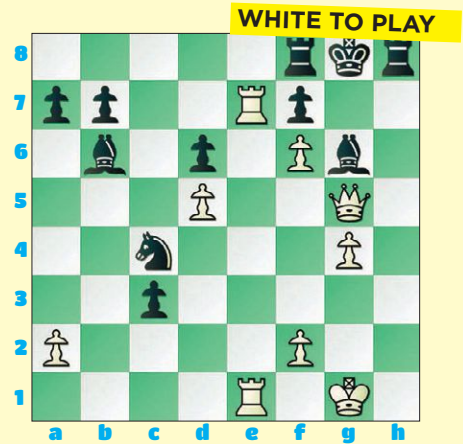
Quiz #1



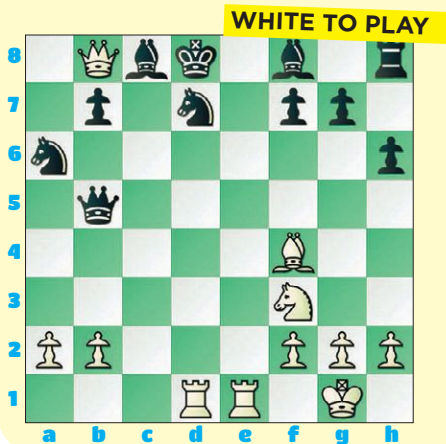
Quiz #3



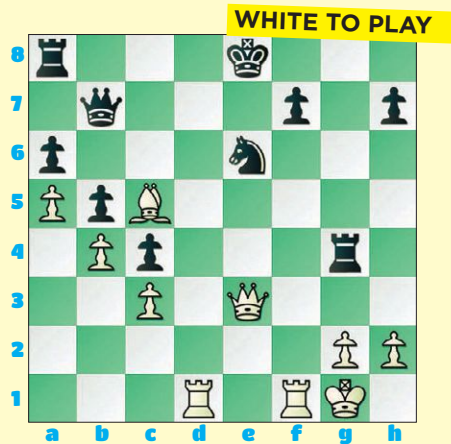
Quiz #5



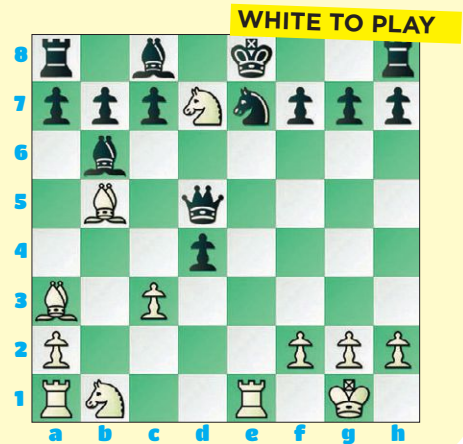
Quiz #2



Quiz #4



Quiz #6



Solutions on page 21

US Chess Junior Grand Prix

2017 Junior Grand Prix Standings

Standings for events received and processed by October 31, 2017 are unofficial and subject to change during the year or until year-end tabulation is complete. The top prize for 2017 will be a Chess.com one-year Diamond membership valued at \$100, a Chess.com gear/merchandise package valued at \$100, a US Chess plaque, free entry into the 2018 U.S. Open, and \$1,000 of expense money from US Chess to offset the trip. For the top five players on the overall list and to each state winner, Chess.com will also award a choice of a one-year ChessKid.com gold membership (valued at \$50/annually) or a one-year Chess.com Gold membership (valued at \$40/annually). US Chess gratefully acknowledges the participation of Chess.com!



Top 5 Overall Standings

NAME	STATE	PTS	EVENTS
HUNG, ALAN	CA-N	10401	12
PILLAI, ADITHYA	VA	8752	11
SIVAKUMAR, SHAAKETH	CA-N	8412	17
PETERS, AARON	OK	8137	7
RAMESH, RAHUL	NC	7911	10

For the top 200 overall, see www.uschess.org

State Leaders

NAME	STATE	PTS	EVENTS
KING, KENNY PAUL	AK	700	1
GUTHRIE, MICHAEL BARTLETT	AL	3147	6
BELLISARIO, STEVEN	AR	5701	7
SELVAM, SANJAY	AZ	5093	9
SIVAKUMAR, SHAASHWATH	CA-N	7466	18
HUANG, YISHI	CA-S	6300	2
MARSH, ALEXANDER J	CO	2449	4
HATCHER, KATHERINE	CT	4444	4
SPASOJEVIC, NICHOLAS	DC	7592	3
LUO, TERRY	DE	6079	11
MARIAN, AARON	FL	5162	7
MYDUKAR, AMIT	GA	5771	11
WHITE, ADRIEL	HI	2268	1
CHEN, NATHAN	IA	4155	8
SHEPARD, RIVER	ID	2766	3
PORTH, DARWIN ALBERT	ID	2766	3
CHENNAREDDY, YUVRAJ RUDRA	IL	6147	9
KACZANOWSKI, AIDAN P	IN	4208	6
SHESHAPPA, SAMEETH	KS	4794	8
SHAWKAT, SAIF	KY	2880	3
APPLEGARTH, BRYANT	LA	3106	3
SU, CARAH	MA	5138	7
GUO, BRADLEY	MD	3736	9
AMAR, BENJAMIN	ME	3446	3
REED, HUNTER	MI	5814	4
FRIEDMANN, ZACHARY	MN	3236	1
ZHENG, MERRICK	MO	6052	11
WU, RYAN BOYD	MS	4450	8
MCGLENN, SIMON BLAISE	MT	418	1
KARTHIK, ADVAITH	NC	5135	5
SOORI, ISIAH C	ND	652	1
LE, BENNY	NE	1934	2
TIRUVEEDHULA, SUHAVI	NH	4860	5
CHINNAMBETI, ABHINAV	NJ	7799	14
CONTRERAS, ANDRES	NM	3978	2
GIOVANNETTI, GRANT	NV	680	3
LAM, KOIIP	NY	7460	15
CAO, ELTON	OH	5894	12
WANG, OSCAR	OK	3664	7
TANG, AUSTIN	OR	3850	2
OSTROFF, CLAYTON MAX	PA	6046	6
VAIJAEPPAY, VAISHNAVI	RI	3318	5
MOORE, ELI DAVIS	SC	3250	5
TAO, ARTHUR	SD	1822	3
RODRIGUEZ, CARLOS XAVIER	TERR	2100	1
WU, LILLIAN	TN	5111	11
OBEROI, SHELEV	TX	4549	10
RAY, UJAN	UT	5759	7
LALWANI, JAY	VA	6142	11
TAYLOR, AEDAN E	VT	1758	1
LI, ALBERT	WA	5856	3
WEBER, MADELINE L	WI	4795	7
YADAV, OMKAR	WV	1506	2
MC LNERNEY, BRYAN C	WY	2008	1



Check out
www.uschess.org
for rules and prizes.

How to earn Points:

Eligible US Chess members earn points by winning or drawing against higher rated players, based on the pre-event ratings for both players. (If a player does not have a US Chess rating yet, or has a provisional rating based on less than 4 games, that player's post-event rating from that event is used to compute JGP points.)

For a win against a higher rated player, the number of JGP points earned is 2X the ratings difference, up to a maximum of 700 points per game.

Example: A 1200 player who defeats a 1350 player earns 2X the difference in ratings (150) or 300 points.

For a draw, the number of JGP points earned is the ratings difference, up to a maximum of 350 points per game.

Example: A 1200 player who draws a 1350 player earns the difference in ratings, or 150 points.

The US Chess Executive Director has the authority to review events for compliance with these rules.

Tournament Life Announcements

DECEMBER 15 THROUGH FEBRUARY 14

Scholastic Members:

As a service to you, we are listing upcoming National US Chess rated events, and requested events of possible interest to you. You can always log in to www.uschess.org, click on "Clubs & Tournaments," then click on "Upcoming Tournaments" for a complete listing of upcoming rated events and details. As always, you can check out the TLA section of *Chess Life*.

Organizers and Tournament Directors:

If you would like your tournament listed here in *Chess Life Kids* for February 2018 (events to be held after February 14), the deadline for submitting your announcements is December 10th. The deadline for the April 2018 issue is February 10th. The processing fee is \$1.00 per line for the first eight lines, \$2.00 for every line thereafter. Send your announcements to Joan DuBois, tda@uschess.org. Display advertising is also available. Advertising rates are posted on the US Chess website, www.uschess.org, or you may email: tda@uschess.org for complete details.

ABBREVIATIONS & TERMS

All tournaments are non-smoking with no computers allowed unless otherwise advertised.

BLZ:	Blitz rated.
QC:	Quick Chess events.
\$\$\$Gtd:	Guaranteed prizes.
\$\$b/x:	Based-on prizes, x = number of entries needed to pay full prize fund. At least 50% of the advertised prize fund of \$501 or more must be awarded.
Bye:	Indicates which rounds players who find it inconvenient to play may take 1/2-point byes instead. For example, Bye 1-3 means 1/2-point byes are available in Rounds 1 through 3.
CC:	Chess club.
dx:	Time delay, x = number of seconds.
+xx:	Time increment, xx = number of seconds added after each move.
EF:	Entry fee.
Ent:	Where to mail entries.
FIDE:	Results submitted to FIDE for possible rating.
G/:	Game in. For instance, G/75 means each side has 75 minutes for the entire game.
GPP:	Grand Prix Points available.
HR:	Hotel rates. For example, 60-65-70-75 means \$60 single, \$65 twin, \$70/3 in room, \$75/4 in room.
JGP:	Junior Grand Prix.
Memb. req'd:	Membership required; cost follows. Usually refers to state affiliate.
Open:	A section open to all. Often has very strong players, but some eligible for lower sections can play for the learning experience.
Quad:	4-player round robin sections; similar strength players.
RBO:	Rated Beginner's Open.
Rds:	Rounds; scheduled game times follow. For example, 11-5, 9-3 means games begin 11 a.m. & 5 p.m. on the first day, 9 a.m. & 3 p.m. on the second day.
Reg:	Registration at site.
RR:	Round robin (preceded by number of rounds).
SD/:	Sudden-death time control (time for rest of game follows). For example, 30/90, SD/1 means each player must make 30 moves in 90 minutes, then complete the rest of the game in an hour.
SS:	Swiss-System pairings (preceded by number of rounds).
Unr:	Unrated.
W:	Site is accessible to wheelchairs.
WEB:	Tournaments that will use a player's online rating.

NATIONALS

US Chess Junior Grand Prix! Dec. 8-10, Florida

2017 National K-12 Grade Championships
7SS, G/90 d5. Disney's Coronado Springs Resort, 1000 West Buena Vista Dr., Lake Buena Vista, FL 32830. Guest rooms can be booked, NLT 11/3/2017, by calling (407) 939-1000, mention "US Chess". **HR:** \$135 Single/Double/Triple/Quad (fees and applicable taxes not included). **13 Sections.** Play only in your grade section - No "playing up" allowed. December Rating Supplement will be used. Only one 1/2-point bye available, any round except Round 7, if requested prior to the start of Rd. 1. Team score = total of top three (minimum two) finishers from each school per grade. First place individual and team, including ties, will be the National Champion for their grade. **Schedule:** Opening ceremony Fri. 12:45 PM. Rds.: Fri. 1 PM - 6 PM, Sat. 10 AM - 2 PM - 6 PM, Sun. 9 AM - 1 PM. Awards Ceremony Sun., approx. 5 PM. Special round times for K-1 sections: Fri. 1:30 PM - 5:30 PM, Sat. 9:30 AM - 1:30 PM - 5:30 PM, Sun. 9:30 AM - 1:30 PM. K-1 Awards Ceremony Sun., approx. 4:30 PM. **EF:** \$50/participant postmarked or online by 11/20, \$70 postmarked or online by 11/27, \$85 by 12/7, \$90 on site; \$5.00 extra for all phone registrations; \$20 fee for roster or section changes after 12/1 or any onsite changes. Onsite registration Thurs. 9 AM to 9 PM & Fri. 8 AM to 11 AM. Players who register or change sections after 11AM on Friday will receive a 1/2-point bye for Rd. 1. **Awards:** Trophies to top individuals & top teams in each grade. Every player receives a commemorative medal! Full list of trophies on tournament info page. **Side Events:** Bughouse: Thurs. 11 AM, Reg. onsite only Thurs. 9-10 AM, \$25/team. **Blitz:** K-6 and K-12, G/5 d0, Thurs. 5 PM, Reg. onsite until 4 PM. **Blitz EF:** \$15 by 11/27, \$20 after or at site. **Blitz Awards:** Trophies in K-6 and K-12 sections. Full list of trophies on tournament info page. **Bughouse Awards:** Top 5 Teams. Team Rooms are limited. Contact Boyd Reed at 931-787-2244 or by email: boyd.reed@uschess.org. General Questions: Susan Kantor at 931.787.1234 ext.136. **Entries:** U.S. Chess Federation, Attn.: 2017 K-12 Championship, P.O. Box 3967, Crossville, TN 38557 or online at <https://secure2.uschess.org/webstore/tournament.php>. **See website for additional information** about the event, advance entries, awards, meetings, updates, corrections, and registration forms, www.uschess.org/tournaments/2017/k12/. W.

US Chess Junior Grand Prix!

Feb. 16-18 or 17-18, Illinois

2018 U.S. Amateur Team Championship - North
Open: 5SS, G/90+30/increment, 2-day: rd.1-2 G/60 d5. Hyatt Regency Schaumburg, 1800 E. Golf Rd., Schaumburg, IL 60173. 847-605-1234 \$100.00 chess rate single-double-triple-quad until 2/5/18, Free WiFi included with Room! Please reserve early. Open to 4 player teams with one optional alternate. **Team average (4 highest ratings - January Rating List) must be under 2200.** **EF:** 3-day \$160, per team if received USPS or on-line 6 PM by February 1st, \$180 if received USPS or on-line 6 PM by Feb. 10th, \$200 on-line until Feb. 16th 6 PM and at door. Individuals wishing to play (note: we can guarantee you will play, but won't guarantee which schedule or the ratings of your team), send \$50 and request to be put on a team by USPS and on-line by 2/14 6 PM, \$60 thereafter. Team changes on site or after 2/16 6 PM \$20. **Check out official website www.chessweekend.com for more info and complete prize list.** **Prizes:** Awards to top 3 teams, top teams with average rating u1900, u1600, u1300, and U1000. Winning team qualifies for national play-offs. Awards for Best Team Name, best team composed of juniors (high school and younger), Top College team, Top HS team, Top Senior team (50 and over), Top Mixed doubles team, Best costume or theme. Prizes to top score on each board. Prizes are Amazon gift cards. **Rounds: 3-day:** on-site registration/check-in 5:30-6:30pm, rds.: 7pm, 10:00am & 4:00pm, 10:00am & 3:30pm. **2-day:** on-site registration/check-in from 8:00-9:30am, rds. 10:00am & 1:00pm then merge with 3-day. **Midwest Blitz Championship on Saturday night,** \$25 by 2/14 USPS or on-line, \$30 at site. First round 8 PM, 2 games with each opponent, 5 rounds, see www.chessweekend.com for details. **All: Register at www.onlineregistration.cc** Checks made payable to and sent to: ChessWeekend, 21694 Doud Ct., Frankfort, IL 60423. Please include Team's name and roster (plus ID#), captain's email and phone number, and desired schedule. **Info:** www.chessweekend.com, glenn@chessweekend.com no phone calls please. Boards and Sets will be provided, please bring clocks.

A Heritage Event!

US Chess Junior Grand Prix!

Feb. 17-19 or 18-19, California, Northern
34th Annual (2018) U.S. Amateur Team Championship - West
Scholastic on Feb. 17 only, Blitz on Feb. 19 only. Santa Clara Convention Center, 5001 Great America Pkwy. Free Parking! **Teams:** Four-player teams plus optional alternate, average rating of four highest must be under 2200, difference between ratings of board 3 & 4 must be less than 1000. January 2018 Supplement, CCA min, & TD discretion used to place players accurately. **Main Event Prizes:** Special 4 commemorative clocks and team trophy to the team for Top 3 overall teams, top team u2000, u1800, u1600, u1400, and u1200. Trophies to all players of the top "Female" team, top "College" team (students/alumni of a college), top "High School" team (students/alumni of a 7-12 school), top "Elementary School" team (students/alumni of a K-6 school), top "Club" team, and top "Family" team (related by blood or marriage within 3 generations). Clocks to top scorer on each board (1-4), trophy to top reserve as well as second and third scorers on each board (1-4). Gift certificates for best 3 team names. **Main Event EF:** \$299/team or \$79/player by 2/11. 2/12-17: \$20 extra per player or \$80 per team & Onsite. A change fee equal to the late fee will apply for any changes, other than by requests within 3 days of the tournament. **3-day Sched:** Onsite Registration @ Sat 9-10a, Round Times @ Sat & Sun 11a 4:30p, Mon 10a 3:30p. Time Control: 40/120 SD/30 d5. **2-day Sched:** Onsite Registration @ Sun 8-8:30a, Round Times @ Sun 9a 11:30a 2p 4:30p; Mon 10a 3:30p. Time Control: G/61 d5 in Rounds 1-3, 40/120 SD/30 d5 in Rounds 4-6 (merge in Round 4 with 3-day

schedule). **Info/flyer:** www.BayAreaChess.com/usatw. **Scholastic Event Prizes:** Trophies to each player in Top 3 teams overall, Top u1200 team, u900 team, u600 team, u300 team. Trophies to top "Girls" team, top "School" team, and top "Club" team. Trophies to top two scorers on each board (1-4). Commemorative medals to all others. **Scholastic Event EF:** \$179/team or \$49/player by 2/11. 2/12-17: \$15 extra per player or \$60 per team & Onsite. **Sched:** Onsite Registration: Sat 8-9a | Games @ Sat 10a 11:30a 1p 2:20p 3:40p. **Info/flyer:** www.BayAreaChess.com/usatws. **Blitz Event:** Registration Mon 6-7pm, Rounds 7:30-9:30pm. EF: \$14, \$16 onsite. 75% of entry fees returned as prizes. **Contact:** Organized by Judit Sztaray. Directed by Tom Langland, John McCumiskey, Jordan Langland, and others. Sponsored by Bay Area Chess. Online entry at www.BayAreaChess.com/my/usatw or mail to Bay Area Chess, 2050 Concourse Drive #42, San Jose, CA 95131. For questions or help in forming teams email ask@BayAreaChess.com. W.

A Heritage Event!

US Chess Junior Grand Prix!

Feb. 17-19, New Jersey

World Amateur Team & U.S. Team East
Celebrate Rock and Roll! 6SS, 40/2, SD/30 delay 5. Parsippany Hilton 1 Hilton Ct., Parsippany, NJ 07054. **Chess Rate valid until 1/17. Reserve early 973-267-7373 or 1-800-HILTONS.** Morris/Essex train to Morris Plains 1.5 miles. Open to 4- player teams with one optional alternate. Team average (4 highest ratings—2018 January Rating list) must be under 2200. EF: \$175 postmarked by 2/5/18. ALL-\$225 after or at door.—all teams, any changes at site \$25 charge. Check out official website www.njscf.org. **Prizes:** 1-5th Place teams, plaque and 4 digital clocks; Top Team (**Denis Barry Award**) U2100, 2000, 1900, 1800, 1700, 1600, 1500, 1400, 1300, 1200, 1000 each plaque and 4 Digital Clocks; Top college team (same school) 4 Digital Clocks & plaque; Top HS team (grades 9-12 same school), Top Middle School (grades 5-9 same school), Top Elementary School (grades K-6 same school), Top 2 Scholastic Teams (mixed schools okay) (**Collins Award**), Mixed Doubles (2 males, 2 females-no alternates), Seniors (all players over age 50), Military, each plaque & 4 Digital Clocks to top team; Company Team (same employer), Family (4 family members), State teams—CT, DE, MD, MA, NJ, NY (**Benjamin Award**), PA, VA, NC, RI each plaque top team; Special Plaque: **Top Future team**, (all future team under age 10), **Top Military College, Top Parent/Child** (2 pairs, one parent, one child), **Best Player 1-4 and top alternate**, All 6-0 scores each Digital clock. Biggest Individual upset each round Engraved Cross pen; Entry fee refunded to team with Best "Chess related" name, Sunday night—Best "Chess Related costumes or gimmick"—1st-gourmet dinner for four. 2nd—Gourmet dinner for 4. **Reg.: 9-12 Sat 2/17. Rds. 1-1-7:30, 11-6, 9-3:30. Surprises and special give-aways each round.** Sunday night—Bughouse \$20 per team. Cash prizes. **HR:** Parsippany Hilton **NEWLY RENOVATED!** NEW LIGHTS! HEATING AND AIR CONDITIONING! Chess rates expire 1/17/2018. Rates \$123(single double) \$125 (Triple, Quad) 2nd hotel attached to Hilton \$130per night (single-double) \$132 (triple, Quad)-Hampton Inn—includes breakfast each day. For help forming teams and more information contact: norenechess@gmail.com. Chks payable to NJSCF, mail by 2/05/18 to: **NJSCF, 17 Stonehenge Road, Morristown, NJ 07960.** (Include Team name, Captain, players full names, USCF Expiration, ID numbers and ratings in board order). No team can include more than two GM's. Include SASE for confirmation if wanted, No registered or certified mail accepted. W.

US Chess Junior Grand Prix!

Feb. 23-25 or 24-25, Florida

2018 U.S. Amateur Team Championship - South
5SS, G/120 d5 (2-day Option Rd. 1 G/60 d5). Ramada Gateway, 7470 W. Irlo Bronson Memorial Hwy, Kissimmee, FL 34747. 4-player teams (with one optional alternate). **Minutes away from Disney, Universal, etc. February temperature mid-70's.** Team average (4 highest ratings - January Supplement) must be under 2200 for Open section & under 1500 for U1500 section. Winning team in Open section qualifies for National playoff online. **EF:** Per player: \$49 by 2/12, \$59 later. **SPECIAL EF:** Team (one entry must be made for all players) \$180 by 2/12, \$210 later (any team changes \$10). Teams from outside Florida will receive \$25 off team entry fee. Scholastic teams (same school) receive \$10 off team entry fee. **PRIZES:** Top 1st-3rd place teams & Top Boards 1-4 in each section; Top teams: Open section: U2000 & U1800; U1500 section: Top U1300 & U1000. Also in Open section: Top Senior team (all 50 & above as of 2/23), Top College team (same school), Top High School team (same school). Also in U1500 section: Top Female team, Top Middle School team (same school, grades 6-8), Top Elementary School team (same school). **Schedule:** 3-day: 1st Rd. Fri. 7:30, 2-Day 1st Rd. Sat. 10; Rds. 2-5 Sat. 1:30, 6:45, Sun. 9:30, 2:45. **HR:** Inn rooms: \$55 until cut-off date, Tower rooms: \$70 until cut-off date, Reservations can be made by calling 800-327-9170 (mention "chess tournament" for these special group rates). Free parking, Internet, refrigerator (Tower rooms also include a microwave), and transportation to Disney, Universal and other attractions. Group guests also receive 10% off at Hotel food facilities. **Ent:** Boca Raton Chess Club, 2385 NW Executive Ctr. Dr., Ste. 100, Boca Raton, FL 33431. **Online entry & addl info:** www.bocachess.com, 561-302-4377.

US Chess Junior Grand Prix!

Mar. 9-11, California, Northern

2018 U.S. Junior Chess Congress
5-SS, G/90 d5. BASIS Independent Silicon Valley School, 1290 Parkmoor Ave., San Jose, CA. 95126. **7 SECTIONS (by age, as of September 1, 2017):** 20 & under, 16 & under, 14 & under, 12 & under, 10 & under, 8 & under & 6 & under. **TROPHIES:** Top 10 individuals and Top 5 clubs in each section. (see flyer on web site for detailed rules on club eligibility) **EF:** \$60 by 2/10, \$70 from 2/11/18-3/4/18, \$80 on 3/5/18 or after. **RDS:** Sat: 10-1:30-5pm, Sun: 9-1. **YES!** 1, 1/2 bye available with exception of last round. Irrevocable once requested. **REGISTRATION:** www.hanleychessacademy.com. **SIDE EVENTS:** 1. USCF Rated Blitz 7pm-10pm on Friday March 9, 2018. Sections: 12 & under & 20 & under. Trophies to top 5 in each section. \$20 by 3/4/18, \$25 on 3/5/18 or

after. **2.** Grades K/6 NonRated Tournaments (Capture the King); No USCF membership required. Two separate tournaments with their own trophies and entry fees...one on Saturday and one on Sunday. For players who have never played in a chess tournament before but know how to play (see web site for all information). Trophies: Top 5 both Saturday and Sunday. Top Club both Saturday and Sunday. 5-DSS. EF: \$30 by 3/4/18, \$40 on 3/5/18 or after for each tournament. **3.** Tactics Problem Tournament, 8:30pm-10pm Saturday March 10, 2018. \$25 by 3/4/18, \$30 on 3/5/18 or after. Sections: Open & Under 1200. Trophies: Top 4 in each section. **TEAM ROOMS:** \$200 from Saturday morning through Sunday evening. Please call 714-925-3195 to reserve. **NEAREST AIRPORT:** Mineta International in San Jose (about 10 minutes from playing site). Advanced Entries, Pairings, Standings and flyer (available for download) at www.hanleychessacademy.com. **QUESTIONS/INFO:** Joe Hanley, hanleychessacademy@gmail.com or 714-925-3195. W.

US Chess Junior Grand Prix!

Apr. 20-22, Illinois

2018 All-Girls National Championships presented by the Kasparov Chess Foundation in association with the Renaissance Knights Chess Foundation & US Chess

Any player that achieves a perfect 6-0 score or wins the first place trophy, in each age category, qualifies to represent the USA at the 2018 World Cadets (U/8, U10, U12) / World Youth (U/14, U/16, U/18) Championships. 6SS, G/90 d5. Hyatt Regency McCormick Place, 2233 S. Martin Luther King Dr., Chicago, IL 60616, (free Wi-Fi). **6 Sections/Trophies: Age as of 1/1/2018 Under 8** top 15 individuals, top 500 - 799, top U500, top 6 schools, **Under 10** top 16 individuals, top 700 - 999, top U700, top 6 schools, **Under 12** top 16 individuals, top 900 - 1199, top U900, top 6 schools, **Under 14** top 12 individuals, top 1100 - 1399, top U1100, top 4 schools, **Under 16** top 8 individuals, top 1300 - 1599, top U1300, top 3 schools, **Under 18** top 8 individuals, top 1500 - 1799, top U1500, top 3 schools, (top 3 players added for team scores). **EF:** \$60 mail/online by 3/19 \$80 by 4/9, \$95 after. Do not mail after 4/13. \$20 fee for roster and section changes after 4/13. \$10 fee for refunds. **Opening Ceremony:** Fri 2:30pm. **Rounds:** Rd. 1 - Fri 3:00pm Rounds 2-4 - Sat 10:00am, 2:30pm, 6:30pm; Rounds 5-6 - Sun 9:00am & 1:00pm. **Awards:** 5:00pm. **Bye:** One 1/2 point bye available for any round, except round 6, if requested at least 2 hours before the start of the round 1. **Side Events: Bughouse Tournament** - Fri, 11:00 am, EF \$30/team. **Blitz Tournament** - Fri, 7pm, G/5 d0, EF \$20 by 4/9, \$25 after or on site. **HR:** single - quad \$159 Reservations: (888) 421-1442. Reserve early rate may increase / sell out. **Entries:** online/info at: www.knights.org/allgirls or mail to RKnights, attn: All-Girls, PO Box 1074, Northbrook, IL 60065, include name, section, rating, USCF ID#, date of birth, grade, school name city & state.

GRAND PRIX

US Chess Junior Grand Prix!

Dec. 15-17 or 16-17, California, Northern

US Chess Grand Prix Points: 30 (Enhanced)

Bay Area Chess Winter Championship

1639A S. Main St., Milpitas, CA 95035. Park free! 5SS, G/90 + 30 2-day rds. 1-2 G/61 d5. Park free. **Prize:** \$5,000 b/90 (60% guar). 3 sects: **2000+** (FIDE) \$1,000-500-200, u2300: 250-125-100. **1600-1999:** \$700-300-100. **U1800:** 200-100. **U1600:** \$700-300-100 u1400: 125-100, u200: 100. **Unr max \$100 exc Open.** Dec 17 Supp & TD disc. **Reg.:** F 6:30-6:45p & Sa 9:30-9:45a. **Rds.:** F 7p, Sa 10a, 3p Su 10a 2:30p. (2-day Sa 10a 12:30 & merge). **EF:** 99, Econ EF: 79 w 50% prz, after 12/8 + 20. **Playup +25.** GMs/IMs \$0 by 12/1 (prize - EF). **Info:** <http://BayAreaChess.com/champs>.

US Chess Junior Grand Prix!

Dec. 23-24, Texas

US Chess Grand Prix Points: 20 (Enhanced)

2017 DCC FIDE Open X1

5SS, G/90 inc/30. Dallas Chess Club, 200 S. Cottonwood Dr. #C, Richardson, TX 75080. Two sections: Open and Reserve. **Open:** \$875G. FIDE and US Chess rated but uses FIDE rules. Use US Chess ratings and rules for pairings and for awarding prizes. Default late forfeiture time is one hour. TD may extend this time at TD's discretion. Note that Foreign players must disclose their FIDE ID number before 1st round in order to play. Note that USA Players with no FIDE ID must disclose their email address. \$\$ \$500-\$250-\$125. **EF:** 2400 + \$125, 2000-2399 \$90, 1600 - 1999 \$99, U1600 \$125, Senior/Birthday during tournament/Additional Family Member \$55. Dallas Chess Club membership required or pay \$20 non-member fee. Small Minimum prize to the First three GM/IM's who apply. GM/IM must play all rounds to get minimum prize (entry fee may be deducted from prize). **Reserve:** Open to players rated below 2000 USCF. This section is not FIDE Rated but is US Chess rated and uses US Chess rules. **EF:** \$40. \$10 non Dallas Chess Club membership fee. The Reserve give back 10% in prizes and if at least 8 paid entries and if there is a clear winner, then that winner receives free entry to next DCC FIDE Open. In the reserve section, Tournament reserves the right to use Fide rules on electronic devices and on starting White's clock at start of a round and to use FIDE pairing rules. Also clocks will be set to 'halt at end'. Both: **Reg.:** Saturday from 9:45-10:15 am. Rds.: Sat 10:45 am-3:10pm-7:16pm. Sun 9:45 am-2:10pm. One half point bye allowed if requested before end of round 2 and before getting full point bye. Withdrawals and zero point last round byes are not eligible for prizes. Note that house players (if required) must pay \$5 per round and be US Chess members. **NEW: Mix Doubles:** Teams (one male and one female make up a team) that pay a \$20 fee, are eligible for a Mix Doubles Prize. Teams must be formed before the 3rd round. Prizes for Mix doubles are 1st receives 60% of mix doubles fees and 2nd receives 30% of mix doubles fees. **ENT:** Make/mail Checks payable to Dallas Chess Club, C/O Barbara Swafford, 2709 Longhorn Trail, Crowley, TX 76036-4719. **Info:** 214-632-9000. FIDE.

A Heritage Event!

US Chess Junior Grand Prix!

Dec. 27-30, 28-30, 29-30 or 27, Virginia

US Chess Grand Prix Points: 100 (Enhanced)

44th Annual Eastern Open

7 Sections: Open, U2200, U1900, & U1600 Sections (7-Rd SS in 4- or 3-days); U1300 & U1000 Sections (6-Rd SS in 2-days); Scholastic Section (4-Rd SS in 1-day). Over \$14,500 prize fund! Over 60 prizes and trophies/medals awarded! Class prizes at 150-point interval within each section! New Location: Westin Hotel, Tyson's Corner, VA (at I-495 and Rte. 7 E. Shuttle to Metro & Tysons) **Open: \$2,000-1,000-500; U2350: \$500. FIDE Rated. Open section prizes guaranteed. Other section prizes based on 40 paid entries for each section. **Under 2200:** \$1,000-500-250; U2050: \$400-200. **Under 1900:** \$1,000-500-250; U1750: \$400-200. **Under 1600:** \$800-410-210; U1450: \$400-200; **Under 1300:** \$700-350-200; U1150: \$300-150; **Under 1000:** \$500-250-125; U800: \$200-100 and trophies/medals; UR max \$150 in U1600, U1300, U1000. **Scholastic: \$100-50 and trophies, medals, certs, and book prizes.** **Special Prizes!** Best Fighting Spirit/Best Played Game: \$200-100. Brilliance: \$100-50. Opening Innovation: \$100-50. Selected winning games, positions, and openings must be annotated and will be submitted for publication in Chess Life. **Upset:** For U1600, Rds 1-6, \$25 book credit prize in 4-day schedule; max 2 prizes per player. Power Moves in U1600 & U1300 Sections: Vote on best moves from rounds 1-6; \$30-20 book credit prizes in each section. **Byes:** 1/2-pt byes available for any round, but Rds. 5-7 must commit before Rd. 4. Limit 2 byes for prizes. **Open Section Rules:** FIDE Rules used, with regular US Chess 1-hr lateness/default rule in effect. If no US Chess rating, use FIDE rating + 100 pts. If no US or FIDE rating, then rating assigned for other countries per US Chess rulebook. Foreign players with no FIDE ID, MUST pre-register by no later than Dec. 15th so that country can properly register player with FIDE 4-day schedule only & no re-entries. **4-day Schedule (7 rds. 12/27-12/30) for Open, U2200, U1900, U1600:** Rd 1: Wed 12/27 at 6 pm; Rds. 2-3, 4-5, 6-7: Thu 12/28 - Sat 12/30 at 11 am & 5:30 pm. **On-Site Reg:** Wed 12/27 at 4-5:30. **TC:** 40/120, SD/30 d10. **3-day Schedule (7 rds. 12/28-12/30) for U2200, U1900, U1600:** Rds. 1-3: Thu 12/28 at 5, 7, 9 pm. **On-Site Reg:** Thu 12/28: 4-4:45 pm. **TC:** G/45 d10. Join 4-day in Rd 4. **2-day Schedule (6 rds. 12/29-12/30) for U1300, U1000:** Fri-Sat Rds. 1-3 & 4-6 at 10 am, 2 pm, 6 pm. **On-Site Reg:** Fri 12/29: 9-9:45 am. **TC:** G/90 d10. **Scholastic Tourney (4 rds. 12/27) in 3 sections: K-12 Open, K-8 U1000, K-5 U700.** Rds. 1-4 at 11 am, 1 pm, 3 pm, 5 pm. **On-Site Reg:** Wed 12/27: 10-10:45 pm. **TC:** G/45 d10. **Blitz Championship:** 5-Rd Dbl Swiss. Wed 12/27 at 1-4:30 pm. **Prizes:** \$850 in prizes based on 40 paid entries: 1st/2nd: \$250/150, U2100: \$150/75; U1800: \$150/75. **TC:** G/6, i3. **Site Reg:** Wed 12/27: 12-12:45 pm. **EF:** Advance EF: \$35; on-site EF: \$45. **Free Lecture: 12/27 at 4-5:30 pm.** **HR:** Amazing, only \$89!! To reserve online, go to easternopenchess.com or call (800) 937-8461 or (703) 893-1340 by 12/20 request Eastern Open chess rate. **Pkg:** Free parking! Shuttle bus to Tyson's Corner and Metro. **Entries:** If postmarked by Dec 19: **Open:** \$125; U2200: \$120; U1900 & U1600: \$110; U1300: \$100; U1000: \$75; Scholastic: \$35. Entries after 12/20: \$25 more for Open-U1000; \$10 more for Scholastic Reentry \$60 and limited to rounds 1-4. **GMs:** free entry, but \$125 deducted from prize; **IMs:** \$65 advance entry, but \$60 deducted. **FMs:** \$90 advance entry, but \$35 deducted; \$10 service charge for refunds. December 2017 Rating List used. **Please make checks or money orders payable to** Eastern Open. Mail entries to Tom Beckman, 3731 Kanawha St. NW, Washington, DC 20015-1809. For entry forms and info, easternopenchess.com or tombekman@rcn.com.**

Dec. 31-Jan. 1, Texas

US Chess Grand Prix Points: 10 (Enhanced)

DCC New Year Eve Insanity

10 Rd. G/30 d5. 2-SS (Play white and black against each opponent), Dallas Chess Club, 200 S. Cottonwood Dr. #C, Richardson, TX 75080. **EF:** \$40. \$25 Junior/Senior/Hcapp/Birthday during tournament. Limited number of House players welcome for \$2 per game. Dallas Chess Club membership required or pay \$10 non member fee. **\$\$GTD:** \$200-100. Class prizes (if any) depends on entries. **Reg.:** 12/31 at 5pm - 5:45 pm. **Rds.:** Round 1 at 6:05 pm rest ASAP with hour breaks at around 12:30 am, 7:30 am and 12:30 pm. 4 points of 1/2 point Byes allowed. Byes for round 9 and 10 must be requested before round 6. **ENT:** Dallas Chess Club, C/O Barbara Swafford, 2709 Longhorn Trail, Crowley, TX 76036. **INFO:** Barbara Swafford, 214-632-9000, info@dallaschess.com. www.dallaschess.com.

US Chess Junior Grand Prix!

Jan. 5-7, Tennessee

US Chess Grand Prix Points: 20 (Enhanced)

3rd Annual Smoky Mountain Chess Tournament

Sponsored by Dollywood's DreamMore Resort and Spa, 2525 DreamMore Way, Pigeon Forge, TN 37863. \$3500.00 Guaranteed Prize Fund. In 3 Sections, **Open:** 5SS, G/120 d5, **\$\$GTD:** \$600-200. Expert, A and below, 1st \$300, 2nd \$100. **Amateur U1800:** 5SS, G/90 d5, **\$\$GTD:** \$300-100. Class C, Class D and Below, 1st \$300, 2nd \$100. **Novice U1200:** 5SS, G/90 d5, **\$\$GTD:** \$150-100. Class F, Class G and below, Unrated, 1st \$100, 2nd \$50. Unrated eligible for unrated prize only. **ALL: EF:** \$30 if mailed or on line by 12/22/17, \$40 later or at site. Online at inches.us or send to Harry D. Sabine, PO Box 381, Crossville, TN 38557. **Memb. Req'd:** TCA \$10.00 TN residents only. Over \$2000 in door prizes furnished by Dollywood's DreamMore Resort and Spa that include Dollywood Tickets, Dixie Stampede Tickets and DreamMore Gift Certificates! **Reg:** Friday 1:00 pm - 6:00 pm EST. **Rds.:** Friday 7 pm, Saturday 9 am, 2 pm and 7 pm, Sunday 9 am. **INFO:** Harry Sabine (931) 484-9593 or (931) 261-8440. **Hotel:** Dollywood's DreamMore Resort and Spa, 2525 DreamMore Way, Pigeon Forge, TN, 800-365-5996. **\$77 plus tax Thurs through Sunday only. Reserve by 12/15/2017. Ask for TN Chess rate or online under Special Codes enter Group Code 180104SMCT.** W.

US Chess Junior Grand Prix!

Jan. 5-7 or 6-7, Florida

US Chess Grand Prix Points: 40 (Enhanced)

4th Gulf Coast New Year's Open

(Sponsored by ChessRegister.com) 5SS, Open section G/90 + 30 sec

incr., **All other sections but U1100** G/120 d5, **U1100 section** G/90 d5 (2-day Option all sections Rd. 1 G/60 d5). Embassy Suites Fort Myers-Estero, 10450 Corkscrew Commons Drive, Estero 33928. **\$\$11,000 b/180** paid entries, 50% min. Gtd. **Open:** \$1100/Trophy-700-600-500, U2300/Unr. \$400. **FIDE. U2100:** \$1000/Trophy-600-500, U1950 \$400. **U1800:** \$1000/Trophy-600-500, U1650 \$400. **U1500:** \$1000/Trophy-600-500, U1350/Unr. \$400. **U1100:** Trophies for 1st to 3rd & 1st U900, 1st U700, Medals to all others. **Top Senior Prize** (among all cash prize sections, must be at least 55 on Jan. 5) \$200. Unr. may enter Open, U1500 or U1100 only. Unr. only eligible for Unr. Prizes in Open & U1500. **EF:** \$99 by Jan. 2, \$10 more later, \$15 more on-site, GMs & IMs free (\$99 deducted from prize). U1100 section \$39 by Jan. 2, \$10 more later, \$15 more onsite. Re-entry cash prize sections \$49. **Reg.:** Ends 1/2 hr before 1st rd. **Rds.:** 3-Day 1st Rd. Fri. 7:30; 2-Day 1st Rd. Sat 10; 2nd Rd. Sat. 1:15; 3rd Rd. all sections but U1100 6:30, 3rd Rd. U1100 5:45; 4th Rd. Sun. 9:30; 5th Rd. all sections but U1100 2:30, 5th Rd. U1100 1:45. With incr. Open section start times could be delayed. 2 1/2 pt. byes, if req'd before rd. 2. **HR:** \$129 with complimentary cooked-to-order breakfast, two-hour beverage reception nightly, Internet, refrigerator & microwave, free airport shuttle, free parking for all, 239-949-4222. **Ent:** Boca Raton Chess Club, 2385 NW Executive Ctr. Dr., Ste. 100, Boca Raton, FL 33431. \$10 service charge for refunds. **Online entry & add'l info:** www.bocachess.com, 561-302-4377.

US Chess Junior Grand Prix!

Jan. 5-7 or 6-7, California, Northern

US Chess Grand Prix Points: 50 (Enhanced)

2018 New Year Open Championship

6SS, 40/120 sd30 d5 (2-day rd1-3 G/61 d5 merge rd4). Biltmore Santa Clara, 2151 Laurelwood Rd., Santa Clara, CA 95054. Rooms \$99 Call Hotel 408-988-8411. **Prizes:** \$12,000 b/159 60% guar. **2000+:** \$1,500 1000 600 300 100 u2300: 300 100. **1800-1999:** 1,000 700 300 100 50. **1600-1799:** 1,000 600 300 100 50. **1400-1599:** 1,000 600 300 100 50. **u1400:** 800 400 200 100. **u1200:** 250 100. Unr max \$200 exc Open. Jan 18 Supp, CCA min & TD disc. **EF:** \$124 by 1/2, Onsite + 30 Playup + 20. Econ: \$104 w 60% prize. GMs/IMs \$0 by 12/24: prize-EF. **Sched:** 3-day Reg F 10 11, Rds Fr/Sa 11 5, Su 10 3:30; 2day Reg Sa 8:30-9, Rds Sa 9-11:30-2-5, Su 10-3:30. Bye for Rd 5&6 must com be rd 1. **Ent:** Online or mail to Bay Area Chess, 2050 Concourse Dr. #42, San Jose, CA 95131. Rfnd fee \$20. **Info:** BayAreaChess.com/ny. E: ask@BayAreaChess.com. T: 408.409.6596. W.

US Chess Junior Grand Prix!

Jan. 26-28 or 27-28, California, Northern

US Chess Grand Prix Points: 30 (Enhanced)

Bay Area Chess Championship

Fri: BAC office, 2050 Concourse Drive, #42, San Jose 95131; Sat&Sun: Santa Clara Convention Center, 5001 Great America Pkwy. Park Free! 5SS, G/90 + 30 2-day rds. 1-2 G/61 d5. Park free. **Prizes:** 5,000 b/90 (60% guar). 3 sects: **2000+** (FIDE) \$1,000-500-200, u2300: 250-125-100. **1600-1999:** \$700-300-100, u1800: 200-100, **u1600:** \$700-300-100 u1400: 125-100, u200: 100. Unr max \$100 exc Open. Jan 18 Supp & TD disc. **Reg.:** F 6:30-6:45p & Sa 9:30-9:45a. **Rds.:** F 7p, Sa 10a, 3p Su 10a 2:30p. (2-day Sa 10a 12:30 & merge). **EF:** 109, Econ EF: 89 w 50% prz, after 1/18 + 20. **Playup +20.** GMs/IMs \$0 by 1/14 (prize - EF). **Info:** <http://BayAreaChess.com/champs>.

REGIONAL California, Northern

Dec. 9, Weibel Fall Youth Quads #3

UNDER 900 G/30 d5, OVER 900 G/45 d5. Weibel Elementary School, 45135 S. Grimmer, Fremont, CA 94539. **AWARDS:** Trophy for first place in each Quad including ties, medals to all others. **SCHED:** Check-in by 9:30 AM, U 900 RDS. 10-15, 11:30, 1:00, 0 900 RDS. 10:15, 12:15, 2:15. **INFO/REG:** www.calnortheyouthchess.org/Applications/FallQuads17-GP/ **CONTACT:** Alan Kirshner, WeibelChess@comcast.net (510) 659-0358.

Dec. 15-17 or 16-17, Bay Area Chess Winter Championship

See Grand Prix.

Dec. 16, Bay Area San Ramon Quads (PK-12; 3xG/30 d5)

Courtyard Marriott, 18090 San Ramon Valley Blvd., San Ramon, CA 94583. **Trophies:** Players w + score. **Sched:** Regrd. Check-in 1:30-2p. Games: 2:15-5p. **EF:** 29, 44 after 12/11. **Info:** <http://BayAreaChess.com/signature.w>.

Dec. 16, Bay Area San Ramon Swiss (PK-12; 4SS, G/30 d5)

Courtyard Marriott, 18090 San Ramon Valley Blvd., San Ramon, CA 94583. **Trophies:** players w + score. **Sched:** Reg. 9:30-9:45a. Games: 10a - 1:30p. **EF:** 34, 42 after 12/11. **Info:** <http://BayAreaChess.com/signature.w>.

Dec. 17, Bay Area Cupertino Quads (PK-12; 3xG/30 d5)

Courtyard Marriott, Cupertino, CA 95014. **Trophies:** Players w + score. **Sched:** Regrd. Check-in 1:30-2p. Games: 2:15-5p. **EF:** 29, 44 after 12/12. **Info:** <http://BayAreaChess.com/signature.w>.

Dec. 17, Bay Area Cupertino Swiss (PK-12; 4SS, G/30 d5)

Courtyard Marriott, Cupertino, CA 95014. **Trophies:** players w + score. **Sched:** Reg. 9:30-9:45a. Games: 10a - 1:30p. **EF:** 34, 49 after 12/12. **Info:** <http://BayAreaChess.com/signature.w>.

US Chess Junior Grand Prix!

Dec. 23, Milpitas SuperSwiss (4SS, G/61 d5)

1639A S. Main St., Milpitas, CA 95035. Park Free! **Prizes:** \$1,300 b/50. 60% guar. 1900 + \$200-100-100, u2000 50-50. 1500-1899: \$200-100, u1600 50-50. u1500: \$200-100, u1200 50-50. Dec 17 Supp & TD disc. **Sched:** Reg. 9-9:15. Rds.: 9:30-11:50-2:30-5. **EF:** 48, Econ 33 w 1/2 prz. after 12/18 + 15, playup + 25, GMs/IMs/NMs \$0 by 11/29. **Info:** <http://BayAreaChess.com/grandprix>.

Dec. 23, San Jose Kids Quads (PK-12; 3xG/30 d5)

2050 Concourse Drive #42, San Jose, CA 95131. **Trophies:** players w

Tournament Life

+ score. **Sched:** Required Check-in 2:30-3p. **Games:** 3-5:30p. EF: 29, 44 after 12/18. **Info:** <http://BayAreaChess.com/signature>. W.

Dec. 23, San Jose Kids Swiss (PK-12; 4SS, G/30 d5)
2050 Concourse Drive #42, San Jose, CA 95131. **Trophies:** players w + score. **Sched:** Reg: 9:30-9:45a. **Games:** 10a - 1:30p. **EF:** 34, 49 after 12/18. **Info:** <http://BayAreaChess.com/signature>. W.

Dec. 30, "Farewell 2017" Milpitas QuickSwiss (4xG/45 d5)
1639A S. Main St., Milpitas, CA 95035. **Prizes:** \$1,300 b/50. 60% guar. 1900+: \$200-100-100, u2000 50-50. 1500-1899: \$200-100, u1600 50-50. u1500: \$200-100, u1200 50-50. Dec 17 Supp & TD disc. **Sched:** Reg: 9: 9:15. **Rds.:** 9:30a-11:30p-1:15p-3p. **EF:** 49, Econ 34 w 1/2 pr. Aft 12/25 +15, playoff +25, GMS/IMS/NMS- \$0 by 12/17. **Info:** <http://BayAreaChess.com/grandprix>.

Jan. 5-7 or 6-7, 2018 New Year Open Championship
See Grand Prix.

Jan. 7, New Year Youth Championship
55S, G/30 d5. Biltmore Santa Clara, 2151 Laurelwood Rd., Santa Clara, CA 95054. Room \$99. **Prizes:** Top 10 w/plus score in ea sec, Top 5 schools & clubs (combined). **5 Secs:** 900-1199, 600-899, 300-599, u300. **Sched:** Reg 9-9:15. **Games:** 10 11:30 1 2:20 3:30. **EF:** 48, after 1/2 +15, Playoff +15. Jan 18 Supp. Rfnd fee 15. **Info/Flyer/Reg:** <http://BayAreaChess.com/nykids>. E: ask@BayAreaChess.com. T: 408.409.6596. W.

Jan. 12-15, 13-15 or 14-15, 9th annual Golden State Open
See *Chess Life* or www.chesstour.com.

Jan. 14, Bay Area Fremont Quads (PK-12; 3xG/30 d5)
Fremont Marriott, 46100 Landing Parkway, Fremont, CA 94538. **Trophies:** Players w + score. **Sched:** Reqr. Check-in 1:30-2p. **Games:** 2:15-5p. **EF:** 29, 44 after 1/7. **Info:** <http://BayAreaChess.com/signature>. W.

Jan. 14, Bay Area Fremont Swiss (PK-12; 4SS, G/30 d5)
Fremont Marriott, 46100 Landing Parkway, Fremont, CA 94538. **Trophies:** players w + score. **Sched:** Reg 9:30-9:45a. **Games:** 10a - 1:30p. **EF:** 34, 49 after 1/7. **Info:** <http://BayAreaChess.com/signature>. W.

Jan. 21, Palo Alto DuperSwiss75 (3SS, G/75 d5)
NEW Location Crown Plaza Palo Alto, 4290 El Camino Real, Palo Alto, CA 94306. **Prizes:** \$1,300 b/50. 60% guar. 1900+: \$200-100-100, u2000 50-50. 1500-1899: \$200-100, u1600 50-50. u1500: \$200-100, u1200 50-50. Dec 17 Supp & TD disc. **Reg.:** 8:30-8:45. **Rds.:** 9-11:45-2:40. **EF:** 49, Econ 39 w 1/2 pr. after 1/14 +20, playoff +20 GMS/IMS/NMS- \$0 by 1/7. **Info:** <http://BayAreaChess.com/grandprix>. W.

Jan. 21, San Jose Kids Quads (PK-12; 3xG/30 d5)
2050 Concourse Drive #42, San Jose, CA 95131. **Trophies:** players w + score. **Sched:** Required Check-in 2:30-3p. **Games:** 3-5:30p. **EF:** 29, 44 after 1/16. **Info:** <http://BayAreaChess.com/signature>. W.

Jan. 21, San Jose Kids Swiss (PK-12; 4SS, G/30 d5)
2050 Concourse Drive #42, San Jose, CA 95131. **Trophies:** players w + score. **Sched:** Reg 9:30-9:45a. **Games:** 10a - 1:30p. **EF:** 34, 49 after 1/16. **Info:** <http://BayAreaChess.com/signature>. W.

Jan. 26-28 or 27-28, Bay Area Chess Championship
See Grand Prix.

Jan. 28, Bay Area San Ramon Quads (PK-12; 3xG/30 d5)
Courtyard Marriott, 18090 San Ramon Valley Blvd, San Ramon, CA 94583. **Trophies:** Players w + score. **Sched:** Reqr. Check-in 1:30-2p. **Games:** 2:15-5p. **EF:** 29, 44 after 1/23. **Info:** <http://BayAreaChess.com/signature>. W.

Jan. 28, Bay Area San Ramon Swiss (PK-12; 4SS, G/30 d5)
Courtyard Marriott, 18090 San Ramon Valley Blvd, San Ramon, CA 94583. **Trophies:** players w + score. **Sched:** Reg 9:30-9:45a. **Games:** 10a - 1:30p. **EF:** 34, 42 after 1/23. **Info:** <http://BayAreaChess.com/signature>. W.

Feb. 4, Bay Area Cupertino Quads (PK-12; 3xG/30 d5)
Courtyard Marriott, Cupertino, CA 95014. **Trophies:** Players w + score. **Sched:** Reqr. Check-in 1:30-2p. **Games:** 2:15-5p. **EF:** 29, 44 after 1/28. **Info:** <http://BayAreaChess.com/signature>. W.

Feb. 4, Bay Area Cupertino Swiss (PK-12; 4SS, G/30 d5)
Courtyard Marriott, Cupertino, CA 95014. **Trophies:** players w + score. **Sched:** Reg 9:30-9:45a. **Games:** 10a - 1:30p. **EF:** 34, 49 after 1/28. **Info:** <http://BayAreaChess.com/signature>. W.

Feb. 4, Milpitas LuperSwiss (4xG/45 d5)
1639A S. Main St., Milpitas, CA 95035. **Prizes:** \$1,300 b/50. 60% guar. 1900+: \$200-100-100, u2000 50-50. 1500-1899: \$200-100, u1600 50-50. u1500: \$200-100, u1200 50-50. Feb 17 Supp & TD disc. **Reg.:** 9-9:15. **Rds.:** 9:30-1:4:30. **EF:** 49, Econ 39 w 1/2 pr. after 1/27 +20, playoff +20, GMS/IMS/NMS- \$0 by 1/20. **Info:** <http://BayAreaChess.com/grandprix>.

Feb. 17-19 or 18-19, 34th Annual (2018) U.S. Amateur Team Championship - West
See Nationals.

Mar. 9-11, 2018 U.S. Junior Chess Congress
See Nationals.

California, Southern

Vellotti's Chess School

Beginners Welcome! Now offering online lessons, Vellotti's Chess School makes chess FUN for both boys & girls from PreK thru 8th grade. Our Award-Winning Enchanted Chess adventure-based system is currently used to train & develop thousands of students into state and national champions. Super star International Master Luke Vellotti supervises the development of lesson plans and also coaches more advanced students

and titled players. Now in two locations- Idaho and Southern CA. For more info about Classes, Camps, and Tournaments, call (208) 713-2486 or email info@SuccessInChess.com. Visit us online at SuccessInChess.com or SoCalChess.com to register for a FREE class today!

Dec. 2, 3, 9, 10, 16, 17, 23, 24, 30, 31, Every Saturday & Sunday Chess 4 Juniors
10 separate events- 5SS, G/30 d0. 11514 Santa Monica Blvd. & Butler, LA, 90025, 2nd fl. 4 blocks West of 405. **EF:** \$30 (\$20 LACC memb, No prize 1/2 EF, siblings 1/2, Free new LACC members). **Reg.:** 12-1 pm. **Rds.:** 1pm & asap; done by 4; **Prizes:** Trophies & medals; All players receive prizes! **Parking:** Free on streets & BoA. Free healthy refreshments. **Info:** (310) 795-5710 or www.LAChessClub.com or Mick@LAChessClub.com.

Mar. 2-4 or 3-4, 25th annual Western Class Championships
See *Chess Life* or www.chesstour.com.

Delaware

Feb. 3, Kasparov Chess Foundation Presents 10th Annual Greater Mid-Atlantic Scholastic Chess Championships (MD)
See Maryland.

District of Columbia

Feb. 3, Kasparov Chess Foundation Presents 10th Annual Greater Mid-Atlantic Scholastic Chess Championships (MD)
See Maryland.

Florida

Boca Raton Chess Club

Friday night tournament games, one game a week for 4 weeks. www.bocachess.com, 561-302-4377.

Dec. 8-10, 2017 National K-12 Grade Championships
See Nationals.

Jan. 5-7 or 6-7, 4th Gulf Coast New Year's Open
See Grand Prix.

Feb. 23-25 or 24-25, 2018 U.S. Amateur Team Championship - South
See Nationals.

Mar. 16-18 or 17-18, 16th annual Southern Class Championships
See *Chess Life* or www.chesstour.com.

Illinois

Feb. 3, Greater Chicago K-12 Championships! Presented by Kasparov Chess Foundation & Renaissance Knights - Sponsored by SBB Global Research Group

Open to all players in grades 12 & below. ***** 100 INDIVIDUAL & 30 TEAM TROPHIES ***** McCormick Place - West Building, 2301 S. Dr. Martin Luther King Jr. Dr., Chicago, IL. **DETAILS:** Championship Sections: 4-SS, G/40 d5. **Rounds:** 10:00, 12:00, 2:00 & 4:00. **Reserve & Notice Sections:** 5-SS, G/25 d5. **Rounds:** 10:00, 12:00, 1:30, 3:00 & 4:30. **Awards Ceremony:** 6:00 pm. **Entry Fee:** \$40 by 1/15; \$50 by 1/29; \$60 after 1/29. On-site entry receives 1/2 point 1st round bye. \$5 off to siblings & team members when registering together. **Byes:** One 1/2-pt bye available, any round except last, if requested before Rd. 1. **Online Entries / info:** www.rknights.org/tournaments. **SECTIONS / AWARDS: PRIMARY (K-3):** Championship: open to all. **Trophies:** top 8 players, top rated Under 800, top 3 schools. **Reserve U600:** open to players rated Under 600. **Trophies:** top 8 players, top 3 schools. **Novice U200:** open to players rated Under 200 / Unrated. **Trophies:** top 12 players, top 3 schools. **ELEMENTARY (K-6):** Championship: open to all. **Trophies:** top 10 players, top rated Under 1000, top 3 schools. **Reserve U800:** open to players rated Under 800. **Trophies:** top 10 players, top 3 schools. **Novice U300:** open to players rated Under 300 / Unrated. **Trophies:** top 12 players, top 3 schools. **JUNIOR HIGH (K-9):** Championship: open to all. **Trophies:** top 5 players, top rated Under 1200, top 2 school. **Reserve U1000:** open to players rated Under 1000. **Trophies:** top 5 players, top 2 schools. **Novice U400:** open to players rated Under 400 / Unrated. **Trophies:** top 8 players, top 2 schools. **HIGH SCHOOL (K-12):** Championship: open to all. **Trophies:** top 5 players, top rated Under 1400, top 2 school. **Reserve U1200:** open to players rated Under 1200. **Trophies:** top 5 players, top 2 schools. **Novice U500:** open to players rated Under 500 / Unrated. **Trophies:** top 8 players, top 2 schools. *Any player who scores 4 or more points and doesn't win a trophy will receive a medal!*

Feb. 16-18 or 17-18, 2018 U.S. Amateur Team Championship - North
See Nationals.

Apr. 20-22, 2018 All-Girls National Championships presented by the Kasparov Chess Foundation in association with the Renaissance Knights Chess Foundation & US Chess
See Nationals.

May 24-28, 25-28, 26-28 or 27-28, 27th annual Chicago Open
See *Chess Life* or www.chesstour.com.

Maryland

Maryland Chess Tournaments

MD Chess runs scholastic tournaments 2 Saturdays per month from September through June & open tournaments 2 Saturdays or weekends per month throughout the year. Visit www.MDChess.org to find tournament announcements, tutors, coaches, & camps;

register online for tournaments; & subscribe to scholastic and/or open e-newsletters. MD scholastic players who compete in the Varsity section (exclusively for players rated 1600+) of a MD-Sweet-16 Qualifier can qualify for the \$45,000 scholarship to UMBC awarded annually. The University of Maryland, Baltimore County's chess team is a perennial top-10 contender for the national championship.

Feb. 3, Kasparov Chess Foundation Presents 10th Annual Greater Mid-Atlantic Scholastic Chess Championships

Baltimore Polytechnic Institute & Western High School, 1400 W. Cold Spring Ln., Baltimore, MD 21209. Open to all K-12 players from anywhere. **7 Sections. Championship K-12:** 1000+ , K-12, 4SS, G/45 d5, Rds.: 9:30-11:30-1:30-3:30. **Championship K-8:** 1000+ , K-8, 4SS, G/45 d5, Rds.: 9:30-11:30-1:30-3:30. **Championship K-5:** 600+ , K-5, 4SS, G/40 d5, Rds.: 9:30-11:30-1:30-2:30. **U1000 K-12:** under 1000 or unr, K-12, 5SS, G/35 d5, Rds.: 9:30-11:30-1:30-2:30. **U800 K-8:** under 800 or unr, K-8, 5SS, G/30 d5, Rds.: 9:30-10:45-12:15-2:30. **U600 K-5:** under 600 or unr, K-5, 5SS, G/30 d5, Rds.: 9:30-10:45-12:15-2:30. **U400 K-5:** under 400 or unr, K-5, 5SS, G/25 d5, Rds.: 9:30-10:30-12:30-1:30. **Trophies** per section: top 25% of individuals; top 40% of teams. **EF:** \$30 through 01:30; \$45 through 02:01; \$60 by 5 AM, 02:03 (half-point bye possible in Rd. 1); \$80, 8-9 AM, 02:03 (on site; if space available; half-point bye likely in Rd. 1). Provided: sets, boards, scoresheets, & pencils. Bring chess clock. Food available for purchase. **Register:** www.mdchess.com. **Contact:** tournaments@mdchess.com.

Massachusetts

Jan. 5-7 or 6-7, 6th annual Boston Chess Congress
See *Chess Life* or www.chesstour.com.

Missouri

Mar. 23-25 or 24-25, 22nd annual Mid-America Open
See *Chess Life* or www.chesstour.com.

Nevada

Dec. 26-30, 26-29 or 27-29, 27th annual North American Open
See *Chess Life* or www.chesstour.com.

New Jersey

Dec. 9, Princeton Charter School

TOURNAMENT LOCATION: Princeton Charter School at:100 Bunn Dr., Princeton, NJ 08540. TIME CONTROL: G/30 d0; Swiss to 4 rounds. SECTIONS: Open above 1000; U1000; U700; U300/Unrated. (sections will be combined. Awards will be given to the top 3 in each section.) **Parental Supervision Required:** The parents or another adult must be designated to supervise the student player between rounds. **Schedule** (will be accelerated if possible) **First Round:** 12:01 PM; **Second Round:** ASAP; **Third Round:** ASAP; **Fourth Round:** ASAP; **Award Ceremony:** ASAP (4:05 the latest). Schedule will be accelerated if possible. (*) **Online Registration \$30 Only if register one week before: www.ChessKidsNY.com/PCSCheProgram.htm. (*) Fee will increase automatically to \$35 if register later. On site registration the date of the event: \$40 from 11:45 am to 12:00 noon. Information:** email to Miguel Iniguez at: migini@gmail.com. **Results will be posted online the same day of the event!**

Dec. 10, Branch Brook Park Quads K-8

New Jersey Children's Chess School, 862 Degraw Ave., Forest Hill (Newark), NJ 07104. 3-RR, G/45 d0. **EF:** \$25 for registration by mail one week in advance, \$30 at door. **Reg.:** 2-2:50PM. **Awards:** trophies to ALL. Chess classes meet every Sunday 3-5:30PM. Website: www.chesskidsnj.com. **Info:** Arkady Geller 973-483-7927 or chesscamp1@yahoo.com

Jan. 13, Princeton Charter School

TOURNAMENT LOCATION: Princeton Charter School at:100 Bunn Dr., Princeton, NJ 08540. TIME CONTROL: G/30 d0; Swiss to 4 rounds. SECTIONS: Open above 1000; U1000; U700; U300/Unrated. (sections will be combined. Awards will be given to the top 3 in each section.) **Parental Supervision Required:** The parents or another adult must be designated to supervise the student player between rounds. **Schedule** (will be accelerated if possible) **First Round:** 12:01 PM; **Second Round:** ASAP; **Third Round:** ASAP; **Fourth Round:** ASAP; **Award Ceremony:** ASAP (4:05 the latest). Schedule will be accelerated if possible. (*) **Online Registration \$30 Only if register one week before: www.ChessKidsNY.com/PCSCheProgram.htm. (*) Fee will increase automatically to \$35 if register later. On site registration the date of the event: \$40 from 11:45 am to 12:00 noon. Information:** email to Miguel Iniguez at: migini@gmail.com. **Results will be posted online the same day of the event!**

Jan. 14, Westfield Winter Scholastic

Please note the earlier start time! Westfield Y, 220 Clark St., Westfield, NJ 07090. K-12. **3 Sections:** Open, U1250, U750. **Open:** 3-SS, G/40 d5. **Rounds:** 1:00, 2:45, 4:30 p.m. **U1250 & U750:** 4-SS, G/25 d5. **Rounds:** 1:00, 2:15, 3:30, 4:45 p.m. **Prizes:** Trophies to Top 5 in each section. Tiebreaks used. See USCF Rule 34E. **EF:** \$25, \$20 members. **Register:** 12:15-12:50 p.m. **Info:** westfieldchessclub@gmail.com, www.westfieldchessclub.org/Events.html

Feb. 17-19, World Amateur Team & U.S. Team East
See Nationals.

A State Championship Event!

Feb. 25, New Jersey State Elementary Championships
55S, G/30 d5. Brookdale College, 765 Newman Springs Rd., Lincoln, NJ 07738. Student Life Center, use Parking Lot #7 or #6; 5 minutes from Garden State Parkway exit 109. **2 Sections:** Elementary (K-6) & Primary (K-3). **All:** Trophies to top 15 individuals, top 5 teams. Elementary

& Primary: Top 5 in each grade. **Rds.:** 10 am then ASAP Top 4 scores constitute the team score for Elementary; top 3 for Primary. **EF:** \$35 before 2/18, \$50 at site. USCF memb. req'd. **Reg.:** 8-9:00am After 9:00am 1/2 point bye for round 1. **Info:** 732 259-3881. **Ent:** Hal Sprechman, 66 Cromwell Ln., Jackson, NJ 08527 or online by Feb 24 at www.NJUSCF.org. Entries must include name, grade, school, section, date of birth, USCF ID and expiration date, mailing address, email address, phone number and entry fee. Checks made out to NJSCF.

A State Championship Event!

Feb. 25, New Jersey Junior High School Championship
55S, G/30 d5. Brookdale College, 765 Newman Springs Rd., Lincroft, NJ 07738. Student Life Center, use Parking Lot #7 or #6; 5 minutes from Garden State Parkway exit 109. **Section:** JHS (K-9). ALL: Trophies to top 15 individuals, top 5 teams. **Rds.:** 10am then ASAP Top 4 scores constitute team score. **EF:** \$35 before 2/18, \$50 at site. USCF memb. req'd. **Reg.:** 8-9:00 am. After 9:00 am, half-point bye for round one. **INFO:** 732-259 3881 halsprechman@gmail.com. **ENT:** Hal Sprechman, 66 Cromwell Ln., Jackson, NJ 08527 or online by Feb 24 at www.NJUSCF.org. Entries must include name, grade, school, date of birth, USCF ID #, & expiration date, mailing address, phone number & entry fee. Checks made out to NJSCF.

US Chess Junior Grand Prix!

A State Championship Event!

Mar. 3-4, New Jersey High School Chess Championship
55S, G/30 d5. Union County Vocational-Technical School, 1776 Raritan Rd., Scotch Plains, NJ 07076. 3 sections: **Varsity** (9-12): 5 player teams with one alternate allowed. Coaches set order by player strength. Order must not be changed. Team avg. based on top 5 highest ratings. Trophies to top 10 NJ teams, top three players, top boards 1-5. **EF:** \$150/team before 2/28, \$185/team at site. \$5 per change on site. **Junior Varsity** (9-12): 4 player teams with one alternate allowed. Team avg. based on top 4 highest ratings. Trophies to top 5 NJ teams, top 3 players, top boards 1-4. **EF:** \$120/team before 2/28, \$150/team on site. \$5 per change on site. **Booster** (K-12): Trophies to top 15 individuals, 3 top teams. Top 4 scores constitute team score. **EF:** \$30 before 2/28, \$40 at site. **All:** USCF memb. required. **Rds.:** Sat. 10-2-6, Sun 10-2. **Reg.:** Sat. 8-9:00am. After 9:00am, 1/2 Point bye for round one. **SIDE EVENT: MAR 4,SUNDAY, Boy Scout/Girl Scout/ Non-Rated Section (K-12)** 4SS (Quad) G/30 d5. USCF Membership Not required. Trophies to top 5 players Medallions for 6 to 10th. **EF:** \$20, by mail or on site registration 9-10am. Limited number of Cloaks and Sets available, if you have equipment please bring it. **All:** Entries must include name, grade, school, date of birth, mailing address, email address, phone number and entry fee..... USCF ID and expiration date only needed for Teams and Booster Sections. Checks made out to NJSCF. Mail to: JIM MUL-LANAPHY, 98 Baird Road, Millstone Twp., NJ 08535. Email questions: Jmull@aol.com

New York

Oct. 15, Nov. 19, Dec. 17, Jan. 28, Feb. 11, Mar. 4 (makeup date: May 6), 5th Annual Magnus High School and Junior High Chess League

Columbia Grammar and Prep. High School Cafeteria, 36 W. 93rd St. (bet. Central Park West & Columbus Ave., near 96th St. subways), NYC. 12-SS, G/60 d10, open to grades 7-12 born after 3/4/98. 3 sections: 1. **Premier** (over 1799), 2. **Under 1800**, 3. **Under 1200**. Plaques to top 3 each section, top U1900 (Premier), top U1500 (Sec. 2), top U800, Unr. (Sec. 3). May be limited to 1st 60 players to register for each date. **Individual free entry prizes:** free entry to 2 specified Continental Chess tmts. thru 12/31/18 to 1st each section. **Team prizes:** free entry to 1 CCA tmt. thru 12/31/18 to the 4-top-scoring players from **same school** across all 3 sections, plaques to top 3 overall team scores, limit 2 teams per school. **Mixed Doubles** (2-player male/female team, avg. rating U2200, may be in different sections and from different schools, must sign-up before 1/28) **Bonus Prize:** free entry to 1 CCA tmt. thru 12/31/18 to 1st Mixed Doubles team, chess sets to top 3 overall Mixed Doubles. Free entries courtesy of Continental Chess and are valid for CCA tmts. with 100% guaranteed prizes; see www.magnusleague.org, www.chesscenter.cc or www.chesttour.com for details and restrictions. **Rds.:** 10am-12:30 pm (earlier if feasible) each date. **Ent:** Applications and EF accepted online, may be paid by school. **All:** Each date's games submitted for rating prior to next date's games. Players must re-register before each date; official USCF rating list in effect on each date used for that date (unofficial ratings usually used if otherwise unrated or if requesting to play in Premier). Unr. may enter section 2 or 3 (or Premier by TD permission). Limit 6 byes (2 byes max. rds. 9-12), commit before Jan. 28. Teammate pairings avoided but possible. Ties for free entries decided by tiebreak except playoff may 6 between top 2 on tiebreak (may be fast game). Special Bonus Points may be awarded each date! Bring clocks! **Info:** director@magnusleague.org, chesscentr@gmail.com, **online entry** thru 4 pm the day before each rd. at **Magnus League website: www.magnusleague.org**. Reg. on-site by 9:30 am. Make school purchase orders payable to: **Chess Center of NY, PO Box 4615, New Windsor, NY 12553, W.**

Dec. 28-30 or 29-30, 36th annual Empire City Open

See *Chess Life* or www.chesttour.com.

Jan. 5, 4th Annual Greater NY Scholastics Friday Night Blitz Booster! (BLZ)
4SS, G/5 d0, double-round, 8 games, NY Marriott at Brooklyn Bridge, 333 Adams St., Brooklyn (see Greater NY Scholastics: 1/6-7). **EF:** \$30, parents, alumni & those with Greater NY Scholastics \$20. Trophies: top 3, Top U1800, U1500/Unr. Reg. on-site 6-6:45 pm. **Rds.:** 7-7:30-8-8:30 pm. Bye OK rd. 1. Blitz-rated, but higher of regular or blitz used for pairings, prizes. W.

An American Classic!

A Heritage Event!

US Chess Junior Grand Prix!

Jan. 6 or 7 or 6-7, Kasparov Chess Foundation presents the 52nd Annual Greater NY Scholastic Championship - Since 1966, USCF's Longest-Running Scholastic!

Beautiful hotel site: NY Marriott Hotel at Brooklyn Bridge, 333 Adams Street (near Borough Hall), Brooklyn, NY. **Nearby subway stations:** Jay Street Metrotech (A, C, F & R trains), Borough Hall (2, 3, 4 & 5 trains). **Hotel policy prohibits food not purchased from hotel in meeting areas!** Online entries at www.gnyscc.com: 1-Day Sections: \$60 thru 12/22/17, \$70 12/23/17-1/2/18, \$80 1/3-4; **Championship Sections**, \$70 thru 12/22/17, \$80 12/23/17-1/2/18, \$90 1/3-4. **Help available for group entries of 5/more: webmaster@gnyscc.com**; online fees are only valid using our website. **For mail entries see www.gnyscc.com or www.chesscenter.cc.** **On-site entry fee:** \$100 the day before your game (starting 7:30 pm 1/5), \$120 on day of event until 90 minutes before 1st game. **May be limited to 1st 1,500 players to register! In 14 sections!** Each section has its own age, grade and rating requirements (Championship sections open to all who are under grade and age limits; unrated allowed all sections). **The 5 Championship sections are each 2 days** (High School Championship, Junior High Championship, Elementary Championship, Primary Championship and K1 Championship): 6-SS, G/60 d10. **Rounds:** 10 am-1-4 pm Sat; **9 am-12-2:45 pm Sun.** Awards ceremonies about 5:30 pm Sun. **The 9 non-Championship sections** are each 1-day, 5-SS, G/30 d5. **Playing on Saturday are:** High School Under 1900, High School Under 1200, Elementary Under 1500, Elementary Under 1100, Elementary Under 700; 10 am-12-1:30-3-4:30 pm, Awards about 6 pm. **Playing on Sunday with earlier starting times are:** Junior High Under 1300, Primary Under 1000, Primary Under 600 and K1 Under 400; **9-11 am-12:30-2-3:30 pm Sun.** Awards about 5 pm. **Both K-1 sections** open to grade 1/below born after 1/7/10. **All 3 Primary sections** open to grades 3/below born after 1/7/08. **All 4 Elementary sections** open to grades 6/below born after 1/7/05. **Both Junior High sections** open to grades 9/below born after 1/7/02. **All 3 High School sections** open to grades 12/below born after 1/7/98. **Trophies** to top 15 in each Elementary, Primary and K1 section; top 10 in each High School and Junior High section, top 3 U1500 in High School U1900, Top 3 U900/Unr in High School U1200 and Junior High U1300; Top 3 U1300 in Elementary U1500; top 3 U900 in Elementary U1100; top 3 U800 in Primary U1000; top 3 Unr. in Elementary U700, Primary U600 and K1 U400. **Trophies also** to top 6 teams each section (top 4 scores from same school = team, all on team must attend same school: no combined teams, even if one school "feeds" another). **Grade plaques:** top 3 Kindergartners in each K1 section, top 3 scorers below 7th Grade in Junior High U1300, Top 3 below 9th grade in High School U1200 (you can win both plaque + trophy). All players scoring 4 or more (5 or more in Championship) who *don't* win a trophy receive a medal! Speed playoff for 5-0 or 6-0. **Individual free entry prizes** (each Championship section): **Free entry to specified Continental Chess tournaments** thru 12/31/18 to 1st, thru 10/10 to 2nd, thru 8/20 to 3rd, thru 6/20 to 4th. **Individual free entry prizes** (each non-Championship section): Free entry to specified Continental Chess tmts. thru 11/15/18 to 1st, thru 8/20 to 2nd, thru 6/20 to 3rd, thru 4/25 to 4th. **Team free entry prizes:** free entry to specified CCA tmts. thru 8/20/17 to 1st team, thru 6/20 to 2nd team each section! Free entries courtesy of Continental Chess and are valid for CCA tmts. with 100% unconditionally guaranteed prize funds. Free entries do not include NYS Scholastics in Saratoga. See www.chesscenter.cc or www.gnyscc.com or www.chesttour.com for complete details and restrictions. **High School Mixed Doubles Bonus Prizes** (best male/female 2-player "team" combined score among all 3 High School sections after 5 rounds): chess sets to 1st 5 **Mixed Doubles teams**; free entry to specified CCA tmts. thru 8/20/18 to 1st team, thru 6/20 to 2nd, thru 4/15 to 3rd. Team average must be U2200; Mixed Doubles teammates may play in different sections and may attend different schools; teams must register on-site (no extra charge) before rd. 3; teammate pairings avoided but possible. **All:** January 2018 official ratings used, except unofficial ratings at uschess.org usually used if otherwise unrated. TD reserves right to assign estimated ratings to players with non-USCF ratings. All substitutions from advance entry list charged late fee. Section switches subject to \$10 extra charge per player thru 1/2, \$20 extra after. \$15 service charge for each player refund. TD reserves right to reassign sections for advance entries with incorrect or unclear registrations. Limit 2 byes, commit before rd. 3. **HR** \$169, call 877-513-6305 or 718-246-7000 by 12/25 (rooms may sell out early), mention chess. Help with entries, parking, etc: www.gnyscc.com **Questions:** director@gnyscc.com or **347-201-2269** (leave message but email is better; on Jan 6-7 also call **718-246-7000**). **Team rooms: teamrooms@gnyscc.com.** Sets provided by Little House of Chess—**bring clocks!** **W. Info: www.gnyscc.com.** To contact us by mail: **Chess Center of NY, PO Box 4615, New Windsor, NY 12553.** US Chess Junior Grand Prix for Championship Sections.

An American Classic!

A Heritage Event!

US Chess Junior Grand Prix!

A State Championship Event!

Mar. 10-11, 51st annual New York State Scholastic Championships (out of state welcome)

6SS, G/60 d10, open to grades K-12; top NYS player & team each section are NY champions. In 14 sections. **High School Sections** at Courtyard by Marriott, 11 Excelsior Ave., Saratoga Springs NY 12866 (2/5 mile from Saratoga Hilton). **Other 11 sections** at Saratoga Hilton and adjacent Saratoga City Center (connected by indoor walkway), 534 Broadway (I-87 Exit 13-N, 4 miles north on US 9), Saratoga Springs, NY 12866. Sections at Hilton/ City Center are limited to a total of 1100 players, sections at Marriott 300 players. **Team prizes** based on top 4 scores from same school; no combined school teams allowed even if one school "feeds" another. Teams of 2 or 3 players allowed, but are at a disadvantage. **Online entry fee** at chessaction.com, all sections: \$59 by 2/15, \$69 2/16-3/2, \$90 3/3 to 3/9. **Entry fee at site**, all sections: \$90. **High School Championship** (all K-12 born after 9/1/98): EF

\$65.30 mailed by 2/15. Top NYS grade 9-12 qualifies for Denker Tournament of HS Champions. **High School Intermediate (K-12 under 1800/Unr):** EF \$65.20 mailed by 2/15. **High School Reserve (K-12 under 1200/Unr):** EF \$65.10 mailed by 2/15. **Junior High Championship (all K-9):** EF \$65 mailed by 2/15. Top NYS grade K-8 born after 9/1/02 qualifies for Barber tournament of K-8 Champions. **Middle School Intermediate (K-8 under 1600/Unr):** EF \$64.90 mailed by 2/15. **Middle School Reserve (K-8 under 1000/Unr):** EF \$64.80 mailed by 2/15. **Elementary Championship (all K-6):** EF \$64.70 mailed by 2/15. **Elementary Intermediate (K-6 under 1400/Unr):** EF \$64.60 mailed by 2/15. **K-5 Intermediate (K-5 under 1100/Unr):** EF \$64.50 mailed by 2/15. **K-5 Reserve (K-5 under 800/Unr):** EF \$64.40 mailed by 2/15. **Primary Championship (all K-3):** EF \$64 mailed by 2/15. **Primary Reserve (K-3 under 600/Unr):** EF: \$63.90 mailed by 2/15. **K-1 Championship (all K-1):** EF \$63.80 mailed by 2/15. **K-1 Reserve (K-1 under 400/Unr):** EF \$63.70 mailed by 2/15. **Postmarked 2/16-27:** All EF \$10 more. Do not mail entry after 2/27. **Special 1 year USCF dues** with magazine if paid with entry. Online at chessaction.com, Young Adult \$22, Scholastic \$15. Mailed or paid at site, Young Adult \$25, Scholastic \$17. **Trophies** to top 10 players and top 7 teams each section, top 2 unrated in each reserve section, and top 2 each U1900, U1700 (HS), U1600, U1400 (HS Intermediate), U1000, U800, U600 (HS Reserve), U1800, U1600, U1400 (JHS), U1400, U1200 (MS Intermediate), U800, U600, U400 (MS Reserve), U1700, U1500 (Elem), U1200, U1000 (K-6 Intermediate), U900, U800 (K-5 Intermediate), U700, U600, U500, U400, U300 (Elem Reserve), U1400, U1200, U1000 (Primary), U500, U400, U300, U200 (Primary Reserve), U800, U600, U400 (K-1), U300, U200 (K-1 Reserve). Speed playoff if perfect score tie. **Free entry** to NY State Championship, Labor Day weekend 2018 (Albany), to top player each section, if not already qualified for free entry from another event. **Mixed doubles prizes** (chess sets) for three HS sections combined; no extra fee; enter at Marriott by Sat 2 pm. **Schedule:** Reg. ends Sat 10 am, rds Sat 11, 2, 5, Sun 9, 12, 3. Awards 5:30 pm. **Half point byes** OK all, limit 2, must commit before rd. 2. **HR:** \$135-135 at Hilton, two nights minimum, 888-999-4711, 518-584-4000, or use link at chesttour.com. Backup hotel: Courtyard by Marriott, two nights minimum, \$135-135, 866-210-9325 or use link at chesttour.com. 7 days notice required for room cancellations. Both hotels are likely to sell out 3-4 months before the tournament, but may again have availability in the final week before the event due to late cancellations. For other backup hotels see chesttour.com. Free parking at Courtyard; free parking for overnight guests at Hilton. 7 days notice required for room cancellation at both. **Special car rentals:** Avis, 800-331-1600, use AWD # 657633. **Online entry:** www.chessaction.com. **Mail entry:** Continental Chess, PO Box 249, Salisbury Mills, NY 12577. Include name, rating, USCF ID, USCF expiration (non-members include dues), section, school, grade, birth date, address of each player. Checks payable to Continental Chess. **\$15 per player** service charge for refunds. **\$10 extra to switch** sections, all substitutions from advance list charged \$90. **Questions:** director@chess.us, 347-201-2269 (leave message, email is better). **Bring clock** if possible- none supplied. **Bring set & board** for HS sections; set & board supplied for other sections, but not for skittles. **March official ratings used** (except unofficial web ratings usually used if otherwise unrated). TD reserves right to assign estimated rating to players with non-USCF ratings.

Ohio

A State Championship Event!

Feb. 24, 2018 Ohio State Elementary Championships

55S G/30 d5. 6 Sections: K-6 Championship and K-3 Championship limited to players residing or attending school/homeschool in Ohio. Other sections: 4-6 U700, 4-6 U400, K-3 U500 and K-3 U300 open to players from all states who meet grade and rating requirements. **Entry fee:** \$35 through Feb. 17, \$45 thereafter. Entries must be received by noon, Feb. 23. No onsite entry. **Prizes:** Trophies to all scoring 3.5+. Medals to all players. Trophies to top 5 teams in each section. **Venue:** Embassy Suites, 4554 Lake Forest Dr. Blue Ash, OH 45242. **Schedule:** Changes 9:30-10:15 am, Announcements 10:30 am, Rd. 1 11:00 am, awards 5:30 pm or earlier. **Information, online entry, and mail entry form** at www.chessinnati.com. Questions: info@chessinnati.com or text/phone Alan at 513-600-9915.

Pennsylvania

Dec. 3, Main Line Chess and Games G/60 Quads

3 RR, G/60 d5. Main Line Chess and Games. 7 South Valley Rd., Paoli, PA 19301. **EF:** \$20. **Prizes:** \$50 to first in each 4 player section. **Register:** 12 noon -12:30 p.m. **Rounds:** 12:45, 3:00, 5:15 p.m. **Information email:** Tom Bartell at mainlinechessandgames@gmail.com. Phone him at 610-240-8900 or visit our website: mainlinechessandgames.net, mainlinechessandgames.com. Bring a chess clock.

Dec. 10, Main Line Chess and Games G/60 Quads

3 RR, G/60 d5. Main Line Chess and Games. 7 South Valley Rd., Paoli, PA 19301. **EF:** \$20. **Prizes:** \$50 to first in each 4 player section. **Register:** 12 noon -12:30 p.m. **Rounds:** 12:45, 3:00, 5:15 p.m. **Information email:** Tom Bartell at mainlinechessandgames@gmail.com. Phone him at 610-240-8900 or visit our website: mainlinechessandgames.net, mainlinechessandgames.com. Bring a chess clock.

Dec. 16, 5th Greater Philadelphia Monthly Scholastic

Sites: Days Inn, 245 Easton Rd., Horsham, PA. Free Parking/Wifi. 4 rooms, G/25 d5. **Reg.:** to 11:30am. **Rds.:** 12:00-4:00PM. Max one 1/2 point bye. **EF:** \$32 by Dec 13; \$35 by Dec 15; \$40 cash at site. **4 Sections:** Championship, Under 1000, Under 600, Beginners, all K-12. **Info/Reg:** keystonechessclub.org. Trophies to all. Sets/clocks provided.

Dec. 17, Main Line Chess and Games G/60 Quads

3 RR, G/60 d5. Main Line Chess and Games. 7 South Valley Rd., Paoli, PA 19301. **EF:** \$20. **Prizes:** \$50 to first in each 4 player section. **Register:** 12 noon -12:30 p.m. **Rounds:** 12:45, 3:00, 5:15 p.m. **Information email:** Tom Bartell at mainlinechessandgames@gmail.com. Phone him

Tournament Life

at 610-240-8900 or visit our website: mainlinechessandgames.net, mainlinechessandgames.com. Bring a chess clock.

Jan. 12-15, 13-15 or 14-15, 50th annual Liberty Bell Open
See *Chess Life* or www.chesstour.com.

Feb. 3, Kasparov Chess Foundation Presents 10th Annual Greater Mid-Atlantic Scholastic Chess Championships (MD)
See Maryland.

Mar. 28-Apr. 1, Mar. 29-Apr. 1, Mar. 30-Apr. 1 or Mar. 31-Apr. 1, 12th annual Philadelphia Open
See *Chess Life* or www.chesstour.com.

July 3-8, 4-8, 5-8 or 6-8, 46th Annual World Open
See *Chess Life* or www.chesstour.com.

Tennessee

Jan. 5-7, 3rd Annual Smoky Mountain Chess Tournament
See Grand Prix.

Texas

Dec. 23-24, 2017 DCC FIDE Open XI
See Grand Prix.

Dec. 31-Jan. 1, DCC New Year Eve Insanity
See Grand Prix.

Feb. 15-19, 16-19, 17-19 or 18-19, 9th annual Southwest Class Championships
See *Chess Life* or www.chesstour.com.

**US Chess Junior Grand Prix!
A State Championship Event!**

Mar. 9-11, 2018 North/Central Texas State Scholastic Chess Championships

75S, Houston Marriott Westchase, 2900 Briarpark Dr., Houston, TX 77042. \$99, \$99, \$99, \$99 rate includes American Breakfast Buffet. Call 1-800-452-5110 to make reservations mention group code Dallas Chess or register online thru link on web page. Reserve by 2/19/2018 or rate may not be honored. Tournament is open to any Kindergarten-12th grade student living in Texas or going to school in Texas. Note that players may play in either the South or the North Central Championships or they may also play in both. Also note that if a student has played in another state's closed championship, they may not play in this tournament. Four championships: TX North/Central Primary Scholastic Championships; TX North/Central Elementary Scholastic Championships; TX North/Central Middle School Scholastic Championships; TX North/Central High School Scholastic Championships. EF: \$43 by 2/1; \$54 by 3/1; \$72 after 3/2 or on site. On Site Registration: Friday, 5:30-6:15pm, Saturday, 8-8:30am. Saturday registrants will receive a 1st Rd. 1/2-pt. bye. Two 1/2-pt. bye allowed

as long as one of the byes is for round 1, if requested by the end of Rd. 2. Sections: K-1 Championship, Primary (K-3) Championship, Primary JV (K-3 w/Ratings Under 600), Elementary (K-5/6) Championship, Elementary JV (K-5/6 Under 800), Elementary Novice (K-5/6 Under 500), Middle School (6-8/9) Championship, MS JV (6-8/9 Under 900), MS Novice (6-8/9 Under 600), High School (9-12) Championship, HS JV (9-12 Under 1000). See Article IX, Section 1E, TCA Bylaws for each section's eligibility requirement, <https://texaschess.org/wordpress/wp-content/uploads/2017/07/TCA-Bylaws-30-Aug-2015.pdf>. Note that 2018 February Supplement will be used. Trophies for top 15 individuals and top 10 teams in each section plus participation medals for all, and plus Score Awards for players scoring 4 or more points that do not win an individual trophy. Top 5 Grand Champion trophies. The 3 Primary sections will be merged and using the top 15 players, a grand champion will be crowned. This will also be done for the 3 Elementary sections and the 3 Middle School Sections. For the High School the two sections will be merged and the top 10 players will be used to determine the grand champions. Note that trophies will not be given out in advance and must be picked up at awards ceremony. Please make arrangements for picking up trophies at award ceremony or to get trophy shipped. Schedule: Round times vary depending on the Section. For round times check website. Time controls: All High School and Middle Schools Sections: Rds. 1 G/45 d5; Rounds 2-4 G/60 d5, Rds. 5-7 G/75 d5. All Elementary and Primary and K-1 sections: rds. 1-4 G/45; d5, rds. 5-7 G/60 d5. For round times see: www.dallaschess.com/2018%20Texas%20Scholastic/index.htm. Side Events: See website for side events. Side event registration on site only. All registrations (except Side events) available on line: see www.dallaschess.com/2018%20Texas%20Scholastic/index.htm and you can download flyers and entry forms. Checks payable to Dallas Chess Club. Mail entries to Dallas Chess Club, c/o Barbara Swafford, 2709 Longhorn Trail, Crowley, TX 76036. For tournament info, visit our website or contact Barbara Swafford, info@dallaschess.com or 214-632-9000. Refunds will be given only up to 3/1 with a \$10 surcharge for withdrawing, after 3/1 there will be no refunds. There will be no substitution of team members. There will be a \$10 change fee for changes after 3/1. There will be a \$5 surcharge per player for phone registrations USCF membership is required. Proof of membership is required or player must join/renew their memberships. No registration/changes/or withdrawals by phone or email after 3/7/18 as we are driving to the site; after that date you must make changes at site (Houston WestChase). W.

Virginia

Dec. 27-30, 28-30, 29-30 or 27, 44th Annual Eastern Open
See Grand Prix.

Jan. 13, CRS FREE PIZZA Tournament

4-SS, G/25 d5. Churchill Road Elem. School Cafeteria, 7100 Churchill Rd., McLean, VA 22101. EF: \$25 if by 1/6, \$30 at site. Open to any student in K - 6. Reg.: 12 - 12:45. Team and individual trophies. (202)

857-4922. www.chessctr.org/CRS.php.

Feb. 3, Kasparov Chess Foundation Presents 10th Annual Greater Mid-Atlantic Scholastic Chess Championships (MD)
See Maryland.

Feb. 23-25 or 24-25, 3rd annual George Washington Open
See *Chess Life* or www.chesstour.com.

WARNING!

The use of a cell phone in the tournament room is prohibited! at most tournaments! If your cell phone rings in a room with games in progress, you could be severely penalized, maybe even forfeited!

TURN IT OFF!



ChessKid

.com

PLAY

LEARN



**#1 Chess Site for Kids. 200,000+ Kids, Parents, & Coaches!
100% Safe and Kid-Friendly! Signup Today - it's FREE!**

ANSWERS

Smothered (from page 12)

1) **1. Rxe6! fxe6 2. Qxe6+ Kh8 3. Nf7+ Kg8 4. Nh6+ Kh8 5. Qg8+ Rxcg8 6. Nf7 mate**

2) **1. ... Qxf2+ 2. Kh1 Qg1!** (Here Black doesn't need the fancy knight moves since the bishop on c5 already ensures the white king can't capture back. It's a shortcut!) **3. Rxcg1 Nf2 mate**

3) **1. Qg8+! Nxcg8 2. Nh7 mate**

4) **1. ... Rf1!** (Clearing out the diagonal for the queen!) **2. Rxf1** (2. Kxf1 Qf5+ leads to either mate on f2 or Black gets the rook back with a winning attack after 3. Rf3 Rxd1+.) **2. ... Qc5+ 3. Kh1 Nf2+ 4. Kg1** (4. Rxf2 doesn't even save White since the back rank is too weak. 4. ... Qc1+ 5. Rd1 Rxd1+ 6. Rf1 Rxf1+ 7. Qxf1 Qxf1 mate.) **4. ... Nh3+** (Now we tell the waitress we want "the usual.") **5. Kh1 Qg1+ 6. Rxcg1 Nf2 mate.**

5) **1. ... Qxc2+ 2. Ka1 Qc4!** (Black is not going in circles—he's clearing out the b1-h7 diagonal!) **3. Kb1** (White has to walk back to avoid mate on a2, but now ...) **3. ... Qe4+ 4. Ka1** (And the king can never step to c1 due to 4. ... Qc2

mate.) **4. ... Nc2+ 5. Kb1 Na3+ 6. Ka1 Qb1+ 7. Rxb1 Nc2 mate.**

6) **1. Qg8+ Kxcg8** (1. ... Rxcg8 2. Nf7 is the "traditional" smothered mate.) **2. Ne7+ Kh8** (2. ... Kf8 3. N5g6+ [3. N7g6+ is also fine] 3. ... hxcg6 4. Nxcg6 mate) **3. Nf7 mate.** The "double knight" smothered mate.

You Can Do It! (from page 14)

Solution #1: **1. Qxf8+ Kxf8 2. Rb8#**

Solution #2: **1. Qxc8+ Kxc8 2. Re8#**

Solution #3: **1. Qxe8+ Rxe8 2. Rxe8#**

Solution #4: **1. Qxe6+ fxe6 2. Rf8#**

Solution #5: **1. Qxcg6+ fxcg6 2.**

Rg7#

Solution #6: **1. Nf6+ Kd8** (1. ... Kf8 2. Bxe7#) **2. Bxe7#**

Learn winning chess openings, endings, tactics and middle game strategies from the experts and experienced online chess coaches one-to-one in the comforts of your home!

Our Coaches have experience of more than 10 years on online coaching and their students have excelled at the National and International level.



support@mychessguru.com

Prices starting at just \$15/hr USD !!!

Choose from a variety of experienced online coaches and conveniently schedule classes online based on availability of students and coaches ...

U.S. Postal Service. Statement of Ownership, Management, and Circulation (required by 39 U.S.C. 3685). (1) Title of publication: Chess Life Kids. (2) Publication number: 023-567. (3) Date of filing: September 25, 2017. (4) Frequency of issue: Bi-monthly. (5) No. of issues published annually: 6. (6) Annual subscription price: \$18. (7) Complete mailing address of known office of publication (street, city, county, state, and ZIP code) (Not printers): P.O. Box 3967, Crossville, TN 38557, 137 Obrien Dr., Crossville, TN 38555 (8) Complete mailing address of the headquarters of general business office of the publisher (Not printers): PO Box 3967, Crossville, TN 38557, 137 Obrien Dr., Crossville, TN 38555. (9) Full names/complete mailing addresses of publisher, editor, and managing editor (this item must not be blank). Publisher (name/complete mailing address): Jean Hoffman, US Chess, PO Box 3967, Crossville, TN 38557, 137 Obrien Dr., Crossville, TN 38555. Editor (name/complete mailing address): Daniel Lucas, P.O. Box 3967, Crossville, TN 38557, 137 Obrien Dr., Crossville, TN 38555. Managing Editor (name and complete mailing address): same as above. (10) Owner. (If owned by a corporation, its name and address must be stated and also immediately there under the names and addresses of stockholders owning or holding 1 percent or more of total amount of stock. If not owned by a corporation, the names and addresses of the individual owners must be given. If owned by a partnership or other incorporated firm, its name and address, as well as that of each individual must be given. If the publication is published by a nonprofit organization, its name and address must be stated.) (Do not leave blank.): United States Chess Federation, PO Box 3967, Crossville, TN 38557, 137 Obrien Dr., Crossville, TN 38555. (11) Known bondholders, mortgagees, and other security holders owning or holding 1 percent or more of total amount of bonds, mortgages or other securities (if there are none, so state): none. (12) For completion by nonprofit organizations authorized to mail at special rates section 423.12, DMM only). The purpose, function, and nonprofit status of this organization and tax exempt status for Federal income tax purposes (check one): has not changed during preceding 12 months; has changed during preceding 12 months. (If changed, publisher must submit explanation of change with this statement.) (13) Publication Name: Chess Life Kids. (14) Issue Date for Circulation Data Below: August 2017. (15) Extent and nature of circulation. (a) Total number copies printed (net press run): average number copies each issue during preceding 12 months, 9,067; actual number copies of single issue published nearest to filing date, 9,184. (b) Paid and/or requested circulation: (1) Paid/requested outside-county mail subscriptions: average number copies each issue during preceding 12 months, 8,376; actual number copies of single issue published nearest to filing date, 8,621. (2) Paid in-county subscriptions (include advertiser's proof copies/exchange copies): average number copies each issue during preceding 12 months, 0; actual number copies of single issue published nearest to filing date, 0. (3) Sales through dealers and carriers, street vendors, and counter sales (not mailed): average number copies each issue during preceding 12 months, 0; actual number copies of single issue published nearest to filing date, 0. (4) Paid distribution by other classes of mail through the USPS (e.g. First Class Mail): average number copies each issue during preceding 12 months, 28; actual number copies of single issue published nearest to filing date, 5. (c) Total paid and/or requested circulation (sum of 15b (1), (2), (3), and (4)): average number copies each issue during preceding 12 months, 8,404; actual number copies of single issue published nearest to filing date, 8,626. (15d (1), (2), (3)). Non requested distribution: average number copies each issue during preceding 12 months, 0; actual number copies of single issue published nearest to filing date, 0. (e) Total non requested distribution (sum of 15d (1), (2), (3)): 0; actual number copies of single issue published nearest to filing date, 0. (f) Total distribution (sum of 15c and 15e): average number copies each issue during preceding 12 months, 8,404; actual number copies of single issue published nearest to filing date, 8,626. (g) Copies not distributed: average number copies each issue during preceding 12 months, 663; actual number copies of single issue published nearest to filing date, 558. (h) Total (sum of 15f and 15g) average number copies each issue during preceding 12 months, 9,067; actual number copies of single issue published nearest to filing date, 9,184. (i) Percent paid. 15c divided by 15f x 100, per cent on average no. copies each issue during preceding 12 months, 100; per cent on actual no. copies of single issue published nearest filing date, 100. 16. Electronic Copy Circulation. (a.) Requested and Paid Electronic Copies, average number copies each issue during preceding 12 months, 2; Number copies of single issue published nearest to filing date, 3. (b.) Total Requested and Paid Print Copies (Line 15c) + Requested/Paid Electronic Copies (Line 16a), 8,406. Number Copies of Single Issue Published Nearest to filing date, 8,629. (c.) Total Requested Copy Distribution (Line 15f) + Requested/Paid Electronic Copies (Line 16a), 8,406; Number Copies of Single Issue Published Nearest to filing date, 8,629. (d.) Percent Paid and/or Requested Circulation (Both Print & Electronic Copies) (16b divided by 16c x 100) 100%; per cent on Number Copies of Single Issue Published Nearest to filing date, 100%. I certify that 50% of all distributed copies (electronic and print) are legitimate requests or paid copies. 17. Publication of Statement of Ownership. Publication of this statement will be printed in the December 2017 issue of this publication. 18. I certify that the statements made by me above are correct and complete (signature and title of editor, publisher, business manager, or owner): Judy Misner (sig.), Business Manager. P.S. Form 3526-R, July 2014.

My First Move



GM Fabiano Caruana, 3rd-Highest Rated Player in History

In this column, we feature advice from your chess heroes and what shaped their development when they were Chess Life Kids like you!

When he began playing

I learned chess at the age of five in an after-school program in Brooklyn. My first coach was Bruce Pandolfini.

On being a child prodigy and playing against adults

I never found playing chess as a child a burden. It was more of a privilege, especially when I had the chance to face stronger, more experienced opponents. I viewed those games as a special challenge, and when I won, as an accomplishment. Close to my heart, for example, was when I beat a grandmaster, Aleksander Wojtkiewicz, for the first time, at the age of 10.

When he got hooked

When I started I was primarily attracted to the competitive aspect of chess. Winning games and seeing my play and consequently, my rating, improve gave me a lot of satisfaction. It was only when I grew older that I began to appreciate the beauty and harmony of chess, more so.



Photo: Lennart Ootes, courtesy of Chess Club and Scholastic Center of Saint Louis

Fabiano just after winning the 2016 U.S. Championship title, with 2016 U.S. Women's Champion, Nazi Paikidze.

When chess became a career

I think it was more of a gradual realization that chess is the activity which I'm best at and which most captures my heart. Around the age of 17 or 18 I decided I would devote most of my time to chess and see how far it takes me.



Photo: Omodi at Italian Wikipedia

Fabiano in 2007, when he played for Italy.

The chess hero's chess hero

During my childhood my chess hero was Bobby Fischer, and he still is in many ways today. I look up to all the great chess players of the past, but for his love of chess and sheer will to win Fischer stands above the others, perhaps with the exception of Garry Kasparov.

Favorite openings

I was taught to play the Sveshnikov and Grünfeld as a child. I continue to enjoy playing the Grünfeld, but these days only play the Sveshnikov sporadically. I play a number of other openings, such as the Benoni, the Petroff, and the Queen's Gambit Accepted. But if I



Photo: Daa'im Shabazz

Playing in the Foxwood Open at age 10, the same year he defeated his first grandmaster.

were to choose a favorite opening for both sides, it would be the Ruy Lopez.

Favorite childhood chess books

Zurich International Chess Tournament, 1953 by David Bronstein stands out as a time-honored favorite. I also greatly enjoyed *Chess for Zebras: Thinking Differently about Black and White* by Jonathan Rowson.

My best chess advice

If you play chess for personal enjoyment and fulfillment, rather than just to obtain a result, that will take you a long way.



Photo: Daa'im Shabazz

Taking on Kimani Stancil at the 2004 World Open.



Photo: Gregg Delman

What calculations lurk behind that smile?



The United States' Largest Chess Specialty Retailer

888.51.CHESS (512.4377)



www.USCFSales.com



CHESSBASE ACCOUNT:
Access the world of ChessBase from wherever you are 24/7!



FRITZ 16

He just wants to play!



WIN001CB \$79.95



PLAYCHESS
The ultimate chess experience



LIVE DATABASE
Professional research; 8 million games online



MY GAMES CLOUD
Your one-stop cloud storage area



FRITZ ONLINE
Your browser-based chess engine



VIDEOS
Private Masterclasses



OPENINGS
Welcome to modern opening preparation



TRAINING
Calculate, sacrifice, mate



ENGINE CLOUD
Top engine on the best hardware



LET'S CHECK
Knowledge is mate; 200 million analyses



CB NEWS
The world-renowned chess news portal

When is chess the most enjoyable? When you win! When Fritz entered his first tournaments some 25 years ago, humans still had a real chance of taking the engine down. Only a few years down the line, Fritz was already beating grandmasters left, right and centre, but ever since his 4:2 victory over Kramnik in 2006, Fritz has been considered unbeatable. Who would want to play against him? In the case of Fritz16, however, playing against an engine is now once again the very definition of fun! A host of features, including "Assisted Analysis", which gives you discreet visual hints as you move, and emoticons, which show Fritz's mood, are there to help you. Even with little knowledge of chess, you can enjoy many an exciting game, and more importantly, victory, against Fritz. If things don't work out, Fritz16 shows you the combinations you might have missed directly after the game with the handy "Tactical Analysis" function, or you can dive right into "Easy Play" calculation

training to hone your skills. Fritz doesn't come up short when it comes to playing strength either: the new multiprocessor engine was developed by star programmer Vas Rajlich ("Rybka") and is up there with the global elite.

Stay mobile with Fritz16: With a 6-month ChessBase Premium Account included, you're guaranteed full access to the world of ChessBase Web Apps (also for iPads, Android Tablets and Smartphones) on the move: 6,000 chess training videos, 60,000 tactical exercises, 8 million games in the Live database and, of course, the best online action on playchess.com. Fritz now also annotates and analyzes as you play, immediately providing you with move-by-move summaries to replay after a game ends.

No other chess program offers you more. Still, Fritz16 is intuitive and easy to use, and whether you want

to play against the engine, analyze or enjoy some online blitz, Fritz16 will open just the functions you need at the click of a mouse.

FRITZ 16 \$ 79.95

System requirements for Fritz16:
Minimum: Pentium III 1 GHz, 2 GB RAM, Windows 7 or 8.1, DirectX9, graphics card with 256 MB RAM, DVD-ROM drive, Windows Media Player 9 and internet access.
Recommended: PC Intel i5 (Quadcore), 4 GB RAM, Windows 10, DirectX10, graphics card with 512 MB RAM or more, 100% DirectX10-compatible sound card, Windows Media Player 11, DVD-ROM drive and internet access.
System requirements for ChessBase Account: Internet access and up-to-date browser, e.g. Chrome, Safari. Runs on Windows, OS X, iOS, Android and Linux.

All Purchases Benefit the US Chess Federation

