

CHESS LIFE Kids



**IM Nazi Paikidze:
Patience, Practice, Pursuit**



KASPAROV
CHESS FOUNDATION



US CHESS
FEDERATION



presents

KCF's 15th Annual All-Girls National Championships

April 20-22, 2018 - Chicago, IL

First place winners of each section will qualify to play at the 2018 World Youth/Cadets Championships

MAIN EVENT

6-SS, G/90,d5

Friday April 20

2:30 PM Opening Ceremony
3:00 PM Round 1

Saturday April 21

10:00 AM Round 2
2:30 PM Round 3
6:30 PM Round 4

Sunday April 22

9:00 AM Round 5
1:00 PM Round 6
5:00 PM Awards Ceremony

ENTRY FEE

\$60 postmarked by 3/19, \$80 by 4/9, \$95 after/on-site.

SIDE EVENTS

Bughouse Tournament

Fri. April 20 11:00 AM
Entry fee: \$30 per team

Blitz Tournament (G/5,d0)

Fri. April 20 7:00 PM
Entry fee: \$20 4/9, \$25 after/on-site.



SECTION/AWARDS

Age as of 1/1/2018

Under 8 top 15 individuals
top 500 – 799, top U500, top 6 schools
Under 10 top 15 individuals
top 700 – 999, top U700, top 6 schools
Under 12 top 15 individuals
top 900 – 1199, top U900, top 6 schools
Under 14 top 15 individuals
top 1100 – 1399, top U1100, top 4 schools
Under 16 top 8 individuals
top 1300 – 1599, top U1300, top 3 schools
Under 18 top 8 individuals,
top 1500 – 1799, top U1500, top 3 schools

HYATT MCCORMICK PLACE

2233 S Martin Luther King Dr
Chicago, IL 60616

HOTEL RESERVATIONS

single - quad \$159
(888) 421-1442, online at
www.rknights.org/allgirls
Reserve early hotel may sell
out / raise rates

INFO

www.rknights.org/allgirls
(773) 844-0701 | david.heiser@renaissanceknights.org

Online Registration: www.rknights.org/allgirls

Mailed Registration: make checks payable to: Rknights, Attn: All-Girls, PO Box 1074 Northbrook, IL 60065

www.kasparovchessfoundation.org

CHESS LIFE Kids

US Chess Executive Director: Carol Meyer
carol.meyer@uschess.org

Director of Publications/
Chess Life Kids Editor: Daniel Lucas
dlucas@uschess.org

Assistant Editor: Melinda Matthews
mmatthews@uschess.org

Art Director: Cat Connor
catseyephoto@mac.com

Character Designer and Illustrator:
Chandler Ellison

Editorial Asst./Copy Editor: Alan Kantor
akantor@uschess.org

Editorial Assistant: Natasha Roberts
nroberts@uschess.org

Tournament Life: Joan DuBois
tla@uschess.org

CONTRIBUTORS: Send your contributions and articles to *Chess Life Kids*, PO Box 3967, Crossville, Tennessee 38557 or email to dlucas@uschess.org.

Chess Life KIDS (USPS 023-567, ISSN: 1932-5894) is published in February, April, June, August, October, and December of every year by US Chess, 137 Obrien Drive, Crossville, Tennessee 38555. Periodical postage paid at Crossville, Tennessee, and additional mailing offices.

CHANGE OF ADDRESS: Be sure to notify us at once of any change of address. Please include your old address and your new address, along with your US Chess I.D. number.

POSTMASTER: Send address changes to US Chess, PO Box 3967, Crossville, Tennessee 38557.

Annual Scholastic Membership: Regular Scholastic Membership (online version of *Chess Life Kids*), age 12 or younger, is just \$17 per year. Premium Scholastic Membership (receives *Chess Life Kids* by mail) is \$25 per year. \$13 of every premium membership goes towards providing *Chess Life Kids*. Annual subscription rate is \$18. Entire contents copyright 2018, US Chess.

Teachers may photocopy instructional articles for classroom use, but republication or widespread copying without the written consent of US Chess is forbidden.



CONTENTS

04

IT'S YOUR MOVE

06

CHESS KIDS
By Al Lawrence

08

ALL-AMERICA
TEAM

12

AVOID THE TRAP!
By Bruce Pandolfini

14

YOU CAN DO IT!
By ICCM Jon Edwards

15

JUNIOR GRAND
PRIX

16

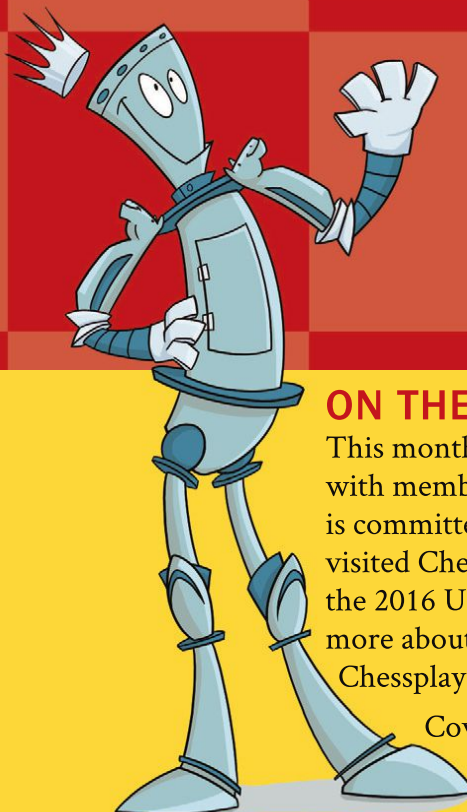
TOURNAMENT
LIFE

21

ANSWERS

22

MY FIRST MOVE
This month:
IM Nazi Paikidze



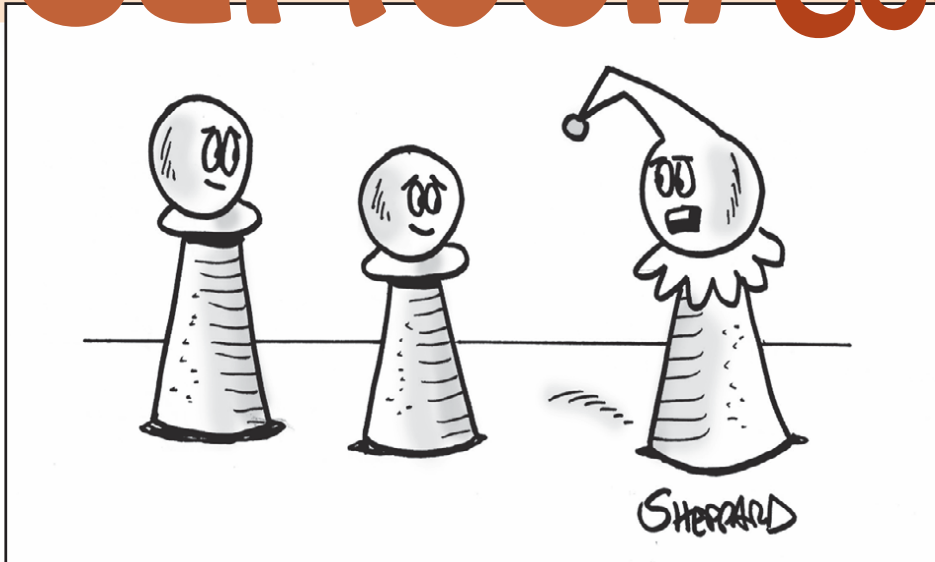
ON THE COVER

This month's cover features IM Nazi Paikidze with members of Chess Girls DC. Nazi, who is committed to promoting women in chess, visited Chess Girls DC shortly after winning the 2016 U.S. Women's Championship. Read more about Nazi, our 2017 Woman Chessplayer of the Year, on page 22.

Cover photo: Jim Doyle

It's Your Move!

Cartoon Caption Contest



Just how funny can you be? Put your humor skills to the test and come up with a caption for the above cartoon. Email your entry to: dluca@uschess.org.

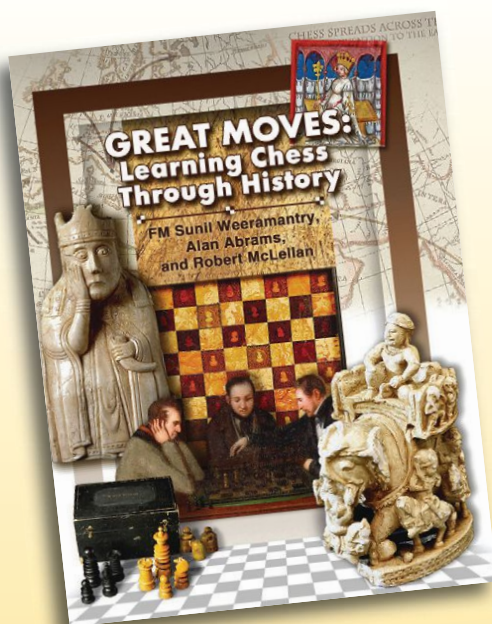
Include your name, your age, your parents' or guardians' name(s), and their phone numbers. Include "Caption Contest" in the subject line.

Entries will be judged on humor and the editors' decision is final. We will print the winning entry in our June 2018 issue.

Deadline for entries: March 15, 2018. Entrants must be no older than age 13 as of December 31, 2018.

One copy of *Great Moves: Learning Chess Through History* will be awarded to the winner (see below).

Now, put on those jester's caps (notice that one of the pieces is wearing a jester's cap—hmm, why would that be?) and make us LOL!



The winning caption provider will receive a copy of *Great Moves: Learning Chess Through History*, signed by the authors. The book blends the intricacies of chess play with the game's compelling and colorful history, putting real people at the 64 squares.

Tracing the development of chess from its origins in ancient India, the authors take the student on a far-ranging journey through the palaces of medieval and Renaissance Europe to the cafés of the Enlightenment and the dawn of the Industrial Age, with a focus on the leading

personalities of the royal game and on their contributions to the understanding of it. Rogues and champions, tragic tales as well as inspirational human stories—all serve as the backdrop for illustrative games and exercises of increasing complexity that highlight their discoveries and invite the student to grasp the potential of chess to fascinate.

More than a primer for beginning chess players and their teachers, *Great Moves* shines a light on the lives of famous players of bygone eras, helping experienced players fill in the gaps in their chess culture.

Donate to US Chess

Your Tax-Deductible Contribution
Will Help US Chess Grow the Game

US CHESS counts on donors to support initiatives that further our mission of empowering people through chess, one move at a time.

Membership dues cover the basic operating costs for US Chess.

Our goals are to grow the game by funding initiatives to improve diversity in chess, sending top players to compete in international events, and growing and retaining women chess players in the game.

With your support, we can elevate chess to be a game for life.

Every dollar counts. Make your contribution today. uschess.org/donate



ChessKid

.com

PLAY



LEARN



**#1 Chess Site for Kids. 200,000+ Kids, Parents, & Coaches!
100% Safe and Kid-Friendly! Signup Today - it's FREE!**



Chess Kids

Across the Board

By Al Lawrence

Celebrating Chess Life Kids from across the country.



Ellen Wang

Great Neck, New York

World-class medals and a selfie with Kasparov!

At nine, Ellen was the top-rated girl chess player in her age group in the nation. On her recent birthday, her rating was so high that she simply moved to the very top of all the 10-year-old girls.

Competing against older players is nothing new for Ellen. In July, she won the gold medal for girls under 14 in the North American Youth Championship in New Jersey.

“Everyone else was four years or so older than me. I didn’t lose one single game and got my Women’s FIDE Master (WFM) title,” she said.

US Chess chose Ellen to represent the USA in two more world championships last summer. She won a bronze medal in the Pan American Youth Chess Championship in Costa Rica. Then

Ellen scored another bronze medal at the World Cadets Championship in Brazil.

Ellen won three world-class medals in one summer!

Ellen returned to Lakeville Elementary School this fall as a fifth-grader. In the mornings, she volunteers with the chess club. She’s studying hard and playing in



Ellen at a ballet recital and with her trophy at the 2017 North American Youth Championship.



rated tournaments. “She’s pushing hard to break 2000,” and become an expert, her mom Emily said. And Ellen is on track to meet her goal of playing in the U.S. Girls’ Junior Championship.

Ellen also plays piano. “It makes my mind cruise at ease,” she says. She studies ballet—the Father’s Day recital is a highlight every year. Ellen also swims, plays badminton, and studies robotics.

Ellen’s parents take her to tournaments and other important chess events. On an airplane to St. Louis to see the U.S. Championships, Ellen spotted former World Chess Champion Garry Kasparov and got a photo with him. “He also autographed my notation book.”

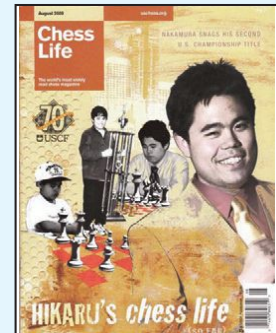
“Chess teaches me to be mentally strong. I know that as long as I play my best, I can beat boys my age—or even much older.”



Ellen wearing her US Chess team jacket. The company Two Sigma sponsored the jackets, which added to the fun!

Chess kids in history

Hikaru Nakamura



Hikaru Nakamura made a splash in the chess world when, at age 10, he broke the U.S. record for youngest-ever national master. Five years later, he smashed another long-standing record when he became the youngest American ever to reach grandmaster status. The record he beat? None other than Bobby Fischer’s, which had stood uncontested since 1958. Hikaru, who was born on December 9, 1987, began playing chess when he was five. Shortly thereafter, he began racking up multiple national and international titles under the guidance of his coach and stepfather, FM Sunil Weeramantry. Today Hikaru’s a four-time U.S. champion who consistently ranks among the top 10 players in the world. He’s also a legendary blitz player. But if blitz play is too slow, never fear: Hikaru has written *Bullet Chess: One Minute to Mate*, which offers advice on how to manage even faster time controls.

2018

Meet some of America's most promising young players.

The All-America Chess Team was created in 1987 to recognize the nation's very best players ages 18 and under. Being selected for the team is one of the highest national honors that young chess players can attain.

This year's team members were chosen based on their chess activity, their ages as of January 1, 2017, and their peak post-tournament ratings from July 1, 2016 through June 30, 2017. They were presented with their team jackets and plaques at the 2017 National K-12 Grade Championships, held in December at Disney's Coronado Springs Resort.

US Chess congratulates each of the 74 members of the 2018 All-America Chess Team for receiving this prestigious award!

Age 8 & Under
(minimum peak rating 1900)

Liran Zhou, 2099
New York

Abhimanyu Mishra, 2025
New Jersey

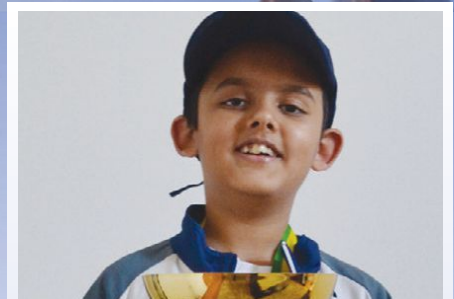
Dimitar Mardov, 2014
Illinois

Marvin Gao, 2013
Florida

Luke Sicong Ye, 2008
Missouri

Sriram Krishnakumar, 1918
California

Liam Henry Putnam, 1907
New York



Abhimanyu Mishra, age 8, holds the record for youngest-ever national chess expert. He crossed 2000 at 7-1/2 years old! Abhimanyu won the U8 championship in *ChessKid.com's* 2016 National Online Invitational Championship even though he played up a section. He's also an international medalist, having captured silver at both the 2017 World Cadets (U8) and 2017 Pan Am Youth (U8). Abhimanyu was recently featured in *The New Yorker* for his incredible performance—which earned him the "Fighting Spirit Award"—in a simultaneous exhibition against GM Fabiano Caruana. Coached by GM Arun Prasad Subramanian and GM Magesh C. Panchanathan, Abhimanyu's goal is to one day beat the highest-rated chess engine.

All-America Team

Brian Huang, 1907
California

Steve Wongso, 1905
Arizona

Age 9
(minimum peak rating 2000)

Arthur Xu, 2036
Illinois

Derek Jin, 2034
Massachusetts

Eric Yuhan Li, 2008
California

Sandeep Sethuraman, 2000
Arizona



Sandeep Sethuraman, age 9, achieved his expert rating in June 2017. A few months later, Sandeep defeated two masters and one international master en route to an undefeated clear first at the fourth annual Chess Helps tournament held in Gilbert, Arizona. He gained 121 rating points and crossed the 2100 threshold. Sandeep, who is coached by IM Joel Banawa, also represented the United States in the U10 section at the 2017 World Cadets Chess Championship. Outside of chess, Sandeep's a huge basketball fan who plays for an Arizona youth club team. He loves tennis as well and has won several tournaments in Arizona. In his free time, Sandeep enjoys math and reading books.

Age 10
(minimum peak rating 2100)

Christopher Woojin Yoo, 2251
California

Nico Werner Chasin, 2239
New York

Arthur Guo, 2239
Georgia

Jason Yuyang Wang, 2213
Ohio

Eddy Tian, 2190
New Jersey

Rochelle Wu, 2133
California

Nathaniel Lande Shuman, 2124
New York

Ming Lu, 2120
California

Derek Clasby, 2107
New Jersey

Eric M. Zhang, 2102
Washington

Rithik Sai Polavaram, 2101
Texas

Shelev Oberoi, 2101
Texas

Age 11
(minimum peak rating 2200)

Justin Wang, 2332
Texas

Anthony Bi He, 2316
Washington

Maximillian Lu, 2268
Connecticut



Christopher Woojin Yoo, age 10, might be the youngest American ever to earn an international master norm. He earned the norm—as well as the FIDE master title—at age 10 after winning the U16 section at the 2017 North American Youth Chess Championship (he played up two sections!). Christopher became the first player to ever win the “triple crown” at any Susan Polgar Foundation event after he took first place in his section, in blitz, and in the puzzle contest at the 2017 Susan Polgar Foundation National Open. When he's not playing for the San Jose Hackers in the PRO Chess League, Christopher, who's coached by GM Melikset Khachiyan and GM Boris Avrukh, moonlights as a broadcast announcer for them.

Balaji Daggupati, 2240
California

Robert Shlyakhtenko, 2214
California

Daniel Hung, 2205
Texas

Vincent Tsay, 2188
New York

Kevin D. Chor, 2166
Arizona



Nikhil Kumar, age 12, had a banner year in 2016. First, he won gold in the U12 section at the 2016 World Cadets championship. Next, he tied for first place at the 2016 National Chess Congress. To cap off his amazing year, Nikhil achieved his first international master norm at the North American Open in December 2016. Nikhil is coached by IM Alejandro Moreno. Beyond chess, Nikhil's interests include piano, violin, and sports such as tennis and basketball. He's a math whiz who enjoys participating in state and regional competitions. He's also learning to play "tablas" (Indian drums).

Age 12
(minimum peak rating 2250)

Andrew Zhang Hong, 2443
California

Nikhil Kumar, 2316
Florida

Christopher Shen, 2316
Ohio

Andy Huang, 2295
Virginia

Wesley Wang, 2291
New York

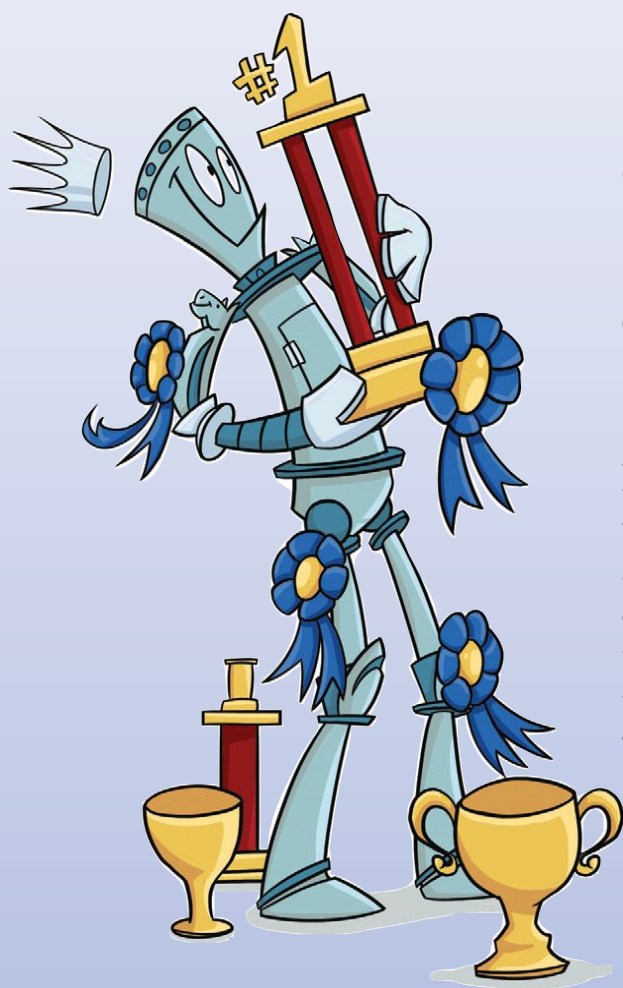
Age 13
(minimum peak rating 2300)

Awonder Liang, 2566
Wisconsin

Hans Moke Niemann, 2419
Connecticut



Carissa Shiwen Yip, age 13, is known for her creative flair over the board. She set the record for the youngest female player to beat a grandmaster after she won against GM Alexander Ivanov in the New England Open at age 10. Setting records is nothing new for Carissa: at age 9, she became the youngest ever to achieve the expert title. Two years later, she broke the record for youngest female to achieve the national master title. Coached by IM Denys Shmelov, Carissa is also a World Youth silver medalist and the 2017 U.S. Cadet co-champion. She enjoys social studies, math, and reading.



FM Mike Klein, also known as "FunMaster Mike" on ChessKid.com (photo, right), was one of the very first chess kids to be named to the All-America Team in 1987. He was a member of the "8 and Under" group then, and over the years he was continually named to the team. As you can see, he has kept all of his team jackets from these many teams, including the very first one from 1987—he can even still fit into it (sort of)!

Mike was playing in the 1987 Elementary Nationals in Terre Haute, Indiana when his dad informed him that he had made the team. Mike's first thought was, "What's an All-America Team?" He was seven years old and in second grade at the time.

We think it is very cool that Mike has stayed involved in the chess world for so long. He even wrote our feature story on smothered mates in last month's issue.

Who from this 2018 list do you think we might still be writing about in a 2049 issue of *Chess Life Kids*?

photo by Christine Vancott

Brandon Jacobson, 2372
New Jersey

Carissa Shiwen Yip, 2355
Massachusetts

Josiah Paul Stearman, 2330
California

David Tianjian Peng, 2325
Illinois

Justin Chen, 2320
New York

Ivan Ke, 2303
California

Age 14
(minimum peak rating 2350)
David Brodsky, 2485
Advait Patel, 2477

Praveen Balakrishnan, 2476
Rayan Taghizadeh, 2417
Ben Li, 2388
Aravind Kumar, 2360
Jennifer Yu, 2357

Age 15
(minimum peak rating 2400)
Ruifeng Li, 2664
John Michael Burke, 2532
Nicolas Checa, 2421
Albert Lu, 2405

Age 16
(minimum peak rating 2400)
Jeffery Xiong, 2743
Samuel Sevian, 2682
Cameron Wheeler, 2493
Craig Hilby, 2478
Vignesh Panchanatham, 2477
John Gabriel Ludwig, 2465

Roland Feng, 2465
Joshua Sheng, 2456
Bryce Tiglon, 2442
Zhaozhi Li, 2423
Ethan Li, 2413

Age 17
(minimum peak rating 2450)
Akshat Chandra, 2578
Andrew Tang, 2569
Kesav Viswanadha, 2471

Age 18
(minimum peak rating 2500)
Kayden Troff, 2555
Luke Harmon-Vellotti, 2549
Mika Andrew Brattain, 2500





AVOID THE by Bruce Pandolfini TRAP!

The Fool's Mate

This column teaches you openings by helping you learn to avoid opening traps. Set up your board and pieces and play through the game below. Have paper and pen by your side. When you reach a question, write down your answer. After you are done with all 10 questions, check your answers at the end of the column. Total your points and see how you did against the scoring scale at the end!

It doesn't take long for a newcomer to learn about the shortest game possible. White can lose in two moves and Black can lose in three. For example, White can lose in two moves by 1. f3 e5 2. g4 Qh4 mate. A similar pattern helps Black lose in three moves. Such an unfortunate beginning would be 1. e4 f6 2. d4 g5 3. Qh5 mate. This tells us that winning so quickly has more to do with randomly bad play by the

loser, and not so much skillful play by the winner. Because winning in this way is much more an indication of badness rather than goodness, the pattern is typically referred to as the Fool's Mate. Hey, what's in a name? Whatever it's called, let's see how such a conclusion could arise in a real game.

1. d4 f5

The Dutch Defense. Black aims to stop White from playing 2. e2-e4. The main drawback is that the e8-h5 diagonal is slightly weakened.

Q1) What are the two usual moves Black relies on to stop White from playing 2. e2-e4? (10 points)

2. Bg5

An unexpected development. More typical are 2. c2-c4 or 2. Ng1-f3.

Q2) What are two plausible

reasons White might play this move? (10 points)

2. ... h6

Black bites the bullet. He takes the bait. Meanwhile, White's bishop is attacked.

Q3) What is the biggest potential problem with 2. ... h7-h6? (10 points)

3. Bh4

White maintains the pin on the e7-pawn, but at great risk.

Q4) Can Black now play to win material? (10 points)

3. ... g5 4. Bg3 f4

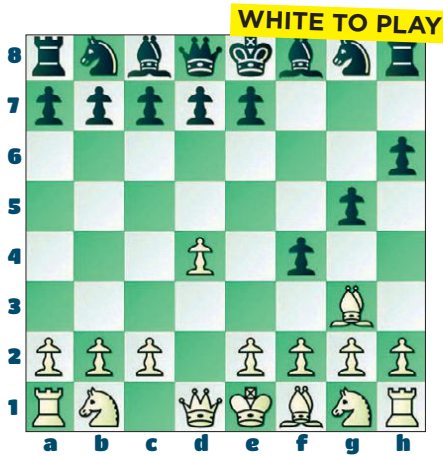
(see diagram next page)

Sure enough, White's bishop is ensnared in a kind of Noah's Ark Trap.

Q5) Can White save the g3-bishop? (10 points)

5. e3

This saves the bishop by threatening mate at h5. But Black



thinks he can still win material.

5. ... h5

Q6) What is Black's idea? (10 points)

6. Bd3

Q7) Doesn't Black now trap the bishop by 6. ... h5-h4? (10 points)

Q8) Isn't 6. Qd1-d3 just as good as 6. Bf1-d3? (10 points)

6. ... Rh6??

Black's rook seems to be performing yeoman's service, but the game is quickly over.

Q9) How else could Black have avoided the mate at g6? (10 points)

Q10) What is White's best seventh move? (10 points)

7. Qxh5+!! Rxh5 8. Bg6 mate!

A1) More typically, Black would try to stop 2. e2-e4 with either 1. ... d7-d5 or 1. ... Ng8-f6.

Q2) What are two plausible reasons White might play this move?

A2) One reason is that if Black plays 2. ... Ng8-f6, White could double Black's pawns by 3. Bg5xf6.

Another reason is that the move 2. Bc1-g5 pins the black e-pawn. A third reason is that White wants to lure Black into playing 2. ... h7-h6.

Q3) What is the biggest potential problem with 2. ... h7-h6?

A3) The move 2. ... h7-h6 weakens the square g6, which no longer can be guarded by a black pawn.

Q4) Can Black now play to win material?

A4) Black has a version of the Noah's Ark Trap, discussed in a previous column. He can trap the white bishop by 3. ... g7-g5 4. Bh4-g3 f5-f4.

Q5) Can White save the g3-bishop?

A5) White can save the g3-

bishop by 5. e2-e3, threatening mate at h5. If Black plays 5. ... Ng8-f6, the bishop escapes by 6. e3xf4.

Q6) What is Black's idea?

A6) If White plays 7. e3xf4, Black still traps the bishop by 7. ... h5-h4.

Q7) Doesn't Black now trap the bishop by 6. ... h5-h4?

A7) Indeed, 6. ... h5-h4 does trap the bishop, but it's bad because it allows 8. Bd3-g6 mate.

Q8) Isn't 6. Qd1-d3 just as good as 6. Bf1-d3?

A8) True, 6. Qd1-d3 also threatens mate, but it's not as good as developing the minor piece, keeping the queen where it is at d1, poised against h5.

Q9) How else could Black have avoided the mate at g6?

A9) As ugly looking as they are, Black could have survived for a while with either 7. ... e7-e6 or 6. ... d7-d6.

Q10) What is White's best seventh move?

A10) The crushing 7. Qd1xh5+ forces mate next move (if 7. ... Rxh5, then 8. Bd3-g6 mate).

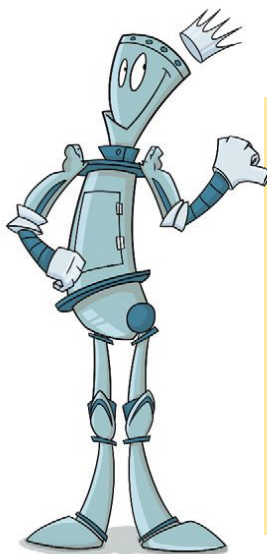
Illustrative Game:

Pospisil versus Simlova-Pizen, 2004 (D02)

1. d4 d5 2. Nf3 Bg4 3. Ne5 Nf6 4. Nxg4 Nxg4 5. e4 Nf6 6. e5 Nfd7 7. Bd3 c5 8. e6 fxe6 9. Qh5+ g6 10. Bxg6+ hxg6 11. Qxg6 mate.

Answers

Q1) What are the two usual moves Black relies on to stop White from playing 2. e2-e4?



How Did You Score?

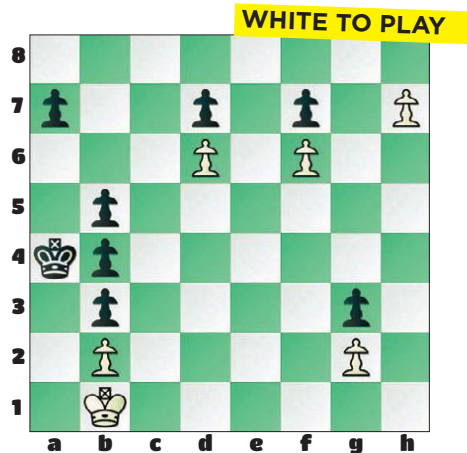
100: 1800+
90: 1600
80: 1400
70: 1200
60 or lower: 1000

The score is based on the US Chess rating system and is intended only as a fun way to monitor your progress each issue as you Avoid The Trap!

YOU can DO IT!

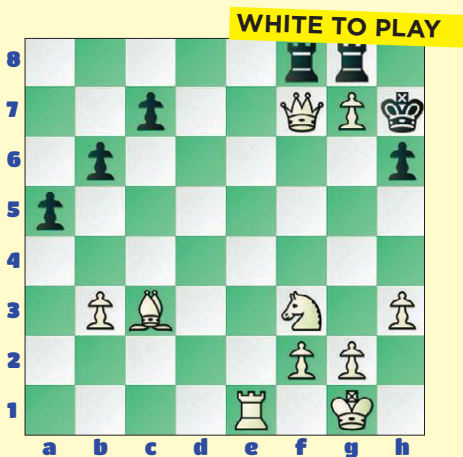
By ICCM Jon Edwards
10th United States Correspondence Chess Champion

It's a simple strategy: Move a pawn all the way to the eighth rank and promote into a queen. Most of the time, turning a pawn into a queen is a winning move, but not always. The diagrammed example is a chess composition by Alexander Fritz from more than 100 years ago. It has a rather remarkable and memorable solution. Black has just played 1. ... b5 hoping for 2. h8=Q a5 when only a major blunder can stall the coming stalemate.

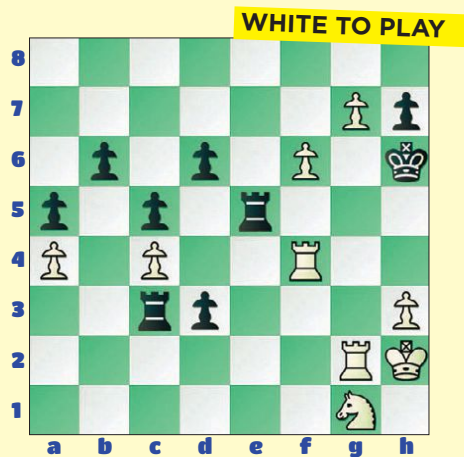


So instead, White should underpromote the pawn with 2. h8=N! a5 3. Ng6 (forcing the capture of the knight) 3. ... fxg6 4. f7 g5 5. f8=N g4 6. Ne6! (once again, to force the capture of the knight) 6. ... dxe6 7. d7 e5 8. d8=N (the third underpromotion to a knight!) 8. ... e4 9. Nb7 e3 10. Nc5 mate. In honor of this achievement, I offer up six puzzles that involve underpromotions to a knight. Armed with that clue, I have no doubt that You Can Do It!

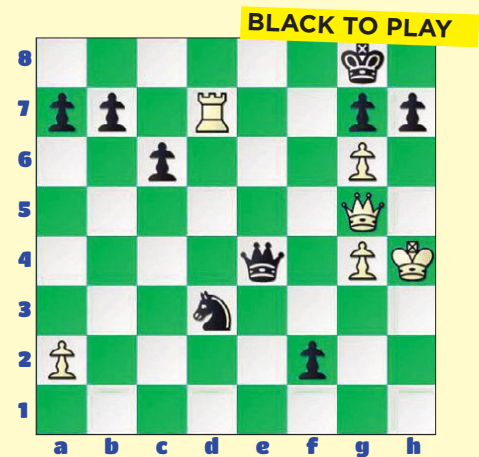
Quiz #1: Mate in One



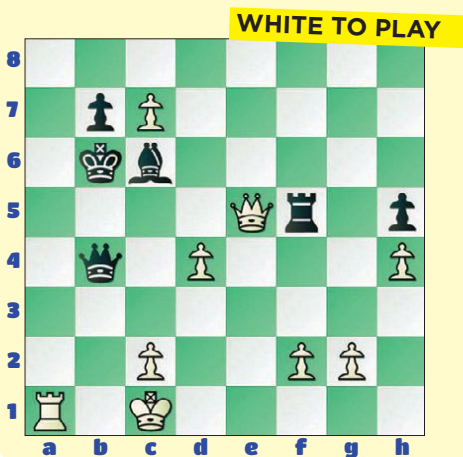
Quiz #3: Mate in Two



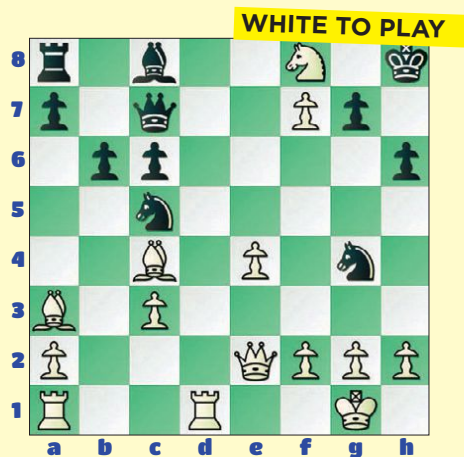
Quiz #5: Mate in Two



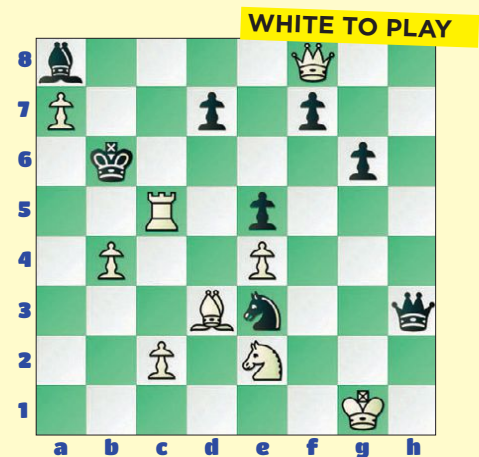
Quiz #2: Mate in One



Quiz #4: Mate in Two



Quiz #6: Mate in Two



Solutions on page 21

US Chess Junior Grand Prix

2017 Junior Grand Prix Standings

Standings for events received and processed by January 9, 2018 are unofficial and subject to change during the year or until year-end tabulation is complete. The top prize for 2017 will be a Chess.com one-year Diamond membership valued at \$100, a Chess.com gear/merchandise package valued at \$100, a US Chess plaque, free entry into the 2018 U.S. Open, and \$1,000 of expense money from US Chess to offset the trip. For the top five players on the overall list and to each state winner, Chess.com will also award a choice of a one-year ChessKid.com gold membership (valued at \$50/annually) or a one-year Chess.com Gold membership (valued at \$40/annually). US Chess gratefully acknowledges the participation of Chess.com!



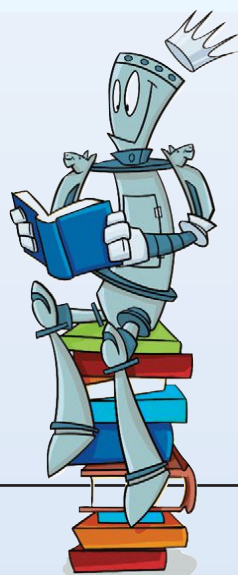
Top 5 Overall Standings

NAME	STATE	PTS	EVENTS
HUNG, ALAN	CA-N	11206	15
PILLAI, ADITHYA	VA	11197	15
SIVAKUMAR, SHAASHWATH	CA-N	9792	22
SIVAKUMAR, SHAAKETH	CA-N	9726	21
LAM, KOIIP	NY	8986	17

For the top 200 overall, see www.uschess.org

State Leaders

NAME	STATE	PTS	EVENTS
KING, KENNY PAUL	AK	700	1
VELIDANDLA, SARVAGNA	AL	3656	8
BELLISARIO, STEVEN	AR	5701	7
SELVAM, SANJAY	AZ	6532	11
RAJARAM, ANIKA	CA-N	8063	15
HUANG, YISHI	CA-S	6300	2
MARSH, ALEXANDER J	CO	2449	4
HATCHER, KATHERINE	CT	4701	5
SPASOJEVIC, NICHOLAS	DC	7592	3
LUO, TERRY	DE	6215	12
CHEN, BENJAMIN LJ	FL	5893	13
MYDUKAR, AMIT	GA	6709	13
WHITE, ADRIEL	HI	2268	1
CHEN, NATHAN	IA	4155	8
PORTH, DARWIN ALBERT	ID	2766	3
SHEPARD, RIVER	ID	2766	3
PLOTNICK, JACOB	IL	7356	12
KACZANOWSKI, AIDAN P	IN	4208	6
SHESHAPPA, SAMEETH	KS	5509	10
SHAWKAT, SAIF	KY	4980	4
APPLEGARTH, BRYANT	LA	4193	4
SU, CARAH	MA	5138	7
GUO, BRADLEY	MD	4490	11
AMAR, BENJAMIN	ME	3446	3
REED, HUNTER	MI	5814	4
LEE, ALICE	MN	3922	6
ZHENG, MERRICK	MO	6704	13
WU, RYAN BOYD	MS	5931	10
CARLINO, DANIEL	MT	700	1
RAMESH, RAHUL	NC	8661	12
SOORI, ISAIAH C	ND	652	1
LE, BENNY	NE	2284	3
TIRUVEEDHULA, SUHAVI	NH	5260	6
CHINNAMBETI, ABHINAV	NJ	8560	17
CONTRERAS, ANDRES	NM	3978	2
NAJIBZADEH, OMID	NV	1642	1
YANG, JACK NATHANIEL	NY	8181	14
CAO, ELTON	OH	7391	15
PETERS, AARON	OK	8981	9
TANG, AUSTIN	OR	5007	3
FENG, ANDREW T	PA	7863	15
VAIJAEPPAY, VAISHNAVI	RI	3318	5
MOORE, ELI DAVIS	SC	3250	5
TAO, ARTHUR	SD	1822	3
RODRIGUEZ, CARLOS XAVIER	TERR	2100	1
WU, LILLIAN	TN	6059	13
KUNG, THOMAS	TX	5497	10
RAY, UJAN	UT	6204	9
LI, MENGYI	VA	7205	8
TAYLOR, AEDAN E	VT	1758	1
LI, ALBERT	WA	6676	6
WEBER, MADELINE L	WI	6103	9
YADAV, OMKAR	WV	1506	2
MC LNERNEY, BRYAN C	WY	2994	2



Check out
www.uschess.org
for rules and prizes.

How to earn Points:

Eligible US Chess members earn points by winning or drawing against higher rated players, based on the pre-event ratings for both players. (If a player does not have a US Chess rating yet, or has a provisional rating based on less than 4 games, that player's post-event rating from that event is used to compute JGP points.)

For a win against a higher rated player, the number of JGP points earned is 2X the ratings difference, up to a maximum of 700 points per game.

Example: A 1200 player who defeats a 1350 player earns 2X the difference in ratings (150) or 300 points.

For a draw, the number of JGP points earned is the ratings difference, up to a maximum of 350 points per game.

Example: A 1200 player who draws a 1350 player earns the difference in ratings, or 150 points.

The US Chess Executive Director has the authority to review events for compliance with these rules.

Tournament Life Announcements

FEBRUARY 15 THROUGH APRIL 14

Scholastic Members:

As a service to you, we are listing upcoming National US Chess rated events, and requested events of possible interest to you. You can always log in to www.uschess.org, and click on "Clubs & Tournaments." Then click on "Upcoming Tournaments" for a complete listing of upcoming rated events and details. As always, you can check out the TLA section of *Chess Life*.

Organizers and Tournament Directors:

If you would like your tournament listed here in *Chess Life Kids* for April 2018 (events to be held after April 14), the deadline for submitting your announcements is February 10th. The deadline for the June 2018 issue is April 10th. The processing fee is \$1.00 per line for the first eight lines, \$2.00 for every line thereafter. Send your announcements to Joan DuBois, tda@uschess.org. Display advertising is also available. Advertising rates are posted on the US Chess website, www.uschess.org, or you may email: tda@uschess.org for complete details.

ABBREVIATIONS & TERMS

All tournaments are non-smoking with no computers allowed unless otherwise advertised.

BLZ:	Blitz rated.
QC:	Quick Chess events.
\$\$\$Gtd:	Guaranteed prizes.
\$\$b/x:	Based-on prizes, x = number of entries needed to pay full prize fund. At least 50% of the advertised prize fund of \$501 or more must be awarded.
Bye:	Indicates which rounds players who find it inconvenient to play may take 1/2-point byes instead. For example, Bye 1-3 means 1/2-point byes are available in Rounds 1 through 3.
CC:	Chess club.
dx:	Time delay, x = number of seconds.
+xx:	Time increment, xx = number of seconds added after each move.
EF:	Entry fee.
Ent:	Where to mail entries.
FIDE:	Results submitted to FIDE for possible rating.
G/:	Game in. For instance, G/75 means each side has 75 minutes for the entire game.
GPP:	Grand Prix Points available.
HR:	Hotel rates. For example, 60-65-70-75 means \$60 single, \$65 twin, \$70/3 in room, \$75/4 in room.
JGP:	Junior Grand Prix.
Memb. req'd:	Membership required; cost follows. Usually refers to state affiliate.
Open:	A section open to all. Often has very strong players, but some eligible for lower sections can play for the learning experience.
Quad:	4-player round robin sections; similar strength players.
RBO:	Rated Beginner's Open.
Rds:	Rounds; scheduled game times follow. For example, 11-5, 9-3 means games begin 11 a.m. & 5 p.m. on the first day, 9 a.m. & 3 p.m. on the second day.
Reg:	Registration at site.
RR:	Round robin (preceded by number of rounds).
SD/:	Sudden-death time control (time for rest of game follows). For example, 30/90, SD/1 means each player must make 30 moves in 90 minutes, then complete the rest of the game in an hour.
SS:	Swiss-System pairings (preceded by number of rounds).
Unr:	Unrated.
W:	Site is accessible to wheelchairs.
WEB:	Tournaments that will use a player's online rating.

NATIONALS

US Chess Junior Grand Prix!

Feb. 16-18 or 17-18, Illinois

2018 U.S. Amateur Team Championship - North

Open: 5SS, G/90+30/increment, 2-day: rd.1-2 G/60 d5. Hyatt Regency Schaumburg, 1800 E. Golf Rd., Schaumburg, IL 60173. 847-605-1234 \$100.00 chess rate single-double-triple-quad until 2/5/18, Free WiFi included with Room! Please reserve early. Open to 4 player teams with one optional alternate. **Team average (4 highest ratings - January Rating List) must be under 2200.** EF: 3-day \$160, per team if received USPS or on-line 6 PM by February 1st, \$180 if received USPS or on-line 6 PM by Feb. 10th, \$200 on-line until Feb. 16th 6 PM and at door. Individuals wishing to play (note: we can guarantee you will play, but won't guarantee which schedule or the ratings of your team), send \$50 and request to be put on a team by USPS and on-line by 2/14 6 PM, \$60 thereafter. Team changes on site or after 2/16 6 PM \$20. **Check out official website www.chessweekend.com for more info and complete prize list.** Prizes: Awards to top 3 teams, top teams with average rating u1900, u1600, u1300, and U1000. Winning team qualifies for national play-offs. Awards for Best Team Name, best team composed of juniors (high school and younger), Top College team, Top HS team, Top Senior team (50 and over), Top Mixed doubles team, Best costume or theme. Prizes to top score on each board. Prizes are Amazon gift cards. **Rounds: 3-day:** on-site registration/check-in 5:30-6:30pm, rds.: 7pm, 10:00am & 4:00pm, 10:00am & 3:30pm. **2-day:** on-site registration/check-in from 8:00-9:30am, rds. 10:00am & 1:00pm then merge with 3-day. **Midwest Blitz Championship on Saturday night,** \$25 by 2/14 USPS or on-line, \$30 at site. First round 8 PM, 2 games with each opponent, 5 rounds, see www.chessweekend.com for details. **All: Register at www.onlineregistration.cc** Checks made payable to and sent to: ChessWeekend, 21694 Doud Ct., Frankfort, IL 60423. Please include Team's name and roster (plus ID#), captain's email and phone number, and desired schedule. **Info:** www.chessweekend.com, glenn@chessweekend.com no phone calls please. Boards and Sets will be provided, please bring clocks.

A Heritage Event!

US Chess Junior Grand Prix!

Feb. 17-19 or 18-19, California, Northern

34th Annual (2018) U.S. Amateur Team Championship - West

Scholastic on Feb. 17 only, Blitz on Feb. 19 only. Santa Clara Convention Center, 5001 Great America Pkwy. Free Parking! **Teams:** Four-player teams plus optional alternate, average rating of four highest must be under 2200, difference between ratings of board 3 & 4 must be less than 1000. January 2018 Supplement, CCA min, & TD discretion used to place players accurately. **Main Event Prizes:** Special 4 commemorative clocks and team trophy to the team for Top 3 overall teams, top team u2000, u1800, u1600, u1400, and u1200. Trophies to all players of the top "Female" team, top "College" team (students/alumni of a college), top "High School" team (students/alumni of a 7-12 school), top "Elementary School" team (students/alumni of a K-6 school), top "Club" team, and top "Family" team (related by blood or marriage within 3 generations). Clocks to top scorer on each board (1-4), trophy to top reserve as well as second and third scorers on each board (1-4). Gift certificates for best 3 team names. **Main Event EF:** \$299/team or \$79/player by 2/11. 2/12-17: \$20 extra per player or \$80 per team & Onsite. A change fee equal to the late fee will apply for any changes, other than by requests within 3 days of the tournament. **3-day Sched:** Onsite Registration @ Sat 9-10a, Round Times @ Sat & Sun 11a 4:30p, Mon 10a 3:30p. Time Control: 40/120 SD/30 d5. **2-day Sched:** Onsite Registration @ Sun 8-8:30a, Round Times @ Sun 9a 11:30a 2p 4:30p; Mon 10a 3:30p. Time Control: G/61 d5 in Rounds 1-3, 40/120 SD/30 d5 in Rounds 4-6 (merge in Round 4 with 3-day schedule). **Info/flyer:** www.BayAreaChess.com/usatw. **Scholastic Event Prizes:** Trophies to each player in Top 3 teams overall, Top u2000 team, u900 team, u600 team, u300 team. Trophies to top "Girls" team, top "School" team, and top "Club" team. Trophies to top 2 scorers on each board (1-4). Commemorative medals to all others. **Scholastic Event EF:** \$179/team or \$49/player by 2/11. 2/12-17: \$15 extra per player or \$60 per team & Onsite. **Sched:** Onsite Registration: Sat 8-9a | Games @ Sat 10a 11:30a 1p 2:20p 3:40p. **Info/flyer:** www.BayAreaChess.com/usatw. **Blitz Event:** Registration Mon 6-7pm, Rounds 7:30-9:30pm. EF: \$14, \$16 onsite. 75% of entry fees returned as prizes. **Contact:** Organized by Judit Sztaray. Directed by Tom Langland, John McCumiskey, Jordan Langland, and others. Sponsored by Bay Area Chess. Online entry at www.BayAreaChess.com/my/usatw or mail to Bay Area Chess, 2050 Concourse Drive #42, San Jose, CA 95131. For questions or help in forming teams email ask@BayAreaChess.com. W.

A Heritage Event!

US Chess Junior Grand Prix!

Feb. 17-19, New Jersey

World Amateur Team & U.S. Team East

Celebrate Rock and Roll! 6SS, 40/2, SD/30 delay 5. Parsippany Hilton 1 Hilton Ct., Parsippany, NJ 07054. **Chess Rate valid until 1/17. Reserve early 973-267-7373 or 1-800-HILTONS.** Morris/Essex train to Morris Plains 1.5 miles. Open to 4- player teams with one optional alternate. Team average (4 highest ratings)—2018 January Rating List) must be under 2200. EF: \$175 postmarked by 2/5/18. ALL-\$225 after or at door—all teams, any changes at site \$25 charge. Check out official website www.njscf.org. **Prizes:** 1-5th Place teams, plaque and 4 digital clocks; Top Team (**Denis Barry Award**) U2100, 2000, 1900, 1800, 1700, 1600, 1500, 1400, 1300, 1200, 1000 each plaque and 4 Digital Clocks; Top college team (same school) 4 Digital Clocks & plaque; Top HS team (grades 9-12 same school), Top Middle School (grades 5-9 same school), Top Elementary School (grades K-6 same school), Top 2 Scholastic Teams (mixed schools okay) (**Collins Award**), Mixed Doubles (2 males, 2 females-no alternates), Seniors (all players over age 50), Military, each plaque & 4 Digital Clocks to top team; Company Team (same employer), Family (4 family members), State teams—CT, DE, MD, MA, NJ, NY (**Benjamin Award**), PA, VA, NC, RI each plaque top team;

Special Plaque: **Top Future team**, (all players under age 10), **Top Military College, Top Parent/Child** (2 pairs, one parent, one child), **Best Player 1-4 and top alternate**, All 6-0 scores each Digital clock. Biggest Individual upset each round Engraved Cross pen; Entry fee refunded to team with Best "Chess related" name, Sunday night—Best "Chess Related costumes or gimmick"—1st-gourmet dinner for four. 2nd—Gourmet dinner for 4. **Reg: 9-12 Sat 2/17: Rds. 1-7:30, 11-6, 9-3:30. Surprises and special give-aways each round.** 7:30pm night—Bug-house \$20 per team. Cash prizes. HR: Parsippany Hilton **NEWLY RENOVATED!** NEW LIGHTS! HEATING AND AIR CONDITIONING! Chess rates expire 1/17/2018. Rates \$123(single double) \$125 (Triple, Quad) 2nd hotel attached to Hilton \$130per night (single-double) \$132 (triple, Quad)-Hampton Inn—includes breakfast each day. For help forming teams and more information contact: noreenches@gmail.com. Checks payable to **NJSCF**, mail by 2/05/18 to: **NJSCF, 17 Stonehenge Road, Morristown, NJ 07960.** (Include Team name, Captain, players full names, USCF Expiration, ID numbers and ratings in board order). No team can include more than two GM's. Include SASE for confirmation if wanted, No registered or certified mail accepted. W.

US Chess Junior Grand Prix!

Feb. 23-25 or 24-25, Florida

2018 U.S. Amateur Team Championship - South

5SS, G/120 d5 (2-day Option Rd. 1 G/60 d5). Ramada Gateway, 7470 W. Irlo Bronson Memorial Hwy., Kissimmee, FL 34747. 4-player teams (with one optional alternate). **Knitts away** from Disney, Universal, etc. **February temperature mid-70's. Two sections** (each paired separately & with their own prizes). Team average (4 highest ratings - January Supplement) must be under 2200 for Open section & under 1500 for U1500 section. Winning team in Open section qualifies for National playoff online. **EF:** Per player: \$49 by 2/12, \$59 later. **SPECIAL EF:** Team (one entry must be made for all players) \$180 by 2/12, \$210 later (any team changes \$10). Teams from outside Florida will receive \$25 off team entry fee. Scholastic teams (same school) receive \$10 off team entry fee. **PRIZES:** Top 1st-3rd place teams & Top Boards 1-4 in each section; Top teams: Open section: U2000 & U1800; U1500 section: Top U1300 & U1000. Also in Open section: Top Senior team (all 50 & above as of 2/23), Top College team (same school), Top High School team (same school). Also in U1500 section: Top Female team, Top Middle School team (same school, grades 6-8), Top Elementary School team (same school). **Schedule:** 3-day: 1st Rd. Fri. 7:30, 2-Day 1st Rd. Sat. 10; Rds. 2-5 Sat. 1:30, 6:45, Sun. 9:30, 2:45. **HR:** Inn rooms: \$55 until cut-off date, Tower rooms: \$70 until cut-off date, Reservations can be made by calling 800-327-9170 (mention "chess tournament" for these special group rates). Free parking, Internet, refrigerator (Tower rooms also include a microwave), and transportation to Disney, Universal and other attractions. Group guests also receive 10% off at Hotel food facilities. **Ent:** Boca Raton Chess Club, 2385 NW Executive Ctr. Dr., Ste. 100, Boca Raton, FL 33431. **Online entry & add info:** www.bocachess.com, 561-302-4377.

US Chess Junior Grand Prix!

Mar. 9-11, California, Northern

2018 U.S. Junior Chess Congress

5-SS, G/90 d5. BASIS Independent Silicon Valley School, 1290 Parkmore Ave., San Jose, CA. 95126. **7 SECTIONS (by age; as of September 1, 2017):** 2 & under, 16 & under, 14 & under, 12 & under, 10 & under, 8 & under & 6 & under. **TROPHIES:** Top 10 individuals and Top 5 clubs in each section. (see flyer on web site for detailed rules on club eligibility) **EF:** \$60 by 2/10, \$70 from 2/11/18-3/4/18, \$80 on 3/5/18 or after. **Rds:** Sat: 10-1:30-5pm, Sun: 9-1. **BYES:** 1, 1/2 bye available with exception of last round. Irrevocable once requested. **REGISTRATION:** www.hanleychessacademy.com. **SIDE EVENTS:** 1. USCF Rated Blitz 7pm-10pm on Friday March 9, 2018. Sections: 12 & under & 20 & under. Trophies to top 5 in each section. \$20 by 3/4/18, \$25 on 3/5/18 or after. 2. Grades K/6 NonRated Tournaments (Capture the King); No USCF membership required. Two separate tournaments with their own trophies and entry fees...one on Saturday and one on Sunday. For players who have never played in a chess tournament before but know how to play (see web site for all information). Trophies: Top 5 both Saturday and Sunday. Top Club both Saturday and Sunday. 5-DSS. EF: \$30 by 3/4/18, \$40 on 3/5/18 or after for each tournament. 3. Tactics Problem Tournament, 8:30pm-10pm Saturday March 10, 2018. \$25 by 3/4/18, \$30 on 3/5/18 or after. Sections: Open & Under 1200. Trophies: Top 4 in each section. **TEAM ROOMS:** \$200 from Saturday morning through Sunday evening. Please call 714-925-3195 to reserve. **NEAREST AIRPORT:** Mineta International in San Jose (about 10 minutes from playing site). Advanced Entries, Pairings, Standings and flyer (available for download) at www.hanleychessacademy.com. **QUESTIONS/INFO:** Joe Hanley, hanleychessacademy@gmail.com or 714-925-3195. W.

US Chess Junior Grand Prix!

Apr. 6-8, Georgia

2018 National Junior High School (K-9) Championship

7SS, G/120 d5. Hyatt Regency Atlanta, 265 Peachtree St. NE, Atlanta, GA 30303. Hotel Chess Rate \$129. Guest rooms may be booked, NLT 3/12/2018 by calling (888) 421-1442 or (404) 577-1234, mention "US Chess" or see www.uschess.org/tournaments/2018/jhs/ to book now! **6 Sections:** K-9 Championship, K-9 U1250, K-9 Unrated, K-8 Championship, K-8 U1000 and K-8 U750. March Rating Supplement will be used. One 1/2-point bye available (limit one) any round (except Round 7) if requested prior to the start of Rd. 1. Team score = total of top four (minimum two) finishers from each school per section. K-9 Championship first place individual and team, including ties, will be the National Junior High School Champion. **Schedule:** Opening ceremony Fri. 12:45 pm. Rds.: Fri. 1 pm and 7 pm, Sat. 9 am, 2 pm and 7 pm, Sun. 9 am-2 pm. Awards Ceremony Sun., approx. 7 pm. **EF:** \$50/participant postmarked or online by 3/12, \$70 postmarked or online by 3/26, \$85 online by 4/4, \$90 on site; \$5.00 extra for all phone registrations; \$20 fee for roster or section changes after 3/26 or any onsite changes. Onsite registration Thurs. 9 AM - 9 PM & Fri. 8 AM - 11 AM. Players who register or change sections after 11 am on Friday will receive a 1/2-point bye for Rd. 1. Players must disclose any other, non-US Chess,

over-the-board (OTB) ratings. **Awards:** Trophies to top individuals & top teams in each section. Every player receives a commemorative item! Full list of trophies on tournament Info Page. **Side Events:** Bughouse: Thurs. 11 am, Reg. onsite only Thurs. 9-10 am, \$25/team. K-9 Blitz: Thurs. 5 pm, Reg. onsite until 4 pm. Blitz EF: \$15 by 4/4, \$20 after or at site. Class trophies will be awarded in main event and in Blitz. Full list of trophies on tournament Info Page. **General questions:** Contact Susan Kantor at 931.787.1234 ext. 136 or by email: skantor@uschess.org. **Team Room questions:** Contact Boyd Reed at 931.787.2244 or by email: boyd.reed@uschess.org. **Entries:** U.S. Chess Federation, Attn.: 2018 JHS Championship, P.O. Box 3967, Crossville, TN 38557 or online at www.uschess.org/tournaments/2018/jhs/. See web site for additional information about the event, advance entries, awards, meetings, team rooms, updates, corrections, and registration forms.

US Chess Junior Grand Prix! Apr. 20-22, Illinois

2018 All-Girls National Championships presented by the Kasparov Chess Foundation in association with the Renaissance Knights Chess Foundation & US Chess

Any player that achieves a perfect 6-0 score or wins the first place trophy, in each age category, qualifies to represent the USA at the 2018 World Cadets (U/8, U/10, U/12) / World Youth (U/14, U/16, U/18) Championships. 6SS, G/90 d5. Hyatt Regency McCormick Place, 2233 S. Martin Luther King Dr., Chicago, IL 60616, (free Wi-Fi). **6 Sections/Trophies: Age as of 1/1/2018 Under 8** top 15 individuals, top 500 - 799, top U500, top 6 schools, **Under 10** top 16 individuals, top 700 - 999, top U700, top 6 schools, **Under 12** top 16 individuals, top 900 - 1199, top U900, top 6 schools, **Under 14** top 12 individuals, top 1100 - 1399, top U1100, top 4 schools, **Under 16** top 8 individuals, top 1300 - 1599, top U1300, top 3 schools, **Under 18** top 8 individuals, top 1500 - 1799, top U1500, top 3 schools, (top 3 players added for team scores). **EF:** \$60 mail/online by 3/19 \$80 by 4/9, \$95 after. Do not mail after 4/13. \$20 fee for roster or section changes after 4/13. \$10 fee for refunds. **Opening Ceremony:** Fri. 2:30pm. **Rounds:** Rd. 1 - Fri 3:00pm Rounds 2-4 - Sat 10:00am, 2:30pm, 6:30pm; Rounds 5-6 - Sun 9:00am & 1:00pm. **Awards:** 5:00pm. **Bye:** One 1/2 point bye available for any round, except round 6, if requested at least 2 hours before the start of the round 1. **Side Events: Bughouse Tournament - Fri. 11:00 am, EF \$30/team. Blitz Tournament - Fri. 7pm, G/5 d0, EF \$20 by 4/9, \$25 after or on site. HR:** single - quad \$159 Reservations: (888) 421-1442. Reserve early rate may increase / sell out. **Entries:** online/info at: www.rknights.org/allgirls or mail to RKnights, attn: All-Girls, PO Box 1074, Northbrook, IL 60065, include name, section, rating, USCF ID#, date of birth, grade, school name city & state.

US Chess Junior Grand Prix! Apr. 27-29, Ohio

2018 National High School (K-12) Championship

7SS, G/120 d5. Greater Columbus Convention Center, 400 North High St., Columbus, OH 43215. Hotel: Hyatt Regency Columbus, 350 North High St., Columbus, OH 43215 (adjacent to GCCC). Hotel Chess Rate \$129. Guest rooms may be booked, NLT 3/23/2018 by calling (402) 592-6464 or (888) 421-1442, mention "US Chess", or online at: https://aws.paskey.com/go/nshschess418. **6 Sections: K-12 Championship, K-12 U1900, K-12 U1600, K-12 U1200, K-12 U800 and K-12 Unrated.** April Rating Supplement will be used. One 1/2-point bye available (limit one) any round (except Round 7) if requested prior to the start of Rd. 1. Team score = total of top four (minimum two) finishers from each school per section. K-12 Championship first place individual and team, including ties, will be the National High School Champion. **Schedule:** Opening ceremony Fri. 12:45 pm. Rds.: Fri. 1 pm and 7 pm, Sat. 9 am, 2 pm and 7 pm, Sun. 9 am-2 pm. **Awards Ceremony Sun., approx. 7 pm.** EF: \$50/participant postmarked or online by 3/26, \$70 postmarked or online by 4/16, \$85 online by 4/25, \$90 on site; \$5.00 extra for all phone registrations; \$20 fee for roster or section changes after 3/26 or any onsite changes. Onsite registration Thurs. 9 AM - 9 PM & Fri. 8 AM -11 AM. Players who register or change sections after 11 am on Friday will receive a 1/2-point bye for Rd.1. Players must disclose any other, non-US Chess over-the-board (OTB) ratings. **Awards:** Trophies to top individuals & top teams in each section. Every player receives a commemorative item! Full list of trophies on tournament Info Page. **Side Events:** Bughouse: Thurs. 11 am, Reg. onsite only Thurs. 9-10 am, \$25/team. K-12 Blitz: Thurs. 5 pm, Reg. onsite until 4 pm. Blitz EF: \$15 by 3/26, \$20 after or at site. Class trophies will be awarded in main event and in Blitz. Full list of trophies on tournament Info Page. **General questions:** Contact Susan Kantor at 931.787.1234 ext. 136 or by email: skantor@uschess.org. **Team Room questions:** Contact Boyd Reed at 931.787.2244 or by email: boyd.reed@uschess.org. **Entries:** U.S. Chess Federation, Attn.: 2018 HS Championship, P.O. Box 3967, Crossville, TN 38557 or online at www.uschess.org/tournaments/2018/hs/. See web site for additional information about the event, advance entries, awards, meetings, team rooms, updates, corrections, and registration forms.

US Chess Junior Grand Prix! May 11-13, Tennessee

2018 National Elementary (K-6) Championship

7SS, G/90 d5. Gaylord Opryland Resort and Convention Center, 2800 Opryland Dr., Nashville, TN 37214. Hotel Chess Rate \$166. Guest rooms may be booked, NLT 4/12/2018 by calling (888) 777-6779 or (615) 889-1000, mention "US Chess" or book online at: https://aws.paskey.com/e/49533585. 13 Sections: K-6 Championship, K-6 U1400, K-6 U1000, K-6 Unrated, K-5 Championship, K-5 U1200, K-5 U900, K-3 Championship, K-3 U1000, K-3 U700, K-3 Unrated, K-1 Championship, K-1 U500/UNR. May Rating Supplement will be used. One 1/2-point bye available (limit one) any round (except Round 7) if requested prior to the start of Rd. 1. Team score = total of top four (minimum two) finishers from each school per section. K-6 Championship first place individual and team, including ties, will be the National Elementary School Champion. **Opening ceremony Fri. 12:45 pm.** Schedule for K-3 and higher: Rds.: Fri. 1 pm and 6 pm, Sat. 10 am, 2 pm and 6 pm, Sun. 10 am and 2 pm. **Awards Ceremony Sun., approx. 6 pm.** Special schedule for K-1 sections: Rds.:

Fri. 1:30 pm and 5:30 pm, Sat. 9:30 am, 1:30 pm and 5:30 pm, Sun. 9:30 am and 1:30 pm. **Awards Ceremony Sun., approx. 5:30 pm.** EF: \$50/participant postmarked or online by 4/23, \$70 postmarked or online by 4/30, \$85 online by 5/9, \$90 on site; \$5.00 extra for all phone registrations; \$20 fee for roster or section changes after 4/25 or any onsite changes. Onsite registration Thurs. 9 AM - 9 PM & Fri. 8 AM -11 AM. Players who register or change sections after 11 am on Friday will receive a 1/2-point bye for Rd. 1. Players must disclose any other, non-US Chess, over-the-board (OTB) ratings. **Awards:** Trophies to top individuals & top teams in each section. Every player receives a commemorative item! Full list of trophies on tournament Info Page. **Side Events:** Bughouse: Thurs. 11 am, Reg. onsite only Thurs. 9-10 am, \$25/team. Blitz Sections: K-6 and K-3, Thurs. 5 pm, Reg. onsite until 4 pm. Blitz EF: \$15 by 4/25, \$20 after or at site. Class trophies will be awarded in main event and in Blitz. Full list of trophies on tournament Info Page. **General questions:** Contact Susan Kantor at 931.787.1234 ext. 136 or by email: skantor@uschess.org. **Team Room questions:** Contact Boyd Reed at 931.787.2244 or by email: boyd.reed@uschess.org. **Entries:** U.S. Chess Federation, Attn.: 2018 Elementary Championship, P.O. Box 3967, Crossville, TN 38557 or online at www.uschess.org/tournaments/2018/elem/. See web site for additional information about the event, advance entries, awards, meetings, team rooms, updates, corrections, and registration forms.

A Heritage Event!

US Chess Junior Grand Prix!

July 28-Aug. 5, July 31-Aug. 5 or Aug. 2-5, Wisconsin

US Chess Grand Prix Points: 300 (Enhanced)

119th Annual U.S. Open

Includes Traditional one game per day schedule (9 days), a 6-day slow time control option, and 4-day option. 9SS, 40/120, SD/60; d5 (4-day slow time control, Rds. 1-6, G/60 d5; then 40/120, SD/60 d5). Madison Marriott West, 1313 John C. Hammans Dr., Middleton, WI 53582, HR: \$115, Call (608) 831-2000, mention "US Chess". Reserve by June 30th or rate may increase. **\$50,000 in prizes based on 500 paid entries, else proportional, \$40,000 (80% of each prize) minimum guaranteed.** A one-section tournament with Class prizes. Top U.S. player not otherwise qualified qualifies for 2018 U.S. Championship. **Choice of three schedules:** **Traditional:** 40/120 SD/60; d5. One round daily at 7 PM, except Rd. 9, 3 PM 8/5. **6-Day Option:** 40/120, SD/60; d5. 7 PM 7/31, 12 NOON & 7 PM 8/1-8/3, 7 PM 8/4, 3 PM 8/5. **4-Day Option:** Rds. 1-6: G/60 d5; then 40/120, SD/60 d5. 12 NOON, 3 PM, 7 PM, 10 PM 8/2; 12 NOON, 3 PM, 7 PM 8/3; 7 PM 8/4; 3 PM 8/5. **All** schedules merge after Round 6 & compete for same prizes. **Projected prizes:** Top places \$800-4000-2000-1500-1000-800-600-500, clear or playoff winner \$200 bonus. If tie for first, top two on tiebreak play Armageddon game (White 5 minutes, 2-sec delay, Black 3 minutes, 2-sec delay and gets draw odds) for bonus and title. **Class Prizes:** Top Master (2200-2399) \$2500-1200-800-500, Expert (2000-2199) \$2500-1200-800-500, Class A (1800-1999) \$2500-1200-800-500, Class B (1600-1799) \$2500-1200-800-500, Class C (1400-1599) \$2000-1000-600-400, Class D (1200-1399) \$1500-700-500-300, Class E or below (under 1200) \$1500-700-500-300, Unrated \$800-400-200. **Half-Point Byes:** must commit before Round 4; up to 3 byes allowed for 2000/up, 2 byes for 1400-1999, one bye for Under 1400/Unr. Limit 1 bye in last two rounds. Zero-point byes are always available in any round if requested at least two hours before the round(s) in question. **Entry Fee:** Online, \$145 by 6/25, \$165 by 7/16, \$185 after 7/16. By mail, \$147 postmarked by 6/25, \$167 postmarked by 7/16, \$187 after 7/16; do not mail after 7/23! By phone, \$150 by 6/25, \$170 by 7/16, \$185 after. No phone entries after 5PM Central 7/27 (close of business at the US Chess Office)! At site, all \$190; Free entry for GMs and WGMs for main event only. All entries must be made at least two (2) hours prior to the player's first game. Current US Chess membership required. **July Rating Supplement** used; unofficial ratings (at least four games) used if otherwise unrated. CCA ratings used if above US Chess. Foreign player ratings: usually 100 points added to FIDE or FQE, 200+ added to most foreign national ratings, no points added to CFC. Highest of multiple ratings generally used. **Entries:** US Chess, ATTN: 2018 U.S. Open, PO Box 3967, Crossville, TN 38557. Online entry available, see website. Phone entry: 800.903.8723. **Not FIDE rated, No cell phones.** Bring a clock — none supplied. Sets/boards supplied for tournament but not for skillies. Many meetings, workshops and seminars, including: **US Chess Committee Meetings 8/1-8/3, US Chess Awards Luncheon 8/4 Noon, US Chess Delegates Meeting 8/4-5.** Many side events and other championships, including: **U.S. National Blitz Championship** 7SS Double, G/5 d0, Rd. 1 at 12 NOON 8/4; **U.S. Open Weekend Swiss** 5SS, G/60 d5, 12-3 Sat 7/28, 10-12:30-3 Sun 7/29; **U.S. Open Scholastic** (see separate TLA for the Scholastic event); **Mon-Wed-Thu/Fri July 30, August 1, 2, 3 U.S. Open Quads (one-day events)** G/30 d5. Entry fee \$20. Registration 9:30-11:30 a.m., Rounds at noon, 1:30 p.m. & 3:00 p.m. \$50 to first in each quad. **Tue July 31 U.S. Open Quads (Tuesday Quads Only)** G/60 d5. Entry Fee \$20. Registration 9 a.m.-10:00 a.m., Rounds at 10:30 a.m., 1:00 p.m. and 3:30 p.m. \$50 to first in each quad. **U.S. Open Bughouse** Sat. 10:30 AM 7/28. **19th Annual Golf Tournament for the US Open Chess Players**, (see tournament website for details). **US Open Tennis Tournament** (see tournament website for details). In addition, three other championships will also take place: the **2018 Denker Tournament of HS Champions** (see website for participants' list), the **2018 Barber Tournament of K-8 Champions** (see website for participants' list) and the **2018 National Girls' Tournament of Champions** (see website for participants' list). **Please check the U.S. Open website often for updates, new information and corrections and other useful documents!** www.uschess.org/tournaments/2018/usopen/

Aug. 4, Wisconsin

US Chess Grand Prix Points: 15

2018 U.S. Open National Blitz Championship (BLZ)

7 Double Round (14 games) Swiss, 1 section, G/5 d0. Blitz rated, higher of regular or Blitz rating used. Entry fee \$40, free to Unrated players if paying US Chess dues. Registration 9-11:30 a.m, round 1 begins at

noon. **\$2000 Guaranteed Prizes!** \$400-200-150, U2200 \$200-100, U2000 \$200-100, U1800 \$180-90, U1600/Unrated \$140-70, U1400 \$100, U1200 \$70. See also www.uschess.org/tournaments/2018/usopen for additional details.

GRAND PRIX

US Chess Junior Grand Prix!

A State Championship Event!

Feb. 10, Pennsylvania

US Chess Grand Prix Points: 6

2018 PA State Game/75 Championship

4SS, G/75 d5. Wm. Pitt Union, Univ. of Pittsburgh, 5th Ave. & Bigelow Blvd., Pittsburgh, PA 15213. 3 Sections, **\$\$ (695G): Championship:** EF: \$30 by 2/2, \$40 later. \$200-100, U2000 \$75, U1800 \$50. **Premier:** U1600. EF: \$25 by 2/2, \$35 later. \$90-60, U1400 \$50, U1200 \$40, U1000 \$30; Trophies to Top 2, Top 2 U1400, Top 2 U1200, Top 2 U1000. **Scholastic:** Grades K-12 U900. EF: \$15 by 2/2, \$25 later. Trophies to Top 7, 1-3 U600. **ALL:** Teams of 4 to 7 combined from all sections, Trophies 1st-2nd clubs, schools. PSCF \$5, OSA. Reg ends 9:30am. **Rds.:** 10-1-4-7. **Ent/Info:** PSCF, c/o Tom Martinak, 25 Freepost St., Pittsburgh, PA 15223, 412-908-0286.

US Chess Junior Grand Prix!

Feb. 17-18, Alabama

US Chess Grand Prix Points: 6

Queen of Hearts - 46th Annual

5SS, TC: G/120 d5. **AUM** Taylor Center, 7401 East Dr., Montgomery, AL 36117. **PREMIERE** (PF: \$725 - \$SGTD): \$300-175-X-125-A125; **RESERVE** (PF: \$600 - \$SGTD): \$225-150-125-U1500: \$100; **AMATEUR** (PF: \$500 - \$SGTD): \$180-120-100-U1000: \$100. **EF:** \$50; if mailed by Feb 10th: \$60 at site. **Late REG.:** FEB 17th, 8-8:30am. **Rds.:** 9-2-7; 9-2:30. **SCHOLASTIC (K-12): NOVICE** (GSS, TC: G/20 d0; **Not Rated**): **EF:** \$20; if mailed by Feb 10th; \$30 at site. **Trophy:** Top 3; **Medal:** 4th-6th. **Rds.:** 9-10-11-12:30-1:30, 2:30. Checks payable to: **Caesar Chess. ENT:** Caesar Chess LLC, 5184 Caldwell Mill Road, Suite 204 - 202, Birmingham, AL 35244 or email your entry form information before **FEB 10th** and pay at site. **Info:** CaesarChess@gmail.com; www.AlabamaChess.org.

A State Championship Event!

Mar. 2, Pennsylvania

US Chess Grand Prix Points: 6

2018 PA Quick Chess Championship (QC)

6SS, G/8 d3. Eisenhower Hotel and Conference Center, 2634 Emmitsburg Rd., Gettysburg, PA 17235. 3 sections: **\$\$\$ (1875G): Open:** 350-150, U2200 \$125, U2000 \$100. **U1800:** 200-150, U1650 \$125, U1500 \$100. **U1400:** 200-150, U1200 \$90, U1000 \$75, Unr \$60. **AL:** College Tr: 1-2 in each section, 1-2 team (top 4 over all sections). **EF:** \$40 rec'd by 2/17, \$50 after, PSCF \$5 OSA. **Reg.:** 8:45-9:30 am. **Rds.:** 10-2:50-3, 9-1. Feb 2018 ratings used. **Bye:** limit 1, ask by rd. 2. **HR:** Mention "Chess Tourney": 717-334-8121 \$75 by 1/31. **Ent:** PSCF, c/o Tom Martinak, 25 Freepost St., Pittsburgh, PA 15223-2245. **Info:** 412-908-0286, martinak_tom_m@hotmail.com pscfchess.org/pascholasticchamp/

US Chess Junior Grand Prix!

A State Championship Event!

Mar. 3-4, Pennsylvania

US Chess Grand Prix Points: 10

2018 Gettysburg Open & PA Collegiate Championship

5SS, G/90 d5. Eisenhower Hotel and Conference Center, 2634 Emmitsburg Rd., Gettysburg, PA 17235. 3 sections: **\$\$\$ (1875G): Open:** 350-150, U2200 \$125, U2000 \$100. **U1800:** 200-150, U1650 \$125, U1500 \$100. **U1400:** 200-150, U1200 \$90, U1000 \$75, Unr \$60. **AL:** College Tr: 1-2 in each section, 1-2 team (top 4 over all sections). **EF:** \$40 rec'd by 2/17, \$50 after, PSCF \$5 OSA. **Reg.:** 8:45-9:30 am. **Rds.:** 10-2:50-3, 9-1. Feb 2018 ratings used. **Bye:** limit 1, ask by rd. 2. **HR:** Mention "Chess Tourney": 717-334-8121 \$75 by 1/31. **Ent:** PSCF, c/o Tom Martinak, 25 Freepost St., Pittsburgh, PA 15223-2245. **Info:** martinak_tom_m@hotmail.com, 412-908-0286, pscfchess.org/pascholasticchamp/

US Chess Junior Grand Prix!

A State Championship Event!

Mar. 23-25 or 24-25, California, Northern

US Chess Grand Prix Points: 30 (Enhanced)

IM Walter Shipman Memorial Championship

Fri: BAC office 2050 Concourse Drive, #42, San Jose 95131; Sat & Sun: Santa Clara Convention Center, 5001 Great America Pkwy. Park Free! 5SS, G/90 +30 2-day rds 1-2 G/61 d5. Park free. **Prize:** 5,000 b/90 (60% guar). 3 sects: **2000+ (FIDE)** \$1,000-500-200, u2300: 250-125-100. **1600-1999:** \$700-300-100, u1800: 200-100, **u1600:** \$700-300-100 u1400: 125-100, u1200: 100. Unr max \$100 exc Open. Mar 18 Supp & TD disc. **Reg.:** F 6:30-6:45p & Sa 9:30-9:45a. **Rds.:** F 7p, Sa 10a, 3p Su 10a 2:30p. (2-day Sa 10a 12:30 & merge). **EF:** 109, Econ EF: 89 w 50% prz, after 3/15 +20. Playup +30. GMs/IMs- \$0 by 3/10 (prize - EF). **Info:** http://BayAreaChess.com/champs.

A State Championship Event!

Mar. 24, Pennsylvania

US Chess Grand Prix Points: 6

2018 PA State Game/29 Championship (QC)

5SS, G/29 d0. O'Hara Student Center, Univ. of Pitt., 4024 O'Hara St., Pittsburgh, PA 15213. 2 Sections: **Championship:** EF: \$25 by 3/16, \$35 later. \$5 (690G): \$200-100, U2000 \$90, U1800 \$80, U1600 \$70, U1400 \$60, U1200 \$50, U1000 \$40. Trophies: 1-3 U1400, 1-3 U1200, 1-3 U1000. **Scholastic:** Grades K-12 unrated or U900. EF: \$15 by 3/16, \$25 later. Trophies to Top 7, 1-3 U600. **ALL:** Trophies: 1-2 Schools, 1-2 Clubs, Teams of 4-7 players from both sections. PSCF \$5, OSA. **Reg.:** 10-10:30am. **Rds.:** 11-12:30-1:45-3:41:15. **Ent:** PSCF, c/o Tom Martinak, 25 Freepost St., Pittsburgh, PA 15223, martinak_tom_m@hotmail.com

July 28-29, Wisconsin

US Chess Grand Prix Points: 10

2018 U.S. Open Weekend Swiss

5SS, G/60 d5. **\$1,150 Guaranteed Prizes:** \$200-100-50, U2200/Unrated

Tournament Life

\$160, U2000 \$150, U1800 \$140, U1600 \$120, U1400 \$100, U1200 \$80, Unrated \$50. Entry fee \$40, Unrated players free if paying US Chess dues. On-site Registration 10:00-11:30 a.m. Saturday, Rounds at noon & 3:00 p.m. Saturday, 10:00 a.m., 12:30 p.m. & 3:00 p.m. Sunday. See www.uschess.org/tournaments/2018/usopen/ for additional details.

July 28-Aug. 5, July 31-Aug. 5 or Aug. 2-5, Wisconsin US Chess Grand Prix Points: 300 (Enhanced) 119th Annual U.S. Open
See Nationals.

Aug. 4, Wisconsin US Chess Grand Prix Points: 15 2018 U.S. Open National Blitz Championship (BLZ)
See Nationals.

REGIONAL Alabama

Feb. 17-18, Queen of Hearts - 46th Annual
See Grand Prix.

California, Northern

Feb. 10, Foster City Luper\$Swiss90 (3SS, G/90 d5)
Foster City Courtyard Marriott, 550 Shell Blvd., 94404. **Prizes:** \$1,300 b/50. 60% guar. 1900+ : \$200-100-100, u2000 50-50. 1500-1899: \$200-100, u1600 50-50. u1500: \$200-100, u1200 50-50. Feb 18 Supp & TD disc. **Reg.:** 8:30-8:45. **Rds.:** 9-1-4-30. **EF:** 49, Econ 39 w 1/2 prz. after 2/3 +20, playup +20, GMs/IMs/NMs-\$0 by 1/25. **Info:** <http://BayAreaChess.com/grandprix.w>.

Feb. 10, Sacramento Kids Quads (PK-12; 3xG/30 d5)
Courtyard Marriott, Rancho Cordova, CA 95670. **Trophies:** players w + score. **Sched:** Reqr. Check-in 1:30-2p. **Games:** 2:30-5p. **EF:** 29, 44 after 2/4. **Info:** <http://BayAreaChess.com/signature.w>.

Feb. 10, Sacramento Luper\$Swiss (3SS, G/90 d5)
Courtyard Marriott, Rancho Cordova, CA 95670. **Prizes:** \$600 b/40. 50% guar. 1700+ : \$150-100, u1900 50. u1700: \$150-100, u1600 50. Feb 18 Supp & TD disc. **Reg.:** 8:30-8:45. **Rds.:** 9-1-4-30. **EF:** 43, Econ 33 w 1/2 prz. after 2/3 +15, playup +15, GMs/IMs/NMs-\$0 by 1/25. **Info:** <http://BayAreaChess.com/grandprix.w>.

Feb. 11, Bay Area Fremont Quads (PK-12; 3xG/30 d5)
Courtyard Marriott, Fremont, CA 94538. **Trophies:** Players w + score. **Sched:** Reqr. Check-in 1:30-2p. **Games:** 2:15-5p. **EF:** 29, 44 after 2/4. **Info:** <http://BayAreaChess.com/signature.w>.

Feb. 11, Bay Area Fremont Swiss (PK-12; 4SS, G/30 d5)
Courtyard Marriott, Fremont, CA 94538. **Trophies:** players w + score. **Sched:** **Reg.:** 9:30-9:45a. **Games:** 10a-11:30p. **EF:** 34, 49 after 2/4. **Info:** <http://BayAreaChess.com/signature.w>.

Feb. 11, Fremont Duper\$Swiss75 (3SS, G/75 d5)
Courtyard Marriott, Fremont, CA 94538. **Prizes:** \$1,300 b/50. 60% guar. 1900+ : \$200-100-100, u2000 50-50. 1500-1899: \$200-100, u1600 50-50. u1500: \$200-100, u1200 50-50. Feb 18 Supp & TD disc. **Reg.:** 8:30-8:45. **Rds.:** 9-12-3. **EF:** 49, Econ 39 w 1/2 prz. after 2/4 +20, playup +20, Rtd 2200+ \$0 by 1/26. **Info:** <http://BayAreaChess.com/grandprix.w>.

Feb. 17-19 or 18-19, 34th Annual (2018) U.S. Amateur Team Championship - West
See Nationals.

Feb. 25, Palo Alto Duper\$Swiss75 (3SS, G/75 d5)
NEW Location Crown Plaza Palo Alto, 4290 El Camino Real, Palo Alto, CA 94306. **Prizes:** \$1,300 b/50. 60% guar. 1900+ : \$200-100-100, u2000 50-50. 1500-1899: \$200-100, u1600 50-50. u1500: \$200-100, u1200 50-50. Feb 18 Supp & TD disc. **Reg.:** 8:30-8:45. **Rds.:** 9-12-3. **EF:** 49, Econ 39 w 1/2 prz. after 2/17 +20, playup +20 GMs/IMs/NMs-\$0 by 2/10. **Info:** <http://BayAreaChess.com/grandprix.w>.

Mar. 3, Cal Chess Girls Age Level (5SS, G/45 d5)
Berkeley Arts Magnet School, 2015 Virginia St., Berkeley. **Prizes:** Trophies to the top 3 players in each age raffle for \$1,000 trip to Nationals in Chicago! Medals for everyone else. Mar 18 Supp & TD disc. **Reg.:** 8:00-8:30. \$70 Onsite. **Rds.:** 9-10:45-12:30-2:15-4:00pm. **EF:** 40, after 3/1 +10 WFM, 9 WCMs-\$0 by 2/28. **Info:** www.Berkeleychessschool.org.

Mar. 3, Sacramento Duper\$Swiss (3SS, G/75 d5)
Courtyard Marriott, Rancho Cordova, CA 95670. **Prizes:** \$600 b/40. 50% guar. 1700+ : \$150-100, u1900 50. u1700: \$150-100, u1600 50. Mar 18 Supp & TD disc. **Reg.:** 8:30-8:45. **Rds.:** 9-12-3. **EF:** 43, Econ 33 w 1/2 prz. after 2/25 +15, playup +15, GMs/IMs/NMs-\$0 by 2/20. **Info:** <http://BayAreaChess.com/grandprix.w>.

Mar. 3, Sacramento Kids Quads (PK-12; 3xG/30 d5)
Courtyard Marriott, Rancho Cordova, CA 95670. **Trophies:** players w + score. **Sched:** Reqr. Check-in 1:30-2p. **Games:** 2:30-5p. **EF:** 29, 44 after 2/28. **Info:** <http://BayAreaChess.com/signature.w>.

Mar. 4, Cupertino Duper\$Swiss75 (3SS, G/75 d5)
Courtyard Marriott, Cupertino, CA 95014. **Prizes:** \$1,300 b/50. 60% guar. 1900+ : \$200-100-100, u2000 50-50. 1500-1899: \$200-100, u1600 50-50. u1500: \$200-100, u1200 50-50. Mar 18 Supp & TD disc. **Reg.:** 8:30-8:45. **Rds.:** 9-12-3. **EF:** 49, Econ 39 w 1/2 prz. after 2/25 +20, playup +20 GMs/IMs/NMs-\$0 by 2/15. **Info:** <http://BayAreaChess.com/grandprix.w>.

Mar. 4, Bay Area Fremont Quads (PK-12; 3xG/30 d5)
Courtyard Marriott, Fremont, CA 94538. **Trophies:** Players w + score. **Sched:** Reqr. Check-in 1:30-2p. **Games:** 2:15-5p. **EF:** 29, 44 after 2/25. **Info:** <http://BayAreaChess.com/signature.w>.

Mar. 4, Bay Area Fremont Swiss (PK-12; 4SS, G/30 d5)
Courtyard Marriott, Fremont, CA 94538. **Trophies:** players w +

score. **Sched:** **Reg.:** 9:30-9:45a. **Games:** 10a-11:30p. **EF:** 34, 49 after 2/25. **Info:** <http://BayAreaChess.com/signature.w>.

Mar. 9-11, 2018 U.S. Junior Chess Congress
See Nationals.

Mar. 10, Foster City Luper\$Swiss90 (3SS, G/90 d5)
Foster City Courtyard Marriott, 550 Shell Blvd., 94404. **Prizes:** \$1,300 b/50. 60% guar. 1900+ : \$200-100-100, u2000 50-50. 1500-1899: \$200-100, u1600 50-50. u1500: \$200-100, u1200 50-50. Mar 18 Supp & TD disc. **Reg.:** 8:30-8:45. **Rds.:** 9-1-4-30. **EF:** 49, Econ 39 w 1/2 prz. after 3/3 +20, playup +20, GMs/IMs/NMs-\$0 by 2/25. **Info:** <http://BayAreaChess.com/grandprix.w>.

Mar. 10, Fremont Duper\$Swiss75 (3SS, G/75 d5)
Courtyard Marriott, Fremont, CA 94538. **Prizes:** \$1,300 b/50. 60% guar. 1900+ : \$200-100-100, u2000 50-50. 1500-1899: \$200-100, u1600 50-50. u1500: \$200-100, u1200 50-50. Mar 18 Supp & TD disc. **Reg.:** 8:30-8:45. **Rds.:** 9-12-3. **EF:** 49, Econ 39 w 1/2 prz. after 3/4 +20, playup +20, Rtd 2200+ \$0 by 2/25. **Info:** <http://BayAreaChess.com/grandprix.w>.

US Chess Junior Grand Prix!

Mar. 18, Palo Alto Super\$Swiss61 (4SS, G/61 d5)
NEW Location Crown Plaza Palo Alto, 4290 El Camino Real, Palo Alto, CA 94306. **Prizes:** \$1,300 b/50. 60% guar. 1900+ : \$200-100-100, u2000 50-50. 1500-1899: \$200-100, u1600 50-50. u1500: \$200-100, u1200 50-50. Feb 18 Supp & TD disc. **Reg.:** 8:30-8:45. **Rds.:** 9-11-30-2-4-30. **EF:** 49, Econ 39 w 1/2 prz. after 3/10 +20, playup +20 GMs/IMs/NMs-\$0 by 3/3. **Info:** <http://BayAreaChess.com/grandprix.w>.

Mar. 23-25 or 24-25, IM Walter Shipman Memorial Championship
See Grand Prix.

Mar. 24-25, 2018 CalChess State Scholastic Team vs. Team Championship

Santa Clara Convention Center, 5001 Great America Pkwy. Park Free! **Teams:** Four-player teams plus optional alternate. Mar 2018 Supplement, CCA min, & TD discretion used to place players accurately. **Sections: Elementary School Teams (K-Gr6)** on Saturday only, **Middle School Teams (K-Gr8)** & **High School Teams (K-Gr12)** on Sunday only. All three sections are one-day events. **Sched: Saturday only section:** Onsite Registration @ Sat 9-9:30a, Round Times @ Sat 10a-11:30a-1p-2:15p-3:30p. **Sunday only section:** Onsite Registration @ Sun 9-9:30a, Round Times @ Sun 10a-11:30a-1p-2:15p-3:30p. **Prizes:** Special 4 commemorative clocks and team trophy to the team for Top 3 overall teams. Clocks to top scorer on each board (1-4) in each section. **Event EF:** \$149/team or \$39/player by 3/15. Late Fee: after 3/15: \$10 extra per player or \$40 per team. Onsite: \$20 extra per player, \$80 extra per team. **Info:** www.bayareachess.com/scholasticteam. **Online entry** at www.BayAreaChess.com/my/scholasticteam or mail to Bay Area Chess, 2050 Concourse Drive #42, San Jose, CA 95131. For questions: ask@BayAreaChess.com.

Mar. 31, Bay Area Cupertino Quads (PK-12; 3xG/30 d5)
Courtyard Marriott, Cupertino, CA 95014. **Trophies:** Players w + score. **Sched:** Reqr. Check-in 1:30-2p. **Games:** 2:15-5p. **EF:** 29, 44 after 3/24. **Info:** <http://BayAreaChess.com/signature.w>.

Mar. 31, Bay Area Cupertino Swiss (PK-12; 4SS, G/30 d5)
Courtyard Marriott, Cupertino, CA 95014. **Trophies:** players w + score. **Sched:** **Reg.:** 9:30-9:45a. **Games:** 10a-11:30p. **EF:** 34, 49 after 3/24. **Info:** <http://BayAreaChess.com/signature.w>.

A State Championship Event!
Apr. 6-8, 2018 CalChess State Scholastic Championship
Santa Clara Convention Center, 5001 Great America Pkwy., CA 95054. Park free. **Prizes:** Huge Trophies to the top 20 players w + score & top 5 teams and top 5 clubs (in ea section). Medals to all others. In case of ties, tiebreaks will determine trophies. Sections based on grades AND rating. **Sched: 1-day event** for all u800 sections: KG, K-Gr3 Rookie(umr), K-Gr3 Beginner(u500), K-Gr3 JV(500-799): Saturday only 5SSxG30 d5: Rounds: 9:30am, 11:30am, 1:30pm, 3pm, 4:30pm. K-Gr6 Rookie(umr), K-Gr6 Beginner(u500), K-Gr6 JV(500-799), K-Gr6 Beginner(u800), K-Gr12 Beginner(u800): Sunday only 5SSxG30 d5: Rounds: 9:30am, 11:30am, 1:30pm, 3pm, 4:30pm. **2-day event** for sections: K-Gr3 Champ (800+), K-Gr5 Champ (800+), K-Gr6 Champ (800+), K-Gr8 Champ (1200+), K-Gr12 JV (800-1599): Sat+Sun 6SSxG/75 d5. Rounds: Sat & Sun 9am, 12n, 3pm. **3-day event** for K-Gr12 Champ(1600+) FIDE rated: 5SSxG/90+30: Fri 6pm, Sat 11am, 3pm, Sun 10am, 2pm **Side-event: Blitz:** KG-Gr3, Gr4-6, Gr 6-8, Gr 9-12: G/5 d0; Sat 6-8p. **Bughouse (G/5 d0)** Fri 6-8p. **EF** by 3/20: 1-day \$53, 2-day \$67. **Playup** (by grade): +20, Late Fee: +10 after 3/20, +20 after 3/25, 4/3 & Onsite +\$40. **Change Fee:** \$10 after 3/25, \$20 after 4/3, \$30 onsite. **Blitz/Bughouse:** \$12. **Register: Online: until Friday 4/6 noon!** **Onsite 7:30-8am!** **No on-site Registration after 8AM.** CalChess & USCF membership reqrd. Apr 18 Supp & TD disc to place players. **Info/Reg:** bayareachess.com/states. **Quest:** ask@BayAreaChess.com.

May 5-6, 13th Susan Polgar Foundation National Open for Boys and Girls

Livermore Community Center, 4444 East Ave., Livermore, CA 94550. **10 Championship sections based on age and gender:** Under8, Under10, Under12, Under14, Under 16 & 18 separate sections for Girls & Boys. **Individual Trophies:** Top 15 players. "Super Performance" trophies to players tied for last place with a trophy award and the top player(s) in each rating class who did not get a place trophy. Commemorative participation medals to all others. **Team Trophies:** Top 3 Schools and Clubs in each section. **Time control:** G/60 d5. **Schedule:** Onsite Registration: Saturday 8-8:30am. Rounds: Saturday 9:30am, 12:30pm, 3:30pm, and Sun 9:30am, 12pm, 2:30pm. **Byes:** Rds. 4&5 byes must be requested before Rd. 1. **Entry Fee for 2-day event by 4/22:** \$54, Add \$15 (4/23-5/1), Add \$30 (5/2-4), Add \$40 for onsite. **Side Events:** 2 sections based on grade and rating: K-Grade4 under500, K-Grade8 under800. **Individual Trophies:** Top 10 players, medals to all others. **Team Trophies:** Top 3 Schools and Clubs in each section. **Time control:** G/30 d5. **Sched-**

ule: Onsite Registration: Saturday 8-8:30am. Rounds: Saturday only: 9:30am, 11am, 12:30pm, 2pm, 3:30pm. **Entry Fee for side event by 4/22:** \$47, Add \$15 (4/23-5/1), Add \$30 (5/2-4), Add \$40 for onsite. **Other Special Side Events:** Q&A & 25-board Simul, Puzzle Solving Competition, Blitz Championship. May 2018 supplemental for all sections. Change fee equal to the late fee will apply for any changes, other than by requests with less than one week before the tournament. Out of state entries 20% off (mail entry or email ask@bayareachess.com with USCF ID for online entry coupon code). Chief Organizer: J. Sztaray. Organizers/TDs: T. Langland, J. McCumiskey. Sponsored by Susan Polgar Foundation. More info & flyer: www.spfno.com. Register online at www.spfno.com/registration. Mail entries to Bay Area Chess, 2050 Concourse Drive #42, San Jose, CA 95131. Register early to save. Questions: ask@BayAreaChess.com, 408-409-6596. W.

California, Southern

The Los Angeles Chess Club
The Most Active Club on the West Coast! (310) 795-5710. * LACC: www.LAChessClub.com; VCC: www.ValleyChessClub.com; Contact: Mick@LAChessClub.com; Saturday & Sundays: 10 am-9 pm (Beginner/Novice & Intermediate classes + 3 Tournaments each day - Details on our web site. Tuesdays: 7:30-9:30 pm (Advance lecture). 11514 Santa Monica Blvd., Los Angeles, CA 90025. (4 blocks W of 405, SW corner of Santa Monica & Butler * 2nd Floor - above Javan Restaurant) Group Classes * Tournaments * Private (1:1) Lessons. Note our monthly major tournaments. Also, we have the best Weekly BLITZ tournament on Saturday nights at 6:30 pm!!

Vellotti's Chess School
Beginners Welcome! Now offering online lessons, Vellotti's Chess School makes chess FUN for both boys & girls from PreK thru 8th grade. Our Award-Winning Enchanted Chess adventure-based system is currently used to train & develop thousands of students into state and national champions. Super star International Master Luke Vellotti supervises the development of lesson plans and also coaches more advanced students and titled players. Now in two locations- Idaho and Southern CA. For more info about Classes, Camps, and Tournaments, call (208) 713-2486 or email info@SuccessInChess.com or SoCalChess.com to register for a FREE class today!

Feb. 3, 4, 10, 11, 17, 18, 24, 25, Every Saturday & Sunday Chess 4 Juniors
8 separate events- 5SS, G/30 d0. 11514 Santa Monica Blvd. & Butler LA, 90025, 2nd fl. 4 blocks West of 405. **EF:** \$30 (\$20 LACC memb, No prize 1/2 EF, siblings 1/2, Free new LACC members). **Reg.:** 12-1 pm. **Rds.:** 1pm & asap; done by 4; **Prizes:** Trophies & medals; All players receive prizes! **Parking:** Free on streets & BoA. Free healthy refreshments. **Info:** (310) 795-5710 or www.LAChessClub.com or Mick@LAChessClub.com.

Mar. 2-4 or 3-4, 25th annual Western Class Championships
See Chess Life or www.chesstour.com.

Florida

Boca Raton Chess Club
Friday night tournament games, one game a week for 4 weeks. www.bocachess.com, 561-302-4377.

Feb. 23-25 or 24-25, 2018 U.S. Amateur Team Championship - South
See Nationals.

Mar. 16-18 or 17-18, 16th annual Southern Class Championships
See Chess Life or www.chesstour.com.

Georgia

Apr. 6-8, 2018 National Junior High School (K-9) Championship
See Nationals.

Illinois

Feb. 16-18 or 17-18, 2018 U.S. Amateur Team Championship - North
See Nationals.

Apr. 20-22, 2018 All-Girls National Championships presented by the Kasparov Chess Foundation in association with the Renaissance Knights Chess Foundation & US Chess
See Nationals.

May 24-28, 25-28, 26-28 or 27-28, 27th annual Chicago Open
See Chess Life or www.chesstour.com.

Maryland

Maryland Chess Tournaments
MD Chess runs scholastic tournaments 2 Saturdays per month from September through June & open tournaments 2 Saturdays or weekends per month throughout the year. Visit www.MDChess.org to find tournament announcements, tutors, coaches, & camps; register online for tournaments; & subscribe to scholastic and/or open e-newsletters. MD scholastic players who compete in the Varsity section (exclusively for players rated 1600+) of a MD-Sweet-16 Qualifier can qualify for the \$45,000 scholarship to UMBC awarded annually.

The University of Maryland, Baltimore County's chess team is a perennial top-10 contender for the national championship.

Massachusetts

Apr. 27-29 or 28-29, 27th annual Eastern Class Championships
See *Chess Life* or www.chesstour.com.

Missouri

Mar. 23-25 or 24-25, 22nd annual Mid-America Open
See *Chess Life* or www.chesstour.com.

Nevada

June 23-24, International Youth Championship
6-SS, G/60 +5. Westgate Las Vegas Resort, 3000 Paradise Road, 89109. **In 4 Sections by age:** 14 & Under Open, 14 & Under Reserve (under 1000), 9 & Under Open, 9 & Under Reserve (under 800). **Trophies** to top 10 in each section plus class and team trophies. 1st Place in each section wins a **Computer** loaded with valuable Chess Software and hundreds of Videos, 2nd-4th win chess prizes valued at 250-150-100. Unrated players may not win 1st in Reserve sections. **EF** \$89 by 5/31, \$99 by 6/20, \$120 later. Half point bye in any round (limit 2) if requested in advance. **Reg.:** 8:30-9 a.m. **Rds.:** 10-1-3:30, 10-1-3:30. **Youth Blitz:** 6/22 6:30 p.m. (\$20 by 5/31 \$25 later). **HR:** \$69, \$92 Friday and Saturday (800) 732-7117 **Cutoff for special hotel rate is May 31; after that rates will increase significantly and there may not be any rooms available.** **ENT:** Vegas Chess Festivals, PO Box 90925, Henderson, NV 89009-0925 or www.VegasChessFestival.com.

New Jersey

Feb. 10, Princeton Charter School
TOURNAMENT LOCATION: Princeton Charter School at:100 Bunn Drive, Princeton, NJ 08540. TIME CONTROL: G/30 d0; Swiss to 4 rounds. SECTIONS: Open above 1000; U1000; U700; U300/Unrated. (sections will be combined. Awards will be given to the top 3 in each section) **Parental Supervision Required:** The parents or another adult must be designated to supervise the student player between rounds. **Schedule** (will be accelerated if possible) **First Round:** 12:01 PM. **Second Round:** ASAP **Third Round:** ASAP. **Fourth Round:** ASAP. **Award Ceremony:** ASAP (4:05 the latest). Schedule will be accelerated if possible. (*) **Online Registration \$30 Only if register one week before:** www.ChessKid-SNY.com/PCSSchessProgram.htm. (*) **Fee will increase automatically to \$35 if register later.** On site registration the date of the event: \$40 from 11:45 am to 12:00 noon. **Information:** email to Miguel Iniguez at: migini@gmail.com **Results will be posted online the same day of the event!**

Feb. 17-19, World Amateur Team & U.S. Team East
See Nationals.

A State Championship Event!

Feb. 25, New Jersey State Elementary Championships
5SS, G/30 d5. Brookdale College, 765 Newman Springs Rd., Lincoln, NJ 07738. Student Life Center, use Parking Lot #7 or #6; 5 minutes from Garden State Parkway exit 109. **2 Sections:** Elementary (K-6) & Primary (K-3). **All:** Trophies to top 15 individuals, top 5 teams. Elementary & Primary: Top 5 in each grade. **Rds.:** 10 am then ASAP. Top 4 scores constitute the team score for Elementary; top 3 for Primary. **EF:** \$35 before 2/18, \$50 at site. USCF memb. req'd. **Reg.:** 8-9:00am After 9:00am 1/2 point by for round 1. **Info:** 732-259-3881. **Ent:** Hal Sprechman, 66 Cromwell Ln., Jackson, NJ 08527 or online by Feb 24 at www.NJSCF.org. Entries must include name, grade, school, section, date of birth, USCF ID and expiration date, mailing address, email address, phone number and entry fee. Checks made out to NJSCF.

A State Championship Event!

Feb. 25, New Jersey Junior High School Championship
5SS, G/30 d5. Brookdale College, 765 Newman Springs Rd., Lincoln, NJ 07738. Student Life Center, use Parking Lot #7 or #6; 5 minutes from Garden State Parkway exit 109. **Section:** JHS (K-9). **All:** Trophies to top 15 individuals, top 5 teams. **Rds.:** 10am then ASAP. Top 4 scores constitute team score. **EF:** \$35 before 2/18, \$50 at site. USCF memb. req'd. **Reg.:** 8-9:00 am. After 9:00 am, half-point bye for round one. **INFO:** 732-259-3881 halsprechman@gmail.com. **ENT:** Hal Sprechman, 66 Cromwell Ln., Jackson, NJ 08527 or online by Feb 24 at www.NJSCF.org. Entries must include name, grade, school, date of birth, USCF ID #, & expiration date, mailing address, phone number & entry fee. Checks made out to NuSCF.

Mar. 3, King's Chess Club Quads

Morning quads and afternoon quads, G/30 d5, Kindergarten-undergraduate (scholastic, youth, and young adult memberships). Bethlehem Church, 758 Route 10, Randolph, NJ 07869. **EF:** None. **Reg.:** 9-9:20 am., 1st rd. 9:40. Arr. by 12:15 pm to reg. only for afternoon quads. Medal to each quad winner. **Info:** Bethlehem Church 973-366-3434 or Bob McAdams 973-694-3988.

US Chess Junior Grand Prix!

A State Championship Event!

Mar. 3-4, New Jersey High School Chess Championship
5SS, G/90 d5. Union County Vocational-Technical School, 1776 Raritan Rd., Scotch Plains, NJ 07076. 3 sections: **Varsity** (9-12): 5 player teams with one alternate allowed. Coaches set order by player strength. Order must not be changed. Team avg. based on top 5 highest ratings. Trophies to top 10 NJ teams, top three players, top boards 1-5. **EF:** \$150/team before 2/28. \$185/team at site. \$5 per change on site. **Junior Varsity** (9-12): 4 player teams with one alternate allowed. Team avg. based on top 4 highest ratings. Trophies to top 5 NJ teams, top 3 players, top boards 1-4. **EF:** \$120/team before 2/28, \$150/team on site. \$5 per change on site. **Booster** (K-12): Trophies to top 15 individuals, 3 top

teams. Top 4 scores constitute team score. **EF:** \$30 before 2/28, \$40 at site. **All:** USCF memb. required. **Rds.:** Sat. 10-2-6, Sun 10-2. **Reg.:** Sat. 8-9:00am. After 9:00am, 1/2 Point bye for round one. **SIDE EVENT: MAR 4,SUNDAY, Boy Scout/Girl Scout/ Non-Rated Section (K-12)** 4SS (Quad) G/30 d5. USCF Membership Not required. Trophies to top 5 players Medallions for 6 to 10th. **EF:** \$20, by mail or on site registration 9-10am. Limited number of Clocks and Sets available, if you have equipment please bring it. **All:** Entries must include name, grade, school, date of birth, mailing address, email address, phone number and entry fee..... USCF ID and expiration date only needed for Teams and Booster Sections. Checks made out to NJSCF. Mail to: JIM MULLANAPHY, 98 Baird Road, Millstone Twp., NJ 08535. Email questions: jmull@aol.com or call Jim Mullanaphy 732-610-1357. Register online at www.NJSCF.org

Mar. 10, Princeton Charter School

TOURNAMENT LOCATION: Princeton Charter School at:100 Bunn Dr, Princeton, NJ 08540. TIME CONTROL: G/30 d0; Swiss to 4 rounds. SECTIONS: Open above 1000; U1000; U700; U300/Unrated. (sections will be combined. Awards will be given to the top 3 in each section) **Parental Supervision Required:** The parents or another adult must be designated to supervise the student player between rounds. **Schedule** (will be accelerated if possible) **First Round:** 12:01 PM. **Second Round:** ASAP **Third Round:** ASAP. **Fourth Round:** ASAP. **Award Ceremony:** ASAP (4:05 the latest). Schedule will be accelerated if possible. (*) **Online Registration \$30 Only if register one week before:** www.ChessKid-SNY.com/PCSSchessProgram.htm. (*) **Fee will increase automatically to \$35 if register later.** On site registration the date of the event: \$40 from 11:45 am to 12:00 noon. **Information:** email to Miguel Iniguez at: migini@gmail.com **Results will be posted online the same day of the event!**

New York

Oct. 15, Nov. 19, Dec. 17, Jan. 28, Feb. 11, Mar. 4 (makeup date: May 6), 5th Annual Magnus High School and Junior High Chess League

Columbia Grammar and Prep. High School Cafeteria, 36 W. 93rd St. (bet. Central Park West & Columbus Ave., near 96th St. subways), NYC. 12-SS, G/60 d10, open to grades 7-12 born after 3/4/98. 3 sections: **1. Premier** (over 1799), **2. Under 1800**, **3. Under 1200**. Plaques to top 3 each section, top U1900 (Premier), top U1500 (Sec. 2), top U800, Unr. (Sec. 3). May be limited to 1st 60 players to register for each date. **Individual free entry prizes:** free entry to 2 specified Continental Chess tmts. thru 12/31/18 to 1st each section. **Team prizes:** free entry to 1 CCA tmt. thru 12/31/18 to the 4-top-scoring players from same school across all 3 sections, plaques to top 3 overall team scores, limit 2 teams per school. **Mixed Doubles** (2-player male/female team, av. rating U2200, may be in different sections and from different schools, must sign-up before 1/28) **Bonus Prize:** free entry to 1 CCA tmt. thru 12/31/18 to 1st Mixed Doubles team, chess sets to top 3 overall Mixed Doubles. Free entries courtesy of Continental Chess and are valid for CCA tmts. with 100% guaranteed prizes; see www.magnusleague.org, www.chesscenter.cc or www.chesstour.com for details and restrictions. **Rds.:** 10 am-12:30 pm (earlier if feasible) each date. **Ent:** Applications and EF accepted online, may be paid by school. **All:** Each date's games submitted for rating prior to next date's games. Players must re-register before each date; official USCF rating list in effect on each date used for that date (unofficial ratings usually used if otherwise unrated or if requesting to play in Premier). Unr. may enter section 2 or 3 (or Premier by TD permission). Limit 6 byes (2 byes max. rds. 9-12), commit before Jan. 28. Teammate pairings avoided but possible. Ties for free entries decided by tiebreak except playoff May 6 between top 2 on tiebreak (may be fast game). Special Bonus Points may be awarded each date! Bring clocks! **Info:** director@magnusleague.org, chesscenter@gmail.com, **online entry** thru 4 pm the day before each rd. at Magnus League website: www.magnusleague.org. Reg. on-site by 9:30 am. Make school purchase orders payable to: **Chess Center of NY, PO Box 4615, New Windsor, NY 12553. W.**

An American Classic!

A Heritage Event!

US Chess Junior Grand Prix!

A State Championship Event!

Mar. 10-11, 51st annual New York State Scholastic Championships (out of state welcome)

6SS, G/60 d10, open to grades K-12; top NYS player & team each section are NY champions. In 14 sections. **High School Sections** at Courtyard by Marriott, 11 Excelsior Ave, Saratoga Springs NY 12866 (2/5 mile from Saratoga Hilton). **Other 11 sections** at Saratoga Hilton and adjacent Saratoga City Center (connected by indoor walkway), 534 Broadway (I-87 Exit 13-N, 4 miles north on US 9), Saratoga Springs, NY 12866. Sections at Hilton/City Center are limited to a total of 1100 players, sections at Marriott 300 players. **Team prizes** based on top 4 scores from same school; no combined school teams allowed even if one school "feeds" another. Teams of 2 or 3 players allowed, but are at a disadvantage. **Online entry fee at chessaction.com, all sections:** \$59 by 2/15, \$69 2/16-3/2, \$90 3/3 to 3/9. **Entry fee at site, all sections:** \$90. **High School Championship (all K-12 born after 9/1/98):** EF \$65.30 mailed by 2/15. Top NYS grade 9-12 qualifies for Denker Tournament of HS Champions. **High School Intermediate (K-12 under 1800/unr):** EF \$65.20 mailed by 2/15. **High School Reserve (K-12 under 1200/unr):** EF \$65.10 mailed by 2/15. **Junior High Championship (all K-9):** EF \$65 mailed by 2/15. Top NYS grade K-8 born after 9/1/02 qualifies for Barber tournament of K-8 Champions. **Middle School Intermediate (K-8 under 1600/unr):** EF \$64.90 mailed by 2/15. **Middle School Reserve (K-8 under 1000/unr):** EF \$64.80 mailed by 2/15. **Elementary Championship (all K-6):** EF \$64.70 mailed by 2/15. **Elementary Intermediate (K-6 under 1400/unr):** EF \$64.60 mailed by 2/15. **K-5 Intermediate (K-5 under 1100/unr):** EF \$64.50 mailed by 2/15. **K-5 Reserve (K-5 under 800/unr):** EF \$64.40 mailed by 2/15. **Primary Championship (all K-3):** EF \$64 mailed by 2/15. **Primary Reserve**

(K-3 under 600/unr): EF: \$63.90 mailed by 2/15. **K-1 Championship (all K-1):** EF \$63.80 mailed by 2/15. **K-1 Reserve (K-1 under 400/unr):** EF \$63.70 mailed by 2/15. **Postmarked 2/16-27:** All EF \$10 more. Do not mail entry after 2/27. **Special 1 year USCF dues** with magazine if paid with entry. Online at chessaction.com, Young Adult \$22, Scholastic \$15. Mailed or paid at site, Young Adult \$25, Scholastic \$17. **Trophies** to top 10 players and top 7 teams each section, top 2 unrated in each reserve section, and top 2 each U1900, U1700 (HS), U1600, U1400 (HS Intermediate), U1000, U800, U600 (HS Reserve), U1800, U1600, U1400 (JHS), U1400, U1200 (MS Intermediate), U800, U600, U400 (MS Reserve), U1700, U1500 (Elem), U1200, U1000 (K-6 Intermediate), U900, U800 (K-5 Intermediate), U700, U600, U500, U400, U300 (Elem Reserve), U1400, U1200, U1000 (Primary), U500, U400, U300, U200 (Primary Reserve), U800, U600, U400 (K-1), U300, U200 (K-1 Reserve). Speed playoff if perfect score tie. **Free entry** to NY State Championship, Labor Day weekend 2018 (Albany), to top player each section, if not already qualified for free entry from another event. **Mixed doubles prizes** (chess sets) for three HS sections combined; no extra fee; enter at Marriott by Sat 2 pm. **Schedule:** Reg. ends Sat 10 am, rds Sat 11, 2, 5, Sun 9, 12, 3. **Awards** 5:30 pm. **Half point byes** OK all, limit 2, must commit before rd. 2. **HR:** \$135-135 at Hilton, two nights minimum, 888-999-4711, 518-584-4000, or use link at chesstour.com. Backup hotel: Courtyard by Marriott, two nights minimum, \$135-135, 866-210-9325 or use link at chesstour.com. 7 days notice required for room cancellations. Both hotels are likely to sell out 3-4 months before the tournament, but may again have availability in the final week before the event due to late cancellations. For other backup hotels see chesstour.com. Free parking at Courtyard; free parking for overnight guests at Hilton. 7 days notice required for room cancellation at both. **Special car rentals:** Avis, 800-331-1600, use AWD #657633. **Online entry:** www.chessaction.com. **Mail entry:** Continental Chess, PO Box 249, Salisbury Mills, NY 12577. Include name, rating, USCF ID, USCF expiration (non-members include dues), section, school, grade, birth date, address of each player. Checks payable to Continental Chess. **\$15 per player** service charge for refunds. **\$10 extra to switch** sections, all substitutions from advance list charged \$90. **Questions:** director@chess.us, 347-201-2269 (leave message, email is better). **Bring clock** if possible- none supplied. **Bring set & board** for HS sections; set & board supplied for other sections, but not for skillies. **March official ratings used** (except unofficial web ratings usually used if otherwise unrated). TD reserves right to assign estimated rating to players with non-USCF ratings.

Apr. 7-8, 2nd annual Bill Little Memorial
See *Chess Life* or www.chesstour.com.

US Chess Junior Grand Prix!

A State Championship Event!

Apr. 14-15 or 15, 22nd Annual NY State Girls Championship!

Open to all girls, out of state welcome, the **NEST+m School**, 111 Columbia Street (between Delancey and E. Houston St), NYC. **Subways:** **Delancey Street** (F train), **2nd Ave. Station** (F, M trains). **Online entries** at www.chessgirls.win: \$55 thru 4/9/18, \$65 4/10-12, \$80 later or at site, at least 1 hour before game (\$5 less per player if 3 or more from same school enter together online by 4/9). **For details on mail or phone entries see** www.chessgirls.win or www.chesscenter.cc. In 7 sections. Each section has its own age, (grade) and rating requirements (Championship sections open to all who are under age (and grade) limits; unrated allowed all sections). **Open Championship**, open to all girls born after 4/15/98 (top NYS K-12 girl qualifies for National Girls Tournament of Champions in Wisconsin), **K-6 Championship** and **K-3 Championship** are each **2-days:** 6-SS, G/60 d10. **Rounds:** 10 am-1-4 pm each day. **K-12 Under 1200, K-6 Under 900, K-3 Under 600** and **K-1 Championship** are each 5-SS, G/30 d5. **Rounds:** 10 am-12-1:30-3-4:45 pm **Sunday, K-1** open to grades 1/below born after 4/15/10. **Both K-3 sections** open to grades 3/below born after 4/15/08. **Both K-6 sections** open to grades 6/below born after 4/15/05. **K-12 Under 1200 section** open to grades 12/below born after 4/15/98. **Trophies** to top 12 each section and top 3 Unr. in each 1-Day section. **Grade plaques:** top 3 K/below in K-1 section, top 3 scorers below 9th Grade in K-12 U1200, top 3 below 4th grade in K-6 U900, and top 3 below 2nd grade in K-3 U600 (you can win both plaque + trophy). All players scoring 4 or more (5 or more in 2-Day sections) who *don't* win a trophy receive a medal! Speed playoff for 5-0 or 6-0. **Plaques also** to top 4 teams each section (top 3 scorers from same school = team, all on team must attend same school: no combined teams, even if one school "feeds" another). **Individual free entry prizes** (in each 2-Day Championship section): **Free entry** to 2 specified Continental Chess tournaments thru 12/31/18 to 1st! Free entries courtesy of Continental Chess and are valid for CCA tmts. with 100% unconditionally guaranteed prize funds. Free entries do not include NYS Scholastics in Saratoga. See www.chesscenter.cc for complete details and restrictions. **All:** Out-of-state eligible for prizes but top NYS player and team each section are NY Champions. April 2018 official ratings used, except unofficial ratings at chess.org usually used if otherwise unrated. TD reserves right to assign estimated ratings to players with non-USCF ratings. All substitutions from advance entry list charged late fee. Section switches subject to \$10 extra charge per player after 4/12. \$15 service charge for each player refund. TD reserves right to reassign sections for advance entries with incorrect or unclear registrations. Limit 2 byes, commit before rd. 3. **HR:** see travel websites for nearby hotels in NYC. **Info,** help with entries, parking, etc.: www.chessgirls.win. **Questions:** director@chessgirls.win, chesscenter@gmail.com or **646-232-3155 (or 347-201-2269):** leave message, email is better). **Team rooms:** teamrooms@chessgirls.win. Sets provided by Little House of Chess— **bring clocks!** School purchase orders payable to: **Chess Center of NY, PO Box 4615, New Windsor, NY 12553. (Note: US Chess Junior Grand Prix for Top 3 Championship Sections only.)**

May 18-20 or 19-20, 26th annual New York State Open and Senior
See *Chess Life* or www.chesstour.com.

Learn winning chess openings, endings, tactics and middle game strategies from the experts and experienced online chess coaches one-to-one in the comforts of your home!

Our Coaches have experience of more than 10 years on online coaching and their students have excelled at the National and International level.



support@mychessguru.com

Prices starting at just \$15/hr USD !!!

Choose from a variety of experienced online coaches and conveniently schedule classes online based on availability of students and coaches ...

Ohio

A State Championship Event!

Feb. 24, 2018 Ohio State Elementary Championships

5SS, G/30 d5. **6 Sections:** K-6 Championship and K-3 Championship limited to players residing or attending school/homeschool in Ohio. Other sections: 4-6 U700, 4-6 U400, K-3 U500 and K-3 U300 open to players from all states who meet grade and rating requirements. **Entry fee:** \$35 through Feb. 17, \$45 thereafter. Entries must be received by noon, Feb. 23. No onsite entry. **Prizes:** Trophies to all scoring 3.5+. Medals to all players. Trophies to top 5 teams in each section. **Venue:** Embassy Suites, 4554 Lake Forest Dr., Blue Ash, OH 45242. **Schedule:** Changes 9:30-10:15 am, Announcements 10:30 am, Rd. 1 11:00 am, awards 5:30 pm or earlier. **Information, online entry, and mail entry form** at www.chesscincinnati.com. Questions: info@chesscincinnati.com or text/phone Alan at 513-600-9915.

Apr. 27-29, 2018 National High School (K-12) Championship

See Nationals.

Pennsylvania

Feb. 10, 2018 PA State Game/75 Championship

See Grand Prix.

Feb. 18, PCL February Quick Quads (QC)

3RR, G/15 d3. Wm. Pitt Union, Univ. of Pittsburgh, 5th Ave. & Bigelow Blvd., Pittsburgh, PA 15213. **EF:** \$10, \$7 Jrs. \$20 to 1st/quad. **Reg.:** 11-11:15am. **Info:** martinak_tom_m@hotmail.com, 412-908-0286. W.

Mar. 2, 2018 PA Quick Chess Championship (QC)

See Grand Prix.

Mar. 3-4, 2018 Gettysburg Open & PA Collegiate Championship

See Grand Prix.

A Heritage Event!

US Chess Junior Grand Prix!

A State Championship Event!

Mar. 3-4, 2018 PA State Scholastic Championship

5SS, 250 Trophies!! (180 Individual & 70 Team). Eisenhower Hotel and Conference Ctr., 2634 Emmitsburg Rd., Gettysburg, PA 17235. 11 sections (Sat & Sun 3/3 & 4 unless indicated). **EF:** K-3 Open: (Sat 3/3 only) \$30. K-6 U500: (Sat 3/3 only) \$26. K-6 U800: (Sat 3/3 only) \$27. K-9 U600: (Sun 3/4 only) \$26.50. K-9 U1100: (Sun 3/4 only) \$27.50. K-6 Open: \$31. K-8 Open: \$32. 7-12 U1000 & 7-12 Unrated: \$28. 7-12 U1300: \$29. K-12 Open: \$33. **All:** EFs if rec'd by 2/17, \$10 more rec'd 2/18-2/24, \$20 more after 2/24. Feb 2018 ratings used. **Bye:** limit 1, ask by rd 2. **Reg.:** Fri 3/2 6-10 pm, Sat 3/3 10-11 am, Saturday entries get 1/2-bye. \$5 charge for changes/refunds after 2/17. **Rds.:** (Sat 3/3 1-day sections): G/40 d5; 10-Noon-2-4-6; (Sun 3/11 1-day sections): G/40 d5; 9-10:45-12:30-2:15-4; (2-day sections): G/90 d5; 10-2-5:30, 9-1. **Bughouse:** Reg on-site only until Sat 3/3 8:30pm. Rds. begin Sat 3/3 8:45pm. **EF:** \$20/team. **HR:** Mention "Chess Tourney": 717-334-

8121 \$75 by 1/31. Info: 412-908-0286, martinak_tom_m@hotmail.com, pscfcchess.org/pascholasticchamp/ Ent: PSCF, c/o Tom Martinak, 25 Freeport St., Pittsburgh, PA 15223.

Mar. 18, PCL March Quick Quads (QC) 3RR, G/15 d3. Wm. Pitt Union, Univ. of Pittsburgh, 5th Ave. & Bigelow Blvd., Pittsburgh, PA 15213. **EF:** \$10, \$7 Jrs. \$20 to 1st/quad. **Reg.:** 11-11:15am. **Info:** martinak_tom_m@hotmail.com, 412-908-0286. W.

Mar. 24, 2018 PA State Game/29 Championship (QC)

See Grand Prix.

Mar. 28-Apr. 1, Mar. 29-Apr. 1, Mar. 30-Apr. 1 or Mar. 31-Apr. 1, 12th annual Philadelphia Open

See *Chess Life* or www.chesstour.com.

July 2-3, 7th annual World Open Women's Championship

See *Chess Life* or www.chesstour.com.

US Chess Junior Grand Prix!

July 2-3, 10th annual World Open Under 13 Championship

6SS, G/60 d10. Philadelphia Marriott Downtown (see World Open for location, rates). Open to all born after 7/3/05. In 4 sections. **Open Section:** Trophies to top 7, top 2 Under 1600/Unr; free entry in all CCA tournaments 7/13/18-12/31/18 to 1st. **Under 1400 Section:** Trophies to top 7, top 2 Under 1200, free entry in all CCA tournaments 7/13/18-9/30/18 to 1st. **Under 1000 Section:** Trophies to top 7, top 2 Under 800, free entry in all CCA tournaments 7/13/18-9/30/18 to 1st. **Under 600 Section:** Trophies to top 7, top 2 Under 400, top Unrated; free entry in all CCA tournaments 7/13/18-9/30/18 to 1st. **EF:** \$48 online at chessaction.com by 6/30, \$51 mailed by 6/15, \$60 at site. **Late reg.** 7/2 to 10 am, rds. Mon 11-2-5, Tue 10-1-4. Up to 2 half point byes allowed, must commit before rd. 3. **Ent:** chessaction.com or Continental Chess, PO Box 8482, Pelham, NY 10803. Questions: chesstour.com, chesstour.info, DirectorAtChess.US, 347-201-2269. \$15 service charge for refunds.

July 3-8, 4-8, 5-8 or 6-8, 46th Annual World Open

See *Chess Life* or www.chesstour.com.

Tennessee

May 11-13, 2018 National Elementary (K-6) Championship

See Nationals.

Texas

Feb. 15-19, 16-19, 17-19 or 18-19, 9th annual Southwest Classic Championships

See *Chess Life* or www.chesstour.com.

Feb. 24, Texas Region VI Scholastic Chess Championships

17 scholastic sections, 5SS, G/30 d5 to G/60 d5, depending on section. One adult section, 4SS, G/45 d5 to G/60 d5. McAuliffe Middle School, 9390 SW Loop 410, San Antonio, TX 78242. Scholastic sections are for all players up to grade 12 who reside in Texas Region VI. The adult section is for all others, including scholastic players outside Region VI. Individual and team trophies awarded in scholastic sections; 50% cash payout in adult section. **Rds.:** varied start times from 8:30am to 5:15pm, depending on section. **EF:** \$20 if received/postmarked by Jan 31, \$25 by Feb 22, or \$30 thereafter for scholastic sections. Adult section \$25 any time before close of registration at 8:30am on Feb 24. Last day to request a refund is Feb 16. PayPal payments preferred; only cash or check on site. **Ent:** Tournament flyer and registration at <http://homemail.org/chesstournaments>.

US Chess Junior Grand Prix!

A State Championship Event!

Mar. 9-11, 2018 North/Central Texas State Scholastic Chess Championships

7SS, Houston Marriott Westchase, 2900 Briarpark Dr., Houston, TX 77042. \$99, \$99, \$99, \$99 rate includes American Breakfast Buffet, Call 1-800-452-5110 to make reservations mention group code Dallas Chess or register online thru link on web page. **Reserve by 2/19/2018 or rate may not be honored.** Tournament is open to any Kindergarten-12th grade student living in Texas or going to school in Texas. Note that players may play in either the South or the North Central Championships or they may also play in both. Also note that if a student has played in another state's closed championship, they may not play in this tournament. Four championships: **TX North/Central Primary Scholastic Championships;** **TX North/Central Elementary Scholastic Championships;** **TX North/Central Middle School Scholastic Championships;** **TX North/Central High School Scholastic Championships.** **EF:** \$43 by 2/1; \$54 by 3/1; \$72 after 3/2 or on site. On Site Registration: Friday, 5:30-6:15pm, Saturday, 8-8:30am. Saturday registrants will receive a 1st Rd. 1/2-pt. bye. Top 1/2-pt. bye allowed as long as one of the byes is for round 1, if requested by the end of Rd. 2. Sections: K-1 Championship, Primary (K-3) Champi-

onship, Primary JV (K-3 w/Ratings Under 600), Elementary (K-5/6) Championship, Elementary JV (K-5/6 Under 800), Elementary Novice (K-5/6 Under 900), Middle School (6-8/9) Championship, MS JV (6-8/9 Under 900), MS Novice (6-8/9 Under 600), High School (9-12) Championship, HS JV (9-12 Under 1000). See Article IX, Section 1E, TCA Bylaws for each section's eligibility requirement, <https://texaschess.org/wordpress/wp-content/uploads/2017/07/TCA-Bylaws-30-Aug-2015.pdf>. Note that 2018 February Supplement will be used. Trophies for top 15 individuals and top 10 teams in each section plus participation medals for all, and plus Score Awards for players scoring 4 or more points that do not win an individual trophy. Top 5 Grand Champion trophies. The 3 Primary sections will be merged and using the top 15 players, a grand champion will be crowned. This will also be done for the 3 Elementary sections and the 3 Middle School Sections. For the High School the two sections will be merged and the top 10 players will be used to determine the grand champions. Note that trophies will not be given out in advance and must be picked up at awards ceremony. Please make arrangements for picking up trophies at award ceremony or to get trophy shipped. **Schedule:** Round times vary depending on the Section. For round times check website. **Time controls:** All High School and Middle Schools Sections: Rds. 1 G/45 d5; Rounds 2-4 G/60 d5, Rds. 5-7 G/75 d5. All Elementary and Primary and K-1 sections: rds. 1-4 G/45; d5, rds. 5-7 G/60 d5. For round times see: www.dallaschess.com/2018%20Texas%20Scholastic/index.htm. Side Events: See website for side events. Side event registration on site only. All registrations (except Side events) available on line: see www.dallaschess.com/2018%20Texas%20Scholastic/index.htm and you can download flyers and entry forms. Checks payable to Dallas Chess Club. Mail entries to Dallas Chess Club, c/o Barbara Swafford, 2709 Longhorn Trail, Crowley, TX 76036. For tournament info, visit our website or contact Barbara Swafford, info@dallaschess.com or 214-632-9000. Refunds will be given only up to 3/1 with a \$10 surcharge for withdrawing, after 3/1 there will be no refunds. There will be no substitution of team members. There will be a \$10 change fee for changes after 3/1. There will be a \$5 surcharge per player for phone registrations USCF membership is required. Proof of membership is required or player must join/renew their memberships. No registration/changes/or withdrawals by phone or email after 3/7/18 as we are driving to the site; after that date you must make changes at site (Houston WestChase). W.

Virginia

Feb. 23-25 or 24-25, 3rd annual George Washington Open

See *Chess Life* or www.chesstour.com.

US Chess Junior Grand Prix!

A State Championship Event!

Mar. 3-4, Virginia Scholastic & College Championships

6SS, Rds. 1-3 G/60 d5; Rds. 4-6 G/90 d5. Organized by the VA Chess Federation at William Fleming High School in Roanoke, VA. Blitz Championships Friday Mar. 2 at 6PM. Main tournament Saturday and Sunday, Mar. 3-4. Players must be K-12 or College players attending school or college full time in Virginia as of Jan. 2018, or must be Virginia residents, including children of Military stationed in VA. Virginia residency NOT REQUIRED for Friday Night Blitz. Parents & Friends tournament on Sat. and Sun. **Tournament schedule, Prizes, Registration, Player Eligibility, Hotel info and other details** at www.vachess.org. Questions to: Mike Hoffpauir, mhoffpauir@aol.com, or 757-846-4805.

May 26, 6th Cherry Blossom Classic Scholastic

Side Event to the 6th Cherry Blossom Classic (May 25-28). Washington Dulles Airport Marriott, 45020 Aviation Dr., Dulles, VA 20166. 4-or-5-SS. Sections: K-12 Open, K-8 U1000, K-5 U800, K-3 U600. K-12/K-8: 4-SS, G/45 d5; K-5/K-3: 5-SS, G/30 d5. \$32 by May 21st, \$37 by May 25th, \$45 onsite. Trophies to Top 5, Other Class Trophies and Medals. Onsite Reg. closes 9:30am. Rounds 10am and ASAR More information/Online registration: www.cherryblossomchess.com. Mail checks (payable to Capital Area Chess) to Cherry Blossom Classic, Attn: Capital Area Chess, PO Box 223582, Chantilly, VA 20151. Email info only: Anand Dommalapati, cbc2018@capitalareachess.com.

Wisconsin

July 28-29, 2018 U.S. Open Weekend Swiss

See Grand Prix.

July 28-Aug. 5, July 31-Aug. 5 or Aug. 2-5, 119th Annual U.S. Open

See Nationals.

July 29, 2018 U.S. Open Scholastic Championships

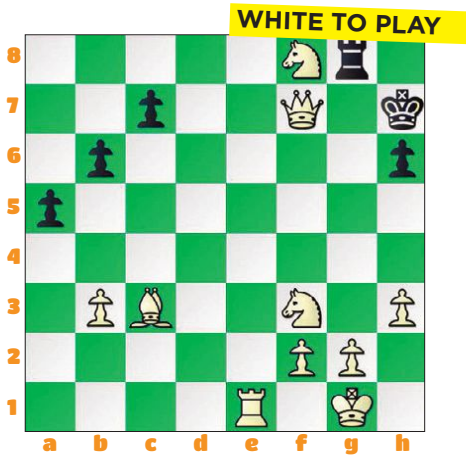
Open to all US Chess members entering Grade 12 and below [including new members]. **4 Round Swiss in Four Sections: Junior High - High School Championship:** Open to players entering Kindergarten through the 12th Grade in the fall. Open to all ratings. **Junior High - High School Under 1200:** Open to players entering Kindergarten through the 12th Grade in the fall. Open to players rated below 1200. **No Unrated's/Elementary Championship:** Open to players entering Kindergarten through the 6th Grade in the fall. Open to all ratings. **Elementary Under 1000:** Open to players entering Kindergarten through the 6th Grade in the fall. Open to players rated below 1000. **No Unrated's!** *If the sections are larger than expected, they may be split into multiple sections.* **Prizes:** Trophies to the Top 3 in each section. *The number of trophies may increase based on the number of entries.* **Schedule: Championship Sections:** Round One at 12 NOON. Round Two at 1:30 PM. Round Three at 3:00 PM. Round Four at 4:30 PM. Awards Ceremony at 6:00 PM. **Time Control:** Game/30 d5. **Entry Fee:** Online, \$25 by 7/9, \$35 after. By mail, \$27 postmarked by 7/9; \$37 postmarked by 7/16. *Do not mail after 7/16 - it will not be received!* By phone, \$30 by 7/9, \$40 after until 7/20 by 5 PM CDT. Onsite, \$40 until 7/29 by 10 AM EDT. See www.uschess.org/tournaments/2018/usopen/ for additional details.

Aug. 4, 2018 U.S. Open National Blitz Championship (BLZ)

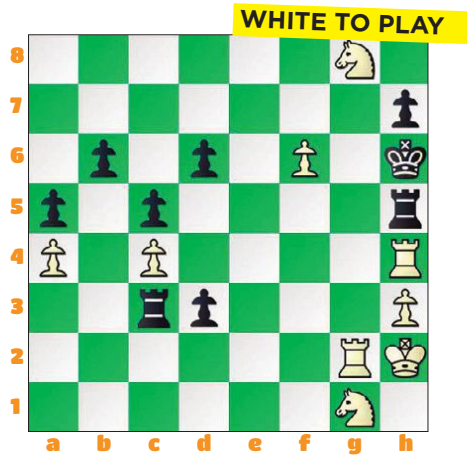
See Nationals.

Answers for **You Can Do It!** (from page 14)

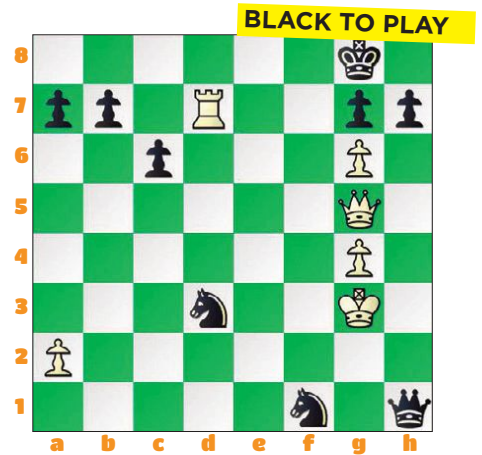
Solution #1: 1. **gxf8=N#**



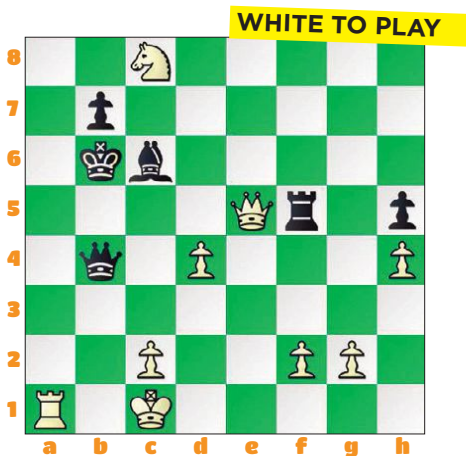
Solution #3: 1. **Rh4+ Rh5 2. g8=N#**



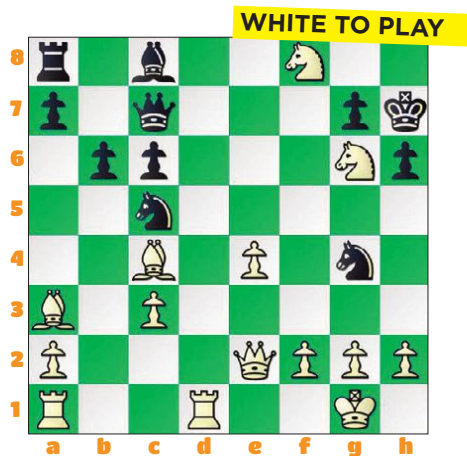
Solution #5: 1. ... **Qh1+ 2. Kg3 f1=N#**



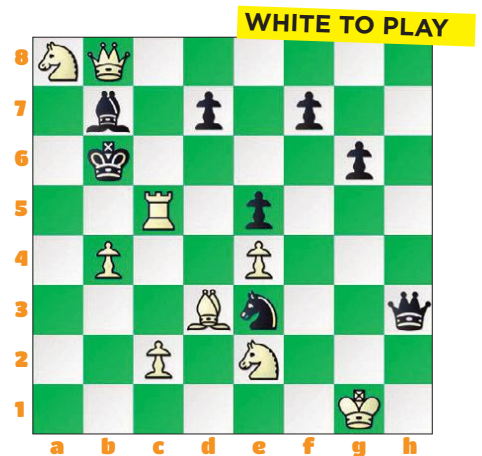
Solution #2: 1. **c8=N#**



Solution #4: 1. **Ng6+ Kh7 2. f8=N#**



Solution #6: 1. **Qb8+ Bb7 2. a8=N#**



Official US Chess online rated!

No entry fees » No hotel costs » Free parking

20% off ICC membership

Bonus



www.chessclub.com/uschess



US CHESS

My First Move



IM Nazi Paikidze, 2016 U.S. Women's Champion and 2017 Woman Chessplayer of the Year

In this column, we feature advice from your chess heroes and explore what shaped their development when they were Chess Life Kids like you!

When she began playing

I learned how to play chess when I was five years old. My dad taught me the basic rules of the game and we used to play each other for fun. About a year later I started elementary school in Tbilisi, Georgia and chess was part of the curriculum.

Practice, practice, practice

As a kid, I loved studying chess. I loved it so much that I could not wait to be done with school homework so I could get started with chess. When you are this passionate about something, it doesn't feel like "work." In fact, it's the opposite; you want to spend all your free time doing it.

In pursuit of excellence

I have always been competitive and chess was an ideal game: it's an individual game, completely based on skill. I loved training and seeing myself improve, leading to good results at competitions.



Photo: David Llada

Nazi focusing intently at the 42nd Chess Olympiad held in Baku, Azerbaijan.

On being the 2016 U.S. Women's Champion and its impact beyond chess.

The title itself has made a real impact on my life. It

opened a lot of doors for me and gave me opportunities to meet and inspire a lot of young chess players.

I don't desire a life in the political arena, but I do think it's extremely important to stand up for what you believe to be right. For me, chess became a way to have my voice and ideas heard and get people talking about some important issues.

Thoughts on girls-only events

I believe girls-only events can encourage more girls to play chess and feel comfortable. I can say from my own experience that playing a tournament in which I was one of the few girls (if not the only one) wasn't always pleasant. When I would look around the playing hall and see only men, sometimes I wondered if I was in the wrong place. At times it felt like I didn't belong there. Luckily for me, I loved chess so much that this wasn't enough to discourage me from playing. But, I know a lot of girls who have ultimately quit chess for this reason. With girls-only events we can meet other female players, make friends, and then play more tournaments together in open sections.

The chess hero's chess hero

Anatoly Karpov was my hero—growing up in Georgia and Russia, I heard about his success countless times, started



Nazi, age 7, at the 2001 Tbilisi Championship, Georgia.



At age 9, in her first international tournament, the 2003 European Youth Championship. She won the U10 girls section with 8/9 points.



Photo: Jim Doyle

Nazi with the Chess Girls DC

analyzing his games, and learned a lot. In fact, I am still using his ideas and positional brilliancies in my games today. My current hero is Hou Yifan. She is the strongest female chess player in the world right now. It's a pleasure to watch her defeat super-elite grandmasters. I am a big fan of hers and always root for her in every tournament that she plays.

Favorite openings

Caro Kann was my favorite childhood opening (learned from Karpov's games) and it's still my favorite today!

Favorite books

Childhood favorite: *My Best Games* by Anatoly Karpov. Current favorites: *Positional Decision Making in Chess* by Boris Gelfand and *Endgame Manual* by Mark Dvoretsky.

Best chess advice received

Be patient. Being a good chess player requires a great deal of discipline and patience, not only during matches, but in everyday life too. As every experienced chess player knows, you can work hard every day and still fail often. It takes patience to keep working hard until your days of success arrive.

My best chess advice

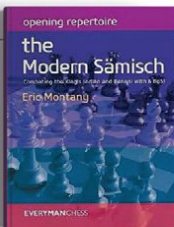
Use your mistakes and failures to your advantage—learn from them, get better, and turn failures into success.



888.51.CHESS (512.4377)



www.USCFSales.com



OPENING REPERTOIRE – THE MODERN SAMISCH

By Eric Montany

B0467EM - \$29.95

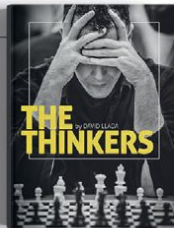
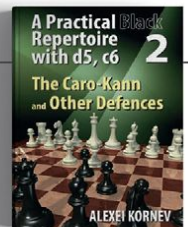
The Sämisch variation is a powerful method to counter the popular King's Indian Defence. The key move is the advance f2-f3, consolidating White's central space advantage and limiting Black's options for counterplay. In the traditional Sämisch White develops the queen's bishop on e3 but in the modern version, as explored in this book, the move Bg5 is preferred.

A PRACTICAL BLACK REPERTOIRE WITH d5, c6 – THE CARO-KANN AND OTHER DEFENCES – VOL. 2

By Alexei Kornev

B0136EU - \$31.95

A Practical Black Repertoire with d5, c6 Volume 2 deals in depth with the Caro-Kann Defence 1.e4 c6 2.d4 d5 and various deviations for White as 1.e4 c6 2.d3; 2.Nc3; 2.c4.



THE THINKERS

By David Llada

B0142QT - \$44.95

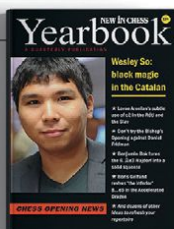
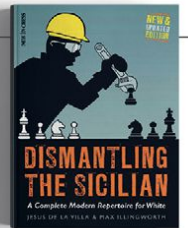
The Thinkers is a visual tribute to the game of chess, showcasing the emotions, exertions and desires of the players, and conveying the mental intensity only chess can command. Included are some of the most iconic portraits of today's stars, as well as emotive shots of ordinary players from all over the world.

DISMANTLING THE SICILIAN

By La Villa & Illingworth

B0194NIC - \$29.95

The Sicilian Defence is the most widely played chess opening, both at club level as well as among top grandmasters. It has been difficult for White to obtain any advantage in Sicilian sidelines, and this book therefore presents a complete repertoire for White in the most widely played main lines: the Open Sicilians with 1.e4 c5 2.Nf3.



NEW IN CHESS YEARBOOK 124 – PAPERBACK

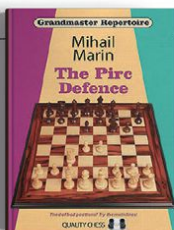
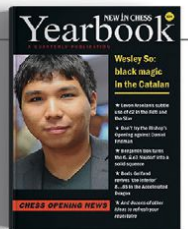
B0124PYB - \$33.95

New in Chess Yearbook is the #1 guide to Chess Opening news! It is published four times per year, ensuring the most up-to-date and topic chess opening information. It includes 25-30 surveys per issue, covering all of the fashionable lines, wild gambits and even forgotten variations! If you're serious about chess, you need New in Chess Yearbooks!

NEW IN CHESS YEARBOOK 124 – HARDCOVER

B0124HYB - \$39.95

New in Chess Yearbook is the #1 guide to Chess Opening news! It is published four times per year, ensuring the most up-to-date and topic chess opening information. It includes 25-30 surveys per issue, covering all of the fashionable lines, wild gambits and even forgotten variations! If you're serious about chess, you need New in Chess Yearbooks!



GRANDMASTER REPERTOIRE – THE PIRC DEFENCE

By Mihail Marin

B0141QT - \$29.95

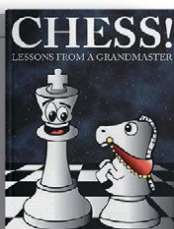
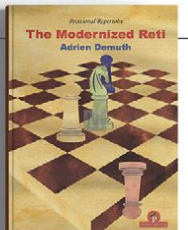
The Pirc chess opening is more of a counterattack than a defense: Black allows his opponent to occupy the center and provokes a confrontation, trusting in the power of the g7-bishop and the dynamic potential in his position. It is the perfect weapon for players who seek a complex strategic fight with the black pieces.

THE MODERNIZED RETI

By Adrien Demuth

B0019TH - \$36.95

The Reti opening has been quite popular in recent years. In the "Modernized Reti", the author explains how this subtle opening needs to be handled. With many transpositions into different types of positions, it is one of the richest White choices has when starting the game. If you are looking for a refined, positional and dynamic way to play as White, this book will show you the way!



CHESS! LESSONS FROM A GRANDMASTER

By Shulman and Sethi

B0121OB - \$25.95

At last a beginners Resource for Learning Chess! This book is an excellent educational guide to understanding this magnificent game. It was written by the 2008 US Chess Champion and his student systematically laying out the foundation of their technical knowledge. Each chapter builds on previous knowledge helping the reader to advance the depth and scope of their understanding.

THE HEDGEHOG

By Sergey Kasparov

B0468EM - \$29.95

An understanding of Hedgehog structures is an essential component in any chessplayer's knowledge. These structures arise when the black c-pawn is exchanged early on for the white d-pawn (as in the Sicilian Defence). White then adopts a formation with pawns on c4 and e4 and Black curls up in a Hedgehog formation with pawns on a6, b6, d6 and e6.

