

APRIL 2018

Official Scholastic Publication of US Chess  uschess.org

CHESS LIFE **Kids**



Learn to Play Blindfold Chess!

CHESS SUMMER CAMPS



Join **grandmaster instructors** and other certified staff members as they walk you through the **ins-and-outs** of the **world's most popular game!**

Enrollment is open to all students, ages 6-14.



Camp Dates:

June 25-29 | July 9-13 | July 23-27
July 30-August 3 (Girls Camp)

Camp Times:

All Day: 9 a.m.-4 p.m.

Morning only: 9 a.m.-Noon

Afternoon only: 1 p.m.-4 p.m.



For more information, call **314.361.CHESS (2437)**,
or visit our website at
saintlouischessclub.org/camps

Building Champions: In the Classroom and the Community | 4657 Maryland Avenue, Saint Louis, MO 63108 | 314.361.CHESS (2437)
saintlouischessclub.org | info@saintlouischessclub.org | [@STLChessClub](https://www.instagram.com/STLChessClub) #STLChessClub [f](#) [t](#) [@](#) [G+](#)

The Chess Club and Scholastic Center of Saint Louis and World Chess Hall of Fame admit students and visitors of any race, color, national and ethnic origin to all the rights, privileges, programs, and activities generally accorded or made available to students at the school. It does not discriminate on the basis of race, color, national and ethnic origin in administration of its educational policies, admissions policies, scholarship and loan programs, and athletic and other school-administered programs.

CHESS LIFE Kids

US Chess Executive Director: Carol Meyer
 carol.meyer@uschess.org

Director of Publications/
Chess Life Kids Editor: Daniel Lucas
 dlucas@uschess.org

Assistant Editor: Melinda Matthews
 mmatthews@uschess.org

Art Director: Cat Connor
 catseyephoto@mac.com

Character Designer and Illustrator:
 Chandler Ellison
 www.chandlerellison.com

Editorial Asst./Copy Editor: Alan Kantor
 akantor@uschess.org

Editorial Assistant: Natasha Roberts
 nroberts@uschess.org

Tournament Life: Joan DuBois
 tla@uschess.org

CONTRIBUTORS: Send your contributions and articles to *Chess Life Kids*, PO Box 3967, Crossville, Tennessee 38557 or email to dlucas@uschess.org.

Chess Life KIDS (USPS 023-567, ISSN: 1932-5894) is published in February, April, June, August, October, and December of every year by US Chess, 137 Obrien Drive, Crossville, Tennessee 38555. Periodical postage paid at Crossville, Tennessee, and additional mailing offices.

CHANGE OF ADDRESS: Be sure to notify us at once of any change of address. Please include your old address and your new address, along with your US Chess I.D. number.

POSTMASTER: Send address changes to US Chess, PO Box 3967, Crossville, Tennessee 38557.

Annual Scholastic Membership: Regular Scholastic Membership (online version of *Chess Life Kids*), age 12 or younger, is just \$17 per year. Premium Scholastic Membership (receives *Chess Life Kids* by mail) is \$25 per year. \$13 of every premium membership goes towards providing *Chess Life Kids*. Annual subscription rate is \$18. Entire contents copyright 2018, US Chess.

Teachers may photocopy instructional articles for classroom use, but republication or widespread copying without the written consent of US Chess is forbidden.

CONTENTS

06

CHESS KIDS
 By Al Lawrence

08

LEARN ALL ABOUT BLINDFOLD CHESS!
 By Jennifer Vallens

16

IT'S YOUR MOVE

20

AVOID THE TRAP!
 By Bruce Pandolfini

22

YOU CAN DO IT!
 By ICCM Jon Edwards

23

APPROVED ELECTRONIC RECORDING DEVICES

24

TOURNAMENT LIFE

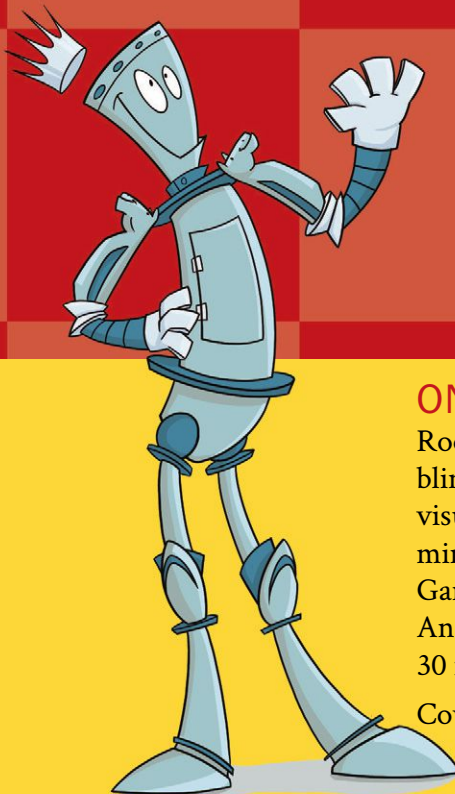
29

ANSWERS

30

MY FIRST MOVE
 This month:
 GM Timur Gareyev

Due to a technical issue, the Junior Grand Prix information will not appear in this issue. Look for it again in our June 2018 edition.



ON THE COVER

Rook-E wants to learn all about blindfold chess! Get training tips on visualizing multiple boards in your mind, like Blindfold King Timur Gareyev does, beginning on page 8. And read more about Timur on page 30 in "My First Move."

Cover art: Chandler Ellison,
www.chandlerellison.com



Official US Chess online rated!

No entry fees » No hotel costs » Free parking

20% off ICC membership

Bonus



www.chessclub.com/uschess



US CHESS

BECOME A MEMBER OF US CHESS

ADULT 1 YEAR \$49
PREMIUM MEMBERSHIP

SCHOLASTIC 1 YEAR \$25
PREMIUM MEMBERSHIP

MEMBER BENEFITS

- Rated Play for the US Chess community
- Print and digital copies of *Chess Life* (or *Chess Life Kids*)
- Discounted chess books and equipment
- Helping US Chess grow the game

In addition to these two premium categories, **US Chess** has many other categories and multi-year memberships to suit your needs. For all of your options, see new.uschess.org/join-uschess/ or call 1-800-903-8723, option 4.



ChessKid

.com

PLAY



LEARN



**#1 Chess Site for Kids. 200,000+ Kids, Parents, & Coaches!
100% Safe and Kid-Friendly! Signup Today - it's FREE!**

Donate to US Chess

Your Tax-Deductible Contribution
Will Help US Chess Grow the Game

US CHESS counts on donors to support initiatives that further our mission of empowering people through chess, one move at a time.

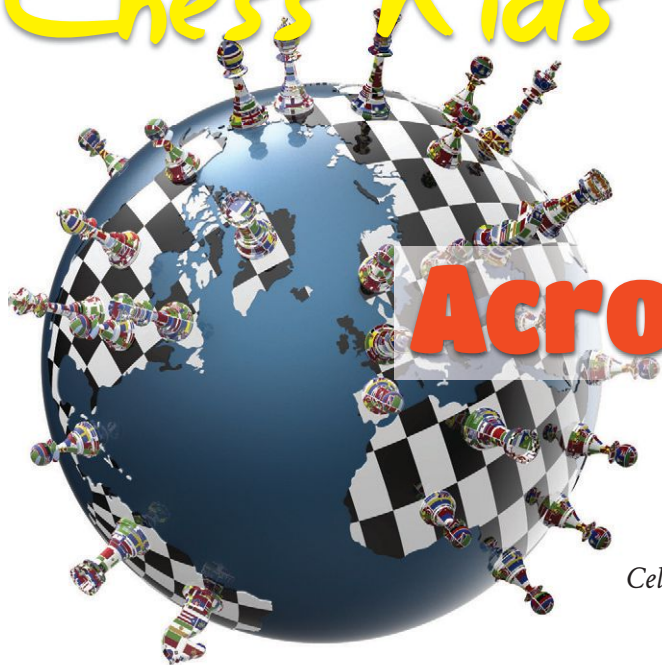
Membership dues cover the basic operating costs for US Chess.

Our goals are to grow the game by funding initiatives to improve diversity in chess, sending top players to compete in international events, and growing and retaining women chess players in the game.

With your support, we can elevate chess to be a game for life.

Every dollar counts. Make your contribution today. uschess.org/donate

Chess Kids



Across the Board

By Al Lawrence

Celebrating Chess Life Kids from across the country.

Alexander Wang

Hillsdale, New Jersey

The joy of blitz chess



You can see from the photos that Alex Wang has fun playing chess! “My favorite is to play blitz with my friends before the tournament starts,” he said. “Blitz” games give each player only five minutes for all the moves. So, he must think fast—and there are always surprises!

A Meadowbrook Elementary

School second-grader, Alex learned chess in group lessons at age five. He has played in tournaments for only a year or so. But he is already number five on the US Chess top 100 list for kids under seven! And that’s *before* he gained nearly 100 more rating points in a February event organized by the International

Chess Academy (ICA).

The Academy is led by Diana Tulman, who was a chess champion in her home country of Moldova before coming to the U.S. She started the Academy more than 20 years ago with Woman Grandmaster Irina Levitina, who once played for the Women’s World Championship.



"I wanted my daughter Hana and my friends' kids to experience the sort of benefits chess offered Irina and myself," Tulman said.

The staff at ICA instructs about 1,000 kids at a time in various programs. Alex is one of its most promising. He studies in a master class taught by Grandmaster Alexander Stripunsky. Alex also gains experience playing at the Westfield Chess Club.

"I like to win chess games. I also like to make friends. Little, young or old—different aged friends," Alex says. "I hope to attend some national tournaments this year and win some big trophies! Maybe I'll become a national master one day." His dad Joshua learned chess only after Alex showed a keen interest. Now his dad takes him to tournaments.

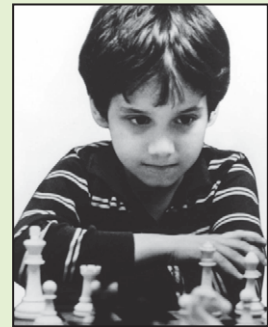
Alex has a lot of other interests. "I swim and play tennis every week. I do like other sports at school. I love math, science, geography. And my hobbies are reading books and playing piano."

"Anything can happen on the chess board before a chess game ends," Alex said. Especially when he plays blitz!

Alex shows the ups and downs—and the fun!—of fast chess. He's playing against his International Chess Academy talented teammate Samuel Zhang.

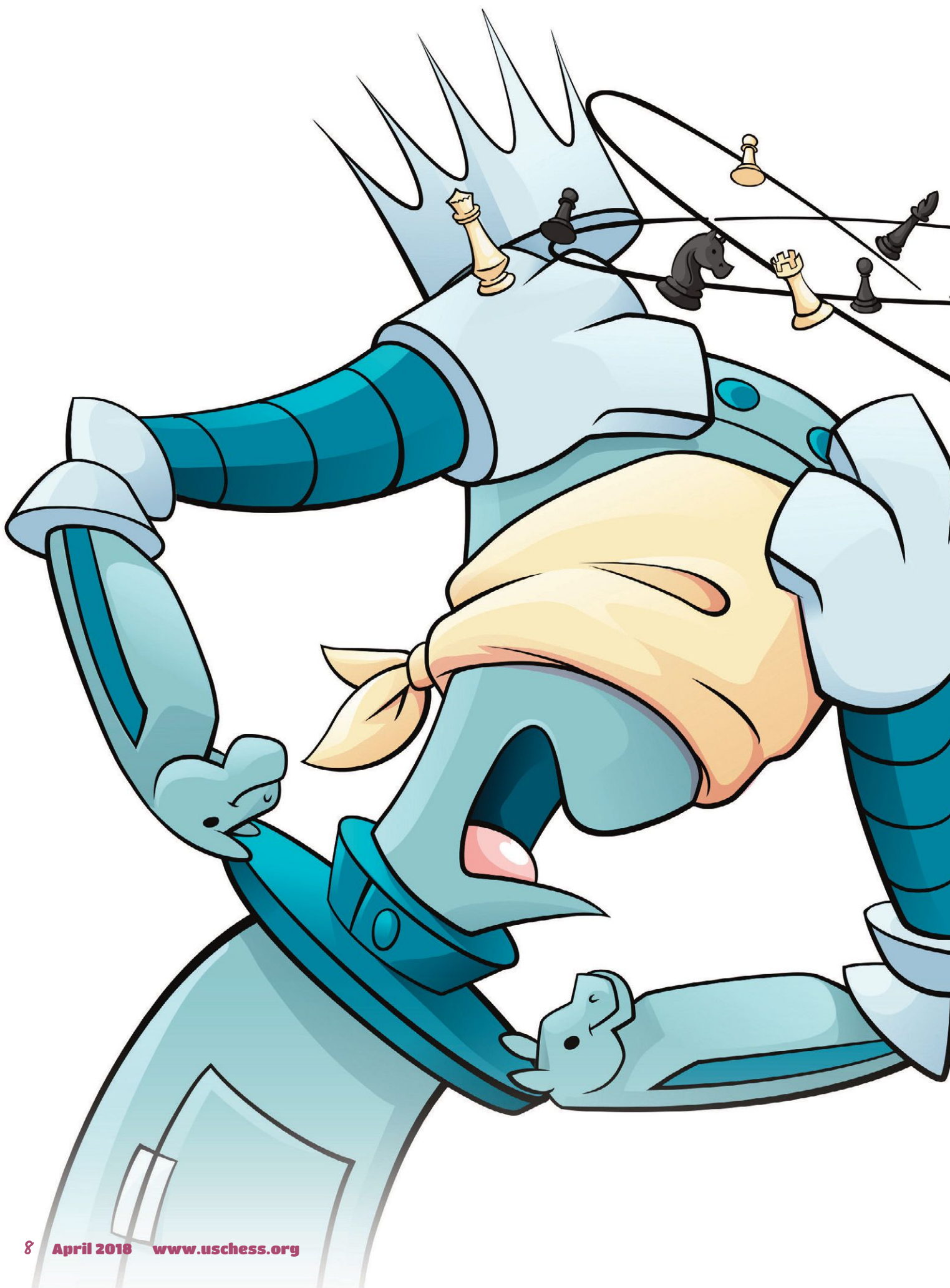
Chess kids in history

Josh Waitzkin



Josh Waitzkin stumbled upon his first chess game at age six while walking through New York City's Washington Square Park with his mother. Captivated by the game, Josh began hanging out at the park regularly, where the players who'd caught his eye became his first teachers. By age seven, Josh, who was born December 4, 1976, had begun formal study with Bruce Pandolfini. He soon dominated national scholastic chess, winning the National Primary, Elementary, Junior High School, High School, U.S. Cadet, and U.S. Junior Closed chess championships. And he drew none other than World Champion Garry Kasparov in a simultaneous exhibition when he was only 11!

Josh rose to international fame in 1993 when Paramount Pictures released *Searching for Bobby Fischer*, a film based on a book written by his father, Fred Waitzkin. At age 21, Josh left competitive chess to study Tai Chi Chuan. Always a fierce competitor, he went on to win several Tai Chi national and world championships.



Learn All About Blindfold Chess!

You want me to play chess without seeing the board? Are you kidding me?

by Jennifer Vallens



André Danican Philidor playing blindfold chess. In 1783 he played three blindfold games simultaneously after teaching himself to visualize the board in bed at night when he had trouble sleeping. Many considered this a miraculous achievement.

Blindfold chess is the ability to play chess without sight of the board or pieces. “How is that possible?” you may ask. Well, it isn’t magic or a super power. Don’t get me wrong—when my friend GM Timur Gareyev broke

the Guinness World Record for playing not one, but 48, blindfold chess games at the same time, he did perform an extraordinary feat. But anyone can play blindfold chess.

Blindfold chess simply requires

the ability to visualize a position in your “mind’s eye.” You already practice visualization every time you imagine possible moves in your head before making your move on an actual chessboard. You are visualizing the change in

position.

You may wonder if playing blindfold chess will help your overall chess game. The answer is yes. Practicing and playing blindfold chess will strengthen your visualization skills and help you to identify the relationship of the pieces on the board to each other and the squares. This will reinforce your pattern recognition and help you think ahead. And the best part is you can impress your family and friends!

Blindfold chess dates back to the middle ages. It was seen as a way to level the playing field by handicapping a stronger player playing a weaker player.

As players began to showcase

their blindfold chess abilities by playing multiple games blindfolded, there was a concern that playing many games at the same time would drive you crazy. (It was officially banned in 1930 in the Soviet Union [now known as Russia]!) We know now that this is not the case. Blindfold chess actually helps your visual/spatial memory and it is a great training tool to improve your chess game.

So, just like learning to walk before you run, it is best to start small with 20 minutes or so of daily visualization practices. This way you will be able to work your way up to playing a full blindfold chess game and perhaps one day even beat the blindfold chess

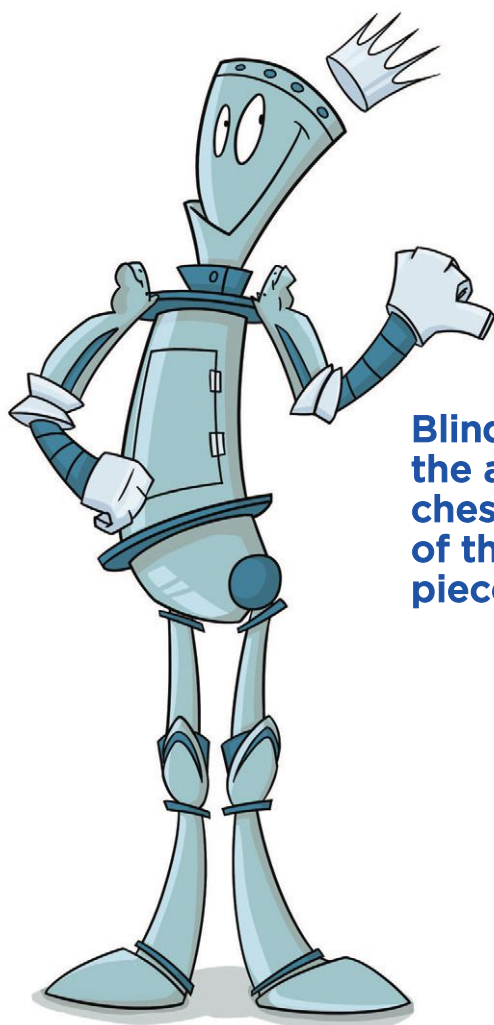
world record!

Understanding the relationship of the pieces to each other and the squares is the cornerstone for playing good chess, blindfolded or not. Here are some tips to get you started.

KNOW YOUR COORDINATES

You probably already know or are learning how to record your moves using chess notation. As you can see in the diagram below, every square is identified by a letter and number. Before attempting to play blindfold chess, it is necessary to be able to identify all the squares on the board and be able to visualize the relationship of one square to another.

Study the diagram below. Begin to notice patterns. What do you see?



Blindfold chess is the ability to play chess without sight of the board or pieces.

8	a8	b8	c8	d8	e8	f8	g8	h8
7	a7	b7	c7	d7	e7	f7	g7	h7
6	a6	b6	c6	d6	e6	f6	g6	h6
5	a5	b5	c5	d5	e5	f5	g5	h5
4	a4	b4	c4	d4	e4	f4	g4	h4
3	a3	b3	c3	d3	e3	f3	g3	h3
2	a2	b2	c2	d2	e2	f2	g2	h2
1	a1	b1	c1	d1	e1	f1	g1	h1
	a	b	c	d	e	f	g	h

COORDINATE EXERCISE

Try to picture a white bishop on his starting square (c1). The possible moves for the bishop from that square are the diagonal b2, a3 or d2, e3, f4, g5, h6. Do you see the relationship or pattern from square-to-square?

Now close your eyes and see if you can recall all the coordinates

of the possible squares where the c1-bishop can move.

Can you see any other relationships or patterns between the squares? Try visualizing the black rook on g8. What are his potential next moves? Do you see any patterns?

TESTING YOUR COLOR KNOWLEDGE

Not only is it necessary to identify the squares, but it is also important to know the color of each square. A good way to practice this is to convert each file letter to a corresponding number. The a-file (which comes first if you are reading left to right) will be converted to the 1-file, the b-file will become the 2-file and so on.

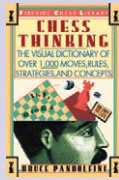
8	a8	b8	c8	d8	e8	f8	g8	h8
7	a7	b7	c7	d7	e7	f7	g7	h7
6	a6	b6	c6	d6	e6	f6	g6	h6
5	a5	b5	c5	d5	e5	f5	g5	h5
4	a4	b4	c4	d4	e4	f4	g4	h4
3	a3	b3	c3	d3	e3	f3	g3	h3
2	a2	b2	c2	d2	e2	f2	g2	h2
1	a1	b1	c1	d1	e1	f1	g1	h1
	a	b	c	d	e	f	g	h
	1	2	3	4	5	6	7	8

Now select a random square. If the total of the two numbers is even the square will be BLACK. If the total of the two numbers is odd the square will be WHITE. Practice by having someone test you with a square—let's say "a7." In your head, this will become 1-7. The total of $1 + 7 = 8$ (or even), so the color of the square is BLACK.

TESTING YOUR INTERSECTIONS

Now, place a rook on a random square on the board. Close your

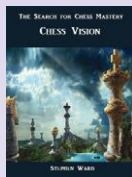
Recommended Reading



Chess Thinking: The Visual Dictionary of Chess Moves, Rules, Strategies and Concepts
Bruce Pandolfini

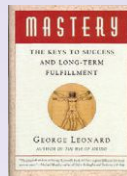


Improve Your Chess Now
Jonathan Tisdall

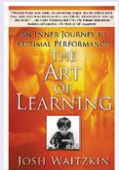


The Search for Chess Mastery: Chess Vision, Checkmate Edition
Stephen Ward

Recommendations from Timur Gareyev in his *Art of Blindfold Chess* booklet include a couple of his favorites on learning and practicing:



Mastery: The Keys to Success and Long-Term Fulfillment
George Leonard



The Art of Learning: An Inner Journey to Optimal Performance
Josh Waitzkin

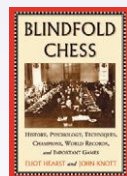
Recommended Websites and Videos

<https://chess24.com/en/learn/advanced/video/lessons-from-blindfold-king/getting-started>

Visualize Chess Training Software

<https://chessfox.com/discover-visualwize/>

History of Blindfold Resources



Blindfold Chess: History, Psychology, Techniques, Champions, World Records, and Important Games
Eliot Hearst & John Knott

<http://blindfoldchess.net/>

<https://youtu.be/oiXvaxsn7tU>

Vision Tests

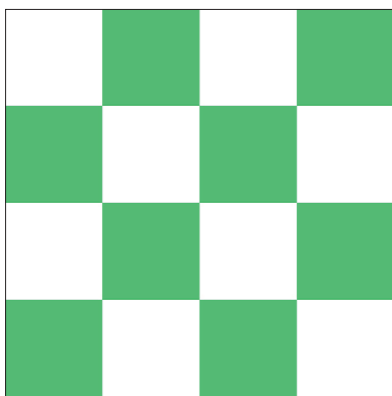
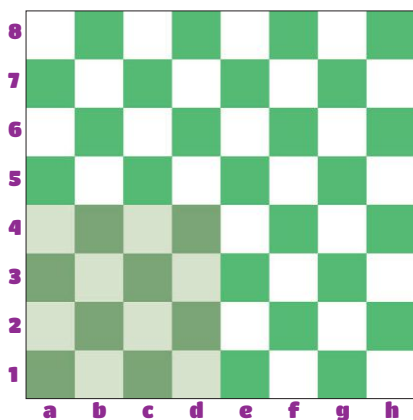
http://www.thechessdrum.net/chessacademy/CA_VisionTest1.html

eyes and see if you can visualize and write down all the squares to which that rook can move. Are you right? Try doing this with each piece. If you can accurately name all the squares, you are well on your way to mastering your visualization of the board.

QUARTER THE BOARD

George Koltanowski, nicknamed “Kolty,” was a brilliant blindfold chess player. In his memoir, *Adventures of a Chess Master*, he describes his approach to blindfold chess.

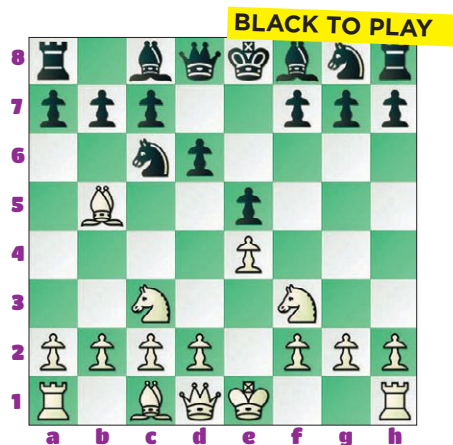
He suggested dividing the board into four quarters. Each quarter looked exactly the same, so really you only need to visualize one quarter of the board at a time.



If you break up your visual of the board into quarters and make sense of what is happening in each quarter of the board, it will help you see the board as a whole.

CREATE A STORY and SAY IT OUT LOUD

When playing blindfold chess, do not just recite the moves but note, as if speaking to yourself, HOW THE POSITION HAS CHANGED. For example in the diagram below ...



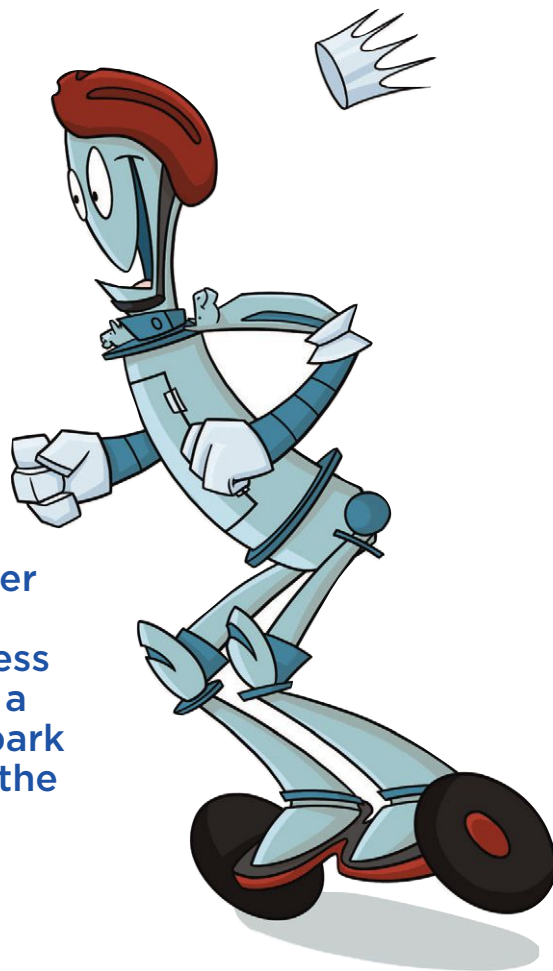
If Black now plays ... Bd7, you

should not just think in terms of memorizing the move ... Bd7, but its consequences also, making a point of saying to yourself, “My knight on c6 is no longer pinned, can move freely, and also now defends the e5-pawn. My rook on a8 is now connected to the queen on d8 and there is nothing now defending my pawn on b7.”

These conversations with yourself will help you see the relationship of the pieces on the board.

RELATIONSHIPS OF PIECES

Connections help memory. Blindfold chess is not just remembering, “I went here and he went there.” To master blindfold chess, it is more important to understand patterns and



Bobby Fischer would play blindfold chess while taking a walk in the park or riding on the train.

relationships of the pieces and ideas. The best way to do this is to create a story that makes sense to you.

It is easier to understand a plan or pattern than the actual moves. For instance, when castling ... it is easier to remember, "I have castled kingside and my pawns have not moved. I need to watch out for a back-rank mate in the endgame." This approach is better than, "My rook is on f1 and my king is on g1, and I have a pawn on f2, a pawn on g2, and a pawn on h2."

For example, if you play the King's Indian opening, then you know you must play ... h6 so the knight cannot come to g5 and e6. Visualize the position and common patterns in your games.

REVIEW YOUR OWN GAMES FIRST

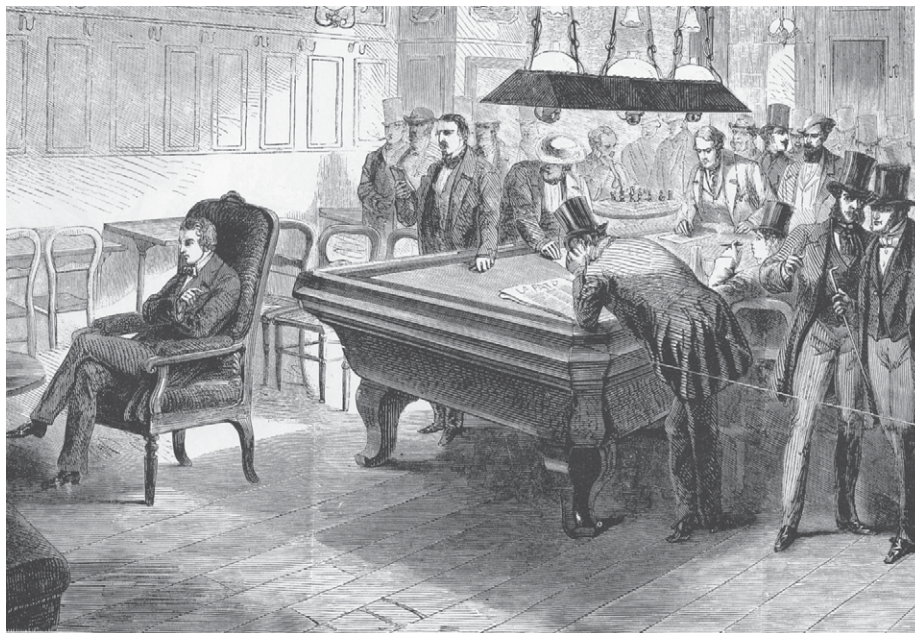
Pick a game that you have played. See if you can play the game in your mind's eye without use of the board. Do you remember what your plan was? Who was positioned where and why? Can you quarter the board in your mind and set up those pieces on an actual board correctly?

PLAY GAMES BACKWARDS

Success in standard chess and blindfold chess involves the ability to see the final position clearly. Start with one of your own games. Set up your board with your checkmate position. Can you play the game backwards?

STUDY THE CHESSBOARD

I can't stress enough that the foundation for becoming a stronger player is to know the board inside and out. You can



Paul Morphy held a blindfold exhibition in 1858 against the eight strongest players in Paris. His six wins and two draws was considered a stunning result—what would those Parisians make of Timur Gareyev's 48-board exhibition?

begin by setting up a board with pieces in their starting positions and then move on and test yourself with an empty board. Look for the relationships of the pieces and the squares. Some ideas to consider:

- Visualize common positions for the pieces. For example, knights on c3, f3, c6 and f6.
- Visualize castling kingside and then castling queenside.
- Visualize the squares where you commonly see knight forks.

Now that you have practiced some visualization techniques and have mastered the board, it is time to play a game.

PLAY ON A BOARD WITHOUT NOTATION HELP

I suggest you start by playing a chess game on a board that does not have any number and letter coordinates. Are you able to notate your game without these

tools?

When you have mastered that, you can start playing blindfold chess.

PLAY ON A BOARD WITHOUT PIECES

Start with a board without pieces. You and an opponent can notate your moves on your notation pads. See how far into the game you can play without consulting your notation sheet to recreate the game in your mind.

Continue to play until either you reach checkmate or you are unable to keep up without peeking at your notation sheet. **Do not give up!** Now try to replay the game on the board with the pieces, but without looking at your notes and analyze your moves. Look for the relationship between the pieces and the squares.

It is far more difficult to play blindfold chess without pieces AND a board. But knowing the

board inside and out will prepare you.

PLAY WITHOUT A BOARD

Test your blindfold chess skill without the board or notation. You can do it anywhere. Bobby Fischer, America's world champion from 1972-1975, would play blindfold chess while taking a walk in the park or riding on the train.

PRACTICE ONLINE WITH BOOKS AND VIDEOS

Many chess servers and software programs now have a blindfold chess setting where you can play without the pieces on the board.

Another way to practice is to go through game diagrams in books starting with games that are only 10 to 15 moves long.

Only look at the text with the notated move and do not look at

the diagram. Use a sheet of paper if you need to stop your temptation to look at the diagram. Try to play out the game in your mind's eye and visualize the moves in your head. Look for the patterns and relationships between the pieces.

Some sample questions you can ask yourself include:

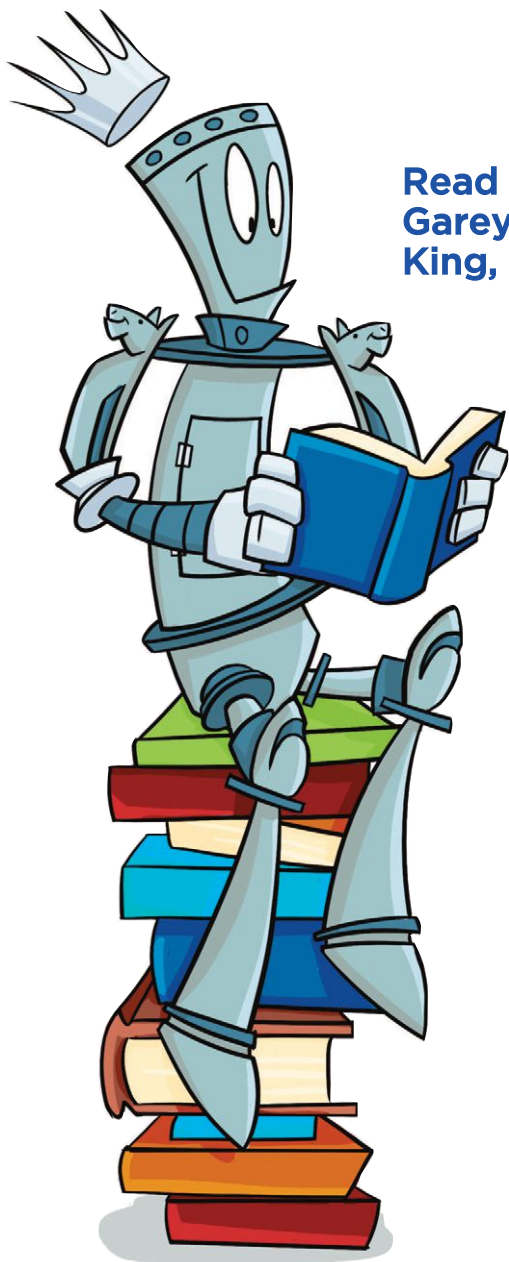
- What is White's plan?
- Is White attacking on the queenside?
- Is Black about to unleash a pawn storm?

Remembering the relationship between the pieces is key. See if you can re-create the game on the board from your memory.

You can also apply a similar technique to videos by closing your eyes and listening to the video. Pause at key moments and see if you can visualize the next move. Then open your eyes and see if the image you have in your head matches the image you see on the screen.

Whether you master blindfold chess or not, these visualization techniques will improve your chess game and make you a stronger player. So go play chess—without a board and pieces!

Read more about Timur Gareyev, The Blindfold King, on page 30.



\$100,000 GUARANTEED PRIZE FUND

NATIONAL OPEN

JUNE 21 – 24, 22 – 24, OR 23 – 24

Now 7 Rounds

8 Sections ◦ Top 2 FIDE Rated

40/90, SD/30, + increment 30

3-day rounds 1–2 G/60 +10 ◦ 2-day rounds 1–4 G/30 +5

Mixed Doubles Prizes for Best Male/Female Combined Scores

Beginners Section with 3 Schedules of 6 Rounds Each Day at G/30 +5

Winner is a US Chess National Champion and receives a replica of the Edmondson Cup



\$3,500 GUARANTEED PRIZE FUND

U.S. WOMEN'S OPEN

WEDNESDAY & THURSDAY JUNE 20 – 21

5 Round Swiss ◦ US Chess & FIDE Rated

Game/90, + increment 30

Winner is a US Chess National Champion and receives the Women's Cup



www.VegasChessFestival.com



**INTERNATIONAL
CHESS FESTIVAL**
JUNE 20 – 24, 2018



US CHESS
FEDERATION

US Chess Membership Rates: Premium (P) and Regular (R)

(U.S., CANADA, MEXICO)

Type	1 yr	2 yr
Adult P	\$49	\$95
Adult R	\$40	\$75
Senior (65+)	\$40	\$75
Young Adult P (U25)*	\$35	\$65
Young Adult R (U25)*	\$26	\$48
Youth P (U16)*	\$30	\$55
Youth R (U16)*	\$22	\$40
Scholastic P (U13)*	\$25	\$45
Scholastic R (U13)*	\$17	\$30

Premium membership provides a printed copy of Chess Life (monthly) or Chess Life Kids (bimonthly) plus all other benefits of regular membership. Regular membership provides online-only access to Chess Life and Chess Life Kids. Youth provides bimonthly Chess Life, Scholastic bimonthly Chess Life Kids, others listed above monthly Chess Life. See www.uschess.org for other membership categories. Dues are not refundable and may be changed without notice.

**Ages at expiration*

2018 National Elementary (K-6) Championship

May 11 - 13

Gaylord Opryland Resort
and Convention Center
Nashville, TN 37214

This is a US Chess National Scholastic Championship tournament. You must meet US Chess eligibility requirements to play. Review our Scholastic Regulations here: www.uschess.org/tournaments/2018/elem/us_chess-scholasticregs_feb2018.pdf

Contact US Chess to resolve potential eligibility questions before entering or making travel arrangements.

Full event information can be found here: www.uschess.org/tournaments/2018/elem/



US CHESS

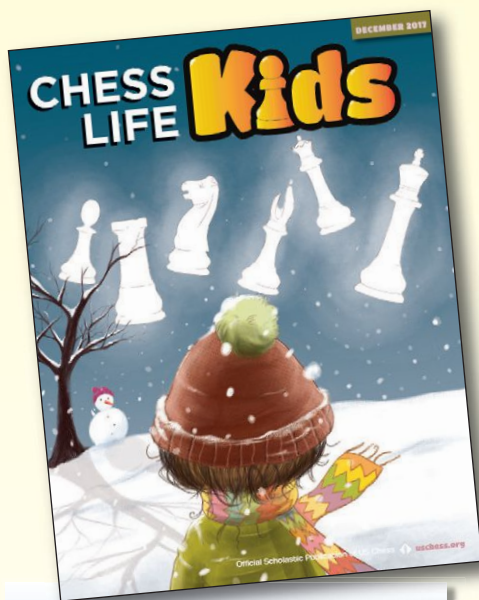
2018
SPRING
NATIONALS

Image: Vecteezy.com

It's Your Move

Story Contest Winners

Our December 2017 cover featured a wintry fantasy holiday scene behind which lay an unspoken story. We invited our readers to let their imaginations run wild and tell us, in 500 words or less, what they thought might be happening in the picture. We received so many thoughtful, creative, and compelling tales from all across the United States that it was hard to narrow down to the top three, but our judges eventually selected four winners (third place was tied). US Chess Federation Sales gift certificates have been awarded to our first place (\$50), second place (\$20), and our two third place (\$10) winners. Congratulations to all and we hope you enjoy their stories as much as we did!



First Place
Fun of Fate
By Laasya Acharya

People walking around daydreaming with frosty eyes. No one listening. People spilling coffee everywhere. The whole world is all “yes” and “no.”

This may seem like the world you live in, but it's not. I'm Siri

Mac, a girl from the future. I have always wanted to help others. But my life, sadly, is this. No time-travel, aliens, floating buildings, or living dinosaur amusement parks. Just being able to see what others cherish and their secrets.

Due to high-tech technology, phones now transmit tiny clouds over your head with symbols representing what you like. Most admire it.

I despise it. It's just eerie.

But there's no escape. I need a phone now that I stay home alone. Plus, I'm in middle school now, so everyone has a phone! And every phone has one of these thingies. It's not an app, so you can't even delete it!

Now everyone thinks that I'm a nerd. You wanna know why? Because I always have chess pieces hovering above my head. I go to school, they're there. I go to build a snowman, they're there. I go for



Laasya Acharya
10 years old
Mason, Ohio
5th Grade
Mason Intermediate School

a walk in the snow, they're there. Parks—same story. Everyone makes fun of me.

But to really understand, we'd have to go back to the beginning, which begins with parents.

I know what you're wondering. What do parents have to do with anything? Parents were the ones who were complaining about their teenagers not giving a full response to anything. "Good" was the answer to everything. Parents were driven berserk.

Thus, they took a stand. Every parent in the city signed a petition started by who else but my mom and my dad. The petition was sent to Town Hall and then Congress and approved. So all phone companies changed their phones. Other countries caught on and started doing the same thing until two countries were left.

In conclusion, my parents changed the phone industry for the whole world ... forever. So not cool.

Now, everyone who has a phone is stuck with the update.

That takes us back to my whole nerd problem. High schoolers with emojis and whatnot floating over their heads would look up from their phones and look at me like I was moldy cheese. Little children would scream in terror.

But my problem was soon fixed. I found out I was not the only kid being ostracized. Other teens were too. Athletes who had books floating above their heads would earn pointing fingers and jeers. "Real nerds" with a ball over their heads would be rejected and so on.

So I took a chance. I emailed the local magazine for a spot. I got it and used it wisely. I told my story about being left out and the others' too. I gave a list of other newspapers and magazines that celebrated the hobbies.

Soon enough, we outcasts were all town stars. Finally, I had gotten my chance to help others and shine.

Second Place

Merry Christmas, Mate!

By Varnika Jammalamadaka

Max looked out the window. It was Christmas Eve and the stars shone bright. Max's parents were so busy with work that they didn't celebrate Christmas. Of course, Max was busy too. He had chess tournaments to go to, chess books to read, and chess homework. Max's schedule was full, but he sometimes wondered what it would be like to celebrate Christmas. He blew out the burning candle and put his head on his pillow.

Hours later, when everyone was asleep, Max crept out of bed and tiptoed down the hallway. He threw on his scarf and hat and walked outside. He ran across the paper-white valley and looked at all the nearby houses. Christmas trees were up and there was a smell of gingerbread in the air.

Then Max saw something. It was a light. He followed it all the way to a statue shaped like a pawn. Max couldn't believe his eyes. In front of him were queens eating pie, kings ice skating, pawns and knights decorating a tree, and rooks and bishops playing around the fire. "Look, he's here!" shouted a pawn. Everyone turned to look at Max. The king stepped forward and said, "Welcome Max, to the Christmas of chess. We, too, celebrate Christmas, just like other people. We know your parents do not think much of this holiday, so we have something to give to you."

The king handed Max a small box. "This is your Christmas gift. I hope you enjoy it!" Then all the pieces flew up into the air and started floating away. "Wait!" said



Varnika Jammalamadaka
9 years old
Bellevue, Washington
3rd grade
Bellevue Children's Academy

Max. "Where are you going?"

"We must leave. A tournament is starting soon," the king said. "Merry Christmas!" and they all left. Max waved goodbye.

He stared at the small box and then unwrapped it. Inside was a snow globe that showed the kingdom of chess, the prettiest one he had ever seen. He smiled for the first time in a long time. He ran home and showed it to his parents. They were surprised and asked Max where he had gotten it. Max told the whole story, and his parents were amazed. The spirit of Christmas had warmed their hearts with joy. They all decided to celebrate this holiday from then on. They huddled together near the fire and said, "Merry Christmas."



Third Place (tie)

A Chess Carol

By Eleanor V. Bolas

Ahh, pine needles, sugar cookies, presents! Tom loved Christmas. Holiday music, food, and a family tradition, staying up 'til 10 p.m. playing chess. After school, Tom burst into his house with the wind, cheeks flaming.

"Let's get this chess party started!" he whooped.

"Hold your horses," Tom's father called from the kitchen. "First we have to eat dinner."

"And then ..." Tom's mom said, holding up a paperback book. Tom groaned. Every Christmas Eve, before chess, his parents read aloud *A Christmas Carol*. Tom hated it. His impatience for chess stopped him from listening too hard, but really, who would want to read about a grumpy old man who gets visited by ghosts? Not even remotely realistic.

...

After dinner, as they were clearing the table, Tom's dad noticed it was cold inside.

"Tom, will you run outside and get wood for the stove?" (Tom's family had modern appliances, of



Eleanor V. Bolas

11 years old

Brooklyn, New York

5th grade

Brooklyn School of Inquiry

course, but they preferred to read around the old-fashioned wood stove in the living room.) Tom got on his coat, scarf, hat, and mittens and went outside. Trudging through the snow, Tom muttered, "Stupid book. Stupid Dickens. Stupid Scrooge. Why do we have to read *A Christmas Carol*, anyway?" As Tom neared the woodpile, eyes on the ground, he noticed a slight shimmering in the air. He looked up, and there, floating in the air before him,

were six glowing chess pieces! "W-what are you?" Tom stuttered.

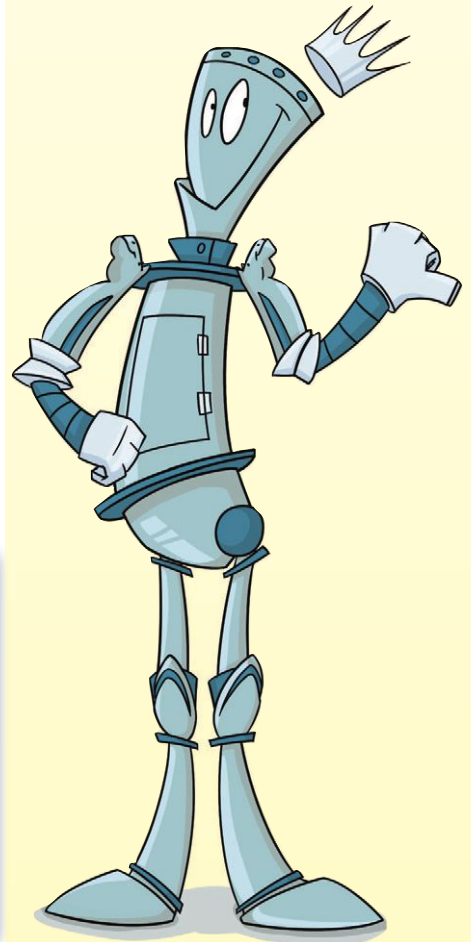
"We are your Guardians," one ghost answered.

"We have come to offer you advice," said another. Then all six pieces spoke in unison.

"Thomas Cratchet, do not shun what you do not understand." And with a flash of light, the ghosts disappeared.

As he gathered the wood, Tom thought about what the Guardians said. All this time he'd been ignoring the book, thinking it stupid. But maybe, just this once, Tom would listen—really listen. He went inside, dumped the wood in a pile next to the stove, and bounced onto the couch. Tom's mom smiled and opened the book.

"Marley was dead, to begin with ..."



Guest Judge Rebecka Ratcliffe

Rebecka Ratcliffe has authored three books for children, including the Moodrangles emotions series for preschoolers and a fantasy novel for middle-graders called *The Tiny Giant*, due to be released this summer. She particularly enjoys the fearless creativity of children's writing. Look for her current releases, *Sally the Sad Shape* and *Carl the Cranky Cone* on Amazon or at littlevoicespublishing.com, and stay up to date on the release of *The Tiny Giant* on Facebook at Little Voices Publishing.

Third Place (tie)
I Think I'll Play Some Chess
By Saanvi Agarwal

Creak ... the old door opened and Samuel Ace walked into the room. This was his first ever chess tournament and he was determined to win it.

Samuel had just started taking chess classes but he didn't know much. His mother said he should meet new kids so she sent him here. The chess coach said, "You will be playing Tana and she's eight, like you." Samuel sat down and the coach cried, "Ladies and gentlemen, let the tournament begin!" Tana played e4 and Samuel, not really knowing what to do, played f6. Tana played d4

"Because I always have chess pieces hovering above my head. I go to school, they're there. I go to build a snowman, they're there. I go for a walk in the snow, they're there. Parks—same story. Everyone makes fun of me."

From our first-place winning story, "Fun of Fate" by Laasya Acharya

and the game continued but it didn't last long. About 10 moves later, Samuel was checkmated by a knight, a bishop, and a queen. His king was cornered and his queen was no help.

"How did you do that?" he cried, gaping at the board as the chess coach came over and noted the win. Tana just shrugged. "You didn't develop your pieces. You won't be able to do a checkmate with only pawns," she replied. "But, why did you do so many moves?" Tana shrugged again and gave him a smirk. "Well, if you think checkmate happens in three moves, you won't win any games," she said, walking out of the room.

During winter break, Samuel spent his time poring over chess books, studying openings and tactics. However, reading them just got him more and more discouraged because everything was just too complex for him. It felt like trying to memorize the history textbook—long and boring and nothing making sense. One night, he tried to memorize the Italian game, only to forget it two minutes later. Throwing the book to the side, he went downstairs. His mom was out again so he sat down at the table. His father came in and said, "Hey, buddy, do you want to play chess?"

"No! I'm bad at chess! I don't understand a thing!" yelled Samuel, running outside. He threw himself on the porch and sobbed.

"Samuel?" called his dad softly, "I made hot chocolate." Samuel sat up, wondering what punishment he would get. Instead, his dad



Saanvi Agarwal
12 years old
Windemere Ranch Middle School
6th grade
San Ramon, California

came over and asked, "What's bothering you in chess?"

"It's too complex. I can't memorize all the moves. I don't get how the girl I lost against played a lot of useless moves and she somehow won." His dad just smiled. "Samuel, that girl could beat you because, as a whole, her moves weren't useless. It's like these stars. They all seem useless but, if you look at them as a whole ..." The kettle whistled and his dad went inside to go get it. Samuel looked up and saw, to his amazement, constellations of chess pieces. They became solid and they shone with a white light. "I understand," he mumbled.

He was in his bed and it was morning. He went downstairs and his dad said, "Samuel, you fell asleep last night. Do you want to watch TV?"

"No, thanks," said Samuel. "I think I'll play some chess."



AVOID THE by Bruce Pandolfini TRAP!

Smothered Mate

This column teaches you openings by helping you learn to avoid opening traps. Set up your board and pieces and play through the game below. Have paper and pen by your side. When you reach a question, write down your answer. After you are done with all 10 questions, check your answers at the end of the column. Total your points and see how you did against the scoring scale at the end!

You may remember the feature story in the December 2017 *Chess Life Kids* about smothered mates, which were called “one of the most satisfying maneuvers in chess.” It can only be performed by one piece, the knight. Smothered mate occurs when a king is surrounded by his own pieces and so can’t escape a check (and so a mate) delivered by a knight. Let’s see how you can use this knowledge to Avoid the Trap!

1. d4

Q1) If given the chance, what would White like to play? (10 points)

1. ... Nf6

Q2) What are two other moves Black might have played to stop 2. e2-e4? (10 points)

2. c4

Q3) Why does White play this move? (10 points)?

2. ... c5

The Benoni Defense. “Son of Sorrow.”

Q4) If White captures 3. d4xc5, can Black get the pawn back? (10 points)

3. d5

White keeps his d-pawn and gains space. But it costs time, and Black gets the next free move.

3. ... b5

Q5) What does Black get by offering the b-pawn? (10 points)

4. cxb5 a6

Black continues with the idea of opening lines on the queenside.

5. Nc3

White develops and defends the b-pawn, while supporting the advance e2-e4.

5. ... axb5

Black takes back his pawn.

(see diagram top of next page)



6. e4

White gains space in the center and clears the way for the king-bishop.

Q6) Is White's e-pawn safe? (10 points)

6. ... b4

This drives away the c3-knight.

7. Nb5

From b5, White's knight has no apparent place to go.

7. ... Nxe4

Q7) Is there something wrong with Black's move? (10 points)

8. Qe2

Q8) Why does White play this move? (10 points)

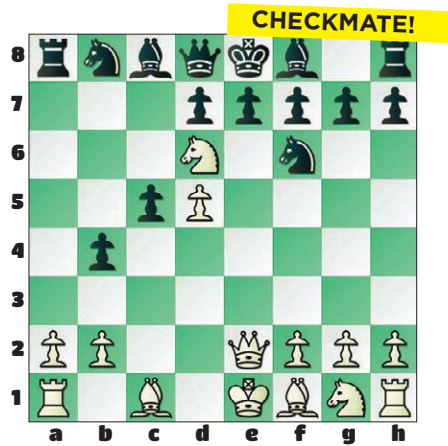
8. ... Nf6

Q9) What did Black overlook? (10 points)

9. Nd6 mate!

(see diagram top of next column)

Q10) How should White have continued if Black had played 8. ... f7-f5 instead of 8. ... Ne4-f6? (10 points)



Illustrative Game:

English Opening, Four Knights Variation (A29)
Gert Iskov
Modesto Bartrina,
Olot, 1974

1. c4 Nf6 2. Nc3 e5 3. Nf3 Nc6 4. g3 g6 5. d4 exd4 6. Nxd4 Ne5 7. Bf4 Qe7 8. Ndb5 Nf3 mate (0-1).

Answers

A1) White would love to play 2. e2-e4, establishing a classical

pawn center.

A2) Black might have tried 1. ... d7-d5 or 1. ... f7-f5.

A3) By playing 2. c2-c4, White attacks d5, gains space, and gives the queen access to the queenside.

A4) Black has several ways to get the pawn back, including 2. ... Qd8-a5+, 2. ... Nb8-a6 or simply moving the e-pawn one or two squares.

A5) Black gets open lines for attack on the queenside.

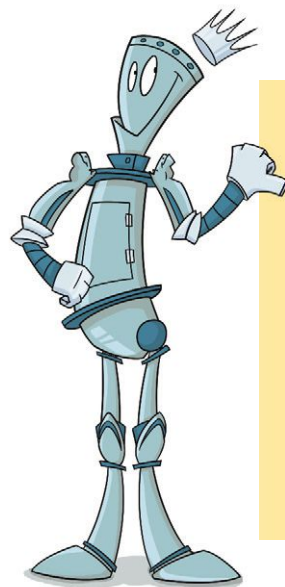
A6) Yes, but not for obvious reasons. It looks like Black can now win a pawn by 6. ... b5-b4.

A7) It's going to lose a knight. (Do you see how?)

A8) To attack the knight, and to threaten mate if it moves to safety.

A9) Black missed that White now has a smothered mate.

A10) After 8. ... f7-f5, White wins the black knight by 9. f2-f3, when 9. ... Ne4-f6 is still answered by 10. Nb5-d6 mate.



How Did You Score?

- 100: 1800+
- 90: 1600
- 80: 1400
- 70: 1200
- 60 or lower: 1000

The score is based on the US Chess rating system and is intended only as a fun way to monitor your progress each issue as you Avoid The Trap!

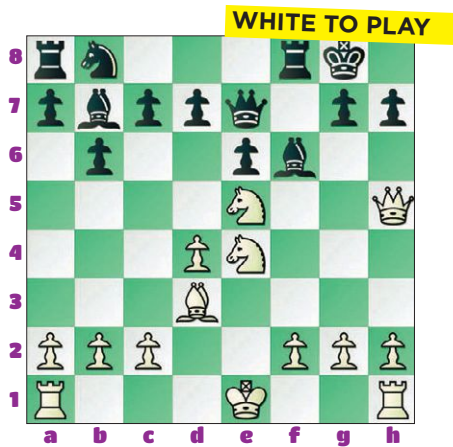
YOU can DO IT!

by Jon Edwards

10th United States Correspondence Chess Champion

In 1970, William Cozins wrote *The King-Hunt in Chess*, a collection of 45 carefully annotated games that have one thing in common. They all involve king hunts. One was Edward Lasker-George Thomas (London, 1912):

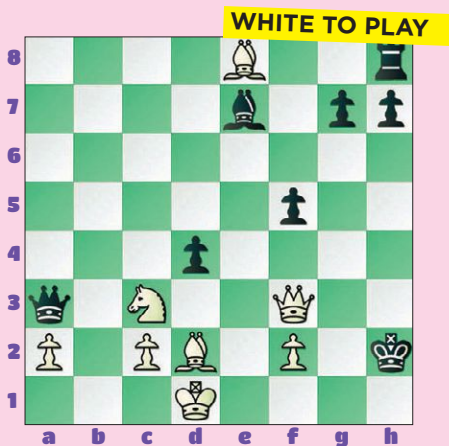
1. d4 e6 2. Nf3 fxe4 3. Nc3 Nf6 4. Bg5 Be7 5. Nxe4 Be7 6. Bxf6 Bxf6 7. e4 fxe4 8. Nxe4 b6 9. Ne5 0-0 10. Bd3 Bb7 11. Qxh7+ Kxh7



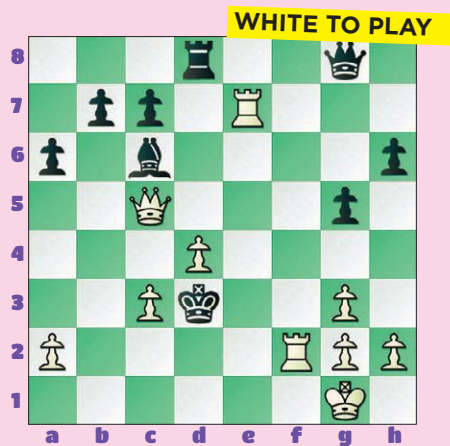
12. Nxf6+ Kh6 13. Neg4+ Kg5 14. h4+ Kf4 15. g3+ Kf3 16. Be2+ Kg2 17. Rh2+ Kg1 18. Kd2 mate.

Lasker's final move is actually a bit disappointing since he might have chosen the more artful 18. 0-0-0 mate. This month, I offer six positions that involve mate right at the end of a cool king hunt. These games were all very special, but I know that You Can Do It!

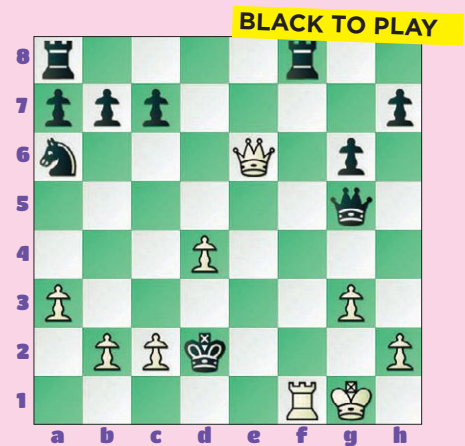
Quiz #1



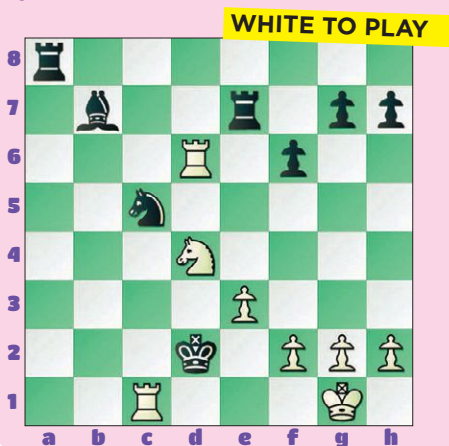
Quiz #3



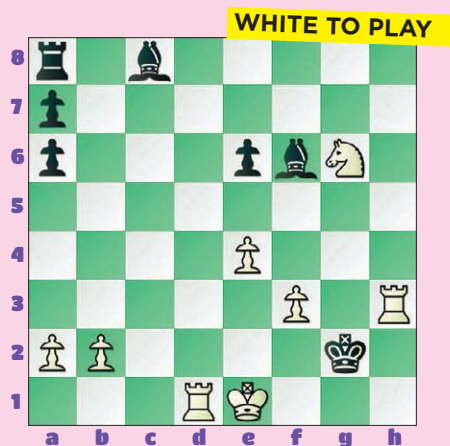
Quiz #5



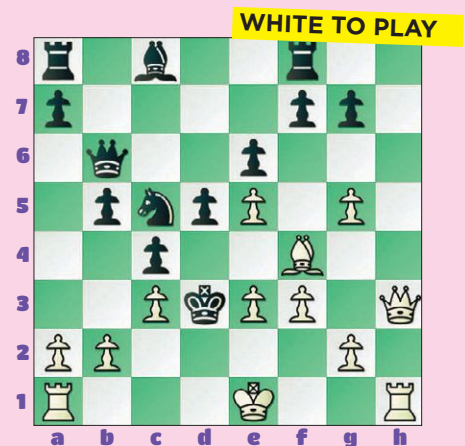
Quiz #2



Quiz #4



Quiz #6



Solutions on page 29

Approved Electronic Recording Devices

From Appendix F of the National Scholastic Regulations

Approved electronic recording devices are in common use at US Chess National Scholastic Tournaments. US Chess no longer requires players to “register” their device with the Tournament Director (TD) before game play. Players who own these devices are responsible for setting and operating them according to the instructions below. Players who do not own an approved electronic recording device should expect they may be paired against players who do.



MonRoi Personal Chess Manager



eNotate



PlyCounter



ChessNoteЯ

Device Owners Should:

1. Set the device in the appropriate mode for recording moves.
2. Turn off or disable any setting(s) that could alert the player of illegal moves.
3. Make the move on the board before recording the move on the device.
4. Keep the device on the table (or immediately above the table) in plain view of the opponent at all times during the game.
5. Touch the device only when recording moves.
6. Never input “variations” in the device at any time during a game.
7. If asked by the opponent to see the player’s device to enter missing moves on their scoresheet, the player will set the device mode to algebraic (or the appropriate mode that allows the opponent to see all previous moves) and turn the device around so the opponent can view the display screen. The device will remain on the table (or immediately above the table) at all times.
8. Never take their device with them if they leave the board while the game is still in progress.
9. Be ready to take written notation if their device malfunctions (if notation is required during game play in this section). If this happens, the player should begin notation with the next move and fill-in missing moves when the player is on move by borrowing the opponent’s scoresheet or device.
10. Summon a TD when questions arise.

Opponents:

1. May ask the player who owns the device to show them the device, explain its use, and ensure it is correctly set for game play for this tournament.
2. May not ask the device owner to take written notation instead of using the device.
3. May ask the device owner to see the player’s device for the purpose of entering missing moves on his/her own scoresheet. When this occurs, the device will remain on the table.
4. Should summon a TD when questions arise.

Coaches/Parents:

1. Are strongly encouraged to assist their players in understanding proper tournament etiquette regarding these devices before tournament play begins.
2. Should summon a TD when questions arise before the start of a game.

Tournament Directors:

1. Should check a player’s device to verify that it is correctly set when requested to do so by a player.
2. Circulate among the players during competition ensuring proper usage of the device.
3. Are not responsible for knowing how to operate each type of device.

Tournament Life Announcements

APRIL 15 THROUGH JUNE 14

Scholastic Members:

As a service to you, we are listing upcoming National US Chess rated events, and requested events of possible interest to you. You can always log in to www.uschess.org, and click on "Clubs & Tournaments." Then click on "Upcoming Tournaments" for a complete listing of upcoming rated events and details. As always, you can check out the TLA section of *Chess Life*.

Organizers and Tournament Directors:

If you would like your tournament listed here in *Chess Life Kids* for June 2018 (events to be held after June 14), the deadline for submitting your announcements is April 10th. The deadline for the August 2018 issue is June 10th. The processing fee is \$1.00 per line for the first eight lines, \$2.00 for every line thereafter. Send your announcements to Joan DuBois, tda@uschess.org. Display advertising is also available. Advertising rates are posted on the US Chess website, www.uschess.org, or you may email: tda@uschess.org for complete details.

ABBREVIATIONS & TERMS

All tournaments are non-smoking with no computers allowed unless otherwise advertised.

BLZ:	Blitz rated.
QC:	Quick Chess events.
\$\$\$Gtd:	Guaranteed prizes.
\$\$b/x:	Based-on prizes, x = number of entries needed to pay full prize fund. At least 50% of the advertised prize fund of \$501 or more must be awarded.
Bye:	Indicates which rounds players who find it inconvenient to play may take 1/2-point byes instead. For example, Bye 1-3 means 1/2-point byes are available in Rounds 1 through 3.
CC:	Chess club.
dx:	Time delay, x = number of seconds.
+xx:	Time increment, xx = number of seconds added after each move.
EF:	Entry fee.
Ent:	Where to mail entries.
FIDE:	Results submitted to FIDE for possible rating.
G/:	Game in. For instance, G/75 means each side has 75 minutes for the entire game.
GPP:	Grand Prix Points available.
HR:	Hotel rates. For example, 60-65-70-75 means \$60 single, \$65 twin, \$70/3 in room, \$75/4 in room.
JGP:	Junior Grand Prix.
Memb. req'd:	Membership required; cost follows. Usually refers to state affiliate.
Open:	A section open to all. Often has very strong players, but some eligible for lower sections can play for the learning experience.
Quad:	4-player round robin sections; similar strength players.
RBO:	Rated Beginner's Open.
Rds:	Rounds; scheduled game times follow. For example, 11-5, 9-3 means games begin 11 a.m. & 5 p.m. on the first day, 9 a.m. & 3 p.m. on the second day.
Reg:	Registration at site.
RR:	Round robin (preceded by number of rounds).
SD/:	Sudden-death time control (time for rest of game follows). For example, 30/90, SD/1 means each player must make 30 moves in 90 minutes, then complete the rest of the game in an hour.
SS:	Swiss-System pairings (preceded by number of rounds).
Unr:	Unrated.
W:	Site is accessible to wheelchairs.
WEB:	Tournaments that will use a player's online rating.

NATIONALS

US Chess Junior Grand Prix! Apr. 6-8, Georgia

2018 National Junior High School (K-9) Championship
7SS, G/120 d5. Hyatt Regency Atlanta, 265 Peachtree St. NE, Atlanta, GA 30303. Hotel Chess Rate \$129. Guest rooms may be booked, NLT 3/12/2018 by calling (888) 421-1442 or (404) 577-1234, mention "US Chess" or see www.uschess.org/tournaments/2018/jhs/ to book now! **6 Sections:** K-9 Championship, K-9 U1250, K-9 Unrated, K-8 Championship, K-8 U1000 and K-8 U750. March Rating Supplement will be used. One 1/2-point bye available (limit one) any round (except Round 7) if requested prior to the start of Rd. 1. Team score = total of top four (minimum two) finishers from each school per section. K-9 Championship first place individual and team, including ties, will be the National Junior High School Champion. **Schedule:** Opening ceremony Fri. 12:45 pm. Rds.: Fri. 1 pm and 7 pm, Sat. 9 am, 2 pm and 7 pm, Sun. 9 am-2 pm. Awards Ceremony Sun., approx. 7 pm. **EF:** \$50/participant postmarked or online by 3/12, \$70 postmarked or online by 3/26, \$85 online by 4/4, \$90 on site; \$5.00 extra for all phone registrations; \$20 fee for roster or section changes after 3/26 or any onsite changes. Onsite registration Thurs. 9 AM - 9 PM & Fri. 8 AM -11 AM. Players who register or change sections after 11 am on Friday will receive a 1/2-point bye for Rd. 1. Players must disclose any other, non-US Chess, over-the-board (OTB) ratings. **Awards:** Trophies to top individuals & top teams in each section. Every player receives a commemorative item! Full list of trophies on tournament Info Page. **Side Events:** Bughouse: Thurs. 11 am, Reg. onsite until Thurs. 9-10 am, \$25/team. K-9 Blitz: Thurs. 5 pm, Reg. onsite until 4 pm. Blitz EF: \$15 by 4/4, \$20 after or at site. Class trophies will be awarded in main event and in Blitz. Full list of trophies on tournament Info Page. **General questions:** Contact Susan Kantor at 931.787.1234 ext. 136 or by email: skantor@uschess.org. **Team Room questions:** Contact Boyd Reed at 931.787.2244 or by email: boyd.reed@uschess.org. **Entries:** U.S. Chess Federation, Attn.: 2018 JHS Championship, P.O. Box 3967, Crossville, TN 38557 or online at www.uschess.org/tournaments/2018/jhs/. See web site for additional information about the event, advance entries, awards, meetings, team rooms, updates, corrections, and registration forms.

US Chess Junior Grand Prix! Apr. 20-22, Illinois

2018 All-Girls National Championships presented by the Kasparov Chess Foundation in association with the Renaissance Knights Chess Foundation & US Chess
Any player that achieves a perfect 6-0 score or wins the first place trophy, in each age category, qualifies to represent the USA at the 2018 World Cadets (U/8, U/10, U/12) / World Youth (U/14, U/16, U/18) Championships. 6SS, G/90 d5. Hyatt Regency McCormick Place, 2233 S. Martin Luther King Dr., Chicago, IL 60616, (free Wi-Fi). **6 Sections/Trophies:** Age as of 1/1/2018 Under 8 top 15 individuals, top 500 - 799, top U500, top 6 schools, Under 10 top 16 individuals, top 700 - 999, top U700, top 6 schools, Under 12 top 16 individuals, top 900 - 1199, top U900, top 6 schools, Under 14 top 12 individuals, top 1100 - 1399, top U1100, top 4 schools, Under 16 top 8 individuals, Top 1300 - 1599, top U1300, top 3 schools, Under 18 top 8 individuals, Top 1500 - 1799, top U1500, top 3 schools, (top 3 players added for team scores). **EF:** \$60 mail/online by 3/19 \$80 by 4/9, \$95 after. Do not mail after 4/13. \$20 fee for roster or section changes after 4/13. \$10 fee for refunds. **Opening Ceremony:** Fri 2:30pm. **Rounds:** Rd. 1 - Fri 3:00pm Rounds 2-4 - Sat 10:00am, 2:30pm, 6:30pm; Rounds 5-6 - Sun 9:00am & 1:00pm. **Awards:** 5:00pm. **Bye:** One 1/2 point bye available for any round, except round 6, if requested at least 2 hours before the start of the round 1. **Side Events:** Bughouse Tournament - Fri. 11:00 am, EF \$30/team. **Blitz Tournament** - Fri. 7pm, G/5 d0, EF \$20 by 4/9, \$25 after or on site. **HR:** single - quad \$159 Reservations: (888) 421-1442. Reserve early rate may increase / sell out. **Entries:** online/info at: www.rknights.org/allgirls or mail to RKnights, attn: All-Girls, PO Box 1074, Northbrook, IL 60065, include name, section, rating, USCF ID#, date of birth, grade, school name city & state.

US Chess Junior Grand Prix! Apr. 27-29, Ohio

2018 National High School (K-12) Championship
7SS, G/120 d5. Greater Columbus Convention Center, 400 North High St., Columbus, OH 43215. Hotel: Hyatt Regency Columbus, 350 North High St., Columbus, OH 43215 (adjacent to GCCC). Hotel Chess Rate \$129. Guest rooms may be booked, NLT 3/23/2018 by calling (402) 592-6464 or (888) 421-1442, mention "US Chess", or online at: <https://aws.passkey.com/go/nshschess418>. **6 Sections:** K-12 Championship, K-12 U1900, K-12 U1600, K-12 U1200, K-12 U800 and K-12 Unrated. April Rating Supplement will be used. One 1/2-point bye available (limit one) any round (except Round 7) if requested prior to the start of Rd. 1. Team score = total of top four (minimum two) finishers from each school per section. K-12 Championship first place individual and team, including ties, will be the National High School Champion. **Schedule:** Opening ceremony Fri. 12:45 pm. Rds.: Fri. 1 pm and 7 pm, Sat. 9 am, 2 pm and 7 pm, Sun. 9 am-2 pm. Awards Ceremony Sun., approx. 7 pm. **EF:** \$50/participant postmarked or online by 3/26, \$70 postmarked or online by 4/16, \$85 online by 4/25, \$90 on site; \$5.00 extra for all phone registrations; \$20 fee for roster or section changes after 3/26 or any onsite changes. Onsite registration Thurs. 9 AM - 9 PM & Fri. 8 AM -11 AM. Players who register or change sections after 11 am on Friday will receive a 1/2-point bye for Rd.1. Players must disclose any other, non-US Chess over-the-board (OTB) ratings. **Awards:** Trophies to top individuals & top teams in each section. Every player receives a commemorative item! Full list of trophies on tournament Info Page. **Side Events:** Bughouse: Thurs. 11 am, Reg. onsite until Thurs. 9-10 am, \$25/team. K-12 Blitz: Thurs. 5 pm, Reg. onsite until 4 pm. Blitz EF: \$15 by 3/26, \$20 after or at site. Class trophies will be awarded in main event and in Blitz. Full list of trophies on tournament Info Page. **General questions:** Contact Susan Kantor at 931.787.1234 ext. 136 or by email: skantor@uschess.org. **Team Room questions:** Contact Boyd

Reed at 931.787.2244 or by email: boyd.reed@uschess.org. **Entries:** U.S. Chess Federation, Attn.: 2018 HS Championship, P.O. Box 3967, Crossville, TN 38557 or online at www.uschess.org/tournaments/2018/hs/. See web site for additional information about the event, advance entries, awards, meetings, team rooms, updates, corrections, and registration forms.

US Chess Junior Grand Prix! May 11-13, Tennessee

2018 National Elementary (K-6) Championship

7SS, G/90 d5. Gaylor Opryland Resort and Convention Center, 2800 Opryland Dr., Nashville, TN 37214. Hotel Chess Rate \$166. Guest rooms may be booked, NLT 4/12/2018 by calling (888) 777-6779 or (615) 889-1000, mention "US Chess" or book online at: <https://aws.passkey.com/e/49533585>. **13 Sections:** K-6 Championship, K-6 U1400, K-6 U1000, K-6 Unrated, K-5 Championship, K-5 U1200, K-5 U900, K-3 Championship, K-3 U1000, K-3 U700, K-3 Unrated, K-1 Championship, K-1 U500/UNR. May Rating Supplement will be used. One 1/2-point bye available (limit one) any round (except Round 7) if requested prior to the start of Rd. 1. Team score = total of top four (minimum two) finishers from each school per section. K-6 Championship first place individual and team, including ties, will be the National Elementary School Champion. **Opening ceremony** Fri. 12:45 pm. **Schedule** for K-3 and higher: Rds.: Fri. 1 pm and 6 pm, Sat. 10 am, 2 pm and 6 pm, Sun. 10 am and 2 pm. **Awards Ceremony** Sun., approx. 6 pm. **Special schedule** for K-1 sections: Rds.: Fri. 1:30 pm and 5:30 pm, Sat. 9:30 am, 1:30 pm and 5:30 pm, Sun. 9:30 am and 1:30 pm. **Awards Ceremony** Sun., approx. 5:30 pm. **EF:** \$50/participant postmarked or online by 4/23, \$70 postmarked or online by 4/30, \$85 online by 5/9, \$90 on site; \$5.00 extra for all phone registrations; \$20 fee for roster or section changes after 4/25 or any onsite changes. Onsite registration Thurs. 9 AM - 9 PM & Fri. 8 AM -11 AM. Players who register or change sections after 11 am on Friday will receive a 1/2-point bye for Rd. 1. Players must disclose any other, non-US Chess, over-the-board (OTB) ratings. **Awards:** Trophies to top individuals & top teams in each section. Every player receives a commemorative item! Full list of trophies on tournament Info Page. **Side Events:** Bughouse: Thurs. 11 am, Reg. onsite until Thurs. 9-10 am, \$25/team. **Blitz Sections:** K-6 and K-3, Thurs. 5 pm, Reg. onsite until 4 pm. **Blitz EF:** \$15 by 4/25, \$20 after or at site. Class trophies will be awarded in main event and in Blitz. Full list of trophies on tournament Info Page. **General questions:** Contact Susan Kantor at 931.787.1234 ext. 136 or by email: skantor@uschess.org. **Team Room questions:** Contact Boyd Reed at 931.787.2244 or by email: boyd.reed@uschess.org. **Entries:** U.S. Chess Federation, Attn.: 2018 Elementary Championship, P.O. Box 3967, Crossville, TN 38557 or online at www.uschess.org/tournaments/2018/elem/. See web site for additional information about the event, advance entries, awards, meetings, team rooms, updates, corrections, and registration forms.

US Chess Junior Grand Prix! May 25-28, Arizona

2018 U.S. Amateur West Championship
Hilton Tucson El Conquistador Golf & Tennis Resort, 10000 N. Oracle Rd., Tucson, AZ 85704, 1-888-370-0980. **SECTIONS:** Championship (U2200), Reserve (U1600), Booster (U1200). **SCHEDULE:** (Championship & Reserve) 6/SS; 40/90, G/30, Inc/30; Rds: 10-4, 10-4, 9-3. (Booster) 6/SS, Game/60, Inc/30; Rds: (Sat) 10-1:30-5, (Sun) 10-1:30-5. **PRIZES:** (Championship) Digital Clock + plaque to Top 3; Digital clock to 1st + Plaque to Top 2 1800-1999, 1600-1799, and U1600; Plaque to top Senior 50+, Junior U20 and Junior U14. (Reserve) Digital clock + plaque to Top 3; Digital clock to 1st + Plaque to Top 2 1200-1399 and U1200; Plaque to top Senior 50+ and Junior U14. (Booster) Digital clock + trophy to 1st; Trophy to 2nd - 5th, Top Unrated and Junior U11. **SPECIAL PRIZES:** 1st Place in Championship and Reserve will receive a FREE ENTRY to the 2018 National Open. Top 2 Family Pairs in combined sections. Biggest Upset of each round (Rds. 1-5). **EF:** (Championship & Reserve) \$65 if rec'd by 5/21 \$75 if after 5/21. (Booster) \$45 if rec'd by 5/21, \$55 if after 5/21. **SIDE EVENTS:** Blitz tournament Friday 5/25 at 6:00pm, Reg. 5:00 - 5:45 at site, G/5 d0, 5 Rounds, Double SS; Entry Fee: \$10 (\$15 to non-tournament players); Saturday Scholastic tournament (K-6 and U1000 rating), Saturday 5/26 at 10:30am, Reg: 8:30 - 9:30, GAME/40 d5; 4 rounds, Entry fee \$20, \$30 if after 5/21; Sunday Scholastic tournament (K-6 and U1000 rating), Sunday 5/27 at 10:30am, Reg: 8:30 - 9:30, GAME/40 d5; 4 rounds, Entry fee \$20, \$30 if after 5/21. **ENTER:** <http://events4chess.com> or mail to: (make checks payable to "Rookery Chess"): 2018 US Amateur West, PMB 215, 4729 E. Sunrise Dr., Tucson, AZ 85718 or at site. **HR:** Online Reservations https://secure.hilton.com/en/hi/res/choose_dates.html?hotel=TUSHTHH&spec_plan=AWR or call 1-888-370-0980, \$149, mention group code "AWR" by 4/25 for chess rate. **INFO:** Karen Penneck, 520-261-3176, email: kpenneck_83@yahoo.com, web: www.events4chess.com. W.

US Chess Junior Grand Prix! May 26-28 or 27-28, New Jersey

74th Annual U.S. Amateur East Championship
6-SS, 40/2 d5, SD-30. Hyatt Morristown, 3 Speedwell Ave., Morristown, NJ 07960. For chess rate (\$129 per night base), details at www.njsctf.org or book at <https://aws.passkey.com/go/NJChessMay> or call Phone: 973-647-1234, mention NJ Chess. Free parking during the day, public transportation to NYC, Philadelphia. Walking distance to 30 restaurants, shops and parks within 5 minute stroll. In 3 sections: Championship (under 2200); Reserve (under 1800); Booster (under 1400); 2-day and 3-day schedules available. 3-Day Registration: Saturday, May 26, 9:30-10:45 am. Rounds: 12-6:15, 11-5:15, 9-3:00. 2-Day Registration: Sunday, May 27, 8:30-9:30 am. 2-day Schedule: First 3 games, May 27, G/60 d5. Rounds: 10, 12:15, 2:30. All schedules merge in round 4. Prizes for each section: trophies to top 5 and top Senior 55/over and Juniors under 16 and 13. **Additional Prizes**—Championship Section: Trophies to top Under 2000, Under 1900, Under 1800. Reserve Section: Trophies to top Under 1600, Under 1500. Booster Section: Trophies to top Under 1200, Under 1100, Under 1000, Under 900, Under 800. **EF:** \$49, if post-marked by May 16. **EF** at site \$60 **cash** only. **Byes:** 3 half-point byes

allowed in rounds 1-5 if requested before round 2. Sets and clocks NOT provided. Entries to Aaron Kiedes, 263 Acabonack Road, Highland Lakes, NJ 07422. Email akiedes@gmail.com for more information. Entries must include name, USCF ID and expiration date, mailing address, email address, phone number, Section and entry fee. Checks made out to NJSCF. No phone entries. Online entries \$52 at www.njscf.org after 4-15-18 until 5-24-18 at midnight. W.

An American Classic!

A Heritage Event!

US Chess Junior Grand Prix!

June 21-24, 22-24 or 23-24, Nevada

US Chess Grand Prix Points: 300 (Enhanced)

2018 National Open

7-SS, 40/90, SD/30, +30 (3-day rounds 1-2 G/60, +10, 2-day round 1-4 G/30, +5, Beginners Section G/30, +5). Westgate Resort & Casino, 3000 Paradise Road, Las Vegas 89109. **\$\$\$100,000 Guaranteed Prize Fund** will not be reduced! In 8 sections, top 2 FIDE rated. **Open:** \$8,000-4,000-2,000-1,000-600-500-400-300-300-300, top under 2500 \$2,500, top under 2400 \$2,400, **Extra** \$2,500 for perfect score. The winner of the Open section also receives a replica of the Edmondson Cup. **Under 2300:** \$6,000-3,000-1,500-750-400-350-300-250-250-250. **Under 2100:** \$6,000-3,000-1,500-750-400-350-300-250-250-250. **Under 1900:** \$5,000-2500-1250-600-350-300-250-250-250-250. **Under 1700:** \$4,000-2,000-1,000-500-300-250-250-250-250-250. **Under 1500:** 3000-1500-700-350-300-250-250-250-250-250. **Under 1300:** \$2000-1,000-500-300-250-250-250, top under 1000 (no provisional) \$900.

Beginners (unrated or rated under 1000): 3 schedules with 6 rounds per day \$200-125-75 each day plus \$300 overall (best 2 results). **Plus Score Bonus:** (\$12,000 guaranteed) in addition to any other prizes, every player with 4 points or more wins a \$50 gift certificate. Plus score certificates will be awarded on site only. **Mixed Doubles:** best male/female combined 2-player team score: \$1,500-750-350-250-150. Teammates may play in different sections but must have average rating below 2200. **The Freddie:** Players age 14 and under are eligible for best game prizes including the Freddie Award and \$400 in cash prizes (donated by Fred Gruenberg). Unrated players may play only in Beginners or Open Section. Provisionally rated players may not win more than 40% of top prize in any under section; balance goes to next player(s) in line. CCA minimum ratings or other ratings may be used if higher than US Chess June Supplement. **EF:** \$199 by 1/31, \$229 by 5/31, \$259 by 6/19, \$280 later. Add \$125 for adults rated under 2200 or juniors under 2100 playing in the Open Section. \$40 less for seniors 65 and over. Beginners section only: \$125 less for players in only 1 schedule, \$60 less in 2 schedules. **Reg.:** 1 p.m.-6 p.m. Thursday. **Rds:** 7/30, 11-5:30, 10-4:30, 10-4:30. 3-day schedule: **Reg.:** 8:30-9:30 a.m. Friday. Rds 11-2 then merge with 4-day in round 3 at 5:30. 2-day schedule: **Reg.:** 8:30-9 a.m. Saturday. **Rds:** 10-11:30-1-2:30 then merge with 4-day in round 4 at 4:30. Half point byes available in any round; round 6 or 7 byes must be requested before the start of round 2 and may not be cancelled.

Chess sets and boards provided for tournament play only, not for skillies. Please bring digital chess clocks! The **LAS VEGAS INTERNATIONAL CHESS FESTIVAL** features the National Open, the U.S. Women's Open, the International Youth Championship, and other events. **Many free extras and surprises!** Free parking. Free raffles with great prizes. Free GM Lectures. Free GM analysis of your games. Free Daily Bulletins and free commemorative DVD for all participants. **Grandmaster Simuls and Chess Camp** for all ages on Thursday. **U.S. Women's Open** Wednesday and Thursday. **Walter Browne Memorial Blitz** Thursday 2:00 p.m. **Youth Tournaments** Friday, Saturday & Sunday. **Blitz** Sectionals Friday, Saturday & Sunday. **Poker Tournament** Monday Morning. **Don't be shut out** - make your reservations early and be sure to ask for the **CHESS Rates** — \$69 single or double (\$92 Friday and Saturday nights) guarantees a premium room with new furniture, refrigerator, flat screen TV and more. The resort package including access to the Fitness Center, free Wi-Fi, and more is substantially discounted for our group. **Cutoff for special hotel rate is May 31; after that rates will increase significantly and there may not be any rooms available.** (800) 732-7117 or www.VegasChessFestival.com/hotel. ENT: Vegas Chess Festivals, PO Box 90925, Henderson, NV 89009-0925, online at www.VegasChessFestival.com. Info: (702) 930-9550 and leave a message. FIDE. W.

US Chess Junior Grand Prix!
June 22-24, Louisiana
2018 U.S. Junior Open
6SS, G/90 i30 (Game in 90 min. with 30-second increment.) All Sections are USCF rated and the U21 Section is also FIDE rated using FIDE Rules. **SIDE EVENT: 2018 U.S. Junior Blitz Tournament:** 5-min. Blitz Tournament on Thurs., 6/21, at 6pm (details below). Hilton New Orleans Airport Hotel, 901 Airline Dr., Kenner, LA 70062, Ph: 504-469-5000 (hotel is directly across from the New Orleans Int'l. Airport with free hotel/airport shuttle service). HR: \$119 + tax for single, double, triple or quad - mention Cajun Chess Tournament and reserve by May 28 to assure group rate. Complimentary parking for all tournament attendees and free basic internet in each room. Hotel hot breakfast buffet tickets discounted to \$15 including tax and tip (usually \$19.95 without tax and tip) for hotel guests only. **SECTS (based on Player's Age as of 1/1/2018):** **U21** (FIDE Rated); **U15; U11; U8.** Ratings used will be from June 2018 USCF Supplement. **INDIVIDUAL PLAYER PRIZES: U21:** \$500 cash prize awarded to eligible qualifier of the 2019 U.S. Junior (Closed) Championship; Individual plaque to top five overall; Plaque for top player age 18, 17, 16, 15 and under 15. **U15:** Individual trophies to top ten overall; Trophies to top player age 14, 13, 12, 11 and under 11. **U11:** Individual trophies to top ten overall; Trophies to top player age 10, 9, 8 and under 8. **U8:** Individual trophies to top ten overall; Trophies to top player age 7, 6, and under 6. **SCHOOL TEAM INFO:** A team will consist of a minimum of THREE players from the same school or home-school district playing in the same section. No maximum limit of number of players on a team; the top FOUR scores will count for final team standings. **TEAM PRIZES:** Trophies to top three school teams in each of the four sections. In the event of a tie, plaque/trophy winners for individuals and teams will be determined by USCF computer tiebreaks. **EF:** \$60 by 6/1/18;

\$75 by 6/15/18; \$90 thereafter and at site; **Onsite Reg:** Fri. 6/22 from 8:30-9:30am. Rds.: Fri/Sat/Sun (June 22-24):10am & 3pm. **BYES:** 1/2-point bye may be taken for any Round in all sections EXCEPT for the last round (Rd. 6) of the U21 Section due to FIDE rules — if you must leave prior to the last round in the U21 Section, you will have to take a zero-point bye or simply withdraw after Round 5; limit of 2 half-pt. byes allowed but must commit to any byes prior to the start of Round 3. **U.S. JUNIOR BLITZ EVENT:** Thurs., 6/21, 1st Round at 6pm. 7SS, G/5 d0 — USCF Blitz Rating (June 2018 Supplement Blitz Ratings used). Two Sections Only: U21, U11. **PRIZES:** Trophies to top 3 in each section. **Blitz EF:** \$15 by 6/15; \$20 thereafter and at site. **ENTRIES:** On-line registration, printable entry form, and more detailed info at www.cajunchess.com or mail entry form to Cajun Chess, 12405 Hillary Step Dr., Olive Branch, MS 38654. Info or Phone Ent: 504-208-9596 or 504-905-2971. Major credit cards accepted (no checks at site). Please bring your own chess boards, sets and clocks; chess vendor will be on site. FIDE.

A Heritage Event!

US Chess Junior Grand Prix!

July 28-Aug. 5, July 31-Aug. 5 or Aug. 2-5, Wisconsin

US Chess Grand Prix Points: 300 (Enhanced)

119th Annual U.S. Open

Includes Traditional one game per day schedule (9 days), a 6-day slow time control option, and 4-day option. 9SS, 40/120, SD/60; d5 (4-day option, Rds. 1-6, G/60 d5; then 40/120, SD/60 d5). Madison Marriott West, 1313 John Q. Hammons Dr., Middleton, WI 53582, HR: \$115, Call (608) 831-2000, mention "US Chess". Reserve by June 30th or rate may increase. **\$50,000 in prizes based on 500 paid entries, else proportional, \$40,000 (80% of each prize) minimum guaranteed.** A one-section tournament with Class prizes. Top U.S. player not otherwise qualified qualifies for 2018 U.S. Championship. **Choice of three schedules:** **Traditional:** 40/120 SD/60; d5. One round daily at 7 PM, except Rd. 9, 3 PM 8/5. **6-Day Option:** 40/120, SD/60; d5. 7 PM 7/31, 12 NOON & 7 PM 8/1-8/3, 7 PM 8/4, 3 PM 8/5. **4-Day Option:** Rds. 1-6: G/60 d5; then 40/120, SD/60 d5. 12 NOON, 3 PM, 7 PM, 10 PM 8/2; 12 NOON, 3 PM, 7 PM 8/3; 7 PM 8/4; 3 PM 8/5. All schedules merge after Round 6 & compete for same prizes. **Projected prizes:** Top places \$8000-4000-2000-1500-1000-800-600-500, clear or playoff winner \$200 bonus. If tie for first, top two on tiebreak play Armageddon game (White 5 minutes, 2-sec delay, Black 3 minutes, 2-sec delay and gets draw odds) for bonus and title. Class Prizes: Top Master (2200-2399) \$2500-1200-800-500, Expert (2000-2199) \$2500-1200-800-500, Class A (1800-1999) \$2500-1200-800-500, Class B (1600-1799) \$2500-1200-800-500, Class C (1400-1599) \$2000-1000-600-400, Class D (1200-1399) \$1500-700-500-300, Class E or below (under 1200) \$1500-700-500-300, Unrated \$800-400-200. **Half-Point Byes:** must commit before Round 4; up to 3 byes allowed for 2000/ up, 2 byes for 1400-1999, one bye for Under 1400/Unr. Limit 1 bye in last two rounds. Zero-point byes are always available in any round if requested at least two hours before the round(s) in question. **Entry Fee:** Online, \$145 by 6/25, \$165 by 7/16, \$185 after 7/16. By mail, \$147 postmarked by 6/25, \$167 postmarked by 7/16, \$187 after 7/16; do not mail after 7/23! By phone, \$150 by 6/25, \$170 by 7/16, \$185 after. No phone entries after 5PM Central 7/27 (close of business at the US Chess Office)! At site, all \$190; Free entry for GMs and WGMs for main event only. All entries must be made at least two (2) hours prior to the player's first game. Current US Chess membership required. **July Rating Supplement** used; unofficial ratings (at least four games) used if otherwise unrated. CCA ratings used if above US Chess. Foreign player ratings: usually 100 points added to FIDE or FQE, 200+ added to most foreign national ratings, no points added to CFC. Highest of multiple ratings generally used. **Entries:** US Chess, ATTN: 2018 U.S. Open, PO Box 3967, Crossville, TN 38557. Online entry available, see website. Phone entry: 800.903.8723. **NOT FIDE rated, NO cell phones.** Bring a clock — none supplied. Sets/boards supplied for tournament but not for skillies. Many meetings, workshops and seminars, including: **US Chess Committee Meetings** 8/1-8/3, **US Chess Awards Luncheon** 8/4 Noon, **US Chess Delegates Meeting** 8/4-5. Many side events and other championships, including: **U.S. National Blitz Championship** 7SS Double, G/5 d0, Rd. 1 at 12 NOON 8/4; **U.S. Open Weekend Swiss** 5SS, G/60 d5, 12-3 Sat 7/28, 10-12:30-3 Sun 7/29; **U.S. Open Scholastic** (see separate TLA for the Scholastic event); **Mon-Wed-Thu/Fri July 30, August 1, 2, 3 U.S. Open Quads (one-day events)** G/30 d5. Entry fee \$20. Registration 9:30-11:30 a.m., Rounds at noon, 1:30 p.m. & 3:00 p.m. \$50 to first in each quad. **Tue July 31 U.S. Open Quads (Tuesday Quads Only)** G/60 d5. Entry Fee \$20. Registration 9 a.m.-10:00 a.m., Rounds at 10:30 a.m., 1:00 p.m. and 3:30 p.m. \$50 to first in each quad. **U.S. Open Bughouse** Sat. 10:30 AM 7/28. **19th Annual Golf Tournament for the US Open Chess Players**, (see tournament website for details). **US Open Tennis Tournament** (see tournament website for details). In addition, three other championships will also take place: the **2018 Denker Tournament of HS Champions** (see website for participants' list), the **2018 Barber Tournament of K-8 Champions** (see website for participants' list) and the **2018 National Girls' Tournament of Champions** (see website for participants' list). **Please check the U.S. Open website often for updates, new information and corrections and other useful documents!** www.uschess.org/tournaments/2018/usopen/

Aug. 4, Wisconsin
US Chess Grand Prix Points: 15
2018 U.S. Open National Blitz Championship (BLZ)
7 Double Round (14 games) Swiss, 1 section, G/5 d0. Blitz rated, higher of regular or Blitz rating used. Entry fee \$40, free to Unrated players if paying US Chess dues. Registration 9-11:30 a.m., round 1 begins at noon. **\$2000 Guaranteed Prizes:** \$4400-200-150, U2200 \$200-100, U2000 \$200-100, U1800 \$180-90, U1600/Unrated \$140-70, U1400 \$100, U1200 \$70. See also www.uschess.org/tournaments/2018/usopen/ for additional details.

Aug. 4, Wisconsin
US Chess Grand Prix Points: 15
2018 U.S. Open National Blitz Championship (BLZ)
7 Double Round (14 games) Swiss, 1 section, G/5 d0. Blitz rated, higher of regular or Blitz rating used. Entry fee \$40, free to Unrated players if paying US Chess dues. Registration 9-11:30 a.m., round 1 begins at noon. **\$2000 Guaranteed Prizes:** \$4400-200-150, U2200 \$200-100, U2000 \$200-100, U1800 \$180-90, U1600/Unrated \$140-70, U1400 \$100, U1200 \$70. See also www.uschess.org/tournaments/2018/usopen/ for additional details.

Aug. 4, Wisconsin
US Chess Grand Prix Points: 15
2018 U.S. Open National Blitz Championship (BLZ)
7 Double Round (14 games) Swiss, 1 section, G/5 d0. Blitz rated, higher of regular or Blitz rating used. Entry fee \$40, free to Unrated players if paying US Chess dues. Registration 9-11:30 a.m., round 1 begins at noon. **\$2000 Guaranteed Prizes:** \$4400-200-150, U2200 \$200-100, U2000 \$200-100, U1800 \$180-90, U1600/Unrated \$140-70, U1400 \$100, U1200 \$70. See also www.uschess.org/tournaments/2018/usopen/ for additional details.

Aug. 4, Wisconsin
US Chess Grand Prix Points: 15
2018 U.S. Open National Blitz Championship (BLZ)
7 Double Round (14 games) Swiss, 1 section, G/5 d0. Blitz rated, higher of regular or Blitz rating used. Entry fee \$40, free to Unrated players if paying US Chess dues. Registration 9-11:30 a.m., round 1 begins at noon. **\$2000 Guaranteed Prizes:** \$4400-200-150, U2200 \$200-100, U2000 \$200-100, U1800 \$180-90, U1600/Unrated \$140-70, U1400 \$100, U1200 \$70. See also www.uschess.org/tournaments/2018/usopen/ for additional details.

Aug. 4, Wisconsin
US Chess Grand Prix Points: 15
2018 U.S. Open National Blitz Championship (BLZ)
7 Double Round (14 games) Swiss, 1 section, G/5 d0. Blitz rated, higher of regular or Blitz rating used. Entry fee \$40, free to Unrated players if paying US Chess dues. Registration 9-11:30 a.m., round 1 begins at noon. **\$2000 Guaranteed Prizes:** \$4400-200-150, U2200 \$200-100, U2000 \$200-100, U1800 \$180-90, U1600/Unrated \$140-70, U1400 \$100, U1200 \$70. See also www.uschess.org/tournaments/2018/usopen/ for additional details.

Aug. 4, Wisconsin
US Chess Grand Prix Points: 15
2018 U.S. Open National Blitz Championship (BLZ)
7 Double Round (14 games) Swiss, 1 section, G/5 d0. Blitz rated, higher of regular or Blitz rating used. Entry fee \$40, free to Unrated players if paying US Chess dues. Registration 9-11:30 a.m., round 1 begins at noon. **\$2000 Guaranteed Prizes:** \$4400-200-150, U2200 \$200-100, U2000 \$200-100, U1800 \$180-90, U1600/Unrated \$140-70, U1400 \$100, U1200 \$70. See also www.uschess.org/tournaments/2018/usopen/ for additional details.

Aug. 4, Wisconsin
US Chess Grand Prix Points: 15
2018 U.S. Open National Blitz Championship (BLZ)
7 Double Round (14 games) Swiss, 1 section, G/5 d0. Blitz rated, higher of regular or Blitz rating used. Entry fee \$40, free to Unrated players if paying US Chess dues. Registration 9-11:30 a.m., round 1 begins at noon. **\$2000 Guaranteed Prizes:** \$4400-200-150, U2200 \$200-100, U2000 \$200-100, U1800 \$180-90, U1600/Unrated \$140-70, U1400 \$100, U1200 \$70. See also www.uschess.org/tournaments/2018/usopen/ for additional details.

Aug. 4, Wisconsin
US Chess Grand Prix Points: 15
2018 U.S. Open National Blitz Championship (BLZ)
7 Double Round (14 games) Swiss, 1 section, G/5 d0. Blitz rated, higher of regular or Blitz rating used. Entry fee \$40, free to Unrated players if paying US Chess dues. Registration 9-11:30 a.m., round 1 begins at noon. **\$2000 Guaranteed Prizes:** \$4400-200-150, U2200 \$200-100, U2000 \$200-100, U1800 \$180-90, U1600/Unrated \$140-70, U1400 \$100, U1200 \$70. See also www.uschess.org/tournaments/2018/usopen/ for additional details.

Aug. 4, Wisconsin
US Chess Grand Prix Points: 15
2018 U.S. Open National Blitz Championship (BLZ)
7 Double Round (14 games) Swiss, 1 section, G/5 d0. Blitz rated, higher of regular or Blitz rating used. Entry fee \$40, free to Unrated players if paying US Chess dues. Registration 9-11:30 a.m., round 1 begins at noon. **\$2000 Guaranteed Prizes:** \$4400-200-150, U2200 \$200-100, U2000 \$200-100, U1800 \$180-90, U1600/Unrated \$140-70, U1400 \$100, U1200 \$70. See also www.uschess.org/tournaments/2018/usopen/ for additional details.

Aug. 4, Wisconsin
US Chess Grand Prix Points: 15
2018 U.S. Open National Blitz Championship (BLZ)
7 Double Round (14 games) Swiss, 1 section, G/5 d0. Blitz rated, higher of regular or Blitz rating used. Entry fee \$40, free to Unrated players if paying US Chess dues. Registration 9-11:30 a.m., round 1 begins at noon. **\$2000 Guaranteed Prizes:** \$4400-200-150, U2200 \$200-100, U2000 \$200-100, U1800 \$180-90, U1600/Unrated \$140-70, U1400 \$100, U1200 \$70. See also www.uschess.org/tournaments/2018/usopen/ for additional details.

Aug. 4, Wisconsin
US Chess Grand Prix Points: 15
2018 U.S. Open National Blitz Championship (BLZ)
7 Double Round (14 games) Swiss, 1 section, G/5 d0. Blitz rated, higher of regular or Blitz rating used. Entry fee \$40, free to Unrated players if paying US Chess dues. Registration 9-11:30 a.m., round 1 begins at noon. **\$2000 Guaranteed Prizes:** \$4400-200-150, U2200 \$200-100, U2000 \$200-100, U1800 \$180-90, U1600/Unrated \$140-70, U1400 \$100, U1200 \$70. See also www.uschess.org/tournaments/2018/usopen/ for additional details.

Aug. 4, Wisconsin
US Chess Grand Prix Points: 15
2018 U.S. Open National Blitz Championship (BLZ)
7 Double Round (14 games) Swiss, 1 section, G/5 d0. Blitz rated, higher of regular or Blitz rating used. Entry fee \$40, free to Unrated players if paying US Chess dues. Registration 9-11:30 a.m., round 1 begins at noon. **\$2000 Guaranteed Prizes:** \$4400-200-150, U2200 \$200-100, U2000 \$200-100, U1800 \$180-90, U1600/Unrated \$140-70, U1400 \$100, U1200 \$70. See also www.uschess.org/tournaments/2018/usopen/ for additional details.

GRAND PRIX

Apr. 7, Connecticut

US Chess Grand Prix Points: 6

CT State Quick Championships! (QC)

at West Haven Police Dept. **\$1000 Prize Fund!** b/30, \$500 b/15. Open, U1700, U1200. 5/SS, G/25 d5, 1 & 2 accl'rd prngs if nec. Rds.: 10am then ASAP. **Open: \$300, \$200, \$100, \$50, U1700 \$150, \$100, \$50, \$50. Trophies to 1st Place Open, U1700, top 3 U1200. EF: \$40 Online, \$50 by 3/18, \$80 on site.** EF: Educational Technologies, 343 Beach St. #404, West Haven, CT 06516. Online EF save \$10! www.edu.techchess.com or www.CTChess.com.

Apr. 8, Connecticut

US Chess Grand Prix Points: 6

CT State Rapid Championships! (QC)

at West Haven Police Dept. **\$1000 Prize Fund!** b/30, \$500 b/15. Open, U1700, U1200. 7/SS, G/15 d5, 1 & 2 accl'rd prngs if nec. Rds.: 10am then ASAP. **Open: \$300, \$200, \$100, \$50, U1700 \$150, \$100, \$50, \$50. Trophies to 1st Place Open, U1700, top 3 U1200. EF: \$40 Online, \$50 by 3/18, \$80 on site.** EF: Educational Technologies, 343 Beach St. #404, West Haven, CT 06516. Online EF save \$10! www.edu.techchess.com or www.CTChess.com.

US Chess Junior Grand Prix!

Apr. 27-29 or 28-29, California, Northern

US Chess Grand Prix Points: 30 (Enhanced)

GM Mammedyarov Championship

Fri: BAC office, 2050 Concourse Drive, #42, San Jose 95131; Sat & Sun: Santa Clara Convention Center, 5001 Great America Pkwy. Park Free! 5SS, G/90 +30 2-day rds. 1-2 G/61 d5. Park free. **Prizes:** \$500 b/90 (60% guar). 3 sects: **2000+ (FIDE)** \$1,000-500-200, u2300-125-100. **1600-1999:** \$700-300-100, u1800: 200-100, **u1600:** \$700-300-100 u1400: 125-100, u1200: 100. Unr max \$100 exc. Open. Apr 18 Supp & TD disc. **Reg.:** F 6:30-6:45p & Sa 9:30-9:45a. **Rds:** F 7p, Sa 10a, 3p Su 10a 2:30p. (2-day Sa 10a 12:30 & merge). **EF:** 109, Econ EF: 89 w 50% prz, after 4/22 +20. Playupp +30. **GMS/IMS:** \$0 by 4/14 (prize - EF). **Info:** <http://BayAreaChess.com/champs>.

US Chess Junior Grand Prix!

June 8-10 or 9-10, Florida

US Chess Grand Prix Points: 30

CFCC 2018 Orlando Sunshine Open & Scholastic

Westin Lake Mary Orlando North, 2974 International Pkwy., 32746. **\$8,500/b150** (Scholastic = 1/2 entry) 70% Guaranteed 5 rounds at G/120 d5 (2-day, Round 1 G/60 d5) 4 Sections: **Prize Fund:** Premier \$1000-700-400, Under 2200 prize: \$500-300; **U2000 \$700-500-300, Under 1800 prize: \$500-300; U1600 \$700-500-300, Under 1400 prize: \$500-300; Scholastic U1200 \$400-300-150, Under 1000 \$100, U800 \$50.** Trophy to top each age "7 & under" thru 14 with at least 2 players. *Unrated limited to \$100, unless Place prize in Premier Rated Players can play-up one section; **EF:** 3-day \$89, Scholastic U1200: EF: \$45; After June 1, EF: \$100, (\$55 for Scholastic), plus \$5 if paid onsite. CFCC member discount: \$10 (\$5 for Jrs/Srs). To join CFCC, go to centralfchess.org. **Reg.:** ends 1/2 hr before 1st Rd. Scholastic (Sat & Sun only). **Round 1:** 7pm Fri (or 10am Sat at G/60 d5) Re-entry \$50 Rounds 2 thru 5: Sat 1:00 & 6:00, Sun 9:00 & 2:00 1/2-pt. byes if requested before round 2; Maximum 2 HR: \$119, (407) 531-3555; (Mention "Chess"), No Resort Fee, Comp WiFi in Guest room (basic elsewhere.) or <http://tinyurl.com/June2018Hotel>. Call Hotel if after May 25. (1-day Cancellation penalty). **Free Self-Parking for all! Send Registration and Check payable to CFCC, c/o Larry Storck, 95 Orene Way, Oviedo, FL 32765** or online at <https://onlineregistration.cfcc.com/> (by 6/7). Shortcut at <https://onlineregistration.cfcc.com/> (by 6/7). **Info:** www.centralfchess.org. **Emergency:** tel.com/407-312-6237.

June 21-24, 22-24 or 23-24, Nevada

US Chess Grand Prix Points: 300 (Enhanced)

2018 National Open

See Nationals.

July 28-29, Wisconsin

US Chess Grand Prix Points: 10

2018 U.S. Open Weekend Swiss

5SS, G/60 d5. **1,150 Guaranteed Prizes:** \$200-100-50, U2200/Unrated \$160, U2000 \$150, U1800 \$140, U1600 \$120, U1400 \$100, U1200 \$80, Unrated \$50. Entry fee \$40, Unrated players free if paying US Chess dues. On-site Registration 10:00-11:30 a.m. Saturday, Rounds at noon & 3:00 p.m. Saturday, 10:00 a.m., 12:30 p.m. & 3:00 p.m. Sunday. See www.uschess.org/tournaments/2018/usopen/ for additional details.

July 28-Aug. 5, July 31-Aug. 5 or Aug. 2-5, Wisconsin

US Chess Grand Prix Points: 300 (Enhanced)

119th Annual U.S. Open

See Nationals.

Aug. 4, Wisconsin

</

Tournament Life

100, u1600 50-50. u1500: \$200-100, u1200 50-50. Apr 18 Supp & TD disc. **Reg.:** 8:30-8:45. **Rds.:** 9-1-4:30. **EF:** 49, Econ 39 w/1/2 prz. after 4/9 +20, playu +20, GMs/IMs/NMs- \$0 by 4/2. **Info:** <http://BayAreaChess.com/grandprix>. W.

Apr. 14, Sacramento Kids Quads (PK-12; 3xG/30 d5)
Court yard Marriott, Rancho Cordova, CA 95670. **Trophies:** players w + score. **Sched:** Reqr. Check-in 1:30-2p. **Games:** 2:30-5p. **EF:** 29, 44 after 4/9. **Info:** <http://BayAreaChess.com/signature>. W.

Apr. 14, Sacramento LuperSwiss90 (3SS, G/90 d5)
Court yard Marriott, Rancho Cordova, CA 95670. **Prizes:** \$600 b/40. 50% guar. 1700+ : \$150-100, u1900 50. u1700: \$150-100, u1600 50. Apr 18 Supp & TD disc. **Reg.:** 8:30-8:45. **Rds.:** 9-1-4:30. **EF:** 43, Econ 33 w/1/2 prz. after 4/9 +15, playu +15, GMs/IMs/NMs-\$0 by 4/2. **Info:** <http://BayAreaChess.com/grandprix>. W.

Apr. 15, Bay Area Fremont Quads (PK-12; 3xG/30 d5)
Court yard Marriott, Fremont, CA 94538. **Trophies:** Players w + score. **Sched:** Reqr. Check-in 1:30-2p. **Games:** 2:15-5p. **EF:** 29, 44 after 4/10. **Info:** <http://BayAreaChess.com/signature>. W.

Apr. 15, Bay Area Fremont Swiss (PK-12; 4SS, G/30 d5)
Court yard Marriott, Fremont, CA 94538. **Trophies:** players w + score. **Sched:** Reg 9:30-9:45a. **Games:** 10a - 1:30p. **EF:** 34, 49 after 4/10. **Info:** <http://BayAreaChess.com/signature>. W.

Apr. 15, Fremont DuperSwiss75 (3SS, G/75 d5)
Court yard Marriott, Fremont, CA 94538. **Prizes:** \$1,300 b/50. 60% guar. 1900+ : \$200-100-100, u2000 50-50. 1500-1899: \$200-100, u1600 50-50. u1500: \$200-100, u1200 50-50. Apr 18 Supp & TD disc. **Reg.:** 8:30-8:45. **Rds.:** 9-12-3. **EF:** 49, Econ 39 w/1/2 prz. after 4/10 +20, playu +20, GMs/IMs/NMs + \$0 by 4/3. **Info:** <http://BayAreaChess.com/grandprix>. W.

Apr. 21, Milpitas QuickSwiss (4xG/45 d5)
NEW ADDRESS: 372 Turquoise Street, Milpitas, CA 95035. **Prizes:** \$1,300 b/50. 60% guar. 1900+ : \$200-100-100, u2000 50-50. 1500-1899: \$200-100, u1600 50-50. u1500: \$200-100, u1200 50-50. Apr 18 Supp & TD disc. **Reg.:** 8:30-8:45. **Rds.:** 9-11-12:45-2:30. **EF:** 49, Econ 39 w/1/2 prz. after 4/16 +20, playu +20, GMs/IMs/NMs- \$0 by 4/7. **Info:** <http://BayAreaChess.com/grandprix>.

US Chess Junior Grand Prix!
Apr. 21-22, BARBER Qualifier
For 1800+ players who must be in Grades K-8. 5SS, G/90 +30. 2050 Concourse Drive #42, San Jose, CA 95131. Park free. **Sched:** Reg: 9:15-9:45a. **Rds.:** 1-3 Sat 10a, 1:30p, 5p. **Rds.:** 4-5 Sun 10a, 1:30p. **1 Section:** 1800+ (FIDE rated). **Prizes: \$650 Guaranteed:** \$300-200-100-50. \$300 to first place provided he/she completes Barber tournament as Northern California Representative. 2nd: \$200, 3rd: \$100, 4th: \$50. **EF:** \$59, after 4/15 +15. Apr 18 Supp used for pairing & TD disc. **Info:** <http://BayAreaChess.com/barber>

US Chess Junior Grand Prix!
Apr. 21-22, DENKER Qualifier
For 2000+ players who must be in Grades 9-12. 5SS, G/90 +30. 2050 Concourse Drive #42, San Jose, CA 95131. Park free. **Sched:** Reg: 8:30-8:45a. **Rds.:** 1-3 Sat 9a, 12:30p, 3:45p. **Rds.:** 4-5 Sun 10a, 2p. **1 Section:** 2000+ (FIDE rated). **Prizes: \$650 Guaranteed:** \$300-200-100-50. \$300 to first place provided he/she completes Barber tournament as Northern California Representative. 2nd: \$200, 3rd: \$100, 4th: \$50. **EF:** \$59, after 4/15 +15. Apr 18 Supp used for pairing & TD disc. **Info:** <http://BayAreaChess.com/denker>

Apr. 22, Bay Area San Ramon Quads (PK-12; 3xG/30 d5)
Court yard Marriott, 18090 San Ramon Valley Blvd., San Ramon, CA 94583. **Trophies:** Players w + score. **Sched:** Reqr Check-in 1:30-2p. **Games:** 2:15-5p. **EF:** 29, 44 after 4/17. **Info:** <http://BayAreaChess.com/signature>. W.

Apr. 22, Bay Area Ramon Swiss (PK-12; 4SS, G/30 d5)
Court yard Marriott, 18090 San Ramon Valley Blvd., San Ramon, CA 94583. **Trophies:** players w + score. **Sched:** Reg 9-9:15a. **Games:** 9:30a-1:30p. **EF:** 34, 42 after 4/17. **Info:** <http://BayAreaChess.com/signature>. W.

Apr. 22, Palo Alto LuperSwiss90 (3SS, G/90 d5)
Crown Plaza Palo Alto, 4290 El Camino Real, Palo Alto, CA 94306. **Prizes:** \$1,300 b/50. 60% guar. 1900+ : \$200-100-100, u2000 50-50. 1500-1899: \$200-100, u1600 50-50. u1500: \$200-100, u1200 50-50. Apr 18 Supp & TD disc. **Reg.:** 8:30-8:45. **Rds.:** 9-1-4:30. **EF:** 49, Econ 39 w/1/2 prz. after 4/17 +20, playu +20 GMs/IMs/NMs- \$0 by 4/8. **Info:** <http://BayAreaChess.com/grandprix>. W.

Apr. 27-29 or 28-29, GM Mammedyarov Championship
See Grand Prix.

Apr. 29, Bay Area Cupertino Quads (PK-12; 3xG/30 d5)
Court yard Marriott, Cupertino, CA 95014. **Trophies:** Players w + score. **Sched:** Reqr. Check-in 1:30-2p. **Games:** 2:15-5p. **EF:** 29, 44 after 4/24. **Info:** <http://BayAreaChess.com/signature>. W.

Apr. 29, Bay Area Cupertino Swiss (PK-12; 4SS, G/30 d5)
Court yard Marriott, Cupertino, CA 95014. **Trophies:** players w + score. **Sched:** Reg 9-9:15a. **Games:** 9:30a - 1:30p. **EF:** 34, 49 after 4/24. **Info:** <http://BayAreaChess.com/signature>. W.

May 5-6, 13th Susan Polgar Foundation National Open for Boys and Girls
Livermore Community Center, 4444 East Ave., Livermore, CA 94550. **10 Championship sections based on age and gender:** Under8, Under10, Under12, Under14, Under 16 & 18 separate sections for Girls & Boys. **Individual Trophies:** Top 15 players. "Super Performance" trophies to players tied for last place with a trophy award and the top player(s) in each rating class who did not get a place trophy. Commemorative participation medals to all others. **Team Trophies:** Top 3 Schools and Clubs in each sections. **Time control:** G/60 d5. **Schedule:** Onsite Registration: Saturday 8-8:30am. Rounds: Saturday 9:30am, 12:30pm, 3:30pm, and

Sun 9:30am, 12pm, 2:30pm. **Byes:** Rds. 4&5 byes must be requested before Rd. 1. **Entry Fee for 2-day event by 4/22:** \$54, Add \$15 (4/23-5/1), Add \$30 (5/2-4), Add \$40 for onsite. **Side Events:** 2 sections based on grade and rating: K-Grade4 under500, K-Grade8 under800. **Individual Trophies:** Top 10 players, medals to all others. **Team Trophies:** Top 3 Schools and Clubs in each sections. **Time control:** G/30 d5. **Schedule:** Onsite Registration: Saturday 8-8:30am. Rounds: Saturday only: 9:30am, 11am, 12:30pm, 2pm, 3:30pm. **Entry Fee for side event by 4/22:** \$47, Add \$15 (4/23-5/1), Add \$30 (5/2-4), Add \$40 for onsite. **Other Special Side Events:** Q&A & 25-board Simul, Puzzle Solving Competition, Blitz Championship. May 2018 supplemental for all sections. Change fee equal to the late fee will apply for any changes, other than bye requests with less than one week before the tournament. Out of state entries 20% off (mail entry or email ask@bayareachess.com with USCF ID for online entry coupon code). Chief Organizer: J. Sztaray. Organizers/TDs.: T. Langland, J. McCumiskey. Sponsored by Susan Polgar Foundation. More info & flyer: www.spfnoc.com. Register online at www.spfnoc.com/registration. Mail entries to Bay Area Chess, 2050 Concourse Drive #42, San Jose, CA 95131. Register early to save. Questions: ask@BayAreaChess.com, 408-409-6596. W.

US Chess Junior Grand Prix!
May 6, Pleasanton SuperSwiss - G/61 (4SS, G/61 d5)
Sheraton Pleasanton, 5990 Stoneridge Mall Rd., Pleasanton, CA 94588. **Prizes:** \$1,300 b/50. 60% guar. 1900+ : \$200-100-100, u2000 50-50. 1500-1899: \$200-100, u1600 50-50. u1500: \$200-100, u1200 50-50. May 18 Supp & TD disc. **Sched:** Reg 8:30-8:45. **Rds.:** 9a, 11:30a, 2p-4:30p. **EF:** 49, Econ 39 w/1/2 prz. after 5/1 +20, playu +20, GMs/IMs/NMs \$0 by 4/22. **Info:** <http://BayAreaChess.com/grandprix>. W.

May 12, Foster City LuperSwiss90 (3SS, G/90 d5)
Foster City Court yard Marriott, 550 Shell Blvd., 94404. **Prizes:** \$1,300 b/50. 60% guar. 1900+ : \$200-100-100, u2000 50-50. 1500-1899: \$200-100, u1600 50-50. u1500: \$200-100, u1200 50-50. May 18 Supp & TD disc. **Reg.:** 8:30-8:45. **Rds.:** 9-1-4:30. **EF:** 49, Econ 39 w/1/2 prz. after 5/7 +20, playu +20, GMs/IMs/NMs- \$0 by 4/28. **Info:** <http://BayAreaChess.com/grandprix>. W.

May 12, Sacramento DuperSwiss (3SS, G/75 d5)
Court yard Marriott, Rancho Cordova, CA 95670. **Prizes:** \$600 b/40. 50% guar. 1700+ : \$150-100, u1900 50. u1700: \$150-100, u1600 50. May 18 Supp & TD disc. **Reg.:** 8:30-8:45. **Rds.:** 9-12-3. **EF:** 43, Econ 33 w/1/2 prz. after 5/7 +15, playu +15, GMs/IMs/NMs-\$0 by 5/1. **Info:** <http://BayAreaChess.com/grandprix>. W.

May 12, Sacramento Kids Quads (PK-12; 3xG/30 d5)
Court yard Marriott, Rancho Cordova, CA 95670. **Trophies:** players w + score. **Sched:** Reqr. Check-in 1:30-2p. **Games:** 2:30-5p. **EF:** 29, 44 after 5/8. **Info:** <http://BayAreaChess.com/signature>. W.

May 13, Fremont DuperSwiss75 (3SS, G/75 d5)
Court yard Marriott, Fremont, CA 94538. **Prizes:** \$1,300 b/50. 60% guar. 1900+ : \$200-100-100, u2000 50-50. 1500-1899: \$200-100, u1600 50-50. u1500: \$200-100, u1200 50-50. May 18 Supp & TD disc. **Reg.:** 8:30-8:45. **Rds.:** 9-12-3. **EF:** 49, Econ 39 w/1/2 prz. after 5/8 +20, playu +20, GMs/IMs/NMs- \$0 by 5/1. **Info:** <http://BayAreaChess.com/grandprix>. W.

May 13, Mother's Day special: Mom & Child Championship (PK-12; 5SS, G/30 d5)
2050 Concord Drive #42, San Jose, CA 95131. **Special commemorative trophies** to players w + score & all teams. **Sched:** Reg 9:30-9:45a. **Games:** 10a - 5p. **EF:** 44 (mother & child team), 59 after 5/4. **Info:** <http://BayAreaChess.com/parentsday>. W.

May 13, Bay Area San Ramon Quads (PK-12; 3xG/30 d5)
Court yard Marriott, 18090 San Ramon Valley Blvd., San Ramon, CA 94583. **Trophies:** Players w + score. **Sched:** Reqr Check-in 1:30-2p. **Games:** 2:15-5p. **EF:** 29, 44 after 5/8. **Info:** <http://BayAreaChess.com/signature>. W.

May 13, Bay Area San Ramon Swiss (PK-12; 4SS, G/30 d5)
Court yard Marriott, 18090 San Ramon Valley Blvd., San Ramon, CA 94583. **Trophies:** players w + score. **Sched:** Reg 9-9:15a. **Games:** 9:30a - 1:30p. **EF:** 34, 42 after 5/8. **Info:** <http://BayAreaChess.com/signature>. W.

May 19, Girls K-12 Western States Regional
Berkeley Chess School, 2622 San Pablo Ave., Berkeley. **Prizes:** Trophies to the top 3 players in each section. Sections K-3, K-6, K-12; May 18 Supp & TD disc. **Reg.:** Sat 9:00-9:30am. **Rds.:** Sat: 10am, 12pm, 2pm, 3:30pm, 5pm. **TC:** G/45 d5. **EF:** 30 after 5/17 +10. **WGMs, WIMs, WFM, s** -\$0 by 5/15. **Out of state players:** Free entry!! Hosting accommodations might be possible **Info:** www.Berkeleychessschool.org.

May 19, Milpitas QuickSwiss (4xG/45 d5)
NEW ADDRESS: 372 Turquoise St, Milpitas, CA 95035. **Prizes:** \$1,300 b/50. 60% guar. 1900+ : \$200-100-100, u2000 50-50. 1500-1899: \$200-100, u1600 50-50. u1500: \$200-100, u1200 50-50. May 18 Supp & TD disc. **Reg.:** 8:30-8:45. **Rds.:** 9-11-12:45-2:30. **EF:** 49, Econ 39 w/1/2 prz. after 5/14 +20, playu +20, GMs/IMs/NMs- \$0 by 5/5. **Info:** <http://BayAreaChess.com/grandprix>.

May 20, Cupertino DuperSwiss75 (3SS, G/75 d5)
Court yard Marriott, Cupertino, CA 95014. **Prizes:** \$1,300 b/50. 60% guar. 1900+ : \$200-100-100, u2000 50-50. 1500-1899: \$200-100, u1600 50-50. u1500: \$200-100, u1200 50-50. May 18 Supp & TD disc. **Reg.:** 8:30-8:45. **Rds.:** 9-12-3. **EF:** 49, Econ 39 w/1/2 prz. after 5/15 +20, playu +20 GMs/IMs/NMs- \$0 by 5/7. **Info:** <http://BayAreaChess.com/grandprix>. W.

May 20, San Jose Kids Quads (PK-12; 3xG/30 d5)
2050 Concourse Drive #42, San Jose, CA 95131. **Trophies:** players w + score. **Sched:** Required Check-in 2:30-3p. **Games:** 3-5:30p. **EF:** 29, 44 after 5/16 **Info:** <http://BayAreaChess.com/signature>. W.

May 20, San Jose Kids Swiss (PK-12; 4SS, G/30 d5)
2050 Concourse Drive #42, San Jose, CA 95131. **Trophies:** players w

+ score. **Sched:** Reg 9-9:15a. **Games:** 9:30a - 1:30p. **EF:** 34, 49 after 5/16. **Info:** <http://BayAreaChess.com/signature>. W.

California, Southern

The Los Angeles Chess Club
The Most Active Club on the West Coast! (310) 795-5710. * LACC: www.LAChessClub.com; VCC: www.ValleyChessClub.com; Contact: [Mick@LAChessClub.com](mailto: Mick@LAChessClub.com); Saturday & Sundays: 10 am-9 pm (Beginner/Novice & Intermediate classes + 3 Tournaments each day - Details on our web site. Tuesdays: 7:30-9:30 pm (Advance lecture). 11514 Santa Monica Blvd., Los Angeles, CA 90025. (4 blocks W of 405, SW corner of Santa Monica & Butler * 2nd Floor - above Javan Restaurant) Group Classes * Tournaments * Private (1:1) Lessons. Note our monthly major tournaments. Also, we have the best Weekly BLITZ tournament on Saturday nights at 6:30 pm!!

Apr. 1, 7, 8, 14, 15, 21, 22, 28, 29, Every Saturday & Sunday Chess 4 Juniors

9 separate events- 5SS, G/30 d0. 11514 Santa Monica Blvd. & Butler, LA, 90025, 2nd fl. 4 blocks West of 405. **EF:** \$30 (\$20 LACC memb, No prize 1/2 EF, siblings 1/2, Free new LACC members). **Reg.:** 12-1 pm. **Rds.:** 1pm & asap; done by 4. **Prizes:** Trophies & medals; All players receive prizes! **Parking:** Free on streets & BoA. Free healthy refreshments. **Info:** (310) 795-5710 or www.LAChessClub.com or Mick@LAChessClub.com.

July 20-22 or 21-22, 23rd Annual Pacific Coast Open
See Chess Life or www.cheststour.com.

Connecticut

Apr. 7, CT State Quick Championships! (QC)
See Grand Prix.

Apr. 8, CT State Rapid Championships! (QC)
See Grand Prix.

June 8-10 or 9-10, 24th Annual Northeast Open
See Chess Life or www.cheststour.com.

June 9, 24th annual Robert Musicant/Donald Yazgoor Memorial Scholastic

5SS, G/30 d0. Norwalk Library, 2nd Flr Auditorium, 1 Belden Ave., Norwalk, CT 06850. Near Exit 1 from US-7. Open to all players finishing 12th grade or younger. **EF:** \$10 postmarked by 6/2/18. ALL-\$15 after or at door. **Prizes:** Trophies to Top 3 overall, Top overall in grade categories K-2, 3-5, 6-8. Name of first overall is engraved on the Musicant Cup. Name of first U-1200/UNR is engraved on the Yazgoor Cup. Both cups are on permanent display in the Norwalk Library Main Branch Children's Library. **Reg.:** 9:15-9:45 Sat 6/9. **Rd. 1-10:00am, others ASAP.** Lunchroom facility available for bag lunch. Pizza/desserts will be provided. Boards and sets will be available. Please bring a clock if you have one. For more information contact: norwalknights@optonline.net. **Chks** payable to **Christopher Potts**, mail to: **Christopher Potts, 73 Nursery St., Norwalk, CT 06850**. Include player's full name, grade finishing and USCF ID number. Include SASE for confirmation if wanted. W.

July 27-29 or 28-29, 23rd Annual Bradley Open
See Chess Life or www.cheststour.com.

Florida

Boca Raton Chess Club
Friday night tournament games, one game a week for 4 weeks. www.bocachess.com, 561-302-4377.

June 8-10 or 9-10, FCFC 2018 Orlando Sunshine Open & Scholastic
See Grand Prix.

July 27-29 or 28-29, 26th Annual Southern Open
See Chess Life or www.cheststour.com.

Georgia

Apr. 6-8, 2018 National Junior High School (K-9) Championship
See Nationals.

May 12, GrayKnight May 2018 Scholastic
5SS, G/30 d0. Frederica Academy, 200 Murray Way, St. Simons Island, GA 31522. **Prizes:** Trophies to 1st, 2nd, 3rd, Team, & Upset in each of the four sections: Section #1 - Primary - K-3; Section #2 - Elementary - 4-5; Section #3 - Middle School - 6-8; Section #4 - High School 9-12. USCF Membership Required. Other States OK. **Entry Fee:** \$18 If before 05/10/18, \$20 the day of the tournament. Registration: 8:30-9:30a.m. Round 1 starts at 10:15a.m then each following round starts 25 minutes after the previous round ends. **Pre-Register to:** Donny Gray, 8601 Beach Blvd. #923, Jacksonville, FL 32216, (706) 589-8131, donny@grayknight.net.

Illinois

Apr. 20-22, 2018 All-Girls National Championships presented by the Kasparov Chess Foundation in association with the Renaissance Knights Chess Foundation & US Chess
See Nationals.

May 5, 1st Annual Little Egyptian Summer Quick Chess Open (QC)
5-SS, G/25 + d4. Southern Illinois University, Student Center, Cambria Room, 1255 Lincoln Dr, Carbondale, IL 62901. **EF:** \$10, \$15 after April 30th or onsite. USCF membership required. Free entries for GMs and IMs. **Rounds:** 10, 11, 1 pm, rounds 4 and 5 ASAP. One section. **Prizes:** Open \$100 1st place, u1600 \$75. Trophies: 1st and 2nd place u1000, u800, u600 and 1st u400, u200 and 1-3rd place Unrated. **Reg.:** 8-9:35am. **Parking:** Free parking in student lots. **Info:** sichess.org,

618-203-0927, info@sichess.org.

May 24-28, 25-28, 26-28 or 27-28, 27th annual Chicago Open
See *Chess Life* or www.chesstour.com.

June 16, 1st Annual Southern Missouri Illinois Egyptian RBO
5-SS, G/30 d5. Southern Illinois University, Student Center, Cambria Room, 1255 Lincoln Dr., Carbondale, IL 62901. **EF:** \$10, \$15 after May 31st or onsite. USCF membership required. **Rounds:** 10, 11, 1 pm, rounds 4 and 5 **ASAP**. **Trophies:** 1st and 2nd place U1000, U800, U600 and 1st U400, 2nd and 1-3rd place Unrated. **Reg.:** 8-9:35am. **Parking:** Free parking in student lots. **Info:** sichess.org, info@sichess.org, 618-203-0927.

July 20-22 or 21-22, 11th annual Chicago Class
See *Chess Life* or www.chesstour.com.

Louisiana

June 22-24, 2018 U.S. Junior Open
See Nationals.

US Chess Junior Grand Prix!

June 22-24, 2018 Not-A-Junior-Not-A-Senior Open
5SS, G/90 130 (Game in 90 minutes with 30-second increment.) Open to all players ages 21 to 49 by start date of tournament (6/22/2018). Hilton New Orleans Airport Hotel, 901 Airline Dr., Kenner, LA 70062, Ph: 504-469-5000 (hotel is directly across from the New Orleans Int'l. Airport with free hotel/airport shuttle service). HR: \$119 + tax for single, double, triple or quad - mention Cajun Chess Tournament and reserve by May 28 to assure group rate. Complimentary parking for all tournament attendees and free basic internet in each room. Hotel hot breakfast buffet tickets discounted to \$15 including tax and tip (usually \$19.95 without tax and tip) for hotel guests only. June 2018 USCF Supplement Ratings used. **SECTS: OPEN** (U2200 & U2000); **U1800/Unr.** (U1600 & U1400). **PRIZES:** 80% of Entry Fees. Two place prizes in each main section; one place prize in each class section. **EF:** \$60 by 6/1/18; \$70 by 6/15/18; \$80 thereafter and at site; **On-site Reg:** Fri. 6/22 from 11am-1pm. **Rds.:** Fri (6/22): 3pm; Sat & Sun (6/23-24): 10am & 3pm. **BYES:** 1/2-point bye may be taken for any Round; limit of 2 half-pt. byes allowed but must commit to any byes prior to the start of Round 3. **ENTRIES:** On-line registration, printable entry form, and more detailed info at www.cajunchess.com or mail entry form to Cajun Chess, 12405 Hillary Step Dr., Olive Branch, MS 38654. Info or Phone Ent: 504-208-9596 or 504-905-2971. Major credit cards accepted (no checks at site). Please bring your own chess boards, sets and clocks; chess vendor will be on site.

Maryland

Maryland Chess Tournaments

MD Chess runs scholastic tournaments 2 Saturdays per month from September through June & open tournaments 2 Saturdays or weekends per month throughout the year. Visit www.MDChess.org to find tournament announcements, tutors, coaches, & camps; register online for tournaments; & subscribe to scholastic and/or open e-newsletters. MD scholastic players who compete in the Varsity section (exclusively for players rated 1600+) of a MD-Sweet-16 Qualifier can qualify for the \$45,000 scholarship to UMBC awarded annually. The University of Maryland, Baltimore County's chess team is a perennial top-10 contender for the national championship.

Massachusetts

Apr. 15, 28th Massachusetts G/60 Championship
See *Chess Life* or www.masschess.org.

Apr. 27-29 or 28-29, 27th annual Eastern Class Championships
See *Chess Life* or www.chesstour.com.

May 26-28 or 27-28, 87th Massachusetts Open
See *Chess Life* or www.masschess.org.

Aug. 16-20, 16-19, 17-19 or 18-19, 48th annual Continental Open
See *Chess Life* or www.chesstour.com.

Nevada

June 21-24, 22-24 or 23-24, 2018 National Open
See Nationals.

June 22, Youth Trophy Tournament

5-SS, G/25, +5. Westgate Las Vegas Resort. Open to players age 14 & under. **3 sections:** Open, U1000, U700. **Trophies** top 5 in each section, top 2 in each 200 point rating group and unrated. Must be 3 players eligible for each prize to be awarded. **EF:** \$39 by 5/31, \$50 later. **Reg.:** 8:30-9 a.m. **Rds.:** 10-11:30-1-2:15-3:30. **Youth Blitz:** 6:30 p.m. (\$20 by 5/31 \$25 later). www.VegasChessFestival.com.

June 23-24, International Youth Championship

6-SS, G/60 +5. Westgate Las Vegas Resort, 3000 Paradise Road, 89109. **In 4 Sections by age:** 14 & Under Open, 14 & Under Reserve (under 1000), 9 & Under Open, 9 & Under Reserve (under 800). **Trophies** top 10 in each section plus class and team trophies. 1st Place in each section wins a **Computer** loaded with valuable Chess Software and hundreds of Videos, 2nd-4th win chess prizes valued at 250-150-100. Unrated players may not win 1st in Reserve sections. **EF** \$89 by 5/31, \$99 by 6/20, \$120 later. Half point bye in any round (limit 2) if requested in advance. **Reg.:** 8:30-9 a.m. **Rds.:** 10-1-3:30, 10-1-3:30. **Youth Blitz:** 6:22 6:30 p.m. (\$20 by 5/31 \$25 later). **HR:** \$69, \$92 Friday and Saturday (800) 732-7117 **Cutoff for special hotel rate is May 31; after that rates will increase significantly and there may not be any rooms available.** **ENT:** Vegas Chess Festivals, PO Box 90925, Henderson, NV 89009-0925 or www.VegasChessFestival.com.

New Jersey

Apr. 14, Princeton Charter School

TOURNAMENT LOCATION: Princeton Charter School at:100 Bunn Dr., Princeton, NJ 08540. TIME CONTROL: G/30 d0; Swiss to 4 rounds. **SECTIONS:** Open above 1000; U1000; U700; U300/Unrated. (sections will be combined. Awards will be given to the top 3 in each section) **Parental Supervision Required:** The parents or another adult must be designated to supervise the student player between rounds. **Schedule** (will be accelerated if possible) **First Round:** 12:01 PM. **Second Round:** ASAP **Third Round:** ASAP. **Fourth Round:** ASAP. **Award Ceremony:** ASAP (4:05 the latest). Schedule will be accelerated if possible. **(*) Online Registration \$30 Only if register one week before: www.ChessKid-sNY.com/PCSSchessProgram.htm. (*) Fee will increase automatically to \$35 if register later.** On site registration the date of the event: \$40 from 11:45 am to 12:00 noon. **Information:** email to Miguel Iniguez at: migini@gmail.com **Results will be posted online the same day of the event!**

Apr. 15, Westfield Spring Scholastic

Westfield Y, 220 Clark St., Westfield, NJ 07090. K-12. **3 Sections:** Open, U1250, U750. **Open:** 3-SS, G/40 d5. **Rounds:** 2:00, 3:45, 5:30 p.m. **U1250 & U750:** 4-SS, G/25 d5. **Rounds:** 2:00, 3:15, 4:30, 5:45 p.m. **Prizes:** Trophies to Top 5 in each section. Tiebreaks used. See USCF Rule 34E. **EF:** \$25, \$20 members. **Register:** 1:15-1:50 p.m. **Info:** westfieldchessclub@gmail.com, www.westfieldchessclub.org/Events.html

May 6, NJ Children's Chess School Open

New Jersey Children's Chess School, 862 Degraw Ave., Forest Hill (Newark), NJ 07104. 3-RR, G/45 d0, K-6, **Reg.:** 2:25-5:00PM. **Awards:** Trophies to ALL. **EF:** \$25 for registration by mail one week in advance, \$30 at door Chess classes meet every Sunday 3-5:30PM. **Info:** Arkady Geller 973-483-7927 or chesscamp1@yahoo.com. **Website:** www.chesskidsnj.com. First round begins at 3:00PM.

May 12, Princeton Charter School

TOURNAMENT LOCATION: Princeton Charter School at:100 Bunn Dr., Princeton, NJ 08540. TIME CONTROL: G/30 d0; Swiss to 4 rounds. **SECTIONS:** Open above 1000; U1000; U700; U300/Unrated. (sections will be combined. Awards will be given to the top 3 in each section) **Parental Supervision Required:** The parents or another adult must be designated to supervise the student player between rounds. **Schedule** (will be accelerated if possible) **First Round:** 12:01 PM. **Second Round:** ASAP **Third Round:** ASAP. **Fourth Round:** ASAP. **Award Ceremony:** ASAP (4:05 the latest). Schedule will be accelerated if possible. **(*) Online Registration \$30 Only if register one week before: www.ChessKid-sNY.com/PCSSchessProgram.htm. (*) Fee will increase automatically to \$35 if register later.** On site registration the date of the event: \$40 from 11:45 am to 12:00 noon. **Information:** email to Miguel Iniguez at: migini@gmail.com **Results will be posted online the same day of the event!**

May 26, U.S. Amateur K-8 East Under 1200

5-SS, G/30 d5. Hyatt Morristown, 3 Speedwell Ave., Morristown, NJ 07960. If staying, for chess rate (\$129 per night base), details at www.njscf.org or book at <https://aws.passkey.com/go/NJChessMay> or call Phone: 973-647-1234, mention NJ Chess. Free parking during the day, public transportation to NYC, Philadelphia. walking distance, 30 restaurants, shops and parks within 5 minute stroll. In three sections: Under 1200, Under 900, Under 600. Trophies to Top Ten in each section. Others win chess medallions. Unrated may not win first place. Registration: Saturday, May 26, 11am -12noon. **Rounds:** 12:30pm, then ASAP with lunch break after Round Two. **EF:** \$30 if postmarked by May 16th. **EF** at site \$40 **cash only.** One 1/2 point bye allowed if requested with entry fee. May Rating Supplement used. Entries to Aaron Kiedes, 263 Acabonack Road, Highland Lakes, NJ 07422. Email akiedes@gmail.com for more information. Entries must include name, USCF ID and expiration date, mailing address, email address, phone number, section, grade level and entry fee. Checks made out to NJSCF. No phone entries. Online entries \$32 at www.njscf.org after 4-15-18 until 5-24-18 at midnight. W.

May 26-28 or 27-28, 74th Annual U.S. Amateur East Championship
See Nationals.

New York

Oct. 15, Nov. 19, Dec. 17, Jan. 28, Feb. 11, Mar. 4 (makeup date: May 6), 5th Annual Magnus High School and Junior High Chess League

Columbia Grammar and Prep. High School Cafeteria, 36 W. 93rd St. (bet. Central Park West & Columbus Ave., near 96th St. subways), NYC. 12-SS, G/60 d10, open to grades 7-12 born after 3/4/98. 3 sections: **1. Premier** (over 1799), **2. Under 1800**, **3. Under 1200**. Plaques to top 3 each section, top U1900 (Premier), top U1500 (Sec. 2), top U800, Unr. (Sec. 3). May be limited to 1st 60 players to register for each date. **Individual free entry prizes:** free entry to 2 specified Continental Chess tmts. thru 12/31/18 to 1st each section. **Team prizes:** free entry to 1 CCA tmt. thru 12/31/18 to the 4-top-scoring players from same school across all 3 sections, plaques to top 3 overall team scores, limit 2 teams per school. **Mixed Doubles** (2-player male/female team, avg. rating U2200, may be in different sections and from different schools, must sign-up before 1/28) **Bonus Prize:** free entry to 1 CCA tmt. thru 12/31/18 to 1st Mixed Doubles team, chess sets to top 3 overall Mixed Doubles. Free entries courtesy of Continental Chess and are valid for CCA tmts. with 100% guaranteed prizes; see www.magnusleague.org, www.chesscenter.cc or www.chesstour.com for details and restrictions. **Rds.:** 10 am-12:30 pm (earlier if feasible) each date. **Ent:** Applications and EF accepted online, may be paid by school. **All:** Each date's games submitted for rating prior to next date's games. Players must re-register before each date; official USCF rating used in effect on each date used for that date (unofficial ratings usually listed if otherwise unrated or if requesting to play in Premier). Unr. may enter section 2 or 3 (or Premier by TD permission). Limit 6 byes (2 byes max. rds. 9-12),

commit before Jan. 28. Teammate pairings avoided but possible. Ties for free entries decided by tiebreak special playoff May 6 between top 2 on tiebreak (may be fast game). Extra Bonus Points may be awarded each date! Bring clocks! **Info:** director@magnusleague.org, chess-centr@gmail.com, **online entry** thru 4 pm the day before each rd. at **Magnus League website:** www.magnusleague.org. Reg. on-site by 9:30 am. Make school purchase orders payable to: **Chess Center of NY, PO Box 4615, New Windsor, NY 12553. W.**

May 18-20 or 19-20, 26th annual New York State Open and Senior
See *Chess Life* or www.chesstour.com.

Ohio

Apr. 27-29, 2018 National High School (K-12) Championship
See Nationals.

Pennsylvania

MasterMinds Scholastic Summer League
Info at: www.mastermindschess.org.

Apr. 15, PCL April Quick Quads (QC)

3RR, G/15 d3. O'Hara Student Center, Univ. of Pitt., 4024 O'Hara St., Pittsburgh, PA 15213. **EF:** \$10, \$7 Jrs. \$20 to 1st/quad. **Reg.:** 11-11:15am. **Info:** martinak_tom_m@hotmail.com, 412-908-0286. W.

July 2-3, 7th annual World Open Women's Championship
See *Chess Life* or www.chesstour.com.

US Chess Junior Grand Prix!

July 2-3, 10th annual World Open Under 13 Championship

6SS, G/60 d10. Philadelphia Marriott Downtown (see World Open for location, rates). Open to all born after 7/3/05. In 4 sections. **Open Section:** Trophies to top 7, top 2 Under 1600/Unr; free entry in all CCA tournaments 7/13/18-12/31/18 to 1st. **Under 1400 Section:** Trophies to top 7, top 2 Under 1200, free entry in all CCA tournaments 7/13/18-9/30/18 to 1st. **Under 800 Section:** Trophies to top 7, top 2 Under 400, top Unrated; free entry in all CCA tournaments 7/13/18-9/30/18 to 1st. **EF:** \$48 online at chessaction.com by 6/30, \$51 mailed by 6/15, \$60 at site. **Late reg.** 7/2 to 10 am, rds. Mon 11-2-5, Tue 10-1-4. Up to 2 half point byes allowed, must commit before rd. 3. **Ent:** chessaction.com or Continental Chess, PO Box 8482, Pelham, NY 10803. Questions: chesstour.com, chesstourinfo@DirectorATChess.US, 347-201-2269. \$15 service charge for refunds.

July 3-8, 4-8, 5-8 or 6-8, 46th Annual World Open
See *Chess Life* or www.chesstour.com.

July 27-29 or 28-29, 19th annual Pittsburgh Open
See *Chess Life* or www.chesstour.com.

Tennessee

May 11-13, 2018 National Elementary (K-6) Championship
See Nationals.

Virginia

May 26, 6th Cherry Blossom Classic Scholastic

Side Event to the 6th Cherry Blossom Classic (May 25-28). Washington Dulles Airport Marriott, 45020 Aviation Dr., Dulles, VA 20166. 4-or-5-SS. Sections: K-12 Open, K-8 U1000, K-5 U800, K-3 U600. K-12/K-8: 4-SS, G/45 d5; K-5/K-3: 5-SS, G/30 d5. \$32 by May 21st, \$37 by May 25th, \$45 onsite. Trophies to Top 5. Other Class Trophies and Medals. Onsite Reg. closes 9:30am. **Rounds** 10am and ASAP. More information/Online registration: www.cherryblossomchess.com. Mail checks (payable to Capital Area Chess) to Cherry Blossom Classic, Attn. Capital Area Chess, PO Box 223582, Chantilly, VA 20151. Email info only: Anand Dommalapati, cb2018@capitalareachess.com.

June 15-17 or 16-17, 7th annual Continental Class Championships
See *Chess Life* or www.chesstour.com.

Wisconsin

July 28-29, 2018 U.S. Open Weekend Swiss
See Grand Prix.

July 28-Aug. 5, July 31-Aug. 5 or Aug. 2-5, 119th Annual U.S. Open
See Nationals.

July 29, 2018 U.S. Open Scholastic Championships

Open to all US Chess members entering Grade 12 and below [including new members]. **4 Round Swiss in Four Sections: Junior High - High School Championship:** Open to players entering Kindergarten through the 12th Grade in the fall. Open to all ratings. **Junior High - High School Under 1200:** Open to players entering Kindergarten through the 12th Grade in the fall. Open to players rated below 1200. **No Unrateds!** **Elementary Championship:** Open to players entering Kindergarten through the 6th Grade in the fall. Open to all ratings. **Elementary Under 1000:** Open to players entering Kindergarten through the 6th Grade in the fall. Open to players entering Kindergarten through the 6th Grade in the fall. Open to players rated below 1000. *No Unrateds! If the sections are larger than expected, they may be split into multiple sections.* **Prizes:** Trophies to the Top 3 in each section. *The number of trophies may increase based on the number of entries.* **Schedule: Championship Sections:** Round One at 12 NOON. Round Two at 1:30 PM. Round Three at 3:00 PM. Round Four at 4:30 PM. Awards Ceremony at 6:00 PM. **Time Control:** Game/30 d5. **Entry Fee:** Online, \$25 by 7/9, \$35 after. By mail, \$27 postmarked by 7/9; \$37 postmarked by 7/16. *Do not mail after 7/16 - it will not be received!* By phone, \$30 by 7/9, \$40 after until 7/20 by 5 PM CDT. Onsite, \$40 until 7/29 by 10 AM EDT. See www.uschess.org/tournaments/2018/usopen/ for additional details.

Aug. 4, 2018 U.S. Open National Blitz Championship (BLZ)
See Nationals.



KASPAROV
CHESS FOUNDATION



US CHESS
FEDERATION



presents

KCF's 15th Annual All-Girls National Championships

April 20-22, 2018 - Chicago, IL

First place winners of each section will qualify to play at the 2018 World Youth/Cadets Championships

MAIN EVENT

6-SS, G/90,d5

Friday April 20

2:30 PM Opening Ceremony
3:00 PM Round 1

Saturday April 21

10:00 AM Round 2
2:30 PM Round 3
6:30 PM Round 4

Sunday April 22

9:00 AM Round 5
1:00 PM Round 6
5:00 PM Awards Ceremony

ENTRY FEE

\$60 postmarked by 3/19, \$80 by 4/9, \$95 after/on-site.

SIDE EVENTS

Bughouse Tournament

Fri. April 20 11:00 AM
Entry fee: \$30 per team

Blitz Tournament (G/5,d0)

Fri. April 20 7:00 PM
Entry fee: \$20 4/9, \$25 after/on-site.



SECTION/AWARDS

Age as of 1/1/2018

- Under 8** top 15 individuals
top 500 – 799, top U500, top 6 schools
- Under 10** top 15 individuals
top 700 – 999, top U700, top 6 schools
- Under 12** top 15 individuals
top 900 – 1199, top U900, top 6 schools
- Under 14** top 15 individuals
top 1100 – 1399, top U1100, top 4 schools
- Under 16** top 8 individuals
top 1300 – 1599, top U1300, top 3 schools
- Under 18** top 8 individuals,
top 1500 – 1799, top U1500, top 3 schools

HYATT MCCORMICK PLACE

2233 S Martin Luther King Dr
Chicago, IL 60616

HOTEL RESERVATIONS

single - quad \$159
(888) 421-1442, online at
www.rknights.org/allgirls
Reserve early hotel may sell out / raise rates

INFO

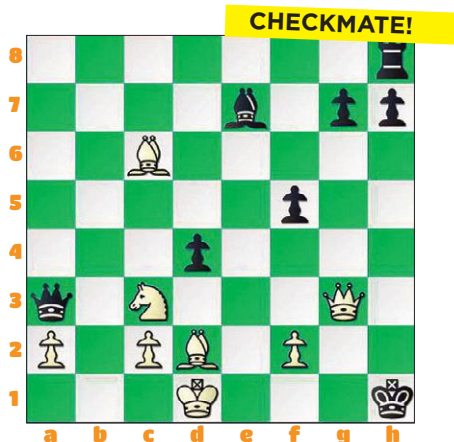
www.rknights.org/allgirls
(773) 844-0701 | david.heiser@
renaissanceknights.org

Online Registration: www.rknights.org/allgirls
Mailed Registration: make checks payable to: Rknights, Attn: All-Girls, PO Box 1074 Northbrook, IL 60065

Answers

for **You Can Do It!** (from page 22)

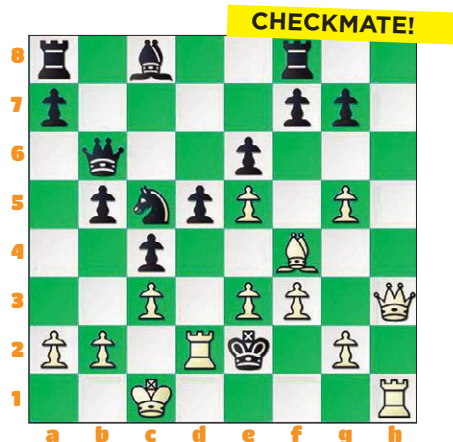
Solution #1: 1. Qg3 Kh1 2. Bc6#



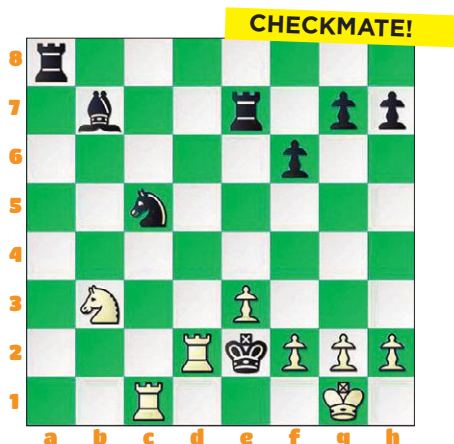
Solution #4: 1. Nf4+ Kg1 2. Ke2#



Solution #6: 1. 0-0-0+ Ke2 2. Rd2#

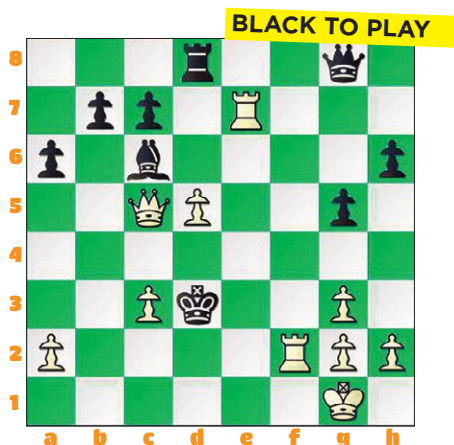


Solution #2: 1. Nb3 discovered double check 1. ... Ke2 2. Rd2#



Solution #5: 1. Qe1+ Kxc2 2. Qc3#
(Note: No diagram is included for this solution.)

Solution #3: 1. d5! (Threatening both Qd4# and Re3#)



Susan Polgar Institute for Chess Excellence

Webster UNIVERSITY

2018 SPICE CHESS SUMMER CAMP

June 18-22 and July 16-20

Ages 5-15

- ★ All day and morning sessions
- ★ Early bird rates until May 10
- ★ Instructors are members of #1 ranked collegiate team in the nation including Grandmasters

For more information:
webster.edu/spice • 314-246-8075
chess@webster.edu

My First Move



GM Timur Gareyev, Blindfold King and Guinness World Record Holder

In this column, we feature advice from your chess heroes and explore what shaped their development when they were Chess Life Kids like you!

How it began

My grandfather taught me how to play chess when I was six years old. I enjoyed the game as I had the freedom to create and rule the magical world of legendary battle between two armies and masterminds.

Maintaining enthusiasm

I developed focus despite the internal and external urges to do something else. To be honest, it was rather 50/50 in terms of quality effort versus just having a good time and doing whatever else I was up to.

Choosing a chess career

I was 8 years old when I played my first tournament. After several years and many competitions, I finally was presented with the opportunity to play internationally at the top junior level. I managed to win the Asian Championship U-14 when I was 12. This served as a great source of acknowledgement and motivation to reach the grandmaster level and aim for the top.



Playing blindfold chess with FMs Shahi Harshal and David Shailesh, from India

How a blindfold chess novice became a Guinness Book record holder for his 48-board blindfold simultaneous exhibition

I attempted blindfold chess on multiple boards for the first time less than seven years ago out of sheer curiosity! The challenge of being able to see through the variations in the games I read [about] in chess books and magazines attracted me early on. I would follow the tactical and strategic ideas to the best of my visualization abilities. This practice of blindfold chess training transferred over to better preparedness when it came to tackling multiple games of chess without sight of the chessboard.

The offbeat way he maintains energy during his blindfold simultaneous exhibitions

I enjoy staying in shape during the match as it keeps the blood flow going. Riding a [stationary] bike [during the match] certainly generates energy! I also like to have plenty of water and fresh snacks like fruits, fresh squeezed juices, and cut-up vegetables as I did during my world-record event.

What's next after breaking a world record?

This year I plan to share interesting ideas and techniques on blindfold chess in the book I am working on.

The chess hero's chess hero

I learned from many champions including my legendary coach Georgy Konstantinovich Borisenko. His legacy included training his wife, Belova, who reached candidates matches of women's world championships, as well coaching World Champion Nona Gaprindashvili.



Timur with Blindfold Chess simultaneous exhibition participants Darin and Sarah Shundo at OFF da ROOK chess camp



Facing Hao Wang on board one at the World Youth Championship U-16 in India



Studying chess with his cousin (left) and his first coach, Aleksey Mikhailovich

Favorite openings

My grandfather taught me how to play the King's Gambit and my father showed me the Queen's Gambit. I stuck with queen-pawn openings for many years and now enjoy experimenting with the King's Gambit and other wild lines. The King's Indian and nowadays the Dragon are among my favorites.

Favorite books

Georgy Lisitsin's *Strategy and Tactics in the Art of Chess* included the Four Knights' opening sacrifice on e4 explaining the benefits of seizing the center. Later on, after missing an important win in a youth championship, my father helped me master the checkmate with bishop and knight using the book.

My best chess advice

Persist in your vision and journey to the ultimate victory.



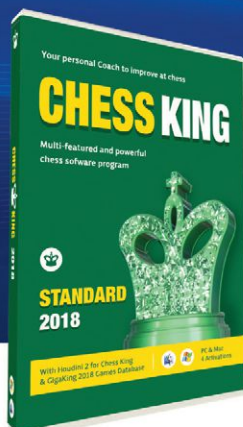
The United States' Largest Chess Specialty Retailer

888.51.CHESS (512.4377) ★ www.USCFSales.com

THE ULTIMATE CHESS DATABASE SOFTWARE



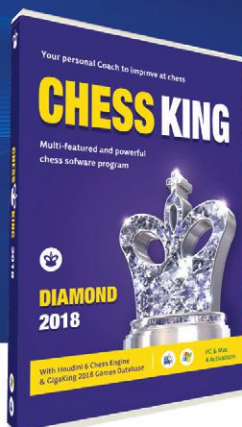
AVAILABLE FOR IMMEDIATE DOWNLOAD!



Standard 2018

E-WIN0028AK

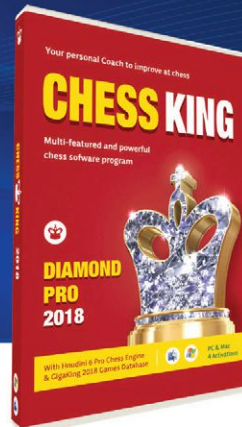
\$39.95



Diamond 2018

E-WIN0029AK

\$79.95



Diamond Pro 2018

E-WIN0030AK

\$109.95



- Easy-to-use and complete chess software
- Super affordable and powerful
- State of the Art Technology – Contains the new Houdini 6 Pro
- Suitable from beginners to masters



Supports Both Mac and Windows



Install On Up To 4 Different Computers

All Purchases Benefit the US Chess Federation