

CHESS LIFE Kids

Cheers from the National Elementary Championship!





CHESS

PROGRAMMING

IN YOUR SCHOOL

The Saint Louis Chess Club has been teaching chess in Greater Saint Louis for **10 years**, and just this past year, we taught chess classes in over **90 schools** throughout the city!



Chess is fun for students, and promotes academic success. Check to see if your school offers chess instruction! If not, the Saint Louis Chess Club can help set yours up today.

Schools without funding may be eligible for scholarships or grants. For questions about getting a chess program in your school, just email scholastics@saintlouischessclub.org and we'll do the rest!



Saint Louis
CHESS CLUB

Building Champions: In the Classroom and the Community

4657 Maryland Avenue, Saint Louis, MO 63108 | 314.361.CHESS (2437) | saintlouischessclub.org
info@saintlouischessclub.org | @STLChessClub #STLChessClub      

The Saint Louis Chess Club and World Chess Hall of Fame admit students and visitors of any race, color, national and ethnic origin to all the rights, privileges, programs, and activities generally accorded or made available to students at the school. It does not discriminate on the basis of race, color, national and ethnic origin in administration of its educational policies, admissions policies, scholarship and loan programs, and athletic and other school-administered programs.



CHESS LIFE Kids

US Chess Executive Director: Carol Meyer
carol.meyer@uschess.org

Senior Director of Strategic Communication:
 Daniel Lucas
dlucas@uschess.org

Chess Life Kids Editor: Melinda Matthews
mmatthews@uschess.org

Art Director: Cat Connor
catseyephotography@mac.com

Character Designer and Illustrator:
 Chandler Ellison
www.chandlerellison.com

Editorial Asst./Copy Editor: Alan Kantor
akantor@uschess.org

Editorial Assistant: Natasha Roberts
nroberts@uschess.org

Tournament Life: Joan DuBois
tla@uschess.org

CONTRIBUTORS: Send your contributions and articles to *Chess Life Kids*, PO Box 3967, Crossville, Tennessee 38557 or email to mmatthews@uschess.org.

Chess Life KIDS (USPS 023-567, ISSN: 1932-5894) is published in February, April, June, August, October, and December of every year by US Chess, 137 Obrien Drive, Crossville, Tennessee 38555. Periodical postage paid at Crossville, Tennessee, and additional mailing offices.

CHANGE OF ADDRESS: Be sure to notify us at once of any change of address. Please include your old address and your new address, along with your US Chess I.D. number.

POSTMASTER: Send address changes to US Chess, PO Box 3967, Crossville, Tennessee 38557.

Annual Scholastic Membership: Regular Scholastic Membership (online version of *Chess Life Kids*), age 12 or younger, is just \$17 per year. Premium Scholastic Membership (receives *Chess Life Kids* by mail) is \$25 per year. \$13 of every premium membership goes towards providing *Chess Life Kids*. Annual subscription rate is \$18. Entire contents copyright 2018, US Chess.

Teachers may photocopy instructional articles for classroom use, but republication or widespread copying without the written consent of US Chess is forbidden.



CONTENTS

04

IT'S YOUR MOVE

07

YOU CAN DO IT!
 By ICCM Jon Edwards

08

CHESS KIDS
 By Al Lawrence

10

AVOID THE TRAP!
 By Bruce Pandolfini

12

NATIONAL ELEMENTARY (K-6)
 CHAMPIONSHIP
 By IM Eric Rosen

18

JUNIOR GRAND
 PRIX

19

TOURNAMENT
 LIFE

21

ANSWERS

22

MY FIRST MOVE
 This month: GM Sam
 Shankland



ON THE COVER

Fabiano Fever spread to all of the scholastic spring nationals, but the National Elementary (K-6) Championship boasted the biggest and most enthusiastic crowd of them all. Participants gathered for a group photo and signed a gigantic card to offer well wishes and support to Fabiano Caruana, our World Championship contender. *Cover photo: Michael Lloyd, www.eaglewingsphotography.com.*

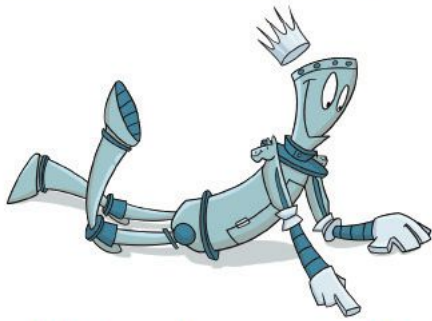
It's Your Move!

Fabiano Fever

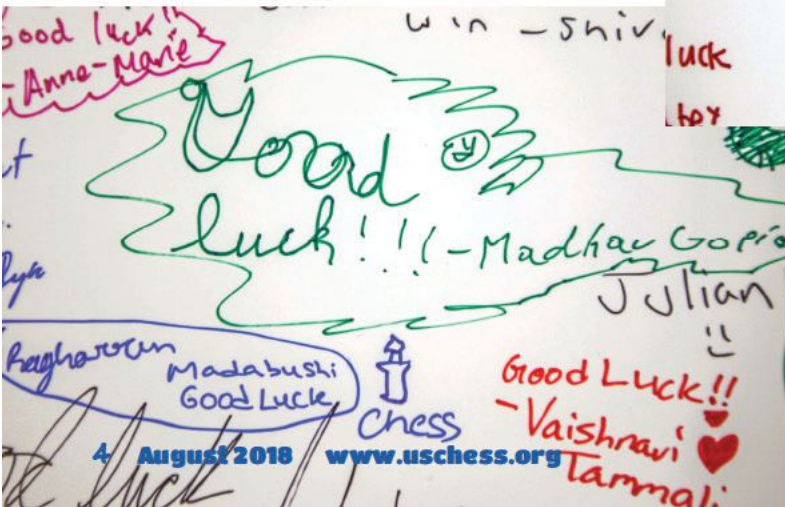
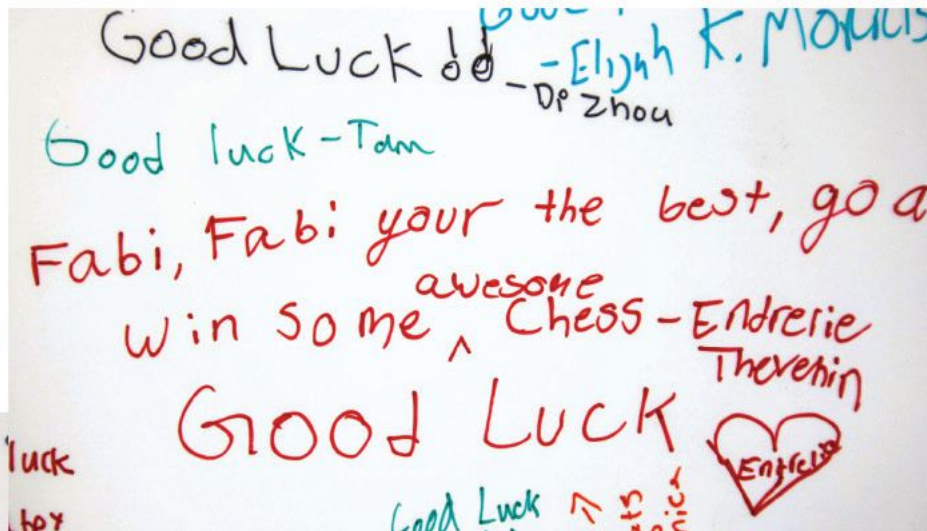
At our spring national championships, we stoked "Fabi Fever" for the upcoming World Championship match by creating giant poster cards featuring group shots of the participants. Everyone had the opportunity to sign the card with words of support and encouragement. The cards have been sent to our world champion candidate.



Photo: Lennart Ootes, courtesy of Saint Louis Chess Club



"Good games, Fabiano!"



Fabiano recorded a video message from the U.S. Championship thanking the players for their support.

Check it out here:
https://www.instagram.com/p/BiPO7FEImSM/?utm_source=ig_web_copy_link



ChessKid.com

PLAY



LEARN



**#1 Chess Site for Kids. 200,000+ Kids, Parents, & Coaches!
100% Safe and Kid-Friendly! Signup Today - it's FREE!**

Official US Chess online rated!

No entry fees » No hotel costs » Free parking

20% off ICC membership

Bonus



www.chessclub.com/uschess



YOU can DO IT!

by ICCM Jon Edwards
10th United States Correspondence Chess Champion

In a blitz game played in 2017, World Championship Candidate Fabiano Caruana defeated Hou Yifan with a neat combination that all of you should know.

(see diagram next column)

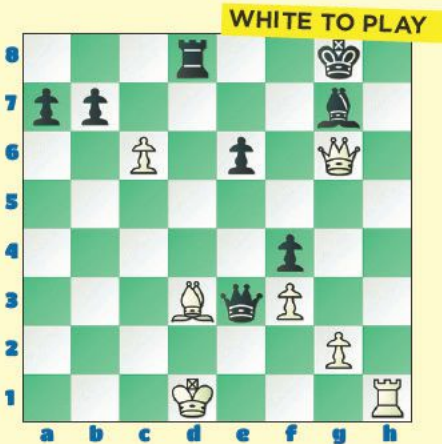
With Black to move, Caruana uncorked the very pretty 20. ... Rh1+. The pinned Bg2 cannot capture and so White must play



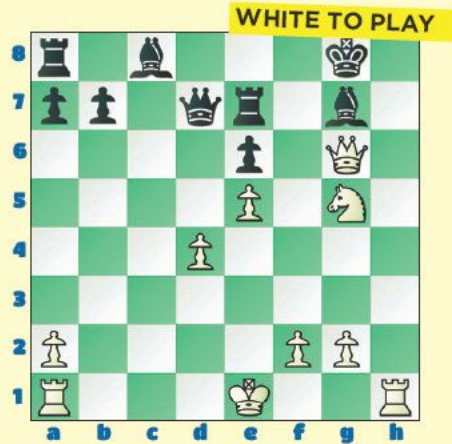
21. Kxh1. Of course, with the white king on h1, Black has 21. ... Qh2 checkmate.

It turns out that this combination occurs often in tournament games. This month's quiz features six real master games in which the idea was used. The last one's quite challenging, but now that you have seen the idea, I have no doubt that You Can Do It!

QUIZ #1



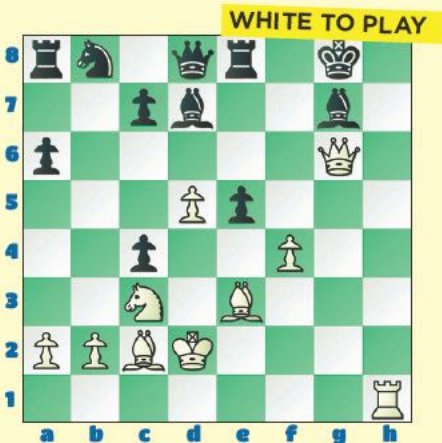
QUIZ #3



QUIZ #5



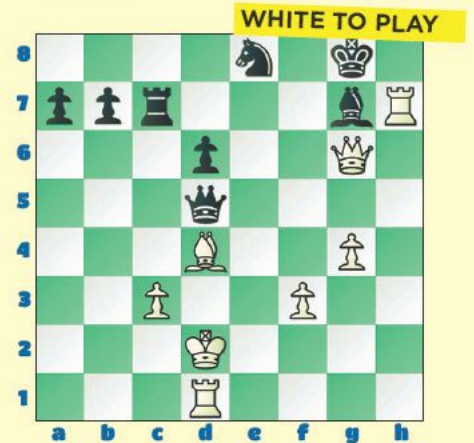
QUIZ #2



QUIZ #4

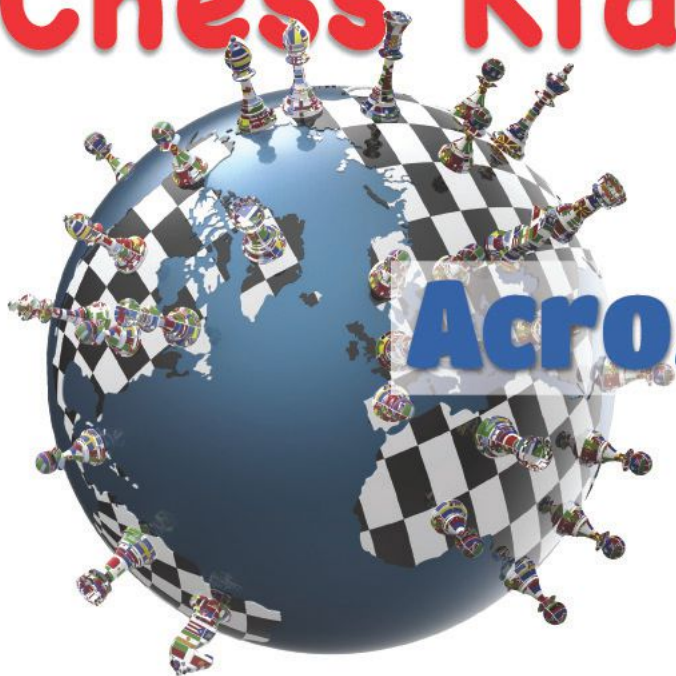


QUIZ #6



Please turn to page 21

Chess Kids



Across the Board

By Al Lawrence

Celebrating Chess Life Kids from across the country.

Jacey Tran

Lincoln, Nebraska

Athlete of the Year!

"I thought it would be cool to learn how to play chess," Jacey said. "Father Brian Connor taught me." That was back when she was in the second grade at North American Martyrs School, where Father Connor runs a chess club. She didn't have anyone to play chess with at home. Her sister Jamie was still too young. So she taught her dad, John. "You can be 6 or 106 and still play chess! It's a great game you can play your whole life."

Now 13 and in seventh grade, Jacey has earned a place on the US Chess Top 100 list for girls her age. This past May she won the Nebraska Girls' Championship for the sixth year in a row! Last year, Jacey won a gold medal in chess and three gold medals and a silver for swimming in the Cornhusker State Games. Jacey became one of only five 2017 Cornhusker State Games Athletes of the Year. The judges admired how hard she worked and how much she helped other athletes.

Jacey helps with the chess lessons her club offers every Monday after school. "I try to teach them



Besides chess, Jacey's many talents include playing the piano, tennis, golf, art, and dancing. Plus she loves math! *Photo courtesy of subject.*



something new every week.” Jacey and Jamie are in the advanced group that meets Wednesdays. “Father Connor usually teaches us a quick lesson. Then, we all find partners to play with.”

“Jacey is a multi-talented young lady,” Father Connor said. “She is also learning Vietnamese, tennis, piano, golf, art, dancing and swimming.”

She’s even won some art contests. “The type of dance that I do is clogging. It’s kind of like tap dancing,” Jacey said. Her favorite school subject is math.

“I do a lot of stuff, but I try to put some time into chess. Chess has been helpful because it somehow trains my brain to be patient and think ahead or be prepared for what’s to come.” But perhaps her favorite benefit of chess is, “Making new friends and learning from my mistakes.” Her goal? “To be a stronger player and keep winning the title of Girl’s State Chess Champion!”

The Chess Olympiads: Meet the team

The US Chess Olympiad team made history in 2016 when it captured gold for the first time in 40 years at the fiercely competitive team event, held in Baku, Azerbaijan. The same

powerhouse squad is heading to Batumi, Georgia from September 23 through October 6 to defend its title at this biennial event. Here’s hoping gold fever strikes again.



Back row, left to right: GM Ray Robson, Team Captain IM John Donaldson, GM Sam Shankland. Front row, left to right: GM Hikaru Nakamura, GM Fabiano Caruana, GM Wesley So.

Photo: courtesy of the World Chess Hall of Fame

Correction

In the April 2018 article, “Learn All About Blindfold Chess,” the diagram on page 11 is incorrect as the numbers on the x-axis skip from 6 to 8, which throws off the math formula. Thanks to WIM Dr. Alexey Root for her eagle eyes.



AVOID THE by Bruce Pandolfini TRAP!

The Power of Double Check

This column teaches you openings by helping you learn to avoid opening traps. Set up your board and pieces and play through the game below. Have paper and pen by your side. When you reach a question, write down your answer. After you are done with all 10 questions, check your answers at the end of the column. Total your points and see how you did against the scoring scale at the end!

Plain old ordinary checks can be pretty good. But some checks are doubly good! In a **double check**, the attacker gives two checks on the same move: one from a unit (a piece or pawn) that moves to give a direct check; the other from a stationary unit that is unveiled to give a **discovered check**. The only way to get out of double check (if it is possible at all) is to move the attacked king. A special feature of **double check** is that the moving unit may be able to move

to an unsafe square—one on which it could normally be captured—because the second check (the discovered check from a stationary piece) prevents that. Because the discovered check must be answered, the moving unit can get a “free pass” to do great damage. Let’s look at a typical example.

1. e4

White begins with a king-pawn opening.

1. ... e5

Black counters with a double king-pawn defense. The most typical answer for White is 2. Nf3.

2. f4

White plays a King’s Gambit. With this move, White hopes to open the f-file.

Q1) What is a gambit? (10 points)

Q2) What does White

potentially gain by opening the f-file? (10 points)

2. ... exf4

Black accepts the gambit.

Q3) Instead of 2. ... exf4, what are two good alternatives to accepting the King’s Gambit? (10 points)?

3. Nf3

White develops the king-knight toward the center, supporting a possible d2-d4.

Q4) What does this knight move safeguard against? (10 points)

3. ... d5

Black counters with a line-opening developing move in the center.

Q5) How can Black try to hold onto the f4-pawn? (10 points)

4. Nc3

White protects the e4-pawn with a developing knight move.

Q6) Instead of 4. Nb1-c3, what two reasonable alternatives did White have? (10 points)

4. ... dxe4

Black opts to exchange d-pawn for e-pawn. The result is that White's queen-knight comes to the center.

5. Nxe4

White takes back on e4. At this point, White has the only two developed pieces, but Black still has the extra pawn, at least for now.

Q7) How can Black try to exploit the undefended e4-knight? (10 points)

5. ... Bg4

Black pins the f3-knight. In general, one must be careful about early developments of the queen-bishop. They leave the queen-knight pawn more vulnerable, and they also delay the possibility of kingside castling.

6. Qe2

A move of contradiction. Its negative point is that it blocks in the f1-bishop. But it does pose certain positive threats.

Q8) In addition to moving the e4-knight with discovery, what other threat with his queen does White now have? (10 points)

6. ... Bxf3

Clearly, this move was played because Black thought that White had to respond to the attack on the queen at e2. But Black didn't

consider the free pass White gets because of the double check.

Q9) Should White take back on f3 with the queen or the g-pawn? (10 points)

7. Nf6 mate.

That's double check and mate!!



Q10) What was the last place Black could have avoided the trap? (10 points)

ILLUSTRATIVE GAME:

Reti versus Tartakower (B15)

1. e4 c6 2. d4 d5 3. Nc3 dxe4 4. Nxe4 Nf6 5. Qd3 e5 6. dxe4 Qa5+ 7. Bd2 Qxe5 8. O-O-O Nxe4 9. Qd8+ Kxd8 10. Bg5+ (Double Check!) 10. ... Kc7 11. Bd8 mate.

(see diagram top of next column)

ANSWERS

A1) A gambit is a sacrifice in the opening, usually of a pawn, for attack.

A2) By opening the f-file, White hopes to develop an attack against the f7-square, the weakest point in Black's position at the start of a game.



A3) Two good alternatives are 2. ... Bf8-c5 or 2. ... d7-d5.

A4) The move 3. Ng1-f3 stops a black queen check at h4.

A5) The most direct way to attempt to keep the f4-pawn is to play 3. ... g7-g5.

A6) White could also have played 4. e4xd5 or 4. e4-e5.

A7) Black could pin the knight by 5. ... Qd8-e7, which is an action that might lead to a trade of queens and an easing of Black's opening difficulties.

A8) In addition to deadly discoveries, White also has the possibility of 6. Qe2-b5+, maybe winning the weakened b7-pawn.

A9) White shouldn't take back on f3 at all. Instead, White should mate Black in one move.

A10) Black could have avoided the trap on move six in several ways. The easiest and safest way was to break the line of discovery by 6. ... Qd8-e7.

How Did You Score?

100: 1800+

90: 1600

80: 1400

70: 1200

60 or lower: 1000

The score is based on the US Chess rating system and is intended only as a fun way to monitor your progress each issue as you Avoid The Trap!



A Photo Essay

by IM Eric Rosen

Grandmaster lessons and exhibitions, live podcasts, a Fabiano Caruana shout-out, and an exciting new record were par for the course at the jam-packed 2018 National Elementary (K-6) Championship, held in Nashville from May 11-13. Although the seven-round main tournament took center stage, side events abounded. Naturally, the ever-popular bughouse and blitz were major draws. Participants also gathered for a gigantic photo and card-signing opportunity to

2018 National Elementary (K-6) Championship

send their best wishes to World Champion challenger Fabiano Caruana. Some kids tested their skills in head-to-head battles with guest GMs Irina Krush and Robert Hess, who scored 24-0 in a tandem simul and who took on all comers in blitz. Our 2018 U.S. Women's Champion, IM Nazi Paikidze, as well as both guest grandmasters, visited the Girls Club to lecture and solve puzzles. Meanwhile, entertaining

Perpetual Chess Podcast host Ben Johnson conducted live interviews with guests ranging from Executive Director Carol Meyer to Scholastic Council co-chair FM Sunil Weeramantry. And, at the end of the seventh round, Rianne Ke had become the first female ever to co-win the K-6 Championship, prompting US Chess Director of Events Boyd Reed to call Rianne a "trailblazer." Relive some memorable tournament moments over these five pages in this photo essay from photographer IM Eric Rosen.





INDIVIDUAL WINNERS

**K-6 TIED FOR FIRST
(6 POINTS)**

**K-5
(6½ POINTS)**

Nathaniel Shuman (NY)
Kevin Pan (CA)
Rithik Polavaram (TX)
Rianne Ke (CA)

Nico Chasin (NY)



INDIVIDUAL WINNERS

K-3 (6½ POINTS)

K-1 (6½ POINTS)

Ronen Wilson (VA)

Rohan Rajaram (CA)



TEAM WINNERS

K-6 TIED FOR FIRST (19½ POINTS)

The Speyer Legacy School (NY)
The Dalton School (NY)
Mission San Jose Elementary (CA)

K-5 (18 POINTS)

P.S. 41 (NY)

K-3 (21 POINTS)

The Dalton School (NY)

K-1 TEAM WINNER (23 POINTS)

Mission San Jose Elementary (CA)



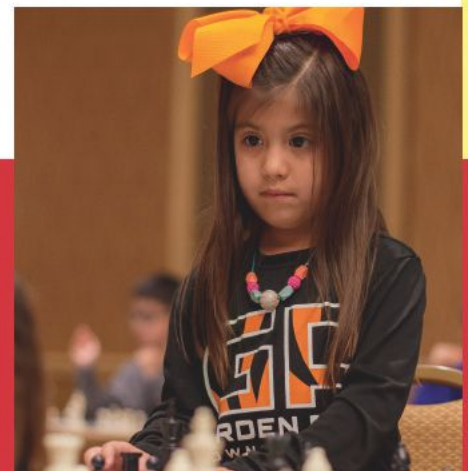
K-6 BLITZ WINNERS

INDIVIDUALS TIED FOR FIRST (10 POINTS)

- Drew Justice (GA)
- Nico Chasin (NY)
- Harry Le (GA)
- Nathaniel Shuman (NY)
- Michael Zheng (MI)

K-6 TEAM (35 POINTS)

The Dalton School (NY)





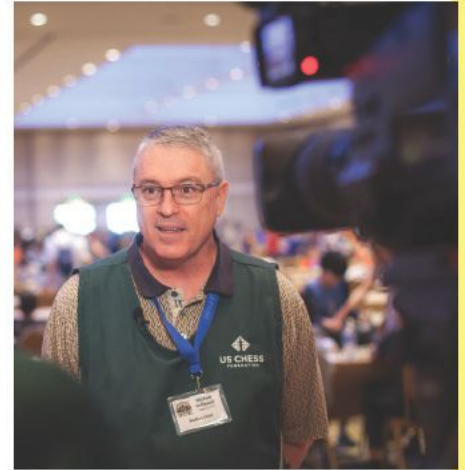
K-3 BLITZ WINNERS

INDIVIDUALS TIED FOR FIRST (10 POINTS)

- Steve Wongso (AZ)
- Doruk Emir (GA)
- Jack Yang (NY)
- Rahul Ramesh (NC)

K-3 TEAM (31½ POINTS)

The Dalton School (NY)



BUGHOUSE CHAMPIONS (9 POINTS)

Alex Zhao (IL) and Reagan Pearl (CA)



BECOME A MEMBER OF US CHESS

ADULT 1 YEAR \$49
PREMIUM MEMBERSHIP

SCHOLASTIC 1 YEAR
PREMIUM MEMBERSHIP \$25

MEMBER BENEFITS

- Rated Play for the US Chess community
- Print and digital copies of *Chess Life* (or *Chess Life Kids*)
- Discounted chess books and equipment
- Helping US Chess grow the game

In addition to these two premium categories, **US Chess** has many other categories and multi-year memberships to suit your needs. For all of your options, see new.uschess.org/join-uschess/ or call 1-800-903-8723, option 4.

Donate to US Chess

Your Tax-Deductible Contribution
Will Help US Chess Grow the Game

US CHESS counts on donors to support initiatives that further our mission of empowering people through chess, one move at a time.

Membership dues cover the basic operating costs for US Chess.

Our goals are to grow the game by funding initiatives to improve diversity in chess, sending top players to compete in international events, and growing and retaining women chess players in the game.

With your support, we can elevate chess to be a game for life.

Every dollar counts. Make your contribution today. uschess.org/donate

US Chess Junior Grand Prix

2018 Junior Grand Prix Standings

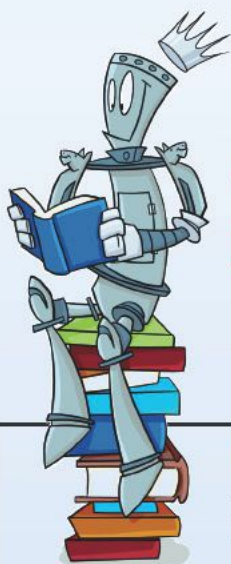


Standings for events received and processed by July 10, 2018 are unofficial and subject to change during the year or until year end tabulation is complete. The top prize for 2018 will be a Chess.com one year Diamond membership valued at \$100, a Chess.com gear/merchandise package valued at \$100, a US Chess plaque, free entry into the 2019 U.S. Open, and \$1,000 of expense money from US Chess to offset the trip. For the top five players on the overall list and to each state winner, Chess.com will also award a choice of a one year ChessKid.com gold membership (valued at \$50/annually) or a one year Chess.com Gold membership (valued at \$40/annually). US Chess gratefully acknowledges the participation of Chess.com!

Top 5 Overall Standings

NAME	STATE	PTS	EVENTS
FAN, JERRY	NY	6906	8
BAMMIDI, RAHUL	IL	6813	8
DE DONA, MARK	NY	6358	8
LEE, MERRILL	IL	6214	6
KUNAMNENI, MEGHANA	MA	5716	7

For the top 200 overall, see www.uschess.org



Check out
www.uschess.org
for rules and prizes.

How to earn Points:

Eligible US Chess members earn points by winning or drawing against higher rated players, based on the pre-event ratings for both players. (If a player does not have a US Chess rating yet, or has a provisional rating based on less than 4 games, that player's post-event rating from that event is used to compute JGP points.)

For a win against a higher rated player, the number of JGP points earned is 2X the ratings difference, up to a maximum of 700 points per game.

Example: A 1200 player who defeats a 1350 player earns 2X the difference in ratings (150) or 300 points.

For a draw, the number of JGP points earned is the ratings difference, up to a maximum of 350 points per game.

Example: A 1200 player who draws a 1350 player earns the difference in ratings, or 150 points.

The US Chess Executive Director has the authority to review events for compliance with these rules.

State Leaders

NAME	STATE	PTS	EVENTS
STALLWORTH, JACOB	AL	3006	1
WENG, KAYLA	AR	1986	2
REMPE, JONAS JAKOB RAZA	AZ	5036	7
RAJARAM, ANIKA	CA-N	5198	9
ANDRANIGIAN, RAFI	CA-S	3855	5
BHAVIKATTI, NEIL	CO	2320	3
GENGER, EITAN	CT	3497	7
STEINER, ADAMSON	DC	4785	9
LUO, TERRY	DE	4259	11
WU, DERRICK K	FL	4443	5
MYDUKAR, AMIT	GA	4665	9
CHEN, MARK YA	HI	2183	1
LI, ALLISON	IA	2974	3
SHEPARD, RIVER CHARLES	ID	2975	2
PHAM, LINDA	IL	5564	10
KACZANOWSKI, AIDAN P	IN	4406	5
ZENG, SHEENA	KS	3682	8
SHAWKAT, SAIF	KY	2768	3
MAYEUX, BENJAMIN THOMAS	LA	2856	4
HAN, HENRY YU-FENG	MA	3786	4
GUO, ANDREW	MD	4014	8
CARTWRIGHT, SAMUEL	ME	2485	1
BHARATH, ASHRITA	MI	3838	4
PATTERSON, BEN	MN	2300	1
LU, SAMUEL	MO	4728	5
SCHEXNAYDRE, BENSON	MS	3318	4
WALTHALL, THOMAS KASEY	MT	2100	2
DURBHA, ANTARA	NC	5300	5
TAN, SOPHIE	NE	1700	3
TIRUVEEDHULA, SUHAVI	NH	2286	3
SHANKAR, PRANAV	NJ	4891	6
LUO, DANIEL	NM	2192	1
BAO, CHRIS	NV	2557	4
YU, SICHENG	NY	5715	8
BAGLEY, HEMMA SVASTI	OH	3714	4
THIESSEN, FRANKLIN JAMES	OK	2800	1
SOIFFER, DUNCAN SMITH	OR	3500	1
SHINKLE-STOLAR, KYLER	PA	5627	3
PAIK, JUSTIN	RI	2083	1
HELPERICH, LUCAS TYLER	SC	1832	1
TAO, CHRISTOPHER	SD	431	1
VAZQUEZ MACCARINI, DANI	TERR	896	3
ZHAO, ERIC	TN	3685	7
OBEROI, SHELEV	TX	5025	8
RAY, UJAN	UT	3190	5
SU, KEVIN	VA	4677	6
NOYES, WILLIAM A	VT	2778	4
VEMPARALA, NIKASH	WA	4237	4
DASHO, DAKITO	WI	3482	1
ELLIS, ANYA	WV	2180	2
MARES, ISAIAH	WY	501	1

Tournament Life Announcements

AUGUST 15 THROUGH OCTOBER 14

Scholastic Members:

As a service to you, we are listing upcoming National US Chess rated events, and requested events of possible interest to you. You can always log in to www.uschess.org, and click on "Clubs & Tournaments." Then click on "Upcoming Tournaments" for a complete listing of upcoming rated events and details. As always, you can check out the TLA section of *Chess Life*.

Organizers and Tournament Directors:

If you would like your tournament listed here in *Chess Life Kids* for October 2018 (events to be held after October 14), the deadline for submitting your announcements is August 10th. The deadline for the December 2018 issue is October 10th. The processing fee is \$1.00 per line for the first eight lines, \$2.00 for every line thereafter. Send your announcements to Joan DuBois, tda@uschess.org. Display advertising is also available. Advertising rates are posted on the US Chess website, www.uschess.org, or you may email: tda@uschess.org for complete details.

ABBREVIATIONS & TERMS

All tournaments are non-smoking with no computers allowed unless otherwise advertised.

BLZ:	Blitz rated.
QC:	Quick Chess events.
\$\$\$Gtd:	Guaranteed prizes.
\$\$b/x:	Based-on prizes, x = number of entries needed to pay full prize fund. At least 50% of the advertised prize fund of \$501 or more must be awarded.
Bye:	Indicates which rounds players who find it inconvenient to play may take 1/2-point byes instead. For example, Bye 1-3 means 1/2-point byes are available in Rounds 1 through 3.
CC:	Chess club.
dx:	Time delay, x = number of seconds.
+xx:	Time increment, xx = number of seconds added after each move.
EF:	Entry fee.
Ent:	Where to mail entries.
FIDE:	Results submitted to FIDE for possible rating.
G/:	Game in. For instance, G/75 means each side has 75 minutes for the entire game.
GPP:	Grand Prix Points available.
HR:	Hotel rates. For example, 60-65-70-75 means \$60 single, \$65 twin, \$70/3 in room, \$75/4 in room.
JGP:	Junior Grand Prix.
Memb. req'd:	Membership required; cost follows. Usually refers to state affiliate.
Open:	A section open to all. Often has very strong players, but some eligible for lower sections can play for the learning experience.
Quad:	4-player round robin sections; similar strength players.
RBO:	Rated Beginner's Open.
Rds:	Rounds; scheduled game times follow. For example, 11-5, 9-3 means games begin 11 a.m. & 5 p.m. on the first day, 9 a.m. & 3 p.m. on the second day.
Reg:	Registration at site.
RR:	Round robin (preceded by number of rounds).
SD/:	Sudden-death time control (time for rest of game follows). For example, 30/90, SD/1 means each player must make 30 moves in 90 minutes, then complete the rest of the game in an hour.
SS:	Swiss-System pairings (preceded by number of rounds).
Unr:	Unrated.
W:	Site is accessible to wheelchairs.
WEB:	Tournaments that will use a player's online rating.

NATIONALS

US Chess Junior Grand Prix!
Aug. 17-21, North Carolina

US Chess Grand Prix Points: 200 (Enhanced)
2018 US Masters Championship

9-SS, 40/90; G/30, inc.30 from move one. Embassy Suites Hotel, 204 Centrepoint Dr., Greensboro, NC 27409, (336) 668-4535, mention chess tournament (code CIC) for discounted hotel rate of \$102 until Aug. 3, 2018. Reserve hotel online: http://embassysuites.hilton.com/en/es/groups/personalized/G/GSOGBE-CIC-20180816/index.html?WTmc_id=POG Non-refundable deposit required. GM, IM, WGM, and WIM norms may be possible. 2013-17 tournaments were superswiss with 16 norms achieved! \$27000 in prizes UNCONDITIONALLY GUARANTEED! \$7000-4000-3000-2000-1500-1000-1000-1000-1000-1000 Class prizes (FIDE): U2500 \$900-600, U2400 \$700-500, U2300 \$600-400, U2200 \$500-300. EF: GM's and foreign IM's free (contact organizer for possible additional conditions). Others by Aug. 12. \$25 discount to all playing in 2018 Washington International. No entry fee deduction from any prize. Eligibility: Must have FIDE or USCF Masters title; Juniors (under age 21) must be previously rated over 2000. RDS.: Aug 17: 7:00PM then 11-6, 11-6, 11-6, 11-6. HR: \$102 all rooms are suite style. Free made to order breakfast daily, free manager's reception nightly, and free airport shuttle available. Advance Entry: www.carolinachessinitiative.com. Alternately, checks may be sent to: CCI, c/o Walter High, 105 N. Crabtree Knoll, Chapel Hill, NC 27514. Make checks payable to: Carolinas Chess Initiative (CCI). No onsite entry for round 1 (cutoff for rd. 1 electronic entries is noon Aug. 17). BYES: Invited players with conditions must play all rounds. Three half-point byes allowed for all others, any round; must request prior to rd. 4. INFO: Walter High (Organizer) wmhigh@ncrr.com. More info including pre-entry lists available at: www.carolinachessinitiative.com. FIDE rated. Hotel has a no smoking policy which includes electronic cigarettes. FIDE electronic device rules in effect.

US Chess Junior Grand Prix!
Aug. 25-26, Tennessee

2018 US Amateur Championship - South

5SS, G/90 d5. University Center at the University of Memphis, 499 University, Memphis, TN 38152. 3 Sections: Championship (U2200), 1st: "River Cup" Championship trophy plus commemorative hat, 2nd-5th places: plaque plus commemorative hat. Reserve (U1600) & Booster (U1200), 1st: Championship trophy plus commemorative hat, 2nd-5th places: plaque plus commemorative hat. EF: \$40, \$10 less to juniors under age 18, \$50 at site. Reg.: 9-9:45am. Rds.: Sat.10-2-6, Sun. 10-2. Byes: One requested half-point bye allowed, any round, must request before start of round 2. HR: \$119, Holiday Inn at the University of Memphis, 3700 Central Ave., Memphis, TN 38111, 901-678-8200, or use booking code CHT online at www.holidayinn.com/mem-uofm, reserve by July 25th to ensure discounted rate. Scholastic Side Event for K-12 players rated U800. Additional details and Online Entry at: www.shelbycountychess.com. Info: Email Arlene Kleibman at midsouthchess@hotmail.com or mail registration to Shelby County Chess, Attention: Amateur South, 1614 Vance Ave., Memphis, TN 38104.

GRAND PRIX

US Chess Junior Grand Prix!
Aug. 17-19, North Carolina

US Chess Grand Prix Points: 60 (Enhanced)
2018 North Carolina Open

5-SS, G/120 d5; 2-day schedule. Rd. 1: G/90 d5. Embassy Suites Hotel, 204 Centrepoint Dr., Greensboro, NC 27409 (336) 668-4535, mention chess for \$102 rate (code CIC) until Aug. 2, 2018. Reserve hotel online: http://embassysuites.hilton.com/en/es/groups/personalized/G/GSOGBE-CIC-20180816/index.html?WTmc_id=POG Non-refundable deposit required. 4 sections: Open, U2000, U1700, U1400, plus Saturday scholastic (U1000) see below. GMs and IMs encouraged to enter concurrent US Masters tournament rather than the NCO. Open section is FIDE rated. \$12000 in total prizes UNCONDITIONALLY GUARANTEED! Prizes in all 4 sections: \$1,000-500-300-250-150-125-125-100-100-100; Class prizes (U2100, U1850, U1550, U1200): \$151-101 each section. EF: \$79 if received by Aug. 12; \$95 thereafter; RDS.: Round 1: Friday at 7:30 pm or Saturday at 10:00 am (G/90 d5); then Saturday 2-7, Sunday 9-2. Two half-point byes allowed, must be requested before Rd. 2 is paired. Advance Entry: Online registration available at www.carolinachessinitiative.com. Alternately: mail checks to CCI, c/o Walter High, 105 N. Crabtree Knoll, Chapel Hill, NC 27514. Onsite entry: Aug. 17 from 5-7:00 pm and Aug. 18 from 8:00-9:30 am. No smoking including electronic cigarettes. Saturday Scholastic: Open to K-12 rated U1000. 4 Rd-SS, G/30 d5. EF: \$20 by Aug. 12, \$25 thereafter. On site entry closes at 10:00 a.m. Rounds: 10:30 am-12:30 pm-1:45 pm-3:00 pm. Trophies: top 5 in three sections. Sections based on rating. INFO: Walter High wmhigh@ncrr.com.

Aug. 17-21, North Carolina

US Chess Grand Prix Points: 200 (Enhanced)
2018 US Masters Championship

See Nationals.

US Chess Junior Grand Prix!

Sept. 21-23 or 22-23, California, Northern

US Chess Grand Prix Points: 30 (Enhanced)

GM George Koltanowski Memorial

"New Milpitas" 372 Turquoise St., Milpitas, CA 95035. Park Free! 5SS, G/90 + 30 2-day rds, 1-2 G/61 d5. Prizes: 5,000 b/90 (60% guar), 3 sects: 2000+ (FIDE): \$1,000-500-200; u2300: 250-125-100. 1600-1999 (FIDE): \$700-300-100, u1800: 200-100, u1600: \$700-300-100 u1400: 125-100, u1200: 100. Unr max \$100 exc Open. Sept 18 Supp & TD disc. Reg.: F:6:30-6:45p & Sa:9:30-9:45a. Rds.: F:7p, Sa 10a, 3p Sa 10a 2:30p. (2-day Sa 10a 12:30 & merge). EF: 99, Econ EF: 79 w 50% prd, after 9/14+20. Playup +25. GMs/IMs: \$0 by 9/7 (prize - EF). Info: <http://BayAreaChess.com/champs>.

A State Championship Event!

Sept. 23, Pennsylvania

US Chess Grand Prix Points: 6

2018 PA State Game/60 Championship

4SS, G/60 d5. O'Hara Student Center, Univ. of Pitt., 4024 O'Hara St., Pittsburgh, PA 15213. 3 Sections, \$5 (695G): Champ: EF: \$30 by 9/15, \$40 later. \$200-100, U2000 \$75, U1800 \$50. Premier: U1600. EF: \$25 by 9/15, \$35 later. \$90-60, U1400 \$50, U1200 \$40, U1000 \$30. Trophies to Top 2, Top 2 U1400, Top 2 U1200, Top 2 U1000. Scholastic: Grades K-12 U900. EF: \$15 by 9/15, \$25 later. Trophies to Top 7, Top 3 U600. All: Trophies: Top 2 Schools, Top 2 Clubs. PSCF \$5, OSA. Reg ends 10am. Rds.: 10:30-1-3:15-5:45. Ent/Info: PSCF, c/o Tom Martinak, 25 Freeport St., Pittsburgh, PA 15223, 412-908-0286, martinak_tom_m@hotmail.com.

US Chess Junior Grand Prix!

Sept. 28-30 or 29-30, Florida

US Chess Grand Prix Points: 20

CFCC Orlando Autumn Open & Scholastic

5SS, G/120 d5 (2-day: Rd.1 G/60 d5). Wyndham Orlando Resort, 8001 International Dr., Orlando, FL 32819. \$88,500/b150 (Scholastic = 1/2-entry), 60% Guaranteed. 5 Sections: Premier \$1000-500-400-200. Under 2000 \$900-600-300-200. Under 1700 \$900-600-300-200. Under 1400 \$800-400-300-200. Scholastic to Under 1200 \$300-200, U1000 \$100, U800 \$100. Trophies in Scholastic to top U1200, U1000, and U800. Rated players may play up one section only. Unrateds limited to \$100 unless place prize in Premier. EF: \$90 (Scholastic U1200 \$45), after Sep 18 EF \$100 (Schol \$35); plus \$5 if paid on-site. CFCC Memb discount: \$10 (\$5 for Jr/Sr member). Re-entry \$50. Reg.: ends 1/2 hr before 1st rd. Rd. 1: 7pm Fri (2-day and Scholastic: 10am Sat at 6/60 d5). Rds.: 2-5: Sat 1 & 6, Sun 9 & 2. Byes: 1/2 pt. must commit before rd 2 paired (max 2). HR: \$113 (No Resort Fee) (407) 351-2420; Reserve ASAP (Mention "Chess" or CFCC); or online <http://tinyurl.com/septemberx2018hotel> (72-hr Cancellation fee). EF Quick link is <https://online.registration.cc/CFCC/OA02018> Free Parking & WiFi for all. Ent: CFCC, c/o Larry Storch, 95 Orense Way, Oviedo, FL 32765 or online: <http://online.registration.cc> by Sep 22, or \$5 extra onsite. Info: Call 407-629-6946 or www.centraffchess.org. After 4pm Sep 28, call (321)297-7087 or (407)670-9304 for onsite cell.

US Chess Junior Grand Prix!

A State Championship Event

Oct. 13-14, Pennsylvania

US Chess Grand Prix Points: 10

2018 Ira Lee Riddle Memorial PA State Championship

5SS, G/120 d5. O'Hara Student Center, Univ. of Pitt., 4024 O'Hara St., Pittsburgh, PA 15213. \$5 (2025 b/72, 2/3 gtd.). 3 Sections: Open: \$500-250, U2000 \$125. U1800: \$300-150, U1600 \$125. U1400: \$300-150, U1200 \$125. Trophies to Top PA & Top PA Junior in each section. Teams of 4 to 7 players from all three sections: Trophies to top 2 schools & top 2 clubs. EF: \$40 by 10/5, \$50 later. PSCF req'd, OSA. Reg.: ends Sat. 9:30am. Rds.: Sat. 10-2:30-7, Sun. 10-2:30. Info: 412-908-0286, martinak_tom_m@hotmail.com. Ent: PSCF, c/o Tom Martinak, 25 Freeport St., Pittsburgh, PA 15223.

An American Classic!

A Heritage Event!

US Chess Junior Grand Prix!

Nov. 22-25 or 23-25, California, Southern

US Chess Grand Prix Points: 150 (Enhanced)

54th Annual American Open

Costa Mesa. 8 rounds, 40/120, SD/55 d5. (3-day option, rounds 1-4, G/60 d5). Site: Hilton Hotel, 3050 Bristol St., Costa Mesa, CA 92626. Prizes: \$25,000 guaranteed. In 6 sections: Open section: \$2500-1250-600-400-300-150, U2450/Unr. \$750-350-250, top U2300/Unr. \$400-200. FIDE Rated. Under 2200 section: \$1500-750-500-250-200-150. FIDE Rated. Under 2000 section: \$1500-750-500-250-200-150. Under 1800 section: \$1500-750-500-250-200-150. Under 1600 section: \$1500-750-350-250-200-150. Under 1400/Unr. \$1000-500-250-150-100-50, U1200 \$500-250-150 (not a separate section; U1200s also eligible for U1400 prizes), Unrated: \$150-100-50 (Unrated players in this section are eligible for these prizes only). Mixed Doubles: Top 3 best male and female team \$500-250-125. Plus-score bonus for every player who finishes with 4-1/2 points or better who didn't place in the money prize wins a \$25 gift certificate towards chess store - redeemable onsite only. EF: \$185 by Nov. 10, \$15 more after. Onsite \$220. Re-entry \$100. Membership required USCF and SCCF. No checks at door - cash or credit card only. Schedule: 4-day schedule Reg. closes 9:30 am on 11/22, (Rounds 11-6, 10:30-5:30, 10-5, 9:30-4:00). 3-day schedule: Reg. closes 9:30am on 11/23, Rounds. 11-2:30-5:00pm (G/60 min d5), schedules merge in Rd. 5 and compete for common prizes. Byes: Two half-point byes may be requested in advance. Lectures and videos playing throughout the weekend. HR: Reduced rate of \$127/day single or double for our group. Group Code "CHESSP". Call Hilton (714) 540-7000. Cutoff is Nov. 1st. Best to reserve through online link in our website. Parking: >\$10 \$5 per day. Ratings: November USCF Rating Supplement used. CCA minimum ratings and TD discretion are used to protect you from improperly rated players. Info:organizing club - Chess Palace 714-899-3421, play@americanopen.org. Mail Entry: American Open, 5246 Lampson Ave., Garden Grove, CA 92845 or Online Entry: www.AmericanOpen.org. W. FIDE.

REGIONAL Alabama

Oct. 13, National Chess Day Scholastic - A Charity Event!

5SS, TC: G/30 d5. Brookwood Village, 780 Brookwood Village, Birmingham, AL 35209. Rated: Rook (K-12), EF: \$20. Not Rated: Novice (6th-12th) and Primary (K-5th): EF: \$20, if mailed by Oct 6th. Trophy: 1st-3rd, Medals 4th - 6th. Late Reg.: Oct 13th at 8AM; Late Fee: Add \$10 more. Rds.: 9-10-11-1-2. Checks payable to: Caesar Chess. Proceeds goes to Children's of Alabama. ENT: Caesar Chess, LLC 5184 Caldwell

Mill Road, Suite 204-202, Birmingham, AL 35244. Info: CaesarChess@gmail.com; www.AlabamaChess.org.

California, Northern

Aug. 10-12 or 11-12, 9th annual Central California Open
See *Chess Life* or www.chesstour.com.

Aug. 11, Sacramento SuperSwiss90 (3SS, G/90 d5)
Court yard Marriott, Rancho Cordova, CA 95670. Prizes: \$600 b/36. 1700+ : \$150-100, u1900 50. u1700: \$150-100, u1600 50. Aug 18 Supp & TD disc. Reg.: 8:30-8:45. Rds.: 9-1-4:30. EF: 49, Econ 39 w 1/2 prz. after 8/6+20, play up +20, GMs/IMs - \$0 by 7/28. Info: <http://BayAreaChess.com/grandprix>. W.

Aug. 12, Fremont QuickSwiss (4xG/45 d5)
Fremont Marriott, 46100 Landing Pkwy, Fremont, CA 94538. Prizes: \$1,300 b/50. 60% guar. 1900+ : \$200-100-100, u2000 50-50. 1500-1899: \$200-100, u1600 50-50. u1500: \$200-100, u1200 50-50. Aug 18 Supp & TD disc. Reg.: 8:30-8:45. Rds.: 9-11-12:45-2:30. EF: 49, Econ 39 w 1/2 prz. after 8/7+20, play up +20, GMs/IMs-\$0 by 7/29. Info: <http://BayAreaChess.com/grandprix>.

Aug. 12, Bay Area Fremont Swiss (PK-12; 4SS, G/30 d5)
Fremont Marriott, 46100 Landing Pkwy, Fremont, CA 94538. Trophies: players w + score. Sched: Reg.: 9-9:15a. Games: 9:30a - 1:30p. EF: 34, 49 after 8/7. Info: <http://BayAreaChess.com/signature>. W.

Aug. 12, Bay Area Fremont Quads (PK-12; 3xG/30 d5)
Fremont Marriott, 46100 Landing Pkwy, Fremont, CA 94538. Trophies: Players w + score. Sched: Regrd. Check-in 1:30-2p. Games: 2:15-5p. EF: 29, 44 after 8/7. Info: <http://BayAreaChess.com/signature>. W.

Aug. 19, Cupertino LuperSwiss90 (3SS, G/90 d5)
Court yard Marriott, Cupertino, CA 95014. Prizes: \$1,300 b/50. 60% guar. 1900+ : \$200-100-100, u2000 50-50. 1500-1899: \$200-100, u1600 50-50. u1500: \$200-100, u1200 50-50. Aug 18 Supp & TD disc. Reg.: 8:30-8:45. Rds.: 9-1-4:30. EF: 49, Econ 39 w 1/2 prz. after 8/14+20, play up +20, GMs/IMs-\$0 by 8/9. Info: <http://BayAreaChess.com/grandprix>. W.

Aug. 19, Bay Area San Ramon Swiss (PK-12; 4SS, G/30 d5)
Court yard Marriott, 18090 San Ramon Valley Blvd., San Ramon, CA 94583. Trophies: players w + score. Sched: 9-9:15a. Games: 9:30a - 1:30p. EF: 34, 42 after 8/14. Info: <http://BayAreaChess.com/signature>. W.

Aug. 19, Bay Area San Ramon Quads (PK-12; 3xG/30 d5)
Court yard Marriott, 18090 San Ramon Valley Blvd., San Ramon, CA 94583. Trophies: Players w + score. Sched: Regrd. Check-in 1:30-2p. Games: 2:15-5p. EF: 29, 44 after 8/14. Info: <http://BayAreaChess.com/signature>. W.

Aug. 26, Bay Area Cupertino Swiss (PK-12; 4SS, G/30 d5)
Court yard Marriott, Cupertino, CA 95014. Trophies: players w + score. Sched: 9-9:15a. Games: 9:30a - 1:30p. EF: 34, 42 after 8/21. Info: <http://BayAreaChess.com/signature>. W.

Aug. 26, Bay Area Cupertino Quads
Court yard Marriott, Cupertino, CA 95014. Trophies: Players w + score. Sched: Regrd. Check-in 1:30-2p. Games: 2:15-5p. EF: 29, 44 after 8/21. Info: <http://BayAreaChess.com/signature>. W.

Aug. 26, Palo Alto DuperSwiss75 (3SS, G/75 d5)
Crown Plaza Palo Alto, 4290 El Camino Real, Palo Alto, CA 94306. Prizes: \$1,300 b/50. 60% guar. 1900+ : \$200-100-100, u2000 50-50. 1500-1899: \$200-100, u1600 50-50. u1500: \$200-100, u1200 50-50. Aug 18 Supp & TD disc. Reg.: 8:30-8:45. Rds.: 9-12-3. EF: 49, Econ 39 w 1/2 prz. after 8/21+20, play up +20, GMs/IMs - \$0 by 8/16. Info: <http://BayAreaChess.com/grandprix>. W.

Sept. 8, Foster City LuperSwiss90 (3SS, G/90 d5)
Foster City Court yard Marriott, 550 Shell Blvd., 94404. Prizes: \$1,300 b/50. 60% guar. 1900+ : \$200-100-100, u2000 50-50. 1500-1899: \$200-100, u1600 50-50. u1500: \$200-100, u1200 50-50. Sept 18 Supp & TD disc. Reg.: 8:30-8:45. Rds.: 9-1-4:30. EF: 49, Econ 39 w 1/2 prz. after 9/2+20, play up +20, GMs/IMs - \$0 by 8/24. Info: <http://BayAreaChess.com/grandprix>. W.

Sept. 8, Sacramento QuickSwiss45 (4SS, G/45 d5)
Court yard Marriott, Rancho Cordova, CA 95670. Prizes: \$600 b/36. 1700+ : \$150-100, u1900 50. u1700: \$150-100, u1600 50. Sept 18 Supp & TD disc. Reg.: 8:30-8:45. Rds.: 9-11-12:45-2:30. EF: 49, Econ 39 w 1/2 prz. after 8/6+20, play up +20, GMs/IMs-\$0 by 8/24. Info: <http://BayAreaChess.com/grandprix>. W.

Sept. 9, Fremont DuperSwiss (3xG/75 d5)
Fremont Marriott, 46100 Landing Pkwy, Fremont, CA 94538. Prizes: \$1,300 b/50. 60% guar. 1900+ : \$200-100-100, u2000 50-50. 1500-1899: \$200-100, u1600 50-50. u1500: \$200-100, u1200 50-50. Sept 18 Supp & TD disc. Reg.: 8:30-8:45. Rds.: 9-12-3. EF: 49, Econ 39 w 1/2 prz. after 8/7+20, play up +20, GMs/IMs-\$0 by 8/27. Info: <http://BayAreaChess.com/grandprix>.

Sept. 9, Bay Area Fremont Swiss (PK-12; 4SS, G/30 d5)
Fremont Marriott, 46100 Landing Pkwy, Fremont, CA 94538. Trophies: players w + score. Sched: Reg.: 9-9:15a. Games: 9:30a - 1:30p. EF: 34, 49 after 9/3. Info: <http://BayAreaChess.com/signature>. W.

Sept. 9, Bay Area Fremont Quads (PK-12; 3xG/30 d5)
Fremont Marriott, 46100 Landing Pkwy, Fremont, CA 94538. Trophies: Players w + score. Sched: Regrd. Check-in 1:30-2p. Games: 2:15-5p. EF: 29, 44 after 9/3. Info: <http://BayAreaChess.com/signature>. W.

Sept. 15, Bay Area Foster City Swiss (PK-12; 4SS, G/30 d5) NEW OFFERING
Foster City Court yard Marriott, 550 Shell Blvd., 94404. Trophies: players w + score. Sched: 9-9:15a. Games: 9:30a - 1:30p. EF: 34, 42 after 9/10. Info: <http://BayAreaChess.com/signature>. W.

Sept. 15, Bay Area Foster City Quads (PK-12; 3xG/30 d5) NEW OFFERING

Foster City Court yard Marriott, 550 Shell Blvd., 94404. Trophies: Players w + score. Sched: Regrd. Check-in 1:30-2p. Games: 2:15-5p. EF: 29, 44 after 9/10. Info: <http://BayAreaChess.com/signature>. W.

Sept. 16, Bay Area San Ramon Swiss (PK-12; 4SS, G/30 d5)
Court yard Marriott, 18090 San Ramon Valley Blvd., San Ramon, CA 94583. Trophies: players w + score. Sched: 9-9:15a. Games: 9:30a - 1:30p. EF: 34, 42 after 9/11. Info: <http://BayAreaChess.com/signature>. W.

Sept. 16, Bay Area San Ramon Quads (PK-12; 3xG/30 d5)
Court yard Marriott, 18090 San Ramon Valley Blvd., San Ramon, CA 94583. Trophies: Players w + score. Sched: Regrd. Check-in 1:30-2p. Games: 2:15-5p. EF: 29, 44 after 9/11. Info: <http://BayAreaChess.com/signature>. W.

Sept. 16, Palo Alto LuperSwiss90 (3SS, G/90 d5)
Crown Plaza Palo Alto, 4290 El Camino Real, Palo Alto, CA 94306. Prizes: \$1,300 b/50. 60% guar. 1900+ : \$200-100-100, u2000 50-50. 1500-1899: \$200-100, u1600 50-50. u1500: \$200-100, u1200 50-50. Sept 18 Supp & TD disc. Reg.: 8:30-8:45. Rds.: 9-1-4:30. EF: 49, Econ 39 w 1/2 prz. after 8/21+20, play up +20, GMs/IMs - \$0 by 9/2. Info: <http://BayAreaChess.com/grandprix>. W.

Sept. 21-23 or 22-23, GM George Koltanowski Memorial
See Grand Prix.

California, Southern

The Los Angeles Chess Club
The Most Active Club on the West Coast! (310) 795-5710. * LACC: www.LAChessClub.com; VCC: www.ValleyChessClub.com; Contact: Mike@LAChessClub.com; Saturday & Sundays: 10 am-9 pm (Beginner/Novice & Intermediate classes + 3 Tournaments each day Details on our web site. Tuesdays: 7:30-9:30 pm (Advance lecture). 11514 Santa Monica Blvd., Los Angeles, CA 90025. (4 blocks W of 405, SW corner of Santa Monica & Butler * 2nd Floor above Javan Restaurant) Group Classes * Tournaments * Private (1:1) Lessons. Note our monthly major tournaments. Also, we have the best Weekly BLITZ tournament on Saturday nights at 6:30 pm!!

Aug. 4, 5, 11, 12, 18, 19, 25, 26, Every Saturday & Sunday Chess 4 Juniors
8 separate events- 5SS, G/30 d0. 11514 Santa Monica Blvd. & Butler LA, 90025, 2nd fl. 4 blocks West of 405. EF: \$30 (\$20 LACC memb, No prize 1/2 EF, siblings 1/2, Free new LACC members). Reg.: 12-1 pm. Rds.: 1pm & asap; done by 4. FREE BUGHOUSE afterwards; Prizes: Trophies & medals! All players receive prizes! Parking: Free on streets & BoA. Free healthy refreshments. Info: (310) 795-5710 or www.LAChessClub.com or Mike@LAChessClub.com.

Nov. 2-4 or 3-4, 13th annual Los Angeles Open
See *Chess Life* or www.chesstour.com.

Nov. 22-25 or 23-25, 54th Annual American Open
See Grand Prix.

Connecticut

Sept. 21-23 or 22-23, 9th Annual Hartford Open
See *Chess Life* or www.chesstour.com.

Nov. 2-4 or 3-4, 4th annual Stamford Open
See *Chess Life* or www.chesstour.com.

Florida

Boca Raton Chess Club
Friday night tournament games, one game a week for 4 weeks. www.bocachess.com, 561-302-4377.

The Stormont Kings Chess Center in Miami, FL
We have a beautiful office with multiple rooms located in the Kendall/Falls/Pinecrest Area. We offer Private and Group Lessons, Homeschool Activities, Tournaments, Camps, Family Game Nights, Parents Night Out, Casual Chess Play TSK Rated and more! Chess Sets and equipment for sale. Complimentary Bottled Water, Ample Parking, Comfortable Waiting Room with legos, and other activities for siblings while waiting. Located at 8353 SW 124 St, Suite 201-A, Miami, FL 33156. Contact Chris Stormont, Phone: 786-303-2437, E-mail: chris@stormontkingschess.com, Web: www.StormontKingsChess.com

Sept. 28-30 or 29-30, CFCC Orlando Autumn Open & Scholastic
See Grand Prix.

Nov. 9-11 or 10-11, 17th Annual Turkey Bowl
See *Chess Life* or www.bocachess.com.

Georgia

Nov. 9-11 or 10-11, 17th Annual Turkey Bowl (FL)
See *Chess Life* or www.bocachess.com.

Illinois

Oct. 5-7 or 6-7, 27th annual Midwest Class Championships
See *Chess Life* or www.chesstour.com.

Indiana

Aug. 24-26 or 25-26, 13th annual Indianapolis Open
See *Chess Life* or www.chesstour.com.

Maryland

Maryland Chess Tournaments
MD Chess runs scholastic tournaments 2 Saturdays per month from September through June & open tournaments 2 Saturdays or weekends per month throughout the year. Visit www.MDChess.org to find tournament announcements, tutors, coaches, & camps; register online for tournaments; & subscribe to scholastic and/or open e-newsletters. MD scholastic players who compete in the Varsity section (exclusively for players rated 1600+) of a MD-Sweet-16 Qualifier can qualify for the \$45,000 scholarship to UMBC awarded annually. The University of Maryland, Baltimore County's chess team is a perennial top-10 contender for the national championship.

Massachusetts

Aug. 16-20, 16-19, 17-19 or 18-19, 48th annual Continental Open
See *Chess Life* or www.chesstour.com.

Nevada

Dec. 26-30, 26-29 or 27-29, 28th annual North American Open
See *Chess Life* or www.chesstour.com.

New Jersey

Sept. 1, New Jersey Scholastic K-8 Championship
5-SS, G/30 d5. Hyatt Morristown, 3 Speedwell Ave., Morristown, NJ 07960. Phone: 973-647-1234, mention NJ Chess. Free parking, public transportation to NYC, Phil. walking distance, 30 restaurants, shops and parks within 5 minute stroll. In three sections: Under 1200, Under 900, Under 600. Trophies to Top Ten in each section. Registration: Saturday, September 1st, 11 am - 12 noon. Rounds: 12:30 pm, then ASAP EF: \$30 if postmarked by August 25th. \$40 cash at site. \$32 online at njscf.org until midnight 8/31. One 1/2 point bye allowed if requested with entry fee. August Rating Supplement used. Entries: to Noreen Davission, 132 US 206, Flanders, NJ 07836. Entries must include section, name, USCF ID and expiration date, mailing address, email address, phone number, and entry fee. Checks made out to NJSCF. Questions to noreenchess@gmail.com, phone: (973) 219-6877, W.

Oct. 14, Westfield Fall Scholastic
Westfield V, 220 Clark St., Westfield, NJ 07090. K-12. 3 Sections: Open, U1250, U750. Open: 3-SS, G/40 d5. Rounds: 12:30, 2:15, 4:00 p.m. U1250 & U750: 4-SS, G/25 d5. Rounds: 12:30, 1:45, 3:00, 4:15 p.m. Prizes: Trophies to Top 5 in each section. Tiebreaks used. See USCF Rule 34E. EF: \$25, \$20 members. Register: 11:45 a.m.-12:20 p.m. Info: westfieldchessclub@gmail.com, www.westfieldchessclub.org/Events.html

Oct. 26-28 or 27-28, 22nd annual Eastern Chess Congress
See *Chess Life* or www.chesstour.com.

A State Championship Event!
Nov. 18, New Jersey K-12 Grade Championship
5SS, G/30 d5. Brookdale College, 765 Newman Springs Rd., Lincroft, NJ 07738. Student Life Center, use Parking Lot #7 or #6; 4 miles from Garden State Parkway exit 109. 13 Sections: Play only in your grade! Grades K-12: Trophies to top 10 individuals, top 3 teams - top 3 from each school/grade; 50% of players receive trophy or medal; Rds.: 10am and ASAP EF: \$35 by 11/11, \$55 at site. USCF mem req'd. Reg.: 8-9:00am After 9:00am 1/2 pt bye rd. 1. Info: 732 259-3881 Halsprechman@gmail.com Ent: Please make checks payable to NJSCF and send to Hal Sprechman, 66 Cromwell Lane, Jackson, NJ 08527. Entries must include name, grade school, date of birth, USCF ID # & expiration, mailing address, phone number & entry fee, please include email address. Register online at: www.njscf.org until midnight 11/16.

New York

Aug. 31-Sept. 3, Sept. 1-3 or 2-3, 140th annual NY State Championship
Out of state welcome. See *Chess Life* or www.chesstour.com.

Oct. 13-14, 5th annual Central New York Open
See *Chess Life* or www.chesstour.com.

Nov. 9-11 or 10-11, 17th Annual Turkey Bowl (FL)
See *Chess Life* or www.bocachess.com.

North Carolina

Aug. 17-19, 2018 North Carolina Open
See Grand Prix.

Aug. 17-21, 2018 U.S. Masters Championship
See Nationals.

Ohio

Aug. 10-12 or 11-12, Cleveland Open
See *Chess Life* or www.chesstour.com.

Oct. 13, National Chess Day Scholastic Swiss
Cincinnati Scholastic Chess Series season 12 begins on National Chess Day at Princeton High School, 100 Vixing Way, Cincinnati, OH 45246. 4SS, 5 sections: Championship, U1000, U700, U400, K-6 Non-Rated. Time control: G/30 d5. Prizes: Medals to all scoring 3.0 or more in each section. Series trophies in rated sections based on points scored; best five scores from six tournaments count toward trophies. Complete series information at www.chesscincinnati.com. Send questions to info@chesscincinnati.com or text/phone Alan Hodge at 513-600-9915.

Nov. 9-11 or 10-11, 27th annual Kings Island Open
See *Chess Life* or www.chesstour.com.

Pennsylvania

MasterMinds Scholastic Summer League
Info at: www.mastermindschess.org.

Sept. 23, 2018 PA State Game/60 Championship
See Grand Prix.

Sept. 30, 59th Annual Pittsburgh Chess League
30/90, SD/60 d5. Wm. Pitt Union, Univ. of Pittsburgh, 5th Ave. & Bigelow Blvd., Pittsburgh, PA 15213. Monthly 4-player team event from Sept. to Apr. EF: \$50/team by 9/27. Rds.: 2pm. Info: 412-908-0286, martinak_tom_m@hotmail.com, www.pitt.edu/~schach/. W.

Oct. 13, PA State Championship Scholastics
5SS, G/40 d5. O'Hara Student Center, Univ. of Pittsburgh, 4024 O'Hara St., Pittsburgh, PA 15213. 2 Sections, open to grades K-12: Premier: U1100

& unr. in grades 8-12. Reserve: U700 & unr. in grades K-7. All: Trophies to top 7 in each section. Teams of 4 to 7 players from both sections: Trophies to top 2 schools & top 2 clubs. EF: \$15 by 10/5, \$25 later. PSCF req'd, OSA Reg.: ends 9:30 am. Rds.: 10-11:30-1-2:30-4. Info: martinak_tom_m@hotmail.com, 412-908-0286. Ent: PSCF, c/o Tom Martinak, 25 Freepoint St., Pittsburgh, PA 15223.

Oct. 13-14, 2018 Ira Lee Riddle Memorial PA State Championship
See Grand Prix.

Nov. 9-11 or 10-11, 17th Annual Turkey Bowl (FL)
See *Chess Life* or www.bocachess.com.

Nov. 23-25 or 24-25, 49th annual National Chess Congress
See *Chess Life* or www.chesstour.com.

Tennessee

Aug. 25-26, 2018 U.S. Amateur Championship - South
See Nationals.

Virginia

Aug. 24-26 or 25-26, 50th annual Atlantic Open
See *Chess Life* or www.chesstour.com.

Oct. 4-8, 5-8 or 6-8, 10th annual Washington Chess Congress
See *Chess Life* or www.chesstour.com.

Wisconsin

Sept. 15, 8th Annual BC Open!
4SS. G/60 d5. USCF rated (Dual rated); to obtain USCF membership, see www.uschess.org. Country Inn & Suites, 1250 S. Moorland RD., Brookfield, WI. \$\$Prizes Non-monetary; Books, DVD's. 4 Sections, Open, U1800, U1400, U1000. EF: (All) \$20 by 9/13 (\$25 at site). \$5 more if moving up a section. Reg.: 8:30-9:30; 1/2 point bye if registered after 9:30; Rds.: 10:00; 1:00; 3:30; 6:00. Mail entries to Benjamin Corcoran, 2711 N. University Dr. #64, Waukesha, WI 53188. Q&A's (262)506-4203 and ask for Ben or benzochess@gmail.com Info: benzochess.com.



Answers for You Can Do It! (from page 7)

Solution #1: 1. Rh8+ Kxh8 2. Qh7 mate.



Solution #3: 1. Rh8+ Kxh8 2. Qh7 mate



Solution #5: There's no mate here, but White wins a queen with 1. Rh8+ Kxh8 2. Qxf7.



Solution #2: 1. Rh8+ Kxh8 2. Qh7 mate.



Solution #4: Here it's mate in one! 1. ... Rh1 checkmate.



Solution #6: This one's harder: 1. Rh8+ Kxh8 2. Rh1+ Kg8 3. Qxe8+ Bf8 4. Rh8 checkmate.



My First Move

GM SAM SHANKLAND 2018 U.S. Champion

In this column, we feature advice from your chess heroes and explore what shaped their development when they were Chess Life Kids like you!



A “late” bloomer

My father taught me how to play when I was six, but I did not really think much of the game until much later. I took my first chess class from the Berkeley Chess School when I was nine and played my first tournament at 10. I really enjoyed playing and I got very good very fast. Chess helped me fuel my competitive energy into something constructive.

Winning the 2018 U.S. Championship

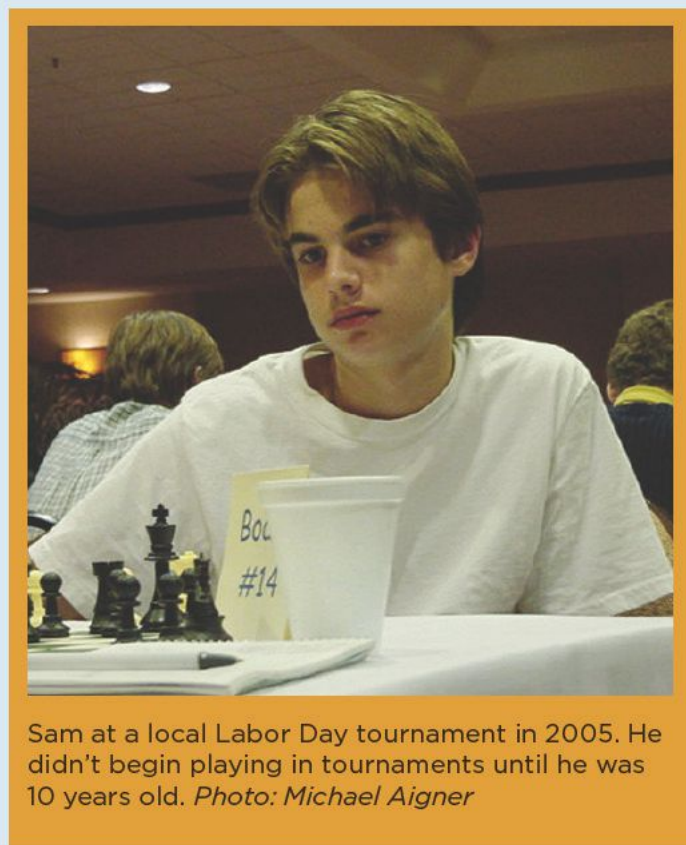
It was a dream come true. I will remember that moment for the rest of my life. It was definitely the strongest event I ever won, and I had to outscore three of the best 10 players in the world.

What’s in the future

My plans are the same as they have been for as long as I have been a professional player. Shoot for the stars, set lofty goals, and work hard to reach them!

Favorite openings

I loved sharp openings and gambits as a kid. When I was young, I played the Danish Gambit a bit, as well as the Evans. Now, I play just about everything with both colors but the Najdorf holds a special place in my heart.



Sam at a local Labor Day tournament in 2005. He didn't begin playing in tournaments until he was 10 years old. *Photo: Michael Aigner*

Favorite chess book

The first serious book I remember reading was *The 10 Most Common Chess Mistakes* by Larry Evans. As a more experienced player, my favorite book is definitely [Mark] Dvoretsky's *Endgame Manual*.

Why he wrote his own book

I wrote the book [*Small Steps to Giant Improvement: Master Pawn Play in Chess*] because my coach co-owns the publishing company, and I lost a bet to him!

When life throws a curve ball ...

When I failed to make grandmaster in my gap year between high school and college, I was emotionally crushed. I played well enough to earn the title, but was held back for technical and political reasons.



Sam with GM Maurice Ashley after winning the 2018 U.S. Championship. *Photo courtesy of Saint Louis Chess Club.*

Undoubtedly, I could have made the title despite the technicalities, but I chose to focus more on how unfair it was and how unlucky I was than on improving my chess. This was entirely the wrong attitude, and it took me some time to realize it—I even left chess for nine months! When I came back, I was stronger than ever and clinched the title in my first tournament.

Grandmaster meets reality television

I didn't play any chess in *Kicking and Screaming* [the show he appeared on]. I was far too busy trying to keep the shelter up and foraging for food! It was a very different experience for me. I learned a lot in the jungle; most notably, that humans are capable of far greater feats than they might realize. I was really upset to have been eliminated on day eight when I felt like I was only just beginning to test myself, and even more so because of the very non-objective manner in which it happened, but I really learned a lot and made friendships that will last a lifetime.

Best advice received

Prepare for the worst, hope for the best. It is very useful both in chess and in life.

My best chess advice

Always play for the love of the game. As soon as chess stops being fun, you will stop playing well.



Sam's successes in 2018 have landed him on three US Chess covers this year.



The United States' Largest Chess Specialty Retailer

888.51.CHESS (512.4377)

★ www.USCFSales.com



A CLASSICAL GUIDE TO THE FRENCH DEFENCE

by GM Yannick Pelletier

WIN0537CB - \$33.95

The French Defence is the sharpest opening setup against 1.e4. With his first two moves, e6 and d5, Black tries to provoke the advance e4-e5. The host is a specialist of this opening, and believes that the most efficient way to understand its ideas, plans, and typical structures is to study classical lines. He offers you a repertoire that is based on well-established lines that have been tried and tested for decades and that have proven their validity.

THE ACCELERATED DRAGON - A SHARP WEAPON AGAINST 1. E4

by GM Nadezhda Kosintseva

WIN0538CB \$33.95

1.e4 c5 2.Nf3 Nc6 3.d4 cxd4 4.Nxd4 g6! leads to the so-called "Accelerated Dragon Defense" of the Sicilian, which is characterized by the idea to achieve the thematic central break d7-d5 in one move. On this DVD, the host reveals the secrets of her favourite opening. Kosintseva has played the Accelerated Dragon for many years and achieved a lot of success with it. You too can accelerate your opening - with this complete repertoire for Black against 1.e4!



THE RISE OF THE ITALIAN GAME

by IM William Paschall

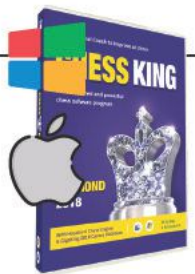
DVD0179CL \$19.95

The Italian Game is a family of chess openings beginning with the moves: 1.e4 e5, 2. Nf3 Nc6, 3. Bc4 Part of the large family of Open Games or Double King's Pawn Games the Italian game is one of the oldest recorded chess openings. Here IM Paschall shows us examples of how it is rising again in popularity and used effectively in modern grandmaster games.

CHESS KING 2018 - DIAMOND PRO EDITION

WIN0030AK \$109.95

Chess King Diamond Pro is a new and versatile tool for chess players and is an ideal introduction for the beginner, a challenging opponent for the practiced amateur, and an invaluable coach for the aspiring master. Chess King Diamond Pro emphasizes simplicity of use in training players. However, it is more than just a traditional training program as it includes an extremely strong chess engine and a huge professional database.



CHESS KING 2018 - DIAMOND EDITION

WIN0029AK \$79.95

Chess King Diamond is a new and versatile tool for chess players and is an ideal introduction for the beginner, a challenging opponent for the practiced amateur, and an invaluable coach for the aspiring master. Chess King Diamond emphasizes simplicity of use in training players. However, it is more than just a traditional training program as it includes an extremely strong chess engine and a huge professional database.

CHESS KING 2018 - STANDARD EDITION

WIN0028AK \$39.95

Chess King Standard is a new and versatile tool for chess players and is an ideal introduction for the beginner, a challenging opponent for the practiced amateur, and an invaluable coach for the aspiring master. Chess King Standard emphasizes simplicity of use in training players. However, it is more than just a traditional training program as it includes an extremely strong chess engine and a huge professional database. It is also a convenient tool for analyzing and studying one's opponent before facing them at a tournament.



MASTER METHOD - THE NIGEL METHOD

GM Nigel Short

DVD-SHORT \$109.00 ~~\$139.00~~

GM Nigel Short has been competing at the top level for 5 decades and counting. During this time, he's beaten every World Champion from Karpov to Carlsen, and become the only Englishman to have challenged for the title, taking on Kasparov in their controversial 1993 match. His razor-sharp, creative tactical ability has been a major factor in his success. And now you can learn how to improve your tactics from Nigel himself in his stunning 15½ hour MasterMethod.

MASTER METHOD - THE MARIN METHOD

GM Mihail Marin

DVD-MARIN \$109.00 ~~\$139.00~~

One of the most respected coaches in the world today, GM Marin has poured his enormous experience and knowledge of the game into his 16 hour Attacking Academy. By analyzing over 90 great games - from Greco to Carlsen - Mihail reveals how the art of attack has evolved over time and the key principles you need to know to emerge victorious from any position that may arise in your games.



All Purchases Benefit the US Chess Federation