

CHESS LIFE

April 2019 | USChess.org

Kids

WESLEY WANG
ERIC LI **BRYAN XIE**

DIMITAR MARDOV

ANDREW HONG
ABHIMANYU MISHRA
LIBAN ZHOU

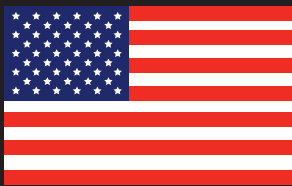
BALAJI DAGGUPATI

CHRISTOPHER SHEN

JUSTIN WANG

JASON WANG

NICO CHASIN



ROCHELLE WU

SRIRAM KRISHNAKUMAR

BREWINGTON HARDAWAY

UYOM VIDYARTHI

DEREK GLASBY

ARTHUR GUO
EVAN PARK
HARSHID KUNKA
STEVE WONGSO
LIAM PUTNAM
ERICK ZHAO
CHRISTOPHER YOO
MAXIMILLIAN LU
ANTHONY HE

THE 2019 ALL-AMERICA TEAM

SEBASTIAN PRESTIA
SANDEEP SETHURAM

13 & under



US CHESS
FEDERATION

CHESS SUMMER CAMPS



Sign your child up now for a week of chess **knowledge** and **fun**!

Enrollment is open to all students, ages 6-14.



Register for our offsite camps:





June 3-7 at Saint Louis Chess Club
June 10-14* at Saint Louis Chess Club
June 17-21 at Saint Louis University
July 7-12 at Little Flower School

*Girls' Camp

For more information, visit saintlouischessclub.org.

Camp Times:

All Day: 9 a.m.-4 p.m. \$400
Morning-only: 9 a.m.-Noon \$225
Afternoon-only: 1 p.m.-4 p.m. \$225

Building Champions: In the Classroom and the Community | 4657 Maryland Avenue, Saint Louis, MO 63108 | 314.361.CHESS (2437)
saintlouischessclub.org | info@saintlouischessclub.org | [@STLChessClub](https://www.instagram.com/STLChessClub) #STLChessClub    

The Saint Louis Chess Club and World Chess Hall of Fame admit students and guests of any gender, race, color, national and ethnic origin to all the rights, privileges, programs, and activities generally accorded or made available to students at the school. They do not discriminate on the basis of gender, race, color, national and ethnic origin in administration of its educational policies, admissions policies, scholarship and loan programs, and athletic and other school-administered programs.

CONTENTS

US Chess Executive Director: Carol Meyer
carol.meyer@uschess.org

Senior Director of Strategic
Communication: Daniel Lucas
dllucas@uschess.org

Chess Life Kids Editor: Melinda Matthews
mmatthews@uschess.org

Creative Content Coordinator:
Natasha Roberts
nroberts@uschess.org

Character Designer and Illustrator:
Chandler Ellison
www.chandlerellison.com

Editorial Asst./Copy Editor: Alan Kantor
akantor@uschess.org

Tournament Life: Joan DuBois
tla@uschess.org

CONTRIBUTORS: Send your contributions
and articles to *Chess Life Kids*, PO Box
3967, Crossville, Tennessee 38557 or email
to mmatthews@uschess.org.

Chess Life KIDS (USPS 023-567, ISSN:
1932-5894) is published in February, April,
June, August, October, and December of
every year by US Chess, 137 Obrien Drive,
Crossville, Tennessee 38555. Periodical
postage paid at Crossville, Tennessee, and
additional mailing offices.

CHANGE OF ADDRESS: Be sure to notify
us at once of any change of address.
Please include your old address and your
new address, along with your US Chess
I.D. number.

POSTMASTER: Send address changes to
US Chess, PO Box 3967, Crossville,
Tennessee 38557.

Annual Scholastic Membership: Regular
Scholastic Membership (online version of
Chess Life Kids), age 13 and under at
expiration, is just \$17 per year. Premium
Scholastic Membership (receives *Chess
Life Kids* by mail) is \$25 per year. \$13 of
every premium membership goes towards
providing *Chess Life Kids*. Annual
subscription rate is \$18. Entire contents
copyright 2019, US Chess.

Teachers may photocopy instructional
articles for classroom use, but republication
or widespread copying without the written
consent of US Chess is forbidden.

04

IT'S YOUR MOVE

05

YOU CAN DO IT!

By SIM Jon Edwards

06

CHESS KIDS
ACROSS THE
BOARD

By Al Lawrence

08

AVOID THE TRAP!

By Bruce Pandolfini

10

ALL-AMERICA
TEAM

12

TACTICS FROM
THE K-12s

By GM Elshan
Moradiabadi

14

JUNIOR GRAND
PRIX

15

TOURNAMENT
LIFE

19

ANSWERS

20

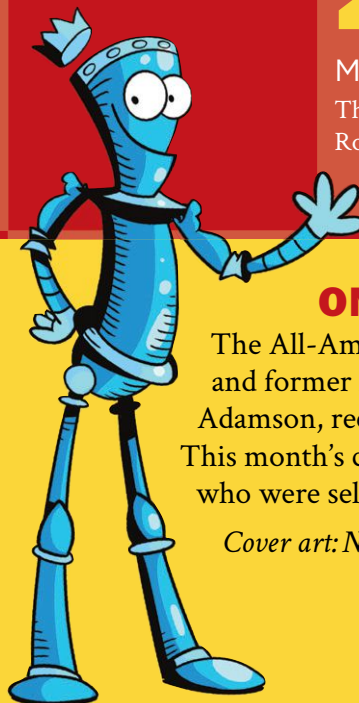
MY FIRST MOVE

This month: GM Ray
Robson

22

CHESS
ADVENTURES

This month: GM Ray
Robson



ON THE COVER

The All-America Chess Team, sponsored by Trophies Plus and former All-America team member IM Robby Adamson, recognizes the nation's best youth chess players. This month's cover features the chess kids ages 13 and under who were selected for this elite team in 2019.

Cover art: *Natasha Roberts*

IT'S YOUR MOVE!



DID YOU CATCH THAT?

01

How many games are played at the National K-12 Grade Championships?

03

What is GM Ray Robson's favorite opening as White?

02

Which Prestia brother is on the 2019 All-America Chess Team?

05

Why is castling important?

04

What are the opening moves for the Sicilian Defense?

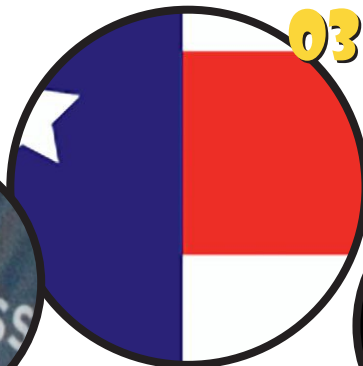
You'll find all sorts of fun facts tucked inside the pages of this month's *Chess Life Kids*. See if you can find the answers to these questions and figure out where the photo close-ups are from. Answers on page 19!

DID YOU CATCH THAT?

01



03



05



02



04



YOU CAN DO IT!

BY SIM JON EDWARDS

10TH U.S. CORRESPONDENCE CHESS CHAMPION

We all learn about castling in our first chess lesson, and then we learn how important it is to safeguard the king. As we play more and more, it often becomes tempting to delay castling to focus our attention instead on an attack or on rapid positional development.

Putting off castling does have its risks, as these examples well demonstrate. In every position in this quiz, the player with the black pieces has put off castling, leaving his

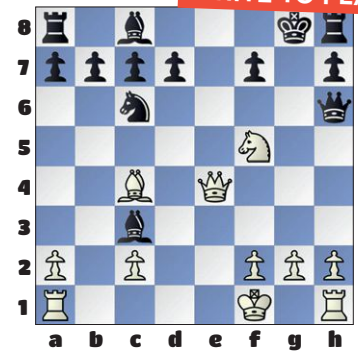
king exposed. Note that in every case, Black's rook remains undeveloped on h8. And in every position here, it is White to move and deliver a forced mate in two moves.

These attacks are exciting and great fun. Some of them are challenging, but I know that You Can Do It!

Answers on page 19

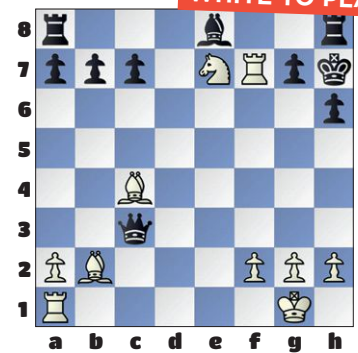
QUIZ #3

WHITE TO PLAY



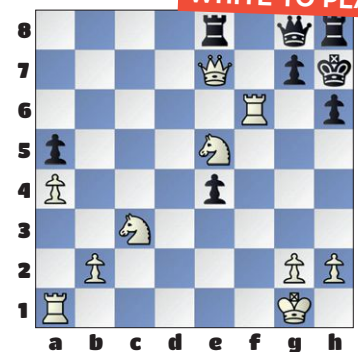
QUIZ #4

WHITE TO PLAY



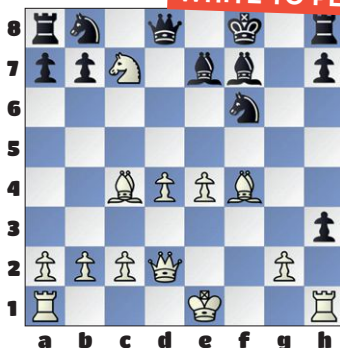
QUIZ #5

WHITE TO PLAY



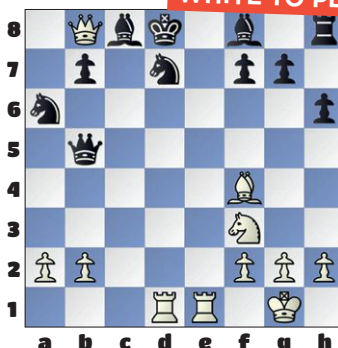
QUIZ #1

WHITE TO PLAY



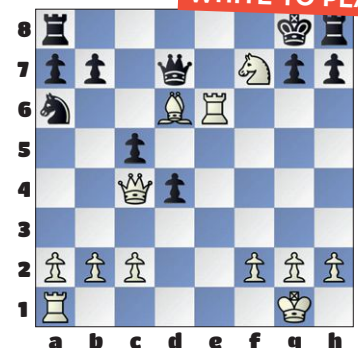
QUIZ #2

WHITE TO PLAY



QUIZ #6

WHITE TO PLAY



CHESS KIDS

ACROSS THE

BOARD

BY AL LAWRENCE



Paris, Frankie, & Sebastian Prestia

Huntington, New York

Three brothers share a U.S. record. They are the only three siblings under the age of 18 to all earn official ratings over 2000. And the oldest of the three, Paris, is only 12! Paris recently went over 2200, reaching the rank of master. Frankie, 11, and Sebastian, 9, have both been rated over 2000. But all three brothers agree, “The biggest accomplishments are still to come!” All want to become chess grandmasters.

When he was eight, Paris saw an ad for an after-school chess program: “Kings and castles and knights ... all fighting!” He borrowed a set from school to show his dad Frank and to learn how to





play. Paris' brother Frankie said, "The pieces look cool!" He began learning at six.

When their Uncle Paul visited, he asked four-year-old Sebastian to play for fun. "Sebastian beat him game after game!" the boys' mother Rosanna said. Sebastian had learned from watching his older brothers! Once Paris and Frankie started bringing home trophies, Sebastian wanted to bring home some of his own. Now, Sebastian has the largest ones in the house! After all, he's in the top four for his age in the entire U.S. and he's on the the 2019 All-America Chess Team for ages 8 and under (*see page 10*).

"Sometimes the three boys study chess together, but soon chess pieces start flying off the board! Their best work is done individually," Rosanna said.



Paris, Frankie, and Sebastian all began chess programs at their school. They volunteer their time on Wednesday mornings at 7:30 a.m. to teach kids chess. All three boys and their parents became official tournament directors to run free chess events for others. They even launched their own website, www.chessli.org, to promote chess so that other kids can enjoy and learn from the game.

Paris, Frankie and Sebastian have all taken martial arts, piano, and surfing lessons, and all three compete in tennis. Paris and Frankie play organized soccer in the fall and basketball in the winter. Paris has played organized baseball, but this spring he and Frankie intend to compete in track and field. All three love creating and cooking food recipes, and making movies with special effects.

"Playing chess is like the 'Rocky' song *Eye of the Tiger*," Paris says. "It's the 'thrill of the fight,' except no one gets hurt! You actually make friends with really great people. Chess connects us with people in a special way."

Far left: The Prestia brothers with four-time U.S. Chess Champ GM Yasser Seirawan during the 2018 US Chess School at the Saint Louis Chess Club. Above: Taking a break from chess in San Diego, California. Left: Frankie, Paris and Sebastian at home with a favorite chessboard. Photos courtesy of subjects.



AVOID THE by Bruce Pandolfini TRAP!

Winning the Queen by Deflection

This tactic can arise in various ways for White. (Naturally, it can happen for Black, too, if a tempo is lost or gained.) A common occurrence can be seen in different king-pawn openings. It tends to come about after the d-file is cleared of pawns so that the friendly and enemy queens are attacking each other directly. If the white king-bishop is also developed and poised at c4 (or c5 for Black), and the only defense to the enemy queen is its king at e8 (or the king at e1, if the victim is White), it might be possible to sacrifice the bishop at f7 (or at f2 for Black) and deflect the king, so that the queen at d8 is hanging (or at d1, if it's White's queen that unfortunately hangs). But enough of this mumbo jumbo. Let's see concretely what we're talking about.

1. e4 c5

The Sicilian Defense was first analyzed in a manuscript by Giulio Polerio in 1594, though it did not receive its name until later, after other Italian players championed it.

2. d4

White makes a quick break in the center. Typically, this advance on the second move involves a gambit.

Q1) What is the most often played second move for White here? (10 points)

2. ... cxd4

In the Sicilian Defense, Black hopes to exchange his c-pawn for White's d-pawn, resulting in Black having a central pawn majority.

Q2) After 1. e2-e4 c7-c5 2. d2-d4, how should White answer the move 2. ... e7-e6? (10 points)

Q3) After 1. e2-e4 c7-c5 2. d2-d4 c5xd4, how should Black answer 3. Qd1xd4? (10 points)

Q4) After 1. e2-e4 c7-c5 2. d2-d4 c5xd4 3. Ng1-f3 e7-e5, can White safely play 4. Nf3xe5? (10 points)

3. c3

White offers a gambit.

3. ... dxc3

Black accepts the gambit.

4. Nxc3



A pawn down, White has several counteradvantages, including better development and a decent initiative. Are they enough for the pawn minus? In a theoretical sense, no. But in a practical sense, perhaps!

4. ... d6

This move is played to restrain the advance of White's e-pawn. Black aims to play a subsequent ... Ng8-f6.

Q5) How would play likely go after the immediate developing move, 4. ... Ng8-f6? (10 points)

5. Bc4

White activates the king-bishop, aiming at Black's vulnerable f7-square.

Q6) What is the safest way for Black to answer this menacing bishop move? (10 points)

5. ... Nf6

Not the best move. It may look superficially okay, but there's potential trouble brewing around it.

6. e5

Attacking the f6-knight, which, of course, must be saved.

Q7) If Black replies 6. ... Nf6-g4, can White force a win by 7. e5-e6? (10 points)

6. ... dxe5?

A serious mistake. Black now has a lost game.

Q8) Should White continue 7. Qd1xd8+ Ke8xd8 8. Bc4xf7? (10 points)

Q9) How can White now win the black queen? (10 points)

(see diagram top of next column)

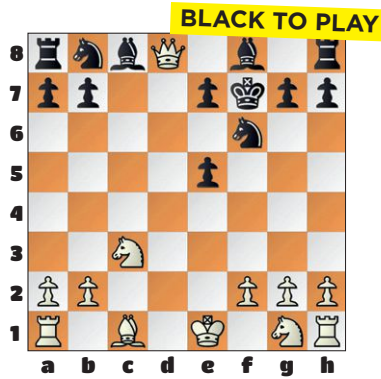
7. Bxf7+

A winning deflection, leaving Black no choice. The black king must take the bishop.



7. ... Kxf7 8. Qxd8

And White has won the queen for a bishop.



Black resigns.

Q10) What was the last move in which Black could have avoided the trap? (10 points)

ILLUSTRATIVE GAME:

CARO-KANN, ADVANCE VARIATION (B12)
V.I. Ivanov
E. Bataev
Chigorin Memorial, St. Petersburg 1999

1. e4 c6 2. d4 d5 3. f3 dxe4 4. fxe4 e5 5. Nf3 exd4 6. Bc4 Bb4+ 7. c3 dxc3 8. Bxf7+ (a defluctive sacrifice to win the black queen) Kxf7 9. Qxd8 cxb2+ 10. Ke2 bxa1=Q 11. Ng5+ Kg6 12. Qe8+ Black will be mated.

If 12. ... Kh6, the discovery 13. Ne6+ leads to mate; and if instead 12. ... Kf6, then 13. Rf1+ will end in mate.

ANSWERS

A1) Usually, after 1. e2-e4 c7-c5, White plays 2. Ng1-f3, which develops a piece and supports the two-square advance of the d-pawn.

A2) White should play 3. d4-d5. This would avoid the exchange of c-pawn for d-pawn and give White more central space.

A3) Black should develop a piece, and steal the initiative, by 3. ... Nb8-c6, which gains a tempo on the white queen.

A4) No! Black would then win the knight by 4. ... Qd8-a5+.

A5) White would drive the black knight back to the home rank with 5. e4-e5.

A6) Black should blunt the c4-bishop's diagonal by 5. ... e7-e6.

A7) No. After 7. e5-e6, Black could deal with the double threat to f7 and g4 by 7. Ng4-e5.

A8) No! This line would wind up being better for Black. The right way is to flip the sequence, doing the second move first!

A9) White wins the queen with the deflecting bishop sacrifice, 7. Bc4xf7+!

A10) At move six, Black could have moved his knight to g4 or d7 (or even to g8), with something like an even game.



How Did You Score?

The score is based on the US Chess rating system and is intended only as a fun way to monitor your progress each issue as you Avoid The Trap!

- 100: 1800+
- 90: 1600
- 80: 1400
- 70: 1200
- 60 or lower: 1000

2019 ALL-AMERICA CHESS TEAM

The All-America Chess Team, sponsored this year by Trophies Plus and former All-America Chess Team member FM Robby Adamson, was created in 1987 to honor the best players ages 18 and under. Being selected for the team is one of the highest national honors attainable by a youth chess player.

This year's team members were selected based on their chess activity, their ages as of January 1, 2018, and their peak post-tournament ratings from July 1, 2017 through June 30, 2018. They were presented with their team jackets and plaques at the 2018 National K-12 Grade Championships, held in December at the Rosen Shingle Creek in Orlando, Florida.

Check out the team members ages 13 and under on this page. For a complete list of all team members, visit uschess.org, click on CLO, and search "2019 All-America Team."

US Chess congratulates each of the 54 members of the 2019 All-America Chess Team for receiving this prestigious award!

AGE 13

(minimum peak rating 2350)

ANDREW ZHANG HONG
WESLEY WANG
CHRISTOPHER SHEN

AGE 12

(minimum peak rating 2300)

JUSTIN WANG
ANTHONY BI HE
BALAJI DAGGUPATI
MAXIMILLIAN LU

AGE 11

(minimum peak rating 2225)

CHRISTOPHER WOOJIN YOO
ARTHUR GUO
JASON YUYANG WANG
DEREK CLASBY
NICO WERNER CHASIN
ROCHELLE WU

AGE 10

(minimum peak rating 2150)

EVAN S PARK
ERIC YUHAN LI
VYOM VIDYARTHI
SANDEEP SETHURAM

AGE 9

(minimum peak rating 2050)

LIRAN ZHOU
DIMITAR MARDOV
LIAM HENRY PUTNAM
SRIRAM KRISHNAKUMAR
ERICK ZHAO

AGE 8 & UNDER

(minimum peak rating 1950)

ABHIMANYU MISHRA
BRYAN XIE
HARSHID KUNKA
STEVE WONGSO
BREWINGTON HARDAWAY
SEBASTIAN PRESTIA



The trio of 13 year olds from this year's All-America team: Andrew Hong (top left), Christopher Shen (top right), Wesley Wang (bottom left). Age 10 team member Evan Park (bottom right) models his All-America Team jacket while—what else?—playing chess. Photos courtesy of subjects.



2019 SPICE CHESS SUMMER CAMP

June 17-21 and July 15-19
Ages 5-15

- ★ All day and morning sessions
- ★ Early bird rates until May 10
- ★ Instructors are members of #1 ranked collegiate team in the nation including Grandmasters

webster.edu/spice • 314-246-8075 • chess@webster.edu

US Chess Membership Rates: Premium (P) and Regular (R)

(U.S., CANADA, MEXICO)

Type	1 yr	2 yr
Adult P	\$49	\$95
Adult R	\$40	\$75
Senior (65+)	\$40	\$75
Young Adult P (25 & UND)*	\$35	\$65
Young Adult R (25 & UND)*	\$26	\$48
Youth P (16 & UND)*	\$30	\$55
Youth R (16 & UND)*	\$22	\$40
Scholastic P (13 & UND)*	\$25	\$45
Scholastic R (13 & UND)*	\$17	\$30

Premium membership provides a printed copy of Chess Life (monthly) or Chess Life Kids (bimonthly) plus all other benefits of regular membership. Regular membership provides online-only access to Chess Life and Chess Life Kids. Youth provides bimonthly Chess Life, Scholastic bimonthly Chess Life Kids, others listed above monthly Chess Life. See www.uschess.org for other membership categories. Dues are not refundable and may be changed without notice.

**Ages at expiration date of membership being purchased*

2019 SPRING NATIONALS

New this year! All events will feature a Twitch livestream with analysis of top games in progress.

For complete information, see www.uschess.org/content/view/10015/95 for hotel details and links to all of our national events.

2019 National Junior High (K-9)
April 26 - 28
Gaylord Texan Resort and Convention Center
1501 Gaylord Trail
Grapevine, TX 76051

2019 National Elementary (K-6)
May 10 - 12
Gaylord Opryland Resort and Convention Center
2800 Opryland Drive
Nashville, TN 37214

Donate to US Chess

Your Tax-Deductible Contribution Will Help US Chess Grow the Game

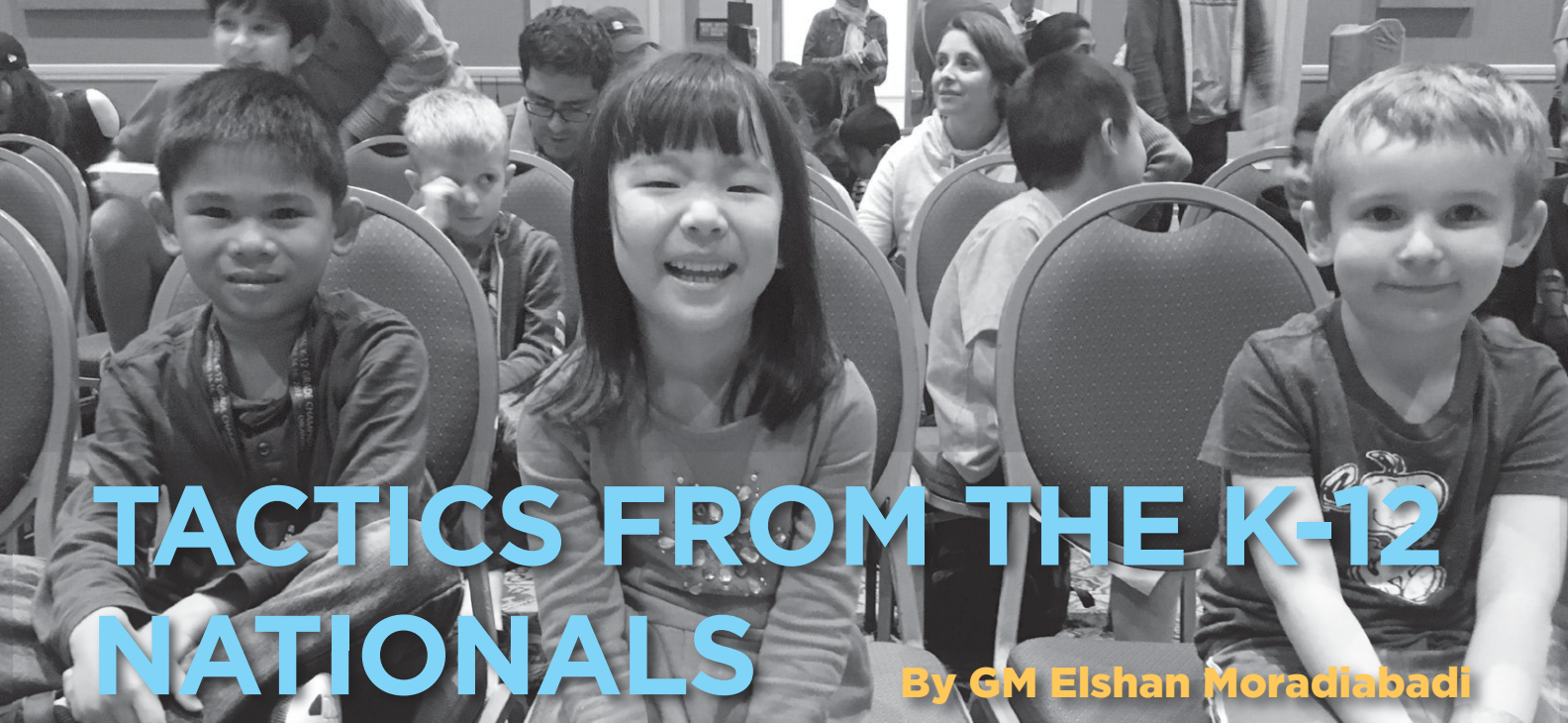
US CHESS counts on donors to support initiatives that further our mission of empowering people through chess, one move at a time.

Membership dues cover the basic operating costs for US Chess.

Our goals are to grow the game by funding initiatives to improve diversity in chess, sending top players to compete in international events, and growing and retaining women chess players in the game.

With your support, we can elevate chess to be a game for life.

Every dollar counts. Make your contribution today. uschess.org/donate



TACTICS FROM THE K-12 NATIONALS

By GM Elshan Moradiabadi

Throughout my years of teaching, many young players and their parents ask me a repetitive question: “What should I do about missing simple tactics? I practice them every day, I really work hard, and I still miss them over the board.” They’ll continue by telling me about their tactical training on different platforms and materials they’ve studied from various books.

The first thing I ask is, “Does your opponent ever tell you that there is a tactical shot in the game?” The main difference between a tactics training session and an actual game is that in an over-the-board game, we are not mentally ready for tactical shots, while when we solve tactic puzzles we know that there must be a solution. The awareness of a game’s trend is one factor in why we may or may not have the necessary tactical sharpness over the board. Other reasons for these “blind spots” are the tournament’s environment and the condition of the player. Playing on a top board, playing for an important title, playing against a much higher rated opponent, time pressure, or fatigue—these are just a few examples of what can affect one’s performance during a game.

In a tournament like the National K-12 Grade Championships, the ability to remain focused is another important aspect. Participants play seven games in three days, so even

with a classical time control, the rounds pass quickly, making concentration even more difficult. Good nutrition and staying off screens are probably two advisable quick fixes.

Irrespective of the aforementioned dynamics, one can only improve tactical alertness by consistent work every day. So let us look at some decisive tactical moments in some games from the 2018 K-12 Nationals!

DAUNTING TASK

Zoe Zelner (1827)
Logan Wu (2240)
2018 K12 Championship, 8th
Grade (3), Orlando, Florida,
12.15.2018

BLACK TO PLAY



25. ... Rc6?

It is always a daunting task to play against someone four hundred points higher-rated than you, especially when your game is broadcast online. If you are ever in such a situation, believe me, I feel

Above, the Kindergarten co-champions eagerly wait to receive their trophies. Photo by Greg Shahade

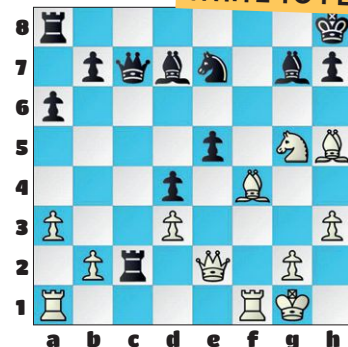
for you! Back in 2014, when I played in the World Rapid and Blitz Championship for the first and last time, I, a seasoned grandmaster, was feeling under pressure because of the presence of World Champion Magnus Carlsen, two rows away from my board. In situations like this, we should remember that we don’t have anything to lose.

26. Rac1?

White returns the favor; probably the position was lost for a long time! Always stay optimistic: you never know when and where your opponent may blunder!

The continuation 26. Bxf4! Rxc2

WHITE TO PLAY



(26. ... exf4 27. Qxe7 and White’s pieces soon will spin a mating net

around Black's king.) 27. Rac1!! and White is completely winning! 27. ... Rxe2 28. Rxc7 exf4 29. Bxe2 and White is up a colossal amount of material.

26. ... Nf5

Black is back in the commanding position; White's position is bad again.

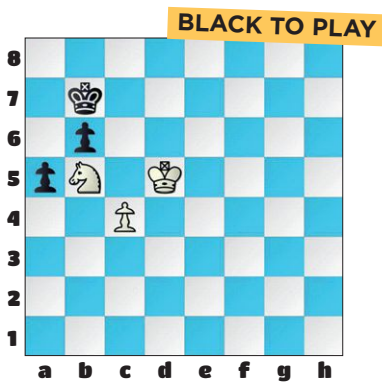
- 27. Nf7+ Kg8 28. Qf3 Ng3 29. Rfe1 Nxf5 30. Qxh5 Be8 31. Qg4 Bxf7 32. g3 Rg6 33. Qf5 Rxc3+ 34. Kh2 Re8 35. Bb4 Be6 36. Qe4 Rxc3+ 37. Kg1 Qf7 38. Re2 Qh5 39. Rf2 Rg3+ 40. Kf1 Qh3+ 41. Ke1 Re3+ 42. Re2 Rxe4 43. Rxe4, White resigned.**

WINNING THE POSITION

Alan Song (2208)

Henry Burton (1938)

2018 K12 Championship, 7th Grade (4), Orlando, Florida, 12.15.2018



57. ... Ka6

White is completely winning, but the hardest task in chess is to win a winning position!

58. Kc6?!

This doesn't blow the win, but it is already a bad trend. White should stop Black's only counterplay, which is the a-pawn by 58. Nc3 a4 (58. ... Kb7 59. Kd6 Ka6 60. Kc6 is not completely winning. 60. ... Ka7 61. Kb5 Kb7 62. Na4) 59. Nxa4 b5 60. Nc5+ Ka5 61. Nb3+.

58. ... a4 59. Na3!

The best move.

59. ... Ka5 60. Nc2!

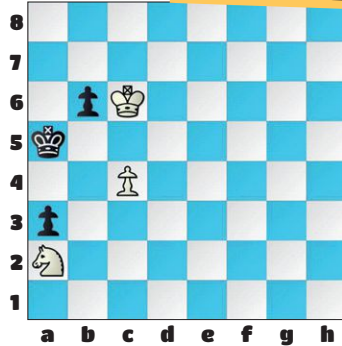
Another tempo-winning move.

60. ... Ka6 61. Nb4+ Ka5 62.

Na2 a3

(see diagram next column)

WHITE TO PLAY



White is still winning but his position has only one way to win. ...

63. Kb7?

Now Black has enough counterplay. White's king needed to retreat. 63. Kd5 Ka4 64. Nc1! restricting Black's king. 64. ... b5 65. c5 b4 66. c6 b3 67. c7 (67. Nxb3?? This is a draw. 67. ... Kxb3 68. c7 a2) 67. ... b2 68. c8=Q b1=Q 69. Qa6+ Kb4 70. Qb7+ and White wins the queen. A very complex line, a hard one to see. White could have chosen a simpler way to win the game.

63. ... b5 64. c5 b4 65. c6 b3 66. c7, Draw agreed.

ADDRESSING THE ISSUE

Adam H. Serota (2070)

FM Marcus Miyasaka (2288)

2018 K12 Championships, 10th Grade (3), Orlando, Florida, 12.15.2018

BLACK TO PLAY



Pin, fork, and skewer are the most common tactical themes in chess. Here Black, the eventual 10th grade champion, correctly addresses the issue.

20. ... Bf8! 21. f5 Nxe4!?

The black pawn is unstoppable after 21. ... d5! 22. e5 Rxe5 23. Qxe5 Re8

24. Qxe8 Nxe8 25. axb5 Bxb5 26. Bxb5 Qxb5 27. Bf4 d3. A difficult decision, because it is not that apparent why Black should be winning here. 28. Rad1 Nf6 29. Kh2 h5 30. Be5 h4 31. Nf1 Ne4 and Black dominates.

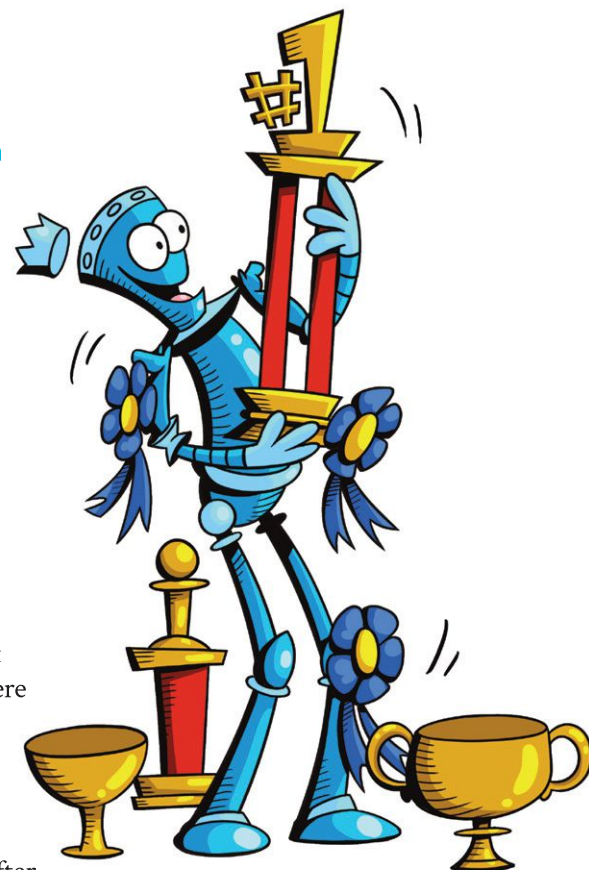
22. Bxe4?

This loses by force.

Better is 22. Nxe4 d5 23. Nf6+! (an important in-between move) 23. ... gxf6 24. Qg4+ Kh8 25. Rxe8 Rxe8 26. Qh4 Bg7 27. a5 and the position is balanced despite Black's extra pawns in the center.

22. ... d5 23. Qg4 dxe4 24. Nxe4 Kh8 25. Bd2 Qd5 26. Ng3 Rc2 27. Rxe8 Bxe8 28. Ne4 Bd7 29. Rf1 bxa4 30. Rf4 Rxb2 31. Qh5 Rb1+ 32. Kh2 Bd6 33. Nxd6 Qxd6 34. Qxf7 Rd1 35. f6 gxf6 36. Bc1, and White resigned.

I hope you enjoyed learning from these positions. Look thoroughly in your games and find the missed tactics and opportunities. There is no better material to learn from than one's own games!





ChessKid.com

PLAY

LEARN



**#1 Chess Site for Kids. 200,000+ Kids, Parents, & Coaches!
100% Safe and Kid-Friendly! Signup Today - it's FREE!**

2018 US CHESS JUNIOR GRAND PRIX FINAL STANDINGS: SREEKAR GANGAVARAPU IS CHAMP

Kudos to Illinois' **Sreekar Gangavarapu**, who just edged out **Pranav Shankar** of New Jersey to win the 2018 US Chess Junior Grand Prix. Gangavarapu is awarded a *Chess.com* one-year Diamond membership valued at \$100, a *Chess.com* gear/merchandise package valued at \$100, a US Chess award, free entry into the 2019 U.S. Open, and \$1,000 of expense money from US Chess to offset the trip. For the top five players on the overall list and to each state winner, *Chess.com* also awards a choice of a one-year *ChessKid.com* gold membership (valued at \$50/annually) or a one-year *Chess.com* Gold membership (valued at \$40/annually). US Chess gratefully acknowledges the participation of *Chess.com*!

Name	State	Pts.	State Leaders	State	Pts.	State Leaders	State	Pts.
GANGAVARAPU, SREEKAR	IL	12860	MU, GRANT	IN	5357	HENDERSON, JORDAN	OR	4269
SHANKAR, PRANAV	NJ	12404	ZENG, SHEENA	KS	5709	LIU, ENMON	PA	6732
KUNAMNENI, MEGHANA	MA	12082	SHAWKAT, SAIF	KY	6254	PAIK, JUSTIN	RI	2083
FAN, JERRY	NY	10297	MAYEUX, BENJAMIN THOMAS	LA	4680	WEBB, NIKOLAI	SC	1943
PHAM, LINDA	IL	10224	KUNAMNENI, SUJAY	MA	6731	TAO, ARTHUR	SD	1366
State Leaders	State	Pts.	GUO, ANDREW	MD	6759	LI, ADAM	TERR	3500
BRUNI, XAVIER	AL	3119	KALLOOR, DENNIS	ME	3840	ZHAO, ERIC	TN	4600
ORTIZ, PAULO	AR	3516	SONG, JUSTIN	MI	7786	OBEROI, SHELEV	TX	7475
REMPE, LENNIK	AZ	5914	KONEZNY, STUART	MN	3936	RAY, UJAN	UT	5766
MEIYAPPAN, KAVYA	CA-N	6838	ZHOU, CELINA	MO	8632	TAYL, BRIAN	VA	8400
ANDRANIGIAN, ARMEN	CA-S	7678	GRIFFIN, GABRIEL	MS	4693	COLLINS, ALEXANDER	VT	3238
AL-ADSANI, SAMI W	CO	2543	WALTHALL, THOMAS KASEV	MT	4450	VEMPARALAI, NIKASH	WA	6239
SU, JASMINE ZHIXIN	CT	5523	DURBHA, ANTARA	NC	6931	PHIPPS, DANIEL	WI	6911
STEINER, ADAMSON	DC	7205	WICKLUND, JOHN	ND	852	ELLIS, ANYA	WV	2182
LUO, TERRY	DE	8081	KOLLI, SAI	NE	4008	AEPLI, WILLIAM ALEXANDER	WY	1881
WU, DERRICK K	FL	8566	TIRUVEEDHULA, SUHAVI	NH	2899			
MYDUKUR, AMIT	GA	8057	SURALIK, DIANA SOPHIA	NJ	9275			
CHEN, MARK Y A	HI	4769	LUO, DANIEL	NM	2190			
LODH, ANJALI	IA	5457	BAO, CHRIS	NV	2559			
SHEPARD, RIVER CHARLES	ID	3278	CHEUNG, RYAN	NY	9936			
CHIFLIKYAN, MICHAEL	IL	9236	SONI, ARJUN GORAKH	OH	7664			
			BARNES, MAXWELL	OK	3281			



Tournament Life Announcements

APRIL 15 THROUGH JUNE 14

Scholastic Members:

As a service to you, we are listing upcoming National US Chess rated events, and requested events of possible interest to you. You can always log in to www.uschess.org, and click on "Clubs & Tournaments." Then click on "Upcoming Tournaments" for a complete listing of upcoming rated events and details. As always, you can check out the TLA section of *Chess Life*.

Organizers and Tournament Directors:

If you would like your tournament listed here in *Chess Life Kids* for June 2019 (events to be held after June 14), the deadline for submitting your announcements is April 10th. The deadline for the August 2019 issue is June 10th. The processing fee is \$1.00 per line for the first eight lines, \$2.00 for every line thereafter. Send your announcements to Joan DuBois, tda@uschess.org. Display advertising is also available. Advertising rates are posted on the US Chess website, www.uschess.org, or you may email: tda@uschess.org for complete details.

ABBREVIATIONS & TERMS

All TDs tournaments are non-smoking with no computers allowed unless otherwise advertised.

BLZ:	Blitz rated.
QC:	Quick Chess events.
\$\$\$Gtd:	Guaranteed prizes.
\$\$b/x:	Based-on-prizes, x = number of entries needed to pay full prize fund. At least 50% of the advertised prize fund of \$501 or more must be awarded.
Bye:	Indicates which rounds players who find it inconvenient to play may take 1/2-point byes instead. For example, Bye 1-3 means 1/2-point byes are available in Rounds 1 through 3.
CC:	Chess club.
dx:	Time delay, x = number of seconds.
+xx:	Time increment, xx = number of seconds added after each move.
EF:	Entry fee.
Ent:	Where to mail entries.
FIDE:	Results submitted to FIDE for possible rating.
G/:	Game in. For instance, G/75 means each side has 75 minutes for the entire game.
GPP:	Grand Prix Points available.
HR:	Hotel rates. For example, 60-65-70-75 means \$60 single, \$65 twin, \$70/3 in room, \$75/4 in room.
JGP:	Junior Grand Prix.
Mem'b req'd:	Membership required; cost follows. Usually refers to state affiliate.
Open:	A section open to all. Often has very strong players, but some eligible for lower sections can play for the learning experience.
Quad:	4-player round robin sections; similar strength players.
RBO:	Rated Beginner's Open.
Rds:	Rounds; scheduled game times follow. For example, 11-5, 9-3 means games begin 11 a.m. & 5 p.m. on the first day, 9 a.m. & 3 p.m. on the second day.
Reg:	Registration at site.
RR:	Round robin (preceded by number of rounds).
SD/:	Sudden-death time control (time for rest of game follows). For example, 30/90, SD/1 means each player must make 30 moves in 90 minutes, then complete the rest of the game in an hour.
SS:	Swiss-System pairings (preceded by number of rounds).
Unr:	Unrated.
W:	Site is accessible to wheelchairs.
WEB:	Tournaments that will use a player's online rating.

NATIONALS

US Chess Junior Grand Prix!
Apr. 12-14, Illinois

2019 All-Girls National Championships presented by the Kasparov Chess Foundation in association with the Renaissance Knights Chess Foundation & US Chess

Any player that achieves a perfect 6-0 score or wins the first place trophy, in each age category, qualifies to represent the USA at the 2019 World Cadets (U/8, U/10, U/12) / World Youth (U/14, U/16, U/18) Championships 6SS, G/90 d5. Hyatt Regency McCormick Place, 2233 S. Martin Luther King Dr., Chicago, IL 60616, (free WI-FI). **6 Sections/Trophies: Age as of 1/1/2019 Under 8** top 15 individuals, top 500 - 799, top U500, top 6 schools, **Under 10** top 16 individuals, top 700 - 999, top U700, top 6 schools, **Under 12** top 16 individuals, top 900 - 1199, top U900, top 6 schools, **Under 14** top 12 individuals, top 1100 - 1399, top U1100, top 4 schools, **Under 16** top 8 individuals, Top 1300 - 1599, top U1300, top 3 schools, **Under 18** top 8 individuals, Top 1500 - 1799, top U1500, top 3 schools, (top 3 players added for team scores). **EF:** \$65 mail/online by 3/11 \$85 by 4/1, \$95 after. Do not mail after 4/5. \$20 fee for roster or section changes after 4/5. \$10 fee for refunds. **Onsite Registration** Fri 9:00 AM - 1:00 PM, Sat 7:30 - 8:30 AM. **Opening Ceremony:** Fri 2:30pm. **Rounds:** Rd. 1 - Fri 3:00pm Rounds 2-4 - Sat 10:00am, 2:30pm, 6:30pm; Rounds 5-6 - Sun 9:00am & 1:00pm. **Awards:** 5:00pm. **Bye:** One 1/2 point bye available for any round, except round 6, if requested at least 2 hours before the start of the round 1. **Side Events: Bughouse Tournament** - Fri. 11:00 am, EF \$35/team. **Blitz Tournament** - Fri. 7pm, G5,d0, EF \$25 by 4/5, \$30 after or on site. **HR:** single - quad \$165 Reservations: (888) 421-1442. Reserve early rate may increase / sell out. **Entries:** online/info at: www.rknights.org/allgirls or mail to RKnights, attn: All-Girls, PO Box 1074, Northbrook, IL 60065, include name, section, rating, USCF ID#, date of birth, grade, school name city & state.

US Chess Junior Grand Prix!
Apr. 26-28, Texas

2019 National Junior High School (K-9) Championships
7SS, G/120 d5. Gaylord Texan Resort & Convention Center, 1501 Gaylord Trail, Grapevine, TX 76051. Hotel Chess Rate \$155. Guest rooms may be booked, NLT 4/4/2019 by calling (877) 382-7299 or (817) 778-2000, mention "US Chess" or see www.uschess.org/tournaments/2019/jhs/ to book now! **6 Sections:** K-9 Championship, K-9 U1250, K-9 Unrated, K-8 Championship, K-8 U1000 and K-8 U750. April Rating Supplement will be used. Maximum one 1/2-point bye available any round if requested prior to the start of Rd. 1. Team score = total of top four (minimum two) finishers from each school per section. K-9 Championship first place individual and team, including ties, will be the National Junior High School Champion. **Schedule:** Opening ceremony Fri. 12:45 pm. Rds.: Fri. 1 pm and 7 pm, Sat. 9 am, 2 pm and 7 pm, Sun. 9 am-2 pm. Awards Ceremony Sun., approx. 7 pm. **EF:** \$60/participant postmarked or online by 3/25, \$80 postmarked or online by 4/15, \$95 online by 4/24, \$100 on site; \$10.00 extra for all phone registrations; \$30 fee for roster or section changes after 4/12 or any onsite changes. Onsite registration Thurs. 9 AM - 9 PM & Fri. 8 AM - 11 AM. Players who register or change sections after 11 am on Friday will receive a 1/2-point bye for Rd. 1. Players must disclose any other, non-US Chess, over-the-board (OTB) ratings. **Awards:** Trophies to top individuals & top teams in each section. Every player receives a commemorative item! Full list of trophies on tournament Info Page. **Side Events:** Bughouse: Thurs. 11 am, Reg. onsite only Thurs. 9 - 10 am, \$25/team. K-9 Blitz: Thurs. 5 pm, Reg. onsite until 4 pm. Blitz EF: \$20 by 4/4, \$25 after or at site. Class trophies will be awarded in main event and in Blitz. Full list of trophies on tournament Info Page. **General questions:** Contact Susan Kantor at 931.787.1234 ext. 136 or by email: skantor@uschess.org. **Team Room questions:** Contact Pete Karagianis at 931.200.9477 or by email: pkaragianis@uschess.org. **Entries:** U.S. Chess Federation, Attn.: 2019 JHS Championship, P.O. Box 3967, Crossville, TN 38557 or online at www.uschess.org/tournaments/2019/jhs/. See web site for additional information about the event, advance entries, awards, meetings, team rooms, updates, corrections, and registration forms.

US Chess Junior Grand Prix!
May 10-12, Tennessee

2019 National Elementary (K-6) Championships
7SS, G/90 d5. Gaylord Opryland Resort and Convention Center, 2800 Opryland Dr., Nashville, TN 37214. Hotel Chess Rate \$171. Guest rooms may be booked, NLT 4/11/2018 by calling (888) 777-6779 or (615) 889-1000, mention "US Chess" or book online at: <https://bit.ly/2TGHTEG>. **13 Sections:** K-6 Championship, K-6 U1400, K-6 U1000, K-6 Unrated, K-5 Championship, K-5 U1200, K-5 U900, K-3 Championship, K-3 U1000, K-3 U700, K-3 Unrated, K-1 Championship, K-1 U500/UMR. May Rating Supplement will be used. One 1/2-point bye available (limit one) ANY round if requested prior to the start of Rd. 1. Team score = total of top four (minimum two) finishers from each school per section. K-6 Championship first place individual and team, including ties, will be the National Elementary School Champion. Opening ceremony Fri. 12:30 pm. **Schedule** for K-3 and higher: Rds.: Fri. 1 pm and 6 pm, Sat. 10 am, 2 pm and 6 pm, Sun. 10 am and 2 pm. Awards Ceremony Sun., approx. 6 pm. Special schedule for K-1 sections: Rds.: Fri. 1:30 pm and 5:30 pm, Sat. 9:30 am, 1:30 pm and 5:30 pm, Sun. 9:30 am and 1:30 pm. Awards Ceremony Sun., approx. 5:30 pm. **EF:** \$60/participant postmarked or online by 4/22, \$80 postmarked or online by 4/29, \$95 online by 5/8, \$90 on site; \$10.00 extra for all phone registrations; \$30 fee for roster or section changes after 4/24 or any onsite changes. Onsite registration Thurs. 9 AM - 9 PM & Fri. 8 AM - 11 AM. Players who register or change sections after 11 am on Friday will receive a 1/2-point bye for Rd. 1. Players must disclose any other, non-US Chess, over-the-board (OTB) ratings. **Awards:** Trophies to top individuals & top teams in each section. Every player receives a commemorative item! Full list of trophies on tournament Info Page. **Side Events:** Bughouse: Thurs. 11 am, Reg. onsite only Thurs. 9 - 10 am, \$30/team. Blitz Sections: K-6 and K-3, Thurs. 5 pm, Reg. onsite until 4 pm. Blitz EF: \$20 by 4/24, \$30 after or at site. Class trophies will be awarded in main event and in Blitz. Full list of trophies on tournament Info Page. **General questions:** Contact Susan

Kantor at 931.787.1234 ext. 136 or by email: skantor@uschess.org. **Team Room questions:** Contact Pete Karagianis at 931.200.9477 or by email: pete.karagianis@uschess.org. **Entries:** U.S. Chess Federation, Attn.: 2019 Elementary Championship, P.O. Box 3967, Crossville, TN 38557 or online at www.uschess.org/tournaments/2019/elem/. See web site for additional information about the event, advance entries, awards, meetings, team rooms, updates, corrections, and registration forms.

US Chess Junior Grand Prix!

May 25-27 or 26-27, New Jersey

75th (2019) Annual U.S. Amateur East Championship
6-SS, 40/2 d5, SD-30. Hyatt Morristown, 3 Speedwell Ave., Morristown, NJ 07960. For chess rate (\$129 per night base), details at www.njscf.org or book at <https://www.hyatt.com/en-US/group-booking/MORRR/MORRR/G-NJCS> or call Phone: 973-647-1234, mention NJ Chess. Free parking during the day (\$10 overnight), public transportation to NYC, Philadelphia. Walking distance to 30 restaurants, shops and parks within 5 minute stroll. **In 3 sections:** Championship (under 2200); Reserve (under 1800); Booster (under 1400); 2-day and 3-day schedules available. **3-Day Registration:** Saturday, May 25, 9:30-10:45 am. Rounds: 12-6pm, 11-5pm, 8:30am-2:15pm. **2-Day Registration:** Sunday, May 26, 8:30-9:30 am. 2-day Schedule: First 3 games, May 26, G/60 d5. Rounds: 10:12:15, 2:30. All schedules merge in round 4. Prizes for each section: trophies to top 5 and top Senior 55/over and Juniors under 16 and 13. Additional Prizes—Championship Section: Trophies to top Under 2000, Under 1900 Reserve Section: Trophies to top Under 1600, Under 1500. Booster Section: Trophies to top Under 1200, Under 1100, Under 1000, Under 900, Under 800. **EF:** \$49, if postmarked by May 15. EF at site \$60 cash only. Byes: 3 half-point byes allowed in rounds 1-5 if requested before round 2. Sets and clocks NOT provided. **Entries to:** Aaron Kiedes, 503 Tulsa Ct., Hackettstown, NJ 07840. Email akiedes@gmail.com for more information. Entries must include name, USCF ID and expiration date, mailing address, email address, phone number, Section and entry fee. Checks made out to NJSCF. NO PHONE OR EMAIL ENTRIES. Online entries \$52 at www.njscf.org after 4-15-19 until 5-23-19 at midnight. W.

An American Classic!

A Heritage Event!

US Chess Junior Grand Prix!

June 12-16, 13-16, 14-16 or 15-16, Nevada

US Chess Grand Prix Points: 300 (Enhanced)

2019 National Open

Open Section June 12-16: 9-SS, 40/90, SD/30, +30. GM & IM norms possible. **Under Sections June 13-16, 14-16 or 15-16:** 7-SS, 40/90, SD/30, +30 (3-day rounds 1-2 G/60, +10, 2-day rounds 1-4 G/30, +5). **Beginners Section June 14, 15, and 16:** 6-SS G/30, +5. Westgate Resort & Casino, 3000 Paradise Road, Las Vegas 89109. **\$\$\$100,000 Guaranteed Prize Fund** will not be reduced! In 8 sections, top 2 FIDE rated. **Open:** \$8,000-4,000-2,000-1,000-600-500-400-300-300-300, top under 2500 \$2,500, top under 2400 \$2,400. **Extra \$2,400** divided among GMs, WGMs and foreign IMs winning less than \$250 and playing 9 rounds. The winner of the Open section also receives a replica of the Edmondson Cup. **Under 2300:** \$6,000-3,000-1,500-750-400-350-300-250-250-250. **Under 2100:** \$6,000-3,000-1,500-750-400-350-300-250-250-250. **Under 1900:** \$5,000-2,500-1,250-600-350-300-250-250-250-250. **Under 1700:** \$4,000-2,000-1,000-500-300-250-250-250-250-250. **Under 1500:** \$3,000-1,500-700-350-300-250-250-250-250-250. **Under 1300:** \$2,000-1,000-500-300-250-250-250, top under 1000 (no provisional) \$900. Provisionally rated players may not win an amount greater than 40% of top prize in any under section; balance goes to next player(s) in line. **Beginners** (unrated or provisionally rated under 1300): 3 schedules with 6 rounds per day \$200-125-75 each day plus \$300 overall (best 2 results). Unrated players may play only in Beginners or Open Section. **Plus-Scor Bonus:** (\$12,000 guarantee) in addition to any other prizes, every player with a plus score wins a \$50 gift certificate. Plus score certificates will be awarded on site only. **Mixed Doubles:** best male/female combined 2-player team score: \$1,500-750-350-250-150. Average rating below 2200, teammates may play in different sections, only rounds 1-7 count for Open Section or best day for Beginners. **The Freddie:** Players age 14 and under are eligible for best game prizes including the Freddie Award and \$400 in cash prizes (donated by Fred Gruenberg). CCA minimum ratings or other ratings may be used if higher than US Chess June Supplement. **EF:** Open: \$239 by 4/30, \$259 by 6/11, \$280 later. \$125 more for players not rated above 2199. GM, WGM & foreign IM free. \$80 less for IM, WIM, foreign FM/WFM. Under sections: \$239 by 4/30, \$259 by 6/11, \$280 later. Beginners: \$125 1 day, \$189 2 days, \$229 3 days. \$30 more after 6/11. Senior over 65 \$40 less by 6/11. **Open Reg:** 5-6 p.m. Wednesday. **Rds.:** 7:30, 1-7:30, 11-5:30, 10-4:30, 10-4:30, 4-day schedule. **Reg:** 2-6 p.m. Thursday. **Rds.:** 7:30, 11-5:30, 10-4:30, 10-4:30, 3-day schedule. **Reg:** 8:30-9:30 a.m. Friday. **Rds.:** 10:30-1:30 then merge with 4-day in round 3 at 5:30. 2-day schedule: **Reg:** 8:30-9 a.m. Saturday. **Rds.:** 9:30-11-1-2:30 then merge with 4-day in round 5 at 4:30. Half point byes available in rounds 1-7; Sunday byes must be requested before the start of round 2 and may not be cancelled. Chess sets and boards provided for tournament play only, not for spectators. Please bring digital chess clocks! **The LAS VEGAS INTERNATIONAL CHESS FESTIVAL** features the National Open, the U.S. Women's Open, the International Youth Championship, and other events. **Many free extras and surprises!** Free parking. Free raffles with great prizes. Free GM Lectures. Free GM analysis of your games. Free Daily Bulletins. **Grandmaster Simuls and Chess Camp** for all ages on Thursday. **U.S. Women's Open** Tuesday and Wednesday. **Walter Browne Memorial Blitz** Saturday 10:30 p.m. **Youth Tournaments** Friday, Saturday & Sunday. **Blitz** Sectionals Friday & Sunday. **Poker Tournament** Monday Morning. **Don't be shut out** - make your reservations early and be sure to ask for the **CHESS group (SVCF9R)** rates — \$69 single or double (\$95 Friday and Saturday nights) guarantees a premium room with new furniture, refrigerator, flat screen TV and more. The resort fee including access to the Fitness Center, free WI-FI, and more is substantially discounted for our group. **Cutoff for special hotel rate is May 23; after that rates will increase significantly and there may not be any rooms available.** (800) 732-7117 or www.VegasChessFestival.com. **Info:** (702) 930-9550 and leave a message. FIDE. W.

Tournament Life

US Chess Junior Grand Prix!

June 28-30, Illinois

2019 U.S. Junior Open

6SS, G/90+30. North Central College, Wentz Science Center—Ratio Hall, 125 S. Loomis St., Naperville, IL 60540. \$55 chess rate dorm single, \$100 doubles; \$145 triple by 5/31, \$10 more per person thereafter. (No taxes/tips for dorm rooms) see www.cavemanchess.com/events for info on nearby hotels (23 within 2.5 miles). Reserve early! June supplement. **EF:** \$60 rec'd by USPS or online by 12/31 7:00 p.m. CT; \$70 rec'd by USPS or online by May 31, 7:00 p.m. CT; \$80 rec'd by USPS or online until June 14, 7:00 p.m. CT; \$95 rec'd by USPS or online until June 27, 7:00 p.m. CT & after door. **Sections (based on age as of 1/1/19):** U21, U15, U11, U8. www.cavemanchess.com/events for more info and complete details.

Prizes: U21 \$300 plus, for firstmost only if eligible, entry in the 2020 U.S. Jr. Closed Championship including \$200 cash; plaques to top 5 overall; & to top age 18, 17, 16, 15, U15; U15 plaques to top 10 overall, top age 14, 13, 12, 11, U11; U11 plaques to top 10 overall, & to top age 10, 9, 8, U8; U8 plaques to top 10 overall, plaques to top age 7, 6, U6. **Team prizes:** Plaques to top 3 school teams in each section, top 3 scores count as team score. One Bye 1-6, must commit by end of rd. 2. **Reg.:** 11-12:30. **Rds.:** Fri 1:00pm & 6:00pm; Sat 9:30am & 3:00pm; Sun 8:30am & 2:00pm. Side events: Thu eve, GM Simul, GM Lecture, Saturday Blitz after R4. See website for details & more possible events. (Possible adult events, possible meal plan.) Free WiFi on campus. Caveman Chess Camp 6/23-28; premier camp see website for details. **Ent:** Caveman Chess, LLC, 27 Morris St., Park Ridge, IL 60068, see online form, or send name, address, phone, email and birthdate, or online at www.cavemanchess.com; Checks payable to: Caveman Chess, LLC. No checks after 6/14. **Info:** www.cavemanchess.com. 847-430-6798. Caveman Chess provides sets, boards; please bring clocks. See website for terms and conditions.

July 19, North Carolina

US Chess Grand Prix Points: 10

2019 U.S. G/10 Championship

6 rounds, G/10 d0. Hilton Charlotte University Place, 8629 JM Keynes Rd., Charlotte, NC — 704-547-7444 and mention chess tournament, or reserve online at www.charlottechesscenter.org. \$109-\$109, reserve by July 1. Free parking, free internet. **\$1000 guaranteed prize fund** in one section. **G/10 National Championship:** \$300 — 200 — 100, top Under 2100 \$100, top Under 1800 \$100, top Under 1500 \$100, top Under 1200/Unrated \$100. Trophy and 2019 U.S. National G/10 Champion title to first place. US Chess Blitz rated, July USCF regular ratings used for pairings and prizes. Up to 3 byes available, request at registration. Rounds Friday 7:30pm then ASAP, tournament should end before 10pm. **Registration:** \$30 online at <https://www.charlottechesscenter.org/usblitzrapid> or check mailed to Charlotte Chess Center, 10700 Kettering Drive, Suite E, Charlotte, NC 28226 by July 17. \$40 after 7/17 or on-site. GMs and IMs free, \$30 from prize. Info and registration: www.charlottechesscenter.org, grant@charlottechesscenter.org.

July 20, North Carolina

US Chess Grand Prix Points: 20

2019 U.S. G/30 Championship

5 rounds, G/30 d5. Hilton Charlotte University Place, 8629 JM Keynes Rd., Charlotte, NC — 704-547-7444 and mention chess tournament, or reserve online at www.charlottechesscenter.org. \$109-\$109, reserve by July 1. Free parking, free internet. **\$3000 guaranteed prize fund** in three sections. **G/30 National Championship:** \$600 — 300 — 200, top Under 2000 \$100. **Under 1800:** \$500 — 250 — 150, top Under 1600 \$100. **Under 1400:** \$400 — 200 — 100, top Under 1200 \$100. **Under 800 Scholastic (K-12):** Entry Fee \$30. Trophies to top 5, same schedule as main tournament. Trophy and 2019 U.S. National G/30 Champion title to first place in Championship section. Rated players may play up if within 100 points of next section, unrated players must play Under 1400 section. Up to 2 byes available, request at registration. Rounds Saturday 10am, 11:30am, 1:30pm, 3:00pm, 4:30pm. **Registration:** \$60 online at <https://www.charlottechesscenter.org/usblitzrapid> or check mailed to Charlotte Chess Center, 10700 Kettering Drive, Suite E, Charlotte, NC 28226 by July 17. \$10 early discount if also entering G/60 Championship Sunday, \$10 discount if staying at official hotel, discounts only apply to entries received by July 17. \$75 after 7/17 or on-site. U800 Scholastic \$30 entry fee. GMs and IMs free, \$50 from prize. Info and registration: www.charlottechesscenter.org, grant@charlottechesscenter.org.

July 21, North Carolina

US Chess Grand Prix Points: 20

2019 U.S. G/60 Championship

4 rounds, G/60 d5. Hilton Charlotte University Place, 8629 JM Keynes Rd., Charlotte, NC — 704-547-7444 and mention chess tournament, or reserve online at www.charlottechesscenter.org. Reserve by July 1. Free parking, free internet. **\$4000 guaranteed prize fund** in three sections. **G/60 National Championship:** \$800 — 400 — 200, top Under 2100 \$100, top Under 1900 \$100. **Under 1700:** \$600 — 300 — 200, top Under 1500 \$100. **Under 1300:** \$600 — 300 — 200, top Under 1100 \$100. Trophy and 2019 U.S. National G/60 Champion title to first place in Championship section. Rated players may play up if within 100 points of next section, unrated players must play Under 1300 section. Up to 2 byes available, request at registration. Rounds Sunday 10am, 12:30pm, 3pm, 5:30pm. **Registration:** \$60 online at <https://www.charlottechesscenter.org/usblitzrapid> or check mailed to Charlotte Chess Center, 10700 Kettering Drive, Suite E, Charlotte, NC 28226 by Tuesday July 17. \$10 discount on early entry fee is also entering G/30 Championship Saturday, \$10 discount if staying at official hotel, discounts only apply to entries received by July 17. \$75 after 7/17 or on-site. GMs and IMs free, \$50 from prize. Info and registration: www.charlottechesscenter.org, 980 265 1156, grant@charlottechesscenter.org.

A Heritage Event!

US Chess Junior Grand Prix!

Aug. 3-11, 6-11 or 8-11, Florida

US Chess Grand Prix Points: 300 (Enhanced)

120th Annual U.S. Open

Includes Traditional one game per day schedule (9 days), a 6-day slow time control option, and 4-day option. 9SS, 40/100, SD/30, +30 increment

from move one (4-day option, Rds. 1-6, G/60 d5; then 40/100, SD/30, +30). Rosen Centre Hotel, 9840 International Dr., Orlando, FL 32819, HR: \$129, Call (800) 204-7324, mention "US Open Chess Championship". Reserve by July 11 or rate may increase. **\$50,000 in prizes based on 500 paid entries, else proportional, \$40,000 (80% of each prize) minimum guaranteed.** A one-section tournament with Class prizes. Top U.S. player not otherwise qualified qualifies for 2020 U.S. Championship. **Choice of three schedules: Traditional:** 40/100, SD/30, +30. One round daily at 7 PM, except Rd. 9, 3 PM 8/11. **6-Day Option:** 40/100, SD/30, +30. 7 PM 8/6, 12 NOON 8/7 3 PM 8/7-8/11, 7 PM 8/10, 3 PM 8/11. **4-Day Option:** Rds. 1-6: G/60 d5; then 40/100, SD/30, +30. 12 NOON, 3 PM, 7 PM, 10 PM 8/8; 12 NOON, 3 PM, 7 PM 8/9; 7 PM 8/10; 3 PM 8/11. All schedules merge after Round 6 & compete for same prizes.

Projected prizes: Top places \$8000-4000-2000-1500-1000-800-600-500, clear or playoff winner \$200 bonus. If tie for first, top two on tiebreak play Armageddon game for bonus and title. (Separate Armageddon game for U.S. Championship qualifier, if necessary.) Armageddon game(s) will be G/10, no delay. Armageddon players will bid on start time with Black. Low bid gets requested start time and draw odds. Class Prizes: Top Master (2200-2399) \$2500-1200-800-500, Expert (2000-2199) \$2500-1200-800-500, Class A (1800-1999) \$2500-1200-800-500, Class B (1600-1799) \$2500-1200-800-500, Class C (1400-1599) \$2000-1000-600-400, Class D (1200-1399) \$1500-700-500-300, Class E or below (under 1200) \$1500-700-500-300, Unrated \$800-400-200. **Half-Point Byes:** must commit before Round 4; up to 3 byes allowed for 2000/up, 2 byes for 1400-1999, one bye for Under 1400/Unr. Limit 1 bye in last two rounds. Zero-point byes are always available in any round if requested at least two hours before the round(s) in question. **Entry Fee:** Online, \$155 by 6/29, \$175 by 7/13, \$195 after 7/22. By mail, \$157 postmarked by 6/29, \$177 postmarked by 7/13, \$197 after 7/22; do not mail after 7/29! By phone, \$150 by 6/29, \$170 by 7/13, \$190 after. No phone entries after 5PM Central 8/2 (close of business at the US Chess Office)! At site, all \$200; Free entry for GMs and WGMs for main event only. All entries must be made at least two (2) hours prior to the player's first game. Current US Chess membership required. **August Rating Supplement used;** unofficial ratings (at least four games) used if otherwise unrated. CCA ratings used if above US Chess. Foreign player ratings: usually 100 points added to FIDE or FQE, 200+ added to most foreign national ratings, no points added to CFC. Highest of multiple ratings generally used. **Entries:** US Chess, ATTN: 2019 U.S. Open, PO Box 3967, Crossville, TN 38557. Online entry available, see website. Phone entry: 800.903.8723. **Not FIDE rated, No cell phones.** Bring a clock — none supplied. Sets/boards supplied for tournament but not for skittles. Many meetings, workshops and seminars, including: **US Chess Committee Meetings 8/7-8/9, US Chess Awards Luncheon 8/10 Noon, US Chess Delegates Meeting 8/10-11.** Many side events and other championships, including: **U.S. National Blitz Championship 7SS Double, G/5 d0, Rd. 1 at 12 NOON 8/10; U.S. National G/15 Championship 5SS, G/60 d5, Rd. 1 at 12 NOON 8/7; U.S. Open Weekend Swiss 5SS, G/15 d5, 12-3 Sat 8/13, 10-12:30-3 Sun 8/4; U.S. Open Scholastic (see separate TLA for the Scholastic event); **Mon-Wed-Thu-Fri Aug. 5, 7, 8, 9 U.S. Open Quads (one-day events) G/30 d5.** Entry fee \$20. Registration 9:30-11:30 a.m., Rounds at noon, 1:30 p.m. & 3:00 p.m. \$50 to first in each quad. **Tue Aug. 6 U.S. Open Quads (Tuesday Quads Only) G/60 d5.** Entry Fee \$20. Registration 9 a.m.-10:00 a.m., Rounds at 10:30 a.m., 1:00 p.m. and 3:30 p.m. \$50 to first in each quad. **U.S. Open Bughouse Sat. 10:30 AM 8/3. 20th Annual Golf Tournament for the US Open Chess Players,** (see tournament website for details).**

US Open Tennis Tournament (see tournament website for details). In addition, four other championships will also take place: the **Denker Tournament of HS Champions** (see website for participants' list), the **Barber Tournament of K-8 Champions** (see website for participants' list), the **National Girls' Tournament of Champions** (see website for participants' list) and the **National Seniors' Tournament of Champions** (see website for participants' list). **Please check the U.S. Open website often for updates, new information and corrections and other useful documents!** www.uschess.org/tournaments/2019/usopen/

Aug. 7, Florida

2019 U.S. National G/15 Championship (CC)

5-SS, G/15 d5. Quick rated, higher of regular or quick rating used. **Entry fee:** \$40. **Registration:** 9:30 AM — 11:30 AM. Rounds at noon, 1:00, 2:00, 3:00, 4:00. 80% of entries as returned as cash prizes. 1st 30%, 2nd 15%, U2100 12%, U1800 10%, U1500/Unrated 8%, U1200 5%. This is a Side Event so see TLA for our 120th Annual U.S. Open Chess Championship for hotel details.

Aug. 10, Florida

US Chess Grand Prix Points: 15

2019 U.S. Open National Blitz Championship (BLZ)

7 Double Round (14 games) Swiss, 1 section, G/5 d0. Blitz rated, higher of regular or Blitz rating used. Entry fee: \$40, free to Unrated players if paying US Chess dues. Registration: 9-11:30 a.m., round 1 begins at noon. **\$2000 Guaranteed Prizes:** \$5400-200-150, U2200 \$200-100, U2000 \$200-100, U1800 \$180-90, U1600/Unrated \$140-70, U1400 \$100, U1200 \$70. This is a Side Event so see our TLA for our 120th Annual U.S. Open Chess Championship for hotel details.

GRAND PRIX

US Chess Junior Grand Prix!

Apr. 13-14, Texas

US Chess Grand Prix Points: 20 (Enhanced)

DCC FIDE Open V

5SS, G/90 inc/30. Dallas Chess Club, 200 S. Cottonwood Dr. #C, Richardson, TX 75080. Two sections: Open and Reserve. **Open:** \$875G. FIDE and US Chess rated but uses FIDE rules. Use US Chess ratings and rules for pairings and for awarding prizes. Default late forfeiture time is one hour. TD may extend this time at TD's discretion. Note that Foreign players must disclose their FIDE ID number before 1st round in order to play. Note that USA Players with no FIDE ID must disclose their email address. \$5 \$500-\$250-\$125. EF: 2400+ \$125, 2000-2399 \$90, 1600-1999 \$99, U1600 \$125, Senior/Birthday during tournament/Additional Family Member \$55. Dallas Chess Club membership required or pay

\$20 non-member fee. Small Minimum prize to the First three GM/IM's who apply. GM/IM must play all rounds to get minimum prize (entry fee may be deducted from prize). **Reserve:** Open to players rated below 2000 USCF. This section is not FIDE Rated but is US Chess rated and uses US Chess rules. EF: \$40. 10\$ non Dallas Chess Club membership fee. The Reserve give back 10% in prizes and if at least 8 paid entries and if there is a clear winner, then that winner receives free entry to next DCC FIDE Open. In the reserve section, Tournament reserves the right to use Fide rules on electronic devices and on starting White's clock at start of a round and to use FIDE pairing rules. Also clocks will be set to 'halt at end'. Both: Reg.: Saturday from 9:45-10:15 am. Rds.: Sat 10:45 am-3:10pm-7:16pm, Sun 9:45 am-2:10pm. One half point Bye allowed if requested before end of round 2 and before getting full point bye. Withdrawals and zero point last round byes are not eligible for prizes. Note that house players (if required) must pay \$5 per round and be US Chess members. ENT: Make/mail Checks payable to Dallas Chess Club, C/O Barbara Swafford, 2709 Longhorn Trail, Crowley, TX 76036-4719. Info: 214-632-9000. FIDE.

US Chess Junior Grand Prix!

May 11-12, Texas

US Chess Grand Prix Points: 20 (Enhanced)

DCC FIDE Open VI

5SS, G/90 inc/30. Dallas Chess Club, 200 S. Cottonwood Dr. #C, Richardson, TX 75080. Two sections: Open and Reserve. **Open:** \$875G. FIDE and US Chess rated but uses FIDE rules. Use US Chess ratings and rules for pairings and for awarding prizes. Default late forfeiture time is one hour. TD may extend this time at TD's discretion. Note that Foreign players must disclose their FIDE ID number before 1st round in order to play. Note that USA Players with no FIDE ID must disclose their email address. \$5 \$500-\$250-\$125. EF: 2400+ \$125, 2000-2399 \$90, 1600-1999 \$99, U1600 \$125, Senior/Birthday during tournament/Additional Family Member \$55. Dallas Chess Club membership required or pay \$20 non-member fee. Small Minimum prize to the First three GM/IM's who apply. GM/IM must play all rounds to get minimum prize (entry fee may be deducted from prize). **Reserve:** Open to players rated below 2000 USCF. This section is not FIDE Rated but is US Chess rated and uses US Chess rules. EF: \$40. 10\$ non Dallas Chess Club membership fee. The Reserve give back 10% in prizes and if at least 8 paid entries and if there is a clear winner, then that winner receives free entry to next DCC FIDE Open. In the reserve section, Tournament reserves the right to use Fide rules on electronic devices and on starting White's clock at start of a round and to use FIDE pairing rules. Also clocks will be set to 'halt at end'. Both: Reg.: Saturday from 9:45-10:15 am. Rds.: Sat 10:45 am-3:10pm-7:16pm, Sun 9:45 am-2:10pm. One half point Bye allowed if requested before end of round 2 and before getting full point bye. Withdrawals and zero point last round byes are not eligible for prizes. Note that house players (if required) must pay \$5 per round and be US Chess members. ENT: Make/mail Checks payable to Dallas Chess Club, C/O Barbara Swafford, 2709 Longhorn Trail, Crowley, TX 76036-4719. Info: 214-632-9000. FIDE.

A Heritage Event!

US Chess Junior Grand Prix!

A State Championship Event!

May 24-27 or 25-27, Texas

US Chess Grand Prix Points: 30 (Enhanced)

74th Annual Texas State and Amateur Championships

7SS. DFW Airport Marriott South, 4151 Centreport Dr., Fort Worth, TX 76155. \$5 8,350G. **Championship:** This section is FIDE rated and uses FIDE rules. The tournament will use USCF ratings for pairings and prize purposes. Must be rated 2000 or above regular (not quick, blitz or rapid) by either USCF or Fide to play in this section or have had a provable 2000 or higher regular rating in the past. defending Texas State Amateur Champion may also play in this section. Texas Scholastic High School Champions may also play in this section. Foreign unrateds may play in this section and at TDs discretion may be required to play in Championship section. G/90 with 30 sec. increment. Foreign players must disclose their FIDE ID number before 1st round in order to play in Championship section. Default late forfeiture time is one hour. TD may extend this time at TD's discretion. \$5 1,000-500-250, 2200-2399 \$750, U2200 \$750. **Amateur:** U2000 & unrated. Rds.: 1-7 G/90 with 30 sec increment. \$5 \$800-400-200. B \$5 600-300-150, C 500-250-125, U1400 \$500-250-125, U1200 \$400, U1000 \$300 Unrated \$200. Both: TCA membership required. Other states accepted. EF: \$89 if received by 5/16, else \$99. \$80 Junior (U19) if received by 5/16 else \$90, senior (over 65)/Handicapped/Full time college student/additional family participant \$53 if receive by 5/16 else \$65. Add \$5 for CC phone entries; pre-reg. requires pre-payment. After 5/22 all registration and changes on site only; all changes including withdrawals, \$10 after 5/22. 4 day: Reg. Friday 5/24, 6:15 pm-7:00. Rds. Fri: 7:30, Sat: 2:45 pm - 7:30, Sun: 11:30 am - 5:15 pm, Mon: 9:30 am - 2:15 pm. 3 day: Reg. Sat. 5/25, 9-9:30 am. Rd. 1 at 10 am then merge with 4 day. Foreign Unrated must play in Championship section. Registrations that do not indicate 4 or 3 day schedule will be put in the 3 day. HR: \$102/102/112/112, \$17-358-1700 or 800-228-9900 reserve by 5/16 and ask for Chess rate. Rate includes breakfast for up to 2 guest with the \$102 rate and up to 4 hotel guests with the \$112 rate. Free Parking. Up to two 1/2 point byes available if requested before end of rd. 2 and before receiving full point bye, but byes for both rounds 6 AND 7 is not permitted. **K-12 Scholastic** on Saturday, 5/25. 5-SS, Rds. G/30 d5, EF: \$29 by 5/16, \$45 after; Pre-reg. requires pre-payment. After 5/23 all registration and changes on site only; all changes \$10 after 5/22. No refunds after 5/23, \$10 handling fee for refunds before 5/23. Registration 8:15-8:45 am, Rd. 1 at 9:30 am, rest ASAP with small lunch break. Sections: **K-12 Championship and K-12 U1000.** Prizes: Trophies to top 12 individuals, top five teams in each section. K-12 U1000 also top three unrateds. Medals to those who do not win a trophy. ENT: Dallas Chess Club, C/O Barbara Swafford, 2709 Longhorn Trail, Crowley, TX 76036. Info: Barb Swafford, 214-632-9000, info@dallaschess.com, www.dallaschess.com. W. FIDE.

June 12-16, 13-16, 14-16 or 15-16, Nevada

US Chess Grand Prix Points: 300 (Enhanced)

2019 National Open

See Nationals.

July 19, North Carolina
US Chess Grand Prix Points: 10
2019 U.S. G/10 Championship
See Nationals.

July 20, North Carolina
US Chess Grand Prix Points: 20
2019 U.S. G/30 Championship
See Nationals.

July 21, North Carolina
US Chess Grand Prix Points: 20
2019 U.S. G/60 Championship
See Nationals.

Aug. 3-4, Florida
US Chess Grand Prix Points: 10 (Enhanced)
Weekend Swiss
55S, G/60 d5. **\$1,150 Guaranteed Prizes:** \$200-100-50, U2200/Unrated \$160, U2000 \$150, U1800 \$140, U1600 \$120, U1400 \$100, U1200 \$80, Unrated \$50. Entry fee: \$40. Unrated players free if paying US Chess dues. On-site Registration: 10:00-11:30 a.m. Saturday, Rounds at noon & 3:00 p.m. Saturday, 10:00 a.m., 12:30 p.m. & 3:00 p.m. Sunday. This is a Side Event so see TLA for our 120th Annual U.S. Open Chess Championship for hotel details.

Aug. 3-11, 6-11 or 8-11, Florida
US Chess Grand Prix Points: 300 (Enhanced)
120th Annual U.S. Open
See Nationals.

Aug. 10, Florida
US Chess Grand Prix Points: 15
2019 U.S. Open National Blitz Championship (BLZ)
See Nationals.

REGIONAL Arizona

Apr. 27-28, 14th Susan Polgar Foundation National Open for Boys and Girls (CA-N)
See California, Northern.

California, Northern

Apr. 13, Foster City Kids Swiss & Quads (PK-12)
Foster City Courtyard Marriott, 550 Shell Blvd., Foster City, CA, 94404. **Trophies:** players w + score, medals to others. **Swiss (4SS, G/30 d5):** Reg: 9-9:15a. Games: 9:30a - 1:30p. **EF:** 36, 51 after 4/8. **Quads (3RR, G/30 d5):** Reg & Reqr Check-in 1:30-2p. Games: 2:15-5p. **EF:** 31, 46 after 4/8. Info: <http://BayAreaChess.com/signature.W>.

Apr. 13, Sacramento Kids Quads (PK-12); 3xG/30 d5)
Courtyard Marriott, Rancho Cordova, CA 95670. **Trophies:** players w + score, medals to others. **Reg & Reqr.** Check-in 1:30-2p. Games: 2:30-5p. **EF:** 29, 44 after 4/8. Info: <http://BayAreaChess.com/signature.W>.

Apr. 14, San Jose Kids Quads (PK-12)
BAC office: 2050 Concourse Drive #42, San Jose, CA 95131. **Trophies:** players w + score, medals to others. **Quads (3RR G/30 d5):** Reg & Reqr Check-in 1:30-2p. Games: 2:15-5p. **EF:** 31, 46 after 4/9. Info: <http://BayAreaChess.com/signature.W>.

Apr. 14, Fremont Kids Swiss & Quads (PK-12)
Fremont Marriott, 46100 Landing Pkwy., Fremont, CA 94538. **Trophies:** players w + score, medals to others. **Swiss (4SS, G/30 d5):** Reg: 9-9:15a. Games: 9:30a - 1:30p. **EF:** 36, 51 after 4/9. **Quads (3RR, G/30 d5):** Reg & Reqr Check-in 1:30-2p. Games: 2:15-5p. **EF:** 31, 46 after 4/9. Info: <http://BayAreaChess.com/signature.W>.

Apr. 20, Cupertino Kids Swiss & Quads (PK-12)
NEW Venue: Aloft Cupertino, 10165 N. De Anza Blvd., Cupertino, CA 95014. **Trophies:** players w + score, medals to others. **Swiss (4SS, G/30 d5):** Reg: 9-9:15a. Games: 9:30a - 1:30p. **EF:** 36, 51 after 4/16. **Quads (3RR, G/30 d5):** Reg & Reqr Check-in 1:30-2p. Games: 2:15-5p. **EF:** 31, 46 after 4/16. Info: <http://BayAreaChess.com/signature.W>.

Apr. 21, Pleasanton Kids Swiss & Quads (PK-12)
NEW Venue: Larkspur Landing, 5535 Johnson Dr., Pleasanton, CA 95336. **Trophies:** players w + score, medals to others. **Swiss (4SS, G/30 d5):** Reg: 9-9:15a. Games: 9:30a - 1:30p. **EF:** 36, 51 after 4/17. **Quads (3RR, G/30 d5):** Reg & Reqr Check-in 1:30-2p. Games: 2:15-5p. **EF:** 31, 46 after 4/17. Info: <http://BayAreaChess.com/signature.W>.

Apr. 27-28, 14th Susan Polgar Foundation National Open for Boys and Girls
Santa Clara Convention Center, 5001 Great America Pkwy. Park Free! **10 Championship sections based on age and gender:** Under8, Under10, Under12, Under14, Under 16&18 separate sections for Girls & Boys. **Individual Trophies:** Top 15 players. "Super Performance" trophies to players tied for last place with a trophy award and the top player(s) in each rating class who did not get a place trophy. Commemorative participation medals to all others. **Team Trophies:** Top 3 Schools and Clubs in each section. **Time control:** G/60 d5. **Schedule:** Onsite Registration: Saturday 8-8:30am. Rounds: Saturday 9:30am, 12:30pm, 3:30pm, and Sun 9:30am, 12pm, 2:30pm. **Byes:** Rd 4 & 5 byes must be requested before Rd 1. **Entry Fee for 2-day event by 4/20:** \$54, Add \$15 (4/21-4/25), Add \$30 (4/26), Add \$40 for onsite. **Side Events** 2 sections based on grade and rating: K-Grade6 under500, K-Grade12 under800. **Individual Trophies:** Top 10 players, medals to all others. **Team Trophies:** Top 3 Schools and Clubs in each section. **Time control:** G/30 d5. **Schedule:** Onsite Registration: Saturday 8-8:30am. Rounds: Sunday 9:30am, 11am, 12:30pm, 2pm, 3:30pm. **Entry Fee for side event by 4/20:** \$47, Add \$15 (4/21-4/25), Add \$30 (4/26), Add \$40 for onsite. **Other Special Side Events:** Q&A & 25-board Simul, Puzzle Solving Competition, Blitz Championship. Apr 2019 supplemental for all sections. Change fee equal to the late fee will apply for any changes,

other than by requests with less than one week before the tournament. Out of state entries 20% off (mail entry or email ask@bayareachess.com with USCF ID for online entry coupon code). Chief Organizer: J. Sztaray. Sponsored by Susan Polgar Foundation. More info & flyer: www.sfnpo.com. Register online at www.sfnpo.com/registration. Mail entries to Bay Area Chess, 2050 Concourse Drive #42, San Jose, CA 95131. Register early to save. Questions: ask@BayAreaChess.com, 408-409-6596. W.

May 5, Fremont Kids Swiss & Quads (PK-12)
Fremont Marriott, 46100 Landing Pkwy., Fremont, CA 94538. **Trophies:** players w + score, medals to others. **Swiss (4SS, G/30 d5):** Reg: 9-9:15a. Games: 9:30a - 1:30p. **EF:** 36, 51 after 4/30. **Quads (3RR, G/30 d5):** Reg & Reqr Check-in 1:30-2p. Games: 2:15-5p. **EF:** 31, 46 after 4/30. Info: <http://BayAreaChess.com/signature.W>.

May 5, Foster City Kids Swiss & Quads (PK-12)
Foster City Courtyard Marriott, 550 Shell Blvd., Foster City, CA, 94404. **Trophies:** players w + score, medals to others. **Swiss (4SS, G/30 d5):** Reg: 9-9:15a. Games: 9:30a - 1:30p. **EF:** 36, 51 after 4/30. **Quads (3RR, G/30 d5):** Reg & Reqr Check-in 1:30-2p. Games: 2:15-5p. **EF:** 31, 46 after 4/30. Info: <http://BayAreaChess.com/signature.W>.

May 11, Cupertino Kids Swiss & Quads (PK-12)
NEW Venue: Aloft Cupertino, 10165 N. De Anza Blvd., Cupertino, CA 95014. **Trophies:** players w + score, medals to others. **Swiss (4SS, G/30 d5):** Reg: 9-9:15a. Games: 9:30a - 1:30p. **EF:** 36, 51 after 5/7. **Quads (3RR, G/30 d5):** Reg & Reqr Check-in 1:30-2p. Games: 2:15-5p. **EF:** 31, 46 after 5/7. Info: <http://BayAreaChess.com/signature.W>.

May 12, San Ramon Kids Swiss & Quads (PK-12)
Courtyard Marriott, 18090 San Ramon Valley Blvd., San Ramon, CA 94583. **Trophies:** players w + score, medals to others. **Swiss (4SS, G/30 d5):** Reg: 9-9:15a. Games: 9:30a - 1:30p. **EF:** 36, 51 after 5/7. **Quads (3RR, G/30 d5):** Reg & Reqr Check-in 1:30-2p. Games: 2:15-5p. **EF:** 31, 46 after 5/7. Info: <http://BayAreaChess.com/signature.W>.

May 12, San Jose Kids Swiss (PK-12)
BAC office: 2050 Concourse Drive #42, San Jose, CA 95131. **Trophies:** players w + score, medals to others. **Swiss (4SS, G/30 d5):** Reg: 9-9:15a. Games: 9:30a - 1:30p. **EF:** 36, 51 after 5/7. Info: <http://BayAreaChess.com/signature.W>.

May 18, Palo Alto Kids Swiss & Quads (PK-12)
Palo Alto Crown Plaza, 4290 El Camino Real, Palo Alto, CA 94306. **Trophies:** players w + score, medals to others. **Swiss (4SS, G/30 d5):** Reg: 9-9:15a. Games: 9:30a - 1:30p. **EF:** 36, 51 after 5/12. **Quads (3RR, G/30 d5):** Reg & Reqr Check-in 1:30-2p. Games: 2:15-5p. **EF:** 31, 46 after 5/12. Info: <http://BayAreaChess.com/signature.W>.

May 19, Fremont Kids Swiss & Quads (PK-12)
Fremont Marriott, 46100 Landing Pkwy., Fremont, CA 94538. **Trophies:** players w + score, medals to others. **Swiss (4SS, G/30 d5):** Reg: 9-9:15a. Games: 9:30a - 1:30p. **EF:** 36, 51 after 5/14. **Quads (3RR, G/30 d5):** Reg & Reqr Check-in 1:30-2p. Games: 2:15-5p. **EF:** 31, 46 after 5/14. Info: <http://BayAreaChess.com/signature.W>.

California, Southern

The Los Angeles Chess Club
The Most Active Club on the West Coast! (310) 795-5710. * LACC: www.LAChessClub.com; VCC: www.ValleyChessClub.com; Contact: Mick@LAChessClub.com; Saturday & Sundays: 10 am-10 pm (Novice & Intern. classes + 3 Tournaments). Sundays: 11 am - 7 pm (Novice & Intern. classes class + 2 Tournaments. FIDE & USCF tournaments. Details on our web site. Tuesdays: 7:30-9:30 pm (Advance lecture). 11514 Santa Monica Blvd., Los Angeles, CA 90025. (4 blocks W of 405, SW corner of Santa Monica & Butler * 2nd Floor - above Javan Restaurant) Group Classes * Tournaments * Private (1:1) Lessons. Note our monthly major tournaments. Also, we have the best Weekly BLITZ tournament on Saturday nights at 6:30 pm!!

Apr. 6, 7, 13, 14, 20, 21, 27, 28, Every Saturday & Sunday Chess 4 Juniors
8 separate events- 55S, G/30 d0. 11514 Santa Monica Blvd. & Butler, LA, 90025, 2nd floor, 4 blocks West of 405. **EF:** \$30 (\$20 LACC memb, No prize 1/2 EF, siblings 1/2, Free new LACC members). **Reg:** 12-1 pm. **Rds.:** 1pm & asap; done by 4. FREE BUGHOUSE afterwards; **Prizes:** Trophies & medals; All players receive prizes! **Parking:** Free on streets & BoA. Free healthy refreshments. **Info:** (310) 795-5710 or www.LAChessClub.com or Mick@LAChessClub.com.

Apr. 27-28, 14th Susan Polgar Foundation National Open for Boys and Girls (CA-N)
See California, Northern.

July 26-28 or 27-28, 24th Annual Pacific Coast Open
See Chess Life or www.chesstour.com.

Connecticut

Apr. 17-21, 18-21 or 19-21, 13th annual Open at Foxwoods
See Chess Life or www.chesstour.com.

June 7-9 or 8-9, 25th Annual Northeast Open
See Chess Life or www.chesstour.com.

June 8, 25th annual Robert Muscat/Donald Yazgoor Memorial
55S G/30 d0. Norwalk Library, 2nd Flr Auditorium, 1 Belden Ave., Norwalk, CT 06850. Open to all players finishing 12th grade or younger. **EF:** \$10 postmarked by 6/1/19. \$15 after or at door. **Prizes:** Trophies to Top 3 overall, Top overall in grade categories K-2, 3-5, 6-8. Name of first overall is engraved on the Muscat Cup. Name of first U-1200/UNR is engraved on the Yazgoor Cup. Both cups are on permanent display in the Norwalk Library Main Branch Children's Library. **Non-rated section with similar prizes is also available. Reg: 9:15-9:45 Sat 6/8. Rd. 1-10:00am, others ASAP.** Pizza/desserts will be provided. Boards and

sets will be provided. Please bring a clock if you have one. Chks payable to **Christopher Potts**, mail to: **Christopher Potts, 73 Nursery St., Norwalk, CT 06850**. Include player's full name, grade finishing and USCF ID number. Include email for confirmation if wanted. **Online registration at Chessregister.com.** Click on "Events". For more information contact: norwalknights@optonline.net. W.

July 26-28 or 27-28, 24th annual Bradley Open
See Chess Life or www.chesstour.com.

Florida

Boca Raton Chess Club
Friday night tournament games, one game a week for 4 weeks. www.bocachess.com, 561-302-4377.

The Stormont Kings Chess Center in Miami, FL
We have a beautiful office with multiple rooms located in the Kendall/Falls/Pinecrest Area. We offer Private and Group Lessons, Homeschool Activities, Tournaments, Camps, Family Game Nights, Parents Night Out, Casual Chess Play TSK Rated and more! Chess Sets and equipment for sale. Complimentary Bottled Water, Ample Parking, Comfortable Waiting Room with legos, and other activities for siblings while waiting. Located at 8353 SW 124 St., Suite 201-A, Miami, FL 33156. Contact Chris Stormont, Phone: 786-303-2437, E-mail: chris@stormontkingschess.com, Web: www.StormontKingsChess.com

June 7-9 or 8-9, 10th Summer Solstice Open
See Chess Life or www.bocachess.com.

July 19, 2019 U.S. G/10 Championship (NC)
See Nationals.

July 19-21 or 20-21, 27th Annual Southern Open
See Chess Life or www.chesstour.com.

July 20, 2019 U.S. G/30 Championship (NC)
See Nationals.

July 21, 2019 U.S. G/60 Championship (NC)
See Nationals.

Aug. 3-4, Weekend Swiss
See Grand Prix.

Aug. 3-11, 6-11 or 8-11, 120th Annual U.S. Open
See Nationals.

Aug. 4, 2019 U.S. Open Scholastic Championships
Open to all US Chess members entering Grade 12 and below [including new members]. **4 Round Swiss in Four Sections: Junior High - High School Championship:** Open to players entering Kindergarten through the 12th Grade in the fall. Open to all ratings. **Junior High - High School Under 1200:** Open to players entering Kindergarten through the 12th Grade in the fall. Open to players rated below 1200. **No Unrateds!** **Elementary Championship:** Open to players entering Kindergarten through the 6th Grade in the fall. Open to all ratings. **Elementary Under 1000:** Open to players entering Kindergarten through the 6th Grade in the fall. Open to players rated below 1000. **No Unrateds!** *If the sections are larger than expected, they may be split into multiple sections.* **Prizes:** Trophies to the Top 3 in each section. *The number of trophies may increase based on the number of entries.* **Schedule: Championship Sections:** Round One at 12 NOON. Round Two at 1:30 PM. Round Three at 3:00 PM. Round Four at 4:30 PM. Awards Ceremony at 6:00 PM. **Time Control:** Game/30 d5. **Entry Fee:** Online, \$25 by 7/22, \$35 after. By mail, \$27 postmarked by 7/13; \$37 postmarked by 7/22. *Do not mail after 7/22 - it will not be received!* By phone, \$30 by 7/13, \$40 after until 7/22 by 5 PM CDT. Onsite, \$40 until 8/4 by 10 AM EDT. August Rating Supplement will be used. Accelerated pairing may be used. See www.uschess.org/tournaments/2019/usopen/ for additional details.

Aug. 7, 2019 U.S. National G/15 Championship (QC)
See Nationals.

Aug. 10, 2019 U.S. Open National Blitz Championship (BLZ)
See Nationals.

Georgia

July 19, 2019 U.S. G/10 Championship (NC)
See Nationals.

July 20, 2019 U.S. G/30 Championship (NC)
See Nationals.

July 21, 2019 U.S. G/60 Championship (NC)
See Nationals.

Illinois

Apr. 12-14, 2019 All-Girls National Championships presented by the Kasparov Chess Foundation in association with the Renaissance Knights Chess Foundation & US Chess
See Nationals.

May 23-27, 24-27, 25-27 or 26-27, 28th annual Chicago Open
See Chess Life or www.chesstour.com.

June 28-30, 2019 U.S. Junior Open
See Nationals.

July 19-21 or 20-21, 12th annual Chicago Class
See Chess Life or www.chesstour.com.

Maryland

Maryland Chess Tournaments
MD Chess runs scholastic tournaments 2 Saturdays per month from September through June & open tournaments 2 Saturdays or weekends per month throughout the year. Visit www.MDChess.org to find tourna-

Tournament Life

ment announcements, tutors, coaches, & camps; register online for tournaments; & subscribe to scholastic and/or open e-newsletters. MD scholastic players who compete in the Varsity section (exclusively for players rated 1600+) of a MD-Sweet-16 Qualifier can qualify for the \$45,000 scholarship to UMBC awarded annually. The University of Maryland, Baltimore County's chess team is a perennial top-10 contender for the national championship.

Massachusetts

May 5, 29th Massachusetts G/60 Championship
See *Chess Life* or www.MassChess.org.

May 25-27 or 26-27, 88th Massachusetts Open
See *Chess Life* or www.MassChess.org.

Aug. 14-18, 15-18, 16-18 or 17-18, 49th Annual Continental Open
See *Chess Life* or www.chesstour.com.

Missouri

May 18, Mayhem in May

Format: Open to students enrolled in elementary, middle or high school in Fall 2018. 4 SS, G/30 d0. **Five sections:** K-12 Open, K-12 U1000, K-6 Open, K-6 U500, K-3 Open. **Rds.:** 11am, 12:15pm, 1:45pm, 3pm. Locations vary every month, all the info and registration is on our website at: <https://saintlouischessclub.org/education/scholastic-tournaments>

Nevada

A State Championship Event!

Apr. 13, Nevada State Scholastic Championship
K-3, K-5 & K5 under 300: 6-SS, G/25 d5. **K-8, K12 & K-12 under 800:** 5-SS, G/25 d5 round 1-2, G/45 d5 round 3-5. Doolittle Community Center, 1950 N J St., Las Vegas. Open to any Nevada school age resident. Trophies for top players, top teams, and more. Every player wins a medal! Winners of K-8 open and K-12 open represent Nevada in National Tournaments of Champions. **EF:** \$40 received by 4/1, \$50 by 4/12, \$70 on site. **Reg.:** Nevada Chess, PO Box 90925, Henderson, NV 89009 or www.nevadachess.org. On site by 8:30. Late registrants may not be paired in round 1. Round 1 at 9:30. **INFO:** td0318@nevadachess.org.

Apr. 27-28, 14th Susan Polgar Foundation National Open for Boys and Girls (CA-N)
See California, Northern.

June 12-16, 13-16, 14-16 or 15-16, 2019 National Open
See National.

June 14, Youth Trophy Tournament

5-SS, G/25 d5. Westgate Las Vegas Resort. Open to players age 14 & under. **3 sections:** Open, U1000, U700. **Trophies** top 5 in each section, top 2 in each 200 point rating group and unrated. Must be 3 players eligible for each prize to be awarded. **EF:** \$39 by 5/31, \$50 later. **Reg.:** 8:30-9 a.m. **Rds.:** 10-11:30-12:15-3:30. **Youth Blitz:** 6:30 p.m. (\$25 by 5/31 \$35 later). **www.VegasChessFestival.com**.

June 15-16, International Youth Championship

6-SS, G/60 d5. Westgate Las Vegas Resort, 3000 Paradise Rd., 89109. **In 4 Sections by age:** 14 & Under Open, 14 & Under Reserve (under 1000), 9 & Under Open, 9 & Under Reserve (under 800). **Trophies** to top 10 in each section plus class and team trophies. 1st Place in each section wins a Computer loaded with valuable Chess Software and hundreds of Videos, 2nd-4th win chess prizes valued at 250-150-100. Unrated players may not win 1st in Reserve sections. **EF:** \$89 by 5/31, \$99 by 6/20, \$120 later. Half point bye in any round (limit 2) if requested in advance. **Reg.:** 8:30-9 a.m. **Rds.:** 10-1-3:30, 10-1-3:30. **Youth Blitz:** 6:22 6:30 p.m. (\$25 by 5/31 \$35 later). **HR:** \$69, \$92 Friday and Saturday (800) 732-7117. **Cutoff for special hotel rate is May 23; after that rates will increase significantly and there may not be any rooms available.** **ENT:** Vegas Chess Festivals, PO Box 90925, Henderson, NV 89009-0925 or www.VegasChessFestival.com.

New Jersey

Apr. 27, Princeton Charter School

Tournament Location: Princeton Charter School at:100 Bunn Dr., Princeton, NJ 08540. **TIME CONTROL:** G/30 d0; Swiss to 4 rounds. **SECTIONS:** Open above 1000; U1000; U700; U300/Unrated. (sections will be combined. Awards will be given to the top 3 in each section) **Parental Supervision Required:** The parents or another adult must be designated to supervise the student player between rounds. **Schedule** (will be accelerated if possible) **First Round:** 12:01 PM. **Second Round:** ASAP. **Third Round:** ASAP. **Fourth Round:** ASAP. **Award Ceremony:** ASAP (4:05 the latest). **Schedule** will be accelerated if possible. (*) **Online Registration \$35 Only if register one week before: www.ChessKidsNY.com/PCSSchessProgram.htm (*) Fee will increase automatically if register later. On site registration the date of the event: \$40 from 11:45 am to 12:00 noon. Information:** email to Miguel Iniguez at: migini@gmail.com. **Results will be posted online the same day of the event!**

May 25, US Amateur K-8 East Under 1200

5-SS, G/30 d5. Hyatt Morristown, 3 Speedwell Ave., Morristown, NJ 07960. If staying, for chess rate (\$129 per night base), details at www.njscf.org or book at <https://www.hyatt.com/en-US/group-booking/MORRM/G-NJc5> or call Phone: 973-647-1234, mention NJ Chess. Free parking during the day (\$10 overnight), public transportation to NYC, Philadelphia, walking distance, 30 restaurants, shops and parks within 5 minute stroll. **In three sections:** Under 1200, Under 900, Under 600. Trophies to Top Ten in each section. Others win chess medallions. Unrated may not win first place. **Registration:** Saturday, May 25, 11am-12noon. **Rounds:** 12:30pm, then ASAR with lunch break after Round Two. **EF:** \$30 if postmarked by May 15th. EF at site \$40 cash only. One 1/2 point bye allowed if requested with entry fee. May Rating Supplement used. **Entries:** to Aaron Kiedes, 263 Acabonack Rd., Highland Lakes, NJ 07422. Email akiedes@gmail.com for more information. Entries must include name, USCF ID and expiration

date, mailing address, email address, phone number, section, grade level and entry fee. **CLOCKS & SETS NOT PROVIDED.** Checks made out to NJSCF. NO PHONE OR EMAIL ENTRIES. Online entries \$32 at www.njscf.org after 4-15-19 until 5-23-19 at midnight. W.

May 25-27 or 26-27, 75th (2019) Annual U.S. Amateur East Championship
See Nationals.

New Mexico

A State Championship Event!

Apr. 20-21, 2019 K-12 Chess Championship

Albuquerque Academy, 6400 Wyoming Blvd. NE, Albuquerque, NM 87109, K thru 12th grade State Championship. Online registration and information at: <https://nmchess.org> via Paypal.

New York

Oct. 21, Nov. 18, Dec. 9, Jan. 27, Mar. 3, May 5, 6th Annual Magnus High School and Junior High Chess League!

Columbia Grammar and Prep. High School Cafeteria, 36 W. 93rd St. (bet. Central Park West & Columbus Ave., near 96th St. subways), NYC. 12-SS, G/60 d10, open to grades 7-12 born after 5/5/99. 3 sections: **1. Premier** (over 1799 and special invitees), **2. Under 1800**, **3. Under 1200**. Plaques to top 3 each section. May be limited to 60 players each date. **Individual free entry prizes:** free entry to 2 specified Continental Chess tmts. thru 12/31/19 to 1st each section. **Team prizes:** free entry to 1 CCA tmt. thru 12/31/19 to the 4-top-scoring players from same school across all 3 sections, plaques to top 3 overall team scores, limit 2 teams per school. **Mixed Doubles** (2-player male/female team, avg. rating U2200, may be in different sections and from different schools, must sign-up by 1/27) **Bonus Prize:** free entry to 1 CCA tmt. thru 12/31/19 to 1st **Mixed Doubles** team, chess sets to top 3 overall Mixed Doubles. Free entries courtesy of Continental Chess and are valid for CCA tmts. with 100% guaranteed prizes; see www.magnusleague.org, www.chesstour.com or www.chesstour.com for details and restrictions. **Rds.:** 10 am-12:45 pm (earlier if feasible) each date. **ENT:** www.magnusleague.org. **All:** Each date's games submitted for rating prior to next date's games. Players must re-confirm before each date; official USCF rating list in effect on each date used for that date (unofficial ratings usually used if otherwise unrated or if requesting to play in Premier). Unr. may enter section 2 or 3 (or Premier by TD permission). Limit 6 bytes (2 bytes max. rds. 9-12), commit by Jan. 27 (by May 3 for players with minus scores). Teammate pairings avoided but possible. Ties for free entries decided by tiebreak except playoff May 5 between top 2 on tiebreak (may be fast game). See www.magnusleague.org for rules and special situations. Special Bonus Points and/or prizes may be awarded each date! Bring clocks! **Info:** director@magnusleague.org, chesstent@gmail.com, **online entry** thru 6 pm the day before each date at: www.magnusleague.org. Reg. on-site by 9:30 am. School purchase orders: **Chess Center of NY, PO Box 4615, New Windsor, NY 12553. W.**

US Chess Junior Grand Prix!

A State Championship Event!

Apr. 6-7 or 7, 3rd Annual NY State Girls Championship!

Open to all girls, out of state welcome, **Columbia Grammar and Preparatory School**, 36 West 93rd St. (the 1-Day sections will probably be across the street, at 5 West 93rd St.), both are between Central Park West & Columbus Ave., NYC. **Subways: Broadway & 96th Street** (L,2,3 trains), **Central Park West & 96th Street** (B, C trains). **Online entries at www.chessgirls.win:** \$60 thru 4/1/19, \$70 4/2-4, \$80 later or at site, at least 1 hour before game. **For details on mail entries see www.chessgirls.win or www.chesstour.com in 7 sections.** Each section has its own age, (grade) and rating requirements (Championship sections open to all who are under age (and grade) limits; unrated allowed all sections). **Open Championship**, open to all girls born after 4/7/99 (top NYS K-12 girl qualifies for National Girls Tournament of Champions in Florida), **K-6 Championship** and **K-3 Championship** are each 2-days: 6-SS, G/60 d10. **Rounds:** 10 am-1-4 pm each day. **K-12 Under 1200, K-6 Under 900, K-3 Under 600 and K-1 Championship** are each 5-SS, G/30 d5. **Rounds:** 10 am-12:130-3-4:45 pm **Sunday, K-1** open to grades 1/below born after 4/7/11. **Both K-3 sections** open to grades 3/below born after 4/7/09. **Both K-6 sections** open to grades 6/below born after 4/7/06. **K-12 Under 1200 section** open to grades 12/below born after 4/7/99. **Trophies** to top 12 each section and top 3 Unr. in each 1-Day section. **Grade plaques:** top 3 K/below in K-1 section, top 3 scorers below 9th Grade in K-12 U1200, top 3 below 4th grade in K-6 U900, and top 3 below 2nd grade in K-3 U600 (you can win both plaque + trophy). All players scoring 4 or more (5 or more in 2-Day sections) who *don't* win a trophy receive a medal! Speed playoff for 5-0 or 6-0. **Plaques also** to top 4 teams each section (top 3 scorers from same school = team, all on team must attend same school: no combined teams, even if one school "feeds" another). **Individual free entry prizes** (in each 2-Day Championship section and in K-1): **Free entry** to 2 specified Continental Chess tournaments thru 12/31/19 to 1st! Free entries courtesy of Continental Chess and are valid for CCA tmts. with 100% unconditionally guaranteed prize funds. See www.chesstour.com for complete details and restrictions. **All:** Out-of-state eligible for prizes but top NYS player and team each section are NY Champions. April 2019 official ratings used, except unofficial ratings at uschess.org usually used if otherwise unrated. TD reserves right to assign estimated ratings to players with non-USCF ratings. All substitutions from advance entry list charged late fee. Section switches subject to \$10 extra charge per player after 4/4. \$15 service charge for each player refund. TD reserves right to reassign sections for advance entries with incorrect or unclear registrations. Limit 2 bytes, commit before rd. **HR:** see travel websites for nearby hotels in NYC. **Info,** help with entries, parking, etc: www.chessgirls.win. **Questions:** director@chessgirls.win, chesstent@gmail.com (or 347-201-2269: leave message, email is much better). **Team rooms:** teamrooms@chessgirls.win. Sets provided by Little House of Chess—bring clocks! School purchase orders payable to: **Chess Center of NY, PO Box 4615, New Windsor, NY 12553. W. NOTE:** US Chess Junior Grand Prix (Top 3 Championship Sections Only).

May 17-19 or 18-19, 27th annual New York State Open and Senior
See *Chess Life* or www.chesstour.com.

July 19-21 or 20-21, 18th annual Manhattan Open
See *Chess Life* or www.chesstour.com.

North Carolina

US Chess Junior Grand Prix!

June 26-30, 2019 North American Junior (U20) FIDE Championships

An official FIDE Continental Championship offering **IM, FM, WIM, WFM direct FIDE titles** and **GM, IM, WGM, WIM norms** for winners! In two sections — **Open U20** and **Girls U20**. 9 rounds, G/90 inc/30, FIDE-rated, FIDE norms and titles available. **Charlotte Chess Center**, 10700 Kettering Drive, Unit E, Charlotte, NC 28226. Open to all players from USA, Canada, and Mexico who are under 20 (19 & younger) as of 1/1/2019 (born 1999 or after). This is a completely open event for those who meet the age and eligibility requirements. **Awards:** Gold, Silver, and Bronze medals to top 3 in each section (on tiebreaks if necessary). Gold medalists win Personal Rights status at 2020 North American Junior and Pan-Am Junior Championships. **Direct FIDE Titles:** Open section — Gold medal = **IM title and GM norm**; if tie for first, top 3 on tiebreaks receive IM title, gold medalist also GM norm; Silver = **FM title and IM norm**; Bronze = **FM title and IM norm**. Girls section — Gold = **WIM title and WGM norm**; if tie for first, top 3 on tiebreaks receive WIM title, gold medalist also WGM norm; Silver = **WFM title and WIM norm**; Bronze = **WFM title and WGM norm**. **Schedule:** suggested arrival Tuesday 6/25. Opening ceremony Wed 6/26 12:30pm, Rounds Wed 1pm, 7pm, Thurs 12pm, 6pm, Fri 12pm, 6pm, Sat 12pm, 6pm, Sun 10am. Closing ceremony Sun 6/30 3:00pm. **Registration:** Players should register directly with the organizers online, it is not necessary to go through the federation. **Entry Fee:** \$240 paid online at www.charlottechesscenter.org/najunior by 6/1, \$280 after; \$300 on-site registration 6/25. No registration after 6/25. No refunds after 6/1. Transportation, hotel, food not included — venue/hotel 20 minutes from CLT international airport. **Venue:** Charlotte Chess Center, 10700 Kettering Drive, Unit E, Charlotte, NC 28226. **Suggested Hotel:** Extended Stay America — Charlotte/Pineville, 8405 Pineville-Matthews Road, Charlotte, NC — walking distance from venue. No half-point byes. All equipment provided! FIDE Rules apply. June FIDE ratings used for pairings. grant@charlottechesscenter.org. Info, detailed regulations, registration: www.charlottechesscenter.org/najunior

July 19, 2019 U.S. G/10 Championship
See Nationals.

July 20, 2019 U.S. G/30 Championship
See Nationals.

July 21, 2019 U.S. G/60 Championship
See Nationals.

Ohio

Aug. 2-4 or 3-4, Cleveland Open
See *Chess Life* or www.chesstour.com.

Oregon

Apr. 27-28, 14th Susan Polgar Foundation National Open for Boys and Girls (CA-N)
See California, Northern.

Pennsylvania

MasterMinds Scholastic Summer League
Info at www.mastermindschess.org.

June 21-23 or 22-23, 20th annual Pittsburgh Open
See *Chess Life* or www.chesstour.com.

June 28-30 or 29-30, 13th annual Philadelphia Open
See *Chess Life* or www.chesstour.com.

US Chess Junior Grand Prix!

July 1-2, 11th annual World Open Under 13 Championship
6SS, G/60 d10. Philadelphia Marriott Downtown (see World Open for location, rates). Open to all born after 7/2/06. In 4 sections. **Open Section:** Plaques to top 7, top 2 Under 1600/Unr; free entry in all CCA tournaments 7/19/19-12/31/19 to 1st. **Under 1400 Section:** Plaques to top 7, top 2 Under 1200/Unr; free entry in all CCA tournaments 7/19/19-10/31/19 to 1st. **Under 1000 Section:** Plaques to top 7, top 2 Under 800/Unr; free entry in all CCA tournaments 7/19/19-9/30/19 to 1st. **Under 600 Section:** Plaques to top 7, top 2 Under 400, top 2 Unrated; free entry in all CCA tournaments 7/19/19-9/30/19 to 1st. **EF:** \$48 online at chesstour.com by 6/30, \$52 mailed by 6/15, \$60 at site. **Late Reg.** 7/1 to 10 am, rds. Mon 11-2-5, Tue 10-1-4. Up to 2 half point byes allowed, must commit before rd. 3. **ENT:** chesstour.com or Continental Chess, PO Box 8482, Pelham, NY 10803. Questions: chesstour.com, chesstourinfo@chesstour.com, DirectorAtChess.US, 347-201-2269. \$15 service charge for refunds.

July 2-7, 3-7, 4-7 or 5-7, 47th Annual World Open
See *Chess Life* or www.chesstour.com.

South Carolina

July 19, 2019 U.S. G/10 Championship (NC)
See Nationals.

July 20, 2019 U.S. G/30 Championship (NC)
See Nationals.

July 21, 2019 U.S. G/60 Championship (NC)
See Nationals.

Tennessee

May 10-12, 2019 National Elementary (K-6) Championships
See Nationals.

Texas

Apr. 13-14, DCC FIDE Open V
See Grand Prix.

Apr. 26-28, 2019 National Junior High School (K-9) Championships
See Nationals.

May 11-12, DCC FIDE Open VI
See Grand Prix.

May 24-27 or 25-27, 74th Annual Texas State and Amateur
Championships
See Grand Prix.

Utah

Apr. 27-28, 14th Susan Polgar Foundation National Open for Boys
and Girls (CA-N)
See California, Northern.

Virginia

Apr. 6, Chess 4 Charity 2019, 6th Semi-Annual Charity Chess Tour-
namment (for Children's Miracle Network Hospitals)
4SS, G/25 d3. Quick Rated Only. NEW LOCATION: Jewish Community
Center (JCC), 8900 Little River Turnpike, Fairfax, VA 22031. **Reg.:** Pre-
Registration online at www.chess4charity.org **Schedule:** Tournament
starts at 10am sharp. On-site Registration 9-9:45am. Silent Charity
Auction. Simul with one or more local masters. All may participate!! Two
Sections of USCF rated games and one section for non-USCF: **Sections:**
Open (1500 floor), U-1600, Non-USCF. Trophies TBD. **100% of your reg-
istration fee goes directly to charity – to the Children's Miracle
Network Hospitals!** Early Bird price is \$45 on or before March 25;
\$55 after March 25. **Elig:** Players welcome from all states and locations
(VA/MD/DC/etc.). All ages & all experience levels welcome. **Adult (16
or above, with valid ID) required to enter / drop off; children under 11
must be accompanied by adult.** **Questions:** See www.chess4charity.org
or email chess4charity@aol.com **Donations to the Children's Miracle
Network Hospitals welcome whether or not you can play:**
www.chess4charity.org

June 14-16 or 15-16, 8th annual Continental Class Championships
See *Chess Life* or www.chesstour.com.

July 19, 2019 U.S. G/10 Championship (NC)
See Nationals.

July 20, 2019 U.S. G/30 Championship (NC)
See Nationals.

July 21, 2019 U.S. G/60 Championship (NC)
See Nationals.

Washington

Apr. 27-28, 14th Susan Polgar Foundation National Open for Boys
and Girls (CA-N)
See California, Northern.

Answers

YOU CAN DO IT!

Solution #1: 1. Bh6+ Kg8 2. Qg5 mate

Solution #2: 1. Qxc8+ Kxc8 2. Re8 mate

Solution #3: 1. Qe8+ Qf8 2. Bxf7 mate

Solution #4: 1. Bd3+ Qxd3 2. Rxf7 mate

Solution #5: 1. Rxf6+ Kxf6 2. Qh4 mate

Solution #6: There are two beautiful solutions: 1. Nh6+ gxh6 2.
Rg6 mate;

1. Re8+ Qxe8 2. Nh6 mate

IT'S YOUR MOVE!

Did you catch that?

1. Seven, page 12
2. Sebastian, page 10
3. 1. e4, page 21
4. 1. e4 c5, page 8
5. It safeguards the king, page 5

Did you see that?

1. Books, page 21
2. US Chess logo on Frankie's
Jacket, page 7
3. American flag, front cover
4. Chess pieces and map, page 22
5. Andrew's shirt, page 10

Official US Chess online rated!

No entry fees » No hotel costs » Free parking

20% off ICC membership

Bonus



www.chessclub.com/uschess



US CHESS

MY FIRST MOVE



GM RAY ROBSON:
BROKE YOUNGEST
GRANDMASTER RECORD;
2016 GOLD MEDAL OLYMPIAD
TEAM MEMBER

In this column, we feature advice from your chess heroes and explore what shaped their development when they were Chess Life Kids like you!

EARLY MOVES

My dad taught me the basic movements of the pieces when I was three or four years old. The complexity of chess and the fact that there are many different kinds of pieces immediately drew me towards it.

UPCOMING PLANS

My immediate plans are to prepare for my upcoming tournaments, such as the U.S. Championship. Some of my main goals are to win the U.S. Championship and to cross 2700 FIDE.

THE CHESS HERO'S CHESS HEROES

The player I admired the most while I was growing up was Garry Kasparov. I loved his aggressive style of play. Nowadays my favorite player is Magnus Carlsen because his understanding of the game is the best I have ever seen.



Ray (left) and current *Chess Life* columnist Daniel Naroditsky at New York's Marshall Chess Club, circa 2005. They're playing on a table that Bobby Fischer used frequently. Photos courtesy of subject.

FAVORITE OPENINGS

I was an attacking player when I was starting out. I always played 1. e4 with white and loved to play against the Sicilian, and with black I played the Sicilian Dragon and also the KID (King's Indian Defense). I think that 1. e4 is still my favorite opening as white.

FAVORITE BOOKS

I read many, many chess books after I started playing in tournaments. But the first and only book I had for a while was *Chess in a Nutshell* by Fred Reinfeld. Then, when Kasparov's *My Great Predecessors* series came out, that was definitely my favorite and probably still is today.

PROUDEST CHESS MOMENTS

I became one of the youngest-ever grandmasters in U.S. history at the age of 14. I also was part of the U.S. Olympiad team that won the gold medal in 2016, which is something I never thought would happen.

MEETING EXPECTATIONS

I think that many people expected me to be a top player and to reach 2700 within the next four or five years [after becoming a grandmaster]. I wasn't really expecting that from myself, and in fact, after becoming a grandmaster I didn't have a clear goal anymore. Unfortunately, the year after becoming a grandmaster I had my worst results ever, and it took some time before I was able to find my game again.

SETBACKS HAPPEN

If you have big goals in any field of life you are bound to have some setbacks. The same is true with my chess career. Even though my rating went up more or less continuously until I became a grandmaster, there were times when I felt stagnant, or when I wasn't even sure if I wanted to keep playing. I remember I had a

really disappointing tournament in the 2003 SuperNationals and it spurred me on to make sure that the same thing wouldn't happen again, so I worked on getting better and better.

MANAGING ENERGY AND PRESSURE

When I was a kid I never had problems with energy and concentration, but now that I'm on my own I need to make sure I get plenty of sleep and eat well. One of my biggest problems has actually been that I have always had problems handling pressure. I lost many crucial last round games and the main reason was that I wasn't playing as well due to the pressure. Part of this was also a lack of self-confidence. Unfortunately, there is no easy fix to this problem and it took a lot of painful losses while growing up before I had more success in last-round games.

IN HIS FREE TIME ...

I love sports, especially tennis. I also love music, although unfortunately I don't play any instruments myself.

BEST ADVICE RECEIVED

Always go over your games, especially those in which you lost. There is something to learn from almost every game, and there is no skill as useful as not making the same mistake twice.

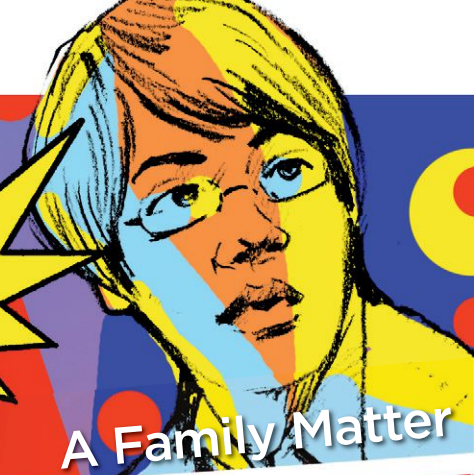
MY BEST CHESS ADVICE

Probably the same as the above, and I would also advise kids and their parents to make sure that the process of playing is still enjoyable. Even though I felt a lot of self-pressure when I played, I always loved chess itself and I never felt that I was pressured into doing something I didn't want to.



CHESS ADVENTURES

with
GM RAY
ROBSON



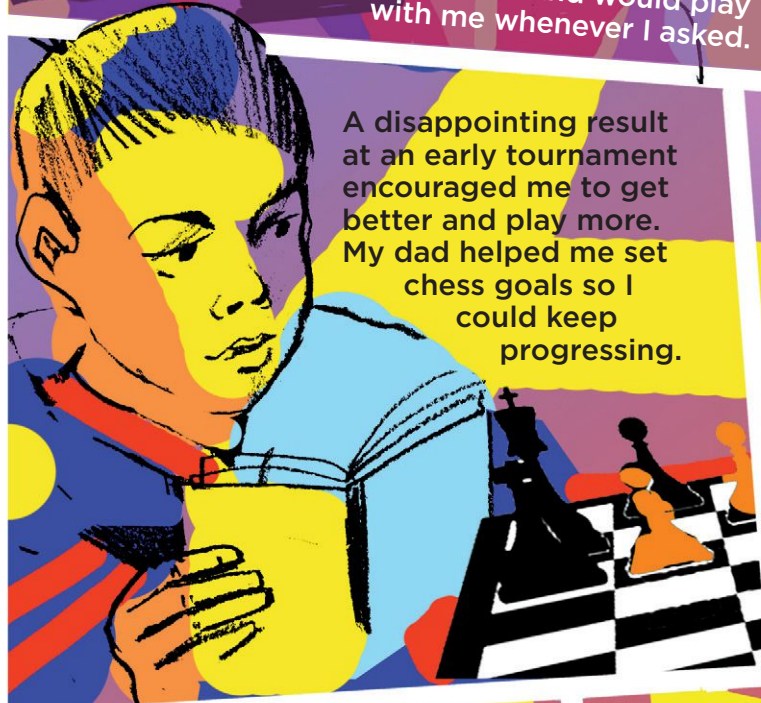
A Family Matter



My dad taught me chess at age 3 and would play with me whenever I asked.



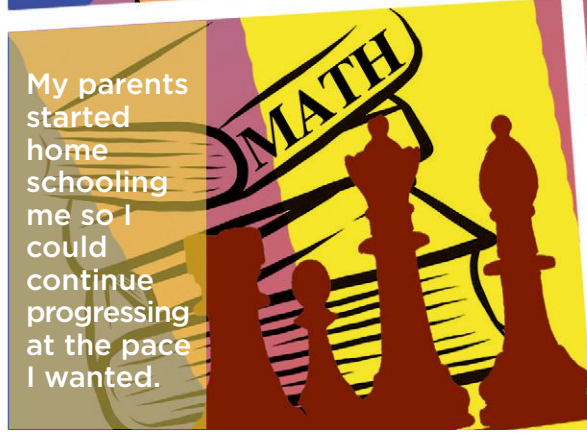
Once I discovered tournaments at age 7, my parents were always willing to take me to them.



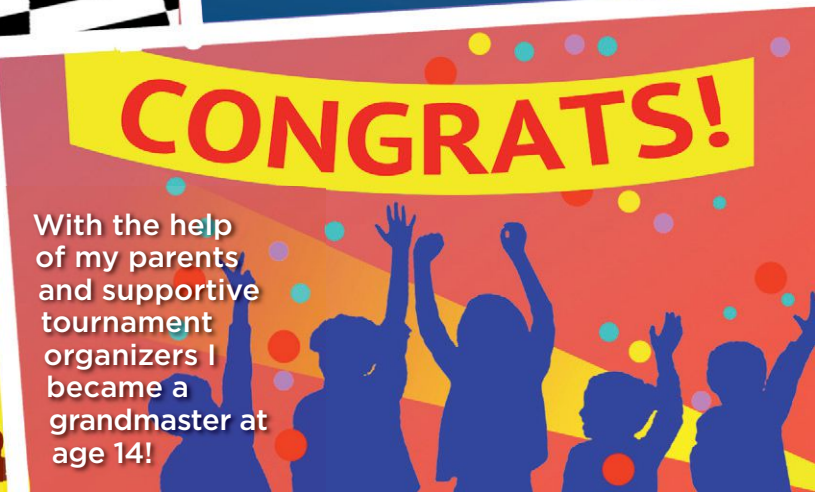
A disappointing result at an early tournament encouraged me to get better and play more. My dad helped me set chess goals so I could keep progressing.



I began traveling to tournaments out-of-state and internationally thanks to the commitment of my parents and others.



My parents started home schooling me so I could continue progressing at the pace I wanted.



With the help of my parents and supportive tournament organizers I became a grandmaster at age 14!



presents

KCF's 16th Annual All-Girls National Championships

April 12-14, 2019 - HYATT MCCORMICK PLACE, CHICAGO, IL

First place winners of each section will qualify to play at the 2019 World Youth/Cadets Championships

MAIN EVENT

6-SS, G/90,d5

Friday April 12

2:30 PM Opening Ceremony
3:00 PM Round 1

Saturday April 13

10:00 AM Round 2
2:30 PM Round 3
6:30 PM Round 4

Sunday April 14

9:00 AM Round 5
1:00 PM Round 6
5:00 PM Awards Ceremony

ENTRY FEE

\$65 postmarked by 3/11, \$85 by 4/1, \$95 after/on-site.

SIDE EVENTS

Bughouse Tournament

Fri. April 12 11:00 AM
Entry fee: \$35 per team

Blitz Tournament (G/5,d0)

Fri. April 12 7:00 PM
Entry fee: \$25 4/1, \$30 after/on-site.



SECTION/AWARDS

Age as of 1/1/2019

- Under 8** top 15 individuals
top 500 – 799, top U500, top 6 schools
- Under 10** top 15 individuals
top 700 – 999, top U700, top 6 schools
- Under 12** top 15 individuals
top 900 – 1199, top U900, top 6 schools
- Under 14** top 15 individuals
top 1100 – 1399, top U1100, top 4 schools
- Under 16** top 8 individuals
top 1300 – 1599, top U1300, top 3 schools
- Under 18** top 8 individuals,
top 1500 – 1799, top U1500, top 3 schools

HYATT MCCORMICK PLACE

2233 S Martin Luther King Dr
Chicago, IL 60616

HOTEL RESERVATIONS

single - quad \$165
(888) 421-1442, online at
www.rknights.org/allgirls
Reserve early hotel may sell out / raise rates

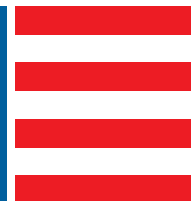
INFO

www.rknights.org/allgirls
(773) 844-0701 | info@
renaissanceknights.org

Online Registration: www.rknights.org/allgirls
Mailed Registration: make checks payable to: Rknights, Attn: All-Girls, PO Box 1074 Northbrook, IL 60065



The United States' Largest Chess Specialty Retailer

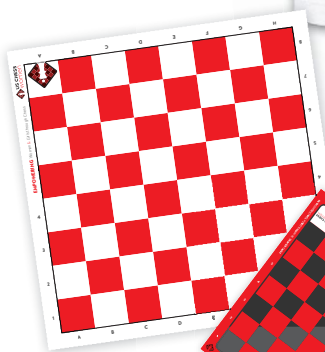


888.51.CHESS (512.4377)

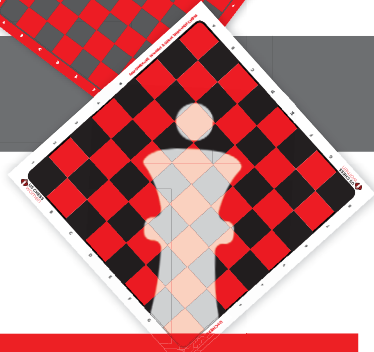


www.USCFSales.com

Women's Polos
\$29⁹⁵



Vinyl Boards
\$14⁹⁵



Mousepads
\$9⁹⁵



T-Shirts
\$19⁹⁵



10% of sales go directly to  **US CHESS women**

US Chess Federation Sales is a proud partner of US Chess Women and uschesswomen.org



Coffee Mugs
\$12⁹⁵