

CHESS LIFE

February 2020 | USChess.org

Kids

**TWO-TIME
WORLD
CADET
CHAMPION**

**LIRAN ZHOU, OUR
2017 U-10 CHAMP,
WINS GOLD AGAIN
IN 2019**



US CHESS

Earn your Chess Merit Badge for Scouts BSA Today!

About the Chess Merit Badge:

- Six all-day sessions held each year
- All sessions held at the Saint Louis Chess Club
- Scout merit badge pass rate is 98%








2020 Chess Merit Badge Dates (All Sessions 10 a.m.-4 p.m.)

February 12th | April 25th | June 6th | August 15th | October 25th | December 19th



More information about the Chess Merit Badge and upcoming sessions can be found at saintlouischessclub.org/scoutsbsa.

4657 Maryland Avenue, Saint Louis, MO 63108 | (314) 361-CHESS (2437) | saintlouischessclub.org | @STLChessClub #STLChessClub     

Photos by Austin Fuller (left) and Crystal Fuller (right)

CONTENTS

04 | MEET THE CREW

05 | YOU CAN DO IT!

By SIM Jon Edwards

06 | IT'S YOUR MOVE

08 | CHESS KIDS ACROSS THE BOARD

By Al Lawrence

10 | AVOID THE TRAP!

By Bruce Pandolfini

12 | WORLD CADET

By FM Aviv Friedman

19 | JUNIOR GRAND PRIX

20 | TOURNAMENT LIFE

26 | ANSWERS

28 | MY FIRST MOVE

This month: WGM Carissa Yip

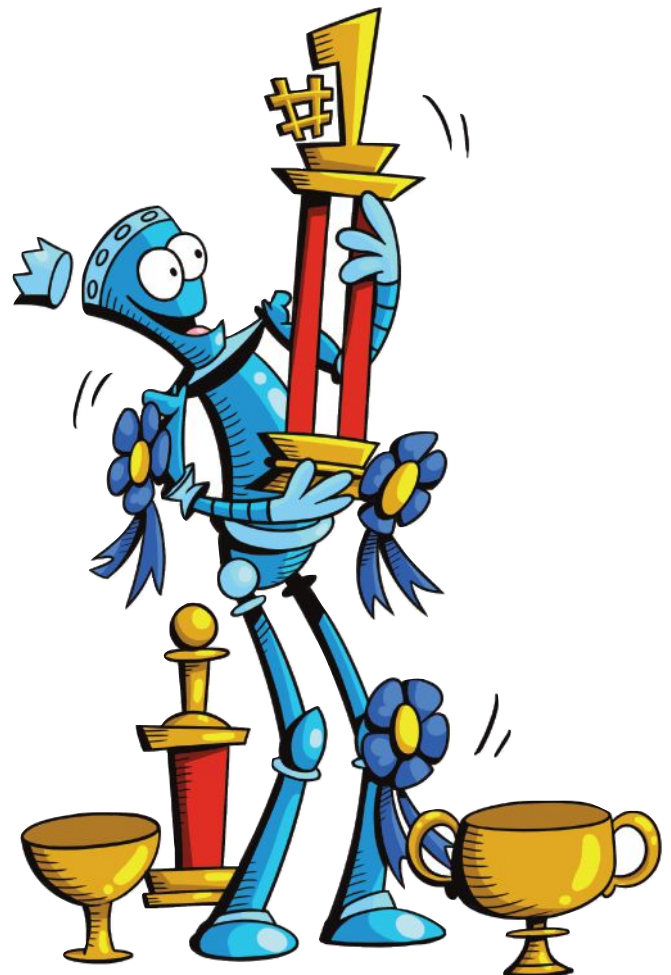
31 | CHESS ADVENTURES

This month: WGM Carissa Yip

In this issue

Our international youth teams are getting stronger every year, and 2019 was no exception. A talented 75-player strong team attended the World Cadet and came home with team silver, plus two individual gold and two individual bronze medals. Also in this issue, meet WGM Carissa Yip in this month's My First Move and Chess Adventures. In October 2019, Carissa earned her final international master (IM) norm and is slated to become America's youngest female IM, pending certification from FIDE.

Cover photo by Grant Oen.



US Chess Executive Director: Carol Meyer
carol.meyer@uschess.org

Senior Director of Strategic Communication:
 Daniel Lucas
dilucas@uschess.org

Chess Life Kids Editor: Melinda Matthews
mmatthews@uschess.org

Creative Content Coordinator:
 Natasha Roberts
nroberts@uschess.org

Character Designer and Illustrator:
 Chandler Ellison
www.chandlerellison.com

Editorial Asst./Copy Editor: Alan Kantor
akantor@uschess.org

Technical Editor: Ron Burnett
rburnett@uschess.org

Tournament Life: Joan DuBois
tla@uschess.org

CONTRIBUTORS: Send your contributions and articles to *Chess Life Kids*, PO Box 3967, Crossville, Tennessee 38557 or email to mmatthews@uschess.org.

Chess Life KIDS (USPS 023-567, ISSN: 1932-5894) is published in February, April, June, August, October, and December of every year by US Chess, 137 Obrien Drive, Crossville, Tennessee 38555. Periodical postage paid at Crossville, Tennessee, and additional mailing offices.

CHANGE OF ADDRESS: Be sure to notify us at once of any change of address. Please include your old address and your new address, along with your US Chess I.D. number.

POSTMASTER: Send address changes to US Chess, PO Box 3967, Crossville, Tennessee 38557.

Annual Scholastic Membership: Regular Scholastic Membership (online version of *Chess Life Kids*), age 13 and under at expiration, is just \$17 per year. Premium Scholastic Membership (receives *Chess Life Kids* by mail) is \$25 per year. \$13 of every premium membership goes towards providing *Chess Life Kids*. Annual subscription rate is \$37. Entire contents copyright 2020, US Chess.

Teachers may photocopy instructional articles for classroom use, but republication or widespread copying without the written consent of US Chess is forbidden.



US CHESS

MEET THE CREW

THIS MONTH'S CONTRIBUTORS

FM AVIV FRIEDMAN

Our feature author is based in New Jersey and is a globe-trotting chess coach/consultant/lecturer, as well as an occasional writer. He has been coaching amateurs at all levels for more than 30 years and has led/coached U.S. youth teams in world events for over two decades. His most recent stint was as head of delegation for the 2019 World Cadet team in Weifang, China—an experience he is eager to share in this issue with *Chess Life Kids*. Aviv is a huge soccer fan, and a grandmaster of food—especially carbohydrates!

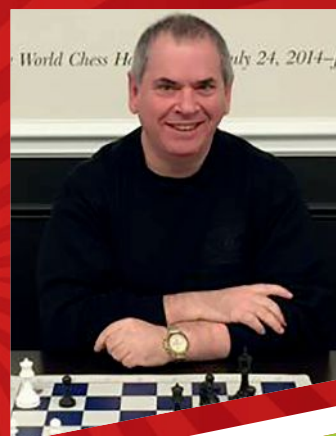


Photo courtesy of subject

BRUCE PANDOLFINI

Our popular “Avoid the Trap!” columnist is generally recognized as America’s most experienced chess coach. He has taught such outstanding players as GM Fabiano Caruana and IM Josh Waitzkin. Co-founder of Chess in the Schools, Bruce has published more than 30 books on chess, including *Solitaire Chess*, based on his long-running *Chess Life* column. Bruce has also enjoyed popular fame on and off the silver screen: he was portrayed by Ben Kingsley in Paramount’s 1993 film *Searching for Bobby Fischer*, adapted from the book by Fred Waitzkin, and he is the chess and script consultant for the upcoming six-part Netflix series, *The Queen’s Gambit*.

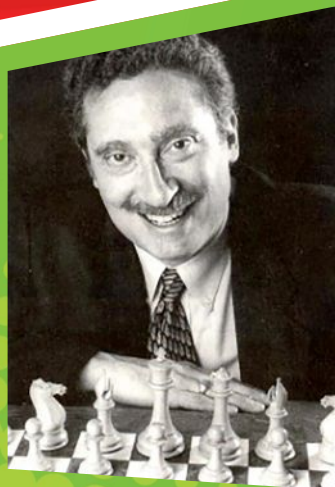


Photo: Wikimedia Commons

MEET THE CHESS LIFE KIDS EDITOR

Melinda J. Matthews is responsible for selecting, reviewing, and managing the contents for *Chess Life Kids*, which she accomplishes with the able assistance of her ace production team (you’ll meet them in later issues). Melinda joined US Chess as its assistant editor in April 2017 and was promoted to publications editor in June 2018. In addition to her work with *Chess Life Kids*, Melinda edits the monthly flagship magazine, *Chess Life*, as well as other in-house publications such as tournament programs, newsletters, and governance documents. Melinda has been a writer and blogger for US Chess since 2010. Her work has earned several Best of CLO wins, including fourth place in 2018 for her interview with *Brooklyn Castle* star, Rochelle Ballantyne, but her proudest role is as a chess parent whose now-grown son, Nicholas, still loves the game.





CAN DO IT!

BY SIM JON EDWARDS

10TH U.S. CORRESPONDENCE CHESS CHAMPION

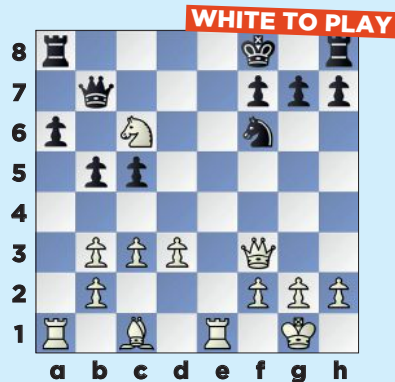
This month, let's look at queen sacrifices on f6, or by Black on f3. One of the earliest examples is from Wilhelm Steinitz, the first official world champion who lived his later years in my state of New Jersey.

(see diagram next column)

Steinitz finished with 1. Qxf6 gxf6 2. Bh6+ Kg8 3. Re3 Qc7 4. Rg3+ Qxg3 5. Ne7 mate.

All of the positions in this quiz involve Qf6 with White or Qf3 with Black. Some of these are still challenging but knowing the first

move will help. Don't forget that You Can Do It!



Answers on page 26

QUIZ 3

BLACK TO PLAY



QUIZ 4

BLACK TO PLAY



QUIZ 5

WHITE TO PLAY



QUIZ 1

WHITE TO PLAY



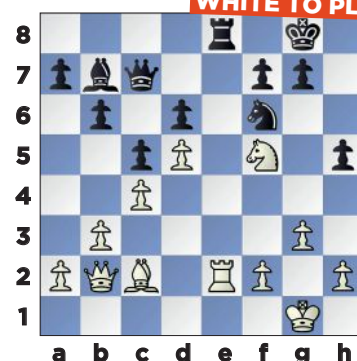
QUIZ 2

WHITE TO PLAY



QUIZ 6

WHITE TO PLAY



IT'S YOUR MOVE!



DID YOU SEE THAT?

What can you spy with your eagle eyes? Look carefully at the art and photos in this month's *Chess Life Kids* and see if you can figure out where these close-ups came from! Answers on page 26.

1.



2.



3.



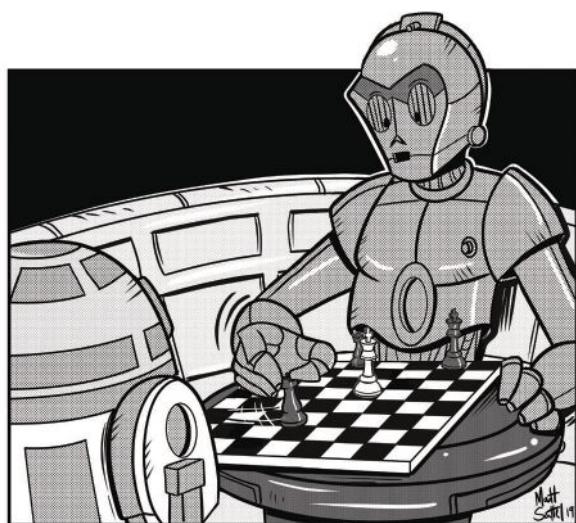
4.



5.



6.



"YOU SAY Rad2, I SAY R2-D2."

GET CREATIVE!

Dan Lucas, our Senior Director of Strategic Communication, used his imagination recently to develop the fun comic strip, left, with the help of artist Matt Sattel. Tapping into our creative sides, whether as adults or kids, helps us keep our minds energized.

So we're asking you: Where does your chess imagination take you? Send us your art, writing, poems, or anything else chess-related that inspires you that we can publish in a print magazine! (Written submissions should be kept under 250 words.) Email your entry to mmatthews@uschess.org and include your parents' or guardians' name(s) and phone number. We will print the most creative submissions in an upcoming issue!

17th Annual

April 17-19, 2020

WESTIN CHICAGO NORTHSORE WHEELING, ILLINOIS

Presented by



First place winners of each section will qualify to represent the USA at the 2020 World Youth/Cadets Championships

MAIN EVENT

6-SS, G/90,d5

Friday April 17

2:30 PM Opening Ceremony

3:00 PM Round 1

Saturday April 18

10:00 AM Round 2

2:30 PM Round 3

6:30 PM Round 4

Sunday April 19

9:00 AM Round 5

1:00 PM Round 6

5:00 PM Awards Ceremony

ENTRY FEE

\$70 postmarked by 3/16, \$85
by 4/6, \$95 after/on-site.

SIDE EVENTS

Bughouse Tournament

Fri. April 17 11:00 AM

Entry fee: \$35 per team

Blitz Tournament (G/5,d0)

Fri. April 17 7:00 PM

Entry fee: \$25 4/6, \$30
after/on-site.



SECTION/AWARDS

Age as of 1/1/2020

Under 8 top 15 individuals
top 500 – 799, top U500, top 6 schools

Under 10 top 15 individuals
top 700 – 999, top U700, top 6 schools

Under 12 top 15 individuals
top 900 – 1199, top U900, top 6 schools

Under 14 top 15 individuals
top 1100 – 1399, top U1100, top 4 schools

Under 16 top 8 individuals
top 1300 – 1599, top U1300, top 3 schools

Under 18 top 8 individuals,
top 1500 – 1799, top U1500, top 3 schools

WESTIN CHICAGO NORTHSORE

601 N Milwaukee Ave, Wheeling,
IL 60090

HOTEL RESERVATIONS

single - quad \$164
(847) 777-6500, online at
www.allgirls.rknights.org
Reserve early hotel may sell out /
raise rates

INFO

www.allgirls.rknights.org
(773) 844-0701
info@renaissanceknights.org

Online Registration: www.allgirls.rknights.org

Mailed Registration: make checks payable to: Rknights, Attn: All-Girls, PO Box 1074 Northbrook, IL 60065

www.kasparovchessfoundation.org

CHESS KIDS

ACROSS THE

BOARD



BY AL LAWRENCE

Celebrating *Chess Life Kids*
from across the country.

Rose Atwell

Valencia, California

Unlocking chess mysteries

“Girls can be as good at chess as boys,” Rose said. She proves that at the chessboard. Rose hasn’t been playing for very long, and she hasn’t played in as many tournaments as the other top players. But she’s already number two in the U.S. among 10-year-old girls. In fact, she’s rated higher than more than 95 percent of *all* tournament players in the U.S., kids or adults.

At first, Rose dedicated her time to music competitions in piano, violin, and voice. But when she turned eight, her passion shifted to chess. Rose’s dad and grandfather play. But Rose can beat them blindfolded now, keeping track of the board and all the pieces in her head!

Rose started playing chess at the California

Rose at the Central California Open in Fresno.





Photo, top: Rose used her blindfold chess skills at a fundraiser organized by Coach Jay for a trip to the national scholastic championships, even though Rose didn't go herself. Photo, left: Rose likes gardening for "the fresh air and fresh food." Photo, right: Rose attended U.S. Chess School #48 in St. Louis. "I spent the week in class with some of the other best chess kids in the U.S." Photos: courtesy of subject.

Youth Chess League led by Coach Jay Stallings. But Rose quickly got better than even the coaches, except for Coach Jay himself. Now she takes online lessons with grandmasters from all over the world.

Many kids like to play fast chess. Not Rose. She says there is a "hidden beauty in chess positions" that takes time to understand. When it comes to studying chess, her favorite thing to do is to solve difficult puzzles, because she finds them beautiful.

"Rose is quick to smile and laugh," Coach Jay said. "But, when faced with a chessboard," she's intense, determined "to unlock the mysteries of the position."

Rose likes gardening "because I like to breathe the fresh air and eat the fresh food out of our backyard. I like to read novels (especially the *Harry Potter* and *Warrior Cats* series!) because I like visualizing worlds completely different from my own. And I like to dance and play with my two little brothers for the exercise."

Rose knows that many of the skills she developed by studying chess will help her in the future, no matter what she decides to do. She's developed good study habits and logical thinking skills. She's learned to bounce back from disappointments.

"I want to become one of the top women players in the United States, so that I can be invited to play in the U.S. Women's Championship in St. Louis," she said. Rose shouldn't have long to wait.



AVOID THE by Bruce Pandolfini TRAP!

UNDERPROMOTION TO A KNIGHT

This column teaches you openings by helping you learn to avoid opening traps. Set up your board and pieces and play through the game below. Have paper and pen by your side. When you reach a question, write down your answer. After you are done with all 10 questions, check your answers at the end of this column. Total your points and see how you did against the scoring scale at the end!

There are all different types of opening tactics. Many are common. Some are rare. One of the least familiar is underpromotion. Underpromoting to a rook or bishop almost never happens in the opening. It usually takes too many moves for a pawn to go up the board far enough in the opening phase. Such stratagems accordingly are more likely in endgame studies. But underpromotion to a knight does occur here and there in the opening. Underpromoting to a knight tends to be more usual than underpromoting to a rook or bishop because it can often be given with a time gaining check, as a kind of in-between move, or *Zwischenzug*. Sometimes the tactic wins material. But there are instances of it producing checkmate. Let's take a look at a possible illustration of the idea.

Ten questions on the following game are included in the text. Each answer is worth 10 points. (Answers can be found at the end of the column.) Try to score at least 80 points!

1. e4

This traditionally has been the most common first move for White. White occupies the center with a pawn, attacks two good squares (d5 and f5), and prepares the way for the queen and king-bishop to come out.

1. ... e5

Black plays a double king-pawn defense. In effect, this symmetrical answer implies that Black is playing for equality.

Q1) What is the most often played move here for White? (10 points)

2. d4

Q2) If 2. ... e5xd4, what are White's three most logical replies? (10 points)

2. ... f5?

With this move Black intends to play a kind of King's Gambit in reverse (or Latvian Gambit). But here, the move is simply no good.

Q3) What is wrong with 2. ... f7-f5? (10 points)

3. exf5

White naturally gobbles what appears to be a free pawn.

Q4) In this position, what are White's two chief threats? (10 points)

3. ... e4

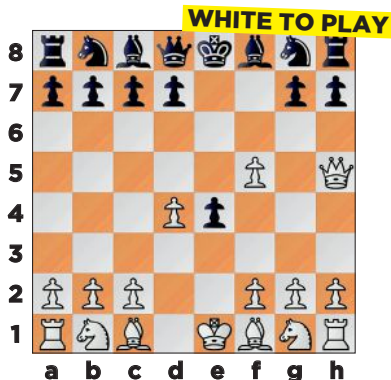
The move 3. ... e5-e4 deals with the danger to Black's e-pawn, but it costs time, and it doesn't deal with White's other threat.

Q5) Why might Black play such a move as 3. ... e5-e4? (10 points)

4. Qh5+

Here is the immediate punishment. Either the king must be moved or Black must answer with another bad pawn move.

Q6) Which is better for Black, 4. ... Ke8-e7 or 4. ... g7-g6? (10 points)



4. ... g6

This is like signing Black's own death warrant. As bad as it was, 4. ... Ke8-e7 was more prudent.

Q7) What are two possible good things about 4. ... Ke8-e7? (10 points)

5. fxg6

White has a pin on Black's h-pawn and two serious threats.

Q8) After 5. f5xg6, what are White's two main threats? (10 points)

5. ... h6?

Ugh! White now has a forced mate in three moves.

6. g7+

After this discovery, Black has but one legal move.

6. ... Ke7 7. Qe5+

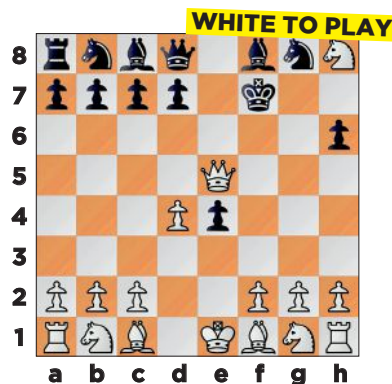
Again, Black has but one legal move.

7. ... Kf7

Q9) What is White's best eighth move? (10 points)

8. gxh8=N mate!

Black is mated!



Q10) What was the last move Black could have avoided the trap? (10 points)

ILLUSTRATIVE GAME:

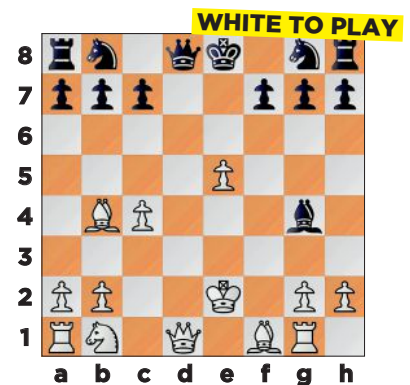
ALBIN COUNTER GAMBIT (D08)

Caceres

Manzur

Mexico, 1998

1. d4 d5 2. c4 e5 3. dxe5 d4 4. e3 Bb4+ 5. Bd2 dxe3 6. Bxb4 exf2+ 7. Ke2 fxg1=N+ 8. Rxg1 Bg4+, White resigned.



FINAL POSITION IN ILLUSTRATIVE GAME

ANSWERS

A1) After 1. e2-e4 e7-e5, the most common White second move is 2. Ng1-f3.

A2) White might play 3. Qd1xd4, 3. Ng1-f3, or 3. c2-c3.

A3) It loses a pawn, it weakens the e8-h5 diagonal, and it unnecessarily exposes the black king.

A4) White is threatening both 4. d4xe5 as well as 4. Qd1-h5+.

A5) Aside from saving the black e-pawn, the move 3. ... e5-e4 deters White from playing 4. Ng1-f3.

A6) The move 4. ... Ke8-e7 is not good, but 4. ... g7-g6 is far worse.

A7) Though not good overall, the king move minimizes further weakness, while keeping open the opportunity to gain a tempo by a future Ng8-f6.

A8) White is threatening both 6. Qh5-e5+ and 6. g6-g7+.

A9) White mates by 8. g7xh8=N mate!

A10) Left with a losing game no matter what, Black could have avoided getting mated by not playing 5. ... h7-h6.

How Did You Score?

The score is based on the US Chess rating system and is intended only as a fun way to monitor your progress each issue as you Avoid The Trap!

100: 1800+

90: 1600

80: 1400

70: 1200

60 or lower: 1000

ANOTHER SUCCESSFUL WORLD CADET!

By FM Aviv Friedman

We were excited to learn that the 2019 edition of the World Cadet championship would take place in China. A visit to the world's most populous country—about 1.4 billion people (yes with a “b”!)—sounded like it would be not just an ordinary “chess trip,” but a unique cultural experience. And that it was! Weifang, a city located in central China, was the venue for the competition. Famous for its annual kite flying festivals, Weifang is considered a “smaller city” in China with “only” about 10 million residents—that is like the entire population of the state of Michigan!

The dates for the championship, between August 21st and September 1st—just before the school year starts for many—ensured great interest in the event. When registration ended, we tallied a 75-player team, and a total of 155 persons when including family members, and staff. To accommodate all in one hotel, our able US Chess office staff chose

the Anqiu New Oriental Hotel in the nearby city of Anqiu as our home away from home. The hotel staff was as friendly and as accommodating as I have ever experienced. Moreover, we were assigned a group of students, who—along with their English teachers and a translator—tirelessly helped solve any and all logistical problems we might have encountered. Thank you, Bettina and Aileen, for heading this project!

Your author served as the head of the delegation, with GM Sergey Kudrin as my assistant. Our experienced group of coaches included WGM Katerina Nemcova and IMs Andranik Matikozian, Konstantin Kavutskiy, Jan Van de Mortel, and Levy Rozman. The Federation's representative was International Arbiter (IA) Grant Oen.

The event is split into six sections of Open and Girls Under 8, 10, and 12 and takes place over 11 rounds. With one round per day, a luxury not too

familiar back home, we had time for proper preparation early on, enough rest and food before the game, and then just one game to concentrate on, instead of two (or even three!).

For years now, our youth team has gained in strength, so our expectations were to get our fair share of the medals and to once more place in the top three of overall participating countries. This ambitious goal is no easy feat—after all, many powerhouse chess nations were playing, such as Russia, China, India, and others from Europe, Asia, and South America—but our players came through in great style! When round 11 ended and the results were tabulated, our team was the “proud owner” of two new world champion gold medalists and two bronze medalists. Five more players finished in the top 10 in their respective sections. All of our participants played hard, showed good sportsmanship, and represented our



country and Federation proudly. The team took the second team position overall, behind Russia and ahead of third place China.

On to some chess!

Our team's top scorer was Alice Lee, who was in fantastic form and who impressed everyone with her level of play. Conceding only two draws, Alice finished with an incredible 10/11 and landed in a tie for first place in the Under 10 Girls. She took the title on tiebreaks. Her last round game was quite exciting:

KING'S INDIAN DEFENSE, CLASSICAL VARIATION (E92)

Alice Lee (FIDE 1822, USA)
Yafei Zhou (FIDE 1757, CHN)
World Cadet Chess Championships, Girls Under 10 (11), Weifang, China, 09.01.2019

1. d4 Nf6 2. c4 g6 3. Nc3 Bg7 4. e4 d6 5. Nf3 O-O 6. Be2 e5 7. d5

White chooses the Petrosian system variation in the classical Kings Indian Defense. Other options are 7. 0-0 and only after 7. ... Nc6 8. d5 Ne7; 7. Be3 is another main line, as is the not-very-ambitious 7. dxe5. Note that White isn't winning a pawn after: 7. ... dxe5 8. Qxd8 Rxd8 9. Nxe5 Nxe4.

7. ... a5

Black wants to place a knight on c5 and is preparing against any b4 ideas by White.

8. Bg5 Na6 9. Nd2

A multi-purpose move that moves the knight towards the queenside, where White has her main play, allows the f-pawn to reinforce the center later and clears the d1-h5 diagonal for the light-square bishop in case the f6-knight later has any ideas to go to h5.

9. ... Qe8

Black wants to move ... Nf6 so that her f-pawn could move forward, so she unpins it.

10. a3

Preparing to play b2-b4, because of the pin on the a-file.

10. ... Bd7

Not only stopping b2-b4, but also threatening to freeze the white queenside with ... a4.

11. b3

A necessary loss of a tempo, as after 11. Rb1 a4.

11. ... h6 12. Be3 Nh7

Normally the knight goes to e8 or d7, and h5 if it can't get captured, but absent those options, it goes to h7.

13. Rb1 f5 14. f3 b6?

With White ready to play b2-b4, Black needs to be a lot more active. This move leaves ... Na6 offside and passive.

The right move was 14. ... Nc5. Perhaps Black was afraid of the capture, but 15. Bxc5? would be a bad idea, now 15. ... dxc5 the double pawns help Black, and



ALICE LEE

a winning pin) 24. Ra7 and Black is hopeless.

21. ... Nf6 22. Bf2 Bh6 23. Nc4 g4 24. Nb6

Another option was to crush Black's dreams of any attack with 24. Kh1 g3 25. Bg1, refusing the pawn and keeping the kingside closed, while scorching the other side.

24. ... g3!

Shouldn't be enough, but the only chance, really. The idea is common, but here White is just too mobilized on the queenside.

25. hxg3?!

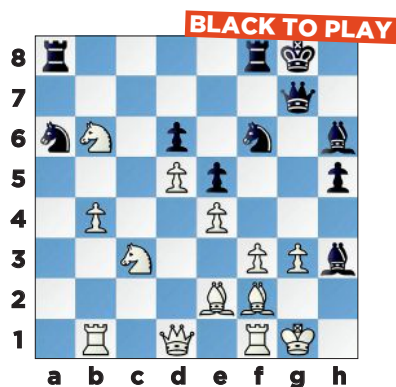
Giving Black more play than she deserves. It was time for calm with 25. Be1! gxh2+ 26. Kh1 and Black is not going anywhere.

25. ... fxe3 26. Bxe3 Qg7 27. Bf2?

Missing a trade down idea. It was time for the brave 27. Nxa8! Qxg3 28. Qe1! (stopping ... Be3 and ... Qh4) 28. ... Qxe1 29. Rbxe1. (The capture with this rook is to take the sting from any ... Bd2 ideas.) 29. ... Rxa8 30. Ra1.

Usually two minor pieces compensate for a rook and a pawn, or even two sometimes, but not here. The rooks are just too active and the passed b-pawn is a huge headache for Black.

27. ... Bh3 28. g3



28. ... Be3!

An unpleasant surprise! Black threatens 29. ... Qxg3+ with mate, and the bishop is safe for the same reason.

28. ... Bxf1 Alice must have expected this move, correctly evaluating that after 29. Qxf1 White has an overwhelming edge.

29. Kh1?

The only move was 29. Kh2.

29. ... Bxb6?

Here 29. ... Ng4! was very strong. For example: 30. fxe4 Bxf2 it's the white king who is feeling very unsafe. Look at this variation: 31. Nxa8 Bxf1 32. Bxf1 hxg4 (with the nasty threat of 33. ... Qh7+ and 34. ... Qh3 mate!) 33. Kg2 Bd4 and White is lost.

Photos, left: CM Liran Zhou, who took the gold medal in the Under 10 Open division in 2017, continued his winning ways in 2019, capturing the Under 12 Open championship and earning his FIDE Master (FM) title in the process. Photo, above: Alice Lee stunned the chess world with her impressive 10/11 score, which catapulted her into the lead. She earned gold in the Under 10 Girls.

30. Bxb6 Bxf1 31. Qxf1 Qxg3 32. Bf2!

Level headed play by Alice!
Of course not: 32. Bxa6?? Ng4!
Crushing!

32. ... Qf4 33. Qh3 Nc7?

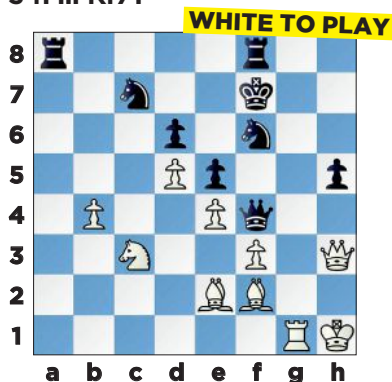
Missing a chance to keep the game balanced.

33. ... Nxb4! 34. Rxb4 Ra1+ and Black regains her material after all of the options: 35. Rb1 (35. Bd1 Qd2; 35. Nb1 Qd2) 35. ... Rxb1+ 36. Nxb1 Qc1+ 37. Qf1 Qxf1+ 38. Bxf1 Nxe4 and Black gets a draw.

34. Rg1+

The try 34. b5 was a bit better.

34. ... Kf7?



Losing to a nice trick! More sensible was the safer 34. ... Kh8!

35. Nb5!

A nice example of removing the defender! The poor knight can't move!

35. ... Rg8

35. ... Nxb5?? 36. Qe6 mate.

36. Nxc7

And the rest was easy.

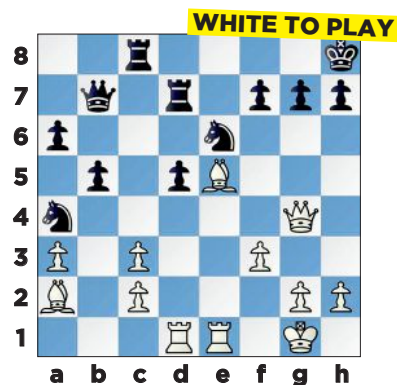
36. ... Rxg1+ 37. Bxg1 Ra1 38. Nb5 Qg5 39. Nxd6+ Kg6 40. Qf5+ Qxf5 41. Nxf5 Nxd5 42. Nh4+ Kg5 43. exd5 Kxh4 44. Kg2 Ra2 45. Bf2+ Kg5 46. Bf1 h4 47. Kg1 Kf4 48. Bxh4 Kxf3 49. b5 e4 50. b6 e3 51. b7 Rb2 52. d6 Rb1 53. Kh2 Rb2+ 54. Kh3 e2 55. Bg2+ Kf4 56. d7 Rb3+ 57. Kh2, Black resigned.

A great fight by both, and an important win by Alice!

Our second world champion is Liran Zhou, who after winning the Under 10 Open edition in 2017, "upgraded" with another win in this year's Under 12 Open category. A master since age nine, Liran is a formidable opponent against anyone. He achieved 9½/11 points and won unshared first place. Here is a segment from his round five game:

OPPORTUNITY KNOCKS

CM Liran Zhou (FIDE 2311, USA)
Yihao Li (FIDE 1861, CHN)
World Cadet Chess
Championships, Open Under 12
(5), Weifang, China, 08.25.2019



In this game, Liran's underated opponent was defending very stubbornly in the Sicilian Najdorf. He achieved a fine position, but his last move ... Rc8? was a mistake. Liran doesn't need a second invitation to seize the opportunity:

30. Bxd5! Qb6+

The bishop was immune from capture as after 30. ... Rxd5 31. Rxd5 (Black either suffers great material loss or mate.) 31. ... Qxd5 32. Bxg7+ Kg8 33. Bh6+ Kh8 34. Rxe6 Rg8 35. Qxg8+ Kxg8 36. Re8 mate.



BRIDGING CULTURAL DIFFERENCES

PHOTO CREDIT: ROLFMUELLER/WIKIMEDIA COMMONS



A bit about the trip itself: We were impressed by how friendly and hospitable everyone we came across was. People we met were always smiling and willing to help, taking our cultural differences in stride.

One major obstacle was working past our language barrier. Imagine going to a mall or a street where none of the people you engage with speak English and the only way you can communicate is by speaking Mandarin Chinese. Thank goodness for technology! Google Translate saved the day for both sides.

Another obstacle was learning how to pay for items. Imagine deciding on what you want to buy, taking out the local currency to pay for it, and ... whoops, there's a problem! Cash isn't accepted! In Weifang, you need to have a mobile payment method (the most common is WeChat Pay) for the transaction. Luckily, we always found someone willing to accept our cash and allow us to use their phone to make the purchase.

Lastly, my dear readers, imagine your smartphone/laptop/tablet without all of your social media. These are all banned in China, so many of our new friends never used Facebook, Instagram, or YouTube (they have their own platforms though). They also have not been exposed to much Western literature, music, and culture overall. But that just made conversations with our new friends all the more interesting (for both sides!) and we still keep in touch.

31. Kh1 Rcd8 32. Bxe6 fxe6 33. Rxd7 Rxd7 34. Bd4 Qb8 35. Qxe6

Even more important than winning the material is that monster bishop on d4, against its knight-on-the-rim counterpart on a4.

35. ... Rd8 36. Qf7 Rg8 37. Re7

Not a bad move at all, but Liran could have chosen the very pleasing 37. Re8 Qxe8 38. Bxg7+; 37. Bxg7+ Rxg7 38. Re8+ is similar.

37. ... Qf8 38. Qxf8 Rxf8 39. Bxg7+ Kg8 40. Bxf8

Black could have resigned here, but he plays on till the bitter end.

40. ... Kxf8 41. Ra7 Nxc3 42. Rxa6 Kf7 43. Rc6 Ne2 44. Rc5 Nd4 45. c3 Nc2 46. Rxb5 Nxa3 47. Rb7+ Kg6 48. Rc7 Nb5 49. Rc6+ Kg7 50. c4 Nd4 51. Rc7+ Kg6 52. c5 Ne6 53. Rc6 Kf7 54. Rxe6 Kxe6 55. g4 Kd5 56. Kg2 Kxc5 57. h4 Kd6 58. Kg3 Ke5 59. f4+ Ke4 60. h5 h6 61. g5 hxg5 62. fxg5 Kf5 63. g6 Kf6 64. Kf4 Kg7 65. Kg5 Kg8 66. Kf6 Kf8 67. g7+ Kg8 68. h6 Kh7 69. Kf7 Kxh6 70. g8=Q Kh5 71. Qg3 Kh6 72. Qh4 mate.

Our first bronze medal winner was Rachael Li, who has been making tremendous progress in recent years,

and, at age nine, just became the youngest female national master in US Chess history. At the Cadets she scored a strong 8/11 points and topped the tie for third place to earn the bronze. Our fourth medalist was Ruiyang Yan, who played wonderful, uncompromising chess throughout the competition. She was leading for much of the event and had 9 points out of her first 10 games. Unfortunately, she lost her last round and had to settle for third place.

Finally, my thanks to the US Chess office staff and the crew at the event for a job well done. Thanks, too, to our generous sponsors, American Intercultural Education!

Donate to US Chess

Your Tax-Deductible Contribution Will Help US Chess Grow the Game

US CHESS counts on donors to support initiatives that further our mission of empowering people through chess, one move at a time.

Membership dues cover the basic operating costs for US Chess.

Our goals are to grow the game by funding initiatives to improve diversity in chess, sending top players to compete in international events, and growing and retaining women chess players in the game.

With your support, we can elevate chess to be a game for life.

Every dollar counts. Make your contribution today. uschess.org/donate

US Chess Membership Rates: Premium (P) and Regular (R)

(U.S., CANADA, MEXICO)

Type	1 yr	2 yr
Adult P	\$49	\$95
Adult R	\$40	\$75
Senior (65+)	\$40	\$75
Young Adult P (25 & UND)*	\$35	\$65
Young Adult R (25 & UND)*	\$26	\$48
Youth P (16 & UND)*	\$30	\$55
Youth R (16 & UND)*	\$22	\$40
Scholastic P (13 & UND)*	\$25	\$45
Scholastic R (13 & UND)*	\$17	\$30

Premium membership provides a printed copy of Chess Life (monthly) or Chess Life Kids (bimonthly) plus all other benefits of regular membership. Regular membership provides online-only access to Chess Life and Chess Life Kids. Youth provides bimonthly Chess Life, Scholastic bimonthly Chess Life Kids, others listed above monthly Chess Life. See www.uschess.org for other membership categories. Dues are not refundable and may be changed without notice.

*Ages at expiration date of membership being purchased

CAISSA'S REVENGE

Looking for the perfect gift for the Chess fan in your life? Look no further than Caissa's revenge, a chess-based card game combining luck with chess-like strategy.

A fun and educational
2-person game,
100 cards,
white and black decks.
32 piece cards &
13 specialty cards.
8 rule cards and
2 inventory cards.



Get yours for the introductory price
of **\$12.95** at www.mkkb.info/cr



ChessKid

.com

PLAY



LEARN



#1 Chess Site for Kids. 200,000+ Kids, Parents, & Coaches!
100% Safe and Kid-Friendly! Signup Today - it's FREE!

2019 US CHESS JUNIOR GRAND PRIX FINAL STANDINGS: SADHANA ARIVOLI

Congratulations to Northern California's **Sadhana Arivoli**, who won the 2019 US Chess Junior Grand Prix. Arivoli is awarded a *Chess.com* one-year Diamond membership valued at \$100, a *Chess.com* gear/merchandise package valued at \$100, a US Chess award, free entry into the 2020 U.S. Open, and \$1,000 of expense money from US Chess to offset the trip. For the top five players on the overall list and to each state winner, *Chess.com* also awards a choice of a one-year *ChessKid.com* gold membership (valued at \$50/annually) or a one-year *Chess.com* Gold membership (valued at \$40/annually). US Chess gratefully acknowledges the participation of *Chess.com*!

Name	State	Pts.	State Leaders	State	Pts.	State Leaders	State	Pts.
ARIVOLI, SADHANA	CA-N	10850	CHENG, ALEX	IN	7159	XIAO, JAMES	PA	8331
ZHANG, ROGER	NJ	10585	OHLY, OLIVER	KS	4564	LITMANOVICH, JOSHUA	RI	2550
LI, THOMAS	NY	9163	SAMMONS, EVAN	KY	2201	WHEELER, CAMERON	SC	3158
SU, KEVIN	VA	9142	WATSON, THOMAS, III	LA	2708	BENGOA, KATSI	TERR	1050
PULLELA, SRICHARAN	CA-N	9110	CHINTAPALLI, TARA GAYATRI	MA	6770	WU, LILLIAN	TN	3867
			SHIMAN, ANDREW LEWIS	MD	6282	VELICHETI, PRAJITH	TX	7037
			THOMAS, AIDAN	ME	2325	RAY, UJAN	UT	5810
State Leaders	State	Pts.	WANG, RYAN R	MI	8053	ZHUANG, KYLE	VA	8383
ENGERISER, WILSON CHARLES	AL	5056	NARAYANAN, SAMRUG	MN	4654	COLLINS, ALEXANDER	VT	3975
LEE, KENNETH	AR	2091	ZHOU, CELINA	MO	6143	MIN, RYAN	WA	5758
WONGSO, STEVE	AZ	4178	WILKINSON, PARKER	MS	2717	KAUR, ARADH	WI	6695
JIANG, LUCAS	CA-N	8910	WALTHALL, THOMAS KASEY	MT	1828	ROBERTSON, CHAEL	WY	456
WILEY, JULIA M	CA-S	6290	RAMESH, RAHUL	NC	6080			
LI, IRIS	CO	3187	KOLLI, SAI	NE	3074			
SU, JASMINE ZHIXIN	CT	8287	SAWDEY, THOMAS	NH	1925			
ALTMAN, JOSHUA A	DC	6426	DESAI, VED	NJ	9011			
BOSE, SIDDHARTH	DE	7247	FERNANDEZ, TOBIAS	NM	3676			
VUDUTALA, SAKETH K	FL	7146	CHONDRO, WILLIAM	NV	2210			
GUO, ARTHUR	GA	5604	CHAN, JADEN J	NY	8596			
KIM, BENJAMIN YUNE	HI	6796	SONI, ARJUN	OH	5390			
RAO, ANJANEYA	IA	7116	SUN, JAMES	OK	6520			
KODIHALLI, KAUSTUBH	ID	3583	WU, ABBIE	OR	5763			
ZHAO, SOPHIA ZIYAN	IL	8827						



Official standings for events received and processed by January 7, 2020.

Tournament Life Announcements

FEBRUARY 15 THROUGH APRIL 14

Scholastic Members:

As a service to you, we are listing upcoming National US Chess rated events, and requested events of possible interest to you. You can always log in to www.uschess.org, and click on "Clubs & Tournaments." Then click on "Upcoming Tournaments" for a complete listing of upcoming rated events and details. As always, you can check out the TLA section of *Chess Life*.

Organizers and Tournament Directors:

If you would like your tournament listed here in *Chess Life Kids* for April 2020 (events to be held after April 14), the deadline for submitting your announcements is February 10th. The deadline for the June 2020 issue is April 10th. The processing fee is \$1.00 per line for the first eight lines, \$2.00 for every line thereafter. Send your announcements to Joan DuBois, tda@uschess.org. Display advertising is also available. Advertising rates are posted on the US Chess website, www.uschess.org, or you may email: tda@uschess.org for complete details.

ABBREVIATIONS & TERMS

All tournaments are non-smoking with no computers allowed unless otherwise advertised.

BLZ:	Blitz rated.
QC:	Quick Chess events.
\$\$Gtd:	Guaranteed prizes.
\$\$b/x:	Based-on prizes, x = number of entries needed to pay full prize fund. At least 50% of the advertised prize fund of \$501 or more must be awarded.
Bye:	Indicates which rounds players who find it inconvenient to play may take 1/2-point byes instead. For example, Bye 1-3 means 1/2-point byes are available in Rounds 1 through 3.
CC:	Chess club.
dx:	Time delay, x = number of seconds.
+xx:	Time increment, xx = number of seconds added after each move.
EF:	Entry fee.
Ent:	Where to mail entries.
FIDE:	Results submitted to FIDE for possible rating.
G/:	Game in. For instance, G/75 means each side has 75 minutes for the entire game.
GPP:	Grand Prix Points available.
HR:	Hotel rates. For example, 60-65-70-75 means \$60 single, \$65 twin, \$70/3 in room, \$75/4 in room.
JGP:	Junior Grand Prix.
Memb. req'd:	Membership required; cost follows. Usually refers to state affiliate.
Open:	A section open to all. Often has very strong players, but some eligible for lower sections can play for the learning experience.
Quad:	4-player round robin sections; similar strength players.
RBO:	Rated Beginner's Open.
Rds:	Rounds; scheduled game times follow. For example, 11-5, 9-3 means games begin 11 a.m. & 5 p.m. on the first day, 9 a.m. & 3 p.m. on the second day.
Reg:	Registration at site.
RR:	Round robin (preceded by number of rounds).
SD/:	Sudden-death time control (time for rest of game follows). For example, 30/90, SD/1 means each player must make 30 moves in 90 minutes, then complete the rest of the game in an hour.
SS:	Swiss-System pairings (preceded by number of rounds).
Unr:	Unrated.
W:	Site is accessible to wheelchairs.
WEB:	Tournaments that will use a player's online rating.

NATIONALS

A Heritage Event!

US Chess Junior Grand Prix!

Feb. 15-17, New Jersey

50th World Amateur Team & U.S. Team East Championship - Golden Anniversary!

6SS, 40/2, SD/30 delay 5. Parsippany Hilton, 1 Hilton Ct., Parsippany, NJ 07054. **Chess Rate valid until 1/17/20. Reserve early!** 973-267-7373 or 1-800-HILTONS. Morris/Essex train to Morris Plains 1.5 miles. Open to 4-player teams with one optional alternate. Team average (4 highest ratings—2020 January Rating list) must be under 2200. Teams rated over 2000 average no more than 1000 points between board 3 and 4. EF: \$199 postmarked by 2/5/20 ALL-\$250 after or at door—all teams, any changes at site \$25 charge. **ENTRY MAXIMUM IS 325 TEAMS. Enter early!** Check out official website www.njscf.org. **Prizes:** 1-5th Place teams, plaque and 4 digital clocks; Top Team (**Denis Barry Award**) U2100, 2000, 1900, 1800, 1700, 1600, 1500, 1400, 1300, 1200, 1000 each plaque and 4 Digital Clocks; Top college team (same school) 4 Digital Clocks & plaque; Top HS team (grades 9-12 same school), Top Middle School (grades 5-9 same school), Top Elementary School (grades K-6 same school), Top 2 Scholastic Teams (mixed schools okay) (**Collins Award**), Mixed Doubles (2 males, 2 females-no alternates), Seniors (all players over age 50), Military, each plaque & 4 Digital Clocks to top team; Company Team (same employer-non educational), Top Coaches (educational), Top team all female, Family (4 family members), State teams—CT, DE, MD, MA, NJ, NY (**Benjamin Award**), PA, VA, each plaque top team; Special Plaque: **Top Future team**, (all players under age 10), **Top Military College, Top Parent/Child** (2 pairs, one parent, one child), **Best Player 1-4 and top alternate**, All 6-0 scores each Digital clock. Biggest Individual upset each round Engraved Cross pin; Entry fee refunded to team with Best "Chess related" name, Sunday night—Best "Chess Related costumes or gimmick"—1st gourmet dinner for four. 2nd—gourmet dinner for 4. **Reg:** 9-12 Sat 2/15: Rds: 1-7:30, 11-6, 9-3:30. **Surprises and special give-aways each round. New prize each round—BEST HAT, Free cake and coffee!!!** Sunday night—Bughouse \$20 per team. Cash prizes. HR: Parsippany Hilton **NEWLY RENOVATED ROOMS!** Chess rates expire 1/17/2020. Rates \$123(single double) \$125 (Triple, Quad) 2nd hotel attached to Hilton \$130 per night (single-double) \$132 (triple, Quad)-Hampton Inn—includes breakfast each day. For help forming teams and more information contact: noreenchess@gmail.com. Chks payable to **NJSCF**, mail by 2/05/20 to: **NJSCF, 17 Stonehenge Road, Morristown, NJ 07960**. (Include Team name, Captain, player full names, USCF Expiration, ID numbers and ratings in board order). No team can include more than two GM's. Include SASE for confirmation if wanted, No registered or certified mail accepted. W.

A Heritage Event!

US Chess Junior Grand Prix!

Feb. 15-17 or 16-17, California, Northern

36th Annual (2020) U.S. Amateur Team Championship - West

Scholastic on Feb. 15 only. Sponsored by Mechanics' Institute Chess Club. Hyatt Regency SFO, 1333 Bayshore Hwy, Burlingame, CA 94010. Discounted parking for \$15/day. **Teams:** Four-player teams plus optional alternate, average rating of four highest must be under 2200, difference between ratings of board 3 & 4 must be less than 1000. January 2020 Supplement, CCA min, & TD discretion used to place players accurately. **Main Event Prizes:** Special 4 commemorative clocks and team plaque to the team for Top 3 overall teams, top team u2000, u1800, u1600, u1400, and u1200. Trophies to all players of the top "Female" team, top "College" team, top "High School" team, top "Elementary School" team, top "Club" team, and top "Family" team. Clocks to top scorer on each board (1-4), trophy to top reserve as well as second and third scorers on each board (1-4). **Main Event EF:** \$276/team or \$69/player by 2/7. 2/8-14: \$20 extra per player or \$80 per team & Onsite. A change fee equal to the late fee will apply for any changes, other than by requests within 3 days of the tournament. **3-day Sched:** Onsite Registration @ Sat 9-10a, Round Times @ Sat & Sun 11a 4:30p, Mon 10a 3:30p. Time Control: 40/120 SD/30 d5. **2-day Sched:** Onsite Registration @ Sun 8-8:30a, Round Times @ Sun 9a 11:30a 2p 4:30p; Mon 10a 3:30p. Time Control: G/61 d5 in Rounds 1-3, 40/120 SD/30 d5 in Rounds 4-6 (merge in Round 4 with 3-day schedule). **Info:** www.milibrary.org/chess/usatv **Scholastic Event Prizes:** Trophies to each player in Top 3 teams overall, Top u1200 team, u900 team, u600 team, u300 team. Trophies to top "Girls" team, top "School" team, and top "Club" team. Trophies to top two scorers on each board (1-4). Commemorative medals to all others. **Scholastic Event EF:** \$196/team or \$49/player by 2/7. 2/8-14: \$15 extra per player or \$60 per team & Onsite. **Sched:** Onsite Registration: Sat 8-9a | Games @ Sat 10a 11:30a 1p 2:20p 3:40p. **Info:** www.milibrary.org/chess/usatv **Guest room:** discounted rooms @145/night, link to room is on website. **Contact:** Organized by Judith Sztaray and Abel Talamantez. Chief TD: John McCumiskey. Online entry at www.milibrary.org/chess/usatv or mail to Mechanics' Institute Chess Club, 57 Post St., San Francisco, CA 94104. For questions or help in forming teams email chessroom@milibrary.org. W.

US Chess Junior Grand Prix!

Feb. 21-23, Illinois

2020 U.S. Amateur Team Championship - North

Open: 5SS, G/90+30/increment, 2-day: rd.1-2 G/60 d5. Hyatt Regency Schaumburg, 1800 E. Golf Rd., Schaumburg, IL 60173. 847-605-1234 \$105.00 chess rate single-double-triple-quad until 2/10/20, Free WiFi included with Room! Please reserve early. MORE PRIZES this year! Open to 4 player teams with one optional alternate. **Two sections:** Open and Reserve. **Team average (4 highest ratings – Jan 2020 Rating List) must be under 2200 for Open, average must be under 1600 for reserve.** EF: \$180 per team if received USPS or online 6pm by Feb. 7, \$200 if received USPS or online 6pm by Feb. 15, \$220 online until Feb. 21 9:30am and on site. Individuals wishing to play send \$60 by USPS or on-line by 2/15 6pm, \$70 thereafter, and request to be put on a team. (Note: we can guarantee you will play, but can't guarantee which schedule, which board you will play, or the ratings of your team). Team changes on site or after 2/21 6pm, \$20. **See www.chess-weekend.com for more info, team rules and categories, complete prize list.** **Open Section Prizes:** Winning team qualifies for national play-offs. Awards to top 3 teams, top teams u2000 and u1800, top college team, top HS team, top junior team (HS and under), top mixed doubles team (2 men and 2 women), top senior team (all 50 & over), top individual score

each board. **Reserve Section Prizes:** top 2 teams, top teams u1300 and U1000, top K-8 team, top female team and top individual score each board. **Special prizes:** best team name, best costume or theme. **Prizes** are clocks or book store credit. Books and equipment by Rochester Chess. **Rounds:** **3-day:** on-site registration/check-in 2/21 5:30-6:30pm, rds.: 7pm; 10:00am & 4:00pm; 10:00am & 3:30pm. **2-day:** on-site registration/check-in 2/22 8:00-9:30am, rds. 10:00am & 1:00pm then merge with 3-day. **Northern Blitz Championship Saturday night,** \$25 by 2/21 USPS or online, \$30 online or at site. First round 8pm, 5/SS double rounds G/3, inc. 2 (2 games w/each opponent), Blitz is FIDE rated, see www.chessweekend.com for details. **All: Register at www.kingregistration.com** Checks made payable and sent to: Chess Weekend, 21694 Doud Ct., Frankfort, IL 60423. Please include Team's name and roster (plus ID#), captain's email and phone number, and desired schedule. **Info:** www.chessweekend.com, glenn@chess-weekend.com. Boards and Sets provided, must bring clocks.

US Chess Junior Grand Prix!

Feb. 28-Mar. 1 or Feb. 29-Mar. 1 (Not Feb. 15-17), North Carolina

2020 U.S. Amateur Team South Championship - Note Date Change

Scholastic on Feb 29 only, Blitz on Mar 1 only. Raleigh-Durham Airport (RDU) Four Points by Sheraton, 1200 Claren Circle, Morrisville, NC 27560. Free Parking! Teams: Four-player teams plus optional alternate, average rating of four highest must be under 2200, difference between ratings of board 3 & 4 must be less than 1000. January 2020 Supplement, CCA min, BAC min, & TD discretion used to place players accurately. **Main Event Prizes:** Special 4 commemorative clocks and team trophy to the team for Top 2 overall teams, top team u2000, u1700, u1400, u1100. Trophies to all players of the top Senior team (50 & over), top All-women team, top College team, top High School team (Grades 9-12), top Junior High School team (Grades 6-8), top Elementary School team (KG – Grade 5), top Family team, top Industry Team (same employer). Clocks to top scorer on each board (1-4), trophy to top reserve as well as second highest scorer on each board (1-4). \$20 Gift certificates for best 2 team names. **Main Event EF:** \$199/team or \$59/player by 2/22. 2/23-25: extra \$10/player (\$25/team), 2/26-28: extra \$20/player (\$50/team), and onsite extra \$26/player (\$66/team). A change fee of \$10 will apply for any changes within 3 days of the tournament. **3-day Sched:** Onsite Reg. @ Sat 12:30-1pm. Rds.: Fri 7pm, Sat 2:30-7, Sun 10-2:30. **Time Control:** 30/90 + 30. **2-day Sched:** Onsite Reg. @ Fri 6-6:30pm. Rds.: Rds.: Sat 1:30-4 and merge in Rd. 3 at 7pm. Sun 10-2:30. **Time Control:** Control: G/61 d5 in Rounds 1-2 and 30/90 + 30 in Rounds 3-5 (after merge). **Info:** www.bayareachess.com/usats. **Scholastic Team Event Prizes:** Trophies to each player in the team overall, top u1000 team, top u700 team, and top u400 team. Trophies to top player on each board and top reserve. Commemorative medals to all players. **Scholastic Team Event EF:** \$99/team or \$29/player by 2/23, 2/24-28 extra \$10/player (\$25/team) and onsite extra \$16/player (\$41/team). \$199/team or \$59/player by 2/22. 2/23-25: extra \$10/player (\$25/team), 2/26-28: extra \$20/player (\$50/team), and onsite extra \$26/player (\$66/team). A change fee of \$10 will apply for any changes within 3 days of the tournament. **Sched:** Onsite Registration: Sat 7:30-8am. Rds.: 8:30-10-11:30-1. **Info:** www.bayareachess.com/usatk. **Blitz Side Event:** Onsite Registration: Sunday 7-8pm. 8 SS x G/5 d0. Rds. on Sunday: 8:15-9:50pm. EF: \$15. 70% of entry fees returned as prizes. **Contact:** Organized by Dr. Salman Azhar. Sponsored by Bay Area Chess. Online entry at www.BayAreaChess.com/my/usats or mail to Bay Area Chess, 2050 Concourse Drive #42, San Jose, CA 95131. For questions or help in forming teams email events@BayAreaChess.com. **W. NOTE:** This version supersedes what appeared in Dec CL and Dec CLK issues.

US Chess Junior Grand Prix!

Apr. 3-5, Ohio

2020 National High School (K-12) Championship

7SS, G/120 d5. Greater Columbus Convention Center, 400 North High St., Columbus, OH 43215. Hotel: Hyatt Regency Columbus, 350 North High Street, Columbus OH 43215 (adjacent to GCCC). Hotel Chess Rate \$155. Guest rooms may be booked, NLT 3/3/2020 by calling (877) 803-7534, mention "US Chess", or online at: <http://bit.ly/2qRyB4f>. 6 Sections: K-12 Championship, K-12 U1900, K-12 U1600, K-12 U1200, K-12 U800 and K-12 Unrated. March Rating Supplement will be used. One 1/2-point bye available (limit one) any round if requested prior to the start of Rd. 1. Team score = total of top four (minimum two) finishers from each school per section. K-12 Championship first place individual and team, including ties, will be the National High School Champion. **Schedule:** Opening ceremony Fri. 12:45 pm. Rds.: Fri. 1 pm and 7 pm, Sat. 9 am, 2 pm and 7 pm, Sun. 9 am and 2 pm. Awards Ceremony Sun., approx. 7 pm. EF: \$60/participant postmarked or online by 2/24, \$80 postmarked or online by 3/9, \$95 online by 4/1, \$100 on site; \$10.00 extra for all phone registrations; \$30 fee for roster or section changes after 3/23 or any onsite changes. Onsite registration Thurs. 9 AM - 9 PM & Fri. 8 AM - 11 AM. Players who register or change sections after 11 am on Friday will receive a 1/2-point bye for Rd.1. Players must disclose any other, non-US Chess over-the-board (OTB) ratings. Awards: to top individuals & top teams in each section. Every player receives a commemorative item! Full list of awards on tournament Info Page. Side Events: Bughouse: Thurs. 11 am, Reg. onsite only Thurs. 9 - 10 am, \$25/team. K-12 Blitz: Thurs. 5 pm, Reg. onsite until 4 pm. Blitz EF: \$20 by 3/23, \$25 after or at site. Class trophies will be awarded in main event and in Blitz. Full list of trophies on tournament Info Page. **General questions:** Contact Susan Kantor at 931.787.1234 ext. 136 or by email: skantor@uschess.org. **Team Room questions:** Contact Pete Karagianis at 931.200.9477 or by email: pete.karagianis@uschess.org. **Entries:** U.S. Chess Federation, Attn: U200 HS Championship, P.O. Box 3967, Crossville, TN 38557 or online at www.uschess.org/tournaments/2020/hs/. See website for additional information about the event, advance entries, awards, meetings, team rooms, updates, corrections, and registration forms.

US Chess Junior Grand Prix!

Apr. 17-19, Illinois

2020 All-Girls National Championships presented by the Kasparov Chess Foundation, Renaissance Knights Chess Federation & US Chess

Any player that achieves a perfect 6-0 score or wins the first-place trophy, in each age category, qualifies to represent the USA at the 2020 World Cadets (U/8, U10, U12) / World Youth (U/14, U/16, U/18) Championships 6SS, G/90 d5. Westin Chicago Northshore, 601 N. Milwaukee Ave., Wheeling, IL 60090. **6 Sections/Trophies:** Age as of 1/1/2020 Under 8 top 15 individuals, top 500 – 799, top U500, top 6 schools, Under 10 top

16 individuals, top 700 – 999, top U700, top 6 schools, **Under 12** top 16 individuals, top 900 – 1199, top U900, top 6 schools, **Under 14** top 12 individuals, top 1100 – 1399, top U1100, top 4 schools, **Under 16** top 8 individuals, top 1300 – 1599, top U1300, top 3 schools, **Under 18** top 8 individuals, top 1500 – 1799, top U1500, top 3 schools, (top 3 players added for team scores). **EF:** \$70 mail/online by 3/16 \$85 by 4/6, \$95 after. Do not mail after 4/10. \$20 fee for roster or section changes after 4/10. \$10 fee for refunds. **Onsite Registration** Fri 9:00 AM - 1:00 PM, Sat 7:30 - 8:30 AM. **Opening Ceremony:** Fri 2:30pm. **Rounds:** Rd. 1 – Fri 3:00pm; Rounds 2-4 – Sat 10:00am, 2:30pm, 6:30pm; Rounds 5-6 – Sun 9:00am & 1:00pm. **Awards:** 5:00pm. **Bye:** A single half-point Bye is available any round, to include the final round. The Bye may be requested as part of the advance entry or online by 11 pm on the day before the tournament starts. On-site you can request a Bye up to 2 hours before the published start time for Round 1. **Side Events: Bughouse Tournament** – Fri. 11:00 am, EF \$35/team. **Blitz Tournament** – Fri. 7pm, G/5 d0, EF \$25 by 4/6, \$30 after or on site. **HR:** single - quad \$164 Reservations: (847) 777-6500. Reserve early rate may increase / sell out. **Entries/info:** online at: www.algirls.knights.org or mail to RKnights, Attn: All-Girls, PO Box 1074, Northbrook, IL 60065, include name, section, rating, USCF ID#, date of birth, grade, school name city & state.

US Chess Junior Grand Prix! Apr. 24-26, Florida

2020 National Junior High School (K-9) Championship

7SS, G/120 d5. Hyatt Regency Jacksonville-Riverfront, 225 East Coastline Dr, Jacksonville, FL 32202. Hotel Chess Rate \$145. Guest rooms may be booked, NLT 4/7/2020 by calling (904) 588-1234, mention "US Chess" or see www.uschess.org/tournaments/2020/jhs/ to book now! **7 Sections:** K-9 Championship, K-9 U1700, K-9 U1400, K-9 U1100, K-9 U900, K-9 U700, K-9 Unrated. April Rating Supplement will be used. Maximum one 1/2-point bye available any round if requested prior to the start of Rd. 1. Team score = total of top four (minimum two) finishers from each school per section. K-9 Championship first place individual and team, including ties, will be the National Junior High School Champion. **Schedule:** Opening ceremony Fri. 12:45 pm. Rds.: Fri. 1 pm and 7 pm, Sat. 9 am, 2 pm and 7 pm, Sun. 9 am and 2 pm. Awards Ceremony Sun., approx. 7 pm. **EF:** \$60/participant postmarked or online by 3/23, \$80 postmarked or online by 4/6, \$95 online by 4/22, \$100 on site; \$10.00 extra for all phone registrations; \$30 fee for roster or section changes after 4/6 or any onsite changes. Onsite registration Thurs. 9 AM - 9 PM & Fri. 8 AM-11 AM. Players who register or change sections after 11 am on Friday will receive a 1/2-point bye for Rd. 1. Players must disclose any other, non-US Chess, over-the-board (OTB) ratings. **Awards:** To top individuals & top teams in each section. Every player receives a commemorative item! Full list of awards on tournament Info Page. **Side Events:** Bughouse: Thurs. 11 am, Reg. onsite only Thurs. 9-10 am, \$25/team. K-9 Blitz: Thurs. 5 pm, Reg. onsite until 4 pm. Blitz EF: \$20 by 4/6, \$25 after or at site. Class trophies will be awarded in main event and in Blitz. Full list of trophies on tournament Info Page. **General questions:** Contact Susan Kantor at 931.787.1234 ext. 136 or by email: skantor@uschess.org. **Team Room questions:** Contact Pete Karagianis at 931.200.9477 or by email: pkaragianis@uschess.org. **Entries:** U.S. Chess Federation, Attn.: 2020 JHS Championship, PO. Box 3967, Crossville, TN 38557 or online at www.uschess.org/tournaments/2020/jhs/. See web site for additional information about the event, advance entries, awards, meetings, team rooms, updates, corrections, and registration forms.

US Chess Junior Grand Prix! May 8-10, Tennessee

2020 National Elementary (K-6) Championship

7SS, G/90 d5. Gaylord Opryland Resort and Convention Center, 2800 Opryland Dr, Nashville, TN 37214. Hotel Chess Rate \$176. Guest rooms may be booked, NLT 4/16/2020 by calling (888) 777-6779 or (615) 889-1000, mention "US Chess" or book online at: <https://book.passkey.com/e/49986969>. 13 Sections: K-6 Championship, K-6 U1400, K-6 U1000, K-6 Unrated, K-5 Championship, K-5 U1200, K-5 U900, K-3 Championship, K-3 U1000, K-3 U700, K-3 Unrated, K-1 Championship, K-1 U500/UNR. April Rating Supplement will be used. One 1/2-point bye available (limit one) ANY round if requested prior to the start of Rd. 1. Team score = total of top four (minimum two) finishers from each school per section. K-6 Championship first place individual and team, including ties, will be the National Elementary School Champion. Opening ceremony Fri. 12:30 pm. Schedule for K-3 and higher: Rds.: Fri. 1 pm and 6 pm, Sat. 10 am, 2 pm and 6 pm, Sun. 10 am and 2 pm. Awards Ceremony Sun., approx. 6 pm. Special schedule for K-1 sections: Rds.: Fri. 1:30 pm and 5:30 pm, Sat. 9:30 am, 1:30 pm and 5:30 pm, Sun. 9:30 am and 1:30 pm. Awards Ceremony Sun., approx. 5:30 pm. EF: \$60/participant postmarked or online by 3/23, \$80 postmarked or online by 4/20, \$95 online by 5/6, \$90 on site; \$10.00 extra for all phone registrations; \$30 fee for roster or section changes after 4/20 or any onsite changes. Onsite registration Thurs. 9 AM - 9 PM & Fri. 8 AM - 11 AM. Players who register or change sections after 11 am on Friday will receive a 1/2-point bye for Rd. 1. Players must disclose any other, non-US Chess, over-the-board (OTB) ratings. **Awards:** To top individuals & top teams in each section. Every player receives a commemorative item! Full list of awards on tournament Info Page. **Side Events:** Bughouse: Thurs. 11 am, Reg. onsite only Thurs. 9-10 am, \$30/team. Blitz Sections: K-6 and K-3, Thurs. 5 pm, Reg. onsite until 4 pm. Blitz EF: \$20 by 4/27, \$30 after or at site. Class trophies will be awarded in main event and in Blitz. Full list of trophies on tournament Info Page. **General questions:** Contact Susan Kantor at 931.787.1234 ext. 136 or by email: skantor@uschess.org. **Team Room questions:** Contact Pete Karagianis at 931.200.9477 or by email: petekaragianis@uschess.org. **Entries:** U.S. Chess Federation, Attn.: 2020 Elementary Championship, PO. Box 3967, Crossville, TN 38557 or online at www.uschess.org/tournaments/2020/elem/. See web site for additional information about the event, advance entries, awards, meetings, team rooms, updates, corrections, and registration forms.

An American Classic! A Heritage Event!

US Chess Junior Grand Prix!

June 24-28, 25-28, 26-28 or 27-28, Nevada

US Chess Grand Prix Points: 300 (Enhanced)

2020 National Open

Open Section June 24-28: 9-SS, 40/90, SD/30, +30. GM & IM norms possible. **Under Sections** June 25-28, 26-28 or 27-28: 7-SS, 40/90,

SD/30, +30 (3-day rounds 1-2 G/60, +10, 2-day rounds 1-4 G/30, +5). **Beginners Sections** June 26, 27 and 28: 6-SS G/30, +5. Westgate Las Vegas Resort & Casino. **\$\$100,000 Guaranteed Prize Fund** will not be reduced! In 8 sections, top 3 FIDE rated. **Open:** \$8,000-4,000-2,000-1,000-600-500-400-300-300-300, top under 2500 \$2,500, top under 2400 \$2,400, **Extra** \$2,500 divided among GMs, WGMs and foreign IMs winning less than \$250 and playing 9 rounds. The winner of the Open section also receives a replica of the Edmondson Cup. **Under 2300:** \$6,000-3,000-1,500-750-400-350-300-250-250-250. **Under 2100:** \$6,000-3,000-1,500-750-400-350-300-250-250-250. **Under 1900:** \$5,000-2,500-1,250-600-350-300-250-250-250. **Under 1700:** \$4,000-2,000-1,000-500-300-250-250-250-250-250. **Under 1500:** 3000-1500-700-350-300-250-250-250-250-250. **Under 1300:** \$2000-1,000-500-300-250-250-250, top under 1000 (no provisional) \$900. Provisionally rated players may not win an amount greater than 40% of top prize in any under section; balance goes to next player(s) in line. **Beginners** (unrated or provisionally rated 1300 or lower): 3 schedules with 6 rounds per day \$200-125-75 each day plus \$300 overall (best 2 results). Unrated players may play only in Beginners or Open Section. **Plus-Score Bonus:** (\$12,000 guaranteed) in addition to any other prizes, every player with a plus score wins a \$50 gift certificate. Plus score certificates will be awarded on site only. **Mixed Doubles:** best male/female combined 2-player team score: \$1,500-750-350-250-150. Average rating below 2200, teammates may play in different sections, only rounds 1-7 count for Open Section or best day for Beginners. **The Freddie:** Players age 14 and under are eligible for best game prizes including the Freddie Award and \$400 in cash prizes (donated by Fred Gruenberg). June FIDE ratings used in Open section, June US Chess ratings in all other sections. CCA minimum ratings or other ratings may be used if higher. **EF Open:** \$239 by 4/30, \$259 by 5/31, \$279 later. \$150 more for players not rated 2200 or above. GM, WGM & foreign IM free. \$80 less for IM or WIM. Under sections: \$239 by 4/30, \$259 by 5/31, \$279 later. Beginners: \$129 1 day, \$189 2 days, \$229 3 days. \$30 more after 5/31. All: Early Bird Loyalty discount \$40 less for players who have played in any of the last 10 National Opens and enter before 1/31; Senior (over 65) \$40 less by 5/31; \$21 more on site. 5-day schedule: **Reg:** Wednesday 4-5 p.m. **Rds:** 6:30, 12-6:30, 12-6:30, 10-4:30, 10-4:30. 4-day schedule: **Reg:** Thursday 2-5 p.m. **Rds:** 6:30, 12-6:30, 10-4:30, 10-4:30. 3-day schedule: **Reg:** Friday 9-10:30 a.m. **Rds:** 11:30-2:30 then merge with 4-day in round 3 at 6:30. 2-day schedule: **Reg:** Saturday 8-8:30 a.m. **Rds:** 9:30-11-1-2:30 then merge with 4-day in round 5 at 4:30. Half point byes available in any round if requested at least 2 hours in advance; Sunday byes must be requested before the start of round 4 and may not be cancelled. Chess sets and boards provided for tournament play only, not for skittles. Please bring digital chess clocks! **The LAS VEGAS INTERNATIONAL CHESS FESTIVAL** features the National Open, the U.S. Women's Open, the International Youth Championship, and other events. **Many free extras and surprises!** Free parking. Free raffles with great prizes. **Free GM** Lectures. **Free GM** analysis of your games. **Free** Daily Bulletins. **Grandmaster Simuls and Chess Camp** for all ages on Thursday. **U.S. Women's Open** Wednesday and Thursday. **Walter Browne Memorial Blitz** Sunday 10:30 p.m. **Action Quads** Thursday. **Blitz** Sectionals Friday & Saturday. **Poker Tournament** Monday Morning. **Don't be shut out** - make your reservations early and be sure to ask for the **CHESS** group (SVCFOR) rates — \$70 single or double (\$97 Friday and Saturday nights) guarantees a premium room with new furniture, refrigerator, flat screen TV and more. The discounted \$15 resort fee includes access to the Fitness Center, free Wi-Fi, in-room safe, and shuttle to Downtown and the Strip. **Cutoff for Special Hotel rate is June 3; after that rates will increase significantly and there may not be any rooms available.** (800) 732-7117 or www.VegasChessFestival.com/hotel. **ENT:** Vegas Chess Festivals, PO Box 90925, Henderson, NV 89009-0925, online at www.VegasChessFestival.com. **Info:** (702) 930-9550. FIDE. W.

GRAND PRIX

US Chess Junior Grand Prix!

Feb. 8-9, California, Northern

US Chess Grand Prix Points: 30 (Enhanced)

NM Paul Gallegos Championship (5SS, G/90 +30)

Convention Center, Santa Clara 95054. Park free. **Prizes:** \$6,000 b/117, 60% guaranteed. 3 sects: **2000+** (FIDE) \$1,000-500-200, u2300: 400-200-100. **1600-1999:** \$700-300-100, u1800: 400-200-100, u1600: \$600-300-100 u1400: 300-100, u1200: 300-100. Unr max \$200 exc Open. Dec 19 Supp & TD disc. **Reg:** Sat 9-9:15a. **Rds:** Sat 9:30-1:50-6:10, Su 10-3:30. **EF:** 99, Econ EF: 79 w/1/2 pr. (+21 after 80% full, & onsite); play +25, GMs/IMs = \$0 by 1/29. **Info:** www.bayareachess.com/champs.W.

A Heritage Event!

US Chess Junior Grand Prix!

Feb. 8-9, Alabama

US Chess Grand Prix Points: 10

Queen of Hearts - 48th Annual

5SS, TC: G/120 d5. **AUM Taylor Center.** 7401 East Drive, Montgomery, AL 36117. **PREMIERE** (PF: \$1,000 - \$5GT): \$350-250-A:200-B:200; **RESERVE** (PF: \$625 - \$5GT): \$225-150-125-U1200: \$125. **EF:** \$50; if mailed by FEB 1st: \$60 at site. **Late REG:** FEB 8th, 8-8:30am. **Rds:** 9-2-7; 9-2. **SCHOLASTIC (K-12): NOVICE** (6SS. TC: G/20 d5; **Not Rated**): **EF:** \$20; if mailed by FEB 1st: \$30 at site. **Trophy:** Top 3; **Medal:** 4th-6th. **Rds:** 9-10-11-12-30-1:30. 2-30. Checks payable to: **Caesar Chess. ENT:** Caesar Chess LLC, 5184 Caldwell Mill Road, Suite 204 - 202, Birmingham, AL 35244 or email your entry form information before **FEB 5th** and pay \$50 at site. **Info:** CaesarChess@gmail.com; www.AlabamaChess.org.

US Chess Junior Grand Prix!

A State Championship Event!

Feb. 16, Pennsylvania

US Chess Grand Prix Points: 6

2020 PA State Game/75 Championship

4SS, G/75 d5. Wm. Pitt Union, Univ. of Pittsburgh, 5th Ave. & Bigelow Blvd., Pittsburgh, PA 15213. 3 sections, **\$\$ (6956):** Championship: EF: \$30 by 2/8, \$40 later. \$200-100, U2000 \$75, U1800 \$50. **Premier:** U1600. EF: \$25 by 2/8, \$35 later. \$90-60, U1400 \$50, U1200 \$40, U1000 \$30; Trophies to Top 2, Top 2 U1400, Top 2 U1200, Top 2 U1000. **Scholastic:** Grades K-12 U900. EF: \$15 by 2/8, \$25 later. Trophies to Top 7, 1-3

U600. **ALL:** Teams of 4 to 7 combined from all sections, Trophies 1st-2nd clubs, schools. PSCF \$5, OSA. Reg ends 9:30am. **Rds.:** 10-1-4-7. **Ent/Info:** PSCF, c/o Tom Martinak, 25 Freepoint St., Pittsburgh, PA 15223, 412-908-0286, martinak_tom_m@hotmail.com

A State Championship Event!

Mar. 6, Pennsylvania

US Chess Grand Prix Points: 6

2020 PA Quick Chess Championship (QC)

6SS, G/8 d3. Eisenhower Hotel and Conference Center, 2634 Emmitsburg Rd., Gettysburg PA 17235. **3 sections**, EF rec'd by 2/17: **Open:** \$12. **U1500:** \$11. **U1100:** \$10. \$\$ (750G): **Open:** 175-100-50, U1800 \$45, U1600 \$40. **U1500:** 125-75-50, U1300 \$40, U1200 \$30, Unr \$20. **U1100:** Trophies: 1-12, U800, U700, U600, 1-3 Unr. **Al:** EF: \$20 after 2/17, PSCF \$5 OSA. **Reg.:** 5:30-6:15pm. **Rd. 1:** 7pm. Feb 2020 Reg rating. **Bye:** limit 1, ask by rd. 2. **HR:** Mention "Chess Tourney": 717-334-8121 \$90 by 1/31. **Ent:** PSCF, c/o Tom Martinak, 25 Freepoint St., Pittsburgh, PA 15223-2245. **Info:** 412-908-0286, martinak_tom_m@hotmail.com, pscfchess.org/pascholasticchamp/

US Chess Junior Grand Prix!

Mar. 7-8, California, Northern

US Chess Grand Prix Points: 30 (Enhanced)

CM Azhar Memorial Championship (5SS, G/90 +30)

Convention Center, Santa Clara 95054. Park free. **Prizes:** \$6,000 b/117, 60% guaranteed. 3 sects: **2000+** (FIDE) \$1,000-500-200, u2300: 400-200-100. **1600-1999:** \$700-300-100, u1800: 400-200-100, u1600: \$600-300-100 u1400: 300-100, u1200: 300-100. Unr max \$200 exc Open. Mar 20 Supp & TD disc. **Reg:** Sat 9-9:15a. **Rds:** Sat 9:30-1:50-6:10, Su 10-3:30. **EF:** 99, Econ EF: 79 w/1/2 pr. (+21 after 80% full, & onsite); play +25, GMs/IMs = \$0 by 2/26. **Info:** www.bayareachess.com/champs.W.

US Chess Junior Grand Prix!

A State Championship Event!

Mar. 7-8, Pennsylvania

US Chess Grand Prix Points: 10

2020 Gettysburg Open & PA Collegiate Championship

5SS, G/90 d5. Eisenhower Hotel and Conference Center, 2634 Emmitsburg Rd., Gettysburg, PA 17235. **3 sections:** **\$\$ (1875G):** **Open:** 350-150, U2200 \$125, U2000 \$100. **U1800:** 200-150, U1650 \$125, U1500 \$100. **U1400:** 200-150, U1200 \$90, U1000 \$75, Unr \$60. **Al:** College Tr: 1-2 in each section, 1-2 team (top 4 over all sections). **EF:** \$40 rec'd by 2/17, \$50 after, PSCF \$5 OSA. **Reg.:** 8:45-9:30 am. **Rds:** 10-2-5:30, 9-1. Feb 2020 ratings used. **Bye:** limit 1, ask by rd. 2. **HR:** Mention "Chess Tourney": 717-334-8121 \$90 by 1/31. **Ent:** PSCF, c/o Tom Martinak, 25 Freepoint St., Pittsburgh, PA 15223-2245. **Info:** martinak_tom_m@hotmail.com, pscfchess.org/pascholasticchamp/

A State Championship Event!

Mar. 28, Pennsylvania

US Chess Grand Prix Points: 6

2020 PA State Game/29 Championship (QC)

5SS, G/29 d0. O'Hara Student Center, Univ. of Pitt., 4024 O'Hara St., Pittsburgh, PA 15213. **2 Sections: Championship:** EF: \$25 by 3/20 \$35 later. \$\$ (690G): \$200-100, U2000 \$90, U1800 \$80, U1600 \$70, U1400 \$60, U1200 \$50, U1000 \$40. Trophies: 1-3 U1400, 1-3 U1200, 1-3 U1000. **Scholastic:** Grades K-12 unrated or U900. EF: \$15 by 3/20, \$25 later. Trophies to Top 7, 1-3 U600. **ALL:** Trophies: 1-2 Schools, 1-2 Clubs, Teams of 4-7 players from both sections. PSCF \$5, OSA. **Reg.:** 10-10:30am. **Rds:** 11-12-30-1:45-3-4:15. Ent: PSCF, c/o Tom Martinak, 25 Freepoint St., Pittsburgh, PA 15223, martinak_tom_m@hotmail.com

US Chess Junior Grand Prix!

Apr. 4-5, California, Northern

US Chess Grand Prix Points: 30 (Enhanced)

Alan Kirshner Championship (5SS, G/90 +30)

Convention Center, Santa Clara 95054. Park free. **Prizes:** \$6,000 b/117, 60% guaranteed. 3 sects: **2000+** (FIDE) \$1,000-500-200, u2300: 400-200-100. **1600-1999:** \$700-300-100, u1800: 400-200-100, u1600: \$600-300-100 u1400: 300-100, u1200: 300-100. Unr max \$200 exc Open. Apr 20 Supp & TD disc. **Reg:** Sat 9-9:15a. **Rds:** Sat 9:30-1:50-6:10, Su 10-2:30. **EF:** 99, Econ EF: 79 w/1/2 pr. (+21 after 80% full, & onsite); play +25, GMs/IMs = \$0 by 3/25. **Info:** www.bayareachess.com/champs.W.

June 24-28, 25-28, 26-28 or 27-28, Nevada

US Chess Grand Prix Points: 300 (Enhanced)

2020 National Open

See Nationals.

REGIONAL

Alabama

Feb. 8-9, Queen of Hearts - 48th Annual

See Grand Prix.

California, Northern

Feb. 8, Pleasanton Swiss75 (3SS, G/75 d5)

Four Points, 5115 Hopyard Rd., Pleasanton, CA 94588. Park Free. **Prizes:** \$1,400 b/50. **3 Sections:** 1800+ , 1400-1799, u1400. **Reg:** 8:30-8:45. **Rds:** 9-12-3. **EF:** 55, Econ 40 w/1/2 pr. (+20 after 80% full, & onsite); play +20, GMs/IMs = \$0 by 1/29. **Info:** www.BayAreaChess.com/1day.W.

Feb. 8, Pleasanton Kids Swiss (PK-12, 4SS, G/30 d5)

Four Points, 5115 Hopyard Rd., Pleasanton, CA 94588. Park Free. **Trophies:** players w + score, Medals to others. **Reg:** 9-9:15a, **Rds.:** 9:30a-1:30p. **EF:** 39 (+15 play, +15 after 80% full, & onsite). **Info:** www.BayAreaChess.com/signature.W.

Feb. 8, Pleasanton Kids Quads (PK-12, 3RR, G/30 d5)

Four Points, 5115 Hopyard Rd., Pleasanton, CA 94588. Park Free. **Trophies:** players w + score, Medals to others. **Must check-in 1:30-2 or no game.** Games 2:15-5. **EF:** 33 (+15 after 80% full, & onsite). **Info:** www.BayAreaChess.com/signature.W.

Feb. 8, San Jose Kids Swiss (PK-12, 4SS, G/30 d5)

Fairfield, 1755 N. 1st St., San Jose, CA 95112. Park Free. **Trophies:** players w + score, Medals to others. **Reg.:** 9-9:15a, **Rds.:** 9:30a-1:30p.

Tournament Life

EF: 39 (+15 playup, +15 after 80% full, & onsite). **Info:** www.BayAreaChess.com/signature.W.

Feb. 8, San Jose Kids Quads (PK-12, 3RR, G/30 d5)
Fairfield, 1755 N. 1st St., San Jose, CA 95670. Park Free. **Trophies:** players w + score, Medals to others. **Must check-in 1:30-2 or no game.** Games 2:15-5. **EF:** 33 (+15 after 80% full, & onsite). **Info:** www.BayAreaChess.com/signature.W.

Feb. 8, Sacramento Kids Swiss (PK-12, 4SS, G/30 d5)
Courtyard Marriott, Rancho Cordova, CA 95670. **Trophies:** players w + score, medals to others. **Reg.:** 9-9:15a, **Rds.:** 9:30a-1:30p. **EF:** 33, 20 with 3/7 Quads entry (+15 playup). **Info:** www.BayAreaChess.com/signature.W.

Feb. 8-9, NM Paul Gallegos Championship (5SS, G/90 +30)
See Grand Prix.

Feb. 9, Chess4Less San Jose Kids Swiss (PK-12, 4SS, G/30 d5)
2050 Concourse Drive #42, San Jose, CA 95131. Park free. **Trophies:** players w + score, Medals to others. **Reg.:** 9-9:15a, **Rds.:** 9:30a-1:30p. **EF:** 33 (+15 playup, +15 after 80% full, & onsite). **Info:** www.BayAreaChess.com/signature.W.

Feb. 9, Chess4Less San Jose Kids Quads (PK-12, 3RR, G/30 d5)
2050 Concourse Drive #42, San Jose, CA 95131. Park free. **Trophies:** players w + score, Medals to others. **Must check-in 1:30-2 or no game.** Games 2:15-5. **EF:** 27 (+15 after 80% full, & onsite). **Info:** www.BayAreaChess.com/signature.W.

Feb. 9, Fremont Swiss45 (4SS, G/45 d5)
Marriott, 46100 Landing Pkwy, Fremont, CA 94538. Park free. **Prizes:** \$1,400 b/50. **3 Sections:** 1800+, 1400-1799, u1400. **Reg.:** 8:30-8:45. **Rds.:** 9-11-1-3. **EF:** 55, Econ 40 w 1/2 pr. (+20 after 80% full, & onsite); playup +20, GMs/IMs = \$0 by 1/30. **Info:** www.bayareachess.com/1day.W.

Feb. 9, Fremont Kids Swiss (PK-12, 4SS, G/30 d5)
Marriott, 46100 Landing Pkwy, Fremont, CA 94538. Park Free. **Trophies:** players w + score, medals to others. **Reg.:** 9-9:15a, **Rds.:** 9:30a-1:30p. **EF:** 39 (+15 playup, +15 after 80% full & onsite). **Info:** www.BayAreaChess.com/signature.W.

Feb. 9, Fremont Kids Quads (PK-12, 3RR, G/30 d5)
Marriott, 46100 Landing Pkwy, Fremont, CA 94538. Park Free. **Trophies:** players w + score, medals to others. **Must check-in 1:30-2 or no game.** Games 2:15-5. **EF:** 33 (+15 after 80% full & onsite). **Info:** www.BayAreaChess.com/signature.W.

Feb. 15, Foster City Swiss45 (4SS, G/45 d5)
Courttyard Marriott, 550 Shell Blvd., Foster City, CA 94404. Park free. **Prizes:** \$1,400 b/50. **3 Sections:** 1800+ , 1400-1799, u1400. **Reg.:** 8:30-8:45. **Rds.:** 9-10:50-12:40-2:30. **EF:** 55, Econ 40 w 1/2 pr. (+20 after 80% full, & onsite); playup +20, GMs/IMs = \$0 by 2/5. **Info:** www.bayareachess.com/1day.W.

Feb. 15, Chess4Less San Jose Kids Swiss (PK-12, 4SS, G/30 d5)
2050 Concourse Dr. #42, San Jose, CA 95131. Park Free. **Trophies:** players w + score, medals to others. **Reg.:** 9-9:15a, **Rds.:** 9:30a-1:30p. **EF:** 33 (+15 playup, +15 after 80% full & onsite). **Info:** www.BayAreaChess.com/signature.W.

Feb. 15, Chess4Less San Jose Kids Quads (PK-12, 3RR, G/30 d5)
2050 Concourse Dr. #42, San Jose, CA 95131. Park Free. **Trophies:** players w + score, medals to others. **Must check-in 1:30-2 or no game.** Games 2:15-5. **EF:** 27 (+15 after 80% full & onsite). **Info:** www.BayAreaChess.com/signature.W.

Feb. 15, Palo Alto Kids Swiss
UUC, 505 E Charleston Rd., Palo Alto, CA 94306. Park Free. **Trophies:** players w + score, medals to others. **Reg.:** 9-9:15a, **Rds.:** 9:30a-1:30p. **EF:** 39 (+15 playup, +15 after 80% full & onsite). **Info:** www.BayAreaChess.com/signature.W.

Feb. 15, Palo Alto Blitz (4SS, G/3 +2) (BLZ)
UUC, 505 E. Charleston Rd., Palo Alto, CA 94306. Park Free. **Trophies:** players w + score, medals to others. **Reg.:** 1-1:15p, **Rds.:** 1:30-2:30p. **EF:** 10 (12 onsite). **Info:** www.BayAreaChess.com/signature.W.

Feb. 15-17 or 16-17, 36th Annual (2020) U.S. Amateur Team Championship - West
See Nationals.

Feb. 16, Chess4Less Kids Swiss (PK-12, 4SS, G/30 d5)
2050 Concourse Dr. #42, San Jose, CA 95131. Park Free. **Trophies:** players w + score, Medals to others. **Reg.:** 9-9:15a, **Rds.:** 9:30a-1:30p. **EF:** 33 (+15 playup, +15 after 80% full, & onsite). **Info:** www.BayAreaChess.com/signature.W.

US Chess Junior Grand Prix!

Feb. 17, Chess4Less San Jose Swiss61 (4SS, G/61 d5)
2050 Concourse Dr. #42, San Jose, CA 95131. Park Free. **Prizes:** \$1,400 b/50. **3 Sections:** 1800+ , 1400-1799, u1400. **Reg.:** 8:30-8:45. **Rds.:** 9-11:30-2-4:30. **EF:** 43 only, Econ 33 w 1/2 pr. (+20 after 80% full & onsite); playup +20, GMs/IMs = \$0 by 2/7. **Info:** www.bayareachess.com/1day.W.

Feb. 22, Palo Alto Kids Swiss (PK-12, 4SS, G/30 d5)
UUC, 505 E. Charleston Rd., Palo Alto, CA 94306. Park Free. **Trophies:** players w + score, medals to others. **Reg.:** 9-9:15a, **Rds.:** 9:30a-1:30p. **EF:** 39 (+15 playup, +15 after 80% full & onsite). **Info:** www.BayAreaChess.com/signature.W.

Feb. 22, Palo Alto Blitz (4SS, G/3 +2) (BLZ)
UUC, 505 E. Charleston Rd., Palo Alto, CA 94306. Park Free. **Trophies:** players w + score, medals to others. **Reg.:** 1-1:15p, **Rds.:** 1:30-2:30p. **EF:** 10 (12 onsite). **Info:** www.BayAreaChess.com/signature.W.

Feb. 22, Fremont Swiss75 (3SS, G/75 d5)
Marriott, 46100 Landing Pkwy, Fremont, CA 94538. Park free. **Prizes:** \$1,400 b/50. **3 Sections:** 1800+ , 1400-1799, u1400. **Reg.:** 8:30-8:45. **Rds.:** 9-12-3. **EF:** 55, Econ 40 w 1/2 pr. (+20 after 80% full & onsite); playup +20, GMs/IMs = \$0 by 2/12. **Info:** www.bayareachess.com/1day.W.

Feb. 22, Fremont Kids Swiss (PK-12, 4SS, G/30 d5)
Marriott, 46100 Landing Pkwy, Fremont, CA 94538. Park Free. **Trophies:** players w + score, medals to others. **Reg.:** 9-9:15a, **Rds.:** 9:30a-1:30p. **EF:** 39 (+15 playup, +15 after 80% full & onsite). **Info:** www.BayAreaChess.com/signature.W.

Feb. 22, Fremont Kids Quads (PK-12, 3RR, G/30 d5)
Marriott, 46100 Landing Pkwy, Fremont, CA 94538. Park Free. **Trophies:** players w + score, medals to others. **Must check-in 1:30-2 or no game.** Games 2:15-5. **EF:** 33 (+15 after 80% full & onsite). **Info:** www.BayAreaChess.com/signature.W.

US Chess Junior Grand Prix!

Feb. 23, Pleasanton Swiss61 (4SS, G/61 d5)
Four Points, 5115 Hopyard Rd., Pleasanton, CA 94588. Park Free. **Prizes:** \$1,400 b/50. **3 Sections:** 1800+ , 1400-1799, u1400. **Reg.:** 8:30-8:45. **Rds.:** 9-11:20-1:40-4. **EF:** 55, Econ 40 w 1/2 pr. (+20 after 80% full, & onsite); playup +20, GMs/IMs = \$0 by 2/13. **Info:** www.BayAreaChess.com/1day.W.

Feb. 23, Pleasanton Kids Swiss (PK-12, 4SS, G/30 d5)
Four Points, 5115 Hopyard Rd., Pleasanton, CA 94588. Park Free. **Trophies:** players w + score, Medals to others. **Reg.:** 9-9:15a, **Rds.:** 9:30a-1:30p. **EF:** 39 (+15 playup, +15 after 80% full, & onsite). **Info:** www.BayAreaChess.com/signature.W.

Feb. 23, Pleasanton Kids Quads (PK-12, 3RR, G/30 d5)
Four Points, 5115 Hopyard Rd., Pleasanton, CA 94588. Park Free. **Trophies:** players w + score, Medals to others. **Must check-in 1:30-2 or no game.** Games 2:15-5. **EF:** 33 (+15 after 80% full, & onsite). **Info:** www.BayAreaChess.com/signature.W.

Feb. 23, Cupertino Swiss75 (3SS, G/75 d5)
Hilton, 10050 S. De Anza Blvd., Cupertino, CA 95014. Park free. **Prizes:** \$1,400 b/50. **3 Sections:** 1800+ , 1400-1799, u1400. **Reg.:** 8:30-8:45. **Rds.:** 9-12-3. **EF:** 55, Econ 40 w 1/2 pr. (+20 after 80% full, & onsite); playup +20, GMs/IMs = \$0 by 2/13. **Info:** www.bayareachess.com/1day.W.

Feb. 23, Cupertino Kids Swiss (PK-12, 4SS, G/30 d5)
Hilton, 10050 S. De Anza Blvd., Cupertino, CA 95014. Park Free. **Trophies:** players w + score, Medals to others. **Reg.:** 9-9:15a, **Rds.:** 9:30a-1:30p. **EF:** 39 (+15 playup, +15 after 80% full, & onsite). **Info:** www.BayAreaChess.com/signature.W.

Feb. 23, Cupertino Kids Quads (PK-12, 3RR, G/30 d5)
Hilton, 10050 S. De Anza Blvd., Cupertino, CA 95014. Park Free. **Trophies:** players w + score, Medals to others. **Must check-in 1:30-2 or no game.** Games 2:15-5. **EF:** 33 (+15 after 80% full, & onsite). **Info:** www.BayAreaChess.com/signature.W.

Feb. 23, Chess4Less San Jose Swiss90 (3SS, G/90 d5)
2050 Concourse Dr. #42, San Jose, CA 95131. Park Free. **Prizes:** \$1,400 b/50. **3 Sections:** 1800+ , 1400-1799, u1400. **Reg.:** 8:30-8:45. **Rds.:** 9-12:30-4. **EF:** 43 only, Econ 33 w 1/2 pr. (+20 after 80% full, & onsite); playup +20, GMs/IMs = \$0 by 1/13. **Info:** www.bayareachess.com/1day.W.

Feb. 24, Monday Night Rapid - Feb 2020 (4SS, G/15 +2s)
Mechanics' Institute Chess Club, 57 Post Street (4th floor) San Francisco, CA 94104. 4SS, G/15 +2s. **Sections:** Open (1600+), Reserve (u1600). All sections FIDE rapid & USCF action rated. Feb 20 Suppl. **Prizes:** 50% of total EF. **Entry:** \$20. Play-up \$5 (within 200 rating). Byes: Max two 0.5 byes. **Reg.:** 5:30-5:45p. **Rounds:** 6p & onwards. Contact: chessroom@milibrary.org, chessclub.org.W.

Feb. 29, Foster City Kids Swiss (PK-12, 4SS, G/30 d5)
Courttyard Marriott, 550 Shell Blvd., Foster City, CA 94404. Park Free. **Trophies:** players w + score, Medals to others. **Reg.:** 9-9:15a, **Rds.:** 9:30a-1:30p. **EF:** 39 (+15 playup, +15 after 80% full, & onsite). **Info:** www.BayAreaChess.com/signature.W.

Feb. 29, Foster City Kids Quads (PK-12, 3RR, G/30 d5)
Courttyard Marriott, 550 Shell Blvd., Foster City, CA 94404. Park Free. **Trophies:** players w + score, Medals to others. **Must check-in 1:30-2 or no game.** Games 2:15-5. **EF:** 33 (+15 after 80% full, & onsite). **Info:** www.BayAreaChess.com/signature.W.

Feb. 29, San Jose Swiss75 (3SS, G/75 d5)
Fairfield, 1755 N. 1st St., San Jose, CA 95112. Park Free. **Prizes:** \$1,400 b/50. **3 Sections:** 1800+ , 1400-1799, u1400. **Reg.:** 8:30-8:45. **Rds.:** 9-12-3. **EF:** 55, Econ 40 w 1/2 pr. (+20 after 80% full, & onsite); playup +20, GMs/IMs = \$0 by 2/19. **Info:** www.BayAreaChess.com/1day.W.

Feb. 29, Palo Alto Kids Quads (PK-12, 3RR, G/30 d5)
UUC, 505 E. Charleston Rd., Palo Alto, CA 94306. Park Free. **Trophies:** players w + score, medals to others. **Must check-in 11:30-11:45 or no game.** Games 12-2:30. **EF:** 33 (+15 after 80% full & onsite). **Info:** www.BayAreaChess.com/signature.W.

Feb. 29, Chess4Less San Jose Kids Swiss (PK-12, 4SS, G/30 d5)
2050 Concourse Dr. #42, San Jose, CA 95131. Park Free. **Trophies:** players w + score, medals to others. **Reg.:** 9-9:15a, **Rds.:** 9:30a-1:30p. **EF:** 33 (+15 playup, +15 after 80% full & onsite). **Info:** www.BayAreaChess.com/signature.W.

Feb. 29, Chess4Less San Jose Kids Quads (PK-12, 3RR, G/30 d5)
2050 Concourse Dr. #42, San Jose, CA 95131. Park Free. **Trophies:** players w + score, medals to others. **Must check-in 1:30-2 or no game.** Games 2:15-5. **EF:** 27 (+15 after 80% full & onsite). **Info:** www.BayAreaChess.com/signature.W.

Feb. 29, Hurt Memorial Tournament (4SS, G/60 d5)
Mechanics' Institute Chess Club, 57 Post Street (4th fl.), San Francisco, CA 94104. 4SS, G/60 d5. **Sections & Prizes:** Total \$720/b40. **1800+:** \$240 \$120 \$85; **u1800:** \$150 \$65 \$60. Feb 20 suppl. **Entry:** \$45, \$40 MI members, play-up: \$10 (if rating 1600+), late fee: \$5 after 1/28. **Reg.:** 9-9:45am. **Rounds:** 10a, 12:30p, 3p, 5:30p. Contact: chessroom@milibrary.org, chessclub.org.W.

Mar. 1, Chess4Less San Jose Kids Swiss (PK-12, 4SS, G/30 d5)
2050 Concourse Drive #42, San Jose, CA 95131. Park free. **Trophies:** players w + score, Medals to others. **Reg.:** 9-9:15a, **Rds.:** 9:30a-1:30p.

EF: 33 (+15 playup, +15 after 80% full, & onsite). **Info:** www.BayAreaChess.com/signature.W.

Mar. 1, Chess4Less San Jose Kids Quads (PK-12, 3RR, G/30 d5)
2050 Concourse Drive #42, San Jose, CA 95131. Park free. **Trophies:** players w + score, Medals to others. **Must check-in 1:30-2 or no game.** Games 2:15-5. **EF:** 27 (+15 after 80% full, & onsite). **Info:** www.BayAreaChess.com/signature.W.

Mar. 1, Fremont Swiss90 (3SS, G/90 d5)
Marriott, 46100 Landing Pkwy, Fremont, CA 94538. Park free. **Prizes:** \$1,400 b/50. **3 Sections:** 1800+ , 1400-1799, u1400. **Reg.:** 8:30-8:45. **Rds.:** 9-12:30-4. **EF:** 55, Econ 40 w 1/2 pr. (+20 after 80% full & onsite); playup +20, GMs/IMs = \$0 by 2/20. **Info:** www.bayareachess.com/1day.W.

Mar. 1, Fremont Kids Swiss (PK-12, 4SS, G/30 d5)
Marriott, 46100 Landing Pkwy, Fremont, CA 94538. Park Free. **Trophies:** players w + score, medals to others. **Reg.:** 9-9:15a, **Rds.:** 9:30a-1:30p. **EF:** 39 (+15 playup, +15 after 80% full & onsite). **Info:** www.BayAreaChess.com/signature.W.

Mar. 1, Fremont Kids Quads (PK-12, 3RR, G/30 d5)
Marriott, 46100 Landing Pkwy, Fremont, CA 94538. Park Free. **Trophies:** players w + score, medals to others. **Must check-in 1:30-2 or no game.** Games 2:15-5. **EF:** 33 (+15 after 80% full & onsite). **Info:** www.BayAreaChess.com/signature.W.

Mar. 1, San Francisco Swiss - March (PK-12)
Mechanics' Institute Chess Club, 57 Post Street (4th fl.), San Francisco, CA 94104. 4SS, G/30 d5. **Sections:** 700+ , 400-699, u400. Mar 20 suppl. **Prizes:** Trophies to Top 5 each section, medals to others. **Entry:** \$35, playup: \$10, late fee: \$10 after 2/27. **Reg.:** 10:30-10:45am. **Rounds:** 11-3pm. Contact: chessroom@milibrary.org, chessclub.org.W.

Mar. 7, Sacramento Kids Quads (PK-12, 3RR, G/30 d5)
Courttyard Marriott, Rancho Cordova, CA 95670. **Trophies:** players w + score, Medals to others. **Must check-in 1:30-2 or no game.** Games 2:15-5. **EF:** 27 only (+15 after 80% full, & onsite). **Info:** www.BayAreaChess.com/signature.W.

Mar. 7, Pleasanton Swiss75 (3SS, G/75 d5)
Four Points, 5115 Hopyard Rd., Pleasanton, CA 94588. Park Free. **Prizes:** \$1,400 b/50. **3 Sections:** 1800+ , 1400-1799, u1400. **Reg.:** 8:30-8:45. **Rds.:** 9-12-3. **EF:** 55, Econ 40 w 1/2 pr. (+20 after 80% full, & onsite); playup +20, GMs/IMs = \$0 by 2/26. **Info:** www.BayAreaChess.com/1day.W.

Mar. 7, Pleasanton Kids Swiss (PK-12, 4SS, G/30 d5)
Four Points, 5115 Hopyard Rd., Pleasanton, CA 94588. Park Free. **Trophies:** players w + score, Medals to others. **Reg.:** 9-9:15a, **Rds.:** 9:30a-1:30p. **EF:** 39 (+15 playup, +15 after 80% full, & onsite). **Info:** www.BayAreaChess.com/signature.W.

Mar. 7, Pleasanton Kids Quads (PK-12, 3RR, G/30 d5)
Four Points, 5115 Hopyard Rd., Pleasanton, CA 94588. Park Free. **Trophies:** players w + score, Medals to others. **Must check-in 1:30-2 or no game.** Games 2:15-5. **EF:** 33 (+15 after 80% full, & onsite). **Info:** www.BayAreaChess.com/signature.W.

Mar. 7, Palo Alto Kids Quads (PK-12, 3RR, G/30 d5)
UUC, 505 E. Charleston Rd., Palo Alto, CA 94306. Park Free. **Trophies:** players w + score, medals to others. **Must check-in 11:30-11:45 or no game.** Games 12-2:30. **EF:** 33 (+15 after 80% full & onsite). **Info:** www.BayAreaChess.com/signature.W.

Mar. 7, Sacramento Kids Swiss (PK-12, 4SS, G/30 d5)
Courttyard Marriott, Rancho Cordova, CA 95670. **Trophies:** players w + score, medals to others. **Reg.:** 9-9:15a, **Rds.:** 9:30a-1:30p. **EF:** 33, 20 with 3/7 Quads entry (+15 playup). **Info:** www.BayAreaChess.com/signature.W.

Mar. 7-8, CM Azhar Memorial Championship (5SS, G/90 +30)
See Grand Prix.

US Chess Junior Grand Prix!

Mar. 7-8, Fink Memorial Tournament (4SS, G/90 +30)
Mechanics' Institute Chess Club, 57 Post Street (4th fl.), San Francisco, CA 94104. 4SS, G/90 +30. **Sections & Prizes:** Total \$720/b40. **1800+ (FIDE):** \$240 \$120 \$85; **u1800:** \$150 \$65 \$60. Mar 20 suppl. **Entry:** \$45, \$40 MI members, play-up: \$10 (if rating 1600+), late fee: \$5 after 3/4. **Reg.:** Sat 9-9:45am. **Rounds:** Sat 10a, 2:30p, Sun 11a, 3:30p. Contact: chessroom@milibrary.org, chessclub.org.W.

Mar. 8, Cupertino Kids Swiss (PK-12, 4SS, G/30 d5)
Hilton, 10050 S. De Anza Blvd., Cupertino, CA 95014. Park Free. **Trophies:** players w + score, Medals to others. **Reg.:** 9-9:15a, **Rds.:** 9:30a-1:30p. **EF:** 39 (+15 playup, +15 after 80% full, & onsite). **Info:** www.BayAreaChess.com/signature.W.

Mar. 8, Cupertino Kids Quads (PK-12, 3RR, G/30 d5)
Hilton, 10050 S. De Anza Blvd., Cupertino, CA 95014. Park Free. **Trophies:** players w + score, Medals to others. **Must check-in 1:30-2 or no game.** Games 2:15-5. **EF:** 33 (+15 after 80% full, & onsite). **Info:** www.BayAreaChess.com/signature.W.

Mar. 8, Chess4Less San Jose Kids Swiss (PK-12, 4SS, G/30 d5)
2050 Concourse Drive #42, San Jose, CA 95131. Park free. **Trophies:** players w + score, Medals to others. **Reg.:** 9-9:15a, **Rds.:** 9:30a-1:30p. **EF:** 33 (+15 playup, +15 after 80% full, & onsite). **Info:** www.BayAreaChess.com/signature.W.

Mar. 8, Chess4Less San Jose Kids Quads (PK-12, 3RR, G/30 d5)
2050 Concourse Drive #42, San Jose, CA 95131. Park free. **Trophies:** players w + score, Medals to others. **Must check-in 1:30-2 or no game.** Games 2:15-5. **EF:** 27 (+15 after 80% full, & onsite). **Info:** www.BayAreaChess.com/signature.W.

US Chess Junior Grand Prix!

A State Championship Event!

Mar. 13-15, 46th CalChess State Scholastics Championship
Santa Clara Convention Center, 5001 Great America Pkwy, CA 95054. Park free. **Prizes:** Trophies to top players with a winning record, top 10 school

teams and top 5 club teams in each section. Medals to all players. Sections based on grades & rating. **1-day Sections:** 5SS x G/30 d5. All K-3 unrated & rated under 800 on Sat. All KG, 4-12 rated under 800 on Sun. **Rds.:** 9-11am-1:2-4:30pm. **Time: 2-day Sections:** 6SS x G/75 d5. All K-12 rated 800+. **Rds.:** Sat & Sun 9-12:30-3:45. **K-12 Champ (1600+) FIDE rated:** 5SS x G/90 + 30: Sat 9-1:30-6 & Sun 10-2:30. **Blitz:** Sections: K-3, 4-6, 7-12. G/5 d0; Fri 6-8pm. **Bughouse:** (G/5 d0) Sat 6:30-8:30pm. Sections: K-3, 4-6, 7-12. **EF:** by 2/29 = 1-day \$53, 2-day \$69. **Playup:** +20. **Late Fee:** 3/1-7 +\$10, 3/8-10 +\$20, 3/11-13 4pm +\$30, onsite +\$40. Change Fee is 1/2 of late fee at all times. **Blitz/Bughouse:** \$15. Register online before Friday 3/13 3pm or onsite Sat/Sun 7:30-8am! CalChess & USCF membership reqrd except KG. Feb 20 Supp & TD disc to place players. **Info/reg:** bayareachess.com/states. Quest: events@BayAreaChess.com. W.

Mar. 21, Palo Alto Kids Quads (PK-12, 3RR, G/30 d5)
UUC, 505 E. Charleston Rd., Palo Alto, CA 94306. Park Free. **Trophies:** players w + score, medals to others. **Must check-in 11:30-11:45 or no game.** Games 12-2:30. **EF:** 33 (+15 after 80% full & onsite). **Info:** www.BayAreaChess.com/signature. W.

Mar. 21, Foster City Swiss75 (3SS, G/75 d5)
Courtyard Marriott, 550 Shell Blvd., Foster City, CA 94404. Park free. **Prizes:** \$1,400 b/50. **3 Sections:** 1800+, 1400-1799, u1400. **Reg.:** 8:30-8:45. **Rds.:** 9-12-3. **EF:** 55, Econ 40 w 1/2 prz. (+20 after 80% full & onsite); playup +20, GMs/IMs = \$0 by 3/11. **Info:** www.bayarea chess.com/1day. W.

Mar. 22, Cupertino Swiss75 (3SS, G/75 d5)
Juniper, 10050 S. De Anza Blvd., Cupertino, CA 95014. Park Free. **Prizes:** \$1,400 b/50. **3 Sections:** 1800+, 1400-1799, u1400. **Reg.:** 8:30-8:45. **Rds.:** 9-12-3. **EF:** 55, Econ 40 w 1/2 prz. (+20 after 80% full & onsite); playup +20, GMs/IMs = \$0 by 3/11. **Info:** www.bayareachess.com/1day. W.

Mar. 22, Cupertino Kids Swiss (PK-12, 4SS, G/30 d5)
Juniper, 10050 S. De Anza Blvd., Cupertino, CA 95014. Park Free. **Trophies:** players w + score, medals to others. **Reg.:** 9-9:15a. **Rds.:** 9:30a-1:30p. **EF:** 39 (+15 playup, +15 after 80% full & onsite). **Info:** www.BayAreaChess.com/signature. W.

Mar. 22, Cupertino Kids Quads (PK-12, 3RR, G/30 d5)
Juniper, 10050 S. De Anza Blvd., Cupertino, CA 95014. Park Free. **Trophies:** players w + score, medals to others. **Must check-in 1:30-2 or no game.** Games 2:15-5. **EF:** 33 (+15 after 80% full & onsite). **Info:** www.BayAreaChess.com/signature. W.

Mar. 22, Chess4Less San Jose Kids Quads (PK-12, 3RR, G/30 d5)
2050 Concourse Dr. #42, San Jose, CA 95131. Park Free. **Trophies:** players w + score, medals to others. **Must check-in 1:30-2 or no game.** Games 2:15-5. **EF:** 27 (+15 after 80% full & onsite). **Info:** www.BayAreaChess.com/signature. W.

US Chess Junior Grand Prix!
Mar. 22, Fremont Swiss61 (4SS, G/61 d5)
Marriott, 46100 Landing Pkwy, Fremont, CA 94538. Park free. **Prizes:** \$1,400 b/50. **3 Sections:** 1800+, 1400-1799, u1400. **Reg.:** 8:30-8:45. **Rds.:** 9-11:30-2-4:30. **EF:** 55, Econ 40 w 1/2 prz. (+20 after 80% full, & onsite); playup +20, GMs/IMs = \$0 by 3/25. **Info:** www.bayarea chess.com/1day. W.

Mar. 22, Fremont Kids Swiss (PK-12, 4SS, G/30 d5)
Marriott, 46100 Landing Pkwy, Fremont, CA 94538. Park Free. **Trophies:** players w + score, medals to others. **Reg.:** 9-9:15a. **Rds.:** 9:30a-1:30p. **EF:** 39 (+15 playup, +15 after 80% full & onsite). **Info:** www.BayArea Chess.com/signature. W.

Mar. 22, Fremont Kids Quads (PK-12, 3RR, G/30 d5)
Marriott, 46100 Landing Pkwy, Fremont, CA 94538. Park Free. **Trophies:** players w + score, medals to others. **Must check-in 1:30-2 or no game.** Games 2:15-5. **EF:** 33 (+15 after 80% full & onsite). **Info:** www.BayAreaChess.com/signature. W.

Mar. 28, Sacramento Kids Swiss & Quads (G/30 d5)
Courtard Marriott, Rancho Cordova, CA 95670. **Trophies:** players w + score, medals to others. ***Swiss*** Reg.: 9-9:15a. **Rds.:** 9:30a-1:30p. **EF:** 33 (+15 playup). ***Quads*** **must check-in 1:30-2 or no game.** Games 2:15-5. **EF:** 27. ***Discount Swiss + Quads*** **EF:** 47 **Info:** www.BayAreaChess.com/signature. W.

Mar. 28, Palo Alto Kids Quads (PK-12, 3RR, G/30 d5)
UUC, 505 E. Charleston Rd., Palo Alto, CA 94306. Park Free. **Trophies:** players w + score, medals to others. **Must check-in 11:30-11:45 or no game.** Games 12-2:30. **EF:** 33 (+15 after 80% full & onsite). **Info:** www.BayAreaChess.com/signature. W.

Mar. 28, 2020 San Francisco Scholastic Championship (4SS, G/30 d5)
Golden Gate Park, County Fair Building, 1199 9th Ave., San Francisco, CA 94122. **FREE** event with special event T-shirt for everyone! 4SS, G/30 d5. **Prizes:** Trophies to Top 10 players in each section, Top 5 overall teams, commemorative medals to all others. **Sections:** USCF rated: u800 & 800+. Non-rated: Grade K-1, 2-3, 4-5, 6-8, 9-12. Mar 20 suppl. Max capacity: 300 players. **Register** online to save your spot: chessclub.org or onsite Sat 9-9:30am. **Rounds:** Sat 10a, 11:30a, 1:30p, 3p. Contact: chessroom@milibrary.org, chessclub.org. W.

US Chess Junior Grand Prix!
Mar. 28-29, Denker, Barber, Rockefeller National Qualifier (5SS, G/90 +30)
Four Points, 5115 Hopyard Rd., Pleasanton, CA 94588. Park Free. **Prizes:** \$300 to top player in each section to represent CalChess in US Chess Tournament of State Champions. 3 sects: **Grades 9-12 1800+, 6-8 1700+, K-5 1600+.** Mar 20 Supp & TD disc to place players. **Reg.:** Sat 8:30-8:45a. **Rds.:** Sat 9-1:30-6, Su 10-2:30. **EF:** 69 (+20 after 3/21 & onsite). **Info:** www.bayareachess.com/quals. W.

Mar. 29, Pleasanton Swiss45 (4SS, G/45 d5)
Four Points, 5115 Hopyard Rd., Pleasanton, CA 94588. Park Free. **Prizes:** \$1,400 b/50. **3 Sections:** 1800+, 1400-1799, u1400. **Reg.:** 8:30-8:45. **Rds.:** 9-11-1-3. **EF:** 55, Econ 40 w 1/2 prz. (+20 after 80% full, &

onsite); playup +20, GMs/IMs = \$0 by 3/19. **Info:** www.bayarea chess.com/1day. W.

Mar. 29, Pleasanton Kids Swiss (PK-12, 4SS, G/30 d5)
Four Points, 5115 Hopyard Rd., Pleasanton, CA 94588. Park Free. **Trophies:** players w + score, Medals to others. **Reg.:** 9-9:15a. **Rds.:** 9:30a-1:30p. **EF:** 39 (+15 playup, +15 after 80% full, & onsite). **Info:** www.BayAreaChess.com/signature. W.

Mar. 29, Pleasanton Kids Quads (PK-12, 3RR, G/30 d5)
Four Points, 5115 Hopyard Rd., Pleasanton, CA 94588. Park Free. **Trophies:** players w + score, Medals to others. **Must check-in 1:30-2 or no game.** Games 2:15-5. **EF:** 33 (+15 after 80% full, & onsite). **Info:** www.BayAreaChess.com/signature. W.

Mar. 29, Chess4Less San Jose Kids Swiss (PK-12, 4SS, G/30 d5)
2050 Concourse Dr. #42, San Jose, CA 95131. Park Free. **Trophies:** players w + score, medals to others. **Reg.:** 9-9:15a. **Rds.:** 9:30a-1:30p. **EF:** 33 (+15 playup, +15 after 80% full & onsite). **Info:** www.BayArea Chess.com/signature. W.

Mar. 29, Chess4Less San Jose Kids Quads (PK-12, 3RR, G/30 d5)
2050 Concourse Dr. #42, San Jose, CA 95131. Park Free. **Trophies:** players w + score, medals to others. **Must check-in 1:30-2 or no game.** Games 2:15-5. **EF:** 27 (+15 after 80% full & onsite). **Info:** www.BayAreaChess.com/signature. W.

US Chess Junior Grand Prix!
Apr. 4, Foster City Swiss61 (4SS, G/61 d5)
Courtard Marriott, 550 Shell Blvd., Foster City, CA 94404. Park free. **Prizes:** \$1,400 b/50. **3 Sections:** 1800+, 1400-1799, u1400. **Reg.:** 8:30-8:45. **Rds.:** 9-11:30-2-4:30. **EF:** 55, Econ 40 w 1/2 prz. (+20 after 80% full, & onsite); playup +20, GMs/IMs = \$0 by 3/25. **Info:** www.bayare chess.com/1day. W.

Apr. 4, Palo Alto Kids Quads (PK-12, 3RR, G/30 d5)
UUC, 505 E. Charleston Rd., Palo Alto, CA 94306. Park Free. **Trophies:** players w + score, medals to others. **Must check-in 11:30-11:45 or no game.** Games 12-2:30. **EF:** 33 (+15 after 80% full & onsite). **Info:** www.BayAreaChess.com/signature. W.

Apr. 4, San Jose Kids Swiss (PK-12, 4SS, G/30 d5)
Fairfield, 1755 N. 1st St., San Jose, CA 95112. Park Free. **Trophies:** players w + score, Medals to others. **Reg.:** 9-9:15a. **Rds.:** 9:30a-1:30p. **EF:** 39 (+15 playup, +15 after 80% full, & onsite). **Info:** www.BayArea Chess.com/signature. W.

Apr. 4, San Jose Kids Quads (PK-12, 3RR, G/30 d5)
Fairfield, 1755 N. 1st St., San Jose, CA 95112. Park Free. **Trophies:** players w + score, Medals to others. **Must check-in 1:30-2 or no game.** Games 2:15-5. **EF:** 33 (+15 after 80% full, & onsite). **Info:** www.BayAreaChess.com/signature. W.

Apr. 4-5, Alan Kirshner Championship (5SS, G/90 +30)
See Grand Prix.

Apr. 5, Cupertino Swiss45 (4SS, G/45 d5)
Juniper, 10050 S. De Anza Blvd., Cupertino, CA 95014. Park free. **Prizes:** \$1,400 b/50. **3 Sections:** 1800+, 1400-1799, u1400. **Reg.:** 8:30-8:45. **Rds.:** 9-11-1-3. **EF:** 55, Econ 40 w 1/2 prz. (+20 after 80% full, & onsite); playup +20, GMs/IMs = \$0 by 3/25. **Info:** www.bayarea chess.com/1day. W.

Apr. 5, Cupertino Kids Swiss (PK-12, 4SS, G/30 d5)
Juniper, 10050 S. De Anza Blvd., Cupertino, CA 95014. Park Free. **Trophies:** players w + score, medals to others. **Reg.:** 9-9:15a. **Rds.:** 9:30a-1:30p. **EF:** 39 (+15 playup, +15 after 80% full & onsite). **Info:** www.BayAreaChess.com/signature. W.

Apr. 5, Cupertino Kids Quads (PK-12, 3RR, G/30 d5)
Juniper, 10050 S. De Anza Blvd., Cupertino, CA 95014. Park Free. **Trophies:** players w + score, medals to others. **Must check-in 1:30-2 or no game.** Games 2:15-5. **EF:** 33 (+15 after 80% full & onsite). **Info:** www.BayAreaChess.com/signature. W.

Apr. 5, Chess4Less San Jose Kids Swiss (PK-12, 4SS, G/30 d5)
2050 Concourse Dr. #42, San Jose, CA 95131. Park Free. **Trophies:** players w + score, medals to others. **Reg.:** 9-9:15a. **Rds.:** 9:30a-1:30p. **EF:** 33 (+15 playup, +15 after 80% full & onsite). **Info:** www.BayArea Chess.com/signature. W.

Apr. 5, Chess4Less San Jose Kids Quads (PK-12, 3RR, G/30 d5)
2050 Concourse Dr. #42, San Jose, CA 95131. Park Free. **Trophies:** players w + score, medals to others. **Must check-in 1:30-2 or no game.** Games 2:15-5. **EF:** 27 (+15 after 80% full & onsite). **Info:** www.BayAreaChess.com/signature. W.

California, Southern

The Los Angeles Chess Club
The Most Active Club on the West Coast! (310) 795-5710. * LACC: www.LAChessClub.com; VCC: www.ValleyChessClub.com. Contact: Mick@LAChessClub.com; Saturday & Sundays: 10 am-10 pm (INTERMEDIATE class [10:30-11:30 am], NOVICE class [12-1 pm] + 3 Tournaments). Sundays: 11-7 pm (NOVICE class [12-1 PM] + 2 Tournaments). FIDE & USCF tournaments. Details on our web site. Tuesdays: 7:30-9 pm (Advance lecture). 11514 Santa Monica Blvd., Los Angeles, CA 90025. (4 blocks W of 405, SW corner of Santa Monica & Butler * 2nd Floor. Group Classes * Tournaments * Private (1:1) Lessons. Note our monthly major FIDE events. We also have the best Weekly FIDE BLITZ tournament on Saturday nights at 6:30 pm.

The South Bay Chess Club
The Only Junior Chess Club in South Bay! (310) 795-5710. * LACC: www.SouthBayChessClub.com; Contact: Mick@SouthBayChessClub.com; Sundays: 11am-4 pm (Novice & Interm. classes + a Junior Tournaments).

Details on our web site. 22753 Hawthorne Blvd Torrance, CA 90505. Group Classes * Tournaments * Private (1:1) Lessons. 5% off everything with online sign ups.

Feb. 1, 2, 8, 9, 15, 16, 22, 23, 29, Every Saturday & Sunday Chess 4 Juniors

8 separate events- 5SS, G/30 d0. 11514 Santa Monica Blvd. & Butler LA, 90025, 2nd floor. 4 blocks West of 405. **EF:** \$20 (extra \$10 non-LACC mbrs. No prize 1/2 EF, siblings 1/2, 1st tourney free for new LACC membership sign ups). **Reg.:** 12-1 pm. **Rds.:** 1pm & asap; done by 4. **Prizes:** Trophies & medals; All players receive prizes! **Parking:** Free on streets & BoA. Free refreshments. **Info:** (310) 795-5710 or www.LAChessClub.com or Mick@LAChessClub.com. **Register Online:** www.LAChessClub.com for 5% off EF.

Feb. 2, 9, 16, 23, Every Sunday Chess 4 Juniors
4 separate events- 5SS, G/30 d0. 22753 Hawthorne Blvd., Torrance, CA 90505. **EF:** \$20 (\$10 extra non-SBBC memb, siblings 1/2, 1st tourney free with SBCC membership sign up.) **Reg.:** 12-1 pm. **Rds.:** 1pm & asap; done by 4 pm. **Prizes:** Trophies & medals; All players receive prizes! Free refreshments. **Info:** (310) 795-5710 or www.SouthBayChessClub.com or Mick@SouthBayChessClub.com. **Register Online:** www.SouthBayChessClub.com for 5% off EF.

Mar. 6-8 or 7-8, 27th annual Western Class Championships
See Chess Life or www.chesstour.com.

Connecticut

Mar. 14-15, 53rd annual New York State Scholastic Championships (out of state welcome) (NY)
See New York.

Apr. 8-12, 9-12 or 10-12, 14th Annual Open At Foxwoods
See Chess Life or www.chesstour.com.

Delaware

Feb. 15, Kasparov Chess Foundation Presents 11th Annual Greater Mid-Atlantic K-12 Chess Championship (MD)
See Maryland.

District of Columbia

Feb. 15, Kasparov Chess Foundation Presents 11th Annual Greater Mid-Atlantic K-12 Chess Championship (MD)
See Maryland.

Florida

Boca Raton Chess Club
Friday night tournament games, one game a week for 4 weeks. www.bocachess.com, 561-302-4377.

Mar. 27-29 or 28-29, 18th annual Southern Class Championships
See Chess Life or www.chesstour.com.

Apr. 24-26, 2020 National Junior High School (K-9) Championship
See Nationals.

Illinois

Feb. 21-23, 2020 U.S. Amateur Team Championship - North
See Nationals.

Apr. 17-19, 2020 All-Girls National Championships presented by the Kasparov Chess Foundation, Renaissance Knights Chess Federation & US Chess
See Nationals.

May 21-25, 22-25, 23-25 or 24-25, 29th annual Chicago Open
See Chess Life or www.chesstour.com.

Maryland

Maryland Chess Tournaments
Maryland Chess runs 21+ annual K-12 tournaments every other Saturday from September through June & 12+ annual 1-day or multi-day open tournaments for adults & K-12 players on weekends. See www.MDChess.org for tournament announcements, registration for tournaments, updated wallcharts, live standings, signup for K-12 & open e-newsletters, lists of coaches & clubs, camp announcements, & news. K-12 MD players who compete in the Varsity section (for players rated 1600+) of 1 of 8+ annual MD-Sweet-16 Qualifiers can qualify for the \$48,000+ scholarship to the University of Maryland, Baltimore County awarded annually. UMBC is a perennial top-10 contender for the collegiate national chess championship.

Feb. 15, Kasparov Chess Foundation Presents 11th Annual Greater Mid-Atlantic K-12 Chess Championship
Baltimore Polytechnic Institute & Western High School, 1400 W. Cold Spring Ln., Baltimore, MD 21209. Open to all K-12 players from anywhere. **5 Sections. Championship:** 1500+, K-12, 4SS, G/45 d5. **Rds.:** 9:30-11:30-1:30-3:30. **1000-1499:** 1000-1499, K-12, 5SS, G/35 d5. **Rds.:** 9:30-11-12:30-2-3:30. **U1000 HS & MS:** under 1000 or unr, grades 6-12, 5SS, G/30 d5. **Rds.:** 9:30-10-45-12-1:15-2:30. **500-999 K-5:** 500-999, K-5, 5SS, G/30 d5. **Rds.:** 9:30-10-45-12-1:15-2:30. **U500 K-5:** under 500 or unr, K-5, 5SS, G/25 d5. **Rds.:** 9:30-10-11-12:30-1:30. **Trophies** per section: top 25% of individuals; top 40% of teams. **EF:** \$30 through 02.11; \$45 through 02.13; \$60 by 8 AM, 02.15 (half-point bye possible in Rd. 1); \$80, 8-9 AM, 02.15 (on site; if space available; half-point bye likely in Rd. 1). Provided: sets, boards, notation sheets, & pencils. Bring chess clock. Food available for purchase. **Contact:** tournaments@mdchess.com. **Register:** www.mdchess.com.

Massachusetts

Mar. 14-15, 53rd annual New York State Scholastic Championships (out of state welcome) (NY)
See New York.

Tournament Life

Apr. 24-26 or 25-26, 29th Annual Eastern Class Championships
See *Chess Life* or *ChessEvents.US*.

Missouri

Mar. 27-29 or 28-29, 24th annual Mid-America Open
See *Chess Life* or *www.chesstour.com*.

Nevada

A State Championship Event!

Mar. 14, Nevada State Scholastic Championship

K-3 and K5: 6-SS, G/25 d5. **6-8 and 9-12:** 5-SS, G/25 d5 rds. 1-2, G/45 d5 rds. 3-5. Site to be announced. Open to any Nevada school age resident. Trophies for top players, top teams, and more. Every player wins a medal! Winners of K-5, 6-8 and 9-12 represent Nevada in National Tournaments of Champions. **EF:** \$40 received by 3/5, \$50 by 3/19, \$70 on site. **Reg.:** Nevada Chess, PO Box 90925, Henderson, NV 89009 or www.nevadachess.org. On site by 8:30. Late registrants may not be paired in round 1. Round 1 at 9:30. **INFO:** td0320@nevadachess.org.

June 24-28, 25-28, 26-28 or 27-28, 2020 National Open
See Nationals.

June 27-28, International Youth Championship

6-SS, G/60 d5. Westgate Las Vegas Resort. **In 4 Sections by age:** 14 & Under Premier (under 1800), 14 & Under Reserve (under 1000), 9 & Under Premier (under 1800), 9 & Under Reserve (under 800). **Trophies** to top 10 and tied for 10th in each section plus class and team trophies. 1st Place in each section wins a **Computer** loaded with valuable Chess Software and hundreds of Videos, 2nd-4th win chess prizes valued at 250-150-100. Unrated players may not win 1st in Reserve sections. **EF** \$89 by 4/30, \$99 by 5/31, \$120 later. Half point bye in any round (limit 2) if requested in advance. **Reg.:** 8:30-9 a.m. **Rds.:** 10-1:30, 10-1:30. **Youth Blitz:** 6/26 6:30 p.m. (\$30 by 5/31 \$40 later). **HR:** \$70, \$97 Friday and Saturday (800) 732-7117. **ENT:** Vegas Chess Festivals, PO Box 90925, Henderson, NV 89009-0925 or www.VegasChessFestival.com.

New Jersey

Feb. 15-17, 50th World Amateur Team & U.S. Team East Championship - Golden Anniversary!
See Nationals.

Feb. 22, Princeton Charter School

TOURNAMENT LOCATION: Princeton Charter School at 100 Bunn Dr., Princeton, NJ 08540. **TIME CONTROL:** G/30 d0; Swiss to 4 rounds. **SECTIONS:** Open above 1000/1200; U1000; U800; U400/Unrated. (sections will be combined. Awards will be given to the top 3 in each section) **Parental Supervision Required:** The parents or another adult must be designated to supervise the student player between rounds. **Schedule** (will be accelerated if possible) **First Round:** 12:01 PM. **Second Round:** ASAP. **Third Round:** ASAP. **Fourth Round:** ASAP. **Award Ceremony:** ASAP (4:05 the latest). **Schedule** will be accelerated if possible. (*) **Online Registration \$35 Only if register one week before:** www.ChessKidsNY.com/PCSChessProgram.htm (*) **Fee will increase automatically if register later.** On site registration the date of the event: \$40 from 11:45 am to 12:00 noon. Restocking fee of \$4 for cancellation. Restocking waived if we are forced to cancel due to tournament site weather conditions. **Information:** email to Miguel Iniguez at: migini@gmail.com. **Results will be posted online the same day of the event!**

A State Championship Event!

Feb. 23, New Jersey State Elementary Championships

5SS, G/25 d5. Brookdale College, 765 Newman Springs Rd., Lincroft, NJ 07738. Student Life Center, use Parking Lot #7 or #6; 5 minutes from Garden State Parkway exit 109. **2 Sections:** Elementary (K-6) & Primary (K-3). **All:** Trophies to top 15 individuals, top 5 teams. Elementary & Primary: Top 3 in each grade. **Rds.:** 10 am then ASAP. Top 4 scores constitute the team score for Elementary; top 3 for Primary. **EF:** \$35 before 2/17, \$50 at site. USCF memb. **reg'd.** \$8-9:00am After 9:00am 1/2 point bye for round 1. **Info:** 732-259-3881. **Ent:** Hal Sprechman, 66 Cromwell Ln., Jackson, NJ 08527 or online by 9:00 pm Feb 22 at www.NJSCF.org. Entries must include name, grade, school, section, date of birth, USCF ID and expiration date, mailing address, email address, phone number and entry fee. Checks made out to NJSCF.

A State Championship Event!

Feb. 23, New Jersey Junior High School Championship

5SS, G/25 d5. Brookdale College, 765 Newman Springs Rd., Lincroft, NJ 07738. Student Life Center, use Parking Lot #7 or #6; 5 minutes from Garden State Parkway exit 109. **Section:** JHS (K-9). **All:** Trophies to top 15 individuals, top 5 teams. **Rds.:** 10am then ASAP. Top 4 scores constitute team score. **EF:** \$35 before 2/16, \$50 at site. USCF memb. **reg'd.** \$8-9:00 am. After 9:00 am, half-point bye for round one. **INFO:** 732-259-3881, halsprechman@gmail.com. **ENT:** Hal Sprechman, 66 Cromwell Ln., Jackson, NJ 08527 or online by 9:00pm Feb 22 at www.NJSCF.org. Entries must include name, grade, school, date of birth, USCF ID #, & expiration date, mailing address, phone number & entry fee. Checks made out to NJSCF.

Feb. 23, Scholastic Chess at South Jersey Innovation Center

2003 Lincoln Dr. West, Marlton, NJ 08053. 4 rds. G/25 d5, Beginning at 12:15 and ASAP: OPEN (Players K-12), RESERVE (K-12 U-1000), NOVICE II (K-8 U-600), NOVICE I (unrated K-8). Plaques to top 3 school teams, top 5 in each section Medals to all players. Pre-registration online, \$35 Info and online registration at <https://snjchess.com/register>. On-site 11-12 noon \$45. Inquiries to chess@incntr.com

Feb. 29, King's Chess Club Quads

Morning quads and afternoon quads, G/30 d5, Kindergarten-undergraduate (scholastic, youth, and young adult memberships). Grace Church Bethlehem Campus, 758 Route 10, Randolph, NJ 07869. **EF:** None. **Reg.:** 9-9:20 am, 1st rd. 9:40. Arr. by 12:30 pm to reg. only for afternoon quads. Medal to each quad winner. **Info:** Email Bob McAdams at fambright@optonline.net or call at 973-694-3988.

A Heritage Event!

A State Championship Event!

Mar. 7-8, New Jersey High School Team Championship

5SS, G/60 d5. Union County Vocational - Technical High School, 1776 Raritan Rd., Scotch Plains, NJ 07076. Change in format from previous years: this year we will follow an INDIVIDUAL - TEAM format, students will play as individuals in Three Sections: 1) VARSITY (grades 9-12) the five Highest Rated players from the same school will constitute a team. A second VARSITY team may be entered consisting of the 6th through 10th next highest rated players from the same school. Schools with 4 or less players and/or individuals may enter this section. Trophies: to top 5 Teams, top 10 individuals. JUNIOR VARSITY (grades 9-12) the top 4 rated players will constitute a team. A second JUNIOR VARSITY team may be entered consisting of the 5th through 8th next highest rated players from the same school. Schools with 3 or less players and/or individuals may enter this section. Trophies to Top 5 Schools, top 10 individuals. 3) BOOSTER (grades K-12) Open to all grades, all ages. Trophies to Top 5 players. ALL SECTIONS: USCF membership required. Entry Fee: before 12am 3/2/20, TEAMS: 5 players = \$150; 4 players = \$120. Smaller TEAMS and Individuals \$30 per player. After 3/2/20 or at the door \$5 extra per person. On site REG: 8-9:30am after 9:30 - 1/2 point bye for round 1. Registration: Full name, USCF ID # and expiration date, School, grade, Coaches or Parents Phone #. Make checks out to NJSCF. Rounds: Sat 10, 12:45, 3:15; Sun 10, 12:45. Please bring clocks and sets. Qs??? Email jmull@aol.com or call JIM 732-610-1357.

Mar. 14-15, 53rd annual New York State Scholastic Championships (out of state welcome) (NY)
See New York.

Mar. 21, Princeton Charter School

TOURNAMENT LOCATION: Princeton Charter School at 100 Bunn Dr., Princeton, NJ 08540. **TIME CONTROL:** G/30 d0; Swiss to 4 rounds. **SECTIONS:** Open above 1000/1200; U1000; U800; U400/Unrated. (sections will be combined. Awards will be given to the top 3 in each section) **Parental Supervision Required:** The parents or another adult must be designated to supervise the student player between rounds. **Schedule** (will be accelerated if possible) **First Round:** 12:01 PM. **Second Round:** ASAP. **Third Round:** ASAP. **Fourth Round:** ASAP. **Award Ceremony:** ASAP (4:05 the latest). **Schedule** will be accelerated if possible. (*) **Online Registration \$35 Only if register one week before:** www.ChessKidsNY.com/PCSChessProgram.htm (*) **Fee will increase automatically if register later.** On site registration the date of the event: \$40 from 11:45 am to 12:00 noon. Restocking fee of \$4 for cancellation. Restocking waived if we are forced to cancel due to tournament site weather conditions. **Information:** email to Miguel Iniguez at: migini@gmail.com. **Results will be posted online the same day of the event!**

A State Championship Event!

Mar. 22, 2020 NJ State North Individual Grades 9-12 Championship
4SS, G/60 d5. ICA Glen Rock, 354 Rock Rd., Glen Rock, NJ, (973) 219-6877. Trophies to Top 8 players. Entries postmarked by 3/17/2020 to Diana Tulman, 28 Canterbury Lane, New Milford, NJ 07646 or online at njscf.org. Checks should be made out to NJSCF. **Entry fee:** \$35, onsite: \$45. **Registration:** 9:00-9:45am. **Rounds:** 10:00am, 12:30pm, 3:00pm and ASAP. Email Noreenchess@gmail.com or go to www.njscf.org for more information. You must play at the site closest to your home via GPS. Playoff will be held to determine the NJ representative to the Denker HS Tournament of Champions.

A State Championship Event!

Mar. 22, 2020 NJ State North Individual Grades 6-8 Championship
4SS, G/60 d5. ICA Glen Rock, 354 Rock Rd., Glen Rock, NJ, (973) 219-6877. Trophies to Top 8 players. Entries postmarked by 3/17/2020 to Diana Tulman, 28 Canterbury Lane, New Milford, NJ 07646 or online at njscf.org. Checks should be made out to NJSCF. **Entry fee:** \$35, onsite: \$45. **Registration:** 9:00-9:45am. **Rounds:** 10:00am, 12:30pm and 3:00pm and ASAP. Email Noreenchess@gmail.com or go to www.njscf.org for more information. You must play at the site closest to your home via GPS. Playoff will be held to determine the NJ representative to the Barber 6-8 Tournament of Champions.

A State Championship Event!

Mar. 22, 2020 NJ State North Individual Grades K-5 Championship
4SS, G/60 d5. ICA Glen Rock, 354 Rock Rd., Glen Rock, NJ, (973) 219-6877. Trophies to Top 8 players. Entries postmarked by 3/17/2020 to Diana Tulman, 28 Canterbury Lane, New Milford, NJ 07646 or online at njscf.org. Checks should be made out to NJSCF. **Entry fee:** \$35, onsite: \$45. **Registration:** 9:00-9:45am. **Rounds:** 10:00am, 12:30pm and 3:00pm and ASAP. Email Noreenchess@gmail.com or go to www.njscf.org for more information. You must play at the site closest to your home via GPS. Playoff will be held to determine the NJ representative to the Rockefeller K-5 Tournament of Champions.

A State Championship Event!

Mar. 22, 2020 NJ State North Girls' Championship

4SS, G/60 d5. ICA Glen Rock, 354 Rock Rd., Glen Rock, NJ, (973) 219-6877. Trophies to Top 8 players. Entries postmarked by 3/17/2020 to Diana Tulman, 28 Canterbury Lane, New Milford, NJ 07646 or online at njscf.org. Checks should be made out to NJSCF. **Entry fee:** \$35, onsite: \$45. **Registration:** 9:00-9:45am. **Rounds:** 10:00am, 12:30pm and 3:00pm and ASAP. Email Noreenchess@gmail.com or go to www.njscf.org for more information. You must play at the site closest to your home via GPS. Playoff will be held to determine the NJ representative to the Haring Girls Tournament of Champions.

A State Championship Event!

Mar. 22, 2020 NJ State South Individual Grades 9-12 Championship
4SS, G/60 d5. 2003 Lincoln Drive West, Marlton, NJ 08053, (703) 989-6867. Trophies to Top 8 players. Entries postmarked by 3/17/2020 to South Jersey Innovation Center, 2003 Lincoln Drive West, Suite A, Marlton, NJ 08053 or online at njscf.org. Checks should be made out to NJSCF. **Entry fee:** \$35, onsite: \$45. **Registration:** 9:00-9:45am. **Rounds:** 10:00am, 12:30pm, 3:00pm and ASAP. Email dgorman@darsemail.com or go to www.njscf.org for more information. You must play at the site

closest to your home via GPS. Playoff will be held to determine the NJ representative to the Denker HS Tournament of Champions.

A State Championship Event!

Mar. 22, 2020 NJ State South Individual Grades 6-8 Championship
4SS, G/60 d5. 2003 Lincoln Drive West, Marlton, NJ 08053, (703) 989-6867. Trophies to Top 8 players. Entries postmarked by 3/17/2020 to South Jersey Innovation Center, 2003 Lincoln Drive West, Suite A, Marlton, NJ 08053 or online at njscf.org. Checks should be made out to NJSCF. **Entry fee:** \$35, onsite: \$45. **Registration:** 9:00-9:45am. **Rounds:** 10:00am, 12:30pm and 3:00pm and ASAP. Email dgorman@darsemail.com or go to www.njscf.org for more information. You must play at the site closest to your home via GPS. Playoff will be held to determine the NJ representative to the Barber 6-8 Tournament of Champions.

A State Championship Event!

Mar. 22, 2020 NJ State South Individual Grades K-5 Championship
4SS, G/60 d5. 2003 Lincoln Drive West, Marlton, NJ 08053, (703) 989-6867. Trophies to Top 8 players. Entries postmarked by 3/17/2020 to South Jersey Innovation Center, 2003 Lincoln Drive West, Suite A, Marlton, NJ 08053 or online at njscf.org. Checks should be made out to NJSCF. **Entry fee:** \$35, onsite: \$45. **Registration:** 9:00-9:45am. **Rounds:** 10:00am, 12:30pm and 3:00pm and ASAP. Email dgorman@darsemail.com or go to www.njscf.org for more information. You must play at the site closest to your home via GPS. Playoff will be held to determine the NJ representative to the Rockefeller K-5 Tournament of Champions.

A State Championship Event!

Mar. 22, 2020 NJ State South Girls' Championship
4SS, G/60 d5. 2003 Lincoln Drive West, Marlton, NJ 08053, (703) 989-6867. Trophies to Top 8 players. Entries postmarked by 3/17/2020 to South Jersey Innovation Center, 2003 Lincoln Drive West, Suite A, Marlton, NJ 08053 or online at njscf.org. Checks should be made out to NJSCF. **Entry fee:** \$35, onsite: \$45. **Registration:** 9:00-9:45am. **Rounds:** 10:00am, 12:30pm and 3:00pm and ASAP. Email dgorman@darsemail.com or go to www.njscf.org for more information. You must play at the site closest to your home via GPS. Playoff will be held to determine the NJ representative to the Haring Tournament of Champions.

Mar. 29, Scholastic Chess at South Jersey Innovation Center

2003 Lincoln Dr. West, Marlton, NJ 08053. 4 rds. G/25 d5, Beginning at 12:15 and ASAP: OPEN (Players K-12), RESERVE (K-12 U-1000), NOVICE II (K-8 U-600), NOVICE I (unrated K-8). Plaques to top 3 school teams, top 5 in each section Medals to all players. Pre-registration online, \$35 Info and online registration at <https://snjchess.com/register>. On-site 11-12 noon \$45. Inquiries to chess@incntr.com

New York

Oct. 4, Nov. 8, Dec. 6, Jan. 10, Feb. 28, May 1, Columbia Grammar Friday Tournaments!

6 separate events, open to K-12, other schools welcome, **Columbia Grammar and Preparatory School (CGPS)**, 36 West 93rd St. (lower sections across street, at 5 West 93rd St.), both are between Central Park West & Columbus Ave., NYC. **Subways: Broadway & 96th Street** (1,2,3 trains), **Central Park West & 96th Street** (B, C trains). **Online entries and details at** www.littlehouseofchess.com. **Early bird EF** \$50 each date thru Wed. before game, \$10 more later (CGPS students \$55), \$5 sibling discount, free if rated 1500+. **Reg. closes** 11 pm Thu. Entries are subject to space limitations at each location and may be subject to wait list (**no on-site entries**). **In 6 sections** each date: **1. Premier**, 3-RR or 3-SS, G/50 d5 (K-12, 1200+ and invitees); **2. Classic**, 4-SS, G/30 d5 (K-12, U1200); **3. Reserve**, 4-SS, G/30 d5 (K-12 U800); **4. Grades 2-3** (U700), 4-SS; **5. Grade 1**, 4-SS; **6. Kindergarten**, 4-SS (Sections 4-6 G/25 d5). **Trophies** to all (\$50 EF towards Marshall CC or G&T events for winner of Section 1). **Round 1:** 4 pm each date, then ASAP (Awards for sections 4-6 about 7:45 pm, sections 1-3 awards about 8:30 pm). **All:** Live ratings may be used at TD discretion; TD reserves right to assign players' sections and to combine sections. Limit 1 bye, must commit by rd. 2 (no byes in Section 1). Sets & boards provided; Sections 1-3: **please bring clocks! See important electronic devices restrictions:** www.littlehouseofchess.com. Parent or adult designate must be present to supervise child. **Questions:** littlehouseofchess@gmail.com or text 646-232-3155. \$15 service charge for refunds.

Oct. 6, Nov. 10, Dec. 8, Jan. 12, Feb. 9, Mar. 1, May 3, 7th Annual Magnus High School and Junior High Chess League!

Columbia Grammar and Prep. High School Cafeteria, 36 W. 93rd St. (bet. Central Park West & Columbus Ave., near 96th St. subways), NYC. 14-SS, open to grades 7-12 born after 5/3/20. 3 sections: **1. Varsity** (over 1799 at match date, and invitees), G/90 d30, **FIDE**. **2. Junior Varsity** (Under 1800 official rating at match date or unr.), G/75 d10. **3. Novice** (Under 1200 official rating at match date or unr.), G/60 d10. **All:** May be limited to 64 players each date (entries may be subject to wait list). **Individual prizes:** free entry to 3 specified Continental Chess tmnts. thru 12/31/20 to 1st, 2 free entries to 2nd each section. Plaques to top 3 each section. **Second-Half Bonus Prize:** 1 free entry to top-scorer (not counting half-point byes), among all 3 sections, in rds. 8-14. **Varsity Section Bonus Prize:** 1 extra free entry to Clear First in Varsity (playoff between top 2 on tiebreak if tie for 1st in Varsity: may be fast game). **Team prizes:** free entry to 1 CCA tmnt. thru 12/31/20 to the 4-top-scoring players from same school across all 3 sections, plaques to top 3 overall team scores. **Mixed Doubles** (2-player male/female team, avg. rating U2200, may be in different sections and from different schools, must sign-up by 2/9, no extra fee); free entry to 1 CCA tmnt. thru 12/31/20 to 1st **Mixed Doubles team**, chess sets to top 3 Mixed Doubles. Free entries courtesy of Continental Chess and are valid for CCA tmnts, with 100% guaranteed prizes. **Rds.** 10 am all sections, then 12:30 pm Novice; 1:15 pm JV; 2 pm Varsity each date. **EF:** \$30 each date per player if paid by 6 pm the day before match, \$35 later, at least 30 min. before game, \$10 less if rated over 1999. Optional \$550 EF per school for up to 6 players for all 7 dates (school EF \$10 less per player over 1999). **Ent:** www.magnusleague.org. Each date's games submitted for USCF rating prior to next date's games; Varsity games may be submitted to FIDE on separate schedule. Players must re-confirm before each date; official USCF rating list in effect on each date used for that date (unofficial ratings usually used if otherwise unrated or if requesting to

play in Varsity). Limit 8 half-point byes (2 byes max. rds. 11-14), commit by Feb. 9 (by May 1 for players with minus scores if team also has minus score); TD may assign byes to players whose ratings exceed previous match section limit. **\$20 fine for forfeits.** \$60 refunded to schools paying school EF if no forfeits for entire season. Teammate pairings awarded but possible. Free entries divided on ties. See www.magnusleague.org for rules and special situations. Bonus Points and/or prizes may be awarded each date! Bring clocks! **Info:** director@magnusleague.org, chesscentr@gmail.com. \$15 service charge for refunds. School purchase orders: **Chess Center of NY, PO Box 4615, New Windsor, NY 12553. W. Note:** this supersedes the Sep., Oct., Nov. CI issues.

An American Classic!

A Heritage Event!

US Chess Junior Grand Prix!

A State Championship Event!

Mar. 14-15, 53rd annual New York State Scholastic Championships (out of state welcome)

6SS, G/60 d10, open to grades K-12; top NYS player & team each section are NY champions. In 14 sections. **High School Sections** at Courtyard by Marriott, 11 Excelsior Ave., Saratoga Springs, NY 12866 (2/5 mile from Saratoga Hilton). **Other 11 sections** at Saratoga Hilton and adjacent Saratoga City Center (connected by indoor walkway), 534 Broadway (I-87 Exit 13-N, 4 miles north on US 9), Saratoga Springs, NY 12866. Sections at Hilton/City Center are limited to a total of 1100 players, sections at Marriott 300 players. **Team prizes** based on top 4 scores from same school; no combined school teams allowed even if one school "feeds" another. Teams of 2 or 3 allowed, but are at a disadvantage. **Online entry fee at chessaction.com, all sections:** \$74 by 2/20, \$84 2/21-3/6, \$100 3/7 to 3/13. **EF at site, all sections \$110.** **HS Championship** (all K-12 born after 9/1/00): EF \$79.30 mailed by 2/20. Top NYS grade 9-12 qualifies for Denker Tournament of HS Champions. **K-12 Under 1800/Unr:** EF \$79.20 mailed by 2/20. **K-12 Under 1200/Unr:** EF \$79.10 mailed by 2/20. **JHS Championship** (all K-9): EF \$79 mailed by 2/20. Top NYS grade 6-8 born after 9/1/04 qualifies for Barber tournament of 6-8 Champions. **K-8 Under 1600/Unr:** EF \$78.90 mailed by 2/20. **K-8 Under 900/Unr:** EF \$78.80 mailed by 2/20. **Elementary Championship** (all K-6): EF \$78.70 mailed by 2/20. Top NYS grade K-5 born after 9/1/07 qualifies for Rockefeller tournament of K-5 Champions. **K-6 Under 1400/Unr:** EF \$78.60 mailed by 2/20. **K-6 Under 1000/Unr:** EF \$78.50 mailed by 2/20. **K-6 Under 600/Unr:** EF \$78.40 mailed by 2/20. **Primary Championship** (all K-3): EF \$78.30 mailed by 2/20. **K-3 Under 800/Unr:** EF \$78.20 mailed by 2/20. **K-1 Championship** (all K-1): EF \$78.10 mailed by 2/20. **K-1 Under 400/Unr:** EF \$78 mailed by 2/20. **Postmarked 2/21-3/2:** All EF \$10 more. Do not mail entry after 3/2. **Special 1 year USCF dues** with magazine if paid with entry. Online at chessaction.com, Young Adult \$22, Scholastic \$15. Mailed or paid at site, Young Adult \$25, Scholastic \$17. **Trophies** to top 10 players & top 7 teams each section, top 2 unrated in U1200, U900, U800, U600 & U400, top 2 each U1900, U1700 (HS), U1600, U1400 (HS U1800), U1000, U800, U600 (HS U1200), U1800, U1600, U1400 (JHS), U1400, U1200, U1000 (K-8 U1600), U700, U500, U300 (K-8 U900), U1700, U1500 (K-6), U1200, U1000 (K-6 U1400), U800, U700 (K-6 U1000), U500, U400, U300 (K-6 U600), U1400, U1200, U1000 (K-3), U600, U500, U400, U300 (K-3 U800), U800, U600, U400 (K-1), U300, U200 (K-1 U400). Speed playoff if perfect score tie. **Free entry** to 2020 NY State Championship (Sept) and National Chess Congress (Nov) to top player each section. **Mixed doubles prizes** (chess sets) for three HS sections combined; no extra fee; enter at Marriott by Sat 2 pm. **Schedule:** Reg. ends Sat 10 am, rds. Sat 11, 2, 5, Sun 9, 12, 3. **Awards** 5:30 pm. **Half point byes** OK all, limit 2, must commit before rd. 2. **HR:** \$143-143 at Hilton, two nights minimum, 888-999-4711, 518-584-4000, or use link at chessstour.com. \$135-135 at Courtyard by Marriott, two nights minimum, use link at chessvents.us or 866-210-9325. 7 days notice required to cancel room reservations at both hotels; free parking at both. Each is likely to sell out about 3 months before the tournament, but may again have availability in the final week before the event due to late cancellations. For backup hotels see chessstour.com. **Special car rentals:** Avis, 800-331-1600, use AWD #657633. **\$15 per player** service charge for refunds. **\$20 extra to switch** sections, all substitutions from advance list charged \$100, no section switching or substitutions after 9 am 3/14. **Questions:** director@chess.us. **Bring clock** if possible- none supplied. **Bring set & board** for HS sections- supplied for other sections, but not for skittles. **March official ratings used** (except unofficial web ratings usually used if otherwise unrated). TD reserves right to assign estimated rating to players with non-USCF ratings. **Electronic devices rules:** Electronic scorekeeping devices not allowed. See also www.devicerules.com; players may not possess cellphones during play but may store them in a bag under their table. **Online entry:** www.chessaction.com. **Mail entry:** Continental Chess, PO Box 249, Salisbury Mills, NY 12577. Include name, rating, USCF ID, USCF expiration (non-members include dues), section, school, grade, birth date, address of each player. Checks payable to Continental Chess.

May 15-17 or 16-17, 28th annual New York State Open and Senior
See *Chess Life* or www.chesstour.com.

North Carolina

Feb. 28-Mar. 1 or Feb. 29-Mar. 1 (Not Feb. 15-17), 2020 U.S. Amateur Team South Championship - Note Date Change
See Nationals.

Ohio

Apr. 3-5, 2020 National High School (K-12) Championship
See Nationals.

Pennsylvania

Feb. 15, Kasparov Chess Foundation Presents 11th Annual Greater Mid-Atlantic K-12 Chess Championship (MD)
See Maryland.

Feb. 16, 2020 PA State Game/75 Championship
See Grand Prix.

Mar. 1, Central Pennsylvania Winter Scholastic Event & Bughouse
Yoder's Restaurant & Banquet, 14 South Tower Rd., New Holland, PA 17557.
4 Rd SS; G/25 d5. Rounds at 11:45 am, 12:45, 1:45, 2:45. Advanced (K-12

Open), Intermediate (U1000), Novice (U600) EF online \$30 for USCF members only at <http://woodchess.net> Trophies to top 3 in each section. Tiebreakers decided by G/5 Blitz Player Raffle for over \$200 in prizes between rds. All you can eat buffet for additional cost. **Side-event, same day & venue: Central PA Winter Bughouse:** 6 Rd Bughouse, 2 games each round. G/5 d0. Rounds start at 10:00 am. EF online \$10 per team at <http://woodchess.net> Prizes: Individual Trophies to first two teams.

Mar. 6, 2020 PA Quick Chess Championship (QC)
See Grand Prix.

Mar. 7-8, 2020 Gettysburg Open & PA Collegiate Championship
See Grand Prix.

A Heritage Event!

US Chess Junior Grand Prix!

A State Championship Event!

Mar. 7-8, 2020 PA State Scholastic Championship

5SS. 261 Trophies!! (191 Individual & 70 Team). Eisenhower Hotel and Conference Ctr., 2634 Emmitsburg Rd., Gettysburg, PA 17235. 11 sections (Sat & Sun 3/7 & 8 unless indicated): **EF:** K-3 Open: (Sat 3/7 only) \$30. K-6 U500: (Sat 3/7 only) \$26. K-6 U800: (Sat 3/7 only) \$27. K-9 U600: (Sun 3/8 only) \$26.50. K-9 U1100: (Sun 3/8 only) \$27.50. K-6 Open: \$31. K-8 Open: \$32. 7-12 U1000 & 7-12 Unrated: \$28. 7-12 U1300: \$29. K-12 Open: \$33. Cash Scholarships: K-12 Open: 1st \$2500, Girl \$150, School \$1000. K-8 Open: 1st \$1500, Girl \$150, School \$1000. K-6 Open: 1st \$1000, Girl \$150, School \$1000. K-3 Open: 1st \$500, Girl \$150, School \$1000. **All:** EFs if rec'd by 2/17, \$10 more rec'd 2/18-2/29, \$20 more after 2/29. Feb 2020 ratings used. **Bye:** limit 1, ask by rd. 2. **Reg:** Fri 3/6 6-10 pm, Sat 3/7 10-11 am, Saturday entries get 1/2-bye. \$5 charge for changes/refunds after 2/17. **Rds.:** (Sat 3/7 1-day sections): G/40 d5; 10-Noon-2-4-6; (Sun 3/7 1-day sections): G/40 d5; 9-10-45-12-30-2-15-4; (2-day sections): G/90 d5; 10-2-5-30, 9-1. **Bughouse:** Reg on-site only until Sat 3/7 8:30pm. Rds begin Sat 3/7 8:45pm. EF: \$20/team. **HR:** Mention "Chess Tournament": 717-334-8121 \$90 by 1/31. Info: 412-908-0286, martinak_tom_m@hotmail.com, pscdchess.org/pascholas-ticchamp/ Ent: PSCF; c/o Tom Martinak, 25 Freeport St., Pittsburgh, PA 15223.

Mar. 14-15, 53rd annual New York State Scholastic Championships (out of state welcome) (NY)
See New York.

Mar. 28-29, 2020 PA State Game/29 Championship (QC)
See Grand Prix.

US Chess Junior Grand Prix!

A State Championship Event!

Mar. 28-29, 2020 PA State Amateur Championship

Nazareth Student Center, 1300 University Ave., Marywood University, Scranton, PA 18509. 2 Sections: **Champ (Sat & Sun):** Open to U2200. 5SS. Rds.: Sat 10-1-3:30, G/75 d5, Sun 9-30-1, G/90 d5. **EF:** \$10 rec'd by 3/23, \$15 later. Trophies: 1-3, U1800, U1600, U1400, U1200/Unrated, School Team (top 3 scores). Top 2 receive free entry into 2020 PA State Champ. Title to top PA resident. **Scholastic (Sat only):** unrated or U1400 in grades K-12. 4SS. G/40 d5. Rds.: 10-11:30-1-2:30. **EF:** \$8 rec'd by 3/23, \$12 later. Trophies: 1-2, U1000, U800/Unrated, School Team (top 3 scores). **ALL:** Reg: 9-9:45am, PSCF \$5, OSA. Ent/Info: 570-604-2461, Bernie Sporko, 127 S. Main St., Carbondale, PA 18407-2652, Or by PayPal with entry info to baspo0529@echoes.net

Mar. 29, PCL March Quick Chess (QC)

3RR, G/11 d3. Wm. Pitt Univ., Univ. of Pittsburgh, 5th Ave. & Bigelow Blvd., Pittsburgh, PA 15213. **EF:** \$10, \$7 Jrs. \$20 to 1st/quadr. **Reg.:** 11:30-11:45am. **Info:** martinak_tom_m@hotmail.com, 412-908-0286.

Apr. 5, PCL April Blitz Hexes (BLZ)

5RR, G/5 d2. O'Hara Student Center, Univ. of Pitt., 4024 O'Hara St., Pittsburgh, PA 15213. **EF:** \$10, \$7 Jrs. \$30 to 1st/hex. **Reg.:** 11:30-11:45am. **Info:** martinak_tom_m@hotmail.com, 412-908-0286.

July 1-5, 2-5, 3-5 or June 30-July 5, 48th Annual World Open

See *Chess Life* or www.chesstour.com.

US Chess Junior Grand Prix!

July 6-7, 12th annual World Open Under 13 Championship

6SS, G/60 d10. Philadelphia Marriott Downtown (see World Open for location, rates). Open to all born before 7/7/07. In 4 sections. **Open Section:** Plaques to top 7, top 2 Under 1600/Unr; free entry in all CCA tournaments 7/17/20-12/31/20 to 1st. **Under 1400:** Plaques to top 7, top 2 Under 1200/Unr, free entry in all CCA tournaments 7/17/20-10/31/20 to 1st. **Under 1000:** Plaques to top 7, top 2 Under 800/Unr, free entry in all CCA tournaments 7/17/20-9/30/20 to 1st. **Under 600:** Plaques to top 7, top 2 Under 400, top 2 Unrated; free entry in all CCA tournaments 7/17/20-9/30/20 to 1st. **EF:** \$48 online at chessaction.com by 7/4, \$52 mailed by 6/15, \$60 at site. **Late Reg:** 7/6 to 10 am, rds. Mon 11-25, Tue 10-1-4. Up to 3 half point byes allowed, must commit before rd. 3. **Ent:** chessaction.com or Continental Chess, PO Box 8482, Pelham, NY 10803. **Questions:** chesstour.com, chesstour.info, DirectorAtChess.US, 347-201-2269. \$15 service charge for refunds.

July 10-12 or 11-12, 14th annual Philadelphia Open

See *Chess Life* or *ChessEvents.US*.

Tennessee

May 8-10, 2020 National Elementary (K-6) Championship
See Nationals.

Texas

Feb. 13-17, 14-17, 15-17 or 16-17, 11th annual Southwest Class Championships
See *Chess Life* or www.chesstour.com.

US Chess Junior Grand Prix!

A State Championship Event!

Mar. 6-8, 2020 Texas South State Scholastic High School Chess Championships

7SS, McAllen Convention Center, 700 Convention Center Blvd., McAllen, TX 78501. Tournament is open to any 9th-12th grade student living in Texas or

going to school in Texas. Note that players may play in either the South or the North Central Championships or they may also play in both. Also note that if a student has played in another state's closed championship, they may not play in this tournament. EF: \$44 by 2/4; \$56 by 2/27; \$74 after 2/27/20 or on site. On Site Registration: Friday, 5:30-6:15pm, Saturday, 8-8:30am. Saturday registrants will receive a 1st Rd. 1/2-pt. bye. Two 1/2-pt. byes allowed as long as one of the byes is for round 1, if requested by the end of Rd. 2. Sections: High School (9-12) Championship, HS JV (9-12 Under 1000). See Article IX, Section 1E, TCA Bylaws for each section's eligibility requirement; <https://texaschess.org/wordpress/wp-content/uploads/2017/07/TCA-Bylaws-30-Aug-2015.pdf>. Trophies for top 20 individuals and top 15 teams in each section plus participation medals for all, and plus Score Awards for players scoring 4 or more points that do not win an individual trophy. Top 5 Grand Champion trophies. For the High School the two sections will be merged and the top 10 players will be used to determine the grand champions. Note that trophies will not be given out in advance and must be picked up at awards ceremony. Please make arrangements for picking up trophies at award ceremony. Schedule: Round times vary depending on the Section. For round times check website. Time controls: All High School Sections: Rds. 1 G/45 d5; Rounds 2-4 G/60 d5, Rds. 5-7 G/75 d5. Side Events: See website for side events. Side event registration on site only. All registrations (except Side events) available on line: see www.dallaschess.com and you can download flyers and entry forms. Checks payable to Texas Chess Association. Mail entries to Dallas Chess Club, c/o Barbara Swafford, 2709 Longhorn Trail, Crowley, TX 76036. For tournament info, visit our website or contact Barbara Swafford, info@dallaschess.com or 214-632-9000. Refunds will be given only up to 2/27 with a \$10 surcharge for withdrawing, after 3/1 there will be no refunds. There will be no substitution of team members. There will be a \$10 change fee for changes after 2/27. There will be a \$5 surcharge per player for phone registrations USCF membership is required. Proof of membership is required or player must join/renew their memberships. No registration/changes/ or withdrawals by phone or email after 3/3/20 as we are driving to the site; after that date you must make changes at site (McAllen Convention Center). The Embassy Suites, 800 Convention, C St., McAllen, TX 78501. Phone: (956) 688-8329. HR: \$119/\$129, please reserve by 2/14 or rate may not be available. Mention Texas Chess Association to get rate. Check Website for other hotels. Note that the McAllen Convention Center does not allow outside food or drink to be brought into the Convention Center. W.

US Chess Junior Grand Prix!

A State Championship Event!

Mar. 6-8, 2020 Texas South State Scholastic Middle School Chess Championships

7SS, McAllen Convention Center, 700 Convention Center Blvd., McAllen, TX 78501. Tournament is open to any 6th-8/9th grade student living in Texas or going to school in Texas. See Article IX, Section 1E, TCA Bylaws for each section's eligibility. Just because a player is in 6th or 9th grade does not mean they can play. Check requirement, <https://texaschess.org/wordpress/wp-content/uploads/2017/07/TCA-Bylaws-30-Aug-2015.pdf>. Note that players may play in either the South or the North Central Championships or they may also play in both. Also note that if a student has played in another state's closed championship, they may not play in this tournament. EF: \$44 by 2/4; \$56 by 2/27; \$74 after 2/27/20 or on site. On Site Registration: Friday, 5:30-6:15pm, Saturday, 8-8:30am. Saturday registrants will receive a 1st Rd. 1/2-pt. bye. Two 1/2-pt. byes allowed as long as one of the byes is for round 1, if requested by the end of Rd. 2. Sections: Middle School (6-8/9) Championship, MS JV (6-8/9 Under 900), MS Novice (6-8/9 Under 600). Trophies for top 20 individuals and top 15 teams in each section plus participation medals for all, and plus Score Awards for players scoring 4 or more points that do not win an individual trophy. Top 5 Grand Champion trophies. For the Middle School the three middle school sections will be merged and the top 15 players will be used to determine the grand champions. Note that trophies will not be given out in advance and must be picked up at awards ceremony. Please make arrangements for picking up trophies at award ceremony. Schedule: Round times vary depending on the Section. For round times check website. Time controls: All Middle School Sections: Rds. 1 G/45 d5; Rounds 2-4 G/60 d5, Rds. 5-7 G/75 d5. Side Events: See website for side events. Side event registration on site only. All registrations (except Side events) available on line: see www.dallaschess.com and you can download flyers and entry forms. Checks payable to Texas Chess Association. Mail entries to Dallas Chess Club, c/o Barbara Swafford, 2709 Longhorn Trail, Crowley, TX 76036. For tournament info, visit our website or contact Barbara Swafford, info@dallaschess.com or 214-632-9000. Refunds will be given only up to 2/27 with a \$10 surcharge for withdrawing, after 3/1 there will be no refunds. There will be no substitution of team members. There will be a \$10 change fee for changes after 2/27. There will be a \$5 surcharge per player for phone registrations USCF membership is required. Proof of membership is required or player must join/renew their memberships. No registration/changes/ or withdrawals by phone or email after 3/3/20 as we are driving to the site; after that date you must make changes at site (McAllen Convention Center). The Embassy Suites, 800 Convention, C St., McAllen, TX 78501. Phone: (956) 688-8329. HR: \$119/\$129, please reserve by 2/14 or rate may not be available. Mention Texas Chess Association to get rate. Check Website for other hotels. Note that the McAllen Convention Center does not allow outside food or drink to be brought into the Convention Center. W.

A State Championship Event!

Mar. 6-8, 2020 Texas South State Scholastic Elementary School Chess Championships

7SS, McAllen Convention Center, 700 Convention Center Blvd., McAllen, TX 78501. Tournament is open to any 6th-8/9th grade student living in Texas or going to school in Texas. See Article IX, Section 1E, TCA Bylaws for each section's eligibility. Just because a player is in 6th grade does not mean that they can play. Check requirement, <https://texaschess.org/wordpress/wp-content/uploads/2017/07/TCA-Bylaws-30-Aug-2015.pdf>. Note that players may play in either the South or the North Central Championships or they may also play in both. Also note that if a student has played in another state's closed championship, they may not play in this tournament. EF: \$44 by 2/4; \$56 by 2/27; \$74 after 2/27/20 or on site. On Site Registration: Friday, 5:30-6:15pm, Saturday, 8-8:30am. Saturday registrants will receive a 1st Rd. 1/2-pt. bye. Two 1/2-pt. byes allowed as long as one of the byes

is for round 1, if requested by the end of Rd. 2. Sections: Elementary (K-5/6) Championship, Elementary JV (K-5/6 Under 800), Elementary Novice (K-5/6 Under 500). Trophies for top 20 individuals and top 15 teams in each section plus participation medals for all, and plus Score Awards for players scoring 4 or more points that do not win an individual trophy. Top 5 Grand Champion trophies. For the Elementary School the three sections will be merged and the top 15 players will be used to determine the grand champions. Note that trophies will not be given out in advance and must be picked up at awards ceremony. Please make arrangements for picking up trophies at award ceremony. Schedule: Round times vary depending on the Section. For round times check website. Time controls: All Elementary School Sections: rds. 1-4 G/45 d5, rds. 5-7 G/60 d5. Side Events: See website for side events. Side event registration on site only. All registrations (except Side events) available on line: see www.dallaschess.com and you can download flyers and entry forms. Checks payable to Texas Chess Association. Mail entries to Dallas Chess Club, c/o Barbara Swafford, 2709 Longhorn Trail, Crowley, TX 76036. For tournament info, visit our website or contact Barbara Swafford, info@dallaschess.com or 214-632-9000. Refunds will be given only up to 2/27 with a \$10 surcharge for withdrawing, after 3/1 there will be no refunds. There will be no substitution of team members. There will be a \$10 change fee for changes after 2/27. There will be a \$5 surcharge per player for phone registrations USCF membership is required. Proof of membership is required or player must join/renew their memberships. No registration/changes or withdrawals by phone or email after 3/3/20 as we are driving to the site; after that date you must make changes at site (McAllen Convention Center). The Embassy Suites, 800 Convention, C St., McAllen, TX 78501. Phone: (956) 688-8329. HR: \$119/\$129, please reserve by 2/14 or rate may not be available. Mention Texas Chess Association to get rate. Check Website for other hotels. Note that the McAllen Convention Center does not allow outside food or drink to be brought into the Convention Center. W.

A State Championship Event!

Mar. 6-8, 2020 Texas South State Scholastic Primary School Chess Championships

7SS, McAllen Convention Center, 700 Convention Center Blvd., McAllen, TX 78501. Tournament is open to any 3rd grade and lower such as 2nd grade student living in Texas or going to school in Texas. Note that players may play in either the South or the North/Central Championships or they may also play in both. Also note that if a student has played in another state's closed championship, they may not play in this tournament. EF: \$44 by 2/4; \$56 by 2/27; \$74 after 2/27/20 or on site. On Site Registration: Friday, 5:30-6:15pm, Saturday, 8-8:30am. Saturday registrants will receive a 1st Rd. 1/2-pt. bye. Two 1/2-pt. byes allowed as long as one of the byes is for round 1, if requested by the end of Rd. 2. Sections: K-1 Championship,

Primary (K-3) Championship, Primary JV (K-3 w/Ratings Under 600). Trophies for top 20 individuals and top 15 teams in each section plus participation medals for all, and plus Score Awards for players scoring 4 or more points that do not win an individual trophy. Top 5 Grand Champion trophies. For the Primary School the three sections will be merged and the top 15 players will be used to determine the grand champions. Note that trophies will not be given out in advance and must be picked up at awards ceremony. Please make arrangements for picking up trophies at award ceremony. Schedule: Round times vary depending on the Section. For round times check website. Time controls: All Primary School Sections: rds. 1-4 G/45 d5, rds. 5-7 G/60 d5. Side Events: See website for side events. Side event registration on site only. All registrations (except Side events) available on line: see www.dallaschess.com and you can download flyers and entry forms. Checks payable to Texas Chess Association. Mail entries to Dallas Chess Club, c/o Barbara Swafford, 2709 Longhorn Trail, Crowley, TX 76036. For tournament info, visit our website or contact Barbara Swafford, info@dallaschess.com or 214-632-9000. Refunds will be given only up to 2/27 with a \$10 surcharge for withdrawing, after 3/1 there will be no refunds. There will be no substitution of team members. There will be a \$10 change fee for changes after 2/27. There will be a \$5 surcharge per player for phone registrations USCF membership is required. Proof of membership is required or player must join/renew their memberships. No registration/changes or withdrawals by phone or email after 3/3/20 as we are driving to the site; after that date you must make changes at site (McAllen Convention Center). The Embassy Suites, 800 Convention, C St., McAllen, TX 78501. Phone: (956) 688-8329. HR: \$119/\$129, please reserve by 2/14 or rate may not be available. Mention Texas Chess Association to get rate. Check Website for other hotels. Note that the McAllen Convention Center does not allow outside food or drink to be brought into the Convention Center. W.

US Chess Junior Grand Prix!

A State Championship Event!

Mar. 13-15, 2020 Texas North/Central State Scholastic Chess Championships

7SS, Houston Marriott Westchase, 2900 Briarpark Dr., Houston, TX 77042. \$109, \$109, \$109, \$109 rate includes American Breakfast Buffet, Call 1-800-452-5110 to make reservations **mention group code DCC** or register online thru link on web page. Reserve by 2/27/2020 or rate may not be honored. Note that the rate can sell out, so make reservations early. Tournament is open to any Kindergarten-12th grade student living in Texas or going to school in Texas. Note that players may play in either the South or the North Central Championships or they may also play in both. Also note that if a student has played in another state's closed championship, they may not play in this tournament. Four championships: TX North/Central Primary Scholastic Championships; TX North/Central Elementary Scholastic

Championships; TX North/Central Middle School Scholastic Championships; TX North/Central High School Scholastic Championships. EF: \$44 by 2/4; \$56 by 3/1; \$74 after 3/1 or on site. On Site Registration: Friday, 5:30-6:15pm, Saturday, 8-8:30am. Saturday registrants will receive a 1st Rd. 1/2-pt. bye. Two 1/2-pt. byes allowed as long as one of the byes is for round 1, if requested by the end of Rd. 2. Sections: K-1 Championship, Primary (K-3) Championship, Primary JV (K-3 w/Ratings Under 600), Elementary (K-5/6) Championship, Elementary JV (K-5/6 Under 800), Elementary Novice (K-5/6 Under 500), Middle School (6-8/9) Championship, MS JV (6-8/9 Under 900), MS Novice (6-8/9 Under 600), High School (9-12) Championship, HS JV (9-12 Under 1000). See Article IX, Section 1E, TCA Bylaws for each section's eligibility requirement, <https://texaschess.org/wordpress/wp-content/uploads/2017/07/TCA-Bylaws-30-Aug-2015.pdf>. Note that 2020 February Supplement will be used. Note continuing this year: John W. Griffin Memorial Chess Scholarship award sponsored by Belleville Capital Management. They will present certificates to the winner of the High School Championship (\$1000), Middle School Championship (\$500) and Elementary Championship (\$100). The certificate is to be used for secondary education at an accredited institution at some point in the future. We will redeem the certificate and pay directly to the institution. It is the sponsors expectation to make this scholarship a yearly annual award in which a player may win more than once. Trophies for top 20 individuals and top 15 teams in each section plus participation medals for all, and plus Score Awards for players scoring 4 or more points that do not win an individual trophy. Top 5 Grand Champion trophies. The 3 Primary sections will be merged and using the top 15 players, a grand champion will be crowned. This will also be done for the 3 Elementary sections and the 3 Middle School Sections. For the High School the two sections will be merged and the top 10 players will be used to determine the grand champions. Note that trophies will not be given out in advance and must be picked up at awards ceremony. Please make arrangements for picking up trophies at award ceremony or to get trophy shipped. Schedule: Round times vary depending on the Section. For round times check website. Time controls: All High School and Middle School Championship Sections: Rds. 1 G/45 d5; Rounds 2-4 G/60 d5, Rds. 5-7 G/75 d5. All Elementary and Primary and K-1 sections as well as MS JV and MS Novice: rds. 1-4 G/45 d5, rds. 5-7 G/60 d5. For round times see. Side Events: See website for side events. Side event registration on site only. All registrations (except Side events) available on line: see www.dallaschess.com and you can download flyers and entry forms. Checks payable to Dallas Chess Club. Mail entries to Dallas Chess Club, c/o Barbara Swafford, 2709 Longhorn Trail, Crowley, TX 76036. For tournament info, visit our website or contact Barbara Swafford, info@dallaschess.com or 214-632-9000. Refunds will be given only up to 3/11 with a \$10 surcharge for withdrawing, after 3/11 there will be no refunds. There will be no substitution of team members. There will be a \$10 change fee for changes after 3/11. There will be a \$5 surcharge per player for phone registrations USCF membership is required. Proof of membership is required or player must join/renew their memberships. No registration/changes or withdrawals by phone or email after 3/11/20 as we are driving to the site; after that date you must make changes at site (Houston Westchase). W.

Vermont

Mar. 14-15, 53rd annual New York State Scholastic Championships (out of state welcome) (NY)

See New York.

Virginia

Feb. 15, Kasparov Chess Foundation Presents 11th Annual Greater Mid-Atlantic K-12 Chess Championship (MD)

See Maryland.

Feb. 21-23 or 22-23, 5th annual George Washington Open

See Chess Life or www.chesstour.com.

US Chess Junior Grand Prix!

A State Championship Event!

Mar. 6-8, Virginia Scholastic & College Championships

5SS. Organized by the VA Chess Federation at Thomas Jefferson HS for Science & Technology in Arlington, VA. Blitz Championships Fri. Mar. 6 at 6:30PM. Main tournament Sat.-Sun., Mar. 7-8. **Rds.:** Rds. 1-3 Sat. 3/7 at 9AM, 12-noon and 4:30PM; Rds. 4-5 Sun. 3/8 at 8:30AM and 12:30PM. **T/C:** Rds. 1-2 G/60 d10, Rds. 3-5 G/90 d10. **Reg.:** Detailed information including registration, entry, and player eligibility at www.vachess.org. **Info:** NTD Anand Dommalapati, adommalapati@yahoo.com.

Wisconsin

A Heritage Event!

Feb. 29, Waukesha Memorial (39th Annual)

A Wisconsin Tour Event! 4SS. G/60 d5. USCF rated (Dual rated). To obtain USCF membership, see uschess.org. Country Inn & Suites, 1250 S. Moorland RD., Brookfield, WI (1-262-782-1400) Exit 301(AB) from I-94. \$\$\$Non-monetary; traveling trophy to First, books for class winners. Open to all. **EF:** \$15 by 2/28 (\$20 at site). **Reg.:** 8:00-9:15; 1/2 point bye if registered after 9:15; groups of 4 or more must pre-register; pre-registrants check in by 9:30 to assure pairing. **Rds.:** 10:00; 1:00; 3:30; 6:00. No state memb. req'd. OSA. Mail entries to Waukesha CC, 1911 Stardust DR., Waukesha, WI 53186. **Phone Info:** Jim Nickell (262) 544-6266. **Online info:** jnickell@wi.rr.com

Feb. 29, Rated Beginners Open (RBO)

4SS. G/60 d5. USCF rated (Dual rated). To obtain USCF membership, see uschess.org. Country Inn & Suites, 1250 S. Moorland RD., Brookfield, WI (1-262-782-1400) Exit 301(AB) from I-94. Open to players rated under 1200 or unrated. **Prizes:** Trophies to top 3, book prizes for class winners. **EF:** \$15 by 2/28 (\$20 at site). **Reg.:** 8:00-9:15; 1/2 point bye if registered after 9:15; groups of 4 or more must pre-register; pre-registrants check in by 9:30 to assure pairing. **Rds.:** 10:00; 1:00; 3:30; 6:00. No state memb. req'd. OSA. Mail entries to: Waukesha CC, 1911 Stardust DR., Waukesha, WI 53186. **Phone Info:** Jim Nickell (262) 544-6266. **Online information:** jnickell@wi.rr.com

ANSWERS

PAGE 5/YOU CAN DO IT!

Solution #1: 1. Qf6 exf6 2. Rxe8 mate

Solution #2: 1. Qxf6+ Nxf6 2. Bxf6 mate

Solution #3: 1. ... Qxf3+ 2. gxf3 (2. Kg1 Qf2 mate) 2. ... Bh3+ 3. Kg1 Rxe1+ 4. Qf1 Rxf1 mate

Solution #4: 1. ... Qxf3+ 2. gxf3 (2. Kg1 Re1+ 3. Qf1 Rxf1 mate [3. ... Qxf1 mate]) 2. ... Bh3+ 3. Kf2 (3. Kg1 Re1+ 4. Kf2 [4. Qf1 Rxf1 mate [4. ... Bd4 mate]] 4. ... Bh4 mate) 3. ... Bh4+ 4. Kg1 Re1+ 5. Qf1 Rxf1 mate

Solution #5: 1. Bf7+ Ke7 2. Qxf6+ Kxf6 (2. ... gxf6 3. Nd5 mate) 3. Nd5+ Ke5 4. Nf3+ Kxe4 5. Nc3 mate

Solution #6: 1. Qxf6 gxf6 2. Rxe8+ Kh7 3. Nxd6+ Kg7 4. Nf5+ Kh7 5. d6 winning

PAGE 6/IT'S YOUR MOVE!

1. Window, page 9

2. Liran Zhou's lanyards, page 14

3. Dancers' elbows, page 29

4. Rose Atwell's shoes, page 9

5. Rook-E's hand, page 3

6. Kite, page 17

MARK YOUR CALENDARS!

SPRING SCHOLASTIC NATIONALS 2020

2020 NATIONAL
HIGH SCHOOL (K-12)
CHAMPIONSHIP

APRIL 3-5

Greater Columbus
Convention Center
COLUMBUS
Ohio

2020 NATIONAL
JUNIOR HIGH (K-9)
CHAMPIONSHIP

APRIL 24-26

Hyatt Regency
Jacksonville Riverfront
JACKSONVILLE
Florida

2020 NATIONAL
ELEMENTARY (K-6)
CHAMPIONSHIP

MAY 8-10

Gaylord Opryland Resort
and Convention Center
NASHVILLE
Tennessee

Official US Chess online rated!

No entry fees » No hotel costs » Free parking

20% off ICC membership

Bonus



www.chessclub.com/uschess



US CHESS

MY FIRST MOVE

WGM CARISSA YIP

YOUNGEST AMERICAN
FEMALE TO QUALIFY FOR THE
INTERNATIONAL MASTER TITLE



In this column, we feature advice from your chess heroes and explore what shaped their development when they were *Chess Life Kids* like you!

HOW IT BEGAN

My dad taught me how to play chess when I was six and I joined my elementary school's chess club as soon as I learned how the pieces moved. At the end of the term, I won a chess pin for being the best first-grader in chess club. It was the highlight of my whole year!

THIS IS IT!

My defining chess moment was when I broke the youngest female expert record. It was my first record and I remember feeling like it could be the start of many more to come.

FROM INTERNATIONAL MASTER TO THE FUTURE

My next step is the grandmaster title, but I expect that goal to take a few years. Right now, I'm just enjoying chess.



PHOTO COURTESY OF SAINT LOUIS CHESS CAMPUS.



Dvoretsky's Analytical Manual, which was one of the most interesting and useful chess books I'd ever read.

YOUNGEST FEMALE IM!

My proudest chess moment to date is [qualifying to become] America's youngest female international master (IM). I worked toward the title for two years now, and it feels fantastic now that I've finally achieved it.

NEVER EASY

One of my worst tournaments was the 2017 U.S. Junior Girls, where I was the top seed but ended with $3\frac{1}{2}/9$. I remember being extremely upset at myself especially after the first five rounds, where I had $\frac{1}{2}/5$. But it motivated me to work harder on chess in general and also taught me the important lesson to never underestimate my opponents.

GIRL PRIDE

I believe girls-only events are great for forming friendships and

Photos: above left, the 2013 World Youth Championship; above right, from a dance recital at age six; right, with her Under 8 trophy from the state championship. Photos courtesy of subject

THE CHESS HERO'S CHESS HERO

My chess hero when I started playing (and now!) was Judit Polgar, the only female to have ever reached the top 10 in the world. She inspired me, as a young girl, to one day be able to be as good as the men in the chess world just like she was.

FAVORITE OPENING

I didn't know any openings until I was 1800; up until then, I just played whatever I felt like at the time! My favorite opening back then was the Scotch Gambit, which I used until I was 2300. I've had quite a few good games with the opening, including a win against a grandmaster, since White has lots of attacking potential. Now I would say my favorite opening is any line in the Sicilian, either as white or black. Since I'm a tactical player, I love the sharp positions that arise.

FAVORITE BOOKS

My favorite chess book when I first started playing was *How to Beat Your Dad at Chess* by Murray Chandler, since I needed to learn those secrets! But the top spot now goes to



Above left, with Rochelle Wu; above right, a candid moment between rounds; left, (left to right), Annie Wang, Emily Nguyen, Carissa, and Jennifer Yu at the Saint Louis Chess Club. Photos courtesy of Saint Louis Chess Campus



At the 2019 World Team Chess Championship. Left to right: WGM Sabina Foisor, Carissa, WIM Rochelle Wu, WGM Tatev Abrahamyan, WGM Katerina Nemcova, and captain IM Melik Khachiyan; not pictured, coach GM Alejandro Ramirez. Photo courtesy of subject.

also encouraging more females to play chess! When I started chess, my favorite tournaments would be girls-only events since it was easier to make friends. Some of my best friends I met were through such tournaments, like the Susan Polgar Foundation's Girls Invitational and U.S. Junior Girls.

BALANCING ACT

It's hard to find a balance between school and chess. For me, homework and extracurricular activities at school take up a lot of my time. I mostly work on chess on the weekends and whenever I have time to spare.

OUTSIDE OF CHESS

My hobbies outside of chess include writing, reading, dancing, and music (such as playing instruments or listening to it). Another thing that I enjoy is learning languages! Even if it's just a few phrases, it's cool being able to communicate in a way that I'm unused to. The internet makes it so easy to learn new things, and I'd like to be able to talk with some of the other five billion people in the world who don't speak English.

THE BEST ADVICE I'VE RECEIVED

The best advice given to me is that it's not over until it's over. During my 2015

World Youth, I had 6/6 but suffered an unfortunate loss in round seven that put me half a point behind the first seed. I thought my gold medal chances were over and was extremely upset with myself, but I ended up tying for first regardless! Don't let one bad game ruin your whole tournament.

MY BEST ADVICE

My advice for young chess players is to not be afraid of losing. Each game is a lesson that you can learn and improve from. Moreover, the point of playing chess is for fun! Whether you win or lose, as long as you're doing what you love the result doesn't matter.

“DON'T LET ONE BAD GAME RUIN YOUR WHOLE TOURNAMENT.”

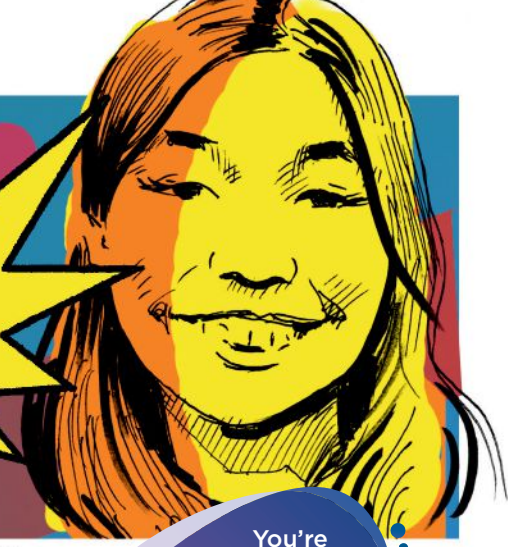
“MY NEXT STEP IS THE GM TITLE.”



PHOTO COURTESY OF SAINT LOUIS CHESS CAMPUS.

CHESS ADVENTURES

with
WGM CARISSA
YIP



When I was seven, I played my first rated game at a local chess club. At this point, I'd only been playing chess for a few months against my dad.



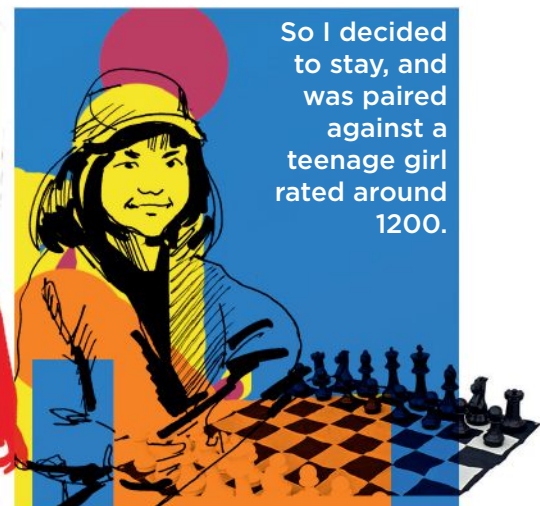
The tournament organizer made me feel doubtful. He thought I would be unable to deal with a loss.



The warning almost convinced me that we should just go ...



... but my dad convinced me to stay.



So I decided to stay, and was paired against a teenage girl rated around 1200.



And somehow, I managed to win! The only thing I remember from the game was promoting my pawn in the endgame, and reaching for my queen. Afterwards, my dad took me out for ice cream to celebrate.



It's crazy to think if I had left, I might not be here today. Now I realize how important it is to be unafraid of losing.

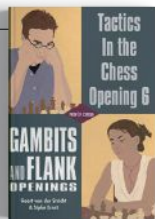
Don't let fear stop you from doing what you love.



888.51.CHESS (512.4377)



www.USCFSales.com



TACTICS IN THE CHESS OPENING - VOLUME 6

by Sipke Ernst

B0006TITO - \$10.00 ~~\$21.95~~

This book covers all the tactical themes and typical traps in the main lines of the English, the Dutch and the Reti, as well as a couple of interesting gambits. They are explained in more than 200 carefully selected and annotated short games. "Tactics in the Chess Opening" teaches you how to recognize opportunities to attack early in the game and how to avoid standard pitfalls in the opening. It will make the adventurous player win more games.

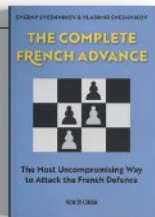


SECRETS OF OPENING SURPRISES - VOLUME 13

by Various Authors

B0013SOS - \$10.00 ~~\$21.95~~

Secrets of Opening Surprises brings you a wide variety of unusual opening ideas. They may seem outrageous at first sight, but have proven to be perfectly playable. An SOS deviates very early from the regular lines in a mainstream opening, usually even before move six! That is why it is so easy to actually bring the variation on the board. You will baffle your opponent without having studied large quantities of stuffy theory.

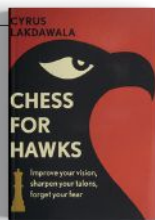


THE COMPLETE FRENCH ADVANCE

by Evgeny Sveshnikov & Vladimir Sveshnikov

B0189NIC - \$10.00 ~~\$32.95~~

The Advance Variation is the most ambitious way to meet the solid French Defence. The closed nature of the positions arising from the Advance Variation leads to strategic play where positional understanding is much more important than studying the latest theoretical developments. White can use the advantage in space by building up an attack against the Black king.

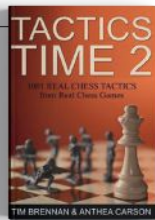


CHESS FOR HAWKS

by Cyrus Lakdawala

B0186NIC - \$10.00 ~~\$24.95~~

Are you a dove or a hawk? Is your natural instinct at the chessboard for caution and strategy or do you crave adventure and confrontation? This question may be more important than you think because being aware of your personal style (and that of your opponent) is essential in your development as a chess player. This book is a fascinating and often hilarious story of Lakdawala's struggle to release his inner hawk. It is also a highly instructional guide that will make you think about questions you may not have thought about before.



TACTICS TIME 2

by Tim Brennan and Anthea Carson

B0150NIC - \$10.00 ~~\$16.95~~

Thousands of beginners and casual chess players have improved by studying the tactical examples in Tactics Time 1. The authors are now back with more real chess tactics from the games of players like you. This book introduces 1001 fresh and instructive positions that Tim and Anthea have assembled from real amateur chess games. Forget about grandmaster and master games and just spend your time and energy on relatively simple patterns like a knight fork, an overloaded piece or a weak back rank.

THE EXTREME CARO-KANN

by Alexey Bezgodov

B0140NIC - \$10.00 ~~\$28.95~~

The Caro-Kann Defence has become one of the most important and popular replies to 1.e4. Its 'solid' and 'drawish' reputation no longer applies in modern chess. Grandmaster Alexey Bezgodov advocates a very early deviation, the annoying and little-explored 3.f3! ? The move 3.f3! ? considerably complicates life for Caro-Kann players, as it makes Black's main problem bigger: the development of his bishop on c8.

THE ART OF THE TARRASCH DEFENCE

by Alexey Bezgodov

B0201NIC - \$10.00 ~~\$29.95~~

The Tarrasch Defence is one of the most ambitious ways to play against 1.d4. Black immediately fights for the centre, gets a lot of space and develops his pieces without many problems. Great fighters like Boris Spassky, Paul Keres and Garry Kasparov have played the Tarrasch Defence. This is a must-have book for fearless players who wish to surprise their opponents and who like to play aggressively with Black -- but only with a reliable opening with a sound positional foundation

DISMANTLING THE SICILIAN

by Jesus de la Villa & Max Illingworth

B0194NIC - \$10.00 ~~\$29.95~~

The Sicilian Defence is the most widely played chess opening, both at club level as well as among top grandmasters. It has been difficult for White to obtain any advantage in Sicilian sidelines, and this book therefore presents a complete repertoire for White in the most widely played main lines: the Open Sicilians with 1.e4 c5 2.Nf3. All of Black's possible answers are covered.

FABIANO CARUANA

by Alexander Kalinin

B0206NIC - \$10.00 ~~\$19.95~~

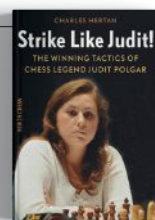
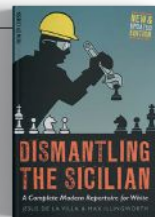
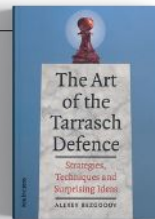
At 14 years, 11 months and 20 days, Fabiano Caruana became the youngest Grandmaster in the history of the United States and embarked on a glorious career. Alexander Kalinin chronicles the amazing story of the first American Challenger since Bobby Fischer and follows his development from a pure attacker to a universal, all-round star. This selection of Caruana's best and most instructive games, arranged in thematic chapters, is a perfect guide for amateur chess players as there is plenty to be learned about all the skills that really matter.

STRIKE LIKE JUDIT!

by Charles Hertan

B0202NIC - \$10.00 ~~\$24.95~~

Judit Polgar is the strongest female chess player of all time. From an early age, the Hungarian prodigy baffled the world with her sensational triumphs. At the age of 15 she beat Bobby Fischer's record to become the youngest grandmaster in history. Award-winning author Charles Hertan has revisited the gold mine of Judit Polgar's games and selected her best and most instructive tactics. They are arranged by theme and presented with helpful explanations and lots of practical advice.



**Clearance Books - All Sales Final
No Additional Discounts Apply**

**Free Ground Shipping On All Books, Software and DVDs at US Chess Sales
\$25.00 Minimum - Excludes Clearance, Shopworn and Items Otherwise Marked**