

CHESSLIFE

October 2021 | USChess.org

Kids

Also in this
issue:
The 2021
Haring, Barber,
and Rockefeller
Invitationals

Abhimanyu Mishra:

**WORLD'S
YOUNGEST
GRANDMASTER**

 **US CHESS**

SHOP

Q BOUTIQUE

at the WORLD CHESS HALL OF FAME



THE AWARD-WINNING GIFT STORE AT THE WORLD CHESS HALL OF FAME—FOR KIDS GIFTS, CHESS SETS, APPAREL, AND MORE!

qboutiquestl.com @QBoutiqueSTL #QBoutiqueSTL



US Chess Executive Director: Carol Meyer
carol.meyer@uschess.org

Senior Director of Strategic
Communication: Daniel Lucas
dllucas@uschess.org

Chess Life Kids Editor: Melinda Matthews
mmatthews@uschess.org

Creative Content Coordinator:
Natasha Roberts
nroberts@uschess.org

Character Designer and Illustrator:
Chandler Ellison
www.chandlerellison.com

Technical Editor: Ron Burnett
rburnett@uschess.org

Tournament Life:
mmatthews@uschess.org

Chess Life KIDS (USPS 023-567, ISSN:
1932-5894) is published in February, April,
June, August, October, and December of
every year by US Chess, 137 Obrien Drive,
Crossville, Tennessee 38555. Periodical
postage paid at Crossville, Tennessee, and
additional mailing offices.

CHANGE OF ADDRESS: Be sure to notify
us at once of any change of address.
Please include your old address and your
new address, along with your US Chess
I.D. number.

POSTMASTER: Send address changes
to US Chess, PO Box 3967, Crossville,
Tennessee 38557.

Chess Life Kids provides a foundational
interest in chess for beginning level
pre-teens through the use of games,
instruction, and human-interest stories.
It is intended to be useful for Youth
members, parents, and coaches. If
interested in writing for this publication,
send a well-crafted query with writing
samples to the editor at mmatthews@uschess.org.

Teachers may photocopy instructional
articles for classroom use, but
republication or widespread copying
without the written consent of US Chess
is forbidden.



CONTENTS

04 | CHESS STORIES ACROSS THE BOARD

By Al Lawrence

07 | IT'S YOUR MOVE!

08 | AVOID THE TRAP!

By Bruce Pandolfini

10 | THE 2021 INVITATIONALS

By Al Lawrence

16 | YOU CAN DO IT!

By SIM Jon Edwards

17 | TOURNAMENT LIFE

19 | ANSWERS

20 | MY FIRST MOVE

This month: GM Abhimanyu Mishra

22 | CHESS ADVENTURES

This month: GM Abhimanyu Mishra

In this issue

We are bookending this issue with the story of Abhimanyu (“Abhi”) Mishra, the 12-year old prodigy who recently smashed the world record for youngest grandmaster. In Chess Stories, Al Lawrence looks at Abhi’s rise through the lens of some of his key games and positions, while Abhi himself tells his story in My First Move and Chess Adventures. Al Lawrence does double-duty this issue, filing a comprehensive report on the recently-concluded Rockefeller, Barber, and Haring invitational tournaments.

This month’s cover features the world’s youngest grandmaster, Abhimanyu Mishra. Cover photo by Rajiv Mundayat.

CHESS STORIES

ACROSS THE



BOARD

BY AL LAWRENCE

Celebrating *Chess Life Kids* stories from across the country.



Abhi Mishra, Youngest Ever Chess Grandmaster

Some friends call him “Abhi.” But his father named him Abhimanyu, after a brave warrior from Hindi-Indian legends who was finally overpowered only because he was alone fighting so many. At the chessboard, the modern Abhimanyu has to face just one opponent at a time. But like his namesake, he’s very good at winning.

Abhi began learning chess at only 2½. By age five, he began playing in official US Chess tournaments. In 2016, when he was just 7½, he lifted his rating above 2000, becoming the youngest player in history to become a US Chess expert. That broke a record set by now-GM Awonder Liang (see page 14 for more on Awonder).

Sometimes Abhi could play near his home in New Jersey. But often he had to travel to get the competition required to reach the next level. Let’s look back on some “game snapshots” as Abhi climbed the chess ladder.

Here’s one of his favorites, played when he was an expert on his way to master.

PHOTOS: THIS PAGE, IREDIA EKHTATO; FACING PAGE, ERIC ROSEN

MASTER ATTACK

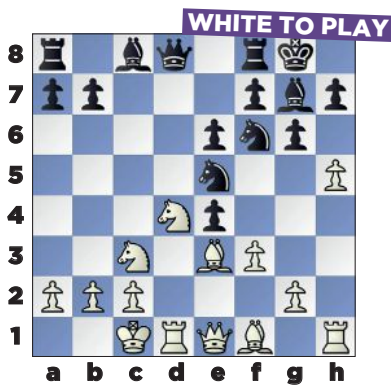
Abhimanyu Mishra (1774)

A. R. Ilamparthi (1492)

World Cadet Championship (5.1),

Pocos de Caldas, Brazil,

08.25.2017



After 12. ... d5xe4

13. Nxe6!

Abhi uncovers an attack on the Black queen. After 13. ... Bxe6 14. Rxd8, Black fought on but never recovered.

In 2018, Abhi broke the next record, making US Chess national master (NM) at just nine years and two months old, beating the old record by more than a month! That got the attention of American chess players, who began following Abhi's quest for the GM title! The very next year, Abhi gained the attention of the whole chess world, as the New Jersey schoolkid became the youngest international master (IM) in world history, breaking the record by 15 days. He was only 10 years, seven months, and three days old. This was a key game in getting the IM title, against an opponent who was already an IM:

IM READY

Abhimanyu Mishra (2304)

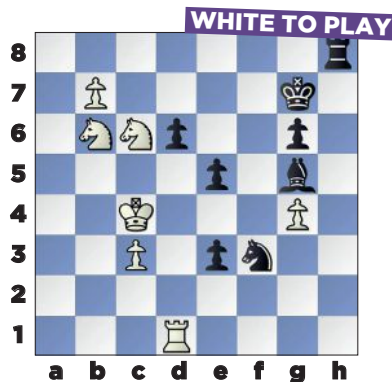
IM Andrew Hong (2434)

Chess Max Academy, NYC

05.08.2019

(see diagram top of next column)

Both sides share a lot of the same ideas. Both have a pawn pushing toward its queening square. Both have a knight reinforcing the



After 55. ... e4-e3

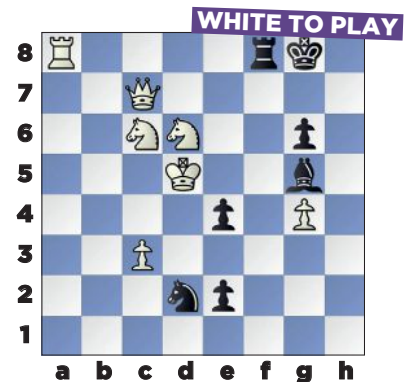
queening square. And both sides have a rook ready to capture a new queen if necessary. But Abhi uses a technique you should know.

56. Nc8!

White blocks the black rook from the queening square!

56. ... e2 57. Ra1 Rf8

Abhi continued with 58. b8=Q and had an overpowering material advantage. A few moves later, Abhi gives the important game a swift and surprising finish. Can you find the mate in two in the next diagram?



After 63. ... Rf1-Rf8

64. Qf7+!

Taking lethal advantage of the pin on the black rook. **Black resigned** because 64. ... Kh8 65. Rxf8 is mate.

Would Abhi go on to become the youngest grandmaster — the highest title in chess? Chess players everywhere began to count the days Abhi had left to set the new milestone, held by world chess championship challenger, Russian GM Sergey Karjakin, for nearly 20 years.

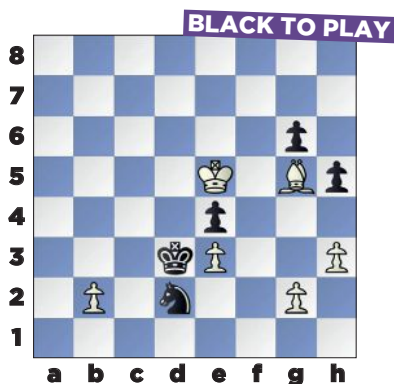
Abhi had seen Karjakin up close at the 2016 World Chess Championship

in New York City, when the youngster was just seven. He has vivid memories. “It was motivating,” Abhi said, “to see the best players in the world and how intensely they focused for six or seven hours!”

To break the record for youngest grandmaster, Abhi had to show chess grit and imagination. He had to come back from a very bad position to win against a strong grandmaster from India, Leon Mendonca.

GM MOVES

GM Leon Mendonca (2549)
IM Abhimanyu Mishra (2485)
Vezerkepzo GM Mix (9.1),
Budapest, Hungary, 06.30.2021



After 48. Kd6-e5

Now this position should be a draw. White is a pawn up, but he just moved his king to a square that lets Mishra make a

tricky move. “I was hoping for that move!” Abhi said.

48. ... Nf3!+ 49. gxf3??

White falls into Abhi’s tempting trap. Even though White is now a piece up in an endgame, he should have resisted capturing the “Trojan Knight” and played 49. Kf4 to keep a draw: 49. ...

Nxg5 50. Kxg5 Kxe3 51. b4 Kf2 52. b5 e3 53. b6 e2 54. b7, when both sides queen their pawns.

49. ... exf3 50. Bh4

White plays the only move to stop Abhi’s advanced pawn from queening. Is Abhi out of ideas?

50. ... g5!! 51. Bf2

The bishop has to stay on the e1-h4 diagonal to guard the queening square. If 51. Bg3, then 51. ... h4!.

51. ... Ke2 52. b4 Kxf2 53. b5 Kxe3 54. b7 f1=Q, White resigned.

Even if White queens his own pawn, Abhi just plays ... Qf4+ and captures it for free.

So Abhi became a GM with more than two months to spare. But he wasn’t done being “the youngest.” Recently, he was invited to the World Cup in Sochi, Russia — where 128 top players from around the world fought for a chance to play for the World Championship! — as perhaps the youngest “wild card” ever to participate in the event. Abhi loves to travel the world. Even though nearly everyone he plays now is a grownup, Abhi finds friends wherever he goes. “People are kind everywhere!” he said. Will he someday be the youngest-ever World Champion? He has about 10 years to beat former World Champion Garry Kasparov’s record, who became champ at 22.

The author interviewed Abhi way back in 2016 (see sidebar), before he’d even made expert. “I want to be the youngest grandmaster and one day become world champion.” Abhi has made good on the first goal. Will he succeed at the second?

This year, Abhi is one of the US Chess Trust Samford Fellows, receiving some important support in his quest to reach the very top of the chess world. But the better he gets, the more it costs to take lessons from the world’s best coaches. Please go to www.mishraabhimanyu.com to follow Abhi and help in his next steps up the chess ladder.

Reprinted from September 2016 *Chess Life*

FACES ACROSS THE BOARD

BY AL LAWRENCE



ABHIMANYU MISHRA

ENGLISHTOWN, NEW JERSEY



▶ **ABHI’S CHESS GOAL SOUNDS grandiose** — but his achievements so far make you think he’s got a shot. “I want to be the youngest grandmaster and one day become world champion.” With a rating well over 1900, he tops the US Chess top list for seven year-olds by nearly 150 points. Opting to play “up” in the Under-eight section of the National Online Championship, he won first place. He’s also earned the right to represent the USA this October in the World Youth Championships in Batumi, Georgia.

GMs Magesh Panchanathan and Arun Prasad share tips with Abhi at the Chess Kings and Queens Academy. “It is an awesome place with lots of learning and fun.” Recently, Mishra fought two marathon scraps with FIDE masters. “I was down by a pawn in both rook-and-pawn endgames and managed to force a draw,” he said. “Every game I play, I literally feel like a king and feel the thrill of a live battle.”



IT'S YOUR MOVE!

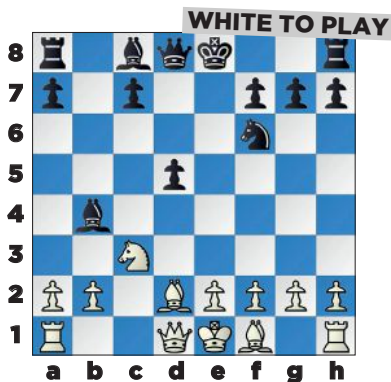


USA brought home the bling at the 2021 North American Youth Championships, held from August 16-21 in Chicago. Several players won FIDE titles in addition to medaling. Congratulations to newly-minted IM Dimitar Mardov; WIM Alice Lee; FMs Erick Zhao, Arthur Xu, and Tani Adewumi; WFMs Kelsey Liu, Zoey Tang, and Omya Vidarthi; and all of the other USA winners! We'll have a complete report in the December issue of *Chess Life Kids*, but until then, Chess Life/CLO editor John Hartmann has created a few problems to whet your appetite. The problems generally get tougher as you progress, but even the "easiest" may be tricky for new players. Look to the game title for a hint! Solutions on page 19.

THE 2021 NORTH AMERICAN YOUTH CHAMPIONSHIPS

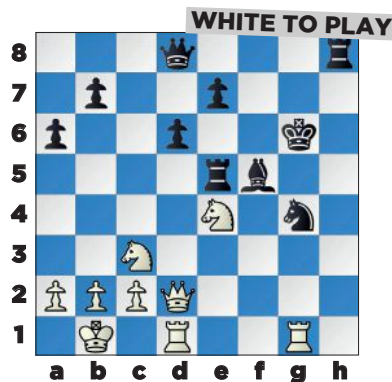
DOUBLE ATTACK (EASY)

Ethan Huang-Cao (Unr.)
Ari Shah (Unr.)
North American Youth (9),
08.21.2021



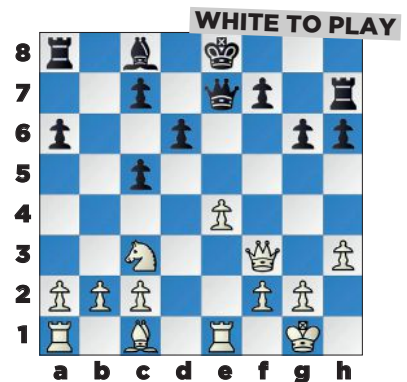
DOUBLE ATTACK (MEDIUM)

Nathan Yan (1417)
Alexander J. Wang (1497)
North American Youth (6),
08.19.2021



DOUBLE ATTACK (MEDIUM)

Ethan Jiao (Unr.)
Victor Garcia (Unr.)
North American Youth (8),
08.20.2021



REMEMBERING GLENN PETERSEN

You can thank Glenn Petersen for the magazine you're holding in your hands — he was the first editor of *Chess Life for Kids* (now named *Chess Life Kids*). Glenn also wore many other hats during his long tenure with US Chess: Assistant Director, *Chess Life* Editor, Director of Publications, Publications Consultant, and Scholastic Editor. Glenn died on August 16, 2021, at age 72. *Chess Life Kids* offers condolences to his family and friends, and we thank Glenn for his lasting contributions to youth chess.

PHOTO: US CHESS ARCHIVES

Ziggurat3DChess.com

Available on Steam and Oculus Rift



Queen's Gambit or Wizard's Gambit?



AVOID THE by Bruce Pandolfini TRAP!

AWKWARD MINOR PIECES

This column teaches you openings by helping you learn to avoid opening traps. Set up your board and pieces and play through the game below. Have paper and pen by your side. When you reach a question, write down your answer. After you are done with all 10 questions, check your answers at the end of this column. Total your points and see how you did against the scoring scale at the end!

You don't have to be Magnus Carlsen to know that the queen is the most powerful piece. Right from the opening it's capable of issuing multiple threats and thereby winning material. To be sure, the queen is so gifted that it's easy to misuse it and overuse it. That's one reason newcomers are advised not to develop it too early. Instead they are encouraged to develop minor pieces first. Get out your knights and bishops fairly quickly and you stake out territory, which makes it safer for the queen's appearance. But you don't want to move out bishops and knights carelessly. If they don't work in harmony, they could wind up stumbling over and into each other. In such cases, the queen could clean up. Such is the situation we are about to see, with the queen suddenly entering a game with a winning double attack.

1. c4

The English Opening. It gets its name from the English player Howard Staunton, who played it a number of times in the 1840s and 1850s.

Q1) Which square is White focusing on by playing 1. c4? (10 points)

1. ... e5

Black clears the a3-f8 diagonal so the king-bishop can come out. This move also attacks a dark square in the center, namely d4. So far, on the surface, White is playing a light-square game and Black a dark-square game.

Q2) Colors reversed, what opening does this look like? (10 points)

2. Nc3

White develops the queen-knight. This continues the assault against the light squares in the center (d5 and e4).

Q3) If 2. Nf3, how can the e5-pawn be defended actively? (10 points)

2. ... Nf6

Black develops the king-knight. This offers a way to contest White's fight for the light squares, especially by playing a subsequent ... d7-d5.

3. g3

White prepares to fianchetto the king-bishop, intending to position it at g2.

Q4) Is 3. g3 in line with White's initial plan? (10 points)

3. ... Nc6

Black has both knights out and well placed. White's edge is very slight.

4. Bg2

White completes the fianchetto. Once a move like g2-g3 is played,

the squares f3 and h3 are weakened. Posting the light-square bishop at g2 tries to keep an eye on those weakened points.

Q5) How is 4. Bg2 consistent with White's early plan? (10 points)

4. ... Bb4

Black gets out another kingside piece, which makes possible kingside castling. The c3-knight is not really threatened, since it's protected by two pawns.

Q6) How does 4. ... Bb4 deal with White's light-square plan? (10 points)

5. Nd5

A typical stratagem. The b4-bishop was attacking the c3-knight. By moving to d5, the knight turns it around and attacks the bishop.

5. ... Nxd5

This exchange is okay, but it was not necessary, since the bishop was protected. If Black wanted to avoid trading away the bishop, it could have been kept on the board by moving it to safety.

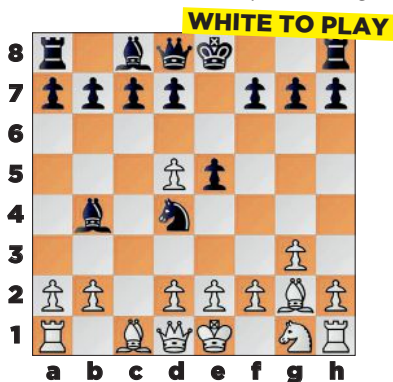
Q7) If not 5. ... Nxd5, where should the bishop have gone to? (10 points)

6. cxd5

White takes back and menaces the c6-knight. It must move somewhere.

6. ... Nd4

There's an old chess saying: Don't enter the lion's den if you can't get out.



Black loses a piece

Q8) Where should the black knight have gone to? (10 points)

7. e3

White's pawn attack doesn't give Black much choice. The d4-knight has to move.

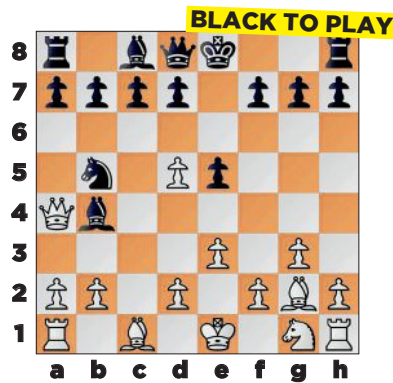
Q9) How does White continue after 7. ... Nf5? (10 points)

7. ... Nb5

This retreat is no better than 7. ... Nf5 (which, as seen in column three, is answered by 8. Qg4). The move 7. ... Nb5 loses a piece, but Black was going to lose a piece no matter what.

8. Qa4

A winning double attack. There is no way to save both the b4-bishop and the b5-knight. With no satisfactory way to answer White's all powerful queen, **Black resigned.**



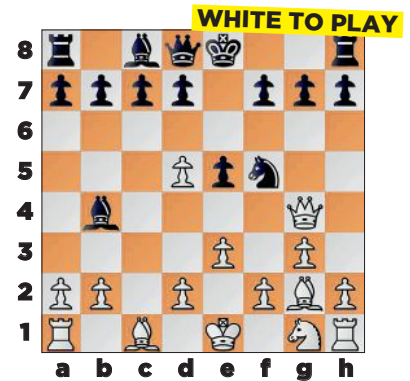
Black loses a piece

Q10) What was the last move Black could have avoided the trap? (10 points)

ILLUSTRATIVE GAME:

Jelmer Veltman vs. Maarten Etmans
Dieren 2007

1. c4 e5 2. g3 Nf6 3. Bg2 Nc6 4. Nc3 Bb4 5. Nd5 Nxd5 6. cxd5 Nd4 7. e3 Nf5 8. Qg4



FINAL POSITION IN THE ILLUSTRATIVE GAME

ANSWERS

A1) White attacks d5 and intends to play a light-square game.

A2) It looks like a Sicilian Defense in reverse.

A3) By advancing the pawn to e4, attacking the f3-knight.

A4) Yes it is. White is still hoping to play a light-square game.

A5) At g2, the bishop continues to fight for central light squares.

A6) It threatens to remove the knight to reduce the pressure on the light squares.

A7) The bishop should have retreated to c5.

A8) Black should have moved the knight either to e7 or b8.

A9) White's queen has a winning fork, 8. Qg4.

A10) On move 6, Black shouldn't have played ... Nd4. Better was 6. ... Ne7.

How Did You Score?

The score is based on the US Chess rating system and is intended only as a fun way to monitor your progress each issue as you Avoid The Trap!

100: 1800+

90: 1600

80: 1400

70: 1200

60 or lower: 1000

2021 INVITATIONALS

By Al Lawrence

ROCKEFELLER

HENRY DENG ROCKS THE ROCKEFELLER!

After four days and six rounds, Henry Deng finished at the top to win the \$5,000 scholarship — even though it was the first time he's competed in the National State Invitationals! Henry scored five points, winning four games and drawing two.

Two other players scored five. But Henry, according to "tiebreak" formulas, won the \$5,000 scholarship in this tournament that honors John D. Rockefeller V's grandfather.

Austin Tang, representing Oregon, and Sepehr Golsefidy, the champion from Southern California, join Henry as co-champions of the 2021 John D. Rockefeller III Tournament of National Elementary School State Champions. Henry was the champion representing Northern California. (California is the only state divided into two "states" by US Chess.)

CHECKMATE WITH ROOK AND PAWN!

Now a sixth-grader at Mission Valley Elementary, Henry's result boosted his rating over 2000, so now he's an expert. He's among the top 20 of all 11-year-olds in the U.S. In the fourth round, he was playing another highly rated Rockefeller competitor, Jasmine Su, the champion from Connecticut.

SICILIAN DEFENSE

Henry Deng (1993), N-CA
Jasmine Zhixin Su (1944), CT
2nd Annual John D. Rockefeller III National Tournament of Elementary School State Champions (4), Cherry Hill, NJ, 08.02.2021

(Comments by Deng, unless printed in italics.)

1. e4 c5 2. Nc3 Nc6 3. Nge2 Nf6 4. d4 cxd4 5. Nxd4 d6 6. Bg5 e6 7. Bb5 Bd7 8. Qd3 Be7 9. O-O-O a6 10. Bxc6 bxc6 11. Nb3

The threat is 12. Bxf6, which ruins Black's pawn structure.

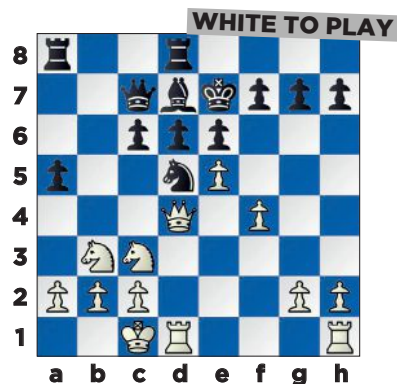
11. ... Qc7 12. f4 a5 13. e5!

Black hasn't castled yet, so it's time to open up lines!

13. ... Nd5

Worse is 13. ... dxe5 14. fxe5 Qxe5? 15. Bxf6!, removing the defender of the bishop on d7, and Black loses a piece.

14. Bxe7 Kxe7 15. Qd4 Rhd8?



16. Ne4!

Wins a pawn.

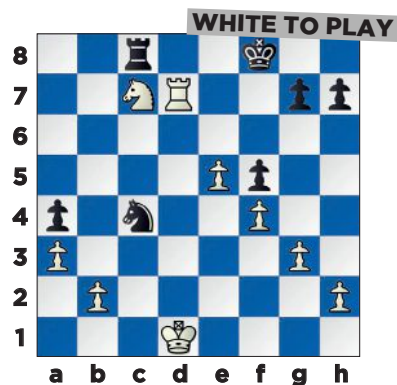
16. ... Qb6

If 16. ... dxe5??, White wins Black's queen with 17. Qc5+ Ke8 18. Nd6+ Kf8 19. Nb5+!

17. Qxb6 Nxb6 18. Nxd6 Nd5 19. a3 f5 20. g3 a4 21. Nc5 Be8 22. Nxe8 Rxe8 23. c4 Nb6 24. Rd6

Now the rook gets in, and White is close to winning.

24. ... Kf7 25. Rxc6 Nxc4 26. Rd1 Ra7 27. Nxe6 Na5 28. Rc7+ Rxc7+ 29. Nxc7 Rc8 30. Rd7+ Kf8 31. Kd1 Nc4



After 31. ... Nc4

Jasmine is threatening to capture Henry's pawn on b2 with check,

SPONSORS

Thank you to all the U.S. Open Invitationals sponsors (listed in alphabetical order):

Anonymous
Dewain Barber
Internet Chess Club (ICC)
John D. Rockefeller V
Richard and Barbara Schiffrin
US Chess
US Chess: The John T. Irwin Fund

US Chess:
The John D. Rockefeller III Fund
US Chess: The Sunil Weeramantry Fund
US Chess Trust
US Chess Trust:
The Dewain Barber Fund

reducing his material advantage to just one pawn. But Henry knows that all pawns are not equal. He has a passed pawn that threatens to become a queen!

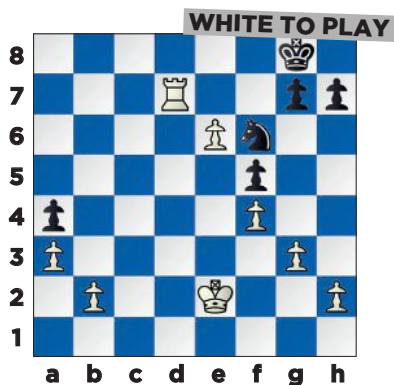
32. e6!

Even though Jasmine makes the good defensive tries, Henry plays the very best moves, leaving her no chance. Jasmine can't take time to capture the pawn on b2, because Henry's pawn would stroll right onto e8, making a queen.

32. ... Rxc7 33. Rxc7 Ne3+ 34. Ke2 Nd5 (threatening the rook on c7.)

Jasmine captures Henry's knight, since it protects the queening square. She gives up a rook for a knight — not usually a good trade. But it's better than letting Henry create a queen. She then attacks Henry's rook on c7. Like a computer, Henry continues to make the strongest moves possible!

35. Rf7+ Kg8 36. Rd7! (attacking Black's knight on d5) **36. ... Nf6**



Now Henry finishes the game by forcing mate in two moves! Do you see it?

THE TOURNAMENTS OF MASKED CHAMPIONS!

Every summer, before most schools start, US Chess holds the National State Invitationals. All the players are champions selected to represent their states. So each of the events is really a “Tournament of Champions.”

Last year, the tournaments had to be held online because of the danger of COVID-19. This year, the players could play in person. But everyone had to wear a mask to keep safe.

There are six different events, all held at the same time in the same huge room. Four of the events are for junior players only. These four go on for six rounds (games) over four days. Each event offers a college scholarship of \$5,000 to the first-place winner!

- The GM Arnold Denker Tournament of High School State Champions (for grades 9-12)
- The Dewain Barber Tournament of Middle School State Champions (for grades 6-8)
- The WIM Ruth Haring Tournament of Girls State Champions (for girls, K-12)
- The John D. Rockefeller III Tournament of Elementary School State Champions (for grades K-5)

Besides the college scholarship, the first-place finisher from each of these four tournaments is invited, if otherwise qualified, to represent the USA at the World Youth or World Cadet Championships!

The other two National State Invitationals aren't separated by grade levels. The Irwin Tournament of Senior State Champions is for adults who are at least 50 years old. Like the other events, each player is selected by a state as its champion. This year, IM (International Master) Igor Khmelnitsky of Pennsylvania led all 40 senior champions by scoring 5½ points.

The remaining National Invitational Championship is a big five-minute chess championship! All the champions from all of the National State Invitationals can play in the FM Sunil Weeramantry Blitz Tournament of State Champions, which was won by GM Awonder Liang.

You should check to see how your state selects its representatives. Maybe you could play in a “Tournament of Champions” next summer!

HENRY **DENG**

ROCKEFELLER
CO-CHAMPION
\$5,000 SCHOLARSHIP

N. CALIFORNIA

RATING: 1993

AUSTIN **TANG**

ROCKEFELLER
CO-CHAMPION
\$3,000 SCHOLARSHIP

OREGON

RATING: 1852

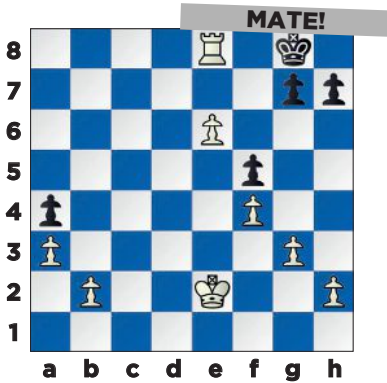
SEPEHR **GOLSEFIDY**

ROCKEFELLER
CO-CHAMPION
\$2,000 SCHOLARSHIP

S. CALIFORNIA

RATING: 1928

37. Rd8+ Ne8 38. Rxe8 mate



Jasmine finished just one-half point out of first place, so she won a \$125 stipend to help with her travel expense.

MAGIC AND CHESS

Before the third round, the contestants were treated to a magic show. “It was fun,” Rockefeller co-champ Tang said. “The magician taught us how to teleport a rubber band.” Tang then showed us a bit of chessboard magic of his own. His opponent would have liked to teleport his own bishop “out of jail”!

QUEEN'S GAMBIT ACCEPTED (BY TRANSPOSITION FROM THE SICILIAN DEFENSE) (D26)

Siddarth Kunapuli (1553), OH
Austin Tang (1852), OR
2nd Annual John D. Rockefeller III National Tournament of Elementary School State Champions (3), Cherry Hill, NJ, 08.01.2021



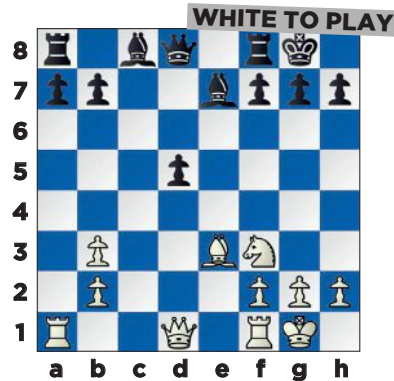
1. e4 c5 2. c3 d5 3. exd5 Qxd5 4. d4 Nf6 5. Nf3 e6 6. Be3 cxd4 7. cxd4 Nc6 8. Nc3 Qd8 9. Bc4 Be7 10. O-O O-O 11. d5?!

Tang suggests 11. Qe2 Nb4. Another good move, 11. a3, gives White’s bishop on c4 a safe retreat and prevents a future ... Nc6-b4 by Black.

11. ... Na5!

“He probably missed this.” ~Tang. His accurate move removes one of the needed guards of the pawn just pushed to d5.

12. Bb3 Nxb3 13. axb3 Nxd5 14. Nxd5 exd5



White has lost a pawn and would like to even things up. Siddarth sees that Black’s pawn on a7 is double attacked by his rook and bishop. Should he take it?

15. Rxa7!? Rxa7 16. Bxa7 b6!

Tang puts the white bishop in jail! “The bishop on a7 is hard to get out!” ~Tang

17. Qd3?

A bit better is 17. Qe2, but it still leaves White’s bishop out of play. If needed, Black can play ... Be7-d6-c7, staying active while reinforcing the prison door on b6!

17. ... Qc7 18. Ra1 Be6 19. Qa6 Ra8

White’s pieces are tied up protecting his bishop.

20. Nd4 Bc8 21. Qa4 Bd7 22. Qa6 Bf6 23. Ne2 Bxb2 24. Ra2 Bf6 25. h3 d4!

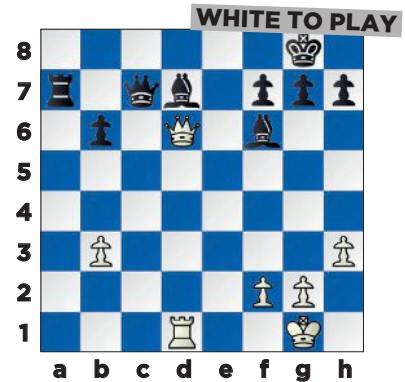
“The pawn is unstoppable.” ~Tang

26. Qa3 d3 27. Nc1 d2 28. Rxd2

White has to leave the protection of his trapped bishop to stop White’s

dangerous passed pawn. Now he loses two pieces and the game.

28. ... Rxa7 29. Qd6 Qxc1+ 30. Rd1 Qc7, White resigned.



BARBER

VIDYARTHI WINS CLEAR FIRST AT THE BARBER

Vyom Vidyarthi, a national master, allowed no co-champions, winning the Dewain Barber National Tournament of Middle School State Champions and taking home the \$5,000 college scholarship. Another champion from “NorCal,” Vyom won five games and drew one, with no losses.

JUMPING INTO FIRST PLACE!

In round four, Vyom played with a lot of imagination and energy against a top competitor, a champion from Minnesota. But Vyom kept a sharp eye out for his own king’s safety: See move 40. g4!. “With this win, I jumped into a tie for first.” His play this round also won Vyom the “Best Game” prize.

RETI OPENING (A06)

Vyom Vidyarthi (2284), N-CA
Troy Cavanah (2168), MN
11th Annual Dewain Barber National Tournament of Middle School State Champions (4), Cherry Hill, NJ, 08.02.2021 (Comments by Vidyarthi)

YOUNG NORTHERN CALIFORNIA CHESS PLAYERS DOMINATE!

“Here we come!” Northern California champions put the rest of American chess on notice. “NorCal” champions departed New Jersey with three of the four

youth championships. Eleven-year-old Henry Deng of Fremont won the Rockefeller. Fourteen-year-old Vyom Vidyarthi of Campbell led the Barber. And 14-year-old Ruiyang Yan of Mountain View won the Haring. All three have their eyes on the grandmaster title. Will most of America’s top players soon hail from the San Francisco Bay area?

There was only one exception to the Northern California sweep: GM

Awonder Liang, 19, of Wisconsin. He’s been a grandmaster since he was 14. This year, he won both the Weeramantry Blitz and the Denker.

The Weeramantry was held only once before, but online. The Denker, first organized in 1985, is the oldest of the National State Championships. Dewain Barber, organizer of the Denker and sponsor of the Barber, tells us that 18 Denker players have gone on to become grandmasters!

1. Nf3 d5 2. e3 Nf6 3. c4 e6 4. b3 Nbd7 5. Bb2 c6 6. Qc2 Bd6 7. Nc3

Until here, both of us are playing theory in a position that has been played over 1,000 times.

7. ... e5 8. cxd5 cxd5? (8. ... Nxd5!) 9. Nb5 Bb8 10. Rc1

Black has no good way to deal with Nb5-c7+ while saving his bishop on c8.

10. ... O-O 11. Nc7 Bxc7 12. Qxc7 Qxc7 13. Rxc7 Ne8 14. Rc2 f6 15. Bb5 Rf7 16. O-O Nd6 17. Be2 Nb6

It may seem as though my opponent has escaped the worst and may be able to successfully develop his position. However, with my next move 18. d4, I force the center closed so that I can use my advantage on the c-file.

18. d4 e4 19. Nd2 Bd7 20. Rfc1 Bc6 21. a4 a6

Black is trying to claim a fortress and attempting to lock down the only open file. If it weren’t for my next sacrifice on c6, my opponent very well may have been able to successfully score a half point.

22. Rxc6 bxc6 23. Rxc6 Ndc8 24. a5 Nd7 25. Ba3

Although I am currently down a piece and a pawn for a rook, the a6-pawn will fall shortly, and my minor pieces will begin to coordinate as they dominate the black knights.

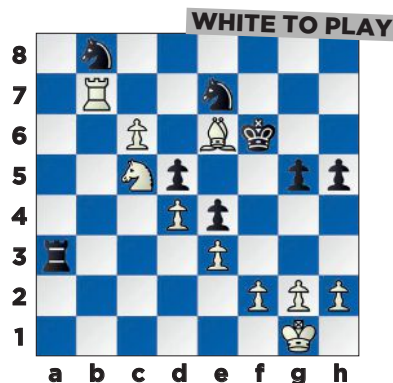
25. ... Na7 26. Rxa6 Nb8 27. Rb6 Nac6 28. b4 Rc7 29. Bg4 Kf7 30. Nb3 h5

A last-ditch effort to remove my bishop from the h3–c8 diagonal. I simply ignore the pawn with 31. Bh3 and continued my idea of Nb3-c5 and Bg4-e6+.

31. Bh3 f5 32. Bxf5 g6 33. Bh3 g5 34. Bf5 Ne7 35. Be6+ Kg7 36. Nc5 Rc6 37. Rb7 Kf6

At this point, I decide that it is time to cash in and simply claim a two-pawn advantage. With my next move 38. b5, I trade down a bunch of pieces and end up in a completely winning endgame.

38. b5 Rxa5 39. bxc6 Rxa3



40. g4!

Importantly, I stop the threat of back-rank checkmate and end up with a two-pawn advantage. From here, I comfortably converted the full point to put myself at 3½/4 going into the final two rounds.

40. ... Nbxc6 41. gxh5 Rc3 42. Bd7 Na5 43. Rb6+ Kg7 44. h6+ Kh7 45. Rf6 Nc4 46. Rf7+ Kxh6 47. Rxe7 Rc1+ 48. Kg2 Nd2 49. Bf5 g4 50. Ne6, Black resigned.

HARING YAN WINS THE HARING

Ruiyang Yan, the champ representing Northern California, won the \$5,000 college championship at the WIM Ruth Haring National Tournament of Girls State Champions. Ruiyang’s US Chess rating is over 2200 and she is the number one rated 14-year-old girl in the USA. In fact, she was the top-rated contender in the Haring, even though the tournament allows any U.S. girl in grades K-12 to play. Like Vyom, she’s a US Chess national master and is also a FIDE woman’s candidate master. She finished in clear second in the 2021 U.S. Girls’ Junior Championship as well.

PIRC DEFENSE (B06)

Ruiyang Yan (2245), N-CA
Aria Hoesley (2077), IL
9th Annual WIM Ruth Haring National Tournament of Girls State Champions (3), Cherry Hill, NJ, 08.01.2021
(Comments by Yan)

This is the first time I have played in the WIM Ruth Haring invitational. The tournament was magnificently held, and it greatly exceeded my expectations. I would like to thank all the organizers and sponsors for contributing to this!

1. e4 g6 2. d4 Bg7 3. Nf3

I don't usually play this line, but under the recommendation of my coach, I decided to give this line a go. Another line is 3. Nc3, with the idea to go Bc1-e3, Qd1-d2, 0-0-0, and attack on the kingside.

3. ... d6 4. Bc4 Nf6 5. Qe2 O-O 6. O-O Bg4

I was expecting 6. ... c6. Black's main idea here, to go ... Qd8-c7, ... Nb8-d7, and ... e7-e5. In some cases, Black can have some ... d6-d5 ideas.

7. Rd1 c6 8. Bb3 Qc7 9. h3 Bxf3 10. Qxf3 Nbd7 11. Nc3 h6 12. Be3 e5 13. dxe5 dxe5 14. a4 a5 15. Rd2 Rad8 16. Rad1 b6 17. Bc4 Kh7 18. h4!?

My idea here was to go Qf3-h3 and put pressure on the d7-knight. My friend later suggested to me another plan for White: g2-g4-g5.

18. ... Nc5

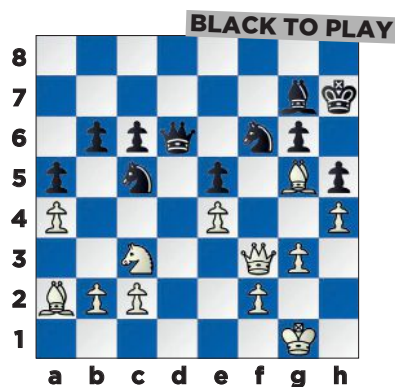
Although this just gives up a pawn, there isn't really anything else Black can do. For example, 18. ... Rde8 19. Rd6!, and none of Black's pieces can move around easily.

19. Rxd8 Rxd8 20. Rxd8 Qxd8 21. Bxf7 Qe7 22. Ba2 h5 23. Bg5 Qd6 24. g3

(see diagram top of next page)

At this point, I knew I was better, but I felt that if she just "held" on and didn't do anything drastic, I would still have a lot of work to do.

24. ... Ng4?



This, however, just allows my queen to go into the seventh rank, which is usually never a good thing to permit. For example, 24. ... Ncd7 would be just fine. I don't have an easy way to break through her defenses.

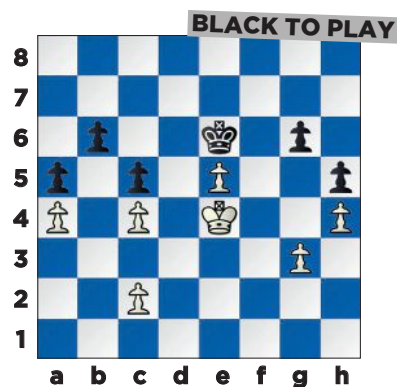
25. Qf7 Qf8 26. Qxf8 Bxf8 27. f3 Nh6 28. Kf1 Nb7 29. Be6 Bb4 30. Bd7 Bxc3 31. bxc3 Nf7 32. Be3

Here I have to be careful not to play 32. Bxc6, because 32. ... Nxc5 33. hxc5 Nc5 gives Black some counterplay.

32. ... c5 33. Be6 Kg7 34. c4 Kf6 35. Bd5 Nbd6 36. f4 Ke7 37. Ke2 Ne8 38. Bd2 Nf6 39. Bc3 Ng4 40. Bxf7 Kxf7 41. Bxe5 Nxe5 42. fxe5 Ke6 43. Kf3 Kxe5 44. Ke3 Ke6 45. Kf4 Kf6 46. e5+ Ke6 47. Ke4, Black resigned.

(see diagram top of next page)

Do you see why Black resigned? Black must move his king. Even against the best defense, White will push her way in. For example: 47. ... Ke7 48. Kd5 Kd7 49. e6+ Ke7 50. Ke5 Ke8 51. Kd6 Kd8 52.



e7+ Ke8 53. Ke6. Now Black's king has no legal moves. So Black has to push pawns that can be captured by White's pawns. White will soon queen a pawn with checkmate! Work this important endgame out on your own board.

GM AWONDER LIANG WINS DENKER AND WEERAMANTRY CHAMPIONSHIPS

GM Awonder Liang of Wisconsin won the 37th Annual GM Arnold Denker National Tournament of High School State Champions, contested by 48 players. The 19-year-old gave up only one draw, to FM Shunkai Peng of Oregon. Liang, who became a GM at only 14, also won the top section of the FM Sunil Weeramantry National Blitz Tournament of State Champions, named in honor of legendary coach FM Sunil Weeramantry, founder and director of the National Scholastic Chess Foundation.

QUEENSIDE VERSUS KINGSIDE

In the final round of the Denker, Liang was matched with another prodigy, IM Carissa Yip. At ten, Yip became the youngest female player ever to beat a grandmaster. The next year, she became a national master. Now 17, she has held the title of the youngest American in history to earn the title of International Master (*since broken by GM Abhimanyu Mishra —*



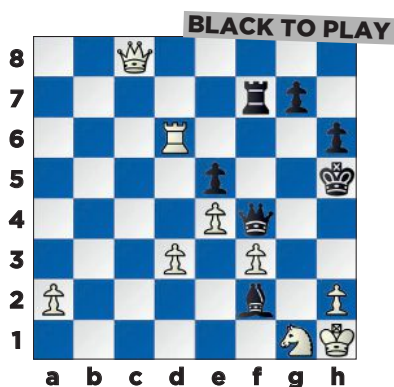
see pages 4 and 20). Yip had the black pieces but had to go all out to try to win in order to catch the tournament leader. The game soon became a tense duel involving each player dominating opposite sides of the board.

RUY LOPEZ, CLOSED (C84)

GM Awonder Liang (2674), WI
IM Carissa Yip (2506), MA
37th Annual GM Arnold Denker
National Tournament of High
School State Champions (6),
Cherry Hill, New Jersey, 08.03.2021

1. e4 e5 2. Nf3 Nc6 3. Bb5 a6 4.
Ba4 Nf6 5. O-O b5 6. Bb3 Bb7 7.
d3 Be7 8. c4 O-O 9. Nc3 bxc4 10.
Bxc4 d6 11. Be3 Na5 12. Bd5 c6
13. Bxf7+ Rxf7 14. b4 Bc8 15. bxa5
Bg4 16. Kh1 Nh5 17. Qb3 Bxf3 18.
gxf3 Qd7 19. Ne2 Raf8 20. Rab1
Bd8 21. Ng1 Bxa5 22. Qa4 Bc3 23.
Rfc1 Bd4 24. Qxc6 Qa7 25. Re1
Qe7 26. Qxa6 Nf4 27. Rec1 Qg5
28. Bxf4 Qxf4 29. Rc8 h6 30. Rbb8
Rxc8 31. Qxc8+ Kh7 32. Qg8+ Kg6
33. Qe8 Kh7 34. Qg8+ Kg6 35.
Rd8 Bxf2 36. Rxd6+ Kh5 37. Qc8

After 37 moves, the game is completely even. White has picked up some pawns with his queenside attack, but Black has aggressively placed her pieces against the white king.



Now Black could play 37. ... Bxg1, and after 38. Qg4+ Qxg4 39. fxc4+ Kxg4 40. Kxg1 Kf3, Black has enough mating threats to keep White from promoting his a-pawn — Black should draw but not win. That wouldn't help Yip, who needed to win to become the champion of champions.

37. ... Qg5!?

THE URSULA FOSTER AWARD

Ursula Foster's life shows us that someone can become a force for good — no matter how difficult their start in life.

Have you read about Anne Frank, the girl who hid from the Nazis in secret rooms behind a bookcase, writing in her famous diary? Ursula and Anne lived on the same street and went to the same school in Holland. Anne mentions Ursula in her diary.

Like Anne, Ursula and her family lived in the time of Nazi terror during World War II. She was a young girl who happened to grow up in Germany with her parents — and who just happened to be Jewish.

Even after the family fled Germany to Holland, Ursula's older brother, Ernst, was arrested by the Nazis. He never returned. Ursula's whole family had to hide. The hiding place was cramped. Ursula had to keep very quiet and was often afraid.

Her parents taught her to play chess to pass the time and occupy her mind. After 20 months, sometimes sleeping in the dirt underneath the house, she and her parents escaped to America.



Black threatens mate in one on g1. Now if 38. Qg4+, as in the line above, Black plays 38. ... Qxg4, and after 39. Qxg4+, plays 39. ... Kh4! with a big advantage! (She threatens ... Be3 and ... Rf1, for example.) But ...



When she grew up, Ursula gave her time to school children at Modesto, California. She gave talks about the Holocaust. She drove cancer patients to their treatments. She delivered books to shut-ins and read to underprivileged children.

Through the US Chess Trust, her sons Rick and Clifford Lester have established the Ursula Foster scholarship to keep alive her love of chess and her devotion to young people.

Every year, the top player age 15 and under in the Denker tournament, and the top player 13 and under from the Haring tournament each receive a \$500 Ursula Foster Award. At those same ages, Ursula Foster hid in fear from the Nazis.

This year's Ursula Foster awards went to Sandeep Sethuraman of Arizona for her performance in the Denker and Kelsey Liu of Massachusetts for her performance in the Haring.

Photos: Above, Ursula Foster during the Holocaust. Left, a young Ursula and her brother, Ernst, who never returned after the war.

38. Nh3!, Black resigned.

Black's queen is forced away from guarding the g4-square, where White threatens mate. It's the end of an exciting, last-minute fight for first place.



CAN DO IT!

BY SIM JON EDWARDS
10TH U.S. CORRESPONDENCE CHESS CHAMPION

Queens and knights work really well together in mating combinations. For example, here's a simple mate that works whether Black's king is on g8 or h8.



White would also be mating if the knight were instead on h6.

These mating patterns are worth remembering because they sometimes force your opponent to give up significant material to prevent the mates. Here are six positions. In some, White delivers this mate. In others, Black is forced to give up a rook or queen for the knight on e7. Armed with that useful information, I am sure that You Can Do It!

Solutions on page 19.

QUIZ 3

WHITE TO PLAY



QUIZ 4

WHITE TO PLAY



QUIZ 5

WHITE TO PLAY



QUIZ 1

WHITE TO PLAY



QUIZ 2

WHITE TO PLAY



QUIZ 6

WHITE TO PLAY



TOURNAMENT LIFE ANNOUNCEMENTS

The Executive Board authorizes a temporary change in the US Chess Grand Prix (GP) rules for the period March 4, 2020 through October 31, 2021 out of concern for the unforeseeable impacts the COVID-19 (Coronavirus) could have on participation in GP events. The change allows organizers with guaranteed prize funds to change the status of their prize fund without first seeking US Chess permission to make the change. Please refer to the Tournament Life Announcement section in *Chess Life* for more information.

Nationals

NATIONAL CHAMPIONSHIP EVENT • JUNIOR GRAND PRIX

2021 U.S. Blind Chess Championship OCTOBER 30-31, PENNSYLVANIA

4 SS, G/135 d0. Holiday Inn Express & Suites Pittsburgh Airport. **Hotel Address:** 5311 Campbells Run Road, Pittsburgh, PA 15205. **Hotel phone:** (412) 788-8400. **Hotel rate:** \$94 by 1 October. Free shuttle to/from airport. **EF:** \$1. **Reg.:** Onsite - Sat. 30 October: 9-9:45am or online at www.relyeatchess.com. **Rds.:** Sat. 10-4, Sun. 10-4. **Prize Fund:** \$1,400 GTD: 1st: \$400, 2nd: \$300, 3rd: \$200, 4th: \$100, \$100-Best player U1400, \$100- Class E (1000-1199), \$100-Under 1000, \$100- Up-set Prize. All meals included. **NOTE:** All players must be classified as Legally Blind and bring proof. You must also be a current member of US Chess for \$18 a year. You can join US Chess at the event! **Contact:** Nita Patel, td@relyeatchess.com. **Phone:** 603-716-3040. **Website:** <http://www.relyeatchess.com>.

NATIONAL CHAMPIONSHIP EVENT • JUNIOR GRAND PRIX

2021 National K-12 Grades Championships DECEMBER 3-5, FLORIDA

Format: 7SS, G/90 d5. 13 Sections. Play only in your grade section - No "playing up" allowed. December Rating Supplement will be used. **Site:** Rosen Shingle Creek, 9939 Bunkers Blvd, Orlando, FL 32819. Guest rooms can be booked, NLT 11/8/2021, by calling (407) 939-1000, mention "US Chess". **HR:** \$129 Single/Quad (fees and applicable taxes not included). **Byes:** Only one 1/2-point bye available, any round except Round 7, if requested prior to the start of Rd. 1. **Scoring:** Team score = total of top three (minimum two) finishers from each school per grade. First place individual and team, including ties, will be the National Champion for their grade. **Schedule:** Opening ceremony Fri. 12:45 PM. Round start times: Fri. 1 PM & 6 PM, Sat. 10 AM, 2PM, & 6 PM, Sun. 9 AM & 1 PM. Awards Ceremony: Sun. approx. 5 PM. Special round times for K-1 sections: Fri. 1:30 PM & 5:30 PM, Sat. 9:30 AM, 1:30 PM, & 5:30 PM, Sun. 9:30 AM & 1:30 PM. K-1 Awards Ceremony: Sun. approx. 4:30 PM. **EF:** \$70/participant postmarked or online by 11/22, \$90 postmarked or online by 11/29, \$105 by 12/1, \$110 on site; \$30.00 extra for all phone registrations; \$30 fee for roster or section changes after 11/29 or any onsite changes. **Registration:** Onsite registration Thurs. 9 AM to 9 PM & Fri. 8 AM to 11 AM. Players who register or change sections after 11 AM on Friday will receive a 1/2-point bye for Rd. 1. **Awards:** Awards to top individuals & top teams in each grade. Every player receives a commemorative medal! Full list of awards on tournament info page. **Side Events:** Bughouse: Thurs. 11 AM, Reg. onsite only Thurs. 9-10 AM, \$30/team. Bughouse Awards: Top 5 Teams. Blitz: K-6 and K-12, G/5 d0, Thurs. 5 PM, Reg. onsite until 4 PM. Blitz EF: \$30 by 11/29, \$40 after or at site. Blitz Awards: Awards in K-6 and K-12 sections. Full list of awards on tournament info page. **Team Rooms:** Limited availability. Contact Pete Karagianis at 931-200-9477 or by email: pkaragianis@uschess.org. **General Questions:** nationalevents@uschess.org. **Entries:** US Chess Federation, Attn: 2021 K-12 Championship, P.O. Box 3967, Crossville, TN 38557 or online at <https://secure2.uschess.org/webstore/tournament.php?wkevent=2021K12>. DO NOT MAIL ANYTHING AFTER NOVEMBER 10! There have been significant mail delays. Online registration STRONGLY encouraged. **See website** for additional information about the event, advance entries, awards, team rooms, meetings, updates, corrections, and registration forms, <http://www.uschess.org/tournaments/2021k12/>.

Grand Prix

HERITAGE EVENT • GRAND PRIX • STATE CHAMPIONSHIP EVENT

2021 Peter P. Lahde Tennessee Open OCTOBER 15-17, TENNESSEE

US CHESS GRAND PRIX POINTS: 15

5SS, G/90; d5. West TN AgResearch & Education Center, 605 Airways Boulevard, Jackson, TN 38301. **EF:** \$75 if registered by 9/24 (Early bird entry includes 75th TN Open t-shirt and name in program), \$75 if mailed by 10/8, \$85 after 10/8 and on-site. IMs and GMs free entry (\$75 entry fee deducted from winnings over \$200). TCA memb. req'd. for Tennessee residents, OSA. **\$5,400 prize fund** (based on 80 entries - 75% guaranteed). 2 Sections: **Open**, 1st: \$600 + plaque-\$350-\$275; Expert \$250 + plaque-\$200; Class A \$225 + plaque, \$175; Class B & below, \$200 + plaque, \$100; top junior champion place prize + plaque + \$75 entry fee returned. **Amateur**, open to U1601. \$300 + plaque-\$225-\$175; Class D \$150 + plaque-\$100, Class E \$125 + plaque-\$100, Class F & below \$125 + plaque-\$100, Unrated \$125 + plaque-\$100. Unrated players only eligible for the top three prizes in the Open section and Unrated prizes in the Amateur section. Plaques and titles to Tennessee residents only. **Reg./Check-in:** Friday 5:00 p.m.-6:00 p.m./Saturday 8:30 a.m.-9:30 a.m. CDT. Re-entry available for \$50 if playing Friday round one. **Rd 1:** Friday 7:00 p.m. or Saturday 10:00 a.m., **Rds. 2-3:** Saturday 2:00 p.m.-7:00 p.m., **Rds. 4-5:** Sunday 10:00 a.m.-2:00 p.m. **Byes:** 1/2-point bye available for any one round if requested at or before registration. **GM Alex Fishbein Simul Event:** Friday, October 15, 7:00 p.m. (limited to first 20 players). **TCA Membership Meeting:** Sunday, October 17, 1:00 p.m. CDT. **Ent:** www.tchess.us or mail to Chris Prosser, 733 Long Hunter Court, Nashville, TN 37217. Make checks payable to TN Chess Association.

STATE CHAMPIONSHIP EVENT • GRAND PRIX

2021 Illinois Class State Championship NOVEMBER 21, ILLINOIS

US CHESS GRAND PRIX POINTS: 6

An Illinois Chess Tour Event. 4/SS. **Hyatt Regency Schaumburg**, 1800 E. Golf Rd., Schaumburg, IL 60173, 847-605-1234. **Sections G/60;d5:** M/X, A, B, C, D, E. **Sections G/45;d5:** U1000, U800. Class A, B, C, D, E (1000-1199) players may play up ONE class for \$20 play-up fee. 800-999 players may play up to Class E at no add. charge. U800 players rated 600 or higher may play to U1000 at no add. charge. Unrated players may play in sections E, U1000 or U800. Nov. supplement determines eligibility, higher of regular or online rating will be used. **Schedules:** M/X through Class E (G/60;d5): 10, 12, 30, 3, 5, 30. U1000 and U800 (G/45;d5): 10, 12, 30, 2, 30, 4, 30. **One half-point bye** OK any round, must commit by end of round. **Prizes:** M/X \$500-200-50; A thru D: \$150-75-40; E, U1000, U800: Trophies to 1-2-3, medals to 4-5. **Entry Fee:** \$50 M/X and A-D; \$30 Class E, Under 1000, Under 800 online or USPS postmarked by 11/12. \$10 increase after 11/12. **On-site registration:** 8:30 - 9:30am; entries after cutoff receive 1/2-point byes for R1. \$5 discount for ICA members (annual dues \$15 regular, \$10 scholastic) - join at www.illchess.org. Free entry to Illinois GMs, WGMs, IMs, WIMs, FMs, WFMIs if registered by 11/8; email glenn@chessweekend.com to request the free entry. **Entries:** kingregistration.com, or mail checks postmarked by 11/12/21 to Chess Weekend, 21694 Doud Ct., Frankfort, IL 60423. No phone entries. **Boards, sets, and clocks** will be provided by The Illinois Chess Association. All special rules, details, and tournament conditions (including COVID protocols) subject to change without notice; changes will be posted ASAP at the site & online. **Info:** glenn@chessweekend.com. **Website:** <http://chessweekend.com>.

GRAND PRIX

2021 Forester Open - \$20,000 NOVEMBER 24-28, TEXAS

US CHESS GRAND PRIX POINTS: 80

The 2021 Forester Open will be held at the Great Wolf Lodge in the DFW Metroplex, 100 Great Wolf Dr, Grapevine, TX 76051. The hotel is 10 minutes from the Dallas International Airport. **Two Sections:** **Open Section** (5 days, November 24th-28th). **Amateur Section** (3 days, November 26th-28th). **Schedule:** **Open** (November 24th-28th) 9 Rounds 40/90, SD30; +30 = 24/11, 6:00pm, 25/11, 10:00am, 5:00pm, 26/11, 10:00am, 5:00pm, 27/11, 10:00am, 5:00pm, 28/11, 10:00am, 5:00pm. **Amateur** U2200 (November 26th-28th) 7 Rounds 690/ +30, 26/11, 2:00pm, 7:00pm, 27/11, 9:00am, 2:00pm, 7:00pm, 28/11, 9:00am, 2:00pm. **Prizes:** \$20,000 based on 240 fully paid entries. Under prizes based on USCF published rating. **Open Section=** 1st, \$3,000, 2nd, \$2,000, 3rd, \$1,200, 4th \$1,000, 5th, \$800, 6th, \$700. Top U2400, \$800, Top U2200 \$700. **Amateur Section (U2200)=** 1st, \$2,400, 2nd, \$1,600,

3rd, \$1,100. Top U2000, \$1,100, \$600. Top U1800, \$800, \$400. Top U1600, \$700, \$300. Top U1200, \$500, \$300. **Hotel:** Each individual guest will make their own reservation by visiting our website at www.greatwolf.com. Guest will select "reservations" and insert Group Code 2111BLAKEM under "Offer Code" or guest can call the toll-free Central Reservations Department at 1-844-554-WOLF(9653) identifying themselves as part of the Blake-man Chess Club by the cut-off date above. **Registration and Entry:** BlakemanChess.com. Extra tournament information can be found at BlakemanChess.com. **FIDE Rated. Organizer:** Cole Blakeman. **Email:** Blakeman-Chess@gmail.com.

HERITAGE EVENT • AMERICAN CLASSIC • GRAND PRIX • ENHANCED GRAND PRIX • JUNIOR GRAND PRIX

52nd annual National Chess Congress NOVEMBER 26-28 OR 27-28, PENNSYLVANIA

US CHESS GRAND PRIX POINTS: 200 (ENHANCED)

6SS, 40/90, SD/30 +30 (2-day option, rds 1-3 G/50 d10). U800 & U600 sections play separate 2-day schedule only, 11/27-28, G/50 d10. **Loews Hotel**, 1200 Market St, Philadelphia PA 19107. **\$43,000 GUARANTEED PRIZES.** In 10 sections. **Premier (2000/over):** \$4000-2000-1000-600-400, clear win or tiebreak 1st \$200, USCF U2400 \$1800-900. **FIDE. Under 2200:** \$2400-1200-600-400-300. **FIDE. Under 2000:** \$2400-1200-600-400-300. **FIDE. Under 1800:** \$2400-1200-600-400-300. **Under 1600:** \$2000-1000-600-400-300. **Under 1400:** \$1600-800-500-300-200. **Under 1200:** \$1400-700-400-300-200. **Under 1000:** \$1200-600-400-300-200. **Under 800:** Trophies to top 10, top 3 same school scholastic/college teams of 3. **Under 600:** Trophies to top 10, top 3 same school scholastic/college teams of 3. **Unrated** may not win over \$200 in U1000, \$300 U1200, \$400 U1400, \$500 U1600, \$600 U1800, or \$700 U2000. **Mixed doubles:** top male-female combined score \$2000-1000-600-400, averaging under 2200, any sections, reg. before both players begin rd 2, teams including an unrated limited to \$400. **Top 8 sections entry fee:** \$138 online at chessaction.com by 11/24, 3-day \$143, 2-day \$142 mailed by 11/15 <http://entry.cc/home/merchant.mv>, \$160 at site or online until 90 minutes before rd 1. **GMs** \$120 from prize. Re-entry (no Premier to Premier) \$60. **Under 800, Under 600 EF:** \$48 online <http://entry.cc/home/merchant.mv> at chessaction.com by 11/24, \$52 mailed by 11/20, \$60 by 9/27 online or at site. **All:** No checks at site, credit cards OK. **Special 1 yr USCF** with magazine paid with entry. At chessaction.com, Adult \$40, Young Adult \$25, Youth \$18. Mailed or at site, \$45, \$27 & \$20. **3-day schedule:** Reg. ends Fri 11 am, rds. Fri 12 & 6:15, Sat 12 & 6:15, Sun 10 & 4. **2-day top 8 sections schedule:** Reg. ends Sat 9 am, rds Sat 10, 12:45, 3:30 & 6:15, Sun 10 & 4. **2-day U800 & U600 sections schedule:** Reg. ends Sat 9 am, rds 10, 12:45 & 3:30 each day. **Half point byes** OK all rounds; limit 3, must commit before rd 3. **HR:** \$114-114-139-139, link at chessents.us (recommended) or 215-627-1200, reserve by 11/11. **Parking:** Loews valet chess rate 25% off regular (about \$36). Gateway Garage, 3/5 mile away at 1540 Spring St (1 block from Sheraton Hotel), about \$9/day Sat & Sun, \$25 other days. **Car rental:** 800-331-1600, use AWD D657633 or link at chessstour.com. **Ent:** chessaction.com or Continental Chess, Box 8482, Pelham NY 10803. **Refunds:** \$15 service charge. **Questions:** director@chess.us Advance entries posted at chessaction.com (click "entry list" after entry). **Blitz tournament** Sat 10 pm; enter by 9:45 pm.

HERITAGE EVENT • AMERICAN CLASSIC • GRAND PRIX • ENHANCED GRAND PRIX • JUNIOR GRAND PRIX

31st annual North American Open DECEMBER 26-30, 26-29 OR 27-29, NEVADA

US CHESS GRAND PRIX POINTS: 300 (ENHANCED)

Open Section, Dec 26-30: 9SS, 40/100, SD/30 +30, GM & IM norms possible. **Other sections, Dec 26-29 or 27-29:** 7SS, 40/100, SD/30 +30 (3-day option, rds 1-2 G/60 d10). Bally's Casino Resort, 3645 Las Vegas Blvd. S, Las Vegas, NV 89103. **\$125,000 guaranteed prizes.** In 7 sections. **Open:** \$10000-5000-3000-2000-1300-1000-800-700-600-500, clear winner or 1st on tiebreak bonus \$300, top FIDE Under 2400/Unr \$3000-2000-1000. **FIDE rated, GM & IM norms possible. Under 2300:** \$7000-4000-2000-1200-800-600-500-400-400. **FIDE. Under 2100:** \$7000-4000-2000-1200-800-600-500-400-400. **FIDE. Under 1900:** \$7000-4000-2000-1200-800-600-500-400-400. **Under 1700:** \$6000-3000-1500-1000-

800-600-500-400-400. **Under 1500:** \$5000-2500-1300-1000-700-600-500-400-300-300. **Under 1200:** \$3000-1500-1000-800-600-500-400-300-300, top Under 1000 (no unr) \$1000-500. No separate U1000 section; under 1000 in U1250 play for both U1250 and U1000 prizes; receive larger if winning both. **Prize limits:** 1) Unrated limit \$500 in U1250, \$1000 U1500, \$1300 U1700, \$1600 U1900, \$2000 U2100. 2) Under 26 OTB regular games played as of Dec 2021 official may not win over \$1500 U1250, \$3000 U1500 or U1700. Games rated too late for Dec 2021 list not counted. 3) If post-event rating posted 11/20-12/20/21 was more than 50 points over section maximum, prize limit \$2000. 4) If USCF Online Regular rating is more than 50 points over section or prize maximum, prize limit \$500. 5) Balance of any limited prize goes to next player(s) in line. **Mixed doubles bonus prizes:** best male/female combined 2-player team score: \$2000-1000-500-300-200. Only rounds 1-7 of Open Section counted. Team must average under 2200; may play in different sections; register (no extra fee) by 3 pm 12/27; prize limits do not apply to doubles. **Top 6 sections EF:** Online at chessaction.com: \$245 <http://chessaction.com/> by 9/15, \$275 by 12/23. Mailed by 12/13: 5-day \$280, 4-day \$279, 3-day \$278. Do not mail entry after 12/13. Online 12/24 to 2 hours before round 1, or at site 12/26 to 1 hour before round 1: [http://chessaction.com/\\$300](http://chessaction.com/$300). **Open Section EF \$100 more** to US players if not USCF or FIDE rated 2200/over. **Under 1250 Section EF:** All \$100 less than above. **Seniors 65/over in U1500/over:** All \$100 less than above. **Re-entry \$120;** no Open to Open. **Foreign GM:** Free (\$200 from prize); minimum prize \$500 if playing all games with no byes, no deduction from minimum prize. **Foreign IM/WGM/WIM in Open Section:** Free (\$200 from prize); minimum prize \$300 if playing all 9 games with no byes, no deduction from minimum prize. **US IM/WGM, foreign FM/WFM in Open Section:** Entry fees \$150 less than above. **All:** No checks at site, credit cards OK. **Special 1 yr USCF** dues with magazine if paid with entry. Online at chessaction.com, Adult \$40, Young Adult \$25, Youth \$18. Mailed or at site, \$45, \$27 & \$20. **5-day reg.** ends 12/26 10 am, rds 12/26-28 11 & 6, 12/29 10 & 4:30, 12/30 10 am. **4-day reg.** ends 12/26 5 pm, rds 12/26 6 pm, 12/27-28 11 & 6, 12/29 10 & 4:30. **3-day reg.** ends 12/27 10 am, rds 12/27 11, 2:30 & 6, 12/28 11 & 6, 12/29 10 & 4:30. **Bye:** all, limit 3, limit 2 in last 4 rounds; must commit before rd 3. **HR:** \$99-99, 800-833-3308, 702-739-4111, rate may increase or chess block sell out about 11/15. Free parking if guest room at Bally's. **Car rental:** Avis, 800-331-1600, use AWD #657633. **Ratings:** December FIDE used in Open, December official USCF in others. For foreign players in U2300 & below, see foreignratings.com. Players who fail to disclose foreign or FIDE ratings may be expelled. **Special rules:** CCA electronic devices rules used; see device.rules.com. **Prizes not claimed** at site sent by Zelle or PayPal. **Blitz 12/29 10 pm.** Ent: chessaction.com or Continental Chess, Box 249, Salisbury Mills, NY 12571 (Director@Chess.us, www.chessvets.us). \$15 service charge for refunds. **Entries posted** at chessaction.com (Click "entry list" after entering).

GRAND PRIX • ENHANCED GRAND PRIX • JUNIOR GRAND PRIX

7th annual Empire State Open DECEMBER 26-28 OR 27-28, NEW YORK

US CHESS GRAND PRIX POINTS: 30 (ENHANCED)

5SS, 40/80, SD/30 +30 (2-day option, rds 1-2 G/60 d10), Albany Marriott, 189 Wolf Road, Albany 12205. Free parking, wireless & airport shuttle, restaurants nearby. **\$5000** guaranteed prizes; 4 sections. **Open:** Open to all. \$700-400-200, top USCF U2100/Unr \$300-150. **FIDE. Under 2000:** \$500-250-150, top U1800/Unr \$300-150. **FIDE. Under 1700:** \$400-200-100, top U1500 (no unr) \$240-120. **Under 1400:** \$200-100-60, top U1200 (no unr) \$120-60. **Unrated** prize limit \$100 in U1400, \$200 U1700. **Mixed doubles:** \$200-100 to best male/female team combined score among all sections. Must average under 2200; may play different sections; register (no extra fee) by 2 pm 12/27. **Top 3 sections EF:** \$88 at chessaction.com by 12/23, 3-day \$93, 2-day \$92 mailed by 12/15, \$100 at site or online until 1 hour before round 1. **NYSICA** members, online entry \$5 less (may join with entry). **U1400 Section EF:** all \$20 less than above. **No checks** at site, credit cards OK. **GMs, IMs & WGMs:** \$80 from prize. **All:** Re-entry \$40; no Open to Open. **Unofficial or Online Regular US Chess.org** ratings usually used if otherwise unrated. If Online Regular rating is 50 or more points over section or prize maximum, prize limit \$150. **Special 1 yr USCF** with magazine if paid with entry. Online at chessaction.com, Adult \$40, Young Adult \$25, Youth

\$18. Mailed or at site, \$45, \$27 or \$20. **3-day reg. ends 12/26 6 pm, rds. 12/26 7, 12/27 11 & 5, 12/28 10 & 3:30. 2-day reg. ends 12/27 10 am, rds 12/27 11, 2 & 5, 12/28 10 & 3:30. Bye:** all, limit 2; must commit before rd 2. **HR:** \$100-100, reserve by 12/12, link at chessevents.us (recommended) or call 518-458-8444. **Ent:** chessaction.com or Continental Chess, Box 249, Salisbury Mills NY 12577. **Questions:** www.chessaction.com, Director@Chess.US. **Prizes not claimed** at site paid by PayPal or Zelle (may take a few weeks). **Refunds:** \$15 service charge. **Entries posted** at chessaction.com (click "entry list" after entering). **Blitz tmt.** 12/28 9:30 pm, reg. ends 9:15 pm. **Bring set, board, clock** if possible- none supplied.

STATE CHAMPIONSHIP EVENT - JUNIOR GRAND PRIX - REGIONALS

New York State Junior Championship (out of state welcome)

DECEMBER 29-30, NEW YORK

6SS, G/60 d10, Albany Marriott, 189 Wolf Road, Albany 12205. Free parking, wireless, & airport shuttle, restaurants nearby. Top NYS player each Championship section is NYS champion. In 8 sections: **Junior Championship & Junior Under 1500:** Open to all born after 12/29/00. **Under 16 Championship & Under 16 Under 1200:** Open to all born after 12/29/05. **Under 13 Championship & Under 13 Under 1000:** Open to all born after 12/29/08. **Under 10 Championship & Under 10 Under 800:** Open to all born after 12/29/11. **EF:** \$68 at chessaction.com by 12/15, \$78 online by 12/28, \$90 online or at site by 9 am 12/29. May be limited to the first 300 entries. **No checks** at site, credit cards OK. **Plaques to top 5 each section,** top U1800, U1600 (Jr Champ), U1300, U1100, U900, Unr (Jr U1500), U1600, U1400 (U16 Champ), U1000, U800, U600, Unr (U16 U1200), U1400, U1200 (U13 Champ), U800, U600, U400, Unr (U13 U1000), U1200, U1000 (U10 Champ), U600, U400, U300, Unr (U10 U800). **Free entry prizes** (good for 2022 CCA non-scholastic tournaments which have all prizes guaranteed, including online events): **Championship sections 1/1-6/15 to 1st., 1/1-4/15 2nd, 1/1-3/15 3rd & 4th. Under sections 1/1-5/15 1st, 1/1-3/15 2nd, 1/1-2/15 3rd & 4th. Bonus to NY residents** scoring 6-0: 2 additional months of free entry. **Unofficial or Online Regular** uscf.org ratings usually used if otherwise unrated. **If Online Regular rating** is 50 or more points over section maximum, not eligible for free entry prizes. **Special 1 yr USCF** with magazine if paid with entry. Online at chessaction.com, Young Adult \$25, Youth \$18. Mailed or at site, \$27 or \$20. Reg. ends 12/29 9 am, rds. 12/29 11:00, 2:00, 5:00, 12/30 9:00, 12:00, 3:00. **Awards 5:30. Bye:** all, limit 2; must commit before rd 2. **HR:** \$100-100, reserve by 12/12, link at chessevents.us (recommended) or call 518-458-8444. **Ent:** chessaction.com or Continental Chess, Box 249, Salisbury Mills NY 12577. **Questions:** www.chessaction.com, Director@Chess.US. Please claim plaques at site. **Refunds:** \$15 service charge. **Entries posted** at chessaction.com (click "entry list" after entering). **Bring set, board, clock** if possible- none supplied.

ENHANCED GRAND PRIX - GRAND PRIX - JUNIOR GRAND PRIX

10th annual Boston Chess Congress

JANUARY 7-9 OR 8-9, MASSACHUSETTS

US CHESS GRAND PRIX POINTS: 80 (ENHANCED)
5SS, 40/80, SD/30 +30 (2-day option, rds 1-2 G/60 d10), Hyatt Regency Boston Harbor, 101 Harborside Dr, Boston MA 02128. Free parking, free airport shuttle. **\$12,000 guaranteed prizes.** 6 sections. **Premier (2000/over):** \$1200-600-400, clear/tiebreak 1st \$100 bonus, top USCF U2300 \$500-250. **FIDE. Under 2100:** \$1000-500-300. **FIDE. Under 1900:** \$1000-500-300. **Under 1700:** \$900-500-300. **Under 1500:** \$800-400-300. **Under 1250:** \$400-200-150. **Prize limits:** 1) Unrated limit \$100 in U1250, \$200 U1500, \$300 U1700. 2) **If Online Regular official rating** is more than 50 points over section or prize maximum, prize limit \$200. **Mixed doubles:** best male/female 2-player team combined score among all sections: \$800-400-200. Must average under 2200; may play different sections; register at site (no extra fee) by 2 pm 1/8. **Top 5 sections EF:** \$88 at chessaction.com by 1/5, 3-day \$93, 2-day \$92 if check mailed by 12/26, \$100 at site, or online until 2 hrs before rd 1. **GMs** \$80 from prize. **U1250 Section EF:** All \$40 less than above. **ALL:** Online EF \$5 less to MACA members; join/renew at masschess.org. Re-entry \$50 (no Premier to Premier). **No checks** at site, credit cards OK. **Unofficial uscf.org** ratings usually used if otherwise unr. **Special 1 year USCF dues** if paid with entry: online at chessaction.com, Adult \$40, Young Adult \$25, Youth \$18. Mailed or at site, \$45, \$27 & \$20. **3-Day Schedule:** Reg. Fri to 6 pm. **Rds:** Fri 7, Sat 11 & 5, Sun 10 & 3:30. **2-Day Schedule:** Reg. Sat to 10 am. **Rds:** Sat 11, 2 & 5, Sun 10 & 3:30. **1/2-pt byes** available all rds, limit 2, must commit before rd 2. **HR:** \$109-109-134, link at chessaction.com or 617-568-1234, request chess rate, reserve by 12/24 or may increase. **Car rental:** Avis, 800-331-1600, use AWD #657633. **Ent:** chessaction.com or Continental Chess, PO Box 249, Salisbury Mills, NY 12577. \$15 service charge for refunds. **Questions:** chessaction.com, Director@Chess.US. **Entries posted** at www.chessaction.com (click "entry list" after entering). **Blitz** Sat 9:30 pm, enter by 9:15.

ENHANCED GRAND PRIX - GRAND PRIX - JUNIOR GRAND PRIX

13th annual Golden State Open

JANUARY 14-17, 15-17, OR 16-17, CALIFORNIA, NORTHERN

US CHESS GRAND PRIX POINTS: 150 (ENHANCED)

7SS, 40/80, SD/30 +30 (3-day option, rds 1-2 G/60 d10, 2-day option except in Major Section, rds. 1-4 G/30 d10). **Crowne Plaza Hotel**, 45 John Glenn Dr, Concord CA 94520 (free BART shuttle may be available). **Prizes \$25,000 guaranteed.** 5 sections. **Major (1900/up):** \$3000-1500-700-500-300, clear/tiebreak 1st \$100, top USCF U2300 \$1000-500. **FIDE. Under 2100:** \$1700-900-500-300-200, top U1900 \$800-400. **FIDE. Under 1800:** \$1700-900-500-300-200, top U1600 \$600-300. **Under 1500:** \$1400-700-400-300-200, top U1300 \$400-200. **Under 1200:** \$1000-500-400-300-200, top U1000 \$200-100. **Prize Limits:** 1) Unrated limit U1200 \$200, U1500 \$300, U1800 \$400. 2) If Online Regular official rating is 50 or more points above section or prize maximum, prize limit \$300. **Mixed doubles:** best male/female 2-player team combined score among all sections: \$1000-500-300. Must average under 2200; may play different sections; register (no extra fee) before both begin rd 2. **Top 4 sections EF:** \$138 at chessaction.com by 1/12, 4-day \$144, 3-day \$143, 2-day \$142 mailed by 1/2, all \$160 (no check, credit card OK) at site, or online to 1 hour before rd 1. **GMs** \$130 from prize. **U1200 Section EF:** \$30 less than top 4 sections. **All: Special 1 yr USCF** with magazine paid with entry- at chessaction.com, Adult \$40, Young Adult \$25, Youth \$18. Mailed or at site, \$45, \$27 & \$20. Re-entry (no Major to Major) \$60. Online EF \$5 less to CalChess members. **4-day schedule:** Late reg. to Fri 6 pm, rds. Fri 7 pm, Sat/Sun 12 & 6, Mon 10 & 3:30. **3-day schedule:** Late reg. ends Sat 11 am, rds. Sat 12, 3 & 6, Sun 12 & 6, Mon 10 & 3:30. **2-day schedule:** Late reg. ends Sun 9 am, rds Sun 10-12-2-3:45-6, Mon 10-3:30. No 2-day Major. **Byes:** OK all, limit 2; must commit before rd 3. **Unofficial or Regular Online ratings** usually used if otherwise unrated, or to qualify for Major (see peakingratings.us). **Foreign player ratings:** see foreignratings.com. **HR:** \$125-125-135, 877-286-8389, 925-825-7700, reserve by 12/31 or may increase. **Car rental:** Avis, 800-331-1600, use AWD #657633. **Ent:** Continental Chess, Box 249, Salisbury Mills NY 12577. **Questions:** chessaction.com, Director@Chess.US. **Refunds,** \$15 service charge. **Bring set, board, clock** if possible; none supplied. **Entries posted** at chessaction.com (Click "entry list" after entering). **Blitz tournament** Sun 10 pm, enter by 9:45 pm.

HERITAGE EVENT - AMERICAN CLASSIC - ENHANCED GRAND PRIX - GRAND PRIX - JUNIOR GRAND PRIX

54th annual Liberty Bell Open

JANUARY 14-17, 15-17, OR 16-17, PENNSYLVANIA

US CHESS GRAND PRIX POINTS: 100 (ENHANCED)

7SS, 40/80, SD/30 +30 (3 day option, rds 1-2 G/60 d10, 2-day option in U2100 & below, rds 1-4 G/30 d10). **Sonesta Hotel**, 1800 Market St, Philadelphia 19103. **Prizes \$20,000** based on 320 paid entries, and 14 of these has drawn over 320, causing prizes to be raised in proportion to where the \$20,000 projection. 6 sections. **Major (1900/up):** \$2000-1200-600-400-300, clear/tiebreak 1st \$100 bonus, top U2300 \$1000-500. **FIDE. Under 2100:** \$1200-600-400-300-200. **FIDE. Under 1900:** \$1200-600-400-300-200. **Under 1700:** \$1000-500-400-300-200. **Under 1500:** \$1000-500-400-300-200. **Under 1200:** \$700-400-300-200-100. **Prize limits:** 1) Unrated may not win over \$100 in U1200, \$200 U1500, \$300 U1700 or \$400 U1900. 2) If Online Regular official rating is more than 50 points over section or prize maximum, limit \$300. **Mixed doubles:** best male/female 2-player team combined score among all sections: \$1000-600-400. Must average under 2200; may play different sections; register (no extra fee) before both begin round 2. **Top 5 sections EF:** \$113 online at chessaction.com by 1/12, 4-day \$119, 3-day \$118, 2-day \$117 if check mailed by 1/3, \$130 (no check, credit card OK) at site, or online to 1 hour before rd 1. **GMs/IMs** \$90 from prize. **U1200 Section EF:** All \$30 less than top 5 sections. **Special 1 yr USCF dues** with magazine paid with entry: At chessaction.com, Adult \$40, Young Adult \$25, Youth \$18. Mailed or at site, \$45, \$27 & \$20. Re-entry (no Major to Major) \$60. **4-day schedule:** Reg ends Fri 6 pm, rds Fri 7 pm, Sat/Sun 12 & 6, Mon 10 & 3:30. **3-day schedule:** Reg ends Sat 11 am, rds. Sat 12, 3 & 6, Sun 12 & 6, Mon 10 & 3:30. **2-day schedule (no Major):** Reg. ends Sun 9 am, rds Sun 10-12-2-3:45-6, Mon 10-3:30. **Byes:** all, limit 2, must commit before rd 3. **Unofficial or Regular Online ratings** usually used if otherwise unrated, or to qualify for Major (see peakingratings.us). **Foreign player ratings:** see foreignratings.com. **HR:** \$112-112, 1-800-SONESTA, 215-561-7500, request Continental Chess rate, reserve by 12/31 or may increase. **Parking:** Chess rate at Sonesta approx. \$24/day (half normal rate). 1540 Spring St, 12 minutes walk, about 59/day Sat & Sun, \$25 other days. **Car rental:** Avis, 800-331-1600, use AWD #657633 or chessaction.com. **Ent:** chessaction.com or Continental Chess, Box 249, Salisbury Mills, NY 12577. **Questions:** Director@Chess.US, www.chessaction.com, www.chessaction.com. \$15 service charge for refunds. **Entries posted** at chessaction.com (click "entry list" after entry). **Blitz tournament** Sun. 10 pm, enter by 9:45 pm.

Online

National Chess Congress Warmup

SATURDAY, NOVEMBER 20, 2021 - SUNDAY, NOVEMBER 21, 2021

6-SS, G/75+10, at Internet Chess Club. \$8000 guaranteed prizes. Must be on Zoom (use real name) to be eligible for prizes, see caazoom.com. \$200 prize limit if no Zoom side/rear camera angle. In 4 sections. **Major Section:** Open to 1900/over. \$1000-600-400-300, top U2200 \$400-200. **Under 2000/Unr Section:** \$700-420-300-200, U1800 (no Unr) \$340-170. **Under 1700/Unr Section:** \$600-400-200-150, top U1500 (no Unr) \$280-140, unrated limit \$250. **Under 1400/Unr Section:** \$400-250-150-100, U1200 (no Unr) \$200-100; unrated limit \$150. **Entry fee** \$98 at chessaction.com by 11/18, \$120 by 10 am EDT 11/20. **New players** (1st CCA event on ICC) should register by 11/18. **EF discount:** \$30 less if playing in National Chess Congress, 11/26-28 in Philadelphia. **GMs** \$90 from prize. **Log into playcca.com** 30 minutes before game. **Rounds begin** each day: EDT 11 am, 2:30 pm & 6 pm. **Half point byes:** Available all rounds, limit 2 byes, must be claimed with registration & cannot be changed. **USCF membership required;** may join with registration. **Online Regular rated** (will not affect OTB ratings), **Online Regular ratings used** for pairings & prizes (OTB Regular used if no Online Regular). \$15 service charge for refunds. **Ent:** chessaction.com. **Questions:** support@chessclub.com.

Regional

ALABAMA

OCTOBER 9, 2021

Susan E. Kantor Fall Open National Chess Day Chess Tournament (TN)

See Tennessee.

CALIFORNIA

JANUARY 14-17, 15-17, OR 16-17, 2022

13th annual Golden State Open (CA-N)

See Grand Prix or chessevents.us.

GEORGIA

OCTOBER 9, 2021

Susan E. Kantor Fall Open National Chess Day Chess Tournament (TN)

See Tennessee.

IDAHO

WEEKLY ON SUNDAY AND SATURDAY, STARTING FROM SATURDAY, JUNE 5, 2021

Chandra Alexis Chess Club

The Chandra Alexis Chess Club is open Wed.-Sun., 11 a.m. - 4 p.m., for lessons, games and tournaments. The club offers weekly 4 RD/SS USCF/FIDE rated and scholastic team tournaments. We are located at 7337 W. Northview Street, Suite 4, Boise, ID 83704. Suite 4 is the Blue Pencil White Pawn office. As seating is limited to 4 players, all tournaments are invitational. Check chandraalexischessclub.org for registration information. Contact USCF Senior TD/FIDE National Arbitrer for the U.S., George Lyud, 208-375-1211 evenings.

ILLINOIS

NOVEMBER 21, 2021

2021 Illinois Class State Championship (IL)

See Grand Prix.

INDIANA

NOVEMBER 21, 2021

2021 Illinois Class State Championship (IL)

See Grand Prix.

IOWA

OCTOBER 9-10, 2021

2021 Cedar Rapids Open

Dual FIDE/USCF Rated Open Tournament, 5SS, TC: G/90 +30. **Location:** Physician Clinic of Iowa, Community Room, 3rd Floor, 202 10th Street SE, Cedar Rapids IA 52403. (FIDE & US Chess Rated). 2 Day, 5 Round Swiss, G90 +30, tournament. Sets provided (wood sets top 8 boards). Limited number of digital clocks available. **EF:** \$60 if received by Saturday, 10/02/2021, 11:59 pm \$70

afterward, \$75 on-site. ISCA Memb. Req'd: \$10. OSA. **PRIZES:** \$1000 b/20: 1st-3rd: \$350-225-125. Class Prizes: U2200, U2000 and U1800 \$100 each; Unrated not eligible for class prizes. **RDS:** Sat 10 AM 2:30 PM, 7:15 PM, Sun 9 AM, 2:00 PM. **One ½ point byes available** upon request made before the start of the tournament. All other byes requests will be zero points. **REG:** Inmate: <https://online.registration.cc/CII/2021CROOPEN> Mail: Chess in Iowa, c/o James Hodina, 3411 Blue Pointe Ct. SW, Cedar Rapids, IA 52404. On-site: 8:30 am to 9:30 am. **INFO:** James Hodina at james.hodina@chessinowa.org, 319-432-1459. **DIR:** I-380 7th Street Exit. North on 1st Ave to 10th Street, west 2 blocks. Free parking in 10th Street ramp. Participants must enter through the skywalk on the 3rd level of the parking ramp on 10th Street then elevator to 3rd floor Community Resource Center. Stairs at ground level of parking ramp to skywalk. **Website:** www.chessinowa.org. FIDE & US CHESS Rated. NS NC W.

NOVEMBER 21, 2021

2021 Illinois Class State Championship (IL)

See Grand Prix.

KENTUCKY

OCTOBER 9, 2021

Susan E. Kantor Fall Open National Chess Day Chess Tournament (TN)

See Tennessee.

MASSACHUSETTS

DECEMBER 28, 2021

New York State Under 13 Action Championship (out of state welcome)

See New York or chessevents.us.

DECEMBER 29-30, 2021

New York State Junior Championships (out of state welcome)

See Grand Prix or chessevents.us.

JANUARY 7-9 OR 8-9, 2022

Boston Chess Congress (MA)

See Grand Prix or chessevents.us.

NEW JERSEY

NOVEMBER 6, 2021

King's Chess Club Quads

Grace Church Bethlehem Campus. Morning quads and afternoon quads, G/30d5, Kindergarten-undergraduate (scholastic, youth, and young adult memberships). **EF:** None. **Reg.:** 9-9:20 am, 1st rd 9:40. Arr. by 12:30 pm to reg. only for afternoon quads. Medal to each quad winner. **Note:** Social distancing protocols may be in effect, so we recommend contacting us in advance to insure that there are no surprises. **Address:** 58 Route 10, Randolph, NJ 07869. **Organizer:** Bob McAdams. **Email:** fambright@optonline.net. Phone: 9736943988

NOVEMBER 21, 2021

New Jersey K-12 Grade Championship

A State Championship Event. 5SS, G/25 d5. Brookdale Community College - Student Life Center. 765 Newman Springs Rd., Lincroft, NJ 07738. Parking Lot #7 or #6; 4 miles from Garden State Parkway exit 109. Face masks are required to be worn in the Student Life Center except while eating or drinking. 13 Sections: Play only in your grade! **Grades K-12:** Trophies to top 10 individuals, top 3 teams - top 3 from each school/grade; 50% of players receive a trophy or medal; **Rds.:** 10am and ASAP. **EF:** \$40 by 11/15, \$60 at site. USCF mem req'd. **Reg.:** 8-9:00am After 9:00am 1/2 pt by rd 1. **Info:** 732 259-3881 halsprechman@gmail.com. **Ent:** Please make checks payable to NJSCF and send to Hal Sprechman, 15 Reigate Lane, Manchester, NJ 08759. Entries must include name, grade school, date of birth, USCF ID # & expiration, mailing address, phone number & entry fee, please include email address. Register online at: www.njscf.org until 9pm 11/19.

NOVEMBER 20-21, 2021

National Chess Congress Warmup

See Online Events or chessevents.us.

NOVEMBER 26-28 OR 27-28, 2021

52nd annual National Chess Congress (PA)

See Grand Prix or chessevents.us.

JANUARY 14-17, 15-17, OR 16-17, 2022

54th annual Liberty Bell Open (PA)

See Grand Prix or chessevents.us.

NEW YORK

NOVEMBER 21, 2021

New Jersey K-12 Grade Championship (NJ)

See New Jersey.

NOVEMBER 20-21, 2021

National Chess Congress Warmup

See Online Events or chessevents.us.

NOVEMBER 26-28 OR 27-28, 2021

52nd annual National Chess Congress (PA)

See Grand Prix or chessevents.us.

DECEMBER 26-28 OR 27-28, 2021

Empire State Open (NY)

See Grand Prix or chessevents.us.

DECEMBER 28, 2021

New York State Under 13 Action Championship (out of state welcome)

State Championship event. 5SS, G/30 d10, Albany Marriott, 189 Wolf Road, Albany 12205. Free parking, wireless, & airport shuttle, restaurants nearby. Open to all born after 12/28/08. Top NYS player in Championship is state Under 13 Action champion. In 2 sections, Championship and Under 1000: **EF:** \$48 at chessaction.com by 12/23, \$60 online or at site by 9 am 12/28. No checks at site, credit cards OK. Plaques to top 5 each section, top U1400, U1200 (Championship), U800, U600, U400, Unr (U1000). **Unofficial or Online Regular uschess.org** ratings usually used if otherwise unrated. **Special 1 yr USCF with magazine** if paid with entry. Online at chessaction.com, Young Adult \$25, Youth \$18. Mailed or at site, \$27 or \$20. **Reg. ends** 12/28 9 am, **rds.** 10:00, 12:00, 2:00, 4:00, 6:00. **Awards** 7:30. **Bye:** all, limit 2; must commit before rd 2. **HR:** \$100-100, reserve by 12/12, link at chessevents.us or call 518-458-8444. **Ent:** chessaction.com or Continental Chess, Box 249, Salisbury Mills NY 12577. **Questions:** www.chesstour.com, Director@Chess.US. Please claim plaques at site. **Refunds:** \$15 service charge. **Entries posted** at chessaction.com (click "entry list" after entering). **Bring set, board, clock** if possible - none supplied.

DECEMBER 29-30, 2021

New York State Junior Championships (out of state welcome).

See Grand Prix or chessevents.us.

JANUARY 14-17, 15-17, OR 16-17, 2022

54th annual Liberty Bell Open (PA)

See Grand Prix or chessevents.us.

NORTH CAROLINA

OCTOBER 9, 2021

Susan E. Kantor Fall Open National Chess Day Chess Tournament (TN)

See Tennessee.

OHIO

NOVEMBER 6, 2021

Ohio Grade Level Championships

A State Championship Event! 5SS; All players must reside or attend school in Ohio. Each grade is a section, K through 12. Players must play in the section for their grade. All sections are rated. **Time Control:** Grades K-6 G/30;d5. Grades 7-12 G45;d5. **EF:** \$35 through Oct 29, then \$40. Limited reduced entries at \$15 available for qualifying players. Entries must be received by noon, Friday, November 5. No onsite registration. **USCF Membership:** Required for grades 4-12; optional for grades K-3. **Awards:** Individual trophies to all players scoring 3.5 or more; team trophies to top 3 teams in each section. **Complete information at:** www.chesscinimati.com/grade-level. **Contact:** Alan 513-600-9915, a.hodge195@gmail.com. **Address:** 4554 Lake Forest Drive, Blue Ash, OH 45242. **Handicap Accessible:** Yes. **Residency Restriction:** Yes.

PENNSYLVANIA

NOVEMBER 21, 2021

New Jersey K-12 Grade Championship (NJ)

See New Jersey.

NOVEMBER 20-21, 2021

National Chess Congress Warmup

See Online Events or chessevents.us.

NOVEMBER 26-28 OR 27-28, 2021

52nd annual National Chess Congress (PA)

See Grand Prix or chessevents.us.

JANUARY 14-17, 15-17, OR 16-17, 2022

54th annual Liberty Bell Open (PA)

See Grand Prix or chessevents.us.

TENNESSEE

OCTOBER 9, 2021

DownTown Memphis National Chess Day!

Both rated and unrated sections available! Rated and unrated Blitz Tournament too! 4ss g/50d5 (Affects regular and quick rating). Published September Ratings Used. **Limited to 120 Players. Prizes: OPEN:** 1st = \$240, 2nd = \$200. **U1701 Section:** 1st = \$200, 2nd = \$160. **U1301 Section:** 1st = \$160, 2nd = \$120. **NON-USCF-RATED 4-ROUND SWISS TOURNAMENT:** 1st = \$70, 2nd = \$65, 3rd = \$60, 4th = \$55. 4-round Swiss **Entry Fee:** Early Discount: \$35 by Oct 2nd. \$5 discount for MCC member. **PREREGISTER IN PERSON FOR MEMBER DISCOUNT.** ***A SINGLE \$5 discount also available for registering for both the 4-round swiss and the blitz tournament*** \$40 after Oct 2nd. **GM = FREE ENTRY!** (deduct \$40 from prize). **Register online** at <https://www.memphischessclub.com>. **Fair play guidelines:** Electronic devices must be off, and put in a bag. If bag unavailable, you may turn off and place face down and leave on table. No player may leave playing hall with a cell phone/electronic device, metal detector will be used! Subject to penalty/disqualification! **Rounds:** R1 9 AM (Lunch break after R1), R2 12 PM, R3 2 PM, R4 4 PM, Finished by 6pm. Limit (1) half-pt bye, must notify before round 1 is paired. **Blitz Rated Tournament** (\$400 b/20). 4-round Open Double Swiss (10 games). G/5, rounds ASAP starting at 6:30pm. **Prizes: OPEN:** 1st = \$120, 2nd = \$100, **Top U1701** = \$80, **Top U1301** = \$60, **Upset** = \$40 (not available to unrated players). **NON-USCF-RATED 4-ROUND SWISS TOURNAMENT:** 1st = \$55, 2nd = \$50, 3rd = \$45, 4th = \$40, 5th = \$35, 4th = \$30. **Blitz Entry Fee:** Early Discount: \$25

by Oct 2nd. \$5 discount for MCC member. **PREREGISTER IN PERSON FOR MEMBER DISCOUNT.** ***A SINGLE \$5 also discount available for registering for both the 4-round swiss and the blitz tournament*** \$30 after Oct 2nd. **GM = FREE ENTRY!** (deduct \$30 from prize). **Register online** at <https://www.memphischessclub.com/>. **Please bring sets + clocks.** Top boards may be broadcasted live! *\$540 guaranteed for the 4-round Swiss tournament per USCF rules. Other 3 tournaments' prizes may be prorated down accordingly. **Address:** 195 Madison Ave Suite 101, Memphis, TN 38103. **Organizer:** Memphis Chess Club. **Email:** info@memphischessclub.com. **Website:** <https://www.memphischessclub.com/>

OCTOBER 9, 2021

2021 Susan E. Kantor Fall Open National Chess Day Tournament

4SS, G/60;d5. Cumberland County Community Complex, 1398 Livingston Road, Crossville, TN. **\$1,370 Guaranteed.** 2 Sections: **Open**, open to all. \$5 150-100-75, Top Expert \$50-\$30, Top Class A \$50-\$30, Top Class B \$50-\$30, Top Class C \$50-\$30. **Amateur**, open to under 1400. \$150-100-75, Top Class E \$50-\$30, Top Class F \$50-\$30, Top Class G \$50-\$30, Top Class H/below \$50-\$30, Top Unrated \$50-\$30. **All, EF:** \$20 if mailed by 10/2/2021, \$30 later or at site. Tennessee Chess Association (TCA) membership dues required for Tennessee residents (\$10). **Reg.** Saturday 7:30-8:30 a.m. CDT. **Rds.** 9:00 a.m.-11:00 a.m.-2:00 p.m.-4:30 p.m. CDT. **Info:** Alan Kantor, (931) 200-9038, president@cumberlandcountychess.org. **Ent:** Enter online at www.cumberlandcountychess.org or mail to Cumberland County Chess Club, P.O. Box 271, Crossville, TN 38557.

OCTOBER 15-17, 2021

2021 Peter P. Lahde Tennessee Open

See Grand Prix.

VIRGINIA

NOVEMBER 26-28 OR 27-28, 2021

52nd annual National Chess Congress (PA)

See Grand Prix or chessevents.us.

WISCONSIN

NOVEMBER 6-7, 2021

2021-2022 Wisconsin Junior Open

State Championship Event. Gruenhagen Conference Center, UW-Oshkosh, Corner of High and Osceola St., Oshkosh, WI 54901. **HR:** \$40 Full Service (dorm room) 920-424-1106. 2022 Denker/Barber/Haring/Rockefeller qualifier; Open to Grades K-12. In 6 Sections, **High School: EF:** \$18 in advance by 11/2; \$23 at site. **Trophies:** Top 5, Top 2 each B, C, D and E/Unrated. **K-8: EF:** \$18 in advance by 11/2; \$23 at site. **Trophies:** Top 5, Top 2 each C, D and E/Unrated. **Girl's Junior Open: EF:** \$18 in advance by 11/2; \$23 at site. **Trophies:** Top 4. **Reserve (U900 or Unrated): EF:** \$18 in advance by 11/2; \$23 at site. **Trophies:** Top 5, Top 2 each 600, 500, U500 and Unrated. **Non-Rated Beginner's Grade 7-12:** Open to Grades 7-12. **EF:** \$17 in advance by 11/2; \$22 at site. **Trophies:** Top 5 and top 3 Grade 7-9. **Non-Rated Beginner's Grade K-6:** Open to Grades K-6. **EF:** \$17 in advance by 11/2; \$22 at site. **Trophies:** Top 5 and top 3 Grade K-3. **ALL:** 5SS, G/120 d5. **Reg.:** 11/6 8:45-9:30 A.M. **Rds.:** 10:15-2:30 7:15; 10:00-3:00. **Ent:** Mike Nietman, 2 Boca Grande Way, Madison, WI 53719. **INFO:** Mike Nietman, 608-467-8510 (before 11/5) mike.nietman@charter.net. **Website:** www.wisconsinchess.org. W. Online registration at www.kingregistration.com. Masks required per UW-O policy. **Address:** 208 Osceola St., Oshkosh, WI 54901.

NOVEMBER 21, 2021

2021 Illinois State Class State Championship (IL)

See Grand Prix.

ANSWERS

PAGE 7/IT'S YOUR MOVE

TACTIC #1: DOUBLE ATTACK

9. Qa4+!

A classic double attack, where one piece attacks two targets — the king, material, or a square (one where you could do something nasty, like deliver a back rank mate) — at the same time. Here, the king and the loose b4-bishop are in our crosshairs.

9. ... Bd7 10. Qxb4

White is winning, but Black made a mighty comeback and checkmated his opponent on the 38th move.

TACTIC #2: DOUBLE ATTACK

29. Qg5+!

The targets are the king and the g4-knight, which is now attacked twice and only defended once.

29. ... Kf7 30. Rxc4

Here 30. Rdf1, creating a pin on the bishop, might even be better, but Yan's move is very natural and strong.

30. ... Bxc4 31. Qxc4

Up material and with the black king feeling a breeze, this should be a win for White. But Wang fought well and the game was eventually drawn in 81 moves.

TACTIC #3: DOUBLE ATTACK

Where are the targets in the black camp? The king, obviously, but the two unprotected rooks should also be noticed. They can both be forked (double attacked) along with the king if the knight can get to c7 or f6. Jiao finds the right move to take advantage of these facts.

16. Nd5!

Attacking the queen, while also threatening the two king-rook forks next.

16. ... Qd7?

Whoops. For better or for worse Black had to play 16. ... Qd8 allowing White to win a full rook with 17. Nf6+.

17. Nf6+

A royal fork!

PAGE 16/YOU CAN DO IT!

Solution #1: 1. Qg5+ Kh8 2. Qf6 mate.

Solution #2: 1. Ne7+ Kf8 (or Black could give up the queen) 2. Nh7 mate.

Solution #3: 1. Nxd5 Qd8 2. Ne7+, forcing Black to give up the queen.

Solution #4: 1. Ne7+ Kf8 2. Nfxg6+ hxc6 3. Nxc6+ and 4. Qh8 mate next move.

Solution #5: 1. Ne7+ Kf8 (1. ... Kh7 2. Qxf7+ with mate next move) 2. Nxc6+ Kg8 (2. ... Ke8 3. Qe7 mate) 3. Qh8 mate.

Solution #6: 1. Qxf6+! Nf7 (if the King moves, it's mate in one) 2. Bxc7+ Kg8 (2. ... Ke8 3. Qe7 mate) 3. Ne7 mate.

MY FIRST MOVE



GM ABHIMANYU MISHRA

THE WORLD'S YOUNGEST
GRANDMASTER

In this column, we feature advice from your chess heroes and explore what shaped their development when they were *Chess Life Kids* like you!

On June 30, 2021, 12-year old Abhimanyu ("Abhi") Mishra toppled the world's youngest grandmaster record previously held for 19 years by GM Sergey Karjakin. Chess Life Kids talked with him about his accomplishments, motivation, and future plans. And read more about Abhi on page four!

**How old were you when you first played chess?
Were you instantly attracted to the game, or did it take a while?**

My dad introduced me to the basic rules and everything when I was two and a half. I really enjoyed it, so I kept on proceeding. By the age of five, I started playing in some local tournaments.

Did you set a main goal to become grandmaster or did you start out by setting smaller goals in between?

I always had intermediate goals. I still remember when I was five, my first goal was to reach the top hundred in the U.S. And then from there I became the young-



est expert, and then I became the youngest master, then international master. Finally grandmaster became the goal.

When did you start thinking about becoming the world's youngest grandmaster seriously?

Right after I became an international master. I had 22 months and it seemed like a doable target. But then COVID-19 came and for 14 months I wasn't able to play that many tournaments. And so, in that time I kept on working. Once everything felt safe, we went to Europe and I played all these events.

Now that you're a grandmaster, do you have new goals?

Yeah, my goal is to get to 2700 and become a super-GM.

What does your day look like?

Chess is basically a full-time thing for me. I mean, I have some other hobbies, like playing some video

games and stuff, but yeah, nothing much apart from that. My day usually is that I get up and start working on chess. I spend a lot of time — at least eight hours a day. For school last year, I finished two grades, fifth and sixth, because I knew that chasing this record was going to be a very difficult task and it's hard to balance school and chess at the same time. So, I finished two grades in one year and this year I didn't go to school at all.

What do you think keeps driving you?

The joy after winning a game — it's one of the best feelings in the world. And I feel that I've already put in so much work, so I keep on going.

What are some sacrifices you've had to make in order to reach these goals?

Mostly missing out. There were instances where I'd be out playing a tournament even on my birthday, and we would come back home at around 12 o'clock [midnight], and I would cut the cake. I mean, I love this life, for sure. But I'm a bit behind on a lot of the other things.

How has your family contributed to your success?

They've been my backbone. They encouraged me from the start, and my dad's taken me to tournaments. They've sacrificed a lot of time, too.

Any other hobbies besides chess?

Before the pandemic I used to play some soccer and I

used to go to some karate classes, but chess is the main thing.

If you couldn't be a professional chess player, what do you think you'd want to do?

I'm not really sure. I've never thought about this. Maybe I'll be a mathematician.

What sorts of tools do you use to study?

We have a lot of books at home. I don't just read the books. Most of the time I set up [the position from the book] on the board and before seeing the answer, I try to solve it myself. And I can say that's definitely

helped. I also work with my coaches, [GMs] Arun Prasad [Subramanian] and Magesh [Panchanathan], who've helped me a lot this whole journey.

What is your best advice

to other aspiring young chess players?

I would say that it's to love the game. This Royal game is very similar to real life. It can help you make better informed decisions in life.



Clockwise from upper left: Letting his game do the talking; soccer is another hobby; a young Abhi rocks out; Abhi with parents Hemant (dad) and Swati (mom) and sister. Ridhima.

CHESS ADVENTURES

with GM Abhimanyu Mishra



My dad taught me chess when I was 2-1/2 years old.



By age five I was playing in local tournaments.



YOUNGEST National Master



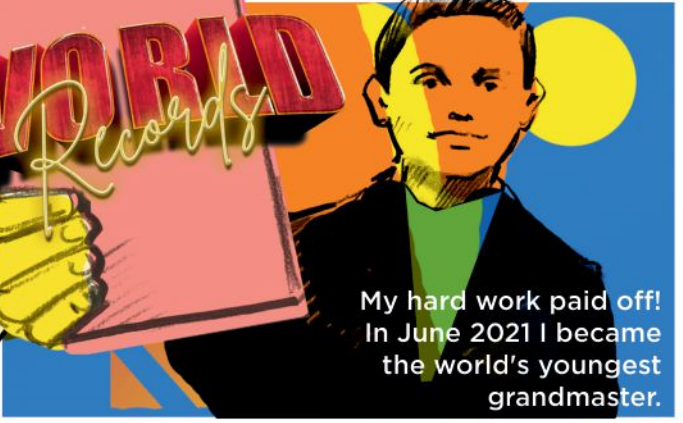
Soon I was breaking all sorts of records. I began to think I could break the world's youngest grandmaster record.

YOUNGEST International Master

My family and I made lots of sacrifices to reach this goal. Sometimes I even missed family celebrations to play chess.



WORLD Records



My hard work paid off! In June 2021 I became the world's youngest grandmaster.

ART BY VAL BOCHKOV



**The Internet Chess Club and
Continental Chess Association
presents:**

Your best choice for online fun!

- ♔ Over **\$250,000** in prize money paid out
- ♔ Class prizes so you can win too!
- ♔ Longer controls for an OTB experience
- ♔ Weekly US Chess rated events
- ♔ US Chess approved fair play oversight



More information:

chessaction.com



ChessKid .com

PLAY

LEARN



**#1 Chess Site for Kids. 200,000+ Kids, Parents, & Coaches!
100% Safe and Kid-Friendly! Signup Today - it's FREE!**



The United States' Largest Chess Specialty Retailer

888.51.CHESS (512.4377) ★ www.USCFSales.com

CHESS SUBSCRIPTIONS

One Year Subscription to

NEW IN CHESS MAGAZINE

(8 Issues)

NICYRSUB

\$100.00

New in Chess is the magazine of choice for serious Chess players. If it is happening in Chess, you'll read about it in New in Chess Magazine. It features On the spot tournament reports, in-depth interviews with top players, comprehensive analysis!



One Year Subscription to

AMERICAN CHESS MAGAZINE

(6 Issues)

BOSUBACM6

Was \$149.95, Now \$129.95

The American Chess Magazine brings you 100 colorful pages, packed with amazing chess material, ranging from world class play to local State news and games. Instructive and entertaining games from recent events are presented with outstanding annotations, while special attention is given to overviews of latest trends in the openings, and explanations of practical endgame techniques. Here's your chance to subscribe and save 20% off MSRP and receive FREE SHIPPING!



One Year Subscription to

CHESS INFORMANT

(4 Issues)

BOSUBINF

Was \$159.95, now \$129.95

Subscribe to Chess Informant – the publication the Pros Use and Create! Subscriptions come with tons of benefits: SAVE 20% off the cover price! Pay once-as soon as a new issue comes out, it is sent directly to you. Don't worry about ordering every issue-subscribe once and let us take care of it for you!



Free Ground Shipping On All Books, Software and DVDS at US Chess Sales
\$25.00 Minimum - Excludes Clearance, Shopworn and Items Otherwise Marked