

CHESS LIFE



US CHESS

APRIL 2022 ■ USChess.org

Kids

A look at the
World Chess
Championship
By **Alex King**

Is Magnus the

GOAT?

Join Our Chess Summer Camps!

Sign your child up now for a week of chess knowledge and fun.



2022 Summer Camp Dates

May 30 - June 3, 2022 (Chess Club)
June 13 - June 17, 2022 (Chess Club)
June 27 - July 1, 2022 (Ursuline Academy)
July 4 - July 8, 2022 (Ursuline Academy)
July 11 - July 15, 2022 (Chess Club)

Camp Time and Prices

All day: 9:00 a.m.- 4:00 p.m. \$400
AM Only: 9:00 a.m.- 12:00 p.m. \$225
PM Only: 1:00 p.m. - 4:00 p.m. \$225

Enrollment is open to all students age 6-14.

**For more information and to register visit saintlouischessclub.org.
Email: scholastics@saintlouischessclub.org Phone: 314-669-5010**

@STLChessClub
#STLChessClub

Building Champions: In The Classroom And The Community

The Saint Louis Chess Club admits students of any gender, race, color, national and ethnic origin to all the rights, privileges, programs, and activities generally accorded or made available to students at the school. It does not discriminate on the basis of gender, race, color, national and ethnic origin in administration of its educational policies, admissions policies, scholarship and loan programs, and athletic and other school-administered programs

 Saint Louis
CHESS CLUB





EXECUTIVE DIRECTOR
Carol Meyer

SENIOR DIRECTOR OF
STRATEGIC COMMUNICATION
Daniel Lucas

EDITORIAL

PUBLICATIONS EDITOR
Melinda Matthews
mmatthews@uschess.org

ART DIRECTOR
Natasha Roberts

CHESS LIFE/CLO EDITOR
John Hartmann

GRAPHICS ASSISTANT
Nicole Esaltare

TECHNICAL EDITOR
IM Ron Burnett

CHARACTER DESIGNER AND
ILLUSTRATOR
Chandler Ellison

For communications and press inquiries, please
contact Dan Lucas at dlucas@uschess.org

To submit letters to the editor, or for advertising
inquiries or TLA display ads, please email
mmatthews@uschess.org

Chess Life Kids provides a foundational interest
in chess for beginning level pre-teens through
the use of games, instruction, and human-
interest stories. It is intended to be useful
for Youth members, parents, and coaches. If
interested in writing for this publication, send a
well-crafted query with writing samples to the
editor at mmatthews@uschess.org.

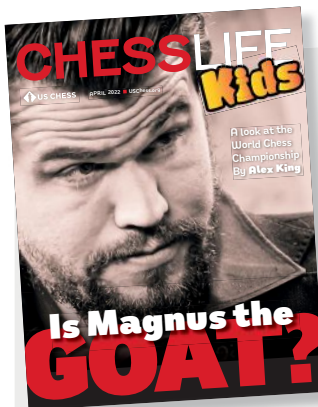
Teachers may photocopy instructional
articles for classroom use, but republication
or widespread copying without the written
consent of US Chess is forbidden.

Chess Life Kids | Vol. 17, No. 2

APRIL 2022

CHESSLIFE Kids

- 4** **CHESS STORIES** **Meet the Top U.S. Youth Chess Players**
BY AL LAWRENCE
- 6** **IN SESSION** **The Three Questions**
BY MATAN PRILLELTENSKY
- 8** **CHESS ADVENTURES** **Matan Prilleltensky**
ART BY NICOLAS BARRIOS
- 10** **COVER STORY**
IS MAGNUS THE GOAT?
World Champion Magnus Carlsen could be history's best chess player.
BY ALEX KING
- 16** **RISING STAR** **Pragg In the Spotlight**
BY JAMAAL ABDUL-ALIM
- 18** **AVOID THE TRAP** **The Risky F-Pawn Advance**
BY BRUCE PANDOLFINI
- 20** **TOURNAMENT LIFE**



ON THE COVER

GM Magnus Carlsen has been the world's number one chess player for 10 years and world champion for eight. You probably don't remember a time when he wasn't on top! In this issue, Alex King takes a look at the history of the world championship and why Magnus' latest victory might make him the Greatest of All Time.

PHOTO BY LENNART OOTES, COURTESY OF SLCC



Meet the Top U.S. Youth Chess Players

BY AL LAWRENCE

IN THIS AND the next two issues of *Chess Life Kids*, we're introducing the highest-rated American chess players from ages 7-12 as of January 2022. This month, we'll meet the number one players who are seven and eight years old, both the overall leaders and the top-rated girls.

Our top-rated champs share their favorite players, quotes, goals, hobbies, and over-the-board moves. Use the diagrams below to figure out why they liked each move so much.

It's understandable that two of our four players picked current world champion Norway's Magnus

Carlsen as their favorite player. But another chose the world champ from more than 70 years ago, Latvia's Mikhail Tal! Tal was one of the most exciting attacking players of all time. To learn more about Tal, go to [youtube.com](https://www.youtube.com) and search for "Mikhail Tal's 5 Most Brilliant Moves!" You'll learn a lot.

SANTHOSH AYYAPPAN
Top Overall Age 7&U | Rating: 1808
Monmouth Junction, New Jersey

SANTHOSH AYYAPPAN

Top Overall Age 7&U | Rating: 1808
Monmouth Junction, New Jersey

Favorite quote: "Nothing is impossible. Never give up."

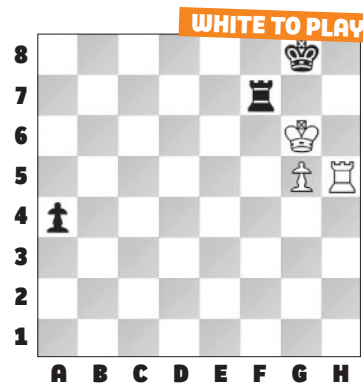
Goals: To become the world's youngest grandmaster and reach a US Chess and FIDE rating of 3000

Favorite player: Magnus Carlsen

Other hobbies: Reading books, playing soccer and badminton, drawing pictures, solving puzzles

SANTHOSH'S FAVORITE TOURNAMENT GAME MOVE

2021 66th Annual Maryland Open, move 58



58. Rh8+!

ANNIE YAO

Top Girl Age 7&U | Rating: 1385
Katy, Texas

Favorite quote: "We will go to the zoo if you play well this weekend." ~my dad
Goals: To reach USCF 1800 (according to my coach, this would mean I start

**ANNIE YAO**

Top Girl Age 7&U | Rating: 1385
Katy, Texas

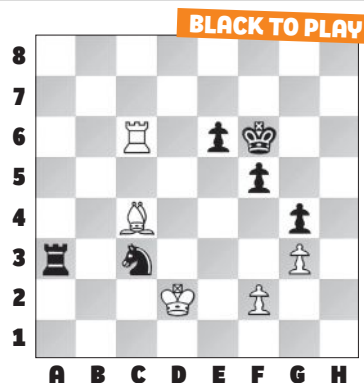
knowing how to play chess). And to travel over the world, see all kinds of animals, and draw them!

Favorite player: Chloe Liu — we study with the same coach and play together during tournament breaks.

Other hobbies: Drawing, swimming, and playing piano

ANNIE'S FAVORITE TOURNAMENT GAME MOVE

\$4,000 Houston Chess Studio Open, 1.16.2022, move 62



62. ... Ne4+!

ETHAN GUO

Top Overall Age 8 | Rating: 1937
San Jose, California

Favorite quote: "There are two types of sacrifices: correct ones, and mine."

~Mikhail Tal

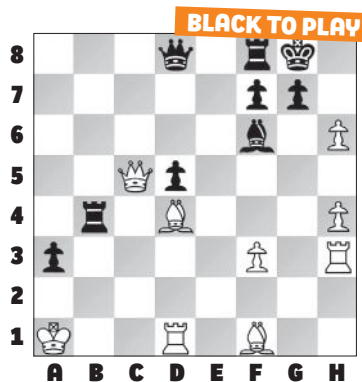
Goals: To become a grandmaster

Favorite player: Former world champion Mikhail Tal because he makes beautiful sacrifices

Other hobbies: Reading, swimming, soccer, and basketball

ETHAN'S FAVORITE TOURNAMENT GAME MOVE

The Real Bay Area Chess Champ Series, February 2022, move 27



27. ... Rxd4

ALICE CHOVANEC

Top Girl Age 8 | Rating: 1513
New York, New York

Favorite quote: "The pin is mightier than the sword." ~Fred Reinfeld

**ALICE CHOVANEC**

Top Girl Age 8 | Rating: 1513
New York, New York

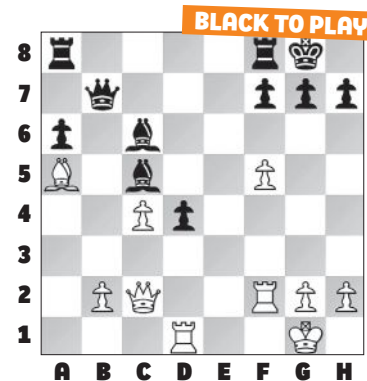
Goals: Reach a US Chess rating of 2000 and travel to Egypt and Japan

Favorite player: Magnus Carlsen

Other hobbies: Reading fiction and comics, writing stories, and playing the violin

ALICE'S FAVORITE TOURNAMENT GAME MOVE

2021 National Chess Congress, move 28



28. ... d3!

DID YOU KNOW?

Every month, US Chess lists the top 100 USA players by age. Check it out online. Go to uschess.org, scroll to the bottom of the page and click on "Top Player Lists." You could be on the list!

**ETHAN GUO**

Top Overall Age 8 | Rating: 1937
San Jose, California



The Three Questions

BY **MATAN PRILLELTENSKY**



Matan is a director at *masterchess.org* and teaches private and group lessons both online and from his Scarsdale, New York studio. You can reach him at matan@masterchess.org.

WHEN **CHESS LIFE** Kids asked me to guest write this column, I polled my students on which lesson they found most helpful. Almost all of them mentioned “The Three Questions.” You’re probably asking yourself: What are The Three Questions?

Every time it’s your turn to move, ask yourself:

- #1. WHAT DOES MY OPPONENT WANT?**
- #2. WHAT ARE THE WEAKNESSES FOR BOTH SIDES?**
- #3. WHAT IS THE WORST PLACED PIECE?**

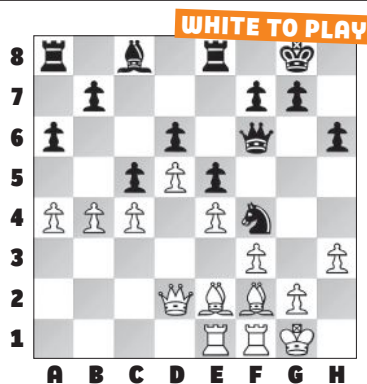
I learned about this from GM Jacob Aagaard’s material, and while he writes for very strong players, I think these questions can be useful on all levels of tournament chess. Here I want to show you different examples of The Three Questions in action.

As soon as your opponent makes their move, ask yourself the first question, “What does my opponent want?” One way to answer this is to think about what they would do if

they got to move again — if they got to play two moves in a row.

PREPARE TO PREVENT

Jenny Zhu (1941)
Ethan Kozower (1949)
Marshall Championship (9),
12.19.2021



Here is a simple example. Black just played 22. ... Nf4. What does he want to do next? He wants to play ... Qf6-g5. That would be crushing: Black would create the dual threats of ... Qg5xg2 mate and ... Nf4xh3+, with a discovered attack on the queen. Note that ... Bc8xh3 is another serious threat: if White took the bishop, she would get mated. Zhu responded well:

23. Kh2!

Note that White doesn’t prevent ... Qf6-g5 — instead she prepares for it.

The alternative 23. Bg3 is not as good because it removes the dark-squared bishop from the attack on the c5-square. After 23. Be3 cxb4 24. Qxb4 Qg6 White will have to trade off the dark-squared bishop for the knight.

23. ... b6

Now 23. ... Qg5 is well met by 24. Rg1 and there is no discovered attack.

24. a5! Qg5

White wins after 24. ... bxa5 25. bxc5 and is better after 24. ... cxb4 25. axb6.

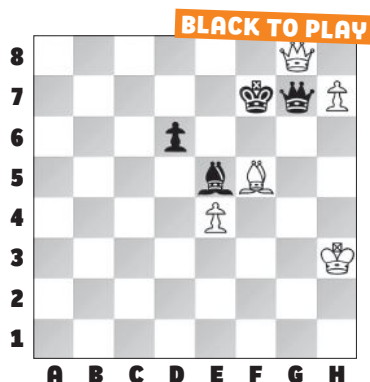
25. Rg1 Rb8 26. axb6 Rxb6 27. bxc5

White had stopped Black’s king-side threats and soon won the game on the queenside.

Sometimes the opponent’s idea will be aimed against one of your possible replies to their move.

CAREFUL REPLIES

GM Aryan Tari (2625)
GM Radoslaw Wojtaszek (2705)
Tata Steel (2), Wijk aan Zee,
01.17.2021



White just played 61. Qg8+. Do you see the idea?

61. ... Ke7!, draw.

The move 61. ... Qxg8?? would fall into White's trap: 62. Be6+ safely promotes on the next move.

Next ask yourself the second question, "What are the weaknesses for both sides?" Very often you will notice a weakness in your opponent's position that you can attack!

The first type of weakness to look for is tactical. Do they have an open king, or weak squares around the king? Are there undefended or badly defended pieces? (A badly defended piece is a piece with an equal number of attackers and defenders). You can also look for lined-up pieces or pieces that lack mobility.

TACTICAL WEAKNESSES

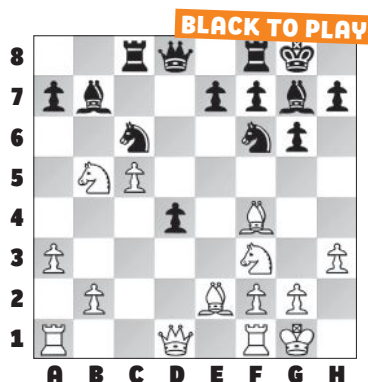
Mark Sinz (1773)

Kiren Nasta (1994)

Marshall Weekend Open (3),
09.04.2021

(see diagram top of next column)

It looks like the black d4-pawn is in trouble, but what are the tactical weaknesses in White's position? The f4-bishop is undefended, and the b5-knight has only one square to go to. Black found a strong way to put these two things together:



14. ... Nh5!

Nice shot. Black attacks the knight and opens up the dark-squared bishop to protect d4, taking the only square away from the stranded b5-knight.

15. Bh2 a6 16. g4

This saves the piece, but at the cost of destroying White's king position.

16. ... axb5 17. gxh5 Qd5

Black soon won.

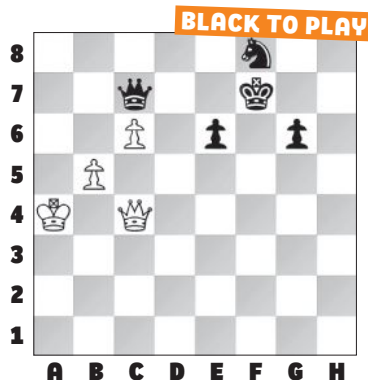
Finally, ask yourself the third question, "What is the worst placed piece?" Very often, the best move will be one that puts an inactive or badly placed piece to work! This is especially useful in positions where you don't know what else to do.

ACTIVATE

GM Jose Martinez Alcantara (2684)

GM Eyal Grinberg (2565)

Pan American Intercollegiate (3),
01.07.2022



Here the f8-knight is clearly the worst placed piece — it has no useful function.

59. ... Nd7!

The knight jumps into play, creating the huge threat of ... Nd7-b6+, stopping Qc4-c5, and also preparing to activate via the f6-square. Of course, it can't be taken because Black then grabs the queen with check!

Black could try to activate the knight with 59. ... Nh7, but then White plays 60. Qc5 with the huge threat of b5-b6.

60. Qf1+ Nf6 61. Qf2 g5 62. Qc2

If 62. Qc5 Nd5! prevents b5-b6.

62. ... g4

The g-pawn started rolling and Black went on to win.

Of course, The Three Questions are not the only thing you should be thinking about when you play a tournament game. When you calculate, you should pay close attention to all the possible forcing moves for both sides: checks, captures, and threats. And don't just come up with one move and immediately play it — the more options you consider, the better your moves will be!

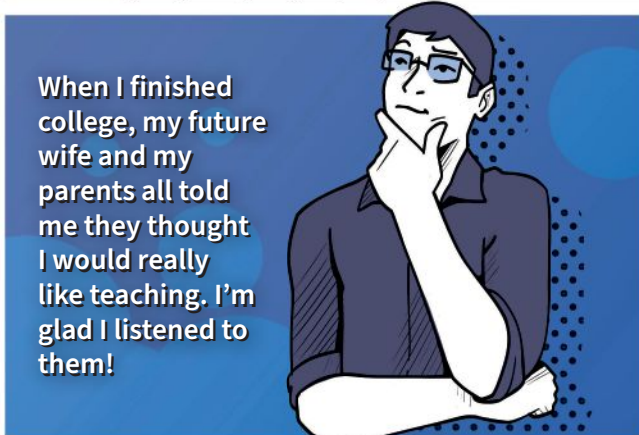
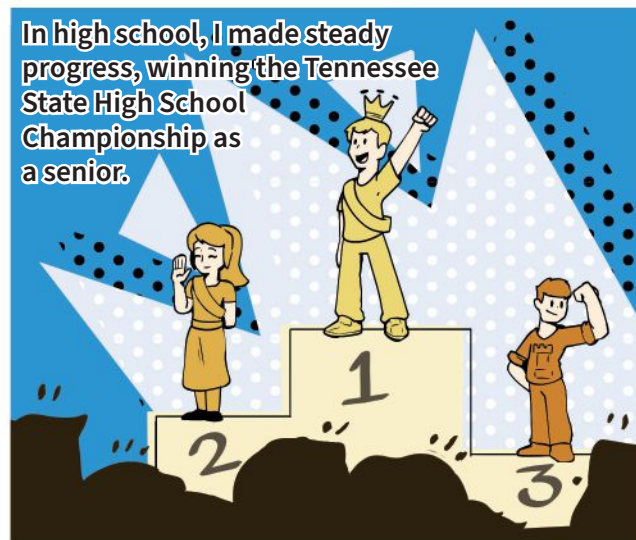
Using The Three Questions consistently is harder than it sounds. With so many things happening during a tournament game, we can easily lose track of our thought processes. In order to build the habit, you have to practice in between tournaments.

I tell students to use The Three Questions when they solve exercises! If you consistently do it when you practice, you'll do it when you play. And you'll both calculate and play better as a result.



CHESS ADVENTURES

WITH MATAN PRILLELTENSKY





The Internet Chess Club and Continental Chess Association presents:

Your best choice for online fun!

- ♔ Over **\$250,000** in prize money paid out
- ♔ Class prizes so you can win too!
- ♔ Longer controls for an OTB experience
- ♔ Weekly US Chess rated events
- ♔ US Chess approved fair play oversight



More information:

chessaction.com



ChessKid .com

PLAY



LEARN



#1 Chess Site for Kids. 200,000+ Kids, Parents, & Coaches!
100% Safe and Kid-Friendly! Signup Today - it's FREE!

Is Magnus the GOAT?

World Champion
Magnus Carlsen
could be
history's best
chess player.

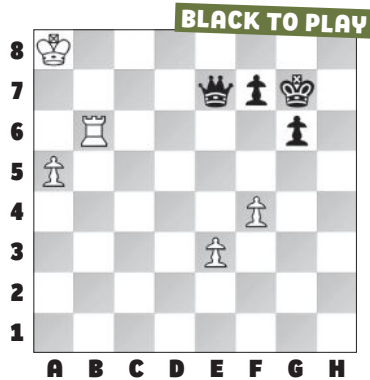
BY ALEX KING



MAGNUS CARLSEN **STARTED** out as a chess kid in Norway, but grew up to become the world champion. He might even be the chess GOAT (Greatest Of All Time). Last year he won his fifth world championship match, against Ian Nepomniachtchi from Russia. Here is the final move he played to win the match:

FINISH HIM!

GM Ian Nepomniachtchi (2782)
GM Magnus Carlsen (2855)
World Championship (11), Dubai,
12.10.2021



49. ... Qc5!, White resigned.

A double attack, or fork, on White's pawns on a5 and e3. Since Black is already ahead a queen for a rook, White resigned.

Magnus has been world champion for over eight years — longer than some chess kids have been alive! But he still wants to get better at chess and achieve even more. Before we learn what Magnus's goals for the future are, let's learn about the world champions before him.

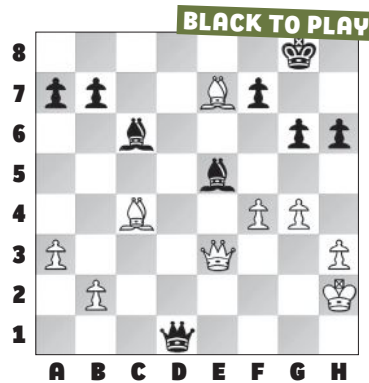
What is a World Champion?

"World Champion" is an official title for the best chess player in the world. Long ago, this title didn't exist. For example, Paul Morphy was clearly the world's best player in the late 1850s, but he was not an

official world champion. The first official world champion was Wilhelm Steinitz, who beat Johannes Zukertort in the first official world championship match in 1886. The match lasted 20 games. Here is how one of those games ended:

SUPER STEINITZ

Johannes Zukertort
Wilhelm Steinitz
World Championship (7), Saint Louis,
02.05.1886



33. ... Bxf4+! 34. Qxf4 Qh1+ 35. Kg3 Qg1+, White resigned.

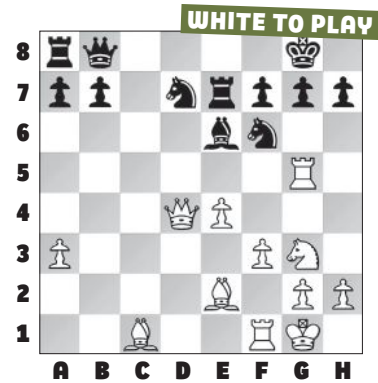
White gave up since he is forced to lose his queen after 36. Kh4 Qe1+ 37. Qg3 g5+! 38. Kh5 Qxg3.

After that, a player had to beat the world champion in an official match to become the new world champion. The first player to do this was Emmanuel Lasker, who became the second world champion by beating Steinitz in a match in 1894. Then José Capablanca beat Lasker in 1921, Alexander Alekhine beat Capablanca in 1927, Max Euwe beat Alekhine in 1935, and Alekhine beat Euwe in a rematch in 1937.

Alekhine was still the world champion when he died in 1946, so the next world champion was decided by a tournament in 1948. Mikhail Botvinnik finished in first place to become the sixth world champion. Here is one of his winning attacks from that tournament:

MIGHTY MIKHAIL

Mikhail Botvinnik
Paul Keres
World Championship Tournament
(10), The Hague, 03.25.1948



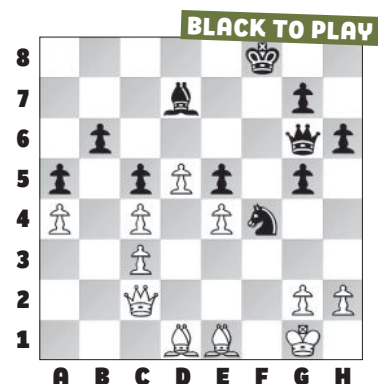
21. Rxc7+!! Kxc7 22. Nh5+! Kg6 23. Qe3!, Black resigned.

There is no good way to meet the threat of 24. Qg5 or 24. Qh6.

The next world champions were Vasily Smyslov in 1957, Mikhail Tal in 1960, Tigran Petrosian in 1963, Boris Spassky in 1969, and Bobby Fischer in 1972. Fischer was the first (and so far the only) world champion from the USA. Here is how he beat Spassky in game five of their match:

TEAM AMERICA

GM Boris Spassky (2660)
GM Bobby Fischer (2785)
World Championship (5), Reykjavik,
07.20.1972



27. ... Bxa4!, White resigned.

This shocking sacrifice wins because if White accepts it then Black will force checkmate: 27. ... Bxa4 28. Qxa4 Qxe4 (threatening 29. ... Qxg2 mate and 29. ... Qxe1 mate) 29. Kf2 Nd3+ 30. Kg3 Qh4+ 31. Kf3 Qf4+ 32. Ke2 Nc1 mate.

Fischer mysteriously refused to play any more world championship matches, so the player he was supposed to face next, Anatoly Karpov, became the 12th world champion in 1975 by default. Garry Kasparov beat Karpov in a match in 1985, but then in 1993 Kasparov got into a big disagreement with the International Chess Federation (FIDE). To make a long

story short, Vladimir Kramnik beat Kasparov in a match in 2000, Viswanathan Anand beat Kramnik in a match in 2008, and Magnus Carlsen beat Anand in a match in 2013. Here is one of Magnus's wins from that match where he first became world champion:

CARLSEN THE CHAMP

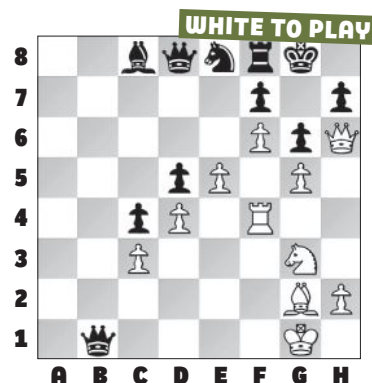
GM Viswanathan Anand (2775)

GM Magnus Carlsen (2870)

World Championship (9), Chennai, 11.21.2013

(see diagram top of next column)

28. Nf1?



The best move was 28. Bf1! Qd1 29. Rh4 Qh5 30. Nxh5 gxh5 31. Rxh5 Bf5 with an unclear position.

28. ... Qe1!, White resigned.

After 29. Rh4 Qxh4 30. Qxh4 White is down a rook for two pawns.

WHO IS MAGNUS

CARLSEN?

PEAK RATING:

2882

DEDICATED FAN OF
REAL MADRID CF

GUEST STARRED ON

THE **SIMPSONS**

HOLDS THE RECORD FOR LONGEST
CLASSICAL CHESS UNBEATEN STREAK

125 GAMES

FOLLOWS A
VEGETARIAN
DIET

Magnus Carlsen was born in Norway in 1990 and learned how to play chess from his father. He played in his first tournament when he was eight. He improved quickly and his rating jumped from 900 to 1900 in one year. In 2002, he tied for first place in the World Under-12 Championship with Ian Nepomniacht-

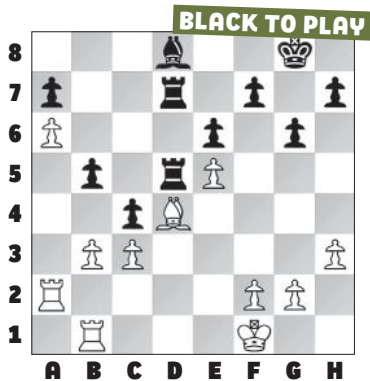
chi. (They probably didn't think that 19 years later they would play an official world championship match against each other!) Here is their first tournament game, which Nepomniachtchi won:

BACK IN THE DAY

Ian Nepomniachtchi (2306)

Magnus Carlsen (2214)

EU-ch U12 (5), Valencia, 10.03.2002



34. ... Rxd4?

Black already has a bad position, but this makes things worse. He should have played 34. ... cxb3 instead.

35. cxd4 c3 36. b4 Bg5 37. Rd1 Rc7 38. Rc2 Be7 39. d5 Bxb4 40. d6 Rc8 41. Rb1, Black resigned.

Carlsen is about to lose his b5-pawn, and then White will just be ahead a rook for a bishop.

Magnus became a grandmaster in 2004, when he was only 13 years old. In 2009 he started taking lessons from a new coach: Garry Kasparov, the 13th world champion. The following year Magnus officially became the highest-rated player in the world. His highest official rating was 2882, which is higher than anyone else ever. (One of his current goals is to be the first player ever to be rated over 2900!) After Magnus became world champion in 2013 by beating Viswanathan Anand in a match, Anand

WHO IS IAN NEPOMNIACHTCHI?

PEAK RATING:

2792

PLAYS VIDEO GAMES

DOTA & DOTA 2

AT COMPETITIVE LEVELS

LEARNED CHESS AT AGE

4.5

qualified for a rematch in 2014. Magnus won the rematch too. He also won world championship matches against Sergey Karjakin in 2016 and Fabiano Caruana in 2018. In 2021, Ian Nepomniachtchi became the fourth player to qualify to face Magnus in a world championship match.

Who is Ian Nepomniachtchi?

Ian Nepomniachtchi was born in 1990 in a place that used to be called the Soviet Union and is now called Russia. He became a grandmaster in 2007, when he was 16 years old. He won the Russian championship in 2010 and 2020. Based on his high rating in 2019, he was invited to play in a series of tournaments called the FIDE Grand Prix. He finished in second place in that series and qualified to play in an even more important tournament: the Candidates Tournament. When he won this tournament, he qualified to play an official world championship match against Magnus Carlsen. Here is the last move of Nepomni-

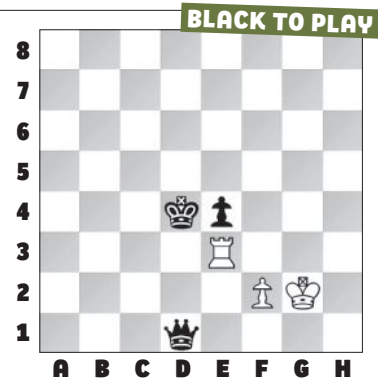
achtchi's first game in the Candidates Tournament:

THE CHALLENGER

GM Anish Giri (2763)

GM Ian Nepomniachtchi (2774)

FIDE Candidates (1), Yekaterinburg, 03.17.2020



73. ... Qd3!, White resigned.

Even though this sacrifices Black's queen, after 74. Rxd3+ exd3 75. Kf1 Kc3 76. Ke1 Kc2 Black's d-pawn will march down the board and become a new queen.

The world championship match between Carlsen and Nepomniachtchi took place in the city of



Dubai in the country of the United Arab Emirates. It was planned to be 14 games long, but it could end early if one of the players scored at least $7\frac{1}{2}$ points. (7 is half of 14, so getting more than half of the total number of points automatically wins the match.) In all the tournament games they had ever played against each other before this match, Nepomniachtchi had beaten Magnus four times and Magnus had beaten Nepomniachtchi only once. Because of this, some people thought that Nepomniachtchi was going to win the match and become the new world champion.

Drama in Dubai

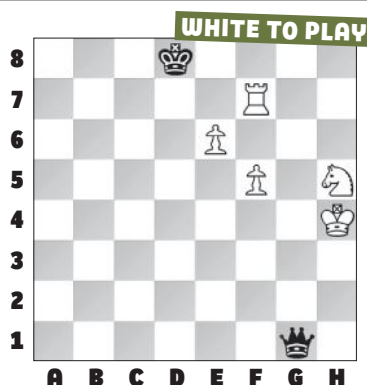
The first five games of the match were draws. Then something amazing happened in game six — Magnus won in 136 moves! This was the longest game that had ever been played in a world championship match. It lasted almost eight hours — the length of a whole school day! Here is the final move of the game:

GRINDING IT OUT

GM Magnus Carlsen (2855)

GM Ian Nepomniachtchi (2782)

World Championship (6), Dubai, 12.03.2021



136. Ng7!, Black resigned.

This creates a shield for White's king, which will run to g8. After that, Black will be unable to stop White from pushing his e-pawn and promoting to a queen.

Nepomniachtchi tried to come back and win a game to even the score, but he only made things

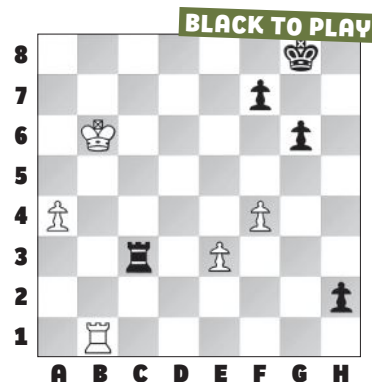
worse — after drawing game seven, he lost game eight and game nine, too. After another draw in game 10, the score was $6\frac{1}{2}$ - $3\frac{1}{2}$. Magnus only needed $7\frac{1}{2}$ points to win the match. Here's what happened in game 11:

KEEPING THE TITLE

GM Ian Nepomniachtchi (2782)

GM Magnus Carlsen (2855)

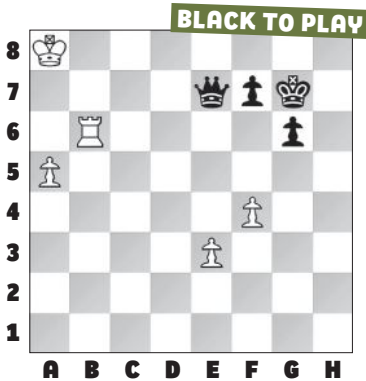
World Championship (11), Dubai, 12.10.2021



44. ... Rb3+!

Sacrificing a rook to promote the h-pawn.

45. Rxb3 h1=Q 46. a5 Qe4 47. Ka7 Qe7+ 48. Ka8 Kg7 49. Rb6



Does this position look familiar? It's the same position we saw at the beginning of this article!

49. ... Qc5!, Black resigned.

Magnus had won the match 7½-3½ to remain the world champion! He received a trophy made of obsidian, a type of black glass formed from lava. He also won over one million dollars! Nepomniachtchi won a lot of money too, even though he lost the match. Most importantly, he earned an automatic qualification into the next Candidates tournament. This means he has a chance to win that tournament again and play another match against Magnus.

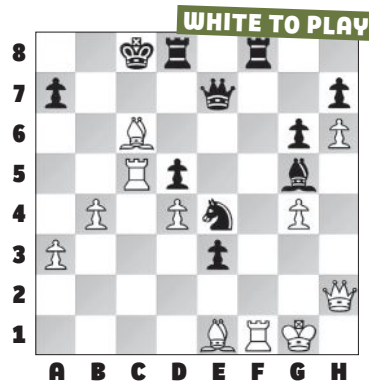
Who is the next world champion?

Magnus said something surprising after this match: he said that the only person he wants to play against in his next world championship match is a chess kid — the best chess kid in the world. Alireza Firouzja is 18 years old and was born in Iran but now lives in France. He has already played many games against Magnus, because Magnus has invited him to tournaments organized by

Magnus's chess company, Play Magnus Group. Here is a game from one of those tournaments where Alireza beat Magnus:

READY FOR FIROUZJA?

GM Alireza Firouzja (2759)
GM Magnus Carlsen (2847)
Aimchess Rapid (4), chess24.com,
08.28.2021



33. Bd7+!

A double check, which means that Black must move his king.

33. ... Kxd7 34. Rc7+ Ke6?

It was better to play 34. ... Ke8 although Black still loses his queen.

35. Qe5, mate.

Alireza will only get to play a world

championship match against Magnus if he wins the Candidates Tournament this summer. But the other players in that tournament include Nepomniachtchi and Caruana, the last two players to face Magnus in a match. It will be a very tough tournament, no matter who wins.

Who is the GOAT?

Magnus has been the highest-rated player in the world for over 10 years. He has been world champion for over eight years. Doesn't that make him the GOAT? Not according to him. He still thinks that the best player in history was Garry Kasparov, because Kasparov was the #1 player in the world for over 20 years. Even if Magnus doesn't beat that record, I still think that he's the GOAT, but that's not an official title like world champion — it's just my opinion.

What's your opinion — do you think Magnus is the GOAT? And do you think he will win another world championship match? Or are you rooting for Alireza, or someone else? Who knows? Maybe a future world champion is reading this article right now.





BY JAMAAL ABDUL-ALIM

WHEN WIM ASHRITHA Eswaran first learned that 16 year-old Rameshbabu Praggnanandhaa — also known as Pragg — had defeated world champion Magnus Carlsen in a rapid online tournament, she didn't view it simply as a victory for an individual player.

Rather, Ashritha says Pragg's recent upset against Magnus should be seen as a win for young chess players around the world who dream of one day competing at the highest levels.

"Pragg's victory is more than just a victory in my opinion," Ashritha told *Chess Life Kids*. "His victory showed the world that age is not a factor when playing chess, and that young people can reach great heights in chess if they work hard and practice daily.

"At local tournaments, kids are often scared to play adults since they are younger than their opponents," Ashritha says. "But Pragg's victory proves as a counterexample to that theory."

When Ashritha talks about hard work and daily practice, it's

not just empty words. I first met Ashritha and her family back in 2013 when she was 12 and she and her younger sister, Aksithi, both won first place in the Under 14 and Under 8 sections, respectively, at the All-Girls Nationals in Chicago.

"I just did a lot of puzzles and practice games," Ashritha told me at the time when I asked her how she prepared for the tournament. She also said she studied chess as much as two hours per day.

All that hard work and daily practice paid off. She earned the Woman International Master

title at age 15. She also won first place in the U.S. Girls' Junior Championship in 2015.

She is now a senior at the University of California at Berkeley, where she is double majoring in Applied Math and Data Science.

But it would be wrong for me — or anyone else, for that matter — to lead you to believe that rising in the world of chess is strictly about hard work and daily practice. Behind every great young chess player is a great chess coach.

That was the case with Ashritha, who has been coached by Ted Castro and Coach GM Dejan Bojkov, and it's also the case with Pragg, who has been a protege of GM RB Ramesh since age eight.

Ashritha has never met Pragg, but she has gotten pretty close. Pragg's sister, Vaishali, has been a regular competitor in her sections at world youth events, where Ashritha has observed Pragg at work or, you might say, at play.

"I don't know Pragg personally nor have I spoken to him, but I have seen him in several world youth events," Ashritha says. "His work ethic has always been one thing that stood out to me."

Indeed, Pragg's coach explained once how when he asked his students if they were watching 10 chess videos a day like he prescribed, most of them said they didn't have time because of their schoolwork and other responsibilities.

Pragg, on the other hand, reported that he was watching 30 chess videos a day.

"I was even surprised, but that is the exact dedication you need to be a champion chess player," Coach Ramesh told a reporter. "I am amazed by his zeal to learn and how he can sacrifice everything for chess."

Pragg is from Chennai, a city in India known as the "Mecca of Indian chess." Chennai is also the birthplace of former world champion Vishy Anand, who held the world championship title for six years before he lost it to Magnus in 2013.

Here is Pragg's victory against Magnus. Ashritha says her favorite part of the game was the middlegame where Pragg put pressure on Magnus, and Magnus blundered on move 21!

QUEEN'S GAMBIT DECLINED (D32)

GM Magnus Carlsen (2865)

GM Rameshbabu Pragganandhaa (2612)

Airthings Masters Prelims, chess24.com (8), 02.20.2022

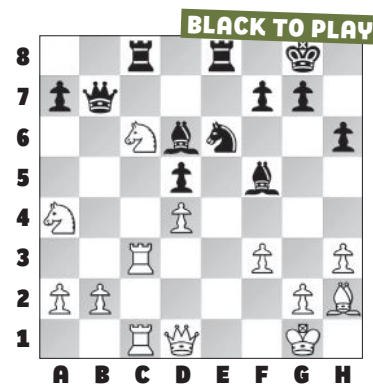
Annotations by WIM Ashritha Eswaran

1. d4 Nf6 2. c4 e6 3. Nf3 d5 4. Nc3 c5 5. e3 Nc6 6. cxd5 exd5 7. Bb5 cxd4 8. exd4 Bd6 9. 0-0 0-0 10. h3 h6 11. Re1 Bf5 12. Ne5 Rc8 13. Bf4 Re8 14. Rc1 Qb6 15. Bxc6 bxc6 16. Na4 Qa6 17. Re3 Ne4 18. f3 Ng5 19. Rec3 Qb7 20. Bh2 Ne6 21. Nxc6

On move 21, Pragg had the opportunity to go 21. ... Bxh2+ 22. Kxh2 Nf4. And positionally speaking, all his pieces were better coordinated, and his position looked very aggressive overall. Instead of that move, Pragg played ... Nf4 directly and allowed Magnus to consolidate his position. My guess was because White's bishop on h2 was a key defender for Magnus. The move, 21. ... Bxh2+ would have traded that important bishop instead.

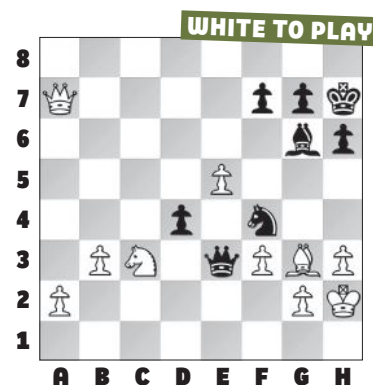
(see diagram top of next column)

21. ... Nf4 22. Ne5 Bxe5 23. dxe5 Nd3 24. Rxc8 Rxc8 25. Rxc8+ Qxc8 26. Bg3 d4 27. b3 Qc6 28. Qd2 Kh7



29. Kh2 Bg6 30. Qa5 Qc1 31. Qxa7 Qe3 32. Nc3 Nf4

After Magnus blundered on move 31, Pragg punished Magnus correctly with ... Nf4. And Pragg's attack following that move was too much to handle. I'm not sure what Magnus missed, but watching Pragg play great attacking chess against the world champion was very inspiring.



33. Nd1 Qd2 34. Nf2 Ne2 35. h4 Qe1 36. Qd7 Nxg3 37. Qxd4 Nf1+ 38. Kh3 Ne3 39. Qb2 Bc2, White resigned.

Like many chess players and enthusiasts of Indian descent, Ashritha sees Pragg's victory against Magnus as a way for someone from her ancestral land to regain the world championship title.

"Pragg's victory definitely gives hope for a potential return of the crown to India," Ashritha says. "I'm very excited to see how far Pragg can take his chess career. I have no doubt that he will be a super GM soon and will beat Magnus more often in the future."



The Risky F-Pawn Advance

BY **BRUCE PANDOLFINI**

This column teaches you openings by helping you learn to avoid opening traps. Set up your board and pieces and play through the game below. Have paper and pen by your side. When you reach a question, write down your answer. After you are done with all 10 questions, check your answers at the end of this column. Total your points and see how you did against the scoring scale at the end!

THE HYPERMODERN SPIRIT is at the foundation of modern opening play. Yet it isn't really that modern. It's been understood and practiced for more than a hundred years. In the hypermodern approach, players don't initially occupy the center. Instead, they cede the middle to the opponent's pawns. Then they try to target and undermine those advanced foot soldiers. Their aim is to provoke overextended weaknesses. The attacks against the central pawn mass could come from the flank, with fianchettoed bishops. Those attacks also might be supported by pawn advances just off the center, with bishop-pawns. Now it's one thing to use c-pawns to hit the opposing center. It's quite another to use f-pawns. The movement of the latter can cause real problems for their own uncastled king, especially along the e1-h4 (e8-h5) diagonal. In this month's illustration, Black lets

White assume the center, tries to destabilize it with an f-pawn thrust, and winds up falling into a well-known trap.

1. e4

White attacks the d5-square and enables the queen and king-bishop to come into play.

Q1) Is the white e-pawn a vulnerable target? (10 points)

1. ... b6

Owen's Defense. Black plans to attack the e4-pawn (with the queen-bishop) from the side.

2. d4

Naturally, being unchallenged in the center, White creates a classical pawn center.

Q2) Can all of White's pieces now be developed? (10 points)

2. ... Bb7

Black flanks the queen-bishop, while attacking the e4-pawn.

Q3) Would it be better to offer a bishop trade by 2. ... Ba6? (10 points)

3. Bd3

White defends the e4-pawn and develops a piece at the same time.

Q4) Which white pawn is potentially weakened by 3. Bd3? (10 points)

3. ... f5

This move exposes the e8-h5 diagonal. Safer were 3. ... Nf6, 3. ... Nc6, or 3. ... e6.

Q5) Why does Black play the risky 3. ... f5? (10 points)

4. exf5

White bites the bullet and captures the offering.

4. ... Bxg2

Black follows through with a capture in turn, attacking White's cornered rook. It looks as if the rook is in really big trouble.

Q6) Can White save the rook at h1 from capture? (10 points)

5. Qh5+

Here is the problem with 3. ... f5. The e8-h5 diagonal is vulnerable.

Q7) Which square in particular is very weak for Black? (10 points)

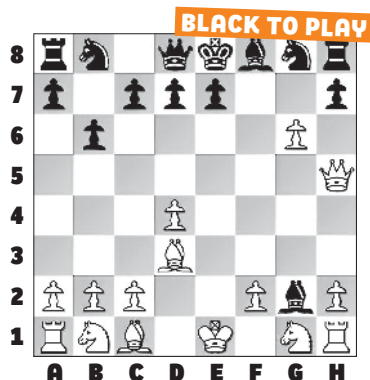
5. ... g6

This is Black's only move. White has three attackers on the g-pawn: the queen, the f5-pawn, and the d3-bishop.

6. fxg6

This capture leaves Black very little choice.

Q8) What is White's threat? (10 points)



6. ... Nf6

Black tries to save the day by attacking the white queen. It doesn't quite work out.

Q9) What was Black's best defensive try on move six? (10 points)

7. gxh7+

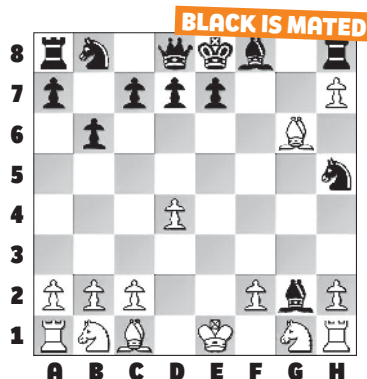
It looks as if the white queen is hanging.

7. ... Nxh5

Once again, this was Black's only possible move.

8. Bg6 mate!

Black has been punished for unsound play. The white rook at h1 is still under attack, but Black hasn't had the time to take it.

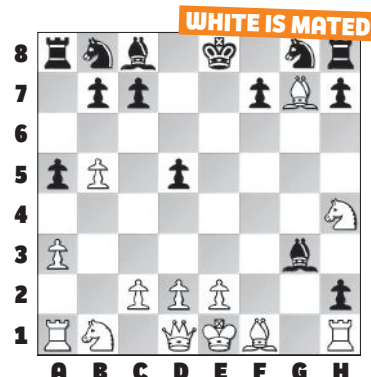


Q10) What was the last move Black could have avoided the trap? (10 points)

ILLUSTRATIVE GAME:

Moraes vs. Das Chagas
Brazil, 2015

1. b4 e5 2. a3 a5 3. b5 d5 4. Bb2 Bd6
5. f4 exf4 6. Bxg7 Qh4+ 7. g3 fxg3 8.
Nf3 gxh2+ 9. Nxh4 Bg3 mate.



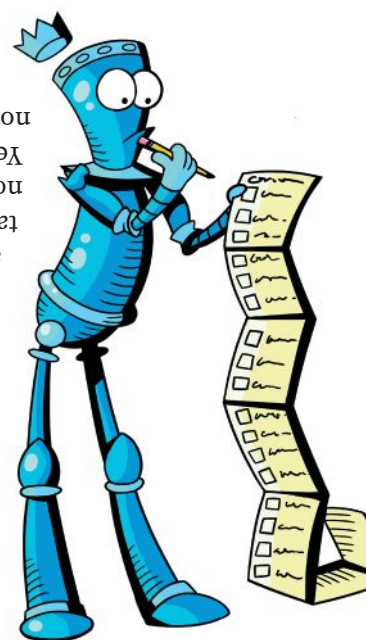
shouldn't have played 3. ... f5.
mate. **A10)** Quite frankly, Black
6. ... Bg7, which at least avoids
pawn. **A9)** Black should have tried
discovered mate by moving the g6-
for Black. **A8)** White threatens a
g6-square is quite vulnerable
But White has a counter. **A7)** The
rook can't be protected directly.
to capture on g2. **A6)** No. The
to lure away the e4-pawn in order
not yet attacked. **A5)** Black wants
g2-pawn is now unguarded. But it's
the plan of attacking e4. **A4)** The
It veers from
inconsistent.

A3) No. It's
other pawns.

not move any
Yes. White need
not yet weak. **A2)**

target, but it's
a potential
A1) No. It's

ANSWERS:



Be sure to
check your
score!

How Did You Score?

The score is based on the US Chess rating system and is intended only as a fun way to monitor your progress each issue as you Avoid The Trap!

100: 1800+

90: 1600

80: 1400

70: 1200

60 or lower: 1000

TOURNAMENT LIFE ANNOUNCEMENTS

The Executive Board authorizes a temporary change in the US Chess Grand Prix (GP) rules for the period March 4, 2020 through April 30, 2022 out of concern for the unforeseeable impacts the COVID-19 (Coronavirus) could have on participation in GP events. The change allows organizers with guaranteed prize funds to change the status of their prize fund without first seeking US Chess permission to make the change. Please refer to the Tournament Life Announcement section in *Chess Life* for more information.

For complete details on individual events, please visit [new.uschess.org/node/\[TLA ID\]](http://new.uschess.org/node/[TLA ID]). You will find the event's unique five-digit TLA ID at the end of each TLA.

Nationals

NATIONAL CHAMPIONSHIP EVENT • JUNIOR GRAND PRIX

2022 National High School (K-12) Championships

APRIL 8-10, 2022, TENNESSEE

Event site: Renaissance Convention Center **Address:** 255 N Main St, Memphis, TN 38103 **Overall prize fund:** n/a **GP Points:** n/a **FIDE Rated:** Y **Handicap accessible:** N **Residency restriction:** N **Organizer:** Boyd Reed **Email:** nationalevents@uschess.org **Phone:** 931-787-2244 **Website:** <http://www.uschess.org/tournaments/2022/hs> **TLA ID:** 32429

NATIONAL CHAMPIONSHIP EVENT • HERITAGE EVENT • JUNIOR GRAND PRIX

2022 National Middle School (K-8) Championships

APRIL 29-MAY 1, 2022, TEXAS

Event site: Gaylord Texan Resort & Convention Center **Address:** 1501 Gaylord Trail, Grapevine, TX 76051 **Overall prize fund:** n/a **GP Points:** n/a **FIDE Rated:** N **Handicap accessible:** Y **Residency restriction:** N **Organizer:** Boyd Reed **Email:** nationalevents@uschess.org **Phone:** 931-787-2244 **Website:** <http://www.uschess.org/tournaments/2022/ms> **TLA ID:** 32529

NATIONAL CHAMPIONSHIP EVENT • HERITAGE EVENT • JUNIOR GRAND PRIX

2022 National Elementary (K-6) Championships

MAY 13-15, 2022, OHIO

Event site: Greater Columbus Convention Center **Address:** 400 North High Street, Columbus, OH 43215 **Overall prize fund:** n/a **GP Points:** n/a **FIDE Rated:** N **Handicap accessible:** Y **Residency restriction:** N **Organizer:** Boyd Reed **Email:** nationalevents@uschess.org **Phone:** 931-787-2244 **Website:** <http://www.uschess.org/tournaments/2022/elem> **TLA ID:** 32594

NATIONAL CHAMPIONSHIP EVENT • GRAND PRIX • ENHANCED GRAND PRIX

2022 U.S. Women's Open

JUNE 8-9, 2022, NEVADA

Event site: Westgate Las Vegas Resort **Address:** 3000 Paradise Rd, Las Vegas, NV 89109 **Overall prize fund:** \$3,500 **GP Points:** 50 **FIDE Rated:** Y **Handicap accessible:** Y **Residency restriction:** N **Organizer:** Vegas Chess Festivals **Email:** vegas@chessmail.com **Phone:** 702-930-9550 **Website:** <https://vegasschessfestival.com> **TLA ID:** 32319

NATIONAL CHAMPIONSHIP EVENT • HERITAGE EVENT • AMERICAN CLASSIC • GRAND PRIX • ENHANCED GRAND PRIX • JUNIOR GRAND PRIX

2022 National Open

JUNE 8-12, 2022, NEVADA

Event site: Westgate Las Vegas Resort **Address:** 3000 Paradise Rd, Las Vegas, NV 89109 **Overall prize fund:** \$100,000 **GP Points:** 200 **FIDE Rated:** Y **Handicap accessible:** Y **Residency restriction:** N **Organizer:** Vegas Chess Festivals **Email:** vegas@chessmail.com **Phone:** 702-930-9550 **Website:** <https://vegasschessfestival.com> **TLA ID:** 32321

NATIONAL CHAMPIONSHIP EVENT • HERITAGE EVENT • AMERICAN CLASSIC • ENHANCED GRAND PRIX

122nd Annual United States Open Chess Championship

JULY 30-AUGUST 7, 2022, CALIFORNIA

Event site: Westin Mission Hills Golf Resort & Spa **Address:** 371333 Dinah Shore Drive, Rancho Mirage, CA 92270 **Overall prize fund:** \$50,000 **GP Points:** 300 **FIDE Rated:** N **Handicap accessible:** Y **Residency restriction:** N **Organizer:** Boyd Reed **Email:** nationalevents@uschess.org **Phone:** 931-787-1234 **Website:** <http://www.uschess.org/tournaments/2022/usopen> **TLA ID:** 33031

Grand Prix

The Grand Prix continues in 2022. Look for 2021 standings in an upcoming issue.

AMERICAN CLASSIC • GRAND PRIX • ENHANCED GRAND PRIX • JUNIOR GRAND PRIX

14th annual Open at Foxwoods

APRIL 13-17, 2022, CONNECTICUT

Event site: Foxwoods Resort Casino **Address:** Rt 2, Mashantucket, CT 06339 **Overall prize fund:** \$75,000 **b/500 GP Points:** 200 **FIDE Rated:** Y **Handicap accessible:** Y **Residency restriction:** N **Organizer:** Continental Chess Association **Email:** director@chess.us **Phone:** 3472012269, leave message including email address **Website:** <http://www.chessevents.us> **TLA ID:** 317625

GRAND PRIX • ENHANCED GRAND PRIX

13th annual Blitz at Foxwoods

APRIL 16, 2022, CONNECTICUT

Event site: Foxwoods Resort Casino **Address:** Rt 2, Mashantucket, CT 06339 **Overall prize fund:** \$2,000 **GP Points:** 20 **FIDE Rated:** N **Handicap accessible:** Y **Residency restriction:** N **Organizer:** Continental Chess Association **Email:** director@chess.us **Phone:** 3472012269, leave message including email address **Website:** <http://www.chessevents.us> **TLA ID:** 32418

GRAND PRIX

2022 Bluff City Open

APRIL 16-17, 2022, TENNESSEE

Event site: Memphis Chess Club **Address:** 195 Madison Ave Suite 101, Memphis, TN 38103 **Overall prize fund:** \$2,520 **GP Points:** 10 **FIDE Rated:** N **Handicap accessible:** Y **Residency restriction:** N **Organizer:** Memphis Chess Club **Email:** info@memphischessclub.com **Phone:** 731-8685755 **Website:** <https://www.memphischessclub.com> **TLA ID:** 32888

HERITAGE EVENT • ENHANCED GRAND PRIX

27th Space Coast Open

APRIL 22-24, 2022, FLORIDA

Event site: Holiday Inn Melbourne-Viera Conference Center **Address:** 8298 N. Wickham Rd, Melbourne, FL 32940 **Overall prize fund:** \$20,000 **GP Points:** 80 **FIDE Rated:** Y **Handicap accessible:** N **Residency restriction:** N **Organizer:** Jon Haskel **Email:** jon@bocachess.com **Phone:** 561-302-4377 **Website:** <http://www.spacecoastchessfoundation.org/> **TLA ID:** 32689

GRAND PRIX

\$3,200 Houston Chess Studio Spring Championship

APRIL 23-24, 2022, TEXAS

Event site: The Houston Chess Studio **Address:** 250 Patton St, Suite H, Houston, TX 77009 **Overall prize fund:** \$3,200 **GP Points:** 30 **FIDE Rated:** N **Handicap accessible:** Y **Residency restriction:** N **Organizer:** Poison Pawns Chess Club **Email:** poisonpawnschessclub@gmail.com **Phone:** 281-844-4139 **Website:** <https://www.poisonpawns.club> **TLA ID:** 32836

HERITAGE EVENT • GRAND PRIX • ENHANCED GRAND PRIX • JUNIOR GRAND PRIX

30th annual Eastern Class Championships

APRIL 29-MAY 1, 2022, MASSACHUSETTS

Event site: Sturbridge Host Hotel **Address:** 366 Main St, Sturbridge, MA 01566 **Overall prize fund:** \$20,000 **GP Points:** 120 **FIDE Rated:** Y **Handicap accessible:** Y **Residency restriction:** N **Organizer:** Continental Chess Association **Email:** director@chess.us **Phone:** 3472012269, leave message including email address **Website:** <http://www.chessevents.us> **TLA ID:** 32412

GRAND PRIX

Sheridan Wyoming Open

APRIL 30-MAY 1, 2022, WYOMING

Event site: Whitney Academic Center **Address:** 1 Whitney Way, Sheridan, WY 82801 **Overall prize fund:** \$3,875 **GP Points:** n/a **FIDE Rated:** N **Handicap accessible:** Y **Residency restriction:** N **Organizer:** Sheridan Chess Association **Email:** admin@sheridanchess.com **Phone:** 202-679-6779 **Website:** <http://www.SheridanChess.com> **TLA ID:** 32856

ENHANCED GRAND PRIX • JUNIOR GRAND PRIX

Chicago Chess Center 4th Haymarket Memorial

APRIL 30-MAY 1, 2022, ILLINOIS

Event site: Student Center East, University of Illinois at Chicago **Address:** 750 S. Halsted, Chicago, IL 60607 **Overall prize fund:** \$7,000 **b/125 GP Points:** 40 **FIDE Rated:** Y **Handicap accessible:** N **Residency restriction:** N **Organizer:** William H. Brock **Email:** billbrock@chicness.org **Phone:** 773-2941709 **Website:** <http://www.chicness.org/events> **TLA ID:** 32930

ENHANCED GRAND PRIX • JUNIOR GRAND PRIX

2022 DFW FIDE Premier 3

MAY 6-8, 2022, TEXAS

Event site: Doubletree by Hilton DFW Airport North **Address:** 4441 W. John Carpenter Fwy, Irving, TX 75063 **Overall prize fund:** \$1,000 **GP Points:** 30 **FIDE Rated:** Y **Handicap accessible:** N **Residency restriction:** N **Organizer:** Luis Salinas **Email:** dallaschess.com **Phone:** 214-632-9000 **Website:** <http://www.dallaschess.com> **TLA ID:** 32572

GRAND PRIX • ENHANCED GRAND PRIX • JUNIOR GRAND PRIX

2nd annual Niagara Falls Open

MAY 13-15, 2022, NEW YORK

Event site: Sheraton Niagara Falls **Address:** 300 3rd St, Niagara Falls NY 14303 **Overall prize fund:** \$12,000 **GP Points:** 100 **FIDE Rated:** Y **Handicap accessible:** Y **Residency restriction:** N **Organizer:** Continental Chess Association **Email:** director@chess.us **Phone:** 3472012269, leave message including email address **Website:** <http://www.chessevents.us> **TLA ID:** 32660

GRAND PRIX

2022 John Hurt Memorial

MAY 14, 2022, TENNESSEE

Event site: Memphis Chess Club **Address:** 195 Madison Ave Suite 101, Memphis, TN 38103 **Overall prize fund:** \$1,350 **GP Points:** 6 **FIDE Rated:** N **Handicap**

accessible: Y **Residency restriction:** N **Organizer:** Memphis Chess Club **Email:** info@memphischessclub.com **Phone:** 731-8685755 **Website:** <https://www.memphischessclub.com/> **TLA ID:** 32900

HERITAGE EVENT • AMERICAN CLASSIC • GRAND PRIX • ENHANCED GRAND PRIX • JUNIOR GRAND PRIX

31st annual Chicago Open

MAY 26-30, 2022, ILLINOIS

Event site: Westin Chicago North Shore Hotel **Address:** 601 North Milwaukee Ave, Wheeling, IL 60090 **Overall prize fund:** \$100,000 **GP Points:** 200 **FIDE Rated:** Y **Handicap accessible:** Y **Residency restriction:** N **Organizer:** Continental Chess Association **Email:** director@chess.us **Phone:** 3472012269, leave message including email address **Website:** <http://www.chessevents.us> **TLA ID:** 32120

HERITAGE EVENT • GRAND PRIX • JUNIOR GRAND PRIX

42nd Annual Lina Grumette Memorial Day Classic

MAY 28-30, 2022, CALIFORNIA, SOUTHERN

Event site: Towneplace Suites Marriott **Address:** 10336 Richardson Street, Loma Linda, CA 92354 **Overall prize fund:** \$10,000 **b/200 GP Points:** 40 **FIDE Rated:** Y **Handicap accessible:** N **Residency restriction:** N **Organizer:** Southern California Chess Federation **Email:** garden909@aol.com **Phone:** 951-505-1064 **Website:** <http://www.schess.com> **TLA ID:** 32894

GRAND PRIX • ENHANCED GRAND PRIX

9th annual Chicago Open Blitz

MAY 29, 2022, ILLINOIS

Event site: Westin Chicago North Shore Hotel **Address:** 601 North Milwaukee Ave, Wheeling, IL 60090 **Overall prize fund:** \$2,500 **GP Points:** 30 **FIDE Rated:** N **Handicap accessible:** Y **Residency restriction:** N **Organizer:** Continental Chess Association **Email:** director@chess.us **Phone:** 3472012269, leave message including email address **Website:** <http://www.chessevents.us> **TLA ID:** 32588

HERITAGE EVENT • GRAND PRIX • ENHANCED GRAND PRIX • JUNIOR GRAND PRIX

27th annual Northeast Open

JUNE 10-12, 2022, CONNECTICUT

Event site: Stamford Hotel (formerly Sheraton) **Address:** 700 Main St, Stamford, CT 06901 **Overall prize fund:** \$15,000 **GP Points:** 120 **FIDE Rated:** Y **Handicap accessible:** Y **Residency restriction:** N **Organizer:** Continental Chess Association **Email:** director@chess.us **Phone:** 3472012269, leave message including email address **Website:** <http://www.chessevents.us> **TLA ID:** 32950

GRAND PRIX • ENHANCED GRAND PRIX • JUNIOR GRAND PRIX

Cleveland Open

JUNE 10-12, 2022, OHIO

Event site: Crowne Plaza Cleveland Airport **Address:** 7230 Engle Road, Middleburg Heights OH 44130 **Overall prize fund:** \$15,000 **GP Points:** 120 **FIDE Rated:** Y **Handicap accessible:** Y **Residency restriction:** N **Organizer:** Continental Chess Association **Email:** director@chess.us **Phone:** 3472012269, leave message including email address **Website:** <http://www.chessevents.us> **TLA ID:** 32990

GRAND PRIX • ENHANCED GRAND PRIX • JUNIOR GRAND PRIX

Midwest Chess Congress

JUNE 17-19, 2022, IOWA

Event site: Ramada Tropics Resort & Conference Center **Address:** 5000 Merle Hay Road (near I-80 & I-35), Des Moines IA 50322 **Overall prize fund:** \$10,000 **GP**

Points: 80 **FIDE Rated:** Y **Handicap accessible:** Y **Residency restriction:** N **Organizer:** Continental Chess Association **Email:** director@chessevents.us **Phone:** 3472012269 leave message including email address **Website:** <http://www.chessevents.us> **TLA ID:** 32992

GRAND PRIX

David Kernell Memorial JUNE 18, 2022, TENNESSEE

Event site: Memphis Chess Club **Address:** 195 Madison Ave Suite 101, Memphis, TN 38103 **Overall prize fund:** \$2,000 **GP Points:** 6 **FIDE Rated:** N **Handicap accessible:** Y **Residency restriction:** N **Organizer:** Memphis Chess Club **Email:** info@memphischessclub.com **Phone:** 7318685755 **Website:** <http://www.memphischessclub.com/> **TLA ID:** 32924

AMERICAN CLASSIC • GRAND PRIX • ENHANCED GRAND PRIX • JUNIOR GRAND PRIX

16th annual Philadelphia Open JUNE 24-26, 2022, PENNSYLVANIA

Event site: Philadelphia Sheraton Downtown **Address:** 201 North 17th St, Philadelphia, PA 19103 **Overall prize fund:** \$15,000 **GP Points:** 100 **FIDE Rated:** Y **Handicap accessible:** Y **Residency restriction:** N **Organizer:** Continental Chess Association **Email:** director@chessevents.us **Phone:** 3472012269 leave message including email address **Website:** <http://www.chessevents.us> **TLA ID:** 32123

HERITAGE EVENT • AMERICAN CLASSIC • GRAND PRIX • ENHANCED GRAND PRIX • JUNIOR GRAND PRIX

50th annual World Open JUNE 29-JULY 4, 2022, PENNSYLVANIA

Event site: Philadelphia Sheraton Downtown **Address:** 201 North 17th St, Philadelphia, PA 19103 **Overall prize fund:** \$225,000 **GP Points:** 300 **FIDE Rated:** Y **Handicap accessible:** Y **Residency restriction:** N **Organizer:** Continental Chess Association **Email:** director@chessevents.us **Phone:** 3472012269 leave message including email address **Website:** <http://www.chessevents.us> **TLA ID:** 32104

ENHANCED GRAND PRIX • GRAND PRIX • JUNIOR GRAND PRIX • ENHANCED GRAND PRIX • JUNIOR GRAND PRIX

11th annual World Open Women's Championship JUNE 29-30, 2022, PENNSYLVANIA

Event site: Philadelphia Sheraton Downtown **Address:** 201 North 17th St, Philadelphia, PA 19103 **Overall prize fund:** \$2,000 **GP Points:** 30 **FIDE Rated:** Y **Handicap accessible:** Y **Residency restriction:** N **Organizer:** Continental Chess Association **Email:** director@chessevents.us **Phone:** 3472012269 leave message including email address **Website:** <http://www.chessevents.us> **TLA ID:** 32615

GRAND PRIX • ENHANCED GRAND PRIX • JUNIOR GRAND PRIX

15th annual Chicago Class JULY 15-17, 2022, ILLINOIS

Event site: Westin Chicago North Shore Hotel **Address:** 601 N Milwaukee Avenue, Wheeling, IL 60090 **Overall prize fund:** \$30,000 **GP Points:** 150 **FIDE Rated:** Y **Handicap accessible:** Y **Residency restriction:** N **Organizer:** Continental Chess Association **Email:** director@chessevents.us **Phone:** 3472012269 leave message including email address **Website:** <http://www.chessevents.us> **TLA ID:** 32928

HERITAGE EVENT • GRAND PRIX • ENHANCED GRAND PRIX • JUNIOR GRAND PRIX

26th annual Pacific Coast Open JULY 15-17, 2022, CALIFORNIA, SOUTHERN

Event site: Airtel Plaza Hotel **Address:** 7277 Valjean Ave, Van Nuys CA 91406 **Overall prize fund:** \$25,000 **GP Points:** 150 **FIDE Rated:** Y **Handicap accessible:** Y **Residency restriction:** N **Organizer:** Continental Chess Association **Email:** director@chessevents.us **Phone:** 3472012269 leave message including email address **Website:** <http://www.chessevents.us> **TLA ID:** 33003

HERITAGE EVENT • GRAND PRIX • ENHANCED GRAND PRIX • JUNIOR GRAND PRIX

30th annual Southern Open JULY 22-24, FLORIDA

Event site: Wyndham Orlando Resort **Address:** 8001 International Drive, Orlando, FL 32819 **Overall prize fund:** \$20,000 **GP Points:** 150 **FIDE Rated:** Y **Handicap accessible:** Y **Residency restriction:** N **Organizer:** Continental Chess Association **Email:**

director@chessevents.us **Phone:** 3472012269 leave message including email address **Website:** <http://www.chessevents.us> **TLA ID:** 32940

GRAND PRIX • ENHANCED GRAND PRIX • JUNIOR GRAND PRIX

23rd annual Pittsburgh Open JULY 22-24, PENNSYLVANIA

Event site: Doubletree Green Tree **Address:** 1750 Rockville Pike, Rockville, MD 20852 **Overall prize fund:** \$26,725 **GP Points:** 200 **FIDE Rated:** Y **Handicap accessible:** N **Residency restriction:** N **Organizer:** Michael Regan **Email:** mregan@stsci.edu **Phone:** 410-419-5130 **Website:** <https://mdchess.com/> **TLA ID:** 33004

HERITAGE EVENT • ENHANCED GRAND PRIX • GRAND PRIX • JUNIOR GRAND PRIX

52nd annual Continental Open JULY 27-31, MASSACHUSETTS

Event site: Sturbridge Host Hotel **Address:** 366 Main St (Rt 20 West), Sturbridge MA 01566 (I-84 Exit 3, near I-90) **Overall prize fund:** \$35,000 **GP Points:** 200 **FIDE Rated:** Y **Handicap accessible:** Y **Residency restriction:** N **Organizer:** Continental Chess Association **Email:** director@chessevents.us **Phone:** 3472012269 leave message including email address **Website:** <http://www.chessevents.us> **TLA ID:** 32986

Regional

ALABAMA

DECEMBER 23, 2021-ONGOING ON SUNDAY, THURSDAY, AND SATURDAY

Weekly and Monthly Rated Chess at Memphis Chess Club (TN)
See Tennessee.

APRIL 16-17, 2022 2022 Bluff City Open (TN)

See Grand Prix.

MAY 14, 2022 2022 John Hurt Memorial (TN)

See Grand Prix.

JUNE 18, 2022 David Kernell Memorial (TN)

See Grand Prix.

ARIZONA

MAY 28, 2022 MDC Scholastics (CA-S)

See California.

MAY 28-30, 2022 42nd Annual Lina Grumette Memorial Day Classic (CA-S)

See Grand Prix.

ARKANSAS

DECEMBER 23, 2021-ONGOING ON SUNDAY, THURSDAY, AND SATURDAY

Weekly and Monthly Rated Chess at Memphis Chess Club (TN)
See Tennessee.

APRIL 16-17, 2022 2022 Bluff City Open (TN)

See Grand Prix.

MAY 14, 2022 2022 John Hurt Memorial (TN)

See Grand Prix.

JUNE 18, 2022 David Kernell Memorial (TN)

See Grand Prix.

CALIFORNIA

MAY 28, 2022 MDC Scholastics

Event site: Towneplace Suites Marriott **Address:** 10336 Richardson Street, Loma Linda, CA 92354 **Overall prize fund:** Trophies **GP Points:** n/a **FIDE**

Rated: N **Handicap accessible:** N **Residency restriction:** N **Organizer:** Southern California Chess Federation **Email:** garden909@aol.com **Phone:** 951-505-1064 **Website:** <http://www.schess.com> **TLA ID:** 32896

CONNECTICUT

APRIL 16-17, 2022

FIDE U2400 at Foxwoods

Event site: Foxwoods Resort Casino **Address:** Rt 2, Mashantucket, CT 06339 **Overall prize fund:** \$2,000 **GP Points:** n/a **FIDE Rated:** Y **Handicap accessible:** Y **Residency restriction:** N **Organizer:** Continental Chess Association **Email:** director@chessevents.us **Phone:** 3472012269, leave message including email address **Website:** <http://www.chessevents.us> **TLA ID:** 32651

APRIL 22-24, 2022

27th Space Coast Open (FL)

See Grand Prix or spacecoastchessfoundation.org.

GEORGIA

APRIL 22-24, 2022

27th Space Coast Open (FL)

See Grand Prix or spacecoastchessfoundation.org.

ILLINOIS

APRIL 22-24, 2022

27th Space Coast Open (FL)

See Grand Prix or spacecoastchessfoundation.org.

APRIL 30-MAY 1, 2022

Chicago Chess Center 4th Haymarket Memorial (IL)

See Grand Prix.

MAY 29-30, 2022 Chicago FIDE U2200

Event site: Westin Chicago North Shore Hotel **Address:** 601 North Milwaukee Ave, Wheeling, IL 60090 **Overall prize fund:** \$1,000 **GP Points:** n/a **FIDE Rated:** Y **Handicap accessible:** Y **Residency restriction:** N **Organizer:** Continental Chess Association **Email:** director@chessevents.us **Phone:** 3472012269 leave message including email address **Website:** <http://www.chessevents.us> **TLA ID:** 32662

KENTUCKY

DECEMBER 23, 2021-ONGOING ON SUNDAY, THURSDAY, AND SATURDAY

Weekly and Monthly Rated Chess at Memphis Chess Club (TN)
See Tennessee.

APRIL 16-17, 2022 2022 Bluff City Open (TN)

See Grand Prix.

MAY 14, 2022 2022 John Hurt Memorial (TN)

See Grand Prix.

JUNE 18, 2022 David Kernell Memorial (TN)

See Grand Prix.

MAINE

APRIL 16, 2022

Kate Gasser Classic Swiss

Event site: Curtis Memorial Library **Address:** 23 Pleasant Street, Brunswick, ME, 04011 **Overall prize fund:** n/a **GP Points:** n/a **FIDE Rated:** N **Handicap accessible:** Y **Residency restriction:** Y **Organizer:** Michael Dudley **Email:** mdudley@chessmaine.org **Phone:** 207-904-0499 **Website:** <https://chessmaine.net/chessmaine/events/> **TLA ID:** 32743

MARYLAND

MARYLAND CHESS TOURNAMENTS (NORTH PENN CHESS CLUB)

Maryland Chess runs 21+ annual K-12 tournaments every other Saturday from September through June & 12+ annual 1-day or multi-day open tournaments for adults & K-12 players on weekends. See www.MD-Chess.org for tournament announcements, registration for tournaments, updated wallcharts, live stand-

ings, signup for K-12 & open e-newsletters, lists of coaches & clubs, camp announcements, & news. K-12 MD players who compete in the Varsity section (for players rated 1600+) of 1 of 8+ annual MD-Sweet-16 Qualifiers can qualify for the \$48,000+ scholarship to the University of Maryland, Baltimore County awarded annually. UMBC is a perennial top-10 contender for the collegiate national chess championship.

MASSACHUSETTS

MAY 28-30, 2022

90th Massachusetts Open (MA)

See Grand Prix.

MISSISSIPPI

DECEMBER 23, 2021-ONGOING ON SUNDAY, THURSDAY, AND SATURDAY

Weekly and Monthly Rated Chess at Memphis Chess Club (TN)
See Tennessee.

APRIL 16-17, 2022

2022 Bluff City Open (TN)

See Grand Prix.

MAY 14, 2022

2022 John Hurt Memorial (TN)

See Grand Prix.

JUNE 18, 2022

David Kernell Memorial (TN)

See Grand Prix.

MISSOURI

DECEMBER 23, 2021-ONGOING ON SUNDAY, THURSDAY, AND SATURDAY

Weekly and Monthly Rated Chess at Memphis Chess Club (TN)
See Tennessee.

APRIL 16-17, 2022

2022 Bluff City Open (TN)

See Grand Prix.

MAY 14, 2022

2022 John Hurt Memorial (TN)

See Grand Prix.

JUNE 18, 2022

David Kernell Memorial (TN)

See Grand Prix.

NEVADA

MAY 28, 2022

MDC Scholastics (CA-S)

See California.

MAY 28-30, 2022

42nd Annual Lina Grumette Memorial Day Classic (CA-S)

See Grand Prix.

NEW JERSEY

JANUARY 8, 2022-ONGOING ON SATURDAY ICA Super Saturday IN-PERSON Quads

Event site: Community Church of Glen Rock **Address:** 354 Rock Road, Education Building, Glen Rock, NJ 07452 **Overall prize fund:** n/a **GP Points:** n/a **FIDE Rated:** N **Handicap accessible:** Y **Residency restriction:** N **Organizer:** International Chess Academy **Email:** chessdirector@icaj.net **Phone:** 2018198280 **Website:** <https://www.icakidsonline.com> **TLA ID:** 32450

APRIL 22-24, 2022

27th Space Coast Open (FL)

See Grand Prix or spacecoastchessfoundation.org.

APRIL 23, 2022

ICA Open Championship

Event site: Community Church of Glen Rock **Address:** 354 Rock Road, Education Building, Glen Rock, NJ 07452 **Overall prize fund:** n/a **GP Points:** n/a **FIDE Rated:** N **Handicap accessible:** N **Residency restriction:** N **Organizer:** International Chess Academy **Email:** chessdirector@icaj.net **Phone:**

For complete details on individual events, please visit [new.uschess.org/node/\[TLA ID\]](http://new.uschess.org/node/[TLA ID]). You will find the event's unique five-digit TLA ID at the end of each TLA.

2017970330 Website: <https://www.icakidsonline.com>
TLA ID: 32923

NEW YORK

APRIL 22-24, 2022

27th Space Coast Open (FL)

See Grand Prix or spacecoastchessfoundation.org.

PENNSYLVANIA

North Penn Chess Club

Main & Richardson - St. John's UCC, 500 West Main St., Lansdale, PA 19446. See www.northpennchessclub.org for schedules & info or 215-699-8418

APRIL 22-24, 2022

27th Space Coast Open (FL)

See Grand Prix or spacecoastchessfoundation.org.

JUNE 23-24, 2022

14th annual World Open Under 13

Event site: Sheraton Philadelphia Downtown Address: 201 North 17th St, Philadelphia, PA 19103 Overall prize fund: n/a GP Points: n/a FIDE Rated: N Handicap accessible: Y Residency restriction: N Organizer: Continental Chess Association Email: director@chess.us Phone: 3472012269 leave message including email address Website: <http://www.chessevents.us> TLA ID: 32608

JUNE 27-29, 2022

World Open Amateur

Event site: Philadelphia Sheraton Downtown Address: 201 North 17th St, Philadelphia, PA 19103 Overall prize fund: \$5,000 GP Points: n/a FIDE

Rated: Y Handicap accessible: Y Residency restriction: N Organizer: Continental Chess Association Email: director@chess.us Phone: 3472012269 leave message including email address Website: <http://www.chessevents.us> TLA ID: 32170

JUNE 29-30, 2022

World Open FIDE U2400

Event site: Philadelphia Sheraton Downtown Address: 201 North 17th St, Philadelphia, PA 19103 Overall prize fund: \$2,000 GP Points: n/a FIDE Rated: Y Handicap accessible: Y Residency restriction: N Organizer: Continental Chess Association Email: director@chess.us Phone: 3472012269 leave message including email address Website: <http://www.chessevents.us> TLA ID: 32614

TENNESSEE

DECEMBER 23, 2021-ONGOING ON SUNDAY, THURSDAY, AND SATURDAY
Weekly and Monthly Rated Chess at Memphis Chess Club

Event site: Douglas Community Center Address: 195 Madison Ave Suite 101, Memphis, TN 38110 Overall prize fund: n/a GP Points: n/a FIDE Rated: N Handicap accessible: N Residency restriction: N Organizer: Memphis Chess Club Email: info@memphischessclub.com Phone: 7318685755 Website: <https://www.memphischessclub.com/> TLA ID: 32334

TEXAS

APRIL 23-24, 2022

\$3,200 Houston Chess Studio Spring Championship (TX)

See Grand Prix.

Gold & Silver Affiliates

US CHESS would like to recognize and thank all of our Affiliates for their commitment and hard work.

For a full list of Gold and Silver Affiliates and all information on becoming a Gold or Silver Affiliate, please visit

www.uschess.org/content/view/7905/95.



2020 JUNIOR GRAND PRIX FINAL STANDINGS

Congratulations to the
2020 Junior Grand Prix champion,
Odin Arnson of Nevada.

	Name	State	Count
1.	ODIN ARNSON	NV	3,736
2.	VED JIGNESH DESAI	NJ	3,698
3.	MELANIE D. GRIFFITH	TX	3,500
4.	AARYA ARAVINDAN GORJALAR	CA-N	3,350
5.	KAMATCHI MUTHU	PA	3,302

Grand Prize: Chess.com one-year Diamond membership (\$100 value), Chess.com gear/merchandise package (\$100 value), free entry into the 2021 U.S. Open with \$1,000 to offset trip expenses, and a US Chess award. Chess.com also awards prizes to the top five players and to each state winner. US Chess gratefully acknowledges the participation of Chess.com.



Visit uschess.org/datapage/jgp-standings.php for full details and standings.

2021 JUNIOR GRAND PRIX FINAL STANDINGS

Congratulations to the
2021 Junior Grand Prix champion,
Eshaan Hebbar of New Jersey.

	Name	State	Count
1.	ESHAAN HEBBAR	NJ	13,729
2.	MAHATI B. KASHYAP	NJ	11,716
3.	MICHAEL DENG	MD	10,631
4.	MANISH B. KASHYAP	NJ	10,490
5.	CHLOE GAW	NY	10,391

Grand Prize: Chess.com one-year Diamond membership (\$100 value), Chess.com gear/merchandise package (\$100 value), free entry into the 2022 U.S. Open with \$1,000 to offset trip expenses, and a US Chess award. Chess.com also awards prizes to the top five players and to each state winner. US Chess gratefully acknowledges the participation of Chess.com.



Visit uschess.org/datapage/jgp-standings.php for full details and standings.

THE 2022 SPRING SCHOLASTIC NATIONALS

2022 NATIONAL
HIGH SCHOOL (K-12)
CHAMPIONSHIP

APRIL 8-10

Sheraton Memphis
Downtown Hotel
MEMPHIS, Tennessee

2022 NATIONAL
MIDDLE SCHOOL (K-8)
CHAMPIONSHIP

APRIL 29-MAY 1

Gaylord Texan Resort
and Convention Center
GRAPEVINE, Texas

2022 NATIONAL
ELEMENTARY (K-6)
CHAMPIONSHIP

MAY 13-15

Greater Columbus
Convention Center
COLUMBUS, Ohio



MEMBERSHIP RATES

(U.S., CANADA, MEXICO)

Type	1 yr	2 yr
Adult (ages 25-64)	\$45	\$87
Senior (age 65+)	\$40	\$77
Young Adult (ages 19-24)	\$27	\$51
Youth (age 18/under)	\$20	\$37
Family Plan 1*	\$87	N/A
Family Plan 2**	\$55	N/A

Printed copies of Chess Life or Chess Life Kids will be available as an add-on to any Adult, Senior, Young Adult, Youth, or Family Plan membership. Membership entitles you to purchase one or both magazines at the member rate, set at no more than 105% of printing and mailing costs. For the fiscal year beginning June 1, 2021, the annual subscription cost for Chess Life is \$9.35/year (12 issues) and for Chess Life Kids, \$4.75/year (6 issues). Current premium members will continue to receive their print magazines; only when you renew your membership will you need to select the add-on option to continue receiving your print magazine. See www.uschess.org for other membership categories. Dues are not refundable and may be changed without notice.

* parents and children under age 19, may include college students up to age 24

**all children under age 19 living in a household at the same address

The Chess Master

**A story about a little girl
who became
the greatest chess player of all time**

written by USCF Master Robert W Richard
and sold on Amazon and everywhere



2022 SPICE SUMMER CHESS CAMP

June 20-24 and August 8-12

Ages 5-15

- ★ All day and morning sessions
- ★ Early bird rates until May 10
- ★ Instructors are members of #1 ranked collegiate team in the nation including Gradmasters

For more information: webster.edu/spice • 314-246-8075 • chess@webster.edu



The United States' Largest Chess Specialty Retailer

888.51.CHESS (512.4377)



www.USCFSales.com

The Millennium eONE ELECTRONIC CHESS BOARD



TECHNICAL SPECIFICATIONS

- 81 LEDs for the move display on the board
- Automatic piece recognition
- Board dimensions 31 x 31 x 2.2 cm
- Board weight approx. 932 g, set of figures approx. 220 g
- Built-in lithium battery
- Connections USB Type C, Bluetooth (BT Classic and BT Low Energy)



READY FOR
CHESS.COM &
LICHESS.ORG

REQUIRES
SMART
PHONE



eONE is an electronic chess board specially designed for players who like to play online chess, and who want to get back the real, authentic game feeling.

Moves are entered comfortably on the electronic sensor board with real pieces. The moves are transmitted in real time via Bluetooth or USB to compatible apps, online platforms or chess programs. The opponent's move is displayed directly on the board using 81 LEDs (4 per board).

CPU-G16 **\$299.95**

Free Ground Shipping On All Orders Over \$100.00
Excludes Clearance, Shopworn and Items Otherwise Marked