

CHESS LIFE

Kids

The National
Elementary
Champs!
by **FM Alex
King**

Join the Saint Louis Chess Club's DIGITAL CLASSROOMS



- » Learn from Saint Louis Chess Club Certified Instructors
- » Connect With Students from All Over the United States
- » Improve and Build Your Chess Skills Using Saint Louis Chess Club Curriculum
- » Choose from Multiple Learning Styles and Classroom Experiences
- » Play in Online Tournaments With Your Peers
- » Have Fun Learning Chess While Improving Your Critical Thinking, Cognitive Skills, and Memory

Visit saintlouischessclub.org to Sign up and Learn More!

Building Champions: In The Classroom And The Community

The Saint Louis Chess Club admits students of any gender, race, color, national and ethnic origin to all the rights, privileges, programs, and activities generally accorded or made available to students at the school. It does not discriminate on the basis of gender, race, color, national and ethnic origin in administration of its educational policies, admissions policies, scholarship and loan programs, and athletic and other school-administered programs.

Saint Louis Chess Club | 4657 Maryland Avenue, Saint Louis, MO 63108 | (314) 361-CHESS (2437) | saintlouischessclub.org

@STLChessClub #STLChessClub



EXECUTIVE DIRECTOR
Carol Meyer

SENIOR DIRECTOR OF
STRATEGIC COMMUNICATION
Daniel Lucas

EDITORIAL

PUBLICATIONS EDITOR
Melinda Matthews
mmatthews@uschess.org

ART DIRECTOR
Natasha Roberts

CHESS LIFE/CLO EDITOR
John Hartmann

GRAPHICS ASSISTANT
Nicole Esaltare

TECHNICAL EDITOR
IM Ron Burnett

CHARACTER DESIGNER AND
ILLUSTRATOR
Chandler Ellison

For communications and press inquiries, please contact Dan Lucas at dlucas@uschess.org.

To submit letters to the editor, or for advertising inquiries or TLA display ads, please email mmatthews@uschess.org.

Chess Life Kids provides a foundational interest in chess for beginning level pre-teens through the use of games, instruction, and human-interest stories. It is intended to be useful for Youth members, parents, and coaches. If interested in writing for this publication, send a well-crafted query with writing samples to the editor at mmatthews@uschess.org.

Teachers may photocopy instructional articles for classroom use, but republication or widespread copying without the written consent of US Chess is forbidden.

Chess Life Kids | Vol. 17, No. 5

CHESSLIFE Kids

4 AVOID THE TRAP *Overuse of the Queen*
BY BRUCE PANDOLFINI

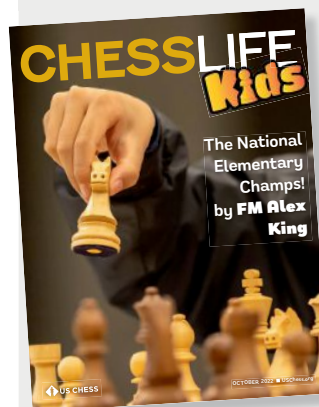
6 IN SESSION *The Art of Chess*
BY FM ALEX KING

9 CHESS ADVENTURES *FM Alex King*
ART BY NICOLAS BARRIOS

10 CHESS STORIES *"Upsets" at the National State Invitationals!*
BY AL LAWRENCE

12 COVER STORY
BACK TO THE BOARD!
BY FM ALEX KING

20 TOURNAMENT LIFE



ON THE COVER

FM Alex King takes over *Chess Life Kids* this month! He reports on the 2022 National Elementary (K-6) Championship and is this month's In Session guest columnist. Plus you can meet Alex up close and personal in Chess Adventures. Also check out our fun and instructive regular columns by Bruce Pandolfini and Al Lawrence. Cover photo: Philip Peterson



Overuse of the Queen

BY **BRUCE PANDOLFINI**

This column teaches you openings by helping you learn to avoid opening traps. Set up your board and pieces and play through the game below. Have paper and pen by your side. When you reach a question, write down your answer. After you are done with all 10 questions, check your answers at the end of this column. Total your points and see how you did against the scoring scale at the end. Try to score at least 80 points!

WHEN THE QUEEN acquired new potential in the 15th century, it morphed from a weak piece to the strongest one. Ever since, players naturally try to tap the queen's fire power, hoping to use it for hurried attack and to bring about early checkmate. But with all that increased capability there's a downside. Because the queen is more valuable, it's also more vulnerable. Bring it out too soon, or needlessly, and it suddenly becomes a target for the opponent. An exposed queen typically and constantly must fend off threats from the lesser forces — rooks, bishops, knights, and especially pawns. Indeed, chess literature is full of game after game where premature and unnecessary use of the queen backfires. Our game this month shows just how quickly and surprisingly the queen can be lost.

1. d4

White attacks e5 and c5, while releasing the queen-bishop.

Q1) If not deterred, what should White play next? (10 points)

1. ... d5

A double d-pawn position. Black directly controls the e4-square.

Q2) After 1. ... d5, which defenses can Black no longer play? (10 points)

2. Nc3

Usually, White doesn't block the c2-pawn, keeping open the option of playing c2-c4.

Q3) What is the chief point behind 2. Nc3? (10 points)

2. ... e6

Black obstructs one bishop and clears the way for the other.

Q4) How might Black have countered the intended 3. e4? (10 points)

3. e4

White follows through on the intended plan.

Q5) By transposition, what defense has this become? (10 points)

3. ... dxe4

This is the Rubinstein Variation of the French Defense. Black exchanges pawns to reduce central tension.

4. Nxe4

White takes back and has a spatial edge.

Q6) Aside from the knight, why does White have more space? (10 points)

4. ... Nc6

Black unnecessarily blocks the c7-pawn. Better moves were 4. ... Nf6, 4. ... Nd7, or 4. ... Be7.

Q7) Why is it good to keep the c7-pawn unblocked? (10 points)

5. Nf3

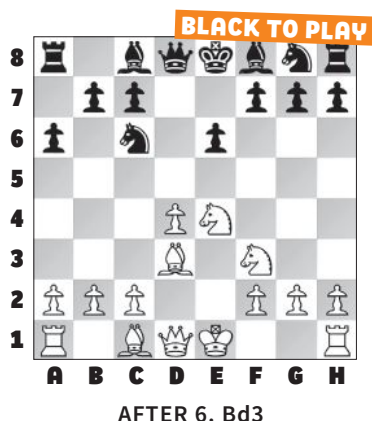
This is a solid developing move that safeguards d4 and e5.

5. ... a6

Black unnecessarily stops a pin by White's light-squared bishop. Better would be further development with 5. ... Nf6.

6. Bd3

White clears the home rank, preparing kingside castling. On the surface, White's d-pawn is not adequately guarded.



Q8) Can Black now win a pawn by 6. ... Nxd4? (10 points)

6. ... Nf6

Black develops and challenges White's centralized knight.

7. Nxf6+

White exchanges knights, aiming to double up Black's pawns.

7. ... Qxf6

This recapture avoids doubled pawns, but it brings out the queen too early.

Q9) What is wrong with 7. ... Qxf6? (10 points)

8. Bg5

White's network of minor pieces trap the black queen.

8. ... Black resigned.



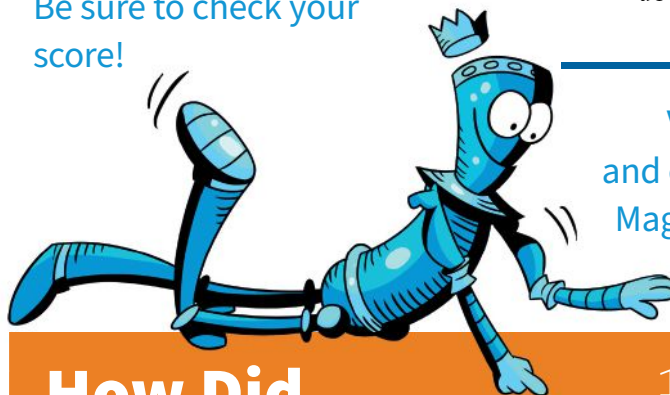
Q10) What was the last move Black could have avoided the trap? (10 points)

ILLUSTRATIVE GAME:

Yuri M Kotkov vs. Gagik Akopian
Krasnodar, Russia 1966

1. e4 e6 2. d4 d5 3. Nd2 dxe4 4. Nxe4 Bd7 5. Nf3 Bc6 6. Bd3 Nf6 7. Nxf6+ Qxf6 8. Bg5 Bxf3 9. Qd2 Qxd4 10. Bb5+, Black resigned.

Be sure to check your score!



How Did You Score?

The score is based on the US Chess rating system and is intended only as a fun way to monitor your progress each issue as you Avoid The Trap!

100: 1800+

90: 1600

80: 1400

70: 1200

60 or lower: 1000

Visit uschess.org and click "Chess Life Magazine" for more Pandolfini!

ANSWERS:

A1) If nothing stops or discourages it, White will play 2. e4. A2) All those defenses where Black must play ... d7-d6. A3) White wants to play 3. e4. A4) Black could have played the more flexible 2. ... Nf6. A5) A French Defense, usually achieved by 1. e4 e6. A6) The d4-pawn is more advanced than the e6-pawn. A7) To retain the option of playing ... c7-c5, attacking the center. A8) No, since 7. Nxd4 Qxd4 8. Bb5+ wins the black queen. A9) It loses the queen to 8. Bg5. A10) Move seven. Black should have accepted doubled pawns with 7. ... gxf6.



FINAL POSITION IN THE ILLUSTRATIVE GAME



The Art of Chess

BY FM ALEX KING



The art of chess is simple: You play Nf3-e5 and then, sooner or later, Nxf7 is decisive.

~Savielly Tartakower
(1887-1956), Polish Grandmaster and chess writer

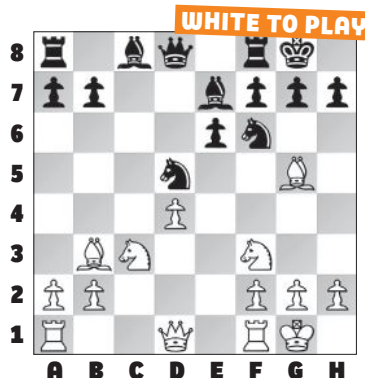
SAW THIS QUOTE, taken from Tartakower's 1956 book, *My Best Games of Chess 1905-1954*, on Edward Winter's *Chess Notes* website. Tartakower, as usual, is half-joking — he doesn't mean that moving your knight from f3 to e5 and then to f7 is a recipe for automatically winning every game. But he is pointing out that this is a common pattern that appears in many games.

I started to understand what Tartakower meant when I saw two similar games by World Champion Mikhail Botvinnik, where he used the same Nf3-e5-xf7 pattern to win:

QUEEN'S GAMBIT DECLINED [D60]

Mikhail Botvinnik
Andrey Batuev
Leningrad (3), 12.13. 1930

1. d4 d5 2. c4 e6 3. Nc3 Nf6 4. Bg5 Be7 5. e3 0-0 6. Nf3 Nbd7 7. Bd3 dxc4 8. Bxc4 c5 9. 0-0 cxd4 10. exd4 Nb6 11. Bb3 Nbd5



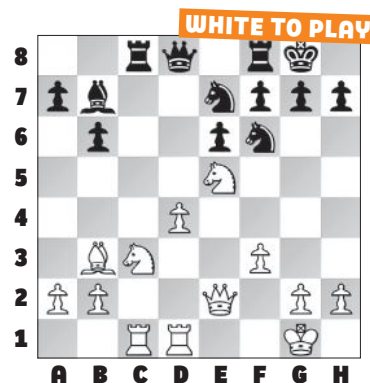
This position is an example of a standard pawn structure called the “isolated queen’s pawn” (IQP), where White’s d-pawn no longer has the c- or e-pawns available to support it. But despite the pawn being all alone, it can still do an important job of occupying and controlling the center, including the e5-square.

12. Ne5

This is the start of Tartakower’s pattern.

12. ... Nd7 13. Bxe7 Nxe7 14. Qe2

Nf6 15. Rfd1 b6 16. Rac1 Bb7 17. f3 Rc8?



A big mistake for Black, allowing a tactical combination by White. He should have played something like 17. ... Ned5, occupying the center and blocking White’s bishop.

18. Nxf7!

The completion of Tartakower’s pattern. Botvinnik shatters Black’s pawn structure that was helping to protect Black’s king from White’s light-squared bishop.

18. ... Rxf7 19. Qxe6 Qf8 20. Ne4

Preparing Nd6 or Ng5 to pile up on Black’s pinned f7-rook.

20. ... Rxc1 21. Rxc1 Nfd5 22. Nd6

Ba8 23. Re1 g6 24. Nxf7 Qxf7 25. Qxe7! Black resigned.

After 25. ... Qxe7 26. Rxe7 Black's knight is pinned, and White is up a rook and two pawns for a knight.

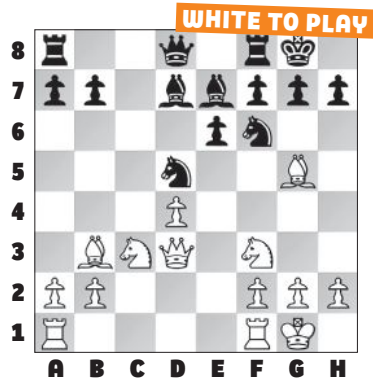
QUEEN'S GAMBIT DECLINED [D60]

Mikhail Botvinnik

Milan Vidmar, Sr

Nottingham (13), 08.25.1936

1. c4 e6 2. Nf3 d5 3. d4 Nf6 4. Bg5 Be7 5. Nc3 0-0 6. e3 Nbd7 7. Bd3 c5 8. 0-0 cxd4 9. exd4 dxc4 10. Bxc4 Nb6 11. Bb3 Bd7 12. Qd3 Nbd5



Does this position look familiar? It's also an IQP structure, and in fact, it's exactly the same position as the first diagram of the previous game, except with the moves Qd3 and ... Bd7 added. Botvinnik's next move again starts the Tartakower pattern:

13. Ne5 Bc6 14. Rad1 Nb4 15. Qh3 Bd5 16. Nxd5 Nbx d5?

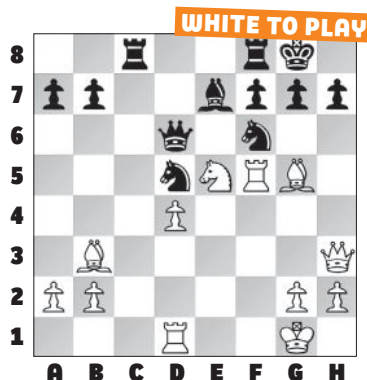
16. ... Nfxd5 would have been better, trying to trade off the dark-squared bishops and simplify the position further.

17. f4! Rc8 18. f5 exf5 19. Rxf5 Qd6

(see diagram top of next column)

20. Nxf7!

The completion of Tartakower's



pattern, for the same reason as in the previous game — to break open the diagonal from White's light-squared bishop to Black's king.

20. ... Rxf7 21. Bxf6 Bxf6 22. Rxd5 Qc6 23. Rd6 Qe8 24. Rd7 Black resigned.

White is about to capture the pinned f7-rook for free.

These games made a big impression on me. It seemed like Botvinnik was following a sort of recipe in this type of IQP position: "...play Nf3-e5 and then, sooner or later, Nxf7," just as Tartakower said.

I myself reach IQP structures often — for example, when I play

the Tarrasch Defense as Black, or the Rubinstein variation of the Nimzo-Indian as White. After studying these Botvinnik games and other games with the Tartakower pattern, I felt myself becoming more aware of opportunities to use this pattern in my own games.

Here is an example of me using the Tartakower pattern to win a game in a rapid tournament at the Memphis Chess Club:

CARO-KANN DEFENSE [B13]

Alexander B. King (2257)

Craig Saurage (1556)

Memphis, Tennessee (3), 04.24.2019

1. e4 c6 2. d4 d5 3. exd5 cxd5 4. c4 Nf6 5. Nc3 a6 6. Nf3 dxc4 7. Bxc4 b5 8. Bb3 Bb7 9. 0-0 e6 10. Re1 Be7

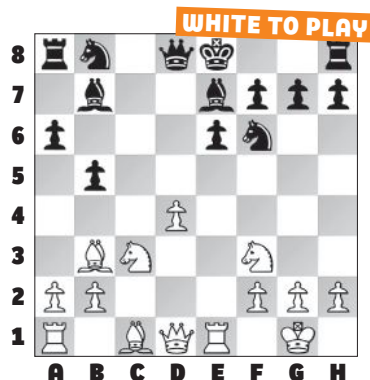
(see diagram next page)

The same IQP structure as in the Botvinnik games. Here I begin the Tartakower pattern.

11. Ne5 Nd5?



Tartakower (L) versus Edward Lasker at the legendary New York 1924 tournament.



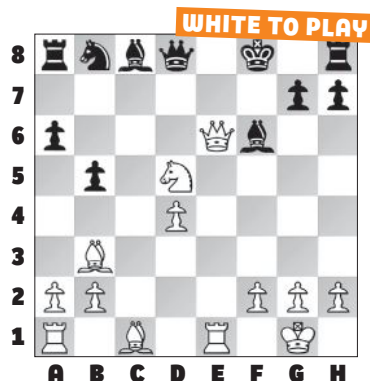
Black needed to bring his king to safety with 11. ... 0-0.

12. Qg4 Bf6 13. Nxf7!

The Tartakower pattern strikes again!

13. ... Kxf7 14. Qxe6+ Kf8 15. Nxd5
White has regained the sacrificed piece and is now up material. But you can see my next move sacrificed again!

15. ... Bc8



16. Qxf6+!? gxf6 17. Bh6+ Kf7 18. Nf4+ Be6 19. Rxe6

White has two bishops and two pawns for Black's queen, and is threatening an unstoppable discovered check (like 20.Rd6+) that will win a huge amount of additional material.

19. ... Qe7 20. Rae1

and **Black resigned**, since after I win his queen on the next move, I will be up at least three points of material with an ongoing attack.

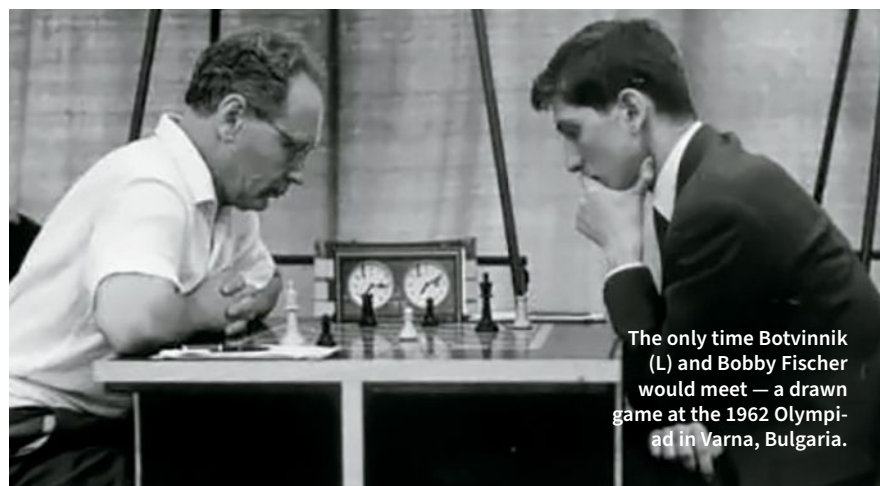
While I was playing this game, I felt that "the art of chess is simple," as Tartakower said. I had a recipe to guide my moves, and it worked perfectly.

As John Hartmann showed in his In Session column from the February 2022 issue of *Chess Life Kids*, Botvinnik himself learned "recipes" and patterns from the players who came before him, like Akiba Rubinstein. All chessplayers see examples of patterns and then try to copy those patterns in their own games.

Patterns aren't only from the games of Botvinnik or another

strong player — they could be something that a teacher shows you, or even something that another player uses to beat you in a game. When you are trying to get better at chess, patterns are your breakfast, lunch, and dinner. Each new one will help you grow and will make the art of chess feel a little simpler.

Alex King is a FIDE Master and professional chess teacher and writer. He lives in Memphis, Tennessee, with his wife, daughter, cat, and soon-to-be second daughter. You can find him on Lichess under the username OjaiJoao.



The only time Botvinnik (L) and Bobby Fischer would meet — a drawn game at the 1962 Olympiad in Varna, Bulgaria.

CHESS ADVENTURES

WITH FM ALEX KING

I started playing in tournaments in fifth grade and loved it immediately.

I worked hard and improved, and in 2003 I tied for first place in the ninth-grade section of the K-12 Grade Nationals.



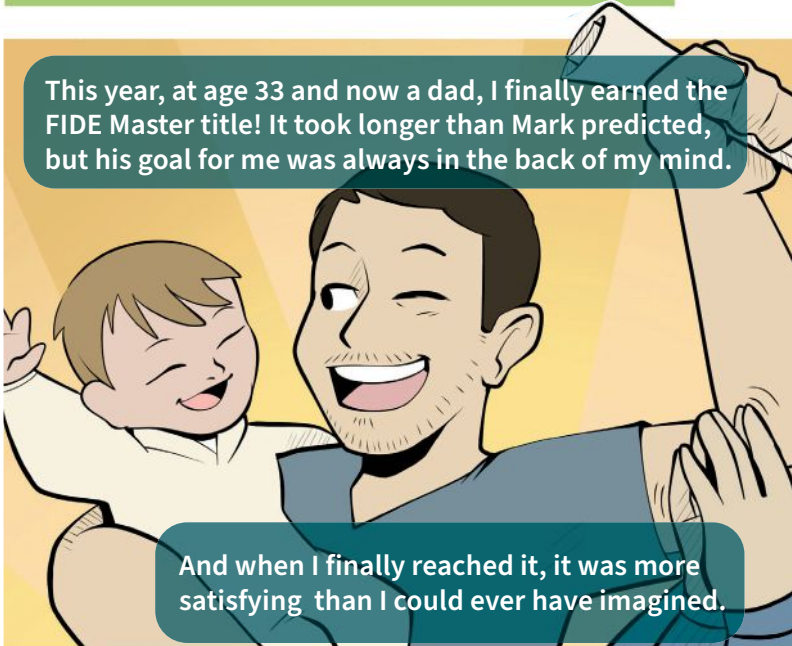
My teacher Mark predicted that I would become a FIDE Master before I graduated high school.



But instead, my rating stayed around 2100 through high school and college. I felt discouraged that I had stopped improving.



Eventually I started working hard again and became a national master. But I hit an even longer plateau, remaining around 2300 for over 10 years.



This year, at age 33 and now a dad, I finally earned the FIDE Master title! It took longer than Mark predicted, but his goal for me was always in the back of my mind.

And when I finally reached it, it was more satisfying than I could ever have imagined.

Art by Nicolas Barrios



“Upsets” at the National State Invitationals

BY AL LAWRENCE

US CHESS HOLDS four “championship of champions” scholastic events alongside the U.S.

Open Championship each summer. Every state in the USA selects a champion to compete in each of the four tournaments: the GM Arnold Denker National Tournament of High School State Champions (9-12), the WIM Ruth Haring National Tournament of Girls State Champions (K-12), the Dewain Barber National Tournament of Middle School State Champions (6-8), and the John D. Rockefeller III National Tournament of Elementary School State Champions (K-5).

Besides other scholarships, players compete for “Biggest Upset Prizes,” sponsored by Dwight Barber. These prizes reward the player in each event who defeats, or “upsets,” a much higher-rated opponent. The player who scores the biggest “upset” in each event — which means having the largest point spread between opponents — takes home the prize.

Let’s meet two of the players who overcame the odds (you’ll meet the other two in a future

issue). And check out the positions below. See if you find the same winning moves they played.

DEWAIN BARBER NATIONAL TOURNAMENT OF MIDDLE SCHOOL STATE CHAMPIONS

Elijah Cummings won all his games in his state’s 30-player qualifying event. And he just got serious about the game about a year ago.

In the very first round of the Barber, Elijah was Black against a player with three times his rating of 585. Elijah’s rating is based on only a few games because he lives in Brattleboro, Vermont, where it’s not easy to find tournaments. (But the skiing is good!) So Elijah knew he had a fighting chance. Alertness counts for a lot in chess.

Elijah saw his opportunity. Do you see it?

(see diagram top of next column)

24. ... Be6!

White can’t move his rook without losing his bishop, so he must lose the Exchange. Elijah’s expectations were modest: “After he blundered his rook



for my bishop, I thought the game was going to be a draw.” But he kept his concentration and won after 60 moves.

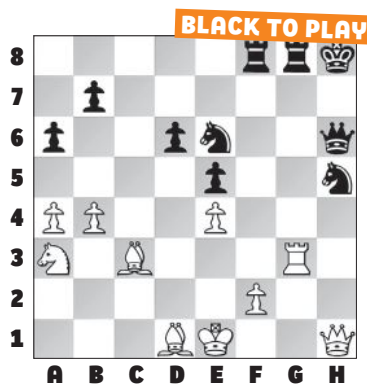
JOHN D. ROCKEFELLER III NATIONAL TOURNAMENT OF ELEMENTARY SCHOOL STATE CHAMPIONS

Liam Applegate took to chess right away. At five years old, he studied chess books checked out from the library. His dad had to study chess to keep up. Now almost 11, he scored the top total point score in four tournaments to qualify for the Rockefeller. He loves the Rubik’s Cube, plays soccer and

other sports, and enjoys math and science.

Chess is a family affair at the Applegate house. Liam's dad helps organize scholastic events. His younger sister, younger brother, and dad all play in tournaments. Charles Unruh, son of US Chess Executive Board member Chuck Unruh, taught Liam in his early years. Now Liam studies with a national master by Zoom and plays a chess video before he goes to bed at night.

Liam likes aggressive openings like the King's Indian and used it to beat a player rated 500 points higher in the last round. Can you figure out how he finished off all resistance?



POSITION AFTER 38. Rxg3

SEE A WIN? TAKE IT!

38. ... Rxg3 39. fxg3 Qe3+.

A crushing move! It must have been hard to visualize this continuation, involving leaving his knight unprotected and pinned to his king.

40. Be2 is forced. Liam played **40. ... Qxc3+ 41. Kd1 Qa1+**, winning White's queen, grabbing the sure win. After the game, he also found **40. ... Qc1+ 41. Bd1 Qxc3+ 42. Ke2 Nd4** checkmate! But when you see a sure win, take it!

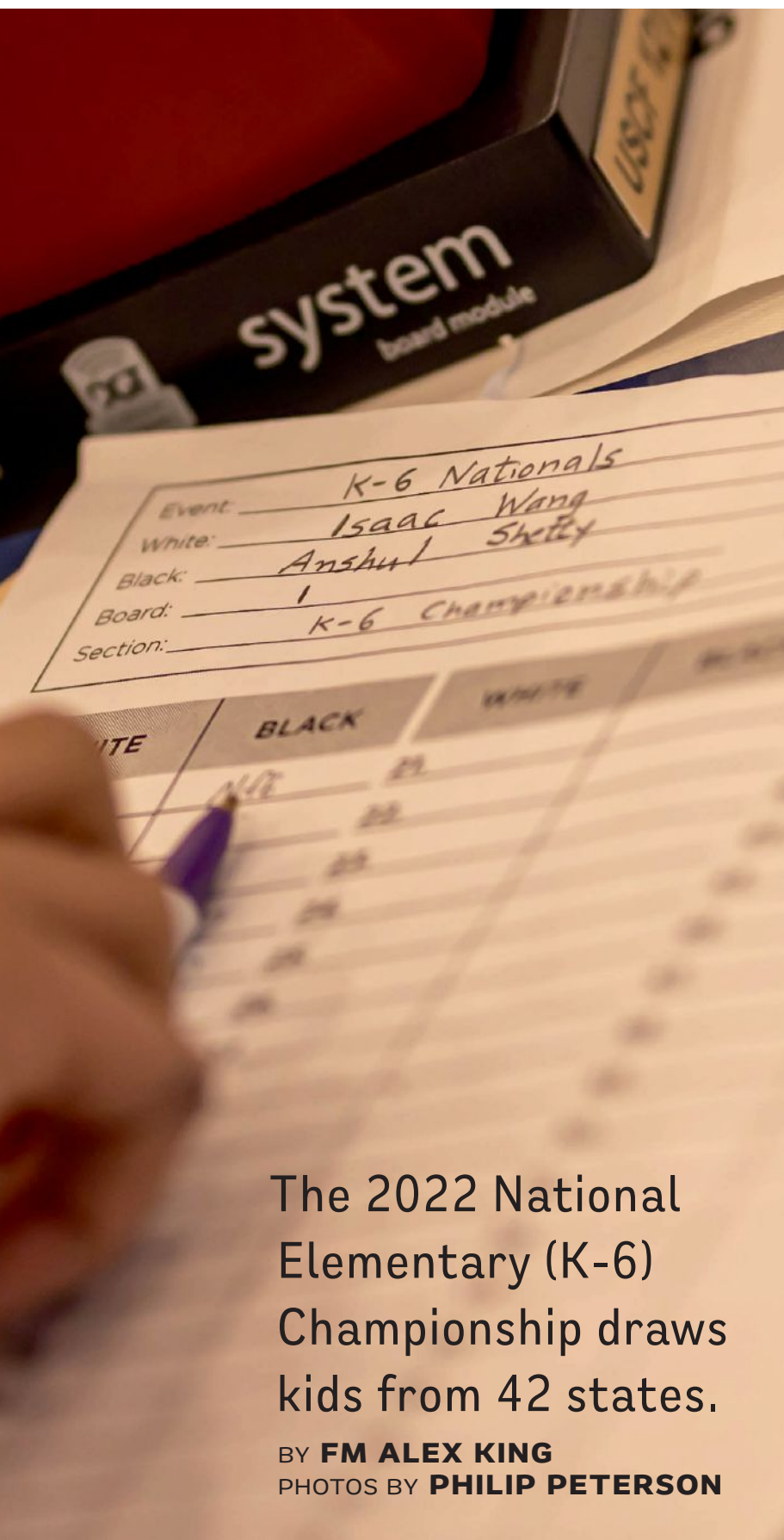
Both these winners had something in common. They weren't overawed by high ratings. They went into the game knowing they could make it a fight! That's one of the qualities that can make you a master player!

Left: Elijah Cummings enjoying the Vermont mountains. Right: Looks can be deceiving — Liam Applegate likes aggressive openings!



Back to the

BOARD!



The 2022 National Elementary (K-6) Championship draws kids from 42 states.

BY **FM ALEX KING**
PHOTOS BY **PHILIP PETERSON**

THE NATIONAL ELEMENTARY is back over the board! After two years of national tournaments being canceled or moved online due to the COVID-19 pandemic, the 2022 National Elementary School (K-6) Championship was held in person in Columbus, Ohio, from May 13-15.

Over 1,000 elementary school kids filled the Greater Columbus Convention Center to have fun and compete. The tournament was divided into over a dozen sections, from K-6 Championship down to K-1 U500 and Unrated. Each section offered trophies, plaques, and medals as prizes. The winners of each championship section in the K-6, K-5, K-3, and K-1 divisions earned the prestigious title of national champion.

The kids playing in the tournament came from 42 of the 50 U.S. states. Some states were represented by only a few kids, while other states were represented by hundreds of kids. The host state Ohio had a lot of players, but over a third of the players in the tournament were from New York!

K-6 CHAMPIONSHIP

Sixth graders Eric Liu of Texas and Isaac Wang of California won the K-6 Championship section. They each scored six points over the seven rounds. Since they tied for first place, they both earned the title of national co-champion.

Eric and Isaac were the only players in the tournament with the national master title, meaning that they have reached a US Chess rating over 2200. Isaac told me that his goal is to become a grandmaster, and I think that he and Eric can both earn that title one day.

Eric and Isaac played each other in the sixth round of the



Carter Ho

tournament, and their game ended in a draw after only 24 moves. Their strategy was probably to save their energy for the final round. This ended up working well, because they both won in round seven. In fact, they both won their games in similar ways:

SICILIAN DEFENSE [B35]

Eric Liu (2166)

Gurru Muthukumaran (1881)

National Elementary (K-6)

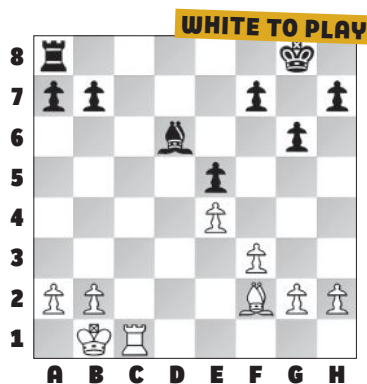
Championship, K-6 section (7),

Columbus, Ohio, 05.15.2022



Aiden Liu

1. e4 c5 2. Nf3 Nc6 3. d4 cxd4 4. Nxd4 g6 5. Nc3 Bg7 6. Be3 Nf6 7. Bc4 0-0 8. Bb3 Re8 9. f3 e6 10. Qd2 d5 11. 0-0-0 Nxd4 12. Bxd4 e5 13. Bf2 d4 14. Ne2 Qc7 15. c3 Be6 16. Bxe6 Rxe6 17. Kb1 dxc3 18. Nxc3 Ra6 19. Nd5 Nxd5 20. Qxd5 Qc6 21. Qxc6 Rxc6 22. Rc1 Rd6 23. Rhd1 Bf8 24. Rxd6 Bxd6



25. Rd1!

The d-file is much better for White's rook than the c-file. On the c-file, there was nowhere for the rook to invade Black's position, but on the d-file White's rook will soon land on d7 — the seventh rank.

25. ... Bf8 26. Rd5 Bg7 27. Rd7!

The reason that rooks love the seventh rank is that this is the rank where many of the opponent's pawns are. The pawns

are easy targets for the rook. Also, a rook on the seventh rank can cut off the opponent's king, preventing it from becoming active.

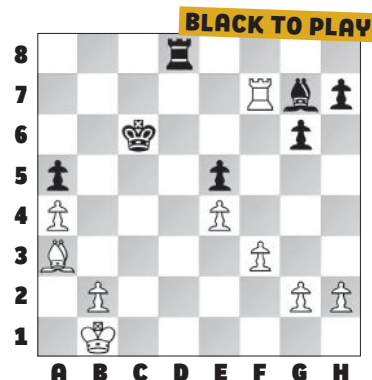
27. ... b6 28. Be3 Kf8 29. a4 Ke8 30. Rb7

Black's king cannot chase White's rook any more without leaving Black's f7-pawn hanging. And Black's rook can't move without hanging the a7-pawn. Black's position is very bad, and sooner or later he is going to lose one of his weak pawns.

30. ... Bf8 31. Bg5 Bg7 32. Be7 a6 33. Bd6 Rd8 34. Rxb6

White wins a pawn, but he's not done yet.

34. ... a5 35. Ra6 Kd7 36. Ba3 Kc7 37. Ra7+ Kc6 38. Rxf7



White wins a second pawn. Now he is fine with trading off his active rook, because he can push his extra pawns and turn one of them into a queen.

38. ... Rd7 39. Rxd7 Kxd7 40. Kc2

In the endgame White's king becomes one of his most important attacking pieces.

40. ... Kc6 41. Kd3 Bf6 42. Kc4 Bd8

43. b4 axb4 44. Bxb4

Now White's a-pawn is a passed pawn, meaning that Black no



Alice Chovanec

longer has any pawns that can block or capture it. Black will eventually have to sacrifice his bishop for this pawn before it promotes.

44. ... h5 45. a5 Bc7 46. a6 Bb6 47. Bc3 Kd6 48. Kb5 Ba7 49. Ba5 g5 50. Bb6 Bb8 51. a7 Bxa7 52. Bxa7

Now White has an extra bishop, but his goal is still to promote one of his pawns into a queen.

52. ... g4 53. fxg4 hxg4 54. h3 gxh3 55. gxh3 Kd7 56. Kc5 Ke6 57. Kc6 Kf6 58. Kd5 Kf7 59. Kxe5 Ke7 60. Kf5 Kf7 61. e5 Ke7 62. e6 Ke8 63. Kf6 Kf8 64. e7+ Ke8 65. Bg1

Of course not 65. Ke6?? stalemate.

65. ... Kd7 66. Kf7 Kd6 67. e8Q Kd5 68. Qe6 mate!

A pretty final move of the tournament for Eric.

GRÜNfeld DEFENSE [D84]

Isaac Wang (2209)

Anshul Shetty (2035)

National Elementary (K-6)

Championship, K-6 section (7),

Columbus, Ohio, 05.15.2022

1. d4 Nf6 2. c4 g6 3. Nc3 d5 4. Bf4 Bg7 5. e3 0-0 6. cxd5 Nxd5 7. Nxd5 Qxd5 8. Bxc7 Na6 9. Bxa6 Qxg2 10. Qf3 Qxf3 11. Nxf3 bxa6 12. Rg1 Bb7 13. Ke2 Rfe8 14. Rac1 Rac8 15. Rc3 e6 16. Rgc1 Bf8 17. a3 Be7 18. Nd2 Bd5 19. Bg3 Rxc3 20. Rxc3 h5 21. e4 Ba8 22. f3 f5 23. Be5 fxe4 24. fxe4 Bg5 25. Rc7 Bxd2 26. Kxd2 Bxe4 27. Ke3 Bf5

(see diagram top of next column)

The same type of endgame as in Eric's game — rook and bishop against rook and bishop. And



again, Isaac's rook is on the seventh rank! These kids are definitely ready for seventh grade...

28. Rxa7 h4 29. Kf4

Just like Eric, Isaac uses his king as an active piece in the endgame.

Isaac Wang (R) and Anshul Shetty faced off for the K-6 title in the final round. See analysis above.



29. ... Bd3 30. Kg5 Rd8 31. Kxh4 Rc8 32. Kg5 Rc2 33. Bd6 Rf2 34. Kh6 Be4 35. Rg7+ Kh8 36. Be5 Rf5 37. Rxg6+ and Black resigned, since after 37. ... Rxe5 38. fxe5 Bxg6 39. Kxg6 White will capture the e6-pawn and promote one of his pawns into a queen.

In the team standings, the K-6 national champion was Success Academy Midtown West of New York, with 13 points.

K-5 CHAMPIONSHIP

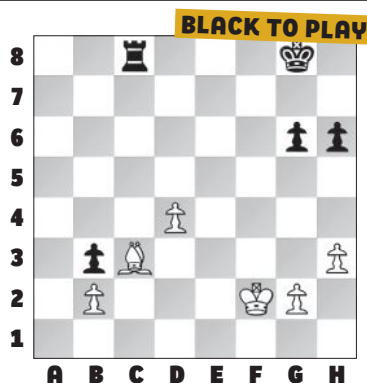
The K-5 Championship section ended in a three-way tie for first between fourth grader Aiden Liu of California, fifth grader Carter Ho of New York, and fourth grader Yusuf Mansurov of New York. All three players earned the title of national co-champion. Carter's school, The Anderson School, also won the K-5 team national champion title with 17½ points.

Aiden lost to Carter in round six, but told me that "confidence helped me a lot in this tournament. If I had no confidence, I would basically give

up" after that tough loss. Instead, Aiden bounced back with a strong win to end the tournament:

BOUNCE BACK!

Ahmed Ilyasov (1823)
Aiden Liu (2015)
National Elementary (K-6)
Championship, K-5 section (7),
Columbus, Ohio, 05.15.2022



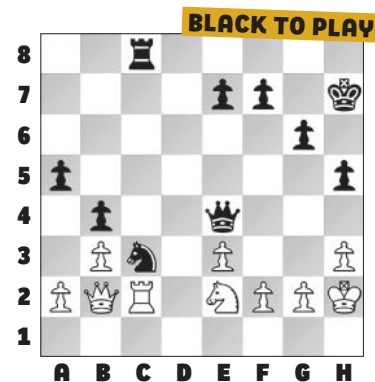
44. ... Rxc3! 45. bxc3 b2 46. Ke3 b1=Q 47. d5 Qg1+ 48. Kd3 Qxg2 49. Kc4 Qxh3 50. d6 g5 51. Kd5 Kf7 52. c4 Qe6+ 53. Kc5 g4 54. Kb6 Qxd6+ 55. Kb7 g3 56. Kc8 g2 57. Kb7 g1=Q 58. Kc8 Qdb6 59. c5 Qg4 mate.

Yusuf's younger brother Umar

also tied for first in the K-1 Championship section (see page 17). It is very rare for two siblings to win elementary national champion titles in the same year. It has only happened three times before. I spoke with the coach of the Mansurov brothers, GM Djurabek Khamrakov, and he told me that his family and the Mansurov family have known each other for many years. They moved to the U.S. from Uzbekistan, a country where chess is growing in popularity. GM Khamrakov described Yusuf as a "little professional" who is "super patient," while Umar has "a more aggressive style." Here is how Yusuf finished off his round four opponent:

DOUBLE TROUBLE

Aidan Amin (1568)
Yusuf Mansurov (1919)
National Elementary (K-6)
Championship, K-5 section (4),
Columbus, Ohio, 05.14.2022



30. ... Nd1!

A combination DOUBLE (on the rook and queen) and DISCOVERED (on the rook) attack. Two in one! **White resigned.**

Women's Program Director WGM Jennifer Shahade analyzes a game in the Girls Club.





K-3 AND K-1 CHAMPIONSHIPS

The K-3 Championship section saw the only clear winner from the top sections: third grader Elliott Goodrich of New York, with 6½ points. Elliott's team, Lower Laboratory School for Gifted Education ("Lower Lab" for short), won the K-3 team national champion title with 19 points. Elliott led the way with some impressively powerful play:

SEMI-SLAV DEFENSE [D46]

Alice Chovanec (1695)

Elliott Goodrich (1868)

National Elementary (K-6)
Championship, K-3 section (5),
Columbus, Ohio, 05.14. 2022

1. d4 d5 2. c4 c6 3. Nc3 Nf6 4. e3 e6

The Semi-Slav, a sharp but very respectable defense for Black. I suspect that Elliott learned the Semi-Slav from his coach Logan, who also plays this opening.

5. Nf3 Nbd7 6. Qc2 Bd6 7. Bd3 dxc4

8. Bxc4 b5 9. Bd3 0-0 10. 0-0 Bb7

11. e4 e5

We are still in a common variation of the Semi-Slav. It's impressive to see how knowledgeable these young players already are about their openings — and how well they are able to remember that knowledge in a real game!

12. dxe5 Nxe5 13. Nxe5 Bxe5



14. f4?

Better was 14. h3, preventing the kingside attack that Black gets in the game.

14. ... Bd4+ 15. Kh1 Ng4!

Targeting White's kingside.

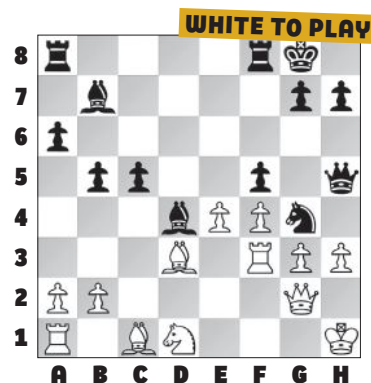
16. Nd1 a6

Even stronger was 16. ... Nxh2! because of 17. Kxh2 Qh4 mate.

17. Rf3 Qh4! 18. g3 Qh5

Black's position is already completely winning. He is not yet up material, but he will be soon.

19. Qg2 c5 20. h3 f5!



Taking advantage of pins against White's h3- and e4-pawns. White's position simply collapses.

21. Nf2 Nxf2+ 22. Rxf2 Bxf2 23. Qxf2 fxe4 24. Bxe4 Bxe4+ 25. Kh2 Qd1 26. g4 Qh1+ 27. Kg3 Rad8 28. Be3 Qxa1 29. Bxc5 Rd3+ 30. Kh4

Qh1 31. Be3 g5+ 32. Kxg5 Qxh3 33. f5 Qxe3+ 34. Qxe3 Rxe3 35. Kf4 Re1 36. Kg3 h5 37. gxh5 Rxf5 38. Kg4 Rg1+ 39. Kh4 Kh7 40. b3 Kh6 41. b4 Rxh5 mate.

Lower Lab also won the team national champion title in the K-1 section with 16½ points. Lower Lab program director Logan Brain, a national master who also teaches Elliott individually, told me that he has been working at the school since 2014 and loves the “intense competitive energy” of the program and the “incredibly talented, passionate people” who are a part of it.

The individual national co-champions in the K-1 Championship section were Aakash Jani of Florida, Rocky Wang of Michigan, Umar Mansurov of New York, and Matthew Yu of Illinois, all first

graders. I asked Aakash and Matthew how they like to practice and improve their chess, and they both told me the same thing: they play every day and solve tactics and other puzzles.

UNDER SECTIONS

Several sections of the tournament were for players under a certain rating or for players with no rating at all. The K-6 Under 1400 section was won by Atman Palaniswamy of Ohio, and the top team was Success Academy Midtown West of New York. (The same school that won the K-6 Championship section.) The K-6 Under 1000 section was won by Andy Yu of Illinois, and the top team was Success Academy East Flatbush of New York.

Ryan Zand of Ohio won the K-6 Unrated section. The K-5 Under 1200 section ended in a tie for

first between Shiv Srinivasan of Ohio, Angus Duncan of California, and Hannah Chan of New York. Hannah’s team, the Dalton School of New York, won the top team award. The K-5 Under 900 section also ended in a tie for first, between Arvin Agrawal of California and Zhuo Diao of Ohio. The top team was the Parkside School of New York.

The K-3 Under 1000 section was won by Daniel Rosen of Massachusetts, and the top team was Dishman Elementary of Texas. Aarav Kavari of Michigan won the K-3 Under 700 section. Aarav and Ryan Zand in the K-6 Unrated were the only players in the tournament to win all seven of their games! The top team in the K-3 Under 700 was Success Academy Union Square of New York.

You may have noticed that the Success Academy school network



When in doubt, ask a tournament director!

has a lot of strong chessplayers! I used to work at a Success Academy school, and part of the reason they have so many good chessplayers is that all the kids there have a chess class once a week during school. That means that kids can find out very early if they like chess and want to start playing in tournaments. I didn't find out about chess tournaments until I was in fifth grade, but if my elementary school had had a chess class or club then I might have started competing at a younger age.

The K-3 Unrated section was won by Shriya Agrawal of California. The K-1 Under 500 and Unrated section was won by Alexander Wu of New York, and the top team was the Dalton School of New York.

BLITZ, BUGHOUSE, AND OTHER FUN

K-6 Co-Champion Eric Liu also tied for first in the K-6 Blitz with sixth grader Anjaneya Rao of Illinois. Both players scored 10 points out of a possible 12,

including a 1-1 split against each other. The K-3 Blitz also ended in a tie: two third graders from California, Sivavishnu Srinivasan and Yuvraj Singh Sawhney, scored 10 points each.

A team of two sixth graders, Aaron Marian of Florida and Oliver Boydel of New York, won the bughouse tournament with a perfect 10 points out of 10.

Special guest grandmasters Joshua Friedel and Elshan Moradiabadi played blitz against all comers throughout the weekend. They also conducted a tandem simultaneous exhibition, which they won with a perfect 22-0 score. GM Moradiabadi moved to the USA from Iran in 2012, when he was 26 years old. GM Friedel grew up in New Hampshire and has been playing in US Chess tournaments since 1993. In fact, he won an earlier version of this tournament, the National K-3 Championship, in 1996.

Fun instructional lectures were given by GMs Friedel

and Moradiabadi, as well as by WGMs Jennifer Shahade and Katerina Némcová in the Girls Club, a special community space for female players in the tournament. WGM Shahade is from Pennsylvania. She has won the U.S. Women's Championship twice and is the current US Chess Women's Program Director. WGM Némcová moved to the USA from Czech Republic in 2011, when she was 20 years old.

WGM Némcová was also one of the commentators, along with FM Gauri Shankar, for the live tournament broadcast on the US Chess Twitch channel. FM Shankar moved to the USA from India in 2003, when he was 10 years old.

GREAT JOB, EVERYONE!

It's great to see nationals back in person, and it's great for kids to be able to see and play their friends (and rivals!) from all around the country. Keep playing and practicing, everyone, and we'll see you at the next nationals!

2022 NATIONAL ELEMENTARY (K-6) CHAMPIONSHIP AT A GLANCE

MAY 13-15, 2022 | COLUMBUS, OHIO

INDIVIDUAL WINNERS:

K-6 CHAMPIONSHIP: Eric Chang Liu, Issac Wang, 6/7. **K-6 U1400:** Atman Palaniswamy, 6/7. **K-6 U1000:** Andy Yu, 6½/7. **K-6 UNRATED:** Ryan Zand, 7/7. **K-5 CHAMPIONSHIP:** Aiden Q. Liu, Carter Ho, Yusuf Mansurov, 6/7. **K-5 U1200:** Shiv Karthik Srinivasan, Angus Smith Duncan, Hannah Chan, 6/7. **K-5 U900:** Arvin Agrawal, Zhuo Diao, 6½/7. **K-3 CHAMPIONSHIP:** Elliott Goodrich, 6½/7. **K-3 U1000:** Daniel Harry Rosen, 6½/7. **K-3 U700:** Aarav Kavari, 7/7. **K-3 UNRATED:** Shriya Agrawal, 6/7. **K-1 CHAMPIONSHIP:** Aakash Jani, Rocky Wang, Umar Mansurov, Matthew Yu, 6/7. **K-1 U500 AND UNRATED:** Alexander Wu, 6½/7. **BLITZ K-6:** Eric Liu, Anjaneya Rao, 10/12. **BLITZ K-3:** Sivavishnu Srinivasan, Yuvraj Singh Sawhney, 10/12.

TEAM WINNERS:

K-6 CHAMPIONSHIP: Success Academy Midtown West (New York, NY), 13. **K-6 U1400:** Success Academy Midtown West (New York, NY), 20. **K-6 U1000:** Success Academy East Flatbush (New York, NY), 19. **K-5 CHAMPIONSHIP:** Anderson School (New York, NY), 17½. **K-5 U1200:** Dalton (New York, NY), 19½. **K-5 U900:** PS 130 Parkside School (New York, NY), 19½. **K-3 CHAMPIONSHIP:** PS 77 Lower Lab School (New York, NY), 19. **K-3 U1000:** Dishman Elementary (Harlingen, TX), 9½. **K-3 U700:** Success Academy Union Square (New York, NY), 16. **K-1 CHAMPIONSHIP:** PS 77 Lower Lab School (New York, NY), 16½. **K-1 U500 AND UNRATED:** Dalton (New York, NY), 17. **BLITZ K-6:** Rodelph Sholom School (New York, NY) 20½. **BLITZ K-3:** Anderson School (New York, NY), 29½. **BUGHOUSE:** Aaron Marian - Oliver Boydel, 10/10

For complete results and additional photos, visit www.uschess.org/tournaments/2022/elem/

TOURNAMENT LIFE ANNOUNCEMENTS

The Executive Board authorizes a temporary change in the US Chess Grand Prix (GP) rules for the period March 4, 2020 through October 31, 2022 out of concern for the unforeseeable impacts the COVID-19 (Coronavirus) could have on participation in GP events. The change allows organizers with guaranteed prize funds to change the status of their prize fund without first seeking US Chess permission to make the change. Please refer to the Tournament Life Announcement section in *Chess Life* for more information.

For complete details on individual events, please visit [new.uschess.org/node/\[TLA ID\]](http://new.uschess.org/node/[TLA ID]). You will find the event's unique five-digit TLA ID at the end of each TLA.

Nationals

NATIONAL CHAMPIONSHIP EVENT • JUNIOR GRAND PRIX

2022 National K-12 Grade Championships

DECEMBER 9-11, MARYLAND

Event site: Gaylord National Resort Address: 201 Waterfront Street, National Harbor MD 20745 Overall prize fund: n/a GP Points: n/a FIDE Rated: N Handicap accessible: Y Residency restriction: N Organizer: U.S. Chess Federation Email: nationalevents@uschess.org Phone: n/a Website: <http://www.uschess.org/tournaments/2022/k12> TLA ID: 35000

Grand Prix

The Grand Prix continues in 2022. For information visit new.uschess.org/us-chess-grand-prix-program.

GRAND PRIX • JUNIOR GRAND PRIX

Downtown Memphis National Chess Day!

OCTOBER 8, TENNESSEE

Event site: Memphis Chess Club Address: 195 Madison Ave Suite 101, Memphis, TN 3810 Overall prize fund: \$1,980 GP Points: 6 FIDE Rated: N Handicap accessible: Y Residency restriction: N Organizer: Memphis Chess Club Email: info@memphischessclub.com Phone: 7318685755 Website: <http://www.memphischessclub.com/> TLA ID: 34284

GRAND PRIX • ENHANCED GRAND PRIX

2nd Annual Susan E. Kantor Fall Open National Chess Day Chess Tournament

OCTOBER 8, TENNESSEE

Event site: Cumberland County Community Complex Address: 1398 Livingston Road, Crossville, Tennessee Overall prize fund: \$1,700 GP Points: 15 FIDE Rated: N Handicap accessible: Y Residency restriction: N Organizer: Cumberland County Chess Club Email: cumberlandcountychessclub@gmail.com Phone: (931) 200-9038 Website: <http://www.cumberlandcountychess.org> TLA ID: 34750

HERITAGE EVENT • AMERICAN CLASSIC • ENHANCED GRAND PRIX

39th Annual Reno Western States Open

OCTOBER 14-16, NEVADA

Event site: Sands Regency Hotel/Casino Address: 345 N. Arlington Ave. Reno, NV 89501 Overall prize fund: \$27,500 GP Points: 150 FIDE Rated: Y Handicap accessible: Y Residency restriction: N Organizer: Jerry Weikel Email: wackyyl@aol.com Phone: 775-747-1405 Website: <http://www.renochess.org> TLA ID: 34274

GRAND PRIX • ENHANCED GRAND PRIX • JUNIOR GRAND PRIX

11th annual Hartford Open

OCTOBER 14-16, CONNECTICUT

Event site: Sheraton Hotel Address: 1 Bradley Airport (visible at airport entrance), Windsor Locks CT 06096 Overall prize fund: \$10,000 GP Points: 60 FIDE Rated: Y Handicap accessible: Y Residency restriction: N Organizer: Continental Chess Association Email: director@chess.us Phone: director@chess.us Website: <http://www.chessevents.us> TLA ID: 34655

GRAND PRIX • ENHANCED GRAND PRIX • JUNIOR GRAND PRIX

8th annual Central New York Open

OCTOBER 21-23, NEW YORK

Event site: Quality Inn and Suites Fairgrounds Address: 100 Farrell Road, Syracuse, NY 13209 Overall prize fund: \$5,000 GP Points: 30 FIDE Rated: Y Handicap accessible: Y Residency restriction: N Organizer: Continental Chess Association Email: director@chess.us Phone: 3472012269 leave message including email address Website: <http://www.chessevents.us> TLA ID: 34188

HERITAGE EVENT • GRAND PRIX • ENHANCED GRAND PRIX • JUNIOR GRAND PRIX

87th Greater Boston Open

OCTOBER 22-23, 2022

Event site: Westford Regency Inn & Conference Center Address: 219 Littleton Rd., Westford MA 01886 Overall prize fund: \$2,500 GP Points: 15 FIDE Rated: N Handicap accessible: Y Residency restriction: N Organizer: Massachusetts Chess Association Email: info@masschess.org Phone: 603-891-2484 Website: <http://www.masschess.org> TLA ID: 34769

HERITAGE EVENT • GRAND PRIX • ENHANCED GRAND PRIX • JUNIOR GRAND PRIX

26th annual Eastern Chess Congress

OCTOBER 28-30, NEW JERSEY

Event site: Westin Princeton at Forrestal Village Address: 201 Village Blvd, Princeton, NJ 08540 Overall prize fund: \$25,000 GP Points: 150 FIDE Rated: Y Handicap accessible: Y Residency restriction: N Organizer: Continental Chess Association Email: director@chess.us Phone: 3472012269 leave message including email address Website: <http://www.chessevents.us> TLA ID: 33992

HERITAGE EVENT • GRAND PRIX • JUNIOR GRAND PRIX • STATE CHAMPIONSHIP EVENT

76th Peter P. Lahde TN Open and State Championship!

OCTOBER 28-30, TENNESSEE

Event site: Memphis Chess Club Address: 195 Madison Ave Suite 101, Memphis, TN 38103 Overall prize fund: \$5,775 GP Points: 15 FIDE Rated: N Handicap accessible: Y Residency restriction: N Organizer: Memphis Chess Club Email: info@memphischessclub.com Phone: 7318685755 Website: <https://www.memphischessclub.com/> TLA ID: 34280

GRAND PRIX • ENHANCED GRAND PRIX

9th annual Eastern Chess Congress Blitz

OCTOBER 29, NEW JERSEY

Event site: Westin Princeton at Forrestal Village Address: 201 Village Blvd, Princeton, NJ 08540 Overall prize fund: \$500 GP Points: 10 FIDE Rated: N Handicap accessible: Y Residency restriction: N Organizer: Continental Chess Association Email: director@chess.us Phone: director@chess.us Website: <http://www.chessevents.us> TLA ID: 34380

GRAND PRIX • ENHANCED GRAND PRIX • JUNIOR GRAND PRIX

17th annual Los Angeles Open

NOVEMBER 4-6, CALIFORNIA, SOUTHERN

Event site: Hilton Orange County Airport Address: 18800 Macarthur Blvd, Irvine CA 92612 Overall prize fund: \$15,000 GP Points: 80 FIDE Rated: Y Handicap accessible: Y Residency restriction: N Organizer: Continental Chess Association Email: director@chess.us Phone: director@chess.us Website: <http://www.chessevents.us> TLA ID: 34349

HERITAGE EVENT • GRAND PRIX • ENHANCED GRAND PRIX • JUNIOR GRAND PRIX

31st annual Kings Island Open

NOVEMBER 11-13, OHIO

Event site: Embassy Suites Cincinnati NE Address: 4554 Lake Forest Drive, Blue Ash OH 45242 Overall prize fund: \$25,000 GP Points: 150 FIDE Rated: Y Handicap accessible: Y Residency restriction: N Organizer: Continental Chess Association Email: director@chess.us Phone: 3472012269 leave message including email address Website: <http://www.chessevents.us> TLA ID: 34170

GRAND PRIX • STATE CHAMPIONSHIP EVENT

2022 Illinois Class State Championship

NOVEMBER 20, ILLINOIS

Event site: Hyatt Regency Schaumburg Address: 1800 E. Golf Rd., Schaumburg, IL 60173 Overall prize fund: \$2,250 gtd GP Points: 15 FIDE Rated: N Handicap accessible: Y Residency restriction: N Organizer: Chess Weekend Email: glenn@chessweekend.com Phone: n/a Website: <https://www.chessweekend.com/> TLA ID: 34818

HERITAGE EVENT • AMERICAN CLASSIC • GRAND PRIX • ENHANCED GRAND PRIX

57th American Open

NOVEMBER 22-27, CALIFORNIA, SOUTHERN

Event site: Doubletree by Hilton Hotel Address: 100 The City Dr S, Orange, CA 92668 Overall prize fund: \$25,000 GP Points: 150 FIDE Rated: Y Handicap accessible: Y Residency restriction: N Organizer: ChessPalace Email: Play@americanopen.org Phone: 714-643-8828 Website: <http://www.americanopen.org> TLA ID: 34947

HERITAGE EVENT • AMERICAN CLASSIC • GRAND PRIX • ENHANCED GRAND PRIX

53rd annual National Chess Congress

NOVEMBER 25-27, PENNSYLVANIA

Event site: Loews Hotel Address: 1200 Market St, Philadelphia PA 19107 Overall prize fund: \$45,000 GP Points: 200 FIDE Rated: Y Handicap accessible: Y Residency restriction: N Organizer: Continental Chess Association Email: director@chess.us Phone: 3472012269 leave message including email address Website: <http://www.chessevents.us> TLA ID: 34207

HERITAGE EVENT • GRAND PRIX • ENHANCED GRAND PRIX

Harry Nelson Pillsbury Memorial

DECEMBER 4, MASSACHUSETTS

Event site: Westford Regency Inn & Conference Center Address: 219 Littleton Road, Westford, MA 01886 Overall prize fund: \$1,500 GP Points: 10 FIDE Rated: N Handicap accessible: Y Residency restriction: N Organizer: Massachusetts Chess Association Email: info@masschess.org Phone: 603-891-2484 Website: <http://www.masschess.org> TLA ID: 34960

GRAND PRIX • STATE CHAMPIONSHIP EVENT

2022 Michigan Action Championship

DECEMBER 10, 2022, MICHIGAN

Event site: Wyndham Garden Ann Arbor Address: 2900 Jackson Ave, Ann Arbor, MI 48103 Overall prize fund: \$2,150 GP Points: 20 FIDE Rated: N Handicap accessible: N Residency restriction: N Organizer: Michigan Chess Association Email: jeffchess64@gmail.com Phone: 810-955-7271 Website: <https://www.michess.org/> TLA ID: 34770

HERITAGE EVENT • AMERICAN CLASSIC • GRAND PRIX • ENHANCED GRAND PRIX

32nd annual North American Open

DECEMBER 26-30, NEVADA

Event site: Bally's Casino Resort Address: 3645 Las Vegas Blvd. S, Las Vegas, NV 89103 Overall prize fund: \$125,000 GP Points: 300 FIDE Rated: Y Handicap accessible: Y Residency restriction: N Organizer: Continental Chess Association Email: director@chess.us Phone: director@chess.us Website: <http://www.chessevents.us> TLA ID: 34320

HERITAGE EVENT • GRAND PRIX • ENHANCED GRAND PRIX • JUNIOR GRAND PRIX

47th annual Eastern Open

DECEMBER 26-29, VIRGINIA

Event site: Hyatt Regency Crystal City Address: 2799 Richmond Highway near Reagan National Airport, Arlington VA 22202 Overall prize fund: \$30,000 GP Points: 150 FIDE Rated: Y Handicap accessible: Y Residency restriction: N Organizer: Continental Chess Association Email: director@chess.us Phone: director@chess.us Website: <http://www.chessevents.us> TLA ID: 34598

GRAND PRIX • ENHANCED GRAND PRIX • JUNIOR GRAND PRIX

11th annual Boston Chess Congress

JANUARY 6-8, 2023, MASSACHUSETTS

Event site: Hyatt Regency Boston Harbor Address: 101 Harborside Dr, Boston MA 02128 Overall prize

PLEASE NOTE

DEADLINE FOR PRINT TLA SUBMISSIONS

TLAs appearing in *Chess Life Kids* must be uploaded online on the 10th, two months prior to the issue cover date in which the ad is to appear. (For example, October TLAs must be uploaded no later than August 10th.) TLAs uploaded past this deadline cannot be published without special approval by US Chess.

fund: \$12,000 **GP Points:** 80 **FIDE Rated:** Y **Handicap accessible:** N **Residency restriction:** N **Organizer:** Continental Chess Association **Email:** director@chessevents.us **Phone:** [717-262-584](tel:717262584) **Website:** <http://www.chessevents.us> **TLA ID:** 34968

HERITAGE EVENT • AMERICAN CLASSIC • GRAND PRIX • ENHANCED GRAND PRIX

55th annual Liberty Bell Open
JANUARY 13-16, 2023, PENNSYLVANIA

Event site: Sheraton Philadelphia Downtown **Address:** 201 N 17th St, Philadelphia 19103 **Overall prize fund:** \$25,000 **GP Points:** 120 **FIDE Rated:** Y **Handicap accessible:** Y **Residency restriction:** N **Organizer:** Continental Chess Association **Email:** director@chessevents.us **Phone:** [717-262-584](tel:717262584) **Website:** <http://www.chessevents.us> **TLA ID:** 34860

GRAND PRIX • ENHANCED GRAND PRIX • JUNIOR GRAND PRIX

4th annual Golden State Open
JANUARY 13-16, 2023, CALIFORNIA, NORTHERN

Event site: Crowne Plaza Concord **Address:** 245 John Glenn Dr, Concord CA 94520 **Overall prize fund:** \$25,000 **GP Points:** 150 **FIDE Rated:** Y **Handicap accessible:** Y **Residency restriction:** N **Organizer:** Continental Chess Association **Email:** director@chessevents.us **Phone:** [717-262-584](tel:717262584) **Website:** <http://www.chessevents.us> **TLA ID:** 35010

GRAND PRIX • ENHANCED GRAND PRIX • JUNIOR GRAND PRIX

14th annual Southwest Class Championships
FEBRUARY 16-20, 2023, TEXAS

Event site: Westin Dallas Fort Worth Airport **Address:** 4545 W John Carpenter Fwy, Irving TX 75063 **Overall prize fund:** \$35,500 **GP Points:** 200 **FIDE Rated:** Y **Handicap accessible:** Y **Residency restriction:** N **Organizer:** Continental Chess Association **Email:** director@chessevents.us **Phone:** [717-262-584](tel:717262584) **Website:** <http://www.chessevents.us> **TLA ID:** 35024

Online

Weekly Online USCF-Rated Tournaments By DMV Chess
THROUGH DECEMBER 31, 2023

Event site: Online **Address:** lichess.org **Overall prize fund:** n/a **GP Points:** n/a **FIDE Rated:** N **Handicap accessible:** Y **Residency restriction:** N **Organizer:** DMV Chess **Email:** tournaments@dmvchess.com **Phone:** 703-415-6600 **Website:** <https://www.dmvchess.com/online/tournaments> **TLA ID:** 33569

Climb the Rating Ladder Weekly Courses with USCF Rated Online Games

THROUGH DECEMBER 31, 2022

Event site: Online **Address:** lichess.org **Overall prize fund:** n/a **GP Points:** n/a **FIDE Rated:** N **Handicap accessible:** Y **Residency restriction:** N **Organizer:** DMV Chess **Email:** courses@dmvchess.com **Phone:** 703-415-6600 **Website:** <https://www.dmvchess.com/courses/register/climb-the-rating-ladder-1100-1600-fridays> **TLA ID:** 30600

Climb the Rating Ladder with GM Angel Arribas Lopez: 1100 to 1600 - Online Course for Serious Students
JANUARY 7-DECEMBER 25, 2022

Event site: Online **Address:** lichess.org **Overall prize fund:** n/a **GP Points:** n/a **FIDE Rated:** N **Handicap accessible:** N **Residency restriction:** N **Organizer:** DMV Chess **Email:** courses@dmvchess.com **Phone:** 703-415-6600 **Website:** <https://www.dmvchess.com/courses/register/climb-the-rating-ladder-1100-1600-fridays> **TLA ID:** 32556

Regional

ALABAMA

OCTOBER 8, 2022

Downtown Memphis National Chess Day! (TN)

See Grand Prix.

OCTOBER 28-30, 2022

76th Peter P. Lahde TN Open and State Championship! (TN)

See Grand Prix.

OCTOBER 29, 2022

Peter P. Lahde TN Scholastic! (TN)

See Tennessee.

ARIZONA

NOVEMBER 22-27, 2022

57th American Open (CA-S)

See Grand Prix.

ARKANSAS

OCTOBER 8, 2022

Downtown Memphis National Chess Day! (TN)

See Grand Prix.

OCTOBER 28-30, 2022

76th Peter P. Lahde TN Open and State Championship! (TN)

See Grand Prix.

OCTOBER 29, 2022

Peter P. Lahde TN Scholastic! (TN)

See Tennessee.

CALIFORNIA

MONTHLY ON SUNDAY

ChessPalace Scholastic & Amateur Tournaments

Event site: SteelCraft Garden Grove **Address:** 12900 S Euclid St, Garden Grove, CA 92640 **Overall prize fund:** n/a **GP Points:** n/a **FIDE Rated:** N **Handicap accessible:** Y **Residency restriction:** N **Organizer:** ChessPalace **Email:** info@chesspalace.com **Phone:** 714-643-8828 **Website:** <http://www.chesspalace.com> **TLA ID:** 34943

NOVEMBER 22-27, 2022

57th American Open (CA-S)

See Grand Prix.

CONNECTICUT

OCTOBER 2, 2022 - MAY 7, 2023

8th Annual Magnus High School and Junior High Chess League! (NY)

See New York.

NOVEMBER 19-20, 2022

6th Annual New York State Girls' Championship! (NY)

See New York.

GEORGIA

OCTOBER 8, 2022

Downtown Memphis National Chess Day! (TN)

See Grand Prix.

OCTOBER 8, 2022

2nd Annual Susan E. Kantor Fall Open National Chess Day Chess Tournament (TN)

See Grand Prix.

NOVEMBER 20, 2022

2022 Georgia Open Scholastic

Event site: DoubleTree by Hilton Atlanta Northlake **Address:** 34156 LaVista Rd., Tucker, GA 30084 **Overall prize fund:** n/a **GP Points:** n/a **FIDE Rated:** N **Handicap accessible:** N **Residency restriction:** N **Organizer:** Georgia Chess Association **Email:** gaopen@georgiachess.org **Phone:** 770.744.8595 **Website:** <http://www.georgiachess.org> **TLA ID:** 34920

ILLINOIS

OCTOBER 8, 2022

Downtown Memphis National Chess Day! (TN)

See Grand Prix.

NOVEMBER 5, 2022

Springfield Harvest Time Open

Event site: Southern View Village Hall **Address:** 3410 S. 5th St, Springfield, IL 62703 **Overall prize fund:** \$400 based on 30 entries **GP Points:** n/a **FIDE Rated:** N **Handicap accessible:** N **Residency restriction:** N **Organizer:** David Long **Email:** n/a **Phone:** 217.726.2584 **Website:** <http://www.springfieldchessclub.com> **TLA ID:** 34746

INDIANA

OCTOBER 8, 2022

Downtown Memphis National Chess Day! (TN)

See Grand Prix.

NOVEMBER 20, 2022

2022 Illinois Class State Championship (IL)

See Grand Prix.

IOWA

NOVEMBER 20, 2022

2022 Illinois Class State Championship (IL)

See Grand Prix.

KENTUCKY

OCTOBER 8, 2022

Downtown Memphis National Chess Day! (TN)

See Grand Prix.

OCTOBER 8, 2022

2nd Annual Susan E. Kantor Fall Open National Chess Day Chess Tournament (TN)

See Grand Prix.

OCTOBER 28-30, 2022

76th Peter P. Lahde TN Open and State Championship! (TN)

See Grand Prix.

OCTOBER 29, 2022

Peter P. Lahde TN Scholastic! (TN)

See Tennessee.

LOUISIANA

OCTOBER 8, 2022

Downtown Memphis National Chess Day! (TN)

See Grand Prix.

MARYLAND

MARYLAND CHESS TOURNAMENTS (NORTH PENN CHESS CLUB)

Maryland Chess runs 21+ annual K-12 tournaments every other Saturday from September through June & 12+ annual 1-day or multi-day open tournaments for adults & K-12 players on weekends. See www.MDChess.org for tournament announcements, registration for tournaments, updated walkcharts, live standings, sign up for K-12 & open e-newsletters, lists of coaches & clubs, camp announcements, & news. K-12 MD players who compete in the Varsity section (for players rated 1600+) of 1 of 8+ annual MD-Sweet-16 Qualifiers can qualify for the \$48,000+ scholarship to the University of Maryland, Baltimore County awarded annually. UMBC is a perennial top-10 contender for the collegiate national chess championship.

MASSACHUSETTS

DECEMBER 4, 2022

Harry Nelson Pillsbury Memorial (MA)

See Grand Prix.

MICHIGAN

STATE CHAMPIONSHIP EVENT

NOVEMBER 5, 2022

2022 Michigan Scholastic Club Championships

Event site: Lansing Center **Address:** 333 E Michigan Ave, Lansing, MI 48933 **Overall prize fund:** n/a **GP Points:** n/a **FIDE Rated:** N **Handicap accessible:** N **Residency restriction:** N **Organizer:** Michigan

Chess Association Email: jeffchess64@gmail.com **Phone:** 810-955-7271 **Website:** <https://www.michess.org/> **TLA ID:** 34640

MISSISSIPPI

OCTOBER 8, 2022

Downtown Memphis National Chess Day! (TN)

See Grand Prix.

OCTOBER 28-30, 2022

76th Peter P. Lahde TN Open and State Championship! (TN)

See Grand Prix.

OCTOBER 29, 2022

Peter P. Lahde TN Scholastic! (TN)

See Tennessee.

MISSOURI

OCTOBER 28-30, 2022

76th Peter P. Lahde TN Open and State Championship! (TN)

See Grand Prix.

OCTOBER 29, 2022

Peter P. Lahde TN Scholastic! (TN)

See Tennessee.

NEVADA

NOVEMBER 22-27, 2022

57th American Open (CA-S)

See Grand Prix.

NEW HAMPSHIRE

OCTOBER 29, 2022

World Academy Scholastic 2022

Event site: World Academy **Address:** 138 Spit Brook Rd, Nashua, NH 03062 **Overall prize fund:** Trophies **GP Points:** n/a **FIDE Rated:** N **Handicap accessible:** Y **Residency restriction:** N **Organizer:** Tournament in a Box **Email:** vbradleychess@gmail.com **Phone:** 603-827-3272 **Website:** <https://nhchess.org/scholastics/> **TLA ID:** 34885

NEW JERSEY

OCTOBER 2, 2022 - MAY 7, 2023

8th Annual Magnus High School and Junior High Chess League! (NY)

See New York.

REGIONALS

OCTOBER 22, 2022

King's Chess Club Quads

Event site: Grace Church Bethlehem Campus **Address:** 758 Route 10, Randolph, NJ 07869 **Overall prize fund:** n/a **GP Points:** n/a **FIDE Rated:** N **Handicap accessible:** Y **Residency restriction:** N **Organizer:** Bob McAdams **Email:** fbmbright@optonline.net **Phone:** 973.694.3988 **Website:** n/a **TLA ID:** 34957

NOVEMBER 19-20, 2022

6th Annual New York State Girls' Championship! (NY)

See New York.

NEW YORK

OCTOBER 2, 2022 - MAY 7, 2023

8th Annual Magnus High School and Junior High Chess League!

Event site: Columbia Grammar and Prep. High School Cafeteria **Address:** 36 W. 93rd St. (bet. Central Park West & Columbus Ave., near 96th St. subways), NYC **Overall prize fund:** \$450 per match date **GP Points:** n/a **FIDE Rated:** Y **Handicap accessible:** Y **Residency restriction:** N **Organizer:** Chess Center of New York **Email:** chesscenter@gmail.com **Phone:** 347-201-2269 (leave message, but email is better) **Website:** <https://www.magnusleague.org/> **TLA ID:** 35086

JUNIOR GRAND PRIX • STATE CHAMPIONSHIP EVENT

NOVEMBER 19-20, 2022

6th Annual New York State Girls' Championship!

Event site: Columbia Grammar and Prep. High

For complete details on individual events, please visit [new.uschess.org/node/\[TLA ID\]](http://new.uschess.org/node/[TLA ID]). You will find the event's unique five-digit TLA ID at the end of each TLA.

School Cafeteria Address: 36 West 93rd St. (some sections may be played at 4 West 93rd St.), both are between Central Park West & Columbus Ave., NYC. **Overall prize fund:** \$450 per match date **GP Points:** n/a **FIDE Rated:** Y **Handicap accessible:** Y **Residency restriction:** N **Organizer:** Chess Center of New York **Email:** chesscentr@gmail.com **Phone:** 347-201-2269 (leave message, but email is better) **Website:** <https://www.chessgirls.win/> **TLA ID:** 35083

NORTH CAROLINA

OCTOBER 8, 2022

2nd Annual Susan E. Kantor Fall Open National Chess Day Chess Tournament (TN)

See Grand Prix.

PENNSYLVANIA

North Penn Chess Club

Main & Richardson - St. John's UCC, 500 West Main St., Lansdale, PA 19446. See www.northpennchessclub.org for schedules & info or 215-699-8418

OCTOBER 2, 2022 - MAY 7, 2023

8th Annual Magnus High School and Junior High Chess League! (NY)

See New York.

NOVEMBER 19-20, 2022

6th Annual New York State Girls' Championship! (NY)

See New York.

TENNESSEE

OCTOBER 8, 2022

2nd Annual Susan E. Kantor Fall Open National Chess Day Chess Tournament (TN)

See Grand Prix.

OCTOBER 29, 2022

Peter P. Lahde TN Scholastic!

Event site: Memphis Chess Club **Address:** 195 Madison Ave Suite 101, Memphis, TN 38103 **Overall prize fund:** n/a **GP Points:** n/a **FIDE Rated:** N **Handicap accessible:** Y **Residency restriction:** N **Organizer:** Memphis Chess Club **Email:** info@memphischessclub.com **Phone:** 731-868-5755 **Website:** <https://www.memphischessclub.com/> **TLA ID:** 34597

VIRGINIA

The Tysons Corner Weekly Scholastic Tournament - In Person Every Sunday

THROUGH DECEMBER 31, 2022

Event site: The Westin Tysons Corner **Address:** 7801

Leesburg Pike, Falls Church, VA 22043 **Overall prize fund:** n/a **GP Points:** n/a **FIDE Rated:** N **Handicap accessible:** Y **Residency restriction:** N **Organizer:** DMV Chess **Email:** josh@dmvchess.com **Phone:** 703-415-6600 **Website:** <https://www.dmvchess.com/inpersonournaments> **TLA ID:** 31467

Tysons Corner Weekly Action Tournaments - Every Sunday In Person

THROUGH DECEMBER 25, 2022

Event site: The Westin Tysons Corner **Address:** 7801 Leesburg Pike, Falls Church, VA 22043 **Overall prize fund:** n/a **GP Points:** n/a **FIDE Rated:** N **Handicap accessible:** Y **Residency restriction:** N **Organizer:** DMV Chess **Email:** josh@dmvchess.com **Phone:** 703-415-6600 **Website:** <https://www.dmvchess.com/inpersonournaments> **TLA ID:** 33763

WASHINGTON

OCTOBER 22-23, 2022

17th Susan Polgar Foundation National Open for Girls and Boys

Event site: Seattle Marriott Bellevue **Address:** 200 110th Ave NE, Bellevue, WA 98004 **Overall prize fund:** Trophies **GP Points:** n/a **FIDE Rated:** N **Handicap accessible:** Y **Residency restriction:** N **Organizer:** Washington Chess Federation **Email:** WashingtonChessFederation@gmail.com **Phone:** (206) 769-3757 **Website:** <http://www.spfn.org/> **TLA ID:** 35055

WISCONSIN

STATE CHAMPIONSHIP EVENT

NOVEMBER 5-6, 2022

2022-2023 Wisconsin Junior Open

Event site: Gruenhagen Conference Center, UW-Oshkosh **Address:** 208 Osceola Street, Oshkosh, WI 54901 **Overall prize fund:** Trophies **GP Points:** n/a **FIDE Rated:** N **Handicap accessible:** Y **Residency restriction:** N **Organizer:** Mike Nietman **Email:** mike.nietman@charter.net **Phone:** 608-467-8510 **Website:** <http://wischess.org> **TLA ID:** 34308

NOVEMBER 20, 2022

2022 Illinois Class State Championship (IL)

See Grand Prix.

Chess Life KIDS (ISSN 1932-5894) or USPS 023-567, Copyright © 2022 by US Chess, is published Bi-Monthly in February, April, June, August, October and December by US Chess, 333 South 18th Street, Suite 210, St. Louis, MO 63103-2256. Call (800) 903-8723 to subscribe. Periodicals postage is paid at St. Louis, MO, and additional mailing offices.

POSTMASTER: Send address changes to US Chess, PO 775308, St. Louis, MO 63177. Please include your old address along with the new address, along with your US Chess I.D. number.

2021 JUNIOR GRAND PRIX FINAL STANDINGS

*Congratulations to the
2021 Junior Grand Prix champion,
Eshaan Hebbbar of New Jersey.*

	Name	State	Count
1.	ESHAAN HEBBAR	NJ	13,729
2.	MAHATI B. KASHYAP	NJ	11,716
3.	MICHAEL DENG	MD	10,631
4.	MANISH B. KASHYAP	NJ	10,490
5.	CHLOE GAW	NY	10,391

Grand Prize: Chess.com one-year Diamond membership (\$100 value), Chess.com gear/merchandise package (\$100 value), free entry into the 2021 U.S. Open with \$1,000 to offset trip expenses, and a US Chess award. Chess.com also awards prizes to the top five players and to each state winner. US Chess gratefully acknowledges the participation of Chess.com.



Visit uschess.org/datapage/jgp-standings.php for full details and standings.

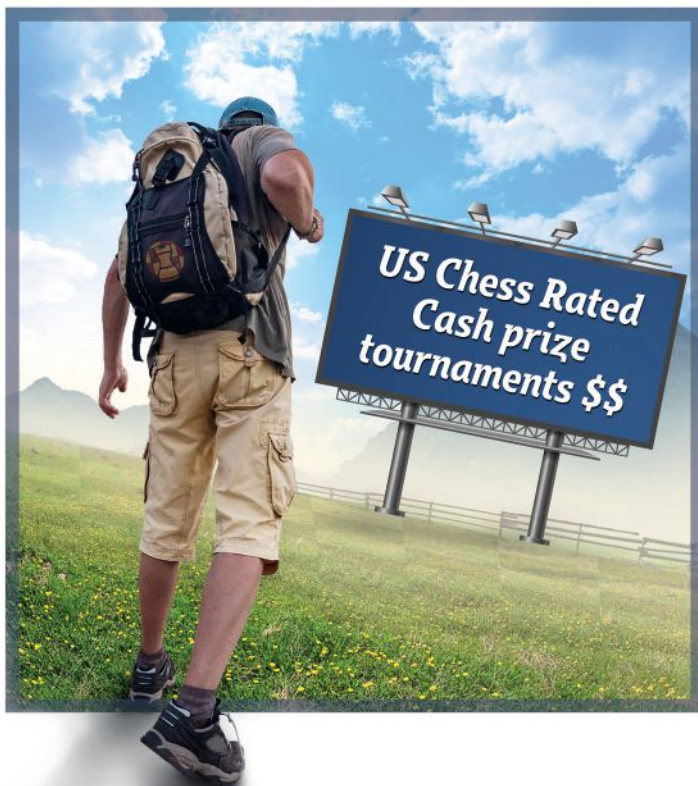
2022 NATIONAL K-12 GRADE CHAMPIONSHIPS

December 9-11

**Gaylord National Resort
National Harbor, MD**



**For information and registration:
www.uschess.org/tournaments/2022/k12/**



The Internet Chess Club and Continental Chess Association presents:

Your best choice for online fun!

- ♔ Over **\$250,000** in prize money paid out
- ♔ Class prizes so you can win too!
- ♔ Longer controls for an OTB experience
- ♔ Weekly US Chess rated events
- ♔ US Chess approved fair play oversight



More information:

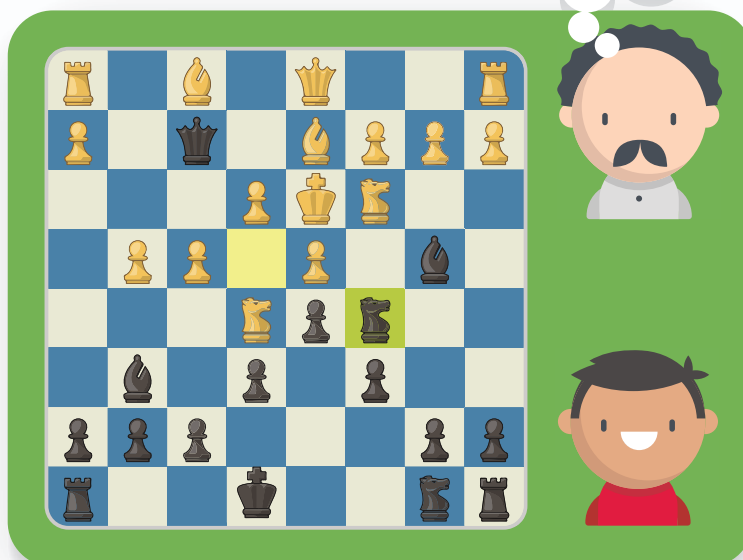
chessaction.com



1 on 1 Chess Coaching

- Level Up your Chess game!
- Improve Tactics and Prep for Tournaments!
- Easy scheduling with online lessons that fit your schedule
- 60 minute sessions of quality & fun chess training

SIGN UP NOW AT CHESSKID.COM





The United States' Largest Chess Specialty Retailer

888.51.CHESS (512.4377)



www.USCFSales.com

AVAILABLE IN SIZES UP TO 3XL - STARTING AT \$24.95

**NOW
AVAILABLE!**

T-USCFL

US Chess Federation logo T-shirt

T-AMONG

They Are Among Us T-Shirt

T-LJACK

Lumberjack "Checkmate!" T-Shirt

T-CMCLC

Chess Mom Classic T-Shirt

T-GITMC

Grandmaster in Training T-Shirt

T-QUEEN

Chess Queen Women's T-Shirt

T-CDCLC

Chess Dad Classic T-Shirt

T-GMOVR

Game Over T-Shirt

T-CDCBD

Chess Dad Chess Board T-Shirt

**CHESS-THEMED
T-SHIRTS**

Free Ground Shipping On All Orders Over \$100.00
Excludes Clearance, Shopworn and Items Otherwise Marked