

CHESS LIFE

Kids



The 2022 INVITATIONALS

Join the Saint Louis Chess Club's DIGITAL CLASSROOMS



- » Learn from Saint Louis Chess Club Certified Instructors
- » Connect With Students from All Over the United States
- » Improve and Build Your Chess Skills Using Saint Louis Chess Club Curriculum
- » Choose from Multiple Learning Styles and Classroom Experiences
- » Play in Online Tournaments With Your Peers
- » Have Fun Learning Chess While Improving Your Critical Thinking, Cognitive Skills, and Memory




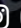

Visit saintlouischessclub.org to Sign up and Learn More!



Building Champions: In The Classroom And The Community

The Saint Louis Chess Club admits students of any gender, race, color, national and ethnic origin to all the rights, privileges, programs, and activities generally accorded or made available to students at the school. It does not discriminate on the basis of gender, race, color, national and ethnic origin in administration of its educational policies, admissions policies, scholarship and loan programs, and athletic and other school-administered programs.

Saint Louis Chess Club | 4657 Maryland Avenue, Saint Louis, MO 63108 | (314) 361-CHESS (2437) | saintlouischessclub.org

@STLChessClub #STLChessClub     



EXECUTIVE DIRECTOR
Carol Meyer

SENIOR DIRECTOR OF
STRATEGIC COMMUNICATION
Daniel Lucas

EDITORIAL

PUBLICATIONS EDITOR
Melinda Matthews
mmatthews@uschess.org

ART DIRECTOR
Natasha Roberts

CHESS LIFE/CLO EDITOR
John Hartmann

GRAPHICS ASSISTANT
Nicole Esaltare

TECHNICAL EDITOR
IM Ron Burnett

CHARACTER DESIGNER AND
ILLUSTRATOR
Chandler Ellison

For communications and press inquiries, please contact Dan Lucas at dlucas@uschess.org. To submit letters to the editor, or for advertising inquiries or TLA display ads, please email mmatthews@uschess.org. Republication or widespread copying without the written consent of US Chess is forbidden.

PLEASE NOTE

For the first time since June 21, 2021, US Chess is adjusting the opt-in fee charged to receive either of our print magazines due to volatility in the paper market and significantly higher mailing fees. Effective January 1, 2023, *Chess Life's* opt-in fee will be \$12 (for 12 monthly issues) and *Chess Life Kid's* fee will be \$6 (for 6 bi-monthly issues). For more information, visit new.uschess.org/news/opt-fee-print-copies-chess-life-and-chess-life-kids-changes-january-1-2023.

DECEMBER 2022

CHESSLIFE Kids

Volume 17, Number 6

4 AVOID THE TRAP
Creating Space for Errors
BY BRUCE PANDOLFINI

6 IN SESSION **Never Give Up**
BY FM RUIYANG YAN

8 CHESS ADVENTURES **FM Ruiyang Yan**
ART BY NICOLAS BARRIOS

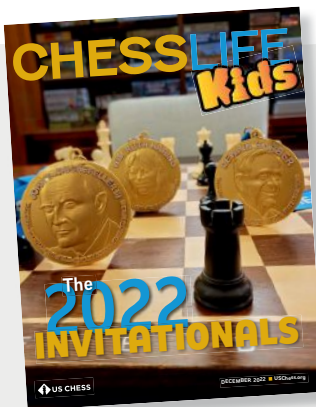
10 CHESS STORIES **Underdogs Who Came Out on Top!**
BY AL LAWRENCE

12 COVER STORY
THE 2022 INVITATIONALS
BY JJ LANG

17 FIRST PERSON **My Star-Spangled Haring**
BY LAUREL ARONIAN

19 TOURNAMENT LIFE

22 CORRESPONDENCE CHESS **Meet our World Champ!**
BY CC-GM JON EDWARDS



ON THE COVER

JJ Lang reports on all the action-packed moments from our five prestigious Invitationals, while Laurel Aronian writes about her personal experiences in Rancho Mirage. Two-time Haring winner FM Ruiyang Yan takes over In Session and Chess Adventures this month to stress the importance of never giving up. And Al Lawrence introduces

you to two more upset winners from the Invitationals in Chess Stories. PHOTO: NATASHA ROBERTS



Creating Space for Errors

BY **BRUCE PANDOLFINI**

This column teaches you openings by helping you learn to avoid opening traps. Set up your board and pieces and play through the game below. Have paper and pen by your side. When you reach a question, write down your answer. After you are done with all 10 questions, check your answers at the end of this column. Total your points and see how you did against the scoring scale at the end. Try to score at least 80 points!

WHEN YOUR MATERIAL is threatened, usually you deal with the threat. It might be good to move the threatened piece or pawn to safety. Sometimes it may be preferable to trade the targeted unit for equal value. Or you may simply add sufficient protection to it. That way, if taken, you can take back.

But there may be other potential ways to cope with some threats. Perhaps, instead of directly defending, you could issue your own threat. Or, if you realize you have a subtle indirect defense against the opposing threat, you might prefer to give your opponent a chance to go wrong. That is, you cunningly play a move that seemingly ignores the threat, but actually doesn't. This month's game provides a typical example of how such an indirect defense could work.

1. Nf3

The Reti Opening. White doesn't

yet commit the pawn structure to a definite setup.

Q1) What central pawn move does 1. Nf3 discourage? (10 points)

Q2) Against 1. Nf3, what center pawn is usually moved? (10 points)

1. ... Nc6

This developing move is fine, though Black certainly has options, including 1. ... d5, 1. ... c5, 1. ... Nf6, and several others.

2. e4

Suddenly, White shifts to a king-pawn opening.

Q3) What central pawn move does 2. e4 discourage? (10 points)

2. ... e5

With this move, just like that Black transposes to a double king-pawn defense.

Q4) What's a transposition in chess? (10 points)

3. c3

Ponziani's Opening.

Q5) What is the purpose of 3. c3? (10 points)

3. ... d6

A more active try was 3. ... d5 4. exd5 Qxd5, bringing the black queen to the center.

Q6) Is it unwise to centralize the black queen so early? (10 points)

4. Be2

A safe, but very quiet development. More active was 4. Bc4.

4. ... Nf6

Black develops, while attacking the e4-pawn.

Q7) Should White defend e4 by either 5. d3 or 5. Qc2? (10 points)

5. d4

White ostensibly ignores the threat to e4, giving the opponent a chance to go wrong.

5. ... Nxe4



Black has captured the apparently unguarded e4-pawn. But the situation can change very quickly on the chessboard.

Q8) Should White try to regain the pawn by 6. dxe5? (10 points)

6. d5

This threat changes everything. Black must save the c6-knight.

6. ... Nb8

Black must lose material, wherever the c6-knight goes.

Q9) How can White win material? (10 points)

7. Qa4+

A winning double attack. However Black answers the check, the e4-knight is lost.

7. ... Bd7

It doesn't matter much how Black blocks the check. The knight is lost.

8. Qxe4

Black doesn't have enough play for the lost knight, so ...

8. ... Black resigned.

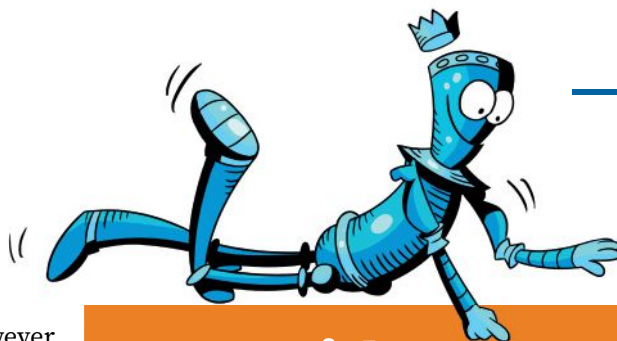


Q10) What was the last move Black could have avoided the trap? (10 points)

ILLUSTRATIVE GAME:

Mateusz Majka
Aleksandr Kaczmarek
Poland, 2013

1. e4 c6 2. Nc3 d5 3. d3 e5 4. Nf3 Nf6 5. Nxe5 d4 6. Ne2 Qa5+ 7. Qd2 Qxe5 and White soon resigned.



How Did You Score?

The score is based on the US Chess rating system and is intended only as a fun way to monitor your progress each issue as you Avoid The Trap!

100: 1800+
90: 1600
80: 1400
70: 1200
60 or lower: 1000



A1) It discourages Black from playing 1. ... e5. **A2)** The d-pawn, usually two squares (1. ... d5). **A3)** It discourages 2. ... d5, since 3. exd5 Qxd5 exposes the queen. **A4)** It's achieving the same position with a different move order. **A5)** White supports the advance d2-d4 at a suitable moment. **A6)** Often it's bad, but not here since 4. Nb1-c3 is not possible. **A7)** Both would be fine, but White has a more active idea. **A8)** No. For one, it doesn't regain the pawn. Besides, there's better. **A9)** White has a deadly queen fork. The e4-knight is now vulnerable. **A10)** Move five. Black should have played 5. ... Be7 or 5. ... exd4 6. cxd4 d5.

ANSWERS:

Be sure to check your score!



Never Give Up

BY FM RUIYANG YAN

I'D NEVER FULLY thought about GM Savielly Tartakower's famous quote, "No one ever won a game by resigning," until the 2022 WIM Ruth Haring National Tournament of Girls State Champions, where the top female scholastic players from each state competed for a \$5,000 scholarship, a spot in the U.S. Girls' Junior Invitational, and most importantly, some serious bragging rights (*see pg. 12 for the full report*).

I went into this tournament with pretty high expectations, especially as the second seed. However, I knew it wasn't going to be an easy affair, since the other top seeds are extremely talented and a few, including me, had just finished the aforementioned U.S. Girls' Junior. Still, I was determined to do my best to win.

The first two rounds went by without a hitch. Then I played two tumultuous games in a row! In the third round, I played a fellow competitor from the U.S. Girls' Junior, Anne-Marie Velea from Washington. Though I felt confident going into the game, I was a bit worried that she would surprise me in the opening. While

she did improve on our game at the U.S. Girls' Junior, it turned out my opening worries were mostly in vain.

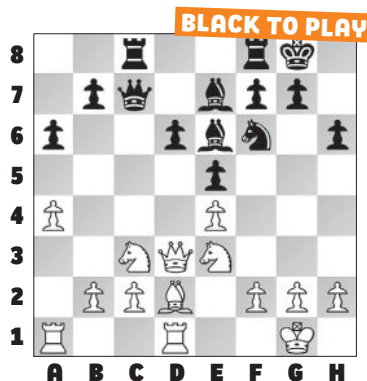
SICILIAN DEFENSE [B51]

WFM Anne-Marie Velea (2151)

FM Ruiyang Yan (2312)

2022 Haring: Girls (3), Rancho Mirage, 07.31.2022

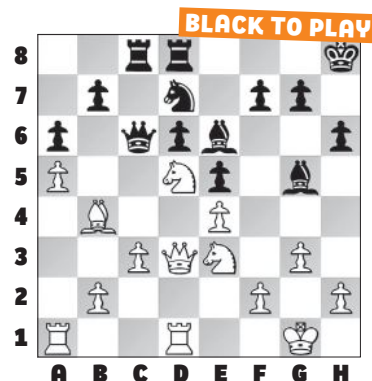
1. e4 c5 2. Nf3 d6 3. Bb5+ Nd7 4. d4 cxd4 5. Qxd4 a6 6. Bxd7+ Bxd7 7. Nc3 e5 8. Qd3 Rc8 9. O-O h6 10. Rd1 Nf6 11. a4 Be7 12. Nd2 Qc7 13. Nf1 O-O 14. Ne3 Be6 15. Bd2



This position arose out of a typical line in the Moscow variation (3. Bb5+). Both sides have, for the most part, completed their plans

for the opening. White's knights on e3 and c3 both eye the d5 square, and her pieces are placed well enough to stop my own pawn breaks. For Black, this position is a slippery slope, and I lost control quickly in this game. To trade off some pieces, 15. ... Bc4 was important here, but I did not want to give up my light-squared bishop.

15. ... Rfd8 16. Be1 Qc5 17. a5 Nd7 18. Ncd5 Bg5 19. Bb4 Qc6 20. c3 Kh8 21. g3



By now, my position had deteriorated exponentially, and I was slightly panicking right now. White's pieces are placed almost perfectly and each of them has a distinct role. In contrast, my

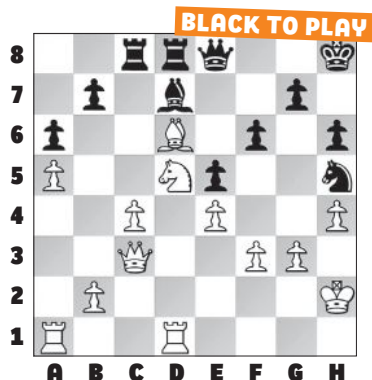
pieces are misplaced and it's clear that my pawn breaks are almost non-existent.

21. ... Re8 22. h4 Bxe3 23. Nxe3 Nf6 24. f3 Red8 25. c4 Nh5 26. Kh2 Qe8



After being squeezed for quite a few moves, I had to try to create some counterplay. This is a crucial part of defense that is very difficult to get right — when and where should you create counterplay? Here I decided to sacrifice the pawn on d6 to try to break through on the light squares in the kingside.

27. Bxd6 Bd7 28. Qc3 f6 29. Nd5



Opportunity reveals itself! My opponent painfully blunders into the light-squared battery.

29. ... Qe6 30. g4 Qxd6 31. Nb6 Qc5 32. Qc2 Nf4 33. Nxd7 Qe3 34. Ra3 Rxc4 35. Rc3 Rxc3 36. bxc3 Qxf3 37. g5 Qh3+ 38. Kg1 Qg3+ 39. Kh1 Qxh4+ 40. Kg1 Qxg5+, White

resigned.

With such a tumultuous game, I was just happy to have won. As you can see, always looking for opportunities plays off!

In the next game, I played Gracy Prasanna from Pennsylvania, another one of my fellow competitors from the U.S. Girls' Junior.

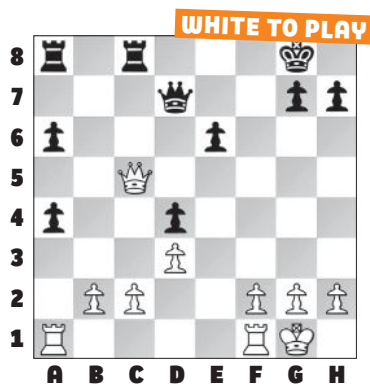
RUY LOPEZ [C84]

FM Ruiyang Yan (2312)

WFM Gracy Prasanna (2206)

2022 Haring: Girls (4), Rancho Mirage, 08.01.2022

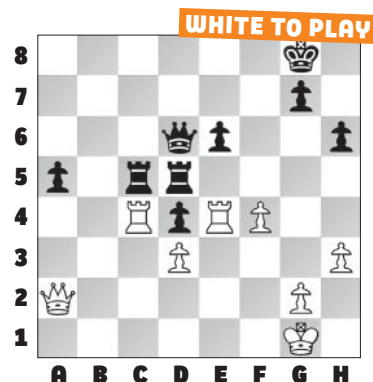
1. e4 e5 2. Nf3 Nc6 3. Bb5 a6 4. Ba4 Nf6 5. O-O Be7 6. d3 b5 7. Bb3 d6 8. a3 O-O 9. Nc3 Bg4 10. Be3 Nd4 11. Bxd4 exd4 12. Nd5 c5 13. a4 Be6 14. Nxf6+ Bxf6 15. Bxe6 fxe6 16. Qe2 Qd7 17. e5 dxe5 18. Nxe5 Bxe5 19. Qxe5 bxa4 20. Qxc5 Rfc8



I realized here that I definitely messed up! I cannot defend my c2-pawn and the b2-pawn will also fall soon after. My idea at this point was that I could put pressure on the d4-, a6-, and e6-pawns. However, it's probably easily a draw, especially since I'm still down a pawn!

21. Qb4 Rxc2 22. Rxa4 Rxb2 23. Qc4 a5 24. h3 Rb5 25. Re1 Rd5 26. Qb3 h6 27. Re4 Qd6 28. f4 Rb8 29. Qa2

Rbb5 30. Rc4 Rbc5




Find the tactic that allowed me to win the game! (The main point is to look for resources, even when things look difficult.)

31. Rxe6 Qxe6 32. Rxc5 Rd6 33. Rxa5 Qxa2 34. Rxa2 Rf6 35. Rf2 Re6 36. Rf3 Kf7 37. f5 Re1+ 38. Kf2 Rd1 39. Ke2 Rg1 40. Rg3 Kf6 41. Rg6+ Kxf5 42. Rxg7 Kf4 43. Rg4+ Ke5 44. Rg6 Kf5 45. Rg3 Kf4 46. Rf3+ Ke5 47. Kf2 Rd1 48. g4 Rd2+ 49. Kg3 Re2 50. h4 Re1 51. Kf2 Rd1 52. g5 hxg5 53. hxg5 Rd2+ 54. Kg3 Rd1 55. Kg4 Rg1+ 56. Rg3 Re1 57. g6 Kf6 58. Kh3 Kg7 59. Kg2 Re6 60. Kf3 Re5 61. Kf2 Re6 62. Rg4 Rxg6 63. Rxd4 Re6 64. Rf4 Re7 65. Kf3 Re1 66. Re4 Rd1 67. Ke2 Ra1 68. Rf4 Kg6 69. Ke3 Ra5 70. d4 Rf5 71. Re4 Kf6 72. Kd3 Rh5 73. Kc4 Rh1 74. d5 Rd1 75. Kc5 Rc1+ 76. Kd6 Rd1 77. Rf4+ Kg5 78. Rf2 Kg6 79. Ke6, Black resigned.

Overall, these two topsy-turvy games were crucial in helping me win the Haring, as the rest of my games went far more smoothly. Each game was a hard-fought battle and they prove that Tarkatower was right!

FM Ruiyang Yan is the 2021 and 2022 winner of the WIM Ruth Haring National Tournament of Girls State Champions. Read more about her on page 8.





Chess has taken me across the country and around the world.


CHESS ADVENTURES

WITH FM RUIYANG YAN



The World Cadets Girls U8 in Greece was my first big international tournament.


Little did I know it was only the beginning!



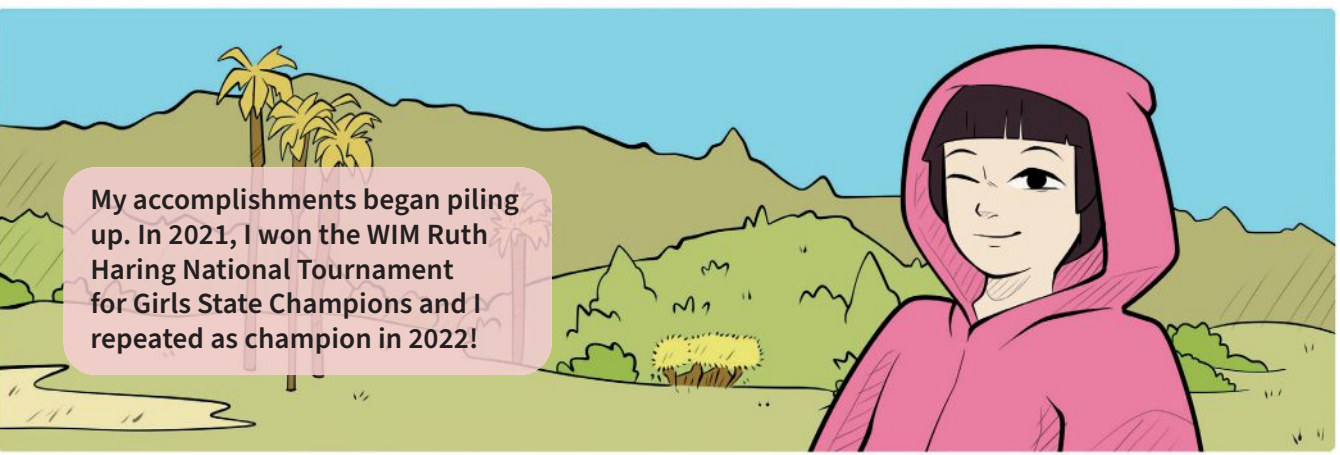
To keep improving, I played in San Francisco (CA) Bay Area tournaments and gradually got better.



In 2017, I returned to the World Cadets Girls in Brazil. I competed in the U10 section and tied for third! I'd never done this well on an international stage before.



Two years later, I was invited to my first U.S. Girls' Junior and finished third out of a group of extremely strong competitors.



My accomplishments began piling up. In 2021, I won the WIM Ruth Haring National Tournament for Girls State Champions and I repeated as champion in 2022!

Art by Nicolas Barrios

ALL GIRLS

18TH ANNUAL

NATIONAL CHESS CHAMPIONSHIPS

APRIL 28 - 30, 2023

CHICAGO, IL



Presented by



HISTORIC PALMER HOUSE HOTEL

The Champion in each age category, qualifies to represent the USA at the World Cadets, and World Youth Championships

MAIN EVENT

6-SS, G/90,d5

Friday April 28

2:30 PM Opening Ceremony

3:00 PM Round 1

Saturday April 29

10:00 AM Round 2

2:30 PM Round 3

6:30 PM Round 4

Sunday April 30

9:00 AM Round 5

1:00 PM Round 6

5:00 PM Awards Ceremony

ENTRY FEE

\$85 postmarked by 3/20,
\$105 by 4/17, \$115 by 4/27,
\$125 on-site.

SIDE EVENTS

Bughouse Tournament

Fri. April 28 11:00 AM

Entry fee: \$40 per team

Blitz Tournament (G/5,d0)

Fri. April 28 7:00 PM

Entry fee: \$30 by 4/17, \$35
after/on-site.



SECTION/AWARDS

Age as of 1/1/2023

Under 8 top 15 individuals

top 500 – 799, top U500, top 6 schools

Under 10 top 15 individuals

top 700 – 999, top U700, top 6 schools

Under 12 top 15 individuals

top 900 – 1199, top U900, top 6 schools

Under 14 top 15 individuals

top 1100 – 1399, top U1100, top 4 schools

Under 16 top 8 individuals

top 1300 – 1599, top U1300, top 3 schools

Under 18 top 8 individuals,

top 1500 – 1799, top U1500, top 3 schools

HISTORIC PALMER HOUSE HOTEL

17 East Monroe St, Chicago, IL
60603

HOTEL RESERVATIONS

single - quad \$169

(312) 726-7500, online at
www.allgirls.rknights.org

Reserve early hotel may sell out /
raise rates

INFO

www.allgirls.rknights.org

(773) 844-0701

info@renaissanceknights.org

Online Registration: www.allgirls.rknights.org

Mailed Registration: make checks payable to: Rknights 599 Linden Ln, Wauconda, IL 60084

www.kasparovchessfoundation.org



Underdogs Who Came Out on Top!

BY AL LAWRENCE

IN THE OCTOBER issue we introduced you to the upset champions from the 2022 Dewain Barber National Tournament of Middle School State Champions (6-8) and the John D. Rockefeller III National Tournament of Elementary School State Champions (K-5). This month we'll meet the players who overcame the biggest odds at the 2022 GM Arnold Denker National Tournament of High School State Champions (9-12) and the WIM Ruth Haring National Tournament of Girls State Champions (K-12), held in Rancho Mirage, California, this summer. They won the "Biggest Upset" prizes sponsored by Dwight Barber. To do that, they had to chalk up the win with the biggest rating difference between opponents in the whole tournament! That wasn't easy, especially since everyone at both events had been selected as a champion to represent their state.

GM ARNOLD DENKER NATIONAL TOURNAMENT OF HIGH SCHOOL STATE CHAMPIONS

Niall McKenzie is from Pocatello,

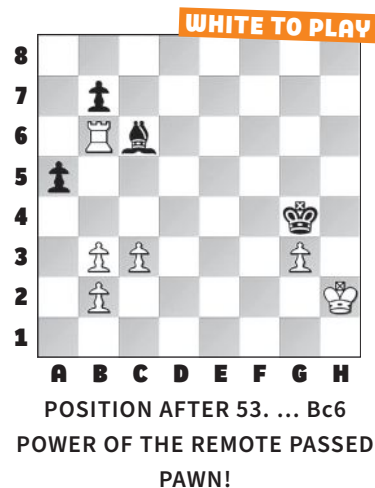
Idaho, a beautiful place. But it's a tough place to get a challenging practice chess game. None of Niall's family or friends play chess. By playing online and watching chess videos, Niall has gotten up to a high Class B rating.

It was Niall's first time playing in any of the four championships. "Unfortunately, I can't play again, since I'm a senior this year." In the very first round, he was paired against a player rated 2178 — a former master! Niall played attacking chess to win a rook for a bishop. But even so, could he beat an Expert rated 450 rating points above him? Niall played solidly, consolidating his advantage. In the position below, he found the quickest and surest way to win. Can you?

(see diagram top of next column)

54. Rxc6!

"Giving back the Exchange makes it an easy endgame for me to win," Niall said. Black can stop White's g-pawn. Or he can guard his queenside pawns. But he can't do both. He's lost.



"I was pretty surprised with myself," Niall said. He went on to draw two games against Class A players.

WIM RUTH HARING NATIONAL TOURNAMENT OF GIRLS STATE CHAMPIONS

Perrine Rainey was first attracted to chess by her family's *Lord of the Rings* chess set. She's rated 426 after playing just a few tournaments. "I was excited and scared at first" walking into the giant tournament hall. "It was fun at the pizza party meet-and-

greet. I got to learn more about the people that I played and make friends.” She even made friends with the New Hampshire representative, Elsa Rogers. Since Perrine recently moved from New Orleans to Lebanon, New Hampshire, the two may be competing for a spot in the Haring next year!

In the last round, Perrine faced an opponent who had triple her rating. “I just went in with the attitude of ‘I’ll play the best I can,’” she recalled. She quickly took advantage of the chance to break apart the pawns in front of the castled enemy king. She used that weakness to fuel an attack. In the position below, how did she force her opponent to give up her queen for a knight?



11. Qxf6+ Rg7 12. Nf5! Qxf5 13. exf5

Black had to give up her queen to avoid being checkmated. With that big material advantage, Perrine went on to win. “I told myself to not get in over my head and still continue to play carefully. After the game, I was surprised and happy that I got to

walk out of that tournament with at least one win.”

So, if you sit down to play someone whose rating makes yours seem small, remember how Niall and Perrine brought down the “top gun!” Play solidly. Don’t think you have to take big risks, like staking it all on a shaky attack. Stay calm, and stay alert for mistakes even good players can make. You just might get your biggest win. Even if you don’t, you’ll still have a game you can learn a lot from, and a game you can be proud of. Keep playing like that — and soon you’ll be that “top gun.”

Left: Perrine Rainey shows off her Haring medal. **Right:** Niall McKenzie poses for his senior yearbook photo.



THE 2022 INVITATIONALS

BY JJ LANG



FROM JULY 30 to August 2, scholastic and senior players from around the country descended on Rancho Mirage, California, to play in five Invitationals that determined national super-champions across age and gender lines. The Invitationals — affectionately known as the Denker, Haring, Barber, Rockefeller, and Irwin — have become prestigious mainstays that occur each year alongside the U.S. Open.

Each scholastic tournament awards scholarships to the top three finishers, as determined by tiebreaks, with \$5,000 to first, \$3,000 to second, and \$2,000 to third. Cash prizes, ranging from \$800-\$200, are also awarded to the top five. (see sidebar, pg. 16)

With so many events, the Invitationals also include a “Battle of the States” competition, where the combined scores of the state representatives from each event determine the ultimate state champion. This year, the New York representatives, whose average rating was 2299, won with a combined 23 points out of a possible 30, finishing ahead of Northern California (22 points) and New Jersey (21 points).

HARING: GIRLS (K-12)

The WIM Ruth Haring National Tournament of Girls State Champions served as a reunion for participants of the 2022 U.S. Girls’ Junior Championship, with six of the 10 players competing as pre-tournament favorites. FM Ruiyang Yan, from Northern California, ran away with clear first with 5/6

ALL PHOTOS: MARK CIESLIKOWSKI

points. Her last four rounds were all rematches from the U.S. Girls' Junior championship. After a come-from-behind repeat victory against Washington's WFM Anne-Marie Velea, Yan took firm control against top-seeded FM Alice Lee of Minnesota.

QUEEN'S GAMBIT DECLINED (D37)

FM Alice Lee (2359)

FM Ruiyang Yan (2312)

2022 Haring: Girls (5), Rancho Mirage, 08.01.2022

1. d4 Nf6 2. c4 e6 3. Nf3 d5 4. Nc3 a6 5. cxd5 exd5 6. Bg5 Be6 7. e3 Nbd7 8. Bd3 Bd6 9. Qc2 c6 10. 0-0 h6 11. Bf4 Qc7 12. Bg3 0-0 13. Rfe1?!

An odd choice. Presumably White is signaling an intention to push e3-e4, but it is unclear how she plans to play with the isolated d-pawn.

13. ... Rfe8 14. Nd2

Black would have an advantage after 14. e4?! because after 14. ... dxe4 15. Nxe4 Nxe4 16. Bxe4 Bxg3 17. hxg3 Nf6 Black has successfully traded two sets of minor pieces, while White has no viable kingside attacking chances as compensation for her isolated pawn.

14. ... Bxg3 15. hxg3 Qd6 16. a3 a5 17. Na4 b6 18. Rab1 c5 19. dxc5?!

Faced with another difficult choice about how to transform the position, White elects to stick Black with a "hanging pawns" structure on d5 and c5. But neither pawn is particularly weak, and so this only cements a space advantage for Black.

Better was 19. Nc3 Rac8 20. Nf3, keeping the tension and forcing Black to make a decision about her intended piece placement.

19. ... bxc5 20. Nc3 Ne5 21. Nf3 Bg4 22. Nh2 c4?!

By committing to this push, Black commits to a permanent weakening of the d5-pawn.

23. Bf1

White had a nice chance to remove a crucial defender with 23. Nxc4!? cxd3 24. Nxf6+ Qxf6 with some chances for counterplay after 25. Qd1.

23. ... Bh5 24. Qd2 Bg6 25. Rbc1 Nd3

Now the choice to push ... c5-c4 has paid off for Black. White has no way to attack the weak d5-pawn for the foreseeable future.

26. Bxd3 Bxd3 27. g4?!

Blockading the backward pawn with 27. Nf3 Qb6 28. Nd4 is objectively better, but practically speaking, it provides White with little to no counterplay.

27. ... Rab8 28. f3 Qb6



We have now entered the surgical stage of the game. White can barely move, and as each move creates new weaknesses, Black uses her space advantage to re-route her pieces to exploit them.

29. Nd1 Nd7 30. Nc3 Nf6!?

I would love to know what spooked Black from playing 30. ... Nc5, which appeared to be

her intended move. Black could rid herself of her weak central pawn after 31. Nxd5 Qd8 32. e4 Nb3, which would also open up more lines for her pieces and net an Exchange. Perhaps she was concerned about introducing unnecessary imbalances into the position, providing White with more chances for counterplay.

31. Nd1 d4! 32. Qf2 Qe6

Even more crushing was 32. ... Nd5 33. e4 Nf4.

33. e4 Qb6 34. Nf1 Bxf1?!

The re-route with 34. ... Nd7 seemed more patient and in the spirit of Black's dominating position.

35. Kxf1 Nd7 36. Rxc4?

In an impossible position, White seeks out clarity, and is now clearly lost.

36. ... Qa6 37. Qxd4 Ne5 38. Ne3 Nxc4?!

Most precise was 38. ... Rbd8! 39. Qc3 Rd3! 40. Qc1 Rxe3!.

Ruiyang Yan



39. Nxc4?

It's understandable that White would not want to trade queens with 39. Qxc4 Qxc4+ 40. Nxc4 and land in a likely lost endgame, but she does have more practical chances to hold here considering that Black's queen was the engine of her attacking chances in the middlegame.

39. ... Red8 40. Qc3 Rdc8 41. Rc1
If 41. b3 a4!.

41. ... Rc6 42. a4 Rb4 43. b3 Qb7!
The knight is still pinned!

44. Rc2 Rxb3 45. Qxa5 Rb4 46. Qd8+ Kh7 47. e5 g6 48. Qd3 Qa6 49. Qd5 Kg7 50. e6 Rbxc4 51. e7 Rxc2+ 52. Kg1 Qa7+, White resigned.

To clinch first, Yan needed only a draw against Oregon's WFM Zoey Tang, but Tang had been the only opponent to defeat Yan in St. Louis. Still, Yan held her resolve, and the ensuing draw also enabled Tang to finish second on tiebreaks ahead of North Carolina's Asha Kumar on 5/6. Tang's impressive result included a grueling win over New York's WIM Ellen Wang.

ACTIVE KING

WFM Zoey Tang (2254)

WIM Ellen L. Wang (2217)

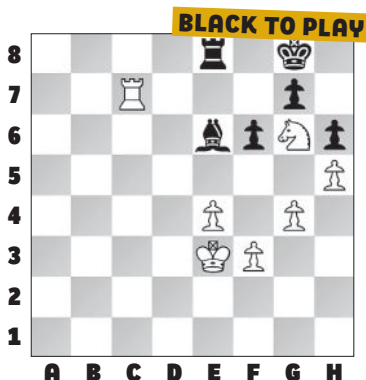
2022 Haring: Girls (6), Rancho Mirage,
08.02.2022

(see diagram top of next column)

61. ... Bb3?

61. ... Rd8 62. Ne7+ Kh7 at least poses White more problems, since the key f5 square is still guarded.

62. Ne7+ Kh8 63. Nf5 Rg8 64. Kf2 Be6 65. Ne7 Re8 66. Kg3 Rd8 67. Ra7 Re8 68. Kf4 Rd8 69. Nf5 Bxf5?



Practically the only error. Due to her king activity, the Lucena position is on the horizon now.

After 69. ... Rd7 70. Ra6 Bf7 the struggle would go on indefinitely here, as White is no closer to making progress against g7.

70. Kxf5 Kh7 71. f4 Rd1 72. e5! fxe5 73. fxe5 Rf1+ 74. Ke6 Rf4 75. Ke7, Black resigned.

Kumar's finish is also noteworthy, as the 1948-rated player was not among the U.S. Girls' Junior Championship squad. Nevertheless, she finished ahead of four of them, including her head-to-head victory over WFM Grace Prasanna.

BARBER: MS (6-8)

New York finished atop the combined standings, and a major reason was Brewington Hardaway's dominating clear-first 5½/6 win in the Dewain Barber National Tournament of Middle School State Champions. After being held to an upset draw by 2159-rated Ohio's Rohan Padhye in round three, Hardaway was unstoppable, beating two of his strongest competitors with Black in the final two games. After outplaying New Jersey's Alexander Wang,

Hardaway knocked out Kansas's Vaseegaran Nandhakumar to clinch the tournament.

CATALAN OPENING [E05]

Vaseegaran Nandhakumar (2165)

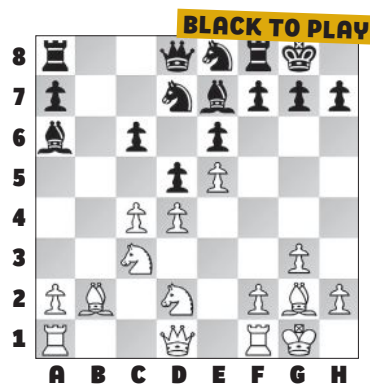
Brewington Hardaway (2344)

2022 Barber: MS (6), Rancho Mirage,
08.02.2022

1. d4 Nf6 2. Nf3 e6 3. g3 d5 4. Bg2 Be7 5. 0-0 0-0 6. b3 Nbd7 7. Bb2 c6 8. c4 b6 9. Nc3 Ba6 10. Nd2 b5 11. e4?!

White is asking a lot from this position. In similar Catalan structures, without Black's queenside counterplay, the central expansion is suffocating. But a major reason for that is that the light-squared bishop is shut in for Black, which is not the case here.

11. ... bxc4 12. e5 Ne8 13. bxc4

**13. ... Nb6!**

A precise move. Now Black's "problem child" is guaranteed to be a force.

14. Re1 Nxc4 15. Nxc4 Bxc4 16. f4 Qa5 17. Qc2 Rb8 18. Bc1 Nc7 19. Bd2 Qb6 20. Rad1 Qb2

By now, it is clear that Black is in control and White has no attack on the black monarch. Excellent positional understanding from the champ.

21. Qa4 Qb6 22. Qc2 Qb2 23. Qa4 Bb4 24. Nb1 c5 25. Bxb4 Qxb4 26. Qxa7 Na6 27. a3 Qb5 28. Qe7 Bb3 29. Rc1 Rb7 30. Qh4 Qd3 31. f5 Qxf5 32. dxc5 Bc2 33. Nd2 Nxc5 34. Rf1 Qg6 35. Qd4 Nd7 36. Rf3 Bf5 37. Rfc3 Qg4 38. Qxg4 Bxg4 39. Rc7 Rxc7 40. Rxc7 Nxe5, and Black won after 46 more moves.

Nandhakumar had developed a reputation as something of a giant-slayer in this tournament, having upset Florida's top-seeded FM Bach Ngo in the fourth round in a game where he was never worse, and then pulling out a perpetual against Pennsylvania's FM Erick Zhao in a game where Nandhakumar was never better.

The biggest upset across all five events occurred when Vermont's Elijah Cummings, rated 585, began the tournament with back-to-back wins over 1793-rated Harsh Mali from Colorado and 1551-rated Colin Dean from Connecticut. As the second-lowest rated player and one of only four players rated under 1000 out of the field of 49, Cummings still finished on an even 3/6 in a tie for 20th. (see the October 2022 issue of Chess Life Kids for more on Elijah!)

ROCKEFELLER: ES (K-5)

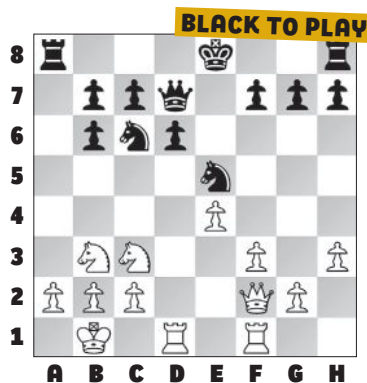
In the John D. Rockefeller III National Tournament of Elementary School State Champions, Georgia's Andrew Jiang, Southern California's Benjamin Tang, and New York's Sam Luger finished with 5/6, with Jiang winning on tiebreaks. All three co-champions showed sophisticated positional understanding in the later

rounds. But earlier in the event, Tang especially showed some tactical acumen, taking advantage of slight inaccuracies from his opponents.

SCOTCH GAME [C45]

Benjamin Tang (2140)
Roshan Sethuraman (2059)
2022 Rockefeller: ES (5), Rancho Mirage, 08.01.2022

1. e4 e5 2. Nf3 Nc6 3. d4 exd4 4. Nxd4 Bc5 5. Nb3 Bb6 6. Qe2 d6 7. Nc3 Nf6 8. Be3 Be6 9. 0-0-0 Ng4 10. Bxb6 axb6 11. Kb1 Qd7 12. f3 Nge5 13. h3 Bc4 14. Qf2 Bxf1 15. Rhxf1



15. ... g5?!

Black is asking a lot of the position. The prophylactic idea is creative, but more suited to less open centers.

16. h4 h6 17. hxg5 hxg5 18. Qe3 0-0-0 19. Qxg5 Rhg8 20. Qd2

The open g-file is not compensation for the pawn because White is not restricted by this move, given the control over d5 and the resulting ability to crash through the center, rendering Black's entire strategy on the g-file less relevant.

20. ... Rg3 21. Nd5 f5 22. f4 Nc4 23. Qe2 b5 24. a4 Qg7 25. e5 Rxg2 26. Qd3 bxa4 27. Nd4 Nxd4 28. Qxd4

b5?

Black's most practical chance was attempting to hold the inferior heavy piece ending after 28. ... Nb6 29. Nxb6+ cxb6 30. Qxa4 (White would have the chance to err here, as after 30. Qxb6? Qc7 31. Qxc7+ Kxc7 The endgame is dynamically balanced.)

29. Qa7 Rh8 30. Qa6+ Kd8 31. Qxb5 Rhh2 32. Qb8+ Kd7 33. e6+ Kxe6 34. Qe8+ Qe7 35. Qxe7 mate.

DENKER: HS (K-12) AND IRWIN: SENIORS (50+)

Georgia's IM Arthur Guo won the GM Arnold Denker National Tournament of High School State Champions, finishing with 5/6 ahead of Northern California's GM Andrew Hong and Arizona's FM Sandeep Sethuraman on tiebreaks. Guo's round five upset of Hong, the lone GM in the field, put

Brewington Hardaway



him in pole position.

In the John T. Irwin National Tournament of Senior State Champions, Texas's IM Douglas Root and Southern California's GM Enrico Sevillano tied for first with 5/6 in the most star-studded event of the field. With most of the top boards coming down to tight endgames, this event featured many instructive positions, including Root's first-round win.

INSTRUCTIVE POSITION

Thomas Braunlich (2200)

IM Douglas Root (2557)

2022 Irwin: Senior (1), Rancho Mirage, 07.30.2022



33. h3?

Black's best chance was 33. cxb4! to keep the weakness on b2 rather

than c3, where it will be harder to exploit.

33. ... bxc3 34. bxc3 Bh4 35. Qc2 h5!

The principle of two weaknesses in action once again: Black exerts pressure on the kingside only because White has to keep monitoring the c3 pawn.

36. Kf3 hxg4+ 37. hxg4 Be1! 38.

Ke2 Qxg4+ 39. Kxe1 Qxf4 40. exd5 Qh4+, White resigned.

Having reached the time control, White does not need to see more.

WEERAMANTRY: BLITZ

The Invitationals kicked off with four sections of the FM Sunil Weeramantry National Blitz Tournament of State Champions, a four double-round Swiss. In the 2200+ section, GM Hong finished with 7/8 ahead of FM Lee and IM He, each on 6/8. In The 1800-2199 section, 1890-rated Kaustubh Kodihalli, from Idaho, finished with 6½/8 ahead of three experts on tiebreaks. Georgia's Haring representative Jwalanthi Ram took clear first in the 1400-1799

THANKS TO OUR SPONSORS!

THE INVITATIONALS OFFER MORE than a national title and bragging rights. Participants have multiple opportunities to win scholarships, awards, cash prizes, and gift certificates, too! All scholarships and awards are funded through generous contributions from US Chess, The U.S. Chess Trust, Dewain Barber, David and Maureen Grimaud, John D. Rockefeller V, Richard and Barbara Schiffrin, the Internet Chess Club (ICC), the Play Magnus Group, and US Chess Sales. US Chess also expresses special thanks to Dwight Barber, the Ursula Foster Family, and the Boca Raton Chess Club for their support.

section with 7/8. And in the U1400, remember the 585-rated player from Vermont who finished with 3/6 in the Barber? Well, Elijah Cummings took clear first in the blitz and was the only player to finish with a perfect score.

Rockefeller co-champs, left to right: Andrew Jiang, Benjamin Tang, and Sam Luger



My Star-Spangled Haring

BY LAUREL ARONIAN

THIS PAST SUMMER, my passions intersected when I played in the WIM Ruth Haring National Tournament of Girls State Champions in Rancho Mirage, California, and sang the national anthem at the concurrent U.S. Open. After I received the phenomenal news that I would sing at the opening ceremony, I spent time readying my voice for the Star-Spangled Banner while most of my opponents were heads-down in chess tactics.

When we arrived in the hot California desert, it was clear that both the Haring and U.S. Open were going to present a challenging physical and cognitive see-saw of performance demands. One minute I was at registration picking up my state flag, Haring medal, and chess queen souvenir; the next, I was on stage rehearsing the anthem. Though I'm used to toggling between schoolwork and extracurriculars, this particular music and chess balancing act was on another level.

The opening ceremony for the U.S. Open was packed with chess enthusiasts and it was thrilling to sing the anthem for them. Following my performance, I quickly changed my clothes and mindset to prepare for round one of the Haring.

A fun Haring tradition is to exchange "souvenirs" from our respective states. I brought mini grow gardens containing Connecticut's state flower seeds: the Mountain Laurel (seriously).

Aside from kind gestures and camaraderie among the girls, a palpable competitive spirit hung in the air. I felt it from the moment I met my first opponent, Kelsey Liu, a national master from Massachusetts.

I finished the tourney with three wins and three losses. Generally, I would consider 3/6 to be a "par-level" tournament, but the experience of competing with the best scholastic female players in the country was inspiring. Even more extraordinary was the opportunity to befriend these girls through several "Meet & Greet" organized by US Chess.

Quite a few invitational players — me included! — folded into the 400+ U.S. Open after the tournament ended. My brother, Jack Aronian, joined me as my mixed doubles partner. We had a blast and, aside from chess, took in some bowling and swimming at the host resort. Jack also tied for fourth in Class C and won some prize money!

At my school, I am the only

competitive female chess player on the team, which I captain. Events like the Haring incentivize girls like me to continue and stoke friendships with other female chess players. I am so grateful to US Chess, the U.S. Chess Trust, Dewain Barber, John D. Rockefeller V, the Connecticut State Chess Association, and everyone else who worked hard to make a memorable nine days in the desert!

MEET LAUREL

Laurel Aronian is the Teen Ambassador for the US Chess Women's Girls Club and was recently featured on WGM Jennifer Shahade's "Ladies Knight" podcast. She loves teaching chess and is the founder of *Chessin1day.com*.





The Internet Chess Club and Continental Chess Association presents:

Your best choice for online fun!

- ♔ Over **\$250,000** in prize money paid out
- ♔ Class prizes so you can win too!
- ♔ Longer controls for an OTB experience
- ♔ Weekly US Chess rated events
- ♔ US Chess approved fair play oversight



Continental
Chess
Association

More information:

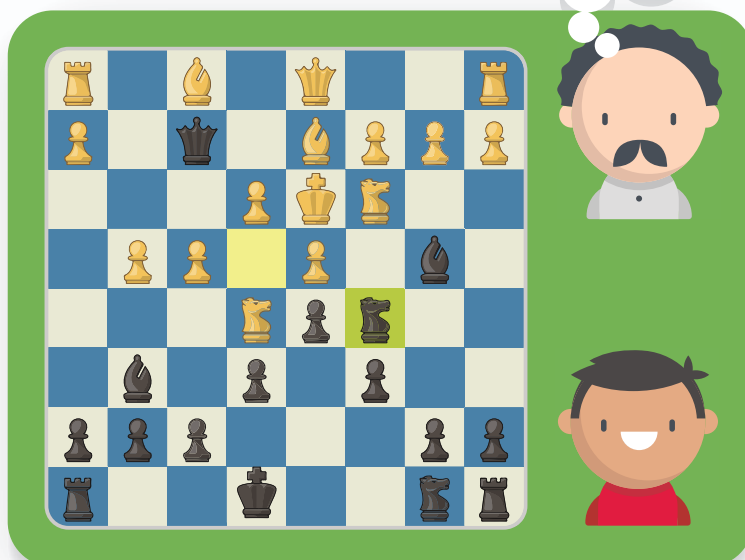
chessaction.com



1 on 1 Chess Coaching

- Level Up your Chess game!
- Improve Tactics and Prep for Tournaments!
- Easy scheduling with online lessons that fit your schedule
- 60 minute sessions of quality & fun chess training

SIGN UP NOW AT CHESSKID.COM



TOURNAMENT LIFE ANNOUNCEMENTS

The Executive Board authorizes a temporary change in the US Chess Grand Prix (GP) rules for the period March 4, 2020 through December 31, 2022 out of concern for the unforeseeable impacts the COVID-19 (Coronavirus) could have on participation in GP events. The change allows organizers with guaranteed prize funds to change the status of their prize fund without first seeking US Chess permission to make the change. Please refer to the Tournament Life Announcement section in *Chess Life* for more information.

For complete details on individual events, please visit [new.uschess.org/node/\[TLA ID\]](http://new.uschess.org/node/[TLA ID]). You will find the event's unique five-digit TLA ID at the end of each TLA.

Nationals

NATIONAL CHAMPIONSHIP EVENT • JUNIOR GRAND PRIX

2022 National K-12 Grade Championships

DECEMBER 9-11, MARYLAND

Event site: Gaylord National Resort & Convention Center **Address:** 201 Waterfront Street, National Harbor MD 20745 **Overall prize fund:** n/a **GP Points:** n/a **FIDE Rated:** N **Handicap accessible:** Y **Residency restriction:** N **Organizer:** U.S. Chess Federation **Email:** nationalevents@uschess.org **Phone:** n/a **Website:** <http://www.uschess.org/tournaments/2022/k12> **TLA ID:** 35000

NATIONAL CHAMPIONSHIP EVENT

2023 KCF All-Girls National Championship

APRIL 28-30, 2023

Event site: Historic Palmer House Hotel **Address:** 17 East Monroe St, Chicago, IL 60603 **Overall prize fund:** n/a **GP Points:** n/a **FIDE Rated:** N **Handicap accessible:** Y **Residency restriction:** N **Organizer:** David Heiser **Email:** david.heiser@renaissanceknights.org **Phone:** n/a **Website:** <http://allgirls.rknights.org/> **TLA ID:** 35478

Grand Prix

The Grand Prix continues in 2022. For information visit new.uschess.org/us-chess-grand-prix-program.

GRAND PRIX • STATE CHAMPIONSHIP EVENT

2022 Michigan Action Championship

DECEMBER 10, 2022, MICHIGAN

Event site: Wyndham Garden Ann Arbor **Address:** 2900 Jackson Ave, Ann Arbor, MI 48103 **Overall prize fund:** \$2,150 **GP Points:** 20 **FIDE Rated:** N **Handicap accessible:** N **Residency restriction:** N **Organizer:** Michigan Chess Association **Email:** jeffchess64@gmail.com **Phone:** 810-955-7271 **Website:** <https://www.michess.org/> **TLA ID:** 34770

GRAND PRIX • ENHANCED GRAND PRIX

MexInsurance.com FIDE Open

DECEMBER 16-18, 2022, IDAHO

Event site: Barber Park Education and Events Center **Address:** 4049 S Eckert Road, Boise, ID 83716 **Overall prize fund:** \$15,725 **GP Points:** 200 **FIDE Rated:** Y **Handicap accessible:** Y **Residency restriction:** N **Organizer:** George Lundy **Email:** chandraalexschessclub@gmail.com **Phone:** (208) 375-1211 **Website:** <https://chandraalexschessclub.org/> **TLA ID:** 33838

HERITAGE EVENT • AMERICAN CLASSIC • GRAND PRIX • ENHANCED GRAND PRIX

32nd annual North American Open

DECEMBER 26-30, NEVADA

Event site: Bally's Casino Resort **Address:** 3645 Las Vegas Blvd. S, Las Vegas, NV 89103 **Overall prize fund:** \$125,000 **GP Points:** 300 **FIDE Rated:** Y **Handicap accessible:** Y **Residency restriction:** N **Organizer:** Continental Chess Association **Email:** director@chess.us **Phone:** director@chess.us **Website:** <http://www.chessevents.us> **TLA ID:** 34320

HERITAGE EVENT • GRAND PRIX • ENHANCED GRAND PRIX • JUNIOR GRAND PRIX

47th annual Eastern Open

DECEMBER 26-29, VIRGINIA

Event site: Hyatt Regency Crystal City **Address:** 2799 Richmond Highway near Reagan National Airport, Arlington VA 22202 **Overall prize fund:** \$30,000 **GP Points:** 150 **FIDE Rated:** Y **Handicap accessible:** Y **Residency restriction:** N **Organizer:** Continental Chess Association **Email:** director@chess.us **Phone:** director@chess.us **Website:** <http://www.chessevents.us> **TLA ID:** 34598

GRAND PRIX • ENHANCED GRAND PRIX • JUNIOR GRAND PRIX

11th annual Boston Chess Congress

JANUARY 6-8, 2023, MASSACHUSETTS

Event site: Hyatt Regency Boston Harbor **Address:** 101 Harborside Dr, Boston MA 02128 **Overall prize fund:** \$12,000 **GP Points:** 80 **FIDE Rated:** Y **Handicap accessible:** N **Residency restriction:** N **Organizer:** Continental Chess Association **Email:** director@chess.us **Phone:** director@chess.us **Website:** <http://www.chessevents.us> **TLA ID:** 34968

HERITAGE EVENT • GRAND PRIX • JUNIOR GRAND PRIX

Tim Just Winter Open XXXIX

JANUARY 6-8, 2023, ILLINOIS

Event site: Hyatt Regency Schaumburg **Address:** 1800 E Golf Rd, Schaumburg, IL 60173 **Overall prize fund:** \$5,000 **GP Points:** 30 **FIDE Rated:** Y **Handicap accessible:** N **Residency restriction:** N **Organizer:** King Registration **Email:** bill@kingregistration.com **Phone:** bill@kingregistration.com **Website:** <https://www.king-registration.com/event/winteropen23> **TLA ID:** 35281

HERITAGE EVENT • AMERICAN CLASSIC • GRAND PRIX • ENHANCED GRAND PRIX

55th annual Liberty Bell Open

JANUARY 13-16, 2023, PENNSYLVANIA

Event site: Sheraton Philadelphia Downtown **Address:** 201 N 17th St, Philadelphia 19103 **Overall prize fund:** \$25,000 **GP Points:** 120 **FIDE Rated:** Y **Handicap accessible:** Y **Residency restriction:** N **Organizer:** Continental Chess Association **Email:** director@chess.us **Phone:** director@chess.us **Website:** <http://www.chessevents.us> **TLA ID:** 34860

GRAND PRIX • ENHANCED GRAND PRIX • JUNIOR GRAND PRIX

8th annual Gulf Coast New Year's Open

JANUARY 6-8, 2023, FLORIDA

Event site: Embassy Suites Hotel **Address:** 10450 Corkscrew Commons Drive, Estero, FL 33928 **Overall prize fund:** \$10,600 **GP Points:** 80 **FIDE Rated:** N **Handicap accessible:** N **Residency restriction:** N **Organizer:** Jon Haskel **Email:** jon@bocachess.com **Phone:** 561-302-4377 **Website:** <https://www.bocachess.com> **TLA ID:** 35613

GRAND PRIX • ENHANCED GRAND PRIX • JUNIOR GRAND PRIX

14th annual Golden State Open (new location)

JANUARY 13-16, 2023, CALIFORNIA, NORTHERN

Event site: Embassy Suites San Rafael Marin County **Address:** 101 McInnis Pkwy, San Rafael CA 94903 **Overall prize fund:** \$25,000 **GP Points:** 150 **FIDE Rated:** Y **Handicap accessible:** Y **Residency restriction:** N **Organizer:** Continental Chess Association **Email:** director@chess.us **Phone:** director@chess.us **Website:** <http://www.chessevents.us> **TLA ID:** 35010

REGIONALS • GRAND PRIX

CFCC 2023 Winter Open & Scholastic

JANUARY 27-29, 2023, FLORIDA

Event site: Holiday Inn Resort Orlando **Address:** 13351 State Road 535, Orlando, FL 32821 **Overall prize fund:** \$10,000 **GP Points:** 30 **FIDE Rated:** Y **Handicap accessible:** Y **Residency restriction:** N **Organizer:** Larry Storch **Email:** larrystorch88@gmail.com **Phone:** 407-312-6237 **Website:** <https://www.centralchess.org/> **TLA ID:** 35538

GRAND PRIX • ENHANCED GRAND PRIX • JUNIOR GRAND PRIX

14th annual Southwest Class Championships

FEBRUARY 16-20, 2023, TEXAS

Event site: Westin Dallas Fort Worth Airport **Address:** 4545 W John Carpenter Fwy, Irving TX 750630 **Overall prize fund:** \$35,000 **GP Points:** 200 **FIDE Rated:** Y **Handicap accessible:** Y **Residency restriction:** N **Organizer:** Continental Chess Association **Email:** director@chess.us **Phone:** director@chess.us **Website:** <http://www.chessevents.us> **TLA ID:** 35024

HERITAGE EVENT • GRAND PRIX • ENHANCED GRAND PRIX • JUNIOR GRAND PRIX

30th annual Western Class Championships

MARCH 3-5, 2023, CALIFORNIA, SOUTHERN

Event site: Hilton Orange County Airport **Address:** 18800 MacArthur Blvd, Irvine CA 92612 **Overall prize fund:** \$20,000 **GP Points:** 120 **FIDE Rated:** Y **Handicap accessible:** Y **Residency restriction:** N **Organizer:** Continental Chess Association **Email:** director@chess.us **Phone:** director@chess.us **Website:** <http://www.chessevents.us> **TLA ID:** 35350

HERITAGE EVENT • GRAND PRIX • ENHANCED GRAND PRIX • JUNIOR GRAND PRIX

27th annual Mid-America Open

MARCH 24-26, 2023, MISSOURI

Event site: Clayton Plaza Hotel St. Louis-Clayton **Address:** 7750 Carondelet Ave., St. Louis MO 63105 **Overall prize fund:** \$20,000 **GP Points:** 120 **FIDE Rated:** Y **Handicap accessible:** Y **Residency restriction:** N **Organizer:** Continental Chess Association **Email:** director@chess.us **Phone:** director@chess.us **Website:** <http://www.chessevents.us> **TLA ID:** 35708

AMERICAN CLASSIC • GRAND PRIX • ENHANCED GRAND PRIX • JUNIOR GRAND PRIX

15th annual Open at Foxwoods

APRIL 5-9, 2023, CONNECTICUT

Event site: Foxwoods Resort Casino & Hotel **Address:** Rt 2, Mashantucket CT 06339 **Overall prize fund:** \$60,000 **GP Points:** 200 **FIDE Rated:** Y **Handicap accessible:** Y **Residency restriction:** N **Organizer:** Continental Chess Association **Email:** director@chess.us **Phone:** director@chess.us **Website:** <http://www.chessevents.us> **TLA ID:** 35657

Online

Climb the Rating Ladder Weekly Courses with USCF Rated Online Games

THROUGH DECEMBER 31, 2022

Event site: Online **Address:** lichess.org **Overall prize fund:** n/a **GP Points:** n/a **FIDE Rated:** N **Handicap accessible:** Y **Residency restriction:** N **Organizer:** DMV Chess **Email:** courses@dmvchess.com **Phone:** 703-415-6600 **Website:** <https://www.dmvchess.com/> **TLA ID:** 30600

USCF-Rated Online Scholastic Tournaments Every Wednesday

THROUGH DECEMBER 31, 2022

Event site: Online **Address:** lichess.org **Overall prize fund:** n/a **GP Points:** n/a **FIDE Rated:** N **Handicap accessible:** Y **Residency restriction:** N **Organizer:** DMV Chess **Email:** tournaments@dmvchess.com **Phone:** 703-415-6600 **Website:** <https://www.dmvchess.com/> **TLA ID:** 31471

USCF-Rated Online Blitz Tournaments Every Thursday

THROUGH DECEMBER 31, 2022

Event site: Online **Address:** lichess.org **Overall prize fund:** n/a **GP Points:** n/a **FIDE Rated:** N **Handicap accessible:** Y **Residency restriction:** N **Organizer:** DMV Chess **Email:** tournaments@dmvchess.com **Phone:** 703-415-6600 **Website:** <https://www.dmvchess.com/> **TLA ID:** 31472

USCF-Rated Online Scholastic Tournaments Every Saturday

THROUGH DECEMBER 31, 2022

Event site: Online **Address:** lichess.org **Overall prize fund:** n/a **GP Points:** n/a **FIDE Rated:** N

PLEASE NOTE

DEADLINE FOR PRINT TLA SUBMISSIONS

TLAs appearing in *Chess Life Kids* must be uploaded online on the 10th, two months prior to the issue cover date in which the ad is to appear. (For example, October TLAs must be uploaded no later than August 10th.) TLAs uploaded past this deadline cannot be published without special approval by US Chess.

For complete details on individual events, please visit [new.uschess.org/node/\[TLA ID\]](https://www.uschess.org/node/[TLA ID]). You will find the event's unique five-digit TLA ID at the end of each TLA.

Handicap accessible: Y Residency restriction: N
Organizer: DMV Chess **Email:** tournaments@dmvchess.com
Phone: 703-415-6600 **Website:** <https://www.dmvchess.com/> **TLA ID:** 31473

USCF-Rated Online Open Action Tournaments Every Sunday THROUGH DECEMBER 31, 2022

Event site: Online **Address:** lichess.org **Overall prize fund:** n/a **GP Points:** n/a **FIDE Rated:** N
Handicap accessible: Y **Residency restriction:** N
Organizer: DMV Chess **Email:** tournaments@dmvchess.com
Phone: 703-415-6600 **Website:** <https://www.dmvchess.com/> **TLA ID:** 31474

Regional

ALABAMA

DECEMBER 16-18, 2022
MexInsurance.com FIDE Open (ID)
 See Grand Prix.

ALASKA

DECEMBER 16-18, 2022
MexInsurance.com FIDE Open (ID)
 See Grand Prix.

ARIZONA

DECEMBER 16-18, 2022
MexInsurance.com FIDE Open (ID)
 See Grand Prix.

ARKANSAS

DECEMBER 16-18, 2022
MexInsurance.com FIDE Open (ID)
 See Grand Prix.

CALIFORNIA

DECEMBER 16-18, 2022
MexInsurance.com FIDE Open (ID)
 See Grand Prix.

COLORADO

DECEMBER 16-18, 2022
MexInsurance.com FIDE Open (ID)
 See Grand Prix.

CONNECTICUT

OCTOBER 9, 2022 - MAY 7, 2023
8th Annual Magnus High School and Junior High Chess League! (NY)
 See New York.

DECEMBER 16-18, 2022
MexInsurance.com FIDE Open (ID)
 See Grand Prix.

DELAWARE

DECEMBER 16-18, 2022
MexInsurance.com FIDE Open (ID)
 See Grand Prix.

DIST. OF COLUMBIA

DECEMBER 16-18, 2022
MexInsurance.com FIDE Open (ID)
 See Grand Prix.

FLORIDA

DECEMBER 16-18, 2022
MexInsurance.com FIDE Open (ID)
 See Grand Prix.

GEORGIA

DECEMBER 16-18, 2022
MexInsurance.com FIDE Open (ID)
 See Grand Prix.

JANUARY 6-8, 2023
8th Annual Gulf Coast New Year's Open (FL)
 See Grand Prix or www.boacchess.com

HAWAII

DECEMBER 16-18, 2022
MexInsurance.com FIDE Open (ID)
 See Grand Prix.

IDAHO

DECEMBER 16-18, 2022
MexInsurance.com FIDE Open (ID)
 See Grand Prix.

ILLINOIS

DECEMBER 16-18, 2022
MexInsurance.com FIDE Open (ID)
 See Grand Prix.

JANUARY 6-8, 2023
Tim Just Winter Open XXXIX (IL)
 See Grand Prix.

JANUARY 6-8, 2023
8th Annual Gulf Coast New Year's Open (FL)
 See Grand Prix or www.boacchess.com

FEBRUARY 4, 2023
2023 Greater Chicago K-12 Championships
Event site: McCormick Place - West Building **Address:** 2301 S Dr Martin Luther King Jr Dr, Chicago, IL 60616 **Overall prize fund:** n/a **GP Points:** n/a **FIDE Rated:** N **Handicap accessible:** Y **Residency restriction:** N **Organizer:** Renaissance Knights **Email:** david.heiser@renaissancenknight.org **Phone:** david.heiser@renaissancenknight.org **Website:** <https://greaterchicago.rknights.org/> **TLA ID:** 35475

INDIANA

DECEMBER 16-18, 2022
MexInsurance.com FIDE Open (ID)
 See Grand Prix.

JANUARY 6-8, 2023
Tim Just Winter Open XXXIX (IL)
 See Grand Prix.

IOWA

DECEMBER 16-18, 2022
MexInsurance.com FIDE Open (ID)
 See Grand Prix.

JANUARY 6-8, 2023
Tim Just Winter Open XXXIX (IL)
 See Grand Prix.

KANSAS

DECEMBER 16-18, 2022
MexInsurance.com FIDE Open (ID)
 See Grand Prix.

KENTUCKY

DECEMBER 16-18, 2022
MexInsurance.com FIDE Open (ID)
 See Grand Prix.

LOUISIANA

DECEMBER 16-18, 2022
MexInsurance.com FIDE Open (ID)
 See Grand Prix.

MAINE

DECEMBER 16-18, 2022
MexInsurance.com FIDE Open (ID)
 See Grand Prix.

MARYLAND

MARYLAND CHESS TOURNAMENTS (NORTH PENN CHESS CLUB)
 Maryland Chess runs 21+ annual K-12 tournaments every other Saturday from September through June & 12+ annual 1-day or multi-day open tournaments for adults & K-12 players on weekends. See www.MDChess.org for tournament announcements, registration for tournaments, updated wallcharts, live standings, sign up for K-12 & open e-newsletters, lists of coaches & clubs, camp announcements, & news. K-12 MD players who compete in the Varsity section (for players rated 1600+) of 1 of 8+ annual MD-Sweet-16 Qualifiers can qualify for the \$48,000+ scholarship to the University of Maryland, Baltimore County awarded annually. UMBC is a perennial top-10 contender for the collegiate national chess championship.

DECEMBER 16-18, 2022
MexInsurance.com FIDE Open (ID)
 See Grand Prix.

MASSACHUSETTS

DECEMBER 16-18, 2022
MexInsurance.com FIDE Open (ID)
 See Grand Prix.

MARCH 11-12, 2023
55th annual New York State Scholastics (NY)
 See New York or chessevents.us.

MICHIGAN

DECEMBER 16-18, 2022
MexInsurance.com FIDE Open (ID)
 See Grand Prix.

JANUARY 6-8, 2023
Tim Just Winter Open XXXIX (IL)
 See Grand Prix.

MINNESOTA

DECEMBER 16-18, 2022
MexInsurance.com FIDE Open (ID)
 See Grand Prix.

MISSISSIPPI

DECEMBER 16-18, 2022
MexInsurance.com FIDE Open (ID)
 See Grand Prix.

MISSOURI

DECEMBER 16-18, 2022
MexInsurance.com FIDE Open (ID)
 See Grand Prix.

NOVEMBER 3, 2022-ONGOING ON THURSDAYS

Chess Cardinals Thursday Open
Event site: Chesterfield YMCA **Address:** 16464 Burkhardt Pl, Chesterfield, MO 63017 **Overall prize fund:** n/a **GP Points:** n/a **FIDE Rated:** N **Handicap accessible:** N **Residency restriction:** N **Organizer:** Chess Cardinals **Email:** chess4chesterfield@gmail.com **Phone:** 210-912-4three seven two nine **Website:** <https://chesscardinals.com/> **TLA ID:** 35826

MONTANA

DECEMBER 16-18, 2022
MexInsurance.com FIDE Open (ID)
 See Grand Prix.

NEBRASKA

DECEMBER 16-18, 2022
MexInsurance.com FIDE Open (ID)
 See Grand Prix.

NEVADA

DECEMBER 16-18, 2022
MexInsurance.com FIDE Open (ID)
 See Grand Prix.

NEW HAMPSHIRE

DECEMBER 16-18, 2022
MexInsurance.com FIDE Open (ID)
 See Grand Prix.

NEW JERSEY

OCTOBER 9, 2022 - MAY 7, 2023
8th Annual Magnus High School and Junior High Chess League! (NY)
 See New York.

DECEMBER 16-18, 2022
MexInsurance.com FIDE Open (ID)
 See Grand Prix.

JANUARY 6-8, 2023
8th Annual Gulf Coast New Year's Open (FL)
 See Grand Prix or www.boacchess.com

HERITAGE EVENT

FEBRUARY 18-20, 2023
World Amateur Team & U.S. Team East
Event site: Parsippany Hilton **Address:** 1 Hilton Ct., Parsippany, NJ 07054 **Overall prize fund:** n/a **GP Points:** n/a **FIDE Rated:** N **Handicap accessible:** Y **Residency restriction:** N **Organizer:** New Jersey Chess Federation **Email:** esdoyle@aol.com **Phone:** n/a **Website:** <https://njscf.org/> **TLA ID:** 35322

STATE CHAMPIONSHIP EVENT

FEBRUARY 26, 2023
NJ Elementary and Junior High School Championships
Event site: Brookdale Community College - Student Life Center **Address:** Just past lots #5-6, Arena Drive, Lincroft, NJ 07738 **Overall prize fund:** n/a **GP Points:** n/a **FIDE Rated:** N **Handicap accessible:** Y **Residency restriction:** N **Organizer:** New Jersey Chess Federation **Email:** tournaments.njscf@gmail.com **Phone:** tournaments.njscf@gmail.com **Website:** <https://njscf.org/> **TLA ID:** 35565

MARCH 11-12, 2023
55th annual New York State Scholastics (NY)
 See New York or chessevents.us.

NEW MEXICO

DECEMBER 16-18, 2022
MexInsurance.com FIDE Open (ID)
 See Grand Prix.

NEW YORK

OCTOBER 9, 2022 - MAY 7, 2023
8th Annual Magnus High School and Junior High Chess League!
Event site: Columbia Grammar and Prep, High School Cafeteria **Address:** 36 W. 93rd St. (bet. Central Park West & Columbus Ave., near 96th St. subways), NYC **Overall prize fund:** \$450 per match date **GP Points:** n/a **FIDE Rated:** Y **Handicap accessible:** Y **Residency restriction:** N **Organizer:** Chess Center of New York **Email:** chesscenter@gmail.com **Phone:** 347-201-2269 (leave message, but email is better) **Website:** <https://www.magnusleague.org/> **TLA ID:** 35086

DECEMBER 16-18, 2022
MexInsurance.com FIDE Open (ID)
 See Grand Prix.

JANUARY 6-8, 2023
8th Annual Gulf Coast New Year's Open (FL)
 See Grand Prix or www.boacchess.com

HERITAGE EVENT • AMERICAN CLASSIC •
JUNIOR GRAND PRIX • STATE CHAMPIONSHIP
EVENT

MARCH 11-12 2023

**55th annual New York State
Scholastic Championships**

Event site: Saratoga Hilton & Courtyard by Marriott
Address: 534 Broadway, 11 Excelsior Ave, Saratoga
Springs, NY 12866 **Overall prize fund:** n/a **GP Points:**
n/a **FIDE Rated:** N **Handicap accessible:** Y **Residen-**
cy restriction: N **Organizer:** Continental Chess Associa-
tion **Email:** director@chess.us **Phone:** [director@chess.us](tel:5184861234)
Website: <http://www.chessevents.us> **TLA**
ID: 35289

📍 **NORTH CAROLINA**

DECEMBER 16-18, 2022

MexInsurance.com FIDE Open (ID)

See Grand Prix.

📍 **NORTH DAKOTA**

DECEMBER 16-18, 2022

MexInsurance.com FIDE Open (ID)

See Grand Prix.

📍 **OHIO**

DECEMBER 16-18, 2022

MexInsurance.com FIDE Open (ID)

See Grand Prix.

📍 **OKLAHOMA**

DECEMBER 16-18, 2022

MexInsurance.com FIDE Open (ID)

See Grand Prix.

📍 **OREGON**

DECEMBER 16-18, 2022

MexInsurance.com FIDE Open (ID)

See Grand Prix.

📍 **PENNSYLVANIA**

North Penn Chess Club

Main & Richardson - St. John's UCC, 500 West Main St.,
Lansdale, PA 19446. See www.northpennchessclub.org
for schedules & info or 215-699-8418

OCTOBER 9, 2022 - MAY 7, 2023

**8th Annual Magnus High School and
Junior High Chess League! (NY)**

DECEMBER 16-18, 2022

MexInsurance.com FIDE Open (ID)

See Grand Prix.

JANUARY 6-8, 2023

**8th Annual Gulf Coast New Year's
Open (FL)**

See Grand Prix or www.boacchess.com

📍 **RHODE ISLAND**

DECEMBER 16-18, 2022

MexInsurance.com FIDE Open (ID)

See Grand Prix.

📍 **SOUTH CAROLINA**

DECEMBER 16-18, 2022

MexInsurance.com FIDE Open (ID)

See Grand Prix.

📍 **SOUTH DAKOTA**

DECEMBER 16-18, 2022

MexInsurance.com FIDE Open (ID)

See Grand Prix.

📍 **TENNESSEE**

DECEMBER 16-18, 2022

MexInsurance.com FIDE Open (ID)

See Grand Prix.

📍 **TEXAS**

DECEMBER 16-18, 2022

MexInsurance.com FIDE Open (ID)

See Grand Prix.

📍 **UTAH**

DECEMBER 16-18, 2022

MexInsurance.com FIDE Open (ID)

See Grand Prix.

📍 **VERMONT**

DECEMBER 16-18, 2022

MexInsurance.com FIDE Open (ID)

See Grand Prix.

📍 **VIRGINIA**

THROUGH DECEMBER 31, 2022

**The Tysons Corner Weekly
Scholastic Tournament - In Person
Every Sunday**

Event site: The Westin Tysons Corner **Address:** 7801
Leesburg Pike, Falls Church, VA 22043 **Overall prize**
fund: n/a **GP Points:** n/a **FIDE Rated:** N **Handicap**
accessible: Y **Residency restriction:** N **Organizer:**
DMV Chess **Email:** josh@dmvchess.com **Phone:** 703-
415-6600 **Website:** [https://www.dmvchess.com/](https://www.dmvchess.com/inpersontournaments)
inpersontournaments **TLA ID:** 31467

THROUGH DECEMBER 25, 2022

**Tysons Corner Weekly Action
Tournaments - Every Sunday In
Person**

Event site: The Westin Tysons Corner **Address:** 7801
Leesburg Pike, Falls Church, VA 22043 **Overall prize**
fund: n/a **GP Points:** n/a **FIDE Rated:** N **Handicap**
accessible: Y **Residency restriction:** N **Organizer:**
DMV Chess **Email:** josh@dmvchess.com **Phone:** 703-
415-6600 **Website:** [https://www.dmvchess.com/](https://www.dmvchess.com/inpersontournaments)
inpersontournaments **TLA ID:** 33763

DECEMBER 16-18, 2022

MexInsurance.com FIDE Open (ID)

See Grand Prix.

JANUARY 14, 2023

**Benjamin Blundercheck's Rock n
Roll Chess Riot**

Event site: Hampton History Museum **Address:**
120 Old Hampton Ln, Hampton, VA **Overall prize**
fund: n/a **GP Points:** n/a **FIDE Rated:** N **Handicap**
accessible: N **Residency restriction:** N **Organizer:**
Blundercheck! Chess Riots **Email:** BenjaminBlundercheck@gmail.com **Phone:** 757-947-5122 **Website:**
<https://www.kingregistration.com/event/Blundercheck2> **TLA ID:** 35643

📍 **WASHINGTON**

DECEMBER 16-18, 2022

MexInsurance.com FIDE Open (ID)

See Grand Prix.

📍 **WEST VIRGINIA**

DECEMBER 16-18, 2022

MexInsurance.com FIDE Open (ID)

See Grand Prix.

📍 **WISCONSIN**

DECEMBER 16-18, 2022

MexInsurance.com FIDE Open (ID)

See Grand Prix.

JANUARY 6-8, 2023

Tim Just Winter Open XXXIX (IL)

See Grand Prix.

JUNIOR GRAND PRIX • HERITAGE EVENT

FEBRUARY 4-5, 2023

**Michael A. Selig Memorial/56th
NorthEastern Open**

Event site: DoubleTree by Hilton **Address:** 150 S.
Nicolet Rd., Appleton, WI 54914 **Overall prize fund:**
\$1,200 **GP Points:** n/a **FIDE Rated:** N **Handicap**
accessible: Y **Residency restriction:** N **Organizer:**
Mike Nietman **Email:** mike.nietman@charter.net
Phone: 608-467-8510 **Website:** <http://wischess.org>
TLA ID: 34318

📍 **WYOMING**

DECEMBER 16-18, 2022

MexInsurance.com FIDE Open (ID)

See Grand Prix.

Chess Life KIDS (USPS 023-567, ISSN:
1932-5894) is published in February,
April, June, August, October, and Decem-
ber of every year by US Chess, 333 S. 18th
Street, Suite 210, St. Louis, MO 63103.
Periodical postage paid at St. Louis, Mis-
souri, and additional mailing offices.

CHANGE OF ADDRESS: Be sure to notify
us at once of any change of address.
Please include your old address and
your new address, along with your US
Chess I.D. number..

POSTMASTER: Send address changes
to US Chess, PO Box 775308, St. Louis,
MO 63177.

U.S. Postal Service. Statement of Ownership, Management, and Circulation (required by 39 U.S.C. 3685). 1. Title of publication: Chess Life Kids. 2. Publication number: 023-567. 3. Date of filing: September 20, 2022. 4. Frequency of issue: Bi-monthly. 5. No. of issues published annually: 6. 6. Annual subscription price: \$29. 7. Complete mailing address of known office of publication (street, city, county, state, and ZIP code) (Not printers): P.O. Box 775038, St. Louis, MO 63177, 333 S. 18th St., St. Louis, MO 63103. 8. Complete mailing address of the headquarters of general business office of the publisher (Not printers): P.O. Box 775038, St. Louis, MO 63177, 333 S. 18th St., St. Louis, MO 63103. 9. Full names/complete mailing addresses of publisher, editor, and managing editor (this item must not be blank). Publisher (name/complete mailing address): Carol Meyer, P.O. Box 775038, St. Louis, MO 63177, 333 S. 18th St., St. Louis, MO 63103. Editor (name/complete mailing address): Melinda Matthews, P.O. Box 775038, St. Louis, MO 63177, 333 S. 18th St., St. Louis, MO 63103. Managing Editor (name and complete mailing address): same as above. 10. Owner. (If owned by a corporation, its name and address must be stated and also immediately there under the names and addresses of stockholders owning or holding 1 percent or more of total amount of stock. If not owned by a corporation, the names and addresses of the individual owners must be given. If owned by a partnership or other incorporated firm, its name and address, as well as that of each individual must be given. If the publication is published by a nonprofit organization, its name and address must be stated.) (Do not leave blank.): United States Chess Federation, P.O. Box 775038, St. Louis, MO 63177, 333 S. 18th St., St. Louis, MO 63103. 11. Known bondholders, mortgagees, and other security holders owning or holding 1 percent or more of total amount of bonds, mortgages or other securities (if there are none, so state): none. 12. For completion by nonprofit organizations authorized to mail at special rates section 423.12, DMM only. The purpose, function, and nonprofit status of this organization and tax exempt status for Federal income tax purposes (check one): has not changed during preceding 12 months; (If changed, publisher must submit explanation of change with this statement.) 13. Publication Name: Chess Life Kids. 14. Issue Date for Circulation Data Below: August 2022. 15. Extent and nature of circulation. (a) Total number copies printed (net press run): average number copies each issue during preceding 12 months, 7,118; actual number copies of single issue published nearest to filing date, 9,020. (b) Paid and/or requested circulation: (1) Paid/requested outside-county mail subscriptions: average number copies each issue during preceding 12 months, 6,463; actual number copies of single issue published nearest to filing date, 8,256. (2) Paid in-county subscriptions (include advertisers' proof copies/exchange copies): average number copies each issue during preceding 12 months, 0; actual number copies of single issue published nearest to filing date, 0. (3) Sales through dealers and carriers, street vendors, and counter sales (not mailed): average number copies each issue during preceding 12 months, 0; actual number copies of single issue published nearest to filing date, 0. (4) Paid distribution by other classes of mail through the USPS (e.g. First Class Mail): average number copies each issue during preceding 12 months, 82; actual number copies of single issue published nearest to filing date, 72. (C) Total paid and/or requested circulation (sum of 15b (1), (2), (3), and (4)): average number copies each issue during preceding 12 months, 6,545; actual number copies of single issue published nearest to filing date, 8,328. (15d (1), (2), (3). Non requested distribution: average number copies each issue during preceding 12 months, 0; actual number copies of single issue published nearest to filing date, 0. (e) Total non requested distribution (sum of 15d (1), (2), (3); 0; actual number copies of single issue published nearest to filing date, 0. (f) Total distribution (sum of 15c and 15e): average number copies each issue during preceding 12 months, 6,545; actual number copies of single issue published nearest to filing date, 8,328. (g) Copies not distributed: average number copies each issue during preceding 12 months, 573; actual number copies of single issue published nearest to filing date, 692. (h) Total (sum of 15f and 15g) average number copies each issue during preceding 12 months, 7,118; actual number copies of single issue published nearest to filing date, 9,020. (i) Percent paid. 15c divided by 15f x 100, per cent on average no. copies each issue during preceding 12 months, 100; per cent on actual no. copies of single issue published nearest filing date, 100. 16. Electronic Copy Circulation. (a) Requested and Paid Electronic Copies, average number copies each issue during preceding 12 months, 19; Number copies of single issue published nearest to filing date, 50. (b) Total Requested and Paid Print Copies (Line 15c) + Requested/Paid Electronic Copies (Line 16a), 6,564. Number Copies of Single Issue Published Nearest to filing date, 8,378. (c.) Total Requested Copy Distribution (Line 15f) + Requested/Paid Electronic Copies (Line 16a), 6,564; Number Copies of Single Issue Published Nearest to filing date, 8,378. (d.) Percent Paid and/or Requested Circulation (Both Print & Electronic Copies) (16b divided by 16c x 100) 100%; per cent on Number Copies of Single Issue Published Nearest to filing date, 100%. I certify that 50% of all distributed copies (electronic and print) are legitimate requests or paid copies. 17. Publication of Statement of Ownership. Publication of this statement will be printed in the December 2022 issue of this publication. 18. I certify that the statements made by me above are correct and complete (signature and title of editor, publisher, business manager, or owner): Melinda Matthews (sig.), Publications Editor. P.S. Form 3526-R, July 2014.

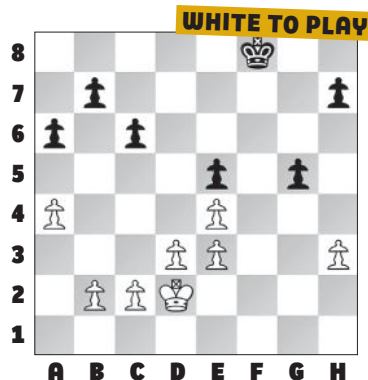
Congratulations to former *Chess Life Kids* columnist, newly-minted CC-GM Jon Edwards, for winning the 32nd World Correspondence Chess Championship! Edwards was kind enough to share stories and fun positions from his road to the championship. Perhaps his success will inspire you to try your hand at correspondence chess!

Meet our WORLD CHAMP!

BY CC-GM JON EDWARDS

I HAVE JUST BECOME THE ICCF (International Correspondence Chess Federation) 32nd World Correspondence Chess Champion. I am the third American (behind Hans Berliner and Victor Palciauskis) to win the World Championship and the first to win the world title in nearly 40 years. I have also become a correspondence grandmaster, the 14th American to become a correspondence GM.

I started playing correspondence chess when I was 16 years old. Back then, we sent chess moves by snail mail using postal cards. Here's a fun position from those early days:



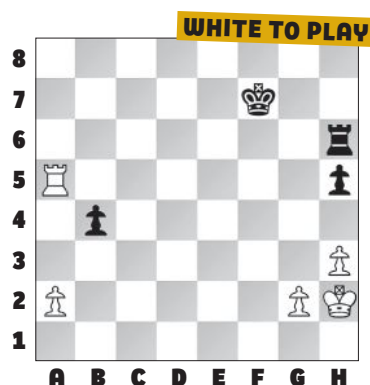
It is White to move and win, and the solution may surprise you.

White is a pawn ahead, but Black is threatening to play ... h7-h5, activating his kingside pawn majority. If Black is indeed able to play ... h7-h5, White's king will need to stay near the kingside to prevent Black from promoting a pawn.

The only solution, remarkably enough, is 24. h4!! On the pawn capture 24. ... gxf4, White's king will be able to rush over and capture the pawn with a winning endgame. If instead, 24. ... g4, with the threat of 25. ... h5, White has the shocking move 25. h5!, which once again wins in every line. Such is the beauty of correspondence chess, a type of chess that gives you plenty of time to think and to master your game.

These days, all moves are sent to a server, a method very much like sending an e-mail. In order to get into the world final, I had to place in the top two in both a semi-final section and then in the Candidates. The final round was a round robin of 17 of the best players in the world. The whole process took 12 years!

Here is one of my endgames from the Candidates:



It is White to move and win. As in all rook endgames, they are harder than they look. The key is first to play 67. Ra7+. In order to avoid the exchange of rooks, Black's king must retreat to the eighth rank, after which White plays 68. Rb7 Ra6 69. Rxb4 Rxa2 70. Rb5 and Black has no way to defend the remaining pawn on h5. White's remaining passed pawns are sufficient to win.

As a result of my triumph in the world final, I will be traveling next summer to Amsterdam where I will receive an engraved silver platter and medal for winning the World Championship, as well as a medal for becoming a grandmaster. Yippee!

PHOTO COURTESY OF SUBJECT

CAVEMAN SUMMER CHESS Festival



JULY 16-23, 2023

Location: Elmhurst University, Elmhurst, IL (15 minutes from O'Hare, just west of Chicago)

CAMPS WITHIN THE CAMP JULY 16-21

- ✓ Master Class- GM instr only [Already two entrants: Arthur Xu 2250, Natalie Wisniewski 2150]
- ✓ Classes for players from 5 to 85, fundamental and advanced, separated by age and strength
- ✓ Family and chaperone registrations to accompany young campers



**Add'l invited
instructors - TBD soon**

Top Women:

GM Krush, WIM Root PhD, WGM Yu

Top Men:

GM's Lenderman, Novikov, Mitkov

Camp Director:

FM, FT Kevin Bachler

Co-Director: Deb Socha

TOURNAMENTS JULY 21-23

- ✓ US Senior Open (Nat'l champ!)
- ✓ Caveman Medior Open
- ✓ US Junior Open (Nat'l champ!)
- ✓ US Blind (Nat'l champ!)
- ✓ Caveman Beginner Open (7/22)
- ✓ Registration on www.kingregistration.com

Tournaments and camps for players of all ages and strengths in a Family Friendly environment with side events for non-players



GM Kaidanov



GM Yermolinsky



GM Shulman



GM Goldin



GM Gurevich



GIFT CERTIFICATES AVAILABLE



Also: dinner theater, shopping excursions, fitness classes

Information and Registration: www.cavemanchess.com **Email:** contact@cavemanchess.com



The United States' Largest Chess Specialty Retailer

888.51.CHESS (512.4377)



www.USCFSales.com



ChessUp



ChessUp is a high-tech chessboard with a built-in chess engine and chess instructor. It makes learning and improving chess faster and easier by lighting up all possible moves according to strength.

Play anyone, anywhere, on a real chessboard

This is online chess like it should be - on a real chessboard. With our online play features, you can match up with over 10 million players from across the globe.

Ready for a fast game? Bring it on.

ChessUp's designated clock, combined with the board's ability to sense the pieces, allows you to play quick games like blitz and bullet, with the clock switching automatically after every move. You, just focus on playing.

No one to play against? ChessUp's adaptive AI makes a perfect opponent no matter your skill level. This is no ordinary chessboard. Simply touch a piece and watch all its available moves appear on the board. ChessUp tracks each move of your game and will let you know when you try to make an illegal move. Your opponent's moves light up on the board in real time. With Lichess integration, you'll always find a match. Choose the assistance level for yourself and your opponent, making an uneven matchup competitive. A comprehensive chess lesson library with interactive content over-the-board, created by world-class chess talent.



CPU-BL-001

\$399.00

ELO/Strength Level: The embedded engine is ~1000 ELO while using the app it is rated 3000+

The Chessup App is available in the following Languages: English, Dutch, French, German, Italian and Spanish

Free Ground Shipping On All Books, Software and DVDS at US Chess Sales
\$25.00 Minimum - Excludes Clearance, Shopworn and Items Otherwise Marked