

CHESS LIFE

Kids

FEBRUARY 2023 USChess.org



That

Nakamura

Life









Happy NEW YEAR!

**Make it your
resolution to share
the gift of chess
with someone new!**

The Saint Louis Chess Club and World Chess Hall of Fame make it easy with free resources, including Dr. Jeanne Cairns Siquefield's **Learn to Read and Write Chess**, and lessons on the Club's YouTube channel.



Building Champions | Mind. Art. Experience.
saintlouischessclub.org | worldchesshof.org

[@STLChessClub](#) [@WorldChessHOF](#)      



SCAN TO DOWNLOAD

LEARN TO

**Read & Write
Chess**

by Jeanne Cairns Siquefield

The Saint Louis Chess Club admits students of any gender, race, color, national and ethnic origin to all the rights, privileges, programs, and activities generally accorded or made available to students at the school. It does not discriminate on the basis of gender, race, color, national and ethnic origin in administration of its educational policies, admissions policies, scholarship and loan programs, and athletic and other school-administered programs.

The Museum does not discriminate or permit harassment or discrimination on the basis of gender, race, color, national and ethnic origin in the treatment of individuals with respect to employment, or admission or access to Museum facilities, programs or activities.



EXECUTIVE DIRECTOR
Carol Meyer

SENIOR DIRECTOR OF
STRATEGIC COMMUNICATION
Daniel Lucas

EDITORIAL

PUBLICATIONS EDITOR
Melinda Matthews
mmatthews@uschess.org

ART DIRECTOR
Natasha Roberts

CHESS LIFE/CLO EDITOR
John Hartmann

GRAPHICS ASSISTANT
Nicole Esaltare

TECHNICAL EDITOR
IM Ron Burnett

CHARACTER DESIGNER AND
ILLUSTRATOR
Chandler Ellison

For communications and press inquiries, please contact Dan Lucas at dlucas@uschess.org.

To submit letters to the editor, or for advertising inquiries or TLA display ads, please email mmatthews@uschess.org.

Chess Life Kids provides a foundational interest in chess for beginning level pre-teens through the use of games, instruction, and human-interest stories. It is intended to be useful for Youth members, parents, and coaches. If interested in writing for this publication, send a well-crafted query with writing samples to the editor at mmatthews@uschess.org.

Teachers may photocopy instructional articles for classroom use, but republication or widespread copying without the written consent of US Chess is forbidden.

Chess Life Kids | Vol. 18, No. 1

FEBRUARY 2023

CHESS LIFE Kids

4 BOOK EXCERPT *Across the Battlefield*
BY JONATHAN FERRY

6 AVOID THE TRAP *Driving On and Driving Off*
BY BRUCE PANDOLFINI

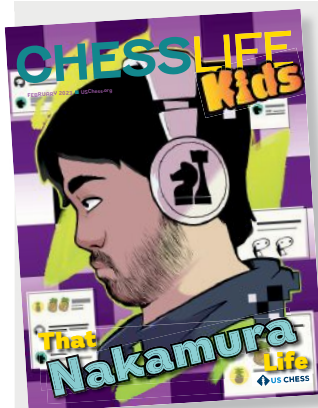
8 IN SESSION *Nakamura's Double Attacks*
BY JOHN HARTMANN

10 CHESS STORIES *Super-Coach Sunil*
BY AL LAWRENCE

12 COVER STORY
THAT NAKAMURA LIFE
ART BY NICOLAS BARRIOS | LAYOUT & DESIGN BY
NATASHA ROBERTS | SCRIPT BY MELINDA MATTHEWS

19 IT'S YOUR MOVE

20 TOURNAMENT LIFE



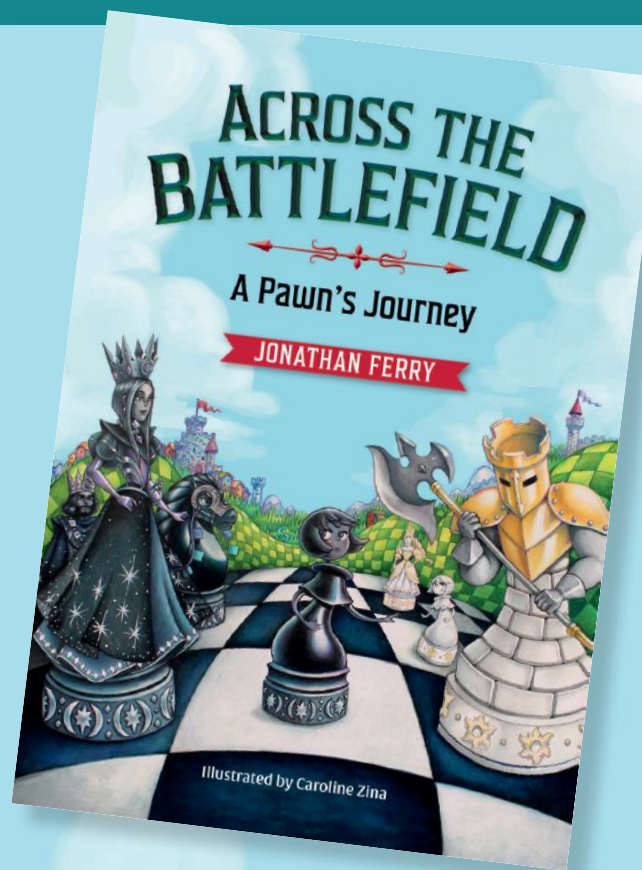
ON THE COVER

In this issue, we introduce highlights from GM Hikaru Nakamura's storied career — as relayed by FM Sunil Weeramantry, with permission from Nakamura — in a fun graphic format, complete with puzzles! To continue the Nakamura theme, Al Lawrence turns the table to interview Weeramantry, Nakamura's first coach, while John Hartmann's In Session focuses on some key Nakamura double attacks.

ART: NICOLAS BARRIOS

Hope, Friendship, and Bravery

A new book by Jonathan Ferry, *Across the Battlefield: A Pawn's Journey*, connects the beauty of chess to self-discovery and shared human experiences such as friendship. Sumptuously illustrated by Caroline Zina, the book tells the tale of Prunella, a pawn who longs to become a queen one day. Please enjoy this excerpt, which sets the stage for the upcoming battle.



The battle was set. Twin armies stood facing one another in uniform rows, one dressed in light-colored clothes decorated with images of the sun, the other in dark attire accented with silver moons and stars. A few spaces over from Nyella, the moon adorned queen, a nervous little soldier, Prunella the pawn, stood in front of a midnight-black steed, shivering in the cool breeze.

“Don’t you worry, little one.” The firm voice came from Norry the knight, directly behind her. “I’m watching out for you.”

“Thanks. I know you are, but...” the little pawn trailed off.

“But what?” Norry repeated patiently.

“It’s just... among all of us pawns...

the only thing that matters is becoming a queen. As a queen, I would command respect! And I wouldn’t fear anybody because I could strike from anywhere on the board!” She waved her arm through the air excitedly, as if holding a sword.

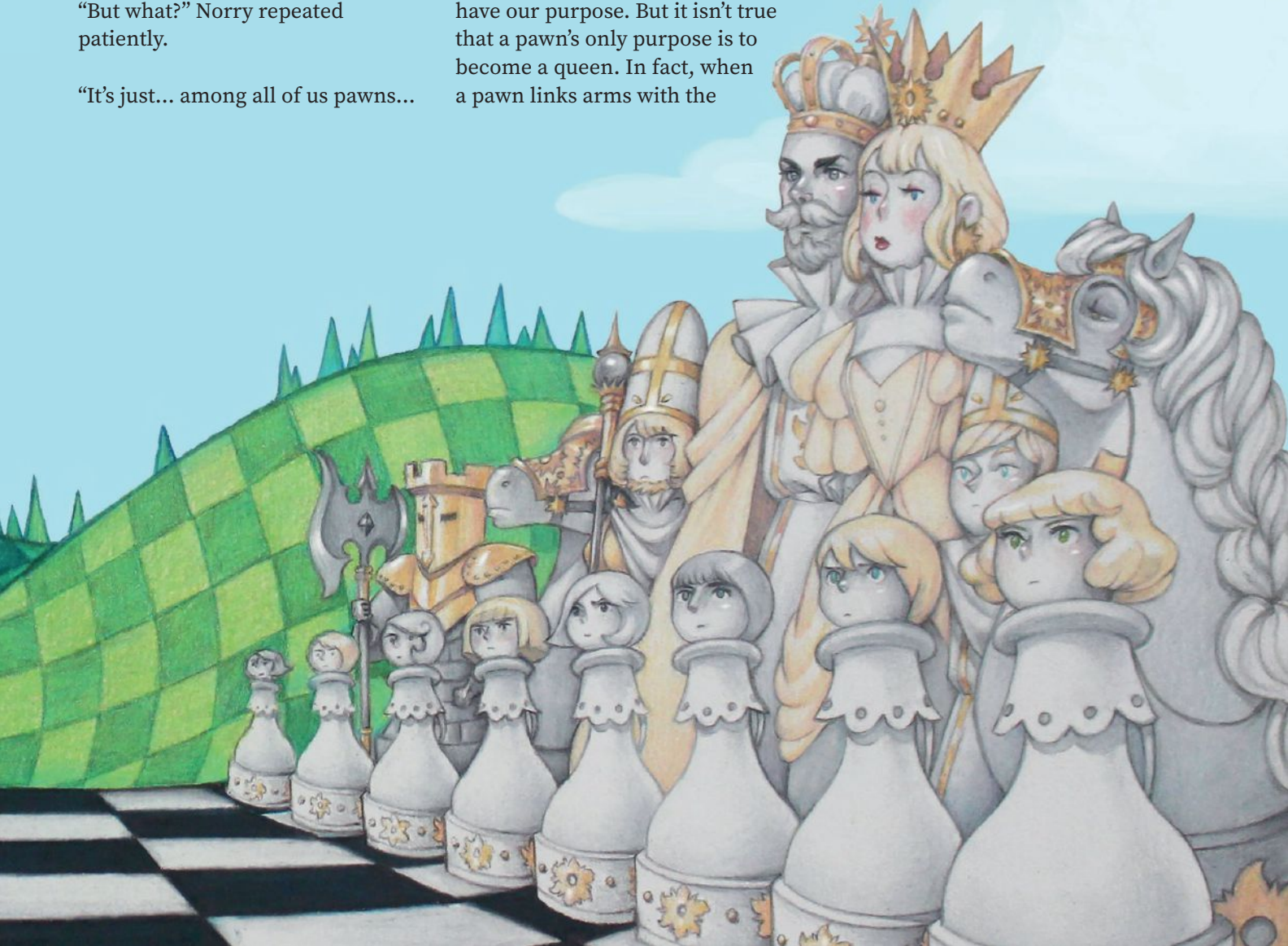
“But...” she sighed, her head now hanging low, “pawns are little and weak. As I look across the black and white squares, I do not see how I could ever make it all the way to the other side moving only one square at a time and with all those opposing pieces ready to attack.”

“I see.” Norry comforted the little pawn, “In chess, as in life, we each have our purpose. But it isn’t true that a pawn’s only purpose is to become a queen. In fact, when a pawn links arms with the

other pawns, or stands guard defending a knight, bishop, or rook, they can have the most important role on the board. It is quite alright, and even admirable, to aspire to become a queen. But do not mistake your goal for your value. A game can be won or lost because of a pawn.”

The little pawn nodded her head. But in her heart, she doubted that the noble knight’s words were true. But she did not have time to consider any further. The battle had begun!

To order *Across the Battlefield: A Pawn’s Journey*, visit chesstalesbooks.com.





Driving On and Driving Off

BY BRUCE PANDOLFINI

This column teaches you openings by helping you learn to avoid opening traps. Set up your board and pieces and play through the game below. Have paper and pen by your side. When you reach a question, write down your answer. After you are done with all 10 questions, check your answers at the end of this column. Total your points and see how you did against the scoring scale at the end. Try to score at least 80 points!

THERE ARE VARIOUS methods to classify tactics. Standard categories are forks, pins, skewers, discoveries, and underminings (removing the defender). These tactics can work in different ways. Consider pins. You can exploit the pinned unit directly or disrupt its functioning. Thus, you can attack the pinned unit's square or some other square related to it. Corresponding to this classification is the "on-and-off" approach. That is, you can drive a piece to a square in order to capitalize on it, or force it away from a square so that the abandoned square becomes vulnerable. A typical example of this combination involves the trap of a queen by a bishop and knight. What follows is an illustration of this often-seen tactical trick.

1. d4

Openings beginning with 1. d4 often lead to slower positions,

where the center may not open for a while or quite some time.

Q1) Why does 1. d4 develop more slowly than 1. e4? (10 points)

1. ... g6

This introduces a Modern (or Pirc) Defense, with the plan of posting the bishop at g7, known as a fianchetto.

Q2) Does 1. ... g6 ignore the center? (10 points)

2. Nc3

White develops the queen-knight, which blocks the c-pawn unnecessarily, delaying a c-pawn advance if useful.

Q3) What would be a more natural White move here after 1. ... g6? (10 points)

2. ... Bg7

Black completes the fianchetto. The plan is to pressure the white

center, hoping to force it into weakening advances.

Q4) Instead of 2. ... Bg7, what pawn move might be useful? (10 points)

3. e4

White establishes a classical pawn center.

Q5) Can White finish developing without more pawn moves? (10 points)

3. ... d6

This clears the c8-bishop's diagonal and strengthens the center.

Q6) What does 3. ... d6 try to guard against? (10 points)

4. Bc4

White develops and takes aim at Black's soft f7-square.

Q7) What other move might White have played on move four? (10 points)

4. ... Nd7

Black temporarily blocks the c8-bishop, which should not be a problem.

5. Nf3

White gets out the king-knight, which makes kingside castling possible.

5. ... c5

Black begins an attack against White's center.

Q8) How should White continue after 5. ... a6? (10 points)



ANALYSIS:

IF BLACK HAD PLAYED 5. ... a6.

6. Be3

White gets out the last minor piece.

6. ... Qb6

This is a risky counterattack, aimed at White's b2-pawn. Black should have followed through with 6. ... cxd4.

7. Nd5

Black must be careful. Probably best now is 7. ... Qa5+.

7. ... Qc6

Black tries to keep the c7-square guarded, declining to play 7. ... Qxb2.

Q9) If instead 7. ... Qxb2, how

should White continue? (10 points)

8. Bb5

Black loses the queen. If 8. ... Qxb5, then 9. Nc7+. The queen has been driven onto b5 and driven off c7.

8. ... Black resigned.



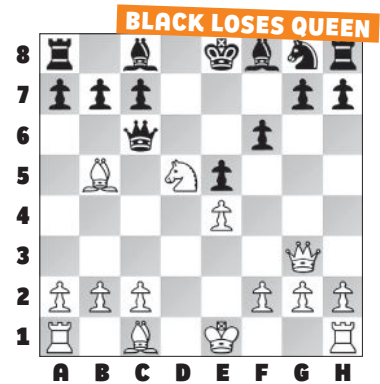
AFTER 8. Bb5

Q10) What was the last move Black could have avoided the trap? (10 points)

ILLUSTRATIVE GAME

GM Nick De Firmian
J.K. Pedersen
Tromsøe 2007

1. e4 e5 2. Nf3 d6 3. d4 exd4 4. Qxd4 Qf6 5. Qd3 Nc6 6. Nc3 Ne5 7. Nxe5 dxe5 8. Nd5 Qc6 9. Qg3 f6 10. Bb5, Black resigned.



ANSWERS

A1) After 1. e4, a subsequent d2-d4 is supported by the queen.
A2) No it doesn't. Black aims to attack the center from the flank.
A3) A more natural response would be 2. e4, with a classical center.
A4) Black could have first played 2. ... d6, following with 3. ... Bg7.
A5) Yes. With both center pawns moved, full development is possible.
A6) Black wants to discourage White from playing e4-e5.
A7) White could have played 4. Nf3, not yet committing the bishop.
A8) White then has 6. Bxf7+ Kxf7 7. Ng5+, and if 7. ... Kf6, then 8. Qf3 mate.
A9) If 7. ... Qxb2, then 8. a3, and Black's queen can't escape.
A10) Move seven. Black should have played 7. ... Qa5+ or 7. ... Qd8. ♠



Be sure to check your score!

How Did You Score?

The score is based on the US Chess rating system and is intended only as a fun way to monitor your progress each issue as you Avoid The Trap!

100: 1800+

90: 1600

80: 1400

70: 1200

60 or lower: 1000



Nakamura's Double Attacks

BY JOHN HARTMANN

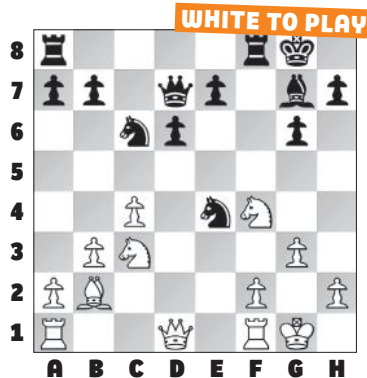
THE DOUBLE ATTACK is one of the most fundamental tactical ideas in chess, and every top player makes use of them to win games, including GM Hikaru Nakamura, who is featured this month. Looking through his games for this article, I was surprised to see just how many games Nakamura won with this tactic, especially in blitz.

To understand double attacks, we need to understand targets. The *king* can be a target, as you might expect, and so can *material* — pieces or pawns, especially if they are unprotected or of high value. A *square* can also be a target, particularly those where checkmate can be delivered. We find double attacks by identifying targets, and choosing moves that aim at two at once.

Here are two examples from Nakamura's games to make this clear.

KING AND MATERIAL

GM Hikaru Nakamura (2768)
GM Shamsiddin Vokhidov (2568)
Titled Tuesday (8), *Chess.com*,
11.15.2022

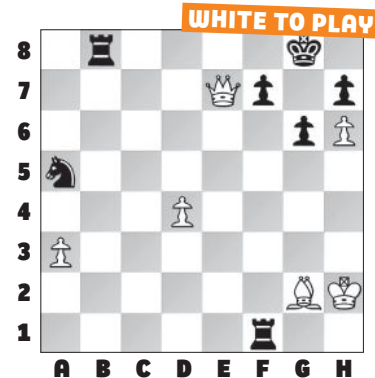


Black has just played 15. ... Ne4, making use of the pin on the c3-knight. But the e4-knight is unprotected, which is a hint that there might be a tactic in the position. The open diagonal towards the king is another helpful hint.

Nakamura noticed both elements and played **16. Qd5+** and because Black can't get out of check and save the knight at the same time, he loses material. After **16. ... Kh8 17. Qxe4**, White won on move 27.

MATERIAL AND SQUARE

GM Hikaru Nakamura (2768)
GM Gawain Jones (2623)
Titled Tuesday (4), *Chess.com*,
11.15.2022



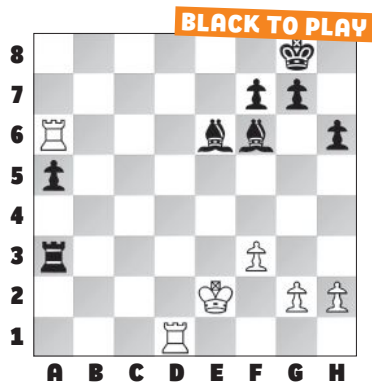
Here is an example where the targets are material and a square. White could simply take the f1-rook with a winning position, but the unprotected b8-rook (and a5-knight!) along with the possible checkmate on the g7-square allowed Nakamura to play the triple attack **35. Qe5**, threatening mate and gain of material. **Black resigned** here.

Notice, by the way, that this tactic wouldn't work without the mate threat on g7. Black could play ... Na5-c6, defending the rook and attacking the queen.

The queen excels at “forks,” or double attacks. But she's not alone in her abilities. Every piece is capable of this kind of tactic, including knights and bishops.

BLAZING BISHOPS

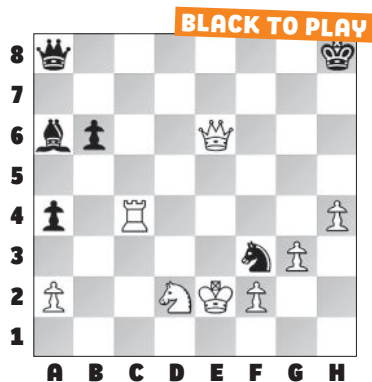
GM Subramaniyam H. Bharath (2479)
GM Hikaru Nakamura (2766)
Titled Tuesday (6), *Chess.com*,
05.24.2022



What are the targets? The king is in the open, so we should consider it, especially since the undefended a6-rook is on the same diagonal! With **30. ... Bc4+**, checking the king and attacking the rook, Nakamura won the game.

TRICKY KNIGHTS

GM Fabiano Caruana (2758)
GM Hikaru Nakamura (2768)
Titled Tuesday (10), *Chess.com*,
09.27.2022



In a worse position, Black was able to turn the tables and win material with **45. ... Nd4+**, a double attack on the queen and king.

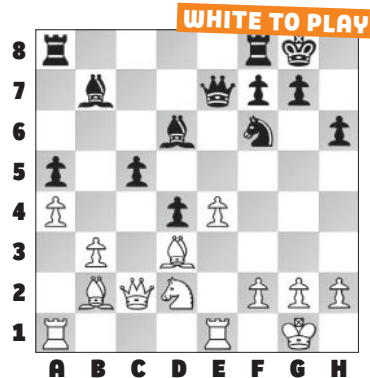
Nakamura's fork depends on the presence of another tactical idea in

the position — the pinned c4-rook can't capture the d4-knight because it would put its own king in check.

Sometimes finding the right move requires that you identify two or more tactical ideas in the position. Here are a few more positions where Nakamura was able to combine themes to earn a victory.

PAWN PUSH

GM Hikaru Nakamura (2750)
GM Grigoriy Oparin (2674)
Titled Tuesday (4), *Chess.com*,
04.19.2022

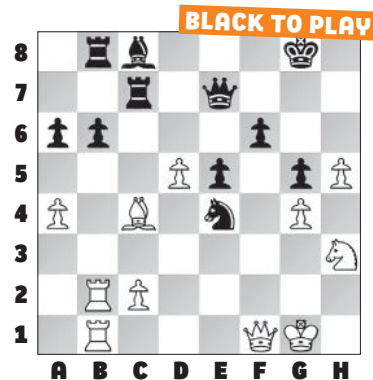


The d6-bishop and f6-knight look ripe for a double attack, but there are two defenders on the e5-square. Do you think the pawn fork works?

Nakamura played **18. e5!**. The key idea is that if Black grabs the pawn with **18. ... Bxe5** then White takes advantage of the new pin on the e5-bishop with **19. f4**, winning material. Oparin tried **18 ... Ng4** **19. exd6 Qh4**, threatening queen checks on h2 and f2, but after **20. Nf1**, everything is defended, and **Black resigned**.

DOUBLE AND TWO-FOLD

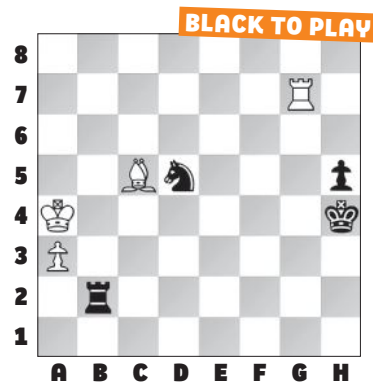
IM Jacob Leon Pajeken (2387)
GM Hikaru Nakamura (2736)
Titled Tuesday (1), *Chess.com*,
09.21.2021



The c4-bishop is attacked once and defended once. How can we bring another attacker into play? **40. ... Qc5+**! Checking the king, and creating a *two-fold attack* (two attackers, one defender) on the c4-bishop. Black wins material after **41. Nf2 Qxc4** **42. Qxc4 Rxc4**.

PREPARATORY MOVE

IM Khazar Araz Babazada (2431)
GM Hikaru Nakamura (2750)
Titled Tuesday (3), *Chess.com*,
04.12.2022



68. ... Nc3+! After taking note of the undefended bishop, Nakamura uses this move to prepare the double attack by luring the king to the right square. **69. Ka5 Rb5+** Winning the bishop. **70. Ka6 Rxc5** **71. a4 Nxa4**, White resigned.

Identifying targets and searching for double attacks can bring big benefits to your game. Let us know if you play any spectacular moves at letters@uschess.org! 📧



Super-Coach Sunil

He inspired hundreds of champions, even world champions!

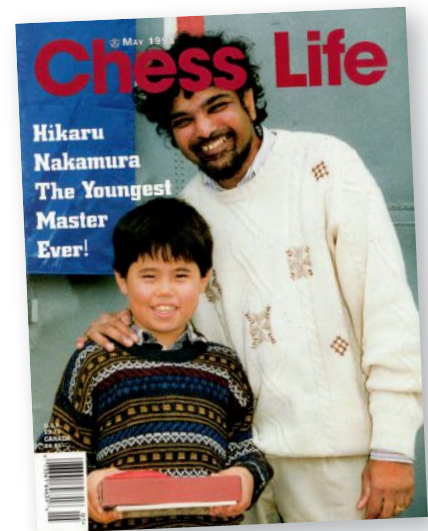
BY AL LAWRENCE

FM SUNIL WEERAMANTRY [Soo-NEEL Ver-a-MAHN-tree] was born in Sri Lanka, an island nation in the Indian Ocean. Sunil became a chess master at just 15, scoring exciting victories reported throughout the chess world. In 1978, he played first board for Sri Lanka in the World Chess Olympiad, finishing fourth among the best players from all 65 nations — ahead of even a former world

champion! In 1983, Sunil moved to America and began teaching his first generation of champions. He kept playing as well, winning the New York State Championship twice, perhaps the most difficult state crown to win.

Sunil became one of the most successful chess coaches in history, raising the level of chess in the USA. He has coached over 200 national and international youth champions. Two of those are his stepsons Asuka Nakamura and GM Hikaru Nakamura. Asuka has won more U.S. scholastic championships than anyone in history. (see *Chess Life Kids* February 2022, page 20) Hikaru is one of the best players in the world, ranking as high as number two, and he's the current World Fischer Random Chess Champion. Hikaru is also the world's most popular chess streamer, with 1.5 million followers on his Twitch channel. (see this issue, page 12)

Sunil founded the National Scholastic Chess Foundation in 1990. His organization now serves more than 100 schools

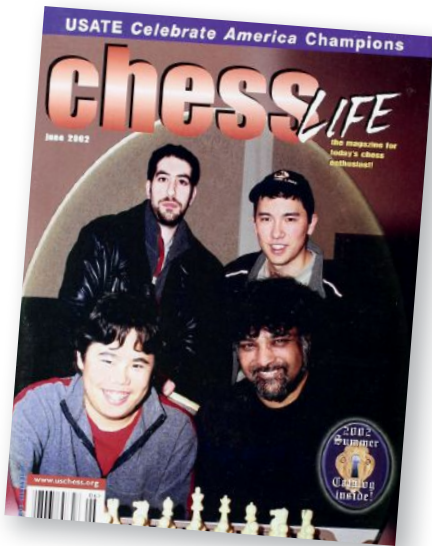


Sunil with stepson Hikaru Nakamura in 1998.

throughout New York State and Florida, and provides community programs and chess-teacher training across the USA. He put many of his teaching tips into two highly praised books: *Best Lessons of a Chess Coach*, and *Great Moves: Learning Chess Through History*. He serves as the U.S. Chess Trust Vice President of Scholastics, helping provide free chess materials and scholarships to school kids.

Honors continue to pile up. He





Team Weera-Family won the 2002 U.S. Amateur Team East. Clockwise from top left: Michael Ellenbogen, Asuka Nakamura, Sunil Weeramantry, Hikaru Nakamura.

was inducted into the New York State Chess Hall of Fame in 1996. The University of Texas at Dallas named him Chess Educator of the Year in 2005. In 2022, US Chess honored him with its highest award, the Distinguished Service Award.

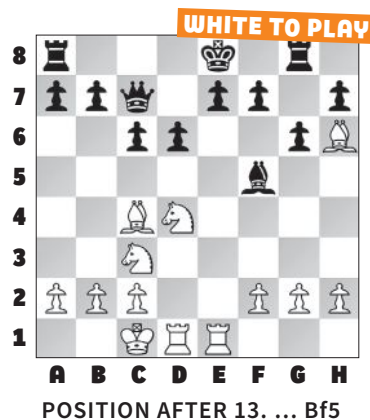
But don't think Sunil's work is finished! He's still teaching chess

and coming up with new ways to bring the game to people of all ages.

Check out FM Weeramantry's attacking style as he punishes another master for leaving his king in the middle of the board too long.

PIN, FORK, AND MATE!

FM Sunil Weeramantry
Mark Schlagenhaut
June 10, 2020



Earlier in the game, Sunil exchanged his queen for three pieces. Black needed to play 13... d5 to hold down the fort in this

complicated, unbalanced position with near material equality. Sunil senses this is the moment to strike while Black's king is still in the center and works out the winning tactics of yet another sacrifice! Do you see it?

14. Ndb5!! cxb5 15. Nxb5 Qb6

If 15. ... Qxc4, a knight fork and the pin on the e-file combine to win the black queen!: 16. Nxd6+ Kd8 17. Nxc4+. But even after Black's game move, the pins and forks are overwhelming. The pawn "protection" in front of Black's king is an illusion!

16. Nxd6+ Kd8 17. Nxf5+ Ke8 18. Rxe7 mate!



Sunil, who is committed to chess in education, speaks at the 2021 Koltanowski conference in Cherry Hill, New Jersey.

INTERNATIONAL KOLTANOWSKI
CONFERENCE
ON CHESS IN
EDUCATION

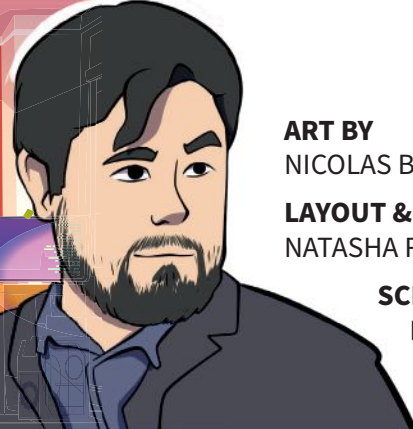


That Nakamura Life

ART BY
NICOLAS BARRIOS

LAYOUT & DESIGN BY
NATASHA ROBERTS

SCRIPT BY
MELINDA
MATTHEWS



Wow, that football stream was fun! I love integrating other sports with chess.

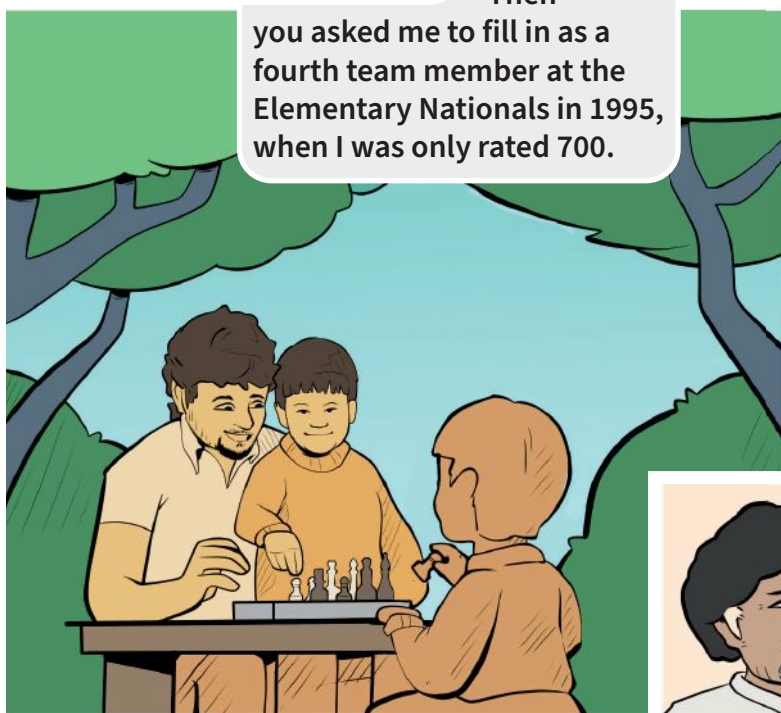
It's hard to remember a time when you weren't streaming. You've done so much in your career.

At first, I wasn't sure chess was for me, but I loved doing things as a family when I was seven — including learning chess from you!

Then you asked me to fill in as a fourth team member at the Elementary Nationals in 1995, when I was only rated 700.

We needed you! And the two points you scored helped our team.

And since your big brother, Asuka, was so involved with chess you got dragged to all the tournaments! But I wasn't sure that chess was right for you, either, in the beginning.

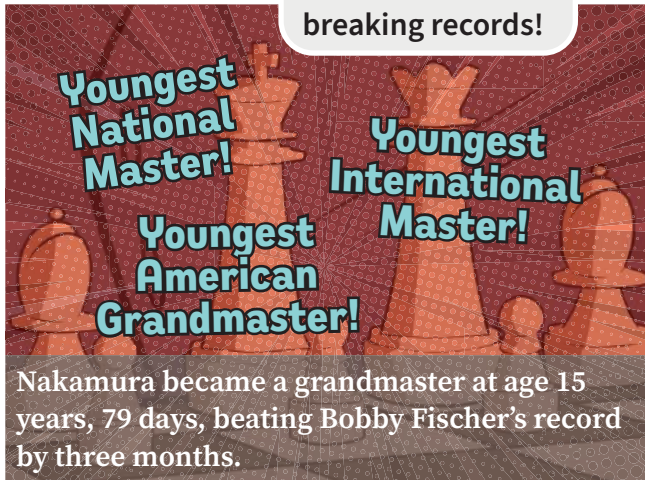


My real turning point was that tournament in Stamford, Connecticut, where I defeated a national master when I was eight. That woke up my competitive spirit.

I remember how you used that Novag computer to help you improve. You were so meticulous. You recorded every game!



Then I started breaking records!



Nakamura became a grandmaster at age 15 years, 79 days, beating Bobby Fischer's record by three months.

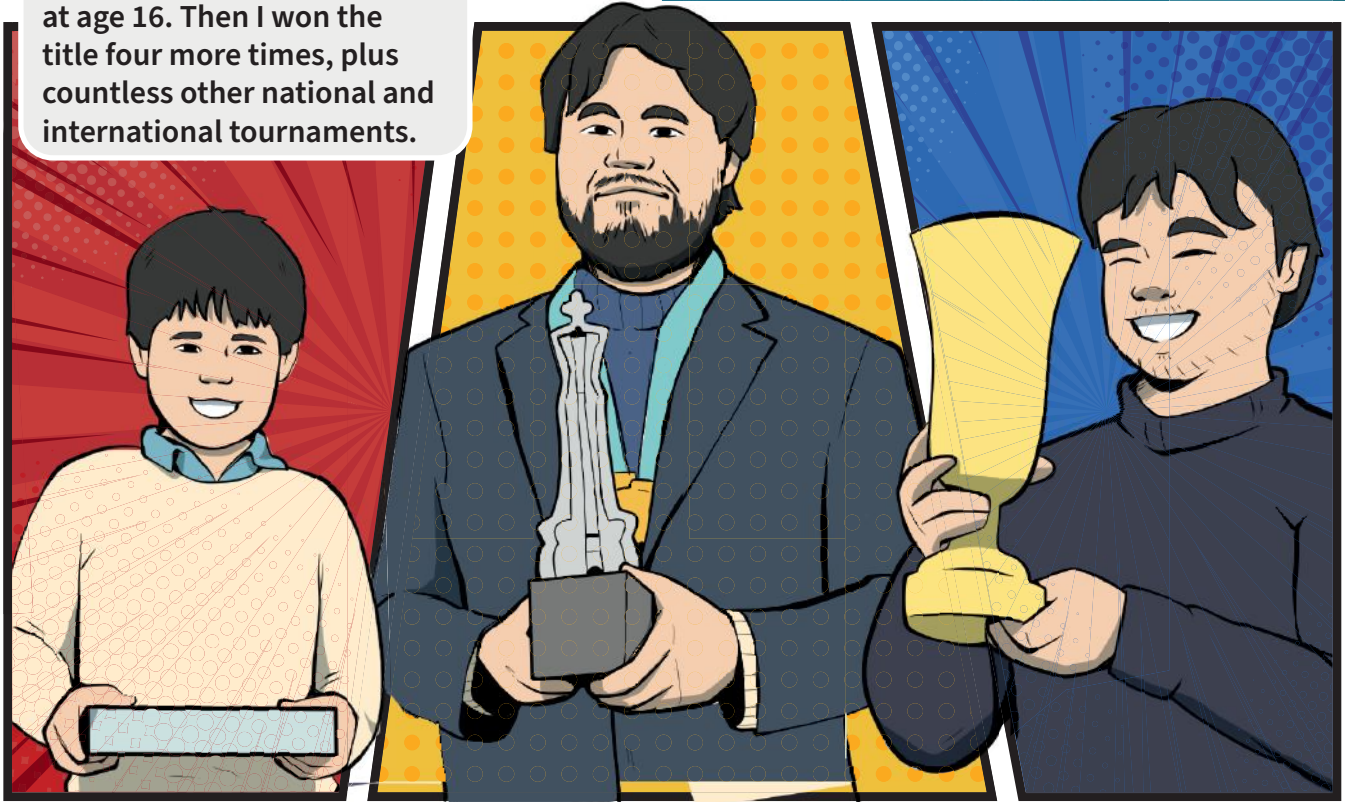
*all youngest records have since been broken

Each time I lost against the computer I learned something new. It helped me improve pretty rapidly.

Hmm.
Let me try alternating sides and copying the computer moves.



Not long after, I won my first U.S. Championship title at age 16. Then I won the title four more times, plus countless other national and international tournaments.



“The first championship in 2005 will always be the most special, but winning this fifth one was by far my best performance because of the strength of the field.”

Hikaru Nakamura on winning his 2019 title, *South Florida Sun-Sentinel*, May 2, 2019

As time passed, people began wondering if my passion for speed chess was going to ruin my game. But I loved it! I still do.

**Fastest hands
in the West!**

A reporter once said I had the fastest hands in the West!

2022 FIDE Fischer Rapid World Champion

World #1 in Blitz
(FIDE Blitz ranking
as of December 2022)

SEVEN BULLET CHESS TIPS FROM HIKARU

Here are suggestions for improvement from one of the world's best speed players.

- Never resign (anything can happen).
- Never assume when pre-moving.
- Don't focus on time.
- Choose your thinking time wisely.
- Almost any opening works.
- Simplify when up material or down on time.
- Know when to quit (stop playing if your form is off).*

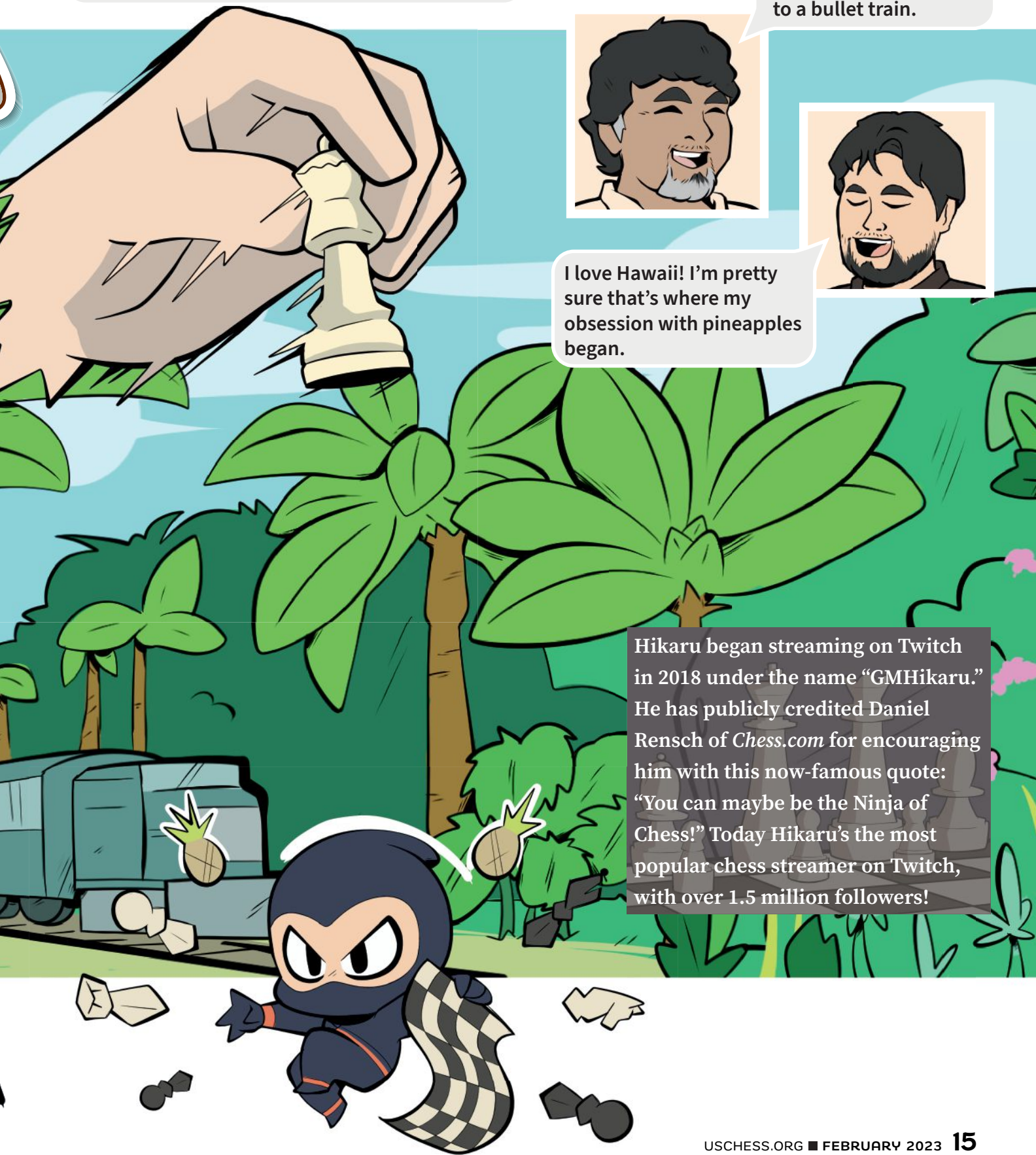
He actually recorded how long it took me to pick up a piece, make the move, and press the clock. It was something like a fraction of a second!

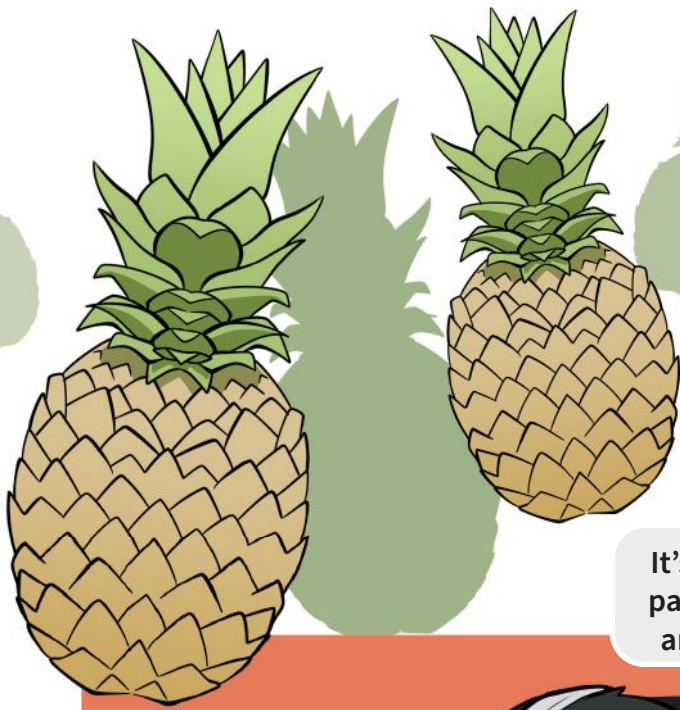
One time a news station in Hawaii even compared your speed to a bullet train.



I love Hawaii! I'm pretty sure that's where my obsession with pineapples began.

Hikaru began streaming on Twitch in 2018 under the name "GMHikaru." He has publicly credited Daniel Rensch of *Chess.com* for encouraging him with this now-famous quote: "You can maybe be the Ninja of Chess!" Today Hikaru's the most popular chess streamer on Twitch, with over 1.5 million followers!





And now you have pineapples all over your studio when you stream!

Yes, who would have guessed that chess would lead to an incredible streaming career?



It's been fun reliving the past with you! But what are your future plans?

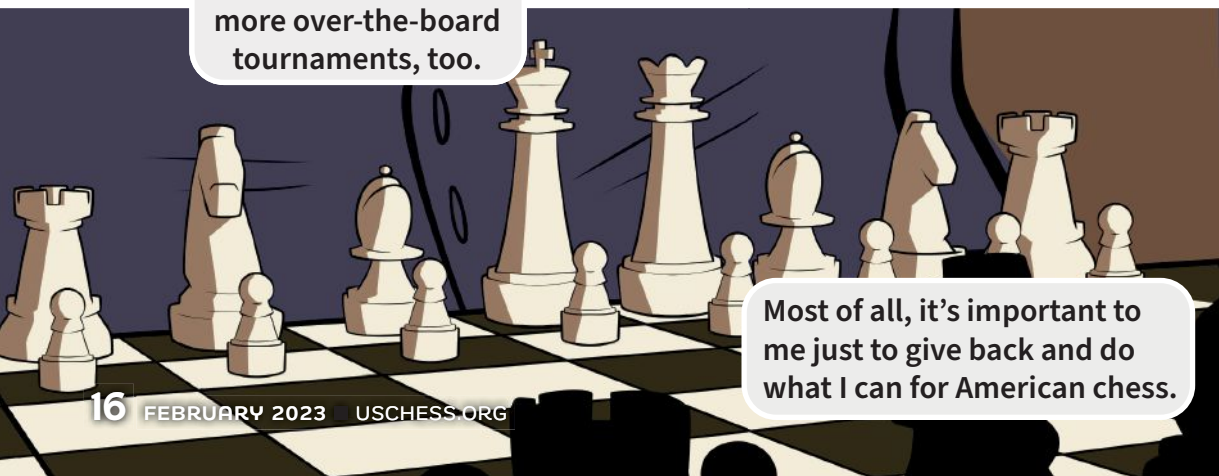
Believe in the journey of chess. Enjoy it because it's only going to be here once.
~ Hikaru, *Chess Life* interview, June 2022



First, I do feel a big responsibility when it comes to streaming.

I would like to see the community of people who enjoy chess but who aren't serious players grow.

And I intend to play more over-the-board tournaments, too.

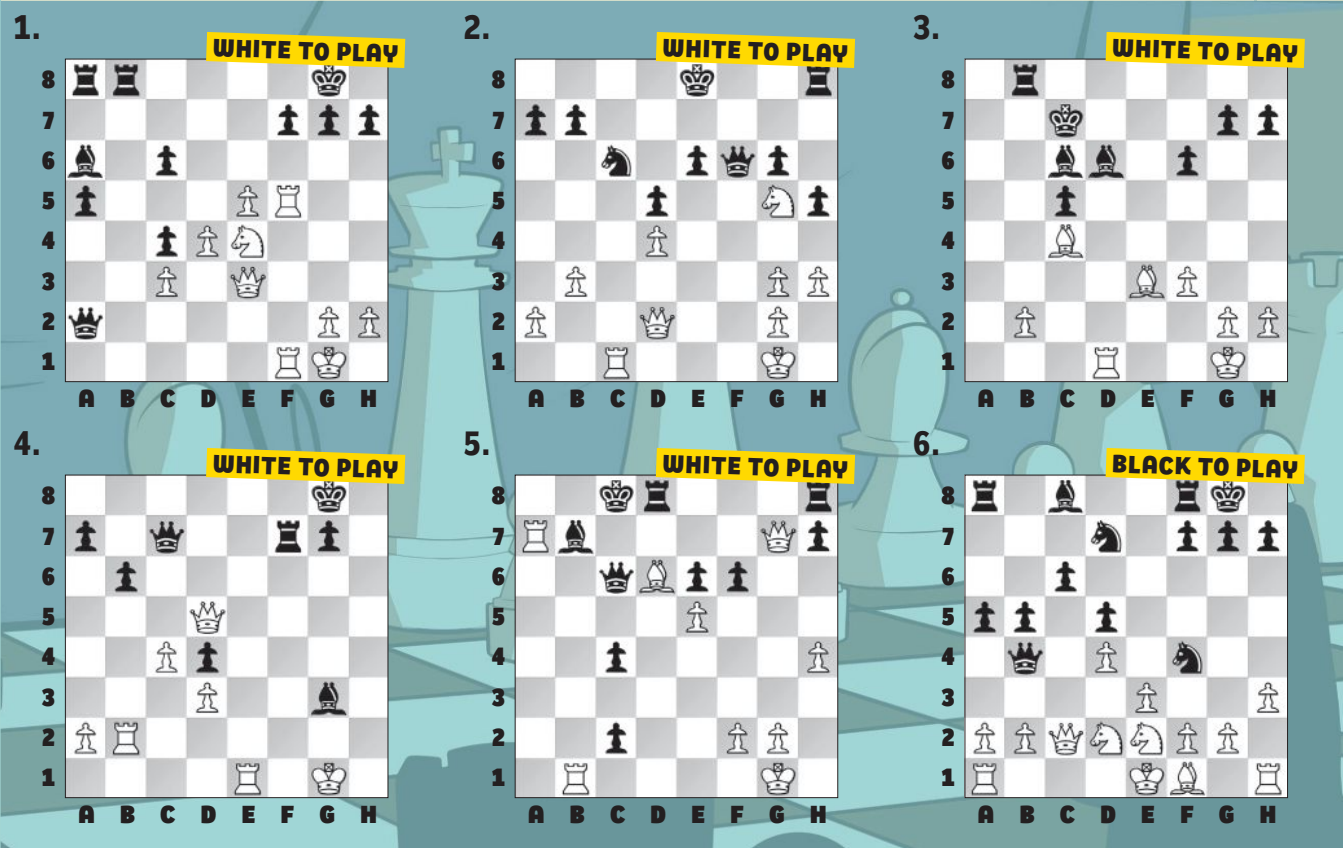


Most of all, it's important to me just to give back and do what I can for American chess.

Many thanks to FM Sunil Weeramantry and GM Hikaru Nakamura for their participation!

What Was Hikaru Thinking?

HIKARU'S TACTICAL SKILLS have been honed over the years. See if you can figure out what he was thinking in these puzzles that span his career. Don't peek at the answers until you try to solve them!



(1) All of the black pieces are on the queenside, while White's pieces are aimed at the king. That's one sign that a tactic is possible. Here the young Nakamura played **24. Nf6+! gxf6** — as good as anything else. Black loses after both 24. ... Kf8 25. Nxf7+ Kg8 26. e6 and 24. ... Kh8 25. Rh5!. **25. Qh6?** Such a natural move, but a bit of a mistake. It's mate soon after the correct 25. Qg3+! Kh8 (25. ... Kf8 26. Rxf6) 26. Qh4 with Qh4xf6+ next. **25. ... Qa3?** One tempo short. After 25. ... Rb2! 26. g3 Rg2+ 27. Kh1 Rxh2+ 28. Qxh2 Qxh2+ 29. Kxh2 Bc8! 30. Rxf6 Be6 and White needs to show technique to win. **26. exf6 Qf8 27. Rg5+ Kh8 28. Rg7, Black resigned.** (Nakamura – Djukic, World U10 Ch, 1997)

(2) **42. Nxe6! Kd7** The queen can't be taken: if 42. ... Qxe6 43. Re1 with a fatal pin. **43. Nc5+ Kc8 44. b4!** Threatening b4-b5 followed by a discovery. **44. ... b5.** No better is 44. ... Qxd4+ 45. Qxd4 Nxd4 due to 46. Nb3+ Nc6 47. b5. **45. a4 Kd8 46. Kh2!** Avoiding any checks on d4. Note the difference in king safety! **46. ... Re8 47. axb5 Ne7 48. Ra1 Nf5 49. Qf4 Qb6 50. Ra6 Qxb5 51. Rxa7**

Re7 52. Ra8+, Black resigned. (Nakamura – Paschall, Bermuda, 2003)

(3) **28. Rxd6!, Black resigned.** A nice way to finish the game. White's point is 28. Rxd6 Kxd6 29. Bf4+ winning a piece. Nakamura won his first U.S. Championship in this event. (Nakamura – Muhammad, U.S. Championship, 2004)

(4) Here Nakamura found a nice mate-in-two in blitz mode. **32. Re8+**, making use of the pin on the rook, and forcing the king to a fatal square. **32. ... Kh7 33. Qh5 mate.** (Nakamura – Nureev, Dos Hermanas / ICC, 2009)

(5) If we could play Rb1-b8, it would be mate. Nakamura finds a neat way to open the file. **25. Ra8+! Bxa8 26. Rb8, mate.** (Nakamura – Wheeler, PRO League, Chess.com, 2018)

(6) **15. ... Qxb2!** Luring the queen to the right square for a double attack. **16. Qxb2 Nd3+ 17. Kd1 Nxb2+ 18. Kc2 Nc4.** Up a clean pawn, Nakamura went on to win on move 29. (Carlsen – Nakamura, Speed Chess Ch, Chess.com, 2022)

ALL GIRLS

18TH ANNUAL

NATIONAL CHESS CHAMPIONSHIPS

APRIL 28 - 30, 2023

CHICAGO, IL



Presented by



The Champion in each age category, qualifies to represent the USA at the World Cadets, and World Youth Championships

MAIN EVENT

6-SS, G/90,d5

Friday April 28

2:30 PM Opening Ceremony
3:00 PM Round 1

Saturday April 29

10:00 AM Round 2
2:30 PM Round 3
6:30 PM Round 4

Sunday April 30

9:00 AM Round 5
1:00 PM Round 6
5:00 PM Awards Ceremony

ENTRY FEE

\$85 postmarked by 3/20,
\$105 by 4/17, \$115 by 4/27,
\$125 on-site.

SIDE EVENTS

Bughouse Tournament

Fri. April 28 11:00 AM
Entry fee: \$40 per team

Blitz Tournament (G/5,d0)

Fri. April 28 7:00 PM
Entry fee: \$30 by 4/17, \$35
after/on-site.



SECTION/AWARDS

Age as of 1/1/2023

Under 8 top 15 individuals
top 500 – 799, top U500, top 6 schools
Under 10 top 15 individuals
top 700 – 999, top U700, top 6 schools
Under 12 top 15 individuals
top 900 – 1199, top U900, top 6 schools
Under 14 top 15 individuals
top 1100 – 1399, top U1100, top 4 schools
Under 16 top 8 individuals
top 1300 – 1599, top U1300, top 3 schools
Under 18 top 8 individuals,
top 1500 – 1799, top U1500, top 3 schools

HISTORIC PALMER HOUSE HOTEL

17 East Monroe St, Chicago, IL
60603

HOTEL RESERVATIONS

single - quad \$169
(312) 726-7500, online at
www.allgirls.rknights.org
Reserve early hotel may sell out /
raise rates

INFO

www.allgirls.rknights.org
(773) 844-0701
info@renaissanceknights.org

Online Registration: www.allgirls.rknights.org

Mailed Registration: make checks payable to: Rknights 599 Linden Ln, Wauconda, IL 60084

www.kasparovchessfoundation.org

Transitions

Chess Life Kids is getting a makeover! John Hartmann, whose spectacular work as *Chess Life* editor has received national awards, will be adding *Chess Life Kids* editor to his duties beginning with the April issue. I'm moving to a new role as managing editor but will continue my involvement with both magazines behind the scenes. We believe this internal restructuring will create a more comprehensive and seamless relationship between *Chess Life* and *Chess Life Kids*. It has been an honor bringing chess content to life in the pages of *Chess Life Kids*, and I look forward to seeing what the future holds!



CLK editors and the Nakamura connection!



Photo, top: John Hartmann prepares to blitz with GM Hikaru Nakamura at a recent street chess event in New Orleans. Photo, bottom: Melinda Matthews' son, Nicholas Rosenthal, was paired with Nakamura on board one at the 2011 U.S. Open in Orlando.

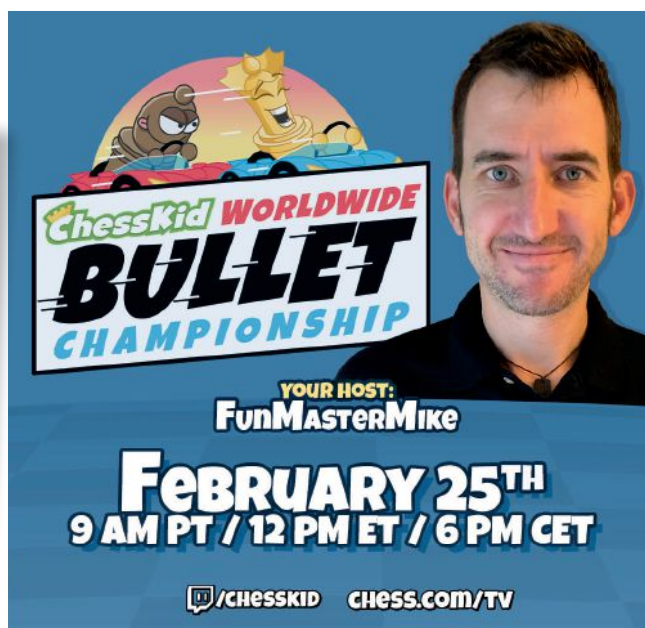
News Flash!

The 2022 National K-12 Grade Championships

concluded on December 11, 2022. You can find the winners at uschess.org/results/2022/k12/ — and look for a comprehensive tournament report from Laurel Aronian in the April issue of *Chess Life Kids*.

ChessKid Worldwide Bullet Championship

If you love bullet chess as much as GM Hikaru Nakamura does, why not sign up for the ChessKid Worldwide Bullet Championship? It's open to all kids and it's free once you join the ChessKid Official Club (club membership is free, too!). The tournament will be held on February 25th at 9 a.m. PT / 12 p.m. ET / 6 p.m. CET. Go to ChessKid.com for details and to join the club!



ChessKid WORLDWIDE BULLET CHAMPIONSHIP

YOUR HOST:
FunMasterMike

FEBRUARY 25TH
9 AM PT / 12 PM ET / 6 PM CET

[/CHESSKID](https://twitch.tv/chesskid) [CHESS.COM/TV](https://chess.com/tv)



THE
2023

SPRING SCHOLASTIC NATIONALS ARE COMING!

MARK YOUR CALENDARS

TOURNAMENT LIFE ANNOUNCEMENTS

The Executive Board authorizes a temporary change in the US Chess Grand Prix (GP) rules for the period March 4, 2020 through February 28, 2023 out of concern for the unforeseeable impacts the COVID-19 (Coronavirus) could have on participation in GP events. The change allows organizers with guaranteed prize funds to change the status of their prize fund without first seeking US Chess permission to make the change. Please refer to the Tournament Life Announcement section in *Chess Life* for more information.

For complete details on individual events, please visit [new.uschess.org/node/\[TLA ID\]](http://new.uschess.org/node/[TLA ID]). You will find the event's unique five-digit TLA ID at the end of each TLA.

Nationals

NATIONAL CHAMPIONSHIP EVENT • HERITAGE EVENT

World Amateur Team & U.S. Team East FEBRUARY 18-20, 2023, NEW JERSEY

Event site: Parsippany Hilton **Address:** 1 Hilton Ct., Parsippany, NJ 07054 **Overall prize fund:** n/a **GP Points:** n/a **FIDE Rated:** N **Handicap accessible:** Y **Residency restriction:** N **Organizer:** New Jersey Chess Federation **Email:** esdoyle@aol.com **Phone:** n/a **Website:** <https://njscf.org/> **TLA ID:** 35322

NATIONAL CHAMPIONSHIP EVENT • HERITAGE EVENT • JUNIOR GRAND PRIX

2023 National High School (K-12) Championships MARCH 31-APRIL 2, 2023, WASHINGTON, D.C.

Event site: Washington Hilton **Address:** 1919 Connecticut Avenue NW, Washington, DC 20009 **Overall prize fund:** n/a **GP Points:** n/a **FIDE Rated:** N **Handicap accessible:** Y **Residency restriction:** N **Organizer:** Boyd Reed **Email:** nationalevents@uschess.org **Phone:** n/a **Website:** <http://www.uschess.org/tournaments/2023/hs> **TLA ID:** 35762

NATIONAL CHAMPIONSHIP EVENT • HERITAGE EVENT • JUNIOR GRAND PRIX

2023 National Middle School (K-8) Championships APRIL 21-23, 2023, TEXAS

Event site: Kalahari Resorts & Conventions **Address:** 3001 Kalahari Drive, Round Rock TX 78665 **Overall prize fund:** n/a **GP Points:** n/a **FIDE Rated:** N **Handicap accessible:** Y **Residency restriction:** N **Organizer:** Boyd Reed **Email:** nationalevents@uschess.org **Phone:** n/a **Website:** <http://www.uschess.org/tournaments/2023/ms> **TLA ID:** 36212

NATIONAL CHAMPIONSHIP EVENT

2023 KCF All-Girls National Championship APRIL 28-30, 2023, ILLINOIS

Event site: Historic Palmer House Hotel **Address:** 17 East Monroe St, Chicago, IL 60603 **Overall prize fund:** n/a **GP Points:** n/a **FIDE Rated:** N **Handicap accessible:** Y **Residency restriction:** N **Organizer:** Continental Chess Association **Email:** director@chess.us **Phone:** 702-930-9550 **Website:** <http://www.chessevents.us> **TLA ID:** 35024

Event site: Sheraton Reston Hotel **Address:** 11810 Sunrise Valley Drive, Reston VA 20191 **Overall prize fund:** \$17,000 **GP Points:** 120 **FIDE Rated:** Y **Handicap accessible:** Y **Residency restriction:** N **Organizer:** Continental Chess Association **Email:** director@chess.us **Phone:** [702-930-9550](tel:702-930-9550) **Website:** <http://www.chessevents.us> **TLA ID:** 36062

NATIONAL CHAMPIONSHIP EVENT • HERITAGE EVENT • JUNIOR GRAND PRIX

2023 National Elementary (K-6) Championships MAY 12-14, 2023, MARYLAND

Event site: Baltimore Convention Center **Address:** 1 West Pratt Street, Baltimore MD 21201 **Overall prize fund:** n/a **GP Points:** n/a **FIDE Rated:** N **Handicap accessible:** Y **Residency restriction:** N **Organizer:** Boyd Reed **Email:** nationalevents@uschess.org **Phone:** n/a **Website:** <http://www.uschess.org/tournaments/2023/elem> **TLA ID:** 36637

NATIONAL CHAMPIONSHIP EVENT • HERITAGE EVENT • AMERICAN CLASSIC • GRAND PRIX • ENHANCED GRAND PRIX • JUNIOR GRAND PRIX

2023 National Open JUNE 14-18, 2023, NEVADA

Event site: Rio All Suites Hotel & Casino **Address:** 3700 W Flamingo Rd, Las Vegas, NV 89103 **Overall prize fund:** \$100,000 **GP Points:** 200 **FIDE Rated:** Y **Handicap accessible:** Y **Residency restriction:** N **Organizer:** Vegas Chess Festivals **Email:** vegashess@gmail.com **Phone:** 702-930-9550 **Website:** <https://vegashessfestival.com> **TLA ID:** 35980

Grand Prix

The Grand Prix continues in 2023. For information visit new.uschess.org/us-chess-grand-prix-program.

GRAND PRIX • ENHANCED GRAND PRIX • JUNIOR GRAND PRIX

14th annual Southwest Class Championships FEBRUARY 16-20, 2023, TEXAS

Event site: Westin Dallas Fort Worth Airport **Address:** 4545 W John Carpenter Fwy, Irving TX 75063 **Overall prize fund:** \$35,000 **GP Points:** 200 **FIDE Rated:** Y **Handicap accessible:** Y **Residency restriction:** N **Organizer:** Continental Chess Association **Email:** director@chess.us **Phone:** 702-930-9550 **Website:** <http://www.chessevents.us> **TLA ID:** 35024

GRAND PRIX • ENHANCED GRAND PRIX • JUNIOR GRAND PRIX

7th annual George Washington Open FEBRUARY 24-26, 2023, VIRGINIA

Event site: Sheraton Reston Hotel **Address:** 11810 Sunrise Valley Drive, Reston VA 20191 **Overall prize fund:** \$17,000 **GP Points:** 120 **FIDE Rated:** Y **Handicap accessible:** Y **Residency restriction:** N **Organizer:** Continental Chess Association **Email:** director@chess.us **Phone:** [702-930-9550](tel:702-930-9550) **Website:** <http://www.chessevents.us> **TLA ID:** 36062

HERITAGE EVENT • GRAND PRIX • ENHANCED GRAND PRIX • JUNIOR GRAND PRIX

30th annual Western Class Championships MARCH 3-5, 2023, CALIFORNIA, SOUTHERN

Event site: Hilton Orange County Airport **Address:** 18800 Macarthur Blvd, Irvine CA 92612 **Overall prize fund:** \$20,000 **GP Points:** 120 **FIDE Rated:** Y **Handicap accessible:** Y **Residency restriction:** N **Organizer:** Continental Chess Association **Email:** director@chess.us **Phone:** [702-930-9550](tel:702-930-9550) **Website:** <http://www.chessevents.us> **TLA ID:** 36062

HERITAGE EVENT • GRAND PRIX • ENHANCED GRAND PRIX • JUNIOR GRAND PRIX

31st annual Eastern Class Championships MARCH 17-19, 2023, CONNECTICUT

Event site: Sheraton Hartford Hotel at Bradley Airport **Address:** 1 Bradley Airport (visible at airport entrance), Windsor Locks CT 06096 **Overall prize fund:** \$20,000 **GP Points:** 120 **FIDE Rated:** Y **Handicap accessible:** Y **Residency restriction:** N **Organizer:** Continental Chess Association **Email:** director@chess.us **Phone:** [702-930-9550](tel:702-930-9550) **Website:** <http://www.chessevents.us> **TLA ID:** 35923

HERITAGE EVENT • GRAND PRIX • ENHANCED GRAND PRIX • JUNIOR GRAND PRIX

20th annual Southern Class Championships MARCH 17-19, 2023, FLORIDA

Event site: Wyndham Orlando Resort **Address:** 8001 International Drive, Orlando 32819 **Overall prize fund:** \$17,000 **GP Points:** 80 **FIDE Rated:** Y **Handicap accessible:** Y **Residency restriction:** N **Organizer:** Continental Chess Association **Email:** director@chess.us **Phone:** [702-930-9550](tel:702-930-9550) **Website:** <http://www.chessevents.us> **TLA ID:** 35983

GRAND PRIX • STATE CHAMPIONSHIP EVENT

2023 Pennsylvania Quick Chess Championship MARCH 17, 2023, PENNSYLVANIA

Event site: Red Lion Hotel Harrisburg Hershey **Address:** 4751 Lindle Road, Harrisburg, PA 17111 **Overall prize fund:** \$750 **GP Points:** 6 **FIDE Rated:** N **Handicap accessible:** Y **Residency restriction:** N **Organizer:** Tom Martinak **Email:** martinak_tom_m@hotmail.com **Phone:** 412-908-0286 **Website:** <http://pscfchess.org/pascholasticchamp> **TLA ID:** 36325

HERITAGE EVENT • GRAND PRIX • ENHANCED GRAND PRIX • JUNIOR GRAND PRIX

27th annual Mid-America Open MARCH 24-26, 2023, MISSOURI

Event site: Clayton Plaza Hotel St. Louis-Clayton **Address:** 7750 Carondelet Ave., St. Louis MO 63105 **Overall prize fund:** \$20,000 **GP Points:** 120 **FIDE Rated:** Y **Handicap accessible:** Y **Residency restriction:** N **Organizer:** Continental Chess Association **Email:** director@chess.us **Phone:** [702-930-9550](tel:702-930-9550) **Website:** <http://www.chessevents.us> **TLA ID:** 35708

AMERICAN CLASSIC • GRAND PRIX • ENHANCED GRAND PRIX • JUNIOR GRAND PRIX

15th annual Open at Foxwoods APRIL 5-9, 2023, CONNECTICUT

Event site: Foxwoods Resort Casino & Hotel **Address:** Rt 2, Mashantucket CT 06339 **Overall prize fund:**

\$60,000 **GP Points:** 200 **FIDE Rated:** Y **Handicap accessible:** Y **Residency restriction:** N **Organizer:** Continental Chess Association **Email:** director@chess.us **Phone:** [702-930-9550](tel:702-930-9550) **Website:** <http://www.chessevents.us> **TLA ID:** 35657

GRAND PRIX • ENHANCED GRAND PRIX • JUNIOR GRAND PRIX

4th Colonial Open APRIL 6-9, 2023, VIRGINIA

Event site: Washington Dulles Airport Marriott **Address:** 45020 Aviation Dr., Dulles, VA 20166 **Overall prize fund:** \$16,000 **GP Points:** 100 **FIDE Rated:** Y **Handicap accessible:** N **Residency restriction:** N **Organizer:** Anand Dommalapati **Email:** co2023@capitalareachess.com **Phone:** 703-627-5314 **Website:** <http://www.colonialopenchess.com> **TLA ID:** 36368

GRAND PRIX • STATE CHAMPIONSHIP EVENT

2023 PA State Game/29 Championship APRIL 8, 2023, PENNSYLVANIA

Event site: William Pitt Union, Univ. of Pittsburgh **Address:** 5th Ave. & Bigelow Blvd., Pittsburgh PA 15213 **Overall prize fund:** \$690 **GP Points:** 6 **FIDE Rated:** N **Handicap accessible:** N **Residency restriction:** N **Organizer:** Tom Martinak **Email:** martinak_tom_m@hotmail.com **Phone:** 412-908-0286 **Website:** <http://www.pscfchess.org/clearinghouse/> **TLA ID:** 36286

GRAND PRIX • ENHANCED GRAND PRIX • JUNIOR GRAND PRIX

3rd annual Niagara Falls Open MAY 5-7, 2023, NEW YORK

Event site: Sheraton Niagara Falls **Address:** 300 3rd St, Niagara Falls NY 14303 **Overall prize fund:** \$10,000 **GP Points:** 80 **FIDE Rated:** Y **Handicap accessible:** Y **Residency restriction:** N **Organizer:** Continental Chess Association **Email:** director@chess.us **Phone:** [702-930-9550](tel:702-930-9550) **Website:** <http://www.chessevents.us> **TLA ID:** 36018

HERITAGE EVENT • AMERICAN CLASSIC • GRAND PRIX • ENHANCED GRAND PRIX • JUNIOR GRAND PRIX

32nd annual Chicago Open MAY 25-29, 2023, ILLINOIS

Event site: Westin Chicago North Shore Hotel **Address:** 601 North Milwaukee Ave, Wheeling IL 60090 **Overall prize fund:** \$100,000 **GP Points:** 200 **FIDE Rated:** Y **Handicap accessible:** Y **Residency restriction:** N **Organizer:** Continental Chess Association **Email:** director@chess.us **Phone:** [702-930-9550](tel:702-930-9550) **Website:** <http://www.chessevents.us> **TLA ID:** 35929

GRAND PRIX • ENHANCED GRAND PRIX • JUNIOR GRAND PRIX

16th annual Continental Chess Cleveland Open JUNE 9-11, 2023, OHIO

Event site: WesCrown Plaza Cleveland Airport **Address:** 7230 Engle Road, Middleburg Heights OH 44130 **Overall prize fund:** \$15,000 **GP Points:** 120 **FIDE Rated:** Y **Handicap accessible:** Y **Residency restriction:** N **Organizer:** Continental Chess Association **Email:** director@chess.us **Phone:** [702-930-9550](tel:702-930-9550) **Website:** <http://www.chessevents.us> **TLA ID:** 36424

AMERICAN CLASSIC • GRAND PRIX • ENHANCED GRAND PRIX • JUNIOR GRAND PRIX

17th annual Philadelphia Open JUNE 23-25, 2023, PENNSYLVANIA

Event site: Sheraton Philadelphia Downtown **Address:** 201 N 17th St, Philadelphia, PA 19103 **Overall prize fund:** \$15,000 **GP Points:** 120 **FIDE Rated:** Y **Handicap accessible:** Y **Residency restriction:** N **Organizer:** Continental Chess Association **Email:** director@chess.us **Phone:** [702-930-9550](tel:702-930-9550) **Website:** <http://www.chessevents.us> **TLA ID:** 35977

PLEASE NOTE

DEADLINE FOR PRINT TLA SUBMISSIONS

TLAs appearing in *Chess Life Kids* must be uploaded online on the 10th, two months prior to the issue cover date in which the ad is to appear. (For example, October TLAs must be uploaded no later than August 10th.) TLAs uploaded past this deadline cannot be published without special approval by US Chess.

GRAND PRIX • ENHANCED GRAND PRIX • JUNIOR GRAND PRIX

16th annual Philadelphia International

JUNE 24-28, 2023, PENNSYLVANIA

Event site: Sheraton Philadelphia Downtown **Address:** 201 N 17th St, Philadelphia, PA 19103 **Overall prize fund:** \$20,000 **GP Points:** 200 **FIDE Rated:** Y **Handicap accessible:** Y **Residency restriction:** N **Organizer:** Continental Chess Association **Email:** director@chess.us **Phone:** [2153993939](tel:2153993939) **Website:** <http://www.chessevents.us> **TLA ID:** 35939

GRAND PRIX • ENHANCED GRAND PRIX • JUNIOR GRAND PRIX

12th annual World Open Women's Championship

JUNE 29-30, 2023, PENNSYLVANIA

Event site: Sheraton Philadelphia Downtown **Address:** 201 N 17th St, Philadelphia, PA 19103 **Overall prize fund:** \$2,000 **GP Points:** 30 **FIDE Rated:** Y **Handicap accessible:** Y **Residency restriction:** N **Organizer:** Continental Chess Association **Email:** director@chess.us **Phone:** [2153993939](tel:2153993939) **Website:** <http://www.chessevents.us> **TLA ID:** 36017

HERITAGE EVENT • AMERICAN CLASSIC • GRAND PRIX • ENHANCED GRAND PRIX • JUNIOR GRAND PRIX

51st annual World Open, top 6 sections

JUNE 30-JULY 4, 2023, PENNSYLVANIA

Event site: Sheraton Philadelphia Downtown **Address:** 201 N 17th St, Philadelphia, PA 19103 **Overall prize fund:** \$208,000 **GP Points:** 300 **FIDE Rated:** Y **Handicap accessible:** Y **Residency restriction:** N **Organizer:** Continental Chess Association **Email:** director@chess.us **Phone:** [2153993939](tel:2153993939) **Website:** <http://www.chessevents.us> **TLA ID:** 36019

GRAND PRIX • ENHANCED GRAND PRIX

12th annual World Open Game/7 Blitz

JUNE 30, 2023, PENNSYLVANIA

Event site: Sheraton Philadelphia Downtown **Address:** 201 N 17th St, Philadelphia, PA 19103 **Overall prize fund:** \$1,500 **GP Points:** 20 **FIDE Rated:** N **Handicap accessible:** Y **Residency restriction:** N **Organizer:** Continental Chess Association **Email:** director@chess.us **Phone:** [2153993939](tel:2153993939) **Website:** <http://www.chessevents.us> **TLA ID:** 36038

Regional

ALABAMA

DECEMBER 31, 2021-ONGOING ON SUNDAY, THURSDAY, AND SATURDAY

Weekly and Monthly Rated Chess at Memphis Chess Club (TN)

See Tennessee.

FEBRUARY 18, 2023

Memphis 2023 Blitz *Open* and Championship! (TN)

See Tennessee.

ARKANSAS

DECEMBER 31, 2021-ONGOING ON SUNDAY, THURSDAY, AND SATURDAY

Weekly and Monthly Rated Chess at Memphis Chess Club (TN)

See Tennessee.

FEBRUARY 18, 2023

Memphis 2023 Blitz *Open* and Championship! (TN)

See Tennessee.

ILLINOIS

JULY 21-23, 2023

2023 Caveman Medior Open

Event site: Elmhurst University, Frick Center **Address:** 190 S Prospect Ave, Elmhurst, 60126 **Overall prize fund:** \$5,000 **GP Points:** n/a **FIDE Rated:** Y **Handicap accessible:** Y **Residency restriction:** N **Organizer:** Kevin Bachler **Email:** contact@cavemanchess.com **Phone:** 224-985-5245 **Website:** <https://www.cavemanchess.com/> **TLA ID:** 36383

JULY 22, 2023

2023 Beginner Open

Event site: Elmhurst University, Frick Center **Address:** 190 S Prospect Ave, Elmhurst, 60126 **Overall prize fund:** Plaques **GP Points:** n/a **FIDE Rated:** Y **Handicap accessible:** Y **Residency restriction:** N **Organizer:** Kevin Bachler **Email:** contact@cavemanchess.com **Phone:** 224-985-5245 **Website:** <https://www.cavemanchess.com/> **TLA ID:** 36387

KENTUCKY

DECEMBER 31, 2021-ONGOING ON SUNDAY, THURSDAY, AND SATURDAY

Weekly and Monthly Rated Chess at Memphis Chess Club (TN)

See Tennessee.

FEBRUARY 18, 2023

Memphis 2023 Blitz *Open* and Championship! (TN)

See Tennessee.

MICHIGAN

STATE CHAMPIONSHIP EVENT

MARCH 11-12, 2023

2023 Michigan Junior Championships

Event site: Lansing Center **Address:** 333 E Michigan Ave, Lansing, MI 48933 **Overall prize fund:** n/a **GP Points:** n/a **FIDE Rated:** N **Handicap accessible:** N **Residency restriction:** N **Organizer:** Michigan Chess Association **Email:** jeffchess64@gmail.com **Phone:** 810-955-1271 **Website:** <https://www.michess.org/> **TLA ID:** 36553

MISSISSIPPI

DECEMBER 31, 2021-ONGOING ON SUNDAY, THURSDAY, AND SATURDAY

Weekly and Monthly Rated Chess at Memphis Chess Club (TN)

See Tennessee.

FEBRUARY 18, 2023

Memphis 2023 Blitz *Open* and Championship! (TN)

See Tennessee.

MISSOURI

DECEMBER 31, 2021-ONGOING ON SUNDAY, THURSDAY, AND SATURDAY

Weekly and Monthly Rated Chess at Memphis Chess Club (TN)

See Tennessee.

FEBRUARY 18, 2023

Memphis 2023 Blitz *Open* and Championship! (TN)

See Tennessee.

NEVADA

JUNE 16, 2023

Youth Trophy Tournament

Event site: Rio All Suites Hotel & Casino **Address:** 3700 W Flamingo Rd, Las Vegas, NV 89103 **Overall prize fund:** Trophies **GP Points:** n/a **FIDE Rated:** N **Handicap accessible:** Y **Residency restriction:** N **Organizer:** Vegas Chess Festivals **Email:** vegaschess@gmail.com **Phone:** 702-930-9550 **Website:** <https://vegaschessfestival.com/> **TLA ID:** 36001

NEW JERSEY

REGIONALS

FEBRUARY 25, 2023

King's Chess Club Youth/Young Adult Quads

Event site: Grace Church Bethlehem Campus **Address:** 758 Route 10, Randolph, NJ 07869 **Overall prize fund:** n/a **GP Points:** n/a **FIDE Rated:** N **Handicap accessible:** Y **Residency restriction:** N **Organizer:** Bob McAdams **Email:** fbmbright@optonline.net **Phone:** 9736943988 **Website:** n/a **TLA ID:** 36334

STATE CHAMPIONSHIP EVENT

FEBRUARY 26, 2023

NJ Elementary and Junior High School Championships

Event site: Brookdale Community College - Student Life Center **Address:** Just past lots #5-6, Arena

Drive, Lincroft, NJ 07738 **Overall prize fund:** n/a **GP Points:** n/a **FIDE Rated:** N **Handicap accessible:** Y **Residency restriction:** N **Organizer:** New Jersey Chess Federation **Email:** tournaments.njscf@gmail.com **Phone:** [9084555555](tel:9084555555) **Website:** <https://njscf.org/> **TLA ID:** 35565

NEW YORK

HERITAGE EVENT • AMERICAN CLASSIC • JUNIOR GRAND PRIX • STATE CHAMPIONSHIP EVENT

MARCH 11-12, 2023

55th annual New York State Scholastic Championships

Event site: Saratoga Hilton & Courtyard by Marriott **Address:** 534 Broadway, 11 Excelsior Ave, Saratoga Springs, NY 12866 **Overall prize fund:** n/a **GP Points:** n/a **FIDE Rated:** N **Handicap accessible:** Y **Residency restriction:** N **Organizer:** Continental Chess Association **Email:** director@chess.us **Phone:** [5184864805](tel:5184864805) **Website:** <http://www.chessevents.us> **TLA ID:** 35289

PENNSYLVANIA

HERITAGE EVENT • STATE CHAMPIONSHIP EVENT

MARCH 18-19, 2023

2023 Pennsylvania State Scholastic Championships

Event site: Red Lion Hotel Harrisburg Hershey **Address:** 4751 Lindle Road, Harrisburg, PA 17111 **Overall prize fund:** n/a **GP Points:** n/a **FIDE Rated:** N **Handicap accessible:** N **Residency restriction:** N **Organizer:** Tom Martinak **Email:** martinak_tom_m@hotmail.com **Phone:** 412-908-0286 **Website:** <http://psfchess.org/pascholasticchamp> **TLA ID:** 36327

HERITAGE EVENT • JUNIOR GRAND PRIX

JUNE 23-25, 2023

51st annual World Open, lower sections

Event site: Sheraton Philadelphia Downtown **Address:** 201 N 17th St, Philadelphia, PA 19103 **Overall prize fund:** \$17,000 **GP Points:** n/a **FIDE Rated:** N **Handicap accessible:** Y **Residency restriction:** N **Organizer:** Continental Chess Association **Email:** director@chess.us **Phone:** [2153993939](tel:2153993939) **Website:** <http://www.chessevents.us> **TLA ID:** 36030

JUNIOR GRAND PRIX

JUNE 26-28, 2023

2nd annual World Open Amateur

Event site: Sheraton Philadelphia Downtown **Address:** 201 N 17th St, Philadelphia, PA 19103 **Overall prize fund:** \$3,000 **GP Points:** n/a **FIDE Rated:** Y **Handicap accessible:** Y **Residency restriction:** N **Organizer:** Continental Chess Association **Email:** director@chess.us **Phone:** [2153993939](tel:2153993939) **Website:** <http://www.chessevents.us> **TLA ID:** 35957

JUNIOR GRAND PRIX

JUNE 26-27, 2023

15th annual World Open Under 13 Championship

Event site: Sheraton Philadelphia Downtown **Address:** 201 N 17th St, Philadelphia, PA 19103 **Overall prize fund:** n/a **GP Points:** n/a **FIDE Rated:** N **Handicap accessible:** Y **Residency restriction:** N **Organizer:** Continental Chess Association **Email:** director@chess.us **Phone:** [2153993939](tel:2153993939) **Website:** <http://www.chessevents.us> **TLA ID:** 35994

JUNIOR GRAND PRIX • REGIONALS

JUNE 28-29, 2023

World Open Junior Championship

Event site: Sheraton Philadelphia Downtown **Address:** 201 N 17th St, Philadelphia, PA 19103 **Overall prize fund:** \$5,000 **GP Points:** n/a **FIDE Rated:** N **Handicap accessible:** Y **Residency restriction:** N **Organizer:** Continental Chess Association **Email:** director@chess.us **Phone:** [2153993939](tel:2153993939) **Website:** <http://www.chessevents.us> **TLA ID:** 36031

JUNE 29, 2023

10th annual World Open Action

Event site: Sheraton Philadelphia Downtown **Address:** 201 N 17th St, Philadelphia, PA 19103 **Overall prize fund:** see TLA **GP Points:** n/a **FIDE Rated:** N **Handicap accessible:** Y **Residency restriction:** N **Organizer:** Continental Chess Association **Email:** director@chess.us **Phone:** [2153993939](tel:2153993939) **Website:** <http://www.chessevents.us> **TLA ID:** 36036

TENNESSEE

DECEMBER 31, 2021-ONGOING ON SUNDAY, THURSDAY, AND SATURDAY

Weekly and Monthly Rated Chess at Memphis Chess Club

Event site: Memphis Chess Club **Address:** 195 Madison Ave Suite 101, Memphis, TN 38103 **Overall prize fund:** n/a **GP Points:** n/a **FIDE Rated:** N **Handicap accessible:** Y **Residency restriction:** N **Organizer:** Memphis Chess Club **Email:** info@memphischessclub.com **Phone:** 33685755 **Website:** <https://www.memphischessclub.com/> **TLA ID:** 32334

FEBRUARY 18, 2023

Memphis 2023 Blitz *Open* and Championship!

Event site: Memphis Chess Club **Address:** 195 Madison Ave Suite 101, Memphis, TN 38103 **Overall prize fund:** \$1,150 **GP Points:** n/a **FIDE Rated:** N **Handicap accessible:** Y **Residency restriction:** N **Organizer:** Memphis Chess Club **Email:** info@memphischessclub.com **Phone:** 7318685755 **Website:** <https://www.memphischessclub.com/> **TLA ID:** 36470

VIRGINIA

STATE CHAMPIONSHIP EVENT

MARCH 25-26, 2023

2023 Virginia Scholastic Championships

Event site: Norfolk Waterside Marriott Hotel **Address:** 235 East Main St., Norfolk, VA 23510 **Overall prize fund:** Over \$5,000 in trophies and medals **GP Points:** n/a **FIDE Rated:** N **Handicap accessible:** Y **Residency restriction:** Y **Organizer:** Mike Hoffpauir **Email:** mhoffpauir@aol.com **Phone:** 7578464805 **Website:** <http://www.vachess.org> **TLA ID:** 36539

WEST VIRGINIA

STATE CHAMPIONSHIP EVENT

MARCH 11, 2023

2023 - WV State Scholastic Chess Championships

Event site: WV State University Student Union **Address:** 284 Washington Ave., Institute, WV 25112 **Overall prize fund:** n/a **GP Points:** n/a **FIDE Rated:** N **Handicap accessible:** Y **Residency restriction:** N **Organizer:** Craig M Timmons **Email:** craigtimmons@gmail.com **Phone:** 3044152119 **Website:** <https://www.wvsca.com> **TLA ID:** 36263

WISCONSIN

HERITAGE EVENT

FEBRUARY 25, 2023

Waukesha Memorial (41st Annual)

Event site: Country Inn & Suites **Address:** 1250 South Moorland RD (Exit 301 AB from I-94), Brookfield, WI 53005 **Overall prize fund:** n/a **GP Points:** n/a **FIDE Rated:** N **Handicap accessible:** Y **Residency restriction:** N **Organizer:** Waukesha Chess Club **Email:** jnic-kell@wi.rr.com **Phone:** 262.544.6266 **Website:** <https://waukeshachessclub.blogspot.com> **TLA ID:** 35602

FEBRUARY 25, 2023

RBO - Waukesha

Event site: Country Inn & Suites **Address:** 1250 South Moorland RD (Exit 301 AB from I-94), Brookfield, WI 53005 **Overall prize fund:** n/a **GP Points:** n/a **FIDE Rated:** N **Handicap accessible:** Y **Residency restriction:** N **Organizer:** Waukesha Chess Club **Email:** jnic-kell@wi.rr.com **Phone:** 262.544.6266 **Website:** <https://waukeshachessclub.blogspot.com> **TLA ID:** 35604

Chess Life KIDS (USPS 023-567, ISSN: 1932-5894) is published in February, April, June, August, October, and December of every year by US Chess, 333 S. 18th Street, Suite 210, St. Louis, MO 63103. Periodical postage paid at St. Louis, Missouri, and additional mailing offices.

CHANGE OF ADDRESS: Be sure to notify us at once of any change of address. Please include your old address and your new address, along with your US Chess I.D. number..

POSTMASTER: Send address changes to US Chess, PO Box 775308, St. Louis, MO 63177.



ChessKid

.com

PLAY

LEARN



**#1 Chess Site for Kids. 200,000+ Kids, Parents, & Coaches!
100% Safe and Kid-Friendly! Signup Today - it's FREE!**



**The Internet Chess Club and
Continental Chess Association
presents:**

Your best choice for online fun!

- ♔ Over **\$250,000** in prize money paid out
- ♔ Class prizes so you can win too!
- ♔ Longer controls for an OTB experience
- ♔ Weekly US Chess rated events
- ♔ US Chess approved fair play oversight



More information:

chessaction.com

CAVEMAN SUMMER CHESS Festival



JULY 16-23, 2023

Location: Elmhurst University, Elmhurst, IL (15 minutes from O'Hare, just west of Chicago)

CAMPS WITHIN THE CAMP JULY 16-21

- ✓ Master Class- GM instr only [Already two entrants: Arthur Xu 2250, Natalie Wisniowski 2150]
- ✓ Classes for players from 5 to 85, fundamental and advanced, separated by age and strength
- ✓ Family and chaperone registrations to accompany young campers



Add'l invited
instructors - TBD soon

Top Women:

GM Krush, WIM Root PhD, WGM Yu

Top Men:

GM's Lenderman, Novikov, Mitkov

Camp Director:

FM, FT Kevin Bachler

Co-Director: Deb Socha

TOURNAMENTS JULY 21-23

- ✓ US Senior Open (Nat'l champ!)
- ✓ Caveman Medior Open
- ✓ US Junior Open (Nat'l champ!)
- ✓ US Blind (Nat'l champ!)
- ✓ Caveman Beginner Open (7/22)
- ✓ Registration on www.kingregistration.com

Tournaments and camps for players of all ages and strengths in a Family Friendly environment with side events for non-players



GM Kaidanov



GM Yermolinsky



GM Shulman



GM Goldin



GM Gurevich



GIFT CERTIFICATES AVAILABLE



Also: dinner theater, shopping excursions, fitness classes

Information and Registration: www.cavemanchess.com Email: contact@cavemanchess.com



US CHESS
FEDERATION SALES

The United States' Largest Chess Specialty Retailer

888.51.CHESS (512.4377)



www.USCFSales.com

CHESS SUBSCRIPTIONS

NEW IN CHESS MAGAZINE

One Year Subscription | 8 Issues



New in Chess is the magazine of choice for serious Chess players. If it is happening in Chess, you'll read about it in New in Chess Magazine. It features On the spot tournament reports, in-depth interviews with top players, comprehensive analysis!

NICYRSUB

Subscription **\$100.00**

If Purchased Individually \$119.95

CHESS INFORMANT

One Year Subscription | 4 Issues



Subscribe to Chess Informant - the publication the Pros Use and Create! Subscriptions come with tons of benefits: SAVE 20% off the cover price! Pay once as soon as a new issue comes out, it is sent directly to you. Don't worry about ordering every issue! subscribe once and let us take care of it for you!

BOSUBINF

Subscription **\$129.95**

If Purchased Individually \$159.95

AMERICAN CHESS MAGAZINE

One Year Subscription | 6 Issues



The American Chess Magazine brings you 100 colorful pages, packed with amazing chess material, ranging from world class play to local State news and games. Instructive and entertaining games from recent events are presented with outstanding annotations, while special attention is given to overviews of latest trends in the openings, and explanations of practical endgame techniques. Here's your chance to subscribe and save 20% off MSRP and receive FREE SHIPPING!

BOSUBACM6

Subscription **\$129.95**

If Purchased Individually \$149.95

**Free Ground Shipping
On All Books, Software and DVDs
at US Chess Sales**

**\$25.00 Minimum - Excludes Clearance,
Shopworn and Items Otherwise Marked**