

CHESS LIFE

Kids

JUNE 2023 ■ USChess.org



**IS BLITZ BAD
FOR YOUR CHESS?**

Join Our Chess Summer Camps!

Sign your child up now for a week
of chess knowledge and fun.



Grandmaster instructors provide daily lessons, puzzles, and play to help guide students through each session. Full and half-day camps are available for ages 6-14. Camps will be held weekly from May - July 2023 at various locations throughout Saint Louis.



It is the mission of the Saint Louis Chess Club, an educational organization, to maintain a formal program of instruction to teach the game of chess and to promote and support its educational program through community outreach and local and national partnerships to increase the awareness of the educational value of chess.

The Saint Louis Chess Club admits students of any gender, race, color, national and ethnic origin to all the rights, privileges, programs, and activities generally accorded or made available to students at the school. It does not discriminate on the basis of gender, race, color, national and ethnic origin in administration of its educational policies, admissions policies, scholarship and loan programs, and athletic and other school-administered programs.

STLCHESSCLUB.ORG/CHESSCAMPS
[@STLCHESSCLUB](https://www.instagram.com/STLCHESSCLUB) [#STLCHESSCLUB](https://www.facebook.com/STLCHESSCLUB)





EXECUTIVE DIRECTOR
Carol Meyer

SENIOR DIRECTOR OF
STRATEGIC COMMUNICATION
Daniel Lucas

EDITORIAL

CHESS LIFE/CHESS LIFE
KIDS EDITOR
John Hartmann
john.hartmann@uschess.org

ART DIRECTOR
Natasha Roberts

MANAGING EDITOR
Melinda Matthews

GRAPHICS ASSISTANT
Nicole Esaltare

TECHNICAL EDITOR
IM Ron Burnett

COMIC ARTIST AND ILLUSTRATOR
Nico Barrios

CHARACTER DESIGNER AND
ILLUSTRATOR
Chandler Ellison

Chess Life Kids provides a foundational interest in chess for beginning level pre-teens through the use of games, instruction, and human-interest stories. It is intended to be useful for Youth members, parents, and coaches. If interested in writing for this publication, send a well-crafted query with writing samples to the editor at john.hartmann@uschess.org

Teachers may photocopy instructional articles for classroom use, but republication or widespread copying without the written consent of US Chess is forbidden.

Chess Life Kids | Vol. 18, No. 3

CHESS LIFE Kids

4 IN SESSION **The CLK Openings Project**

BY JOHN HARTMANN AND JJ LANG

7 CHESS ADVENTURES **"The Chess Players"**

ART BY NICOLAS BARRIOS

8 CHESS STORIES **Rose Rockets Up the Ranks!**

BY AL LAWRENCE

12 COVER STORY

LET THE KIDS PLAY!

One of America's top young GMs argues for the value of blitz chess.

BY GM JEFFERY XIONG

18 PUZZLE ME THIS, PUZZLE ME THAT

BY JEFF COAKLEY



ON THE COVER

World Champions Mikhail Botvinnik and Bobby Fischer may not have agreed on much, but they both seem to have believed that blitz chess "kills your ideas." Is that really true? Will your playing blitz make your coach mad? In this issue GM Jeffery Xiong makes the case for including blitz in your chess diet, so long as you play slow games too!

ART: KENNETH ANDERSON



BY JOHN HARTMANN

The CHESSLIFE Kids Opening Project



AND JJ LANG

THE OPENING PHASE of the game is perhaps the most studied part of chess, and it's also the most misunderstood.

Consider how many books, videos, and online courses are out there, each offering different repertoires to learn, different moves to memorize... and each promising to boost your game to the stratosphere.

There's so much conflicting advice! Some people say you should learn a system like the London or the Colle. Others believe you should play what the top GMs play right away — the Najdorf, perhaps, or the Grünfeld. Still others argue for gambits and tricks, with the idea that quick wins encourage players to keep improving.

So what's the right path? What's the best way to really learn openings?

Beginning this month, we here at *Chess Life Kids* will try to cut through all of the noise and offer a complete attacking repertoire for an improving scholastic player. Using data from *Lichess.org* to pinpoint moves you'll see

over-the-board, we'll give you a complete set of openings with key moves and ideas clearly explained, along with just enough analysis to map out critical positions and variations.

But more than that, we want to try to model how to go about learning openings, because it's not simply about cramming move after move into your memory banks. We want to teach you how to read chess analysis, how to know when to memorize moves and when to focus on understanding, and how to go about building your own opening files, based on what you see here, or perhaps created completely on your own.

With each installment of our repertoire, there will be a complementary video on the US Chess YouTube channel, explaining the main ideas and showing a model game or two. We will put the analysis with a number of model games in a Lichess study for you to work on, and for you Chessable fans out there, we're even making all of this available in a free course on the Chessable website.

That's all beginning in our August issue. In this first installment, we want to explain why we've made certain repertoire choices, and how our ideas about improvement feed into the lines we recommend.

There's an old joke you may have heard: A visitor to New York City is wandering around 57th Street, and stops to ask a passerby with a violin case: "How do I get to Carnegie Hall?" (Carnegie Hall is a famous concert hall in New York.) The answer? "Practice, practice, practice!"

It's always dangerous to explain a joke, but here we'll risk it. The tourist is expecting to get directions, like "Turn here, go there." Instead they get advice. The only way they'll "get there" — the only way they'll perform on-stage — is by practicing.

Chess players have their own version of this joke. "How do I get to 1800? Tactics, tactics, tactics!" If you have chess-playing parents or grandparents, they may have heard a slightly different take on this from FM Ken Smith, who wrote that "until you are at least an [1800 or 1900] player... your

first name is ‘Tactics,’ your middle name is ‘Tactics,’ and your last name is ‘Tactics.’”

While we certainly do not believe that Puzzle Rush alone will lead to improvement, it’s clear that solving tactics on a regular basis is essential for an improving player. We also believe that some openings are better for training us to play tactical, aggressive chess. When we get open positions — those that do not feature locked pawn centers — on the board, we are forced to use patterns we have studied and calculate our way to victory. And even closed, locked positions have a tendency to become open at some point.

Attackers have a greater margin of error than defenders; after all, if your attack fizzles out, you can usually fight on, while if you miss an important defensive move, you’re probably lost. Perhaps more importantly, when you play open, attacking chess, and when you aim for those kinds of positions, you end up in situations where your tactics training can be put to good use. That’s not always true in quieter, “system-based” openings.

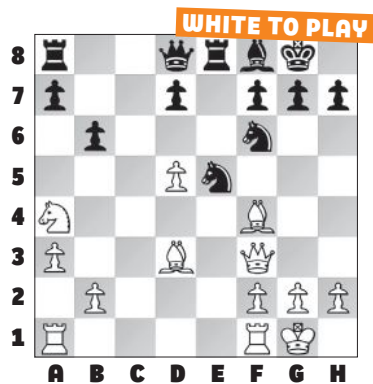
Consider these two examples.

POSITION A

GM Yu Yangyi (2736)

GM Magnus Carlsen (2834)

Qatar Masters (Tiebreak), 12.29.2015



There is no obvious weakness in Black’s position, and while White has something called a “space advantage” thanks to the d5-pawn, it is not clear what the short-term goals or plans are. What would you play?

15. Qd1??

This, or any other retreating move with the queen, loses a piece. The hardest part of this position is even realizing that there is a tactic here, since there was nothing obvious to look for. But, as is often the case, a slow and long-term advantage opens you up to fast and short-term threats from your opponent.

The best move was 15. Bxe5 Rxe5 16. Nc3 re-centralizing White’s pieces.

15. ... Nxd3

Here, Carlsen’s 2736-rated opponent thought for over three minutes. Why didn’t he capture immediately? Because he realized he was losing a piece!

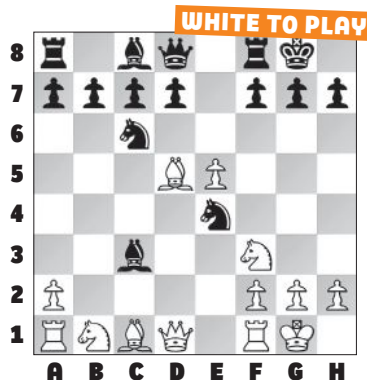
16. Qxd3 Re4, White resigned.

POSITION B

Mikhail Chigorin

Semion Alapin

St. Petersburg, 1883



The only way to save the rook is to

capture Black’s bishop. But does any other move jump out?

10. Bxe4!

If you’ve ever studied the “Greek Gift,” you’ll notice the coordination of White’s pieces against Black’s lonely king. This doesn’t necessarily mean it works, but you probably have already started calculating what Chigorin played after...

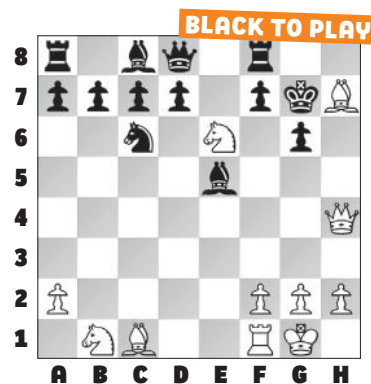
10. ... Bxa1 11. Bxh7+ Kh8

Black loses by force after 11. ... Kxh7 12. Ng5+ Kg8 13. Qh5 Re8? 14. Qxf7+ Kh8 15. Qh5+ Kg8 16. Qh7+ Kf8 17. Qh8+ Ke7 18. Qxg7, mate.

12. Ng5 g6 13. Qg4

Probably the first “hard” move to find, as it is not forcing. But we have opened the h-file, and we now want a long-range piece to stare down Black’s king.

13. ... Bxe5 14. Qh4 Kg7 15. Ne6+



If you could see all of this in your head, you should definitely be playing an attacking repertoire as White. But even if you couldn’t, chances are you had an easier time looking for something like this than you did realizing that White was losing a piece in the previous diagram. This is because, for most chess players, attack comes easier than defense.

15. ... fxe6 16. Qh6+ Kf7 17. Bxg6+

Ke7 18. Qh4+ Rf6 19. Ba3+ d6 20. Qh7+ Kf8 21. Qh8+ Ke7 22. Qg7+ Rf7 23. Qxf7, mate.

The repertoire we will analyze over the coming months is aimed at giving you clear, playable positions where you can put your tactical skills to good use. We also want you to learn something along the way, so isolated queen’s pawn positions (or “IQPs”) will make up a big part of the package.

IQPs can emerge from many different opening systems. You can reach them from the Sicilian, the Caro-Kann, the French, the Queen’s Gambit (Accepted and Declined!), the Nimzo-Indian, and more. IQPs require the “attacker” — the one with the isolated queen’s pawn — to play actively to compensate for the isolated pawn, while the “defender” — the one without the isolani — has to limit

their opponent’s piece play and bear down on their weaknesses.

Learning to play IQPs as both attacker and defender is critical for long-term success in chess. You’ll get plenty of practice with them in this repertoire.

We’ll also work to make sure you understand what you have to memorize, and what you have to simply understand. And this gets to one of the most common misconceptions about opening study.

We have known students who react badly when their opponent plays something “out of book.” After dutifully memorizing their analysis, they get flustered when their opponent does something they’re not “supposed to.” “The book says this and not that,” we’re told, “so why don’t I know how to win?”

There are surprisingly few positions, even in the open games,

where you have to know a string of only-moves by heart. In most cases, knowledge of key ideas and patterns is more important, and if you know them, you may find critical tactical moves on your own, as we saw in Position B above.

We will shy away from “hope chess,” or playing poor moves that try to trick our opponents into blunders. But we will, using data from Lichess, show you how to exploit those all-too-typical mistakes that you will see at the board with both words and analysis.

Most of all, we’ll try to show you that opening study can be fun, especially when limited to what we really need to know. We’ll begin by pushing our e-pawns forward, and sketching our response to Black’s most popular move at the amateur level — 1. ... e5. See you in August! ♠

 KHAN WORLD SCHOOL

 ASU Preparatory Academy
Arizona State University

Stay a move ahead.

Khan World School @ ASU Prep

We’ve partnered with Sal Khan, founder of Khan Academy, to build an innovative online school for high-achieving students around the world. Our college-prep model focuses on student agency and collaborative learning to supercharge academic growth.

Now enrolling grades 6–12.

Learn more at khanworldschool.com

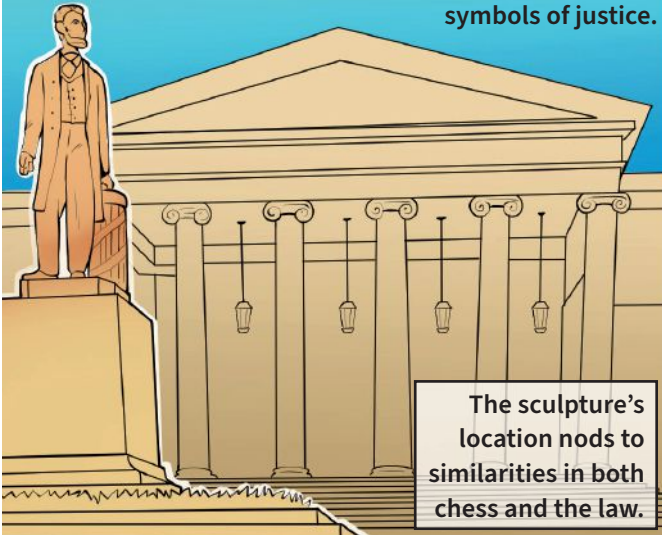


CHESS ADVENTURES

WITH "THE CHESS PLAYERS"

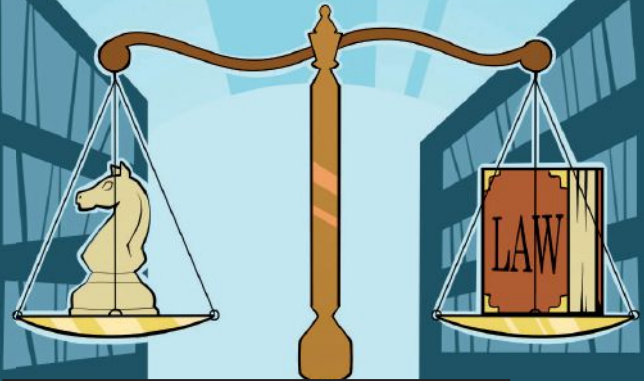
"The Chess Players," a life-sized bronze sculpture in Washington, D.C., turns 40 this year. It depicts two men engrossed in a chess game.

The sculpture sits in the shadow of the U.S. Capitol, juxtaposed with other iconic buildings and symbols of justice.



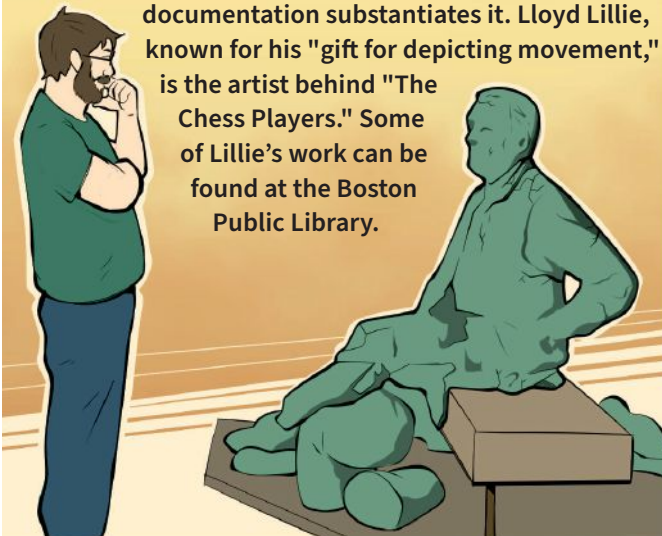
The sculpture's location nods to similarities in both chess and the law.

Chess games have openings, middles, and ends, just as court cases have opening and closing arguments. And both balance logic and creativity.



Why the sculpture was commissioned and how it ended up in D.C.'s John Marshall Memorial Park remains a mystery.

Rumor has it that Marshall, the longest-serving chief justice of the U.S. Supreme Court, played chess — but no documentation substantiates it. Lloyd Lillie, known for his "gift for depicting movement," is the artist behind "The Chess Players." Some of Lillie's work can be found at the Boston Public Library.



Passersby love to add whimsical touches to the sculpture, such as scarves or extra chess pieces. If you visit D.C. be sure to look for "The Chess Players" and perhaps add your own chess flourish!

ART BY NICOLAS BARRIOS

To learn more, see "First Moves" by Menachim Wecker in the April issue of *Chess Life*.



Rose Rockets Up the Ranks!

BY AL LAWRENCE

NOT SO LONG ago, Rose Atwell was reading the same magazine you're reading for tips on how to improve her chess. Now her rating has shot up like a rocket! At a recent tournament in Los Angeles, she earned the elite title of national master. Just two weeks later in Reno, Nevada, 14-year-old Rose ignited the afterburners. She beat a grandmaster! That's one giant leap to the moon for any future champ. Here's that game, her first win against a GM.

SICILIAN DEFENSE, ACCELERATED DRAGON (B27)

GM Rose Atwell (2203)

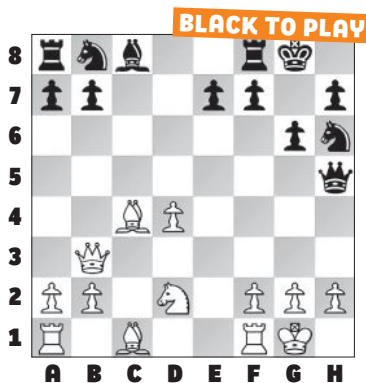
GM Sergey Kudrin (2424)

Larry Evans Memorial (3), Reno, 04.12.2023

Annotations by Rose Atwell

1. e4 c5 2. Nf3 g6 3. c3 d5 4. exd5 Qxd5 5. d4 Bg7 6. Nbd2 cxd4 7. Bc4 Developing with a tempo!

7. ... Qh5 8. Qb3 Nh6 9. Nxd4 0-0 10. 0-0 Bxd4 11. cxd4



I have a lonely pawn in the center, but it's okay because Black has weak squares near his king.

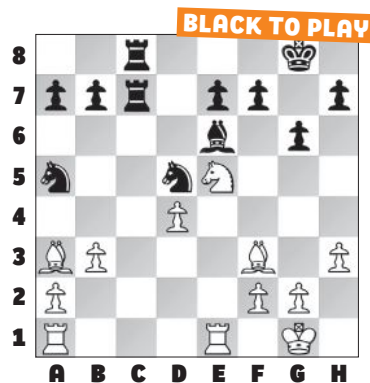
11. ... Nc6 12. Qc3 Na5 13. Bd3

This move is a little too passive. His king is weak. Instead I should have played 13. b3 and developed my other bishop to b2, so it can attack.

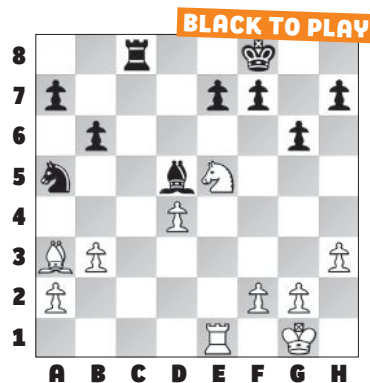
13. ... Be6 14. Nf3 Rac8 15. Qd2 Ng4 16. b3 Nc6 17. h3 Nf6 18. Be2 Qa5 19. Qxa5 Nxa5 20. Ba3 Rc7 21. Ne5 Nd5 22. Bf3 Rfc8 23. Rfe1

(see diagram top of next column)

This endgame is around equal. I have an isolated d-pawn, but I also have a little more activity.



23. ... Kf8 24. Bc5 b6 25. Ba3 Rd8 26. Rac1 Rdc8 27. Bxd5 Rxc1 28. Bxc1 Bxd5 29. Ba3



29. ... Rc7?

After this he is lost.

Black's last chance to hold was 29. ... Ke8, which looks scary for him, but I don't have any useful knight jumps.

30. Ng4 Be6 31. Nf6 Rc2 32. d5 Rxa2 33. Bb4 Kg7 34. dxe6 Nc6
Here 34. ... Kxf6 doesn't work because the pawn promotes after 35. Bc3+ Kg5 36. exf7.

35. Nd5 fxe6 36. Rxe6 Nxb4 37. Nxb4
Black is just down a piece.

37. ... Ra1+ 38. Kh2 Kf7 39. Re3 Rc1 40. Nd5 e6 41. Nf4 Rc6 42. Nd3 Ke7 43. Ne5 Rc7 44. f4 a5 45. Nc4 Rc6 46. Rd3, Black resigned.
This is my first win against a grandmaster!

Rose proved it was no fluke. In the same tournament, she also beat a prominent master and drew GM Melik Khachiyani, the event's top-rated player! "Rose is clearly a big talent with a big future," Khachiyani said. Then, in the last round, she faced yet another grandmaster. For a while, the game looked as if it might be a draw that would earn Rose clear first place. But eventually, she was tripped up by the more experienced player. With a 1½/3 result against GMs, her rating climbed to 2250, which should make her the top-rated 14-year-old girl in US Chess.

Rose is home-schooled and lives with her parents and two younger

brothers in Valencia, California. She started playing soon after her eighth birthday, intrigued by her father's online chess games. At first, she played only with her dad. Then she began attending Jay Stallings' nearby "Coach Jay's Chess Academy." She especially liked beating the older schoolkids. Now she takes lessons online from grandmasters. "Whatever Rose does, her commitment and dedication bring success," Stallings said.

"I spend several hours on chess a day," Rose said. She doesn't use costly chess programs on her computer. She relies on the free online resources from *Lichess.com* and practices on *Chess.com* and *Chesstempo.com* — "Great for training in tactics. But I'd call myself a more positional player, although good players have to be a bit of everything." She learned a lot from her recent matchups against grandmasters and goes over her tournament games with her online coaches. "And I've been following the world championship online."

Her dad Jeff drives Rose to one or two tournaments a month. "That gives me plenty of time to relax a bit and study my games from the tournaments," she said. She makes sure to get physical



exercise as well, spending time on the family treadmill.

Rose sees her next step as making FIDE Master and is hoping for an invitation to the U.S. Girls' Junior Championship. "I've been wanting to compete in that since I started playing." She also looks forward to qualifying for the U.S. Women's Championship. "And I'm hoping to go to Europe for norm tournaments." Those are top-rated events that can be stepping stones to the IM and GM titles.

Rose's ultimate goal is not "only" to beat GMs but to become one, like her chess hero Judith Polgar, who became the first woman to break into the world's top 10.

"But I kind of want to be my own hero in chess and inspire other young girls." We think she's already done that. 🏆



PHOTOS: COURTESY SUBJECT

DID YOU KNOW? Like Rose, you can practice with FREE online resources. Check out: *Lichess.com*, *Chess.com*, and *Chesstempo.com*. And play over famous grandmaster games at *Chessgames.com*. You won't even need to set up a board!



Come play chess this summer on the beautiful shores of Lake Michigan in downtown Chicago

FIDE Direct Titles & Norms Available

Awards for the top 3 national teams & top players in each category

The Pan-American Youth Chess Championships feature both Open & Female sections for players in categories: Under 8, 10, 12, 14, 16 & 18 years old

The Pan-American Youth Blitz Championships feature Open categories Under 8, 10, 12, 14, 16 & 18 years old

The Pan-American Youth Bughouse Tournament features one Open section

WWW.PANAMYOUTH2023.COM





**The Internet Chess Club and
Continental Chess Association
presents:**

Your best choice for online fun!

- 👑 Over **\$250,000** in prize money paid out
- 👑 Class prizes so you can win too!
- 👑 Longer controls for an OTB experience
- 👑 Weekly US Chess rated events
- 👑 US Chess approved fair play oversight



*Continental
Chess
Association*

More information:

chessaction.com



ChessKid
.com

PLAY

LEARN



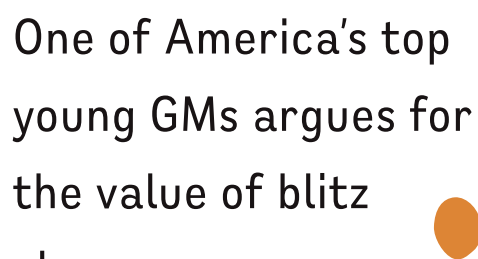
**#1 Chess Site for Kids. 200,000+ Kids, Parents, & Coaches!
100% Safe and Kid-Friendly! Signup Today - it's FREE!**



Let the

K **I** **I** **D** **S**

P **L** **A** **Y**!



One of America's top young GMs argues for the value of blitz chess.

BY **GM JEFFERY XIONG**

MY FIRST GM coach, Babakuli Annakov, and later, the coaches provided by Kasparov Chess Foundation such as GM Alex Chernin, provided rigorous chess training designed to grow world class players. Then and now, they tend to believe that serious chess players should not spend precious time on playful blitz games.

When I was young and just starting out in chess, my favorite things to do were playing blitz and bullet games online, along with watching GMs playing blitz on the Internet Chess Club. Now called *chessclub.com*, “ICC” was the place for online chess before *Chess.com* became the dominant online chess platform. This certainly could have been perceived as naughty by my coaches and my dad, but since my chess rating kept progressing smoothly over those years, they were not too harsh with me.

My coaches had valid reasons for thinking blitz chess was not ideal for chess development. Perhaps you have heard similar ideas from your own coaches.

Chess is a strategy game that requires thoughtful planning and in-depth analysis. In order to master chess, it is important to spend time studying and analyzing, as well as playing longer games that allow for more complex strategies and ideas to be explored. When we are at the board playing classical time control games, we need to be willing to invest time in developing plans and double check our decisions to avoid blunders, especially at critical moments of the game. Only that way can we find the best move and maximize our results.

My coaches were all of the “Soviet School” of chess, which

believes that training time should be invested in developing positional understanding, long-term planning, and analytical skills. I remember days when GM Chernin gave me positions that were so complicated that it took me as much as an hour to analyze and calculate to a result. That was very beneficial in building my chess understanding and analytical muscle.

Blitz, in contrast, requires quick decisions, and relies heavily on intuition and instinct. If you spend too much time finding the best move or pushing an edge, you may not have enough time to convert the advantage to a win later in the game. There is incentive to avoid doing long calculation in blitz games.

The fast-paced nature of the blitz game can build bad habits in young players. The speed of the game forces us to make hasty decisions, instead of exploring different candidate moves, weighing them to identify optimal plans, and checking our ideas before touching the pieces.

Now we get to the question. Is blitz good or bad for your overall game?

I believe that young players should play blitz games as much as they want, as long as they



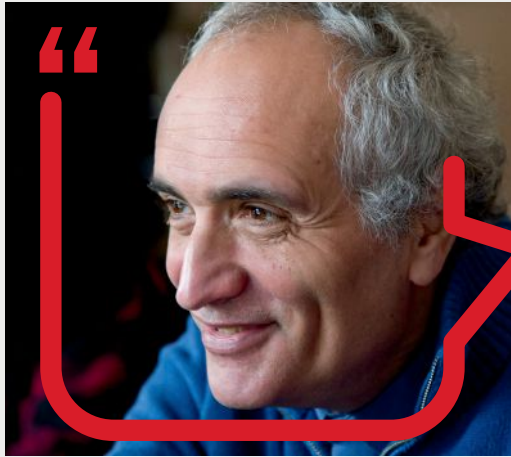
GM Jeffery Xiong at the 2022 American Cup Blitz tournament

don't refuse their chess lessons or give up longer time control games and tournaments. My biggest reason for giving young players freedom to play blitz is this: many young players LOVE playing blitz! I know that for a fact because I am one of them. And many of my chess friends who I grew up with are the same. I have built a lot of friendships in the many blitz games we played after national and world youth chess championships.

LOVE is the best coach of chess.



*“Playing blitz trains you for those inevitable time scrambles, forcing you to learn how to **THINK EFFICIENTLY** and with focus. It's also perfect for getting a lot of games in with a new opening. But I discourage young players from doing it in between rounds at tournaments because the fast-paced moves could creep into games that count.” - Coach Jay Stallings*



*"If you are a great chess player, then with **SPECIAL EFFORT** you can improve a lot in blitz – see the recent Titled Tuesday results of GM Fabiano Caruana. But it doesn't work the other way around. Still, I think blitz is helpful... if you don't play too much."* - GM Dmitry Gurevich

Love of chess keeps us in the game. If young players lose their love for the game, they are not going to work to improve their understanding and skills, no matter how many brilliant coaches and training programs you provide them. Letting kids enjoy the game is the most important thing in chess growth.

But there are more reasons for my belief in the value of blitz. Playing blitz chess can help improve key chess skills, such as pattern recognition, tactical awareness, and speed of calculation. It can also give the player the chance to play many

more games than one could get at long time controls, giving improving players exposure to more (and different) openings, while growing experience in handling all kinds of scenarios.

With today's time controls growing faster and faster, and with rapid and blitz games increasingly used for tiebreakers, there are competitive reasons for growing skill in quick games. We have seen recent U.S. Championships go to Armageddon blitz games, and the FIDE World Cup features a knockout format where matches are often decided by rapid and blitz battles.

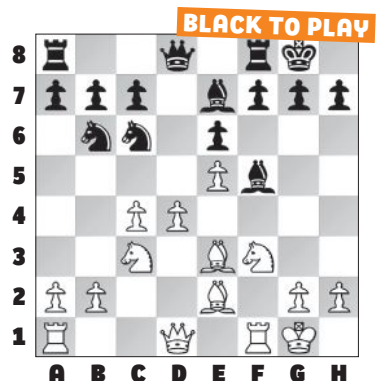
Let me show you a blitz game

that I played in the 2019 FIDE World Cup against the world class GM Jan-Krzysztof Duda. I eliminated him with this victory, but Duda won the next World Cup in 2021. This match was bitterly fought. We traded wins in the classical and rapid time control games. I was able to finally hold him to a draw in the first blitz game and now, with the white pieces, I wanted to take the full point.

ALEKHINE'S DEFENSE (B03)

GM Jeffery Xiong (2707)
GM Jan-Krzysztof Duda (2730)
FIDE World Cup (4.8), Khanty-Mansiysk, 09.22.2019

1. e4 Nf6 2. e5 Nd5 3. c4 Nb6 4. d4 d6 5. f4 Bf5 6. Nc3 e6 7. Nf3 Be7 8. Be3 0-0 9. Be2 dxe5 10. fxe5 Nc6 11. 0-0



My coach and I had prepared this line very carefully, and I think that it's important to play opening lines in blitz that you are extremely familiar with, so you can play those first moves using little time.

11. ... f6 12. exf6 Bxf6

White has a clear weakness on the e6-square, and all my pieces are pointed towards the center.

13. b3?!

More natural is 13. Qd2!, followed



*"I am convinced that the **BEST WAY** to learning anything is to start off slowly and then speed up. It's the same with chess, where we see that young players focused on classical chess are generally improving faster than the speed geniuses. But we should not forget the **IMPORTANCE OF JOY**. If you like playing blitz, do it! I certainly do. If you want to use blitz for training, work out a strategy for how it can improve your game. Perhaps you can focus on openings or on finding candidate moves. But the work you do analyzing the games afterwards is more important than the games themselves."* - GM Jacob Aagaard

by Ra1-d1 when all my pieces are well-placed.

13. ... Qe7 14. Qe1

A typical idea, moving the queen off the d-file to avoid any pins.

14. ... Rad8 15. Rd1 Bg4?

Missing my response. The correct 15. ... Nb4 would have been challenging for me to deal with. Wild complications ensue after 16. Qg3 c5.

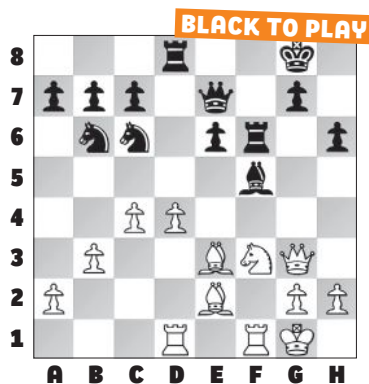
16. Ne4!

Black's position is awful after I eliminate the dark-squared bishop.

16. ... h6

I think Duda missed the in-between move 16. ... Bxf3 17. Nxf6+!.

17. Qg3 Bf5 18. Nxf6+ Rxf6



There are many promising options, so I spent some time here.

19. Nh4

Centralizing with 19. Ne5 is usually a good idea, and in blitz, it's great to keep things simple. After 19. ... Nxe5 20. dxe5 Rg6 21. Rxd8+ Qxd8 22. Qf4 I missed that the rook would be stuck on g6.

19. ... Bc2 20. Rxf6?

A miscalculation. Again, it

was best to just keep things simple with 20. Rd2.

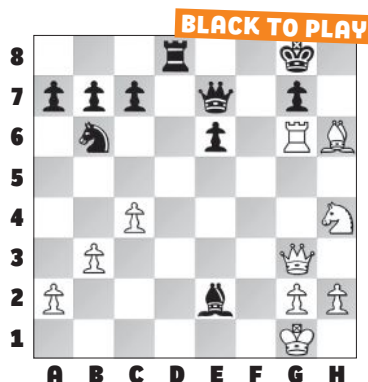
20. ... Bxd1

After the correct 20. ... Qxf6! 21. Rf1 Nxd4! Black would be back in the game!

21. Rg6?

Again allowing Black back into the game. I should have found the correct 21. Rxh6! Bxe2 22. Rh8+.

21. ... Nxd4 22. Bd3 Ne2+ 23. Bxe2 Bxe2 24. Bxh6



24. ... Rd1+??

A panic move, but this happens in blitz! With 24. ... Qc5+ 25. Qe3 Qxe3+ 26. Bxe3 Black is worse, but after 26. ... Kf7 there are definitely decent drawing chances in this endgame.

25. Kf2 Qf8+ 26. Nf3!

This is what Duda missed.

26. ... Rd7

Or 26. ... Bxf3 27. Rxg7+ Kh8 28. Rh7+.

27. Kxe2

Now I'm just up a piece.

27. ... Kh7 28. Ng5+ Kh8

29. Nxe6 Qf5 30. Bxg7+ Kg8 31. Bd4+ Kf7 32.

Rf6+, Black resigned.

This was a topsy-turvy



"I have a hard time understanding how blitz could be bad for your chess because blitz is chess. You get so much practice and experience because you play so many more games than you would in a [slow] tournament. It's also really fun, which is important in its own right, but enjoying something helps in improving at it. I don't know any strong players who don't play blitz." WFM Elizabeth Spiegel

game with many mistakes. That's blitz! It's almost impossible to be perfectly accurately in fast time controls, but as long as your mistakes are smaller than your opponent's, you can win. With this win I advanced to the quarter-final of the World Cup, and as a teenager representing my country on the world stage, I was very proud!

There was a boom in chess on the internet in 2020 after the COVID-19 pandemic started. Playing blitz on the internet became a popular activity for people staying at home, while



“Excellence in chess results from finding the right **BALANCE** among three issues: opening knowledge (moves and ideas), evaluation and understanding of positional cues, and calculating in pursuit of realizing those strategic concepts. Playing targeted blitz games could improve these three factors by **FORCING** one to remain highly focused in making accurate opening moves, thematic middlegame ones, and finally noticing ‘cheapos’ and tactical nuances in a short amount of time. They can also train our practical decisions due to the quick decision making in blitz.” - GM Elshan Moradiabadi

classical time control tournaments were on hold due to the public health risk. Chess was speeding up anyway, but I think this growth of online blitz really blossomed during the pandemic. Now-former world champion

Magnus Carlsen has even argued for it becoming the main form of chess. “I feel,” he said in December 2022, “that classical [chess] probably will be phased out a little bit, at least at the top level. At least that’s what I think should happen.”

There are clearly benefits to professional players with online rapid and blitz. It’s convenient (you can play from home!), there’s more prize money for less time playing, and the speed is exciting to online audiences. I have served as a commentator for many online events, and FIDE has even organized an Online Olympiad, where countries around the world compete in rapid and blitz battles.

The next game we’ll analyze is a key matchup from the 2021 FIDE Online Olympiad. I played first board for Team USA, and we were paired against Kazakhstan. We had already lost to them earlier in the tournament, and this game was part of a blitz tiebreaker. My opponent is Kazakhstan’s number one player, a very strong grandmaster.

KING’S INDIAN ATTACK (A04)

GM Rinat Jumabayev (2651)
GM Jeffery Xiong (2700)
FIDE Online Olympiad (1.13),
09.13.2021

1. Nf3

Jumabayev is normally a 1. d4 player, but he wants to mix things up in this game. His first four moves can be played quickly against almost any Black setup.

1. ... c5 2. g3 Nc6 3.

Bg2 g6 4. 0-0 Bg7 5. e4 d6 6. c3 e5
Fighting for control of the center.

7. Na3 Nge7 8. Nc2

I think already White is going for the wrong plan. The traditional King’s Indian Attack approach would be 8. d3 followed by Na3-c4 and a2-a4.

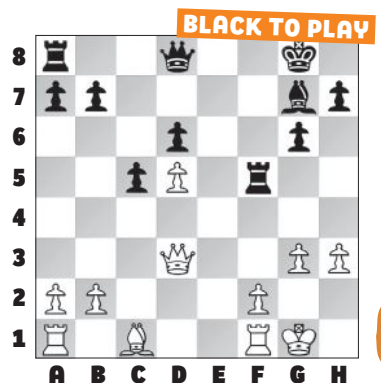
8. ... 0-0 9. d4 exd4! 10. cxd4 Bg4

Strong. Now my g7-bishop becomes a monster!

11. d5 Ne5 12. Ne3 Bh5!

This might look strange, but now the threat of ... f7-f5 is devastating.

13. h3 f5 14. exf5 Bxf3 15. Bxf3 Nxf3+ 16. Qxf3 Nxf5 17. Nxf5 Rxf5 18. Qd3



Material is equal, but Black dominates the board. With my next move I threaten to move my queen to f7, or to double rooks on the f-file.

18. ... Qd7 19. g4 Rf7 20. Kg2 Re8 21. a4 Qe7

White’s position is really hard to play, and it’s not far from collapse. The weaknesses on b2 and d5 are easy targets.

22. Be3 Qf6

Switching gears and deciding to hunt the king instead of grabbing



*"I played a lot of blitz in my youth, and I found it an enjoyable way to work on openings and tactical vision. My one concern is that players practicing online should make sure they get a **HEALTHY DIET** of slower games to develop their decision making, calculation, and endgame technique." - GM Joel Benjamin*



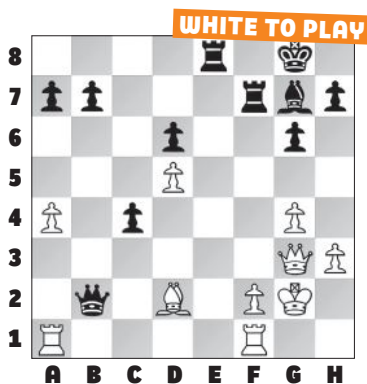
*"Past experience shows that the most talented kids can **GREATLY BENEFIT** from blitz. However, too much blitz can also lead to developing some bad habits. It really depends on your personality." - GM Gregory Kaidanov*

a pawn. Naturally 22. ... Bxb2 23. Rab1 Qf6 would also have been sufficient.

23. Bd2 c4 24. Qg3

After 24. Qxc4 Qf3+ 25. Kg1 Re4 White's position collapses after the h3- and g4-pawns fall.

24. ... Qxb2



With this move I'm not just winning a pawn, but also putting my queen in good position to attack the white king.

25. Be3 Be5 26. Qh4 Qc2 27. Rac1 Qe4+ 28. Kg1 Qxd5 29. Rfd1 Qf3 30. g5 d5

A nice finishing touch. Everything is guarded.

31. Qg4 Qxg4+ 32. hxg4 Bf4

I think this is best. Other moves,

like pushing the c-pawn, give White some defensive hopes.

33. Rxd5

The only real chance to defend was with 33. Bxf4, but there are few chances to save the game. Play might continue 33. ... Rxf4 34. Rxd5 Rg4+ 35. Kf1 Rc8 36. Rd7 c3 and Black should win.

33. ... Rxe3 34. fxe3 Bxe3+, White resigned.

Even in blitz, it's always important to check your analysis. So here I slowed down and thought for a few seconds before clicking the mouse and making this move. White resigned, giving our team a

precious point and allowing us to win the tiebreaker.

I am certainly not discounting the importance of classical time control chess. But chess is a sport, and rapid and blitz can be a good way to determine a winner between two evenly matched players in classical time control matches. Having strong blitz skills can really come in handy in those situations, and of course, blitz is a lot of fun too!

So if your coaches or parents come over and scold you for playing blitz, you can tell them that I gave you permission (and a few good reasons) to play! ♫



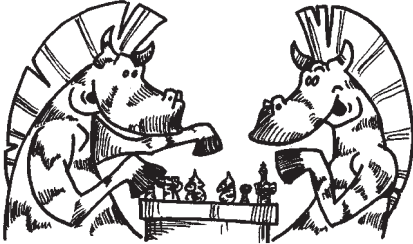
*"Blitz can be good by helping you to become **COMFORTABLE** with making decisions and using your intuition. However, you can ruin your overall game and slow your progress with too much blitz. You can become lazy by not calculating any variations in your games, and instead completely relying on your intuition." - WGM Katerina Nemcova*

Puzzle Me THIS



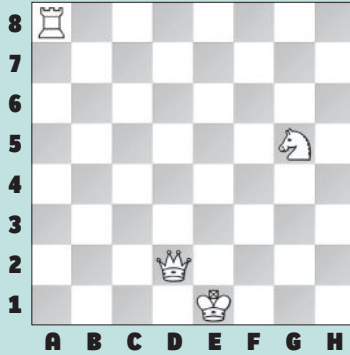
Puzzle Me THAT

BY JEFF COAKLEY



Welcome, friends! We're the zebra twins, Zed and Zephyr, here to bring you a variety of fun and challenging puzzles. A little bit of this and little bit of that. Some of the problems have special rules. Others are the standard kinds of positions that might happen in your own games. We hope you enjoy them all. Good luck!

1. TRIPLE LOYD



Place the black king on the board so that:

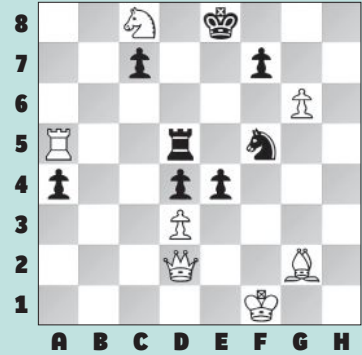
- (a) Black is in checkmate.
- (b) Black is in stalemate.
- (c) White has mate in one.

2. PROOF GAME



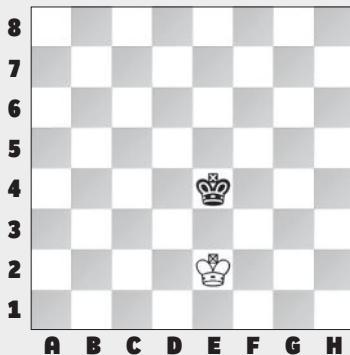
This position was reached after Black's fourth turn. What were the moves?

3. MAZE RACE



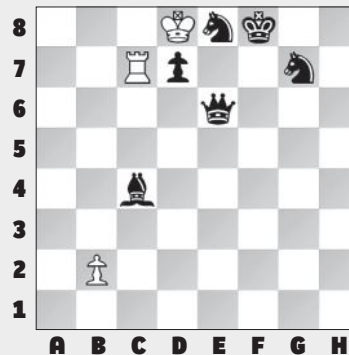
Only one white piece (rook, bishop, or knight) may move. Black does not get a turn. Capture the black king without taking any pieces or moving to a square guarded by Black. Which piece is the fastest — rook, bishop, or knight? Which is slowest?

4. MATE MAXIMIZER



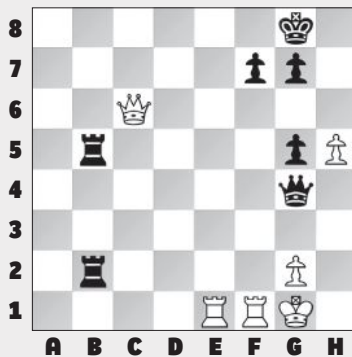
Add a white queen, rook, bishop, and knight so that White has the most mates in one.

5. SERIES-MATE IN 9



White plays nine moves in a row to checkmate Black. Only the final move may give check. Captures are allowed. Black does not get a turn. White may not place their own king in check, even if they get it out of check on the next move.

6. MATE IN 3



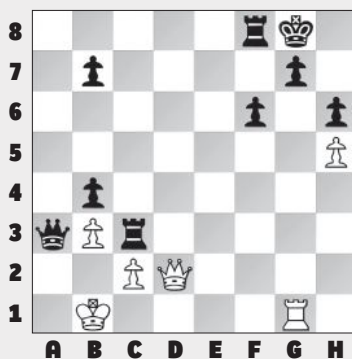
White to play. Mate in three.

7. COMBO



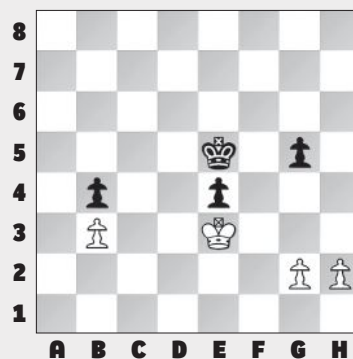
White to play and win material.

8. DEFENSE



White to play and not lose.

9. ENDGAME



White to play and win.

10. SYNTHETIC GAME

Make up a game in which Black mates White with a knight on the third move.

ANSWERS:

1) A. Ke3, mate. B. Kb1, stalemate. C. Ke7 (allowing 1. Qd8 mate) **2)** 1. d3 d6 2. Bf4 Qd7 3. Bxd6 Qxd6 4. d4 Qxd4. Tempo moves by black queen and white pawn. **3)** Knight is fastest. Rook is slowest. Here are the lines: Nc8-a7-c6-b4-a2-c1-e2-f4-h5-f6xe8 (10 moves), Bg2-h3-g4-d1-c2-b1-a2-c4-a6-b7-c6xe8 (11), Ra5-a6-c6-c1-e1-e2-f2-f4-g4-g5-h5-h8xe8 (12). **4)** Add Qd6 Rf5 Bh7 Nb3 for 24 mates (9Q + 13R + 2N). Note that each “disco check” by the rook counts separately.

Without discovered checks, the max number of mates is 16: add Qd7 Ra5 Bh2 Nf3. (12Q + 2R + 2N). **5)** 1. b3 2. bxc4 3. c5 4. c6 5. cxd7 6. dxe8=N 7. Rxd7 8. Nc7 9. Nxe6 mate. Promoting to queen on b8 takes one extra move. For example, 1. b4? 2. b5 3. b6 4. b7 5. b8=Q 6. Rxd7 7. Qb3 8. Qxc4 9. Qxe6 10. Qf7 mate. **6)** **1. Re8+ Kh7 2. Qh6+!** Amazing. After **2. ... Kxh6 Rh8** mate, while after **2. ... gxh6** the g-pawn is deflected, allowing

3. Rxf7 mate. Based on a game by the great Magnus Carlsen. **7)** **1. Qxe7+** Decoying the king into a double attack or fork. **1. ... Kxe7 2. Nxd5+** A forcing fork removes the guard of c6. After **2. ... exd5 3. Nc6+ Ke6 4. Nxb4** White is up a knight. **8)** Black has an extra rook and a powerful attack. It looks like curtains for White. But there is a defense! **1. Rxd7+ Kxd7** (1. ... Kh8? 2. Qxh6 mate) **2. Qd7+!** The most accurate move. (2. Qg2+ also draws, but requires more work. After 2. ... Rg3!? 3. Qxg3+, White must play for perpetual check.) **2. ... Kg8 3. Qg7+ Kxg7**, stalemate! Beats losing, right? Same thing after **2. ... Rf7 3. Qxf7+ Kxf7**. Note that other first moves don't work: 1. Qxh6? Rxb3+! 2. cxb3 Qxb3+ 3. Kc1 Rc8+ 4. Kd2 Rc2+ 5. Kd1 Qb1+ 6. Qc1 Qxc1 mate, or 1. Qg2? Rc7!. **9)** Material is even and Black has a passed pawn on e5, but White wins by creating their own passer on the h-file. **1. h3** (Be careful. Not 1. g3? when White loses after 1. ... g4!.) **1. ... Kd5 2. g3 Ke5 3. h4** Black has two choices at this point. (a) **3. ... gxh4 4. gxh4** Now both sides have passers. White wins because they have the *outside passed pawn*, the one further from the pawns on the other side of the board. **4. ... Kf5 5. h5** White gives up the passer to get a big head start in the race to the queenside. **5. ... Kg5 6. Kxe4 Kxh5 7. Kd4 Kg5 8. Kc4 Kf5 9. Kxb4** and White wins. (b) **3. ... g4 4. h5 Kf5 5. h6** In this line, White gives up the h-pawn so the king can win the g-pawn. **5. ... Kg6 6. Kxe4 Kxh6 7. Kf5 Kh5 8. Kf4 Kh6 9. Kxg4 Kg6 10. Kf4 Kf6 11. Ke4** Leaving the g-pawn behind, to score the point on the b-file. **11. ... Kg5 12. Kd4 Kg4 13. Kc4 Kxg3 14. Kxb4** and White wins. **10)** Here are two solutions: 1. e4 Nc6 2. Ne2 Ne5 3. g3 Nf3 mate, or 1. c4 Nc6 2. e3 Ne5 3. Ne2 Nd3 mate. ♠

TOURNAMENT LIFE ANNOUNCEMENTS

The Executive Board authorizes a temporary change in the US Chess Grand Prix (GP) rules for the period March 4, 2020 through June 30, 2023 out of concern for the unforeseeable impacts the COVID-19 (Coronavirus) could have on participation in GP events. The change allows organizers with guaranteed prize funds to change the status of their prize fund without first seeking US Chess permission to make the change. Please refer to the Tournament Life Announcement section in *Chess Life* for more information.

For complete details on individual events, please visit [new.uschess.org/node/\[TLA ID\]](http://new.uschess.org/node/[TLA ID]). You will find the event's unique five-digit TLA ID at the end of each TLA.

Nationals

NATIONAL CHAMPIONSHIP EVENT • HERITAGE EVENT • AMERICAN CLASSIC • GRAND PRIX • ENHANCED GRAND PRIX • JUNIOR GRAND PRIX

2023 National Open JUNE 14-18, 2023, NEVADA

Event site: Rio All Suites Hotel & Casino Address: 3700 W Flamingo Rd, Las Vegas, NV 89103 Overall prize fund: \$100,000 GP Points: 200 FIDE Rated: Y Handicap accessible: Y Residency restriction: N Organizer: Vegas Chess Festivals Email: vegaschess@gmail.com Phone: 702-930-9550 Website: <https://vegaschessfestival.com> TLA ID: 35980

NATIONAL CHAMPIONSHIP EVENT • GRAND PRIX • ENHANCED GRAND PRIX • JUNIOR GRAND PRIX

2023 U.S. Women's Open JUNE 14-15, 2023, NEVADA

Event site: Rio All Suites Hotel & Casino Address: 3700 W Flamingo Rd, Las Vegas, NV 89103 Overall prize fund: \$3,500 GP Points: 50 FIDE Rated: Y Handicap accessible: Y Residency restriction: N Organizer: Vegas Chess Festivals Email: vegaschess@gmail.com Phone: 702-930-9550 Website: <https://vegaschessfestival.com> TLA ID: 35981

NATIONAL CHAMPIONSHIP EVENT • AMERICAN CLASSIC • HERITAGE EVENT • ENHANCED GRAND PRIX

123rd Annual U.S. Open Championship JULY 29-AUGUST 6, 2023, MICHIGAN

Event site: DeVos Place Convention Center Address: 303 Monroe Ave. NW, Grand Rapids MI 49503 Overall prize fund: \$50,000 b/500; \$40,000 gtd. GP Points: 300 FIDE Rated: N Handicap accessible: Y Residency restriction: N Organizer: Boyd Reed Email: national-events@uschess.org Phone: n/a Website: <http://www.uschess.org/tournaments/2023/usopen> TLA ID: 37403

Grand Prix

The Grand Prix continues in 2023. For information visit new.uschess.org/us-chess-grand-prix-program.

GRAND PRIX

CFCC 2023 Sunshine Open & Scholastic JUNE 16-18, 2023, FLORIDA

Event site: Holiday Inn at Lake Buena Vista Address: 13351 State Road 535 Orlando, Florida, 32821 Overall prize fund: \$8,500 GP Points: 30 FIDE Rated: Y Handicap accessible: Y Residency restriction: N Organizer: Larry Storch Email: larrystorch88@gmail.com Phone: n/a Website: <https://www.centralchess.org> TLA ID: 37199

GRAND PRIX • ENHANCED GRAND PRIX

Walter Browne Memorial National Open Blitz Championship JUNE 17, 2023, NEVADA

Event site: Rio All Suites Hotel & Casino Address: 3700 W Flamingo Rd, Las Vegas, NV 89103 Overall prize fund: \$3,600 GP Points: 30 FIDE Rated: Y Handicap accessible: Y Residency restriction: N Organizer: Vegas Chess Festivals Email: vegaschess@gmail.com Phone: 702-930-9550 Website: <https://vegaschessfestival.com> TLA ID: 35998

GRAND PRIX • JUNIOR GRAND PRIX

2023 Chicago Summer Open JUNE 23-25, 2023, ILLINOIS

Event site: Hyatt Regency Schaumburg Address: 1800 E Golf Rd, Schaumburg, IL 60173 Overall prize fund: \$10,000 GP Points: 20 FIDE Rated: Y Handicap accessible: N Residency restriction: N Organizer: King Tournaments Email: bill@kingregistration.com Phone: n/a Website: <https://www.kingregistration.com/event/chisummeropen23> TLA ID: 37668

AMERICAN CLASSIC • GRAND PRIX • ENHANCED GRAND PRIX • JUNIOR GRAND PRIX

17th annual Philadelphia Open JUNE 23-25, 2023, PENNSYLVANIA

Event site: Sheraton Philadelphia Downtown Address: 201 N 17th St, Philadelphia, PA 19103 Overall prize fund: \$15,000 GP Points: 120 FIDE Rated: Y Handicap accessible: Y Residency restriction: N Organizer: Continental Chess Association Email: director@chess.us Phone: [761-35977](tel:761-35977) Website: <http://www.chessevents.us> TLA ID: 35977

GRAND PRIX • ENHANCED GRAND PRIX • JUNIOR GRAND PRIX

12th annual World Open Women's Championship

JUNE 29-30, 2023, PENNSYLVANIA

Event site: Sheraton Philadelphia Downtown Address: 201 N 17th St, Philadelphia, PA 19103 Overall prize fund: \$2,000 GP Points: 30 FIDE Rated: Y Handicap accessible: Y Residency restriction: N Organizer: Continental Chess Association Email: director@chess.us Phone: [761-35977](tel:761-35977) Website: <http://www.chessevents.us> TLA ID: 36017

GRAND PRIX • ENHANCED GRAND PRIX

12th annual World Open Game/7 Blitz JUNE 30, 2023, PENNSYLVANIA

Event site: Sheraton Philadelphia Downtown Address: 201 N 17th St, Philadelphia, PA 19103 Overall prize fund: \$1,500 GP Points: 20 FIDE Rated: N Handicap accessible: Y Residency restriction: N Organizer: Continental Chess Association Email: director@chess.us Phone: [761-35977](tel:761-35977) Website: <http://www.chessevents.us> TLA ID: 36038

HERITAGE EVENT • AMERICAN CLASSIC • GRAND PRIX • ENHANCED GRAND PRIX • JUNIOR GRAND PRIX

51st annual World Open, top 6 sections JUNE 30-JULY 4, 2023, PENNSYLVANIA

Event site: Sheraton Philadelphia Downtown Address: 201 N 17th St, Philadelphia, PA 19103 Overall prize fund: \$208,000 GP Points: 300 FIDE Rated: Y Handicap accessible: Y Residency restriction: N Organizer: Continental Chess Association Email: director@chess.us Phone: [761-35977](tel:761-35977) Website: <http://www.chessevents.us> TLA ID: 36019

HERITAGE EVENT • GRAND PRIX

46th Annual Green Bay Open JULY 1-2, 2023, WISCONSIN

Event site: Radisson Hotel & Conference Center Address: 2040 Airport Dr., Green Bay, WI 54313 Overall prize fund: \$2,600+ GP Points: 15 FIDE Rated: N Handicap accessible: Y Residency restriction: N Organizer: Luke A. Ludwig Email: lukaaludwig@aol.com Phone: 9204659859 Website: n/a TLA ID: 37548

GRAND PRIX • REGIONALS

13th Western New England Open JULY 8-9, 2023, MASSACHUSETTS

Event site: Amvets Post 74 Address: 2150 Main St, Three Rivers, MA 01080 Overall prize fund: \$4,850 GP Points: 40 FIDE Rated: N Handicap accessible: Y Residency restriction: N Organizer: Western Massachusetts Chess Association Email: wmass-chess@comcast.net Phone: n/a Website: <http://www.wmass-chess.us> TLA ID: 37914

HERITAGE EVENT • GRAND PRIX • ENHANCED GRAND PRIX • JUNIOR GRAND PRIX

53rd annual Continental Open JULY 13-16, 2023, MASSACHUSETTS

Event site: Best Western Royal Plaza Hotel Address: 181 Boston Post Road W, Marlborough MA 01752 Overall prize fund: \$30,000 GP Points: 150 FIDE Rated: Y Handicap accessible: Y Residency restriction: N Organizer: Continental Chess Association Email: director@chess.us Phone: [761-35977](tel:761-35977) Website: <http://www.chessevents.us> TLA ID: 36814

GRAND PRIX • ENHANCED GRAND PRIX • JUNIOR GRAND PRIX

16th annual Chicago Class JULY 14-16, 2023, ILLINOIS

Event site: Westin Chicago North Shore Hotel Address: 601 N Milwaukee Avenue, Wheeling IL 60090 Overall prize fund: \$30,000 GP Points: 150 FIDE Rated: Y Handicap accessible: Y Residency restriction: N Organizer: Continental Chess Association Email: director@chess.us Phone: [761-35977](tel:761-35977) Website: <http://www.chessevents.us> TLA ID: 36839

HERITAGE EVENT • GRAND PRIX • ENHANCED GRAND PRIX • JUNIOR GRAND PRIX

27th annual Pacific Coast Open JULY 21-23, 2023, CALIFORNIA, SOUTHERN

Event site: Airtel Plaza Hotel Address: Airtel Plaza Hotel, 7277 Valjean Ave, Van Nuys CA 91406 Overall prize fund: \$30,000 GP Points: 150 FIDE Rated: Y Handicap accessible: Y Residency restriction: N Organizer: Continental Chess Association Email: director@chess.us Phone: [761-35977](tel:761-35977) Website: <http://www.chessevents.us> TLA ID: 37297

GRAND PRIX • ENHANCED GRAND PRIX • JUNIOR GRAND PRIX

24th annual Pittsburgh Open JULY 21-23, 2023, PENNSYLVANIA

Event site: Doubletree Green Tree Address: 500 Mansfield Ave (near I-376 Exit 67), Pittsburgh PA 15205 Overall prize fund: \$13,000 GP Points: 80 FIDE Rated: Y Handicap accessible: Y Residency restriction: N Organizer: Continental Chess Association Email: director@chess.us Phone: [761-35977](tel:761-35977) Website: <http://www.chessevents.us> TLA ID: 37298

GRAND PRIX • ENHANCED GRAND PRIX • STATE CHAMPIONSHIP EVENT

Texas Action Championship JULY 22, 2023, TEXAS

Event site: Waco Convention Center Address: 100 Washington Avenue, Waco, TX 76701 Overall prize fund: \$1,600 (projected); \$700 gtd Open GP Points: 15 FIDE Rated: N Handicap accessible: Y Residency restriction: N Organizer: Innovative Chess Solutions, LLC Email: csbrown.entrepreneur@gmail.com Phone: n/a Website: <https://innovativechessolutions.com/> TLA ID: 37971

HERITAGE EVENT • GRAND PRIX • ENHANCED GRAND PRIX • JUNIOR GRAND PRIX

31st annual Southern Open JULY 28-30, 2023, FLORIDA

Event site: Wyndham Orlando Resort Address: Wyndham Orlando Resort, 8001 International Drive, Orlando 32819 Overall prize fund: \$20,000 GP Points: 150 FIDE Rated: Y Handicap accessible: Y Residency restriction: N Organizer: Continental Chess Association Email: director@chess.us Phone: [761-35977](tel:761-35977) Website: <http://www.chessevents.us> TLA ID: 37301

GRAND PRIX

JULY 28-30, 2023

The 1st Annual Pennsylvania Classic

Event site: Sheraton Bucks County Langhorne Address: 400 Oxford Valley Road, Langhorne, PA, 19047 Overall prize fund: see TLA GP Points: n/a FIDE Rated: Y Handicap accessible: Y Residency restriction: N Organizer: DMV Chess Email: josh@dmvchess.com Phone: n/a Website: <https://www.dmvchess.com/> TLA ID: 38203

HERITAGE EVENT • GRAND PRIX • ENHANCED GRAND PRIX • JUNIOR GRAND PRIX

28th annual Bradley Open JULY 28-30, 2023, CONNECTICUT

Event site: Sheraton Hartford Hotel at Bradley Airport Address: 1 Bradley Airport, Windsor Locks CT 06096 Overall prize fund: \$15,000 GP Points: 120 FIDE Rated: Y Handicap accessible: Y Residency restriction: N Organizer: Continental Chess Association Email: director@chess.us Phone: [761-35977](tel:761-35977) Website: <http://www.chessevents.us> TLA ID: 37352

GRAND PRIX • ENHANCED GRAND PRIX • JUNIOR GRAND PRIX

13th annual Central California Open AUGUST 11-13, 2023, CALIFORNIA, NORTHERN

Event site: Doubletree Hotel Address: 2233 Ventura St, Fresno CA 93710 Overall prize fund: \$10,000 GP Points:

PLEASE NOTE

DEADLINE FOR PRINT TLA SUBMISSIONS

TLAs appearing in *Chess Life Kids* must be uploaded online on the 10th, two months prior to the issue cover date in which the ad is to appear. (For example, October TLAs must be uploaded no later than August 10th.) TLAs uploaded past this deadline cannot be published without special approval by US Chess.

100 FIDE Rated: Y Handicap accessible: Y Residency restriction: N Organizer: Continental Chess Association Email: director@chess.us Phone: [703-415-6600](tel:703-415-6600) Website: <http://www.chessevents.us> TLAID: 37944

HERITAGE EVENT • AMERICAN CLASSIC • GRAND PRIX • ENHANCED GRAND PRIX • JUNIOR GRAND PRIX

55th annual Atlantic Open
AUGUST 25-27, 2023, VIRGINIA

Event site: Sheraton Reston Hotel Address: 11810 Sunrise Valley Drive, Reston VA 20191 Overall prize fund: \$30,000 GP Points: 150 FIDE Rated: Y Handicap accessible: Y Residency restriction: N Organizer: Continental Chess Association Email: director@chess.us Phone: [703-415-6600](tel:703-415-6600) Website: <http://www.chessevents.us> TLAID: 37675

GRAND PRIX • ENHANCED GRAND PRIX • JUNIOR GRAND PRIX

16th annual Indianapolis Open
AUGUST 25-27, 2023, INDIANA

Event site: Hilton Garden Inn Indianapolis Airport Address: 8910 Hatfield Drive, Indianapolis IN 46241 Overall prize fund: \$15,000 GP Points: 100 FIDE Rated: Y Handicap accessible: Y Residency restriction: N Organizer: Continental Chess Association Email: director@chess.us Phone: [703-415-6600](tel:703-415-6600) Website: <http://www.chessevents.us> TLAID: 37676

HERITAGE EVENT • GRAND PRIX • ENHANCED GRAND PRIX • STATE CHAMPIONSHIP EVENT

145th annual New York State Championship
SEPTEMBER 1-4, 2023, NEW YORK

Event site: Albany Marriott Address: 189 Wolf Road, Albany, NY 12205 Overall prize fund: \$18,000 GP Points: 150 FIDE Rated: Y Handicap accessible: Y Residency restriction: N Organizer: Continental Chess Association Email: director@chess.us Phone: [703-415-6600](tel:703-415-6600) Website: <http://www.chessevents.us> TLAID: 38164

Online

Online Scholastic Tournaments Every Wednesday
BEGINNING APRIL 14, 2021-ONGOING WEEKLY

Event site: Online Address: lichess.org Overall prize fund: n/a GP Points: n/a FIDE Rated: N Handicap accessible: n/a Residency restriction: N Organizer: DMV Chess Email: tournaments@dmvchess.com Phone: 703-415-6600 Website: <https://www.dmvchess.com/scholastic-tournaments> TLAID: 30042

Online Scholastic Tournaments Every Saturday
BEGINNING APRIL 17, 2021-ONGOING WEEKLY

Event site: Online Address: lichess.org Overall prize fund: n/a GP Points: n/a FIDE Rated: N Handicap accessible: n/a Residency restriction: N Organizer: DMV Chess Email: tournaments@dmvchess.com Phone: 703-415-6600 Website: <https://www.dmvchess.com/scholastic-tournaments> TLAID: 30043

Online Open Tournaments Every Sunday
BEGINNING APRIL 18, 2021-ONGOING WEEKLY

Event site: Online Address: lichess.org Overall prize fund: n/a GP Points: n/a FIDE Rated: N Handicap accessible: n/a Residency restriction: N Organizer: DMV Chess Email: tournaments@dmvchess.com Phone: 703-415-6600 Website: <https://www.dmvchess.com/open-tournaments> TLAID:30044

Regional

ALABAMA

DECEMBER 23, 2021-ONGOING ON SUNDAY, THURSDAY, AND SATURDAY
Weekly and Monthly Rated Chess at Memphis Chess Club (TN)
See Tennessee.

ARKANSAS

DECEMBER 23, 2021-ONGOING ON SUNDAY, THURSDAY, AND SATURDAY
Weekly and Monthly Rated Chess at Memphis Chess Club (TN)
See Tennessee.

JULY 15, 2023
2023 Clinton H. Pearson, Jr. Memorial Summer Open Chess (TN) Tournament
See Tennessee.

CONNECTICUT

JULY 28-30, 2023
The 1st Annual Pennsylvania Classic (PA)
See Grand Prix.

JULY 29, 2023
The 1st Annual Pennsylvania Classic Scholastic Tournament (PA)
See Pennsylvania.

JULY 29, 2023
Action at the 1st Annual Pennsylvania Classic (PA)
See Pennsylvania.

DELAWARE

JULY 28-30, 2023
The 1st Annual Pennsylvania Classic (PA)
See Grand Prix.

JULY 29, 2023
The 1st Annual Pennsylvania Classic Scholastic Tournament (PA)
See Pennsylvania.

JULY 29, 2023
Action at the 1st Annual Pennsylvania Classic (PA)
See Pennsylvania.

DIST. OF COLUMBIA

JULY 28-30, 2023
The 1st Annual Pennsylvania Classic (PA)
See Grand Prix.

JULY 29, 2023
The 1st Annual Pennsylvania Classic Scholastic Tournament (PA)
See Pennsylvania.

JULY 29, 2023
Action at the 1st Annual Pennsylvania Classic (PA)
See Pennsylvania.

GEORGIA

APRIL 8, 2023-ONGOING MONTHLY
Pizza Scholastic
Event site: The Boardroom Address: 1675 Peachtree Pkwy, Suite 180, Cumming Georgia 30041 Overall prize fund: n/a GP Points: n/a FIDE Rated: N Handicap accessible: Y Residency restriction: N Organizer: ThinkChess, LLC Email: info@myThinkChess.com Phone: 770.744.8595 Website: <https://mythinkchess.com/> TLAID: 37216

JULY 15, 2023
2023 Clinton H. Pearson, Jr. Memorial Summer Open Chess (TN) Tournament
See Tennessee.

ILLINOIS

JUNE 23-25, 2023
2023 Chicago Summer Open (IL)
See Grand Prix.

AUGUST 11-18, 2023
XXXIII Pan-American Youth Chess Festival
Event site: Hyatt Regency McCormick Place Address: 2233 South Dr. Martin Luther King Jr. Dr., Chicago, IL 60616

Overall prize fund: Direct FIDE titles and norms GP Points: n/a FIDE Rated: Y Handicap accessible: Y Residency restriction: N Organizer: David Heiser Email: david.heiser@renaissanceknights.org Phone: n/a Website: <https://panamyouth2023.com/> TLAID: 36757

KENTUCKY

DECEMBER 23, 2021-ONGOING ON SUNDAY, THURSDAY, AND SATURDAY
Weekly and Monthly Rated Chess at Memphis Chess Club (TN)
See Tennessee.

REGIONALS

JUNE 10, 2023
Derby City Classic
Event site: Broadway Theater Address: 816 East Broadway, Louisville, KY Overall prize fund: \$1,050 GP Points: n/a FIDE Rated: N Handicap accessible: Y Residency restriction: N Organizer: Corbin Seavers Email: urbanlouisvillechess@yahoo.com Phone: n/a Website: n/a TLAID: 38022

JULY 15, 2023
2023 Clinton H. Pearson, Jr. Memorial Summer Open Chess (TN) Tournament
See Tennessee.

MAINE

JULY 28-30, 2023
The 1st Annual Pennsylvania Classic (PA)
See Grand Prix.

JULY 29, 2023
The 1st Annual Pennsylvania Classic Scholastic Tournament (PA)
See Pennsylvania.

JULY 29, 2023
Action at the 1st Annual Pennsylvania Classic (PA)
See Pennsylvania.

MARYLAND

MARYLAND CHESS TOURNAMENTS (NORTH PENN CHESS CLUB)
Maryland Chess runs 21+ annual K-12 tournaments every other Saturday from September through June & 12+ annual 1-day or multi-day open tournaments for adults & K-12 players on weekends. See www.MDChess.org for tournament announcements, registration for tournaments, updated wallcharts, live standings, signup for K-12 & open e-newsletters, lists of coaches & clubs, camp announcements, & news. K-12 MD players who compete in the Varsity section (for players rated 1600+) of 1 of 8+ annual MD-Sweet-16 Qualifiers can qualify for the \$48,000+ scholarship to the University of Maryland, Baltimore County awarded annually. UMBC is a perennial top-10 contender for the collegiate national chess championship.

JULY 28-30, 2023
The 1st Annual Pennsylvania Classic (PA)
See Grand Prix.

JULY 29, 2023
The 1st Annual Pennsylvania Classic Scholastic Tournament (PA)
See Pennsylvania.

JULY 29, 2023
Action at the 1st Annual Pennsylvania Classic (PA)
See Pennsylvania.

MASSACHUSETTS

JULY 28-30, 2023
The 1st Annual Pennsylvania Classic (PA)
See Grand Prix.

JULY 29, 2023
The 1st Annual Pennsylvania Classic Scholastic Tournament (PA)
See Pennsylvania.

JULY 29, 2023
Action at the 1st Annual Pennsylvania Classic (PA)
See Pennsylvania.

MISSISSIPPI

DECEMBER 23, 2021-ONGOING ON SUNDAY, THURSDAY, AND SATURDAY
Weekly and Monthly Rated Chess at Memphis Chess Club (TN)
See Tennessee.

MISSOURI

DECEMBER 23, 2021-ONGOING ON SUNDAY, THURSDAY, AND SATURDAY
Weekly and Monthly Rated Chess at Memphis Chess Club (TN)
See Tennessee.

NEVADA

JUNE 16, 2023
Youth Trophy Tournament
Event site: Rio All Suites Hotel & Casino Address: 3700 W Flamingo Rd, Las Vegas, NV 89103 Overall prize fund: Trophies GP Points: n/a FIDE Rated: N Handicap accessible: Y Residency restriction: N Organizer: Vegas Chess Festivals Email: vegaschess@gmail.com Phone: 702-930-9550 Website: <https://vegaschessfestival.com> TLAID: 36001

JUNIOR GRAND PRIX

JUNE 17-19, 2023
2023 Las Vegas International Youth Championship
Event site: Rio All Suites Hotel & Casino Address: 3700 W Flamingo Rd, Las Vegas, NV 89103 Overall prize fund: n/a GP Points: n/a FIDE Rated: N Handicap accessible: Y Residency restriction: N Organizer: Vegas Chess Festivals Email: vegaschess@gmail.com Phone: 702-930-9550 Website: <https://vegaschessfestival.com> TLAID: 36000

NEW HAMPSHIRE

JULY 28-30, 2023
The 1st Annual Pennsylvania Classic (PA)
See Grand Prix.

JULY 29, 2023
The 1st Annual Pennsylvania Classic Scholastic Tournament (PA)
See Pennsylvania.

JULY 29, 2023
Action at the 1st Annual Pennsylvania Classic (PA)
See Pennsylvania.

NEW JERSEY

REGIONALS

JUNE 17, 2023
King's Chess Club Youth/Young Adult Quads
Event site: Grace Church Bethlehem Campus Address: 758 Route 10, Randolph, NJ 07869 Overall prize fund: n/a GP Points: n/a FIDE Rated: N Handicap accessible: Y Residency restriction: N Organizer: Bob McAdams Email: fambright@optonline.net Phone: 9736943988 Website: n/a TLAID: 37931

JULY 28-30, 2023
The 1st Annual Pennsylvania Classic (PA)
See Grand Prix.

JULY 29, 2023
The 1st Annual Pennsylvania Classic Scholastic Tournament (PA)
See Pennsylvania.

JULY 29, 2023
Action at the 1st Annual Pennsylvania Classic (PA)
See Pennsylvania.

For complete details on individual events, please visit [new.uschess.org/node/\[TLA ID\]](http://new.uschess.org/node/[TLA ID]). You will find the event's unique five-digit TLA ID at the end of each TLA.

NEW YORK

JULY 28-30, 2023

The 1st Annual Pennsylvania Classic (PA)

See Grand Prix.

JULY 29, 2023

The 1st Annual Pennsylvania Classic Scholastic Tournament (PA)

See Pennsylvania.

JULY 29, 2023

Action at the 1st Annual Pennsylvania Classic (PA)

See Pennsylvania.

NORTH CAROLINA

JULY 15, 2023

2023 Clinton H. Pearson, Jr. Memorial Summer Open Chess (TN) Tournament

See Tennessee.

OHIO

JULY 28-30, 2023

The 1st Annual Pennsylvania Classic (PA)

See Grand Prix.

JULY 29, 2023

The 1st Annual Pennsylvania Classic Scholastic Tournament (PA)

See Pennsylvania.

JULY 29, 2023

Action at the 1st Annual Pennsylvania Classic (PA)

See Pennsylvania.

PENNSYLVANIA

North Penn Chess Club

Main & Richardson - St. John's UCC, 500 West Main St., Lansdale, PA 19446. See www.northpennchessclub.org for schedules & info or 215-699-8418

JUNE 20, 2023

June Quick Quads

Event site: Pittsburgh Chess Club Address: 5869 Forbes Ave., Pittsburgh, PA 15217 Overall prize fund: n/a GP Points: n/a FIDE Rated: N Handicap accessible: N Residency restriction: N Organizer: Pittsburgh Chess Club Email: director@pittsburghchessclub.org Phone: 412-421-1881 Website: <https://pittsburghchessclub.org/uscf/june-quick-2023> TLA ID: 37207

HERITAGE EVENT • JUNIOR GRAND PRIX

JUNE 23-25, 2023

51st annual World Open, lower sections

Event site: Sheraton Philadelphia Downtown Address: 201 N 17th St, Philadelphia, PA 19103 Overall prize fund: \$17,000 GP Points: n/a FIDE Rated: N Handicap accessible: Y Residency restriction: N Organizer: Continental Chess Association Email: director@chess.us Phone: [215-597-3594](tel:215-597-3594) Website: <http://www.chessevents.us> TLA ID: 36030

JUNIOR GRAND PRIX

JUNE 26-27, 2023

15th annual World Open Under 13 Championship

Event site: Sheraton Philadelphia Downtown Address: 201 N 17th St, Philadelphia, PA 19103 Overall prize fund: n/a GP Points: n/a FIDE Rated: N Handicap accessible: Y Residency restriction: N Organizer: Continental Chess Association Email: director@chess.us Phone: [215-597-3594](tel:215-597-3594) Website: <http://www.chessevents.us> TLA ID: 35994

JUNIOR GRAND PRIX

JUNE 26-28, 2023

2nd annual World Open Amateur

Event site: Sheraton Philadelphia Downtown Address: 201 N 17th St, Philadelphia, PA 19103 Overall prize fund: \$3,000 GP Points: n/a FIDE Rated: Y Handicap accessible: Y Residency restriction: N Organizer: Continental Chess Association Email: director@chess.us Phone: [215-597-3594](tel:215-597-3594) Website: <http://www.chessevents.us> TLA ID: 35957

JUNIOR GRAND PRIX • REGIONALS

JUNE 28-29, 2023

World Open Junior Championship

Event site: Sheraton Philadelphia Downtown Address: 201 N 17th St, Philadelphia, PA 19103 Overall prize fund: \$5,000 GP Points: n/a FIDE Rated: N Handicap accessible: Y Residency restriction: N Organizer: Continental Chess Association Email: director@chess.us Phone: [215-597-3594](tel:215-597-3594) Website: <http://www.chessevents.us> TLA ID: 36031

REGIONALS

JUNE 29, 2023

10th annual World Open Action

Event site: Sheraton Philadelphia Downtown Address: 201 N 17th St, Philadelphia, PA 19103 Overall prize fund: see TLA GP Points: n/a FIDE Rated: N Handicap accessible: Y Residency restriction: N Organizer: Continental Chess Association Email: director@chess.us Phone: [215-597-3594](tel:215-597-3594) Website: <http://www.chessevents.us> TLA ID: 36036

JULY 29, 2023

The 1st Annual Pennsylvania Classic Scholastic Tournament

Event site: Sheraton Bucks County Langhorne Address: 400 Oxford Valley Road, Langhorne, PA, 19047 Overall prize fund: n/a GP Points: n/a FIDE Rated: N Handicap accessible: Y Residency restriction: N Organizer: DMV Chess Email: josh@dmvchess.com Phone: n/a Website: <https://www.dmvchess.com/> TLA ID: 38204

JULY 29, 2023

Action at the 1st Annual Pennsylvania Classic

Event site: Sheraton Bucks County Langhorne Address: 400 Oxford Valley Road, Langhorne, PA, 19047 Overall prize fund: n/a GP Points: n/a FIDE Rated: N Handicap accessible: Y Residency restriction: N Organizer: DMV Chess Email: josh@dmvchess.com Phone: n/a Website: <https://www.dmvchess.com/> TLA ID: 38205

RHODE ISLAND

JULY 28-30, 2023

The 1st Annual Pennsylvania Classic (PA)

See Grand Prix.

JULY 29, 2023

The 1st Annual Pennsylvania Classic Scholastic Tournament (PA)

See Pennsylvania.

JULY 29, 2023

Action at the 1st Annual Pennsylvania Classic (PA)

See Pennsylvania.

TENNESSEE

DECEMBER 23, 2021-ONGOING ON SUNDAY, THURSDAY, AND SATURDAY

Weekly and Monthly Rated Chess at Memphis Chess Club

Event site: Memphis Chess Club Address: 195 Madison Ave Suite 101, Memphis, TN 38103 Overall prize fund: n/a GP Points: n/a FIDE Rated: N Handicap accessible: Y Residency restriction: N Organizer: Memphis Chess Club Email: info@memphischessclub.com Phone: 731-8685755 Website: <https://www.memphischessclub.com/> TLA ID: 32334

JULY 15, 2023

2023 Clinton H. Pearson, Jr. Memorial Summer Open Chess Tournament

Event site: Fair Park Senior Center, Cumberland County Community Complex Address: 11398 Livingston Road, Crossville, TN 38555 Overall prize fund: \$1,700 GP Points: 15 FIDE Rated: N Handicap accessible: Y Residency restriction: N Organizer: Cumberland County Chess Club Email: cumberlandcountychessclub@gmail.com Phone: (931) 200-9038 Website: <http://www.cumberlandcountychessclub.org> TLA ID: 37674

VERMONT

JULY 28-30, 2023

The 1st Annual Pennsylvania Classic (PA)

See Grand Prix.

JULY 29, 2023

The 1st Annual Pennsylvania Classic Scholastic Tournament (PA)

See Pennsylvania.

JULY 29, 2023

Action at the 1st Annual Pennsylvania Classic (PA)

See Pennsylvania.

VIRGINIA

JULY 28-30, 2023

The 1st Annual Pennsylvania Classic (PA)

See Grand Prix.

JULY 29, 2023

The 1st Annual Pennsylvania Classic Scholastic Tournament (PA)

See Pennsylvania.

JULY 29, 2023

Action at the 1st Annual Pennsylvania Classic (PA)

See Pennsylvania.

WISCONSIN

JUNE 23-25, 2023

2023 Chicago Summer Open (IL)

See Grand Prix.

JULY 1-2, 2023

46th Annual Green Bay Open (WI)

See Grand Prix.

ADVERTISE WITH US CHESS

Want to know more?
For more information and rates, see new.uschess.org/about/advertise/

US CHESS

Chess Life KIDS (USPS 023-567, ISSN: 1932-5894) is published in February, April, June, August, October, and December of every year by US Chess, 333 S. 18th Street, Suite 210, St. Louis, MO 63103. Periodical postage paid at St. Louis, Missouri, and additional mailing offices.

CHANGE OF ADDRESS: Be sure to notify us at once of any change of address. Please include your old address and your new address, along with your US Chess I.D. number.

POSTMASTER: Send address changes to US Chess, PO Box 775308, St. Louis, MO 63177.

CAVEMAN SUMMER CHESS Festival



JULY 21-23, 2023

Location: Elmhurst University, Elmhurst, IL (15 minutes from O'Hare, just west of Chicago)

CAMPS WITHIN THE CAMP JULY 16-21

- ✓ Master Class- GM instr only [Already two entrants: Arthur Xu 2250, Natalie Wisniowski 2150]
- ✓ Classes for players from 5 to 85, fundamental and advanced, separated by age and strength
- ✓ Family and chaperone registrations to accompany young campers



**Add'l invited
instructors - TBD soon**

Top Women:

GM Krush, WIM Root PhD, WGM Yu

Top Men:

GM's Lenderman, Novikov, Mitkov

Camp Director:

FM, FT Kevin Bachler

Co-Director: Deb Socha

TOURNAMENTS JULY 21-23

- ✓ US Senior Open (Nat'l champ!)
- ✓ Caveman Medior Open
- ✓ US Junior Open (Nat'l champ!)
- ✓ US Blind (Nat'l champ!)
- ✓ Caveman Beginner Open (7/22)
- ✓ Registration on www.kingregistration.com

Tournaments and camps for players of all ages and strengths in a Family Friendly environment with side events for non-players



GM Kaidanov



GM Yermolinsky



GM Shulman



GM Goldin



GM Gurevich



GIFT CERTIFICATES AVAILABLE



Also: dinner theater, shopping excursions, fitness classes

Information and Registration: www.cavemanchess.com **Email:** contact@cavemanchess.com



US CHESS
FEDERATION SALES

The United States' Largest Chess Specialty Retailer

888.51.CHESS (512.4377) ★ www.USCFSales.com

UNBEATABLE BOOK AND MAGAZINE DEALS AT US CHESS SALES

Over 700 Titles
Starting at
Just \$1!



Supplies are Limited -
Sold on a First Come, First Sold Basis
No Additional Discounts Apply -
While Supplies Last

**Free Ground Shipping On All Books,
Software and DVDS at US Chess Sales**

\$25.00 Minimum - Excludes Clearance, Shopworn and Items Otherwise Marked